

CFTC COMMITMENT OF TRADERS REPORT

As of 6/26/2018

TRADITIONAL FUNDS net position changes

Wed to Tue, in 000 contracts

	Corn	Bean	Meal	Oil	Chi. Wheat	KC Wheat	Min Wheat
Futures Only	(83.6)	(56.9)	(16.2)	(1.0)	(2.8)	(17.5)	(1.7)
Futures & Options Combined	(47.3)	(28.1)	(18.3)	3.9	(2.6)	(18.5)	(1.4)

TRADITIONAL COMMERCIAL net position changes

	Corn	Bean	Meal	Oil	Chi. Wheat	KC Wheat	Min Wheat
Futures Only	77.9	51.7	18.5	0.3	3.3	17.9	0.3
Futures & Options Combined	39.4	20.3	20.5	(4.8)	3.2	18.6	(0.0)

MANAGED MONEY net position changes

	Corn	Bean	Meal	Oil	Chi. Wheat	KC Wheat	Min Wheat
Futures Only	(33.3)	(25.6)	(21.4)	1.1	(7.2)	(16.3)	(2.5)
Futures & Options Combined	(46.3)	(31.2)	(20.4)	3.0	(11.7)	(16.3)	(2.6)

SWAP DEALERS net position changes

	Corn	Bean	Meal	Oil	Chi. Wheat	KC Wheat	Min Wheat
Futures Only	9.4	(15.0)	6.7	(5.0)	7.0	5.8	(0.9)
Futures & Options Combined	(5.6)	(22.9)	7.2	(2.8)	4.8	5.9	(0.7)

PRODUCERS/END USERS net position changes

	Corn	Bean	Meal	Oil	Chi. Wheat	KC Wheat	Min Wheat
Futures Only	68.5	66.7	11.8	5.3	(3.8)	12.1	1.2
Futures & Options Combined	44.9	43.2	13.4	(2.1)	(1.6)	12.7	0.7

INDEX net position changes

	Corn	Bean	Meal	Oil	Chi. Wheat	KC Wheat	Min Wheat
Futures & Options Combined	(11.7)	(21.6)	2.0	(9.9)	1.3	(4.9)	NA

SUPPLEMENTAL NON-COMMERCIAL net position changes

	Corn	Bean	Meal	Oil	Chi. Wheat	KC Wheat	Min Wheat
Futures & Options Combined	(43.0)	(23.0)	(16.3)	5.9	(2.9)	(13.6)	NA

OPEN INTEREST net position changes

Wed to Tue, in 000 contracts

	Corn	Bean	Meal	Oil	Chi. Wheat	KC Wheat	Min Wheat
Futures Only	(106.4)	(79.3)	(16.1)	(25.5)	(13.5)	(22.0)	(3.2)
Futures & Options Combined	(249.6)	(179.2)	(48.2)	(38.2)	(63.2)	(30.0)	(4.0)

Source: CFTC and FI

Wed to Tue, in 000 contracts

6/29/2018

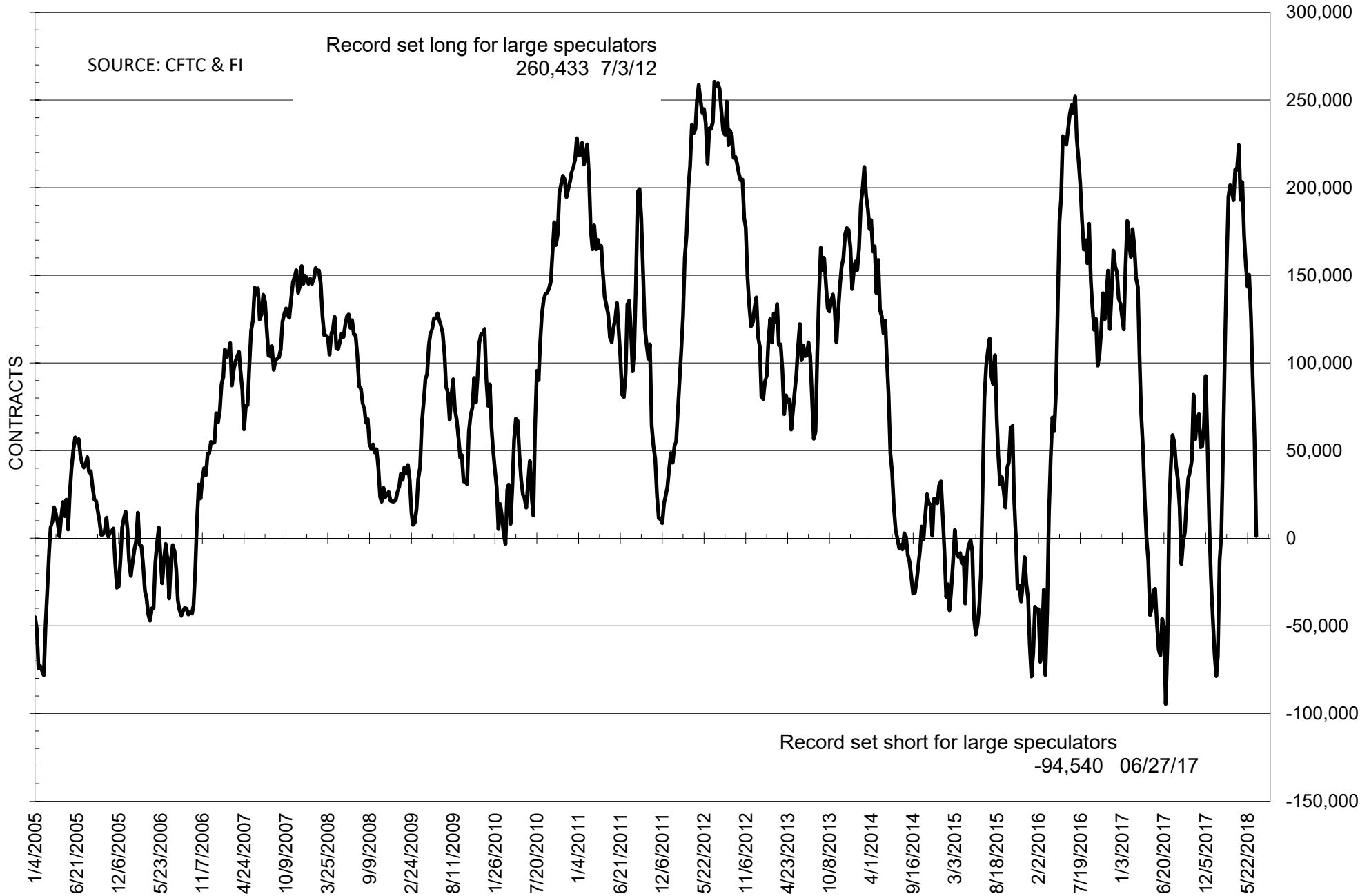
**COMMITMENT OF TRADERS
FUTURES ONLY NET POSITIONS
AS OF 06/26/2018
(IN THOUSAND CONTRACTS)**

	COMMERCIAL				(FUND) NON COMMERCIAL				(SPEC) NON-REPORTABLE			
	26-Jun	19-Jun	12-Jun	5-Jun	26-Jun	19-Jun	12-Jun	5-Jun	26-Jun	19-Jun	12-Jun	5-Jun
	WHEAT											
Chicago	2.3	-1.0	-35.9	-28.0	15.6	18.4	49.7	40.2	-17.9	-17.4	-13.8	-12.2
Kansas City	-38.0	-55.9	-74.2	-69.3	44.7	62.2	76.5	73.2	-6.6	-6.3	-2.2	-3.9
Minneapolis	6.2	5.9	2.3	-0.3	-4.9	-3.2	0.3	3.1	-1.3	-2.7	-2.6	-2.8
All Wheat	-29.6	-51.0	-107.9	-97.5	55.4	77.4	126.5	116.5	-25.8	-26.4	-18.6	-18.9
CORN	-136.7	-214.6	-231.0	-262.6	181.3	264.9	286.7	330.0	-44.6	-50.3	-55.7	-67.5
OATS	-0.4	-0.2	-0.6	-1.2	-0.1	-0.2	-0.1	0.2	0.5	0.4	0.7	1.0
SOYBEANS	29.0	-22.7	-49.7	-78.7	1.3	58.2	91.7	126.9	-30.3	-35.5	-41.9	-48.2
SOY OIL	34.1	33.7	9.6	-2.6	-37.2	-36.2	-17.8	-6.3	3.1	2.5	8.2	8.9
SOY MEAL	-115.4	-133.9	-134.6	-146.9	105.7	121.9	124.1	135.0	9.7	12.0	10.5	11.9

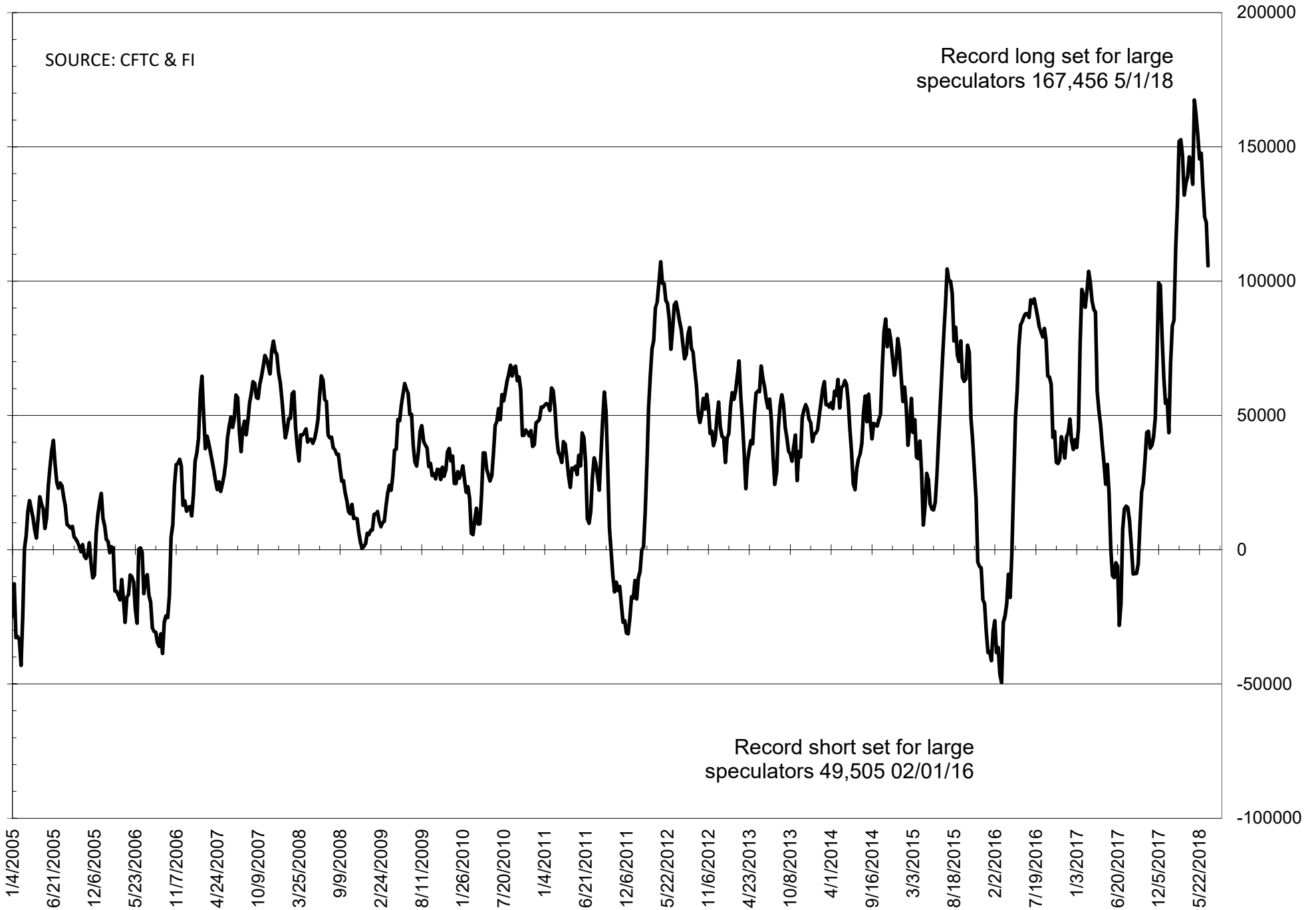
	TOTAL OPEN INTEREST				NEARBY FUTURES PRICE					26-Jun-18 LAST REPORTED % HELD BY TRADERS			
	26-Jun	19-Jun	12-Jun	5-Jun	N 29-Jun	N 26-Jun	N 19-Jun	N 12-Jun	N 5-Jun	LARGE FUND		SMALL	
										LONG	SHORT	LONG	SHORT
WHEAT													
Chicago	478880	492425	540509	547074	497.50	469.50	499.50	534.50	510.00	31%	28%	6%	9%
Kansas City	249919	271951	293320	307909	470.75	458.00	519.75	553.50	529.00	35%	17%	8%	10%
Minneapolis	52881	56102	54966	55582	521.50	533.75	570.75	592.50	597.00	21%	30%	22%	24%
CORN	1885804	1992169	1963233	1988935	350.25	352.50	361.25	377.50	383.75	33%	23%	9%	11%
OATS	5084	5296	5260	5247	250.50	241.25	233.50	242.25	244.00	23%	26%	42%	33%
SOYBEANS	838292	917545	923162	912593	858.50	867.25	905.50	954.00	1001.25	21%	20%	7%	11%
SOY OIL	500152	525643	506204	512124	29.12	28.94	29.50	30.05	30.79	26%	34%	8%	8%
SOY MEAL	495303	511414	511108	517330	332.80	333.70	338.90	353.50	367.30	22%	6%	11%	7%

SOURCE: CFTC & FI

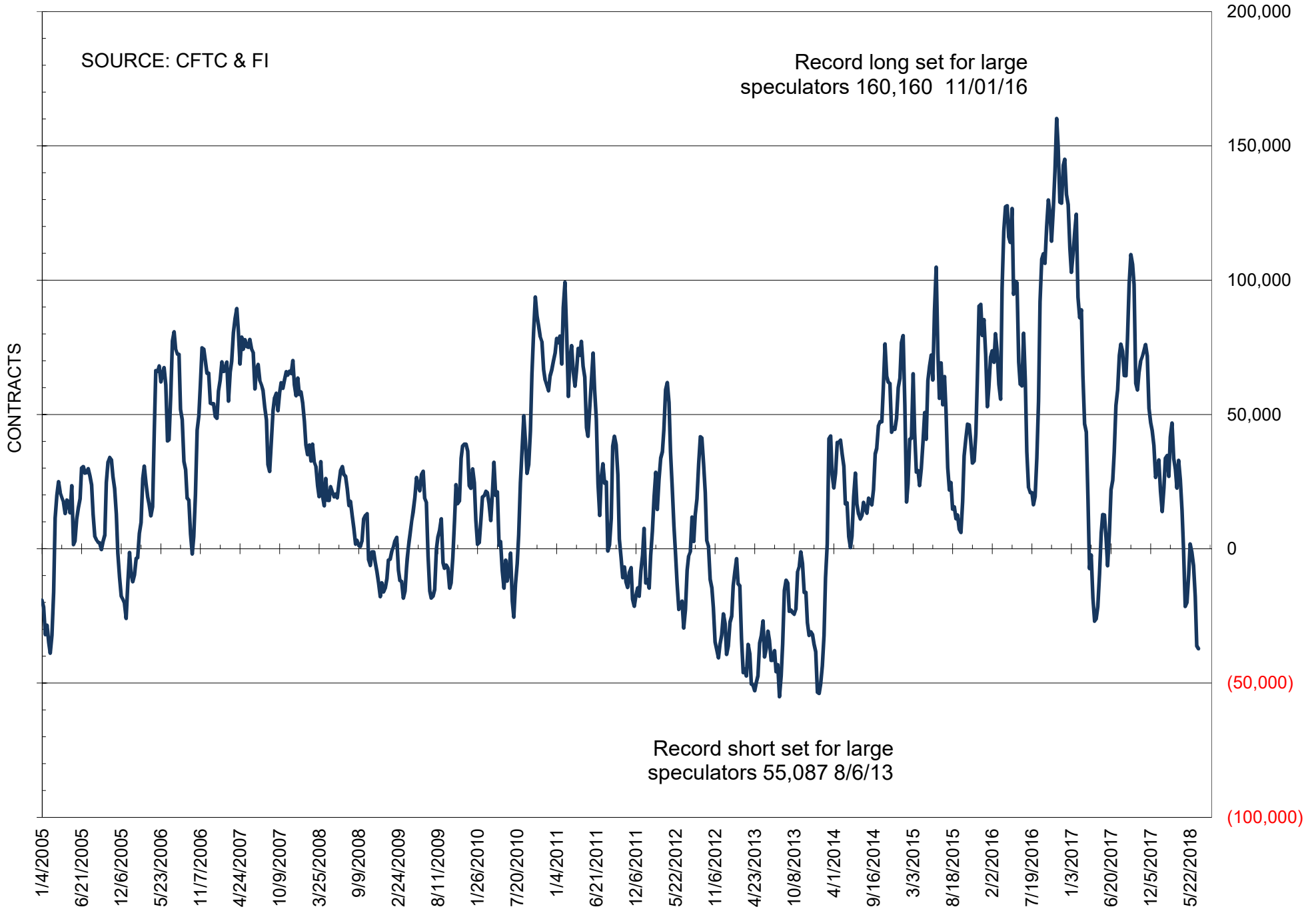
NET POSITION OF FUTURES ONLY LARGE SPECS IN SOYBEANS



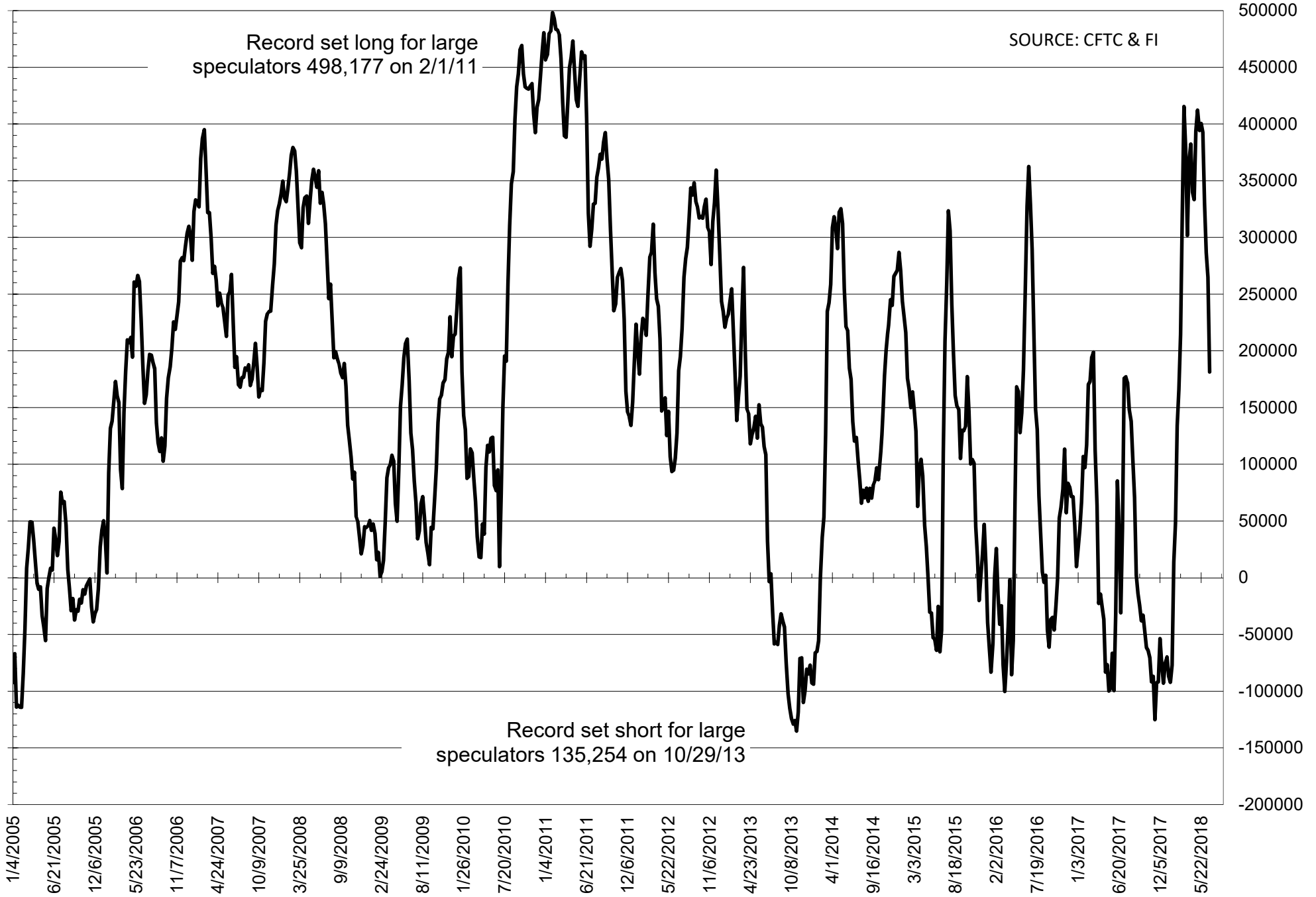
NET POSITION OF FUTURES ONLY LARGE SPECS IN SOYMEAL



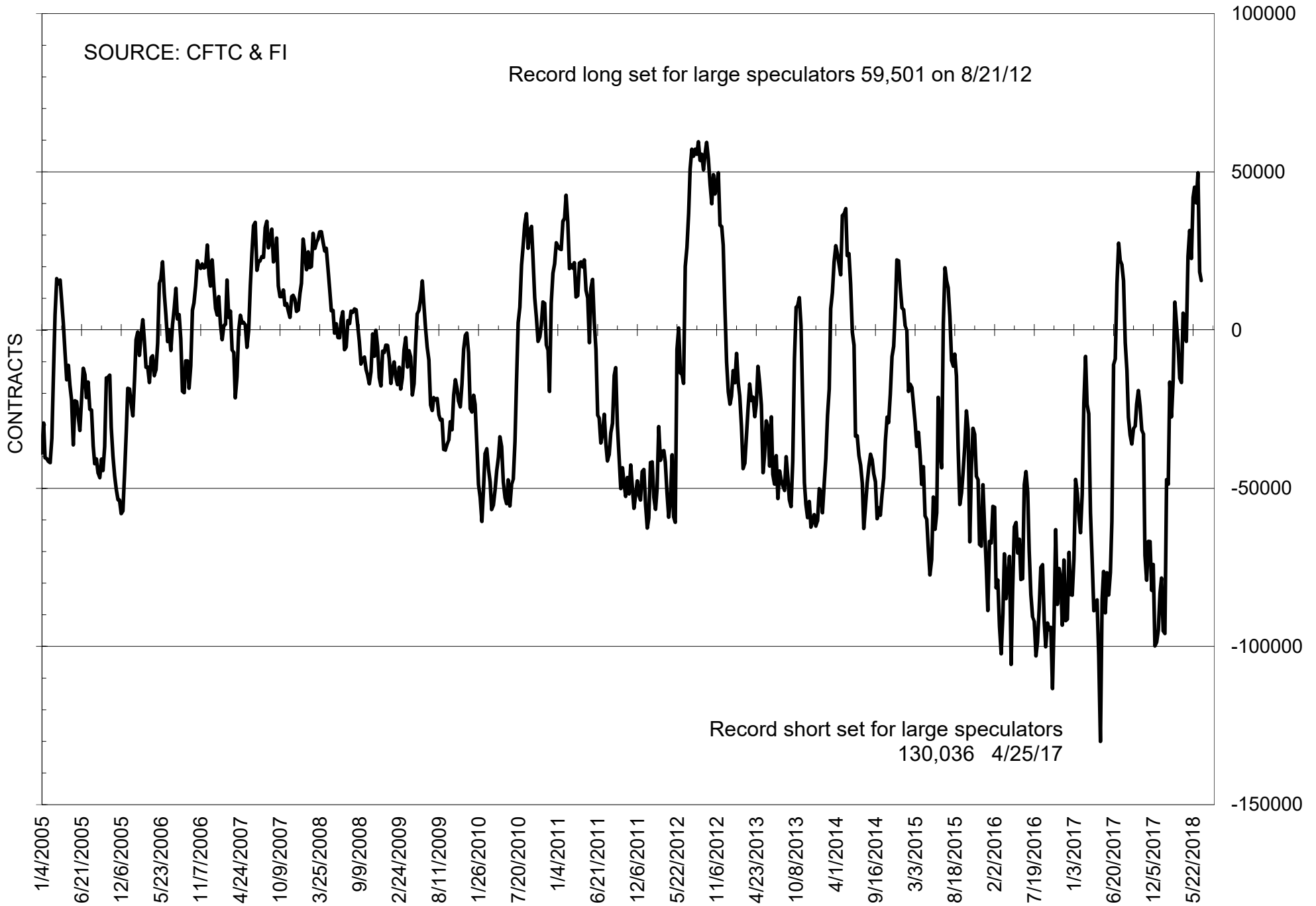
NET POSITION OF FUTURES ONLY LARGE SPECS IN SOYOIL



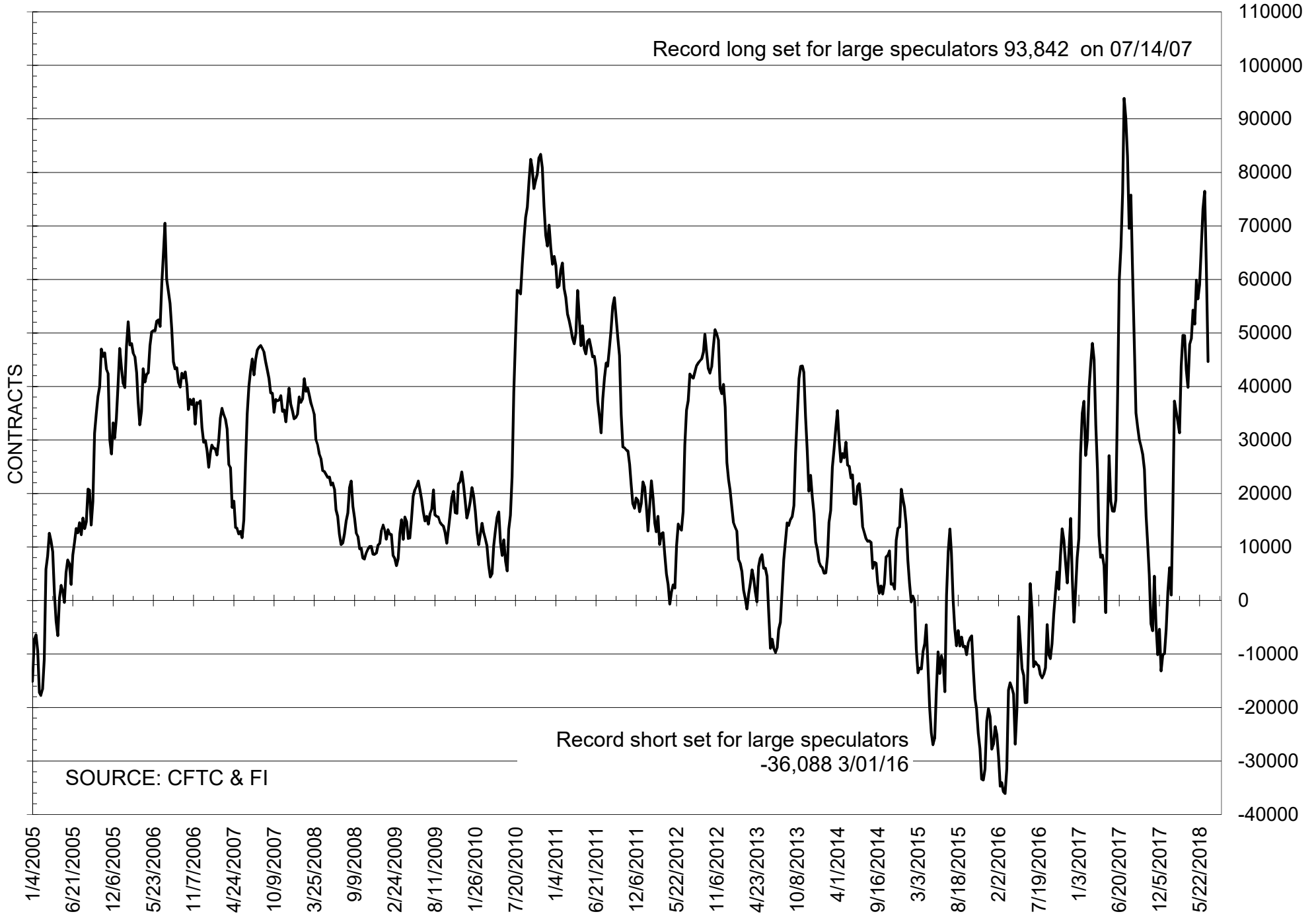
NET POSITION OF LARGE SPECULATORS IN CORN



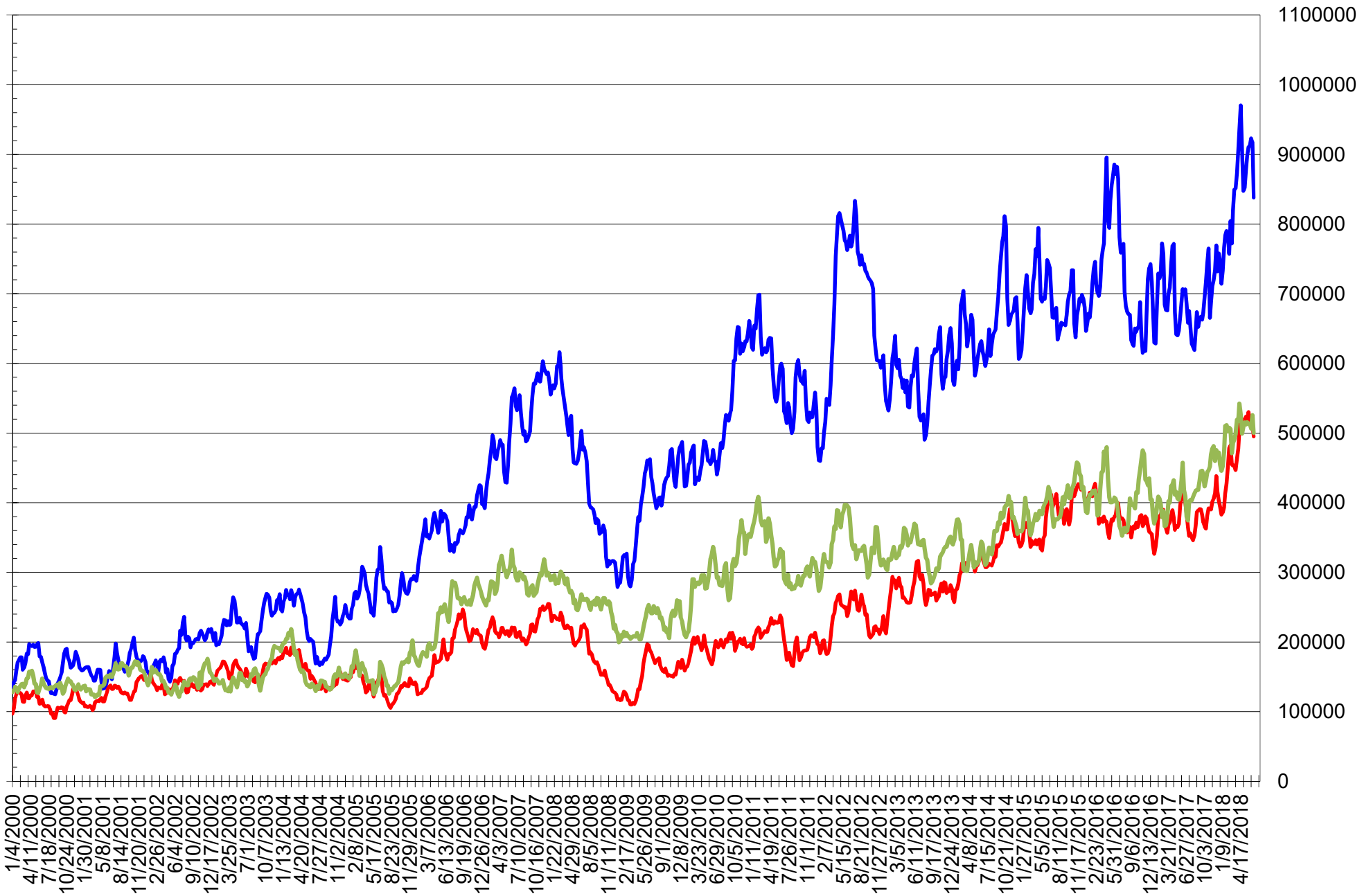
NET POSITION OF FUTURES ONLY LARGE SPECS IN CHICAGO WHEAT



NET POSITION OF LARGE SPECULATORS IN KANSAS CITY WHEAT



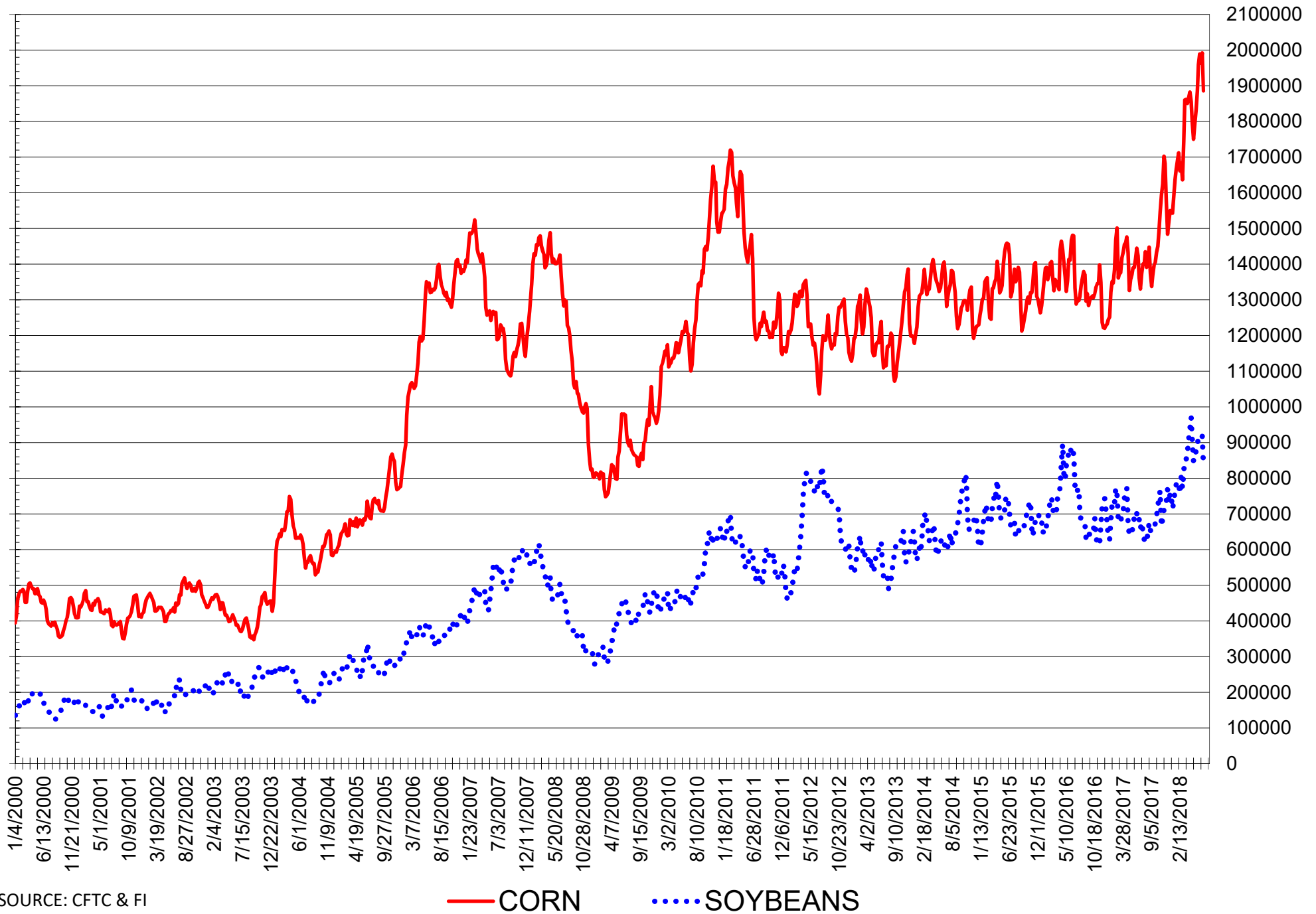
TOTAL OPEN INTEREST IN SOYBEANS, MEAL AND OIL, FUTURES ONLY



SOURCE: CFTC & FI

— SOYBEANS — SOYBEAN MEAL — SOYBEAN OIL

TOTAL OPEN INTEREST IN CORN AND SOYBEANS, FUTURES ONLY



SOURCE: CFTC & FI

— CORN ●●● SOYBEANS

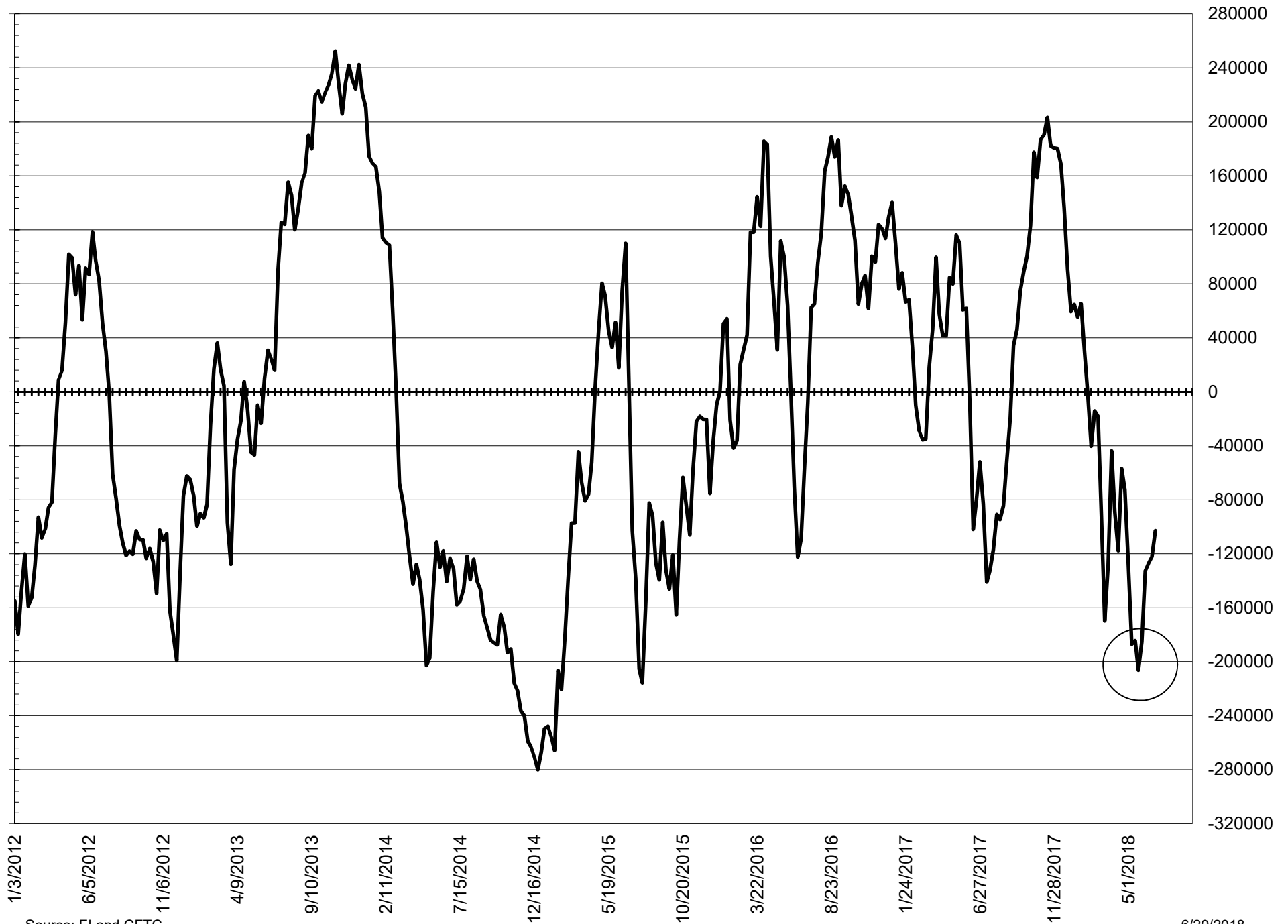
**COMMITMENT OF TRADERS
FUTURES & OPTIONS NET POSITIONS
AS OF 06/26/2018
(IN THOUSAND CONTRACTS)**

	COMMERCIAL				(FUND) NON COMMERCIAL				(SPEC) NON-REPORTABLE			
	26-Jun	19-Jun	12-Jun	5-Jun	26-Jun	19-Jun	12-Jun	5-Jun	26-Jun	19-Jun	12-Jun	5-Jun
WHEAT												
Chicago	21.6	18.4	-7.4	-9.5	-3.9	-1.3	23.2	22.3	-17.7	-17.1	-15.8	-12.9
Kansas City	-36.2	-54.8	-75.3	-69.2	43.4	62.0	77.8	73.7	-7.3	-7.2	-2.5	-4.5
Minneapolis	7.0	7.0	2.8	0.1	-5.5	-4.1	-0.1	2.7	-1.5	-2.9	-2.6	-2.8
All Wheat	-7.6	-29.4	-79.9	-78.6	34.1	56.6	100.8	98.8	-26.5	-27.2	-20.9	-20.2
CORN	-34.6	-74.0	-121.9	-168.7	72.9	120.3	167.2	227.6	-38.3	-46.3	-45.3	-59.0
OATS	-0.3	-0.1	-0.6	-1.2	-0.3	-0.4	-0.2	0.1	0.6	0.5	0.8	1.1
SOYBEANS	58.2	37.8	6.5	-39.2	-30.0	-1.9	40.4	95.0	-28.2	-35.9	-46.9	-55.8
SOY OIL	37.4	42.3	14.9	0.0	-42.1	-46.0	-23.6	-9.2	4.7	3.7	8.6	9.1
SOY MEAL	-108.4	-128.9	-131.4	-145.3	96.7	115.0	119.1	132.0	11.7	13.9	12.3	13.3

	TOTAL OPEN INTEREST				COMMERCIALS		% HELD BY TRADERS LARGE (FUNDS)		SMALL (NON-REP)	
	26-Jun	19-Jun	12-Jun	5-Jun	LONG	SHORT	LONG	SHORT	LONG	SHORT
WHEAT										
Chicago	589,541	652,757	699,899	687,020	40%	36%	22%	23%	5%	8%
Kansas City	264,423	294,405	318,574	330,723	40%	54%	32%	16%	8%	11%
Minneapolis	55,327	59,313	57,902	58,641	53%	41%	19%	29%	21%	24%
CORN	2,386,393	2,635,956	2,566,347	2,558,208	43%	44%	21%	18%	9%	11%
OATS	5,297	5,543	5,501	5,457	34%	39%	20%	25%	43%	32%
SOYBEANS	1,020,620	1,199,773	1,158,517	1,105,632	51%	46%	14%	17%	8%	10%
SOY OIL	524,465	562,689	533,174	534,745	45%	38%	24%	32%	8%	7%
SOY MEAL	545,769	594,016	580,300	578,191	41%	61%	23%	6%	9%	7%

SOURCE: CFTC & FI

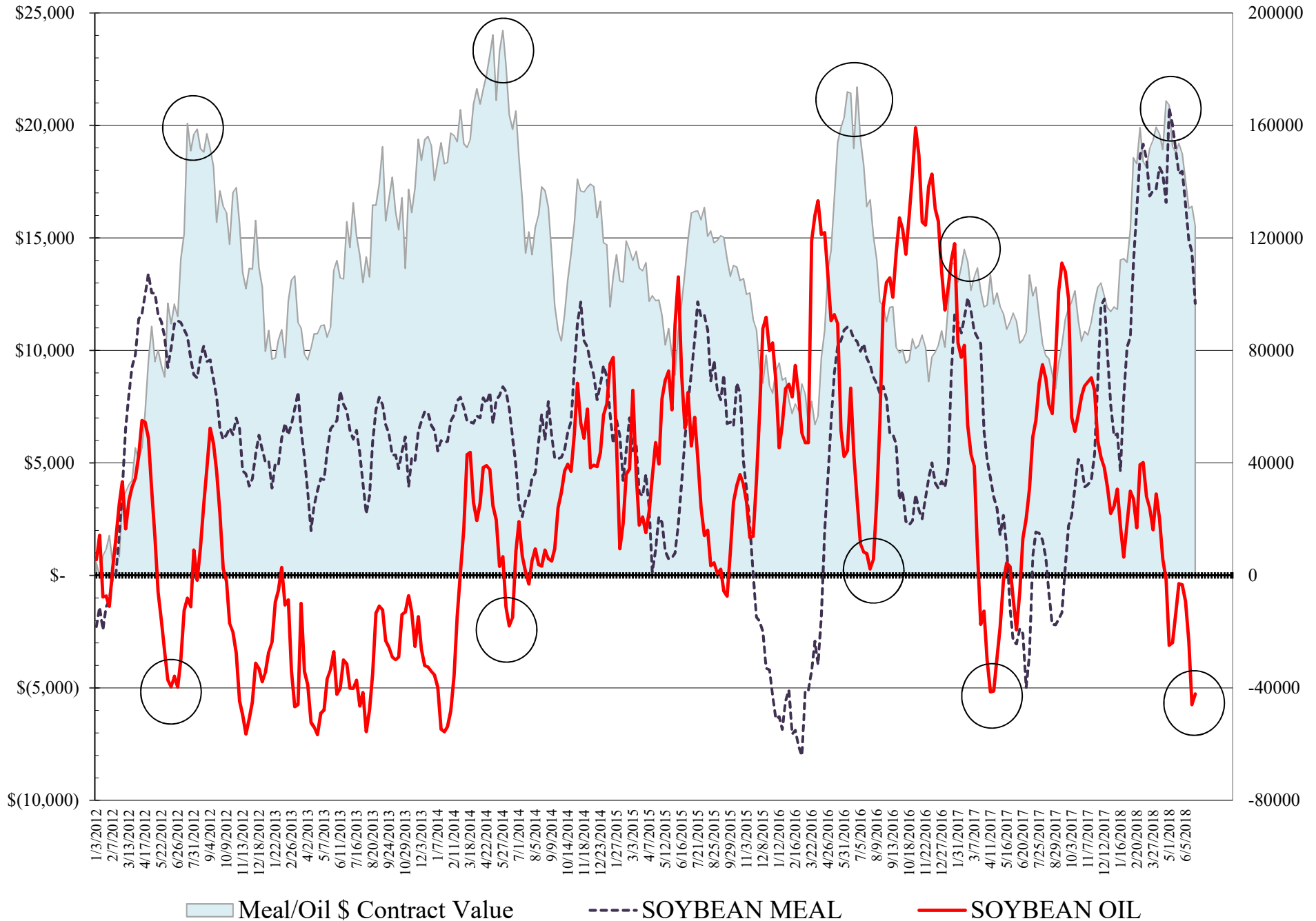
NET POSITION FUTURES AND OPTIONS SPREAD OF LARGE SPECULATORS IN SOYBEANS MINUS CORN



Source: FI and CFTC

6/29/2018

NET POSITION FUTURES AND OPTIONS OF LARGE SPECULATORS IN SOYBEAN MEAL AND SOYBEAN OIL



Meal/Oil \$ Contract Value
 SOYBEAN MEAL
 SOYBEAN OIL

**DISAGGREGATED COMMITMENT OF TRADERS
FUTURES ONLY NET POSITIONS
AS OF 06/26/2018
(IN THOUSAND CONTRACTS)**

	PRODUCER / MERCHANT / PROCESSOR / USER				(INDEX/ETF) SWAP DEALERS				(CTA/CPO/OTHER UNREGISTERED) MANAGED MONEY					
	26-Jun	19-Jun	12-Jun	5-Jun	26-Jun	19-Jun	12-Jun	5-Jun	26-Jun	19-Jun	12-Jun	5-Jun		
WHEAT														
Chicago	(113.7)	(109.9)	(132.5)	(122.4)	116.0	108.9	96.5	94.4	(12.1)	(4.9)	25.1	23.1		
Kansas City	(75.7)	(87.8)	(105.3)	(99.1)	37.7	31.9	31.0	29.8	30.6	46.9	60.6	57.2		
Minneapolis	3.6	2.4	(2.3)	(4.8)	2.6	3.5	4.6	4.5	(7.9)	(5.4)	(2.0)	0.6		
All Wheat	(185.8)	(195.3)	(240.0)	(226.3)	156.2	144.3	132.1	128.8	10.6	36.6	83.7	80.8		
CORN	(327.1)	(395.6)	(428.5)	(480.3)	190.4	181.0	197.6	217.7	(90.8)	(57.5)	(12.2)	78.7		
OATS	(0.6)	(0.5)	(0.9)	(1.4)	0.2	0.3	0.3	0.2	(1.2)	(1.1)	(0.9)	(0.7)		
SOYBEANS	(94.3)	(161.0)	(197.3)	(237.0)	123.3	138.3	147.6	158.3	(52.7)	(27.0)	0.1	65.2		
SOY OIL	(65.0)	(70.3)	(84.0)	(93.9)	99.1	104.1	93.6	91.3	(90.5)	(91.6)	(72.3)	(56.3)		
SOY MEAL	(199.7)	(211.5)	(210.3)	(225.6)	84.3	77.6	75.8	78.7	61.8	83.1	90.5	101.4		
										Managed % of OI				
										Chicago W	-3%	-1%	5%	4%
										Corn	-5%	-3%	-1%	4%
	TOTAL				OTHER REPORTABLE				NON REPORTABLE					
	OPEN INTEREST				26-Jun				26-Jun					
	26-Jun	19-Jun	12-Jun	5-Jun	26-Jun	19-Jun	12-Jun	5-Jun	26-Jun	19-Jun	12-Jun	5-Jun		
WHEAT														
Chicago	478,880	492,425	540,509	547,074	27.7	23.3	24.6	17.1	(17.9)	(17.4)	(13.8)	(12.2)		
Kansas City	249,919	271,951	293,320	307,909	14.1	15.3	15.9	16.0	(6.6)	(6.3)	(2.2)	(3.9)		
Minneapolis	52,881	56,102	54,966	55,582	3.1	2.2	2.3	2.4	(1.3)	(2.7)	(2.6)	(2.8)		
All Wheat	781,680	820,478	888,795	910,565	44.8	40.7	42.8	35.6	(25.8)	(26.4)	(18.6)	(18.9)		
CORN	1,885,804	1,992,169	1,963,233	1,988,935	272.1	322.4	298.9	251.3	(44.6)	(50.3)	(55.7)	(67.5)		
OATS	5,084	5,296	5,260	5,247	1.1	0.9	0.8	0.9	0.5	0.4	0.7	1.0		
SOYBEANS	838,292	917,545	923,162	912,593	53.9	85.2	91.6	61.8	(30.3)	(35.5)	(41.9)	(48.2)		
SOY OIL	500,152	525,643	506,204	512,124	53.3	55.4	54.5	50.0	3.1	2.5	8.2	8.9		
SOY MEAL	495,303	511,414	511,108	517,330	44.0	38.8	33.6	33.6	9.7	12.0	10.5	11.9		

SOURCE: CFTC & FI

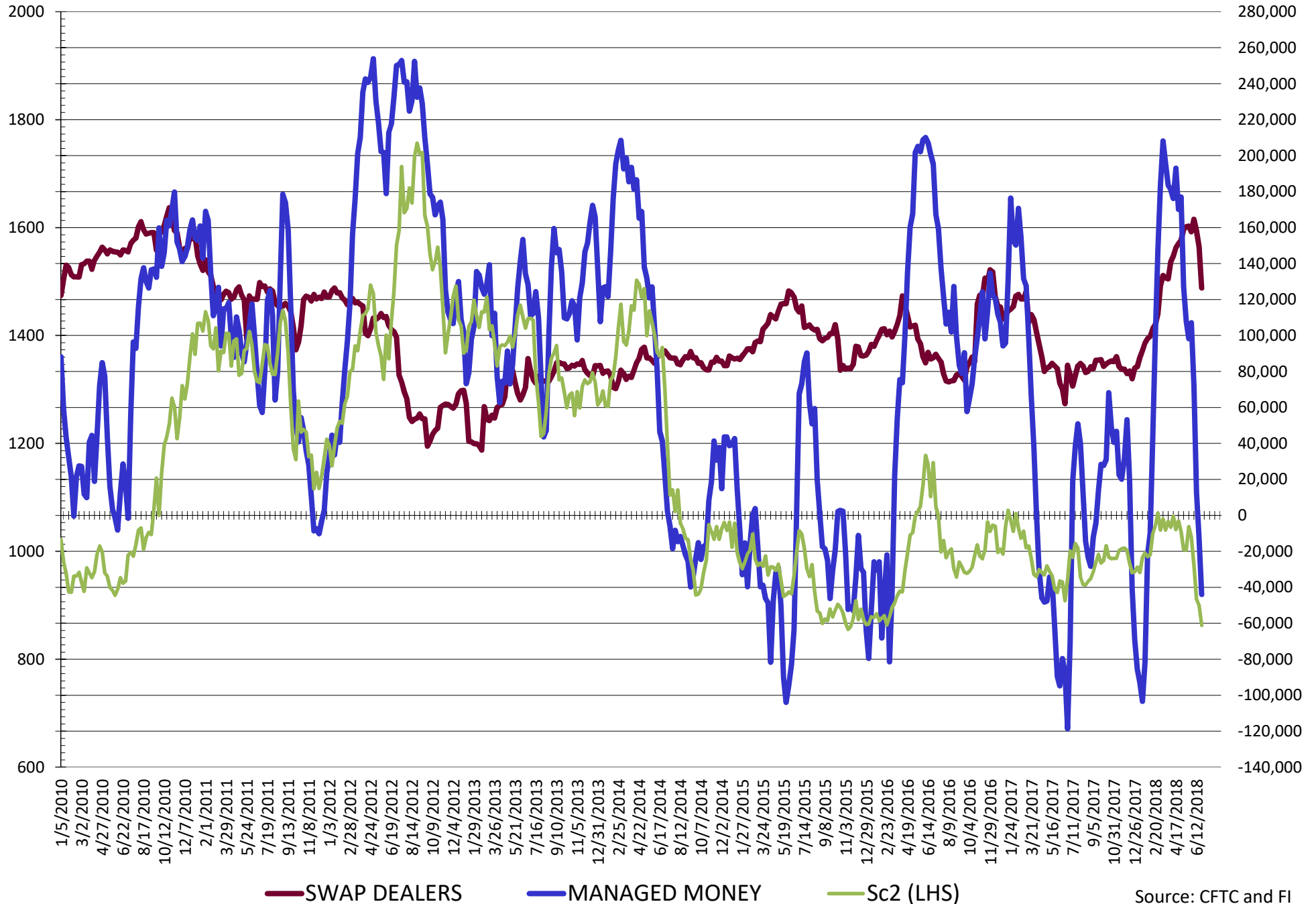
**DISAGGREGATED COMMITMENT OF TRADERS
FUTURES & OPTIONS NET POSITIONS
AS OF 06/26/2018
(IN THOUSAND CONTRACTS)**

	PRODUCER / MERCHANT / PROCESSOR / USER				(INDEX/ETF) SWAP DEALERS				(CTA/CPO/OTHER UNREGISTERED) MANAGED MONEY			
	26-Jun	19-Jun	12-Jun	5-Jun	26-Jun	19-Jun	12-Jun	5-Jun	26-Jun	19-Jun	12-Jun	5-Jun
	WHEAT											
Chicago	(106.9)	(105.3)	(117.2)	(117.0)	128.5	123.7	109.8	107.5	(12.5)	(0.8)	14.9	16.3
Kansas City	(74.0)	(86.7)	(105.0)	(98.5)	37.8	31.9	29.7	29.3	30.9	47.2	61.1	57.8
Minneapolis	4.4	3.7	(1.7)	(4.4)	2.6	3.3	4.5	4.5	(7.9)	(5.3)	(1.9)	0.8
All Wheat	(176.5)	(188.3)	(224.0)	(219.9)	168.9	158.9	144.1	141.3	10.5	41.1	74.1	74.9
CORN	(255.2)	(300.1)	(345.2)	(405.4)	220.5	226.1	223.3	236.8	(60.3)	(14.0)	36.2	113.6
OATS	(0.5)	(0.4)	(0.9)	(1.4)	0.2	0.3	0.3	0.2	(1.2)	(1.1)	(0.9)	(0.7)
SOYBEANS	(68.2)	(111.5)	(151.7)	(203.8)	126.4	149.3	158.2	164.6	(44.0)	(12.8)	12.9	72.3
SOY OIL	(61.7)	(59.6)	(77.6)	(90.9)	99.1	101.8	92.6	90.9	(90.2)	(93.1)	(73.7)	(57.6)
SOY MEAL	(190.9)	(204.3)	(203.9)	(218.9)	82.5	75.3	72.5	73.6	63.1	83.6	89.5	100.8

	TOTAL OPEN INTEREST				OTHER REPORTABLE				NON REPORTABLE			
	26-Jun	19-Jun	12-Jun	5-Jun	26-Jun	19-Jun	12-Jun	5-Jun	26-Jun	19-Jun	12-Jun	5-Jun
	WHEAT											
Chicago	589,541	652,757	699,899	687,020	8.6	(0.5)	8.3	6.1	(17.7)	(17.1)	(15.8)	(12.9)
Kansas City	264,423	294,405	318,574	330,723	12.6	14.8	16.7	16.0	(7.3)	(7.2)	(2.5)	(4.5)
Minneapolis	55,327	59,313	57,902	58,641	2.4	1.2	1.8	1.9	(1.5)	(2.9)	(2.6)	(2.8)
All Wheat	909,291	1,006,475	1,076,375	1,076,384	23.6	15.4	26.7	23.9	(26.5)	(27.2)	(20.9)	(20.2)
CORN	2,386,393	2,635,956	2,566,347	2,558,208	133.3	134.3	131.0	114.0	(38.3)	(46.3)	(46.3)	(46.3)
OATS	5,297	5,543	5,501	5,457	0.9	0.8	0.7	0.8	0.6	0.5	0.8	1.1
SOYBEANS	1,020,620	1,199,773	1,158,517	1,105,632	14.0	10.9	27.5	22.7	(28.2)	(35.9)	(46.9)	(55.8)
SOY OIL	524,465	562,689	533,174	534,745	48.1	47.2	50.2	48.4	4.7	3.7	8.6	9.1
SOY MEAL	545,769	594,016	580,300	578,191	33.6	31.4	29.6	31.1	11.7	13.9	12.3	13.3

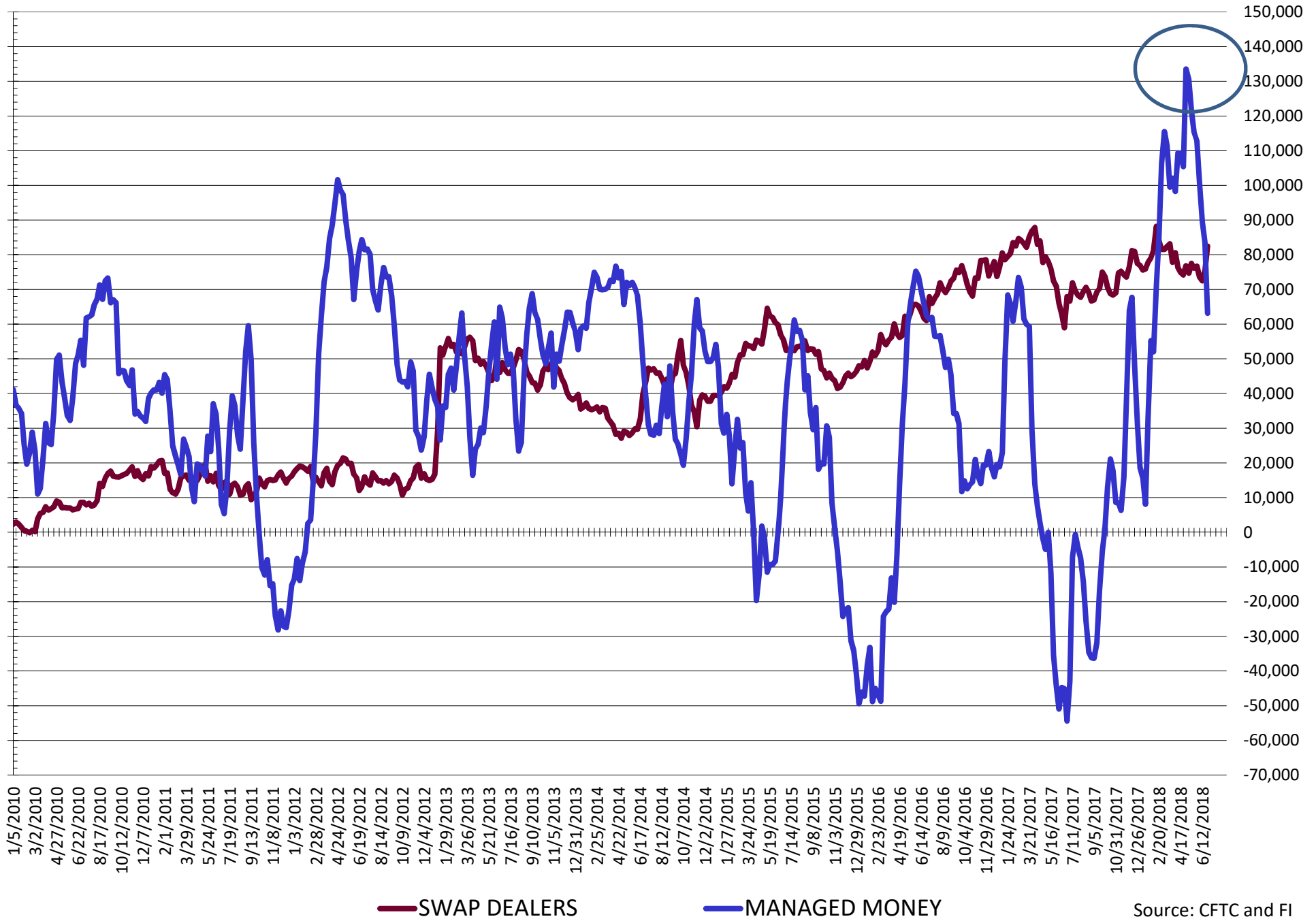
SOURCE: CFTC & FI

NET POSITION FUTURES AND OPTIONS OF SWAP AND MANAGED FUNDS IN SOYBEANS



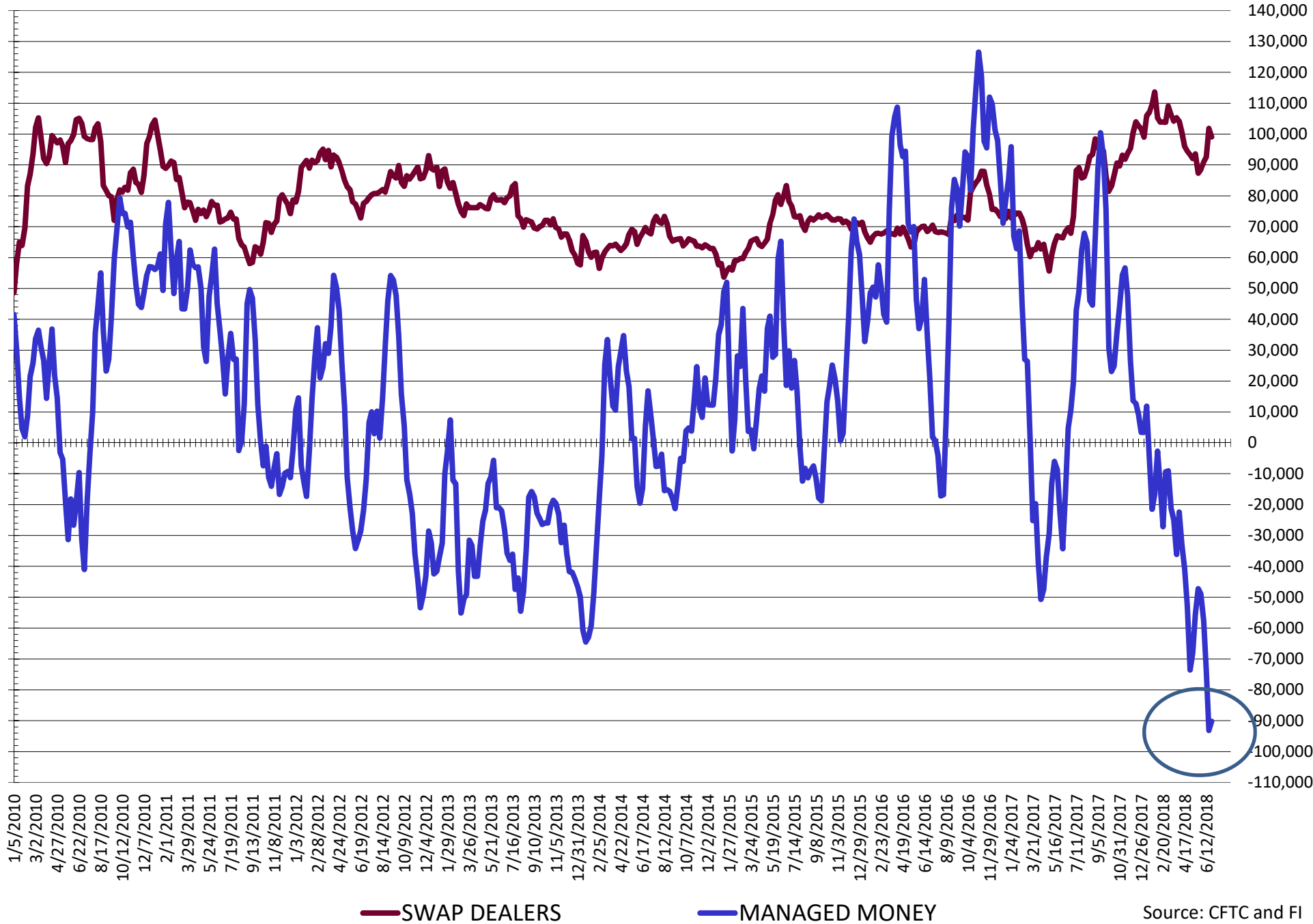
Source: CFTC and FI
6/29/2018

NET POSITION FUTURES AND OPTIONS OF SWAP AND MANAGED FUNDS IN SOYBEAN MEAL



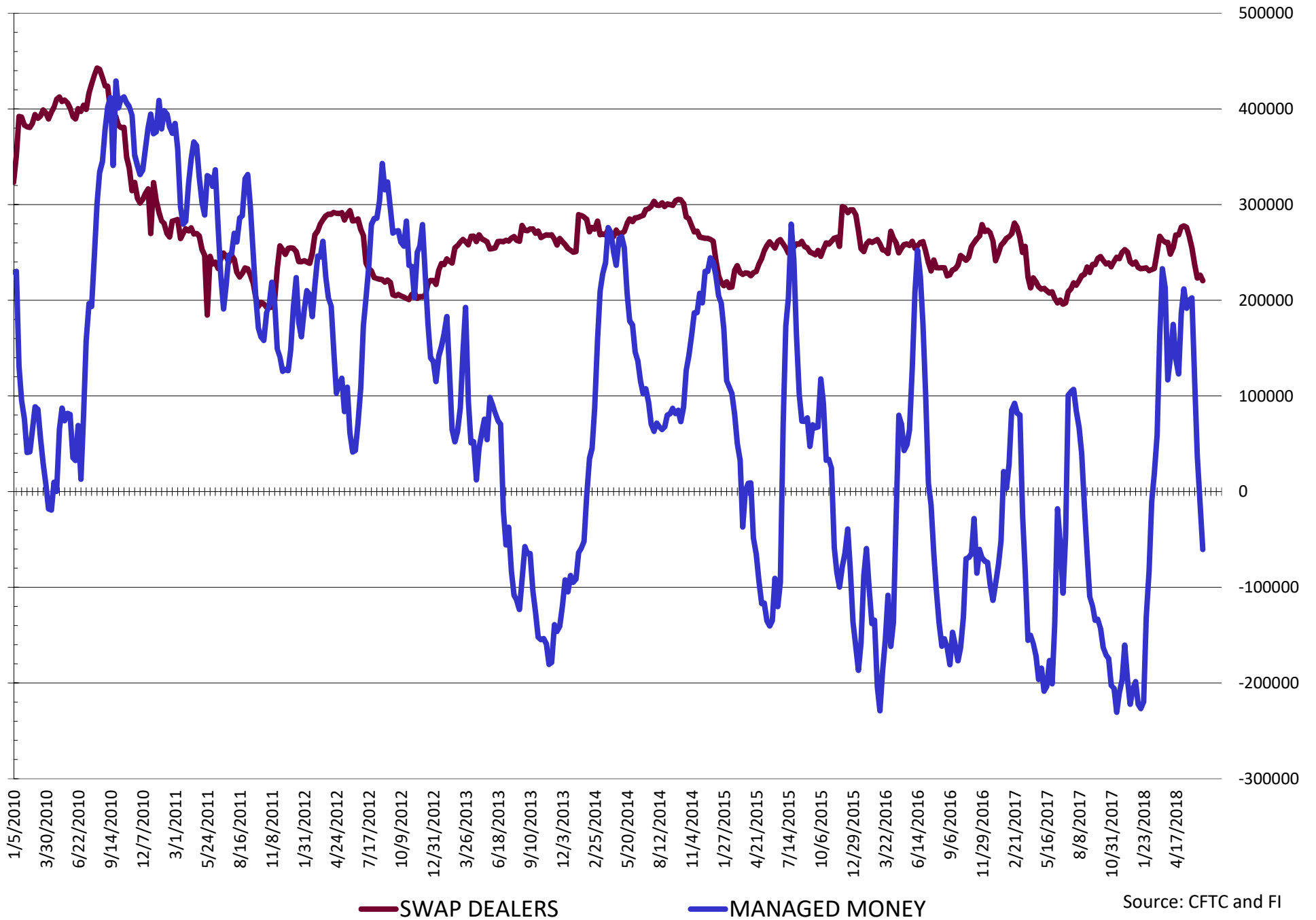
Source: CFTC and FI
6/29/2018

NET POSITION FUTURES AND OPTIONS OF SWAP AND MANAGED FUNDS IN SOYBEAN OIL



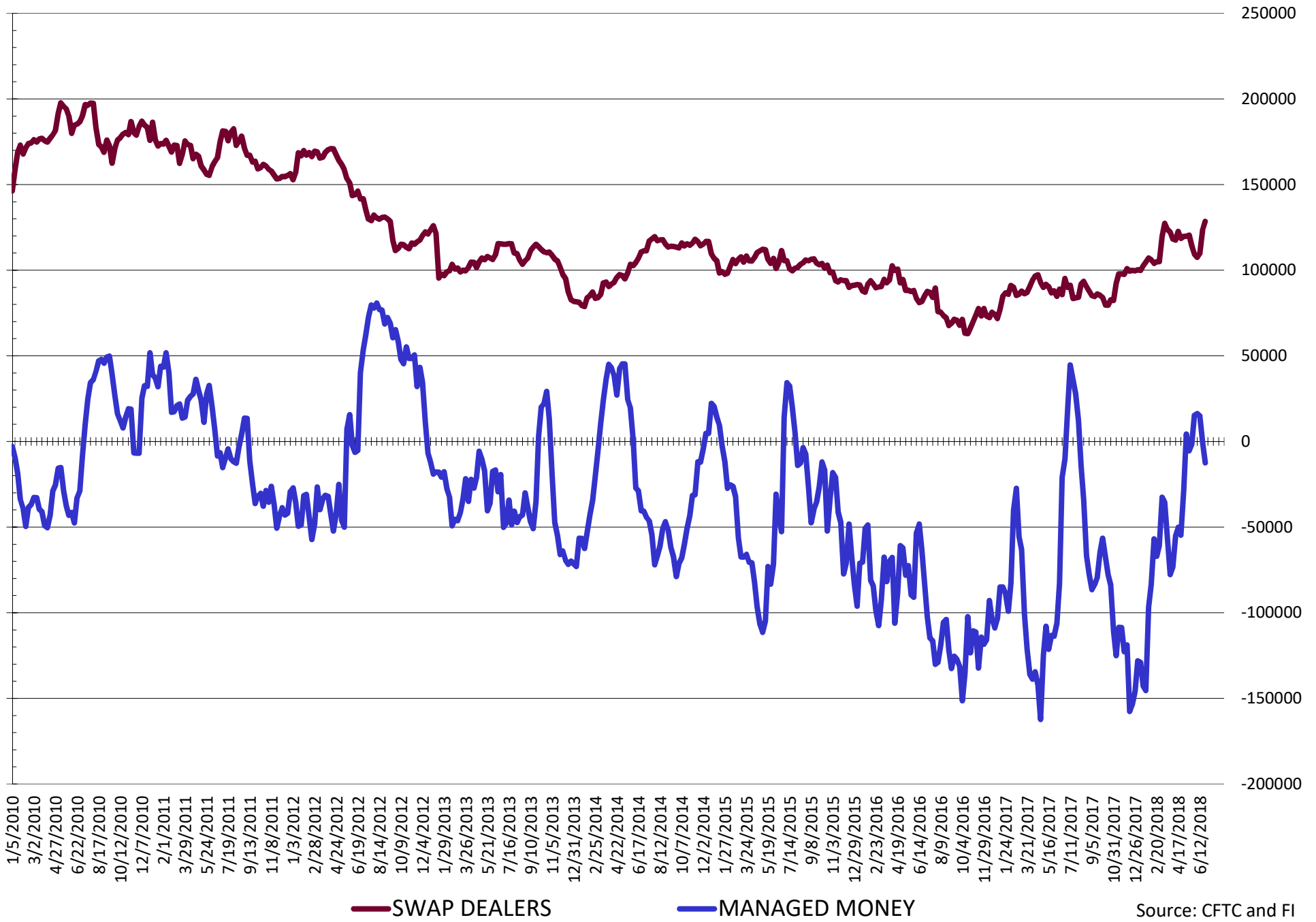
Source: CFTC and FI
6/29/2018

NET POSITION FUTURES AND OPTIONS OF SWAP AND MANAGED FUNDS IN CORN



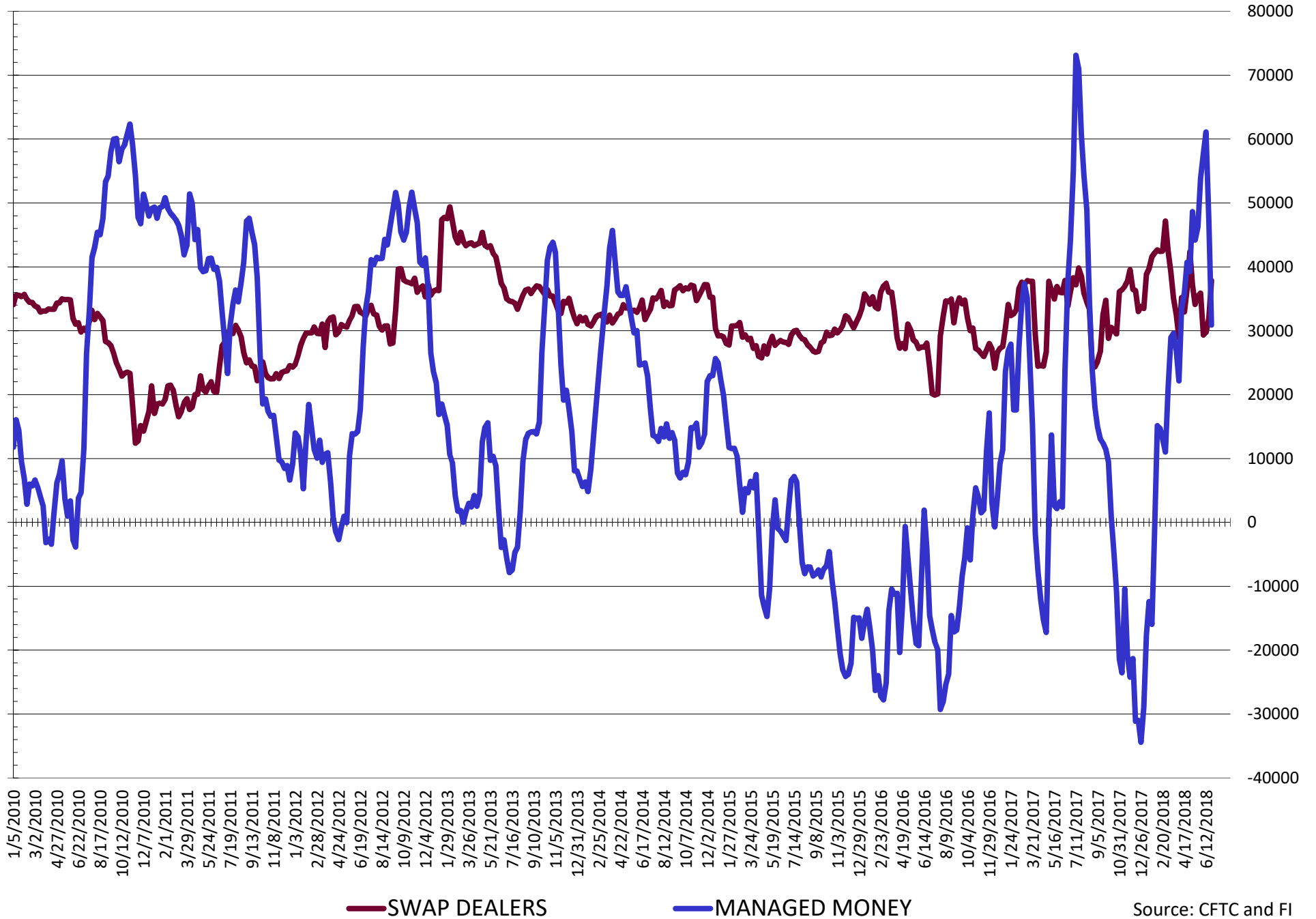
Source: CFTC and FI
6/29/2018

NET POSITION FUTURES AND OPTIONS OF SWAP AND MANAGED FUNDS IN CHICAGO WHEAT



Source: CFTC and FI
6/29/2018

NET POSITION FUTURES AND OPTIONS OF SWAP AND MANAGED FUNDS IN KANSAS WHEAT



Source: CFTC and FI
6/29/2018

COMMITMENT OF TRADERS
FUTURES & OPTIONS NET POSITIONS (INDEX BROKEN OUT)
AS OF 06/26/2018
(IN THOUSAND CONTRACTS)

	COMMERCIAL				(FUND) NON COMMERCIAL				(SPEC) NON-REPORTABLE			
	26-Jun	19-Jun	12-Jun	5-Jun	26-Jun	19-Jun	12-Jun	5-Jun	26-Jun	19-Jun	12-Jun	5-Jun
	WHEAT											
Chicago	(82.0)	(84.3)	(102.1)	(104.7)	(39.6)	(36.6)	(11.6)	(13.7)	(17.7)	(17.1)	(15.8)	(12.9)
Kansas City	(67.3)	(85.8)	(106.0)	(99.9)	29.2	42.8	54.0	47.9	(7.3)	(7.2)	(2.5)	(4.5)
Minneapolis	-	-	-	-	-	-	-	-	-	-	-	-
All Wheat	(149.3)	(170.1)	(208.2)	(204.5)	(10.4)	6.2	42.4	34.2	(25.0)	(24.3)	(18.3)	(17.4)
CORN	(241.2)	(287.9)	(324.0)	(379.2)	(8.0)	35.0	84.5	140.3	(38.3)	(46.3)	(45.3)	(59.0)
OATS	-	-	-	-	-	-	-	-	-	-	-	-
SOYBEANS	(37.1)	(74.0)	(102.7)	(154.6)	(75.4)	(52.4)	(11.4)	36.5	(28.2)	(35.9)	(46.9)	(55.8)
SOY OIL	(39.6)	(42.6)	(63.8)	(75.0)	(62.3)	(68.2)	(50.7)	(39.4)	4.7	3.7	8.6	9.1
SOY MEAL	(169.6)	(186.1)	(186.4)	(201.8)	66.7	82.9	86.6	97.6	11.7	13.9	12.3	13.3

	TOTAL OPEN INTEREST				(INDEX) COMMERCIAL INDEX TRADERS				(INDEX) % NET OF TOTAL OPEN INTEREST			
	26-Jun	19-Jun	12-Jun	5-Jun	26-Jun	19-Jun	12-Jun	5-Jun	26-Jun	19-Jun	12-Jun	5-Jun
	WHEAT											
Chicago	589,541	652,757	699,899	687,020	139.3	138.0	129.5	131.2	23.6%	21.1%	18.5%	19.1%
Kansas City	264,423	294,405	318,574	330,723	45.4	50.3	54.6	56.5	17.2%	17.1%	17.1%	17.1%
Minneapolis	-	-	-	-	-	-	-	-	-	-	-	-
All Wheat	853,964	947,162	1,018,473	1,017,743	184.7	188.3	184.1	187.7	21.6%	19.9%	18.1%	18.4%
CORN	2,386,393	2,635,956	2,566,347	2,558,208	287.5	299.2	284.8	297.9	12.0%	11.4%	11.1%	11.6%
OATS	-	-	-	-	-	-	-	-	-	-	-	-
SOYBEANS	1,020,620	1,199,773	1,158,517	1,105,632	140.7	162.3	161.1	173.9	13.8%	13.5%	13.9%	15.7%
SOY OIL	524,465	562,689	533,174	534,745	97.2	107.1	105.9	105.3	18.5%	19.0%	19.9%	19.7%
SOY MEAL	545,769	594,016	580,300	578,191	91.2	89.3	87.5	91.0	16.7%	15.0%	15.1%	15.7%

SOURCE: CFTC & FI

Traditional Daily Estimate of Funds 6/29/18

	(Neg)-"Short"	Pos-"Long"			
Actual less Est.	(72.6)	(30.9)	3.2	(7.2)	2.0
	Corn	Bean	Chi. Wheat	Meal	Oil
Act. 6/28/18	181.3	1.3	15.6	105.7	(37.2)
27-Jun	(5.0)	0.0	5.0	(3.0)	3.0
28-Jun	(13.0)	(5.0)	(4.0)	(2.0)	3.0
29-Jun	20.0	(3.0)	15.0	(2.0)	1.0
2-Jul					
3-Jul					
FI Est. of Futures Only 6/29/18	183.3	(6.7)	31.6	98.7	(30.2)
FI Est. Futures & Options	74.9	(37.9)	12.1	89.7	(35.1)
Futures only record long	498.2	260.4	59.5	167.5	160.2
	2/1/2011	6/27/2017	8/21/2012	5/1/2018	11/1/2016
Futures only record short	(135.3)	(94.5)	(130.0)	(49.5)	(55.1)
	10/29/2013	6/27/2017	4/25/2017	3/1/2016	8/6/2013
Futures and options record net long	458.5	259.8	64.8	132.1	159.2
	9/28/2010	5/1/2012	8/7/2012	5/1/2018	1/1/2016
Futures and options record net short	(166.8)	(113.1)	(143.3)	(64.1)	(56.6)
	11/14/2017	6/27/2017	4/25/2017	3/1/2016	4/23/2013

Managed Money Daily Estimate of Funds 6/29/18

	Corn	Bean	Chi. Wheat	Meal	Oil
Latest CFTC Fut. Only	(90.8)	(52.7)	(12.1)	61.8	(90.5)
Latest CFTC F&O	(60.3)	(44.0)	(12.5)	63.1	(90.2)
FI Est. Managed Fut. Only	(87.8)	(64.7)	11.9	51.3	(80.0)
FI Est. Managed Money F&O	(57.3)	(56.0)	11.5	52.6	(79.7)

Index Funds Latest Positions (as of last Tuesday)

Index Futures & Options	287.5	140.7	139.3	NA	97.2
Change From Previous Week	(11.7)	(21.6)	1.3	NA	(9.9)

Source: Reuters, CFTC & FI (FI est. are noted with latest date)

Disclaimer

TO CLIENTS/PROSPECTS OF FUTURES INTERNATIONAL, SEE RISK DISCLOSURE BELOW:

THIS COMMUNICATION IS CONVEYED AS A SOLICITATION FOR ENTERING INTO A DERIVATIVES TRANSACTION.

Any trading recommendations and market or other information to Customer by Futures International (FI), although based upon information obtained from sources believed by FI to be reliable may not be accurate and may be changed without notice to customer. FI makes no guarantee as to the accuracy or completeness of any of the information or recommendations furnished to Customer. Customer understands that FI, its managers, employees and/or affiliates may have a position in commodity futures, options or other derivatives which may not be consistent with the recommendations furnished by FI to Customer.

The risk of trading futures and options and other derivatives involves a substantial risk of loss and is not suitable for all persons. In purchasing an option, the risk is limited to the premium paid, and all commissions and fees involved with the trade. When an option is shorted or written, the writer of the option has unlimited risk with respect to the option written. The use of options strategies such as a straddles and strangles involve multiple option positions and may substantially increase the amount of commissions and fees paid to execute the strategy. Option prices do not necessarily move in tandem with cash or futures prices. Each person must consider whether a particular trade, combination of trades or strategy is suitable for that person's financial means and objectives.

This material may include discussions of seasonal patterns, however, futures prices have already factored in the seasonal aspects of supply and demand, and seasonal patterns are no indication of future market trends. Finally, past performance is not indicative of future results.

This communication may contain links to third party websites which are not under the control of FI and FI is not responsible for their content. Products and services are offered only in jurisdictions where solicitation and sale are lawful, and in accordance with applicable laws and regulations in each such jurisdiction.