

USDA US Export Sales Results in 000 Metric Tons

	Week ending:	Actual 7/12/2018	Trade* Estimates	Last Week 7/5/2018		Year Ago 7/13/2017	
Beans	2017-18	252.3	200-500	2016-17	158.6		409.6
	2018-19	613.4	100-500	2017-18	270.8		1522.6
Meal	2017-18	131.0	50-200	Sales	37.5	Sales	41.4
	2018-19	91.0	25-150	n/c	40.7		669.5
	Shipments	341.9	NA	Shipments	153.9	Shipments	155.1
Oil	2017-18	10.9	8-30	Sales	27.6	Sales	25.4
	2018-19	9.2	0-10	n/c	0.0		0.0
	Shipments	20.4	NA	Shipments	5.6	Shipments	27.6
Corn	2017-18	641.1	300-600	2016-17	402.1		466.5
	2018-19	774.5	200-500	2017-18	128.0		212.1
Wheat	2018-19	300.0	150-500	2018-19	136.4		669.5

Source: FI & USDA *Reuters estimates

n/c= New Crop

USDA Export Sales Results in 000 tons

AS OF: 7/12/2018

	ESTIMATED This Week		ACTUAL This Week		as of ACTUAL Last week		as of 7/13/2017 Year Ago		
Beans	17/18	250-450	17/18	252.3	17/18	158.6	16/17	409.6	
	n/c	300-500	n/c	613.4	n/c	270.8	n/c	1522.6	
			Sales to China -6.0		Sales to China 3.3		Sales to China 71.8		
Meal	Shipped		Shipped		Shipped		Shipped		
	16/17	50-200 100-300	17/18	131.0	341.9	17/18	37.5 153.9	16/17	41.4 155.1
	n/c	25-75	n/c	91.0		n/c	40.7	n/c	75.9
Oil	Shipped		Shipped		Shipped		Shipped		
	16/17	15-30 5-15	17/18	10.9	20.4	17/18	27.6 5.6	16/17	25.4 27.6
	n/c	0-10	n/c	9.2		n/c	3.9	n/c	0.0
		Sales to China 0.0		Sales to China 0.0		Sales to China 0.0			
Corn	17/18	400-600	17/18	641.1	17/18	402.1	16/17	466.5	
	n/c	200-400	n/c	774.5	n/c	128.0	n/c	212.1	
			Sales to China 0.0		Sales to China 0.0		Sales to China 0.0		
Wheat	17/18	300-500	18/19	300.0	18/19	136.4	17/18	669.5	
	n/c	0.0	n/c	0.0	n/c	0.0	n/c	0.0	

o/c=Old Crop, n/c= New Crop Source: Futures International and USDA

US crop-year to date export sales

% sold from USDA's export projection

	Current	Last Year	YOY	YOY	2018-19	2017-18	2016-17	2015-16
2017-18 Soybeans mil bu	2120	2218	-98	-4.4%		101.7%	102.4%	97.0%
2017-18 SoyOil MT	1006	1031	-25	-2.4%		90.6%	88.9%	109.4%
2017-18 SoyMeal MT	11677	10048	1628	16.2%		95.3%	95.6%	93.9%
2017-18 Corn mil bu	2312	2214	99	4.5%		96.3%	96.5%	99.2%
2018-19 Wheat mil bu	236	346	-110	-31.8%	24.2%	38.4%	30.4%	30.6%

Source: Futures International and USDA

EXPORT SALES SITUATION

ALL-WHEAT

(million bushels)

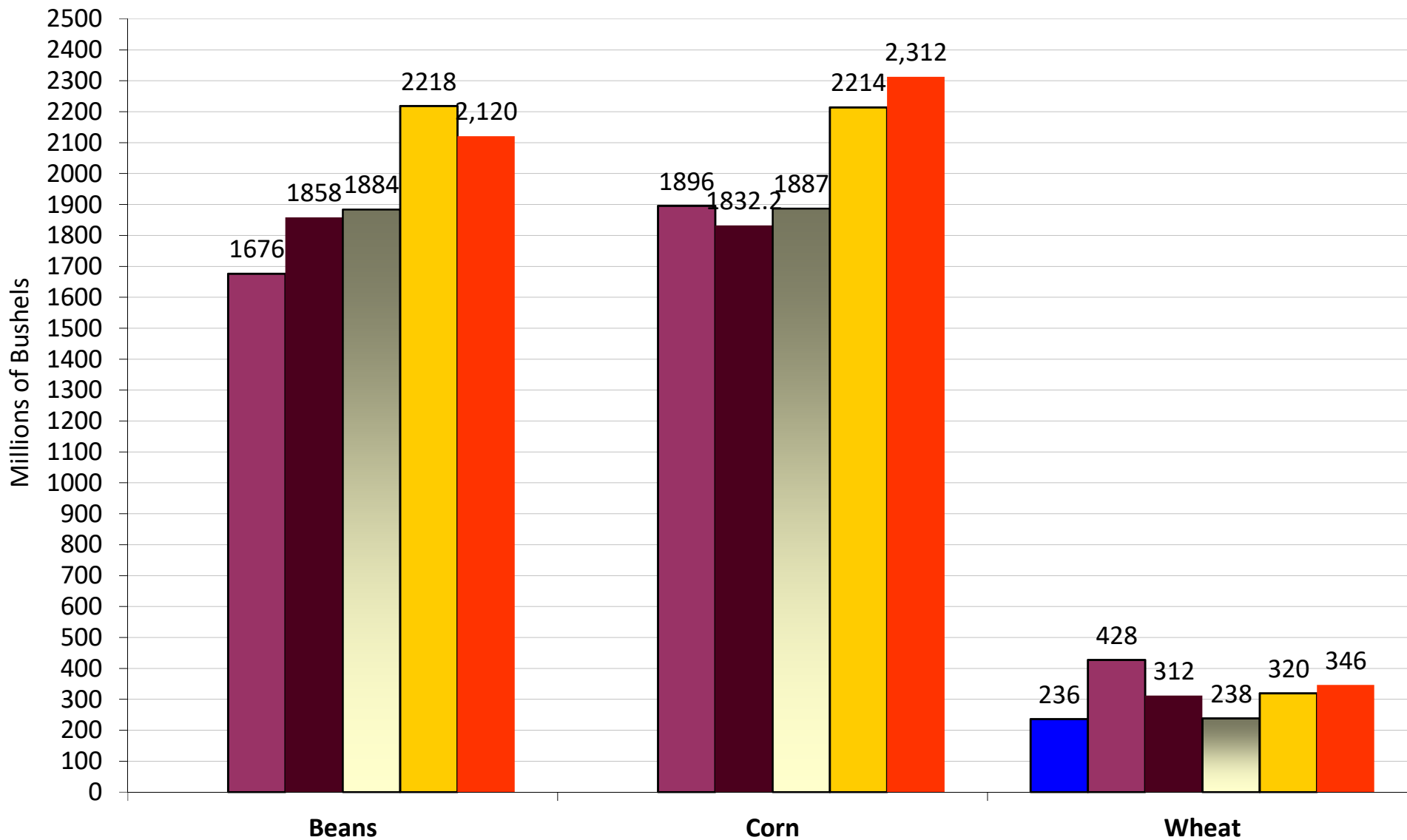
Weekly Sales Total	2018-19	2017-18	2016-17	2015-16	2014-15	2013-14	2012-13	2011-12	2010-11	2009-10	2008-09	2007-08	2006-07	2005-06	2004-05	2003-04	2002-03	2001-02	
New Crop Sales	155.2	250.5	200.6	160.1	219.3	256.5	185.8	243.2	148.6	115.7	263.9	159.2	134.1	134.1	208.4	125.1	112.6	111.0	
7-Jun	11.1	16.9	8.2	13.8	20.9	15.7	15.9	16.7	4.8	12.4	12.3	15.2	16.9	12.1	10.7	10.2	11.0	7.5	
Weeks remaining	14-Jun	17.0	13.7	28.0	11.6	13.7	15.9	30.9	24.3	35.3	9.9	19.8	19.9	11.6	18.8	21.7	21.7	7.6	13.0
46	21-Jun	20.7	19.9	17.0	16.0	13.2	26.9	11.9	20.0	26.5	13.5	18.3	22.9	19.9	21.6	15.9	19.0	16.4	19.9
	28-Jun	16.2	18.1	23.7	13.4	20.9	21.8	15.4	15.6	15.4	8.9	24.5	19.1	11.0	23.1	17.2	24.2	20.5	22.6
	5-Jul	5.0	13.8	30.3	12.7	12.4	54.1	11.5	19.1	18.9	21.5	22.7	43.5	7.4	11.3	20.2	20.6	6.2	10.8
	12-Jul	11.0	13.1	11.7	10.7	11.6	36.6	21.6	12.7	11.4	15.5	27.5	28.1	12.1	21.6	11.5	24.2	31.2	20.0
	19-Jul																		
	26-Jul																		
	2-Aug																		
	9-Aug																		
	16-Aug																		
	23-Aug																		
	30-Aug																		
	6-Sep																		
	13-Sep																		
Crop year to date sales	236.2	346.1	319.6	238.3	312.0	427.5	293.0	351.6	260.7	197.4	389.0	307.8	213.1	242.7	305.7	245.2	205.7	204.9	
Average weekly sales																			
rate to reach proj total	16.1	12.1	15.9	11.7	12.0	16.3	15.6	15.2	22.4	14.8	13.6	20.8	15.1	16.5	16.5	19.8	14.0	16.5	
Proj./Actual export total	975	901	1051	778	864	1176	1012	1051	1289	879	1015	1263	908	1003	1066	1158	850	962	
YTD sales as % of total	24.2	38.4	30.4	30.6	36.1	36.4	29.0	33.5	20.2	22.5	38.3	24.4	23.5	24.2	28.7	21.2	24.2	21.3	

Source: Futures International and USDA

Export Sales As of 7/12/18

Crop Year Sales to Date

Source: USDA & FI

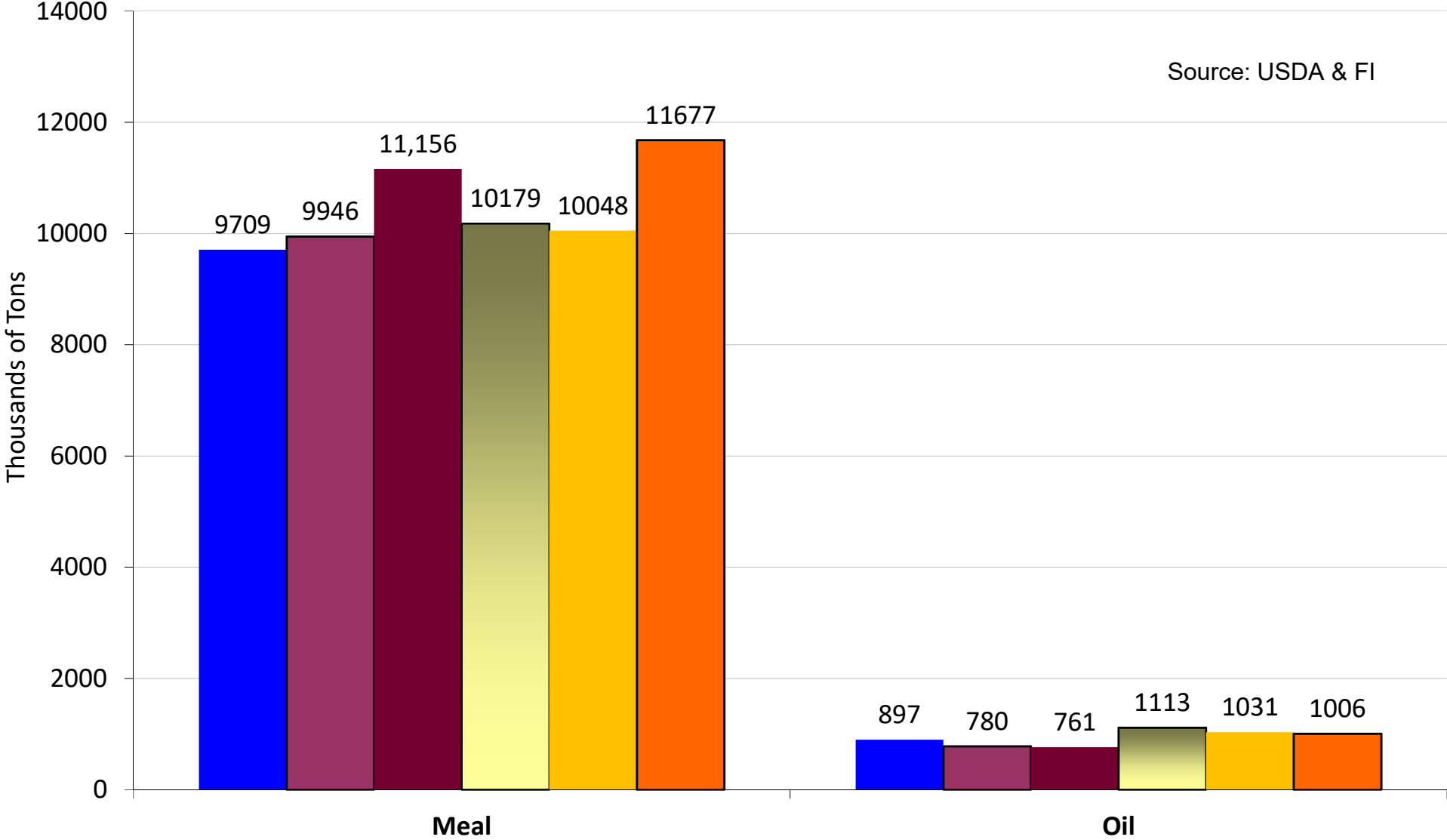


■ 2018-19
 ■ 2013-14
 ■ 2014-15
 ■ 2015-16
 ■ 2016-17
 ■ 2017-18

Export Sales As of 7/12/18

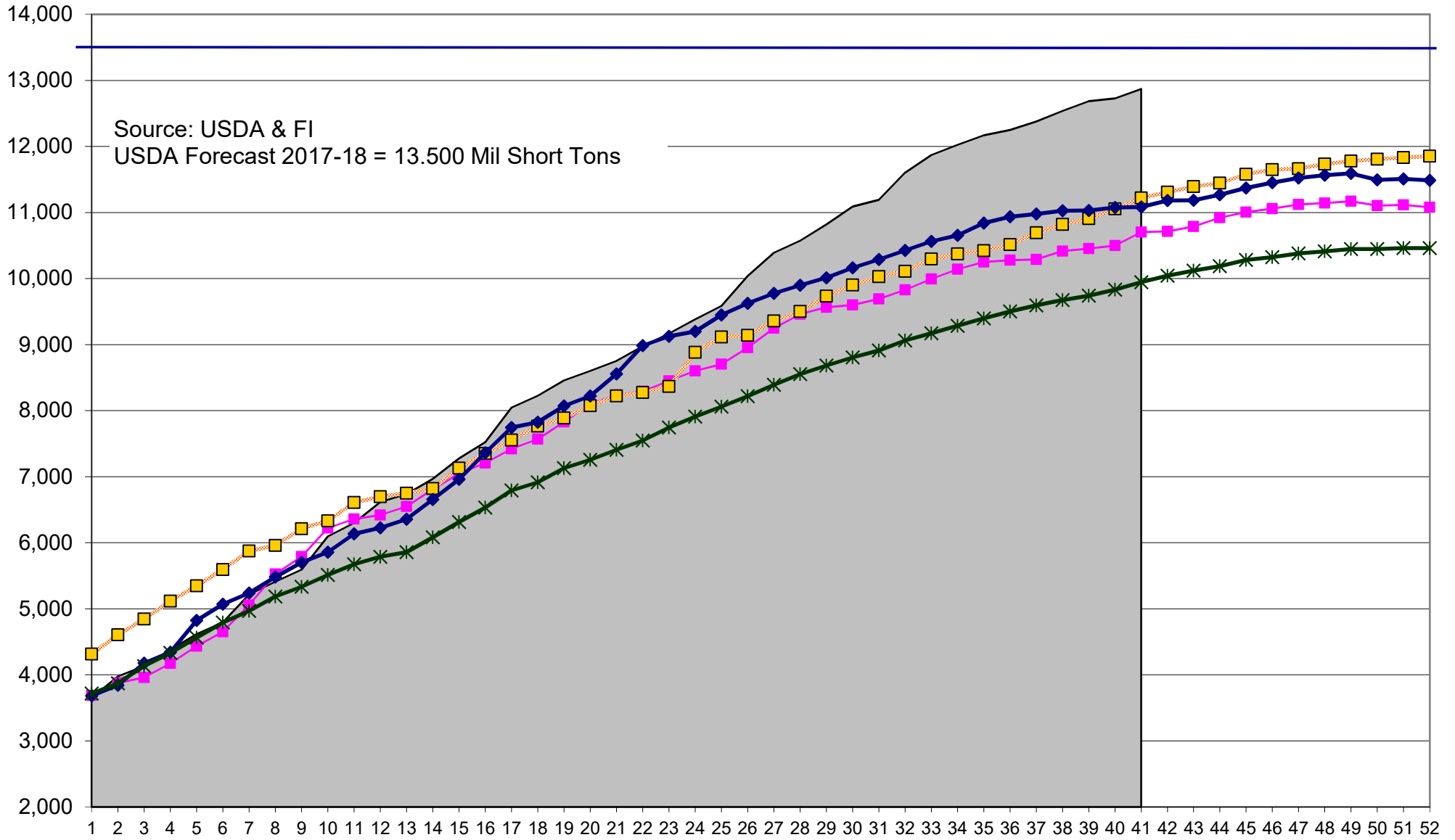
Crop Year Sales to Date

Source: USDA & FI



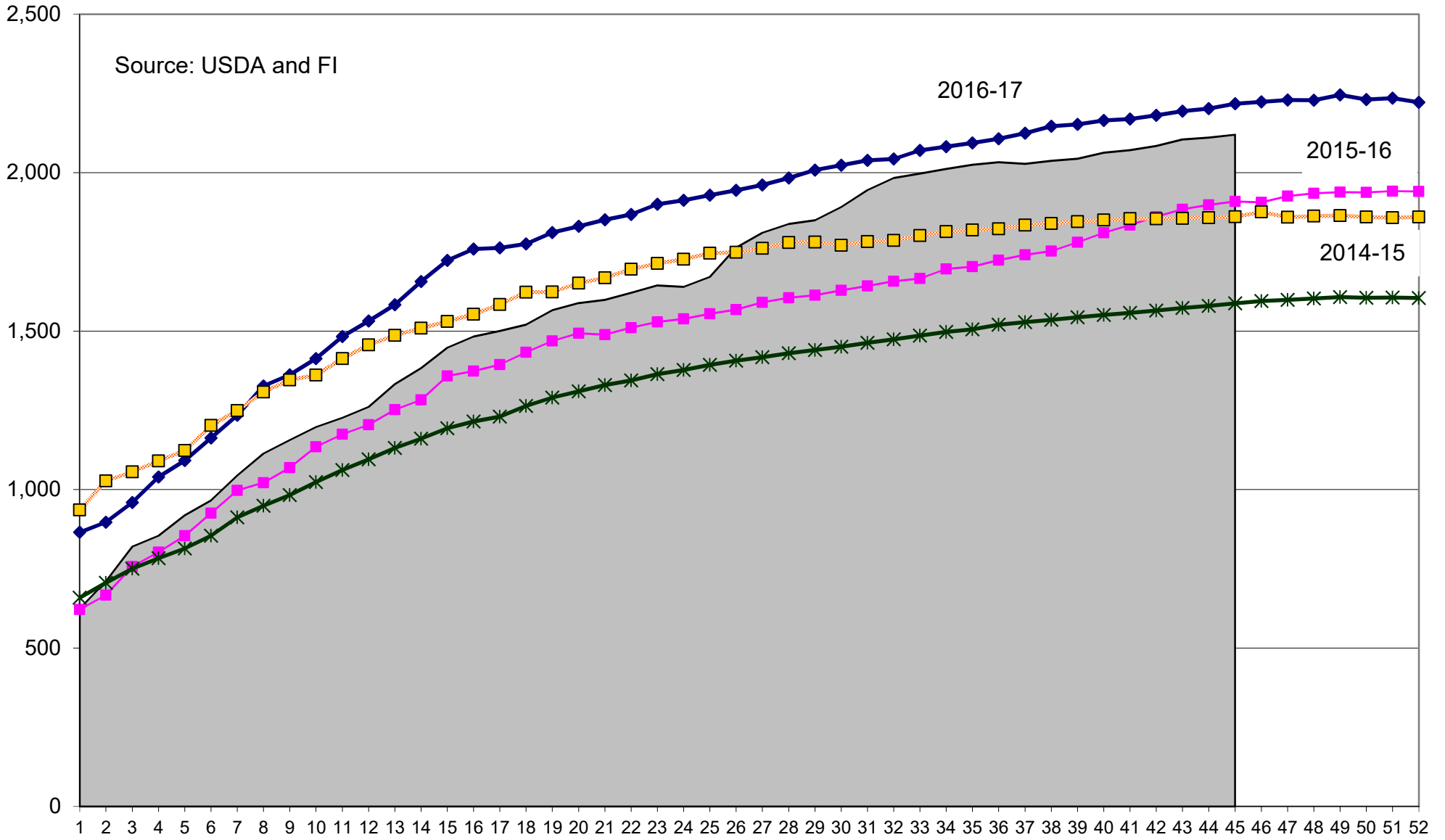
■ 2012-13 ■ 2013-14 ■ 2014-15 ■ 2015-16 ■ 2016-17 ■ 2017-18

US Soymeal, Current Crop-Year Commitments, 000 short tons



2017-18
 2014-15
 2015-16
 2016-17
 10-Year Average

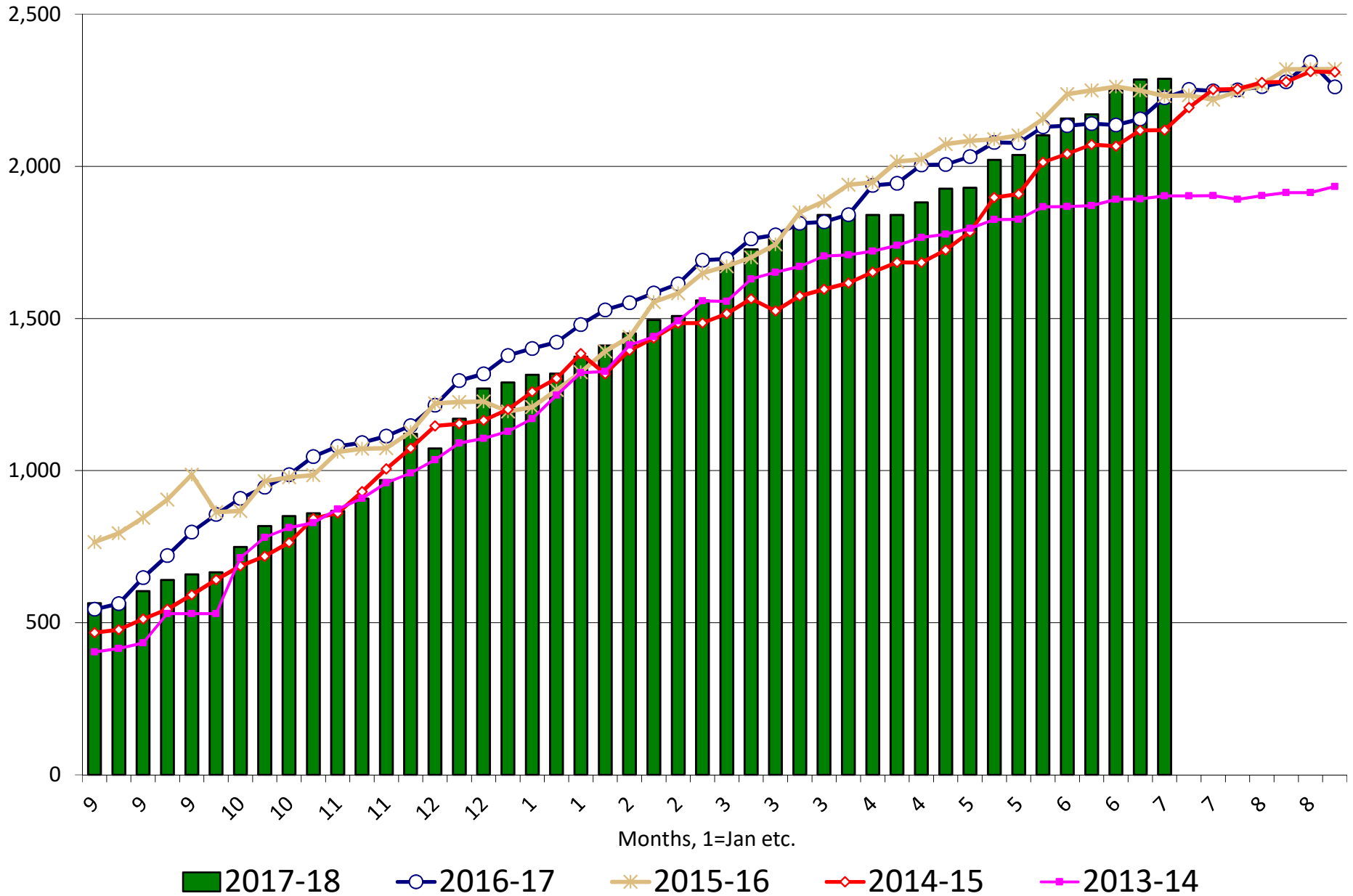
Soybeans, Current Crop-Year Commitments, million bushels



2017-18
 2016-17
 2015-16
 2014-15
 "10-Year Average"

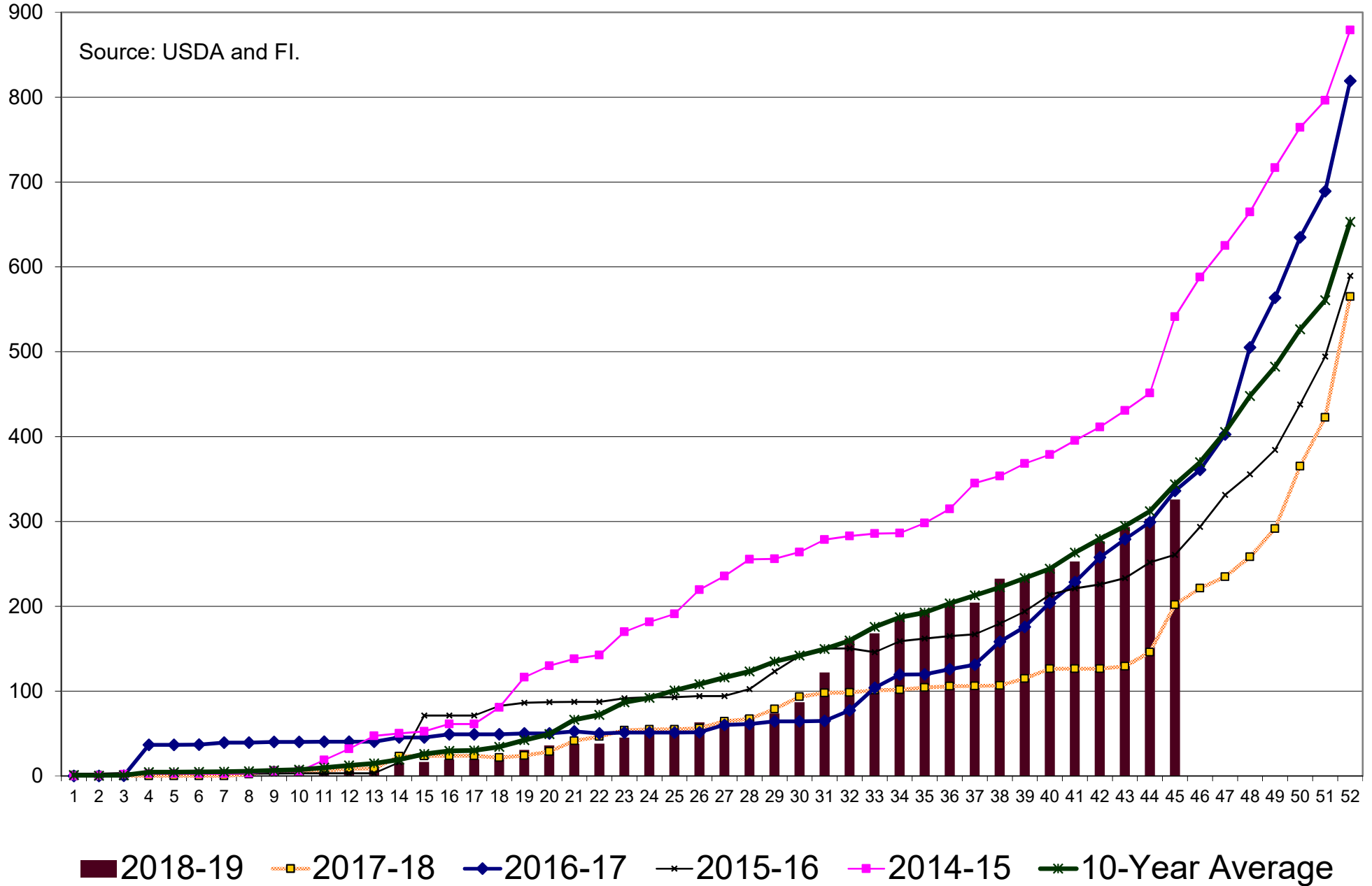
US Soybean Current Crop-Year Commitments to Japan

Thousand Tons, Sept-Aug Crop-Year

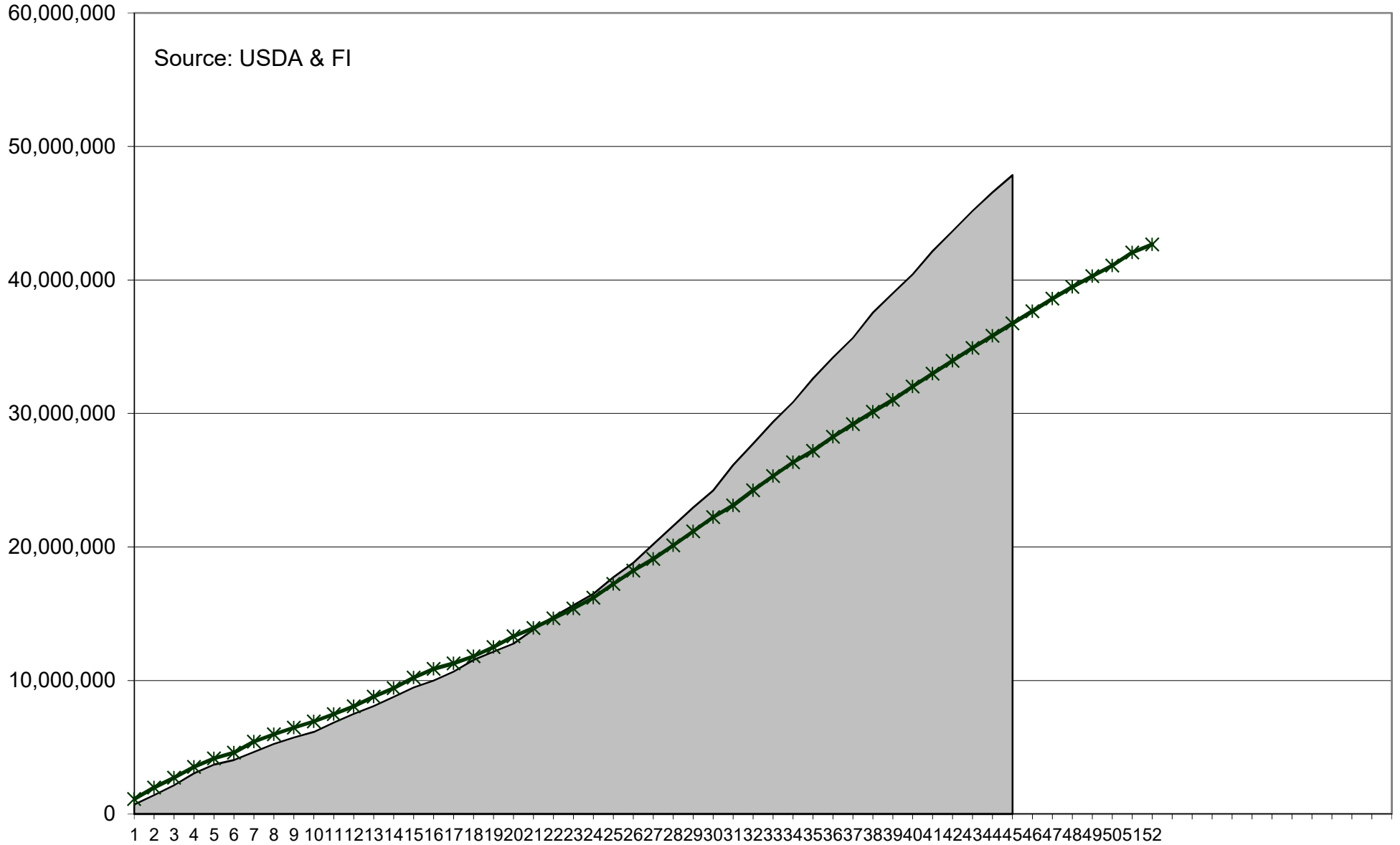


Soybeans, New Crop (Forward) Commitments, million bushels

Source: USDA and FI.



US Corn Current Crop-Year Accumulated Shipments versus 5-year

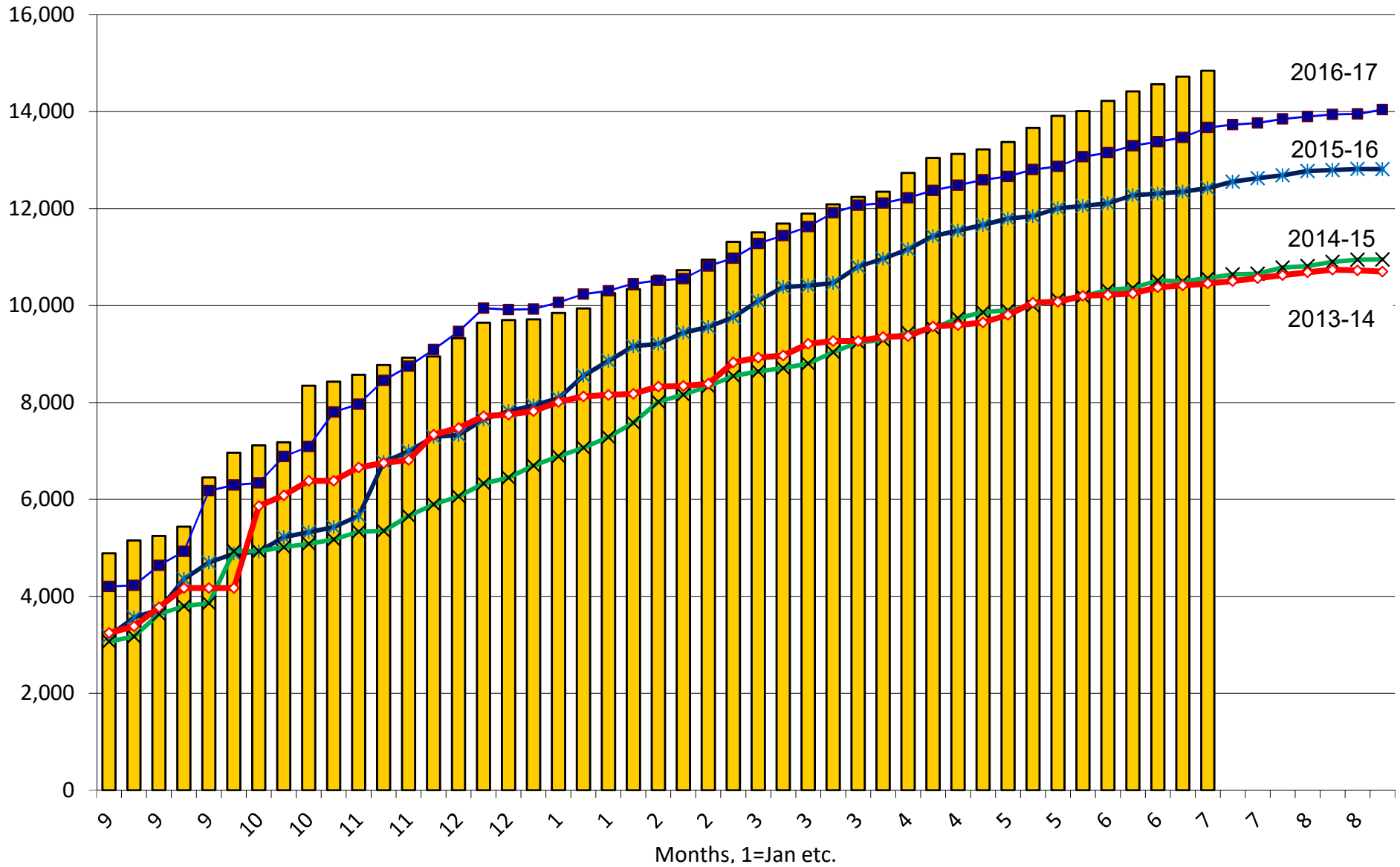


2017-18

5-Year Average

US Corn Current Crop-Year Commitments to Mexico

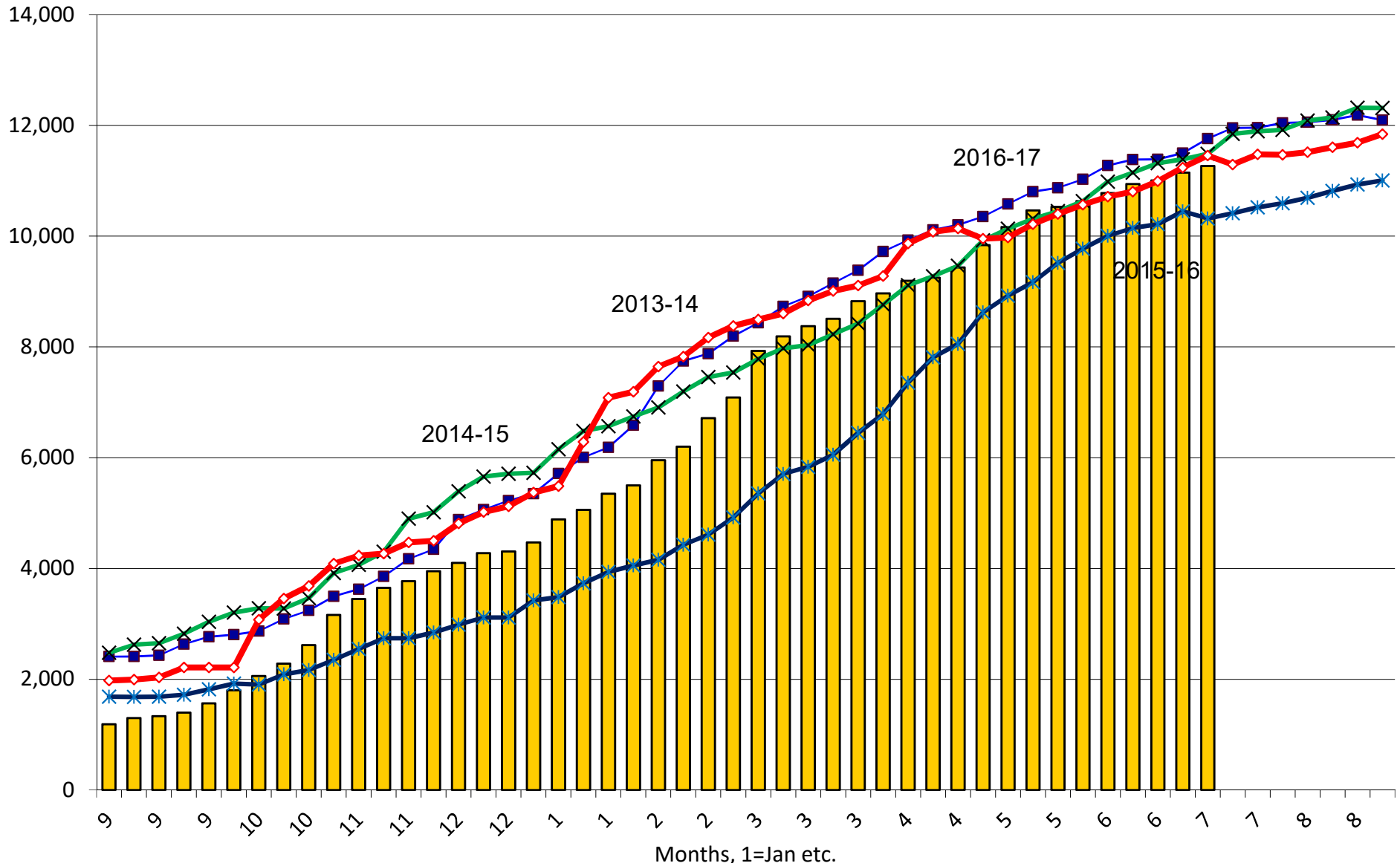
Thousand Tons, Sept-Aug



2017-18
 2016-17
 2015-16
 2014-15
 2013-14

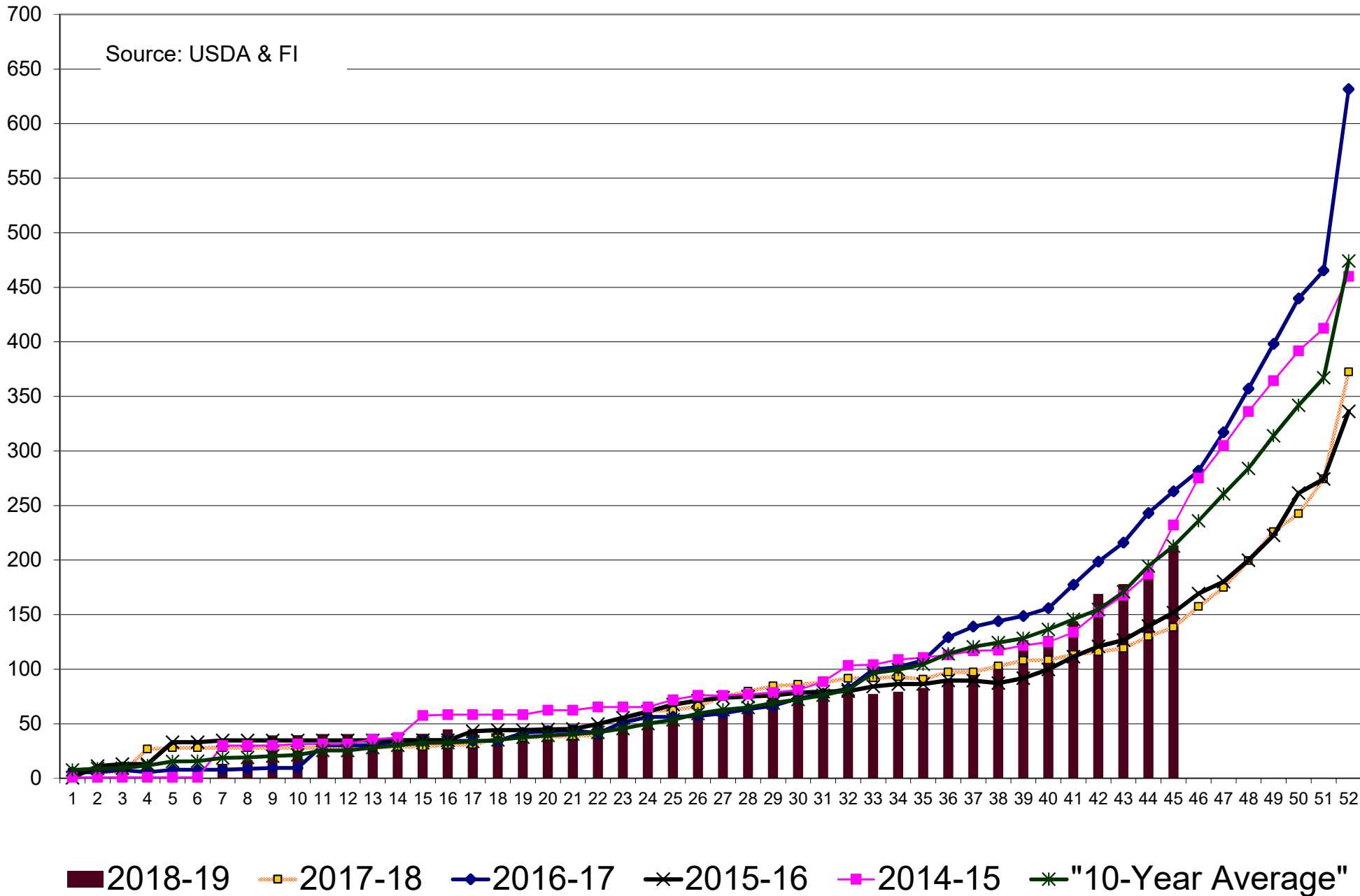
US Corn Current Crop-Year Commitments to Japan

Thousand Tons, Sept-Aug



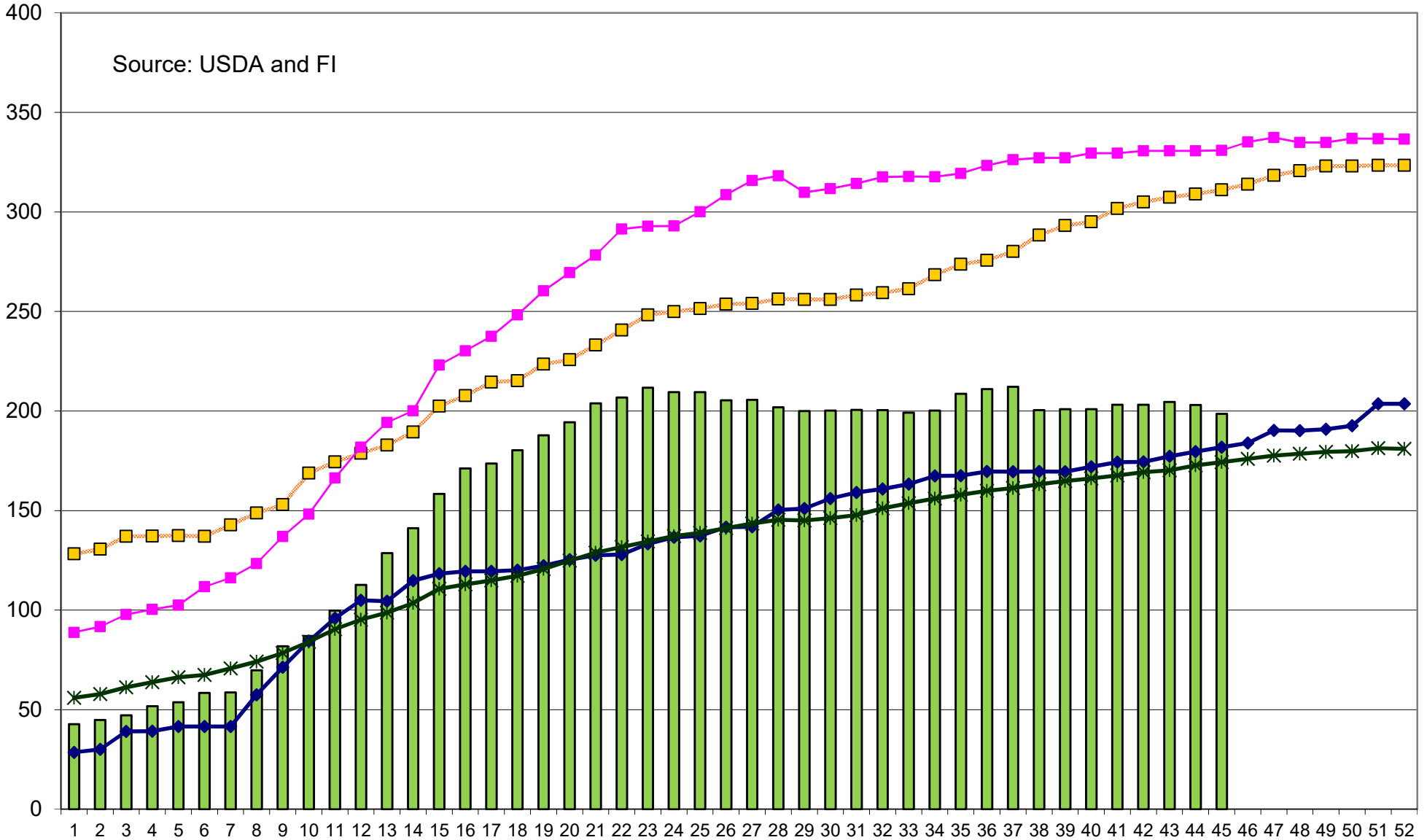
2017-18
 2016-17
 2015-16
 2014-15
 2013-14

Corn, New Crop (Forward) Commitments, million bushels



US Sorghum, Current Crop-Year Commitments, million bushels

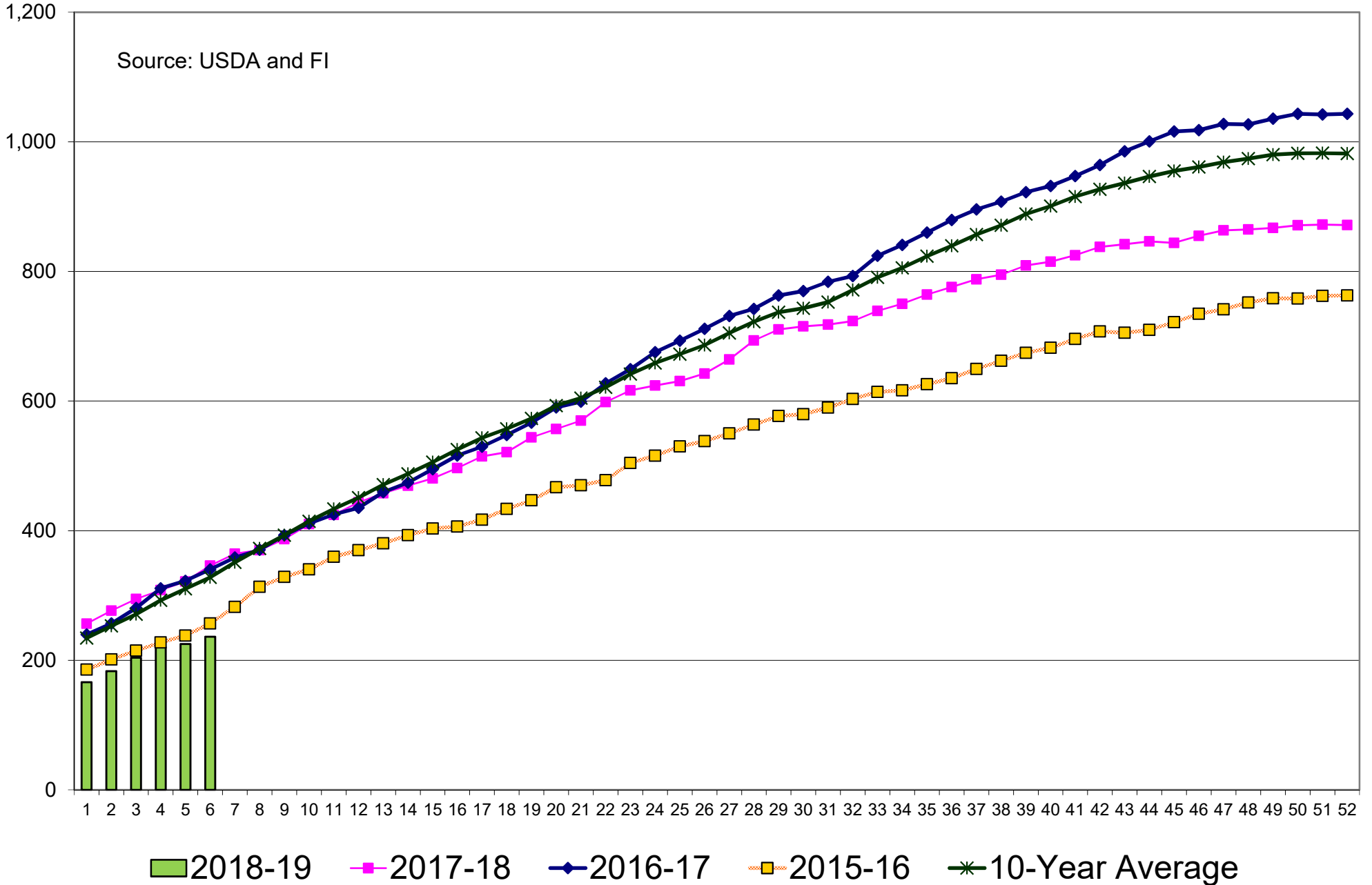
Source: USDA and FI



2017-18
 2016-17
 2015-16
 2014-15
 10-Year Average

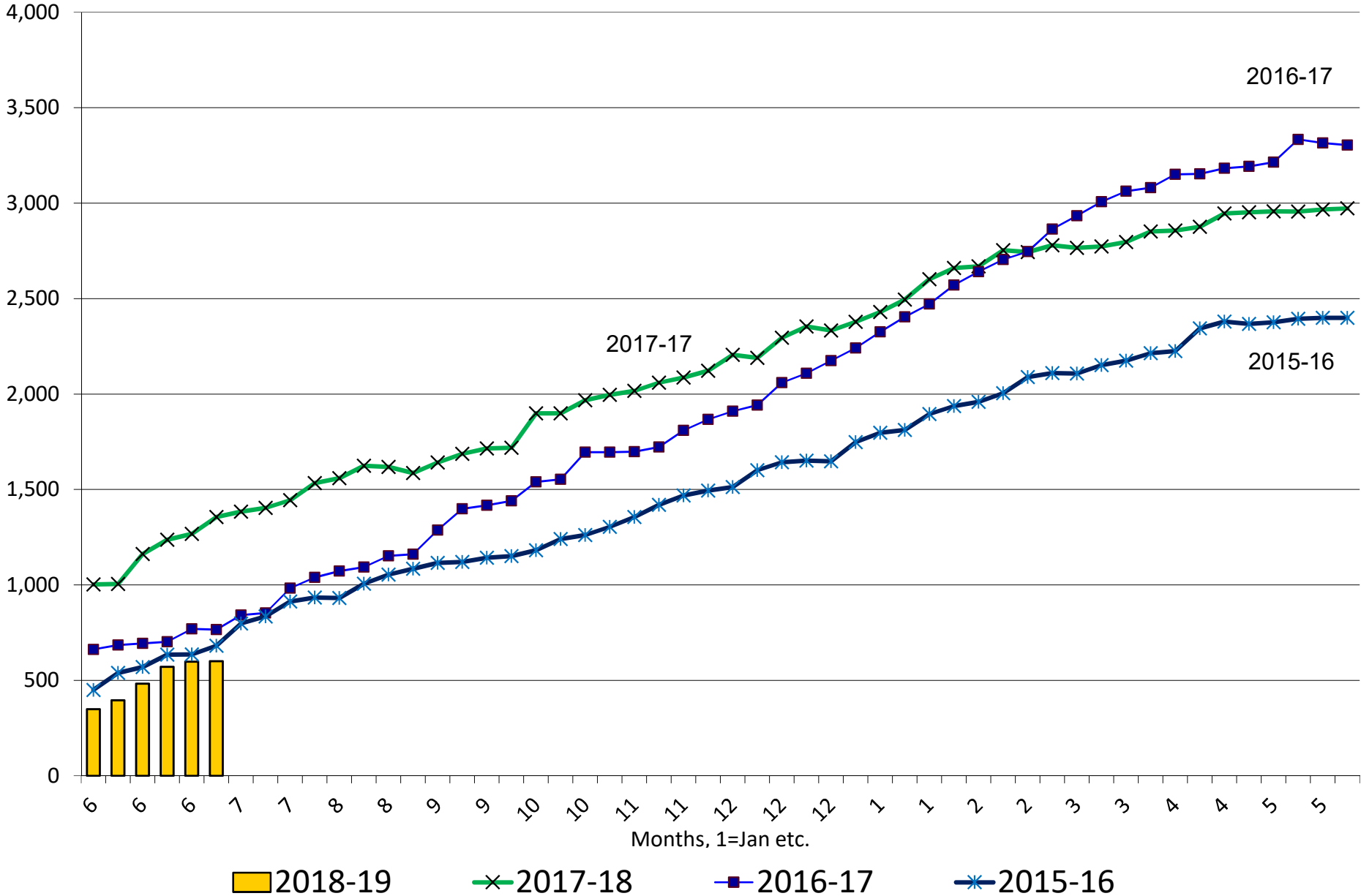
US Wheat, Current Crop-Year Commitments, million bushels

Source: USDA and FI



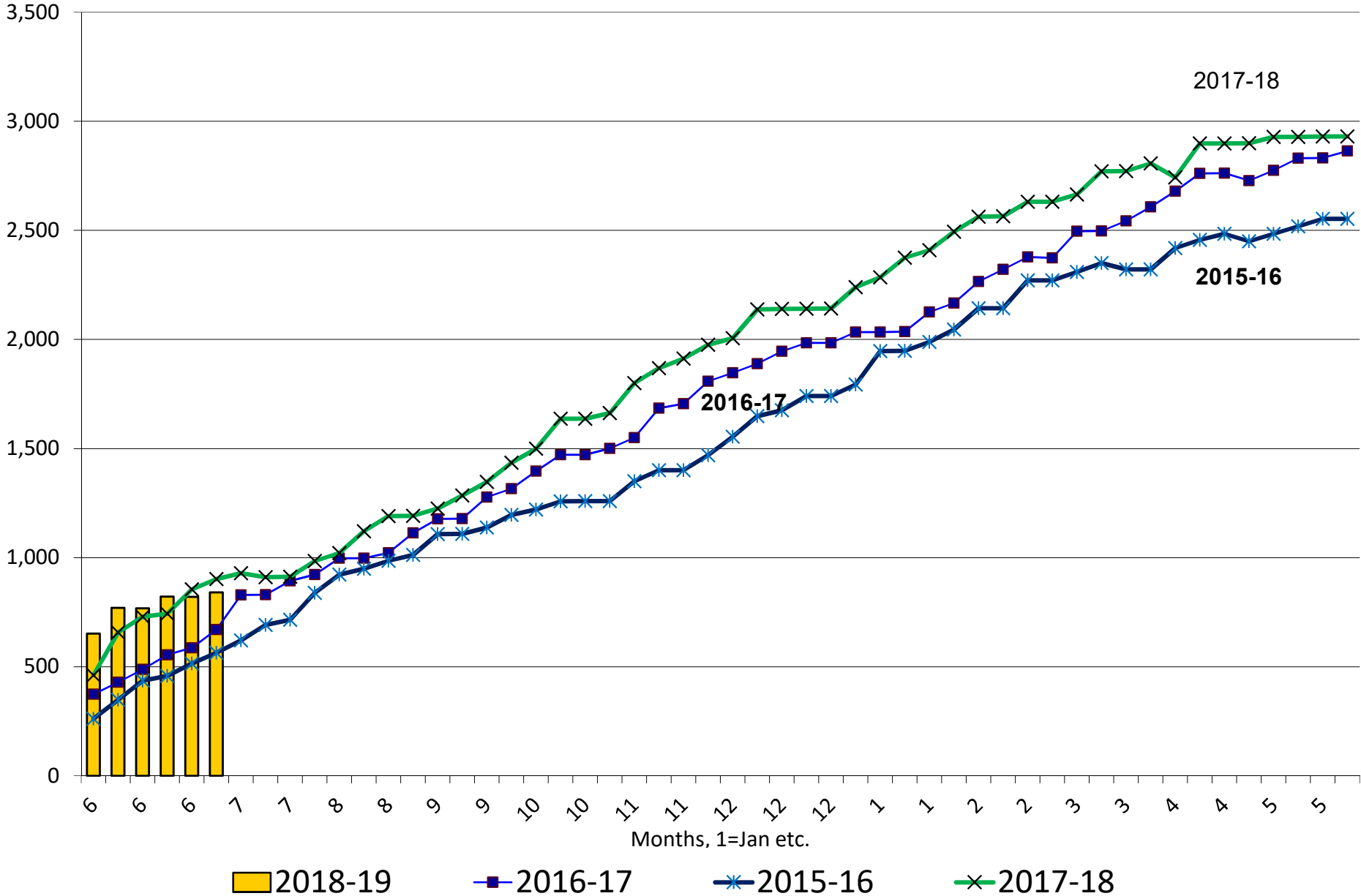
US All Wheat Current Crop-Year Commitments to Mexico

Thousand Tons, Sept-Aug



US All Wheat Current Crop-Year Commitments to Japan

Thousand Tons, Sept-Aug



Disclaimer

TO CLIENTS/PROSPECTS OF FUTURES INTERNATIONAL, SEE RISK DISCLOSURE BELOW:

THIS COMMUNICATION IS CONVEYED AS A SOLICITATION FOR ENTERING INTO A DERIVATIVES TRANSACTION.

Any trading recommendations and market or other information to Customer by Futures International (FI), although based upon information obtained from sources believed by FI to be reliable may not be accurate and may be changed without notice to customer. FI makes no guarantee as to the accuracy or completeness of any of the information or recommendations furnished to Customer. Customer understands that FI, its managers, employees and/or affiliates may have a position in commodity futures, options or other derivatives which may not be consistent with the recommendations furnished by FI to Customer.

The risk of trading futures and options and other derivatives involves a substantial risk of loss and is not suitable for all persons. In purchasing an option, the risk is limited to the premium paid, and all commissions and fees involved with the trade. When an option is shorted or written, the writer of the option has unlimited risk with respect to the option written. The use of options strategies such as a straddles and strangles involve multiple option positions and may substantially increase the amount of commissions and fees paid to execute the strategy. Option prices do not necessarily move in tandem with cash or futures prices. Each person must consider whether a particular trade, combination of trades or strategy is suitable for that person's financial means and objectives.

This material may include discussions of seasonal patterns, however, futures prices have already factored in the seasonal aspects of supply and demand, and seasonal patterns are no indication of future market trends. Finally, past performance is not indicative of future results.

This communication may contain links to third party websites which are not under the control of FI and FI is not responsible for their content. Products and services are offered only in jurisdictions where solicitation and sale are lawful, and in accordance with applicable laws and regulations in each such jurisdiction.