

USDA US Export Sales Results in 000 Metric Tons

	Week ending:	Actual 7/5/2018	Trade* Estimates		Last Week 6/28/2018		Year Ago 7/6/2017
Beans	2017-18	158.6	200-500	2016-17	561.7		228.0
	2018-19	270.8	250-550	2017-18	458.7		455.0
Meal	2017-18	37.5	50-250	Sales	132.8	Sales	3.7
	2018-19	40.7	30-150	n/c	61.6		357.7
	Shipments	153.9	NA	Shipments	250.9	Shipments	128.8
Oil	2017-18	27.6	10-30	Sales	36.6	Sales	16.2
	2018-19	3.9	0-10	n/c	0.0		0.0
	Shipments	5.6	NA	Shipments	34.2	Shipments	7.5
Corn	2017-18	402.1	400-800	2016-17	440.8		161.1
	2018-19	128.0	250-550	2017-18	232.1		279.7
Wheat	2018-19	136.4	200-500	2018-19	440.1		357.7

Source: FI & USDA *Reuters estimates

n/c= New Crop

USDA Export Sales Results in 000 tons

AS OF: 7/5/2018

	ESTIMATED This Week		ACTUAL This Week		as of ACTUAL Last week		as of 7/6/2017 Year Ago		
Beans	17/18	300-500	17/18	158.6	17/18	561.7	16/17	228.0	
	n/c	350-550	n/c	270.8	n/c	458.7	n/c	455.0	
			Sales to China 3.3		Sales to China -366.0		Sales to China 67.1		
Meal	Shipped		Shipped		Shipped		Shipped		
	16/17	100-200 150-350	17/18	37.5	153.9	17/18	132.8 250.9	16/17	3.7 128.8
	n/c	50-100	n/c	40.7		n/c	61.6	n/c	137.0
Oil	Shipped		Shipped		Shipped		Shipped		
	16/17	15-30 5-15	17/18	27.6	5.6	17/18	36.6 34.2	16/17	16.2 7.5
	n/c	0-10	n/c	3.9		n/c	3.8	n/c	0.0
		Sales to China 0.0		Sales to China 0.0		Sales to China 0.0			
Corn	17/18	450-650	17/18	402.1	17/18	440.8	16/17	161.1	
	n/c	225-425	n/c	128.0	n/c	232.1	n/c	279.7	
			Sales to China 0.0		Sales to China 0.4		Sales to China 0.8		
Wheat	17/18	350-550	18/19	136.4	18/19	440.1	17/18	357.7	
	n/c	0.0	n/c	0.0	n/c	0.0	n/c	0.0	

o/c=Old Crop, n/c= New Crop Source: Futures International and USDA

US crop-year to date export sales

% sold from USDA's export projection

	Current	Last Year	YOY	YOY	2018-19	2017-18	2016-17	2015-16
2017-18 Soybeans mil bu	2111	2203	-92	-4.2%		102.2%	101.3%	96.3%
2017-18 SoyOil MT	995	1006	-10	-1.0%		115.5%	86.7%	104.6%
2017-18 SoyMeal MT	11546	10007	1539	15.4%		102.6%	95.1%	92.5%
2017-18 Corn mil bu	2287	2195	92	4.2%		99.4%	95.7%	97.9%
2018-19 Wheat mil bu	225	322	-96	-30.0%	23.7%	35.7%	29.2%	29.2%

Source: Futures International and USDA

EXPORT SALES SITUATION

SOYBEANS

(million bushels)

		2017-18	2016-17	2015-16	2014-15	2013-14	2012-13	2011-12	2010-11	2009-10	2008-09	2007-08	2006-07	2005-06	2004-05	2003-04	2002-03	2001-02
Weekly Sales Total																		
	New Crop Sales	575.7	1175.9	452.1	800.8	789.1	738.3	522.9	623.8	583.1	309.4	284.6	237.7	145.7	219.3	296.3	213.2	206.2
Weeks remaining	7-Sep	59.2	65.3	62.3	36.2	17.6	23.1	16.3	31.2	30.5	16.9	12.7	27.2	0.5	2.7	1.5	4.0	2.5
9	14-Sep	85.9	37.4	33.5	53.9	33.9	23.8	14.9	24.6	18.0	15.1	18.9	28.0	21.9	23.3	21.7	23.1	20.9
	21-Sep	109.6	32.2	48.4	94.3	103.5	29.4	38.0	39.8	42.3	22.5	27.4	31.8	27.6	36.9	27.7	25.9	15.3
	28-Sep	37.3	62.2	92.1	31.9	31.6	47.6	25.8	63.8	50.9	17.3	24.5	43.9	24.8	27.8	25.8	9.8	35.4
	5-Oct	64.2	80.1	47.2	33.9	34.2	18.4	24.7	34.8	16.6	22.1	20.2	39.9	19.9	35.3	17.4	19.0	40.0
	12-Oct	46.9	52.1	54.3	34.4	0.0	19.2	21.9	39.6	24.0	37.8	27.6	31.9	25.2	36.0	42.2	20.6	48.5
	19-Oct	78.2	71.0	74.6	79.6	0.0	19.2	8.4	74.1	36.3	28.8	17.0	23.0	32.7	36.3	36.3	44.4	39.1
	26-Oct	72.3	72.4	76.7	48.7	174.2	27.2	7.7	74.4	25.4	53.5	27.2	23.5	30.9	34.0	59.7	60.0	32.5
	2-Nov	42.6	92.4	24.1	59.2	36.6	6.8	22.2	58.3	19.2	32.9	22.6	28.2	28.0	17.6	68.8	29.1	55.2
	9-Nov	40.6	34.5	47.7	39.5	28.6	20.6	27.4	29.7	46.8	17.6	47.6	27.8	21.3	24.2	33.7	29.3	27.3
	16-Nov	31.9	51.7	66.0	17.7	47.8	16.2	33.9	37.0	49.6	29.1	66.4	29.5	22.0	35.3	26.0	43.0	51.6
	23-Nov	34.6	69.8	43.1	54.6	51.7	11.7	18.0	24.8	41.7	28.7	41.1	26.8	7.7	49.1	31.7	36.0	36.8
	30-Nov	74.1	48.8	32.3	43.3	29.6	42.0	28.3	49.3	26.6	13.2	29.5	24.5	12.2	15.0	9.1	25.5	31.4
	7-Dec	53.4	51.1	53.4	29.8	40.7	48.5	17.2	23.4	34.1	29.8	35.7	33.2	35.0	16.4	13.2	48.8	29.6
	14-Dec	64.0	73.8	32.6	25.6	12.4	22.8	24.0	3.1	34.3	32.8	32.1	27.3	15.2	31.4	7.5	38.4	36.4
	21-Dec	35.8	66.6	76.0	23.4	26.5	-0.3	24.3	28.1	43.9	21.5	25.1	38.1	30.5	42.5	53.5	41.3	20.9
	28-Dec	20.4	35.8	17.6	22.4	33.5	16.0	10.3	24.3	29.4	18.8	5.2	12.5	32.7	32.0	20.0	9.3	12.7
	4-Jan	22.3	3.2	23.5	33.5	5.7	11.8	15.9	18.0	26.7	19.5	4.4	21.7	17.0	23.9	5.7	14.0	19.1
	11-Jan	45.6	12.8	41.4	41.6	25.5	56.7	36.4	15.4	27.7	50.0	35.5	40.3	16.5	39.2	17.1	50.3	41.6
	18-Jan	19.8	19.8	36.2	0.5	23.4	11.3	17.1	26.9	34.2	48.7	24.4	22.6	47.0	31.6	0.5	21.0	27.7
	25-Jan	10.4	3.6	23.8	32.6	13.3	14.2	9.0	28.7	24.7	19.3	17.9	24.9	19.2	19.1	-4.8	25.3	26.5
	1-Feb	24.5	3.9	-1.6	18.0	16.0	29.9	22.2	37.9	14.0	12.4	38.1	29.5	16.4	20.2	13.5	20.2	11.2
	8-Feb	20.7	0.7	24.5	27.4	6.4	-4.0	13.5	0.8	11.5	39.3	12.1	14.0	19.0	20.2	5.9	16.1	4.3
	15-Feb	-6.8	16.5	20.8	18.6	0.4	-4.4	39.8	18.9	7.5	40.2	23.2	24.8	19.5	13.9	7.3	14.6	14.5
	22-Feb	28.7	-3.8	12.1	16.9	12.0	22.5	20.2	4.9	8.8	12.5	21.4	15.3	18.5	15.7	-0.2	11.1	12.9
	1-Mar	89.4	-0.5	16.2	18.4	28.4	9.6	37.3	13.3	6.7	5.7	7.4	20.8	13.5	23.4	-1.0	12.3	24.9
	8-Mar	43.8	-0.8	17.5	6.2	2.4	23.0	22.4	15.1	-4.3	30.8	9.5	16.6	18.5	25.1	9.7	23.5	-11.9
	15-Mar	25.1	1.1	22.9	12.6	7.4	4.0	13.1	5.4	7.9	5.3	16.1	19.2	14.0	23.0	1.6	12.4	8.1
	22-Mar	8.9	5.7	15.1	18.6	0.4	2.4	17.3	9.7	10.0	15.8	13.6	9.9	8.6	12.3	7.9	12.0	9.1
	29-Mar	38.8	8.8	10.0	1.0	2.4	14.4	15.0	5.3	6.6	22.0	6.8	9.5	8.1	11.0	6.4	7.6	2.7
	5-Apr	52.7	-0.9	15.4	-6.5	2.9	11.7	16.9	2.8	7.6	15.9	21.5	5.0	13.0	12.3	3.8	22.3	14.8
	12-Apr	35.4	-1.4	16.8	11.5	0.7	11.3	11.5	4.8	5.8	29.7	17.5	10.4	12.6	4.4	6.6	9.6	11.5
	19-Apr	10.8	-11.2	15.0	3.8	0.0	-7.6	34.0	12.8	11.3	22.7	13.8	15.5	7.1	5.8	4.6	6.3	8.0
	26-Apr	12.5	10.7	8.3	15.9	-0.6	-4.0	22.0	5.3	3.7	30.7	11.4	-2.6	4.1	9.1	1.8	7.9	13.1
	3-May	10.2	-4.5	30.0	12.5	1.5	7.1	17.1	0.8	10.4	24.0	1.5	7.5	6.7	12.0	4.7	1.4	9.5
	10-May	10.4	-4.3	7.8	5.0	2.7	0.6	22.6	2.2	9.7	14.8	7.4	8.2	14.3	6.1	-1.2	5.2	12.9
	17-May	-5.1	-3.1	20.4	6.1	6.0	6.7	29.4	6.1	17.6	25.7	14.1	3.1	12.2	13.9	0.7	4.0	12.2
	24-May	10.0	1.2	16.8	11.8	2.2	-4.0	8.8	6.0	6.4	8.7	9.0	12.7	8.6	9.7	-0.5	9.6	12.7
	31-May	6.1	6.2	11.4	4.8	1.5	1.8	8.1	3.0	5.0	-0.9	11.0	7.4	12.7	7.2	0.8	4.1	9.7
	7-Jun	19.1	-10.4	27.9	6.0	3.2	1.2	15.6	4.4	15.5	-2.2	10.0	8.1	6.6	3.2	0.2	14.1	17.5
	14-Jun	11.1	-3.7	30.0	4.9	3.6	1.9	5.2	6.6	-5.0	5.4	6.3	13.2	14.1	6.7	3.6	-1.7	8.8
	21-Jun	13.2	-12.1	24.3	4.4	11.7	0.5	14.8	-1.2	11.3	1.0	-9.9	8.8	7.4	5.4	3.5	8.5	10.1
	28-Jun	20.6	-4.7	26.8	-0.4	1.5	4.4	11.0	-12.3	9.7	7.1	17.1	7.1	13.2	6.3	0.6	7.2	9.6
	5-Jul	5.8	-2.8	23.4	1.5	2.1	-2.6	12.2	11.2	9.6	10.5	2.4	5.3	7.9	6.0	0.1	8.5	3.2
	12-Jul																	
	19-Jul																	
	26-Jul																	
	2-Aug																	
	9-Aug																	
	16-Aug																	
	23-Aug																	
	30-Aug																	
	6-Sep																	
Crop year to date sales		2111.0	2203.0	1870.5	1856.1	1674.3	1351.0	1394.7	1537.1	1453.2	1262.2	1128.8	1113.6	910.1	1101.5	890.9	1068.0	1086.8
Average weekly sales rate to reach proj total		-5.1	-3.2	7.9	-1.6	-4.0	-3.8	-3.3	-4.0	5.1	1.9	3.4	0.3	3.3	-0.5	-0.4	-2.7	-2.5
Proj./Actual export total		2065	2174	1942	1842	1638	1317	1365	1501	1499	1279	1159	1116	940	1097	887	1044	1064
YTD sales as % of total		102.2	101.3	96.3	100.8	102.2	102.6	102.2	102.4	96.9	98.7	97.4	99.8	96.8	100.4	100.4	102.3	102.1
Sold as of around Sep 1 %		27.9	54.1	23.3	43.5	48.2	56.1	38.3	41.6	38.9	24.2	24.6	21.3	15.5	20.0	33.4	20.4	19.4

Source: Futures International and USDA

EXPORT SALES SITUATION

SOYMEAL

(000 metric tons)

Weekly Sales Total	2017-18	2016-17	2015-16	2014-15	2013-14	2012-13	2011-12	2010-11	2009-10	2008-09	2007-08	2006-07	2005-06	2004-05	2003-04	2002-03	2001-02
New Crop Sales	3,205.7	2,743.4	3,685.7	5,318.9	2,679.3	3,203.3	1,431.4	2,079.9	3,014.9	1,673.6	1,648.7	1,117.6	1,051.0	1,586.8	1,677.7	1,398.4	1,612.1
Weeks remaining	5-Oct	106.0	200.0	225.8	707.6	1,189.2	143.5	558.6	423.1	466.1	29.2	266.0	611.2	59.9	177.6	456.0	269.1
13	12-Oct	296.0	398.0	264.4	195.9	0.0	173.1	348.9	245.7	115.7	242.3	100.4	151.4	119.8	230.5	291.2	112.8
	19-Oct	142.8	146.2	218.7	23.0	0.0	73.2	74.1	153.9	176.2	263.5	244.4	101.0	194.2	182.9	96.0	103.1
	26-Oct	225.0	301.0	246.2	147.8	805.2	194.5	120.8	165.6	116.7	130.2	203.9	57.7	304.7	24.4	65.4	218.5
	2-Nov	212.9	149.9	208.2	-123.7	287.8	234.6	291.4	365.3	224.1	107.4	211.0	265.9	79.8	145.8	589.6	228.7
	9-Nov	163.1	437.4	224.1	21.3	283.2	197.9	201.5	198.0	357.5	124.4	153.2	132.7	204.7	97.2	-131.5	87.7
	16-Nov	379.8	224.5	254.9	265.7	116.0	365.1	150.2	292.7	225.2	92.3	133.1	245.9	143.2	125.2	74.8	222.2
	23-Nov	176.6	150.4	77.5	-22.3	307.9	429.9	135.5	133.8	107.4	59.7	145.2	214.1	76.1	110.6	102.1	210.6
	30-Nov	166.4	222.5	228.7	226.8	120.4	238.2	170.0	193.4	232.3	106.0	163.4	116.5	272.4	82.8	-4.7	130.5
	7-Dec	455.4	200.0	108.6	88.9	82.7	390.8	103.7	171.8	191.4	18.5	96.0	205.5	120.7	167.2	46.3	110.8
	14-Dec	184.1	139.2	252.5	146.8	77.1	124.7	142.0	113.5	254.2	62.2	111.8	115.4	84.1	113.4	129.5	84.7
	21-Dec	288.4	251.9	78.9	206.7	83.3	53.8	51.1	219.3	286.9	145.7	73.3	108.7	81.8	29.7	86.2	145.5
	28-Dec	109.1	83.3	46.5	157.9	123.9	118.2	144.4	24.5	61.8	43.3	49.1	71.8	46.2	113.7	17.6	89.5
	4-Jan	209.3	119.1	64.7	37.3	62.8	236.1	48.0	26.2	356.7	19.7	77.9	101.5	68.9	70.7	-30.0	12.1
	11-Jan	281.8	269.8	280.6	72.1	234.7	218.0	181.2	232.2	416.2	74.4	93.8	221.2	158.0	104.8	55.6	192.1
	18-Jan	223.1	276.8	200.8	284.5	241.4	141.7	124.2	-30.0	254.1	210.8	162.4	34.4	189.1	47.1	79.1	214.7
	25-Jan	474.8	365.0	186.3	296.5	68.3	196.3	74.7	177.9	134.9	201.7	225.8	160.5	196.6	94.4	-4.1	203.3
	1-Feb	160.8	347.7	189.4	296.3	283.7	132.4	161.9	182.7	102.7	184.0	365.8	135.3	133.3	44.0	21.8	-50.1
	8-Feb	210.0	71.8	111.4	189.4	18.7	236.1	80.1	107.7	242.1	196.7	106.6	170.3	152.9	173.5	-93.7	75.1
	15-Feb	131.9	223.0	171.7	316.6	227.5	250.3	216.0	108.3	81.9	142.6	48.6	201.6	77.3	52.8	80.8	76.0
	22-Feb	139.0	139.5	132.1	-6.4	115.9	119.3	40.0	148.1	85.7	145.6	102.8	0.8	89.6	52.4	-127.7	44.6
	1-Mar	200.6	301.9	46.6	130.2	232.8	51.7	111.0	156.7	1.9	117.1	75.6	66.1	78.0	121.7	-3.4	28.9
	8-Mar	173.3	389.5	83.4	101.3	160.0	143.4	156.1	51.4	92.5	147.4	147.8	277.0	93.5	90.4	95.6	93.9
	15-Mar	194.6	127.0	468.7	204.0	242.9	137.2	87.4	210.9	189.5	33.4	175.8	17.5	115.2	149.9	33.0	152.7
	22-Mar	184.1	65.9	211.6	224.3	158.5	92.6	132.9	79.7	68.1	140.8	156.8	105.2	179.0	195.5	42.8	127.3
	29-Mar	414.3	228.6	23.3	214.1	307.8	227.1	174.0	46.2	211.9	106.9	90.0	121.7	37.1	33.5	39.4	87.9
	5-Apr	317.4	158.7	196.8	46.0	179.6	266.0	33.2	171.6	85.0	85.8	129.6	172.5	85.3	77.9	37.6	25.4
	12-Apr	164.9	135.0	131.6	130.4	36.6	193.3	300.7	130.1	94.3	167.2	176.1	103.9	142.6	95.6	13.7	154.3
	19-Apr	223.7	112.0	209.3	107.4	186.3	93.2	221.1	121.1	57.4	108.3	140.4	151.3	18.4	58.5	48.5	21.6
	26-Apr	246.0	103.6	152.7	134.7	140.9	34.4	59.0	78.7	137.8	293.0	59.0	119.1	124.0	110.3	70.2	104.9
	3-May	90.9	137.1	115.3	136.8	75.0	82.8	138.4	61.0	68.3	135.4	122.2	68.6	61.8	51.1	22.5	-11.9
	10-May	376.0	113.6	73.0	45.2	84.5	123.6	114.3	10.0	32.5	260.1	115.6	86.9	157.3	66.1	15.6	72.2
	17-May	239.5	125.0	169.5	103.0	186.3	149.2	144.6	137.5	47.4	210.8	151.4	117.7	87.3	78.2	43.6	24.3
	24-May	140.7	123.6	68.6	123.7	83.7	134.2	33.2	34.9	115.4	193.9	110.0	83.6	133.4	54.6	49.6	58.6
	31-May	131.2	84.9	44.3	53.2	65.8	97.7	75.0	60.5	49.7	142.4	264.1	127.3	72.8	84.8	26.4	94.0
	7-Jun	74.6	166.8	84.4	129.7	59.5	26.6	116.8	80.1	84.1	70.2	153.6	68.7	182.7	53.7	50.8	57.9
	14-Jun	115.1	86.6	162.5	96.1	54.7	9.2	258.7	9.5	35.1	93.2	94.4	57.7	84.0	109.7	19.8	64.3
	21-Jun	146.3	38.0	115.5	106.3	66.3	116.3	229.6	108.3	71.6	79.6	34.6	55.6	109.5	175.9	27.3	74.1
	28-Jun	132.8	45.1	77.4	87.1	82.8	33.7	155.9	-43.5	109.5	-23.0	158.1	99.8	90.8	39.0	4.4	53.6
	5-Jul	37.5	3.7	136.1	101.7	48.8	41.6	95.2	14.7	61.0	18.4	62.6	41.1	54.9	79.5	24.7	97.2
	12-Jul																
	19-Jul																
	26-Jul																
	2-Aug																
	9-Aug																
	16-Aug																
	23-Aug																
	30-Aug																
	6-Sep																
	13-Sep																
	20-Sep																
	27-Sep																
	4-Oct																
Crop year to date sales	11545.5	10006.9	10028.5	11123.1	9862.2	9524.8	7486.4	7253.0	9117.7	6654.7	7200.9	6482.3	5812.1	5553.3	4139.8	5561.3	6942.4
Average weekly sales																	
***rate to reach proj total	-22.8	39.8	62.8	59.1	47.1	47.2	104.0	75.8	77.4	81.1	91.0	115.7	114.5	85.0	42.3	-7.8	-10.1
Proj./Actual export total***	11249	10524	10845	11891	10474	10139	8839	8238	10124	7708	8384	7987	7301	6659	4690	5460	6811
YTD sales as % of total	102.6	95.1	92.5	93.5	94.2	93.9	84.7	88.0	90.1	86.3	85.9	81.2	79.6	83.4	88.3	101.8	101.9

***Does not include USDA's Forecast on Flour Meal (MT)

Source: Futures International and USDA

EXPORT SALES SITUATION

SOYOIL

(000 metric tons)

Weekly Sales Total	2017-18	2016-17	2015-16	2014-15	2013-14	2012-13	2011-12	2010-11	2009-10	2008-09	2007-08	2006-07	2005-06	2004-05	2003-04	2002-03	2001-02	
New Crop Sales	71.4	259.4	145.1	95.4	26.6	144.7	38.9	633.7	388.3	67.1	14.3	92.8	79.7	121.3	118.0	149.9	46.8	
5-Oct	10.9	16.8	79.8	69.8	38.1	57.8	36.6	26.7	195.9	79.8	58.2	6.0	3.8	17.5	42.4	67.5	36.4	
12-Oct	27.4	0.3	53.2	46.4	0.0	24.5	6.1	13.7	24.0	16.1	26.4	6.2	-1.3	8.2	2.4	2.5	36.0	
19-Oct	27.9	24.5	14.8	10.6	0.0	12.0	4.1	5.5	23.3	3.3	24.3	2.1	6.3	12.3	5.9	9.0	11.2	
26-Oct	27.0	21.2	82.1	15.8	14.5	28.5	0.7	-32.6	9.2	5.2	14.8	5.8	4.7	4.1	9.5	9.1	28.4	
2-Nov	15.9	16.3	36.2	13.9	65.9	36.7	21.7	6.0	6.9	1.0	7.2	-0.1	41.2	0.3	-19.2	26.3	36.4	
9-Nov	2.7	14.4	28.9	15.6	7.2	21.0	2.1	60.0	5.8	6.3	29.7	18.0	0.9	13.6	8.1	1.6	-8.2	
16-Nov	4.2	26.1	37.7	19.6	95.8	124.1	2.7	-0.7	12.4	7.9	65.1	0.3	11.6	11.9	13.0	11.6	2.2	
23-Nov	11.6	54.5	12.8	35.6	18.8	121.5	8.9	32.1	19.2	17.1	31.8	31.5	3.4	9.4	6.9	11.3	6.5	
30-Nov	21.0	13.4	5.3	25.1	1.4	19.0	18.5	51.3	19.0	2.7	40.9	48.4	14.5	2.3	-0.8	8.1	22.0	
7-Dec	14.5	40.3	13.8	14.7	2.3	30.5	5.5	128.2	12.3	0.4	42.1	15.6	0.3	11.3	1.7	14.3	10.8	
14-Dec	24.2	15.1	10.2	38.8	27.0	-5.8	14.8	21.1	20.7	1.5	8.5	6.3	0.4	18.2	-3.5	4.0	20.8	
21-Dec	44.3	18.9	39.8	3.9	83.9	17.2	2.3	1.6	46.7	5.4	13.2	61.0	7.5	17.3	18.1	23.1	34.4	
28-Dec	17.9	30.9	-5.7	24.7	-18.9	31.3	7.3	13.0	1.5	-6.7	5.7	4.5	0.6	6.9	1.7	10.3	16.4	
4-Jan	-1.6	7.3	3.6	30.2	33.6	10.9	1.1	7.5	3.5	3.5	28.2	-1.3	0.3	10.0	3.3	3.5	14.9	
11-Jan	27.9	41.5	17.7	29.4	16.9	12.9	18.7	60.1	50.0	17.0	35.7	15.5	1.1	43.0	3.6	-1.2	35.7	
18-Jan	11.8	49.5	19.3	17.1	20.2	26.3	2.5	13.1	10.4	7.5	58.8	2.3	4.4	16.7	0.7	72.9	60.4	
25-Jan	58.8	12.2	9.1	10.6	6.7	20.1	6.7	5.0	46.0	21.5	97.5	37.3	20.8	-5.1	2.6	35.9	27.5	
1-Feb	7.8	35.3	12.8	15.1	26.0	25.5	22.2	38.4	58.8	10.1	40.9	2.9	0.6	6.5	2.5	27.3	38.9	
8-Feb	24.4	9.9	3.8	16.1	53.3	6.6	21.1	14.8	44.8	45.9	24.0	2.3	-3.3	4.4	3.2	16.8	13.1	
15-Feb	42.9	12.7	12.7	10.9	11.7	28.9	25.2	1.0	46.7	46.1	26.9	1.8	4.3	7.2	2.7	23.4	26.6	
22-Feb	16.6	28.7	3.2	14.2	1.6	4.8	4.8	16.0	40.2	8.5	25.7	-8.9	0.2	7.4	-4.1	46.1	26.1	
1-Mar	34.0	8.4	0.9	5.6	16.9	-19.7	15.5	2.1	15.9	13.6	6.8	8.0	22.5	1.5	-2.1	32.8	23.8	
8-Mar	31.6	-35.8	35.1	4.6	7.1	6.0	5.1	14.2	-9.4	24.8	29.1	2.2	17.5	-3.0	4.8	-7.0	12.2	
15-Mar	36.5	15.3	17.5	8.1	2.0	19.6	38.1	-9.8	18.4	-8.0	23.8	10.1	4.0	1.7	2.1	14.7	8.0	
22-Mar	34.6	12.5	24.4	22.4	4.0	12.6	3.5	14.1	13.0	48.6	42.0	-7.8	9.4	6.9	6.3	17.4	21.6	
29-Mar	43.5	22.4	18.2	20.5	6.2	-4.6	-3.5	-1.1	14.0	62.0	55.8	13.8	-0.9	7.5	-2.9	17.3	-1.7	
5-Apr	22.0	18.6	-7.6	11.9	3.4	7.7	2.1	8.8	6.8	6.9	17.1	3.4	0.7	1.8	-3.2	19.5	0.2	
12-Apr	28.0	33.2	2.1	4.5	5.5	8.2	23.9	0.6	13.5	14.7	7.3	0.9	2.8	7.0	2.9	1.9	0.0	
19-Apr	11.2	-2.0	10.7	4.4	5.7	1.7	0.7	24.0	-1.9	57.8	25.1	16.6	8.5	6.4	1.0	-15.3	3.7	
26-Apr	44.6	10.6	9.6	7.3	0.5	1.1	14.9	3.9	2.0	31.1	8.9	3.5	1.2	3.3	0.3	8.5	3.0	
3-May	45.4	29.0	10.0	15.6	7.7	0.9	30.1	2.0	10.3	34.6	11.9	-5.9	1.9	5.2	0.1	9.1	19.4	
10-May	10.2	14.9	16.7	7.3	1.8	-5.3	8.1	2.6	3.2	20.2	10.8	3.5	-1.4	2.0	0.2	8.6	50.0	
17-May	17.8	10.0	89.5	9.9	41.3	9.6	9.4	0.5	3.5	3.5	46.4	2.6	9.5	-0.5	0.5	9.6	6.8	
24-May	6.0	22.8	32.9	9.2	15.0	2.9	12.7	29.2	12.9	5.3	-0.3	7.6	1.1	2.0	2.5	9.7	33.4	
31-May	10.0	17.6	44.7	32.7	5.1	30.5	13.1	10.1	3.7	3.9	9.1	2.5	0.5	5.6	5.7	2.9	17.5	
7-Jun	-0.2	30.3	14.5	3.4	71.8	13.2	6.8	10.7	12.2	6.8	15.1	21.3	3.0	-0.1	10.1	2.0	9.8	
14-Jun	16.0	13.3	13.8	-0.1	10.3	0.7	20.4	6.0	87.1	21.6	0.9	20.6	19.0	6.1	4.5	7.9	36.7	
21-Jun	30.5	12.6	14.0	9.5	1.9	2.9	8.3	23.6	45.5	6.9	20.3	29.1	-3.2	5.9	0.2	20.7	2.3	
28-Jun	36.6	6.6	62.4	5.3	19.4	1.6	6.8	-11.3	10.8	69.4	6.0	13.6	3.3	2.2	0.2	17.4	-1.4	
5-Jul	27.6	16.2	18.1	1.4	12.8	-2.3	34.4	1.3	0.9	-60.2	15.6	9.3	0.3	0.0	2.4	5.2	1.5	
12-Jul																		
19-Jul																		
26-Jul																		
2-Aug																		
9-Aug																		
16-Aug																		
23-Aug																		
30-Aug																		
6-Sep																		
13-Sep																		
20-Sep																		
27-Sep																		
4-Oct																		
Crop year to date sales	995.4	1005.7	1064.0	756.9	771.2	886.4	523.0	1247.3	1348.1	731.0	1071.6	505.1	301.4	406.2	254.1	756.2	790.1	
Average weekly sales																		
rate to reach proj total	-10.3	11.8	-3.6	12.0	6.2	7.3	10.9	16.9	13.5	20.3	19.1	26.6	17.0	15.0	13.1	20.8	27.1	
Proj./Actual export total (MT)	862	1159	1017	914	851	982	664	1466	1524	995	1320	851	523	601	425	1026	1143	
YTD sales as % of total	115.5	86.7	104.6	82.9	90.6	90.3	78.8	85.1	88.5	73.5	81.2	59.3	57.6	67.6	59.9	73.7	69.1	

Source: Futures International and USDA

EXPORT SALES SITUATION

CORN

(million bushels)

Weekly Sales Total	2017-18	2016-17	2015-16	2014-15	2013-14	2012-13	2011-12	2010-11	2009-10	2008-09	2007-08	2006-07	2005-06	2004-05	2003-04	2002-03	2001-02
New Crop Sales	363.2	603.4	323.2	458.7	490.2	385.1	535.9	579.0	455.4	455.8	608.3	458.8	309.6	273.1	300.2	244.3	279.1
7-Sep	41.2	43.0	16.2	22.2	13.1	9.8	32.3	26.8	43.4	19.9	40.9	26.4	0.4	9.1	18.1	17.3	22.3
14-Sep	20.7	27.7	21.0	26.0	17.2	2.7	23.5	23.0	38.0	12.8	80.0	40.5	21.6	47.5	36.0	41.0	27.3
21-Sep	12.6	36.3	16.8	32.9	25.2	0.0	31.0	22.1	26.5	21.6	66.8	32.7	29.4	45.5	54.2	29.1	47.0
28-Sep	32.0	22.6	29.5	25.1	30.5	12.9	50.8	36.4	48.1	22.3	45.3	45.6	27.7	35.6	36.1	37.6	49.4
5-Oct	62.7	81.1	20.5	30.9	52.8	0.2	49.6	23.9	20.5	37.7	91.3	50.7	37.5	30.7	37.7	27.3	24.4
12-Oct	49.4	34.4	23.6	75.7	0.0	6.6	69.4	35.7	24.9	36.4	72.9	32.3	36.5	58.1	64.5	25.6	32.0
19-Oct	50.7	40.3	9.8	40.6	0.0	5.6	13.2	7.6	9.2	31.1	60.8	41.2	37.9	51.5	29.4	20.4	35.6
26-Oct	31.9	31.5	27.9	19.3	172.3	6.6	24.5	21.7	14.5	16.3	25.0	40.4	28.3	42.9	58.0	40.5	22.2
2-Nov	93.1	58.0	21.9	18.8	63.0	6.2	9.9	18.2	22.2	18.6	59.3	75.9	48.0	57.2	56.8	42.8	35.4
9-Nov	37.4	48.6	24.4	19.9	47.4	4.1	8.0	22.6	19.2	14.0	53.7	54.9	34.8	32.7	29.5	45.2	31.8
16-Nov	42.6	65.4	30.7	35.8	30.3	30.3	12.3	21.0	13.9	17.1	72.7	41.0	58.8	28.5	36.1	36.8	26.8
23-Nov	23.6	66.5	80.2	37.2	39.6	9.3	11.0	32.4	48.2	18.3	72.5	40.2	40.7	51.2	63.1	45.4	25.6
30-Nov	34.5	30.0	19.7	46.1	11.1	2.0	27.4	29.8	25.9	13.5	41.7	32.0	24.1	23.0	33.4	26.5	59.8
7-Dec	34.1	58.9	43.1	37.9	18.1	10.2	19.9	26.4	33.4	36.6	45.5	55.1	27.3	36.0	40.9	21.5	34.8
14-Dec	61.3	59.7	22.8	27.3	32.5	4.5	28.1	31.9	48.3	24.1	46.0	49.8	36.1	25.1	36.3	28.0	23.7
21-Dec	49.0	49.3	31.6	67.1	55.7	4.1	12.6	35.7	62.7	21.7	56.0	45.4	34.8	28.6	37.5	26.7	35.1
28-Dec	4.0	37.7	27.8	35.2	6.1	1.9	11.8	27.5	30.4	10.6	27.6	22.6	13.5	27.4	29.7	14.6	21.4
4-Jan	17.2	16.9	10.0	15.3	3.6	0.5	12.7	14.5	14.4	10.3	26.4	46.3	18.1	16.9	16.5	11.2	4.5
11-Jan	74.3	23.8	26.3	32.2	32.3	15.5	29.9	17.3	12.9	8.5	93.3	56.1	24.8	25.9	33.0	24.3	36.1
18-Jan	56.9	53.8	45.6	86.0	27.3	5.5	37.7	35.6	62.4	42.8	62.8	39.1	48.1	35.8	39.3	25.5	49.1
25-Jan	72.9	53.9	32.2	42.1	72.4	7.4	35.9	16.3	35.5	43.6	74.3	31.4	84.9	30.0	30.5	13.3	29.2
1-Feb	69.7	45.0	44.5	33.3	66.9	6.6	27.3	45.9	36.3	45.8	40.5	36.1	54.2	11.6	38.6	29.3	54.7
8-Feb	77.7	38.3	15.9	39.5	50.0	8.9	39.6	43.6	29.3	60.8	36.7	54.6	63.5	39.2	45.4	24.3	41.5
15-Feb	61.2	30.8	41.4	36.7	27.2	14.2	33.1	40.6	38.4	52.5	44.9	33.0	47.1	30.9	37.5	17.6	45.4
22-Feb	69.0	29.3	36.8	28.2	33.1	11.9	27.2	59.1	15.8	17.7	23.7	12.5	58.4	35.8	38.9	27.1	31.7
1-Mar	73.1	27.3	43.2	32.6	59.8	-2.0	17.5	42.5	30.0	31.2	25.5	46.8	23.9	32.0	14.7	55.6	15.7
8-Mar	98.6	29.2	46.2	16.5	25.0	11.1	32.9	18.8	13.3	43.0	30.3	29.5	53.7	28.9	22.6	27.8	41.2
15-Mar	57.9	49.4	48.3	19.8	29.4	3.6	33.9	40.8	29.4	17.3	29.5	25.2	40.5	39.7	51.7	46.0	42.9
22-Mar	53.3	53.0	31.6	17.1	54.4	11.6	5.1	35.2	23.9	46.9	24.9	44.2	35.5	36.5	46.8	27.6	31.0
29-Mar	35.4	28.2	31.1	16.0	37.8	13.9	36.9	75.4	31.8	49.3	27.7	21.6	40.9	44.9	27.3	14.1	37.7
5-Apr	33.1	44.8	37.2	25.2	25.9	7.3	37.8	24.4	53.5	41.8	18.7	52.2	26.0	26.0	51.9	33.9	17.4
12-Apr	43.0	29.1	44.7	23.2	21.2	15.8	11.8	33.4	39.6	34.2	34.2	31.6	32.1	36.0	48.1	27.0	34.9
19-Apr	27.4	29.8	47.4	34.2	24.4	12.4	25.4	24.1	58.3	47.8	30.5	43.5	43.4	26.3	45.2	23.0	36.0
26-Apr	40.2	38.9	85.1	32.8	36.9	13.0	52.4	13.7	48.4	48.2	21.7	24.2	30.8	19.4	36.4	35.4	45.1
3-May	27.4	30.4	30.3	33.1	6.3	4.6	8.8	11.2	72.9	23.2	13.3	20.6	50.5	24.5	43.1	23.3	29.1
10-May	38.8	10.9	43.5	14.6	13.5	8.7	13.4	17.1	32.2	36.9	21.5	59.6	43.5	54.7	19.9	41.1	57.7
17-May	33.6	27.8	58.0	32.0	20.0	4.1	6.1	33.2	53.3	26.9	20.0	25.9	60.6	33.6	28.9	29.8	37.8
24-May	39.1	18.0	54.4	25.8	22.7	3.4	7.4	28.6	40.6	29.8	18.8	26.6	44.7	21.7	49.7	25.0	44.5
31-May	33.0	16.2	51.9	18.3	21.7	4.2	9.9	18.6	7.8	23.8	20.9	14.8	45.5	29.3	16.2	21.0	16.5
7-Jun	36.9	13.7	61.4	19.5	16.1	3.2	3.6	12.6	40.1	28.1	20.7	20.9	34.1	22.1	2.1	28.7	51.5
14-Jun	6.5	23.6	35.8	24.7	4.3	5.3	6.7	11.6	42.9	30.2	13.5	32.6	57.7	25.0	23.4	29.2	41.1
21-Jun	33.5	20.8	34.3	19.6	10.1	13.3	7.6	16.2	44.2	27.0	9.1	30.0	62.0	20.0	6.3	32.0	36.4
28-Jun	17.4	12.4	18.4	23.4	11.4	9.2	0.8	27.2	25.6	45.5	12.8	42.0	53.3	47.9	31.9	30.3	38.8
5-Jul	15.8	5.5	14.6	21.1	14.3	15.4	6.8	24.5	19.7	29.5	13.3	39.7	31.1	37.1	20.5	28.4	14.1
12-Jul																	
19-Jul																	
26-Jul																	
2-Aug																	
9-Aug																	
16-Aug																	
23-Aug																	
30-Aug																	
6-Sep																	
Crop year to date sales	2287.1	2195.3	1860.2	1819.2	1873.0	730.7	1539.7	1803.9	1937.2	1770.8	2375.8	2126.1	2055.9	1735.7	1863.9	1522.5	1795.2
Average weekly sales rate to reach proj total	1.4	10.9	4.5	5.3	5.2	-0.1	0.4	3.3	4.8	8.7	6.8	-0.1	8.7	9.1	4.0	7.3	12.2
Proj./Actual export total	2300	2293	1901	1867	1920	730	1543	1834	1980	1849	2437	2125	2134	1818	1900	1588	1905
YTD sales as % of total	99.4	95.7	97.9	97.4	97.6	100.1	99.8	98.4	97.8	95.8	97.5	100.1	96.3	95.5	98.1	95.9	94.2
Sold as of around Sep 1 %	15.8	26.3	17.0	24.6	25.5	52.8	34.7	31.6	23.0	24.7	25.0	21.6	14.5	15.0	15.8	15.4	14.7

Source: Futures International and USDA

EXPORT SALES SITUATION

ALL-WHEAT

(million bushels)

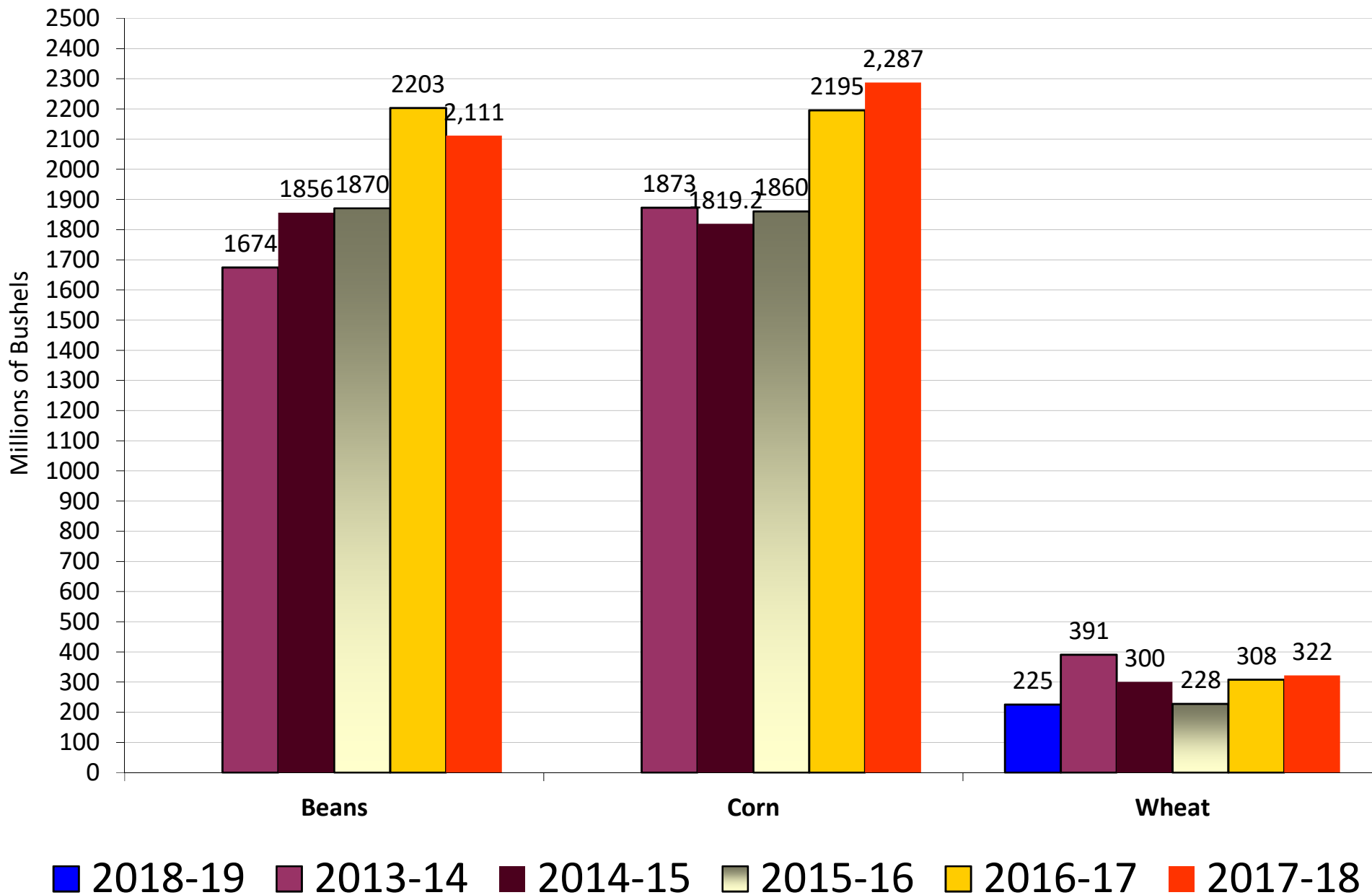
Weekly Sales Total	2018-19	2017-18	2016-17	2015-16	2014-15	2013-14	2012-13	2011-12	2010-11	2009-10	2008-09	2007-08	2006-07	2005-06	2004-05	2003-04	2002-03	2001-02	
New Crop Sales	155.2	239.0	200.6	160.1	219.3	256.5	185.8	243.2	148.6	115.7	263.9	159.2	134.1	134.1	208.4	125.1	112.6	111.0	
7-Jun	11.1	16.9	8.2	13.8	20.9	15.7	15.9	16.7	4.8	12.4	12.3	15.2	16.9	12.1	10.7	10.2	11.0	7.5	
Weeks remaining	14-Jun	17.0	13.7	28.0	11.6	13.7	15.9	30.9	24.3	35.3	9.9	19.8	19.9	11.6	18.8	21.7	21.7	7.6	13.0
47	21-Jun	20.7	19.9	17.0	16.0	13.2	26.9	11.9	20.0	26.5	13.5	18.3	22.9	19.9	21.6	15.9	19.0	16.4	19.9
	28-Jun	16.2	18.1	23.7	13.4	20.9	21.8	15.4	15.6	15.4	8.9	24.5	19.1	11.0	23.1	17.2	24.2	20.5	22.6
	5-Jul	5.0	13.8	30.3	12.7	12.4	54.1	11.5	19.1	18.9	21.5	22.7	43.5	7.4	11.3	20.2	20.6	6.2	10.8
	12-Jul																		
	19-Jul																		
	26-Jul																		
	2-Aug																		
	9-Aug																		
	16-Aug																		
	23-Aug																		
	30-Aug																		
	6-Sep																		
	13-Sep																		
Crop year to date sales	225.2	321.5	307.9	227.6	300.4	390.9	271.4	338.9	249.3	181.8	361.5	279.7	201.0	221.1	294.2	220.9	174.5	184.8	
Average weekly sales																			
rate to reach proj total	15.4	12.3	15.9	11.7	12.0	16.7	15.8	15.2	22.1	14.8	13.9	20.9	15.0	16.6	16.4	19.9	14.4	16.5	
Proj./Actual export total	950	900	1055	778	864	1176	1012	1051	1289	879	1015	1263	908	1003	1066	1158	850	962	
YTD sales as % of total	23.7	35.7	29.2	29.2	34.8	33.2	26.8	32.2	19.3	20.7	35.6	22.1	22.1	22.0	27.6	19.1	20.5	19.2	

Source: Futures International and USDA

Export Sales As of 7/5/18

Crop Year Sales to Date

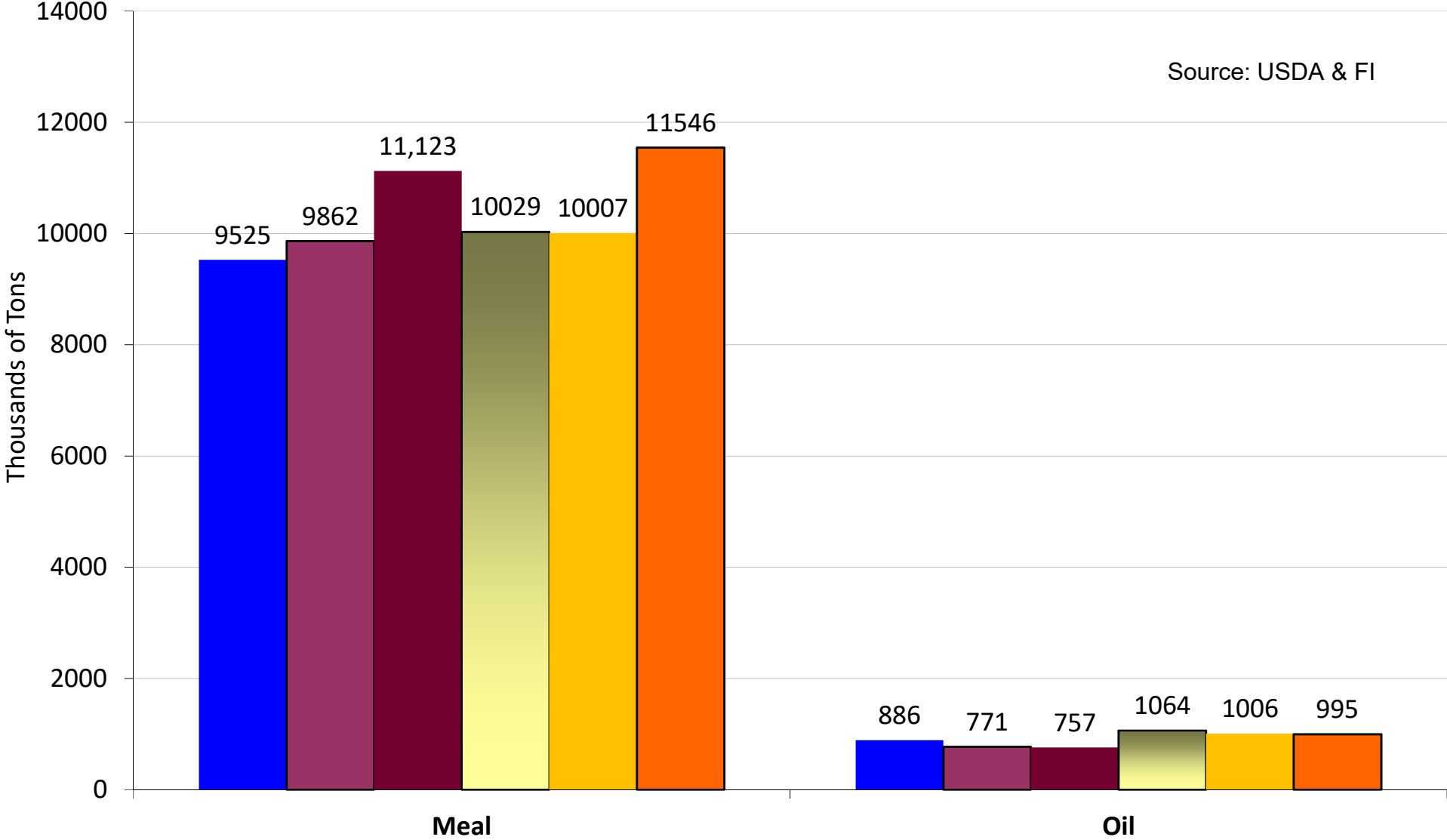
Source: USDA & FI



Export Sales As of 7/5/18

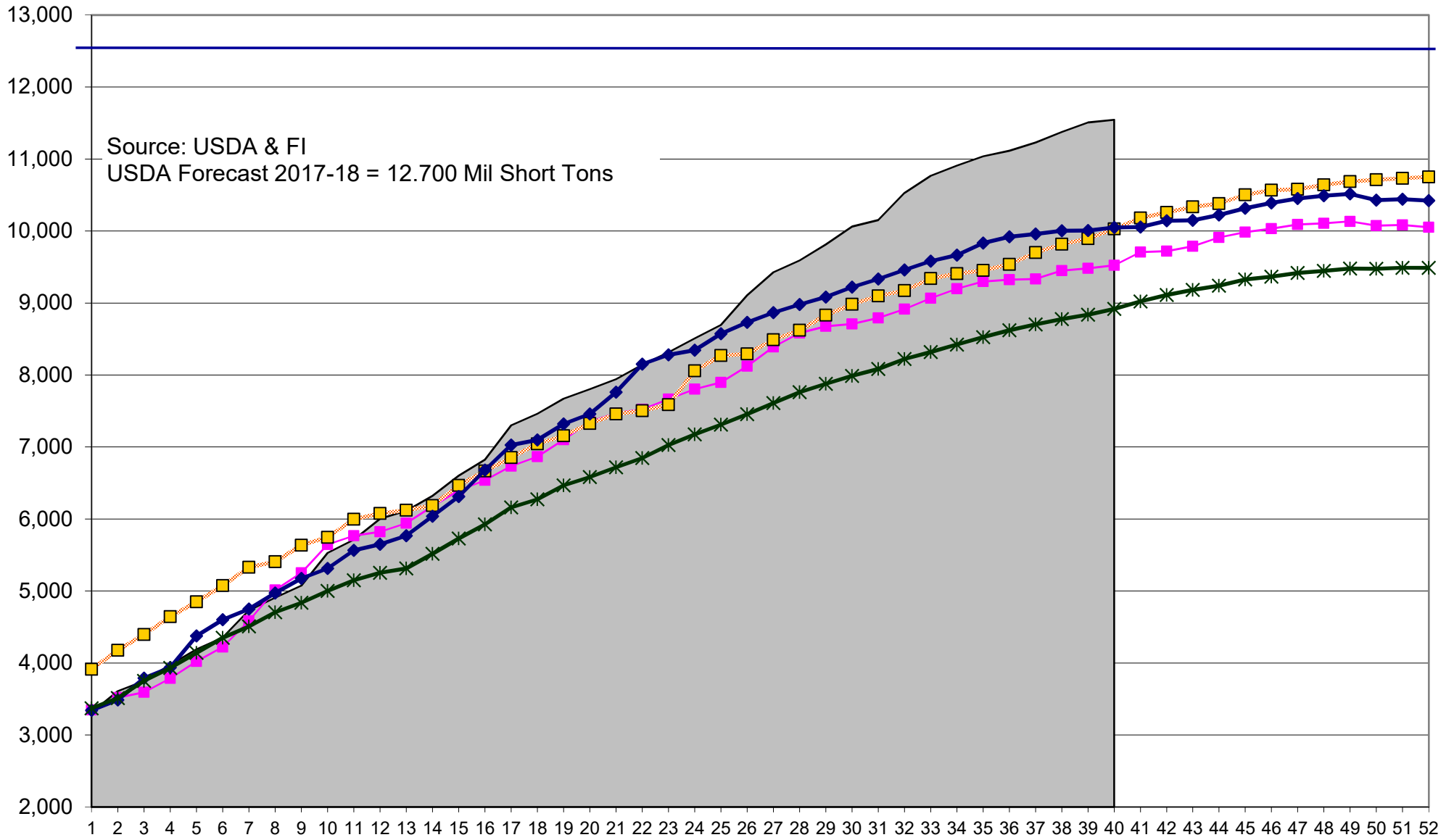
Crop Year Sales to Date

Source: USDA & FI



■ 2012-13 ■ 2013-14 ■ 2014-15 ■ 2015-16 ■ 2016-17 ■ 2017-18

US Soymeal, Current Crop-Year Commitments, 000 short tons



2017-18
 2014-15
 2015-16
 2016-17
 10-Year Average

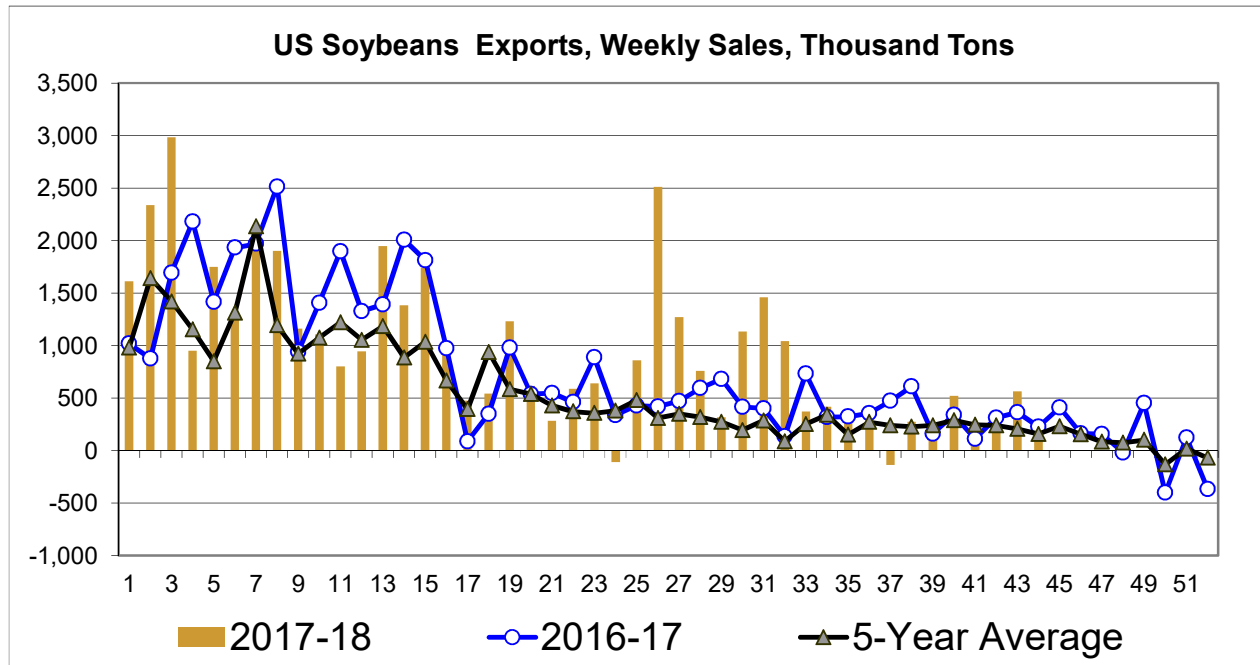
U.S. Crop Soybean Export Sales Commitments

U.S. Commitments as % of Actual Annual Exports
Million Bushels

World Soybean Production
Million Tonnes

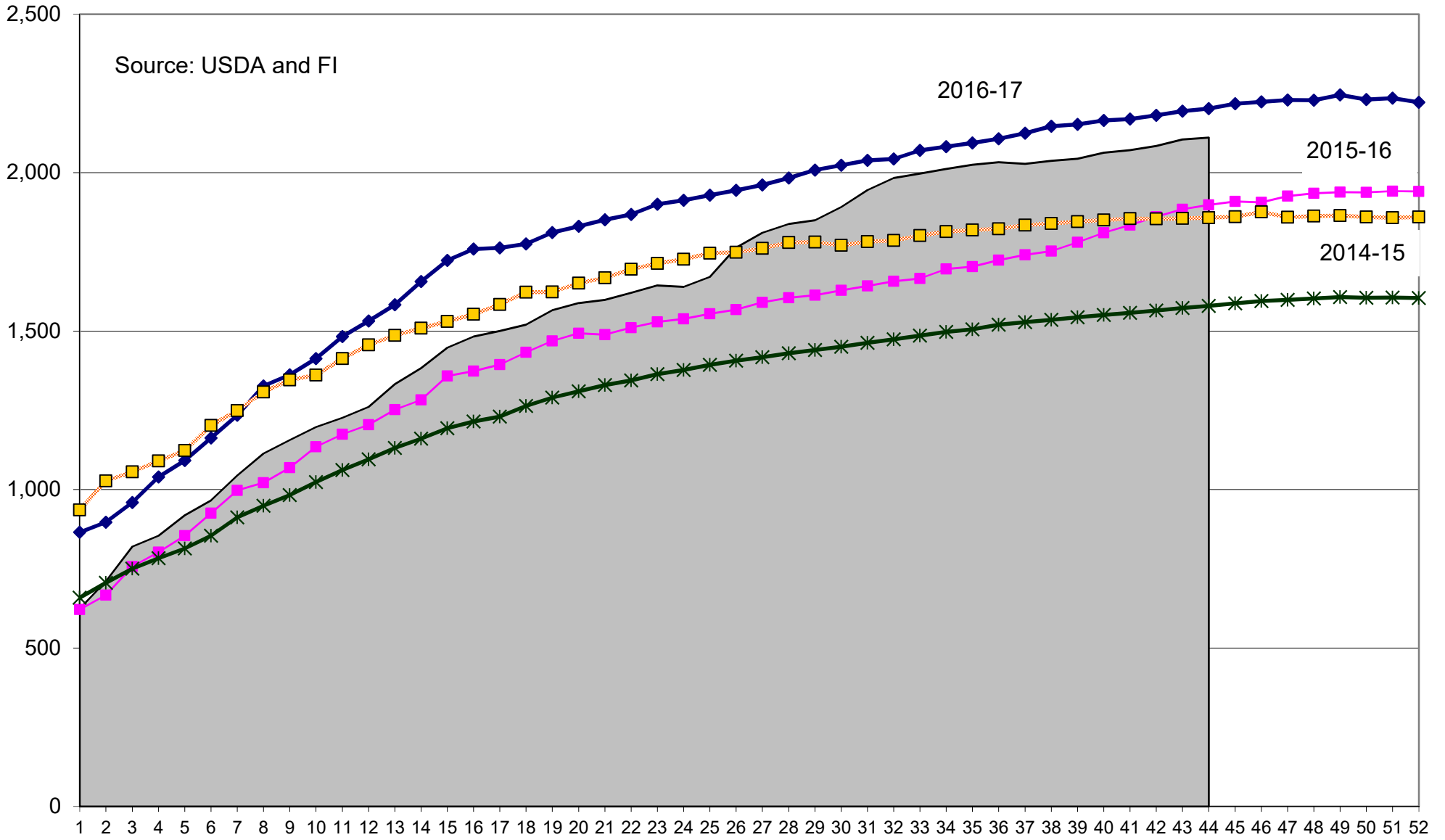
Crop Year	Sales Date	Crop YTD Commitments	% Annual Exports	Annual U.S. Exports	Crop Year	Production	Change
1993-94	07/05/94	581.1	99%	588	1993-94	117.6	117.6
1994-95	07/05/95	844.2	100%	840	1994-95	137.7	20.1
1995-96	07/04/96	871.9	103%	849	1995-96	124.7	(12.9)
1996-97	07/05/97	885.3	100%	886	1996-97	131.9	7.2
1997-98	07/05/98	890.0	102%	874	1997-98	158.0	26.0
1998-99	07/05/99	798.4	99%	805	1998-99	159.8	1.9
1999-00	07/04/00	956.7	98%	975	1999-00	160.3	0.5
2000-01	07/05/01	1006.4	101%	996	2000-01	175.8	15.4
2001-02	07/05/02	1086.7	102%	1064	2001-02	184.8	9.1
2002-03	07/05/03	1067.9	102%	1044	2002-03	197.0	12.1
2003-04	07/04/04	890.6	100%	887	2003-04	186.8	(10.2)
2004-05	07/05/05	1101.3	100%	1097	2004-05	215.9	29.1
2005-06	07/05/06	910.0	97%	940	2005-06	220.9	5.0
2006-07	07/05/07	1107.7	99%	1116	2006-07	236.3	15.4
2007-08	07/04/08	1128.7	97%	1159	2007-08	219.0	(17.3)
2008-09	07/05/09	1261.3	99%	1279	2008-09	212.1	(6.9)
2009-10	07/05/10	1453.0	97%	1499	2009-10	260.6	48.5
2010-11	07/05/11	1535.5	102%	1501	2010-11	264.4	3.8
2011-12	07/04/12	1382.5	101%	1365	2011-12	240.4	(23.9)
2012-13	07/05/13	1351.0	103%	1317	2012-13	268.8	28.4
2013-14	07/05/14	1674.3	102%	1638	2013-14	282.6	13.8
2014-15	07/05/15	1856.1	101%	1842	2014-15	319.6	37.0
2015-16	07/04/16	1884.7	97%	1942	2015-16	313.8	(5.8)
2016-17	07/05/17	2194.4	101%	2174	2016-17	351.3	37.6
2017-18	07/05/18	2110.7	102%	2065	2017-18	340.9	(10.5)

Source: USDA & Futures International



Source: USDA & Futures International

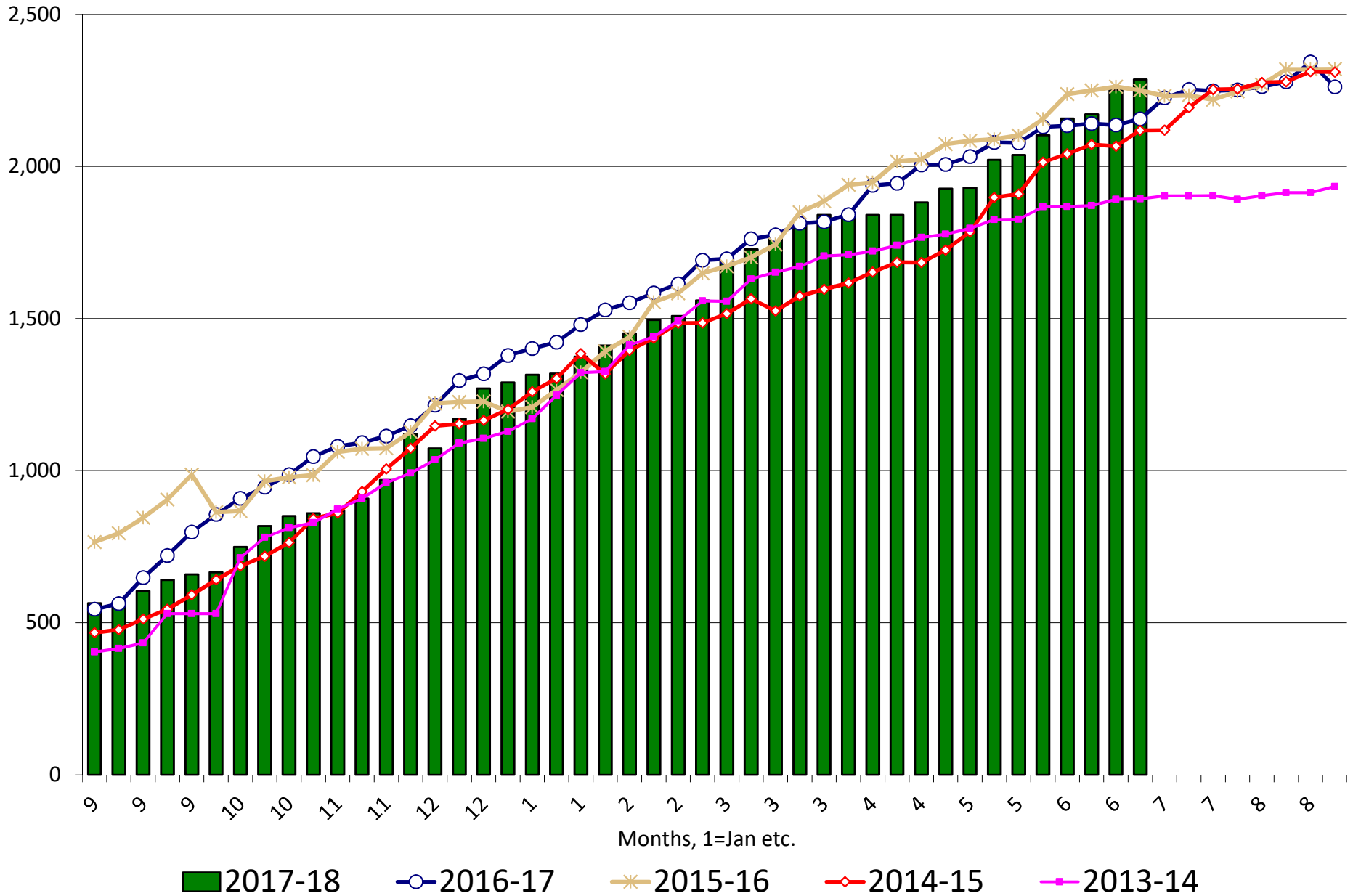
Soybeans, Current Crop-Year Commitments, million bushels



2017-18
 2016-17
 2015-16
 2014-15
 "10-Year Average"

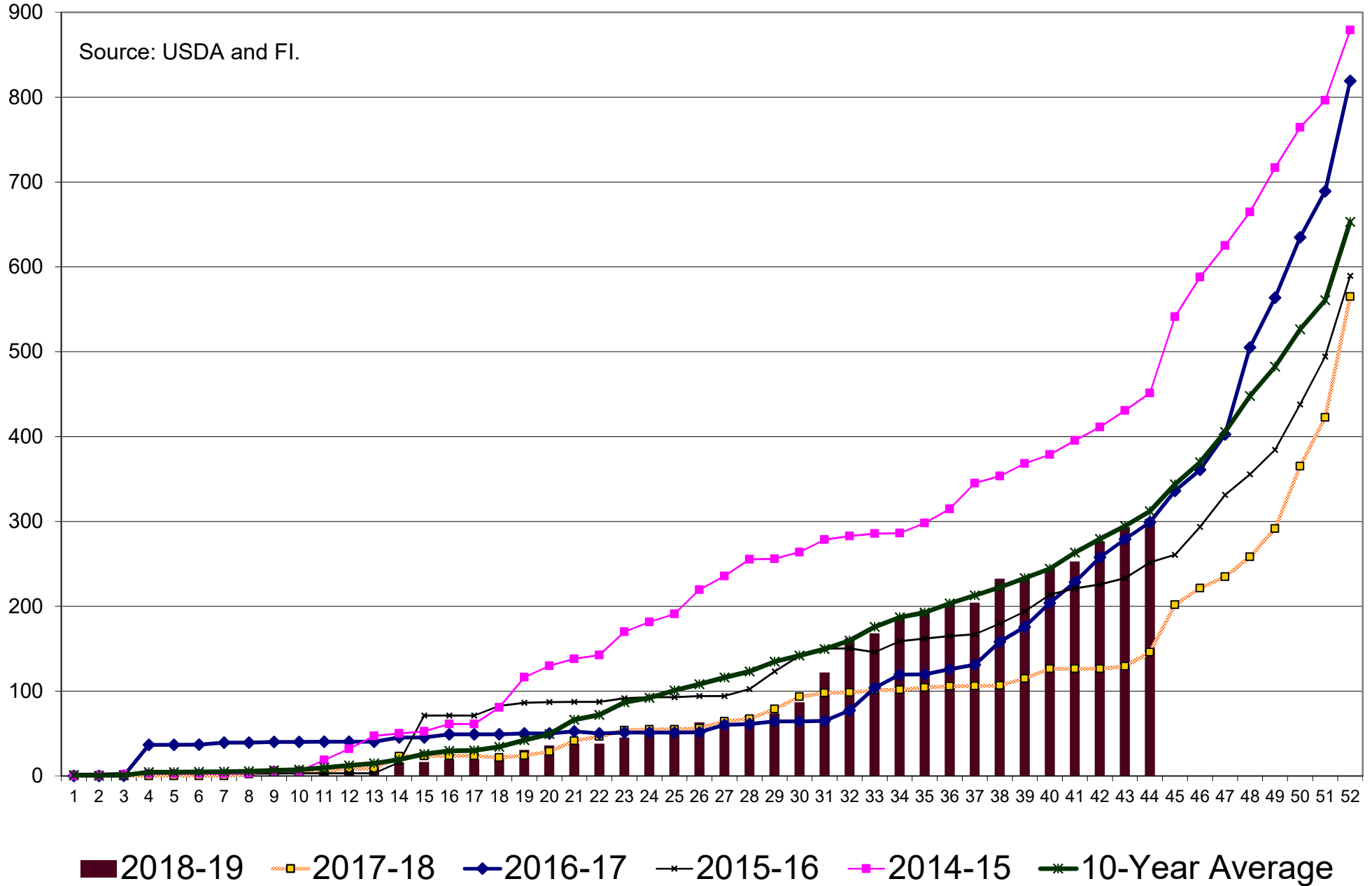
US Soybean Current Crop-Year Commitments to Japan

Thousand Tons, Sept-Aug Crop-Year



Soybeans, New Crop (Forward) Commitments, million bushels

Source: USDA and FI.

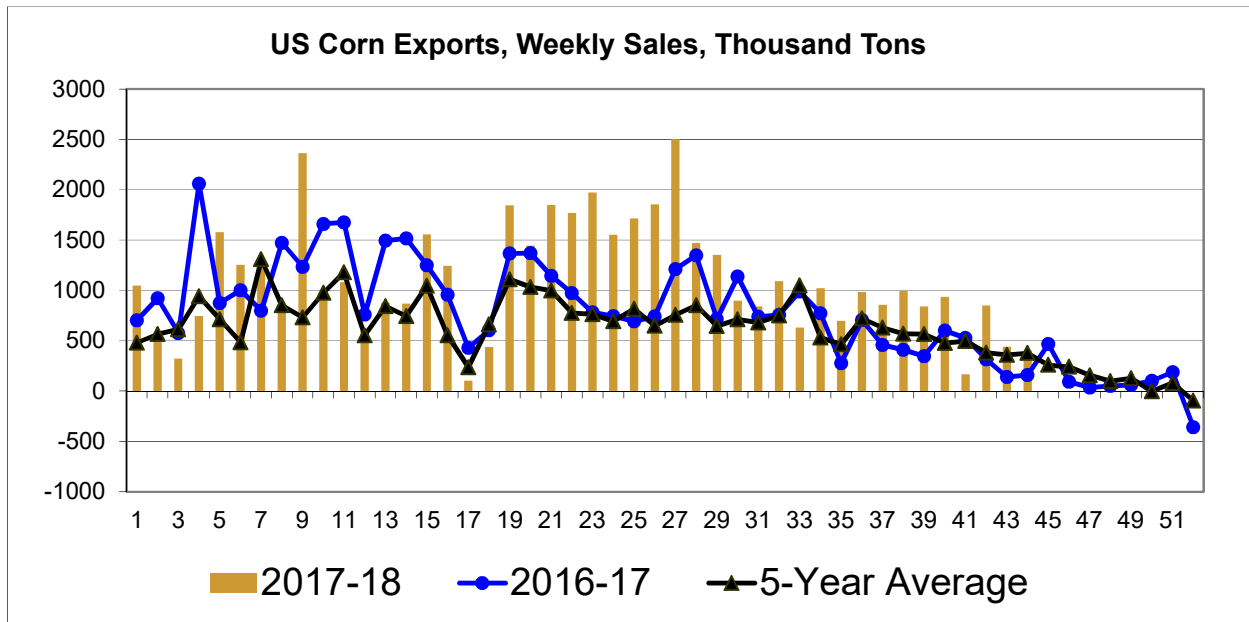


U.S. Crop Corn Export Sales Commitments

U.S. Commitments as % of Actual Annual Exports
Million Bushels

World Corn Production
Million Tonnes

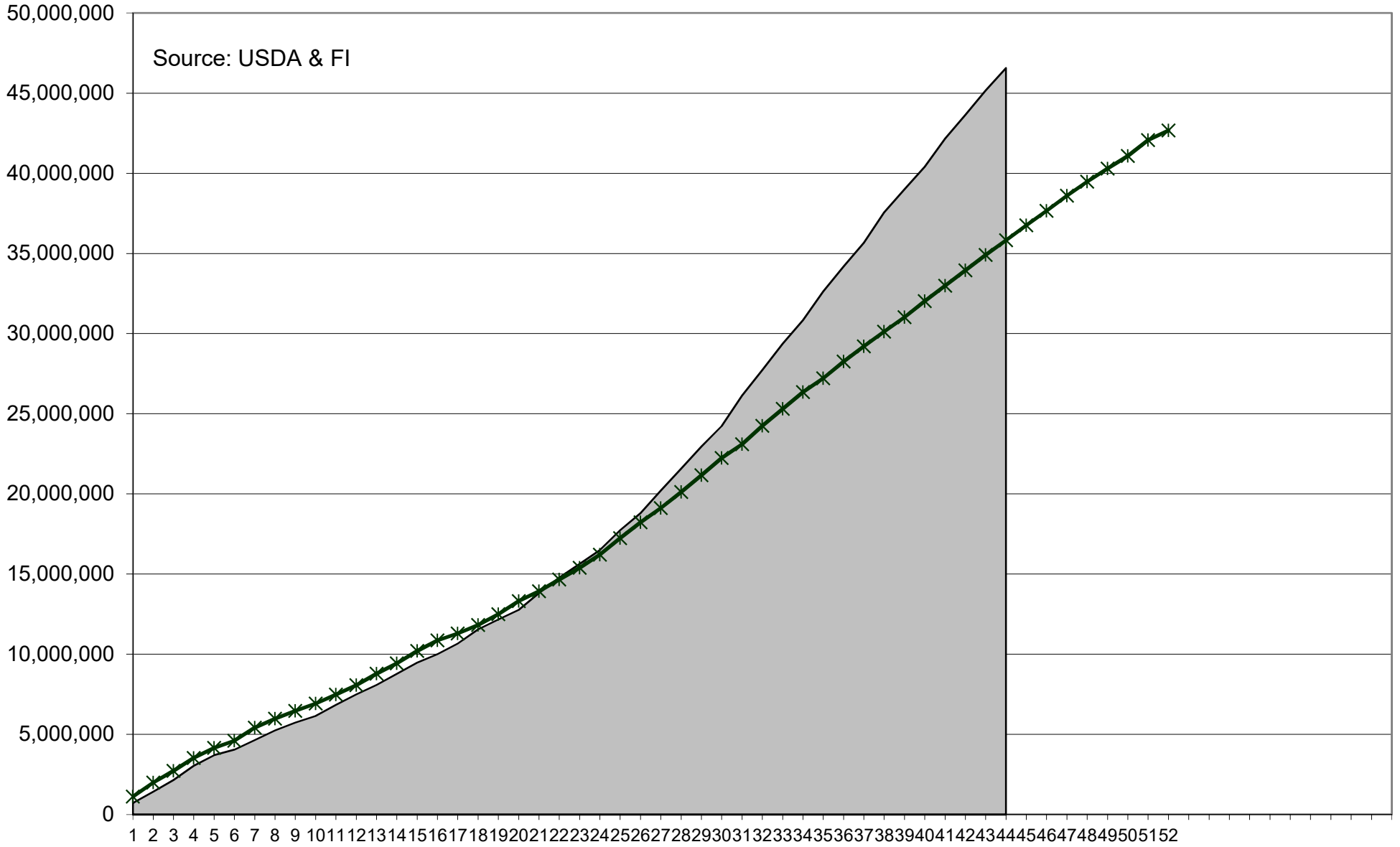
Crop Year	Sales Date	Crop YTD Commitments	% Annual Exports	Annual U.S. Exports	Crop Year	Production	Change
1990-91	07/05/91	1613.7	94%	1725	1990-91	482.1	
1991-92	07/04/92	1491.7	94%	1586	1991-92	493.2	11.1
1992-93	07/05/93	1582.1	95%	1663	1992-93	536.1	42.8
1993-94	07/05/94	1216.7	92%	1329	1993-94	476.0	(60.1)
1994-95	07/05/95	2129.7	98%	2177	1994-95	559.4	83.4
1995-96	07/04/96	2273.0	102%	2228	1995-96	516.5	(42.9)
1996-97	07/05/97	1772.2	99%	1798	1996-97	592.8	76.3
1997-98	07/05/98	1390.9	92%	1504	1997-98	574.4	(18.4)
1998-99	07/05/99	1859.5	94%	1981	1998-99	605.7	31.3
1999-00	07/04/00	1850.4	96%	1936	1999-00	608.4	2.7
2000-01	07/05/01	1783.5	92%	1941	2000-01	591.8	(16.6)
2001-02	07/05/02	1795.2	94%	1905	2001-02	601.8	10.0
2002-03	07/05/03	1522.4	96%	1592	2002-03	603.9	2.1
2003-04	07/04/04	1863.9	98%	1900	2003-04	627.5	23.6
2004-05	07/05/05	1735.6	95%	1818	2004-05	716.9	89.4
2005-06	07/05/06	2055.9	96%	2147	2005-06	700.7	(16.2)
2006-07	07/05/07	2127.3	100%	2125	2006-07	716.7	16.0
2007-08	07/04/08	2375.8	98%	2436	2007-08	795.6	78.9
2008-09	07/05/09	1770.8	95%	1858	2008-09	799.8	4.2
2009-10	07/05/10	1937.2	98%	1980	2009-10	824.8	25.0
2010-11	07/05/11	1804.0	98%	1834	2010-11	835.5	10.7
2011-12	07/04/12	1533.0	99%	1543	2011-12	888.2	52.7
2012-13	07/05/13	730.7	100%	730	2012-13	869.3	(18.9)
2013-14	07/05/14	1873.0	98%	1920	2013-14	990.5	121.2
2014-15	07/05/15	1819.2	97%	1867	2014-15	1016.0	25.6
2015-16	07/04/16	1860.2	98%	1901	2015-16	973.5	(42.6)
2016-17	07/05/17	2189.0	95%	2293	2016-17	1076.0	102.5
2017-18	07/05/18	2287.1	99%	2300	2017-18	1044.6	(31.4)



Source: USDA & Futures International

Uses USDA data

US Corn Current Crop-Year Accumulated Shipments versus 5-year

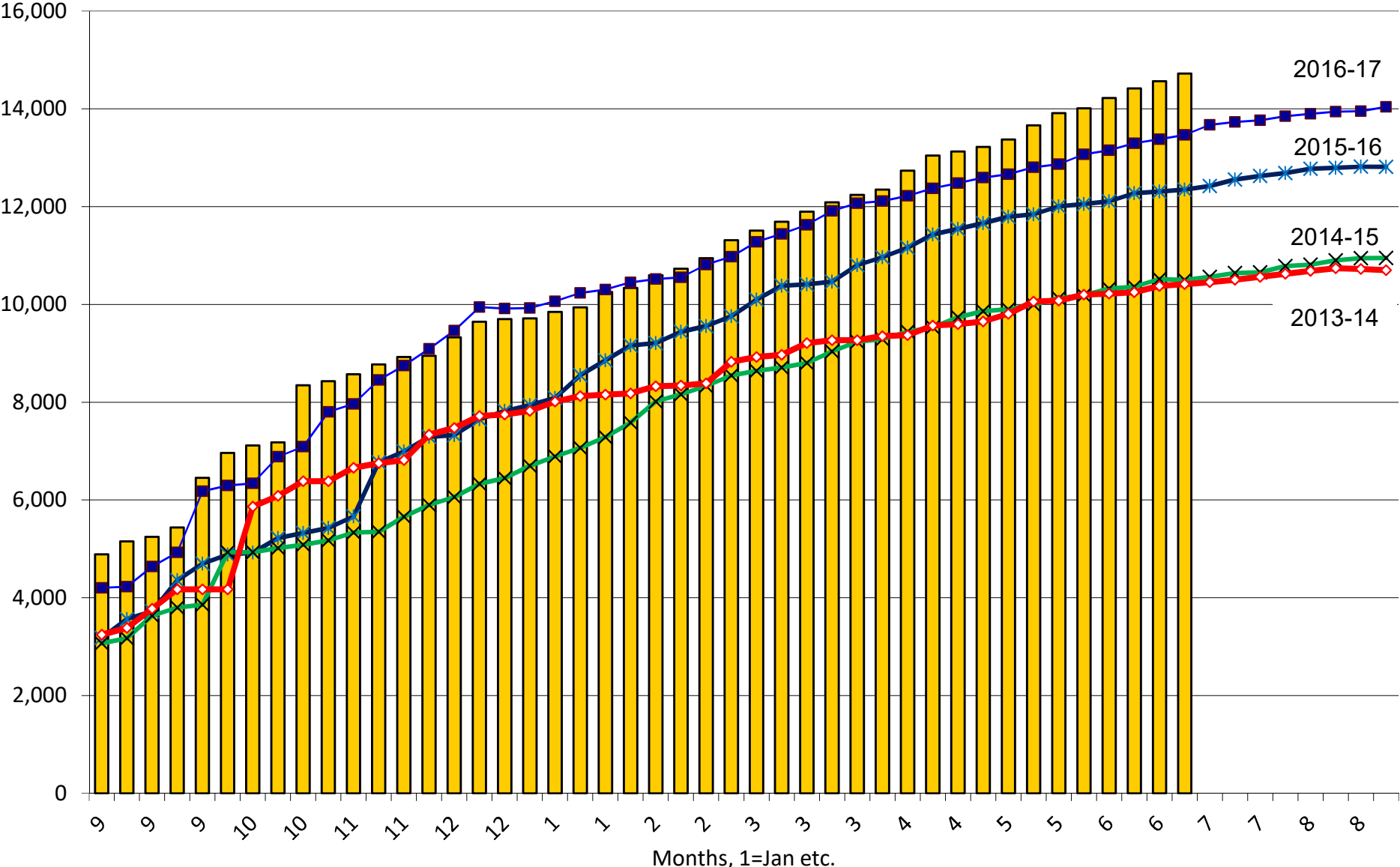


2017-18

5-Year Average

US Corn Current Crop-Year Commitments to Mexico

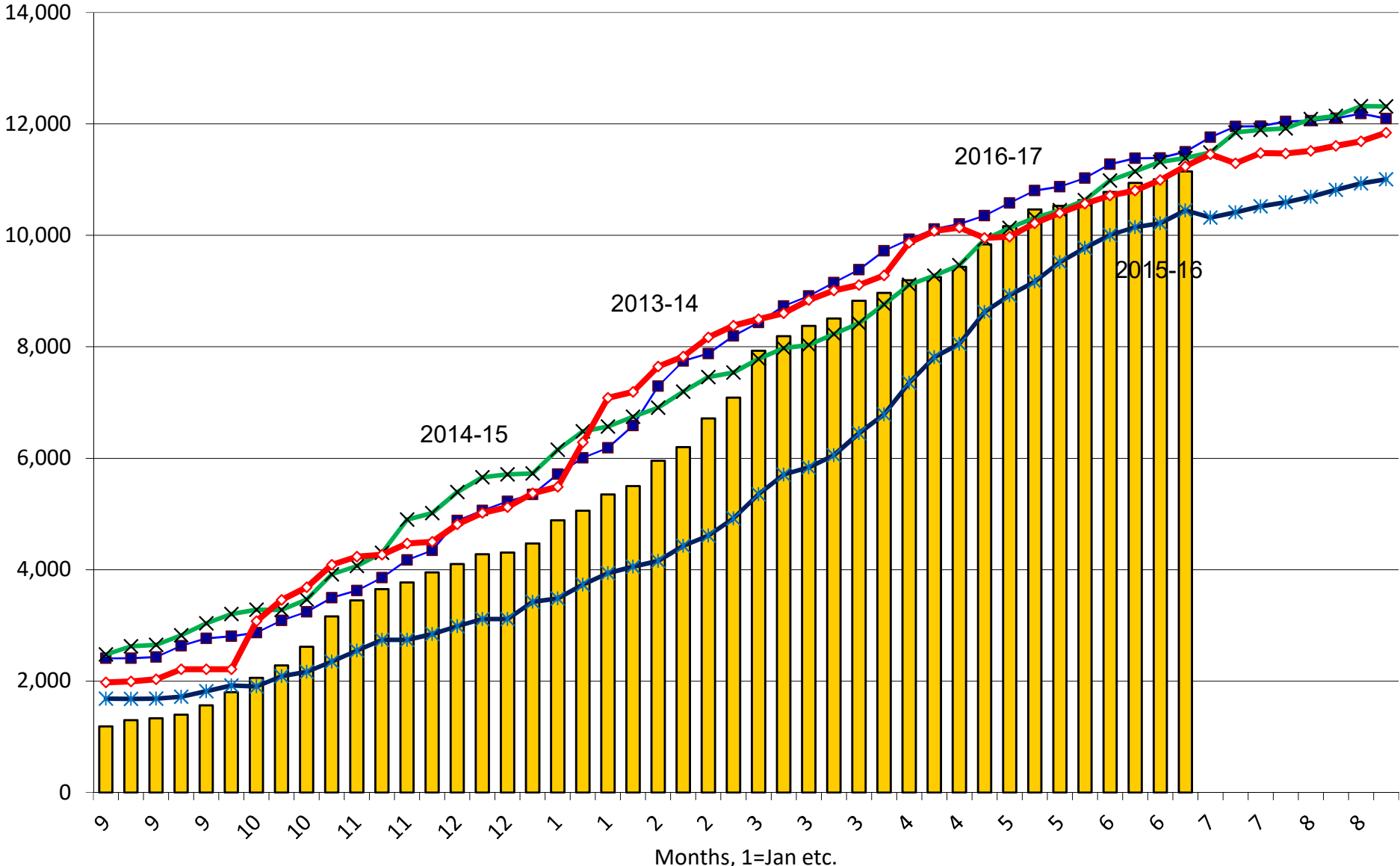
Thousand Tons, Sept-Aug



2017-18
 2016-17
 2015-16
 2014-15
 2013-14

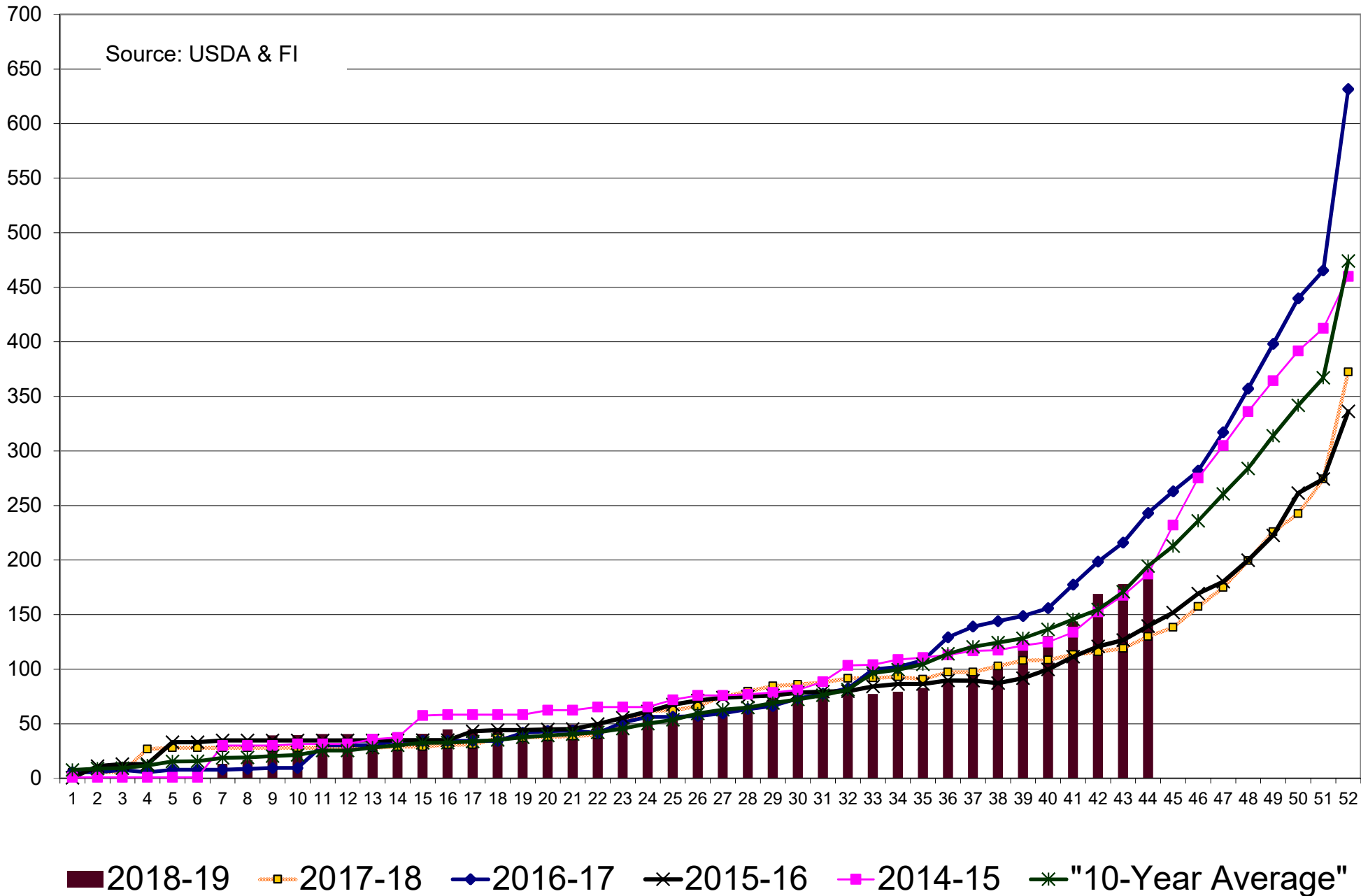
US Corn Current Crop-Year Commitments to Japan

Thousand Tons, Sept-Aug



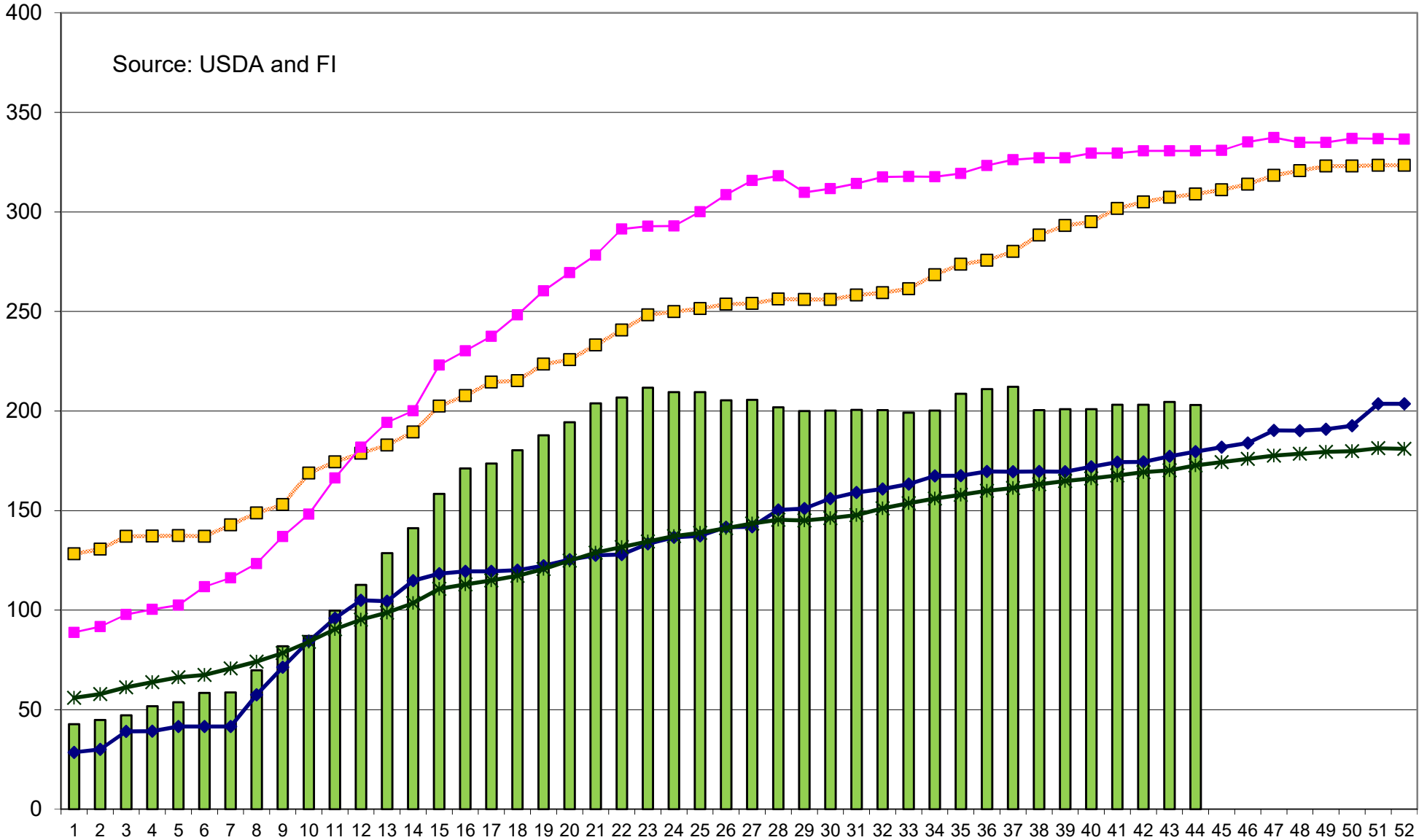
2017-18
 2016-17
 2015-16
 2014-15
 2013-14

Corn, New Crop (Forward) Commitments, million bushels



US Sorghum, Current Crop-Year Commitments, million bushels

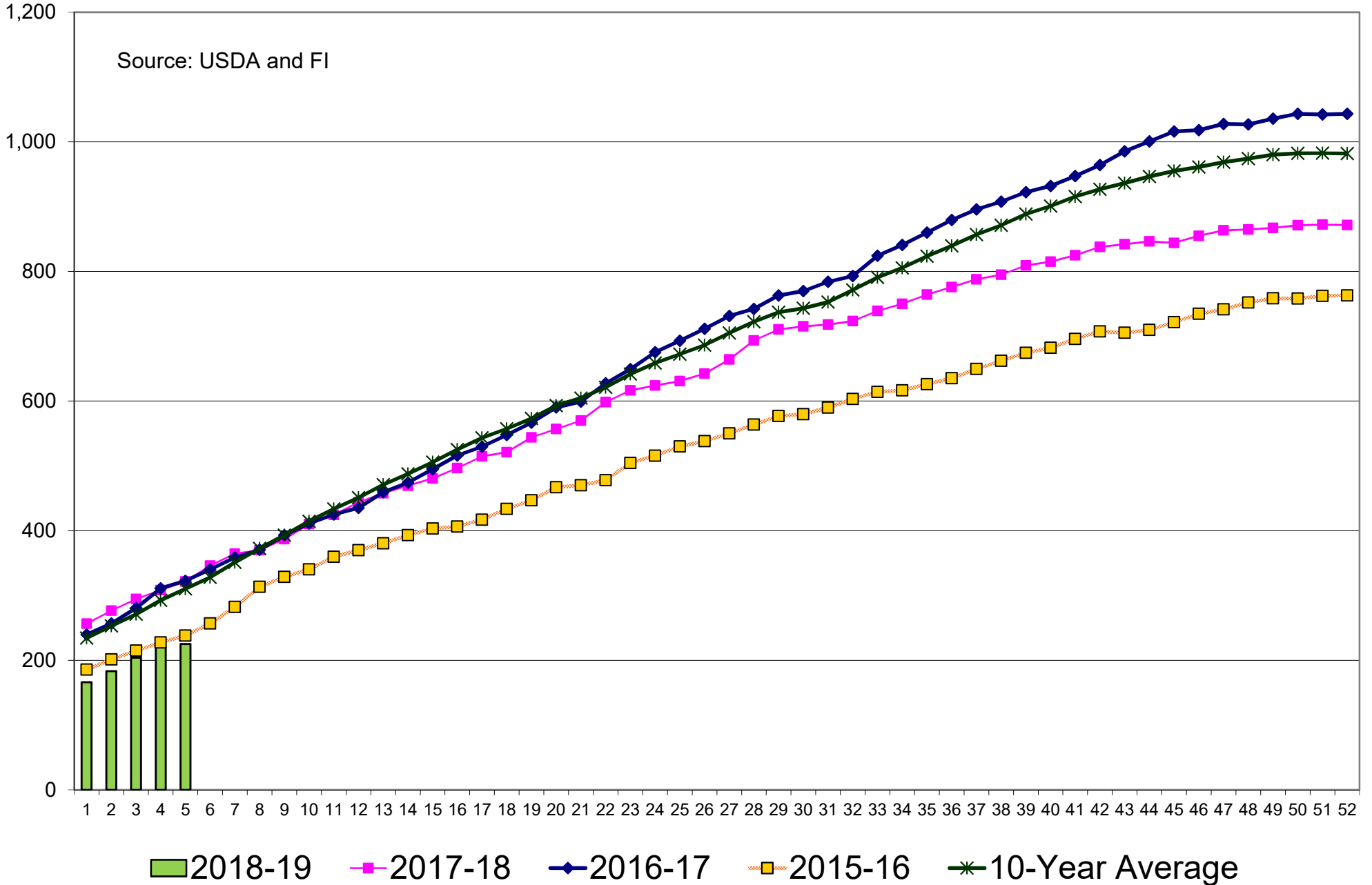
Source: USDA and FI



2017-18
 2016-17
 2015-16
 2014-15
 10-Year Average

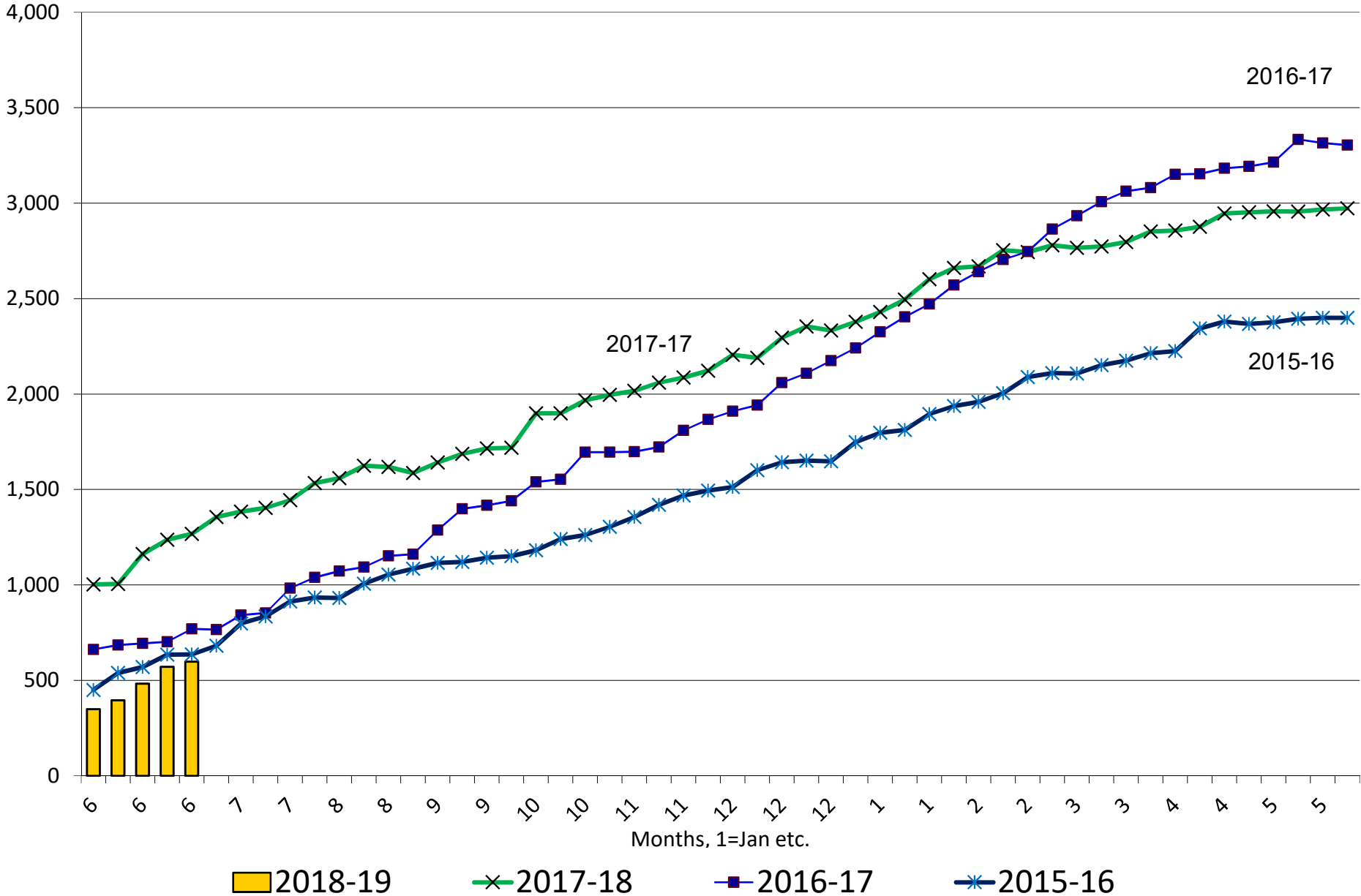
US Wheat, Current Crop-Year Commitments, million bushels

Source: USDA and FI



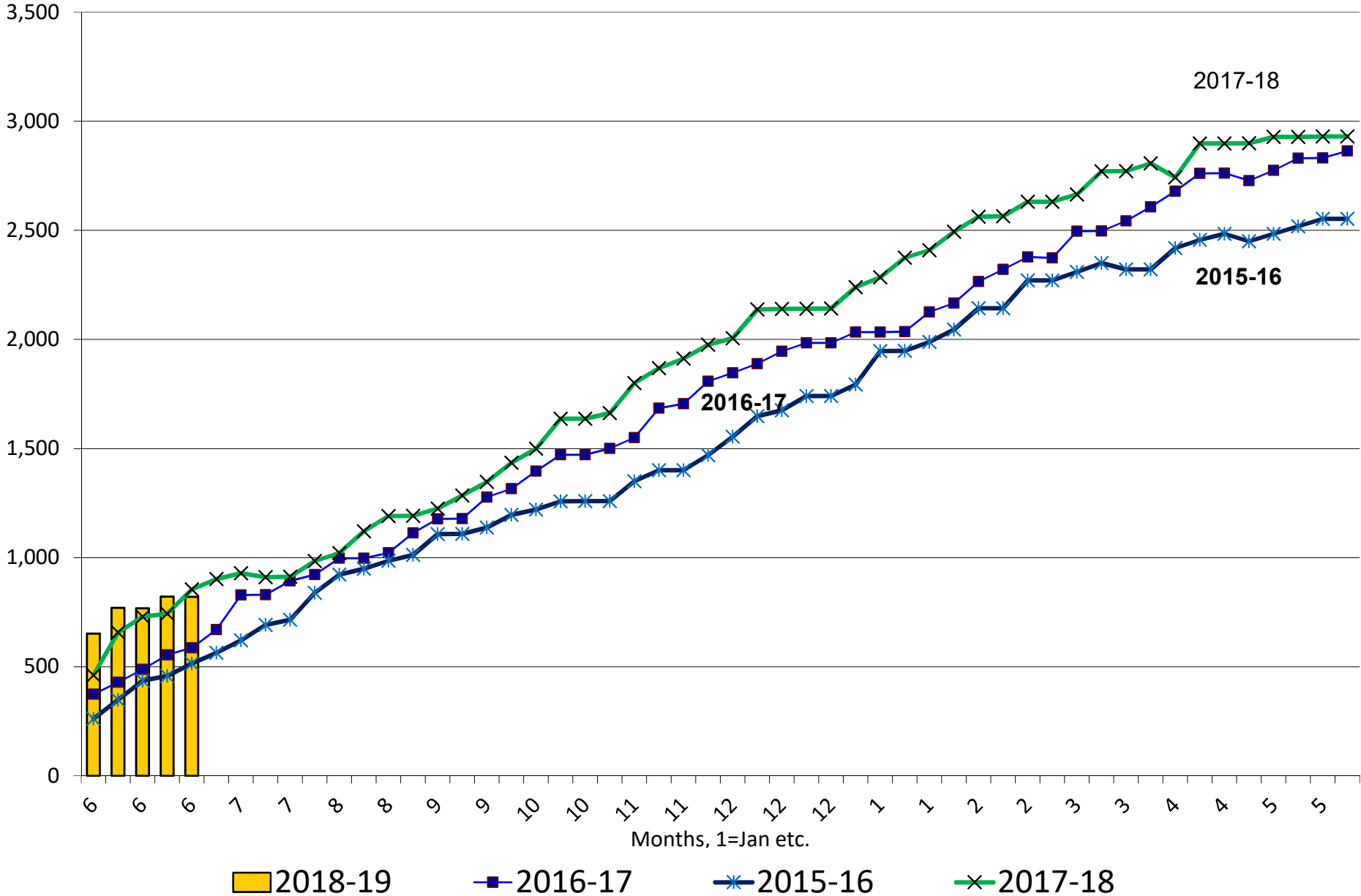
US All Wheat Current Crop-Year Commitments to Mexico

Thousand Tons, Sept-Aug



US All Wheat Current Crop-Year Commitments to Japan

Thousand Tons, Sept-Aug



Disclaimer

TO CLIENTS/PROSPECTS OF FUTURES INTERNATIONAL, SEE RISK DISCLOSURE BELOW:

THIS COMMUNICATION IS CONVEYED AS A SOLICITATION FOR ENTERING INTO A DERIVATIVES TRANSACTION.

Any trading recommendations and market or other information to Customer by Futures International (FI), although based upon information obtained from sources believed by FI to be reliable may not be accurate and may be changed without notice to customer. FI makes no guarantee as to the accuracy or completeness of any of the information or recommendations furnished to Customer. Customer understands that FI, its managers, employees and/or affiliates may have a position in commodity futures, options or other derivatives which may not be consistent with the recommendations furnished by FI to Customer.

The risk of trading futures and options and other derivatives involves a substantial risk of loss and is not suitable for all persons. In purchasing an option, the risk is limited to the premium paid, and all commissions and fees involved with the trade. When an option is shorted or written, the writer of the option has unlimited risk with respect to the option written. The use of options strategies such as a straddles and strangles involve multiple option positions and may substantially increase the amount of commissions and fees paid to execute the strategy. Option prices do not necessarily move in tandem with cash or futures prices. Each person must consider whether a particular trade, combination of trades or strategy is suitable for that person's financial means and objectives.

This material may include discussions of seasonal patterns, however, futures prices have already factored in the seasonal aspects of supply and demand, and seasonal patterns are no indication of future market trends. Finally, past performance is not indicative of future results.

This communication may contain links to third party websites which are not under the control of FI and FI is not responsible for their content. Products and services are offered only in jurisdictions where solicitation and sale are lawful, and in accordance with applicable laws and regulations in each such jurisdiction.