



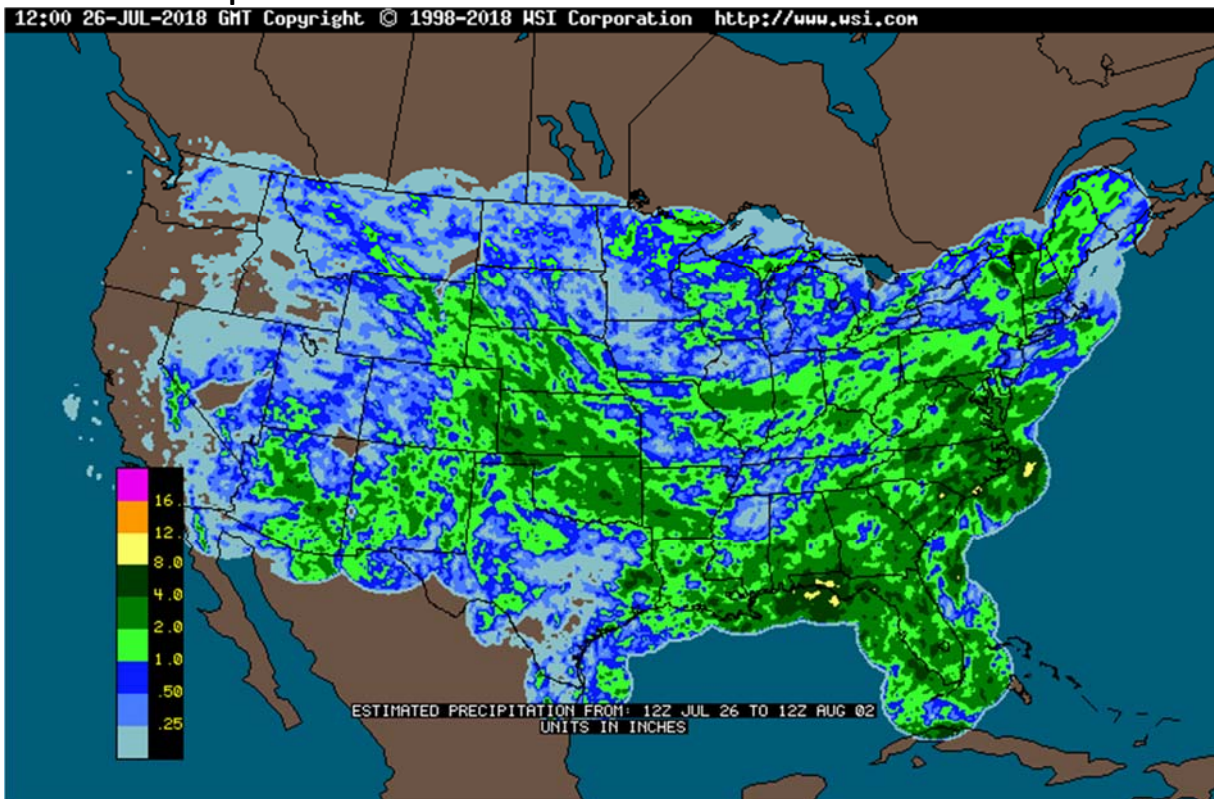
Prices as 8/3/18 7:34 AM

Soybeans				Soybean Meal			Soybean Oil				
	Change	Volume		Change	Volume		Change	Volume			
AUG8	881.75	(0.75)	626	AUG8	330.40	(2.40)	111	AUG8	28.20	0.08	16
SEP8	876.50	(10.50)	3847	SEP8	328.80	(2.20)	3587	SEP8	28.29	0.00	957
NOV8	886.50	(11.00)	22641	OCT8	328.60	(2.70)	2001	OCT8	28.40	0.00	910
JAN9	898.00	(10.75)	2773	DEC8	329.60	(3.00)	8805	DEC8	28.60	(0.01)	7807
MAR9	907.25	(10.75)	2357	JAN9	329.30	(2.70)	1322	JAN9	28.85	(0.01)	651
MAY9	916.50	(11.00)	1051	MAR9	326.00	(3.00)	1271	MAR9	29.17	(0.01)	524
Corn			Oats			Chicago Wheat					
	Change	Volume		Change	Volume		Change	Volume			
SEP8	366.75	0.00	11698	SEP8	245.00	2.00	10	SEP8	557.25	(3.25)	16606
DEC8	381.00	(0.25)	21974	DEC8	251.75	1.00	31	DEC8	580.00	(2.75)	13560
MAR9	392.25	0.00	4650	MAR9	254.25	0.00	0	MAR9	598.25	(1.75)	4938
MAY9	398.50	0.50	1533	MAY9	256.75	0.00	0	MAY9	604.75	(1.25)	1169
JUL9	403.75	0.00	1598	JUL9	260.00	0.00	0	JUL9	597.75	0.25	1536
SEP9	405.50	0.50	501	SEP9	264.50	0.00	0	SEP9	605.50	1.75	142
China				London				Malaysian Palm			
Soybeans#1	Month	Settle		Wheat	Month	Price	Change		Month	Price	Change
Soybeans#1	JAN9	3,601	(22)	Wheat	MAY9	197.70	(2)	USD	Index	95.117	(0.042)
SoyMeal	DEC8	3,187	(2)	Matif				EUR/USD	Spot	1.1589	0.001
SoyOil	DEC8	5,814	(38)	Rapeseed	FEB9	377.50	(1.00)	USD/BRL	Bid	3.7433	(0.006)
Palm	DEC8	4,856	0	Corn	AUG8	190.00	(5.00)	BITCOIN	BTCC1	\$7,355	(\$170)
Corn	JAN9	1,849	(5)	Mill Wheat	SEP8	213.25	0.50	WTI Crude	SEP8	68.76	(0.200)
Wheat	JAN9	2,607	7					Brent	OCT8	73.4	(0.050)
				Malaysian Palm				Nat Gas	SEP8	2.831	0.015
				Futures	OCT8	2,196	5	DJ Mini	SEP8	25299	(6)
				Cash	OCT8	568.75	0.00	US 10-Yr	SEP8	119 12/32	1/32

Nearby Soy/Corn Ratio 2.3899

Source: FI and Reuters

Weather and crop conditions



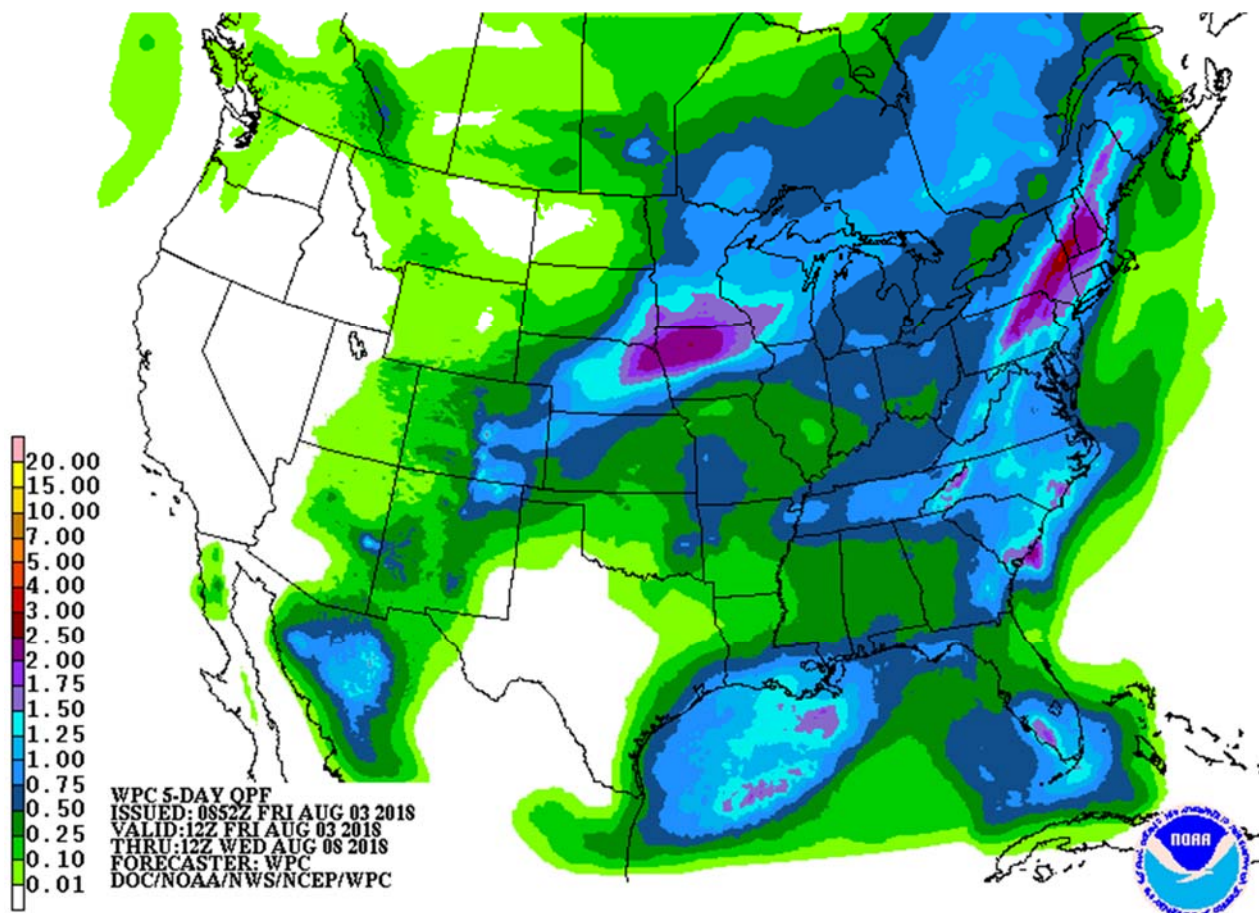
Terry Reilly Grain Research

Futures International | 190 S. LaSalle St., Suite 410 | Chicago, IL 60603

W: 312.604.1366 | treilly@futures-int.com

US crop conditions are expected to decline one in corn, soybeans unchanged, and spring wheat down 1-2 what updated on Monday. Spring wheat harvest progress may have advanced 11 points to 15 percent complete. Winter wheat could end up 7 points to 92 percent complete.

- The near-term weather model appears to be drier for the central WCB through early next week.
- 6-10 day is drier for the central and eastern Midwest and temperatures are cooler for the southeastern Plains and Delta. 11-15 day is wetter in the Midwest and eastern Great Plains, and temperatures are slightly warmer in the Midwest and eastern Plains.
- The ridge of high pressure building up over the Great Plains and a part of western Corn Belt during the coming weekend and next week is still slated to happen, accelerating net drying and limiting rainfall across the Plains, Midwest and Delta from August 5th through August 14.
- Temperatures across the northern Midwest will be warm to hot through early next week.
- Rainfall between now and August 5 for the Midwest will be very important.
- Some of the Midwest northern growing areas will pick up on rain. The northwestern growing areas will see rain this weekend. The Delta will see rain in the southeastern areas on Saturday. All other areas of the Delta will see net drying through the weekend.
- Canada's southern Prairies will still see stress this week for the summer crops. Southeastern Canada is in good shape.



Terry Reilly Grain Research

Futures International | 190 S. LaSalle St., Suite 410 | Chicago, IL 60603

W: 312.604.1366 | treilly@futures-int.com

SIGNIFICANT CORN AND SOYBEAN BELT PRECIPITATION EVENTS

	WEST CORN BELT	EAST CORN BELT
Tdy-Sun		15-35% daily cvg of up to 0.35" and locally more each day
Fri-Sat	45% cvg of up to 0.75" and local amts over 2.0"; S.D. to Mn. wettest; driest south	
Sun-Mon	65% cvg of up to 0.75" and local amts over 2.0"; Ia. wettest; far south and far NW driest	
Mon-Tue		80% cvg of up to 0.75" and local amts to 2.0"; west-central and SW Illinois driest
Tue-Wed	60% cvg of up to 0.50" and local amts to 1.10"; driest south	
Wed-Aug 10		70% cvg of up to 0.55" and local amts to 1.15"; wettest south
Aug 9-11	Up to 20% daily cvg of up to 0.25" and locally more each day; some days may be dry	
Aug 11-12		5-20% daily cvg of up to 0.30" and locally more each day
Aug 12-13	40% cvg of up to 0.50" and locally more; wettest north	
Aug 13-14		45% cvg of up to 0.40" and locally more; north and east wettest
Aug 14-16	5-20% daily cvg of up to 0.30" and locally more each day	
Aug 15-16		5-20% daily cvg of up to 0.30" and locally more each day

U.S. DELTA/SOUTHEAST SIGNIFICANT PRECIPITATION EVENTS

	DELTA	SOUTHEAST
Tdy-Fri	Up to 10% daily cvg of up to 0.20" and locally more each day; some	85% cvg of 0.40-1.50" and local amts to 2.50" in most areas from Fl.

Terry Reilly Grain Research

Futures International | 190 S. LaSalle St., Suite 410 | Chicago, IL 60603

W: 312.604.1366 | treilly@futures-int.com

	days may be dry	to Va. and a few bands of 2.50-3.75" with up to 0.40" and locally more elsewhere; east Ms. driest
Sat-Mon	10-25% daily cvg of up to 0.30" and locally more each day	
Sat-Tue		15-35% daily cvg of up to 0.50" and locally more each day
Tue-Wed	65% cvg of up to 0.75" and local amts to 1.50"; driest south	
Wed-Aug 10		80% cvg of up to 0.75" and local amts to 2.0"; driest NE
Aug 9-10	75% cvg of up to 0.75" and local amts to 1.50"	
Aug 11-16	10-25% daily cvg of up to 0.30" and locally more each day	10-25% daily cvg of up to 0.30" and locally more each day

Source: World Weather Inc. and FI

Bloomberg weekly agenda

FRIDAY, AUG. 3:

- ICE Futures Europe commitments of traders weekly report on coffee, cocoa, sugar positions, ~1:30pm ET (~6:30pm London)
- CFTC commitments of traders weekly report on positions for various U.S. futures and options, 3:30pm
- FranceAgriMer weekly updates on French crop conditions
- EARNINGS: Kraft Heinz Co.

MONDAY, AUG. 6:

- Canada on holiday
- Malaysian Palm Oil Council POINTERS webinar
 - Malaysian Palm Oil Board, Malaysian Palm Oil Council, Indonesian Palm Oil Association give their latest market outlook
- EU weekly grain, oilseed import and export data, 10am (3pm London)
- USDA weekly corn, soybean, wheat export inspections, 11am
- USDA weekly crop progress report, 4pm
- Ivory Coast weekly cocoa arrivals
- EARNINGS: Tyson Foods

TUESDAY, AUG. 7:

- New Zealand dairy auction on Global Dairy Trade online market starts ~7am ET (~noon London, ~11pm Wellington)
- China National Grain and Oils Information Center (CNGOIC) publishes forecast on country's grains output
- EARNINGS: Dean Foods, Mosaic

WEDNESDAY, AUG. 8:

- China's General Administration of Customs releases preliminary agricultural commodity trade data for July, 11pm ET Tuesday (11am Beijing Wednesday)

Terry Reilly Grain Research

Futures International | 190 S. LaSalle St., Suite 410 | Chicago, IL 60603

W: 312.604.1366 | treilly@futures-int.com

- EIA U.S. weekly ethanol inventories, output, 10:30am
- French Agriculture Ministry publishes crop areas, production forecasts

THURSDAY, AUG. 9:

- USDA weekly net-export sales for corn, wheat, soy, cotton, 8:30am
- Brazil's crop agency Conab updates its forecast on 2017-18 grain and oilseed crop, 8am ET (9am Sao Paulo)
- Strategie Grains monthly report on European market outlook
- Port of Rouen data on French grain exports
- Buenos Aires Grain Exchange weekly crop report
- Bloomberg weekly survey of analysts' expectations on grain, sugar prices
- EARNINGS: BayWa

FRIDAY, AUG. 10:

- USDA's monthly World Agricultural Supply and Demand Estimates (WASDE) report for August, noon
- China's Ministry of Agriculture publishes China Agricultural Supply & Demand Estimates (CASDE) report
- Malaysian Palm Oil Board (MPOB) releases data on palm oil stockpiles, exports, production as of end-July, 12:30am ET (12:30pm Kuala Lumpur)
- Cargo surveyors Intertek, AmSpec release respective data on Malaysia's Aug. 1-10 palm oil exports, 11pm ET Thursday (11am Kuala Lumpur Friday)
 - SGS data during same period, 3am ET Friday (3pm Kuala Lumpur Friday)
- Unica's bi-weekly Brazil Center-South sugar output, 9am ET
- FranceAgriMer weekly updates on French crop conditions
- ICE Futures Europe commitments of traders weekly report on coffee, cocoa, sugar positions, ~1:30pm ET (~6:30pm London)
- CFTC commitments of traders weekly report on positions for various U.S. futures and options, 3:30pm
- EARNINGS: BRF

Source: Bloomberg and FI

Registrations

- None Reported

CBOT Deliveries

	Current		Latest Registrations	Change
Soybeans	867	ADM INV issued 147	1,243	0
Soybean Meal	0		150	0
Soybean Oil	919	no commercial stoppers	3,719	0
Corn			1,151	0
Oats			186	0
Chi. Wheat			107	0
KC Wheat			274	0
Rice			35	0

Source: CBOT, Reuters and FI

Open Interest

CBOT Product			Prompt OI	Change	Total Open Interest*	Change	WOW Change
<i>Soybeans</i>	<i>Sv1</i>	<i>Nov 18</i>	422,157	(1,043)	793,124	(2,050)	(32,828)
<i>Soy Oil</i>	<i>BOv1</i>	<i>Dec 18</i>	249,975	(73)	517,287	3,798	(1,802)
<i>Soy Meal</i>	<i>SMv1</i>	<i>Dec 18</i>	198,091	(3,261)	508,493	(4,141)	(4,949)
<i>Corn</i>	<i>Cv1</i>	<i>Dec 18</i>	808,886	737	1,811,025	(19,874)	(51,781)
<i>Oats</i>	<i>Oc1</i>	<i>Sep 18</i>	1,325	(61)	4,905	(106)	(184)
<i>CHI Wheat</i>	<i>Wv1</i>	<i>Sep 18</i>	169,711	(9,844)	497,796	(6,109)	17,243
<i>KC Wheat</i>	<i>KWv1</i>	<i>Sep 18</i>	113,370	1,947	297,493	9,508	15,772

CME Product					Total Open Interest*	Change	Change
<i>Live Cattle</i>	<i>LCc2</i>	<i>Dec 17</i>	128,455	794	308,093	(201)	(3,947)
<i>Lean Hogs</i>	<i>LHc2</i>	<i>Dec 17</i>	118,578	(787)	241,318	(536)	3,461

*Previous day preliminary data as of

8/2/2018

*MN previous session

Source: CBOT, MGE, FI

Weekly Bloomberg Bull/Bear Survey

- Wheat survey results: Bullish: 9 Bearish: 2 Neutral: 3
- Corn: Bullish: 8 Bearish: 2 Neutral: 5
- Soybeans: Bullish: 6 Bearish: 5 Neutral: 4
- Raw sugar: Bullish: 5 Bearish: 3 Neutral: 1
- White sugar: Bullish: 5 Bearish: 1 Neutral: 3 White-sugar

FI ESTIMATES FOR US EXPORT INSPECTIONS

Million Bushels	FI Estimates	Last Week	5-Year Ave.
WHEAT	12 to 17	13.9	19.7
CORN	57 to 67	65.3	32.8
SOYBEANS	22 to 28	27.2	10.8

Million Tons	FI Estimates	Last Week	5-Year Ave.
WHEAT	325 to 450	379.1	535.2
CORN	1,450 to 1,700	1,658.5	833.5
SOYBEANS	600 to 750	740.3	294.6

Source: USDA & FI

Macros.

- US stocks are mostly higher, USD lower, WTI crude near unchanged but generally lower, and gold higher, at the time this was written.
- Change In Nonfarm Payrolls (Jul): 157K (est 193K, prevR 248k)
 - Unemployment Rate (Jul): (est 3.9%, prev 4.0%)
 - Average Hourly Earnings (M/M) (Jul): 0.3% (est 0.3%, prevR 0.1%)
 - Average Hourly Earnings (Y/Y) (Jul): 2.7% (est 2.7%, prev 2.7%)

Terry Reilly Grain Research

Futures International | 190 S. LaSalle St., Suite 410 | Chicago, IL 60603

W: 312.604.1366 | treilly@futures-int.com

- Change In Private Payrolls (Jul): 170K (est 190K, prev 234K)
- Change In Manufacturing Payrolls (Jul): 37K (est 25K, prevR 33K)
- Average Weekly Hours All Employees (Jul): 34.5(est 34.5, prevR 34.6)
- Labor Force Participation Rate (Jul): 62.9% (prev 62.9%)
- US Trade Balance (Jun): \$-46.3 (est -\$46.5Bln, prevR -\$43.2Bln)
- China To Levy Differentiated Tariffs On About \$60Bln US Goods
- China Govt Says It Will Immediately Impose The Import Tax Measures If The U.S. Starts To Slap Tax On China Imports (livesquak)
- China Central Bank Says Raising Reserve Requirements For Forex Settlements In Order To Fend Off Financial Risks, Promote Stable Operations Of Financial Institutions

Corn.

- Corn prices were nearly unchanged on lack of direction with soybeans lower and wheat mixed.
- Baltic Dry Index increased 17 points to 1,773 or 1%.
- Farm Futures sees the 2018 US corn yield at 175.4 bushels per acre and production at 14.360 billion.
- Informa may release US crop supply later. In July we understand Informa used a 176.0 yield and 14.392 billion bushel crop. USDA is at 14.230 billion bushels and 174.0/bu for the yield.
- FI is using 178.0 with 14.543 billion.
- French corn conditions for the week ending July 29 fell by 5 points from the previous week to 66 percent, below 79 percent at this time last year.
- Argentina's corn harvest is running at 84% complete, compared to 79.1% last week and 68.7% last year. Wheat plantings were 97.3% complete.

Export Developments

- China sold 856,885 tons of corn out of reserves at an average price of 1416 yuan per ton (\$206.16/ton), 22 percent of total offered. Yesterday they sold 1.1 million tons.
- China sold about 59.4 million tons of corn out of reserves this season.

Soybean complex.

- Soybeans on Friday saw a choppy trade after China said they plan to levy additional tariffs on about \$60 billion US products if the US adds more tariffs, so it's subject to US actions they said.
- Soybeans are down for the third day of risk off from the ongoing China/US trade concerns. Products are mixed with meal down and soybean oil struggling to stay near unchanged.
- China Gvt's New Proposed Tariffs On U.S. Goods Include Soybean Oil, Peanut Oil, Corn Oil, Olive Oil, Mutton, Dried, Smoked And Salted Beef, Coffee, Wheat Flour, Spirits (ICE)
- Farm Futures sees the 2018 US soybean yield at 49.8 bushels per acre and production at 4.420 billion.
- Informa might release crop supply later. In July we understand Informa used a 49.1 yield and 4.425 billion bushel crop. USDA is at 4.310 billion bushels and 48.5/bu for the yield.
- FI is using 49.0 with 4.353 billion.
- China approved the imports of sunflower seeds from Bulgaria.
- China September soybean futures -16 yuan per ton or 0.5%
- China September meal -1 or 0.1%
- China September soybean oil -20 or 0.4%
- China September palm -28 or 0.6%

- September China cash crush margins were last running at 42 cents/bu, compared to 43 previous session, 48 last week and 66 cents a year ago.
- Rotterdam vegetable oils were mostly unchanged, and SA soybean meal were lower, as of early morning CT time.
- October Malaysian palm was up 5 to MYR2196, and cash unchanged at \$568.75/ton.
- Offshore values were leading soybean oil 26 points higher (23 higher for the week to date) and meal \$0.20/short ton lower (\$4.70 lower for the week to date).

Export Developments

- No fresh export developments for Friday.
- South Korea seeks 12,000 tons of non-GMO soybeans in Aug 7 for Nov/Dec arrival.
- USDA seeks 2,160 tons of refined vegetable oil under the PL480 program on August 7 for shipment in September for Zimbabwe.
- Results awaited: Iran seeks 30,000 tons of soybean oil on August 1.
- Iran seeks 30,000 tons of sunflower oil on September 24.
- China sold 1.054 million tons of soybeans out of reserves so far, this season.

Wheat.

- US wheat futures are mixed. Chicago is down on profit taking, KC mixed on higher Paris wheat and lower Chicago along with light selling, and MN higher on US spring wheat crop concerns.
- We look for a 1-2 point drop in the US spring wheat rating on Monday.
- 1300 Black Sea wheat basis SEP already traded this morning. 238-239.75. All lower than yesterday. Last trade 238. (JD)
- December Paris wheat futures was last 0.75 euros higher at 214.00 euros. Yesterday the contract made another high during the session and on a rolling basis Paris wheat hit over a 4-year high. (April 2014)
- The Ukraine AgMin increased their estimate for the wheat crop to 24 million tons from previous 22-23 million tons, including 13MMT of milling wheat. We are using 25.1MMT.
- For the August Crop Production report, we are using 47.5 and 613 million bushels for spring wheat, 41.7 and 77 million for durum, and 47.6 bu/ac and 1.884 billion for the all-wheat crop.
- India's weather office noted there is a 47 percent chance of India recording below average rainfall during the second half of the monsoon season which stretches between June to September. The first two months of the season were below normal.
- Egypt said they have enough strategic wheat reserves for 4 months.
- Yesterday the EU awarded 72,048 tons of wheat imports under quotas. No barley was granted.

Black Sea - THURSDAY/FRIDAY MORNING BLOCKS

B	04:32:57	BWF	Sep18	Block	20	238.00
B	04:31:44	BWF	Sep18	Block	100	238.00
B	04:28:52	BWF	Sep18	Block	100	238.50
B	02 Aug 2018 11:47:51	BWF	Sep18	Block	200	241.00
B	02 Aug 2018 11:18:13	BWF	Oct18	Block	200	243.75
B	02 Aug 2018 11:17:28	BWF	Nov18	Block	100	248.50
B	02 Aug 2018 11:17:02	BWF	Nov18	Block	100	248.50
B	02 Aug 2018 10:45:10	BWF	Sep18	Block	200	240.00
B	02 Aug 2018 10:40:06	BWF	Nov18	Block	200	248.00
B	02 Aug 2018 10:23:31	BWF	Nov18	Block	200	245.00
B	02 Aug 2018 10:20:11	BWF	Dec18	Block	100	247.00
B	02 Aug 2018 10:19:11	BWF	Mar19	Block	100	253.00
B	02 Aug 2018 10:17:58	BWF	Nov18	Block	100	245.00
B	02 Aug 2018 10:16:54	BWF	Mar19	Block	100	253.00
B	02 Aug 2018 10:10:46	BWF	Sep18	Block	40	240.00
B	02 Aug 2018 10:06:53	BWF	Oct18	Block	200	242.00
B	02 Aug 2018 09:30:15	BWF	Sep18	Block	10	239.50
B	02 Aug 2018 09:24:09	BWF	Sep18	Block	150	239.50
B	02 Aug 2018 09:22:56	BWF	Sep18	Block	200	239.50
B	02 Aug 2018 09:22:07	BWF	Oct18	Block	150	242.00
B	02 Aug 2018 06:18:43	BWF	Sep18	Block	100	238.00
B	02 Aug 2018 06:00:25	BWF	Sep18	Block	100	238.00
B	02 Aug 2018 04:45:19	BWF	Sep18	Block	100	237.00

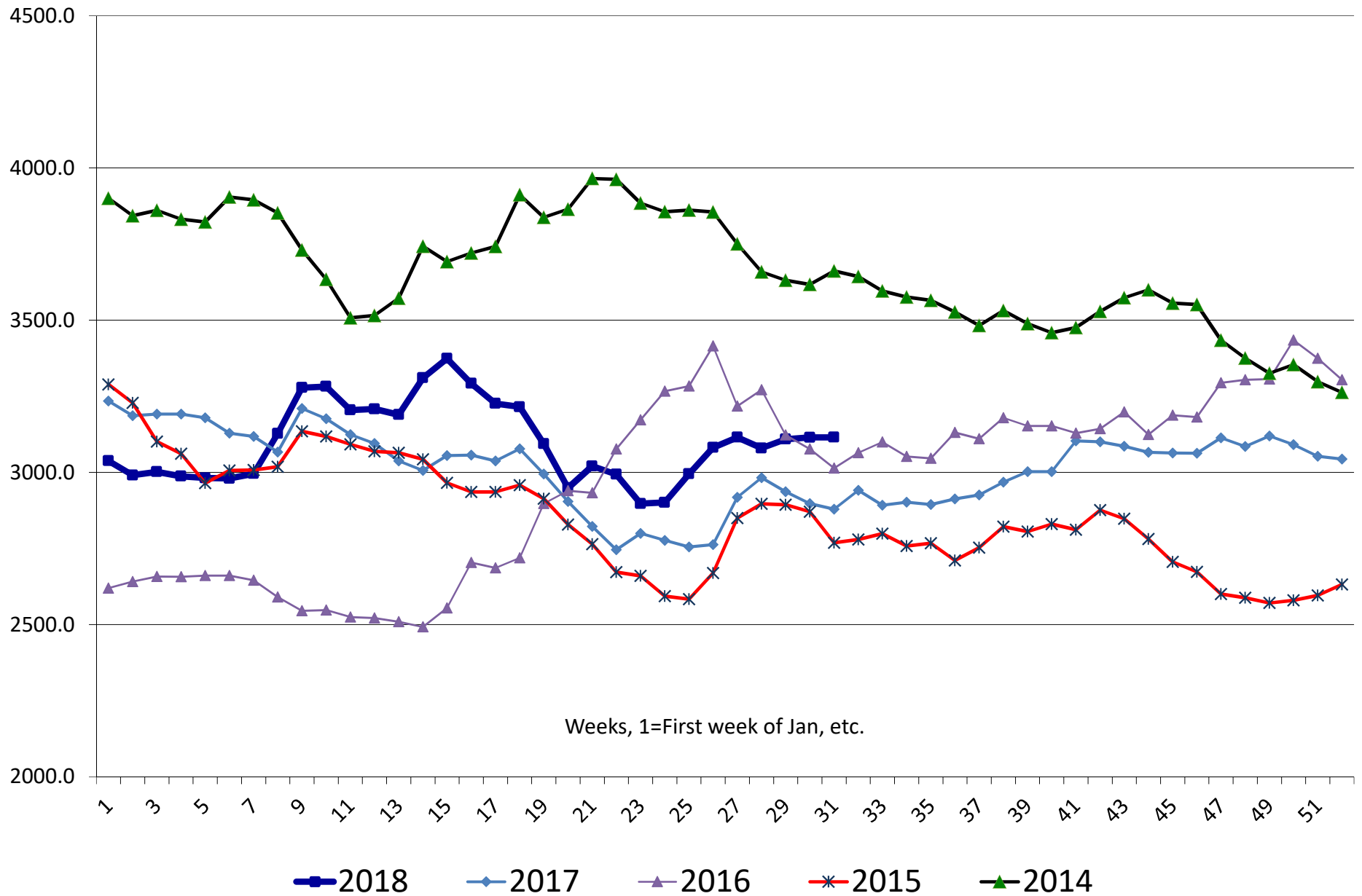
Export Developments.

- Yesterday Egypt bought 240,000 tons of Russian and Roman wheat for September 11-20 shipment. Lowest paid was \$251.96/ton c&f.
- Yesterday Algeria bought at least 360,000 tons of milling wheat at around \$263/ton c&f & \$272/ton c&f, for October shipment.
- Jordan issued an import tender for 120,000 tons of feed barley on August 8.
- Japan in a SBS import tender seeks 120,000 tons of feed wheat and 200,000 tons of barley on August 8 for arrival by January 31.

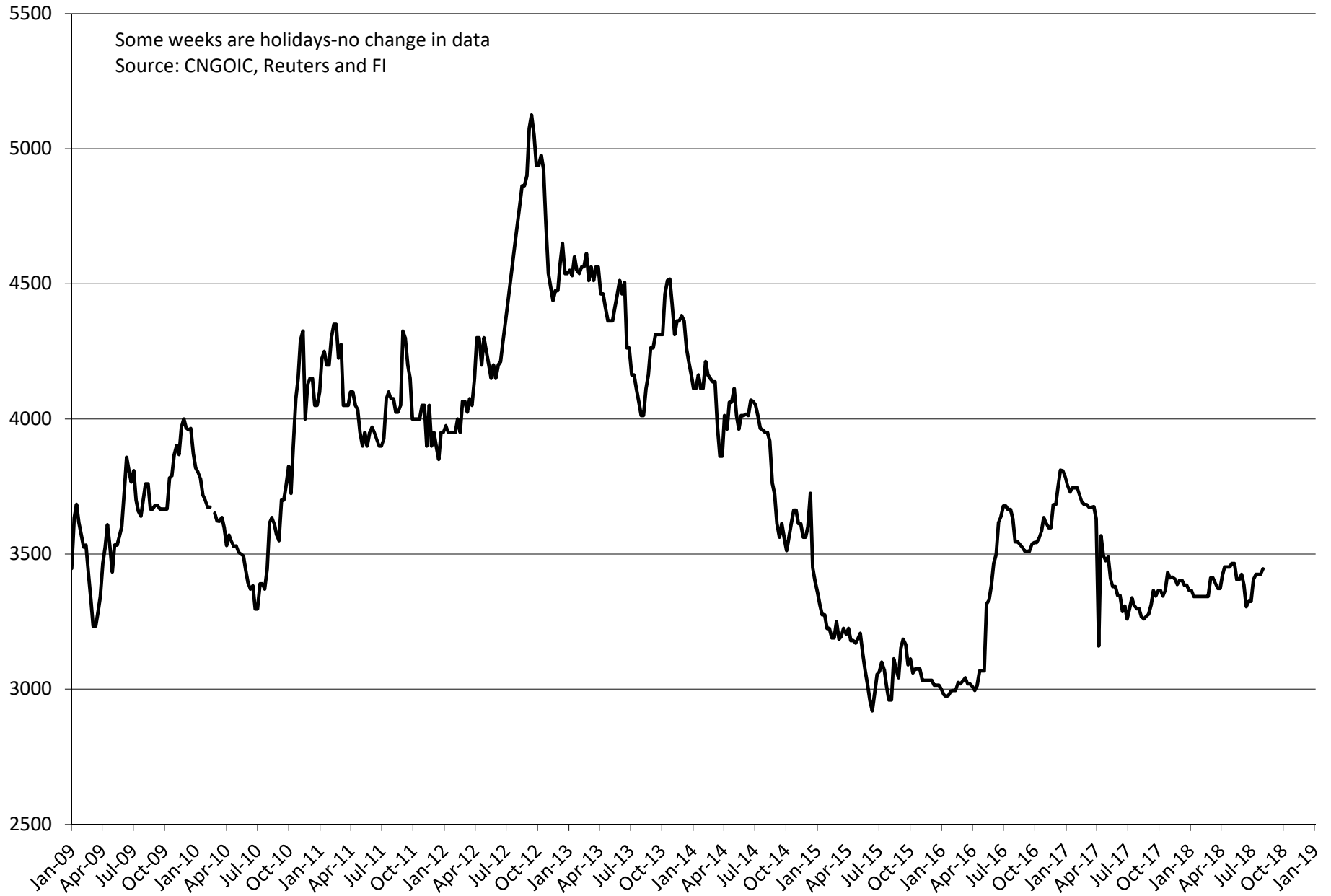
Rice/Other

- Iraq seeks 30,000 tons of rice on August 12, open until Aug 16.

Average soybean meal price at selected China locations
RMB/ton

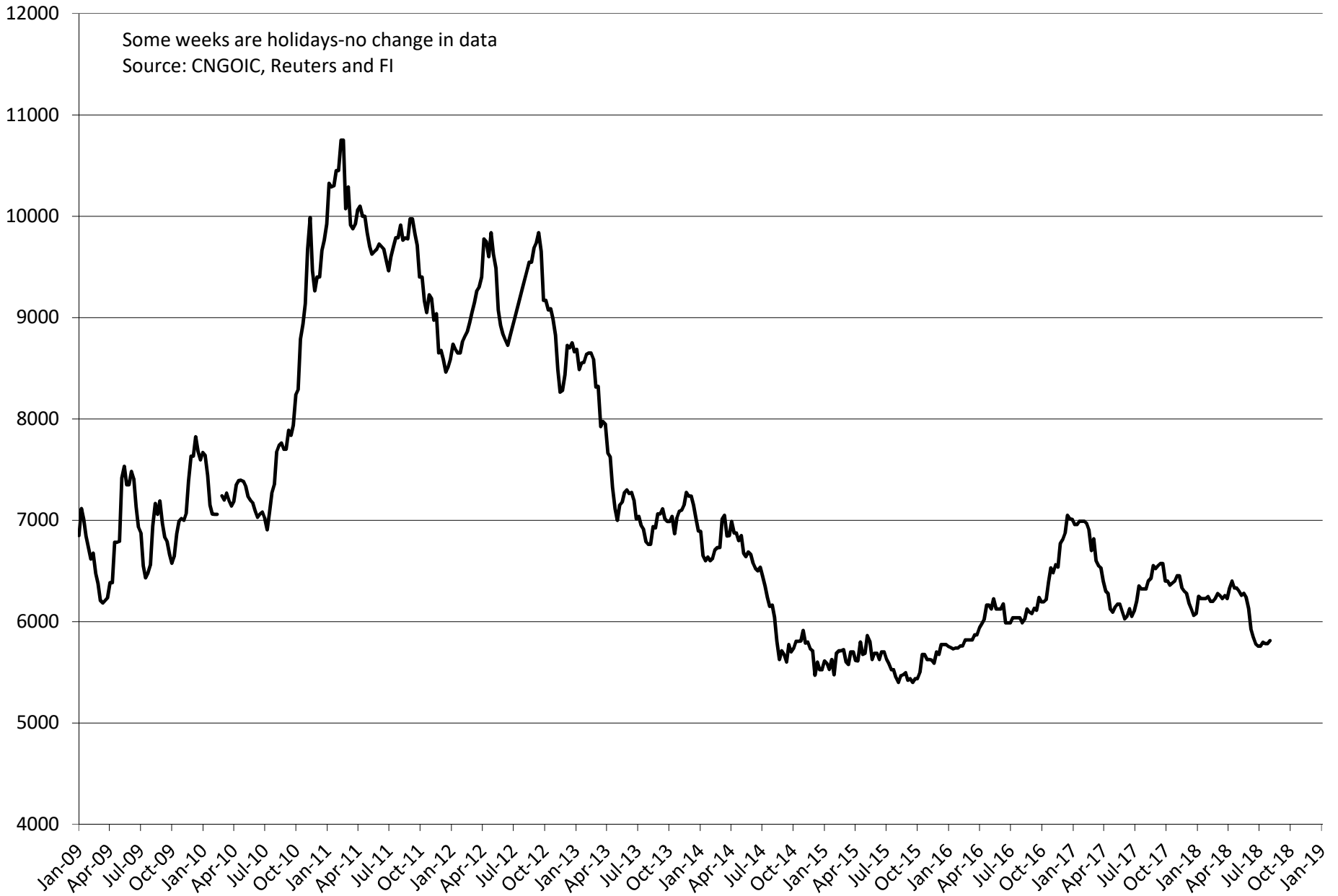


Average US soybean import price for China RMB/ton



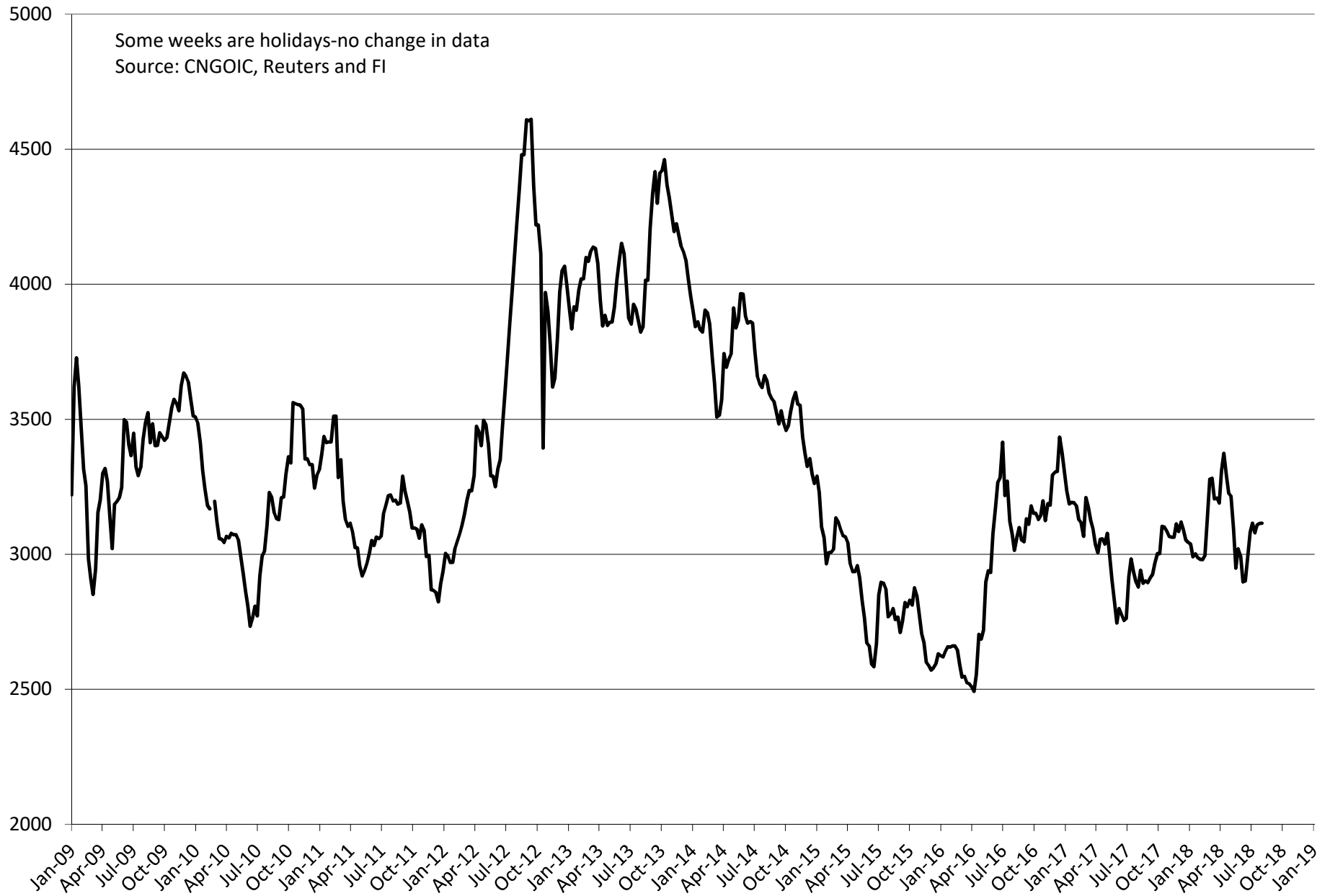
Average soybean oil price at selected China locations

RMB/ton

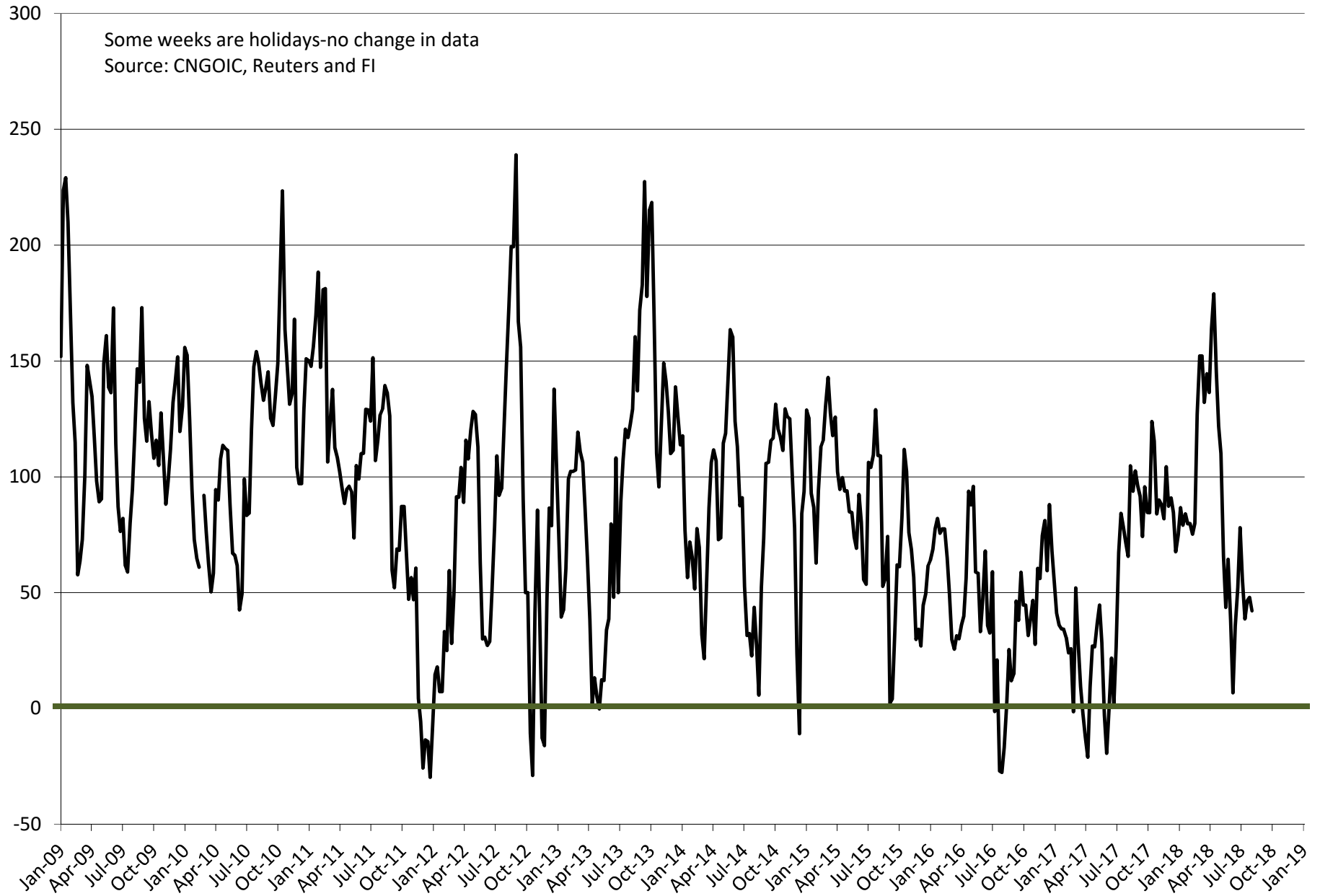


Average soybean meal price at selected China locations

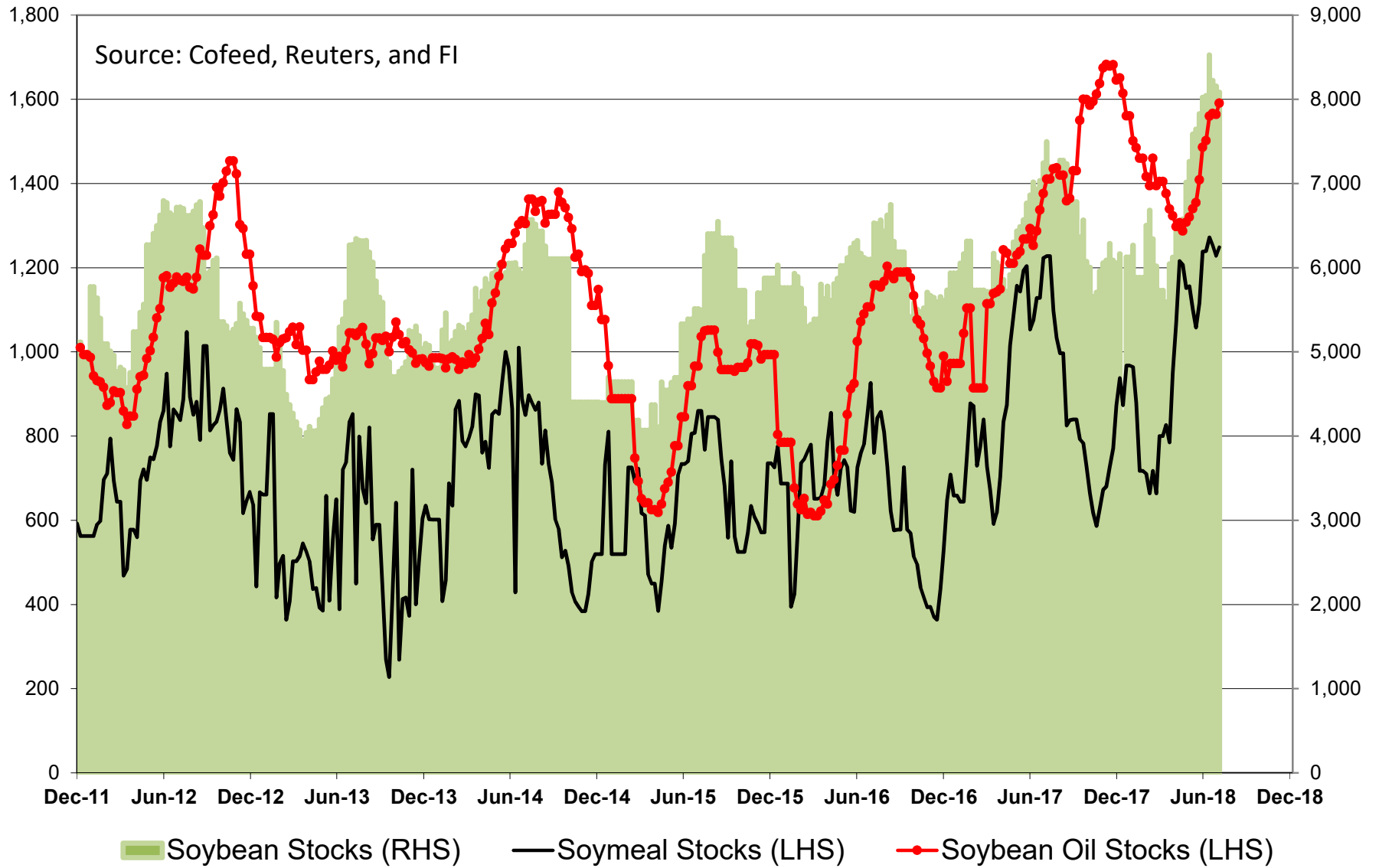
RMB/ton



Average soybean crush price at selected China locations cents/bu (does not include costs)

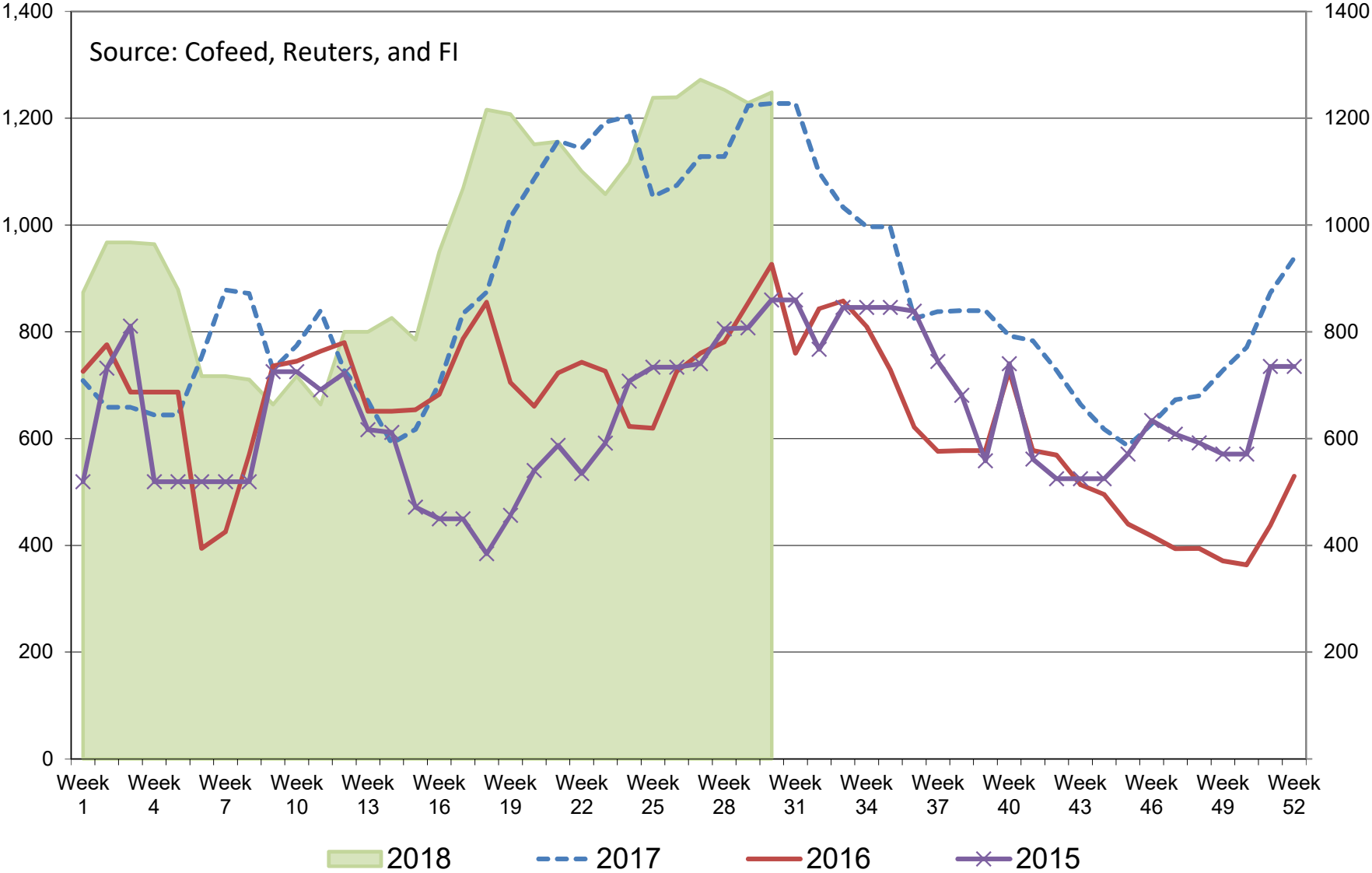


China Soybean (RHS) and Soybean Meal & Oil (LHS) Stocks, in 000 tons



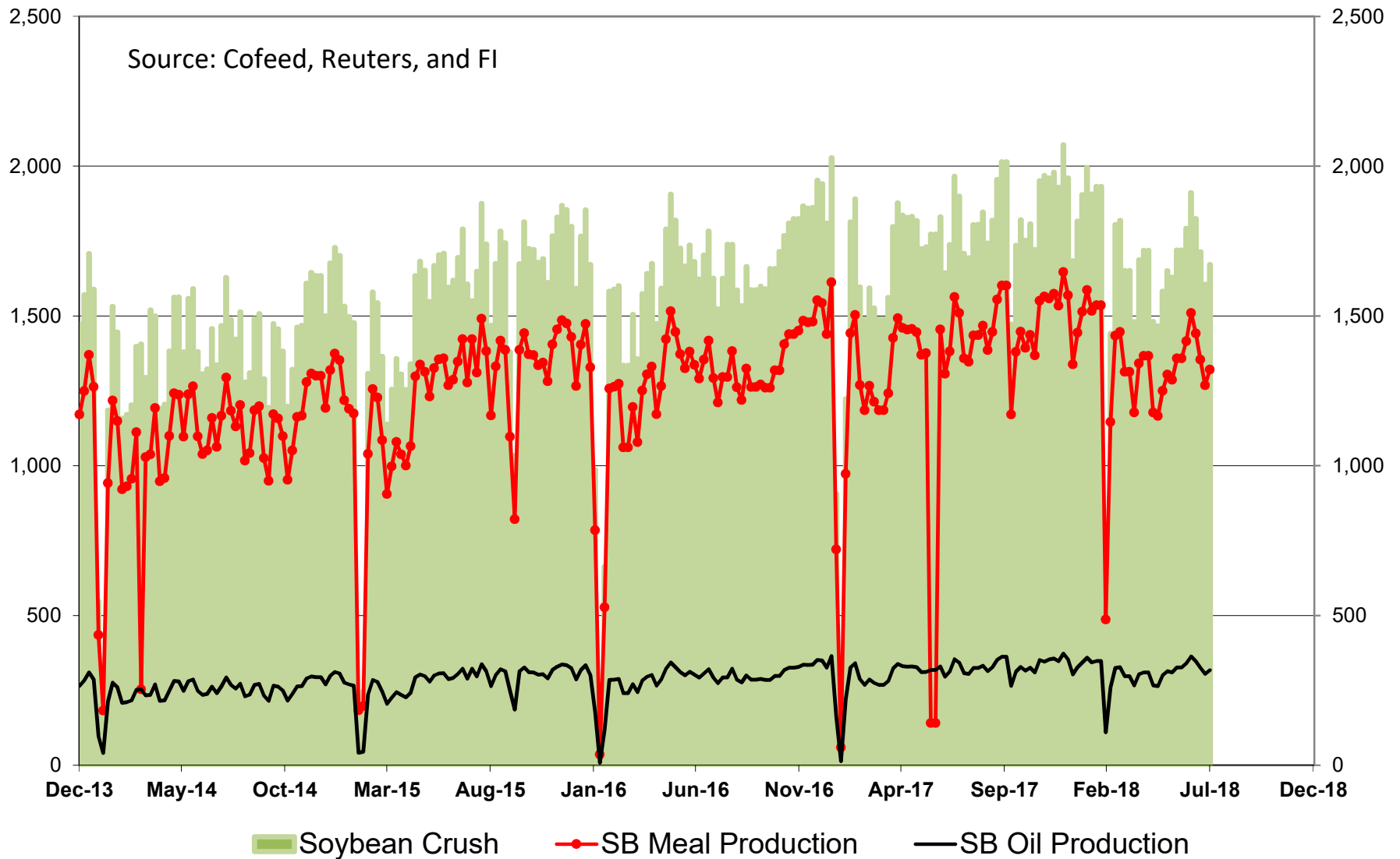
China Seasonal Soybean Meal Stocks, in 000 tons

Source: Cofeed, Reuters, and FI



China Soybean Crush and Soybean Meal & Oil Production, in 000 tons

Source: Cofeed, Reuters, and FI





Futures International, LLC

An OTC Global Holdings LP Company

CBOT Deliverable Commodities Under Registration

Source: CBOT and FI

Date	CHI Wheat	Change	Oats	Change	Corn	Change	Ethanol	Change	Soybeans	Change	Soy Oil	Change	Soy Meal	Change	Rough Rice	Change	KC Wheat	Change
8/2/2018	107	0	186	0	1,151	0	254	0	1,243	0	3,719	0	150	0	35	0	274	0
8/1/2018	107	0	186	0	1,151	0	254	(7)	1,243	0	3,719	0	150	0	35	0	274	0
7/31/2018	107	0	186	0	1,151	0	261	0	1,243	747	3,719	0	150	0	35	0	274	0
7/30/2018	107	0	186	0	1,151	0	261	0	496	390	3,719	333	150	0	35	0	274	0
7/27/2018	107	0	186	0	1,151	0	261	0	106	0	3,386	0	150	0	35	0	274	0
7/26/2018	107	0	186	0	1,151	0	261	0	106	(296)	3,386	0	150	0	35	0	274	0
7/25/2018	107	0	186	0	1,151	0	261	0	402	0	3,386	0	150	0	35	0	274	0
7/24/2018	107	0	186	0	1,151	0	261	0	402	0	3,386	0	150	0	35	0	274	0
7/23/2018	107	0	186	0	1,151	0	261	0	402	(599)	3,386	0	150	0	35	0	274	0
7/20/2018	107	0	186	0	1,151	0	261	0	1,001	0	3,386	0	150	0	35	0	274	0
7/19/2018	107	0	186	0	1,151	0	261	0	1,001	0	3,386	0	150	0	35	(50)	274	0
7/18/2018	107	0	186	0	1,151	0	261	0	1,001	0	3,386	0	150	0	85	0	274	0
7/17/2018	107	0	186	0	1,151	(22)	261	0	1,001	(86)	3,386	0	150	0	85	(129)	274	(20)
7/16/2018	107	0	186	0	1,173	0	261	0	1,087	(96)	3,386	0	150	0	214	(71)	294	0
7/13/2018	107	96	186	0	1,173	0	261	0	1,183	(194)	3,386	0	150	0	285	21	294	0
7/12/2018	11	0	186	0	1,173	0	261	0	1,377	(51)	3,386	0	150	0	264	(79)	294	0
7/11/2018	11	0	186	0	1,173	0	261	0	1,428	0	3,386	0	150	0	343	0	294	0
7/10/2018	11	0	186	0	1,173	0	261	0	1,428	0	3,386	0	150	0	343	0	294	0
7/9/2018	11	0	186	0	1,173	0	261	0	1,428	0	3,386	0	150	0	343	0	294	0
7/6/2018	11	0	186	0	1,173	0	261	0	1,428	(261)	3,386	0	150	0	343	(23)	294	0
7/5/2018	11	0	186	0	1,173	0	261	48	1,689	(30)	3,386	0	150	0	366	(35)	294	0
7/4/2018	11	0	186	(40)	1,173	0	213	0	1,719	(303)	3,386	0	150	0	401	(59)	294	(2)
7/3/2018	11	0	226	37	1,173	0	213	0	2,022	0	3,386	0	150	0	460	0	296	0
7/2/2018	11	0	189	0	1,173	0	213	0	2,022	0	3,386	0	150	0	460	0	296	0
6/29/2018	11	0	189	84	1,173	437	213	0	2,022	436	3,386	0	150	0	460	0	296	0
6/28/2018	11	0	105	0	736	0	213	0	1,586	0	3,386	0	150	0	460	0	296	0
6/27/2018	11	0	105	0	736	0	213	0	1,586	0	3,386	0	150	0	460	0	296	(40)
6/26/2018	11	0	105	0	736	0	213	0	1,586	0	3,386	0	150	0	460	0	336	0
6/25/2018	11	0	105	0	736	0	213	0	1,586	0	3,386	0	150	0	460	0	336	0
6/22/2018	11	0	105	0	736	0	213	0	1,586	0	3,386	0	150	0	460	0	336	0
6/21/2018	11	0	105	0	736	0	213	0	1,586	0	3,386	0	150	0	460	0	336	0
6/20/2018	11	0	105	0	736	0	213	0	1,586	0	3,386	0	150	0	460	(18)	336	0
6/19/2018	11	0	105	0	736	0	213	0	1,586	0	3,386	0	150	0	478	0	336	0
6/18/2018	11	0	105	0	736	0	213	0	1,586	0	3,386	0	150	0	478	0	336	0
6/15/2018	11	0	105	0	736	0	213	0	1,586	0	3,386	0	150	0	478	(18)	336	0
6/14/2018	11	0	105	0	736	0	213	0	1,586	0	3,386	0	150	0	496	(38)	336	0

CME CLEARING - CHICAGO BOARD OF TRADE

DLV600-T

BUSINESS DATE: 08/02/2018 DAILY ISSUES AND STOPS
 PRODUCT GROUP: GRAINS

RUN DATE: 08/02/2018
 RUN TIME: 08:12:33PM

CONTRACT: AUGUST 2018 SOYBEAN MEAL FUTURES
 SETTLEMENT: 332.800000000 USD
 NEXT AVAILABLE DATE: 03/21/2018
 INTENT DATE:

DELIVERY DATE:

FIRM NBR	ORIG	FIRM NAME	ISSUED	STOPPED
TOTAL:			0	0
MONTH TO DATE:				

CONTRACT: AUGUST 2018 SOYBEAN OIL FUTURES
 SETTLEMENT: 28.120000000 USD
 NEXT AVAILABLE DATE: 08/02/2018
 INTENT DATE: 08/02/2018

DELIVERY DATE: 08/06/2018

FIRM NBR	ORIG	FIRM NAME	ISSUED	STOPPED
125	CUST	ABN CLR CHGO	1	
135	CUST	RAND FINANCIAL		36
140	CUST	E.M. COMBS& SON	238	135
150	CUST	DORMAN TRD	16	
159	CUST	ED&F MAN CAP	174	55
314	CUST	SHATKIN ARBOR L	167	305
690	CUST	ABN AMRO CLR	173	21
737	CUST	ADVANTAGE	1	62
800	CUST	ROSENTHAL		4
878	CUST	PHILLIP CAPITAL	86	204
895	CUST	CUNNINGHAM COM		3
905	CUST	ADM INV SER	63	94
TOTAL:			919	919
MONTH TO DATE:				4,918

CONTRACT: AUGUST 2018 ETHANOL FUTURES
 SETTLEMENT: 1.430000000 USD
 NEXT AVAILABLE DATE: 07/11/2018
 INTENT DATE:

DELIVERY DATE:

FIRM NBR	ORIG	FIRM NAME	ISSUED	STOPPED
TOTAL:			0	0

CME CLEARING - CHICAGO BOARD OF TRADE

DLV600-T

BUSINESS DATE: 08/02/2018 DAILY ISSUES AND STOPS
 PRODUCT GROUP: GRAINS

RUN DATE: 08/02/2018
 RUN TIME: 08:12:33PM

MONTH TO DATE:

CONTRACT: AUGUST 2018 SOYBEAN FUTURES
 SETTLEMENT: 8.825000000 USD
 NEXT AVAILABLE DATE: 08/02/2018
 INTENT DATE: 08/02/2018 DELIVERY DATE: 08/06/2018

FIRM NBR	ORIG FIRM NAME	ISSUED	STOPPED
100	CUST CENTURY GROUP	73	49
135	CUST RAND FINANCIAL	73	
140	CUST E.M. COMBS& SON	122	98
150	CUST DORMAN TRD	6	15
159	CUST ED&F MAN CAP	59	162
314	CUST SHATKIN ARBOR L	217	294
363	CUST WELLS FARGO SEC	5	28
685	CUST R.J.O'BRIEN	5	
690	CUST ABN AMRO CLR		1
737	CUST ADVANTAGE	17	15
800	CUST ROSENTHAL	8	
878	CUST PHILLIP CAPITAL	69	150
905	CUST ADM INV SER	66	55
905	HOUS ADM INV SER	147	
TOTAL:		867	867
MONTH TO DATE:			3,782

CONTRACT: AUGUST 2018 MINI-SIZED SOYBEANS FUTURES
 SETTLEMENT:
 NEXT AVAILABLE DATE: NO LONG DATES REPORTED
 INTENT DATE: DELIVERY DATE:

FIRM NBR	ORIG FIRM NAME	ISSUED	STOPPED
TOTAL:		0	0
MONTH TO DATE:			

<<< End of Report >>>

Foreign Agriculture Market Guidance

As of 6:23 AM

Day on day change

		3-Aug	2-Aug	Change
Rotterdam Oils				
Soy oil EUR/MT	Aug/Oct	663.33	663.33	unchanged
Rape oil EUR/MT	Aug/Oct	722.00	723.00	-1.00
Rotterdam Soybean Meal				
Argentina USD/MT	Aug/Sep	404.00	411.50	-7.50
Argentina USD/MT	Oct/Dec	414.00	419.00	-5.00
Brazil USD/MT	Aug/Sep	401.00	405.50	-4.50
Brazil USD/MT	Oct/Dec	411.00	416.00	-5.00
MALAYSIA PALM OIL				
	Tl. Vol.=	28,409	49614	
Futures MYR/MT	OCT8	2196	2191	+5
RBD Olien Cash USD/MT	Oct18	\$568.75	\$568.75	unchanged
US Gulf Crude SBO over RBD Palm	Spot	\$116	\$116	\$0
China Futures				
Soybeans #1 (DCE) CNY/MT	SEP8	3498	3514	-16
Soybean Meal	SEP8	3155	3156	-1
Soybean Oil	SEP8	5622	5642	-20
China Palm Oil	SEP8	4722	4750	-28
China Futures Crush Margin USD/BU	SEP8	0.04	0.02	+0.02
CNY/MT	SEP8	22.18	10.58	+11.61
Corn (DCE) CNY/MT	JAN9	1849	1854	-5
Wheat (ZCE) CNY/MT	JAN9	2607	2600	+7
China Cash				
Cash Soybean Crush USD/BU	Spot	\$0.42	\$0.43	-0.01
Average Cash Wheat USD/BU		\$9.49	\$9.51	-0.02
Average Cash Corn USD/BU		\$6.76	\$6.79	-0.02
Corn North USD/BU	Spot	\$6.13	\$6.15	-0.02
Corn South USD/BU	Spot	\$6.98	\$7.01	-0.02
Reuters Imported Corn South USD/BU	Spot	\$5.36	\$5.35	+0.01
Matif Wheat (Liffe)				
Matif EUR/MT morning over morning	DEC8	213.50	214.25	-0.75
Matif wheat from prev. settle 2day before	DEC8	213.25	208.25	+5.00
Baltic Dry Index				
	Spot	1756	1760	-4
		2-Aug	1-Aug	
Exchange Rates				
EU	Euro/\$	1.1603	1.1614	-0.0011
MYR	Ringgit/\$	4.0800	4.0740	+0.0060
CNY	RMB/\$	6.8487	6.8397	+0.0090

Currency adjusted to the CME pit close

In cents/bu
oils in points and meal in USD/short ton

	3-Aug
Rot soy oil	+30
Rot rape oil	+24
Rot meal	Aug/Sep
	-\$1.94
Rot meal	Oct/Dec
	-\$1.49
Malaysian Fut	+36
Malaysian Cash	+34
China soy #1	-4
China meal	\$2.82
China oil	+14
Dalian corn	-5
Zhengzhou wheat	-5

\$ 247.72 \$/ton

Matif morning -9.01
Matif settle +9.17

ALL OILS Average lead 26 ALL MEAL Average lead -\$0.20

Week to Date
23
-\$4.73

CME electronic close change

SN8	-4.25	SMN8	-3.70	BON8	-33	CN8	+1.75
SQ8	-4.50	SMQ8	-3.50	BOQ8	-33	CU8	+1.75
SU8	-4.25	SMU8	-3.50	BOU8	-32	CZ8	+2.00
SX8	-4.00	SMV8	-3.40	BOV8	-34	WN8	+2.25
SF9	-3.75	SMZ8	-2.70	BOZ8	-34	WU8	+4.00
SH9	-3.00	SMF9	-1.30	BOF9	-33	WZ8	+6.00
						WH9	+7.50

#1 China SB is only designed for Non-GMO soybeans, but captures 96-98% of total bean open interest. #2 China soybeans are not heavily traded

Source: Reuters, Dow Jones Newswires and Futures International

Disclaimer

TO CLIENTS/PROSPECTS OF FUTURES INTERNATIONAL, SEE RISK DISCLOSURE BELOW:

THIS COMMUNICATION IS CONVEYED AS A SOLICITATION FOR ENTERING INTO A DERIVATIVES TRANSACTION.

Any trading recommendations and market or other information to Customer by Futures International (FI), although based upon information obtained from sources believed by FI to be reliable may not be accurate and may be changed without notice to customer. FI makes no guarantee as to the accuracy or completeness of any of the information or recommendations furnished to Customer. Customer understands that FI, its managers, employees and/or affiliates may have a position in commodity futures, options or other derivatives which may not be consistent with the recommendations furnished by FI to Customer.

The risk of trading futures and options and other derivatives involves a substantial risk of loss and is not suitable for all persons. In purchasing an option, the risk is limited to the premium paid, and all commissions and fees involved with the trade. When an option is shorted or written, the writer of the option has unlimited risk with respect to the option written. The use of options strategies such as a straddles and strangles involve multiple option positions and may substantially increase the amount of commissions and fees paid to execute the strategy. Option prices do not necessarily move in tandem with cash or futures prices. Each person must consider whether a particular trade, combination of trades or strategy is suitable for that person's financial means and objectives.

This material may include discussions of seasonal patterns, however, futures prices have already factored in the seasonal aspects of supply and demand, and seasonal patterns are no indication of future market trends. Finally, past performance is not indicative of future results.

This communication may contain links to third party websites which are not under the control of FI and FI is not responsible for their content. Products and services are offered only in jurisdictions where solicitation and sale are lawful, and in accordance with applicable laws and regulations in each such jurisdiction.