

CFTC COMMITMENT OF TRADERS REPORT

As of 8/7/2018

TRADITIONAL FUNDS net position changes

Wed to Tue, in 000 contracts

	Corn	Bean	Meal	Oil	Chi. Wheat	KC Wheat	Min Wheat
Futures Only	10.7	(4.6)	(7.4)	(0.6)	11.5	10.2	5.7
Futures & Options Combined	21.4	(2.5)	(7.8)	2.6	11.6	12.4	6.2

TRADITIONAL COMMERCIAL net position changes

	Corn	Bean	Meal	Oil	Chi. Wheat	KC Wheat	Min Wheat
Futures Only	(3.4)	11.0	8.3	1.3	(17.2)	(12.1)	(4.9)
Futures & Options Combined	(8.5)	10.1	8.6	(2.1)	(16.7)	(13.7)	(5.3)

MANAGED MONEY net position changes

	Corn	Bean	Meal	Oil	Chi. Wheat	KC Wheat	Min Wheat
Futures Only	27.6	3.5	(4.7)	0.4	15.1	15.8	6.6
Futures & Options Combined	22.5	2.4	(5.8)	0.4	11.7	15.2	6.7

SWAP DEALERS net position changes

	Corn	Bean	Meal	Oil	Chi. Wheat	KC Wheat	Min Wheat
Futures Only	(8.7)	(0.8)	0.4	(5.5)	(1.8)	(0.1)	0.2
Futures & Options Combined	(6.6)	(1.8)	0.6	(5.6)	(2.2)	(0.2)	0.1

PRODUCERS/END USERS net position changes

	Corn	Bean	Meal	Oil	Chi. Wheat	KC Wheat	Min Wheat
Futures Only	5.2	11.8	7.8	6.8	(15.4)	(12.0)	(5.1)
Futures & Options Combined	(1.9)	11.9	8.0	3.5	(14.5)	(13.6)	(5.4)

INDEX net position changes

	Corn	Bean	Meal	Oil	Chi. Wheat	KC Wheat	Min Wheat
Futures & Options Combined	(3.7)	(0.5)	(0.4)	(3.1)	(1.4)	5.5	NA

SUPPLEMENTAL NON-COMMERCIAL net position changes

	Corn	Bean	Meal	Oil	Chi. Wheat	KC Wheat	Min Wheat
Futures & Options Combined	21.8	(2.5)	(7.5)	(0.8)	11.0	8.3	NA

OPEN INTEREST net position changes

Wed to Tue, in 000 contracts

	Corn	Bean	Meal	Oil	Chi. Wheat	KC Wheat	Min Wheat
Futures Only	(90.7)	(14.7)	(7.1)	7.0	6.9	1.8	5.5
Futures & Options Combined	(82.7)	(11.4)	(10.0)	9.9	28.2	4.7	5.9

Source: CFTC and FI

Wed to Tue, in 000 contracts

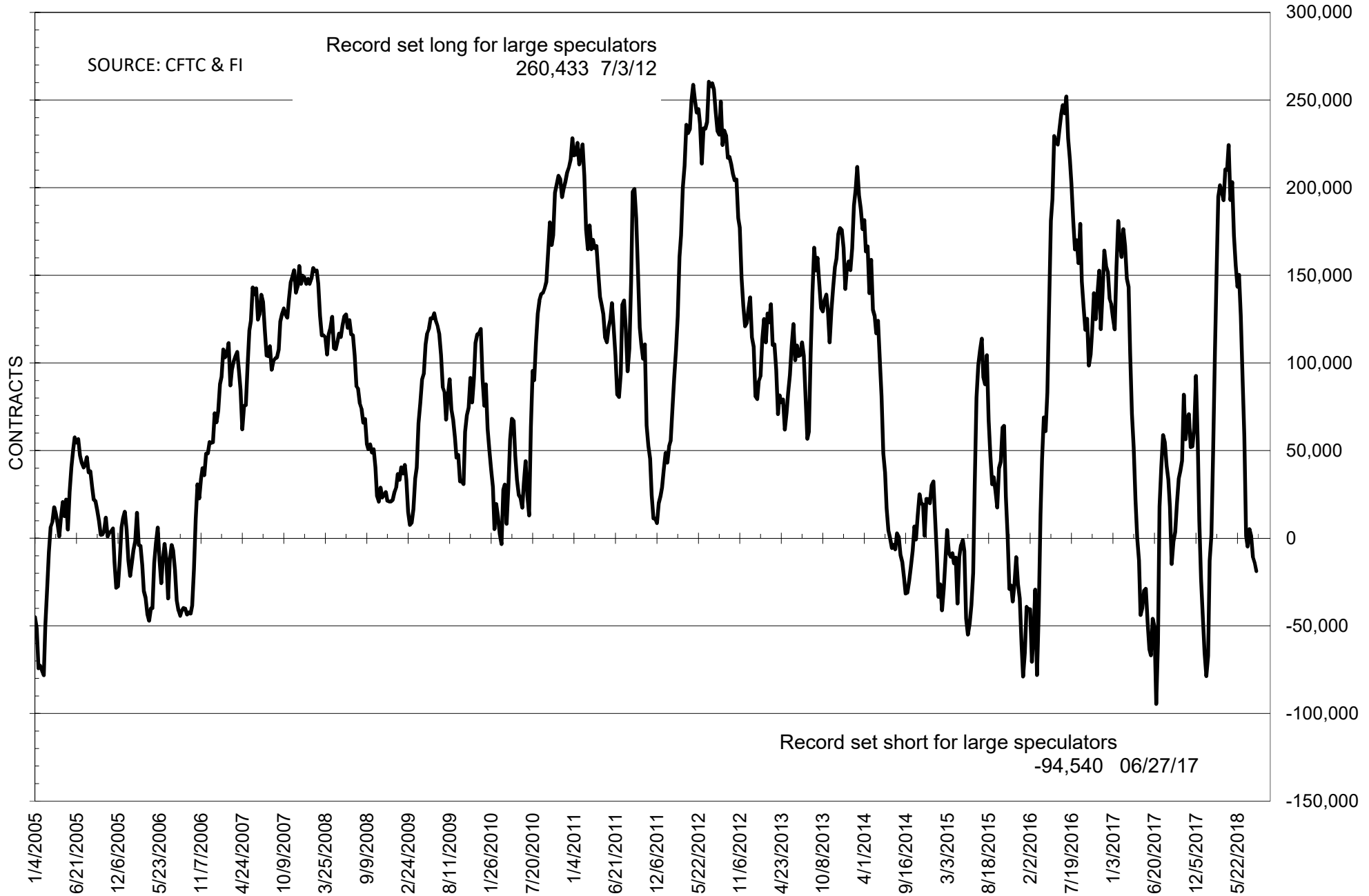
**COMMITMENT OF TRADERS
FUTURES ONLY NET POSITIONS
AS OF 08/07/2018
(IN THOUSAND CONTRACTS)**

	COMMERCIAL				(FUND) NON COMMERCIAL				(SPEC) NON-REPORTABLE			
	7-Aug	31-Jul	24-Jul	17-Jul	7-Aug	31-Jul	24-Jul	17-Jul	7-Aug	31-Jul	24-Jul	17-Jul
	WHEAT											
Chicago	-77.2	-59.9	-33.9	-22.5	86.5	75.0	49.5	38.6	-9.4	-15.1	-15.6	-16.1
Kansas City	-60.1	-48.0	-31.6	-28.3	59.8	49.5	35.7	32.3	0.3	-1.6	-4.2	-4.0
Minneapolis	1.8	6.8	13.2	13.7	0.4	-5.3	-11.2	-11.1	-2.3	-1.5	-2.0	-2.6
All Wheat	-135.4	-101.1	-52.3	-37.1	146.7	119.3	74.0	59.8	-11.3	-18.1	-21.7	-22.7
CORN	-96.3	-92.9	-54.9	-73.0	121.3	110.6	71.4	90.8	-25.0	-17.7	-16.5	-17.8
OATS	-1.1	-0.6	-0.7	-0.7	0.8	0.2	0.2	0.3	0.2	0.4	0.5	0.4
SOYBEANS	44.0	33.0	34.5	25.2	-18.7	-14.1	-10.8	1.2	-25.3	-18.9	-23.7	-26.3
SOY OIL	48.4	47.1	45.1	48.5	-53.9	-53.3	-49.8	-53.9	5.5	6.2	4.7	5.4
SOY MEAL	-103.9	-112.2	-108.4	-113.0	90.2	97.6	96.7	100.3	13.7	14.6	11.7	12.7

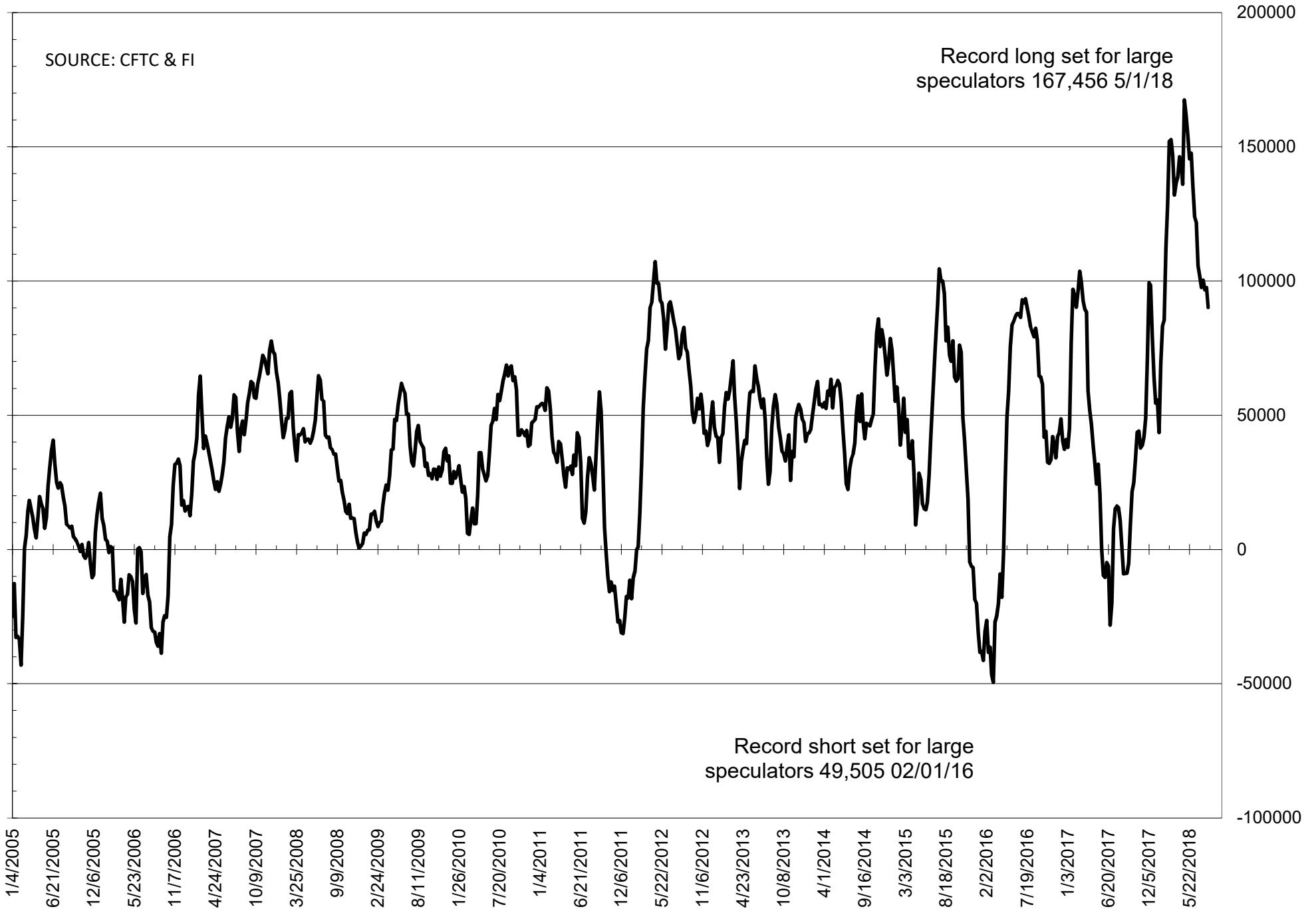
	TOTAL OPEN INTEREST				NEARBY FUTURES PRICE					7-Aug-18 LAST REPORTED % HELD BY TRADERS			
	7-Aug	31-Jul	24-Jul	17-Jul	U 10-Aug	U 7-Aug	U 31-Jul	Q/U 24-Jul	Q/U 17-Jul	LARGE FUND		SMALL	
										LONG	SHORT	LONG	SHORT
WHEAT													
Chicago	497660	490809	452132	471315	546.75	568.25	546.50	510.25	497.75	37%	20%	8%	10%
Kansas City	285855	284058	280721	274418	559.75	579.50	547.75	509.75	490.75	34%	13%	8%	8%
Minneapolis	67676	62192	61557	59552	629.75	627.75	615.50	572.50	533.25	25%	24%	17%	20%
CORN	1760500	1851246	1906291	1845765	357.75	370.75	367.25	352.00	346.25	30%	23%	10%	11%
OATS	4486	5116	5067	4904	256.75	255.25	233.50	230.50	231.00	31%	12%	40%	35%
SOYBEANS	789827	804573	860280	857941	850.75	895.25	875.00	858.00	839.50	21%	23%	7%	11%
SOY OIL	524735	517688	529883	517119	28.10	28.75	28.31	28.24	27.73	21%	31%	7%	6%
SOY MEAL	507395	514543	521742	522450	321.70	331.00	333.90	328.90	329.10	22%	8%	11%	7%

SOURCE: CFTC & FI

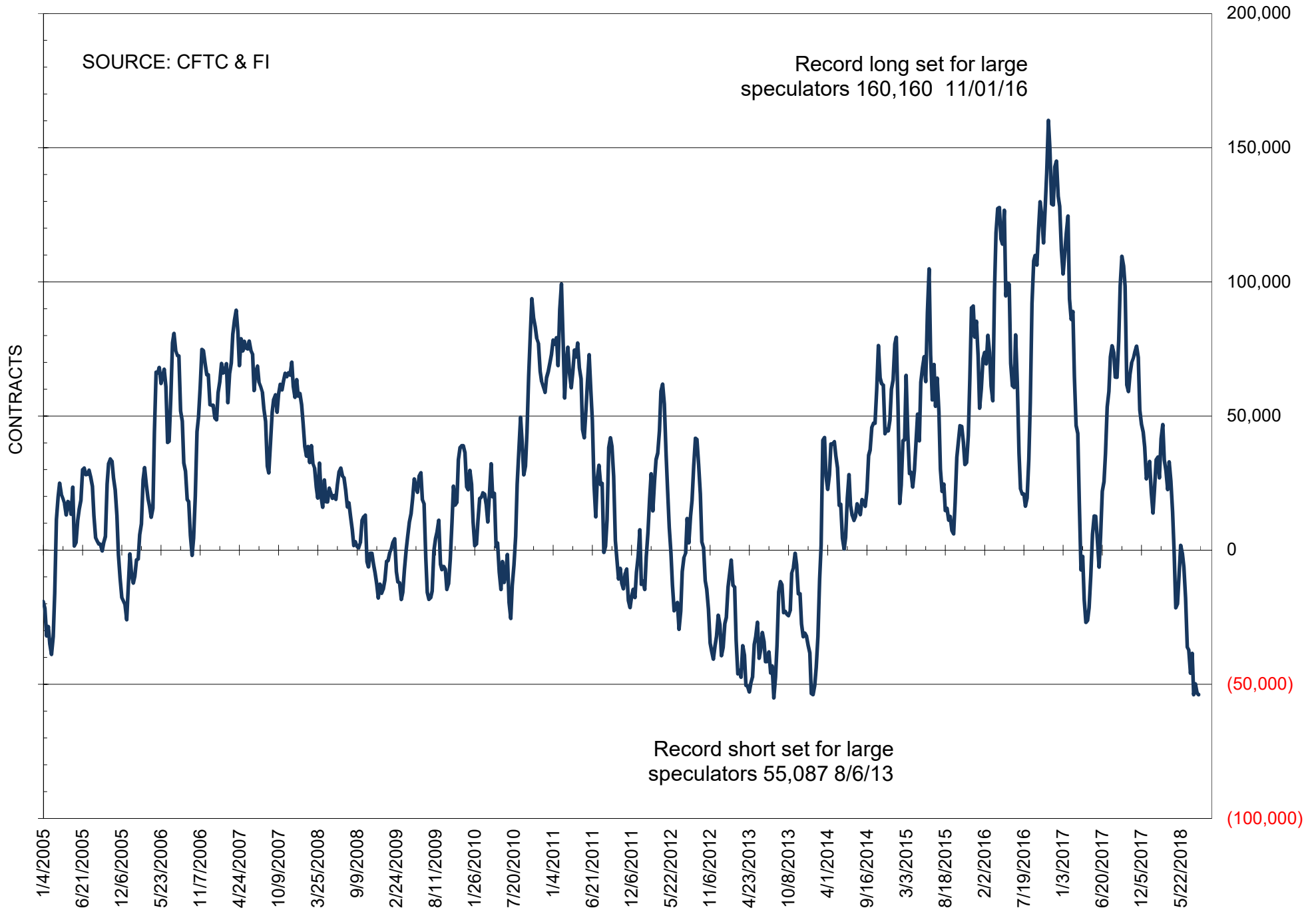
NET POSITION OF FUTURES ONLY LARGE SPECS IN SOYBEANS



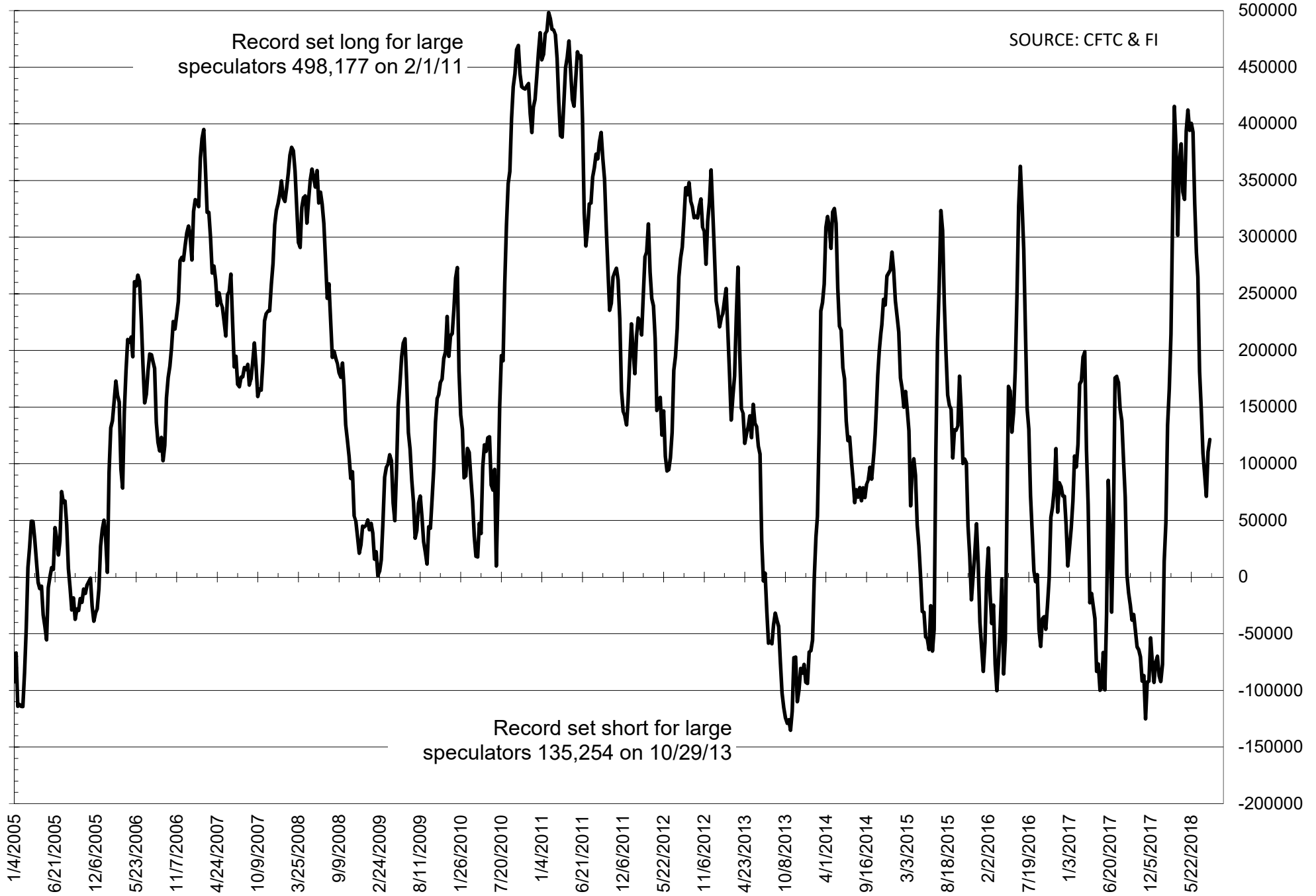
NET POSITION OF FUTURES ONLY LARGE SPECS IN SOYMEAL



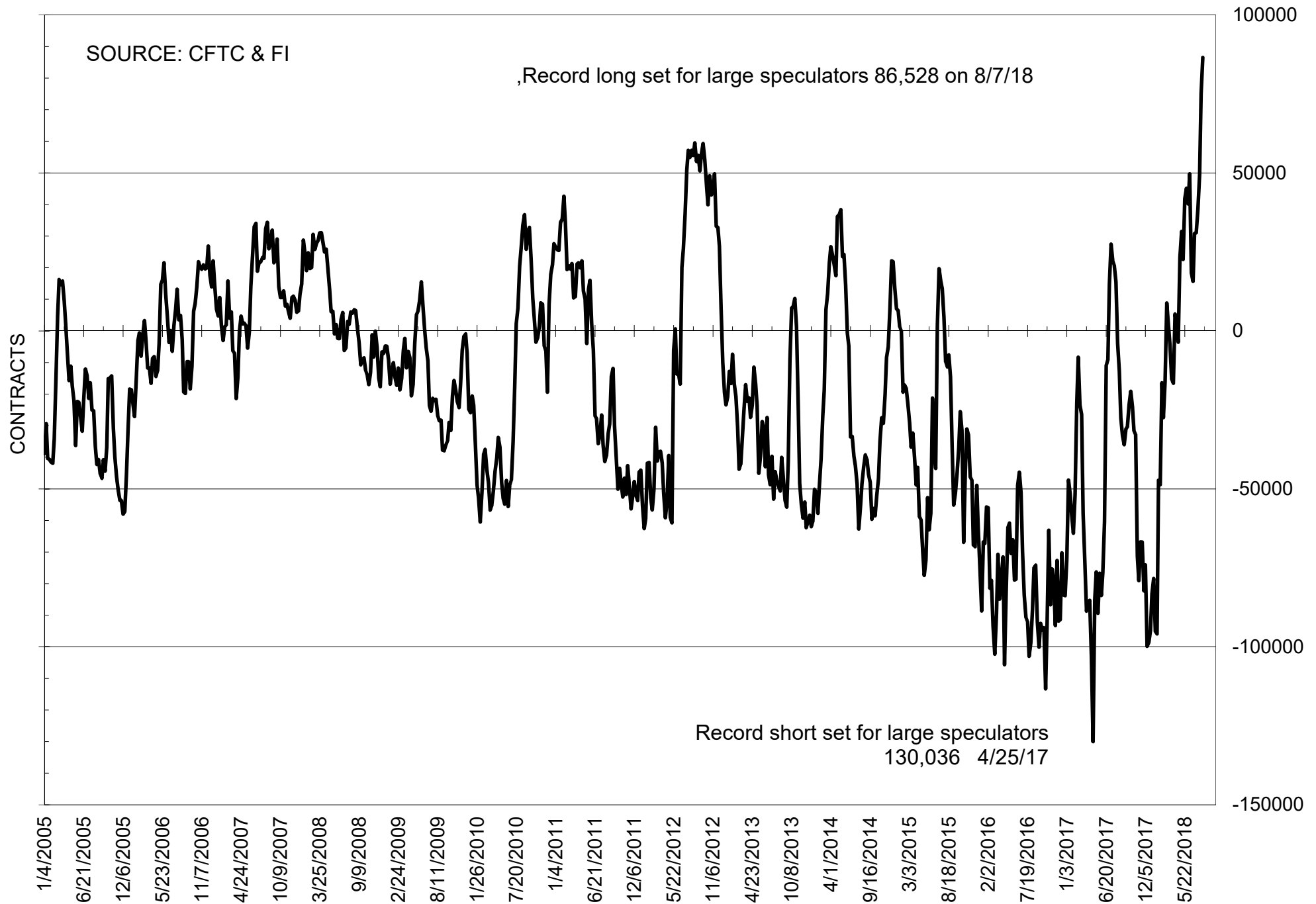
NET POSITION OF FUTURES ONLY LARGE SPECS IN SOYOIL



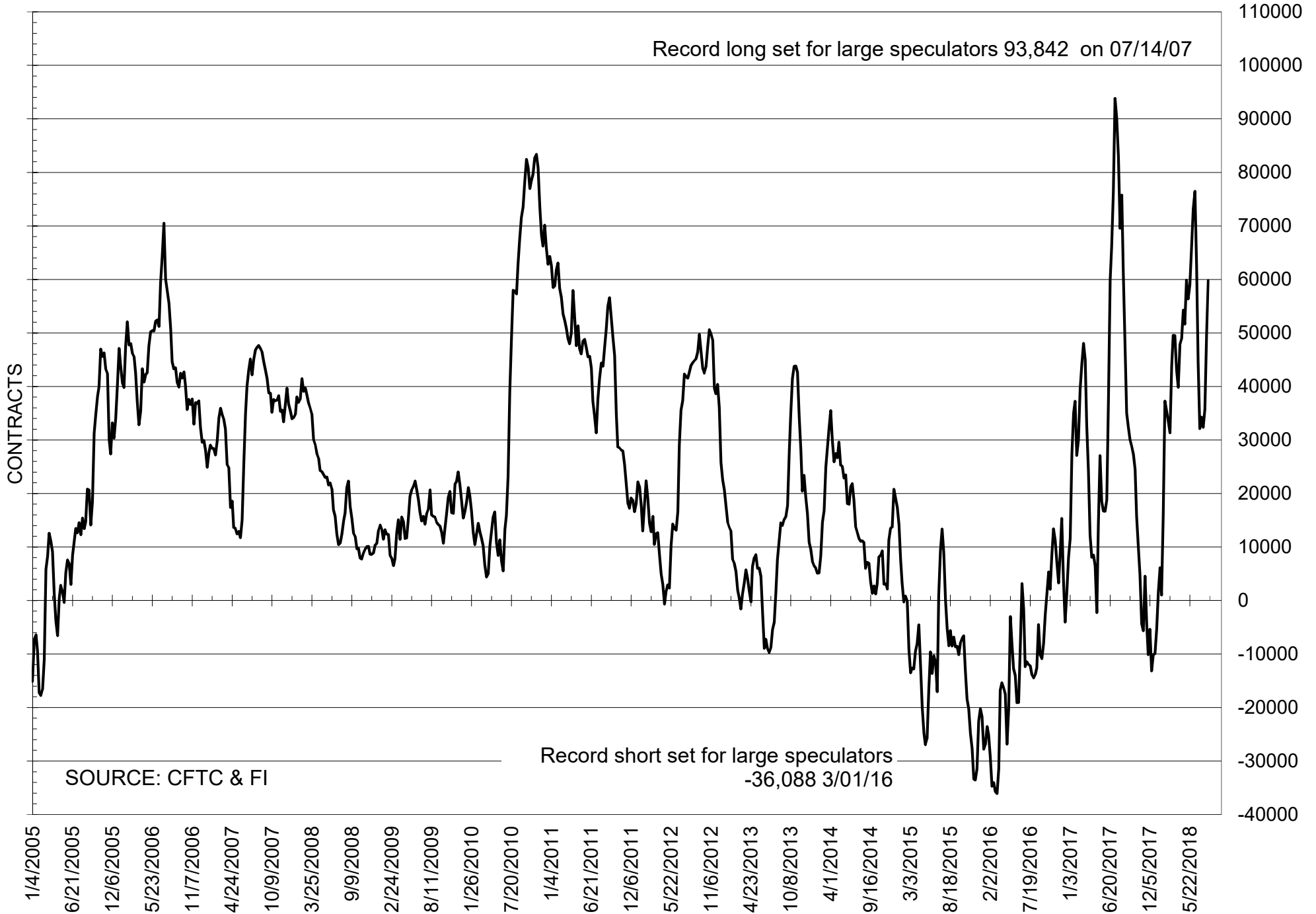
NET POSITION OF LARGE SPECULATORS IN CORN



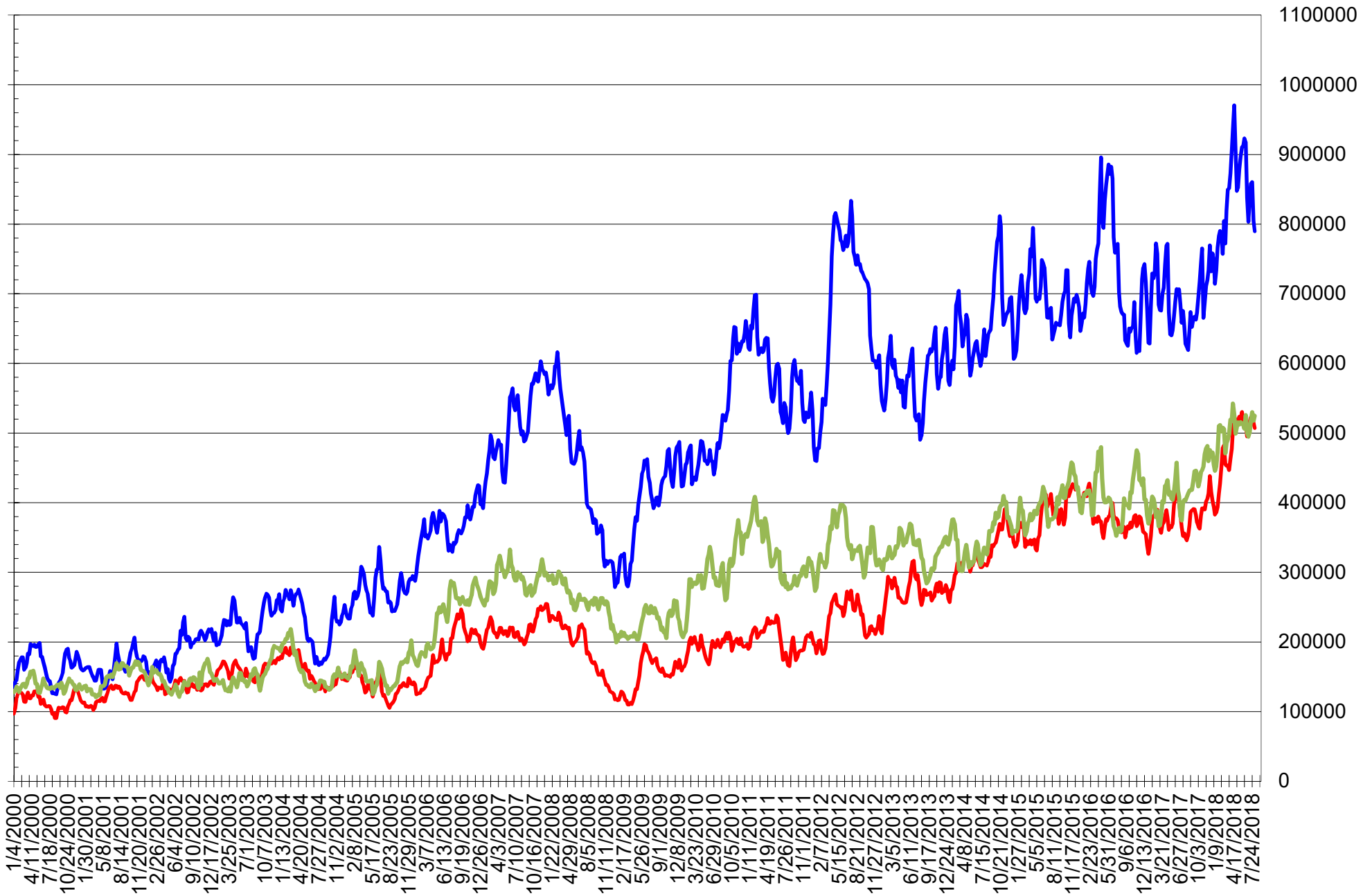
NET POSITION OF FUTURES ONLY LARGE SPECS IN CHICAGO WHEAT



NET POSITION OF LARGE SPECULATORS IN KANSAS CITY WHEAT



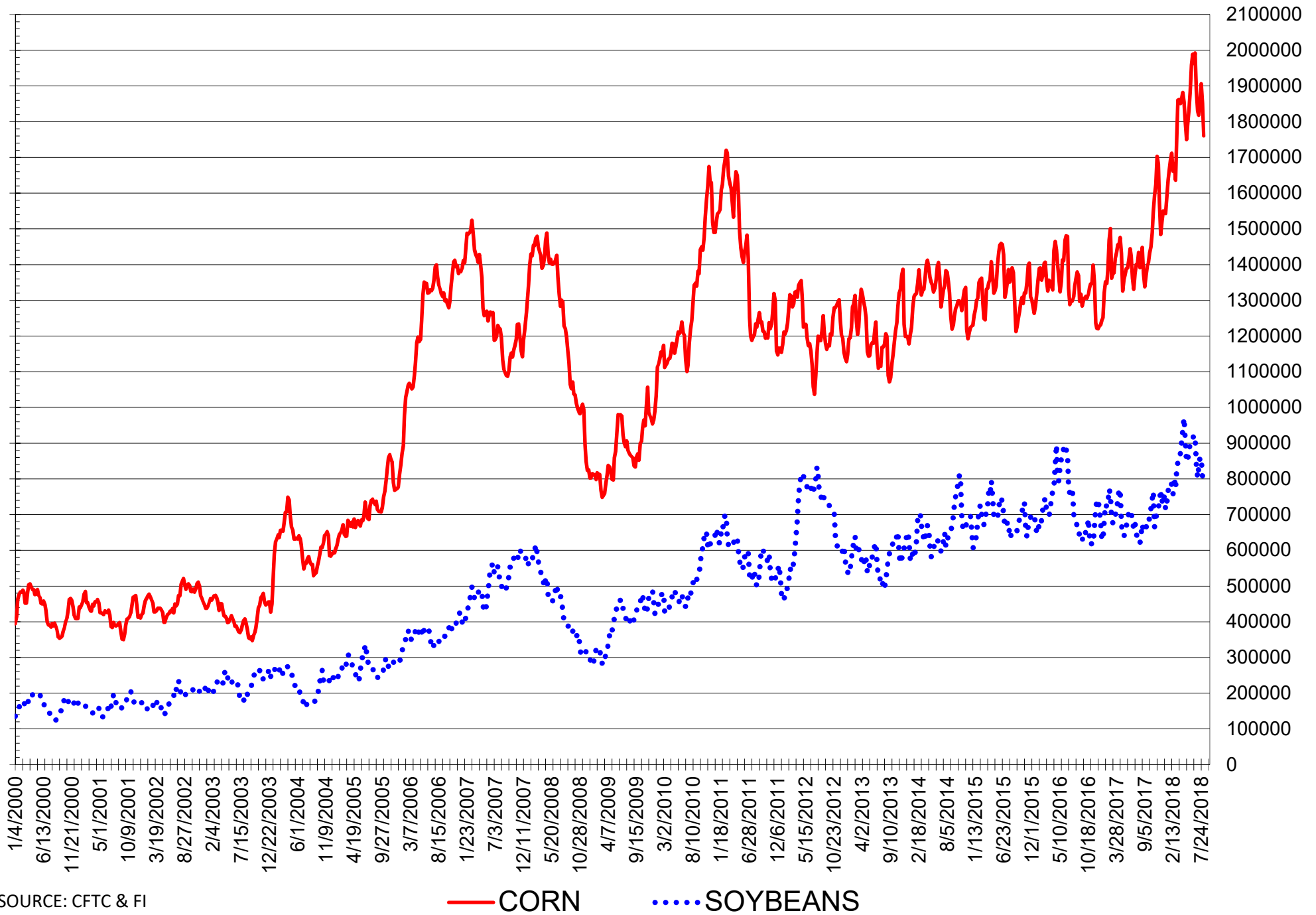
TOTAL OPEN INTEREST IN SOYBEANS, MEAL AND OIL, FUTURES ONLY



SOURCE: CFTC & FI

— SOYBEANS — SOYBEAN MEAL — SOYBEAN OIL

TOTAL OPEN INTEREST IN CORN AND SOYBEANS, FUTURES ONLY



SOURCE: CFTC & FI

— CORN SOYBEANS

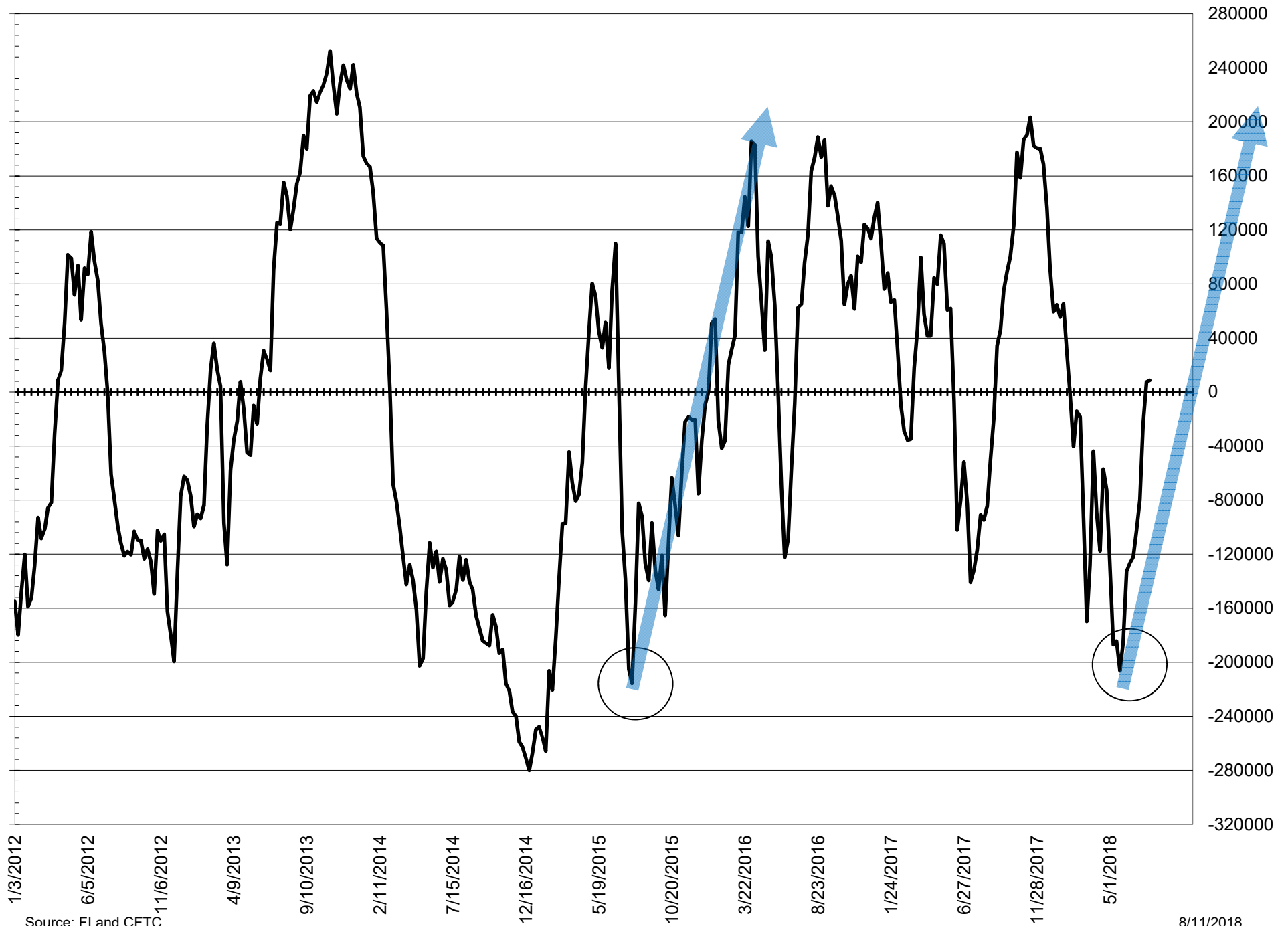
**COMMITMENT OF TRADERS
FUTURES & OPTIONS NET POSITIONS
AS OF 08/07/2018
(IN THOUSAND CONTRACTS)**

	COMMERCIAL				(FUND) NON COMMERCIAL				(SPEC) NON-REPORTABLE			
	7-Aug	31-Jul	24-Jul	17-Jul	7-Aug	31-Jul	24-Jul	17-Jul	7-Aug	31-Jul	24-Jul	17-Jul
WHEAT												
Chicago	-51.7	-35.0	-5.1	4.1	63.2	51.6	20.9	11.6	-11.5	-16.6	-15.8	-15.7
Kansas City	-59.0	-45.2	-27.8	-24.3	58.8	46.4	31.3	28.1	0.1	-1.2	-3.6	-3.7
Minneapolis	2.0	7.3	14.2	14.7	0.2	-5.9	-12.1	-12.0	-2.2	-1.4	-2.1	-2.8
All Wheat	-108.7	-72.9	-18.6	-5.5	122.3	92.2	40.1	27.7	-13.6	-19.3	-21.4	-22.2
CORN	-33.3	-24.8	59.7	52.5	52.2	30.8	-53.4	-41.5	-18.9	-6.0	-6.2	-11.1
OATS	-1.1	-0.5	-0.6	-0.6	0.8	0.1	0.1	0.2	0.3	0.5	0.5	0.4
SOYBEANS	63.8	53.8	62.5	55.6	-41.5	-38.9	-44.7	-33.9	-22.4	-14.9	-17.8	-21.7
SOY OIL	50.4	52.5	52.8	54.3	-56.5	-59.1	-59.2	-61.6	6.1	6.6	6.3	7.3
SOY MEAL	-97.9	-106.5	-99.7	-104.8	82.1	89.9	85.7	90.3	15.8	16.6	13.9	14.6

	TOTAL OPEN INTEREST				COMMERCIALS		% HELD BY TRADERS LARGE (FUNDS)		SMALL (NON-REP)	
	7-Aug	31-Jul	24-Jul	17-Jul	LONG	SHORT	LONG	SHORT	LONG	SHORT
WHEAT										
Chicago	678,322	650,116	599,702	610,468						
Kansas City	317,248	312,538	302,683	293,472	36%	43%	24%	15%	6%	8%
Minneapolis	72,772	66,837	65,377	63,019	39%	58%	30%	12%	8%	8%
					53%	50%	23%	23%	17%	20%
CORN	2,287,244	2,369,980	2,470,639	2,409,890	42%	44%	19%	17%	10%	10%
OATS	4,708	5,349	5,319	5,156	27%	50%	28%	11%	40%	34%
SOYBEANS	989,374	1,000,785	1,090,029	1,091,032	48%	42%	15%	19%	7%	10%
SOY OIL	552,033	542,097	565,582	550,453	47%	38%	20%	30%	7%	6%
SOY MEAL	559,065	569,042	584,459	585,171	41%	58%	22%	7%	9%	7%

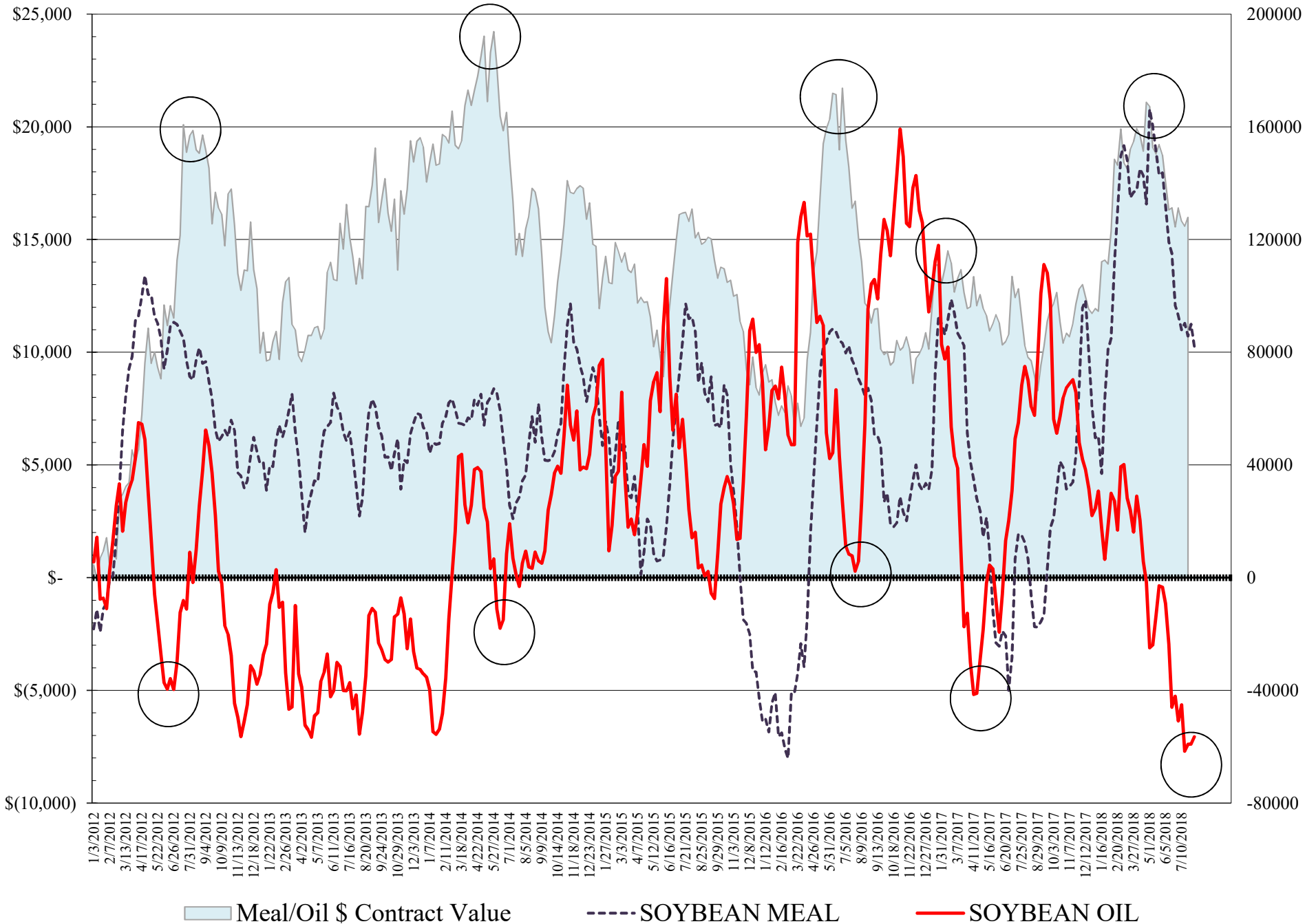
SOURCE: CFTC & FI

NET POSITION FUTURES AND OPTIONS SPREAD OF LARGE SPECULATORS IN SOYBEANS MINUS CORN



Source: FI and CFTC

NET POSITION FUTURES AND OPTIONS OF LARGE SPECULATORS IN SOYBEAN MEAL AND SOYBEAN OIL



**DISAGGREGATED COMMITMENT OF TRADERS
FUTURES ONLY NET POSITIONS
AS OF 08/07/2018
(IN THOUSAND CONTRACTS)**

	PRODUCER / MERCHANT / PROCESSOR / USER				(INDEX/ETF) SWAP DEALERS				(CTA/CPO/OTHER UNREGISTERED) MANAGED MONEY			
	7-Aug	31-Jul	24-Jul	17-Jul	7-Aug	31-Jul	24-Jul	17-Jul	7-Aug	31-Jul	24-Jul	17-Jul
	WHEAT											
Chicago	(161.9)	(146.5)	(121.8)	(120.3)	84.8	86.6	87.9	97.8	66.4	51.3	22.6	0.6
Kansas City	(103.0)	(91.0)	(74.1)	(61.3)	42.9	43.0	42.6	33.0	53.7	38.0	19.8	16.3
Minneapolis	(0.8)	4.3	10.4	10.6	2.6	2.4	2.8	3.1	0.3	(6.3)	(12.9)	(12.6)
All Wheat	(265.7)	(233.1)	(185.6)	(171.1)	130.3	132.0	133.3	134.0	120.4	82.9	29.6	4.3
CORN	(262.6)	(267.8)	(216.1)	(238.5)	166.2	174.9	161.2	165.5	(68.0)	(95.6)	(164.9)	(166.0)
OATS	(1.3)	(0.8)	(0.9)	(0.9)	0.2	0.2	0.2	0.2	(0.1)	(1.0)	(1.0)	(0.8)
SOYBEANS	(73.2)	(85.1)	(77.0)	(86.5)	117.2	118.1	111.5	111.6	(63.1)	(66.6)	(73.4)	(72.0)
SOY OIL	(42.3)	(49.2)	(53.3)	(48.4)	90.7	96.2	98.4	96.9	(91.0)	(91.4)	(90.1)	(90.4)
SOY MEAL	(178.5)	(186.3)	(183.5)	(191.0)	74.6	74.1	75.1	78.1	45.3	50.0	47.9	52.1

Managed % of OI				
Chicago W	13%	10%	5%	0%
Corn	-4%	-5%	-9%	-9%

	TOTAL OPEN INTEREST				OTHER REPORTABLE				NON REPORTABLE			
	7-Aug	31-Jul	24-Jul	17-Jul	7-Aug	31-Jul	24-Jul	17-Jul	7-Aug	31-Jul	24-Jul	17-Jul
	WHEAT											
Chicago	497,660	490,809	452,132	471,315	20.2	23.8	26.9	38.0	(9.4)	(15.1)	(15.6)	(16.1)
Kansas City	285,855	284,058	280,721	274,418	6.0	11.6	15.9	16.1	0.3	(1.6)	(4.2)	(4.0)
Minneapolis	67,676	62,192	61,557	59,552	0.1	1.0	1.7	1.5	(2.3)	(1.5)	(2.0)	(2.6)
All Wheat	851,191	837,059	794,410	805,285	26.4	36.3	44.4	55.5	(11.3)	(18.1)	(21.7)	(22.7)
CORN	1,760,500	1,851,246	1,906,291	1,845,765	189.3	206.2	236.3	256.8	(25.0)	(17.7)	(16.5)	(17.8)
OATS	4,486	5,116	5,067	4,904	0.9	1.1	1.2	1.2	0.2	0.4	0.5	0.4
SOYBEANS	789,827	804,573	860,280	857,941	44.4	52.5	62.5	73.2	(25.3)	(18.9)	(23.7)	(26.3)
SOY OIL	524,735	517,688	529,883	517,119	37.1	38.1	40.3	36.5	5.5	6.2	4.7	5.4
SOY MEAL	507,395	514,543	521,742	522,450	44.9	47.6	48.8	48.2	13.7	14.6	11.7	12.7

SOURCE: CFTC & FI

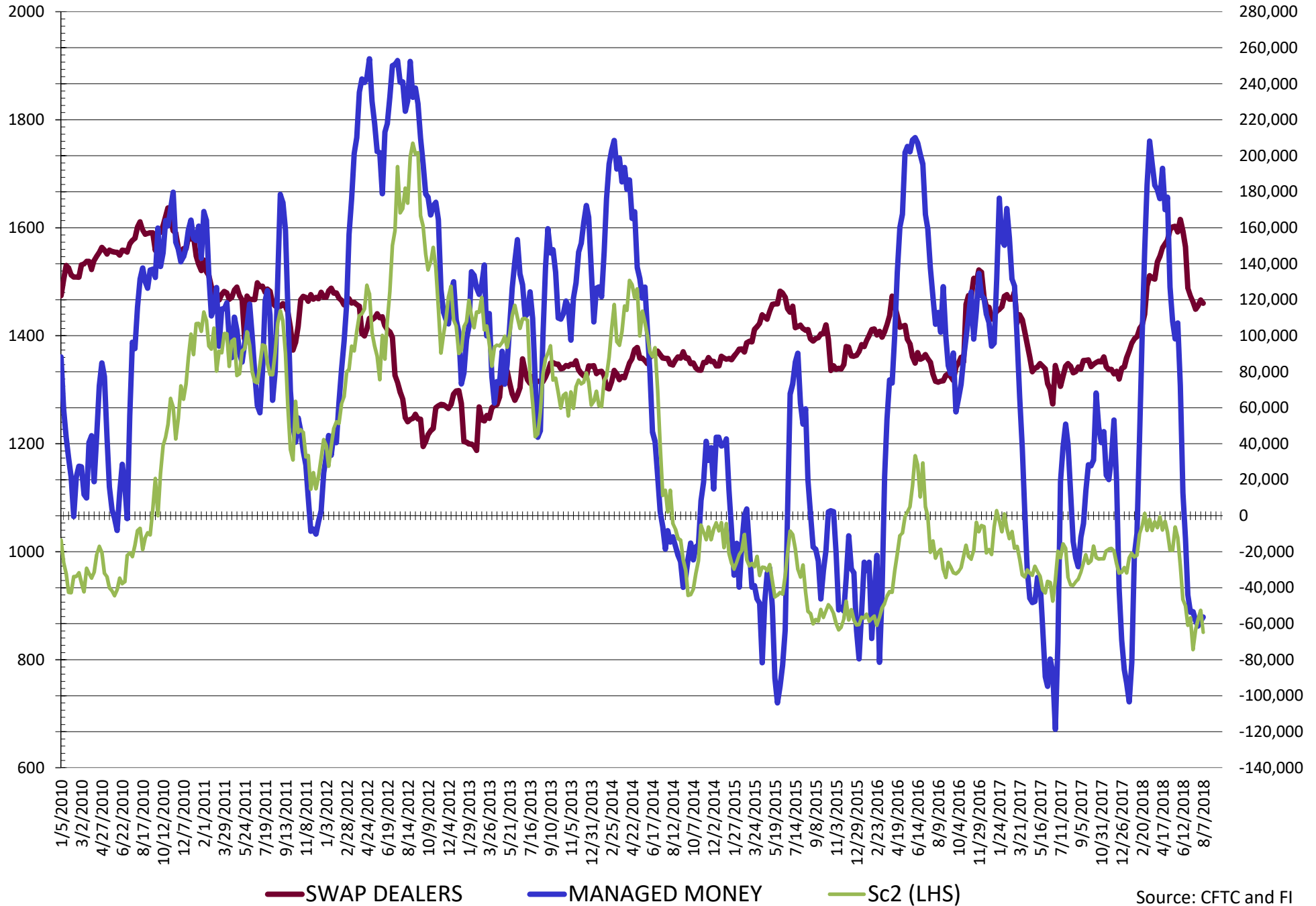
**DISAGGREGATED COMMITMENT OF TRADERS
FUTURES & OPTIONS NET POSITIONS
AS OF 08/07/2018
(IN THOUSAND CONTRACTS)**

	PRODUCER / MERCHANT / PROCESSOR / USER				(INDEX/ETF) SWAP DEALERS				(CTA/CPO/OTHER UNREGISTERED) MANAGED MONEY			
	7-Aug	31-Jul	24-Jul	17-Jul	7-Aug	31-Jul	24-Jul	17-Jul	7-Aug	31-Jul	24-Jul	17-Jul
	WHEAT											
Chicago	(148.2)	(133.6)	(107.9)	(106.6)	96.4	98.6	102.8	110.7	64.6	52.9	23.9	3.6
Kansas City	(101.0)	(87.4)	(70.0)	(57.5)	42.0	42.2	42.3	33.2	55.1	39.9	22.1	17.9
Minneapolis	(0.2)	5.2	11.5	11.7	2.2	2.1	2.7	3.1	0.4	(6.3)	(12.9)	(12.6)
All Wheat	(249.3)	(215.8)	(166.4)	(152.5)	140.6	142.9	147.8	147.0	120.0	86.6	33.1	8.9
CORN	(220.3)	(218.4)	(140.8)	(151.5)	187.0	193.6	200.5	204.0	(29.7)	(52.2)	(130.2)	(129.3)
OATS	(1.3)	(0.8)	(0.8)	(0.8)	0.2	0.2	0.2	0.2	(0.1)	(1.0)	(1.0)	(0.8)
SOYBEANS	(54.3)	(66.1)	(54.2)	(59.1)	118.1	119.9	116.7	114.7	(56.3)	(58.7)	(61.3)	(58.4)
SOY OIL	(40.6)	(44.1)	(45.6)	(42.5)	91.0	96.6	98.5	96.8	(91.4)	(91.8)	(90.0)	(90.2)
SOY MEAL	(170.6)	(178.7)	(174.0)	(181.3)	72.7	72.2	74.4	76.5	46.8	52.6	49.9	53.4

	TOTAL OPEN INTEREST				OTHER REPORTABLE				NON REPORTABLE			
	7-Aug	31-Jul	24-Jul	17-Jul	7-Aug	31-Jul	24-Jul	17-Jul	7-Aug	31-Jul	24-Jul	17-Jul
	WHEAT											
Chicago	678,322	650,116	599,702	610,468	(1.4)	(1.3)	(3.0)	8.0	(11.5)	(16.6)	(15.8)	(15.7)
Kansas City	317,248	312,538	302,683	293,472	3.7	6.5	9.3	10.1	0.1	(1.2)	(3.6)	(3.7)
Minneapolis	72,772	66,837	65,377	63,019	(0.1)	0.4	0.7	0.6	(2.2)	(1.4)	(2.1)	(2.8)
All Wheat	1,068,342	1,029,491	967,762	966,959	2.2	5.6	6.9	18.8	(13.6)	(19.3)	(21.4)	(22.2)
CORN	2,287,244	2,369,980	2,470,639	2,409,890	81.9	83.0	76.8	87.9	(18.9)	(6.0)	(6.0)	(6.0)
OATS	4,708	5,349	5,319	5,156	0.9	1.0	1.1	1.0	0.3	0.5	0.5	0.4
SOYBEANS	989,374	1,000,785	1,090,029	1,091,032	14.8	19.7	16.6	24.5	(22.4)	(14.9)	(17.8)	(21.7)
SOY OIL	552,033	542,097	565,582	550,453	34.9	32.7	30.8	28.6	6.1	6.6	6.3	7.3
SOY MEAL	559,065	569,042	584,459	585,171	35.3	37.3	35.8	36.9	15.8	16.6	13.9	14.6

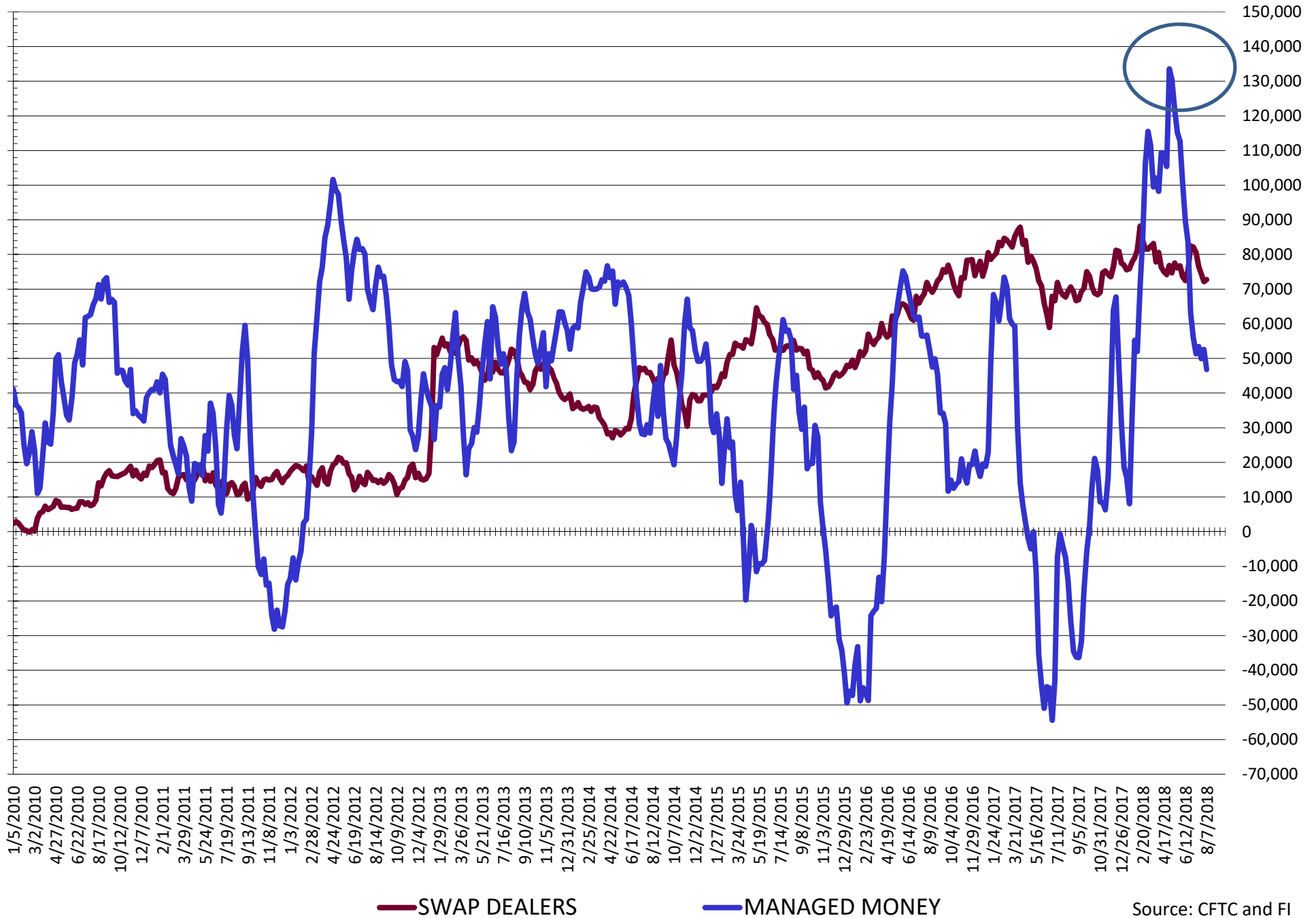
SOURCE: CFTC & FI

NET POSITION FUTURES AND OPTIONS OF SWAP AND MANAGED FUNDS IN SOYBEANS



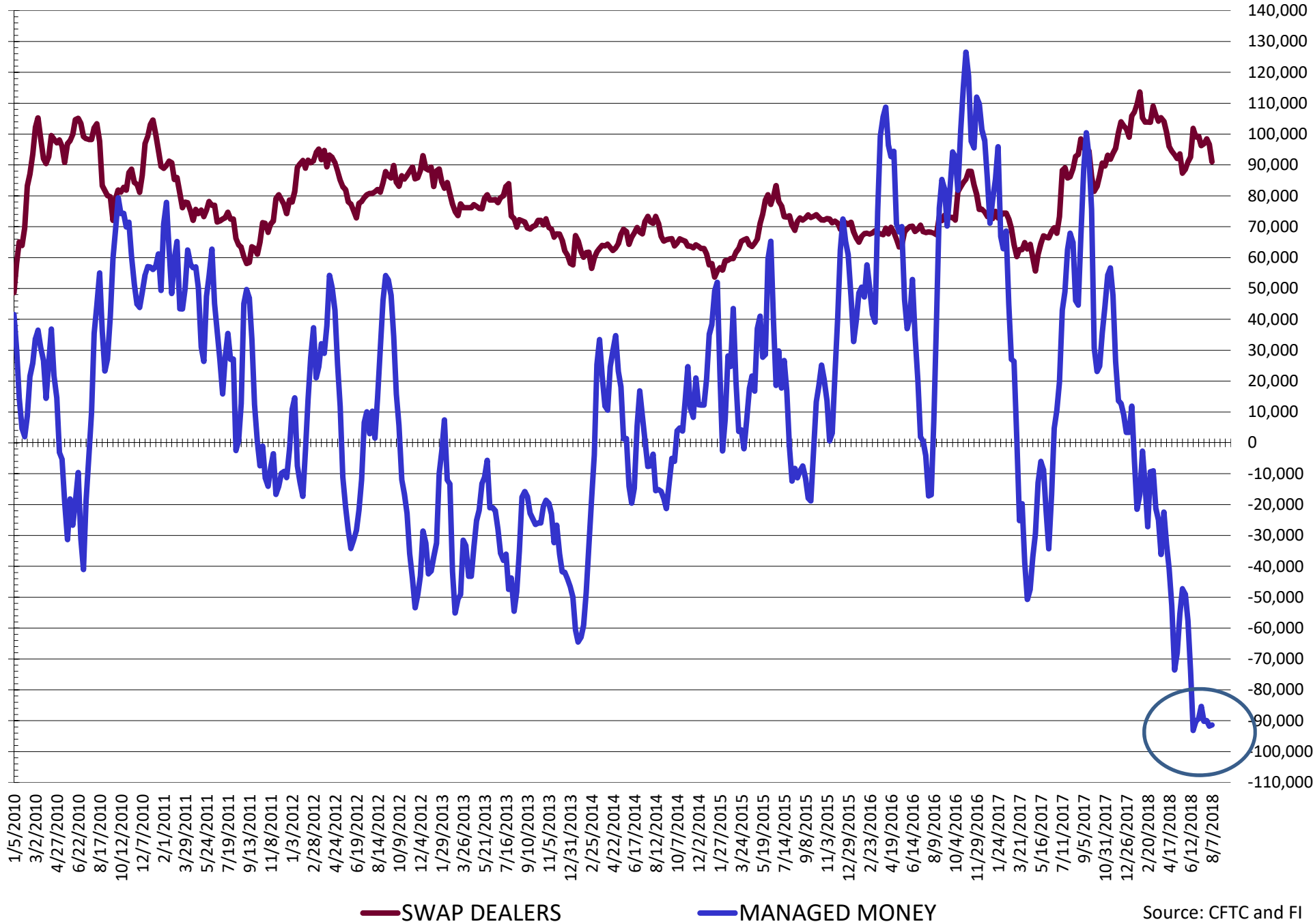
Source: CFTC and FI
8/11/2018

NET POSITION FUTURES AND OPTIONS OF SWAP AND MANAGED FUNDS IN SOYBEAN MEAL



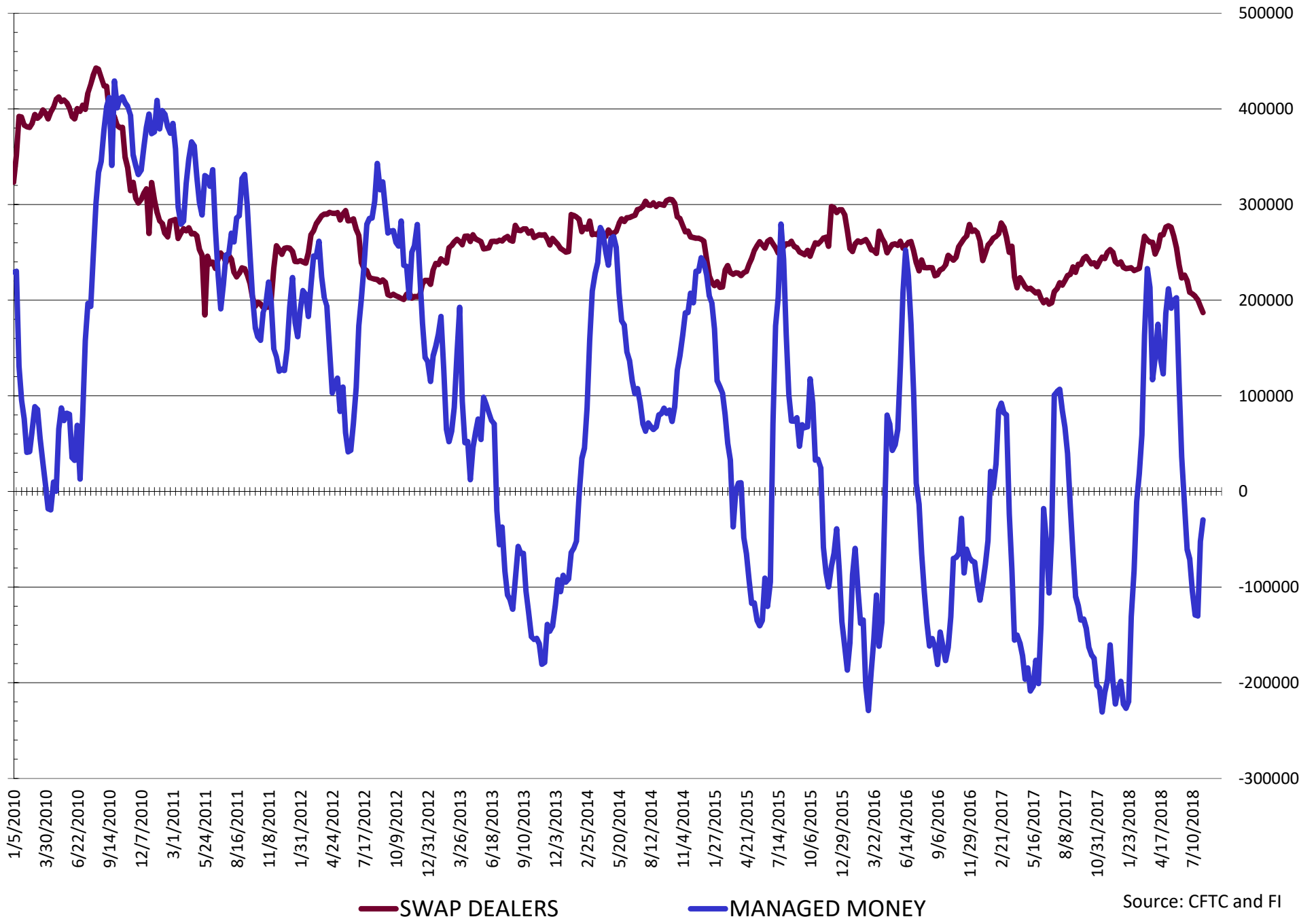
Source: CFTC and FI
8/11/2018

NET POSITION FUTURES AND OPTIONS OF SWAP AND MANAGED FUNDS IN SOYBEAN OIL



Source: CFTC and FI
8/11/2018

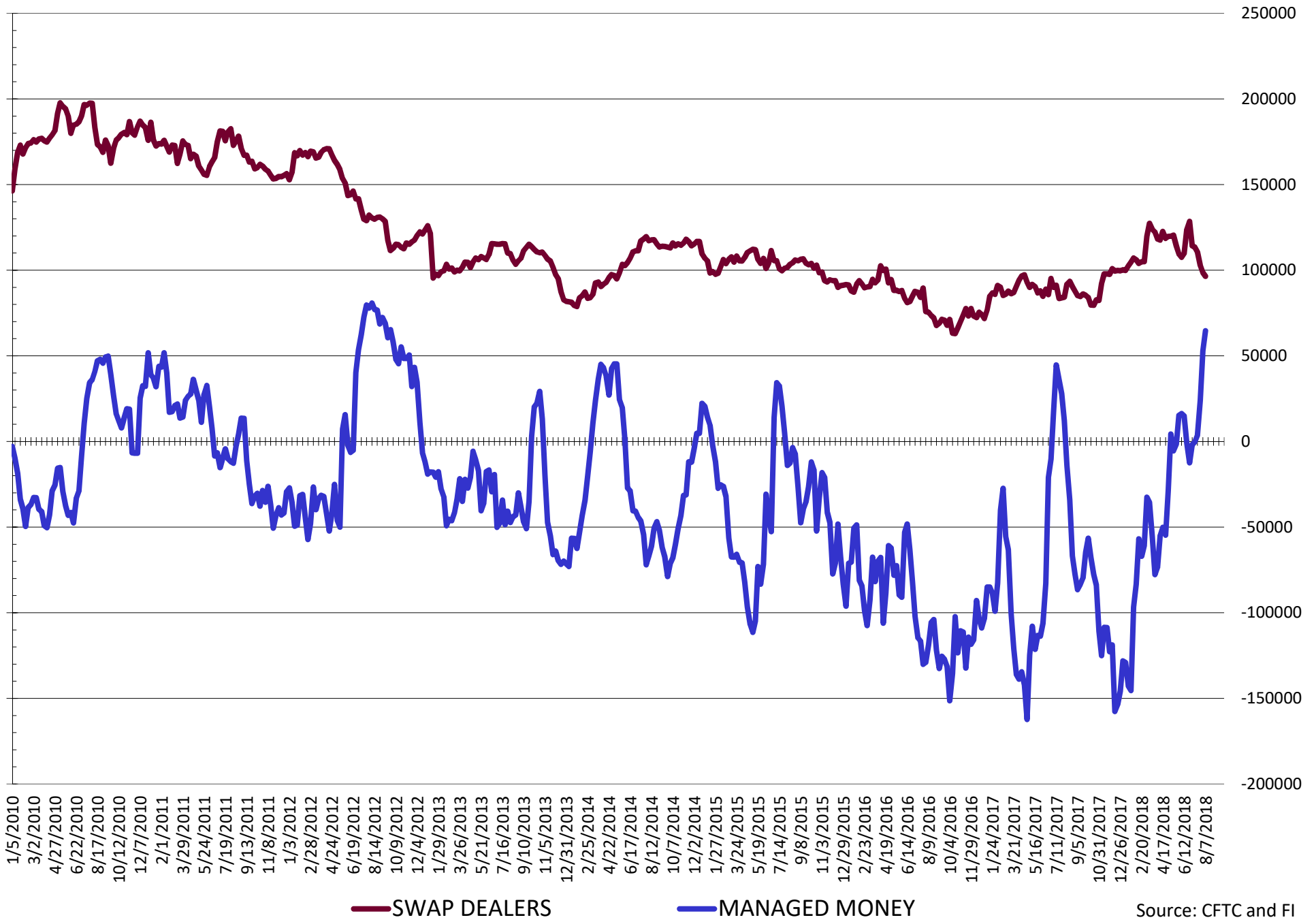
NET POSITION FUTURES AND OPTIONS OF SWAP AND MANAGED FUNDS IN CORN



Source: CFTC and FI

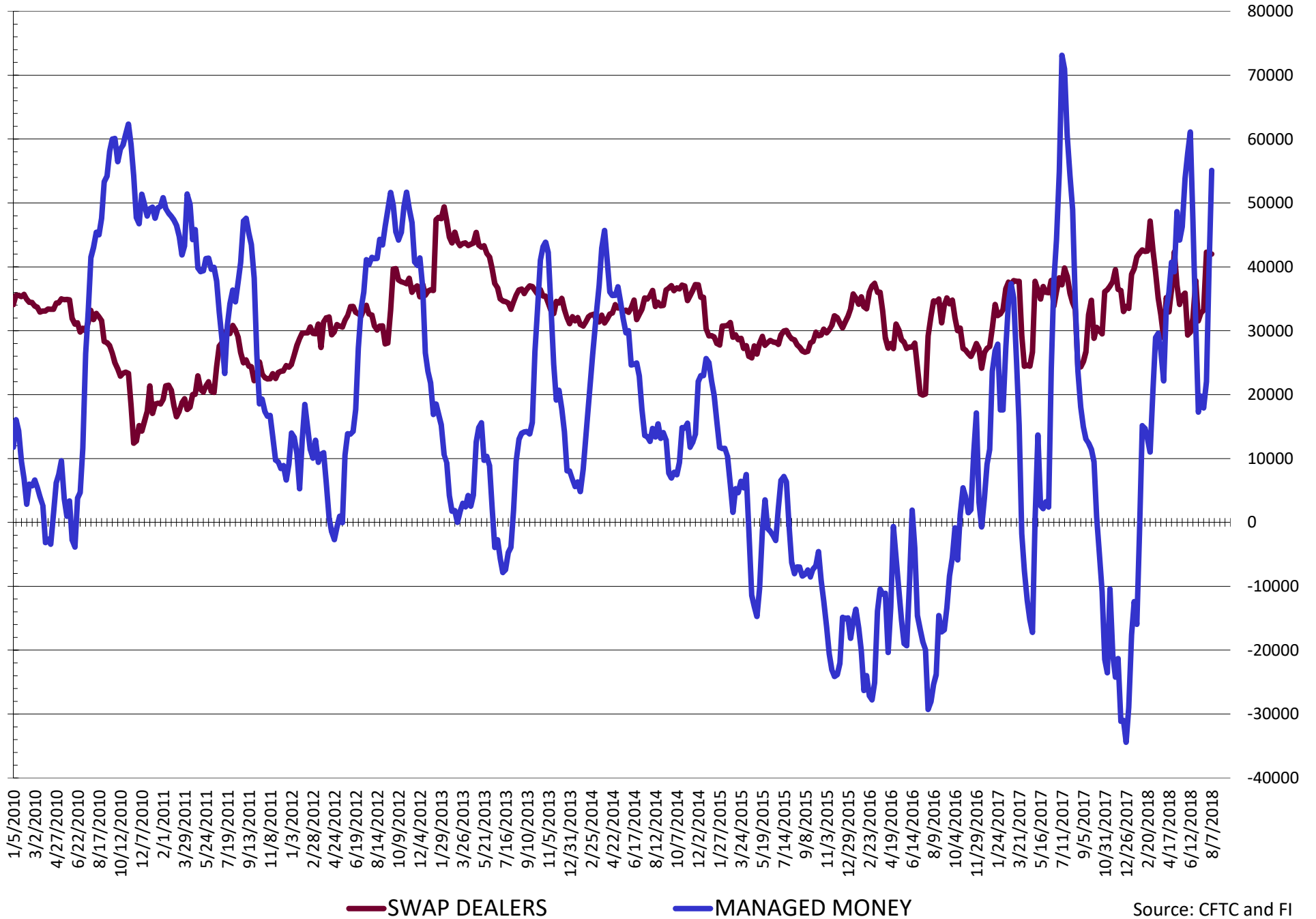
8/11/2018

NET POSITION FUTURES AND OPTIONS OF SWAP AND MANAGED FUNDS IN CHICAGO WHEAT



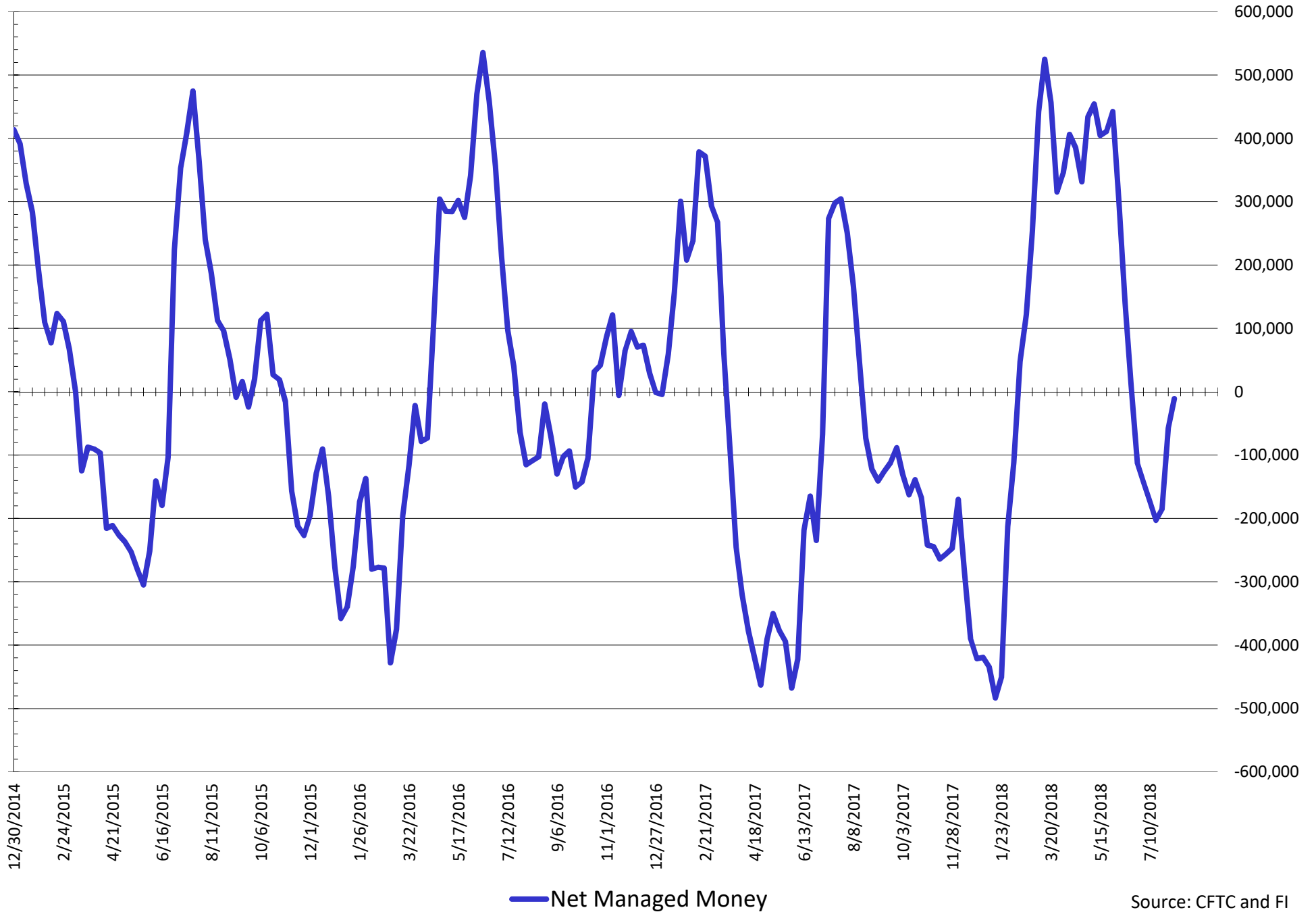
Source: CFTC and FI
8/11/2018

NET POSITION FUTURES AND OPTIONS OF SWAP AND MANAGED FUNDS IN KANSAS WHEAT



Source: CFTC and FI
8/11/2018

NET POSITION FUTURES AND OPTIONS OF SWAP AND MANAGED FUNDS IN COMBINED SRW, HRW, CORN, SOYBEANS, SOYMEAL AND SOYOIL



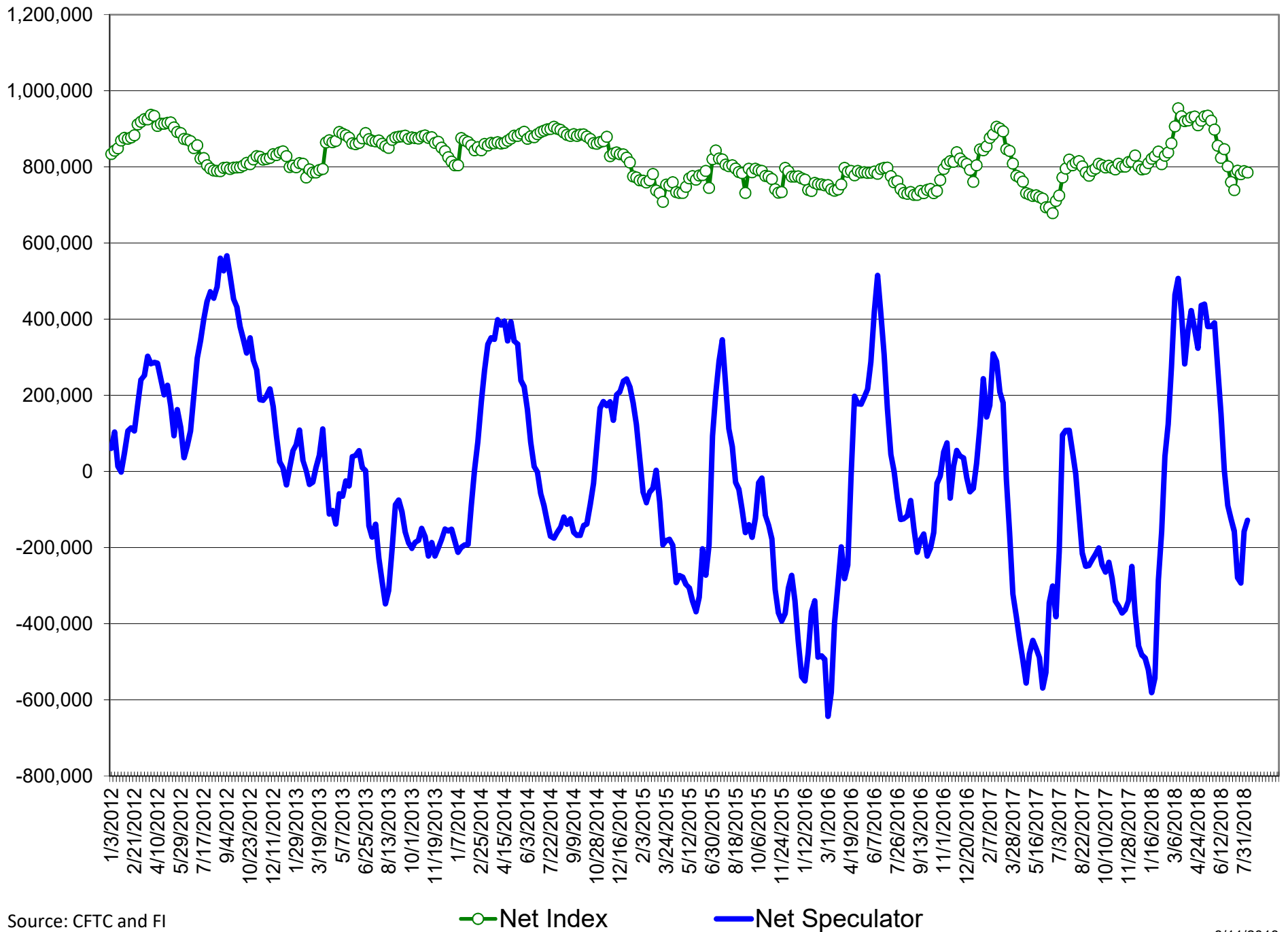
COMMITMENT OF TRADERS
FUTURES & OPTIONS NET POSITIONS (INDEX BROKEN OUT)
AS OF 08/07/2018
(IN THOUSAND CONTRACTS)

	COMMERCIAL				(FUND) NON COMMERCIAL				(SPEC) NON-REPORTABLE			
	7-Aug	31-Jul	24-Jul	17-Jul	7-Aug	31-Jul	24-Jul	17-Jul	7-Aug	31-Jul	24-Jul	17-Jul
	WHEAT											
Chicago	(131.9)	(117.1)	(86.5)	(84.4)	11.0	0.0	(28.8)	(37.4)	(11.5)	(16.6)	(15.8)	(15.7)
Kansas City	(98.1)	(83.0)	(64.7)	(60.1)	34.6	26.4	12.7	10.6	0.1	(1.2)	(3.6)	(3.7)
Minneapolis	-	-	-	-	-	-	-	-	-	-	-	-
All Wheat	(230.0)	(200.2)	(151.2)	(144.5)	45.7	26.4	(16.1)	(26.8)	(11.3)	(17.9)	(19.4)	(19.4)
CORN	(208.6)	(203.4)	(117.3)	(128.4)	(41.9)	(63.6)	(144.6)	(134.4)	(18.9)	(6.0)	(6.2)	(11.1)
OATS	-	-	-	-	-	-	-	-	-	-	-	-
SOYBEANS	(19.5)	(30.0)	(19.6)	(27.4)	(94.4)	(91.9)	(93.7)	(84.0)	(22.4)	(14.9)	(17.8)	(21.7)
SOY OIL	(17.8)	(22.2)	(22.9)	(20.3)	(84.4)	(83.6)	(88.0)	(89.2)	6.1	6.6	6.3	7.3
SOY MEAL	(150.4)	(159.1)	(154.0)	(160.2)	46.7	54.2	49.6	55.4	15.8	16.6	13.9	14.6

	TOTAL OPEN INTEREST				(INDEX) COMMERCIAL INDEX TRADERS				(INDEX) % NET OF TOTAL OPEN INTEREST			
	7-Aug	31-Jul	24-Jul	17-Jul	7-Aug	31-Jul	24-Jul	17-Jul	7-Aug	31-Jul	24-Jul	17-Jul
	WHEAT											
Chicago	678,322	650,116	599,702	610,468	132.4	133.7	131.2	137.5	19.5%	20.6%	21.9%	22.5%
Kansas City	317,248	312,538	302,683	293,472	63.3	57.8	55.5	53.3	20.0%	18.5%	18.3%	18.1%
Minneapolis	-	-	-	-	-	-	-	-	-	-	-	-
All Wheat	995,570	962,654	902,385	903,940	195.7	191.6	186.7	190.8	19.7%	19.9%	20.7%	21.1%
CORN	2,287,244	2,369,980	2,470,639	2,409,890	269.3	273.0	268.1	273.9	11.8%	11.5%	10.8%	11.4%
OATS	-	-	-	-	-	-	-	-	-	-	-	-
SOYBEANS	989,374	1,000,785	1,090,029	1,091,032	136.2	136.8	131.1	133.1	13.8%	13.7%	12.0%	12.2%
SOY OIL	552,033	542,097	565,582	550,453	96.1	99.2	104.7	102.2	17.4%	18.3%	18.5%	18.6%
SOY MEAL	559,065	569,042	584,459	585,171	87.8	88.3	90.4	90.2	15.7%	15.5%	15.5%	15.4%

SOURCE: CFTC & FI

NET POSITION FUTURES AND OPTIONS OF SPECULATORS AND INDEX FUNDS IN COMBINED SRW, HRW, CORN, SOYBEANS, SOYMEAL AND SOYOIL



Source: CFTC and FI

Traditional Daily Estimate of Funds 8/11/18

	(Neg)-"Short"	Pos-"Long"			
Actual less Est.	2.7	3.4	(1.5)	2.6	1.4
	Corn	Bean	Chi. Wheat	Meal	Oil
Actual	121.3	(18.7)	86.5	90.2	(53.9)
8-Aug	6.0	3.0	4.0	5.0	(2.0)
9-Aug	(7.0)	(4.0)	(5.0)	(3.0)	(1.0)
10-Aug	(35.0)	(27.0)	(12.0)	(11.0)	(5.0)
13-Aug					
14-Aug					
FI Est. of Futures Only 8/11/18	85.3	(46.7)	73.5	81.2	(61.9)
FI Est. Futures & Options	16.2	(69.5)	50.2	73.1	(64.5)
Futures only record long	498.2	260.4	86.5	167.5	160.2
	2/1/2011	6/27/2017	8/7/2018	5/1/2018	11/1/2016
Futures only record short	(135.3)	(94.5)	(130.0)	(49.5)	(55.1)
	10/29/2013	6/27/2017	4/25/2017	3/1/2016	8/6/2013
Futures and options record net long	458.5	259.8	64.8	132.1	159.2
	9/28/2010	5/1/2012	8/7/2012	5/1/2018	1/1/2016
Futures and options record net short	(166.8)	(113.1)	(143.3)	(64.1)	(61.6)
	11/14/2017	6/27/2017	4/25/2017	3/1/2016	7/17/2018

Managed Money Daily Estimate of Funds 8/11/18

	Corn	Bean	Chi. Wheat	Meal	Oil
Latest CFTC Fut. Only	(68.0)	(63.1)	66.4	45.3	(91.0)
Latest CFTC F&O	(29.7)	(56.3)	64.6	46.8	(91.4)
FI Est. Managed Fut. Only	(122.0)	(105.1)	46.9	31.8	(103.0)
FI Est. Managed Money F&O	(83.7)	(98.3)	45.1	33.3	(103.4)

Index Funds Latest Positions (as of last Tuesday)

Index Futures & Options	269.3	136.2	132.4	NA	96.1
Change From Previous Week	(3.7)	(0.5)	(1.4)	NA	(3.1)

Source: Reuters, CFTC & FI (FI est. are noted with latest date)

Disclaimer

TO CLIENTS/PROSPECTS OF FUTURES INTERNATIONAL, SEE RISK DISCLOSURE BELOW:

THIS COMMUNICATION IS CONVEYED AS A SOLICITATION FOR ENTERING INTO A DERIVATIVES TRANSACTION.

Any trading recommendations and market or other information to Customer by Futures International (FI), although based upon information obtained from sources believed by FI to be reliable may not be accurate and may be changed without notice to customer. FI makes no guarantee as to the accuracy or completeness of any of the information or recommendations furnished to Customer. Customer understands that FI, its managers, employees and/or affiliates may have a position in commodity futures, options or other derivatives which may not be consistent with the recommendations furnished by FI to Customer.

The risk of trading futures and options and other derivatives involves a substantial risk of loss and is not suitable for all persons. In purchasing an option, the risk is limited to the premium paid, and all commissions and fees involved with the trade. When an option is shorted or written, the writer of the option has unlimited risk with respect to the option written. The use of options strategies such as a straddles and strangles involve multiple option positions and may substantially increase the amount of commissions and fees paid to execute the strategy. Option prices do not necessarily move in tandem with cash or futures prices. Each person must consider whether a particular trade, combination of trades or strategy is suitable for that person's financial means and objectives.

This material may include discussions of seasonal patterns, however, futures prices have already factored in the seasonal aspects of supply and demand, and seasonal patterns are no indication of future market trends. Finally, past performance is not indicative of future results.

This communication may contain links to third party websites which are not under the control of FI and FI is not responsible for their content. Products and services are offered only in jurisdictions where solicitation and sale are lawful, and in accordance with applicable laws and regulations in each such jurisdiction.