

**USDA US Export Sales Results in 000 Metric Tons**

	Week ending:	Actual <b>7/26/2018</b>	Trade* Estimates		Last Week 7/19/2018		Year Ago 7/27/2017
<b>Beans</b>	2017-18	<b>93.7</b>	150-500	2016-17	538.1		233.4
	2018-19	<b>543.3</b>	300-700	2017-18	963.8		367.5
<b>Meal</b>	2017-18	<b>79.0</b>	50-250	Sales	166.5	Sales	87.1
	2018-19	<b>57.3</b>	0-100	n/c	37.6		145.6
	Shipments	<b>247.7</b>	NA	Shipments	215.4	Shipments	188.9
<b>Oil</b>	2017-18	<b>14.2</b>	5-20	Sales	-4.4	Sales	10.7
	2018-19	<b>1.3</b>	0-15	n/c	0.0		0.0
	Shipments	<b>18.4</b>	NA	Shipments	29.4	Shipments	31.9
<b>Corn</b>	2017-18	<b>292.0</b>	300-600	2016-17	338.5		36.7
	2018-19	<b>986.1</b>	400-800	2017-18	747.5		438.3
<b>Wheat</b>	2018-19	<b>382.5</b>	200-450	2018-19	385.9		145.6

Source: FI & USDA \*Reuters estimates

n/c= New Crop

## USDA Export Sales Results in 000 tons

AS OF: 7/26/2018

	ESTIMATED This Week		ACTUAL This Week		as of ACTUAL Last week		as of 7/27/2017 Year Ago		
<b>Beans</b>	17/18	150-350	17/18	<b>93.7</b>	17/18	538.1	16/17	233.4	
	n/c	400-700	n/c	<b>543.3</b>	n/c	963.8	n/c	367.5	
			Sales to China -120.0		Sales to China -3.0		Sales to China -59.5		
<b>Meal</b>	Shipped		Shipped		Shipped		Shipped		
	16/17	50-150 100-300	17/18	<b>79.0</b>	<b>247.7</b>	17/18	166.5 215.4	16/17	87.1 188.9
	n/c	0-100	n/c	<b>57.3</b>		n/c	37.6	n/c	57.7
<b>Oil</b>	Shipped		Shipped		Shipped		Shipped		
	16/17	5-15 10-20	17/18	<b>14.2</b>	<b>18.4</b>	17/18	-4.4 29.4	16/17	10.7 31.9
	n/c	0-15	n/c	<b>1.3</b>		n/c	5.4	n/c	0.0
		Sales to China 0.0		Sales to China 0.0		Sales to China 0.0			
<b>Corn</b>	17/18	300-500	17/18	<b>292.0</b>	17/18	338.5	16/17	36.7	
	n/c	500-800	n/c	<b>986.1</b>	n/c	747.5	n/c	438.3	
			Sales to China 0.0		Sales to China 0.0		Sales to China 93.4		
<b>Wheat</b>	17/18	250-450	18/19	<b>382.5</b>	18/19	385.9	17/18	145.6	
	n/c	0.0	n/c	<b>0.0</b>	n/c	0.0	n/c	0.0	

o/c=Old Crop, n/c= New Crop Source: Futures International and USDA

### US crop-year to date export sales

% sold from USDA's export projection

	Current	Last Year	YOY	YOY	2018-19	2017-18	2016-17	2015-16
2017-18 Soybeans mil bu	2136	2230	-94	-4.2%		102.4%	102.9%	97.6%
2017-18 SoyOil MT	1016	1053	-37	-3.5%		91.4%	90.8%	111.7%
2017-18 SoyMeal MT	11922	10142	1780	17.5%		97.3%	96.5%	95.3%
2017-18 Corn mil bu	2337	2219	118	5.3%		97.4%	96.7%	100.9%
2018-19 Wheat mil bu	264	370	-105	-28.5%	27.1%	41.0%	33.8%	36.3%

Source: Futures International and USDA

## EXPORT SALES SITUATION

### SOYBEANS

(million bushels)

		2017-18	2016-17	2015-16	2014-15	2013-14	2012-13	2011-12	2010-11	2009-10	2008-09	2007-08	2006-07	2005-06	2004-05	2003-04	2002-03	2001-02
Weekly Sales Total																		
	New Crop Sales	568.3	1221.9	452.1	800.8	789.1	738.3	522.9	623.8	583.1	309.4	284.6	237.7	145.7	219.3	296.3	213.2	206.2
Weeks remaining	7-Sep	59.2	65.3	62.3	36.2	17.6	23.1	16.3	31.2	30.5	16.9	12.7	27.2	0.5	2.7	1.5	4.0	2.5
6	14-Sep	85.9	37.4	33.5	53.9	33.9	23.8	14.9	24.6	18.0	15.1	18.9	28.0	21.9	23.3	21.7	23.1	20.9
	21-Sep	109.6	32.2	48.4	94.3	103.5	29.4	38.0	39.8	42.3	22.5	27.4	31.8	27.6	36.9	27.7	25.9	15.3
	28-Sep	37.3	62.2	92.1	31.9	31.6	47.6	25.8	63.8	50.9	17.3	24.5	43.9	24.8	27.8	25.8	9.8	35.4
	5-Oct	64.2	80.1	47.2	33.9	34.2	18.4	24.7	34.8	16.6	22.1	20.2	39.9	19.9	35.3	17.4	19.0	40.0
	12-Oct	46.9	52.1	54.3	34.4	0.0	19.2	21.9	39.6	24.0	37.8	27.6	31.9	25.2	36.0	42.2	20.6	48.5
	19-Oct	78.2	71.0	74.6	79.6	0.0	19.2	8.4	74.1	36.3	28.8	17.0	23.0	32.7	36.3	36.3	44.4	39.1
	26-Oct	72.3	72.4	76.7	48.7	174.2	27.2	7.7	74.4	25.4	53.5	27.2	23.5	30.9	34.0	59.7	60.0	32.5
	2-Nov	42.6	92.4	24.1	59.2	36.6	6.8	22.2	58.3	19.2	32.9	22.6	28.2	28.0	17.6	68.8	29.1	55.2
	9-Nov	40.6	34.5	47.7	39.5	28.6	20.6	27.4	29.7	46.8	17.6	47.6	27.8	21.3	24.2	33.7	29.3	27.3
	16-Nov	31.9	51.7	66.0	17.7	47.8	16.2	33.9	37.0	49.6	29.1	66.4	29.5	22.0	35.3	26.0	43.0	51.6
	23-Nov	34.6	69.8	43.1	54.6	51.7	11.7	18.0	24.8	41.7	28.7	41.1	26.8	7.7	49.1	31.7	36.0	36.8
	30-Nov	74.1	48.8	32.3	43.3	29.6	42.0	28.3	49.3	26.6	13.2	29.5	24.5	12.2	15.0	9.1	25.5	31.4
	7-Dec	53.4	51.1	53.4	29.8	40.7	48.5	17.2	23.4	34.1	29.8	35.7	33.2	35.0	16.4	13.2	48.8	29.6
	14-Dec	64.0	73.8	32.6	25.6	12.4	22.8	24.0	3.1	34.3	32.8	32.1	27.3	15.2	31.4	7.5	38.4	36.4
	21-Dec	35.8	66.6	76.0	23.4	26.5	-0.3	24.3	28.1	43.9	21.5	25.1	38.1	30.5	42.5	53.5	41.3	20.9
	28-Dec	20.4	35.8	17.6	22.4	33.5	16.0	10.3	24.3	29.4	18.8	5.2	12.5	32.7	32.0	20.0	9.3	12.7
	4-Jan	22.3	3.2	23.5	33.5	5.7	11.8	15.9	18.0	26.7	19.5	4.4	21.7	17.0	23.9	5.7	14.0	19.1
	11-Jan	45.6	12.8	41.4	41.6	25.5	56.7	36.4	15.4	27.7	50.0	35.5	40.3	16.5	39.2	17.1	50.3	41.6
	18-Jan	19.8	19.8	36.2	0.5	23.4	11.3	17.1	26.9	34.2	48.7	24.4	22.6	47.0	31.6	0.5	21.0	27.7
	25-Jan	10.4	3.6	23.8	32.6	13.3	14.2	9.0	28.7	24.7	19.3	17.9	24.9	19.2	19.1	-4.8	25.3	26.5
	1-Feb	24.5	3.9	-1.6	18.0	16.0	29.9	22.2	37.9	14.0	12.4	38.1	29.5	16.4	20.2	13.5	20.2	11.2
	8-Feb	20.7	0.7	24.5	27.4	6.4	-4.0	13.5	0.8	11.5	39.3	12.1	14.0	19.0	20.2	5.9	16.1	4.3
	15-Feb	-6.8	16.5	20.8	18.6	0.4	-4.4	39.8	18.9	7.5	40.2	23.2	24.8	19.5	13.9	7.3	14.6	14.5
	22-Feb	28.7	-3.8	12.1	16.9	12.0	22.5	20.2	4.9	8.8	12.5	21.4	15.3	18.5	15.7	-0.2	11.1	12.9
	1-Mar	89.4	-0.5	16.2	18.4	28.4	9.6	37.3	13.3	6.7	5.7	7.4	20.8	13.5	23.4	-1.0	12.3	24.9
	8-Mar	43.8	-0.8	17.5	6.2	2.4	23.0	22.4	15.1	-4.3	30.8	9.5	16.6	18.5	25.1	9.7	23.5	-11.9
	15-Mar	25.1	1.1	22.9	12.6	7.4	4.0	13.1	5.4	7.9	5.3	16.1	19.2	14.0	23.0	1.6	12.4	8.1
	22-Mar	8.9	5.7	15.1	18.6	0.4	2.4	17.3	9.7	10.0	15.8	13.6	9.9	8.6	12.3	7.9	12.0	9.1
	29-Mar	38.8	8.8	10.0	1.0	2.4	14.4	15.0	5.3	6.6	22.0	6.8	9.5	8.1	11.0	6.4	7.6	2.7
	5-Apr	52.7	-0.9	15.4	-6.5	2.9	11.7	16.9	2.8	7.6	15.9	21.5	5.0	13.0	12.3	3.8	22.3	14.8
	12-Apr	35.4	-1.4	16.8	11.5	0.7	11.3	11.5	4.8	5.8	29.7	17.5	10.4	12.6	4.4	6.6	9.6	11.5
	19-Apr	10.8	-11.2	15.0	3.8	0.0	-7.6	34.0	12.8	11.3	22.7	13.8	15.5	7.1	5.8	4.6	6.3	8.0
	26-Apr	12.5	10.7	8.3	15.9	-0.6	-4.0	22.0	5.3	3.7	30.7	11.4	-2.6	4.1	9.1	1.8	7.9	13.1
	3-May	10.2	-4.5	30.0	12.5	1.5	7.1	17.1	0.8	10.4	24.0	1.5	7.5	6.7	12.0	4.7	1.4	9.5
	10-May	10.4	-4.3	7.8	5.0	2.7	0.6	22.6	2.2	9.7	14.8	7.4	8.2	14.3	6.1	-1.2	5.2	12.9
	17-May	-5.1	-3.1	20.4	6.1	6.0	6.7	29.4	6.1	17.6	25.7	14.1	3.1	12.2	13.9	0.7	4.0	12.2
	24-May	10.0	1.2	16.8	11.8	2.2	-4.0	8.8	6.0	6.4	8.7	9.0	12.7	8.6	9.7	-0.5	9.6	12.7
	31-May	6.1	6.2	11.4	4.8	1.5	1.8	8.1	3.0	5.0	-0.9	11.0	7.4	12.7	7.2	0.8	4.1	9.7
	7-Jun	19.1	-10.4	27.9	6.0	3.2	1.2	15.6	4.4	15.5	-2.2	10.0	8.1	6.6	3.2	0.2	14.1	17.5
	14-Jun	11.1	-3.7	30.0	4.9	3.6	1.9	5.2	6.6	-5.0	5.4	6.3	13.2	14.1	6.7	3.6	-1.7	8.8
	21-Jun	13.2	-12.1	24.3	4.4	11.7	0.5	14.8	-1.2	11.3	1.0	-9.9	8.8	7.4	5.4	3.5	8.5	10.1
	28-Jun	20.6	-4.7	26.8	-0.4	1.5	4.4	11.0	-12.3	9.7	7.1	17.1	7.1	13.2	6.3	0.6	7.2	9.6
	5-Jul	5.8	-2.8	23.4	1.5	2.1	-2.6	12.2	11.2	9.6	10.5	2.4	5.3	7.9	6.0	0.1	8.5	3.2
	12-Jul	9.3	-7.8	13.4	1.7	1.4	4.1	5.0	0.2	24.5	4.9	2.3	6.7	11.6	4.4	-0.2	8.3	7.7
	19-Jul	19.8	-1.2	11.9	3.0	8.3	4.7	7.1	9.4	4.1	11.8	6.7	10.6	8.7	2.4	4.1	6.8	4.0
	26-Jul	3.4	-10.2	0.0	15.3	6.9	2.9	7.1	0.4	12.5	9.0	10.0	6.8	7.3	-2.3	-1.4	4.4	4.2
	2-Aug																	
	9-Aug																	
	16-Aug																	
	23-Aug																	
	30-Aug																	
	6-Sep																	
Crop year to date sales		2136.0	2229.8	1895.7	1876.1	1690.9	1362.7	1413.9	1547.1	1494.3	1288.0	1147.9	1137.7	937.7	1106.0	893.4	1087.5	1102.6
Average weekly sales rate to reach proj total		-8.5	-10.6	7.7	-5.7	-8.8	-7.6	-8.1	-7.7	0.8	-1.5	1.9	-3.6	0.4	-1.5	-1.1	-7.2	-6.4
Proj./Actual export total		2085	2166	1942	1842	1638	1317	1365	1501	1499	1279	1159	1116	940	1097	887	1044	1064
YTD sales as % of total		102.4	102.9	97.6	101.8	103.2	103.5	103.6	103.1	99.7	100.7	99.0	101.9	99.8	100.8	100.7	104.2	103.6
Sold as of around Sep 1 %		27.3	56.4	23.3	43.5	48.2	56.1	38.3	41.6	38.9	24.2	24.6	21.3	15.5	20.0	33.4	20.4	19.4

Source: Futures International and USDA

## EXPORT SALES SITUATION

### SOYMEAL

(000 metric tons)

Weekly Sales Total	2017-18	2016-17	2015-16	2014-15	2013-14	2012-13	2011-12	2010-11	2009-10	2008-09	2007-08	2006-07	2005-06	2004-05	2003-04	2002-03	2001-02
New Crop Sales	3,205.5	2,743.3	3,685.7	5,318.9	2,679.3	3,203.3	1,431.4	2,079.9	3,014.9	1,673.6	1,648.7	1,117.6	1,051.0	1,586.8	1,677.7	1,398.4	1,612.1
Weeks remaining																	
10	5-Oct	106.0	200.0	225.8	707.6	1,189.2	143.5	558.6	423.1	466.1	29.2	266.0	611.2	59.9	177.6	456.0	269.1
	12-Oct	296.0	398.0	264.4	195.9	0.0	173.1	348.9	245.7	115.7	242.3	100.4	151.4	119.8	230.5	291.2	112.8
	19-Oct	142.8	146.2	218.7	23.0	0.0	73.2	74.1	153.9	176.2	263.5	244.4	101.0	194.2	182.9	96.0	103.1
	26-Oct	225.0	301.0	246.2	147.8	805.2	194.5	120.8	165.6	116.7	130.2	203.9	57.7	304.7	24.4	65.4	218.5
	2-Nov	212.9	149.9	208.2	-123.7	287.8	234.6	291.4	365.3	224.1	107.4	211.0	265.9	79.8	145.8	589.6	228.7
	9-Nov	163.1	437.4	224.1	21.3	283.2	197.9	201.5	198.0	357.5	124.4	153.2	132.7	204.7	97.2	-131.5	87.7
	16-Nov	379.8	224.5	254.9	265.7	116.0	365.1	150.2	292.7	225.2	92.3	133.1	245.9	143.2	125.2	74.8	222.2
	23-Nov	176.6	150.4	77.5	-22.3	307.9	429.9	135.5	133.8	107.4	59.7	145.2	214.1	76.1	110.6	102.1	210.6
	30-Nov	166.4	222.5	228.7	226.8	120.4	238.2	170.0	193.4	232.3	106.0	163.4	116.5	272.4	82.8	-4.7	130.5
	7-Dec	455.4	200.0	108.6	88.9	82.7	390.8	103.7	171.8	191.4	18.5	96.0	205.5	120.7	167.2	46.3	110.8
	14-Dec	184.1	139.2	252.5	146.8	77.1	124.7	142.0	113.5	254.2	62.2	111.8	115.4	84.1	113.4	129.5	84.7
	21-Dec	288.4	251.9	78.9	206.7	83.3	53.8	51.1	219.3	286.9	145.7	73.3	108.7	81.8	29.7	86.2	145.5
	28-Dec	109.1	83.3	46.5	157.9	123.9	118.2	144.4	24.5	61.8	43.3	49.1	71.8	46.2	113.7	17.6	89.5
	4-Jan	209.3	119.1	64.7	37.3	62.8	236.1	48.0	26.2	356.7	19.7	77.9	101.5	68.9	70.7	-30.0	12.1
	11-Jan	281.8	269.8	280.6	72.1	234.7	218.0	181.2	232.2	416.2	74.4	93.8	221.2	158.0	104.8	55.6	192.1
	18-Jan	223.1	276.8	200.8	284.5	241.4	141.7	124.2	-30.0	254.1	210.8	162.4	34.4	189.1	47.1	79.1	214.7
	25-Jan	474.8	365.0	186.3	296.5	68.3	196.3	74.7	177.9	134.9	201.7	225.8	160.5	196.6	94.4	-4.1	203.3
	1-Feb	160.8	347.7	189.4	296.3	283.7	132.4	161.9	182.7	102.7	184.0	365.8	135.3	133.3	44.0	21.8	-50.1
	8-Feb	210.0	71.8	111.4	189.4	18.7	236.1	80.1	107.7	242.1	196.7	106.6	170.3	152.9	173.5	-93.7	75.1
	15-Feb	131.9	223.0	171.7	316.6	227.5	250.3	216.0	108.3	81.9	142.6	48.6	201.6	77.3	52.8	80.8	76.0
	22-Feb	139.0	139.5	132.1	-6.4	115.9	119.3	40.0	148.1	85.7	145.6	102.8	0.8	89.6	52.4	-127.7	44.6
	1-Mar	200.6	301.9	46.6	130.2	232.8	51.7	111.0	156.7	1.9	117.1	75.6	66.1	78.0	121.7	-3.4	28.9
	8-Mar	173.3	389.5	83.4	101.3	160.0	143.4	156.1	51.4	92.5	147.4	147.8	277.0	93.5	90.4	95.6	93.9
	15-Mar	194.6	127.0	468.7	204.0	242.9	137.2	87.4	210.9	189.5	33.4	175.8	17.5	115.2	149.9	33.0	152.7
	22-Mar	184.1	65.9	211.6	224.3	158.5	92.6	132.9	79.7	68.1	140.8	156.8	105.2	179.0	195.5	42.8	127.3
	29-Mar	414.3	228.6	23.3	214.1	307.8	227.1	174.0	46.2	211.9	106.9	90.0	121.7	37.1	33.5	39.4	87.9
	5-Apr	317.4	158.7	196.8	46.0	179.6	266.0	33.2	171.6	85.0	85.8	129.6	172.5	85.3	77.9	37.6	25.4
	12-Apr	164.9	135.0	131.6	130.4	36.6	193.3	300.7	130.1	94.3	167.2	176.1	103.9	142.6	95.6	13.7	154.3
	19-Apr	223.7	112.0	209.3	107.4	186.3	93.2	221.1	121.1	57.4	108.3	140.4	151.3	18.4	58.5	48.5	21.6
	26-Apr	246.0	103.6	152.7	134.7	140.9	34.4	59.0	78.7	137.8	293.0	59.0	119.1	124.0	110.3	70.2	104.9
	3-May	90.9	137.1	115.3	136.8	75.0	82.8	138.4	61.0	68.3	135.4	122.2	68.6	61.8	51.1	22.5	-11.9
	10-May	376.0	113.6	73.0	45.2	84.5	123.6	114.3	10.0	32.5	260.1	115.6	86.9	157.3	66.1	15.6	72.2
	17-May	239.5	125.0	169.5	103.0	186.3	149.2	144.6	137.5	47.4	210.8	151.4	117.7	87.3	78.2	43.6	24.3
	24-May	140.7	123.6	68.6	123.7	83.7	134.2	33.2	34.9	115.4	193.9	110.0	83.6	133.4	54.6	49.6	58.6
	31-May	131.2	84.9	44.3	53.2	65.8	97.7	75.0	60.5	49.7	142.4	264.1	127.3	72.8	84.8	26.4	94.0
	7-Jun	74.6	166.8	84.4	129.7	59.5	26.6	116.8	80.1	84.1	70.2	153.6	68.7	182.7	53.7	50.8	57.9
	14-Jun	115.1	86.6	162.5	96.1	54.7	9.2	258.7	9.5	35.1	93.2	94.4	57.7	84.0	109.7	19.8	64.3
	21-Jun	146.3	38.0	115.5	106.3	66.3	116.3	229.6	108.3	71.6	79.6	34.6	55.6	109.5	175.9	27.3	74.1
	28-Jun	132.8	45.1	77.4	87.1	82.8	33.7	155.9	-43.5	109.5	-23.0	158.1	99.8	90.8	39.0	4.4	53.6
	5-Jul	37.5	3.7	136.1	101.7	48.8	41.6	95.2	14.7	61.0	18.4	62.6	41.1	54.9	79.5	24.7	97.2
	12-Jul	131.0	41.4	150.4	33.0	83.8	184.0	166.1	116.8	100.4	62.6	60.6	101.7	152.0	44.3	3.5	34.6
	19-Jul	166.5	6.7	79.2	65.8	93.9	11.1	150.9	83.5	23.8	157.6	80.3	87.0	145.3	88.8	25.1	54.4
	26-Jul	79.0	87.1	75.4	71.5	43.7	66.7	164.7	251.3	132.8	168.3	20.5	54.4	89.0	72.7	18.9	280.1
	2-Aug																
	9-Aug																
	16-Aug																
	23-Aug																
	30-Aug																
	6-Sep																
	13-Sep																
	20-Sep																
	27-Sep																
	4-Oct																
Crop year to date sales	11921.8	10142.1	10333.4	11293.4	10083.6	9786.6	7968.1	7704.7	9374.7	7043.2	7362.3	6725.4	6198.4	5759.1	4187.4	5930.4	7042.3
Average weekly sales																	
***rate to reach proj total	32.5	36.3	51.1	59.8	39.1	35.2	87.1	53.4	75.0	66.5	102.2	126.1	110.3	90.0	50.3	-47.0	-23.1
Proj./Actual export total***	12247	10505	10845	11891	10474	10139	8839	8238	10124	7708	8384	7987	7301	6659	4690	5460	6811
YTD sales as % of total	97.3	96.5	95.3	95.0	96.3	96.5	90.1	93.5	92.6	91.4	87.8	84.2	84.9	86.5	89.3	108.6	103.4

\*\*\*Does not include USDA's Forecast on Flour Meal (MT)

Source: Futures International and USDA

## EXPORT SALES SITUATION

### SOYOIL

(000 metric tons)

Weekly Sales Total	2017-18	2016-17	2015-16	2014-15	2013-14	2012-13	2011-12	2010-11	2009-10	2008-09	2007-08	2006-07	2005-06	2004-05	2003-04	2002-03	2001-02	
New Crop Sales	71.4	259.4	145.1	95.4	26.6	144.7	38.9	633.7	388.3	67.1	14.3	92.8	79.7	121.3	118.0	149.9	46.8	
5-Oct	10.9	16.8	79.8	69.8	38.1	57.8	36.6	26.7	195.9	79.8	58.2	6.0	3.8	17.5	42.4	67.5	36.4	
12-Oct	27.4	0.3	53.2	46.4	0.0	24.5	6.1	13.7	24.0	16.1	26.4	6.2	-1.3	8.2	2.4	2.5	36.0	
19-Oct	27.9	24.5	14.8	10.6	0.0	12.0	4.1	5.5	23.3	3.3	24.3	2.1	6.3	12.3	5.9	9.0	11.2	
26-Oct	27.0	21.2	82.1	15.8	14.5	28.5	0.7	-32.6	9.2	5.2	14.8	5.8	4.7	4.1	9.5	9.1	28.4	
2-Nov	15.9	16.3	36.2	13.9	65.9	36.7	21.7	6.0	6.9	1.0	7.2	-0.1	41.2	0.3	-19.2	26.3	36.4	
9-Nov	2.7	14.4	28.9	15.6	7.2	21.0	2.1	60.0	5.8	6.3	29.7	18.0	0.9	13.6	8.1	1.6	-8.2	
16-Nov	4.2	26.1	37.7	19.6	95.8	124.1	2.7	-0.7	12.4	7.9	65.1	0.3	11.6	11.9	13.0	11.6	2.2	
23-Nov	11.6	54.5	12.8	35.6	18.8	121.5	8.9	32.1	19.2	17.1	31.8	31.5	3.4	9.4	6.9	11.3	6.5	
30-Nov	21.0	13.4	5.3	25.1	1.4	19.0	18.5	51.3	19.0	2.7	40.9	48.4	14.5	2.3	-0.8	8.1	22.0	
7-Dec	14.5	40.3	13.8	14.7	2.3	30.5	5.5	128.2	12.3	0.4	42.1	15.6	0.3	11.3	1.7	14.3	10.8	
14-Dec	24.2	15.1	10.2	38.8	27.0	-5.8	14.8	21.1	20.7	1.5	8.5	6.3	0.4	18.2	-3.5	4.0	20.8	
21-Dec	44.3	18.9	39.8	3.9	83.9	17.2	2.3	1.6	46.7	5.4	13.2	61.0	7.5	17.3	18.1	23.1	34.4	
28-Dec	17.9	30.9	-5.7	24.7	-18.9	31.3	7.3	13.0	1.5	-6.7	5.7	4.5	0.6	6.9	1.7	10.3	16.4	
4-Jan	-1.6	7.3	3.6	30.2	33.6	10.9	1.1	7.5	3.5	3.5	28.2	-1.3	0.3	10.0	3.3	3.5	14.9	
11-Jan	27.9	41.5	17.7	29.4	16.9	12.9	18.7	60.1	50.0	17.0	35.7	15.5	1.1	43.0	3.6	-1.2	35.7	
18-Jan	11.8	49.5	19.3	17.1	20.2	26.3	2.5	13.1	10.4	7.5	58.8	2.3	4.4	16.7	0.7	72.9	60.4	
25-Jan	58.8	12.2	9.1	10.6	6.7	20.1	6.7	5.0	46.0	21.5	97.5	37.3	20.8	-5.1	2.6	35.9	27.5	
1-Feb	7.8	35.3	12.8	15.1	26.0	25.5	22.2	38.4	58.8	10.1	40.9	2.9	0.6	6.5	2.5	27.3	38.9	
8-Feb	24.4	9.9	3.8	16.1	53.3	6.6	21.1	14.8	44.8	45.9	24.0	2.3	-3.3	4.4	3.2	16.8	13.1	
15-Feb	42.9	12.7	12.7	10.9	11.7	28.9	25.2	1.0	46.7	46.1	26.9	1.8	4.3	7.2	2.7	23.4	26.6	
22-Feb	16.6	28.7	3.2	14.2	1.6	4.8	4.8	16.0	40.2	8.5	25.7	-8.9	0.2	7.4	-4.1	46.1	26.1	
1-Mar	34.0	8.4	0.9	5.6	16.9	-19.7	15.5	2.1	15.9	13.6	6.8	8.0	22.5	1.5	-2.1	32.8	23.8	
8-Mar	31.6	-35.8	35.1	4.6	7.1	6.0	5.1	14.2	-9.4	24.8	29.1	2.2	17.5	-3.0	4.8	-7.0	12.2	
15-Mar	36.5	15.3	17.5	8.1	2.0	19.6	38.1	-9.8	18.4	-8.0	23.8	10.1	4.0	1.7	2.1	14.7	8.0	
22-Mar	34.6	12.5	24.4	22.4	4.0	12.6	3.5	14.1	13.0	48.6	42.0	-7.8	9.4	6.9	6.3	17.4	21.6	
29-Mar	43.5	22.4	18.2	20.5	6.2	-4.6	-3.5	-1.1	14.0	62.0	55.8	13.8	-0.9	7.5	-2.9	17.3	-1.7	
5-Apr	22.0	18.6	-7.6	11.9	3.4	7.7	2.1	8.8	6.8	6.9	17.1	3.4	0.7	1.8	-3.2	19.5	0.2	
12-Apr	28.0	33.2	2.1	4.5	5.5	8.2	23.9	0.6	13.5	14.7	7.3	0.9	2.8	7.0	2.9	1.9	0.0	
19-Apr	11.2	-2.0	10.7	4.4	5.7	1.7	0.7	24.0	-1.9	57.8	25.1	16.6	8.5	6.4	1.0	-15.3	3.7	
26-Apr	44.6	10.6	9.6	7.3	0.5	1.1	14.9	3.9	2.0	31.1	8.9	3.5	1.2	3.3	0.3	8.5	3.0	
3-May	45.4	29.0	10.0	15.6	7.7	0.9	30.1	2.0	10.3	34.6	11.9	-5.9	1.9	5.2	0.1	9.1	19.4	
10-May	10.2	14.9	16.7	7.3	1.8	-5.3	8.1	2.6	3.2	20.2	10.8	3.5	-1.4	2.0	0.2	8.6	50.0	
17-May	17.8	10.0	89.5	9.9	41.3	9.6	9.4	0.5	3.5	3.5	46.4	2.6	9.5	-0.5	0.5	9.6	6.8	
24-May	6.0	22.8	32.9	9.2	15.0	2.9	12.7	29.2	12.9	5.3	-0.3	7.6	1.1	2.0	2.5	9.7	33.4	
31-May	10.0	17.6	44.7	32.7	5.1	30.5	13.1	10.1	3.7	3.9	9.1	2.5	0.5	5.6	5.7	2.9	17.5	
7-Jun	-0.2	30.3	14.5	3.4	71.8	13.2	6.8	10.7	12.2	6.8	15.1	21.3	3.0	-0.1	10.1	2.0	9.8	
14-Jun	16.0	13.3	13.8	-0.1	10.3	0.7	20.4	6.0	87.1	21.6	0.9	20.6	19.0	6.1	4.5	7.9	36.7	
21-Jun	30.5	12.6	14.0	9.5	1.9	2.9	8.3	23.6	45.5	6.9	20.3	29.1	-3.2	5.9	0.2	20.7	2.3	
28-Jun	36.6	6.6	62.4	5.3	19.4	1.6	6.8	-11.3	10.8	69.4	6.0	13.6	3.3	2.2	0.2	17.4	-1.4	
5-Jul	27.6	16.2	18.1	1.4	12.8	-2.3	34.4	1.3	0.9	-60.2	15.6	9.3	0.3	0.0	2.4	5.2	1.5	
12-Jul	10.9	25.4	48.7	3.6	8.3	10.6	14.3	16.0	13.0	48.1	5.8	3.2	0.5	7.1	-4.5	8.1	5.8	
19-Jul	-4.4	10.9	17.1	18.1	2.9	3.3	7.2	9.6	0.9	17.5	11.2	33.7	0.5	1.0	0.5	-0.7	17.7	
26-Jul	14.2	10.7	6.5	74.8	12.8	11.3	9.7	18.4	3.2	22.7	12.3	24.0	0.1	1.1	4.6	0.8	5.5	
2-Aug																		
9-Aug																		
16-Aug																		
23-Aug																		
30-Aug																		
6-Sep																		
13-Sep																		
20-Sep																		
27-Sep																		
4-Oct																		
Crop year to date sales	1016.1	1052.6	1136.3	853.5	795.2	911.6	554.1	1291.2	1365.1	819.3	1101.0	566.0	302.5	415.4	254.8	764.4	819.1	
Average weekly sales																		
rate to reach proj total	9.5	10.7	-11.9	6.0	5.6	7.0	11.0	17.5	15.9	17.5	21.9	28.5	22.0	18.5	17.0	26.2	32.4	
Proj./Actual export total (MT)	1111	1159	1017	914	851	982	664	1466	1524	995	1320	851	523	601	425	1026	1143	
YTD sales as % of total	91.4	90.8	111.7	93.4	93.4	92.9	83.4	88.0	89.6	82.4	83.4	66.5	57.8	69.2	60.0	74.5	71.7	

Source: Futures International and USDA

# EXPORT SALES SITUATION

## CORN

(million bushels)

Weekly Sales Total	2017-18	2016-17	2015-16	2014-15	2013-14	2012-13	2011-12	2010-11	2009-10	2008-09	2007-08	2006-07	2005-06	2004-05	2003-04	2002-03	2001-02	
New Crop Sales	363.2	598.5	323.2	458.7	490.2	385.1	535.9	579.0	455.4	455.8	608.3	458.8	309.6	273.1	300.2	244.3	279.1	
7-Sep	41.2	43.0	16.2	22.2	13.1	9.8	32.3	26.8	43.4	19.9	40.9	26.4	0.4	9.1	18.1	17.3	22.3	
14-Sep	20.7	27.7	21.0	26.0	17.2	2.7	23.5	23.0	38.0	12.8	80.0	40.5	21.6	47.5	36.0	41.0	27.3	
21-Sep	12.6	36.3	16.8	32.9	25.2	0.0	31.0	22.1	26.5	21.6	66.8	32.7	29.4	45.5	54.2	29.1	47.0	
28-Sep	32.0	22.6	29.5	25.1	30.5	12.9	50.8	36.4	48.1	22.3	45.3	45.6	27.7	35.6	36.1	37.6	49.4	
5-Oct	62.7	81.1	20.5	30.9	52.8	0.2	49.6	23.9	20.5	37.7	91.3	50.7	37.5	30.7	37.7	27.3	24.4	
12-Oct	49.4	34.4	23.6	75.7	0.0	6.6	69.4	35.7	24.9	36.4	72.9	32.3	36.5	58.1	64.5	25.6	32.0	
19-Oct	50.7	40.3	9.8	40.6	0.0	5.6	13.2	7.6	9.2	31.1	60.8	41.2	37.9	51.5	29.4	20.4	35.6	
26-Oct	31.9	31.5	27.9	19.3	172.3	6.6	24.5	21.7	14.5	16.3	25.0	40.4	28.3	42.9	58.0	40.5	22.2	
2-Nov	93.1	58.0	21.9	18.8	63.0	6.2	9.9	18.2	22.2	18.6	59.3	75.9	48.0	57.2	56.8	42.8	35.4	
9-Nov	37.4	48.6	24.4	19.9	47.4	4.1	8.0	22.6	19.2	14.0	53.7	54.9	34.8	32.7	29.5	45.2	31.8	
16-Nov	42.6	65.4	30.7	35.8	30.3	30.3	12.3	21.0	13.9	17.1	72.7	41.0	58.8	28.5	36.1	36.8	26.8	
23-Nov	23.6	66.5	80.2	37.2	39.6	9.3	11.0	32.4	48.2	18.3	72.5	40.2	40.7	51.2	63.1	45.4	25.6	
30-Nov	34.5	30.0	19.7	46.1	11.1	2.0	27.4	29.8	25.9	13.5	41.7	32.0	24.1	23.0	33.4	26.5	59.8	
7-Dec	34.1	58.9	43.1	37.9	18.1	10.2	19.9	26.4	33.4	36.6	45.5	55.1	27.3	36.0	40.9	21.5	34.8	
14-Dec	61.3	59.7	22.8	27.3	32.5	4.5	28.1	31.9	48.3	24.1	46.0	49.8	36.1	25.1	36.3	28.0	23.7	
21-Dec	49.0	49.3	31.6	67.1	55.7	4.1	12.6	35.7	62.7	21.7	56.0	45.4	34.8	28.6	37.5	26.7	35.1	
28-Dec	4.0	37.7	27.8	35.2	6.1	1.9	11.8	27.5	30.4	10.6	27.6	22.6	13.5	27.4	29.7	14.6	21.4	
4-Jan	17.2	16.9	10.0	15.3	3.6	0.5	12.7	14.5	14.4	10.3	26.4	46.3	18.1	16.9	16.5	11.2	4.5	
11-Jan	74.3	23.8	26.3	32.2	32.3	15.5	29.9	17.3	12.9	8.5	93.3	56.1	24.8	25.9	33.0	24.3	36.1	
18-Jan	56.9	53.8	45.6	86.0	27.3	5.5	37.7	35.6	62.4	42.8	62.8	39.1	48.1	35.8	39.3	25.5	49.1	
25-Jan	72.9	53.9	32.2	42.1	72.4	7.4	35.9	16.3	35.5	43.6	74.3	31.4	84.9	30.0	30.5	13.3	29.2	
1-Feb	69.7	45.0	44.5	33.3	66.9	6.6	27.3	45.9	36.3	45.8	40.5	36.1	54.2	11.6	38.6	29.3	54.7	
8-Feb	77.7	38.3	15.9	39.5	50.0	8.9	39.6	43.6	29.3	60.8	36.7	54.6	63.5	39.2	45.4	24.3	41.5	
15-Feb	61.2	30.8	41.4	36.7	27.2	14.2	33.1	40.6	38.4	52.5	44.9	33.0	47.1	30.9	37.5	17.6	45.4	
22-Feb	69.0	29.3	36.8	28.2	33.1	11.9	27.2	59.1	15.8	17.7	23.7	12.5	58.4	35.8	38.9	27.1	31.7	
1-Mar	73.1	27.3	43.2	32.6	59.8	-2.0	17.5	42.5	30.0	31.2	25.5	46.8	23.9	32.0	14.7	55.6	15.7	
8-Mar	98.6	29.2	46.2	16.5	25.0	11.1	32.9	18.8	13.3	43.0	30.3	29.5	53.7	28.9	22.6	27.8	41.2	
15-Mar	57.9	49.4	48.3	19.8	29.4	3.6	33.9	40.8	29.4	17.3	29.5	25.2	40.5	39.7	51.7	46.0	42.9	
22-Mar	53.3	53.0	31.6	17.1	54.4	11.6	5.1	35.2	23.9	46.9	24.9	44.2	35.5	36.5	46.8	27.6	31.0	
29-Mar	35.4	28.2	31.1	16.0	37.8	13.9	36.9	75.4	31.8	49.3	27.7	21.6	40.9	44.9	27.3	14.1	37.7	
5-Apr	33.1	44.8	37.2	25.2	25.9	7.3	37.8	24.4	53.5	41.8	18.7	52.2	26.0	51.9	33.9	17.4	17.4	
12-Apr	43.0	29.1	44.7	23.2	21.2	15.8	11.8	33.4	39.6	34.2	34.2	31.6	32.1	36.0	48.1	27.0	34.9	
19-Apr	27.4	29.8	47.4	34.2	24.4	12.4	25.4	24.1	58.3	47.8	30.5	43.5	43.4	26.3	45.2	23.0	36.0	
26-Apr	40.2	38.9	85.1	32.8	36.9	13.0	52.4	13.7	48.4	48.2	21.7	24.2	30.8	19.4	36.4	35.4	45.1	
3-May	27.4	30.4	30.3	33.1	6.3	4.6	8.8	11.2	72.9	23.2	13.3	20.6	50.5	24.5	43.1	23.3	29.1	
10-May	38.8	10.9	43.5	14.6	13.5	8.7	13.4	17.1	32.2	36.9	21.5	59.6	43.5	54.7	19.9	41.1	57.7	
17-May	33.6	27.8	58.0	32.0	20.0	4.1	6.1	33.2	53.3	26.9	20.0	25.9	60.6	33.6	28.9	29.8	37.8	
24-May	39.1	18.0	54.4	25.8	22.7	3.4	7.4	28.6	40.6	29.8	18.8	26.6	44.7	21.7	49.7	25.0	44.5	
31-May	33.0	16.2	51.9	18.3	21.7	4.2	9.9	18.6	7.8	23.8	20.9	14.8	45.5	29.3	16.2	21.0	16.5	
7-Jun	36.9	13.7	61.4	19.5	16.1	3.2	3.6	12.6	40.1	28.1	20.7	20.9	34.1	22.1	2.1	28.7	51.5	
14-Jun	6.5	23.6	35.8	24.7	4.3	5.3	6.7	11.6	42.9	30.2	13.5	32.6	57.7	25.0	23.4	29.2	41.1	
21-Jun	33.5	20.8	34.3	19.6	10.1	13.3	7.6	16.2	44.2	27.0	9.1	30.0	62.0	20.0	6.3	32.0	36.4	
28-Jun	17.4	12.4	18.4	23.4	11.4	9.2	0.8	27.2	25.6	45.5	12.8	42.0	53.3	47.9	31.9	30.3	38.8	
5-Jul	15.8	5.5	14.6	21.1	14.3	15.4	6.8	24.5	19.7	29.5	13.3	39.7	31.1	37.1	20.5	28.4	14.1	
12-Jul	25.2	6.3	26.3	13.0	22.6	6.0	1.3	18.9	26.7	27.5	14.5	26.4	23.2	12.7	25.9	18.8	28.2	
19-Jul	13.3	18.4	13.6	8.8	11.5	-1.1	-0.4	16.9	24.2	29.8	12.7	16.2	13.3	23.5	14.1	18.5	29.6	
26-Jul	11.5	3.6	17.3	14.4	6.8	5.3	7.0	13.0	17.0	18.1	2.5	31.7	38.4	25.1	14.9	21.6	27.1	
2-Aug																		
9-Aug																		
16-Aug																		
23-Aug																		
30-Aug																		
6-Sep																		
Crop year to date sales	2337.1	2218.7	1917.4	1855.4	1913.9	740.9	1547.7	1852.8	2005.1	1846.2	2405.5	2200.4	2130.8	1797.1	1918.8	1581.3	1880.1	
Average weekly sales																		
rate to reach proj total	10.5	12.6	-2.7	1.9	1.0	-1.8	-0.8	-3.1	-4.2	0.5	5.2	-12.6	0.5	3.5	-3.1	1.1	4.1	
Proj./Actual export total	2400	2294	1901	1867	1920	730	1543	1834	1980	1849	2437	2125	2134	1818	1900	1588	1905	
YTD sales as % of total	97.4	96.7	100.9	99.4	99.7	101.5	100.3	101.0	101.3	99.8	98.7	103.5	99.9	98.8	101.0	99.6	98.7	
Sold as of around Sep 1 %	15.1	26.1	17.0	24.6	25.5	52.8	34.7	31.6	23.0	24.7	25.0	21.6	14.5	15.0	15.8	15.4	14.7	

Source: Futures International and USDA

## EXPORT SALES SITUATION

### ALL-WHEAT

(million bushels)

Weekly Sales Total	2018-19	2017-18	2016-17	2015-16	2014-15	2013-14	2012-13	2011-12	2010-11	2009-10	2008-09	2007-08	2006-07	2005-06	2004-05	2003-04	2002-03	2001-02	
New Crop Sales	155.2	231.2	200.6	160.1	219.3	256.5	185.8	243.2	148.6	115.7	263.9	159.2	134.1	134.1	208.4	125.1	112.6	111.0	
7-Jun	11.1	16.9	8.2	13.8	20.9	15.7	15.9	16.7	4.8	12.4	12.3	15.2	16.9	12.1	10.7	10.2	11.0	7.5	
Weeks remaining	14-Jun	17.0	13.7	28.0	11.6	13.7	15.9	30.9	24.3	35.3	9.9	19.8	19.9	11.6	18.8	21.7	21.7	7.6	13.0
44	21-Jun	20.7	19.9	17.0	16.0	13.2	26.9	11.9	20.0	26.5	13.5	18.3	22.9	19.9	21.6	15.9	19.0	16.4	19.9
	28-Jun	16.2	18.1	23.7	13.4	20.9	21.8	15.4	15.6	15.4	8.9	24.5	19.1	11.0	23.1	17.2	24.2	20.5	22.6
	5-Jul	5.0	13.8	30.3	12.7	12.4	54.1	11.5	19.1	18.9	21.5	22.7	43.5	7.4	11.3	20.2	20.6	6.2	10.8
	12-Jul	11.0	13.1	11.7	10.7	11.6	36.6	21.6	12.7	11.4	15.5	27.5	28.1	12.1	21.6	11.5	24.2	31.2	20.0
	19-Jul	14.2	24.6	17.6	18.5	16.3	24.3	13.5	17.4	14.0	12.6	22.4	76.3	17.1	19.2	15.7	13.8	20.6	26.0
	26-Jul	14.1	18.3	18.6	25.7	29.4	21.9	19.0	18.4	33.8	21.1	26.7	64.0	21.4	31.7	22.0	17.9	10.6	16.6
	2-Aug																		
	9-Aug																		
	16-Aug																		
	23-Aug																		
	30-Aug																		
	6-Sep																		
	13-Sep																		
Crop year to date sales	264.4	369.8	355.8	282.4	357.7	473.8	325.5	387.4	308.5	231.1	438.2	448.1	251.6	293.6	343.4	276.9	236.8	247.5	
Average weekly sales																			
rate to reach proj total	16.1	12.1	15.8	11.3	11.5	16.0	15.6	15.1	22.3	14.7	13.1	18.5	14.9	16.1	16.4	20.0	13.9	16.2	
Proj./Actual export total	975	901	1051	778	864	1176	1012	1051	1289	879	1015	1263	908	1003	1066	1158	850	962	
YTD sales as % of total	27.1	41.0	33.8	36.3	41.4	40.3	32.2	36.9	23.9	26.3	43.2	35.5	27.7	29.3	32.2	23.9	27.9	25.7	

Source: Futures International and USDA

## U.S. Wheat Export Sales for the Week Ending 07/26/2018

(000 tons)										WKLY
	OUTSTANDING SALES			ACCUMULATED EXPORTS			Crop Year to Date Sales		USDA PROJ.	TO
	NET SALES	CURRENT YEAR	YEAR AGO	WEEKLY EXPORTS	CURRENT YEAR	YEAR AGO	CURRENT YEAR	YEAR AGO		REACH Proj.
HRW	72.4	984.0	1393.1	107.8	792.8	2121.2	1776.8	3514.3	9934.7	185.4
SRW	39.5	490.3	674.0	23.4	417.4	401.5	907.7	1075.5	3402.3	56.7
HRS	132.1	1390.3	1427.5	155.9	918.2	1213.7	2308.5	2641.2	7348.9	114.6
WHITE	159.7	1198.8	1628.3	80.4	841.0	1000.7	2039.8	2629.0	5171.5	71.2
DURUM	-21.3	136.3	126.9	19.2	27.7	76.3	164.0	203.2	680.5	11.7
TOTAL	382.5	4199.6	5249.8	386.6	2997.1	4813.4	7196.7	10063.2	26537.8	439.6

Source: Futures International and USDA

## U.S. Wheat Export Sales for the Week Ending 07/26/2018

(bushels)										WKLY
	OUTSTANDING SALES			ACCUMULATED EXPORTS			Crop Year to Date Sales		USDA PROJ.	TO
	NET SALES	CURRENT YEAR	YEAR AGO	WEEKLY EXPORTS	CURRENT YEAR	YEAR AGO	CURRENT YEAR	YEAR AGO		REACH Proj.
HRW	2.7	36.2	51.2	4.0	29.1	77.9	65.3	129.1	365	6.8
SRW	1.5	18.0	24.8	0.9	15.3	14.8	33.4	39.5	125	2.1
HRS	4.9	51.1	52.5	5.7	33.7	44.6	84.8	97.0	270	4.2
WHITE	5.9	44.0	59.8	3.0	30.9	36.8	74.9	96.6	190	2.6
DURUM	-0.8	5.0	4.7	0.7	1.0	2.8	6.0	7.5	25	0.4
TOTAL	14.1	154.3	192.9	14.2	110.1	176.9	264.4	369.8	975	16.1

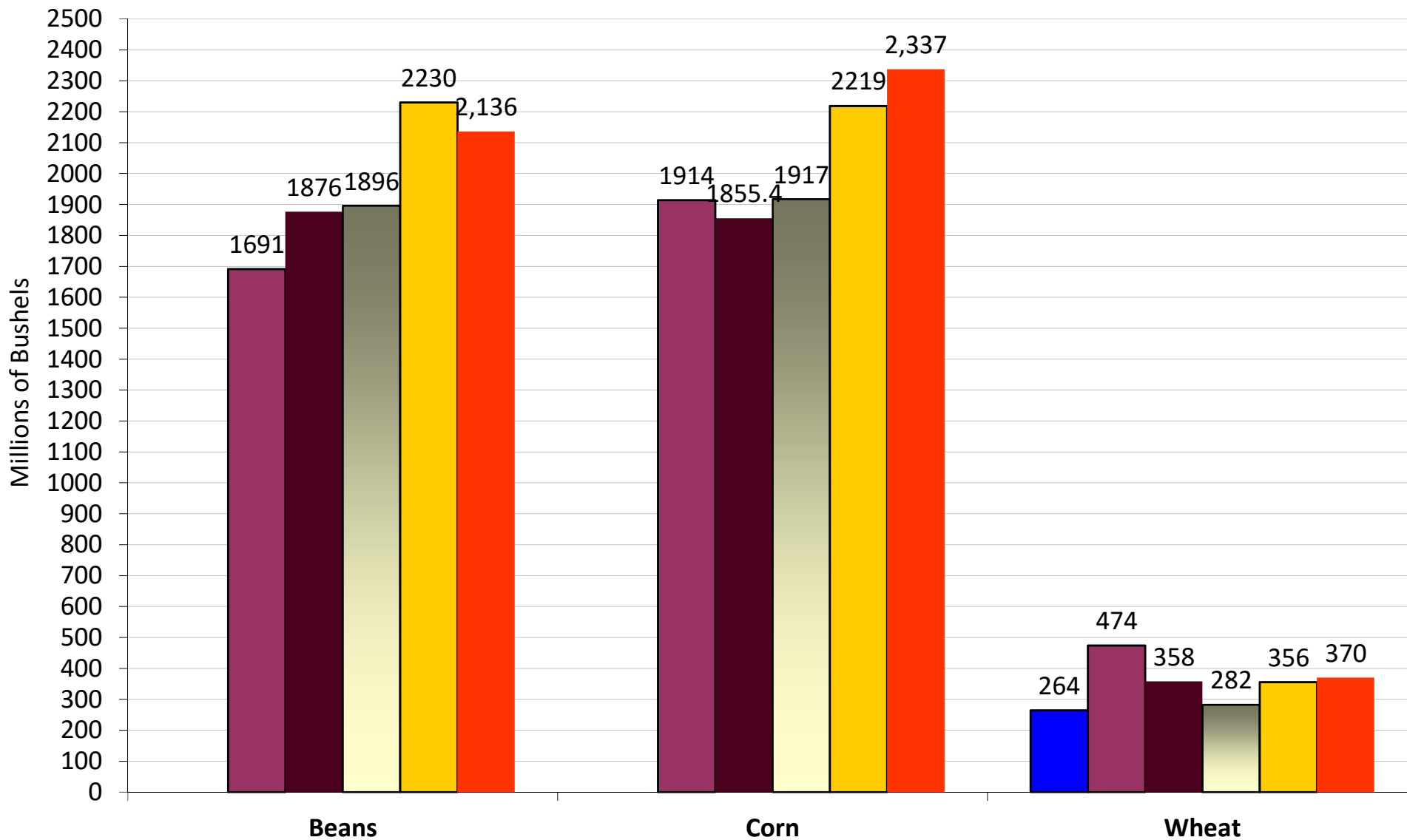
Source: Futures International and USDA



# Export Sales As of 7/26/18

Source: USDA & FI

## Crop Year Sales to Date

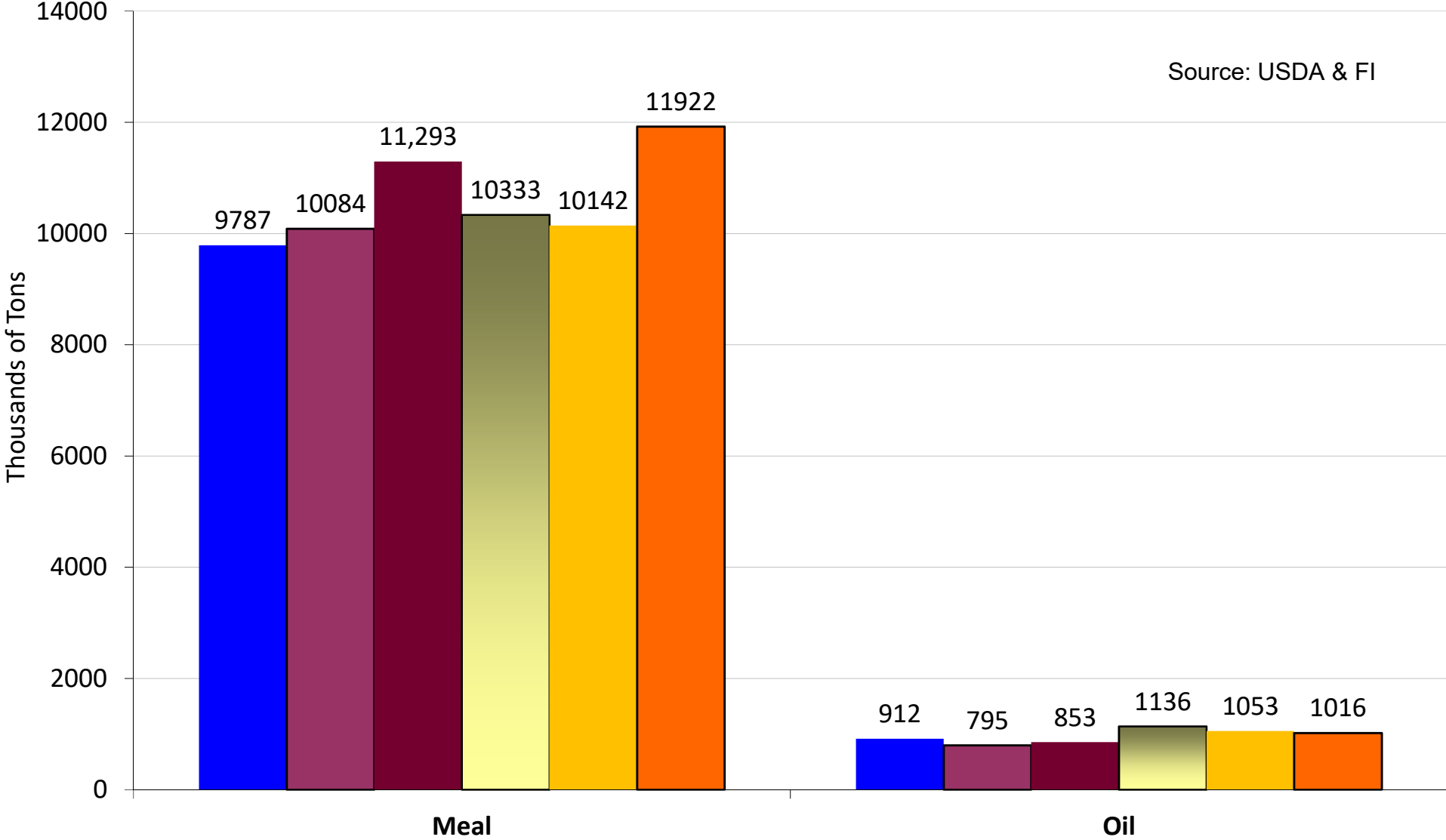


■ 2018-19 ■ 2013-14 ■ 2014-15 ■ 2015-16 ■ 2016-17 ■ 2017-18

# Export Sales As of 7/26/18

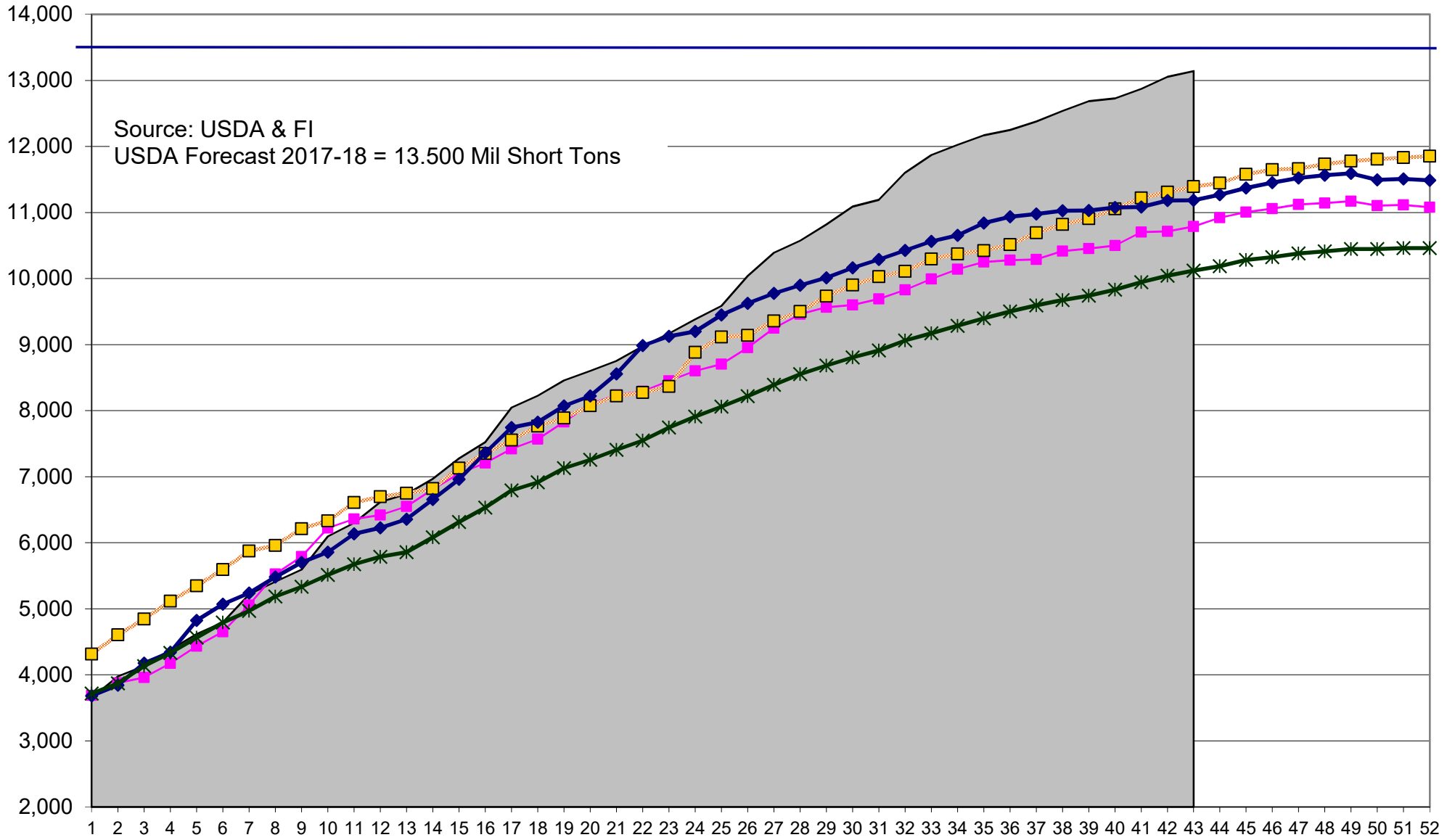
## Crop Year Sales to Date

Source: USDA & FI



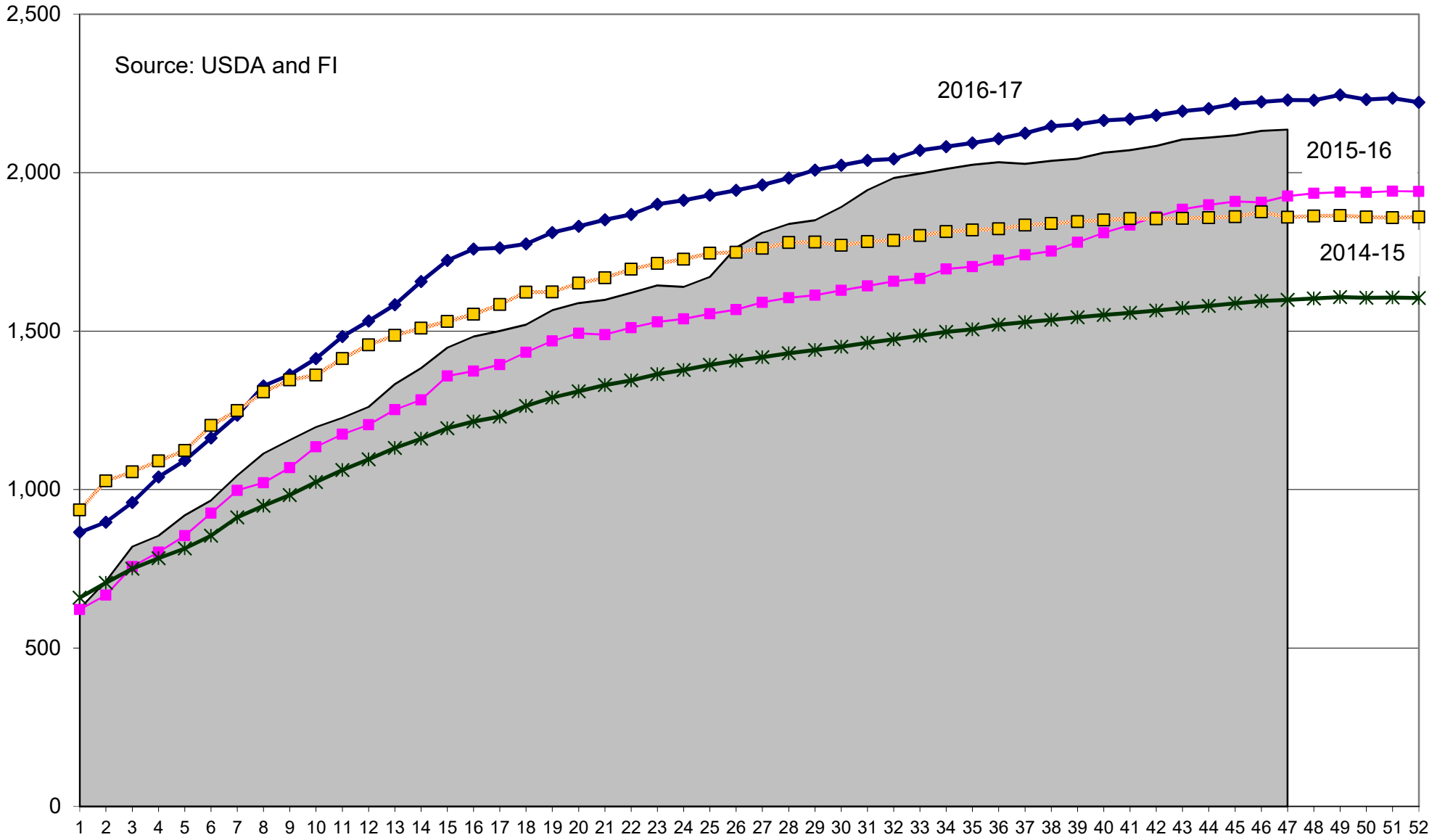
■ 2012-13 ■ 2013-14 ■ 2014-15 ■ 2015-16 ■ 2016-17 ■ 2017-18

# US Soymeal, Current Crop-Year Commitments, 000 short tons



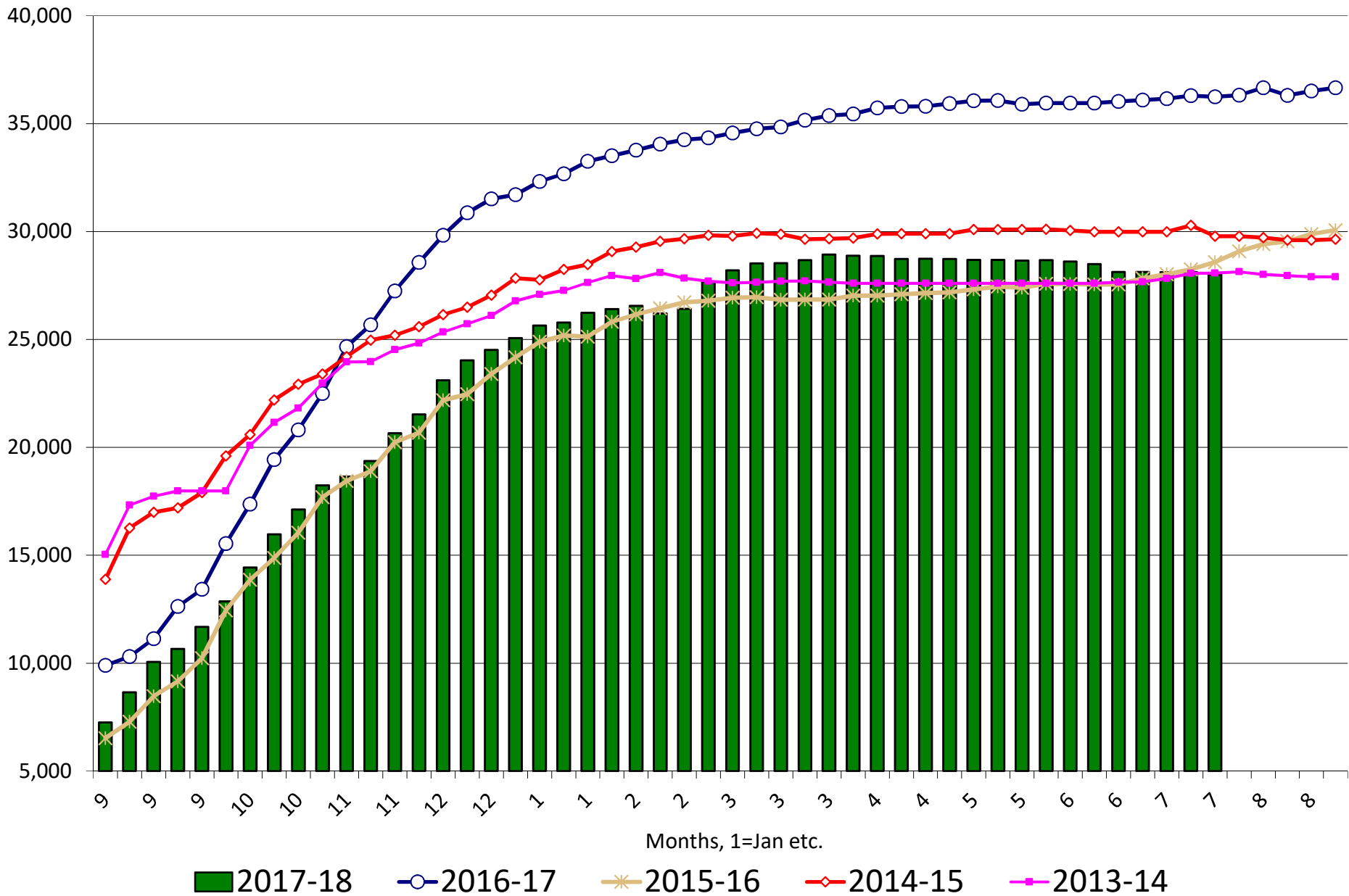
2017-18
  2014-15
  2015-16
  2016-17
  10-Year Average

# Soybeans, Current Crop-Year Commitments, million bushels



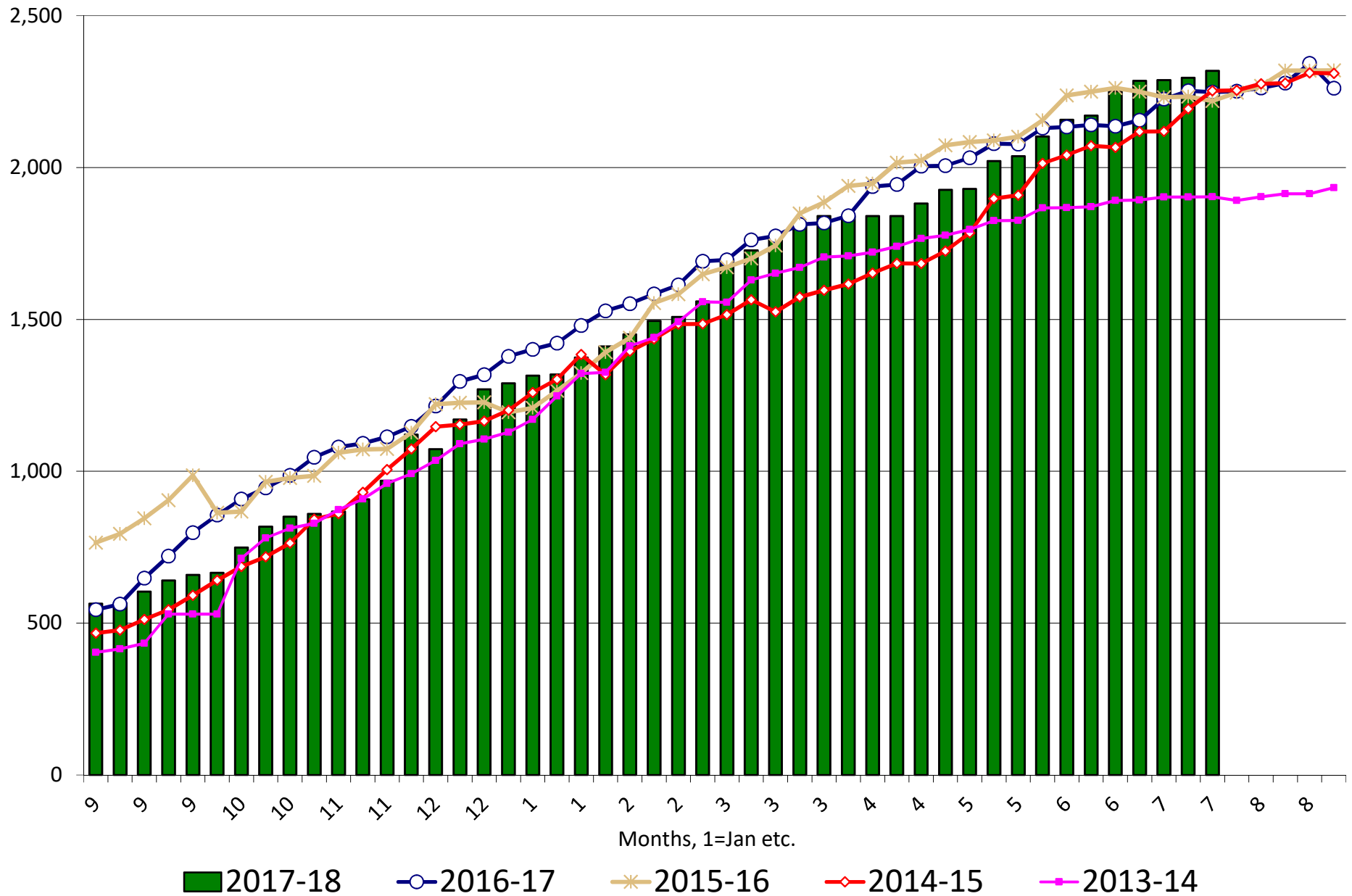
2017-18
  2016-17
  2015-16
  2014-15
  "10-Year Average"

## US Soybean Current Crop-Year Commitments to China Thousand Tons, Sept-Aug Crop-Year



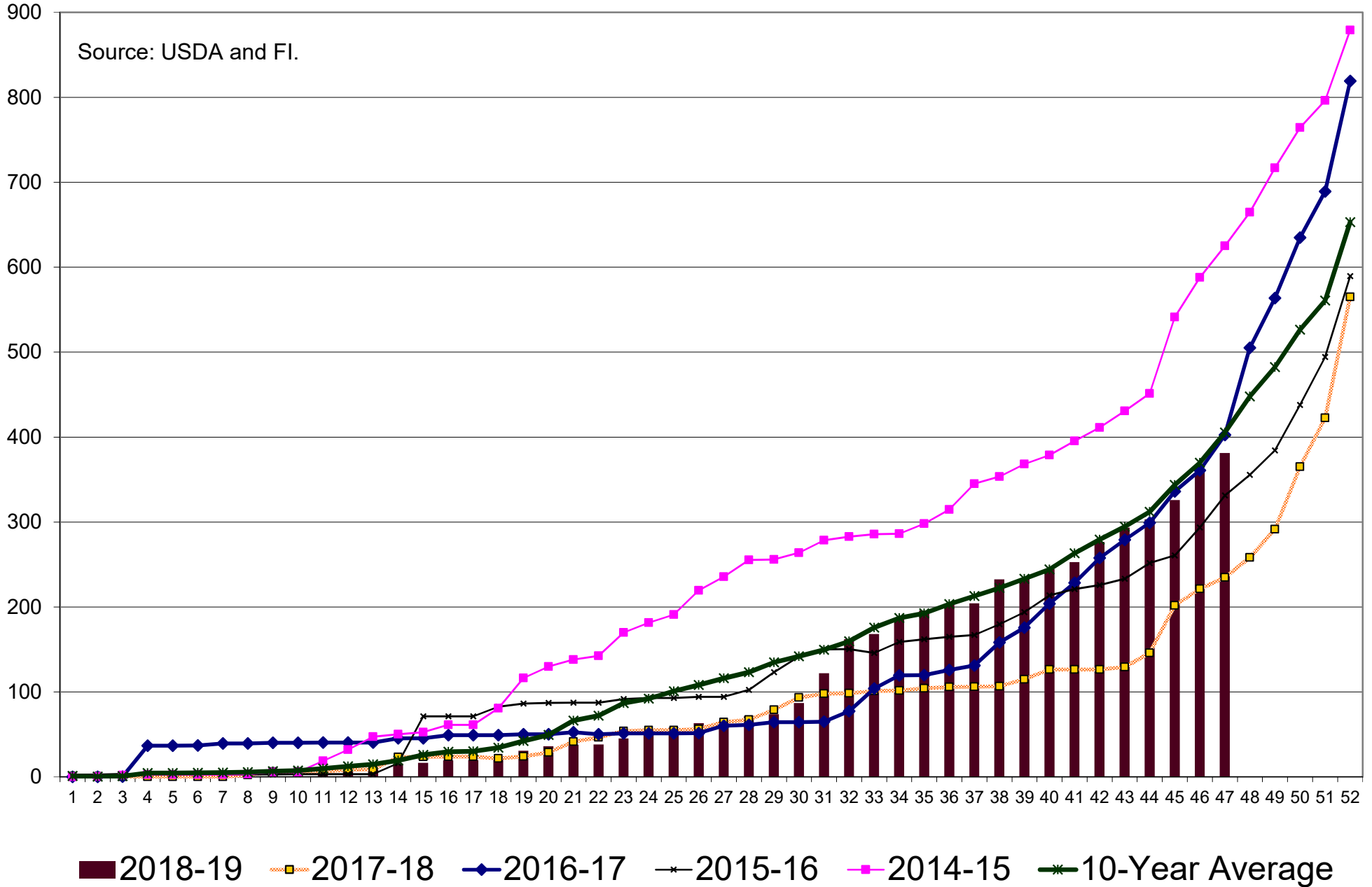
# US Soybean Current Crop-Year Commitments to Japan

## Thousand Tons, Sept-Aug Crop-Year

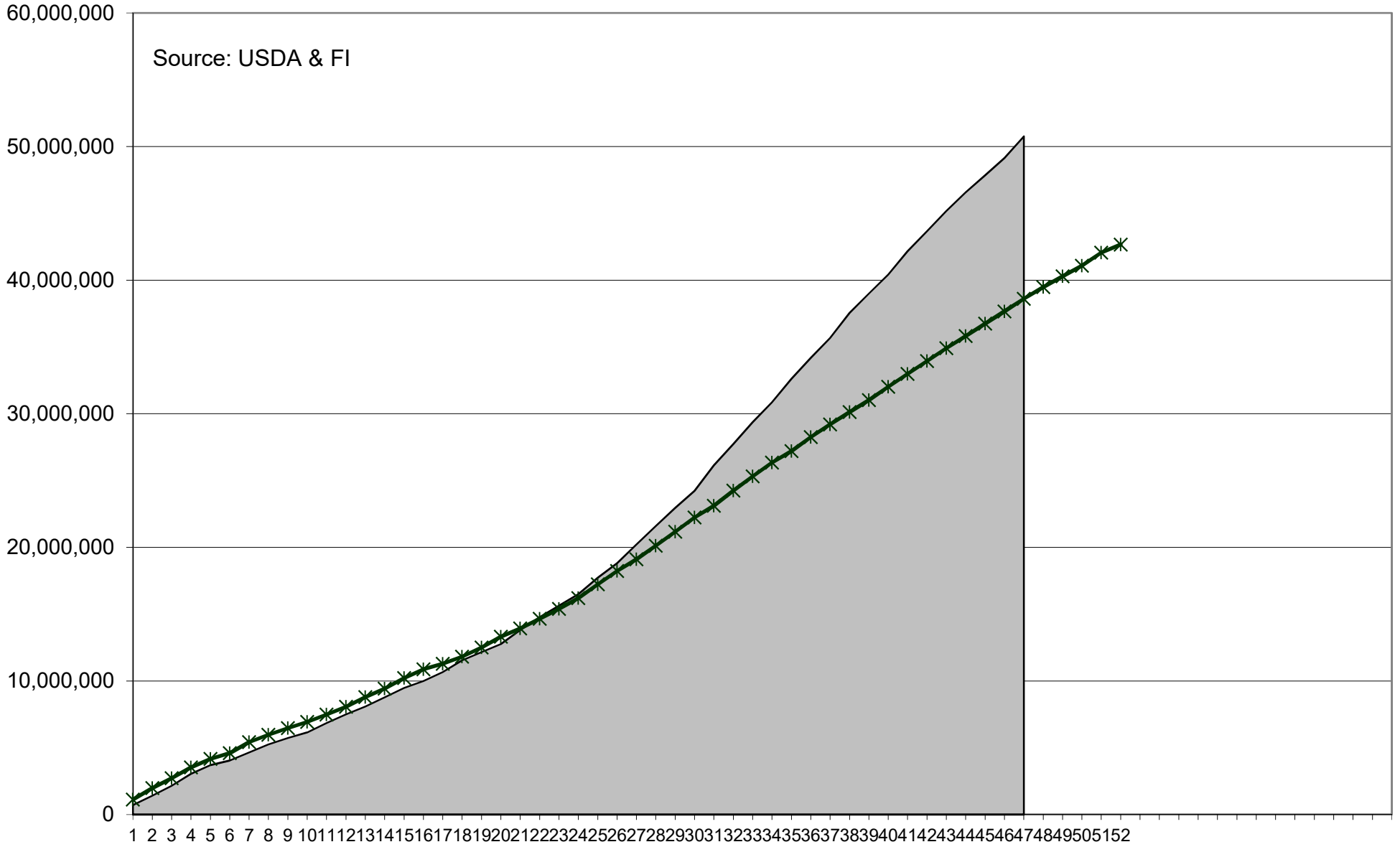


# Soybeans, New Crop (Forward) Commitments, million bushels

Source: USDA and FI.



# US Corn Current Crop-Year Accumulated Shipments versus 5-year

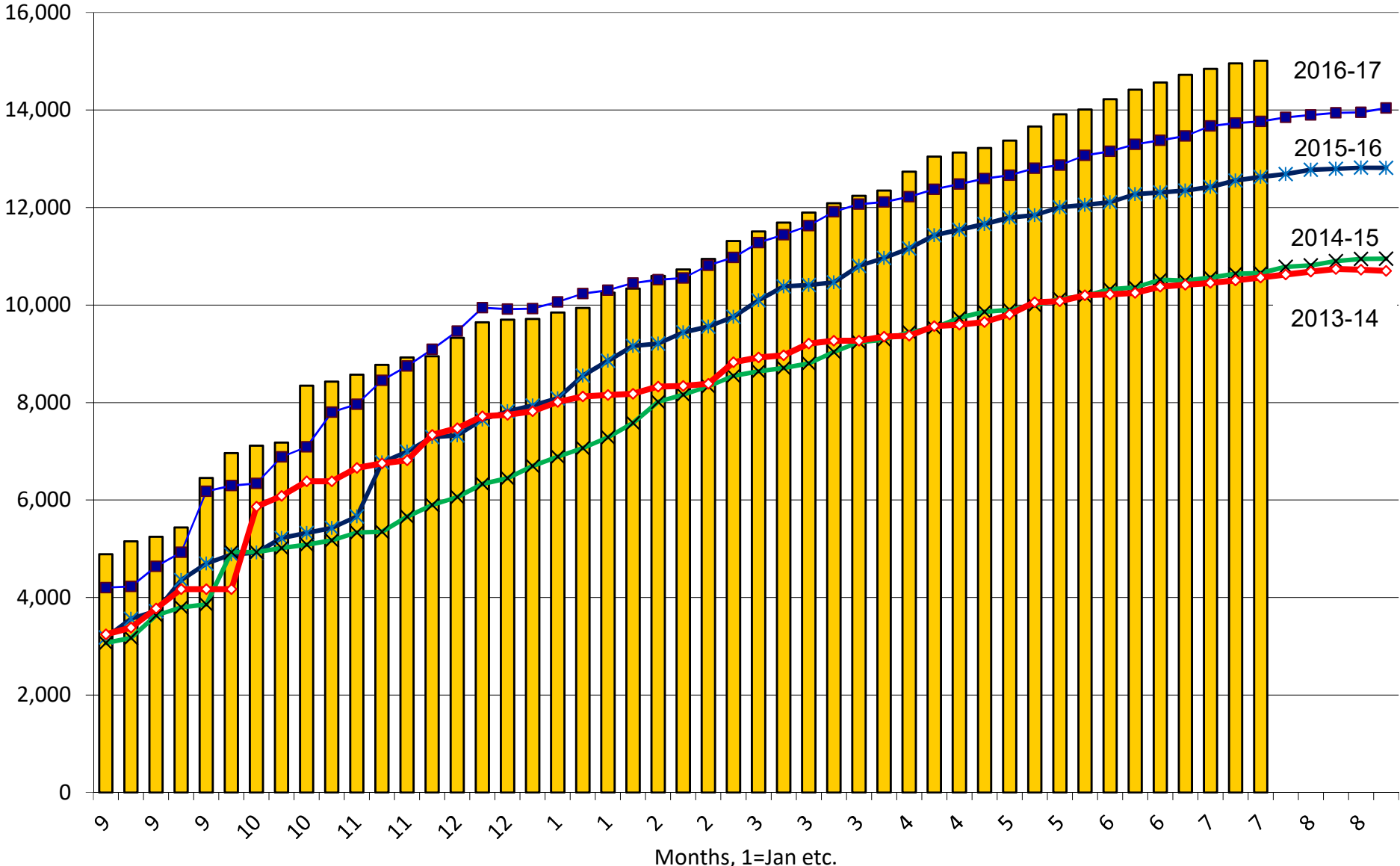


2017-18 5-Year Average



# US Corn Current Crop-Year Commitments to Mexico

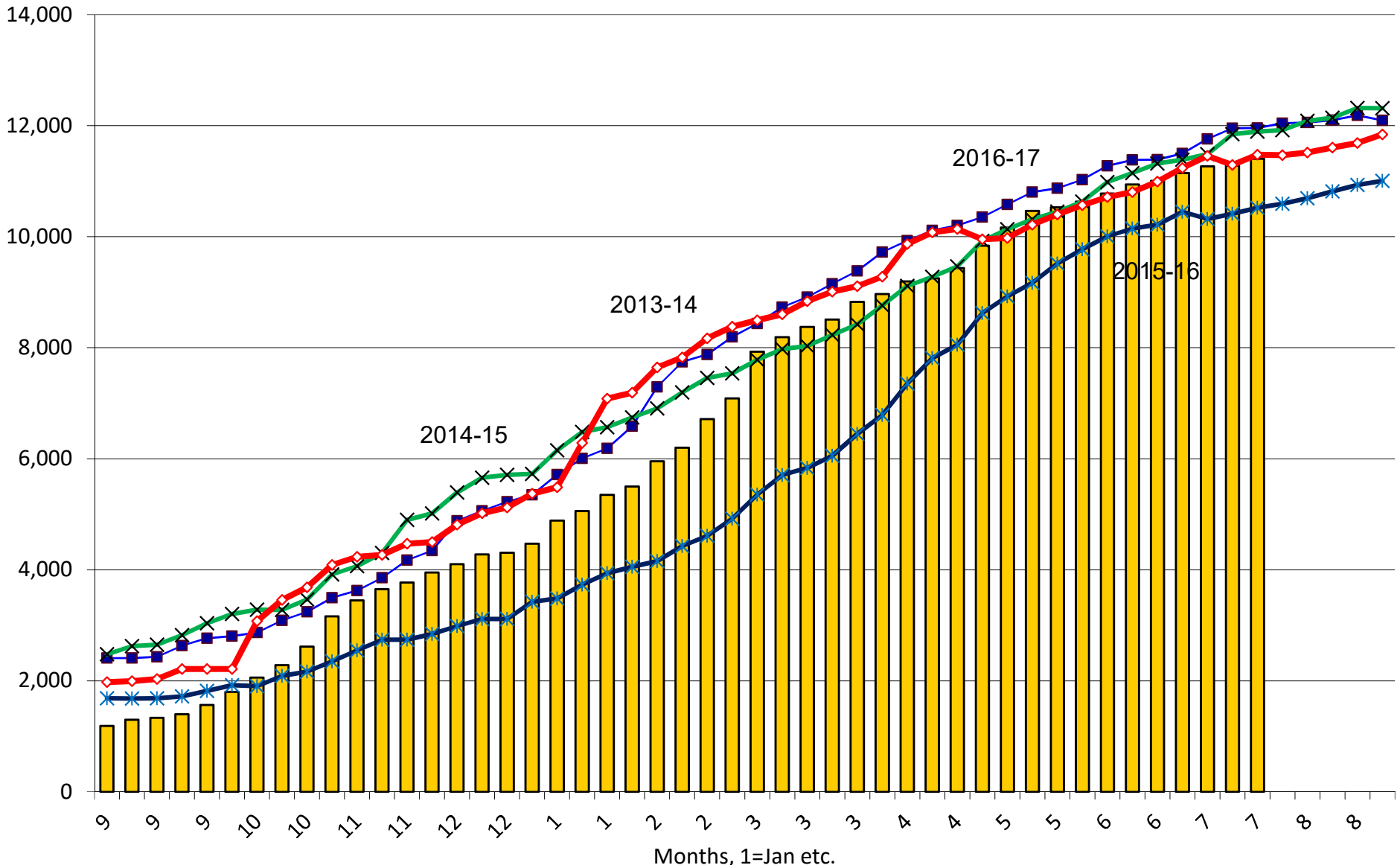
## Thousand Tons, Sept-Aug



2017-18   
  2016-17   
  2015-16   
  2014-15   
  2013-14

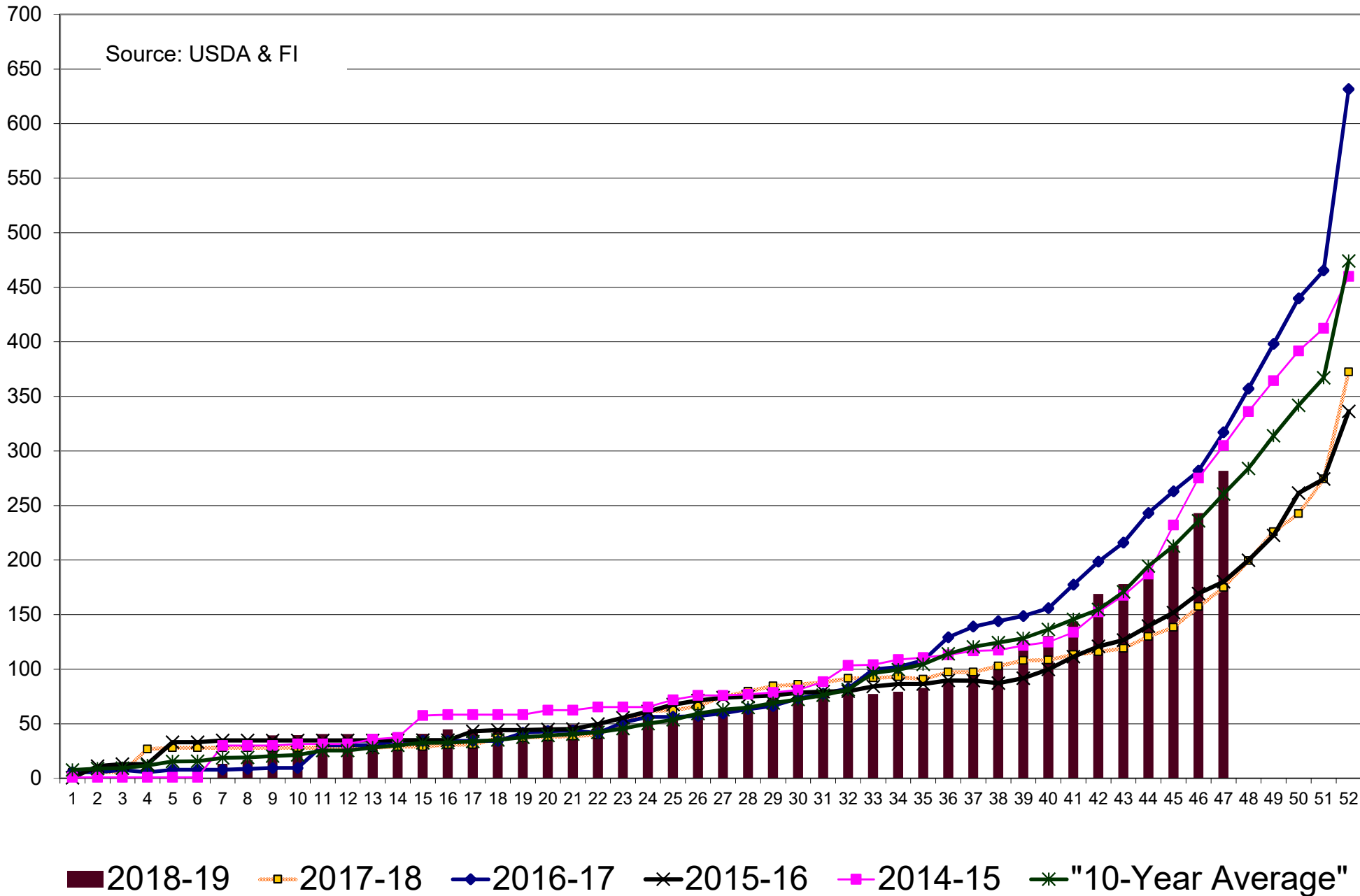
# US Corn Current Crop-Year Commitments to Japan

## Thousand Tons, Sept-Aug



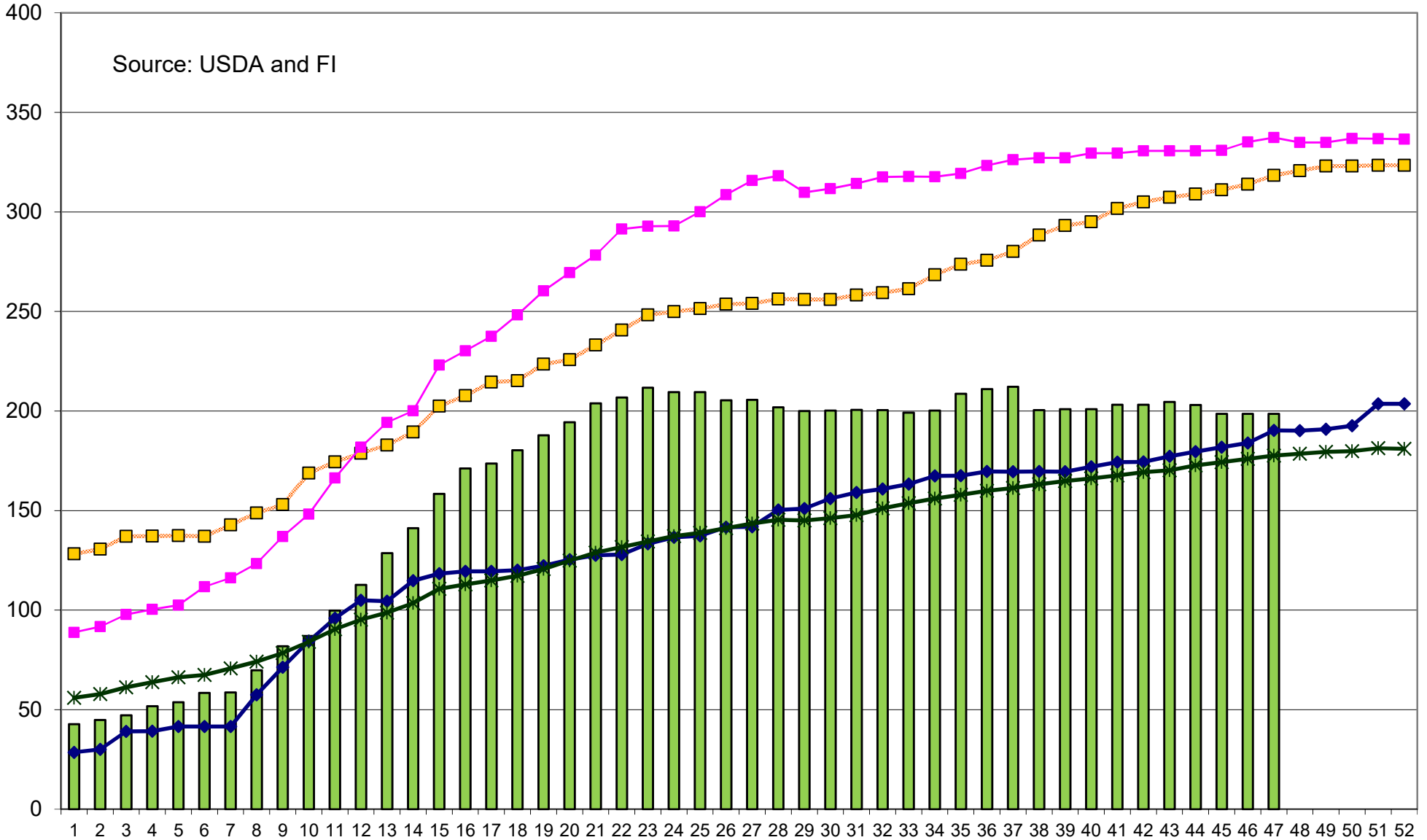
2017-18
  2016-17
  2015-16
  2014-15
  2013-14

# Corn, New Crop (Forward) Commitments, million bushels



# US Sorghum, Current Crop-Year Commitments, million bushels

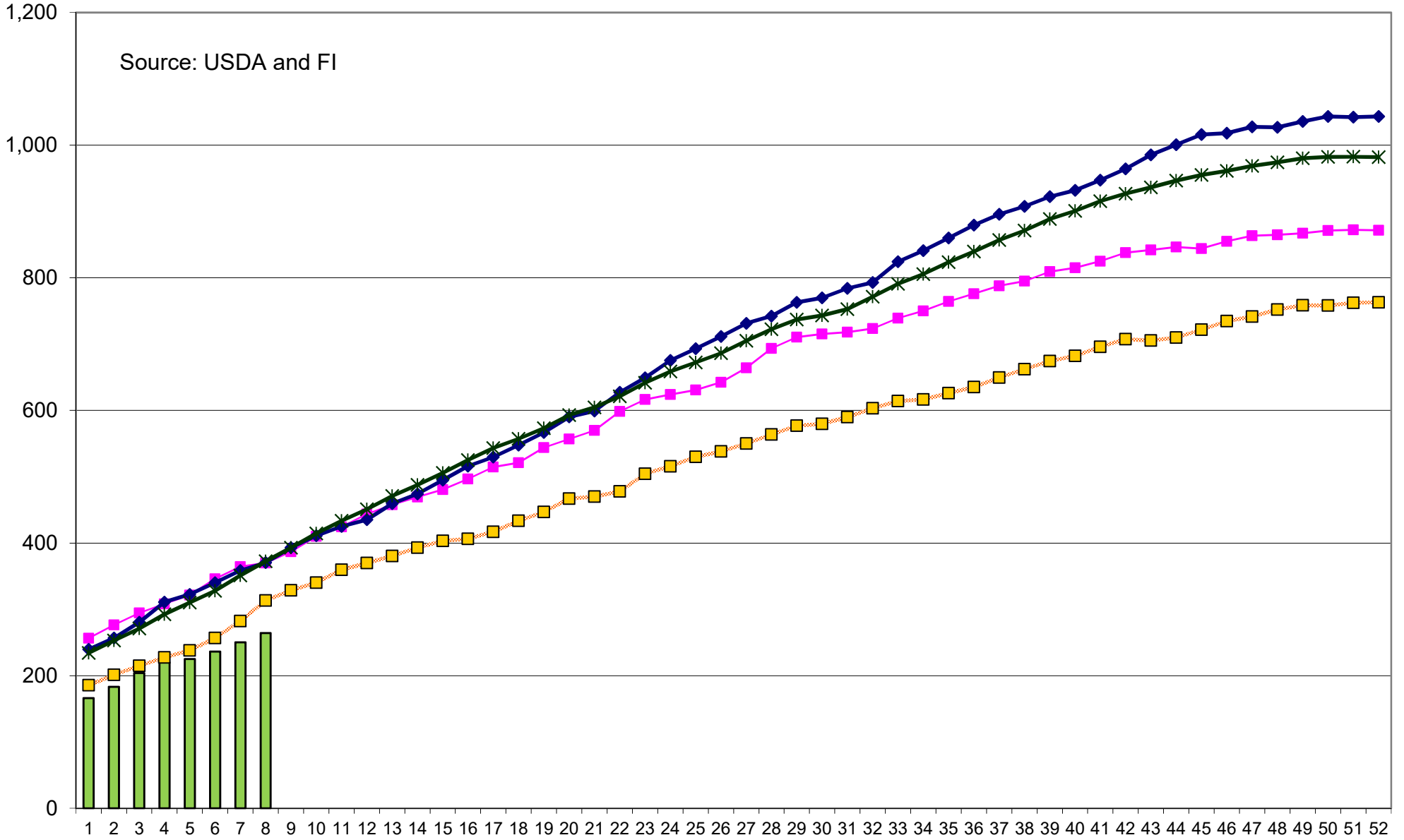
Source: USDA and FI



2017-18
  2016-17
  2015-16
  2014-15
  10-Year Average

# US Wheat, Current Crop-Year Commitments, million bushels

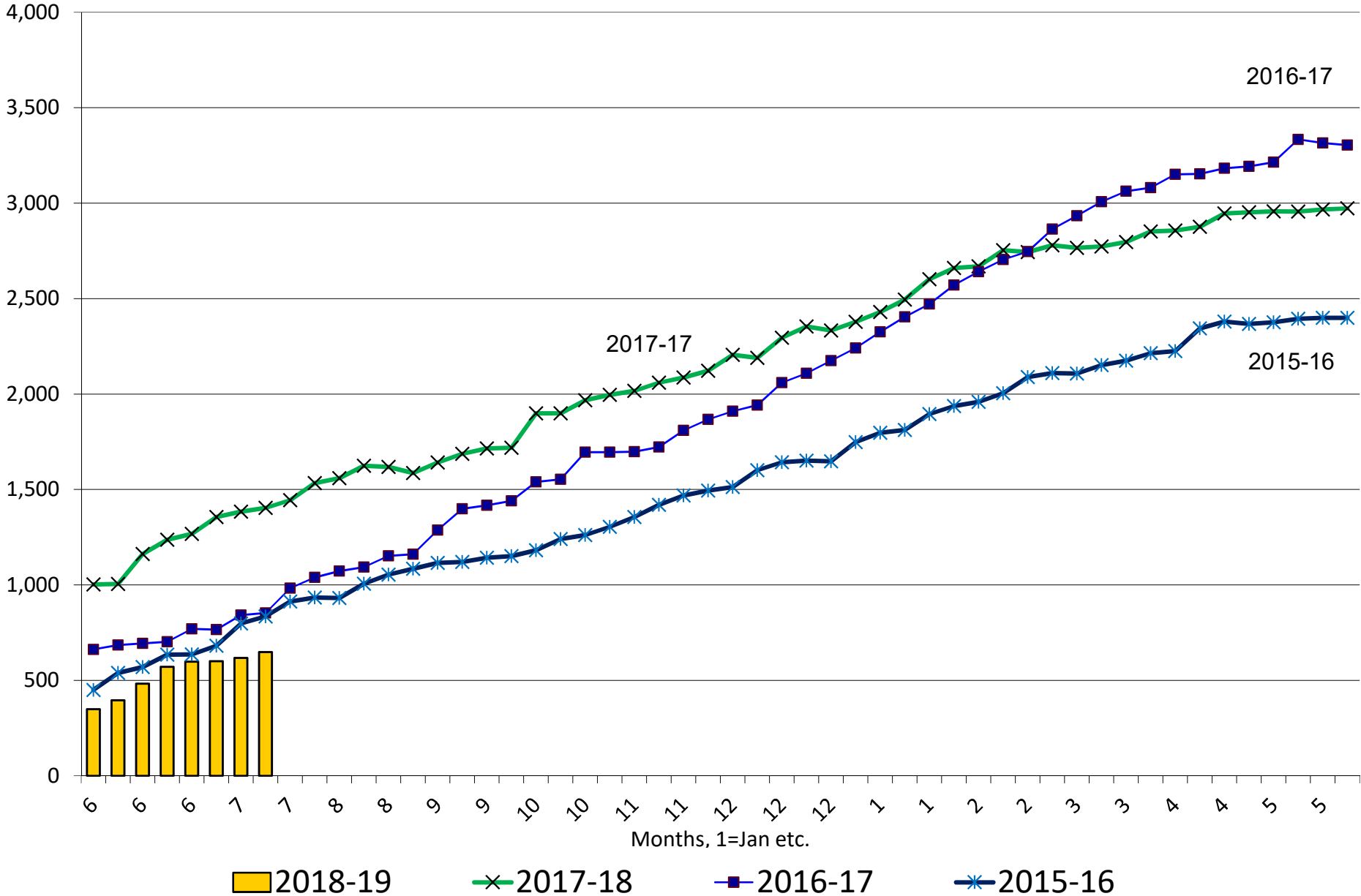
Source: USDA and FI



2018-19
  2017-18
  2016-17
  2015-16
  10-Year Average

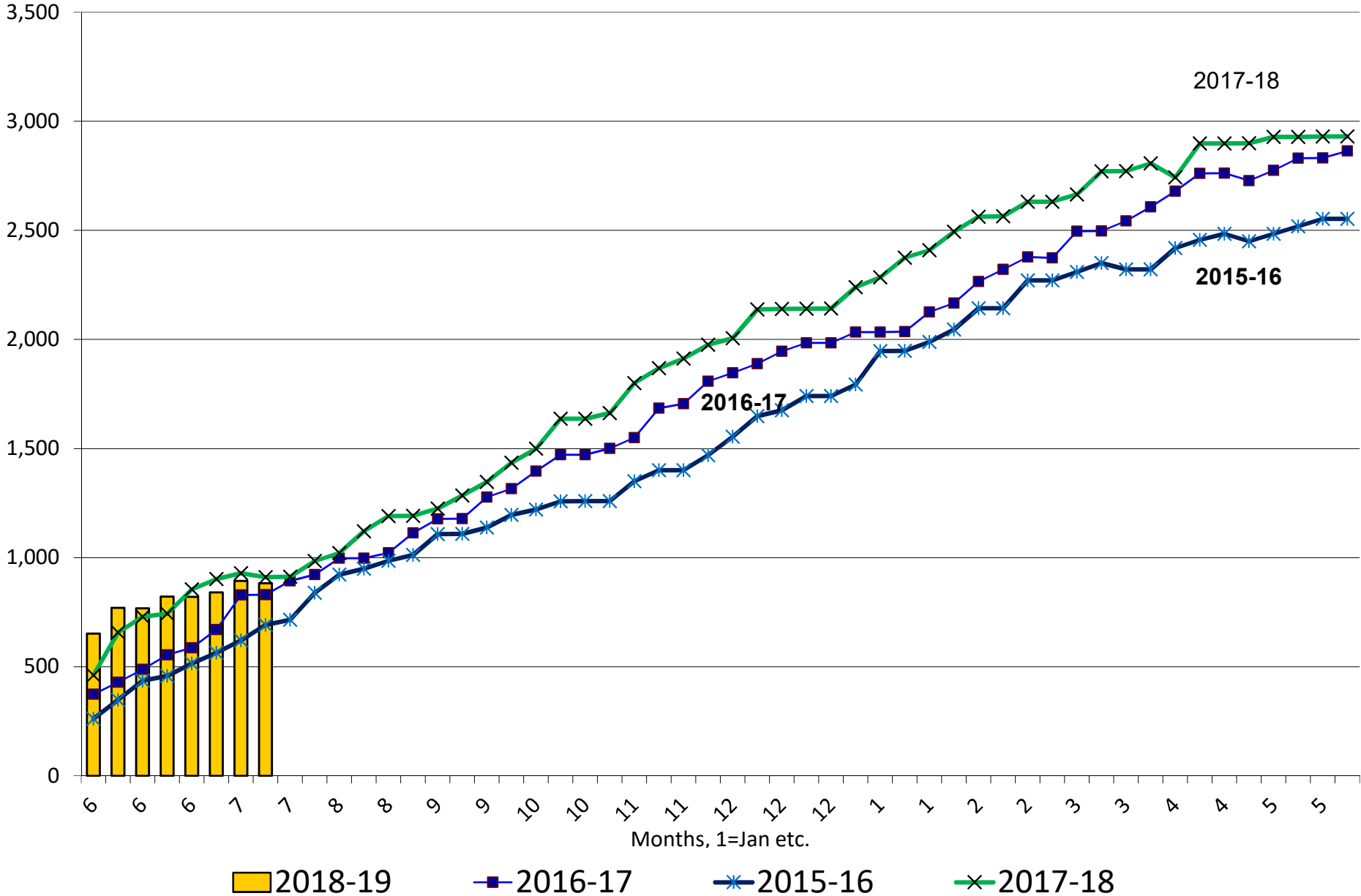
# US All Wheat Current Crop-Year Commitments to Mexico

## Thousand Tons, Sept-Aug



# US All Wheat Current Crop-Year Commitments to Japan

## Thousand Tons, Sept-Aug



# Disclaimer

TO CLIENTS/PROSPECTS OF FUTURES INTERNATIONAL, SEE RISK DISCLOSURE BELOW:

THIS COMMUNICATION IS CONVEYED AS A SOLICITATION FOR ENTERING INTO A DERIVATIVES TRANSACTION.

Any trading recommendations and market or other information to Customer by Futures International (FI), although based upon information obtained from sources believed by FI to be reliable may not be accurate and may be changed without notice to customer. FI makes no guarantee as to the accuracy or completeness of any of the information or recommendations furnished to Customer. Customer understands that FI, its managers, employees and/or affiliates may have a position in commodity futures, options or other derivatives which may not be consistent with the recommendations furnished by FI to Customer.

The risk of trading futures and options and other derivatives involves a substantial risk of loss and is not suitable for all persons. In purchasing an option, the risk is limited to the premium paid, and all commissions and fees involved with the trade. When an option is shorted or written, the writer of the option has unlimited risk with respect to the option written. The use of options strategies such as a straddles and strangles involve multiple option positions and may substantially increase the amount of commissions and fees paid to execute the strategy. Option prices do not necessarily move in tandem with cash or futures prices. Each person must consider whether a particular trade, combination of trades or strategy is suitable for that person's financial means and objectives.

This material may include discussions of seasonal patterns, however, futures prices have already factored in the seasonal aspects of supply and demand, and seasonal patterns are no indication of future market trends. Finally, past performance is not indicative of future results.

This communication may contain links to third party websites which are not under the control of FI and FI is not responsible for their content. Products and services are offered only in jurisdictions where solicitation and sale are lawful, and in accordance with applicable laws and regulations in each such jurisdiction.