

# CFTC COMMITMENT OF TRADERS REPORT

As of 8/28/2018

## TRADITIONAL FUNDS net position changes

Wed to Tue, in 000 contracts

	Corn	Bean	Meal	Oil	Chi. Wheat	KC Wheat	Min Wheat
Futures Only	(68.6)	(22.8)	(32.4)	6.9	(15.5)	(0.6)	(2.9)
Futures & Options Combined	(40.0)	(0.7)	(36.3)	5.9	(13.8)	0.5	(1.2)

## TRADITIONAL COMMERCIAL net position changes

	Corn	Bean	Meal	Oil	Chi. Wheat	KC Wheat	Min Wheat
Futures Only	61.7	25.0	37.6	(6.8)	18.6	2.1	3.0
Futures & Options Combined	42.9	7.4	43.5	(7.8)	13.1	(0.5)	2.2

## MANAGED MONEY net position changes

	Corn	Bean	Meal	Oil	Chi. Wheat	KC Wheat	Min Wheat
Futures Only	(29.4)	(19.2)	(24.7)	8.6	(11.3)	(3.2)	(3.1)
Futures & Options Combined	(42.1)	(13.6)	(25.3)	8.7	(9.6)	(2.9)	(3.1)

## SWAP DEALERS net position changes

	Corn	Bean	Meal	Oil	Chi. Wheat	KC Wheat	Min Wheat
Futures Only	20.4	(1.4)	1.8	(3.6)	7.4	(2.8)	0.0
Futures & Options Combined	15.6	(0.4)	5.0	(3.8)	2.8	(2.5)	0.4

## PRODUCERS/END USERS net position changes

	Corn	Bean	Meal	Oil	Chi. Wheat	KC Wheat	Min Wheat
Futures Only	41.4	26.3	35.9	(3.2)	11.2	4.9	3.0
Futures & Options Combined	31.2	24.5	33.5	(3.6)	9.1	4.9	2.0

## INDEX net position changes

	Corn	Bean	Meal	Oil	Chi. Wheat	KC Wheat	Min Wheat
Futures & Options Combined	5.3	(10.1)	(5.0)	(1.4)	4.3	(3.1)	NA

## SUPPLEMENTAL NON-COMMERCIAL net position changes

	Corn	Bean	Meal	Oil	Chi. Wheat	KC Wheat	Min Wheat
Futures & Options Combined	(46.8)	(13.5)	(31.5)	7.2	(8.7)	0.5	NA

## OPEN INTEREST net position changes

Wed to Tue, in 000 contracts

	Corn	Bean	Meal	Oil	Chi. Wheat	KC Wheat	Min Wheat
Futures Only	(42.0)	11.4	9.1	(8.6)	(36.7)	(23.7)	(5.4)
Futures & Options Combined	(178.2)	(11.0)	(8.7)	(13.3)	(91.4)	(28.4)	(9.2)

Source: CFTC and FI

Wed to Tue, in 000 contracts

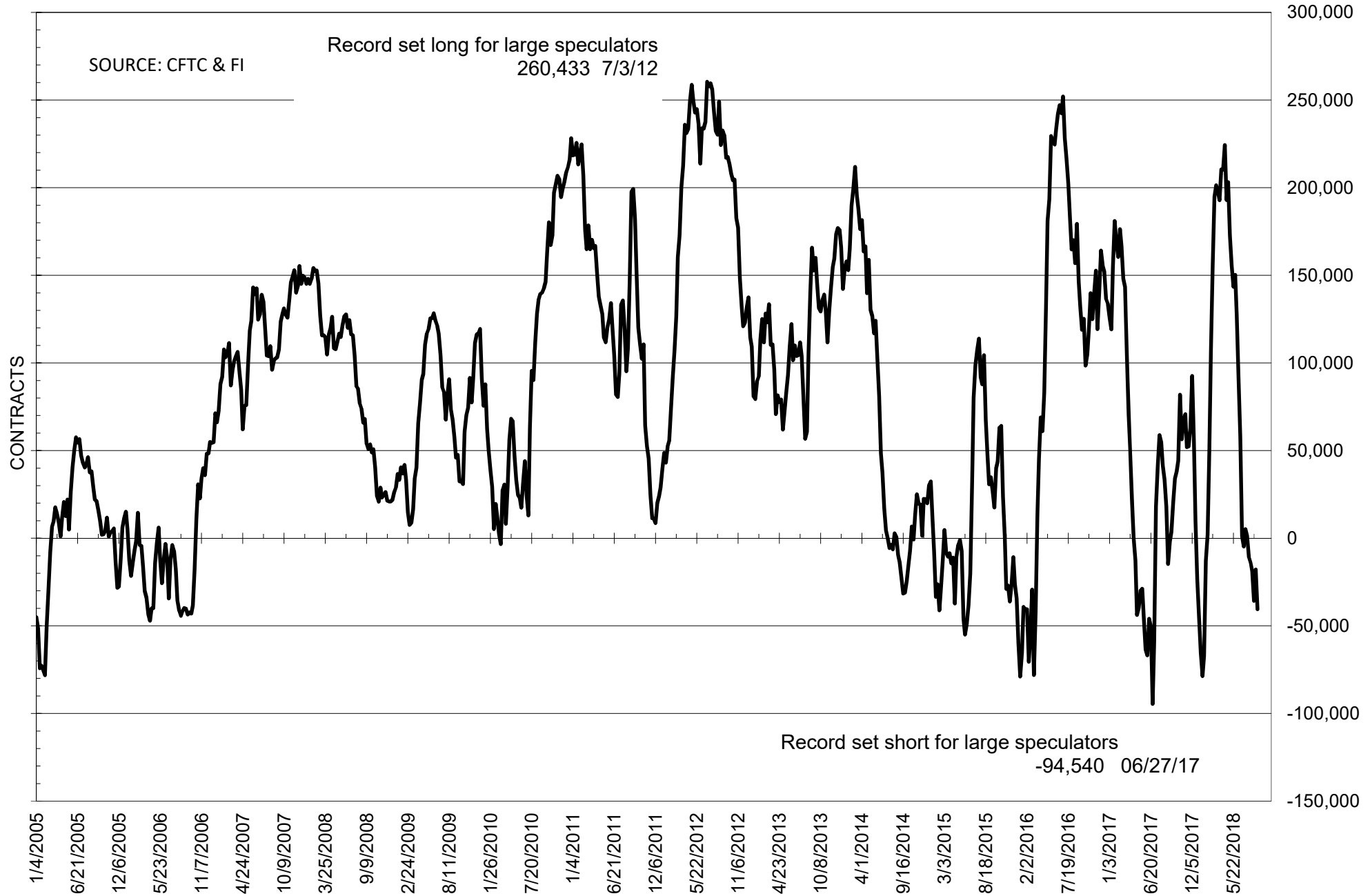
**COMMITMENT OF TRADERS  
FUTURES ONLY NET POSITIONS  
AS OF 08/28/2018  
(IN THOUSAND CONTRACTS)**

	COMMERCIAL				(FUND) NON COMMERCIAL				(SPEC) NON-REPORTABLE			
	28-Aug	21-Aug	14-Aug	7-Aug	28-Aug	21-Aug	14-Aug	7-Aug	28-Aug	21-Aug	14-Aug	7-Aug
	<b>WHEAT</b>											
Chicago	-56.3	-74.9	-76.3	-77.2	63.9	79.4	82.8	86.5	-7.6	-4.5	-6.5	-9.4
Kansas City	-67.0	-69.1	-66.1	-60.1	68.7	69.3	67.6	59.8	-1.7	-0.2	-1.5	0.3
Minneapolis	2.3	-0.7	-0.3	1.8	0.9	3.7	2.5	0.4	-3.1	-3.0	-2.1	-2.3
All Wheat	-121.0	-144.7	-142.7	-135.4	133.5	152.4	152.9	146.7	-12.5	-7.7	-10.2	-11.3
<b>CORN</b>	-41.8	-103.5	-94.7	-96.3	65.4	133.9	122.7	121.3	-23.6	-30.4	-28.0	-25.0
OATS	-1.3	-1.6	-1.6	-1.1	0.5	1.0	1.0	0.8	0.8	0.6	0.6	0.2
<b>SOYBEANS</b>	73.0	48.1	62.4	44.0	-40.6	-17.8	-35.8	-18.7	-32.4	-30.2	-26.6	-25.3
SOY OIL	44.6	51.5	51.6	48.4	-49.2	-56.1	-54.3	-53.9	4.6	4.7	2.6	5.5
SOY MEAL	-74.6	-112.2	-115.7	-103.9	66.3	98.7	100.1	90.2	8.4	13.5	15.6	13.7

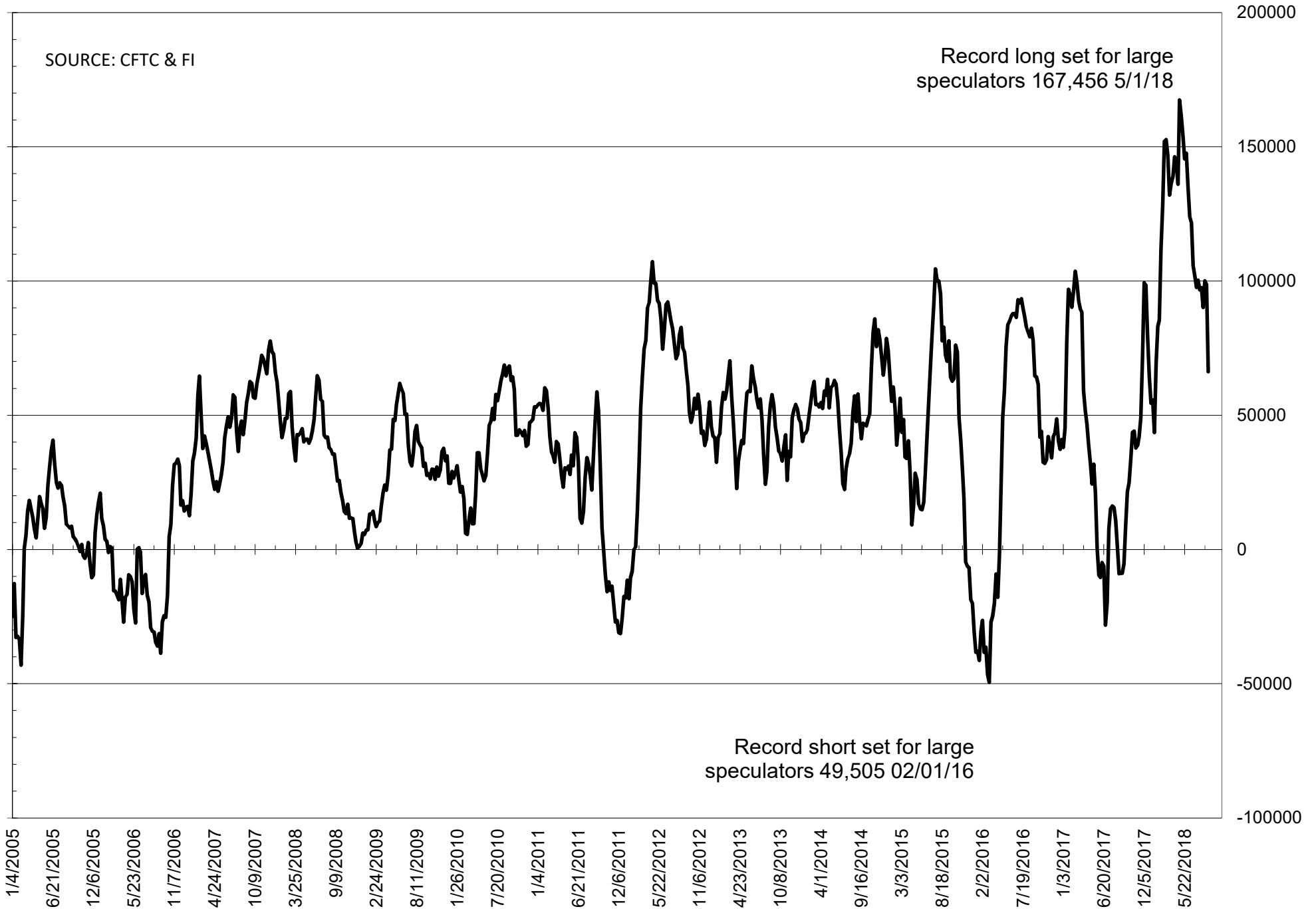
	TOTAL OPEN INTEREST				NEARBY FUTURES PRICE					28-Aug-18 LAST REPORTED % HELD BY TRADERS			
	28-Aug	21-Aug	14-Aug	7-Aug	U 31-Aug	U 28-Aug	U 21-Aug	U 14-Aug	U 7-Aug	LARGE FUND		SMALL	
										LONG	SHORT	LONG	SHORT
<b>WHEAT</b>													
Chicago	456974	493627	492285	497660	518.50	498.25	527.25	541.75	568.25	36%	22%	8%	10%
Kansas City	263082	286830	281801	285855	523.00	499.25	534.50	545.75	579.50	37%	11%	9%	10%
Minneapolis	60060	65426	67263	67676	583.75	544.50	588.50	596.25	627.75	24%	22%	18%	23%
<b>CORN</b>	1671504	1713501	1717134	1760500	351.00	341.00	359.75	362.25	370.75	28%	24%	10%	11%
OATS	4611	4934	4872	4486	243.50	248.00	257.00	260.25	255.25	28%	17%	38%	21%
<b>SOYBEANS</b>	801315	789943	800037	789827	833.00	820.50	874.50	868.25	895.25	19%	24%	7%	11%
SOY OIL	531159	539764	541123	524735	28.37	28.18	28.59	28.28	28.75	21%	30%	7%	6%
SOY MEAL	509363	500229	516696	507395	303.70	300.70	324.90	335.80	331.00	22%	11%	11%	8%

SOURCE: CFTC & FI

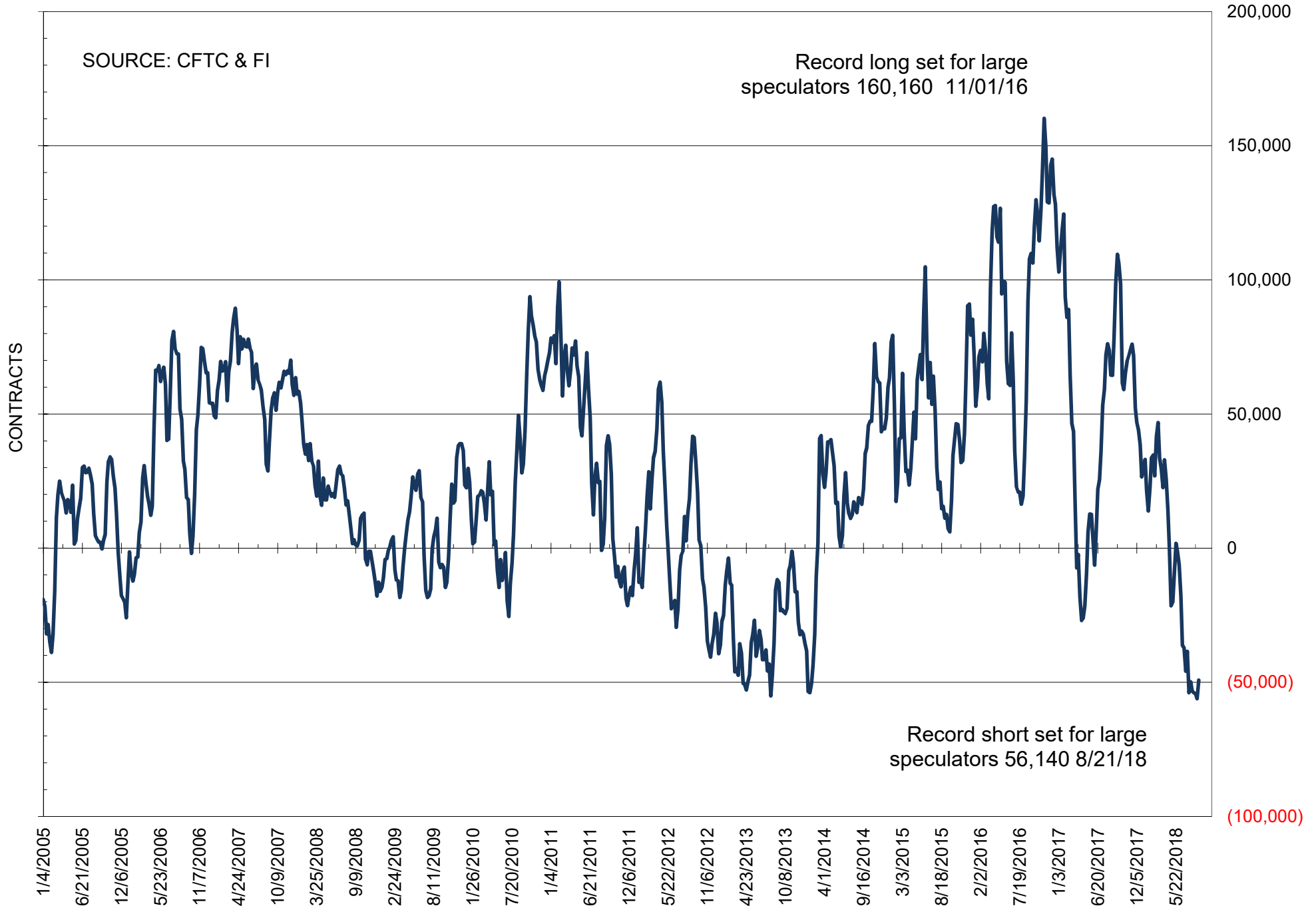
# NET POSITION OF FUTURES ONLY LARGE SPECS IN SOYBEANS



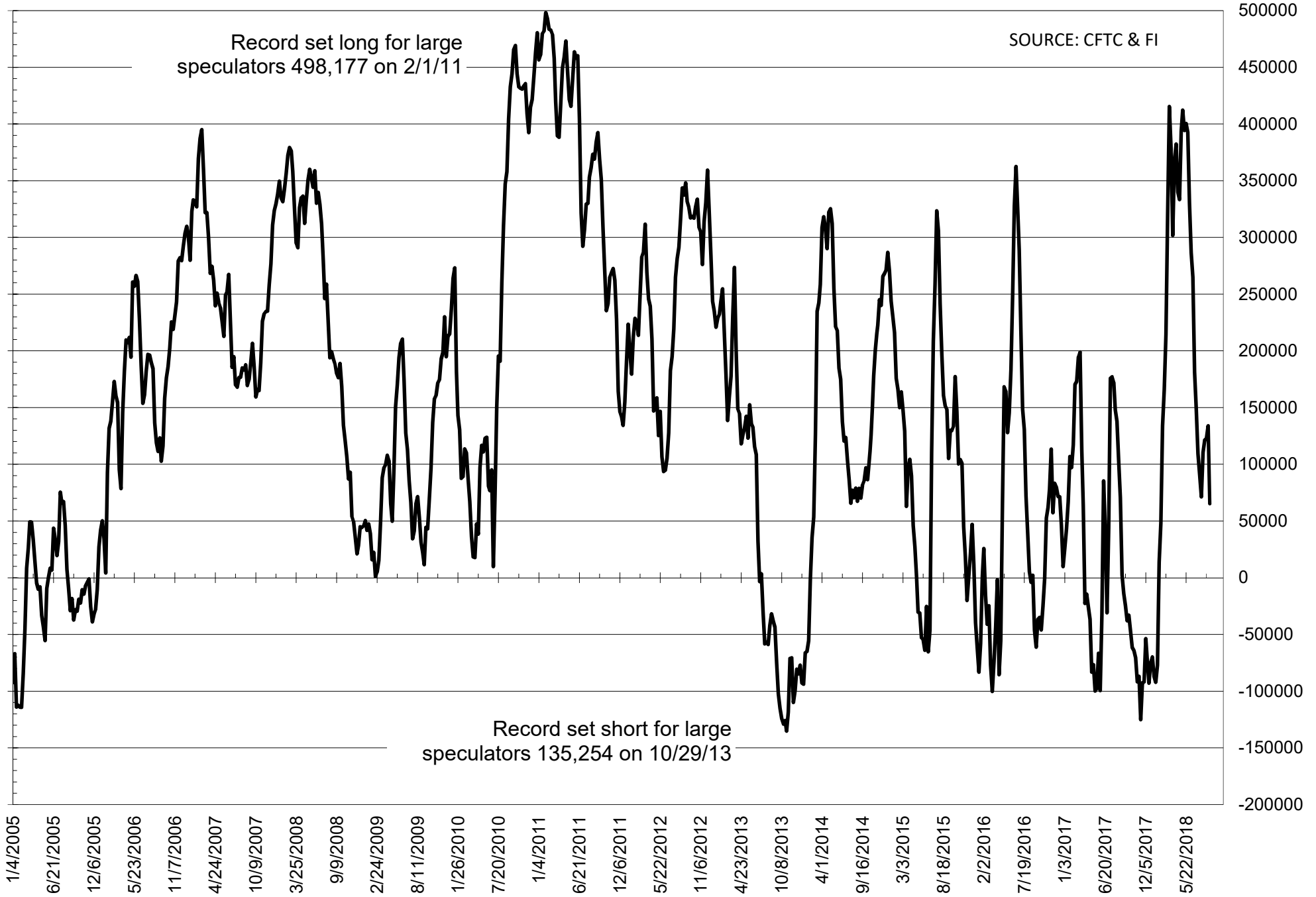
# NET POSITION OF FUTURES ONLY LARGE SPECS IN SOYMEAL



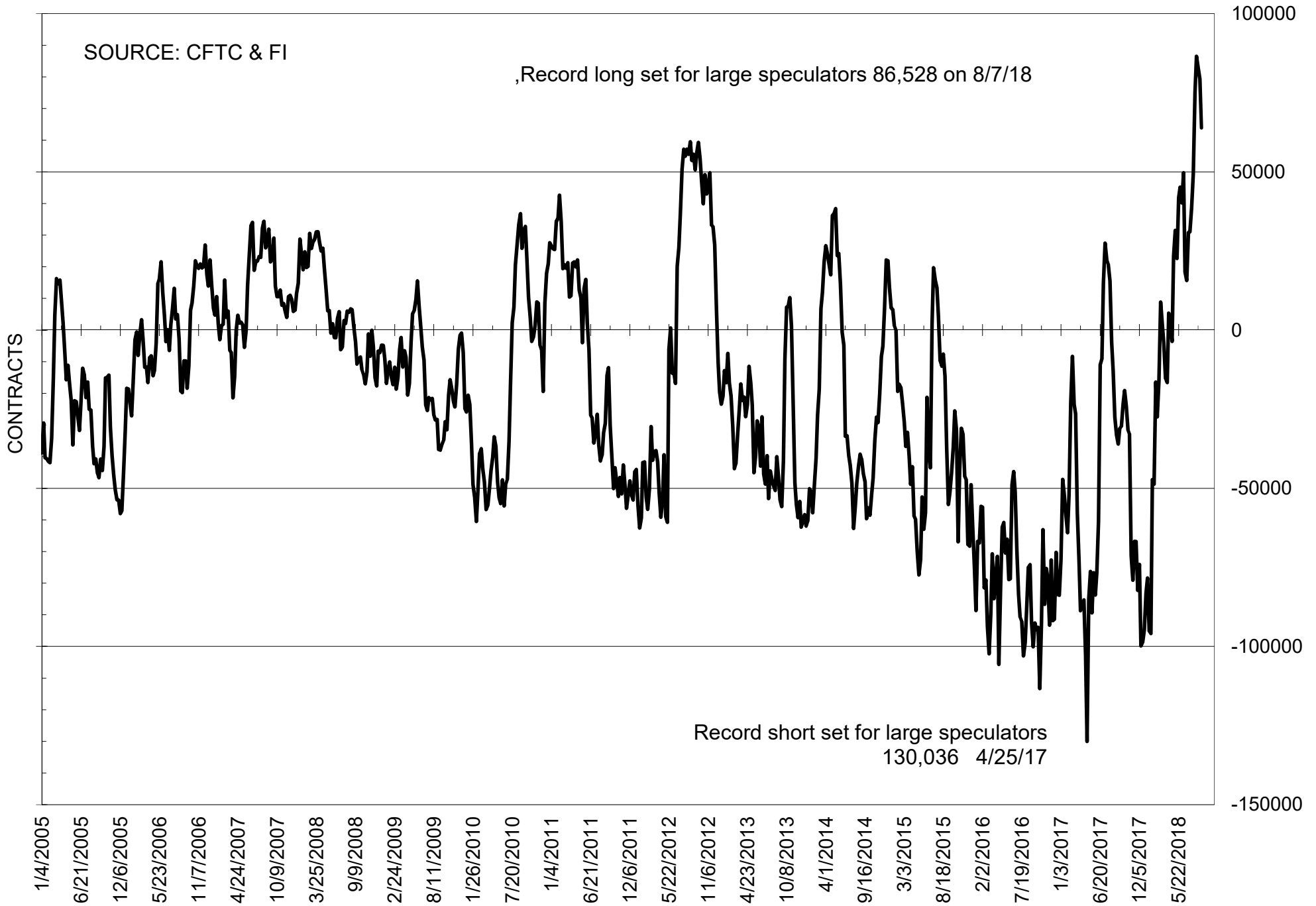
# NET POSITION OF FUTURES ONLY LARGE SPECS IN SOYOIL



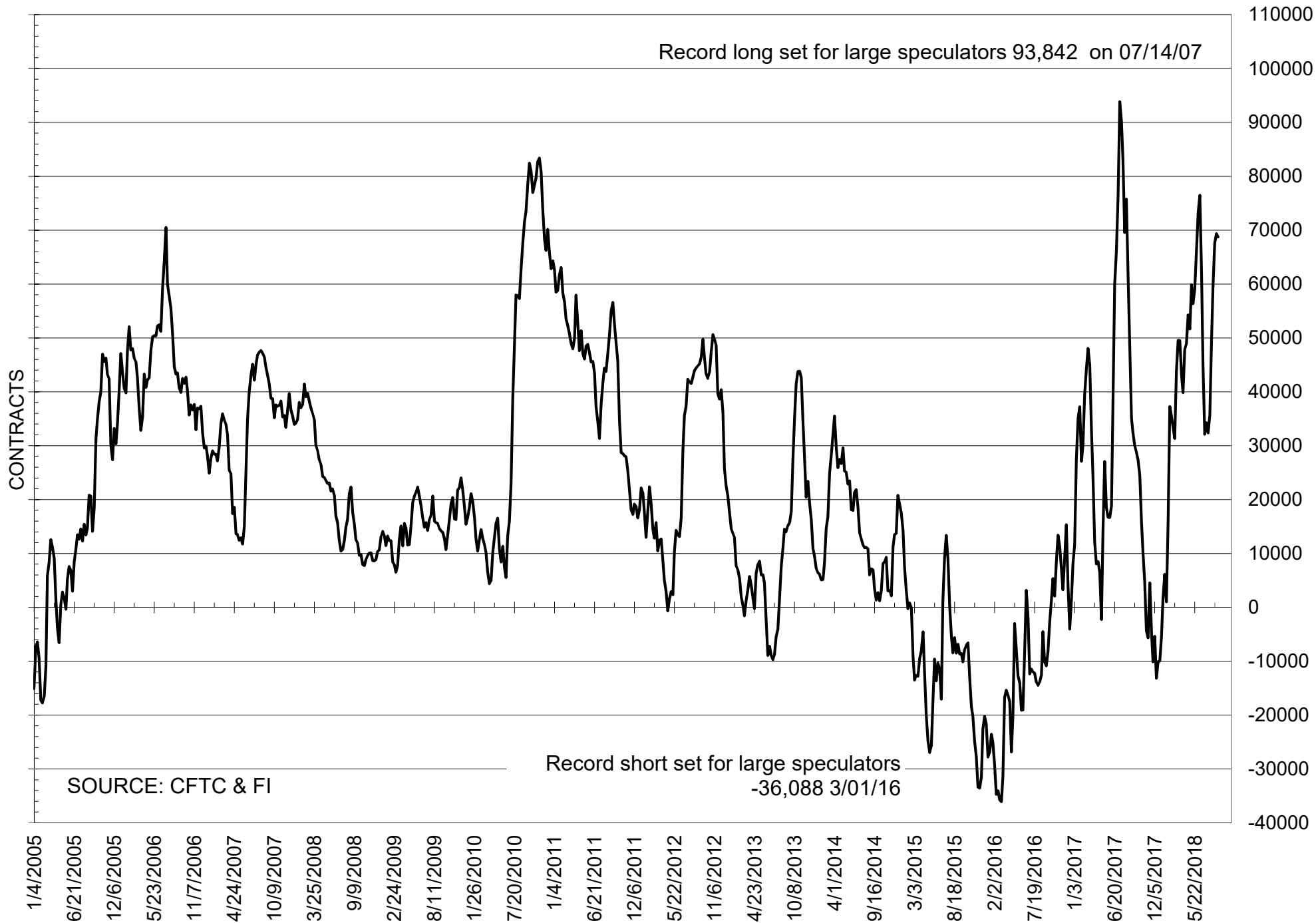
# NET POSITION OF LARGE SPECULATORS IN CORN



# NET POSITION OF FUTURES ONLY LARGE SPECS IN CHICAGO WHEAT

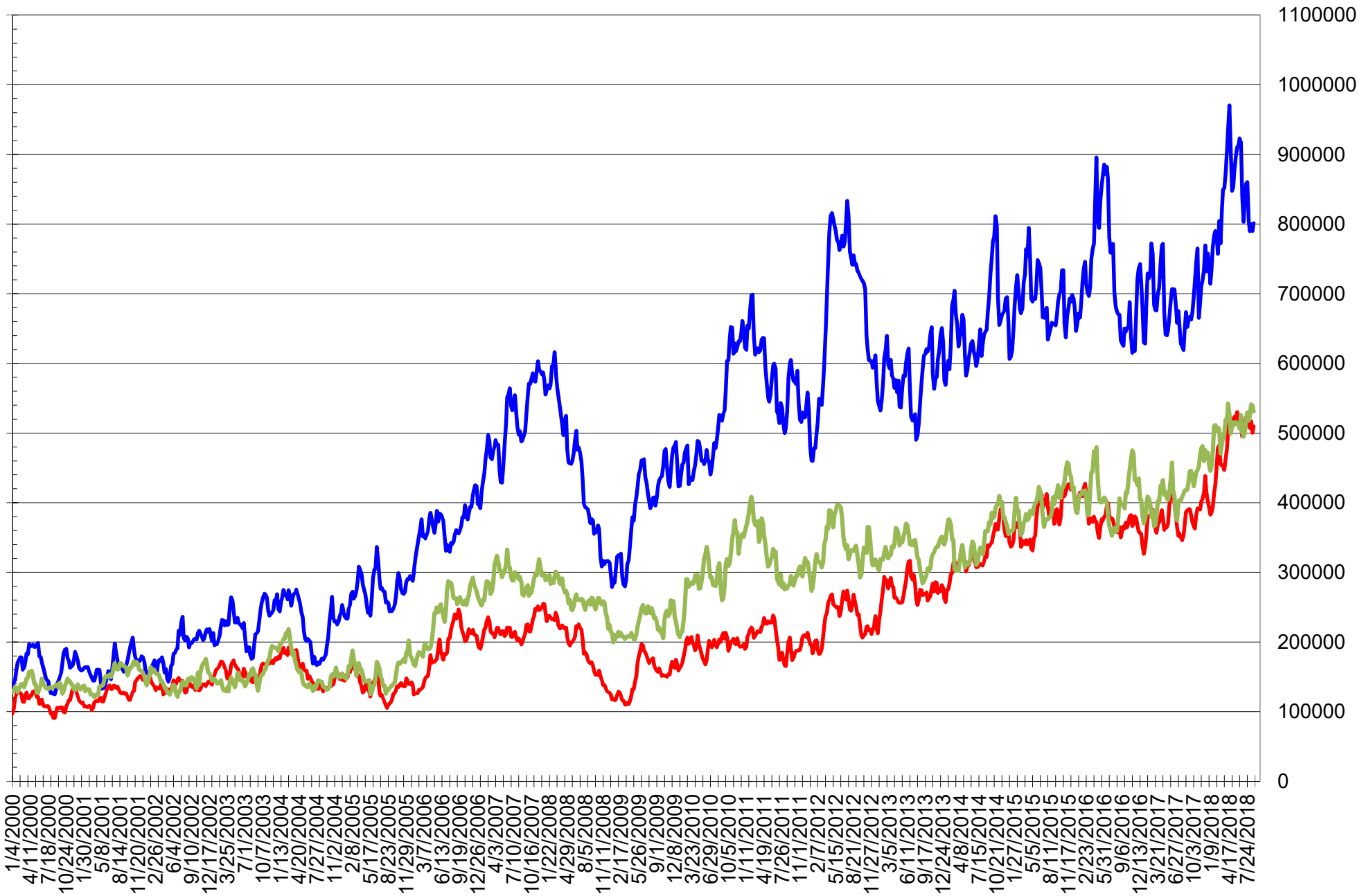


# NET POSITION OF LARGE SPECULATORS IN KANSAS CITY WHEAT





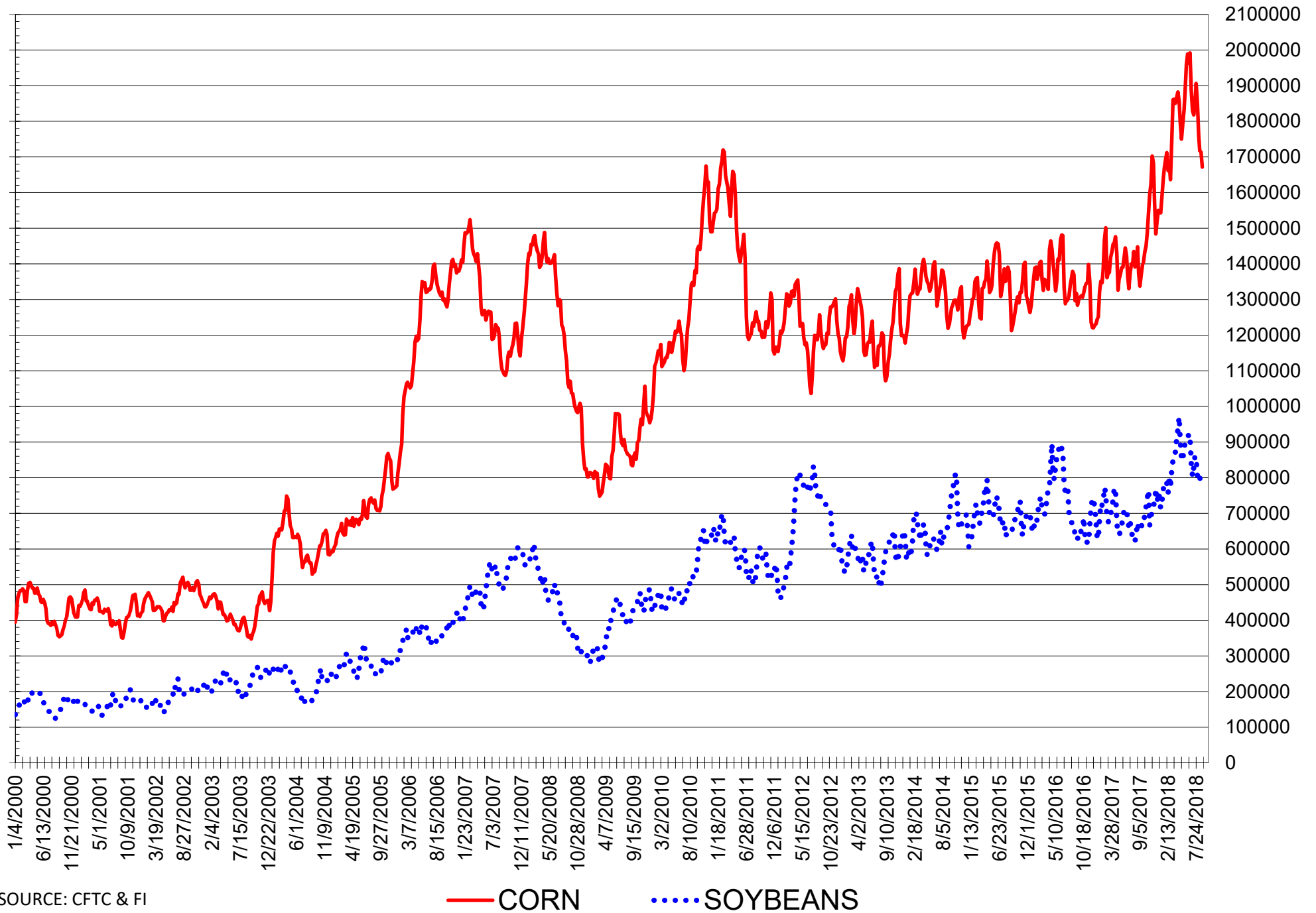
# TOTAL OPEN INTEREST IN SOYBEANS, MEAL AND OIL, FUTURES ONLY



SOURCE: CFTC & FI

— SOYBEANS — SOYBEAN MEAL — SOYBEAN OIL

# TOTAL OPEN INTEREST IN CORN AND SOYBEANS, FUTURES ONLY



SOURCE: CFTC & FI

— CORN      ..... SOYBEANS

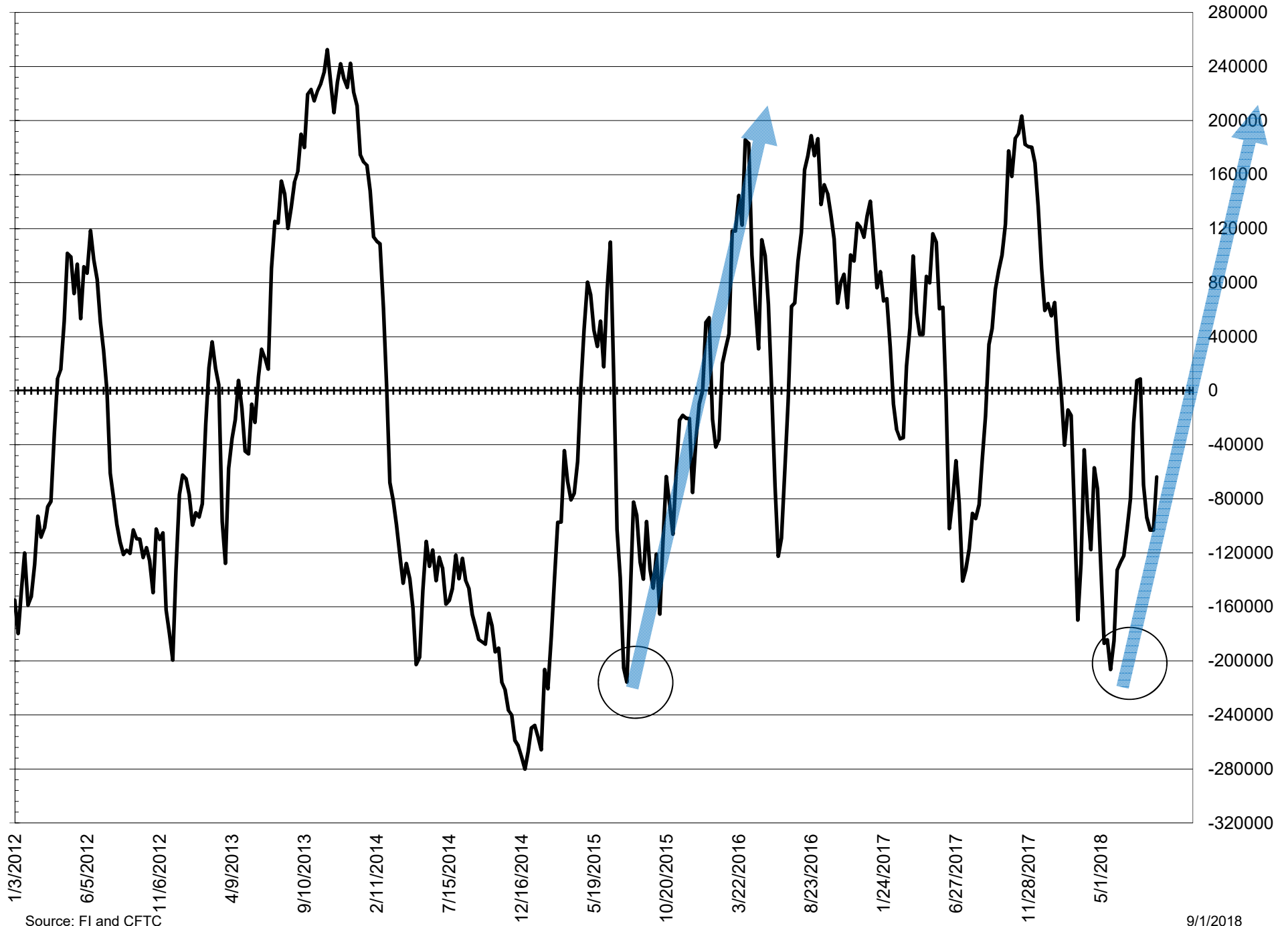
**COMMITMENT OF TRADERS  
FUTURES & OPTIONS NET POSITIONS  
AS OF 08/28/2018  
(IN THOUSAND CONTRACTS)**

	COMMERCIAL				(FUND) NON COMMERCIAL				(SPEC) NON-REPORTABLE			
	28-Aug	14-Aug	14-Aug	7-Aug	28-Aug	14-Aug	14-Aug	7-Aug	28-Aug	14-Aug	14-Aug	7-Aug
	<b>WHEAT</b>											
Chicago	-39.8	-53.0	-53.0	-51.7	46.8	60.6	60.6	63.2	-7.0	-7.6	-7.6	-11.5
Kansas City	-64.1	-63.6	-63.6	-59.0	66.0	65.5	65.5	58.8	-1.9	-1.9	-1.9	0.1
Minneapolis	2.6	0.3	0.3	2.0	0.8	2.0	2.0	0.2	-3.4	-2.3	-2.3	-2.2
All Wheat	-101.4	-116.3	-116.3	-108.7	113.7	128.1	128.1	122.3	-12.2	-11.8	-11.8	-13.6
<b>CORN</b>	24.0	-18.9	-18.9	-33.3	9.2	49.2	49.2	52.2	-33.2	-30.3	-30.3	-18.9
OATS	-1.2	-1.7	-1.7	-1.1	0.4	1.0	1.0	0.8	0.8	0.7	0.7	0.3
<b>SOYBEANS</b>	87.4	80.0	80.0	63.8	-54.7	-54.1	-54.1	-41.5	-32.7	-26.0	-26.0	-22.4
SOY OIL	49.8	57.7	57.7	50.4	-55.0	-60.9	-60.9	-56.5	5.1	3.2	3.2	6.1
SOY MEAL	-67.1	-110.6	-110.6	-97.9	56.6	92.9	92.9	82.1	10.5	17.7	17.7	15.8

	TOTAL OPEN INTEREST				COMMERCIALS		% HELD BY TRADERS LARGE (FUNDS)		SMALL (NON-REP)	
	28-Aug	14-Aug	14-Aug	7-Aug	LONG	SHORT	LONG	SHORT	LONG	SHORT
	<b>WHEAT</b>									
Chicago	569,779	661,149	661,149	678,322	37%	44%	25%	16%	8%	9%
Kansas City	280,351	308,705	308,705	317,248	39%	62%	34%	10%	9%	10%
Minneapolis	62,746	71,990	71,990	72,772	54%	50%	23%	21%	18%	24%
<b>CORN</b>	2,049,082	2,227,303	2,227,303	2,287,244	44%	43%	19%	19%	10%	11%
OATS	4,859	5,117	5,117	4,708	33%	58%	24%	16%	37%	21%
<b>SOYBEANS</b>	984,531	995,560	995,560	989,374	50%	41%	14%	19%	7%	10%
SOY OIL	558,494	571,765	571,765	552,033	46%	37%	19%	29%	7%	6%
SOY MEAL	563,031	571,753	571,753	559,065	46%	57%	20%	10%	9%	7%

SOURCE: CFTC & FI

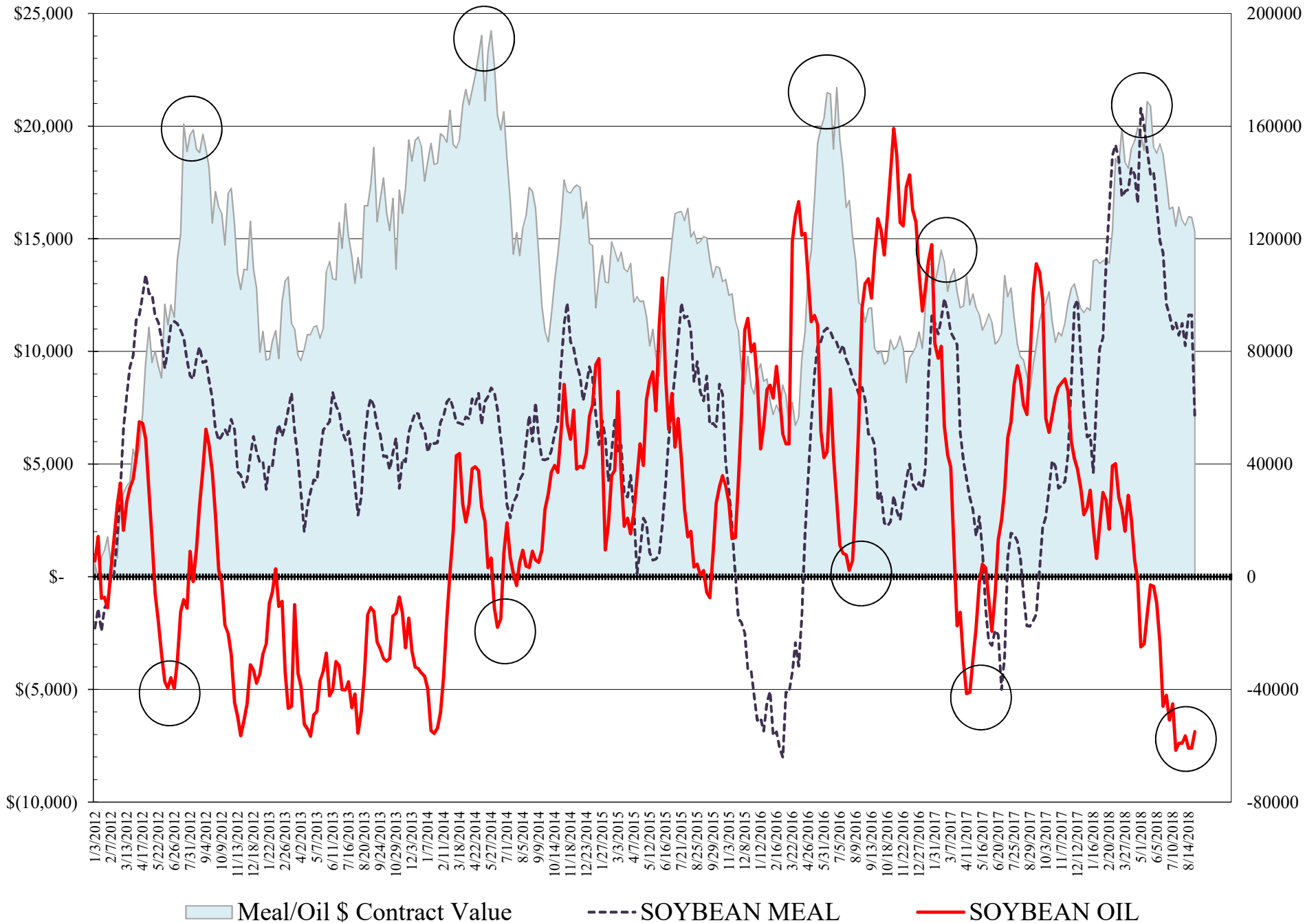
# NET POSITION FUTURES AND OPTIONS SPREAD OF LARGE SPECULATORS IN SOYBEANS MINUS CORN



Source: FI and CFTC

9/1/2018

# NET POSITION FUTURES AND OPTIONS OF LARGE SPECULATORS IN SOYBEAN MEAL AND SOYBEAN OIL



**DISAGGREGATED COMMITMENT OF TRADERS  
FUTURES ONLY NET POSITIONS  
AS OF 08/28/2018  
(IN THOUSAND CONTRACTS)**

	PRODUCER / MERCHANT / PROCESSOR / USER				(INDEX/ETF) SWAP DEALERS				(CTA/CPO/OTHER UNREGISTERED) MANAGED MONEY			
	28-Aug	21-Aug	14-Aug	7-Aug	28-Aug	21-Aug	14-Aug	7-Aug	28-Aug	21-Aug	14-Aug	7-Aug
	WHEAT											
Chicago	(145.2)	(156.4)	(161.6)	(161.9)	89.0	81.6	85.3	84.8	46.1	57.4	65.2	66.4
Kansas City	(107.6)	(112.5)	(109.8)	(103.0)	40.7	43.4	43.6	42.9	60.1	63.4	61.4	53.7
Minneapolis	(1.3)	(4.3)	(3.3)	(0.8)	3.6	3.6	3.0	2.6	2.6	5.7	3.7	0.3
All Wheat	(254.2)	(273.3)	(274.6)	(265.7)	133.2	128.6	131.9	130.3	108.8	126.5	130.3	120.4
CORN	(226.4)	(267.8)	(266.8)	(262.6)	184.7	164.3	172.1	166.2	(79.3)	(49.9)	(60.1)	(68.0)
OATS	(1.5)	(1.8)	(1.8)	(1.3)	0.2	0.2	0.2	0.2	0.0	0.2	0.2	(0.1)
SOYBEANS	(40.6)	(66.9)	(56.2)	(73.2)	113.6	115.0	118.5	117.2	(61.2)	(42.0)	(62.2)	(63.1)
SOY OIL	(42.4)	(39.2)	(42.4)	(42.3)	87.0	90.7	94.0	90.7	(86.2)	(94.8)	(96.7)	(91.0)
SOY MEAL	(149.2)	(185.1)	(190.8)	(178.5)	74.6	72.8	75.0	74.6	26.5	51.1	54.6	45.3

Managed % of OI				
Chicago W	10%	12%	13%	13%
Corn	-5%	-3%	-4%	-4%

	TOTAL OPEN INTEREST				OTHER REPORTABLE				NON REPORTABLE			
	28-Aug	21-Aug	14-Aug	7-Aug	28-Aug	21-Aug	14-Aug	7-Aug	28-Aug	21-Aug	14-Aug	7-Aug
	WHEAT											
Chicago	456,974	493,627	492,285	497,660	17.8	21.9	17.6	20.2	(7.6)	(4.5)	(6.5)	(9.4)
Kansas City	263,082	286,830	281,801	285,855	8.6	6.0	6.2	6.0	(1.7)	(0.2)	(1.5)	0.3
Minneapolis	60,060	65,426	67,263	67,676	(1.7)	(2.0)	(1.2)	0.1	(3.1)	(3.0)	(2.1)	(2.3)
All Wheat	780,116	845,883	841,349	851,191	24.7	25.9	22.6	26.4	(12.5)	(7.7)	(10.2)	(11.3)
CORN	1,671,504	1,713,501	1,717,134	1,760,500	144.7	183.8	182.8	189.3	(23.6)	(30.4)	(28.0)	(25.0)
OATS	4,611	4,934	4,872	4,486	0.5	0.8	0.8	0.9	0.8	0.6	0.6	0.2
SOYBEANS	801,315	789,943	800,037	789,827	20.7	24.2	26.5	44.4	(32.4)	(30.2)	(26.6)	(25.3)
SOY OIL	531,159	539,764	541,123	524,735	37.0	38.7	42.4	37.1	4.6	4.7	2.6	5.5
SOY MEAL	509,363	500,229	516,696	507,395	39.8	47.6	45.5	44.9	8.4	13.5	15.6	13.7

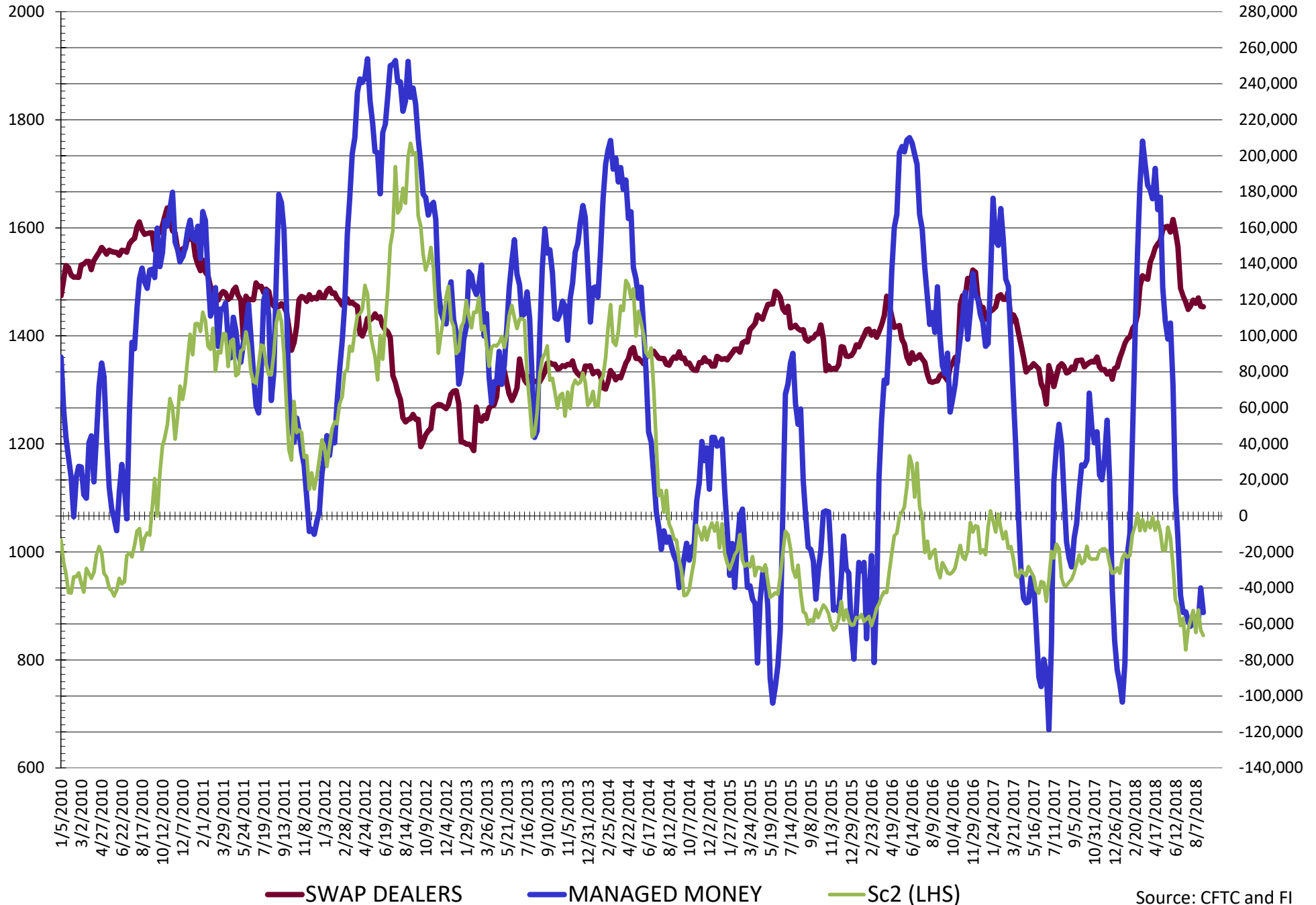
SOURCE: CFTC & FI

**DISAGGREGATED COMMITMENT OF TRADERS  
FUTURES & OPTIONS NET POSITIONS  
AS OF 08/28/2018  
(IN THOUSAND CONTRACTS)**

	PRODUCER / MERCHANT / PROCESSOR / USER				(INDEX/ETF) SWAP DEALERS				(CTA/CPO/OTHER UNREGISTERED) MANAGED MONEY			
	28-Aug	21-Aug	14-Aug	7-Aug	28-Aug	21-Aug	14-Aug	7-Aug	28-Aug	21-Aug	14-Aug	7-Aug
	WHEAT											
Chicago	(139.7)	(148.8)	(152.5)	(148.2)	99.9	97.1	99.6	96.4	51.2	60.8	66.9	64.6
Kansas City	(105.0)	(109.9)	(107.0)	(101.0)	40.8	43.3	43.4	42.0	61.5	64.4	62.7	55.1
Minneapolis	(0.8)	(2.9)	(2.2)	(0.2)	3.4	2.9	2.5	2.2	2.6	5.7	3.7	0.4
All Wheat	(245.5)	(261.5)	(261.7)	(249.3)	144.0	143.3	145.4	140.6	115.2	130.9	133.3	120.0
CORN	(184.8)	(216.0)	(218.2)	(220.3)	208.8	193.3	199.3	187.0	(57.0)	(14.8)	(25.0)	(29.7)
OATS	(1.4)	(1.8)	(1.9)	(1.3)	0.2	0.2	0.2	0.2	0.0	0.2	0.2	(0.1)
SOYBEANS	(28.7)	(53.2)	(41.0)	(54.3)	116.1	116.6	121.1	118.1	(53.6)	(40.0)	(58.9)	(56.3)
SOY OIL	(37.0)	(33.5)	(36.3)	(40.6)	86.9	90.7	93.9	91.0	(86.5)	(95.2)	(97.1)	(91.4)
SOY MEAL	(143.9)	(177.4)	(183.6)	(170.6)	76.8	71.9	72.9	72.7	27.4	52.7	56.9	46.8
	TOTAL				OTHER REPORTABLE				NON REPORTABLE			
	OPEN INTEREST				SWAP DEALERS				MANAGED MONEY			
	28-Aug	21-Aug	14-Aug	7-Aug	28-Aug	21-Aug	14-Aug	7-Aug	28-Aug	21-Aug	14-Aug	7-Aug
WHEAT												
Chicago	569,779	660,739	661,149	678,322	(4.4)	(4.2)	(6.4)	(1.4)	(7.0)	(4.9)	(7.6)	(11.5)
Kansas City	280,351	313,197	308,705	317,248	4.6	2.9	2.9	3.7	(1.9)	(0.6)	(1.9)	0.1
Minneapolis	62,746	70,328	71,990	72,772	(1.8)	(2.6)	(1.7)	(0.1)	(3.4)	(3.2)	(2.3)	(2.2)
All Wheat	912,876	1,044,264	1,041,844	1,068,342	(1.6)	(3.9)	(5.2)	2.2	(12.2)	(8.7)	(11.8)	(13.6)
CORN	2,049,082	2,207,245	2,227,303	2,287,244	66.1	73.9	74.1	81.9	(33.2)	(36.4)	(36.4)	(36.4)
OATS	4,859	5,243	5,117	4,708	0.4	0.8	0.8	0.9	0.8	0.6	0.7	0.3
SOYBEANS	984,531	991,658	995,560	989,374	(1.1)	7.0	4.9	14.8	(32.7)	(30.3)	(26.0)	(22.4)
SOY OIL	558,494	572,391	571,765	552,033	31.5	32.7	36.3	34.9	5.1	5.2	3.2	6.1
SOY MEAL	563,031	556,148	571,753	559,065	29.1	37.1	36.0	35.3	10.5	15.7	17.7	15.8

SOURCE: CFTC & FI

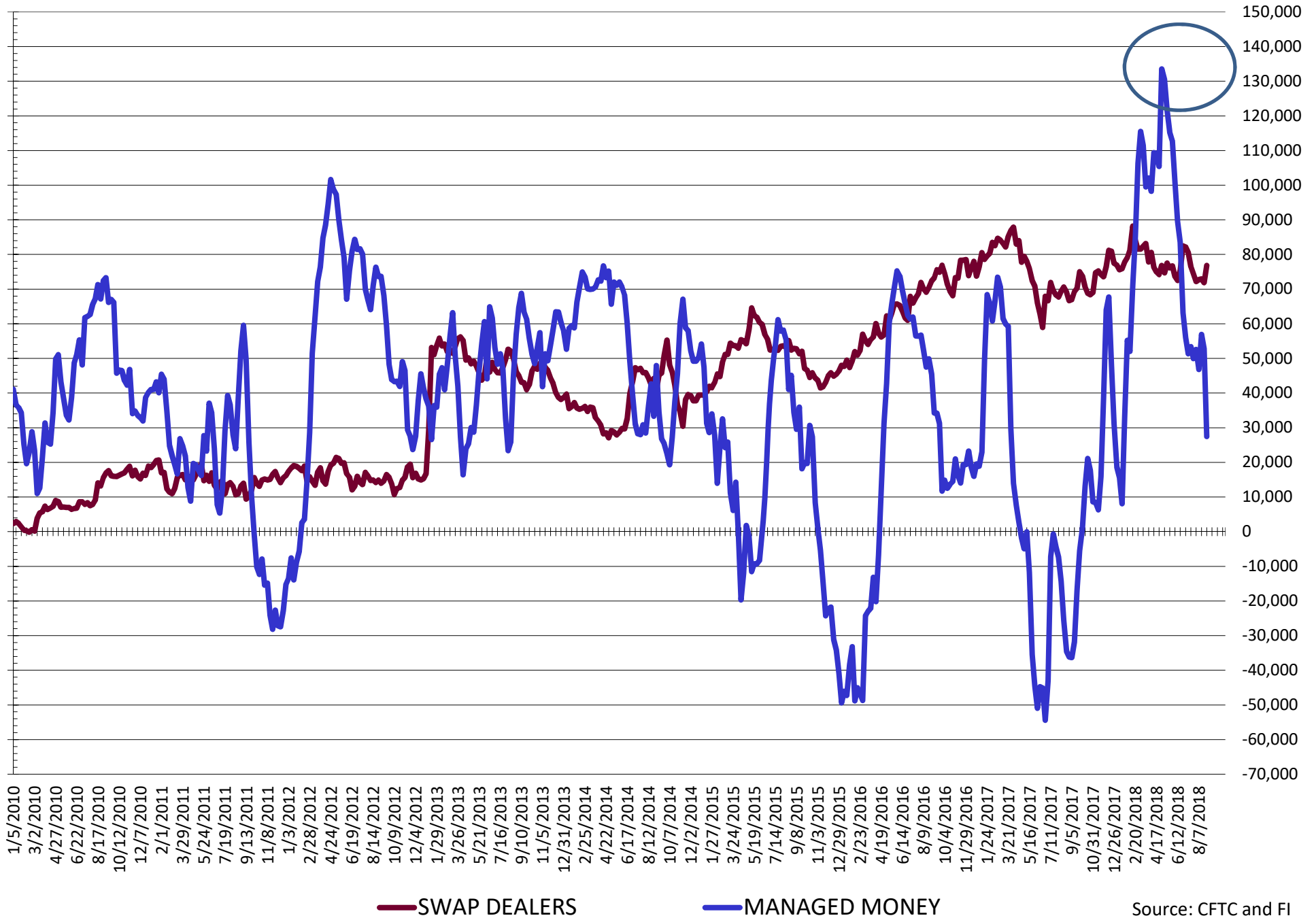
# NET POSITION FUTURES AND OPTIONS OF SWAP AND MANAGED FUNDS IN SOYBEANS



Source: CFTC and FI  
9/1/2018

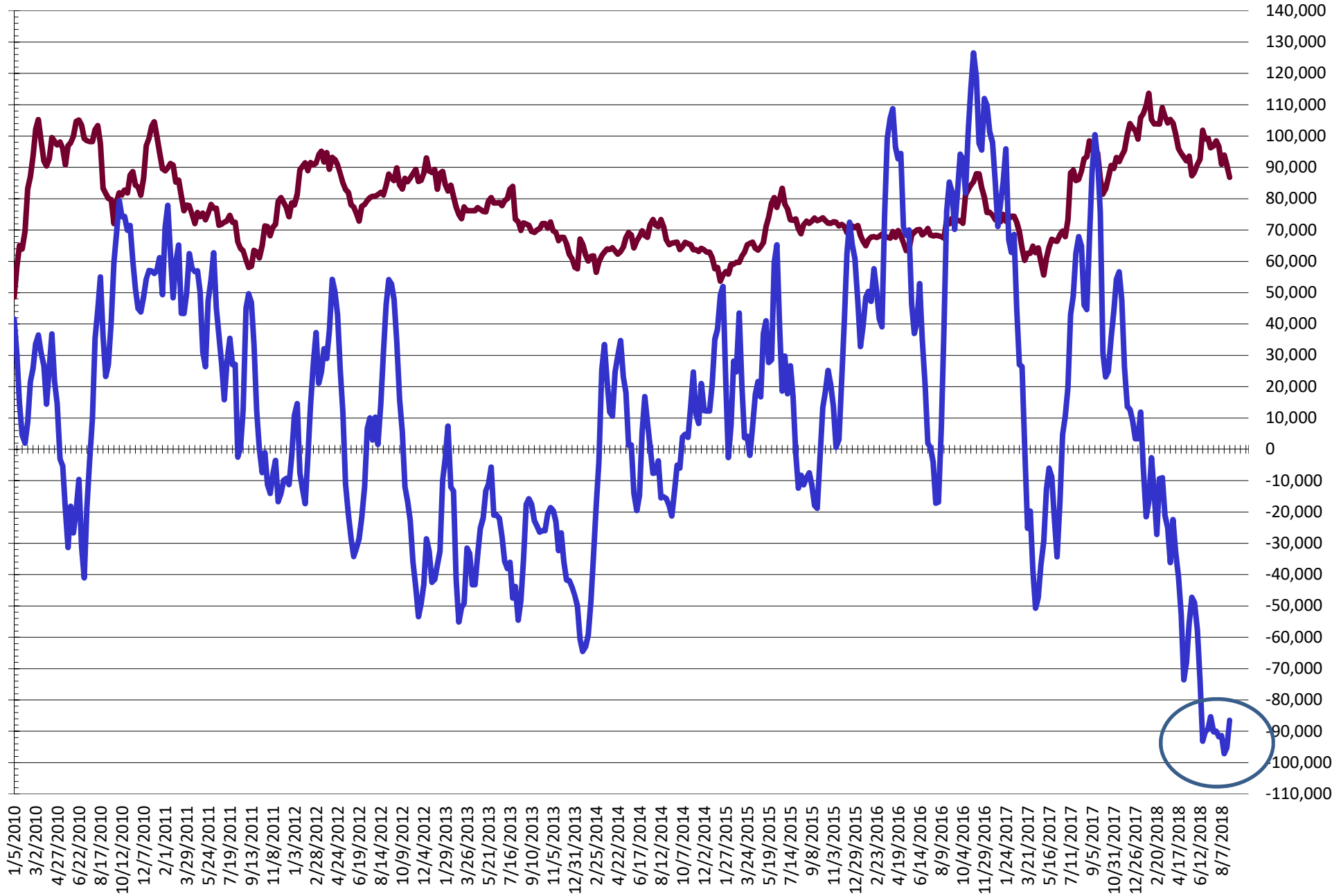


# NET POSITION FUTURES AND OPTIONS OF SWAP AND MANAGED FUNDS IN SOYBEAN MEAL



Source: CFTC and FI  
9/1/2018

# NET POSITION FUTURES AND OPTIONS OF SWAP AND MANAGED FUNDS IN SOYBEAN OIL

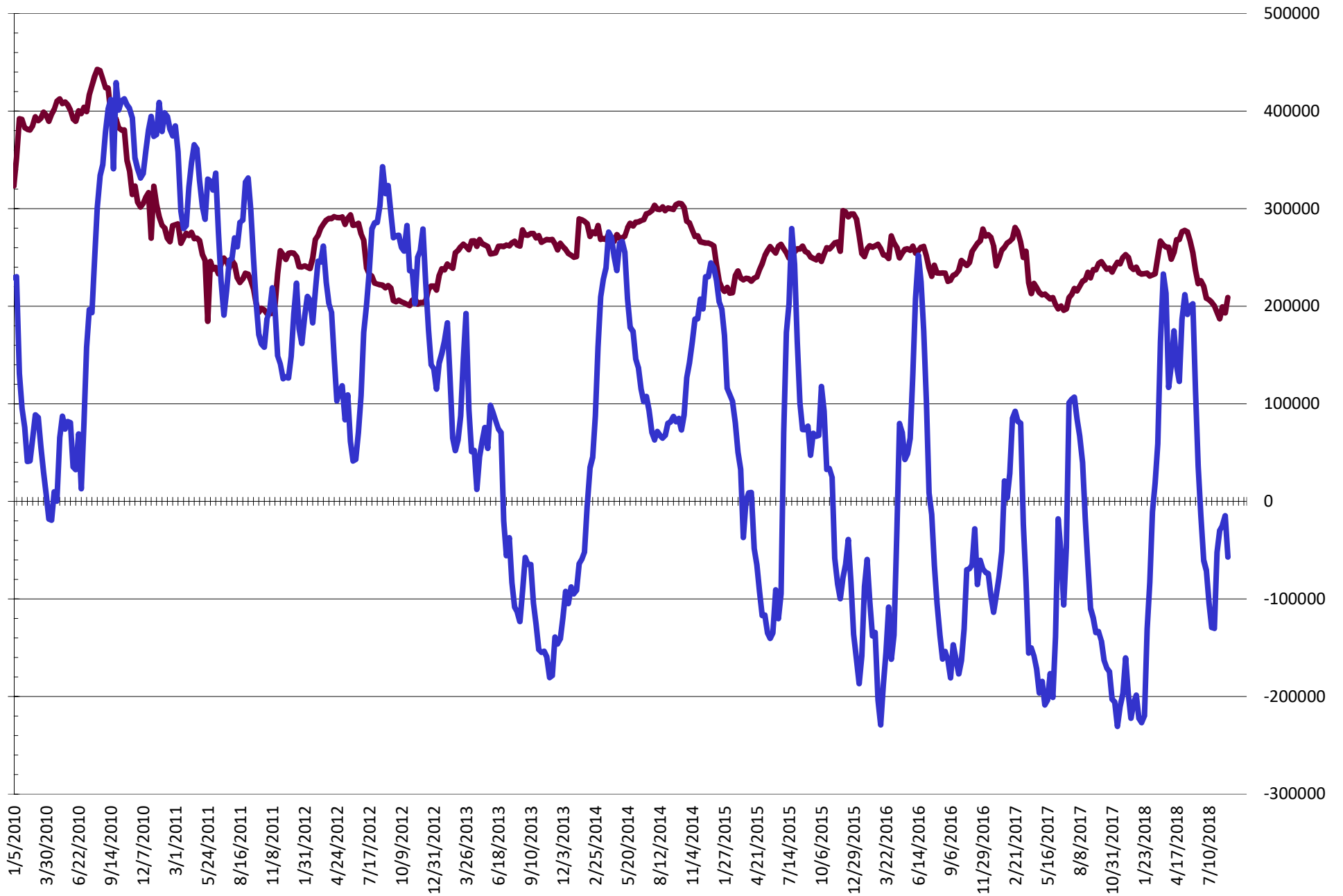


— SWAP DEALERS

— MANAGED MONEY

Source: CFTC and FI  
9/1/2018

# NET POSITION FUTURES AND OPTIONS OF SWAP AND MANAGED FUNDS IN CORN



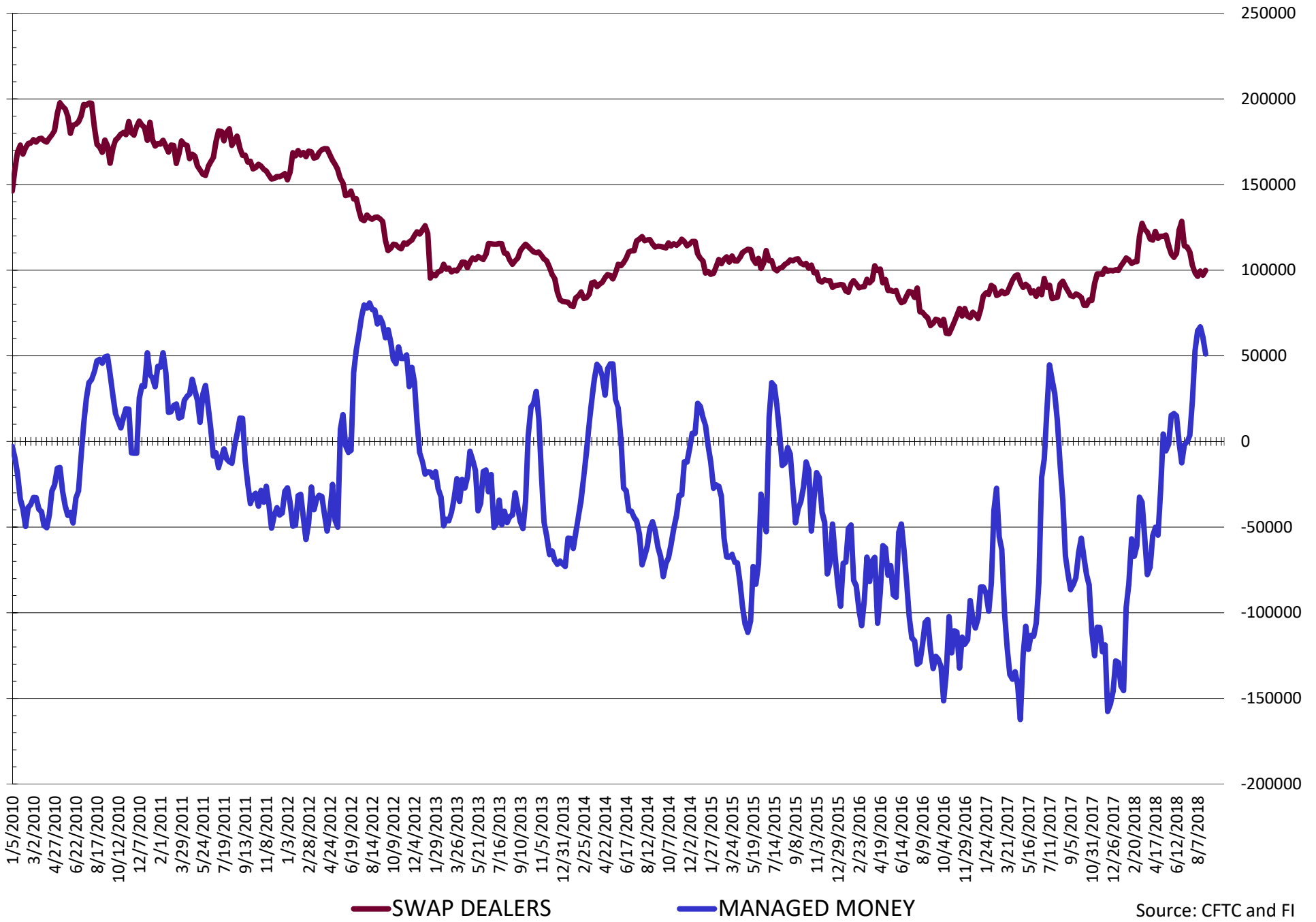
— SWAP DEALERS

— MANAGED MONEY

Source: CFTC and FI

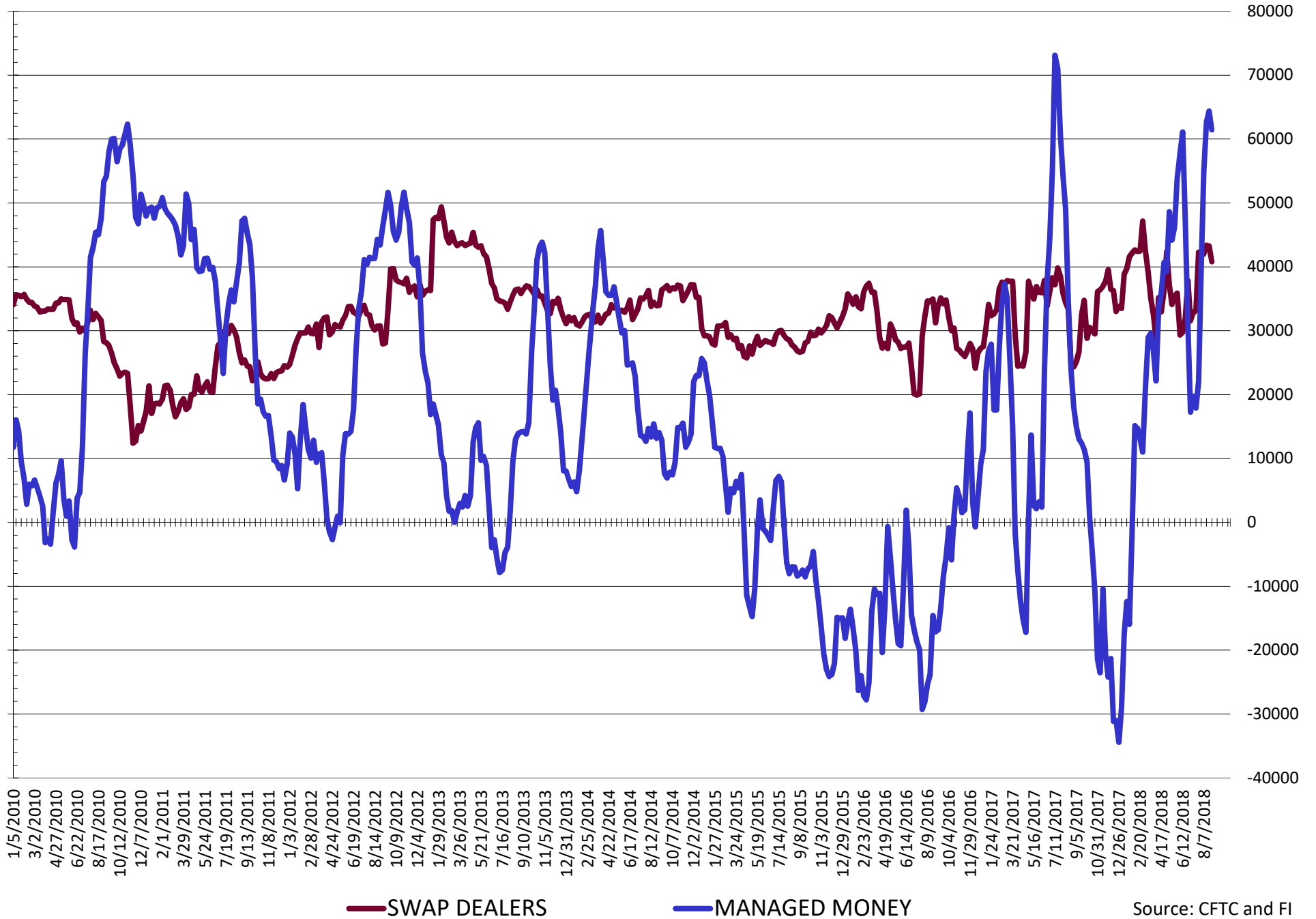
9/1/2018

# NET POSITION FUTURES AND OPTIONS OF SWAP AND MANAGED FUNDS IN CHICAGO WHEAT



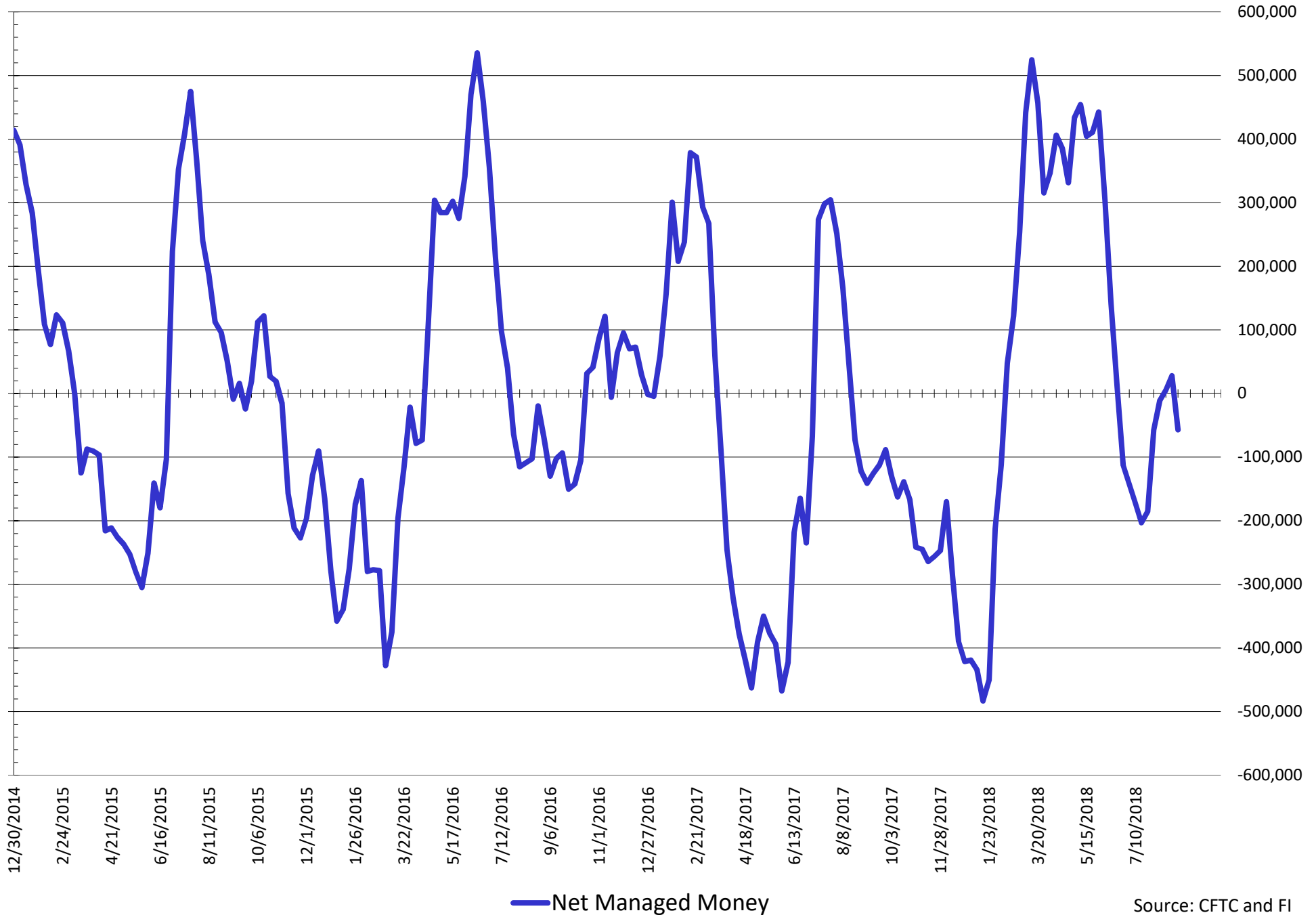
Source: CFTC and FI  
9/1/2018

# NET POSITION FUTURES AND OPTIONS OF SWAP AND MANAGED FUNDS IN KANSAS WHEAT



Source: CFTC and FI  
9/1/2018

# NET POSITION FUTURES AND OPTIONS OF SWAP AND MANAGED FUNDS IN COMBINED SRW, HRW, CORN, SOYBEANS, SOYMEAL AND SOYOIL



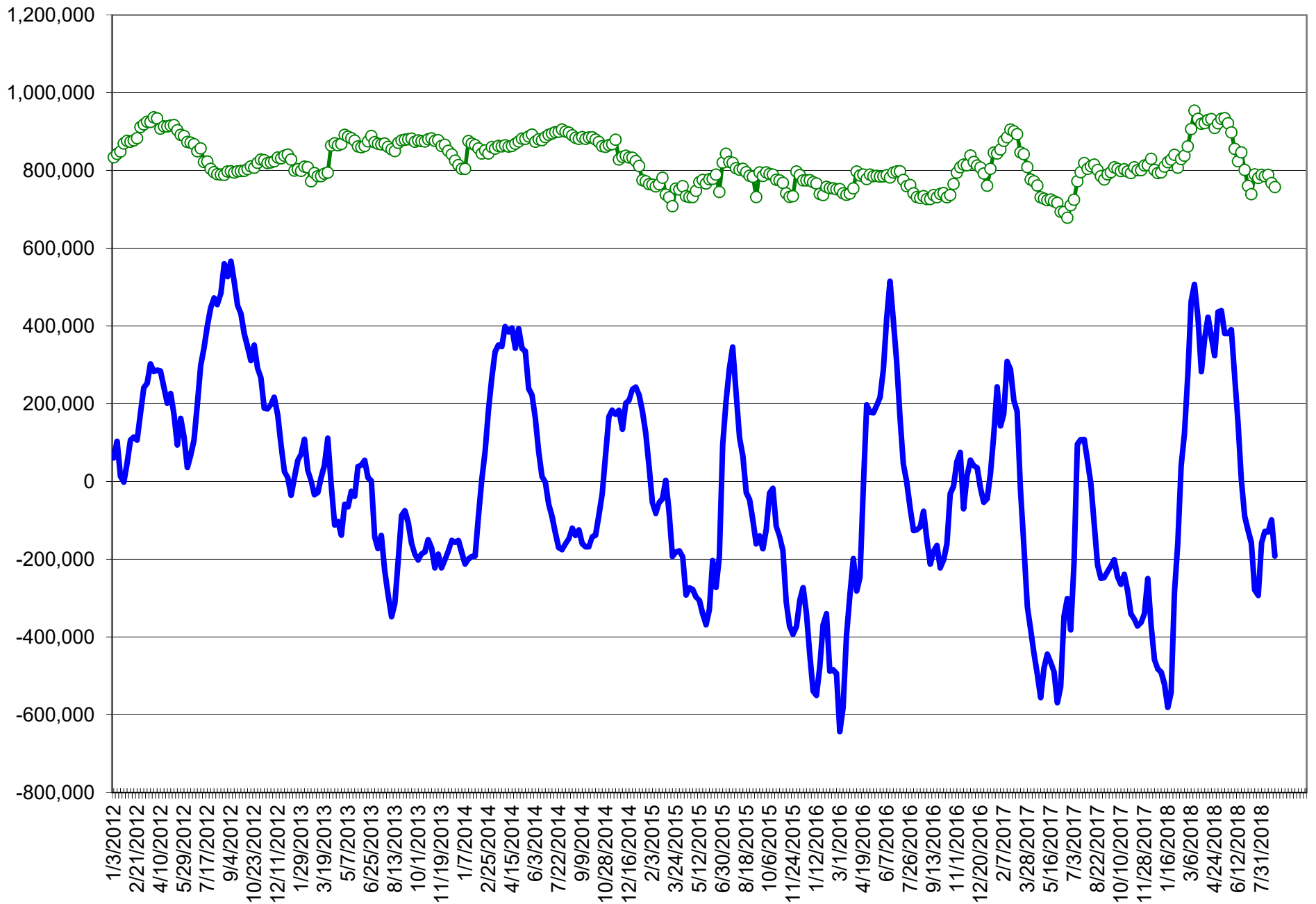
**COMMITMENT OF TRADERS**  
**FUTURES & OPTIONS NET POSITIONS (INDEX BROKEN OUT)**  
**AS OF 08/28/2018**  
(IN THOUSAND CONTRACTS)

	COMMERCIAL				(FUND) NON COMMERCIAL				(SPEC) NON-REPORTABLE			
	28-Aug	21-Aug	14-Aug	7-Aug	28-Aug	21-Aug	14-Aug	7-Aug	28-Aug	21-Aug	14-Aug	7-Aug
	WHEAT											
Chicago	(126.1)	(132.6)	(133.9)	(131.9)	3.9	12.6	14.2	11.0	(7.0)	(4.9)	(7.6)	(11.5)
Kansas City	(102.8)	(106.6)	(103.7)	(98.1)	41.9	41.3	39.6	34.6	(1.9)	(0.6)	(1.9)	0.1
Minneapolis	-	-	-	-	-	-	-	-	-	-	-	-
All Wheat	(228.9)	(239.2)	(237.6)	(230.0)	45.7	53.9	53.8	45.7	(8.9)	(5.5)	(9.5)	(11.3)
CORN	(155.9)	(194.2)	(195.0)	(208.6)	(82.2)	(35.3)	(47.4)	(41.9)	(33.2)	(36.4)	(30.3)	(18.9)
OATS	-	-	-	-	-	-	-	-	-	-	-	-
SOYBEANS	10.9	(15.0)	(2.2)	(19.5)	(97.4)	(83.9)	(103.9)	(94.4)	(32.7)	(30.3)	(26.0)	(22.4)
SOY OIL	(17.1)	(11.4)	(15.0)	(17.8)	(81.1)	(88.3)	(88.3)	(84.4)	5.1	5.2	3.2	6.1
SOY MEAL	(115.6)	(157.3)	(164.5)	(150.4)	23.1	54.7	56.5	46.7	10.5	15.7	17.7	15.8

	TOTAL OPEN INTEREST				(INDEX) COMMERCIAL INDEX TRADERS				(INDEX) % NET OF TOTAL OPEN INTEREST			
	28-Aug	21-Aug	14-Aug	7-Aug	28-Aug	21-Aug	14-Aug	7-Aug	28-Aug	21-Aug	14-Aug	7-Aug
	WHEAT											
Chicago	569,779	660,739	661,149	678,322	129.2	124.9	127.2	132.4	22.7%	18.9%	19.2%	19.5%
Kansas City	280,351	313,197	308,705	317,248	62.9	65.9	66.0	63.3	22.4%	21.0%	21.4%	20.0%
Minneapolis	-	-	-	-	-	-	-	-	-	-	-	-
All Wheat	850,130	973,936	969,854	995,570	192.0	190.8	193.3	195.7	22.6%	19.6%	19.9%	19.7%
CORN	2,049,082	2,207,245	2,227,303	2,287,244	271.3	266.0	272.6	269.3	13.2%	12.0%	12.2%	11.8%
OATS	-	-	-	-	-	-	-	-	-	-	-	-
SOYBEANS	984,531	991,658	995,560	989,374	119.2	129.3	132.1	136.2	12.1%	13.0%	13.3%	13.8%
SOY OIL	558,494	572,391	571,765	552,033	93.0	94.4	100.1	96.1	16.7%	16.5%	17.5%	17.4%
SOY MEAL	563,031	556,148	571,753	559,065	81.9	87.0	90.4	87.8	14.6%	15.6%	15.8%	15.7%

SOURCE: CFTC & FI

# NET POSITION FUTURES AND OPTIONS OF SPECULATORS AND INDEX FUNDS IN COMBINED SRW, HRW, CORN, SOYBEANS, SOYMEAL AND SOYOIL



Source: CFTC and FI

○ Net Index

— Net Speculator



## Traditional Daily Estimate of Funds 9/1/18

	(Neg)-"Short"	Pos-"Long"			
Actual less Est.	(20.5)	5.2	3.5	(12.4)	5.9
	<b>Corn</b>	<b>Bean</b>	<b>Chi. Wheat</b>	<b>Meal</b>	<b>Oil</b>
<b>Actual</b>	65.4	(40.6)	63.9	66.3	(49.2)
29-Aug	(1.0)	5.0	11.0	(1.0)	(2.0)
30-Aug	(1.0)	(5.0)	(5.0)	(5.0)	4.0
31-Aug	17.0	5.0	6.0	3.0	3.0
3-Sep					
4-Sep					
<b>FI Est. of Futures Only 9/1/18</b>	<b>80.4</b>	<b>(35.6)</b>	<b>75.9</b>	<b>63.3</b>	<b>(44.2)</b>
<b>FI Est. Futures &amp; Options</b>	<b>24.2</b>	<b>(49.8)</b>	<b>58.8</b>	<b>53.6</b>	<b>(50.0)</b>
Futures only record long	498.2	260.4	86.5	167.5	160.2
	2/1/2011	6/27/2017	8/7/2018	5/1/2018	11/1/2016
Futures only record short	(135.3)	(94.5)	(130.0)	(49.5)	(55.1)
	10/29/2013	6/27/2017	4/25/2017	3/1/2016	8/6/2013
Futures and options record net long	458.5	259.8	64.8	132.1	159.2
	9/28/2010	5/1/2012	8/7/2012	5/1/2018	1/1/2016
Futures and options record net short	(166.8)	(113.1)	(143.3)	(64.1)	(61.6)
	11/14/2017	6/27/2017	4/25/2017	3/1/2016	7/17/2018

## Managed Money Daily Estimate of Funds 9/1/18

	Corn	Bean	Chi. Wheat	Meal	Oil
Latest CFTC Fut. Only	(79.3)	(61.2)	46.1	26.5	(86.2)
Latest CFTC F&O	(57.0)	(53.6)	51.2	27.4	(86.5)
FI Est. Managed Fut. Only	(56.8)	(53.7)	64.1	22.0	(78.7)
FI Est. Managed Money F&O	(34.5)	(46.1)	69.2	22.9	(79.0)

## Index Funds Latest Positions (as of last Tuesday)

Index Futures & Options	271.3	119.2	129.2	NA	93.0
Change From Previous Week	5.3	(10.1)	4.3	NA	(1.4)

Source: Reuters, CFTC & FI (FI est. are noted with latest date)

# Disclaimer

TO CLIENTS/PROSPECTS OF FUTURES INTERNATIONAL, SEE RISK DISCLOSURE BELOW:

THIS COMMUNICATION IS CONVEYED AS A SOLICITATION FOR ENTERING INTO A DERIVATIVES TRANSACTION.

Any trading recommendations and market or other information to Customer by Futures International (FI), although based upon information obtained from sources believed by FI to be reliable may not be accurate and may be changed without notice to customer. FI makes no guarantee as to the accuracy or completeness of any of the information or recommendations furnished to Customer. Customer understands that FI, its managers, employees and/or affiliates may have a position in commodity futures, options or other derivatives which may not be consistent with the recommendations furnished by FI to Customer.

The risk of trading futures and options and other derivatives involves a substantial risk of loss and is not suitable for all persons. In purchasing an option, the risk is limited to the premium paid, and all commissions and fees involved with the trade. When an option is shorted or written, the writer of the option has unlimited risk with respect to the option written. The use of options strategies such as a straddles and strangles involve multiple option positions and may substantially increase the amount of commissions and fees paid to execute the strategy. Option prices do not necessarily move in tandem with cash or futures prices. Each person must consider whether a particular trade, combination of trades or strategy is suitable for that person's financial means and objectives.

This material may include discussions of seasonal patterns, however, futures prices have already factored in the seasonal aspects of supply and demand, and seasonal patterns are no indication of future market trends. Finally, past performance is not indicative of future results.

This communication may contain links to third party websites which are not under the control of FI and FI is not responsible for their content. Products and services are offered only in jurisdictions where solicitation and sale are lawful, and in accordance with applicable laws and regulations in each such jurisdiction.