

CFTC COMMITMENT OF TRADERS REPORT

As of 9/25/2018

TRADITIONAL FUNDS net position changes

Wed to Tue, in 000 contracts

	Corn	Bean	Meal	Oil	Chi. Wheat	KC Wheat	Min Wheat
Futures Only	24.0	14.7	2.9	26.6	(0.1)	(2.1)	(0.7)
Futures & Options Combined	33.9	18.1	3.3	26.5	(1.1)	(2.7)	(0.7)

TRADITIONAL COMMERCIAL net position changes

	Corn	Bean	Meal	Oil	Chi. Wheat	KC Wheat	Min Wheat
Futures Only	(22.9)	(16.2)	(4.0)	(28.8)	1.7	2.3	0.5
Futures & Options Combined	(40.3)	(21.5)	(4.5)	(28.5)	2.2	2.9	0.7

MANAGED MONEY net position changes

	Corn	Bean	Meal	Oil	Chi. Wheat	KC Wheat	Min Wheat
Futures Only	33.6	22.1	(0.1)	25.6	8.5	(3.9)	0.1
Futures & Options Combined	28.5	11.2	(0.7)	24.2	0.3	(3.1)	0.1

SWAP DEALERS net position changes

	Corn	Bean	Meal	Oil	Chi. Wheat	KC Wheat	Min Wheat
Futures Only	9.6	(0.7)	(4.5)	4.4	(6.5)	(0.5)	0.2
Futures & Options Combined	(4.7)	(3.2)	(4.7)	4.9	(6.6)	(0.5)	0.1

PRODUCERS/END USERS net position changes

	Corn	Bean	Meal	Oil	Chi. Wheat	KC Wheat	Min Wheat
Futures Only	(32.5)	(15.5)	0.5	(33.2)	8.3	2.8	0.4
Futures & Options Combined	(35.6)	(18.3)	0.3	(33.4)	8.8	3.3	0.5

INDEX net position changes

	Corn	Bean	Meal	Oil	Chi. Wheat	KC Wheat	Min Wheat
Futures & Options Combined	3.1	3.7	(1.9)	6.1	(6.7)	(2.0)	NA

SUPPLEMENTAL NON-COMMERCIAL net position changes

	Corn	Bean	Meal	Oil	Chi. Wheat	KC Wheat	Min Wheat
Futures & Options Combined	29.7	13.4	4.6	25.0	(0.5)	(2.0)	NA

OPEN INTEREST net position changes

Wed to Tue, in 000 contracts

	Corn	Bean	Meal	Oil	Chi. Wheat	KC Wheat	Min Wheat
Futures Only	(10.2)	(3.3)	(14.2)	(13.0)	(11.3)	(2.0)	1.6
Futures & Options Combined	(34.2)	(37.7)	(25.4)	(20.8)	(31.0)	(1.9)	1.7

Source: CFTC and FI

Wed to Tue, in 000 contracts

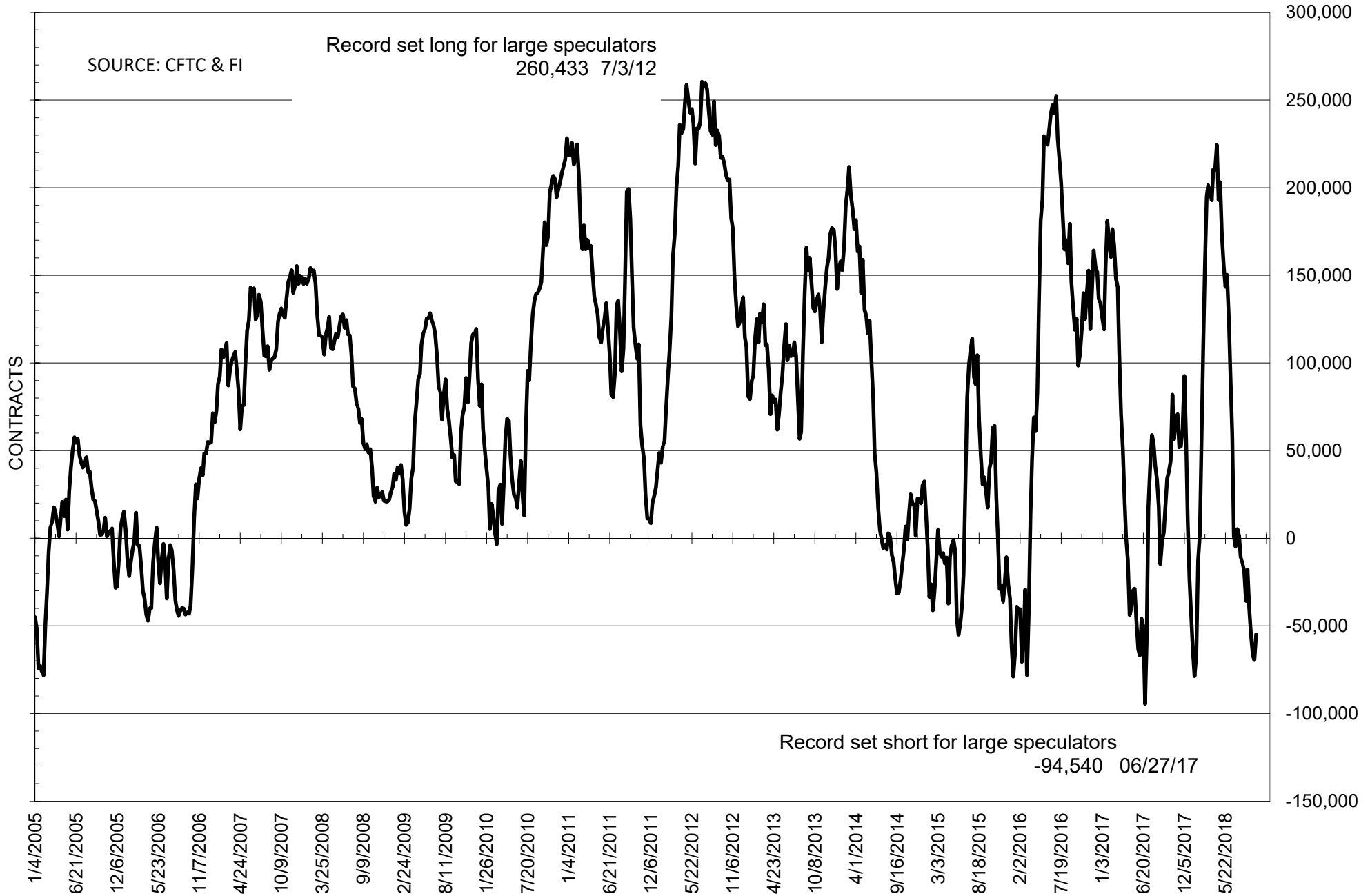
**COMMITMENT OF TRADERS
FUTURES ONLY NET POSITIONS
AS OF 09/25/2018
(IN THOUSAND CONTRACTS)**

	COMMERCIAL				(FUND) NON COMMERCIAL				(SPEC) NON-REPORTABLE			
	25-Sep	18-Sep	11-Sep	4-Sep	25-Sep	18-Sep	11-Sep	4-Sep	25-Sep	18-Sep	11-Sep	4-Sep
	WHEAT											
Chicago	-25.6	-27.3	-35.3	-50.8	36.6	36.6	45.5	60.6	-11.0	-9.3	-10.2	-9.8
Kansas City	-44.3	-46.6	-52.6	-63.2	46.1	48.2	54.2	64.5	-1.8	-1.7	-1.6	-1.4
Minneapolis	6.5	6.0	5.0	2.8	-3.9	-3.3	-2.0	0.0	-2.6	-2.7	-3.0	-2.8
All Wheat	-63.3	-67.9	-82.9	-111.1	78.7	81.6	97.7	125.1	-15.4	-13.7	-14.9	-14.0
CORN	0.4	23.3	-50.7	-52.3	9.5	-14.5	69.2	71.9	-9.9	-8.8	-18.5	-19.6
OATS	-0.6	-0.3	0.0	-1.1	0.2	0.0	0.0	0.2	0.4	0.4	0.0	0.9
SOYBEANS	82.9	99.1	96.5	86.6	-54.9	-69.5	-66.6	-55.7	-28.0	-29.6	-30.0	-30.9
SOY OIL	36.6	65.3	55.7	43.0	-43.2	-69.8	-60.2	-48.7	6.7	4.5	4.4	5.7
SOY MEAL	-70.1	-66.1	-80.9	-68.8	61.0	58.1	70.5	58.8	9.1	7.9	10.4	10.0

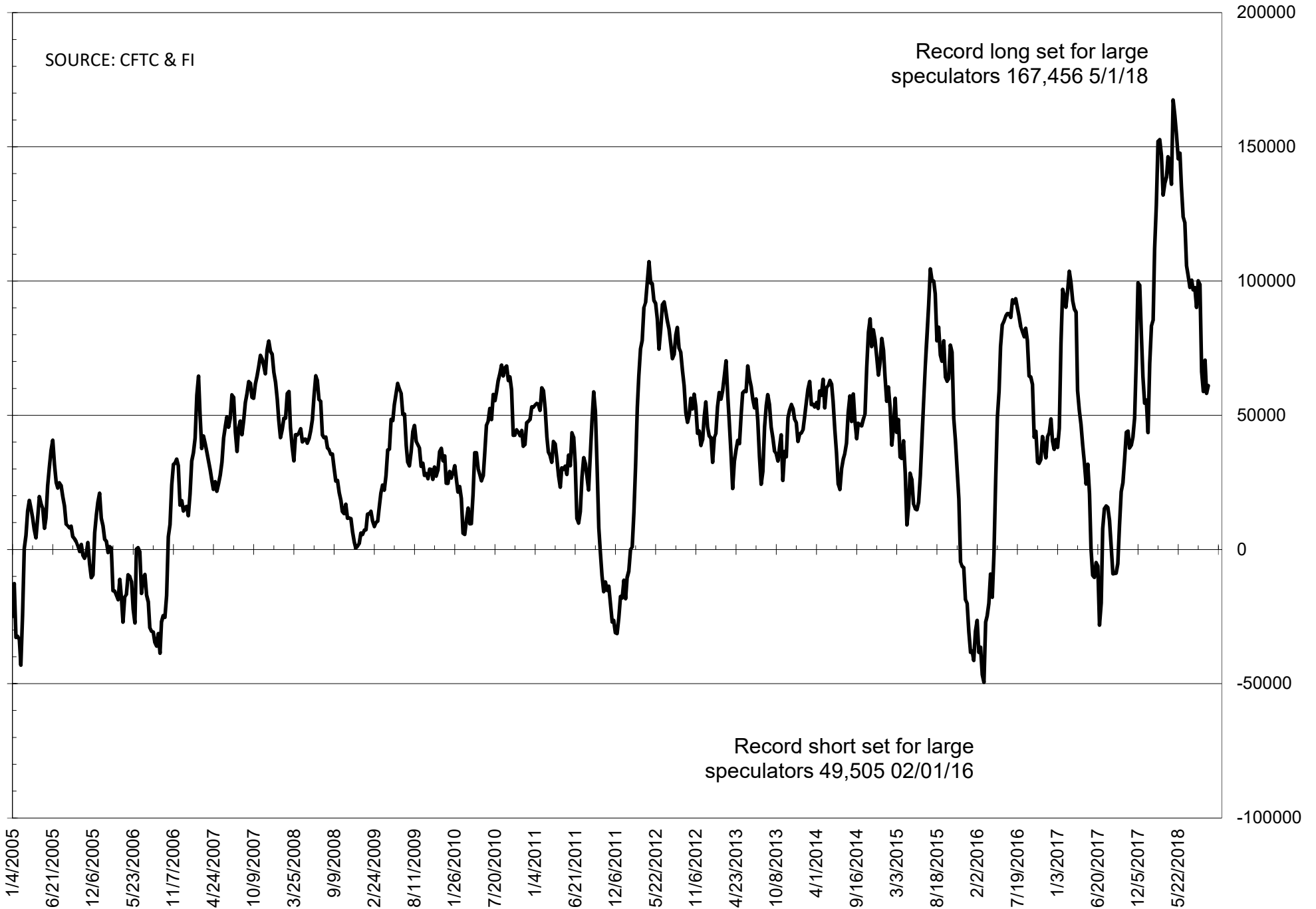
	TOTAL OPEN INTEREST				NEARBY FUTURES PRICE					25-Sep-18 LAST REPORTED % HELD BY TRADERS			
	25-Sep	18-Sep	11-Sep	4-Sep	V/Z 28-Sep	V/Z 25-Sep	V/Z 18-Sep	V/Z 11-Sep	V/Z 4-Sep	LARGE FUND		SMALL	
										LONG	SHORT	LONG	SHORT
WHEAT													
Chicago	461262	472608	454002	446974	509.00	520.75	510.50	518.75	531.50	34%	26%	8%	10%
Kansas City	270040	272070	263307	253546	511.25	522.00	516.00	522.75	537.00	35%	18%	9%	9%
Minneapolis	59206	57581	56435	56152	572.50	581.00	580.25	575.25	584.75	22%	29%	15%	19%
CORN	1716016	1726248	1677065	1655575	356.25	363.75	343.25	366.75	368.25	27%	26%	10%	10%
OATS	4182	3966	0	3811	264.75	257.00	245.75	246.50	246.00	26%	20%	36%	27%
SOYBEANS	865196	868535	826269	808144	845.50	845.75	814.00	831.75	844.25	19%	25%	7%	10%
SOY OIL	588433	601384	564029	528062	28.68	28.37	27.12	27.82	28.53	19%	27%	7%	5%
SOY MEAL	517504	531670	528799	521993	305.40	306.20	300.50	314.20	309.20	22%	10%	11%	8%

SOURCE: CFTC & FI

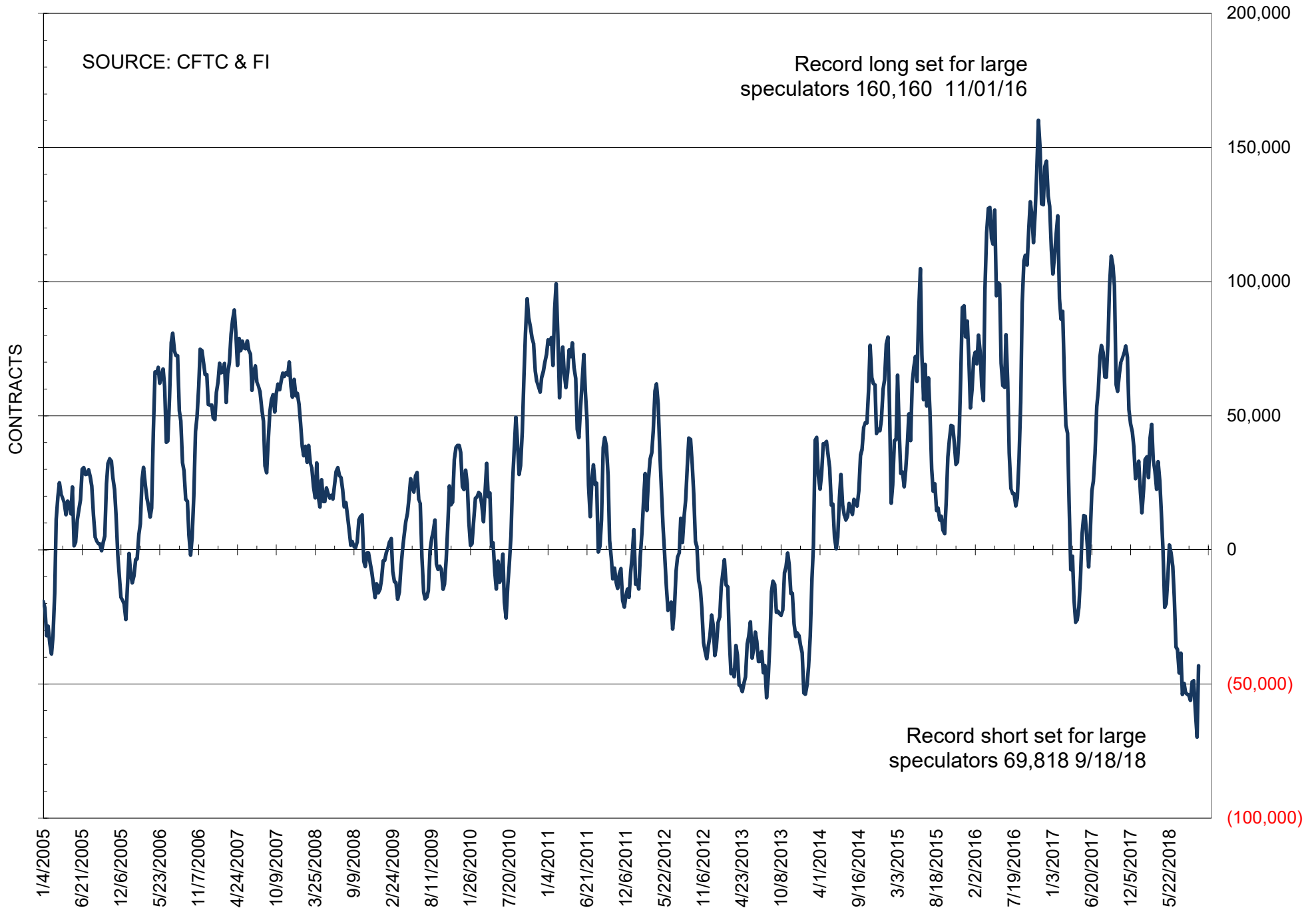
NET POSITION OF FUTURES ONLY LARGE SPECS IN SOYBEANS



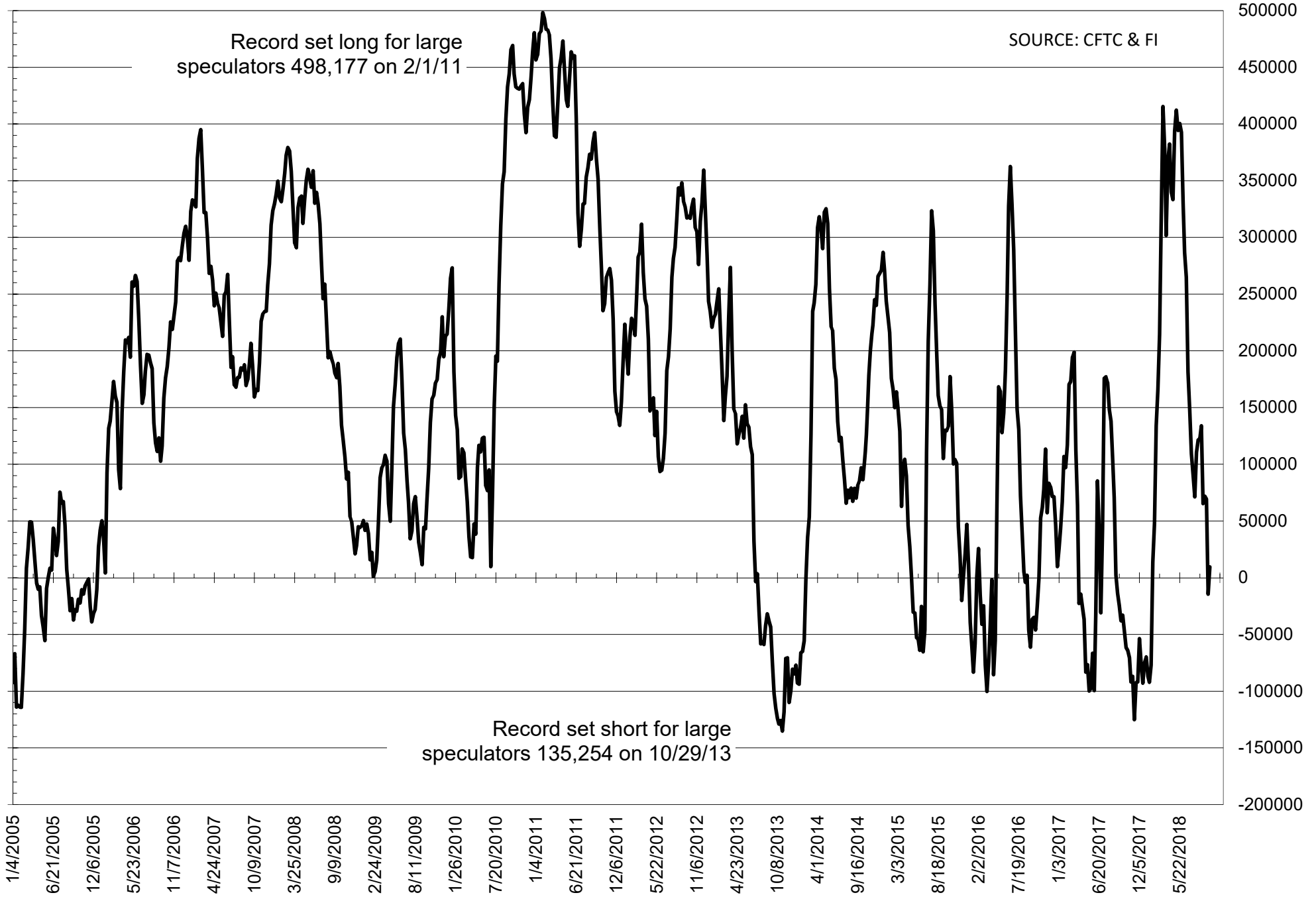
NET POSITION OF FUTURES ONLY LARGE SPECS IN SOYMEAL



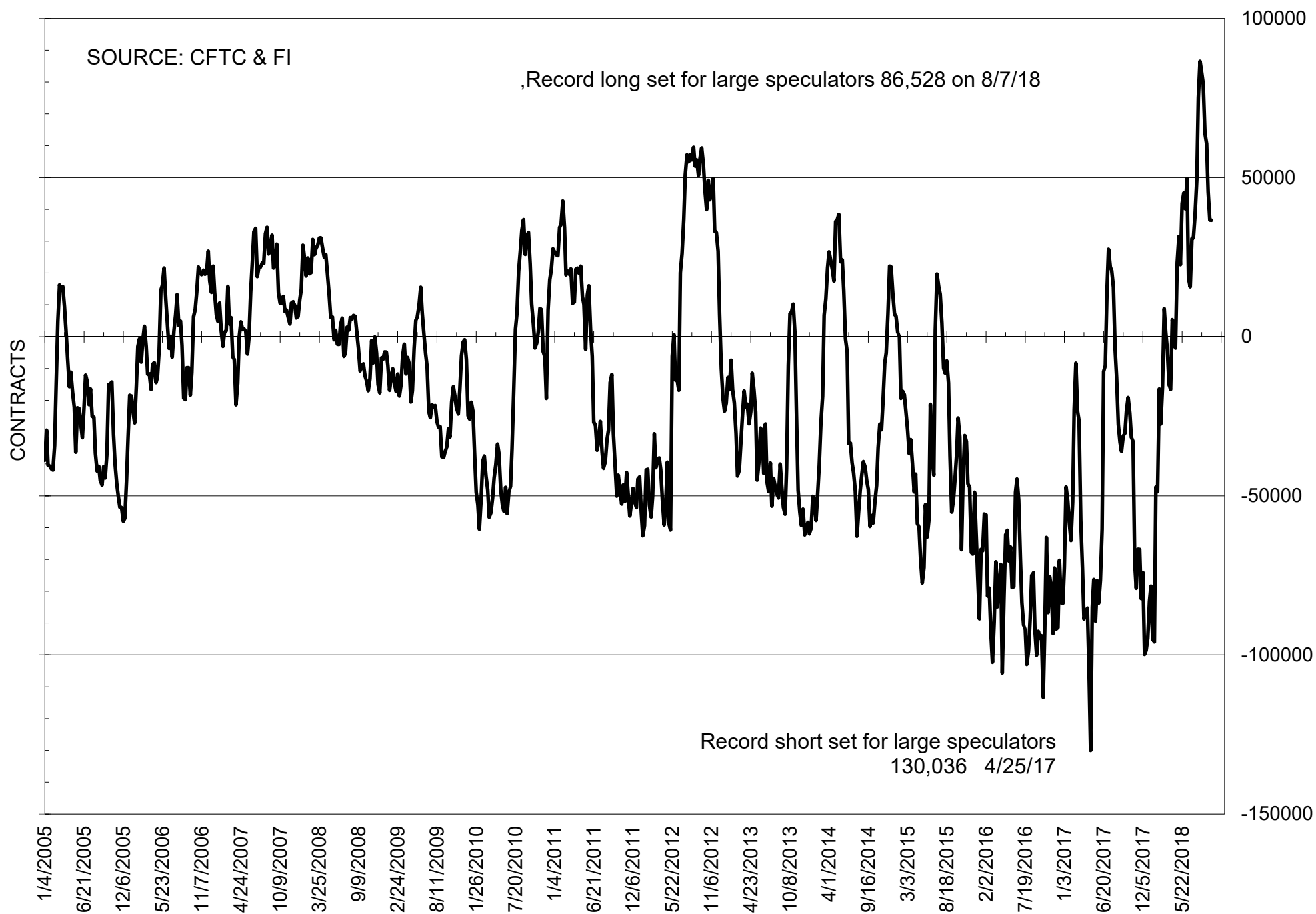
NET POSITION OF FUTURES ONLY LARGE SPECS IN SOYOIL



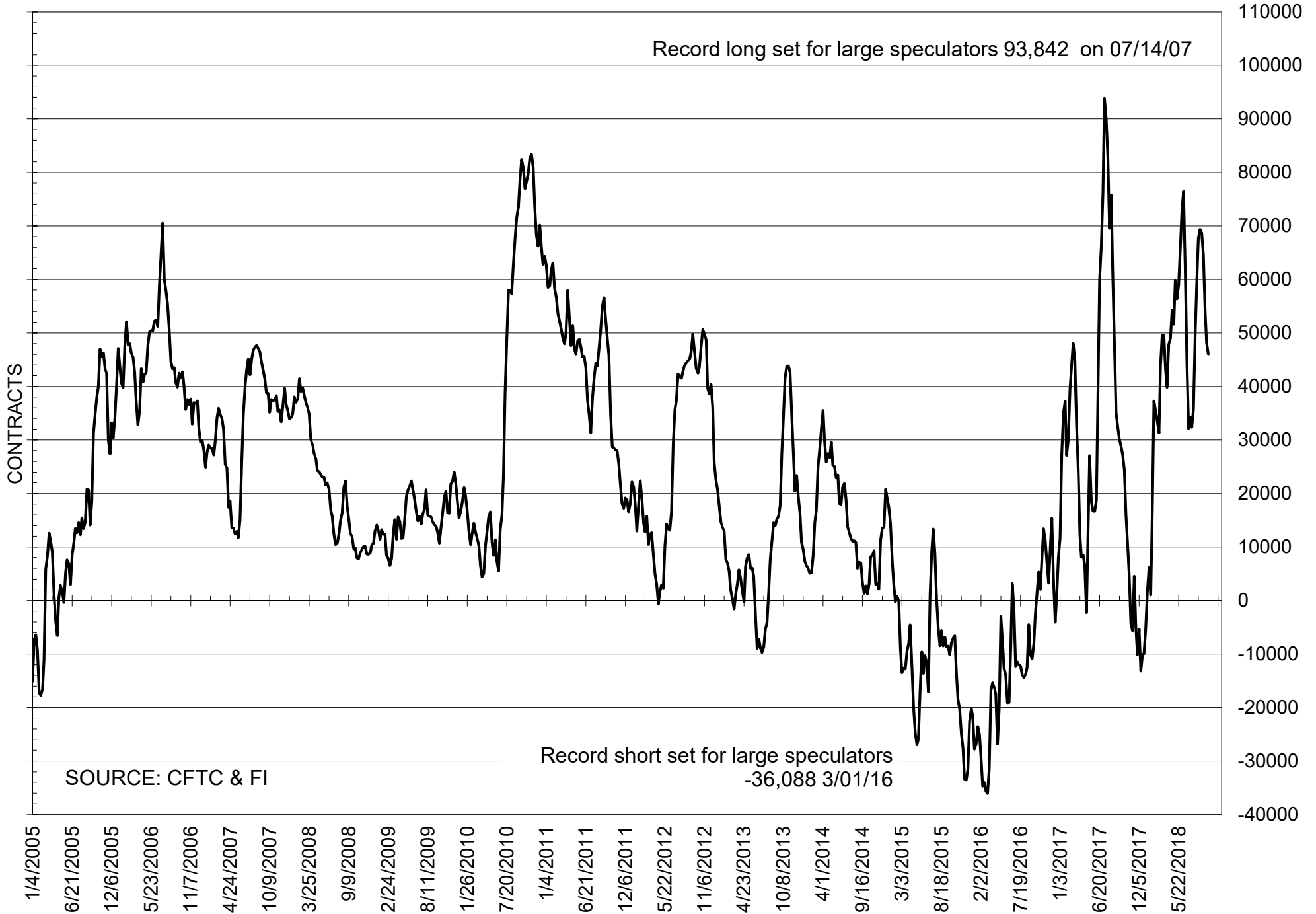
NET POSITION OF LARGE SPECULATORS IN CORN



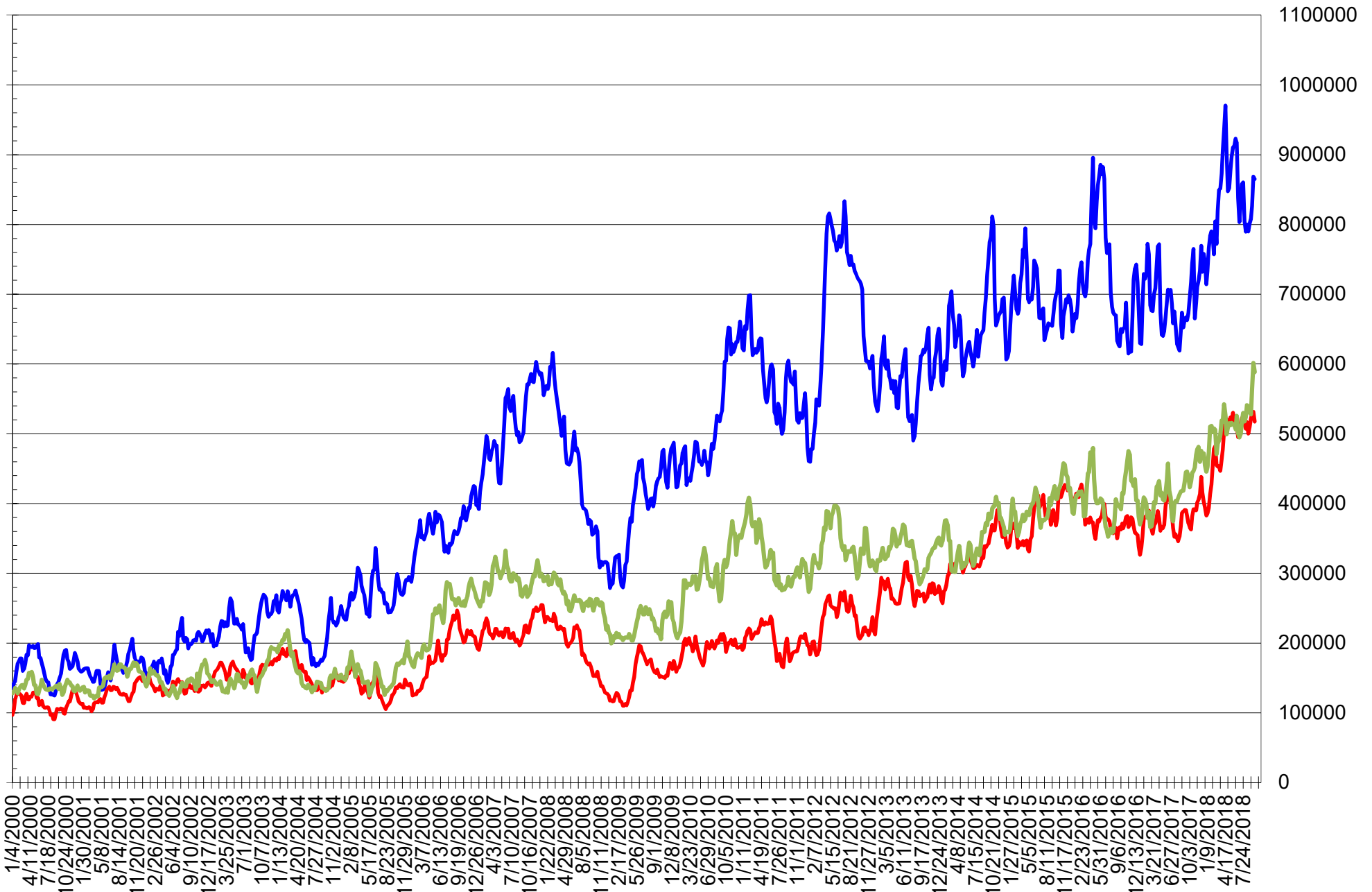
NET POSITION OF FUTURES ONLY LARGE SPECS IN CHICAGO WHEAT



NET POSITION OF LARGE SPECULATORS IN KANSAS CITY WHEAT



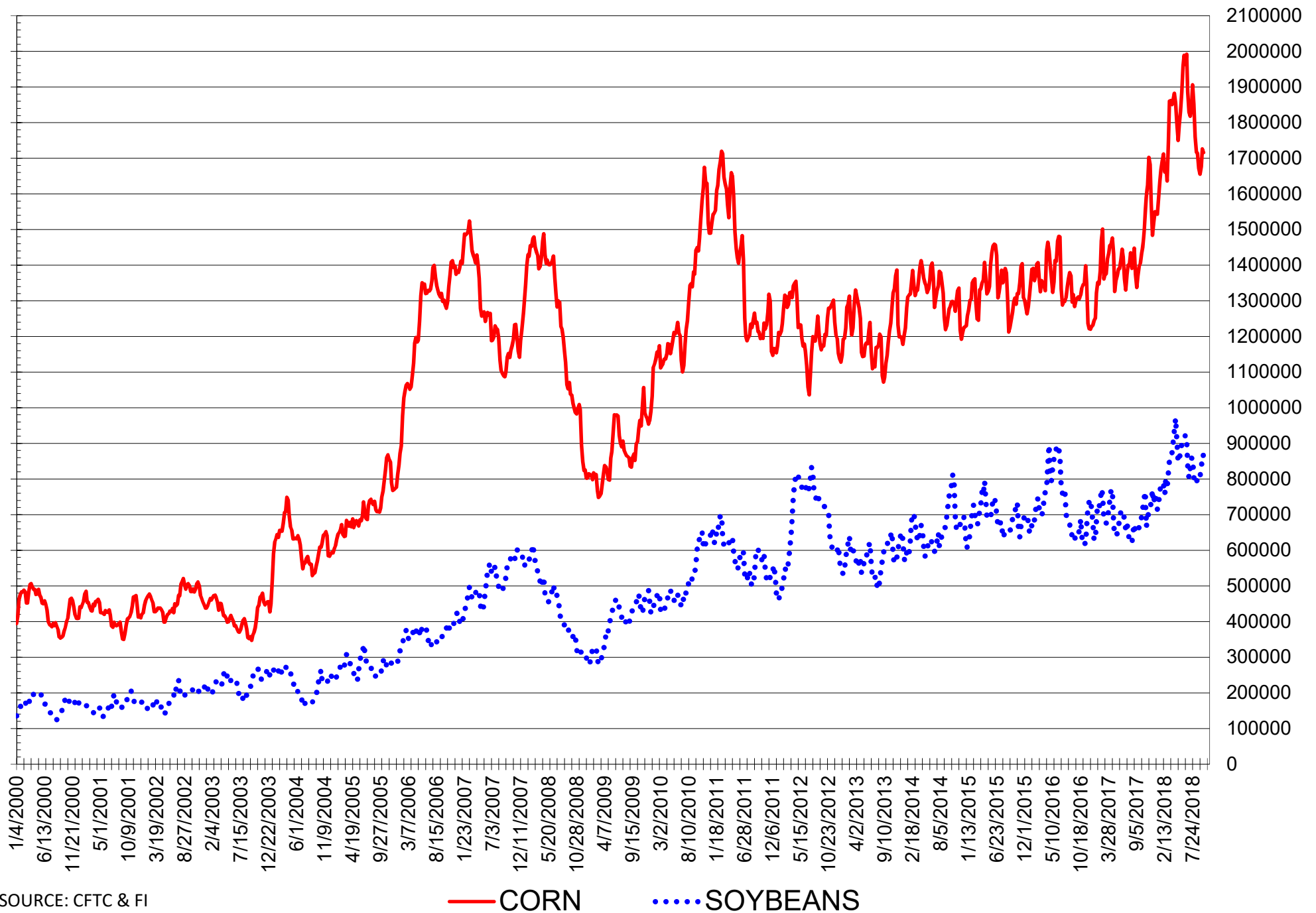
TOTAL OPEN INTEREST IN SOYBEANS, MEAL AND OIL, FUTURES ONLY



SOURCE: CFTC & FI

— SOYBEANS — SOYBEAN MEAL — SOYBEAN OIL

TOTAL OPEN INTEREST IN CORN AND SOYBEANS, FUTURES ONLY



SOURCE: CFTC & FI

— CORN

..... SOYBEANS

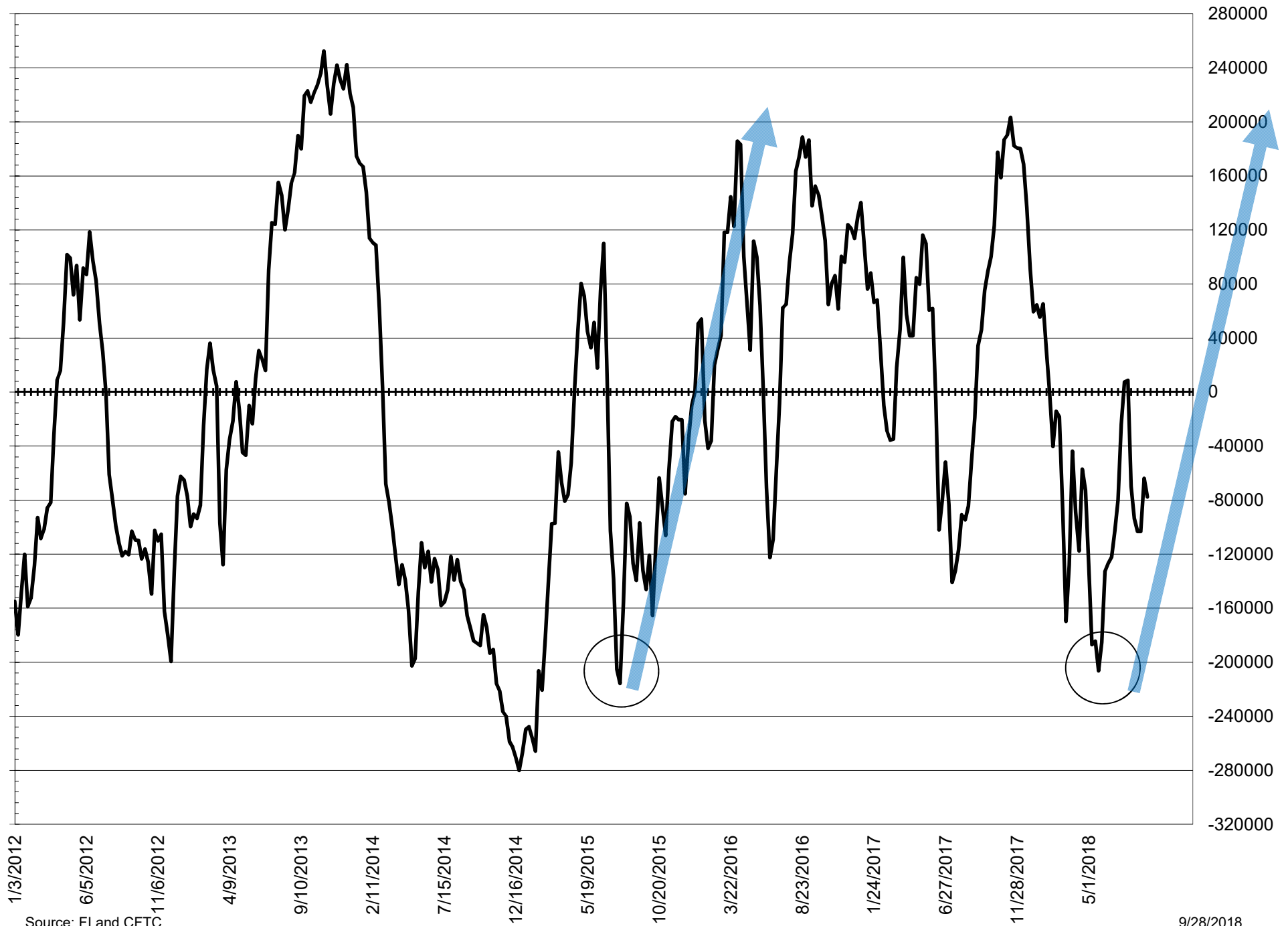
**COMMITMENT OF TRADERS
FUTURES & OPTIONS NET POSITIONS
AS OF 09/25/2018
(IN THOUSAND CONTRACTS)**

	COMMERCIAL				(FUND) NON COMMERCIAL				(SPEC) NON-REPORTABLE			
	25-Sep	18-Sep	11-Sep	4-Sep	25-Sep	18-Sep	11-Sep	4-Sep	25-Sep	18-Sep	11-Sep	4-Sep
WHEAT												
Chicago	7.2	4.9	-9.7	-29.3	2.4	3.5	18.4	38.2	-9.5	-8.4	-8.8	-9.0
Kansas City	-39.4	-42.2	-49.4	-60.7	40.7	43.4	50.5	61.7	-1.3	-1.1	-1.1	-1.1
Minneapolis	6.9	6.2	5.3	3.0	-4.2	-3.5	-2.2	-0.1	-2.7	-2.7	-3.1	-2.9
All Wheat	-25.3	-31.1	-53.8	-86.9	38.8	43.3	66.8	99.9	-13.5	-12.3	-13.0	-13.0
CORN	59.6	99.9	14.7	11.6	-52.3	-86.2	6.2	8.9	-7.3	-13.7	-20.9	-20.5
OATS	-0.5	-0.2	0.0	-1.0	0.1	-0.2	0.0	0.1	0.4	0.4	0.0	0.9
SOYBEANS	93.2	114.7	108.7	99.4	-64.4	-82.5	-77.9	-68.9	-28.7	-32.2	-30.8	-30.6
SOY OIL	44.1	72.5	62.3	50.0	-51.3	-77.8	-67.5	-56.2	7.2	5.3	5.1	6.2
SOY MEAL	-62.7	-58.2	-73.3	-62.5	51.4	48.1	60.5	50.3	11.3	10.1	12.8	12.2

	TOTAL OPEN INTEREST				COMMERCIALS		% HELD BY TRADERS LARGE (FUNDS)		SMALL (NON-REP)	
	25-Sep	18-Sep	11-Sep	4-Sep	LONG	SHORT	LONG	SHORT	LONG	SHORT
WHEAT										
Chicago	585,740	616,694	592,719	577,239						
Kansas City	294,772	296,625	285,014	273,227	37%	36%	21%	20%	7%	9%
Minneapolis	62,400	60,654	59,213	58,996	38%	51%	30%	16%	9%	9%
					58%	46%	21%	27%	15%	19%
CORN	2,127,915	2,162,153	2,085,115	2,058,661	44%	41%	18%	21%	10%	10%
OATS	4,572	4,322	-	4,076						
SOYBEANS	1,033,689	1,071,417	1,016,904	986,647	50%	41%	14%	20%	7%	10%
SOY OIL	617,858	638,655	596,612	556,714	47%	40%	17%	25%	6%	5%
SOY MEAL	566,081	591,453	583,032	576,598	48%	59%	18%	9%	10%	8%

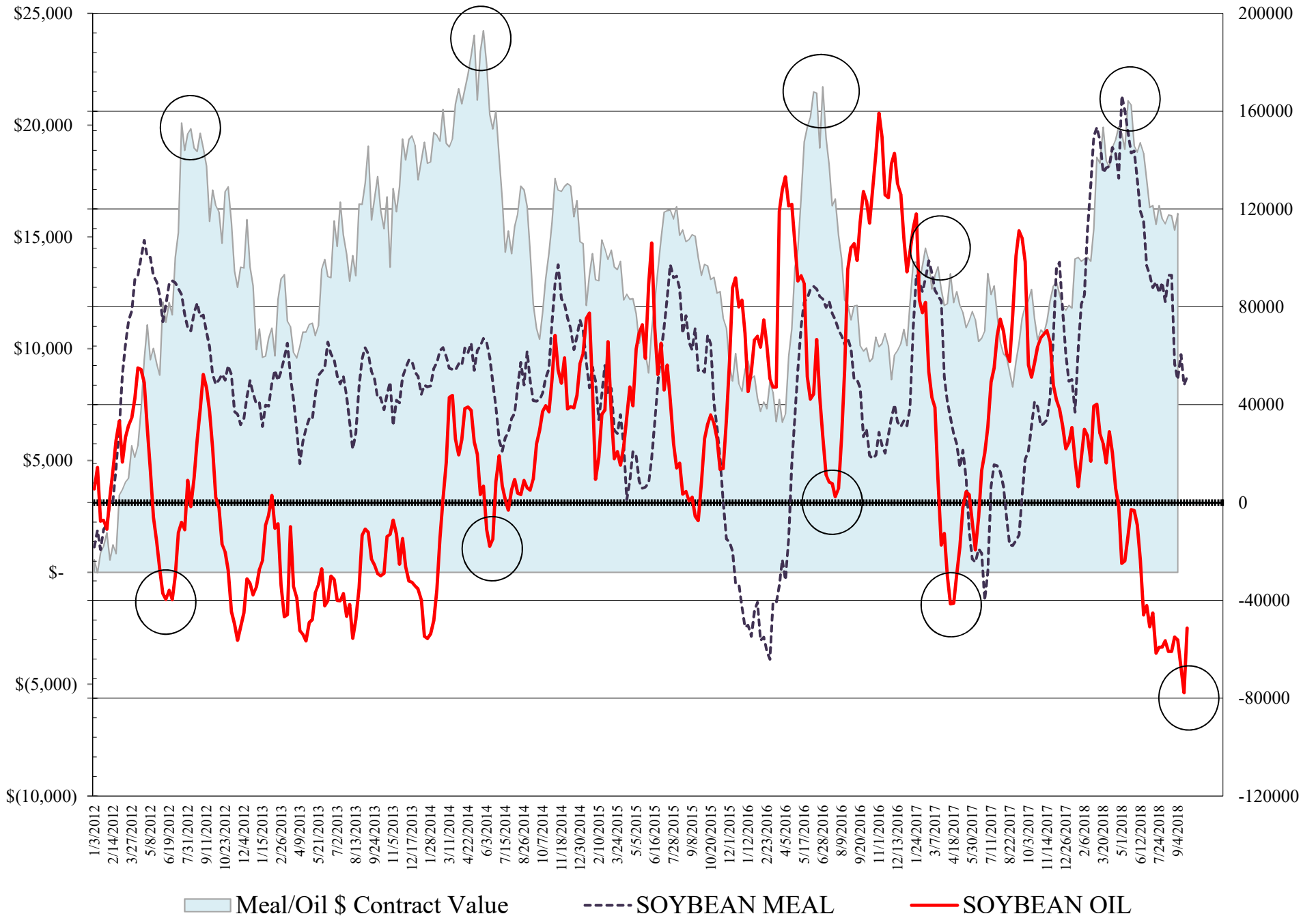
SOURCE: CFTC & FI

NET POSITION FUTURES AND OPTIONS SPREAD OF LARGE SPECULATORS IN SOYBEANS MINUS CORN



Source: FI and CFTC

NET POSITION FUTURES AND OPTIONS OF LARGE SPECULATORS IN SOYBEAN MEAL AND SOYBEAN OIL



**DISAGGREGATED COMMITMENT OF TRADERS
FUTURES ONLY NET POSITIONS
AS OF 09/25/2018
(IN THOUSAND CONTRACTS)**

	PRODUCER / MERCHANT / PROCESSOR / USER				(INDEX/ETF) SWAP DEALERS				(CTA/CPO/OTHER UNREGISTERED) MANAGED MONEY			
	25-Sep	18-Sep	11-Sep	4-Sep	25-Sep	18-Sep	11-Sep	4-Sep	25-Sep	18-Sep	11-Sep	4-Sep
	WHEAT											
Chicago	(109.9)	(118.2)	(128.2)	(139.8)	84.4	90.9	92.9	89.0	0.2	(8.3)	11.6	36.0
Kansas City	(77.5)	(80.3)	(88.7)	(100.4)	33.3	33.8	36.1	37.3	28.7	32.5	40.2	52.6
Minneapolis	2.6	2.3	1.4	(0.9)	3.9	3.7	3.6	3.7	(2.9)	(2.9)	(0.8)	1.0
All Wheat	(184.8)	(196.3)	(215.5)	(241.1)	121.5	128.4	132.7	130.0	26.0	21.4	50.9	89.6
CORN	(197.2)	(164.8)	(241.2)	(241.7)	197.6	188.1	190.5	189.4	(124.9)	(158.4)	(83.9)	(80.5)
OATS	(0.8)	(0.5)	-	(1.3)	0.2	0.2	-	0.2	(0.4)	(0.5)	-	(0.1)
SOYBEANS	(23.5)	(8.0)	(14.7)	(28.6)	106.4	107.1	111.3	115.2	(60.1)	(82.2)	(78.9)	(69.8)
SOY OIL	(63.6)	(30.4)	(39.2)	(48.2)	100.1	95.7	95.0	91.3	(85.2)	(110.8)	(97.3)	(87.6)
SOY MEAL	(146.5)	(147.0)	(162.0)	(145.4)	76.4	80.9	81.1	76.6	21.1	21.2	28.5	19.6

Managed % of OI

Chicago W	0%	-2%	3%	8%
Corn	-7%	-9%	-5%	-5%

	TOTAL OPEN INTEREST				OTHER REPORTABLE				NON REPORTABLE			
	25-Sep	18-Sep	11-Sep	4-Sep	25-Sep	18-Sep	11-Sep	4-Sep	25-Sep	18-Sep	11-Sep	4-Sep
	WHEAT											
Chicago	461,262	472,608	454,002	446,974	36.3	44.9	33.9	24.6	(11.0)	(9.3)	(10.2)	(9.8)
Kansas City	270,040	272,070	263,307	253,546	17.4	15.7	14.0	11.9	(1.8)	(1.7)	(1.6)	(1.4)
Minneapolis	59,206	57,581	56,435	56,152	(1.1)	(0.3)	(1.2)	(1.0)	(2.6)	(2.7)	(3.0)	(2.8)
All Wheat	790,508	802,259	773,744	756,672	52.7	60.2	46.8	35.6	(15.4)	(13.7)	(14.9)	(14.0)
CORN	1,716,016	1,726,248	1,677,065	1,655,575	134.4	143.9	153.1	152.4	(9.9)	(8.8)	(18.5)	(19.6)
OATS	4,182	3,966	-	3,811	0.6	0.5	-	0.3	0.4	0.4	-	0.9
SOYBEANS	865,196	868,535	826,269	808,144	5.3	12.7	12.3	14.1	(28.0)	(29.6)	(30.0)	(30.9)
SOY OIL	588,433	601,384	564,029	528,062	42.0	41.0	37.1	38.9	6.7	4.5	4.4	5.7
SOY MEAL	517,504	531,670	528,799	521,993	39.9	36.9	42.0	39.3	9.1	7.9	10.4	10.0

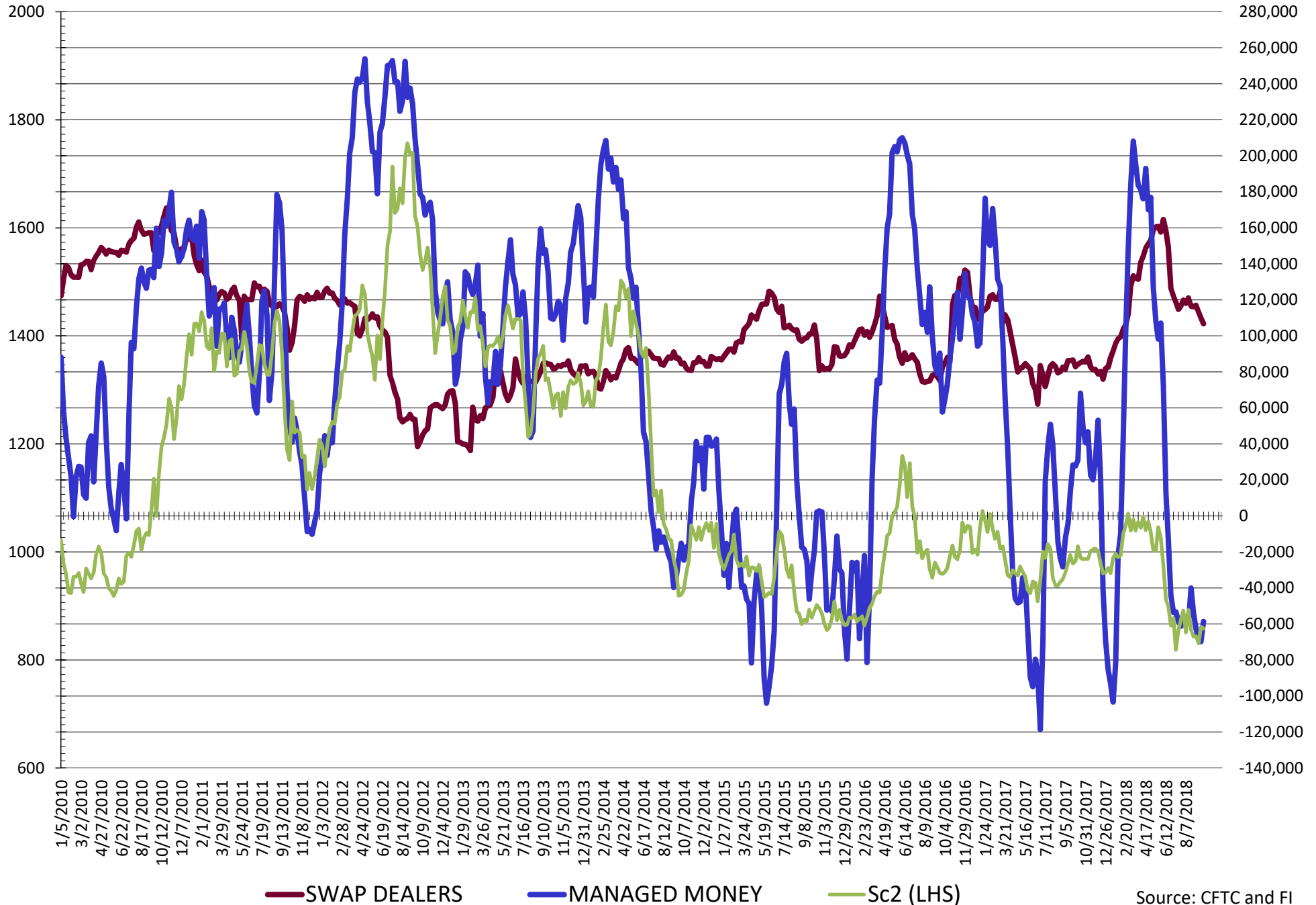
SOURCE: CFTC & FI

**DISAGGREGATED COMMITMENT OF TRADERS
FUTURES & OPTIONS NET POSITIONS
AS OF 09/25/2018
(IN THOUSAND CONTRACTS)**

	PRODUCER / MERCHANT / PROCESSOR / USER				(INDEX/ETF) SWAP DEALERS				(CTA/CPO/OTHER UNREGISTERED) MANAGED MONEY			
	25-Sep	18-Sep	11-Sep	4-Sep	25-Sep	18-Sep	11-Sep	4-Sep	25-Sep	18-Sep	11-Sep	4-Sep
	WHEAT											
Chicago	(92.4)	(101.2)	(115.8)	(130.2)	99.6	106.2	106.1	101.0	(1.1)	(1.4)	18.4	42.8
Kansas City	(73.2)	(76.5)	(85.9)	(98.0)	33.8	34.3	36.5	37.4	34.0	37.1	43.5	55.3
Minneapolis	3.3	2.7	1.9	(0.5)	3.6	3.5	3.3	3.5	(2.9)	(2.9)	(0.8)	1.0
All Wheat	(162.3)	(175.0)	(199.7)	(228.8)	137.0	143.9	145.9	141.8	30.0	32.8	61.1	99.0
CORN	(156.7)	(121.1)	(193.8)	(193.8)	216.3	221.0	208.5	205.4	(112.8)	(141.3)	(63.5)	(56.9)
OATS	(0.7)	(0.4)	-	(1.2)	0.2	0.2	-	0.2	(0.3)	(0.5)	-	(0.1)
SOYBEANS	(13.5)	4.7	(4.5)	(17.6)	106.7	109.9	113.2	117.0	(58.6)	(69.8)	(68.3)	(62.7)
SOY OIL	(55.8)	(22.4)	(32.2)	(41.1)	99.8	94.9	94.5	91.1	(85.8)	(110.0)	(97.4)	(88.0)
SOY MEAL	(140.9)	(141.2)	(155.1)	(140.6)	78.2	82.9	81.8	78.0	21.2	21.9	30.1	21.4
	TOTAL				OTHER REPORTABLE				NON REPORTABLE			
	OPEN INTEREST				SWAP DEALERS				MANAGED MONEY			
	25-Sep	18-Sep	11-Sep	4-Sep	25-Sep	18-Sep	11-Sep	4-Sep	25-Sep	18-Sep	11-Sep	4-Sep
WHEAT												
Chicago	585,740	616,694	592,719	577,239	3.5	4.8	0.0	(4.5)	(9.5)	(8.4)	(8.8)	(9.0)
Kansas City	294,772	296,625	285,014	273,227	6.6	6.3	7.0	6.5	(1.3)	(1.1)	(1.1)	(1.1)
Minneapolis	62,400	60,654	59,213	58,996	(1.3)	(0.6)	(1.3)	(1.0)	(2.7)	(2.7)	(3.1)	(2.9)
All Wheat	942,912	973,973	936,946	909,462	8.8	10.6	5.7	0.9	(13.5)	(12.3)	(13.0)	(13.0)
CORN	2,127,915	2,162,153	2,085,115	2,058,661	60.4	55.1	69.7	65.7	(7.3)	(13.7)	(13.7)	(13.7)
OATS	4,572	4,322	-	4,076	0.4	0.3	-	0.2	0.4	0.4	-	0.9
SOYBEANS	1,033,689	1,071,417	1,016,904	986,647	(5.8)	(12.7)	(9.6)	(6.1)	(28.7)	(32.2)	(30.8)	(30.6)
SOY OIL	617,858	638,655	596,612	556,714	34.5	32.2	29.9	31.9	7.2	5.3	5.1	6.2
SOY MEAL	566,081	591,453	583,032	576,598	30.2	26.2	30.4	28.9	11.3	10.1	12.8	12.2

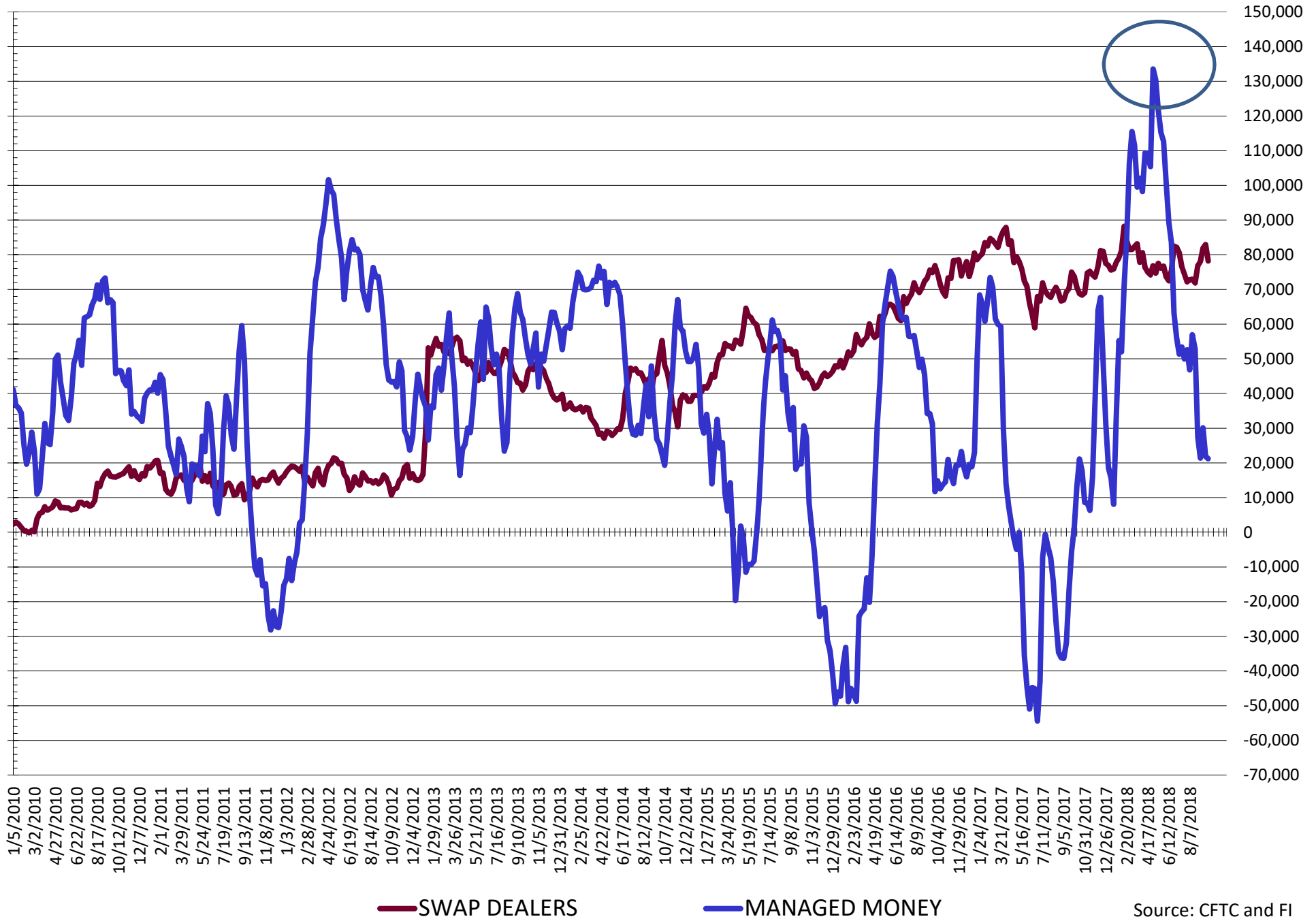
SOURCE: CFTC & FI

NET POSITION FUTURES AND OPTIONS OF SWAP AND MANAGED FUNDS IN SOYBEANS



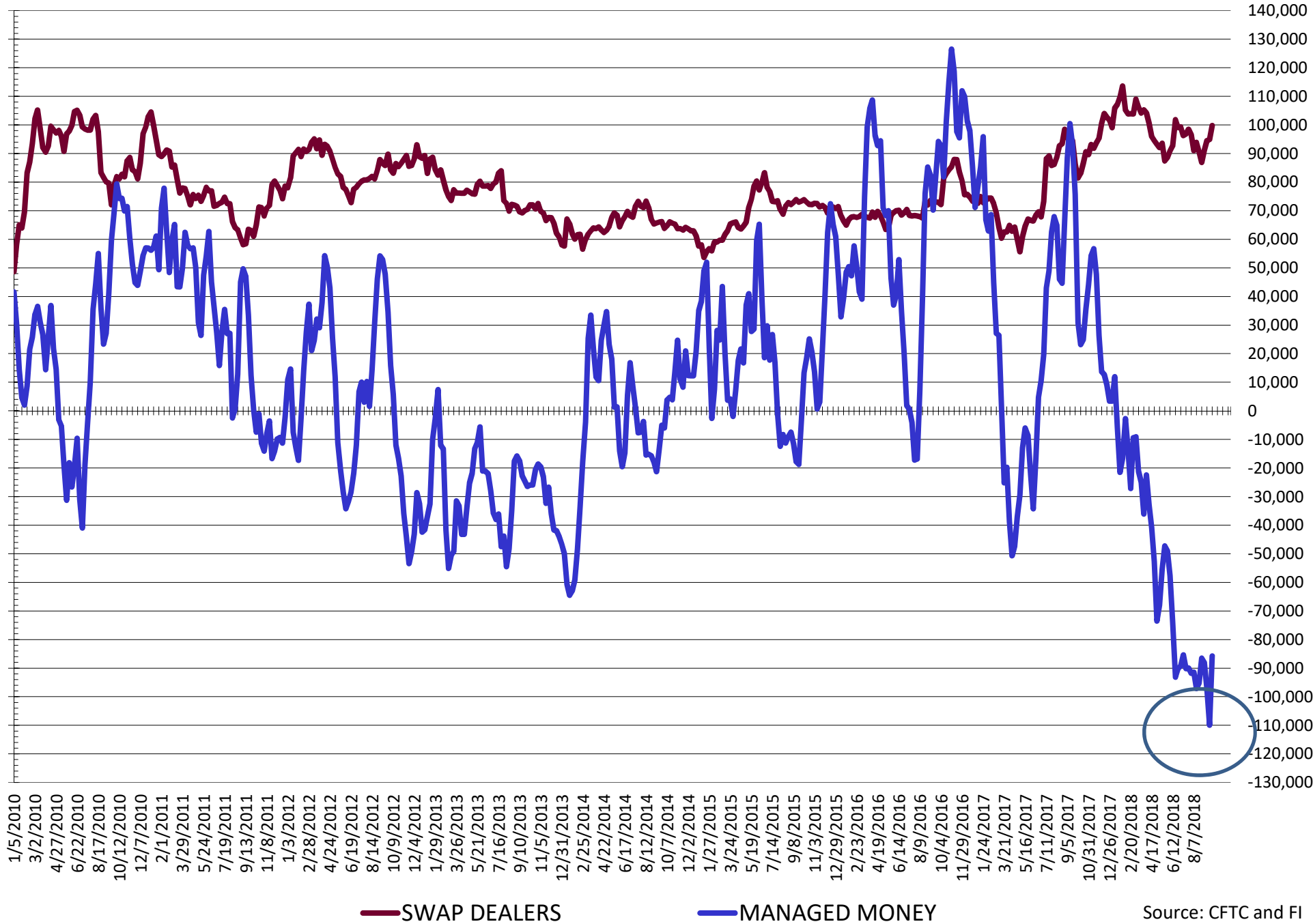
Source: CFTC and FI
9/28/2018

NET POSITION FUTURES AND OPTIONS OF SWAP AND MANAGED FUNDS IN SOYBEAN MEAL



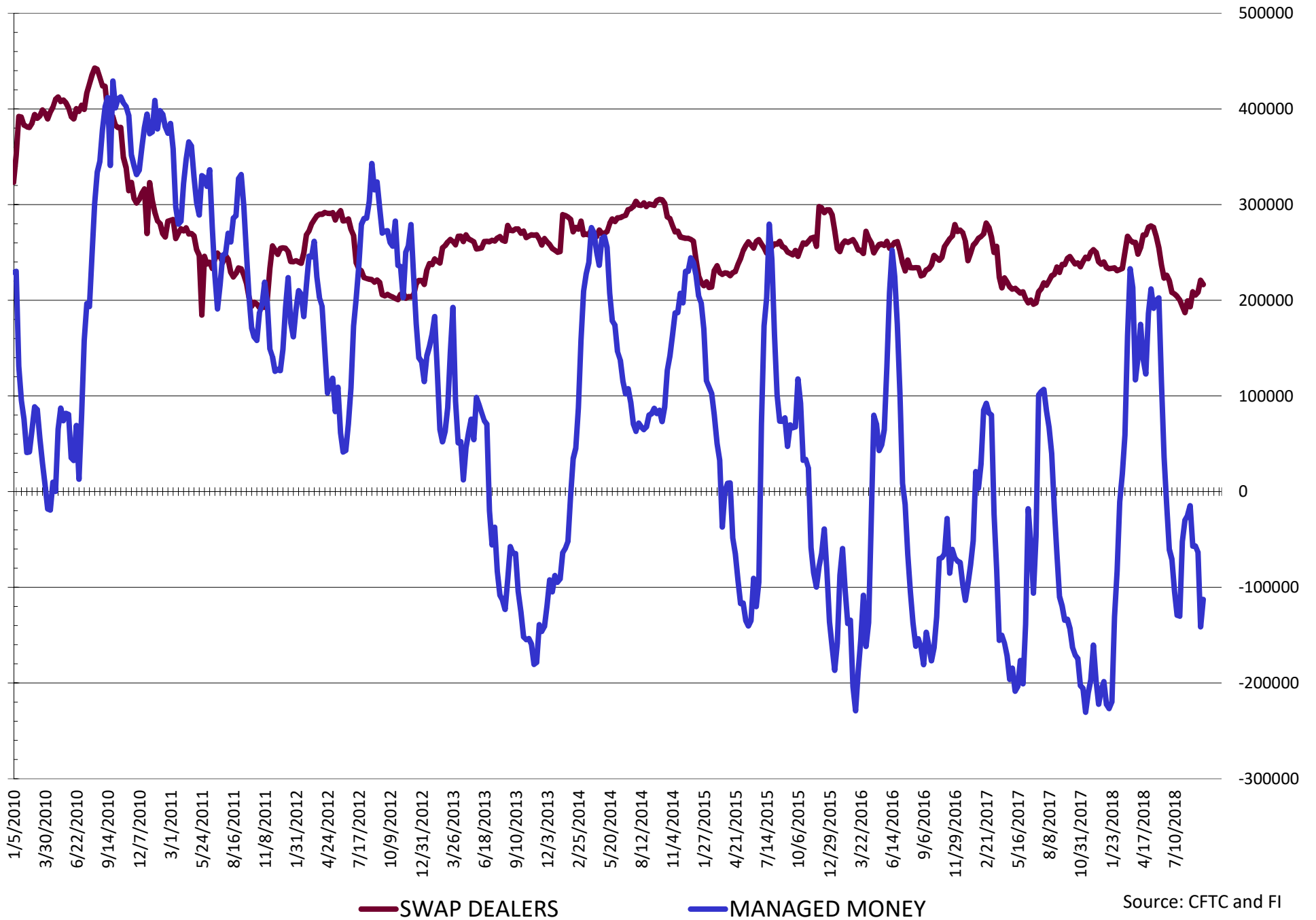
Source: CFTC and FI
9/28/2018

NET POSITION FUTURES AND OPTIONS OF SWAP AND MANAGED FUNDS IN SOYBEAN OIL



Source: CFTC and FI
9/28/2018

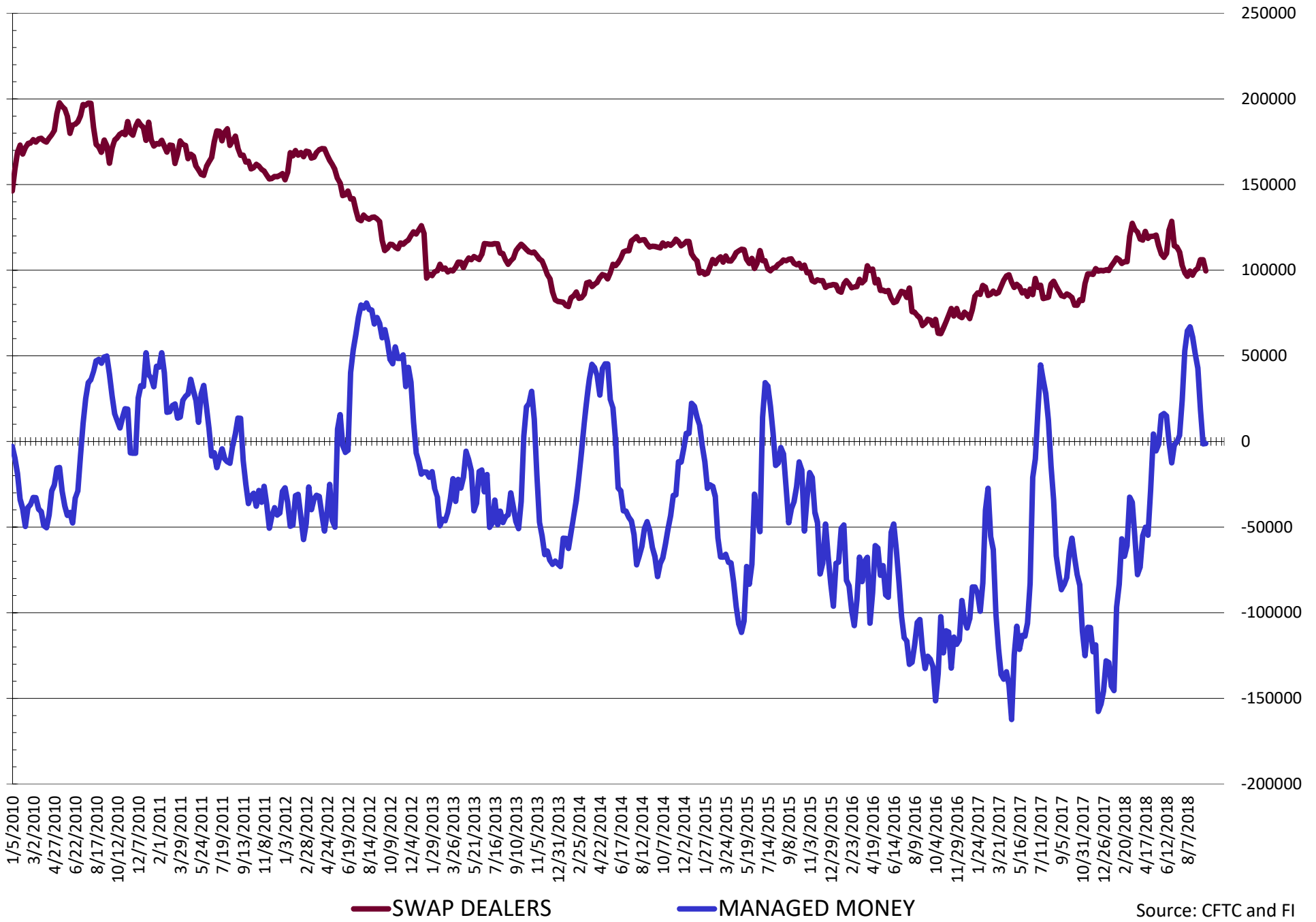
NET POSITION FUTURES AND OPTIONS OF SWAP AND MANAGED FUNDS IN CORN



Source: CFTC and FI

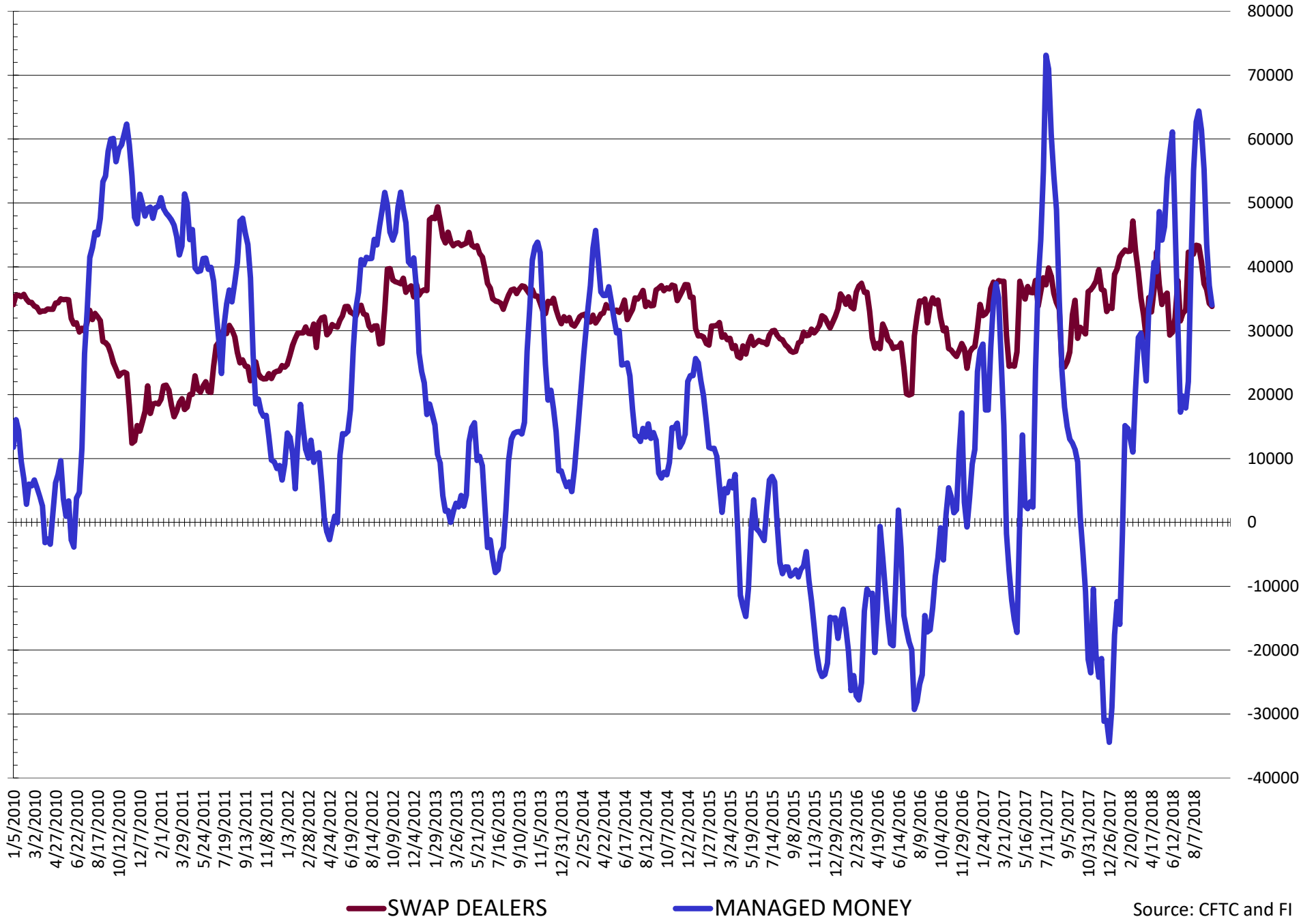
9/28/2018

NET POSITION FUTURES AND OPTIONS OF SWAP AND MANAGED FUNDS IN CHICAGO WHEAT



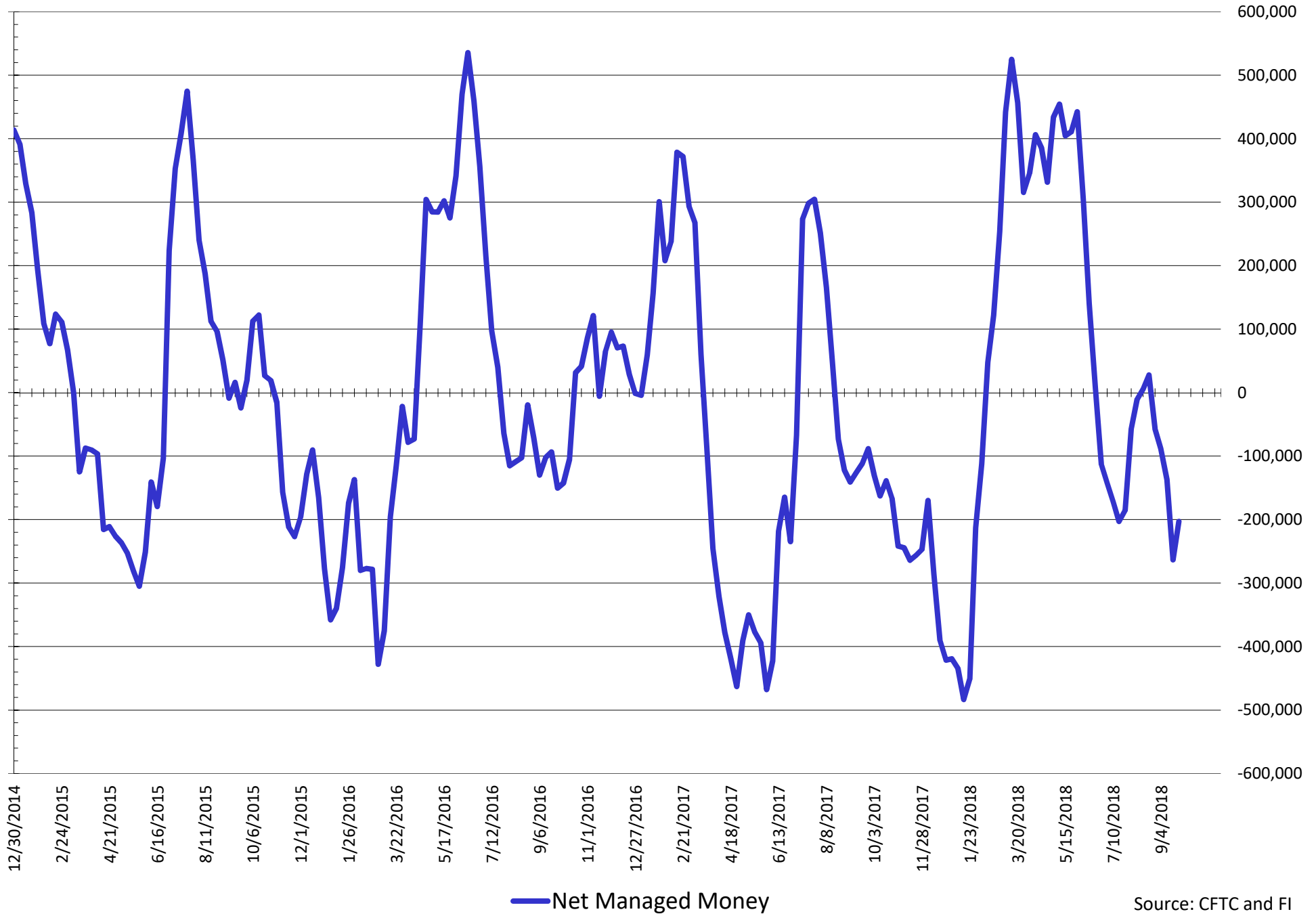
Source: CFTC and FI
9/28/2018

NET POSITION FUTURES AND OPTIONS OF SWAP AND MANAGED FUNDS IN KANSAS WHEAT



Source: CFTC and FI
9/28/2018

NET POSITION FUTURES AND OPTIONS OF SWAP AND MANAGED FUNDS IN COMBINED SRW, HRW, CORN, SOYBEANS, SOYMEAL AND SOYOIL



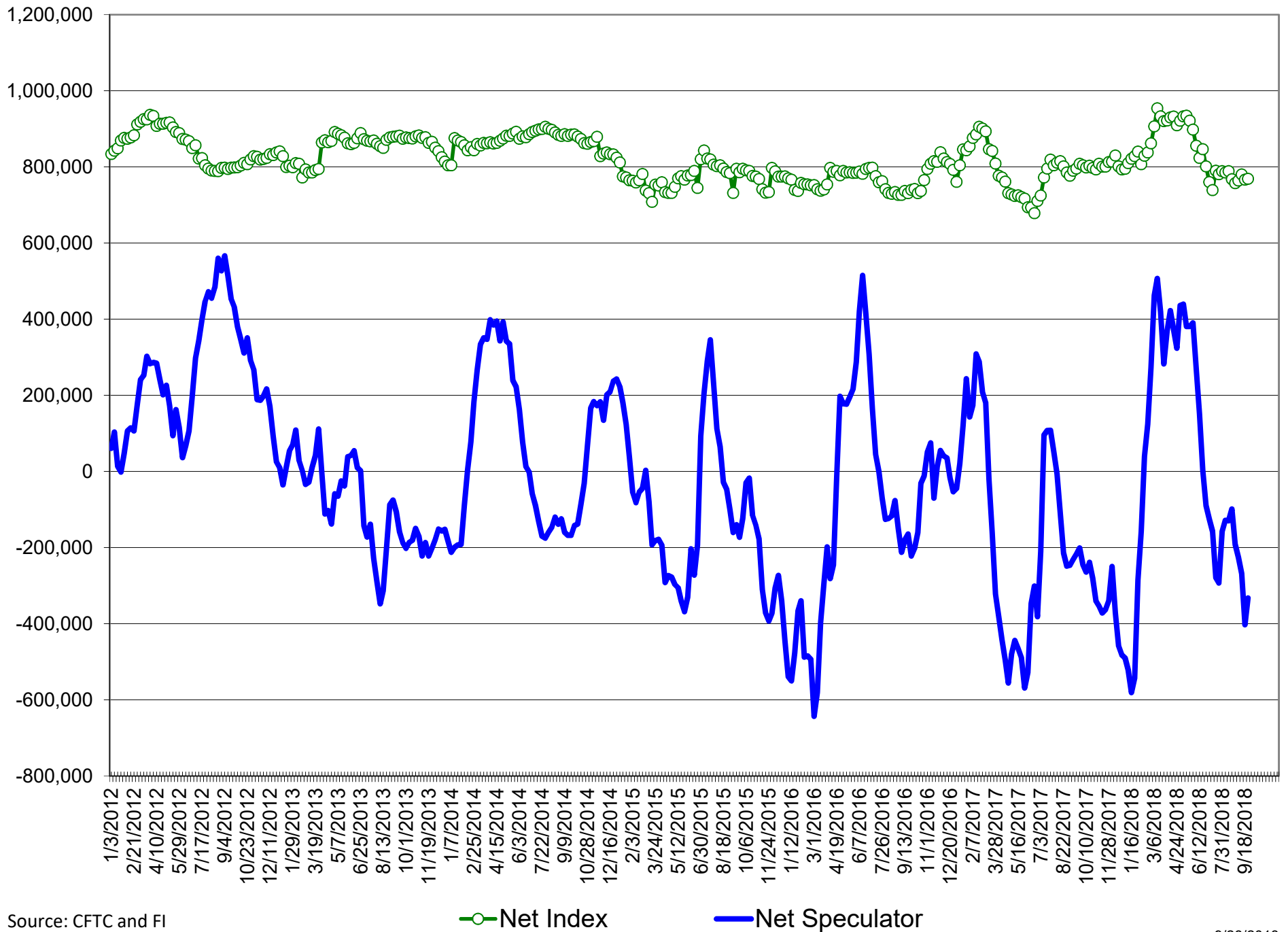
COMMITMENT OF TRADERS
FUTURES & OPTIONS NET POSITIONS (INDEX BROKEN OUT)
AS OF 09/25/2018
(IN THOUSAND CONTRACTS)

	COMMERCIAL				(FUND) NON COMMERCIAL				(SPEC) NON-REPORTABLE			
	25-Sep	18-Sep	11-Sep	4-Sep	25-Sep	18-Sep	11-Sep	4-Sep	25-Sep	18-Sep	11-Sep	4-Sep
	WHEAT											
Chicago	(77.5)	(85.9)	(101.1)	(117.2)	(38.0)	(37.5)	(24.3)	(5.5)	(9.5)	(8.4)	(8.8)	(9.0)
Kansas City	(71.8)	(76.0)	(86.0)	(98.0)	21.1	23.1	29.0	37.9	(1.3)	(1.1)	(1.1)	(1.1)
Minneapolis	-	-	-	-	-	-	-	-	-	-	-	-
All Wheat	(149.4)	(161.8)	(187.1)	(215.2)	(16.9)	(14.5)	4.8	32.4	(10.8)	(9.5)	(9.9)	(10.0)
CORN	(128.1)	(88.9)	(174.1)	(168.6)	(146.5)	(176.2)	(86.5)	(82.6)	(7.3)	(13.7)	(20.9)	(20.5)
OATS	-	-	-	-	-	-	-	-	-	-	-	-
SOYBEANS	18.9	39.4	32.7	21.8	(114.5)	(127.9)	(123.4)	(111.6)	(28.7)	(32.2)	(30.8)	(30.6)
SOY OIL	(33.9)	(0.8)	(12.8)	(21.1)	(77.8)	(102.8)	(95.2)	(84.2)	7.2	5.3	5.1	6.2
SOY MEAL	(115.8)	(111.9)	(126.9)	(112.3)	23.6	19.0	32.2	19.9	11.3	10.1	12.8	12.2

	TOTAL OPEN INTEREST				(INDEX) COMMERCIAL INDEX TRADERS				(INDEX) % NET OF TOTAL OPEN INTEREST			
	25-Sep	18-Sep	11-Sep	4-Sep	25-Sep	18-Sep	11-Sep	4-Sep	25-Sep	18-Sep	11-Sep	4-Sep
	WHEAT											
Chicago	585,740	616,694	592,719	577,239	125.1	131.8	134.2	131.6	21.4%	21.4%	22.6%	22.8%
Kansas City	294,772	296,625	285,014	273,227	52.0	54.0	58.1	61.2	17.6%	18.2%	20.4%	22.4%
Minneapolis	-	-	-	-	-	-	-	-	-	-	-	-
All Wheat	880,512	913,319	877,733	850,466	177.1	185.8	192.3	192.8	20.1%	20.3%	21.9%	22.7%
CORN	2,127,915	2,162,153	2,085,115	2,058,661	281.9	278.8	281.6	271.6	13.2%	12.9%	13.5%	13.2%
OATS	-	-	-	-	-	-	-	-	-	-	-	-
SOYBEANS	1,033,689	1,071,417	1,016,904	986,647	124.3	120.7	121.6	120.3	12.0%	11.3%	12.0%	12.2%
SOY OIL	617,858	638,655	596,612	556,714	104.4	98.3	102.8	99.1	16.9%	15.4%	17.2%	17.8%
SOY MEAL	566,081	591,453	583,032	576,598	80.9	82.7	81.9	80.2	14.3%	14.0%	14.0%	13.9%

SOURCE: CFTC & FI

NET POSITION FUTURES AND OPTIONS OF SPECULATORS AND INDEX FUNDS IN COMBINED SRW, HRW, CORN, SOYBEANS, SOYMEAL AND SOYOIL



Source: CFTC and FI

Traditional Daily Estimate of Funds 9/28/18

	(Neg)-"Short"	Pos-"Long"			
Actual less Est.	22.3	22.7	6.1	3.5	26.0
	Corn	Bean	Chi. Wheat	Meal	Oil
Actual	9.5	(54.9)	36.6	61.0	(43.2)
26-Sep	(3.0)	3.0	(3.0)	3.0	3.0
27-Sep	7.0	4.0	(4.0)	3.0	5.0
28-Sep	(22.0)	(9.0)	(5.0)	(4.0)	(3.0)
1-Oct					
2-Oct					
FI Est. of Futures Only 9/28/18	(8.5)	(56.9)	24.6	63.0	(38.2)
FI Est. Futures & Options	(70.3)	(66.5)	(9.6)	53.4	(46.3)
Futures only record long	498.2	260.4	86.5	167.5	160.2
	2/1/2011	6/27/2017	8/7/2018	5/1/2018	11/1/2016
Futures only record short	(135.3)	(94.5)	(130.0)	(49.5)	(69.8)
	10/29/2013	6/27/2017	4/25/2017	3/1/2016	9/18/2018
Futures and options record net long	458.5	259.8	64.8	132.1	159.2
	9/28/2010	5/1/2012	8/7/2012	5/1/2018	1/1/2016
Futures and options record net short	(166.8)	(113.1)	(143.3)	(64.1)	(77.8)
	11/14/2017	6/27/2017	4/25/2017	3/1/2016	9/18/2018

Managed Money Daily Estimate of Funds 9/28/18

	Corn	Bean	Chi. Wheat	Meal	Oil
Latest CFTC Fut. Only	(124.9)	(60.1)	0.2	21.1	(85.2)
Latest CFTC F&O	(112.8)	(58.6)	(1.1)	21.2	(85.8)
FI Est. Managed Fut. Only	(151.9)	(63.1)	(17.8)	24.1	(77.7)
FI Est. Managed Money F&O	(139.8)	(61.6)	(19.1)	24.2	(78.3)

Index Funds Latest Positions (as of last Tuesday)

Index Futures & Options	281.9	124.3	125.1	NA	104.4
Change From Previous Week	3.1	3.7	(6.7)	NA	6.1

Source: Reuters, CFTC & FI (FI est. are noted with latest date)

Disclaimer

TO CLIENTS/PROSPECTS OF FUTURES INTERNATIONAL, SEE RISK DISCLOSURE BELOW:

THIS COMMUNICATION IS CONVEYED AS A SOLICITATION FOR ENTERING INTO A DERIVATIVES TRANSACTION.

Any trading recommendations and market or other information to Customer by Futures International (FI), although based upon information obtained from sources believed by FI to be reliable may not be accurate and may be changed without notice to customer. FI makes no guarantee as to the accuracy or completeness of any of the information or recommendations furnished to Customer. Customer understands that FI, its managers, employees and/or affiliates may have a position in commodity futures, options or other derivatives which may not be consistent with the recommendations furnished by FI to Customer.

The risk of trading futures and options and other derivatives involves a substantial risk of loss and is not suitable for all persons. In purchasing an option, the risk is limited to the premium paid, and all commissions and fees involved with the trade. When an option is shorted or written, the writer of the option has unlimited risk with respect to the option written. The use of options strategies such as a straddles and strangles involve multiple option positions and may substantially increase the amount of commissions and fees paid to execute the strategy. Option prices do not necessarily move in tandem with cash or futures prices. Each person must consider whether a particular trade, combination of trades or strategy is suitable for that person's financial means and objectives.

This material may include discussions of seasonal patterns, however, futures prices have already factored in the seasonal aspects of supply and demand, and seasonal patterns are no indication of future market trends. Finally, past performance is not indicative of future results.

This communication may contain links to third party websites which are not under the control of FI and FI is not responsible for their content. Products and services are offered only in jurisdictions where solicitation and sale are lawful, and in accordance with applicable laws and regulations in each such jurisdiction.