

CFTC COMMITMENT OF TRADERS REPORT

As of 2/18/2020

TRADITIONAL FUNDS net position changes

Wed to Tue, in 000 contracts

	Corn	Bean	Meal	Oil	Chi. Wheat	KC Wheat	Min Wheat
Futures Only	5.6	7.8	(4.2)	(13.1)	21.0	3.0	(5.1)
Futures & Options Combined	4.4	6.2	(2.9)	(12.7)	18.0	3.5	(5.1)

TRADITIONAL COMMERCIAL net position changes

	Corn	Bean	Meal	Oil	Chi. Wheat	KC Wheat	Min Wheat
Futures Only	(3.7)	(11.3)	5.3	16.1	(21.5)	(1.8)	3.9
Futures & Options Combined	(4.4)	(10.5)	4.0	15.8	(18.5)	(2.1)	3.8

MANAGED MONEY net position changes

	Corn	Bean	Meal	Oil	Chi. Wheat	KC Wheat	Min Wheat
Futures Only	12.2	1.4	(4.4)	(12.8)	19.8	3.7	(5.1)
Futures & Options Combined	10.6	2.4	(4.3)	(13.0)	18.8	3.8	(5.0)

SWAP DEALERS net position changes

	Corn	Bean	Meal	Oil	Chi. Wheat	KC Wheat	Min Wheat
Futures Only	(5.8)	2.2	(0.6)	0.3	(5.1)	(2.4)	0.1
Futures & Options Combined	(6.2)	2.7	(0.8)	0.5	(7.0)	(2.5)	0.1

PRODUCERS/END USERS net position changes

	Corn	Bean	Meal	Oil	Chi. Wheat	KC Wheat	Min Wheat
Futures Only	2.2	(13.4)	5.9	15.7	(16.4)	0.7	3.8
Futures & Options Combined	1.7	(13.2)	4.8	15.3	(11.4)	0.4	3.7

INDEX net position changes

	Corn	Bean	Meal	Oil	Chi. Wheat	KC Wheat	Min Wheat
Futures & Options Combined	(2.6)	9.0	4.4	(1.7)	(3.6)	(0.2)	NA

SUPPLEMENTAL NON-COMMERCIAL net position changes

	Corn	Bean	Meal	Oil	Chi. Wheat	KC Wheat	Min Wheat
Futures & Options Combined	3.1	3.6	(4.3)	(11.7)	18.3	3.2	NA

OPEN INTEREST net position changes

Wed to Tue, in 000 contracts

	Corn	Bean	Meal	Oil	Chi. Wheat	KC Wheat	Min Wheat
Futures Only	34.4	(20.3)	3.6	4.0	6.8	(6.1)	1.7
Futures & Options Combined	32.7	(22.7)	2.9	3.4	13.2	(4.6)	1.8

Source: CFTC and FI

Wed to Tue, in 000 contracts

2/22/2020

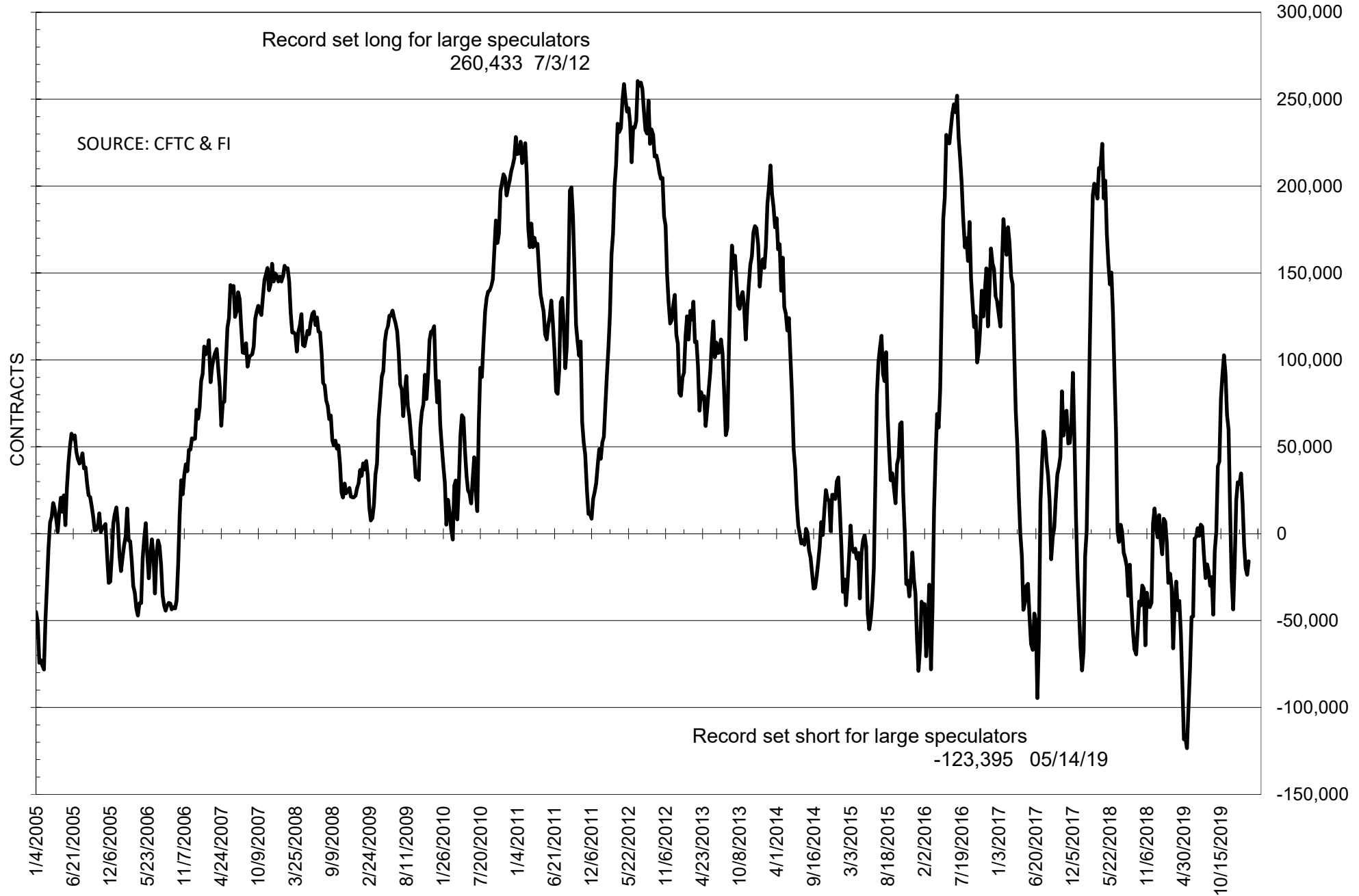
**COMMITMENT OF TRADERS
FUTURES ONLY NET POSITIONS
AS OF 02/18/2020
(IN THOUSAND CONTRACTS)**

	COMMERCIAL				(FUND) NON COMMERCIAL				(SPEC) NON-REPORTABLE			
	18-Feb	11-Feb	4-Feb	28-Jan	18-Feb	11-Feb	4-Feb	28-Jan	18-Feb	11-Feb	4-Feb	28-Jan
	WHEAT											
Chicago	-42.0	-20.5	-29.5	-23.9	62.2	41.2	48.4	41.1	-20.2	-20.7	-18.9	-17.2
Kansas City	-19.4	-17.6	-14.3	-18.6	15.0	12.0	10.3	11.2	4.4	5.6	4.1	7.4
Minneapolis	3.6	-0.4	-1.5	-3.2	-6.0	-0.9	0.9	2.0	2.5	1.3	0.6	1.2
All Wheat	-57.8	-38.5	-45.3	-45.7	71.1	52.3	59.5	54.3	-13.3	-13.8	-14.2	-8.6
CORN	-113.8	-110.2	-120.5	-139.8	43.8	38.2	52.6	73.4	70.1	71.9	67.9	66.4
OATS	-3.0	-3.1	-3.1	-3.1	2.5	2.7	2.6	2.7	0.5	0.4	0.4	0.4
SOYBEANS	11.1	22.3	24.3	15.9	-15.9	-23.7	-19.8	-6.3	4.8	1.4	-4.5	-9.6
SOY OIL	-63.7	-79.8	-87.4	-118.7	58.4	71.5	83.3	112.7	5.3	8.2	4.1	5.9
SOY MEAL	23.4	18.1	15.8	-6.1	-39.4	-35.1	-33.7	-9.7	16.0	17.0	17.8	15.8

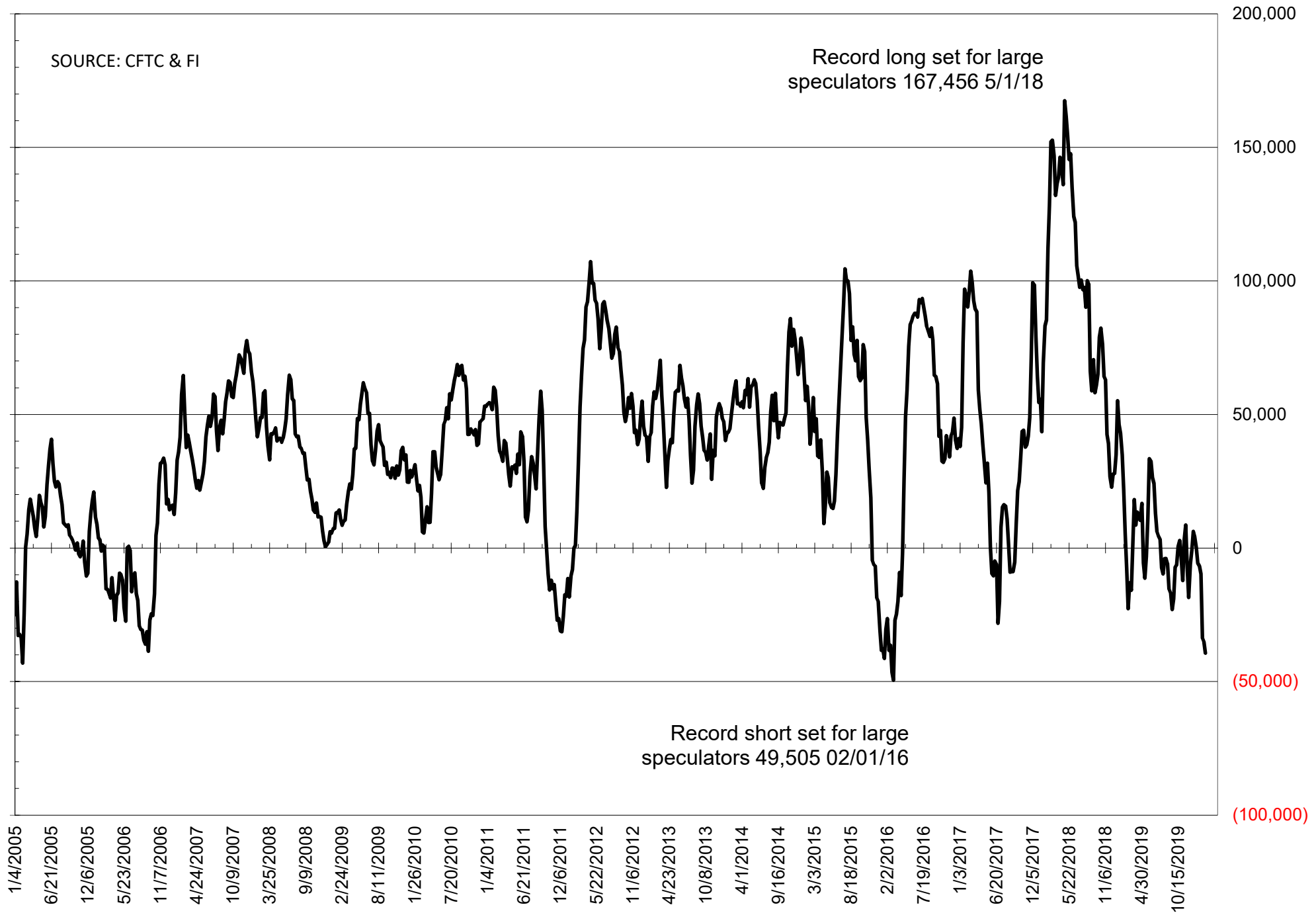
	TOTAL OPEN INTEREST				NEARBY FUTURES PRICE					18-Feb-20 LAST REPORTED % HELD BY TRADERS			
	18-Feb	11-Feb	4-Feb	28-Jan	H Latest	H 18-Feb	H 11-Feb	H 4-Feb	H 28-Jan	LARGE FUND		SMALL	
										LONG	SHORT	LONG	SHORT
WHEAT													
Chicago	513909	507064	525368	505930	551.00	566.75	542.00	557.25	569.00	0%	21%	0%	11%
Kansas City	284730	290843	304577	302135	468.50	485.75	468.25	467.25	482.00	0%	22%	0%	8%
Minneapolis	72287	70605	66805	66258	526.00	540.00	531.25	531.75	542.25	0%	25%	0%	15%
CORN	1607877	1573430	1567004	1528284	377.00	383.00	379.75	382.25	386.50	0%	18%	0%	11%
OATS	5742	5617	5448	5425	295.50	304.75	298.25	309.00	307.00	0%	0%	0%	17%
SOYBEANS	860488	880780	859677	818168	890.50	892.25	884.75	879.50	895.00	20%	21%	8%	7%
SOY OIL	515651	511696	526658	552456	30.64	30.48	30.72	30.73	31.46	0%	9%	0%	6%
SOY MEAL	506777	503208	499317	486471	289.20	292.20	290.80	288.50	297.60	0%	25%	0%	6%

SOURCE: CFTC & FI

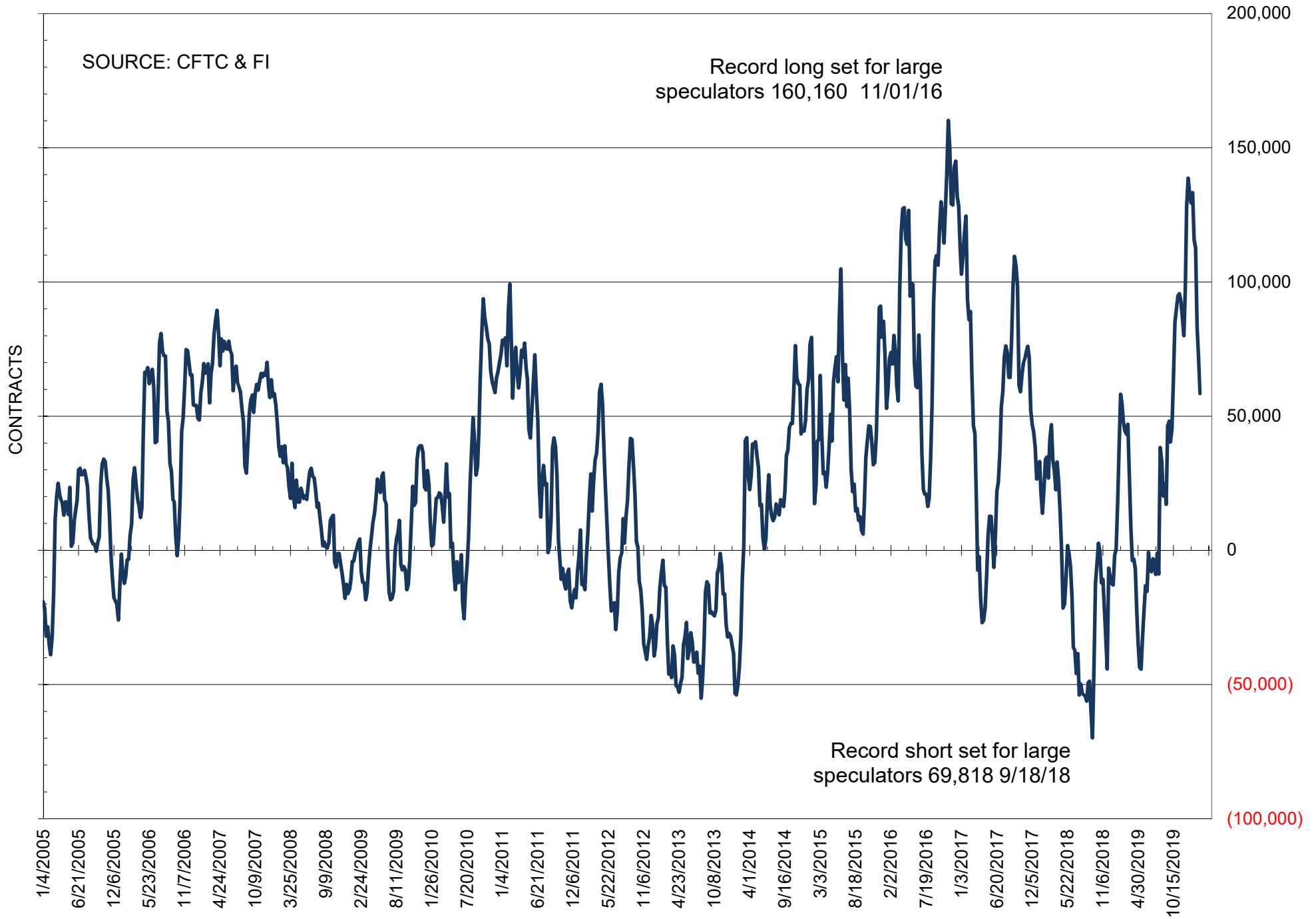
NET POSITION OF FUTURES ONLY LARGE SPECS IN SOYBEANS



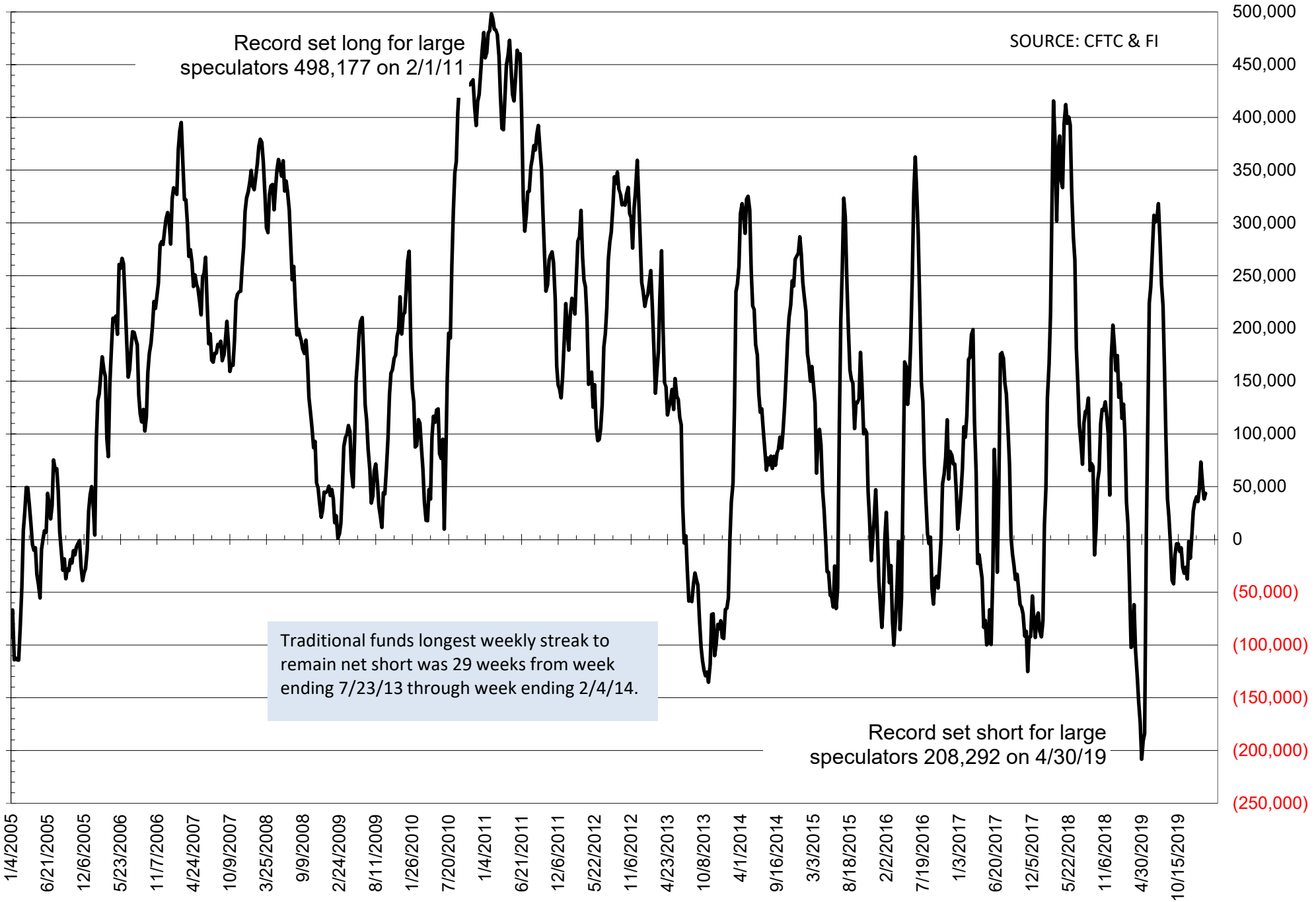
NET POSITION OF FUTURES ONLY LARGE SPECS IN SOYMEAL



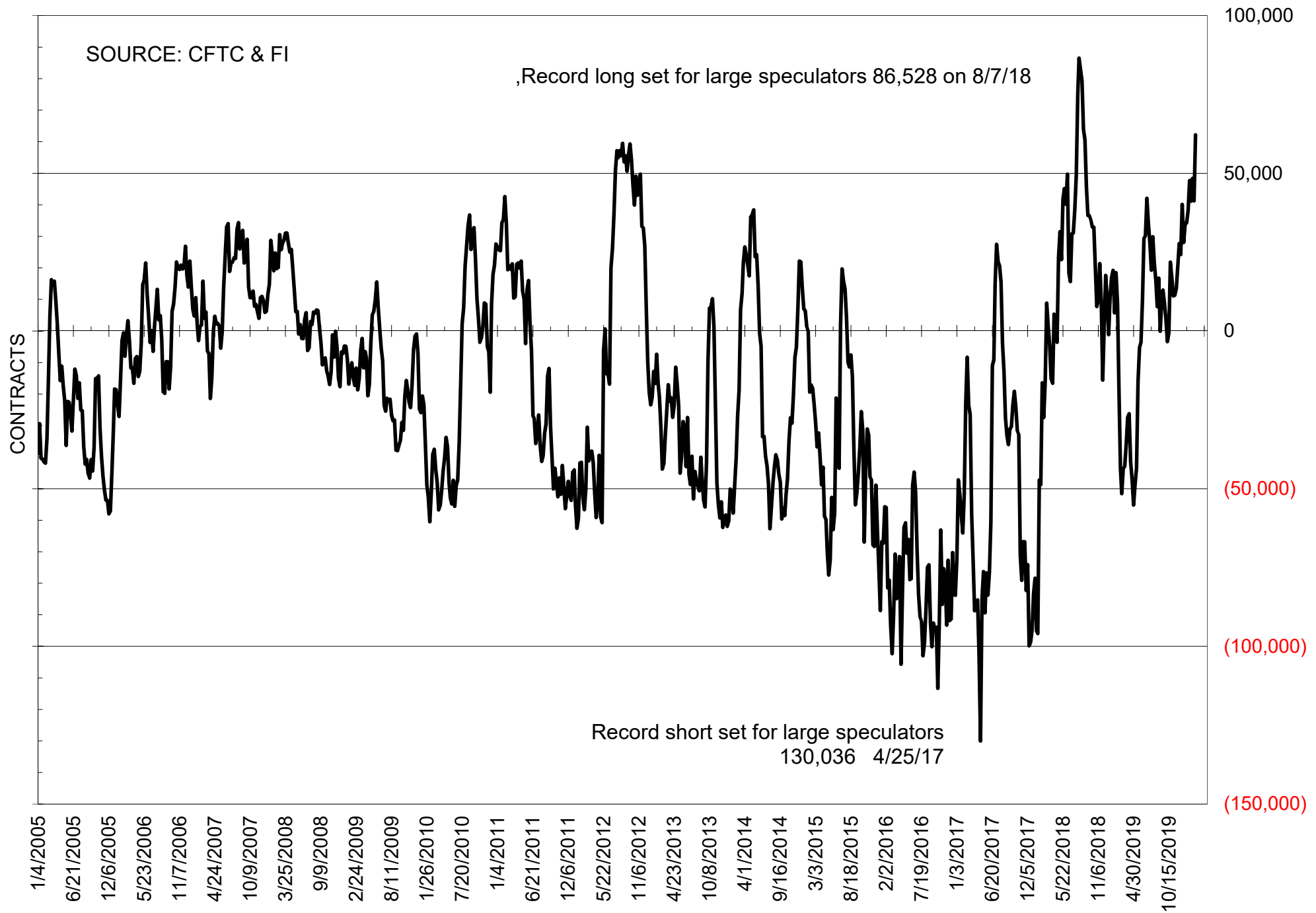
NET POSITION OF FUTURES ONLY LARGE SPECS IN SOYOIL



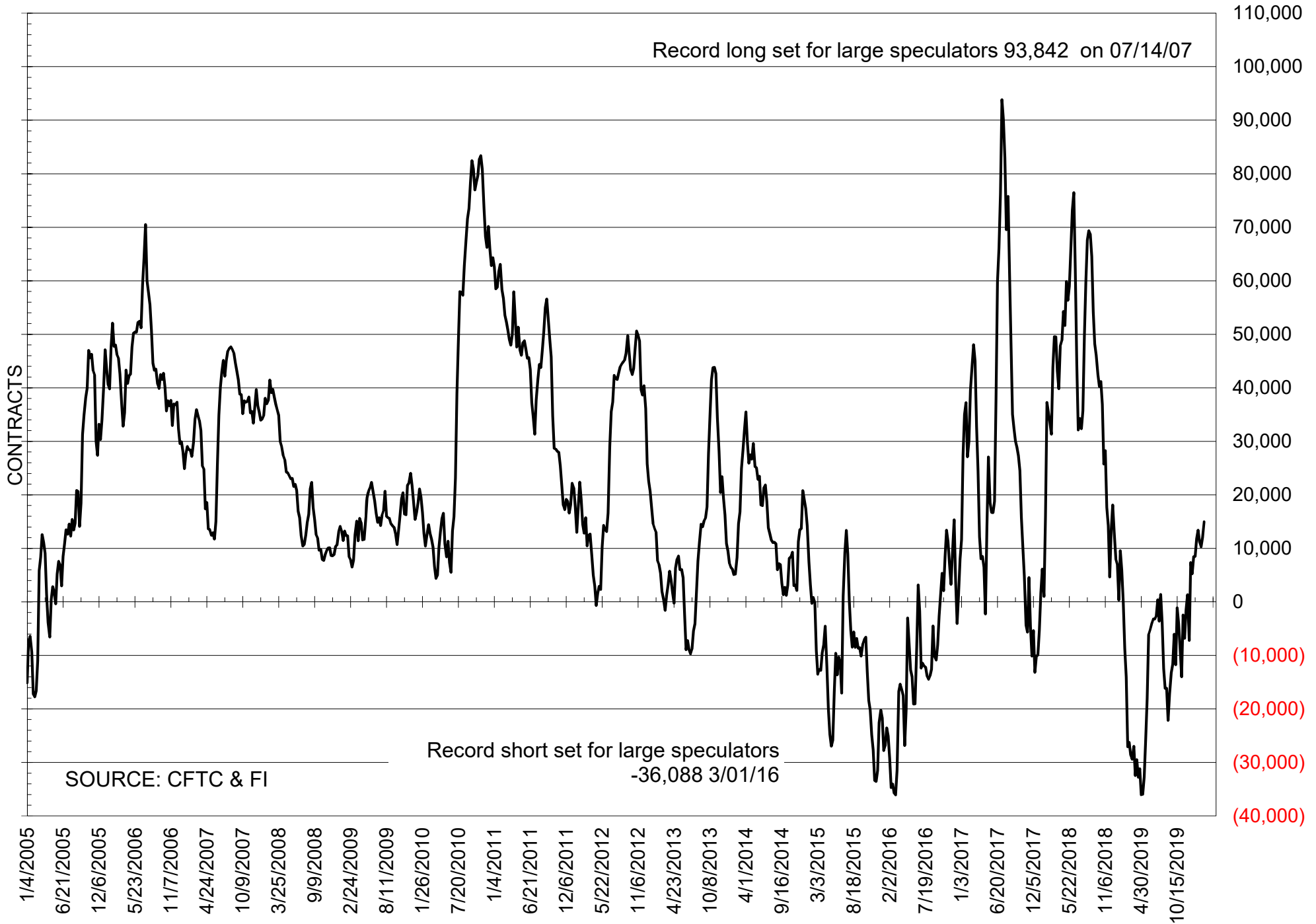
NET POSITION OF LARGE SPECULATORS IN CORN



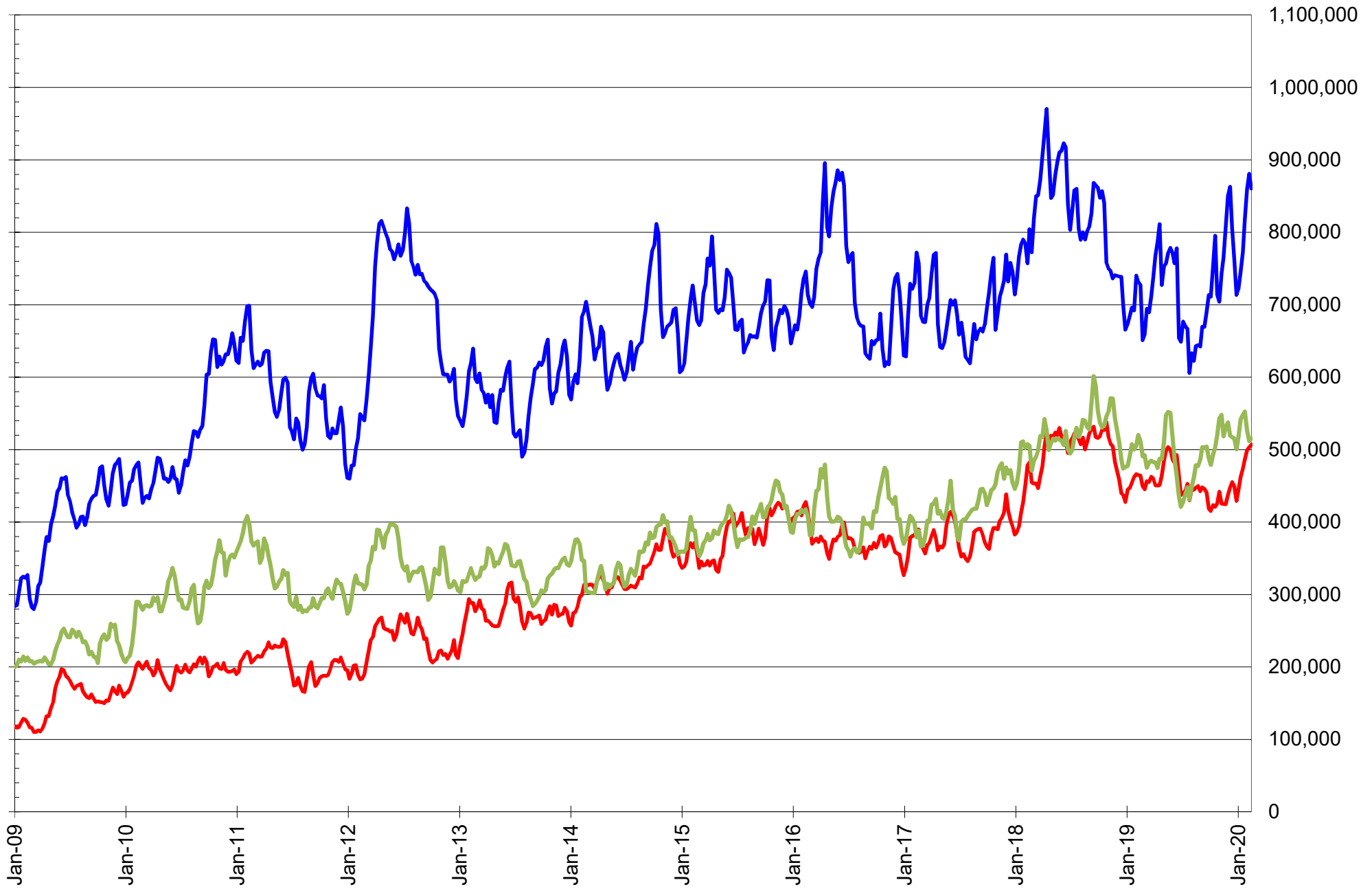
NET POSITION OF FUTURES ONLY LARGE SPECS IN CHICAGO WHEAT



NET POSITION OF LARGE SPECULATORS IN KANSAS CITY WHEAT



TOTAL OPEN INTEREST IN SOYBEANS, MEAL AND OIL, FUTURES ONLY



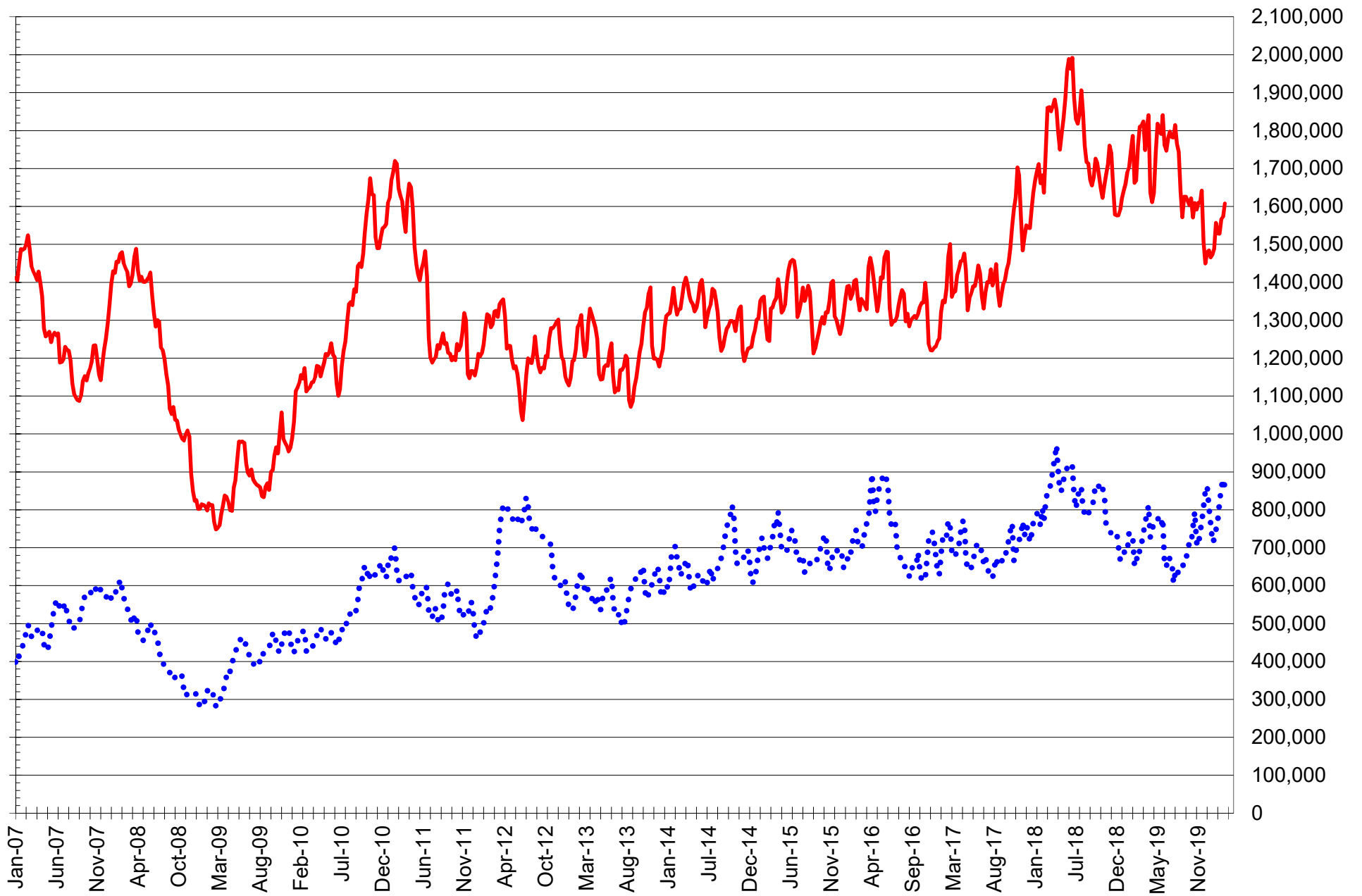
SOURCE: CFTC & FI

— SOYBEANS

— SOYBEAN MEAL

— SOYBEAN OIL

TOTAL OPEN INTEREST IN CORN AND SOYBEANS, FUTURES ONLY



SOURCE: CFTC & FI

— CORN

..... SOYBEANS

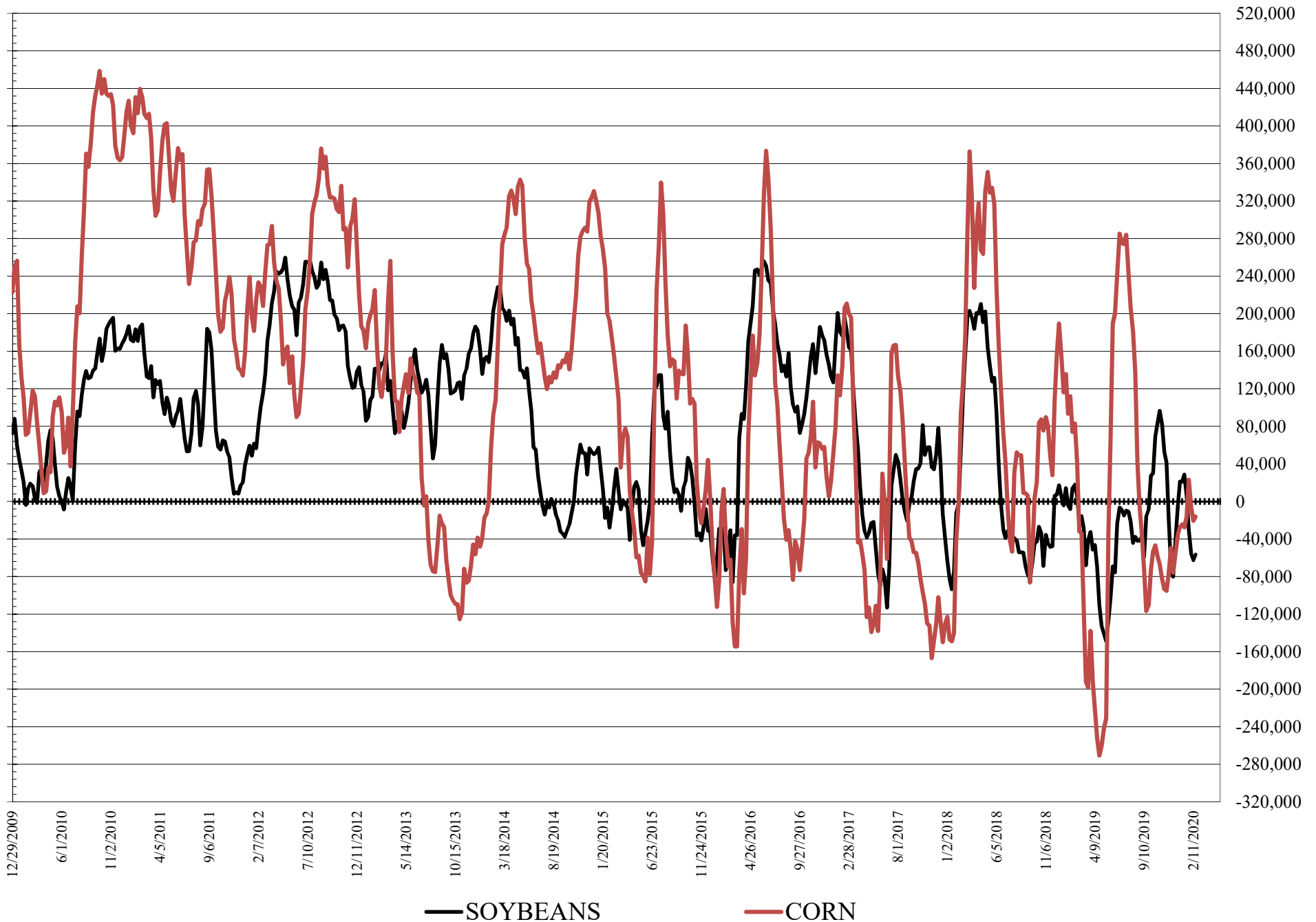
**COMMITMENT OF TRADERS
FUTURES & OPTIONS NET POSITIONS
AS OF 02/18/2020
(IN THOUSAND CONTRACTS)**

	COMMERCIAL				(FUND) NON COMMERCIAL				(SPEC) NON-REPORTABLE			
	18-Feb	11-Feb	4-Feb	28-Jan	18-Feb	11-Feb	4-Feb	28-Jan	18-Feb	11-Feb	4-Feb	28-Jan
WHEAT												
Chicago	-38.0	-19.5	-31.3	-27.6	60.3	42.3	51.9	47.1	-22.3	-22.8	-20.6	-19.5
Kansas City	-17.6	-15.5	-13.1	-17.6	12.5	8.9	7.9	9.3	5.1	6.5	5.1	8.2
Minneapolis	4.1	0.2	-1.0	-2.8	-6.8	-1.7	0.2	1.2	2.7	1.5	0.8	1.5
All Wheat	-51.5	-34.8	-45.4	-48.0	66.0	49.5	60.0	57.6	-14.5	-14.8	-14.6	-9.7
CORN	-68.0	-63.5	-77.1	-108.5	-16.2	-20.6	-6.4	23.0	84.2	84.1	83.5	85.4
OATS	-3.0	-3.0	-3.0	-3.0	2.5	2.6	2.6	2.6	0.5	0.4	0.4	0.4
SOYBEANS	48.9	59.4	59.3	39.8	-56.4	-62.6	-56.0	-30.0	7.5	3.3	-3.4	-9.8
SOY OIL	-56.3	-72.1	-81.6	-112.8	50.4	63.1	76.7	106.5	5.9	9.0	4.9	6.3
SOY MEAL	31.2	27.2	23.3	0.7	-49.1	-46.2	-43.0	-18.3	18.0	19.1	19.7	17.6

	TOTAL OPEN INTEREST				COMMERCIALS		% HELD BY TRADERS LARGE (FUNDS)		SMALL (NON-REP)	
	18-Feb	11-Feb	4-Feb	28-Jan	LONG	SHORT	LONG	SHORT	LONG	SHORT
WHEAT										
Chicago	647,497	634,249	650,138	630,775			25%	16%	6%	9%
Kansas City	313,424	318,010	331,638	329,663			23%	19%	9%	7%
Minneapolis	74,770	72,989	69,168	68,718			15%	24%	19%	15%
CORN	1,901,283	1,868,556	1,864,295	1,823,044			14%	15%	16%	11%
OATS	6,010	5,890	5,701	5,673						
SOYBEANS	1,026,078	1,048,773	1,020,423	955,012			12%	17%	8%	7%
SOY OIL	561,772	558,381	573,527	592,545			17%	8%	6%	5%
SOY MEAL	538,260	535,353	530,653	512,178			14%	23%	10%	6%

SOURCE: CFTC & FI

NET POSITION FUTURES AND OPTIONS OF LARGE SPECULATORS IN SOYBEANS AND CORN



**DISAGGREGATED COMMITMENT OF TRADERS
FUTURES ONLY NET POSITIONS
AS OF 02/18/2020
(IN THOUSAND CONTRACTS)**

	PRODUCER / MERCHANT / PROCESSOR / USER				(INDEX/ETF) SWAP DEALERS				(CTA/CPO/OTHER UNREGISTERED) MANAGED MONEY			
	18-Feb	11-Feb	4-Feb	28-Jan	18-Feb	11-Feb	4-Feb	28-Jan	18-Feb	11-Feb	4-Feb	28-Jan
	WHEAT											
Chicago	(114.2)	(97.9)	(104.7)	(96.2)	72.3	77.4	75.2	72.3	59.3	39.5	45.6	41.8
Kansas City	(62.8)	(63.5)	(61.7)	(68.2)	43.4	45.8	47.4	49.6	13.7	10.0	7.9	8.8
Minneapolis	1.3	(2.5)	(3.5)	(5.5)	2.3	2.2	2.0	2.3	(12.0)	(6.9)	(4.7)	(3.5)
All Wheat	(175.8)	(163.9)	(169.8)	(169.9)	118.0	125.4	124.5	124.2	61.0	42.6	48.8	47.1
CORN	(268.9)	(271.1)	(283.3)	(299.1)	155.1	160.9	162.7	159.3	(56.9)	(69.1)	(52.0)	(25.4)
OATS	(3.1)	(3.2)	(3.2)	(3.2)	0.1	0.1	0.1	0.1	1.1	1.2	1.2	1.1
SOYBEANS	(99.5)	(86.1)	(99.2)	(116.0)	110.6	108.4	123.5	131.9	(96.0)	(97.4)	(87.0)	(55.4)
SOY OIL	(162.4)	(178.1)	(188.1)	(222.6)	98.7	98.4	100.7	104.0	39.7	52.4	67.8	96.3
SOY MEAL	(70.0)	(75.9)	(83.7)	(111.5)	93.4	94.0	99.6	105.4	(71.5)	(67.1)	(63.2)	(38.2)

Managed % of OI				
Chicago W	12%	8%	9%	8%
Corn	-4%	-4%	-3%	-2%

	TOTAL OPEN INTEREST				OTHER REPORTABLE				NON REPORTABLE			
	18-Feb	11-Feb	4-Feb	28-Jan	18-Feb	11-Feb	4-Feb	28-Jan	18-Feb	11-Feb	4-Feb	28-Jan
	WHEAT											
Chicago	513,909	507,064	525,368	505,930	2.9	1.8	2.8	(0.7)	(20.2)	(20.7)	(18.9)	(17.2)
Kansas City	284,730	290,843	304,577	302,135	1.3	2.0	2.4	2.4	4.4	5.6	4.1	7.4
Minneapolis	72,287	70,605	66,805	66,258	5.9	6.0	5.6	5.6	2.5	1.3	0.6	1.2
All Wheat	870,926	868,512	896,750	874,323	10.2	9.7	10.7	7.3	(13.3)	(13.8)	(14.2)	(8.6)
CORN	1,607,877	1,573,430	1,567,004	1,528,284	100.6	107.3	104.7	98.8	70.1	71.9	67.9	66.4
OATS	5,742	5,617	5,448	5,425	1.4	1.4	1.4	1.6	0.5	0.4	0.4	0.4
SOYBEANS	860,488	880,780	859,677	818,168	80.1	73.7	67.2	49.2	4.8	1.4	(4.5)	(9.6)
SOY OIL	515,651	511,696	526,658	552,456	18.8	19.1	15.5	16.4	5.3	8.2	4.1	5.9
SOY MEAL	506,777	503,208	499,317	486,471	32.1	32.0	29.5	28.5	16.0	17.0	17.8	15.8

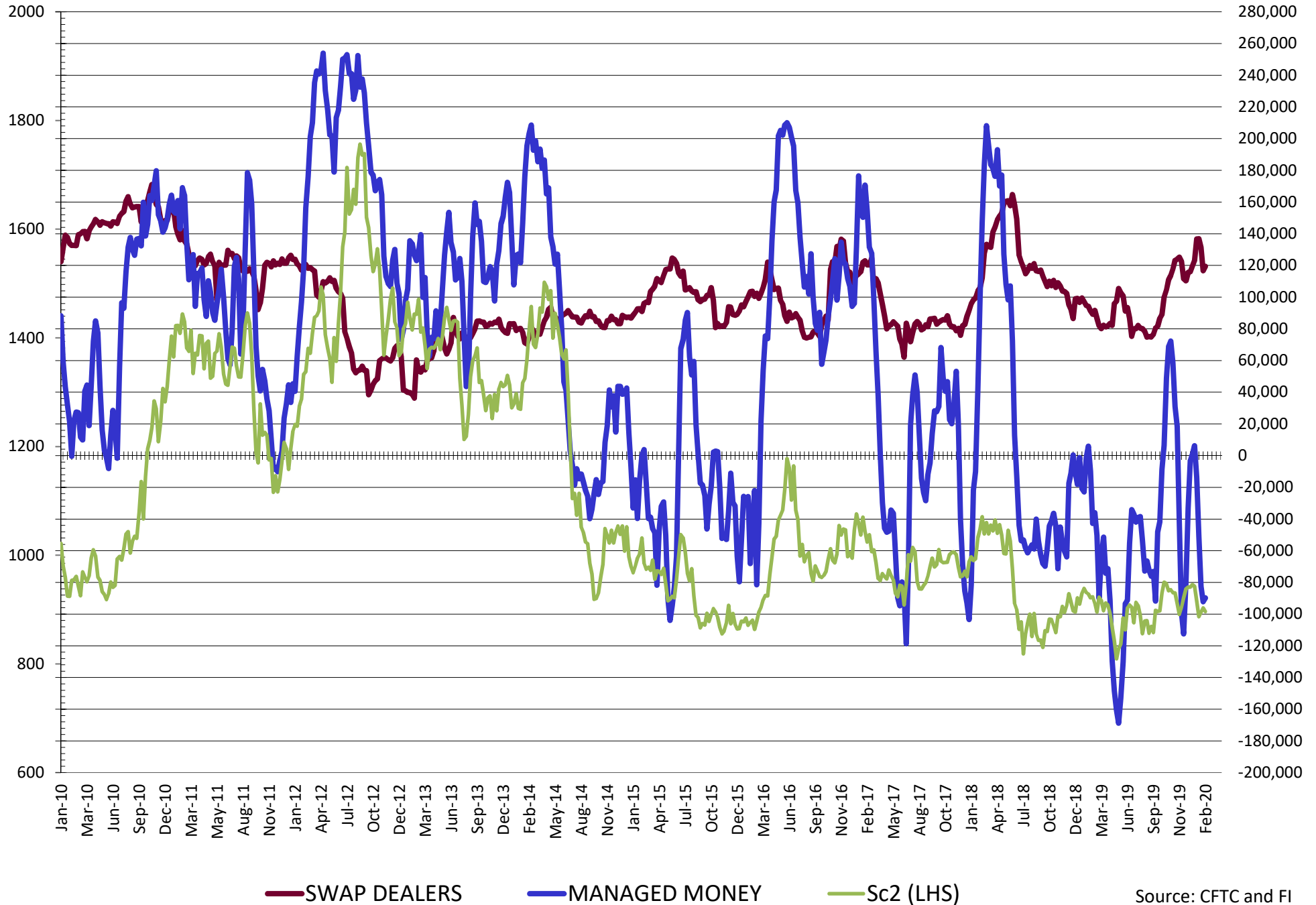
SOURCE: CFTC & FI

**DISAGGREGATED COMMITMENT OF TRADERS
FUTURES & OPTIONS NET POSITIONS
AS OF 02/18/2020
(IN THOUSAND CONTRACTS)**

	PRODUCER / MERCHANT / PROCESSOR / USER				(INDEX/ETF) SWAP DEALERS				(CTA/CPO/OTHER UNREGISTERED) MANAGED MONEY											
	18-Feb	11-Feb	4-Feb	28-Jan	18-Feb	11-Feb	4-Feb	28-Jan	18-Feb	11-Feb	4-Feb	28-Jan								
	WHEAT																			
Chicago	(106.7)	(95.3)	(101.7)	(92.1)	68.7	75.8	70.4	64.5	64.7	45.9	52.2	48.5								
Kansas City	(61.2)	(61.6)	(60.6)	(67.4)	43.6	46.1	47.5	49.8	14.3	10.5	8.3	9.4								
Minneapolis	1.8	(2.0)	(3.0)	(5.0)	2.3	2.2	2.0	2.3	(11.9)	(6.9)	(4.6)	(3.5)								
All Wheat	(166.1)	(158.8)	(165.3)	(164.5)	114.7	124.0	119.9	116.6	67.1	49.6	55.8	54.3								
CORN	(236.4)	(238.1)	(250.7)	(273.0)	168.4	174.6	173.7	164.5	(61.5)	(72.1)	(56.0)	(29.5)								
OATS	(3.1)	(3.1)	(3.1)	(3.1)	0.1	0.1	0.1	0.1	1.1	1.2	1.2	1.1								
SOYBEANS	(70.5)	(57.3)	(71.9)	(97.1)	119.3	116.7	131.2	136.9	(89.8)	(92.2)	(82.4)	(51.0)								
SOY OIL	(154.4)	(169.7)	(181.7)	(216.1)	98.1	97.6	100.0	103.2	39.6	52.7	67.9	96.7								
SOY MEAL	(64.1)	(68.9)	(78.6)	(106.2)	95.3	96.1	101.9	106.9	(72.5)	(68.2)	(64.4)	(39.7)								
	TOTAL				OTHER REPORTABLE				NON REPORTABLE											
	OPEN INTEREST				18-Feb				11-Feb				4-Feb				28-Jan			
	18-Feb	11-Feb	4-Feb	28-Jan	18-Feb	11-Feb	4-Feb	28-Jan	18-Feb	11-Feb	4-Feb	28-Jan	18-Feb	11-Feb	4-Feb	28-Jan				
WHEAT																				
Chicago	647,497	634,249	650,138	630,775	(4.4)	(3.7)	(0.3)	(1.4)	(22.3)	(22.8)	(20.6)	(19.5)								
Kansas City	313,424	318,010	331,638	329,663	(1.8)	(1.5)	(0.3)	(0.1)	5.1	6.5	5.1	8.2								
Minneapolis	74,770	72,989	69,168	68,718	5.1	5.2	4.8	4.7	2.7	1.5	0.8	1.5								
All Wheat	1,035,691	1,025,248	1,050,944	1,029,156	(1.1)	(0.0)	4.2	3.3	(14.5)	(14.8)	(14.6)	(9.7)								
CORN	1,901,283	1,868,556	1,864,295	1,823,044	45.3	51.5	49.5	52.5	84.2	84.1	84.1	84.1								
OATS	6,010	5,890	5,701	5,673	1.4	1.4	1.4	1.5	0.5	0.4	0.4	0.4								
SOYBEANS	1,026,078	1,048,773	1,020,423	955,012	33.4	29.5	26.4	21.0	7.5	3.3	(3.4)	(9.8)								
SOY OIL	561,772	558,381	573,527	592,545	10.8	10.4	8.8	9.8	5.9	9.0	4.9	6.3								
SOY MEAL	538,260	535,353	530,653	512,178	23.3	21.9	21.4	21.4	18.0	19.1	19.7	17.6								

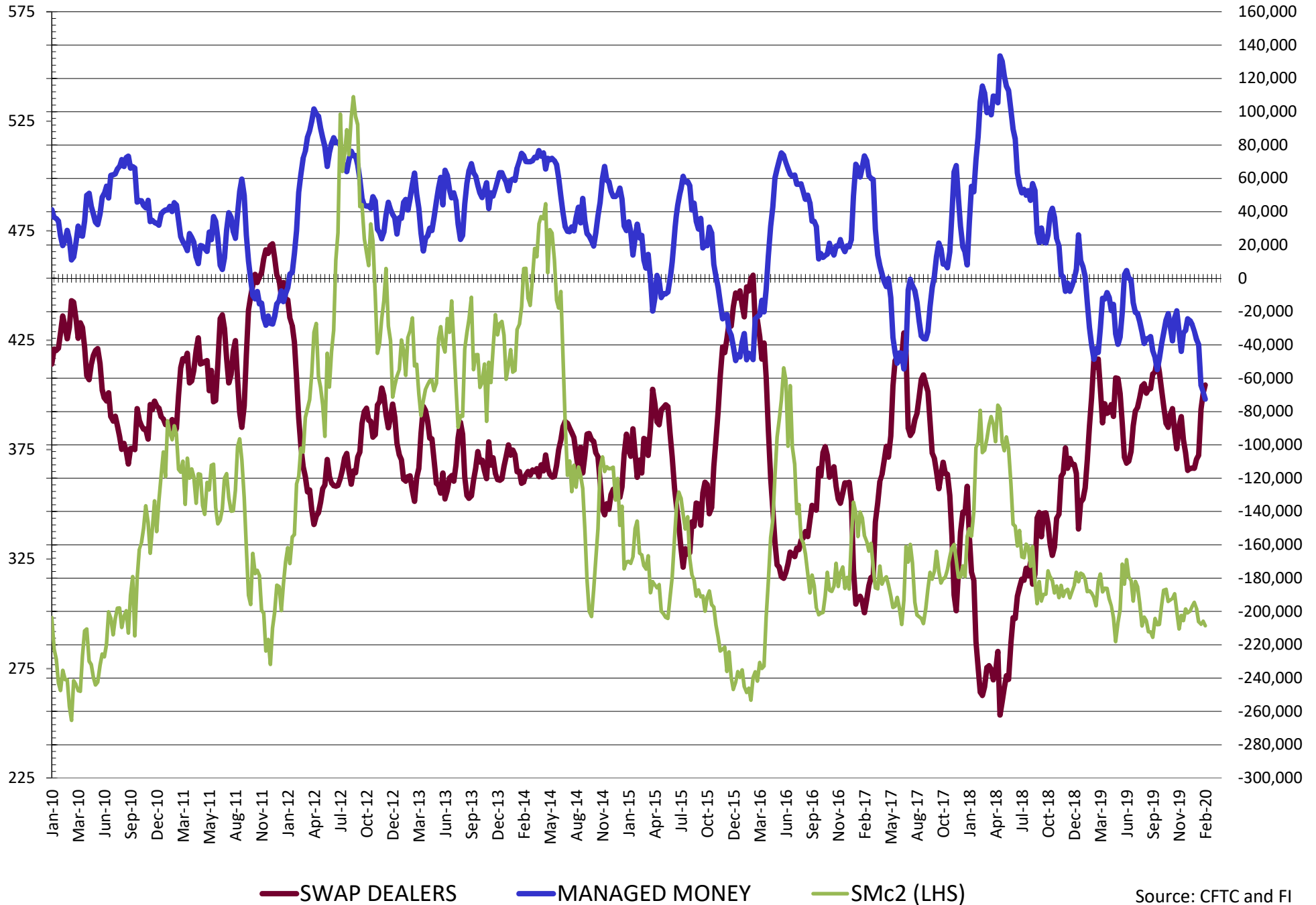
SOURCE: CFTC & FI

NET POSITION FUTURES AND OPTIONS OF SWAP AND MANAGED FUNDS IN SOYBEANS



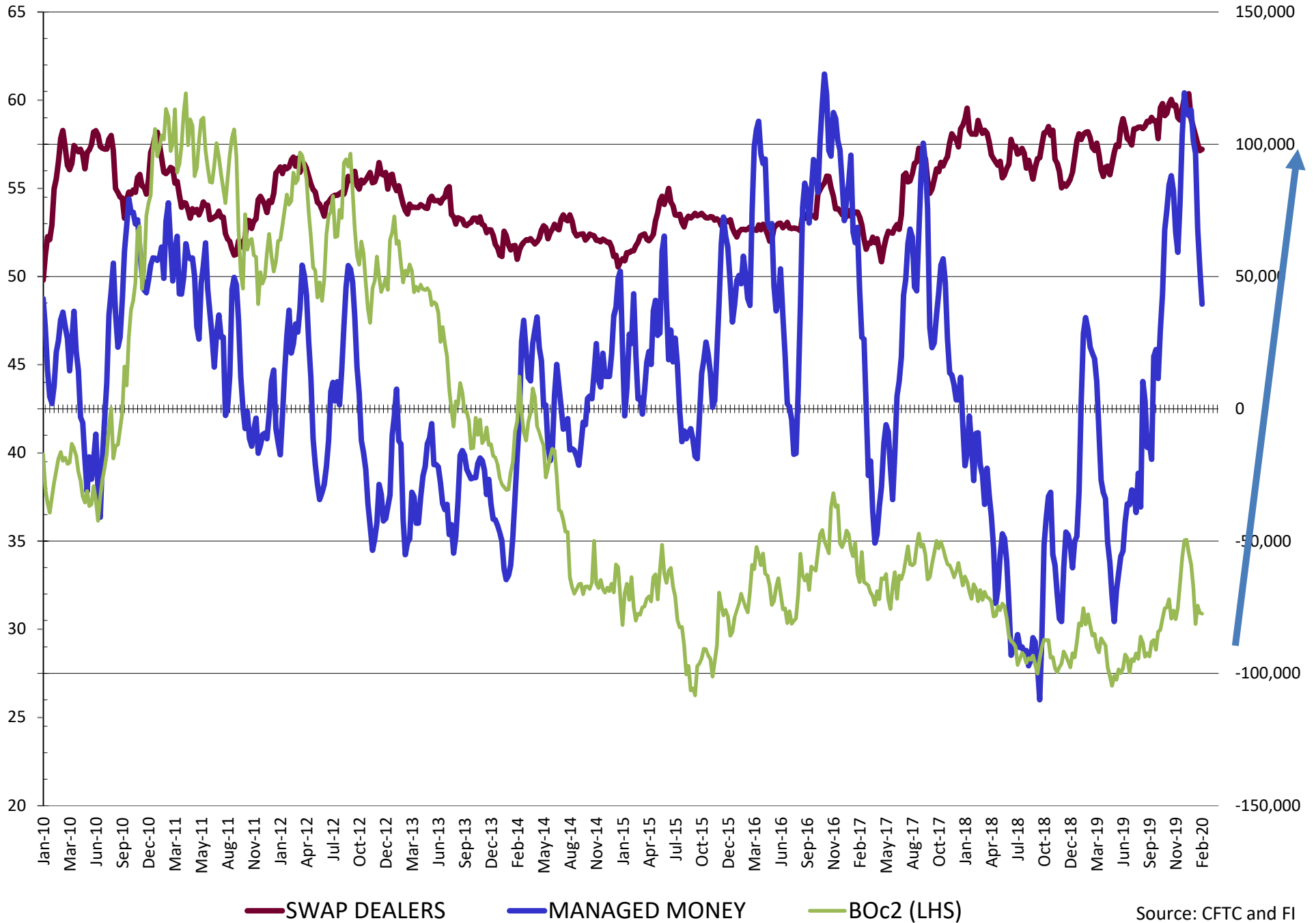
Source: CFTC and FI
2/21/2020

NET POSITION FUTURES AND OPTIONS OF SWAP AND MANAGED FUNDS IN SOYBEAN MEAL



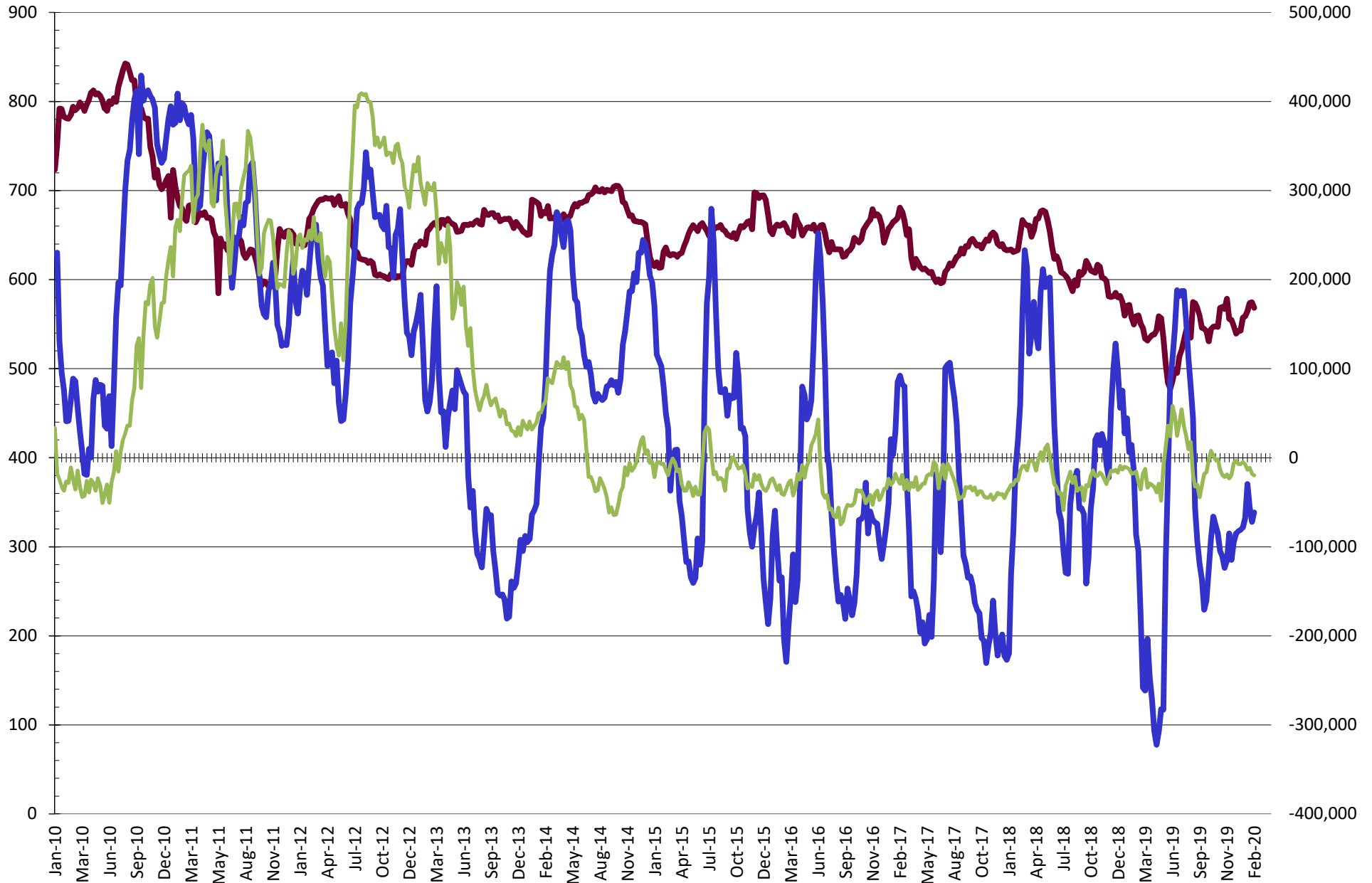
Source: CFTC and FI
2/21/2020

NET POSITION FUTURES AND OPTIONS OF SWAP AND MANAGED FUNDS IN SOYBEAN OIL



Source: CFTC and FI
2/21/2020

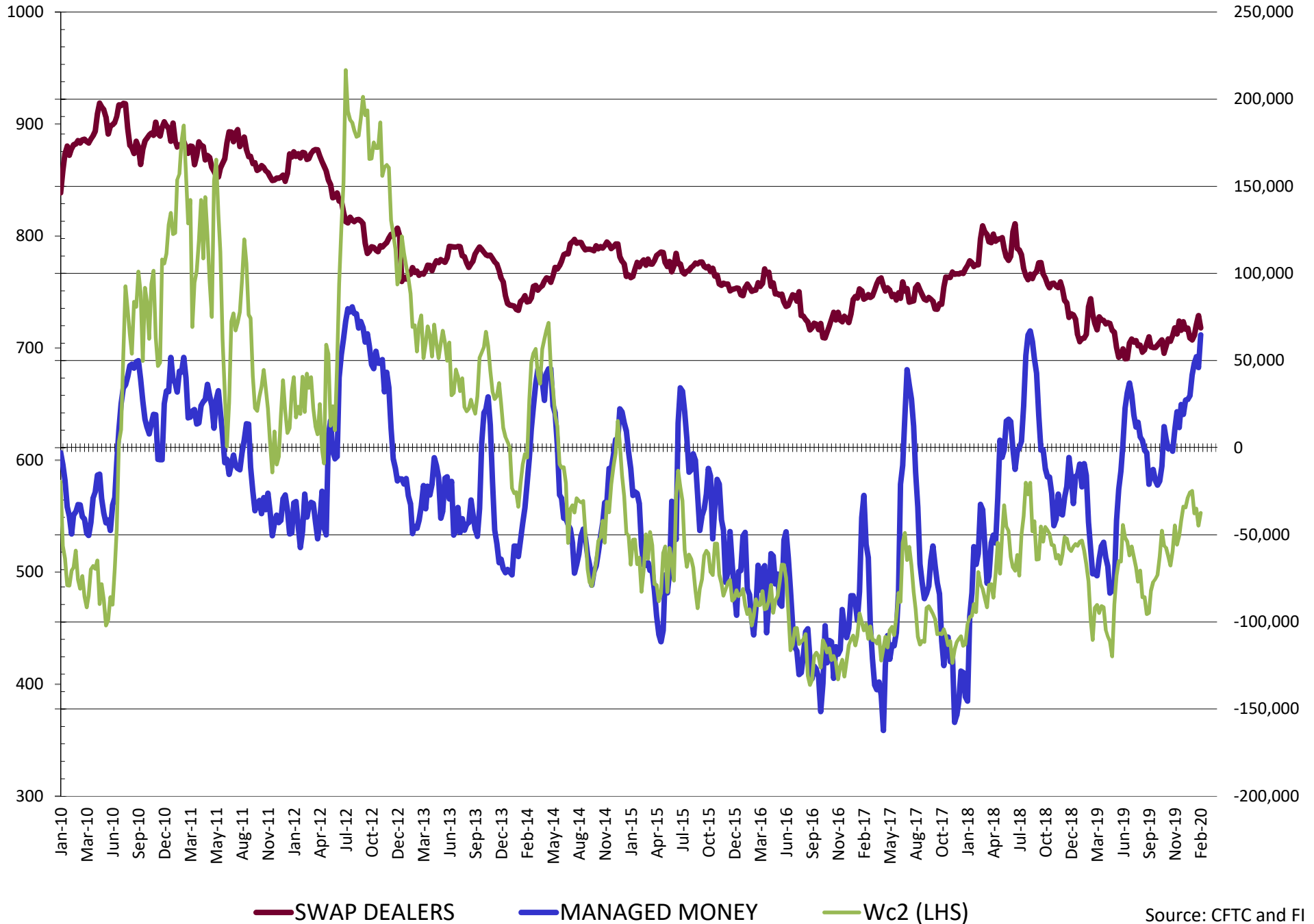
NET POSITION FUTURES AND OPTIONS OF SWAP AND MANAGED FUNDS IN CORN



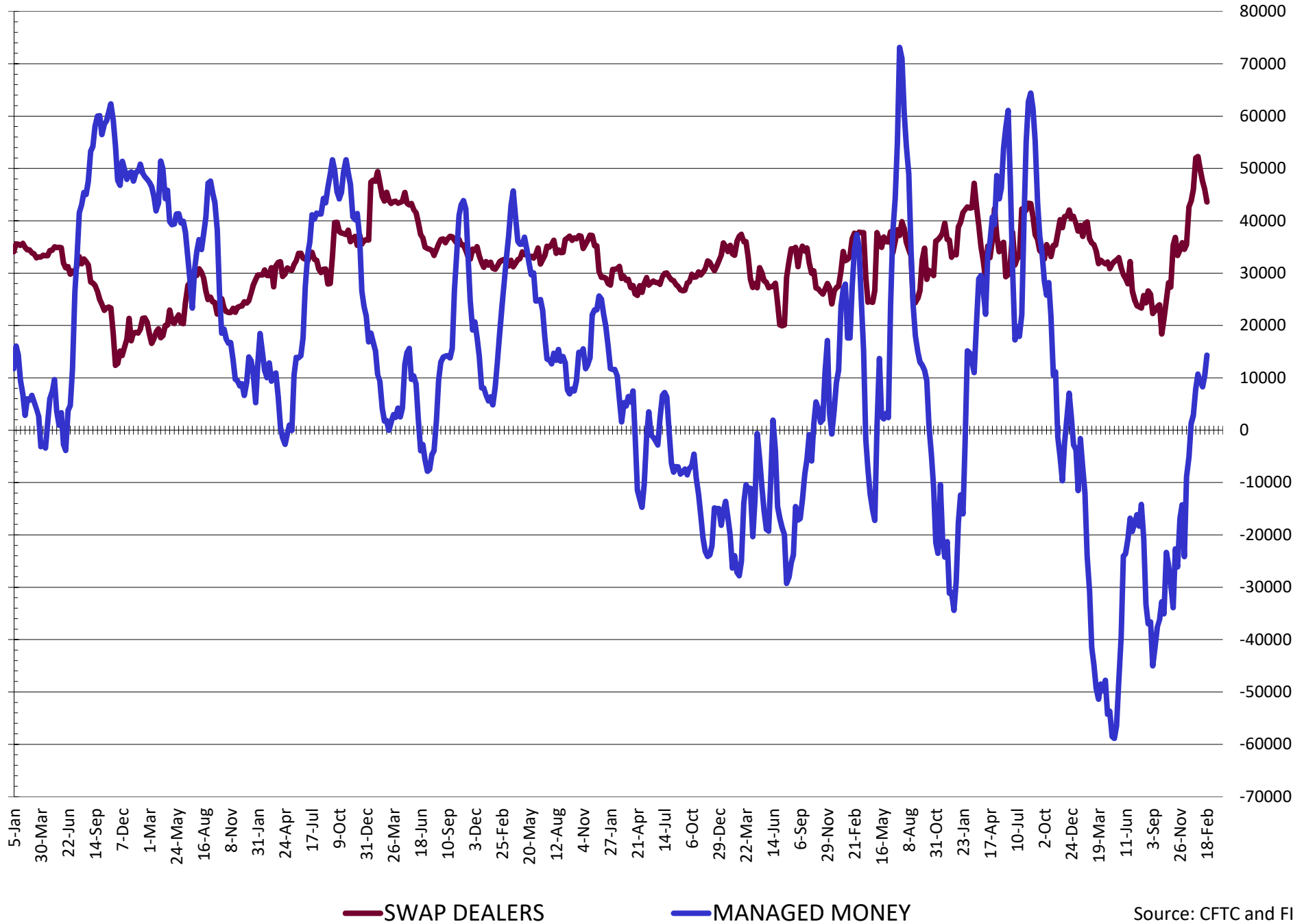
— SWAP DEALERS
 — MANAGED MONEY
 — Cc2 (LHS)

Source: CFTC and FI
2/21/2020

NET POSITION FUTURES AND OPTIONS OF SWAP AND MANAGED FUNDS IN CHICAGO WHEAT

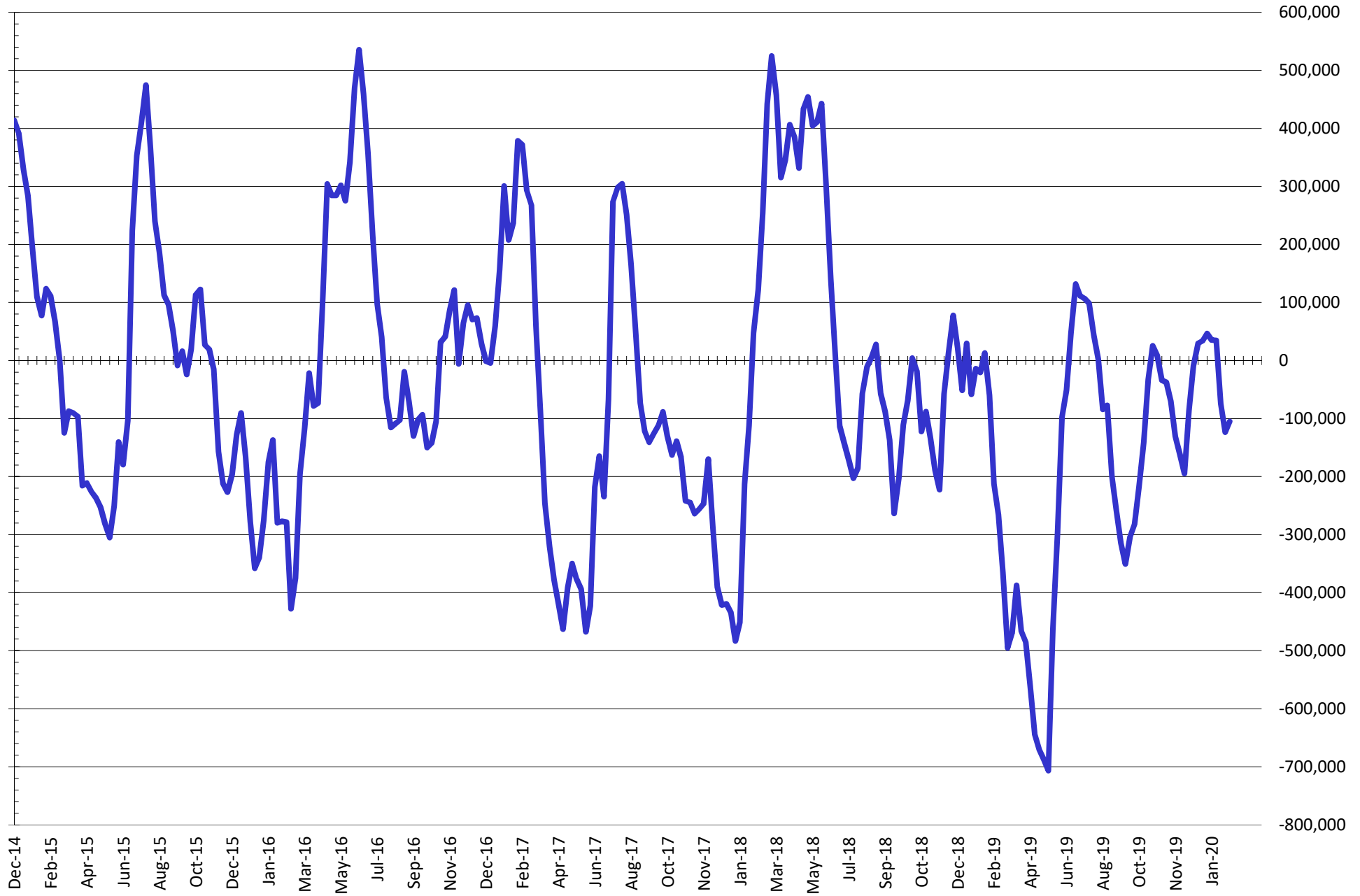


NET POSITION FUTURES AND OPTIONS OF SWAP DEALERS AND MANAGED FUNDS IN KANSAS WHEAT



Source: CFTC and FI
2/21/2020

NET POSITION FUTURES AND OPTIONS OF SWAP AND MANAGED FUNDS IN COMBINED SRW, HRW, CORN, SOYBEANS, SOYMEAL AND SOYOIL



— Net Managed Money

Source: CFTC and FI
2/21/2020

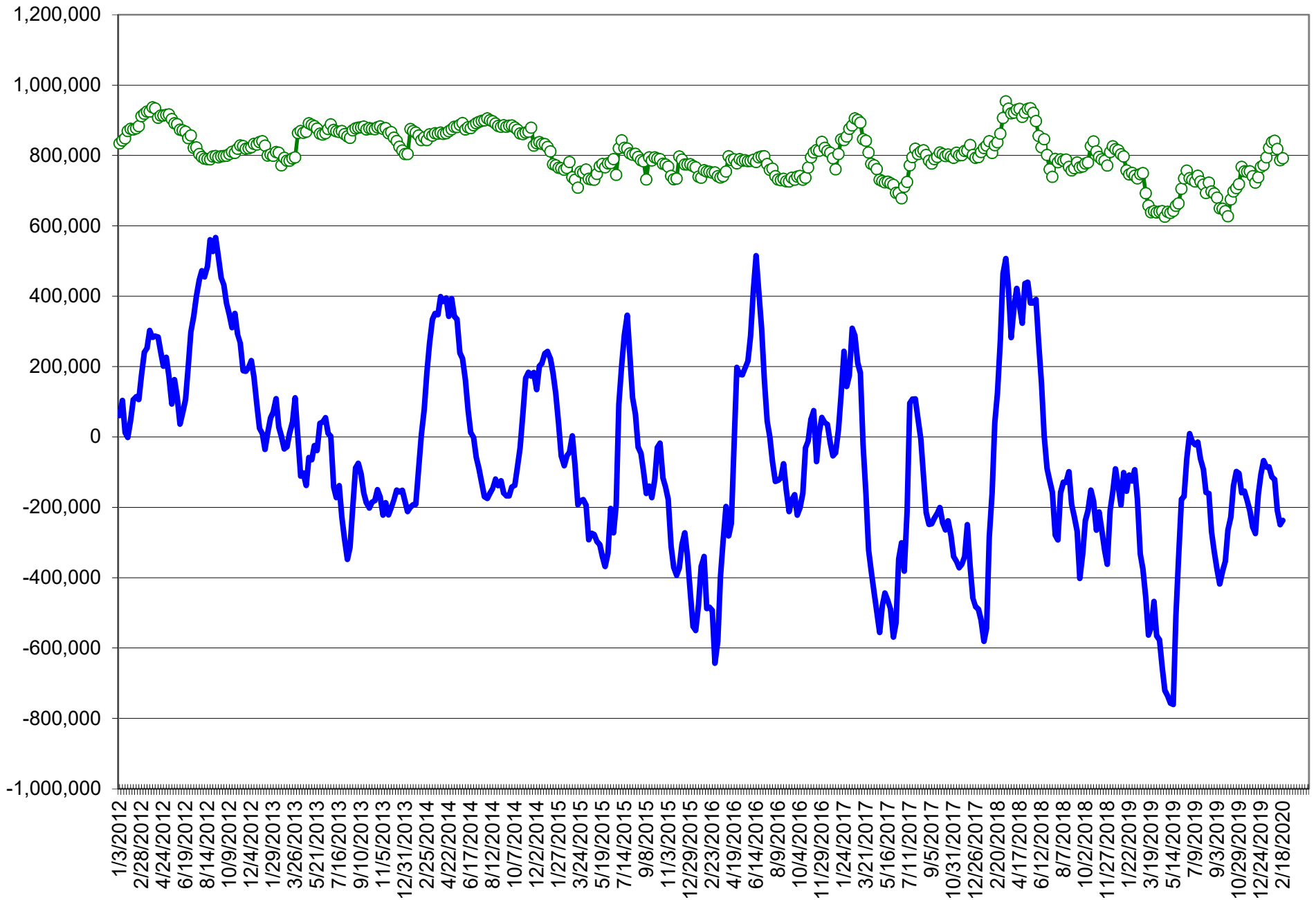
COMMITMENT OF TRADERS
FUTURES & OPTIONS NET POSITIONS (INDEX BROKEN OUT)
AS OF 02/18/2020
(IN THOUSAND CONTRACTS)

	COMMERCIAL				(FUND) NON COMMERCIAL				(SPEC) NON-REPORTABLE			
	18-Feb	11-Feb	4-Feb	28-Jan	18-Feb	11-Feb	4-Feb	28-Jan	18-Feb	11-Feb	4-Feb	28-Jan
	WHEAT											
Chicago	(118.5)	(103.4)	(113.9)	(106.6)	32.1	13.8	21.7	16.2	(22.3)	(22.8)	(20.6)	(19.5)
Kansas City	(64.4)	(62.8)	(60.1)	(66.1)	(6.0)	(9.2)	(10.9)	(8.9)	5.1	6.5	5.1	8.2
Minneapolis	-	-	-	-	-	-	-	-	-	-	-	-
All Wheat	(182.8)	(166.2)	(174.1)	(172.7)	26.1	4.6	10.8	7.3	(17.3)	(16.2)	(15.4)	(11.2)
CORN	(249.1)	(248.4)	(265.1)	(287.4)	(114.1)	(117.2)	(102.4)	(79.9)	84.2	84.1	83.5	85.4
OATS	-	-	-	-	-	-	-	-	-	-	-	-
SOYBEANS	(56.7)	(39.8)	(54.1)	(79.2)	(97.6)	(101.2)	(95.7)	(74.2)	7.5	3.3	(3.4)	(9.8)
SOY OIL	(127.2)	(143.7)	(156.4)	(191.3)	17.7	29.4	41.6	64.1	5.9	9.0	4.9	6.3
SOY MEAL	(37.4)	(38.4)	(49.3)	(78.4)	(69.4)	(65.1)	(63.3)	(38.2)	18.0	19.1	19.7	17.6

	TOTAL OPEN INTEREST				(INDEX) COMMERCIAL INDEX TRADERS				(INDEX) % NET OF TOTAL OPEN INTEREST			
	18-Feb	11-Feb	4-Feb	28-Jan	18-Feb	11-Feb	4-Feb	28-Jan	18-Feb	11-Feb	4-Feb	28-Jan
	WHEAT											
Chicago	647,497	634,249	650,138	630,775	108.7	112.4	112.9	109.9	16.8%	17.7%	17.4%	17.4%
Kansas City	313,424	318,010	331,638	329,663	65.3	65.5	65.8	66.7	20.8%	20.6%	19.9%	20.2%
Minneapolis	-	-	-	-	-	-	-	-	-	-	-	-
All Wheat	960,921	952,259	981,776	960,438	174.0	177.9	178.7	176.6	18.1%	18.7%	18.2%	18.4%
CORN	1,901,283	1,868,556	1,864,295	1,823,044	278.9	281.5	284.0	281.9	14.7%	15.1%	15.2%	15.5%
OATS	-	-	-	-	-	-	-	-	-	-	-	-
SOYBEANS	1,026,078	1,048,773	1,020,423	955,012	146.7	137.7	153.2	163.2	14.3%	13.1%	15.0%	17.1%
SOY OIL	561,772	558,381	573,527	592,545	103.5	105.2	109.9	120.9	18.4%	18.8%	19.2%	20.4%
SOY MEAL	538,260	535,353	530,653	512,178	88.8	84.4	92.9	99.0	16.5%	15.8%	17.5%	19.3%

SOURCE: CFTC & FI

NET POSITION FUTURES AND OPTIONS OF SPECULATORS AND INDEX FUNDS IN COMBINED SRW, HRW, CORN, SOYBEANS, SOYMEAL AND SOYOIL



Source: CFTC and FI

○ Net Index

— Net Speculator

2/21/2020

Traditional Daily Estimate of Funds 2/18/20

	(Neg)-"Short"	Pos-"Long"			
Actual less Est.	1.6	2.8	11.0	(8.3)	(5.1)
	Corn	Bean	Chi. Wheat	Meal	Oil
Act.	43.8	(15.9)	62.2	(39.4)	58.4
19-Feb	(9.0)	9.0	(2.0)	4.0	(2.0)
20-Feb	(11.0)	(6.0)	(4.0)	(1.0)	(5.0)
21-Feb	(11.0)	(8.0)	(7.0)	(7.0)	6.0
24-Feb					
25-Feb					
FI Est. of Futures Only 2/18/20	12.8	(20.9)	49.2	(43.4)	57.4
FI Est. Futures & Options	(47.2)	(61.4)	47.3	(53.2)	49.4
Futures only record long	498.2	260.4	86.5	167.5	160.2
	2/1/2011	6/27/2017	8/7/2018	5/1/2018	11/1/2016
Futures only record short	(173.1)	(118.3)	(130.0)	(49.5)	(69.8)
	4/26/2019	4/30/2019	4/25/2017	3/1/2016	9/18/2018
Futures and options record net long	458.5	259.8	64.8	132.1	159.2
	9/28/2010	5/1/2012	8/7/2012	5/1/2018	1/1/2016
Futures and options record net short	(270.6)	(132.0)	(143.3)	(64.1)	(77.8)
	4/26/2019	4/30/2019	4/25/2017	3/1/2016	9/18/2018

Managed Money Daily Estimate of Funds 2/18/20

	Corn	Bean	Chi. Wheat	Meal	Oil
Latest CFTC Fut. Only	(56.9)	(96.0)	59.3	(71.5)	39.7
Latest CFTC F&O	(61.5)	(89.8)	64.7	(72.5)	39.6
FI Est. Managed Fut. Only	(88)	(101)	46	(76)	39
FI Est. Managed Money F&O	(92)	(95)	52	(76)	39

Index Funds Latest Positions (as of last Tuesday)

Index Futures & Options	278.9	146.7	108.7	NA	103.5
Change From Previous Week	(2.6)	9.0	(3.6)	NA	(1.7)

Source: Reuters, CFTC & FI (FI est. are noted with latest date)

Disclaimer

TO CLIENTS/PROSPECTS OF FUTURES INTERNATIONAL, SEE RISK DISCLOSURE BELOW:

THIS COMMUNICATION IS CONVEYED AS A SOLICITATION FOR ENTERING INTO A DERIVATIVES TRANSACTION.

Any trading recommendations and market or other information to Customer by Futures International (FI), although based upon information obtained from sources believed by FI to be reliable may not be accurate and may be changed without notice to customer. FI makes no guarantee as to the accuracy or completeness of any of the information or recommendations furnished to Customer. Customer understands that FI, its managers, employees and/or affiliates may have a position in commodity futures, options or other derivatives which may not be consistent with the recommendations furnished by FI to Customer.

The risk of trading futures and options and other derivatives involves a substantial risk of loss and is not suitable for all persons. In purchasing an option, the risk is limited to the premium paid, and all commissions and fees involved with the trade. When an option is shorted or written, the writer of the option has unlimited risk with respect to the option written. The use of options strategies such as a straddles and strangles involve multiple option positions and may substantially increase the amount of commissions and fees paid to execute the strategy. Option prices do not necessarily move in tandem with cash or futures prices. Each person must consider whether a particular trade, combination of trades or strategy is suitable for that person's financial means and objectives.

This material may include discussions of seasonal patterns, however, futures prices have already factored in the seasonal aspects of supply and demand, and seasonal patterns are no indication of future market trends. Finally, past performance is not indicative of future results.

This communication may contain links to third party websites which are not under the control of FI and FI is not responsible for their content. Products and services are offered only in jurisdictions where solicitation and sale are lawful, and in accordance with applicable laws and regulations in each such jurisdiction.