

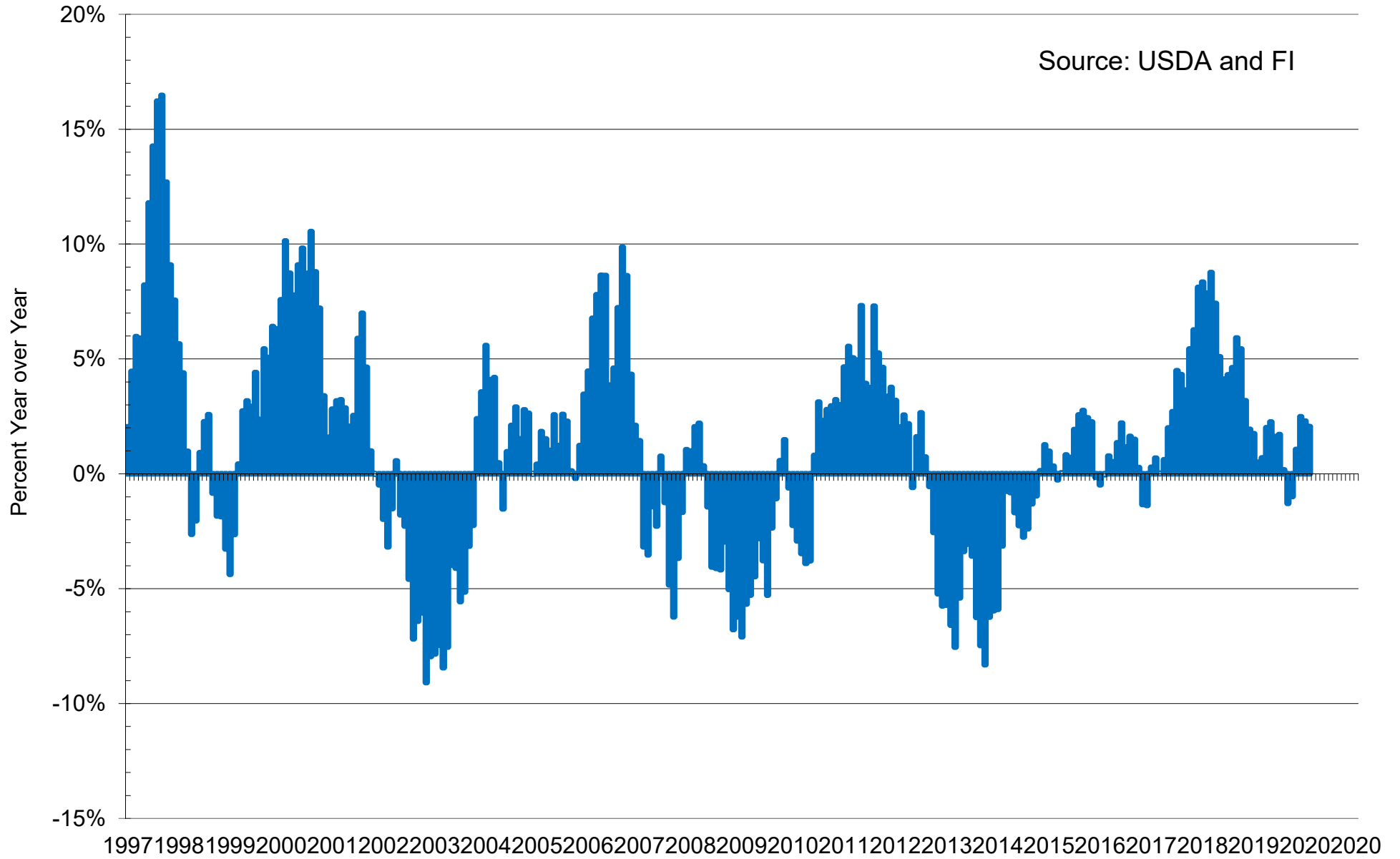
CATTLE ON FEED SUMMARY (1,000 HEAD, PERCENT OF A YEAR AGO)

Item	Actual 2019	Actual 2020	Percent of Previous Year	Average of Estimates	Actual less Estimates	Range of Estimates
Jan. 1 On Feed (Ending Inventory)	11,690	11,958	102.3%	NA	NA	NA
Placed on Feed during Jan.	1,969	1,955	99.3%	101.4%	-2.1%	97.8-103.5%
Fed Cattle Marketed during Jan.	1,910	1,931	101.1%	100.7%	0.4%	97.6-101.6%
Feb. 1 On Feed (Ending Inventory)	11,688	11,928	102.1%	102.4%	-0.3%	101.8-103.0%

Source: Reuters, USDA and FI Placements and Sales estimates in million head are derived using Reuters average %

U.S. CATTLE ON FEED AS OF FIRST OF EACH MONTH

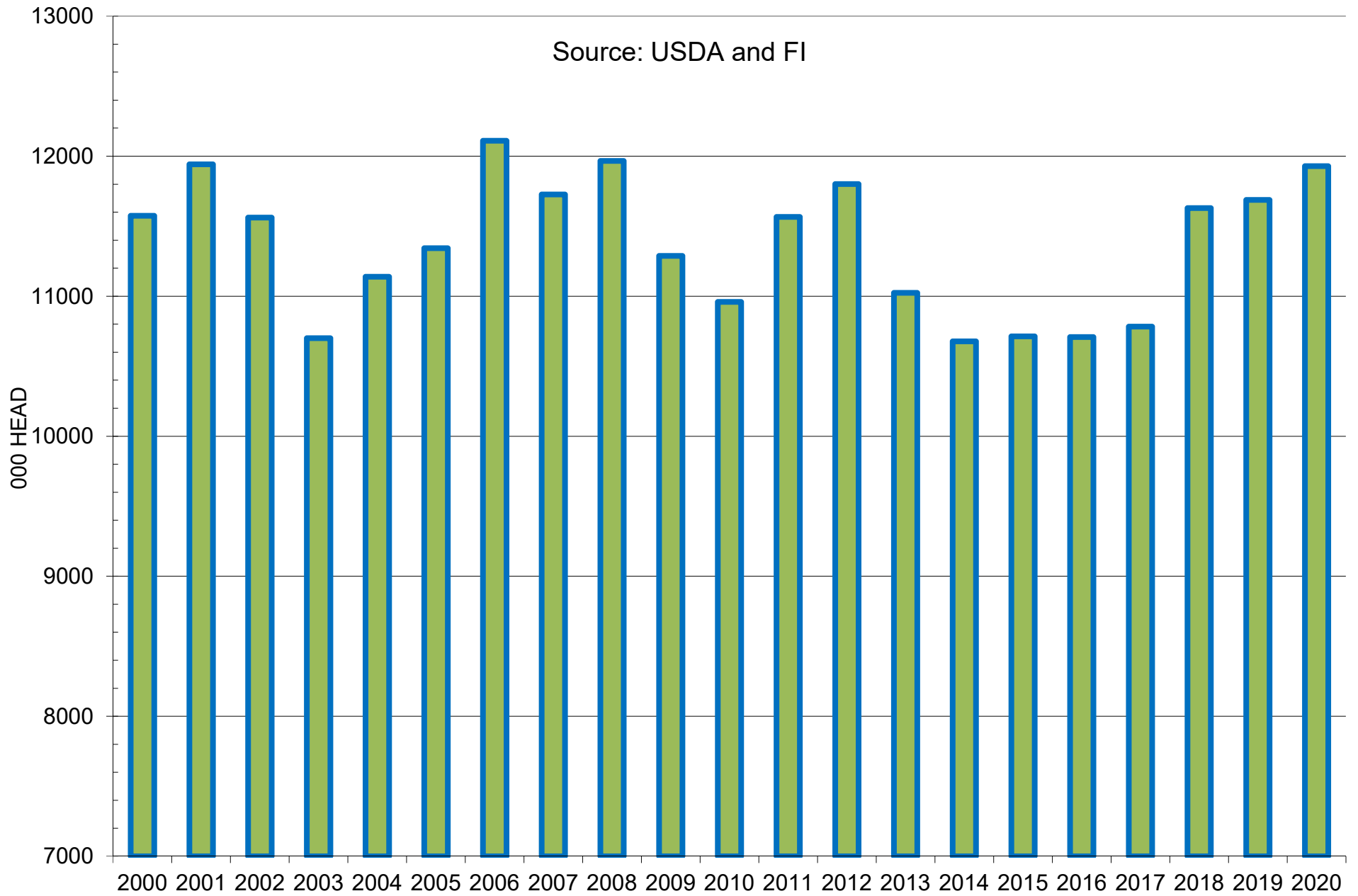
Source: USDA and F1



■ % Year over Year

U.S. MONTHLY FED CATTLE INVENTORIES

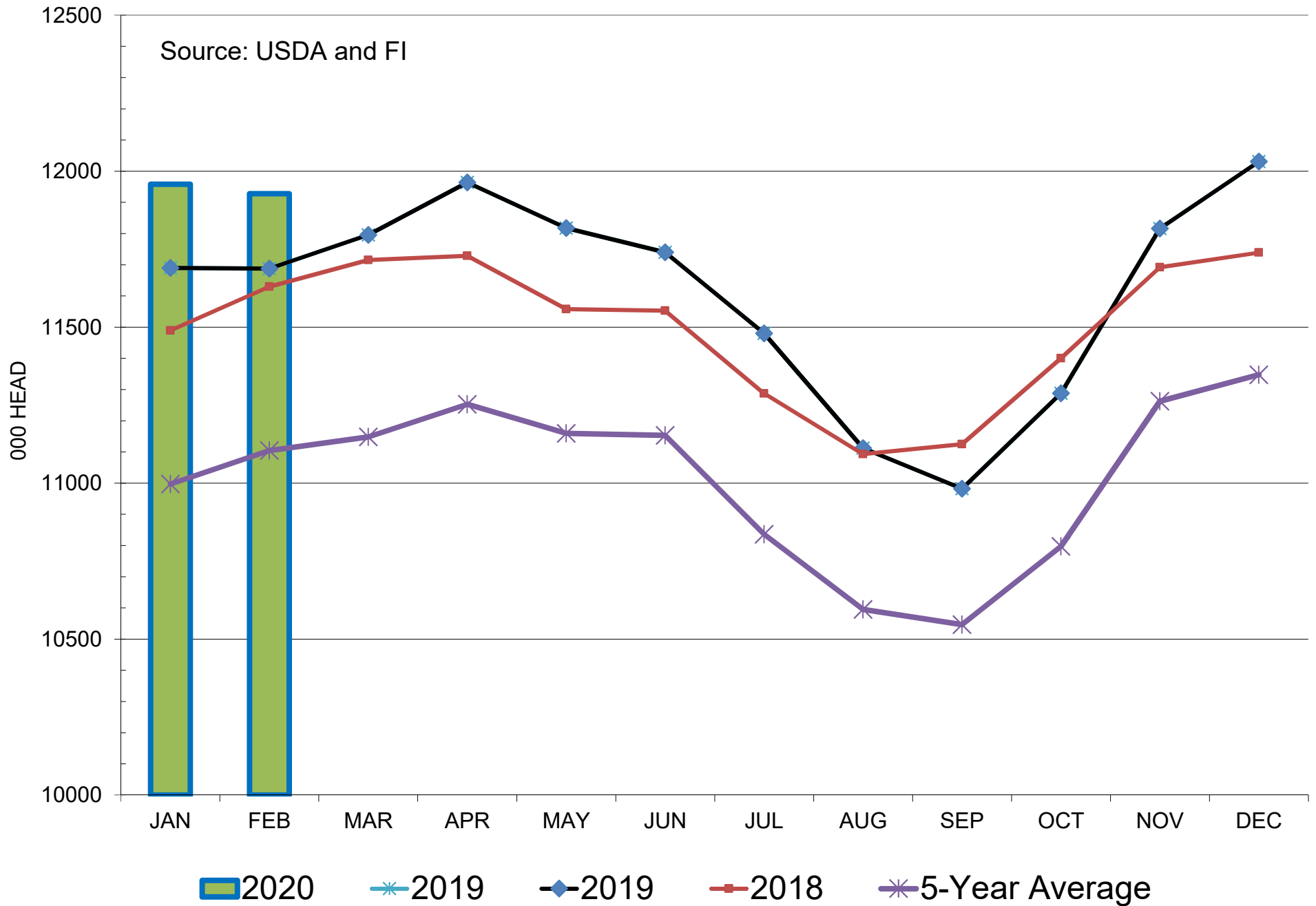
Source: USDA and FI



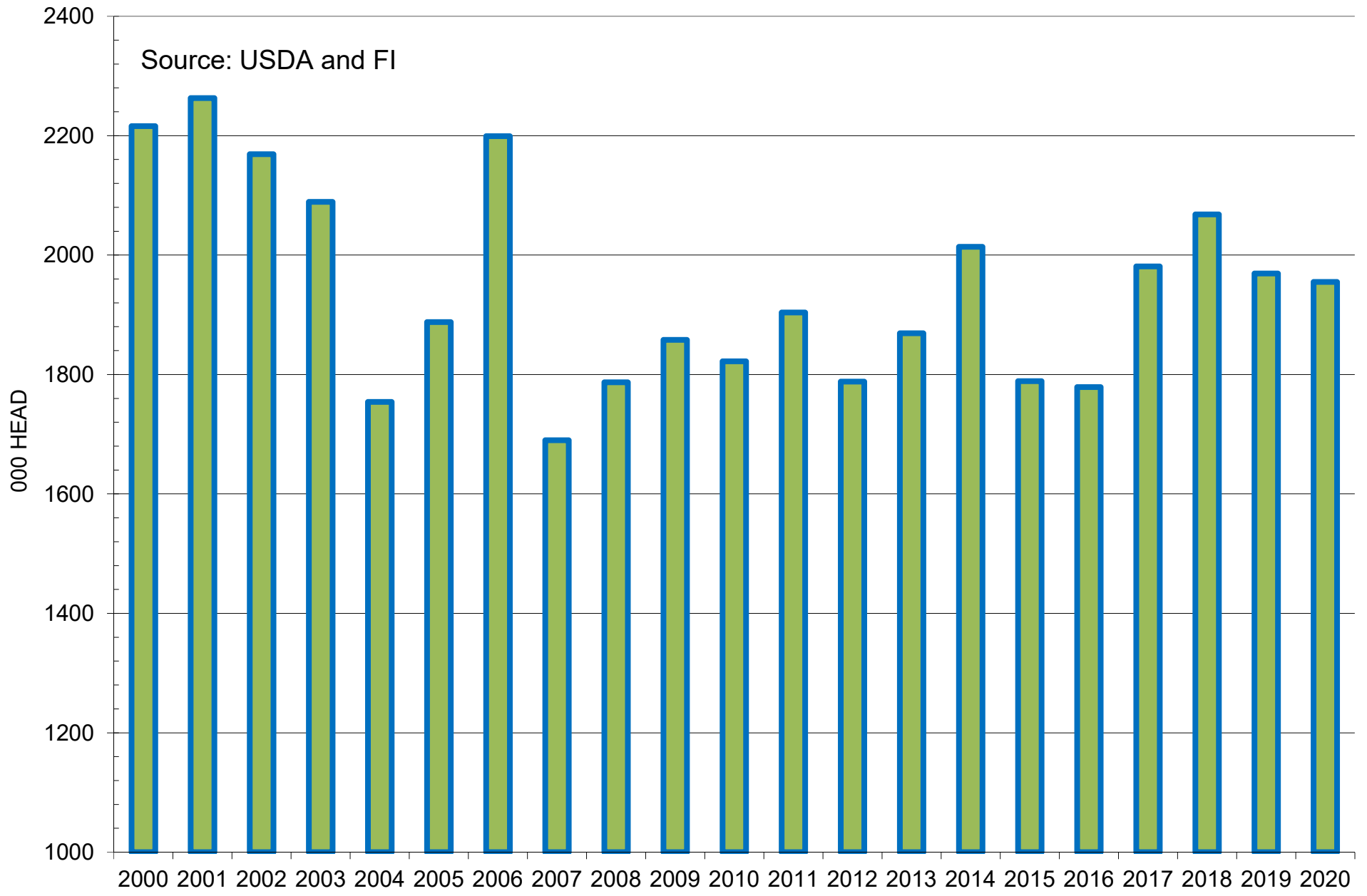
■ US Cattle on Feed as of February 1

U.S. MONTHLY FED CATTLE INVENTORIES

AS OF FIRST OF EACH MONTH



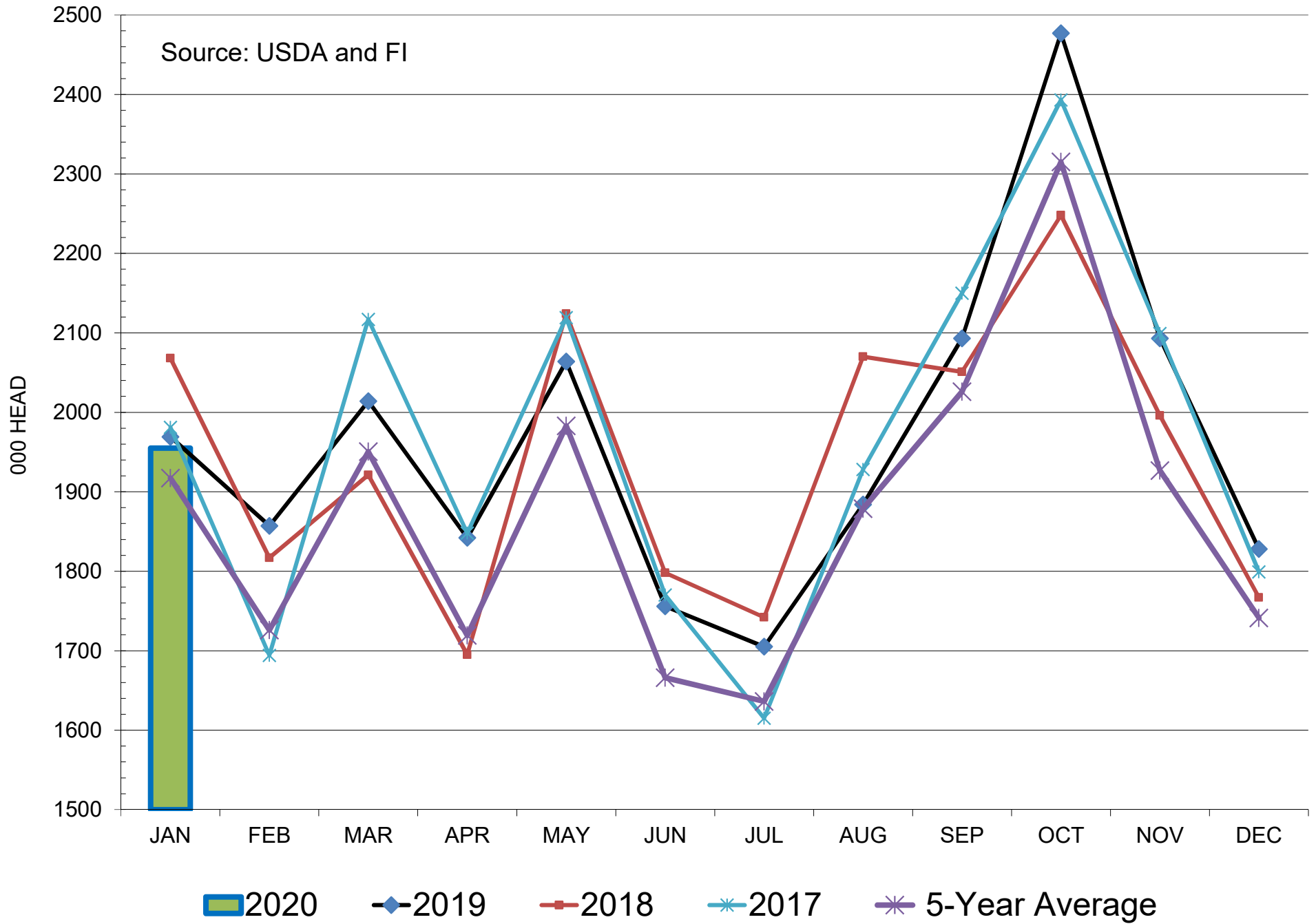
U.S. MONTHLY FED CATTLE PLACEMENTS



■ US Cattle Placements During January

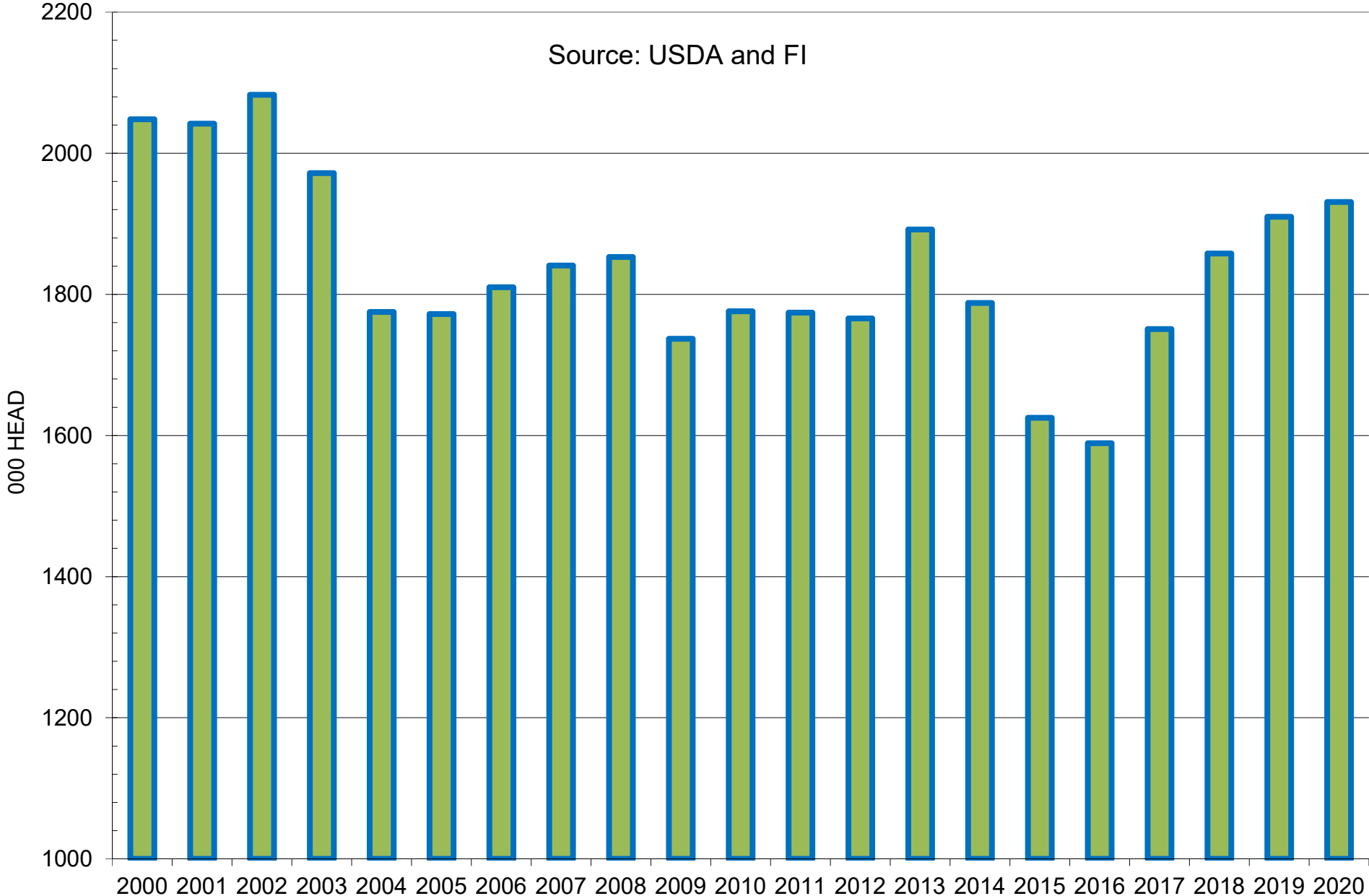
U.S. MONTHLY FED CATTLE PLACEMENTS

Source: USDA and FI



U.S. MONTHLY CATTLE MARKETED

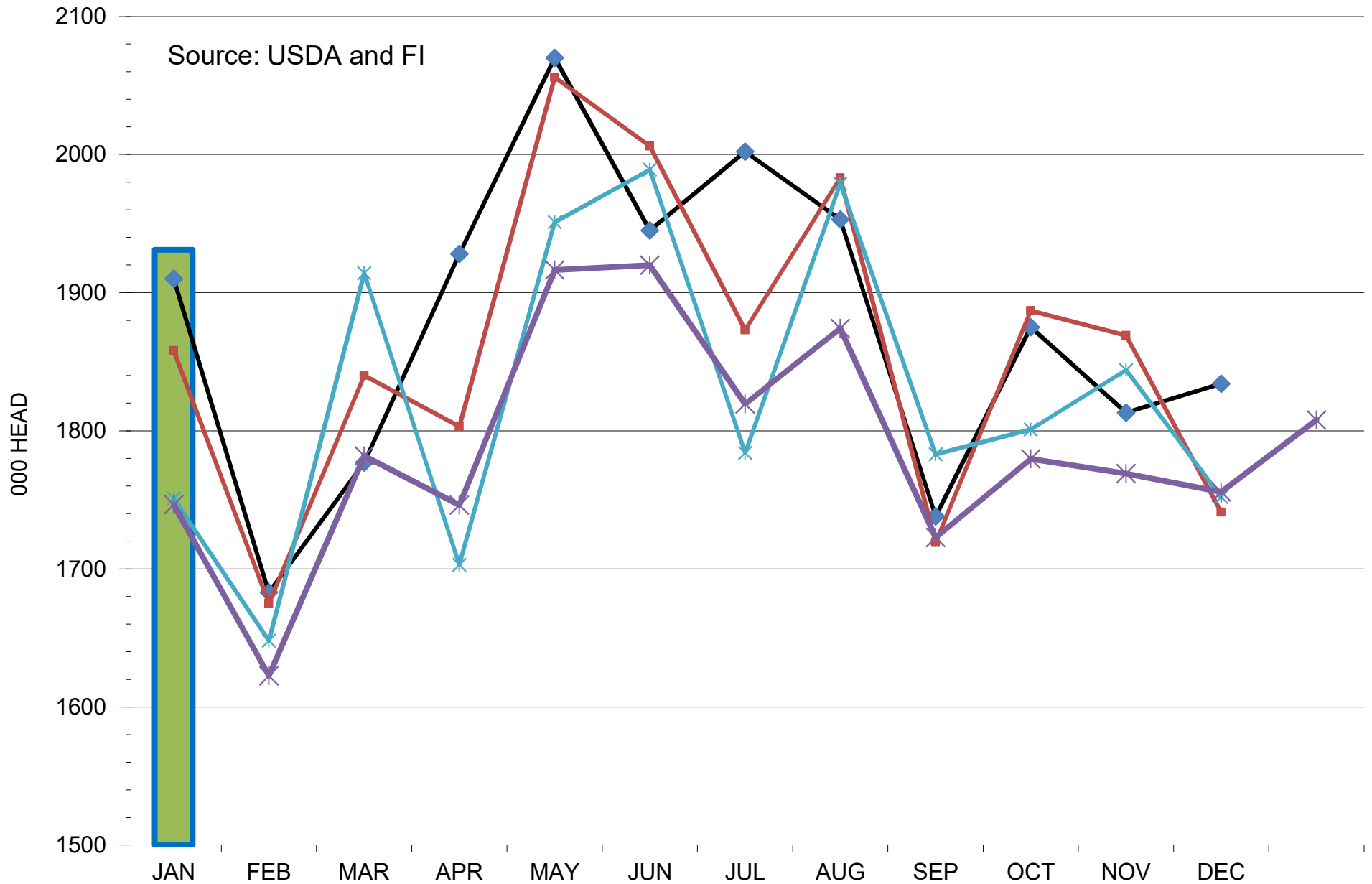
Source: USDA and FI



■ US Cattle Marketed During January

U.S. MONTHLY CATTLE MARKETED

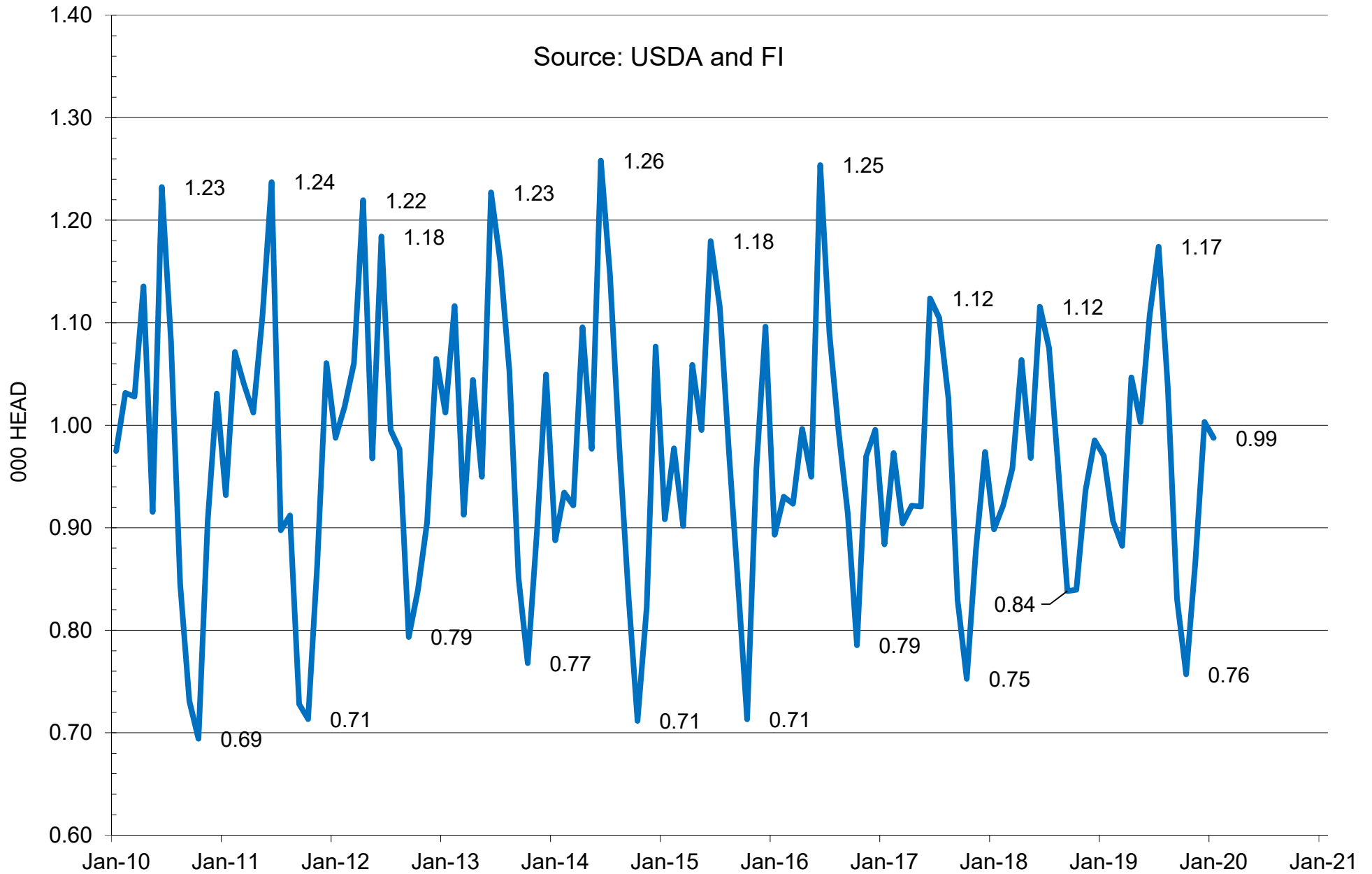
Source: USDA and FI



■ 2020 ◆ 2019 ■ 2018 * 2017 * 5-Year Average

U.S. MARKETED TO PLACEMENTS RATIO

Source: USDA and FI



— SALES TO PLACEMENTS RATIO

Disclaimer

TO CLIENTS/PROSPECTS OF FUTURES INTERNATIONAL, SEE RISK DISCLOSURE BELOW:

THIS COMMUNICATION IS CONVEYED AS A SOLICITATION FOR ENTERING INTO A DERIVATIVES TRANSACTION.

Any trading recommendations and market or other information to Customer by Futures International (FI), although based upon information obtained from sources believed by FI to be reliable may not be accurate and may be changed without notice to customer. FI makes no guarantee as to the accuracy or completeness of any of the information or recommendations furnished to Customer. Customer understands that FI, its managers, employees and/or affiliates may have a position in commodity futures, options or other derivatives which may not be consistent with the recommendations furnished by FI to Customer.

The risk of trading futures and options and other derivatives involves a substantial risk of loss and is not suitable for all persons. In purchasing an option, the risk is limited to the premium paid, and all commissions and fees involved with the trade. When an option is shorted or written, the writer of the option has unlimited risk with respect to the option written. The use of options strategies such as a straddles and strangles involve multiple option positions and may substantially increase the amount of commissions and fees paid to execute the strategy. Option prices do not necessarily move in tandem with cash or futures prices. Each person must consider whether a particular trade, combination of trades or strategy is suitable for that person's financial means and objectives.

This material may include discussions of seasonal patterns, however, futures prices have already factored in the seasonal aspects of supply and demand, and seasonal patterns are no indication of future market trends. Finally, past performance is not indicative of future results.

This communication may contain links to third party websites which are not under the control of FI and FI is not responsible for their content. Products and services are offered only in jurisdictions where solicitation and sale are lawful, and in accordance with applicable laws and regulations in each such jurisdiction.