

## Traditional Daily Estimate of Funds 3/3/20

(Neg)-"Short" Pos-"Long"

	Corn	Bean	Chi. Wheat	Meal	Oil
<b>Act.</b>	5.6	11.4	26.7	9.4	36.6
4-Mar	13.0	7.0	(5.0)	(4.0)	6.0
5-Mar	(8.0)	(9.0)	1.0	(5.0)	(6.0)
6-Mar	(12.0)	(6.0)	(3.0)	(5.0)	3.0
9-Mar					
10-Mar					
<b>FI Est. of Futures Only 3/3/20</b>	<b>(1.4)</b>	<b>3.4</b>	<b>19.7</b>	<b>(4.6)</b>	<b>39.6</b>
<b>FI Est. Futures &amp; Options</b>	<b>(47.2)</b>	<b>(15.4)</b>	<b>12.7</b>	<b>(13.1)</b>	<b>33.1</b>
Futures only record long	498.2 2/1/2011	260.4 6/27/2017	86.5 8/7/2018	167.5 5/1/2018	160.2 11/1/2016
Futures only record short	(173.1) 4/26/2019	(118.3) 4/30/2019	(130.0) 4/25/2017	(49.5) 3/1/2016	(69.8) 9/18/2018
Futures and options record net long	458.5 9/28/2010	259.8 5/1/2012	64.8 8/7/2012	132.1 5/1/2018	159.2 1/1/2016
Futures and options record net short	(270.6) 4/26/2019	(132.0) 4/30/2019	(143.3) 4/25/2017	(64.1) 3/1/2016	(77.8) 9/18/2018

## Managed Money Daily Estimate of Funds 3/3/20

	Corn	Bean	Chi. Wheat	Meal	Oil
Latest CFTC Fut. Only	(77.2)	(35.0)	17.1	(16.5)	15.9
Latest CFTC F&O	(84.9)	(35.8)	15.4	(18.3)	15.0
	Corn	Bean	Chi. Wheat	Meal	Oil
FI Est. Managed Fut. Only	(84)	(43)	10	(31)	19
FI Est. Managed Money F&O	(92)	(44)	8	(32)	18

## Index Funds Latest Positions (as of last Tuesday)

Index Futures & Options	288.7	145.3	112.5	NA	98.2
Change From Previous Week	(7.2)	(0.3)	1.1	NA	(2.2)

Source: Reuters, CFTC & FI (FI est. are noted with latest date)

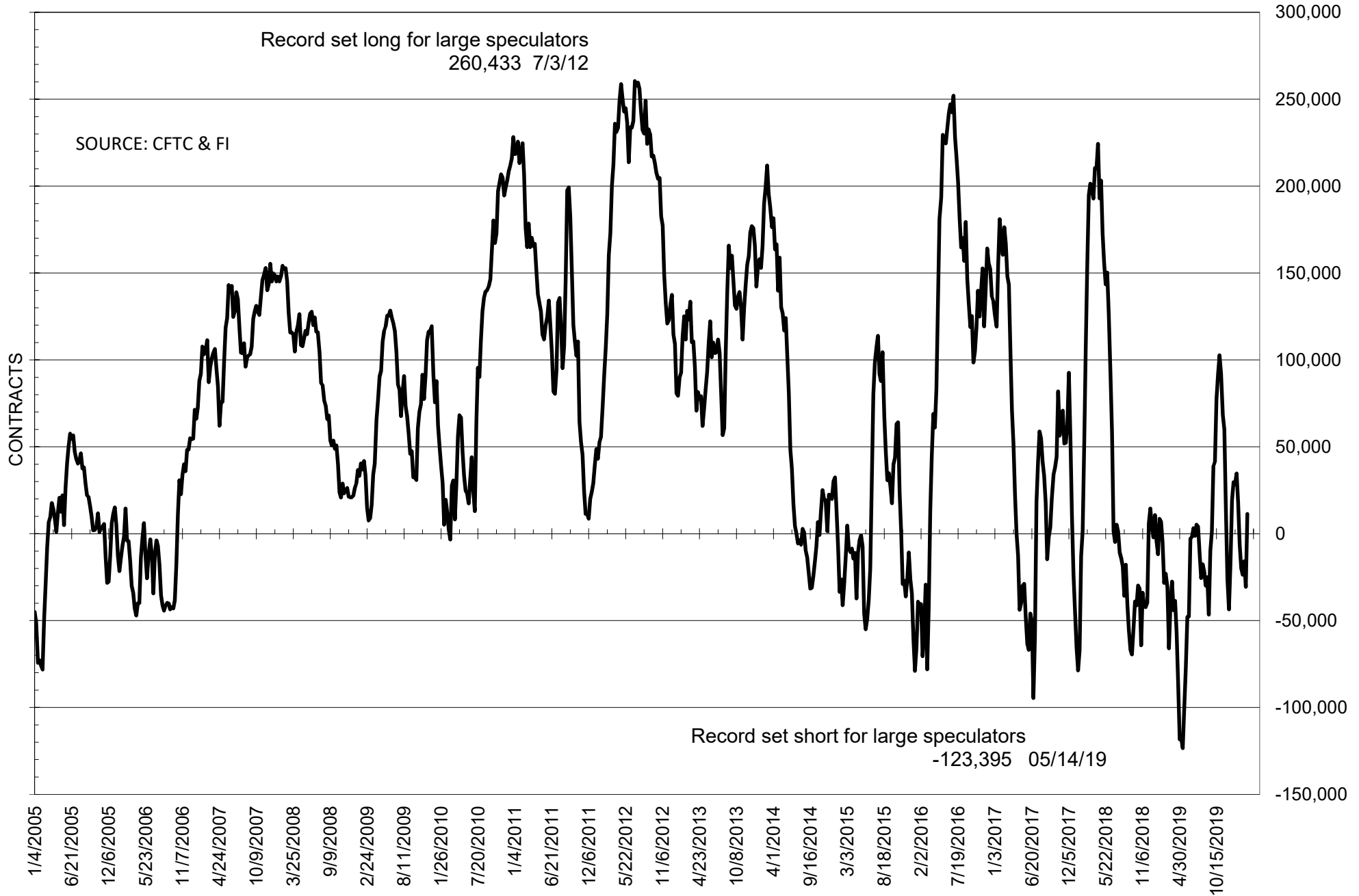
**COMMITMENT OF TRADERS  
FUTURES ONLY NET POSITIONS  
AS OF 03/03/2020  
(IN THOUSAND CONTRACTS)**

	COMMERCIAL				(FUND) NON COMMERCIAL				(SPEC) NON-REPORTABLE			
	3-Mar	25-Feb	18-Feb	11-Feb	3-Mar	25-Feb	18-Feb	11-Feb	3-Mar	25-Feb	18-Feb	11-Feb
	<b>WHEAT</b>											
Chicago	-8.1	-23.0	-42.0	-20.5	26.7	42.9	62.2	41.2	-18.6	-19.9	-20.2	-20.7
Kansas City	-1.2	-10.4	-19.4	-17.6	-1.6	7.6	15.0	12.0	2.8	2.8	4.4	5.6
Minneapolis	9.6	5.3	3.6	-0.4	-11.8	-8.1	-6.0	-0.9	2.2	2.8	2.5	1.3
All Wheat	0.3	-28.0	-57.8	-38.5	13.3	42.3	71.1	52.3	-13.6	-14.3	-13.3	-13.8
<b>CORN</b>	-62.4	-56.0	-113.8	-110.2	5.6	-7.1	43.8	38.2	56.8	63.2	70.1	71.9
OATS	-1.8	-2.8	-3.0	-3.1	1.2	2.4	2.5	2.7	0.6	0.4	0.5	0.4
<b>SOYBEANS</b>	-16.4	28.5	11.1	22.3	11.4	-30.6	-15.9	-23.7	5.0	2.0	4.8	1.4
SOY OIL	-36.0	-40.8	-63.7	-79.8	36.6	39.5	58.4	71.5	-0.6	1.3	5.3	8.2
SOY MEAL	-24.6	32.5	23.4	18.1	9.4	-49.3	-39.4	-35.1	15.2	16.8	16.0	17.0

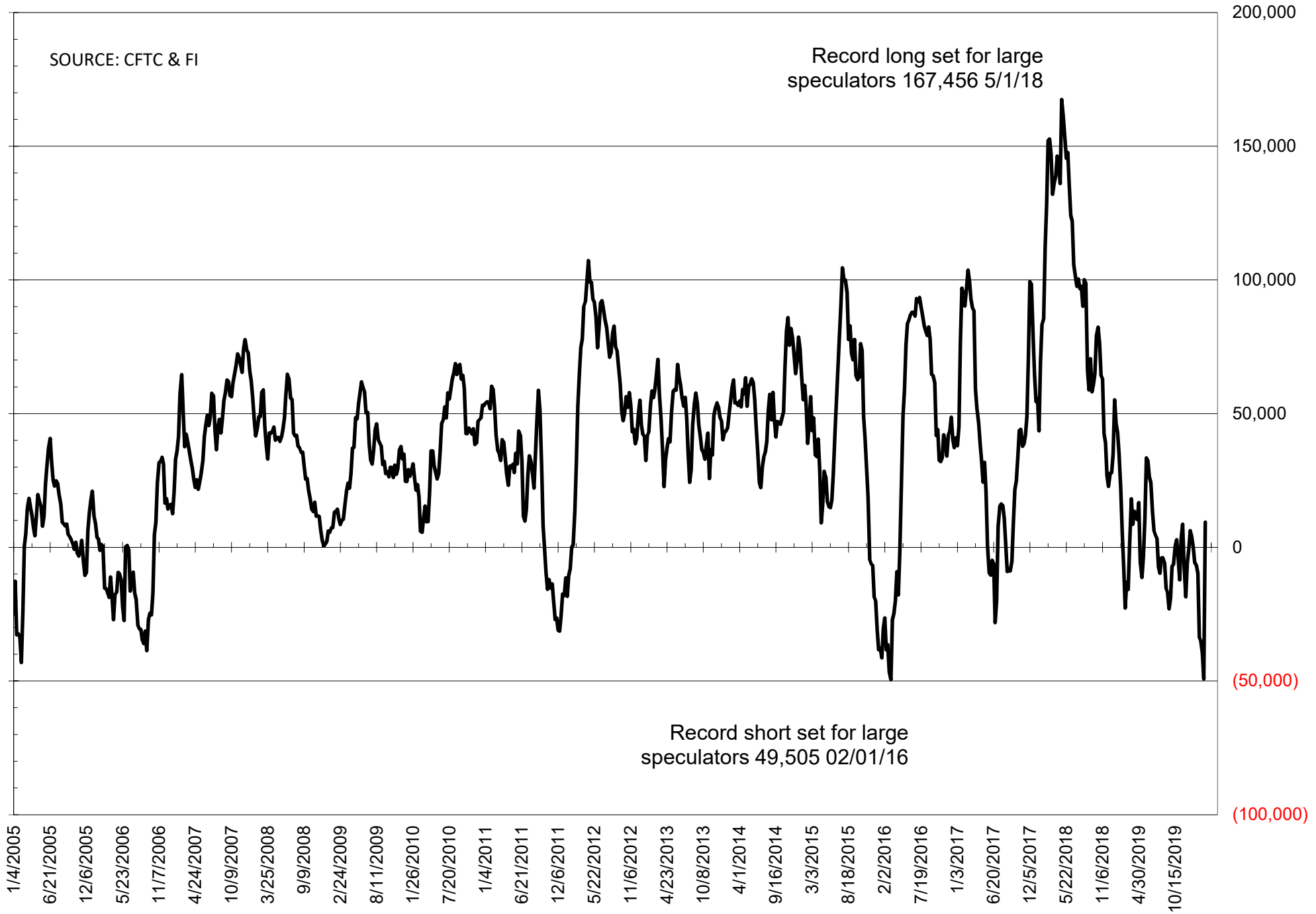
	TOTAL OPEN INTEREST				NEARBY FUTURES PRICE					3-Mar-20 LAST REPORTED % HELD BY TRADERS			
	3-Mar	25-Feb	18-Feb	11-Feb	K Latest	K 3-Mar	H 25-Feb	H 18-Feb	H 11-Feb	LARGE FUND		SMALL	
										LONG	SHORT	LONG	SHORT
<b>WHEAT</b>													
Chicago	426357	465877	513909	507064	515.75	531.00	539.00	566.75	542.00	0%	22%	0%	11%
Kansas City	250643	267971	284730	290843	446.25	463.75	455.00	485.75	468.25	0%	28%	0%	8%
Minneapolis	66523	68005	72287	70605	525.25	528.25	516.00	540.00	531.25	0%	30%	0%	15%
<b>CORN</b>	1501015	1584614	1607877	1573430	376.00	381.50	372.50	383.00	379.75	0%	21%	0%	12%
OATS	4753	4776	5742	5617	268.25	268.50	286.50	304.75	298.25	0%	9%	0%	21%
<b>SOYBEANS</b>	787023	812537	860488	880780	891.25	905.25	879.00	892.25	884.75	19%	17%	8%	7%
SOY OIL	458102	502463	515651	511696	28.75	29.29	29.23	30.48	30.72	0%	11%	0%	8%
SOY MEAL	449552	505670	506777	503208	305.10	309.70	286.50	292.20	290.80	0%	17%	0%	7%

SOURCE: CFTC & FI

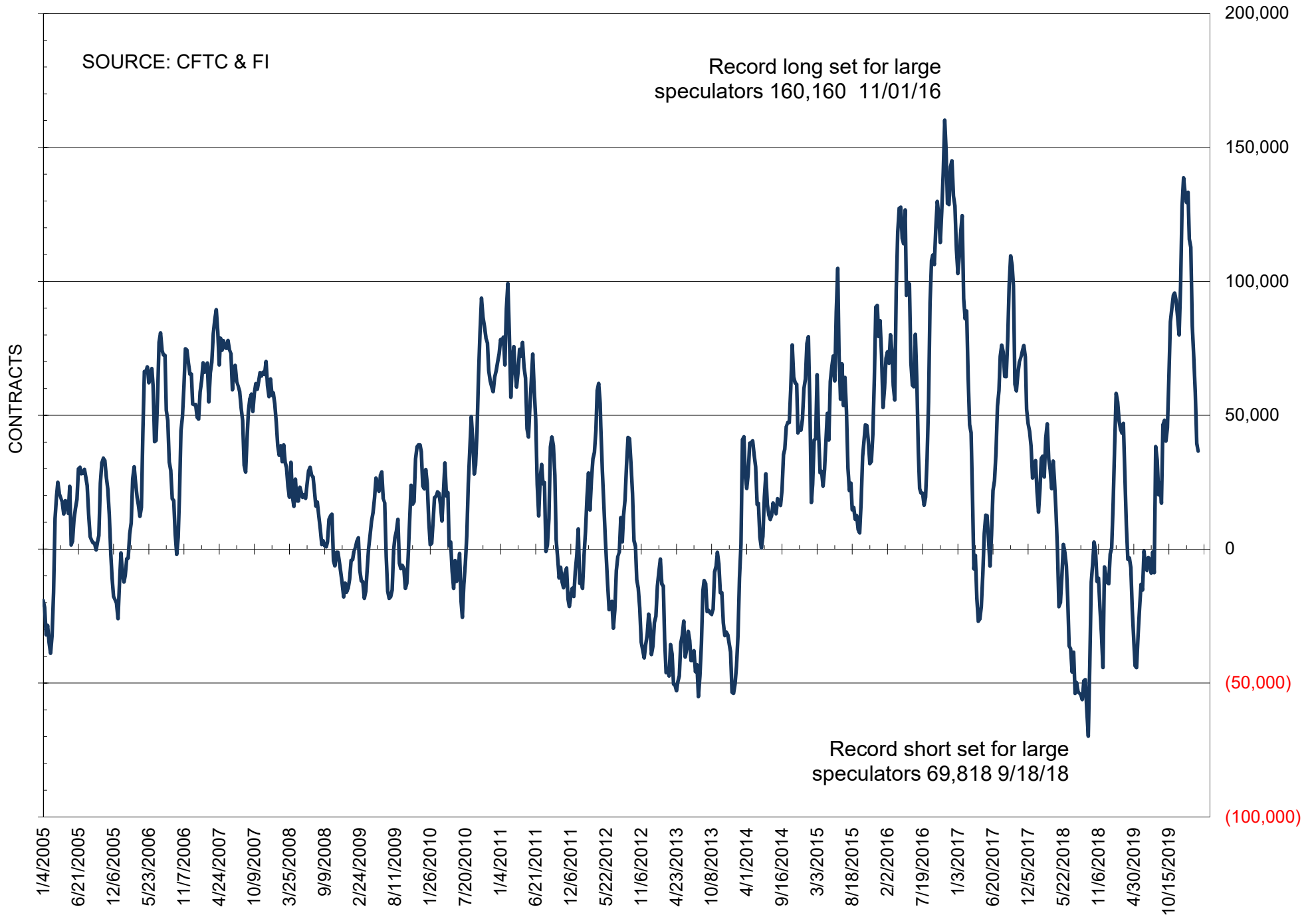
# NET POSITION OF FUTURES ONLY LARGE SPECS IN SOYBEANS



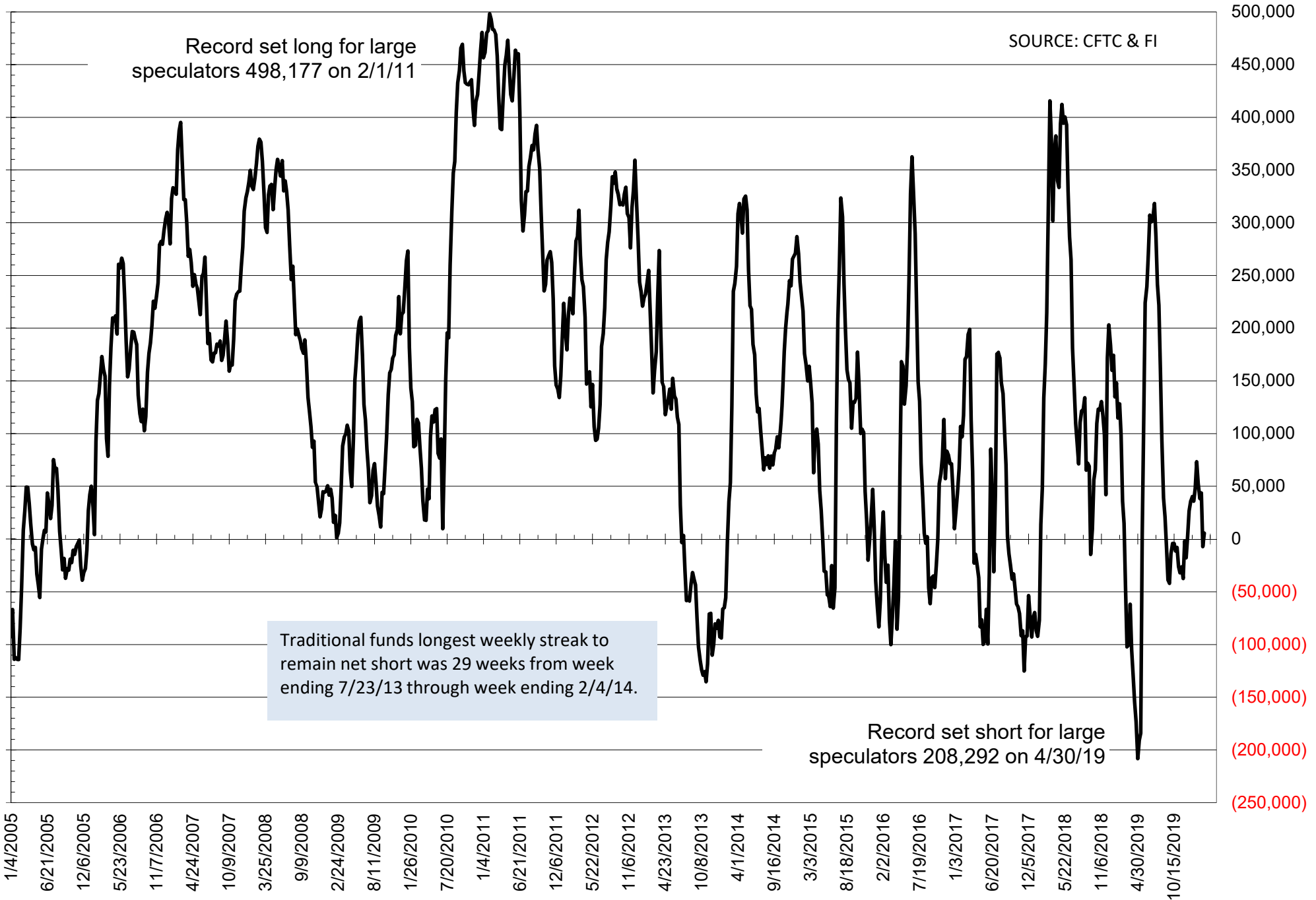
# NET POSITION OF FUTURES ONLY LARGE SPECS IN SOYMEAL



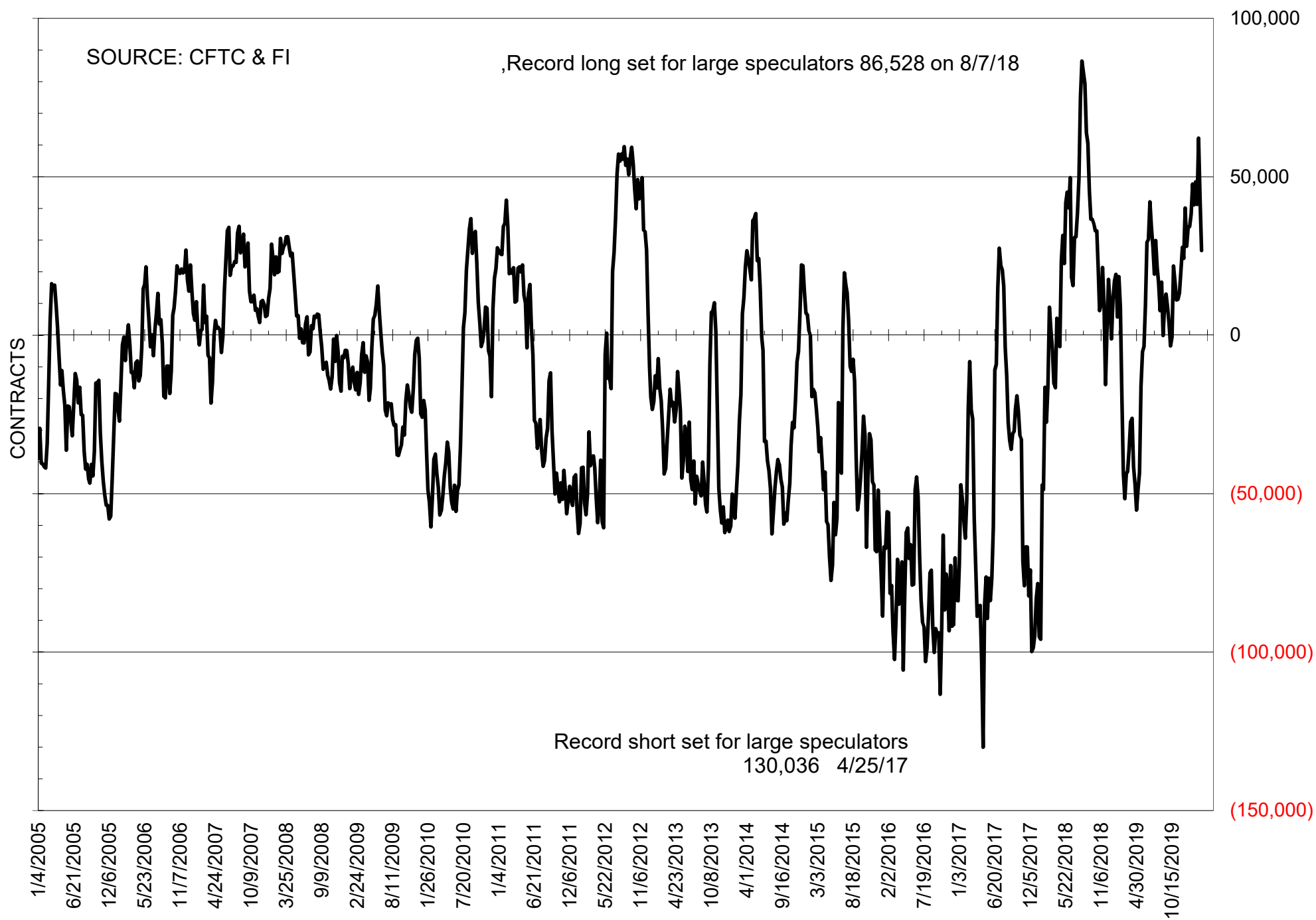
# NET POSITION OF FUTURES ONLY LARGE SPECS IN SOYOIL



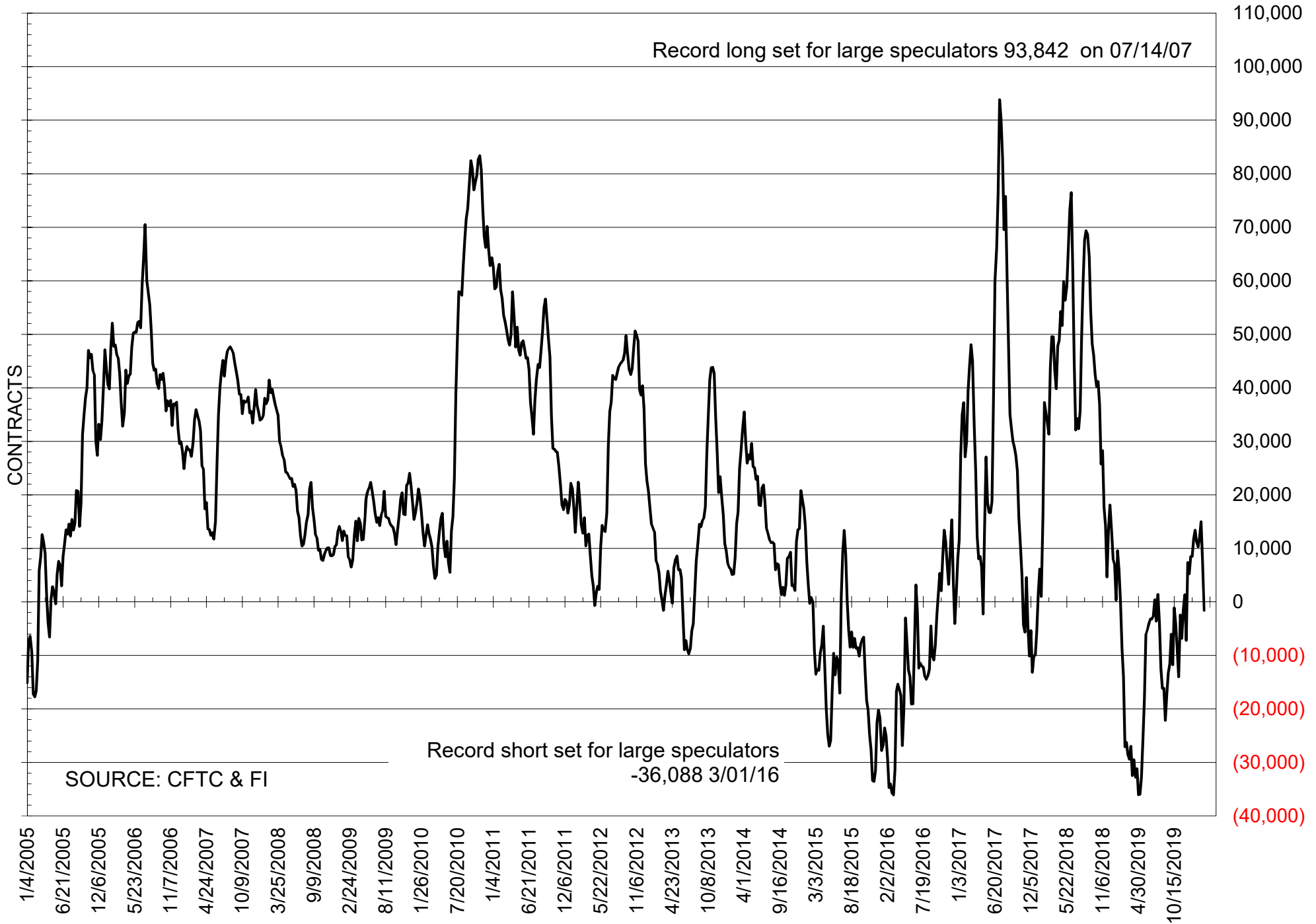
# NET POSITION OF LARGE SPECULATORS IN CORN



# NET POSITION OF FUTURES ONLY LARGE SPECS IN CHICAGO WHEAT

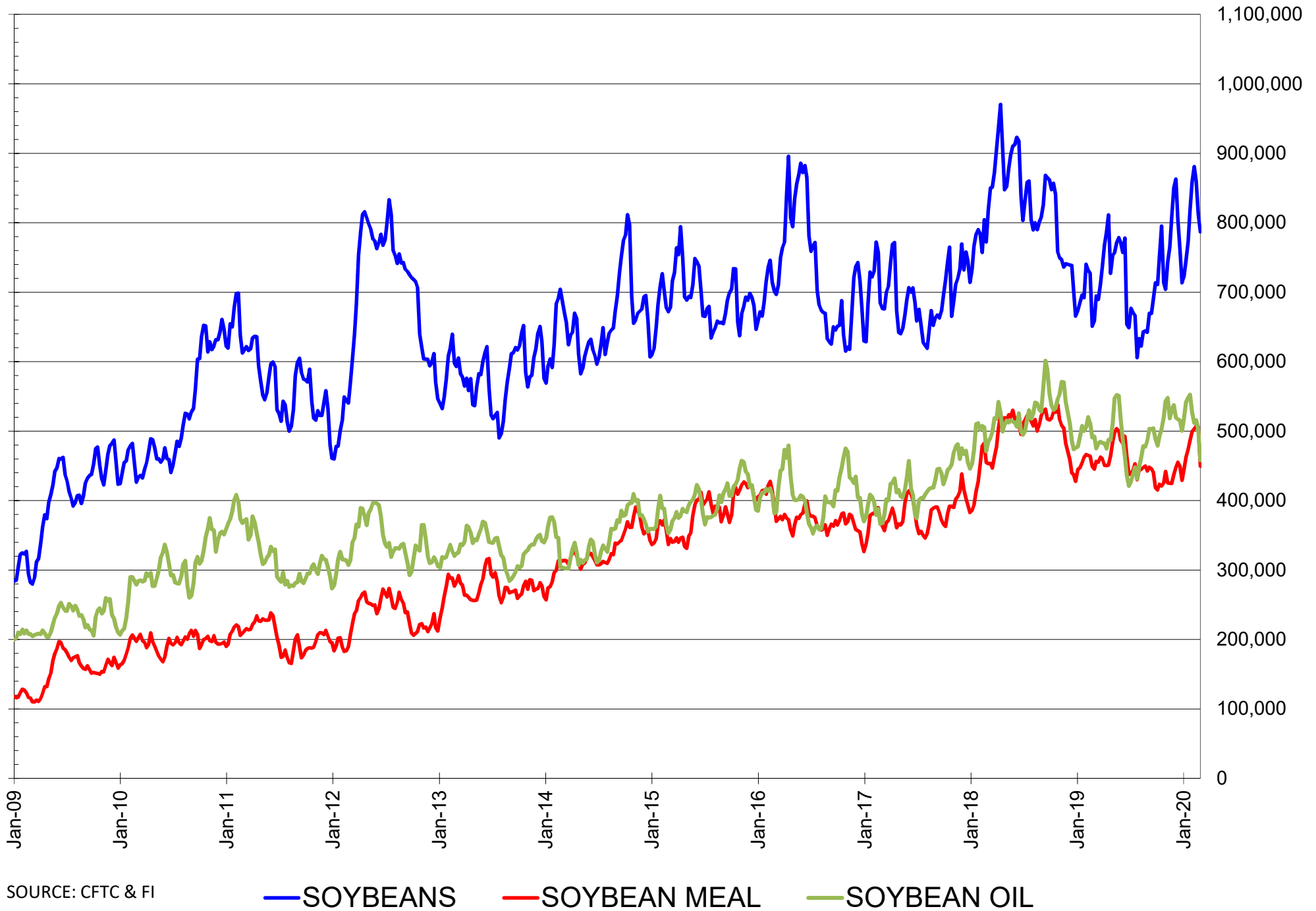


# NET POSITION OF LARGE SPECULATORS IN KANSAS CITY WHEAT





# TOTAL OPEN INTEREST IN SOYBEANS, MEAL AND OIL, FUTURES ONLY



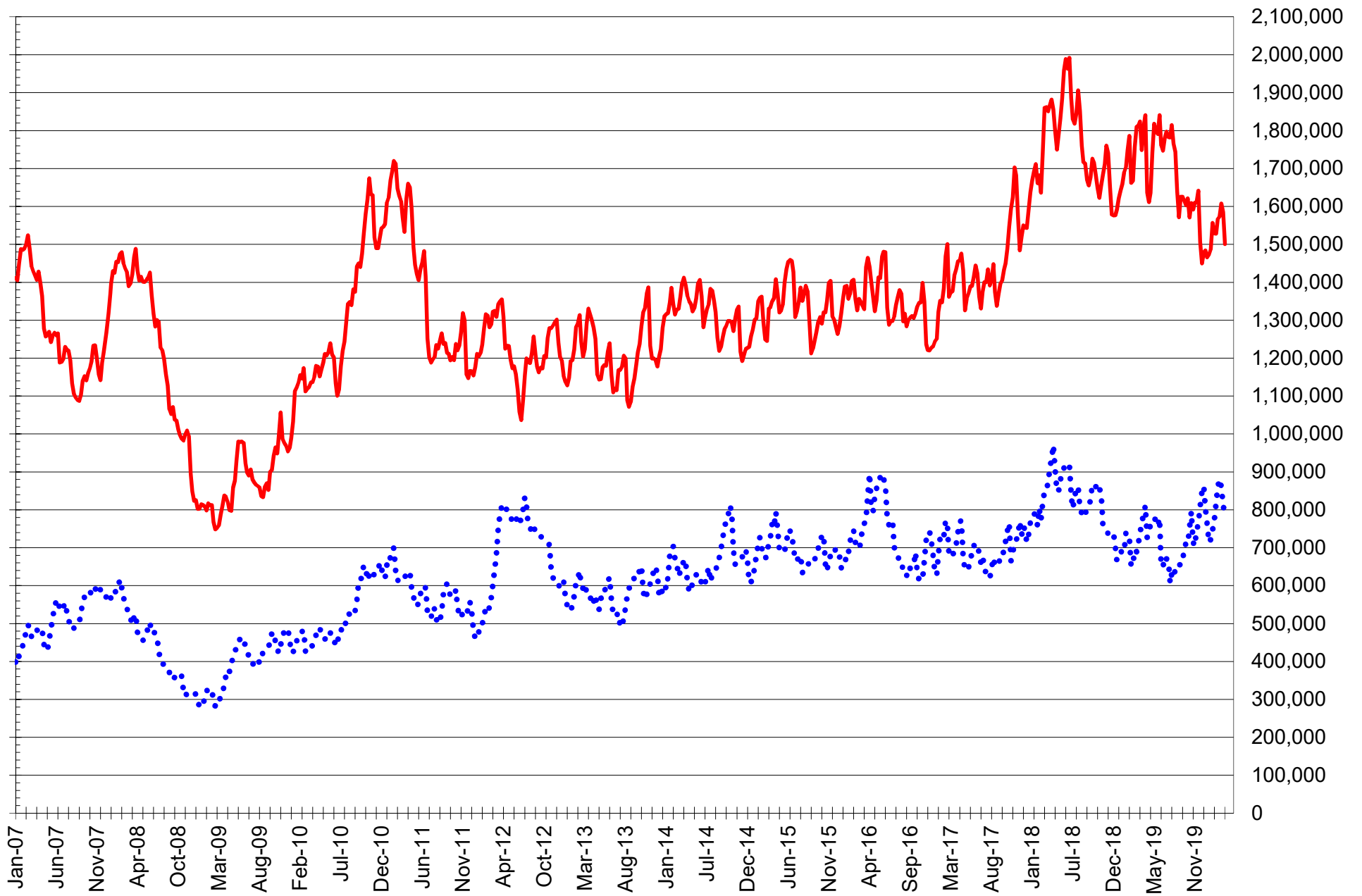
SOURCE: CFTC & FI

— SOYBEANS

— SOYBEAN MEAL

— SOYBEAN OIL

# TOTAL OPEN INTEREST IN CORN AND SOYBEANS, FUTURES ONLY



SOURCE: CFTC & FI

— CORN

..... SOYBEANS

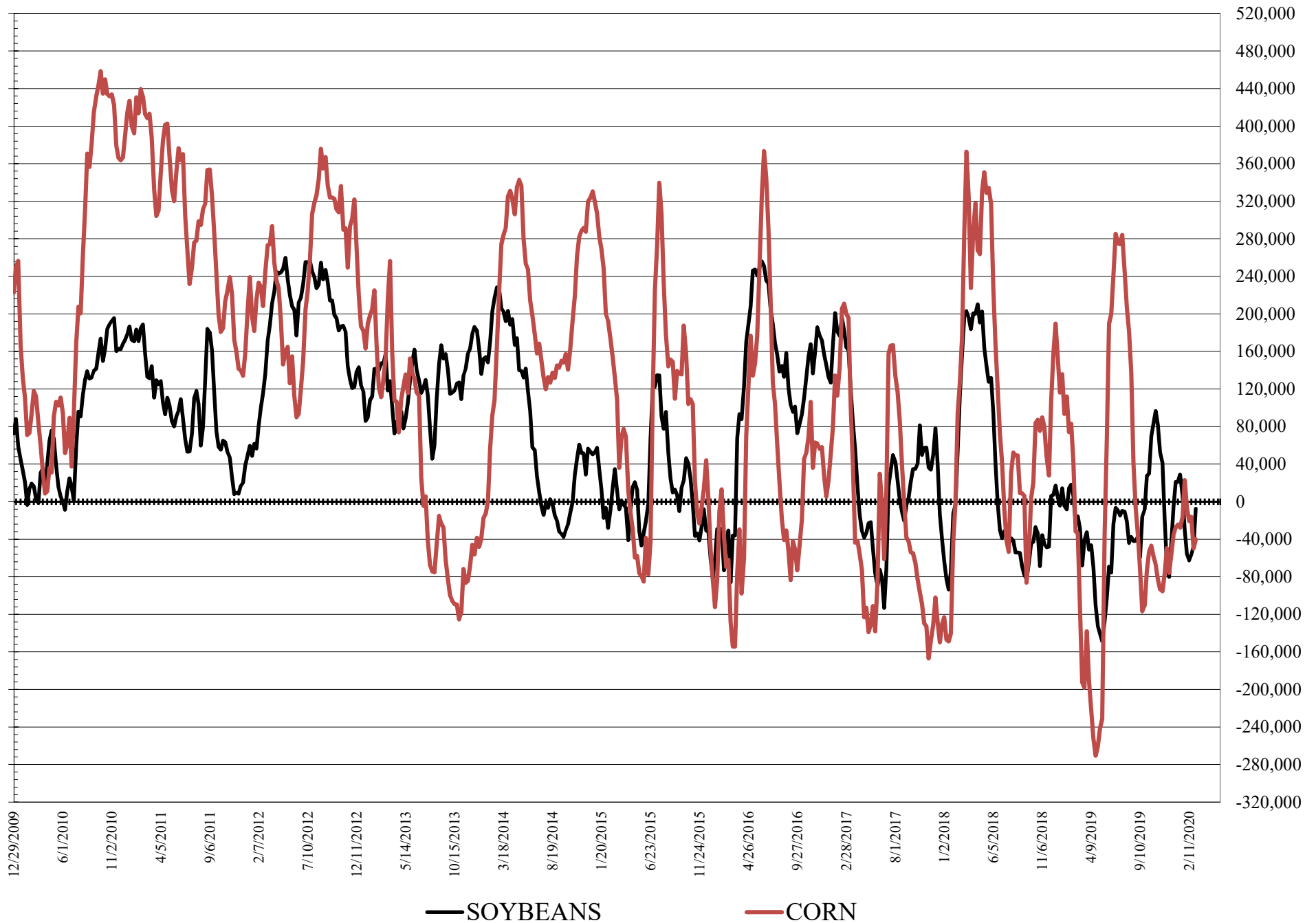
**COMMITMENT OF TRADERS  
FUTURES & OPTIONS NET POSITIONS  
AS OF 03/03/2020  
(IN THOUSAND CONTRACTS)**

	COMMERCIAL				(FUND) NON COMMERCIAL				(SPEC) NON-REPORTABLE			
	3-Mar	25-Feb	18-Feb	11-Feb	3-Mar	25-Feb	18-Feb	11-Feb	3-Mar	25-Feb	18-Feb	11-Feb
<b>WHEAT</b>												
Chicago	-0.3	-19.5	-38.0	-19.5	19.8	40.4	60.3	42.3	-19.4	-21.0	-22.3	-22.8
Kansas City	1.9	-8.0	-17.6	-15.5	-5.3	4.9	12.5	8.9	3.4	3.1	5.1	6.5
Minneapolis	10.0	5.8	4.1	0.2	-12.4	-8.7	-6.8	-1.7	2.4	2.9	2.7	1.5
All Wheat	11.6	-21.7	-51.5	-34.8	2.1	36.6	66.0	49.5	-13.7	-14.9	-14.5	-14.8
<b>CORN</b>	-25.9	-18.5	-68.0	-63.5	-40.2	-50.0	-16.2	-20.6	66.1	68.6	84.2	84.1
OATS	-1.6	-2.8	-3.0	-3.0	1.1	2.3	2.5	2.6	0.6	0.4	0.5	0.4
<b>SOYBEANS</b>	-0.8	44.4	48.9	59.4	-7.4	-48.0	-56.4	-62.6	8.2	3.6	7.5	3.3
SOY OIL	-31.1	-39.4	-56.3	-72.1	30.1	36.7	50.4	63.1	1.0	2.7	5.9	9.0
SOY MEAL	-17.9	39.5	31.2	27.2	0.9	-58.2	-49.1	-46.2	17.0	18.7	18.0	19.1

	TOTAL OPEN INTEREST				COMMERCIALS		% HELD BY TRADERS LARGE (FUNDS)		SMALL (NON-REP)	
	3-Mar	25-Feb	18-Feb	11-Feb	LONG	SHORT	LONG	SHORT	LONG	SHORT
<b>WHEAT</b>										
Chicago	533,295	557,399	647,497	634,249	31%	31%	21%	18%	6%	10%
Kansas City	270,676	285,634	313,424	318,010	41%	40%	24%	26%	9%	8%
Minneapolis	67,816	69,265	74,770	72,989	60%	45%	11%	30%	18%	15%
<b>CORN</b>	1,764,525	1,815,443	1,901,283	1,868,556	41%	42%	16%	18%	16%	12%
OATS	5,058	5,038	6,010	5,890						
<b>SOYBEANS</b>	920,924	932,765	1,026,078	1,048,773	49%	49%	14%	15%	8%	7%
SOY OIL	498,604	535,217	561,772	558,381	50%	56%	16%	10%	7%	7%
SOY MEAL	481,543	530,638	538,260	535,353	53%	57%	16%	16%	10%	7%

SOURCE: CFTC & FI

# NET POSITION FUTURES AND OPTIONS OF LARGE SPECULATORS IN SOYBEANS AND CORN



**DISAGGREGATED COMMITMENT OF TRADERS  
FUTURES ONLY NET POSITIONS  
AS OF 03/03/2020  
(IN THOUSAND CONTRACTS)**

	PRODUCER / MERCHANT / PROCESSOR / USER				(INDEX/ETF) SWAP DEALERS				(CTA/CPO/OTHER UNREGISTERED) MANAGED MONEY				
	3-Mar	25-Feb	18-Feb	11-Feb	3-Mar	25-Feb	18-Feb	11-Feb	3-Mar	25-Feb	18-Feb	11-Feb	
<b>WHEAT</b>													
Chicago	(76.2)	(93.7)	(114.2)	(97.9)	68.1	70.8	72.3	77.4	17.1	43.3	59.3	39.5	
Kansas City	(47.2)	(54.1)	(62.8)	(63.5)	45.9	43.7	43.4	45.8	(2.1)	8.2	13.7	10.0	
Minneapolis	7.2	3.3	1.3	(2.5)	2.4	2.1	2.3	2.2	(16.5)	(14.3)	(12.0)	(6.9)	
All Wheat	(116.1)	(144.5)	(175.8)	(163.9)	116.4	116.5	118.0	125.4	(1.5)	37.2	61.0	42.6	
<b>CORN</b>	(238.2)	(235.8)	(268.9)	(271.1)	175.8	179.8	155.1	160.9	(77.2)	(88.2)	(56.9)	(69.1)	
<b>OATS</b>	(1.9)	(2.9)	(3.1)	(3.2)	0.1	0.1	0.1	0.1	(0.0)	1.0	1.1	1.2	
<b>SOYBEANS</b>	(133.3)	(84.1)	(99.5)	(86.1)	116.9	112.7	110.6	108.4	(35.0)	(75.7)	(96.0)	(97.4)	
<b>SOY OIL</b>	(138.9)	(139.4)	(162.4)	(178.1)	102.9	98.5	98.7	98.4	15.9	23.6	39.7	52.4	
<b>SOY MEAL</b>	(124.4)	(65.2)	(70.0)	(75.9)	99.8	97.7	93.4	94.0	(16.5)	(75.9)	(71.5)	(67.1)	
									<b>Managed % of OI</b>				
									Chicago W	4%	9%	12%	8%
									Corn	-5%	-6%	-4%	-4%
	<b>TOTAL</b>				<b>OTHER REPORTABLE</b>				<b>NON REPORTABLE</b>				
<b>WHEAT</b>													
Chicago	426,357	465,877	513,909	507,064	9.6	(0.5)	2.9	1.8	(18.6)	(19.9)	(20.2)	(20.7)	
Kansas City	250,643	267,971	284,730	290,843	0.5	(0.6)	1.3	2.0	2.8	2.8	4.4	5.6	
Minneapolis	66,523	68,005	72,287	70,605	4.7	6.2	5.9	6.0	2.2	2.8	2.5	1.3	
All Wheat	743,523	801,853	870,926	868,512	14.8	5.1	10.2	9.7	(13.6)	(14.3)	(13.3)	(13.8)	
<b>CORN</b>	1,501,015	1,584,614	1,607,877	1,573,430	82.7	81.0	100.6	107.3	56.8	63.2	70.1	71.9	
<b>OATS</b>	4,753	4,776	5,742	5,617	1.2	1.4	1.4	1.4	0.6	0.4	0.5	0.4	
<b>SOYBEANS</b>	787,023	812,537	860,488	880,780	46.4	45.2	80.1	73.7	5.0	2.0	4.8	1.4	
<b>SOY OIL</b>	458,102	502,463	515,651	511,696	20.7	15.9	18.8	19.1	(0.6)	1.3	5.3	8.2	
<b>SOY MEAL</b>	449,552	505,670	506,777	503,208	25.9	26.6	32.1	32.0	15.2	16.8	16.0	17.0	

SOURCE: CFTC & FI

3/6/2020

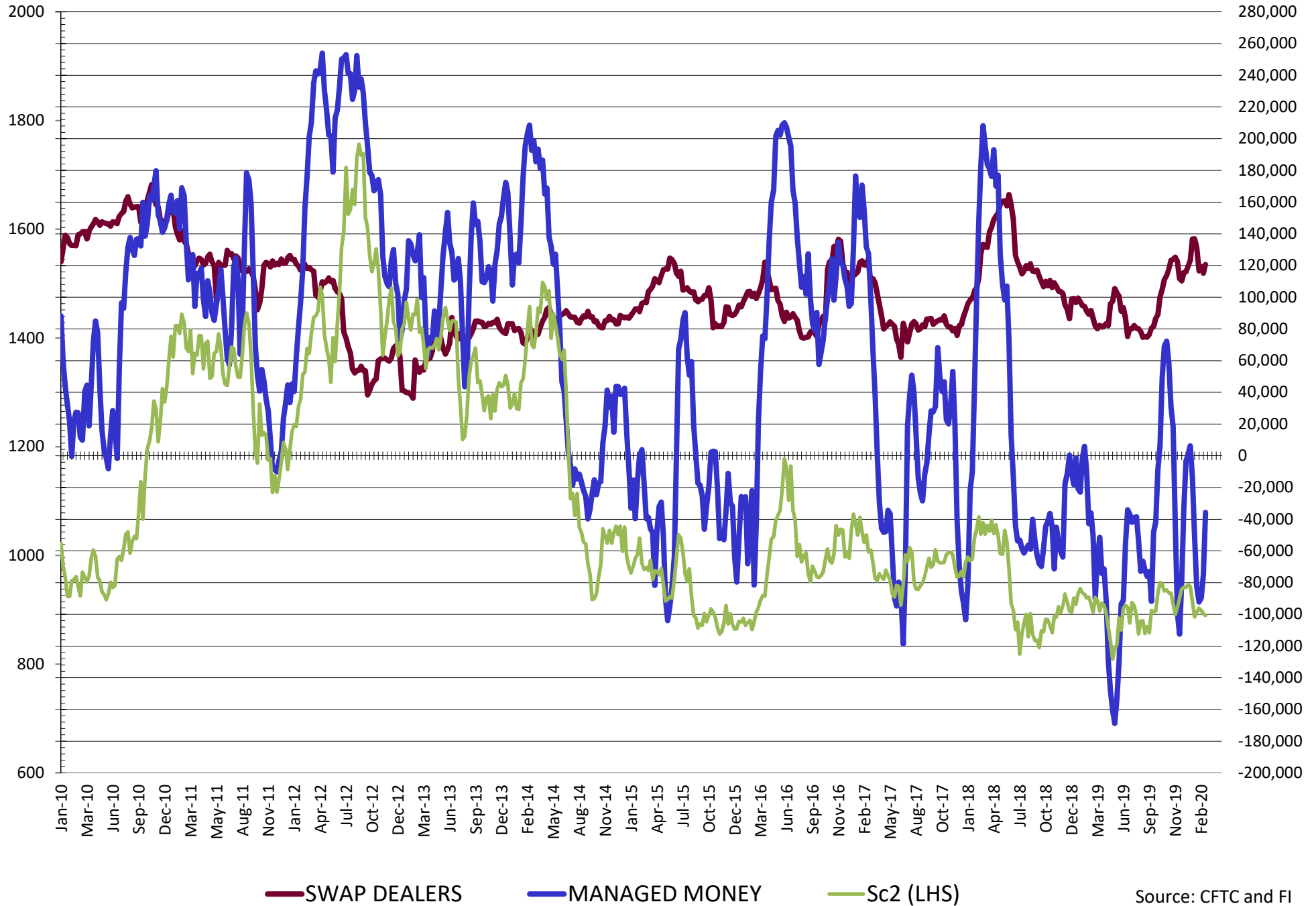
**DISAGGREGATED COMMITMENT OF TRADERS  
FUTURES & OPTIONS NET POSITIONS  
AS OF 03/03/2020  
(IN THOUSAND CONTRACTS)**

	PRODUCER / MERCHANT / PROCESSOR / USER				(INDEX/ETF) SWAP DEALERS				(CTA/CPO/OTHER UNREGISTERED) MANAGED MONEY			
	3-Mar	25-Feb	18-Feb	11-Feb	3-Mar	25-Feb	18-Feb	11-Feb	3-Mar	25-Feb	18-Feb	11-Feb
	WHEAT											
Chicago	(74.4)	(92.2)	(106.7)	(95.3)	74.1	72.7	68.7	75.8	15.4	42.0	64.7	45.9
Kansas City	(44.3)	(51.9)	(61.2)	(61.6)	46.2	43.9	43.6	46.1	(2.0)	8.3	14.3	10.5
Minneapolis	7.6	3.7	1.8	(2.0)	2.4	2.1	2.3	2.2	(16.5)	(14.3)	(11.9)	(6.9)
All Wheat	(111.1)	(140.4)	(166.1)	(158.8)	122.7	118.7	114.7	124.0	(3.1)	35.9	67.1	49.6
CORN	(215.1)	(211.5)	(236.4)	(238.1)	189.2	193.0	168.4	174.6	(84.9)	(95.5)	(61.5)	(72.1)
OATS	(1.8)	(2.9)	(3.1)	(3.1)	0.1	0.1	0.1	0.1	(0.0)	1.0	1.1	1.2
SOYBEANS	(121.4)	(70.8)	(70.5)	(57.3)	120.6	115.1	119.3	116.7	(35.8)	(75.1)	(89.8)	(92.2)
SOY OIL	(134.0)	(137.7)	(154.4)	(169.7)	102.8	98.4	98.1	97.6	15.0	23.0	39.6	52.7
SOY MEAL	(119.8)	(60.5)	(64.1)	(68.9)	101.9	100.1	95.3	96.1	(18.3)	(77.1)	(72.5)	(68.2)

	TOTAL OPEN INTEREST				OTHER REPORTABLE				NON REPORTABLE			
	3-Mar	25-Feb	18-Feb	11-Feb	3-Mar	25-Feb	18-Feb	11-Feb	3-Mar	25-Feb	18-Feb	11-Feb
	WHEAT											
Chicago	533,295	557,399	647,497	634,249	4.4	(1.6)	(4.4)	(3.7)	(19.4)	(21.0)	(22.3)	(22.8)
Kansas City	270,676	285,634	313,424	318,010	(3.4)	(3.4)	(1.8)	(1.5)	3.4	3.1	5.1	6.5
Minneapolis	67,816	69,265	74,770	72,989	4.2	5.6	5.1	5.2	2.4	2.9	2.7	1.5
All Wheat	871,787	912,298	1,035,691	1,025,248	5.2	0.7	(1.1)	(0.0)	(13.7)	(14.9)	(14.5)	(14.8)
CORN	1,764,525	1,815,443	1,901,283	1,868,556	44.7	45.5	45.3	51.5	66.1	68.6	68.6	68.6
OATS	5,058	5,038	6,010	5,890	1.1	1.3	1.4	1.4	0.6	0.4	0.5	0.4
SOYBEANS	920,924	932,765	1,026,078	1,048,773	28.4	27.1	33.4	29.5	8.2	3.6	7.5	3.3
SOY OIL	498,604	535,217	561,772	558,381	15.1	13.7	10.8	10.4	1.0	2.7	5.9	9.0
SOY MEAL	481,543	530,638	538,260	535,353	19.2	18.9	23.3	21.9	17.0	18.7	18.0	19.1

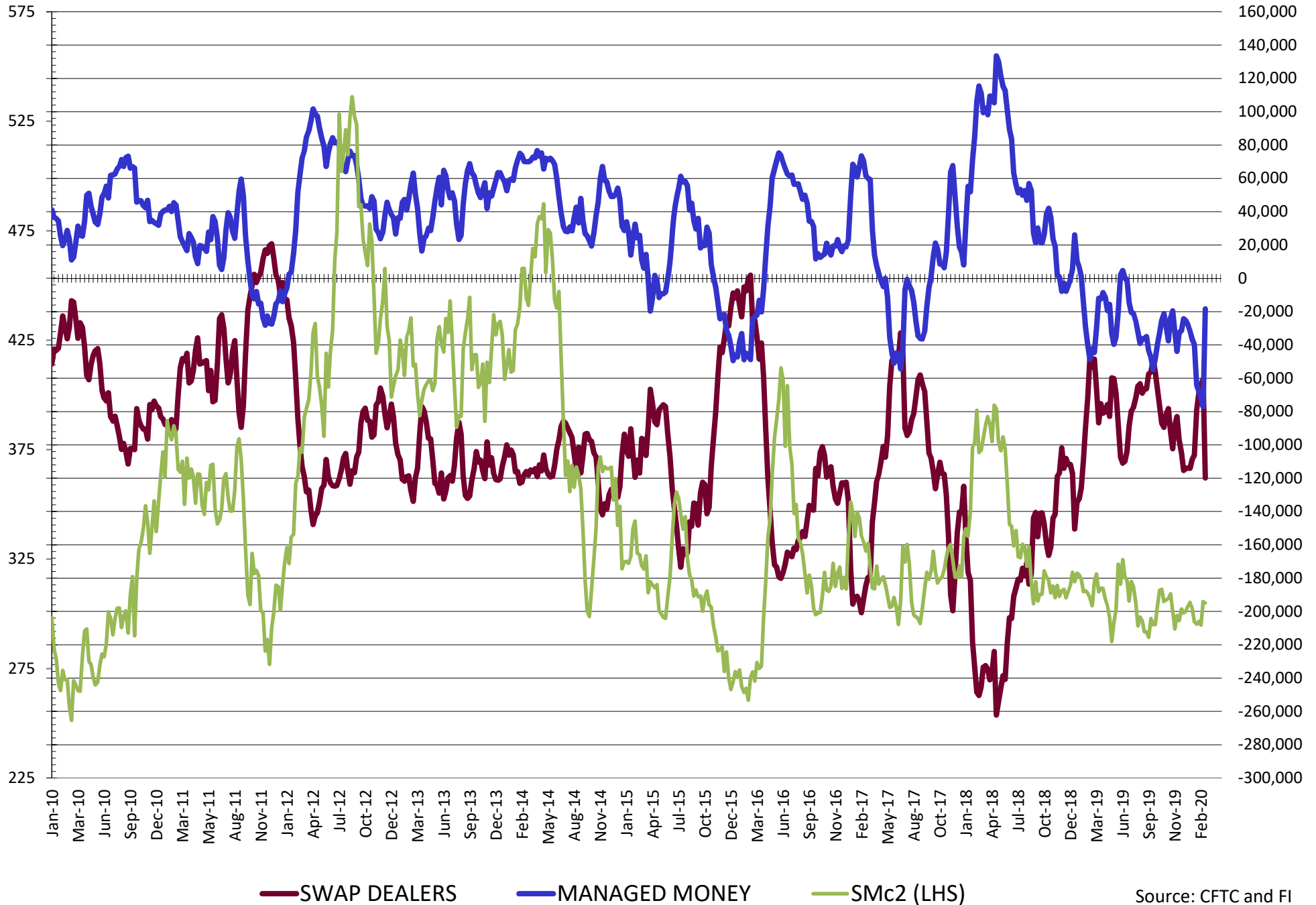
SOURCE: CFTC & FI

# NET POSITION FUTURES AND OPTIONS OF SWAP AND MANAGED FUNDS IN SOYBEANS



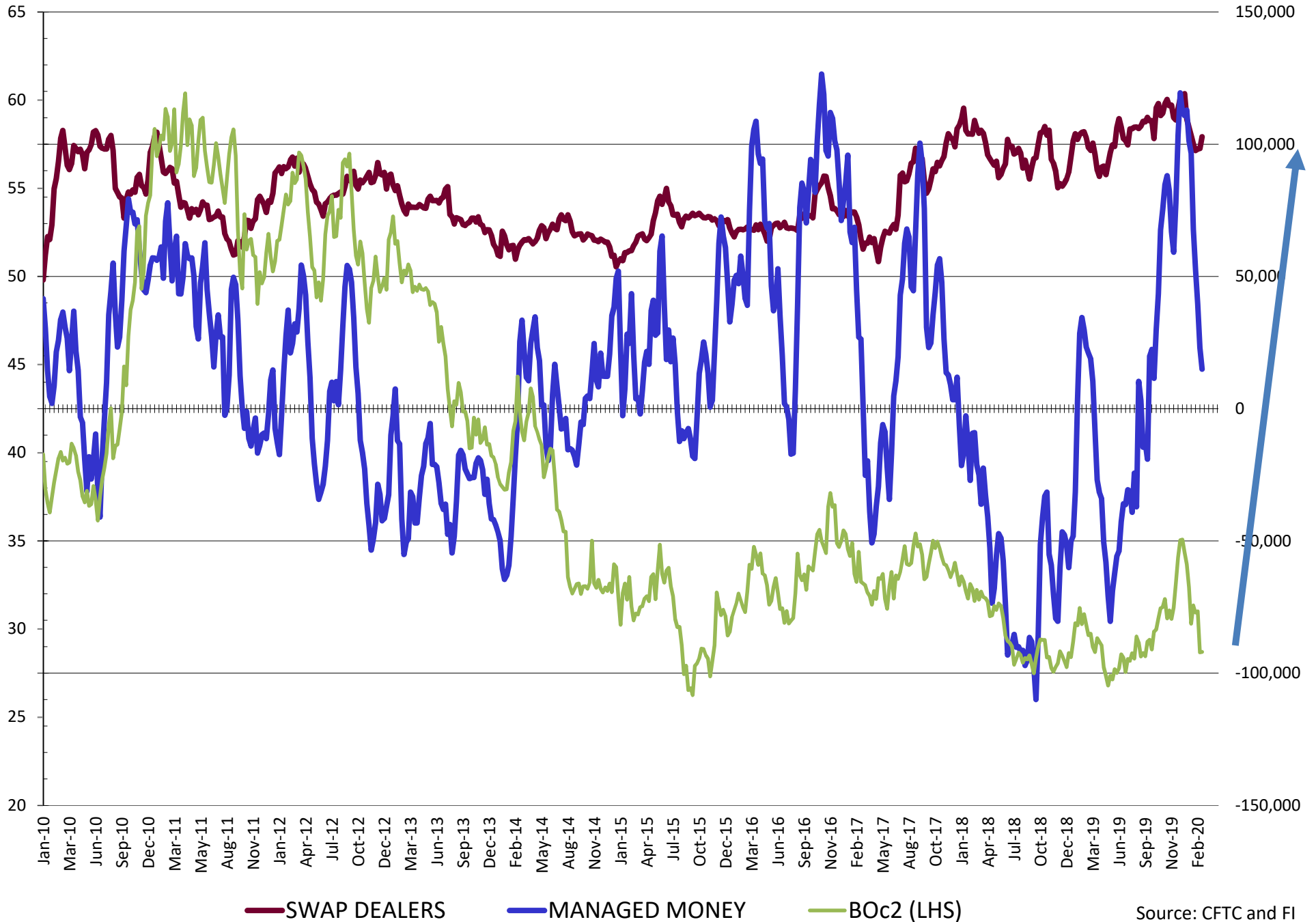
Source: CFTC and FI  
3/6/2020

# NET POSITION FUTURES AND OPTIONS OF SWAP AND MANAGED FUNDS IN SOYBEAN MEAL

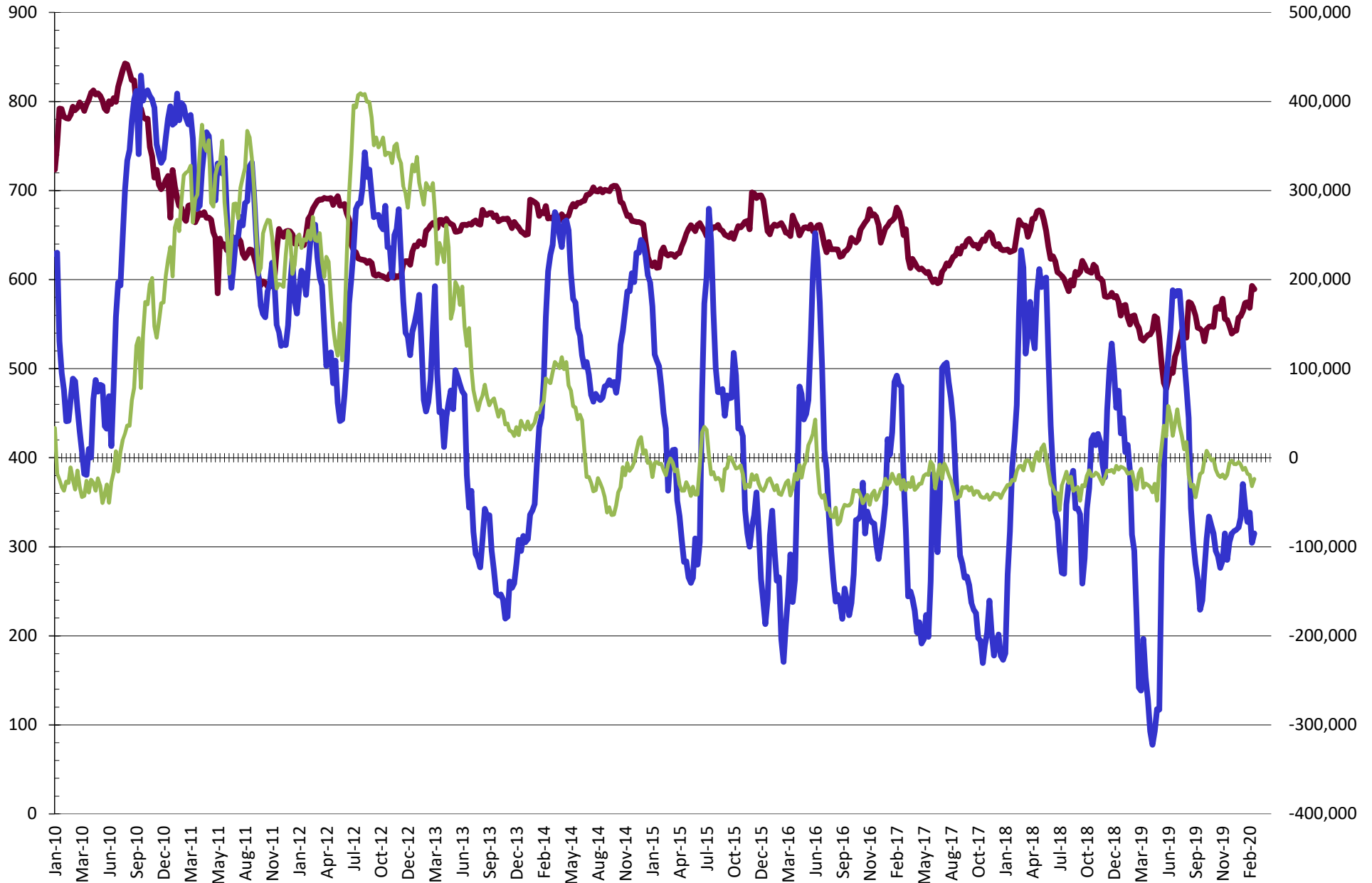




# NET POSITION FUTURES AND OPTIONS OF SWAP AND MANAGED FUNDS IN SOYBEAN OIL

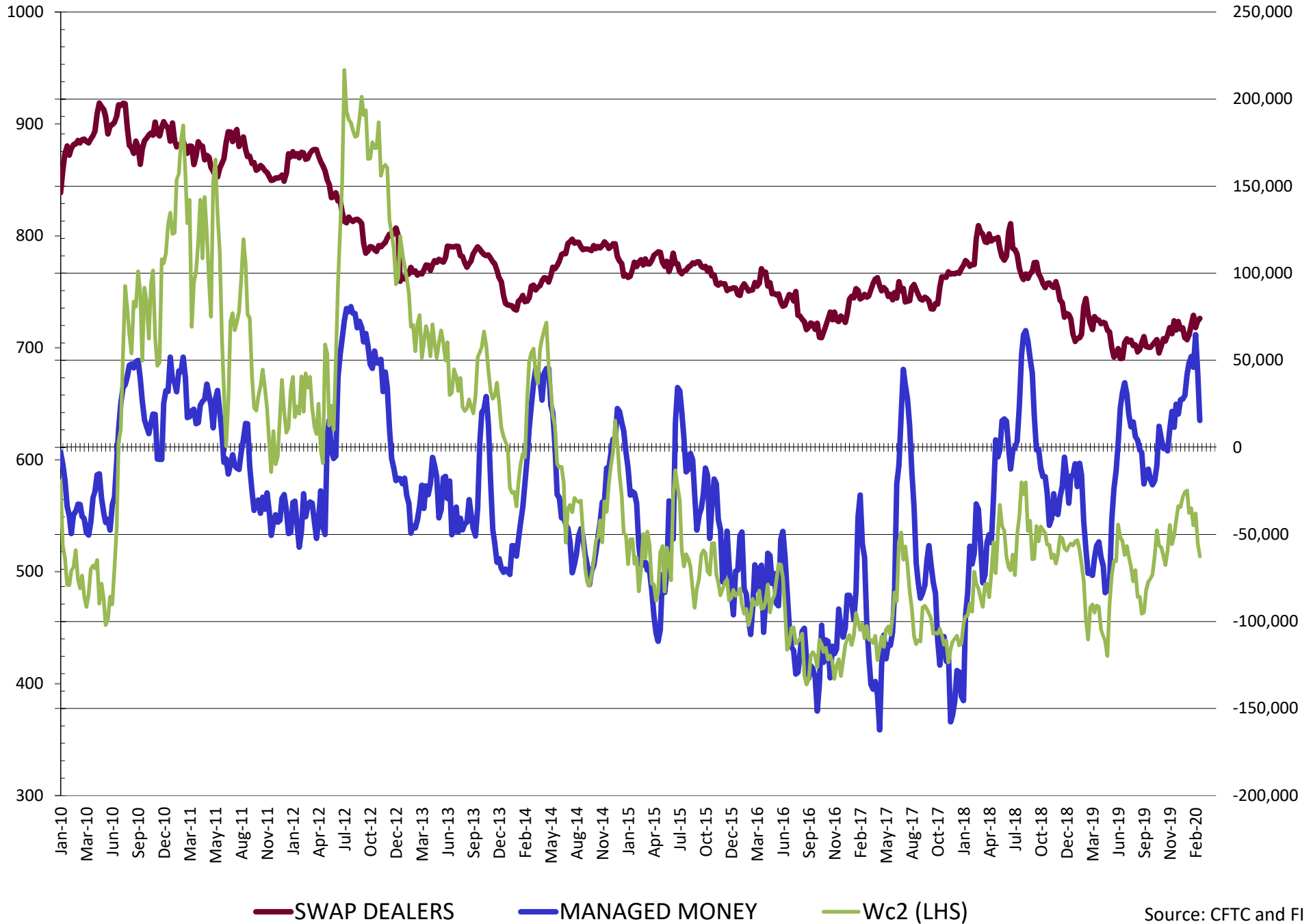


# NET POSITION FUTURES AND OPTIONS OF SWAP AND MANAGED FUNDS IN CORN

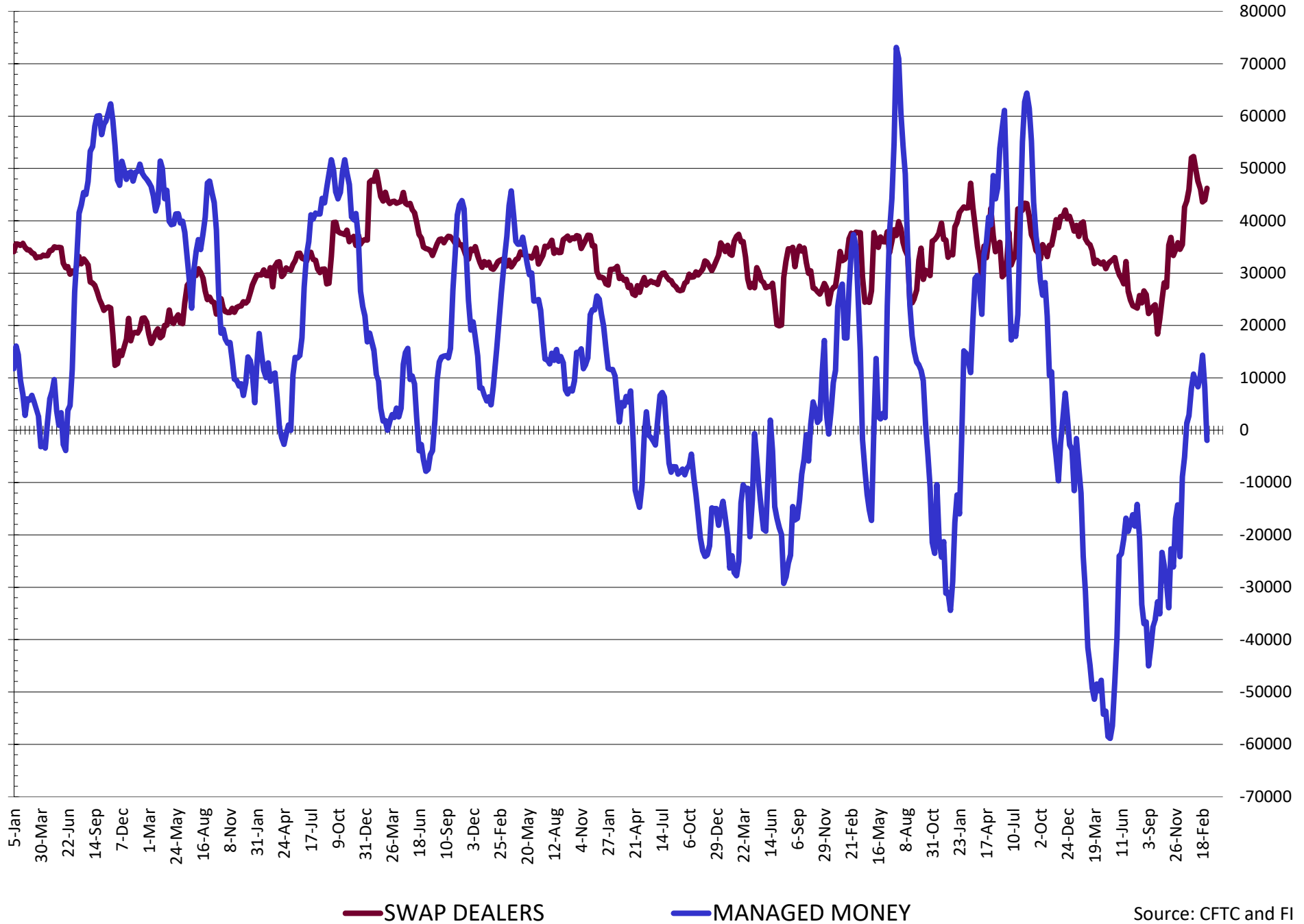


— SWAP DEALERS     
 — MANAGED MONEY     
 — Cc2 (LHS)

# NET POSITION FUTURES AND OPTIONS OF SWAP AND MANAGED FUNDS IN CHICAGO WHEAT

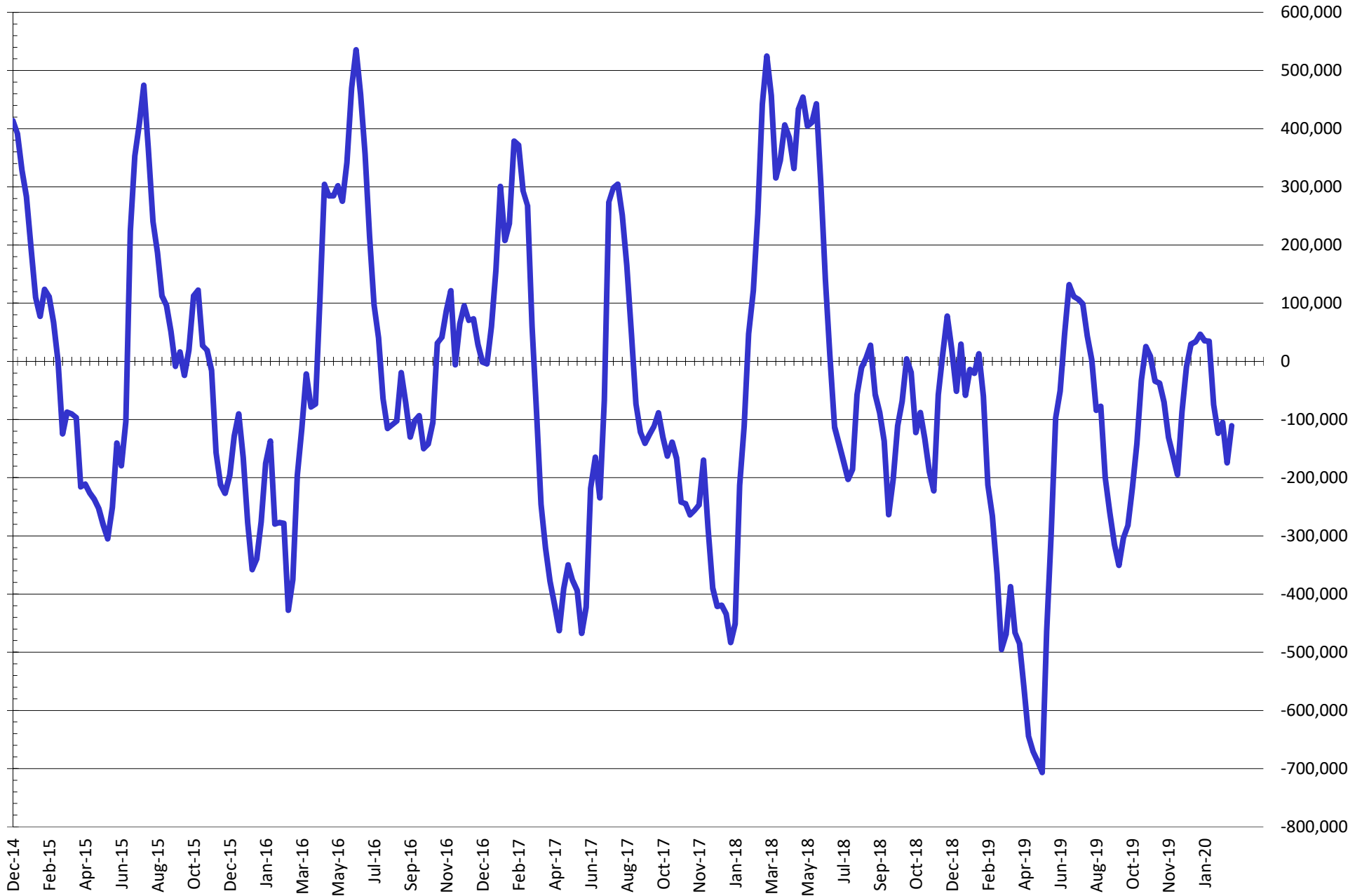


# NET POSITION FUTURES AND OPTIONS OF SWAP DEALERS AND MANAGED FUNDS IN KANSAS WHEAT



Source: CFTC and FI  
3/6/2020

# NET POSITION FUTURES AND OPTIONS OF SWAP AND MANAGED FUNDS IN COMBINED SRW, HRW, CORN, SOYBEANS, SOYMEAL AND SOYOIL



— Net Managed Money

Source: CFTC and FI  
3/6/2020

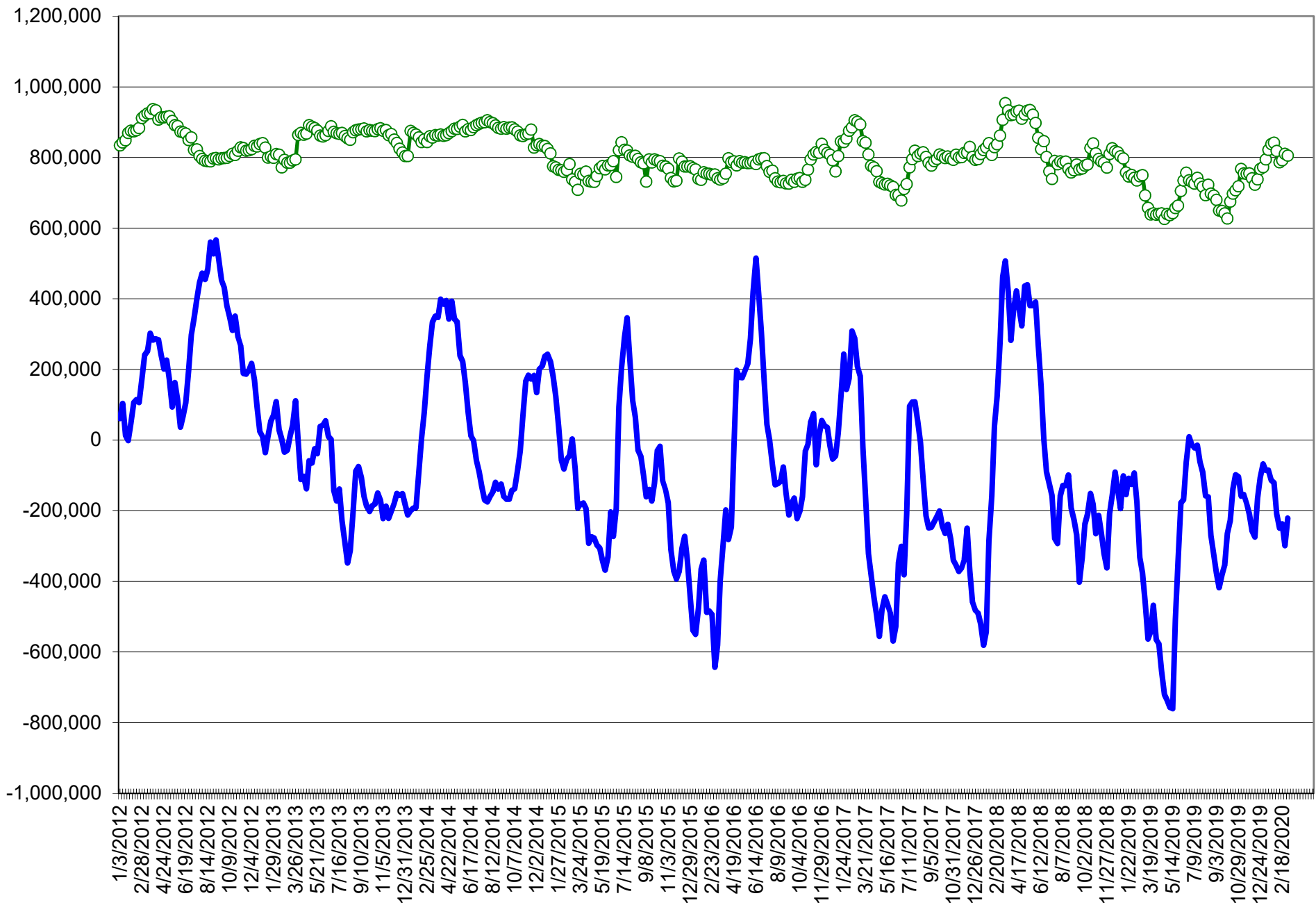
**COMMITMENT OF TRADERS**  
**FUTURES & OPTIONS NET POSITIONS (INDEX BROKEN OUT)**  
**AS OF 03/03/2020**  
(IN THOUSAND CONTRACTS)

	COMMERCIAL				(FUND) NON COMMERCIAL				(SPEC) NON-REPORTABLE			
	3-Mar	25-Feb	18-Feb	11-Feb	3-Mar	25-Feb	18-Feb	11-Feb	3-Mar	25-Feb	18-Feb	11-Feb
	WHEAT											
Chicago	(82.7)	(101.9)	(118.5)	(103.4)	(10.3)	11.4	32.1	13.8	(19.4)	(21.0)	(22.3)	(22.8)
Kansas City	(46.6)	(55.3)	(64.4)	(62.8)	(19.7)	(12.1)	(6.0)	(9.2)	3.4	3.1	5.1	6.5
Minneapolis	-	-	-	-	-	-	-	-	-	-	-	-
All Wheat	(129.3)	(157.2)	(182.8)	(166.2)	(30.0)	(0.7)	26.1	4.6	(16.0)	(17.8)	(17.3)	(16.2)
CORN	(227.2)	(223.6)	(249.1)	(248.4)	(127.6)	(140.8)	(114.1)	(117.2)	66.1	68.6	84.2	84.1
OATS	-	-	-	-	-	-	-	-	-	-	-	-
SOYBEANS	(105.7)	(61.3)	(56.7)	(39.8)	(47.8)	(88.0)	(97.6)	(101.2)	8.2	3.6	7.5	3.3
SOY OIL	(103.9)	(110.7)	(127.2)	(143.7)	4.7	7.6	17.7	29.4	1.0	2.7	5.9	9.0
SOY MEAL	(94.0)	(34.1)	(37.4)	(38.4)	(20.6)	(77.4)	(69.4)	(65.1)	17.0	18.7	18.0	19.1

	TOTAL OPEN INTEREST				(INDEX) COMMERCIAL INDEX TRADERS				(INDEX) % NET OF TOTAL OPEN INTEREST			
	3-Mar	25-Feb	18-Feb	11-Feb	3-Mar	25-Feb	18-Feb	11-Feb	3-Mar	25-Feb	18-Feb	11-Feb
	WHEAT											
Chicago	533,295	557,399	647,497	634,249	112.5	111.4	108.7	112.4	21.1%	20.0%	16.8%	17.7%
Kansas City	270,676	285,634	313,424	318,010	62.9	64.3	65.3	65.5	23.2%	22.5%	20.8%	20.6%
Minneapolis	-	-	-	-	-	-	-	-	-	-	-	-
All Wheat	803,971	843,033	960,921	952,259	175.4	175.7	174.0	177.9	21.8%	20.8%	18.1%	18.7%
CORN	1,764,525	1,815,443	1,901,283	1,868,556	288.7	295.8	278.9	281.5	16.4%	16.3%	14.7%	15.1%
OATS	-	-	-	-	-	-	-	-	-	-	-	-
SOYBEANS	920,924	932,765	1,026,078	1,048,773	145.3	145.6	146.7	137.7	15.8%	15.6%	14.3%	13.1%
SOY OIL	498,604	535,217	561,772	558,381	98.2	100.4	103.5	105.2	19.7%	18.8%	18.4%	18.8%
SOY MEAL	481,543	530,638	538,260	535,353	97.6	92.9	88.8	84.4	20.3%	17.5%	16.5%	15.8%

SOURCE: CFTC & FI

# NET POSITION FUTURES AND OPTIONS OF SPECULATORS AND INDEX FUNDS IN COMBINED SRW, HRW, CORN, SOYBEANS, SOYMEAL AND SOYOIL



Source: CFTC and FI

○ Net Index

— Net Speculator

# CFTC COMMITMENT OF TRADERS REPORT

As of 3/3/2020

## TRADITIONAL FUNDS net position changes

Wed to Tue, in 000 contracts

	Corn	Bean	Meal	Oil	Chi. Wheat	KC Wheat	Min Wheat
Futures Only	12.7	41.9	58.7	(2.9)	(16.1)	(9.1)	(3.7)
Futures & Options Combined	9.9	40.6	59.1	(6.6)	(20.7)	(10.2)	(3.7)

## TRADITIONAL COMMERCIAL net position changes

	Corn	Bean	Meal	Oil	Chi. Wheat	KC Wheat	Min Wheat
Futures Only	(6.3)	(44.9)	(57.1)	4.9	14.8	9.1	4.3
Futures & Options Combined	(7.4)	(45.2)	(57.4)	8.2	19.1	9.9	4.3

## MANAGED MONEY net position changes

	Corn	Bean	Meal	Oil	Chi. Wheat	KC Wheat	Min Wheat
Futures Only	11.0	40.7	59.3	(7.7)	(26.2)	(10.2)	(2.2)
Futures & Options Combined	10.6	39.4	58.8	(8.1)	(26.6)	(10.2)	(2.2)

## SWAP DEALERS net position changes

	Corn	Bean	Meal	Oil	Chi. Wheat	KC Wheat	Min Wheat
Futures Only	(3.9)	4.2	2.1	4.4	(2.7)	2.2	0.3
Futures & Options Combined	(3.7)	5.5	1.9	4.5	1.4	2.2	0.3

## PRODUCERS/END USERS net position changes

	Corn	Bean	Meal	Oil	Chi. Wheat	KC Wheat	Min Wheat
Futures Only	(2.4)	(49.1)	(59.2)	0.5	17.5	6.9	3.9
Futures & Options Combined	(3.6)	(50.6)	(59.3)	3.8	17.8	7.6	3.9

## INDEX net position changes

	Corn	Bean	Meal	Oil	Chi. Wheat	KC Wheat	Min Wheat
Futures & Options Combined	(7.2)	(0.3)	4.7	(2.2)	1.1	(1.4)	NA

## SUPPLEMENTAL NON-COMMERCIAL net position changes

	Corn	Bean	Meal	Oil	Chi. Wheat	KC Wheat	Min Wheat
Futures & Options Combined	13.2	40.2	56.9	(2.9)	(21.7)	(7.6)	NA

## OPEN INTEREST net position changes

Wed to Tue, in 000 contracts

	Corn	Bean	Meal	Oil	Chi. Wheat	KC Wheat	Min Wheat
Futures Only	(83.6)	(25.5)	(56.1)	(44.4)	(39.5)	(17.3)	(1.5)
Futures & Options Combined	(50.9)	(11.8)	(49.1)	(36.6)	(24.1)	(15.0)	(1.4)

Source: CFTC and FI

Wed to Tue, in 000 contracts



# Disclaimer

TO CLIENTS/PROSPECTS OF FUTURES INTERNATIONAL, SEE RISK DISCLOSURE BELOW:

THIS COMMUNICATION IS CONVEYED AS A SOLICITATION FOR ENTERING INTO A DERIVATIVES TRANSACTION.

Any trading recommendations and market or other information to Customer by Futures International (FI), although based upon information obtained from sources believed by FI to be reliable may not be accurate and may be changed without notice to customer. FI makes no guarantee as to the accuracy or completeness of any of the information or recommendations furnished to Customer. Customer understands that FI, its managers, employees and/or affiliates may have a position in commodity futures, options or other derivatives which may not be consistent with the recommendations furnished by FI to Customer.

The risk of trading futures and options and other derivatives involves a substantial risk of loss and is not suitable for all persons. In purchasing an option, the risk is limited to the premium paid, and all commissions and fees involved with the trade. When an option is shorted or written, the writer of the option has unlimited risk with respect to the option written. The use of options strategies such as a straddles and strangles involve multiple option positions and may substantially increase the amount of commissions and fees paid to execute the strategy. Option prices do not necessarily move in tandem with cash or futures prices. Each person must consider whether a particular trade, combination of trades or strategy is suitable for that person's financial means and objectives.

This material may include discussions of seasonal patterns, however, futures prices have already factored in the seasonal aspects of supply and demand, and seasonal patterns are no indication of future market trends. Finally, past performance is not indicative of future results.

This communication may contain links to third party websites which are not under the control of FI and FI is not responsible for their content. Products and services are offered only in jurisdictions where solicitation and sale are lawful, and in accordance with applicable laws and regulations in each such jurisdiction.