

USDA US Export Sales Results in 000 Metric Tons

		Actual 3/12/2020	Trade Estimates* 3/12/2020	Last Week Last Week		Year Ago 3/14/2019
Beans	2019-20	631.6	400-1000	2017-18	302.8	399.5
	2020-21	69.6	60-100	2019-20	1.4	-64.4
Meal	2018-19	129.1	150-400	Sales	171.8	Sales 97.5
	2020-21	0.0	0			
	Shipments	291.4	NA	Shipments	341.5	Shipments 185.4
Oil	2018-19	18.9	5-35	Sales	24.7	Sales 5.6
	2020-21	2.0	0			
	Shipments	39.1	NA	Shipments	13.9	Shipments 29.2
Corn	2019-20	904.5	600-1200	2017-18	1471.2	855.9
	2020-21	56.1	50-150	2019-20	128.1	60.0
Wheat	2019-20	338.3	200-600	2019-20	452.3	298.6
	2020-21	143.8	50-100	2020-21	28.5	138.8

Source: FI & USDA *Reuters estimates

n/c= New Crop

USDA Export Sales Estimates/Results in 000 tons

	ESTIMATED 3/12/2020			ACTUAL This Week			3/5/2020 Last Week			3/14/2019 Year Ago		
Beans	19/20	600-850		19/20	631.6		19/20	302.8		18/19	399.5	
	n/c	60-100		n/c	69.6		n/c	1.4		n/c	(64.4)	
				Sales to China 6.0			Sales to China (90.3)			Sales to China 142.6		
Meal	Shipped			Shipped			Shipped			Shipped		
	19-20	200-400	200-350	19/20	129.1		19/20	171.8	341.5	18/19	97.5	185.4
	n/c	0.0		n/c	0.0		0.1		n/c	0.0		
Oil	Shipped			Shipped			Shipped			Shipped		
	19-20	15-30	15-30	19/20	18.9		19/20	24.7	13.9	18/19	5.6	29.2
	n/c	0.0		n/c	2.0		0.0		n/c	0.0		
			Sales to China 0.0			Sales to China 0.0			Sales to China 0.0			
Corn	19/20	900-1200		19/20	904.5		19/20	1,471.2		18/19	855.9	
	n/c	50-150		n/c	56.1		n/c	128.1		n/c	60.0	
				Sales to China 0.0			Sales to China 0.0			Sales to China 0.0		
Wheat	19/20	350-500		19/20	338.3		19/20	452.3		18/19	298.6	
	n/c	50-100		n/c	143.8		n/c	28.5		n/c	138.8	

o/c=Old Crop, n/c= New Crop Souce: Futures International and USDA

US crop-year to date export sales

		Current	Last Year	YOY	YOY	% sold from USDA's export projection			
						2019-20	2018-19	2017-18	2016-17
2019-20	Soybeans mil bu	1286	1522	-236	-15.5%	70.5%	87.1%	86.0%	90.6%
2019-20	SoyOil MT	536	615	-79	-12.8%	90.1%	60.9%	55.5%	63.6%
2019-20	SoyMeal MT	9046	8511	536	6.3%	70.6%	73.6%	66.9%	79.6%
2019-20	Corn mil bu	1142	1644	-501	-30.5%	66.2%	79.6%	72.6%	77.8%
2019-20	Wheat mil bu	881	850	30	3.6%	88.1%	90.9%	90.0%	88.7%

Souce: Futures International and USDA

EXPORT SALES SITUATION

SOYBEANS

(million bushels)

	2019-20	2018-19	2017-18	2016-17	2015-16	2014-15	2013-14	2012-13	2011-12	2010-11	2009-10	2008-09	2007-08	2006-07	2005-06	2004-05	2003-04	2002-03	2001-02
Weekly Sales Total																			
New Crop Sales	279.7	558.9	561.4	762.3	452.1	800.8	789.1	738.3	522.9	623.8	583.1	309.4	284.6	237.7	145.7	219.3	296.3	213.2	206.2
Weeks remaining																			
25																			
5-Sep	43.1	25.5	59.2	65.3	62.3	36.2	17.6	23.1	16.3	31.2	30.5	16.9	12.7	27.2	0.5	2.7	1.5	4.0	2.5
12-Sep	63.5	33.7	85.9	37.4	33.5	53.9	33.9	23.8	14.9	24.6	18.0	15.1	18.9	28.0	21.9	23.3	21.7	23.1	20.9
19-Sep	38.1	32.0	109.6	32.2	48.4	94.3	103.5	29.4	38.0	39.8	42.3	22.5	27.4	31.8	27.6	36.9	27.7	25.9	15.3
26-Sep	76.3	55.9	37.3	62.2	92.1	31.9	31.6	47.6	25.8	63.8	50.9	17.3	24.5	43.9	24.8	27.8	25.8	9.8	35.4
3-Oct	76.9	16.2	64.2	80.1	47.2	33.9	34.2	18.4	24.7	34.8	16.6	22.1	20.2	39.9	19.9	35.3	17.4	19.0	40.0
10-Oct	58.8	10.8	46.9	52.1	54.3	34.4	0.0	19.2	21.9	39.6	24.0	37.8	27.6	31.9	25.2	36.0	42.2	20.6	48.5
17-Oct	17.5	7.8	78.2	71.0	74.6	79.6	0.0	19.2	8.4	74.1	36.3	28.8	17.0	23.0	32.7	36.3	36.3	44.4	39.1
24-Oct	34.7	14.5	72.3	72.4	76.7	48.7	174.2	27.2	7.7	74.4	25.4	53.5	27.2	23.5	30.9	34.0	59.7	60.0	32.5
31-Oct	66.4	14.3	42.6	92.4	24.1	59.2	36.6	6.8	22.2	58.3	19.2	32.9	22.6	28.2	28.0	17.6	68.8	29.1	55.2
7-Nov	46.0	17.3	40.6	34.5	47.7	39.5	28.6	20.6	27.4	29.7	46.8	17.6	47.6	27.8	21.3	24.2	33.7	29.3	27.3
14-Nov	55.7	25.0	31.9	51.7	66.0	17.7	47.8	16.2	33.9	37.0	49.6	29.1	66.4	29.5	22.0	35.3	26.0	43.0	51.6
21-Nov	61.1	23.1	34.6	69.8	43.1	54.6	51.7	11.7	18.0	24.8	41.7	28.7	41.1	26.8	7.7	49.1	31.7	36.0	36.8
28-Nov	25.1	32.7	74.1	48.8	32.3	43.3	29.6	42.0	28.3	49.3	26.6	13.2	29.5	24.5	12.2	15.0	9.1	25.5	31.4
5-Dec	38.6	29.1	53.4	51.1	53.4	29.8	40.7	48.5	17.2	23.4	34.1	29.8	35.7	33.2	35.0	16.4	13.2	48.8	29.6
12-Dec	52.6	104.2	64.0	73.8	32.6	25.6	12.4	22.8	24.0	3.1	34.3	32.8	32.1	27.3	15.2	31.4	7.5	38.4	36.4
19-Dec	27.1	87.9	35.8	66.6	76.0	23.4	26.5	-0.3	24.3	28.1	43.9	21.5	25.1	38.1	30.5	42.5	53.5	41.3	20.9
26-Dec	12.1	38.6	20.4	35.8	17.6	22.4	33.5	16.0	10.3	24.3	29.4	18.8	5.2	12.5	32.7	32.0	20.0	9.3	12.7
2-Jan	13.1	-22.5	22.3	3.2	23.5	33.5	5.7	11.8	15.9	18.0	26.7	19.5	4.4	21.7	17.0	23.9	5.7	14.0	19.1
9-Jan	26.1	NA	45.6	12.8	41.4	41.6	25.5	56.7	36.4	15.4	27.7	50.0	35.5	40.3	16.5	39.2	17.1	50.3	41.6
16-Jan	29.0	NA	19.8	36.0	36.2	0.5	23.4	11.3	17.1	26.9	34.2	48.7	24.4	22.6	47.0	31.6	0.5	21.0	27.7
23-Jan	17.3	NA	10.4	19.8	23.8	32.6	13.3	14.2	9.0	28.7	24.7	19.3	17.9	24.9	19.2	19.1	-4.8	25.3	26.5
30-Jan	25.9	NA	24.5	20.1	-1.6	18.0	16.0	29.9	22.2	37.9	14.0	12.4	38.1	29.5	16.4	20.2	13.5	20.2	11.2
6-Feb	23.7	NA	20.7	16.9	24.5	27.4	6.4	-4.0	13.5	0.8	11.5	39.3	12.1	14.0	19.0	20.2	5.9	16.1	4.3
13-Feb	18.2	240.0	-6.8	32.7	20.8	18.6	0.4	-4.4	39.8	18.9	7.5	40.2	23.2	24.8	19.5	13.9	7.3	14.6	14.5
20-Feb	12.5	80.7	28.7	12.4	12.1	16.9	12.0	22.5	20.2	4.9	8.8	12.5	21.4	15.3	18.5	15.7	-0.2	11.1	12.9
27-Feb	12.7	11.4	89.4	15.7	16.2	18.4	28.4	9.6	37.3	13.3	6.7	5.7	7.4	20.8	13.5	23.4	-1.0	12.3	24.9
5-Mar	11.1	70.2	43.8	15.4	17.5	6.2	2.4	23.0	22.4	15.1	-4.3	30.8	9.5	16.6	18.5	25.1	9.7	23.5	-11.9
12-Mar	23.2	14.7	25.1	17.3	22.9	12.6	7.4	4.0	13.1	5.4	7.9	5.3	16.1	19.2	14.0	23.0	1.6	12.4	8.1
19-Mar																			
26-Mar																			
Crop year to date sales	1286.0	1522.1	1836.1	1961.7	1571.1	1755.2	1632.4	1305.0	1133.1	1469.6	1318.0	1031.4	975.3	984.5	752.8	970.2	847.4	941.3	921.3
Average weekly sales																			
rate to reach proj total	21.7	9.1	12.0	8.2	14.9	3.5	0.2	0.5	9.3	1.3	7.3	10.0	7.4	5.3	7.5	5.1	1.6	4.1	5.7
Proj./Actual export total	1825	1748	2134	2166	1942	1842	1638	1317	1365	1501	1499	1279	1159	1116	940	1097	887	1044	1064
YTD sales as % of total	70.5	87.1	86.0	90.6	80.9	95.3	99.7	99.1	83.0	97.9	87.9	80.6	84.1	88.2	80.1	88.4	95.5	90.2	86.6
Sold as of around Sep 1 %	15.3	32.0	26.3	35.2	23.3	43.5	48.2	56.1	38.3	41.6	38.9	24.2	24.6	21.3	15.5	20.0	33.4	20.4	19.4

Source: Futures International and USDA

EXPORT SALES SITUATION

SOYMEAL

(000 metric tons)

Weekly Sales Total	2019-20	2018-19	2017-18	2016-17	2015-16	2014-15	2013-14	2012-13	2011-12	2010-11	2009-10	2008-09	2007-08	2006-07	2005-06	2004-05	2003-04	2002-03	2001-02		
New Crop Sales	3,098.3	3,599.7	3,206.0	2,962.9	3,686.7	5,318.9	2,679.3	3,203.3	1,431.4	2,079.9	3,014.9	1,673.6	1,648.7	1,117.6	1,051.0	1,586.8	1,677.7	1,398.4	1,612.1		
Weeks remaining	3-Oct	348.2	348.2	106.0	398.0	225.8	707.6	1,189.2	143.5	558.6	423.1	466.1	29.2	266.0	611.2	59.9	177.6	456.0	269.1	562.9	
28	10-Oct	104.1	104.1	296.0	146.2	264.4	195.9	0.0	173.1	348.9	245.7	115.7	242.3	100.4	151.4	119.8	230.5	291.2	112.8	220.2	
	17-Oct	203.0	203.0	142.8	301.0	218.7	23.0	0.0	73.2	74.1	153.9	176.2	263.5	244.4	101.0	194.2	182.9	96.0	103.1	186.6	
	24-Oct	317.4	317.4	225.0	149.9	246.2	147.8	805.2	194.5	120.8	165.6	116.7	130.2	203.9	57.7	304.7	24.4	65.4	218.5	231.3	
	31-Oct	255.1	255.1	212.9	437.4	208.2	-123.7	287.8	234.6	291.4	365.3	224.1	107.4	211.0	265.9	79.8	145.8	589.6	228.7	78.9	
	7-Nov	432.3	432.3	163.1	224.5	224.1	21.3	283.2	197.9	201.5	198.0	357.5	124.4	153.2	132.7	204.7	97.2	-131.5	87.7	161.9	
	14-Nov	229.7	229.7	379.8	150.4	254.9	265.7	116.0	365.1	150.2	292.7	225.2	92.3	133.1	245.9	143.2	125.2	74.8	222.2	153.2	
	21-Nov	189.5	189.5	176.6	222.5	77.5	-22.3	307.9	429.9	135.5	133.8	107.4	59.7	145.2	214.1	76.1	110.6	102.1	210.6	144.2	
	28-Nov	287.3	287.3	166.4	200.0	228.7	226.8	120.4	238.2	170.0	193.4	232.3	106.0	163.4	116.5	272.4	82.8	-4.7	130.5	173.4	
	5-Dec	50.5	50.5	455.4	139.2	108.6	88.9	82.7	390.8	103.7	171.8	18.5	96.0	205.5	120.7	167.2	46.3	110.8	134.2	134.2	
	12-Dec	300.0	300.0	184.1	251.9	252.5	146.8	77.1	124.7	142.0	113.5	254.2	62.2	111.8	115.4	84.1	113.4	129.5	84.7	142.4	
	19-Dec	427.4	427.4	288.3	83.3	78.9	206.7	83.3	53.8	51.1	219.3	286.9	145.7	73.3	108.7	81.8	29.7	86.2	145.5	238.6	
	26-Dec	40.7	40.7	109.0	119.1	46.5	157.9	123.9	118.2	144.4	24.5	61.8	43.3	49.1	71.8	46.2	113.7	17.6	89.5	180.9	
	2-Jan	124.8	124.8	209.3	269.8	64.7	37.3	62.8	236.1	48.0	26.2	356.7	19.7	77.9	101.5	68.9	70.7	-30.0	12.1	4.7	
	9-Jan	74.2	74.2	NA	281.8	276.8	280.6	72.1	234.7	218.0	181.2	232.2	416.2	74.4	93.8	221.2	158.0	104.8	55.6	192.1	260.3
	16-Jan	NA	NA	223.1	365.0	200.8	284.5	241.4	141.7	124.2	-30.0	254.1	210.8	162.4	34.4	189.1	47.1	79.1	214.7	142.8	
	23-Jan	NA	NA	474.8	347.7	186.3	296.5	68.3	196.3	74.7	177.9	134.9	201.7	225.8	160.5	196.6	94.4	-4.1	203.3	99.8	
	30-Jan	NA	NA	160.8	71.8	189.4	296.3	283.7	132.4	161.9	182.7	102.7	184.0	365.8	135.3	133.3	44.0	21.8	-50.1	198.9	
	6-Feb	NA	NA	210.0	223.0	111.4	189.4	18.7	236.1	80.1	107.7	242.1	196.7	106.6	170.3	152.9	173.5	-93.7	75.1	243.0	
	13-Feb	1,468.8	1,468.8	131.9	139.5	171.7	316.6	227.5	250.3	216.0	108.3	81.9	142.6	48.6	201.6	77.3	52.8	80.8	76.0	195.7	
	20-Feb	113.6	113.6	139.0	301.9	132.1	-6.4	115.9	119.3	40.0	148.1	85.7	145.6	102.8	0.8	89.6	52.4	-127.7	44.6	105.4	
	27-Feb	230.5	230.5	200.6	389.5	46.6	130.2	232.8	51.7	111.0	156.7	1.9	117.1	75.6	66.1	78.0	121.7	-3.4	28.9	141.1	
	5-Mar	226.0	226.0	173.3	127.0	83.4	101.3	160.0	143.4	156.1	51.4	92.5	147.4	147.8	277.0	93.5	90.4	95.6	93.9	129.3	
	12-Mar	97.5	97.5	194.6	65.9	468.7	204.0	242.9	137.2	87.4	210.9	189.5	33.4	175.8	17.5	115.2	149.9	33.0	152.7	82.7	
	19-Mar																				
	26-Mar																				
	2-Apr																				
	9-Apr																				
	16-Apr																				
	23-Apr																				
	30-Apr																				
Crop year to date sales	8460.2	9046.1	8510.6	8364.2	8057.5	9283.4	8044.8	7803.2	5203.9	6152.6	7788.6	4571.7	5182.4	4901.5	4191.0	4189.5	3602.9	4455.5	5824.7		
Average weekly sales																					
***rate to reach proj total	126.2	116.7	150.9	76.9	100.1	93.6	87.2	83.8	130.5	74.9	83.8	112.6	114.9	110.8	111.6	88.6	39.0	36.1	35.4		
Proj./Actual export total***	11975	12296	12715	10505	10845	11891	10474	10139	8839	8238	10124	7708	8384	7987	7301	6659	4690	5460	6811		
YTD sales as % of total	70.6	73.6	66.9	79.6	74.3	78.1	76.8	77.0	58.9	74.7	76.9	59.3	61.8	61.4	57.4	62.9	76.8	81.6	85.5		

***Does not include USDA's Forecast on Flour Meal (MT)

Source: Futures International and USDA

EXPORT SALES SITUATION

SOYOIL

(000 metric tons)

Weekly Sales Total	2019-20	2018-19	2017-18	2016-17	2015-16	2014-15	2013-14	2012-13	2011-12	2010-11	2009-10	2008-09	2007-08	2006-07	2005-06	2004-05	2003-04	2002-03	2001-02	
New Crop Sales	194.3	138.1	74.7	259.5	137.4	95.4	26.6	144.7	38.9	633.7	388.3	67.1	14.3	92.8	79.7	121.3	118.0	149.9	46.8	
Weeks remaining	3-Oct	1.2	11.4	10.9	16.8	79.8	69.8	38.1	57.8	36.6	26.7	195.9	79.8	58.2	6.0	3.8	17.5	42.4	67.5	36.4
28	10-Oct	4.0	26.6	27.4	0.3	53.2	46.4	0.0	24.5	6.1	13.7	24.0	16.1	26.4	6.2	-1.3	8.2	2.4	2.5	36.0
	17-Oct	3.4	26.3	27.9	24.5	14.8	10.6	0.0	12.0	4.1	5.5	23.3	3.3	24.3	2.1	6.3	12.3	5.9	9.0	11.2
	24-Oct	30.0	22.2	27.0	21.2	82.1	15.8	14.5	28.5	0.7	-32.6	9.2	5.2	14.8	5.8	4.7	4.1	9.5	9.1	28.4
	31-Oct	3.8	22.4	15.9	16.3	36.2	13.9	65.9	36.7	21.7	6.0	6.9	1.0	7.2	-0.1	41.2	0.3	-19.2	26.3	36.4
	7-Nov	30.6	15.1	2.7	14.4	28.9	15.6	7.2	21.0	2.1	60.0	5.8	6.3	29.7	18.0	0.9	13.6	8.1	1.6	-8.2
	14-Nov	39.1	40.0	4.2	26.1	37.7	19.6	95.8	124.1	2.7	-0.7	12.4	7.9	65.1	0.3	11.6	11.9	13.0	11.6	2.2
	21-Nov	14.9	9.2	11.6	54.5	12.8	35.6	18.8	121.5	8.9	32.1	19.2	17.1	31.8	31.5	3.4	9.4	6.9	11.3	6.5
	28-Nov	10.8	21.1	21.0	13.4	5.3	25.1	1.4	19.0	18.5	51.3	19.0	2.7	40.9	48.4	14.5	2.3	-0.8	8.1	22.0
	5-Dec	30.0	5.9	14.5	40.3	13.8	14.7	2.3	30.5	5.5	128.2	12.3	0.4	42.1	15.6	0.3	11.3	1.7	14.3	10.8
	12-Dec	28.0	35.7	24.2	15.1	10.2	38.8	27.0	-5.8	14.8	21.1	20.7	1.5	8.5	6.3	0.4	18.2	-3.5	4.0	20.8
	19-Dec	37.4	13.7	44.2	18.9	39.8	3.9	83.9	17.2	2.3	1.6	46.7	5.4	13.2	61.0	7.5	17.3	18.1	23.1	34.4
	26-Dec	-1.9	16.0	17.9	30.9	-5.7	24.7	-18.9	31.3	7.3	13.0	1.5	-6.7	5.7	4.5	0.6	6.9	1.7	10.3	16.4
	2-Jan	2.6	2.2	-1.6	7.3	3.6	30.2	33.6	10.9	1.1	7.5	3.5	3.5	28.2	-1.3	0.3	10.0	3.3	3.5	14.9
	9-Jan	36.2	NA	27.9	41.5	17.7	29.4	16.9	12.9	18.7	60.1	50.0	17.0	35.7	15.5	1.1	43.0	3.6	-1.2	35.7
	16-Jan	55.6	NA	11.8	49.5	19.3	17.1	20.2	26.3	2.5	13.1	10.4	7.5	58.8	2.3	4.4	16.7	0.7	72.9	60.4
	23-Jan	29.4	NA	58.8	12.2	9.1	10.6	6.7	20.1	6.7	5.0	46.0	21.5	97.5	37.3	20.8	-5.1	2.6	35.9	27.5
	30-Jan	52.9	NA	7.8	35.3	12.8	15.1	26.0	25.5	22.2	38.4	58.8	10.1	40.9	2.9	0.6	6.5	2.5	27.3	38.9
	6-Feb	39.1	NA	24.4	9.9	3.8	16.1	53.3	6.6	21.1	14.8	44.8	45.9	24.0	2.3	-3.3	4.4	3.2	16.8	13.1
	13-Feb	42.0	92.1	42.9	12.7	12.7	10.9	11.7	28.9	25.2	1.0	46.7	46.1	26.9	1.8	4.3	7.2	2.7	23.4	26.6
	20-Feb	5.6	10.6	16.6	28.7	3.2	14.2	1.6	4.8	4.8	16.0	40.2	8.5	25.7	-8.9	0.2	7.4	-4.1	46.1	26.1
	27-Feb	43.5	8.1	34.0	8.4	0.9	5.6	16.9	-19.7	15.5	2.1	15.9	13.6	6.8	8.0	22.5	1.5	-2.1	32.8	23.8
	5-Mar	24.7	14.0	31.6	-35.8	35.1	4.6	7.1	6.0	5.1	14.2	-9.4	24.8	29.1	2.2	17.5	-3.0	4.8	-7.0	12.2
	12-Mar	18.9	5.6	36.5	15.3	17.5	8.1	2.0	19.6	38.1	-9.8	18.4	-8.0	23.8	10.1	4.0	1.7	2.1	14.7	8.0
	19-Mar																			
	26-Mar																			
	2-Apr																			
	9-Apr																			
	16-Apr																			
	23-Apr																			
	30-Apr																			
Crop year to date sales	776.1	536.3	614.8	737.2	682.2	591.8	558.7	805.0	331.3	1122.2	1110.6	397.8	779.7	370.6	245.9	345.0	223.4	613.8	587.2	
Average weekly sales																				
rate to reach proj total	3.1	12.4	17.7	15.2	12.0	11.6	10.5	6.3	11.9	12.4	14.8	21.4	19.4	17.3	9.9	9.2	7.2	14.8	19.9	
Proj./Actual export total (MT)	862	880	1108	1159	1017	914	851	982	664	1466	1524	995	1320	851	523	601	425	1026	1143	
YTD sales as % of total	90.1	60.9	55.5	63.6	67.1	64.8	65.6	82.0	49.9	76.5	72.9	40.0	59.0	43.5	47.0	57.4	52.6	59.8	51.4	

Source: Futures International and USDA

EXPORT SALES SITUATION

CORN

(million bushels)

Weekly Sales Total	2019-20	2018-19	2017-18	2016-17	2015-16	2014-15	2013-14	2012-13	2011-12	2010-11	2009-10	2008-09	2007-08	2006-07	2005-06	2004-05	2003-04	2002-03	2001-02
New Crop Sales	263.5	565.7	360.6	597.1	323.5	458.7	490.2	385.1	535.9	579.0	455.4	455.8	608.3	458.8	309.6	273.1	300.2	244.3	279.1
5-Sep	19.6	30.5	41.2	43.0	16.2	22.2	13.1	9.8	32.3	26.8	43.4	19.9	40.9	26.4	0.4	9.1	18.1	17.3	22.3
12-Sep	57.7	54.5	20.7	27.7	21.0	26.0	17.2	2.7	23.5	23.0	38.0	12.8	80.0	40.5	21.6	47.5	36.0	41.0	27.3
19-Sep	19.4	67.4	12.6	36.3	16.8	32.9	25.2	0.0	31.0	22.1	26.5	21.6	66.8	32.7	29.4	45.5	54.2	29.1	47.0
26-Sep	22.1	56.3	32.0	22.6	29.5	25.1	30.5	12.9	50.8	36.4	48.1	22.3	45.3	45.6	27.7	35.6	36.1	37.6	49.4
3-Oct	11.2	39.6	62.7	81.1	20.5	30.9	52.8	0.2	49.6	23.9	20.5	37.7	91.3	50.7	37.5	30.7	37.7	27.3	24.4
10-Oct	14.5	15.1	49.4	34.4	23.6	75.7	0.0	6.6	69.4	35.7	24.9	36.4	72.9	32.3	36.5	58.1	64.5	25.6	32.0
Weeks remaining	17-Oct	19.3	13.8	50.7	40.3	9.8	40.6	0.0	5.6	13.2	7.6	9.2	31.1	60.8	41.2	37.9	51.5	29.4	35.6
25	24-Oct	21.6	15.5	31.9	31.5	27.9	19.3	172.3	6.6	24.5	21.7	14.5	16.3	25.0	40.4	28.3	42.9	58.0	40.5
	31-Oct	19.2	27.6	93.1	58.0	21.9	18.8	63.0	6.2	9.9	18.2	22.2	18.6	59.3	75.9	48.0	57.2	56.8	42.8
	7-Nov	22.9	35.1	37.4	48.6	24.4	19.9	47.4	4.1	8.0	22.6	19.2	14.0	53.7	54.9	34.8	32.7	29.5	31.8
	14-Nov	31.0	34.5	42.6	65.4	30.7	35.8	30.3	30.3	12.3	21.0	13.9	17.1	72.7	41.0	58.8	28.5	36.1	26.8
	21-Nov	31.8	49.9	23.6	66.5	80.2	37.2	39.6	9.3	11.0	32.4	48.2	18.3	72.5	40.2	51.2	63.1	45.4	25.6
	28-Nov	21.5	46.4	34.5	30.0	19.7	46.1	11.1	2.0	27.4	29.8	13.5	41.7	32.0	24.1	23.0	33.4	26.5	59.8
	5-Dec	34.4	35.6	34.1	58.9	43.1	37.9	18.1	10.2	19.9	26.4	33.4	36.6	45.5	27.3	36.0	40.9	21.5	34.8
	12-Dec	67.3	77.7	61.3	59.7	22.8	27.3	32.5	4.5	28.1	31.9	48.3	24.1	46.0	36.1	25.1	36.3	28.0	23.7
	19-Dec	24.6	66.9	49.0	49.3	31.6	67.1	55.7	4.1	12.6	35.7	62.7	21.7	56.0	45.4	28.6	37.5	26.7	35.1
	26-Dec	20.9	19.8	4.0	37.7	27.8	35.2	6.1	1.9	11.8	27.5	30.4	10.6	22.6	13.5	27.4	29.7	14.6	21.4
	2-Jan	6.4	18.1	17.2	16.9	10.0	15.3	3.6	0.5	12.7	14.5	14.4	10.3	26.4	46.3	18.1	16.9	16.5	4.5
	9-Jan	30.9	NA	74.3	23.8	26.3	32.2	32.3	15.5	29.9	17.3	12.9	8.5	93.3	56.1	24.8	25.9	33.0	36.1
	16-Jan	39.6	NA	56.9	53.8	45.6	86.0	27.3	5.5	37.7	35.6	62.4	42.8	62.8	39.1	48.1	35.8	39.3	49.1
	23-Jan	48.6	NA	72.9	53.9	32.2	42.1	72.4	7.4	35.9	16.3	35.5	43.6	74.3	31.4	84.9	30.0	30.5	29.2
	30-Jan	49.1	NA	69.7	45.0	44.5	33.3	66.9	6.6	27.3	45.9	36.3	45.8	40.5	54.2	11.6	38.6	29.3	54.7
	6-Feb	38.1	NA	77.7	38.3	15.9	39.5	50.0	8.9	39.6	43.6	29.3	60.8	36.7	54.6	63.5	39.2	45.4	41.5
	13-Feb	49.2	238.4	61.2	30.8	41.4	36.7	27.2	14.2	33.1	40.6	38.4	52.5	44.9	33.0	30.9	37.5	17.6	45.4
	20-Feb	34.0	48.8	69.0	29.3	36.8	28.2	33.1	11.9	27.2	59.1	15.8	17.7	23.7	12.5	58.4	35.8	38.9	31.7
	27-Feb	30.3	38.2	73.1	27.3	43.2	32.6	59.8	-2.0	17.5	42.5	30.0	31.2	25.5	46.8	23.9	32.0	14.7	15.7
	5-Mar	57.9	14.6	98.6	29.2	46.2	16.5	25.0	11.1	32.9	18.8	13.3	30.3	29.5	53.7	28.9	22.6	27.8	41.2
	12-Mar	35.6	33.7	57.9	49.4	48.3	19.8	29.4	3.6	33.9	40.8	29.4	17.3	29.5	40.5	39.7	51.7	46.0	42.9
	19-Mar																		
	26-Mar																		
Crop year to date sales	1142.4	1643.7	1770.2	1785.7	1180.9	1438.8	1531.8	585.4	1299.1	1396.9	1302.4	1201.7	2054.2	1596.1	1364.2	1230.7	1366.2	1072.5	1225.6
Average weekly sales																			
rate to reach proj total	23.4	16.9	26.9	20.4	29.0	17.2	15.6	5.8	9.8	17.6	27.3	26.0	15.4	21.3	31.0	23.6	21.5	20.7	27.3
Proj./Actual export total	1725	2065	2438	2294	1901	1867	1920	730	1543	1834	1980	1849	2437	2125	2134	1818	1900	1588	1905
YTD sales as % of total	66.2	79.6	72.6	77.8	62.1	77.1	79.8	80.2	84.2	76.2	65.8	65.0	84.3	75.1	63.9	67.7	71.9	67.5	64.3
Sold as of around Sep 1 %	15.3	27.4	14.8	26.0	17.0	24.6	25.5	52.8	34.7	31.6	23.0	24.7	25.0	21.6	14.5	15.0	15.8	15.4	14.7

Source: Futures International and USDA

EXPORT SALES SITUATION

ALL-WHEAT

(million bushels)

Table with columns: Weekly Sales Total, New Crop Sales, Weeks remaining, 10.85714286, and 2019-20 through 2001-02. Rows include weekly sales data from 6-Jun to 26-Mar, and summary rows for crop year to date sales, average weekly sales, and YTD sales as % of total.

Source: Futures International and USDA

U.S. Wheat Export Sales for the Week Ending 03/12/2020

	(000 tons)									WKLY RATE TO REACH Proj.
	OUTSTANDING SALES			ACCUMULATED EXPORTS			Crop Year to Date Sales			
	NET SALES	CURRENT YEAR	YEAR AGO	WEEKLY EXPORTS	CURRENT YEAR	YEAR AGO	CURRENT YEAR	YEAR AGO	USDA PROJ.	
HRW	106.9	1746.6	2415.0	139.7	7133.3	5675.4	8879.9	8090.4	10615.1	159.8
SRW	36.8	306.2	875.3	67.3	2031.4	2186.3	2337.6	3061.6	2721.8	35.4
HRS	128.4	1614.3	1334.3	121.0	5490.4	5103.3	7104.7	6437.6	7485.0	35.0
WHITE	65.9	1070.4	1023.9	41.4	3748.7	4048.7	4819.1	5072.6	5307.6	45.0
DURUM	0.4	146.4	120.7	2.4	682.2	360.4	828.6	481.1	1088.7	24.0
TOTAL	338.3	4883.9	5769.1	371.8	19086.0	17374.1	23969.9	23143.2	27218.3	299.2

Source: Futures International and USDA

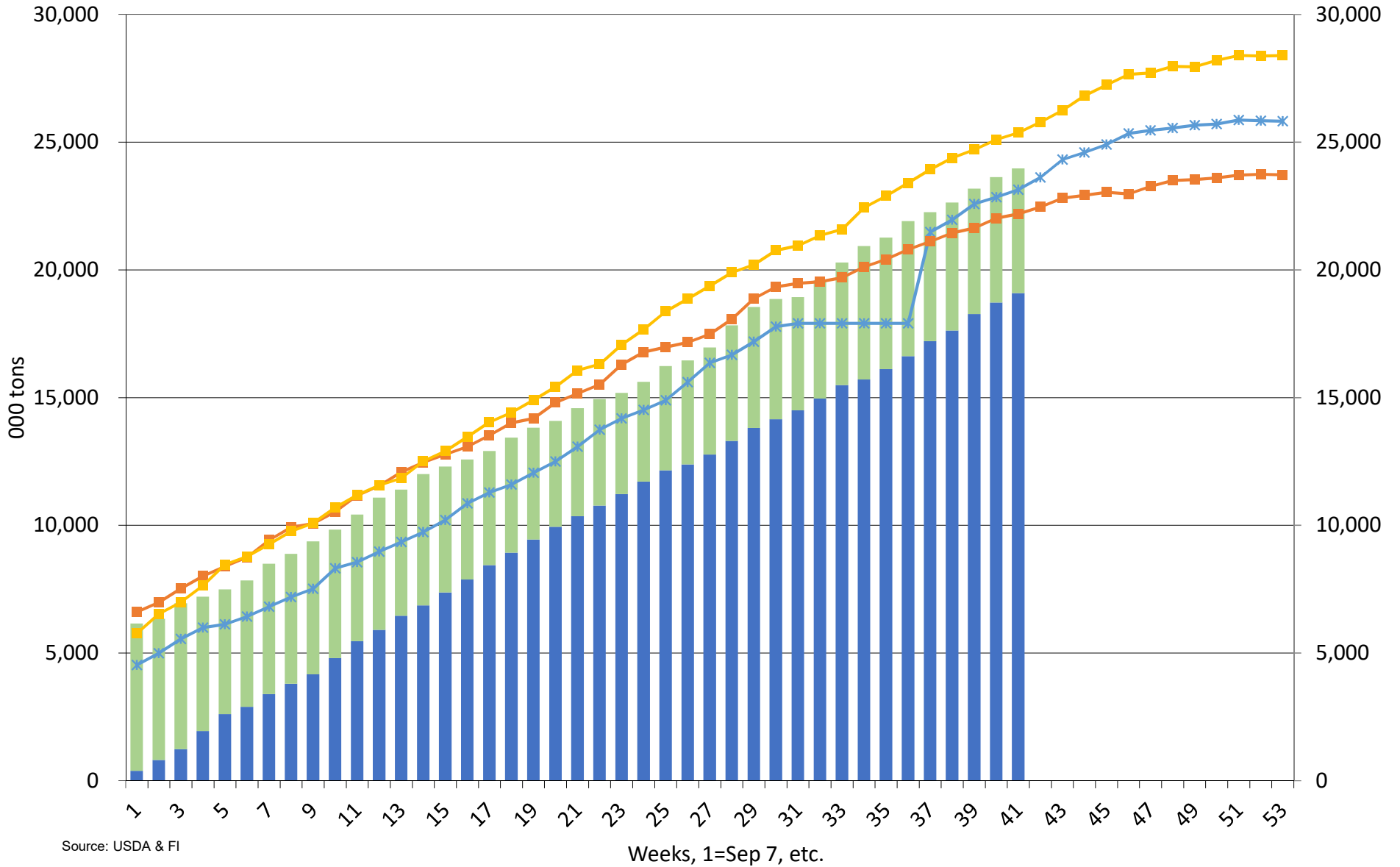
U.S. Wheat Export Sales for the Week Ending 03/12/2020

	(bushels)									WKLY RATE TO REACH Proj.
	OUTSTANDING SALES			ACCUMULATED EXPORTS			Crop Year to Date Sales			
	NET SALES	CURRENT YEAR	YEAR AGO	WEEKLY EXPORTS	CURRENT YEAR	YEAR AGO	CURRENT YEAR	YEAR AGO	USDA PROJ.	
HRW	3.9	64.2	88.7	5.1	262.1	208.5	326.3	297.3	390	5.9
SRW	1.4	11.3	32.2	2.5	74.6	80.3	85.9	112.5	100	1.3
HRS	4.7	59.3	49.0	4.4	201.7	187.5	261.1	236.5	275	1.3
WHITE	2.4	39.3	37.6	1.5	137.7	148.8	177.1	186.4	195	1.7
DURUM	0.0	5.4	4.4	0.1	25.1	13.2	30.4	17.7	40	0.9
TOTAL	12.4	179.5	212.0	13.7	701.3	638.4	880.7	850.4	1000	11.0

Source: Futures International and USDA

US Wheat Current Crop-Year Commitments

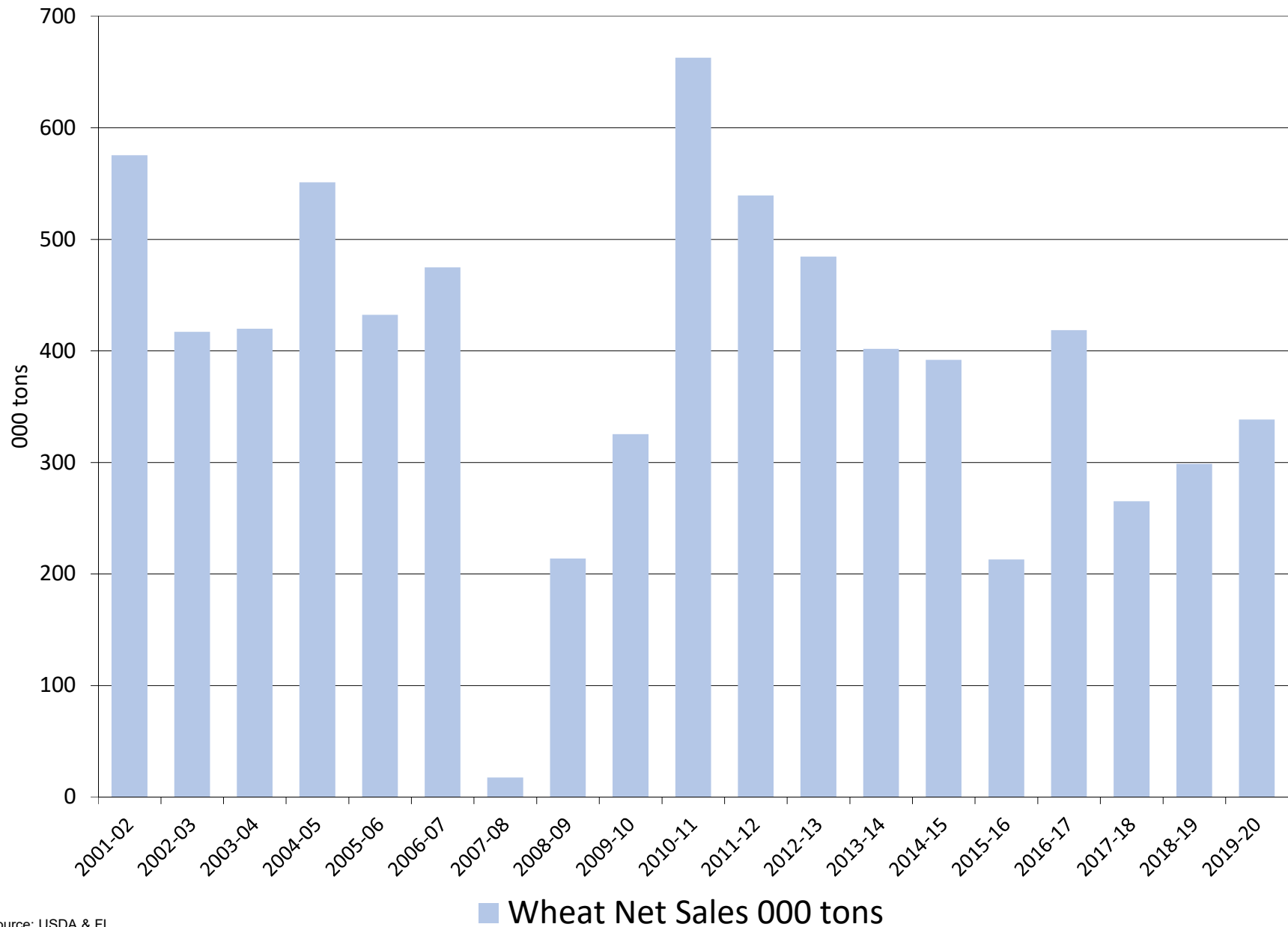
Thousand Tons, Sept-Aug Crop-Year



Source: USDA & FI

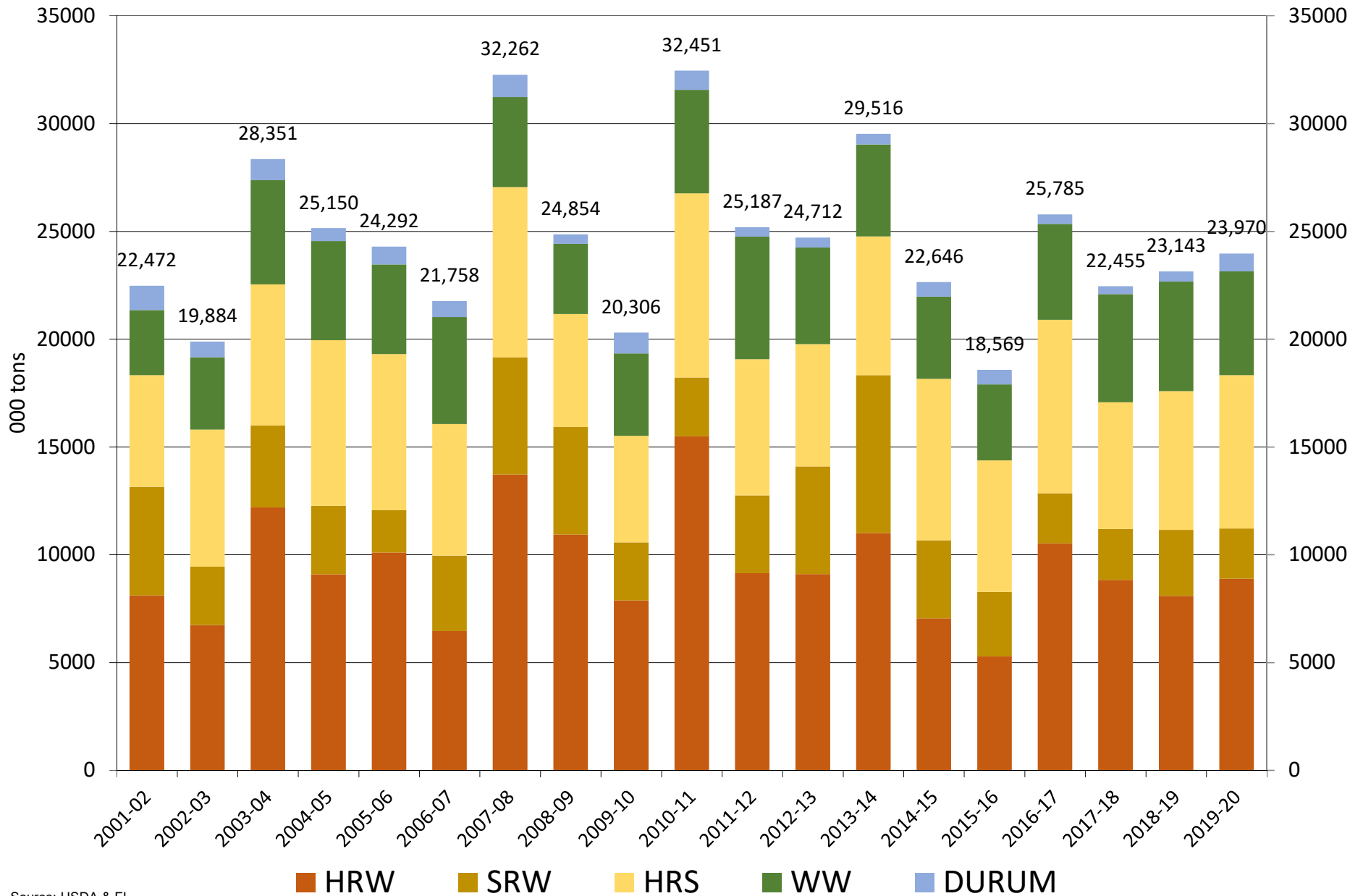
■ Accumulated Exports
 ■ Outstanding Sales
 —* 2018-19
 —■ 2017-18
 —■ 2016-17

US all wheat export sales for the week ending on or near 03/15/2020



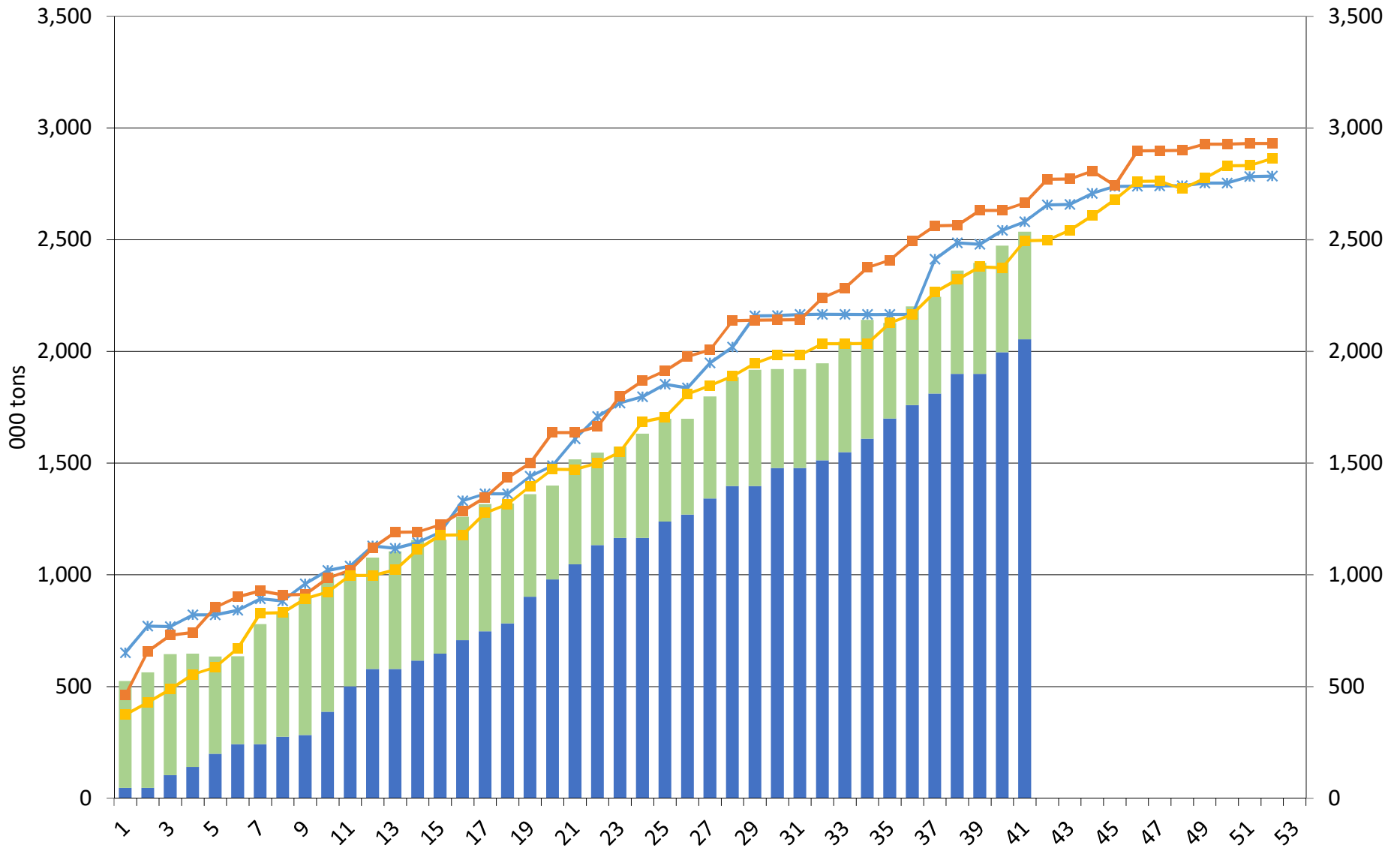
Source: USDA & FI

US all wheat export commitments on or near 03/15/2020



US Wheat Current Crop-Year Commitments for Japan

Thousand Tons, Sept-Aug Crop-Year



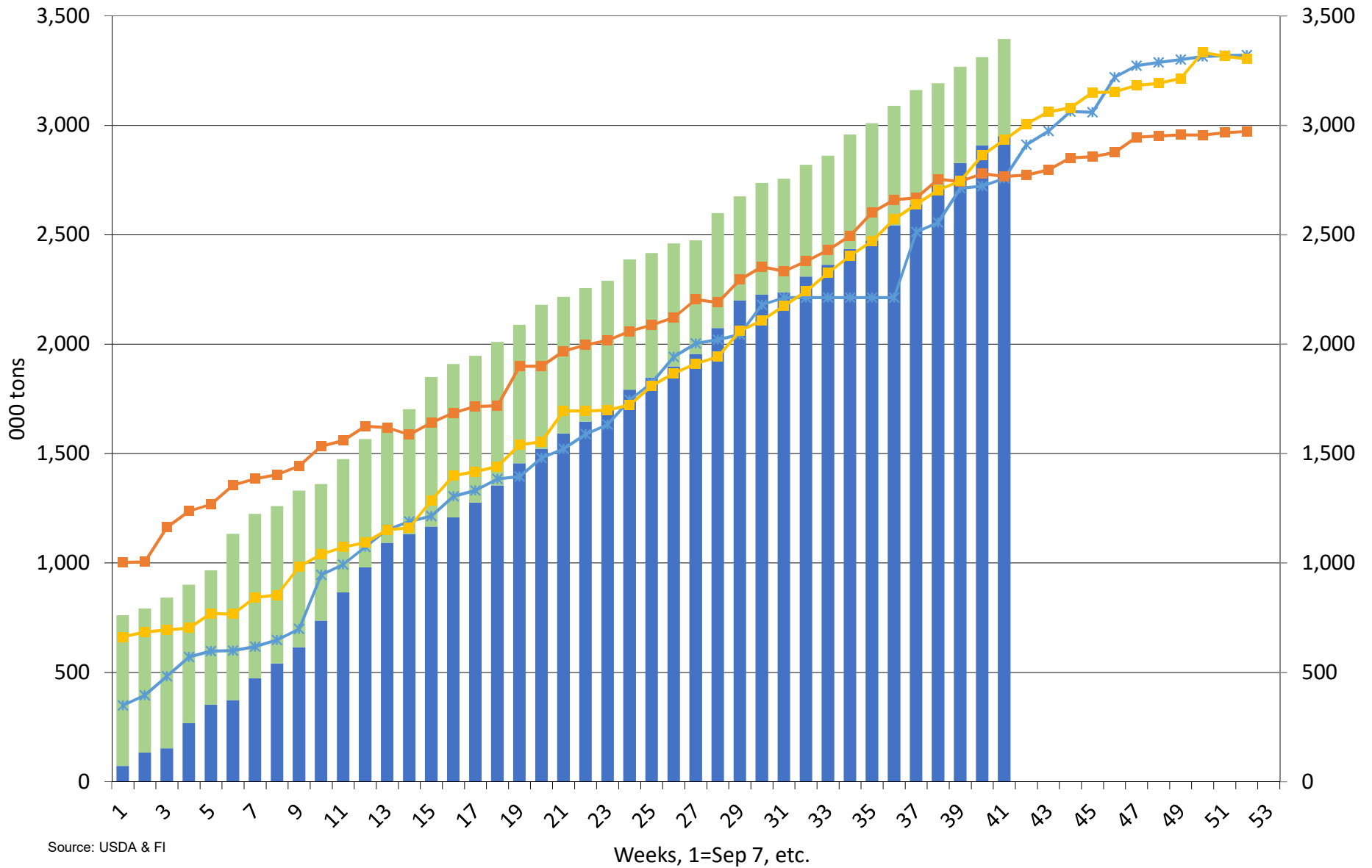
Source: USDA & FI

Weeks, 1=Sep 7, etc.

■ Accumulated Exports
 ■ Outstanding Sales
 * 2018-19
 ■ 2017-18
 ■ 2016-17

US Wheat Current Crop-Year Commitments for Mexico

Thousand Tons, Sept-Aug Crop-Year



Source: USDA & FI

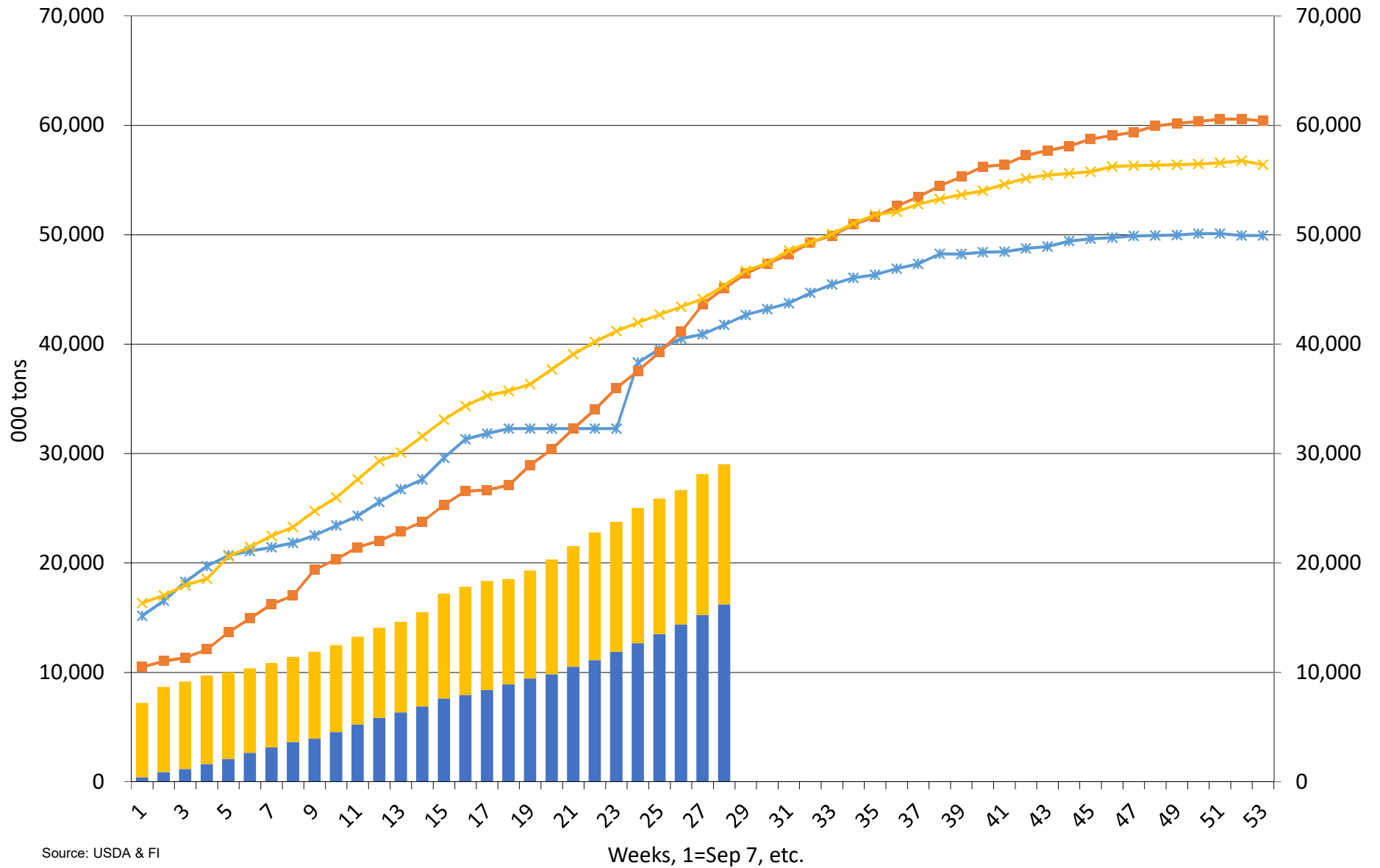
Weeks, 1=Sep 7, etc.

■ Accumulated Exports
 ■ Outstanding Sales
 ✱ 2018-19
 ■ 2017-18
 ■ 2016-17

Source: USDA and FI

US Corn Current Crop-Year Commitments

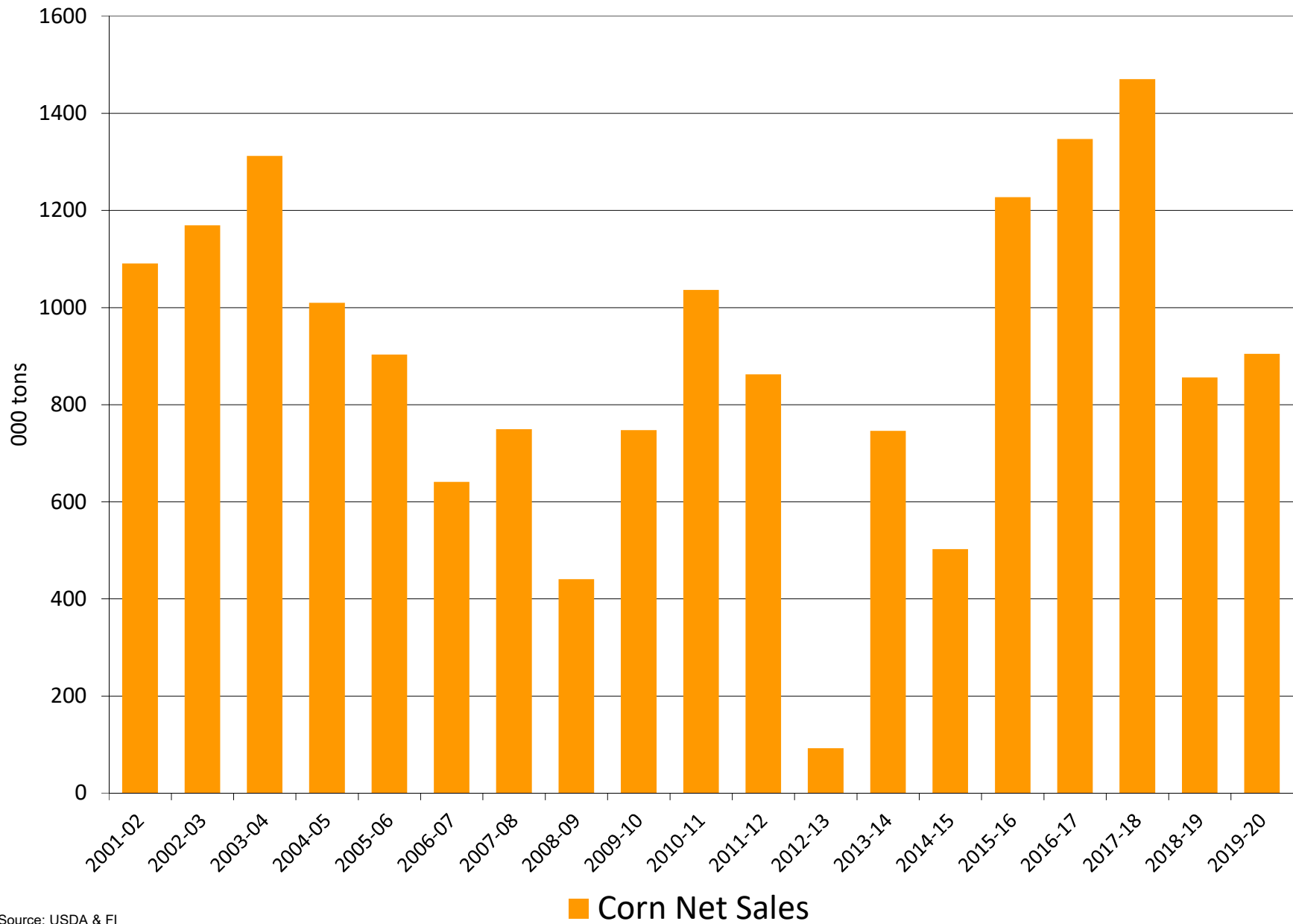
Thousand Tons, Sept-Aug Crop-Year



Source: USDA & FI

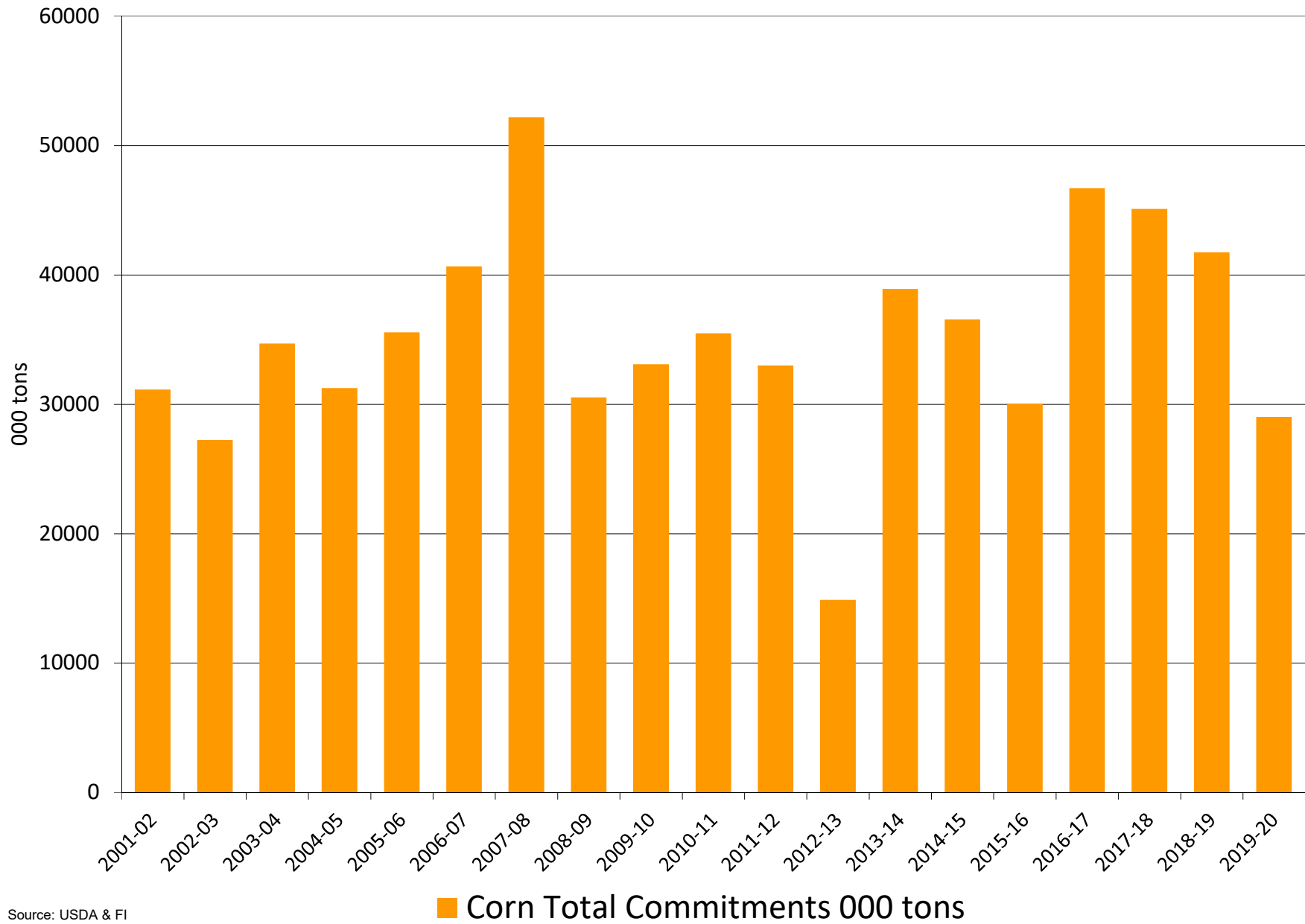
■ Accumulated Exports ■ Outstanding Sales * 2018-19 ■ 2017-18 * 2016-17

US corn export sales for the week ending on or near 03/15/2020



Source: USDA & FI

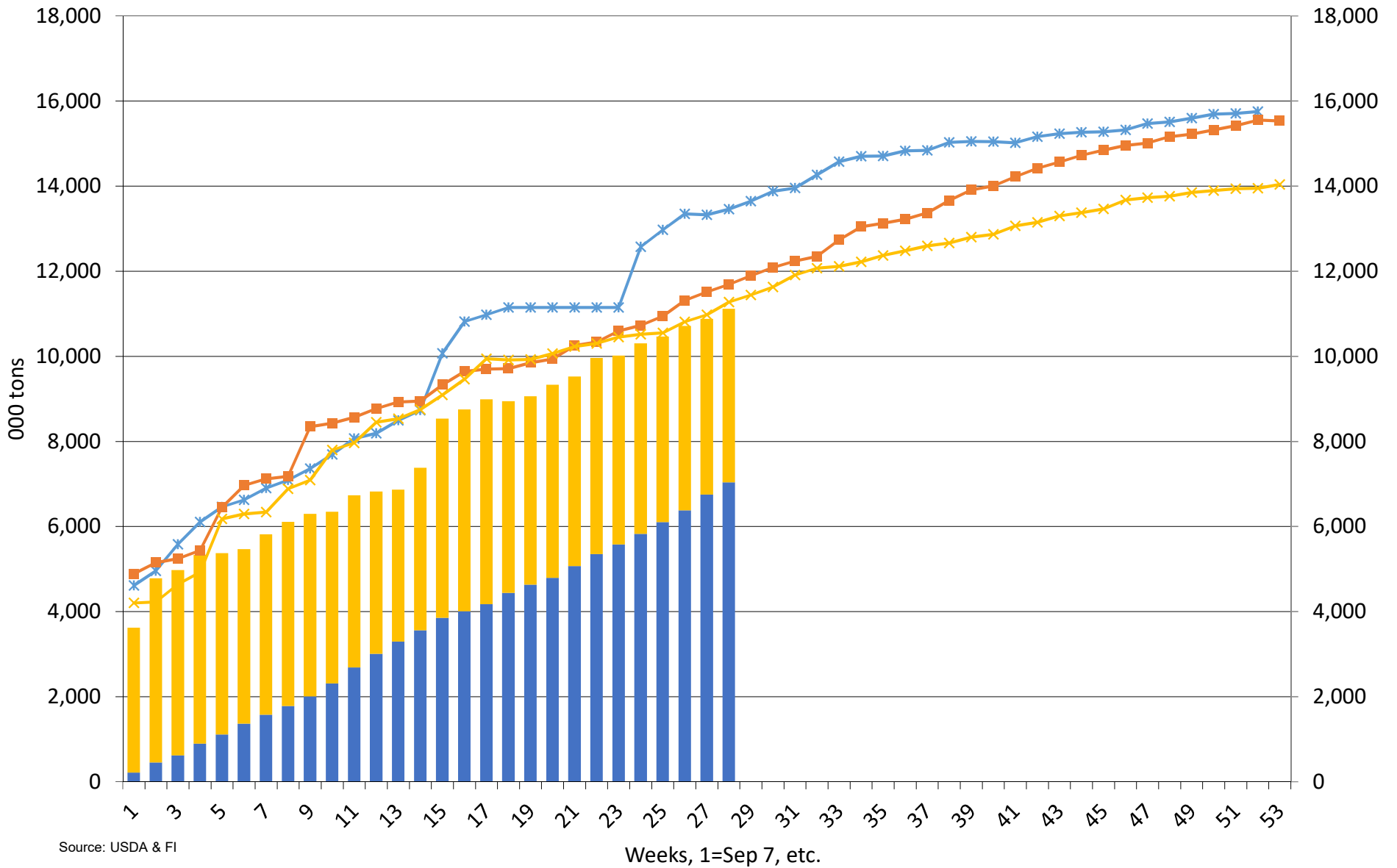
US corn export commitments on or near 03/15/2020



Source: USDA & FI

US Corn Current Crop-Year Commitments to Mexico

Thousand Tons, Sept-Aug Crop-Year

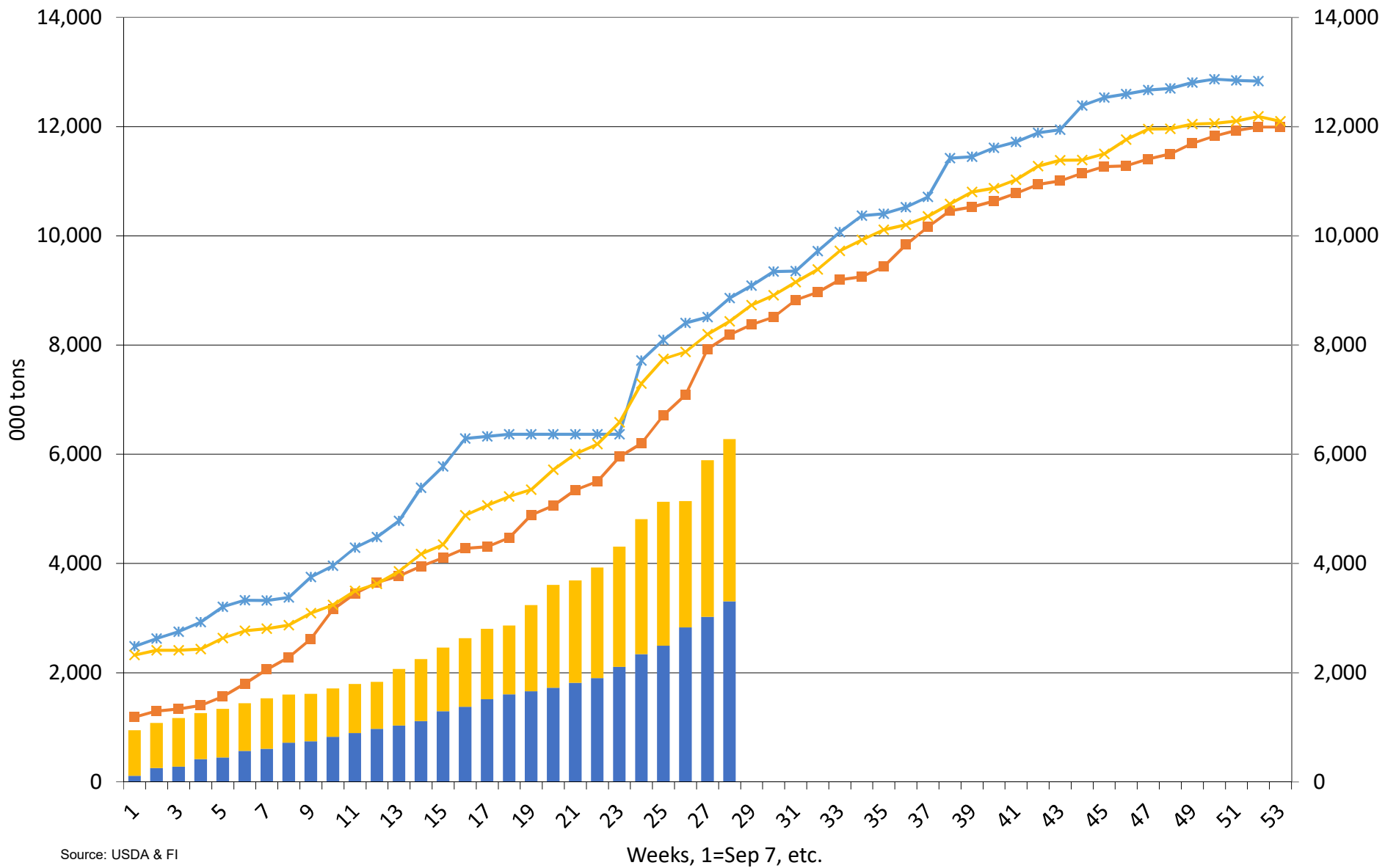


Source: USDA & FI

■ Accumulated Exports
 ■ Outstanding Sales
 —* 2018-19
 —■ 2017-18
 —x 2016-17

US Corn Current Crop-Year Commitments to Japan

Thousand Tons, Sept-Aug Crop-Year

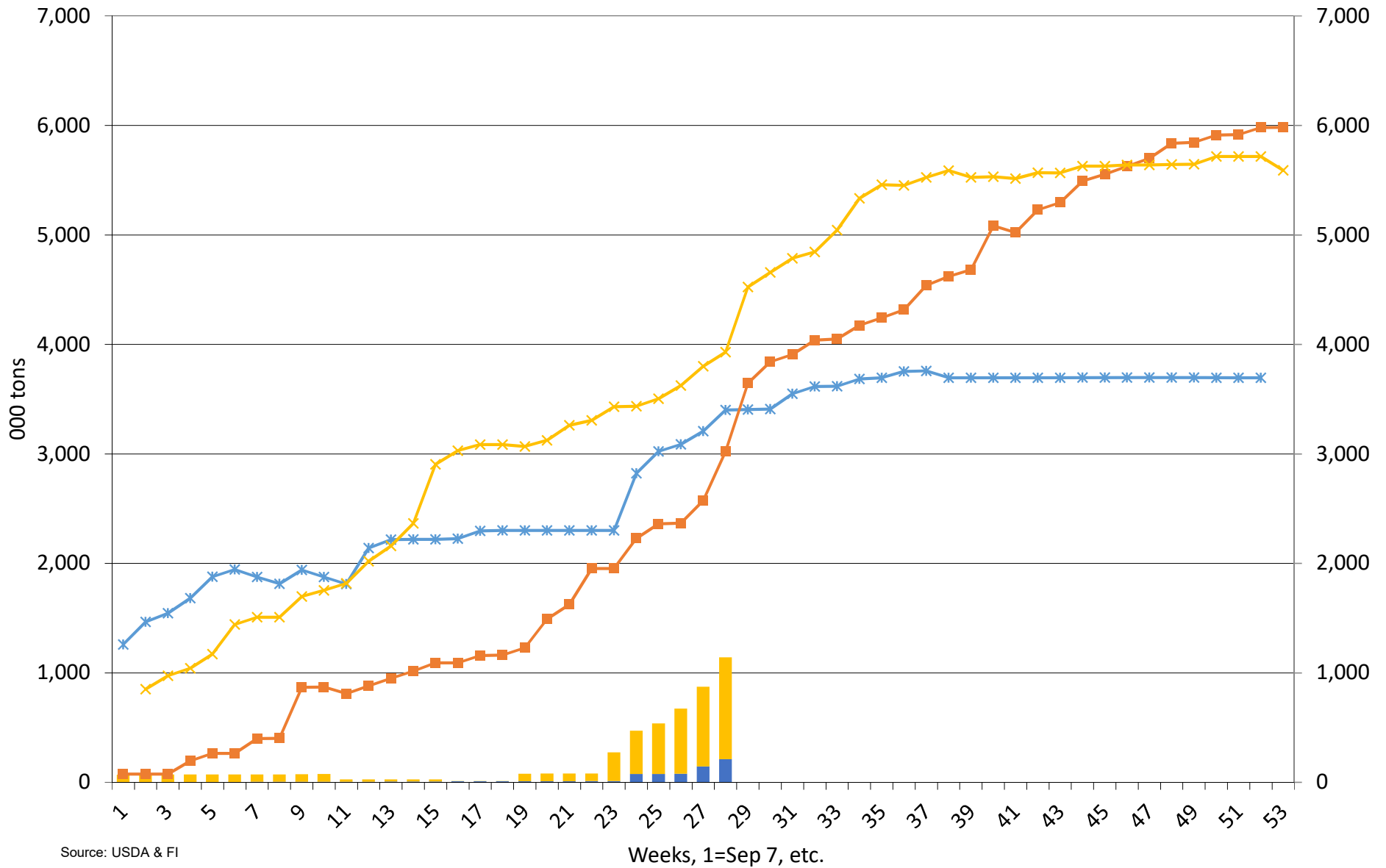


Source: USDA & FI

■ Accumulated Exports
 ■ Outstanding Sales
 *— 2018-19
 —■ 2017-18
 —x 2016-17

US Corn Current Crop-Year Commitments to South Korea

Thousand Tons, Sept-Aug Crop-Year

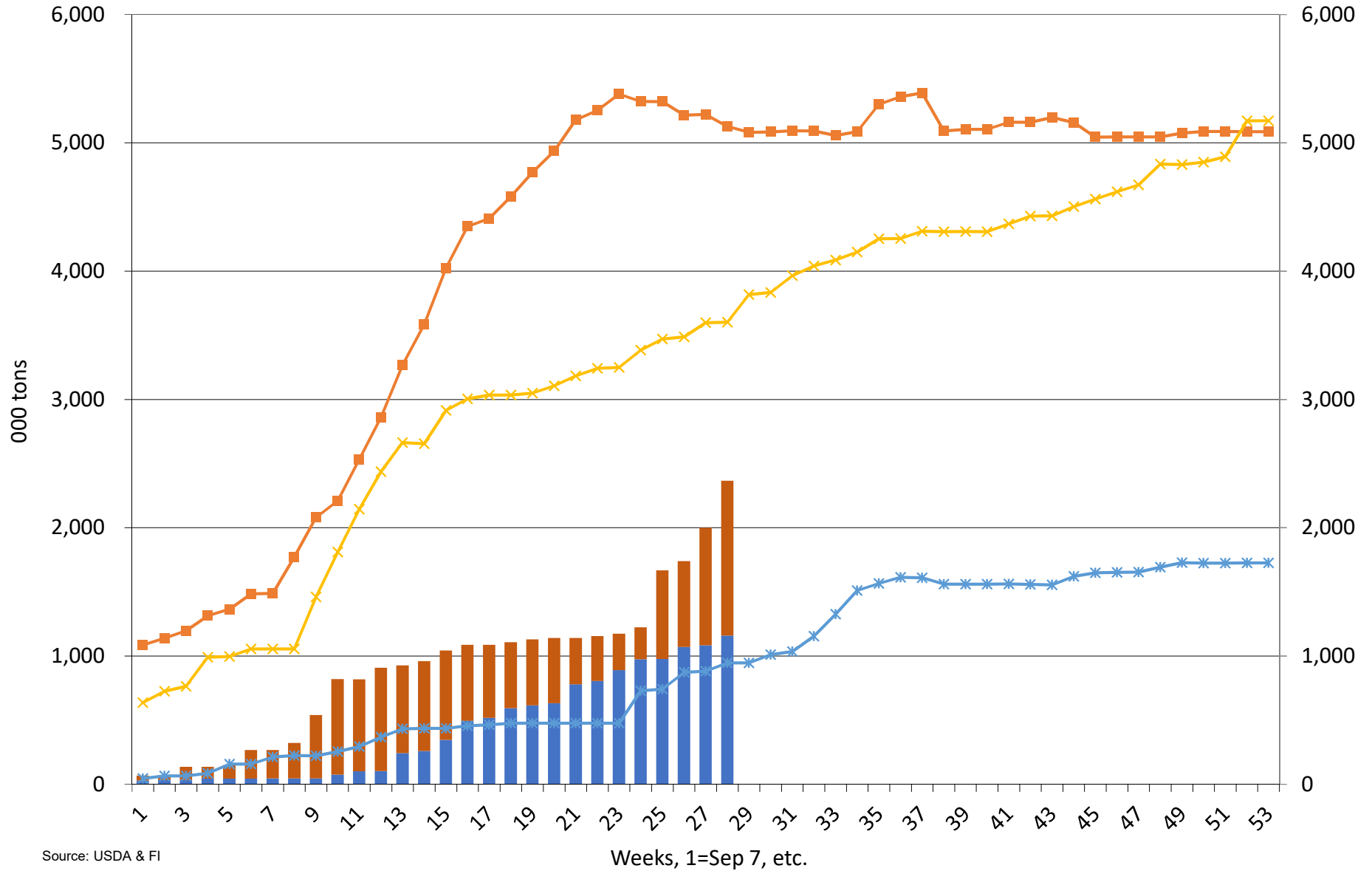


Source: USDA & FI

■ Accumulated Exports
 ■ Outstanding Sales
 * 2018-19
 ■ 2017-18
 x 2016-17

Source: USDA and FI

US Sorghum Current Crop-Year Commitments Thousand Tons, Sept-Aug Crop-Year



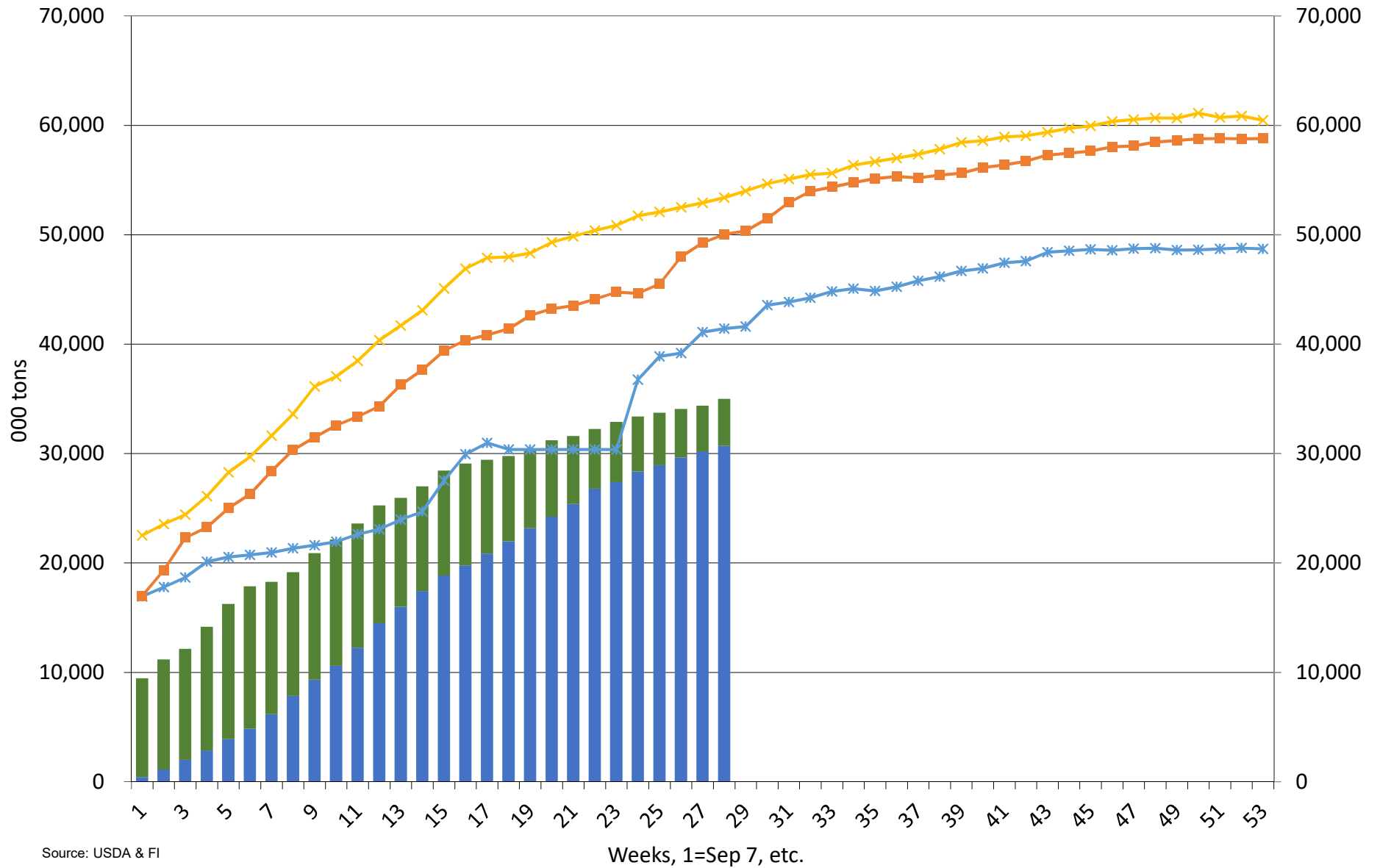
Source: USDA & FI

■ Accumulated Exports ■ Outstanding Sales * 2018-19 ■ 2017-18 * 2016-17

Source: USDA and FI

US Soybean Current Crop-Year Commitments

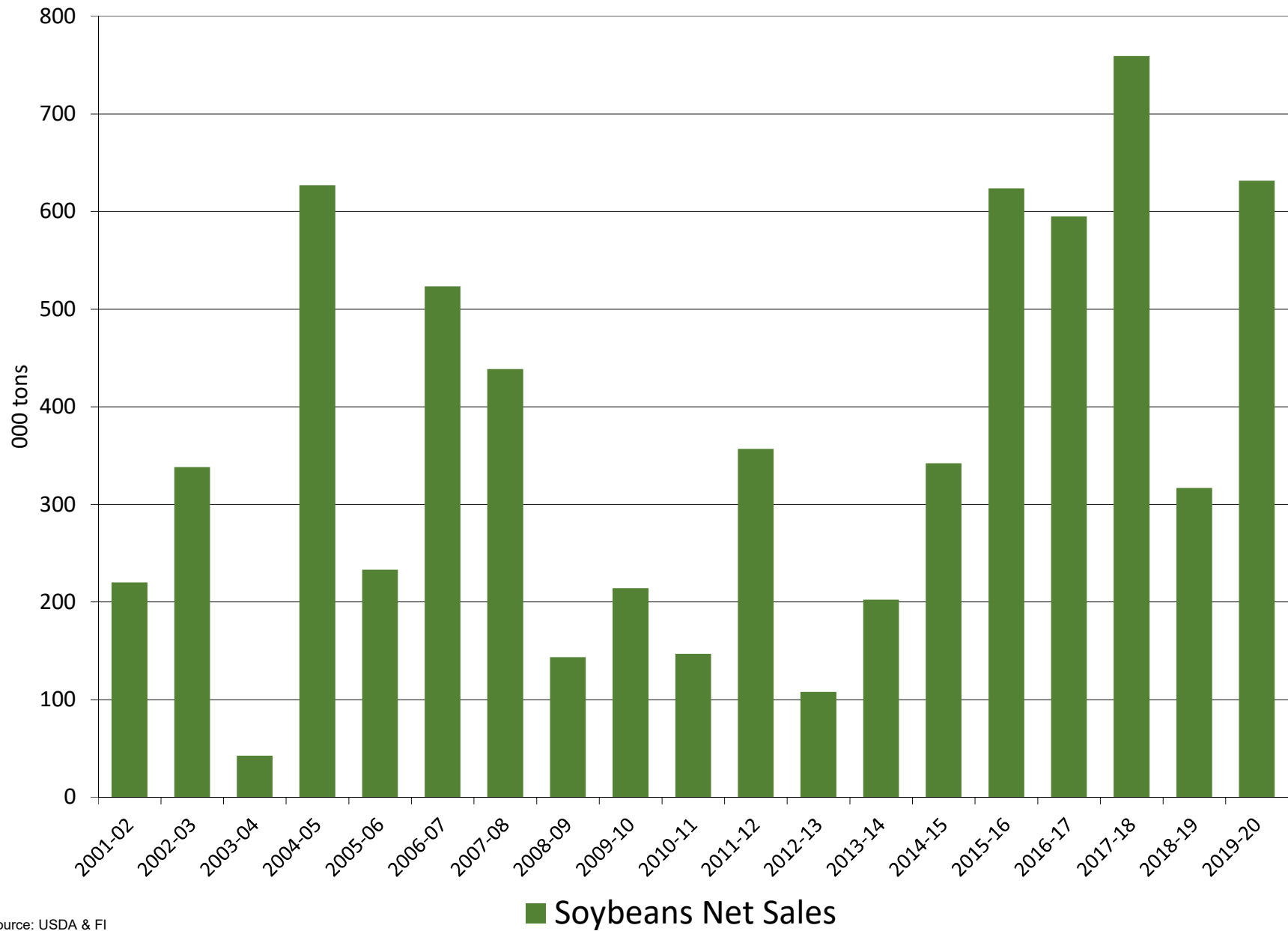
Thousand Tons, Sept-Aug Crop-Year



Source: USDA & FI

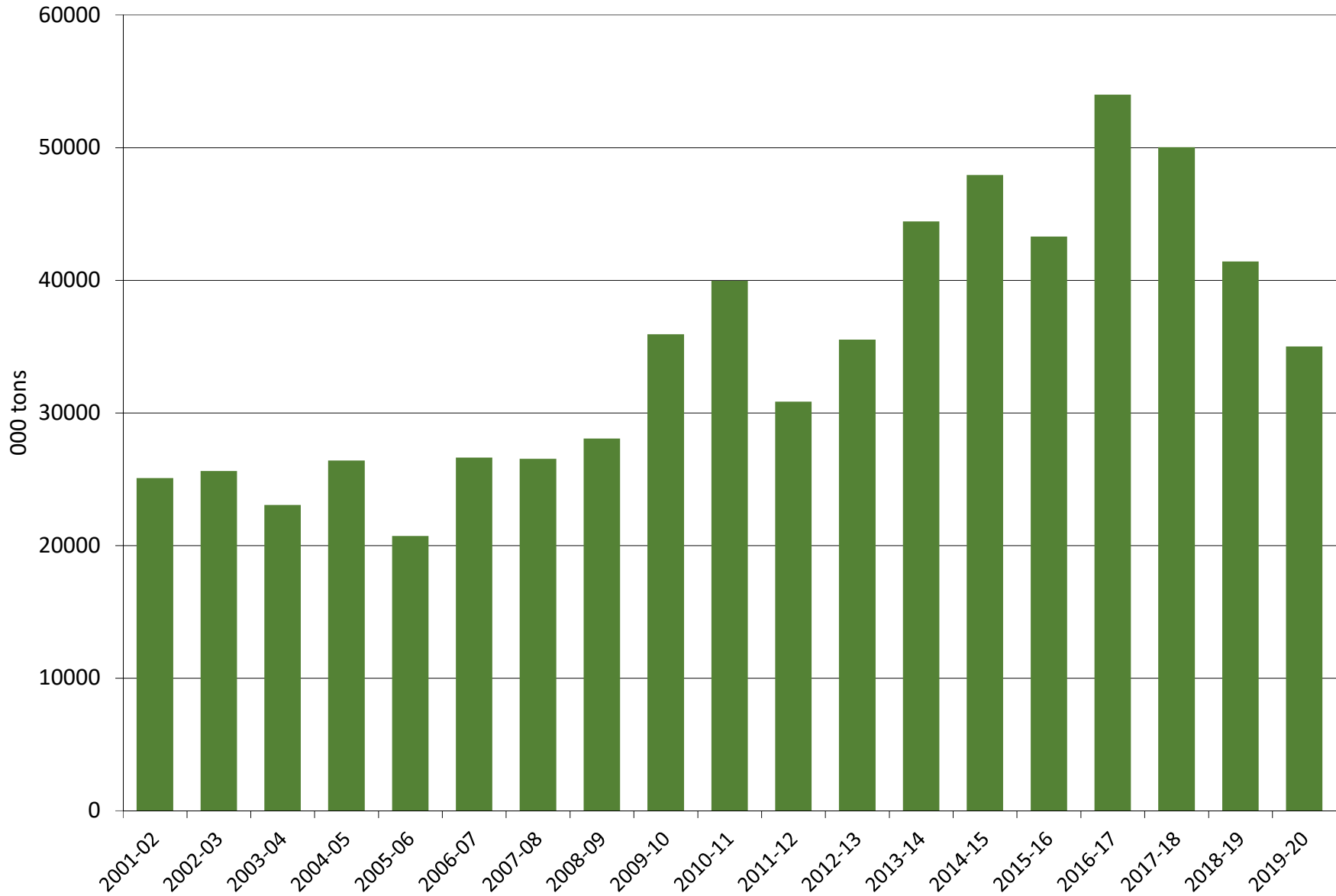
■ Accumulated Exports ■ Outstanding Sales * 2018-19 ■ 2017-18 * 2016-17

US soybean export sales for the week ending on or near 03/15/2020



Source: USDA & FI

US soybean export commitments on or near 03/15/2020

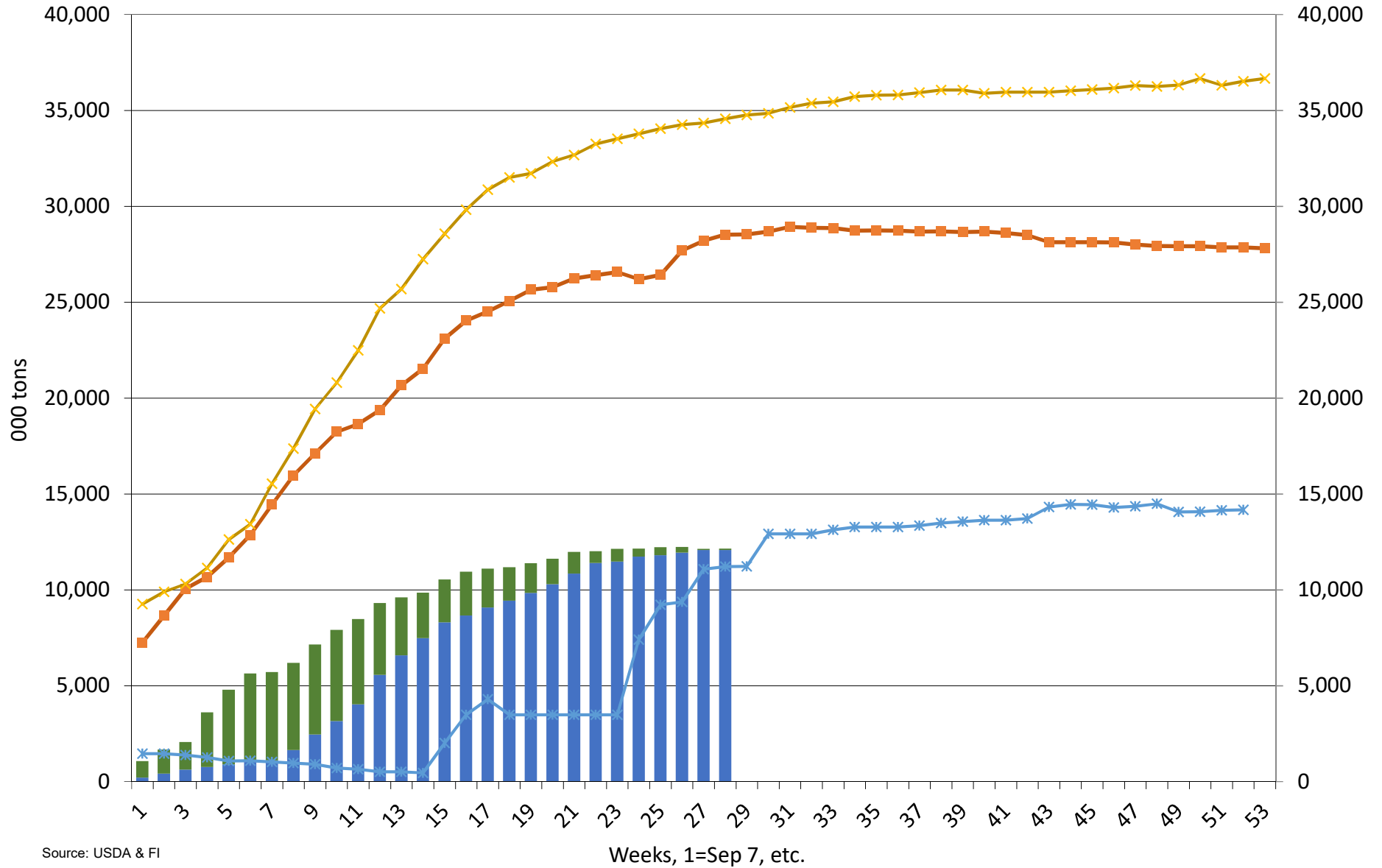


Source: USDA & FI

■ Soybeans Total Commitments 000 tons

Source: USDA and FI

US Soybean Current Crop-Year Commitments to China Thousand Tons, Sept-Aug Crop-Year

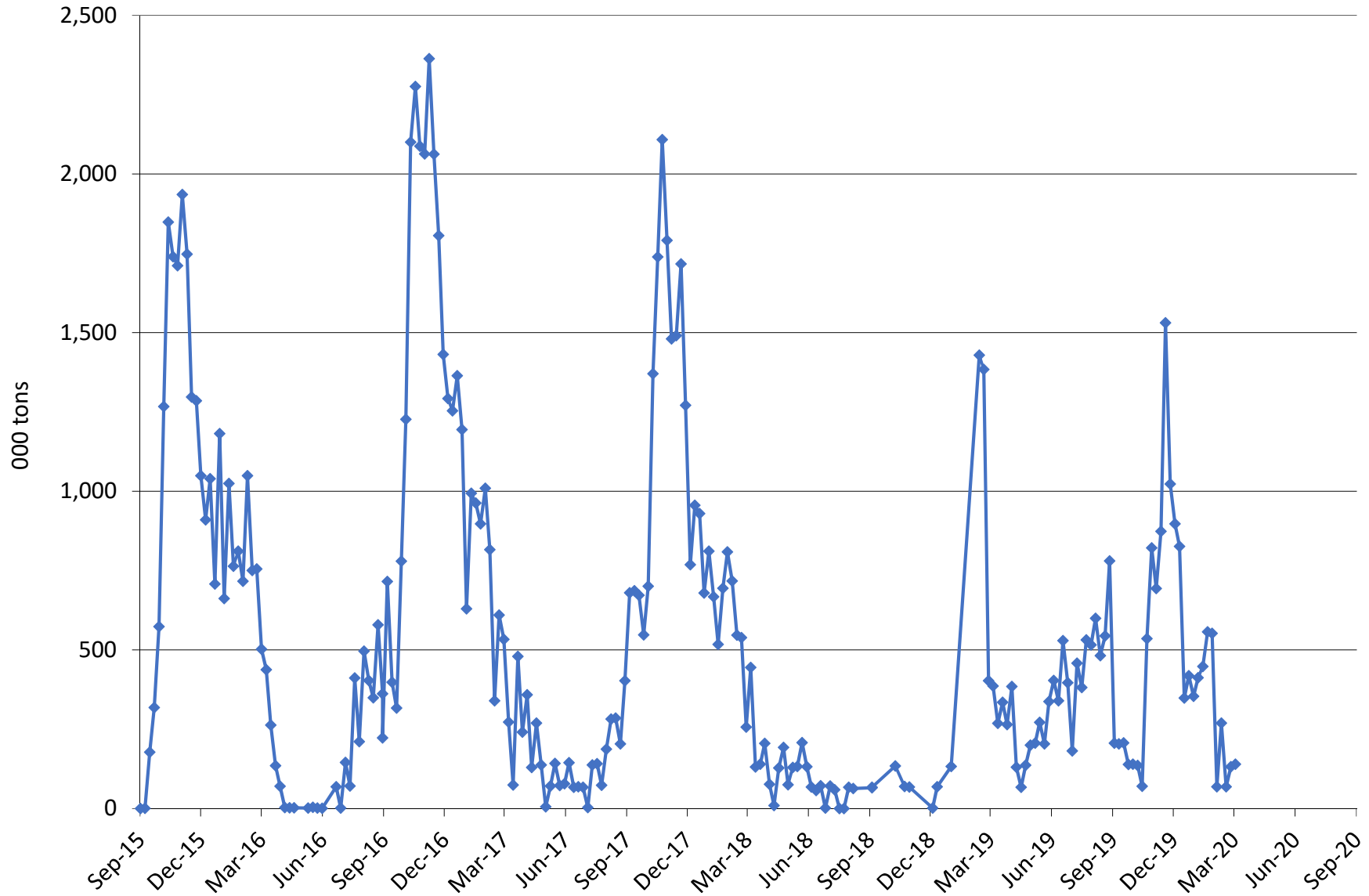


Source: USDA & FI

■ Accumulated Exports ■ Outstanding Sales * 2018-19 ■ 2017-18 * 2016-17

Source: USDA and FI

US Soybean Current Crop-Year Exports to China Thousand Tons, Sept-Aug Crop-Year



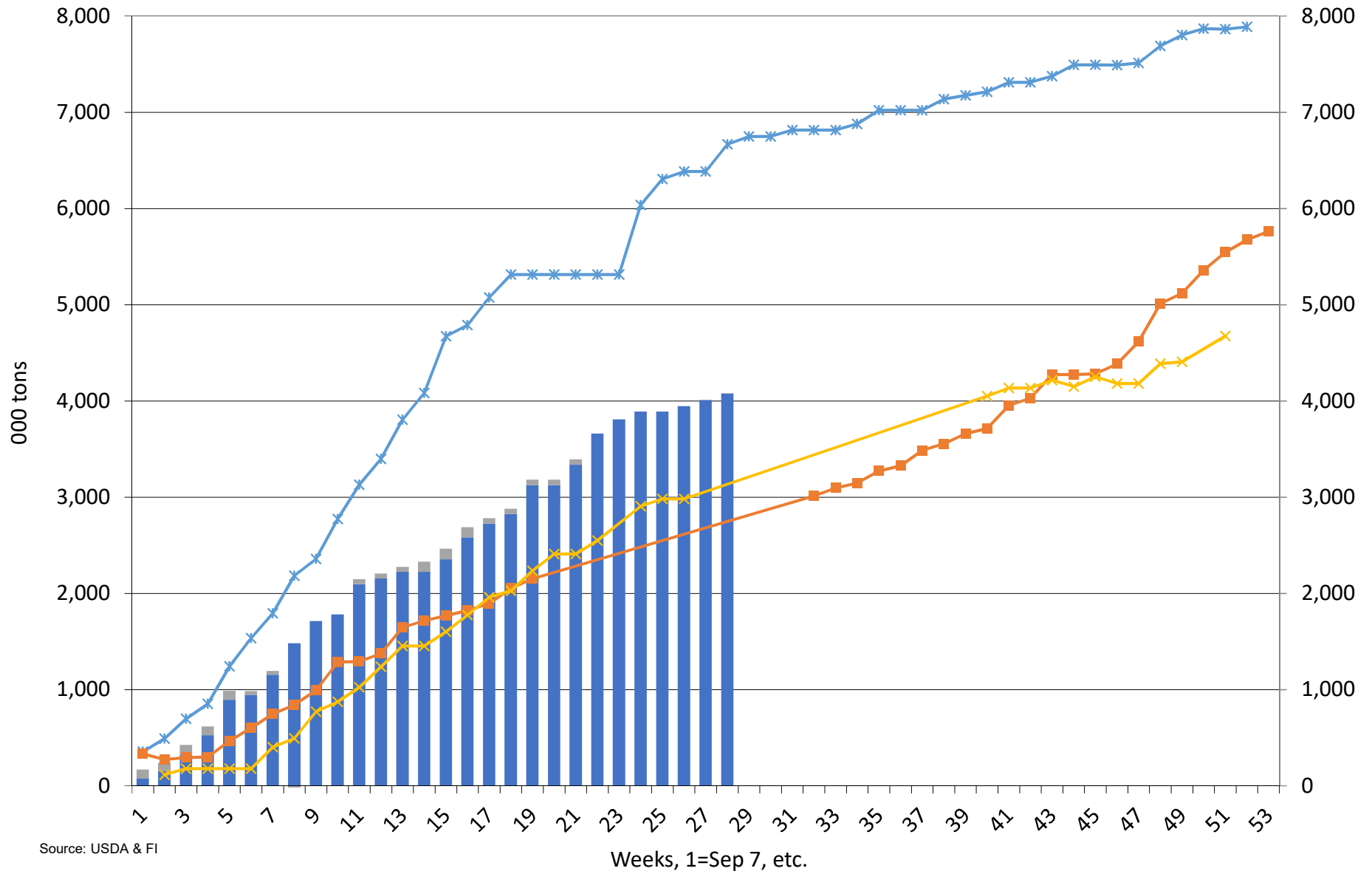
Source: USDA & FI

—◆— Accumulated Exports

Source: USDA and FI

US Soybean Current Crop-Year Commitments to EU

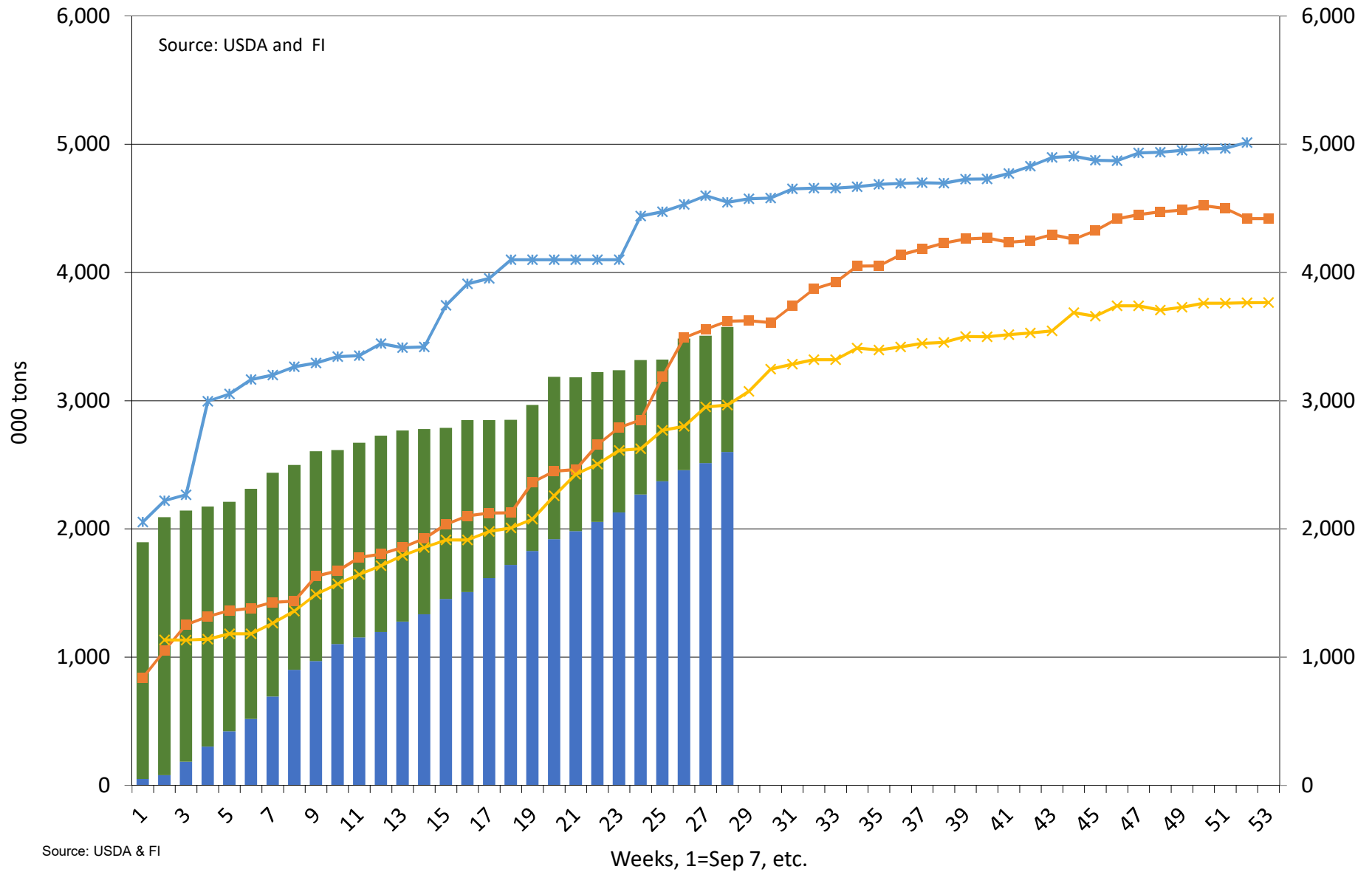
Thousand Tons, Sept-Aug Crop-Year



■ Accumulated Exports ■ Outstanding Sales * 2018-19 ■ 2017-18 x 2016-17

US Soybean Current Crop-Year Commitments to Mexico

Thousand Tons, Sept-Aug Crop-Year

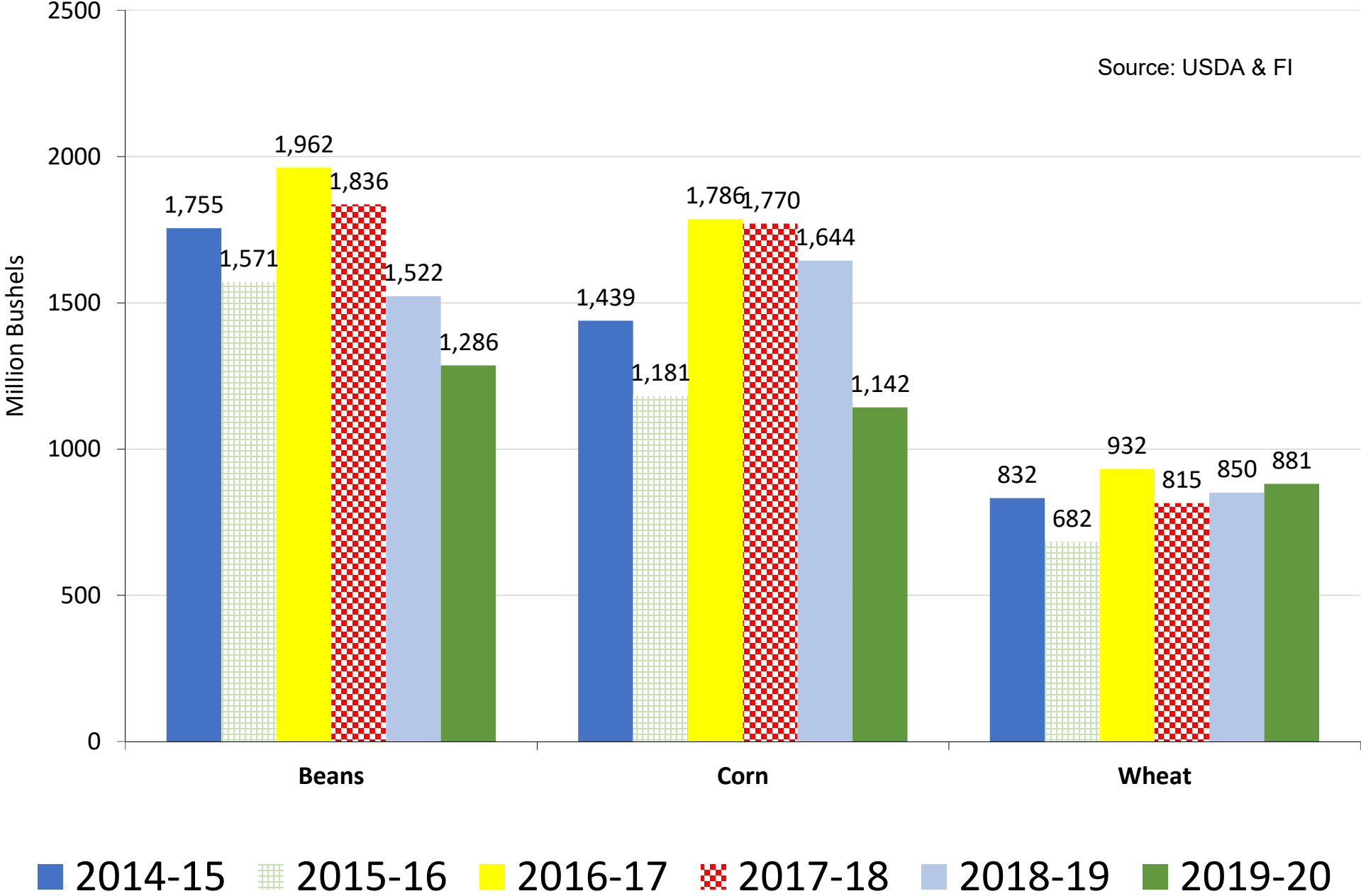


Source: USDA & FI

■ Accumulated Exports
 ■ Outstanding Sales
 —* 2018-19
 —■ 2017-18
 —* 2016-17

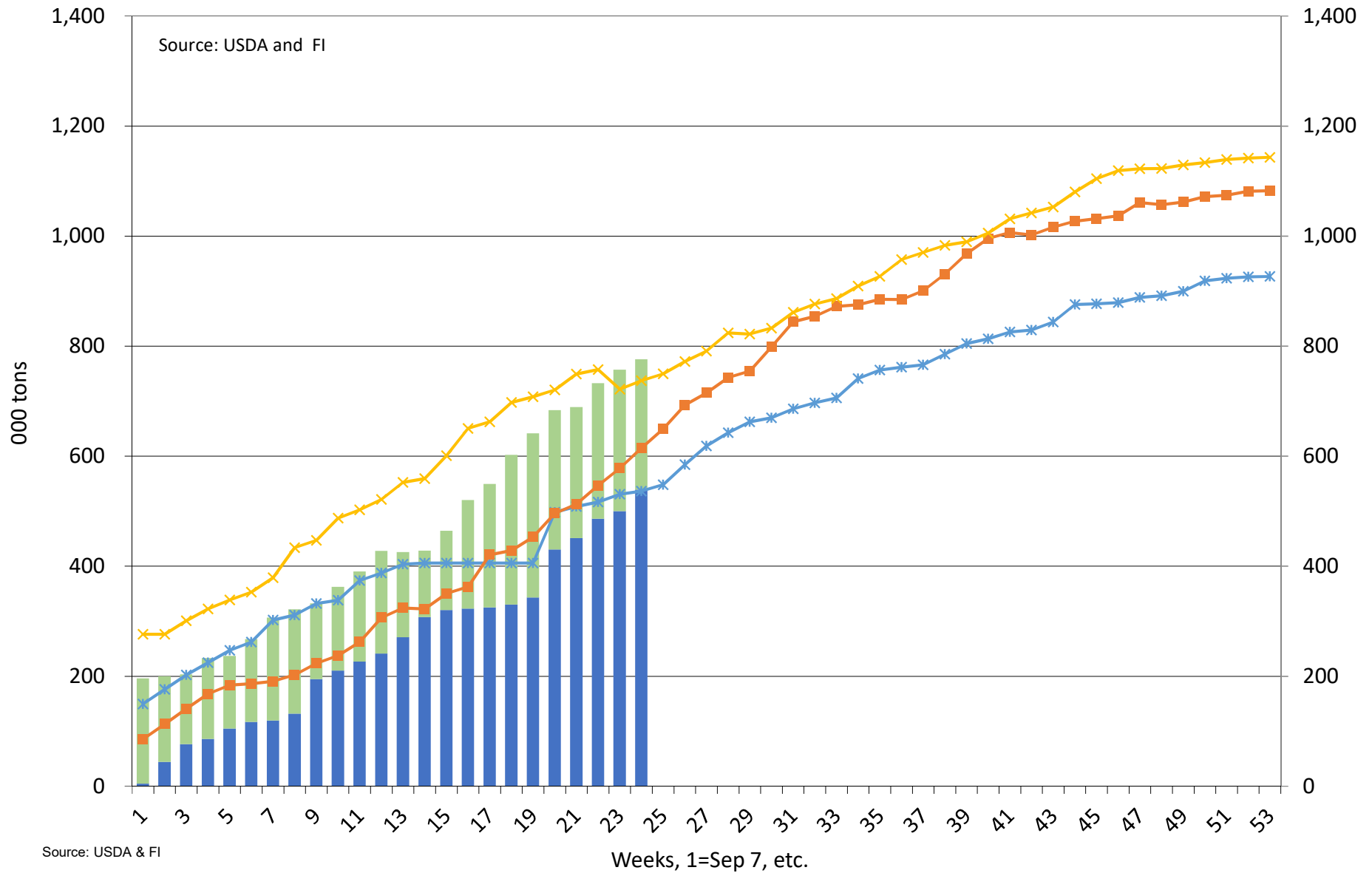
Crop year to date US export sales

Source: USDA & FI



US Soybean Oil Current Crop-Year Commitments

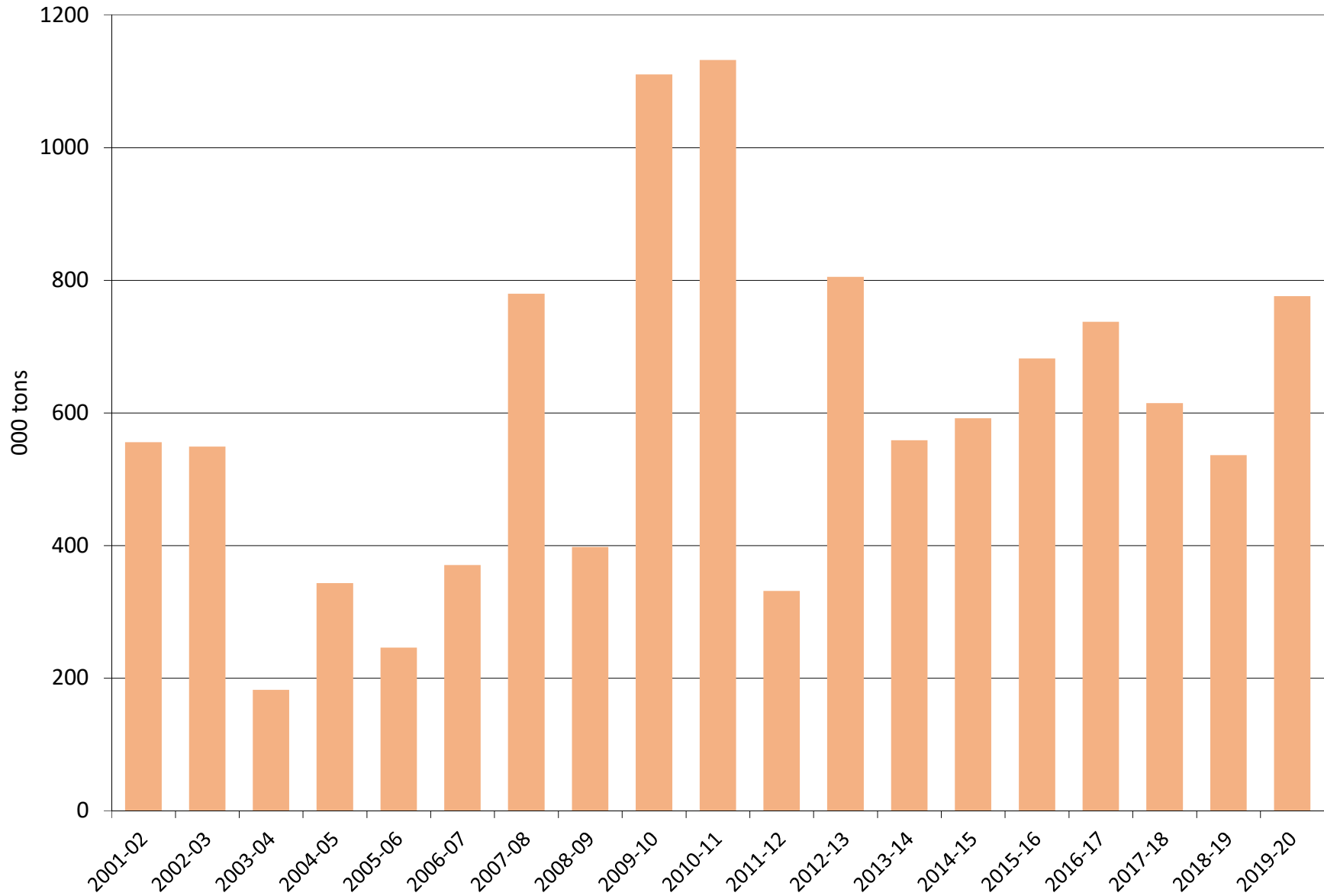
Thousand Tons, Sept-Aug Crop-Year



Source: USDA & FI

■ Accumulated Exports
 ■ Outstanding Sales
 —* 2018-19
 —■ 2017-18
 —x 2016-17

Soybean Oil Total Commitments 000 Metric Tons

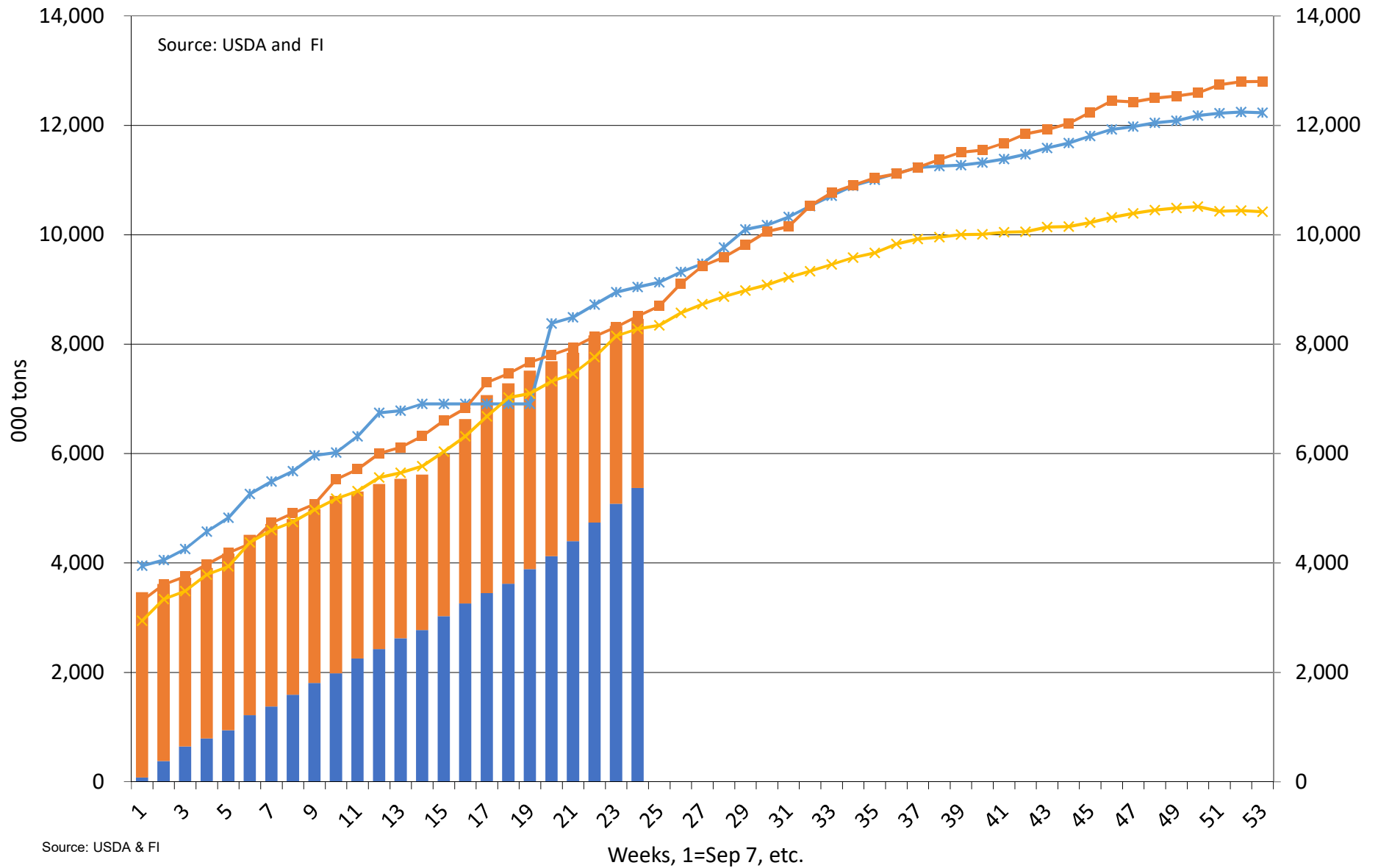


Source: USDA & F1

■ Soybean Oil Total Commitments 000 Metric Tons

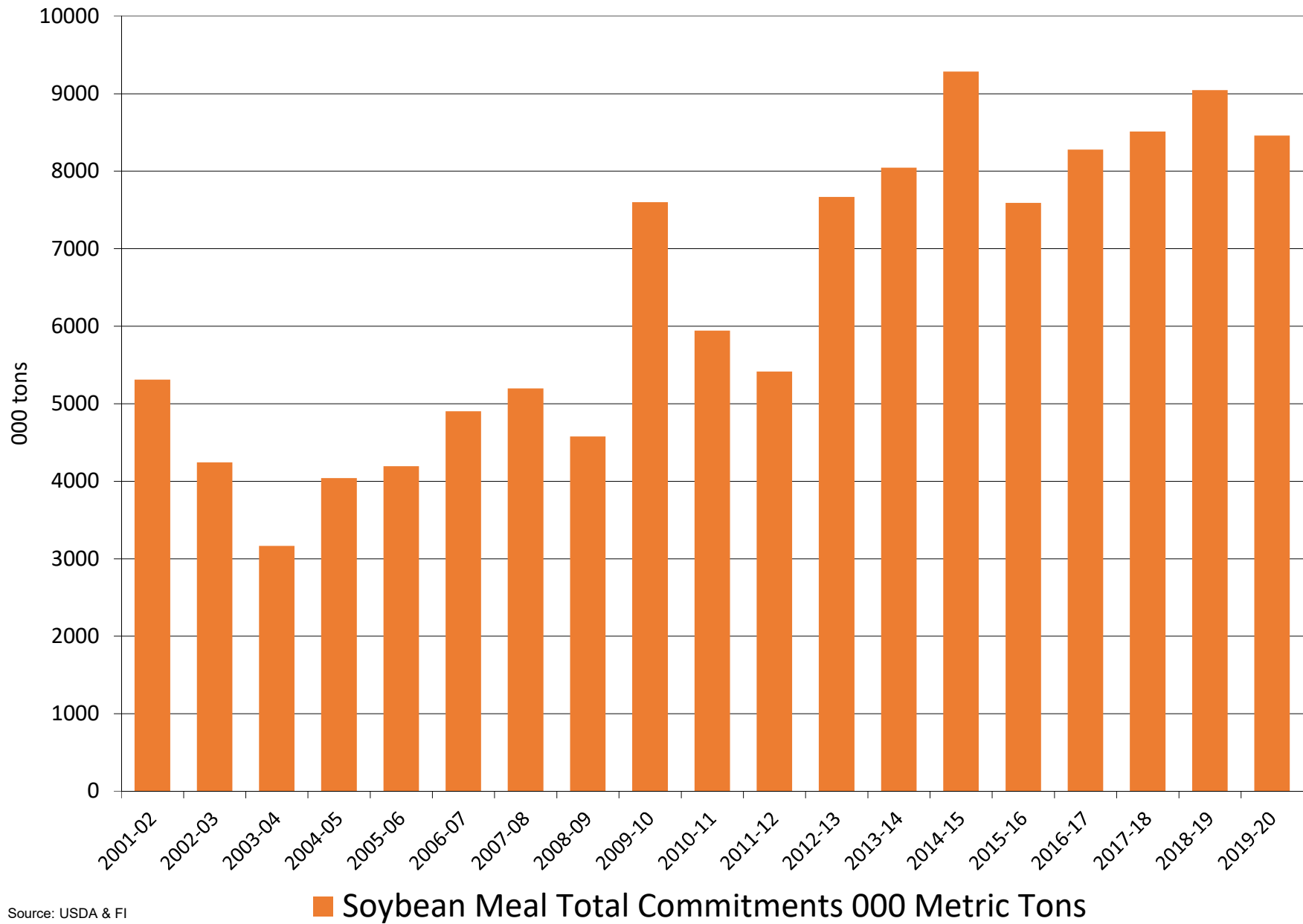
US Soybean Meal Current Crop-Year Commitments

Thousand Tons, Sept-Aug Crop-Year



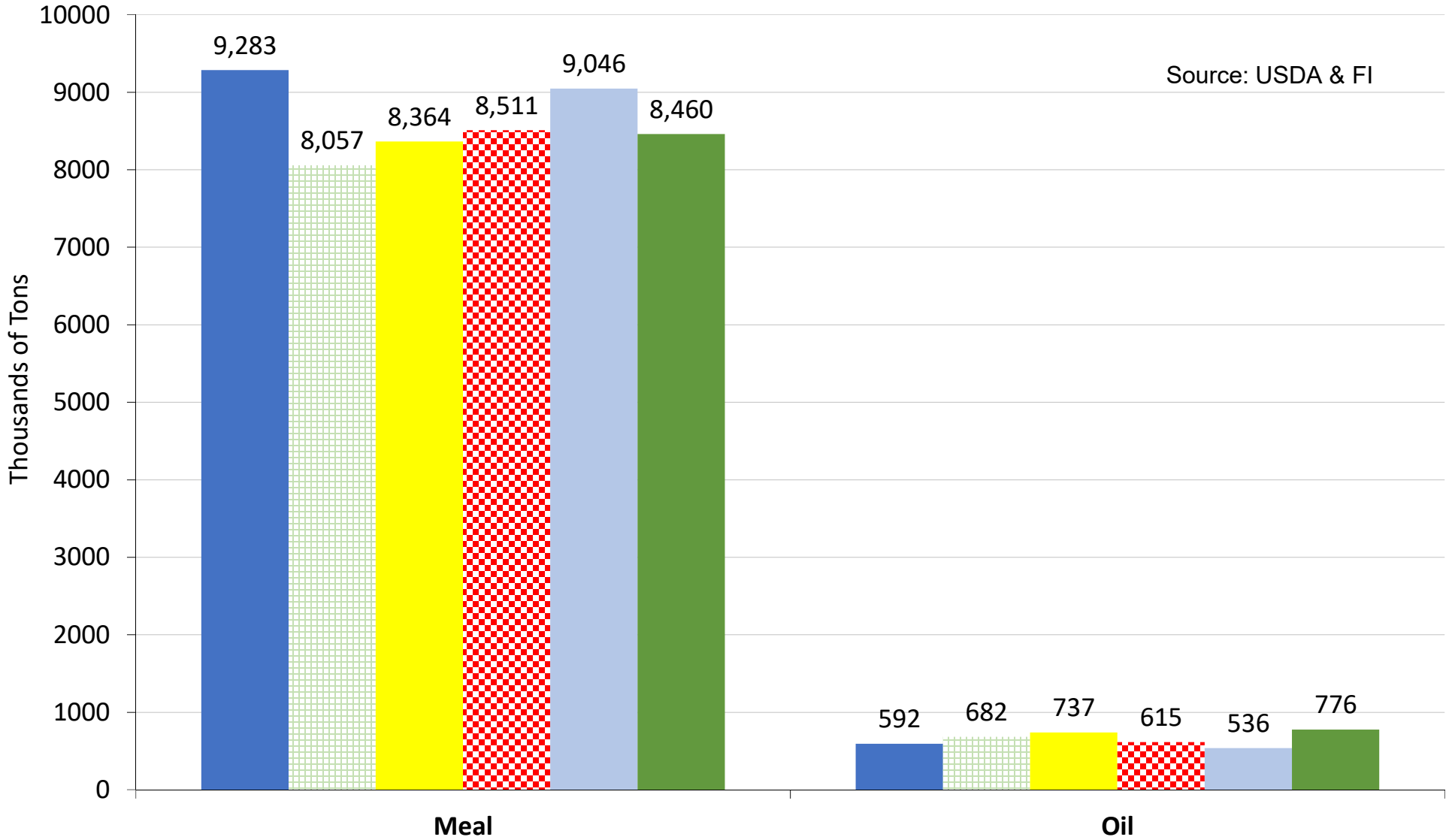
■ Accumulated Exports
 ■ Outstanding Sales
 —* 2018-19
 —■ 2017-18
 —x 2016-17

US soybean meal export commitments on or near 03/15/2020



Source: USDA & FI

Crop year to date US export sales



■ 2014-15 ■ 2015-16 ■ 2016-17 ■ 2017-18 ■ 2018-19 ■ 2019-20

Disclaimer

TO CLIENTS/PROSPECTS OF FUTURES INTERNATIONAL, SEE RISK DISCLOSURE BELOW:

THIS COMMUNICATION IS CONVEYED AS A SOLICITATION FOR ENTERING INTO A DERIVATIVES TRANSACTION.

Any trading recommendations and market or other information to Customer by Futures International (FI), although based upon information obtained from sources believed by FI to be reliable may not be accurate and may be changed without notice to customer. FI makes no guarantee as to the accuracy or completeness of any of the information or recommendations furnished to Customer. Customer understands that FI, its managers, employees and/or affiliates may have a position in commodity futures, options or other derivatives which may not be consistent with the recommendations furnished by FI to Customer.

The risk of trading futures and options and other derivatives involves a substantial risk of loss and is not suitable for all persons. In purchasing an option, the risk is limited to the premium paid, and all commissions and fees involved with the trade. When an option is shorted or written, the writer of the option has unlimited risk with respect to the option written. The use of options strategies such as a straddles and strangles involve multiple option positions and may substantially increase the amount of commissions and fees paid to execute the strategy. Option prices do not necessarily move in tandem with cash or futures prices. Each person must consider whether a particular trade, combination of trades or strategy is suitable for that person's financial means and objectives.

This material may include discussions of seasonal patterns, however, futures prices have already factored in the seasonal aspects of supply and demand, and seasonal patterns are no indication of future market trends. Finally, past performance is not indicative of future results.

This communication may contain links to third party websites which are not under the control of FI and FI is not responsible for their content. Products and services are offered only in jurisdictions where solicitation and sale are lawful, and in accordance with applicable laws and regulations in each such jurisdiction.