

CFTC COMMITMENT OF TRADERS REPORT

As of 6/15/2021

TRADITIONAL FUNDS net position changes

Wed to Tue, in 000 contracts

	Corn	Bean	Meal	Oil	Chi. Wheat	KC Wheat	Min Wheat
Futures Only	(27.1)	(21.3)	(6.7)	(15.3)	(4.7)	(2.9)	1.5
Futures & Options Combined	(21.8)	(36.2)	(9.5)	(16.8)	(7.1)	(3.9)	1.7

TRADITIONAL COMMERCIAL net position changes

	Corn	Bean	Meal	Oil	Chi. Wheat	KC Wheat	Min Wheat
Futures Only	33.3	28.3	7.0	17.8	6.4	5.9	(0.4)
Futures & Options Combined	39.6	48.2	11.1	19.1	8.8	7.1	(0.5)

MANAGED MONEY net position changes

	Corn	Bean	Meal	Oil	Chi. Wheat	KC Wheat	Min Wheat
Futures Only	(22.6)	(27.6)	(7.7)	(13.0)	(6.9)	(2.4)	1.7
Futures & Options Combined	(22.9)	(34.0)	(7.6)	(14.1)	(7.0)	(2.2)	1.7

SWAP DEALERS net position changes

	Corn	Bean	Meal	Oil	Chi. Wheat	KC Wheat	Min Wheat
Futures Only	(0.7)	1.2	2.8	4.7	(0.6)	1.7	(0.6)
Futures & Options Combined	3.6	1.3	3.6	3.7	0.1	1.9	(0.6)

PRODUCERS/END USERS net position changes

	Corn	Bean	Meal	Oil	Chi. Wheat	KC Wheat	Min Wheat
Futures Only	33.9	27.1	4.2	13.0	7.1	4.2	0.1
Futures & Options Combined	36.0	46.9	7.4	15.4	8.7	5.2	0.1

INDEX net position changes

	Corn	Bean	Meal	Oil	Chi. Wheat	KC Wheat	Min Wheat
Futures & Options Combined	6.0	0.0	1.9	(1.4)	2.4	(0.3)	NA

SUPPLEMENTAL NON-COMMERCIAL net position changes

	Corn	Bean	Meal	Oil	Chi. Wheat	KC Wheat	Min Wheat
Futures & Options Combined	(23.5)	(33.4)	(10.2)	(14.3)	(8.3)	(3.1)	NA

OPEN INTEREST net position changes

Wed to Tue, in 000 contracts

	Corn	Bean	Meal	Oil	Chi. Wheat	KC Wheat	Min Wheat
Futures Only	(4.6)	(23.0)	3.4	3.3	12.0	(5.6)	0.0
Futures & Options Combined	(20.2)	(29.9)	5.5	(5.1)	7.9	(5.1)	(0.5)

Source: CFTC and FI

Wed to Tue, in 000 contracts

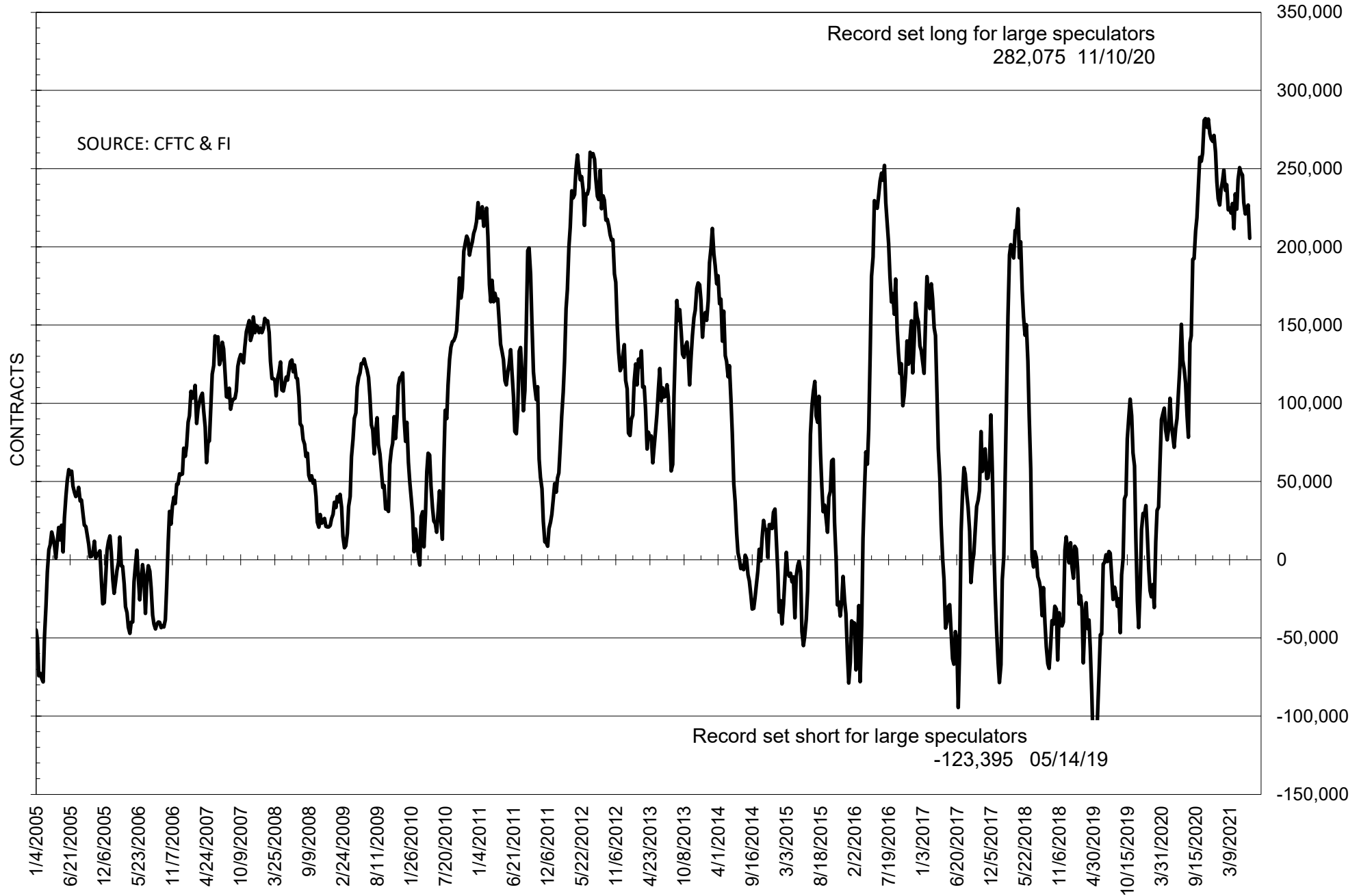
**COMMITMENT OF TRADERS
FUTURES ONLY NET POSITIONS
AS OF 06/15/2021
(IN THOUSAND CONTRACTS)**

	COMMERCIAL				(FUND) NON COMMERCIAL				(SPEC) NON-REPORTABLE			
	15-Jun	8-Jun	1-Jun	25-May	15-Jun	8-Jun	1-Jun	25-May	15-Jun	8-Jun	1-Jun	25-May
	WHEAT											
Chicago	-6.2	-12.7	-8.6	-6.4	13.9	18.6	18.8	18.4	-7.7	-5.9	-10.2	-12.1
Kansas City	-12.5	-18.5	-16.2	-18.9	16.8	19.8	19.3	24.3	-4.3	-1.3	-3.1	-5.3
Minneapolis	-25.2	-24.7	-23.7	-21.3	18.0	16.4	16.1	17.5	7.2	8.3	7.6	3.8
All Wheat	-44.0	-55.9	-48.4	-46.6	48.8	54.8	54.2	60.2	-4.8	1.1	-5.8	-13.6
CORN	-348.9	-382.2	-405.1	-379.5	401.4	428.4	452.4	428.4	-52.5	-46.3	-47.3	-49.0
OATS	-1.9	-2.1	-1.8	-1.7	0.9	0.8	0.6	0.7	1.0	1.3	1.2	1.0
SOYBEANS	-194.3	-222.6	-213.5	-204.4	205.4	226.7	224.1	221.1	-11.1	-4.1	-10.6	-16.6
SOY OIL	-83.4	-101.2	-107.2	-102.7	68.6	83.9	89.2	87.2	14.9	17.3	18.0	15.5
SOY MEAL	-76.4	-83.4	-80.7	-86.7	53.8	60.4	55.5	60.3	22.6	22.9	25.2	26.4

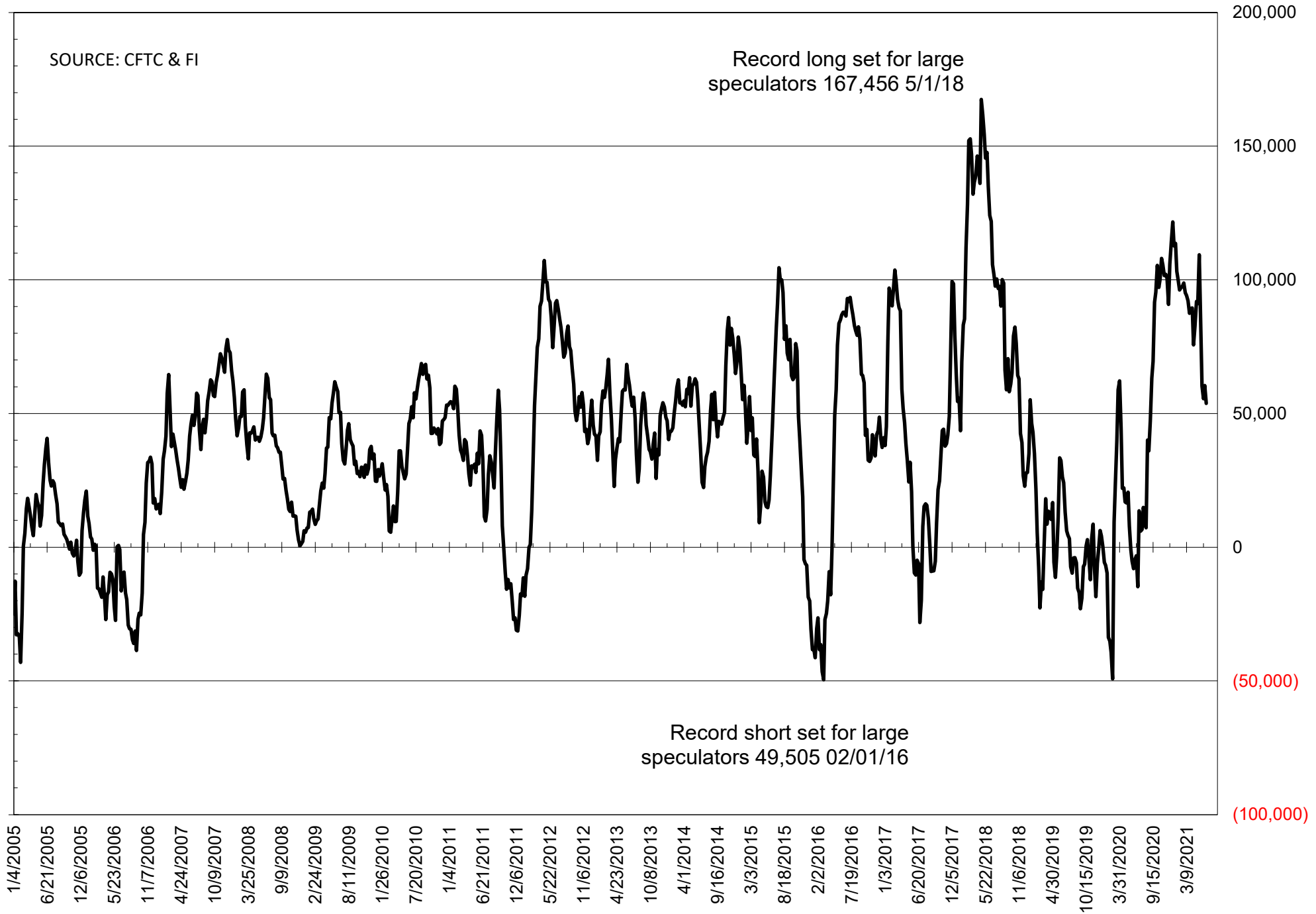
	TOTAL OPEN INTEREST				NEARBY FUTURES PRICE					15-Jun-21 LAST REPORTED % HELD BY TRADERS			
	15-Jun	8-Jun	1-Jun	25-May	N Latest	N 15-Jun	N 8-Jun	N 1-Jun	N 25-May	LARGE FUND		SMALL	
										LONG	SHORT	LONG	SHORT
WHEAT													
Chicago	422754	410761	397450	406006	661.50	661.50	685.00	693.50	656.50	0%	22%	0%	9%
Kansas City	203255	208861	221164	224190	599.75	612.75	632.50	637.50	604.50	0%	20%	0%	11%
Minneapolis	79933	79904	77370	77326	764.50	747.75	771.25	771.50	682.50	0%	3%	0%	14%
CORN	1723608	1728203	1735715	1720733	659.25	667.50	680.00	688.75	620.25	0%	6%	0%	11%
OATS	3821	4558	4242	4163	363.50	365.50	408.00	384.75	360.75	0%	7%	0%	19%
SOYBEANS	791507	814479	807816	804827	1415.00	1465.75	1580.00	1548.50	1511.75	33%	7%	7%	8%
SOY OIL	540026	536701	536541	510710	60.33	65.57	72.08	67.39	66.69	0%	7%	0%	5%
SOY MEAL	407483	404060	400535	403292	373.10	372.40	389.80	398.70	386.30	0%	8%	0%	7%

SOURCE: CFTC & FI

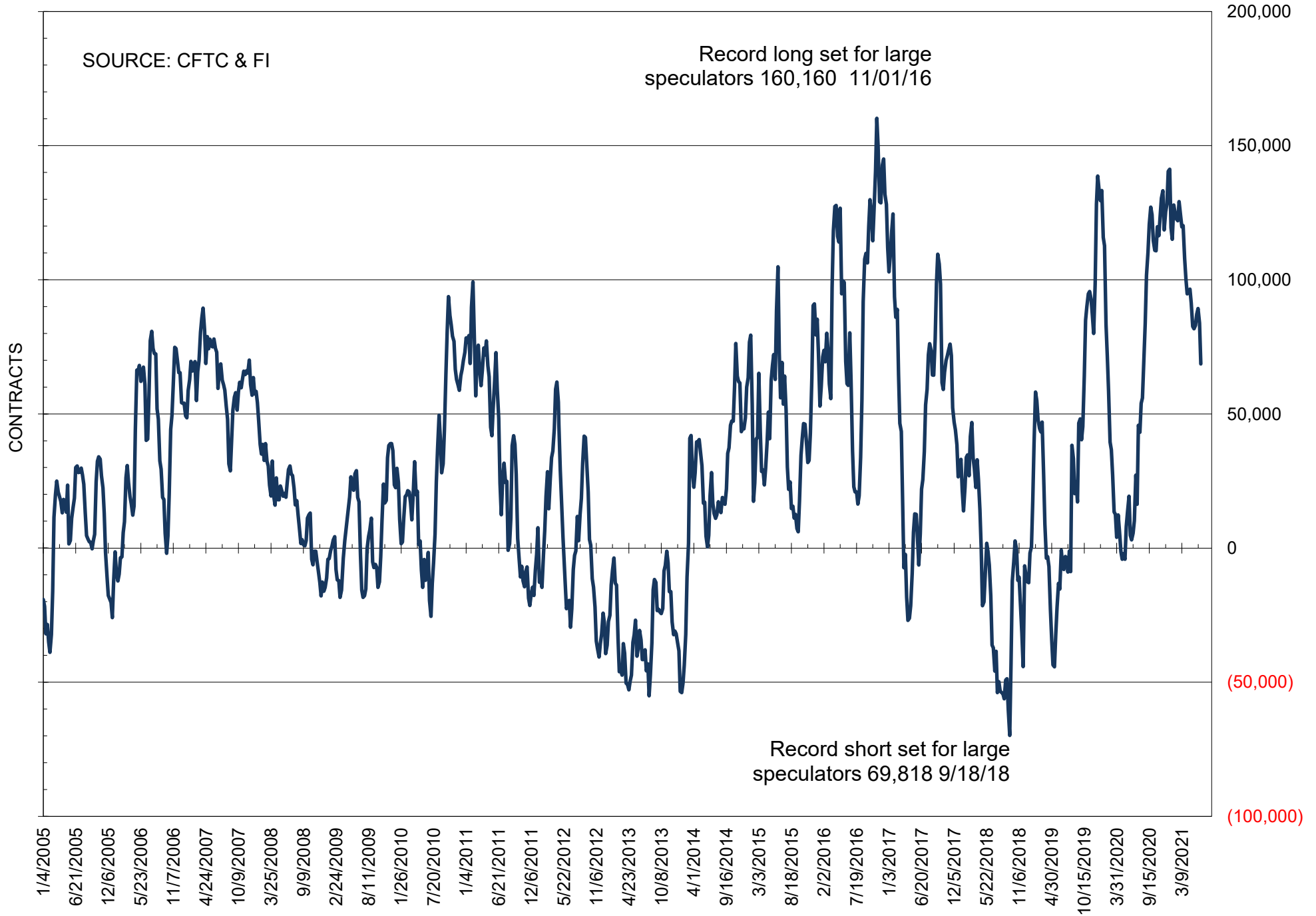
NET POSITION OF FUTURES ONLY LARGE SPECS IN SOYBEANS



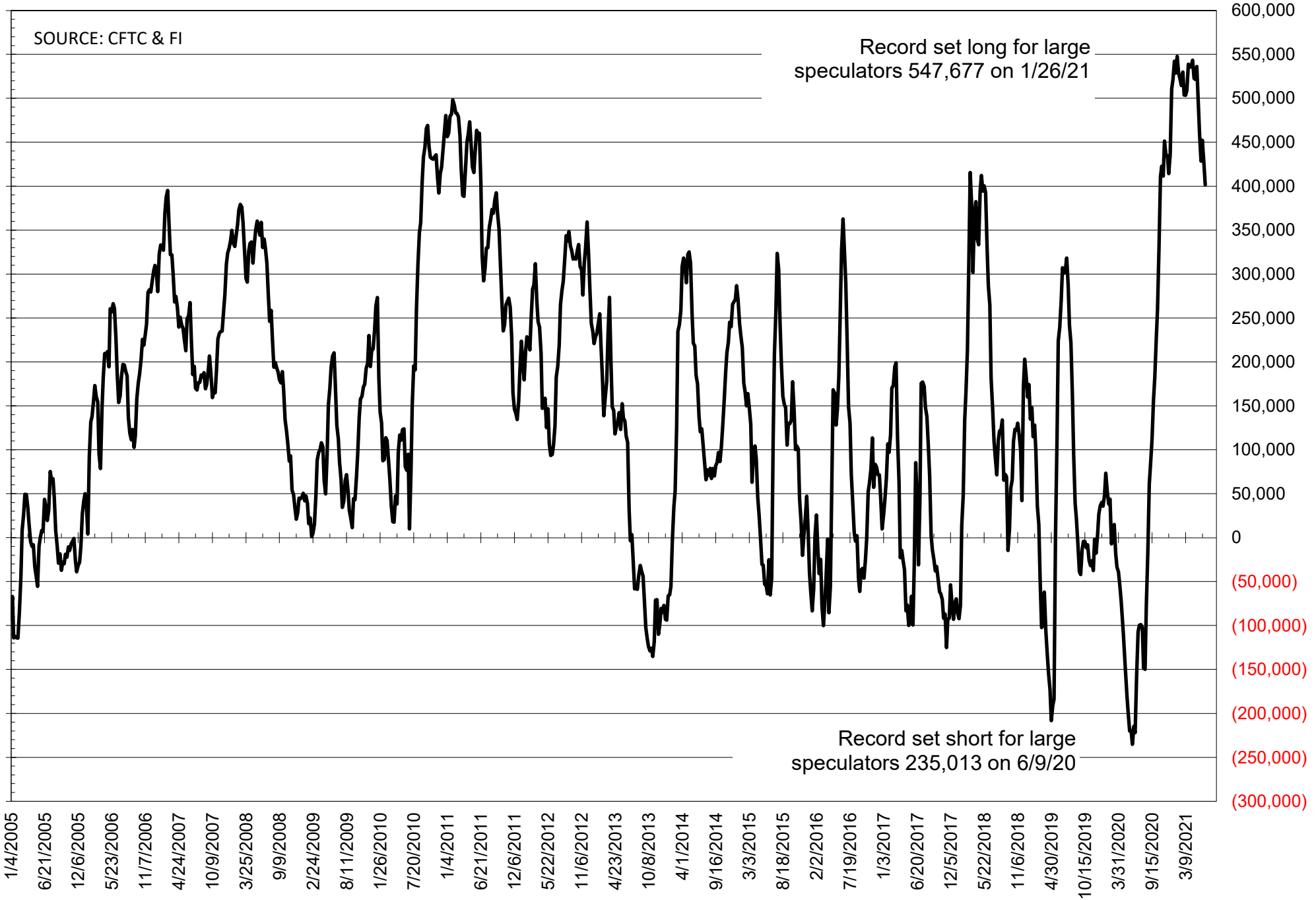
NET POSITION OF FUTURES ONLY LARGE SPECS IN SOYMEAL



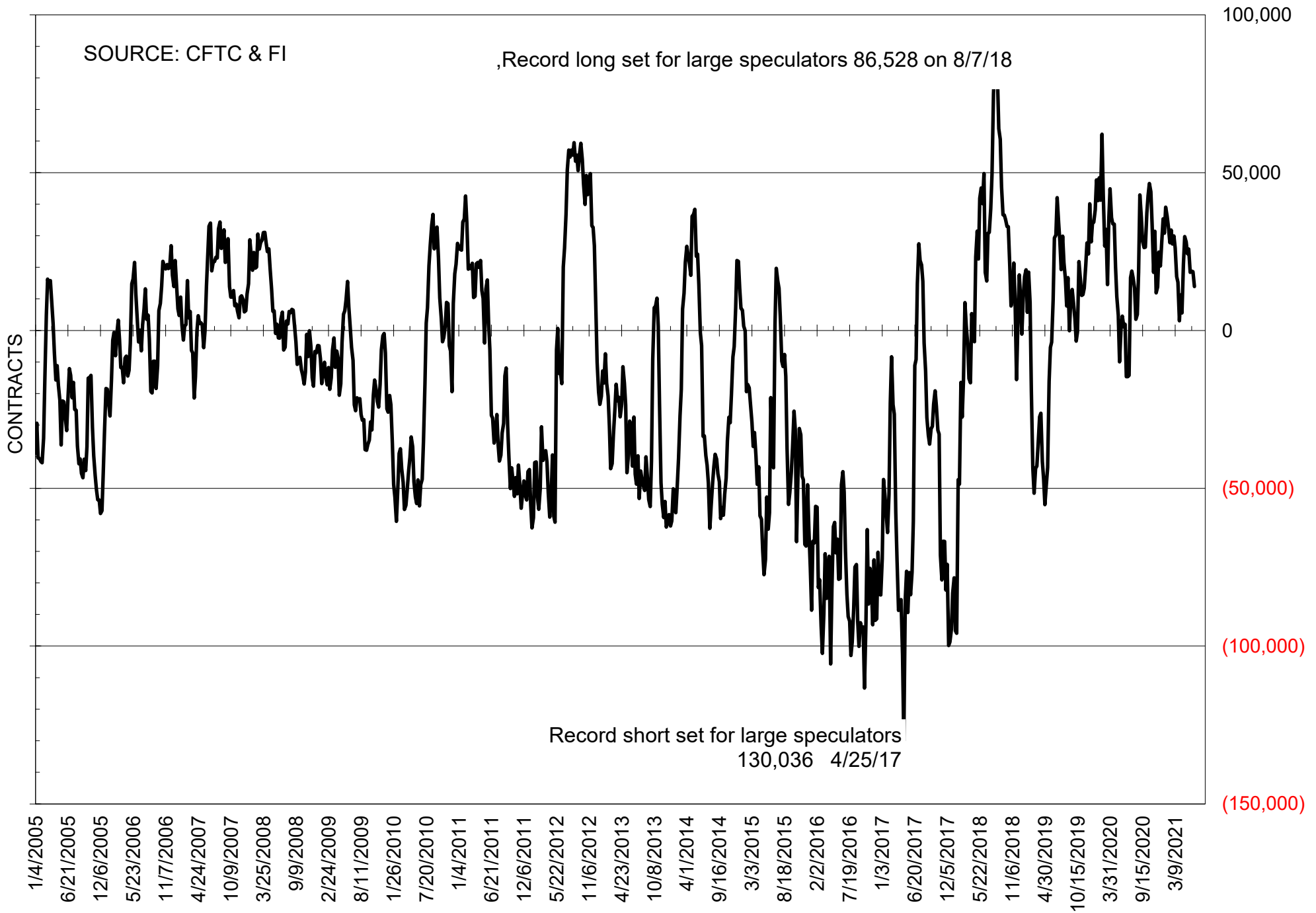
NET POSITION OF FUTURES ONLY LARGE SPECS IN SOYOIL



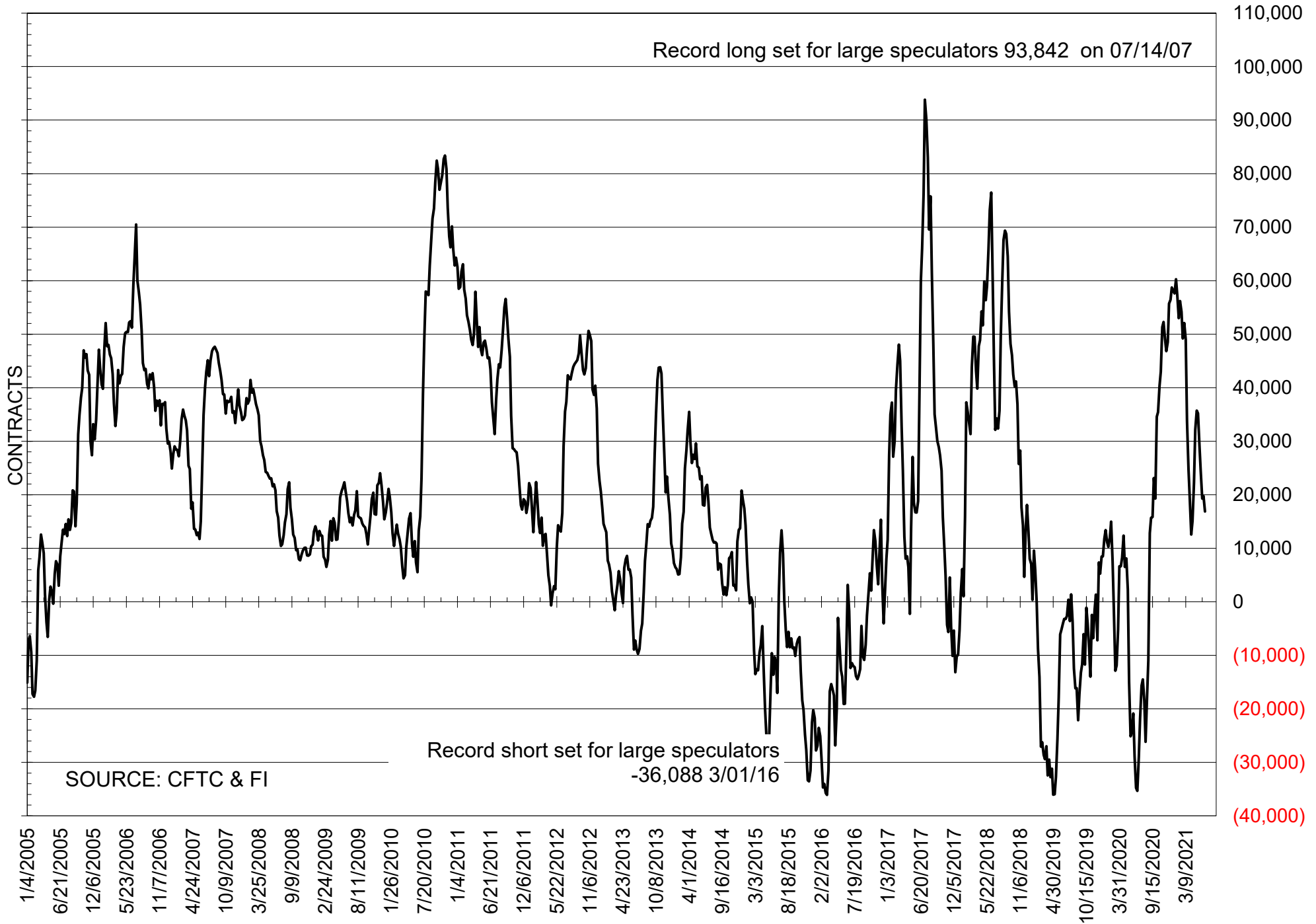
NET POSITION OF LARGE SPECULATORS IN CORN



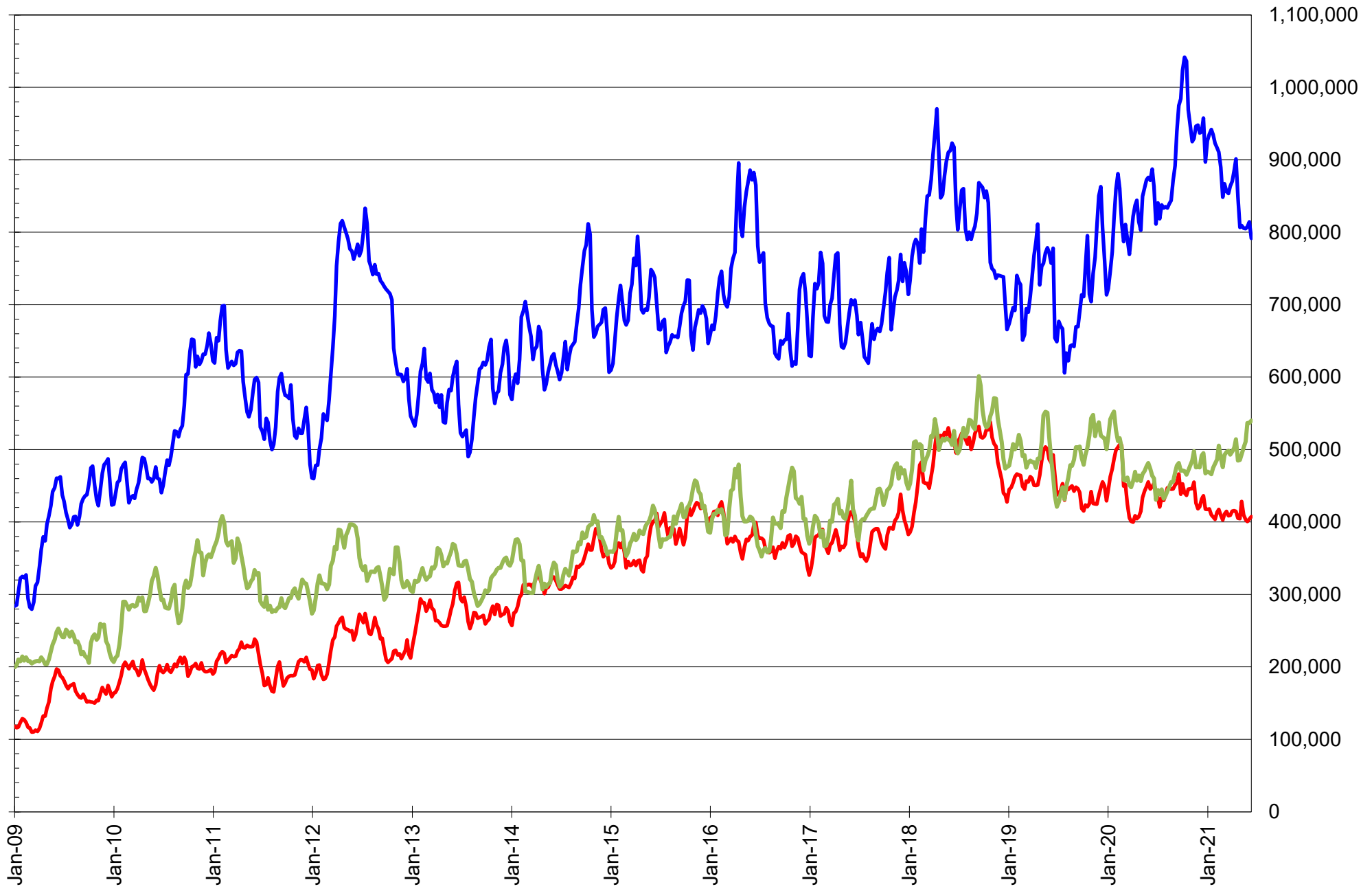
NET POSITION OF FUTURES ONLY LARGE SPECS IN CHICAGO WHEAT



NET POSITION OF LARGE SPECULATORS IN KANSAS CITY WHEAT



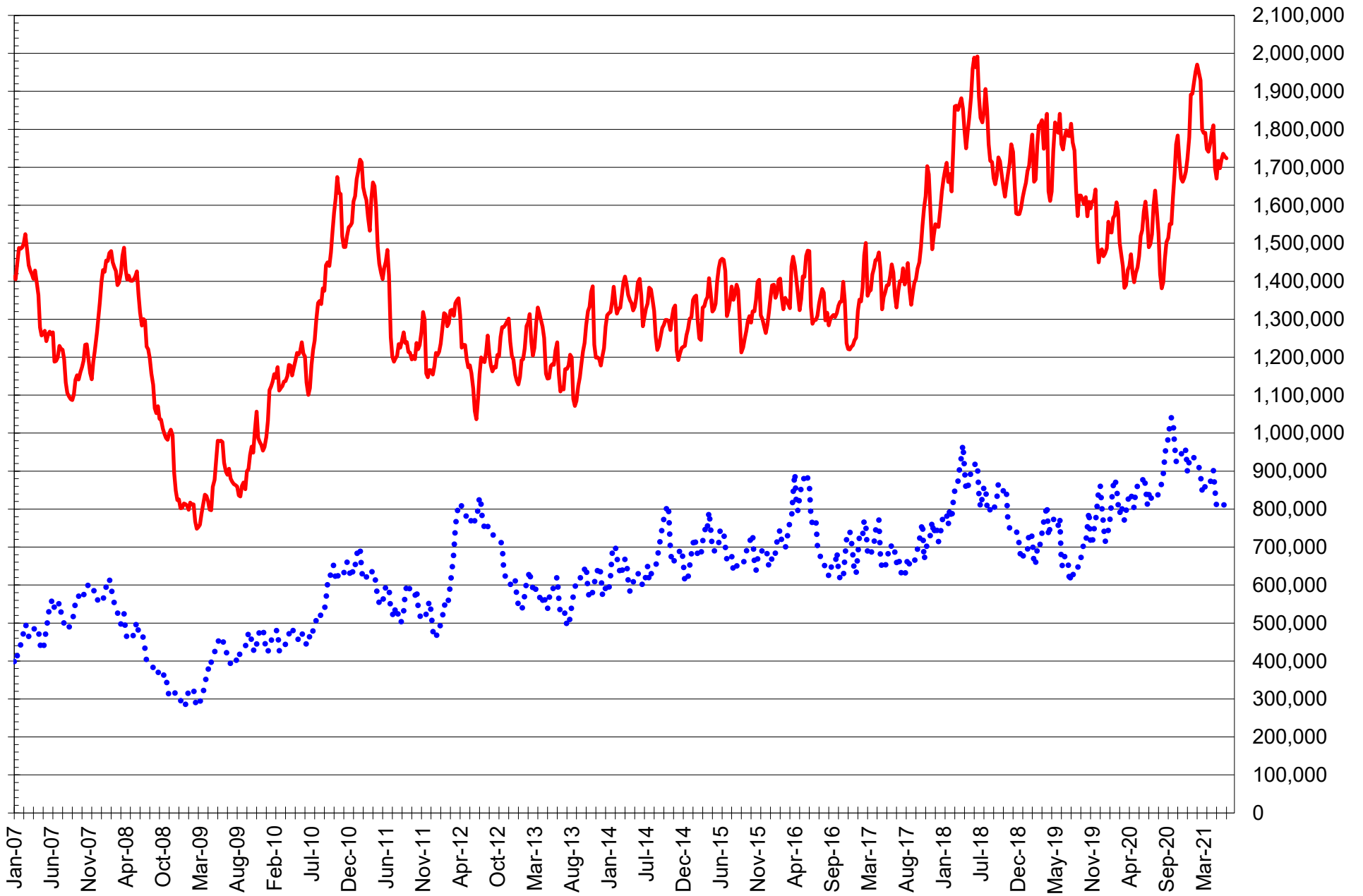
TOTAL OPEN INTEREST IN SOYBEANS, MEAL AND OIL, FUTURES ONLY



SOURCE: CFTC & FI

— SOYBEANS — SOYBEAN MEAL — SOYBEAN OIL

TOTAL OPEN INTEREST IN CORN AND SOYBEANS, FUTURES ONLY



SOURCE: CFTC & FI

— CORN

•••• SOYBEANS

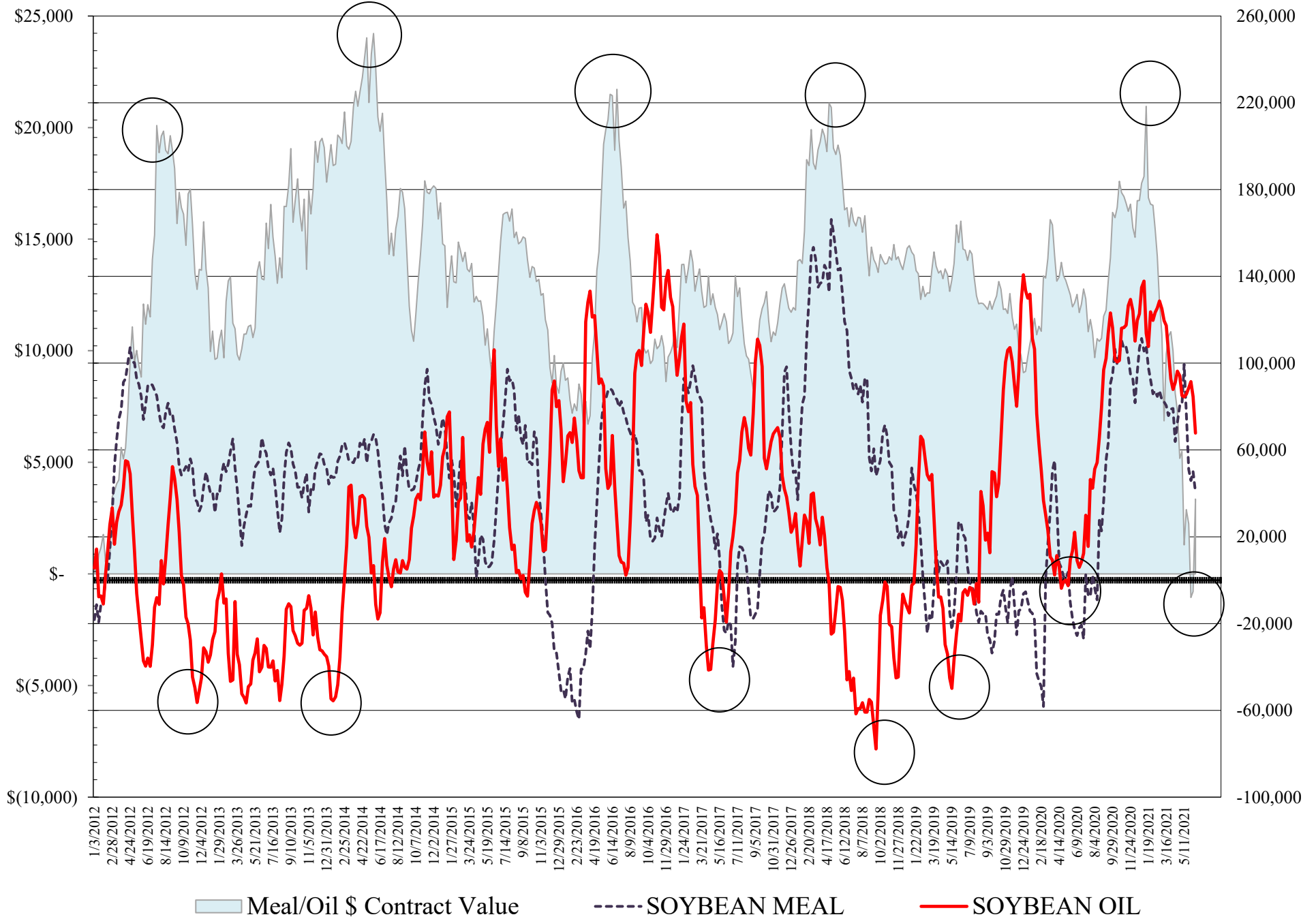
**COMMITMENT OF TRADERS
FUTURES & OPTIONS NET POSITIONS
AS OF 06/15/2021
(IN THOUSAND CONTRACTS)**

	COMMERCIAL				(FUND) NON COMMERCIAL				(SPEC) NON-REPORTABLE			
	15-Jun	8-Jun	1-Jun	25-May	15-Jun	8-Jun	1-Jun	25-May	15-Jun	8-Jun	1-Jun	25-May
	WHEAT											
Chicago	-1.1	-9.9	-6.8	-4.3	9.3	16.4	17.6	17.3	-8.2	-6.5	-10.9	-13.0
Kansas City	-9.8	-16.9	-14.5	-16.4	14.8	18.7	17.9	22.6	-5.0	-1.8	-3.4	-6.1
Minneapolis	-24.6	-24.1	-23.1	-21.0	16.4	14.8	14.5	16.7	8.2	9.3	8.6	4.4
All Wheat	-35.5	-50.9	-44.4	-41.7	40.6	49.9	50.0	56.5	-5.1	1.0	-5.7	-14.8
CORN	-328.2	-367.9	-383.3	-345.4	368.0	389.8	408.1	388.0	-39.8	-21.9	-24.8	-42.6
OATS	-1.9	-2.2	-1.9	-1.8	0.9	0.8	0.6	0.7	1.0	1.4	1.3	1.0
SOYBEANS	-121.4	-169.6	-157.1	-144.1	130.7	166.9	162.4	158.6	-9.3	2.7	-5.3	-14.5
SOY OIL	-82.9	-102.0	-109.2	-104.2	67.7	84.5	91.5	88.6	15.2	17.5	17.7	15.6
SOY MEAL	-67.0	-78.0	-76.6	-82.3	40.4	49.9	45.9	51.0	26.6	28.1	30.7	31.3

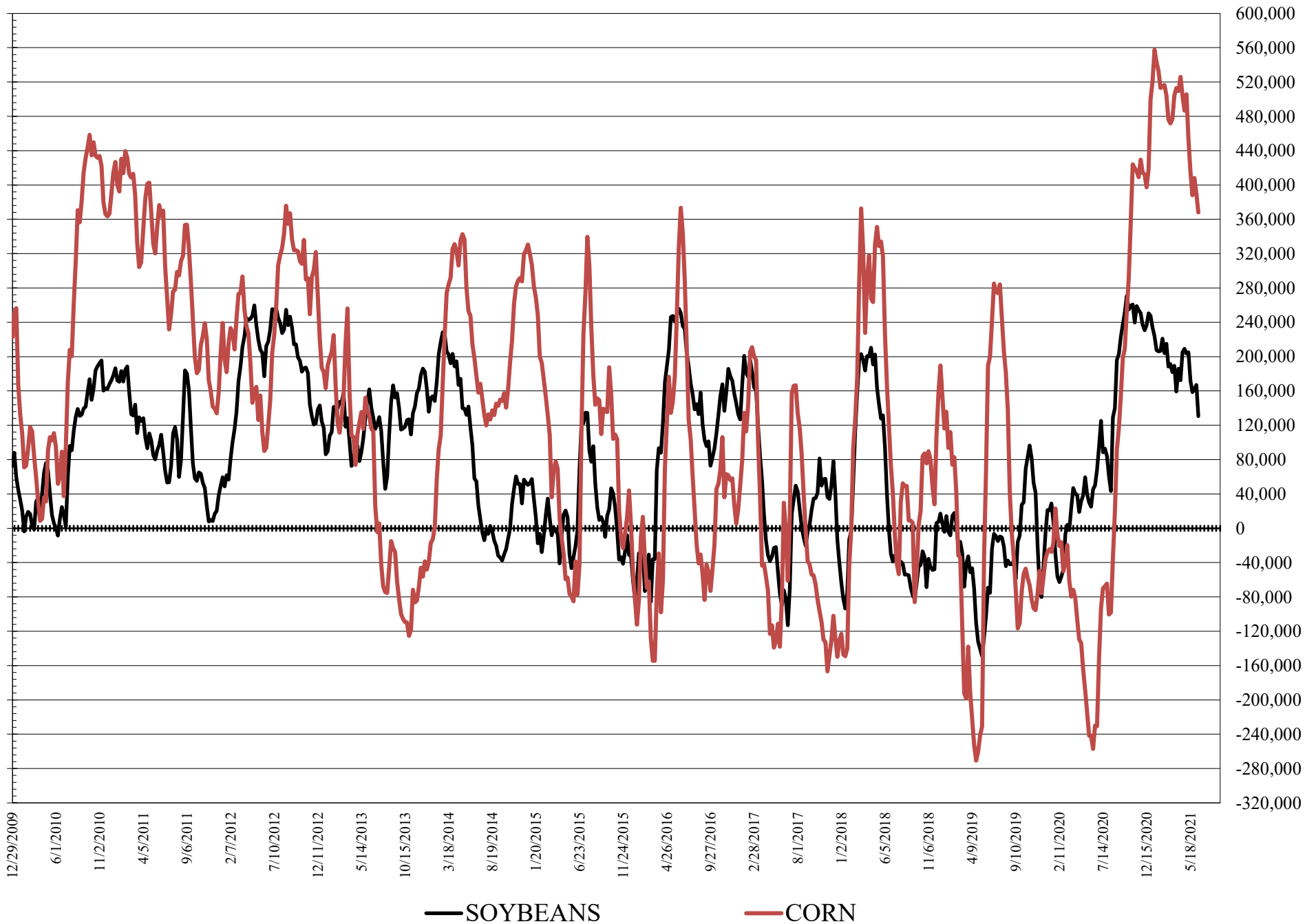
	TOTAL OPEN INTEREST				COMMERCIALS		% HELD BY TRADERS LARGE (FUNDS)		SMALL (NON-REP)	
	15-Jun	8-Jun	1-Jun	25-May	LONG	SHORT	LONG	SHORT	LONG	SHORT
	WHEAT									
Chicago	532,513	524,595	510,166	510,434	36%	37%	18%	16%	6%	8%
Kansas City	222,545	227,637	240,969	244,330	44%	48%	25%	18%	9%	11%
Minneapolis	88,059	88,510	85,185	82,931	44%	72%	21%	3%	23%	13%
CORN	2,538,875	2,559,044	2,527,672	2,433,267	43%	56%	17%	3%	8%	10%
OATS	3,924	4,679	4,325	4,239						
SOYBEANS	1,165,967	1,195,861	1,165,736	1,142,076	44%	54%	16%	4%	6%	7%
SOY OIL	662,386	667,461	650,311	619,928	47%	59%	16%	5%	7%	4%
SOY MEAL	468,746	463,283	457,200	456,909	51%	65%	16%	7%	12%	6%

SOURCE: CFTC & FI

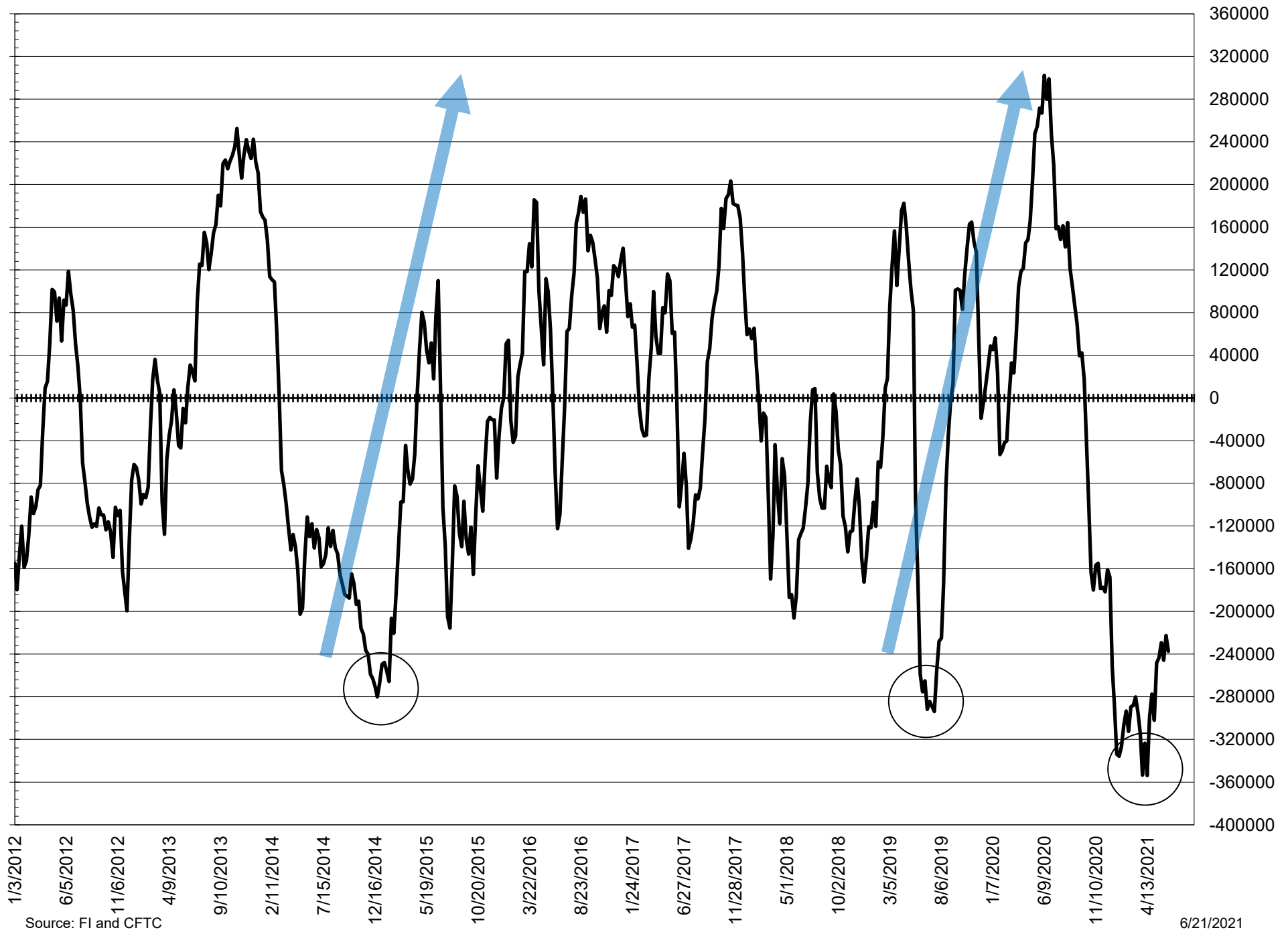
NET POSITION FUTURES AND OPTIONS OF LARGE SPECULATORS IN SOYBEAN MEAL AND SOYBEAN OIL



NET POSITION FUTURES AND OPTIONS OF LARGE SPECULATORS IN SOYBEANS AND CORN



NET POSITION FUTURES AND OPTIONS SPREAD OF LARGE SPECULATORS IN SOYBEANS MINUS CORN



Source: FI and CFTC

6/21/2021

**DISAGGREGATED COMMITMENT OF TRADERS
FUTURES ONLY NET POSITIONS
AS OF 06/15/2021
(IN THOUSAND CONTRACTS)**

	PRODUCER / MERCHANT / PROCESSOR / USER				(INDEX/ETF) SWAP DEALERS				(CTA/CPO/OTHER UNREGISTERED) MANAGED MONEY			
	15-Jun	8-Jun	1-Jun	25-May	15-Jun	8-Jun	1-Jun	25-May	15-Jun	8-Jun	1-Jun	25-May
	WHEAT											
Chicago	(82.9)	(90.0)	(91.9)	(90.1)	76.7	77.3	83.3	83.8	(16.2)	(9.3)	(4.8)	(2.5)
Kansas City	(55.8)	(60.0)	(59.2)	(62.6)	43.2	41.5	43.0	43.7	16.6	19.0	18.4	23.3
Minneapolis	(28.5)	(28.6)	(27.5)	(25.7)	3.3	3.9	3.8	4.4	15.3	13.6	13.5	14.7
All Wheat	(167.2)	(178.6)	(178.6)	(178.4)	123.2	122.7	130.2	131.9	15.7	23.3	27.1	35.4
CORN	(606.2)	(640.1)	(666.5)	(640.2)	257.2	257.9	261.5	260.8	254.9	277.6	290.1	268.8
OATS	(2.0)	(2.3)	(2.0)	(1.9)	0.1	0.1	0.2	0.1	(0.0)	0.0	(0.1)	(0.0)
SOYBEANS	(266.0)	(293.1)	(287.9)	(284.3)	71.7	70.5	74.5	79.8	102.2	129.9	129.9	133.7
SOY OIL	(196.4)	(209.4)	(216.9)	(213.3)	112.9	108.2	109.7	110.6	67.3	80.3	85.0	83.9
SOY MEAL	(162.9)	(167.1)	(162.9)	(166.6)	86.5	83.7	82.2	79.9	18.3	26.0	20.4	24.5

	Managed % of OI			
Chicago W	-4%	-2%	-1%	-1%
Corn	15%	16%	17%	16%

	TOTAL OPEN INTEREST				OTHER REPORTABLE				NON REPORTABLE			
	15-Jun	8-Jun	1-Jun	25-May	15-Jun	8-Jun	1-Jun	25-May	15-Jun	8-Jun	1-Jun	25-May
	WHEAT											
Chicago	422,754	410,761	397,450	406,006	30.2	27.9	23.6	20.9	(7.7)	(5.9)	(10.2)	(12.1)
Kansas City	203,255	208,861	221,164	224,190	0.2	0.8	0.9	1.0	(4.3)	(1.3)	(3.1)	(5.3)
Minneapolis	79,933	79,904	77,370	77,326	2.7	2.8	2.7	2.9	7.2	8.3	7.6	3.8
All Wheat	705,942	699,526	695,984	707,522	33.1	31.5	27.1	24.8	(4.8)	1.1	(5.8)	(13.6)
CORN	1,723,608	1,728,203	1,735,715	1,720,733	146.5	150.9	162.3	159.7	(52.5)	(46.3)	(47.3)	(49.0)
OATS	3,821	4,558	4,242	4,163	0.9	0.8	0.7	0.7	1.0	1.3	1.2	1.0
SOYBEANS	791,507	814,479	807,816	804,827	103.2	96.8	94.2	87.4	(11.1)	(4.1)	(10.6)	(16.6)
SOY OIL	540,026	536,701	536,541	510,710	1.3	3.6	4.2	3.3	14.9	17.3	18.0	15.5
SOY MEAL	407,483	404,060	400,535	403,292	35.5	34.4	35.2	35.7	22.6	22.9	25.2	26.4

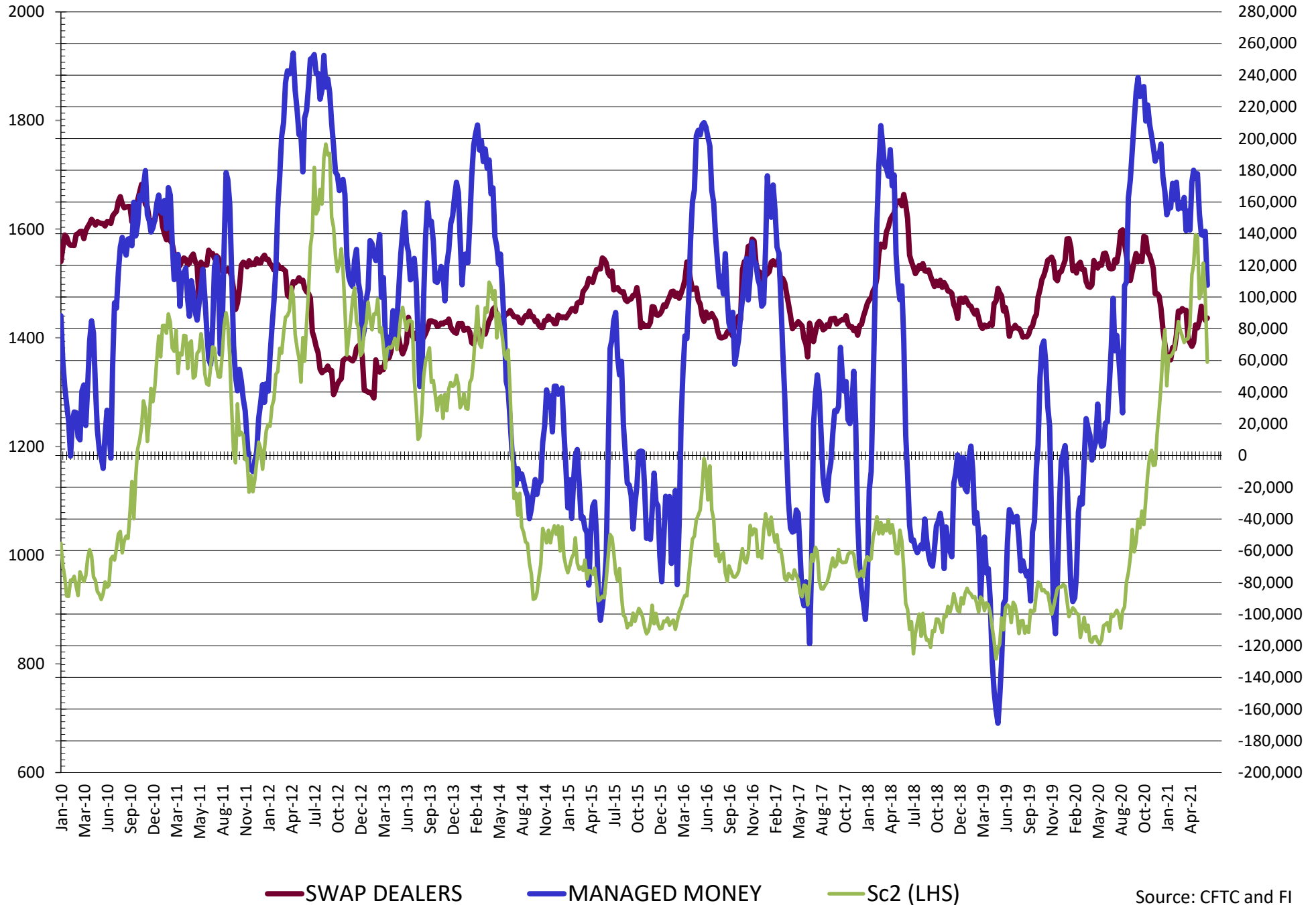
SOURCE: CFTC & FI

**DISAGGREGATED COMMITMENT OF TRADERS
FUTURES & OPTIONS NET POSITIONS
AS OF 06/15/2021
(IN THOUSAND CONTRACTS)**

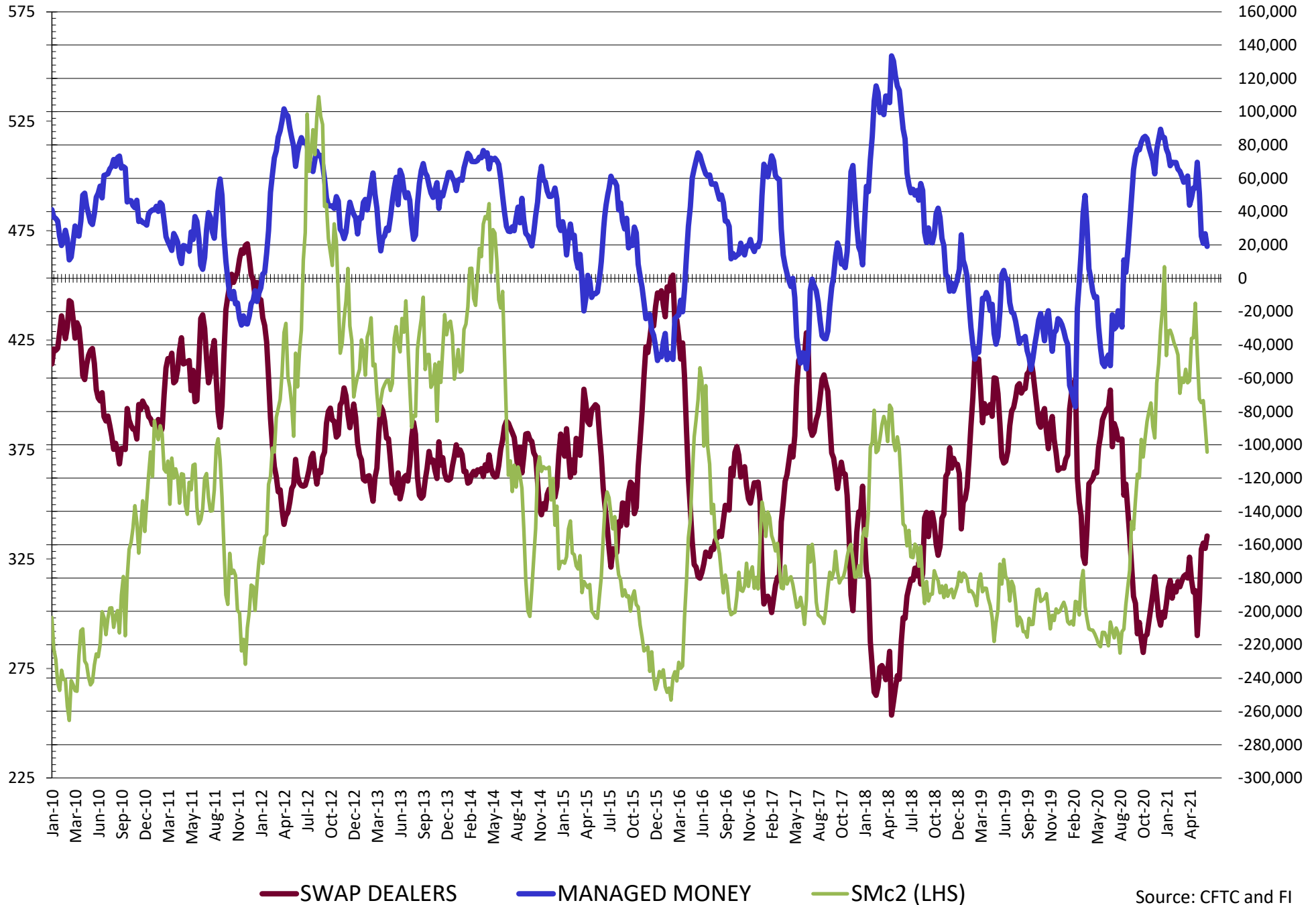
	PRODUCER / MERCHANT / PROCESSOR / USER				(INDEX/ETF) SWAP DEALERS				(CTA/CPO/OTHER UNREGISTERED) MANAGED MONEY			
	15-Jun	8-Jun	1-Jun	25-May	15-Jun	8-Jun	1-Jun	25-May	15-Jun	8-Jun	1-Jun	25-May
	WHEAT											
Chicago	(77.8)	(86.5)	(89.7)	(88.0)	76.8	76.6	83.0	83.8	(8.4)	(1.4)	3.2	4.5
Kansas City	(52.9)	(58.1)	(57.1)	(60.2)	43.1	41.2	42.6	43.8	17.5	19.7	19.1	23.5
Minneapolis	(27.9)	(28.0)	(26.8)	(25.4)	3.3	3.9	3.7	4.4	15.3	13.6	13.5	14.7
All Wheat	(158.7)	(172.7)	(173.7)	(173.6)	123.1	121.8	129.3	131.9	24.4	31.9	35.8	42.7
CORN	(567.7)	(603.7)	(628.3)	(594.3)	239.4	235.8	245.0	248.9	252.7	275.6	289.9	268.1
OATS	(2.0)	(2.3)	(2.1)	(1.9)	0.1	0.1	0.2	0.1	(0.0)	0.0	(0.1)	(0.0)
SOYBEANS	(208.1)	(255.0)	(246.3)	(238.3)	86.8	85.4	89.2	94.2	107.5	141.5	138.8	139.4
SOY OIL	(201.1)	(216.4)	(223.7)	(219.5)	118.1	114.4	114.5	115.3	67.2	81.3	86.1	85.3
SOY MEAL	(154.8)	(162.2)	(159.0)	(162.8)	87.8	84.2	82.4	80.5	19.1	26.7	20.9	25.2
	TOTAL				OTHER REPORTABLE				NON REPORTABLE			
	OPEN INTEREST											
	15-Jun	8-Jun	1-Jun	25-May	15-Jun	8-Jun	1-Jun	25-May	15-Jun	8-Jun	1-Jun	25-May
WHEAT												
Chicago	532,513	524,595	510,166	510,434	17.7	17.8	14.4	12.8	(8.2)	(6.5)	(10.9)	(13.0)
Kansas City	222,545	227,637	240,969	244,330	(2.7)	(1.0)	(1.2)	(0.9)	(5.0)	(1.8)	(3.4)	(6.1)
Minneapolis	88,059	88,510	85,185	82,931	1.1	1.2	1.1	2.0	8.2	9.3	8.6	4.4
All Wheat	843,117	840,742	836,320	837,695	16.2	18.0	14.3	13.8	(5.1)	1.0	(5.7)	(14.8)
CORN	2,538,875	2,559,044	2,527,672	2,433,267	115.3	114.2	118.2	119.9	(39.8)	(21.9)	(21.9)	(21.9)
OATS	3,924	4,679	4,325	4,239	0.9	0.8	0.7	0.7	1.0	1.4	1.3	1.0
SOYBEANS	1,165,967	1,195,861	1,165,736	1,142,076	23.2	25.5	23.6	19.2	(9.3)	2.7	(5.3)	(14.5)
SOY OIL	662,386	667,461	650,311	619,928	0.5	3.2	5.4	3.3	15.2	17.5	17.7	15.6
SOY MEAL	468,746	463,283	457,200	456,909	21.3	23.2	25.0	25.7	26.6	28.1	30.7	31.3

SOURCE: CFTC & FI

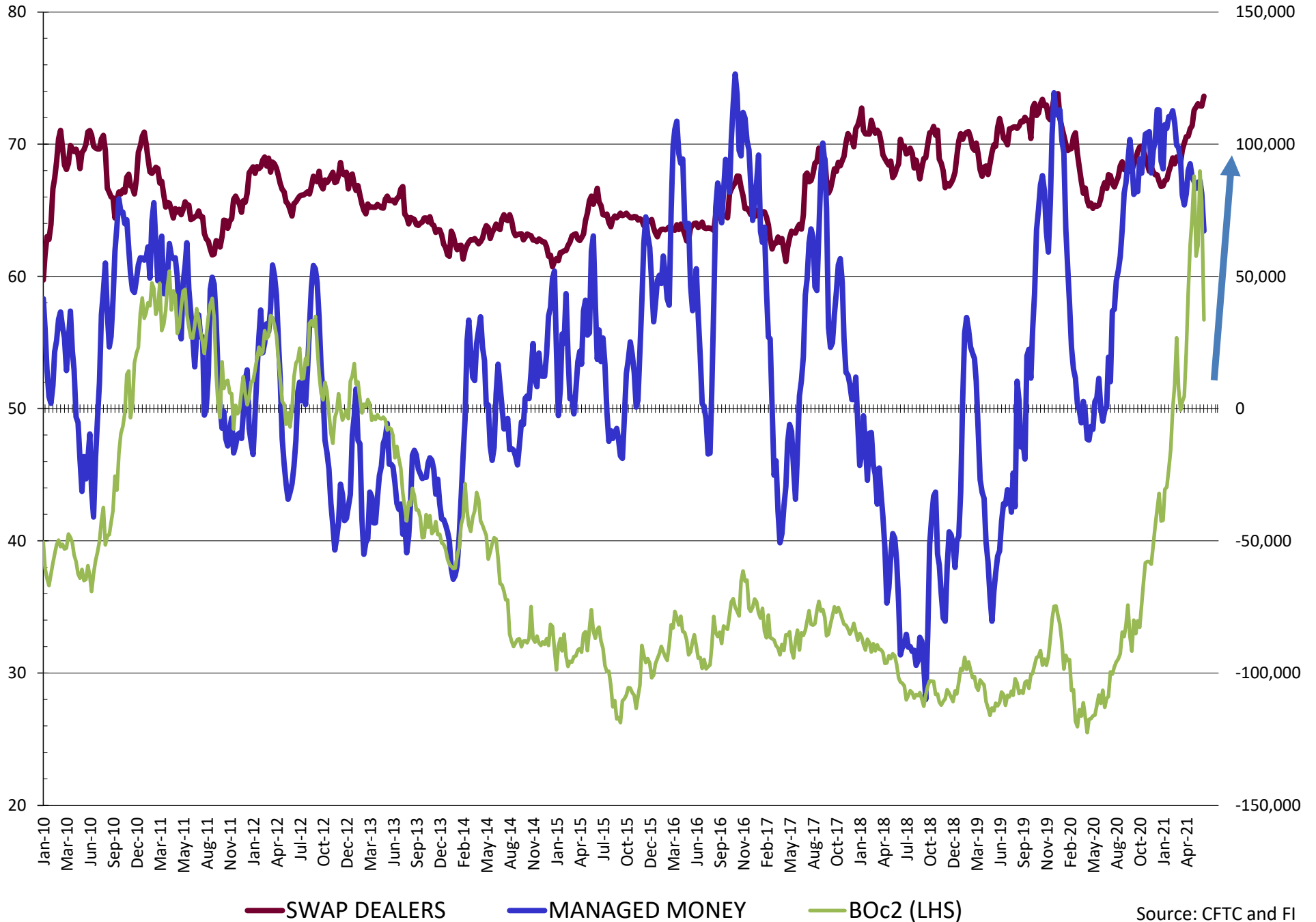
NET POSITION FUTURES AND OPTIONS OF SWAP AND MANAGED FUNDS IN SOYBEANS



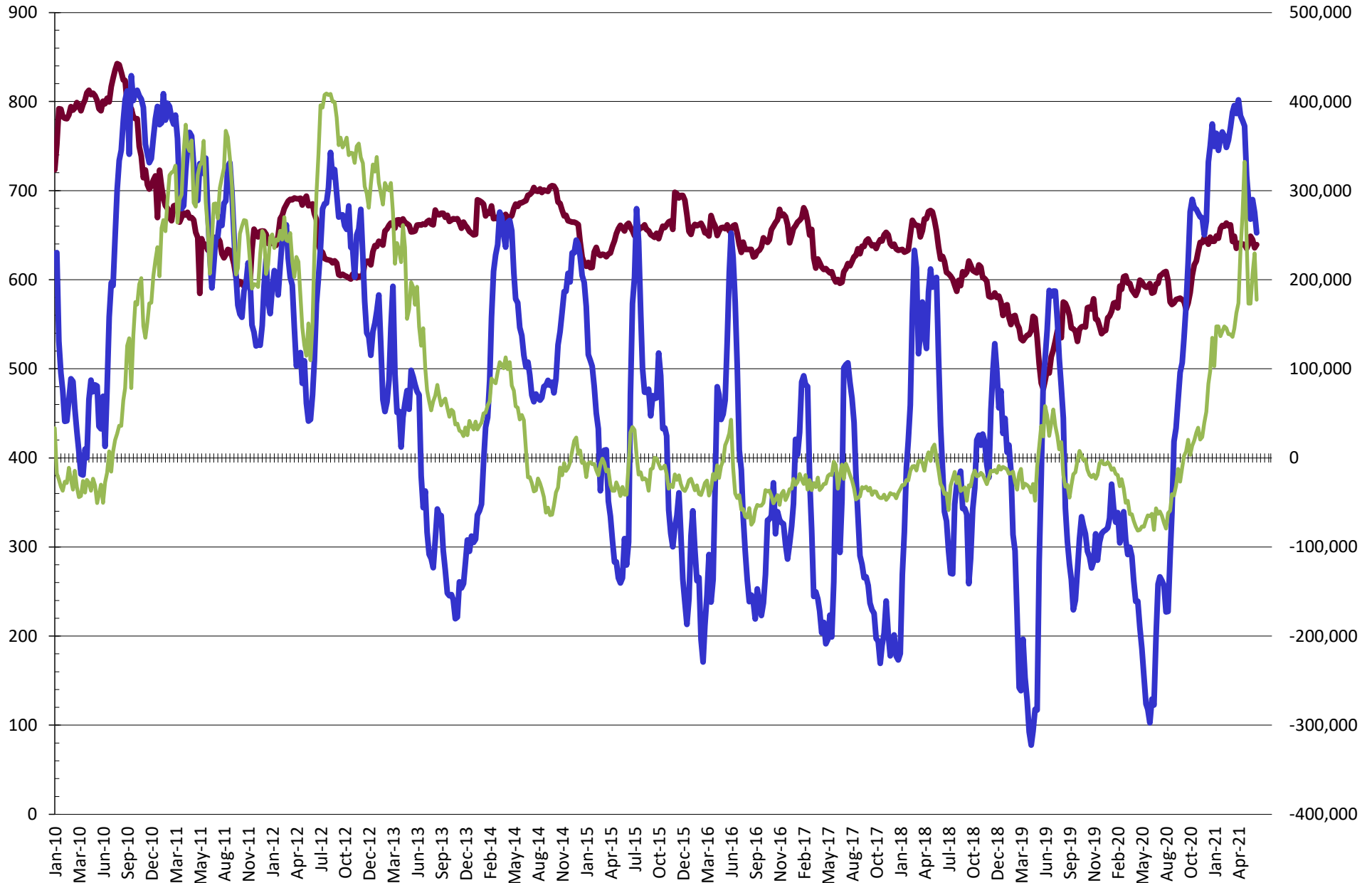
NET POSITION FUTURES AND OPTIONS OF SWAP AND MANAGED FUNDS IN SOYBEAN MEAL



NET POSITION FUTURES AND OPTIONS OF SWAP AND MANAGED FUNDS IN SOYBEAN OIL



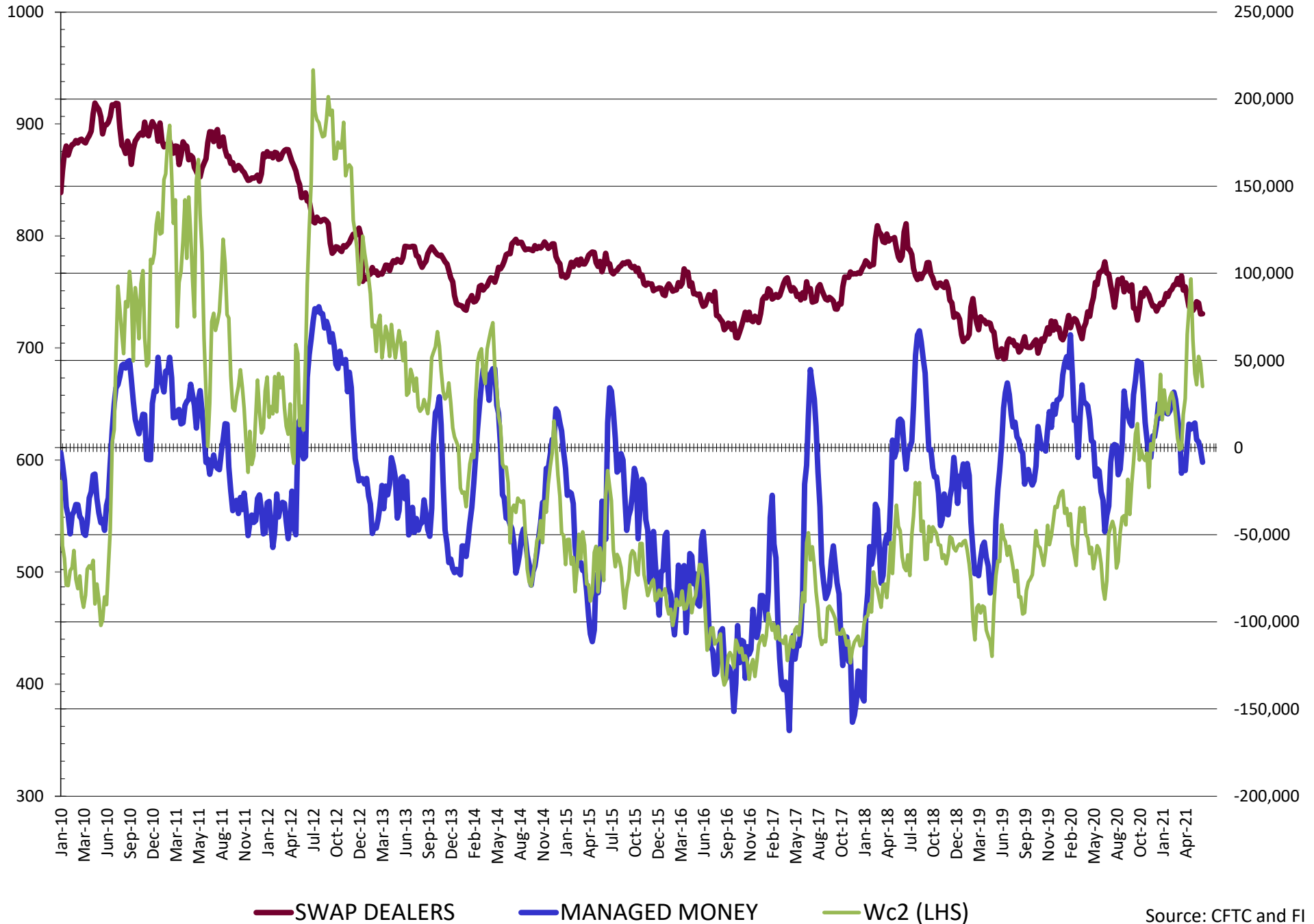
NET POSITION FUTURES AND OPTIONS OF SWAP AND MANAGED FUNDS IN CORN



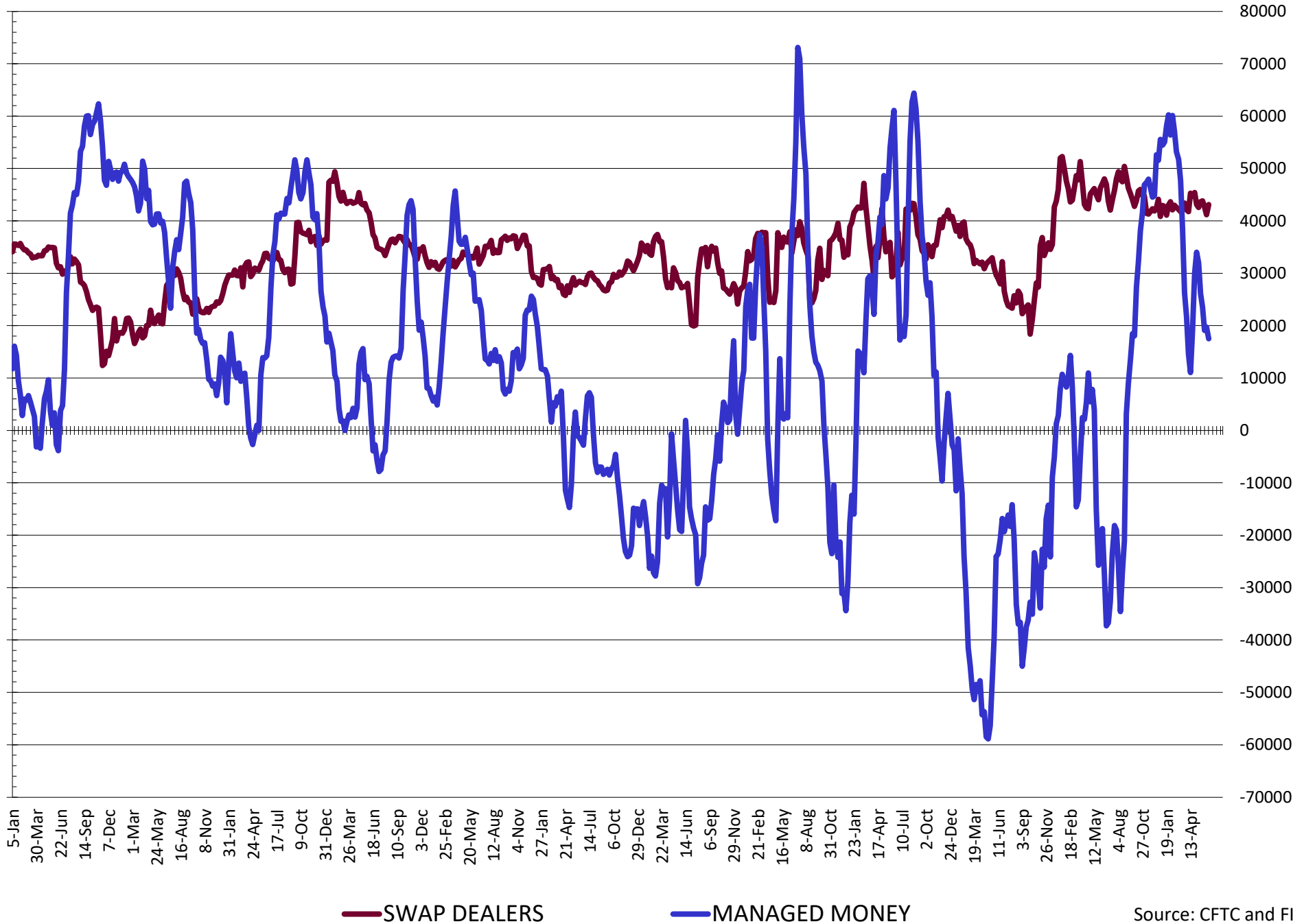
— SWAP DEALERS
 — MANAGED MONEY
 — Cc2 (LHS)

Source: CFTC and FI
6/21/2021

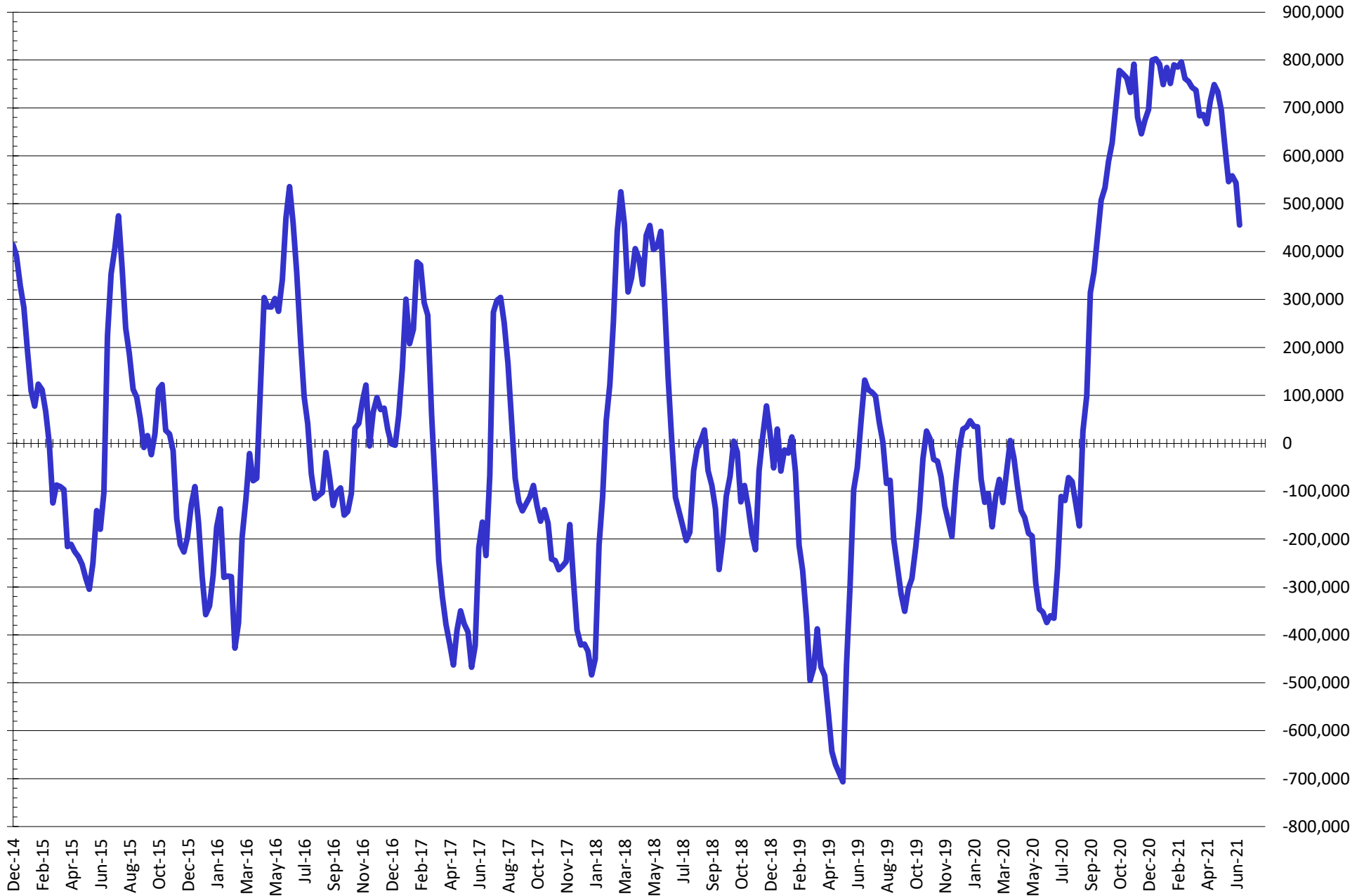
NET POSITION FUTURES AND OPTIONS OF SWAP AND MANAGED FUNDS IN CHICAGO WHEAT



NET POSITION FUTURES AND OPTIONS OF SWAP DEALERS AND MANAGED FUNDS IN KANSAS WHEAT



NET POSITION FUTURES AND OPTIONS OF SWAP AND MANAGED FUNDS IN COMBINED SRW, HRW, CORN, SOYBEANS, SOYMEAL AND SOYOIL



— Net Managed Money

Source: CFTC and FI
6/21/2021

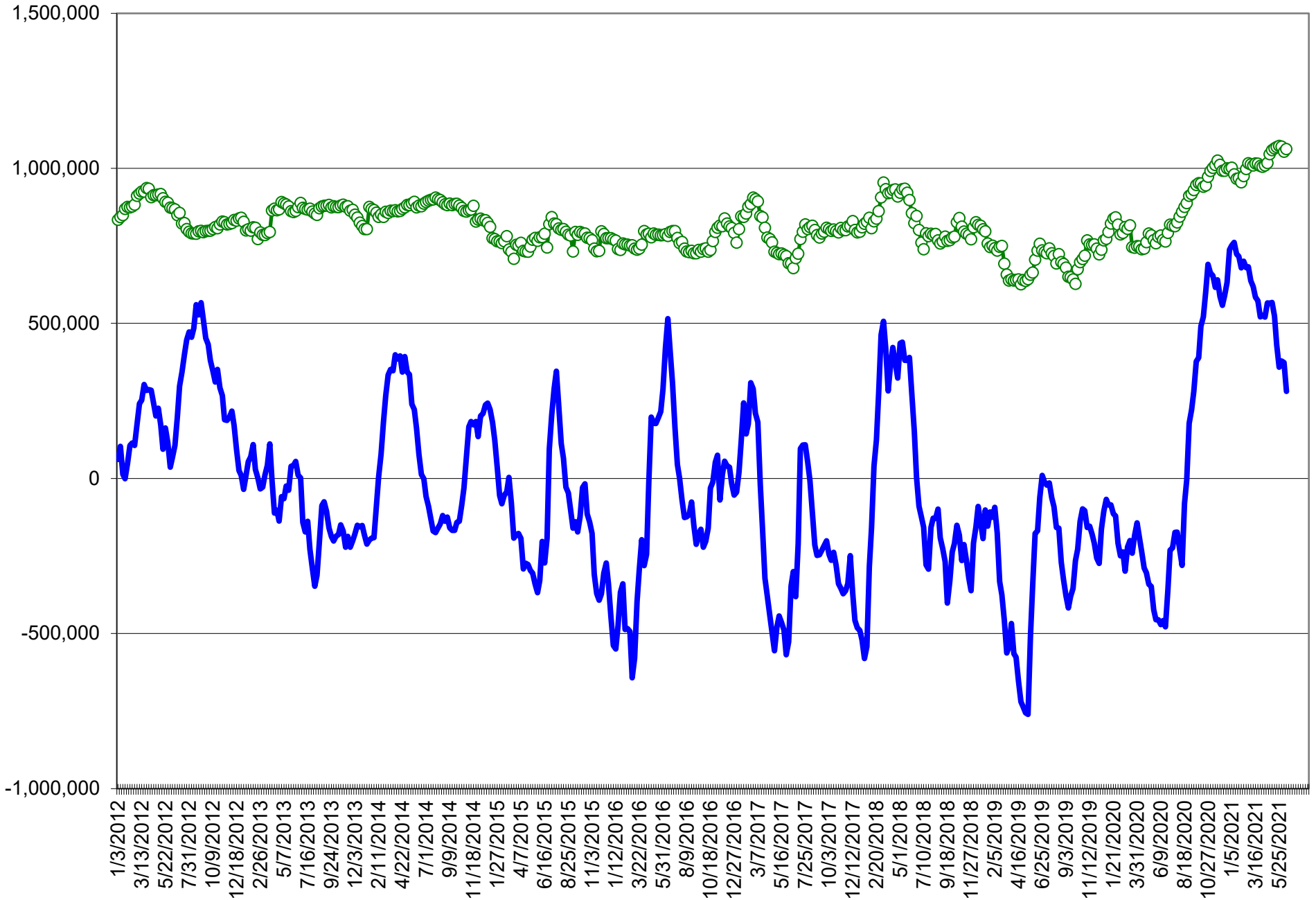
COMMITMENT OF TRADERS
FUTURES & OPTIONS NET POSITIONS (INDEX BROKEN OUT)
AS OF 06/15/2021
(IN THOUSAND CONTRACTS)

	COMMERCIAL				(FUND) NON COMMERCIAL				(SPEC) NON-REPORTABLE			
	15-Jun	8-Jun	1-Jun	25-May	15-Jun	8-Jun	1-Jun	25-May	15-Jun	8-Jun	1-Jun	25-May
	WHEAT											
Chicago	(107.4)	(115.0)	(112.4)	(110.9)	(44.9)	(36.6)	(37.0)	(38.3)	(8.2)	(6.5)	(10.9)	(13.0)
Kansas City	(59.2)	(65.8)	(63.8)	(66.5)	1.9	5.0	4.6	8.4	(5.0)	(1.8)	(3.4)	(6.1)
Minneapolis	-	-	-	-	-	-	-	-	-	-	-	-
All Wheat	(166.6)	(180.8)	(176.2)	(177.4)	(42.9)	(31.6)	(32.4)	(29.9)	(13.3)	(8.3)	(14.3)	(19.2)
CORN	(606.0)	(641.4)	(658.9)	(620.3)	213.0	236.6	250.6	232.9	(39.8)	(21.9)	(24.8)	(42.6)
OATS	-	-	-	-	-	-	-	-	-	-	-	-
SOYBEANS	(236.4)	(281.8)	(271.6)	(260.6)	61.6	95.1	91.4	87.4	(9.3)	2.7	(5.3)	(14.5)
SOY OIL	(177.7)	(195.6)	(202.5)	(195.3)	40.4	54.7	56.8	53.3	15.2	17.5	17.7	15.6
SOY MEAL	(135.7)	(145.5)	(143.2)	(147.5)	8.3	18.6	12.2	14.8	26.6	28.1	30.7	31.3

	TOTAL OPEN INTEREST				(INDEX) COMMERCIAL INDEX TRADERS				(INDEX) % NET OF TOTAL OPEN INTEREST			
	15-Jun	8-Jun	1-Jun	25-May	15-Jun	8-Jun	1-Jun	25-May	15-Jun	8-Jun	1-Jun	25-May
	WHEAT											
Chicago	532,513	524,595	510,166	510,434	160.6	158.1	160.3	162.2	30.2%	30.1%	31.4%	31.8%
Kansas City	222,545	227,637	240,969	244,330	62.2	62.5	62.6	64.3	28.0%	27.5%	26.0%	26.3%
Minneapolis	-	-	-	-	-	-	-	-	-	-	-	-
All Wheat	755,058	752,232	751,135	754,764	222.8	220.7	223.0	226.5	29.5%	29.3%	29.7%	30.0%
CORN	2,538,875	2,559,044	2,527,672	2,433,267	432.8	426.8	433.0	429.9	17.0%	16.7%	17.1%	17.7%
OATS	-	-	-	-	-	-	-	-	-	-	-	-
SOYBEANS	1,165,967	1,195,861	1,165,736	1,142,076	184.1	184.0	185.5	187.7	15.8%	15.4%	15.9%	16.4%
SOY OIL	662,386	667,461	650,311	619,928	122.0	123.4	128.0	126.4	18.4%	18.5%	19.7%	20.4%
SOY MEAL	468,746	463,283	457,200	456,909	100.8	98.9	100.3	101.4	21.5%	21.3%	21.9%	22.2%

SOURCE: CFTC & FI

NET POSITION FUTURES AND OPTIONS OF SPECULATORS AND INDEX FUNDS IN COMBINED SRW, HRW, CORN, SOYBEANS, SOYMEAL AND SOYOIL



Source: CFTC and FI

○ Net Index

— Net Speculator

Traditional Daily Estimate of Funds 6/15/21

	(Neg)-"Short"	Pos-"Long"			
Actual less Est.	(7.0)	33.7	14.3	7.4	25.7
	Corn	Bean	Chi. Wheat	Meal	Oil
Actual	401.4	205.4	13.9	53.8	68.6
16-Jun	(3.0)	(11.0)	1.0	5.0	(15.0)
17-Jun	(30.0)	(30.0)	(15.0)	(12.0)	(15.0)
18-Jun	18.0	18.0	12.0	6.0	7.0
21-Jun	(4.0)	7.0	1.0	(1.0)	9.0
22-Jun					
FI Est. of Futures Only 6/15/21	382.4	189.4	12.9	51.8	54.6
FI Est. Futures & Options	349.0	114.7	8.3	38.4	53.7
Futures only record long "Traditional Funds"	547.7 1/26/2021	280.9 11/10/2020	86.5 8/7/2018	167.5 5/1/2018	160.2 11/1/2016
Futures only record short	(235.0) 6/9/2020	(118.3) 4/30/2019	(130.0) 4/25/2017	(49.5) 3/1/2016	(69.8) 9/18/2018
Futures and options record net long	557.6 1/12/2021	270.9 10/6/2020	64.8 8/7/2012	132.1 5/1/2018	159.2 1/1/2016
Futures and options record net short	(270.6) 4/26/2019	(132.0) 4/30/2019	(143.3) 4/25/2017	(64.1) 3/1/2016	(77.8) 9/18/2018

Managed Money Daily Estimate of Funds 6/15/21

	Corn	Bean	Chi. Wheat	Meal	Oil
Latest CFTC Fut. Only	254.9	102.2	(16.2)	18.3	67.3
Latest CFTC F&O	252.7	107.5	(8.4)	19.1	67.2
FI Est. Managed Fut. Only	236	86	(17)	16	53
FI Est. Managed Money F&O	234	91	(9)	17	53

Index Funds Latest Positions (as of last Tuesday)

Index Futures & Options	432.8	184.1	160.6	NA	122.0
Change From Previous Week	6.0	0.0	2.4	NA	(1.4)

Source: Reuters, CFTC & FI (FI est. are noted with latest date)

Disclaimer

TO CLIENTS/PROSPECTS OF FUTURES INTERNATIONAL, SEE RISK DISCLOSURE BELOW:

THIS COMMUNICATION IS CONVEYED AS A SOLICITATION FOR ENTERING INTO A DERIVATIVES TRANSACTION.

Any trading recommendations and market or other information to Customer by Futures International (FI), although based upon information obtained from sources believed by FI to be reliable may not be accurate and may be changed without notice to customer. FI makes no guarantee as to the accuracy or completeness of any of the information or recommendations furnished to Customer. Customer understands that FI, its managers, employees and/or affiliates may have a position in commodity futures, options or other derivatives which may not be consistent with the recommendations furnished by FI to Customer.

The risk of trading futures and options and other derivatives involves a substantial risk of loss and is not suitable for all persons. In purchasing an option, the risk is limited to the premium paid, and all commissions and fees involved with the trade. When an option is shorted or written, the writer of the option has unlimited risk with respect to the option written. The use of options strategies such as a straddles and strangles involve multiple option positions and may substantially increase the amount of commissions and fees paid to execute the strategy. Option prices do not necessarily move in tandem with cash or futures prices. Each person must consider whether a particular trade, combination of trades or strategy is suitable for that person's financial means and objectives.

This material may include discussions of seasonal patterns, however, futures prices have already factored in the seasonal aspects of supply and demand, and seasonal patterns are no indication of future market trends. Finally, past performance is not indicative of future results.

This communication may contain links to third party websites which are not under the control of FI and FI is not responsible for their content. Products and services are offered only in jurisdictions where solicitation and sale are lawful, and in accordance with applicable laws and regulations in each such jurisdiction.