

CFTC COMMITMENT OF TRADERS REPORT

As of 6/8/2021

TRADITIONAL FUNDS net position changes

Wed to Tue, in 000 contracts

	Corn	Bean	Meal	Oil	Chi. Wheat	KC Wheat	Min Wheat
Futures Only	(23.9)	2.6	4.9	(5.3)	(0.2)	0.5	0.3
Futures & Options Combined	(18.3)	4.6	4.1	(7.0)	(1.2)	0.8	0.2

TRADITIONAL COMMERCIAL net position changes

	Corn	Bean	Meal	Oil	Chi. Wheat	KC Wheat	Min Wheat
Futures Only	22.9	(9.1)	(2.7)	6.0	(4.1)	(2.3)	(1.1)
Futures & Options Combined	15.5	(12.5)	(1.4)	7.2	(3.2)	(2.4)	(1.0)

MANAGED MONEY net position changes

	Corn	Bean	Meal	Oil	Chi. Wheat	KC Wheat	Min Wheat
Futures Only	(12.5)	(0.0)	5.6	(4.7)	(4.5)	0.6	0.1
Futures & Options Combined	(14.3)	2.7	5.8	(4.8)	(4.6)	0.6	0.1

SWAP DEALERS net position changes

	Corn	Bean	Meal	Oil	Chi. Wheat	KC Wheat	Min Wheat
Futures Only	(3.5)	(3.9)	1.5	(1.5)	(6.0)	(1.5)	0.0
Futures & Options Combined	(9.2)	(3.7)	1.8	(0.1)	(6.3)	(1.5)	0.2

PRODUCERS/END USERS net position changes

	Corn	Bean	Meal	Oil	Chi. Wheat	KC Wheat	Min Wheat
Futures Only	26.5	(5.2)	(4.2)	7.5	1.9	(0.8)	(1.1)
Futures & Options Combined	24.6	(8.8)	(3.2)	7.3	3.2	(1.0)	(1.2)

INDEX net position changes

	Corn	Bean	Meal	Oil	Chi. Wheat	KC Wheat	Min Wheat
Futures & Options Combined	(6.2)	(1.5)	(1.4)	(4.6)	(2.2)	(0.1)	NA

SUPPLEMENTAL NON-COMMERCIAL net position changes

	Corn	Bean	Meal	Oil	Chi. Wheat	KC Wheat	Min Wheat
Futures & Options Combined	(14.1)	3.7	6.4	(2.1)	0.4	0.4	NA

OPEN INTEREST net position changes

Wed to Tue, in 000 contracts

	Corn	Bean	Meal	Oil	Chi. Wheat	KC Wheat	Min Wheat
Futures Only	(7.5)	6.7	3.5	0.2	13.3	(12.3)	2.5
Futures & Options Combined	31.4	30.1	6.1	17.2	14.4	(13.3)	3.3

Source: CFTC and FI

Wed to Tue, in 000 contracts

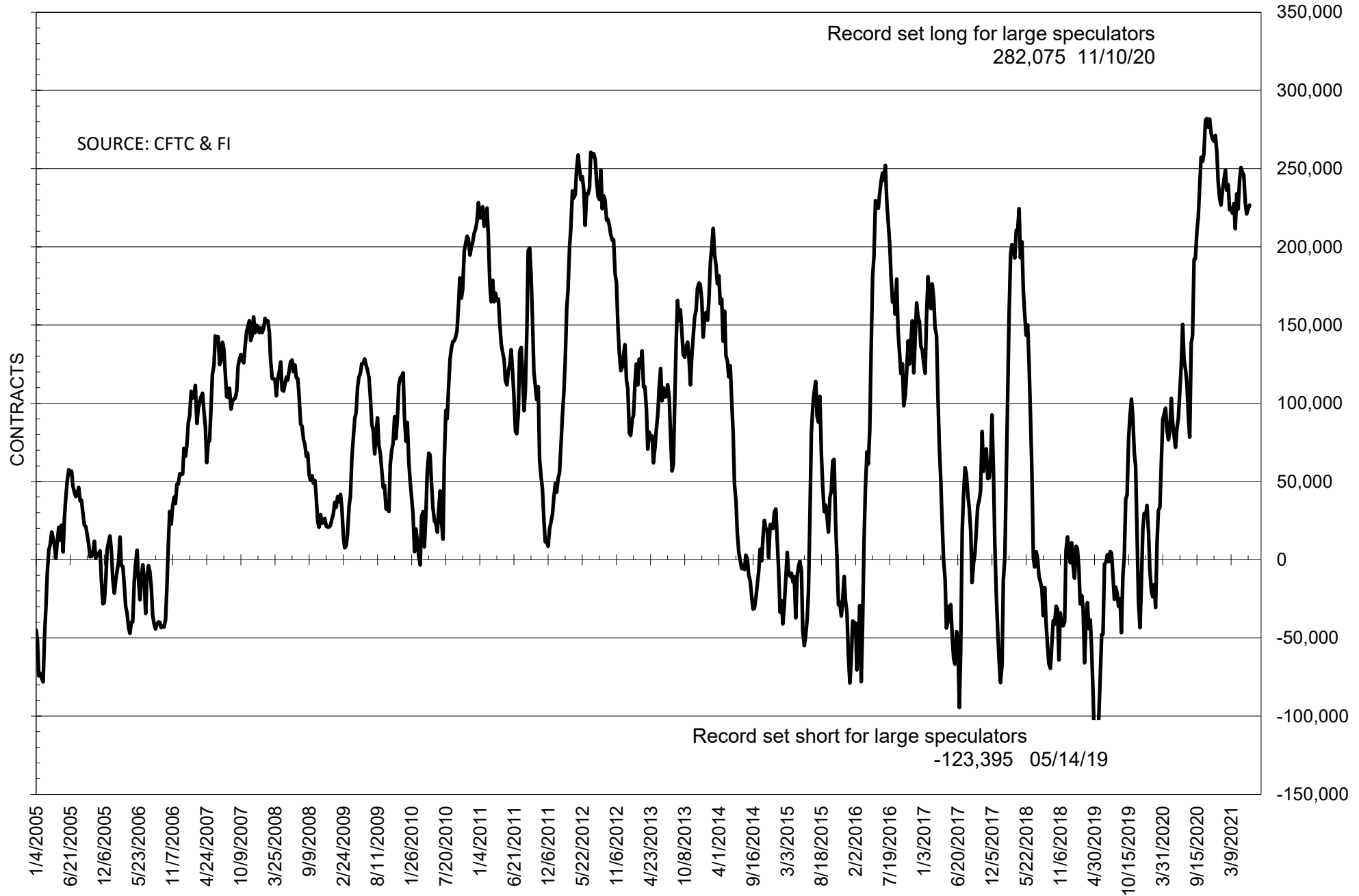
**COMMITMENT OF TRADERS
FUTURES ONLY NET POSITIONS
AS OF 06/08/2021
(IN THOUSAND CONTRACTS)**

	COMMERCIAL				(FUND) NON COMMERCIAL				(SPEC) NON-REPORTABLE			
	8-Jun	1-Jun	25-May	18-May	8-Jun	1-Jun	25-May	18-May	8-Jun	1-Jun	25-May	18-May
	WHEAT											
Chicago	-12.7	-8.6	-6.4	-16.2	18.6	18.8	18.4	25.7	-5.9	-10.2	-12.1	-9.6
Kansas City	-18.5	-16.2	-18.9	-25.9	19.8	19.3	24.3	29.1	-1.3	-3.1	-5.3	-3.1
Minneapolis	-24.7	-23.7	-21.3	-23.4	16.4	16.1	17.5	19.9	8.3	7.6	3.8	3.5
All Wheat	-55.9	-48.4	-46.6	-65.5	54.8	54.2	60.2	74.7	1.1	-5.8	-13.6	-9.2
CORN	-382.2	-405.1	-379.5	-420.4	428.4	452.4	428.4	459.5	-46.3	-47.3	-49.0	-39.1
OATS	-2.1	-1.8	-1.7	-2.0	0.8	0.6	0.7	1.2	1.3	1.2	1.0	0.8
SOYBEANS	-222.6	-213.5	-204.4	-217.0	226.7	224.1	221.1	228.3	-4.1	-10.6	-16.6	-11.3
SOY OIL	-101.2	-107.2	-102.7	-99.4	83.9	89.2	87.2	83.0	17.3	18.0	15.5	16.4
SOY MEAL	-83.4	-80.7	-86.7	-117.5	60.4	55.5	60.3	86.8	22.9	25.2	26.4	30.7

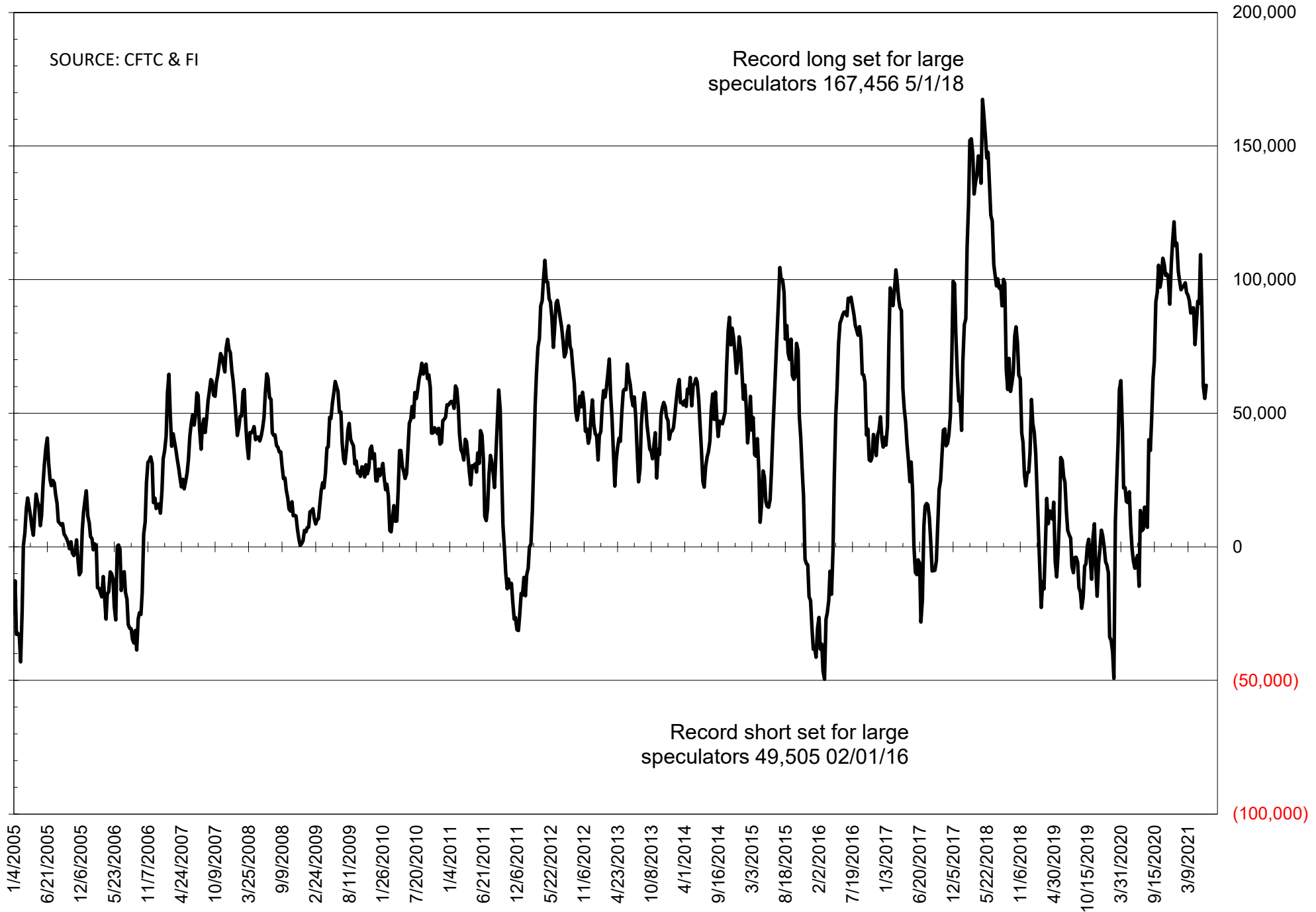
	TOTAL OPEN INTEREST				NEARBY FUTURES PRICE					8-Jun-21 LAST REPORTED % HELD BY TRADERS			
	8-Jun	1-Jun	25-May	18-May	N Latest	N 8-Jun	N 1-Jun	N 25-May	N 18-May	LARGE FUND		SMALL	
										LONG	SHORT	LONG	SHORT
WHEAT													
Chicago	410761	397450	406006	411192	680.75	685.00	693.50	656.50	698.00	0%	22%	0%	9%
Kansas City	208861	221164	224190	224139	638.00	632.50	637.50	604.50	647.75	0%	18%	0%	10%
Minneapolis	79904	77370	77326	77848	764.75	771.25	771.50	682.50	714.00	0%	4%	0%	14%
CORN	1728203	1735715	1720733	1697454	684.50	680.00	688.75	620.25	658.25	0%	5%	0%	11%
OATS	4558	4242	4163	4434	381.25	408.00	384.75	360.75	356.50	0%	5%	0%	14%
SOYBEANS	814479	807816	804827	805419	1508.50	1580.00	1548.50	1511.75	1574.25	35%	7%	8%	8%
SOY OIL	536701	536541	510710	502696	66.98	72.08	67.39	66.69	68.67	0%	6%	0%	5%
SOY MEAL	404060	400535	403292	409716	383.30	389.80	398.70	386.30	410.80	0%	7%	0%	7%

SOURCE: CFTC & FI

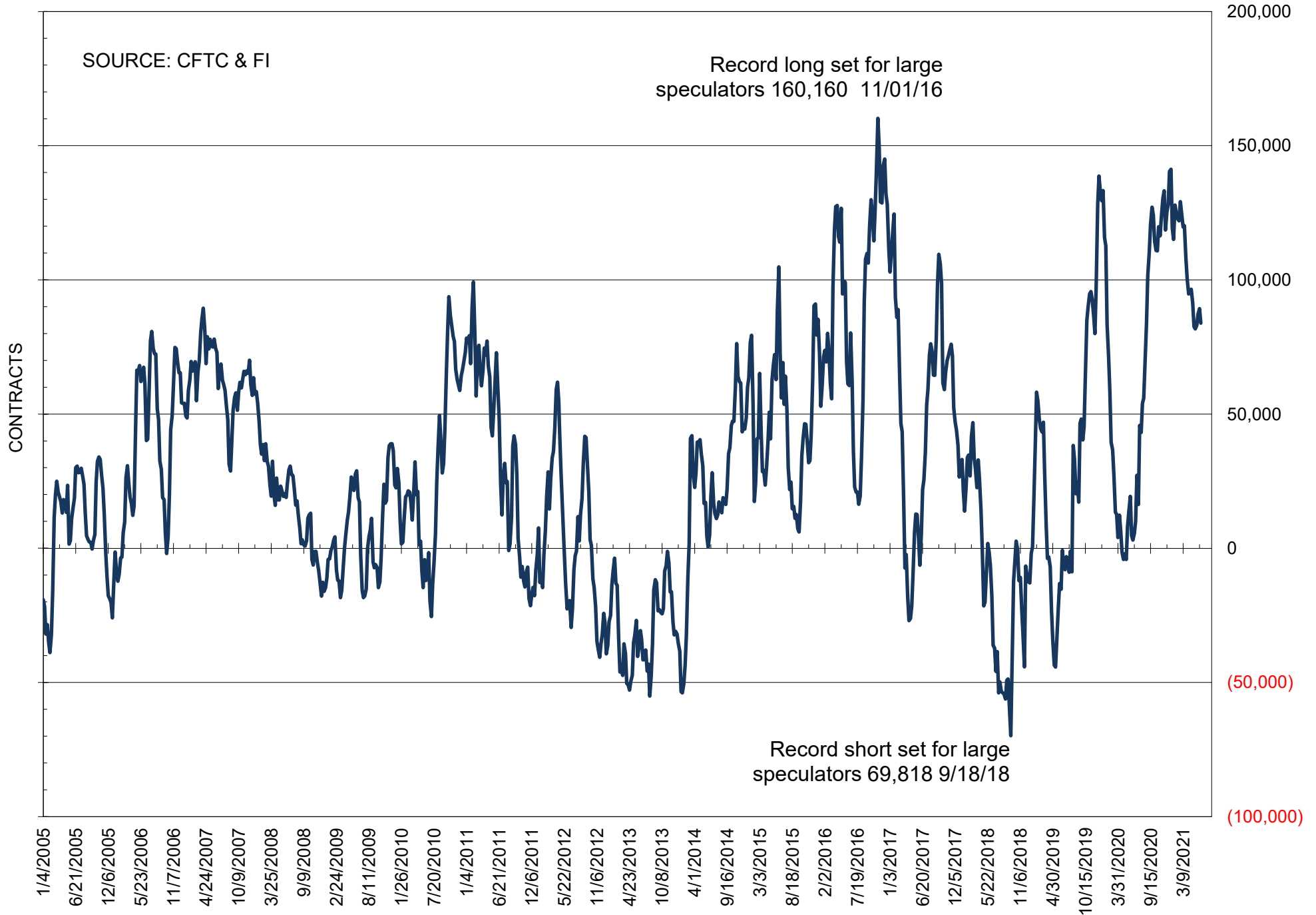
NET POSITION OF FUTURES ONLY LARGE SPECS IN SOYBEANS



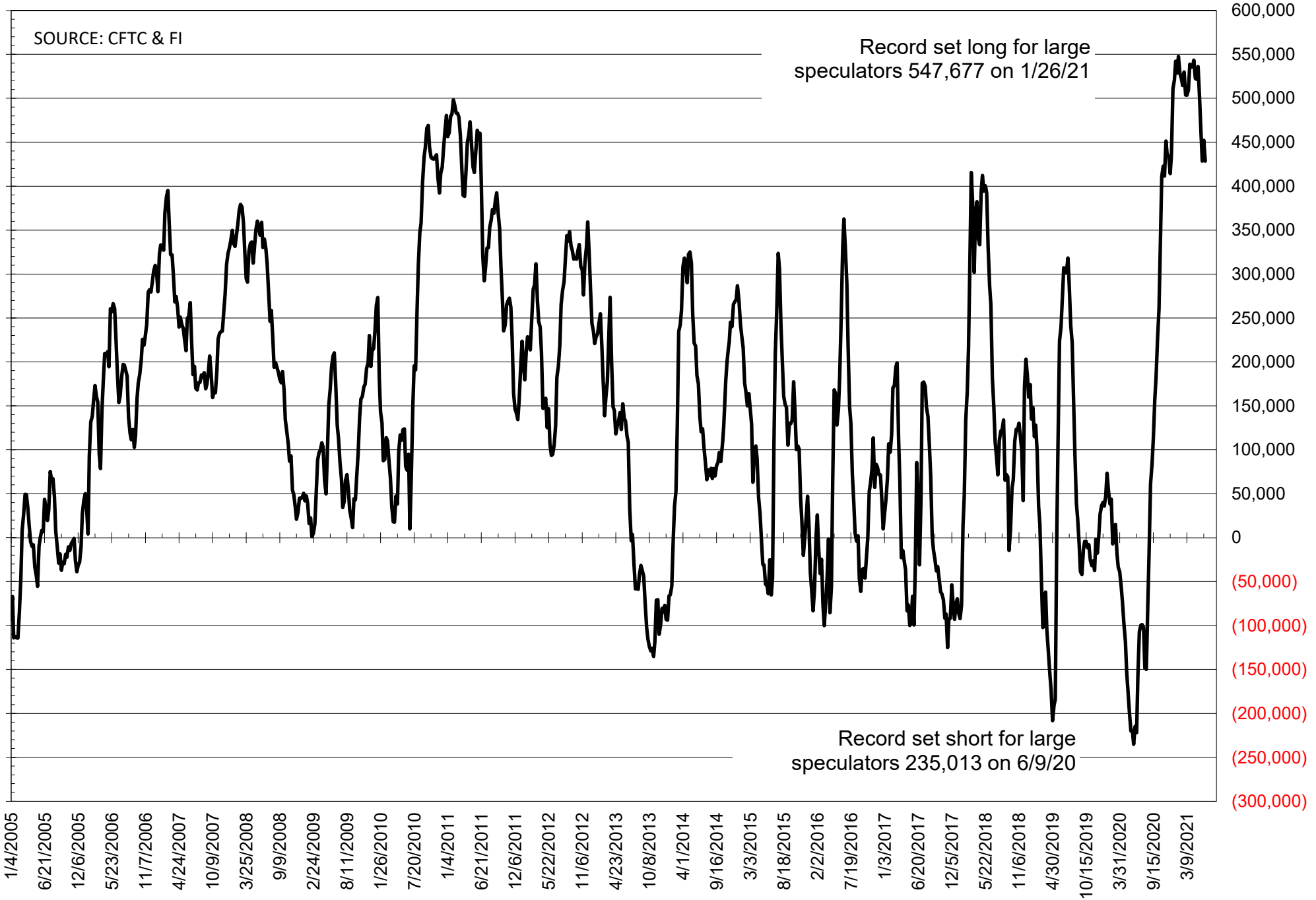
NET POSITION OF FUTURES ONLY LARGE SPECS IN SOYMEAL



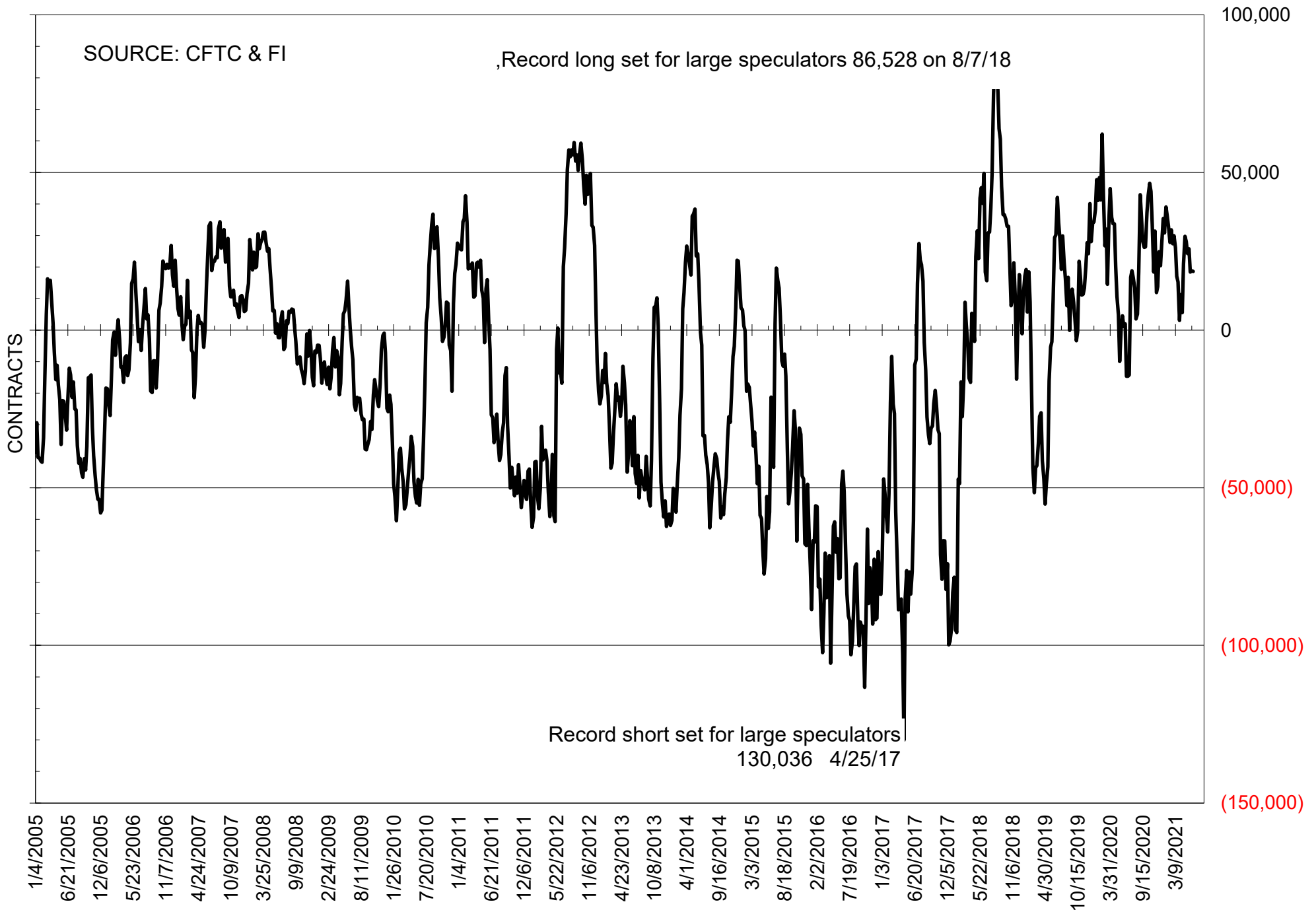
NET POSITION OF FUTURES ONLY LARGE SPECS IN SOYOIL



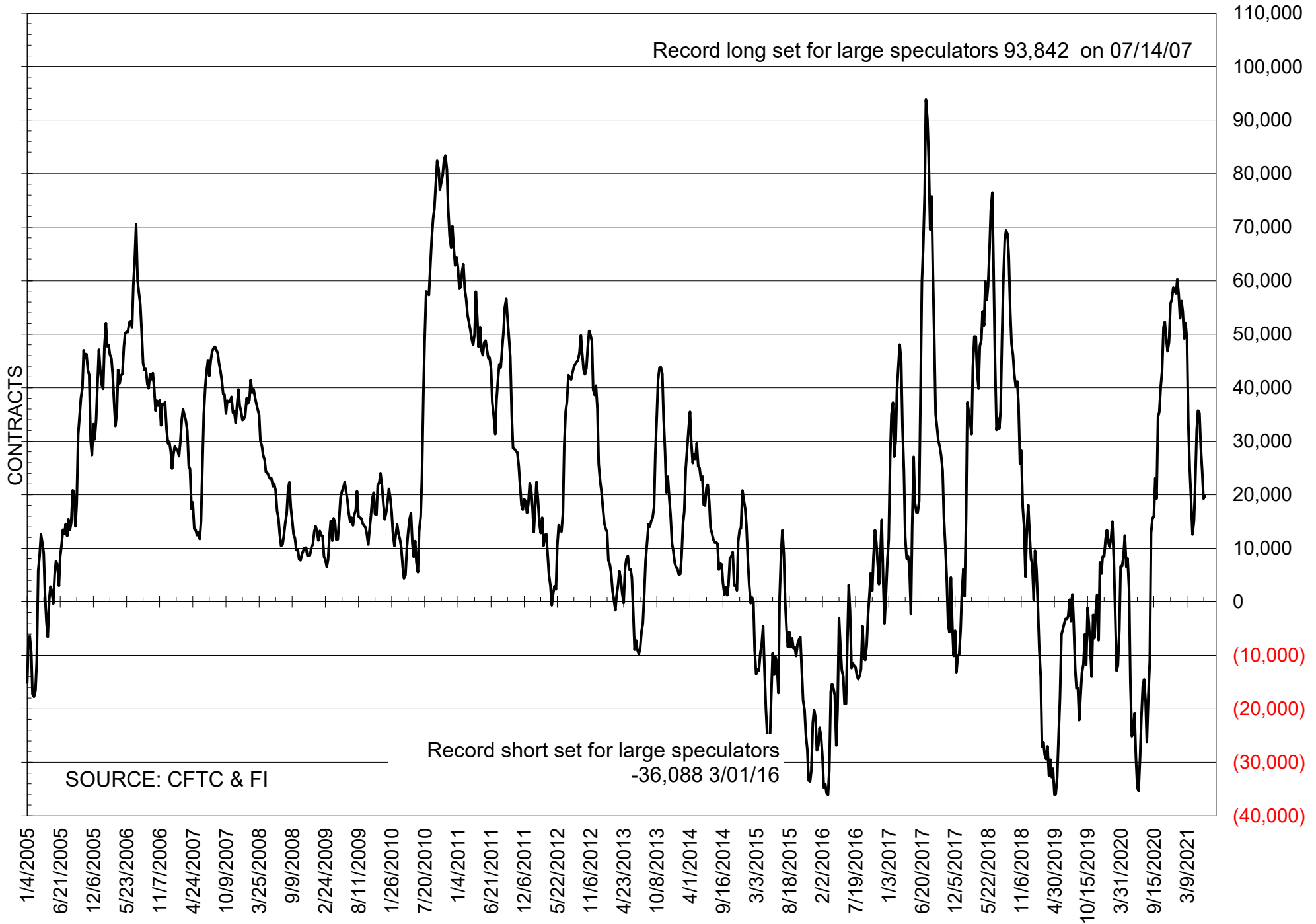
NET POSITION OF LARGE SPECULATORS IN CORN



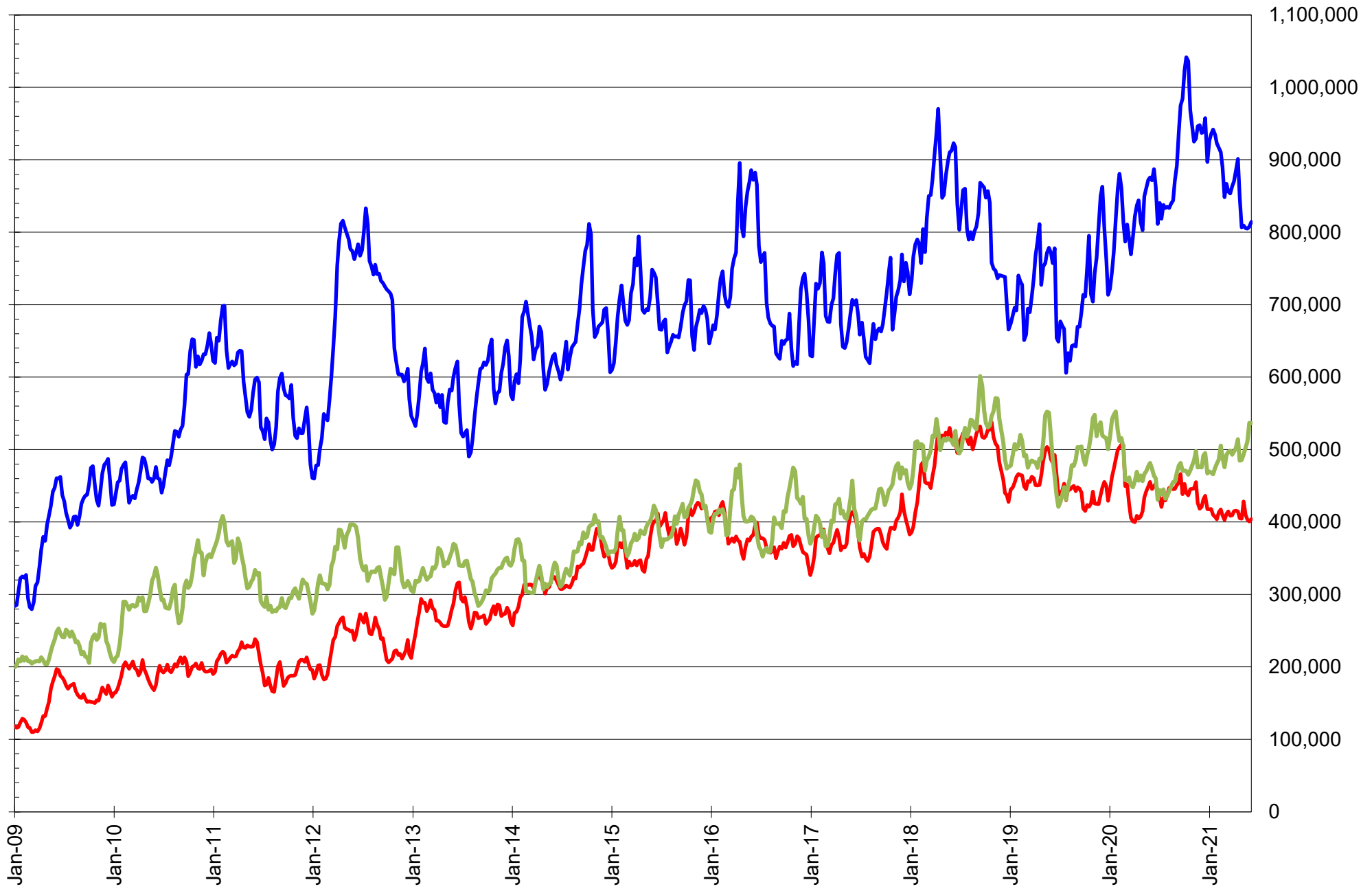
NET POSITION OF FUTURES ONLY LARGE SPECS IN CHICAGO WHEAT



NET POSITION OF LARGE SPECULATORS IN KANSAS CITY WHEAT



TOTAL OPEN INTEREST IN SOYBEANS, MEAL AND OIL, FUTURES ONLY



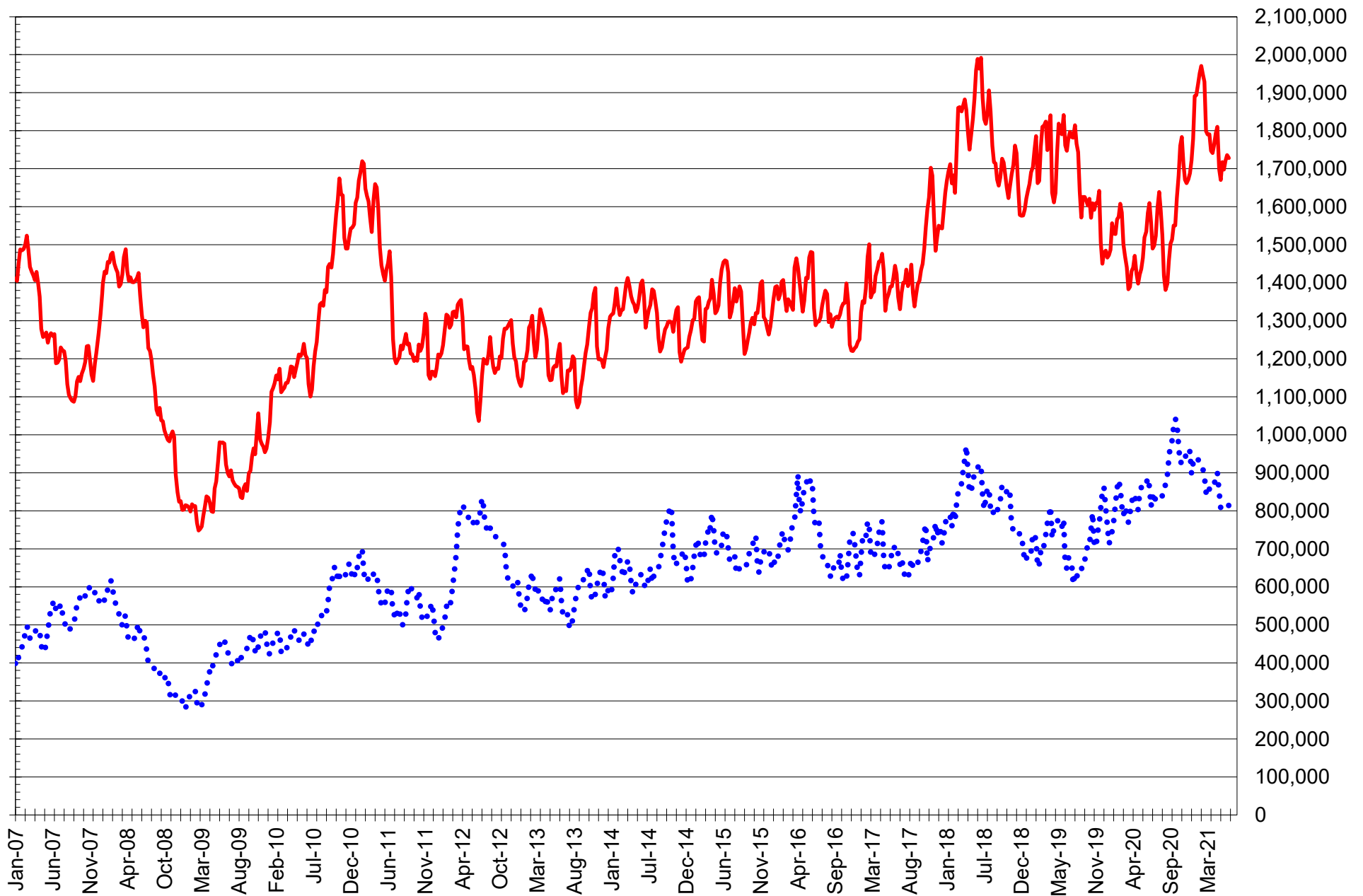
SOURCE: CFTC & FI

— SOYBEANS

— SOYBEAN MEAL

— SOYBEAN OIL

TOTAL OPEN INTEREST IN CORN AND SOYBEANS, FUTURES ONLY



SOURCE: CFTC & FI

— CORN

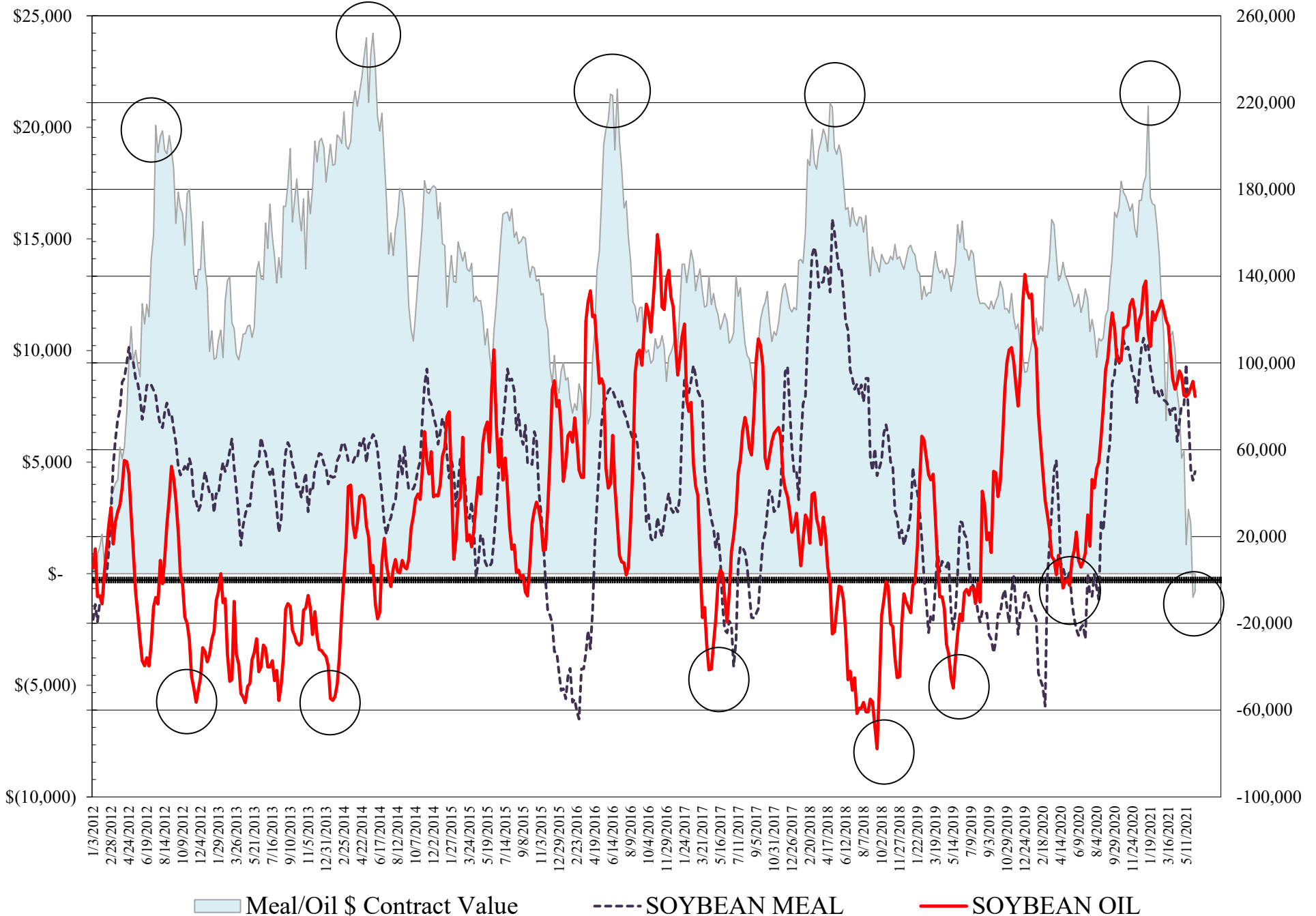
•••• SOYBEANS

**COMMITMENT OF TRADERS
FUTURES & OPTIONS NET POSITIONS
AS OF 06/08/2021
(IN THOUSAND CONTRACTS)**

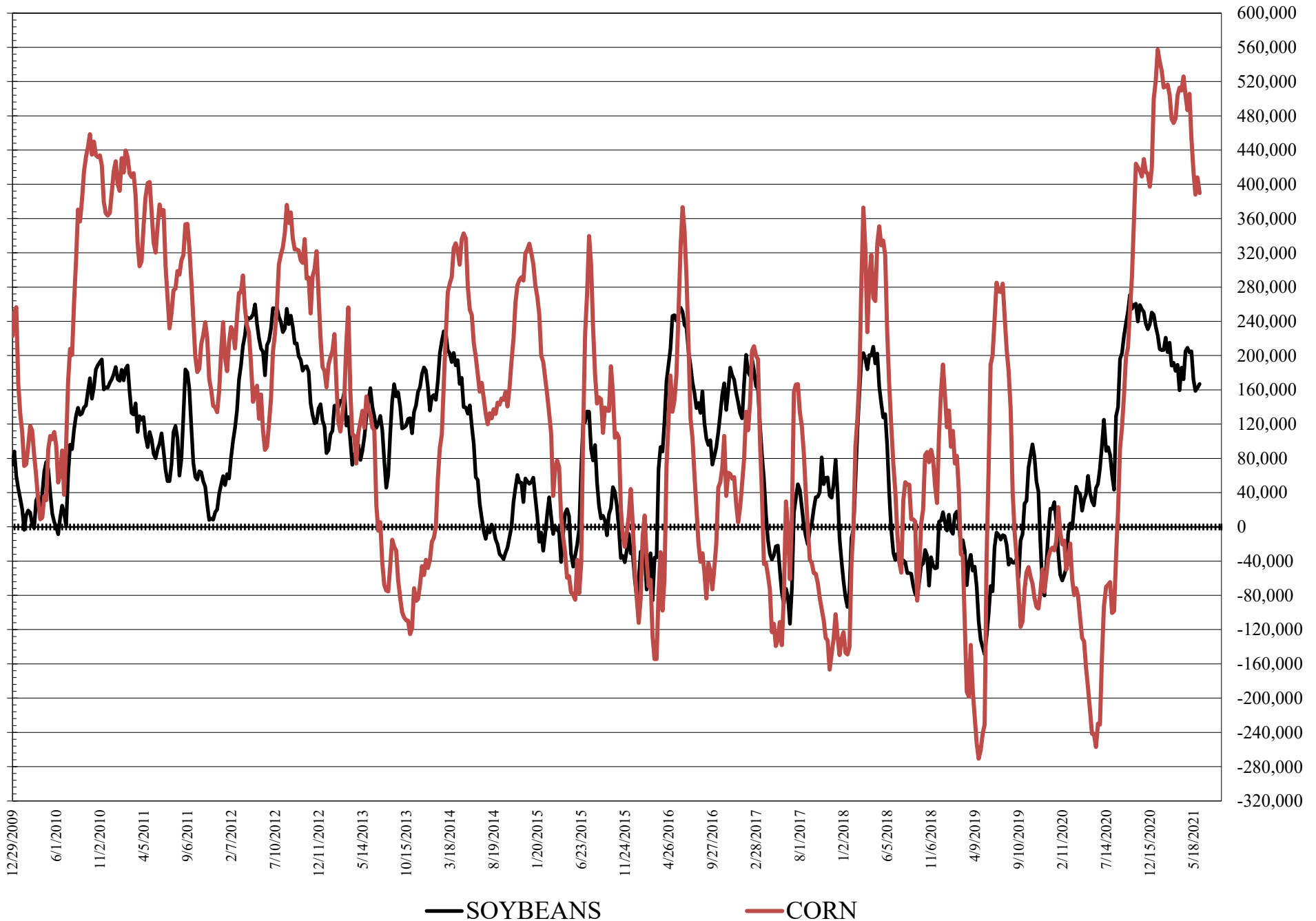
	COMMERCIAL				(FUND) NON COMMERCIAL				(SPEC) NON-REPORTABLE			
	8-Jun	1-Jun	25-May	18-May	8-Jun	1-Jun	25-May	18-May	8-Jun	1-Jun	25-May	18-May
	<hr/>											
WHEAT												
Chicago	-9.9	-6.8	-4.3	-17.8	16.4	17.6	17.3	28.2	-6.5	-10.9	-13.0	-10.4
Kansas City	-16.9	-14.5	-16.4	-22.9	18.7	17.9	22.6	26.6	-1.8	-3.4	-6.1	-3.7
Minneapolis	-24.1	-23.1	-21.0	-22.9	14.8	14.5	16.7	18.7	9.3	8.6	4.4	4.2
All Wheat	-50.9	-44.4	-41.7	-63.6	49.9	50.0	56.5	73.5	1.0	-5.7	-14.8	-9.9
CORN	-367.9	-383.3	-345.4	-388.3	389.8	408.1	388.0	415.8	-21.9	-24.8	-42.6	-27.5
OATS	-2.2	-1.9	-1.8	-2.0	0.8	0.6	0.7	1.2	1.4	1.3	1.0	0.8
SOYBEANS	-169.6	-157.1	-144.1	-164.7	166.9	162.4	158.6	172.3	2.7	-5.3	-14.5	-7.6
SOY OIL	-102.0	-109.2	-104.2	-102.2	84.5	91.5	88.6	85.7	17.5	17.7	15.6	16.5
SOY MEAL	-78.0	-76.6	-82.3	-112.9	49.9	45.9	51.0	76.9	28.1	30.7	31.3	36.0
	TOTAL OPEN INTEREST				COMMERCIALS		% HELD BY TRADERS LARGE (FUNDS)		SMALL (NON-REP)			
	8-Jun	1-Jun	25-May	18-May	LONG	SHORT	LONG	SHORT	LONG	SHORT		
	<hr/>											
WHEAT												
Chicago	524,595	510,166	510,434	536,423	35%	37%	19%	15%	6%	8%		
Kansas City	227,637	240,969	244,330	243,775	43%	51%	25%	16%	9%	10%		
Minneapolis	88,510	85,185	82,931	84,252	45%	72%	20%	3%	24%	14%		
CORN	2,559,044	2,527,672	2,433,267	2,493,255	43%	57%	18%	3%	9%	10%		
OATS	4,679	4,325	4,239	4,517								
SOYBEANS	1,195,861	1,165,736	1,142,076	1,175,415	42%	56%	18%	4%	7%	7%		
SOY OIL	667,461	650,311	619,928	623,254	44%	59%	17%	4%	7%	5%		
SOY MEAL	463,283	457,200	456,909	467,317	49%	66%	17%	6%	12%	6%		

SOURCE: CFTC & FI

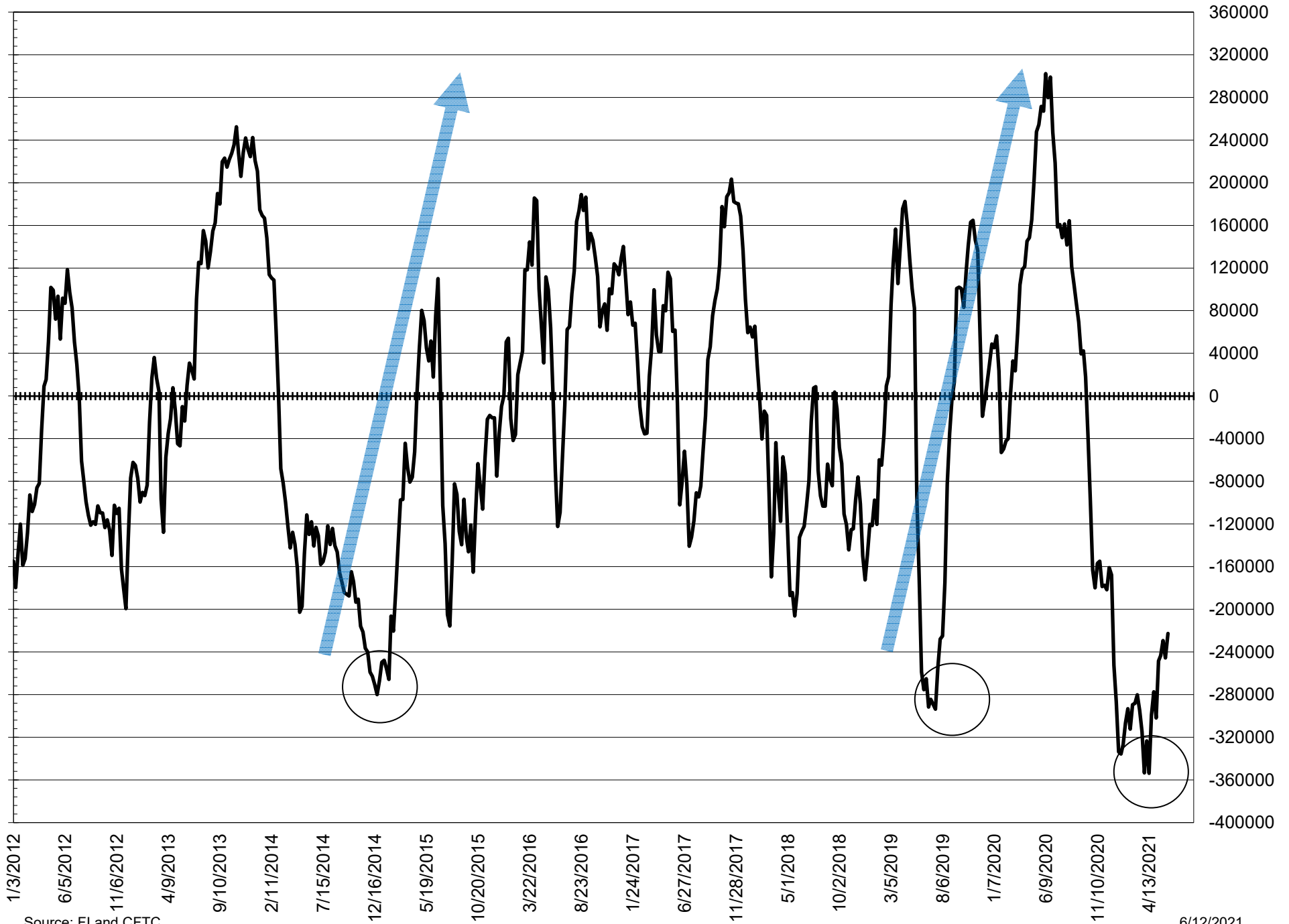
NET POSITION FUTURES AND OPTIONS OF LARGE SPECULATORS IN SOYBEAN MEAL AND SOYBEAN OIL



NET POSITION FUTURES AND OPTIONS OF LARGE SPECULATORS IN SOYBEANS AND CORN



NET POSITION FUTURES AND OPTIONS SPREAD OF LARGE SPECULATORS IN SOYBEANS MINUS CORN



Source: FI and CFTC

6/12/2021

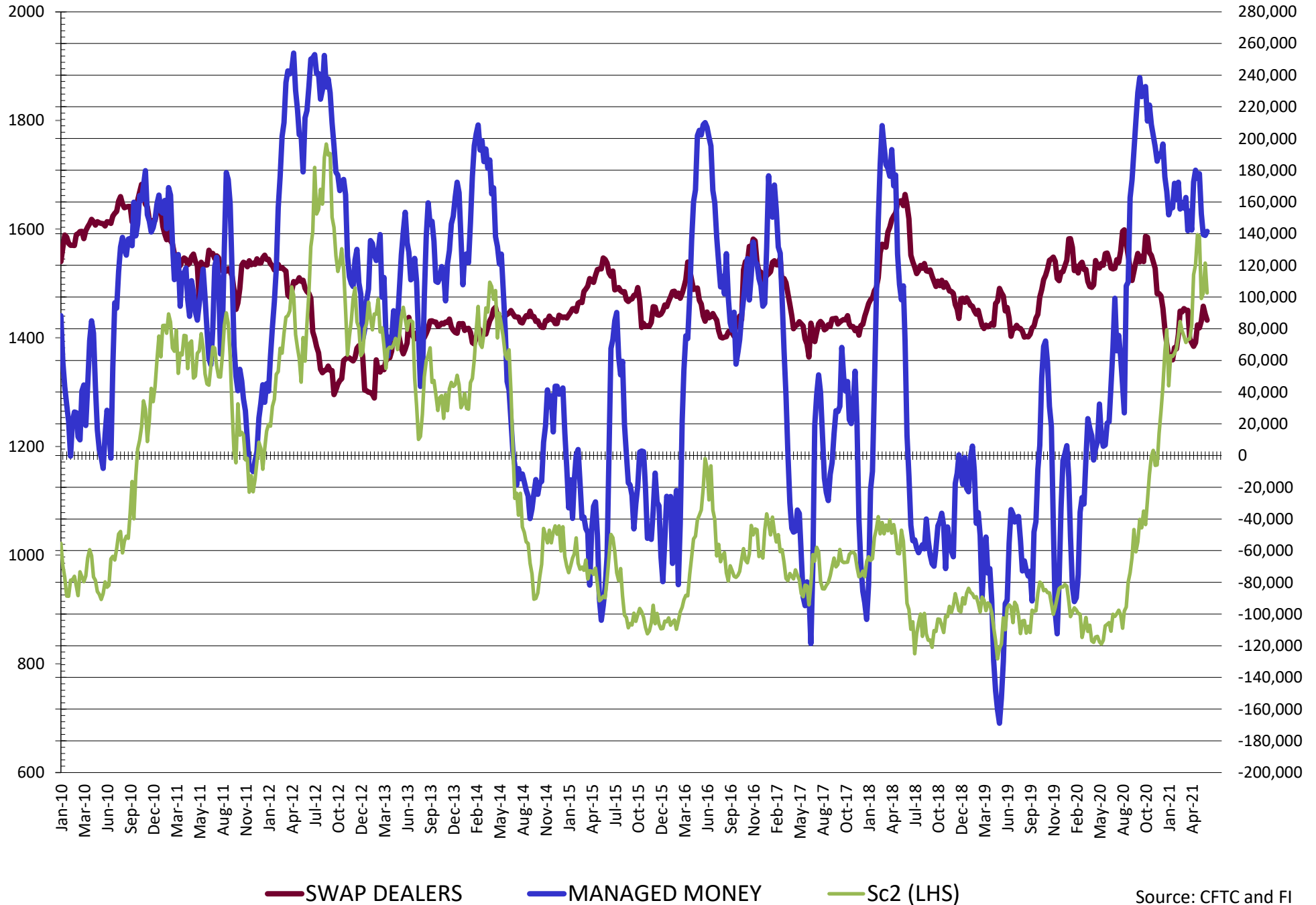
**DISAGGREGATED COMMITMENT OF TRADERS
FUTURES & OPTIONS NET POSITIONS
AS OF 06/08/2021
(IN THOUSAND CONTRACTS)**

	PRODUCER / MERCHANT / PROCESSOR / USER				(INDEX/ETF) SWAP DEALERS				(CTA/CPO/OTHER UNREGISTERED) MANAGED MONEY			
	8-Jun	1-Jun	25-May	18-May	8-Jun	1-Jun	25-May	18-May	8-Jun	1-Jun	25-May	18-May
	WHEAT											
Chicago	(86.5)	(89.7)	(88.0)	(98.5)	76.6	83.0	83.8	80.7	(1.4)	3.2	4.5	14.0
Kansas City	(58.1)	(57.1)	(60.2)	(66.6)	41.2	42.6	43.8	43.7	19.7	19.1	23.5	26.1
Minneapolis	(28.0)	(26.8)	(25.4)	(28.0)	3.9	3.7	4.4	5.1	13.6	13.5	14.7	16.4
All Wheat	(172.7)	(173.7)	(173.6)	(193.0)	121.8	129.3	131.9	129.4	31.9	35.8	42.7	56.6
CORN	(603.7)	(628.3)	(594.3)	(627.9)	235.8	245.0	248.9	239.6	275.6	289.9	268.1	291.0
OATS	(2.3)	(2.1)	(1.9)	(2.2)	0.1	0.2	0.1	0.1	0.0	(0.1)	(0.0)	0.4
SOYBEANS	(255.0)	(246.3)	(238.3)	(249.6)	85.4	89.2	94.2	84.9	141.5	138.8	139.4	152.6
SOY OIL	(216.4)	(223.7)	(219.5)	(216.2)	114.4	114.5	115.3	114.0	81.3	86.1	85.3	83.2
SOY MEAL	(162.2)	(159.0)	(162.8)	(193.1)	84.2	82.4	80.5	80.2	26.7	20.9	25.2	50.8

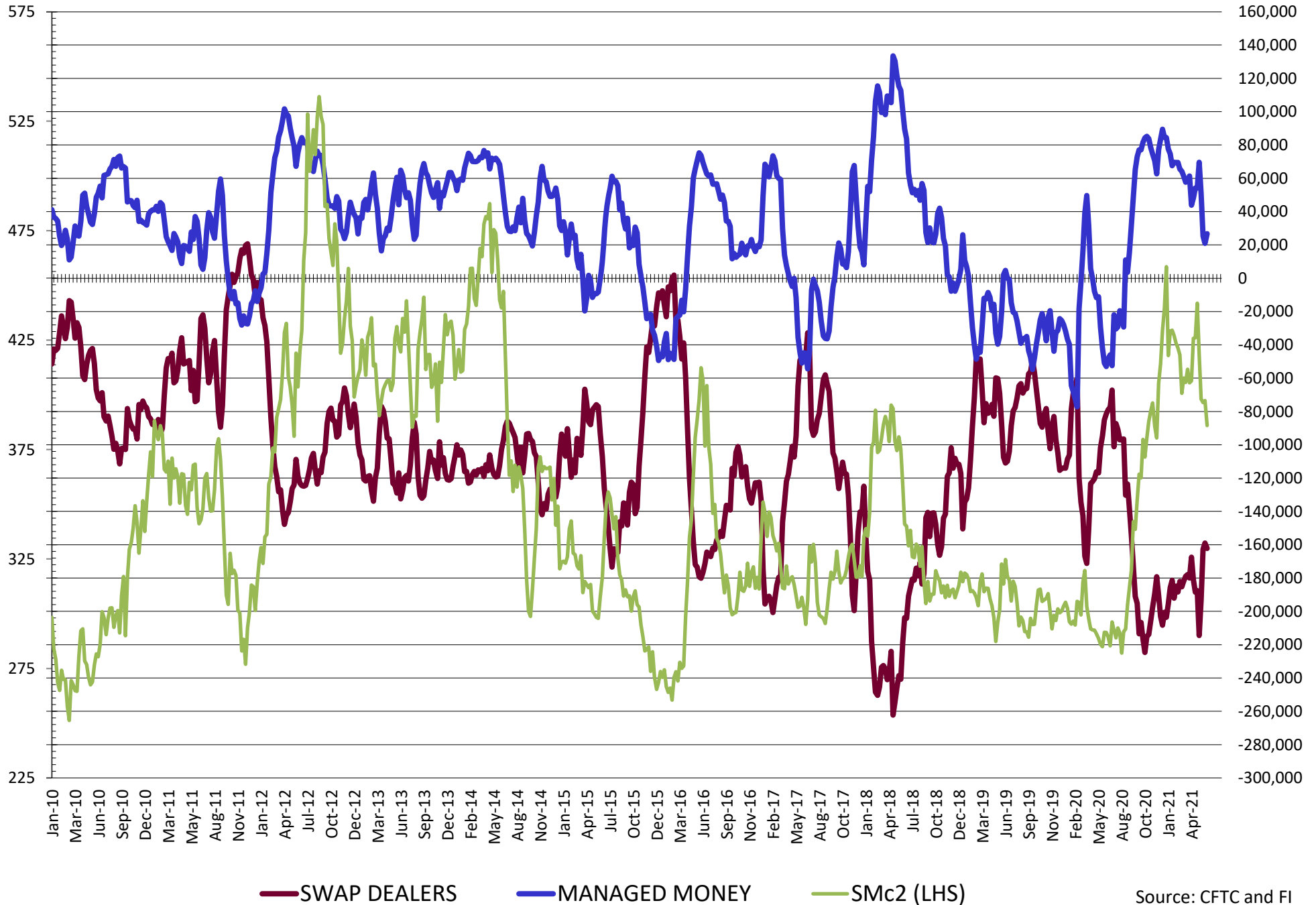
	TOTAL OPEN INTEREST				OTHER REPORTABLE				NON REPORTABLE			
	8-Jun	1-Jun	25-May	18-May	8-Jun	1-Jun	25-May	18-May	8-Jun	1-Jun	25-May	18-May
	WHEAT											
Chicago	524,595	510,166	510,434	536,423	17.8	14.4	12.8	14.2	(6.5)	(10.9)	(13.0)	(10.4)
Kansas City	227,637	240,969	244,330	243,775	(1.0)	(1.2)	(0.9)	0.5	(1.8)	(3.4)	(6.1)	(3.7)
Minneapolis	88,510	85,185	82,931	84,252	1.2	1.1	2.0	2.3	9.3	8.6	4.4	4.2
All Wheat	840,742	836,320	837,695	864,450	18.0	14.3	13.8	17.0	1.0	(5.7)	(14.8)	(9.9)
CORN	2,559,044	2,527,672	2,433,267	2,493,255	114.2	118.2	119.9	124.8	(21.9)	(24.8)	(24.8)	(24.8)
OATS	4,679	4,325	4,239	4,517	0.8	0.7	0.7	0.8	1.4	1.3	1.0	0.8
SOYBEANS	1,195,861	1,165,736	1,142,076	1,175,415	25.5	23.6	19.2	19.7	2.7	(5.3)	(14.5)	(7.6)
SOY OIL	667,461	650,311	619,928	623,254	3.2	5.4	3.3	2.5	17.5	17.7	15.6	16.5
SOY MEAL	463,283	457,200	456,909	467,317	23.2	25.0	25.7	26.1	28.1	30.7	31.3	36.0

SOURCE: CFTC & FI

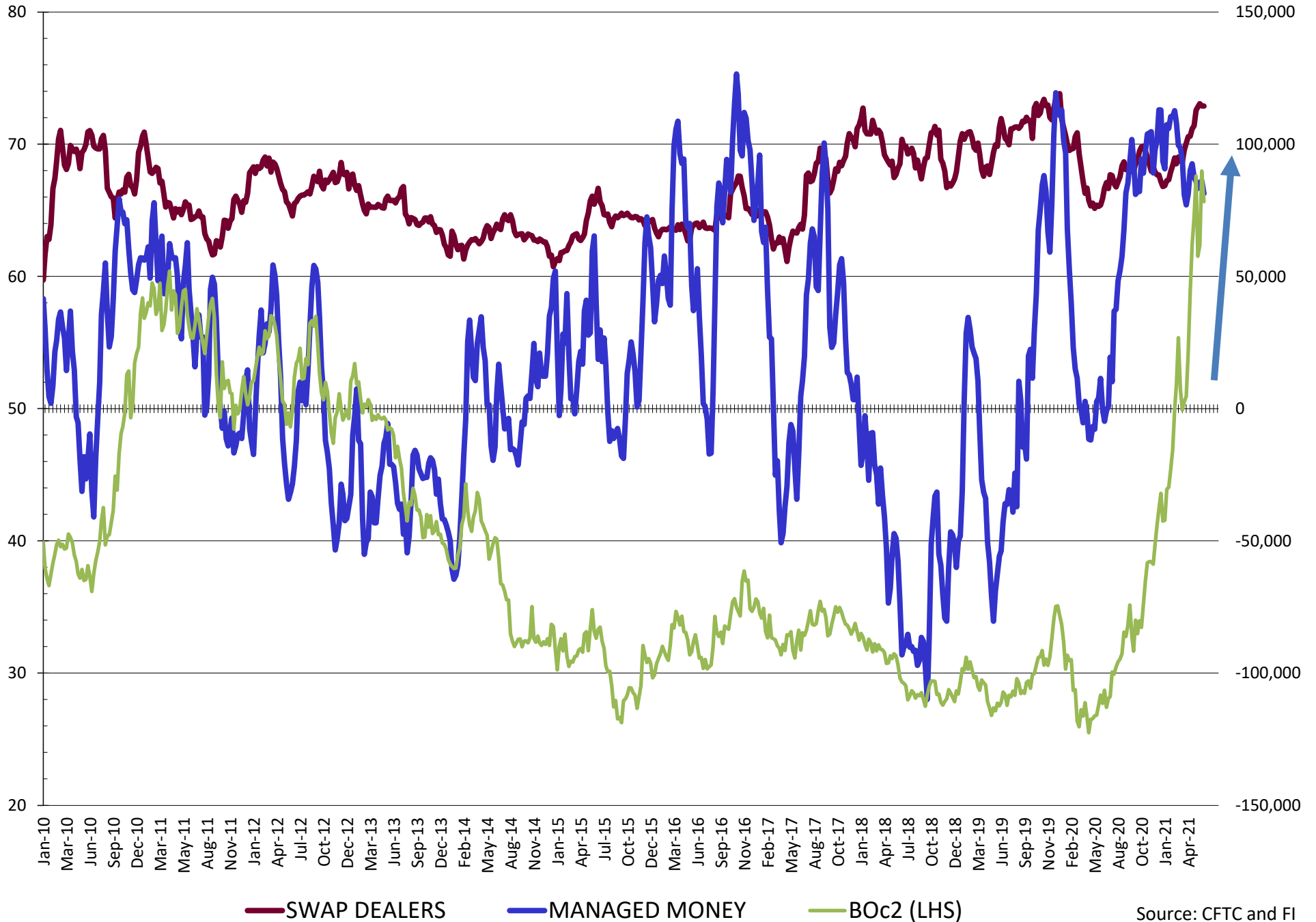
NET POSITION FUTURES AND OPTIONS OF SWAP AND MANAGED FUNDS IN SOYBEANS



NET POSITION FUTURES AND OPTIONS OF SWAP AND MANAGED FUNDS IN SOYBEAN MEAL

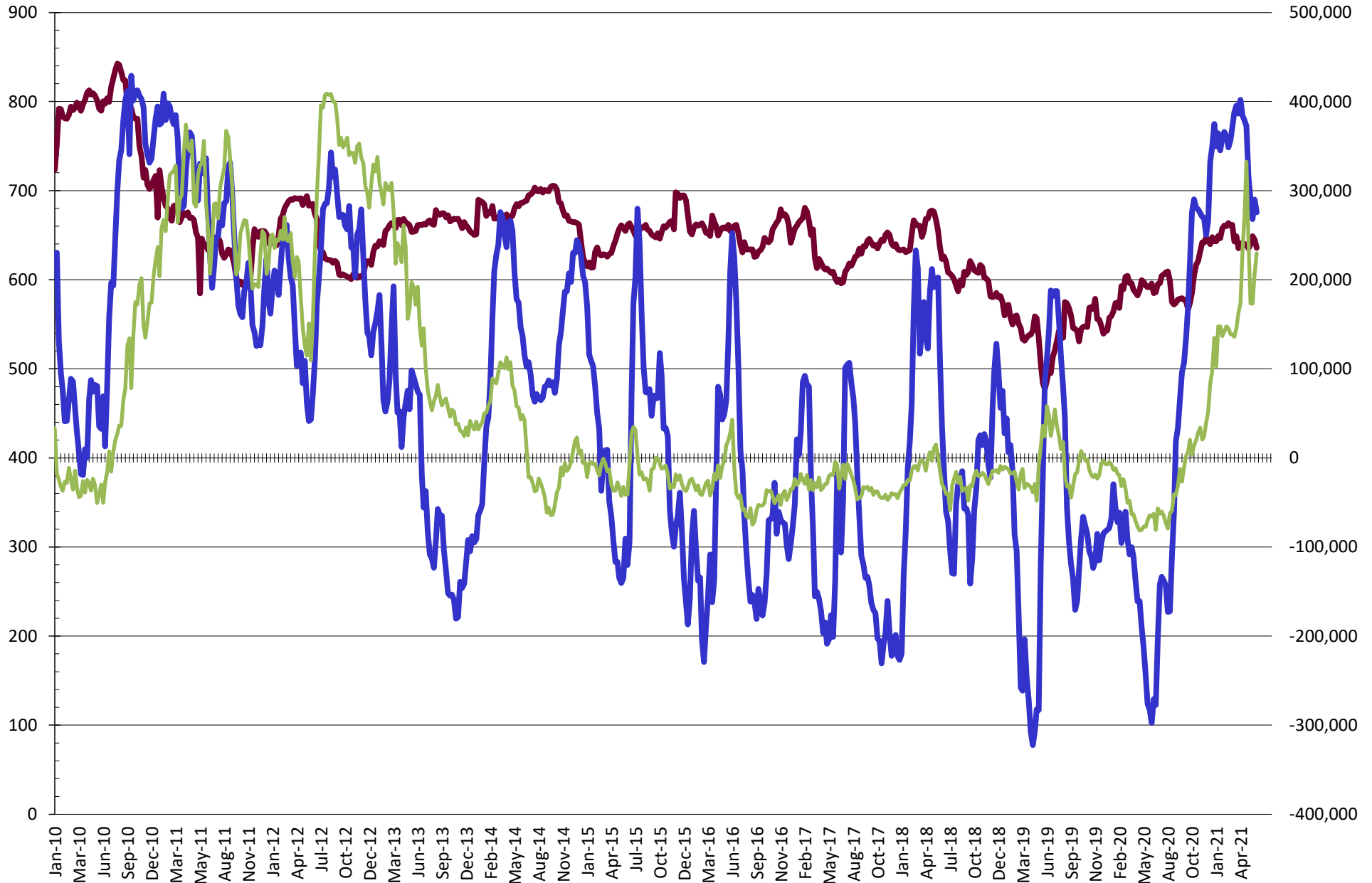


NET POSITION FUTURES AND OPTIONS OF SWAP AND MANAGED FUNDS IN SOYBEAN OIL



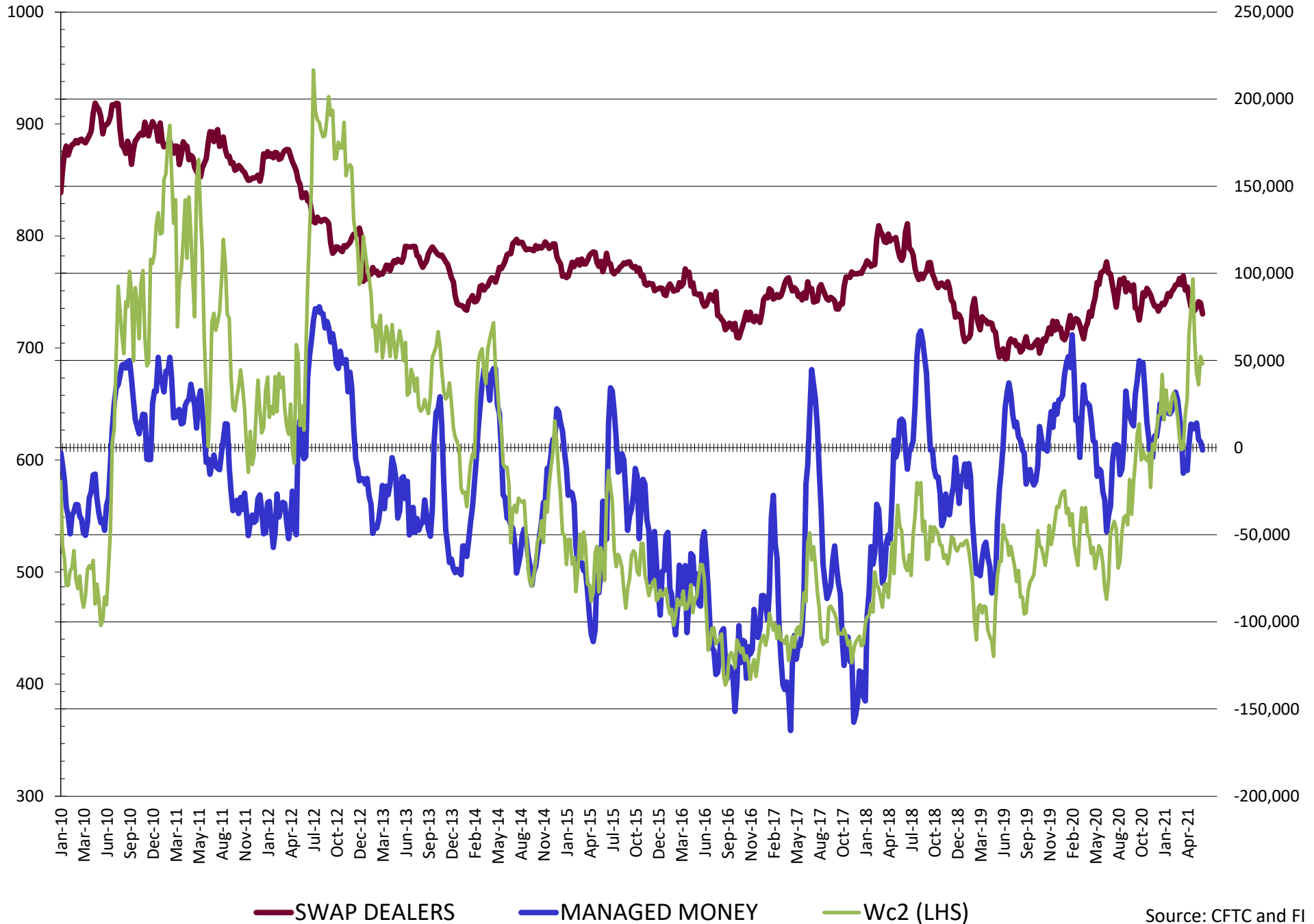
Source: CFTC and FI
6/12/2021

NET POSITION FUTURES AND OPTIONS OF SWAP AND MANAGED FUNDS IN CORN

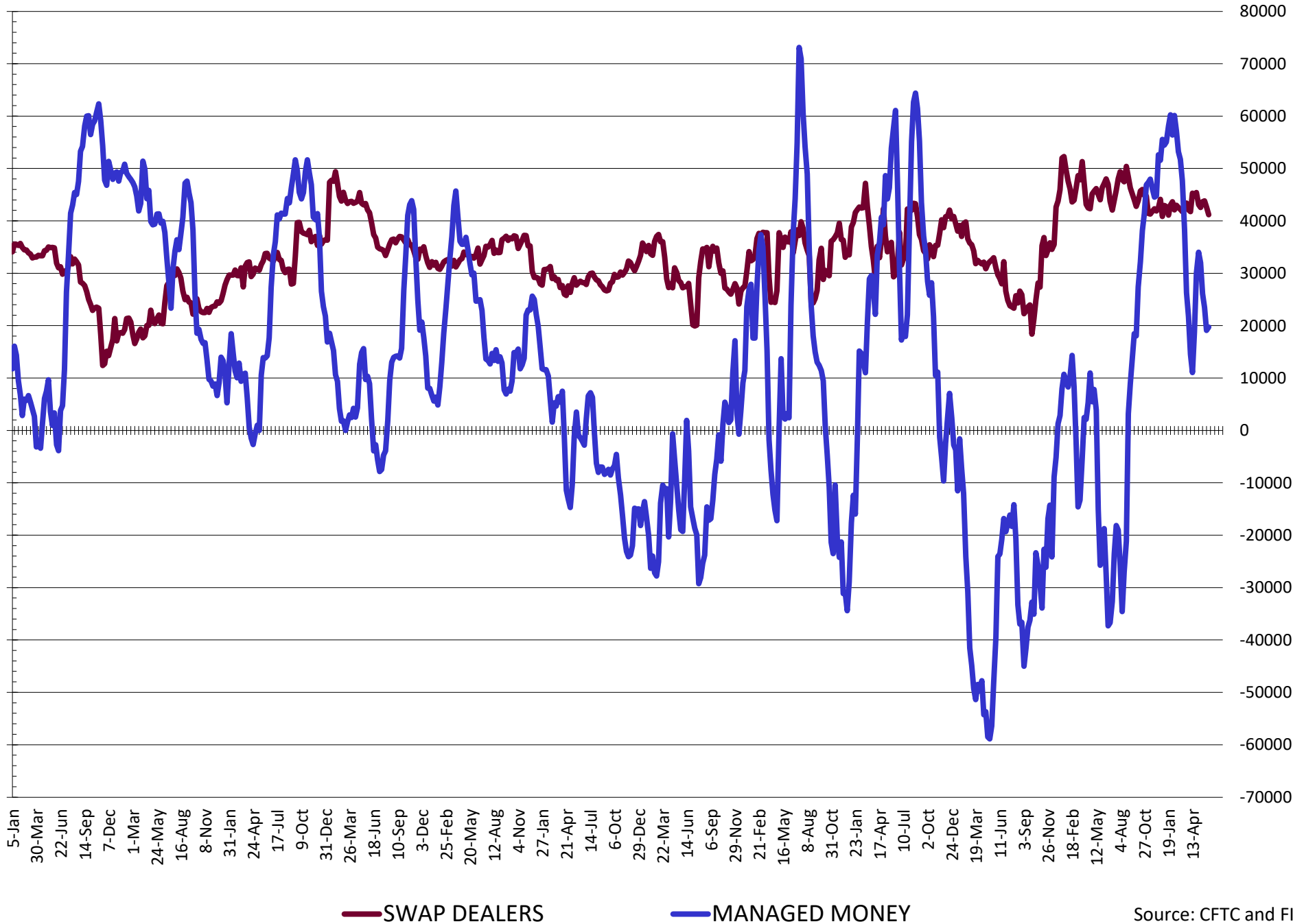


— SWAP DEALERS
 — MANAGED MONEY
 — Cc2 (LHS)

NET POSITION FUTURES AND OPTIONS OF SWAP AND MANAGED FUNDS IN CHICAGO WHEAT

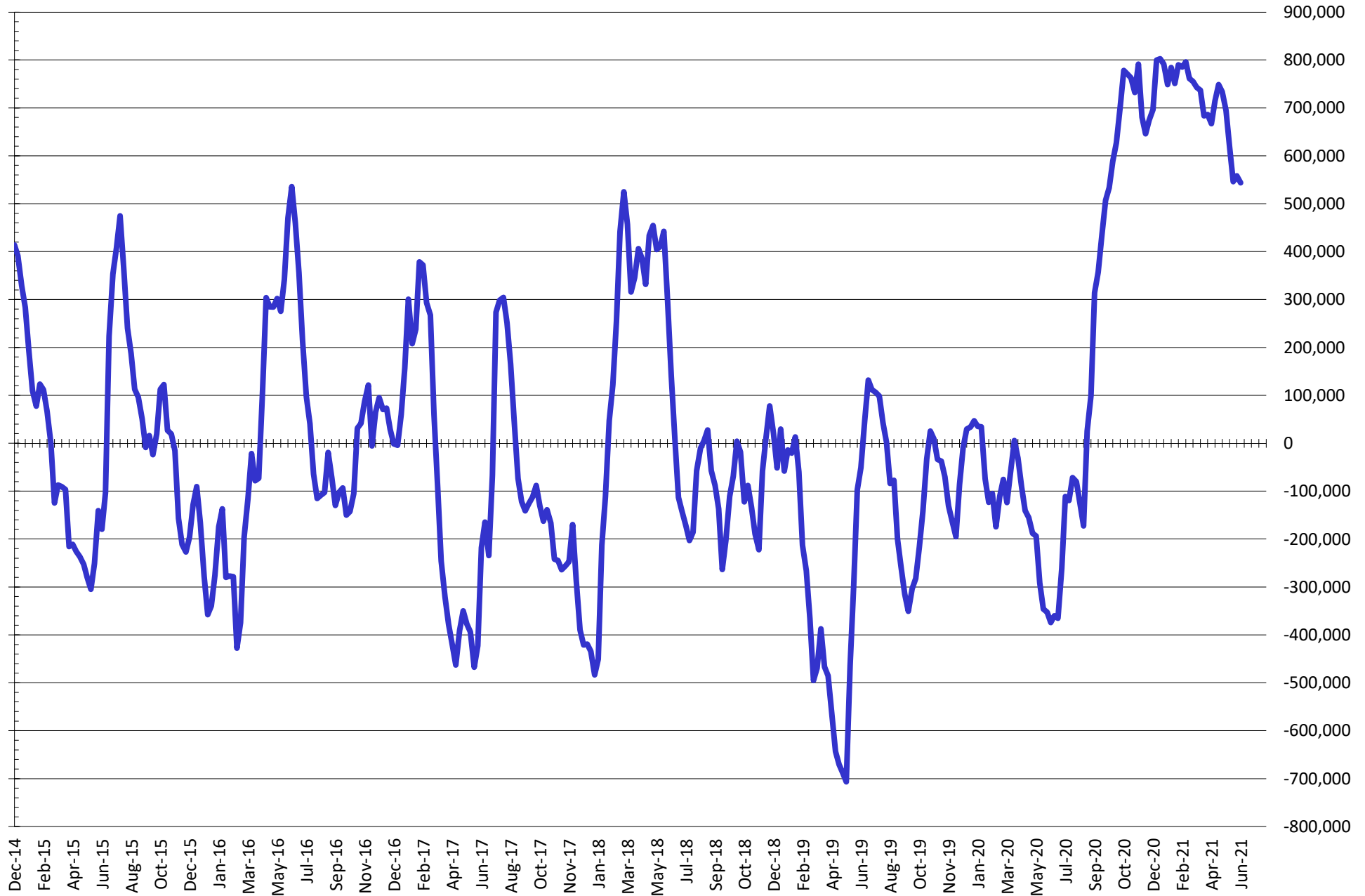


NET POSITION FUTURES AND OPTIONS OF SWAP DEALERS AND MANAGED FUNDS IN KANSAS WHEAT



Source: CFTC and FI
6/12/2021

NET POSITION FUTURES AND OPTIONS OF SWAP AND MANAGED FUNDS IN COMBINED SRW, HRW, CORN, SOYBEANS, SOYMEAL AND SOYOIL



— Net Managed Money

Source: CFTC and FI
6/12/2021

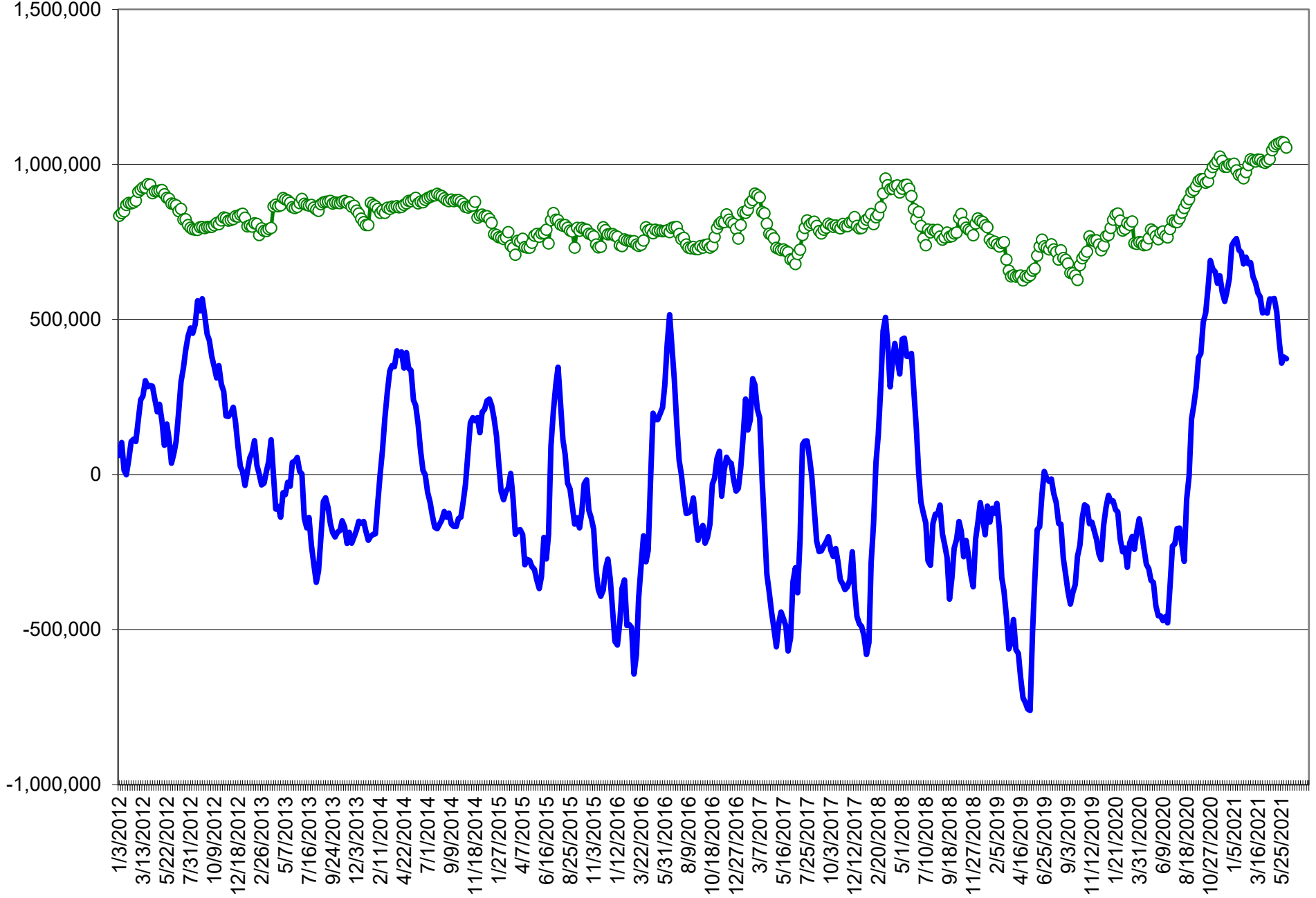
COMMITMENT OF TRADERS
FUTURES & OPTIONS NET POSITIONS (INDEX BROKEN OUT)
AS OF 06/08/2021
(IN THOUSAND CONTRACTS)

	COMMERCIAL				(FUND) NON COMMERCIAL				(SPEC) NON-REPORTABLE			
	8-Jun	1-Jun	25-May	18-May	8-Jun	1-Jun	25-May	18-May	8-Jun	1-Jun	25-May	18-May
	WHEAT											
Chicago	(115.0)	(112.4)	(110.9)	(124.7)	(36.6)	(37.0)	(38.3)	(26.7)	(6.5)	(10.9)	(13.0)	(10.4)
Kansas City	(65.8)	(63.8)	(66.5)	(73.9)	5.0	4.6	8.4	9.3	(1.8)	(3.4)	(6.1)	(3.7)
Minneapolis	-	-	-	-	-	-	-	-	-	-	-	-
All Wheat	(180.8)	(176.2)	(177.4)	(198.7)	(31.6)	(32.4)	(29.9)	(17.4)	(8.3)	(14.3)	(19.2)	(14.1)
CORN	(641.4)	(658.9)	(620.3)	(658.1)	236.6	250.6	232.9	259.4	(21.9)	(24.8)	(42.6)	(27.5)
OATS	-	-	-	-	-	-	-	-	-	-	-	-
SOYBEANS	(281.8)	(271.6)	(260.6)	(273.1)	95.1	91.4	87.4	100.3	2.7	(5.3)	(14.5)	(7.6)
SOY OIL	(195.6)	(202.5)	(195.3)	(193.2)	54.7	56.8	53.3	50.9	17.5	17.7	15.6	16.5
SOY MEAL	(145.5)	(143.2)	(147.5)	(179.2)	18.6	12.2	14.8	37.2	28.1	30.7	31.3	36.0

	TOTAL OPEN INTEREST				(INDEX) COMMERCIAL INDEX TRADERS				(INDEX) % NET OF TOTAL OPEN INTEREST			
	8-Jun	1-Jun	25-May	18-May	8-Jun	1-Jun	25-May	18-May	8-Jun	1-Jun	25-May	18-May
	WHEAT											
Chicago	524,595	510,166	510,434	536,423	158.1	160.3	162.2	161.8	30.1%	31.4%	31.8%	30.2%
Kansas City	227,637	240,969	244,330	243,775	62.5	62.6	64.3	68.3	27.5%	26.0%	26.3%	28.0%
Minneapolis	-	-	-	-	-	-	-	-	-	-	-	-
All Wheat	752,232	751,135	754,764	780,198	220.7	223.0	226.5	230.1	29.3%	29.7%	30.0%	29.5%
CORN	2,559,044	2,527,672	2,433,267	2,493,255	426.8	433.0	429.9	426.1	16.7%	17.1%	17.7%	17.1%
OATS	-	-	-	-	-	-	-	-	-	-	-	-
SOYBEANS	1,195,861	1,165,736	1,142,076	1,175,415	184.0	185.5	187.7	180.4	15.4%	15.9%	16.4%	15.3%
SOY OIL	667,461	650,311	619,928	623,254	123.4	128.0	126.4	125.8	18.5%	19.7%	20.4%	20.2%
SOY MEAL	463,283	457,200	456,909	467,317	98.9	100.3	101.4	106.0	21.3%	21.9%	22.2%	22.7%

SOURCE: CFTC & FI

NET POSITION FUTURES AND OPTIONS OF SPECULATORS AND INDEX FUNDS IN COMBINED SRW, HRW, CORN, SOYBEANS, SOYMEAL AND SOYOIL



Source: CFTC and FI

○ Net Index

— Net Speculator

6/12/2021

Traditional Daily Estimate of Funds 6/8/21

	(Neg)-"Short"	Pos-"Long"			
Actual less Est.	462.4	264.1	14.8	49.5	115.2
	Corn	Bean	Chi. Wheat	Meal	Oil
Actual	428.4	226.7	18.6	60.4	83.9
9-Jun	10.0	(11.0)	(3.0)	(3.0)	(4.0)
10-Jun	10.0	(7.0)	1.0	(4.0)	(2.0)
11-Jun	(15.0)	(15.0)	(3.0)	2.0	(25.0)
14-Jun					
15-Jun					
FI Est. of Futures Only 6/8/21	433.4	193.7	13.6	55.4	52.9
FI Est. Futures & Options	394.7	133.9	11.4	44.9	53.5
Futures only record long "Traditional Funds"	547.7 1/26/2021	280.9 11/10/2020	86.5 8/7/2018	167.5 5/1/2018	160.2 11/1/2016
Futures only record short	(235.0) 6/9/2020	(118.3) 4/30/2019	(130.0) 4/25/2017	(49.5) 3/1/2016	(69.8) 9/18/2018
Futures and options record net long	557.6 1/12/2021	270.9 10/6/2020	64.8 8/7/2012	132.1 5/1/2018	159.2 1/1/2016
Futures and options record net short	(270.6) 4/26/2019	(132.0) 4/30/2019	(143.3) 4/25/2017	(64.1) 3/1/2016	(77.8) 9/18/2018

Managed Money Daily Estimate of Funds 6/8/21

	Corn	Bean	Chi. Wheat	Meal	Oil
Latest CFTC Fut. Only	277.6	129.9	(9.3)	26.0	80.3
Latest CFTC F&O	275.6	141.5	(1.4)	26.7	81.3
FI Est. Managed Fut. Only	283	97	(14)	21	49
FI Est. Managed Money F&O	281	108	(6)	22	50

Index Funds Latest Positions (as of last Tuesday)

Index Futures & Options	426.8	184.0	158.1	NA	123.4
Change From Previous Week	(6.2)	(1.5)	(2.2)	NA	(4.6)

Source: Reuters, CFTC & FI (FI est. are noted with latest date)

Disclaimer

TO CLIENTS/PROSPECTS OF FUTURES INTERNATIONAL, SEE RISK DISCLOSURE BELOW:

THIS COMMUNICATION IS CONVEYED AS A SOLICITATION FOR ENTERING INTO A DERIVATIVES TRANSACTION.

Any trading recommendations and market or other information to Customer by Futures International (FI), although based upon information obtained from sources believed by FI to be reliable may not be accurate and may be changed without notice to customer. FI makes no guarantee as to the accuracy or completeness of any of the information or recommendations furnished to Customer. Customer understands that FI, its managers, employees and/or affiliates may have a position in commodity futures, options or other derivatives which may not be consistent with the recommendations furnished by FI to Customer.

The risk of trading futures and options and other derivatives involves a substantial risk of loss and is not suitable for all persons. In purchasing an option, the risk is limited to the premium paid, and all commissions and fees involved with the trade. When an option is shorted or written, the writer of the option has unlimited risk with respect to the option written. The use of options strategies such as a straddles and strangles involve multiple option positions and may substantially increase the amount of commissions and fees paid to execute the strategy. Option prices do not necessarily move in tandem with cash or futures prices. Each person must consider whether a particular trade, combination of trades or strategy is suitable for that person's financial means and objectives.

This material may include discussions of seasonal patterns, however, futures prices have already factored in the seasonal aspects of supply and demand, and seasonal patterns are no indication of future market trends. Finally, past performance is not indicative of future results.

This communication may contain links to third party websites which are not under the control of FI and FI is not responsible for their content. Products and services are offered only in jurisdictions where solicitation and sale are lawful, and in accordance with applicable laws and regulations in each such jurisdiction.