

	Current	Δ from YD	Δ from 7D Avg
Nat Gas Prompt	\$ 3.67	▼ \$ (0.02)	▼ \$ (0.01)

	Current	Δ from YD	Δ from 7D Avg
WTI Prompt	\$ 73.70	▲ \$ 0.76	▼ \$ (0.5)

	Current	Δ from YD	Δ from 7D Avg
Brent Prompt	\$ 74.68	▲ \$ 0.56	▼ \$ (0.7)

Page Menu

[Short-term Weather Model Outlooks](#)

[Lower 48 Component Models](#)

[Regional S/D Models Storage Projection](#)

[Weather Model Storage Projection](#)

[Supply – Demand Trends](#)

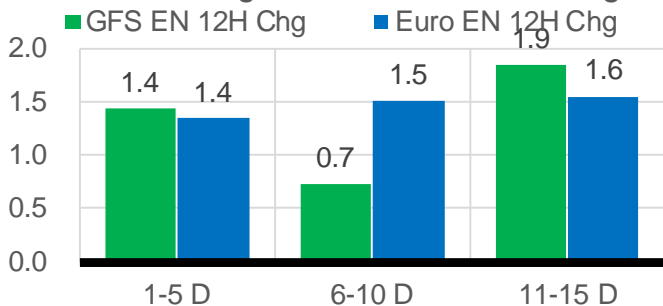
[Nat Gas Options Volume and Open Interest](#)

[Nat Gas Futures Open Interest](#)

[Price Summary](#)

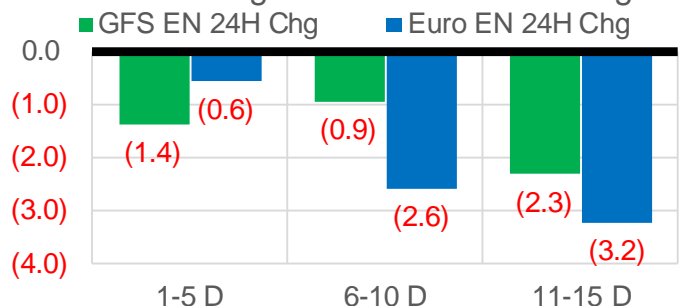
Vs. 12H Ago

L48 Region - 00z TDD vs 12H Ago



Vs. 24H Ago

L48 Region - 00z TDD vs 24H Ago



	Current	Δ from YD	Δ from 7D Avg
US Dry Production	90.9	▼ -0.97	▼ -0.23

	Current	Δ from YD	Δ from 7D Avg
US Power Burns	37.8	▼ -0.80	▲ 0.50

	Current	Δ from YD	Δ from 7D Avg
US ResComm	8.3	▼ -0.29	▲ 0.31

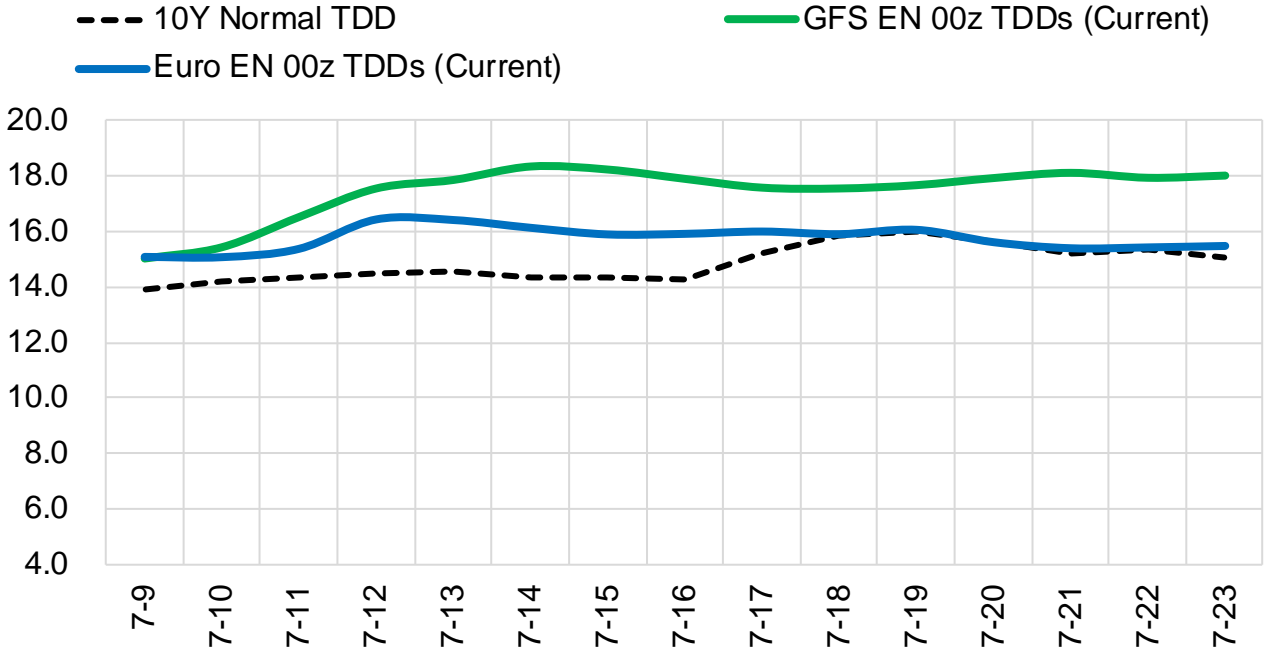
	Current	Δ from YD	Δ from 7D Avg
Canadian Imports	4.9	▼ -0.24	▼ -0.22

	Current	Δ from YD	Δ from 7D Avg
Net LNG Exports	10.8	▼ -0.37	▼ -0.24

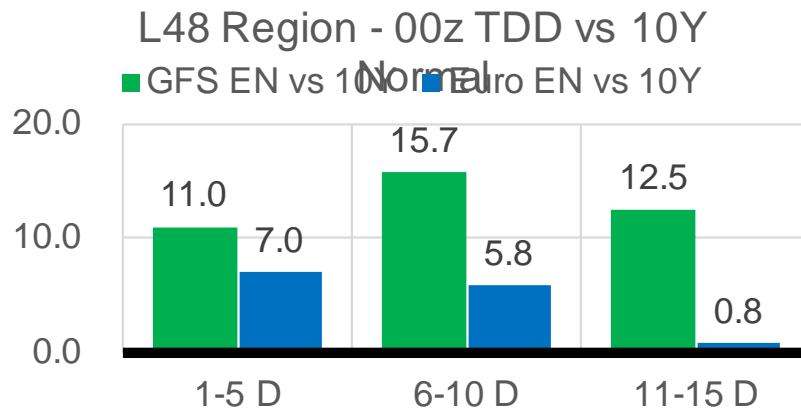
	Current	Δ from YD	Δ from 7D Avg
Mexican Exports	7.5	▼ -0.05	▲ 0.37

Short-term Weather Model Outlooks (00z)

L48 Region



Vs. 10Y Normal



Source: WSI , Bloomberg

Lower 48 Component Models

Daily Balances

	3-Jul	4-Jul	5-Jul	6-Jul	7-Jul	8-Jul	9-Jul	DoD	vs. 7D
Lower 48 Dry Production	90.2	92.0	91.9	92.1	91.6	91.9	90.9	▼ -1.0	▼ -0.7
Canadian Imports	4.9	4.9	4.9	5.5	5.6	5.1	4.9	▼ -0.2	▼ -0.3
L48 Power	33.3	34.4	37.9	41.7	40.6	38.6	37.8	▼ -0.8	▲ 0.1
L48 Residential & Commercial	7.5	7.3	7.8	8.3	8.5	8.6	8.3	▼ -0.3	▲ 0.3
L48 Industrial	19.0	18.7	18.8	18.9	19.1	19.4	19.4	▼ 0.0	▲ 0.4
L48 Lease and Plant Fuel	5.0	5.1	5.1	5.1	5.1	5.1	5.0	▼ -0.1	▼ 0.0
L48 Pipeline Distribution	1.9	2.0	2.2	2.4	2.3	2.2	2.2	▼ -0.1	▲ 0.0
L48 Regional Gas Consumption	66.8	67.4	71.8	76.3	75.7	73.9	72.7	▼ -1.2	▲ 0.7
Net LNG Delivered	11.09	11.08	11.05	11.15	11.03	11.16	10.79	▼ -0.4	▼ -0.3
Total Mexican Exports	6.9	6.7	7.0	7.2	7.5	7.6	7.5	▼ -0.1	▲ 0.4
Implied Daily Storage Activity	10.4	11.6	7.0	3.0	3.0	4.4	4.8		
EIA Reported Daily Storage Activity									
Daily Model Error									

EIA Storage Week Balances

	4-Jun	11-Jun	18-Jun	25-Jun	2-Jul	9-Jul	WoW	vs. 4W
Lower 48 Dry Production	92.0	92.3	91.7	92.7	91.7	91.2	▼ -0.5	▼ -0.9
Canadian Imports	3.9	4.8	5.1	4.7	5.2	5.1	▼ 0.0	▲ 0.2
L48 Power	27.8	34.4	34.8	34.6	40.0	37.3	▼ -2.6	▲ 1.4
L48 Residential & Commercial	11.9	8.5	8.3	8.4	8.3	8.0	▼ -0.4	▼ -0.4
L48 Industrial	17.5	21.1	21.9	19.4	21.2	19.0	▼ -2.1	▼ -1.8
L48 Lease and Plant Fuel	5.1	5.1	5.1	5.1	5.1	5.0	▼ 0.0	▼ 0.0
L48 Pipeline Distribution	2.0	2.1	2.1	2.1	2.4	2.1	▼ -0.2	▼ 0.0
L48 Regional Gas Consumption	64.4	71.2	72.1	69.5	76.9	71.5	▼ -5.3	▼ -0.9
Net LNG Exports	11.0	9.4	9.6	10.3	11.2	11.0	▼ -0.1	▲ 0.9
Total Mexican Exports	7.2	7.3	7.5	7.6	7.2	7.2	▼ 0.0	▼ -0.3
Implied Daily Storage Activity	13.3	9.1	7.6	9.9	1.6	6.6	5.0	
EIA Reported Daily Storage Activity	14.0	2.3	7.9	10.9	2.3			
Daily Model Error	-0.7	6.9	-0.2	-0.9	-0.7			

Monthly Balances

	2Yr Ago Jul-19	LY Jul-20	Mar-21	Apr-21	May-21	Jun-21	MTD Jul-21	MoM	vs. LY
Lower 48 Dry Production	91.9	89.1	91.5	92.3	91.7	92.2	90.9	▼ -1.3	▲ 1.8
Canadian Imports	5.0	4.4	4.8	4.7	4.5	4.9	5.1	▲ 0.2	▲ 0.7
L48 Power	40.8	43.6	24.3	25.1	27.0	35.4	37.5	▲ 2.2	▼ -6.1
L48 Residential & Commercial	8.0	7.9	29.3	19.7	13.3	8.4	8.0	▼ -0.4	▲ 0.1
L48 Industrial	21.6	20.4	19.4	21.1	18.7	20.6	19.2	▼ -1.4	▼ -1.2
L48 Lease and Plant Fuel	5.0	4.9	5.0	5.1	5.0	5.1	5.0	▼ -0.1	▲ 0.1
L48 Pipeline Distribution	2.3	2.4	2.5	2.3	2.1	2.2	2.2	▼ 0.0	▼ -0.3
L48 Regional Gas Consumption	77.8	79.4	80.6	73.3	66.2	71.6	71.9	▲ 0.3	▼ -7.4
Net LNG Exports	6.0	3.3	11.1	11.5	10.8	10.2	11.0	▲ 0.9	▲ 7.8
Total Mexican Exports	5.3	5.9	6.5	6.7	6.8	7.4	7.2	▼ -0.2	▲ 1.3
Implied Daily Storage Activity	7.9	5.0	-2.0	5.5	12.4	7.9	5.8		
EIA Reported Daily Storage Activity									
Daily Model Error									

Source: Bloomberg, analytix.ai

Daily Average Generation Data

Nuclear Generation Daily Average - GWh (NRC)

	3-Jul	4-Jul	5-Jul	6-Jul	7-Jul	8-Jul	9-Jul	DoD	vs. 7D
NRC Nuclear Daily Output	89.4	89.4	89.3	89.3	89.4	89.8	89.8	0.0	0.4
NRC Nuclear Max Capacity	104.9	104.9	104.9	104.9	104.9	104.9	104.9	0.0	0.0
NRC Nuclear Outage	15.4	15.5	15.5	15.6	15.5	15.1	15.1	0.0	-0.4
NRC % Nuclear Cap Utilization	90.9	90.9	90.8	90.8	90.9	91.3	91.3	0.0	0.4

Wind Generation Daily Average - MWh (Genscape)

	3-Jul	4-Jul	5-Jul	6-Jul	7-Jul	8-Jul	9-Jul	DoD	vs. 7D
CAISO Wind	4583	4583	4583	4583	4583	4583	4583	0	0
ERCOT	5916	10341	5805	3160	3207	12482	7560	-4922	742
Genscape US Wind	24034	35419	28631	22481	19400	19400	19400	0	-5494

Generation Daily Average - MWh (Genscape)

	3-Jul	4-Jul	5-Jul	6-Jul	7-Jul	8-Jul	9-Jul	DoD	vs. 7D
Genscape US Wind	24034	35419	28631	22481	19400	19400	19400	0	-5494
Genscape US Solar	6381	6369	11859	20779	24351	24351	24351	0	8669
Genscape US Other	4349	4256	4591	5455	5460	5460	5460	0	531
Genscape US Coal	111143	105589	115946	129390	132928	132928	132928	0	11607
Genscape US Nuke	93411	93342	93260	93237	93378	93378	93378	0	44
Genscape US Hydro	23279	22957	22633	23343	22868	22868	22868	0	-123
Genscape US Gas	186858	187715	215801	248930	234819	234819	234819	0	16662

See National Wind and Nuclear daily charts

Source: Bloomberg, analytix.ai

Storage Week Average Generation Data

Nuclear Generation Weekly Average - GWh (NRC)

	4-Jun	11-Jun	18-Jun	25-Jun	2-Jul	9-Jul	WoW	WoW Bcf/d Impact
NRC Nuclear Daily Output	89.2	88.6	86.7	89.9	89.1	89.5	0.3	-0.1
NRC Nuclear Max Capacity	104.9	104.9	104.9	104.9	104.9	104.9	0.0	
NRC Nuclear Outage	15.7	16.3	18.1	15.0	15.7	15.4	-0.3	
NRC % Nuclear Cap Utilization	0.1	0.1	0.1	0.1	0.1	0.1	0.0	

Wind Generation Weekly Average - MWh (Genscape)

	4-Jun	11-Jun	18-Jun	25-Jun	2-Jul	9-Jul	WoW	WoW Bcf/d Impact
CAISO Wind	4012	4607	3723	3254	4655	4583	-72	0.0
ERCOT	9217	17072	10749	16549	10225	6583	-3641	0.6
Genscape US Wind	29242	43337	32707	50972	25398	24138	-1260	0.2

Generation Weekly Average - MWh (Genscape)

	4-Jun	11-Jun	18-Jun	25-Jun	2-Jul	9-Jul	WoW	WoW Bcf/d Impact
Genscape US Wind	29242	43337	32707	50972	25398	24138	-1260	0.2
Genscape US Solar	15426	15643	7817	12070	24039	16231	-7808	1.3
Genscape US Other	5443	5942	5201	4746	4728	4825	97	0.0
Genscape US Coal	91844	118938	120230	118888	132762	121753	-11010	1.8
Genscape US Nuke	93111	92667	90822	93987	93205	93358	154	0.0
Genscape US Hydro	28202	32469	29459	30022	24181	23085	-1096	0.2
Genscape US Gas	167948	212241	210769	202074	238370	216486	-21884	

See National Wind and Nuclear daily charts

Source: Bloomberg, analytix.ai

Monthly Average Generation Data

Nuclear Generation Monthly Average - GWh (NRC)

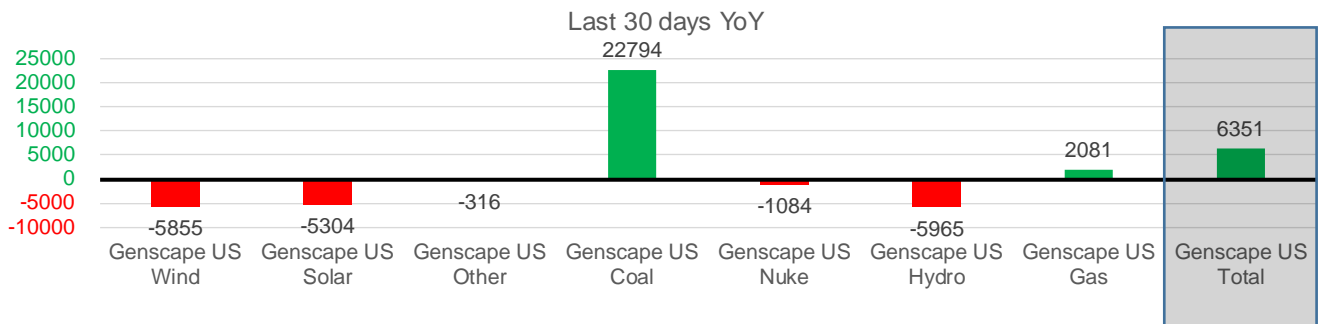
	2Yr Ago	LY					MTD	Last 30 days	MoM (MTD vs LY)	Last 30 days YoY
	Same 30 days	Same 30 days	Apr-21	May-21	Jun-21	Jul-21				
NRC Nuclear Daily Output	94.0	91.5	75.9	81.8	88.7	89.5	88.8	0.7	-2.7	
NRC Nuclear Max Capacity	104.9	104.9	104.9	104.9	104.9	104.9	104.9	0.0	0.0	
NRC Nuclear Outage	10.9	13.4	29.0	23.1	16.2	15.4	16.1	-0.7	2.7	
NRC % Nuclear Cap Utilization	95.6	93.0	77.1	83.2	90.2	91.0	90.3	0.8	-2.7	

Wind Generation Monthly Average - MWh (Genscape)

	2Yr Ago	LY					MTD	Last 30 days	MoM (MTD vs LY)	Last 30 days YoY
	Same 30 days	Same 30 days	Apr-21	May-21	Jun-21	Jul-21				
CAISO Wind	3744	3463	4009	3984	3994	4583	4084	589	621	
ERCOT	10901	14211	13820	15379	12995	6640	11210	-6355	-3001	
Genscape US Wind	31472	39039	50942	46211	36758	23216	33184	-13542	-5855	

Generation Monthly Average - MWh (Genscape)

	2Yr Ago	LY					MTD	Last 30 days	MoM (MTD vs LY)	Last 30 days YoY
	Same 30 days	Same 30 days	Apr-21	May-21	Jun-21	Jul-21				
Genscape US Wind	31472	39039	50942	46211	36758	23216	33184	▲9967.6	▼-5855	
Genscape US Solar	20898	20463	11261	15499	14357	17813	15159	▼-2654	▼-5304	
Genscape US Other	5098	5232	4512	5256	5178	4859	4916	▲56	▼-316	
Genscape US Coal	119189	101057	73683	87336	119945	124690	123852	▼-839	▲22794	
Genscape US Nuke	96379	93929	79842	85659	92805	93318	92845	▼-473	▼-1084	
Genscape US Hydro	33151	32675	27386	27514	29334	23112	26711	▲3598	▼-5965	
Genscape US Gas	202819	215461	152976	160888	212447	220477	217542	▲20569	▲2081	
Genscape US Total	509005	507857	400602	428362	510825	507486	514207	▲31169	▲6351	



See National Wind and Nuclear daily charts

Source: Bloomberg, analytix.ai

Regional S/D Models Storage Projection

Week Ending 9-Jul

	Daily Raw Storage	Daily Adjustment Factor	Daily Average Storage Activity (Adjusted) *	Weekly Adjusted Storage Activity
L48	6.3	0.9	7.1	50
East	1.2	1.1	2.3	16
Midwest	3.7	-0.4	3.2	23
Mountain	4.7	-3.9	0.8	6
South Central	-3.8	4.0	0.2	2
Pacific	0.5	0.1	0.6	4

*Adjustment Factor is calculated based on historical regional deltas

U.S. underground natural gas storage facilities by type (July 2015)

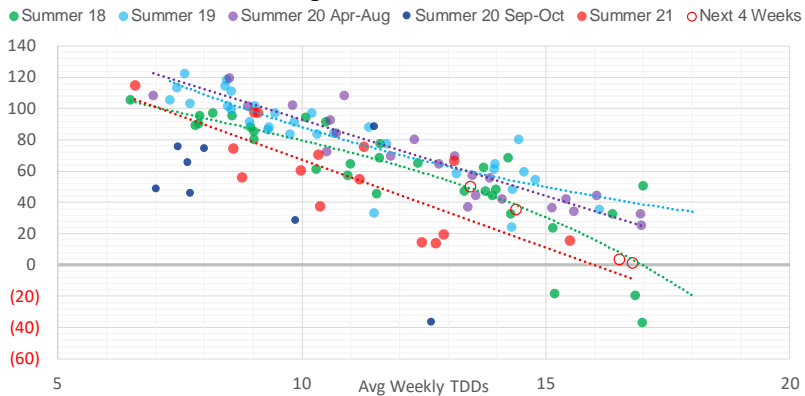


Weather Model Storage Projection

Next report
and beyond

Week Ending	GWDDs	Week Storage Projection
09-Jul	13.5	50
16-Jul	16.5	3
23-Jul	16.8	1
30-Jul	14.4	35

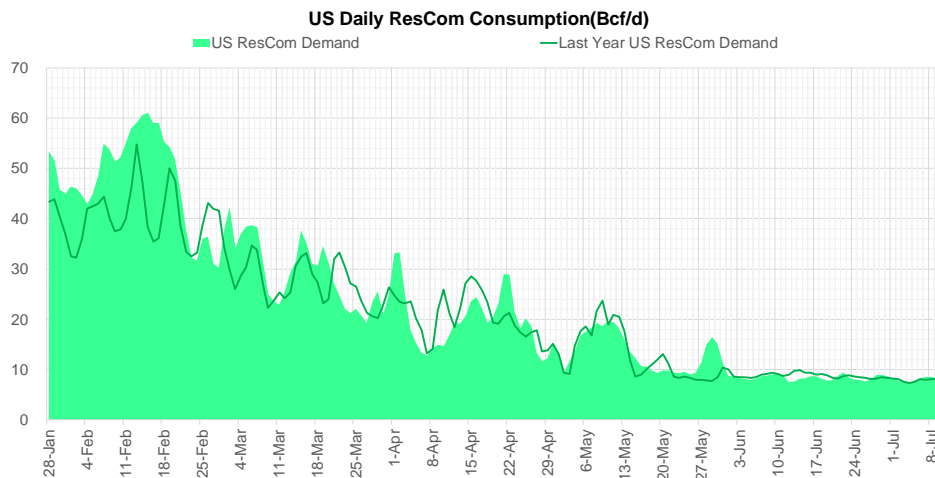
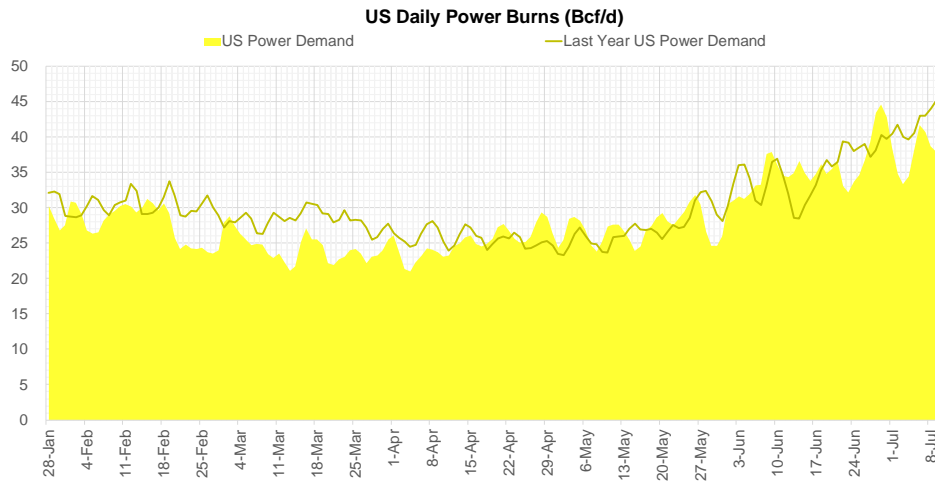
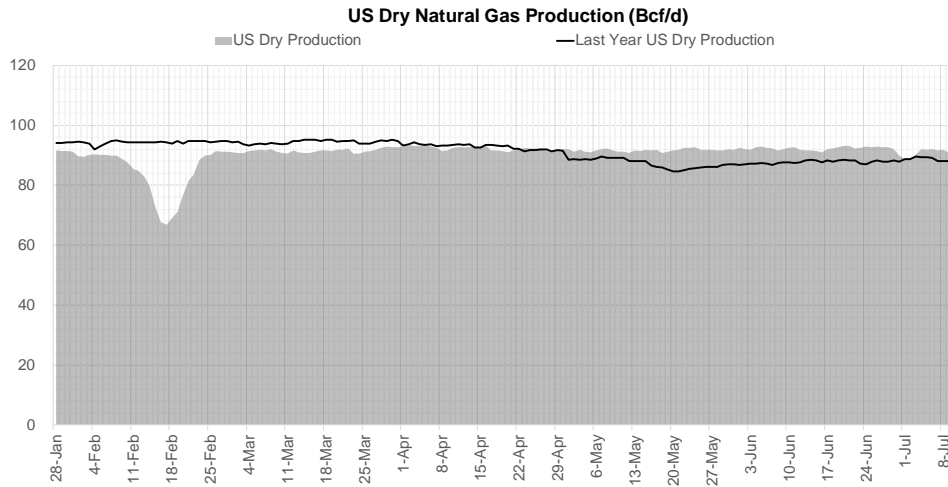
Weather Storage Model - Next 4 Week Forecast



Go to larger image



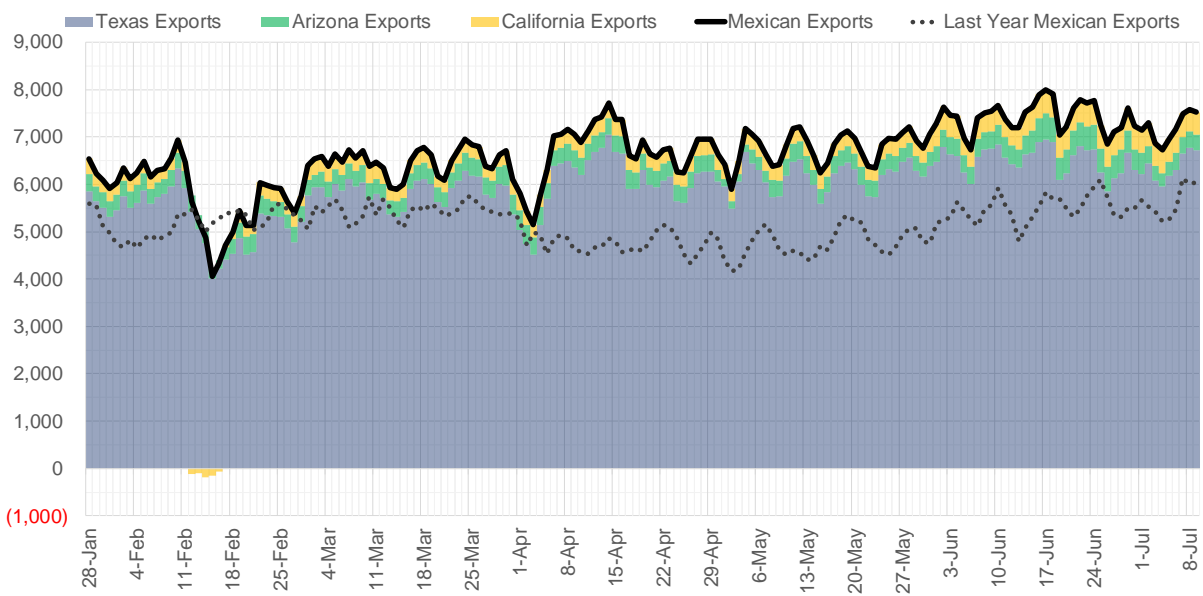
Supply – Demand Trends



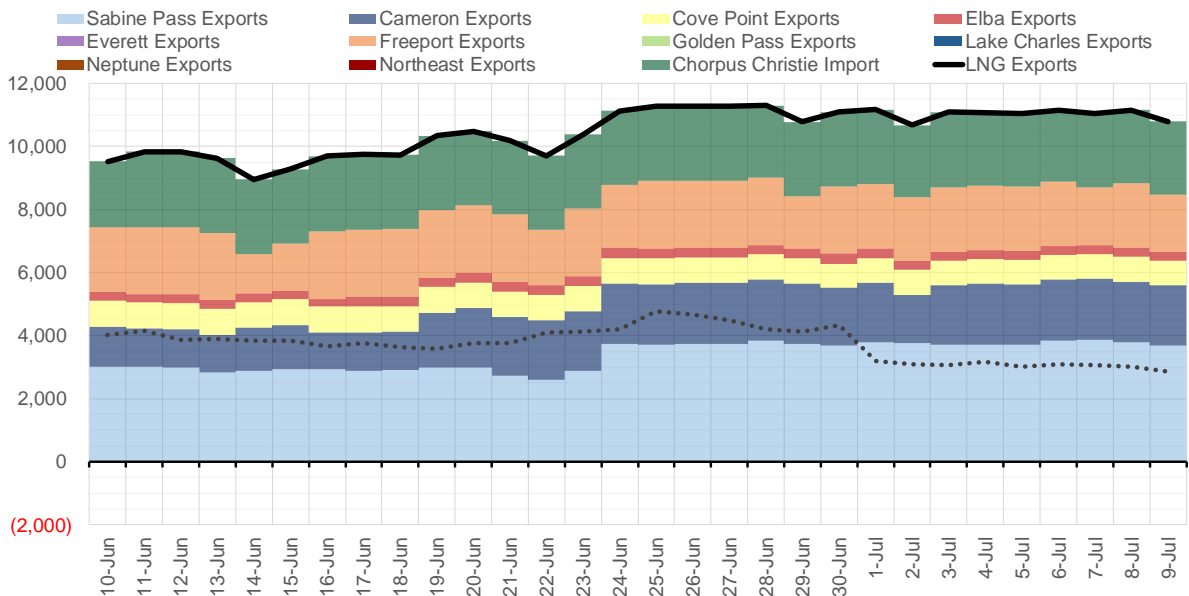
Source: Bloomberg

The risk of trading futures and options and other derivatives involves a substantial risk of loss and is not suitable for all persons. Each person must consider whether a particular trade, combination of trades, or strategy is suitable for that person's financial means and objectives. Past results are not necessarily indicative of future results. This communication may contain links to third party websites which are not under the control of and are not maintained by ION Energy Group, and ION Energy Group is not responsible for their content.

Mexican Exports (MMcf/d)



Net LNG Exports - Last 30 days (MMcf/d)



Source: Bloomberg

The risk of trading futures and options and other derivatives involves a substantial risk of loss and is not suitable for all persons. Each person must consider whether a particular trade, combination of trades, or strategy is suitable for that person's financial means and objectives. Past results are not necessarily indicative of future results. This communication may contain links to third party websites which are not under the control of and are not maintained by ION Energy Group, and ION Energy Group is not responsible for their content.

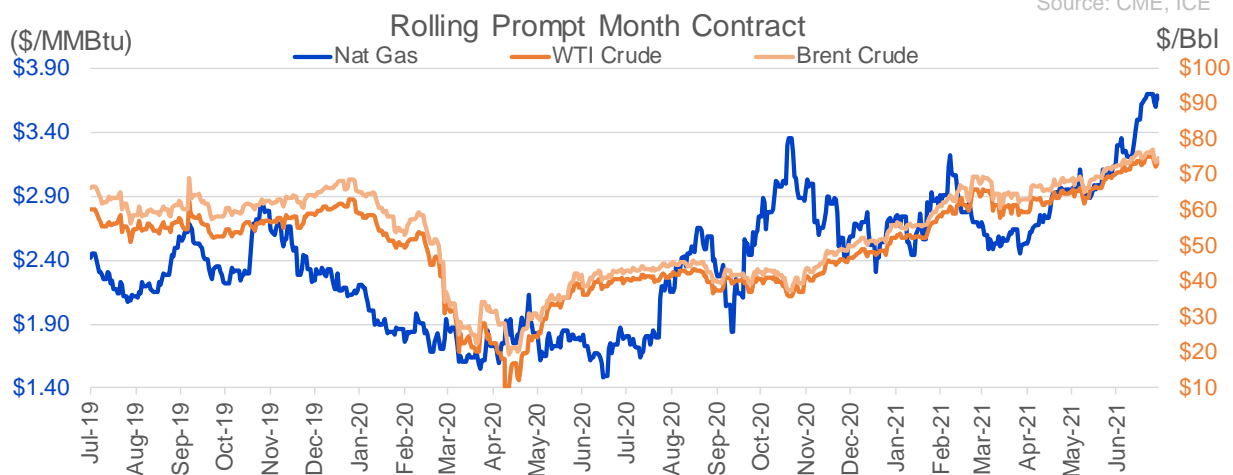
Nat Gas Options Volume and Open Interest CME, ICE and Nasdaq Combined

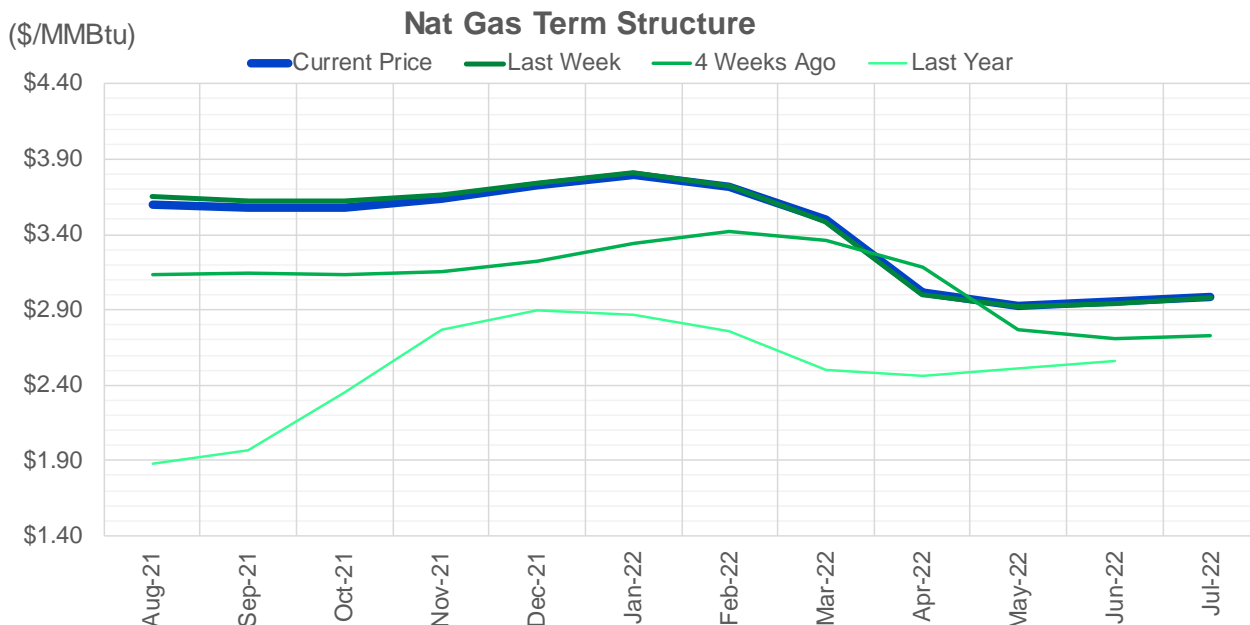
CONTRACT MONTH	CONTRACT YEAR	PUT/CALL	STRIKE	CUMULATIVE VOL	CONTRACT MONTH	CONTRACT YEAR	PUT/CALL	STRIKE	CUMULATIVE OI
8	2021	C	4.50	6584	10	2021	C	4.00	45347
8	2021	P	3.25	6508	8	2021	C	4.00	43109
8	2021	C	4.25	5614	8	2021	C	3.50	40529
9	2021	C	4.00	5438	9	2021	C	4.00	37299
8	2021	C	4.00	5118	10	2021	C	3.50	34096
9	2021	C	4.50	3791	10	2021	C	5.00	32773
8	2021	C	5.00	3420	10	2021	P	2.50	32510
8	2021	P	3.50	3249	8	2021	P	3.00	30879
11	2021	P	3.00	3000	8	2021	P	2.50	29351
10	2021	C	4.50	2549	10	2021	C	3.25	28365
8	2021	C	3.75	2271	10	2021	P	2.75	26446
9	2021	C	4.75	2162	8	2021	C	3.75	25646
9	2021	P	3.00	2146	8	2021	P	3.25	25271
9	2021	C	5.00	2101	10	2021	P	2.00	24785
11	2021	C	3.75	2101	11	2021	C	4.00	24269
8	2021	C	3.95	1882	9	2021	C	3.50	24213
8	2021	P	3.40	1806	8	2021	C	3.25	23608
9	2021	C	4.25	1795	9	2021	P	2.50	23469
8	2021	C	3.70	1732	10	2021	C	4.50	22778
8	2021	C	4.10	1719	12	2021	C	4.00	21886
8	2021	P	3.05	1699	8	2021	P	2.90	21603
8	2021	P	3.30	1622	10	2021	P	3.00	21581
8	2021	C	4.15	1569	9	2021	P	2.00	20423
8	2021	P	3.00	1451	4	2022	C	3.00	19785
11	2021	C	4.00	1403	8	2021	P	2.00	19664
5	2022	C	4.00	1300	8	2021	P	2.25	19478
10	2021	P	3.50	1252	10	2021	P	2.25	19196
8	2021	C	3.90	1221	9	2021	C	3.25	19003
2	2022	C	3.50	1200	8	2021	C	4.50	18592
10	2021	P	3.00	1152	10	2021	C	3.00	18500
10	2021	C	4.00	1142	8	2021	P	2.75	18483
9	2021	C	3.80	1069	9	2021	P	3.00	18464
9	2021	C	3.90	1007	10	2021	C	6.00	18289
9	2021	P	3.25	1006	8	2021	P	3.50	16476
8	2021	P	2.90	1000	10	2021	C	3.75	16304
4	2022	C	4.00	1000	8	2021	C	3.00	15829
6	2022	C	4.00	1000	8	2021	C	3.30	15333
7	2022	C	4.00	1000	3	2022	C	4.00	14616
8	2022	C	4.00	1000	11	2021	C	3.75	14578
9	2022	C	4.00	1000	10	2021	P	3.50	14498
10	2022	C	4.00	1000	3	2022	C	3.00	14448
8	2021	P	3.35	910	1	2022	C	4.00	14408
1	2022	C	6.00	900	9	2021	P	2.75	14346
11	2021	C	4.50	897	9	2021	C	4.25	14114
6	2022	P	2.50	852	9	2021	C	4.50	14110
4	2022	P	2.50	850	3	2022	C	5.00	14086
5	2022	P	2.50	850	12	2021	P	2.00	13884
7	2022	P	2.50	850	2	2022	C	4.00	13855
8	2022	P	2.50	850	9	2021	P	2.60	13854
					9	2021	P	1.9	13773

Source: CME, ICE

Nat Gas Futures Open Interest CME, and ICE Combined

CME Henry Hub Futures (10,000 MMBtu)				ICE Henry Hub Futures Contract Equivalent (10,000 MM			
	Current	Prior	Daily Change		Current	Prior	Daily Change
AUG 21	189647	201717	-12070	AUG 21	100048	99676	372
SEP 21	243593	235618	7975	SEP 21	87338	87122	216
OCT 21	155621	158773	-3152	OCT 21	101453	102329	-876
NOV 21	100959	101440	-481	NOV 21	71270	70875	395
DEC 21	69430	68787	643	DEC 21	70017	70176	-160
JAN 22	115372	113930	1442	JAN 22	80172	80155	18
FEB 22	46544	46122	422	FEB 22	65831	65844	-13
MAR 22	90859	91008	-149	MAR 22	67996	68373	-378
APR 22	94456	93387	1069	APR 22	63676	63699	-23
MAY 22	79660	78241	1419	MAY 22	63605	62601	1004
JUN 22	26595	26707	-112	JUN 22	54895	54422	473
JUL 22	22331	22049	282	JUL 22	53604	53194	410
AUG 22	22256	21184	1072	AUG 22	54632	54199	433
SEP 22	21285	20655	630	SEP 22	54241	53938	303
OCT 22	58864	59510	-646	OCT 22	57591	58035	-444
NOV 22	23639	24476	-837	NOV 22	46703	46523	180
DEC 22	20375	19543	832	DEC 22	49776	49422	354
JAN 23	12476	12240	236	JAN 23	28140	28025	116
FEB 23	4405	4305	100	FEB 23	24792	24716	76
MAR 23	8190	8182	8	MAR 23	27582	27498	85
APR 23	9172	9092	80	APR 23	22068	21951	116
MAY 23	5426	5321	105	MAY 23	22222	22148	74
JUN 23	2180	2180	0	JUN 23	20717	20653	64
JUL 23	2260	2260	0	JUL 23	20795	20731	65
AUG 23	1400	1300	100	AUG 23	20704	20639	65
SEP 23	1839	1747	92	SEP 23	20345	20281	64
OCT 23	2361	2356	5	OCT 23	21635	21569	66
NOV 23	1081	1076	5	NOV 23	19550	19540	10
DEC 23	1154	1134	20	DEC 23	21178	19925	1253
JAN 24	793	793	0	JAN 24	12323	12317	6





	Aug-21	Sep-21	Oct-21	Nov-21	Dec-21	Jan-22	Feb-22	Mar-22	Apr-22	May-22	Jun-22	Jul-22
Current Price	\$3.596	\$3.574	\$3.576	\$3.633	\$3.730	\$3.794	\$3.715	\$3.498	\$3.011	\$2.922	\$2.952	\$2.988
Last Week	\$3.650	\$3.624	\$3.619	\$3.658	\$3.743	\$3.807	\$3.725	\$3.488	\$2.998	\$2.917	\$2.943	\$2.977
vs. Last Week	-\$0.054	-\$0.050	-\$0.043	-\$0.025	-\$0.013	-\$0.013	-\$0.010	\$0.010	\$0.013	\$0.005	\$0.009	\$0.011
4 Weeks Ago	\$3.129	\$3.144	\$3.137	\$3.157	\$3.223	\$3.339	\$3.419	\$3.356	\$3.180	\$2.768	\$2.707	\$2.732
vs. 4 Weeks Ago	\$0.467	\$0.430	\$0.439	\$0.476	\$0.507	\$0.455	\$0.296	\$0.142	-\$0.169	\$0.154	\$0.245	\$0.256
Last Year	\$1.824	\$1.876	\$1.970	\$2.355	\$2.767	\$2.895	\$2.863	\$2.760	\$2.497	\$2.465	\$2.508	\$2.559
vs. Last Year	\$1.772	\$1.698	\$1.606	\$1.278	\$0.963	\$0.899	\$0.852	\$0.738	\$0.514	\$0.457	\$0.444	\$0.429

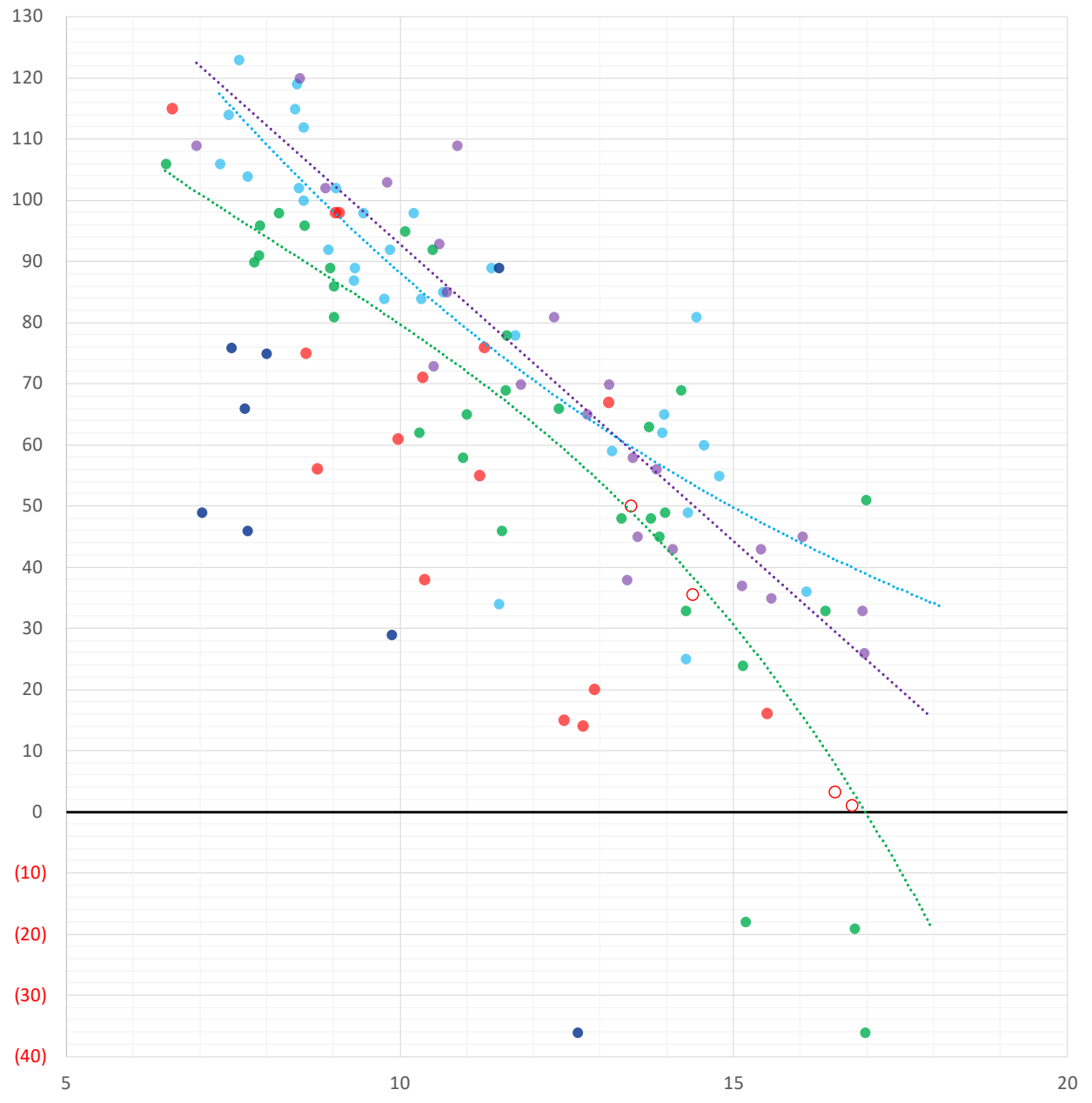
	Units	Cash Settled	Prompt Settle	Cash to Prompt
AGT Citygate	\$/MMBtu	3.10	3.34	0.24
TETCO M3	\$/MMBtu	3.15	3.15	0.00
FGT Zone 3	\$/MMBtu	3.26	3.75	0.50
Zone 6 NY	\$/MMBtu	3.26	3.13	-0.13
Chicago Citygate	\$/MMBtu	3.44	3.56	0.12
Michcon	\$/MMBtu	3.43	3.49	0.06
Columbia TCO Pool	\$/MMBtu	3.01	2.96	-0.05
Ventura	\$/MMBtu	3.26	3.51	0.25
Rockies/Opal	\$/MMBtu	3.69	3.50	-0.19
El Paso Permian Basin	\$/MMBtu	3.42	3.60	0.18
Socal Citygate	\$/MMBtu	5.98	5.61	-0.37
Malin	\$/MMBtu	3.75	4.19	0.44
Houston Ship Channel	\$/MMBtu	3.54	3.68	0.14
Henry Hub Cash	\$/MMBtu	3.52	3.50	-0.02
AECO Cash	C\$/GJ	3.00	2.85	-0.15
Station2 Cash	C\$/GJ	2.95	4.06	1.11
Dawn Cash	C\$/GJ	3.40	3.51	0.11

Source: CME, Bloomberg

	Units	Current Price	vs. Last Week	vs. 4 Weeks Ago	vs. Last Year
NatGas Jul21/Oct21	\$/MMBtu	0.051	▲ 0.045	▲ 0.022	▲ 0.030
NatGas Oct21/Nov21	\$/MMBtu	0.054	▲ 0.012	▼ -0.006	▲ 0.004
NatGas Oct21/Jan22	\$/MMBtu	0.207	▲ 0.016	▼ -0.043	▼ -0.076
NatGas Apr22/Oct22	\$/MMBtu	-0.014	▼ -0.006	▼ -0.028	▼ -0.076
WTI Crude	\$/Bbl	72.94	▼ -2.290	▲ 2.650	▲ 33.320
Brent Crude	\$/Bbl	74.12	▼ -1.720	▲ 1.600	▲ 31.770
Fuel Oil, NY Harbour 1%	\$/Bbl	97.18	▲ 0.000	▲ 0.000	▲ 0.000
Heating Oil	cents/Gallon	212.04	▼ -3.580	▼ -2.300	▲ 89.650
Propane, Mt. Bel	cents/Gallon	1.09	▼ -0.011	▲ 0.147	▲ 0.608
Ethane, Mt. Bel	cents/Gallon	0.30	▲ 0.001	▲ 0.027	▲ 0.087
Coal, PRB	\$/MTon	12.30	▲ 0.000	▲ 0.000	▲ 0.000
Coal, PRB	\$/MMBtu	0.70			
Coal, ILB	\$/MTon	31.05	▲ 0.000	▲ 0.000	▲ 0.000
Coal, ILB	\$/MMBtu	1.32			

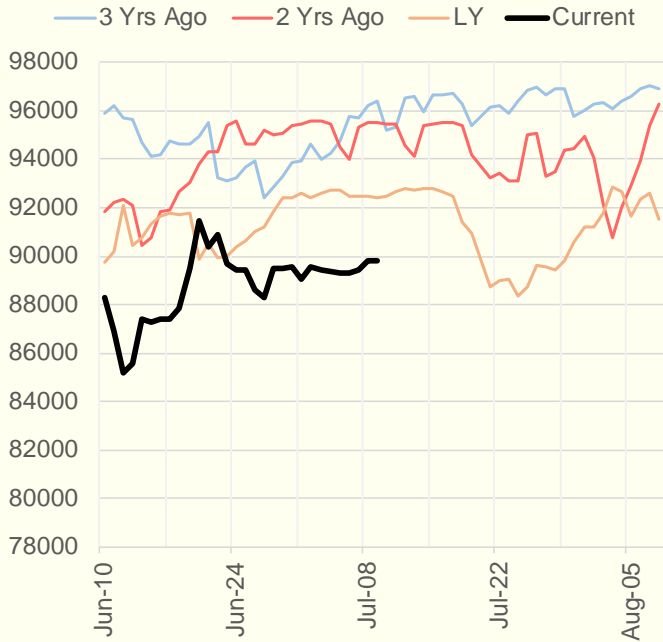
Weather Storage Model - Next 4 Week Forecast

● Summer 18
 ● Summer 19
 ● Summer 20 Apr-Aug
 ● Summer 20 Sept-Oct
 ● Summer 21
 ○ Next 4 Weeks

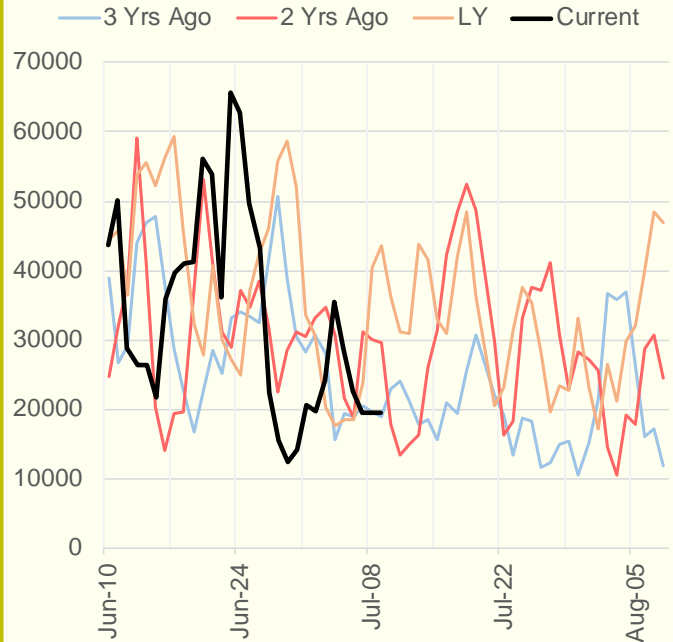


The risk of trading futures and options and other derivatives involves a substantial risk of loss and is not suitable for all persons. Each person must consider whether a particular trade, combination of trades, or strategy is suitable for that person's financial means and objectives. Past results are not necessarily indicative of future results. This communication may contain links to third party websites which are not under the control of and are not maintained by ION Energy Group, and ION Energy Group is not responsible for their content.

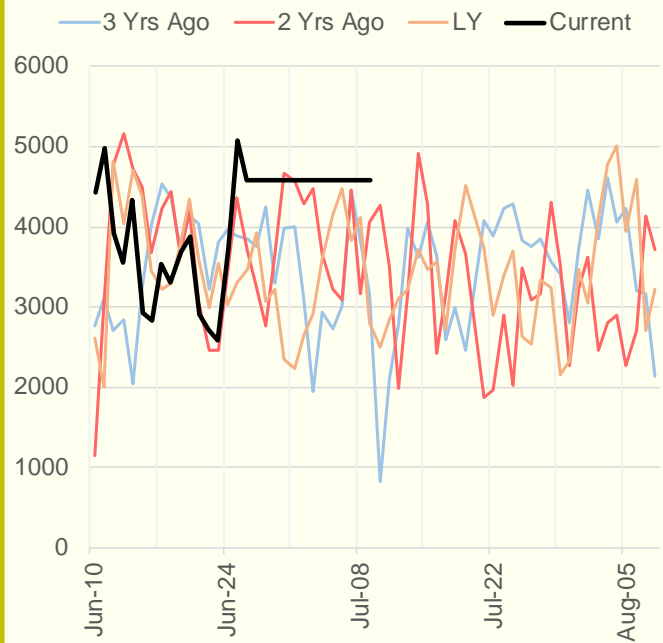
NRC Nuclear Daily Output



Genscape US Wind



CAISO Wind



ERCOT

