

	Current	Δ from YD	Δ from 7D Avg
Nat Gas Prompt	\$ 3.68 ▲	\$ 0.00 ▲	\$ 0.01 ▲

	Current	Δ from YD	Δ from 7D Avg
WTI Prompt	\$ 73.60 ▼	\$ (0.96) ▼	\$ (0.3) ▼

	Current	Δ from YD	Δ from 7D Avg
Brent Prompt	\$ 74.63 ▼	\$ (0.92) ▼	\$ (0.5) ▼

Page Menu

[Short-term Weather Model Outlooks](#)

[Lower 48 Component Models](#)

[Regional S/D Models Storage Projection](#)

[Weather Model Storage Projection](#)

[Supply – Demand Trends](#)

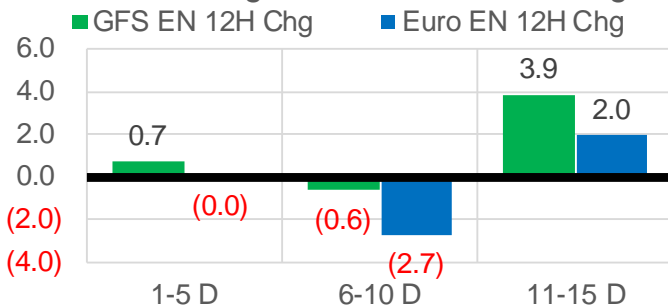
[Nat Gas Options Volume and Open Interest](#)

[Nat Gas Futures Open Interest](#)

[Price Summary](#)

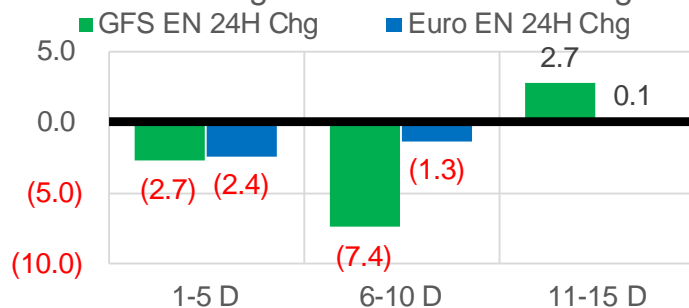
Vs. 12H Ago

L48 Region - 00z TDD vs 12H Ago



Vs. 24H Ago

L48 Region - 00z TDD vs 24H Ago



	Current	Δ from YD	Δ from 7D Avg
US Dry Production	90.6 ▼	-1.34 ▼	-1.44 ▼

	Current	Δ from YD	Δ from 7D Avg
US Power Burns	37.8 ▲	1.56 ▲	-0.73 ▼

	Current	Δ from YD	Δ from 7D Avg
US ResComm	8.3 ▲	0.21 ▲	0.06 ▲

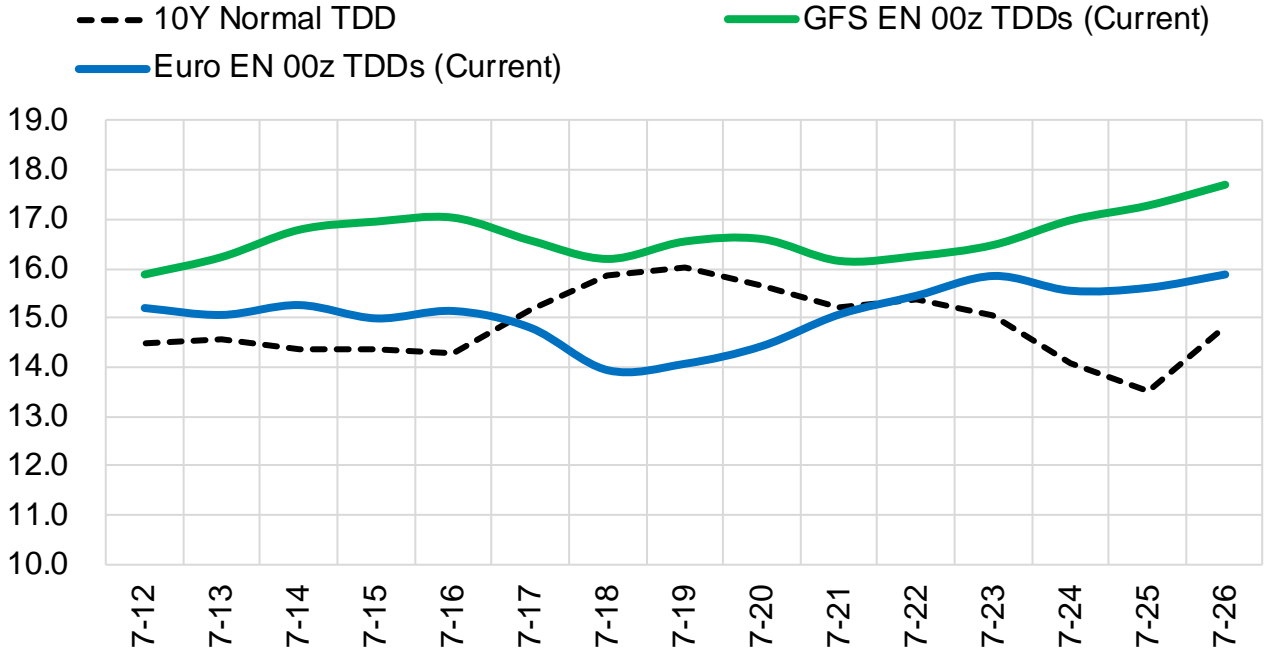
	Current	Δ from YD	Δ from 7D Avg
Canadian Imports	4.9 ▲	0.08 ▲	-0.23 ▼

	Current	Δ from YD	Δ from 7D Avg
Net LNG Exports	10.2 ▼	-0.40 ▼	-0.74 ▼

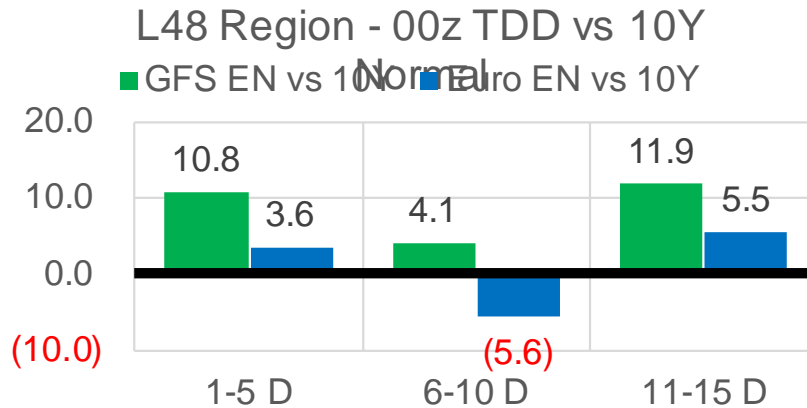
	Current	Δ from YD	Δ from 7D Avg
Mexican Exports	7.2 ▲	0.22 ▲	-0.01 ▼

Short-term Weather Model Outlooks (00z)

L48 Region



Vs. 10Y Normal



Source: WSI, Bloomberg

Lower 48 Component Models

Daily Balances

	6-Jul	7-Jul	8-Jul	9-Jul	10-Jul	11-Jul	12-Jul	DoD	vs. 7D
Lower 48 Dry Production	92.3	91.8	92.1	92.3	91.8	91.9	90.6	▼ -1.3	▼ -1.5
Canadian Imports	5.5	5.6	5.2	5.1	4.8	4.8	4.9	▲ 0.1	▼ -0.3
L48 Power	41.8	40.6	38.9	38.2	36.2	36.3	37.8	▲ 1.6	▼ -0.8
L48 Residential & Commercial	8.4	8.6	8.6	8.3	7.9	8.1	8.3	▲ 0.2	▼ 0.0
L48 Industrial	19.0	19.3	19.8	20.0	20.0	20.0	19.9	▼ -0.2	▲ 0.2
L48 Lease and Plant Fuel	5.1	5.1	5.1	5.1	5.1	5.1	5.0	▼ -0.1	▼ -0.1
L48 Pipeline Distribution	2.4	2.3	2.2	2.2	2.1	2.1	2.2	▲ 0.1	▼ 0.0
L48 Regional Gas Consumption	76.6	75.9	74.6	73.7	71.4	71.5	73.2	▲ 1.6	▼ -0.8
Net LNG Delivered	11.15	11.03	11.16	10.92	10.84	10.64	10.23	▼ -0.4	▼ -0.7
Total Mexican Exports	7.2	7.5	7.5	7.2	7.0	7.0	7.2	▲ 0.2	▼ 0.0
Implied Daily Storage Activity	2.9	3.0	4.0	5.5	7.4	7.6	4.9		
EIA Reported Daily Storage Activity									
Daily Model Error									

EIA Storage Week Balances

	4-Jun	11-Jun	18-Jun	25-Jun	2-Jul	9-Jul	WoW	vs. 4W
Lower 48 Dry Production	92.0	92.3	91.7	92.7	91.7	91.3	▼ -0.4	▼ -0.8
Canadian Imports	3.9	4.8	5.1	4.7	5.2	5.1	▼ 0.0	▲ 0.2
L48 Power	27.8	34.4	34.8	34.6	39.9	37.4	▼ -2.6	▲ 1.4
L48 Residential & Commercial	11.9	8.5	8.3	8.4	8.3	8.0	▼ -0.4	▼ -0.4
L48 Industrial	17.5	21.1	21.9	19.4	21.1	19.2	▼ -2.0	▼ -1.7
L48 Lease and Plant Fuel	5.1	5.1	5.1	5.1	5.1	5.1	▼ 0.0	▼ 0.0
L48 Pipeline Distribution	2.0	2.1	2.1	2.1	2.4	2.1	▼ -0.2	▼ 0.0
L48 Regional Gas Consumption	64.4	71.2	72.1	69.5	76.9	71.7	▼ -5.2	▼ -0.7
Net LNG Exports	11.0	9.4	9.6	10.3	11.2	11.0	▼ -0.1	▲ 0.9
Total Mexican Exports	7.2	7.3	7.5	7.6	7.2	7.1	▼ -0.1	▼ -0.3
Implied Daily Storage Activity	13.3	9.1	7.6	9.9	1.6	6.6	4.9	
EIA Reported Daily Storage Activity	14.0	2.3	7.9	10.9	2.3			
Daily Model Error	-0.7	6.9	-0.2	-0.9	-0.6			

Monthly Balances

	2Yr Ago Jul-19	LY Jul-20	Mar-21	Apr-21	May-21	Jun-21	MTD Jul-21	MoM	vs. LY
Lower 48 Dry Production	91.9	89.1	91.5	92.3	91.7	92.2	91.2	▼ -1.0	▲ 2.1
Canadian Imports	5.0	4.4	4.8	4.7	4.5	4.9	5.1	▲ 0.2	▲ 0.7
L48 Power	40.8	43.6	24.3	25.1	27.0	35.4	37.4	▲ 2.0	▼ -6.3
L48 Residential & Commercial	8.0	7.9	29.3	19.7	13.3	8.4	8.0	▼ -0.4	▲ 0.1
L48 Industrial	21.6	20.4	19.4	21.1	18.7	20.6	19.5	▼ -1.1	▼ -0.9
L48 Lease and Plant Fuel	5.0	4.9	5.0	5.1	5.0	5.1	5.0	▼ 0.0	▲ 0.1
L48 Pipeline Distribution	2.3	2.4	2.5	2.3	2.1	2.2	2.1	▼ 0.0	▼ -0.3
L48 Regional Gas Consumption	77.8	79.4	80.6	73.3	66.2	71.6	72.1	▲ 0.5	▼ -7.2
Net LNG Exports	6.0	3.3	11.1	11.5	10.8	10.2	10.9	▲ 0.8	▲ 7.7
Total Mexican Exports	5.3	5.9	6.5	6.7	6.8	7.4	7.1	▼ -0.3	▲ 1.2
Implied Daily Storage Activity	7.9	5.0	-2.0	5.5	12.4	7.9	6.1		
EIA Reported Daily Storage Activity									
Daily Model Error									

Source: Bloomberg, analytix.ai

Daily Average Generation Data

Nuclear Generation Daily Average - GWh (NRC)

	6-Jul	7-Jul	8-Jul	9-Jul	10-Jul	11-Jul	12-Jul	DoD	vs. 7D
NRC Nuclear Daily Output	89.3	89.4	89.8	89.3	89.3	89.3	89.3	0.0	-0.1
NRC Nuclear Max Capacity	104.9	104.9	104.9	104.9	104.9	104.9	104.9	0.0	0.0
NRC Nuclear Outage	15.6	15.5	15.1	15.6	15.6	15.6	15.6	0.0	0.1
NRC % Nuclear Cap Utilization	90.8	90.9	91.3	90.8	90.8	90.8	90.8	0.0	-0.1

Wind Generation Daily Average - MWh (Genscape)

	6-Jul	7-Jul	8-Jul	9-Jul	10-Jul	11-Jul	12-Jul	DoD	vs. 7D
CAISO Wind	4583	4583	4583	4583	4583	4583	4583	0	0
ERCOT	3160	3207	12482	11473	13533	6601	3970	-2631	-4439
Genscape US Wind	22481	19400	20980	36716	36716	36716	36716	0	7881

Generation Daily Average - MWh (Genscape)

	6-Jul	7-Jul	8-Jul	9-Jul	10-Jul	11-Jul	12-Jul	DoD	vs. 7D
Genscape US Wind	22481	19400	20980	36716	36716	36716	36716	0	7881
Genscape US Solar	20779	24351	20071	20447	20447	20447	20447	0	-643
Genscape US Other	5455	5460	4960	5006	5006	5006	5006	0	-143
Genscape US Coal	129390	132928	130713	124219	124219	124219	124219	0	-3396
Genscape US Nuke	93237	93378	93803	93210	93210	93210	93210	0	-131
Genscape US Hydro	23343	22868	23292	22914	22914	22914	22914	0	-127
Genscape US Gas	249718	246862	233450	224201	224201	224201	224201	0	-9571

See National Wind and Nuclear daily charts

Source: Bloomberg, analytix.ai

Storage Week Average Generation Data

Nuclear Generation Weekly Average - GWh (NRC)

	4-Jun	11-Jun	18-Jun	25-Jun	2-Jul	9-Jul	WoW	WoW Bcf/d Impact
NRC Nuclear Daily Output	89.2	88.6	86.7	89.9	89.1	89.5	0.3	-0.1
NRC Nuclear Max Capacity	104.9	104.9	104.9	104.9	104.9	104.9	0.0	
NRC Nuclear Outage	15.7	16.3	18.1	15.0	15.7	15.4	-0.3	
NRC % Nuclear Cap Utilization	0.1	0.1	0.1	0.1	0.1	0.1	0.0	

Wind Generation Weekly Average - MWh (Genscape)

	4-Jun	11-Jun	18-Jun	25-Jun	2-Jul	9-Jul	WoW	WoW Bcf/d Impact
CAISO Wind	4012	4607	3723	3254	4655	4583	-72	0.0
ERCOT	9217	17072	10749	16549	10225	6583	-3641	0.6
Genscape US Wind	29242	43337	32707	50972	25398	24364	-1034	0.2

Generation Weekly Average - MWh (Genscape)

	4-Jun	11-Jun	18-Jun	25-Jun	2-Jul	9-Jul	WoW	WoW Bcf/d Impact
Genscape US Wind	29242	43337	32707	50972	25398	24364	-1034	0.2
Genscape US Solar	15426	15643	7817	12070	24039	15619	-8420	1.4
Genscape US Other	5443	5942	5201	4746	4728	4754	26	0.0
Genscape US Coal	91844	118938	120230	118888	132762	121436	-11326	1.9
Genscape US Nuke	93111	92667	90822	93987	93205	93419	214	0.0
Genscape US Hydro	28202	32469	29459	30022	24181	23145	-1036	0.2
Genscape US Gas	167948	212241	210769	202074	238370	218182	-20187	

See National Wind and Nuclear daily charts

Source: Bloomberg, analytix.ai

Monthly Average Generation Data

Nuclear Generation Monthly Average - GWh (NRC)

	2Yr Ago	LY					MTD	Last 30 days	MoM (MTD vs LY)	Last 30 days YoY
	Same 30 days	Same 30 days	Apr-21	May-21	Jun-21	Jul-21				
NRC Nuclear Daily Output	94.3	91.7	75.9	81.8	88.7	89.4	89.0	0.6	-2.6	
NRC Nuclear Max Capacity	104.9	104.9	104.9	104.9	104.9	104.9	104.9	0.0	0.0	
NRC Nuclear Outage	10.6	13.2	29.0	23.1	16.2	15.5	15.8	-0.6	2.6	
NRC % Nuclear Cap Utilization	95.9	93.2	77.1	83.2	90.2	90.9	90.5	0.7	-2.7	

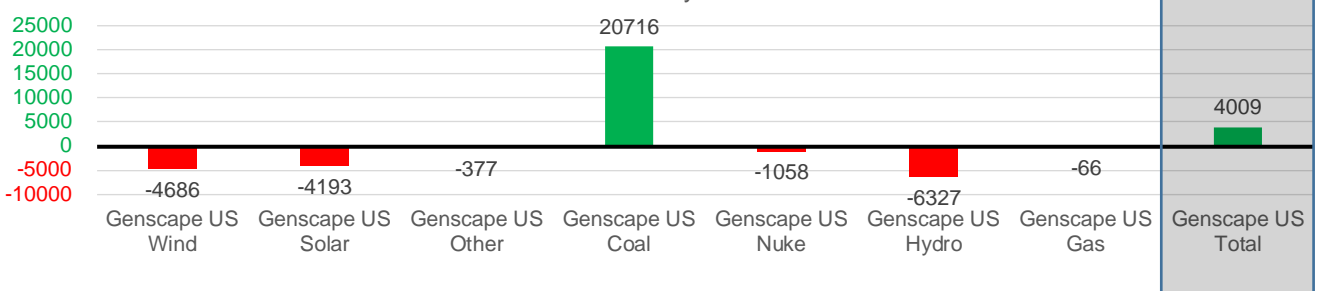
Wind Generation Monthly Average - MWh (Genscape)

	2Yr Ago	LY					MTD	Last 30 days	MoM (MTD vs LY)	Last 30 days YoY
	Same 30 days	Same 30 days	Apr-21	May-21	Jun-21	Jul-21				
CAISO Wind	3771	3429	4009	3984	3994	4583	4098	589	668	
ERCOT	10521	14371	13820	15379	12995	7315	10384	-5680	-3987	
Genscape US Wind	29853	38092	50942	46211	36758	28166	33406	-8593	-4686	

Generation Monthly Average - MWh (Genscape)

	2Yr Ago	LY					MTD	Last 30 days	MoM (MTD vs LY)	Last 30 days YoY
	Same 30 days	Same 30 days	Apr-21	May-21	Jun-21	Jul-21				
Genscape US Wind	29853	38092	50942	46211	36758	28166	33406	▲ 5240.1	▼ -4686	
Genscape US Solar	20801	20601	11261	15499	14357	17790	16408	▼ -1382	▼ -4193	
Genscape US Other	5123	5227	4512	5256	5178	4816	4850	▲ 34	▼ -377	
Genscape US Coal	124000	103199	73683	87336	119945	123662	123915	▲ 253	▲ 20716	
Genscape US Nuke	96629	94146	79842	85659	92805	93312	93089	▼ -224	▼ -1058	
Genscape US Hydro	32867	32246	27386	27514	29334	23102	25919	▲ 2817	▼ -6327	
Genscape US Gas	209585	219312	152976	160888	212447	221512	219245	▲ 13415	▼ -66	
Genscape US Total	518857	512822	400602	428362	510825	512360	516832	▲ 21589	▲ 4009	

Last 30 days YoY



See National Wind and Nuclear daily charts

Source: Bloomberg, analytix.ai

Regional S/D Models Storage Projection

Week Ending 9-Jul

	Daily Raw Storage	Daily Adjustment Factor	Daily Average Storage Activity (Adjusted) *	Weekly Adjusted Storage Activity
L48	6.3	0.9	7.1	50
East	1.2	1.1	2.3	16
Midwest	3.7	-0.4	3.2	23
Mountain	4.7	-3.9	0.8	6
South Central	-3.8	4.0	0.2	1
Pacific	0.5	0.1	0.6	4

*Adjustment Factor is calculated based on historical regional deltas

U.S. underground natural gas storage facilities by type (July 2015)

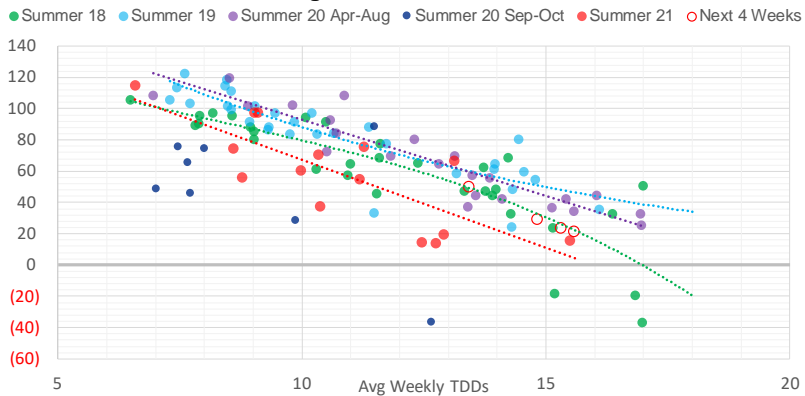


Weather Model Storage Projection

Next report
and beyond

Week Ending	GWDDs	Week Storage Projection
09-Jul	13.4	50
16-Jul	14.8	29
23-Jul	15.6	21
30-Jul	15.3	23

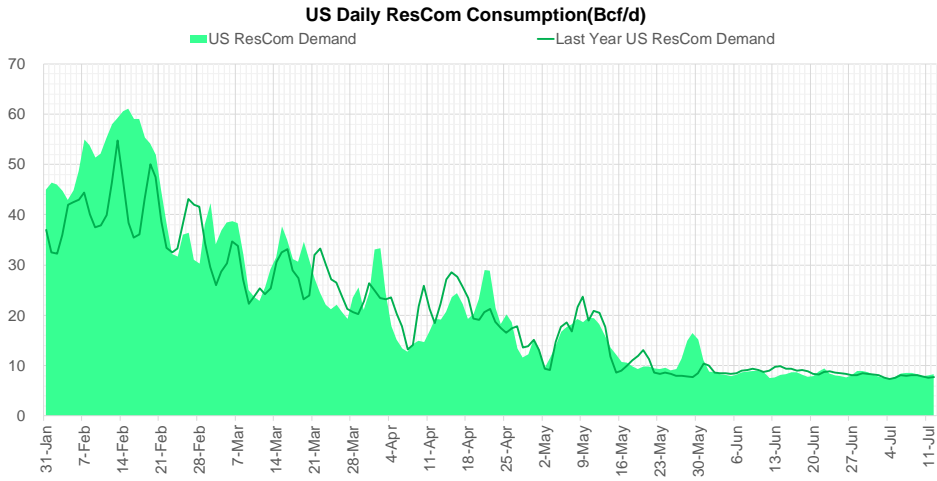
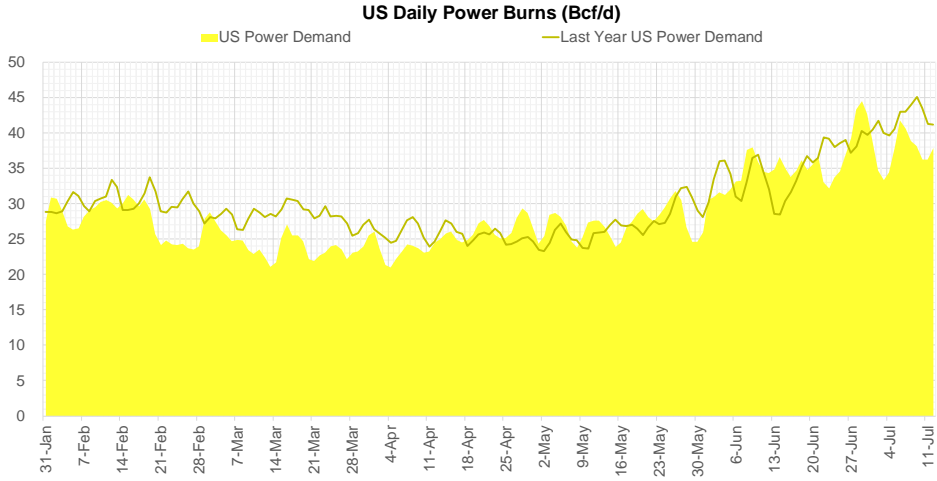
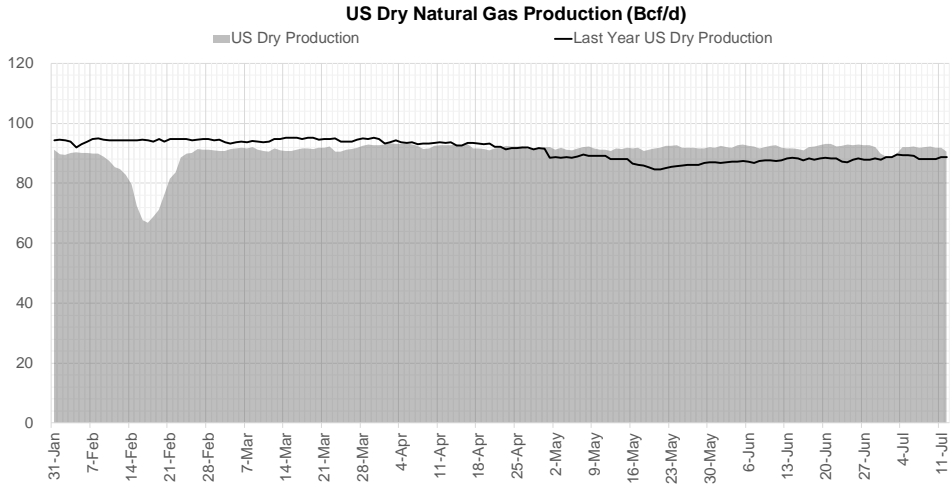
Weather Storage Model - Next 4 Week Forecast



Go to larger image



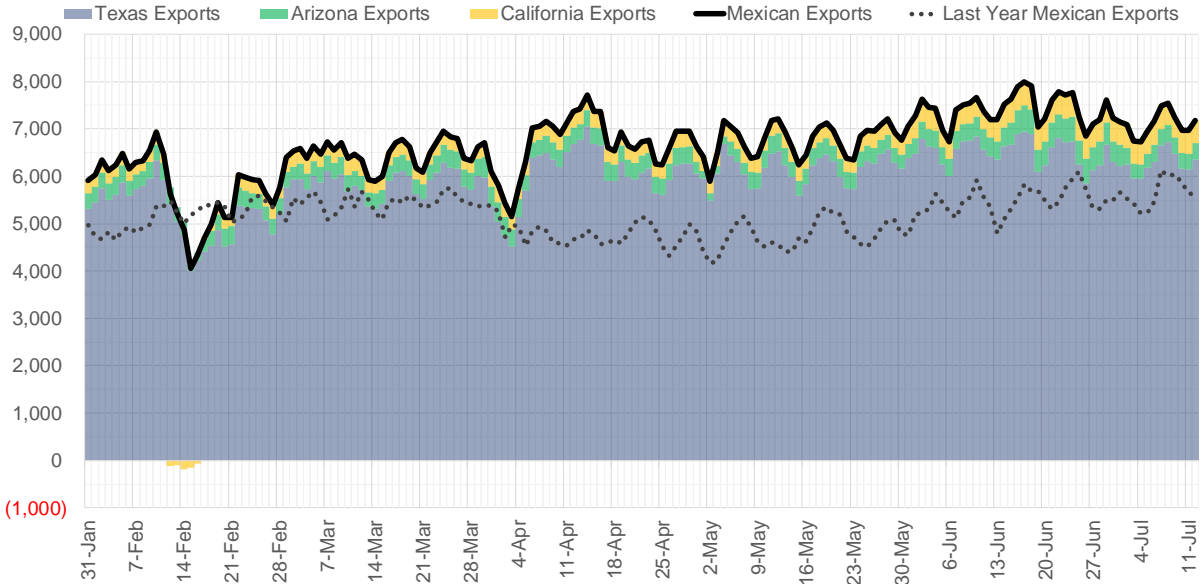
Supply – Demand Trends



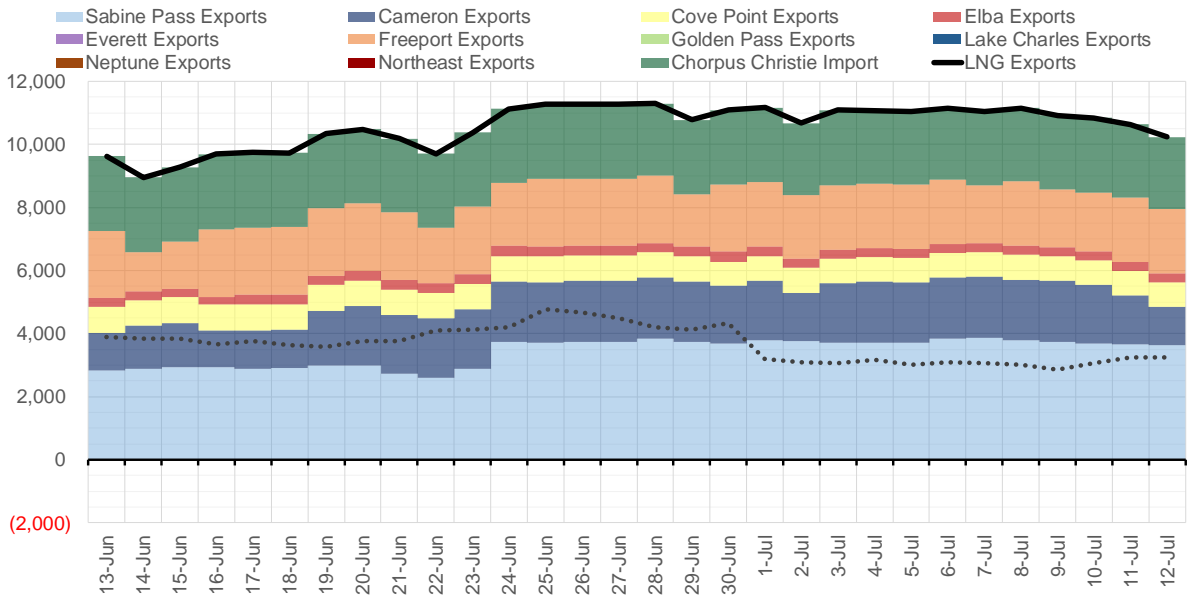
Source: Bloomberg

The risk of trading futures and options and other derivatives involves a substantial risk of loss and is not suitable for all persons. Each person must consider whether a particular trade, combination of trades, or strategy is suitable for that person's financial means and objectives. Past results are not necessarily indicative of future results. This communication may contain links to third party websites which are not under the control of and are not maintained by ION Energy Group, and ION Energy Group is not responsible for their content.

Mexican Exports (MMcf/d)



Net LNG Exports - Last 30 days (MMcf/d)



Source: Bloomberg

The risk of trading futures and options and other derivatives involves a substantial risk of loss and is not suitable for all persons. Each person must consider whether a particular trade, combination of trades, or strategy is suitable for that person's financial means and objectives. Past results are not necessarily indicative of future results. This communication may contain links to third party websites which are not under the control of and are not maintained by ION Energy Group, and ION Energy Group is not responsible for their content.

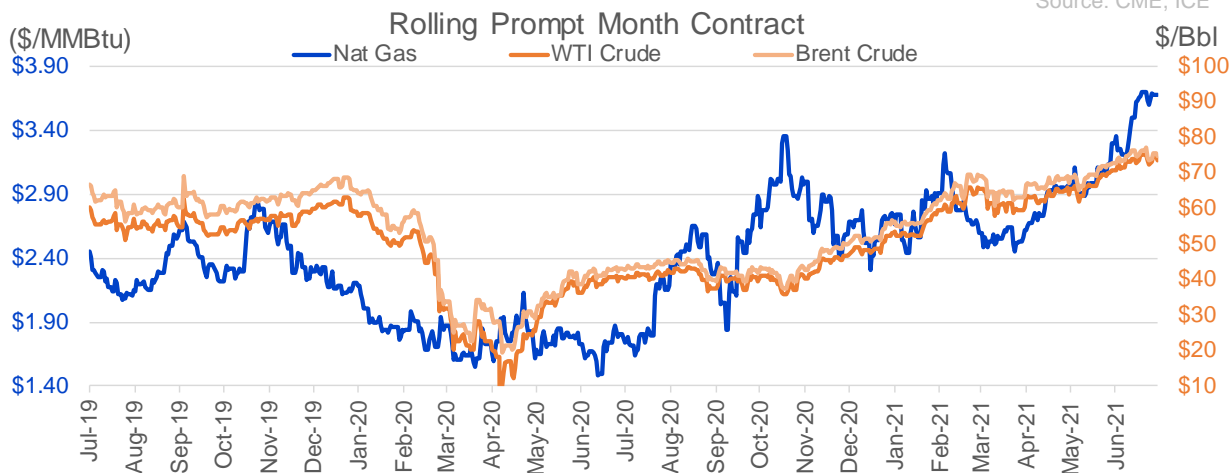
Nat Gas Options Volume and Open Interest CME, ICE and Nasdaq Combined

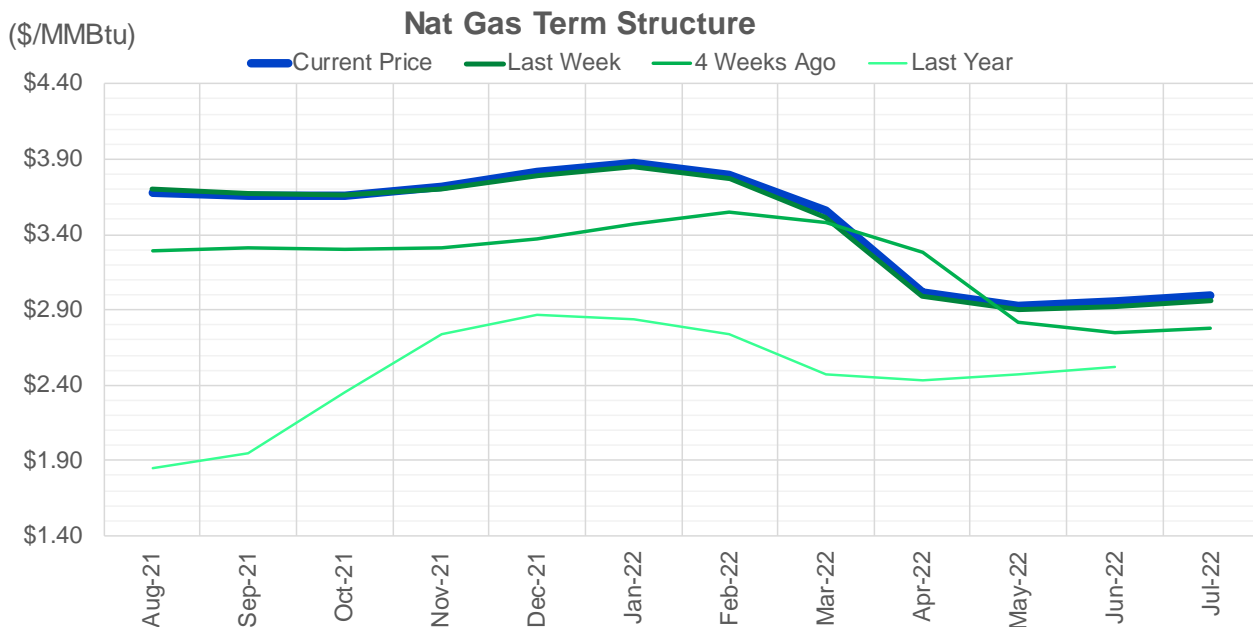
CONTRACT MONTH	CONTRACT YEAR	PUT/CALL	STRIKE	CUMULATIVE VOL	CONTRACT MONTH	CONTRACT YEAR	PUT/CALL	STRIKE	CUMULATIVE OI
8	2021	C	4.00	9882	10	2021	C	4.00	45147
8	2021	C	4.25	9669	8	2021	C	4.00	43311
8	2021	C	4.50	4515	8	2021	C	3.50	40690
8	2021	P	3.30	4076	9	2021	C	4.00	36880
8	2021	P	3.50	3392	10	2021	C	3.50	34096
10	2021	C	6.00	3154	10	2021	C	5.00	32522
8	2021	P	3.00	2910	10	2021	P	2.50	32510
9	2021	P	3.20	2619	8	2021	P	2.50	29351
8	2021	P	3.25	2296	8	2021	P	3.00	28490
9	2021	C	5.00	2232	10	2021	C	3.25	28365
8	2021	C	3.75	2001	10	2021	P	2.75	26446
5	2022	C	4.00	1925	8	2021	C	3.75	25639
8	2021	C	4.05	1326	10	2021	P	2.00	24785
9	2021	C	4.00	1282	9	2021	C	3.50	24248
9	2021	C	4.50	1250	8	2021	P	3.25	23978
10	2021	C	4.00	1227	8	2021	C	3.25	23781
11	2021	C	5.00	1200	11	2021	C	4.00	23767
9	2021	P	3.40	1188	10	2021	C	4.50	23752
4	2022	C	4.00	1175	9	2021	P	2.50	23469
11	2021	C	4.50	1066	8	2021	P	2.90	22603
8	2021	C	3.80	990	8	2021	C	4.50	22231
9	2021	P	3.00	918	10	2021	P	3.00	21962
10	2021	C	5.00	903	12	2021	C	4.00	21886
9	2021	P	3.60	878	9	2021	P	2.00	20423
9	2021	P	2.75	803	4	2022	C	3.00	19785
1	2022	C	4.50	800	8	2021	P	2.00	19664
2	2022	C	4.50	800	8	2021	P	2.25	19478
3	2022	C	4.50	800	10	2021	P	2.25	19196
10	2021	C	3.75	780	9	2021	C	3.25	19003
10	2021	C	4.25	748	9	2021	P	3.00	18820
8	2021	C	5.00	709	10	2021	C	3.00	18500
2	2022	C	4.00	700	8	2021	P	2.75	18483
1	2022	P	3.50	650	10	2021	C	6.00	17690
2	2022	P	3.50	650	8	2021	P	3.50	16753
3	2022	C	4.00	650	10	2021	C	3.75	16054
3	2022	P	3.50	650	8	2021	C	3.00	15829
8	2021	P	3.40	642	11	2021	C	3.75	15424
8	2021	C	4.20	603	8	2021	C	3.30	15332
2	2022	C	3.75	600	9	2021	C	4.50	14800
9	2021	C	3.75	593	9	2021	P	2.75	14713
10	2021	C	4.50	566	3	2022	C	4.00	14516
8	2021	C	4.75	562	1	2022	C	4.00	14493
8	2021	C	4.70	532	3	2022	C	3.00	14448
9	2021	C	4.25	509	10	2021	P	3.50	14311
10	2021	P	3.10	501	9	2021	C	4.25	14290
11	2021	P	2.30	500	3	2022	C	5.00	14086
9	2021	C	3.80	486	11	2021	P	3.00	13886
9	2021	P	3.25	473	12	2021	P	2.00	13884
8	2021	P	3.70	466	2	2022	C	4.00	13855
					9	2021	P	2.6	13814

Source: CME, ICE

Nat Gas Futures Open Interest CME, and ICE Combined

CME Henry Hub Futures (10,000 MMBtu)				ICE Henry Hub Futures Contract Equivalent (10,000 MM			
	Current	Prior	Daily Change		Current	Prior	Daily Change
AUG 21	176046	189614	-13568	AUG 21	99680	100048	-368
SEP 21	254910	243593	11317	SEP 21	86900	87338	-438
OCT 21	155932	155624	308	OCT 21	102589	101453	1136
NOV 21	102704	100959	1745	NOV 21	71771	71270	501
DEC 21	69398	69430	-32	DEC 21	69785	70017	-232
JAN 22	116217	115369	848	JAN 22	80242	80172	70
FEB 22	46625	46544	81	FEB 22	66368	65831	537
MAR 22	91534	90859	675	MAR 22	67814	67996	-182
APR 22	95192	94454	738	APR 22	64378	63676	703
MAY 22	81404	79660	1744	MAY 22	64122	63605	517
JUN 22	26625	26595	30	JUN 22	55037	54895	143
JUL 22	22484	22331	153	JUL 22	53606	53604	2
AUG 22	22308	22256	52	AUG 22	54795	54632	163
SEP 22	21454	21285	169	SEP 22	54413	54241	173
OCT 22	59599	58864	735	OCT 22	57962	57591	371
NOV 22	24016	23639	377	NOV 22	46815	46703	113
DEC 22	20511	20375	136	DEC 22	49908	49776	132
JAN 23	12521	12476	45	JAN 23	28653	28140	513
FEB 23	4450	4405	45	FEB 23	24919	24792	127
MAR 23	8180	8190	-10	MAR 23	27298	27582	-284
APR 23	9061	9172	-111	APR 23	22177	22068	110
MAY 23	5426	5426	0	MAY 23	22287	22222	65
JUN 23	2180	2180	0	JUN 23	20780	20717	63
JUL 23	2260	2260	0	JUL 23	20860	20795	65
AUG 23	1400	1400	0	AUG 23	20769	20704	65
SEP 23	1785	1839	-54	SEP 23	20407	20345	63
OCT 23	2392	2361	31	OCT 23	21715	21635	81
NOV 23	1109	1081	28	NOV 23	19649	19550	99
DEC 23	1214	1154	60	DEC 23	21259	21178	82
JAN 24	793	793	0	JAN 24	12385	12323	62





	Aug-21	Sep-21	Oct-21	Nov-21	Dec-21	Jan-22	Feb-22	Mar-22	Apr-22	May-22	Jun-22	Jul-22
Current Price	\$3.674	\$3.657	\$3.660	\$3.716	\$3.815	\$3.876	\$3.796	\$3.558	\$3.019	\$2.930	\$2.959	\$2.995
Last Week	\$3.700	\$3.668	\$3.659	\$3.705	\$3.792	\$3.854	\$3.770	\$3.510	\$2.987	\$2.897	\$2.924	\$2.959
vs. Last Week	-\$0.026	-\$0.011	\$0.001	\$0.011	\$0.023	\$0.022	\$0.026	\$0.048	\$0.032	\$0.033	\$0.035	\$0.036
4 Weeks Ago	\$3.296	\$3.311	\$3.301	\$3.314	\$3.369	\$3.472	\$3.549	\$3.476	\$3.280	\$2.817	\$2.748	\$2.774
vs. 4 Weeks Ago	\$0.378	\$0.346	\$0.359	\$0.402	\$0.446	\$0.404	\$0.247	\$0.082	-\$0.261	\$0.113	\$0.211	\$0.221
Last Year	\$1.805	\$1.847	\$1.943	\$2.355	\$2.741	\$2.869	\$2.836	\$2.737	\$2.470	\$2.437	\$2.475	\$2.522
vs. Last Year	\$1.869	\$1.810	\$1.717	\$1.361	\$1.074	\$1.007	\$0.960	\$0.821	\$0.549	\$0.493	\$0.484	\$0.473

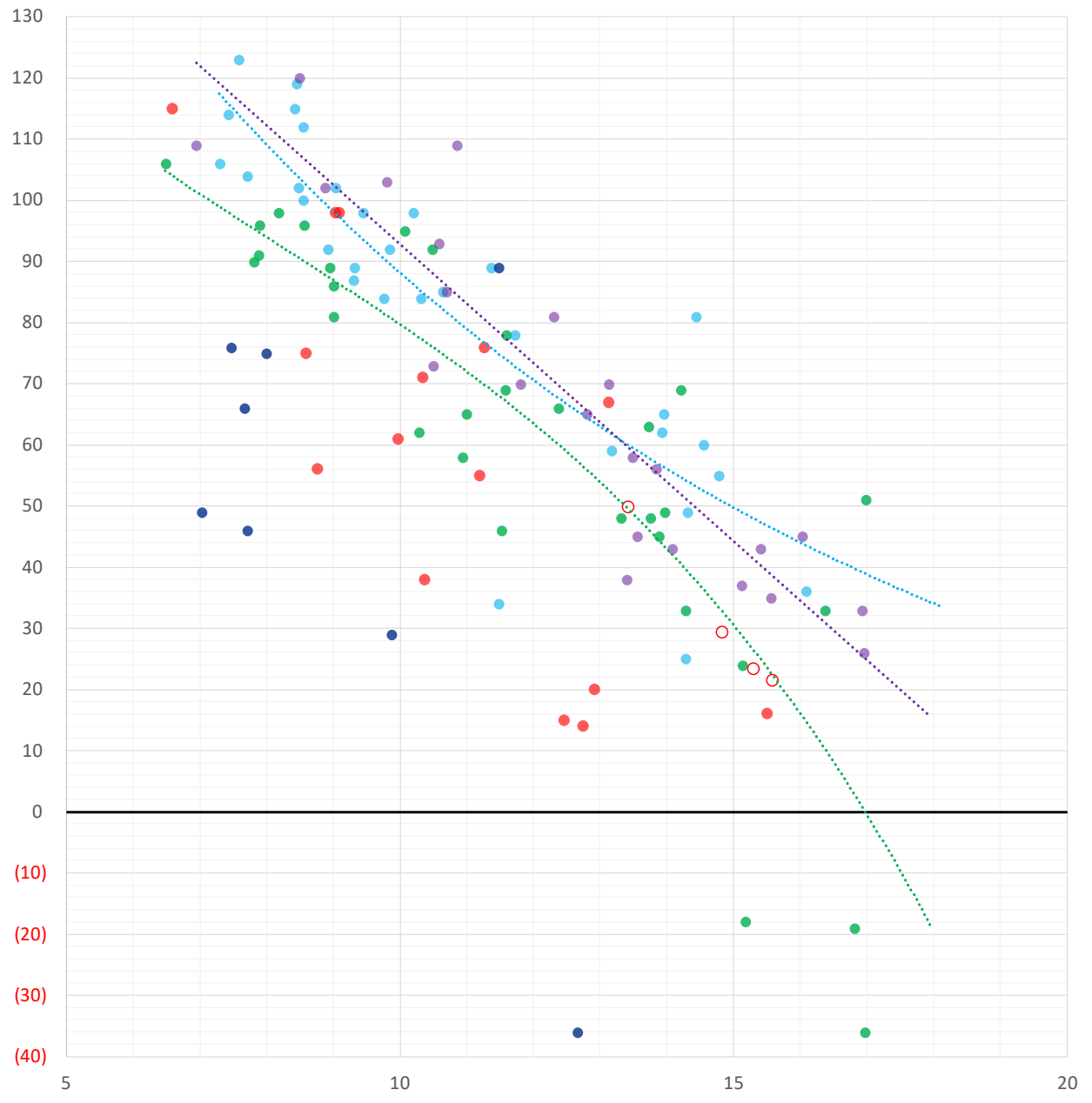
	Units	Cash Settled	Prompt Settle	Cash to Prompt
AGT Citygate	\$/MMBtu	3.10	3.40	0.30
TETCO M3	\$/MMBtu	3.22	3.23	0.01
FGT Zone 3	\$/MMBtu	3.17	3.79	0.62
Zone 6 NY	\$/MMBtu	3.17	3.19	0.02
Chicago Citygate	\$/MMBtu	3.48	3.54	0.06
Michcon	\$/MMBtu	3.45	3.48	0.03
Columbia TCO Pool	\$/MMBtu	3.06	3.02	-0.04
Ventura	\$/MMBtu	3.26	3.49	0.23
Rockies/Opal	\$/MMBtu	3.72	3.53	-0.20
El Paso Permian Basin	\$/MMBtu	3.47	3.58	0.11
Socal Citygate	\$/MMBtu	6.61	5.29	-1.32
Malin	\$/MMBtu	3.95	4.11	0.16
Houston Ship Channel	\$/MMBtu	3.56	3.70	0.14
Henry Hub Cash	\$/MMBtu	3.71	3.48	-0.23
AECO Cash	C\$/GJ	3.07	2.89	-0.19
Station2 Cash	C\$/GJ	2.97	3.87	0.90
Dawn Cash	C\$/GJ	3.47	3.53	0.06

Source: CME, Bloomberg

	Units	Current Price	vs. Last Week	vs. 4 Weeks Ago	vs. Last Year
NatGas Jul21/Oct21	\$/MMBtu	0.043	▲ 0.001	▲ 0.025	▲ 0.025
NatGas Oct21/Nov21	\$/MMBtu	0.056	▲ 0.010	▲ 0.001	▲ 0.008
NatGas Oct21/Jan22	\$/MMBtu	0.216	▲ 0.021	▼ -0.019	▼ -0.063
NatGas Apr22/Oct22	\$/MMBtu	-0.009	▲ 0.000	▼ -0.021	▼ -0.073
WTI Crude	\$/Bbl	74.56	▼ -0.600	▲ 3.650	▲ 34.010
Brent Crude	\$/Bbl	75.55	▼ -0.620	▲ 2.860	▲ 32.310
Fuel Oil, NY Harbour 1%	\$/Bbl	97.18	▲ 0.000	▲ 0.000	▲ 0.000
Heating Oil	cents/Gallon	215.52	▼ -2.390	▲ 3.450	▲ 91.400
Propane, Mt. Bel	cents/Gallon	1.11	▼ -0.005	▲ 0.164	▲ 0.625
Ethane, Mt. Bel	cents/Gallon	0.31	▲ 0.001	▲ 0.028	▲ 0.086
Coal, PRB	\$/MTon	12.30	▲ 0.000	▲ 0.000	▲ 0.000
Coal, PRB	\$/MMBtu	0.70			
Coal, ILB	\$/MTon	31.05	▲ 0.000	▲ 0.000	▲ 0.000
Coal, ILB	\$/MMBtu	1.32			

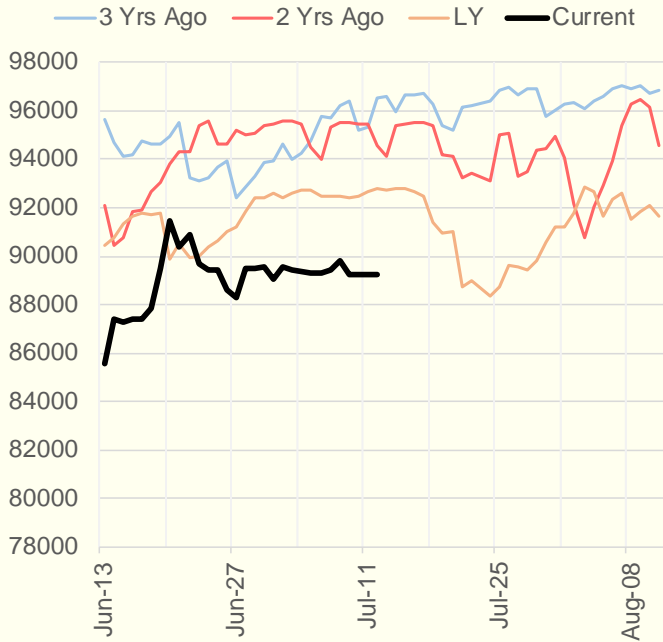
Weather Storage Model - Next 4 Week Forecast

● Summer 18
 ● Summer 19
 ● Summer 20 Apr-Aug
 ● Summer 20 Sept-Oct
 ● Summer 21
 ○ Next 4 Weeks

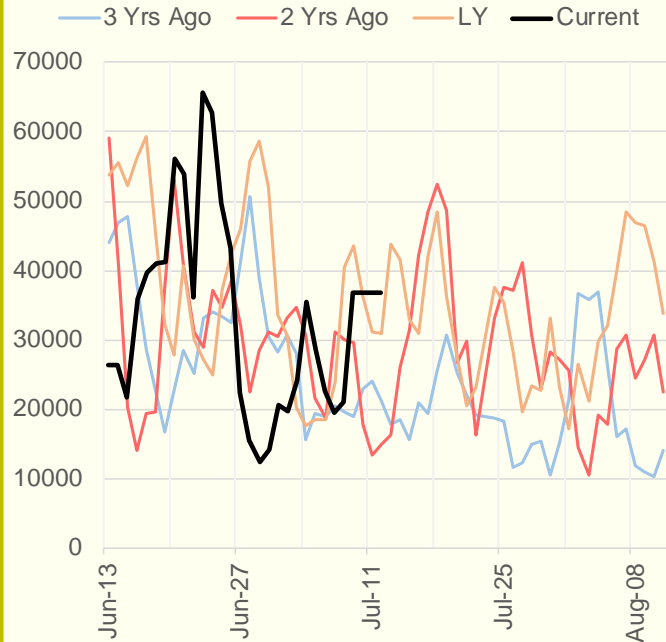


The risk of trading futures and options and other derivatives involves a substantial risk of loss and is not suitable for all persons. Each person must consider whether a particular trade, combination of trades, or strategy is suitable for that person's financial means and objectives. Past results are not necessarily indicative of future results. This communication may contain links to third party websites which are not under the control of and are not maintained by ION Energy Group, and ION Energy Group is not responsible for their content.

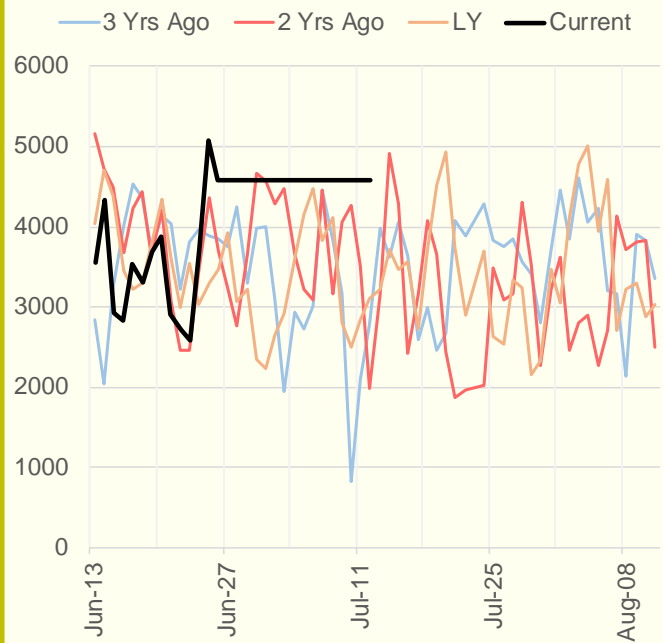
NRC Nuclear Daily Output



Genscape US Wind



CAISO Wind



ERCOT

