

	Current	Δ from YD	Δ from 7D Avg
Nat Gas Prompt	\$ 3.97	▼ \$ (0.09)	▼ \$ (0.08)

	Current	Δ from YD	Δ from 7D Avg
WTI Prompt	\$ 73.44	▼ \$ (0.18)	▲ \$ 1.2

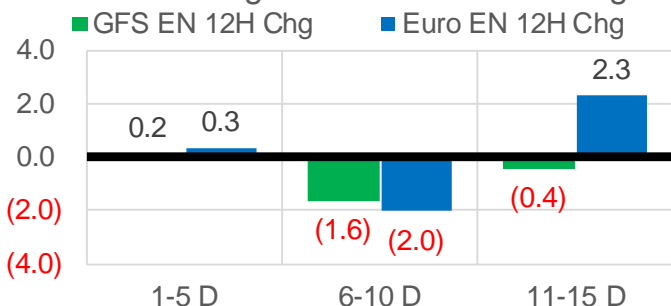
	Current	Δ from YD	Δ from 7D Avg
Brent Prompt	\$ 76.04	▼ \$ (0.01)	▲ \$ 1.5

### Page Menu

- [Short-term Weather Model Outlooks](#)
- [Lower 48 Component Models](#)
- [Regional S/D Models Storage Projection](#)
- [Weather Model Storage Projection](#)
- [Supply – Demand Trends](#)
- [Nat Gas Options Volume and Open Interest](#)
- [Nat Gas Futures Open Interest](#)
- [Price Summary](#)

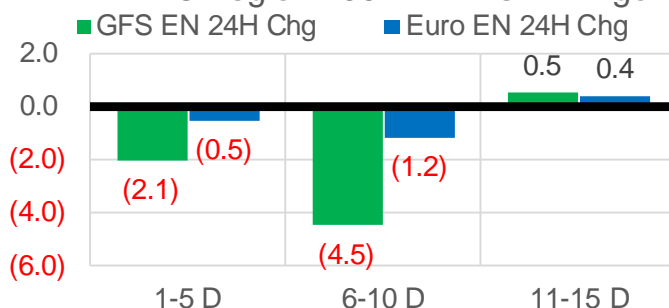
### Vs. 12H Ago

L48 Region - 00z TDD vs 12H Ago



### Vs. 24H Ago

L48 Region - 00z TDD vs 24H Ago



	Current	Δ from YD	Δ from 7D Avg
US Dry Production	91.5	▼ -0.48	▼ -0.85

	Current	Δ from YD	Δ from 7D Avg
US Power Burns	39.4	▼ -3.16	▼ -2.76

	Current	Δ from YD	Δ from 7D Avg
US ResComm	8.0	▼ -0.43	▼ -0.13

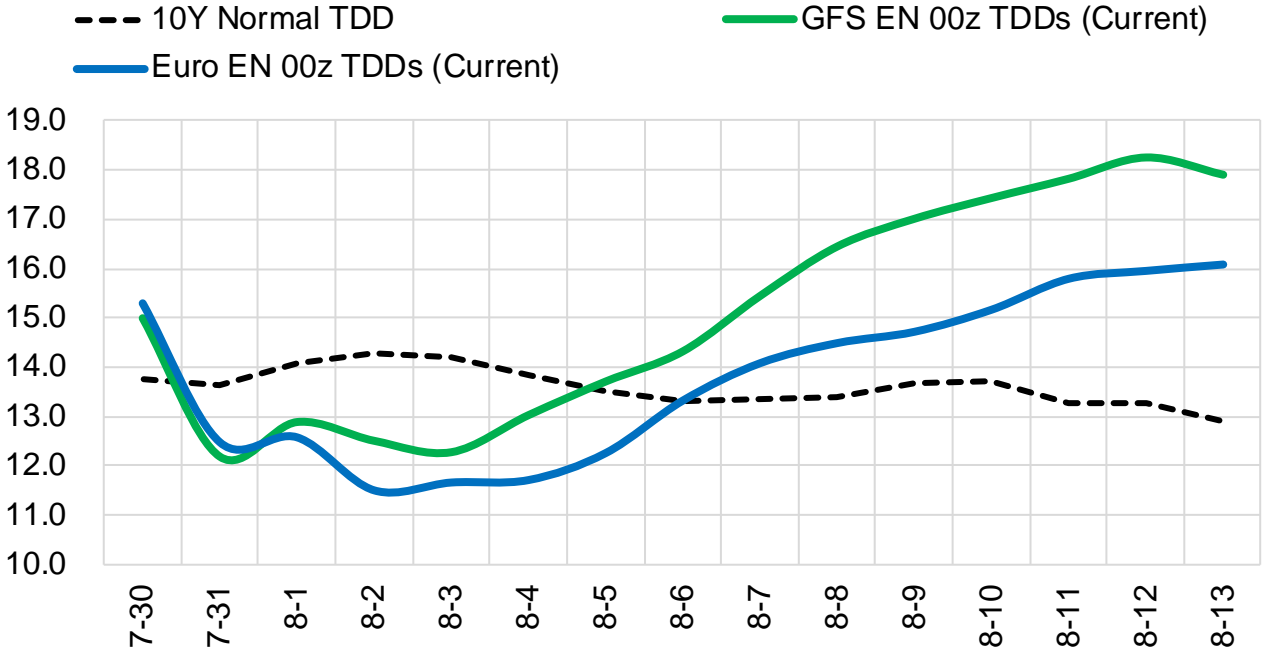
	Current	Δ from YD	Δ from 7D Avg
Canadian Imports	5.1	▼ -0.62	▼ -0.50

	Current	Δ from YD	Δ from 7D Avg
Net LNG Exports	10.8	▼ -0.08	▼ -0.02

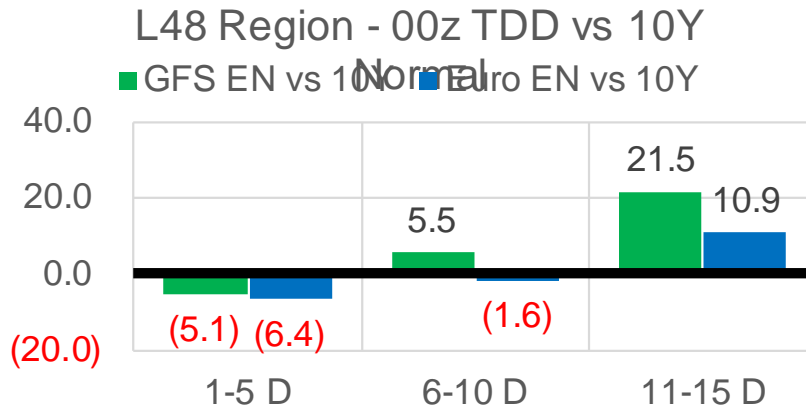
	Current	Δ from YD	Δ from 7D Avg
Mexican Exports	7.3	▲ 0.04	▲ 0.27

## Short-term Weather Model Outlooks (00z)

### L48 Region



## Vs. 10Y Normal



Source: WSI , Bloomberg

### Lower 48 Component Models

#### Daily Balances

	24-Jul	25-Jul	26-Jul	27-Jul	28-Jul	29-Jul	30-Jul	DoD	vs. 7D
<b>Lower 48 Dry Production</b>	<b>92.3</b>	<b>92.5</b>	<b>93.0</b>	<b>92.2</b>	<b>92.3</b>	<b>92.0</b>	<b>91.5</b>	▼ -0.5	▼ -0.8
<b>Canadian Imports</b>	<b>5.3</b>	<b>5.5</b>	<b>5.7</b>	<b>5.8</b>	<b>5.9</b>	<b>5.7</b>	<b>5.1</b>	▼ -0.6	▼ -0.6
L48 Power	40.0	41.5	43.6	44.2	43.1	42.5	39.4	▼ -3.2	▼ -3.1
L48 Residential & Commercial	7.7	7.8	8.3	8.3	8.5	8.4	8.0	▼ -0.4	▼ -0.2
L48 Industrial	23.0	23.7	24.1	24.3	24.2	23.8	23.2	▼ -0.6	▼ -0.7
L48 Lease and Plant Fuel	5.1	5.1	5.1	5.1	5.1	5.1	5.1	▼ 0.0	▼ 0.0
L48 Pipeline Distribution	2.3	2.3	2.5	2.5	2.4	2.4	2.2	▼ -0.2	▼ -0.2
<b>L48 Regional Gas Consumption</b>	<b>78.0</b>	<b>80.5</b>	<b>83.7</b>	<b>84.4</b>	<b>83.3</b>	<b>82.2</b>	<b>77.8</b>	▼ -4.4	▼ -4.2
<b>Net LNG Delivered</b>	<b>10.88</b>	<b>10.82</b>	<b>10.74</b>	<b>10.83</b>	<b>10.90</b>	<b>10.86</b>	<b>10.78</b>	▼ -0.1	▼ -0.1
<b>Total Mexican Exports</b>	<b>6.6</b>	<b>6.5</b>	<b>7.0</b>	<b>7.5</b>	<b>7.4</b>	<b>7.3</b>	<b>7.3</b>	▲ 0.0	▲ 0.3
<b>Implied Daily Storage Activity</b>	<b>2.0</b>	<b>0.3</b>	<b>-2.7</b>	<b>-4.7</b>	<b>-3.4</b>	<b>-2.7</b>	<b>0.7</b>		
<b>EIA Reported Daily Storage Activity</b>									
<b>Daily Model Error</b>									

#### EIA Storage Week Balances

	25-Jun	2-Jul	9-Jul	16-Jul	23-Jul	30-Jul	WoW	vs. 4W
<b>Lower 48 Dry Production</b>	<b>93.2</b>	<b>92.2</b>	<b>91.8</b>	<b>92.3</b>	<b>92.2</b>	<b>92.4</b>	▲ 0.2	▲ 0.3
<b>Canadian Imports</b>	<b>4.7</b>	<b>5.2</b>	<b>5.1</b>	<b>5.2</b>	<b>4.9</b>	<b>5.6</b>	▲ 0.6	▲ 0.5
L48 Power	34.4	39.7	37.1	38.7	39.7	42.1	▲ 2.4	▲ 3.3
L48 Residential & Commercial	8.4	8.3	7.9	8.2	8.3	8.1	▼ -0.1	▼ -0.1
L48 Industrial	20.0	21.5	19.7	19.8	20.0	23.6	▲ 3.6	▲ 3.4
L48 Lease and Plant Fuel	5.2	5.1	5.1	5.1	5.1	5.1	▲ 0.0	▲ 0.0
L48 Pipeline Distribution	2.1	2.4	2.1	2.2	2.3	2.4	▲ 0.1	▲ 0.1
<b>L48 Regional Gas Consumption</b>	<b>70.1</b>	<b>76.9</b>	<b>72.0</b>	<b>74.0</b>	<b>75.3</b>	<b>81.4</b>	▲ 6.0	▲ 6.8
<b>Net LNG Exports</b>	<b>10.3</b>	<b>11.2</b>	<b>11.0</b>	<b>10.8</b>	<b>10.5</b>	<b>10.8</b>	▲ 0.3	▼ -0.1
<b>Total Mexican Exports</b>	<b>7.6</b>	<b>7.2</b>	<b>7.1</b>	<b>7.1</b>	<b>7.0</b>	<b>7.0</b>	▲ 0.0	▼ -0.1
<b>Implied Daily Storage Activity</b>	<b>9.9</b>	<b>2.1</b>	<b>6.8</b>	<b>5.5</b>	<b>4.3</b>	<b>-1.3</b>	<b>-5.6</b>	
<b>EIA Reported Daily Storage Activity</b>	<b>10.9</b>	<b>2.3</b>	<b>7.9</b>	<b>7.0</b>	<b>5.1</b>			
<b>Daily Model Error</b>	<b>-0.9</b>	<b>-0.2</b>	<b>-1.1</b>	<b>-1.5</b>	<b>-0.8</b>			

#### Monthly Balances

	2Yr Ago Jul-19	LY Jul-20	Mar-21	Apr-21	May-21	Jun-21	MTD Jul-21	MoM	vs. LY
<b>Lower 48 Dry Production</b>	<b>91.9</b>	<b>89.1</b>	<b>91.5</b>	<b>92.3</b>	<b>92.2</b>	<b>92.8</b>	<b>92.1</b>	▼ -0.7	▲ 3.0
<b>Canadian Imports</b>	<b>5.0</b>	<b>4.4</b>	<b>4.8</b>	<b>4.7</b>	<b>4.5</b>	<b>4.9</b>	<b>5.2</b>	▲ 0.3	▲ 0.8
L48 Power	40.8	43.7	24.3	25.0	27.1	35.3	39.4	▲ 4.1	▼ -4.3
L48 Residential & Commercial	8.0	7.9	29.3	19.7	13.3	8.4	8.1	▼ -0.3	▲ 0.2
L48 Industrial	21.6	20.4	19.3	21.2	19.2	21.0	20.8	▼ -0.2	▲ 0.4
L48 Lease and Plant Fuel	5.0	4.9	5.0	5.1	5.1	5.1	5.1	▼ 0.0	▲ 0.2
L48 Pipeline Distribution	2.3	2.4	2.5	2.3	2.1	2.2	2.2	▲ 0.1	▼ -0.2
<b>L48 Regional Gas Consumption</b>	<b>77.8</b>	<b>79.4</b>	<b>80.6</b>	<b>73.3</b>	<b>66.7</b>	<b>72.0</b>	<b>75.7</b>	▲ 3.7	▼ -3.7
<b>Net LNG Exports</b>	<b>6.0</b>	<b>3.3</b>	<b>11.1</b>	<b>11.5</b>	<b>10.8</b>	<b>10.2</b>	<b>10.8</b>	▲ 0.6	▲ 7.5
<b>Total Mexican Exports</b>	<b>5.3</b>	<b>5.9</b>	<b>6.5</b>	<b>6.7</b>	<b>6.8</b>	<b>7.4</b>	<b>7.1</b>	▼ -0.4	▲ 1.2
<b>Implied Daily Storage Activity</b>	<b>7.8</b>	<b>5.0</b>	<b>-2.0</b>	<b>5.5</b>	<b>12.4</b>	<b>8.0</b>	<b>3.7</b>		
<b>EIA Reported Daily Storage Activity</b>									
<b>Daily Model Error</b>									

Source: Bloomberg, analytix.ai

## Daily Average Generation Data

### Nuclear Generation Daily Average - GWh (NRC)

	23-Jul	24-Jul	25-Jul	26-Jul	27-Jul	28-Jul	29-Jul	DoD	vs. 7D
NRC Nuclear Daily Output	88.1	88.1	88.1	90.2	90.6	90.0	89.8	-0.2	0.7
NRC Nuclear Max Capacity	104.9	104.9	104.9	104.9	104.9	104.9	104.9	0.0	0.0
NRC Nuclear Outage	16.8	16.8	16.8	14.7	14.3	14.9	15.0	0.2	-0.7
NRC % Nuclear Cap Utilization	89.6	89.6	89.6	91.7	92.1	91.5	91.4	-0.2	0.7

### Wind Generation Daily Average - MWh (EIA)

	23-Jul	24-Jul	25-Jul	26-Jul	27-Jul	28-Jul	29-Jul	DoD	vs. 7D
CALI Wind	2083	2283	2561	1522	879	1754	1754	0	-93
TEXAS Wind	15356	12202	8893	6079	4279	5594	5594	0	-3140
US Wind	44311	35200	25751	23692	22328	28948	28948	0	-1090

### Generation Daily Average - MWh (EIA)

	23-Jul	24-Jul	25-Jul	26-Jul	27-Jul	28-Jul	29-Jul	DoD	vs. 7D
US Wind	44311	35200	25751	23692	22328	28948	28948	0	-1090
US Solar	13713	13419	13653	12092	14433	12819	12819	0	-536
US Petroleum	4240	4458	4230	5003	5264	5033	5033	0	328
US Other	8939	8889	8805	9371	9353	9136	9136	0	54
US Coal	136904	136164	141498	152143	151434	153194	153194	0	7972
US Nuke	90641	91058	92840	92850	93252	92079	92079	0	-41
US Hydro	30221	27861	26806	29905	29833	29950	29950	0	854
<b>US Gas</b>	<b>203302</b>	<b>202131</b>	<b>207181</b>	<b>235677</b>	<b>241140</b>	<b>237758</b>	<b>237758</b>	<b>0</b>	<b>16560</b>

See National Wind and Nuclear daily charts

Source: Bloomberg, analytix.ai

## Storage Week Average Generation Data

### Nuclear Generation Weekly Average - GWh (NRC)

	25-Jun	2-Jul	9-Jul	16-Jul	23-Jul	30-Jul	WoW	WoW Bcf/d Impact
NRC Nuclear Daily Output	89.9	89.1	89.5	90.7	90.7	89.3	-1.4	0.2
NRC Nuclear Max Capacity	104.9	104.9	104.9	104.9	104.9	104.9	0.0	
NRC Nuclear Outage	15.0	15.7	15.4	14.2	14.2	15.6	1.4	
NRC % Nuclear Cap Utilization	9%	9%	9%	9%	9%	9%	0%	

### Wind Generation Weekly Average - MWh (EIA)

	25-Jun	2-Jul	9-Jul	16-Jul	23-Jul	30-Jul	WoW	WoW Bcf/d Impact
CALI Wind	2568	2588	2604	3004	2064	1834	-231	0.0
TEXAS Wind	13415	8326	3739	10817	7162	8285	1123	-0.2
US Wind	49248	27216	25698	36365	26445	29883	3438	-0.6

### Generation Weekly Average - MWh (EIA)

	25-Jun	2-Jul	9-Jul	16-Jul	23-Jul	30-Jul	WoW	WoW Bcf/d Impact
US Wind	49248	27216	25698	36365	26445	29883	3438	<b>-0.6</b>
US Solar	14070	14060	14162	14488	13949	13278	-671	<b>0.1</b>
US Petroleum	3331	5142	4035	4282	3892	4751	860	<b>-0.1</b>
US Other	8246	8886	9159	9554	9301	9090	-211	0.0
US Coal	118233	136480	131305	131524	137034	146362	9327	-1.6
US Nuke	93426	92257	92359	93735	93171	92114	-1057	<b>0.2</b>
US Hydro	32186	33024	30127	30420	30031	29218	-813	0.1
<b>US Gas</b>	<b>180182</b>	<b>208732</b>	<b>194610</b>	<b>199730</b>	<b>209198</b>	<b>223564</b>	<b>14366</b>	

See National Wind and Nuclear daily charts

Source: Bloomberg, analytix.ai

## Monthly Average Generation Data

### Nuclear Generation Monthly Average - GWh (NRC)

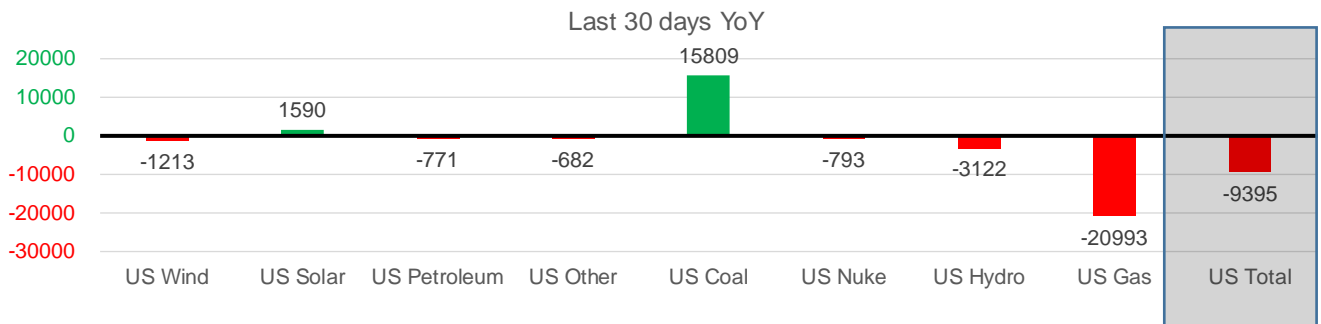
	2Yr Ago		LY		MTD		Last 30 days	MoM (MTD vs LY)	Last 30 days YoY
	Same 30 days	Same 30 days	Apr-21	May-21	Jun-21	Jul-21			
	NRC Nuclear Daily Output	94.7	91.3	75.9	81.8	88.7			
NRC Nuclear Max Capacity	104.9	104.9	104.9	104.9	104.9	104.9	104.9	0.0	0.0
NRC Nuclear Outage	10.2	13.5	29.0	23.1	16.2	14.9	14.9	-1.3	1.4
NRC % Nuclear Cap Utilization	96.3	92.9	77.1	83.2	90.2	91.5	91.5	1.3	-1.4

### Wind Generation Monthly Average - MWh (Genscape)

	2Yr Ago		LY		MTD		Last 30 days	MoM (MTD vs LY)	Last 30 days YoY
	Same 30 days	Same 30 days	Apr-21	May-21	Jun-21	Jul-21			
	CALI Wind	2665	2490	3113	3402	2913			
TEXAS Wind	8257	9395	12104	12259	9675	7338	7338	-2337	-2057
US Wind	28545	30556	50707	46081	37299	29343	29343	-7957	-1213

### Generation Monthly Average - MWh (EIA)

	2Yr Ago		LY		MTD		Last 30 days	MoM (MTD vs LY)	Last 30 days YoY
	Same 30 days	Same 30 days	Apr-21	May-21	Jun-21	Jul-21			
	US Wind	28545	30556	50707	46081	37299			
US Solar	9587	12375	13194	14486	14563	13966	13966	▲ 0.0	▲ 1590
US Petroleum	5204	5040	2652	3012	4149	4270	4270	▲ 0	▼ -771
US Other	8975	9962	7157	7439	8162	9281	9281	▲ 0	▼ -682
US Coal	132162	121495	75976	86422	121348	137304	137304	▲ 0	▲ 15809
US Nuke	101409	93588	79237	85517	92175	92795	92795	▲ 0	▼ -793
US Hydro	34442	33144	28449	30677	32575	30022	30022	▲ 0	▼ -3122
<b>US Gas</b>	<b>214150</b>	<b>228785</b>	<b>133124</b>	<b>139477</b>	<b>188818</b>	<b>207792</b>	<b>207792</b>	▲ 0	▼ -20993
<b>US Total</b>	<b>535966</b>	<b>534652</b>	<b>390890</b>	<b>413562</b>	<b>499436</b>	<b>525257</b>	<b>525257</b>	▲ 0	▼ -9395



See National Wind and Nuclear daily charts

Source: Bloomberg, analytix.ai

### Regional S/D Models Storage Projection

Week Ending 30-Jul

	Daily Raw Storage	Daily Adjustment Factor	Daily Average Storage Activity (Adjusted) *	Weekly Adjusted Storage Activity
L48	-1.6	1.3	-0.3	13
East	1.2	1.4	2.6	18
Midwest	1.9	-0.4	1.4	10
Mountain	4.4	-4.1	0.3	2
South Central	-8.2	4.4	-3.8	-12
Pacific	-0.8	0.0	-0.8	-6

\*Adjustment Factor is calculated based on historical regional deltas

U.S. underground natural gas storage facilities by type (July 2015)

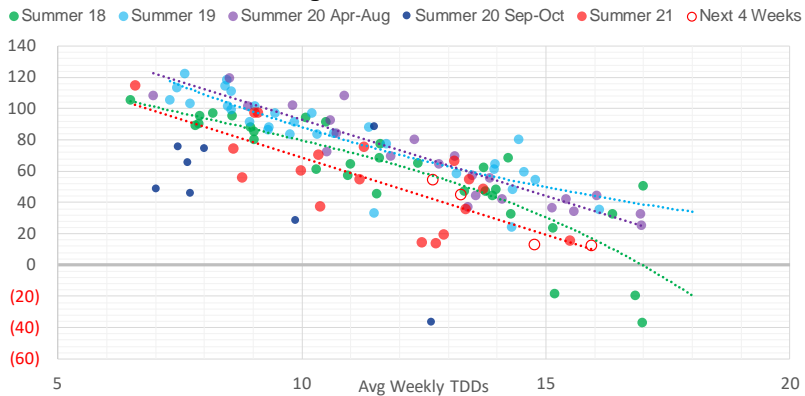


### Weather Model Storage Projection

Next report  
and beyond

Week Ending	GWDDs	Week Storage Projection
30-Jul	14.8	13
06-Aug	12.7	54
13-Aug	16.0	12
20-Aug	13.3	45

**Weather Storage Model - Next 4 Week Forecast**

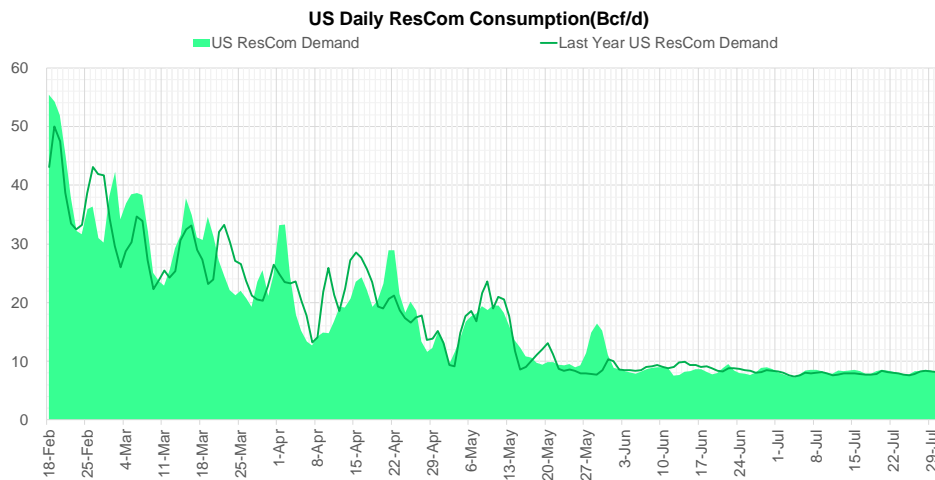
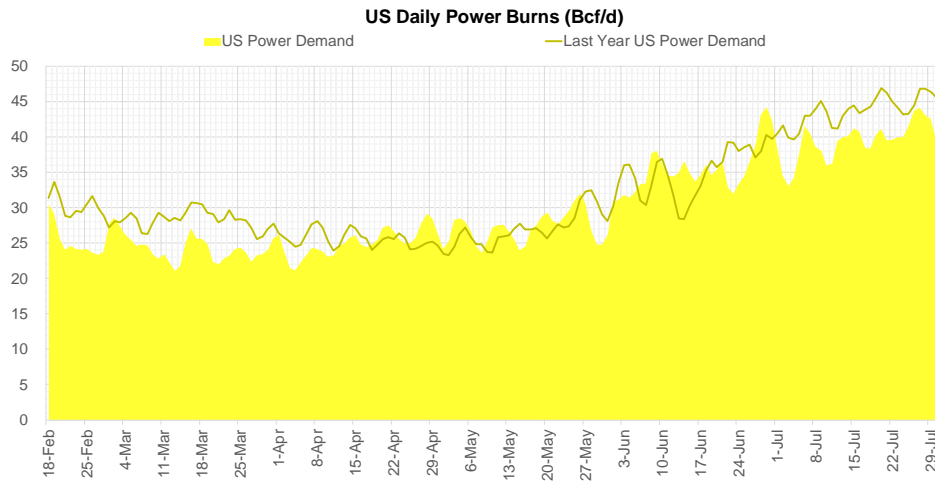
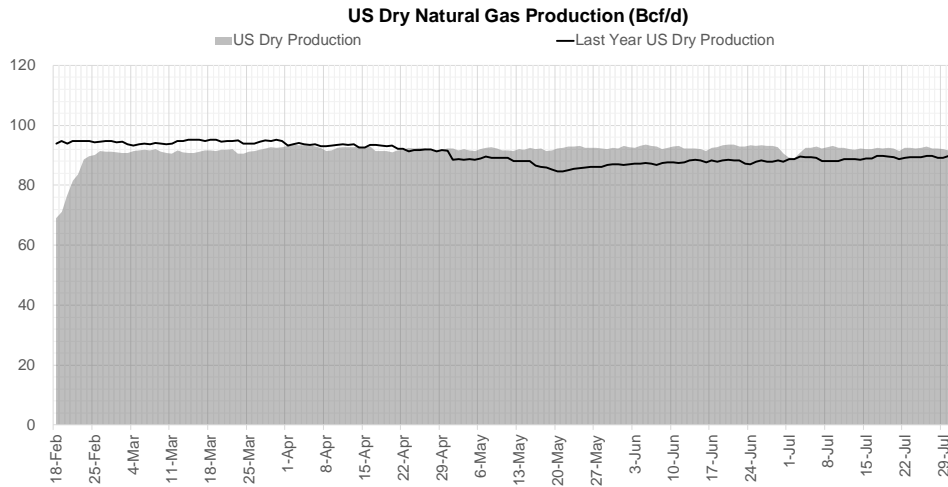


Go to larger image





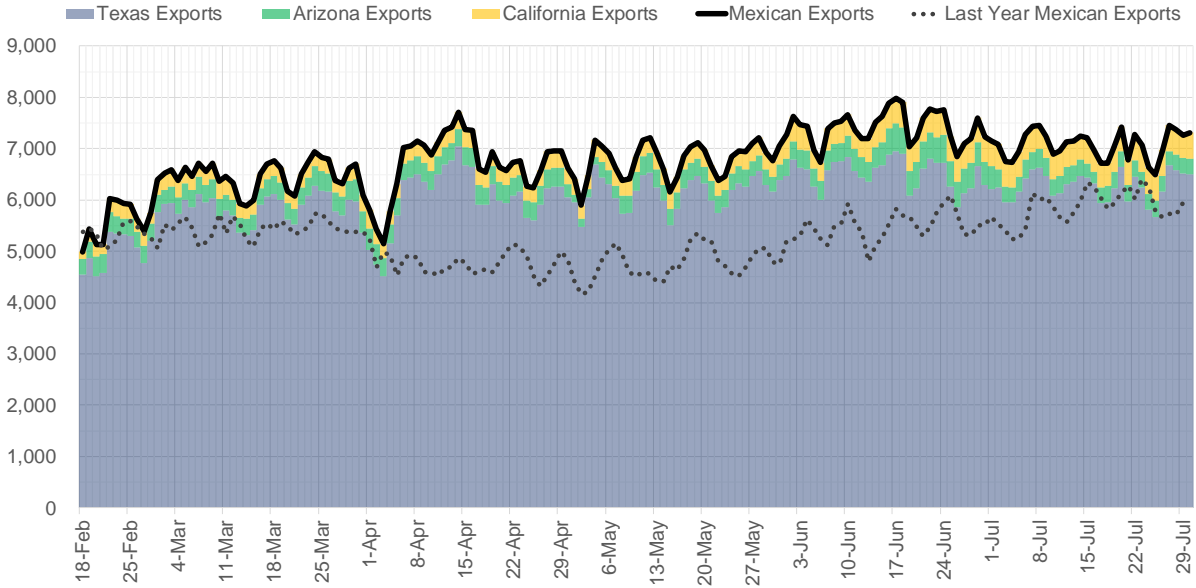
## Supply – Demand Trends



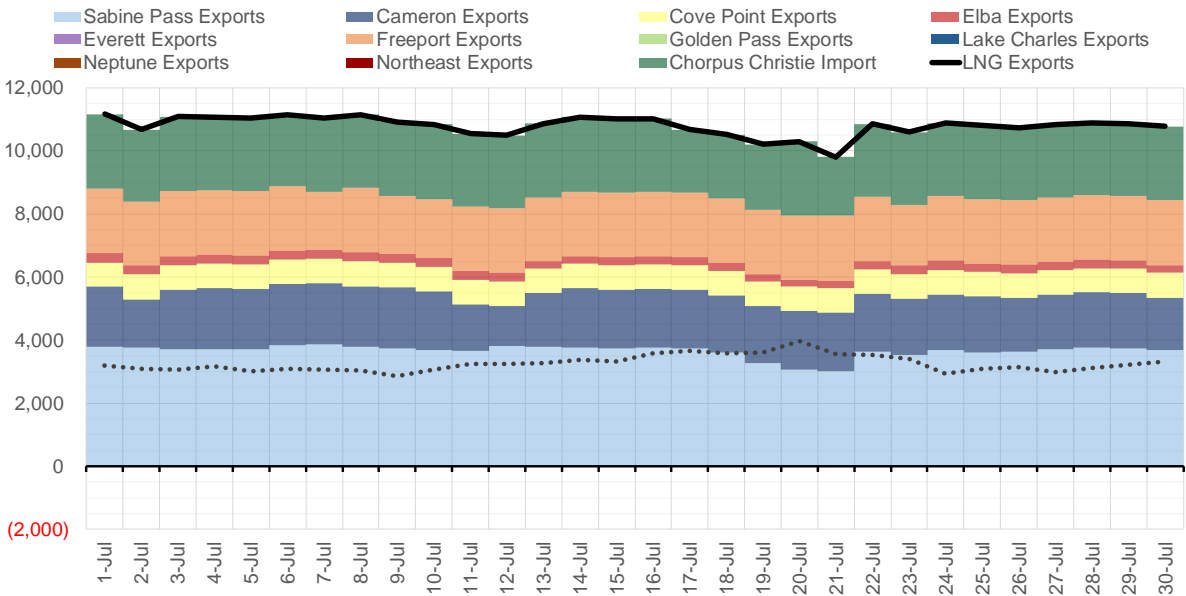
Source: Bloomberg

The risk of trading futures and options and other derivatives involves a substantial risk of loss and is not suitable for all persons. Each person must consider whether a particular trade, combination of trades, or strategy is suitable for that person's financial means and objectives. Past results are not necessarily indicative of future results. This communication may contain links to third party websites which are not under the control of and are not maintained by ION Energy Group, and ION Energy Group is not responsible for their content.

### Mexican Exports (MMcf/d)



### Net LNG Exports - Last 30 days (MMcf/d)



Source: Bloomberg

The risk of trading futures and options and other derivatives involves a substantial risk of loss and is not suitable for all persons. Each person must consider whether a particular trade, combination of trades, or strategy is suitable for that person's financial means and objectives. Past results are not necessarily indicative of future results. This communication may contain links to third party websites which are not under the control of and are not maintained by ION Energy Group, and ION Energy Group is not responsible for their content.

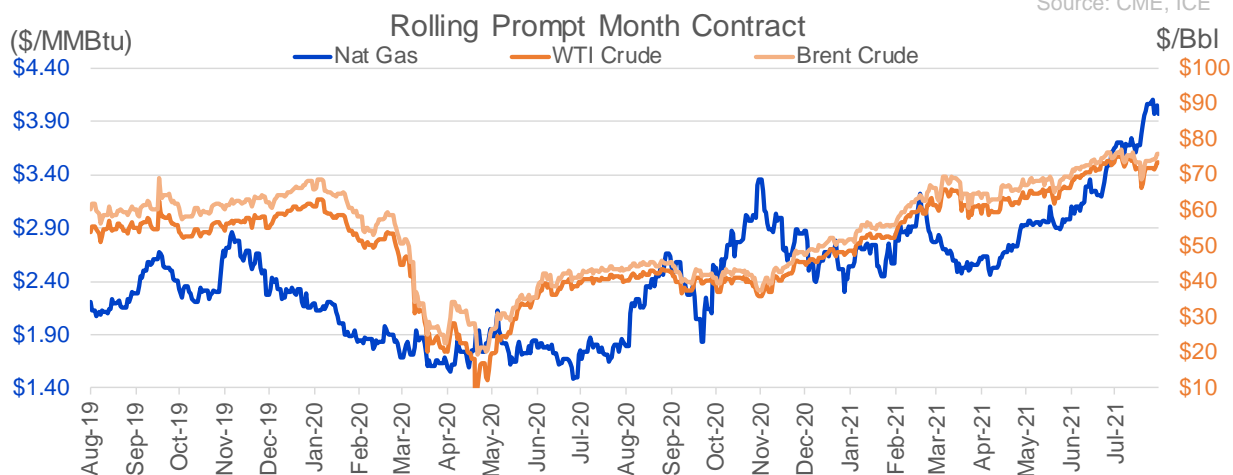
## Nat Gas Options Volume and Open Interest CME, ICE and Nasdaq Combined

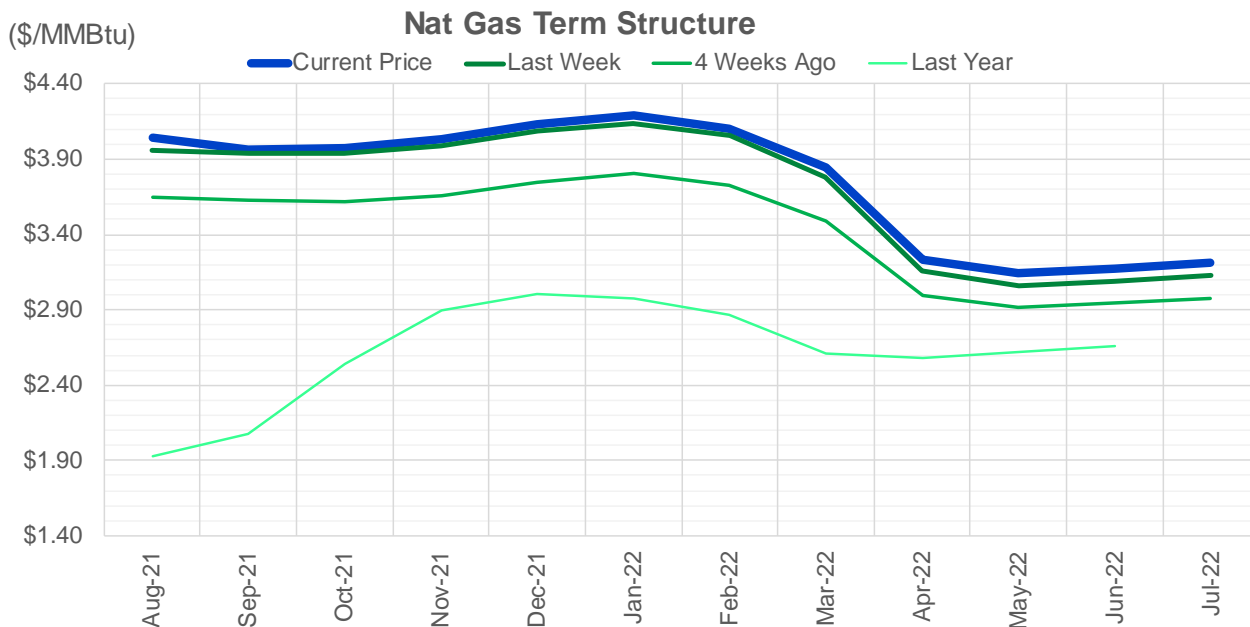
CONTRACT MONTH	CONTRACT YEAR	PUT/CALL	STRIKE	CUMULATIVE VOL	CONTRACT MONTH	CONTRACT YEAR	PUT/CALL	STRIKE	CUMULATIVE OI
9	2021	C	4.50	7790	10	2021	C	4.00	41857
9	2021	P	3.25	7461	10	2021	C	5.00	33875
9	2021	P	3.50	5486	10	2021	C	3.50	33005
9	2021	C	4.25	5005	9	2021	C	4.00	30880
10	2021	C	4.50	4271	10	2021	P	2.50	30078
9	2021	P	2.90	3802	10	2021	C	4.50	29455
9	2021	C	4.00	3744	10	2021	C	3.25	28230
9	2021	P	3.70	2787	10	2021	P	2.75	26775
9	2021	P	3.75	2746	10	2021	P	2.00	26497
10	2021	C	5.00	2734	12	2021	P	2.75	24346
9	2021	P	4.00	2721	9	2021	P	2.50	23376
10	2021	C	4.35	2650	10	2021	P	3.50	23341
9	2021	C	5.00	2540	9	2021	C	3.50	23108
10	2021	P	3.00	2451	10	2021	P	3.00	22909
9	2021	P	3.60	2418	11	2021	C	4.00	22667
10	2021	P	3.75	2113	12	2021	C	4.00	21756
3	2022	P	2.00	1800	12	2021	P	2.50	21309
9	2021	P	3.40	1770	9	2021	P	2.00	20427
10	2021	P	3.50	1644	9	2021	P	3.00	20349
9	2021	C	4.75	1614	10	2021	P	2.25	19800
10	2021	P	3.25	1231	4	2022	C	3.00	19610
9	2021	C	4.20	1165	9	2021	C	3.25	18995
10	2021	P	2.75	1120	10	2021	C	3.00	18501
10	2021	C	4.75	1062	11	2021	P	3.00	18017
4	2022	C	4.00	926	9	2021	C	4.50	17450
5	2022	C	4.00	925	10	2021	C	3.75	16789
6	2022	C	4.00	925	9	2021	C	4.25	16652
7	2022	C	4.00	925	9	2021	P	3.50	16594
8	2022	C	4.00	925	10	2021	C	6.00	16468
9	2022	C	4.00	925	3	2022	C	5.00	16336
10	2022	C	4.00	925	9	2021	C	5.00	16290
1	2022	C	5.00	920	12	2021	P	3.00	16091
9	2021	C	5.10	903	9	2021	P	2.75	15821
9	2021	P	5.10	901	11	2021	C	3.75	15339
9	2021	P	5.00	900	1	2022	C	4.00	14698
2	2022	P	3.50	850	11	2021	C	5.00	14507
2	2022	P	4.00	800	3	2022	C	3.00	14448
10	2021	C	6.00	761	1	2022	C	5.00	14215
9	2021	P	3.90	713	11	2021	P	2.50	13994
4	2022	P	2.50	676	12	2021	P	2.00	13889
3	2022	P	2.50	660	9	2021	P	2.60	13814
10	2021	C	4.25	618	9	2021	P	3.25	13800
10	2021	C	5.25	600	9	2021	P	1.90	13773
1	2022	P	4.00	600	2	2022	C	5.00	13595
11	2021	C	6.50	564	2	2022	C	4.00	13562
4	2022	C	5.00	550	5	2022	C	3.00	13050
5	2022	C	5.00	550	9	2021	P	2.25	12762
6	2022	C	5.00	550	6	2022	C	3.00	12755
7	2022	C	5.00	550	9	2021	C	3.00	12592
					7	2022	C	3	12547

Source: CME, ICE

## Nat Gas Futures Open Interest CME, and ICE Combined

CME Henry Hub Futures (10,000 MMBtu)				ICE Henry Hub Futures Contract Equivalent (10,000 MM			
	Current	Prior	Daily Change		Current	Prior	Daily Change
SEP 21	338079	337479	337583	SEP 21	95341	95346	-385
OCT 21	161116	159132	-176363	OCT 21	106366	104662	-5
NOV 21	124651	122605	-34481	NOV 21	72308	73141	1704
DEC 21	74750	74047	-47855	DEC 21	73283	72888	-833
JAN 22	121633	120737	47586	JAN 22	78105	78832	396
FEB 22	51410	50703	-69327	FEB 22	68937	68753	-728
MAR 22	102256	101561	51553	MAR 22	68021	68250	184
APR 22	104927	104005	3366	APR 22	66483	66108	-229
MAY 22	87671	87284	-16334	MAY 22	66812	66786	375
JUN 22	29124	28733	-58160	JUN 22	55866	55639	27
JUL 22	23850	23709	-4883	JUL 22	54946	54775	227
AUG 22	24653	24263	944	AUG 22	56387	56239	171
SEP 22	24414	24357	151	SEP 22	56030	55835	148
OCT 22	60034	59506	35677	OCT 22	60394	58977	195
NOV 22	25380	25268	-34126	NOV 22	48272	48265	1417
DEC 22	22131	21619	-3137	DEC 22	50477	50453	8
JAN 23	16516	16470	-5103	JAN 23	30650	30559	23
FEB 23	5656	5646	-10814	FEB 23	26344	26278	91
MAR 23	7617	7595	1971	MAR 23	27963	27860	66
APR 23	9804	9491	2209	APR 23	22838	22657	103
MAY 23	5492	5770	-3999	MAY 23	23821	23690	182
JUN 23	2308	2366	-3462	JUN 23	22134	22009	131
JUL 23	2587	2572	221	JUL 23	22407	22270	126
AUG 23	1822	1770	-750	AUG 23	22423	22284	137
SEP 23	2036	1987	266	SEP 23	21783	21656	139
OCT 23	2679	2653	692	OCT 23	23442	23302	127
NOV 23	1213	1213	-1440	NOV 23	22334	22281	140
DEC 23	1752	1742	539	DEC 23	21773	21724	53
JAN 24	993	993	-749	JAN 24	12918	12948	49
FEB 24	838	993	-155	FEB 24	12918	12948	-30





	Aug-21	Sep-21	Oct-21	Nov-21	Dec-21	Jan-22	Feb-22	Mar-22	Apr-22	May-22	Jun-22	Jul-22
<b>Current Price</b>	<b>\$4.044</b>	<b>\$3.967</b>	<b>\$3.969</b>	<b>\$4.030</b>	<b>\$4.130</b>	<b>\$4.190</b>	<b>\$4.106</b>	<b>\$3.841</b>	<b>\$3.234</b>	<b>\$3.147</b>	<b>\$3.175</b>	<b>\$3.210</b>
Last Week	\$3.959	\$3.938	\$3.935	\$3.990	\$4.084	\$4.141	\$4.053	\$3.781	\$3.157	\$3.064	\$3.092	\$3.126
vs. Last Week	\$0.085	\$0.029	\$0.034	\$0.040	\$0.046	\$0.049	\$0.053	\$0.060	\$0.077	\$0.083	\$0.083	\$0.084
4 Weeks Ago	\$3.650	\$3.624	\$3.619	\$3.658	\$3.743	\$3.807	\$3.725	\$3.488	\$2.998	\$2.917	\$2.943	\$2.977
vs. 4 Weeks Ago	\$0.394	\$0.343	\$0.350	\$0.372	\$0.387	\$0.383	\$0.381	\$0.353	\$0.236	\$0.230	\$0.232	\$0.233
Last Year	\$1.854	\$1.930	\$2.079	\$2.538	\$2.896	\$3.010	\$2.975	\$2.871	\$2.609	\$2.576	\$2.615	\$2.662
vs. Last Year	\$2.190	\$2.037	\$1.890	\$1.492	\$1.234	\$1.180	\$1.131	\$0.970	\$0.625	\$0.571	\$0.560	\$0.548

	Units	Cash Settled	Prompt Settle	Cash to Prompt
AGT Citygate	\$/MMBtu	2.88	3.59	0.71
TETCO M3	\$/MMBtu	3.20	3.46	0.26
FGT Zone 3	\$/MMBtu	3.16	4.08	0.92
Zone 6 NY	\$/MMBtu	3.16	3.41	0.26
Chicago Citygate	\$/MMBtu	3.81	3.84	0.03
Michcon	\$/MMBtu	3.82	3.81	-0.01
Columbia TCO Pool	\$/MMBtu	3.29	3.28	-0.02
Ventura	\$/MMBtu	3.62	3.77	0.15
Rockies/Opal	\$/MMBtu	3.89	3.72	-0.17
El Paso Permian Basin	\$/MMBtu	3.87	3.83	-0.04
Socal Citygate	\$/MMBtu	7.75	5.72	-2.04
Malin	\$/MMBtu	4.00	4.24	0.24
Houston Ship Channel	\$/MMBtu	3.99	3.98	-0.01
Henry Hub Cash	\$/MMBtu	4.00	3.74	-0.26
AECO Cash	C\$/GJ	3.19	3.01	-0.18
Station2 Cash	C\$/GJ	3.13	4.12	0.99
Dawn Cash	C\$/GJ	3.73	3.83	0.10

Source: CME, Bloomberg

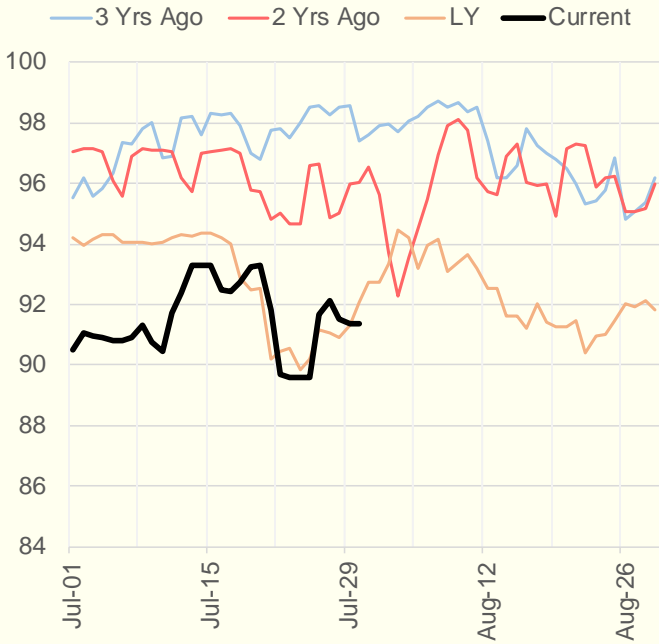
	Units	Current Price	vs. Last Week	vs. 4 Weeks Ago	vs. Last Year
NatGas Jul21/Oct21	\$/MMBtu	0.443	▲ 0.084	▲ 0.437	▲ 0.431
NatGas Oct21/Nov21	\$/MMBtu	0.059	▲ 0.002	▲ 0.017	▲ 0.008
NatGas Oct21/Jan22	\$/MMBtu	0.216	▲ 0.011	▲ 0.025	▼ -0.064
NatGas Apr22/Oct22	\$/MMBtu	-0.018	▲ 0.001	▼ -0.010	▼ -0.085
WTI Crude	\$/Bbl	73.62	▲ 1.710	▼ -1.610	▲ 33.700
Brent Crude	\$/Bbl	76.05	▲ 2.260	▲ 0.210	▲ 33.110
Fuel Oil, NY Harbour 1%	\$/Bbl	97.18	▲ 0.000	▲ 0.000	▲ 0.000
Heating Oil	cents/Gallon	218.94	▲ 5.680	▲ 3.320	▲ 97.750
Propane, Mt. Bel	cents/Gallon	1.09	▲ 0.003	▼ -0.007	▲ 0.603
Ethane, Mt. Bel	cents/Gallon	0.31	▲ 0.001	▲ 0.012	▲ 0.098
Coal, PRB	\$/MTon	12.30	▲ 0.000	▲ 0.000	▲ 0.000
Coal, PRB	\$/MMBtu	0.70			
Coal, ILB	\$/MTon	31.05	▲ 0.000	▲ 0.000	▲ 0.000
Coal, ILB	\$/MMBtu	1.32			

### Weather Storage Model - Next 4 Week Forecast

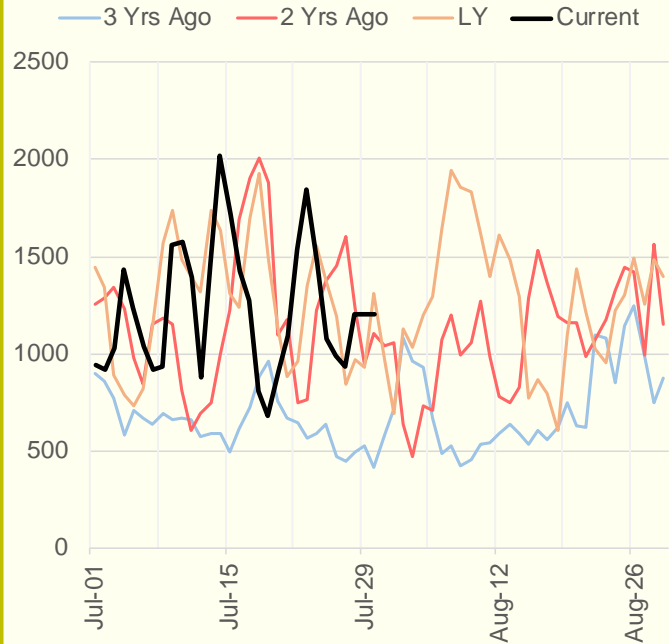


The risk of trading futures and options and other derivatives involves a substantial risk of loss and is not suitable for all persons. Each person must consider whether a particular trade, combination of trades, or strategy is suitable for that person's financial means and objectives. Past results are not necessarily indicative of future results. This communication may contain links to third party websites which are not under the control of and are not maintained by ION Energy Group, and ION Energy Group is not responsible for their content.

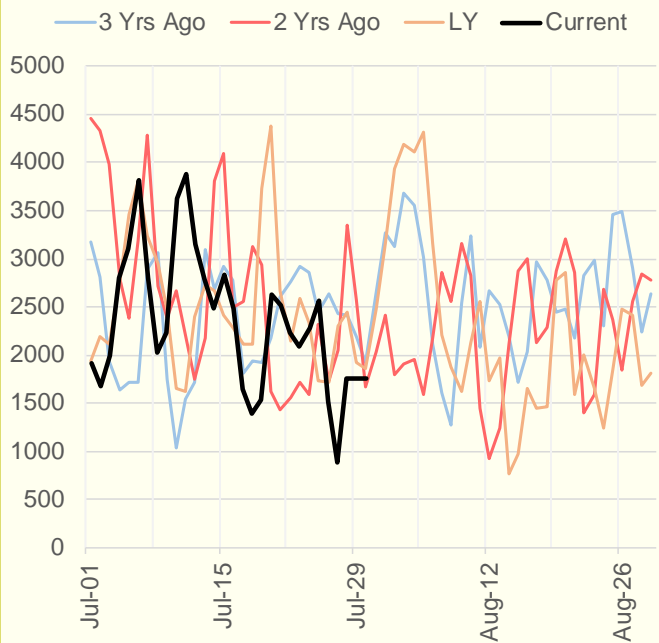
### NRC % Nuclear Cap Utilization



### US Wind



### CALI Wind



### TEXAS Wind

