

USDA US Export Sales Results in 000 Metric Tons

		Actual 8/12/2021	Trade Estimates* 8/12/2021	Last Week Last Week	Year Ago 8/13/2020
Beans	2020-21	67.7	-75 to +200	2020-21 96.9	-12.6
	NC	2142.1	1000-1800	NC 1120.3	2573.2
Meal	2020-21	72.4	25-200	Sales 116.3	Sales 34.5
	NC	104.6	50-250		
	Shipments	213.7	NA	Shipments 9/7/1900	Shipments 222.5
Oil	2020-21	0.5	0-10	Sales 0.4	Sales -0.1
	NC	0.1	0		
	Shipments	0.4	NA	Shipments 0.5	Shipments 2.2
Corn	2020-21	216.6	-100 to 200	2020-21 377.6	61.6
	NC	510.0	300-930	NC 601.8	723.3
Wheat	2021-22	306.7	250-500	2021-22 293.1	523.0

Source: FI & USDA *Reuters estimates

n/c= New Crop

USDA Export Sales Estimates/Results in 000 tons

	ESTIMATED 8/12/2021			ACTUAL This Week		8/5/2021 Last Week		8/13/2020 Year Ago				
Beans	20/21	-75 to +100		20/21	67.7	20/21	96.9		19/20	(12.6)		
	21/22	1400-1800		21/22	2,142.1	21/22	1,120.3		n/c	2,573.2		
				Sales to China 92.3		Sales to China 84.5		Sales to China (32.8)				
Meal	Shipped			Shipped		Shipped		Shipped				
	20/21	25-125	150-300	20/21	72.4	213.7	20/21	116.3	251.2	19/20	34.5	222.5
	21/22	50-175		21/22	104.6		21/22	268.3		n/c	155.8	
Oil	Shipped			Shipped		Shipped		Shipped				
	20/21	0-5	0-5	20/21	0.5	0.4	20/21	0.4	0.5	19/20	(0.1)	2.2
	21/22	0.0		21/22	0.1		21/22	0.0		n/c	0.0	
			Sales to China 0.0		Sales to China 0.0		Sales to China 0.0					
Corn	20/21	-100 to +200		20/21	216.6		20/21	377.6		19/20	61.6	
	21/22	300-500		21/22	510.0		21/22	601.8		n/c	723.3	
				Sales to China 2.9		Sales to China 11.3		Sales to China 8.6				
Wheat	21/22	250-500		21/22	306.7		21/22	293.1		20/21	523.0	

o/c=Old Crop, n/c= New Crop Souce: Futures International and USDA

US crop-year to date export sales

% sold from USDA's export projection

		Current	Last Year	YOY	YOY	2021-22	2020-21	2019-20	2018-19
2020-21	Soybeans mil bu	2281	1738	543	31.3%		100.9%	103.5%	102.0%
2020-21	SoyOil MT	684	1267	-583	-46.0%		88.6%	98.4%	99.9%
2020-21	SoyMeal MT	12001	11992	9	0.1%		93.8%	95.6%	97.7%
2020-21	Corn mil bu	2768	1741	1027	59.0%		99.8%	98.0%	95.5%
2021-22	Wheat mil bu	405	383	22	5.7%	37.8%	40.8%	39.5%	33.3%

Souce: Futures International and USDA

EXPORT SALES SITUATION

ALL-WHEAT

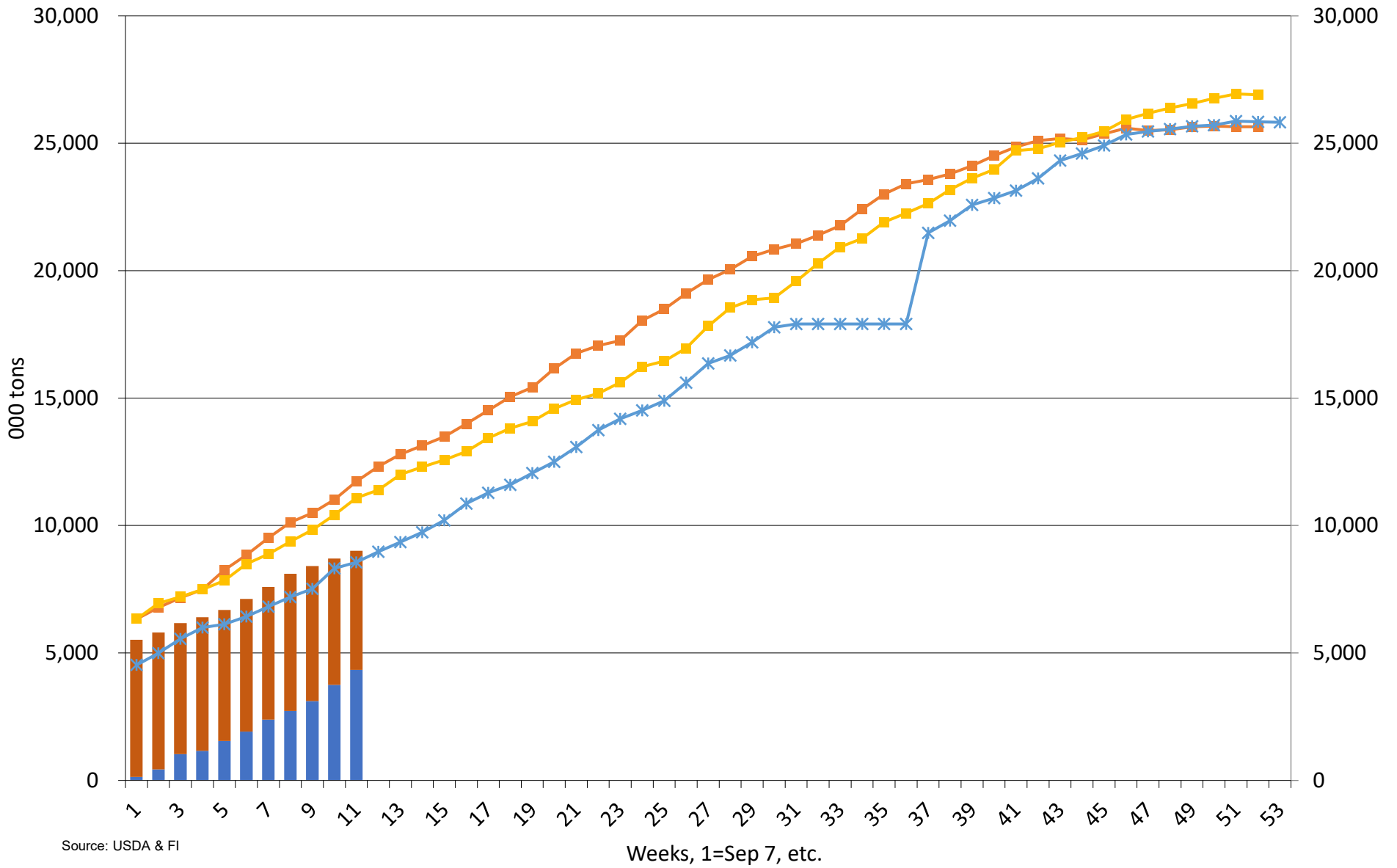
(million bushels)

Weekly Sales Total	2021-22	2020-21	2019-20	2018-19	2017-18	2016-17	2015-16	2014-15	2013-14	2012-13	2011-12	2010-11	2009-10	2008-09	2007-08	2006-07	2005-06	2004-05	2003-04	2002-03	2001-02	
New Crop Sales	190.5	240.4	213.1	152.7	225.5	200.6	160.1	219.3	256.5	185.8	243.2	148.6	115.7	263.9	159.2	134.1	134.1	208.4	125.1	112.6	111.0	
4-Jun	12.0	9.9	12.0	11.1	16.9	8.2	13.8	20.9	15.7	15.9	16.7	4.8	12.4	12.3	15.2	16.9	12.1	10.7	10.2	11.0	7.5	
Weeks remaining	11-Jun	10.5	10.9	6.9	17.0	13.7	11.6	13.7	15.9	30.9	24.3	35.3	9.9	19.8	19.9	11.6	18.8	21.7	21.7	7.6	13.0	
52	18-Jun	13.7	11.9	22.5	20.7	19.9	17.0	16.0	13.2	26.9	11.9	20.0	26.5	13.5	18.3	22.9	19.9	21.6	15.9	19.0	16.4	19.9
	25-Jun	8.3	12.9	10.2	16.2	18.1	23.7	13.4	20.9	21.8	15.4	15.6	15.4	8.9	24.5	19.1	11.0	23.1	17.2	24.2	20.5	22.6
	2-Jul	10.7	13.9	10.4	5.0	13.8	30.3	12.7	12.4	54.1	11.5	19.1	18.9	21.5	22.7	43.5	7.4	11.3	20.2	20.6	6.2	10.8
	9-Jul	15.6	14.9	12.8	11.0	13.1	11.7	10.7	11.6	36.6	21.6	12.7	11.4	15.5	27.5	28.1	12.1	21.6	11.5	24.2	31.2	20.0
	16-Jul	17.4	15.9	24.2	14.2	24.6	17.6	18.5	16.3	24.3	13.5	17.4	14.0	12.6	22.4	76.3	17.1	19.2	15.7	13.8	20.6	26.0
	23-Jul	18.9	16.9	14.1	14.1	18.3	18.6	25.7	29.4	21.9	19.0	18.4	33.8	21.1	26.7	64.0	21.4	31.7	22.0	17.9	10.6	16.6
	30-Jul	11.3	17.9	17.9	11.7	5.3	12.0	30.8	21.7	26.7	23.5	13.8	31.0	20.3	25.1	32.7	14.5	22.8	18.5	20.9	24.8	19.7
	6-Aug	10.8	18.9	17.0	29.5	17.1	22.3	15.5	12.4	18.0	14.5	20.2	48.9	17.6	23.9	43.6	14.2	17.2	20.6	26.5	23.3	28.1
	13-Aug	11.3	19.9	21.8	8.8	23.3	18.0	11.6	7.7	18.2	17.2	12.8	51.9	13.2	33.7	38.6	14.5	31.4	27.3	27.2	6.6	15.5
	20-Aug																					
	27-Aug																					
	3-Sep																					
	10-Sep																					
	17-Sep																					
	24-Sep																					
	1-Oct																					
	8-Oct																					
	15-Oct																					
	22-Oct																					
	29-Oct																					
Crop year to date sales	331.1	404.7	382.9	311.9	409.7	408.1	340.3	399.4	536.6	380.7	434.1	440.3	282.2	520.8	562.9	294.8	365.0	409.8	351.5	291.6	310.8	
Average weekly sales																						
rate to reach proj total	10.5	11.3	11.3	12.0	9.5	12.4	8.4	8.9	12.3	12.1	11.9	16.3	11.5	9.5	13.5	11.8	12.3	12.6	15.5	10.7	12.5	
Proj./Actual export total	875	992	969	937	906	1051	778	864	1176	1012	1051	1289	879	1015	1263	908	1003	1066	1158	850	962	
YTD sales as % of total	37.8	40.8	39.5	33.3	45.2	38.8	43.7	46.2	45.6	37.6	41.3	34.2	32.1	51.3	44.6	32.5	36.4	38.4	30.4	34.3	32.3	

Source: Futures International and USDA

US Wheat Current Crop-Year Commitments

Thousand Tons, Sept-Aug Crop-Year

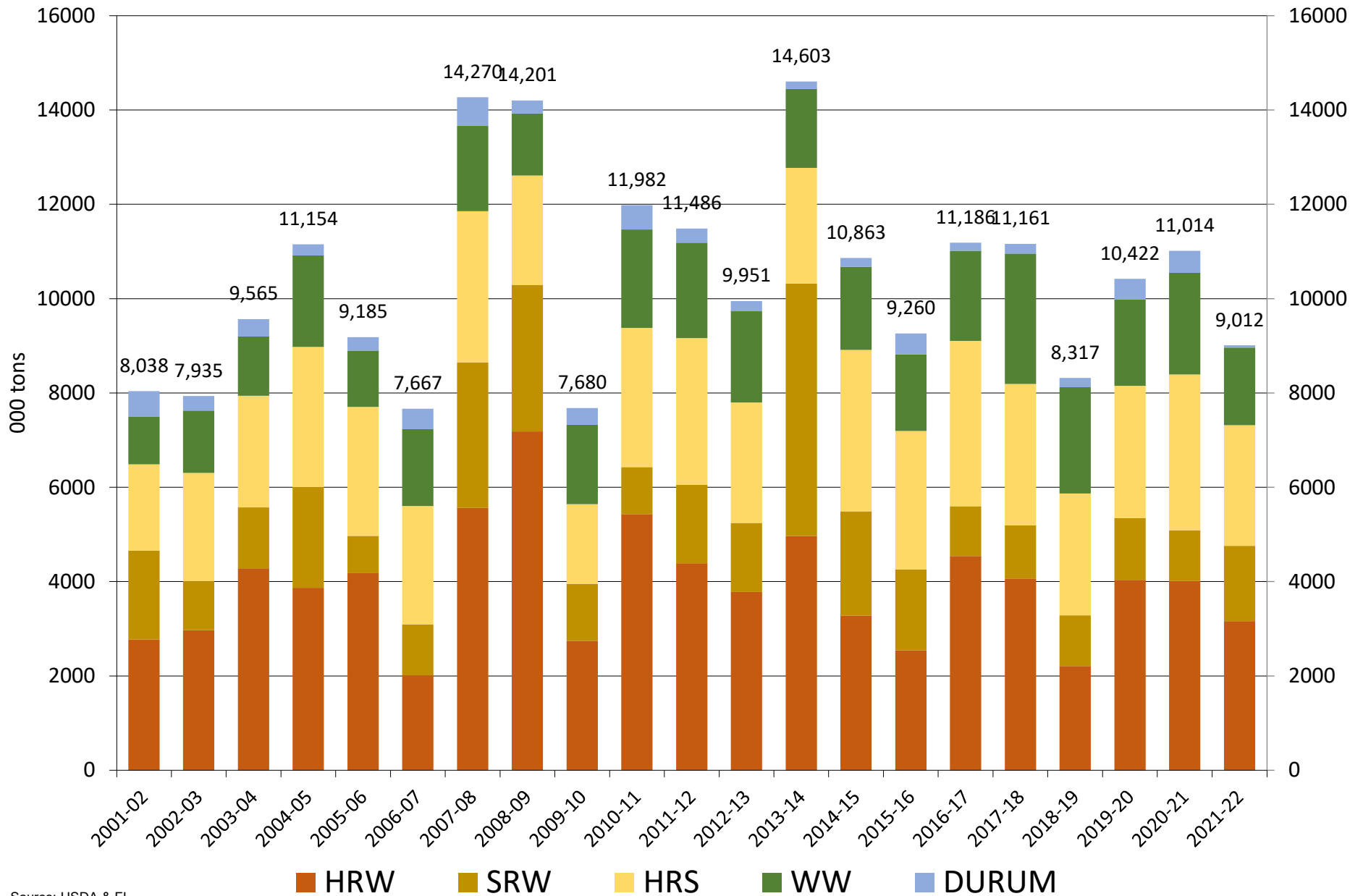


Source: USDA & FI

Weeks, 1=Sep 7, etc.

■ Accumulated Exports
 ■ Outstanding Sales
 —■— 2020-21
 —■— 2019-20
 —*— 2018-19

US all wheat export commitments on or near 08/15/2021

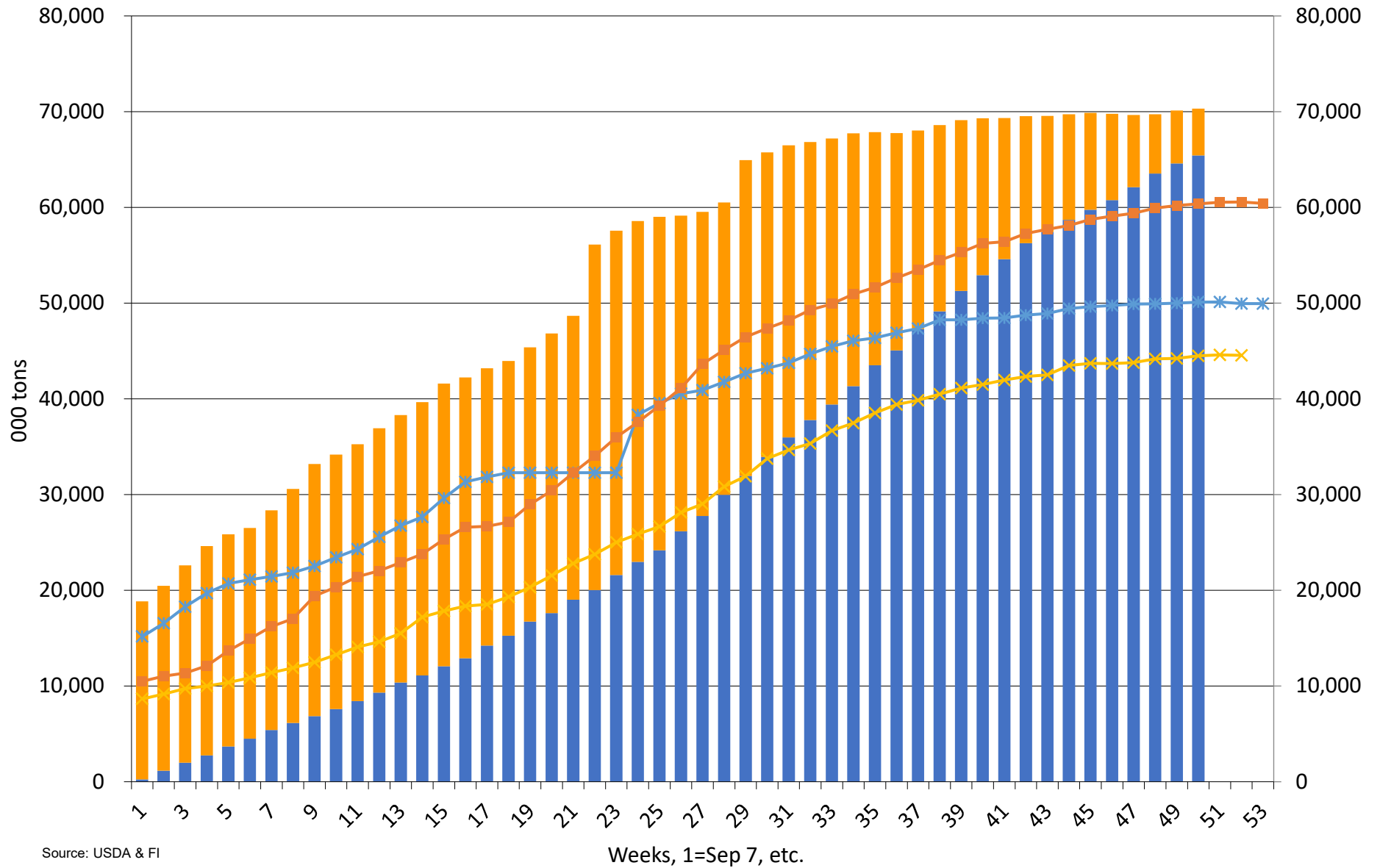


Source: USDA & FI

Source: USDA and FI

US Corn Current Crop-Year Commitments

Thousand Tons, Sept-Aug Crop-Year

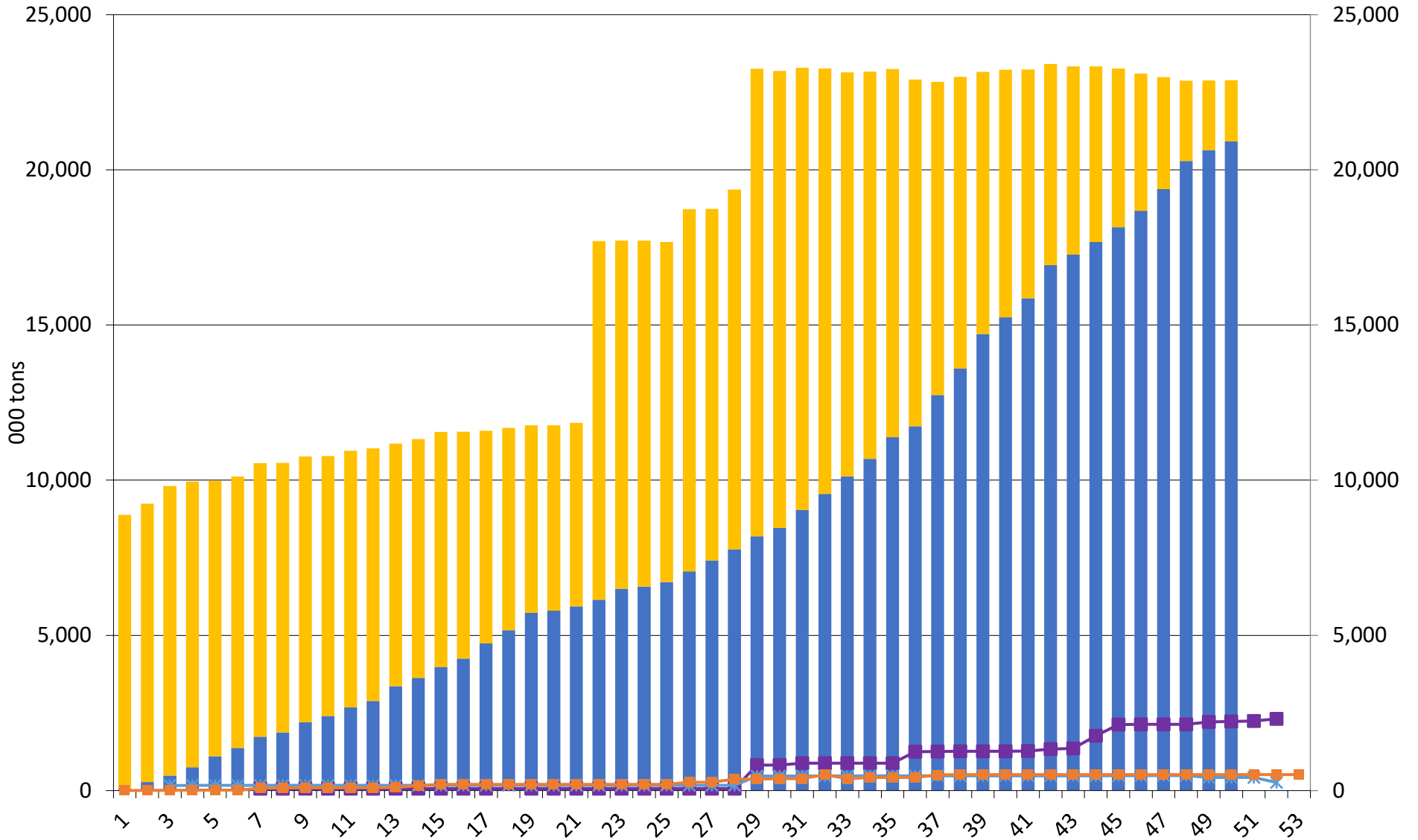


Source: USDA & FI

■ Accumulated Exports ■ Outstanding Sales ✕ 2019-20 * 2018-19 ■ 2017-18

US Corn Current Crop-Year Commitments to China

Thousand Tons, Sept-Aug Crop-Year



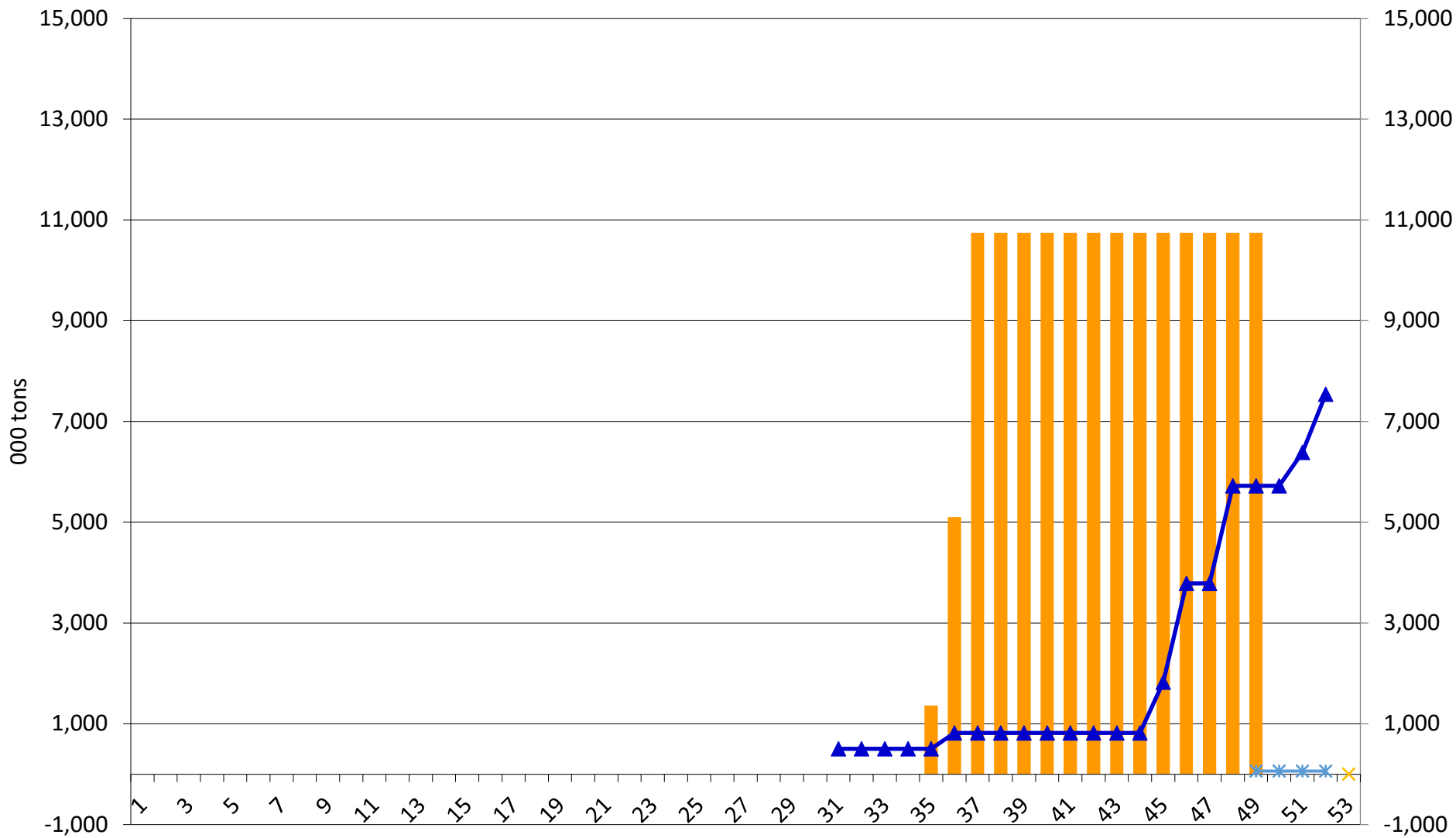
Source: USDA & FI

Weeks, 1=Sep 7, etc.

■ Accumulated Exports
 ■ Outstanding Sales
 —■— 2019-20
 —*— 2018-19
 —■— 2017-18

US Corn New Crop-Year Commitments to China

Thousand Tons, Sept-Aug Crop-Year



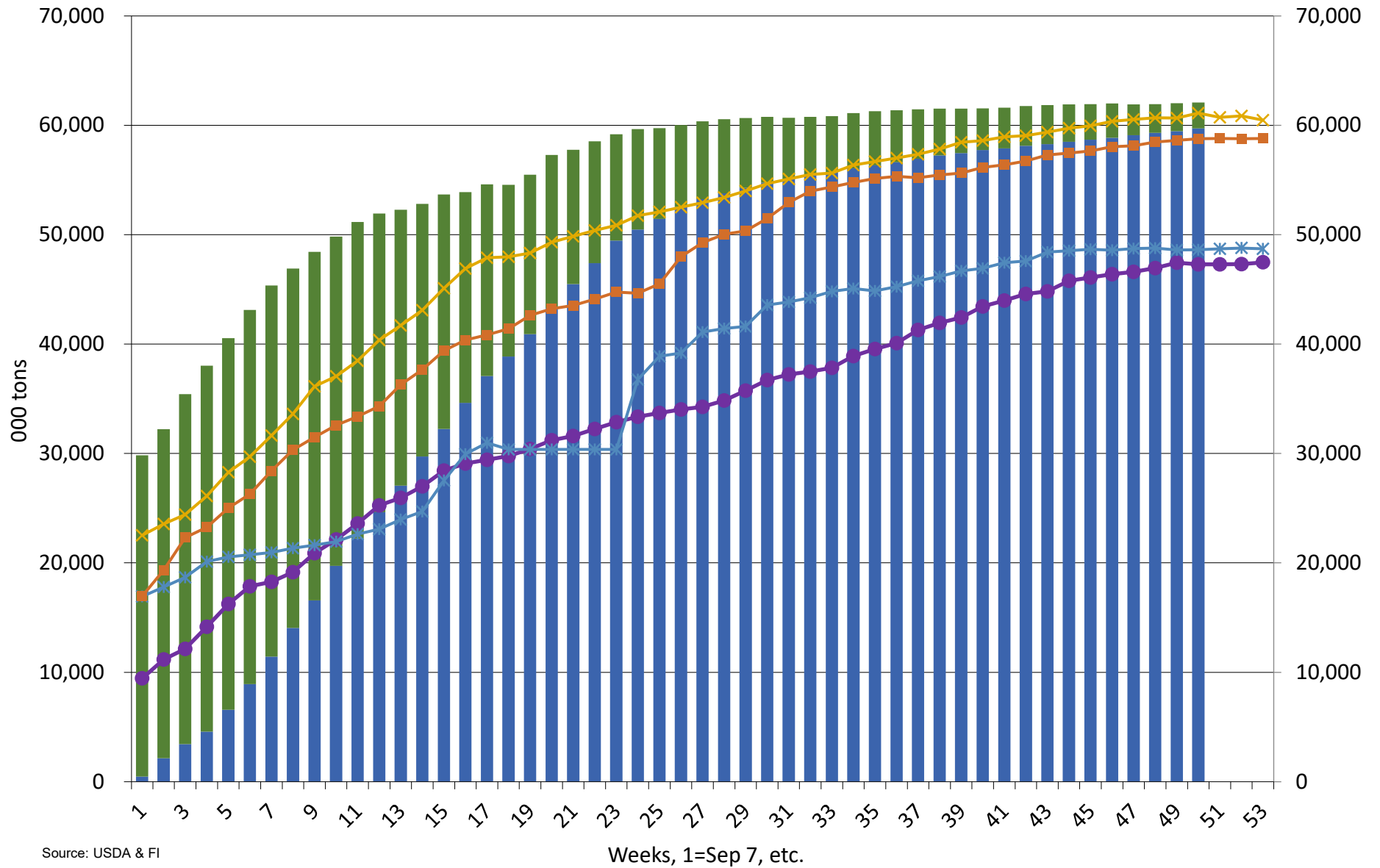
Source: USDA & FI

Weeks, 1=Sep 7, etc.

■ NMY Outstanding Sales
 ▲ 2020-21
 ✱ 2019-20
 ✕ 2018-19
 ■ 2017-18

Source: USDA and FI

US Soybean Current Crop-Year Commitments Thousand Tons, Sept-Aug Crop-Year

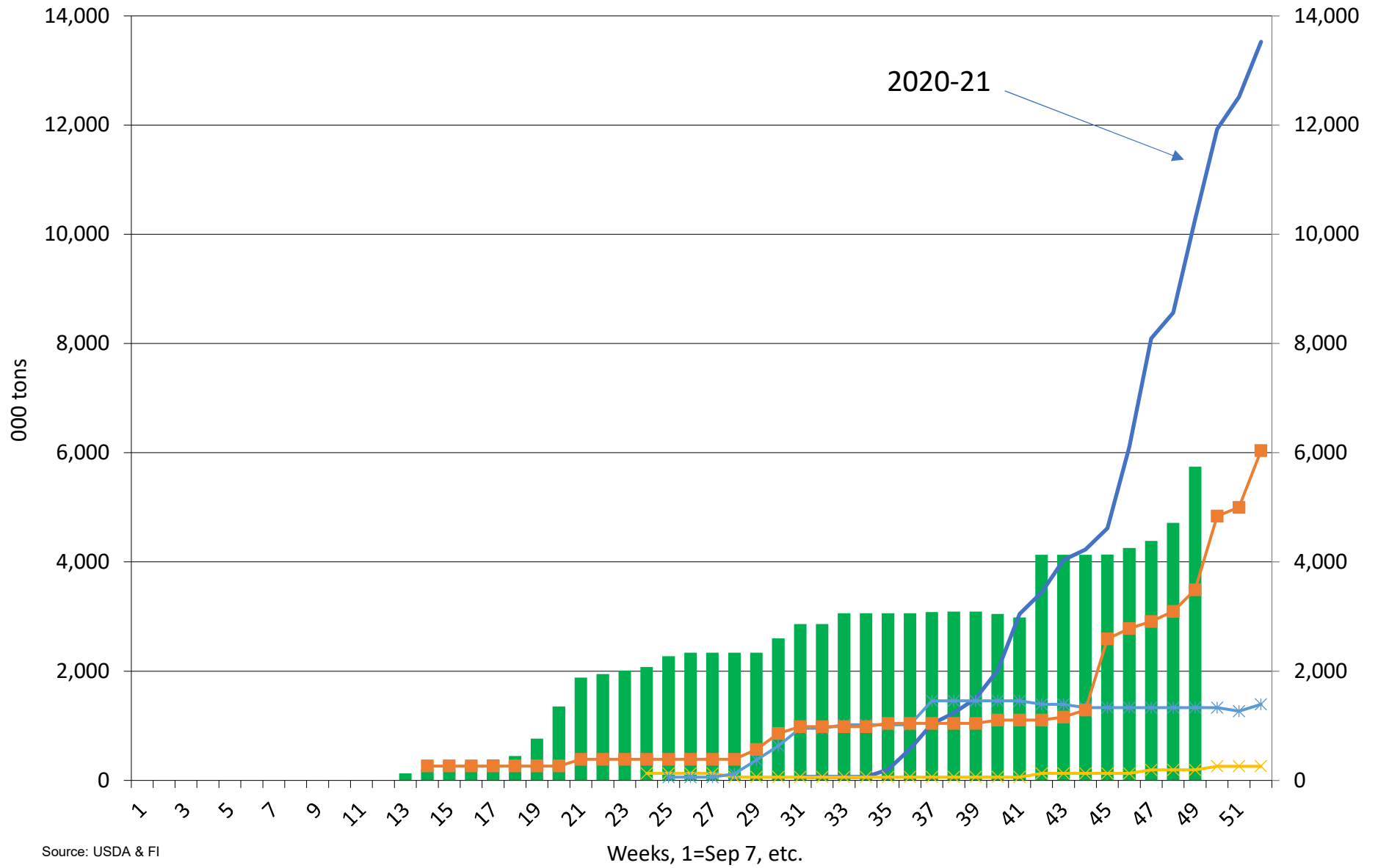


Source: USDA & FI

Accumulated Exports Outstanding Sales 2019-20 2018-19 2017-18 2016-17

Source: USDA and FI

US Soybean New-Crop Commitments to China Thousand Tons, Sept-Aug Crop-Year



Source: USDA & FI

■ NMY Outstanding Sales — 2020-21 × 2019-20 * 2018-19 ■ 2017-18

Disclaimer

TO CLIENTS/PROSPECTS OF FUTURES INTERNATIONAL, SEE RISK DISCLOSURE BELOW:

THIS COMMUNICATION IS CONVEYED AS A SOLICITATION FOR ENTERING INTO A DERIVATIVES TRANSACTION.

Any trading recommendations and market or other information to Customer by Futures International (FI), although based upon information obtained from sources believed by FI to be reliable may not be accurate and may be changed without notice to customer. FI makes no guarantee as to the accuracy or completeness of any of the information or recommendations furnished to Customer. Customer understands that FI, its managers, employees and/or affiliates may have a position in commodity futures, options or other derivatives which may not be consistent with the recommendations furnished by FI to Customer.

The risk of trading futures and options and other derivatives involves a substantial risk of loss and is not suitable for all persons. In purchasing an option, the risk is limited to the premium paid, and all commissions and fees involved with the trade. When an option is shorted or written, the writer of the option has unlimited risk with respect to the option written. The use of options strategies such as a straddles and strangles involve multiple option positions and may substantially increase the amount of commissions and fees paid to execute the strategy. Option prices do not necessarily move in tandem with cash or futures prices. Each person must consider whether a particular trade, combination of trades or strategy is suitable for that person's financial means and objectives.

This material may include discussions of seasonal patterns, however, futures prices have already factored in the seasonal aspects of supply and demand, and seasonal patterns are no indication of future market trends. Finally, past performance is not indicative of future results.

This communication may contain links to third party websites which are not under the control of FI and FI is not responsible for their content. Products and services are offered only in jurisdictions where solicitation and sale are lawful, and in accordance with applicable laws and regulations in each such jurisdiction.