

	Current	Δ from YD	Δ from 7D Avg
Nat Gas Prompt	\$ 3.95	▲ \$ 0.02	▼ \$ (0.01)

	Current	Δ from YD	Δ from 7D Avg
WTI Prompt	\$ 71.33	▲ \$ 0.07	▼ \$ (1.6)

	Current	Δ from YD	Δ from 7D Avg
Brent Prompt	\$ 73.05	▲ \$ 0.16	▼ \$ (2.3)

### Page Menu

[Short-term Weather Model Outlooks](#)

[Lower 48 Component Models](#)

[Regional S/D Models Storage Projection](#)

[Weather Model Storage Projection](#)

[Supply – Demand Trends](#)

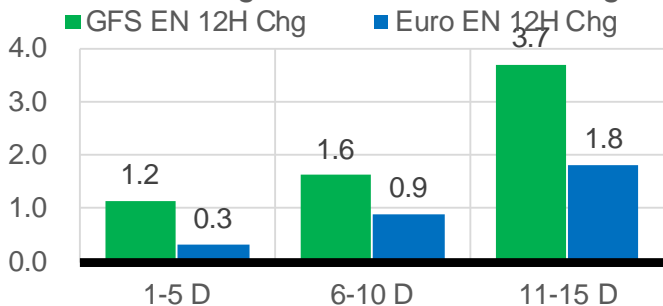
[Nat Gas Options Volume and Open Interest](#)

[Nat Gas Futures Open Interest](#)

[Price Summary](#)

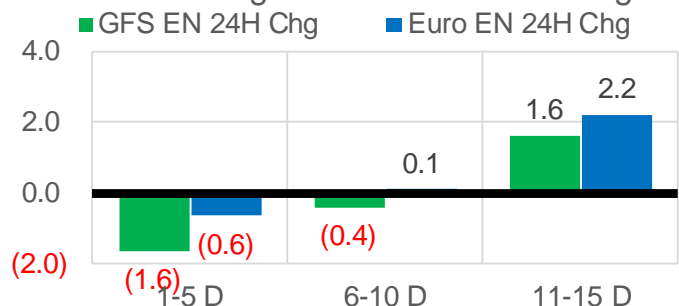
### Vs. 12H Ago

L48 Region - 00z TDD vs 12H Ago



### Vs. 24H Ago

L48 Region - 00z TDD vs 24H Ago



	Current	Δ from YD	Δ from 7D Avg
US Dry Production	89.7	▼ -1.90	▼ -2.52

	Current	Δ from YD	Δ from 7D Avg
US Power Burns	37.6	▼ -0.78	▼ -3.23

	Current	Δ from YD	Δ from 7D Avg
US ResComm	8.1	▲ 0.12	▼ -0.05

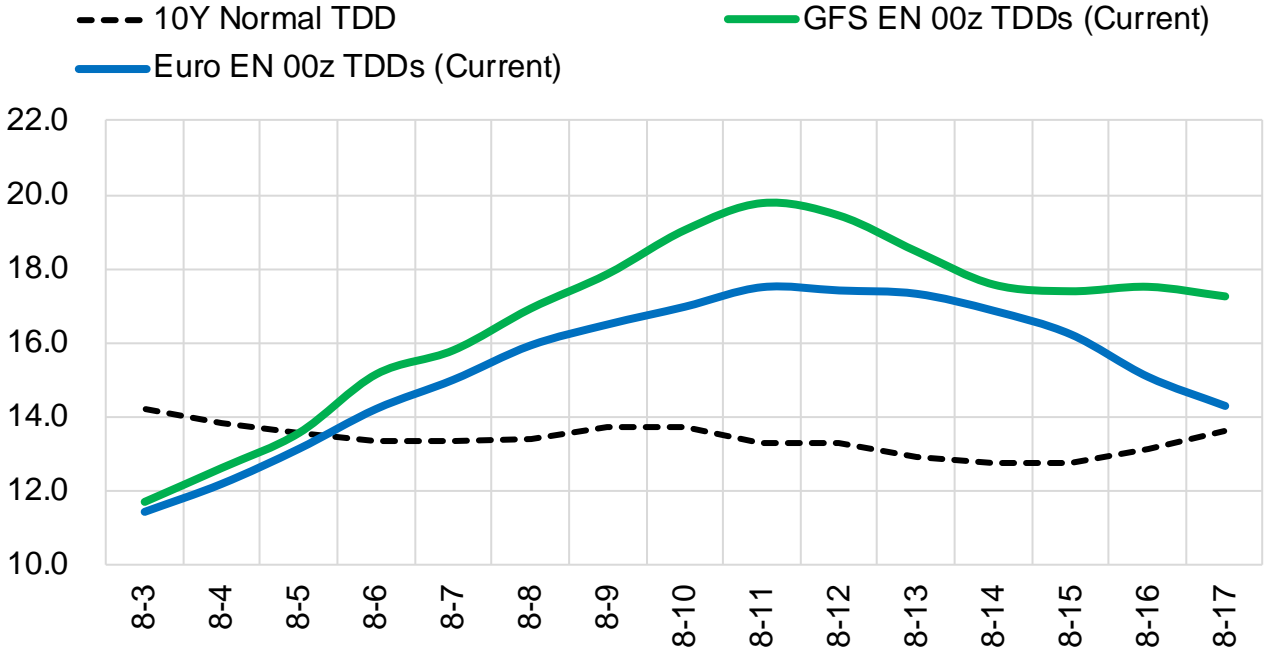
	Current	Δ from YD	Δ from 7D Avg
Canadian Imports	4.9	▼ -0.22	▼ -0.46

	Current	Δ from YD	Δ from 7D Avg
Net LNG Exports	10.4	▲ 0.10	▼ -0.38

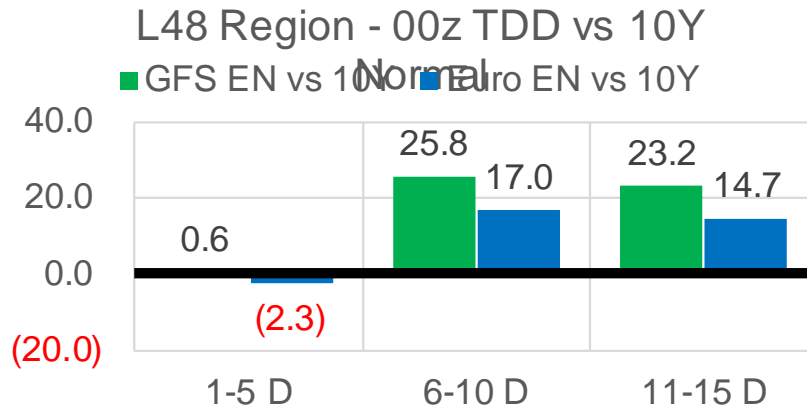
	Current	Δ from YD	Δ from 7D Avg
Mexican Exports	7.0	▲ 0.15	▲ 0.00

## Short-term Weather Model Outlooks (00z)

### L48 Region



## Vs. 10Y Normal



Source: WSI , Bloomberg

## Lower 48 Component Models

### Daily Balances

	28-Jul	29-Jul	30-Jul	31-Jul	1-Aug	2-Aug	3-Aug	DoD	vs. 7D
<b>Lower 48 Dry Production</b>	<b>92.5</b>	<b>92.2</b>	<b>93.0</b>	<b>92.1</b>	<b>91.7</b>	<b>91.6</b>	<b>89.7</b>	▼ -1.9	▼ -2.5
<b>Canadian Imports</b>	<b>5.8</b>	<b>5.7</b>	<b>5.3</b>	<b>5.2</b>	<b>5.0</b>	<b>5.2</b>	<b>4.9</b>	▼ -0.2	▼ -0.4
L48 Power	43.1	42.8	41.0	38.7	37.6	38.4	37.6	▼ -0.8	▼ -2.7
L48 Residential & Commercial	8.7	8.6	8.2	7.6	7.6	8.0	8.1	▲ 0.1	▼ 0.0
L48 Industrial	20.5	20.6	20.4	20.3	20.2	20.2	20.2	▼ 0.0	▼ -0.2
L48 Lease and Plant Fuel	5.1	5.1	5.2	5.1	5.1	5.1	5.0	▼ -0.1	▼ -0.1
L48 Pipeline Distribution	2.5	2.4	2.3	2.2	2.2	2.3	2.2	▼ 0.0	▼ -0.1
<b>L48 Regional Gas Consumption</b>	<b>79.9</b>	<b>79.6</b>	<b>77.1</b>	<b>73.9</b>	<b>72.7</b>	<b>73.9</b>	<b>73.1</b>	▼ -0.8	▼ -3.0
<b>Net LNG Delivered</b>	<b>10.90</b>	<b>10.86</b>	<b>10.97</b>	<b>10.86</b>	<b>10.58</b>	<b>10.28</b>	<b>10.38</b>	▲ 0.1	▼ -0.4
<b>Total Mexican Exports</b>	<b>7.4</b>	<b>7.2</b>	<b>7.1</b>	<b>6.6</b>	<b>6.3</b>	<b>6.8</b>	<b>7.0</b>	▲ 0.1	▲ 0.1
<b>Implied Daily Storage Activity</b>	<b>0.2</b>	<b>0.2</b>	<b>3.0</b>	<b>5.9</b>	<b>7.2</b>	<b>5.7</b>	<b>4.1</b>		
<b>EIA Reported Daily Storage Activity</b>									
<b>Daily Model Error</b>									

### EIA Storage Week Balances

	25-Jun	2-Jul	9-Jul	16-Jul	23-Jul	30-Jul	WoW	vs. 4W
<b>Lower 48 Dry Production</b>	<b>93.2</b>	<b>92.2</b>	<b>91.7</b>	<b>92.3</b>	<b>92.4</b>	<b>92.5</b>	▲ 0.1	▲ 0.3
<b>Canadian Imports</b>	<b>4.6</b>	<b>5.1</b>	<b>5.1</b>	<b>5.2</b>	<b>4.9</b>	<b>5.5</b>	▲ 0.6	▲ 0.5
L48 Power	34.4	39.8	37.2	38.7	39.7	42.2	▲ 2.4	▲ 3.3
L48 Residential & Commercial	8.8	8.6	8.2	8.4	8.4	8.3	▼ -0.1	▼ -0.1
L48 Industrial	19.5	21.1	19.3	19.5	19.6	20.1	▲ 0.5	▲ 0.2
L48 Lease and Plant Fuel	5.2	5.1	5.1	5.1	5.1	5.1	▲ 0.0	▲ 0.0
L48 Pipeline Distribution	2.1	2.4	2.1	2.2	2.3	2.4	▲ 0.1	▲ 0.1
<b>L48 Regional Gas Consumption</b>	<b>70.0</b>	<b>76.9</b>	<b>71.9</b>	<b>73.9</b>	<b>75.2</b>	<b>78.1</b>	▲ 2.9	▲ 3.6
<b>Net LNG Exports</b>	<b>10.3</b>	<b>11.2</b>	<b>11.0</b>	<b>10.8</b>	<b>10.5</b>	<b>10.8</b>	▲ 0.3	▼ -0.1
<b>Total Mexican Exports</b>	<b>7.6</b>	<b>7.2</b>	<b>7.1</b>	<b>7.1</b>	<b>7.1</b>	<b>7.0</b>	▼ -0.1	▼ -0.1
<b>Implied Daily Storage Activity</b>	<b>9.9</b>	<b>2.0</b>	<b>6.8</b>	<b>5.6</b>	<b>4.4</b>	<b>2.1</b>	-2.3	
<b>EIA Reported Daily Storage Activity</b>	<b>10.9</b>	<b>2.3</b>	<b>7.9</b>	<b>7.0</b>	<b>5.1</b>			
<b>Daily Model Error</b>	<b>-0.9</b>	<b>-0.3</b>	<b>-1.1</b>	<b>-1.4</b>	<b>-0.7</b>			

### Monthly Balances

	2Yr Ago Aug-19	LY Aug-20	Apr-21	May-21	Jun-21	Jul-21	MTD Aug-21	MoM	vs. LY
<b>Lower 48 Dry Production</b>	<b>94.6</b>	<b>89.5</b>	<b>92.2</b>	<b>92.7</b>	<b>92.8</b>	<b>92.2</b>	<b>91.0</b>	▼ -1.2	▲ 1.5
<b>Canadian Imports</b>	<b>4.4</b>	<b>4.9</b>	<b>4.6</b>	<b>4.5</b>	<b>4.8</b>	<b>5.2</b>	<b>5.0</b>	▼ -0.1	▲ 0.2
L48 Power	41.0	40.9	24.9	26.7	35.3	39.4	37.9	▼ -1.6	▼ -3.0
L48 Residential & Commercial	7.8	7.7	19.5	13.2	8.8	8.3	7.9	▼ -0.4	▲ 0.3
L48 Industrial	23.5	21.8	21.2	20.3	20.7	19.7	20.2	▲ 0.5	▼ -1.6
L48 Lease and Plant Fuel	5.2	5.0	5.1	5.1	5.1	5.1	5.0	▼ -0.1	▲ 0.1
L48 Pipeline Distribution	2.4	2.4	2.3	2.1	2.2	2.3	2.2	▼ 0.0	▼ -0.1
<b>L48 Regional Gas Consumption</b>	<b>79.8</b>	<b>77.6</b>	<b>73.0</b>	<b>67.2</b>	<b>72.1</b>	<b>74.8</b>	<b>73.2</b>	▼ -1.6	▼ -4.4
<b>Net LNG Exports</b>	<b>5.2</b>	<b>4.0</b>	<b>11.5</b>	<b>10.8</b>	<b>10.2</b>	<b>10.8</b>	<b>10.4</b>	▼ -0.4	▲ 6.4
<b>Total Mexican Exports</b>	<b>5.3</b>	<b>6.0</b>	<b>6.7</b>	<b>6.8</b>	<b>7.4</b>	<b>7.1</b>	<b>6.7</b>	▼ -0.4	▲ 0.7
<b>Implied Daily Storage Activity</b>	<b>8.8</b>	<b>6.7</b>	<b>5.7</b>	<b>12.4</b>	<b>8.0</b>	<b>4.6</b>	<b>5.7</b>		
<b>EIA Reported Daily Storage Activity</b>									
<b>Daily Model Error</b>									

Source: Bloomberg, analytix.ai

## Daily Average Generation Data

### Nuclear Generation Daily Average - GWh (NRC)

	27-Jul	28-Jul	29-Jul	30-Jul	31-Jul	1-Aug	2-Aug	DoD	vs. 7D
NRC Nuclear Daily Output	90.6	90.0	89.8	90.3	90.3	90.3	90.8	0.5	0.5
NRC Nuclear Max Capacity	104.9	104.9	104.9	104.9	104.9	104.9	104.9	0.0	0.0
NRC Nuclear Outage	14.3	14.9	15.0	14.5	14.5	14.5	14.1	-0.5	-0.5
NRC % Nuclear Cap Utilization	92.1	91.5	91.4	91.8	91.8	91.8	92.3	0.5	0.6

### Wind Generation Daily Average - MWh (EIA)

	27-Jul	28-Jul	29-Jul	30-Jul	31-Jul	1-Aug	2-Aug	DoD	vs. 7D
CALI Wind	879	1754	2254	1644	1891	2316	2316	0	526
TEXAS Wind	4279	5594	2991	4585	7192	8517	8517	0	2991
US Wind	22329	28958	27887	25303	27259	27375	27375	0	856

### Generation Daily Average - MWh (EIA)

	27-Jul	28-Jul	29-Jul	30-Jul	31-Jul	1-Aug	2-Aug	DoD	vs. 7D
US Wind	22329	28958	27887	25303	27259	27375	27375	0	856
US Solar	14436	12827	14235	13108	13312	12220	12220	0	-1137
US Petroleum	5264	5033	4873	4470	3642	3419	3419	0	-1031
US Other	9355	9165	8843	9142	7615	7783	7783	0	-867
US Coal	151434	153259	153100	152833	113203	109045	109045	0	-29767
US Nuke	93252	92218	92482	92366	60710	60638	60638	0	-21306
US Hydro	29826	29968	29769	27722	25007	23843	23843	0	-3846
<b>US Gas</b>	<b>241140</b>	<b>238115</b>	<b>238031</b>	<b>232925</b>	<b>161403</b>	<b>150515</b>	<b>150515</b>	<b>0</b>	<b>-59840</b>

See National Wind and Nuclear daily charts

Source: Bloomberg, analytix.ai

## Storage Week Average Generation Data

### Nuclear Generation Weekly Average - GWh (NRC)

	25-Jun	2-Jul	9-Jul	16-Jul	23-Jul	30-Jul	WoW	WoW Bcf/d Impact
NRC Nuclear Daily Output	89.9	89.1	89.5	90.7	90.7	89.3	-1.4	0.2
NRC Nuclear Max Capacity	104.9	104.9	104.9	104.9	104.9	104.9	0.0	
NRC Nuclear Outage	15.0	15.7	15.4	14.2	14.2	15.6	1.4	
NRC % Nuclear Cap Utilization	0.1	0.1	0.1	0.1	0.1	0.1	0.0	

### Wind Generation Weekly Average - MWh (EIA)

	25-Jun	2-Jul	9-Jul	16-Jul	23-Jul	30-Jul	WoW	WoW Bcf/d Impact
CALI Wind	2568	2588	2604	3004	2064	1905	-159	0.0
TEXAS Wind	13415	8326	3739	10817	7162	7913	751	-0.1
US Wind	49248	27216	25698	36365	26445	29733	3289	-0.6

### Generation Weekly Average - MWh (EIA)

	25-Jun	2-Jul	9-Jul	16-Jul	23-Jul	30-Jul	WoW	WoW Bcf/d Impact
US Wind	49248	27216	25698	36365	26445	29733	3289	<b>-0.6</b>
US Solar	14070	14060	14162	14488	14034	13697	-337	<b>0.1</b>
US Petroleum	3331	5142	4035	4282	3892	4729	837	<b>-0.1</b>
US Other	8246	8886	9159	9554	9336	9149	-187	0.0
US Coal	118233	136480	131305	131524	137617	146414	8797	-1.5
US Nuke	93426	92257	92359	93735	93488	92226	-1261	<b>0.2</b>
US Hydro	32186	33024	30127	30420	30191	29203	-988	0.2
<b>US Gas</b>	<b>180182</b>	<b>208732</b>	<b>194610</b>	<b>199730</b>	<b>210468</b>	<b>223989</b>	<b>13522</b>	

See National Wind and Nuclear daily charts

Source: Bloomberg, analytix.ai

## Monthly Average Generation Data

### Nuclear Generation Monthly Average - GWh (NRC)

	2Yr Ago		LY		MTD		Last 30 days	MoM (MTD vs LY)	Last 30 days YoY
	Same 30 days	Same 30 days	May-21	Jun-21	Jul-21	Aug-21			
	NRC Nuclear Daily Output	94.4	91.2	81.8	88.7	90.0			
NRC Nuclear Max Capacity	104.9	104.9	104.9	104.9	104.9	104.9	104.9	0.0	0.0
NRC Nuclear Outage	10.5	13.6	23.1	16.2	14.9	14.2	14.7	-0.6	1.1
NRC % Nuclear Cap Utilization	95.9	92.8	83.2	90.2	91.5	92.2	91.7	0.6	-1.1

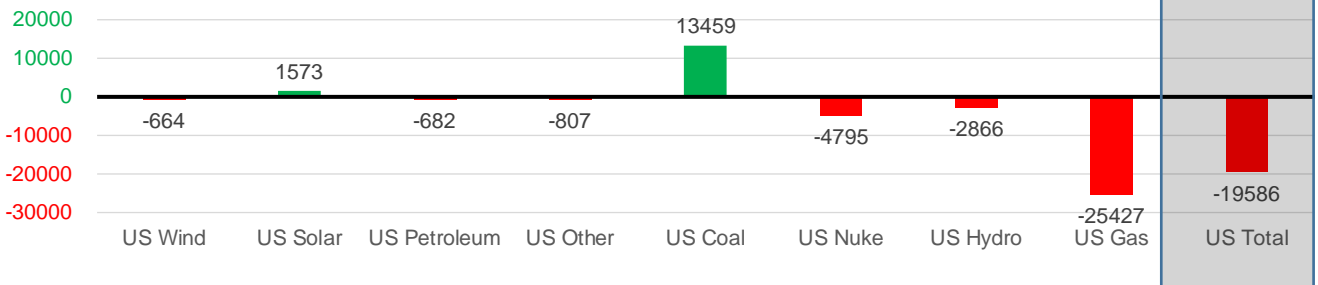
### Wind Generation Monthly Average - MWh (Genscape)

	2Yr Ago		LY		MTD		Last 30 days	MoM (MTD vs LY)	Last 30 days YoY
	Same 30 days	Same 30 days	May-21	Jun-21	Jul-21	Aug-21			
	CALI Wind	2417	2648	3402	2913	2338			
TEXAS Wind	7631	8738	12259	9675	7217	8517	7750	1300	-988
US Wind	27018	30040	46081	37299	29124	27375	29375	-1749	-664

### Generation Monthly Average - MWh (EIA)

	2Yr Ago		LY		MTD		Last 30 days	MoM (MTD vs LY)	Last 30 days YoY
	Same 30 days	Same 30 days	May-21	Jun-21	Jul-21	Aug-21			
	US Wind	27018	30040	46081	37299	29124			
US Solar	9457	12299	14486	14563	14068	12220	13871	▲ 1651.5	▲ 1573
US Petroleum	5262	4911	3012	4149	4226	3419	4229	▲ 811	▼ -682
US Other	8993	9968	7439	8162	9248	7783	9161	▲ 1378	▼ -807
US Coal	131123	121737	86422	121348	136659	109045	135196	▲ 26150	▲ 13459
US Nuke	101061	93457	85517	92175	91866	60638	88661	▲ 28024	▼ -4795
US Hydro	34347	32021	30677	32575	29821	23843	29155	▲ 5312	▼ -2866
<b>US Gas</b>	<b>215962</b>	<b>229927</b>	<b>139477</b>	<b>188818</b>	<b>206522</b>	<b>150515</b>	<b>204499</b>	<b>▲ 65326</b>	<b>▼ -25427</b>
<b>US Total</b>	<b>534672</b>	<b>534020</b>	<b>413562</b>	<b>499436</b>	<b>521779</b>	<b>395508</b>	<b>514434</b>	<b>▲ 128652</b>	<b>▼ -19586</b>

Last 30 days YoY



See National Wind and Nuclear daily charts

Source: Bloomberg, analytix.ai

## Regional S/D Models Storage Projection

Week Ending 30-Jul

	Daily Raw Storage	Daily Adjustment Factor	Daily Average Storage Activity (Adjusted) *	Weekly Adjusted Storage Activity
L48	1.8	1.2	3.0	21
East	1.7	1.6	3.3	23
Midwest	2.6	-0.6	2.0	14
Mountain	4.5	-4.1	0.4	3
South Central	-6.7	4.4	-2.4	-16
Pacific	-0.3	-0.2	-0.4	-3

\*Adjustment Factor is calculated based on historical regional deltas

U.S. underground natural gas storage facilities by type (July 2015)

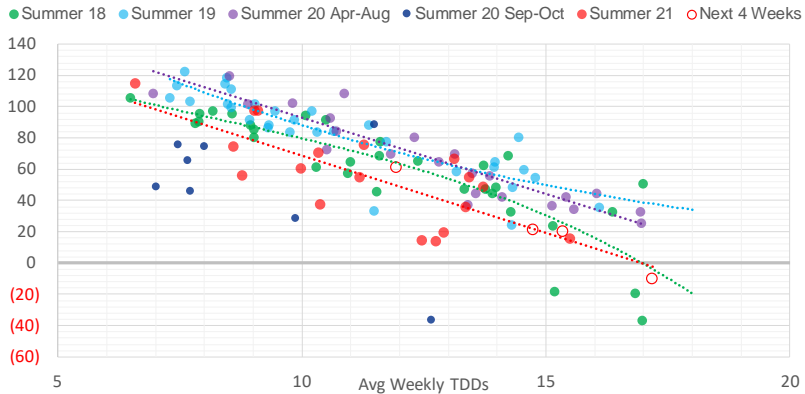


### Weather Model Storage Projection

Next report  
and beyond

Week Ending	GWDDs	Week Storage Projection
30-Jul	14.7	21
06-Aug	12.0	61
13-Aug	17.2	-10
20-Aug	15.4	20

**Weather Storage Model - Next 4 Week Forecast**

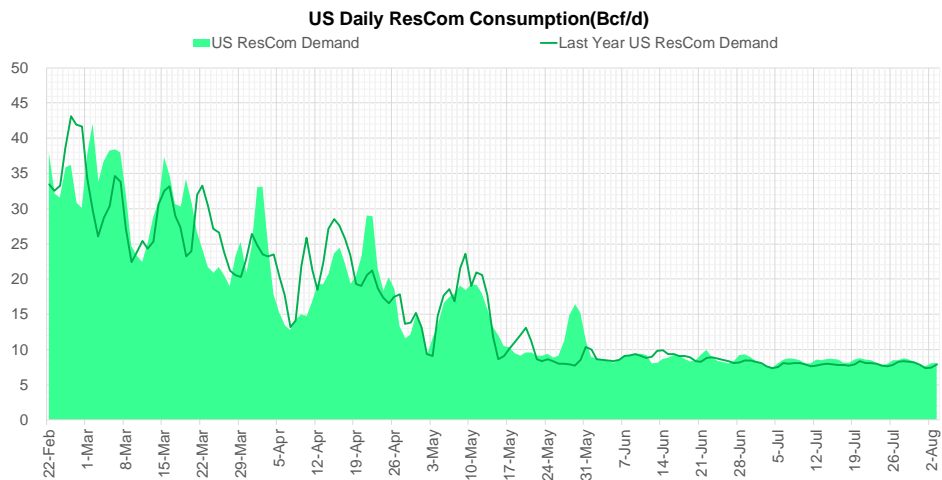
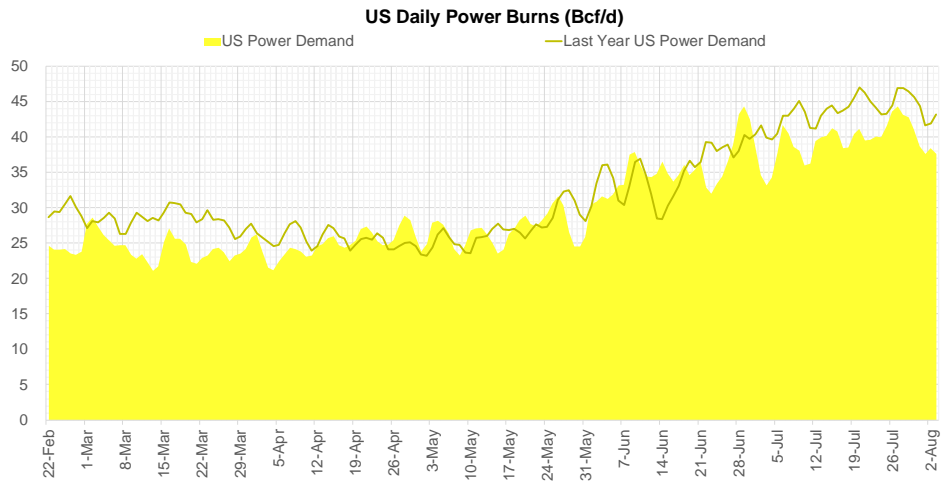
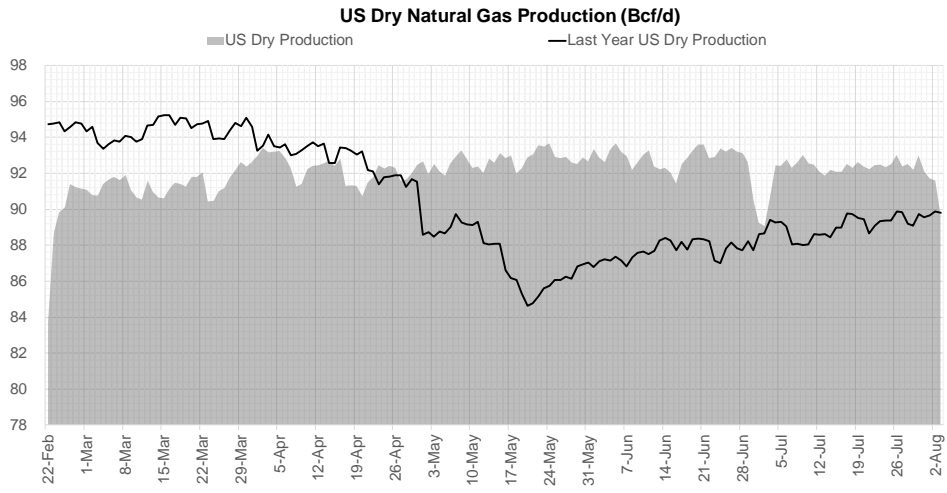


Go to larger image





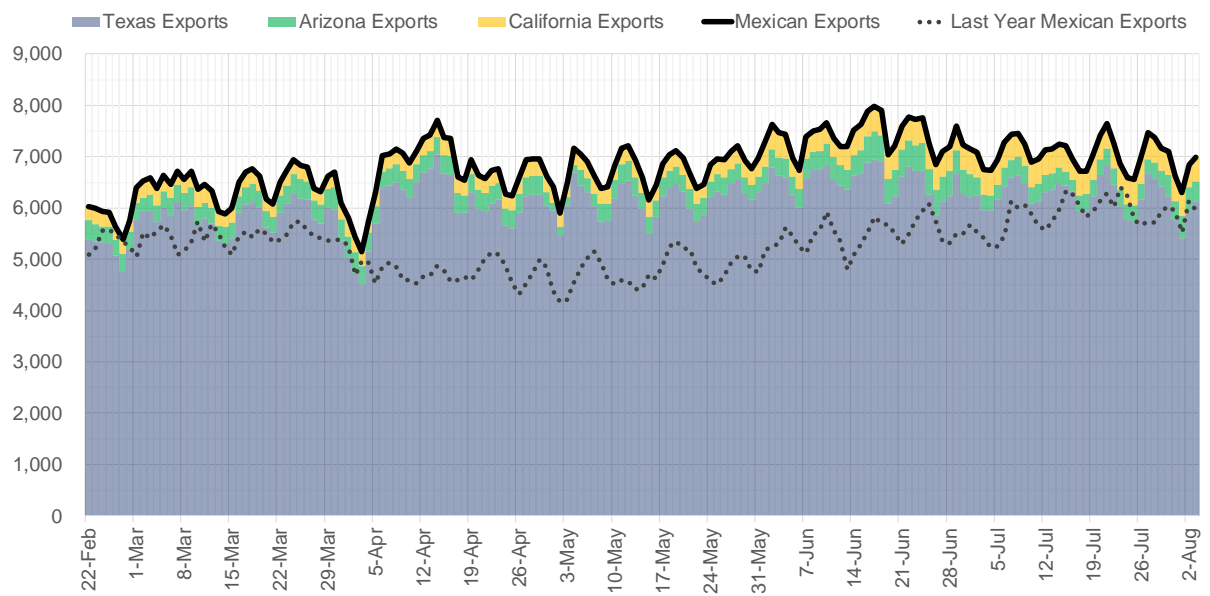
## Supply – Demand Trends



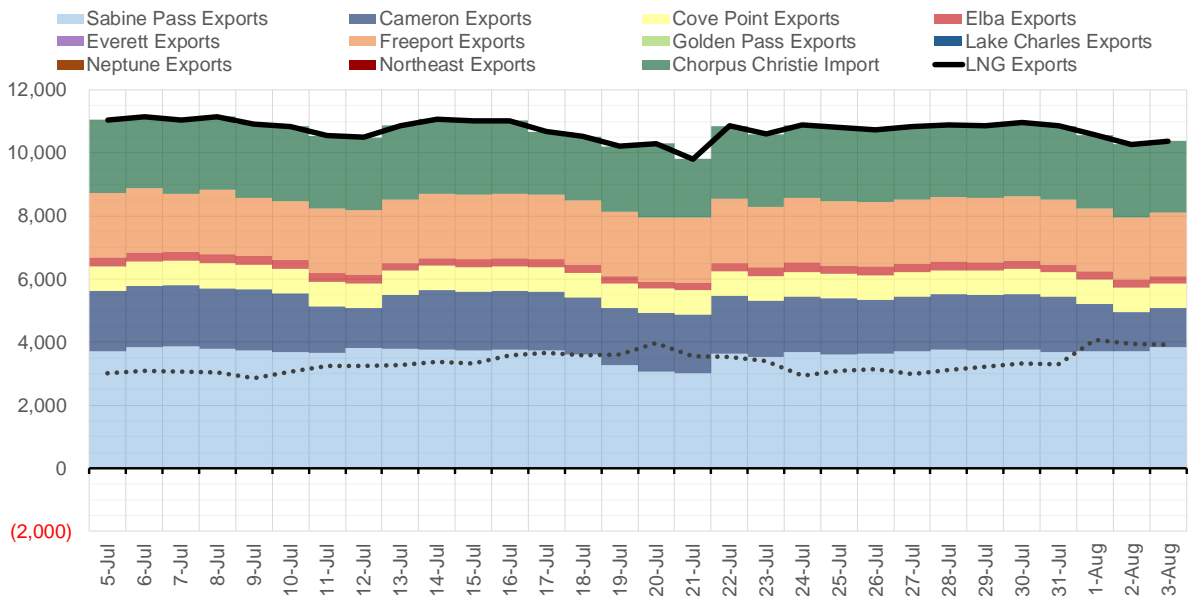
Source: Bloomberg

The risk of trading futures and options and other derivatives involves a substantial risk of loss and is not suitable for all persons. Each person must consider whether a particular trade, combination of trades, or strategy is suitable for that person's financial means and objectives. Past results are not necessarily indicative of future results. This communication may contain links to third party websites which are not under the control of and are not maintained by ION Energy Group, and ION Energy Group is not responsible for their content.

### Mexican Exports (MMcf/d)



### Net LNG Exports - Last 30 days (MMcf/d)



Source: Bloomberg

The risk of trading futures and options and other derivatives involves a substantial risk of loss and is not suitable for all persons. Each person must consider whether a particular trade, combination of trades, or strategy is suitable for that person's financial means and objectives. Past results are not necessarily indicative of future results. This communication may contain links to third party websites which are not under the control of and are not maintained by ION Energy Group, and ION Energy Group is not responsible for their content.

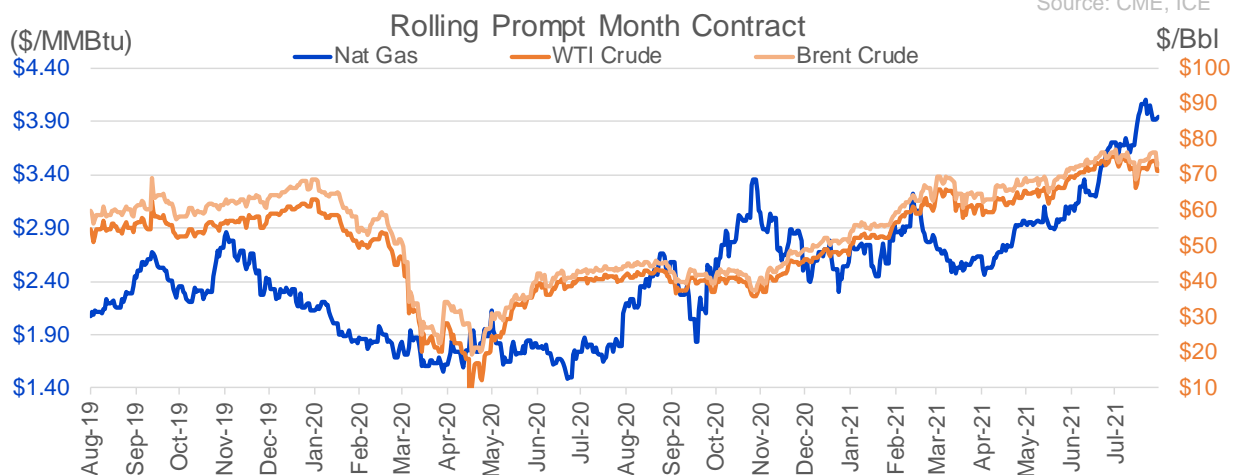
## Nat Gas Options Volume and Open Interest CME, ICE and Nasdaq Combined

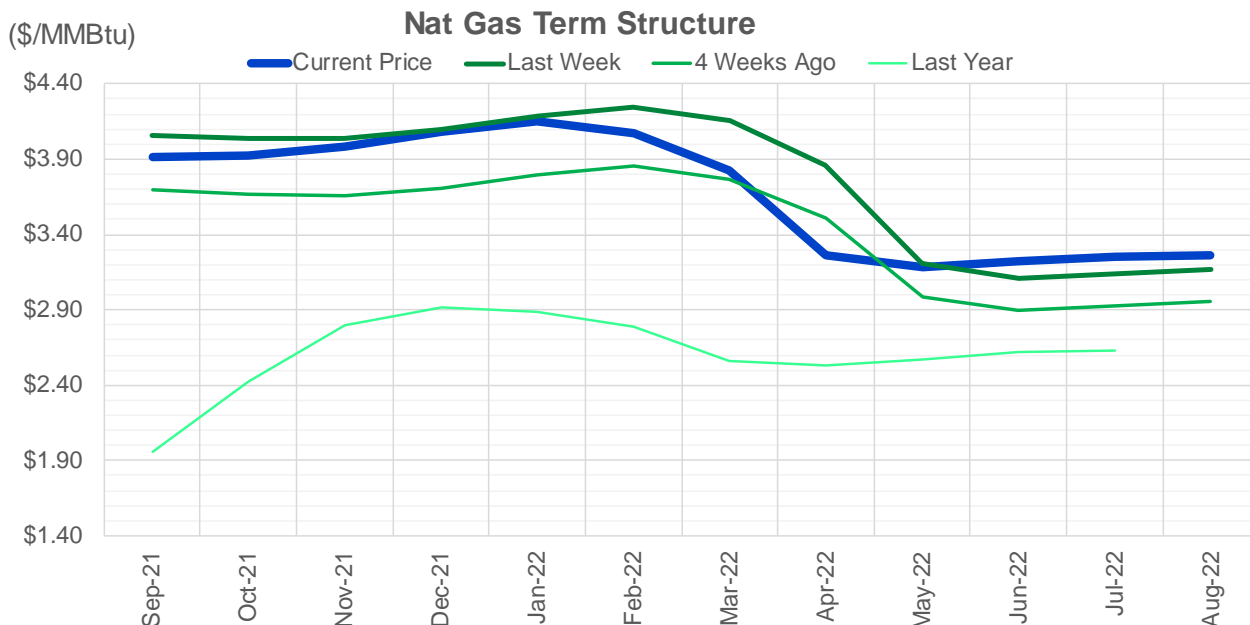
CONTRACT MONTH	CONTRACT YEAR	PUT/CALL	STRIKE	CUMULATIVE VOL	CONTRACT MONTH	CONTRACT YEAR	PUT/CALL	STRIKE	CUMULATIVE OI
9	2021	C	4.75	12457	10	2021	C	4.00	41612
9	2021	C	5.00	7397	10	2021	C	4.50	40293
9	2021	C	4.50	4902	10	2021	C	5.00	33964
9	2021	P	3.75	4508	10	2021	C	3.50	33004
9	2021	C	4.25	4369	10	2021	P	2.50	30039
10	2021	C	5.00	3747	9	2021	C	4.00	29775
4	2022	P	2.50	2600	10	2021	C	3.25	28230
3	2022	P	2.50	2500	10	2021	P	2.00	26497
9	2021	P	3.80	2055	10	2021	P	2.75	25913
10	2021	P	3.75	2001	10	2021	P	3.50	24441
10	2021	C	4.50	1987	12	2021	P	2.75	24392
12	2021	C	7.00	1806	10	2021	P	3.00	24211
9	2021	P	4.00	1595	9	2021	P	2.50	23376
9	2021	P	3.50	1560	9	2021	C	3.50	22932
9	2021	P	3.40	1529	11	2021	C	4.00	22029
10	2021	C	4.00	1459	12	2021	C	4.00	21989
11	2021	C	3.75	1200	9	2021	P	3.00	21527
9	2021	P	3.90	1170	12	2021	P	2.50	20808
10	2021	C	6.00	1154	9	2021	P	2.00	20427
2	2022	C	5.50	1049	10	2021	P	2.25	19800
1	2022	C	5.00	956	4	2022	C	3.00	19610
9	2021	C	4.00	955	9	2021	P	3.50	18997
9	2021	P	3.55	875	9	2021	C	3.25	18994
9	2021	P	3.60	864	9	2021	C	5.00	18738
10	2021	P	3.50	862	10	2021	C	3.00	18501
9	2021	P	3.25	842	11	2021	P	3.00	18138
12	2021	C	5.00	827	10	2021	C	6.00	17950
10	2021	C	4.75	804	9	2021	P	3.25	17837
3	2022	C	5.00	778	9	2021	C	4.25	17803
9	2021	P	3.00	701	9	2021	C	4.50	17154
12	2021	P	3.50	678	10	2021	C	3.75	16850
9	2021	P	3.45	667	3	2022	C	5.00	16466
9	2021	C	4.20	614	12	2021	P	3.00	16150
10	2021	P	3.60	607	9	2021	P	2.75	15804
3	2022	C	5.50	562	11	2021	C	5.00	15315
10	2021	P	4.00	552	11	2021	C	3.75	15089
10	2021	P	3.15	534	1	2022	C	4.00	14707
3	2022	C	4.00	514	2	2022	C	5.00	14632
10	2021	C	6.70	500	3	2022	C	3.00	14448
11	2021	P	3.15	493	9	2021	C	4.75	13976
2	2022	P	3.50	450	12	2021	P	2.00	13889
9	2021	P	3.30	447	9	2021	P	2.60	13814
2	2022	C	5.55	445	9	2021	P	1.90	13773
10	2021	C	3.25	438	11	2021	P	2.50	13647
11	2021	C	4.50	425	2	2022	C	4.00	13524
11	2021	P	3.60	419	3	2022	C	4.00	13309
9	2021	P	3.65	401	3	2022	P	2.50	13259
11	2021	C	4.60	341	5	2022	C	3.00	13050
9	2021	P	3.95	331	9	2021	P	2.25	12762

Source: CME, ICE

## Nat Gas Futures Open Interest CME, and ICE Combined

CME Henry Hub Futures (10,000 MMBtu)				ICE Henry Hub Futures Contract Equivalent (10,000 MM			
	Current	Prior	Daily Change		Current	Prior	Daily Change
SEP 21	322762	326983	-4221	SEP 21	94718	94580	138
OCT 21	157707	155806	1901	OCT 21	107344	107892	-548
NOV 21	126270	124217	2053	NOV 21	72603	72562	41
DEC 21	72169	73563	-1394	DEC 21	73924	73957	-33
JAN 22	125672	124932	740	JAN 22	78033	78333	-300
FEB 22	52249	51851	398	FEB 22	69133	69402	-269
MAR 22	102649	102018	631	MAR 22	69314	68943	371
APR 22	105520	105277	243	APR 22	67537	67471	66
MAY 22	87502	86337	1165	MAY 22	66919	66945	-26
JUN 22	30321	28840	1481	JUN 22	56224	56172	53
JUL 22	23978	23748	230	JUL 22	55611	55572	39
AUG 22	24323	24742	-419	AUG 22	56940	56870	70
SEP 22	24333	24326	7	SEP 22	56693	56626	68
OCT 22	59615	59829	-214	OCT 22	61461	61462	0
NOV 22	25677	26150	-473	NOV 22	48769	48711	58
DEC 22	22592	22190	402	DEC 22	50985	50829	156
JAN 23	16473	16537	-64	JAN 23	30977	30902	75
FEB 23	5483	5590	-107	FEB 23	26629	26577	51
MAR 23	7743	7700	43	MAR 23	28328	28284	44
APR 23	9601	9899	-298	APR 23	23190	23024	166
MAY 23	5518	5506	12	MAY 23	24174	23950	224
JUN 23	2329	2275	54	JUN 23	22399	22222	178
JUL 23	2657	2598	59	JUL 23	22619	22493	125
AUG 23	1831	1822	9	AUG 23	22577	22485	92
SEP 23	2010	2036	-26	SEP 23	21998	21872	127
OCT 23	2735	2678	57	OCT 23	24584	23484	1100
NOV 23	1260	1213	47	NOV 23	23336	22411	925
DEC 23	1750	1748	2	DEC 23	21868	21872	-4
JAN 24	993	993	0	JAN 24	12891	12883	8
FEB 24	870	838	32	FEB 24	11138	11000	138





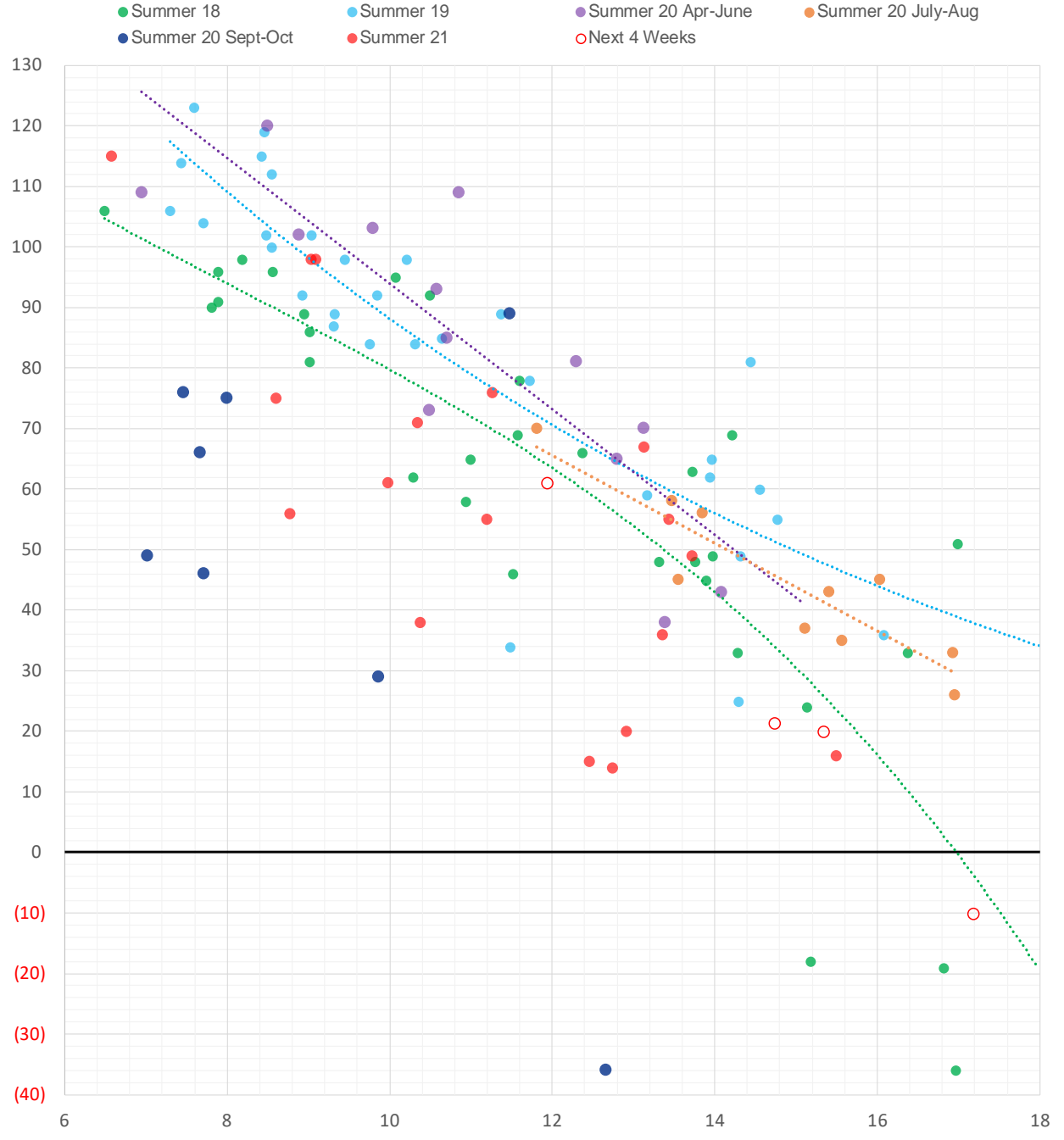
	Sep-21	Oct-21	Nov-21	Dec-21	Jan-22	Feb-22	Mar-22	Apr-22	May-22	Jun-22	Jul-22	Aug-22
<b>Current Price</b>	<b>\$3.914</b>	<b>\$3.920</b>	<b>\$3.982</b>	<b>\$4.085</b>	<b>\$4.149</b>	<b>\$4.069</b>	<b>\$3.828</b>	<b>\$3.267</b>	<b>\$3.188</b>	<b>\$3.218</b>	<b>\$3.254</b>	<b>\$3.261</b>
Last Week	\$4.060	\$4.042	\$4.034	\$4.094	\$4.185	\$4.244	\$4.153	\$3.856	\$3.206	\$3.111	\$3.139	\$3.172
vs. Last Week	-\$0.146	-\$0.122	-\$0.052	-\$0.009	-\$0.036	-\$0.175	-\$0.325	-\$0.589	-\$0.018	\$0.107	\$0.115	\$0.089
4 Weeks Ago	\$3.700	\$3.668	\$3.659	\$3.705	\$3.792	\$3.854	\$3.770	\$3.510	\$2.987	\$2.897	\$2.924	\$2.959
vs. 4 Weeks Ago	\$0.214	\$0.252	\$0.323	\$0.380	\$0.357	\$0.215	\$0.058	-\$0.243	\$0.201	\$0.321	\$0.330	\$0.302
Last Year	\$1.799	\$1.957	\$2.418	\$2.793	\$2.915	\$2.884	\$2.788	\$2.556	\$2.529	\$2.572	\$2.622	\$2.634
vs. Last Year	\$2.115	\$1.963	\$1.564	\$1.292	\$1.234	\$1.185	\$1.040	\$0.711	\$0.659	\$0.646	\$0.632	\$0.627

	Units	Cash Settled	Prompt Settle	Cash to Prompt
AGT Citygate	\$/MMBtu	2.88	3.58	0.70
TETCO M3	\$/MMBtu	3.19	3.37	0.18
FGT Zone 3	\$/MMBtu	3.24	4.18	0.94
Zone 6 NY	\$/MMBtu	3.24	3.41	0.17
Chicago Citygate	\$/MMBtu	3.83	3.94	0.11
Michcon	\$/MMBtu	3.76	3.89	0.13
Columbia TCO Pool	\$/MMBtu	3.38	3.29	-0.09
Ventura	\$/MMBtu	3.79	3.87	0.08
Rockies/Opal	\$/MMBtu	3.70	3.82	0.11
El Paso Permian Basin	\$/MMBtu	3.71	3.87	0.16
Socal Citygate	\$/MMBtu	8.06	5.65	-2.41
Malin	\$/MMBtu	4.08	4.31	0.23
Houston Ship Channel	\$/MMBtu	3.96	4.09	0.13
Henry Hub Cash	\$/MMBtu	3.97	3.82	-0.15
AECO Cash	C\$/GJ	2.93	3.09	0.16
Station2 Cash	C\$/GJ	3.13	4.10	0.97
Dawn Cash	C\$/GJ	3.74	3.91	0.17

Source: CME, Bloomberg

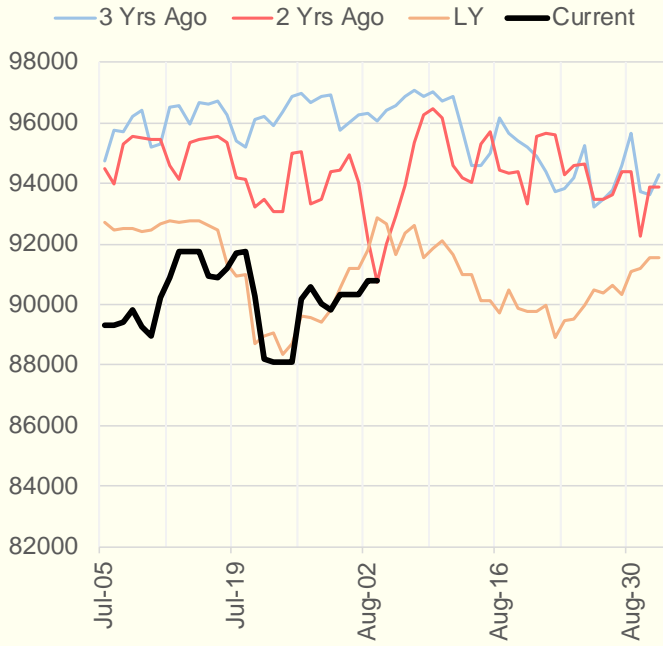
	Units	Current Price	vs. Last Week	vs. 4 Weeks Ago	vs. Last Year
NatGas Jul21/Oct21	\$/MMBtu	0.321	▼ -0.138	▲ 0.279	▲ 0.308
NatGas Oct21/Nov21	\$/MMBtu	0.060	▼ -0.001	▲ 0.014	▲ 0.014
NatGas Oct21/Jan22	\$/MMBtu	0.232	▲ 0.015	▲ 0.037	▼ -0.040
NatGas Apr22/Oct22	\$/MMBtu	0.001	▲ 0.027	▲ 0.010	▼ -0.062
WTI Crude	\$/Bbl	71.26	▼ -0.650	▼ -3.900	▲ 30.250
Brent Crude	\$/Bbl	72.89	▼ -1.610	▼ -4.270	▲ 28.740
Fuel Oil, NY Harbour 1%	\$/Bbl	97.18	▲ 0.000	▲ 0.000	▲ 0.000
Heating Oil	cents/Gallon	213.58	▼ -1.520	▼ -4.330	▲ 89.490
Propane, Mt. Bel	cents/Gallon	1.10	▲ 0.004	▼ -0.015	▲ 0.594
Ethane, Mt. Bel	cents/Gallon	0.33	▲ 0.014	▲ 0.023	▲ 0.108
Coal, PRB	\$/MTon	12.30	▲ 0.000	▲ 0.000	▲ 0.000
Coal, PRB	\$/MMBtu	0.70			
Coal, ILB	\$/MTon	31.05	▲ 0.000	▲ 0.000	▲ 0.000
Coal, ILB	\$/MMBtu	1.32			

### Weather Storage Model - Next 4 Week Forecast

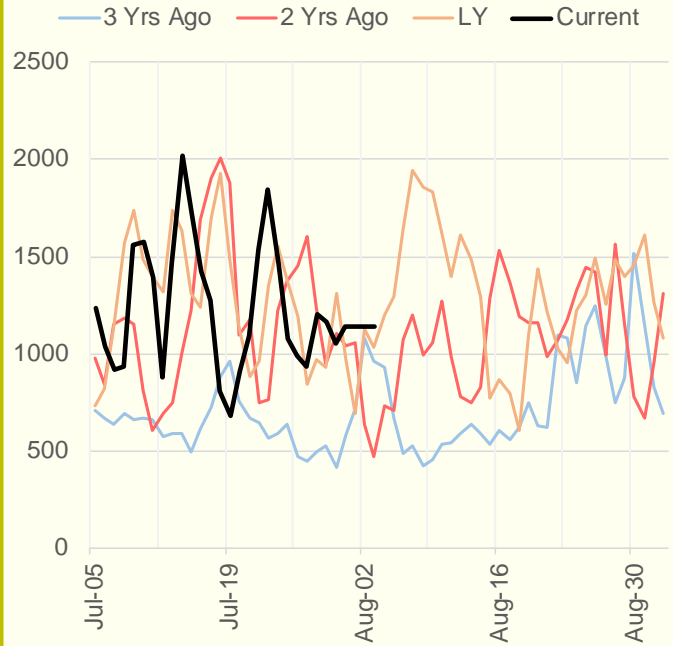


The risk of trading futures and options and other derivatives involves a substantial risk of loss and is not suitable for all persons. Each person must consider whether a particular trade, combination of trades, or strategy is suitable for that person's financial means and objectives. Past results are not necessarily indicative of future results. This communication may contain links to third party websites which are not under the control of and are not maintained by ION Energy Group, and ION Energy Group is not responsible for their content.

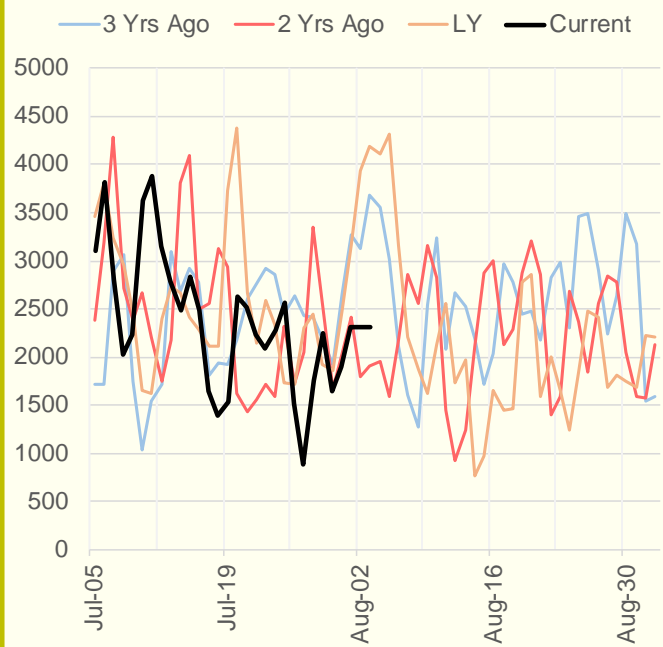
### NRC Nuclear Daily Output



### US Wind



### CALI Wind



### TEXAS Wind

