

	Current	Δ from YD	Δ from 7D Avg
Nat Gas Prompt	\$ 4.06	▲ \$ 0.00	▼ \$ (0.05)

	Current	Δ from YD	Δ from 7D Avg
WTI Prompt	\$ 67.57	▲ \$ 1.09	▼ \$ (0.9)

	Current	Δ from YD	Δ from 7D Avg
Brent Prompt	\$ 69.95	▲ \$ 0.91	▼ \$ (0.8)

Page Menu

[Short-term Weather Model Outlooks](#)

[Lower 48 Component Models](#)

[Regional S/D Models Storage Projection](#)

[Weather Model Storage Projection](#)

[Supply – Demand Trends](#)

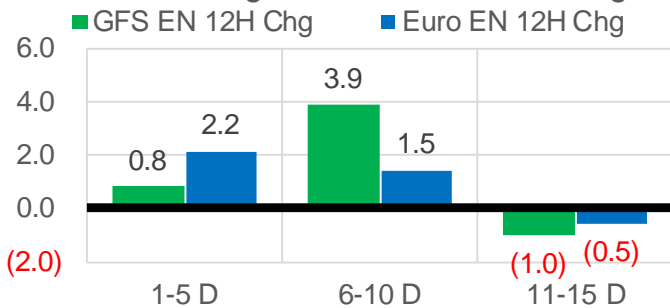
[Nat Gas Options Volume and Open Interest](#)

[Nat Gas Futures Open Interest](#)

[Price Summary](#)

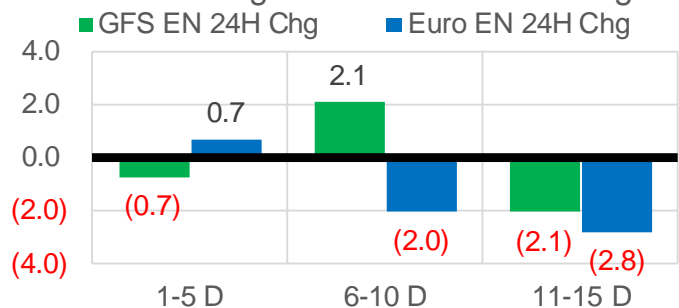
Vs. 12H Ago

L48 Region - 00z TDD vs 12H Ago



Vs. 24H Ago

L48 Region - 00z TDD vs 24H Ago



	Current	Δ from YD	Δ from 7D Avg
US Dry Production	90.3	▼ -2.16	▼ -1.60

	Current	Δ from YD	Δ from 7D Avg
US Power Burns	41.9	▲ 0.95	▲ 3.14

	Current	Δ from YD	Δ from 7D Avg
US ResComm	7.9	▲ 0.11	▲ 0.27

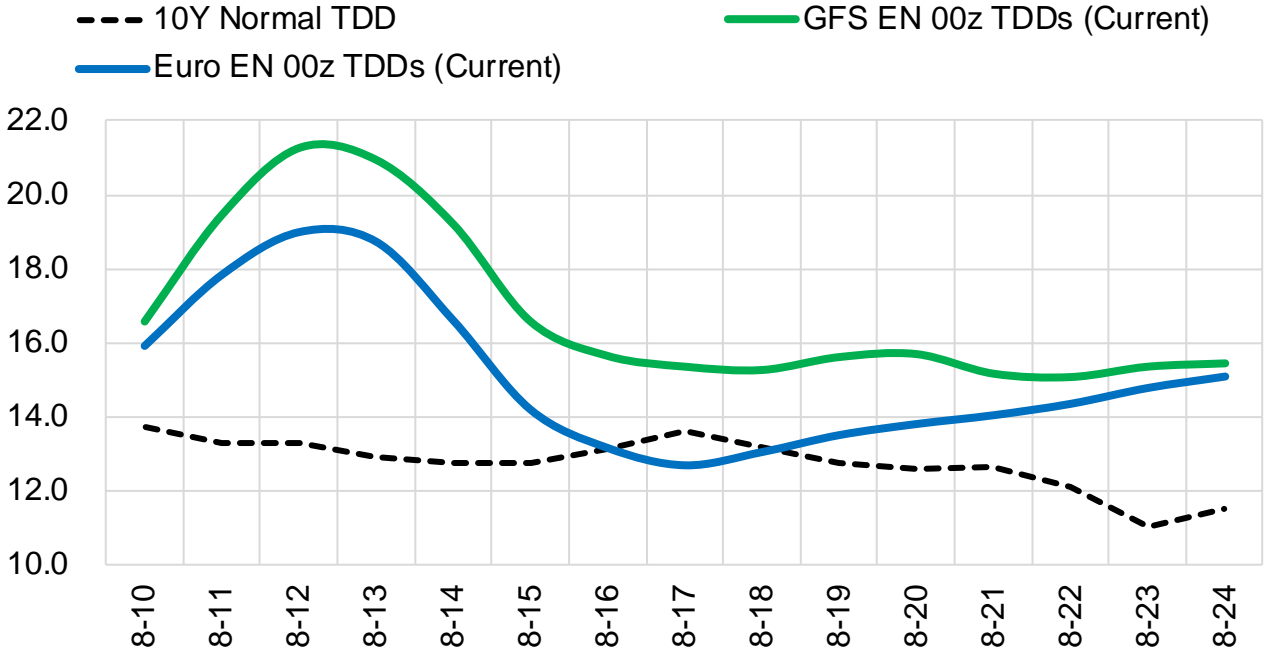
	Current	Δ from YD	Δ from 7D Avg
Canadian Imports	5.1	▲ 0.06	▲ 0.18

	Current	Δ from YD	Δ from 7D Avg
Net LNG Exports	9.5	▲ 0.15	▼ -0.73

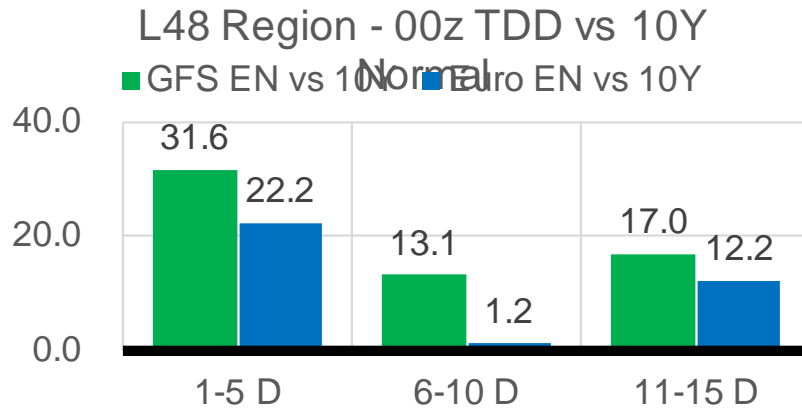
	Current	Δ from YD	Δ from 7D Avg
Mexican Exports	6.6	▼ -0.30	▼ -0.43

Short-term Weather Model Outlooks (00z)

L48 Region



Vs. 10Y Normal



Source: WSI , Bloomberg

Lower 48 Component Models

Daily Balances

	4-Aug	5-Aug	6-Aug	7-Aug	8-Aug	9-Aug	10-Aug	DoD	vs. 7D
Lower 48 Dry Production	91.2	91.8	92.5	91.7	92.1	92.5	90.3	▼-2.2	▼-1.7
Canadian Imports	5.0	4.6	4.8	4.9	4.9	5.0	5.1	▲0.1	▲0.2
L48 Power	37.5	39.0	40.0	38.2	38.6	41.0	41.9	▲0.9	▲2.9
L48 Residential & Commercial	7.9	7.8	7.6	7.2	7.4	7.8	7.9	▲0.1	▲0.3
L48 Industrial	20.7	21.1	21.4	21.4	21.6	21.7	21.5	▼-0.2	▲0.2
L48 Lease and Plant Fuel	5.0	5.1	5.1	5.1	5.1	5.1	5.0	▼-0.1	▼-0.1
L48 Pipeline Distribution	2.2	2.3	2.3	2.2	2.2	2.4	2.4	▲0.1	▲0.2
L48 Regional Gas Consumption	73.3	75.2	76.4	74.0	74.8	77.9	78.7	▲0.8	▲3.4
Net LNG Delivered	10.34	10.37	10.44	10.40	10.08	9.33	9.47	▲0.1	▼-0.7
Total Mexican Exports	7.6	7.3	7.4	6.4	6.5	6.9	6.6	▼-0.3	▼-0.4
Implied Daily Storage Activity	5.1	3.5	3.1	5.8	5.6	3.4	0.6		
EIA Reported Daily Storage Activity									
Daily Model Error									

EIA Storage Week Balances

	2-Jul	9-Jul	16-Jul	23-Jul	30-Jul	6-Aug	WoW	vs. 4W
Lower 48 Dry Production	92.2	91.8	92.4	92.4	92.5	91.9	▼-0.6	▼-0.4
Canadian Imports	5.1	5.1	5.2	4.9	5.5	5.1	▼-0.5	▼-0.1
L48 Power	39.8	37.2	38.7	39.7	42.2	38.4	▼-3.7	▼-1.0
L48 Residential & Commercial	8.6	8.2	8.4	8.4	8.3	7.9	▼-0.5	▼-0.5
L48 Industrial	21.1	19.4	19.5	19.5	20.7	20.5	▼-0.2	▲0.7
L48 Lease and Plant Fuel	5.1	5.1	5.1	5.1	5.1	5.1	▼0.0	▼0.0
L48 Pipeline Distribution	2.4	2.1	2.2	2.3	2.4	2.2	▼-0.2	▼0.0
L48 Regional Gas Consumption	76.9	71.9	74.0	75.1	78.7	74.1	▼-4.6	▼-0.8
Net LNG Exports	11.2	11.0	10.8	10.5	10.8	10.6	▼-0.3	▼-0.2
Total Mexican Exports	7.2	7.1	7.1	7.1	7.0	6.9	▼-0.1	▼-0.2
Implied Daily Storage Activity	2.0	6.8	5.6	4.6	1.5	5.4	3.9	
EIA Reported Daily Storage Activity	2.3	7.9	7.0	5.1	1.9			
Daily Model Error	-0.2	-1.1	-1.4	-0.5	-0.4			

Monthly Balances

	2Yr Ago Aug-19	LY Aug-20	Apr-21	May-21	Jun-21	Jul-21	MTD Aug-21	MoM	vs. LY
Lower 48 Dry Production	94.7	89.6	92.3	92.7	92.8	92.2	91.7	▼-0.4	▲2.1
Canadian Imports	4.4	4.9	4.6	4.5	4.8	5.2	5.0	▼-0.2	▲0.1
L48 Power	41.0	40.9	24.9	26.7	35.3	39.4	38.9	▼-0.5	▼-1.9
L48 Residential & Commercial	7.8	7.7	19.5	13.2	8.8	8.3	7.7	▼-0.6	▲0.0
L48 Industrial	23.5	21.9	21.2	20.3	20.8	19.8	21.0	▲1.1	▼-0.9
L48 Lease and Plant Fuel	5.2	5.0	5.1	5.1	5.1	5.1	5.1	▼0.0	▲0.1
L48 Pipeline Distribution	2.4	2.4	2.3	2.1	2.2	2.3	2.3	▲0.0	▼-0.1
L48 Regional Gas Consumption	79.9	77.7	73.0	67.2	72.1	75.0	74.9	▼0.0	▼-2.7
Net LNG Exports	5.2	4.0	11.5	10.8	10.2	10.8	10.2	▼-0.6	▲6.1
Total Mexican Exports	5.3	6.0	6.7	6.8	7.4	7.0	6.9	▼-0.2	▲0.9
Implied Daily Storage Activity	8.8	6.7	5.7	12.4	8.0	4.5	4.7		
EIA Reported Daily Storage Activity									
Daily Model Error									

Source: Bloomberg, analytix.ai

Daily Average Generation Data

Nuclear Generation Daily Average - GWh (NRC)

	2-Aug	3-Aug	4-Aug	5-Aug	6-Aug	7-Aug	8-Aug	DoD	vs. 7D
NRC Nuclear Daily Output	90.8	91.6	90.8	90.9	89.9	90.2	91.3	1.1	0.6
NRC Nuclear Max Capacity	104.9	104.9	104.9	104.9	104.9	104.9	104.9	0.0	0.0
NRC Nuclear Outage	14.1	13.3	14.1	14.0	15.0	14.7	13.6	-1.1	-0.6
NRC % Nuclear Cap Utilization	92.3	93.1	92.3	92.4	91.4	91.7	92.8	1.1	0.6

Wind Generation Daily Average - MWh (EIA)

	2-Aug	3-Aug	4-Aug	5-Aug	6-Aug	7-Aug	8-Aug	DoD	vs. 7D
CALI Wind	1884	2143	2569	3209	3051	2013	2483	470	5
TEXAS Wind	5495	2238	2665	5568	9348	17855	18246	391	11051
US Wind	15275	15174	21440	23389	40825	54359	47462	-6897	19052

Generation Daily Average - MWh (EIA)

	2-Aug	3-Aug	4-Aug	5-Aug	6-Aug	7-Aug	8-Aug	DoD	vs. 7D
US Wind	15275	15174	21440	23389	40825	54359	47462	-6897	19052
US Solar	14303	13518	13554	14229	14730	13256	14413	1156	481
US Petroleum	4152	4162	3954	4277	4654	3835	4151	317	-21
US Other	8996	8821	8819	8762	9047	9171	9273	102	337
US Coal	135093	131981	130721	131872	129291	127777	131518	3740	395
US Nuke	93791	93691	93547	93711	92859	93241	94174	933	701
US Hydro	28163	28371	28161	27911	27143	24700	23812	-888	-3596
US Gas	201911	203047	201342	208008	205906	181054	183339	2285	-16872

See National Wind and Nuclear daily charts

Source: Bloomberg, analytix.ai

Storage Week Average Generation Data

Nuclear Generation Weekly Average - GWh (NRC)

	2-Jul	9-Jul	16-Jul	23-Jul	30-Jul	6-Aug	WoW	WoW Bcf/d Impact
NRC Nuclear Daily Output	89.1	89.5	90.7	90.7	89.3	90.7	1.4	-0.2
NRC Nuclear Max Capacity	104.9	104.9	104.9	104.9	104.9	104.9	0.0	
NRC Nuclear Outage	15.7	15.4	14.2	14.2	15.6	14.2	-1.4	
NRC % Nuclear Cap Utilization	0.1	0.1	0.1	0.1	0.1	0.1	0.0	

Wind Generation Weekly Average - MWh (EIA)

	2-Jul	9-Jul	16-Jul	23-Jul	30-Jul	6-Aug	WoW	WoW Bcf/d Impact
CALI Wind	2588	2604	3004	2064	1905	2237	331	-0.1
TEXAS Wind	8326	3739	10817	7162	7913	5180	-2733	0.5
US Wind	27215	25696	36364	26445	29734	22377	-7358	1.2

Generation Weekly Average - MWh (EIA)

	2-Jul	9-Jul	16-Jul	23-Jul	30-Jul	6-Aug	WoW	WoW Bcf/d Impact
US Wind	27215	25696	36364	26445	29734	22377	-7358	1.2
US Solar	14055	14165	14489	14036	13977	13912	-65	0.0
US Petroleum	5142	4035	4282	3892	4729	4074	-654	0.1
US Other	8886	9159	9554	9336	9280	8932	-348	0.1
US Coal	136486	131306	131524	137617	146400	134732	-11669	2.0
US Nuke	92257	92359	93735	93488	92226	93225	999	-0.2
US Hydro	33030	30129	30421	30193	29205	27735	-1471	0.2
US Gas	208730	194610	199730	210468	224376	204249	-20127	

See National Wind and Nuclear daily charts

Source: Bloomberg, analytix.ai

Monthly Average Generation Data

Nuclear Generation Monthly Average - GWh (NRC)

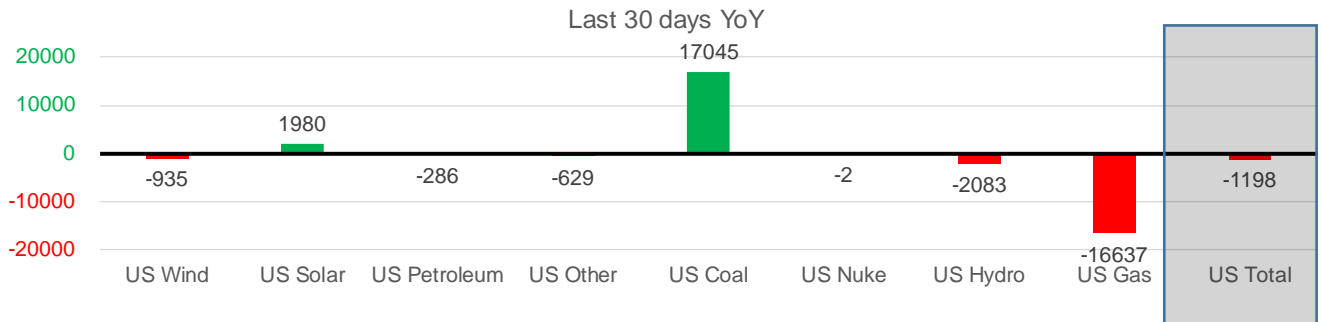
	2Yr Ago	LY					MTD		
	Same 30 days	Same 30 days	May-21	Jun-21	Jul-21	Aug-21	Last 30 days	MoM (MTD vs LY)	Last 30 days YoY
NRC Nuclear Daily Output	94.3	91.1	81.8	88.7	90.0	91.0	90.5	0.9	-0.6
NRC Nuclear Max Capacity	104.9	104.9	104.9	104.9	104.9	104.9	104.9	0.0	0.0
NRC Nuclear Outage	10.6	13.7	23.1	16.2	14.9	13.9	14.3	-0.9	0.6
NRC % Nuclear Cap Utilization	95.9	92.7	83.2	90.2	91.5	92.5	92.1	1.0	-0.6

Wind Generation Monthly Average - MWh (Genscape)

	2Yr Ago	LY					MTD		
	Same 30 days	Same 30 days	May-21	Jun-21	Jul-21	Aug-21	Last 30 days	MoM (MTD vs LY)	Last 30 days YoY
CALI Wind	2327	2656	3402	2913	2338	2463	2241	125	-415
TEXAS Wind	8349	9536	12259	9675	7217	10642	9055	3425	-480
US Wind	27274	32045	46081	37299	29105	34224	31111	5120	-935

Generation Monthly Average - MWh (EIA)

	2Yr Ago	LY					MTD		
	Same 30 days	Same 30 days	May-21	Jun-21	Jul-21	Aug-21	Last 30 days	MoM (MTD vs LY)	Last 30 days YoY
US Wind	27274	32045	46081	37299	29105	34224	31111	▼-3113.7	▼-935
US Solar	9326	12144	14488	14564	14200	14008	14125	▲116.1	▲1980
US Petroleum	5436	4573	3012	4149	4233	4113	4287	▲174	▼-286
US Other	9193	9919	7439	8162	9324	9039	9290	▲250	▼-629
US Coal	130282	120455	86422	121351	137225	131107	137499	▲6392	▲17045
US Nuke	100785	93321	85517	92175	92897	93615	93319	▼-296	▼-2
US Hydro	33886	30744	30677	32578	29937	26117	28661	▲2544	▼-2083
US Gas	217781	224658	139477	188815	207790	193581	208021	▲6067	▼-16637
US Total	535238	527615	413562	499435	524895	505837	526417	▲15247	▼-1198



See National Wind and Nuclear daily charts

Source: Bloomberg, analytix.ai

Regional S/D Models Storage Projection

Week Ending 6-Aug

	Daily Raw Storage	Daily Adjustment Factor	Daily Average Storage Activity (Adjusted) *	Weekly Adjusted Storage Activity
L48	5.1	1.0	6.1	42
East	2.3	1.5	3.7	26
Midwest	3.2	-0.3	2.9	20
Mountain	4.3	-4.3	0.0	0
South Central	-4.5	4.2	-0.4	-2
Pacific	-0.1	-0.1	-0.2	-2

*Adjustment Factor is calculated based on historical regional deltas

U.S. underground natural gas storage facilities by type (July 2015)

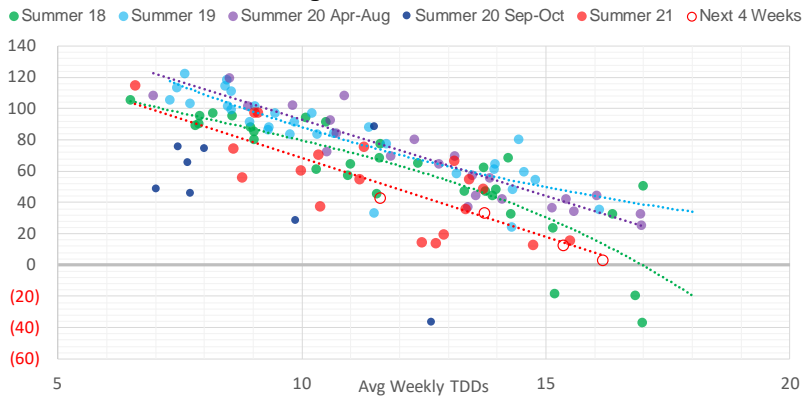


Weather Model Storage Projection

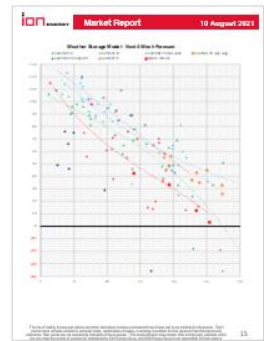
Next report
and beyond

Week Ending	GWDDs	Week Storage Projection
06-Aug	11.6	42
13-Aug	16.2	3
20-Aug	15.4	12
27-Aug	13.8	33

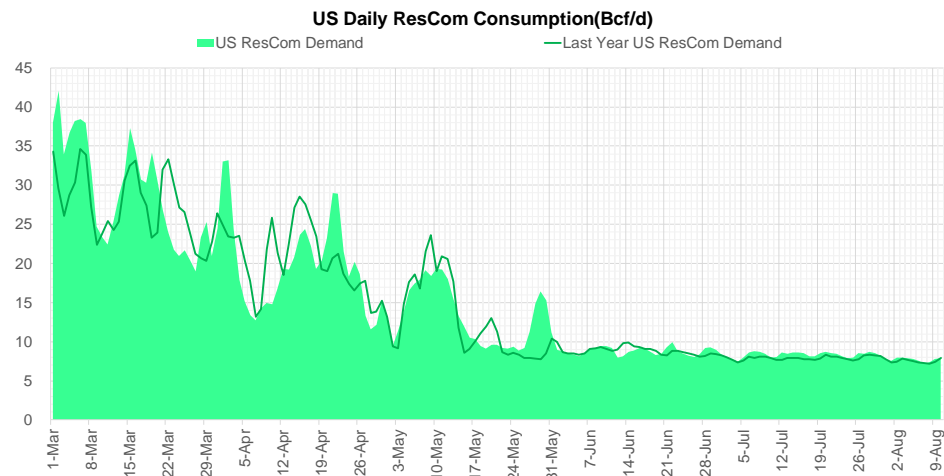
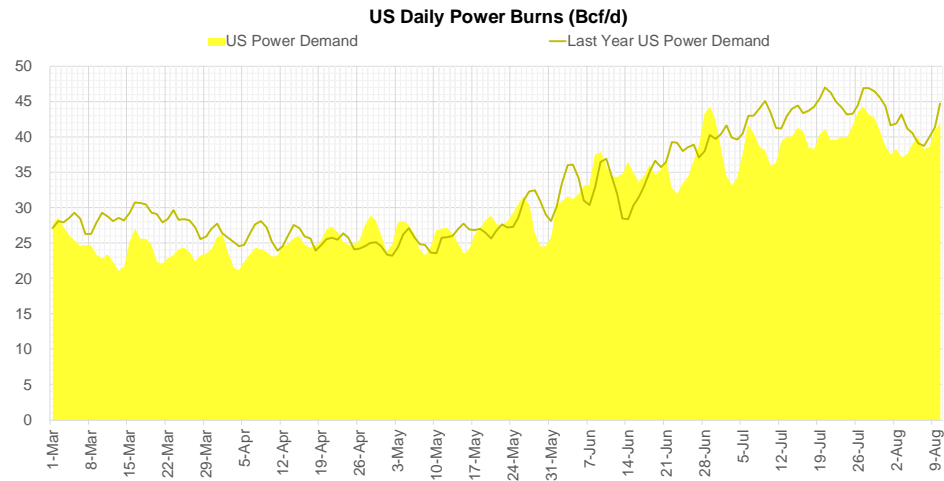
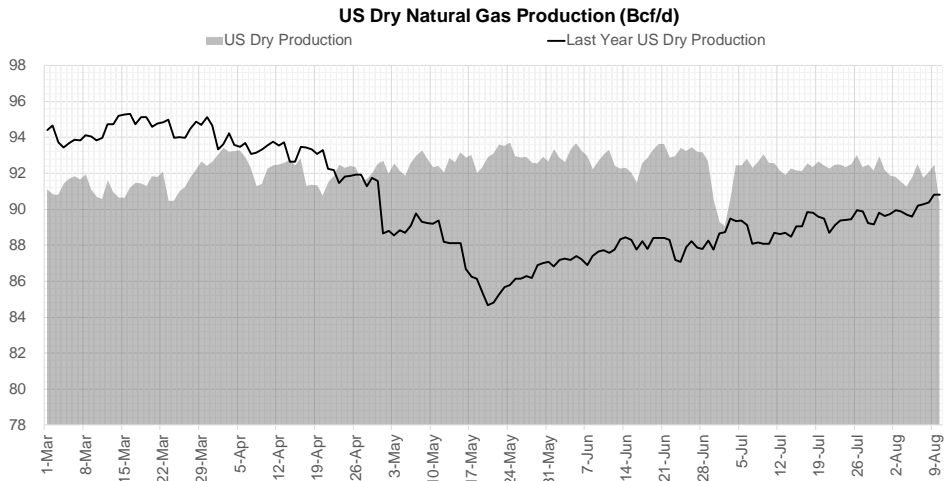
Weather Storage Model - Next 4 Week Forecast



Go to larger image



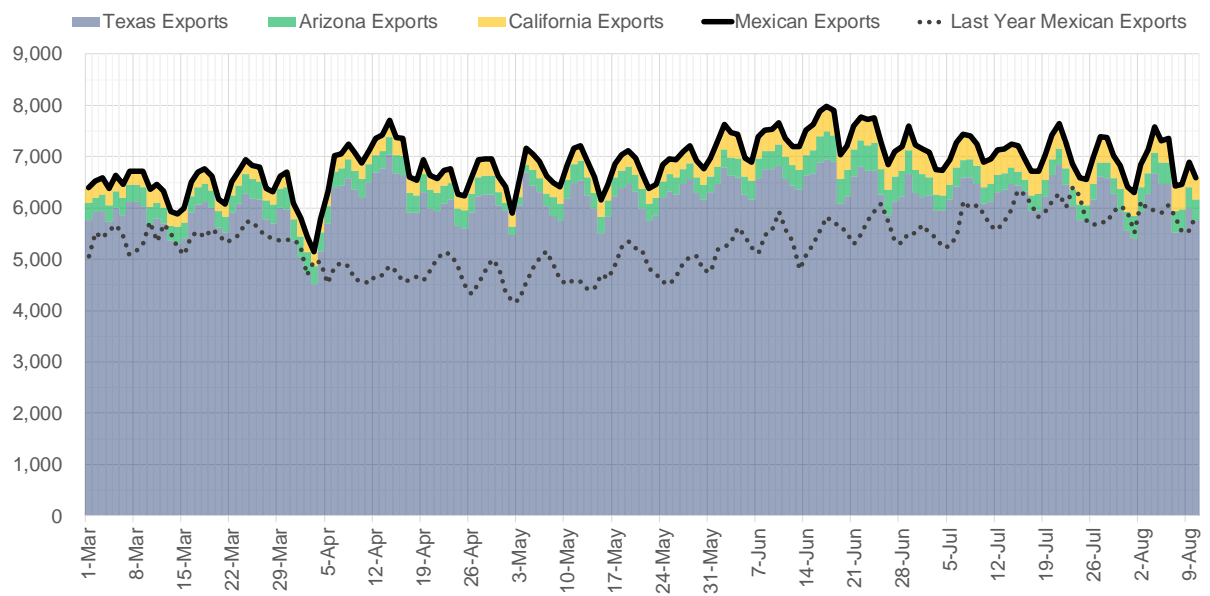
Supply – Demand Trends



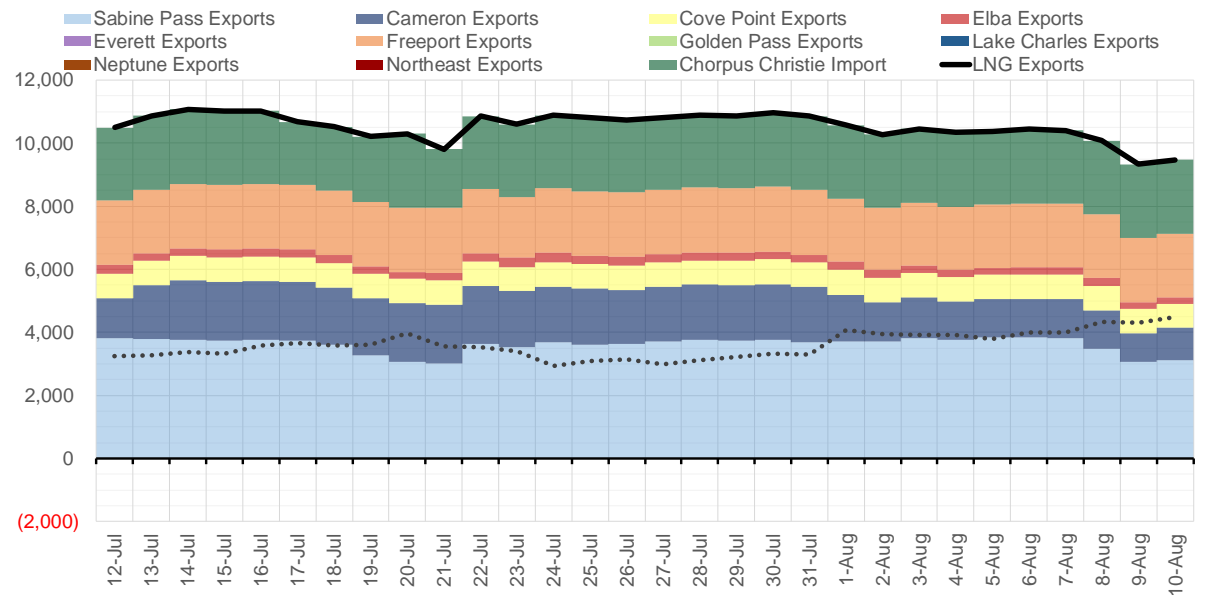
Source: Bloomberg

The risk of trading futures and options and other derivatives involves a substantial risk of loss and is not suitable for all persons. Each person must consider whether a particular trade, combination of trades, or strategy is suitable for that person's financial means and objectives. Past results are not necessarily indicative of future results. This communication may contain links to third party websites which are not under the control of and are not maintained by ION Energy Group, and ION Energy Group is not responsible for their content.

Mexican Exports (MMcf/d)



Net LNG Exports - Last 30 days (MMcf/d)



Source: Bloomberg

The risk of trading futures and options and other derivatives involves a substantial risk of loss and is not suitable for all persons. Each person must consider whether a particular trade, combination of trades, or strategy is suitable for that person's financial means and objectives. Past results are not necessarily indicative of future results. This communication may contain links to third party websites which are not under the control of and are not maintained by ION Energy Group, and ION Energy Group is not responsible for their content.

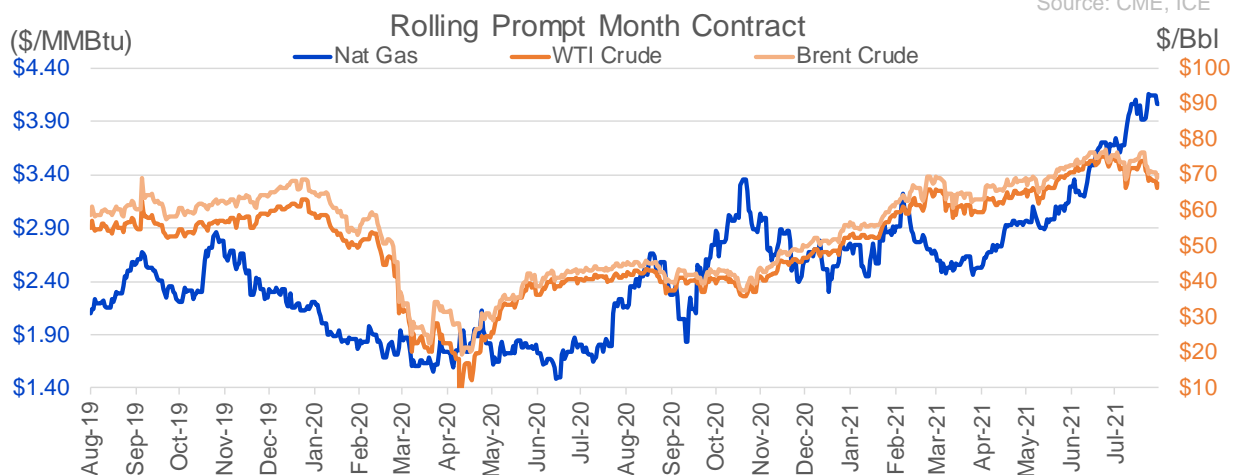
Nat Gas Options Volume and Open Interest CME, ICE and Nasdaq Combined

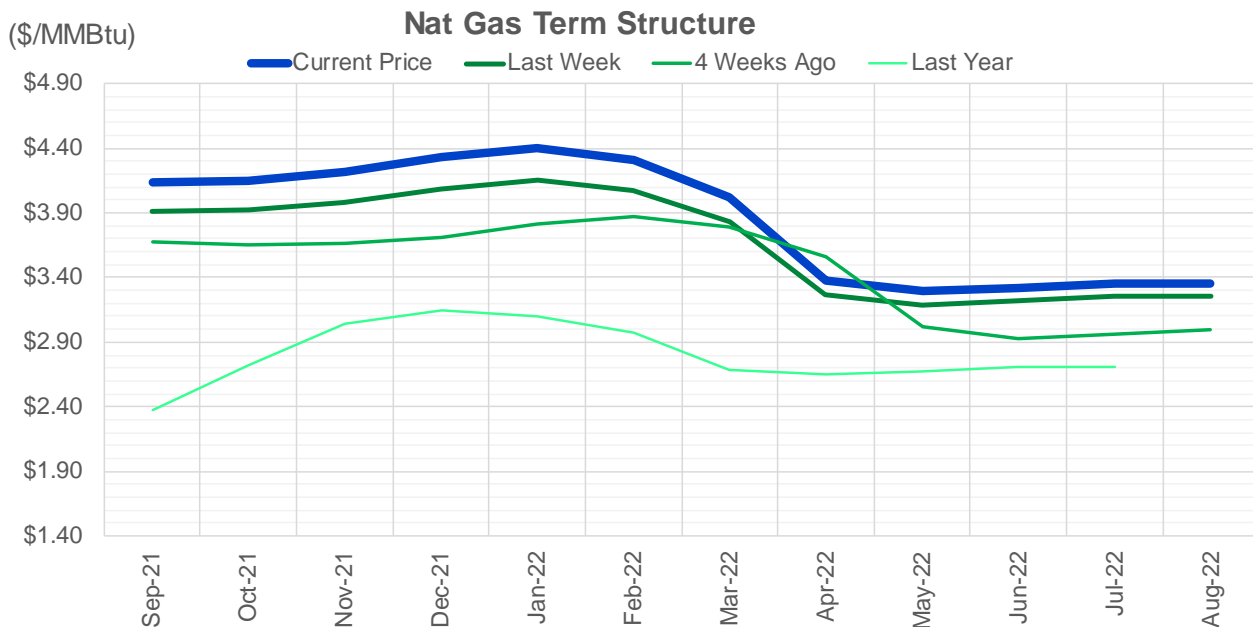
CONTRACT MONTH	CONTRACT YEAR	PUT/CALL	STRIKE	CUMULATIVE VOL	CONTRACT MONTH	CONTRACT YEAR	PUT/CALL	STRIKE	CUMULATIVE OI
9	2021	C	4.75	13789	12	2021	P	2.75	41395
10	2021	C	4.50	8774	10	2021	C	4.00	40530
10	2021	C	4.25	8746	10	2021	C	4.50	39718
10	2021	C	5.00	7535	10	2021	C	3.50	33006
9	2021	C	4.50	7512	10	2021	C	5.00	32831
9	2021	C	5.00	7126	10	2021	P	2.50	30039
10	2021	P	3.50	7007	12	2021	P	2.50	29530
9	2021	C	4.25	6983	10	2021	C	3.25	28230
10	2021	C	4.75	5535	10	2021	P	3.50	27028
11	2021	C	4.25	3664	9	2021	C	5.00	27008
9	2021	C	5.50	3518	10	2021	P	2.00	26845
10	2021	P	3.75	3399	9	2021	C	4.00	26514
9	2021	P	3.75	3242	10	2021	P	2.75	25766
10	2021	P	3.25	2879	9	2021	C	4.25	25596
9	2021	P	3.85	2417	12	2021	P	3.00	24672
9	2021	P	4.00	2178	10	2021	P	3.00	24606
10	2021	P	4.00	1938	9	2021	P	2.50	23385
9	2021	P	3.50	1837	9	2021	C	3.50	22613
11	2021	P	3.50	1830	9	2021	P	3.00	22432
9	2021	C	4.40	1801	10	2021	C	6.00	22181
11	2021	C	4.30	1712	11	2021	C	4.00	22136
11	2021	C	4.50	1677	12	2021	C	4.00	22091
11	2021	C	5.00	1654	11	2021	P	3.00	21989
11	2021	P	4.00	1653	9	2021	P	2.00	20427
11	2021	P	3.00	1628	10	2021	P	2.25	19900
9	2021	C	5.25	1600	4	2022	C	3.00	19610
9	2021	P	3.60	1571	9	2021	C	4.50	19609
9	2021	C	4.65	1244	9	2021	P	3.25	19513
11	2021	C	6.00	1204	9	2021	C	4.75	19231
9	2021	P	3.70	1186	9	2021	P	3.50	19143
9	2021	P	3.90	1106	9	2021	C	3.25	18994
10	2021	C	6.00	1050	10	2021	C	3.00	18502
1	2022	C	10.00	1000	11	2021	C	5.00	17650
1	2022	C	12.50	1000	10	2021	C	3.75	16815
9	2021	C	4.00	937	3	2022	C	5.00	16768
12	2021	C	7.00	901	1	2022	C	5.00	15979
10	2021	C	5.25	871	9	2021	P	2.75	15816
9	2021	C	4.15	800	11	2021	C	3.75	14989
12	2021	C	3.50	800	2	2022	C	5.00	14975
9	2021	P	3.55	711	1	2022	C	4.00	14707
9	2021	P	3.80	674	3	2022	C	3.00	14448
1	2022	P	3.00	656	10	2021	P	3.25	14438
9	2021	C	4.60	651	3	2022	P	2.50	13969
3	2022	C	4.50	625	12	2021	P	2.00	13889
9	2021	C	4.10	586	9	2021	P	2.60	13814
12	2021	P	3.50	574	9	2021	P	1.90	13773
12	2021	P	4.00	566	11	2021	P	2.50	13697
1	2022	C	5.00	535	2	2022	C	4.00	13564
10	2021	P	3.60	503	3	2022	C	4.00	13510
					3	2022	C	8	13373

Source: CME, ICE

Nat Gas Futures Open Interest CME, and ICE Combined

CME Henry Hub Futures (10,000 MMBtu)				ICE Henry Hub Futures Contract Equivalent (10,000 MM			
	Current	Prior	Daily Change		Current	Prior	Daily Change
SEP 21	237900	274672	-36772	SEP 21	92222	91140	1082
OCT 21	174866	168243	6623	OCT 21	107274	106716	558
NOV 21	146560	137428	9132	NOV 21	70025	70083	-58
DEC 21	73601	73179	422	DEC 21	75573	75757	-185
JAN 22	133156	133173	-17	JAN 22	78359	78686	-327
FEB 22	56134	55257	877	FEB 22	71120	70791	330
MAR 22	106752	107045	-293	MAR 22	72274	71185	1090
APR 22	108144	108200	-56	APR 22	69031	68959	72
MAY 22	90675	88352	2323	MAY 22	67485	67237	248
JUN 22	30484	29685	799	JUN 22	55227	55218	9
JUL 22	26418	26335	83	JUL 22	55232	55201	32
AUG 22	25585	25407	178	AUG 22	56029	55989	41
SEP 22	25102	24838	264	SEP 22	55787	55785	2
OCT 22	64015	62864	1151	OCT 22	62640	62590	50
NOV 22	25945	25898	47	NOV 22	49525	49521	4
DEC 22	23594	23555	39	DEC 22	52047	52064	-17
JAN 23	16886	16655	231	JAN 23	32962	32876	86
FEB 23	6124	5951	173	FEB 23	27614	27598	16
MAR 23	8196	8460	-264	MAR 23	29580	29455	125
APR 23	9915	9887	28	APR 23	23985	24027	-42
MAY 23	5651	5640	11	MAY 23	25008	25049	-41
JUN 23	4035	4020	15	JUN 23	23331	23370	-40
JUL 23	3117	3111	6	JUL 23	23438	23471	-33
AUG 23	2574	2568	6	AUG 23	23256	23290	-34
SEP 23	3030	3024	6	SEP 23	22784	22816	-32
OCT 23	4169	4124	45	OCT 23	24425	24434	-9
NOV 23	1321	1316	5	NOV 23	24432	24452	-21
DEC 23	1839	1840	-1	DEC 23	22186	22200	-14
JAN 24	992	992	0	JAN 24	12967	12971	-4
FEB 24	875	870	5	FEB 24	11355	11406	-51





	Sep-21	Oct-21	Nov-21	Dec-21	Jan-22	Feb-22	Mar-22	Apr-22	May-22	Jun-22	Jul-22	Aug-22
Current Price	\$4.140	\$4.154	\$4.219	\$4.330	\$4.400	\$4.315	\$4.023	\$3.377	\$3.291	\$3.319	\$3.351	\$3.357
Last Week	\$3.914	\$3.920	\$3.982	\$4.085	\$4.149	\$4.069	\$3.828	\$3.267	\$3.188	\$3.218	\$3.254	\$3.261
vs. Last Week	\$0.226	\$0.234	\$0.237	\$0.245	\$0.251	\$0.246	\$0.195	\$0.110	\$0.103	\$0.101	\$0.097	\$0.096
4 Weeks Ago	\$3.674	\$3.657	\$3.660	\$3.716	\$3.815	\$3.876	\$3.796	\$3.558	\$3.019	\$2.930	\$2.959	\$2.995
vs. 4 Weeks Ago	\$0.466	\$0.497	\$0.559	\$0.614	\$0.585	\$0.439	\$0.227	-\$0.181	\$0.272	\$0.389	\$0.392	\$0.362
Last Year	\$2.238	\$2.376	\$2.720	\$3.044	\$3.147	\$3.098	\$2.973	\$2.685	\$2.647	\$2.674	\$2.707	\$2.712
vs. Last Year	\$1.902	\$1.778	\$1.499	\$1.286	\$1.253	\$1.217	\$1.050	\$0.692	\$0.644	\$0.645	\$0.644	\$0.645

	Units	Cash Settled	Prompt Settle	Cash to Prompt
AGT Citygate	\$/MMBtu	4.15	3.09	-1.06
TETCO M3	\$/MMBtu	3.88	2.83	-1.05
FGT Zone 3	\$/MMBtu	4.00	4.04	0.04
Zone 6 NY	\$/MMBtu	4.00	2.89	-1.11
Chicago Citygate	\$/MMBtu	3.97	3.78	-0.19
Michcon	\$/MMBtu	3.94	3.72	-0.22
Columbia TCO Pool	\$/MMBtu	3.77	2.95	-0.82
Ventura	\$/MMBtu	3.91	3.72	-0.19
Rockies/Opal	\$/MMBtu	4.04	3.63	-0.40
El Paso Permian Basin	\$/MMBtu	3.88	3.74	-0.14
Socal Citygate	\$/MMBtu	6.89	5.23	-1.66
Malin	\$/MMBtu	4.12	4.11	-0.01
Houston Ship Channel	\$/MMBtu	4.05	3.95	-0.11
Henry Hub Cash	\$/MMBtu	4.15	3.72	-0.43
AECO Cash	C\$/GJ	2.56	2.99	0.43
Station2 Cash	C\$/GJ	2.57	3.95	1.38
Dawn Cash	C\$/GJ	3.94	3.74	-0.20

Source: CME, Bloomberg

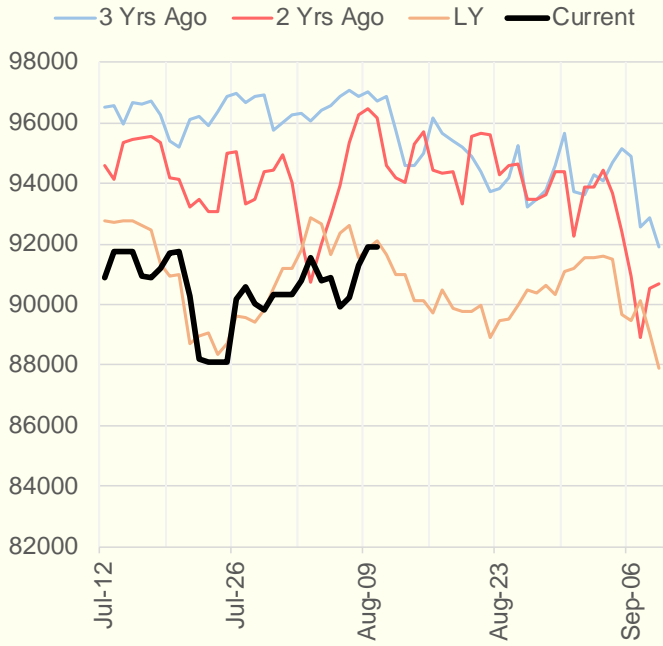
	Units	Current Price	vs. Last Week	vs. 4 Weeks Ago	vs. Last Year
NatGas Jul21/Oct21	\$/MMBtu	0.458	▲ 0.137	▲ 0.343	▲ 0.445
NatGas Oct21/Nov21	\$/MMBtu	0.068	▲ 0.008	▲ 0.010	▲ 0.019
NatGas Oct21/Jan22	\$/MMBtu	0.243	▲ 0.011	▲ 0.025	▼ -0.036
NatGas Apr22/Oct22	\$/MMBtu	-0.003	▼ -0.004	▲ 0.007	▼ -0.055
WTI Crude	\$/Bbl	66.48	▼ -4.780	▼ -7.620	▲ 24.540
Brent Crude	\$/Bbl	69.04	▼ -3.850	▼ -6.120	▲ 24.050
Fuel Oil, NY Harbour 1%	\$/Bbl	97.18	▲ 0.000	▲ 0.000	▲ 0.000
Heating Oil	cents/Gallon	204.21	▼ -9.370	▼ -10.770	▲ 80.520
Propane, Mt. Bel	cents/Gallon	1.08	▼ -0.012	▼ -0.012	▲ 0.579
Ethane, Mt. Bel	cents/Gallon	0.34	▲ 0.013	▲ 0.033	▲ 0.113
Coal, PRB	\$/MTon	12.30	▲ 0.000	▲ 0.000	▲ 0.000
Coal, PRB	\$/MMBtu	0.70			
Coal, ILB	\$/MTon	31.05	▲ 0.000	▲ 0.000	▲ 0.000
Coal, ILB	\$/MMBtu	1.32			

Weather Storage Model - Next 4 Week Forecast

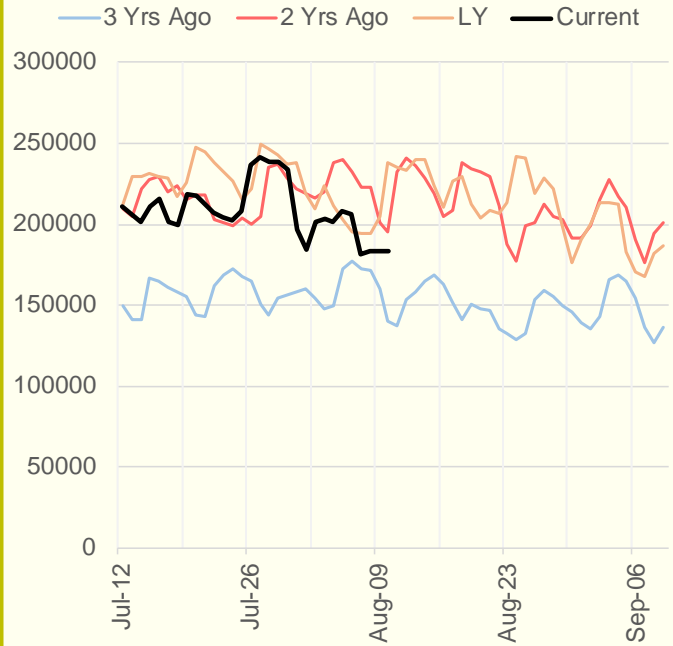


The risk of trading futures and options and other derivatives involves a substantial risk of loss and is not suitable for all persons. Each person must consider whether a particular trade, combination of trades, or strategy is suitable for that person's financial means and objectives. Past results are not necessarily indicative of future results. This communication may contain links to third party websites which are not under the control of and are not maintained by ION Energy Group, and ION Energy Group is not responsible for their content.

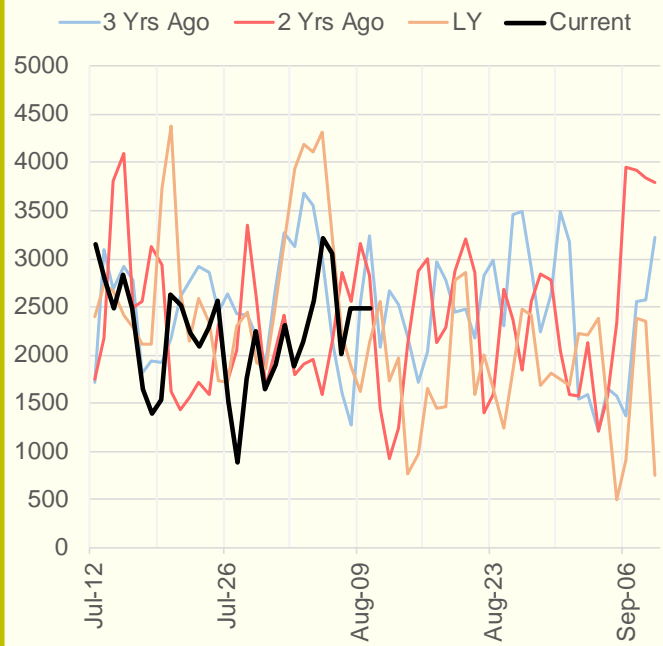
NRC Nuclear Daily Output



US Gas



CALI Wind



TEXAS Wind

