

	Current	Δ from YD	Δ from 7D Avg
Nat Gas Prompt	\$ 3.89	▼ \$ (0.05)	▼ \$ (0.20)

	Current	Δ from YD	Δ from 7D Avg
WTI Prompt	\$ 68.90	▼ \$ (0.19)	▲ \$ 0.6

	Current	Δ from YD	Δ from 7D Avg
Brent Prompt	\$ 71.16	▼ \$ (0.15)	▲ \$ 0.5

### Page Menu

[Short-term Weather Model Outlooks](#)

[Lower 48 Component Models](#)

[Regional S/D Models Storage Projection](#)

[Weather Model Storage Projection](#)

[Supply – Demand Trends](#)

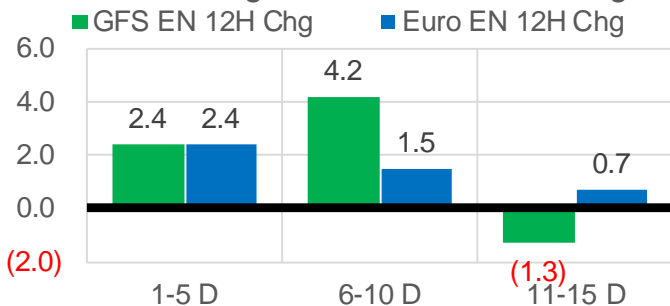
[Nat Gas Options Volume and Open Interest](#)

[Nat Gas Futures Open Interest](#)

[Price Summary](#)

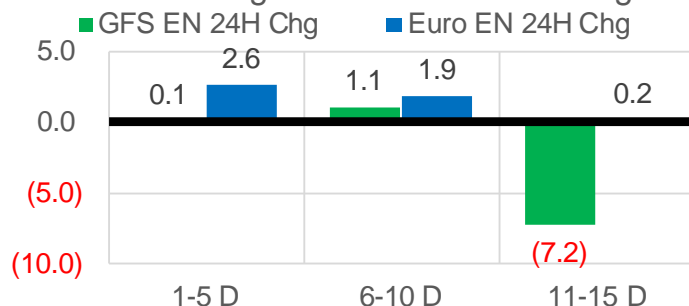
### Vs. 12H Ago

L48 Region - 00z TDD vs 12H Ago



### Vs. 24H Ago

L48 Region - 00z TDD vs 24H Ago



	Current	Δ from YD	Δ from 7D Avg
US Dry Production	91.2	▼ -1.24	▼ -1.08

	Current	Δ from YD	Δ from 7D Avg
US Power Burns	40.7	▼ -3.32	▼ -0.40

	Current	Δ from YD	Δ from 7D Avg
US ResComm	8.0	▼ -0.31	▲ 0.28

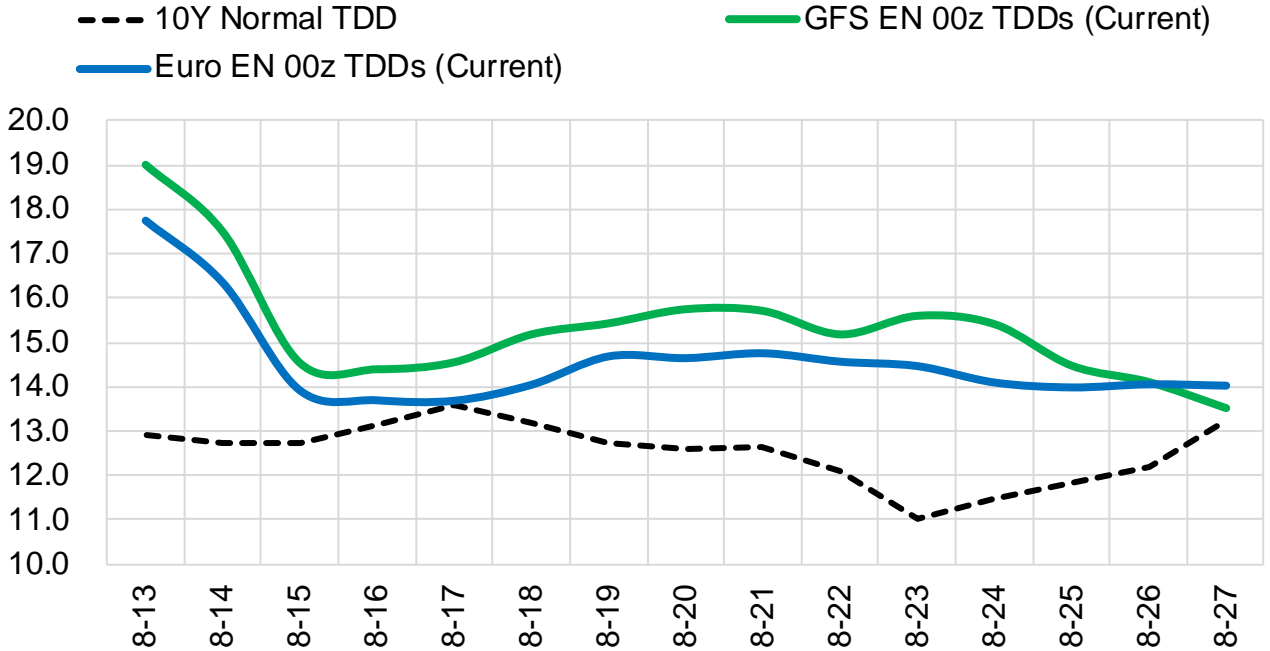
	Current	Δ from YD	Δ from 7D Avg
Canadian Imports	5.0	▼ -0.64	▼ -0.12

	Current	Δ from YD	Δ from 7D Avg
Net LNG Exports	10.9	▲ 0.54	▲ 0.99

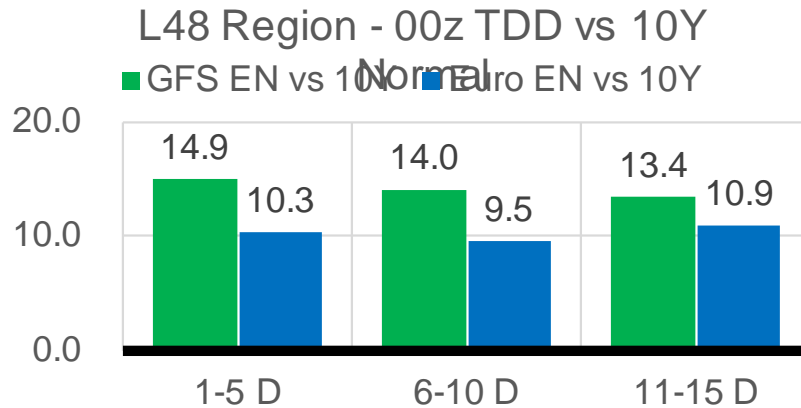
	Current	Δ from YD	Δ from 7D Avg
Mexican Exports	7.2	▲ 0.16	▲ 0.30

## Short-term Weather Model Outlooks (00z)

### L48 Region



## Vs. 10Y Normal



Source: WSI , Bloomberg

## Lower 48 Component Models

### Daily Balances

	7-Aug	8-Aug	9-Aug	10-Aug	11-Aug	12-Aug	13-Aug	DoD	vs. 7D
<b>Lower 48 Dry Production</b>	<b>91.8</b>	<b>92.1</b>	<b>92.5</b>	<b>92.3</b>	<b>92.4</b>	<b>92.5</b>	<b>91.2</b>	▼ -1.2	▼ -1.0
<b>Canadian Imports</b>	<b>4.9</b>	<b>4.9</b>	<b>5.1</b>	<b>5.3</b>	<b>5.5</b>	<b>5.7</b>	<b>5.0</b>	▼ -0.6	▼ -0.2
L48 Power	38.2	38.6	41.0	42.6	43.2	44.0	40.7	▼ -3.3	▼ -0.6
L48 Residential & Commercial	7.2	7.2	7.8	7.9	8.1	8.3	8.0	▼ -0.3	▲ 0.3
L48 Industrial	20.3	20.2	20.4	20.4	20.5	20.6	20.7	▲ 0.1	▲ 0.3
L48 Lease and Plant Fuel	5.1	5.1	5.1	5.1	5.1	5.1	5.0	▼ -0.1	▼ -0.1
L48 Pipeline Distribution	2.2	2.2	2.4	2.4	2.5	2.5	2.4	▼ -0.2	▼ 0.0
<b>L48 Regional Gas Consumption</b>	<b>72.9</b>	<b>73.4</b>	<b>76.7</b>	<b>78.4</b>	<b>79.4</b>	<b>80.6</b>	<b>76.8</b>	▼ -3.8	▼ -0.1
<b>Net LNG Delivered</b>	<b>10.40</b>	<b>10.08</b>	<b>9.33</b>	<b>9.29</b>	<b>9.62</b>	<b>10.39</b>	<b>10.93</b>	▲ 0.5	▲ 1.1
<b>Total Mexican Exports</b>	<b>6.4</b>	<b>6.5</b>	<b>6.9</b>	<b>7.2</b>	<b>6.9</b>	<b>7.0</b>	<b>7.2</b>	▲ 0.2	▲ 0.4
<b>Implied Daily Storage Activity</b>	<b>7.0</b>	<b>7.0</b>	<b>4.8</b>	<b>2.6</b>	<b>2.0</b>	<b>0.1</b>	<b>1.3</b>		
<b>EIA Reported Daily Storage Activity</b>									
<b>Daily Model Error</b>									

### EIA Storage Week Balances

	9-Jul	16-Jul	23-Jul	30-Jul	6-Aug	13-Aug	WoW	vs. 4W
<b>Lower 48 Dry Production</b>	<b>91.8</b>	<b>92.4</b>	<b>92.4</b>	<b>92.5</b>	<b>91.9</b>	<b>92.3</b>	▲ 0.4	▲ 0.0
<b>Canadian Imports</b>	<b>5.1</b>	<b>5.2</b>	<b>4.9</b>	<b>5.5</b>	<b>5.1</b>	<b>5.2</b>	▲ 0.1	▲ 0.0
L48 Power	37.2	38.7	39.7	42.2	38.4	41.1	▲ 2.7	▲ 1.3
L48 Residential & Commercial	8.2	8.4	8.4	8.3	7.8	7.7	▼ -0.1	▼ -0.5
L48 Industrial	19.4	19.5	19.5	20.6	20.4	20.4	▲ 0.0	▲ 0.4
L48 Lease and Plant Fuel	5.1	5.1	5.1	5.1	5.1	5.1	▲ 0.0	▼ 0.0
L48 Pipeline Distribution	2.1	2.2	2.3	2.4	2.2	2.4	▲ 0.1	▲ 0.1
<b>L48 Regional Gas Consumption</b>	<b>71.9</b>	<b>74.0</b>	<b>75.1</b>	<b>78.6</b>	<b>74.0</b>	<b>76.7</b>	▲ 2.7	▲ 1.3
<b>Net LNG Exports</b>	<b>11.0</b>	<b>10.8</b>	<b>10.5</b>	<b>10.8</b>	<b>10.6</b>	<b>9.9</b>	▼ -0.6	▼ -0.7
<b>Total Mexican Exports</b>	<b>7.1</b>	<b>7.1</b>	<b>7.1</b>	<b>7.0</b>	<b>6.9</b>	<b>6.9</b>	▼ 0.0	▼ -0.1
<b>Implied Daily Storage Activity</b>	<b>6.8</b>	<b>5.6</b>	<b>4.6</b>	<b>1.7</b>	<b>5.5</b>	<b>3.9</b>	-1.5	
<b>EIA Reported Daily Storage Activity</b>	<b>7.9</b>	<b>7.0</b>	<b>5.1</b>	<b>1.9</b>	<b>7.0</b>			
<b>Daily Model Error</b>	<b>-1.1</b>	<b>-1.4</b>	<b>-0.5</b>	<b>-0.2</b>	<b>-1.5</b>			

### Monthly Balances

	2Yr Ago Aug-19	LY Aug-20	Apr-21	May-21	Jun-21	Jul-21	MTD Aug-21	MoM	vs. LY
<b>Lower 48 Dry Production</b>	<b>94.7</b>	<b>89.6</b>	<b>92.3</b>	<b>92.7</b>	<b>92.8</b>	<b>92.2</b>	<b>92.0</b>	▼ -0.2	▲ 2.4
<b>Canadian Imports</b>	<b>4.4</b>	<b>4.9</b>	<b>4.6</b>	<b>4.5</b>	<b>4.8</b>	<b>5.2</b>	<b>5.1</b>	▼ -0.1	▲ 0.2
L48 Power	41.0	40.9	24.9	26.7	35.3	39.4	39.8	▲ 0.4	▼ -1.0
L48 Residential & Commercial	7.8	7.7	19.5	13.2	8.8	8.3	7.8	▼ -0.5	▲ 0.1
L48 Industrial	23.5	21.9	21.2	20.3	20.8	19.8	20.4	▲ 0.6	▼ -1.4
L48 Lease and Plant Fuel	5.2	5.0	5.1	5.1	5.1	5.1	5.1	▼ 0.0	▲ 0.1
L48 Pipeline Distribution	2.4	2.4	2.3	2.1	2.2	2.3	2.3	▲ 0.1	▼ 0.0
<b>L48 Regional Gas Consumption</b>	<b>79.9</b>	<b>77.7</b>	<b>73.0</b>	<b>67.2</b>	<b>72.1</b>	<b>74.9</b>	<b>75.4</b>	▲ 0.5	▼ -2.3
<b>Net LNG Exports</b>	<b>5.2</b>	<b>4.0</b>	<b>11.5</b>	<b>10.8</b>	<b>10.2</b>	<b>10.8</b>	<b>10.2</b>	▼ -0.6	▲ 6.1
<b>Total Mexican Exports</b>	<b>5.3</b>	<b>6.0</b>	<b>6.7</b>	<b>6.8</b>	<b>7.4</b>	<b>7.0</b>	<b>7.0</b>	▼ -0.1	▲ 1.0
<b>Implied Daily Storage Activity</b>	<b>8.8</b>	<b>6.7</b>	<b>5.7</b>	<b>12.4</b>	<b>8.0</b>	<b>4.6</b>	<b>4.5</b>		
<b>EIA Reported Daily Storage Activity</b>									
<b>Daily Model Error</b>									

Source: Bloomberg, analytix.ai

## Daily Average Generation Data

### Nuclear Generation Daily Average - GWh (NRC)

	5-Aug	6-Aug	7-Aug	8-Aug	9-Aug	10-Aug	11-Aug	DoD	vs. 7D
NRC Nuclear Daily Output	90.9	89.9	90.2	91.3	91.9	92.2	92.6	0.4	1.5
NRC Nuclear Max Capacity	104.9	104.9	104.9	104.9	104.9	104.9	104.9	0.0	0.0
NRC Nuclear Outage	14.0	15.0	14.7	13.6	13.0	12.7	12.3	-0.4	-1.5
NRC % Nuclear Cap Utilization	92.4	91.4	91.7	92.8	93.4	93.7	94.2	0.4	1.6

### Wind Generation Daily Average - MWh (EIA)

	5-Aug	6-Aug	7-Aug	8-Aug	9-Aug	10-Aug	11-Aug	DoD	vs. 7D
CALI Wind	3209	3051	2013	2483	1912	1903	2561	659	133
TEXAS Wind	5568	9348	17855	18246	18829	19443	16463	-2981	1581
US Wind	23390	40825	54359	47462	49061	52778	54627	1849	9981

### Generation Daily Average - MWh (EIA)

	5-Aug	6-Aug	7-Aug	8-Aug	9-Aug	10-Aug	11-Aug	DoD	vs. 7D
US Wind	23390	40825	54359	47462	49061	52778	54627	1849	9981
US Solar	14607	14722	13245	14428	14425	13420	12855	-565	-1286
US Petroleum	4277	4654	3835	4151	4187	5384	4832	-553	417
US Other	8942	9050	9168	9274	9680	10546	9683	-863	240
US Coal	131981	129205	127741	131518	142603	149372	149082	-290	13679
US Nuke	93711	92859	93241	94174	94652	94812	95168	356	1260
US Hydro	27913	27139	24702	23813	25292	27469	29190	1720	3135
<b>US Gas</b>	<b>208408</b>	<b>205952</b>	<b>181075</b>	<b>183389</b>	<b>205799</b>	<b>219679</b>	<b>221461</b>	<b>1781</b>	<b>20744</b>

See National Wind and Nuclear daily charts

Source: Bloomberg, analytix.ai

## Storage Week Average Generation Data

### Nuclear Generation Weekly Average - GWh (NRC)

	9-Jul	16-Jul	23-Jul	30-Jul	6-Aug	13-Aug	WoW	WoW Bcf/d Impact
NRC Nuclear Daily Output	89.5	90.7	90.7	89.3	90.7	91.5	0.8	-0.1
NRC Nuclear Max Capacity	104.9	104.9	104.9	104.9	104.9	104.9	0.0	
NRC Nuclear Outage	15.4	14.2	14.2	15.6	14.2	13.3	-0.8	
NRC % Nuclear Cap Utilization	0.1	0.1	0.1	0.1	0.1	0.1	0.0	

### Wind Generation Weekly Average - MWh (EIA)

	9-Jul	16-Jul	23-Jul	30-Jul	6-Aug	13-Aug	WoW	WoW Bcf/d Impact
CALI Wind	2604	3004	2064	1905	2237	2355	118	0.0
TEXAS Wind	3739	10817	7162	7913	5180	16664	11484	-1.9
US Wind	25696	36364	26446	29735	22378	50534	28156	-4.7

### Generation Weekly Average - MWh (EIA)

	9-Jul	16-Jul	23-Jul	30-Jul	6-Aug	13-Aug	WoW	WoW Bcf/d Impact
US Wind	25696	36364	26446	29735	22378	50534	28156	-4.7
US Solar	14165	14486	14023	13977	14127	13707	-420	0.1
US Petroleum	4035	4282	3892	4729	4074	4554	479	-0.1
US Other	9159	9555	9336	9281	9056	9583	527	-0.1
US Coal	131306	131524	137617	146398	134763	139800	5037	-0.8
US Nuke	92359	93735	93488	92226	93269	94296	1027	-0.2
US Hydro	30129	30421	30191	29203	27733	26685	-1048	0.2
<b>US Gas</b>	<b>194610</b>	<b>199730</b>	<b>210468</b>	<b>224374</b>	<b>204514</b>	<b>205545</b>	<b>1031</b>	

See National Wind and Nuclear daily charts

Source: Bloomberg, analytix.ai

## Monthly Average Generation Data

### Nuclear Generation Monthly Average - GWh (NRC)

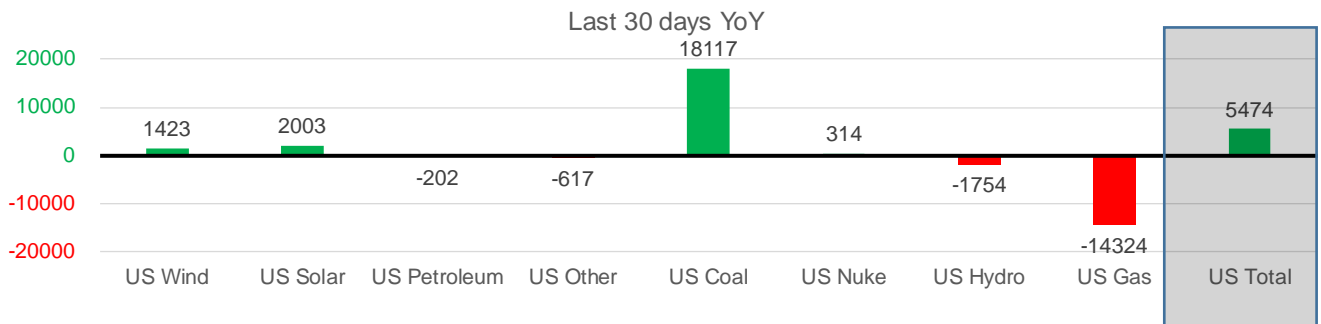
	2Yr Ago	LY					MTD		
	Same 30 days	Same 30 days	May-21	Jun-21	Jul-21	Aug-21	Last 30 days	MoM (MTD vs LY)	Last 30 days YoY
NRC Nuclear Daily Output	94.2	91.0	81.8	88.7	90.0	91.4	90.7	1.4	-0.3
NRC Nuclear Max Capacity	104.9	104.9	104.9	104.9	104.9	104.9	104.9	0.0	0.0
NRC Nuclear Outage	10.7	13.9	23.1	16.2	14.9	13.5	14.2	-1.4	0.3
NRC % Nuclear Cap Utilization	95.8	92.5	83.2	90.2	91.5	92.9	92.2	1.4	-0.3

### Wind Generation Monthly Average - MWh (EIA)

	2Yr Ago	LY					MTD		
	Same 30 days	Same 30 days	May-21	Jun-21	Jul-21	Aug-21	Last 30 days	MoM (MTD vs LY)	Last 30 days YoY
CALI Wind	2190	2604	3402	2913	2338	2397	2178	59	-427
TEXAS Wind	8789	9488	12259	9675	7217	12122	9676	4906	188
US Wind	27334	31891	46081	37299	29105	39465	33314	10360	1423

### Generation Monthly Average - MWh (EIA)

	2Yr Ago	LY					MTD		
	Same 30 days	Same 30 days	May-21	Jun-21	Jul-21	Aug-21	Last 30 days	MoM (MTD vs LY)	Last 30 days YoY
US Wind	27334	31891	46081	37299	29105	39465	33314	▼-6151.2	▲ 1423
US Solar	9293	11976	14488	14564	14195	13785	13980	▲ 194.6	▲ 2003
US Petroleum	5486	4560	3012	4149	4233	4376	4357	▼ -19	▼ -202
US Other	9304	9962	7439	8162	9324	9384	9346	▼ -38	▼ -617
US Coal	130178	121840	86422	121351	137224	137488	139957	▲ 2469	▲ 18117
US Nuke	100656	93107	85517	92175	92897	94083	93421	▼ -662	▲ 314
US Hydro	33936	30345	30677	32578	29936	27221	28592	▲ 1371	▼ -1754
<b>US Gas</b>	<b>220229</b>	<b>225896</b>	<b>139477</b>	<b>188815</b>	<b>207789</b>	<b>204689</b>	<b>211572</b>	<b>▼-2837</b>	<b>▼-14324</b>
<b>US Total</b>	<b>537654</b>	<b>529308</b>	<b>413562</b>	<b>499435</b>	<b>524880</b>	<b>530935</b>	<b>534782</b>	<b>▲ 477</b>	<b>▲ 5474</b>



See National Wind and Nuclear daily charts

Source: Bloomberg, analytix.ai

## Regional S/D Models Storage Projection

Week Ending 13-Aug

	Daily Raw Storage	Daily Adjustment Factor	Daily Average Storage Activity (Adjusted) *	Weekly Adjusted Storage Activity
L48	3.6	1.3	4.9	34
East	1.2	1.3	2.5	18
Midwest	3.6	-0.3	3.3	23
Mountain	4.2	-4.2	0.0	0
South Central	-5.3	4.6	-0.7	-5
Pacific	0.0	-0.2	-0.2	-1

\*Adjustment Factor is calculated based on historical regional deltas

U.S. underground natural gas storage facilities by type (July 2015)

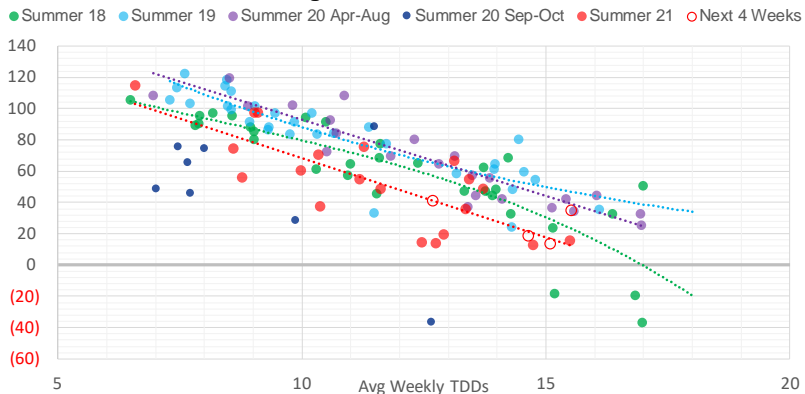


### Weather Model Storage Projection

Next report  
and beyond

Week Ending	GWDDs	Week Storage Projection
13-Aug	15.5	34
20-Aug	15.1	13
27-Aug	14.7	19
03-Sep	12.7	41

**Weather Storage Model - Next 4 Week Forecast**

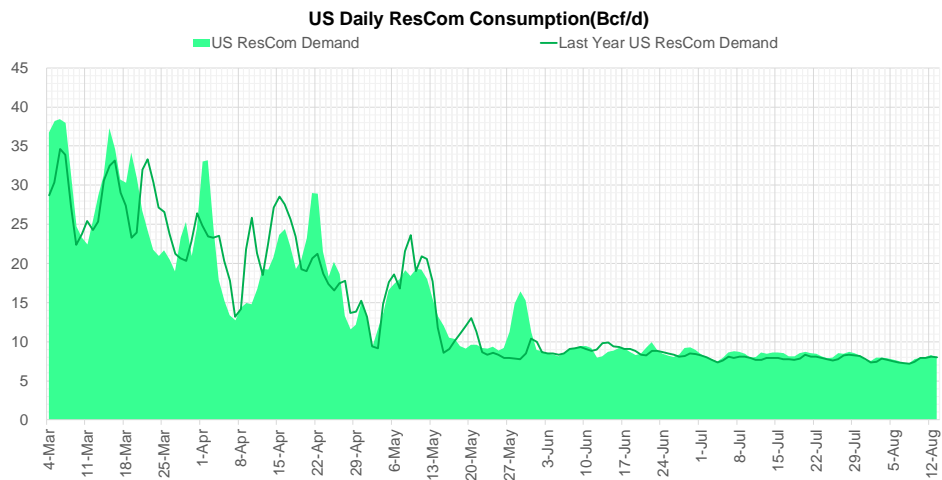
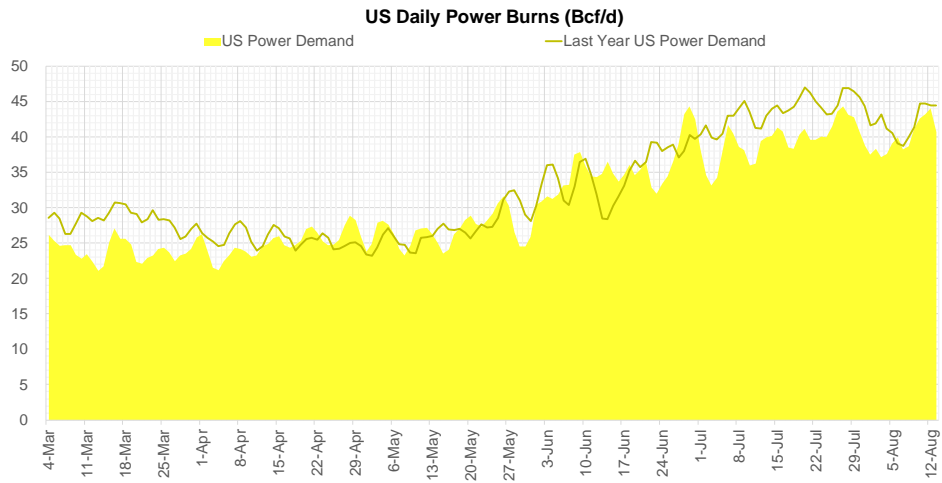
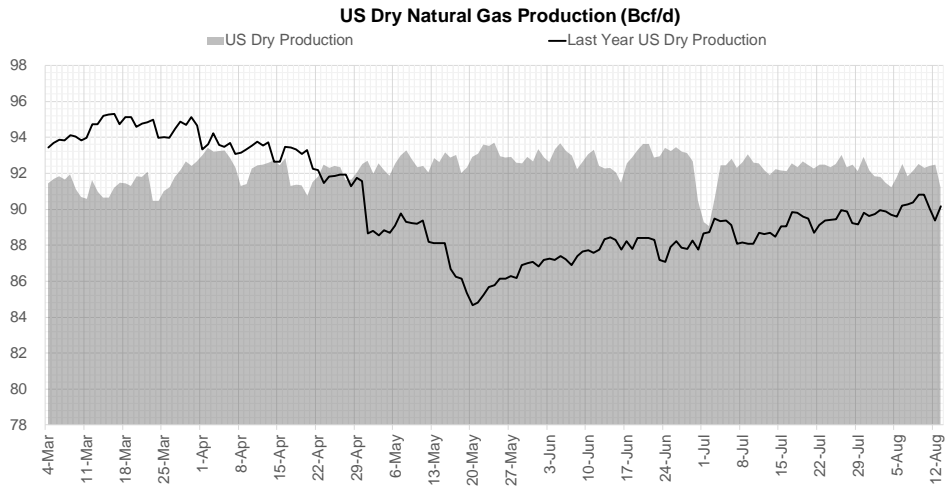


Go to larger image





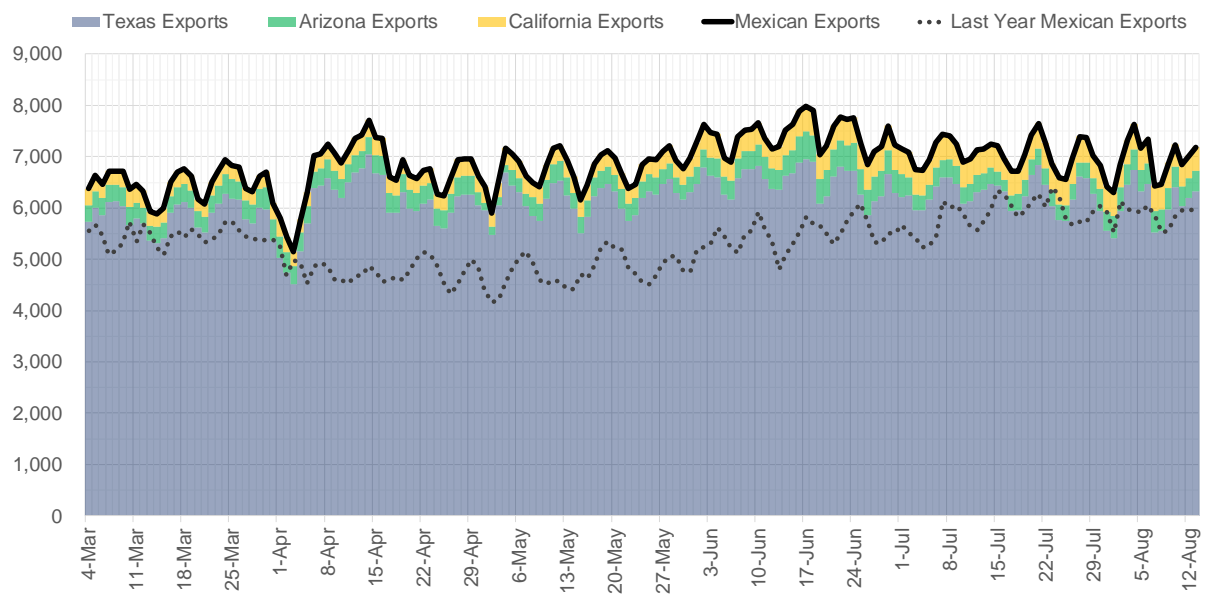
## Supply – Demand Trends



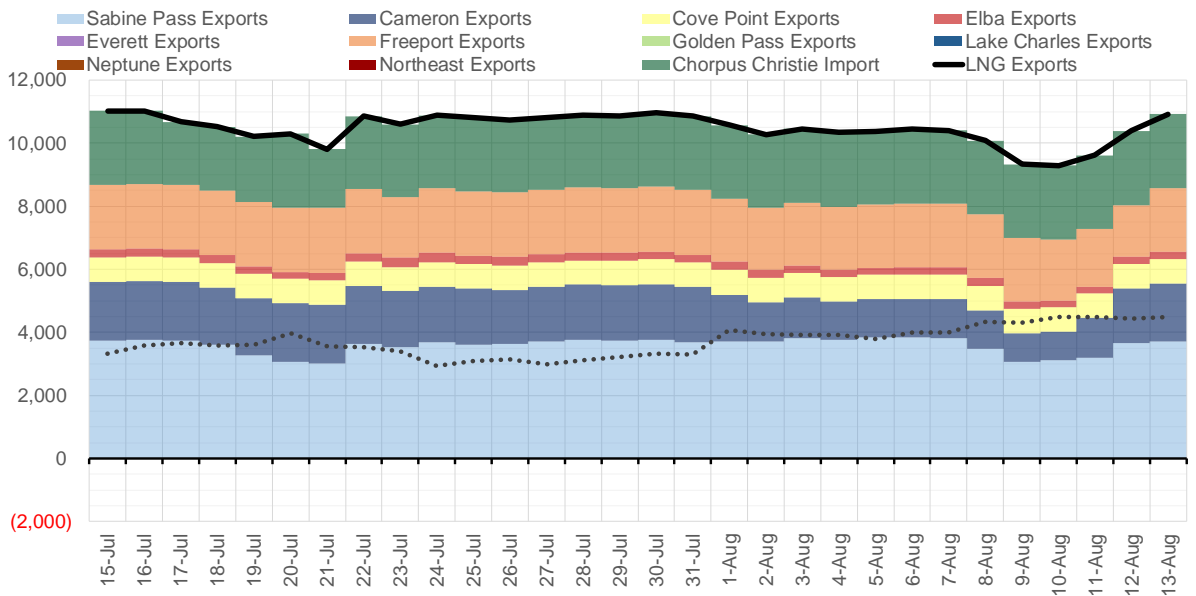
Source: Bloomberg

The risk of trading futures and options and other derivatives involves a substantial risk of loss and is not suitable for all persons. Each person must consider whether a particular trade, combination of trades, or strategy is suitable for that person's financial means and objectives. Past results are not necessarily indicative of future results. This communication may contain links to third party websites which are not under the control of and are not maintained by ION Energy Group, and ION Energy Group is not responsible for their content.

### Mexican Exports (MMcf/d)



### Net LNG Exports - Last 30 days (MMcf/d)



Source: Bloomberg

The risk of trading futures and options and other derivatives involves a substantial risk of loss and is not suitable for all persons. Each person must consider whether a particular trade, combination of trades, or strategy is suitable for that person's financial means and objectives. Past results are not necessarily indicative of future results. This communication may contain links to third party websites which are not under the control of and are not maintained by ION Energy Group, and ION Energy Group is not responsible for their content.

## Nat Gas Options Volume and Open Interest CME, ICE and Nasdaq Combined

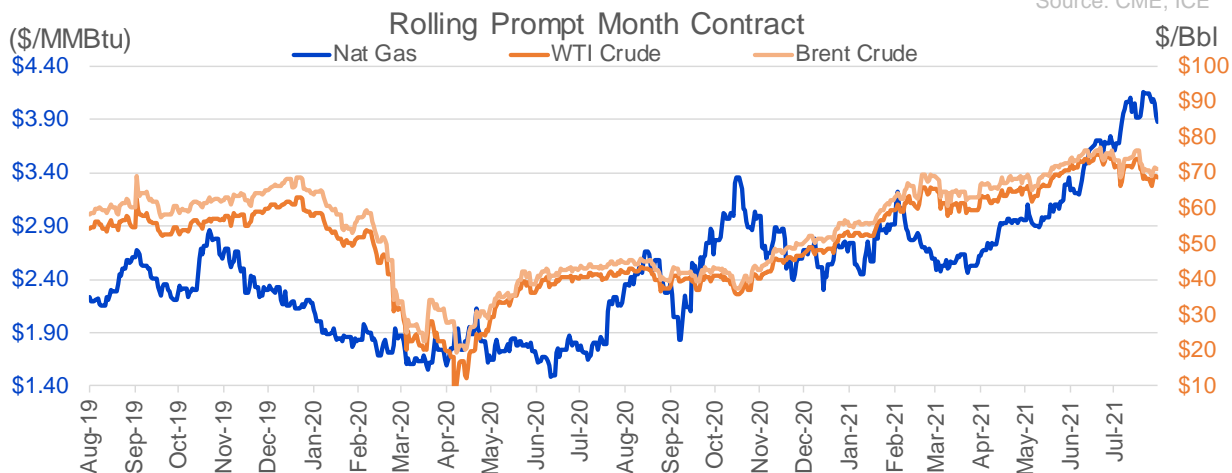
CONTRACT MONTH	CONTRACT YEAR	PUT/CALL	STRIKE	CUMULATIVE VOL	CONTRACT MONTH	CONTRACT YEAR	PUT/CALL	STRIKE	CUMULATIVE OI
9	2021	C	4.25	14089	10	2021	C	4.50	44846
9	2021	P	3.80	9569	12	2021	P	2.75	41619
10	2021	P	3.50	9551	10	2021	C	4.00	40327
9	2021	P	3.90	8815	10	2021	C	5.00	38063
10	2021	C	4.50	8803	10	2021	C	3.50	33006
9	2021	P	3.70	7101	10	2021	P	3.50	32450
9	2021	C	4.75	5558	10	2021	P	2.50	30039
10	2021	C	4.25	5472	12	2021	P	2.50	29530
9	2021	C	4.00	5049	10	2021	P	2.00	28650
10	2021	P	3.75	4456	10	2021	C	3.25	28230
9	2021	P	4.00	3230	10	2021	P	3.00	28070
11	2021	C	4.25	3094	9	2021	C	4.00	26651
9	2021	C	4.50	2975	9	2021	C	5.00	26599
9	2021	P	3.75	2883	9	2021	C	4.25	25785
10	2021	C	4.00	2655	10	2021	P	2.75	25764
4	2022	P	2.25	2200	12	2021	P	3.00	24895
10	2022	P	2.25	2200	10	2021	C	6.00	24501
9	2021	P	3.60	2033	9	2021	P	2.50	23385
10	2021	C	5.00	1838	11	2021	P	3.00	22898
9	2021	P	3.50	1821	9	2021	C	3.50	22604
9	2021	C	4.10	1724	9	2021	P	3.00	22432
11	2021	P	3.25	1702	11	2021	C	4.00	22136
10	2021	C	4.75	1653	12	2021	C	4.00	22091
11	2021	C	4.50	1647	10	2021	C	4.25	21929
11	2021	P	3.75	1628	9	2021	C	4.75	20629
10	2021	P	3.60	1626	9	2021	P	2.00	20427
11	2021	P	3.50	1453	9	2021	P	3.25	20102
9	2021	P	3.85	1431	10	2021	P	2.25	19900
10	2021	P	3.25	1417	4	2022	C	3.00	19810
9	2021	C	4.40	1353	9	2021	P	3.50	19617
11	2021	P	4.00	1317	9	2021	C	3.25	18994
12	2021	P	3.50	1301	10	2021	C	3.00	18502
9	2021	C	4.05	1269	11	2021	C	5.00	18033
10	2021	P	4.00	1252	10	2021	C	3.75	16815
10	2021	C	4.10	1211	9	2021	C	4.50	16514
11	2021	C	4.75	1193	1	2022	C	5.00	16023
11	2021	C	5.00	1001	9	2021	P	2.75	15816
9	2021	C	4.20	992	3	2022	C	5.00	15521
11	2021	P	3.00	865	9	2021	P	4.00	15490
9	2021	C	4.30	792	2	2022	C	5.00	15076
9	2021	C	5.00	784	11	2021	C	3.75	15026
9	2021	C	3.95	778	1	2022	C	4.00	14782
12	2021	P	3.75	775	3	2022	C	3.00	14448
9	2021	C	4.65	764	10	2021	P	3.25	14039
12	2021	P	3.25	750	12	2021	P	2.00	13889
11	2021	P	3.70	740	3	2022	C	8.00	13874
9	2021	C	4.85	710	9	2021	P	2.60	13814
10	2021	P	2.90	702	3	2022	C	10.00	13784
9	2021	C	3.90	679	9	2021	P	1.90	13773
					11	2021	P	2.5	13698

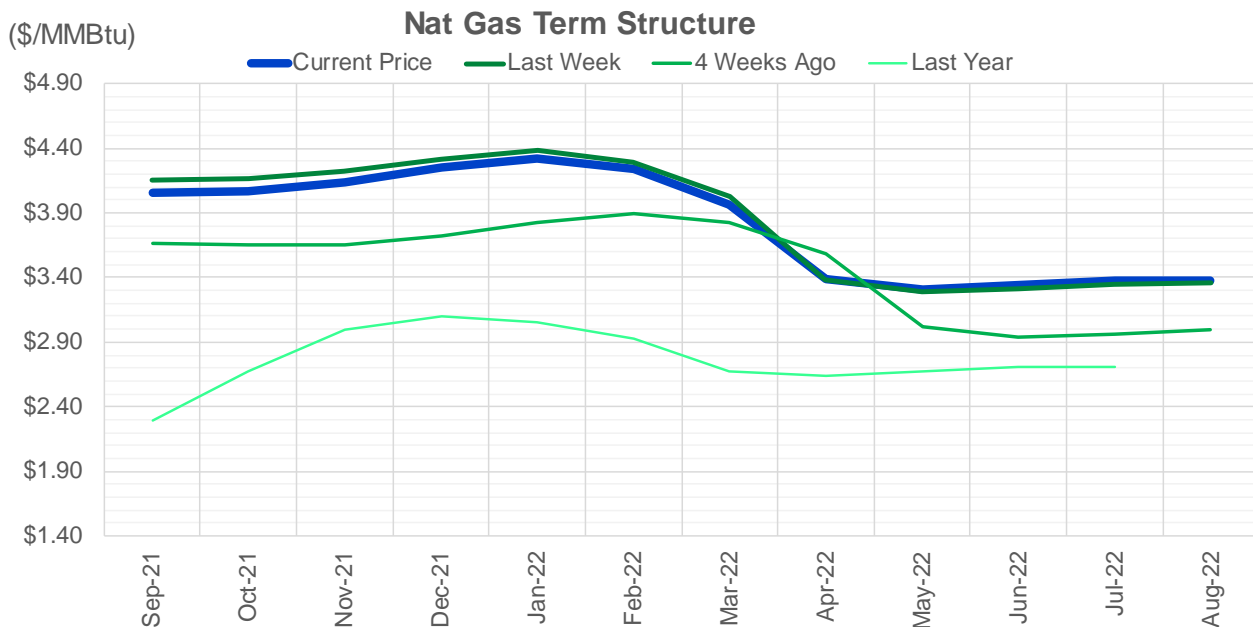
Source: CME, ICE

## Nat Gas Futures Open Interest CME, and ICE Combined

CME Henry Hub Futures (10,000 MMBtu)				ICE Henry Hub Futures Contract Equivalent (10,000 MM			
	Current	Prior	Daily Change		Current	Prior	Daily Change
SEP 21	138851	160885	-22034	SEP 21	85568	89531	-3964
OCT 21	203663	195203	8460	OCT 21	106579	107878	-1299
NOV 21	184303	173012	11291	NOV 21	69480	69676	-197
DEC 21	78545	75978	2567	DEC 21	76100	75672	428
JAN 22	135049	133563	1486	JAN 22	78312	78622	-310
FEB 22	54725	55135	-410	FEB 22	71172	71199	-27
MAR 22	101308	103599	-2291	MAR 22	74196	73338	858
APR 22	111073	110161	912	APR 22	70496	70347	149
MAY 22	98134	94727	3407	MAY 22	69150	68771	380
JUN 22	30339	30718	-379	JUN 22	54924	55037	-113
JUL 22	26284	26156	128	JUL 22	54914	54769	146
AUG 22	25114	25099	15	AUG 22	55842	55919	-77
SEP 22	25913	25416	497	SEP 22	55664	55750	-86
OCT 22	64920	65481	-561	OCT 22	62489	62334	155
NOV 22	27235	26983	252	NOV 22	48886	48847	39
DEC 22	24028	23854	174	DEC 22	52331	52368	-37
JAN 23	17502	17330	172	JAN 23	33231	33202	30
FEB 23	6160	6200	-40	FEB 23	27844	27871	-27
MAR 23	7929	7894	35	MAR 23	29645	29682	-37
APR 23	10723	10538	185	APR 23	24389	24303	86
MAY 23	6287	6152	135	MAY 23	25297	25230	67
JUN 23	4651	4701	-50	JUN 23	23515	23444	72
JUL 23	3810	3772	38	JUL 23	23657	23577	80
AUG 23	3429	3222	207	AUG 23	23490	23410	80
SEP 23	3863	3676	187	SEP 23	22999	22921	78
OCT 23	4647	4804	-157	OCT 23	24624	24542	82
NOV 23	1392	1330	62	NOV 23	24558	24598	-39
DEC 23	1850	1850	0	DEC 23	23517	22357	1160
JAN 24	989	989	0	JAN 24	12973	13060	-87
FEB 24	873	873	0	FEB 24	11311	11332	-22

Source: CME, ICE





	Sep-21	Oct-21	Nov-21	Dec-21	Jan-22	Feb-22	Mar-22	Apr-22	May-22	Jun-22	Jul-22	Aug-22
<b>Current Price</b>	<b>\$4.059</b>	<b>\$4.071</b>	<b>\$4.143</b>	<b>\$4.256</b>	<b>\$4.319</b>	<b>\$4.237</b>	<b>\$3.967</b>	<b>\$3.385</b>	<b>\$3.309</b>	<b>\$3.338</b>	<b>\$3.371</b>	<b>\$3.378</b>
Last Week	\$4.158	\$4.163	\$4.221	\$4.320	\$4.386	\$4.298	\$4.025	\$3.381	\$3.285	\$3.313	\$3.348	\$3.355
vs. Last Week	-\$0.099	-\$0.092	-\$0.078	-\$0.064	-\$0.067	-\$0.061	-\$0.058	\$0.004	\$0.024	\$0.025	\$0.023	\$0.023
4 Weeks Ago	\$3.660	\$3.648	\$3.655	\$3.721	\$3.829	\$3.899	\$3.821	\$3.580	\$3.024	\$2.935	\$2.965	\$3.001
vs. 4 Weeks Ago	\$0.399	\$0.423	\$0.488	\$0.535	\$0.490	\$0.338	\$0.146	-\$0.195	\$0.285	\$0.403	\$0.406	\$0.377
Last Year	\$2.152	\$2.297	\$2.672	\$2.997	\$3.101	\$3.055	\$2.932	\$2.675	\$2.641	\$2.669	\$2.704	\$2.710
vs. Last Year	\$1.907	\$1.774	\$1.471	\$1.259	\$1.218	\$1.182	\$1.035	\$0.710	\$0.668	\$0.669	\$0.667	\$0.668

	Units	Cash Settled	Prompt Settle	Cash to Prompt
AGT Citygate	\$/MMBtu	4.21	3.46	-0.75
TETCO M3	\$/MMBtu	3.77	3.17	-0.60
FGT Zone 3	\$/MMBtu	3.92	4.24	0.32
Zone 6 NY	\$/MMBtu	3.92	3.10	-0.82
Chicago Citygate	\$/MMBtu	3.85	4.02	0.17
Michcon	\$/MMBtu	3.85	3.96	0.11
Columbia TCO Pool	\$/MMBtu	3.69	3.35	-0.34
Ventura	\$/MMBtu	3.96	3.95	-0.01
Rockies/Opal	\$/MMBtu	3.78	3.88	0.10
El Paso Permian Basin	\$/MMBtu	3.81	3.95	0.14
Socal Citygate	\$/MMBtu	6.48	5.36	-1.12
Malin	\$/MMBtu	4.12	4.27	0.15
Houston Ship Channel	\$/MMBtu	3.95	4.13	0.18
Henry Hub Cash	\$/MMBtu	4.07	3.94	-0.13
AECO Cash	C\$/GJ	2.34	3.05	0.71
Station2 Cash	C\$/GJ	2.27	4.14	1.87
Dawn Cash	C\$/GJ	3.88	3.94	0.06

Source: CME, Bloomberg

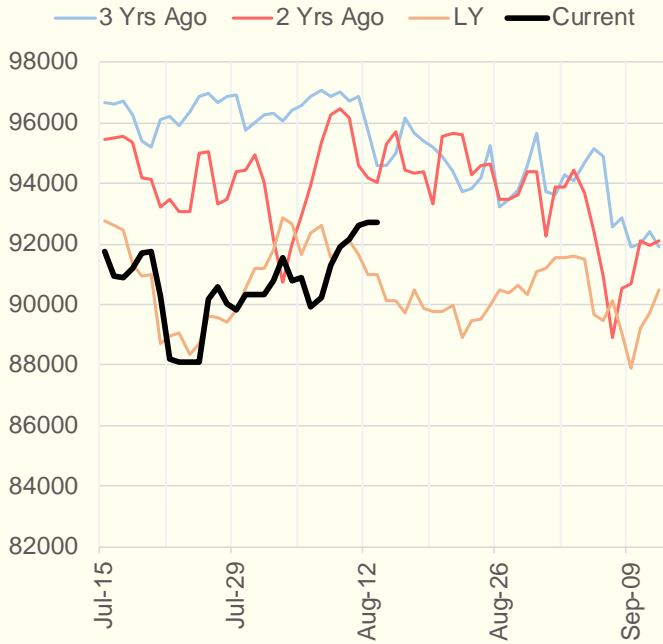
	Units	Current Price	vs. Last Week	vs. 4 Weeks Ago	vs. Last Year
NatGas Jul21/Oct21	\$/MMBtu	0.331	▼ -0.200	▲ 0.338	▲ 0.319
NatGas Oct21/Nov21	\$/MMBtu	0.073	▲ 0.011	▲ 0.003	▲ 0.024
NatGas Oct21/Jan22	\$/MMBtu	0.260	▲ 0.025	▲ 0.009	▼ -0.018
NatGas Apr22/Oct22	\$/MMBtu	0.007	▲ 0.028	▲ 0.008	▼ -0.043
WTI Crude	\$/Bbl	69.09	▲ 0.000	▼ -2.560	▲ 26.850
Brent Crude	\$/Bbl	71.31	▲ 0.020	▼ -2.160	▲ 26.350
Fuel Oil, NY Harbour 1%	\$/Bbl	97.18	▲ 0.000	▲ 0.000	▲ 0.000
Heating Oil	cents/Gallon	210.39	▼ -0.210	▼ -0.870	▲ 86.580
Propane, Mt. Bel	cents/Gallon	1.12	▲ 0.032	▲ 0.021	▲ 0.620
Ethane, Mt. Bel	cents/Gallon	0.34	▼ -0.004	▲ 0.033	▲ 0.106
Coal, PRB	\$/MTon	12.30	▲ 0.000	▲ 0.000	▲ 0.000
Coal, PRB	\$/MMBtu	0.70			
Coal, ILB	\$/MTon	31.05	▲ 0.000	▲ 0.000	▲ 0.000
Coal, ILB	\$/MMBtu	1.32			

### Weather Storage Model - Next 4 Week Forecast

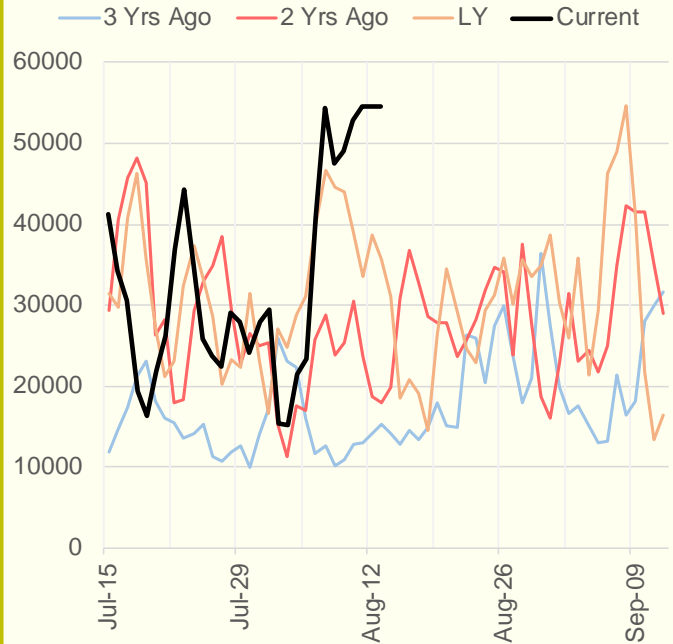


The risk of trading futures and options and other derivatives involves a substantial risk of loss and is not suitable for all persons. Each person must consider whether a particular trade, combination of trades, or strategy is suitable for that person's financial means and objectives. Past results are not necessarily indicative of future results. This communication may contain links to third party websites which are not under the control of and are not maintained by ION Energy Group, and ION Energy Group is not responsible for their content.

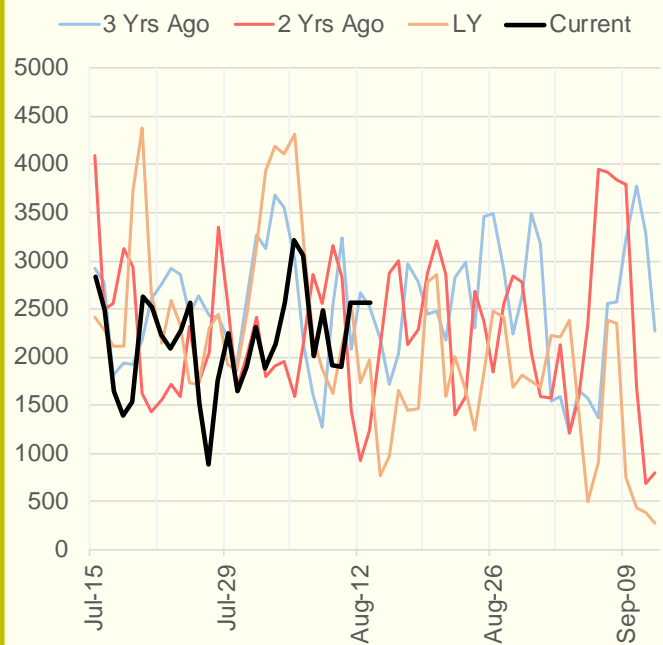
### NRC Nuclear Daily Output



### US Wind



### CALI Wind



### TEXAS Wind

