

	Current	Δ from YD	Δ from 7D Avg
Nat Gas Prompt	\$ 3.91	▲ \$ 0.05	▼ \$ (0.05)

	Current	Δ from YD	Δ from 7D Avg
WTI Prompt	\$ 67.51	▼ \$ (0.93)	▼ \$ (0.8)

	Current	Δ from YD	Δ from 7D Avg
Brent Prompt	\$ 69.76	▼ \$ (0.83)	▼ \$ (0.8)

### Page Menu

[Short-term Weather Model Outlooks](#)

[Lower 48 Component Models](#)

[Regional S/D Models Storage Projection](#)

[Weather Model Storage Projection](#)

[Supply – Demand Trends](#)

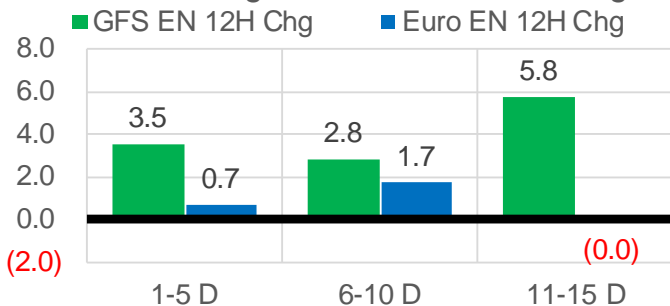
[Nat Gas Options Volume and Open Interest](#)

[Nat Gas Futures Open Interest](#)

[Price Summary](#)

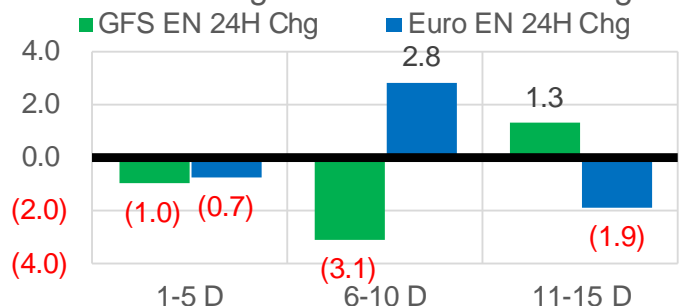
### Vs. 12H Ago

L48 Region - 00z TDD vs 12H Ago



### Vs. 24H Ago

L48 Region - 00z TDD vs 24H Ago



	Current	Δ from YD	Δ from 7D Avg
US Dry Production	90.8	▼ -0.54	▼ -1.44

	Current	Δ from YD	Δ from 7D Avg
US Power Burns	37.2	▲ 0.64	▼ -3.86

	Current	Δ from YD	Δ from 7D Avg
US ResComm	7.5	▲ 0.25	▼ -0.25

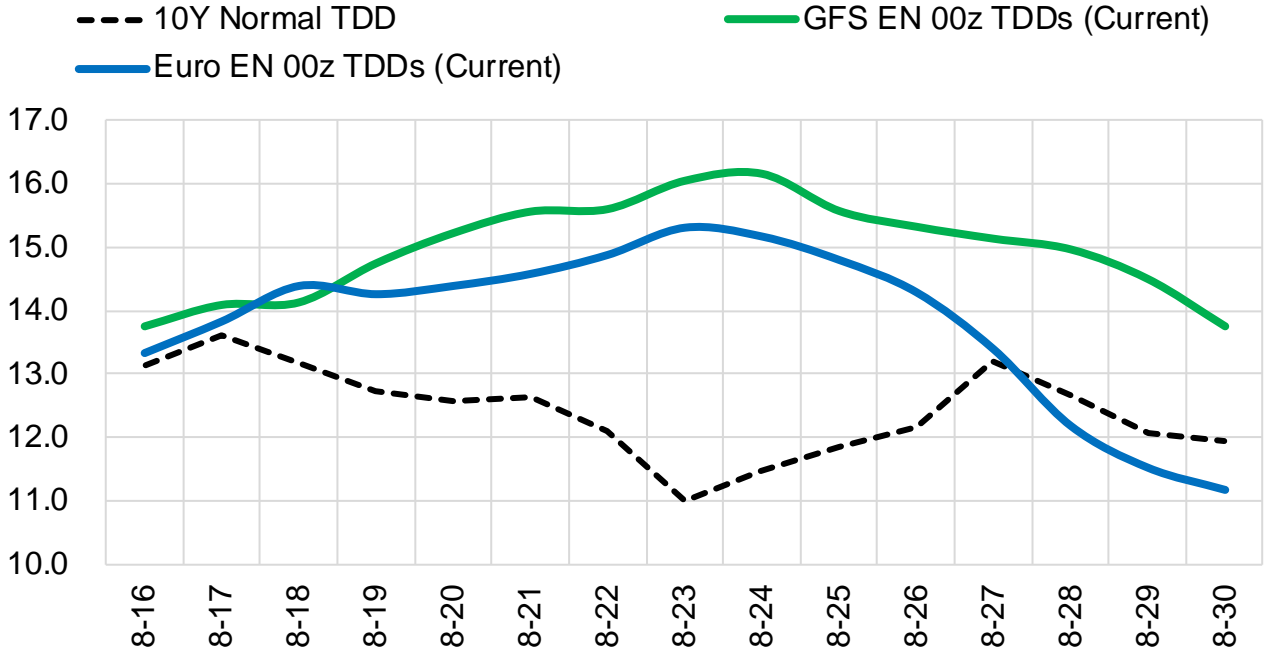
	Current	Δ from YD	Δ from 7D Avg
Canadian Imports	4.6	▼ -0.07	▼ -0.62

	Current	Δ from YD	Δ from 7D Avg
Net LNG Exports	10.9	▼ -0.17	▲ 0.70

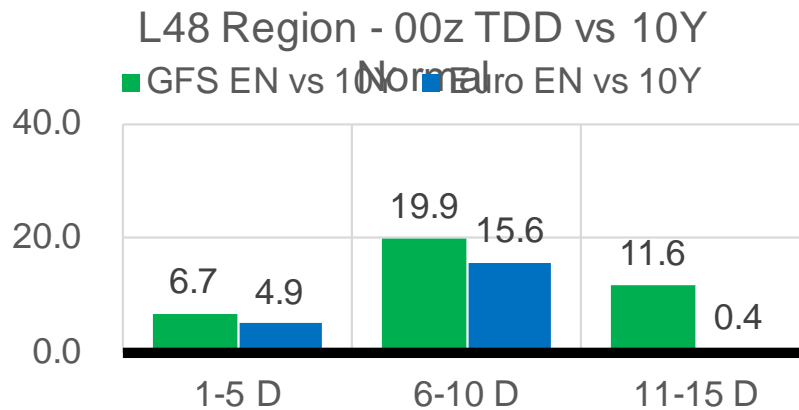
	Current	Δ from YD	Δ from 7D Avg
Mexican Exports	6.6	▲ 0.58	▼ -0.09

## Short-term Weather Model Outlooks (00z)

### L48 Region



## Vs. 10Y Normal



Source: WSI , Bloomberg

## Lower 48 Component Models

### Daily Balances

	10-Aug	11-Aug	12-Aug	13-Aug	14-Aug	15-Aug	16-Aug	DoD	vs. 7D
<b>Lower 48 Dry Production</b>	<b>92.4</b>	<b>92.5</b>	<b>92.6</b>	<b>92.4</b>	<b>92.0</b>	<b>91.3</b>	<b>90.8</b>	▼ -0.5	▼ -1.4
<b>Canadian Imports</b>	<b>5.3</b>	<b>5.5</b>	<b>5.7</b>	<b>5.3</b>	<b>4.8</b>	<b>4.7</b>	<b>4.6</b>	▼ -0.1	▼ -0.6
L48 Power	42.9	43.4	43.8	41.5	37.8	36.5	37.2	▲ 0.6	▼ -3.8
L48 Residential & Commercial	8.0	8.2	8.2	7.8	7.2	7.3	7.5	▲ 0.3	▼ -0.2
L48 Industrial	20.1	20.4	20.9	21.3	21.7	22.1	22.0	▼ 0.0	▲ 1.0
L48 Lease and Plant Fuel	5.1	5.1	5.1	5.1	5.1	5.1	5.0	▼ 0.0	▼ -0.1
L48 Pipeline Distribution	2.5	2.5	2.5	2.4	2.2	2.1	2.2	▲ 0.0	▼ -0.2
<b>L48 Regional Gas Consumption</b>	<b>78.5</b>	<b>79.6</b>	<b>80.5</b>	<b>78.1</b>	<b>74.0</b>	<b>73.0</b>	<b>73.9</b>	▲ 0.9	▼ -3.4
<b>Net LNG Delivered</b>	<b>9.29</b>	<b>9.62</b>	<b>10.39</b>	<b>11.07</b>	<b>10.53</b>	<b>11.06</b>	<b>10.89</b>	▼ -0.2	▲ 0.6
<b>Total Mexican Exports</b>	<b>7.2</b>	<b>6.9</b>	<b>7.0</b>	<b>6.7</b>	<b>6.4</b>	<b>6.1</b>	<b>6.6</b>	▲ 0.6	▼ -0.1
<b>Implied Daily Storage Activity</b>	<b>2.6</b>	<b>1.9</b>	<b>0.4</b>	<b>1.8</b>	<b>5.8</b>	<b>5.8</b>	<b>4.0</b>		
<b>EIA Reported Daily Storage Activity</b>									
<b>Daily Model Error</b>									

### EIA Storage Week Balances

	9-Jul	16-Jul	23-Jul	30-Jul	6-Aug	13-Aug	WoW	vs. 4W
<b>Lower 48 Dry Production</b>	<b>91.8</b>	<b>92.4</b>	<b>92.4</b>	<b>92.5</b>	<b>91.9</b>	<b>92.4</b>	▲ 0.5	▲ 0.1
<b>Canadian Imports</b>	<b>5.1</b>	<b>5.2</b>	<b>4.9</b>	<b>5.5</b>	<b>5.1</b>	<b>5.2</b>	▲ 0.1	▲ 0.0
L48 Power	37.2	38.7	39.7	42.2	38.5	41.2	▲ 2.7	▲ 1.4
L48 Residential & Commercial	8.2	8.4	8.4	8.3	7.9	7.8	▼ -0.1	▼ -0.5
L48 Industrial	19.4	19.5	19.5	20.5	20.3	20.2	▼ -0.1	▲ 0.2
L48 Lease and Plant Fuel	5.1	5.1	5.1	5.1	5.1	5.1	▲ 0.0	▼ 0.0
L48 Pipeline Distribution	2.1	2.2	2.3	2.4	2.2	2.4	▲ 0.1	▲ 0.1
<b>L48 Regional Gas Consumption</b>	<b>71.9</b>	<b>74.0</b>	<b>75.1</b>	<b>78.5</b>	<b>74.0</b>	<b>76.6</b>	▲ 2.6	▲ 1.2
<b>Net LNG Exports</b>	<b>11.0</b>	<b>10.8</b>	<b>10.5</b>	<b>10.8</b>	<b>10.6</b>	<b>9.9</b>	▼ -0.6	▼ -0.7
<b>Total Mexican Exports</b>	<b>7.1</b>	<b>7.1</b>	<b>7.1</b>	<b>7.0</b>	<b>6.9</b>	<b>6.9</b>	▼ -0.1	▼ -0.2
<b>Implied Daily Storage Activity</b>	<b>6.8</b>	<b>5.6</b>	<b>4.6</b>	<b>1.7</b>	<b>5.5</b>	<b>4.2</b>	-1.3	
<b>EIA Reported Daily Storage Activity</b>	<b>7.9</b>	<b>7.0</b>	<b>5.1</b>	<b>1.9</b>	<b>7.0</b>			
<b>Daily Model Error</b>	<b>-1.1</b>	<b>-1.4</b>	<b>-0.5</b>	<b>-0.2</b>	<b>-1.5</b>			

### Monthly Balances

	2Yr Ago Aug-18	LY Aug-18	Apr-21	May-21	Jun-21	Jul-21	MTD Aug-21	MoM	vs. LY
<b>Lower 48 Dry Production</b>	<b>85.0</b>	<b>85.0</b>	<b>92.3</b>	<b>92.7</b>	<b>92.8</b>	<b>92.2</b>	<b>91.9</b>	▼ -0.2	▲ 6.9
<b>Canadian Imports</b>	<b>5.0</b>	<b>5.0</b>	<b>4.6</b>	<b>4.5</b>	<b>4.8</b>	<b>5.2</b>	<b>5.0</b>	▼ -0.1	▲ 0.0
L48 Power	38.1	38.1	24.9	26.7	35.3	39.4	39.4	▼ 0.0	▲ 1.3
L48 Residential & Commercial	7.8	7.8	19.5	13.2	8.8	8.3	7.7	▼ -0.6	▼ -0.1
L48 Industrial	21.6	21.6	21.2	20.2	20.7	19.8	20.6	▲ 0.8	▼ -1.0
L48 Lease and Plant Fuel	4.7	4.7	5.1	5.1	5.1	5.1	5.1	▼ 0.0	▲ 0.4
L48 Pipeline Distribution	2.2	2.2	2.3	2.1	2.2	2.3	2.3	▲ 0.0	▲ 0.1
<b>L48 Regional Gas Consumption</b>	<b>74.4</b>	<b>74.4</b>	<b>73.0</b>	<b>67.2</b>	<b>72.1</b>	<b>74.9</b>	<b>75.1</b>	▲ 0.2	▲ 0.8
<b>Net LNG Exports</b>	<b>3.3</b>	<b>3.3</b>	<b>11.5</b>	<b>10.8</b>	<b>10.2</b>	<b>10.8</b>	<b>10.3</b>	▼ -0.5	▲ 7.0
<b>Total Mexican Exports</b>	<b>4.9</b>	<b>4.9</b>	<b>6.7</b>	<b>6.8</b>	<b>7.4</b>	<b>7.0</b>	<b>6.8</b>	▼ -0.2	▲ 1.9
<b>Implied Daily Storage Activity</b>	<b>7.4</b>	<b>7.4</b>	<b>5.7</b>	<b>12.4</b>	<b>8.0</b>	<b>4.6</b>	<b>4.7</b>		
<b>EIA Reported Daily Storage Activity</b>									
<b>Daily Model Error</b>									

Source: Bloomberg, analytix.ai

## Daily Average Generation Data

### Nuclear Generation Daily Average - GWh (NRC)

	8-Aug	9-Aug	10-Aug	11-Aug	12-Aug	13-Aug	14-Aug	DoD	vs. 7D
NRC Nuclear Daily Output	91.3	91.9	92.2	92.6	92.7	92.7	92.7	0.0	0.5
NRC Nuclear Max Capacity	104.9	104.9	104.9	104.9	104.9	104.9	104.9	0.0	0.0
NRC Nuclear Outage	13.6	13.0	12.7	12.3	12.2	12.2	12.2	0.0	-0.5
NRC % Nuclear Cap Utilization	92.8	93.4	93.7	94.2	94.3	94.3	94.3	0.0	0.5

### Wind Generation Daily Average - MWh (EIA)

	8-Aug	9-Aug	10-Aug	11-Aug	12-Aug	13-Aug	14-Aug	DoD	vs. 7D
CALI Wind	2483	1912	1903	2561	3629	4191	2822	-1369	42
TEXAS Wind	18246	18829	19443	16463	14046	7789	4346	-3443	-11456
US Wind	47462	49061	52778	54627	48561	26370	22914	-3456	-23563

### Generation Daily Average - MWh (EIA)

	8-Aug	9-Aug	10-Aug	11-Aug	12-Aug	13-Aug	14-Aug	DoD	vs. 7D
US Wind	47462	49061	52778	54627	48561	26370	22914	-3456	-23563
US Solar	14428	14425	13445	13051	13804	13377	11341	-2036	-2414
US Petroleum	4151	4187	5382	4803	5516	5347	3817	-1531	-1081
US Other	9286	9681	10340	10353	10185	10342	9386	-956	-645
US Coal	131518	142603	149372	149429	150898	152667	140750	-11917	-5331
US Nuke	94174	94652	94812	95168	95067	95166	94844	-322	4
US Hydro	23814	25293	27469	29190	30033	31082	27408	-3674	-406
<b>US Gas</b>	<b>183409</b>	<b>205799</b>	<b>219917</b>	<b>223386</b>	<b>228724</b>	<b>230902</b>	<b>206041</b>	<b>-24862</b>	<b>-9316</b>

See National Wind and Nuclear daily charts

Source: Bloomberg, analytix.ai

## Storage Week Average Generation Data

### Nuclear Generation Weekly Average - GWh (NRC)

	9-Jul	16-Jul	23-Jul	30-Jul	6-Aug	13-Aug	WoW	WoW Bcf/d Impact
NRC Nuclear Daily Output	89.5	90.7	90.7	89.3	90.7	91.5	0.8	-0.1
NRC Nuclear Max Capacity	104.9	104.9	104.9	104.9	104.9	104.9	0.0	
NRC Nuclear Outage	15.4	14.2	14.2	15.6	14.2	13.3	-0.8	
NRC % Nuclear Cap Utilization	0.1	0.1	0.1	0.1	0.1	0.1	0.0	

### Wind Generation Weekly Average - MWh (EIA)

	9-Jul	16-Jul	23-Jul	30-Jul	6-Aug	13-Aug	WoW	WoW Bcf/d Impact
CALI Wind	2604	3004	2064	1905	2237	2507	271	0.0
TEXAS Wind	3739	10817	7162	7913	5180	16319	11139	-1.9
US Wind	25696	36364	26446	29735	22378	49668	27290	-4.6

### Generation Weekly Average - MWh (EIA)

	9-Jul	16-Jul	23-Jul	30-Jul	6-Aug	13-Aug	WoW	WoW Bcf/d Impact
US Wind	25696	36364	26446	29735	22378	49668	27290	-4.6
US Solar	14165	14486	14023	13977	14129	14000	-129	0.0
US Petroleum	4035	4282	3892	4729	4074	4647	573	-0.1
US Other	9159	9555	9336	9281	9058	9797	739	-0.1
US Coal	131313	131514	137621	146400	134732	140127	5395	-0.9
US Nuke	92359	93735	93488	92226	93269	94282	1012	-0.2
US Hydro	30129	30422	30191	29204	27732	26806	-926	0.2
<b>US Gas</b>	<b>194605</b>	<b>199737</b>	<b>210464</b>	<b>224376</b>	<b>204525</b>	<b>207061</b>	<b>2535</b>	

See National Wind and Nuclear daily charts

Source: Bloomberg, analytix.ai

## Monthly Average Generation Data

### Nuclear Generation Monthly Average - GWh (NRC)

	2Yr Ago		LY		MTD		Last 30 days	MoM (MTD vs LY)	Last 30 days YoY
	Same 30 days	Same 30 days	May-21	Jun-21	Jul-21	Aug-21			
	NRC Nuclear Daily Output	94.2	90.7	81.8	88.7	90.0			
NRC Nuclear Max Capacity	104.9	104.9	104.9	104.9	104.9	104.9	104.9	0.0	0.0
NRC Nuclear Outage	10.7	14.2	23.1	16.2	14.9	13.3	14.1	-1.6	-0.1
NRC % Nuclear Cap Utilization	95.8	92.2	83.2	90.2	91.5	93.2	92.4	1.6	0.1

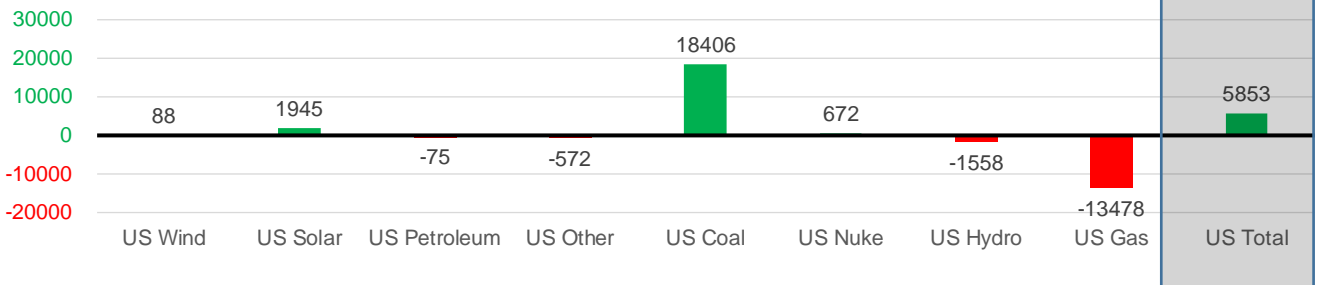
### Wind Generation Monthly Average - MWh (EIA)

	2Yr Ago		LY		MTD		Last 30 days	MoM (MTD vs LY)	Last 30 days YoY
	Same 30 days	Same 30 days	May-21	Jun-21	Jul-21	Aug-21			
	CALI Wind	2152	2490	3402	2913	2338			
TEXAS Wind	8294	9060	12259	9675	7217	9971	8442	2754	-618
US Wind	26386	30843	46081	37299	29105	34217	30930	5112	88

### Generation Monthly Average - MWh (EIA)

	2Yr Ago		LY		MTD		Last 30 days	MoM (MTD vs LY)	Last 30 days YoY
	Same 30 days	Same 30 days	May-21	Jun-21	Jul-21	Aug-21			
	US Wind	26386	30843	46081	37299	29105			
US Solar	9208	11699	14488	14564	14195	13489	13643	▲ 154.5	▲ 1945
US Petroleum	5283	4448	3012	4150	4233	4345	4373	▲ 28	▼ -75
US Other	9284	9965	7439	8162	9324	9520	9392	▼ -127	▼ -572
US Coal	128714	122014	86419	121357	137224	138453	140420	▲ 1967	▲ 18406
US Nuke	100526	92822	85517	92175	92897	94219	93494	▼ -725	▲ 672
US Hydro	33412	29942	30677	32577	29936	27427	28384	▲ 957	▼ -1558
<b>US Gas</b>	<b>219377</b>	<b>225364</b>	<b>139478</b>	<b>188815</b>	<b>207789</b>	<b>206201</b>	<b>211886</b>	▼ -1033	▼ -13478
<b>US Total</b>	<b>533442</b>	<b>526819</b>	<b>413542</b>	<b>499468</b>	<b>524885</b>	<b>528103</b>	<b>532672</b>	▲ 1221	▲ 5853

Last 30 days YoY



See National Wind and Nuclear daily charts

Source: Bloomberg, analytix.ai

## Regional S/D Models Storage Projection

Week Ending 13-Aug

	Daily Raw Storage	Daily Adjustment Factor	Daily Average Storage Activity (Adjusted) *	Weekly Adjusted Storage Activity
L48	3.8	1.3	5.1	36
East	1.2	1.3	2.5	18
Midwest	3.6	-0.3	3.3	23
Mountain	4.2	-4.2	0.0	0
South Central	-5.1	4.6	-0.5	-4
Pacific	0.0	-0.2	-0.2	-1

\*Adjustment Factor is calculated based on historical regional deltas

U.S. underground natural gas storage facilities by type (July 2015)

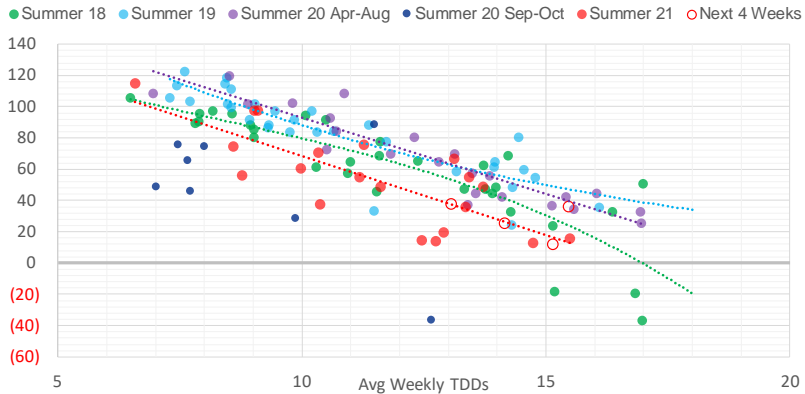


## Weather Model Storage Projection

Next report  
and beyond

Week Ending	GWDDs	Week Storage Projection
13-Aug	15.5	36
20-Aug	14.2	25
27-Aug	15.2	12
03-Sep	13.1	37

**Weather Storage Model - Next 4 Week Forecast**

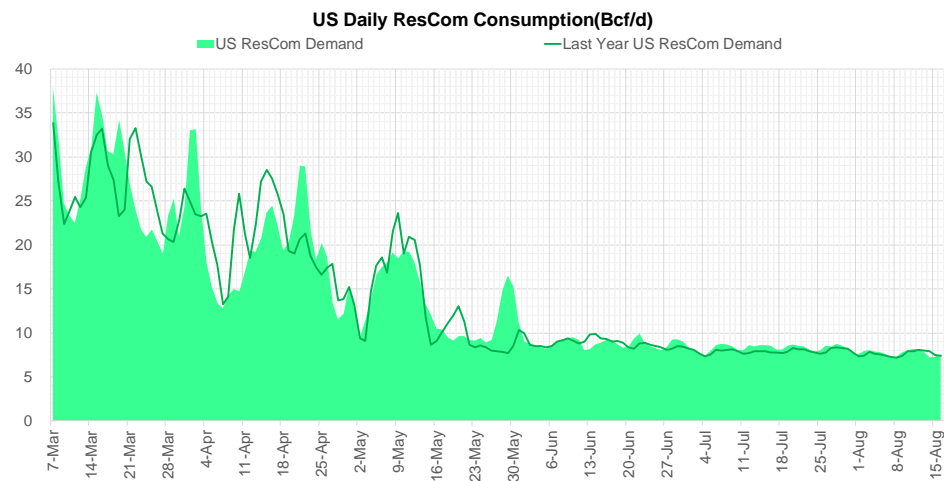
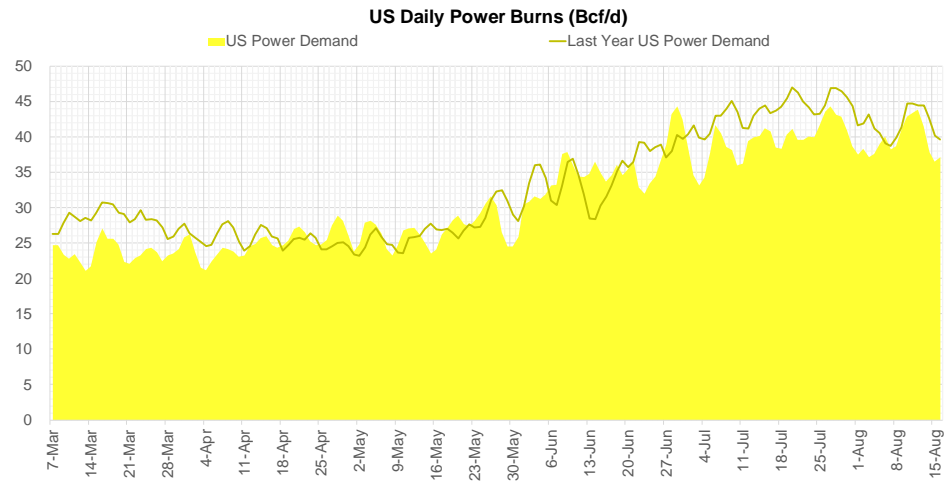
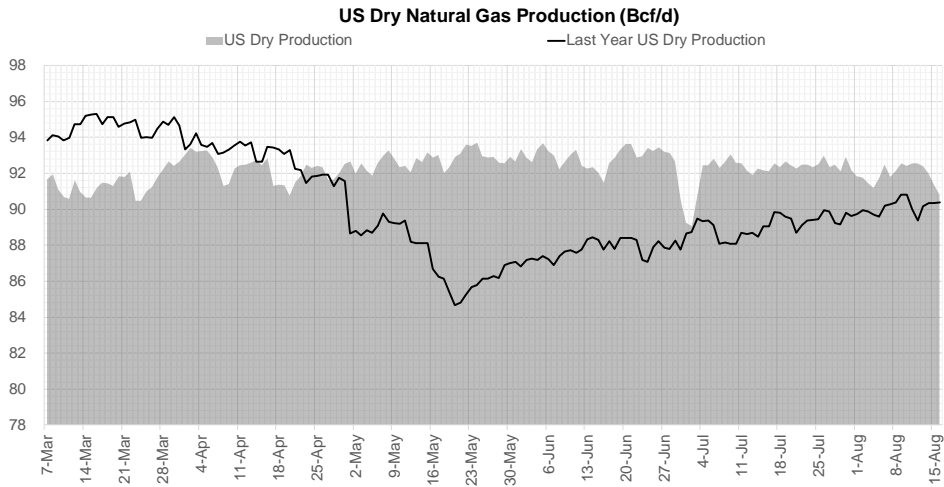


Go to larger image





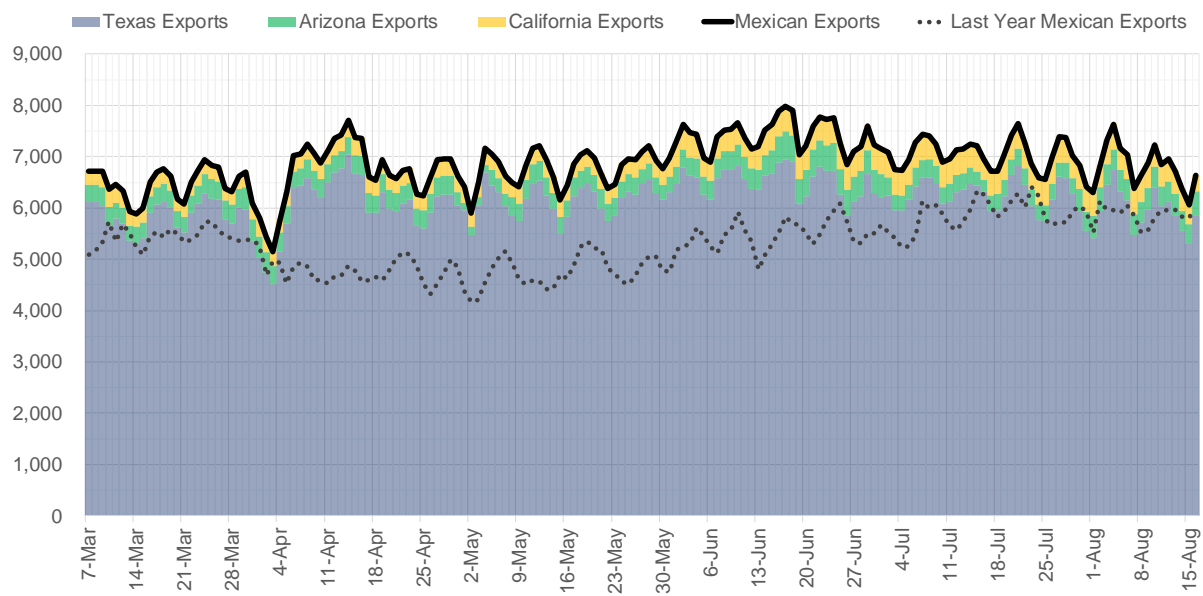
## Supply – Demand Trends



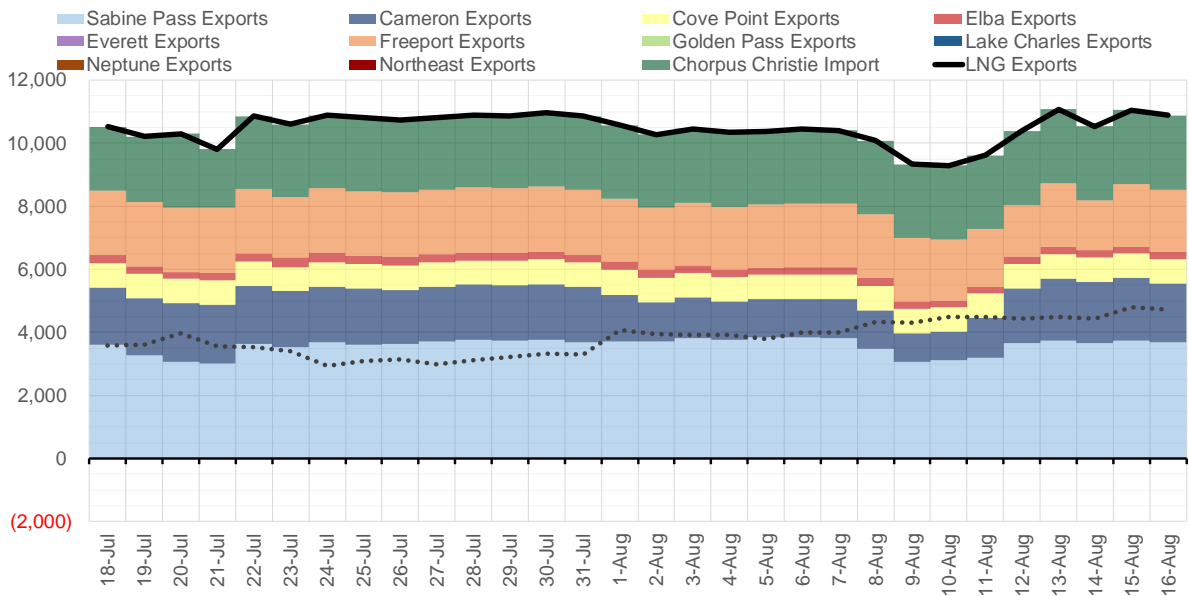
Source: Bloomberg

The risk of trading futures and options and other derivatives involves a substantial risk of loss and is not suitable for all persons. Each person must consider whether a particular trade, combination of trades, or strategy is suitable for that person's financial means and objectives. Past results are not necessarily indicative of future results. This communication may contain links to third party websites which are not under the control of and are not maintained by ION Energy Group, and ION Energy Group is not responsible for their content.

### Mexican Exports (MMcf/d)



### Net LNG Exports - Last 30 days (MMcf/d)



Source: Bloomberg

The risk of trading futures and options and other derivatives involves a substantial risk of loss and is not suitable for all persons. Each person must consider whether a particular trade, combination of trades, or strategy is suitable for that person's financial means and objectives. Past results are not necessarily indicative of future results. This communication may contain links to third party websites which are not under the control of and are not maintained by ION Energy Group, and ION Energy Group is not responsible for their content.

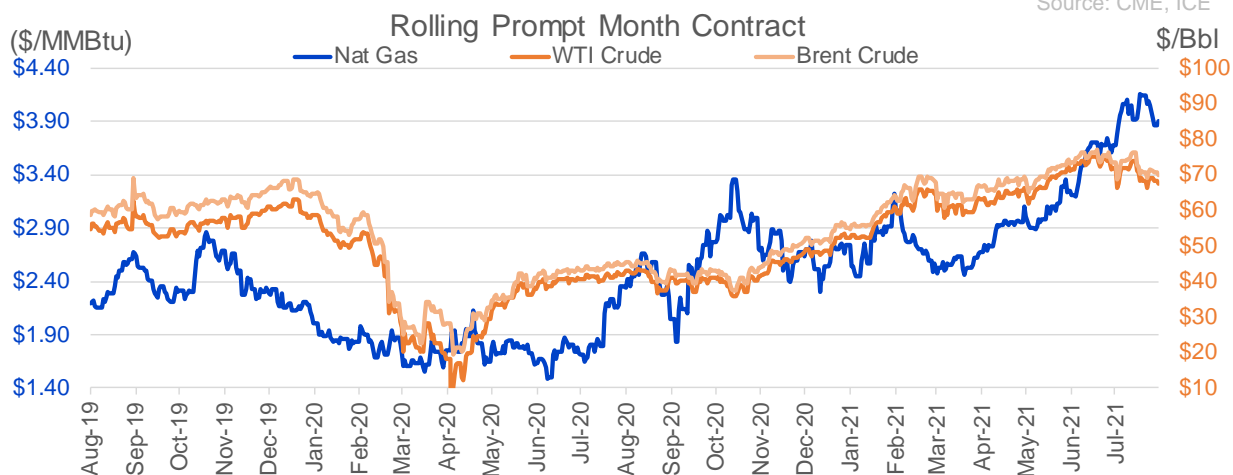
## Nat Gas Options Volume and Open Interest CME, ICE and Nasdaq Combined

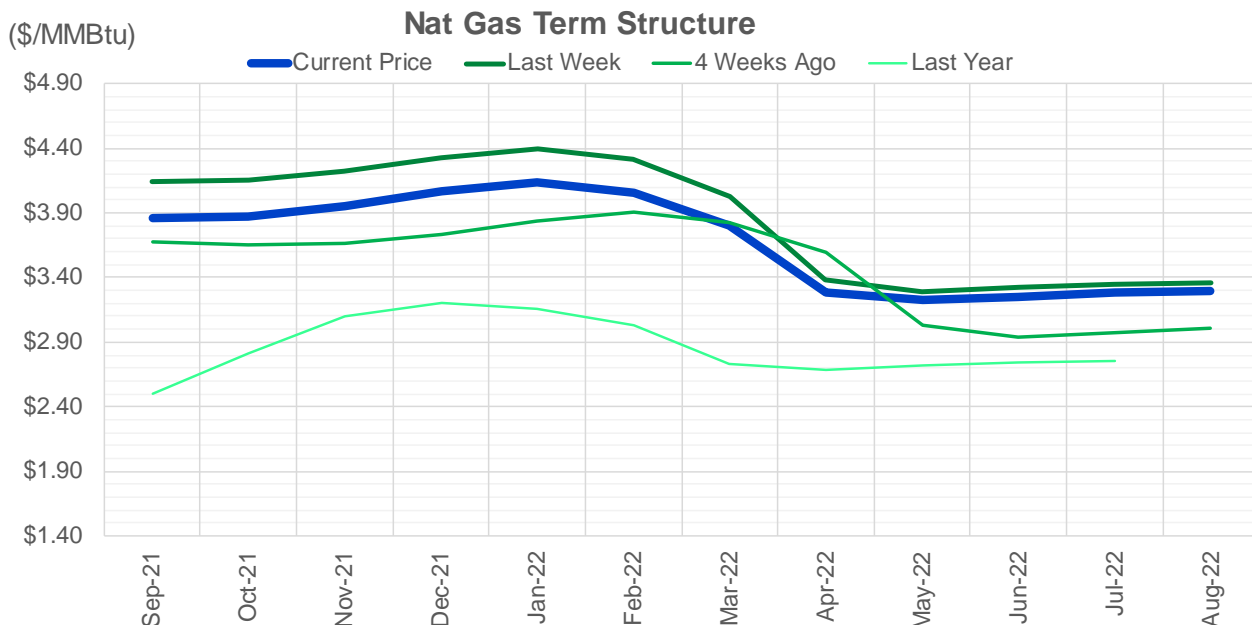
CONTRACT MONTH	CONTRACT YEAR	PUT/CALL	STRIKE	CUMULATIVE VOL	CONTRACT MONTH	CONTRACT YEAR	PUT/CALL	STRIKE	CUMULATIVE OI
12	2021	P	2.50	9321	10	2021	C	4.50	43842
9	2021	C	4.50	7905	12	2021	P	2.75	41619
9	2021	P	3.75	7549	10	2021	C	4.00	40562
9	2021	C	4.00	6650	10	2021	C	5.00	38203
10	2021	P	3.50	6208	10	2021	P	3.50	34165
10	2021	C	4.50	6027	10	2021	C	3.50	33006
9	2021	P	3.70	5968	10	2021	P	2.50	30044
9	2021	P	3.50	4646	12	2021	P	2.50	29530
10	2021	C	4.25	4271	10	2021	P	2.00	28650
10	2021	P	3.25	3951	10	2021	P	3.00	28572
9	2021	P	3.80	3638	10	2021	C	3.25	28230
10	2021	P	2.75	3373	9	2021	C	4.00	28146
9	2021	P	3.65	2988	9	2021	C	4.25	27693
10	2021	C	5.00	2680	10	2021	P	2.75	27063
9	2021	P	3.60	2540	9	2021	C	5.00	26044
9	2021	P	3.85	2472	12	2021	P	3.00	24898
10	2021	C	4.75	2294	10	2021	C	6.00	24499
10	2021	C	4.00	2092	9	2021	P	2.50	23385
9	2021	C	4.65	2091	9	2021	C	3.50	22606
9	2021	P	3.90	1756	11	2021	P	3.00	22534
9	2021	P	3.45	1593	9	2021	P	3.00	22432
10	2021	P	3.00	1544	10	2021	C	4.25	22151
10	2021	P	3.75	1499	11	2021	C	4.00	22123
9	2021	C	4.25	1473	12	2021	C	4.00	22090
11	2021	C	6.00	1460	9	2021	P	2.00	20427
11	2021	C	4.25	1142	9	2021	C	4.75	20415
4	2022	P	2.25	1100	9	2021	P	3.25	20102
5	2022	P	2.25	1100	10	2021	P	2.25	19900
6	2022	P	2.25	1100	4	2022	C	3.00	19810
7	2022	P	2.25	1100	9	2021	P	3.50	19358
8	2022	P	2.25	1100	9	2021	C	3.25	18994
9	2022	P	2.25	1100	10	2021	C	3.00	18502
10	2022	P	2.25	1100	11	2021	C	5.00	18104
9	2021	C	4.35	1085	9	2021	C	4.50	17242
9	2021	C	3.90	1053	10	2021	P	3.25	17101
11	2021	P	2.50	1000	10	2021	C	3.75	16814
10	2021	P	3.40	951	1	2022	C	5.00	16173
9	2021	P	4.00	949	9	2021	P	2.75	15816
9	2021	C	4.15	936	3	2022	C	5.00	15523
12	2021	C	4.50	901	11	2021	C	3.75	15026
9	2021	C	4.10	891	2	2022	C	5.00	14976
12	2021	P	3.15	883	9	2021	P	4.00	14941
1	2022	P	3.25	850	1	2022	C	4.00	14792
10	2021	P	3.30	836	3	2022	C	3.00	14448
3	2022	C	5.25	828	11	2021	P	2.50	14398
9	2021	P	3.55	797	9	2021	P	3.75	14396
9	2021	P	3.95	758	12	2021	P	2.00	13889
2	2022	P	3.25	750	3	2022	C	8.00	13875
12	2021	C	4.25	653	9	2021	P	2.60	13814
					3	2022	C	10	13784

Source: CME, ICE

## Nat Gas Futures Open Interest CME, and ICE Combined

CME Henry Hub Futures (10,000 MMBtu)				ICE Henry Hub Futures Contract Equivalent (10,000 MM			
	Current	Prior	Daily Change		Current	Prior	Daily Change
SEP 21	122128	139030	-16902	SEP 21	82934	85568	-2634
OCT 21	209083	203500	5583	OCT 21	106255	106579	-324
NOV 21	187136	187387	-251	NOV 21	70024	69480	545
DEC 21	80922	78544	2378	DEC 21	76587	76100	487
JAN 22	137719	135049	2670	JAN 22	78444	78312	132
FEB 22	55889	54725	1164	FEB 22	70990	71172	-183
MAR 22	101691	101308	383	MAR 22	74361	74196	165
APR 22	111752	111073	679	APR 22	70854	70496	358
MAY 22	99235	98134	1101	MAY 22	69403	69150	253
JUN 22	30749	30339	410	JUN 22	54858	54924	-67
JUL 22	26426	26284	142	JUL 22	55210	54914	295
AUG 22	25184	25114	70	AUG 22	55916	55842	75
SEP 22	26011	25913	98	SEP 22	55678	55664	14
OCT 22	67222	64920	2302	OCT 22	62613	62489	124
NOV 22	27375	27235	140	NOV 22	48745	48886	-141
DEC 22	24343	24028	315	DEC 22	52304	52331	-27
JAN 23	17360	17502	-142	JAN 23	33245	33231	14
FEB 23	6160	6160	0	FEB 23	27864	27844	20
MAR 23	8841	7929	912	MAR 23	29644	29645	-2
APR 23	11013	10723	290	APR 23	24557	24389	169
MAY 23	6312	6287	25	MAY 23	25509	25297	212
JUN 23	4672	4651	21	JUN 23	23674	23515	159
JUL 23	3838	3810	28	JUL 23	23820	23657	163
AUG 23	3474	3429	45	AUG 23	23653	23490	163
SEP 23	3868	3863	5	SEP 23	23143	22999	144
OCT 23	4647	4647	0	OCT 23	24755	24624	131
NOV 23	1392	1392	0	NOV 23	24889	24558	330
DEC 23	1850	1850	0	DEC 23	23586	23517	69
JAN 24	984	989	-5	JAN 24	12989	12973	16
FEB 24	873	873	0	FEB 24	11273	11311	-37





	Sep-21	Oct-21	Nov-21	Dec-21	Jan-22	Feb-22	Mar-22	Apr-22	May-22	Jun-22	Jul-22	Aug-22
<b>Current Price</b>	<b>\$3.861</b>	<b>\$3.875</b>	<b>\$3.949</b>	<b>\$4.070</b>	<b>\$4.135</b>	<b>\$4.058</b>	<b>\$3.808</b>	<b>\$3.289</b>	<b>\$3.222</b>	<b>\$3.251</b>	<b>\$3.285</b>	<b>\$3.293</b>
Last Week	\$4.140	\$4.154	\$4.219	\$4.330	\$4.400	\$4.315	\$4.023	\$3.377	\$3.291	\$3.319	\$3.351	\$3.357
vs. Last Week	-\$0.279	-\$0.279	-\$0.270	-\$0.260	-\$0.265	-\$0.257	-\$0.215	-\$0.088	-\$0.069	-\$0.068	-\$0.066	-\$0.064
4 Weeks Ago	\$3.674	\$3.658	\$3.664	\$3.732	\$3.843	\$3.909	\$3.830	\$3.591	\$3.031	\$2.941	\$2.972	\$3.008
vs. 4 Weeks Ago	\$0.187	\$0.217	\$0.285	\$0.338	\$0.292	\$0.149	-\$0.022	-\$0.302	\$0.191	\$0.310	\$0.313	\$0.285
Last Year	\$2.356	\$2.495	\$2.811	\$3.104	\$3.203	\$3.156	\$3.026	\$2.732	\$2.689	\$2.714	\$2.746	\$2.752
vs. Last Year	\$1.505	\$1.380	\$1.138	\$0.966	\$0.932	\$0.902	\$0.782	\$0.557	\$0.533	\$0.537	\$0.539	\$0.541

	Units	Cash Settled	Prompt Settle	Cash to Prompt
AGT Citygate	\$/MMBtu	4.15	3.43	-0.72
TETCO M3	\$/MMBtu	3.55	3.12	-0.43
FGT Zone 3	\$/MMBtu	3.94	4.21	0.27
Zone 6 NY	\$/MMBtu	3.94	3.09	-0.86
Chicago Citygate	\$/MMBtu	3.76	4.00	0.24
Michcon	\$/MMBtu	3.75	3.95	0.20
Columbia TCO Pool	\$/MMBtu	3.56	3.32	-0.24
Ventura	\$/MMBtu	3.67	3.94	0.27
Rockies/Opal	\$/MMBtu	3.65	3.86	0.21
El Paso Permian Basin	\$/MMBtu	3.69	3.92	0.23
Socal Citygate	\$/MMBtu	4.56	5.35	0.79
Malin	\$/MMBtu	4.12	4.25	0.13
Houston Ship Channel	\$/MMBtu	3.88	4.11	0.23
Henry Hub Cash	\$/MMBtu	3.90	3.92	0.02
AECO Cash	C\$/GJ	2.37	2.86	0.49
Station2 Cash	C\$/GJ	2.26	4.14	1.88
Dawn Cash	C\$/GJ	3.76	3.93	0.17

Source: CME, Bloomberg

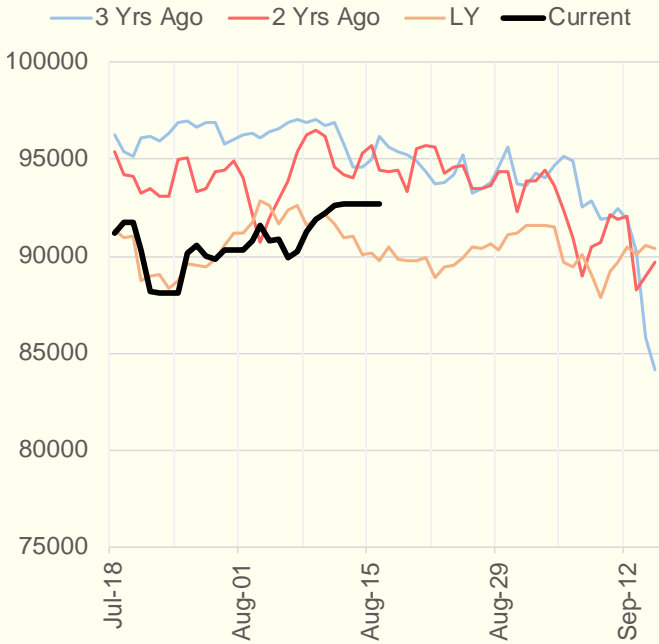
	Units	Current Price	vs. Last Week	vs. 4 Weeks Ago	vs. Last Year
NatGas Jul21/Oct21	\$/MMBtu	0.258	▼ -0.279	▲ 0.211	▲ 0.241
NatGas Oct21/Nov21	\$/MMBtu	0.074	▲ 0.009	▲ 0.006	▲ 0.026
NatGas Oct21/Jan22	\$/MMBtu	0.260	▲ 0.014	▲ 0.015	▼ -0.015
NatGas Apr22/Oct22	\$/MMBtu	0.012	▲ 0.027	▲ 0.016	▼ -0.036
WTI Crude	\$/Bbl	68.44	▲ 0.160	▼ -3.370	▲ 26.430
Brent Crude	\$/Bbl	70.59	▼ -0.110	▼ -3.000	▲ 25.790
Fuel Oil, NY Harbour 1%	\$/Bbl	97.18	▲ 0.000	▲ 0.000	▲ 0.000
Heating Oil	cents/Gallon	207.79	▼ -0.660	▼ -3.540	▲ 84.120
Propane, Mt. Bel	cents/Gallon	1.13	▲ 0.030	▲ 0.023	▲ 0.625
Ethane, Mt. Bel	cents/Gallon	0.34	▼ -0.005	▲ 0.032	▲ 0.101
Coal, PRB	\$/MTon	12.30	▲ 0.000	▲ 0.000	▲ 0.000
Coal, PRB	\$/MMBtu	0.70			
Coal, ILB	\$/MTon	31.05	▲ 0.000	▲ 0.000	▲ 0.000
Coal, ILB	\$/MMBtu	1.32			

## Weather Storage Model - Next 4 Week Forecast

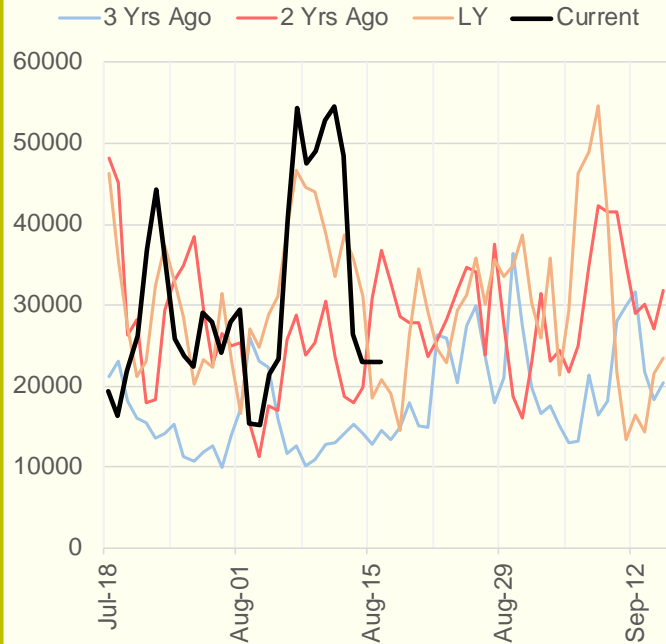


The risk of trading futures and options and other derivatives involves a substantial risk of loss and is not suitable for all persons. Each person must consider whether a particular trade, combination of trades, or strategy is suitable for that person's financial means and objectives. Past results are not necessarily indicative of future results. This communication may contain links to third party websites which are not under the control of and are not maintained by ION Energy Group, and ION Energy Group is not responsible for their content.

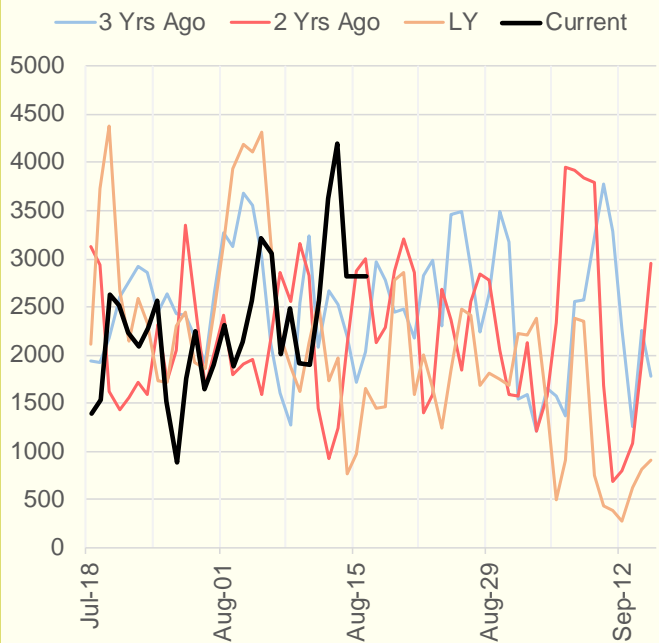
### NRC Nuclear Daily Output



### US Wind



### CALI Wind



### TEXAS Wind

