

	Current	Δ from YD	Δ from 7D Avg
Nat Gas Prompt	\$ 3.88	▼ \$ (0.06)	▼ \$ (0.06)

	Current	Δ from YD	Δ from 7D Avg
WTI Prompt	\$ 66.80	▼ \$ (0.49)	▼ \$ (1.7)

	Current	Δ from YD	Δ from 7D Avg
Brent Prompt	\$ 69.15	▼ \$ (0.36)	▼ \$ (1.5)

Page Menu

[Short-term Weather Model Outlooks](#)

[Lower 48 Component Models](#)

[Regional S/D Models Storage Projection](#)

[Weather Model Storage Projection](#)

[Supply – Demand Trends](#)

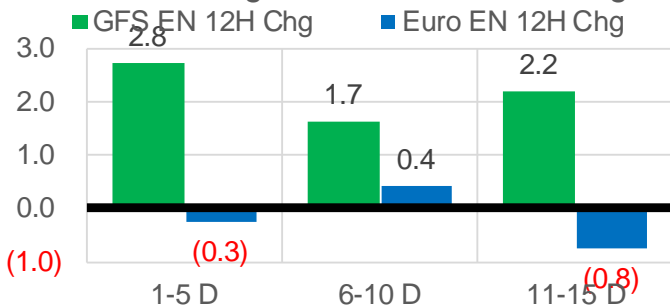
[Nat Gas Options Volume and Open Interest](#)

[Nat Gas Futures Open Interest](#)

[Price Summary](#)

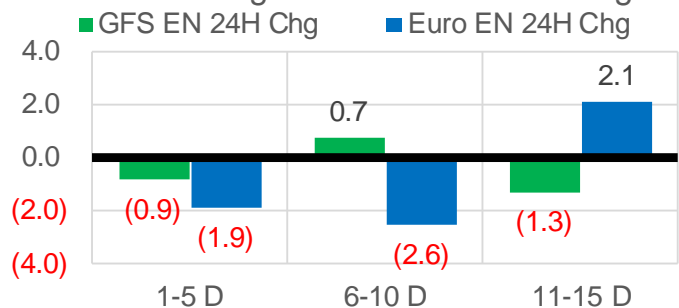
Vs. 12H Ago

L48 Region - 00z TDD vs 12H Ago



Vs. 24H Ago

L48 Region - 00z TDD vs 24H Ago



	Current	Δ from YD	Δ from 7D Avg
US Dry Production	89.7	▼ -1.24	▼ -2.49

	Current	Δ from YD	Δ from 7D Avg
US Power Burns	37.4	▼ -1.30	▼ -3.32

	Current	Δ from YD	Δ from 7D Avg
US ResComm	7.6	▼ -0.04	▼ -0.14

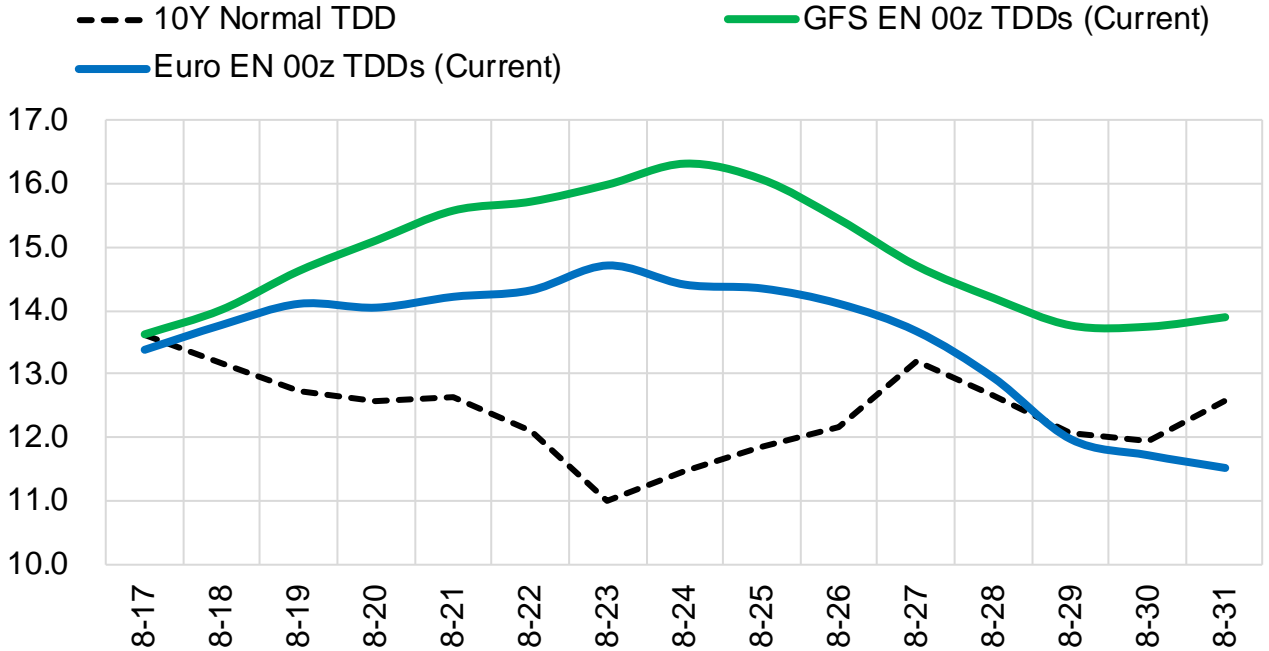
	Current	Δ from YD	Δ from 7D Avg
Canadian Imports	4.6	▼ -0.18	▼ -0.52

	Current	Δ from YD	Δ from 7D Avg
Net LNG Exports	10.9	▼ -0.08	▲ 0.49

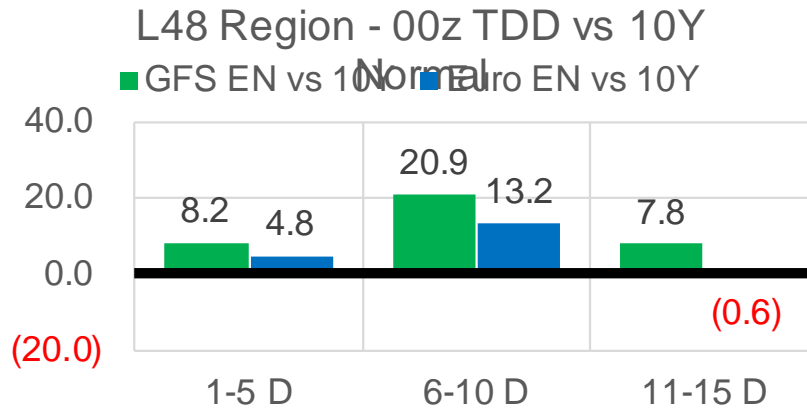
	Current	Δ from YD	Δ from 7D Avg
Mexican Exports	5.5	▲ 0.09	▼ -1.02

Short-term Weather Model Outlooks (00z)

L48 Region



Vs. 10Y Normal



Source: WSI , Bloomberg

Lower 48 Component Models

Daily Balances

	11-Aug	12-Aug	13-Aug	14-Aug	15-Aug	16-Aug	17-Aug	DoD	vs. 7D
Lower 48 Dry Production	92.7	92.7	92.6	92.2	91.6	90.9	89.7	▼ -1.2	▼ -2.4
Canadian Imports	5.5	5.7	5.3	4.8	4.6	4.8	4.6	▼ -0.2	▼ -0.5
L48 Power	43.4	44.0	41.7	37.8	36.4	38.7	37.4	▼ -1.3	▼ -3.0
L48 Residential & Commercial	8.2	8.1	7.8	7.1	7.1	7.6	7.6	▼ 0.0	▼ -0.1
L48 Industrial	20.4	20.6	20.9	21.1	21.4	21.5	21.3	▼ -0.2	▲ 0.4
L48 Lease and Plant Fuel	5.1	5.1	5.1	5.1	5.1	5.0	5.0	▼ -0.1	▼ -0.1
L48 Pipeline Distribution	2.5	2.5	2.4	2.2	2.1	2.2	2.2	▼ -0.1	▼ -0.1
L48 Regional Gas Consumption	79.6	80.4	78.0	73.2	72.1	75.1	73.4	▼ -1.6	▼ -3.0
Net LNG Delivered	9.62	10.39	11.08	10.53	11.06	11.00	10.91	▼ -0.1	▲ 0.3
Total Mexican Exports	6.9	7.0	6.7	6.4	6.2	5.4	5.5	▲ 0.1	▼ -0.9
Implied Daily Storage Activity	2.1	0.7	2.2	6.8	6.9	4.3	4.5		
EIA Reported Daily Storage Activity									
Daily Model Error									

EIA Storage Week Balances

	9-Jul	16-Jul	23-Jul	30-Jul	6-Aug	13-Aug	WoW	vs. 4W
Lower 48 Dry Production	91.9	92.5	92.6	92.6	92.0	92.5	▲ 0.5	▲ 0.1
Canadian Imports	5.1	5.2	4.9	5.5	5.1	5.2	▲ 0.1	▲ 0.0
L48 Power	37.2	38.7	39.7	42.2	38.5	41.2	▲ 2.7	▲ 1.4
L48 Residential & Commercial	8.2	8.4	8.4	8.3	7.9	7.7	▼ -0.1	▼ -0.5
L48 Industrial	19.5	19.6	19.6	20.7	20.4	20.3	▼ -0.2	▲ 0.2
L48 Lease and Plant Fuel	5.1	5.1	5.1	5.1	5.1	5.1	▲ 0.0	▼ 0.0
L48 Pipeline Distribution	2.1	2.2	2.3	2.4	2.2	2.4	▲ 0.1	▲ 0.1
L48 Regional Gas Consumption	72.1	74.1	75.2	78.7	74.1	76.7	▲ 2.6	▲ 1.2
Net LNG Exports	11.0	10.8	10.5	10.8	10.6	9.9	▼ -0.6	▼ -0.7
Total Mexican Exports	7.1	7.1	7.1	7.0	6.9	6.9	▼ -0.1	▼ -0.2
Implied Daily Storage Activity	6.8	5.6	4.6	1.7	5.5	4.2	-1.3	
EIA Reported Daily Storage Activity	7.9	7.0	5.1	1.9	7.0			
Daily Model Error	-1.1	-1.4	-0.5	-0.2	-1.5			

Monthly Balances

	2Yr Ago Aug-18	LY Aug-18	Apr-21	May-21	Jun-21	Jul-21	MTD Aug-21	MoM	vs. LY
Lower 48 Dry Production	85.0	85.0	92.3	92.7	93.0	92.3	92.0	▼ -0.4	▲ 6.9
Canadian Imports	5.0	5.0	4.6	4.5	4.8	5.2	5.0	▼ -0.2	▼ 0.0
L48 Power	38.1	38.1	24.9	26.7	35.3	39.4	39.4	▼ 0.0	▲ 1.3
L48 Residential & Commercial	7.8	7.8	19.5	13.2	8.8	8.3	7.7	▼ -0.6	▼ -0.1
L48 Industrial	21.6	21.6	21.2	20.3	20.9	19.9	20.6	▲ 0.7	▼ -1.0
L48 Lease and Plant Fuel	4.7	4.7	5.1	5.1	5.1	5.1	5.1	▼ 0.0	▲ 0.4
L48 Pipeline Distribution	2.2	2.2	2.3	2.1	2.2	2.3	2.3	▲ 0.0	▲ 0.1
L48 Regional Gas Consumption	74.4	74.4	73.0	67.2	72.2	75.1	75.1	▲ 0.0	▲ 0.7
Net LNG Exports	3.3	3.3	11.5	10.8	10.2	10.8	10.4	▼ -0.4	▲ 7.0
Total Mexican Exports	4.9	4.9	6.7	6.8	7.4	7.0	6.7	▼ -0.4	▲ 1.7
Implied Daily Storage Activity	7.4	7.4	5.7	12.4	8.0	4.6	4.9		
EIA Reported Daily Storage Activity									
Daily Model Error									

Source: Bloomberg, analytix.ai

Daily Average Generation Data

Nuclear Generation Daily Average - GWh (NRC)

	9-Aug	10-Aug	11-Aug	12-Aug	13-Aug	14-Aug	15-Aug	DoD	vs. 7D
NRC Nuclear Daily Output	91.9	92.2	92.6	92.7	92.7	92.7	92.7	0.0	0.2
NRC Nuclear Max Capacity	104.9	104.9	104.9	104.9	104.9	104.9	104.9	0.0	0.0
NRC Nuclear Outage	13.0	12.7	12.3	12.2	12.2	12.2	12.2	0.0	-0.2
NRC % Nuclear Cap Utilization	93.4	93.7	94.2	94.3	94.3	94.3	94.3	0.0	0.2

Wind Generation Daily Average - MWh (EIA)

	9-Aug	10-Aug	11-Aug	12-Aug	13-Aug	14-Aug	15-Aug	DoD	vs. 7D
CALI Wind	1912	1903	2561	3629	4191	2822	2623	-199	-214
TEXAS Wind	18829	19443	16463	14046	7789	4346	2507	-1840	-10980
US Wind	49061	52778	54647	48561	26370	22914	27068	4154	-15321

Generation Daily Average - MWh (EIA)

	9-Aug	10-Aug	11-Aug	12-Aug	13-Aug	14-Aug	15-Aug	DoD	vs. 7D
US Wind	49061	52778	54647	48561	26370	22914	27068	4154	-15321
US Solar	14425	13445	13051	13804	13377	11366	11932	566	-1313
US Petroleum	4187	5382	4803	5516	5347	3817	3268	-549	-1574
US Other	9693	10340	10353	10185	10342	9383	8957	-426	-1093
US Coal	142603	149372	149499	150898	152667	140750	128425	-12325	-19207
US Nuke	94652	94812	95168	95067	95166	94844	94943	99	-9
US Hydro	25293	27469	29190	30033	31082	27408	24827	-2580	-3585
US Gas	205820	219917	223405	228724	230902	206041	184034	-22006	-35100

See National Wind and Nuclear daily charts

Source: Bloomberg, analytix.ai

Storage Week Average Generation Data

Nuclear Generation Weekly Average - GWh (NRC)

	9-Jul	16-Jul	23-Jul	30-Jul	6-Aug	13-Aug	WoW	WoW Bcf/d Impact
NRC Nuclear Daily Output	89.5	90.7	90.7	89.3	90.7	91.5	0.8	-0.1
NRC Nuclear Max Capacity	104.9	104.9	104.9	104.9	104.9	104.9	0.0	
NRC Nuclear Outage	15.4	14.2	14.2	15.6	14.2	13.3	-0.8	
NRC % Nuclear Cap Utilization	0.1	0.1	0.1	0.1	0.1	0.1	0.0	

Wind Generation Weekly Average - MWh (EIA)

	9-Jul	16-Jul	23-Jul	30-Jul	6-Aug	13-Aug	WoW	WoW Bcf/d Impact
CALI Wind	2604	3004	2064	1905	2237	2507	271	0.0
TEXAS Wind	3739	10817	7162	7913	5180	16319	11139	-1.9
US Wind	25696	36364	26446	29735	22376	49671	27295	-4.6

Generation Weekly Average - MWh (EIA)

	9-Jul	16-Jul	23-Jul	30-Jul	6-Aug	13-Aug	WoW	WoW Bcf/d Impact
US Wind	25696	36364	26446	29735	22376	49671	27295	-4.6
US Solar	14165	14486	14023	13977	14129	14082	-47	0.0
US Petroleum	4035	4282	3892	4729	4074	4647	573	-0.1
US Other	9159	9555	9336	9281	9058	9835	777	-0.1
US Coal	131313	131514	137620	146400	134732	140137	5405	-0.9
US Nuke	92359	93735	93488	92226	93269	94282	1012	-0.2
US Hydro	30129	30422	30191	29204	27732	26806	-926	0.2
US Gas	194605	199737	210464	224376	204525	207142	2617	

See National Wind and Nuclear daily charts

Source: Bloomberg, analytix.ai

Monthly Average Generation Data

Nuclear Generation Monthly Average - GWh (NRC)

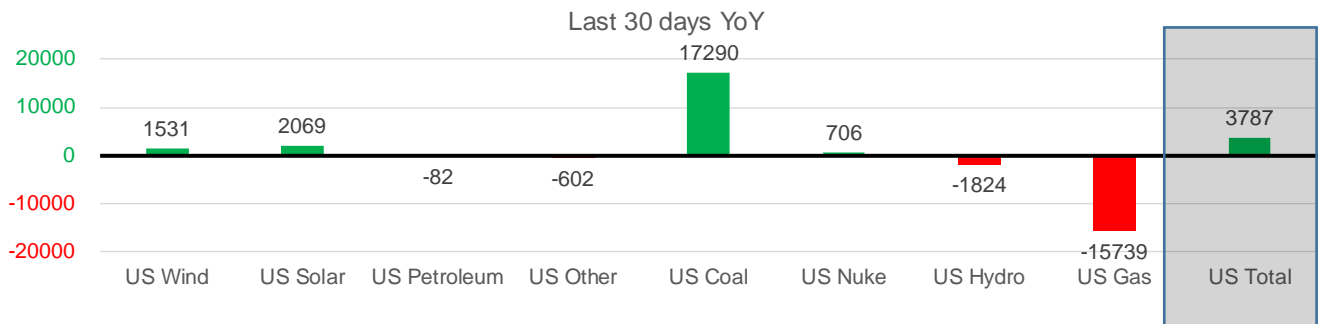
	2Yr Ago		LY		MTD		Last 30 days	MoM (MTD vs LY)	Last 30 days YoY
	Same 30 days	Same 30 days	May-21	Jun-21	Jul-21	Aug-21			
	NRC Nuclear Daily Output	94.2	90.7	81.8	88.7	90.0			
NRC Nuclear Max Capacity	104.9	104.9	104.9	104.9	104.9	104.9	104.9	0.0	0.0
NRC Nuclear Outage	10.7	14.2	23.1	16.2	14.9	13.2	14.0	-1.6	-0.2
NRC % Nuclear Cap Utilization	95.7	92.2	83.2	90.2	91.5	93.2	92.4	1.7	0.2

Wind Generation Monthly Average - MWh (EIA)

	2Yr Ago		LY		MTD		Last 30 days	MoM (MTD vs LY)	Last 30 days YoY
	Same 30 days	Same 30 days	May-21	Jun-21	Jul-21	Aug-21			
	CALI Wind	2119	2468	3402	2913	2338			
TEXAS Wind	8185	8831	12259	9675	7217	9316	8217	2099	-613
US Wind	25870	29936	46081	37299	29104	34286	31467	5182	1531

Generation Monthly Average - MWh (EIA)

	2Yr Ago		LY		MTD		Last 30 days	MoM (MTD vs LY)	Last 30 days YoY
	Same 30 days	Same 30 days	May-21	Jun-21	Jul-21	Aug-21			
	US Wind	25870	29936	46081	37299	29104			
US Solar	9191	11613	14488	14564	14195	13502	13682	▲ 180.1	▲ 2069
US Petroleum	5181	4421	3012	4150	4233	4217	4339	▲ 122	▼ -82
US Other	9255	9969	7439	8162	9324	9452	9367	▼ -85	▼ -602
US Coal	128001	122196	86419	121357	137224	136418	139486	▲ 3068	▲ 17290
US Nuke	100472	92814	85517	92175	92897	94274	93520	▼ -754	▲ 706
US Hydro	33154	29948	30677	32577	29936	26971	28125	▲ 1154	▼ -1824
US Gas	218850	225656	139478	188815	207789	202341	209917	▲ 867	▼ -15739
US Total	531202	526252	413542	499468	524884	521680	530038	▲ 4552	▲ 3787



See National Wind and Nuclear daily charts

Source: Bloomberg, analytix.ai

Regional S/D Models Storage Projection

Week Ending 13-Aug

	Daily Raw Storage	Daily Adjustment Factor	Daily Average Storage Activity (Adjusted) *	Weekly Adjusted Storage Activity
L48	3.9	1.3	5.1	36
East	1.2	1.4	2.6	18
Midwest	3.5	-0.2	3.3	23
Mountain	4.2	-4.2	0.0	0
South Central	-5.1	4.5	-0.5	-4
Pacific	0.0	-0.2	-0.2	-1

*Adjustment Factor is calculated based on historical regional deltas

U.S. underground natural gas storage facilities by type (July 2015)

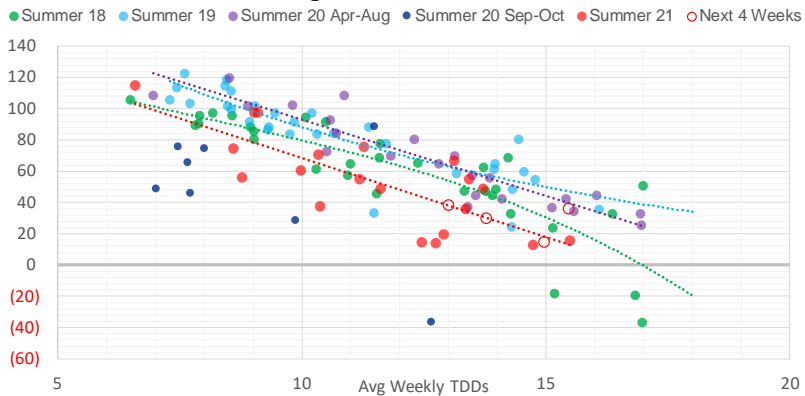


Weather Model Storage Projection

Next report
and beyond

Week Ending	GWDDs	Week Storage Projection
13-Aug	15.5	36
20-Aug	13.8	29
27-Aug	15.0	14
03-Sep	13.0	38

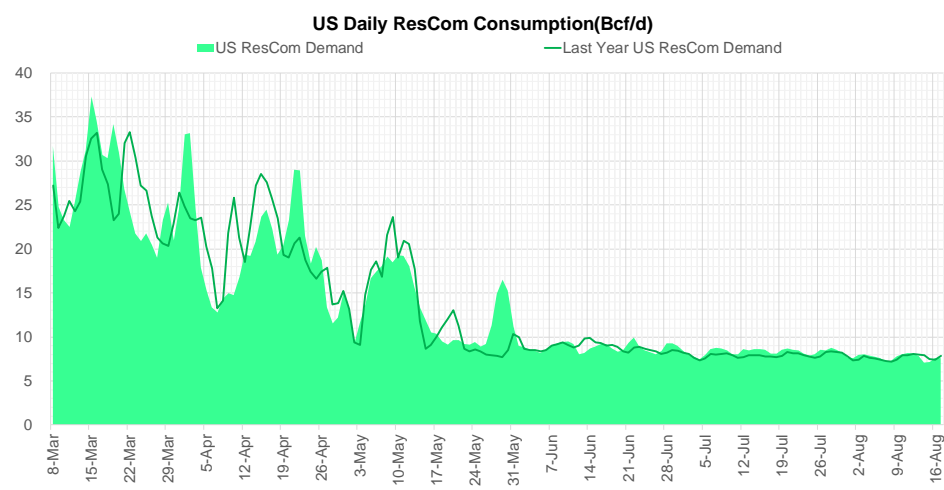
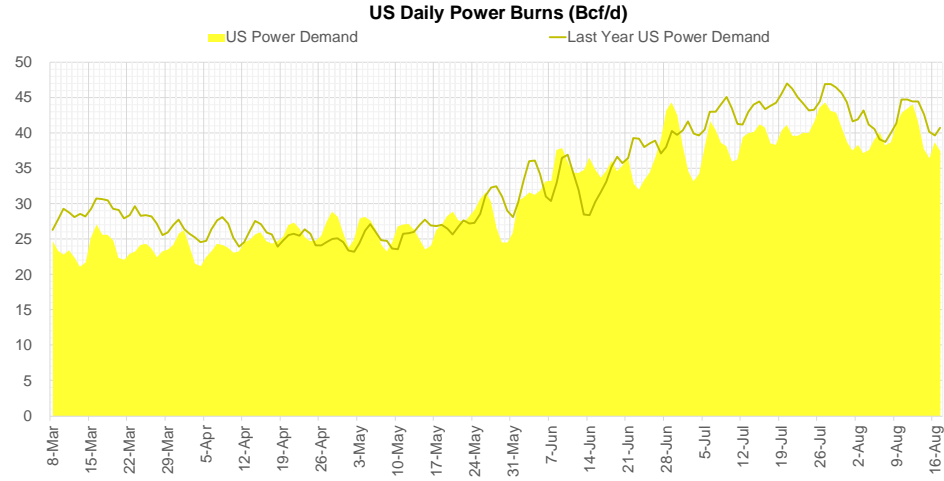
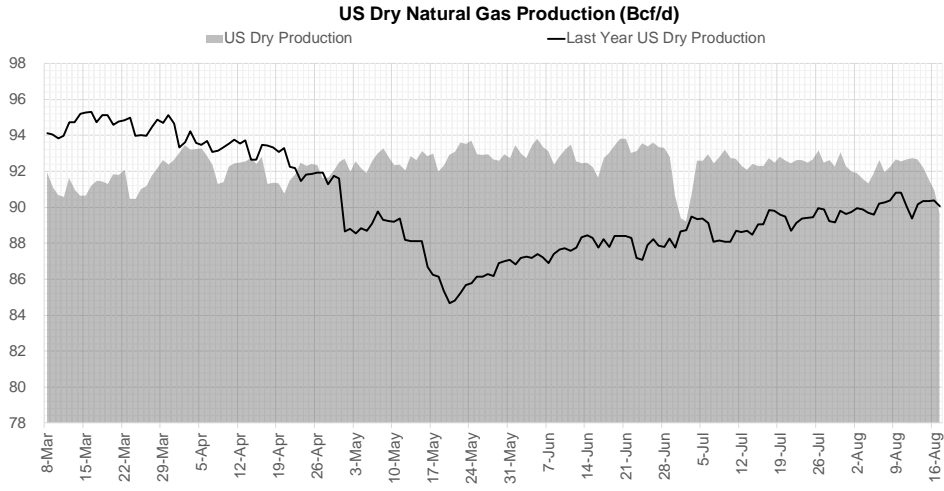
Weather Storage Model - Next 4 Week Forecast



Go to larger image

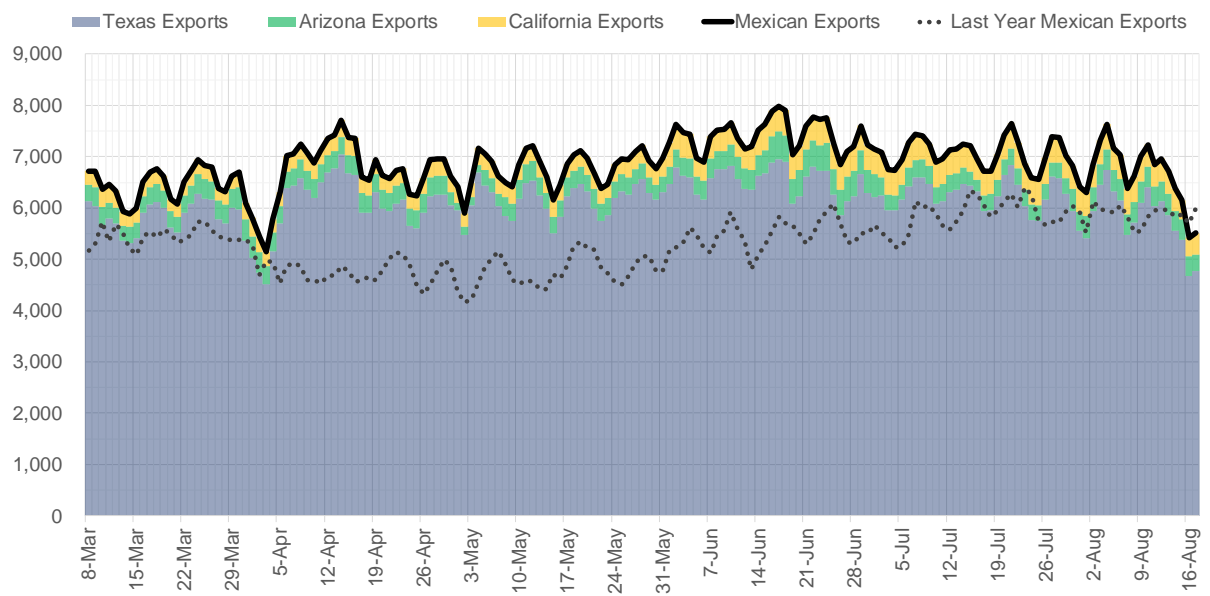


Supply – Demand Trends

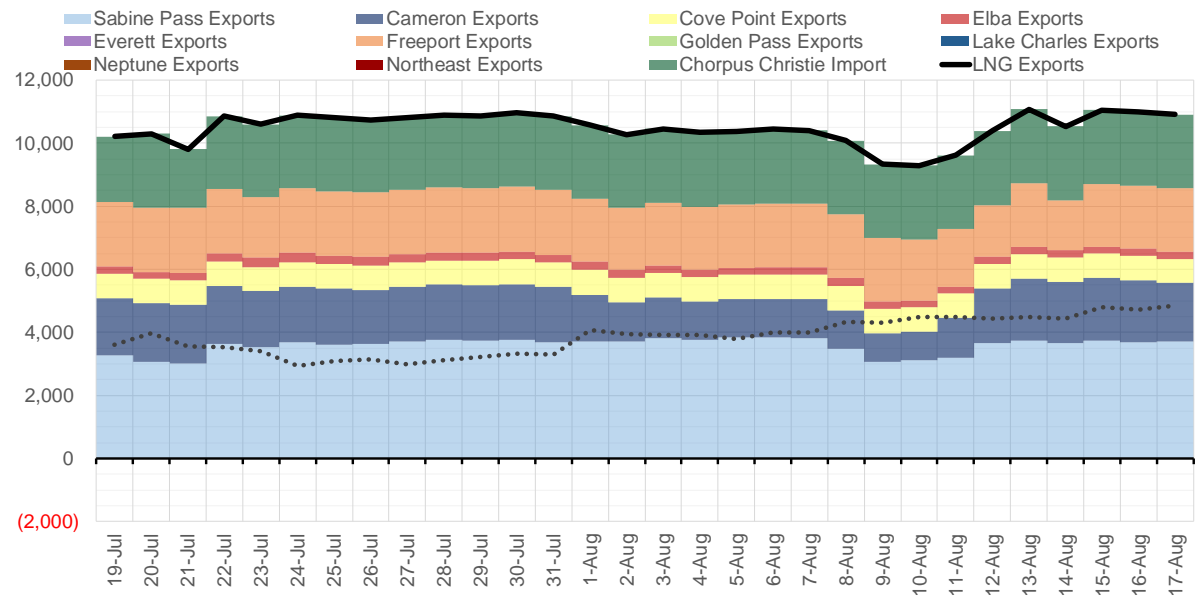


Source: Bloomberg

Mexican Exports (MMcf/d)



Net LNG Exports - Last 30 days (MMcf/d)



Source: Bloomberg

The risk of trading futures and options and other derivatives involves a substantial risk of loss and is not suitable for all persons. Each person must consider whether a particular trade, combination of trades, or strategy is suitable for that person's financial means and objectives. Past results are not necessarily indicative of future results. This communication may contain links to third party websites which are not under the control of and are not maintained by ION Energy Group, and ION Energy Group is not responsible for their content.

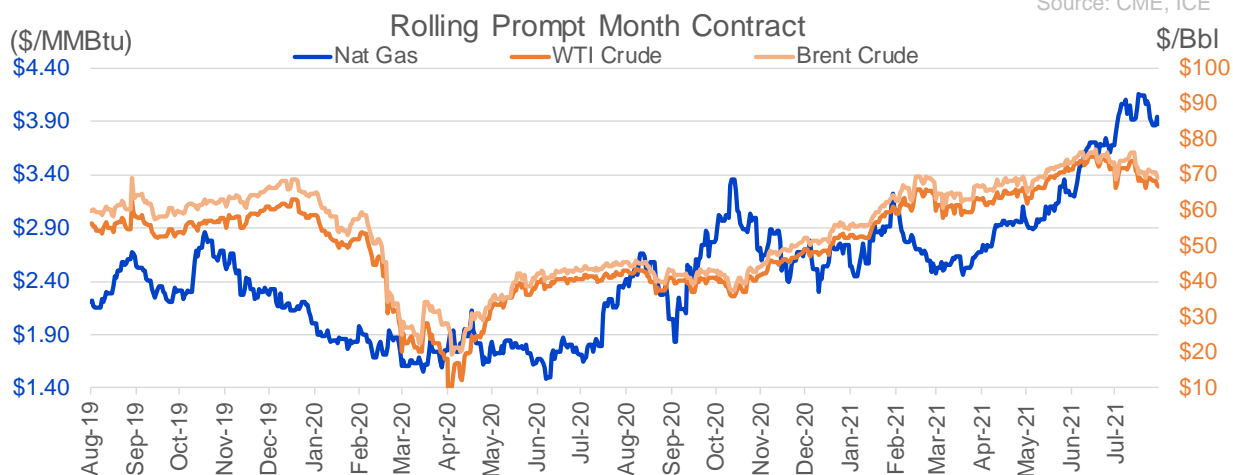
Nat Gas Options Volume and Open Interest CME, ICE and Nasdaq Combined

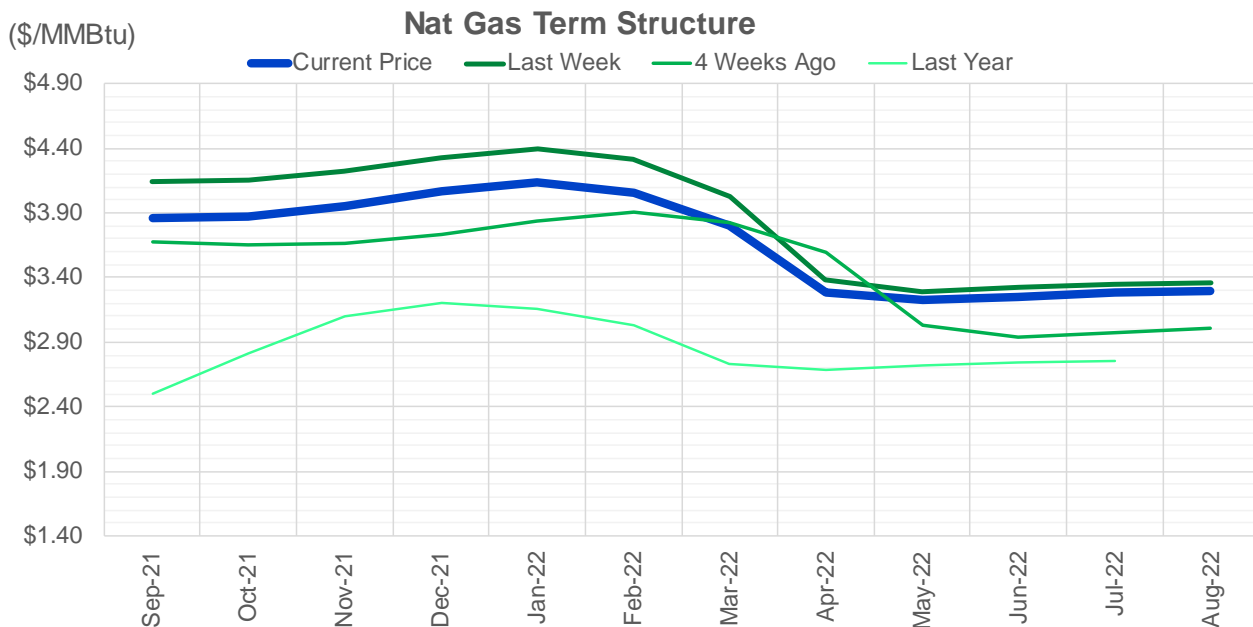
CONTRACT MONTH	CONTRACT YEAR	PUT/CALL	STRIKE	CUMULATIVE VOL	CONTRACT MONTH	CONTRACT YEAR	PUT/CALL	STRIKE	CUMULATIVE OI
10	2021	P	3.50	9623	10	2021	C	4.50	42673
10	2021	C	4.50	7201	12	2021	P	2.75	41620
9	2021	P	3.75	6961	10	2021	C	4.00	40791
9	2021	C	4.25	5377	12	2021	P	2.50	38656
9	2021	C	4.00	4364	10	2021	C	5.00	37797
10	2021	C	4.25	3750	10	2021	P	3.50	35206
10	2021	C	5.00	3729	10	2021	C	3.50	33004
10	2021	C	4.00	3480	9	2021	C	4.00	31875
9	2021	P	3.80	3364	10	2021	P	2.50	30044
10	2021	P	3.25	2480	10	2021	P	2.00	28650
9	2021	C	4.20	2474	10	2021	P	3.00	28559
9	2021	P	3.50	2454	10	2021	C	3.25	28230
10	2021	P	3.75	2391	9	2021	C	4.25	27321
12	2021	P	3.50	2301	10	2021	P	2.75	27063
2	2022	P	3.50	2235	9	2021	C	5.00	26562
2	2022	P	3.75	2200	12	2021	P	3.00	24898
9	2021	C	4.10	2191	10	2021	C	6.00	24499
11	2021	C	4.50	2169	10	2021	C	4.25	23900
10	2021	C	4.20	2140	9	2021	P	2.50	23385
9	2021	C	4.50	2032	11	2021	P	3.00	22744
10	2021	P	3.00	2027	9	2021	C	3.50	22610
9	2021	P	3.90	1992	9	2021	P	3.00	22432
9	2021	P	3.85	1972	12	2021	C	4.00	22092
9	2021	P	4.00	1866	11	2021	C	4.00	21941
9	2021	P	3.70	1710	9	2021	C	4.50	20892
9	2021	P	3.95	1462	9	2021	P	2.00	20427
10	2021	C	4.75	1282	9	2021	C	4.75	20409
11	2021	C	5.00	1115	9	2021	P	3.25	20099
2	2022	P	2.50	1100	9	2021	P	3.50	20010
9	2021	C	3.90	1043	10	2021	P	2.25	19900
10	2021	P	3.60	1020	4	2022	C	3.00	19810
1	2022	P	2.50	1000	9	2021	C	3.25	18994
3	2022	P	2.50	1000	10	2021	C	3.00	18502
3	2023	P	2.75	1000	11	2021	C	5.00	18107
4	2023	P	2.75	1000	10	2021	P	3.25	17082
9	2021	P	3.60	938	10	2021	C	3.75	16814
11	2021	P	3.50	937	1	2022	C	5.00	16249
9	2021	P	3.45	932	9	2021	P	2.75	15816
10	2021	P	3.05	774	9	2021	P	4.00	15542
9	2021	C	5.00	742	3	2022	C	5.00	15533
1	2022	P	3.50	737	2	2022	C	5.00	15276
12	2021	C	4.25	718	11	2021	C	3.75	15026
12	2021	C	4.50	700	1	2022	C	4.00	14782
11	2021	C	4.00	692	3	2022	C	3.00	14448
12	2021	P	2.75	650	11	2021	P	2.50	14398
1	2022	P	3.00	650	3	2022	P	2.50	13969
11	2021	C	4.75	602	12	2021	P	2.00	13889
3	2022	P	3.00	584	3	2022	C	8.00	13875
9	2021	C	4.30	553	9	2021	P	2.60	13814
					3	2022	C	10	13784

Source: CME, ICE

Nat Gas Futures Open Interest CME, and ICE Combined

CME Henry Hub Futures (10,000 MMBtu)				ICE Henry Hub Futures Contract Equivalent (10,000 MM			
	Current	Prior	Daily Change		Current	Prior	Daily Change
SEP 21	114412	122136	-7724	SEP 21	83707	82934	773
OCT 21	213048	209083	3965	OCT 21	106604	106255	349
NOV 21	189712	187563	2149	NOV 21	69952	70024	-73
DEC 21	83472	80922	2550	DEC 21	76678	76587	91
JAN 22	137627	137719	-92	JAN 22	78411	78444	-34
FEB 22	56192	55889	303	FEB 22	70991	70990	2
MAR 22	103061	101691	1370	MAR 22	74566	74361	205
APR 22	112879	111752	1127	APR 22	70884	70854	30
MAY 22	99821	99235	586	MAY 22	70175	69403	772
JUN 22	30957	30749	208	JUN 22	54925	54858	67
JUL 22	26483	26426	57	JUL 22	55461	55210	251
AUG 22	25334	25184	150	AUG 22	56007	55916	90
SEP 22	26635	26011	624	SEP 22	55775	55678	97
OCT 22	67167	67222	-55	OCT 22	63136	62613	523
NOV 22	27778	27375	403	NOV 22	49020	48745	275
DEC 22	24482	24343	139	DEC 22	52499	52304	195
JAN 23	17398	17360	38	JAN 23	33393	33245	148
FEB 23	6131	6160	-29	FEB 23	27984	27864	120
MAR 23	9078	8841	237	MAR 23	29806	29644	162
APR 23	10850	11013	-163	APR 23	24640	24557	83
MAY 23	6342	6312	30	MAY 23	25595	25509	86
JUN 23	4768	4672	96	JUN 23	23730	23674	56
JUL 23	3853	3838	15	JUL 23	23846	23820	27
AUG 23	3473	3474	-1	AUG 23	23711	23653	58
SEP 23	3880	3868	12	SEP 23	23169	23143	26
OCT 23	4672	4647	25	OCT 23	24795	24755	40
NOV 23	1404	1392	12	NOV 23	24920	24889	31
DEC 23	1850	1850	0	DEC 23	23594	23586	8
JAN 24	984	984	0	JAN 24	13128	12989	140
FEB 24	873	873	0	FEB 24	11302	11273	29





	Sep-21	Oct-21	Nov-21	Dec-21	Jan-22	Feb-22	Mar-22	Apr-22	May-22	Jun-22	Jul-22	Aug-22
Current Price	\$3.861	\$3.875	\$3.949	\$4.070	\$4.135	\$4.058	\$3.808	\$3.289	\$3.222	\$3.251	\$3.285	\$3.293
Last Week	\$4.140	\$4.154	\$4.219	\$4.330	\$4.400	\$4.315	\$4.023	\$3.377	\$3.291	\$3.319	\$3.351	\$3.357
vs. Last Week	-\$0.279	-\$0.279	-\$0.270	-\$0.260	-\$0.265	-\$0.257	-\$0.215	-\$0.088	-\$0.069	-\$0.068	-\$0.066	-\$0.064
4 Weeks Ago	\$3.674	\$3.658	\$3.664	\$3.732	\$3.843	\$3.909	\$3.830	\$3.591	\$3.031	\$2.941	\$2.972	\$3.008
vs. 4 Weeks Ago	\$0.187	\$0.217	\$0.285	\$0.338	\$0.292	\$0.149	-\$0.022	-\$0.302	\$0.191	\$0.310	\$0.313	\$0.285
Last Year	\$2.356	\$2.495	\$2.811	\$3.104	\$3.203	\$3.156	\$3.026	\$2.732	\$2.689	\$2.714	\$2.746	\$2.752
vs. Last Year	\$1.505	\$1.380	\$1.138	\$0.966	\$0.932	\$0.902	\$0.782	\$0.557	\$0.533	\$0.537	\$0.539	\$0.541

	Units	Cash Settled	Prompt Settle	Cash to Prompt
AGT Citygate	\$/MMBtu	3.80	3.32	-0.48
TETCO M3	\$/MMBtu	3.68	3.06	-0.62
FGT Zone 3	\$/MMBtu	3.71	4.12	0.41
Zone 6 NY	\$/MMBtu	3.71	3.01	-0.70
Chicago Citygate	\$/MMBtu	3.75	3.90	0.15
Michcon	\$/MMBtu	3.77	3.86	0.09
Columbia TCO Pool	\$/MMBtu	3.64	3.23	-0.41
Ventura	\$/MMBtu	3.67	3.85	0.18
Rockies/Opal	\$/MMBtu	3.65	3.78	0.13
El Paso Permian Basin	\$/MMBtu	3.60	3.83	0.23
Socal Citygate	\$/MMBtu	7.50	5.26	-2.24
Malin	\$/MMBtu	4.12	4.16	0.04
Houston Ship Channel	\$/MMBtu	3.92	4.02	0.10
Henry Hub Cash	\$/MMBtu	3.93	3.83	-0.11
AECO Cash	C\$/GJ	1.92	2.82	0.90
Station2 Cash	C\$/GJ	2.00	4.05	2.05
Dawn Cash	C\$/GJ	3.77	3.84	0.07

Source: CME, Bloomberg

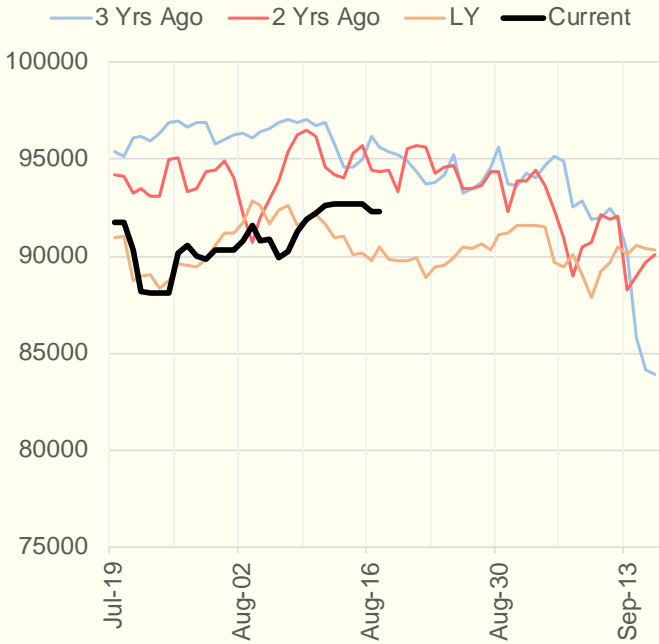
	Units	Current Price	vs. Last Week	vs. 4 Weeks Ago	vs. Last Year
NatGas Jul21/Oct21	\$/MMBtu	0.343	▼ -0.115	▲ 0.209	▲ 0.325
NatGas Oct21/Nov21	\$/MMBtu	0.073	▲ 0.005	▲ 0.012	▲ 0.023
NatGas Oct21/Jan22	\$/MMBtu	0.250	▲ 0.007	▲ 0.026	▼ -0.026
NatGas Apr22/Oct22	\$/MMBtu	0.005	▲ 0.008	▲ 0.016	▼ -0.042
WTI Crude	\$/Bbl	67.29	▲ 0.810	▲ 0.870	▲ 24.400
Brent Crude	\$/Bbl	69.51	▲ 0.470	▲ 0.890	▲ 24.140
Fuel Oil, NY Harbour 1%	\$/Bbl	97.18	▲ 0.000	▲ 0.000	▲ 0.000
Heating Oil	cents/Gallon	204.83	▲ 0.620	▲ 6.310	▲ 80.920
Propane, Mt. Bel	cents/Gallon	1.12	▲ 0.040	▲ 0.049	▲ 0.620
Ethane, Mt. Bel	cents/Gallon	0.34	▼ 0.000	▲ 0.032	▲ 0.100
Coal, PRB	\$/MTon	12.30	▲ 0.000	▲ 0.000	▲ 0.000
Coal, PRB	\$/MMBtu	0.70			
Coal, ILB	\$/MTon	31.05	▲ 0.000	▲ 0.000	▲ 0.000
Coal, ILB	\$/MMBtu	1.32			

Weather Storage Model - Next 4 Week Forecast

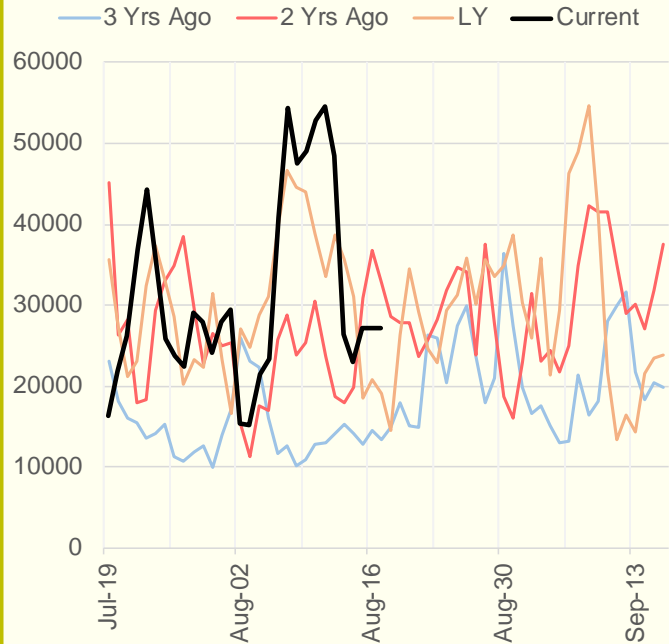


The risk of trading futures and options and other derivatives involves a substantial risk of loss and is not suitable for all persons. Each person must consider whether a particular trade, combination of trades, or strategy is suitable for that person's financial means and objectives. Past results are not necessarily indicative of future results. This communication may contain links to third party websites which are not under the control of and are not maintained by ION Energy Group, and ION Energy Group is not responsible for their content.

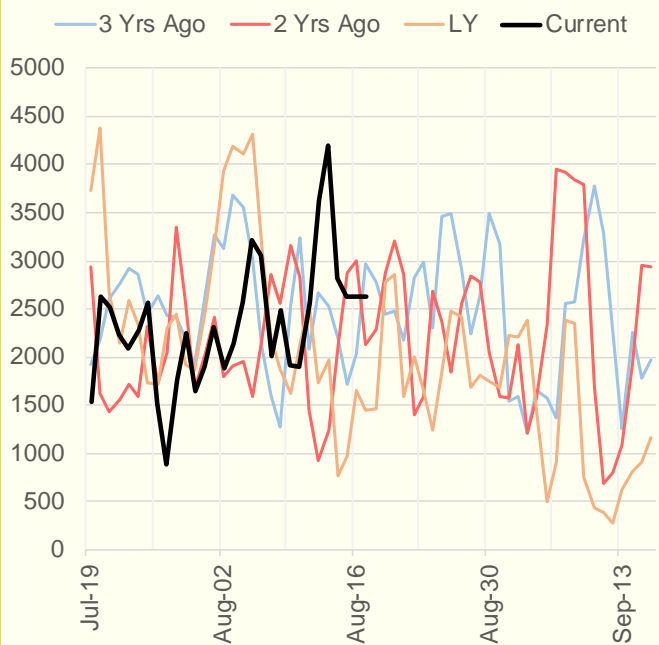
NRC Nuclear Daily Output



US Wind



CALI Wind



TEXAS Wind

