

	Current	Δ from YD	Δ from 7D Avg
Nat Gas Prompt	\$ 3.93	▼ \$ (0.01)	▲ \$ 0.07

	Current	Δ from YD	Δ from 7D Avg
WTI Prompt	\$ 66.60	▲ \$ 0.96	▲ \$ 2.6

	Current	Δ from YD	Δ from 7D Avg
Brent Prompt	\$ 69.84	▲ \$ 1.09	▲ \$ 3.0

Page Menu

[Short-term Weather Model Outlooks](#)

[Lower 48 Component Models](#)

[Regional S/D Models Storage Projection](#)

[Weather Model Storage Projection](#)

[Supply – Demand Trends](#)

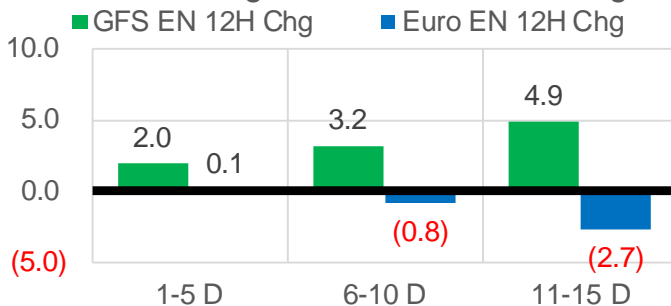
[Nat Gas Options Volume and Open Interest](#)

[Nat Gas Futures Open Interest](#)

[Price Summary](#)

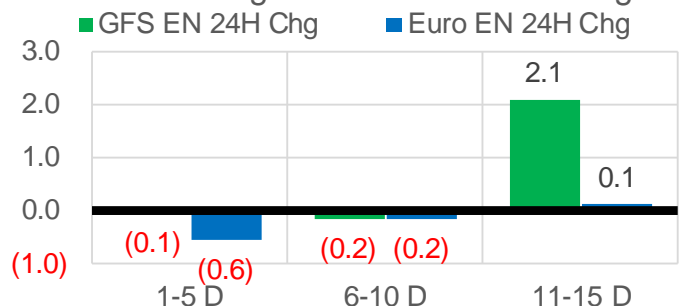
Vs. 12H Ago

L48 Region - 00z TDD vs 12H Ago



Vs. 24H Ago

L48 Region - 00z TDD vs 24H Ago



	Current	Δ from YD	Δ from 7D Avg
US Dry Production	91.3	▼ -1.85	▼ -1.57

	Current	Δ from YD	Δ from 7D Avg
US Power Burns	42.9	▲ 0.79	▲ 2.38

	Current	Δ from YD	Δ from 7D Avg
US ResComm	7.8	▲ 0.14	▲ 0.17

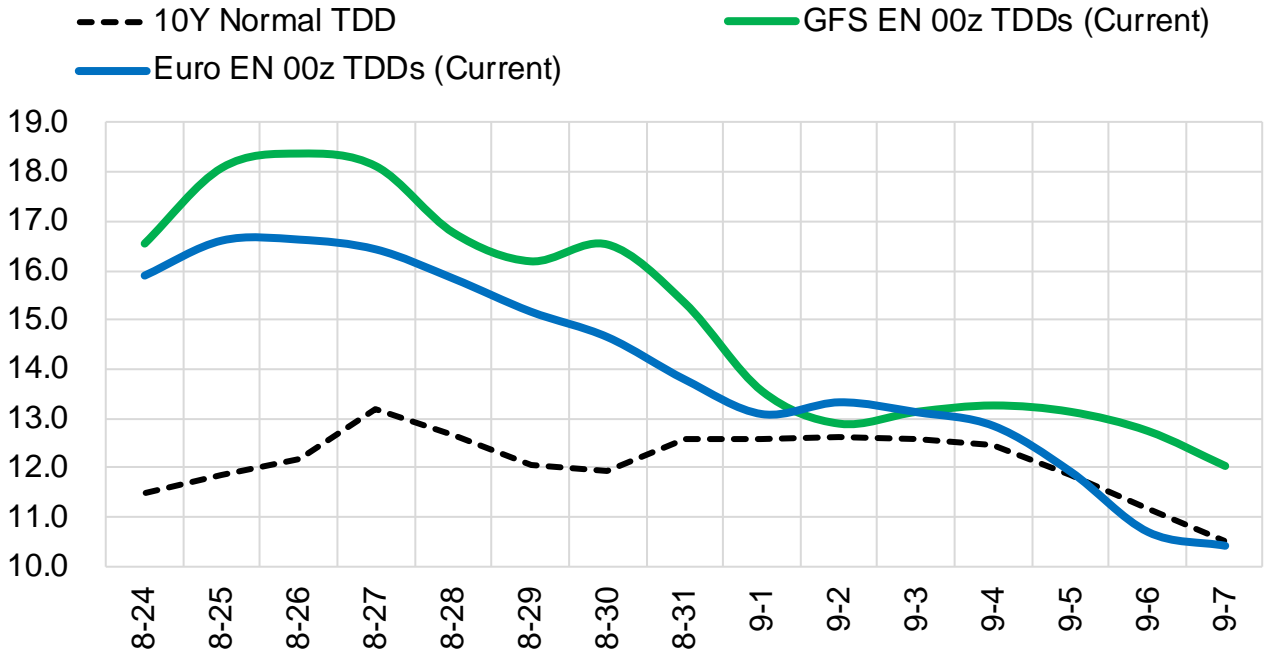
	Current	Δ from YD	Δ from 7D Avg
Canadian Imports	5.0	▼ -0.10	▼ -0.15

	Current	Δ from YD	Δ from 7D Avg
Net LNG Exports	10.1	▼ -0.21	▼ -0.60

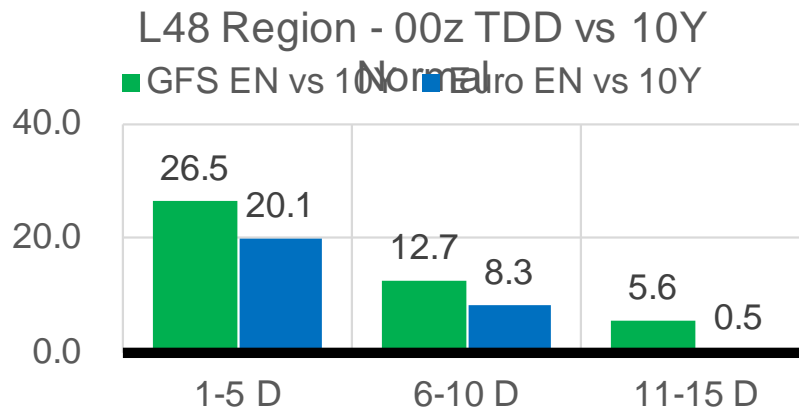
	Current	Δ from YD	Δ from 7D Avg
Mexican Exports	6.9	▲ 0.31	▼ -0.04

Short-term Weather Model Outlooks (00z)

L48 Region



Vs. 10Y Normal



Source: WSI , Bloomberg

Lower 48 Component Models

Daily Balances

	18-Aug	19-Aug	20-Aug	21-Aug	22-Aug	23-Aug	24-Aug	DoD	vs. 7D
Lower 48 Dry Production	92.5	93.1	92.9	92.8	92.9	93.1	91.3	▼ -1.8	▼ -1.6
Canadian Imports	5.3	5.3	5.3	5.1	5.0	5.1	5.0	▼ -0.1	▼ -0.2
L48 Power	41.6	42.2	41.1	39.0	38.7	42.2	42.9	▲ 0.8	▲ 2.2
L48 Residential & Commercial	7.9	8.1	7.8	7.1	7.2	7.7	7.8	▲ 0.1	▲ 0.2
L48 Industrial	20.1	20.2	20.1	19.9	20.0	20.0	20.2	▲ 0.2	▲ 0.2
L48 Lease and Plant Fuel	5.1	5.2	5.1	5.1	5.1	5.1	5.0	▼ -0.1	▼ -0.1
L48 Pipeline Distribution	2.4	2.4	2.4	2.2	2.2	2.4	2.5	▲ 0.0	▲ 0.1
L48 Regional Gas Consumption	77.1	78.0	76.5	73.3	73.2	77.5	78.5	▲ 1.0	▲ 2.5
Net LNG Delivered	10.72	10.55	10.81	10.85	10.72	10.33	10.12	▼ -0.2	▼ -0.5
Total Mexican Exports	7.2	7.2	7.0	6.6	6.3	6.5	6.9	▲ 0.3	▲ 0.0
Implied Daily Storage Activity	2.7	2.7	3.9	7.1	7.6	3.9	0.8		
EIA Reported Daily Storage Activity									
Daily Model Error									

EIA Storage Week Balances

	16-Jul	23-Jul	30-Jul	6-Aug	13-Aug	20-Aug	WoW	vs. 4W
Lower 48 Dry Production	92.5	92.6	92.6	92.0	92.4	92.4	▼ 0.0	▲ 0.0
Canadian Imports	5.2	4.9	5.5	5.1	5.2	5.0	▼ -0.1	▼ -0.1
L48 Power	38.7	39.7	42.1	38.4	41.1	39.6	▼ -1.5	▼ -0.7
L48 Residential & Commercial	8.4	8.4	8.3	7.8	7.7	7.6	▼ -0.1	▼ -0.5
L48 Industrial	19.6	19.7	20.7	20.3	19.9	20.1	▲ 0.1	▼ -0.1
L48 Lease and Plant Fuel	5.1	5.1	5.1	5.1	5.1	5.1	▼ 0.0	▼ 0.0
L48 Pipeline Distribution	2.2	2.3	2.4	2.2	2.4	2.3	▼ -0.1	▼ 0.0
L48 Regional Gas Consumption	74.1	75.2	78.7	73.8	76.2	74.7	▼ -1.5	▼ -1.3
Net LNG Exports	10.8	10.5	10.8	10.6	9.9	10.9	▲ 0.9	▲ 0.4
Total Mexican Exports	7.1	7.1	7.0	6.9	6.8	6.9	▲ 0.0	▼ -0.1
Implied Daily Storage Activity	5.6	4.6	1.7	5.7	4.6	5.0	0.4	
EIA Reported Daily Storage Activity	7.0	5.1	1.9	7.0	6.6			
Daily Model Error	-1.4	-0.5	-0.2	-1.3	-2.0			

Monthly Balances

	2Yr Ago Aug-18	LY Aug-18	Apr-21	May-21	Jun-21	Jul-21	MTD Aug-21	MoM	vs. LY
Lower 48 Dry Production	85.0	85.0	92.3	92.7	93.0	92.3	92.3	▼ 0.0	▲ 7.3
Canadian Imports	5.0	5.0	4.6	4.5	4.8	5.2	5.1	▼ -0.1	▲ 0.1
L48 Power	38.1	38.1	24.9	26.6	35.3	39.4	39.9	▲ 0.5	▲ 1.8
L48 Residential & Commercial	7.8	7.8	19.5	13.2	8.8	8.3	7.6	▼ -0.7	▼ -0.1
L48 Industrial	21.6	21.6	21.2	20.3	20.8	19.9	20.0	▲ 0.1	▼ -1.5
L48 Lease and Plant Fuel	4.7	4.7	5.1	5.1	5.1	5.1	5.1	▼ 0.0	▲ 0.4
L48 Pipeline Distribution	2.2	2.2	2.3	2.1	2.2	2.3	2.3	▲ 0.0	▲ 0.2
L48 Regional Gas Consumption	74.4	74.4	73.0	67.2	72.3	75.0	75.0	▲ 0.0	▲ 0.7
Net LNG Exports	3.3	3.3	11.5	10.8	10.2	10.8	10.4	▼ -0.4	▲ 7.1
Total Mexican Exports	4.9	4.9	6.7	6.8	7.4	7.0	6.9	▼ -0.2	▲ 1.9
Implied Daily Storage Activity	7.4	7.4	5.7	12.4	8.0	4.6	5.0		
EIA Reported Daily Storage Activity									
Daily Model Error									

Source: Bloomberg, analytix.ai

Daily Average Generation Data

Nuclear Generation Daily Average - GWh (NRC)

	16-Aug	17-Aug	18-Aug	19-Aug	20-Aug	21-Aug	22-Aug	DoD	vs. 7D
NRC Nuclear Daily Output	92.3	92.6	92.8	91.5	91.4	91.4	91.4	0.0	-0.6
NRC Nuclear Max Capacity	104.9	104.9	104.9	104.9	104.9	104.9	104.9	0.0	0.0
NRC Nuclear Outage	12.6	12.3	12.0	13.4	13.4	13.4	13.4	0.0	0.6
NRC % Nuclear Cap Utilization	93.9	94.2	94.4	93.0	93.0	93.0	93.0	0.0	-0.6

Wind Generation Daily Average - MWh (EIA)

	16-Aug	17-Aug	18-Aug	19-Aug	20-Aug	21-Aug	22-Aug	DoD	vs. 7D
CALI Wind	3042	3553	3565	2675	1414	2441	1663	-777	-1118
TEXAS Wind	5411	5691	9772	14683	15088	13159	14159	1000	3525
US Wind	31339	31829	31824	32643	48112	40796	42756	1959	6665

Generation Daily Average - MWh (EIA)

	16-Aug	17-Aug	18-Aug	19-Aug	20-Aug	21-Aug	22-Aug	DoD	vs. 7D
US Wind	31339	31829	31824	32643	48112	40796	42756	1959	6665
US Solar	11810	12041	13109	13229	13057	13419	14168	748	1390
US Petroleum	3873	4700	4855	5400	4719	4035	3399	-636	-1198
US Other	9179	10040	10604	10430	9671	9278	9650	373	-217
US Coal	133602	136336	136612	137970	131327	125307	129733	4427	-3792
US Nuke	95017	95330	95548	95254	94039	94014	94050	37	-816
US Hydro	27865	28238	31305	32151	32434	30021	26951	-3070	-3385
US Gas	208241	210007	218896	222791	214169	193094	185409	-7685	-25791

See National Wind and Nuclear daily charts

Source: Bloomberg, analytix.ai

Storage Week Average Generation Data

Nuclear Generation Weekly Average - GWh (NRC)

	16-Jul	23-Jul	30-Jul	6-Aug	13-Aug	20-Aug	WoW	WoW Bcf/d Impact
NRC Nuclear Daily Output	90.7	90.7	89.3	90.6	91.5	92.4	0.8	-0.1
NRC Nuclear Max Capacity	104.9	104.9	104.9	104.9	104.9	104.9	0.0	
NRC Nuclear Outage	14.2	14.2	15.6	14.3	13.3	12.5	-0.8	
NRC % Nuclear Cap Utilization	0.1	0.1	0.1	0.1	0.1	0.1	0.0	

Wind Generation Weekly Average - MWh (EIA)

	16-Jul	23-Jul	30-Jul	6-Aug	13-Aug	20-Aug	WoW	WoW Bcf/d Impact
CALI Wind	3004	2064	1905	2237	2507	3210	703	-0.1
TEXAS Wind	10817	7162	7913	5180	16319	7171	-9147	1.5
US Wind	36364	26446	29735	22376	49585	29141	-20443	3.4

Generation Weekly Average - MWh (EIA)

	16-Jul	23-Jul	30-Jul	6-Aug	13-Aug	20-Aug	WoW	WoW Bcf/d Impact
US Wind	36364	26446	29735	22376	49585	29141	-20443	3.4
US Solar	14486	14023	13977	14130	14385	12624	-1760	0.3
US Petroleum	4282	3892	4729	4074	4709	4466	-243	0.0
US Other	9555	9336	9281	9058	10066	9964	-101	0.0
US Coal	131514	137623	146407	134740	140522	138047	-2475	0.4
US Nuke	93735	93488	92226	93269	94283	95157	874	-0.1
US Hydro	30422	30196	29209	27738	27022	28982	1960	-0.3
US Gas	199737	210463	224359	204525	208196	211936	3740	

See National Wind and Nuclear daily charts

Source: Bloomberg, analytix.ai

Monthly Average Generation Data

Nuclear Generation Monthly Average - GWh (NRC)

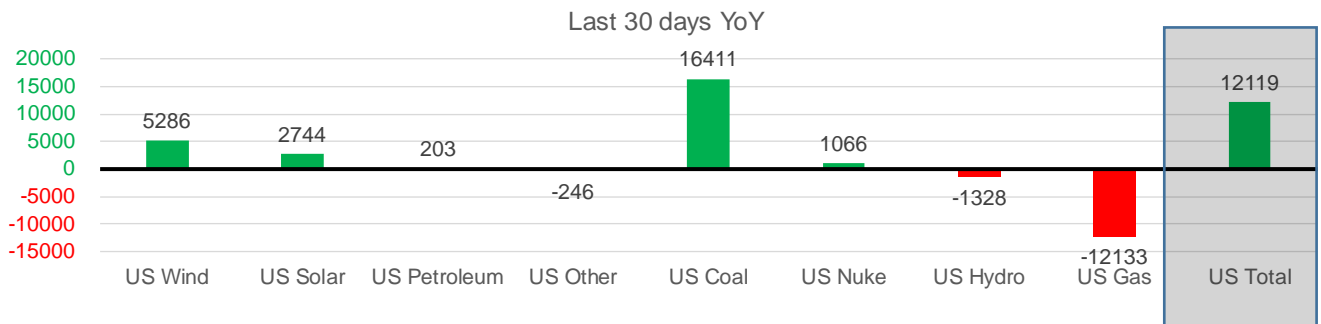
	2Yr Ago		LY		MTD		Last 30 days	MoM (MTD vs LY)	Last 30 days YoY
	Same 30 days	Same 30 days	May-21	Jun-21	Jul-21	Aug-21			
	NRC Nuclear Daily Output	94.4	90.7	81.8	88.7	90.0			
NRC Nuclear Max Capacity	104.9	104.9	104.9	104.9	104.9	104.9	104.9	0.0	0.0
NRC Nuclear Outage	10.5	14.1	23.1	16.2	14.9	13.2	13.5	-1.7	-0.7
NRC % Nuclear Cap Utilization	96.0	92.3	83.2	90.2	91.5	93.3	92.9	1.7	0.7

Wind Generation Monthly Average - MWh (EIA)

	2Yr Ago		LY		MTD		Last 30 days	MoM (MTD vs LY)	Last 30 days YoY
	Same 30 days	Same 30 days	May-21	Jun-21	Jul-21	Aug-21			
	CALI Wind	2243	2269	3402	2913	2338			
TEXAS Wind	8058	8580	12259	9675	7217	10818	9679	3601	1099
US Wind	25716	28972	46083	37299	29105	36372	34259	7267	5286

Generation Monthly Average - MWh (EIA)

	2Yr Ago		LY		MTD		Last 30 days	MoM (MTD vs LY)	Last 30 days YoY
	Same 30 days	Same 30 days	May-21	Jun-21	Jul-21	Aug-21			
	US Wind	25716	28972	46083	37299	29105			
US Solar	9217	11005	14489	14564	14195	13686	13750	▲ 63.8	▲ 2744
US Petroleum	5140	4193	3012	4150	4233	4307	4395	▲ 89	▲ 203
US Other	9337	9886	7439	8161	9324	9723	9640	▼ -83	▼ -246
US Coal	126299	121886	86419	121357	137228	135638	138297	▲ 2659	▲ 16411
US Nuke	100663	92933	85517	92175	92897	94339	93999	▼ -339	▲ 1066
US Hydro	32243	29628	30681	32578	29939	28053	28301	▲ 248	▼ -1328
US Gas	220605	221856	139478	188815	207785	204382	209722	▲ 523	▼ -12133
US Total	530536	520183	413549	499469	524889	526530	532301	▲ 3159	▲ 12119



See National Wind and Nuclear daily charts

Source: Bloomberg, analytix.ai

Regional S/D Models Storage Projection

Week Ending 20-Aug

	Daily Raw Storage	Daily Adjustment Factor	Daily Average Storage Activity (Adjusted) *	Weekly Adjusted Storage Activity
L48	4.7	1.7	6.4	45
East	2.0	1.2	3.2	22
Midwest	3.7	-0.2	3.5	25
Mountain	4.0	-4.0	0.0	0
South Central	-5.4	4.9	-0.5	-3
Pacific	0.4	-0.2	0.2	1

*Adjustment Factor is calculated based on historical regional deltas

U.S. underground natural gas storage facilities by type (July 2015)

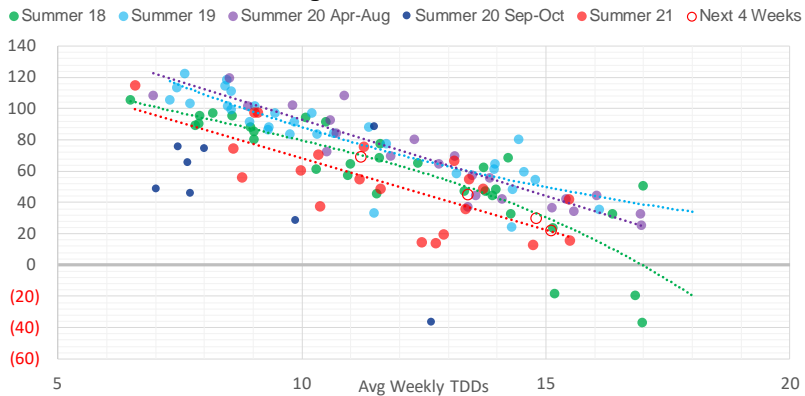


Weather Model Storage Projection

Next report
and beyond

Week Ending	GWDDs	Week Storage Projection
20-Aug	13.4	45
27-Aug	15.1	22
03-Sep	14.8	30
10-Sep	11.2	69

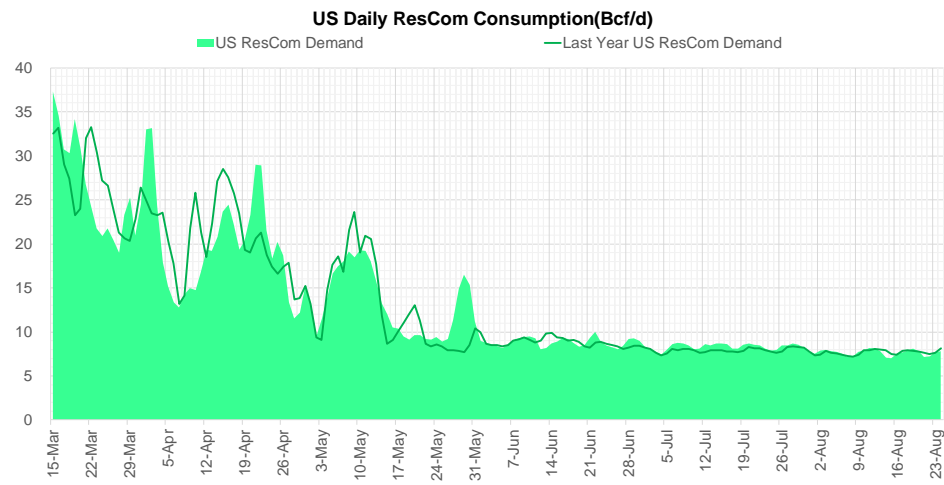
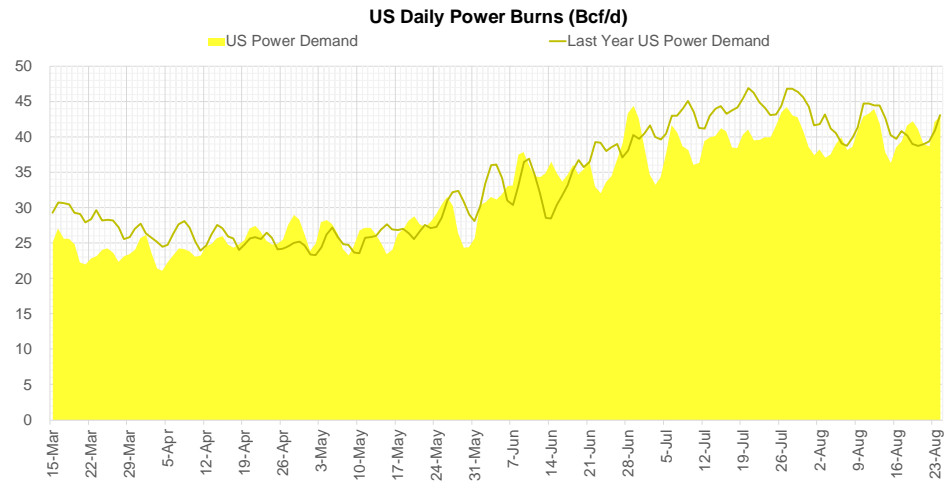
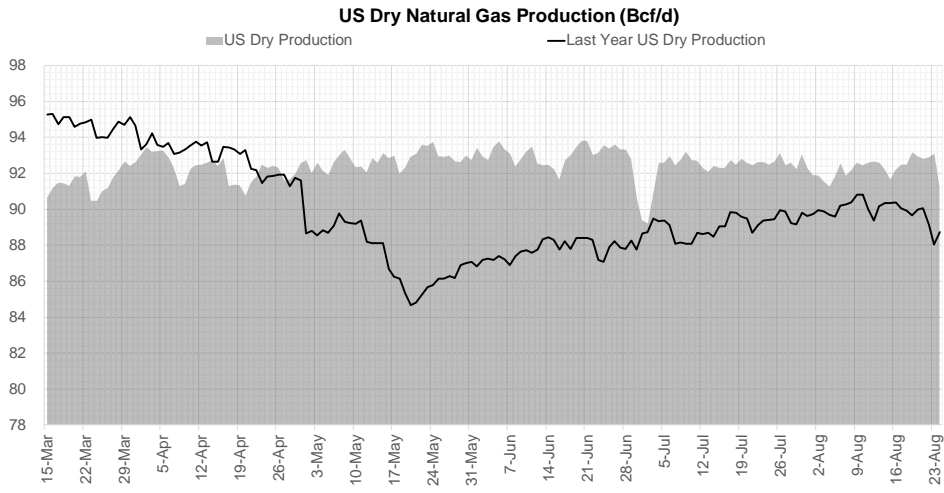
Weather Storage Model - Next 4 Week Forecast



Go to larger image



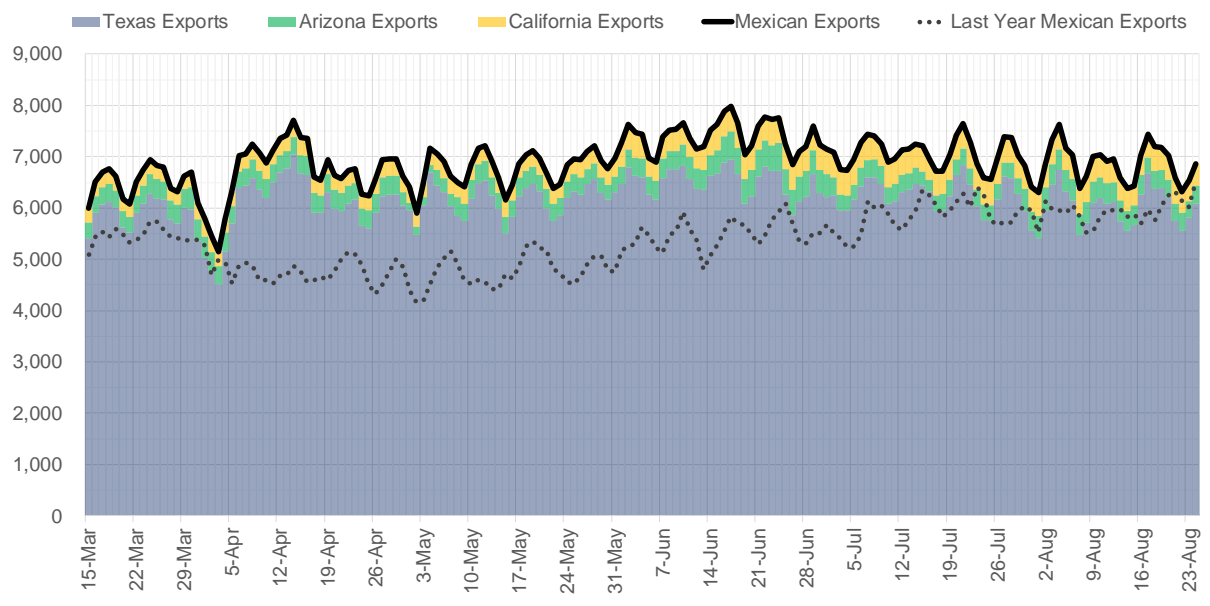
Supply – Demand Trends



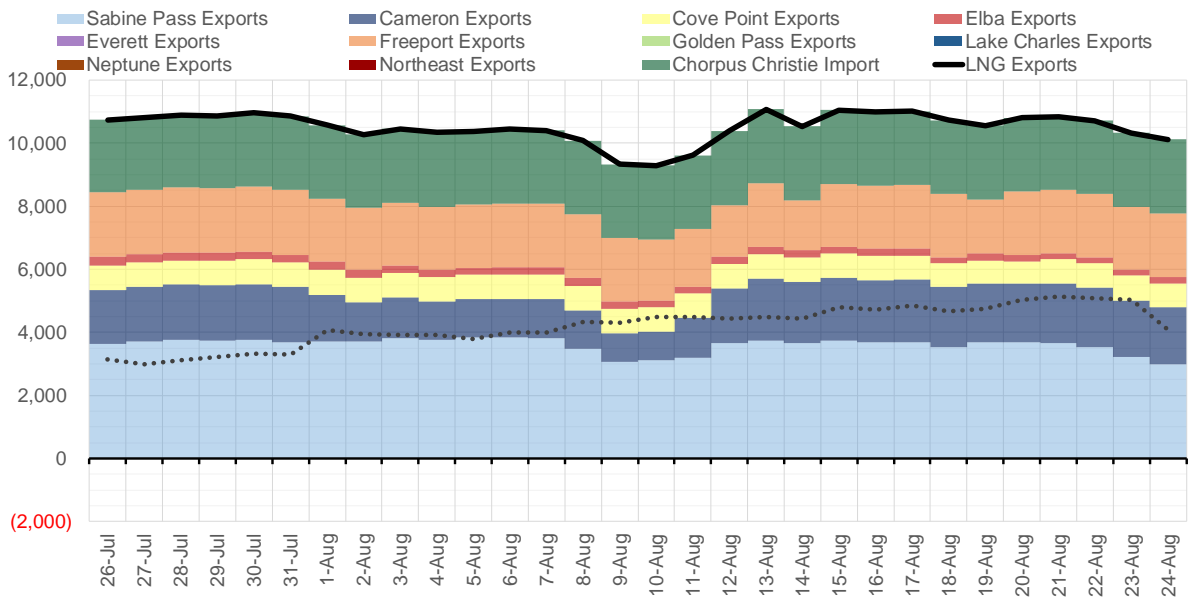
Source: Bloomberg

The risk of trading futures and options and other derivatives involves a substantial risk of loss and is not suitable for all persons. Each person must consider whether a particular trade, combination of trades, or strategy is suitable for that person's financial means and objectives. Past results are not necessarily indicative of future results. This communication may contain links to third party websites which are not under the control of and are not maintained by ION Energy Group, and ION Energy Group is not responsible for their content.

Mexican Exports (MMcf/d)



Net LNG Exports - Last 30 days (MMcf/d)



Source: Bloomberg

The risk of trading futures and options and other derivatives involves a substantial risk of loss and is not suitable for all persons. Each person must consider whether a particular trade, combination of trades, or strategy is suitable for that person's financial means and objectives. Past results are not necessarily indicative of future results. This communication may contain links to third party websites which are not under the control of and are not maintained by ION Energy Group, and ION Energy Group is not responsible for their content.

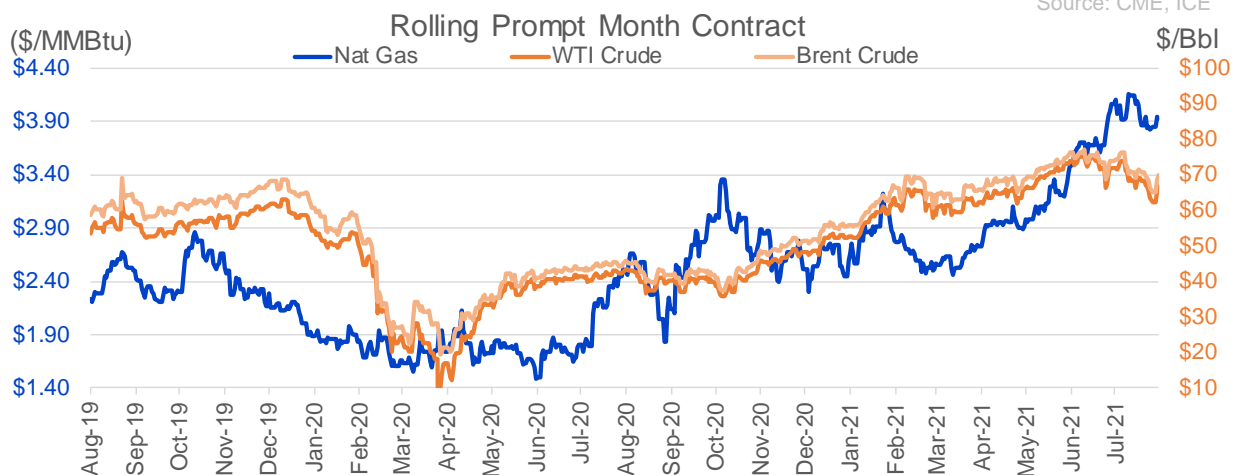
Nat Gas Options Volume and Open Interest CME, ICE and Nasdaq Combined

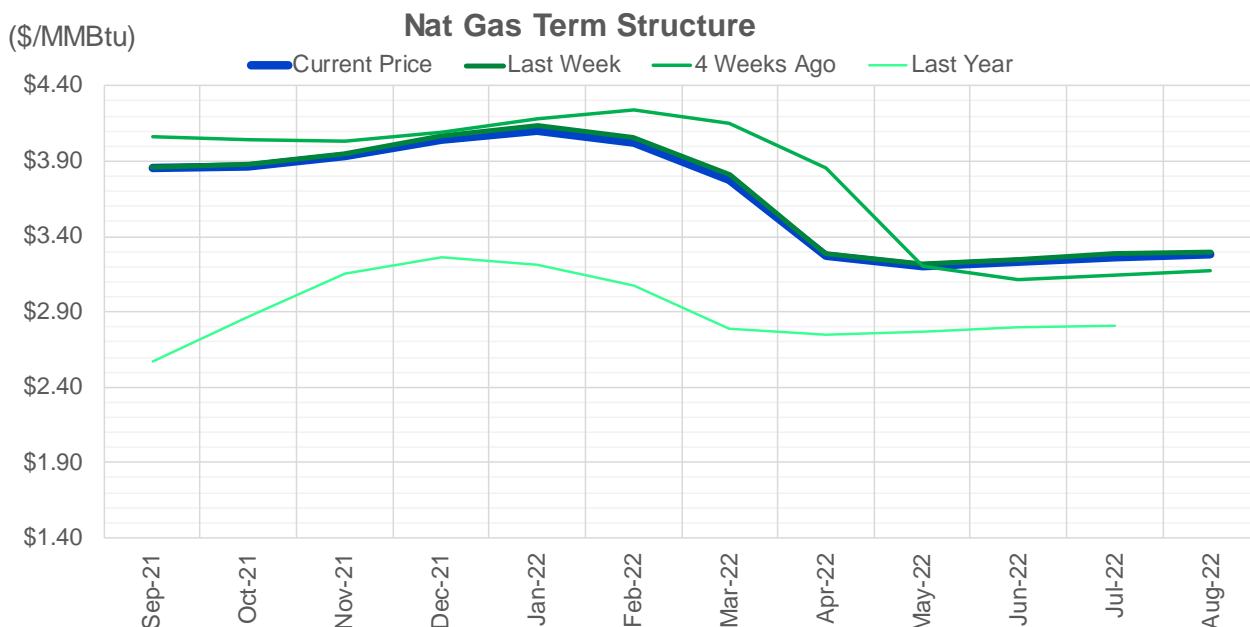
CONTRACT MONTH	CONTRACT YEAR	PUT/CALL	STRIKE	CUMULATIVE VOL	CONTRACT MONTH	CONTRACT YEAR	PUT/CALL	STRIKE	CUMULATIVE OI
10	2021	C	4.50	7843	10	2021	C	5.00	52245
10	2021	C	5.00	7426	10	2021	C	4.50	42515
10	2021	C	4.25	7124	12	2021	P	2.75	42060
10	2021	C	4.00	6158	10	2021	C	4.00	41644
10	2021	P	3.50	5625	10	2021	P	3.50	38561
10	2021	P	3.25	3603	12	2021	P	2.50	38528
9	2021	C	4.10	3567	10	2021	C	3.50	33003
9	2021	C	4.00	3229	10	2021	P	3.00	32336
9	2021	C	3.90	2987	9	2021	C	4.00	29951
9	2021	C	4.20	2954	10	2021	P	2.50	29844
9	2021	P	3.85	2872	9	2021	C	4.25	28712
9	2021	P	3.80	2822	10	2021	P	2.00	28650
3	2022	C	7.00	2400	10	2021	C	3.25	28195
10	2021	P	3.75	2348	10	2021	C	4.25	27718
10	2021	C	3.90	2095	10	2021	P	2.75	27144
9	2021	P	3.75	2071	9	2021	C	5.00	26583
9	2021	P	3.70	1877	10	2021	C	6.00	26517
9	2021	P	3.90	1811	12	2021	P	3.00	24879
10	2021	C	4.75	1572	9	2021	P	2.50	23385
9	2021	C	3.95	1566	11	2021	P	3.00	22826
11	2021	P	3.25	1530	11	2021	C	4.00	22802
9	2021	C	4.05	1482	9	2021	C	3.50	22615
3	2022	C	5.00	1325	9	2021	P	3.00	22432
9	2021	C	3.85	1222	12	2021	C	4.00	22178
11	2021	P	4.00	1127	9	2021	P	3.50	21696
11	2021	P	3.30	1001	9	2021	P	2.00	20427
2	2022	P	3.30	1000	9	2021	C	4.75	20402
2	2022	P	4.15	1000	9	2021	P	3.25	20291
1	2022	C	4.50	770	10	2021	P	2.25	19900
12	2021	C	4.50	751	4	2022	C	3.00	19810
10	2021	C	3.85	746	9	2021	C	3.25	18993
11	2021	C	5.00	680	10	2021	C	3.00	18495
11	2021	P	3.50	666	9	2021	C	3.90	17625
12	2021	P	3.45	600	9	2021	C	4.50	17429
12	2021	P	3.50	576	10	2021	P	3.25	17344
10	2021	P	3.70	569	11	2021	C	5.00	17269
11	2021	C	4.50	561	10	2021	C	3.75	16981
12	2021	P	4.00	541	1	2022	C	5.00	16342
9	2021	C	4.25	526	3	2022	P	2.50	15834
12	2021	P	3.25	520	9	2021	P	2.75	15816
10	2021	C	5.35	517	11	2021	P	3.50	15766
11	2021	C	4.00	503	9	2021	P	4.00	15580
11	2021	C	4.25	500	3	2022	C	5.00	15522
12	2021	C	5.50	500	2	2022	C	5.00	15277
10	2021	C	5.50	488	9	2021	P	3.75	14840
9	2021	C	4.15	466	2	2022	C	4.00	14784
10	2021	P	3.40	459	11	2021	C	3.75	14578
10	2021	P	3.80	456	3	2022	C	3.00	14448
4	2022	P	2.75	450	11	2021	P	2.50	14406
					3	2022	C	4	14323

Source: CME, ICE

Nat Gas Futures Open Interest CME, and ICE Combined

CME Henry Hub Futures (10,000 MMBtu)				ICE Henry Hub Futures Contract Equivalent (10,000 MM			
	Current	Prior	Daily Change		Current	Prior	Daily Change
SEP 21	34296	53862	-19566	SEP 21	87389	85072	2317
OCT 21	240983	231567	9416	OCT 21	109095	107682	1413
NOV 21	197355	194653	2702	NOV 21	70631	70780	-149
DEC 21	87866	86444	1422	DEC 21	76229	75713	516
JAN 22	142559	140644	1915	JAN 22	78394	78155	239
FEB 22	55774	55714	60	FEB 22	67957	68285	-328
MAR 22	106052	105000	1052	MAR 22	72697	73014	-318
APR 22	110614	110293	321	APR 22	67908	68435	-527
MAY 22	101485	100970	515	MAY 22	66680	66778	-98
JUN 22	31570	31496	74	JUN 22	51686	51821	-135
JUL 22	26974	26861	113	JUL 22	52920	53429	-509
AUG 22	25778	25354	424	AUG 22	52873	53038	-165
SEP 22	27209	26955	254	SEP 22	52787	52951	-164
OCT 22	71641	70064	1577	OCT 22	60335	60790	-456
NOV 22	29029	28050	979	NOV 22	46218	46481	-263
DEC 22	24383	24612	-229	DEC 22	50047	50347	-300
JAN 23	18232	18037	195	JAN 23	33577	33492	85
FEB 23	6438	6420	18	FEB 23	28470	28232	239
MAR 23	8682	8799	-117	MAR 23	30218	30187	31
APR 23	10613	11223	-610	APR 23	25346	25021	325
MAY 23	6395	6365	30	MAY 23	26208	26066	142
JUN 23	5160	5133	27	JUN 23	24387	24272	115
JUL 23	3895	3898	-3	JUL 23	24411	24292	118
AUG 23	3164	3163	1	AUG 23	24306	24165	142
SEP 23	4101	4097	4	SEP 23	23698	23606	92
OCT 23	4707	4711	-4	OCT 23	25516	25398	118
NOV 23	1726	1722	4	NOV 23	25723	25642	81
DEC 23	1808	1808	0	DEC 23	24031	23955	76
JAN 24	994	994	0	JAN 24	13568	13560	8
FEB 24	878	874	4	FEB 24	11358	11249	109





	Sep-21	Oct-21	Nov-21	Dec-21	Jan-22	Feb-22	Mar-22	Apr-22	May-22	Jun-22	Jul-22	Aug-22
Current Price	\$3.851	\$3.866	\$3.932	\$4.039	\$4.099	\$4.023	\$3.774	\$3.268	\$3.201	\$3.231	\$3.267	\$3.277
Last Week	\$3.861	\$3.875	\$3.949	\$4.070	\$4.135	\$4.058	\$3.808	\$3.289	\$3.222	\$3.251	\$3.285	\$3.293
vs. Last Week	-\$0.010	-\$0.009	-\$0.017	-\$0.031	-\$0.036	-\$0.035	-\$0.034	-\$0.021	-\$0.021	-\$0.020	-\$0.018	-\$0.016
4 Weeks Ago	\$4.060	\$4.042	\$4.034	\$4.094	\$4.185	\$4.244	\$4.153	\$3.856	\$3.206	\$3.111	\$3.139	\$3.172
vs. 4 Weeks Ago	-\$0.209	-\$0.176	-\$0.102	-\$0.055	-\$0.086	-\$0.221	-\$0.379	-\$0.588	-\$0.005	\$0.120	\$0.128	\$0.105
Last Year	\$2.448	\$2.573	\$2.866	\$3.158	\$3.266	\$3.216	\$3.079	\$2.788	\$2.745	\$2.769	\$2.802	\$2.810
vs. Last Year	\$1.403	\$1.293	\$1.066	\$0.881	\$0.833	\$0.807	\$0.695	\$0.480	\$0.456	\$0.462	\$0.465	\$0.467

	Units	Cash Settled	Prompt Settle	Cash to Prompt
AGT Citygate	\$/MMBtu	4.35	3.29	-1.06
TETCO M3	\$/MMBtu	3.91	3.02	-0.89
FGT Zone 3	\$/MMBtu	3.96	4.02	0.06
Zone 6 NY	\$/MMBtu	3.96	2.96	-1.00
Chicago Citygate	\$/MMBtu	3.90	3.80	-0.10
Michcon	\$/MMBtu	3.83	3.76	-0.07
Columbia TCO Pool	\$/MMBtu	3.70	3.18	-0.52
Ventura	\$/MMBtu	3.84	3.73	-0.11
Rockies/Opal	\$/MMBtu	3.52	3.62	0.10
El Paso Permian Basin	\$/MMBtu	3.51	3.64	0.13
Socal Citygate	\$/MMBtu	4.89	4.98	0.09
Malin	\$/MMBtu	3.94	3.88	-0.06
Houston Ship Channel	\$/MMBtu	3.86	3.90	0.04
Henry Hub Cash	\$/MMBtu	3.92	3.69	-0.23
AECO Cash	C\$/GJ	2.32	2.82	0.50
Station2 Cash	C\$/GJ	2.73	3.79	1.06
Dawn Cash	C\$/GJ	3.82	3.77	-0.05

Source: CME, Bloomberg

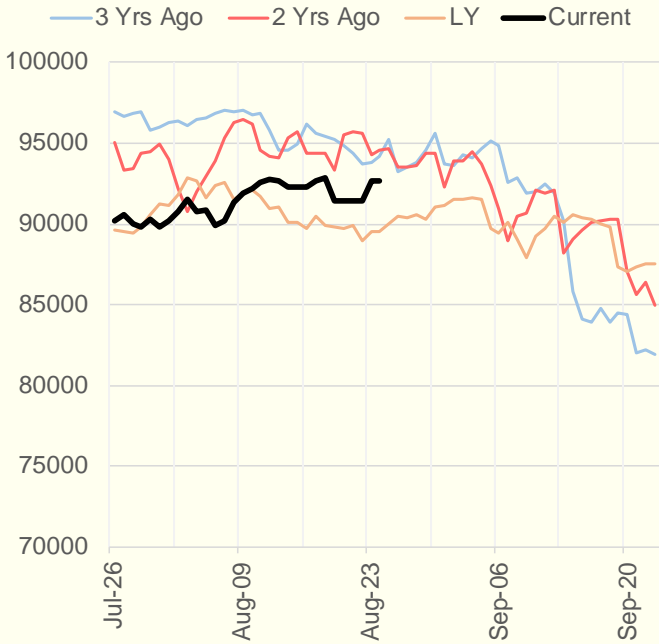
	Units	Current Price	vs. Last Week	vs. 4 Weeks Ago	vs. Last Year
NatGas Jul21/Oct21	\$/MMBtu	0.343	▲ 0.000	▼ -0.116	▲ 0.325
NatGas Oct21/Nov21	\$/MMBtu	0.064	▼ -0.009	▲ 0.003	▲ 0.015
NatGas Oct21/Jan22	\$/MMBtu	0.223	▼ -0.027	▲ 0.006	▼ -0.052
NatGas Apr22/Oct22	\$/MMBtu	0.008	▲ 0.003	▲ 0.034	▼ -0.029
WTI Crude	\$/Bbl	65.64	▼ -1.650	▼ -6.270	▲ 23.020
Brent Crude	\$/Bbl	68.75	▼ -0.760	▼ -5.750	▲ 23.620
Fuel Oil, NY Harbour 1%	\$/Bbl	97.18	▲ 0.000	▲ 0.000	▲ 0.000
Heating Oil	cents/Gallon	200.51	▼ -4.320	▼ -14.590	▲ 75.750
Propane, Mt. Bel	cents/Gallon	1.11	▼ -0.017	▲ 0.015	▲ 0.600
Ethane, Mt. Bel	cents/Gallon	0.34	▼ -0.004	▲ 0.023	▲ 0.091
Coal, PRB	\$/MTon	12.30	▲ 0.000	▲ 0.000	▲ 0.000
Coal, PRB	\$/MMBtu	0.70			
Coal, ILB	\$/MTon	31.05	▲ 0.000	▲ 0.000	▲ 0.000
Coal, ILB	\$/MMBtu	1.32			

Weather Storage Model - Next 4 Week Forecast

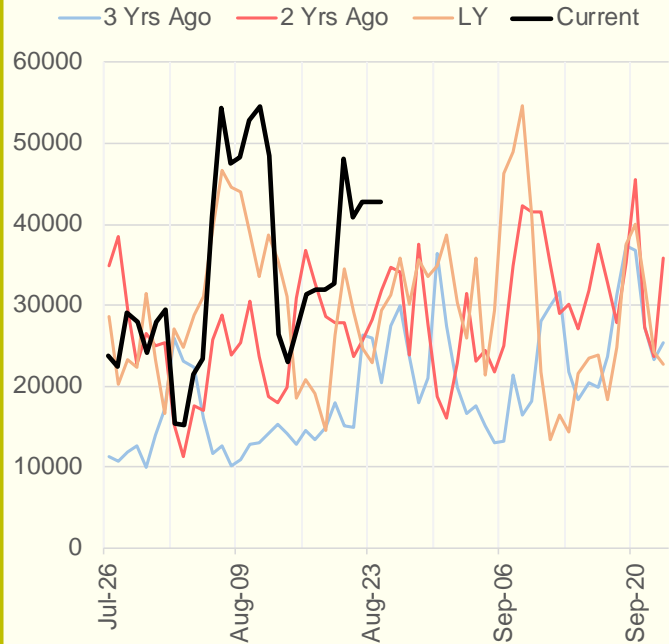


The risk of trading futures and options and other derivatives involves a substantial risk of loss and is not suitable for all persons. Each person must consider whether a particular trade, combination of trades, or strategy is suitable for that person's financial means and objectives. Past results are not necessarily indicative of future results. This communication may contain links to third party websites which are not under the control of and are not maintained by ION Energy Group, and ION Energy Group is not responsible for their content.

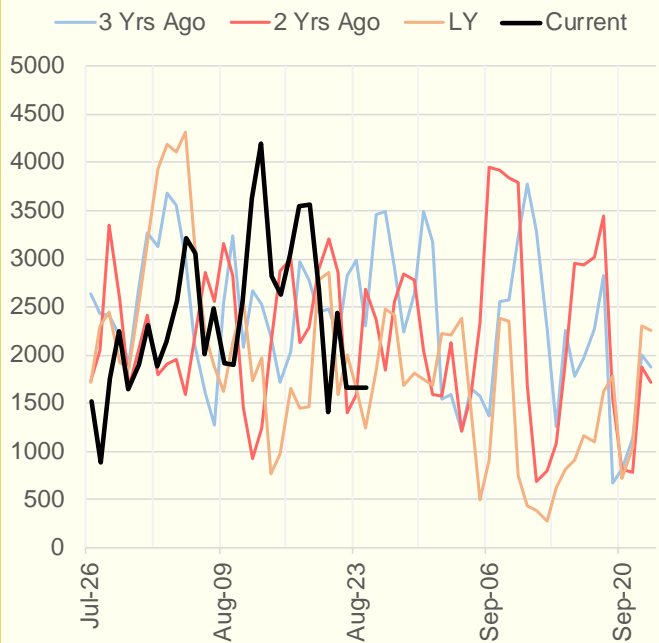
NRC Nuclear Daily Output



US Wind



CALI Wind



TEXAS Wind

