

CFTC COMMITMENT OF TRADERS REPORT

As of 8/31/2021

TRADITIONAL FUNDS net position changes

Wed to Tue, in 000 contracts

	Corn	Bean	Meal	Oil	Chi. Wheat	KC Wheat	Min Wheat
Futures Only	(26.8)	(20.5)	(9.2)	(10.3)	(12.2)	0.1	(0.4)
Futures & Options Combined	(21.2)	(13.6)	(9.8)	(7.6)	(3.5)	(0.3)	(0.6)

TRADITIONAL COMMERCIAL net position changes

	Corn	Bean	Meal	Oil	Chi. Wheat	KC Wheat	Min Wheat
Futures Only	24.8	22.2	11.1	12.5	12.3	1.0	1.6
Futures & Options Combined	20.9	16.8	12.3	10.1	3.4	1.6	1.7

MANAGED MONEY net position changes

	Corn	Bean	Meal	Oil	Chi. Wheat	KC Wheat	Min Wheat
Futures Only	(12.1)	(12.8)	(8.9)	(11.7)	(0.3)	0.2	(0.2)
Futures & Options Combined	(12.2)	(14.1)	(8.9)	(11.7)	(0.6)	0.3	(0.2)

SWAP DEALERS net position changes

	Corn	Bean	Meal	Oil	Chi. Wheat	KC Wheat	Min Wheat
Futures Only	13.6	5.3	(0.2)	(1.4)	8.4	(2.2)	(1.3)
Futures & Options Combined	10.3	5.7	(0.2)	(0.6)	4.5	(2.1)	(0.9)

PRODUCERS/END USERS net position changes

	Corn	Bean	Meal	Oil	Chi. Wheat	KC Wheat	Min Wheat
Futures Only	11.3	16.9	11.3	13.9	3.8	3.2	2.8
Futures & Options Combined	10.5	11.1	12.5	10.7	(1.1)	3.7	2.6

INDEX net position changes

	Corn	Bean	Meal	Oil	Chi. Wheat	KC Wheat	Min Wheat
Futures & Options Combined	(6.3)	(4.9)	(3.6)	(0.9)	(0.4)	(0.7)	NA

SUPPLEMENTAL NON-COMMERCIAL net position changes

	Corn	Bean	Meal	Oil	Chi. Wheat	KC Wheat	Min Wheat
Futures & Options Combined	(10.6)	(5.2)	(7.6)	(6.8)	1.9	(1.0)	NA

OPEN INTEREST net position changes

Wed to Tue, in 000 contracts

	Corn	Bean	Meal	Oil	Chi. Wheat	KC Wheat	Min Wheat
Futures Only	(69.1)	(15.4)	(14.4)	(15.0)	(22.1)	(1.0)	(3.8)
Futures & Options Combined	(179.0)	(46.3)	(20.3)	(25.2)	(52.1)	(8.5)	(6.7)

Source: CFTC and FI

Wed to Tue, in 000 contracts

**COMMITMENT OF TRADERS
FUTURES ONLY NET POSITIONS
AS OF 08/31/2021
(IN THOUSAND CONTRACTS)**

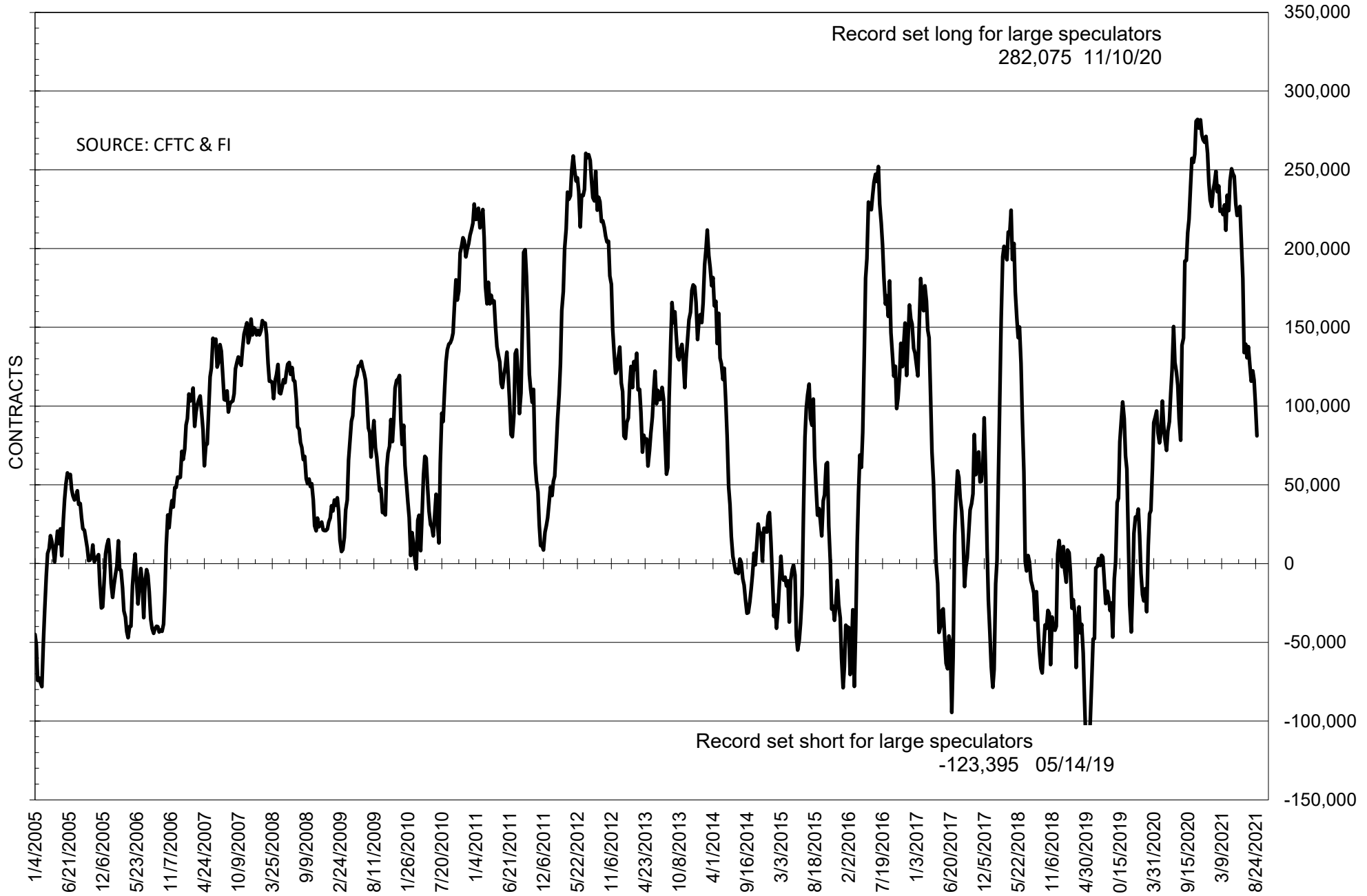
	COMMERCIAL				(FUND) NON COMMERCIAL				(SPEC) NON-REPORTABLE			
	31-Aug	24-Aug	17-Aug	10-Aug	31-Aug	24-Aug	17-Aug	10-Aug	31-Aug	24-Aug	17-Aug	10-Aug
	WHEAT											
Chicago	-12.9	-25.2	-36.1	-31.5	22.8	35.0	46.8	43.6	-9.9	-9.8	-10.7	-12.2
Kansas City	-43.2	-44.2	-43.5	-39.9	42.1	41.9	41.6	40.7	1.2	2.3	1.9	-0.8
Minneapolis	-27.4	-29.0	-28.2	-25.6	19.3	19.6	18.2	15.1	8.1	9.3	10.0	10.5
All Wheat	-83.6	-98.4	-107.9	-97.0	84.1	96.6	106.7	99.5	-0.6	1.8	1.2	-2.4
CORN	-231.9	-256.7	-271.0	-250.3	304.2	331.0	345.8	321.6	-72.3	-74.3	-74.9	-71.3
OATS	-1.7	-1.7	-1.9	-1.9	0.8	0.8	0.8	0.7	0.9	1.0	1.0	1.3
SOYBEANS	-58.2	-80.4	-100.6	-106.5	81.1	101.6	116.4	122.4	-22.9	-21.2	-15.8	-15.9
SOY OIL	-59.5	-72.0	-70.9	-69.6	54.8	65.0	64.6	63.4	4.7	7.0	6.3	6.2
SOY MEAL	-56.3	-67.4	-77.8	-72.9	40.5	49.7	54.9	52.9	15.8	17.7	22.9	20.1

Oats positions thin to be reported

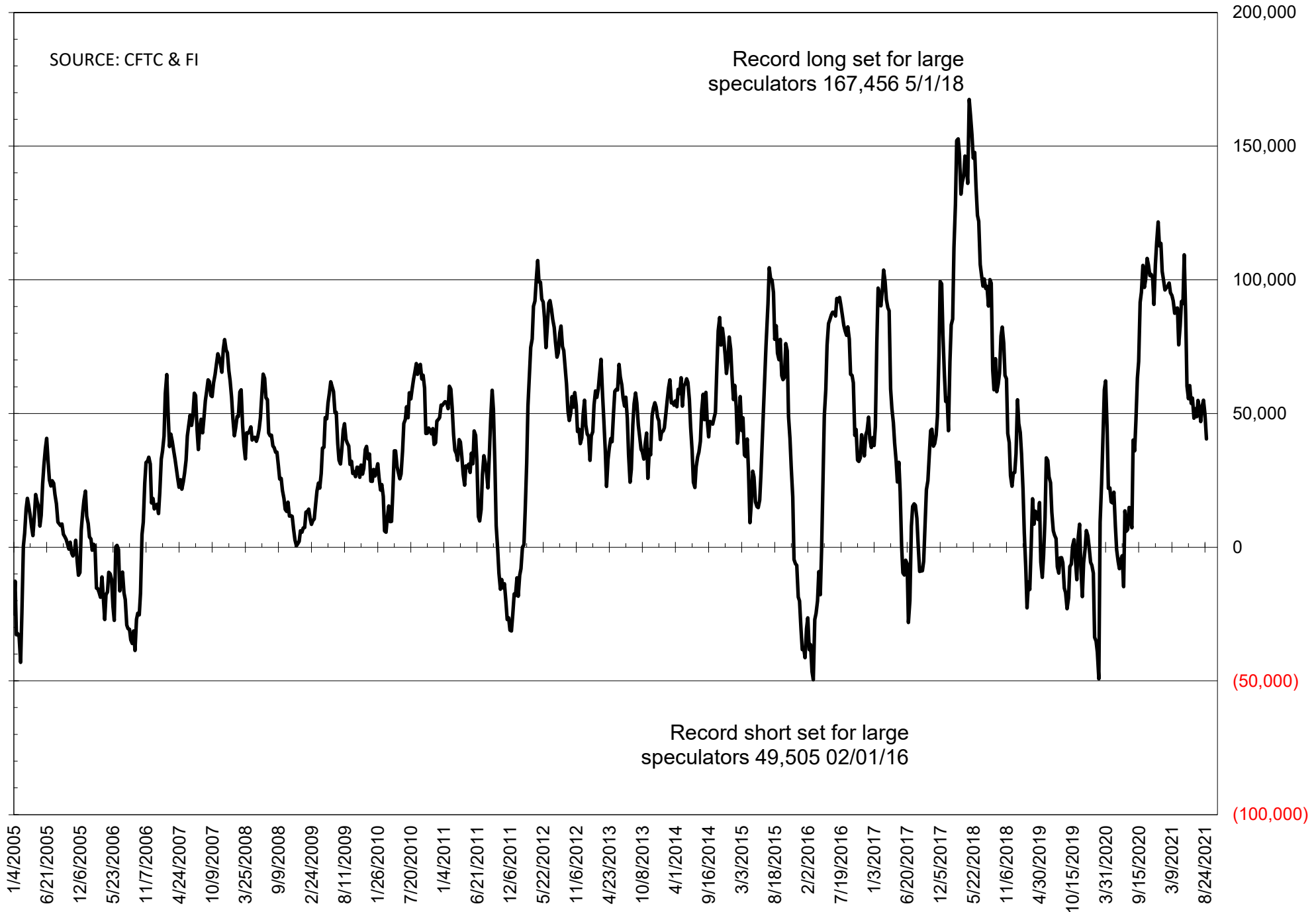
	TOTAL OPEN INTEREST				NEARBY FUTURES PRICE					31-Aug-21 LAST REPORTED % HELD BY TRADERS			
	31-Aug	24-Aug	17-Aug	10-Aug	V/XZ Latest	V/XZ 31-Aug	U 24-Aug	U 17-Aug	U 10-Aug	LARGE FUND		SMALL	
										LONG	SHORT	LONG	SHORT
WHEAT													
Chicago	374928	396979	390322	382959	726.25	722.25	718.00	734.50	727.00	0%	24%	0%	10%
Kansas City	231629	232626	229763	230837	723.00	712.00	704.25	716.75	714.25	0%	21%	0%	8%
Minneapolis	69231	73041	77366	78501	912.50	903.50	930.75	921.00	916.50	0%	3%	0%	16%
CORN	1374654	1443764	1435341	1424121	524.00	534.25	544.50	558.25	549.25	0%	7%	0%	13%
OATS	4845	4832	4660	4485	509.75	502.25	509.00	507.50	467.25	0%	6%	0%	31%
SOYBEANS	669205	684606	665803	660007	1292.00	1292.50	1337.00	1369.00	1248.25	24%	12%	7%	10%
SOY OIL	410633	425628	436726	435486	59.00	58.89	61.09	62.54	61.19	0%	10%	0%	6%
SOY MEAL	349675	364085	367632	362641	338.10	343.10	354.90	360.10	357.50	0%	12%	0%	8%

SOURCE: CFTC & FI

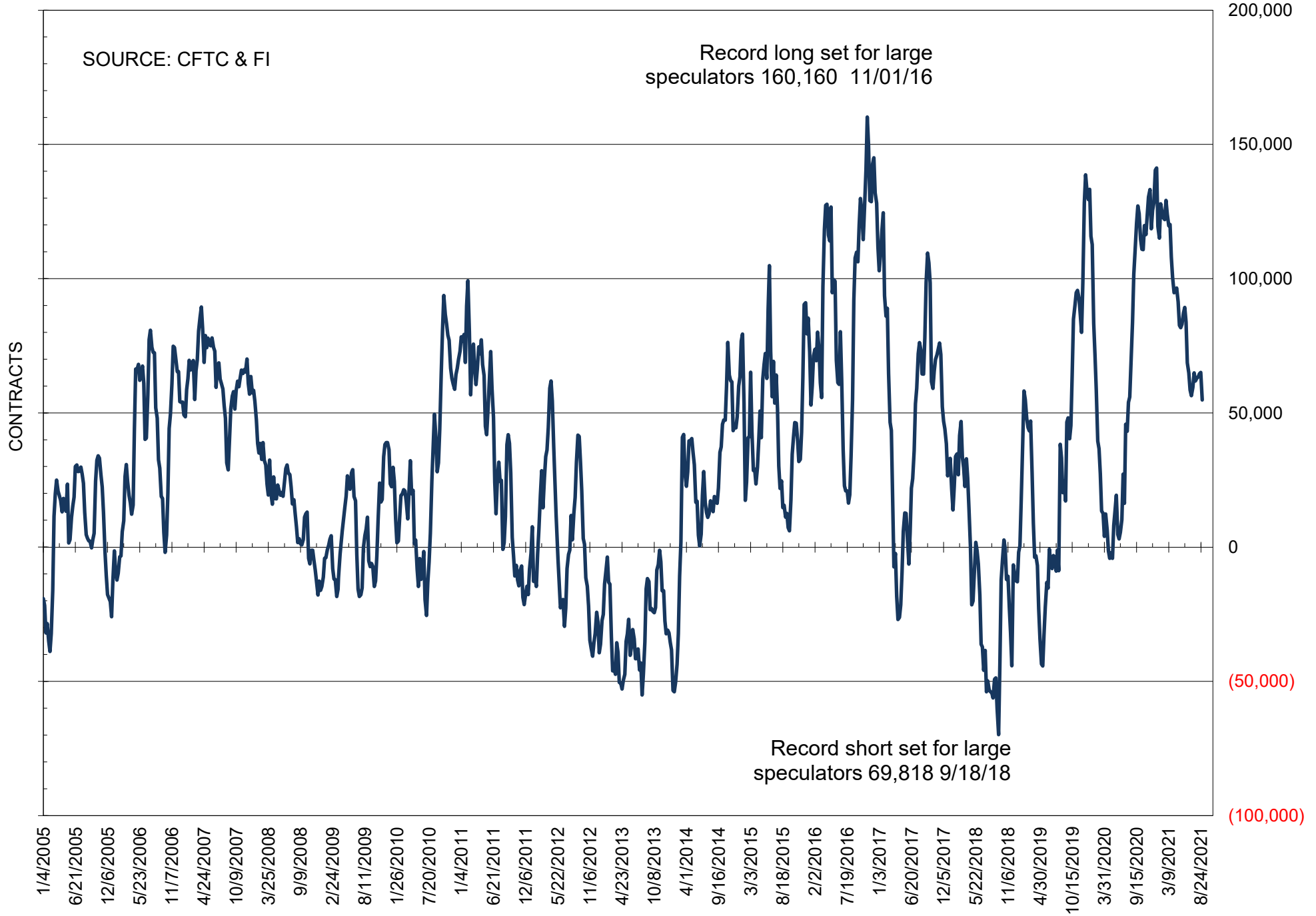
NET POSITION OF FUTURES ONLY LARGE SPECS IN SOYBEANS



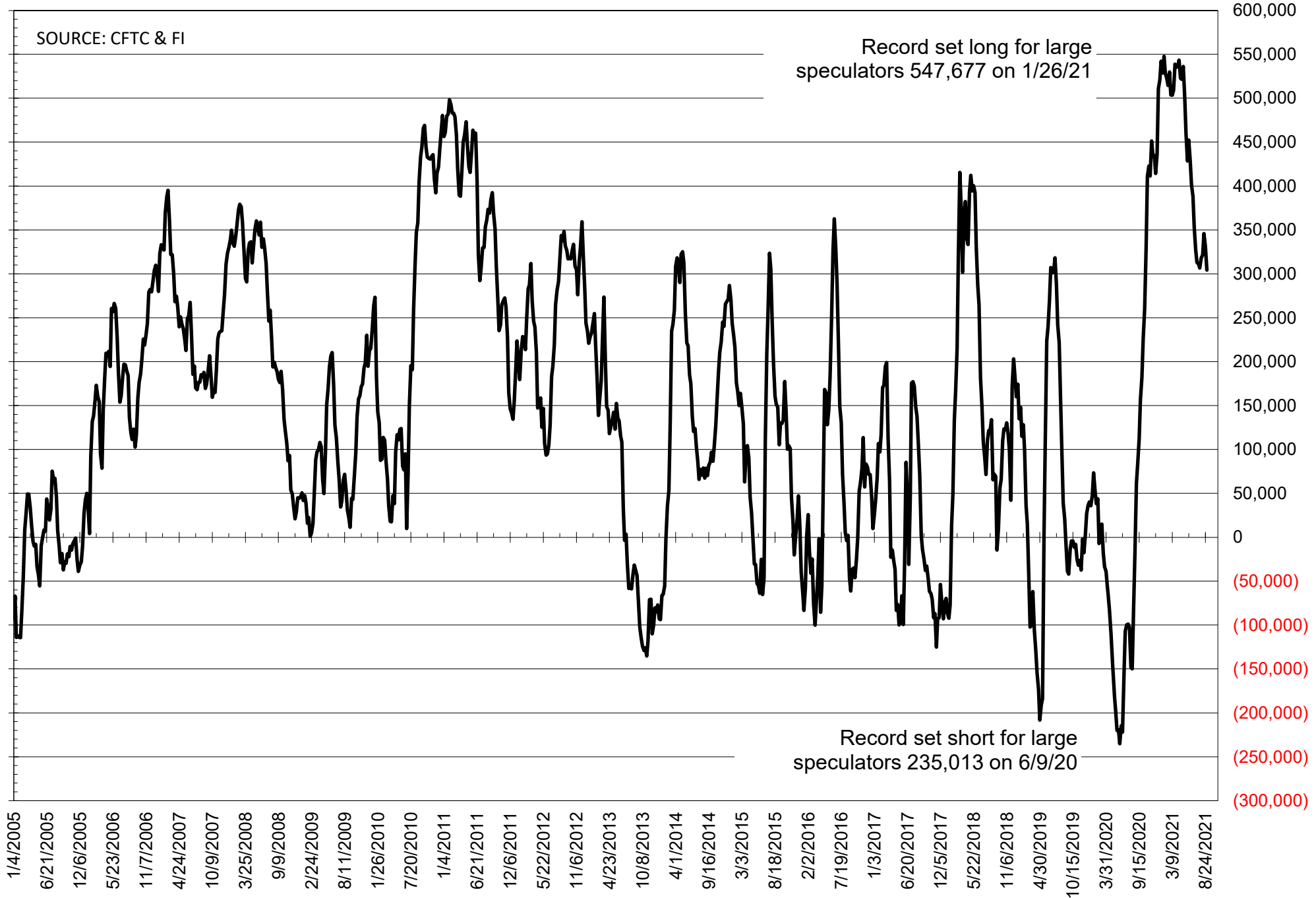
NET POSITION OF FUTURES ONLY LARGE SPECS IN SOYMEAL



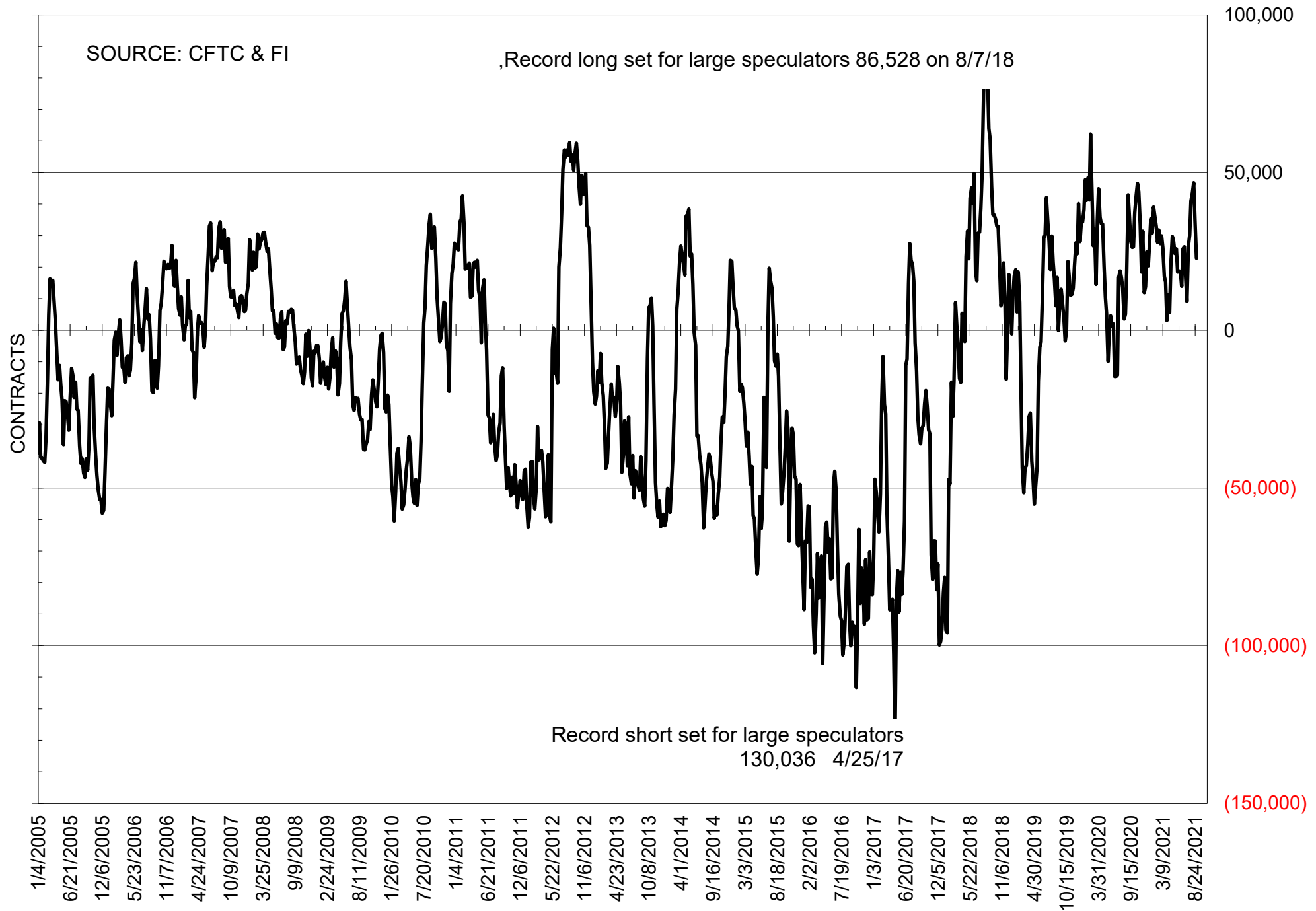
NET POSITION OF FUTURES ONLY LARGE SPECS IN SOYOIL



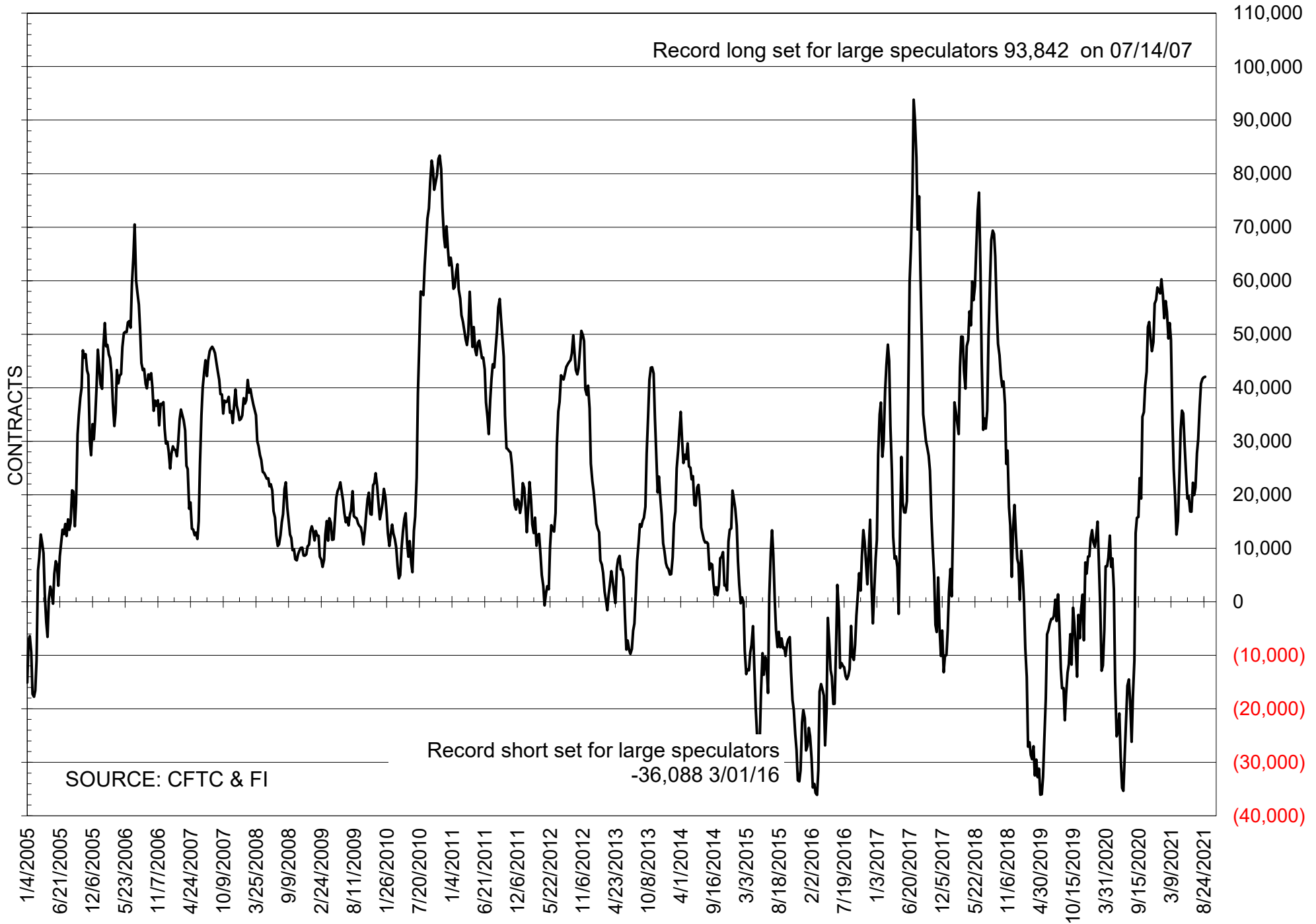
NET POSITION OF LARGE SPECULATORS IN CORN



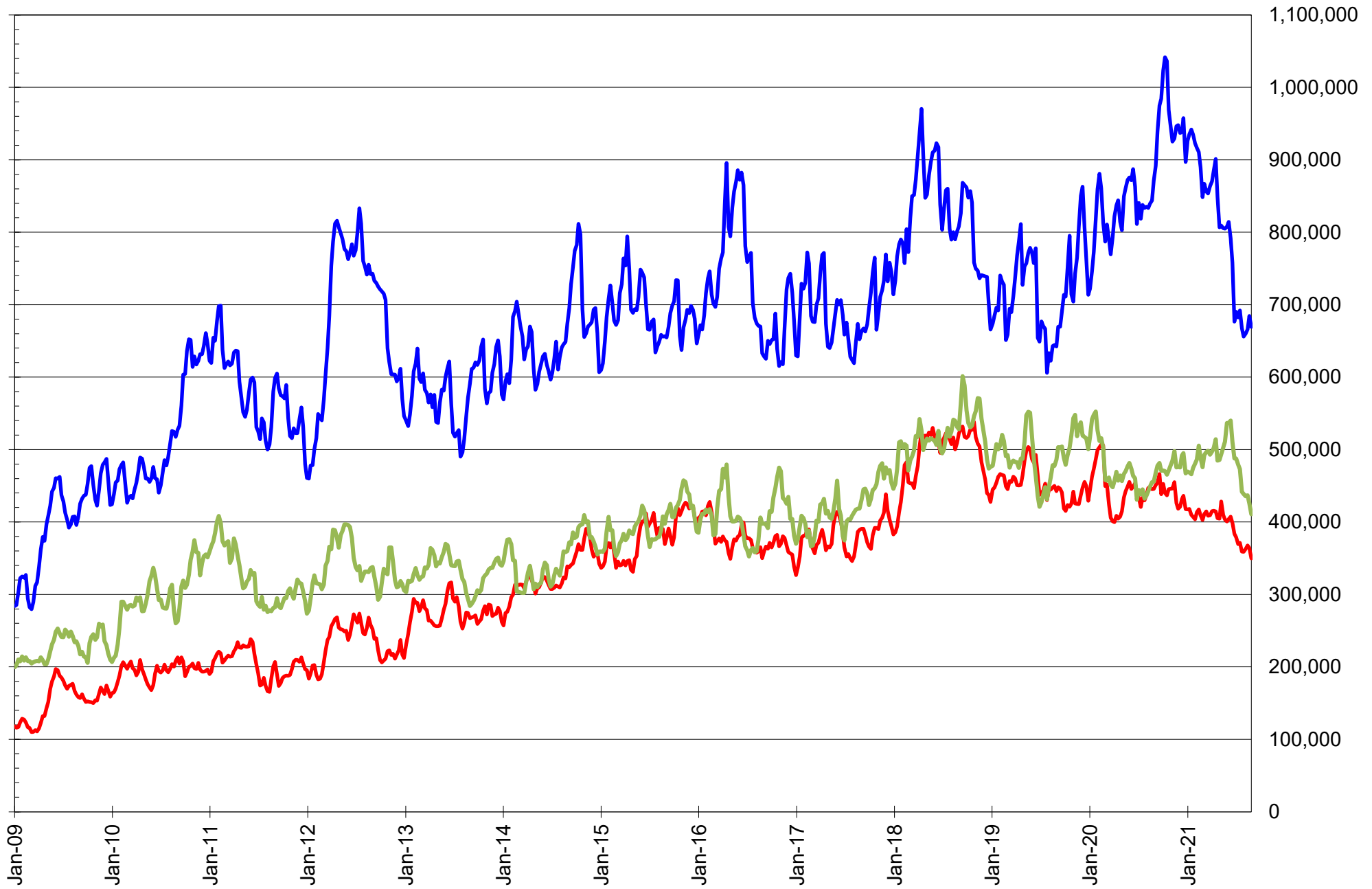
NET POSITION OF FUTURES ONLY LARGE SPECS IN CHICAGO WHEAT



NET POSITION OF LARGE SPECULATORS IN KANSAS CITY WHEAT



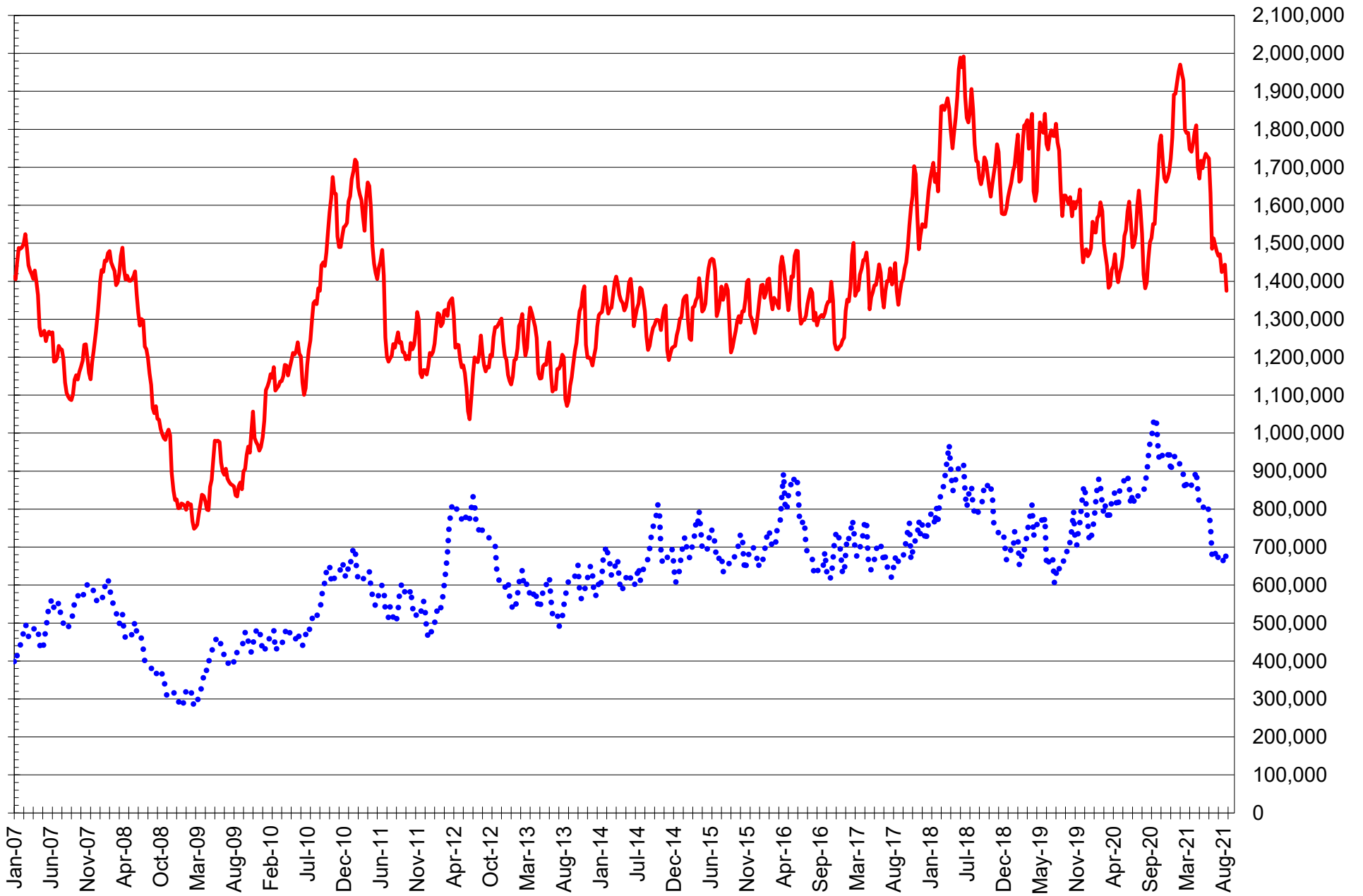
TOTAL OPEN INTEREST IN SOYBEANS, MEAL AND OIL, FUTURES ONLY



SOURCE: CFTC & FI

— SOYBEANS — SOYBEAN MEAL — SOYBEAN OIL

TOTAL OPEN INTEREST IN CORN AND SOYBEANS, FUTURES ONLY

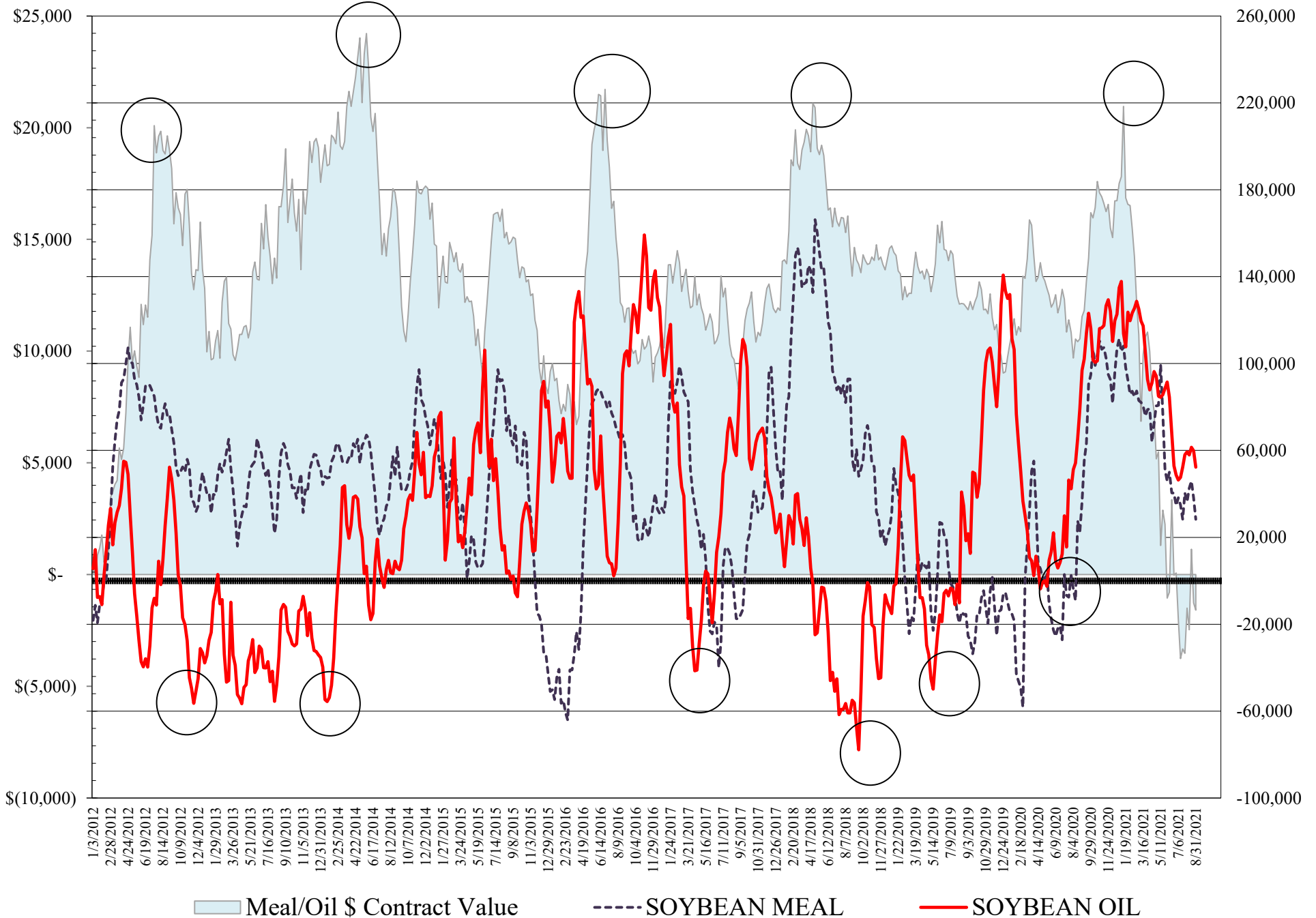


SOURCE: CFTC & FI

— CORN

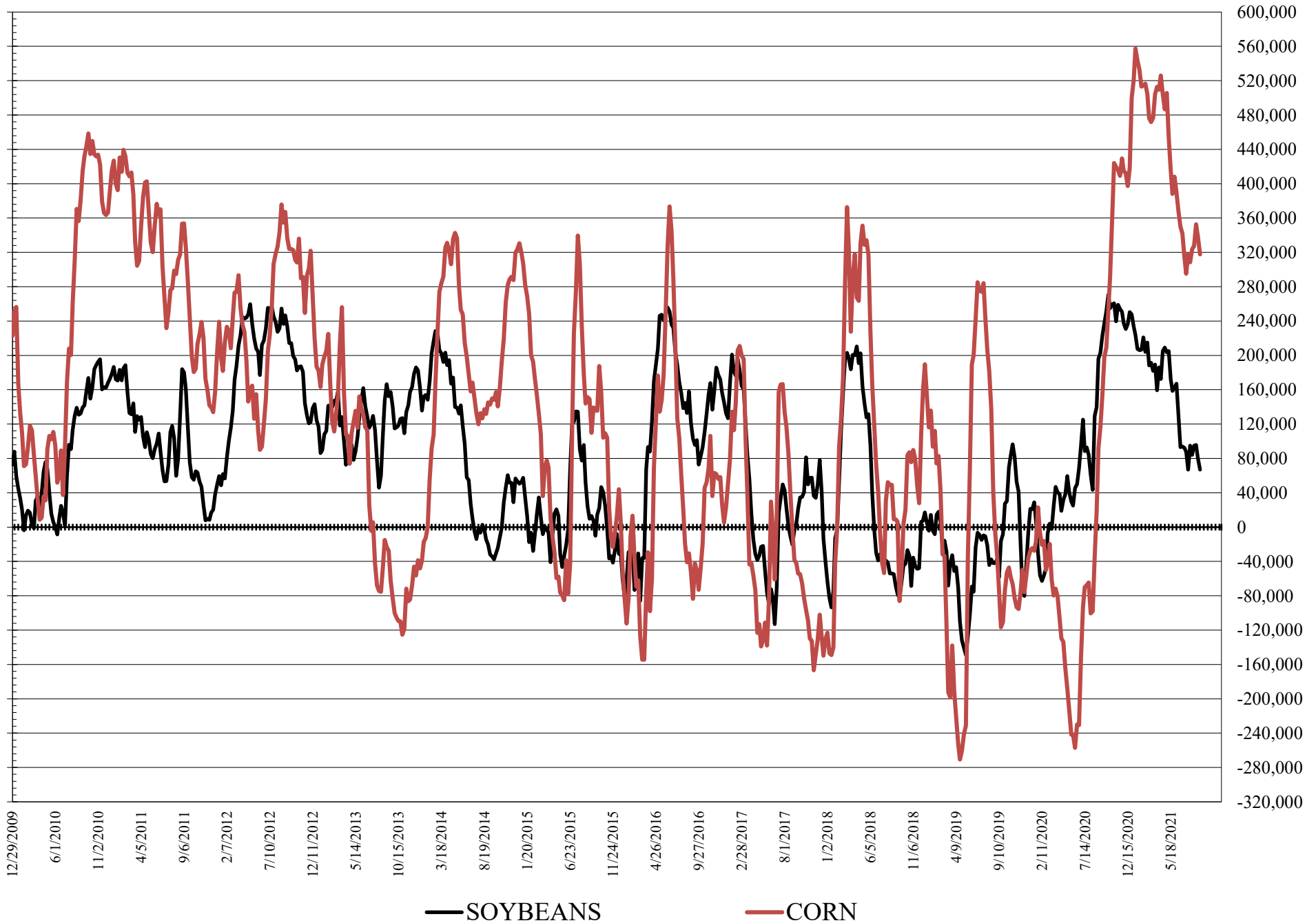
..... SOYBEANS

NET POSITION FUTURES AND OPTIONS OF LARGE SPECULATORS IN SOYBEAN MEAL AND SOYBEAN OIL

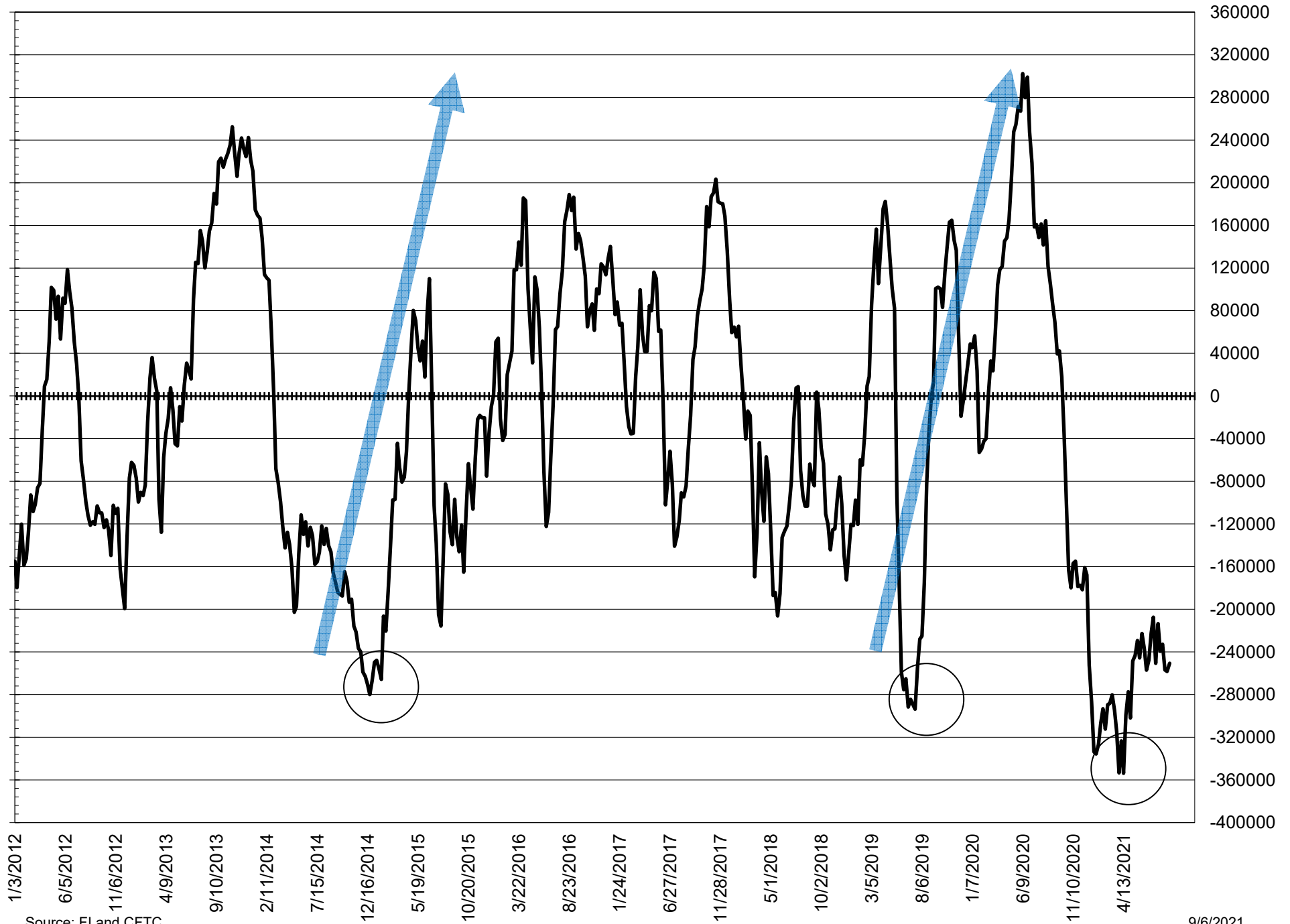


Source: FI and CFTC

NET POSITION FUTURES AND OPTIONS OF LARGE SPECULATORS IN SOYBEANS AND CORN



NET POSITION FUTURES AND OPTIONS SPREAD OF LARGE SPECULATORS IN SOYBEANS MINUS CORN



Source: FI and CFTC

9/6/2021

**DISAGGREGATED COMMITMENT OF TRADERS
FUTURES ONLY NET POSITIONS
AS OF 08/31/2021
(IN THOUSAND CONTRACTS)**

	PRODUCER / MERCHANT / PROCESSOR / USER				(INDEX/ETF) SWAP DEALERS				(CTA/CPO/OTHER UNREGISTERED) MANAGED MONEY			
	31-Aug	24-Aug	17-Aug	10-Aug	31-Aug	24-Aug	17-Aug	10-Aug	31-Aug	24-Aug	17-Aug	10-Aug
	WHEAT											
Chicago	(83.7)	(87.5)	(93.1)	(87.2)	70.7	62.3	57.0	55.8	8.0	8.3	22.1	16.9
Kansas City	(82.6)	(85.8)	(86.0)	(85.4)	39.4	41.6	42.5	45.5	46.9	46.7	45.6	43.7
Minneapolis	(29.3)	(32.1)	(31.5)	(28.8)	1.9	3.1	3.3	3.2	15.6	15.8	15.0	11.9
All Wheat	(195.6)	(205.4)	(210.6)	(201.4)	112.0	107.0	102.7	104.4	70.5	70.9	82.7	72.6
CORN	(491.7)	(503.0)	(520.3)	(502.6)	259.9	246.3	249.3	252.3	245.8	257.9	269.1	246.5
OATS	(1.8)	(1.8)	(2.0)	(2.0)	0.1	0.1	0.1	0.1	0.4	0.4	0.4	0.3
SOYBEANS	(155.7)	(172.6)	(186.6)	(189.4)	97.5	92.2	86.0	83.0	65.8	78.6	93.7	86.9
SOY OIL	(162.9)	(176.8)	(175.8)	(172.5)	103.4	104.7	104.9	102.9	55.4	67.2	69.4	64.1
SOY MEAL	(141.6)	(153.0)	(163.3)	(158.9)	85.3	85.6	85.5	86.0	12.0	20.9	27.7	25.2

	Managed % of OI			
Chicago W	2%	2%	6%	4%
Corn	18%	18%	19%	17%

	TOTAL OPEN INTEREST				OTHER REPORTABLE				NON REPORTABLE			
	31-Aug	24-Aug	17-Aug	10-Aug	31-Aug	24-Aug	17-Aug	10-Aug	31-Aug	24-Aug	17-Aug	10-Aug
	WHEAT											
Chicago	374,928	396,979	390,322	382,959	14.9	26.8	24.7	26.7	(9.9)	(9.8)	(10.7)	(12.2)
Kansas City	231,629	232,626	229,763	230,837	(4.9)	(4.8)	(3.9)	(3.0)	1.2	2.3	1.9	(0.8)
Minneapolis	69,231	73,041	77,366	78,501	3.6	3.8	3.2	3.2	8.1	9.3	10.0	10.5
All Wheat	675,788	702,646	697,451	692,297	13.6	25.7	24.0	26.9	(0.6)	1.8	1.2	(2.4)
CORN	1,374,654	1,443,764	1,435,341	1,424,121	58.4	73.1	76.8	75.1	(72.3)	(74.3)	(74.9)	(71.3)
OATS	4,845	4,832	4,660	4,485	0.4	0.4	0.4	0.4	0.9	1.0	1.0	1.3
SOYBEANS	669,205	684,606	665,803	660,007	15.3	23.1	22.7	35.5	(22.9)	(21.2)	(15.8)	(15.9)
SOY OIL	410,633	425,628	436,726	435,486	(0.7)	(2.1)	(4.9)	(0.7)	4.7	7.0	6.3	6.2
SOY MEAL	349,675	364,085	367,632	362,641	28.5	28.9	27.2	27.6	15.8	17.7	22.9	20.1

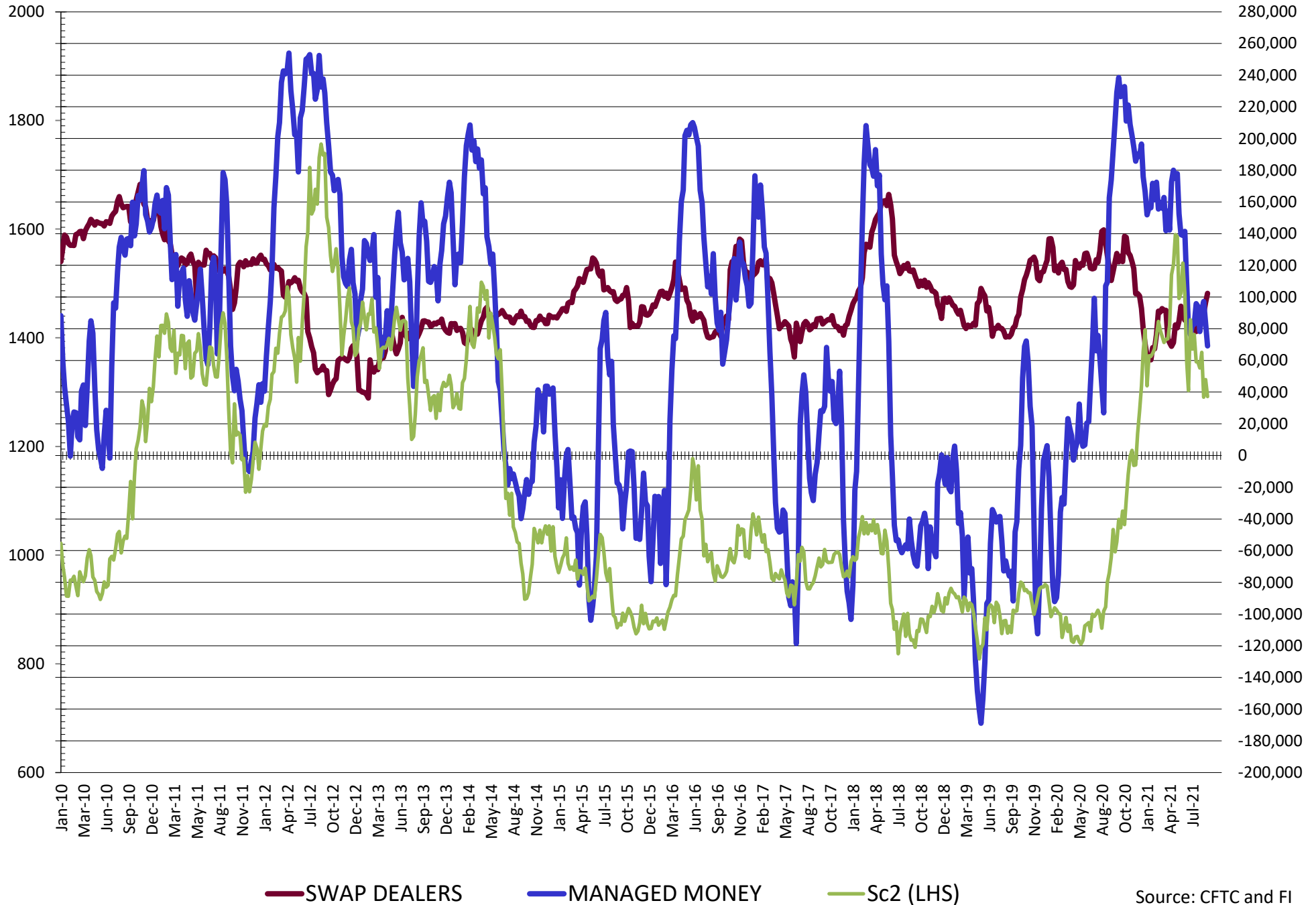
SOURCE: CFTC & FI

**DISAGGREGATED COMMITMENT OF TRADERS
FUTURES & OPTIONS NET POSITIONS
AS OF 08/31/2021
(IN THOUSAND CONTRACTS)**

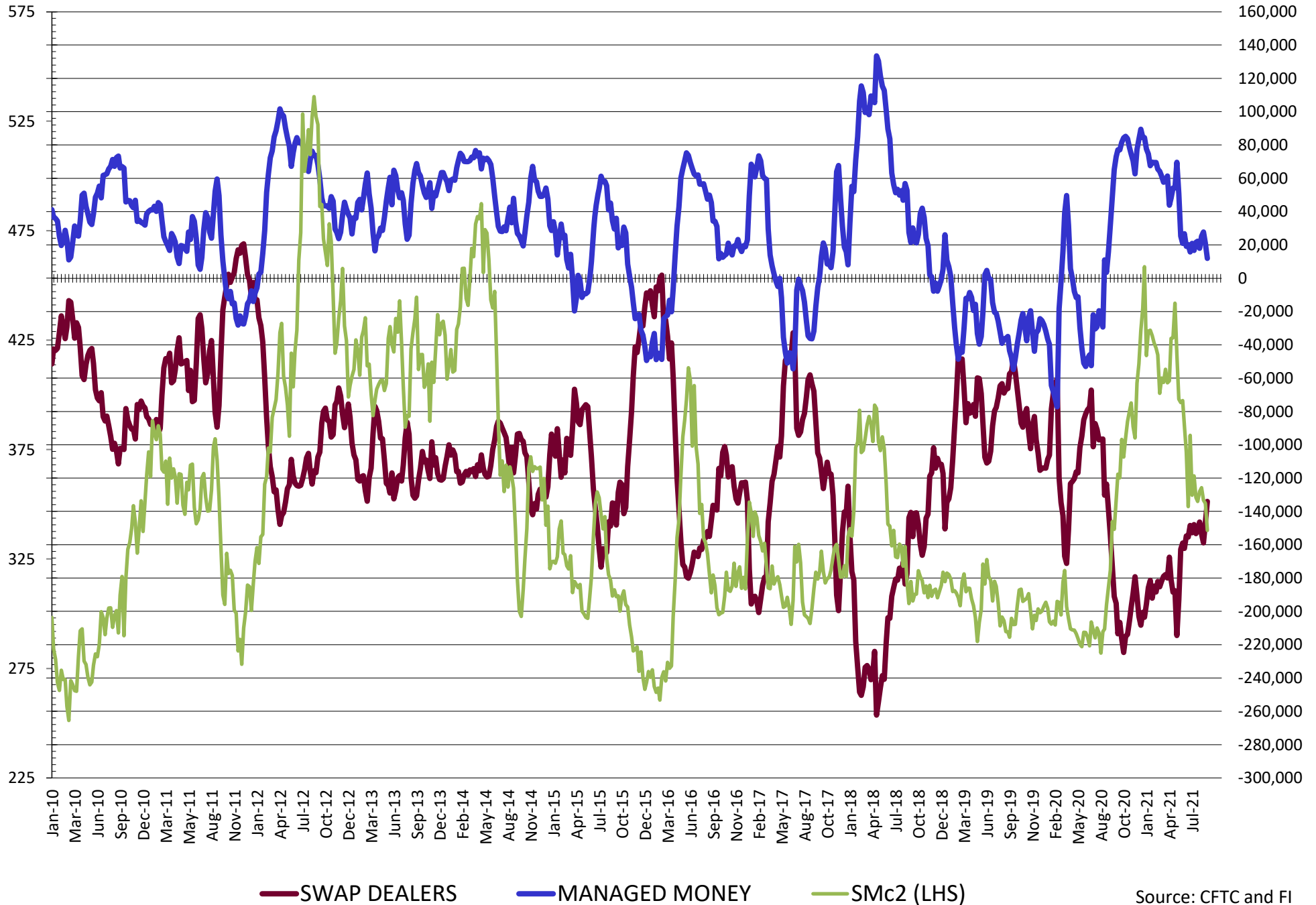
	PRODUCER / MERCHANT / PROCESSOR / USER				(INDEX/ETF) SWAP DEALERS				(CTA/CPO/OTHER UNREGISTERED) MANAGED MONEY			
	31-Aug	24-Aug	17-Aug	10-Aug	31-Aug	24-Aug	17-Aug	10-Aug	31-Aug	24-Aug	17-Aug	10-Aug
	WHEAT											
Chicago	(82.8)	(81.7)	(89.0)	(83.8)	68.9	64.4	59.1	57.4	11.4	12.0	24.2	19.1
Kansas City	(81.1)	(84.8)	(85.8)	(85.8)	39.0	41.1	41.4	45.3	47.7	47.4	46.5	44.8
Minneapolis	(29.1)	(31.7)	(31.4)	(29.0)	2.4	3.2	3.1	3.0	15.7	15.9	15.0	11.9
All Wheat	(193.0)	(198.3)	(206.2)	(198.5)	110.2	108.7	103.6	105.7	74.8	75.3	85.8	75.8
CORN	(475.5)	(486.0)	(502.9)	(486.5)	238.9	228.5	227.2	232.0	258.8	271.0	278.9	254.0
OATS	(1.8)	(1.9)	(2.0)	(2.1)	0.1	0.1	0.1	0.1	0.4	0.4	0.4	0.3
SOYBEANS	(143.4)	(154.5)	(170.2)	(165.8)	102.3	96.6	89.7	86.5	69.1	83.2	97.2	91.6
SOY OIL	(159.5)	(170.3)	(172.0)	(165.3)	102.5	103.1	103.7	101.1	55.3	67.0	69.1	63.5
SOY MEAL	(134.1)	(146.6)	(158.8)	(153.5)	86.4	86.6	86.0	86.8	11.9	20.7	27.7	25.2
	TOTAL				OTHER REPORTABLE				NON REPORTABLE			
	OPEN INTEREST				31-Aug				31-Aug			
	31-Aug	24-Aug	17-Aug	10-Aug	31-Aug	24-Aug	17-Aug	10-Aug	31-Aug	24-Aug	17-Aug	10-Aug
WHEAT												
Chicago	446,666	498,801	494,409	476,360	11.9	14.8	16.3	19.4	(9.3)	(9.4)	(10.6)	(12.2)
Kansas City	250,744	259,263	256,929	253,628	(6.8)	(6.2)	(4.2)	(3.9)	1.2	2.5	2.0	(0.3)
Minneapolis	73,554	80,280	84,752	85,925	2.5	2.9	2.7	2.9	8.6	9.7	10.5	11.1
All Wheat	770,964	838,344	836,090	815,913	7.5	11.5	14.8	18.3	0.5	2.8	2.0	(1.4)
CORN	1,806,045	1,985,043	1,989,268	1,973,657	58.9	67.9	73.7	73.6	(81.1)	(81.4)	(81.4)	(81.4)
OATS	5,048	5,082	4,902	4,699	0.4	0.4	0.5	0.4	0.9	0.9	1.0	1.2
SOYBEANS	853,399	899,684	878,154	873,847	(2.2)	(2.7)	(1.5)	3.3	(25.8)	(22.7)	(15.2)	(15.6)
SOY OIL	470,377	495,595	502,103	501,924	(3.0)	(7.1)	(7.6)	(5.7)	4.8	7.3	6.9	6.3
SOY MEAL	384,278	404,589	407,639	402,359	16.5	17.4	18.1	17.4	19.3	21.8	27.0	24.1

SOURCE: CFTC & FI

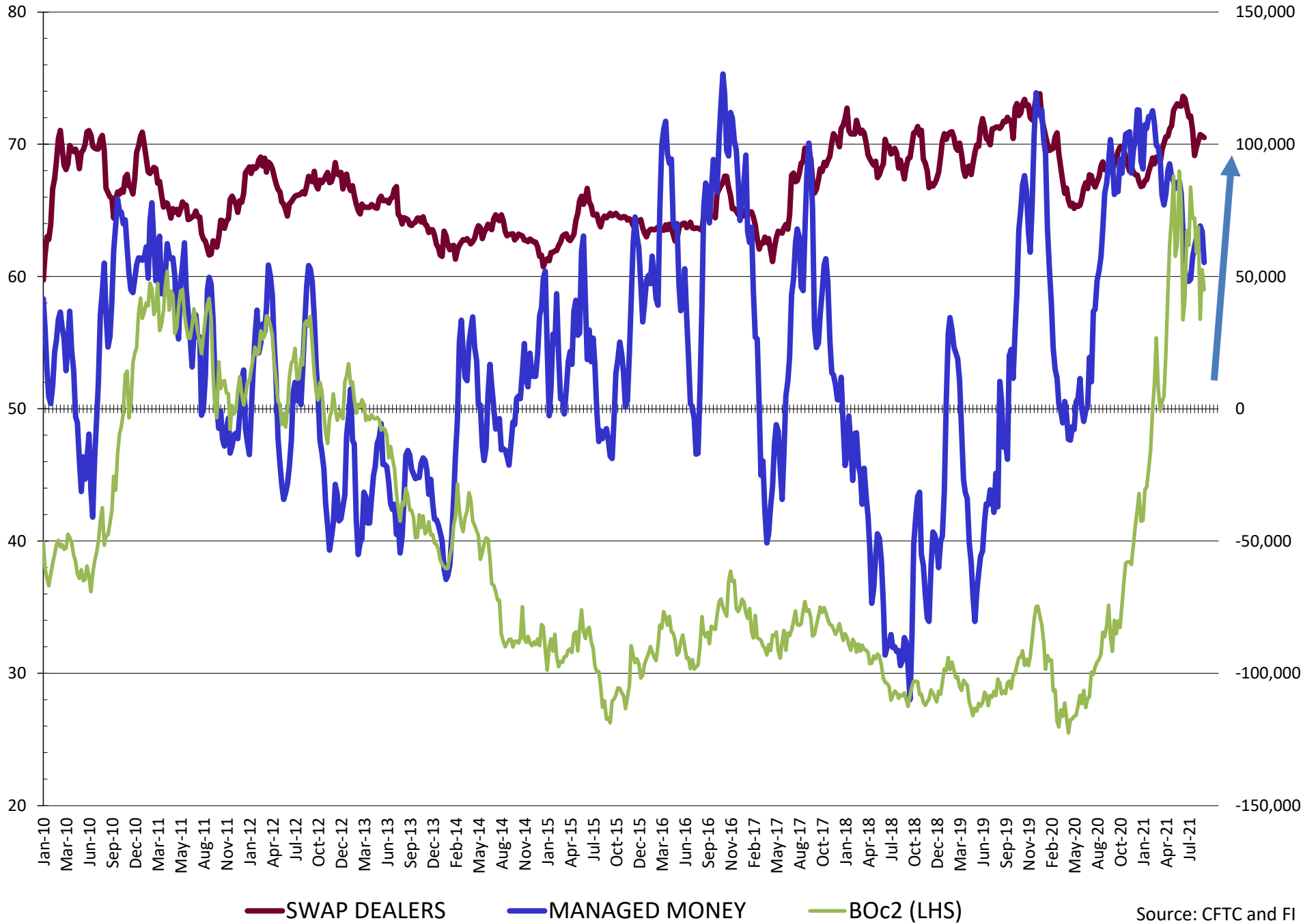
NET POSITION FUTURES AND OPTIONS OF SWAP AND MANAGED FUNDS IN SOYBEANS



NET POSITION FUTURES AND OPTIONS OF SWAP AND MANAGED FUNDS IN SOYBEAN MEAL

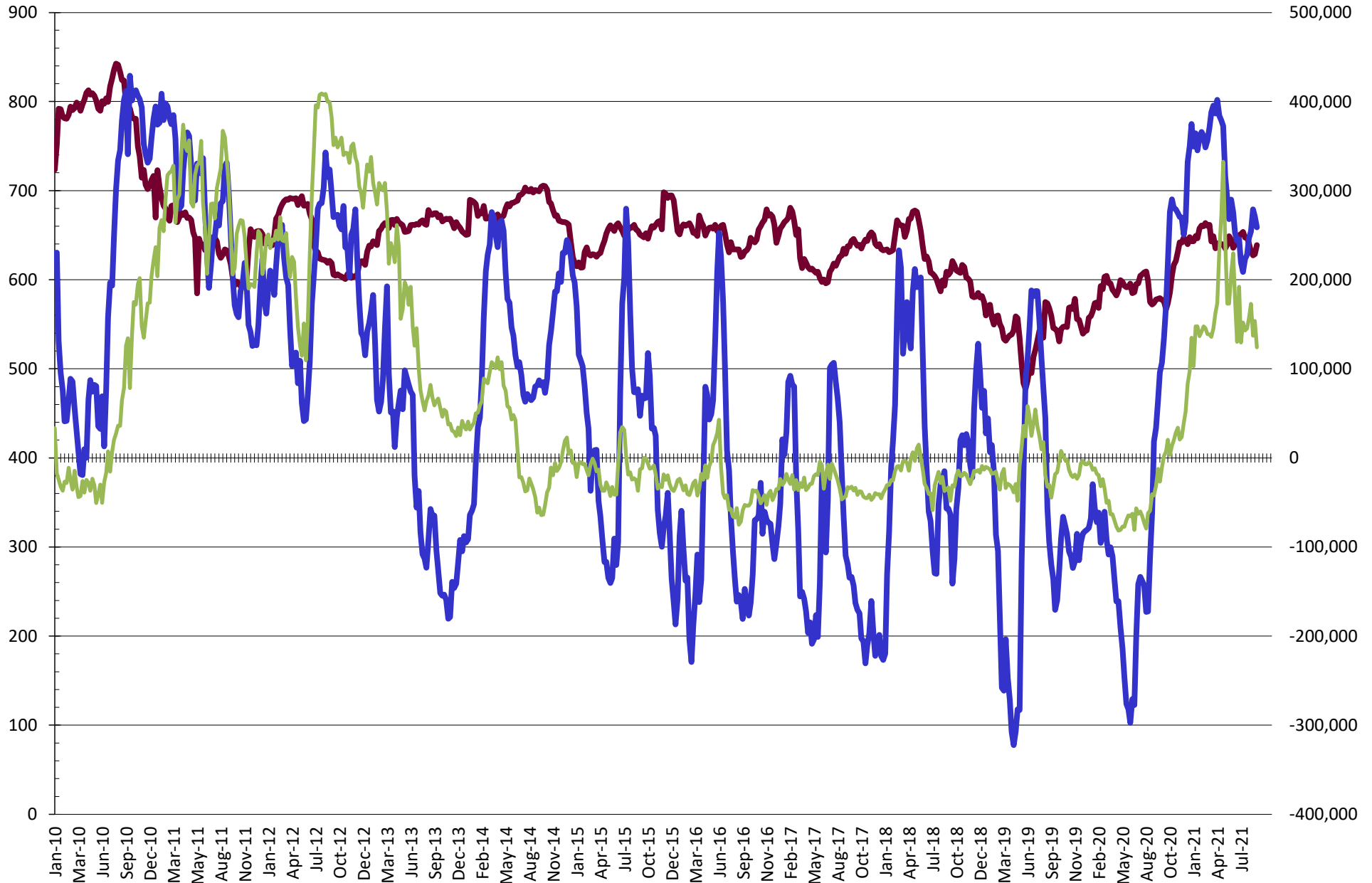


NET POSITION FUTURES AND OPTIONS OF SWAP AND MANAGED FUNDS IN SOYBEAN OIL



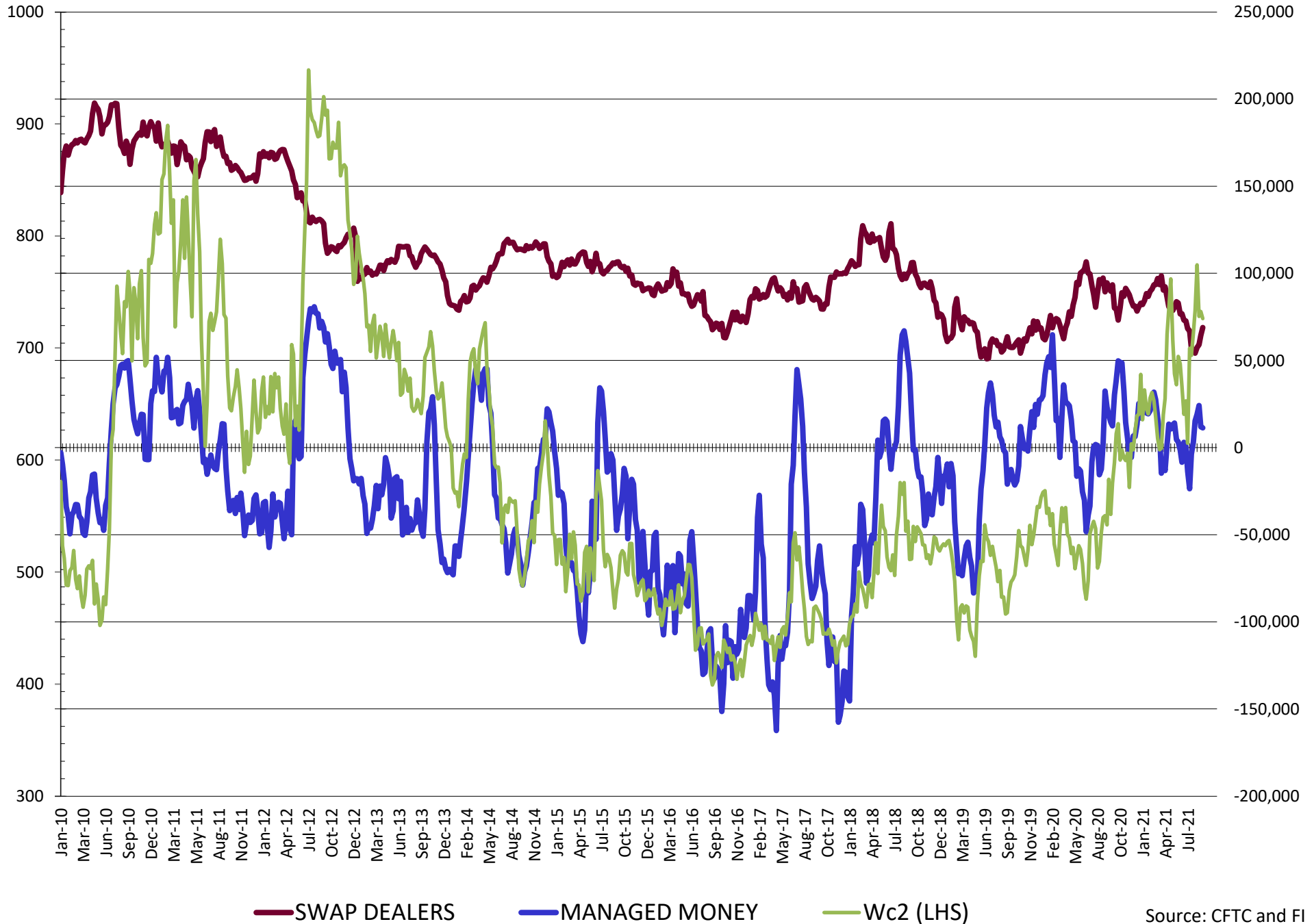
Source: CFTC and FI
9/6/2021

NET POSITION FUTURES AND OPTIONS OF SWAP AND MANAGED FUNDS IN CORN

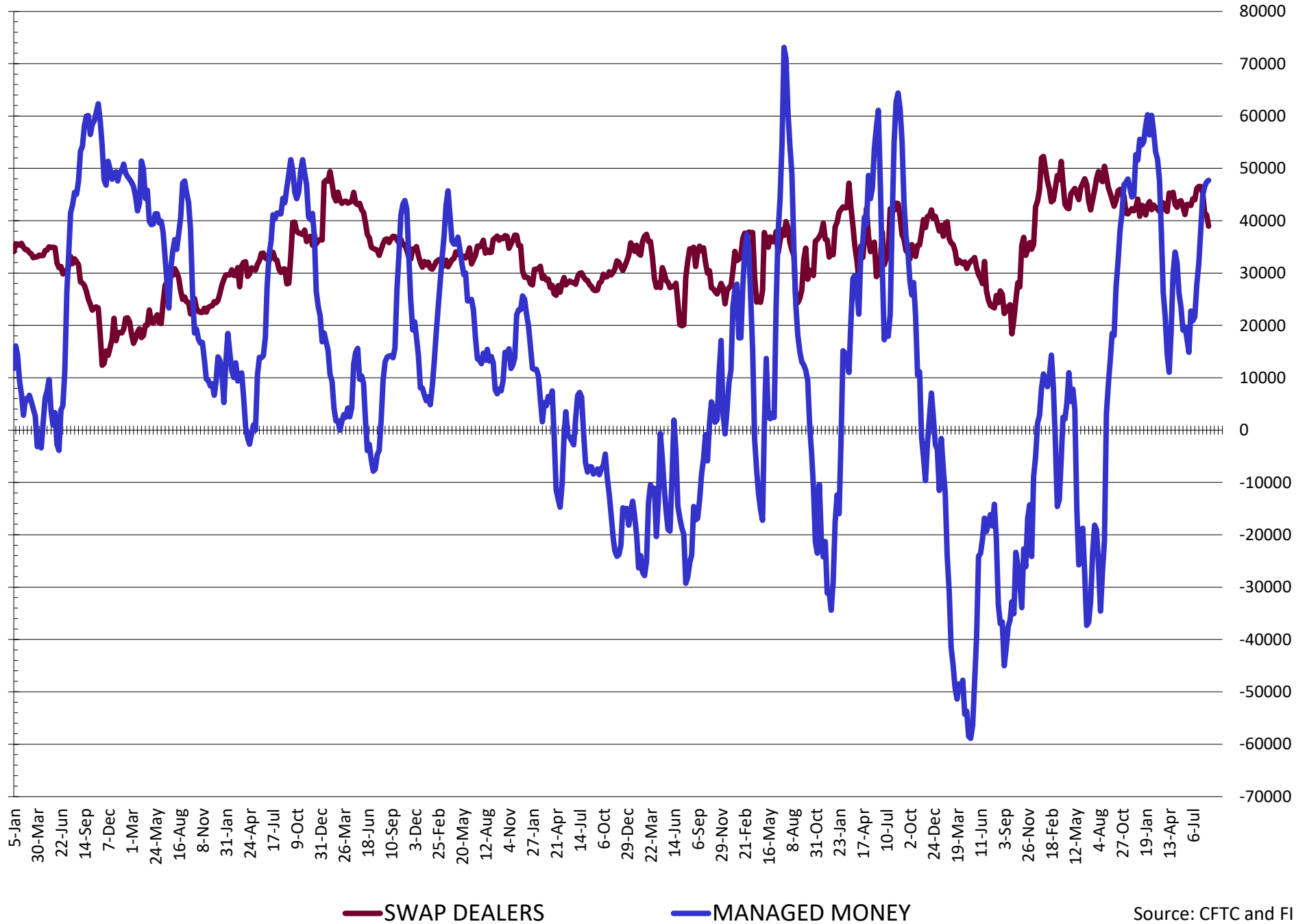


— SWAP DEALERS — MANAGED MONEY — Cc2 (LHS)

NET POSITION FUTURES AND OPTIONS OF SWAP AND MANAGED FUNDS IN CHICAGO WHEAT

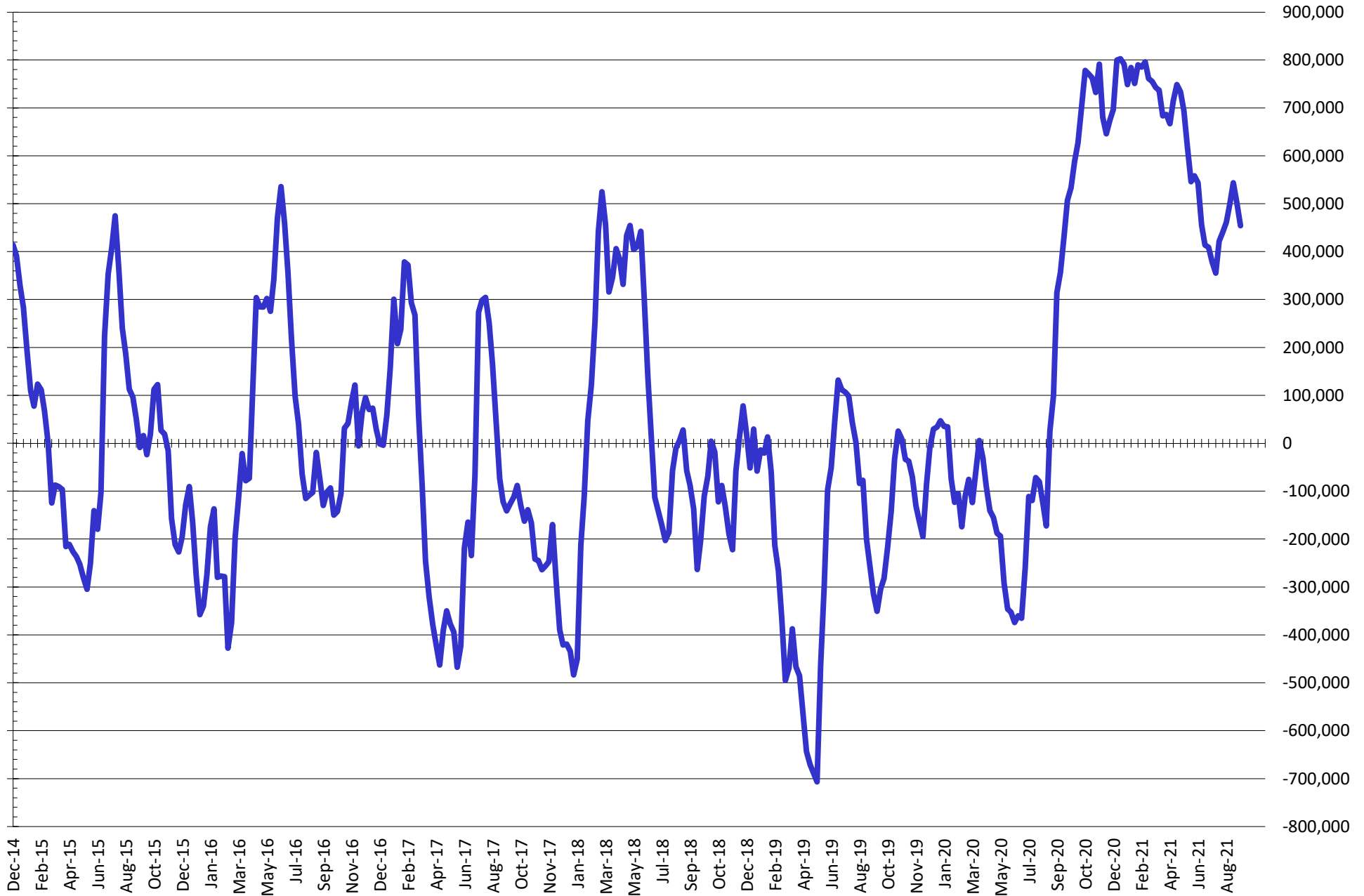


NET POSITION FUTURES AND OPTIONS OF SWAP AND MANAGED FUNDS IN KANSAS WHEAT



Source: CFTC and FI
9/6/2021

NET POSITION FUTURES AND OPTIONS OF SWAP AND MANAGED FUNDS IN COMBINED SRW, HRW, CORN, SOYBEANS, SOYMEAL AND SOYOIL



— Net Managed Money

Source: CFTC and FI
9/6/2021

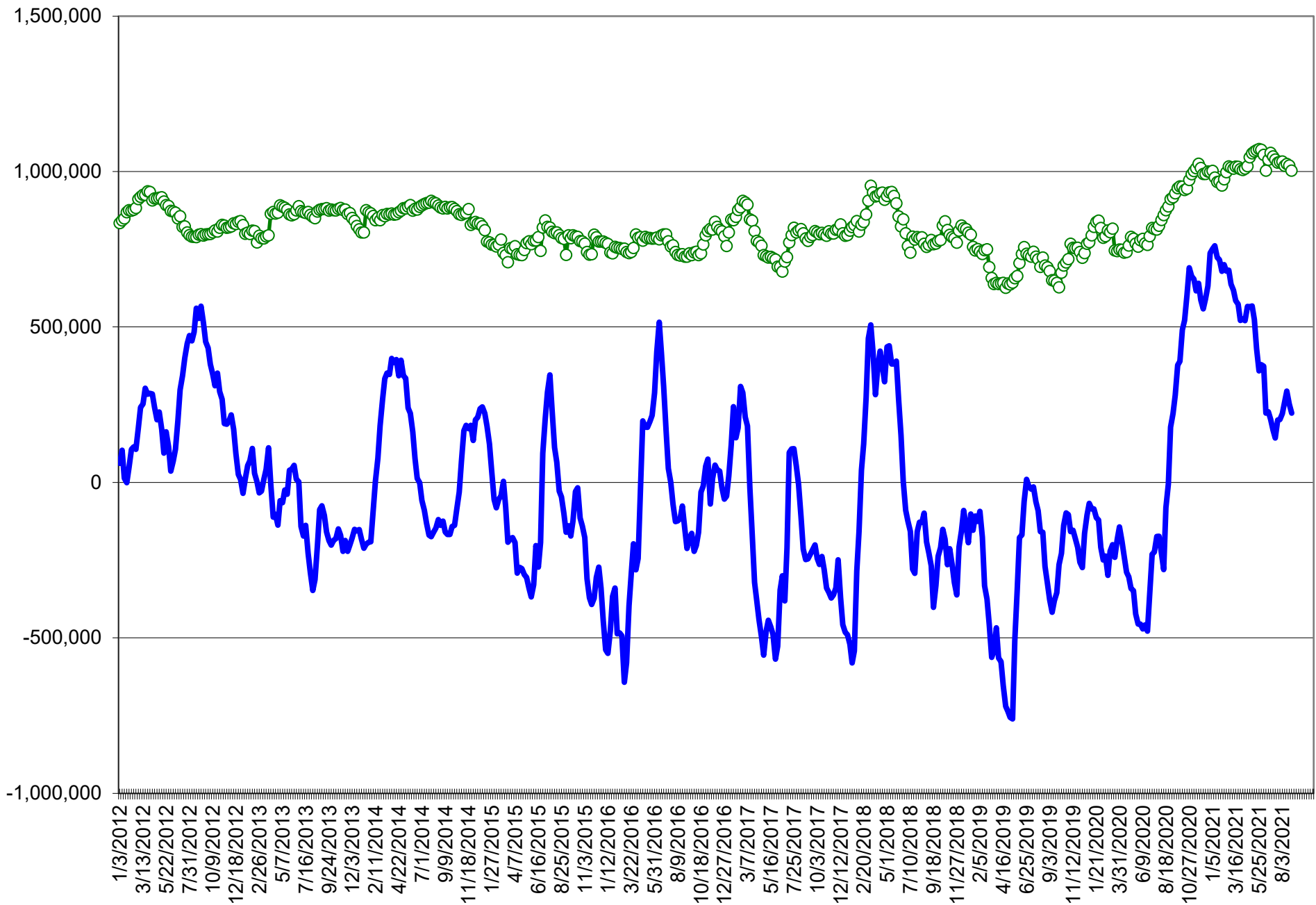
COMMITMENT OF TRADERS
FUTURES & OPTIONS NET POSITIONS (INDEX BROKEN OUT)
AS OF 08/31/2021
(IN THOUSAND CONTRACTS)

	COMMERCIAL				(FUND) NON COMMERCIAL				(SPEC) NON-REPORTABLE			
	31-Aug	24-Aug	17-Aug	10-Aug	31-Aug	24-Aug	17-Aug	10-Aug	31-Aug	24-Aug	17-Aug	10-Aug
	WHEAT											
Chicago	(113.2)	(111.5)	(123.2)	(116.2)	(17.4)	(19.2)	(6.3)	(10.9)	(9.3)	(9.4)	(10.6)	(12.2)
Kansas City	(87.9)	(90.9)	(91.7)	(89.2)	20.0	21.0	21.8	21.9	1.2	2.5	2.0	(0.3)
Minneapolis	-	-	-	-	-	-	-	-	-	-	-	-
All Wheat	(201.1)	(202.5)	(214.8)	(205.4)	2.6	1.8	15.5	11.0	(8.1)	(6.9)	(8.6)	(12.5)
CORN	(501.8)	(518.3)	(536.4)	(521.0)	179.7	190.3	199.0	173.7	(81.1)	(81.4)	(77.0)	(73.2)
OATS	-	-	-	-	-	-	-	-	-	-	-	-
SOYBEANS	(166.2)	(179.6)	(196.1)	(189.3)	17.0	22.3	32.0	33.1	(25.8)	(22.7)	(15.2)	(15.6)
SOY OIL	(147.8)	(157.9)	(158.5)	(152.7)	25.6	32.3	33.1	29.5	4.8	7.3	6.9	6.3
SOY MEAL	(117.8)	(131.5)	(144.6)	(137.0)	(2.1)	5.5	13.6	10.1	19.3	21.8	27.0	24.1

	TOTAL OPEN INTEREST				(INDEX) COMMERCIAL INDEX TRADERS				(INDEX) % NET OF TOTAL OPEN INTEREST			
	31-Aug	24-Aug	17-Aug	10-Aug	31-Aug	24-Aug	17-Aug	10-Aug	31-Aug	24-Aug	17-Aug	10-Aug
	WHEAT											
Chicago	446,666	498,801	494,409	476,360	139.8	140.2	140.1	139.3	31.3%	28.1%	28.3%	29.2%
Kansas City	250,744	259,263	256,929	253,628	66.7	67.4	67.8	67.7	26.6%	26.0%	26.4%	26.7%
Minneapolis	-	-	-	-	-	-	-	-	-	-	-	-
All Wheat	697,410	758,064	751,338	729,988	206.5	207.6	207.9	206.9	29.6%	27.4%	27.7%	28.3%
CORN	1,806,045	1,985,043	1,989,268	1,973,657	403.1	409.4	414.3	420.5	22.3%	20.6%	20.8%	21.3%
OATS	-	-	-	-	-	-	-	-	-	-	-	-
SOYBEANS	853,399	899,684	878,154	873,847	175.0	180.0	179.3	171.8	20.5%	20.0%	20.4%	19.7%
SOY OIL	470,377	495,595	502,103	501,924	117.4	118.3	118.5	116.9	25.0%	23.9%	23.6%	23.3%
SOY MEAL	384,278	404,589	407,639	402,359	100.6	104.2	104.0	102.7	26.2%	25.8%	25.5%	25.5%

SOURCE: CFTC & FI

NET POSITION FUTURES AND OPTIONS OF SPECULATORS AND INDEX FUNDS IN COMBINED SRW, HRW, CORN, SOYBEANS, SOYMEAL AND SOYOIL



Source: CFTC and FI

○ Net Index

— Net Speculator

Traditional Daily Estimate of Funds 8/31/21

	(Neg)-"Short"	Pos-"Long"			
Actual less Est.	(5.8)	3.5	(3.2)	(3.2)	(7.2)
	Corn	Bean	Chi. Wheat	Meal	Oil
Actual	304.2	81.1	22.8	40.5	54.8
1-Sep	(11.0)	(9.0)	(5.0)	(2.0)	(3.0)
2-Sep	3.0	3.0	2.0	(3.0)	2.0
3-Sep	(2.0)	5.0	5.0	2.0	1.0
6-Sep					
7-Sep					
FI Est. of Futures Only 8/31/21	294.2	80.1	24.8	37.5	54.8
FI Est. Futures & Options	307.7	65.9	25.2	25.3	52.3
Futures only record long "Traditional Funds"	547.7 1/26/2021	280.9 11/10/2020	86.5 8/7/2018	167.5 5/1/2018	160.2 11/1/2016
Futures only record short	(235.0) 6/9/2020	(118.3) 4/30/2019	(130.0) 4/25/2017	(49.5) 3/1/2016	(69.8) 9/18/2018
Futures and options record net long	557.6 1/12/2021	270.9 10/6/2020	64.8 8/7/2012	132.1 5/1/2018	159.2 1/1/2016
Futures and options record net short	(270.6) 4/26/2019	(132.0) 4/30/2019	(143.3) 4/25/2017	(64.1) 3/1/2016	(77.8) 9/18/2018

Managed Money Daily Estimate of Funds 8/31/21

	Corn	Bean	Chi. Wheat	Meal	Oil
Latest CFTC Fut. Only	245.8	65.8	8.0	12.0	55.4
Latest CFTC F&O	258.8	69.1	11.4	11.9	55.3
FI Est. Managed Fut. Only	236	65	10	9	55
FI Est. Managed Money F&O	249	68	13	9	55

Index Funds Latest Positions (as of last Tuesday)

Index Futures & Options	403.1	175.0	139.8	NA	117.4
Change From Previous Week	(6.3)	(4.9)	(0.4)	NA	(0.9)

Source: Reuters, CFTC & FI (FI est. are noted with latest date)

Disclaimer

TO CLIENTS/PROSPECTS OF FUTURES INTERNATIONAL, SEE RISK DISCLOSURE BELOW:

THIS COMMUNICATION IS CONVEYED AS A SOLICITATION FOR ENTERING INTO A DERIVATIVES TRANSACTION.

Any trading recommendations and market or other information to Customer by Futures International (FI), although based upon information obtained from sources believed by FI to be reliable may not be accurate and may be changed without notice to customer. FI makes no guarantee as to the accuracy or completeness of any of the information or recommendations furnished to Customer. Customer understands that FI, its managers, employees and/or affiliates may have a position in commodity futures, options or other derivatives which may not be consistent with the recommendations furnished by FI to Customer.

The risk of trading futures and options and other derivatives involves a substantial risk of loss and is not suitable for all persons. In purchasing an option, the risk is limited to the premium paid, and all commissions and fees involved with the trade. When an option is shorted or written, the writer of the option has unlimited risk with respect to the option written. The use of options strategies such as a straddles and strangles involve multiple option positions and may substantially increase the amount of commissions and fees paid to execute the strategy. Option prices do not necessarily move in tandem with cash or futures prices. Each person must consider whether a particular trade, combination of trades or strategy is suitable for that person's financial means and objectives.

This material may include discussions of seasonal patterns, however, futures prices have already factored in the seasonal aspects of supply and demand, and seasonal patterns are no indication of future market trends. Finally, past performance is not indicative of future results.

This communication may contain links to third party websites which are not under the control of FI and FI is not responsible for their content. Products and services are offered only in jurisdictions where solicitation and sale are lawful, and in accordance with applicable laws and regulations in each such jurisdiction.