

	Current	Δ from YD	Δ from 7D Avg
Nat Gas Prompt	\$ 4.60	▼ \$ (0.02)	▲ \$ 0.23

	Current	Δ from YD	Δ from 7D Avg
WTI Prompt	\$ 68.83	▲ \$ 0.24	▲ \$ 0.3

	Current	Δ from YD	Δ from 7D Avg
Brent Prompt	\$ 71.89	▲ \$ 0.30	▼ \$ (0.6)

Page Menu

[Short-term Weather Model Outlooks](#)

[Lower 48 Component Models](#)

[Regional S/D Models Storage Projection](#)

[Weather Model Storage Projection](#)

[Supply – Demand Trends](#)

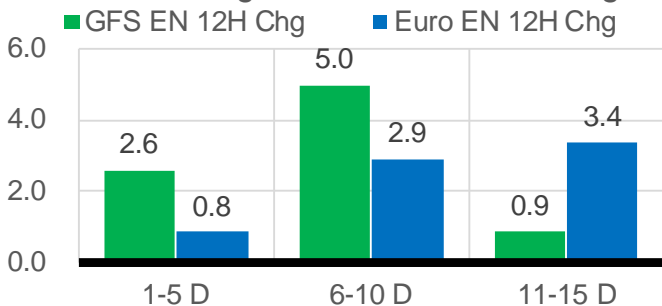
[Nat Gas Options Volume and Open Interest](#)

[Nat Gas Futures Open Interest](#)

[Price Summary](#)

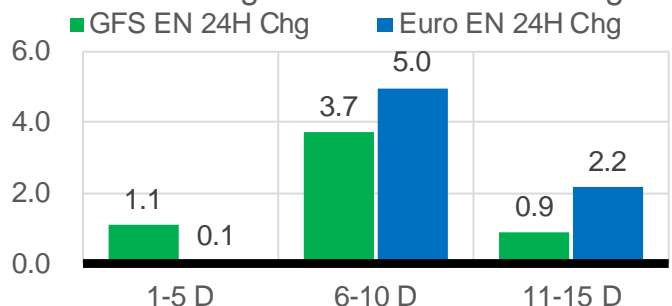
Vs. 12H Ago

L48 Region - 00z TDD vs 12H Ago



Vs. 24H Ago

L48 Region - 00z TDD vs 24H Ago



	Current	Δ from YD	Δ from 7D Avg
US Dry Production	89.3	▼ -1.49	▼ -1.79

	Current	Δ from YD	Δ from 7D Avg
US Power Burns	33.9	▼ -0.82	▼ -5.50

	Current	Δ from YD	Δ from 7D Avg
US ResComm	7.7	▲ 0.04	▲ 0.13

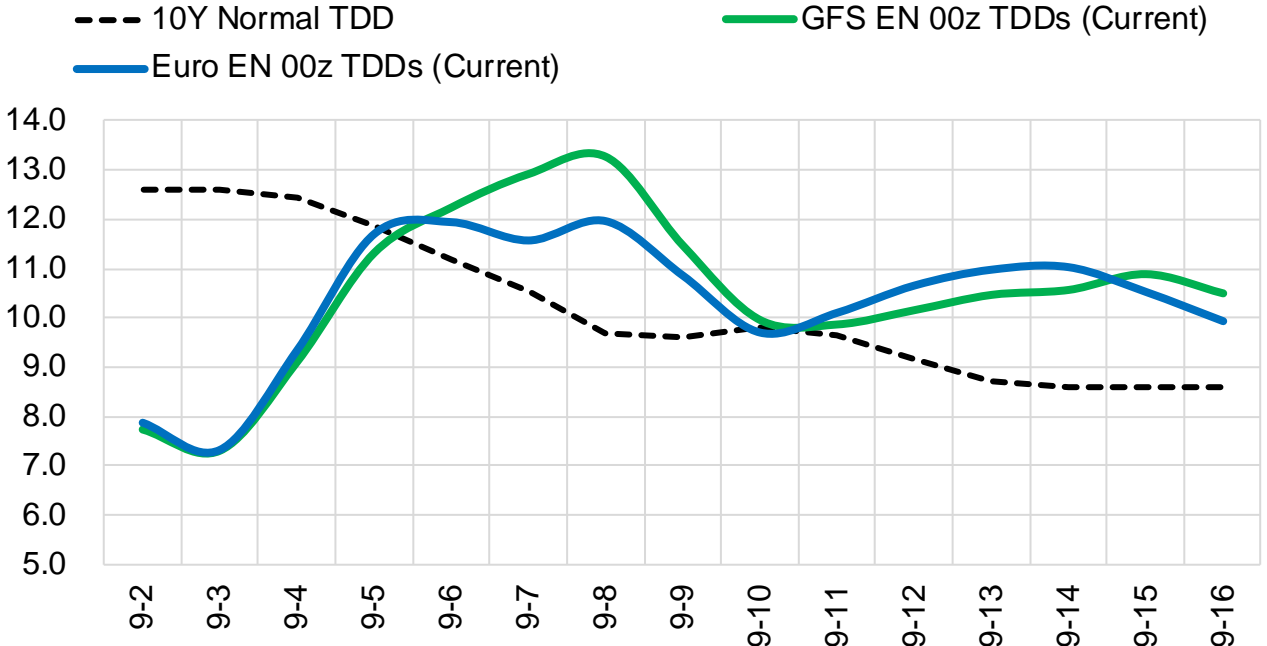
	Current	Δ from YD	Δ from 7D Avg
Canadian Imports	4.3	▼ -0.40	▼ -0.85

	Current	Δ from YD	Δ from 7D Avg
Net LNG Exports	10.0	▲ 0.20	▼ -0.53

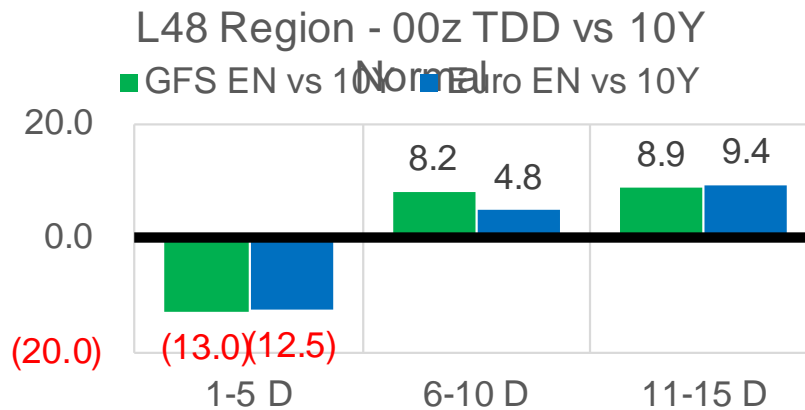
	Current	Δ from YD	Δ from 7D Avg
Mexican Exports	7.2	▲ 0.00	▲ 0.22

Short-term Weather Model Outlooks (00z)

L48 Region



Vs. 10Y Normal



Source: WSI , Bloomberg

Lower 48 Component Models

Daily Balances

	27-Aug	28-Aug	29-Aug	30-Aug	31-Aug	1-Sep	2-Sep	DoD	vs. 7D
Lower 48 Dry Production	91.1	90.3	90.5	91.0	91.1	90.8	89.3	▼ -1.5	▼ -1.5
Canadian Imports	5.3	4.9	5.0	5.3	5.1	4.7	4.3	▼ -0.4	▼ -0.7
L48 Power	41.5	39.0	39.1	40.7	37.5	34.8	33.9	▼ -0.8	▼ -4.8
L48 Residential & Commercial	7.8	7.0	7.2	7.5	7.5	7.6	7.7	▲ 0.0	▲ 0.2
L48 Industrial	20.6	20.2	19.9	19.4	19.4	19.2	19.2	▲ 0.1	▼ -0.5
L48 Lease and Plant Fuel	5.0	5.0	5.0	5.0	5.0	5.0	4.9	▼ -0.1	▼ -0.1
L48 Pipeline Distribution	2.4	2.2	2.2	2.3	2.2	2.2	2.1	▼ 0.0	▼ -0.1
L48 Regional Gas Consumption	77.3	73.5	73.4	75.0	71.6	68.7	67.9	▼ -0.8	▼ -5.4
Net LNG Delivered	10.88	11.03	10.87	10.27	10.12	9.83	10.03	▲ 0.2	▼ -0.5
Total Mexican Exports	7.1	6.6	6.4	7.2	7.2	7.2	7.2	▲ 0.0	▲ 0.2
Implied Daily Storage Activity	1.1	4.1	4.7	3.9	7.2	9.8	8.5		
EIA Reported Daily Storage Activity									
Daily Model Error									

EIA Storage Week Balances

	23-Jul	30-Jul	6-Aug	13-Aug	20-Aug	27-Aug	WoW	vs. 4W
Lower 48 Dry Production	92.6	92.6	91.9	92.4	92.4	93.0	▲ 0.5	▲ 0.6
Canadian Imports	4.9	5.5	5.0	5.2	5.0	5.3	▲ 0.3	▲ 0.2
L48 Power	39.7	42.1	38.3	41.1	39.7	41.9	▲ 2.2	▲ 1.6
L48 Residential & Commercial	8.8	8.6	8.0	7.8	7.6	7.8	▲ 0.2	▼ -0.2
L48 Industrial	19.3	20.5	20.1	19.2	20.9	20.9	▼ 0.0	▲ 0.7
L48 Lease and Plant Fuel	5.1	5.1	5.1	5.1	5.1	5.1	▲ 0.0	▲ 0.0
L48 Pipeline Distribution	2.3	2.4	2.2	2.4	2.3	2.4	▲ 0.1	▲ 0.1
L48 Regional Gas Consumption	75.2	78.6	73.7	75.5	75.6	78.1	▲ 2.5	▲ 2.2
Net LNG Exports	10.5	10.8	10.6	9.9	10.9	10.6	▼ -0.3	▲ 0.0
Total Mexican Exports	7.1	7.0	6.9	6.8	6.8	6.8	▼ -0.1	▼ -0.1
Implied Daily Storage Activity	4.7	1.7	5.7	5.2	4.1	2.9	-1.3	
EIA Reported Daily Storage Activity	5.1	1.9	7.0	6.6	4.1			
Daily Model Error	-0.5	-0.1	-1.3	-1.3	0.0			

Monthly Balances

	2Yr Ago Sep-18	LY Sep-18	May-21	Jun-21	Jul-21	Aug-21	MTD Sep-21	MoM	vs. LY
Lower 48 Dry Production	86.6	86.6	93.1	93.4	92.4	92.1	90.1	▼ -2.1	▲ 3.4
Canadian Imports	4.5	4.5	4.5	4.8	5.2	5.1	4.5	▼ -0.6	▲ 0.0
L48 Power	34.3	34.3	26.8	35.9	39.6	40.2	34.4	▼ -5.8	▲ 0.0
L48 Residential & Commercial	8.5	8.5	12.8	8.9	8.6	7.7	7.7	▼ 0.0	▼ -0.8
L48 Industrial	22.6	22.6	20.8	20.6	19.6	20.2	19.2	▼ -1.0	▼ -3.4
L48 Lease and Plant Fuel	4.8	4.8	5.1	5.1	5.1	5.1	5.0	▼ -0.1	▲ 0.2
L48 Pipeline Distribution	2.1	2.1	2.1	2.2	2.3	2.3	2.1	▼ -0.2	▲ 0.1
L48 Regional Gas Consumption	72.3	72.3	67.6	72.7	75.1	75.5	68.3	▼ -7.2	▼ -4.0
Net LNG Exports	3.1	3.1	10.8	10.2	10.8	10.5	9.9	▼ -0.5	▲ 6.8
Total Mexican Exports	5.0	5.0	6.8	7.4	7.0	6.9	7.2	▲ 0.3	▲ 2.2
Implied Daily Storage Activity	10.7	10.7	12.4	8.0	4.6	4.4	9.2		
EIA Reported Daily Storage Activity									
Daily Model Error									

Source: Bloomberg, analytix.ai

Daily Average Generation Data

Nuclear Generation Daily Average - GWh (NRC)

	25-Aug	26-Aug	27-Aug	28-Aug	29-Aug	30-Aug	31-Aug	DoD	vs. 7D
NRC Nuclear Daily Output	91.8	91.9	91.0	91.0	91.0	89.3	90.1	0.8	-0.9
NRC Nuclear Max Capacity	104.9	104.9	104.9	104.9	104.9	104.9	104.9	0.0	0.0
NRC Nuclear Outage	13.0	13.0	13.9	13.9	13.9	15.6	14.8	-0.8	0.9
NRC % Nuclear Cap Utilization	93.4	93.5	92.5	92.5	92.5	90.8	91.6	0.8	-0.9

Wind Generation Daily Average - MWh (EIA)

	25-Aug	26-Aug	27-Aug	28-Aug	29-Aug	30-Aug	31-Aug	DoD	vs. 7D
CALI Wind	2323	2486	1308	833	1443	2598	3005	406	1173
TEXAS Wind	10429	6565	6618	8681	4821	3359	6351	2992	-394
US Wind	35084	36897	37959	40900	28774	20762	31085	10323	-2311

Generation Daily Average - MWh (EIA)

	25-Aug	26-Aug	27-Aug	28-Aug	29-Aug	30-Aug	31-Aug	DoD	vs. 7D
US Wind	35084	36897	37959	40900	28774	20762	31085	10323	-2311
US Solar	14316	14500	14271	14358	12981	12370	11094	-1276	-2706
US Petroleum	6552	6412	5341	3872	3117	2666	2316	-350	-2344
US Other	10459	10178	9820	9689	9410	10150	10044	-106	94
US Coal	145977	144353	145284	136089	136235	146802	139299	-7503	-3158
US Nuke	93788	94243	92900	92092	91978	91825	92283	457	-522
US Hydro	31682	31530	30341	28440	26393	26763	27687	923	-1505
US Gas	237395	238341	229831	207657	205089	226570	207435	-19135	-16712

See National Wind and Nuclear daily charts

Source: Bloomberg, analytix.ai

Storage Week Average Generation Data

Nuclear Generation Weekly Average - GWh (NRC)

	23-Jul	30-Jul	6-Aug	13-Aug	20-Aug	27-Aug	WoW	WoW Bcf/d Impact
NRC Nuclear Daily Output	90.7	89.3	90.6	91.5	92.4	91.9	-0.5	0.1
NRC Nuclear Max Capacity	104.9	104.9	104.9	104.9	104.9	104.9	0.0	
NRC Nuclear Outage	14.2	15.6	14.3	13.3	12.5	13.0	0.5	
NRC % Nuclear Cap Utilization	0.1	0.1	0.1	0.1	0.1	0.1	0.0	

Wind Generation Weekly Average - MWh (EIA)

	23-Jul	30-Jul	6-Aug	13-Aug	20-Aug	27-Aug	WoW	WoW Bcf/d Impact
CALI Wind	2064	1905	2237	2507	3210	2053	-1157	0.2
TEXAS Wind	7162	7913	5180	16319	7171	12600	5428	-1.0
US Wind	26446	29738	22379	49586	29141	41810	12669	-2.3
					-20445.1			
					-41%			

Generation Weekly Average - MWh (EIA)

	23-Jul	30-Jul	6-Aug	13-Aug	20-Aug	27-Aug	WoW	WoW Bcf/d Impact
US Wind	26446	29738	22379	49586	29141	41810	12669	-2.3
US Solar	14023	13978	14130	14383	12828	14408	1580	-0.3
US Petroleum	3892	4729	4074	4712	4466	5323	857	-0.2
US Other	9336	9289	9070	10070	10101	10061	-40	0.0
US Coal	137623	146407	134740	140524	138047	136168	-1879	0.3
US Nuke	93488	92266	93328	94302	95157	94283	-874	0.2
US Hydro	30196	29216	27752	27035	28982	30617	1634	-0.3
US Gas	210463	224459	204634	208281	212106	215853	3747	-0.7

See National Wind and Nuclear daily charts

Source: Bloomberg, analytix.ai

Monthly Average Generation Data

Nuclear Generation Monthly Average - GWh (NRC)

	2Yr Ago	LY	MTD						
	Same 30 days	Same 30 days	Jun-21	Jul-21	Aug-21	Sep-21	Last 30 days	MoM (MTD vs LY)	Last 30 days YoY
NRC Nuclear Daily Output	94.4	90.8	88.7	90.0	91.5	90.1	91.5	-1.4	0.7
NRC Nuclear Max Capacity	104.9	104.9	104.9	104.9	104.9	104.9	104.9	0.0	0.0
NRC Nuclear Outage	10.4	14.1	16.2	14.9	13.4	14.8	13.4	1.4	-0.7
NRC % Nuclear Cap Utilization	96.0	92.3	90.2	91.5	93.1	91.6	93.0	-1.4	0.7

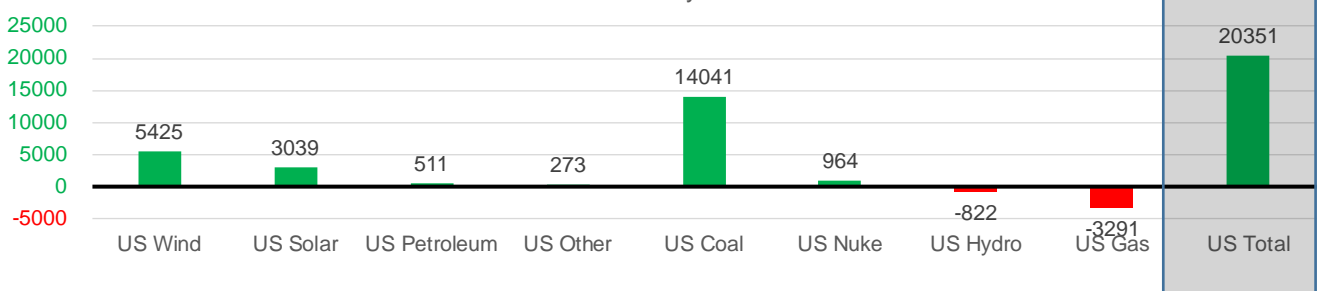
Wind Generation Monthly Average - MWh (EIA)

	2Yr Ago	LY	MTD						
	Same 30 days	Same 30 days	Jun-21	Jul-21	Aug-21	Sep-21	Last 30 days	MoM (MTD vs LY)	Last 30 days YoY
CALI Wind	2250	2072	2881	2338	2442	3005	2512	563	440
TEXAS Wind	7999	9149	9509	7217	9901	6351	10113	-3550	964
US Wind	26309	31583	36827	29106	35740	31085	37008	-4655	5425

Generation Monthly Average - MWh (EIA)

	2Yr Ago	LY	MTD						
	Same 30 days	Same 30 days	Jun-21	Jul-21	Aug-21	Sep-21	Last 30 days	MoM (MTD vs LY)	Last 30 days YoY
US Wind	26309	31583	36827	29106	35740	31085	37008	▲ 5923.1	▲ 5425
US Solar	9005	10535	14578	14195	13769	11094	13575	▲ 2480.9	▲ 3039
US Petroleum	4860	3878	4155	4233	4484	2316	4389	▲ 2073	▲ 511
US Other	9178	9688	8208	9327	9872	10044	9961	▼ -83	▲ 273
US Coal	121804	124230	122034	137228	137625	139299	138271	▼ -1028	▲ 14041
US Nuke	100821	93011	92180	92911	94045	92283	93975	▲ 1692	▲ 964
US Hydro	31218	29409	32565	29941	28518	27687	28587	▲ 900	▼ -822
US Gas	215022	215153	189395	207814	210696	207435	211862	▲ 11958	▼ -3291
US Total	519731	517296	500272	524888	534717	521940	537647	▲ 17994	▲ 20351

Last 30 days YoY



See National Wind and Nuclear daily charts

Source: Bloomberg, analytix.ai

Regional S/D Models Storage Projection

Week Ending 27-Aug

	Daily Raw Storage	Daily Adjustment Factor	Daily Average Storage Activity (Adjusted) *	Weekly Adjusted Storage Activity
L48	2.5	0.8	3.3	23
East	1.2	0.9	2.2	15
Midwest	3.5	0.0	3.5	25
Mountain	3.4	-3.8	-0.5	-3
South Central	-6.2	3.9	-2.2	-16
Pacific	0.6	-0.3	0.4	2

*Adjustment Factor is calculated based on historical regional deltas

U.S. underground natural gas storage facilities by type (July 2015)

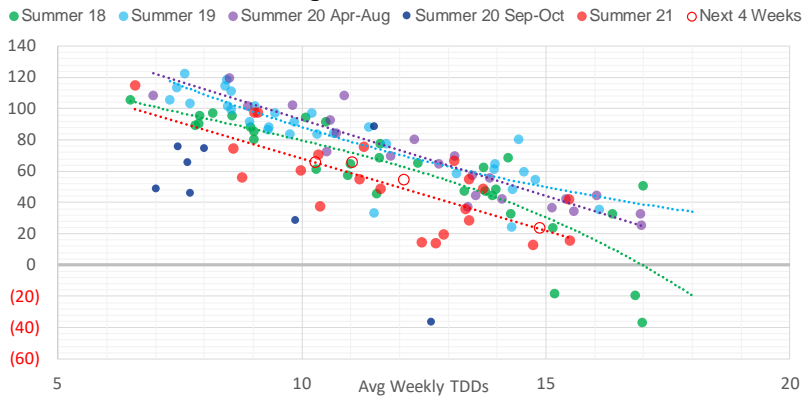


Weather Model Storage Projection

Next report
and beyond

Week Ending	GWDDs	Week Storage Projection
27-Aug	14.9	23
03-Sep	12.1	54
10-Sep	11.1	65
17-Sep	10.3	66

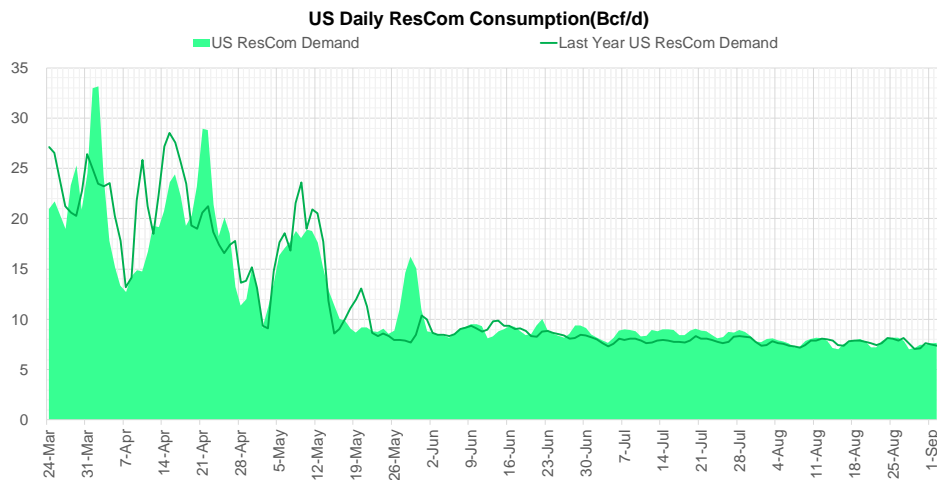
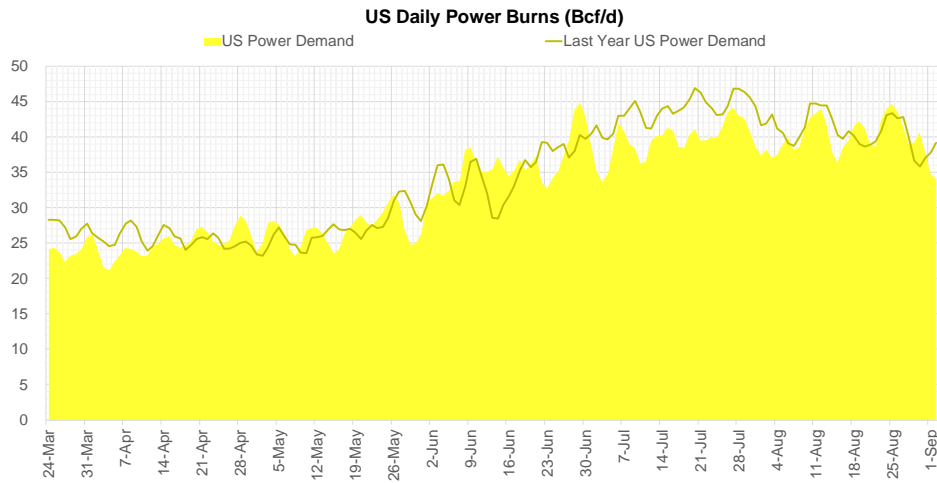
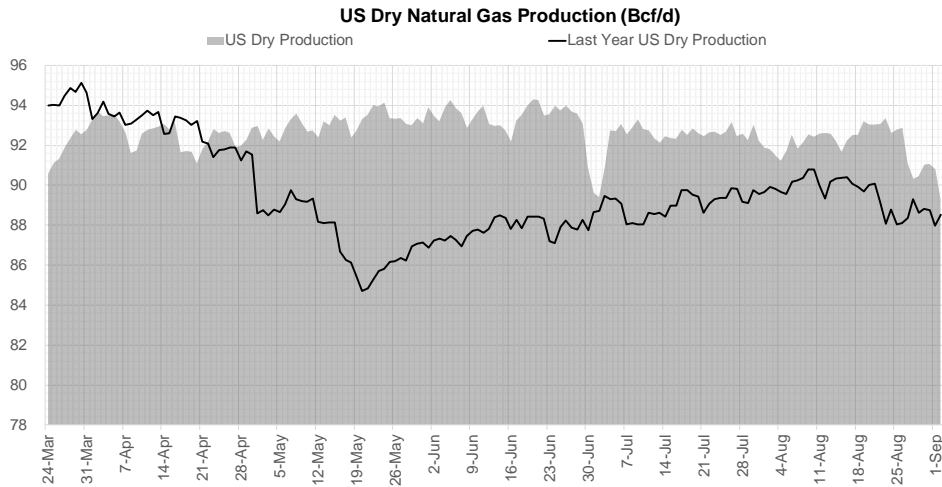
Weather Storage Model - Next 4 Week Forecast



Go to larger image



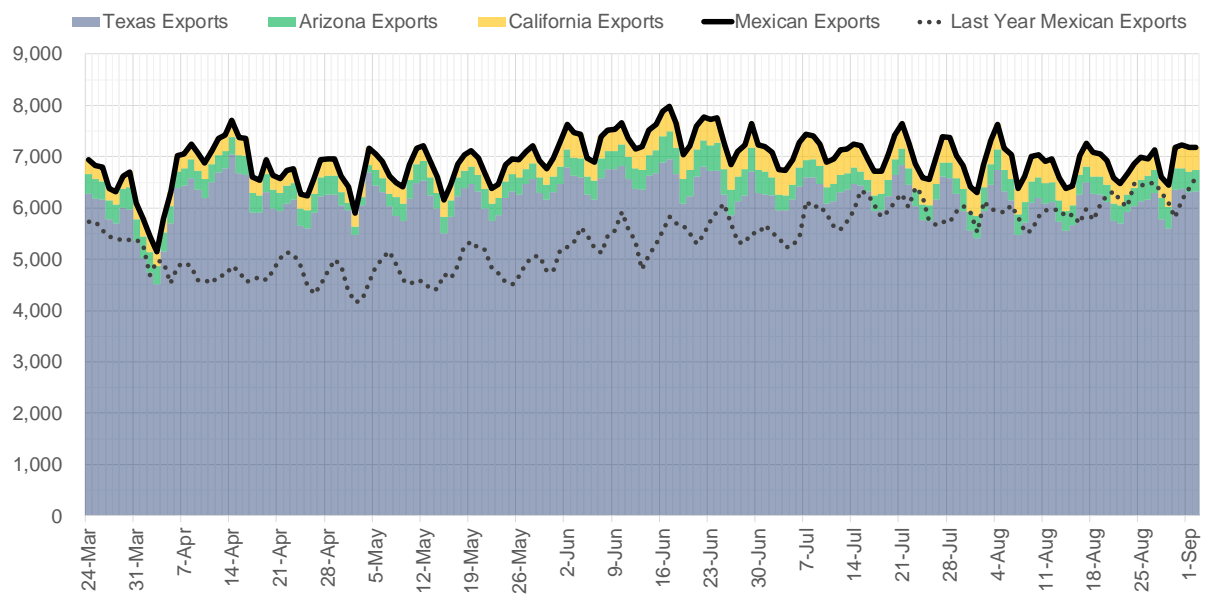
Supply – Demand Trends



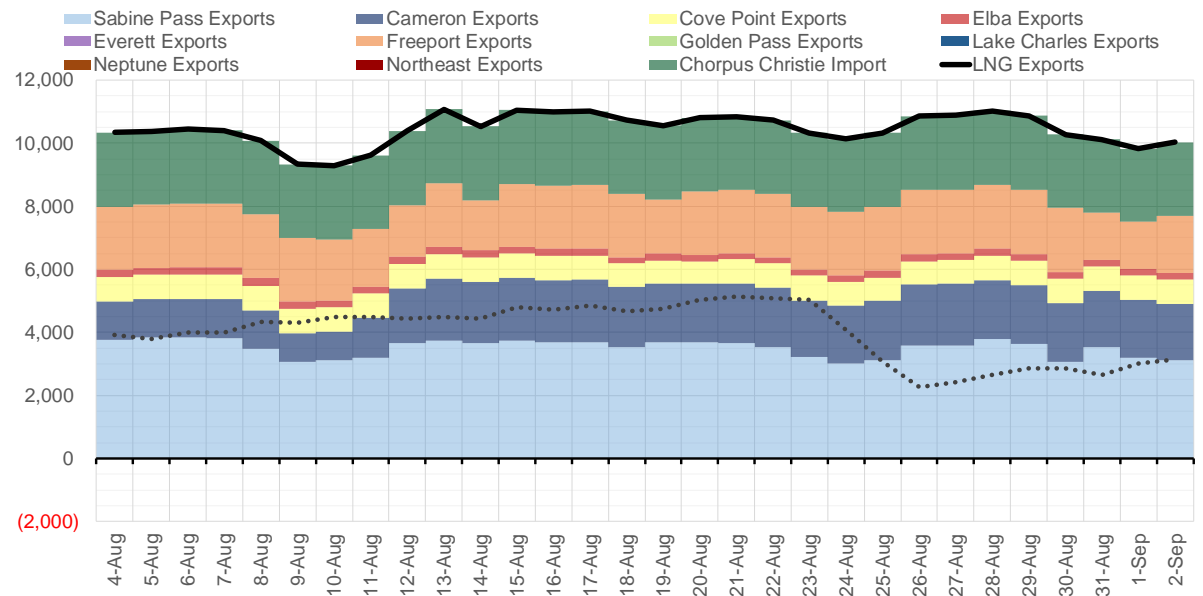
Source: Bloomberg

The risk of trading futures and options and other derivatives involves a substantial risk of loss and is not suitable for all persons. Each person must consider whether a particular trade, combination of trades, or strategy is suitable for that person's financial means and objectives. Past results are not necessarily indicative of future results. This communication may contain links to third party websites which are not under the control of and are not maintained by ION Energy Group, and ION Energy Group is not responsible for their content.

Mexican Exports (MMcf/d)



Net LNG Exports - Last 30 days (MMcf/d)



Source: Bloomberg

The risk of trading futures and options and other derivatives involves a substantial risk of loss and is not suitable for all persons. Each person must consider whether a particular trade, combination of trades, or strategy is suitable for that person's financial means and objectives. Past results are not necessarily indicative of future results. This communication may contain links to third party websites which are not under the control of and are not maintained by ION Energy Group, and ION Energy Group is not responsible for their content.

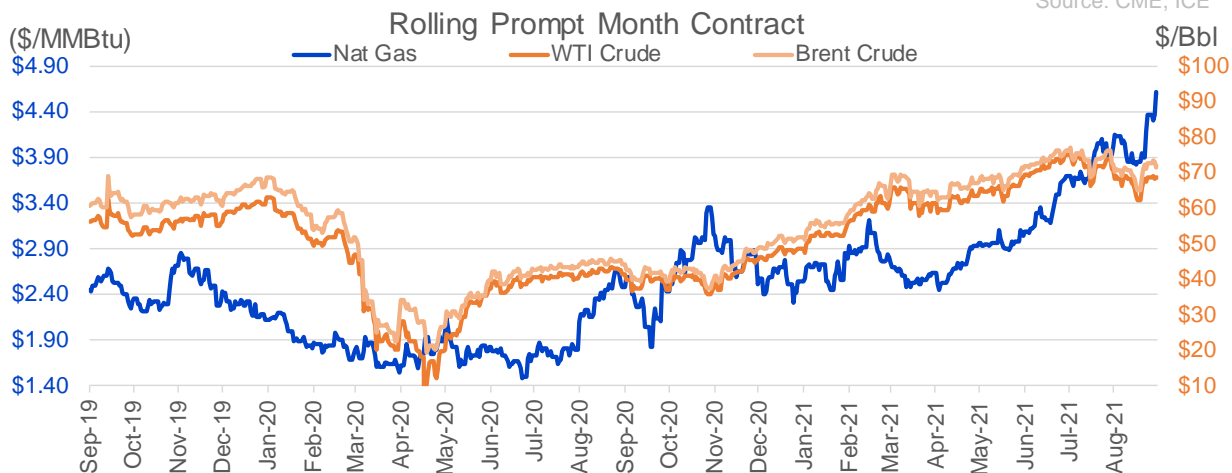
Nat Gas Options Volume and Open Interest CME, ICE and Nasdaq Combined

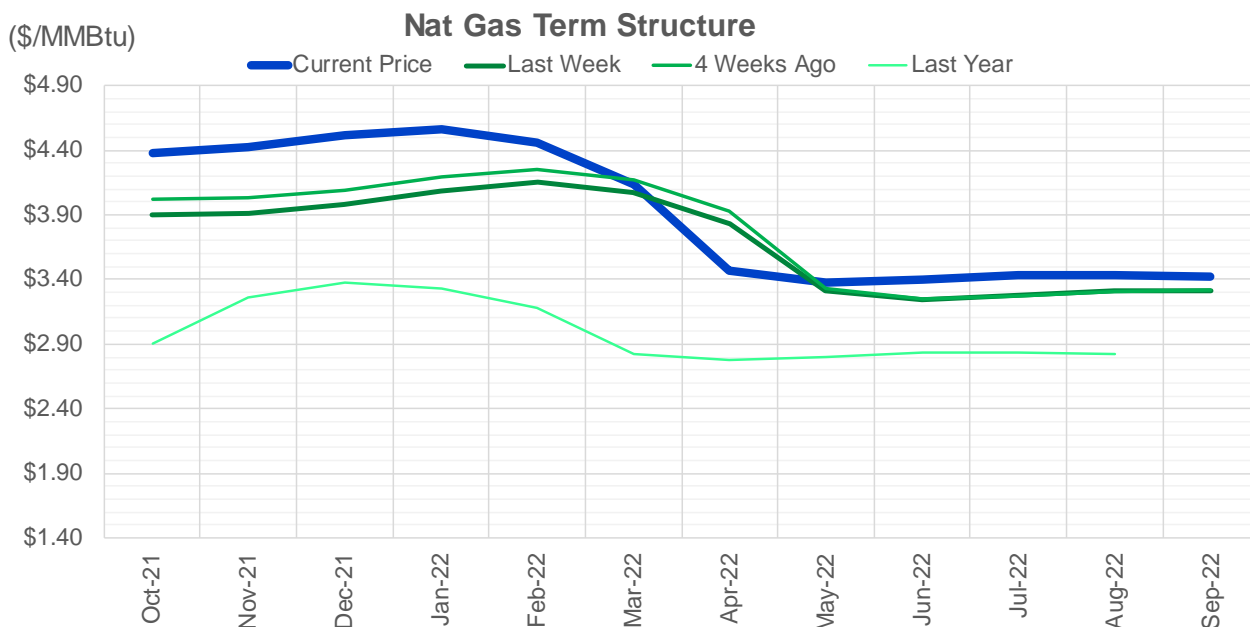
CONTRACT MONTH	CONTRACT YEAR	PUT/CALL	STRIKE	CUMULATIVE VOL	CONTRACT MONTH	CONTRACT YEAR	PUT/CALL	STRIKE	CUMULATIVE OI
10	2021	C	5.00	17189	10	2021	C	5.00	53759
10	2021	P	4.00	15427	10	2021	C	4.50	43816
11	2021	C	7.00	14212	10	2021	P	3.50	43392
10	2021	C	5.50	13374	10	2021	C	4.00	43383
11	2021	P	4.00	12869	12	2021	P	2.75	42059
10	2021	C	4.75	10358	12	2021	P	2.50	38552
10	2021	C	5.25	9248	10	2021	C	3.50	32999
10	2021	C	4.50	7585	10	2021	C	4.25	32239
11	2021	P	3.00	7054	10	2021	P	3.00	31766
10	2021	P	4.25	6666	11	2021	P	3.00	30766
10	2021	C	6.00	6011	10	2021	P	2.50	29995
12	2021	P	4.00	5765	10	2021	P	2.00	28650
10	2021	P	3.75	5015	10	2021	C	3.25	28194
10	2021	P	3.50	4471	10	2021	P	2.75	26887
10	2021	C	5.75	4233	10	2021	C	6.00	24989
10	2021	P	4.50	3420	12	2021	P	3.00	24767
10	2021	C	4.65	3196	11	2021	C	4.00	23375
11	2021	P	3.75	3148	12	2021	C	4.00	22646
11	2021	C	5.25	3008	10	2021	P	3.75	21989
11	2021	P	3.50	2866	10	2021	P	4.00	21913
12	2021	C	6.00	2759	11	2021	P	3.50	20864
11	2021	C	5.00	2645	10	2021	P	2.25	19900
1	2022	P	2.75	2638	4	2022	C	3.00	19760
11	2021	P	4.50	2296	11	2021	C	5.00	19566
11	2021	P	4.10	2253	10	2021	C	3.00	18494
10	2021	C	4.55	2161	10	2021	P	3.25	17958
11	2021	C	4.75	2115	3	2022	C	5.00	17403
10	2021	C	5.05	2100	3	2022	P	2.50	17169
11	2021	C	6.00	2067	1	2022	C	5.00	17014
12	2021	C	5.00	2053	10	2021	C	3.75	16981
3	2022	C	5.00	2020	2	2022	C	5.00	16512
3	2022	C	6.00	1909	11	2021	P	4.00	16195
10	2021	C	4.00	1847	2	2022	C	4.00	15829
10	2021	C	4.90	1832	3	2022	C	4.00	15775
10	2021	P	4.10	1716	3	2022	C	8.00	15677
11	2021	C	4.50	1472	1	2022	C	6.00	15506
1	2022	C	10.00	1453	11	2021	C	4.50	14793
2	2022	C	6.00	1426	4	2022	P	2.50	14684
10	2021	C	4.60	1388	1	2022	C	4.00	14482
3	2022	C	10.00	1384	11	2021	C	3.75	14479
12	2021	C	7.00	1382	3	2022	C	3.00	14448
10	2021	P	4.15	1327	11	2021	P	2.50	14276
10	2021	P	3.60	1314	12	2021	P	4.00	14198
4	2022	P	2.75	1290	3	2022	C	10.00	14174
5	2022	P	2.75	1290	12	2021	C	5.00	13954
6	2022	P	2.75	1290	12	2021	P	2.00	13889
7	2022	P	2.75	1290	11	2021	C	4.25	13579
8	2022	P	2.75	1290	10	2021	C	4.35	13276
9	2022	P	2.75	1290	5	2022	C	3.00	13110
					3	2022	P	3.5	13023

Source: CME, ICE

Nat Gas Futures Open Interest CME, and ICE Combined

CME Henry Hub Futures (10,000 MMBtu)				ICE Henry Hub Futures Contract Equivalent (10,000 MM			
	Current	Prior	Daily Change		Current	Prior	Daily Change
OCT 21	244454	248138	-3684	OCT 21	108716	110931	-2215
NOV 21	202378	199369	3009	NOV 21	73606	73508	98
DEC 21	91850	92077	-227	DEC 21	76938	76990	-51
JAN 22	147411	145306	2105	JAN 22	83623	83047	577
FEB 22	55980	55764	216	FEB 22	66943	66233	709
MAR 22	113678	111346	2332	MAR 22	71626	71779	-154
APR 22	118255	116445	1810	APR 22	67282	67501	-220
MAY 22	111096	108571	2525	MAY 22	67284	67650	-366
JUN 22	35251	34308	943	JUN 22	51062	50756	307
JUL 22	29471	29023	448	JUL 22	52383	51953	430
AUG 22	30345	30197	148	AUG 22	52368	51921	447
SEP 22	33085	32946	139	SEP 22	52385	51995	390
OCT 22	83607	81572	2035	OCT 22	60611	61243	-632
NOV 22	31213	30881	332	NOV 22	46350	46140	210
DEC 22	24729	24728	1	DEC 22	49195	48883	312
JAN 23	19983	19726	257	JAN 23	35455	35192	262
FEB 23	7846	7772	74	FEB 23	29740	29489	251
MAR 23	9765	8727	1038	MAR 23	31687	31387	300
APR 23	10277	10808	-531	APR 23	27784	27126	658
MAY 23	6289	6328	-39	MAY 23	28539	27850	689
JUN 23	5202	5196	6	JUN 23	26598	25894	704
JUL 23	4009	4007	2	JUL 23	26516	25826	691
AUG 23	3229	3226	3	AUG 23	26422	25725	697
SEP 23	4146	4144	2	SEP 23	25722	25052	669
OCT 23	4875	4874	1	OCT 23	27718	27097	621
NOV 23	1750	1745	5	NOV 23	27824	26982	842
DEC 23	1766	1766	0	DEC 23	25073	24816	257
JAN 24	1090	1090	0	JAN 24	13952	13771	181
FEB 24	880	879	1	FEB 24	11708	11563	145
MAR 24	3282	3281	1	MAR 24	15637	15482	155





	Oct-21	Nov-21	Dec-21	Jan-22	Feb-22	Mar-22	Apr-22	May-22	Jun-22	Jul-22	Aug-22	Sep-22
Current Price	\$4.377	\$4.425	\$4.515	\$4.563	\$4.456	\$4.132	\$3.470	\$3.373	\$3.398	\$3.430	\$3.439	\$3.427
Last Week	\$3.896	\$3.916	\$3.982	\$4.088	\$4.149	\$4.072	\$3.828	\$3.316	\$3.245	\$3.275	\$3.310	\$3.318
vs. Last Week	\$0.481	\$0.509	\$0.533	\$0.475	\$0.307	\$0.060	-\$0.358	\$0.057	\$0.153	\$0.155	\$0.129	\$0.109
4 Weeks Ago	\$4.027	\$4.032	\$4.089	\$4.190	\$4.256	\$4.175	\$3.930	\$3.331	\$3.244	\$3.273	\$3.308	\$3.315
vs. 4 Weeks Ago	\$0.350	\$0.393	\$0.426	\$0.373	\$0.200	-\$0.043	-\$0.460	\$0.042	\$0.154	\$0.157	\$0.131	\$0.112
Last Year	\$2.527	\$2.901	\$3.266	\$3.375	\$3.327	\$3.185	\$2.823	\$2.776	\$2.800	\$2.831	\$2.838	\$2.826
vs. Last Year	\$1.850	\$1.524	\$1.249	\$1.188	\$1.129	\$0.947	\$0.647	\$0.597	\$0.598	\$0.599	\$0.601	\$0.601

	Units	Cash Settled	Prompt Settle	Cash to Prompt
AGT Citygate	\$/MMBtu	4.14	3.33	-0.81
TETCO M3	\$/MMBtu	3.82	3.09	-0.73
FGT Zone 3	\$/MMBtu	3.87	4.00	0.13
Zone 6 NY	\$/MMBtu	3.87	3.04	-0.83
Chicago Citygate	\$/MMBtu	4.40	3.79	-0.61
Michcon	\$/MMBtu	4.37	3.73	-0.64
Columbia TCO Pool	\$/MMBtu	4.02	3.19	-0.83
Ventura	\$/MMBtu	4.31	3.72	-0.59
Rockies/Opal	\$/MMBtu	4.40	3.62	-0.78
El Paso Permian Basin	\$/MMBtu	4.24	3.64	-0.60
Socal Citygate	\$/MMBtu	5.22	5.07	-0.15
Malin	\$/MMBtu	4.40	4.00	-0.41
Houston Ship Channel	\$/MMBtu	4.59	3.91	-0.68
Henry Hub Cash	\$/MMBtu	4.38	3.69	-0.69
AECO Cash	C\$/GJ	1.91	2.89	0.98
Station2 Cash	C\$/GJ	1.89	3.74	1.85
Dawn Cash	C\$/GJ	4.43	3.74	-0.69

Source: CME, Bloomberg

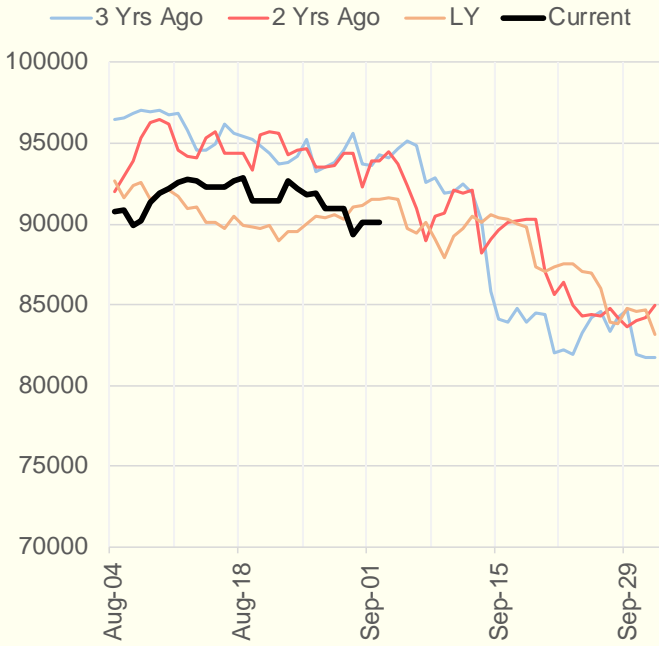
	Units	Current Price	vs. Last Week	vs. 4 Weeks Ago	vs. Last Year
NatGas Jul21/Oct21	\$/MMBtu	0.998	▲ 0.690	▲ 0.452	▲ 0.981
NatGas Oct21/Nov21	\$/MMBtu	0.048	▼ -0.022	▼ -0.010	▲ 0.001
NatGas Oct21/Jan22	\$/MMBtu	0.183	▼ -0.058	▼ -0.040	▼ -0.091
NatGas Apr22/Oct22	\$/MMBtu	-0.032	▼ -0.046	▼ -0.012	▼ -0.056
WTI Crude	\$/Bbl	68.59	▲ 0.230	▲ 0.440	▲ 27.080
Brent Crude	\$/Bbl	71.59	▼ -0.660	▲ 1.210	▲ 27.160
Fuel Oil, NY Harbour 1%	\$/Bbl	97.18	▲ 0.000	▲ 0.000	▲ 0.000
Heating Oil	cents/Gallon	212.89	▲ 1.070	▲ 5.480	▲ 94.040
Propane, Mt. Bel	cents/Gallon	1.18	▲ 0.071	▲ 0.098	▲ 0.676
Ethane, Mt. Bel	cents/Gallon	0.36	▲ 0.022	▲ 0.014	▲ 0.151
Coal, PRB	\$/MTon	12.30	▲ 0.000	▲ 0.000	▲ 0.000
Coal, PRB	\$/MMBtu	0.70			
Coal, ILB	\$/MTon	31.05	▲ 0.000	▲ 0.000	▲ 0.000
Coal, ILB	\$/MMBtu	1.32			

Weather Storage Model - Next 4 Week Forecast

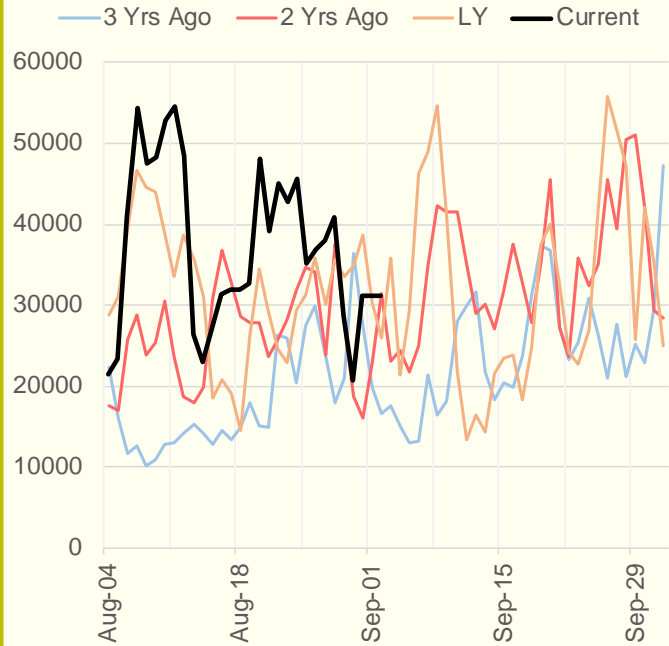


The risk of trading futures and options and other derivatives involves a substantial risk of loss and is not suitable for all persons. Each person must consider whether a particular trade, combination of trades, or strategy is suitable for that person's financial means and objectives. Past results are not necessarily indicative of future results. This communication may contain links to third party websites which are not under the control of and are not maintained by ION Energy Group, and ION Energy Group is not responsible for their content.

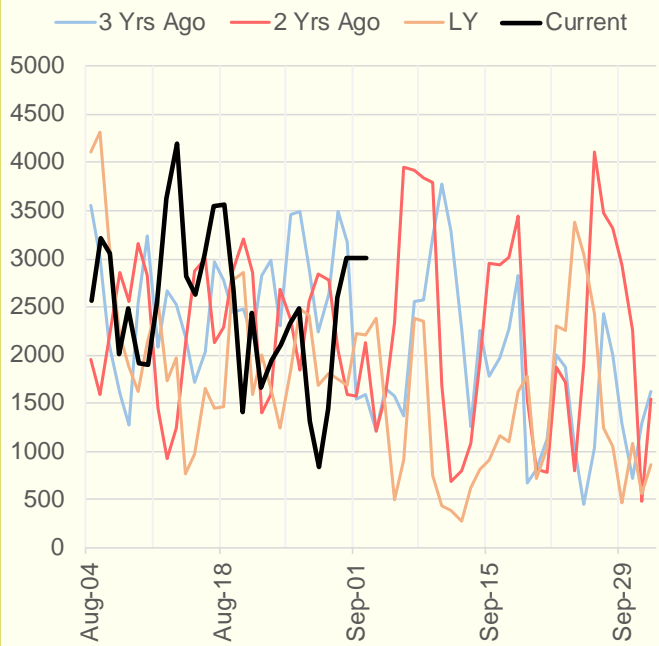
NRC Nuclear Daily Output



US Wind



CALI Wind



TEXAS Wind

