

	Current	Δ from YD	Δ from 7D Avg
Nat Gas Prompt	\$ 4.66	▲ \$ 0.09	▼ \$ (0.01)

	Current	Δ from YD	Δ from 7D Avg
WTI Prompt	\$ 69.21	▲ \$ 0.86	▲ \$ 0.1

	Current	Δ from YD	Δ from 7D Avg
Brent Prompt	\$ 72.46	▲ \$ 0.77	▲ \$ 0.1

Page Menu

[Short-term Weather Model Outlooks](#)

[Lower 48 Component Models](#)

[Regional S/D Models Storage Projection](#)

[Weather Model Storage Projection](#)

[Supply – Demand Trends](#)

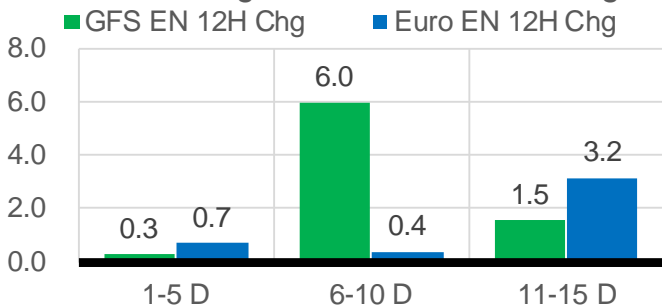
[Nat Gas Options Volume and Open Interest](#)

[Nat Gas Futures Open Interest](#)

[Price Summary](#)

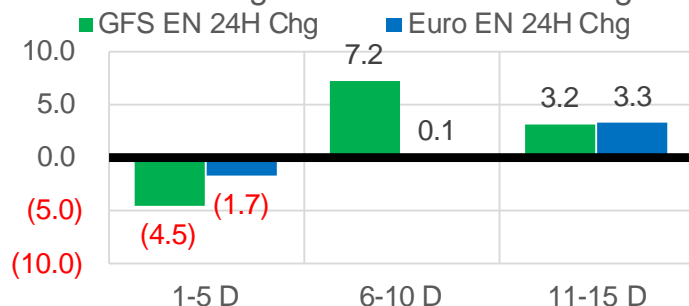
Vs. 12H Ago

L48 Region - 00z TDD vs 12H Ago



Vs. 24H Ago

L48 Region - 00z TDD vs 24H Ago



	Current	Δ from YD	Δ from 7D Avg
US Dry Production	89.1	▼ -2.32	▼ -2.06

	Current	Δ from YD	Δ from 7D Avg
US Power Burns	35.3	▲ 0.38	▲ 2.16

	Current	Δ from YD	Δ from 7D Avg
US ResComm	7.4	▲ 0.24	▲ 0.32

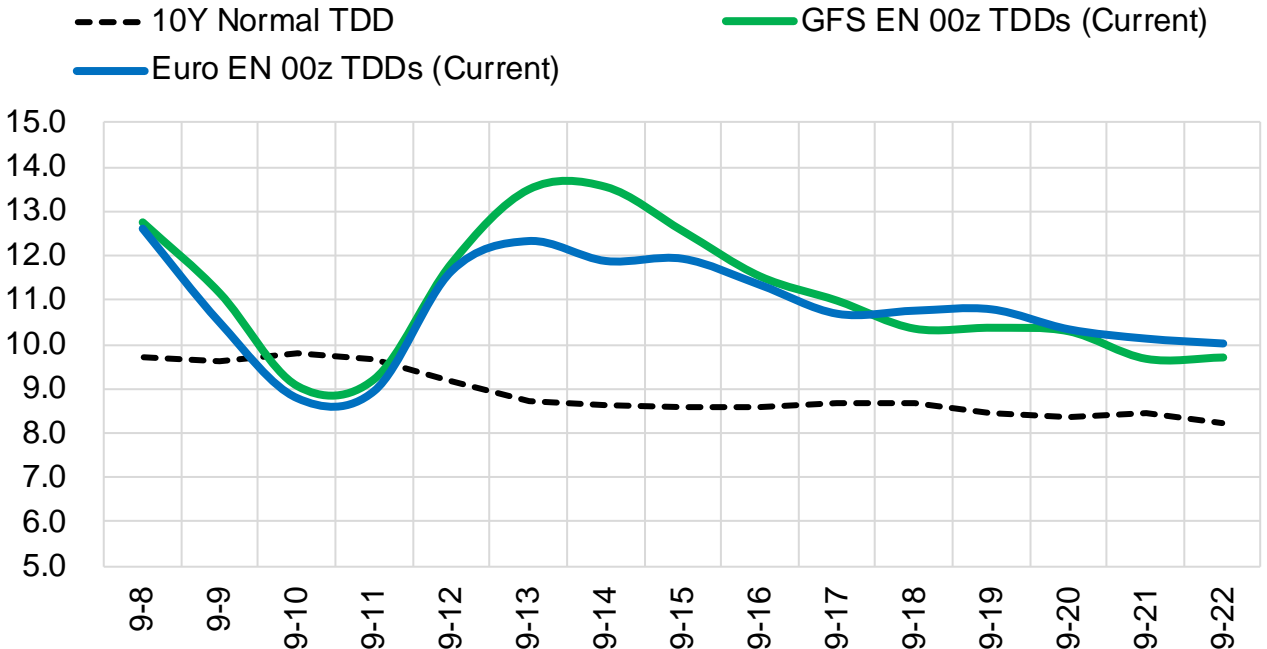
	Current	Δ from YD	Δ from 7D Avg
Canadian Imports	4.7	▼ -0.03	▲ 0.06

	Current	Δ from YD	Δ from 7D Avg
Net LNG Exports	11.1	▼ -0.17	▲ 0.38

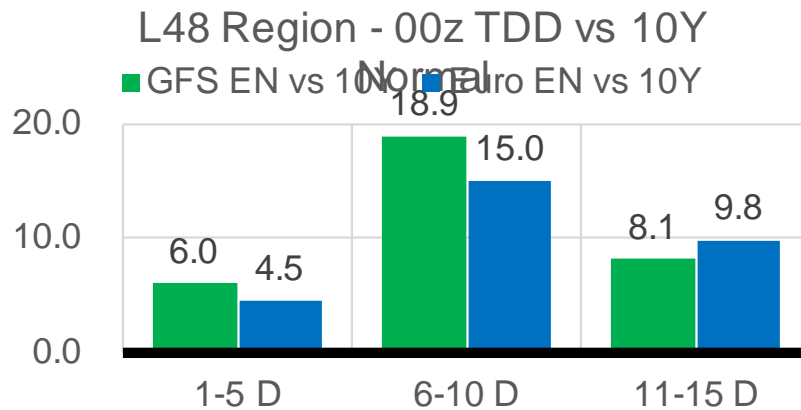
	Current	Δ from YD	Δ from 7D Avg
Mexican Exports	6.9	▼ -0.06	▲ 0.09

Short-term Weather Model Outlooks (00z)

L48 Region



Vs. 10Y Normal



Source: WSI , Bloomberg

Lower 48 Component Models

Daily Balances

	2-Sep	3-Sep	4-Sep	5-Sep	6-Sep	7-Sep	8-Sep	DoD	vs. 7D
Lower 48 Dry Production	90.6	91.0	91.2	91.2	91.2	91.4	89.1	▼ -2.3	▼ -2.1
Canadian Imports	4.4	4.6	4.6	4.7	4.8	4.8	4.7	▼ 0.0	▲ 0.1
L48 Power	32.7	32.2	31.9	32.4	32.9	34.9	35.3	▲ 0.4	▲ 2.4
L48 Residential & Commercial	7.6	7.5	6.6	6.5	6.7	7.2	7.4	▲ 0.2	▲ 0.4
L48 Industrial	19.2	19.6	19.9	20.0	20.2	20.1	20.2	▲ 0.1	▲ 0.3
L48 Lease and Plant Fuel	5.0	5.0	5.0	5.0	5.0	5.0	4.9	▼ -0.1	▼ -0.1
L48 Pipeline Distribution	2.1	2.0	2.0	2.0	2.0	2.1	2.2	▲ 0.0	▲ 0.1
L48 Regional Gas Consumption	66.6	66.3	65.3	65.8	66.9	69.4	69.9	▲ 0.6	▲ 3.2
Net LNG Delivered	10.39	10.96	11.02	10.89	11.00	11.30	11.13	▼ -0.2	▲ 0.2
Total Mexican Exports	7.0	7.0	6.6	6.4	6.7	7.0	6.9	▼ -0.1	▲ 0.1
Implied Daily Storage Activity	11.0	11.3	13.0	12.8	11.4	8.5	5.8		
EIA Reported Daily Storage Activity									
Daily Model Error									

EIA Storage Week Balances

	30-Jul	6-Aug	13-Aug	20-Aug	27-Aug	3-Sep	WoW	vs. 4W
Lower 48 Dry Production	92.6	91.9	92.4	92.4	93.0	90.9	▼ -2.1	▼ -1.5
Canadian Imports	5.5	5.0	5.2	5.0	5.3	5.0	▼ -0.4	▼ -0.2
L48 Power	42.1	38.3	41.1	39.7	41.9	37.9	▼ -3.9	▼ -2.3
L48 Residential & Commercial	8.6	8.0	7.8	7.6	7.8	7.5	▼ -0.3	▼ -0.3
L48 Industrial	20.5	20.1	19.2	20.9	21.1	19.5	▼ -1.7	▼ -0.9
L48 Lease and Plant Fuel	5.1	5.1	5.1	5.1	5.1	5.0	▼ -0.1	▼ -0.1
L48 Pipeline Distribution	2.4	2.2	2.4	2.3	2.4	2.2	▼ -0.2	▼ -0.1
L48 Regional Gas Consumption	78.6	73.7	75.5	75.6	78.3	72.1	▼ -6.2	▼ -3.7
Net LNG Exports	10.8	10.6	9.9	10.9	10.6	10.5	▼ -0.1	▼ 0.0
Total Mexican Exports	7.0	6.9	6.8	6.8	6.8	7.0	▲ 0.2	▲ 0.1
Implied Daily Storage Activity	1.7	5.7	5.2	4.2	2.6	6.3	3.7	
EIA Reported Daily Storage Activity	1.9	7.0	6.6	4.1	2.9			
Daily Model Error	-0.1	-1.3	-1.4	0.0	-0.3			

Monthly Balances

	2Yr Ago Sep-18	LY Sep-18	May-21	Jun-21	Jul-21	Aug-21	MTD Sep-21	MoM	vs. LY
Lower 48 Dry Production	86.6	86.6	93.1	93.4	92.4	92.2	90.9	▼ -1.3	▲ 4.3
Canadian Imports	4.5	4.5	4.5	4.8	5.2	5.1	4.7	▼ -0.5	▲ 0.2
L48 Power	34.3	34.3	26.8	35.9	39.6	40.2	33.4	▼ -6.8	▼ -1.0
L48 Residential & Commercial	8.5	8.5	12.8	8.9	8.6	7.7	7.1	▼ -0.6	▼ -1.3
L48 Industrial	22.6	22.6	20.8	20.6	19.6	20.2	19.8	▼ -0.5	▼ -2.9
L48 Lease and Plant Fuel	4.8	4.8	5.1	5.1	5.1	5.1	5.0	▼ -0.1	▲ 0.2
L48 Pipeline Distribution	2.1	2.1	2.1	2.2	2.3	2.3	2.1	▼ -0.3	▼ 0.0
L48 Regional Gas Consumption	72.3	72.3	67.6	72.7	75.1	75.5	67.3	▼ -8.2	▼ -5.0
Net LNG Exports	3.1	3.1	10.8	10.2	10.8	10.5	10.8	▲ 0.3	▲ 7.7
Total Mexican Exports	5.0	5.0	6.8	7.4	7.0	6.9	6.9	▼ 0.0	▲ 1.9
Implied Daily Storage Activity	10.7	10.7	12.4	8.0	4.6	4.4	10.5		
EIA Reported Daily Storage Activity									
Daily Model Error									

Source: Bloomberg, analytix.ai

Daily Average Generation Data

Nuclear Generation Daily Average - GWh (NRC)

	31-Aug	1-Sep	2-Sep	3-Sep	4-Sep	5-Sep	6-Sep	DoD	vs. 7D
NRC Nuclear Daily Output	90.1	90.1	89.9	89.9	89.9	89.9	89.9	0.0	-0.1
NRC Nuclear Max Capacity	104.9	104.9	104.9	104.9	104.9	104.9	104.9	0.0	0.0
NRC Nuclear Outage	14.8	14.8	15.0	15.0	15.0	15.0	15.0	0.0	0.1
NRC % Nuclear Cap Utilization	91.6	91.6	91.4	91.4	91.4	91.4	91.4	0.0	-0.1

Wind Generation Daily Average - MWh (EIA)

	31-Aug	1-Sep	2-Sep	3-Sep	4-Sep	5-Sep	6-Sep	DoD	vs. 7D
CALI Wind	3005	3892	2647	1475	735	624	917	293	-1146
TEXAS Wind	6351	11690	11217	11688	10074	5319	4445	-875	-4945
US Wind	31085	44200	43754	32918	25931	21742	29088	7346	-4183

Generation Daily Average - MWh (EIA)

	31-Aug	1-Sep	2-Sep	3-Sep	4-Sep	5-Sep	6-Sep	DoD	vs. 7D
US Wind	31085	44200	43754	32918	25931	21742	29088	7346	-4183
US Solar	11119	11956	14360	14823	14877	13982	13942	-40	422
US Petroleum	2316	2314	2320	2181	1719	1492	2272	780	215
US Other	10047	8922	8553	8447	8506	8382	8604	222	-205
US Coal	139635	129442	119865	120611	116389	115401	113657	-1744	-9900
US Nuke	92283	92622	92854	93063	93475	93303	93181	-122	248
US Hydro	27951	28984	28222	28526	26093	24557	25833	1277	-1555
US Gas	207549	185810	171731	167087	159729	168088	177477	9389	811

See National Wind and Nuclear daily charts

Source: Bloomberg, analytix.ai

Storage Week Average Generation Data

Nuclear Generation Weekly Average - GWh (NRC)

	30-Jul	6-Aug	13-Aug	20-Aug	27-Aug	3-Sep	WoW	WoW Bcf/d Impact
NRC Nuclear Daily Output	89.3	90.6	91.5	92.4	91.9	90.2	-1.7	0.3
NRC Nuclear Max Capacity	104.9	104.9	104.9	104.9	104.9	104.9	0.0	
NRC Nuclear Outage	15.6	14.3	13.3	12.5	13.0	14.7	1.7	
NRC % Nuclear Cap Utilization	0.1	0.1	0.1	0.1	0.1	0.1	0.0	

Wind Generation Weekly Average - MWh (EIA)

	30-Jul	6-Aug	13-Aug	20-Aug	27-Aug	3-Sep	WoW	WoW Bcf/d Impact
CALI Wind	1905	2237	2507	3210	2052	2247	194	0.0
TEXAS Wind	7913	5180	16319	7171	12600	7534	-5066	0.9
US Wind	29738	22379	49586	29141	41810	35348	-6462	1.2
					12668.4			
					43%			

Generation Weekly Average - MWh (EIA)

	30-Jul	6-Aug	13-Aug	20-Aug	27-Aug	3-Sep	WoW	WoW Bcf/d Impact
US Wind	29738	22379	49586	29141	41810	35348	-6462	1.2
US Solar	13978	14131	14383	12828	14536	13254	-1282	0.2
US Petroleum	4729	4074	4712	4466	5323	3135	-2188	0.4
US Other	9289	9070	10070	10104	10131	9653	-478	0.1
US Coal	146407	134740	140524	138052	136168	136226	58	0.0
US Nuke	92266	93328	94302	95157	94358	92365	-1993	0.4
US Hydro	29215	27752	27035	28988	30618	28156	-2462	0.4
US Gas	224459	204634	208281	212106	215990	205164	-10826	1.9

See National Wind and Nuclear daily charts

Source: Bloomberg, analytix.ai

Monthly Average Generation Data

Nuclear Generation Monthly Average - GWh (NRC)

	2Yr Ago		LY		MTD			Last 30 days	MoM (MTD vs LY)	Last 30 days YoY
	Same 30 days	Same 30 days	Jun-21	Jul-21	Aug-21	Sep-21				
	NRC Nuclear Daily Output	93.9	90.4	88.7	90.0	91.5	90.0			
NRC Nuclear Max Capacity	104.9	104.9	104.9	104.9	104.9	104.9	104.9	0.0	0.0	
NRC Nuclear Outage	11.0	14.5	16.2	14.9	13.4	14.9	13.6	1.5	-0.9	
NRC % Nuclear Cap Utilization	95.5	91.9	90.2	91.5	93.0	91.5	92.8	-1.5	0.9	

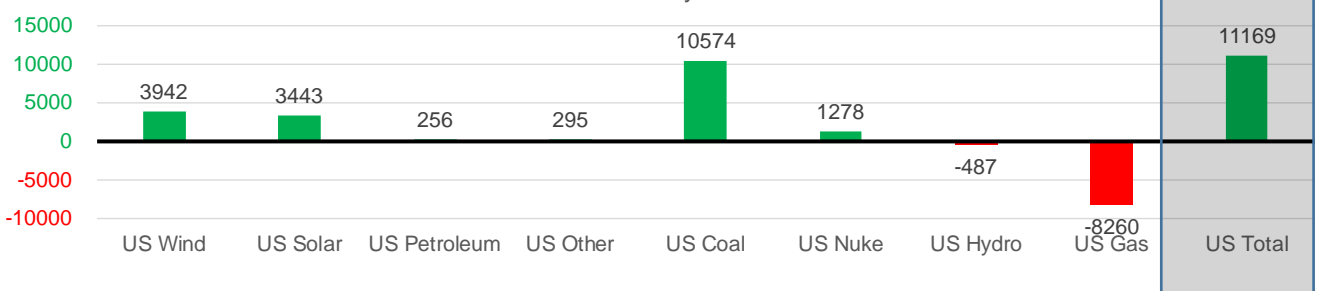
Wind Generation Monthly Average - MWh (EIA)

	2Yr Ago		LY		MTD			Last 30 days	MoM (MTD vs LY)	Last 30 days YoY
	Same 30 days	Same 30 days	Jun-21	Jul-21	Aug-21	Sep-21				
	CALI Wind	2334	1828	2881	2338	2442	1515			
TEXAS Wind	7845	8261	9509	7217	9901	7915	9383	-1986	1122	
US Wind	27419	31661	36827	29106	35740	31976	35603	-3764	3942	

Generation Monthly Average - MWh (EIA)

	2Yr Ago		LY		MTD			Last 30 days	MoM (MTD vs LY)	Last 30 days YoY
	Same 30 days	Same 30 days	Jun-21	Jul-21	Aug-21	Sep-21				
	US Wind	27419	31661	36827	29106	35740	31976			
US Solar	8857	10278	14578	14195	13843	13978	13721	▼ -256.6	▲ 3443	
US Petroleum	4567	3691	4155	4233	4484	2105	3947	▲ 1842	▲ 256	
US Other	8751	9443	8208	9327	9920	8578	9738	▲ 1160	▲ 295	
US Coal	119157	123305	122034	137228	137645	117835	133879	▲ 16044	▲ 10574	
US Nuke	100329	92646	92180	92911	94062	93108	93924	▲ 817	▲ 1278	
US Hydro	30214	29081	32565	29941	28528	26735	28594	▲ 1859	▼ -487	
US Gas	210310	212745	189395	207814	210792	173110	204485	▲ 25092	▼ -8260	
US Total	511265	512680	500272	524889	534957	467518	523849	▲ 46557	▲ 11169	

Last 30 days YoY



See National Wind and Nuclear daily charts

Source: Bloomberg, analytix.ai

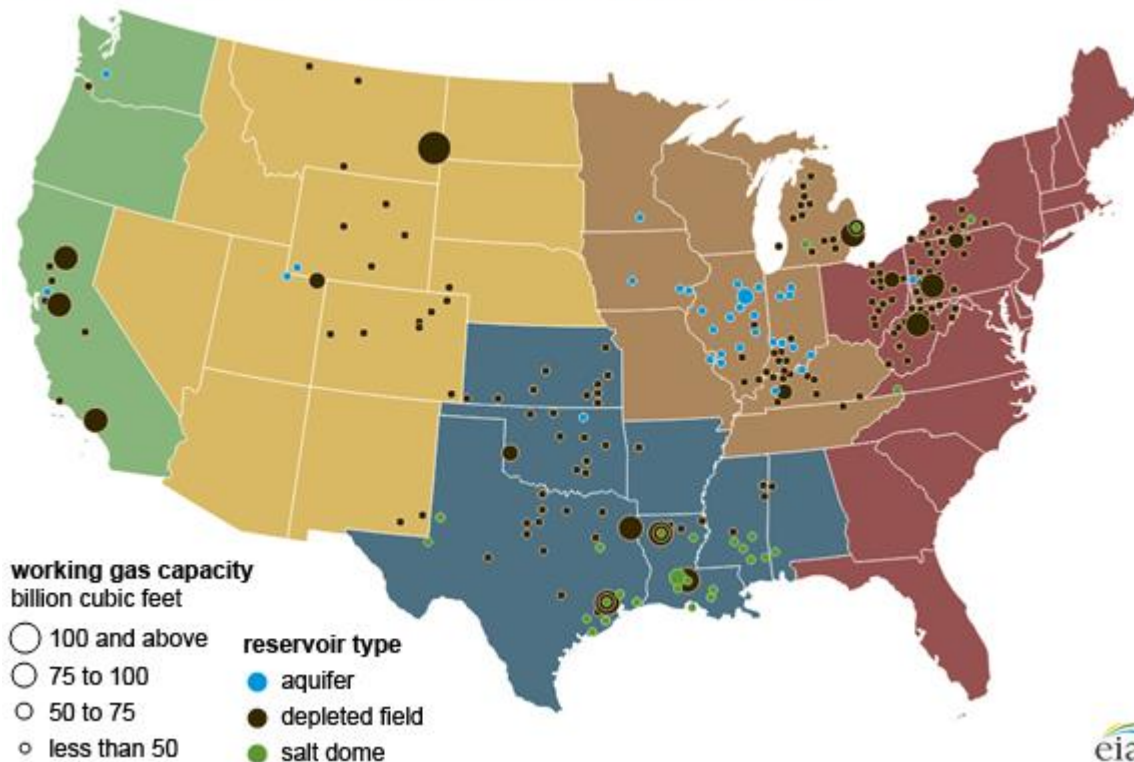
Regional S/D Models Storage Projection

Week Ending 3-Sep

	Daily Raw Storage	Daily Adjustment Factor	Daily Average Storage Activity (Adjusted) *	Weekly Adjusted Storage Activity
L48	6.0	0.9	6.9	48
East	2.3	1.1	3.3	23
Midwest	4.4	-0.2	4.2	29
Mountain	3.3	-3.4	-0.1	-1
South Central	-4.4	3.7	-0.7	-5
Pacific	0.4	-0.3	0.1	1

*Adjustment Factor is calculated based on historical regional deltas

U.S. underground natural gas storage facilities by type (July 2015)

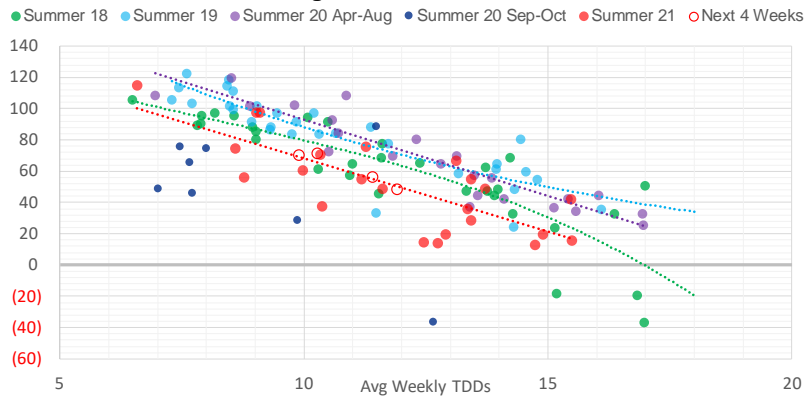


Weather Model Storage Projection

Next report
and beyond

Week Ending	GWDDs	Week Storage Projection
03-Sep	11.9	48
10-Sep	10.3	71
17-Sep	11.4	56
24-Sep	9.9	70

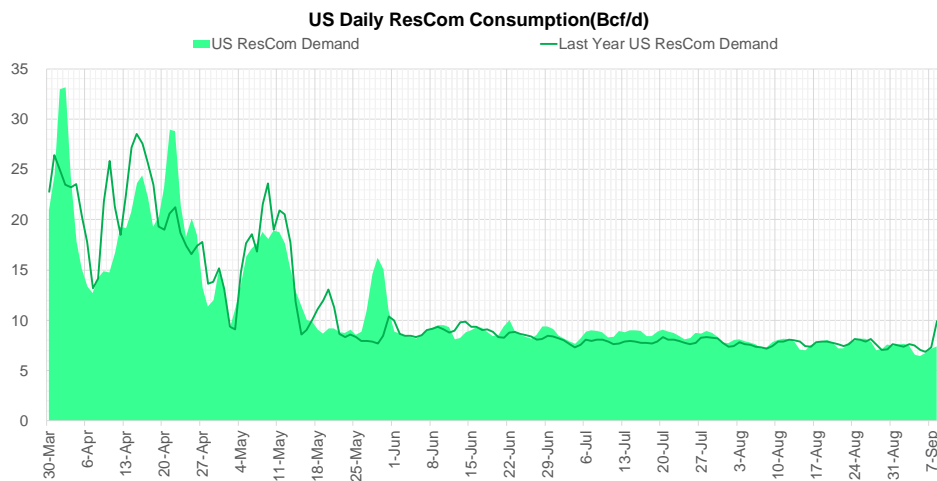
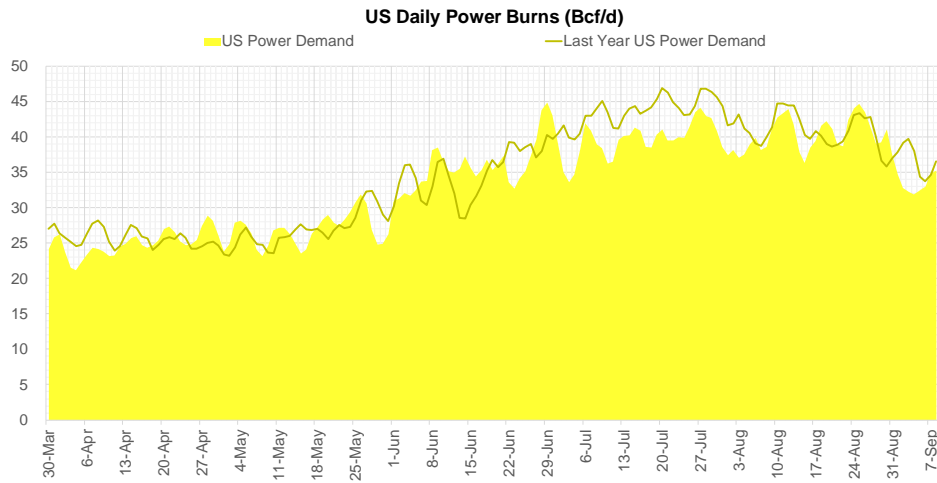
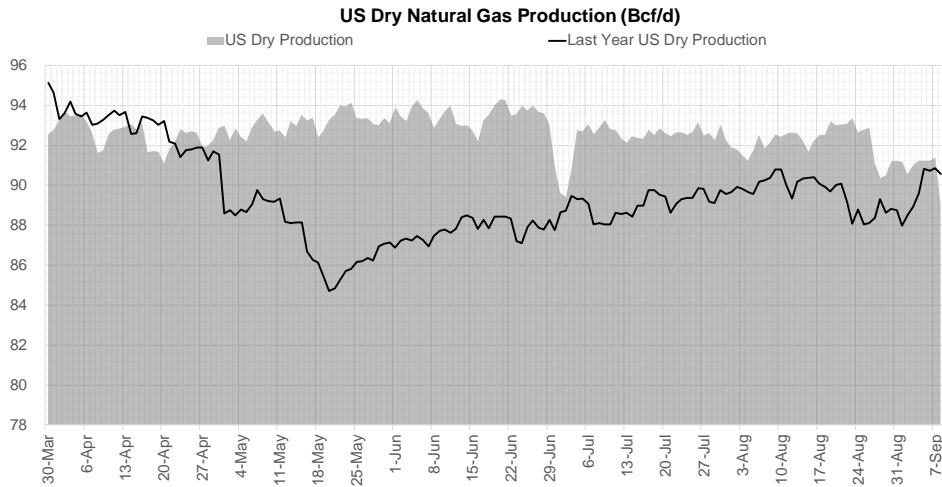
Weather Storage Model - Next 4 Week Forecast



Go to larger image



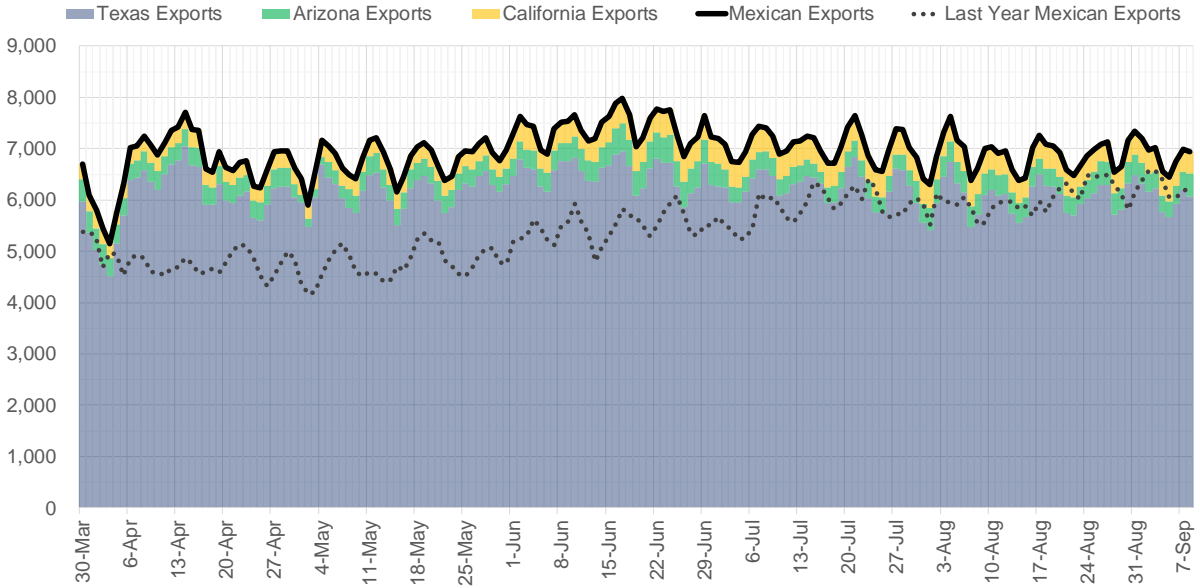
Supply – Demand Trends



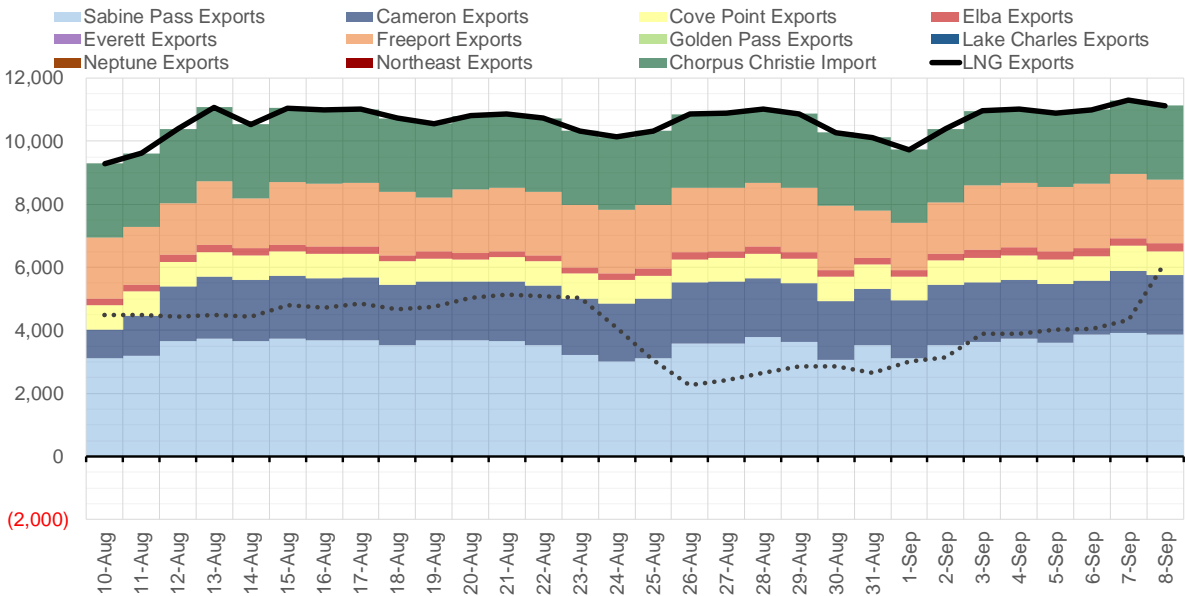
Source: Bloomberg

The risk of trading futures and options and other derivatives involves a substantial risk of loss and is not suitable for all persons. Each person must consider whether a particular trade, combination of trades, or strategy is suitable for that person's financial means and objectives. Past results are not necessarily indicative of future results. This communication may contain links to third party websites which are not under the control of and are not maintained by ION Energy Group, and ION Energy Group is not responsible for their content.

Mexican Exports (MMcf/d)



Net LNG Exports - Last 30 days (MMcf/d)



Source: Bloomberg

The risk of trading futures and options and other derivatives involves a substantial risk of loss and is not suitable for all persons. Each person must consider whether a particular trade, combination of trades, or strategy is suitable for that person's financial means and objectives. Past results are not necessarily indicative of future results. This communication may contain links to third party websites which are not under the control of and are not maintained by ION Energy Group, and ION Energy Group is not responsible for their content.

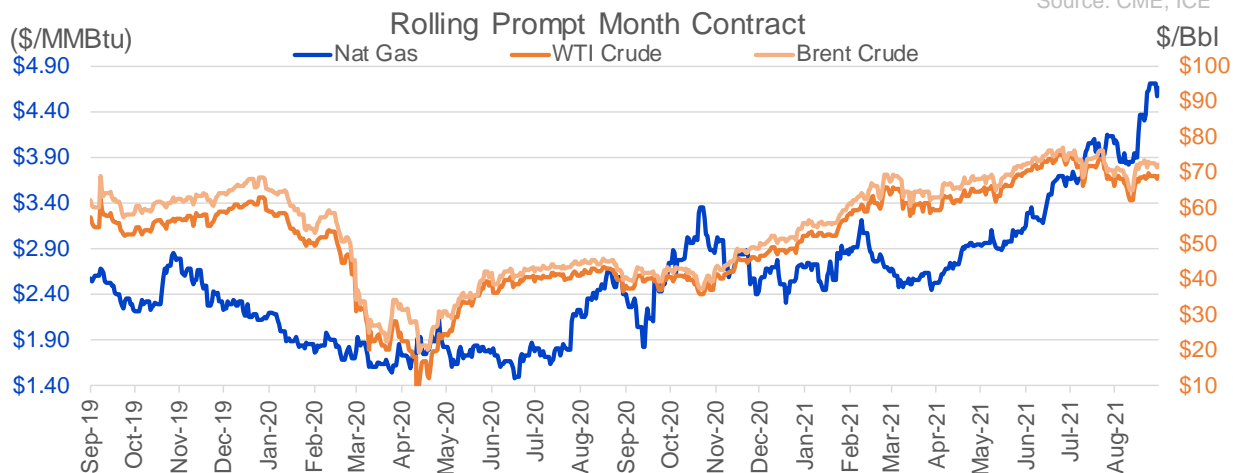
Nat Gas Options Volume and Open Interest CME, ICE and Nasdaq Combined

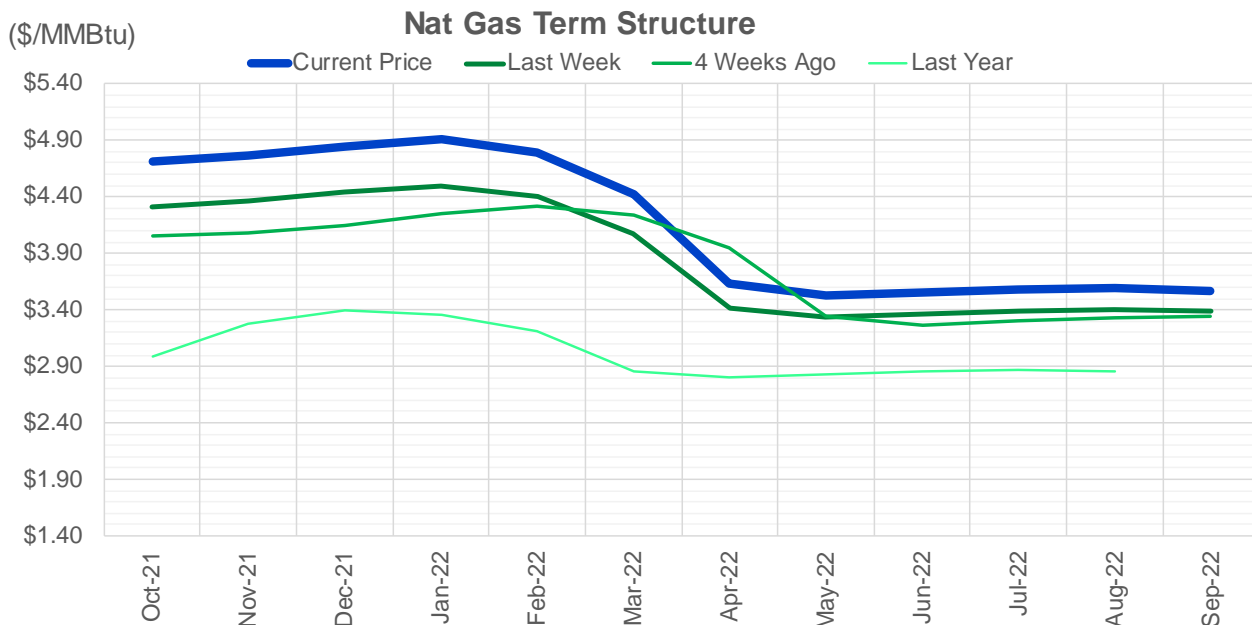
CONTRACT MONTH	CONTRACT YEAR	PUT/CALL	STRIKE	CUMULATIVE VOL	CONTRACT MONTH	CONTRACT YEAR	PUT/CALL	STRIKE	CUMULATIVE OI
10	2021	C	5.00	13424	10	2021	C	5.00	57111
10	2021	P	4.10	12689	10	2021	C	4.00	43371
10	2021	P	4.00	9082	12	2021	P	2.75	42059
10	2021	P	4.25	8564	10	2021	P	3.50	42013
10	2021	P	4.20	6828	10	2021	C	4.50	41298
10	2021	C	4.75	4522	12	2021	P	2.50	38554
10	2021	P	4.50	4059	10	2021	C	3.50	32999
11	2021	C	5.50	3227	10	2021	C	4.25	32332
10	2021	C	4.50	3218	10	2021	C	6.00	31838
10	2021	C	5.50	3167	10	2021	P	3.00	31758
11	2021	C	5.00	2651	11	2021	P	3.00	30540
10	2021	C	4.60	2381	10	2021	P	4.00	30026
10	2021	P	4.30	2220	10	2021	P	2.50	29995
10	2021	C	5.25	2219	10	2021	P	2.00	28650
11	2021	C	6.00	2155	10	2021	C	3.25	28193
2	2022	C	3.25	2000	10	2021	P	2.75	26887
2	2022	P	3.25	2000	12	2021	P	3.00	25000
10	2021	C	5.20	1958	11	2021	C	4.00	23277
3	2022	C	5.50	1947	12	2021	C	4.00	22646
11	2021	C	7.50	1777	10	2021	P	3.75	22506
12	2021	P	4.00	1763	11	2021	P	3.50	21473
10	2021	C	4.80	1677	11	2021	C	5.00	19941
10	2021	C	4.90	1367	10	2021	P	2.25	19784
10	2021	P	4.35	1346	4	2022	C	3.00	19760
10	2021	C	4.70	1269	10	2021	C	3.00	18494
10	2021	C	5.75	1152	12	2021	P	4.00	18190
12	2021	C	8.00	1112	3	2022	C	10.00	18002
12	2021	C	7.00	1013	10	2021	P	3.25	17947
11	2021	P	3.60	1008	10	2021	C	5.50	17886
3	2022	C	4.60	1000	11	2021	C	7.00	17702
4	2022	C	6.00	1000	3	2022	C	5.00	17701
10	2021	P	4.60	990	11	2021	P	4.00	17655
3	2022	C	6.00	926	3	2022	P	2.50	17199
12	2021	C	6.00	820	1	2022	C	5.00	17116
12	2021	P	4.50	800	10	2021	C	3.75	16780
10	2021	P	4.45	793	2	2022	C	5.00	16386
10	2021	P	4.15	729	3	2022	C	4.00	16024
11	2021	P	3.75	727	2	2022	C	4.00	15821
11	2021	P	4.50	652	3	2022	C	8.00	15501
3	2023	C	4.00	650	11	2021	C	4.50	15480
11	2021	P	4.00	634	10	2021	C	5.25	15385
12	2021	P	4.40	626	1	2022	C	6.00	14908
12	2021	C	4.75	600	4	2022	P	2.50	14534
12	2021	C	8.50	506	1	2022	C	4.00	14503
12	2021	C	6.50	502	11	2021	P	2.50	14486
12	2021	P	4.25	500	11	2021	C	3.75	14481
1	2022	C	6.50	500	3	2022	C	3.00	14447
1	2022	C	8.50	500	11	2021	C	6.00	14355
1	2022	C	8.50	500	12	2021	P	2.00	13889
1	2022	P	4.00	500	3	2022	C	6	13606

Source: CME, ICE

Nat Gas Futures Open Interest CME, and ICE Combined

CME Henry Hub Futures (10,000 MMBtu)				ICE Henry Hub Futures Contract Equivalent (10,000 MM			
	Current	Prior	Daily Change		Current	Prior	Daily Change
OCT 21	229383	235911	-6528	OCT 21	107143	109290	-2148
NOV 21	214495	209417	5078	NOV 21	74621	75121	-500
DEC 21	91838	90901	937	DEC 21	76688	76927	-239
JAN 22	151520	149472	2048	JAN 22	87564	87019	545
FEB 22	57311	57058	253	FEB 22	67702	67567	135
MAR 22	116589	115751	838	MAR 22	72033	71185	848
APR 22	117576	117549	27	APR 22	68045	67477	568
MAY 22	114831	113998	833	MAY 22	68466	68318	148
JUN 22	38674	38044	630	JUN 22	51246	51427	-181
JUL 22	29423	29139	284	JUL 22	52398	52318	81
AUG 22	31451	30388	1063	AUG 22	52748	52588	161
SEP 22	34093	34412	-319	SEP 22	52732	52653	79
OCT 22	84853	84609	244	OCT 22	60512	60465	47
NOV 22	31522	31467	55	NOV 22	46640	46535	105
DEC 22	24933	24904	29	DEC 22	49769	49666	103
JAN 23	21129	20903	226	JAN 23	36413	35877	536
FEB 23	8172	8150	22	FEB 23	29870	29791	79
MAR 23	10009	10047	-38	MAR 23	32129	32019	110
APR 23	11245	11298	-53	APR 23	27911	27953	-42
MAY 23	6545	6533	12	MAY 23	28797	28832	-35
JUN 23	5246	5243	3	JUN 23	26758	26799	-42
JUL 23	4085	4043	42	JUL 23	26862	26904	-43
AUG 23	3278	3276	2	AUG 23	26713	26756	-43
SEP 23	4192	4187	5	SEP 23	26016	26058	-42
OCT 23	5740	5747	-7	OCT 23	27961	28004	-43
NOV 23	1984	1971	13	NOV 23	27849	27844	5
DEC 23	1807	1806	1	DEC 23	25024	25018	6
JAN 24	1122	1117	5	JAN 24	14217	14153	64
FEB 24	890	885	5	FEB 24	11927	11882	45
MAR 24	3313	3308	5	MAR 24	15885	15823	62





	Oct-21	Nov-21	Dec-21	Jan-22	Feb-22	Mar-22	Apr-22	May-22	Jun-22	Jul-22	Aug-22	Sep-22
Current Price	\$4.712	\$4.762	\$4.850	\$4.905	\$4.791	\$4.420	\$3.628	\$3.521	\$3.549	\$3.579	\$3.587	\$3.568
Last Week	\$4.305	\$4.359	\$4.448	\$4.499	\$4.404	\$4.075	\$3.420	\$3.330	\$3.356	\$3.389	\$3.398	\$3.387
vs. Last Week	\$0.407	\$0.403	\$0.402	\$0.406	\$0.387	\$0.345	\$0.208	\$0.191	\$0.193	\$0.190	\$0.189	\$0.181
4 Weeks Ago	\$4.060	\$4.075	\$4.143	\$4.252	\$4.318	\$4.237	\$3.955	\$3.349	\$3.270	\$3.299	\$3.332	\$3.338
vs. 4 Weeks Ago	\$0.652	\$0.687	\$0.707	\$0.653	\$0.473	\$0.183	-\$0.327	\$0.172	\$0.279	\$0.280	\$0.255	\$0.230
Last Year	\$2.588	\$2.987	\$3.276	\$3.389	\$3.350	\$3.217	\$2.852	\$2.806	\$2.830	\$2.860	\$2.867	\$2.855
vs. Last Year	\$2.124	\$1.775	\$1.574	\$1.516	\$1.441	\$1.203	\$0.776	\$0.715	\$0.719	\$0.719	\$0.720	\$0.713

	Units	Cash Settled	Prompt Settle	Cash to Prompt
AGT Citygate	\$/MMBtu	4.40	4.10	-0.30
TETCO M3	\$/MMBtu	4.03	3.29	-0.74
FGT Zone 3	\$/MMBtu	4.05	4.49	0.44
Zone 6 NY	\$/MMBtu	4.05	3.21	-0.84
Chicago Citygate	\$/MMBtu	4.45	4.29	-0.16
Michcon	\$/MMBtu	4.41	4.25	-0.17
Columbia TCO Pool	\$/MMBtu	4.00	3.41	-0.59
Ventura	\$/MMBtu	4.42	4.27	-0.15
Rockies/Opal	\$/MMBtu	4.80	4.15	-0.65
El Paso Permian Basin	\$/MMBtu	4.47	4.13	-0.34
Socal Citygate	\$/MMBtu	13.78	5.23	-8.55
Malin	\$/MMBtu	5.19	4.57	-0.63
Houston Ship Channel	\$/MMBtu	4.66	4.47	-0.19
Henry Hub Cash	\$/MMBtu	4.68	4.20	-0.48
AECO Cash	C\$/GJ	2.77	3.56	0.79
Station2 Cash	C\$/GJ	2.71	4.60	1.89
Dawn Cash	C\$/GJ	4.40	4.21	-0.19

Source: CME, Bloomberg

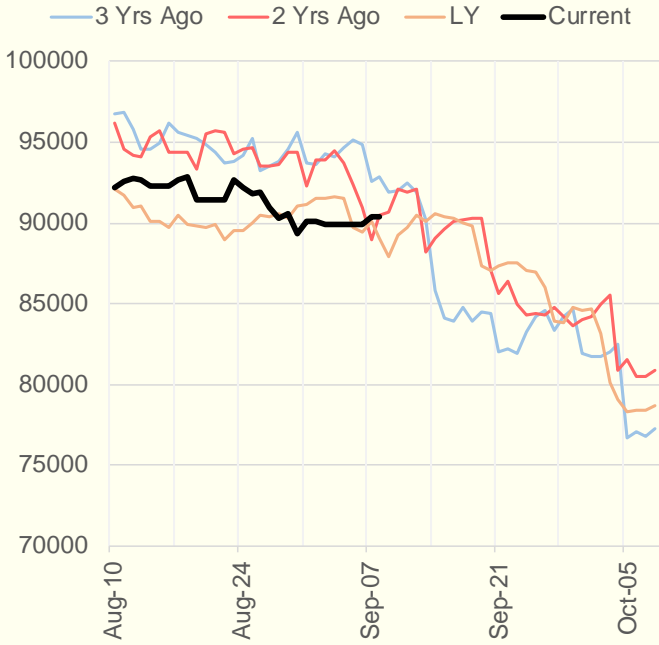
	Units	Current Price	vs. Last Week	vs. 4 Weeks Ago	vs. Last Year
NatGas Jul21/Oct21	\$/MMBtu	0.951	▲ 0.191	▲ 0.465	▲ 0.930
NatGas Oct21/Nov21	\$/MMBtu	0.047	▼ -0.001	▼ -0.022	▼ -0.003
NatGas Oct21/Jan22	\$/MMBtu	0.196	▲ 0.010	▼ -0.043	▼ -0.090
NatGas Apr22/Oct22	\$/MMBtu	-0.004	▲ 0.009	▼ -0.001	▼ -0.025
WTI Crude	\$/Bbl	68.35	▼ -0.150	▲ 0.060	▲ 31.590
Brent Crude	\$/Bbl	71.69	▼ -1.300	▲ 1.060	▲ 31.910
Fuel Oil, NY Harbour 1%	\$/Bbl	97.18	▲ 0.000	▲ 0.000	▲ 0.000
Heating Oil	cents/Gallon	212.16	▼ -0.940	▲ 4.140	▲ 104.480
Propane, Mt. Bel	cents/Gallon	1.19	▲ 0.073	▲ 0.086	▲ 0.724
Ethane, Mt. Bel	cents/Gallon	0.36	▲ 0.020	▲ 0.013	▲ 0.158
Coal, PRB	\$/MTon	12.30	▲ 0.000	▲ 0.000	▲ 0.000
Coal, PRB	\$/MMBtu	0.70			
Coal, ILB	\$/MTon	31.05	▲ 0.000	▲ 0.000	▲ 0.000
Coal, ILB	\$/MMBtu	1.32			

Weather Storage Model - Next 4 Week Forecast

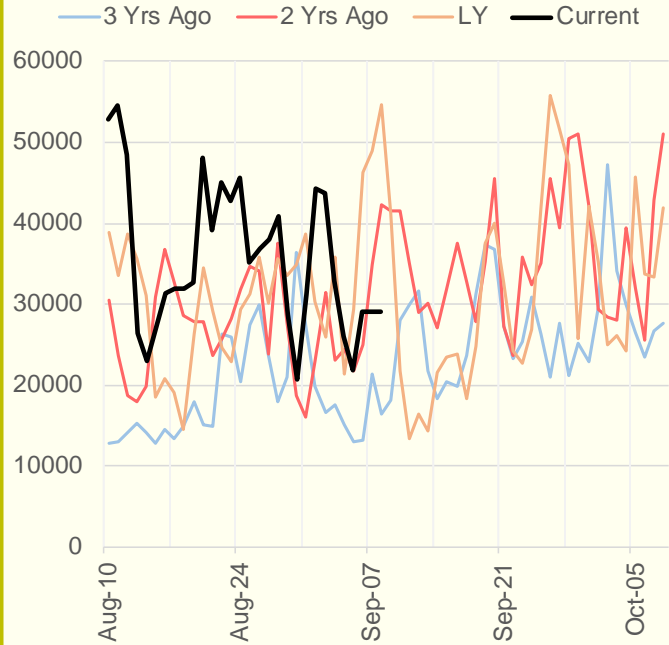


The risk of trading futures and options and other derivatives involves a substantial risk of loss and is not suitable for all persons. Each person must consider whether a particular trade, combination of trades, or strategy is suitable for that person's financial means and objectives. Past results are not necessarily indicative of future results. This communication may contain links to third party websites which are not under the control of and are not maintained by ION Energy Group, and ION Energy Group is not responsible for their content.

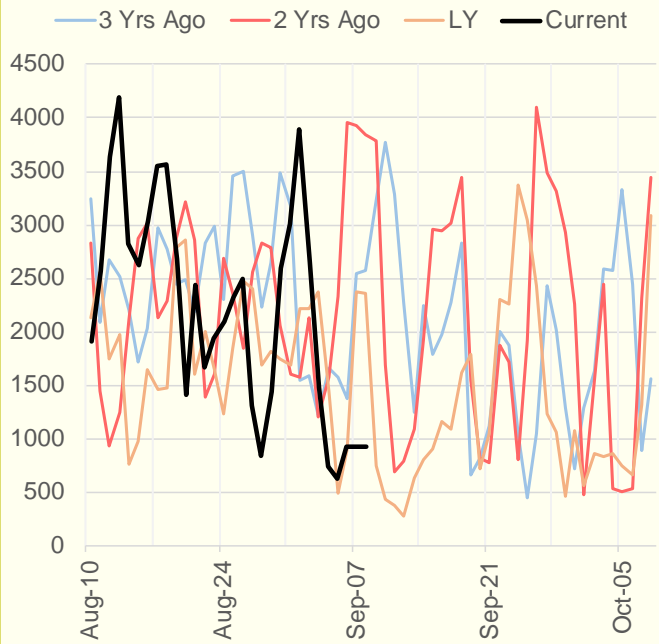
NRC Nuclear Daily Output



US Wind



CALI Wind



TEXAS Wind

