

	Current	Δ from YD	Δ from 7D Avg
Nat Gas Prompt	\$ 4.94 ▲	\$ 0.03 ▲	\$ 0.23

	Current	Δ from YD	Δ from 7D Avg
WTI Prompt	\$ 69.74 ▲	\$ 0.44 ▲	\$ 0.5

	Current	Δ from YD	Δ from 7D Avg
Brent Prompt	\$ 73.09 ▲	\$ 0.49 ▲	\$ 0.6

Page Menu

[Short-term Weather Model Outlooks](#)

[Lower 48 Component Models](#)

[Regional S/D Models Storage Projection](#)

[Weather Model Storage Projection](#)

[Supply – Demand Trends](#)

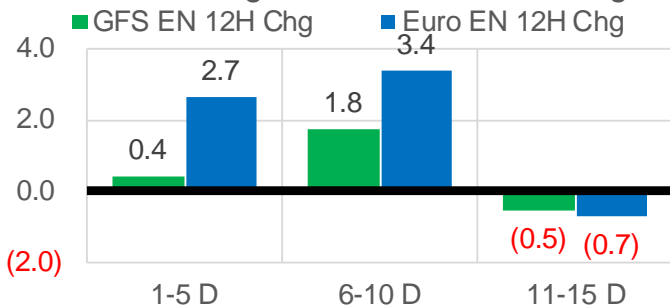
[Nat Gas Options Volume and Open Interest](#)

[Nat Gas Futures Open Interest](#)

[Price Summary](#)

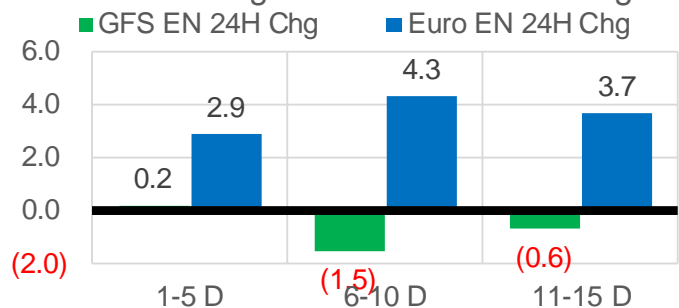
Vs. 12H Ago

L48 Region - 00z TDD vs 12H Ago



Vs. 24H Ago

L48 Region - 00z TDD vs 24H Ago



	Current	Δ from YD	Δ from 7D Avg
US Dry Production	89.2 ▼	-1.83 ▼	-1.96

	Current	Δ from YD	Δ from 7D Avg
US Power Burns	34.5 ▼	-1.62 ▼	1.21 ▲

	Current	Δ from YD	Δ from 7D Avg
US ResComm	7.4 ▼	-0.12 ▼	0.28 ▲

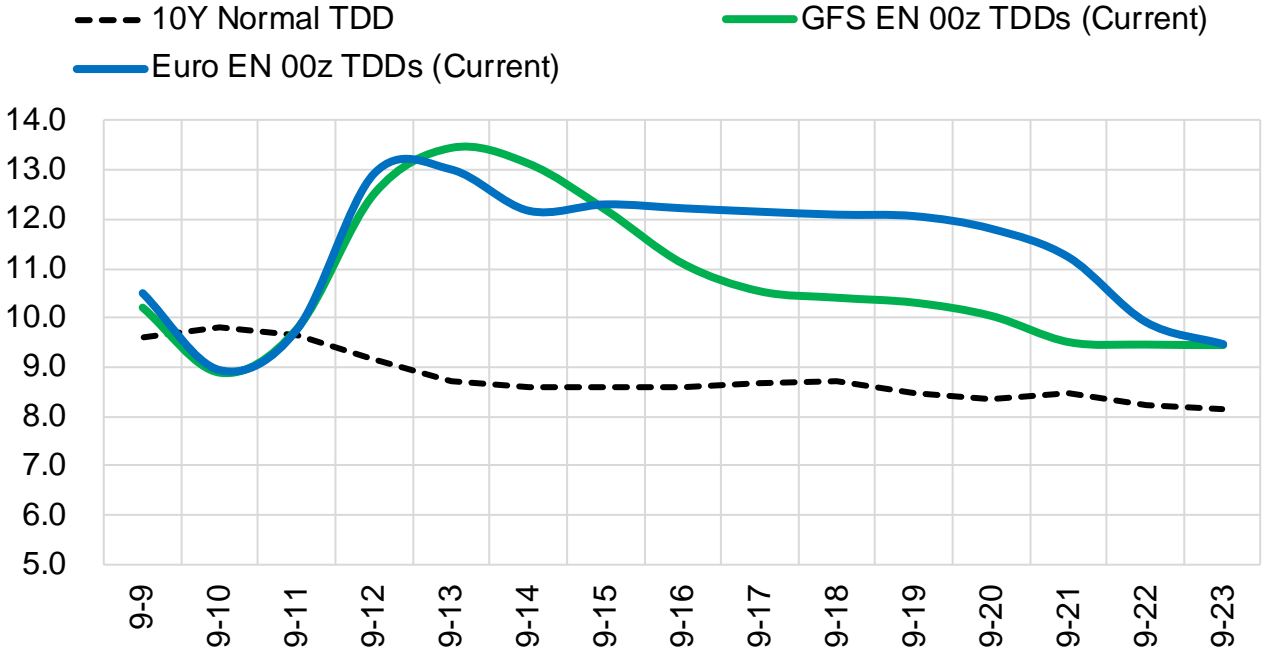
	Current	Δ from YD	Δ from 7D Avg
Canadian Imports	5.0 ▲	0.07 ▲	0.29 ▲

	Current	Δ from YD	Δ from 7D Avg
Net LNG Exports	10.3 ▼	-0.70 ▼	-0.67

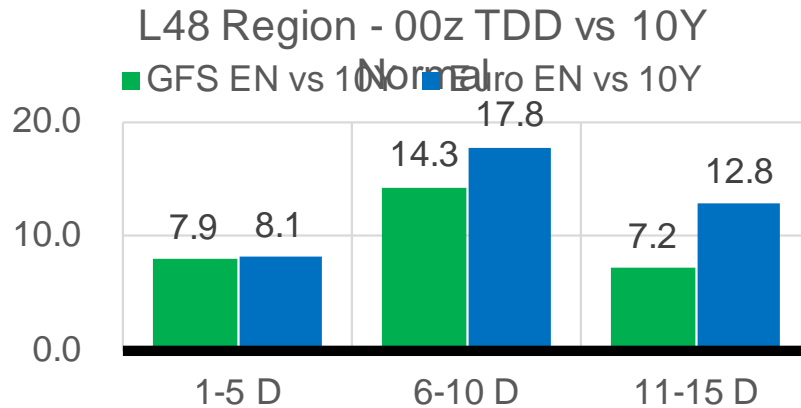
	Current	Δ from YD	Δ from 7D Avg
Mexican Exports	6.8 ▼	-0.10 ▼	0.03 ▲

Short-term Weather Model Outlooks (00z)

L48 Region



Vs. 10Y Normal



Source: WSI , Bloomberg

Lower 48 Component Models

Daily Balances

	3-Sep	4-Sep	5-Sep	6-Sep	7-Sep	8-Sep	9-Sep	DoD	vs. 7D
Lower 48 Dry Production	91.0	91.3	91.4	91.3	91.5	91.0	89.2	▼ -1.8	▼ -2.1
Canadian Imports	4.6	4.6	4.7	4.8	4.9	4.9	5.0	▲ 0.1	▲ 0.2
L48 Power	32.2	31.8	32.5	32.9	34.9	36.1	34.5	▼ -1.6	▲ 1.1
L48 Residential & Commercial	7.5	6.6	6.5	6.7	7.1	7.5	7.4	▼ -0.1	▲ 0.4
L48 Industrial	19.7	19.9	20.2	20.3	20.3	20.3	20.3	▼ -0.1	▲ 0.1
L48 Lease and Plant Fuel	5.0	5.0	5.0	5.0	5.0	5.0	4.9	▼ -0.1	▼ -0.1
L48 Pipeline Distribution	2.0	2.0	2.0	2.0	2.1	2.2	2.1	▼ -0.1	▲ 0.1
L48 Regional Gas Consumption	66.5	65.3	66.2	67.0	69.5	71.2	69.2	▼ -2.0	▲ 1.6
Net LNG Delivered	10.96	11.02	10.89	11.00	11.30	10.96	10.26	▼ -0.7	▼ -0.8
Total Mexican Exports	7.0	6.6	6.4	6.7	7.0	6.9	6.8	▼ -0.1	▲ 0.1
Implied Daily Storage Activity	11.1	13.1	12.5	11.3	8.6	6.9	7.9		
EIA Reported Daily Storage Activity									
Daily Model Error									

EIA Storage Week Balances

	30-Jul	6-Aug	13-Aug	20-Aug	27-Aug	3-Sep	WoW	vs. 4W
Lower 48 Dry Production	92.6	91.9	92.4	92.4	93.0	90.9	▼ -2.1	▼ -1.5
Canadian Imports	5.5	5.0	5.2	5.0	5.3	5.0	▼ -0.4	▼ -0.2
L48 Power	42.1	38.3	41.1	39.7	41.9	38.0	▼ -3.9	▼ -2.3
L48 Residential & Commercial	8.6	8.0	7.8	7.6	7.8	7.5	▼ -0.3	▼ -0.3
L48 Industrial	20.5	20.1	19.2	20.9	21.1	19.5	▼ -1.7	▼ -0.9
L48 Lease and Plant Fuel	5.1	5.1	5.1	5.1	5.1	5.0	▼ -0.1	▼ -0.1
L48 Pipeline Distribution	2.4	2.2	2.4	2.3	2.4	2.2	▼ -0.2	▼ -0.1
L48 Regional Gas Consumption	78.6	73.8	75.5	75.6	78.3	72.2	▼ -6.2	▼ -3.6
Net LNG Exports	10.8	10.6	9.9	10.9	10.6	10.5	▼ -0.1	▼ 0.0
Total Mexican Exports	7.0	6.9	6.8	6.8	6.8	7.0	▲ 0.2	▲ 0.1
Implied Daily Storage Activity	1.7	5.7	5.2	4.2	2.6	6.2	3.6	
EIA Reported Daily Storage Activity	1.9	7.0	6.6	4.1	2.9			
Daily Model Error	-0.1	-1.3	-1.4	0.0	-0.3			

Monthly Balances

	2Yr Ago Sep-18	LY Sep-18	May-21	Jun-21	Jul-21	Aug-21	MTD Sep-21	MoM	vs. LY
Lower 48 Dry Production	86.6	86.6	93.1	93.4	92.4	92.2	90.9	▼ -1.2	▲ 4.3
Canadian Imports	4.5	4.5	4.5	4.8	5.2	5.1	4.7	▼ -0.4	▲ 0.2
L48 Power	34.3	34.3	26.8	35.9	39.6	40.2	33.6	▼ -6.6	▼ -0.7
L48 Residential & Commercial	8.5	8.5	12.8	8.9	8.6	7.7	7.2	▼ -0.5	▼ -1.3
L48 Industrial	22.6	22.6	20.8	20.6	19.6	20.2	19.9	▼ -0.3	▼ -2.7
L48 Lease and Plant Fuel	4.8	4.8	5.1	5.1	5.1	5.1	5.0	▼ -0.1	▲ 0.2
L48 Pipeline Distribution	2.1	2.1	2.1	2.2	2.3	2.3	2.1	▼ -0.2	▲ 0.0
L48 Regional Gas Consumption	72.3	72.3	67.6	72.7	75.1	75.5	67.8	▼ -7.7	▼ -4.5
Net LNG Exports	3.1	3.1	10.8	10.2	10.8	10.5	10.7	▲ 0.2	▲ 7.6
Total Mexican Exports	5.0	5.0	6.8	7.4	7.0	6.9	6.9	▼ 0.0	▲ 1.9
Implied Daily Storage Activity	10.7	10.7	12.4	8.0	4.6	4.4	10.3		
EIA Reported Daily Storage Activity									
Daily Model Error									

Source: Bloomberg, analytix.ai

Daily Average Generation Data

Nuclear Generation Daily Average - GWh (NRC)

	1-Sep	2-Sep	3-Sep	4-Sep	5-Sep	6-Sep	7-Sep	DoD	vs. 7D
NRC Nuclear Daily Output	90.1	89.9	89.9	90.5	90.3	90.1	90.4	0.3	0.3
NRC Nuclear Max Capacity	104.9	104.9	104.9	104.9	104.9	104.9	104.9	0.0	0.0
NRC Nuclear Outage	14.8	15.0	15.0	14.4	14.5	14.8	14.5	-0.3	-0.3
NRC % Nuclear Cap Utilization	91.6	91.4	91.4	92.0	91.8	91.6	91.9	0.3	0.3

Wind Generation Daily Average - MWh (EIA)

	1-Sep	2-Sep	3-Sep	4-Sep	5-Sep	6-Sep	7-Sep	DoD	vs. 7D
CALI Wind	3892	2647	1475	735	624	917	1916	999	201
TEXAS Wind	11690	11217	11688	10074	5319	4445	6387	1943	-2685
US Wind	44200	43754	32918	25931	21742	29088	44321	15232	11382

Generation Daily Average - MWh (EIA)

	1-Sep	2-Sep	3-Sep	4-Sep	5-Sep	6-Sep	7-Sep	DoD	vs. 7D
US Wind	44200	43754	32918	25931	21742	29088	44321	15232	11382
US Solar	11956	14360	14823	14877	13982	13961	14108	146	115
US Petroleum	2314	2320	2181	1719	1492	2272	2068	-204	19
US Other	8933	8553	8447	8506	8382	8601	9182	581	611
US Coal	129472	119865	120611	116389	115401	113657	112308	-1348	-6924
US Nuke	92622	92854	93063	93475	93303	93181	92903	-279	-180
US Hydro	28984	28222	28526	26093	24557	25833	27671	1838	636
US Gas	185825	171731	167087	159729	168088	177477	194259	16781	22602

See National Wind and Nuclear daily charts

Source: Bloomberg, analytix.ai

Storage Week Average Generation Data

Nuclear Generation Weekly Average - GWh (NRC)

	30-Jul	6-Aug	13-Aug	20-Aug	27-Aug	3-Sep	WoW	WoW Bcf/d Impact
NRC Nuclear Daily Output	89.6	90.6	91.5	92.4	91.9	90.2	-1.8	0.3
NRC Nuclear Max Capacity	104.9	104.9	104.9	104.9	104.9	104.9	0.0	
NRC Nuclear Outage	15.3	14.3	13.3	12.5	12.9	14.7	1.8	
NRC % Nuclear Cap Utilization	0.1	0.1	0.1	0.1	0.1	0.1	0.0	

Wind Generation Weekly Average - MWh (EIA)

	30-Jul	6-Aug	13-Aug	20-Aug	27-Aug	3-Sep	WoW	WoW Bcf/d Impact
CALI Wind	1905	2237	2507	3210	2052	2247	194	0.0
TEXAS Wind	7913	5180	16319	7171	12600	7534	-5066	0.9
US Wind	29738	22379	49586	29141	41810	35348	-6462	1.2
					12668.4			
					43%			

Generation Weekly Average - MWh (EIA)

	30-Jul	6-Aug	13-Aug	20-Aug	27-Aug	3-Sep	WoW	WoW Bcf/d Impact
US Wind	29738	22379	49586	29141	41810	35348	-6462	1.2
US Solar	13978	14131	14383	12828	14536	13280	-1256	0.2
US Petroleum	4729	4074	4712	4466	5323	3135	-2188	0.4
US Other	9289	9070	10070	10104	10131	9693	-438	0.1
US Coal	146407	134740	140524	138052	136168	136251	83	0.0
US Nuke	92266	93328	94302	95157	94358	92365	-1993	0.4
US Hydro	29215	27752	27035	28988	30618	28156	-2462	0.4
US Gas	224459	204634	208281	212106	215990	205230	-10760	1.9

See National Wind and Nuclear daily charts

Source: Bloomberg, analytix.ai

Monthly Average Generation Data

Nuclear Generation Monthly Average - GWh (NRC)

	2Yr Ago	LY	MTD						
	Same 30 days	Same 30 days	Jun-21	Jul-21	Aug-21	Sep-21	Last 30 days	MoM (MTD vs LY)	Last 30 days YoY
NRC Nuclear Daily Output	93.7	90.3	88.7	90.1	91.5	90.2	91.3	-1.3	1.0
NRC Nuclear Max Capacity	104.9	104.9	104.9	104.9	104.9	104.9	104.9	0.0	0.0
NRC Nuclear Outage	11.1	14.6	16.2	14.8	13.4	14.7	13.6	1.3	-1.0
NRC % Nuclear Cap Utilization	95.3	91.8	90.2	91.6	93.0	91.7	92.8	-1.4	1.0

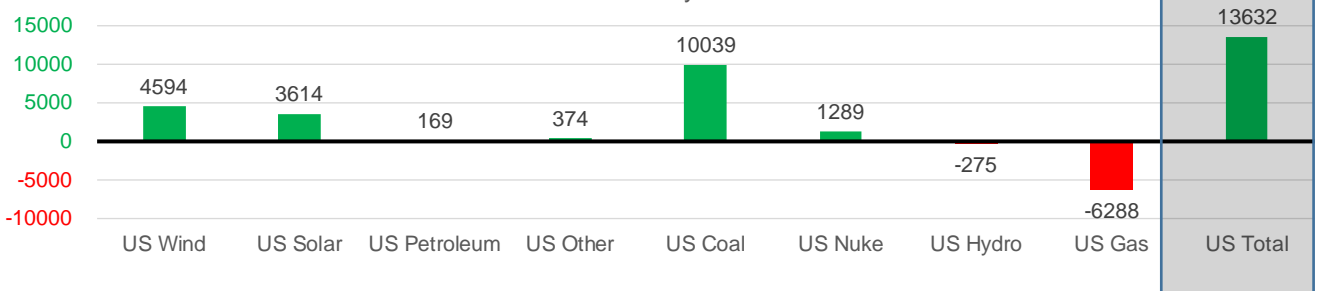
Wind Generation Monthly Average - MWh (EIA)

	2Yr Ago	LY	MTD						
	Same 30 days	Same 30 days	Jun-21	Jul-21	Aug-21	Sep-21	Last 30 days	MoM (MTD vs LY)	Last 30 days YoY
CALI Wind	2367	1782	2881	2338	2442	1782	2275	-660	493
TEXAS Wind	7883	8318	9509	7217	9901	8177	9078	-1724	760
US Wind	27782	31738	36827	29106	35740	36733	36332	993	4594

Generation Monthly Average - MWh (EIA)

	2Yr Ago	LY	MTD						
	Same 30 days	Same 30 days	Jun-21	Jul-21	Aug-21	Sep-21	Last 30 days	MoM (MTD vs LY)	Last 30 days YoY
US Wind	27782	31738	36827	29106	35740	36733	36332	▼ -401.2	▲ 4594
US Solar	8809	10133	14578	14195	13849	14031	13747	▼ -284.0	▲ 3614
US Petroleum	4571	3653	4155	4233	4484	2056	3823	▲ 1767	▲ 169
US Other	8735	9362	8208	9327	9929	8774	9736	▲ 962	▲ 374
US Coal	119407	122517	122034	137228	137649	116925	132556	▲ 15632	▲ 10039
US Nuke	100199	92553	92180	92911	94062	93023	93842	▲ 819	▲ 1289
US Hydro	30199	28998	32565	29941	28528	27248	28722	▲ 1475	▼ -275
US Gas	210485	211029	189395	207814	210806	179190	204741	▲ 19968	▼ -6288
US Total	511872	509826	500272	524889	534991	478068	523458	▲ 40338	▲ 13632

Last 30 days YoY



See National Wind and Nuclear daily charts

Source: Bloomberg, analytix.ai

Regional S/D Models Storage Projection

Week Ending 3-Sep

	Daily Raw Storage	Daily Adjustment Factor	Daily Average Storage Activity (Adjusted) *	Weekly Adjusted Storage Activity
L48	5.9	0.9	6.8	48
East	2.2	1.1	3.3	23
Midwest	4.3	-0.2	4.2	29
Mountain	3.3	-3.4	-0.1	-1
South Central	-4.4	3.7	-0.6	-5
Pacific	0.4	-0.3	0.1	1

*Adjustment Factor is calculated based on historical regional deltas

U.S. underground natural gas storage facilities by type (July 2015)

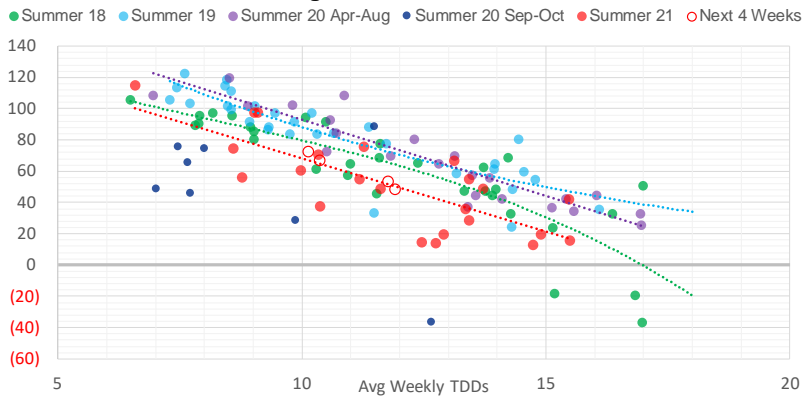


Weather Model Storage Projection

Next report
and beyond

Week Ending	GWDDs	Week Storage Projection
03-Sep	11.9	48
10-Sep	10.2	72
17-Sep	11.8	53
24-Sep	10.4	66

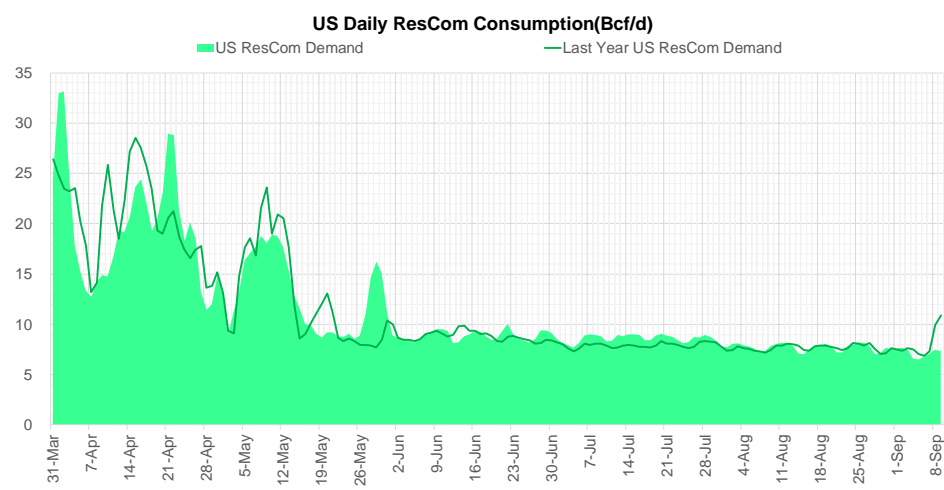
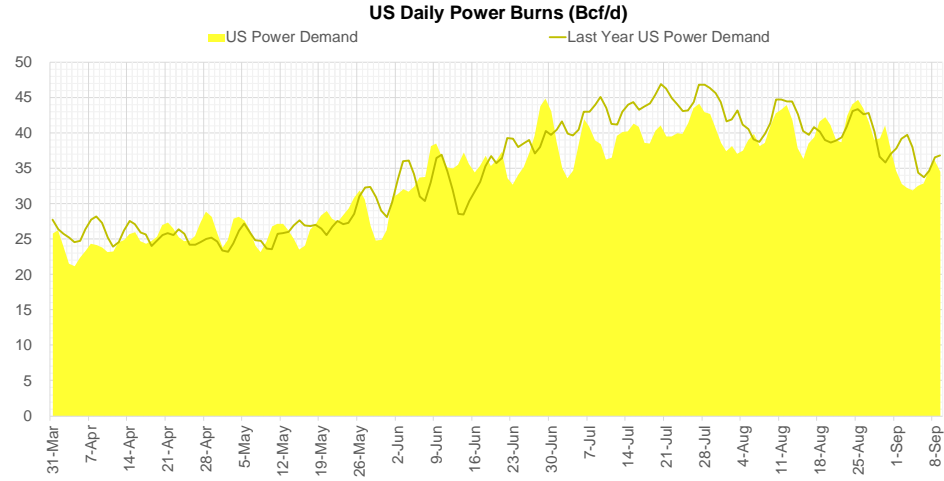
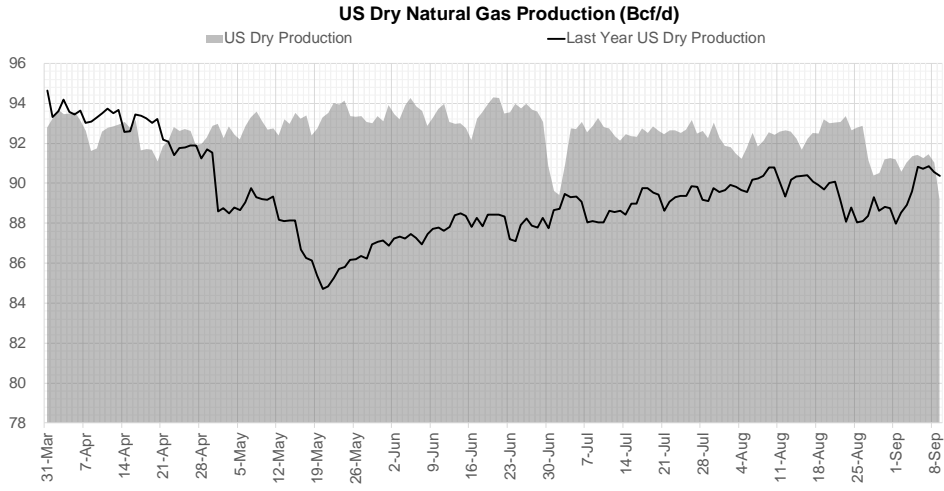
Weather Storage Model - Next 4 Week Forecast



Go to larger image



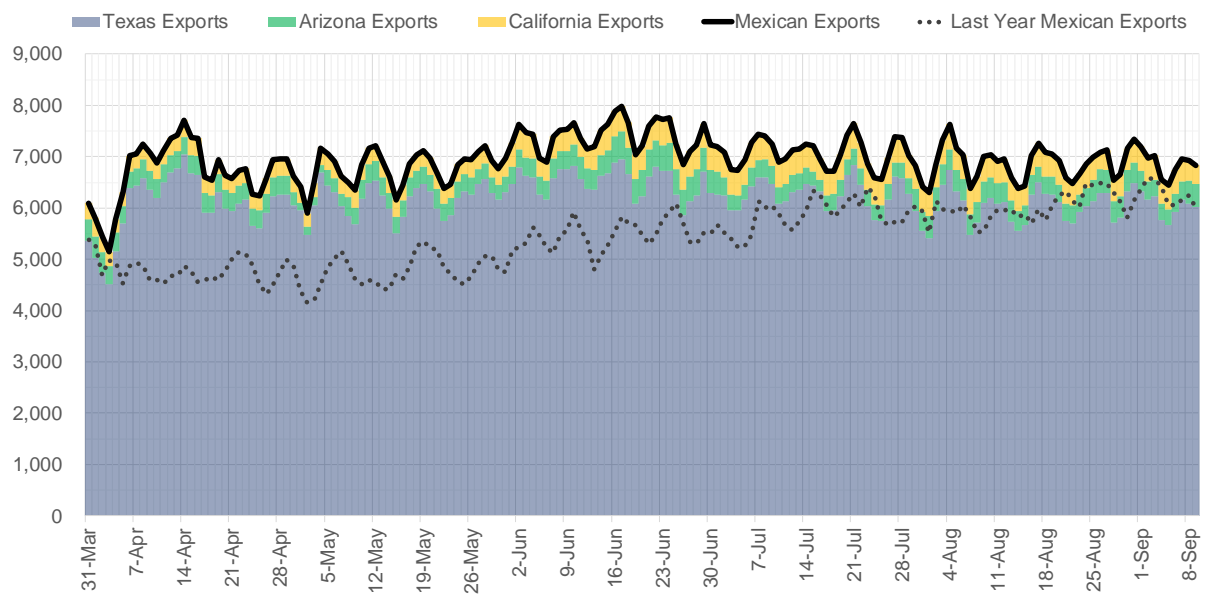
Supply – Demand Trends



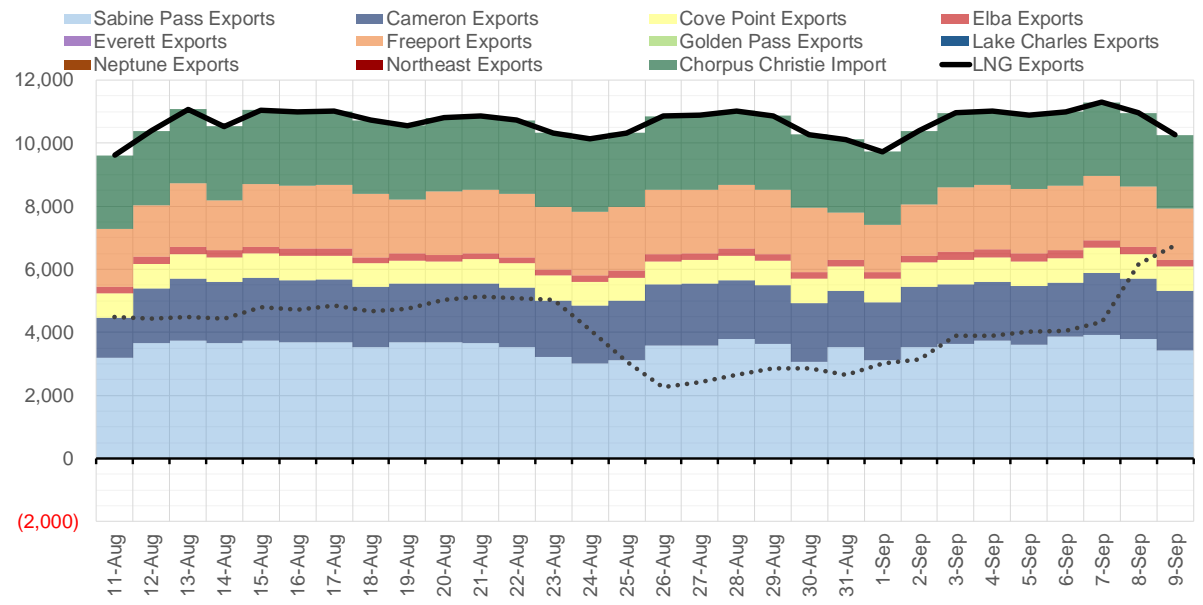
Source: Bloomberg

The risk of trading futures and options and other derivatives involves a substantial risk of loss and is not suitable for all persons. Each person must consider whether a particular trade, combination of trades, or strategy is suitable for that person's financial means and objectives. Past results are not necessarily indicative of future results. This communication may contain links to third party websites which are not under the control of and are not maintained by ION Energy Group, and ION Energy Group is not responsible for their content.

Mexican Exports (MMcf/d)



Net LNG Exports - Last 30 days (MMcf/d)



Source: Bloomberg

The risk of trading futures and options and other derivatives involves a substantial risk of loss and is not suitable for all persons. Each person must consider whether a particular trade, combination of trades, or strategy is suitable for that person's financial means and objectives. Past results are not necessarily indicative of future results. This communication may contain links to third party websites which are not under the control of and are not maintained by ION Energy Group, and ION Energy Group is not responsible for their content.

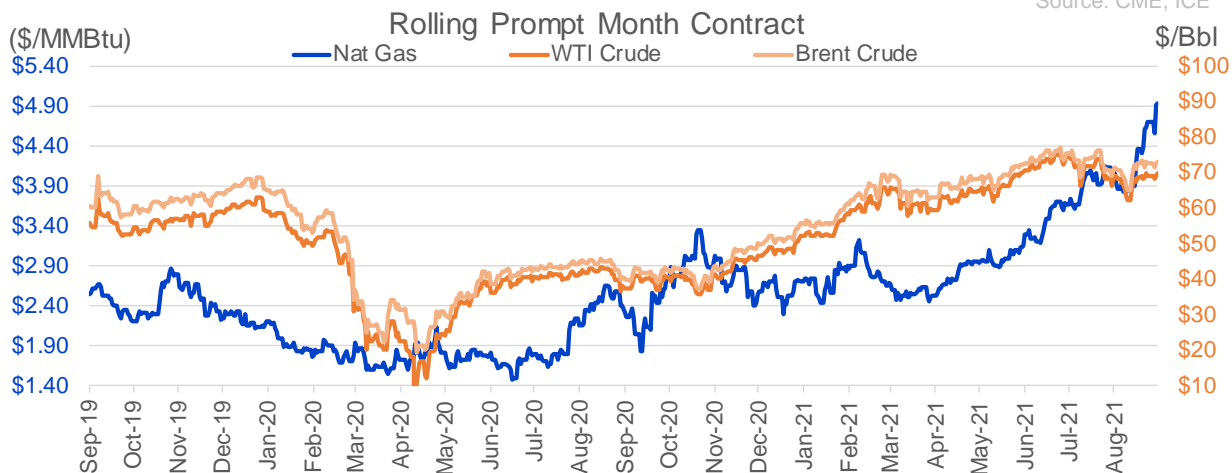
Nat Gas Options Volume and Open Interest CME, ICE and Nasdaq Combined

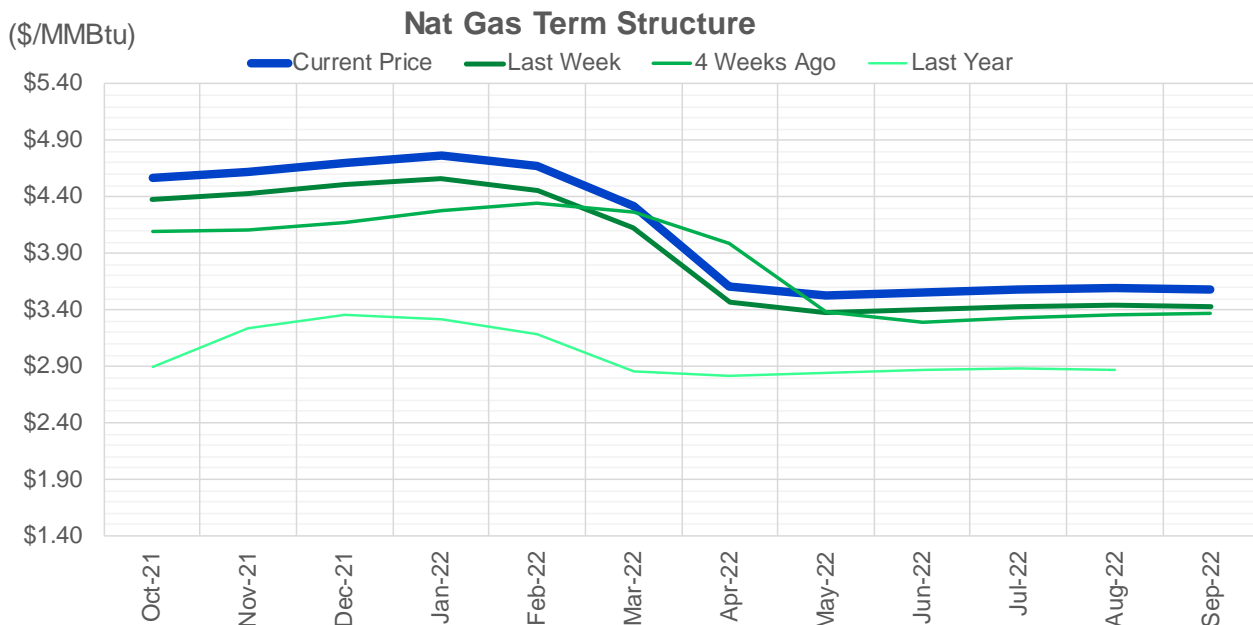
CONTRACT MONTH	CONTRACT YEAR	PUT/CALL	STRIKE	CUMULATIVE VOL	CONTRACT MONTH	CONTRACT YEAR	PUT/CALL	STRIKE	CUMULATIVE OI
10	2021	C	5.00	26450	10	2021	C	5.00	59611
10	2021	C	5.50	16686	10	2021	C	4.00	43342
10	2021	P	4.50	12997	10	2021	C	4.50	42159
10	2021	C	5.25	12145	12	2021	P	2.75	42059
10	2021	P	4.25	10701	10	2021	P	3.50	41973
10	2021	C	6.00	10578	12	2021	P	2.50	38564
11	2021	P	4.00	8233	10	2021	C	3.50	32999
3	2022	C	10.00	8091	10	2021	C	4.25	32589
11	2021	C	5.00	7391	10	2021	C	6.00	32389
10	2021	P	4.00	6246	10	2021	P	3.00	31758
10	2021	P	4.35	4627	10	2021	P	4.00	31644
10	2021	P	4.40	4537	11	2021	P	3.00	30539
12	2021	C	7.00	4515	10	2021	P	2.50	29994
3	2022	P	3.50	4300	10	2021	P	2.00	28650
3	2022	P	4.00	4300	10	2021	C	3.25	28193
10	2021	C	4.50	4108	10	2021	P	2.75	26887
3	2022	P	4.50	4090	12	2021	P	3.00	25003
10	2021	C	4.90	4013	11	2021	C	4.00	23275
3	2022	C	8.00	3700	12	2021	C	4.00	22646
10	2021	P	4.70	3558	10	2021	P	3.75	22519
12	2021	C	10.00	3441	3	2022	C	10.00	22502
11	2021	C	4.95	3388	11	2021	P	3.50	21477
10	2021	P	4.75	3039	10	2021	P	2.25	19784
11	2021	C	6.00	2994	4	2022	C	3.00	19760
11	2021	C	7.00	2988	11	2021	C	5.00	18515
2	2022	C	10.00	2802	10	2021	C	3.00	18494
1	2022	C	10.00	2750	12	2021	P	4.00	18341
10	2021	P	4.60	2722	3	2022	C	5.00	18233
10	2021	P	3.90	2647	10	2021	P	3.25	17941
11	2021	C	5.50	2569	11	2021	P	4.00	17932
10	2021	P	4.20	2535	3	2022	C	8.00	17903
10	2021	C	5.75	2497	10	2021	C	5.50	17872
10	2021	P	4.45	2492	11	2021	C	7.00	17714
12	2021	C	6.00	2456	1	2022	C	5.00	17080
10	2021	C	5.20	2301	10	2021	C	5.25	16856
12	2021	C	5.50	2288	3	2022	P	2.50	16799
11	2021	C	5.25	2196	10	2021	C	3.75	16780
12	2021	P	4.25	2072	2	2022	C	5.00	16386
10	2021	C	4.70	2062	3	2022	C	4.00	16024
3	2022	C	15.00	2050	2	2022	C	4.00	15821
11	2021	C	5.75	1976	11	2021	C	4.50	15480
10	2021	P	4.10	1932	10	2021	P	4.25	14765
10	2021	C	4.80	1915	4	2022	P	2.50	14534
11	2021	C	10.00	1850	1	2022	C	6.00	14517
12	2021	C	5.00	1820	1	2022	C	4.00	14503
10	2021	P	4.90	1767	11	2021	P	2.50	14486
2	2022	C	12.00	1655	11	2021	C	3.75	14481
2	2022	P	3.50	1652	3	2022	C	3.00	14447
1	2022	C	7.00	1558	12	2021	P	2.00	13889
					11	2021	C	6	13863.25

Source: CME, ICE

Nat Gas Futures Open Interest CME, and ICE Combined

CME Henry Hub Futures (10,000 MMBtu)				ICE Henry Hub Futures Contract Equivalent (10,000 MM			
	Current	Prior	Daily Change		Current	Prior	Daily Change
OCT 21	217124	228830	-11706	OCT 21	105187	107143	-1956
NOV 21	218898	214493	4405	NOV 21	76277	74621	1656
DEC 21	93078	91838	1240	DEC 21	78353	76688	1665
JAN 22	153382	151520	1862	JAN 22	87381	87564	-183
FEB 22	57263	57311	-48	FEB 22	68153	67702	451
MAR 22	119231	116585	2646	MAR 22	71405	72033	-628
APR 22	117735	117576	159	APR 22	68419	68045	374
MAY 22	113789	114831	-1042	MAY 22	68923	68466	457
JUN 22	38749	38674	75	JUN 22	51946	51246	700
JUL 22	29216	29423	-207	JUL 22	53125	52398	726
AUG 22	31937	31451	486	AUG 22	53447	52748	699
SEP 22	34549	34093	456	SEP 22	53590	52732	858
OCT 22	86298	84853	1445	OCT 22	60708	60512	197
NOV 22	31764	31522	242	NOV 22	46895	46640	255
DEC 22	24871	24933	-62	DEC 22	50044	49769	276
JAN 23	22051	21129	922	JAN 23	36716	36413	303
FEB 23	8709	8172	537	FEB 23	30173	29870	303
MAR 23	10247	10009	238	MAR 23	32413	32129	284
APR 23	11364	11245	119	APR 23	28382	27911	471
MAY 23	7041	6545	496	MAY 23	29020	28797	224
JUN 23	5246	5246	0	JUN 23	26973	26758	216
JUL 23	3993	4085	-92	JUL 23	27085	26862	224
AUG 23	3193	3278	-85	AUG 23	26936	26713	224
SEP 23	4095	4192	-97	SEP 23	26232	26016	216
OCT 23	5670	5740	-70	OCT 23	28146	27961	185
NOV 23	1962	1984	-22	NOV 23	28077	27849	228
DEC 23	1810	1807	3	DEC 23	25893	25024	869
JAN 24	1132	1122	10	JAN 24	14475	14217	258
FEB 24	890	890	0	FEB 24	12059	11927	132
MAR 24	3283	3313	-30	MAR 24	16029	15885	144





	Oct-21	Nov-21	Dec-21	Jan-22	Feb-22	Mar-22	Apr-22	May-22	Jun-22	Jul-22	Aug-22	Sep-22
Current Price	\$4.568	\$4.615	\$4.704	\$4.764	\$4.669	\$4.324	\$3.608	\$3.522	\$3.551	\$3.584	\$3.591	\$3.577
Last Week	\$4.377	\$4.425	\$4.515	\$4.563	\$4.456	\$4.132	\$3.470	\$3.373	\$3.398	\$3.430	\$3.439	\$3.427
vs. Last Week	\$0.191	\$0.190	\$0.189	\$0.201	\$0.213	\$0.192	\$0.138	\$0.149	\$0.153	\$0.154	\$0.152	\$0.150
4 Weeks Ago	\$4.089	\$4.103	\$4.172	\$4.281	\$4.342	\$4.260	\$3.982	\$3.376	\$3.296	\$3.324	\$3.357	\$3.363
vs. 4 Weeks Ago	\$0.479	\$0.512	\$0.532	\$0.483	\$0.327	\$0.064	-\$0.374	\$0.146	\$0.255	\$0.260	\$0.234	\$0.214
Last Year	\$2.400	\$2.892	\$3.235	\$3.352	\$3.313	\$3.187	\$2.858	\$2.815	\$2.839	\$2.871	\$2.880	\$2.868
vs. Last Year	\$2.168	\$1.723	\$1.469	\$1.412	\$1.356	\$1.137	\$0.750	\$0.707	\$0.712	\$0.713	\$0.711	\$0.709

	Units	Cash Settled	Prompt Settle	Cash to Prompt
AGT Citygate	\$/MMBtu	4.50	4.33	-0.17
TETCO M3	\$/MMBtu	4.28	3.50	-0.78
FGT Zone 3	\$/MMBtu	4.36	4.73	0.37
Zone 6 NY	\$/MMBtu	4.36	3.41	-0.95
Chicago Citygate	\$/MMBtu	4.75	4.55	-0.20
Michcon	\$/MMBtu	4.74	4.49	-0.25
Columbia TCO Pool	\$/MMBtu	4.38	3.62	-0.76
Ventura	\$/MMBtu	4.42	4.52	0.10
Rockies/Opal	\$/MMBtu	4.45	4.38	-0.07
El Paso Permian Basin	\$/MMBtu	4.57	4.39	-0.18
Socal Citygate	\$/MMBtu	19.74	5.42	-14.32
Malin	\$/MMBtu	5.00	4.83	-0.17
Houston Ship Channel	\$/MMBtu	4.86	4.72	-0.14
Henry Hub Cash	\$/MMBtu	4.66	4.46	-0.21
AECO Cash	C\$/GJ	3.17	3.64	0.47
Station2 Cash	C\$/GJ	3.05	4.88	1.83
Dawn Cash	C\$/GJ	4.68	4.44	-0.24

Source: CME, Bloomberg

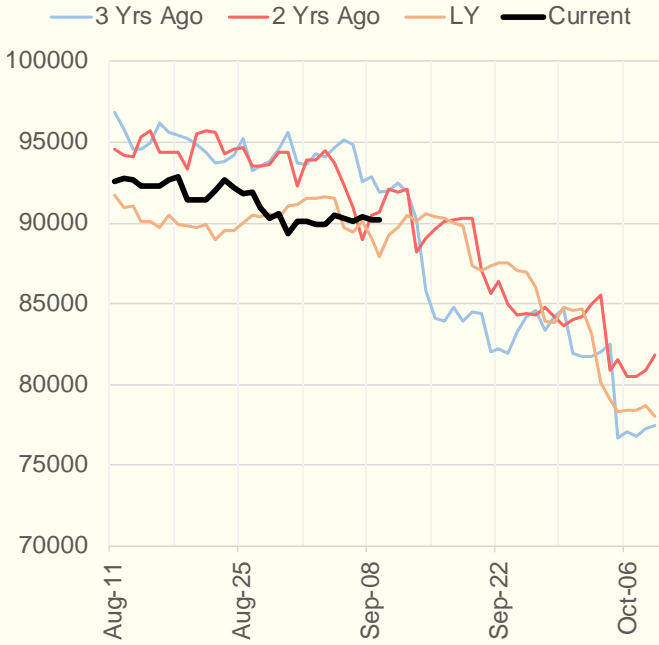
	Units	Current Price	vs. Last Week	vs. 4 Weeks Ago	vs. Last Year
NatGas Jul21/Oct21	\$/MMBtu	1.297	▲ 0.299	▲ 0.843	▲ 1.276
NatGas Oct21/Nov21	\$/MMBtu	0.048	▲ 0.000	▼ -0.024	▲ 0.000
NatGas Oct21/Jan22	\$/MMBtu	0.189	▲ 0.006	▼ -0.059	▼ -0.086
NatGas Apr22/Oct22	\$/MMBtu	-0.044	▼ -0.012	▼ -0.044	▼ -0.065
WTI Crude	\$/Bbl	69.30	▲ 0.710	▲ 0.050	▲ 31.250
Brent Crude	\$/Bbl	72.60	▲ 1.010	▲ 1.160	▲ 31.810
Fuel Oil, NY Harbour 1%	\$/Bbl	97.18	▲ 0.000	▲ 0.000	▲ 0.000
Heating Oil	cents/Gallon	213.64	▲ 0.750	▲ 3.060	▲ 103.030
Propane, Mt. Bel	cents/Gallon	1.19	▲ 0.010	▲ 0.070	▲ 0.722
Ethane, Mt. Bel	cents/Gallon	0.37	▲ 0.014	▲ 0.028	▲ 0.157
Coal, PRB	\$/MTon	12.30	▲ 0.000	▲ 0.000	▲ 0.000
Coal, PRB	\$/MMBtu	0.70			
Coal, ILB	\$/MTon	31.05	▲ 0.000	▲ 0.000	▲ 0.000
Coal, ILB	\$/MMBtu	1.32			

Weather Storage Model - Next 4 Week Forecast

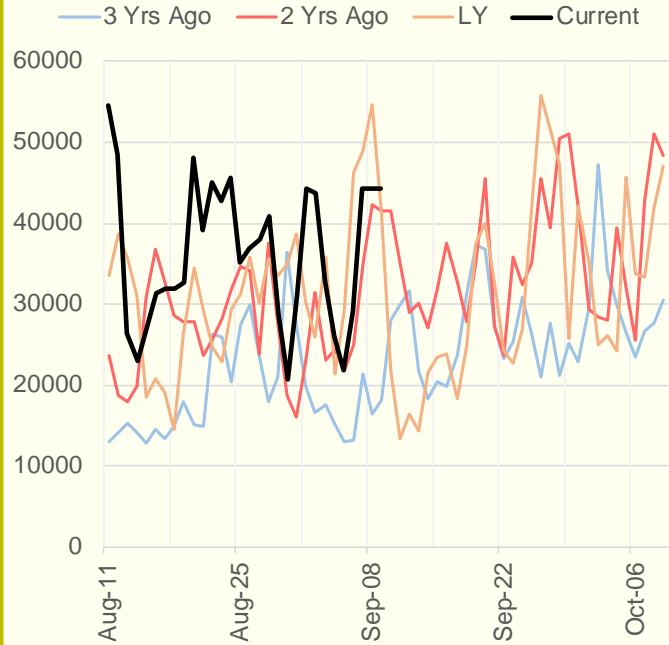


The risk of trading futures and options and other derivatives involves a substantial risk of loss and is not suitable for all persons. Each person must consider whether a particular trade, combination of trades, or strategy is suitable for that person's financial means and objectives. Past results are not necessarily indicative of future results. This communication may contain links to third party websites which are not under the control of and are not maintained by ION Energy Group, and ION Energy Group is not responsible for their content.

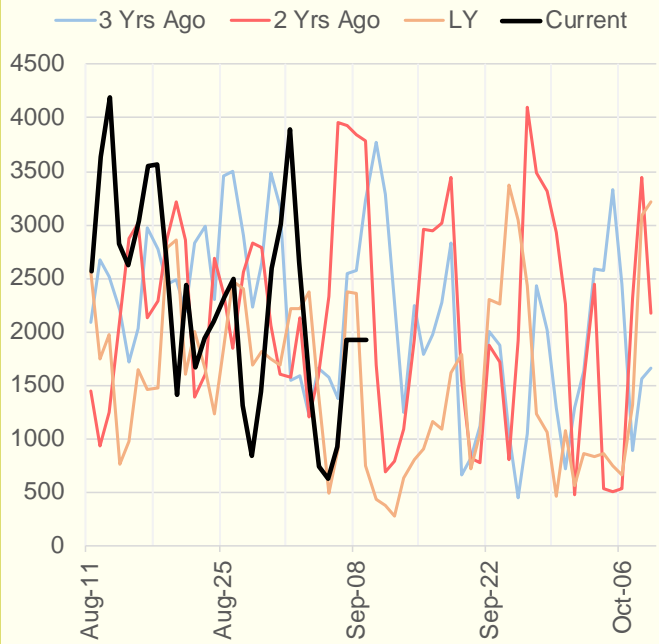
NRC Nuclear Daily Output



US Wind



CALI Wind



TEXAS Wind

