

	Current	Δ from YD	Δ from 7D Avg
Nat Gas Prompt	\$ 5.08	▼ \$ (0.03)	▼ \$ (0.15)

	Current	Δ from YD	Δ from 7D Avg
WTI Prompt	\$ 70.41	▼ \$ (1.56)	▼ \$ (1.3)

	Current	Δ from YD	Δ from 7D Avg
Brent Prompt	\$ 73.98	▼ \$ (1.36)	▼ \$ (0.9)

Page Menu

[Short-term Weather Model Outlooks](#)

[Lower 48 Component Models](#)

[Regional S/D Models Storage Projection](#)

[Weather Model Storage Projection](#)

[Supply – Demand Trends](#)

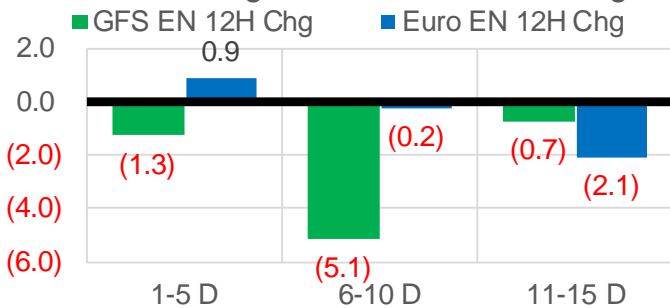
[Nat Gas Options Volume and Open Interest](#)

[Nat Gas Futures Open Interest](#)

[Price Summary](#)

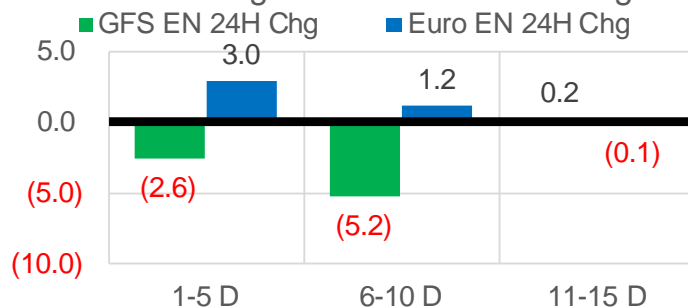
Vs. 12H Ago

L48 Region - 00z TDD vs 12H Ago



Vs. 24H Ago

L48 Region - 00z TDD vs 24H Ago



	Current	Δ from YD	Δ from 7D Avg
US Dry Production	91.1	▼ -1.60	▼ -1.05

	Current	Δ from YD	Δ from 7D Avg
US Power Burns	33.0	▼ -0.08	▼ -2.23

	Current	Δ from YD	Δ from 7D Avg
US ResComm	7.4	▲ 0.40	▲ 0.06

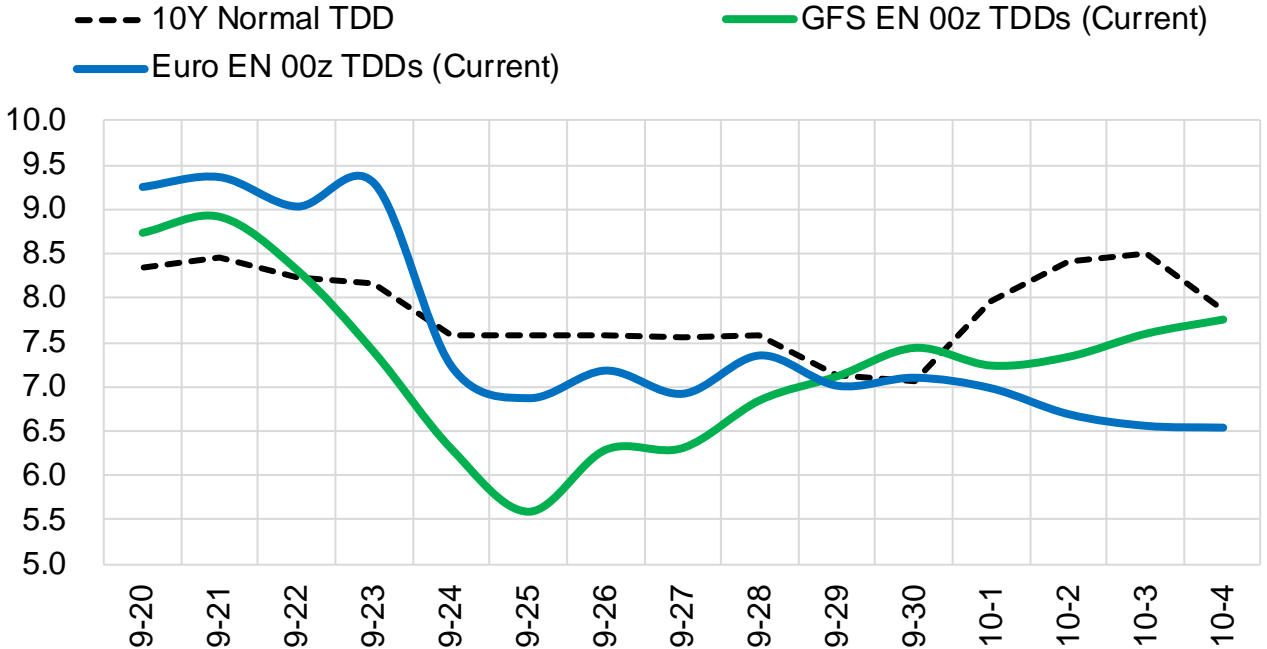
	Current	Δ from YD	Δ from 7D Avg
Canadian Imports	4.6	▼ -0.29	▼ -0.53

	Current	Δ from YD	Δ from 7D Avg
Net LNG Exports	10.1	▼ -0.52	▲ 0.23

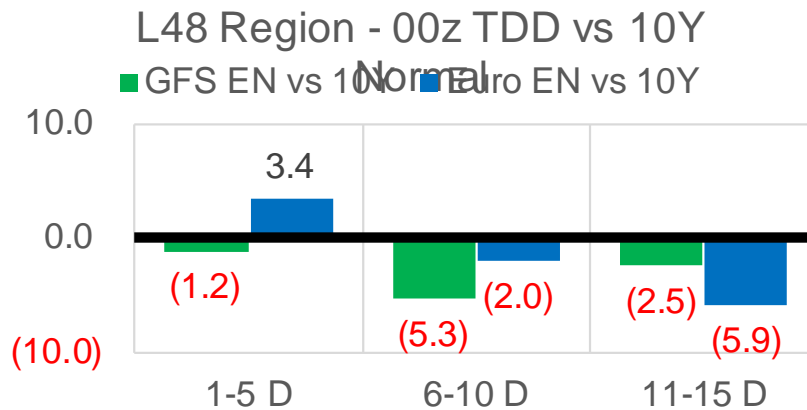
	Current	Δ from YD	Δ from 7D Avg
Mexican Exports	6.6	▲ 0.15	▼ -0.09

Short-term Weather Model Outlooks (00z)

L48 Region



Vs. 10Y Normal



Source: WSI, Bloomberg

Lower 48 Component Models

Daily Balances

	14-Sep	15-Sep	16-Sep	17-Sep	18-Sep	19-Sep	20-Sep	DoD	vs. 7D
Lower 48 Dry Production	91.6	91.5	91.1	92.9	92.9	92.7	91.1	▼ -1.6	▼ -1.0
Canadian Imports	5.3	5.1	4.9	5.1	5.0	4.8	4.6	▼ -0.3	▼ -0.5
L48 Power	37.3	36.0	34.5	35.2	33.3	33.0	33.0	▼ -0.1	▼ -1.9
L48 Residential & Commercial	7.6	7.4	7.5	7.5	7.0	7.0	7.4	▲ 0.4	▲ 0.1
L48 Industrial	21.0	21.3	21.6	21.9	21.8	21.9	21.5	▼ -0.4	▼ -0.1
L48 Lease and Plant Fuel	5.0	5.0	5.0	5.1	5.1	5.1	5.0	▼ -0.1	▼ -0.1
L48 Pipeline Distribution	2.3	2.2	2.1	2.2	2.0	2.0	0.0	▼ -2.0	▼ -2.1
L48 Regional Gas Consumption	73.3	72.0	70.8	71.9	69.3	69.1	66.9	▼ -2.2	▼ -4.2
Net LNG Delivered	9.33	8.90	8.97	9.29	10.59	10.59	10.07	▼ -0.5	▲ 0.5
Total Mexican Exports	7.0	6.9	6.6	6.7	6.6	6.5	6.6	▲ 0.1	▼ -0.1
Implied Daily Storage Activity	7.3	8.8	9.6	10.1	11.3	11.4	12.1		
EIA Reported Daily Storage Activity									
Daily Model Error									

EIA Storage Week Balances

	13-Aug	20-Aug	27-Aug	3-Sep	10-Sep	17-Sep	WoW	vs. 4W
Lower 48 Dry Production	92.4	92.4	93.0	90.9	91.3	91.8	▲ 0.5	▼ -0.1
Canadian Imports	5.2	5.0	5.3	5.0	4.8	5.2	▲ 0.3	▲ 0.1
L48 Power	41.0	39.7	41.9	38.0	33.7	34.9	▲ 1.2	▼ -3.4
L48 Residential & Commercial	7.8	7.6	7.8	7.5	7.1	7.3	▲ 0.2	▼ -0.2
L48 Industrial	19.3	20.9	20.9	19.0	20.0	20.8	▲ 0.8	▲ 0.6
L48 Lease and Plant Fuel	5.1	5.1	5.1	5.0	5.0	5.1	▲ 0.0	▼ 0.0
L48 Pipeline Distribution	2.4	2.3	2.4	2.2	2.1	2.2	▲ 0.1	▼ -0.1
L48 Regional Gas Consumption	75.6	75.6	78.2	71.7	67.9	70.2	▲ 2.4	▼ -3.1
Net LNG Exports	9.9	10.9	10.6	10.5	11.0	10.2	▼ -0.7	▼ -0.5
Total Mexican Exports	6.8	6.8	6.8	7.0	6.7	6.6	▼ -0.1	▼ -0.2
Implied Daily Storage Activity	5.2	4.2	2.8	6.7	10.6	9.9	-0.7	
EIA Reported Daily Storage Activity	6.6	4.1	2.9	7.4	11.9			
Daily Model Error	-1.4	0.1	-0.1	-0.7	-1.2			

Monthly Balances

	2Yr Ago Sep-19	LY Sep-20	May-21	Jun-21	Jul-21	Aug-21	MTD Sep-21	MoM	vs. LY
Lower 48 Dry Production	94.4	89.1	93.1	93.4	92.4	92.2	91.7	▼ -0.5	▲ 2.5
Canadian Imports	4.7	3.8	4.5	4.8	5.2	5.1	4.9	▼ -0.2	▲ 1.1
L48 Power	36.3	34.4	26.8	35.9	39.6	40.2	34.1	▼ -6.1	▼ -0.3
L48 Residential & Commercial	8.2	8.8	12.8	8.9	8.6	7.7	7.2	▼ -0.5	▼ -1.6
L48 Industrial	22.5	20.3	20.8	20.6	19.6	20.1	20.5	▲ 0.4	▲ 0.2
L48 Lease and Plant Fuel	5.1	4.9	5.1	5.1	5.1	5.1	5.1	▼ 0.0	▲ 0.1
L48 Pipeline Distribution	2.2	2.2	2.1	2.2	2.3	2.3	2.0	▼ -0.3	▼ -0.2
L48 Regional Gas Consumption	74.5	70.6	67.6	72.7	75.1	75.4	68.9	▼ -6.5	▼ -1.7
Net LNG Exports	6.2	5.9	10.8	10.2	10.8	10.5	10.5	▼ 0.0	▲ 4.5
Total Mexican Exports	5.3	6.1	6.8	7.4	7.1	6.9	6.7	▼ -0.2	▲ 0.6
Implied Daily Storage Activity	13.2	10.2	12.4	8.0	4.6	4.5	10.5		
EIA Reported Daily Storage Activity									
Daily Model Error									

Source: Bloomberg, analytix.ai

Daily Average Generation Data

Nuclear Generation Daily Average - GWh (NRC)

	12-Sep	13-Sep	14-Sep	15-Sep	16-Sep	17-Sep	18-Sep	DoD	vs. 7D
NRC Nuclear Daily Output	85.7	85.6	85.4	86.1	86.1	86.0	86.0	0.0	0.1
NRC Nuclear Max Capacity	104.9	104.9	104.9	104.9	104.9	104.9	104.9	0.0	0.0
NRC Nuclear Outage	19.2	19.3	19.4	18.8	18.8	18.9	18.9	0.0	-0.1
NRC % Nuclear Cap Utilization	87.2	87.0	86.9	87.6	87.5	87.4	87.4	0.0	0.2

Wind Generation Daily Average - MWh (EIA)

	12-Sep	13-Sep	14-Sep	15-Sep	16-Sep	17-Sep	18-Sep	DoD	vs. 7D
CALI Wind	1639	2254	1735	2601	2839	1645	2681	1036	562
TEXAS Wind	10433	10403	8035	4586	8035	9546	4741	-4805	-3765
US Wind	45363	44310	37115	30421	46466	37154	32631	-4523	-7507

Generation Daily Average - MWh (EIA)

	12-Sep	13-Sep	14-Sep	15-Sep	16-Sep	17-Sep	18-Sep	DoD	vs. 7D
US Wind	45363	44310	37115	30421	46466	37154	32631	-4523	-7507
US Solar	14248	13996	13985	13256	12757	11260	12139	879	-1111
US Petroleum	2594	2632	2765	2644	2257	2897	2356	-541	-276
US Other	9070	9416	9500	9588	9021	9153	9166	14	-125
US Coal	108214	118241	125803	125026	115063	118603	115190	-3413	-3302
US Nuke	88978	88224	88293	88913	88175	88162	86756	-1406	-1701
US Hydro	22701	25738	25770	20657	24427	25702	23362	-2340	-804
US Gas	170357	198449	197429	194457	182786	191964	183511	-8454	-5730

See National Wind and Nuclear daily charts

Source: Bloomberg, analytix.ai

Storage Week Average Generation Data

Nuclear Generation Weekly Average - GWh (NRC)

	13-Aug	20-Aug	27-Aug	3-Sep	10-Sep	17-Sep	WoW	WoW Bcf/d Impact
NRC Nuclear Daily Output	91.5	92.4	91.9	90.2	90.3	86.7	-3.6	0.6
NRC Nuclear Max Capacity	104.9	104.9	104.9	104.9	104.9	104.9	0.0	
NRC Nuclear Outage	13.3	12.5	12.9	14.7	14.6	18.2	3.6	
NRC % Nuclear Cap Utilization	0.1	0.1	0.1	0.1	0.1	0.1	0.0	

Wind Generation Weekly Average - MWh (EIA)

	13-Aug	20-Aug	27-Aug	3-Sep	10-Sep	17-Sep	WoW	WoW Bcf/d Impact
CALI Wind	2507	3210	2052	2247	1236	2083	847	-0.2
TEXAS Wind	16319	7171	12600	7534	7327	9541	2214	-0.4
US Wind	49696	29243	41912	35441	30659	42355	11696	-2.1
					-4781.5			
					-13%			

Generation Weekly Average - MWh (EIA)

	13-Aug	20-Aug	27-Aug	3-Sep	10-Sep	17-Sep	WoW	WoW Bcf/d Impact
US Wind	49696	29243	41912	35441	30659	42355	11696	-2.1
US Solar	14383	12828	14536	13423	14316	13866	-450	0.1
US Petroleum	4712	4466	5323	3135	2072	2470	398	-0.1
US Other	10070	10104	10131	9766	8934	9121	187	0.0
US Coal	140524	138055	136177	136318	116993	115066	-1927	0.3
US Nuke	94302	95157	94358	92365	93162	89425	-3736	0.7
US Hydro	27035	28988	30621	28179	26944	24136	-2808	0.5
US Gas	208281	212106	215990	205486	181094	181669	575	-0.1

See National Wind and Nuclear daily charts

Source: Bloomberg, analytix.ai

Monthly Average Generation Data

Nuclear Generation Monthly Average - GWh (NRC)

	2Yr Ago	LY					MTD		
	Same 30 days	Same 30 days	Jun-21	Jul-21	Aug-21	Sep-21	Last 30 days	MoM (MTD vs LY)	Last 30 days YoY
	NRC Nuclear Daily Output	92.0	90.0	88.7	90.1	91.5	88.1	89.2	-3.3
NRC Nuclear Max Capacity	104.9	104.9	104.9	104.9	104.9	104.9	104.9	0.0	0.0
NRC Nuclear Outage	12.8	14.9	16.2	14.8	13.4	16.7	15.7	3.3	0.8
NRC % Nuclear Cap Utilization	93.6	91.5	90.2	91.6	93.0	89.6	90.7	-3.4	-0.8

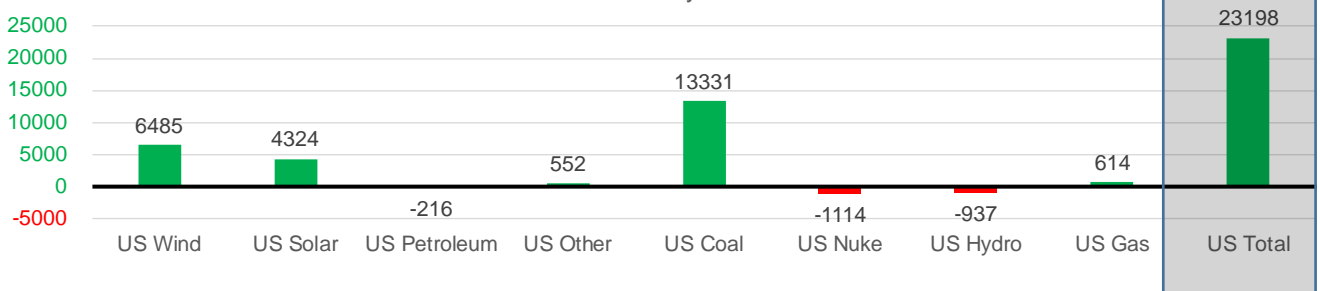
Wind Generation Monthly Average - MWh (EIA)

	2Yr Ago	LY					MTD		
	Same 30 days	Same 30 days	Jun-21	Jul-21	Aug-21	Sep-21	Last 30 days	MoM (MTD vs LY)	Last 30 days YoY
	CALI Wind	2231	1448	2881	2338	2442	1973	1972	-469
TEXAS Wind	7615	6913	9509	7217	9901	8238	8484	-1664	1571
US Wind	30619	30186	36864	29215	35830	36714	36671	885	6485

Generation Monthly Average - MWh (EIA)

	2Yr Ago	LY					MTD		
	Same 30 days	Same 30 days	Jun-21	Jul-21	Aug-21	Sep-21	Last 30 days	MoM (MTD vs LY)	Last 30 days YoY
	US Wind	30619	30186	36864	29215	35830	36714	36671	▼ -42.8
US Solar	8450	9454	14577	14195	13849	13613	13778	▲ 164.8	▲ 4324
US Petroleum	4297	3290	4155	4233	4484	2320	3073	▲ 754	▼ -216
US Other	8234	8877	8208	9327	9929	9052	9429	▲ 377	▲ 552
US Coal	114187	111192	122034	137228	137655	116916	124523	▲ 7607	▲ 13331
US Nuke	98789	92631	92180	92911	94062	90601	91517	▲ 917	▼ -1114
US Hydro	28254	27678	32566	29941	28532	25531	26742	▲ 1211	▼ -937
US Gas	196189	193394	189395	207814	210803	182064	194008	▲ 10988	▲ 614
US Total	490885	476674	500271	524889	534999	477055	499872	▲ 22019	▲ 23198

Last 30 days YoY



See National Wind and Nuclear daily charts

Source: Bloomberg, analytix.ai

Regional S/D Models Storage Projection

Week Ending 17-Sep

	Daily Raw Storage	Daily Adjustment Factor	Daily Average Storage Activity (Adjusted) *	Weekly Adjusted Storage Activity
L48	9.6	1.2	10.7	75
East	2.6	1.1	3.7	26
Midwest	5.0	-0.4	4.5	32
Mountain	4.2	-3.5	0.8	5
South Central	-2.6	4.5	1.9	14
Pacific	0.3	-0.5	-0.2	-1

*Adjustment Factor is calculated based on historical regional deltas

U.S. underground natural gas storage facilities by type (July 2015)

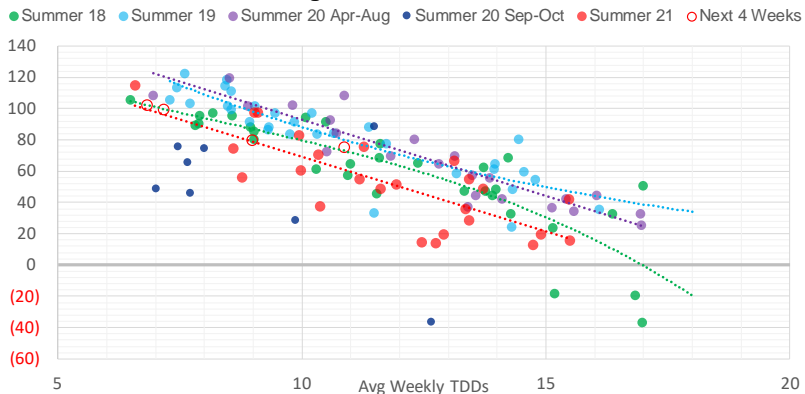


Weather Model Storage Projection

Next report
and beyond

Week Ending	GWDDs	Week Storage Projection
17-Sep	10.9	75
24-Sep	9.0	80
01-Oct	6.9	102
08-Oct	7.2	99

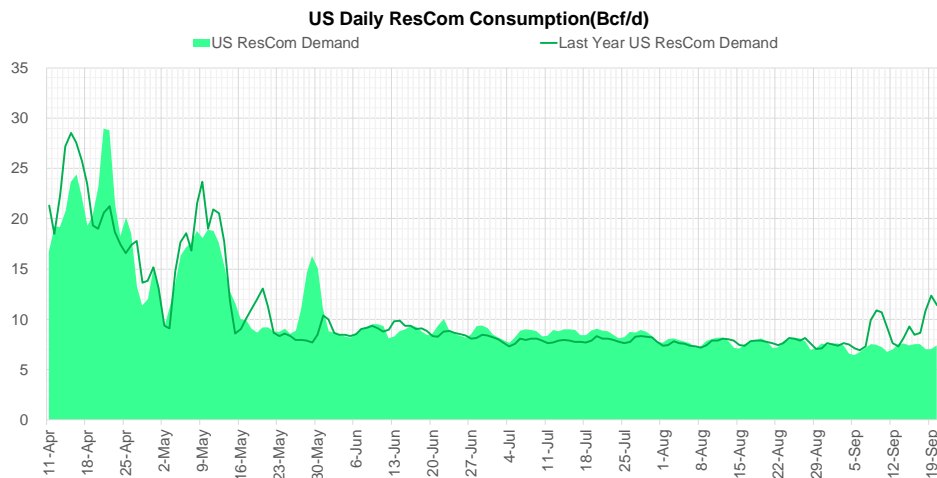
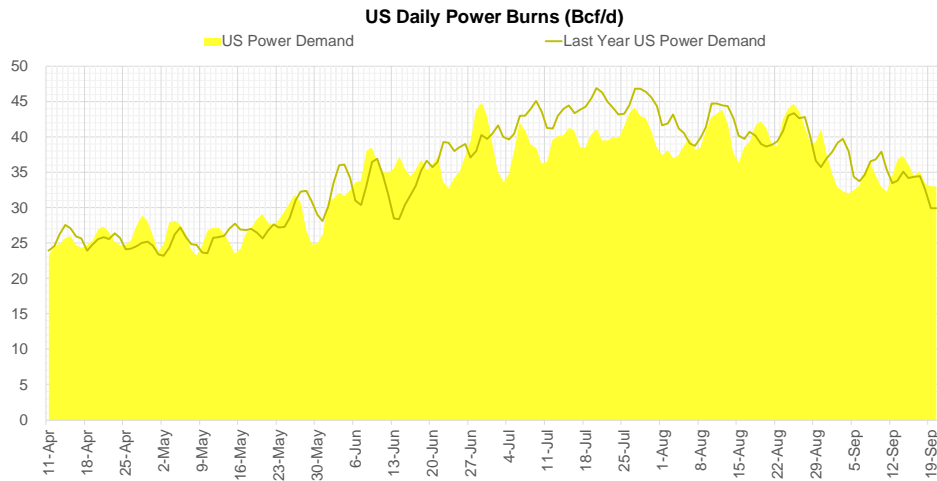
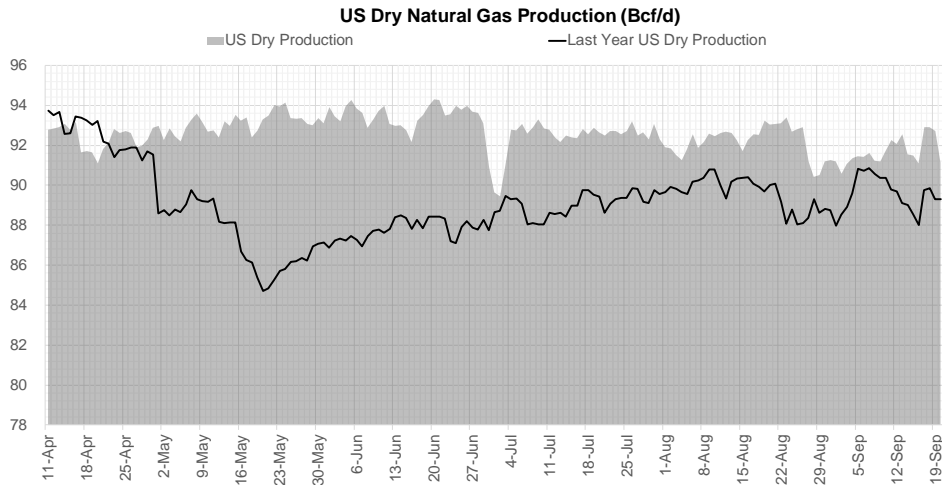
Weather Storage Model - Next 4 Week Forecast



Go to larger image



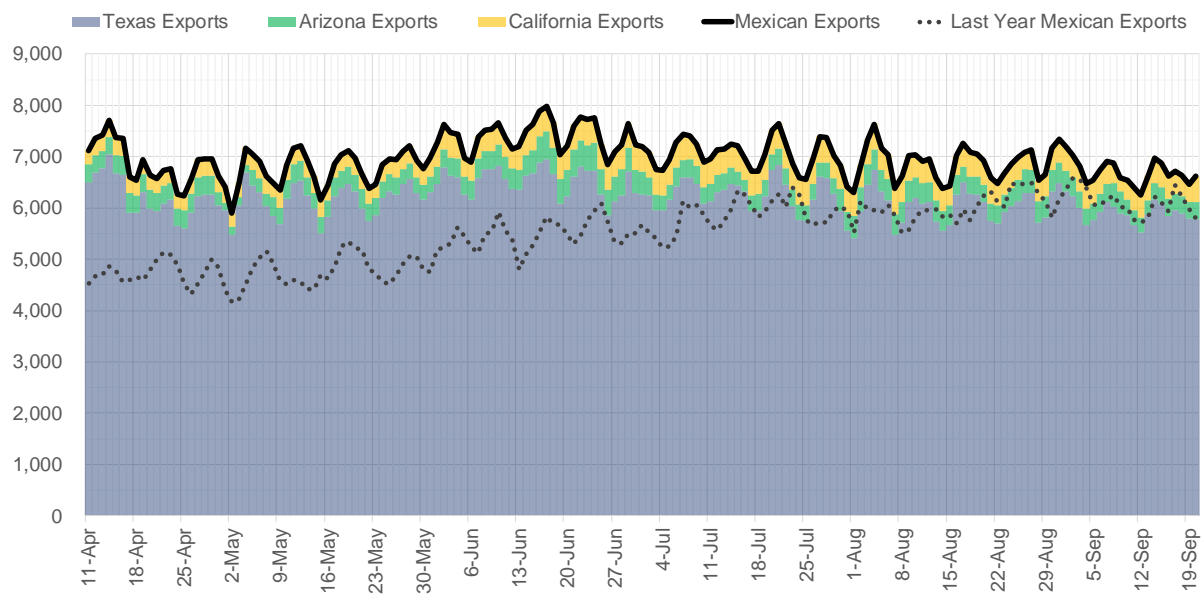
Supply – Demand Trends



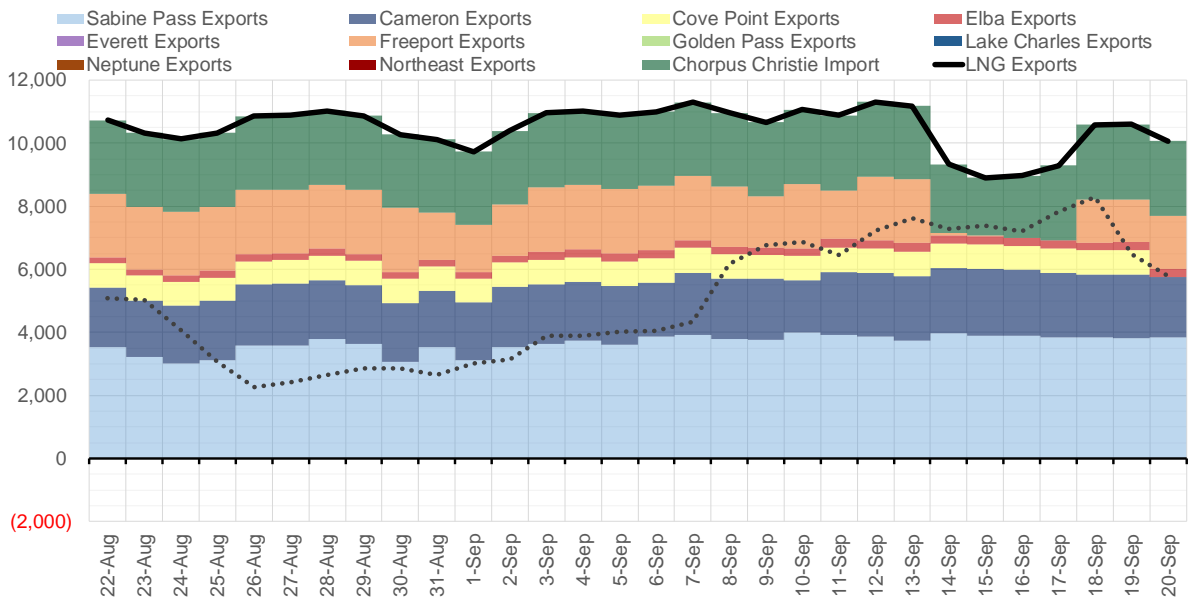
Source: Bloomberg

The risk of trading futures and options and other derivatives involves a substantial risk of loss and is not suitable for all persons. Each person must consider whether a particular trade, combination of trades, or strategy is suitable for that person's financial means and objectives. Past results are not necessarily indicative of future results. This communication may contain links to third party websites which are not under the control of and are not maintained by ION Energy Group, and ION Energy Group is not responsible for their content.

Mexican Exports (MMcf/d)



Net LNG Exports - Last 30 days (MMcf/d)



Source: Bloomberg

The risk of trading futures and options and other derivatives involves a substantial risk of loss and is not suitable for all persons. Each person must consider whether a particular trade, combination of trades, or strategy is suitable for that person's financial means and objectives. Past results are not necessarily indicative of future results. This communication may contain links to third party websites which are not under the control of and are not maintained by ION Energy Group, and ION Energy Group is not responsible for their content.

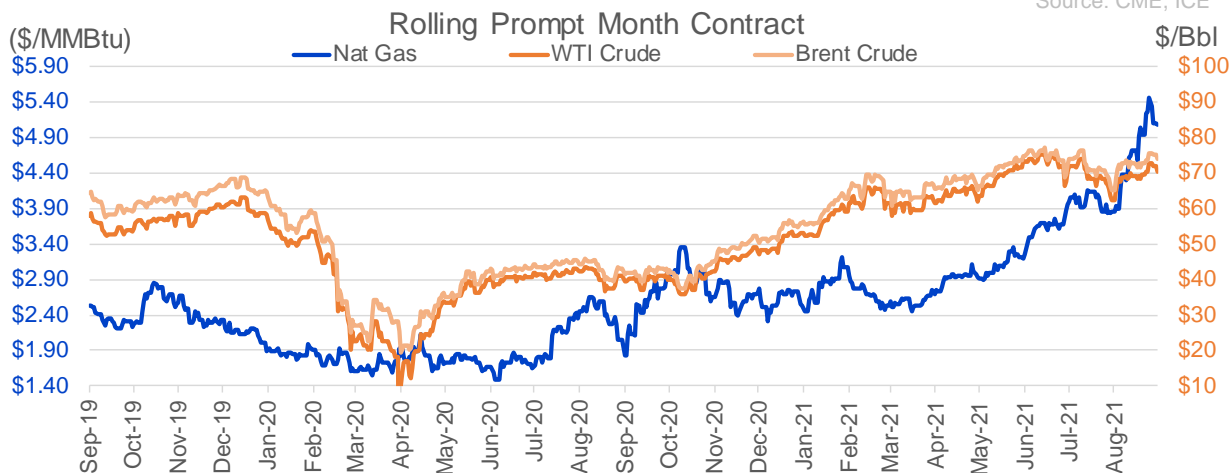
Nat Gas Options Volume and Open Interest CME, ICE and Nasdaq Combined

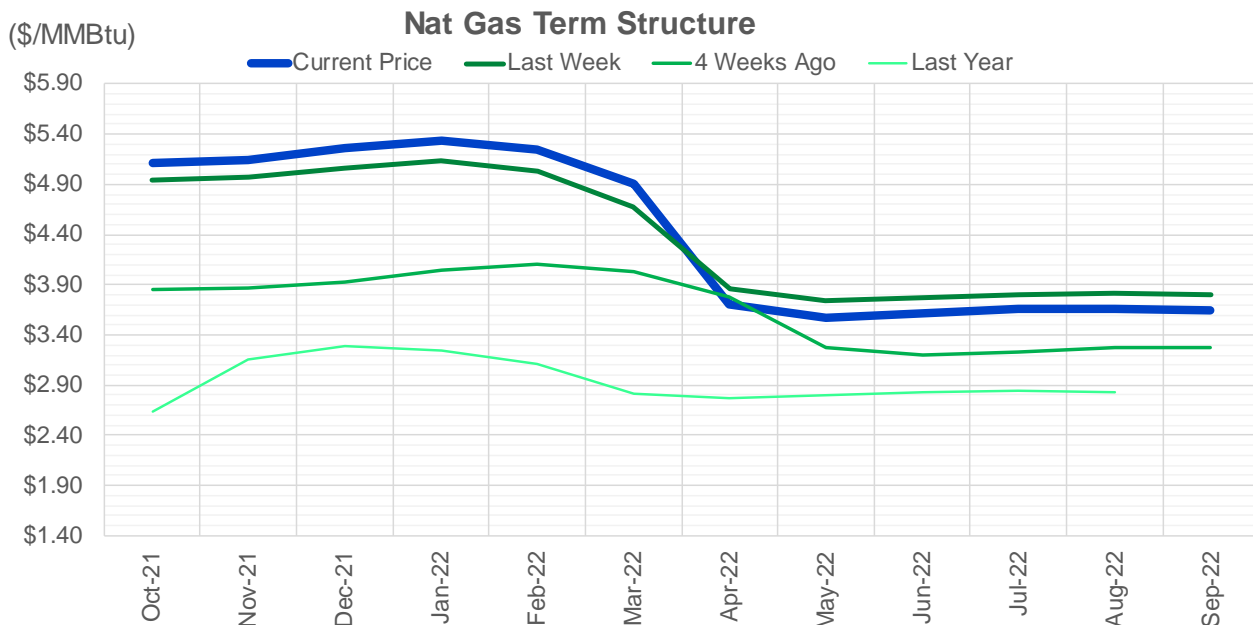
CONTRACT MONTH	CONTRACT YEAR	PUT/CALL	STRIKE	CUMULATIVE VOL	CONTRACT MONTH	CONTRACT YEAR	PUT/CALL	STRIKE	CUMULATIVE OI
10	2021	P	4.50	8259	10	2021	C	5.00	55799
10	2021	P	5.00	8211	10	2021	C	6.00	43463
10	2021	P	4.75	7445	10	2021	P	3.50	41989
3	2022	C	10.00	5622	12	2021	P	2.75	41959
3	2022	C	8.00	5156	10	2021	C	4.00	41752
10	2021	C	5.50	4371	10	2021	C	4.50	40099
10	2021	C	6.00	4284	12	2021	P	2.50	38546
2	2022	C	9.40	3999	10	2021	C	3.50	32999
5	2022	P	3.50	3300	10	2021	C	4.25	32688
5	2022	P	3.00	3025	10	2021	P	3.00	31755
11	2021	P	4.50	2913	10	2021	P	4.00	31002
10	2021	C	5.25	2831	11	2021	P	3.00	30645
10	2021	P	4.80	2678	10	2021	P	2.50	29994
11	2021	P	5.00	2674	10	2021	P	2.00	28650
10	2021	P	4.85	2469	10	2021	C	3.25	28193
10	2021	P	5.25	2343	10	2021	P	2.75	26887
10	2021	C	5.00	2322	12	2021	P	3.00	24527
10	2021	C	7.00	2255	3	2022	C	10.00	23450
10	2021	C	5.75	2171	11	2021	C	4.00	23308
2	2022	C	9.20	2000	11	2021	P	4.00	23018
4	2023	C	5.00	2000	12	2021	C	4.00	22596
5	2023	C	5.00	2000	11	2021	P	3.50	22538
6	2023	C	5.00	2000	10	2021	P	3.75	22362
7	2023	C	5.00	2000	12	2021	P	4.00	22130
8	2023	C	5.00	2000	11	2021	C	7.00	21818
9	2023	C	5.00	2000	10	2021	P	2.25	19784
10	2023	C	5.00	2000	4	2022	C	3.00	19760
2	2022	C	9.80	1999	3	2022	C	5.00	19636
10	2021	P	4.25	1763	3	2022	P	3.50	19253
3	2022	C	7.00	1739	10	2021	P	4.25	18872
3	2022	C	5.00	1549	3	2022	C	8.00	18751
12	2021	C	8.00	1533	11	2021	C	6.00	18586
11	2021	P	4.00	1487	10	2021	C	3.00	18494
10	2021	P	4.00	1479	2	2022	P	3.50	18130
4	2022	C	5.00	1451	10	2021	P	3.25	17940
1	2022	C	8.00	1244	1	2022	C	5.00	17419
3	2022	C	6.00	1205	1	2022	P	3.50	16951
10	2021	P	4.70	1185	3	2022	P	2.50	16805
10	2021	C	6.25	1165	10	2021	C	3.75	16780
12	2021	C	10.00	1165	10	2021	C	5.50	16714
4	2023	C	4.00	1150	2	2022	C	5.00	16592
5	2023	C	4.00	1150	12	2021	C	6.00	16203
6	2023	C	4.00	1150	11	2021	C	5.00	16160
7	2023	C	4.00	1150	10	2021	P	4.50	16104
8	2023	C	4.00	1150	3	2022	C	4.00	16022
9	2023	C	4.00	1150	2	2022	C	4.00	15799
10	2023	C	4.00	1150	11	2021	C	4.50	15152
3	2022	C	5.50	1146	11	2021	P	3.25	14582
12	2021	C	7.00	1055	1	2022	C	6.00	14577
					1	2022	C	4	14488

Source: CME, ICE

Nat Gas Futures Open Interest CME, and ICE Combined

CME Henry Hub Futures (10,000 MMBtu)				ICE Henry Hub Futures Contract Equivalent (10,000 MM			
	Current	Prior	Daily Change		Current	Prior	Daily Change
OCT 21	95358	110134	-14776	OCT 21	101250	100264	986
NOV 21	258740	256600	2140	NOV 21	79052	79662	-611
DEC 21	89790	90103	-313	DEC 21	76048	76287	-240
JAN 22	155495	156200	-705	JAN 22	96118	94528	1590
FEB 22	57227	57222	5	FEB 22	69282	68833	449
MAR 22	119494	117909	1585	MAR 22	76039	75016	1024
APR 22	118884	117476	1408	APR 22	72533	71464	1069
MAY 22	118028	116488	1540	MAY 22	69763	69815	-52
JUN 22	37393	39299	-1906	JUN 22	53228	52845	383
JUL 22	30907	30667	240	JUL 22	55523	54873	651
AUG 22	33139	32973	166	AUG 22	55233	54767	466
SEP 22	35095	35279	-184	SEP 22	55304	55049	255
OCT 22	87883	87787	96	OCT 22	62038	61154	884
NOV 22	31994	31728	266	NOV 22	47661	47529	132
DEC 22	25597	25712	-115	DEC 22	50984	50872	112
JAN 23	22741	22694	47	JAN 23	37189	37222	-33
FEB 23	9073	8908	165	FEB 23	30455	30441	15
MAR 23	11936	12012	-76	MAR 23	32728	32677	52
APR 23	12130	11709	421	APR 23	29462	29335	128
MAY 23	7424	7398	26	MAY 23	29726	29574	152
JUN 23	5594	5562	32	JUN 23	27677	27516	162
JUL 23	4052	4050	2	JUL 23	27770	27618	153
AUG 23	3227	3225	2	AUG 23	27603	27451	153
SEP 23	4472	4470	2	SEP 23	26914	26760	154
OCT 23	5788	5781	7	OCT 23	28943	28814	129
NOV 23	2106	2094	12	NOV 23	28030	27827	203
DEC 23	2083	2024	59	DEC 23	26781	26570	211
JAN 24	1312	1312	0	JAN 24	14856	14825	31
FEB 24	891	891	0	FEB 24	12393	12364	29
MAR 24	3092	3213	-121	MAR 24	16683	16652	31





	Oct-21	Nov-21	Dec-21	Jan-22	Feb-22	Mar-22	Apr-22	May-22	Jun-22	Jul-22	Aug-22	Sep-22
Current Price	\$5.105	\$5.146	\$5.258	\$5.328	\$5.244	\$4.902	\$3.703	\$3.576	\$3.611	\$3.653	\$3.661	\$3.644
Last Week	\$4.938	\$4.973	\$5.067	\$5.129	\$5.028	\$4.680	\$3.854	\$3.742	\$3.770	\$3.802	\$3.809	\$3.794
vs. Last Week	\$0.167	\$0.173	\$0.191	\$0.199	\$0.216	\$0.222	-\$0.151	-\$0.166	-\$0.159	-\$0.149	-\$0.148	-\$0.150
4 Weeks Ago	\$3.851	\$3.866	\$3.932	\$4.039	\$4.099	\$4.023	\$3.774	\$3.268	\$3.201	\$3.231	\$3.267	\$3.277
vs. 4 Weeks Ago	\$1.254	\$1.280	\$1.326	\$1.289	\$1.145	\$0.879	-\$0.071	\$0.308	\$0.410	\$0.422	\$0.394	\$0.367
Last Year	\$2.048	\$2.633	\$3.154	\$3.285	\$3.242	\$3.116	\$2.813	\$2.771	\$2.798	\$2.834	\$2.845	\$2.833
vs. Last Year	\$3.057	\$2.513	\$2.104	\$2.043	\$2.002	\$1.786	\$0.890	\$0.805	\$0.813	\$0.819	\$0.816	\$0.811

	Units	Cash Settled	Prompt Settle	Cash to Prompt
AGT Citygate	\$/MMBtu	5.30	4.55	-0.75
TETCO M3	\$/MMBtu	4.92	3.58	-1.34
FGT Zone 3	\$/MMBtu	4.94	5.07	0.13
Zone 6 NY	\$/MMBtu	4.94	3.40	-1.54
Chicago Citygate	\$/MMBtu	5.03	4.81	-0.22
Michcon	\$/MMBtu	5.11	4.70	-0.41
Columbia TCO Pool	\$/MMBtu	4.74	3.82	-0.92
Ventura	\$/MMBtu	4.68	4.76	0.08
Rockies/Opal	\$/MMBtu	5.29	4.73	-0.56
El Paso Permian Basin	\$/MMBtu	4.71	4.69	-0.02
Socal Citygate	\$/MMBtu	7.19	5.86	-1.33
Malin	\$/MMBtu	6.00	5.23	-0.78
Houston Ship Channel	\$/MMBtu	5.05	5.05	0.00
Henry Hub Cash	\$/MMBtu	5.45	4.80	-0.65
AECO Cash	C\$/GJ	3.73	3.23	-0.50
Station2 Cash	C\$/GJ	3.58	5.28	1.70
Dawn Cash	C\$/GJ	5.08	4.69	-0.39

Source: CME, Bloomberg

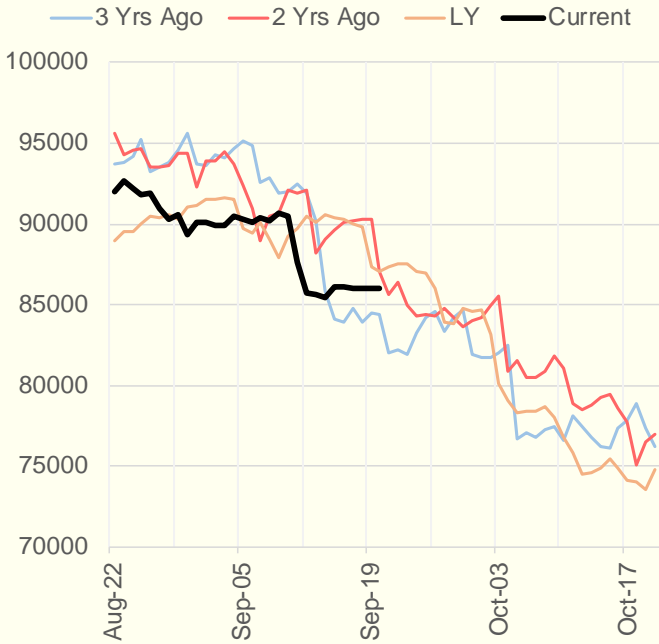
	Units	Current Price	vs. Last Week	vs. 4 Weeks Ago	vs. Last Year
NatGas Jul21/Oct21	\$/MMBtu	1.488	▲ 0.167	▲ 1.239	▲ 1.462
NatGas Oct21/Nov21	\$/MMBtu	0.041	▲ 0.006	▼ -0.025	▼ -0.013
NatGas Oct21/Jan22	\$/MMBtu	0.223	▲ 0.032	▼ -0.010	▼ -0.068
NatGas Apr22/Oct22	\$/MMBtu	-0.031	▲ 0.001	▼ -0.050	▼ -0.054
WTI Crude	\$/Bbl	71.97	▲ 2.250	▲ 9.650	▲ 30.860
Brent Crude	\$/Bbl	75.34	▲ 2.420	▲ 10.160	▲ 32.190
Fuel Oil, NY Harbour 1%	\$/Bbl	97.18	▲ 0.000	▲ 0.000	▲ 0.000
Heating Oil	cents/Gallon	220.91	▲ 6.310	▲ 30.090	▲ 105.010
Propane, Mt. Bel	cents/Gallon	1.28	▲ 0.061	▲ 0.176	▲ 0.778
Ethane, Mt. Bel	cents/Gallon	0.38	▲ 0.012	▲ 0.048	▲ 0.187
Coal, PRB	\$/MTon	12.30	▲ 0.000	▲ 0.000	▲ 0.000
Coal, PRB	\$/MMBtu	0.70			
Coal, ILB	\$/MTon	31.05	▲ 0.000	▲ 0.000	▲ 0.000
Coal, ILB	\$/MMBtu	1.32			

Weather Storage Model - Next 4 Week Forecast

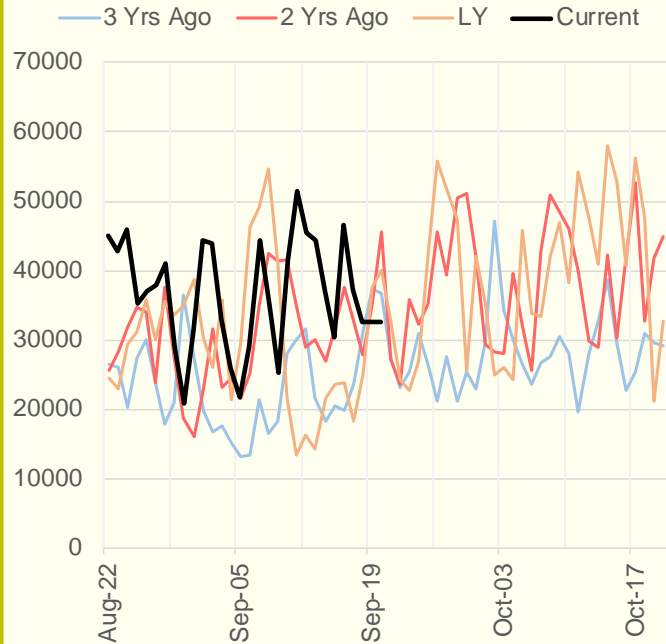


The risk of trading futures and options and other derivatives involves a substantial risk of loss and is not suitable for all persons. Each person must consider whether a particular trade, combination of trades, or strategy is suitable for that person's financial means and objectives. Past results are not necessarily indicative of future results. This communication may contain links to third party websites which are not under the control of and are not maintained by ION Energy Group, and ION Energy Group is not responsible for their content.

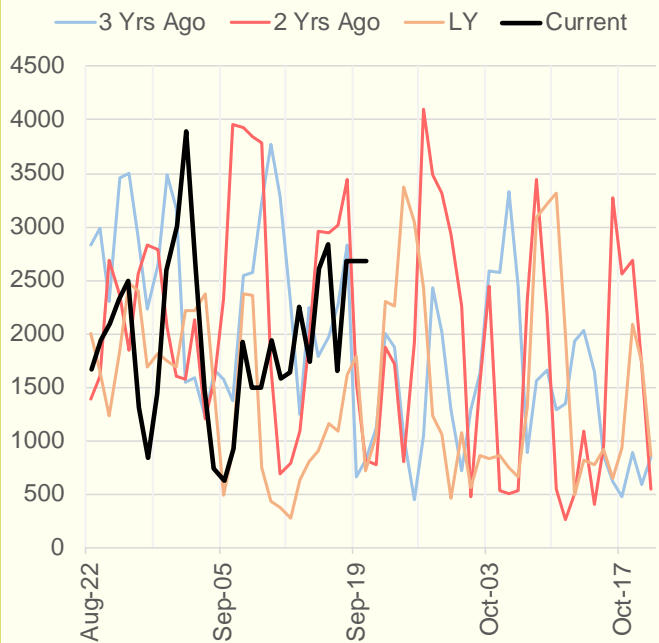
NRC Nuclear Daily Output



US Wind



CALI Wind



TEXAS Wind

