

	Current	Δ from YD	Δ from 7D Avg
Nat Gas Prompt	\$ 6.26 ▲	\$ 0.56 ▲	\$ 1.16

	Current	Δ from YD	Δ from 7D Avg
WTI Prompt	\$ 76.28 ▲	\$ 0.83 ▲	\$ 2.9

	Current	Δ from YD	Δ from 7D Avg
Brent Prompt	\$ 80.11 ▲	\$ 0.58 ▲	\$ 2.7

Page Menu

[Short-term Weather Model Outlooks](#)

[Lower 48 Component Models](#)

[Regional S/D Models Storage Projection](#)

[Weather Model Storage Projection](#)

[Supply – Demand Trends](#)

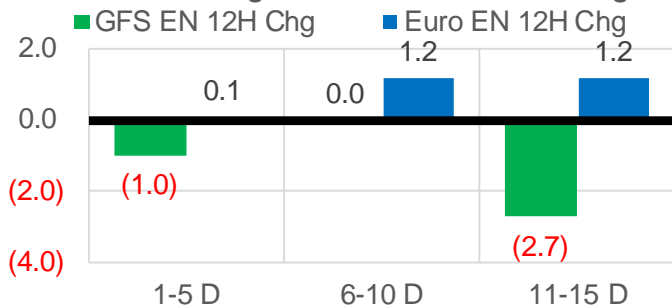
[Nat Gas Options Volume and Open Interest](#)

[Nat Gas Futures Open Interest](#)

[Price Summary](#)

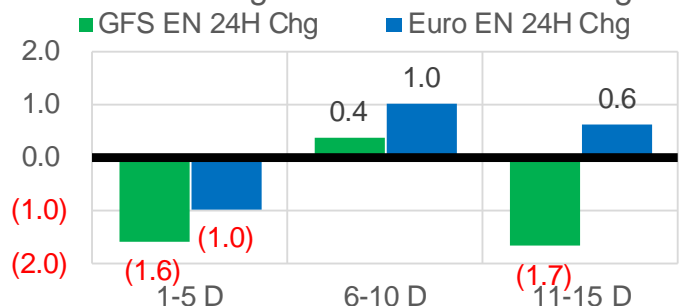
Vs. 12H Ago

L48 Region - 00z TDD vs 12H Ago



Vs. 24H Ago

L48 Region - 00z TDD vs 24H Ago



	Current	Δ from YD	Δ from 7D Avg
US Dry Production	91.7 ▼	-1.73 ▼	-1.02

	Current	Δ from YD	Δ from 7D Avg
US Power Burns	30.7 ▼	-0.24 ▼	0.45 ▲

	Current	Δ from YD	Δ from 7D Avg
US ResComm	7.9 ▲	0.41 ▲	-0.75 ▼

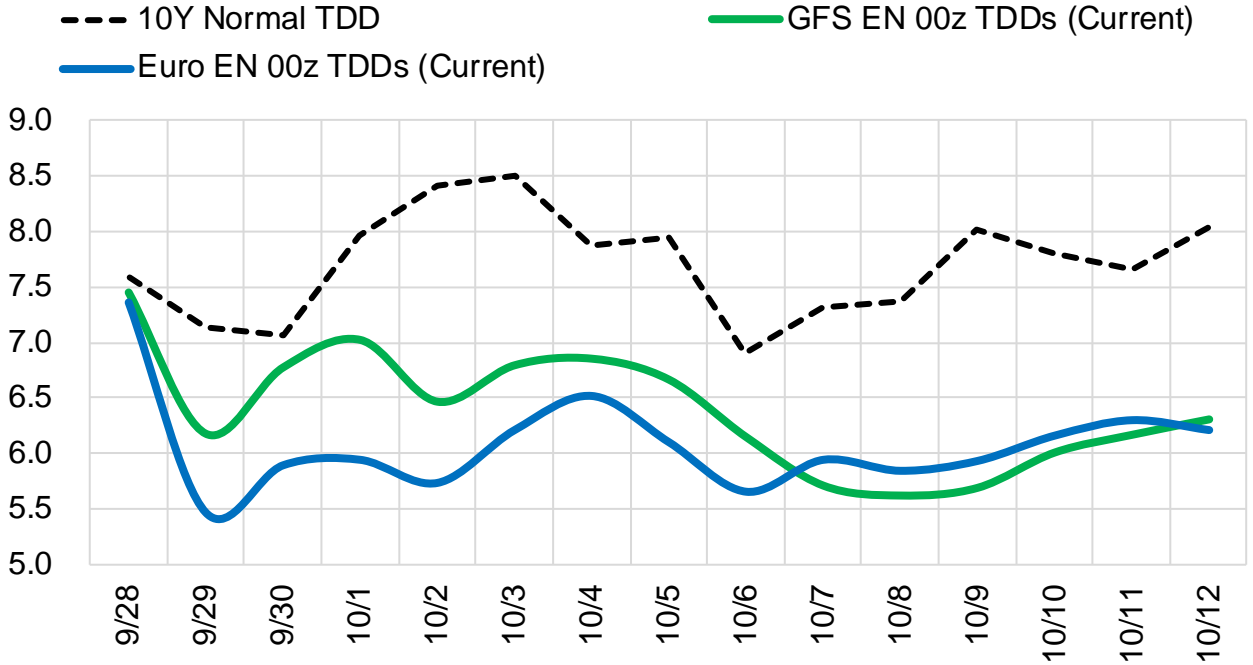
	Current	Δ from YD	Δ from 7D Avg
Canadian Imports	5.6 ▼	-0.11 ▼	0.03 ▲

	Current	Δ from YD	Δ from 7D Avg
Net LNG Exports	10.2 ▲	0.26 ▲	-0.04 ▼

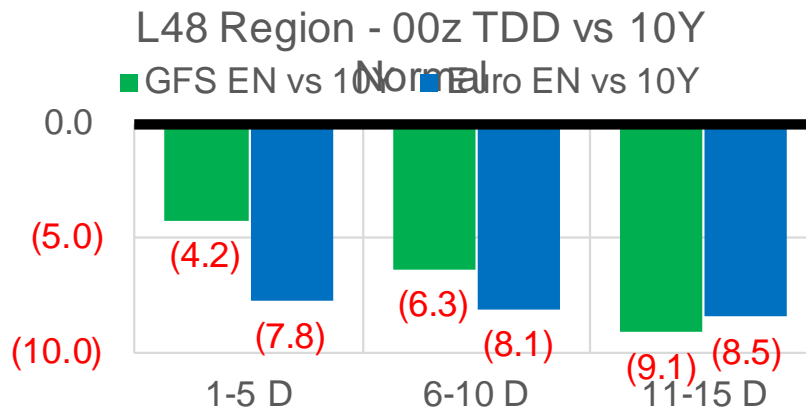
	Current	Δ from YD	Δ from 7D Avg
Mexican Exports	6.7 ▲	0.16 ▲	0.05 ▲

Short-term Weather Model Outlooks (00z)

L48 Region



Vs. 10Y Normal



Source: WSI, Bloomberg

Lower 48 Component Models

Daily Balances

	22-Sep	23-Sep	24-Sep	25-Sep	26-Sep	27-Sep	28-Sep	DoD	vs. 7D
Lower 48 Dry Production	91.9	92.5	92.5	92.9	93.1	93.4	91.7	▼ -1.7	▼ -1.0
Canadian Imports	5.5	5.6	5.7	5.6	5.6	5.7	5.6	▼ -0.1	▼ 0.0
L48 Power	32.3	30.3	29.1	27.7	28.0	30.9	30.7	▼ -0.2	▲ 1.0
L48 Residential & Commercial	9.5	10.2	8.9	8.8	7.6	7.5	7.9	▲ 0.4	▼ -0.8
L48 Industrial	20.5	20.7	20.9	20.9	20.7	20.6	20.3	▼ -0.3	▼ -0.4
L48 Lease and Plant Fuel	5.1	5.1	5.1	5.1	5.1	5.1	5.1	▼ -0.1	▼ -0.1
L48 Pipeline Distribution	2.1	2.1	1.9	1.9	1.8	2.0	2.0	▲ 0.0	▲ 0.0
L48 Regional Gas Consumption	69.5	68.4	65.8	64.3	63.2	66.2	66.0	▼ -0.2	▼ -0.3
Net LNG Delivered	10.24	9.47	10.60	10.80	10.48	9.89	10.15	▲ 0.3	▼ -0.1
Total Mexican Exports	7.1	6.8	6.6	6.3	6.3	6.6	6.7	▲ 0.2	▲ 0.1
Implied Daily Storage Activity	10.6	13.4	15.2	17.0	18.7	16.5	14.5		
EIA Reported Daily Storage Activity									
Daily Model Error									

EIA Storage Week Balances

	20-Aug	27-Aug	3-Sep	10-Sep	17-Sep	24-Sep	WoW	vs. 4W
Lower 48 Dry Production	92.4	93.0	90.8	91.1	91.6	92.7	▲ 1.1	▲ 1.0
Canadian Imports	5.0	5.3	5.0	4.8	5.2	5.2	▲ 0.0	▲ 0.1
L48 Power	39.7	41.9	38.1	33.7	35.0	33.2	▼ -1.8	▼ -4.0
L48 Residential & Commercial	7.6	7.8	7.5	7.1	7.3	8.2	▲ 0.9	▲ 0.8
L48 Industrial	20.9	20.9	18.9	19.5	20.9	20.5	▼ -0.5	▲ 0.4
L48 Lease and Plant Fuel	5.1	5.1	5.0	5.0	5.0	5.1	▲ 0.1	▲ 0.1
L48 Pipeline Distribution	2.3	2.4	2.2	2.1	2.2	2.1	▼ 0.0	▼ -0.1
L48 Regional Gas Consumption	75.6	78.2	71.6	67.4	70.4	69.0	▼ -1.4	▼ -2.9
Net LNG Exports	10.9	10.6	10.5	11.0	10.2	9.9	▼ -0.3	▼ -0.6
Total Mexican Exports	6.8	6.8	7.0	6.7	6.6	6.8	▲ 0.2	▲ 0.0
Implied Daily Storage Activity	4.2	2.8	6.7	10.9	9.5	12.1	2.6	
EIA Reported Daily Storage Activity	4.1	2.9	7.4	11.9	10.9			
Daily Model Error	0.1	-0.1	-0.8	-1.0	-1.3			

Monthly Balances

	2Yr Ago Sep-19	LY Sep-20	May-21	Jun-21	Jul-21	Aug-21	MTD Sep-21	MoM	vs. LY
Lower 48 Dry Production	94.4	89.1	93.1	93.4	92.4	92.2	91.9	▼ -0.3	▲ 2.8
Canadian Imports	4.7	3.8	4.5	4.8	5.2	5.1	5.1	▼ 0.0	▲ 1.3
L48 Power	36.3	34.4	26.8	35.9	39.6	40.2	33.1	▼ -7.1	▼ -1.3
L48 Residential & Commercial	8.2	8.8	12.8	8.9	8.6	7.7	7.6	▼ -0.1	▼ -1.2
L48 Industrial	22.5	20.3	20.8	20.6	19.6	20.1	20.2	▲ 0.1	▼ -0.1
L48 Lease and Plant Fuel	5.1	4.9	5.1	5.1	5.1	5.1	5.1	▼ 0.0	▲ 0.2
L48 Pipeline Distribution	2.2	2.2	2.1	2.2	2.3	2.3	2.1	▼ -0.2	▼ -0.1
L48 Regional Gas Consumption	74.5	70.6	67.6	72.7	75.1	75.4	68.1	▼ -7.3	▼ -2.5
Net LNG Exports	6.2	5.9	10.8	10.2	10.8	10.5	10.4	▼ -0.1	▲ 4.4
Total Mexican Exports	5.3	6.1	6.8	7.4	7.1	6.9	6.7	▼ -0.2	▲ 0.6
Implied Daily Storage Activity	13.2	10.2	12.4	8.0	4.6	4.5	11.8		
EIA Reported Daily Storage Activity									
Daily Model Error									

Source: Bloomberg, analytix.ai

Daily Average Generation Data

Nuclear Generation Daily Average - GWh (NRC)

	20-Sep	21-Sep	22-Sep	23-Sep	24-Sep	25-Sep	26-Sep	DoD	vs. 7D
NRC Nuclear Daily Output	85.8	86.2	86.6	86.5	86.5	86.5	86.5	0.0	0.1
NRC Nuclear Max Capacity	104.9	104.9	104.9	104.9	104.9	104.9	104.9	0.0	0.0
NRC Nuclear Outage	19.0	18.7	18.3	18.4	18.4	18.4	18.4	0.0	-0.1
NRC % Nuclear Cap Utilization	87.3	87.6	88.1	88.0	87.9	87.9	87.9	0.0	0.1

Wind Generation Daily Average - MWh (EIA)

	20-Sep	21-Sep	22-Sep	23-Sep	24-Sep	25-Sep	26-Sep	DoD	vs. 7D
CALI Wind	1687	681	1454	1560	828	1682	3242	1560	1926
TEXAS Wind	14461	15903	5860	11025	10189	7123	11806	4683	1046
US Wind	57480	49488	33230	44897	45990	34443	53202	18759	8948

Generation Daily Average - MWh (EIA)

	20-Sep	21-Sep	22-Sep	23-Sep	24-Sep	25-Sep	26-Sep	DoD	vs. 7D
US Wind	57480	49488	33230	44897	45990	34443	53202	18759	8948
US Solar	12291	10389	12552	11856	12102	13123	12234	-889	182
US Petroleum	3067	2632	2491	2171	1711	1835	2017	182	-301
US Other	8916	8667	8885	8467	8344	8173	7503	-669	-1072
US Coal	109686	109937	107259	96633	91842	90534	83925	-6609	-17057
US Nuke	88637	89207	89642	89850	89617	89000	88851	-150	-475
US Hydro	25578	26636	26671	26711	27103	24960	23414	-1546	-2862
US Gas	176817	173146	171981	154958	143514	135201	129556	-5645	-29714

See National Wind and Nuclear daily charts

Source: Bloomberg, analytix.ai

Storage Week Average Generation Data

Nuclear Generation Weekly Average - GWh (NRC)

	20-Aug	27-Aug	3-Sep	10-Sep	17-Sep	24-Sep	WoW	WoW Bcf/d Impact
NRC Nuclear Daily Output	92.4	91.9	90.2	90.3	86.7	85.9	-0.8	0.1
NRC Nuclear Max Capacity	104.9	104.9	104.9	104.9	104.9	104.9	0.0	
NRC Nuclear Outage	12.5	12.9	14.7	14.6	18.2	19.0	0.8	
NRC % Nuclear Cap Utilization	0.1	0.1	0.1	0.1	0.1	0.1	0.0	

Wind Generation Weekly Average - MWh (EIA)

	20-Aug	27-Aug	3-Sep	10-Sep	17-Sep	24-Sep	WoW	WoW Bcf/d Impact
CALI Wind	3210	2052	2247	1236	2083	1936	-148	0.0
TEXAS Wind	7171	12600	7534	7327	9541	9780	239	0.0
US Wind	29243	41912	35441	30659	42355	43173	819	-0.1
					11695.5			
					38%			

Generation Weekly Average - MWh (EIA)

	20-Aug	27-Aug	3-Sep	10-Sep	17-Sep	24-Sep	WoW	WoW Bcf/d Impact
US Wind	29243	41912	35441	30659	42355	43173	819	-0.1
US Solar	12828	14536	13410	14316	14116	12005	-2111	0.4
US Petroleum	4466	5323	3135	2072	2470	2594	124	0.0
US Other	10104	10131	9766	8934	9277	9009	-269	0.0
US Coal	138055	136177	136318	116993	115066	109063	-6003	1.1
US Nuke	95157	94358	92365	93162	89489	88789	-701	0.1
US Hydro	28988	30621	28181	26944	24140	25334	1194	-0.2
US Gas	212121	216025	205503	181094	182107	174820	-7287	1.3

See National Wind and Nuclear daily charts

Source: Bloomberg, analytix.ai

Monthly Average Generation Data

Nuclear Generation Monthly Average - GWh (NRC)

	2Yr Ago	LY	MTD						
	Same 30 days	Same 30 days	Jun-21	Jul-21	Aug-21	Sep-21	Last 30 days	MoM (MTD vs LY)	Last 30 days YoY
	NRC Nuclear Daily Output	89.5	89.0	88.7	90.1	91.5	87.5	87.6	-4.0
NRC Nuclear Max Capacity	104.9	104.9	104.9	104.9	104.9	104.9	104.9	0.0	0.0
NRC Nuclear Outage	15.3	15.9	16.2	14.8	13.4	17.4	17.3	4.0	1.4
NRC % Nuclear Cap Utilization	91.0	90.5	90.2	91.6	93.0	88.9	89.1	-4.1	-1.4

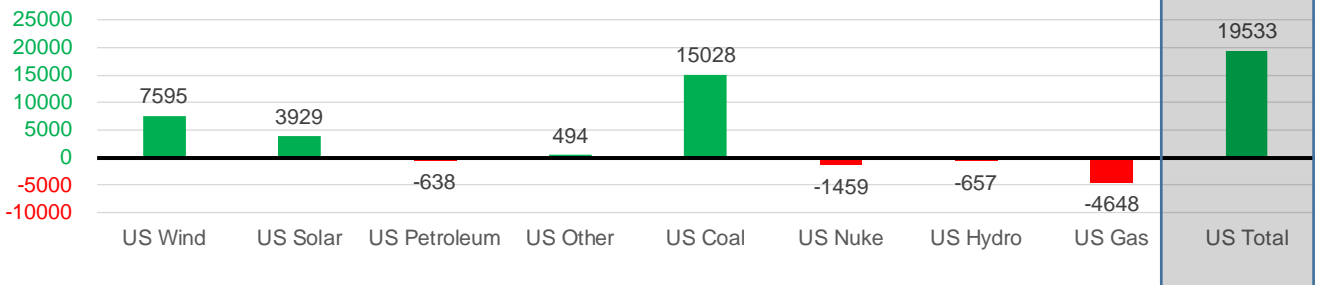
Wind Generation Monthly Average - MWh (EIA)

	2Yr Ago	LY	MTD						
	Same 30 days	Same 30 days	Jun-21	Jul-21	Aug-21	Sep-21	Last 30 days	MoM (MTD vs LY)	Last 30 days YoY
	CALI Wind	2228	1503	2881	2338	2442	1984	2039	-457
TEXAS Wind	7963	7312	9509	7217	9901	9363	9063	-538	1751
US Wind	32156	32193	36864	29217	35830	40767	39788	4938	7595

Generation Monthly Average - MWh (EIA)

	2Yr Ago	LY	MTD						
	Same 30 days	Same 30 days	Jun-21	Jul-21	Aug-21	Sep-21	Last 30 days	MoM (MTD vs LY)	Last 30 days YoY
	US Wind	32156	32193	36864	29217	35830	40767	39788	▼ -979.7
US Solar	8216	9280	14577	14195	13846	13296	13209	▼ -87.7	▲ 3929
US Petroleum	4348	2943	4155	4233	4484	2292	2305	▲ 13	▼ -638
US Other	8073	8449	8205	9327	9929	8841	8943	▲ 101	▲ 494
US Coal	115655	96921	122034	137228	137655	109705	111949	▲ 2245	▲ 15028
US Nuke	96160	91953	92180	92911	94062	90383	90494	▲ 111	▼ -1459
US Hydro	26893	26300	32566	29941	28532	25518	25642	▲ 124	▼ -657
US Gas	190653	178912	189395	207823	210824	171178	174263	▲ 1528	▼ -4648
US Total	483806	447088	500268	524889	534996	462052	466622	▲ 4035	▲ 19533

Last 30 days YoY



See National Wind and Nuclear daily charts

Source: Bloomberg, analytix.ai

Regional S/D Models Storage Projection

Week Ending 24-Sep

	Daily Raw Storage	Daily Adjustment Factor	Daily Average Storage Activity (Adjusted) *	Weekly Adjusted Storage Activity
L48	11.8	1.3	13.1	92
East	3.1	0.7	3.7	26
Midwest	5.2	-0.7	4.5	31
Mountain	3.8	-3.6	0.3	2
South Central	-1.0	5.3	4.3	30
Pacific	0.7	-0.4	0.3	2

*Adjustment Factor is calculated based on historical regional deltas

U.S. underground natural gas storage facilities by type (July 2015)

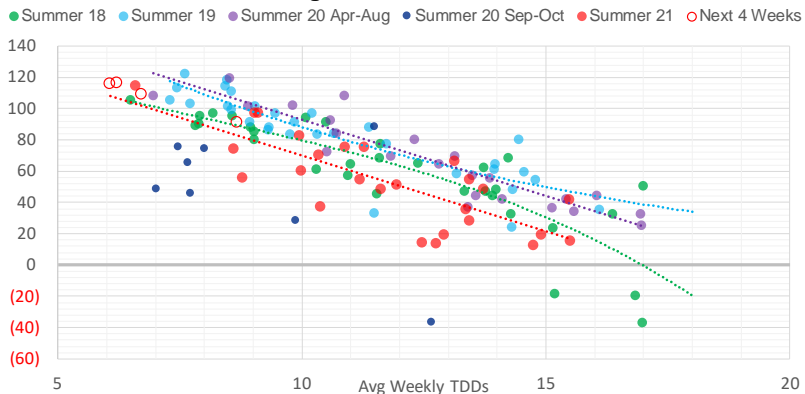


Weather Model Storage Projection

Next report
and beyond

Week Ending	GWDDs	Week Storage Projection
24-Sep	8.7	92
01-Oct	6.1	116
08-Oct	6.2	116
15-Oct	6.7	109

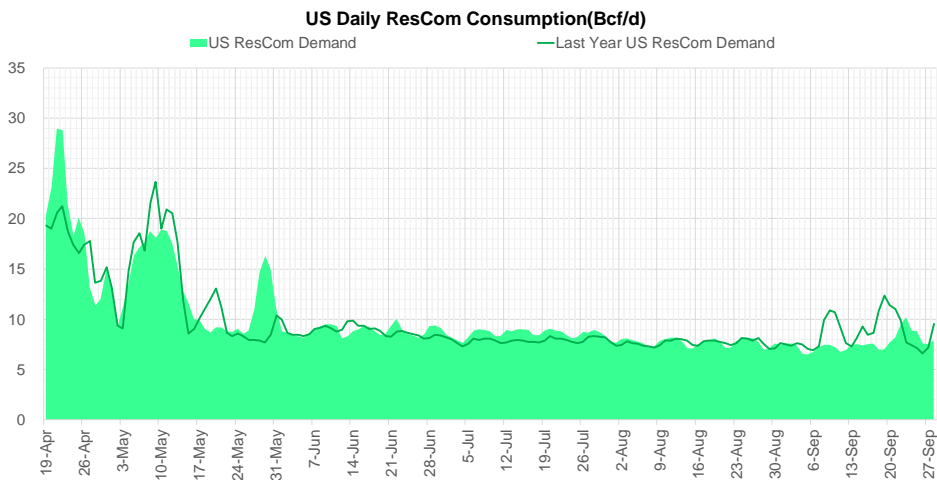
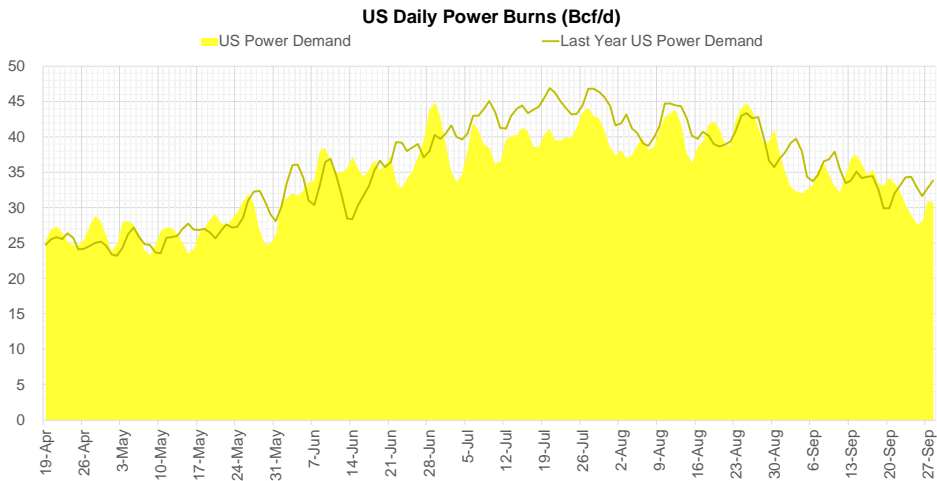
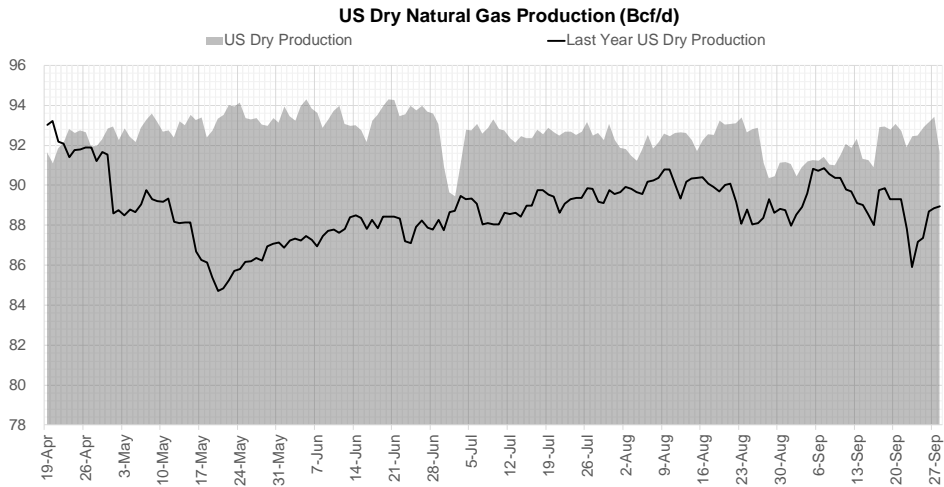
Weather Storage Model - Next 4 Week Forecast



Go to larger image



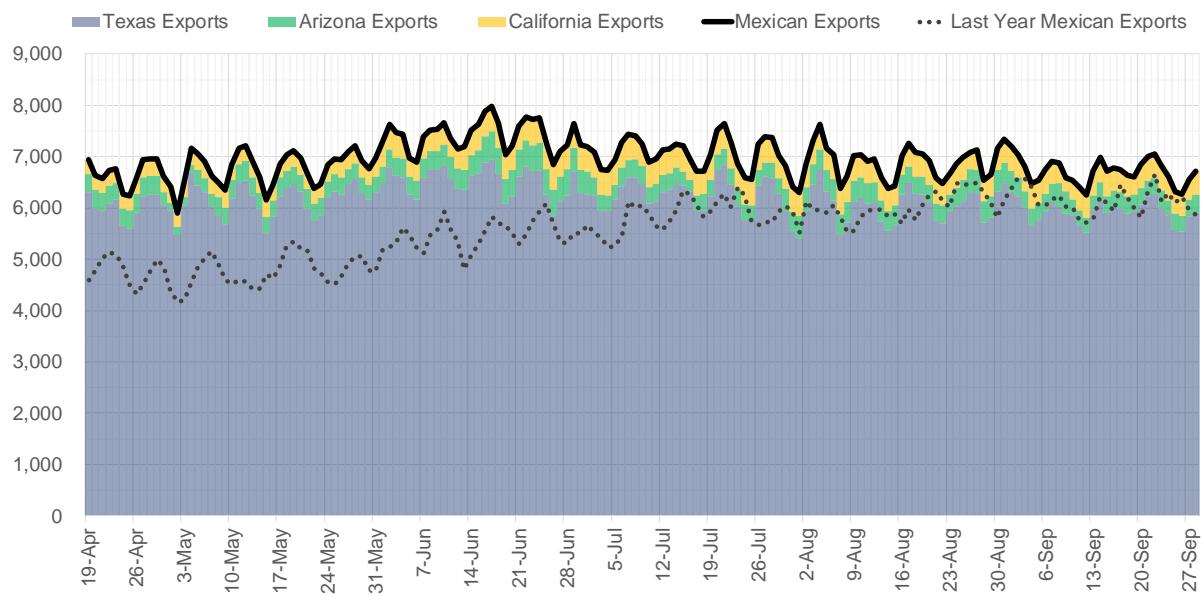
Supply – Demand Trends



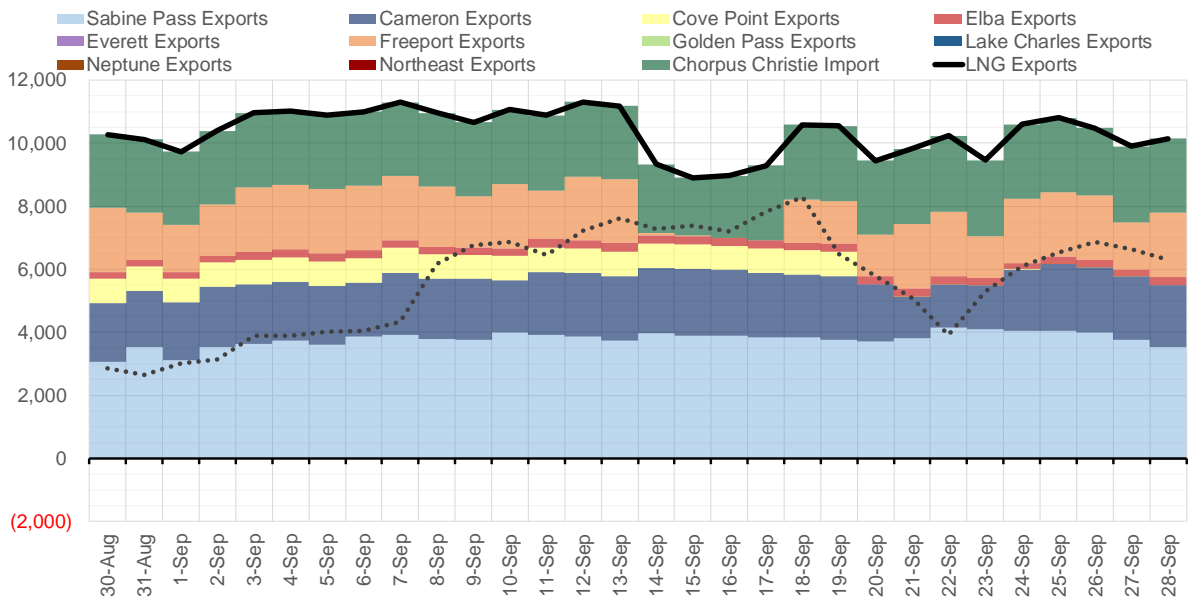
Source: Bloomberg

The risk of trading futures and options and other derivatives involves a substantial risk of loss and is not suitable for all persons. Each person must consider whether a particular trade, combination of trades, or strategy is suitable for that person's financial means and objectives. Past results are not necessarily indicative of future results. This communication may contain links to third party websites which are not under the control of and are not maintained by ION Energy Group, and ION Energy Group is not responsible for their content.

Mexican Exports (MMcf/d)



Net LNG Exports - Last 30 days (MMcf/d)



Source: Bloomberg

The risk of trading futures and options and other derivatives involves a substantial risk of loss and is not suitable for all persons. Each person must consider whether a particular trade, combination of trades, or strategy is suitable for that person's financial means and objectives. Past results are not necessarily indicative of future results. This communication may contain links to third party websites which are not under the control of and are not maintained by ION Energy Group, and ION Energy Group is not responsible for their content.

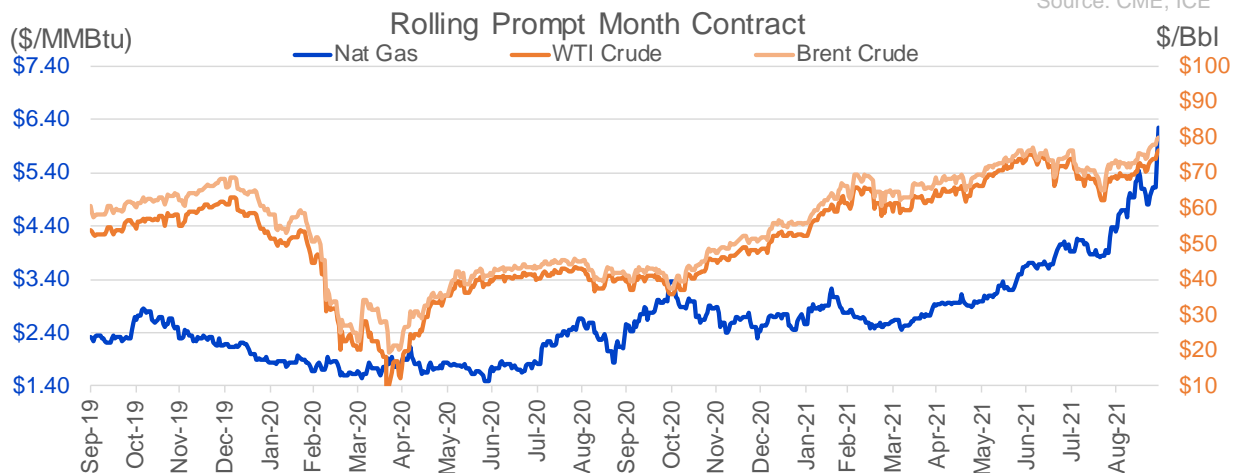
Nat Gas Options Volume and Open Interest CME, ICE and Nasdaq Combined

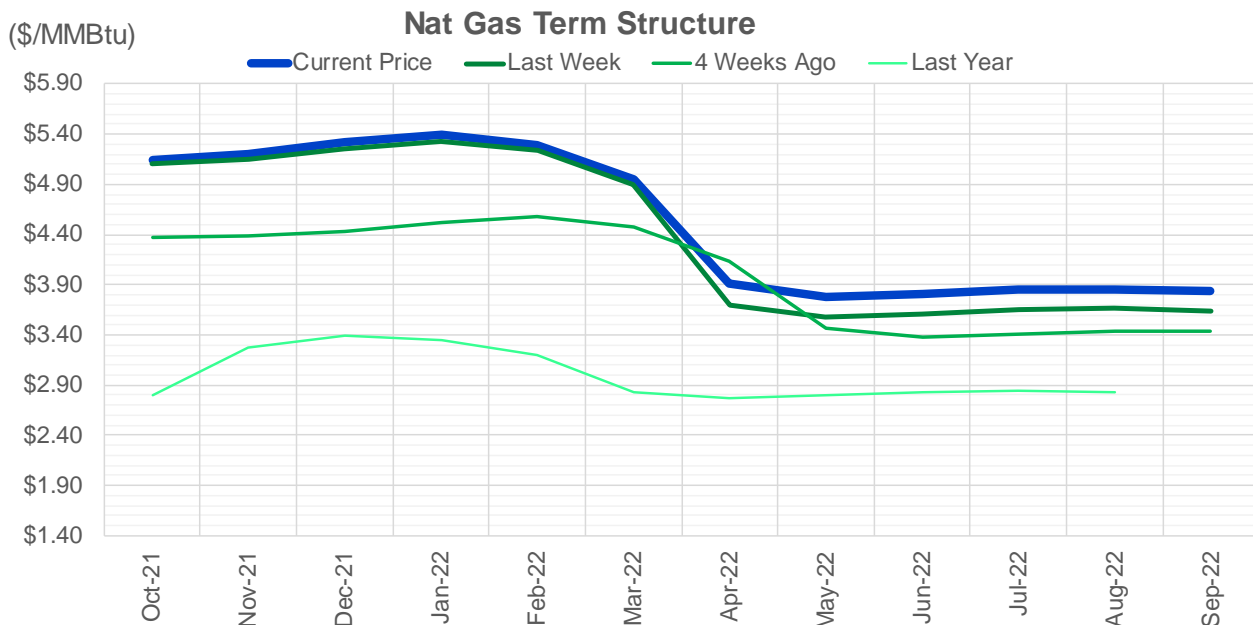
CONTRACT MONTH	CONTRACT YEAR	PUT/CALL	STRIKE	CUMULATIVE VOL	CONTRACT MONTH	CONTRACT YEAR	PUT/CALL	STRIKE	CUMULATIVE OI
11	2021	P	5.00	10506	10	2021	C	5.00	49571
11	2021	P	4.50	9239	10	2021	C	6.00	46809
11	2021	P	5.25	7231	12	2021	P	2.75	42009
11	2021	P	4.45	6910	10	2021	P	3.50	41998
11	2021	C	6.50	4258	10	2021	C	4.00	41711
11	2021	C	6.00	4224	10	2021	C	4.50	39045
10	2021	C	5.50	4164	12	2021	P	2.50	38547
11	2021	P	4.00	3031	10	2021	C	3.50	32999
11	2021	P	4.75	3010	10	2021	C	4.25	32761
10	2021	C	5.75	2886	10	2021	P	3.00	31755
3	2022	C	9.00	2776	11	2021	P	3.00	30130
10	2021	C	5.60	2594	10	2021	P	2.50	29993
10	2021	C	5.70	2543	10	2021	P	2.00	28650
11	2021	C	7.00	2454	10	2021	P	4.00	28599
11	2021	P	4.25	2416	10	2021	C	3.25	28188
10	2021	P	5.50	2382	10	2021	P	2.75	26887
12	2021	C	6.00	2273	3	2022	C	10.00	26631
3	2022	C	10.00	2269	12	2021	P	3.00	26437
11	2021	C	5.50	2111	3	2022	C	8.00	26432
12	2021	P	4.00	2093	11	2021	P	4.00	24783
2	2022	C	10.00	2055	10	2021	P	4.25	23544
12	2021	P	4.75	1959	11	2021	C	4.00	23311
10	2021	C	5.55	1953	12	2021	P	4.00	23005
12	2021	P	4.50	1905	12	2021	C	4.00	22596
12	2021	P	4.25	1805	11	2021	C	7.00	22130
12	2021	C	7.00	1677	10	2021	P	3.75	22037
2	2022	P	3.75	1623	10	2021	P	4.50	21961
10	2021	C	5.65	1618	11	2021	P	3.50	21270
11	2021	C	5.60	1543	3	2022	C	5.00	21221
4	2022	C	6.00	1460	3	2022	P	3.50	20933
1	2022	C	8.00	1439	10	2021	P	2.25	19784
1	2022	C	10.00	1402	4	2022	C	3.00	19760
2	2022	C	6.00	1401	10	2021	C	5.50	19591
10	2021	P	5.45	1388	11	2021	C	6.00	18661
4	2022	C	8.00	1350	10	2021	C	3.00	18486
11	2021	C	6.75	1291	2	2022	P	3.50	18376
11	2021	C	6.25	1258	1	2022	C	5.00	18030
12	2021	P	4.15	1231	1	2022	P	3.50	18000
11	2021	C	5.75	1096	10	2021	P	3.25	17940
2	2022	C	8.00	1085	12	2021	C	6.00	17761
12	2021	P	5.50	1060	2	2022	C	5.00	17205
10	2021	C	5.80	1054	10	2021	C	3.75	16780
2	2022	C	9.00	1051	3	2022	P	2.50	16638
2	2022	C	7.50	1049	3	2022	C	4.00	16441
11	2021	C	4.00	1048	11	2021	C	5.00	16178
11	2021	P	5.50	909	12	2021	C	7.00	15838
12	2021	P	3.85	907	3	2022	P	4.00	15321
12	2021	C	10.00	899	2	2022	C	4.00	15201
11	2021	C	10.00	884	10	2021	C	5.25	15179
					11	2021	C	4.5	15100.5

Source: CME, ICE

Nat Gas Futures Open Interest CME, and ICE Combined

CME Henry Hub Futures (10,000 MMBtu)				ICE Henry Hub Futures Contract Equivalent (10,000 MM			
	Current	Prior	Daily Change		Current	Prior	Daily Change
OCT 21	4062	19763	-15701	OCT 21	85873	88636	-2763
NOV 21	274686	277362	-2676	NOV 21	89714	84976	4738
DEC 21	96987	93213	3774	DEC 21	76351	76275	76
JAN 22	159801	163121	-3320	JAN 22	94712	94687	25
FEB 22	57823	58143	-320	FEB 22	70226	69606	620
MAR 22	127206	125222	1984	MAR 22	73838	74024	-186
APR 22	120406	118931	1475	APR 22	72626	72737	-111
MAY 22	121032	117808	3224	MAY 22	70304	69906	398
JUN 22	41090	41308	-218	JUN 22	54237	53989	248
JUL 22	37110	37875	-765	JUL 22	56538	56048	490
AUG 22	32212	32189	23	AUG 22	54942	54768	174
SEP 22	35154	33808	1346	SEP 22	55613	55266	347
OCT 22	90271	87621	2650	OCT 22	61963	61922	41
NOV 22	32425	32320	105	NOV 22	48496	48158	338
DEC 22	26455	26279	176	DEC 22	51800	51434	366
JAN 23	24153	23178	975	JAN 23	38185	37819	366
FEB 23	9905	9497	408	FEB 23	31197	31005	192
MAR 23	13388	12310	1078	MAR 23	32874	32646	228
APR 23	13222	12705	517	APR 23	31409	31167	242
MAY 23	7153	6688	465	MAY 23	30828	30388	440
JUN 23	6130	6114	16	JUN 23	28666	28241	426
JUL 23	4201	4194	7	JUL 23	28867	28426	440
AUG 23	3351	3224	127	AUG 23	28601	28170	432
SEP 23	4487	4608	-121	SEP 23	27942	27509	433
OCT 23	5688	5686	2	OCT 23	30276	29750	526
NOV 23	2232	2224	8	NOV 23	28673	28679	-6
DEC 23	2515	2254	261	DEC 23	27535	27541	-7
JAN 24	1479	1490	-11	JAN 24	15167	15099	68
FEB 24	1080	1078	2	FEB 24	12999	12740	259
MAR 24	3344	3344	0	MAR 24	17487	17394	93





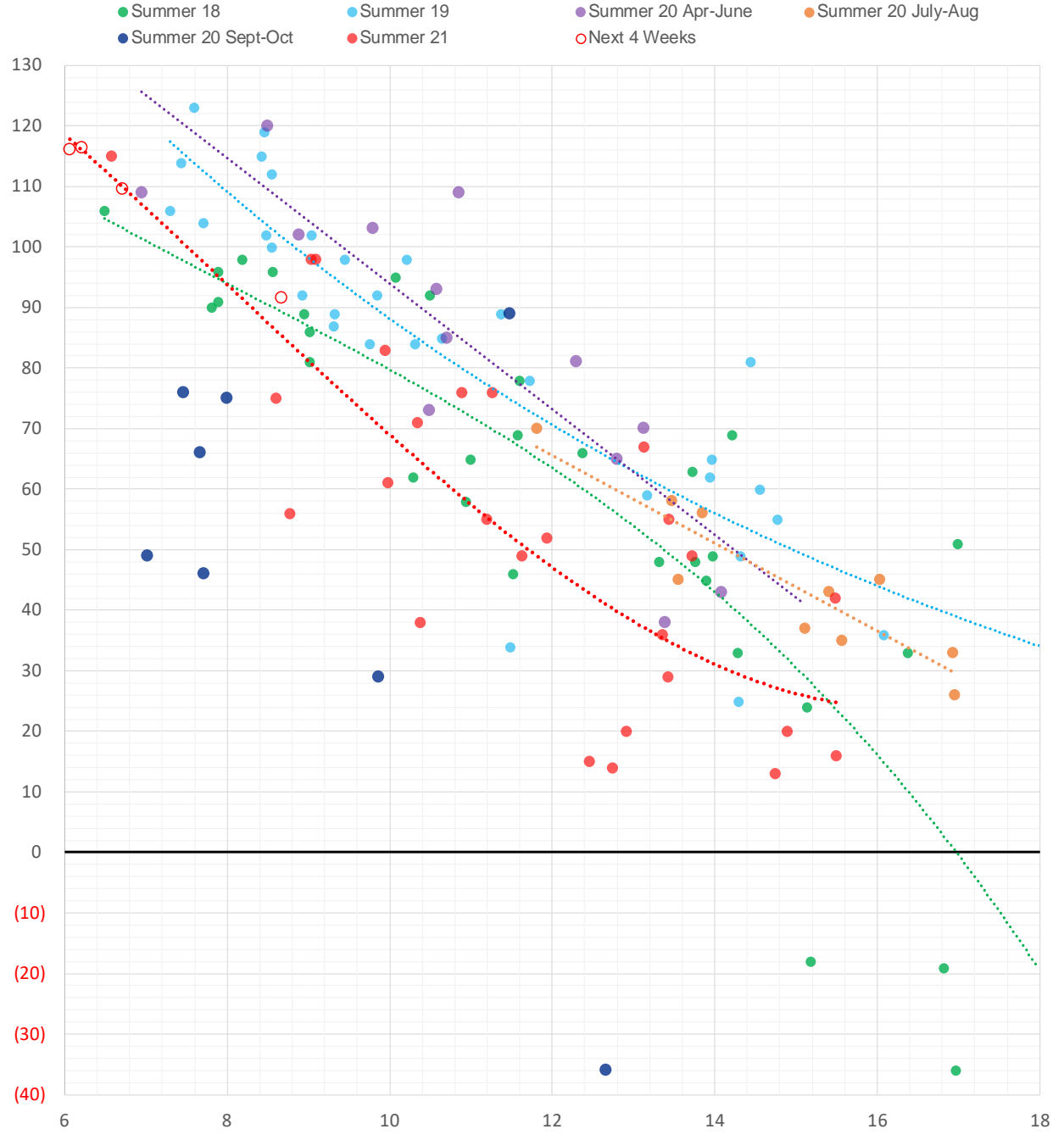
	Oct-21	Nov-21	Dec-21	Jan-22	Feb-22	Mar-22	Apr-22	May-22	Jun-22	Jul-22	Aug-22	Sep-22
Current Price	\$5.140	\$5.200	\$5.315	\$5.391	\$5.289	\$4.949	\$3.905	\$3.775	\$3.805	\$3.847	\$3.852	\$3.831
Last Week	\$5.105	\$5.146	\$5.258	\$5.328	\$5.244	\$4.902	\$3.703	\$3.576	\$3.611	\$3.653	\$3.661	\$3.644
vs. Last Week	\$0.035	\$0.054	\$0.057	\$0.063	\$0.045	\$0.047	\$0.202	\$0.199	\$0.194	\$0.194	\$0.191	\$0.187
4 Weeks Ago	\$4.370	\$4.388	\$4.434	\$4.522	\$4.574	\$4.480	\$4.140	\$3.472	\$3.379	\$3.405	\$3.436	\$3.443
vs. 4 Weeks Ago	\$0.770	\$0.812	\$0.881	\$0.869	\$0.715	\$0.469	-\$0.235	\$0.303	\$0.426	\$0.442	\$0.416	\$0.388
Last Year	\$2.139	\$2.807	\$3.277	\$3.398	\$3.348	\$3.200	\$2.834	\$2.777	\$2.801	\$2.834	\$2.842	\$2.829
vs. Last Year	\$3.001	\$2.393	\$2.038	\$1.993	\$1.941	\$1.749	\$1.071	\$0.998	\$1.004	\$1.013	\$1.010	\$1.002

	Units	Cash Settled	Prompt Settle	Cash to Prompt
AGT Citygate	\$/MMBtu	4.65	4.70	0.05
TETCO M3	\$/MMBtu	4.40	3.82	-0.58
FGT Zone 3	\$/MMBtu	4.41	5.11	0.70
Zone 6 NY	\$/MMBtu	4.41	3.65	-0.76
Chicago Citygate	\$/MMBtu	5.06	4.85	-0.21
Michcon	\$/MMBtu	5.05	4.78	-0.27
Columbia TCO Pool	\$/MMBtu	4.54	3.93	-0.61
Ventura	\$/MMBtu	4.96	4.75	-0.21
Rockies/Opal	\$/MMBtu	4.73	4.72	-0.01
El Paso Permian Basin	\$/MMBtu	4.69	4.70	0.01
Socal Citygate	\$/MMBtu	7.02	5.89	-1.13
Malin	\$/MMBtu	5.40	5.36	-0.04
Houston Ship Channel	\$/MMBtu	5.20	5.03	-0.17
Henry Hub Cash	\$/MMBtu	5.02	4.77	-0.25
AECO Cash	C\$/GJ	2.15	3.18	1.03
Station2 Cash	C\$/GJ	0.03	5.61	5.58
Dawn Cash	C\$/GJ	4.99	4.71	-0.28

Source: CME, Bloomberg

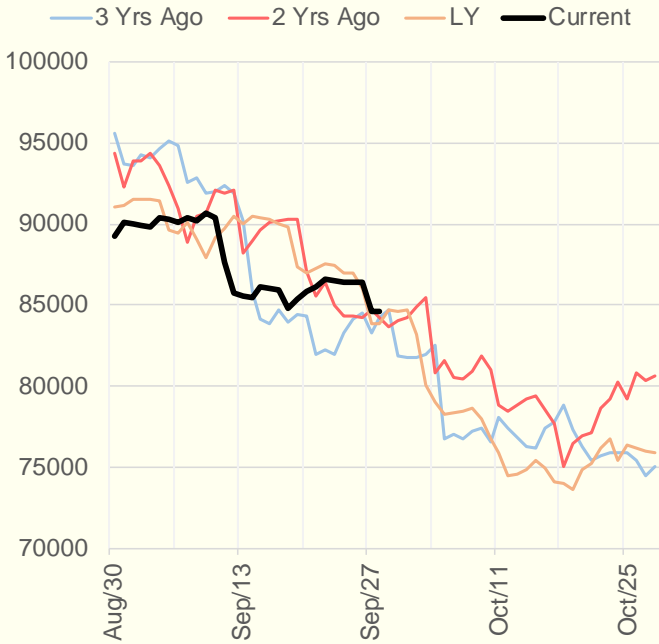
	Units	Current Price	vs. Last Week	vs. 4 Weeks Ago	vs. Last Year
NatGas Jul21/Oct21	\$/MMBtu	2.089	▲ 0.721	▲ 1.401	▲ 2.065
NatGas Oct21/Nov21	\$/MMBtu	0.025	▼ -0.012	▼ -0.029	▼ -0.028
NatGas Oct21/Jan22	\$/MMBtu	0.204	▼ -0.013	▲ 0.010	▼ -0.084
NatGas Apr22/Oct22	\$/MMBtu	-0.089	▼ -0.059	▼ -0.085	▼ -0.096
WTI Crude	\$/Bbl	75.45	▲ 5.160	▲ 6.240	▲ 34.850
Brent Crude	\$/Bbl	79.53	▲ 5.610	▲ 6.120	▲ 37.100
Fuel Oil, NY Harbour 1%	\$/Bbl	97.18	▲ 0.000	▲ 0.000	▲ 0.000
Heating Oil	cents/Gallon	229.60	▲ 13.700	▲ 15.570	▲ 115.650
Propane, Mt. Bel	cents/Gallon	1.28	▲ 0.011	▲ 0.169	▲ 0.788
Ethane, Mt. Bel	cents/Gallon	0.39	▲ 0.007	▲ 0.054	▲ 0.189
Coal, PRB	\$/MTon	12.30	▲ 0.000	▲ 0.000	▲ 0.000
Coal, PRB	\$/MMBtu	0.70			
Coal, ILB	\$/MTon	31.05	▲ 0.000	▲ 0.000	▲ 0.000
Coal, ILB	\$/MMBtu	1.32			

Weather Storage Model - Next 4 Week Forecast

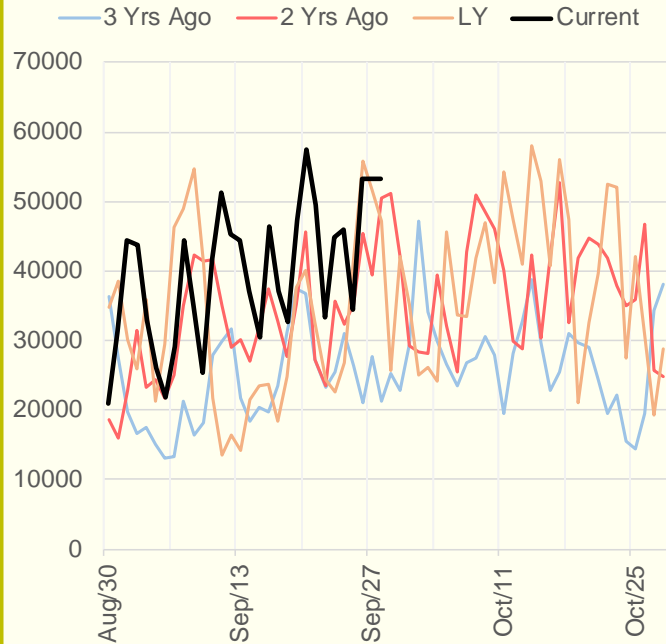


The risk of trading futures and options and other derivatives involves a substantial risk of loss and is not suitable for all persons. Each person must consider whether a particular trade, combination of trades, or strategy is suitable for that person's financial means and objectives. Past results are not necessarily indicative of future results. This communication may contain links to third party websites which are not under the control of and are not maintained by ION Energy Group, and ION Energy Group is not responsible for their content.

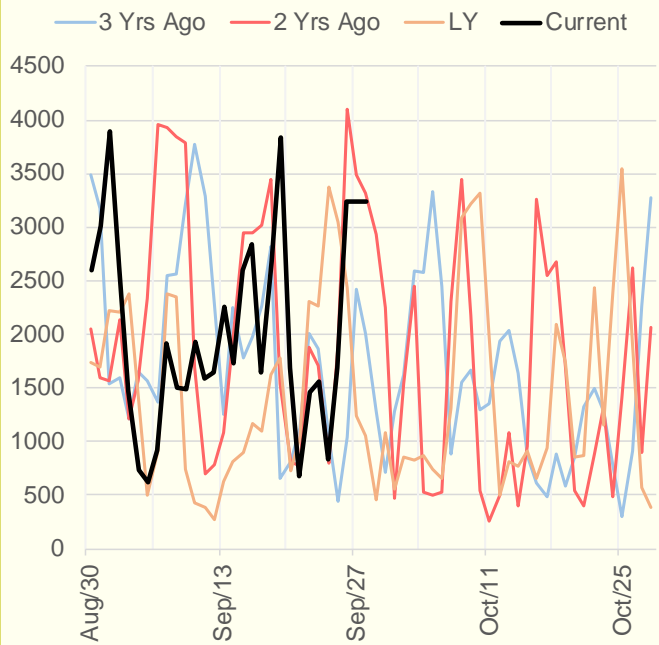
NRC Nuclear Daily Output



US Wind



CALI Wind



TEXAS Wind

