

CFTC COMMITMENT OF TRADERS REPORT

As of 10/5/2021

TRADITIONAL FUNDS net position changes

Wed to Tue, in 000 contracts

	Corn	Bean	Meal	Oil	Chi. Wheat	KC Wheat	Min Wheat
Futures Only	18.5	(13.3)	(11.3)	26.7	11.0	4.2	(0.0)
Futures & Options Combined	13.6	(6.7)	(18.0)	27.9	9.7	4.7	0.1

TRADITIONAL COMMERCIAL net position changes

	Corn	Bean	Meal	Oil	Chi. Wheat	KC Wheat	Min Wheat
Futures Only	(22.5)	20.0	8.1	(30.9)	(7.8)	(6.5)	0.4
Futures & Options Combined	(20.3)	15.0	14.6	(31.8)	(6.3)	(7.0)	0.3

MANAGED MONEY net position changes

	Corn	Bean	Meal	Oil	Chi. Wheat	KC Wheat	Min Wheat
Futures Only	8.6	(10.0)	(16.8)	26.9	17.5	3.6	0.5
Futures & Options Combined	5.9	(9.9)	(17.1)	27.7	15.0	3.8	0.5

SWAP DEALERS net position changes

	Corn	Bean	Meal	Oil	Chi. Wheat	KC Wheat	Min Wheat
Futures Only	(11.4)	3.6	1.1	(1.1)	(6.8)	0.4	(0.0)
Futures & Options Combined	(10.1)	4.5	2.8	(0.7)	(7.8)	0.2	(0.1)

PRODUCERS/END USERS net position changes

	Corn	Bean	Meal	Oil	Chi. Wheat	KC Wheat	Min Wheat
Futures Only	(11.1)	16.4	7.1	(29.9)	(1.0)	(6.9)	0.5
Futures & Options Combined	(10.2)	10.5	11.8	(31.1)	1.5	(7.2)	0.4

INDEX net position changes

	Corn	Bean	Meal	Oil	Chi. Wheat	KC Wheat	Min Wheat
Futures & Options Combined	3.8	6.1	(2.8)	2.8	(4.1)	0.1	NA

SUPPLEMENTAL NON-COMMERCIAL net position changes

	Corn	Bean	Meal	Oil	Chi. Wheat	KC Wheat	Min Wheat
Futures & Options Combined	0.8	(9.4)	(15.6)	23.9	12.3	4.9	NA

OPEN INTEREST net position changes

Wed to Tue, in 000 contracts

	Corn	Bean	Meal	Oil	Chi. Wheat	KC Wheat	Min Wheat
Futures Only	3.4	29.6	37.8	5.2	14.7	5.7	1.4
Futures & Options Combined	1.6	36.9	47.8	10.3	29.4	11.5	1.5

Source: CFTC and FI

Wed to Tue, in 000 contracts

**COMMITMENT OF TRADERS
FUTURES ONLY NET POSITIONS
AS OF 10/05/2021
(IN THOUSAND CONTRACTS)**

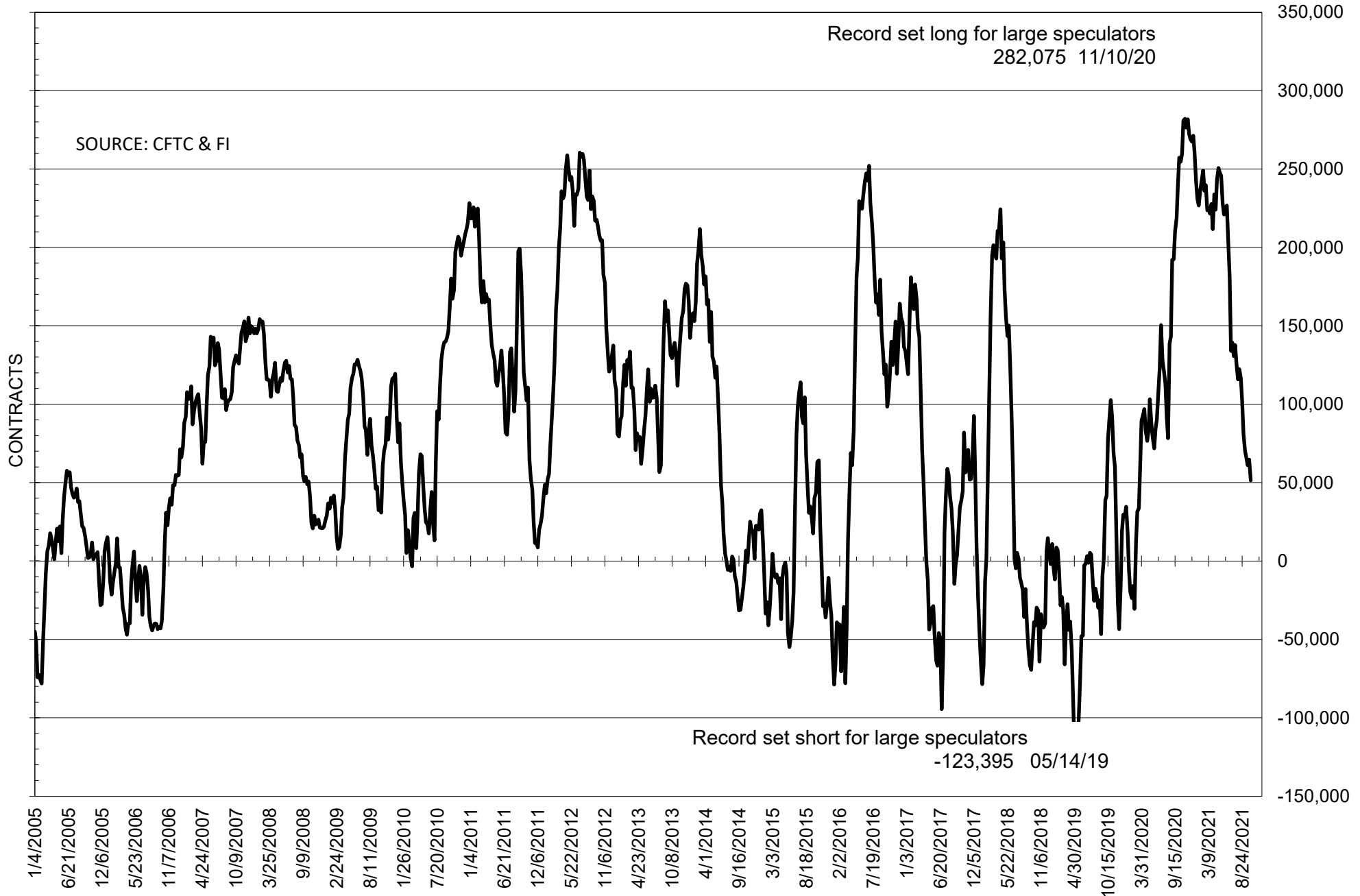
	COMMERCIAL				(FUND) NON COMMERCIAL				(SPEC) NON-REPORTABLE			
	5-Oct	28-Sep	21-Sep	14-Sep	5-Oct	28-Sep	21-Sep	14-Sep	5-Oct	28-Sep	21-Sep	14-Sep
	WHEAT											
Chicago	3.7	11.5	9.7	8.1	7.3	-3.6	1.8	4.6	-11.0	-7.8	-11.5	-12.6
Kansas City	-46.5	-40.0	-31.9	-33.1	45.7	41.5	32.0	32.2	0.8	-1.5	-0.1	0.9
Minneapolis	-28.7	-29.1	-26.8	-26.8	22.9	23.0	21.2	20.5	5.7	6.1	5.6	6.2
All Wheat	-71.5	-57.7	-49.1	-51.8	75.9	60.9	55.0	57.4	-4.4	-3.2	-6.0	-5.5
CORN	-237.6	-215.1	-199.0	-191.3	297.0	278.5	265.5	258.6	-59.4	-63.5	-66.5	-67.3
OATS	-1.1	-1.2	-1.3	-1.4	0.7	0.7	0.8	0.8	0.4	0.4	0.5	0.6
SOYBEANS	-22.6	-42.6	-39.4	-45.6	51.4	64.7	61.1	65.8	-28.8	-22.2	-21.7	-20.2
SOY OIL	-87.2	-56.3	-42.7	-52.7	77.8	51.2	40.5	48.1	9.4	5.1	2.1	4.6
SOY MEAL	-22.2	-30.3	-32.4	-29.5	2.5	13.8	13.8	13.0	19.7	16.5	18.5	16.5

Oats positions thin to be reported

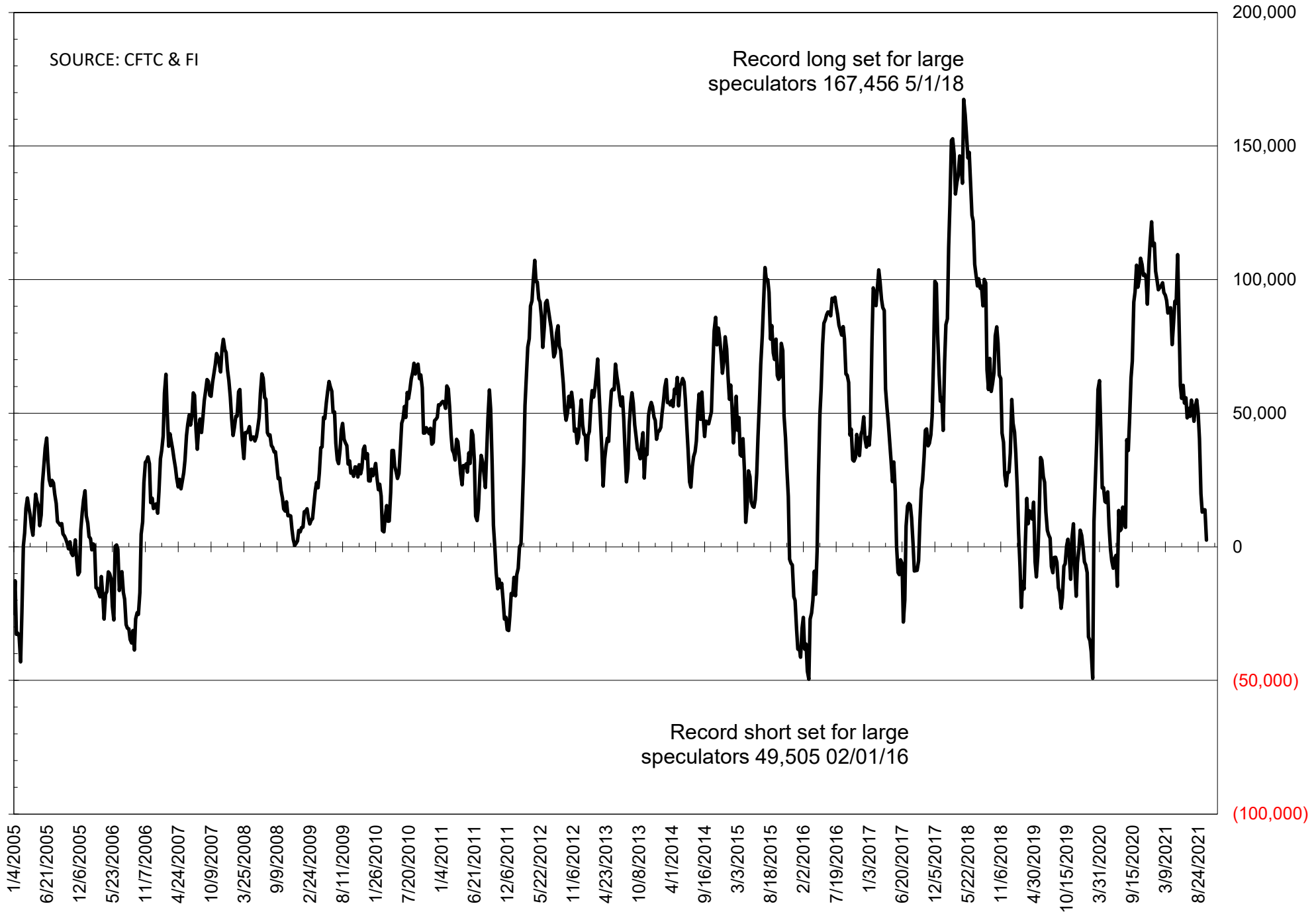
	TOTAL OPEN INTEREST				NEARBY FUTURES PRICE					5-Oct-21 LAST REPORTED % HELD BY TRADERS			
	5-Oct	28-Sep	21-Sep	14-Sep	X/Z Latest	X/Z 5-Oct	V/X/Z 28-Sep	V/X/Z 21-Sep	V/X/Z 14-Sep	LARGE FUND		SMALL	
										LONG	SHORT	LONG	SHORT
WHEAT													
Chicago	373320	358631	353551	359608	734.00	744.75	706.50	690.25	700.75	0%	24%	0%	11%
Kansas City	230413	224674	225465	223846	734.50	741.00	705.00	690.50	701.75	0%	20%	0%	9%
Minneapolis	75798	74446	72514	73009	946.50	925.00	907.25	887.75	887.25	0%	5%	0%	14%
CORN	1397458	1394022	1379770	1380464	530.50	537.50	532.50	517.00	520.25	0%	8%	0%	13%
OATS	5014	4759	4603	4480	653.75	594.75	583.25	532.75	515.00	0%	4%	0%	42%
SOYBEANS	715835	686272	660472	654989	1243.00	1250.50	1277.00	1274.00	1282.50	19%	12%	7%	11%
SOY OIL	388128	382917	383919	384148	61.51	61.14	57.46	55.32	56.74	0%	7%	0%	5%
SOY MEAL	399931	362115	365082	361685	318.70	321.20	339.50	337.90	338.00	0%	20%	0%	7%

SOURCE: CFTC & FI

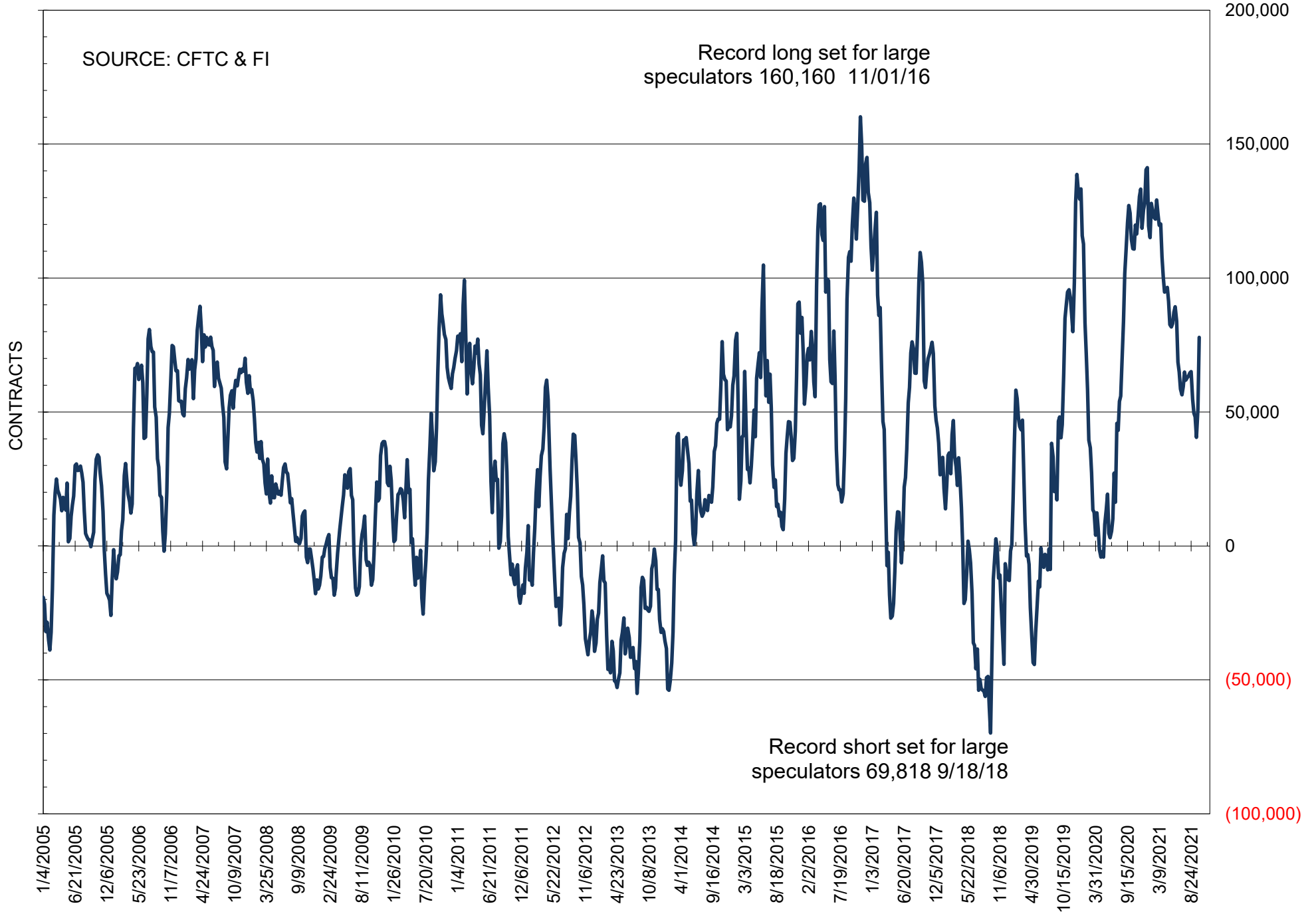
NET POSITION OF FUTURES ONLY LARGE SPECS IN SOYBEANS



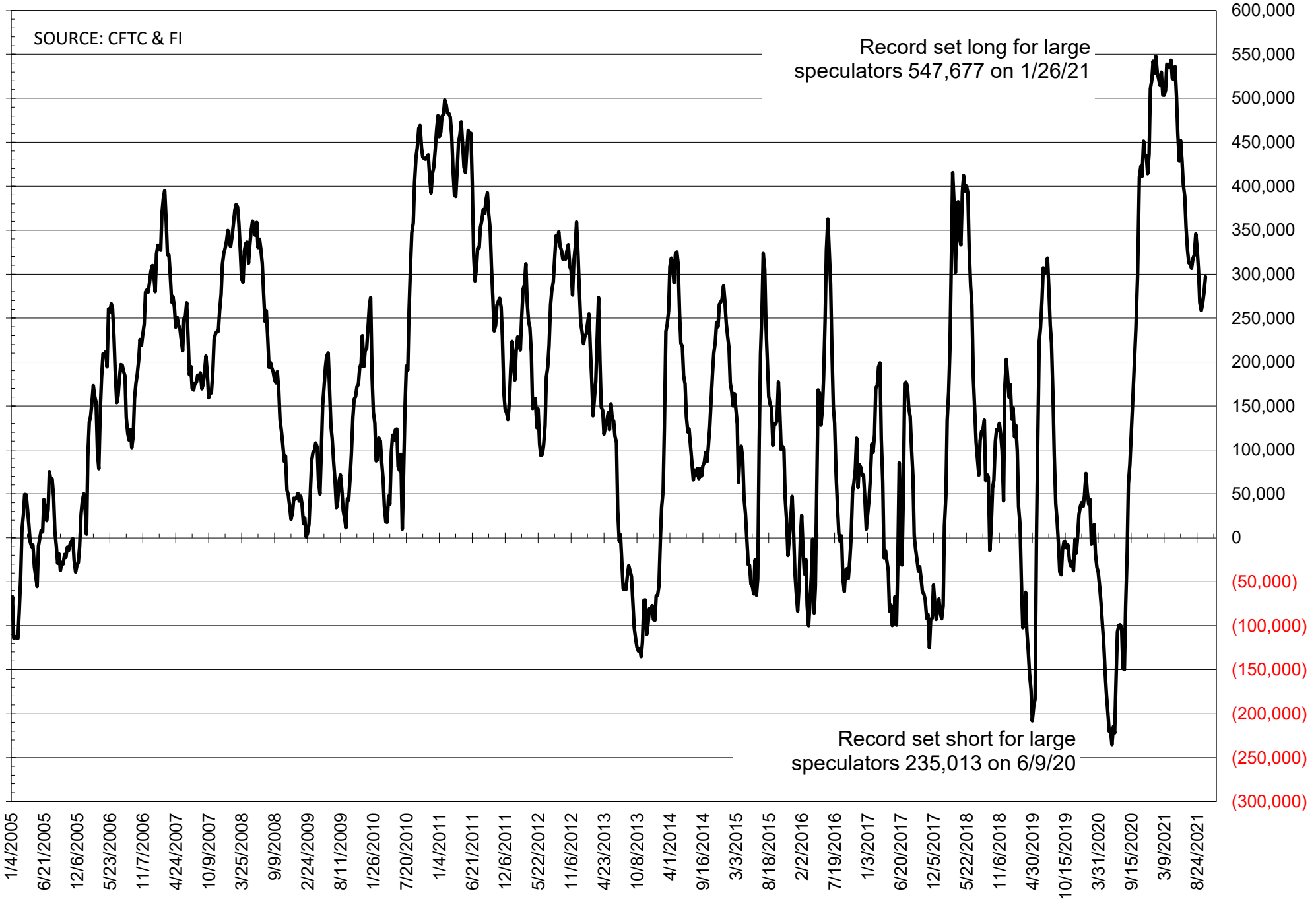
NET POSITION OF FUTURES ONLY LARGE SPECS IN SOYMEAL



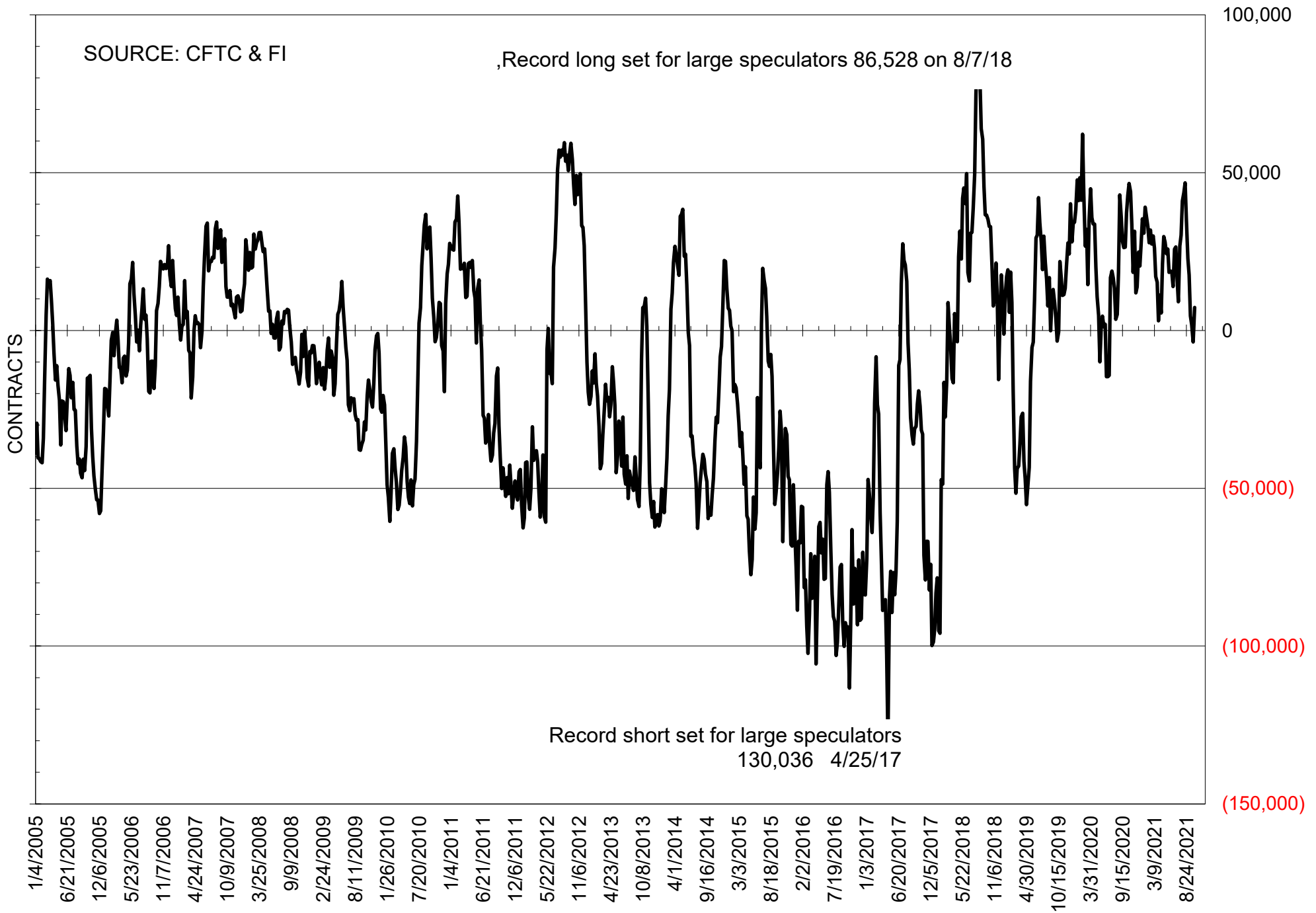
NET POSITION OF FUTURES ONLY LARGE SPECS IN SOYOIL



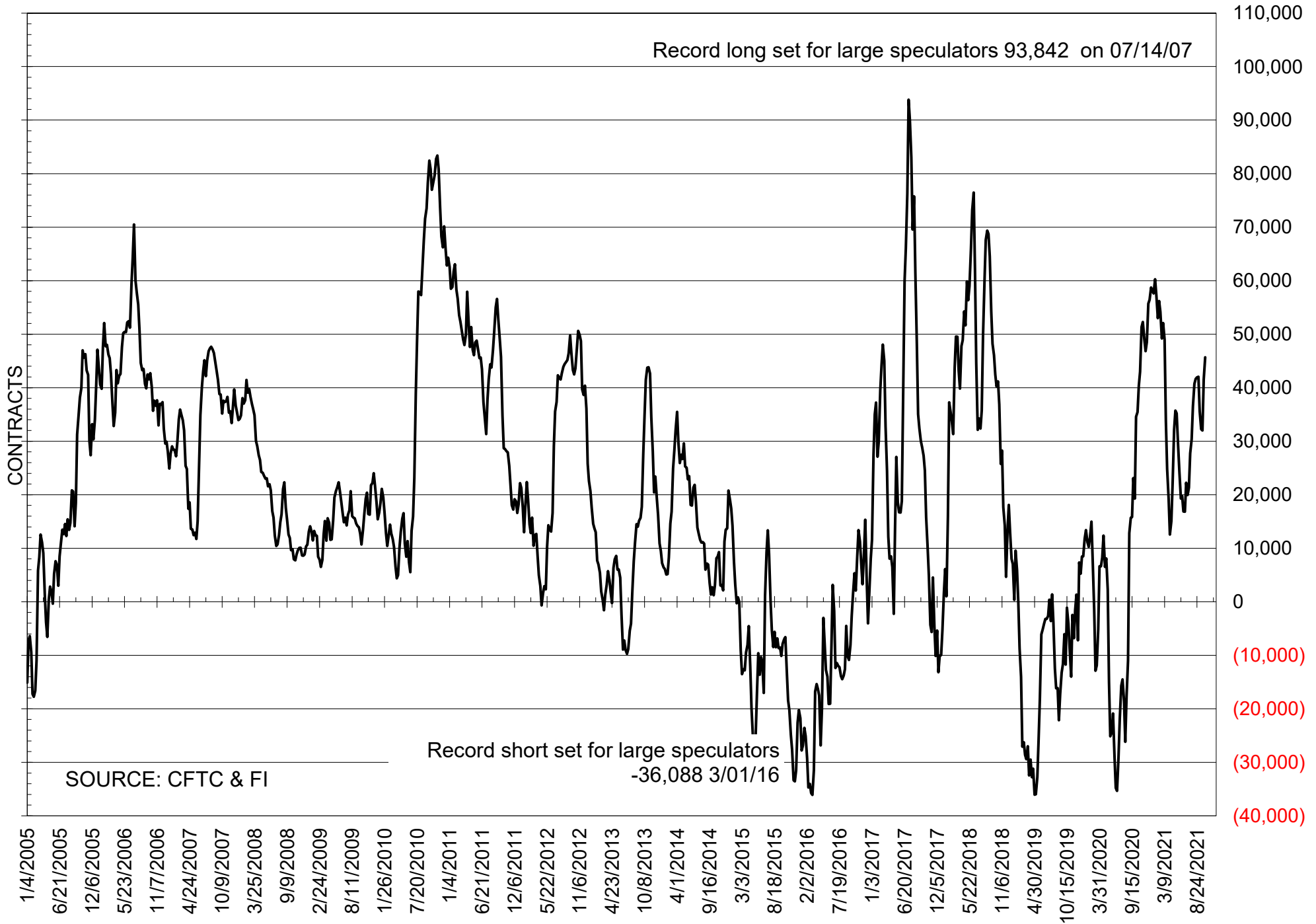
NET POSITION OF LARGE SPECULATORS IN CORN



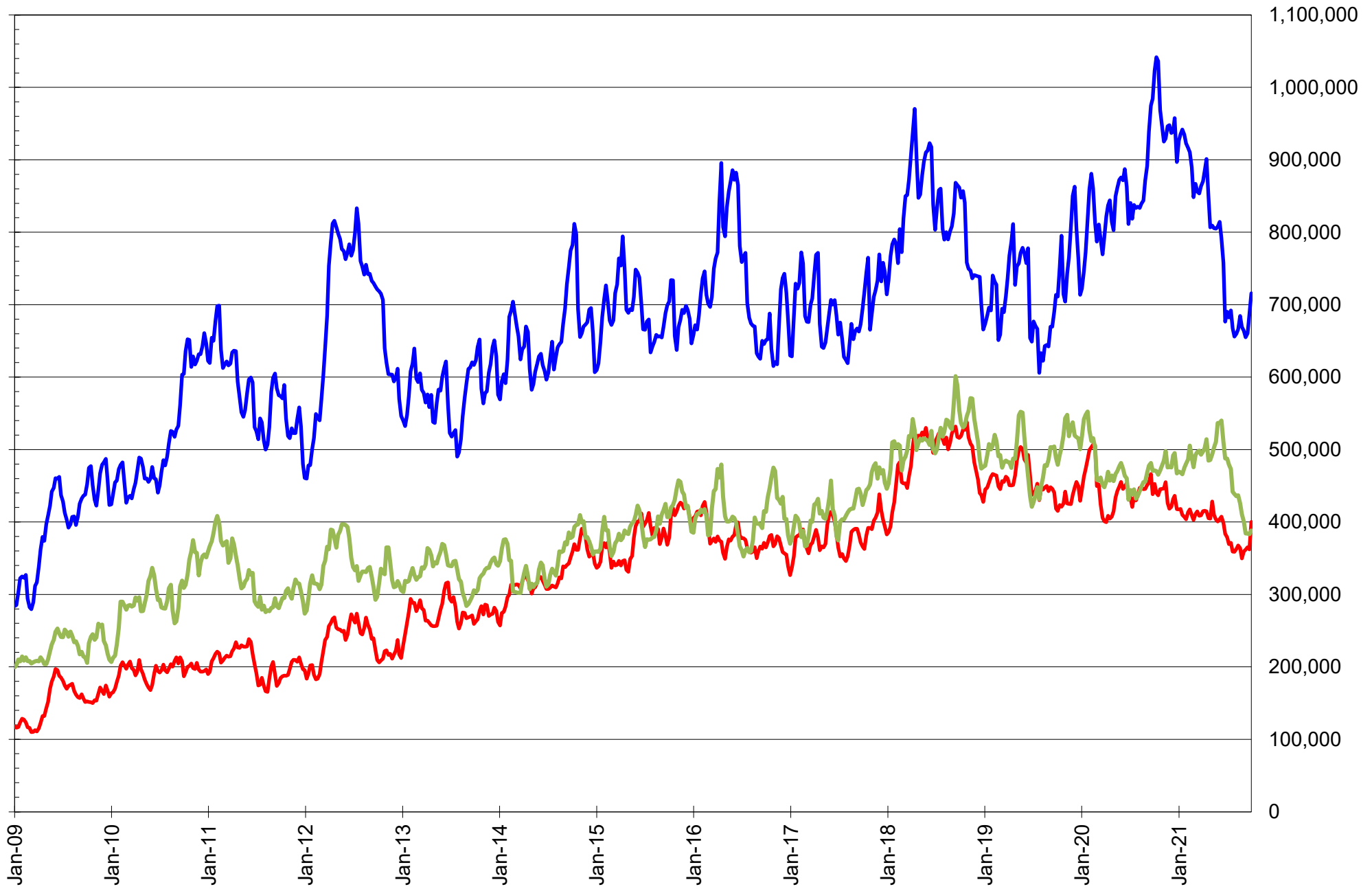
NET POSITION OF FUTURES ONLY LARGE SPECS IN CHICAGO WHEAT



NET POSITION OF LARGE SPECULATORS IN KANSAS CITY WHEAT



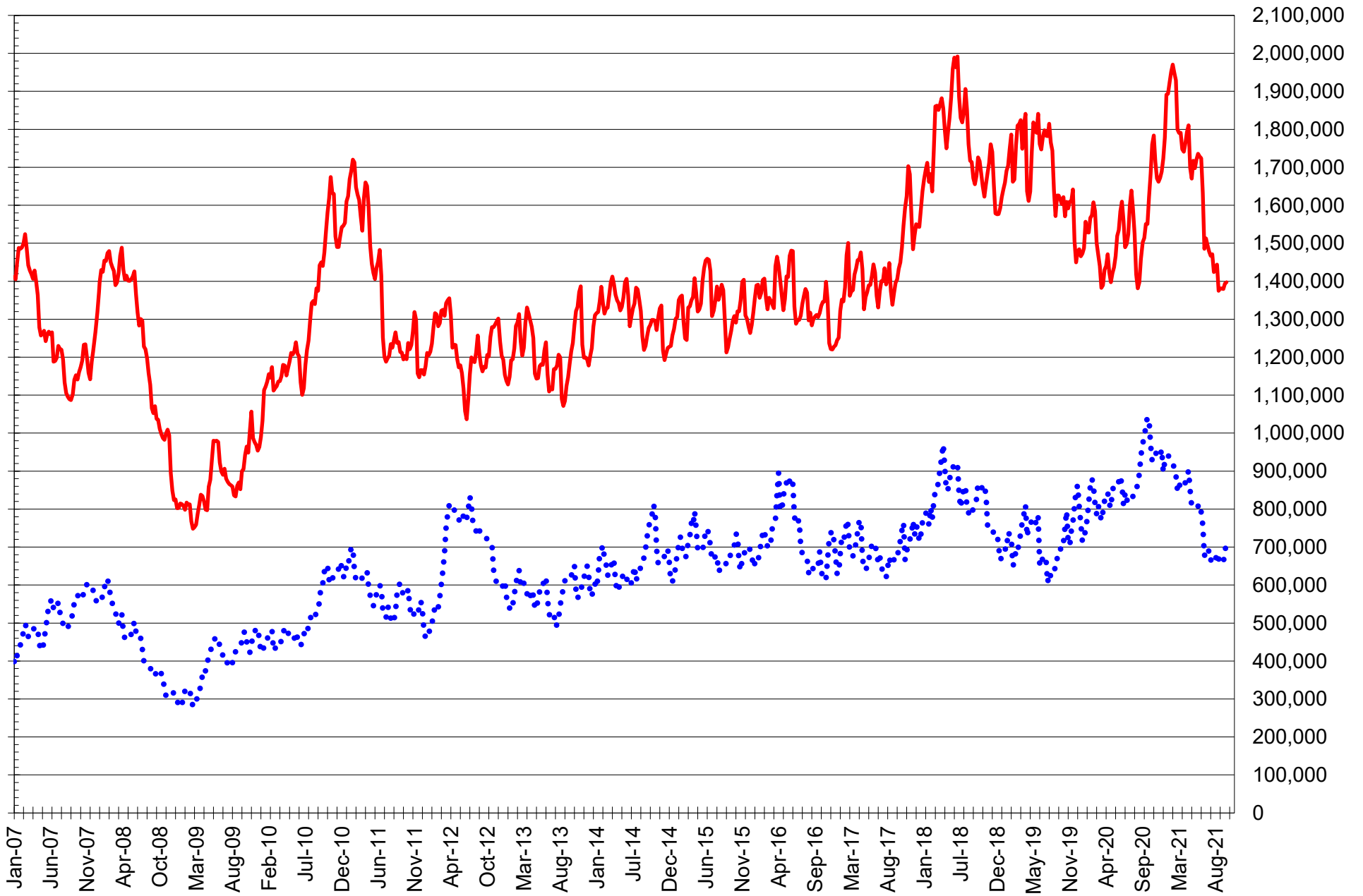
TOTAL OPEN INTEREST IN SOYBEANS, MEAL AND OIL, FUTURES ONLY



SOURCE: CFTC & FI

— SOYBEANS — SOYBEAN MEAL — SOYBEAN OIL

TOTAL OPEN INTEREST IN CORN AND SOYBEANS, FUTURES ONLY



SOURCE: CFTC & FI

— CORN

..... SOYBEANS

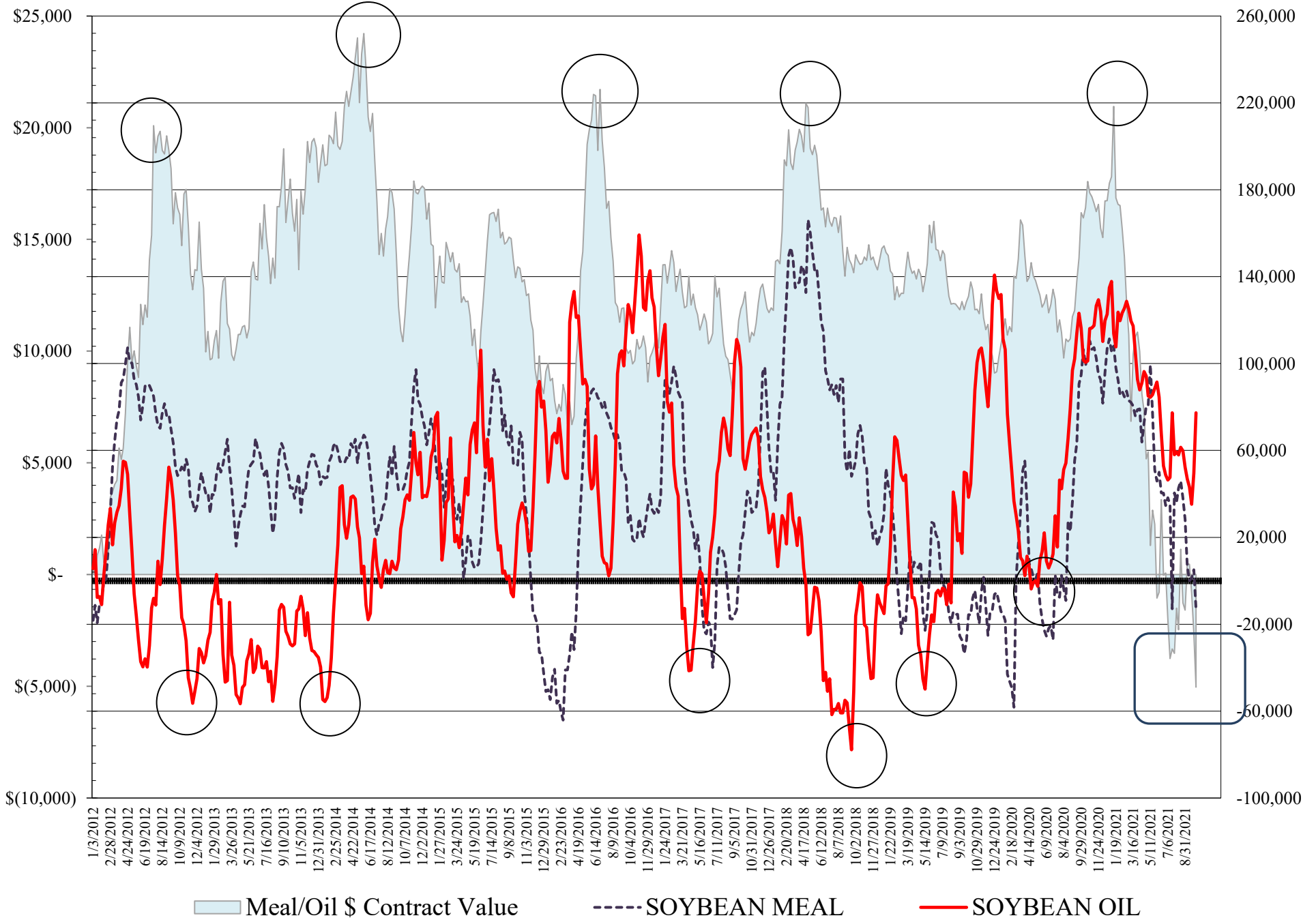
**COMMITMENT OF TRADERS
FUTURES & OPTIONS NET POSITIONS
AS OF 10/05/2021
(IN THOUSAND CONTRACTS)**

	COMMERCIAL				(FUND) NON COMMERCIAL				(SPEC) NON-REPORTABLE			
	5-Oct	28-Sep	21-Sep	14-Sep	5-Oct	28-Sep	21-Sep	14-Sep	5-Oct	28-Sep	21-Sep	14-Sep
WHEAT												
Chicago	7.3	13.6	11.2	9.6	3.2	-6.5	-0.8	2.2	-10.5	-7.1	-10.4	-11.8
Kansas City	-45.2	-38.1	-30.1	-31.2	44.1	39.5	30.1	30.1	1.0	-1.3	0.0	1.1
Minneapolis	-27.8	-28.1	-25.5	-25.7	21.7	21.5	19.5	19.0	6.1	6.6	6.0	6.7
All Wheat	-65.6	-52.6	-44.4	-47.2	69.0	54.5	48.8	51.3	-3.3	-1.9	-4.4	-4.1
CORN	-252.2	-231.9	-206.7	-202.4	311.0	297.4	281.7	277.6	-58.9	-65.5	-75.0	-75.2
OATS	-1.2	-1.2	-1.4	-1.4	0.8	0.8	0.9	0.8	0.3	0.4	0.5	0.6
SOYBEANS	-16.2	-31.1	-23.4	-33.3	50.2	56.8	49.2	56.9	-34.0	-25.7	-25.8	-23.6
SOY OIL	-87.1	-55.2	-38.1	-48.4	77.3	49.5	35.2	43.1	9.7	5.8	2.9	5.3
SOY MEAL	-9.9	-24.5	-23.1	-20.0	-12.9	5.1	1.2	0.0	22.8	19.4	21.9	20.0

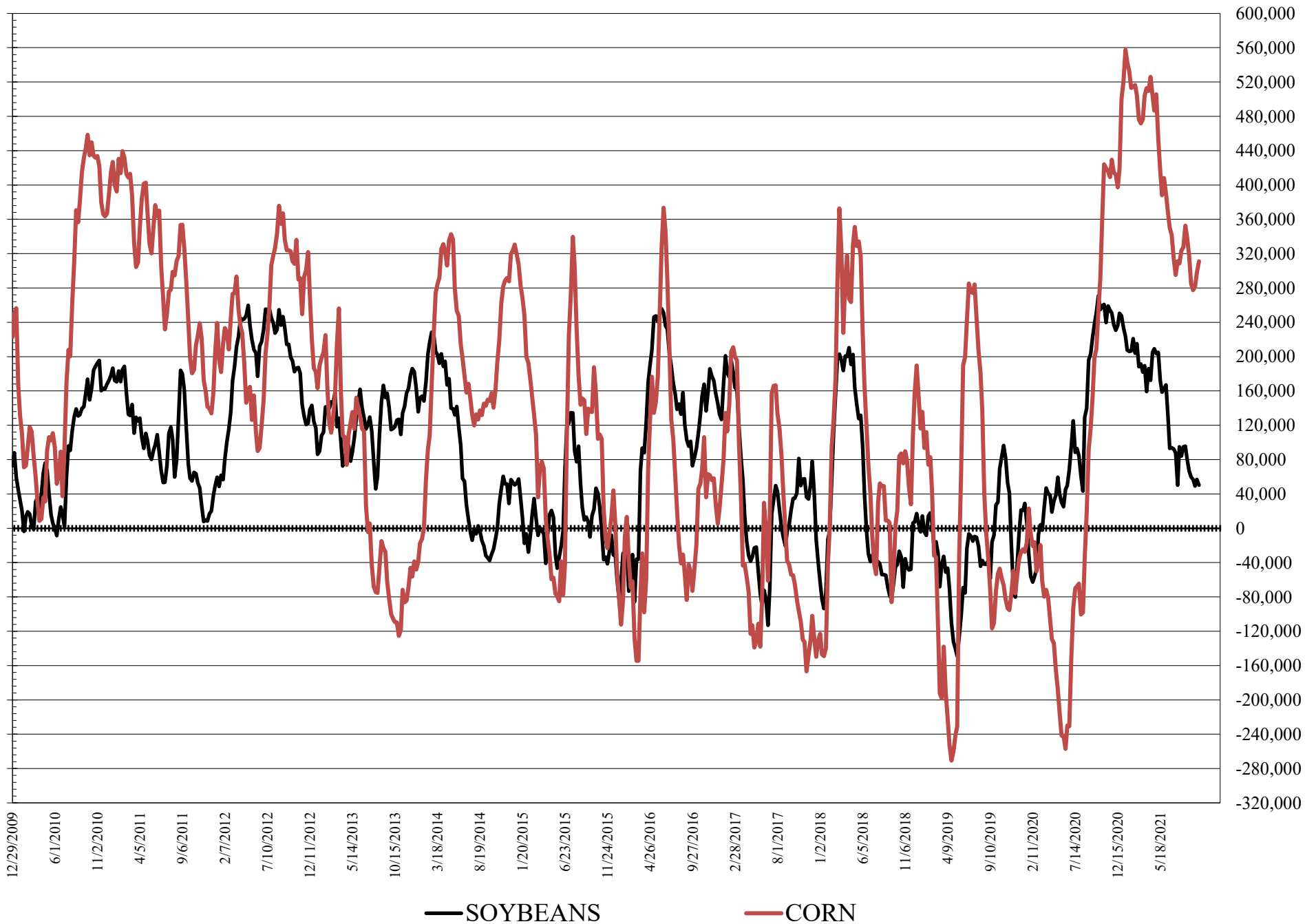
	TOTAL OPEN INTEREST				COMMERCIALS		% HELD BY TRADERS LARGE (FUNDS)		SMALL (NON-REP)	
	5-Oct	28-Sep	21-Sep	14-Sep	LONG	SHORT	LONG	SHORT	LONG	SHORT
WHEAT										
Chicago	459,518	430,091	431,266	434,267	40%	38%	19%	18%	7%	9%
Kansas City	256,057	244,526	244,081	243,759	33%	50%	35%	18%	9%	8%
Minneapolis	80,853	79,382	77,451	77,523	37%	71%	31%	4%	22%	14%
CORN	1,826,338	1,824,772	1,825,578	1,819,484	43%	57%	21%	4%	9%	12%
OATS	5,305	5,052	4,839	4,691						
SOYBEANS	908,200	871,342	857,135	845,260	51%	53%	13%	8%	6%	10%
SOY OIL	448,531	438,193	445,944	445,998	46%	65%	23%	6%	7%	5%
SOY MEAL	444,953	397,196	406,065	401,560	50%	52%	15%	17%	12%	7%

SOURCE: CFTC & FI

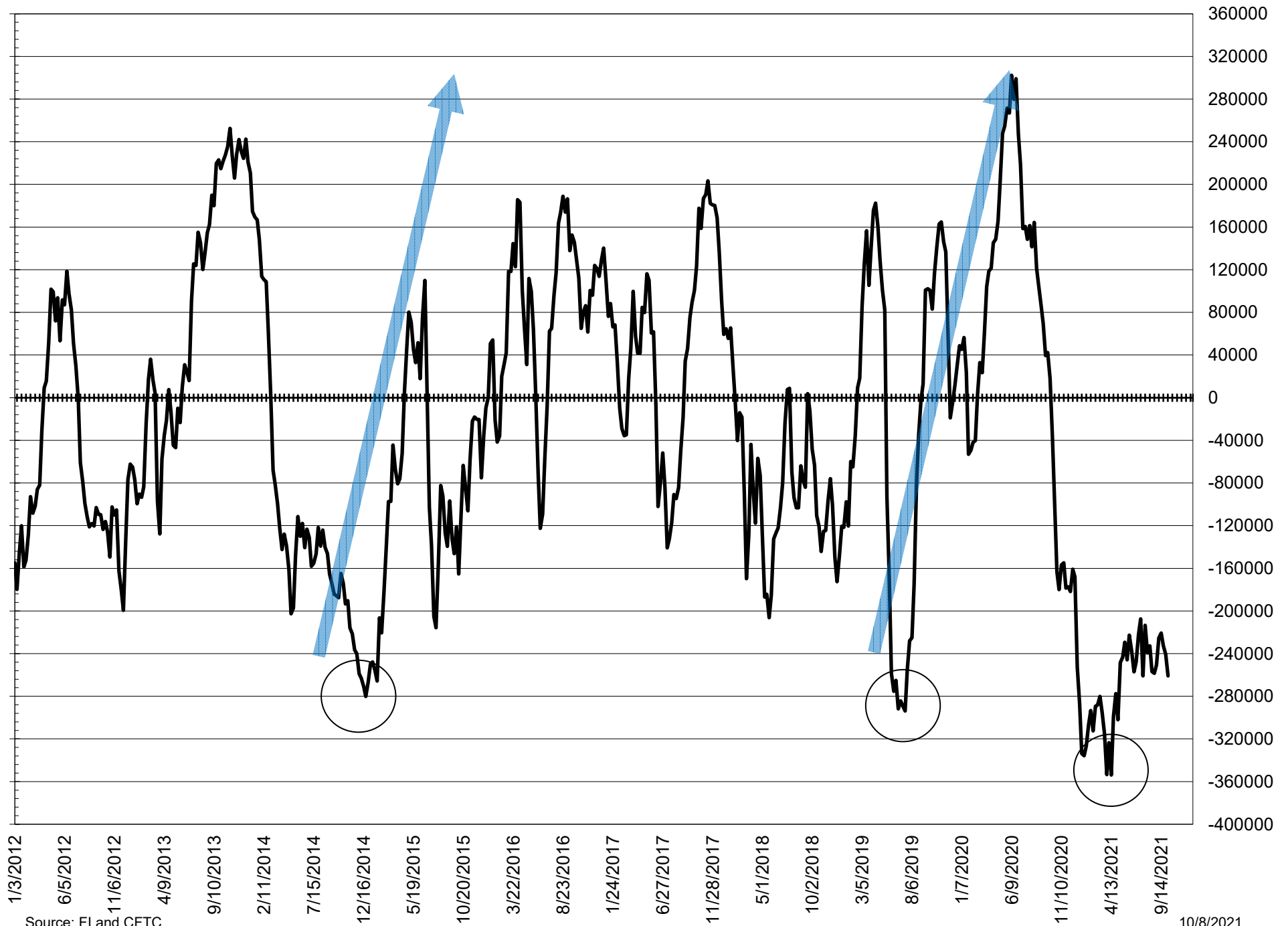
NET POSITION FUTURES AND OPTIONS OF LARGE SPECULATORS IN SOYBEAN MEAL AND SOYBEAN OIL



NET POSITION FUTURES AND OPTIONS OF LARGE SPECULATORS IN SOYBEANS AND CORN



NET POSITION FUTURES AND OPTIONS SPREAD OF LARGE SPECULATORS IN SOYBEANS MINUS CORN



Source: FI and CFTC

10/8/2021

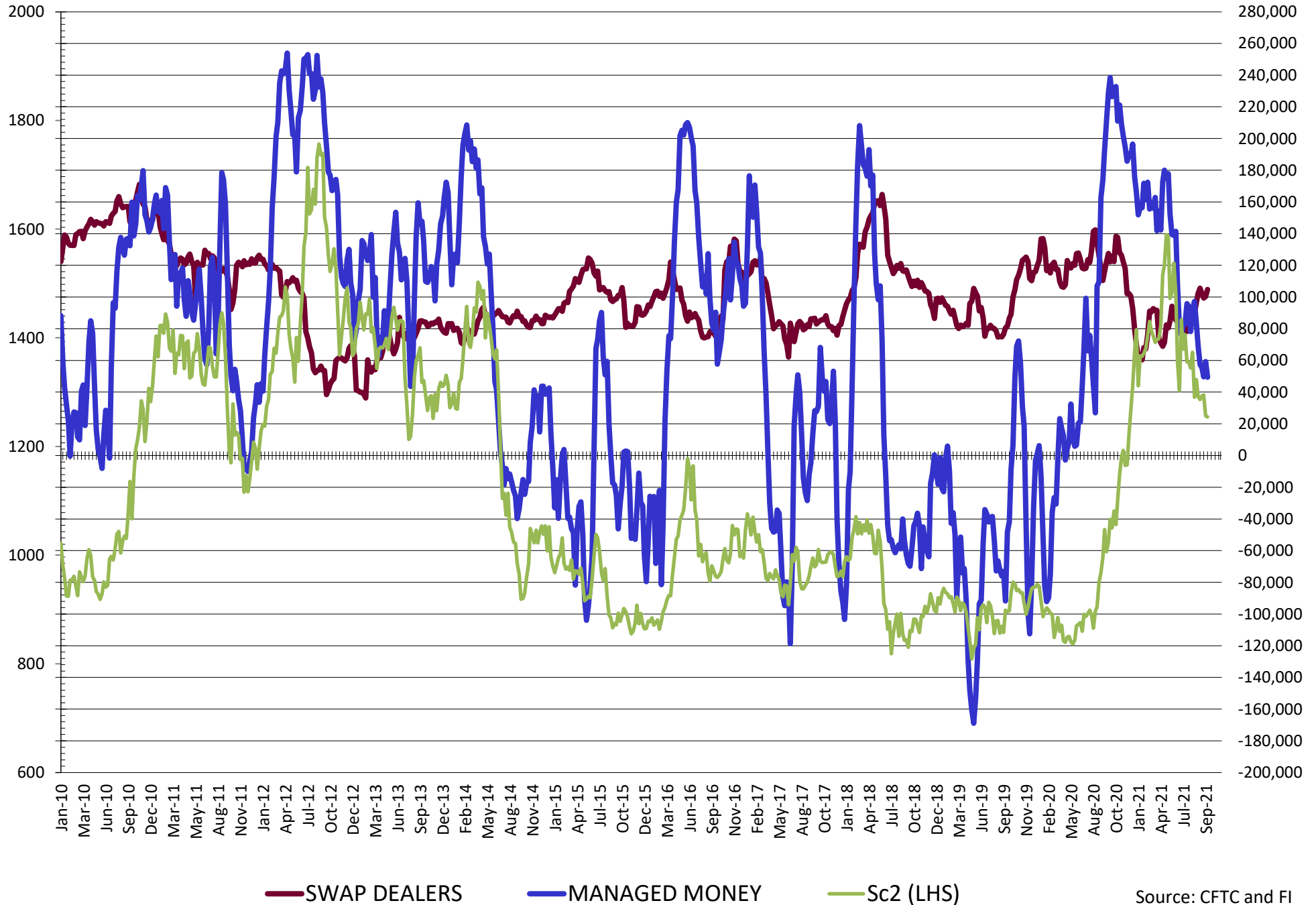
DISAGGREGATED COMMITMENT OF TRADERS
FUTURES & OPTIONS NET POSITIONS
AS OF 10/05/2021
(IN THOUSAND CONTRACTS)

	PRODUCER / MERCHANT / PROCESSOR / USER				(INDEX/ETF) SWAP DEALERS				(CTA/CPO/OTHER UNREGISTERED) MANAGED MONEY			
	5-Oct	28-Sep	21-Sep	14-Sep	5-Oct	28-Sep	21-Sep	14-Sep	5-Oct	28-Sep	21-Sep	14-Sep
	WHEAT											
Chicago	(76.0)	(77.5)	(74.1)	(73.0)	83.3	91.1	85.4	82.6	5.2	(9.8)	(5.5)	(6.0)
Kansas City	(78.6)	(71.4)	(70.4)	(71.6)	33.5	33.3	40.3	40.4	49.9	46.1	39.0	37.6
Minneapolis	(29.3)	(29.7)	(27.5)	(27.4)	1.5	1.6	2.0	1.7	15.3	14.8	12.7	12.9
All Wheat	(184.0)	(178.6)	(172.1)	(172.0)	118.3	126.0	127.7	124.7	70.5	51.1	46.2	44.6
CORN	(469.7)	(459.5)	(441.2)	(436.9)	217.5	227.6	234.6	234.5	250.6	244.7	214.4	212.2
OATS	(1.3)	(1.3)	(1.3)	(1.5)	0.1	0.1	(0.1)	0.1	0.4	0.4	0.4	0.4
SOYBEANS	(120.9)	(131.4)	(122.7)	(135.3)	104.8	100.3	99.4	102.1	49.5	59.3	49.7	55.4
SOY OIL	(185.1)	(154.0)	(142.9)	(152.0)	98.1	98.8	104.7	103.6	75.2	47.5	39.0	47.1
SOY MEAL	(95.2)	(107.0)	(105.9)	(104.5)	85.4	82.5	82.8	84.6	(32.1)	(15.0)	(18.6)	(16.3)

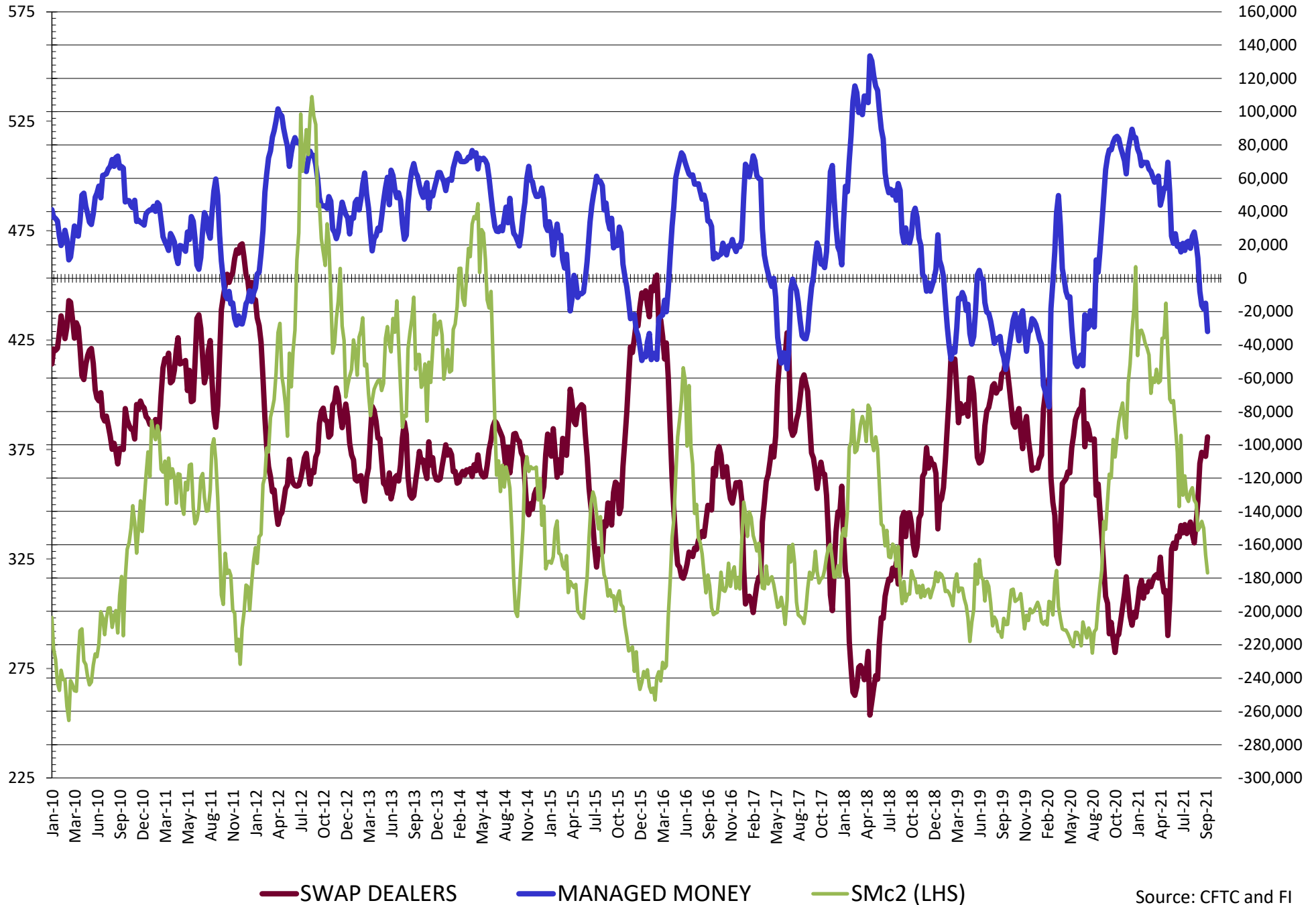
	TOTAL OPEN INTEREST				OTHER REPORTABLE				NON REPORTABLE			
	5-Oct	28-Sep	21-Sep	14-Sep	5-Oct	28-Sep	21-Sep	14-Sep	5-Oct	28-Sep	21-Sep	14-Sep
	WHEAT											
Chicago	459,518	430,091	431,266	434,267	(2.0)	3.3	4.7	8.2	(10.5)	(7.1)	(10.4)	(11.8)
Kansas City	256,057	244,526	244,081	243,759	(5.8)	(6.7)	(8.9)	(7.5)	1.0	(1.3)	0.0	1.1
Minneapolis	80,853	79,382	77,451	77,523	6.3	6.7	6.8	6.1	6.1	6.6	6.0	6.7
All Wheat	796,428	753,999	752,798	755,549	(1.5)	3.4	2.5	6.7	(3.3)	(1.9)	(4.4)	(4.1)
CORN	1,826,338	1,824,772	1,825,578	1,819,484	60.4	52.7	67.3	65.3	(58.9)	(65.5)	(65.5)	(65.5)
OATS	5,305	5,052	4,839	4,691	0.4	0.5	0.5	0.5	0.3	0.4	0.5	0.6
SOYBEANS	908,200	871,342	857,135	845,260	0.7	(2.5)	(0.5)	1.5	(34.0)	(25.7)	(25.8)	(23.6)
SOY OIL	448,531	438,193	445,944	445,998	2.1	2.0	(3.8)	(3.9)	9.7	5.8	2.9	5.3
SOY MEAL	444,953	397,196	406,065	401,560	19.2	20.1	19.7	16.3	22.8	19.4	21.9	20.0

SOURCE: CFTC & FI

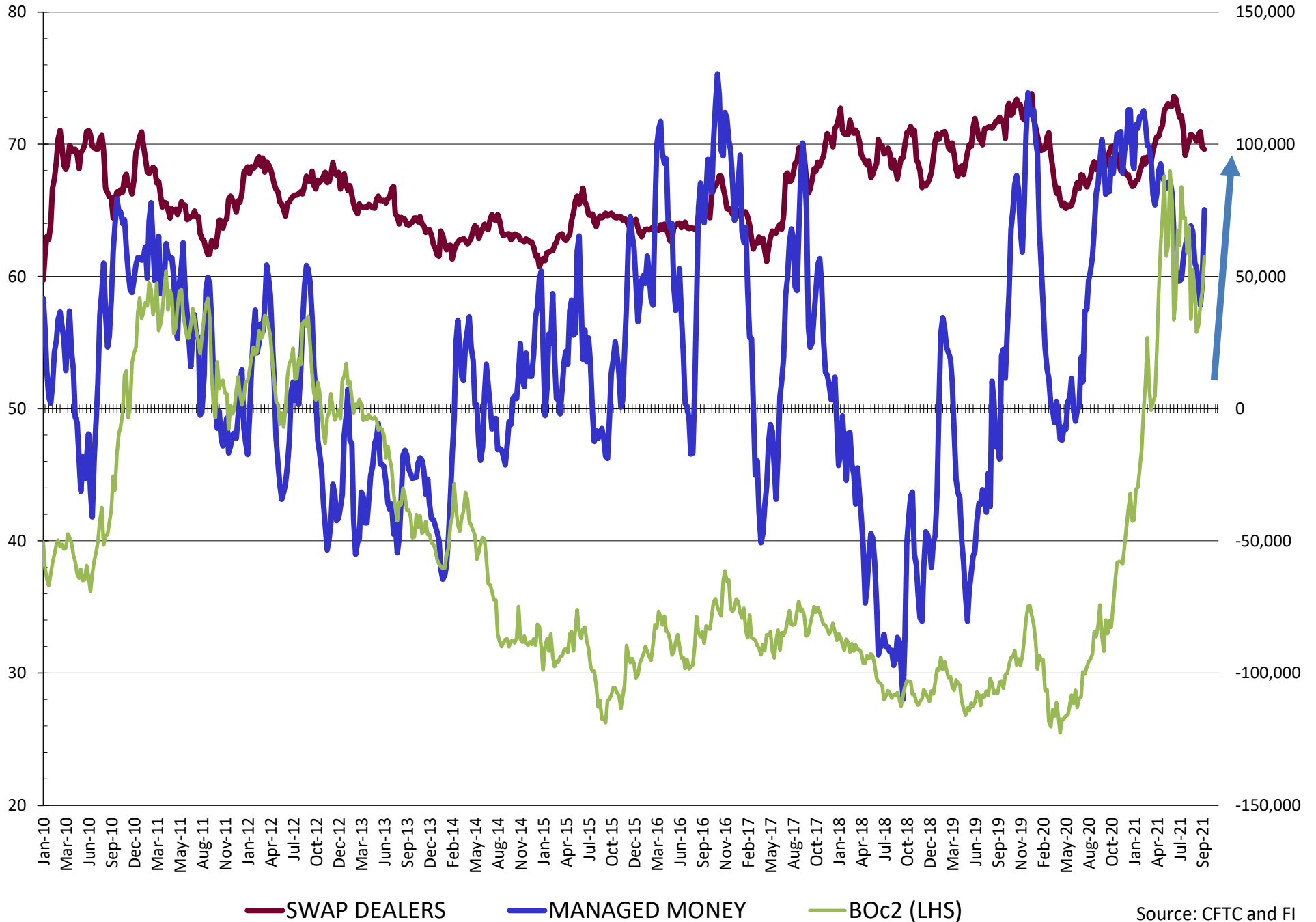
NET POSITION FUTURES AND OPTIONS OF SWAP AND MANAGED FUNDS IN SOYBEANS



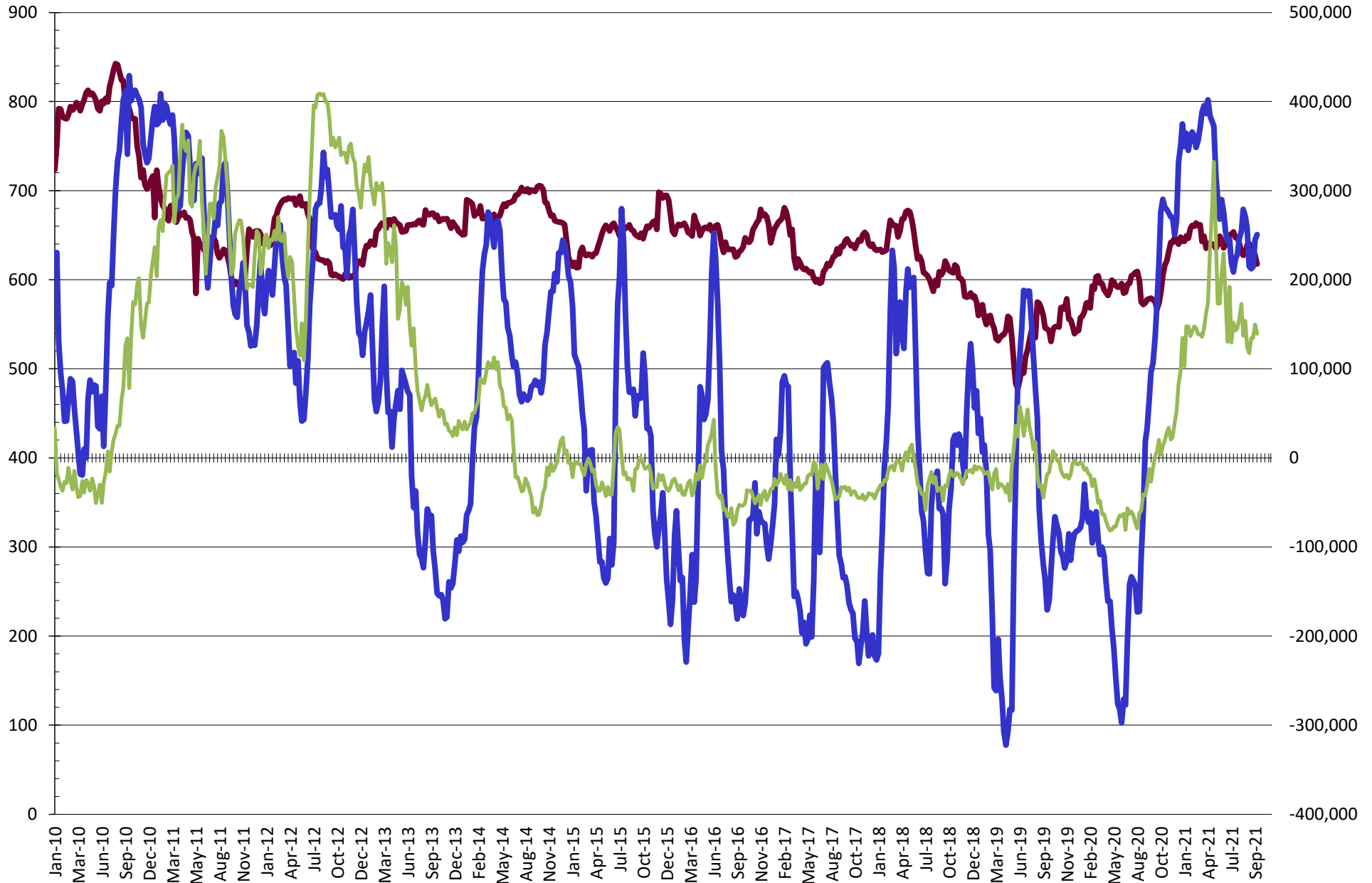
NET POSITION FUTURES AND OPTIONS OF SWAP AND MANAGED FUNDS IN SOYBEAN MEAL



NET POSITION FUTURES AND OPTIONS OF SWAP AND MANAGED FUNDS IN SOYBEAN OIL

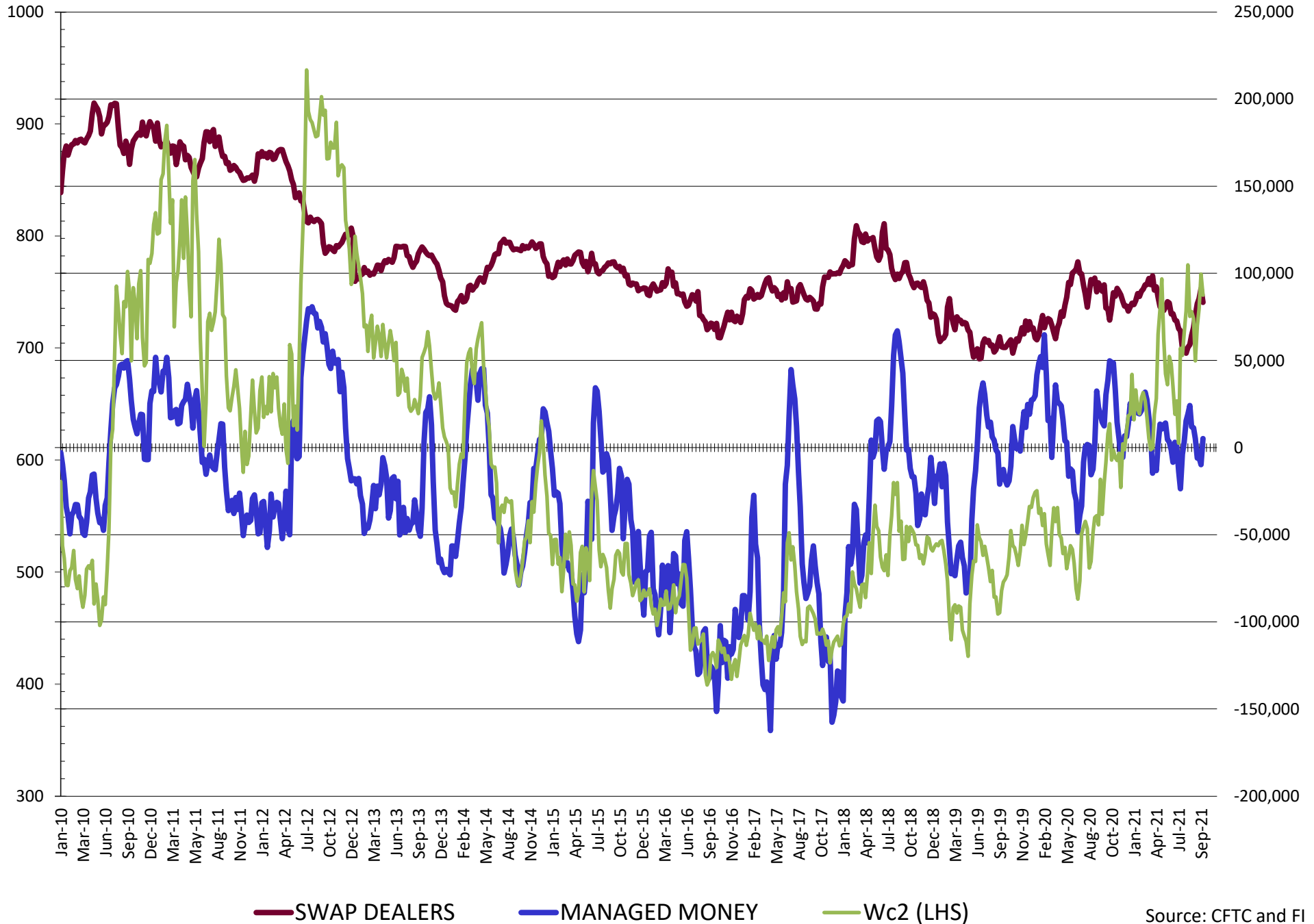


NET POSITION FUTURES AND OPTIONS OF SWAP AND MANAGED FUNDS IN CORN

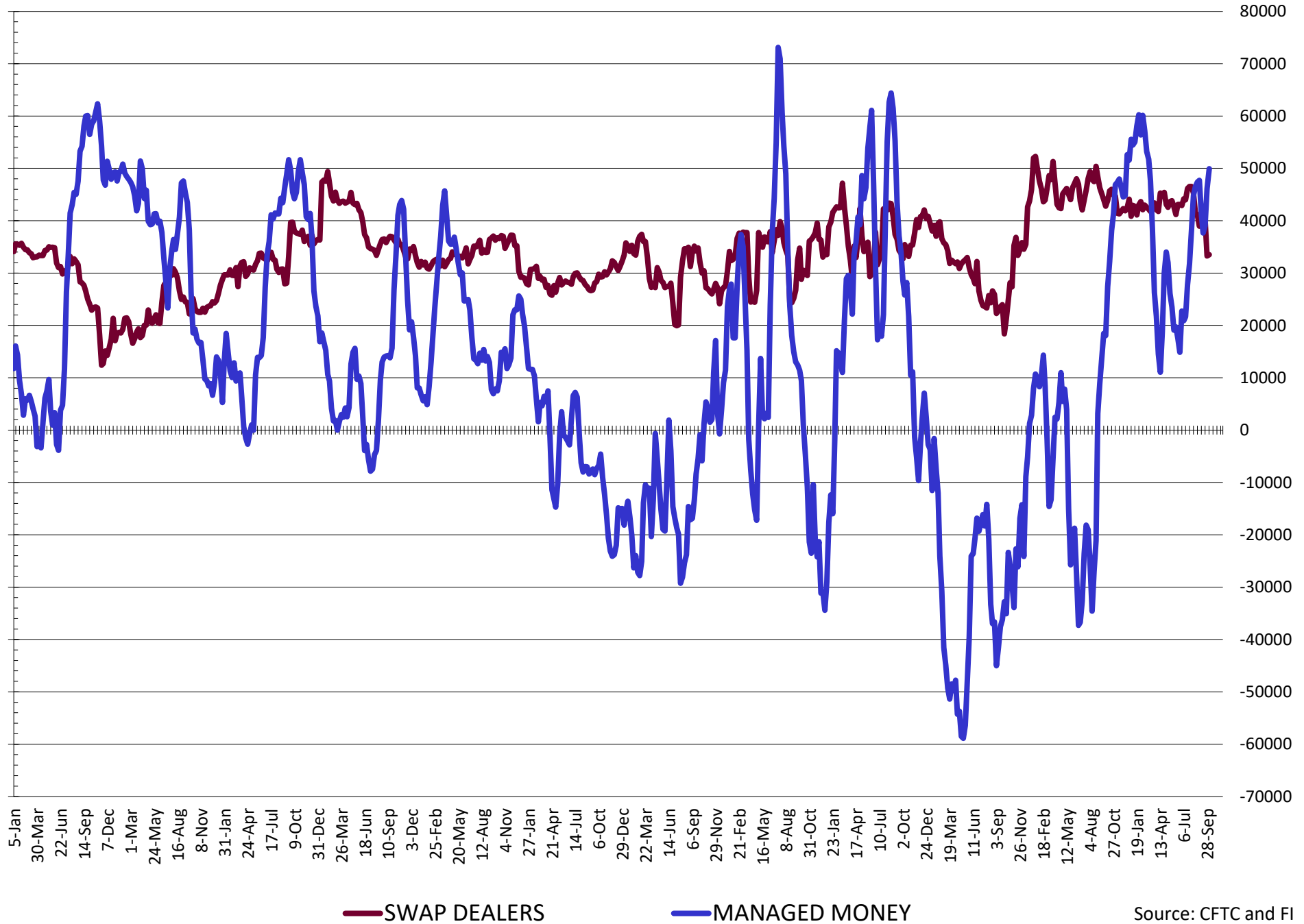


— SWAP DEALERS
 — MANAGED MONEY
 — Cc2 (LHS)

NET POSITION FUTURES AND OPTIONS OF SWAP AND MANAGED FUNDS IN CHICAGO WHEAT

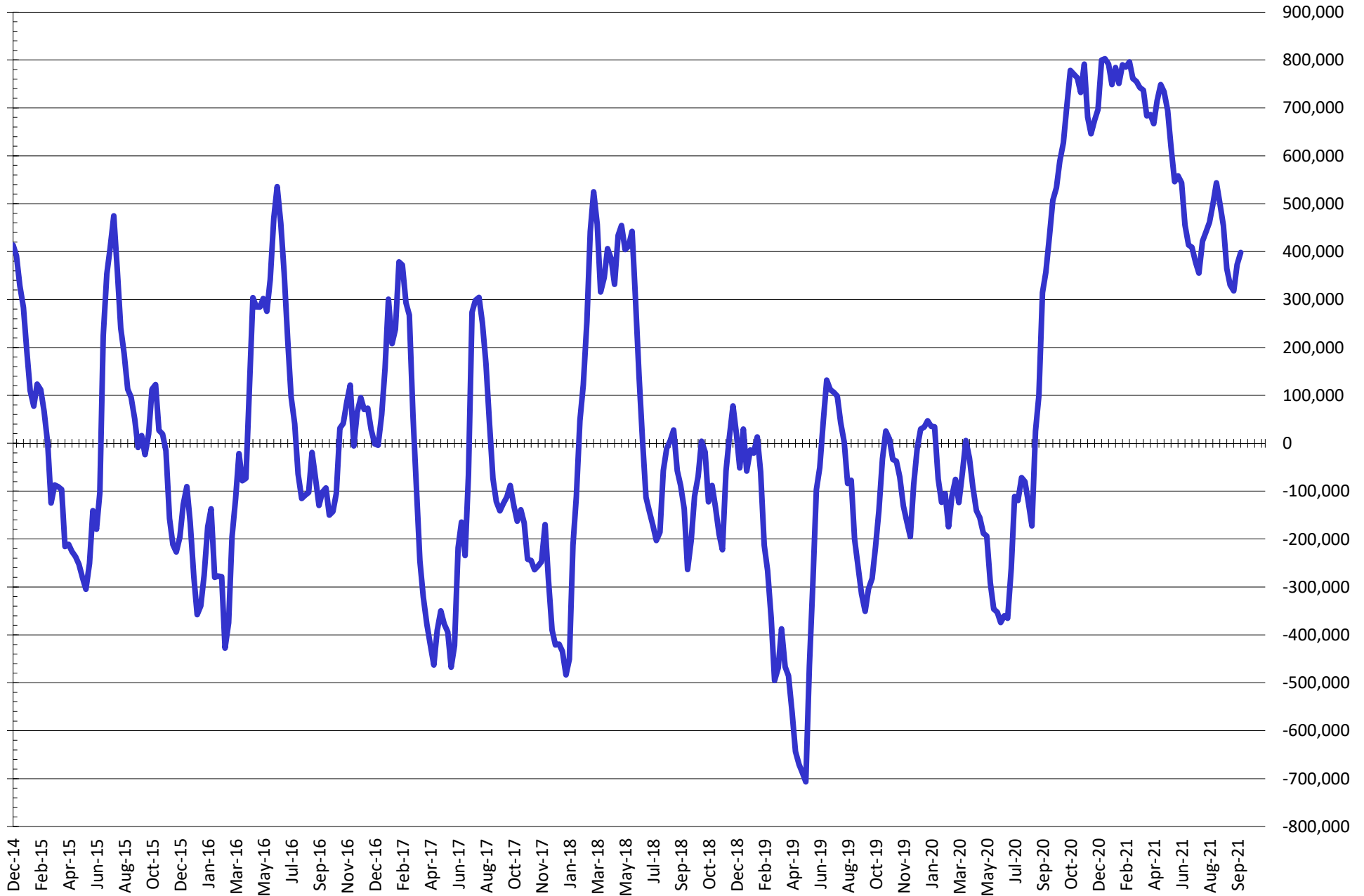


NET POSITION FUTURES AND OPTIONS OF SWAP AND MANAGED FUNDS IN KANSAS WHEAT



Source: CFTC and FI
10/8/2021

NET POSITION FUTURES AND OPTIONS OF SWAP AND MANAGED FUNDS IN COMBINED SRW, HRW, CORN, SOYBEANS, SOYMEAL AND SOYOIL



— Net Managed Money

Source: CFTC and FI
10/8/2021

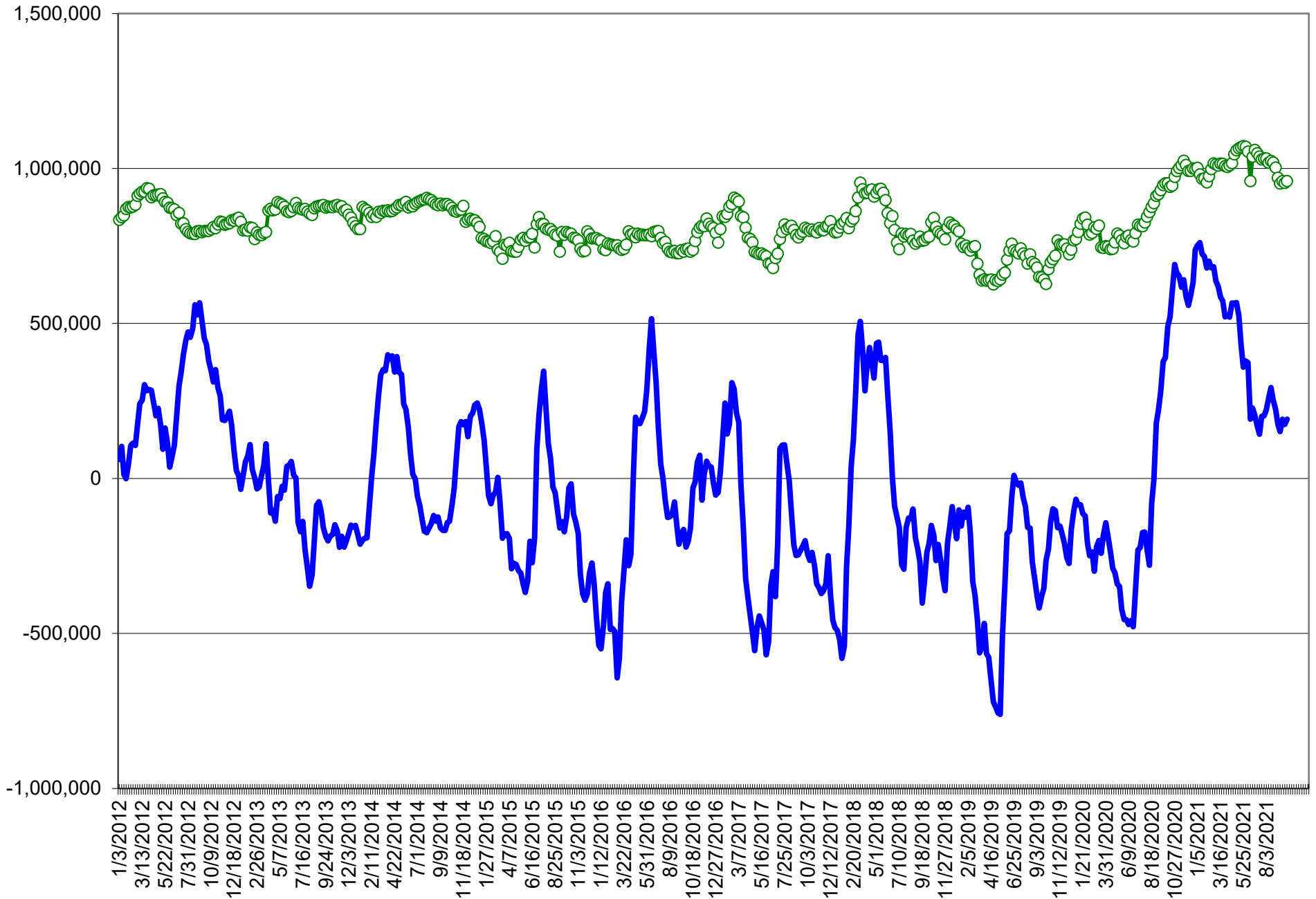
COMMITMENT OF TRADERS
FUTURES & OPTIONS NET POSITIONS (INDEX BROKEN OUT)
AS OF 10/05/2021
(IN THOUSAND CONTRACTS)

	COMMERCIAL				(FUND) NON COMMERCIAL				(SPEC) NON-REPORTABLE			
	5-Oct	28-Sep	21-Sep	14-Sep	5-Oct	28-Sep	21-Sep	14-Sep	5-Oct	28-Sep	21-Sep	14-Sep
	WHEAT											
Chicago	(98.2)	(93.3)	(89.6)	(91.4)	(24.8)	(37.1)	(31.4)	(28.3)	(10.5)	(7.1)	(10.4)	(11.8)
Kansas City	(85.7)	(78.4)	(75.2)	(77.2)	27.3	22.4	13.1	12.9	1.0	(1.3)	0.0	1.1
Minneapolis	-	-	-	-	-	-	-	-	-	-	-	-
All Wheat	(183.9)	(171.7)	(164.8)	(168.6)	2.6	(14.7)	(18.4)	(15.4)	(9.5)	(8.4)	(10.4)	(10.8)
CORN	(496.3)	(485.1)	(462.8)	(460.2)	171.0	170.1	159.2	154.0	(58.9)	(65.5)	(75.0)	(75.2)
OATS	-	-	-	-	-	-	-	-	-	-	-	-
SOYBEANS	(145.0)	(156.6)	(148.4)	(160.0)	(0.3)	9.2	4.6	14.8	(34.0)	(25.7)	(25.8)	(23.6)
SOY OIL	(178.6)	(147.8)	(131.1)	(141.0)	50.3	26.4	14.3	21.5	9.7	5.8	2.9	5.3
SOY MEAL	(76.3)	(91.4)	(90.1)	(87.9)	(32.8)	(17.1)	(21.1)	(24.2)	22.8	19.4	21.9	20.0

	TOTAL OPEN INTEREST				(INDEX) COMMERCIAL INDEX TRADERS				(INDEX) % NET OF TOTAL OPEN INTEREST			
	5-Oct	28-Sep	21-Sep	14-Sep	5-Oct	28-Sep	21-Sep	14-Sep	5-Oct	28-Sep	21-Sep	14-Sep
	WHEAT											
Chicago	459,518	430,091	431,266	434,267	133.4	137.5	131.5	131.5	29.0%	32.0%	30.5%	30.3%
Kansas City	256,057	244,526	244,081	243,759	57.4	57.3	62.1	63.3	22.4%	23.4%	25.4%	26.0%
Minneapolis	-	-	-	-	-	-	-	-	-	-	-	-
All Wheat	715,575	674,617	675,347	678,026	190.8	194.8	193.6	194.8	26.7%	28.9%	28.7%	28.7%
CORN	1,826,338	1,824,772	1,825,578	1,819,484	384.3	380.5	378.6	381.5	21.0%	20.9%	20.7%	21.0%
OATS	-	-	-	-	-	-	-	-	-	-	-	-
SOYBEANS	908,200	871,342	857,135	845,260	179.2	173.1	169.7	168.8	19.7%	19.9%	19.8%	20.0%
SOY OIL	448,531	438,193	445,944	445,998	118.5	115.7	113.8	114.2	26.4%	26.4%	25.5%	25.6%
SOY MEAL	444,953	397,196	406,065	401,560	86.3	89.1	89.2	92.1	19.4%	22.4%	22.0%	22.9%

SOURCE: CFTC & FI

NET POSITION FUTURES AND OPTIONS OF SPECULATORS AND INDEX FUNDS IN COMBINED SRW, HRW, CORN, SOYBEANS, SOYMEAL AND SOYOIL



Source: CFTC and FI

○ Net Index

— Net Speculator

Traditional Daily Estimate of Funds 10/5/21

	(Neg)-"Short"	Pos-"Long"			
Actual less Est.	10.5	(4.3)	(14.1)	(2.3)	15.6
	Corn	Bean	Chi. Wheat	Meal	Oil
Act.	297.0	51.4	7.3	2.5	77.8
6-Oct	(5.0)	(4.0)	2.0	1.0	(5.0)
7-Oct	1.0	3.0	(3.0)	(2.0)	4.0
8-Oct	(2.0)	(3.0)	(5.0)	(1.0)	(1.0)
11-Oct					
12-Oct					
FI Est. of Futures Only 10/5/21	291.0	47.4	1.3	0.5	75.8
FI Est. Futures & Options	305.0	46.2	(2.8)	(14.9)	75.3
Futures only record long "Traditional Funds"	547.7 1/26/2021	280.9 11/10/2020	86.5 8/7/2018	167.5 5/1/2018	160.2 11/1/2016
Futures only record short	(235.0) 6/9/2020	(118.3) 4/30/2019	(130.0) 4/25/2017	(49.5) 3/1/2016	(69.8) 9/18/2018
Futures and options record net long	557.6 1/12/2021	270.9 10/6/2020	64.8 8/7/2012	132.1 5/1/2018	159.2 1/1/2016
Futures and options record net short	(270.6) 4/26/2019	(132.0) 4/30/2019	(143.3) 4/25/2017	(64.1) 3/1/2016	(77.8) 9/18/2018

Managed Money Daily Estimate of Funds 10/5/21

	Corn	Bean	Chi. Wheat	Meal	Oil
Latest CFTC Fut. Only	243.6	47.1	4.6	(31.9)	74.5
Latest CFTC F&O	250.6	49.5	5.2	(32.1)	75.2
FI Est. Managed Fut. Only	238	43	(1)	(34)	72
FI Est. Managed Money F&O	245	45	(1)	(34)	73

Index Funds Latest Positions (as of last Tuesday)

Index Futures & Options	384.3	179.2	133.4	NA	118.5
Change From Previous Week	3.8	6.1	(4.1)	NA	2.8

Source: Reuters, CFTC & FI (FI est. are noted with latest date)

Disclaimer

TO CLIENTS/PROSPECTS OF FUTURES INTERNATIONAL, SEE RISK DISCLOSURE BELOW:

THIS COMMUNICATION IS CONVEYED AS A SOLICITATION FOR ENTERING INTO A DERIVATIVES TRANSACTION.

Any trading recommendations and market or other information to Customer by Futures International (FI), although based upon information obtained from sources believed by FI to be reliable may not be accurate and may be changed without notice to customer. FI makes no guarantee as to the accuracy or completeness of any of the information or recommendations furnished to Customer. Customer understands that FI, its managers, employees and/or affiliates may have a position in commodity futures, options or other derivatives which may not be consistent with the recommendations furnished by FI to Customer.

The risk of trading futures and options and other derivatives involves a substantial risk of loss and is not suitable for all persons. In purchasing an option, the risk is limited to the premium paid, and all commissions and fees involved with the trade. When an option is shorted or written, the writer of the option has unlimited risk with respect to the option written. The use of options strategies such as a straddles and strangles involve multiple option positions and may substantially increase the amount of commissions and fees paid to execute the strategy. Option prices do not necessarily move in tandem with cash or futures prices. Each person must consider whether a particular trade, combination of trades or strategy is suitable for that person's financial means and objectives.