

Traditional Daily Estimate of Funds 10/19/21

	(Neg)-"Short"	Pos-"Long"			
Actual less Est.	(8.3)	(13.5)	(9.1)	(0.3)	(2.2)
	Corn	Bean	Chi. Wheat	Meal	Oil
Act.	277.0	43.5	(8.6)	9.1	87.1
20-Oct	10.0	11.0	9.0	5.0	9.0
21-Oct	(8.0)	(12.0)	(6.0)	(3.0)	(7.0)
22-Oct	4.0	(3.0)	8.0	3.0	(1.0)
25-Oct					
26-Oct					
FI Est. of Futures Only 10/19/21	283.0	39.5	2.4	14.1	88.1
FI Est. Futures & Options	292.0	32.4	(7.1)	(4.1)	83.9
Futures only record long "Traditional Funds"	547.7 1/26/2021	280.9 11/10/2020	86.5 8/7/2018	167.5 5/1/2018	160.2 11/1/2016
Futures only record short	(235.0) 6/9/2020	(118.3) 4/30/2019	(130.0) 4/25/2017	(49.5) 3/1/2016	(69.8) 9/18/2018
Futures and options record net long	557.6 1/12/2021	270.9 10/6/2020	64.8 8/7/2012	132.1 5/1/2018	159.2 1/1/2016
Futures and options record net short	(270.6) 4/26/2019	(132.0) 4/30/2019	(143.3) 4/25/2017	(64.1) 3/1/2016	(77.8) 9/18/2018

Managed Money Daily Estimate of Funds 10/19/21

	Corn	Bean	Chi. Wheat	Meal	Oil
Latest CFTC Fut. Only	211.7	15.3	(19.5)	(32.3)	81.0
Latest CFTC F&O	219.6	18.2	(17.7)	(32.2)	82.2
	Corn	Bean	Chi. Wheat	Meal	Oil
FI Est. Managed Fut. Only	218	11	(8)	(27)	82
FI Est. Managed Money F&O	226	14	(7)	(27)	83

Index Funds Latest Positions (as of last Tuesday)

Index Futures & Options	383.7	176.7	125.4	NA	119.9
Change From Previous Week	(3.9)	(3.9)	(2.5)	NA	1.9

Source: Reuters, CFTC & FI (FI est. are noted with latest date)

**COMMITMENT OF TRADERS
FUTURES ONLY NET POSITIONS
AS OF 10/19/2021
(IN THOUSAND CONTRACTS)**

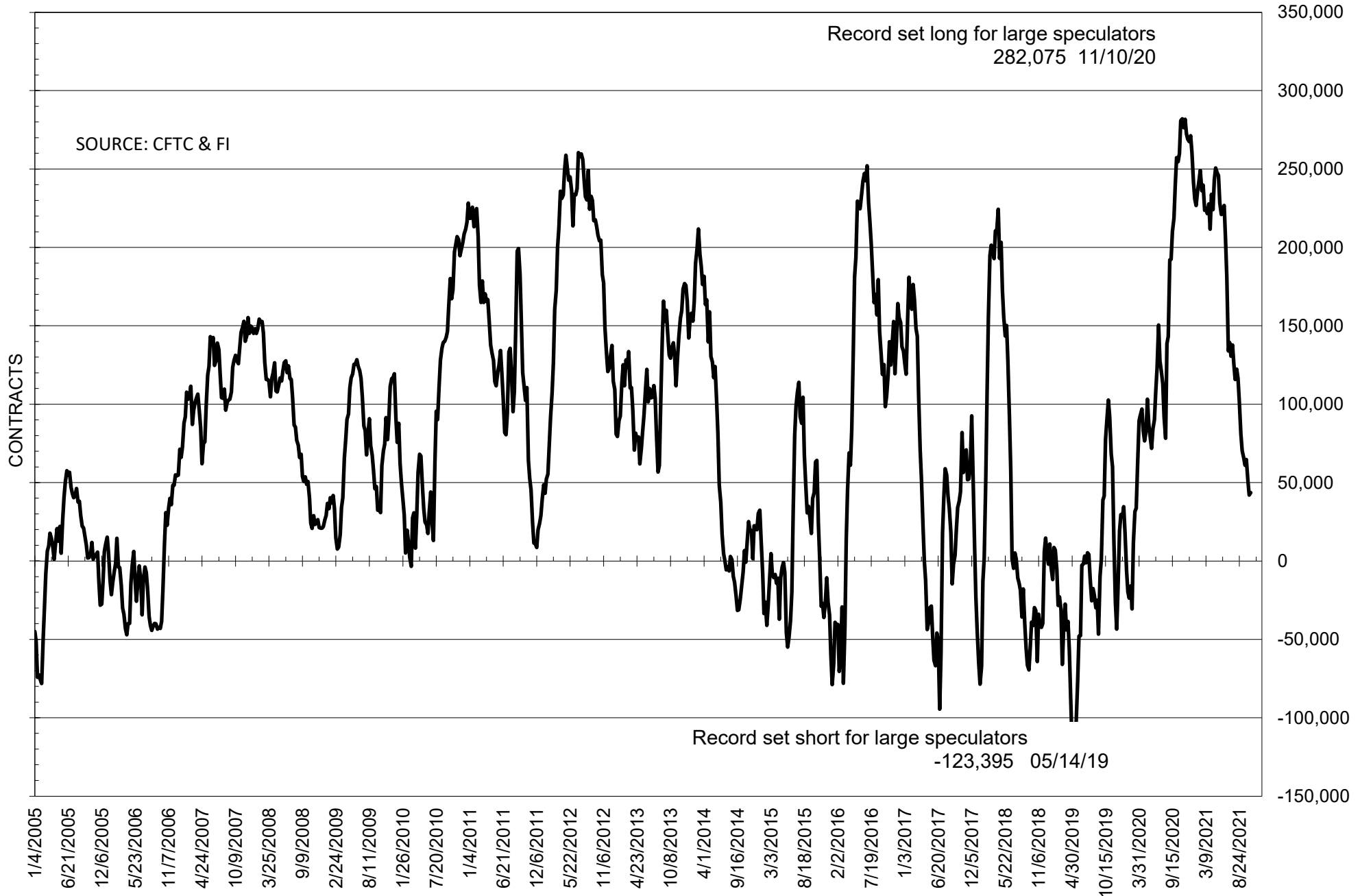
	COMMERCIAL				(FUND) NON COMMERCIAL				(SPEC) NON-REPORTABLE			
	19-Oct	12-Oct	5-Oct	28-Sep	19-Oct	12-Oct	5-Oct	28-Sep	19-Oct	12-Oct	5-Oct	28-Sep
	WHEAT											
Chicago	18.2	13.0	3.7	11.5	-8.6	-4.5	7.3	-3.6	-9.6	-8.4	-11.0	-7.8
Kansas City	-43.2	-45.0	-46.5	-40.0	42.2	44.3	45.7	41.5	0.9	0.7	0.8	-1.5
Minneapolis	-31.4	-29.7	-28.7	-29.1	26.2	24.5	22.9	23.0	5.3	5.2	5.7	6.1
All Wheat	-56.4	-61.7	-71.5	-57.7	59.8	64.3	75.9	60.9	-3.4	-2.6	-4.4	-3.2
CORN	-218.2	-223.3	-237.6	-215.1	277.0	279.3	297.0	278.5	-58.9	-56.0	-59.4	-63.5
OATS	-0.7	-1.0	-1.1	-1.2	0.6	0.6	0.7	0.7	0.1	0.3	0.4	0.4
SOYBEANS	-9.6	-9.7	-22.6	-42.6	43.5	42.0	51.4	64.7	-34.0	-32.3	-28.8	-22.2
SOY OIL	-97.5	-84.8	-87.2	-56.3	87.1	75.3	77.8	51.2	10.5	9.5	9.4	5.1
SOY MEAL	-32.2	-18.1	-22.2	-30.3	9.1	-2.6	2.5	13.8	23.1	20.6	19.7	16.5

Oats positions thin to be reported

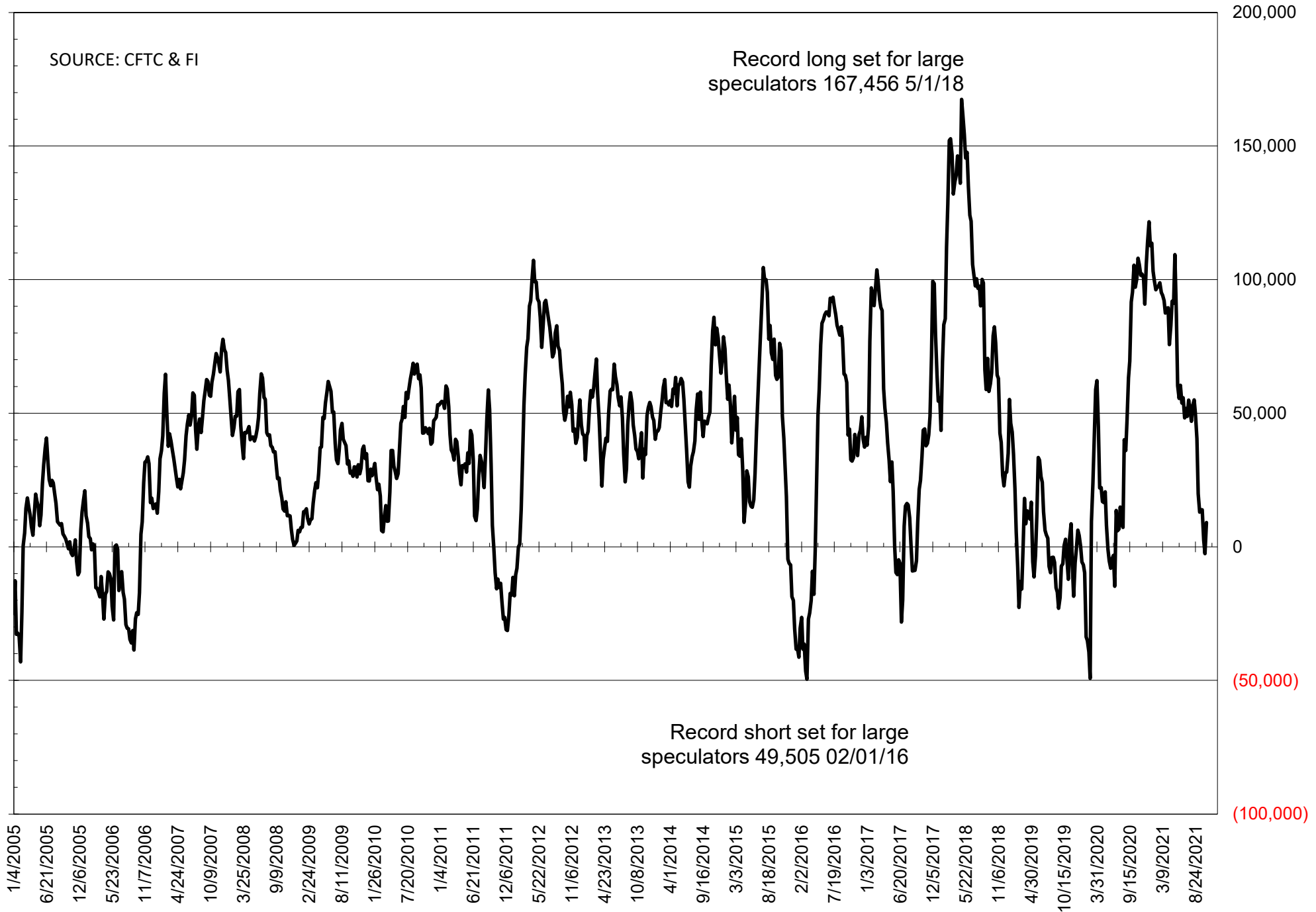
	TOTAL OPEN INTEREST				NEARBY FUTURES PRICE					19-Oct-21 LAST REPORTED % HELD BY TRADERS			
	19-Oct	12-Oct	5-Oct	28-Sep	X/Z Latest	X/Z 19-Oct	X/Z 12-Oct	X/Z 5-Oct	V/X/Z 28-Sep	LARGE FUND		SMALL	
										LONG	SHORT	LONG	SHORT
WHEAT													
Chicago	394949	385204	373320	358631	756.00	736.00	734.00	744.75	706.50	0%	27%	0%	10%
Kansas City	235946	234627	230413	224674	774.00	748.25	738.75	741.00	705.00	0%	20%	0%	9%
Minneapolis	76183	76406	75798	74446	1016.50	974.25	955.00	925.00	907.25	0%	4%	0%	14%
CORN	1404126	1400377	1397458	1394022	538.00	530.25	522.50	537.50	532.50	0%	8%	0%	13%
OATS	5210	5228	5014	4759	667.25	656.00	648.00	594.75	583.25	0%	5%	0%	45%
SOYBEANS	750939	759101	715835	686272	1220.50	1228.00	1198.25	1250.50	1277.00	18%	13%	7%	11%
SOY OIL	416033	401384	388128	382917	62.09	62.39	53.20	61.14	57.46	0%	7%	0%	5%
SOY MEAL	441345	423431	399931	362115	327.40	322.60	313.00	321.20	339.50	0%	18%	0%	7%

SOURCE: CFTC & FI

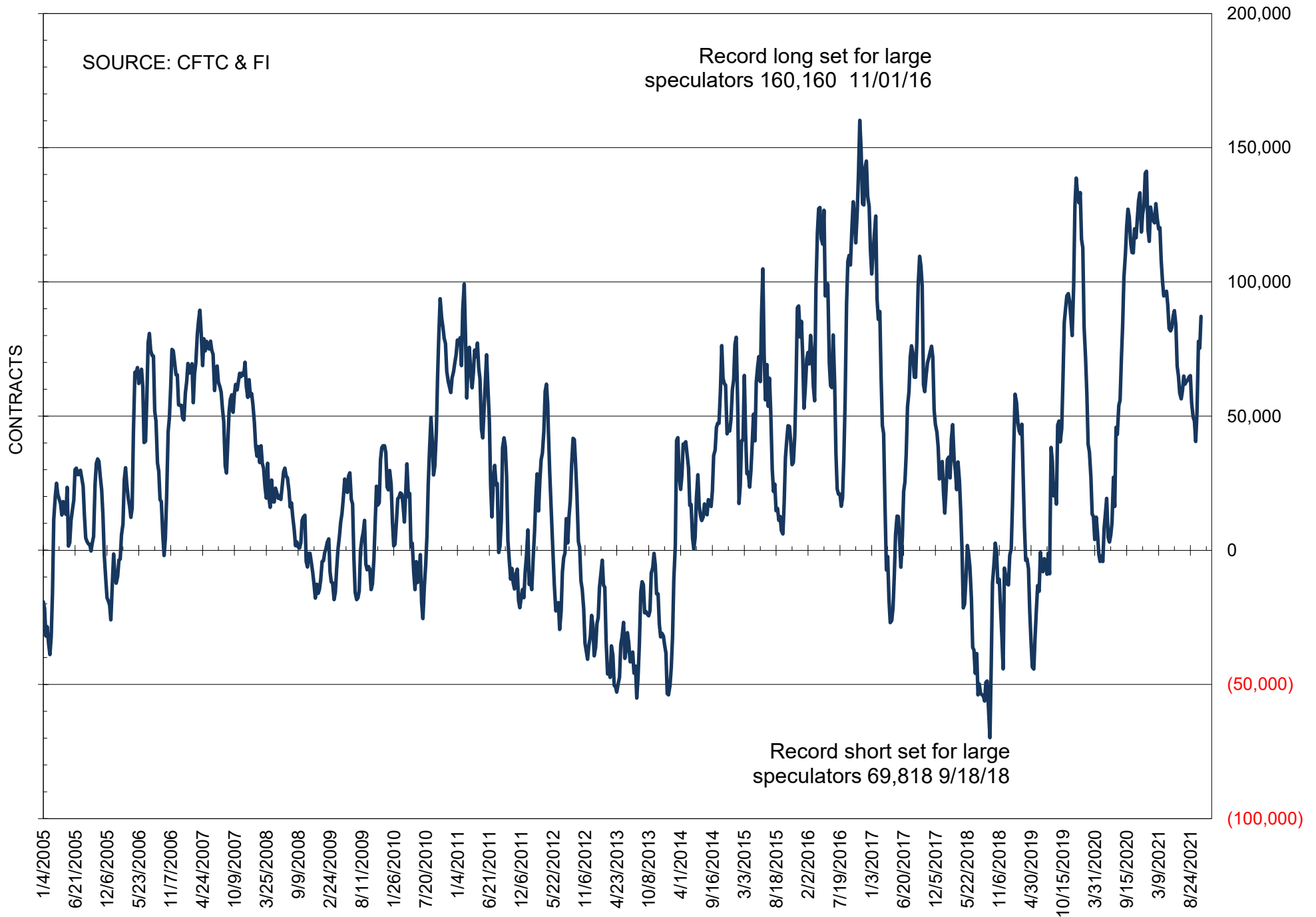
NET POSITION OF FUTURES ONLY LARGE SPECS IN SOYBEANS



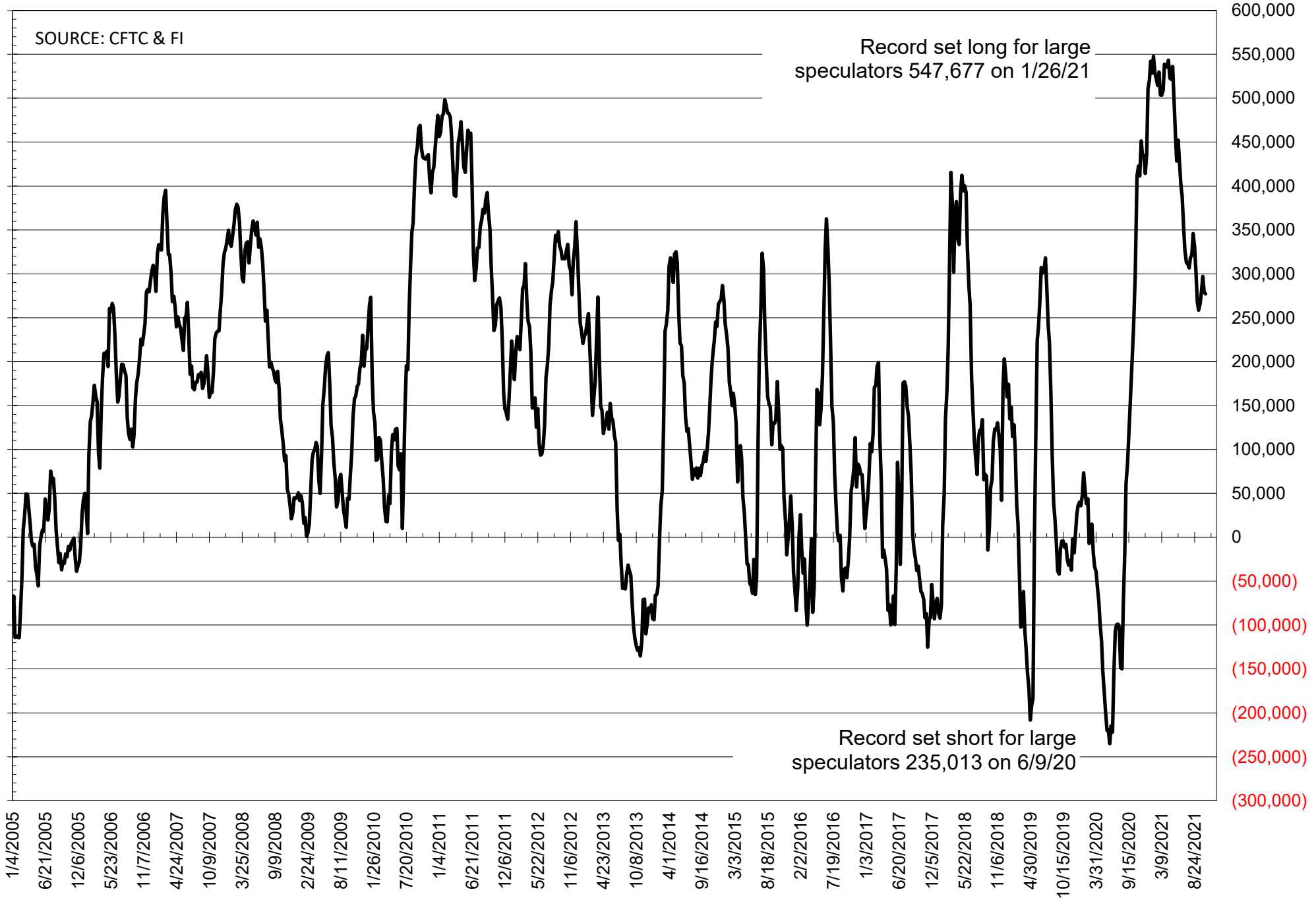
NET POSITION OF FUTURES ONLY LARGE SPECS IN SOYMEAL



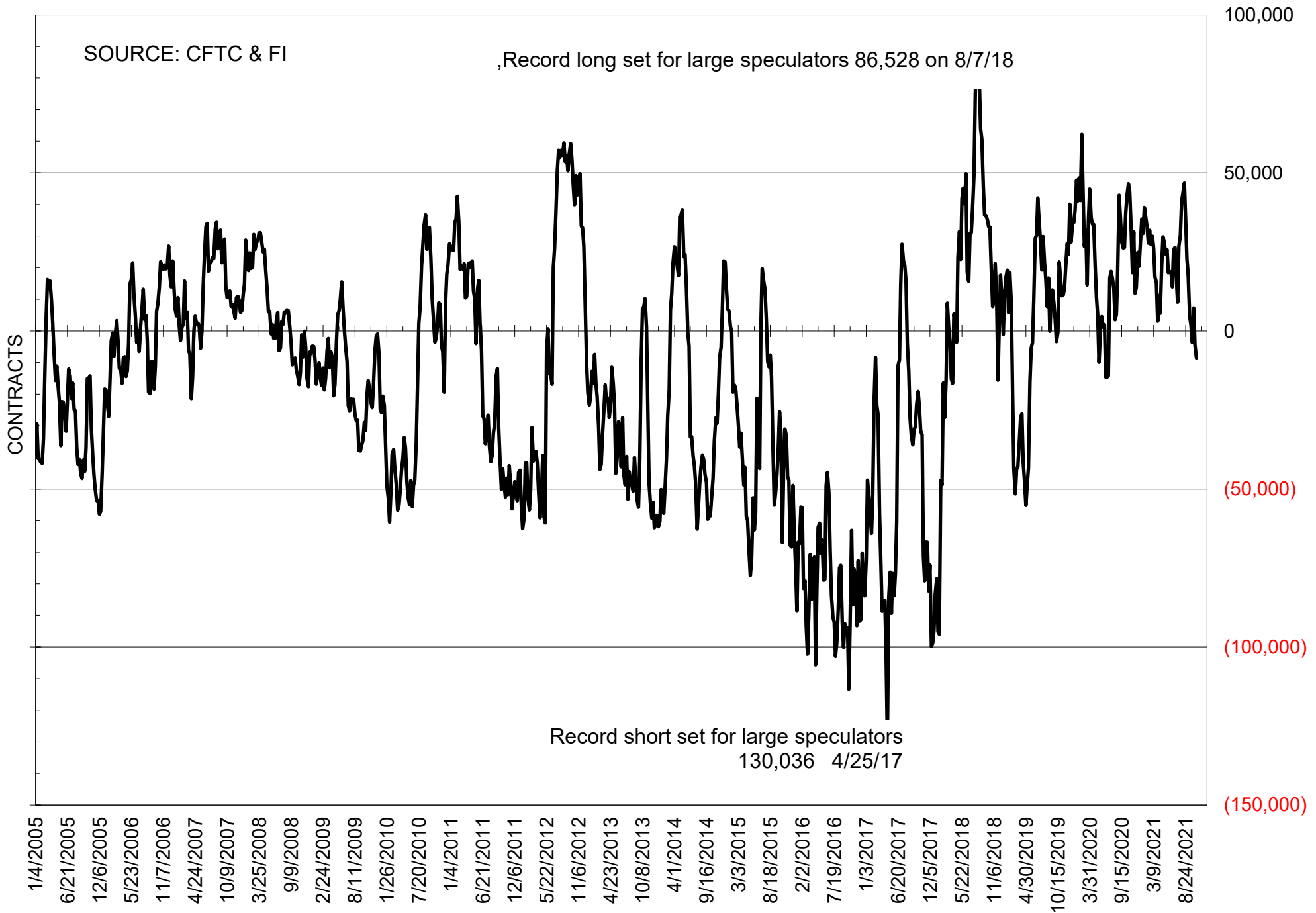
NET POSITION OF FUTURES ONLY LARGE SPECS IN SOYOIL



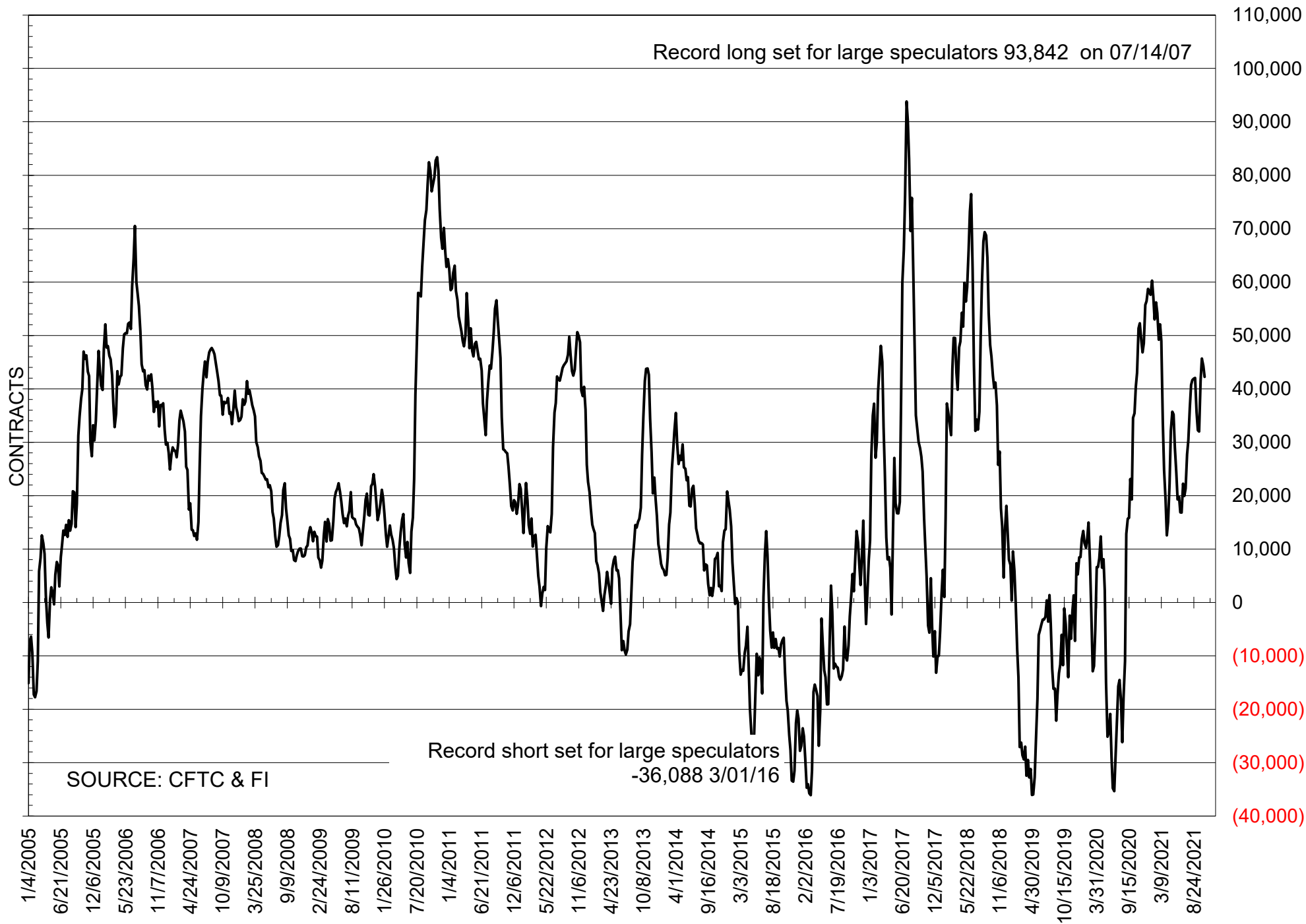
NET POSITION OF LARGE SPECULATORS IN CORN



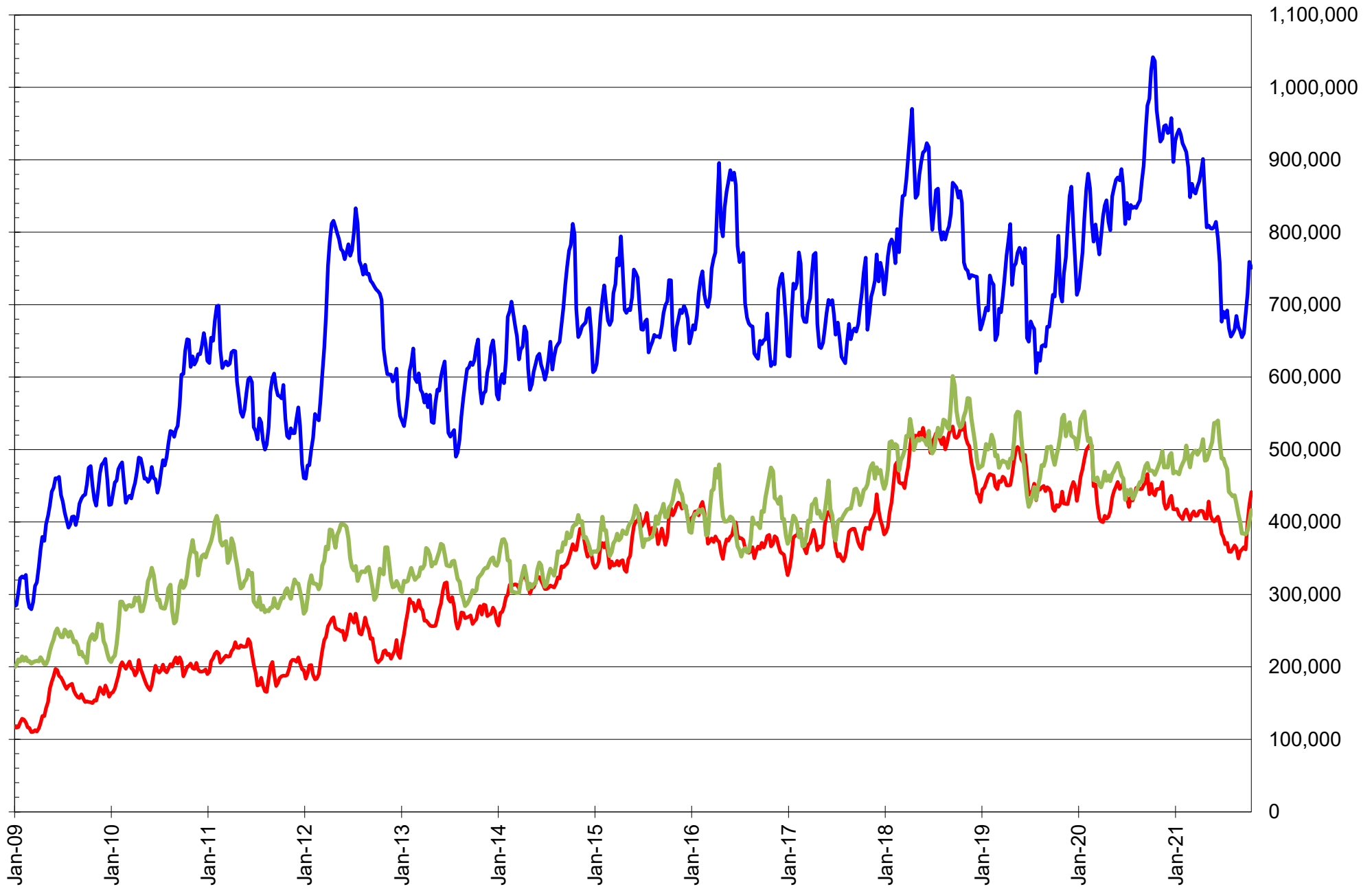
NET POSITION OF FUTURES ONLY LARGE SPECS IN CHICAGO WHEAT



NET POSITION OF LARGE SPECULATORS IN KANSAS CITY WHEAT



TOTAL OPEN INTEREST IN SOYBEANS, MEAL AND OIL, FUTURES ONLY



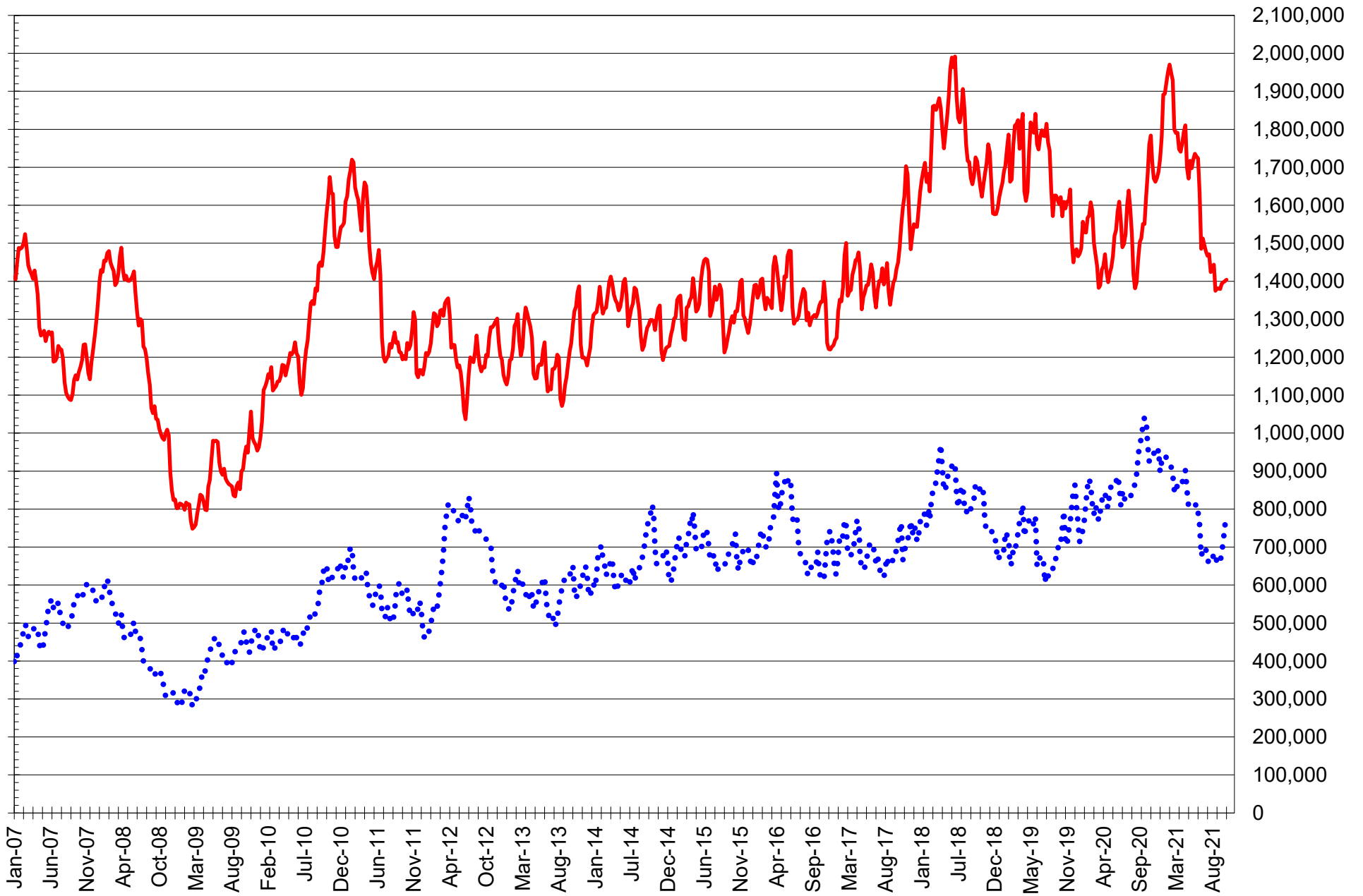
SOURCE: CFTC & FI

— SOYBEANS

— SOYBEAN MEAL

— SOYBEAN OIL

TOTAL OPEN INTEREST IN CORN AND SOYBEANS, FUTURES ONLY



SOURCE: CFTC & FI

— CORN

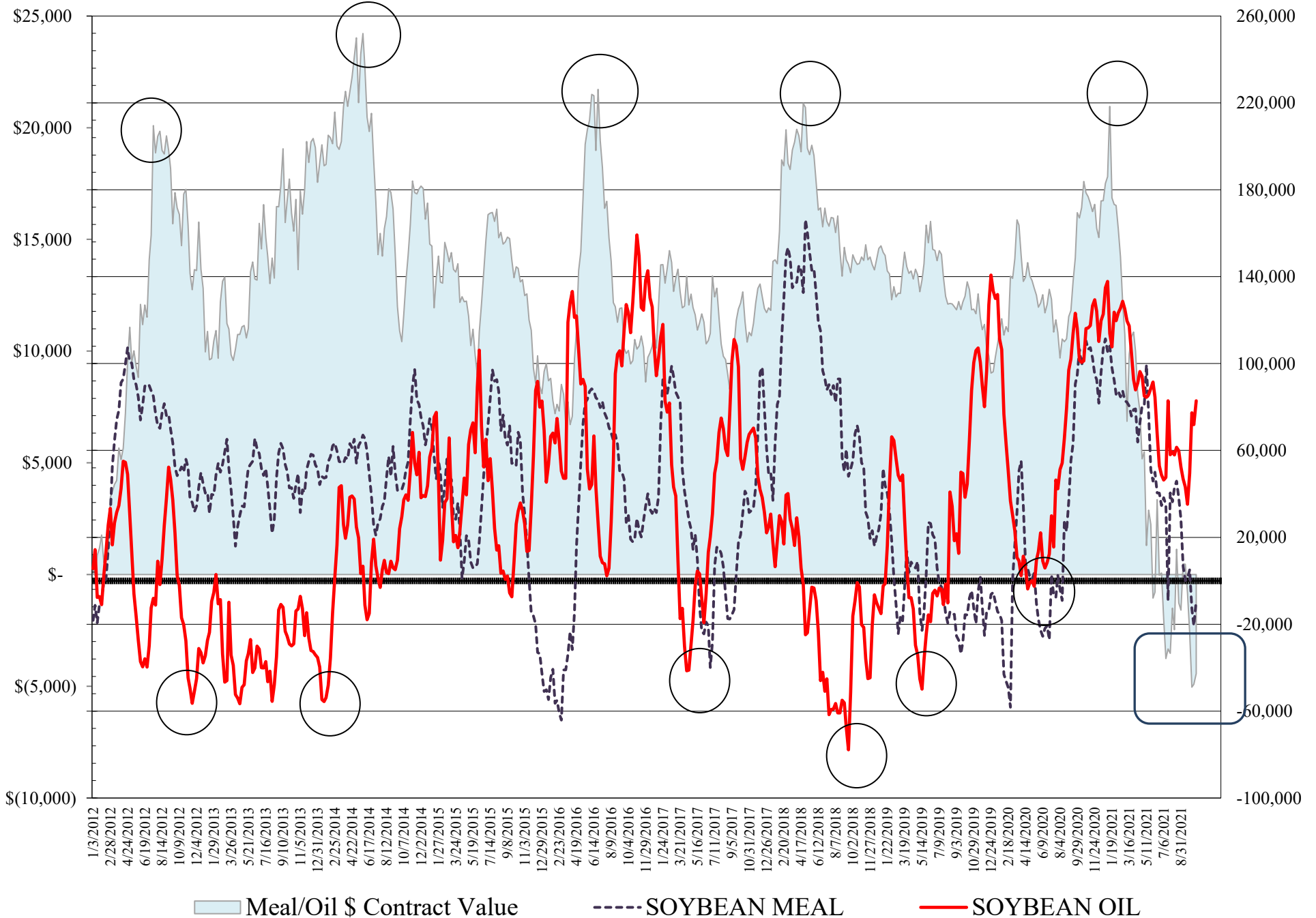
..... SOYBEANS

**COMMITMENT OF TRADERS
FUTURES & OPTIONS NET POSITIONS
AS OF 10/19/2021
(IN THOUSAND CONTRACTS)**

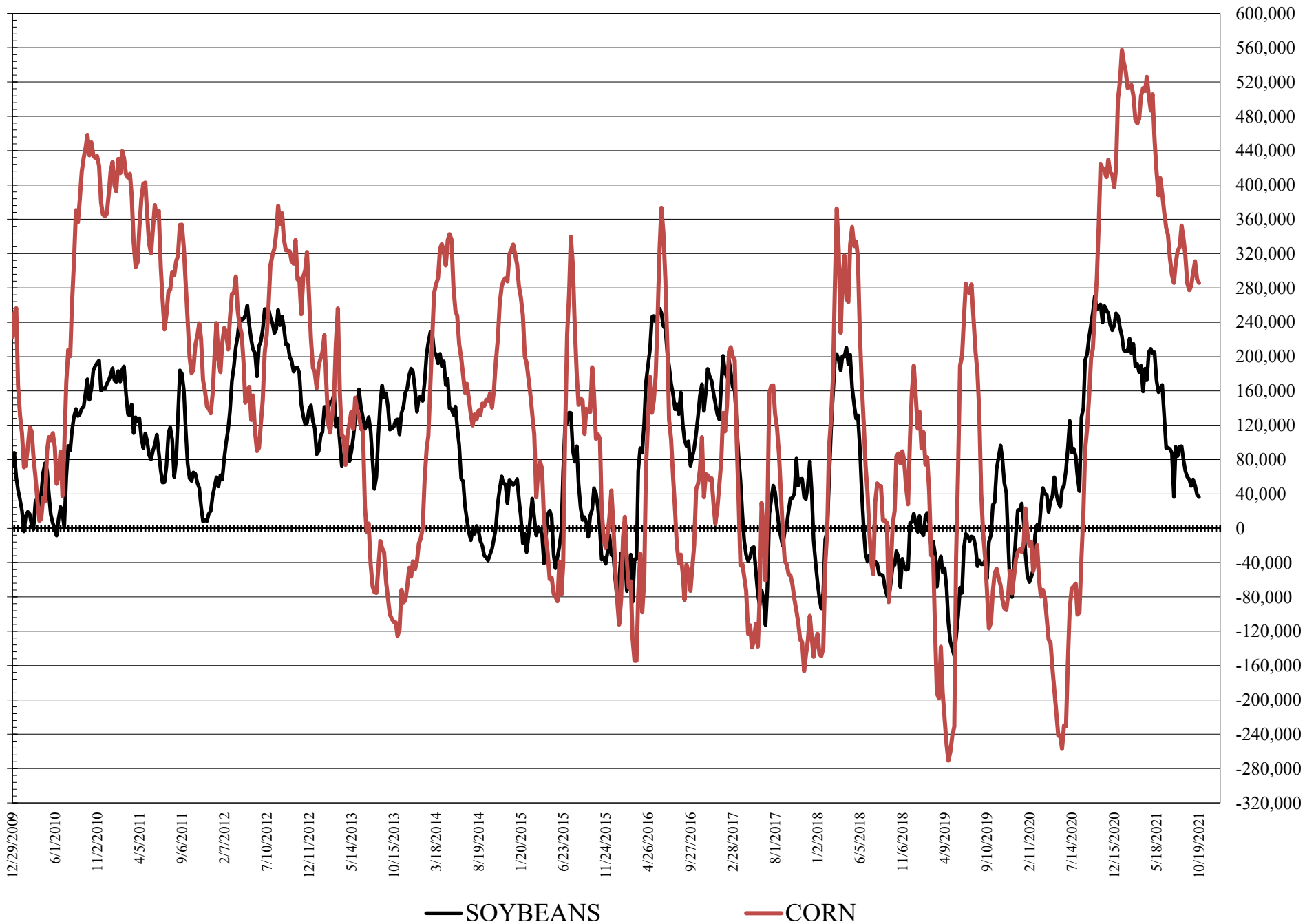
	COMMERCIAL				(FUND) NON COMMERCIAL				(SPEC) NON-REPORTABLE			
	19-Oct	12-Oct	5-Oct	28-Sep	19-Oct	12-Oct	5-Oct	28-Sep	19-Oct	12-Oct	5-Oct	28-Sep
	WHEAT											
Chicago	27.1	19.0	7.3	13.6	-18.1	-11.3	3.2	-6.5	-9.0	-7.7	-10.5	-7.1
Kansas City	-41.8	-43.2	-45.2	-38.1	40.6	42.3	44.1	39.5	1.2	0.9	1.0	-1.3
Minneapolis	-30.2	-29.1	-27.8	-28.1	24.5	23.5	21.7	21.5	5.6	5.6	6.1	6.6
All Wheat	-44.9	-53.2	-65.6	-52.6	47.1	54.4	69.0	54.5	-2.2	-1.2	-3.3	-1.9
CORN	-228.2	-230.3	-252.2	-231.9	286.0	290.3	311.0	297.4	-57.8	-59.9	-58.9	-65.5
OATS	-0.8	-1.0	-1.2	-1.2	0.6	0.7	0.8	0.8	0.1	0.3	0.3	0.4
SOYBEANS	1.6	1.5	-16.2	-31.1	36.5	39.2	50.2	56.8	-38.1	-40.6	-34.0	-25.7
SOY OIL	-93.8	-82.1	-87.1	-55.2	82.9	71.9	77.3	49.5	11.0	10.2	9.7	5.8
SOY MEAL	-17.4	-3.2	-9.9	-24.5	-9.1	-20.6	-12.9	5.1	26.6	23.8	22.8	19.4
	TOTAL OPEN INTEREST				COMMERCIALS		% HELD BY TRADERS					
	19-Oct	12-Oct	5-Oct	28-Sep	LONG	SHORT	LARGE (FUNDS)		SMALL (NON-REP)			
							LONG	SHORT	LONG	SHORT		
WHEAT												
Chicago	487,060	470,730	459,518	430,091	40%	35%	17%	21%	7%	9%		
Kansas City	262,312	260,494	256,057	244,526	34%	50%	33%	18%	9%	9%		
Minneapolis	82,149	81,687	80,853	79,382	35%	72%	34%	4%	21%	14%		
CORN	1,830,900	1,830,438	1,826,338	1,824,772	44%	57%	20%	4%	9%	13%		
OATS	5,692	5,696	5,305	5,052								
SOYBEANS	963,784	978,147	908,200	871,342	54%	53%	13%	9%	6%	10%		
SOY OIL	481,777	460,957	448,531	438,193	46%	66%	23%	6%	7%	4%		
SOY MEAL	490,823	470,906	444,953	397,196	49%	53%	14%	16%	12%	7%		

SOURCE: CFTC & FI

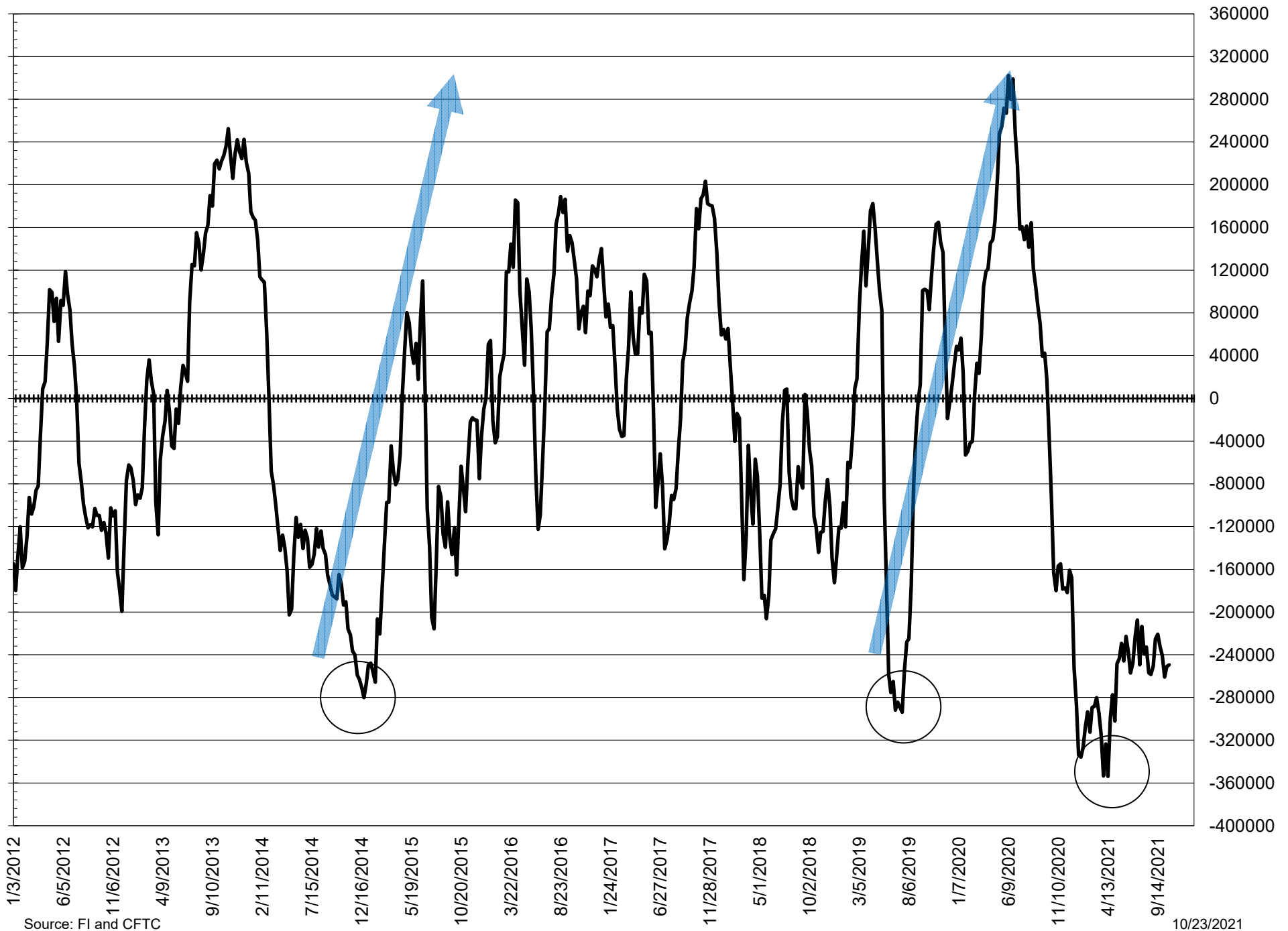
NET POSITION FUTURES AND OPTIONS OF LARGE SPECULATORS IN SOYBEAN MEAL AND SOYBEAN OIL



NET POSITION FUTURES AND OPTIONS OF LARGE SPECULATORS IN SOYBEANS AND CORN



NET POSITION FUTURES AND OPTIONS SPREAD OF LARGE SPECULATORS IN SOYBEANS MINUS CORN



Source: FI and CFTC

10/23/2021

**DISAGGREGATED COMMITMENT OF TRADERS
FUTURES ONLY NET POSITIONS
AS OF 10/19/2021
(IN THOUSAND CONTRACTS)**

	PRODUCER / MERCHANT / PROCESSOR / USER				(INDEX/ETF) SWAP DEALERS				(CTA/CPO/OTHER UNREGISTERED) MANAGED MONEY				
	19-Oct	12-Oct	5-Oct	28-Sep	19-Oct	12-Oct	5-Oct	28-Sep	19-Oct	12-Oct	5-Oct	28-Sep	
	WHEAT												
Chicago	(66.9)	(73.8)	(82.1)	(81.2)	85.1	86.7	85.8	92.6	(19.5)	(10.0)	4.6	(12.9)	
Kansas City	(75.9)	(77.8)	(80.3)	(73.4)	32.7	32.8	33.8	33.4	46.5	47.5	49.2	45.6	
Minneapolis	(32.8)	(31.0)	(29.7)	(30.2)	1.4	1.3	1.1	1.1	16.2	15.7	15.2	14.7	
All Wheat	(175.6)	(182.5)	(192.2)	(184.8)	119.2	120.8	120.7	127.1	43.2	53.2	69.0	47.4	
CORN	(460.2)	(465.5)	(475.7)	(464.5)	242.0	242.1	238.1	249.4	211.7	218.2	243.6	235.0	
OATS	(0.8)	(1.1)	(1.2)	(1.3)	0.1	0.1	0.1	0.1	0.3	0.4	0.4	0.4	
SOYBEANS	(102.4)	(106.5)	(120.4)	(136.8)	92.9	96.9	97.8	94.3	15.3	24.2	47.1	57.1	
SOY OIL	(197.7)	(185.7)	(184.9)	(155.0)	100.2	100.9	97.7	98.8	81.0	72.9	74.5	47.6	
SOY MEAL	(115.9)	(101.8)	(104.7)	(111.7)	83.8	83.7	82.5	81.5	(32.3)	(40.2)	(31.9)	(15.0)	
Managed % of OI													
									Chicago W	-5%	-3%	1%	-4%
									Corn	15%	16%	17%	17%
	TOTAL OPEN INTEREST				OTHER REPORTABLE				NON REPORTABLE				
	19-Oct	12-Oct	5-Oct	28-Sep	19-Oct	12-Oct	5-Oct	28-Sep	19-Oct	12-Oct	5-Oct	28-Sep	
	WHEAT												
Chicago	394,949	385,204	373,320	358,631	10.9	5.4	2.7	9.3	(9.6)	(8.4)	(11.0)	(7.8)	
Kansas City	235,946	234,627	230,413	224,674	(4.3)	(3.2)	(3.5)	(4.1)	0.9	0.7	0.8	(1.5)	
Minneapolis	76,183	76,406	75,798	74,446	10.0	8.8	7.7	8.3	5.3	5.2	5.7	6.1	
All Wheat	707,078	696,237	679,531	657,751	16.7	11.1	6.9	13.5	(3.4)	(2.6)	(4.4)	(3.2)	
CORN	1,404,126	1,400,377	1,397,458	1,394,022	65.4	61.0	53.4	43.5	(58.9)	(56.0)	(59.4)	(63.5)	
OATS	5,210	5,228	5,014	4,759	0.2	0.3	0.3	0.4	0.1	0.3	0.4	0.4	
SOYBEANS	750,939	759,101	715,835	686,272	28.3	17.8	4.3	7.6	(34.0)	(32.3)	(28.8)	(22.2)	
SOY OIL	416,033	401,384	388,128	382,917	6.1	2.4	3.4	3.5	10.5	9.5	9.4	5.1	
SOY MEAL	441,345	423,431	399,931	362,115	41.4	37.6	34.4	28.8	23.1	20.6	19.7	16.5	

SOURCE: CFTC & FI

10/23/2021

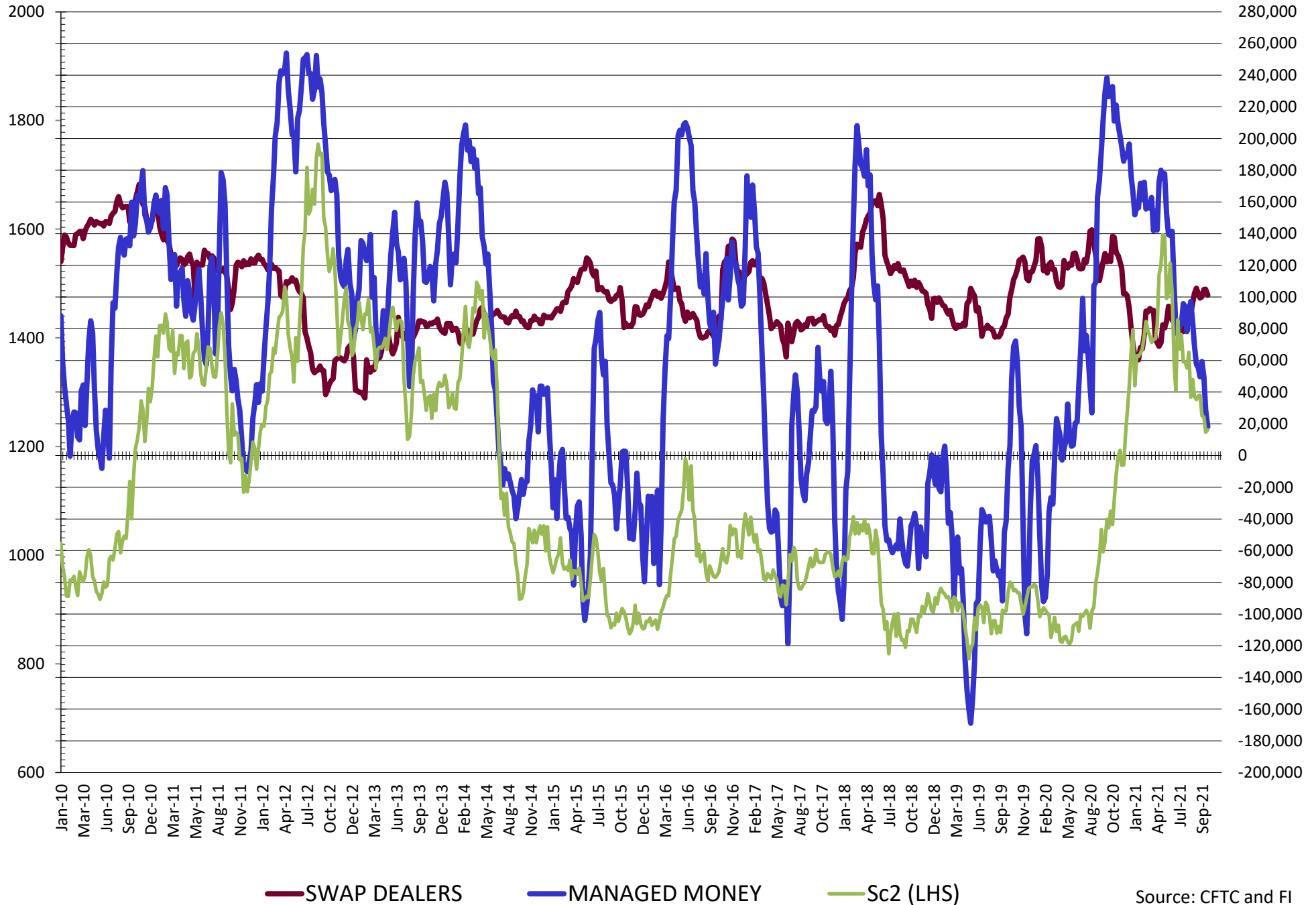
**DISAGGREGATED COMMITMENT OF TRADERS
FUTURES & OPTIONS NET POSITIONS
AS OF 10/19/2021
(IN THOUSAND CONTRACTS)**

	PRODUCER / MERCHANT / PROCESSOR / USER				(INDEX/ETF) SWAP DEALERS				(CTA/CPO/OTHER UNREGISTERED) MANAGED MONEY			
	19-Oct	12-Oct	5-Oct	28-Sep	19-Oct	12-Oct	5-Oct	28-Sep	19-Oct	12-Oct	5-Oct	28-Sep
	WHEAT											
Chicago	(55.8)	(65.2)	(76.0)	(77.5)	82.8	84.3	83.3	91.1	(17.7)	(8.5)	5.2	(9.8)
Kansas City	(74.0)	(75.7)	(78.6)	(71.4)	32.1	32.5	33.5	33.3	47.4	48.3	49.9	46.1
Minneapolis	(31.8)	(30.6)	(29.3)	(29.7)	1.7	1.6	1.5	1.6	16.3	15.9	15.3	14.8
All Wheat	(161.5)	(171.5)	(184.0)	(178.6)	116.6	118.3	118.3	126.0	46.0	55.6	70.5	51.1
CORN	(452.7)	(455.6)	(469.7)	(459.5)	224.5	225.2	217.5	227.6	219.6	227.9	250.6	244.7
OATS	(0.9)	(1.1)	(1.3)	(1.3)	0.1	0.1	0.1	0.1	0.3	0.4	0.4	0.4
SOYBEANS	(99.5)	(103.4)	(120.9)	(131.4)	101.1	104.9	104.8	100.3	18.2	29.1	49.5	59.3
SOY OIL	(194.5)	(183.4)	(185.1)	(154.0)	100.7	101.3	98.1	98.8	82.2	73.0	75.2	47.5
SOY MEAL	(103.8)	(90.0)	(95.2)	(107.0)	86.3	86.8	85.4	82.5	(32.2)	(40.3)	(32.1)	(15.0)

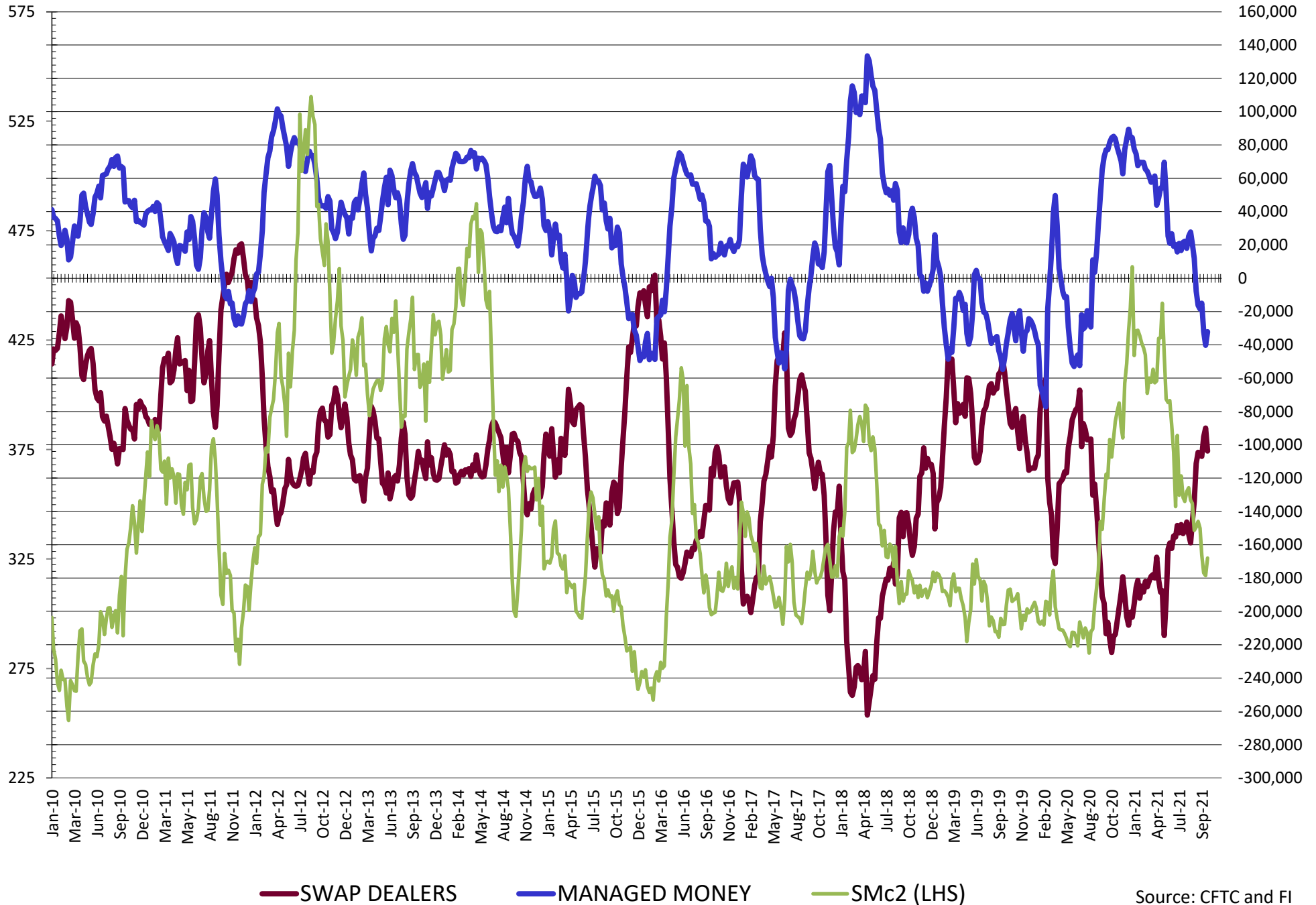
	TOTAL OPEN INTEREST				OTHER REPORTABLE				NON REPORTABLE			
	19-Oct	12-Oct	5-Oct	28-Sep	19-Oct	12-Oct	5-Oct	28-Sep	19-Oct	12-Oct	5-Oct	28-Sep
	WHEAT											
Chicago	487,060	470,730	459,518	430,091	(0.3)	(2.8)	(2.0)	3.3	(9.0)	(7.7)	(10.5)	(7.1)
Kansas City	262,312	260,494	256,057	244,526	(6.7)	(6.0)	(5.8)	(6.7)	1.2	0.9	1.0	(1.3)
Minneapolis	82,149	81,687	80,853	79,382	8.2	7.6	6.3	6.7	5.6	5.6	6.1	6.6
All Wheat	831,521	812,911	796,428	753,999	1.1	(1.2)	(1.5)	3.4	(2.2)	(1.2)	(3.3)	(1.9)
CORN	1,830,900	1,830,438	1,826,338	1,824,772	66.4	62.3	60.4	52.7	(57.8)	(59.9)	(59.9)	(59.9)
OATS	5,692	5,696	5,305	5,052	0.3	0.3	0.4	0.5	0.1	0.3	0.3	0.4
SOYBEANS	963,784	978,147	908,200	871,342	18.3	10.1	0.7	(2.5)	(38.1)	(40.6)	(34.0)	(25.7)
SOY OIL	481,777	460,957	448,531	438,193	0.7	(1.1)	2.1	2.0	11.0	10.2	9.7	5.8
SOY MEAL	490,823	470,906	444,953	397,196	23.0	19.7	19.2	20.1	26.6	23.8	22.8	19.4

SOURCE: CFTC & FI

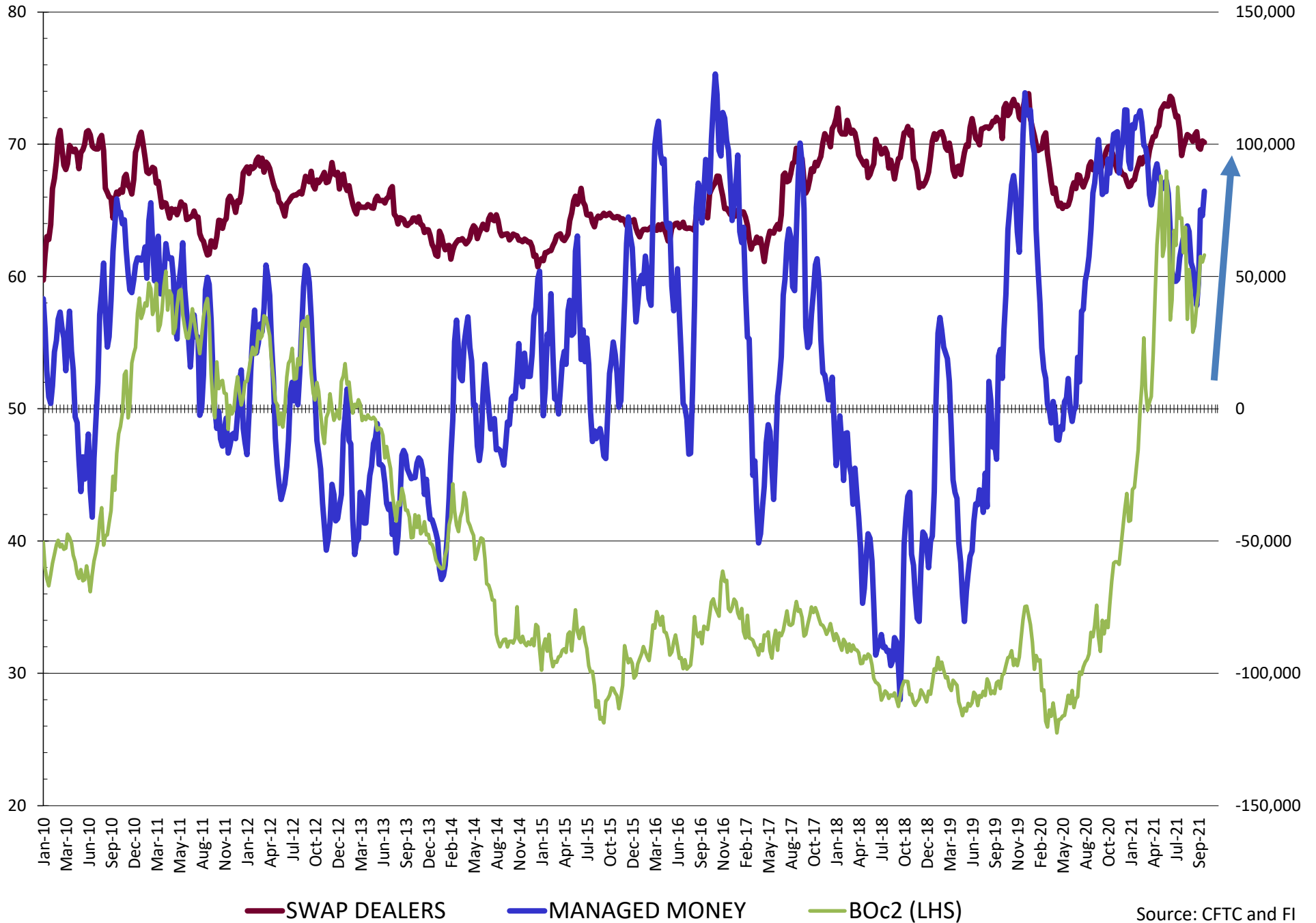
NET POSITION FUTURES AND OPTIONS OF SWAP AND MANAGED FUNDS IN SOYBEANS



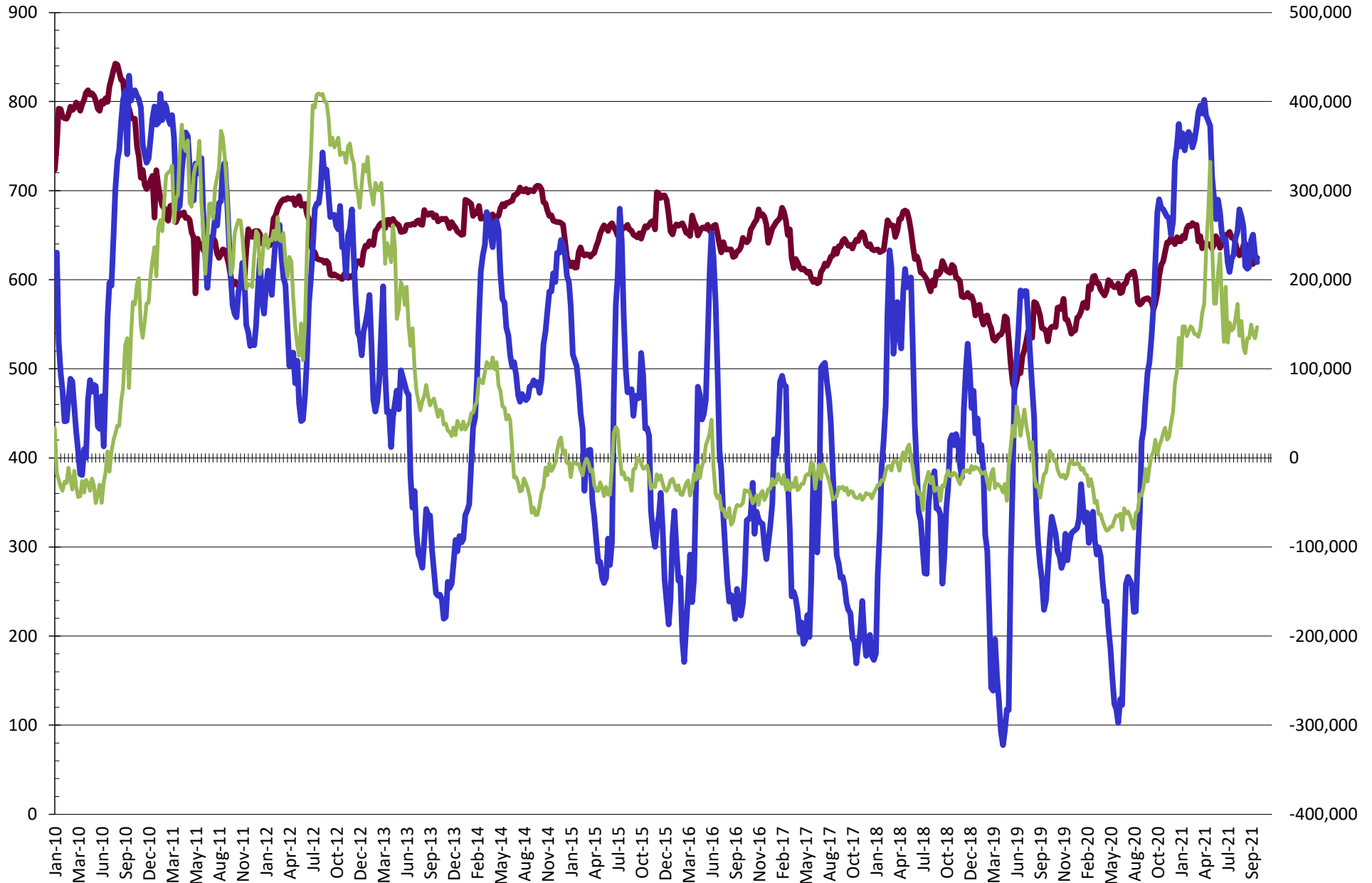
NET POSITION FUTURES AND OPTIONS OF SWAP AND MANAGED FUNDS IN SOYBEAN MEAL



NET POSITION FUTURES AND OPTIONS OF SWAP AND MANAGED FUNDS IN SOYBEAN OIL

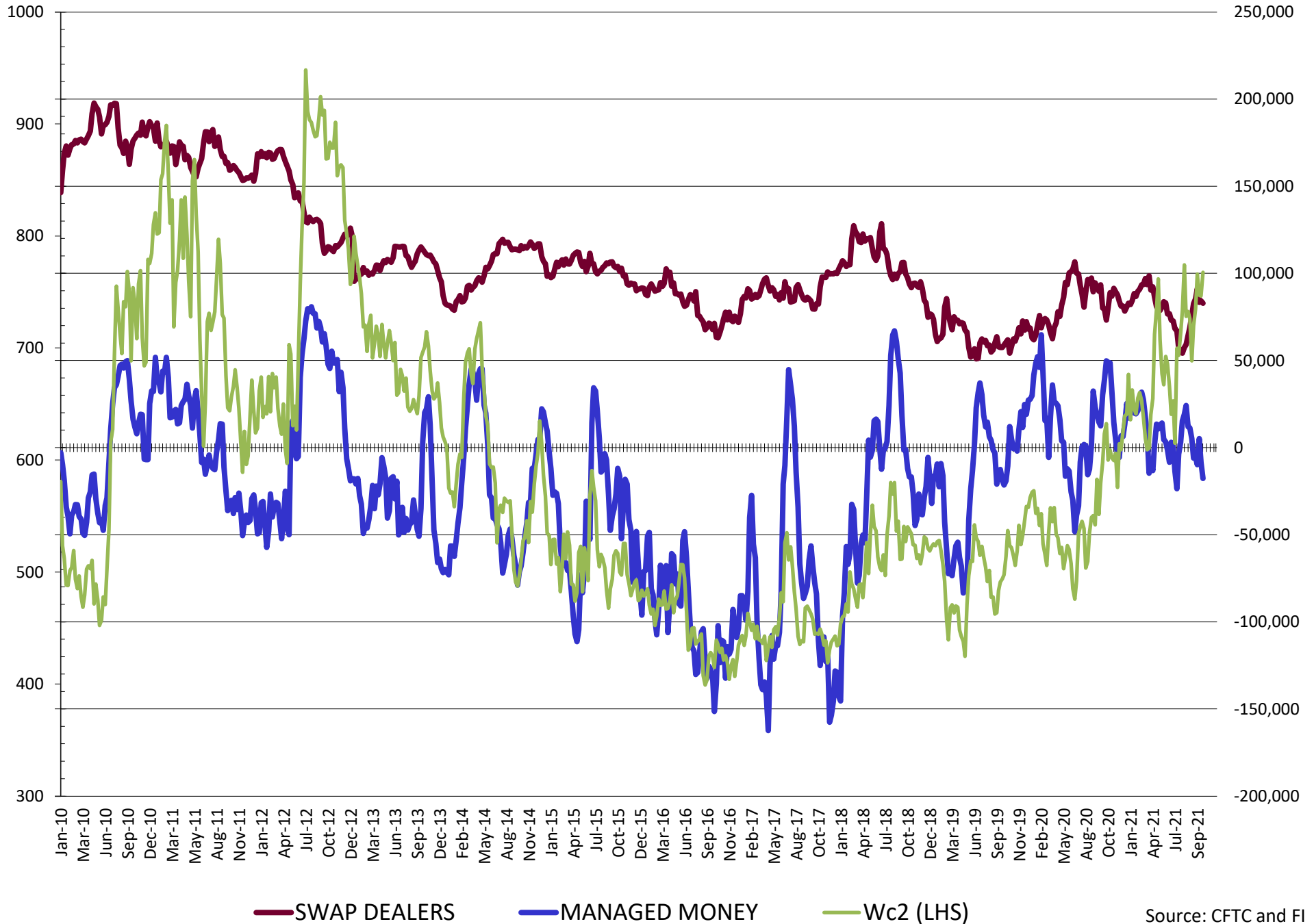


NET POSITION FUTURES AND OPTIONS OF SWAP AND MANAGED FUNDS IN CORN

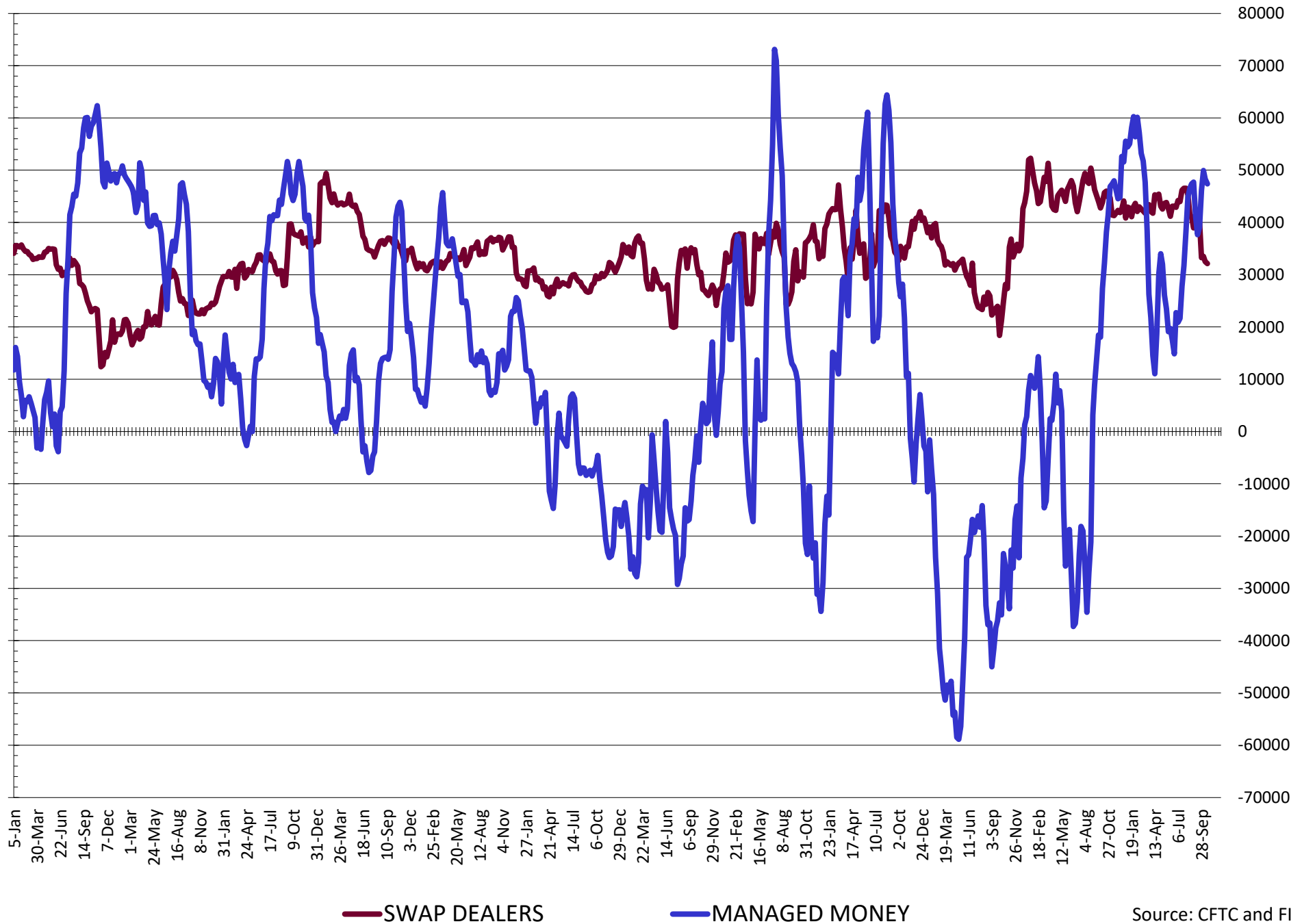


— SWAP DEALERS
 — MANAGED MONEY
 — Cc2 (LHS)

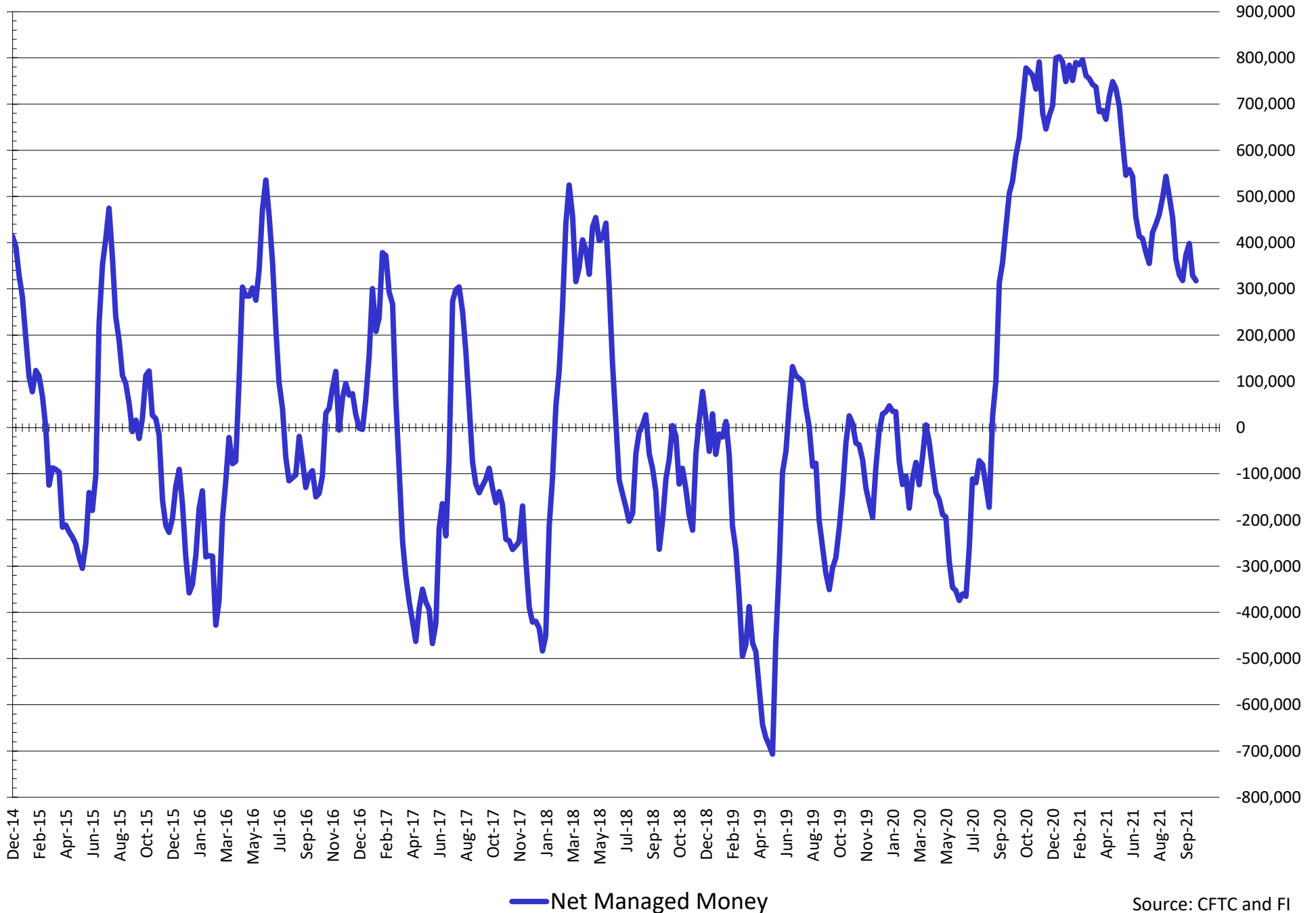
NET POSITION FUTURES AND OPTIONS OF SWAP AND MANAGED FUNDS IN CHICAGO WHEAT



NET POSITION FUTURES AND OPTIONS OF SWAP AND MANAGED FUNDS IN KANSAS WHEAT



NET POSITION FUTURES AND OPTIONS OF SWAP AND MANAGED FUNDS IN COMBINED SRW, HRW, CORN, SOYBEANS, SOYMEAL AND SOYOIL



Source: CFTC and FI
10/23/2021

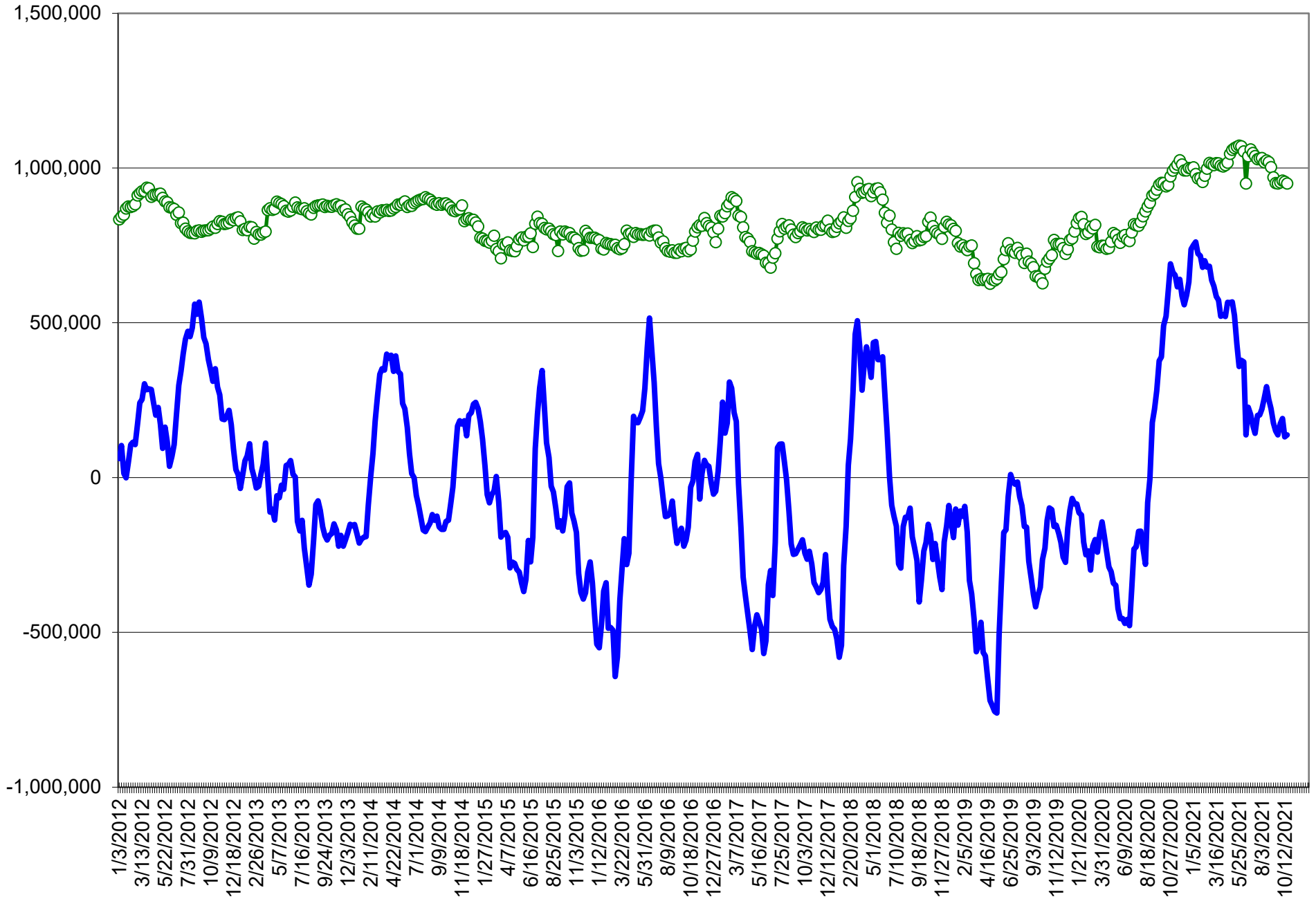
COMMITMENT OF TRADERS
FUTURES & OPTIONS NET POSITIONS (INDEX BROKEN OUT)
AS OF 10/19/2021
(IN THOUSAND CONTRACTS)

	COMMERCIAL				(FUND) NON COMMERCIAL				(SPEC) NON-REPORTABLE			
	19-Oct	12-Oct	5-Oct	28-Sep	19-Oct	12-Oct	5-Oct	28-Sep	19-Oct	12-Oct	5-Oct	28-Sep
	WHEAT											
Chicago	(74.4)	(83.8)	(98.2)	(93.3)	(41.9)	(36.4)	(24.8)	(37.1)	(9.0)	(7.7)	(10.5)	(7.1)
Kansas City	(81.7)	(83.4)	(85.7)	(78.4)	23.0	25.2	27.3	22.4	1.2	0.9	1.0	(1.3)
Minneapolis	-	-	-	-	-	-	-	-	-	-	-	-
All Wheat	(156.1)	(167.2)	(183.9)	(171.7)	(18.9)	(11.2)	2.6	(14.7)	(7.8)	(6.8)	(9.5)	(8.4)
CORN	(474.4)	(476.5)	(496.3)	(485.1)	148.5	148.9	171.0	170.1	(57.8)	(59.9)	(58.9)	(65.5)
OATS	-	-	-	-	-	-	-	-	-	-	-	-
SOYBEANS	(123.6)	(127.6)	(145.0)	(156.6)	(14.9)	(12.3)	(0.3)	9.2	(38.1)	(40.6)	(34.0)	(25.7)
SOY OIL	(183.7)	(172.4)	(178.6)	(147.8)	52.8	44.2	50.3	26.4	11.0	10.2	9.7	5.8
SOY MEAL	(83.4)	(69.5)	(76.3)	(91.4)	(29.9)	(38.6)	(32.8)	(17.1)	26.6	23.8	22.8	19.4

	TOTAL OPEN INTEREST				(INDEX) COMMERCIAL INDEX TRADERS				(INDEX) % NET OF TOTAL OPEN INTEREST			
	19-Oct	12-Oct	5-Oct	28-Sep	19-Oct	12-Oct	5-Oct	28-Sep	19-Oct	12-Oct	5-Oct	28-Sep
	WHEAT											
Chicago	487,060	470,730	459,518	430,091	125.4	127.8	133.4	137.5	25.7%	27.2%	29.0%	32.0%
Kansas City	262,312	260,494	256,057	244,526	57.5	57.3	57.4	57.3	21.9%	22.0%	22.4%	23.4%
Minneapolis	-	-	-	-	-	-	-	-	-	-	-	-
All Wheat	749,372	731,224	715,575	674,617	182.9	185.1	190.8	194.8	24.4%	25.3%	26.7%	28.9%
CORN	1,830,900	1,830,438	1,826,338	1,824,772	383.7	387.6	384.3	380.5	21.0%	21.2%	21.0%	20.9%
OATS	-	-	-	-	-	-	-	-	-	-	-	-
SOYBEANS	963,784	978,147	908,200	871,342	176.7	180.5	179.2	173.1	18.3%	18.5%	19.7%	19.9%
SOY OIL	481,777	460,957	448,531	438,193	119.9	118.0	118.5	115.7	24.9%	25.6%	26.4%	26.4%
SOY MEAL	490,823	470,906	444,953	397,196	86.7	84.4	86.3	89.1	17.7%	17.9%	19.4%	22.4%

SOURCE: CFTC & FI

NET POSITION FUTURES AND OPTIONS OF SPECULATORS AND INDEX FUNDS IN COMBINED SRW, HRW, CORN, SOYBEANS, SOYMEAL AND SOYOIL



Source: CFTC and FI

○ Net Index

— Net Speculator

CFTC COMMITMENT OF TRADERS REPORT

As of 10/19/2021

TRADITIONAL FUNDS net position changes

Wed to Tue, in 000 contracts

	Corn	Bean	Meal	Oil	Chi. Wheat	KC Wheat	Min Wheat
Futures Only	(2.3)	1.6	11.7	11.8	(4.0)	(2.1)	1.6
Futures & Options Combined	(4.3)	(2.7)	11.5	11.0	(6.7)	(1.7)	1.1

TRADITIONAL COMMERCIAL net position changes

	Corn	Bean	Meal	Oil	Chi. Wheat	KC Wheat	Min Wheat
Futures Only	5.2	0.1	(14.1)	(12.7)	5.2	1.8	(1.7)
Futures & Options Combined	2.1	0.1	(14.3)	(11.7)	8.0	1.4	(1.1)

MANAGED MONEY net position changes

	Corn	Bean	Meal	Oil	Chi. Wheat	KC Wheat	Min Wheat
Futures Only	(6.6)	(8.9)	7.9	8.1	(9.5)	(1.0)	0.5
Futures & Options Combined	(8.4)	(10.9)	8.2	9.2	(9.2)	(0.9)	0.4

SWAP DEALERS net position changes

	Corn	Bean	Meal	Oil	Chi. Wheat	KC Wheat	Min Wheat
Futures Only	(0.1)	(4.0)	0.0	(0.7)	(1.6)	(0.1)	0.1
Futures & Options Combined	(0.7)	(3.8)	(0.5)	(0.6)	(1.4)	(0.3)	0.1

PRODUCERS/END USERS net position changes

	Corn	Bean	Meal	Oil	Chi. Wheat	KC Wheat	Min Wheat
Futures Only	5.3	4.1	(14.2)	(12.0)	6.8	1.9	(1.8)
Futures & Options Combined	2.8	3.9	(13.8)	(11.1)	9.5	1.8	(1.2)

INDEX net position changes

	Corn	Bean	Meal	Oil	Chi. Wheat	KC Wheat	Min Wheat
Futures & Options Combined	(3.9)	(3.9)	2.3	1.9	(2.5)	0.3	NA

SUPPLEMENTAL NON-COMMERCIAL net position changes

	Corn	Bean	Meal	Oil	Chi. Wheat	KC Wheat	Min Wheat
Futures & Options Combined	(0.4)	(2.6)	8.8	8.6	(5.5)	(2.2)	NA

OPEN INTEREST net position changes

Wed to Tue, in 000 contracts

	Corn	Bean	Meal	Oil	Chi. Wheat	KC Wheat	Min Wheat
Futures Only	3.7	(8.2)	17.9	14.6	9.7	1.3	(0.2)
Futures & Options Combined	0.5	(14.4)	19.9	20.8	16.3	1.8	0.5

Source: CFTC and FI

Wed to Tue, in 000 contracts

10/23/2021

Disclaimer

TO CLIENTS/PROSPECTS OF FUTURES INTERNATIONAL, SEE RISK DISCLOSURE BELOW:

THIS COMMUNICATION IS CONVEYED AS A SOLICITATION FOR ENTERING INTO A DERIVATIVES TRANSACTION.

Any trading recommendations and market or other information to Customer by Futures International (FI), although based upon information obtained from sources believed by FI to be reliable may not be accurate and may be changed without notice to customer. FI makes no guarantee as to the accuracy or completeness of any of the information or recommendations furnished to Customer. Customer understands that FI, its managers, employees and/or affiliates may have a position in commodity futures, options or other derivatives which may not be consistent with the recommendations furnished by FI to Customer.

The risk of trading futures and options and other derivatives involves a substantial risk of loss and is not suitable for all persons. In purchasing an option, the risk is limited to the premium paid, and all commissions and fees involved with the trade. When an option is shorted or written, the writer of the option has unlimited risk with respect to the option written. The use of options strategies such as a straddles and strangles involve multiple option positions and may substantially increase the amount of commissions and fees paid to execute the strategy. Option prices do not necessarily move in tandem with cash or futures prices. Each person must consider whether a particular trade, combination of trades or strategy is suitable for that person's financial means and objectives.

This material may include discussions of seasonal patterns, however, futures prices have already factored in the seasonal aspects of supply and demand, and seasonal patterns are no indication of future market trends. Finally, past performance is not indicative of future results.

This communication may contain links to third party websites which are not under the control of FI and FI is not responsible for their content. Products and services are offered only in jurisdictions where solicitation and sale are lawful, and in accordance with applicable laws and regulations in each such jurisdiction.