

	Current	Δ from YD	Δ from 7D Avg
Nat Gas Prompt	\$ 6.01	▲ \$ 0.24	▲ \$ 0.32

	Current	Δ from YD	Δ from 7D Avg
WTI Prompt	\$ 78.57	▲ \$ 0.95	▲ \$ 2.8

	Current	Δ from YD	Δ from 7D Avg
Brent Prompt	\$ 82.42	▲ \$ 1.16	▲ \$ 3.1

Page Menu

[Short-term Weather Model Outlooks](#)

[Lower 48 Component Models](#)

[Regional S/D Models Storage Projection](#)

[Weather Model Storage Projection](#)

[Supply – Demand Trends](#)

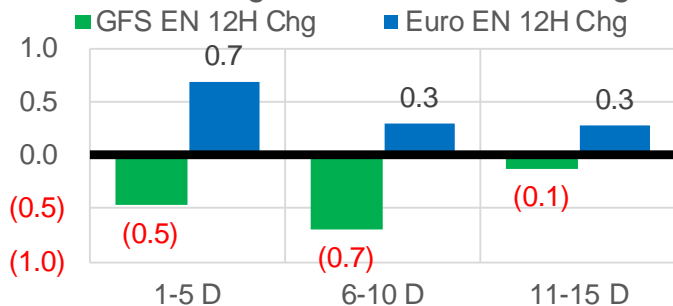
[Nat Gas Options Volume and Open Interest](#)

[Nat Gas Futures Open Interest](#)

[Price Summary](#)

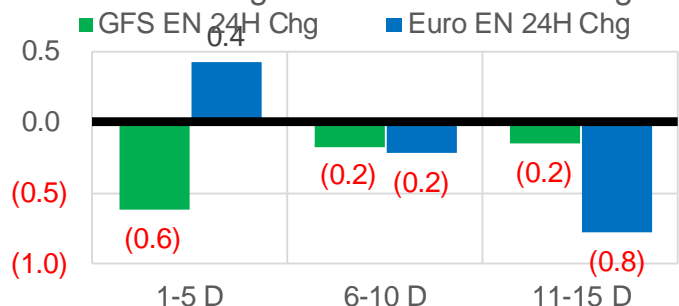
Vs. 12H Ago

L48 Region - 00z TDD vs 12H Ago



Vs. 24H Ago

L48 Region - 00z TDD vs 24H Ago



	Current	Δ from YD	Δ from 7D Avg
US Dry Production	91.9	▼ -0.32	▼ -0.95

	Current	Δ from YD	Δ from 7D Avg
US Power Burns	32.6	▼ -1.25	▲ 0.96

	Current	Δ from YD	Δ from 7D Avg
US ResComm	7.8	▲ 0.21	▼ -0.56

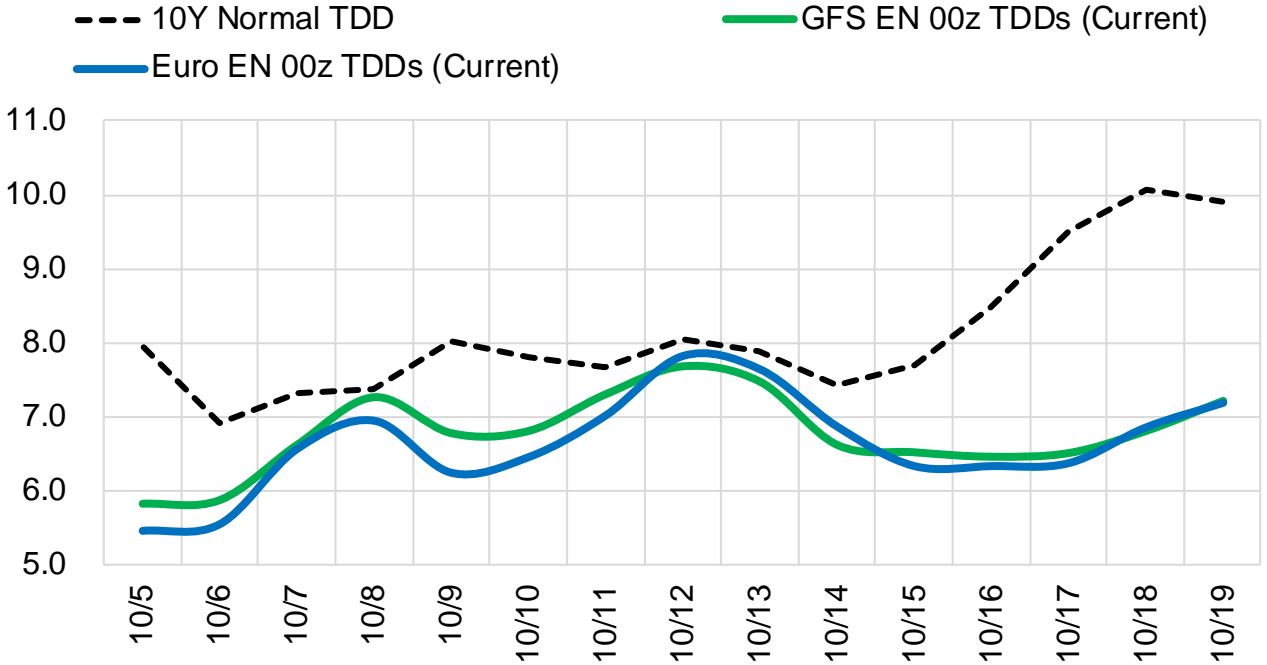
	Current	Δ from YD	Δ from 7D Avg
Canadian Imports	4.7	▲ 0.08	▼ -0.51

	Current	Δ from YD	Δ from 7D Avg
Net LNG Exports	9.7	▼ -0.56	▼ -0.58

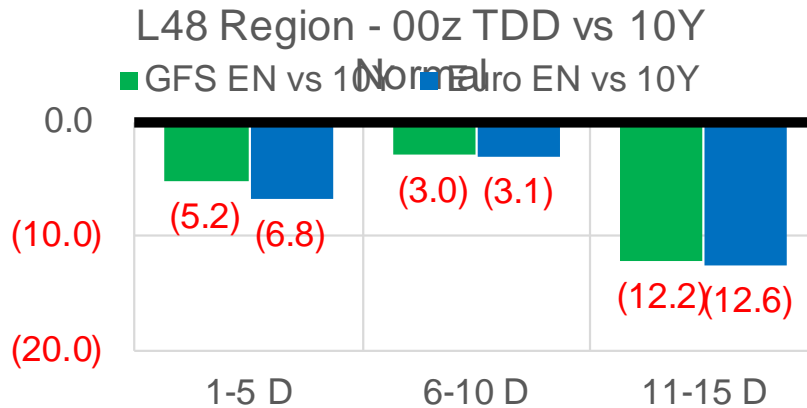
	Current	Δ from YD	Δ from 7D Avg
Mexican Exports	6.6	▼ -0.12	▼ -0.10

Short-term Weather Model Outlooks (00z)

L48 Region



Vs. 10Y Normal



Source: WSI , Bloomberg

Lower 48 Component Models

Daily Balances

	29-Sep	30-Sep	1-Oct	2-Oct	3-Oct	4-Oct	5-Oct	DoD	vs. 7D
Lower 48 Dry Production	93.0	93.3	92.8	92.9	92.2	92.2	91.9	▼ -0.3	▼ -0.9
Canadian Imports	5.9	5.7	4.9	4.7	4.7	4.6	4.7	▲ 0.1	▼ -0.4
L48 Power	31.8	32.1	31.2	30.0	31.1	33.9	32.6	▼ -1.3	▲ 1.0
L48 Residential & Commercial	9.1	9.3	9.5	7.7	7.4	7.6	7.8	▲ 0.2	▼ -0.6
L48 Industrial	19.9	19.9	20.0	20.1	20.1	20.0	20.2	▲ 0.2	▲ 0.2
L48 Lease and Plant Fuel	5.1	5.1	5.1	5.1	5.0	5.0	4.9	▼ -0.1	▼ -0.1
L48 Pipeline Distribution	2.2	2.3	2.2	2.0	2.1	2.2	2.2	▼ -0.1	▼ 0.0
L48 Regional Gas Consumption	68.1	68.7	67.9	64.9	65.6	68.8	67.7	▼ -1.1	▲ 0.4
Net LNG Delivered	10.57	10.47	10.08	10.60	10.39	10.25	9.68	▼ -0.6	▼ -0.7
Total Mexican Exports	6.8	6.9	6.7	6.4	6.4	6.7	6.6	▼ -0.1	▼ -0.1
Implied Daily Storage Activity	13.4	12.9	13.0	15.9	14.6	11.1	12.6		
EIA Reported Daily Storage Activity									
Daily Model Error									

EIA Storage Week Balances

	27-Aug	3-Sep	10-Sep	17-Sep	24-Sep	1-Oct	WoW	vs. 4W
Lower 48 Dry Production	93.1	90.9	91.3	91.8	92.9	93.2	▲ 0.4	▲ 1.5
Canadian Imports	5.3	5.0	4.8	5.2	5.2	5.7	▲ 0.6	▲ 0.7
L48 Power	41.9	38.1	33.8	35.0	33.2	30.2	▼ -3.0	▼ -4.8
L48 Residential & Commercial	7.8	7.4	6.9	7.2	8.0	8.3	▲ 0.3	▲ 0.9
L48 Industrial	21.0	18.9	19.6	20.8	20.4	20.1	▼ -0.4	▲ 0.1
L48 Lease and Plant Fuel	5.1	5.0	5.0	5.0	5.1	5.1	▲ 0.0	▲ 0.1
L48 Pipeline Distribution	2.6	2.4	2.2	2.3	2.3	2.1	▼ -0.1	▼ -0.2
L48 Regional Gas Consumption	78.3	71.7	67.5	70.2	69.0	65.8	▼ -3.2	▼ -3.8
Net LNG Exports	10.6	10.5	11.0	10.2	9.9	10.3	▲ 0.4	▼ -0.1
Total Mexican Exports	6.8	7.0	6.7	6.6	6.8	6.6	▼ -0.1	▼ -0.1
Implied Daily Storage Activity	2.8	6.7	10.9	9.9	12.3	16.2	3.8	
EIA Reported Daily Storage Activity	2.9	7.4	11.9	10.9	12.6			
Daily Model Error	-0.1	-0.8	-1.0	-1.0	-0.2			

Monthly Balances

	2Yr Ago Oct-19	LY Oct-20	Jun-21	Jul-21	Aug-21	Sep-21	MTD Oct-21	MoM	vs. LY
Lower 48 Dry Production	95.1	88.3	93.3	93.3	92.4	92.2	92.1	▼ -0.1	▲ 3.7
Canadian Imports	4.6	4.3	4.9	5.2	5.1	5.2	4.7	▼ -0.4	▲ 0.5
L48 Power	30.3	30.8	35.9	39.4	40.2	33.1	31.8	▼ -1.3	▲ 1.0
L48 Residential & Commercial	15.3	15.3	8.8	8.1	7.7	7.6	8.0	▲ 0.4	▼ -7.3
L48 Industrial	23.5	22.6	20.5	20.8	20.2	20.1	20.1	▼ 0.0	▼ -2.5
L48 Lease and Plant Fuel	5.1	4.8	5.0	5.1	5.0	5.0	5.0	▼ 0.0	▲ 0.2
L48 Pipeline Distribution	2.4	2.5	2.4	2.5	2.5	2.2	2.1	▼ -0.1	▼ -0.3
L48 Regional Gas Consumption	76.6	75.9	72.7	76.0	75.7	68.1	67.0	▼ -1.1	▼ -8.9
Net LNG Exports	6.7	8.0	10.2	10.8	10.5	10.3	10.2	▼ -0.1	▲ 2.2
Total Mexican Exports	5.4	6.0	7.4	7.1	6.9	6.7	6.5	▼ -0.2	▲ 0.5
Implied Daily Storage Activity	11.1	2.7	7.8	4.6	4.5	12.2	13.1		
EIA Reported Daily Storage Activity									
Daily Model Error									

Source: Bloomberg, analytix.ai

Daily Average Generation Data

Nuclear Generation Daily Average - GWh (NRC)

	27-Sep	28-Sep	29-Sep	30-Sep	1-Oct	2-Oct	3-Oct	DoD	vs. 7D
NRC Nuclear Daily Output	84.6	84.5	84.4	84.4	84.8	82.0	83.0	1.0	-1.1
NRC Nuclear Max Capacity	104.9	104.9	104.9	104.9	104.9	104.9	104.9	0.0	0.0
NRC Nuclear Outage	20.2	20.4	20.4	20.5	20.1	22.8	21.9	-1.0	1.1
NRC % Nuclear Cap Utilization	86.1	85.9	85.9	85.8	86.2	83.4	84.4	1.0	-1.1

Wind Generation Daily Average - MWh (EIA)

	27-Sep	28-Sep	29-Sep	30-Sep	1-Oct	2-Oct	3-Oct	DoD	vs. 7D
CALI Wind	4569	4121	1907	917	295	313	425	113	-1595
TEXAS Wind	9937	10983	11385	11121	3603	1684	1553	-131	-6565
US Wind	47614	46045	43045	32138	13566	13223	14182	959	-18423

Generation Daily Average - MWh (EIA)

	27-Sep	28-Sep	29-Sep	30-Sep	1-Oct	2-Oct	3-Oct	DoD	vs. 7D
US Wind	47614	46045	43045	32138	13566	13223	14182	959	-18423
US Solar	12428	11997	12647	12038	11689	13033	11941	-1092	-364
US Petroleum	3239	3244	3279	4102	4456	4058	4016	-43	286
US Other	8412	8681	9307	9253	9167	8703	9102	399	181
US Coal	94994	97855	99622	103268	106201	99597	96699	-2898	-3557
US Nuke	87958	87806	87770	87822	87850	85063	85687	624	-1691
US Hydro	26561	24475	25099	24195	24136	22657	22506	-150	-2014
US Gas	161292	170114	163040	170012	173603	164196	170510	6314	3467

See National Wind and Nuclear daily charts

Source: Bloomberg, analytix.ai

Storage Week Average Generation Data

Nuclear Generation Weekly Average - GWh (NRC)

	27-Aug	3-Sep	10-Sep	17-Sep	24-Sep	1-Oct	WoW	WoW Bcf/d Impact
NRC Nuclear Daily Output	91.9	90.2	90.3	86.7	85.9	85.1	-0.8	0.1
NRC Nuclear Max Capacity	104.9	104.9	104.9	104.9	104.9	104.9	0.0	
NRC Nuclear Outage	12.9	14.7	14.6	18.2	19.0	19.8	0.8	
NRC % Nuclear Cap Utilization	0.1	0.1	0.1	0.1	0.1	0.1	0.0	

Wind Generation Weekly Average - MWh (EIA)

	27-Aug	3-Sep	10-Sep	17-Sep	24-Sep	1-Oct	WoW	WoW Bcf/d Impact
CALI Wind	2052	2247	1236	2083	1936	2467	531	-0.1
TEXAS Wind	12600	7534	7327	9541	9780	10364	584	-0.1
US Wind	41912	35441	30659	42378	43250	43246	-4	0.0
					872.3			
					2%			

Generation Weekly Average - MWh (EIA)

	27-Aug	3-Sep	10-Sep	17-Sep	24-Sep	1-Oct	WoW	WoW Bcf/d Impact
US Wind	41912	35441	30659	42378	43250	43246	-4	0.0
US Solar	14469	13358	14254	14057	12185	12647	462	-0.1
US Petroleum	5323	3135	2072	2470	2594	2775	182	0.0
US Other	10131	9765	8934	9277	9125	8602	-522	0.1
US Coal	136177	136318	116993	115066	109063	94622	-14440	2.6
US Nuke	94358	92365	93162	89490	88789	88403	-385	0.1
US Hydro	30621	28181	26944	24138	25338	25131	-207	0.0
US Gas	216025	205503	181094	182116	175354	153288	-22066	4.0

See National Wind and Nuclear daily charts

Source: Bloomberg, analytix.ai

Monthly Average Generation Data

Nuclear Generation Monthly Average - GWh (NRC)

	2Yr Ago	LY	MTD						
	Same 30 days	Same 30 days	Jul-21	Aug-21	Sep-21	Oct-21	Last 30 days	MoM (MTD vs LY)	Last 30 days YoY
	NRC Nuclear Daily Output	87.2	86.9	90.1	91.5	87.2	83.2	86.0	-4.0
NRC Nuclear Max Capacity	104.9	104.9	104.9	104.9	104.9	104.9	104.9	0.0	0.0
NRC Nuclear Outage	17.7	18.0	14.8	13.4	17.7	21.7	18.8	4.0	0.8
NRC % Nuclear Cap Utilization	88.7	88.3	91.6	93.0	88.7	84.6	87.5	-4.1	-0.8

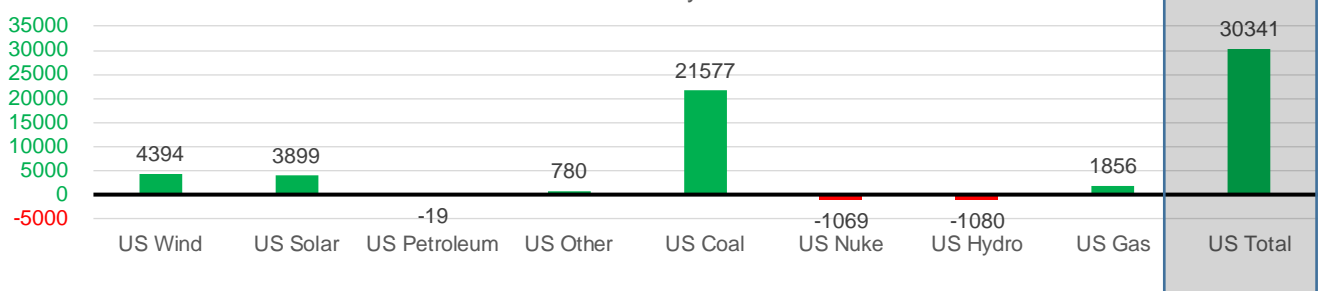
Wind Generation Monthly Average - MWh (EIA)

	2Yr Ago	LY	MTD						
	Same 30 days	Same 30 days	Jul-21	Aug-21	Sep-21	Oct-21	Last 30 days	MoM (MTD vs LY)	Last 30 days YoY
	CALI Wind	2169	1277	2338	2442	2020	377	1770	-1643
TEXAS Wind	8943	7540	7217	9901	9400	1989	8065	-7410	525
US Wind	35228	32453	29217	35830	40162	13867	36847	-26295	4394

Generation Monthly Average - MWh (EIA)

	2Yr Ago	LY	MTD						
	Same 30 days	Same 30 days	Jul-21	Aug-21	Sep-21	Oct-21	Last 30 days	MoM (MTD vs LY)	Last 30 days YoY
	US Wind	35228	32453	29217	35830	40162	13867	36847	▲22980.1
US Solar	8511	9012	14140	13787	13307	12109	12911	▲ 801.5	▲ 3899
US Petroleum	4346	2837	4233	4484	2467	4112	2818	▼ -1294	▼ -19
US Other	8341	8240	9327	9929	8985	9035	9020	▼ -15	▲ 780
US Coal	114510	84869	137228	137655	109998	99179	106446	▲ 7267	▲ 21577
US Nuke	93750	90037	92911	94062	90146	85995	88968	▲ 2973	▼ -1069
US Hydro	25393	25946	29941	28532	25604	22862	24865	▲ 2003	▼ -1080
US Gas	184450	171336	207823	210824	173414	169866	173192	▲ 34716	▲ 1856
US Total	475848	424831	524834	534937	464324	416099	455172	▲ 46452	▲ 30341

Last 30 days YoY



See National Wind and Nuclear daily charts

Source: Bloomberg, analytix.ai

Regional S/D Models Storage Projection

Week Ending 1-Oct

	Daily Raw Storage	Daily Adjustment Factor	Daily Average Storage Activity (Adjusted) *	Weekly Adjusted Storage Activity
L48	15.9	1.0	16.8	118
East	3.7	0.5	4.3	30
Midwest	5.9	-0.8	5.2	36
Mountain	3.7	-3.3	0.4	3
South Central	1.2	5.1	6.3	44
Pacific	1.3	-0.5	0.8	5

*Adjustment Factor is calculated based on historical regional deltas

U.S. underground natural gas storage facilities by type (July 2015)

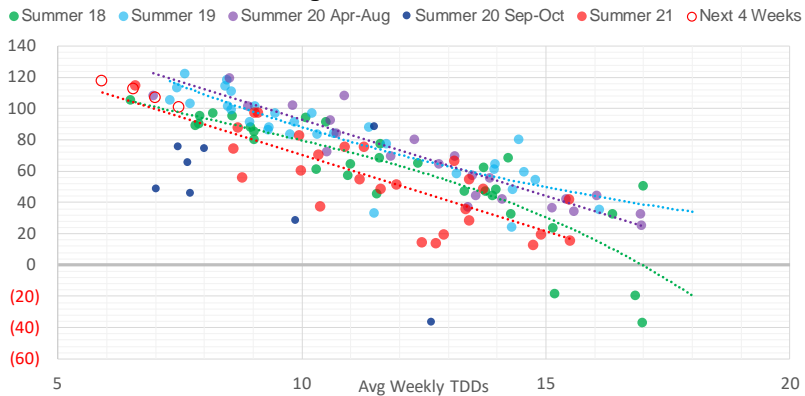


Weather Model Storage Projection

Next report
and beyond

Week Ending	GWDDs	Week Storage Projection
01-Oct	5.9	118
08-Oct	6.6	113
15-Oct	7.0	107
22-Oct	7.5	101

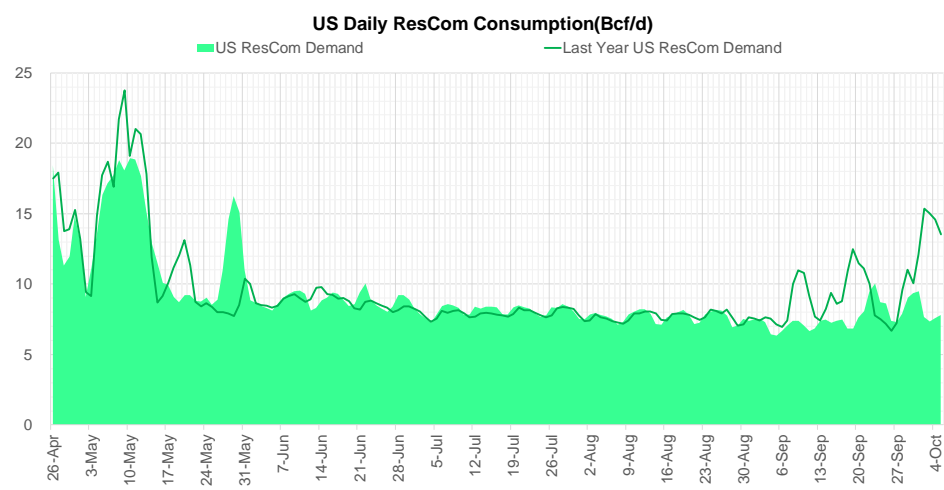
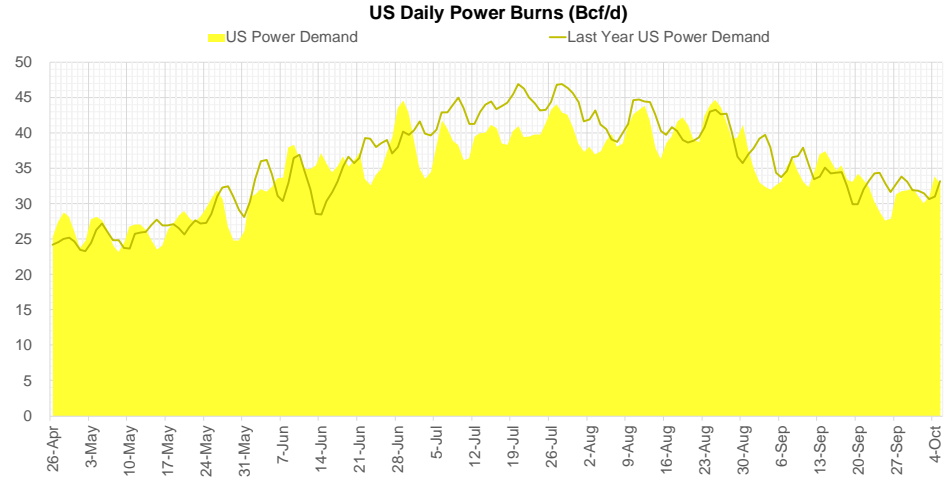
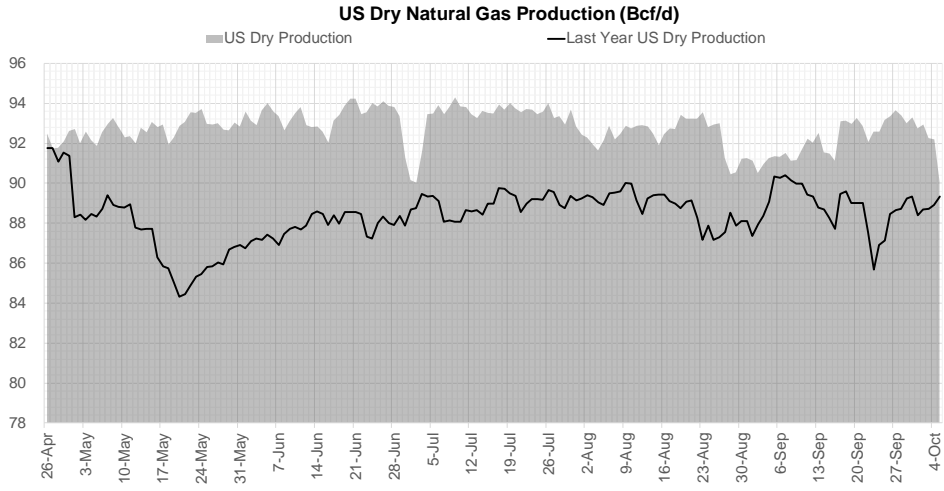
Weather Storage Model - Next 4 Week Forecast



Go to larger image



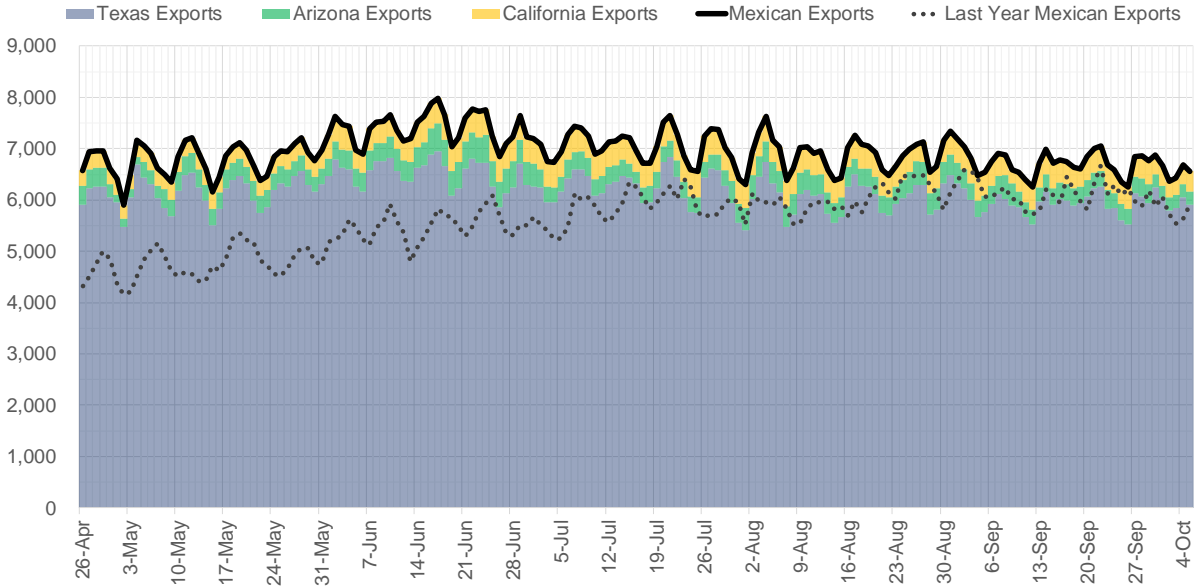
Supply – Demand Trends



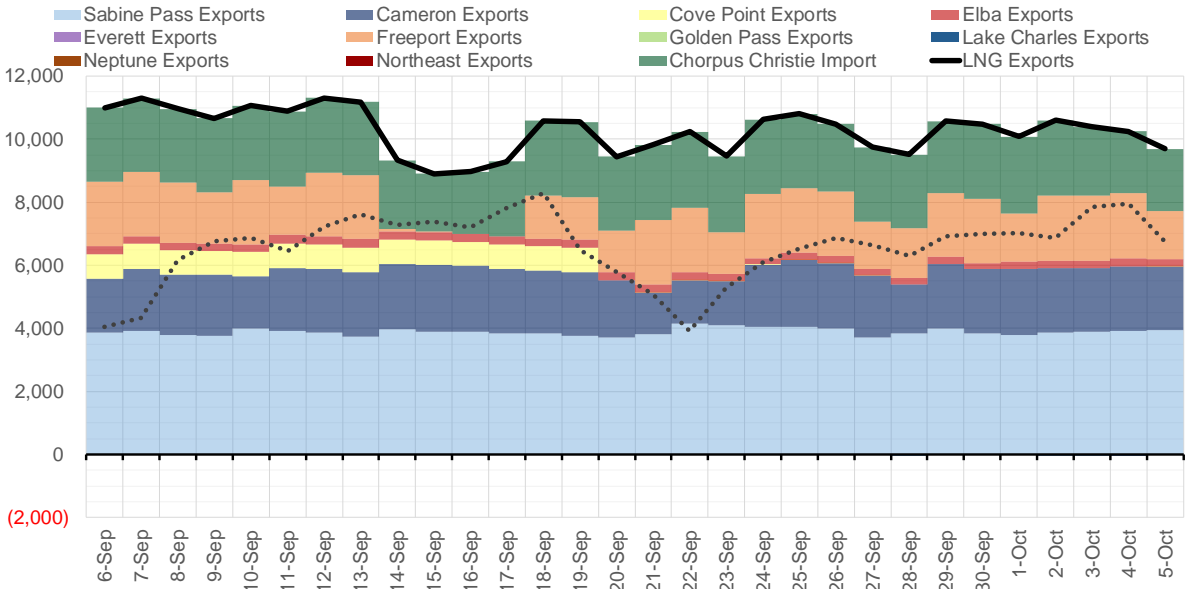
Source: Bloomberg

The risk of trading futures and options and other derivatives involves a substantial risk of loss and is not suitable for all persons. Each person must consider whether a particular trade, combination of trades, or strategy is suitable for that person's financial means and objectives. Past results are not necessarily indicative of future results. This communication may contain links to third party websites which are not under the control of and are not maintained by ION Energy Group, and ION Energy Group is not responsible for their content.

Mexican Exports (MMcf/d)



Net LNG Exports - Last 30 days (MMcf/d)



Source: Bloomberg

The risk of trading futures and options and other derivatives involves a substantial risk of loss and is not suitable for all persons. Each person must consider whether a particular trade, combination of trades, or strategy is suitable for that person's financial means and objectives. Past results are not necessarily indicative of future results. This communication may contain links to third party websites which are not under the control of and are not maintained by ION Energy Group, and ION Energy Group is not responsible for their content.

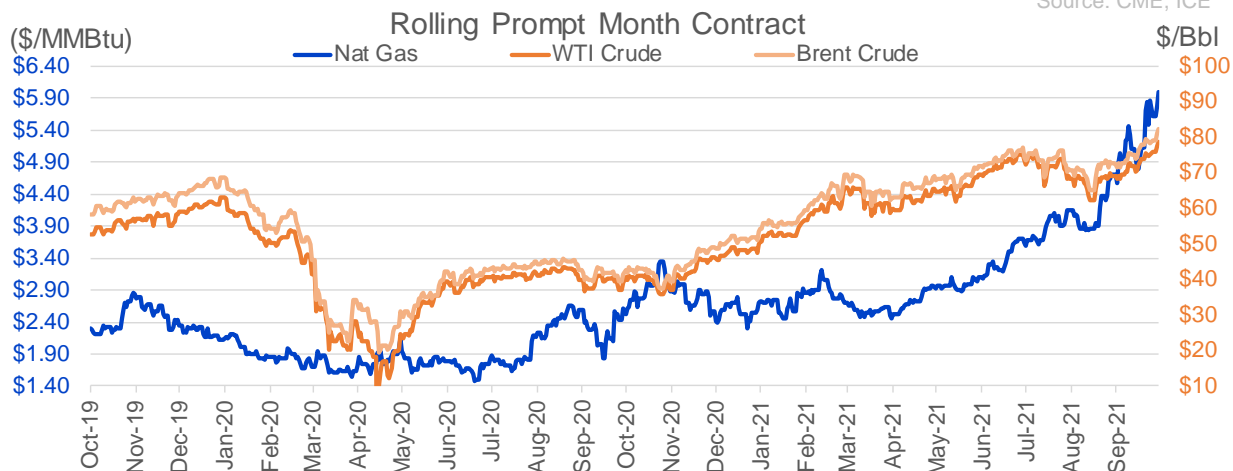
Nat Gas Options Volume and Open Interest CME, ICE and Nasdaq Combined

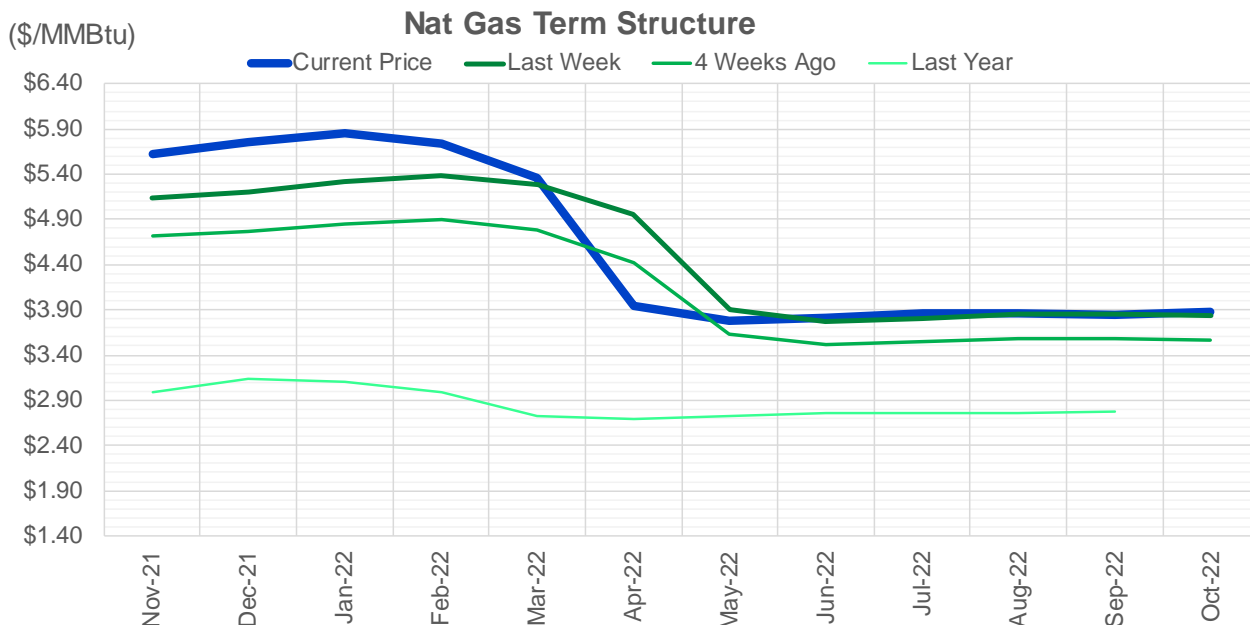
CONTRACT MONTH	CONTRACT YEAR	PUT/CALL	STRIKE	CUMULATIVE VOL	CONTRACT MONTH	CONTRACT YEAR	PUT/CALL	STRIKE	CUMULATIVE OI
11	2021	P	5.00	7112	12	2021	P	2.75	43712
11	2021	P	4.50	3253	12	2021	P	2.50	38567
12	2021	P	5.00	3140	12	2021	P	3.00	32086
11	2021	C	7.00	2892	12	2021	P	4.00	30899
12	2021	C	8.00	2784	3	2022	C	10.00	30461
12	2021	C	15.00	2433	11	2021	P	3.00	30169
12	2021	C	11.00	2219	11	2021	P	4.00	26937
11	2021	C	6.50	1761	3	2022	C	8.00	25934
11	2021	C	9.00	1687	12	2021	P	3.50	25806
12	2021	C	10.00	1505	11	2021	P	4.50	24782
12	2021	C	12.00	1358	11	2021	C	7.00	24010
11	2021	P	4.75	1299	12	2021	C	4.00	22528
12	2021	P	5.50	1279	11	2021	P	5.00	22378
1	2022	P	3.00	1202	3	2022	P	3.50	20936
12	2021	C	5.50	1175	3	2022	C	5.00	20472
12	2021	C	7.00	1173	11	2021	C	4.00	20146
11	2021	C	8.00	1115	11	2021	P	3.50	20047
4	2022	C	4.25	1100	4	2022	C	3.00	19760
3	2022	P	4.25	1075	11	2021	C	6.00	19385
1	2022	P	2.50	1001	1	2022	P	3.50	18671
3	2022	P	2.50	1001	2	2022	P	3.50	18595
2	2022	P	2.50	1000	1	2022	C	5.00	18197
5	2022	C	4.00	1000	2	2022	C	5.00	17437
5	2022	P	3.50	1000	12	2021	C	6.00	17314
6	2022	P	3.50	1000	3	2022	P	4.00	16955
11	2021	P	5.50	995	3	2022	P	2.50	16807
11	2021	C	6.00	960	3	2022	C	4.00	16341
12	2021	P	4.50	928	12	2021	C	7.00	15879
3	2022	P	4.75	926	11	2021	C	5.00	15172
12	2021	P	6.00	897	11	2021	C	4.50	14904
11	2021	P	5.25	894	11	2021	P	2.50	14488
2	2022	P	5.00	890	1	2022	C	4.00	14488
3	2022	C	20.00	879	11	2021	C	3.75	14480
1	2022	P	3.50	806	4	2022	C	5.00	14447
11	2021	C	5.75	773	12	2022	C	5.00	14372
2	2022	P	3.00	710	11	2021	P	3.25	14216
3	2022	C	8.00	706	4	2022	P	2.50	14206
12	2021	P	4.60	704	1	2022	C	6.00	13937
3	2022	P	3.00	700	2	2022	C	4.00	13914
12	2021	P	4.75	681	12	2021	P	2.00	13885
12	2021	P	4.30	679	11	2021	C	5.50	13688
3	2022	C	15.00	650	11	2021	C	4.25	13296
11	2021	P	4.00	645	1	2022	C	7.00	13295
12	2021	P	4.00	621	1	2022	P	4.00	13292
4	2022	P	3.80	600	2	2022	C	6.00	13204
5	2022	P	3.80	600	12	2021	C	8.00	13176
12	2021	P	3.50	599	3	2022	C	3.00	13127
12	2021	C	6.50	598	12	2022	C	4.50	13115
12	2021	P	4.25	574	5	2022	C	3.00	13110
					12	2021	C	5	12870.5

Source: CME, ICE

Nat Gas Futures Open Interest CME, and ICE Combined

CME Henry Hub Futures (10,000 MMBtu)				ICE Henry Hub Futures Contract Equivalent (10,000 MM			
	Current	Prior	Daily Change		Current	Prior	Daily Change
NOV 21	260042	255804	4238	NOV 21	87861	87262	599
DEC 21	106126	103750	2376	DEC 21	75454	75848	-394
JAN 22	170053	165038	5015	JAN 22	94385	94355	30
FEB 22	59786	59466	320	FEB 22	70532	70462	70
MAR 22	127728	126593	1135	MAR 22	76155	75479	676
APR 22	123886	124102	-216	APR 22	74380	74246	135
MAY 22	120839	120376	463	MAY 22	70689	70580	110
JUN 22	37059	37550	-491	JUN 22	54607	54276	331
JUL 22	33886	34385	-499	JUL 22	56951	56639	312
AUG 22	32167	32170	-3	AUG 22	55822	55478	344
SEP 22	34711	34873	-162	SEP 22	56803	56354	449
OCT 22	90039	90464	-425	OCT 22	62527	62219	309
NOV 22	31606	31607	-1	NOV 22	48553	48471	82
DEC 22	25690	26286	-596	DEC 22	51823	51762	61
JAN 23	24594	24389	205	JAN 23	38125	38094	31
FEB 23	9879	10075	-196	FEB 23	31524	31515	9
MAR 23	13491	13552	-61	MAR 23	33423	33458	-35
APR 23	12595	12675	-80	APR 23	32508	32517	-9
MAY 23	7806	7922	-116	MAY 23	31676	31609	67
JUN 23	6108	6106	2	JUN 23	29471	29437	35
JUL 23	4226	4236	-10	JUL 23	29720	29700	20
AUG 23	3341	3338	3	AUG 23	29506	29479	28
SEP 23	4580	4557	23	SEP 23	28640	28620	20
OCT 23	5686	5704	-18	OCT 23	31728	31699	28
NOV 23	2514	2504	10	NOV 23	30322	30356	-34
DEC 23	2653	2655	-2	DEC 23	28176	28211	-36
JAN 24	1479	1479	0	JAN 24	15487	15471	16
FEB 24	1084	1084	0	FEB 24	13134	13062	72
MAR 24	3361	3366	-5	MAR 24	17902	17894	8
APR 24	3517	3466	51	APR 24	12134	12065	69





	Nov-21	Dec-21	Jan-22	Feb-22	Mar-22	Apr-22	May-22	Jun-22	Jul-22	Aug-22	Sep-22	Oct-22
Current Price	\$5.619	\$5.763	\$5.853	\$5.742	\$5.367	\$3.940	\$3.787	\$3.820	\$3.861	\$3.869	\$3.851	\$3.880
Last Week	\$5.140	\$5.200	\$5.315	\$5.391	\$5.289	\$4.949	\$3.905	\$3.775	\$3.805	\$3.847	\$3.852	\$3.831
vs. Last Week	\$0.479	\$0.563	\$0.538	\$0.351	\$0.078	-\$1.009	-\$0.118	\$0.045	\$0.056	\$0.022	-\$0.001	\$0.049
4 Weeks Ago	\$4.712	\$4.762	\$4.850	\$4.905	\$4.791	\$4.420	\$3.628	\$3.521	\$3.549	\$3.579	\$3.587	\$3.568
vs. 4 Weeks Ago	\$0.907	\$1.001	\$1.003	\$0.837	\$0.576	-\$0.480	\$0.159	\$0.299	\$0.312	\$0.290	\$0.264	\$0.312
Last Year	\$2.438	\$2.991	\$3.138	\$3.100	\$2.993	\$2.725	\$2.687	\$2.718	\$2.757	\$2.766	\$2.752	\$2.782
vs. Last Year	\$3.181	\$2.772	\$2.715	\$2.642	\$2.374	\$1.215	\$1.100	\$1.102	\$1.104	\$1.103	\$1.099	\$1.098

	Units	Cash Settled	Prompt Settle	Cash to Prompt
AGT Citygate	\$/MMBtu	5.00	5.34	0.34
TETCO M3	\$/MMBtu	4.66	4.54	-0.12
FGT Zone 3	\$/MMBtu	4.69	5.79	1.10
Zone 6 NY	\$/MMBtu	4.69	4.44	-0.25
Chicago Citygate	\$/MMBtu	5.75	5.52	-0.23
Michcon	\$/MMBtu	5.78	5.35	-0.43
Columbia TCO Pool	\$/MMBtu	4.53	4.68	0.15
Ventura	\$/MMBtu	5.36	5.39	0.02
Rockies/Opal	\$/MMBtu	5.52	5.42	-0.10
El Paso Permian Basin	\$/MMBtu	5.61	5.40	-0.21
Socal Citygate	\$/MMBtu	6.66	6.17	-0.49
Malin	\$/MMBtu	5.52	5.93	0.41
Houston Ship Channel	\$/MMBtu	5.74	5.73	-0.02
Henry Hub Cash	\$/MMBtu	5.80	5.45	-0.35
AECO Cash	C\$/GJ	4.03	3.99	-0.04
Station2 Cash	C\$/GJ	3.59	6.02	2.43
Dawn Cash	C\$/GJ	5.76	5.36	-0.40

Source: CME, Bloomberg

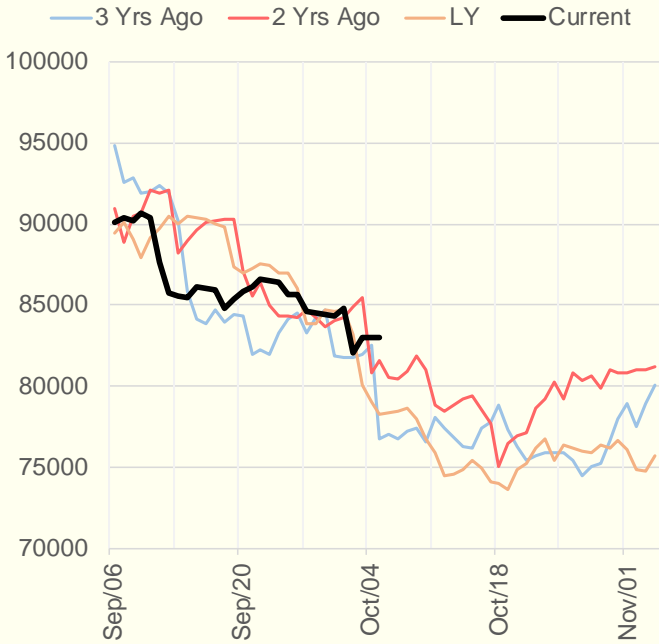
	Units	Current Price	vs. Last Week	vs. 4 Weeks Ago	vs. Last Year
NatGas Jul21/Oct21	\$/MMBtu	2.224	▲ 0.135	▲ 1.129	▲ 2.200
NatGas Oct21/Nov21	\$/MMBtu	-0.075	▼ -0.100	▼ -0.125	▼ -0.133
NatGas Oct21/Jan22	\$/MMBtu	0.158	▼ -0.046	▼ -0.035	▼ -0.136
NatGas Apr22/Oct22	\$/MMBtu	-0.079	▲ 0.010	▼ -0.046	▼ -0.084
WTI Crude	\$/Bbl	77.62	▲ 2.170	▲ 8.330	▲ 38.400
Brent Crude	\$/Bbl	81.26	▲ 1.730	▲ 9.040	▲ 39.970
Fuel Oil, NY Harbour 1%	\$/Bbl	97.18	▲ 0.000	▲ 0.000	▲ 0.000
Heating Oil	cents/Gallon	243.66	▲ 14.060	▲ 27.720	▲ 130.330
Propane, Mt. Bel	cents/Gallon	1.50	▲ 0.219	▲ 0.308	▲ 0.992
Ethane, Mt. Bel	cents/Gallon	0.44	▲ 0.050	▲ 0.077	▲ 0.239
Coal, PRB	\$/MTon	12.30	▲ 0.000	▲ 0.000	▲ 0.000
Coal, PRB	\$/MMBtu	0.70			
Coal, ILB	\$/MTon	31.05	▲ 0.000	▲ 0.000	▲ 0.000
Coal, ILB	\$/MMBtu	1.32			

Weather Storage Model - Next 4 Week Forecast

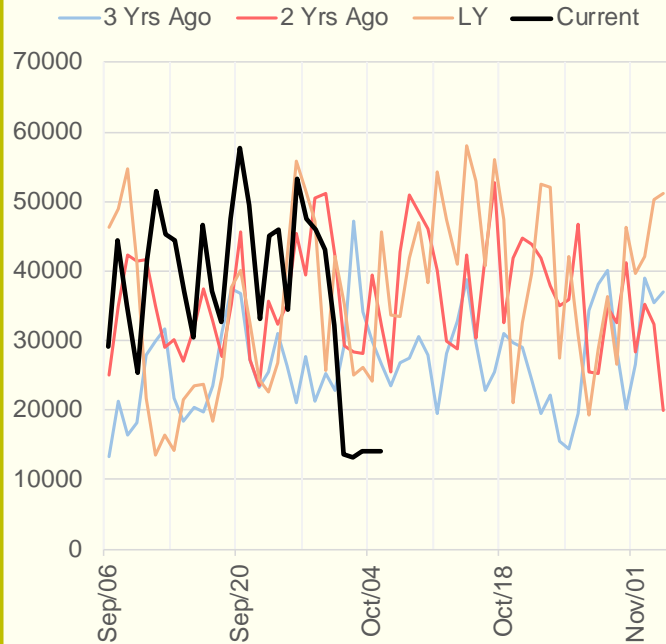


The risk of trading futures and options and other derivatives involves a substantial risk of loss and is not suitable for all persons. Each person must consider whether a particular trade, combination of trades, or strategy is suitable for that person's financial means and objectives. Past results are not necessarily indicative of future results. This communication may contain links to third party websites which are not under the control of and are not maintained by ION Energy Group, and ION Energy Group is not responsible for their content.

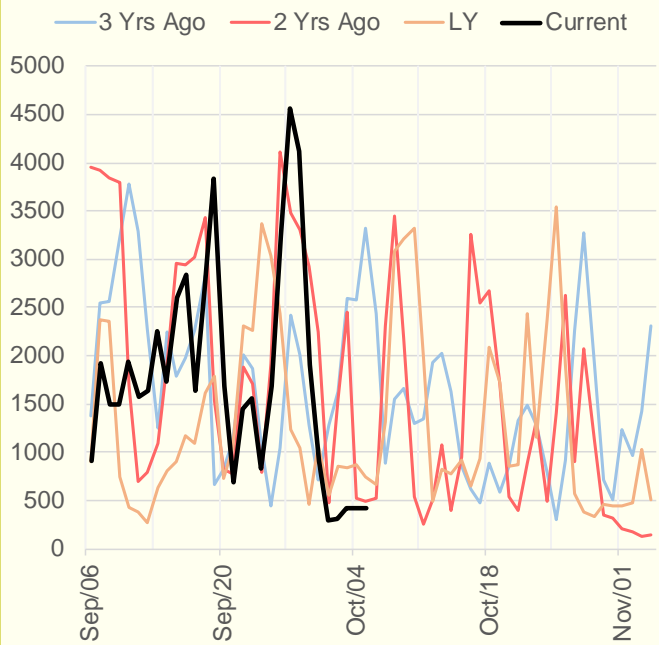
NRC Nuclear Daily Output



US Wind



CALI Wind



TEXAS Wind

