

	Current	Δ from YD	Δ from 7D Avg
Nat Gas Prompt	\$ 6.04	▼ \$ (0.27)	▲ \$ 0.28

	Current	Δ from YD	Δ from 7D Avg
WTI Prompt	\$ 77.93	▼ \$ (1.00)	▲ \$ 1.6

	Current	Δ from YD	Δ from 7D Avg
Brent Prompt	\$ 81.63	▼ \$ (0.93)	▲ \$ 1.8

### Page Menu

[Short-term Weather Model Outlooks](#)

[Lower 48 Component Models](#)

[Regional S/D Models Storage Projection](#)

[Weather Model Storage Projection](#)

[Supply – Demand Trends](#)

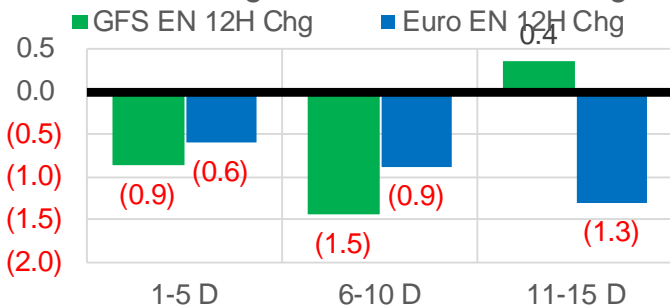
[Nat Gas Options Volume and Open Interest](#)

[Nat Gas Futures Open Interest](#)

[Price Summary](#)

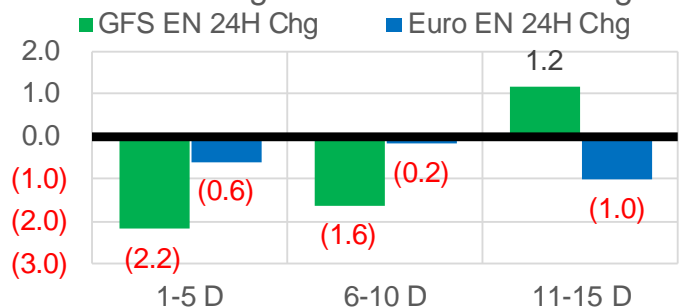
### Vs. 12H Ago

L48 Region - 00z TDD vs 12H Ago



### Vs. 24H Ago

L48 Region - 00z TDD vs 24H Ago



	Current	Δ from YD	Δ from 7D Avg
US Dry Production	92.7	▼ -0.03	▼ -0.29

	Current	Δ from YD	Δ from 7D Avg
US Power Burns	33.1	▼ -0.73	▲ 1.05

	Current	Δ from YD	Δ from 7D Avg
US ResComm	7.9	▼ -0.26	▼ -0.49

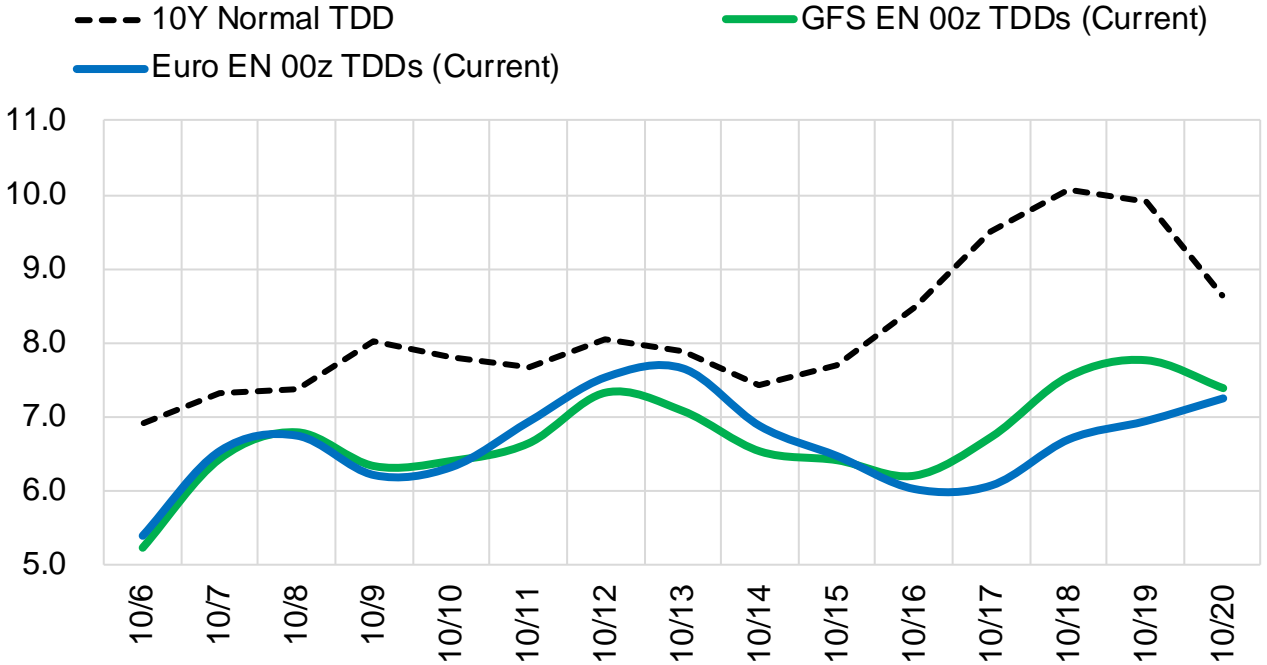
	Current	Δ from YD	Δ from 7D Avg
Canadian Imports	5.0	▼ -0.45	▼ -0.58

	Current	Δ from YD	Δ from 7D Avg
Net LNG Exports	9.5	▲ 0.37	▼ -0.71

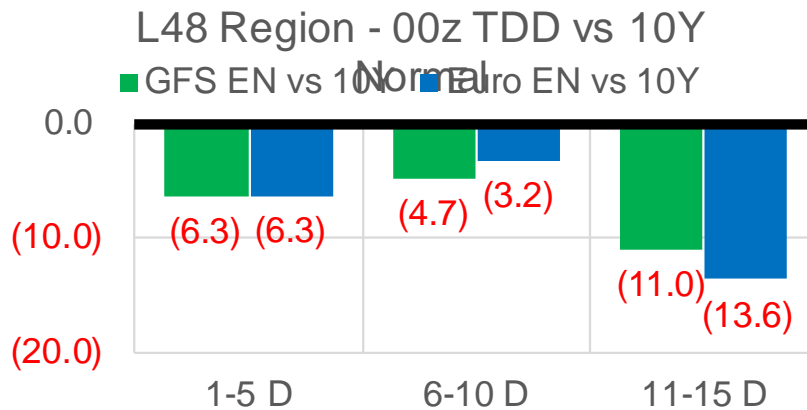
	Current	Δ from YD	Δ from 7D Avg
Mexican Exports	6.7	▲ 0.04	▲ 0.06

## Short-term Weather Model Outlooks (00z)

### L48 Region



## Vs. 10Y Normal



Source: WSI , Bloomberg

## Lower 48 Component Models

### Daily Balances

	30-Sep	1-Oct	2-Oct	3-Oct	4-Oct	5-Oct	6-Oct	DoD	vs. 7D
<b>Lower 48 Dry Production</b>	<b>93.3</b>	<b>92.7</b>	<b>93.1</b>	<b>93.2</b>	<b>93.1</b>	<b>92.8</b>	<b>92.7</b>	▼ 0.0	▼ -0.3
<b>Canadian Imports</b>	<b>5.7</b>	<b>5.5</b>	<b>5.4</b>	<b>5.5</b>	<b>5.4</b>	<b>5.4</b>	<b>5.0</b>	▼ -0.4	▼ -0.5
L48 Power	32.1	31.1	30.0	31.5	33.8	33.8	33.1	▼ -0.7	▲ 1.0
L48 Residential & Commercial	9.3	9.5	7.8	7.4	7.6	8.2	7.9	▼ -0.3	▼ -0.4
L48 Industrial	20.2	20.4	20.8	20.8	20.8	21.0	20.9	▼ -0.1	▲ 0.2
L48 Lease and Plant Fuel	5.1	5.1	5.1	5.1	5.1	5.1	5.0	▼ -0.1	▼ -0.1
L48 Pipeline Distribution	2.3	2.2	2.0	2.1	2.2	2.2	2.2	▼ -0.1	▲ 0.0
<b>L48 Regional Gas Consumption</b>	<b>69.0</b>	<b>68.3</b>	<b>65.7</b>	<b>66.8</b>	<b>69.5</b>	<b>70.3</b>	<b>69.0</b>	▼ -1.2	▲ 0.8
<b>Net LNG Delivered</b>	<b>10.47</b>	<b>10.08</b>	<b>10.60</b>	<b>10.39</b>	<b>10.25</b>	<b>9.13</b>	<b>9.50</b>	▲ 0.4	▼ -0.7
<b>Total Mexican Exports</b>	<b>6.9</b>	<b>6.7</b>	<b>6.4</b>	<b>6.4</b>	<b>6.7</b>	<b>6.7</b>	<b>6.7</b>	▲ 0.0	▲ 0.1
<b>Implied Daily Storage Activity</b>	<b>12.6</b>	<b>13.2</b>	<b>15.9</b>	<b>15.0</b>	<b>12.1</b>	<b>12.1</b>	<b>12.5</b>		
<b>EIA Reported Daily Storage Activity</b>									
<b>Daily Model Error</b>									

### EIA Storage Week Balances

	27-Aug	3-Sep	10-Sep	17-Sep	24-Sep	1-Oct	WoW	vs. 4W
<b>Lower 48 Dry Production</b>	<b>93.1</b>	<b>90.9</b>	<b>91.3</b>	<b>91.8</b>	<b>92.9</b>	<b>93.2</b>	▲ 0.4	▲ 1.5
<b>Canadian Imports</b>	<b>5.3</b>	<b>5.0</b>	<b>4.8</b>	<b>5.2</b>	<b>5.2</b>	<b>5.7</b>	▲ 0.6	▲ 0.7
L48 Power	41.9	38.1	33.8	35.0	33.2	30.2	▼ -3.0	▼ -4.8
L48 Residential & Commercial	7.8	7.4	6.9	7.2	8.0	8.3	▲ 0.3	▲ 0.9
L48 Industrial	21.0	18.9	19.6	20.8	20.4	20.1	▼ -0.3	▲ 0.2
L48 Lease and Plant Fuel	5.1	5.0	5.0	5.0	5.1	5.1	▲ 0.0	▲ 0.1
L48 Pipeline Distribution	2.6	2.4	2.2	2.3	2.3	2.1	▼ -0.1	▼ -0.2
<b>L48 Regional Gas Consumption</b>	<b>78.3</b>	<b>71.7</b>	<b>67.5</b>	<b>70.2</b>	<b>69.0</b>	<b>65.8</b>	▼ -3.1	▼ -3.8
<b>Net LNG Exports</b>	<b>10.6</b>	<b>10.5</b>	<b>11.0</b>	<b>10.2</b>	<b>9.9</b>	<b>10.3</b>	▲ 0.4	▼ -0.1
<b>Total Mexican Exports</b>	<b>6.8</b>	<b>7.0</b>	<b>6.7</b>	<b>6.6</b>	<b>6.8</b>	<b>6.7</b>	▼ -0.1	▼ -0.1
<b>Implied Daily Storage Activity</b>	<b>2.8</b>	<b>6.7</b>	<b>10.9</b>	<b>9.9</b>	<b>12.3</b>	<b>16.1</b>	<b>3.8</b>	
<b>EIA Reported Daily Storage Activity</b>	<b>2.9</b>	<b>7.4</b>	<b>11.9</b>	<b>10.9</b>	<b>12.6</b>			
<b>Daily Model Error</b>	<b>-0.1</b>	<b>-0.8</b>	<b>-1.0</b>	<b>-1.0</b>	<b>-0.2</b>			

### Monthly Balances

	2Yr Ago Oct-19	LY Oct-20	Jun-21	Jul-21	Aug-21	Sep-21	MTD Oct-21	MoM	vs. LY
<b>Lower 48 Dry Production</b>	<b>95.1</b>	<b>88.3</b>	<b>93.3</b>	<b>93.3</b>	<b>92.4</b>	<b>92.2</b>	<b>92.6</b>	▲ 0.5	▲ 4.3
<b>Canadian Imports</b>	<b>4.6</b>	<b>4.3</b>	<b>4.9</b>	<b>5.2</b>	<b>5.1</b>	<b>5.2</b>	<b>5.4</b>	▲ 0.2	▲ 1.1
L48 Power	30.3	30.8	35.9	39.4	40.2	33.1	32.2	▼ -0.9	▲ 1.5
L48 Residential & Commercial	15.3	15.3	8.8	8.1	7.7	7.6	8.1	▲ 0.5	▼ -7.2
L48 Industrial	23.5	22.6	20.5	20.8	20.2	20.1	20.8	▲ 0.7	▼ -1.8
L48 Lease and Plant Fuel	5.1	4.8	5.0	5.1	5.0	5.0	5.0	▲ 0.0	▲ 0.2
L48 Pipeline Distribution	2.4	2.5	2.4	2.5	2.5	2.2	2.2	▼ -0.1	▼ -0.3
<b>L48 Regional Gas Consumption</b>	<b>76.6</b>	<b>75.9</b>	<b>72.7</b>	<b>76.0</b>	<b>75.7</b>	<b>68.1</b>	<b>68.3</b>	▲ 0.2	▼ -7.6
<b>Net LNG Exports</b>	<b>6.7</b>	<b>8.0</b>	<b>10.2</b>	<b>10.8</b>	<b>10.5</b>	<b>10.3</b>	<b>10.0</b>	▼ -0.3	▲ 2.0
<b>Total Mexican Exports</b>	<b>5.4</b>	<b>6.0</b>	<b>7.4</b>	<b>7.1</b>	<b>6.9</b>	<b>6.7</b>	<b>6.6</b>	▼ -0.1	▲ 0.6
<b>Implied Daily Storage Activity</b>	<b>11.1</b>	<b>2.7</b>	<b>7.8</b>	<b>4.6</b>	<b>4.5</b>	<b>12.2</b>	<b>13.2</b>		
<b>EIA Reported Daily Storage Activity</b>									
<b>Daily Model Error</b>									

Source: Bloomberg, analytix.ai

## Daily Average Generation Data

### Nuclear Generation Daily Average - GWh (NRC)

	28-Sep	29-Sep	30-Sep	1-Oct	2-Oct	3-Oct	4-Oct	DoD	vs. 7D
NRC Nuclear Daily Output	84.5	84.4	84.4	84.8	82.0	83.0	81.6	-1.5	-2.3
NRC Nuclear Max Capacity	104.9	104.9	104.9	104.9	104.9	104.9	104.9	0.0	0.0
NRC Nuclear Outage	20.4	20.4	20.5	20.1	22.8	21.9	23.3	1.5	2.3
NRC % Nuclear Cap Utilization	85.9	85.9	85.8	86.2	83.4	84.4	82.9	-1.5	-2.3

### Wind Generation Daily Average - MWh (EIA)

	28-Sep	29-Sep	30-Sep	1-Oct	2-Oct	3-Oct	4-Oct	DoD	vs. 7D
CALI Wind	4121	1907	917	295	313	425	752	327	-577
TEXAS Wind	10983	11385	11121	3603	1684	1553	2617	1063	-4105
US Wind	46045	43045	32138	13566	13223	14192	12934	-1258	-14101

### Generation Daily Average - MWh (EIA)

	28-Sep	29-Sep	30-Sep	1-Oct	2-Oct	3-Oct	4-Oct	DoD	vs. 7D
US Wind	46045	43045	32138	13566	13223	14192	12934	-1258	-14101
US Solar	11997	12647	12038	11689	13033	11970	10092	-1878	-2137
US Petroleum	3244	3279	4102	4456	4058	4016	4383	367	524
US Other	8689	9307	9255	9167	8703	9100	12078	2977	3041
US Coal	97854	99622	103268	106201	99597	96694	103437	6743	2898
US Nuke	87806	87770	87822	87850	85063	85687	82373	-3315	-4627
US Hydro	24475	25099	24195	24136	22657	22506	25444	2938	1599
<b>US Gas</b>	<b>170128</b>	<b>163040</b>	<b>170011</b>	<b>173603</b>	<b>164196</b>	<b>170473</b>	<b>193482</b>	<b>23009</b>	<b>24907</b>

See National Wind and Nuclear daily charts

Source: Bloomberg, analytix.ai

## Storage Week Average Generation Data

### Nuclear Generation Weekly Average - GWh (NRC)

	27-Aug	3-Sep	10-Sep	17-Sep	24-Sep	1-Oct	WoW	WoW Bcf/d Impact
NRC Nuclear Daily Output	91.9	90.2	90.3	86.7	85.9	85.1	-0.8	0.1
NRC Nuclear Max Capacity	104.9	104.9	104.9	104.9	104.9	104.9	0.0	
NRC Nuclear Outage	12.9	14.7	14.6	18.2	19.0	19.8	0.8	
NRC % Nuclear Cap Utilization	0.1	0.1	0.1	0.1	0.1	0.1	0.0	

### Wind Generation Weekly Average - MWh (EIA)

	27-Aug	3-Sep	10-Sep	17-Sep	24-Sep	1-Oct	WoW	WoW Bcf/d Impact
CALI Wind	2052	2247	1236	2083	1936	2467	531	-0.1
TEXAS Wind	12600	7534	7327	9541	9780	10364	584	-0.1
US Wind	41912	35441	30659	42378	43250	43246	-4	0.0
					872.3			
					2%			

### Generation Weekly Average - MWh (EIA)

	27-Aug	3-Sep	10-Sep	17-Sep	24-Sep	1-Oct	WoW	WoW Bcf/d Impact
US Wind	41912	35441	30659	42378	43250	43246	-4	0.0
US Solar	14469	13358	14254	14057	12185	12732	548	-0.1
US Petroleum	5323	3135	2072	2470	2594	2775	182	0.0
US Other	10131	9765	8934	9277	9125	8628	-496	0.1
US Coal	136177	136318	116993	115066	109063	94622	-14440	2.6
US Nuke	94358	92365	93162	89490	88789	88403	-385	0.1
US Hydro	30621	28181	26944	24138	25340	25132	-208	0.0
<b>US Gas</b>	<b>216025</b>	<b>205503</b>	<b>181094</b>	<b>182116</b>	<b>175354</b>	<b>153373</b>	<b>-21981</b>	<b>4.0</b>

See National Wind and Nuclear daily charts

Source: Bloomberg, analytix.ai

## Monthly Average Generation Data

### Nuclear Generation Monthly Average - GWh (NRC)

	2Yr Ago	LY	MTD						
	Same 30 days	Same 30 days	Jul-21	Aug-21	Sep-21	Oct-21	Last 30 days	MoM (MTD vs LY)	Last 30 days YoY
	NRC Nuclear Daily Output	86.8	86.5	90.1	91.5	87.2	55.2	80.2	-32.0
NRC Nuclear Max Capacity	104.9	104.9	104.9	104.9	104.9	104.9	104.9	0.0	0.0
NRC Nuclear Outage	18.0	18.4	14.8	13.4	17.7	49.6	24.7	32.0	6.3
NRC % Nuclear Cap Utilization	88.3	88.0	91.6	93.0	88.7	56.2	81.6	-32.5	-6.4

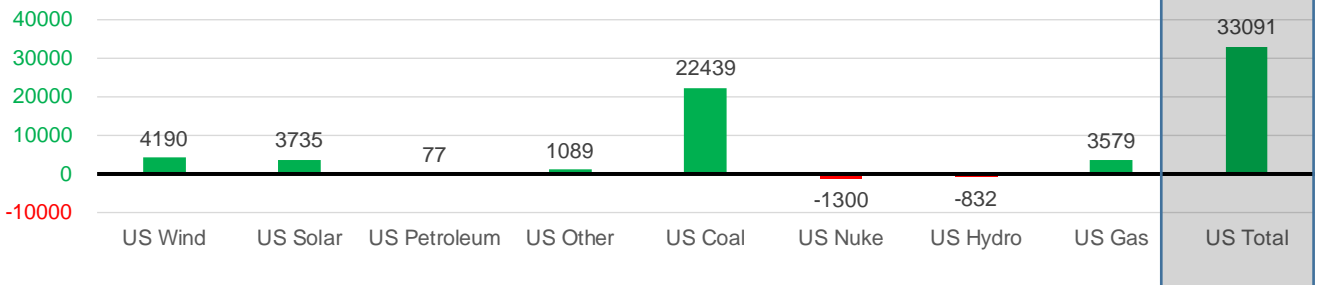
### Wind Generation Monthly Average - MWh (EIA)

	2Yr Ago	LY	MTD						
	Same 30 days	Same 30 days	Jul-21	Aug-21	Sep-21	Oct-21	Last 30 days	MoM (MTD vs LY)	Last 30 days YoY
	CALI Wind	2055	1269	2338	2442	2020	548	1787	-1471
TEXAS Wind	8968	7510	7217	9901	9400	2448	8075	-6951	565
US Wind	35242	32035	29217	35830	40162	13297	36225	-26865	4190

### Generation Monthly Average - MWh (EIA)

	2Yr Ago	LY	MTD						
	Same 30 days	Same 30 days	Jul-21	Aug-21	Sep-21	Oct-21	Last 30 days	MoM (MTD vs LY)	Last 30 days YoY
	US Wind	35242	32035	29217	35830	40162	13297	36225	▲22927.8
US Solar	8610	8931	14140	13787	13327	11161	12666	▲ 1504.6	▲ 3735
US Petroleum	4349	2836	4233	4484	2467	4280	2913	▼ -1367	▲ 77
US Other	8384	8242	9327	9929	8992	10534	9331	▼ -1203	▲ 1089
US Coal	114011	84106	137228	137655	109998	102134	106544	▲ 4411	▲ 22439
US Nuke	93368	89687	92911	94062	90146	84286	88387	▲ 4100	▼ -1300
US Hydro	25288	25882	29941	28532	25605	24272	25050	▲ 778	▼ -832
<b>US Gas</b>	<b>183846</b>	<b>171673</b>	<b>207823</b>	<b>210824</b>	<b>173434</b>	<b>181453</b>	<b>175253</b>	<b>▲ 31152</b>	<b>▲ 3579</b>
<b>US Total</b>	<b>474376</b>	<b>423459</b>	<b>524834</b>	<b>534937</b>	<b>464376</b>	<b>431028</b>	<b>456550</b>	<b>▲ 39376</b>	<b>▲ 33091</b>

Last 30 days YoY



See National Wind and Nuclear daily charts

Source: Bloomberg, analytix.ai

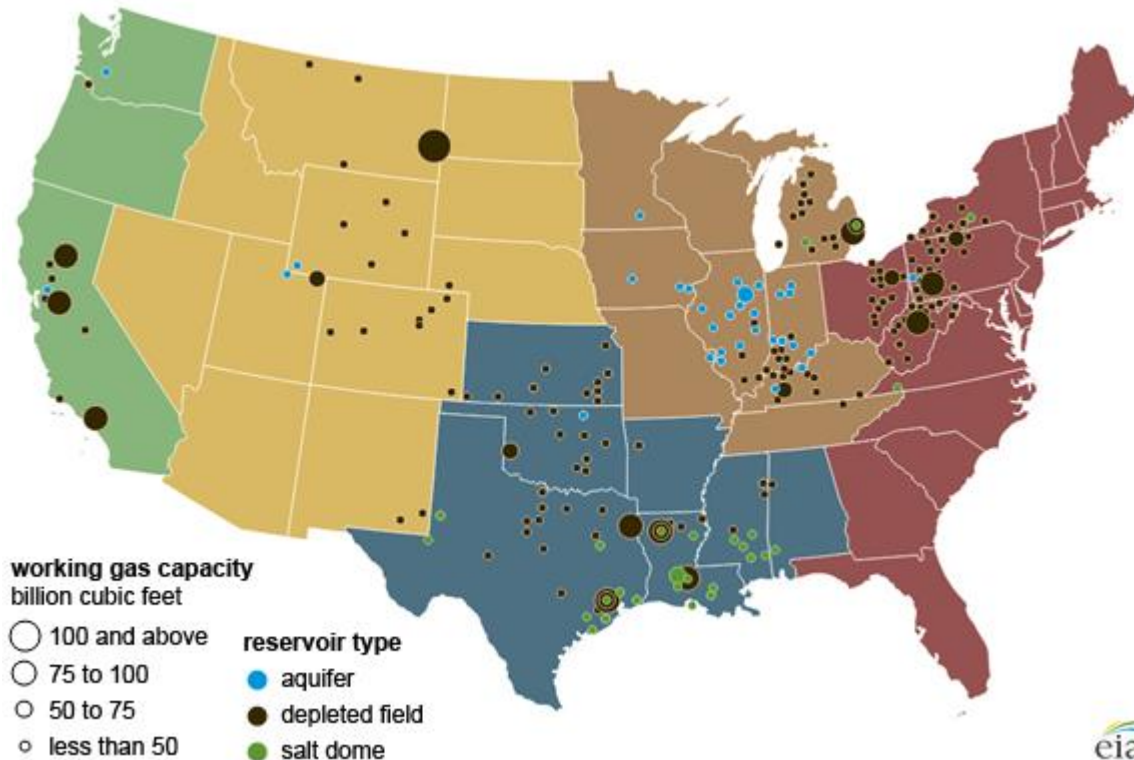
### Regional S/D Models Storage Projection

Week Ending 1-Oct

	Daily Raw Storage	Daily Adjustment Factor	Daily Average Storage Activity (Adjusted) *	Weekly Adjusted Storage Activity
L48	15.8	0.9	16.8	117
East	3.7	0.5	4.3	30
Midwest	5.9	-0.8	5.1	36
Mountain	3.7	-3.3	0.4	3
South Central	1.2	5.1	6.2	44
Pacific	1.3	-0.5	0.8	5

\*Adjustment Factor is calculated based on historical regional deltas

U.S. underground natural gas storage facilities by type (July 2015)

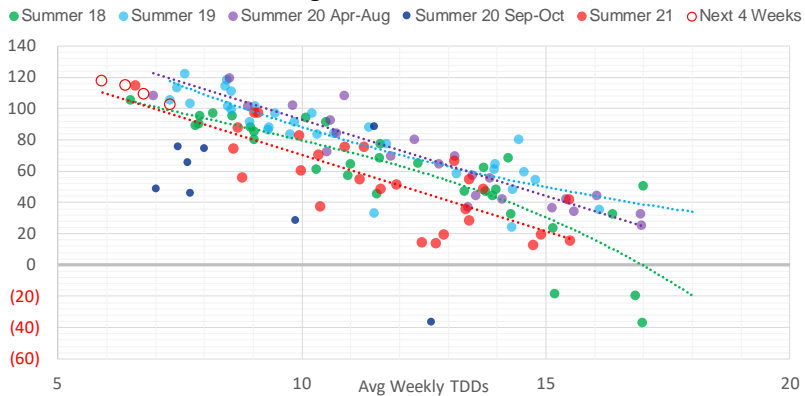


### Weather Model Storage Projection

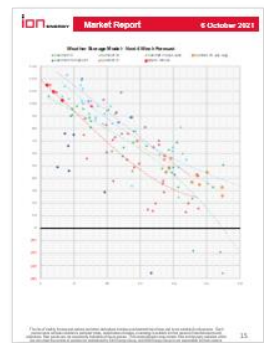
Next report  
and beyond

Week Ending	GWDDs	Week Storage Projection
01-Oct	5.9	117
08-Oct	6.4	115
15-Oct	6.8	109
22-Oct	7.3	103

**Weather Storage Model - Next 4 Week Forecast**

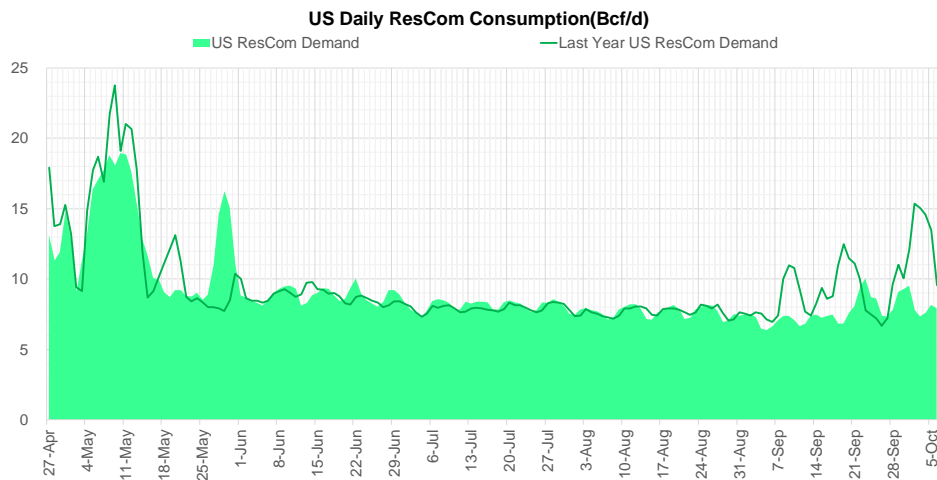
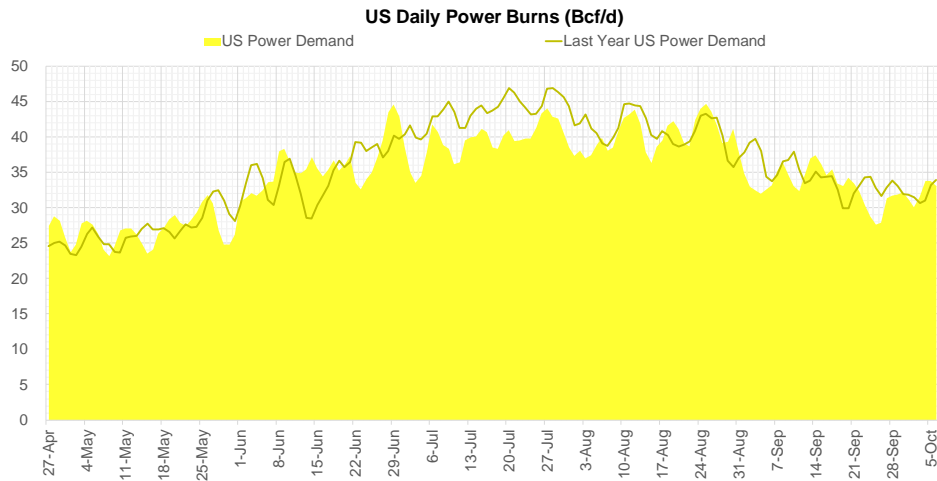
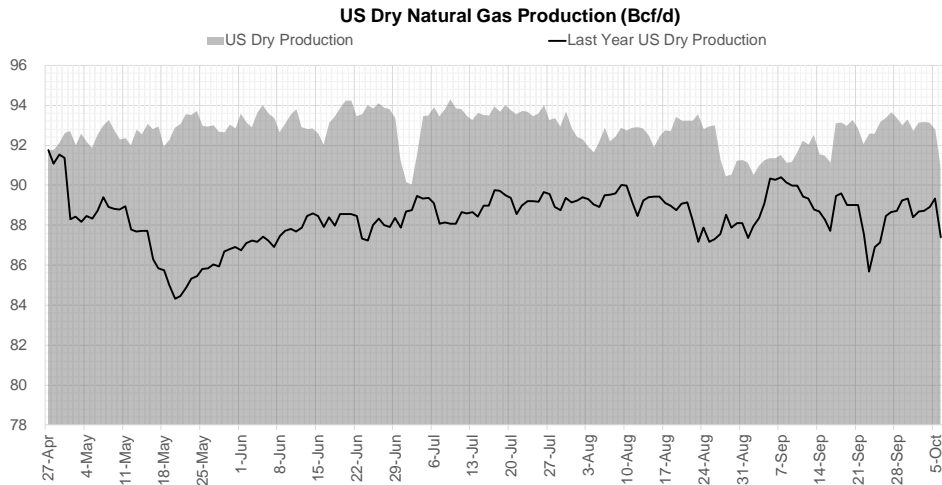


Go to larger image





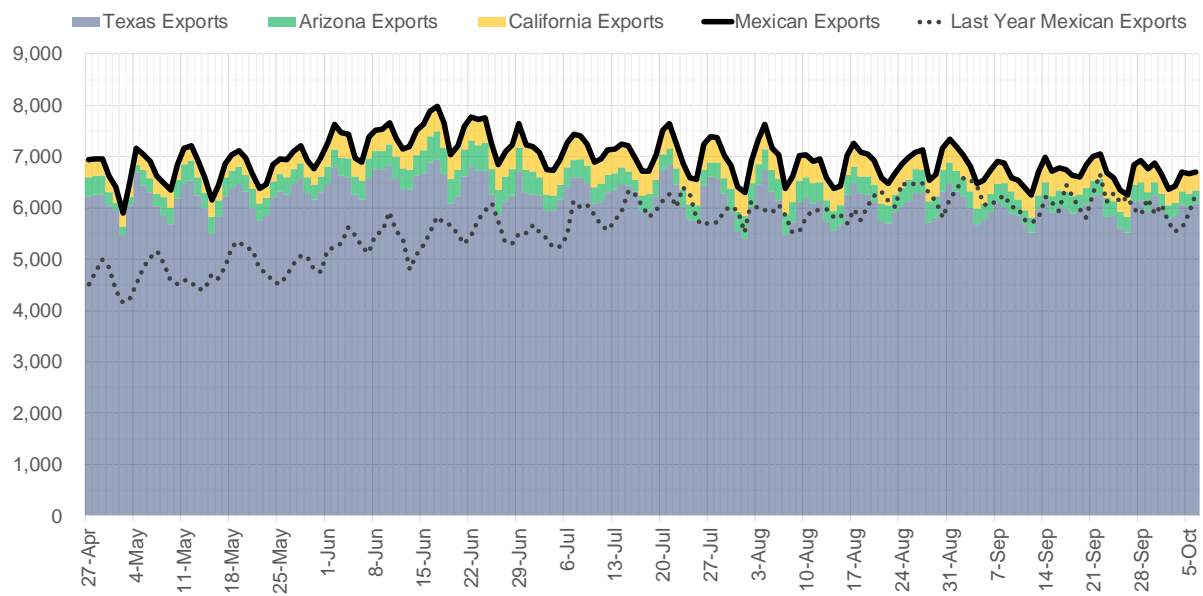
## Supply – Demand Trends



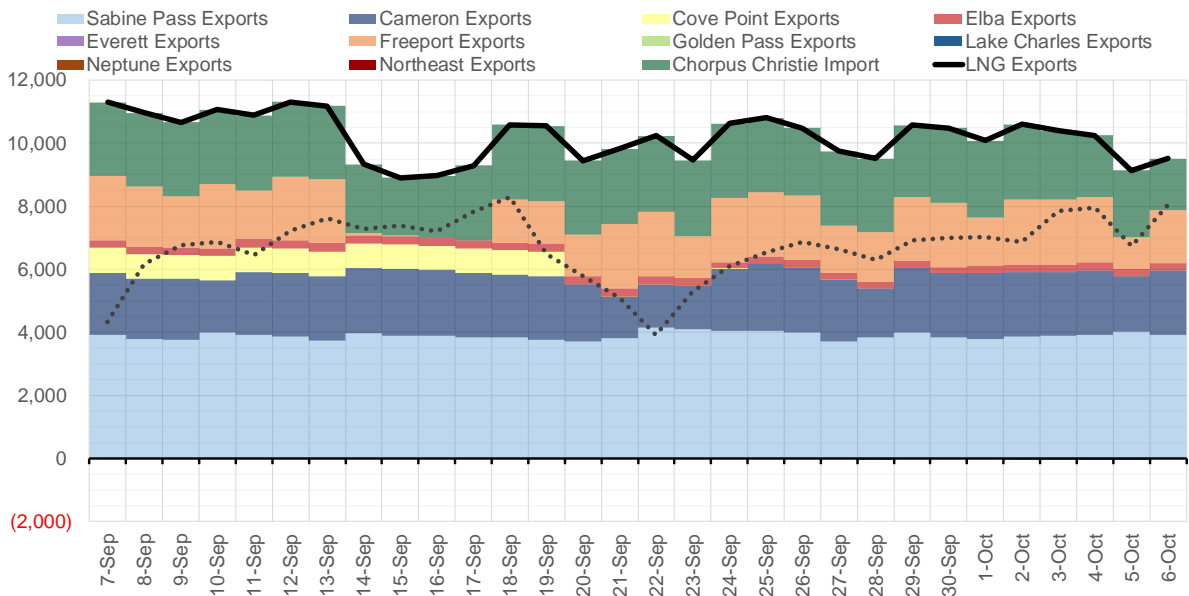
Source: Bloomberg

The risk of trading futures and options and other derivatives involves a substantial risk of loss and is not suitable for all persons. Each person must consider whether a particular trade, combination of trades, or strategy is suitable for that person's financial means and objectives. Past results are not necessarily indicative of future results. This communication may contain links to third party websites which are not under the control of and are not maintained by ION Energy Group, and ION Energy Group is not responsible for their content.

### Mexican Exports (MMcf/d)



### Net LNG Exports - Last 30 days (MMcf/d)



Source: Bloomberg

The risk of trading futures and options and other derivatives involves a substantial risk of loss and is not suitable for all persons. Each person must consider whether a particular trade, combination of trades, or strategy is suitable for that person's financial means and objectives. Past results are not necessarily indicative of future results. This communication may contain links to third party websites which are not under the control of and are not maintained by ION Energy Group, and ION Energy Group is not responsible for their content.

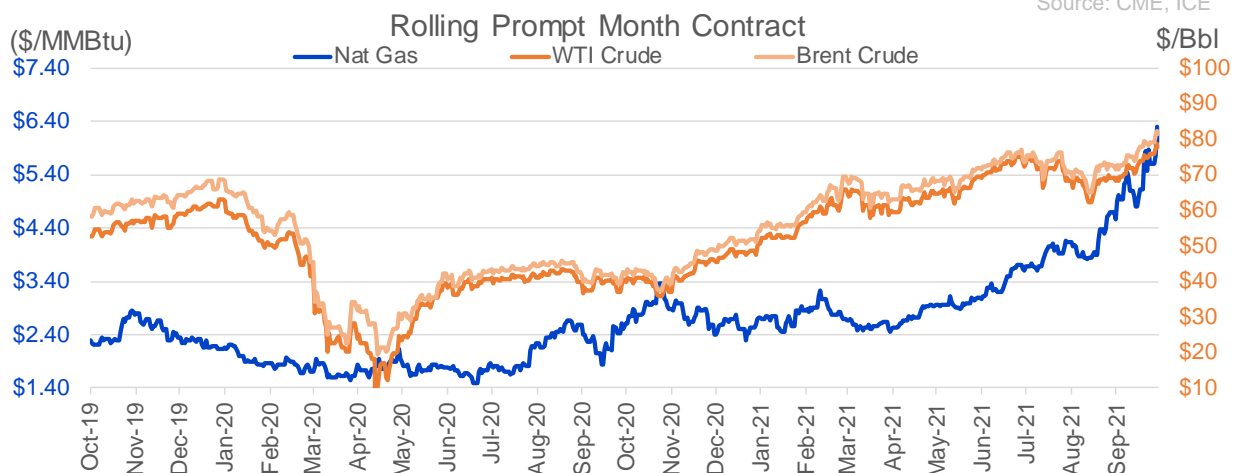
### Nat Gas Options Volume and Open Interest CME, ICE and Nasdaq Combined

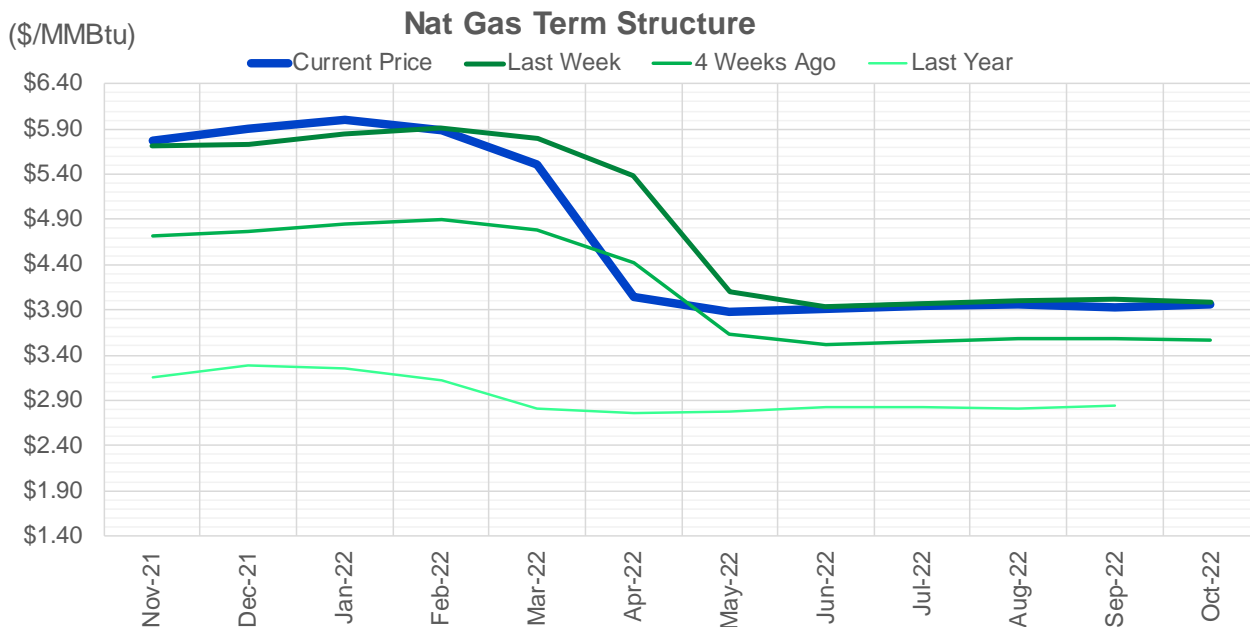
CONTRACT MONTH	CONTRACT YEAR	PUT/CALL	STRIKE	CUMULATIVE VOL	CONTRACT MONTH	CONTRACT YEAR	PUT/CALL	STRIKE	CUMULATIVE OI
11	2021	P	5.00	2797	12	2021	P	2.75	43712
11	2021	P	5.50	2645	12	2021	P	2.50	38567
1	2022	C	17.00	2000	12	2021	P	3.00	32086
11	2021	C	9.00	1917	12	2021	P	4.00	31164
1	2022	C	10.00	1624	3	2022	C	10.00	30811
4	2022	C	4.25	1400	11	2021	P	3.00	30169
11	2021	C	8.00	1194	11	2021	P	4.00	26642
5	2022	C	4.00	1125	3	2022	C	8.00	26365
3	2022	P	3.00	975	12	2021	P	3.50	25663
1	2022	C	8.00	921	11	2021	P	4.50	25269
3	2022	P	4.25	912	11	2021	P	5.00	23692
11	2021	C	7.00	848	11	2021	C	7.00	23281
12	2021	C	10.00	796	12	2021	C	4.00	22528
2	2022	C	15.00	736	3	2022	P	3.50	20936
11	2021	C	10.00	732	3	2022	C	5.00	20486
3	2022	P	3.50	680	11	2021	C	4.00	20146
12	2021	P	5.00	673	11	2021	P	3.50	20074
3	2022	C	20.00	623	4	2022	C	3.00	19760
11	2021	P	5.30	607	11	2021	C	6.00	19544
4	2022	C	6.00	602	1	2022	P	3.50	18199
12	2021	C	8.50	590	1	2022	C	5.00	18097
12	2021	P	4.00	589	12	2021	C	6.00	17655
3	2022	C	7.00	582	2	2022	P	3.50	17545
11	2021	C	6.50	574	2	2022	C	5.00	17401
12	2021	P	3.50	553	3	2022	P	4.00	16934
2	2022	C	8.00	539	3	2022	P	2.50	16801
12	2021	C	15.00	516	12	2021	C	7.00	16105
11	2021	P	5.75	512	3	2022	C	4.00	15831
11	2021	P	6.00	506	11	2021	C	5.00	15178
1	2022	C	2.00	500	11	2021	C	4.50	14904
3	2022	P	5.25	500	1	2022	C	4.00	14503
4	2022	C	8.00	500	11	2021	P	2.50	14488
4	2022	P	3.25	500	11	2021	C	3.75	14480
11	2021	P	4.50	492	4	2022	C	5.00	14446
1	2022	C	8.50	458	12	2022	C	5.00	14372
12	2021	C	11.00	445	11	2021	P	3.25	14214
1	2022	C	7.00	404	4	2022	P	2.50	14210
1	2022	C	6.00	378	1	2022	C	6.00	13937
1	2022	C	6.50	377	12	2021	P	2.00	13885
2	2022	C	20.00	377	11	2021	C	5.50	13725
12	2021	C	9.00	369	1	2022	P	4.00	13518
11	2021	C	7.50	362	1	2022	C	7.00	13406
12	2021	C	7.00	353	11	2021	C	4.25	13294
3	2022	P	5.00	350	2	2022	C	6.00	13229
5	2022	C	10.00	350	12	2022	C	4.50	13115
5	2022	C	12.00	350	5	2022	C	3.00	13110
6	2022	C	10.00	350	12	2021	C	8.00	13008
6	2022	C	12.00	350	2	2022	C	4.00	12914
7	2022	C	10.00	350	12	2021	C	5.00	12871
					6	2022	C	3	12815

Source: CME, ICE

### Nat Gas Futures Open Interest CME, and ICE Combined

CME Henry Hub Futures (10,000 MMBtu)				ICE Henry Hub Futures Contract Equivalent (10,000 MM			
	Current	Prior	Daily Change		Current	Prior	Daily Change
NOV 21	252830	251348	1482	NOV 21	87937	87861	77
DEC 21	111339	106116	5223	DEC 21	76585	75454	1131
JAN 22	174588	170053	4535	JAN 22	94704	94385	320
FEB 22	61118	59798	1320	FEB 22	69591	70532	-941
MAR 22	129143	127728	1415	MAR 22	76016	76155	-139
APR 22	124794	123886	908	APR 22	74509	74380	128
MAY 22	121229	120899	330	MAY 22	70751	70689	62
JUN 22	37554	37044	510	JUN 22	54591	54607	-16
JUL 22	33390	33886	-496	JUL 22	56927	56951	-23
AUG 22	31287	32167	-880	AUG 22	55976	55822	154
SEP 22	35250	34711	539	SEP 22	56856	56803	53
OCT 22	89826	90039	-213	OCT 22	62659	62527	132
NOV 22	31416	31606	-190	NOV 22	48654	48553	101
DEC 22	25445	25690	-245	DEC 22	51927	51823	104
JAN 23	24602	24594	8	JAN 23	38234	38125	109
FEB 23	10030	9879	151	FEB 23	31688	31524	164
MAR 23	13337	13491	-154	MAR 23	33330	33423	-93
APR 23	12427	12595	-168	APR 23	33009	32508	501
MAY 23	7936	7806	130	MAY 23	31870	31676	194
JUN 23	6169	6108	61	JUN 23	29619	29471	148
JUL 23	4294	4226	68	JUL 23	29868	29720	148
AUG 23	3377	3341	36	AUG 23	29659	29506	153
SEP 23	4632	4580	52	SEP 23	28787	28640	148
OCT 23	5754	5686	68	OCT 23	31826	31728	99
NOV 23	2580	2514	66	NOV 23	30299	30322	-23
DEC 23	2363	2653	-290	DEC 23	28224	28176	48
JAN 24	1179	1479	-300	JAN 24	15610	15487	123
FEB 24	1085	1084	1	FEB 24	13174	13134	41
MAR 24	3361	3361	0	MAR 24	18028	17902	127
APR 24	3518	3517	1	APR 24	12255	12134	121





	Nov-21	Dec-21	Jan-22	Feb-22	Mar-22	Apr-22	May-22	Jun-22	Jul-22	Aug-22	Sep-22	Oct-22
<b>Current Price</b>	<b>\$5.766</b>	<b>\$5.906</b>	<b>\$5.999</b>	<b>\$5.888</b>	<b>\$5.505</b>	<b>\$4.042</b>	<b>\$3.880</b>	<b>\$3.911</b>	<b>\$3.950</b>	<b>\$3.955</b>	<b>\$3.935</b>	<b>\$3.963</b>
Last Week	\$5.706	\$5.731	\$5.839	\$5.910	\$5.798	\$5.385	\$4.107	\$3.938	\$3.967	\$4.007	\$4.010	\$3.990
vs. Last Week	\$0.060	\$0.175	\$0.160	-\$0.022	-\$0.293	-\$1.343	-\$0.227	-\$0.027	-\$0.017	-\$0.052	-\$0.075	-\$0.027
4 Weeks Ago	\$4.712	\$4.762	\$4.850	\$4.905	\$4.791	\$4.420	\$3.628	\$3.521	\$3.549	\$3.579	\$3.587	\$3.568
vs. 4 Weeks Ago	\$1.054	\$1.144	\$1.149	\$0.983	\$0.714	-\$0.378	\$0.252	\$0.390	\$0.401	\$0.376	\$0.348	\$0.395
Last Year	\$2.615	\$3.161	\$3.293	\$3.247	\$3.122	\$2.801	\$2.751	\$2.780	\$2.817	\$2.825	\$2.811	\$2.841
vs. Last Year	\$3.151	\$2.745	\$2.706	\$2.641	\$2.383	\$1.241	\$1.129	\$1.131	\$1.133	\$1.130	\$1.124	\$1.122

	Units	Cash Settled	Prompt Settle	Cash to Prompt
AGT Citygate	\$/MMBtu	6.50	5.42	-1.09
TETCO M3	\$/MMBtu	5.30	4.63	-0.67
FGT Zone 3	\$/MMBtu	5.32	5.88	0.56
Zone 6 NY	\$/MMBtu	5.32	4.53	-0.79
Chicago Citygate	\$/MMBtu	6.02	5.63	-0.39
Michcon	\$/MMBtu	5.98	5.44	-0.54
Columbia TCO Pool	\$/MMBtu	5.23	4.76	-0.47
Ventura	\$/MMBtu	5.97	5.44	-0.53
Rockies/Opal	\$/MMBtu	6.08	5.50	-0.57
El Paso Permian Basin	\$/MMBtu	5.75	5.49	-0.26
Socal Citygate	\$/MMBtu	6.65	6.15	-0.50
Malin	\$/MMBtu	6.30	5.81	-0.50
Houston Ship Channel	\$/MMBtu	6.05	5.82	-0.23
Henry Hub Cash	\$/MMBtu	5.81	5.54	-0.27
AECO Cash	C\$/GJ	4.43	3.93	-0.50
Station2 Cash	C\$/GJ	4.20	6.39	2.19
Dawn Cash	C\$/GJ	6.02	5.41	-0.61

Source: CME, Bloomberg

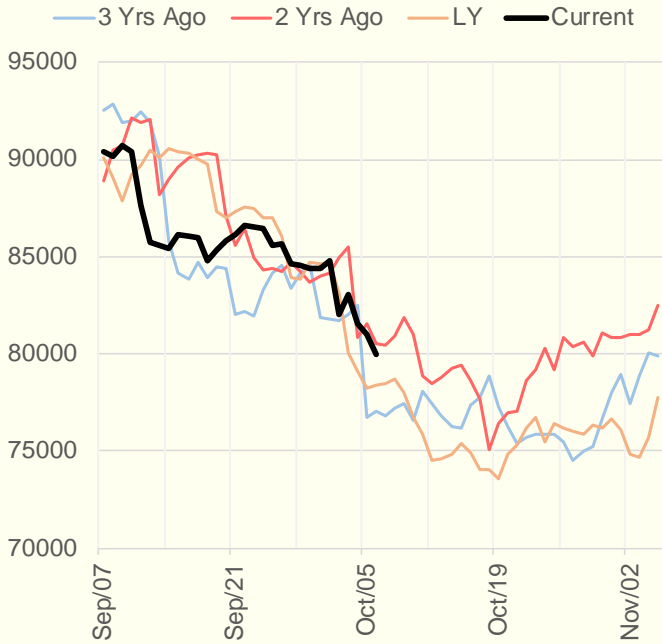
	Units	Current Price	vs. Last Week	vs. 4 Weeks Ago	vs. Last Year
NatGas Jul21/Oct21	\$/MMBtu	2.224	▲ 0.000	▲ 1.273	▲ 2.200
NatGas Oct21/Nov21	\$/MMBtu	0.471	▲ 0.432	▲ 0.424	▲ 0.414
NatGas Oct21/Jan22	\$/MMBtu	0.681	▲ 0.464	▲ 0.485	▲ 0.388
NatGas Apr22/Oct22	\$/MMBtu	-0.108	▼ -0.003	▼ -0.104	▼ -0.117
WTI Crude	\$/Bbl	78.93	▲ 3.640	▲ 10.580	▲ 38.260
Brent Crude	\$/Bbl	82.56	▲ 3.470	▲ 10.870	▲ 39.910
Fuel Oil, NY Harbour 1%	\$/Bbl	97.18	▲ 0.000	▲ 0.000	▲ 0.000
Heating Oil	cents/Gallon	249.36	▲ 20.460	▲ 37.200	▲ 130.500
Propane, Mt. Bel	cents/Gallon	1.51	▲ 0.221	▲ 0.326	▲ 1.001
Ethane, Mt. Bel	cents/Gallon	0.46	▲ 0.072	▲ 0.107	▲ 0.259
Coal, PRB	\$/MTon	12.30	▲ 0.000	▲ 0.000	▲ 0.000
Coal, PRB	\$/MMBtu	0.70			
Coal, ILB	\$/MTon	31.05	▲ 0.000	▲ 0.000	▲ 0.000
Coal, ILB	\$/MMBtu	1.32			

### Weather Storage Model - Next 4 Week Forecast

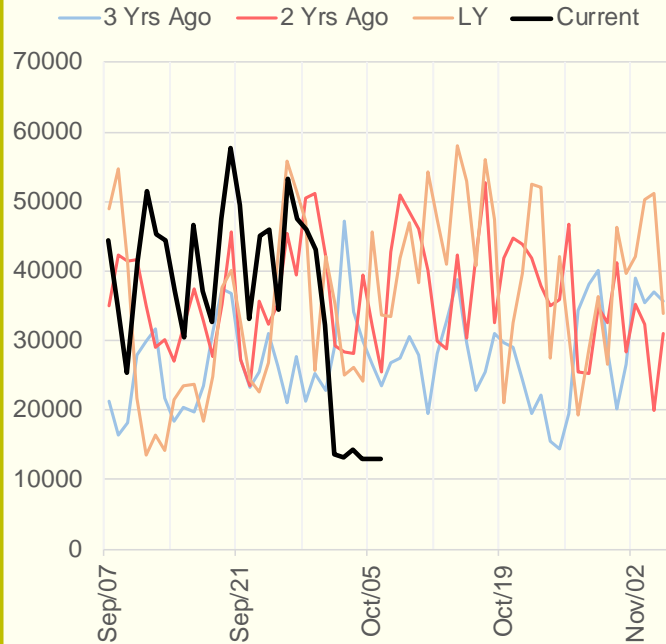


The risk of trading futures and options and other derivatives involves a substantial risk of loss and is not suitable for all persons. Each person must consider whether a particular trade, combination of trades, or strategy is suitable for that person's financial means and objectives. Past results are not necessarily indicative of future results. This communication may contain links to third party websites which are not under the control of and are not maintained by ION Energy Group, and ION Energy Group is not responsible for their content.

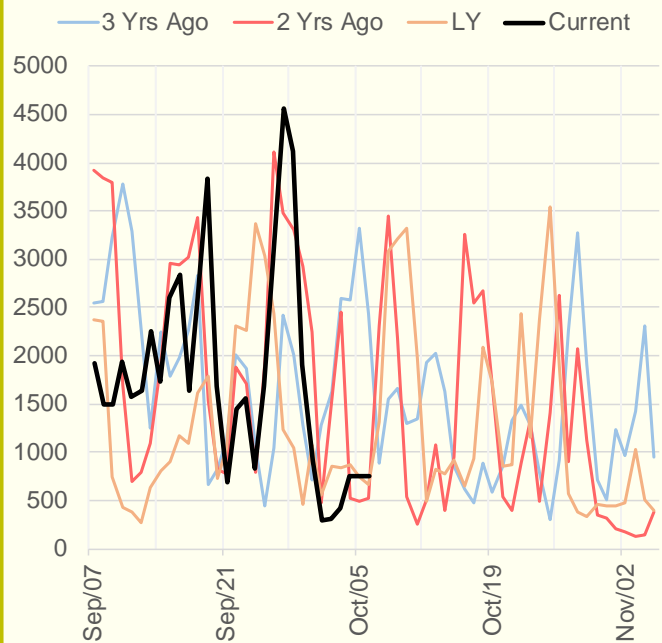
### NRC Nuclear Daily Output



### US Wind



### CALI Wind



### TEXAS Wind

