

	Current	Δ from YD	Δ from 7D Avg
Nat Gas Prompt	\$ 5.72	▲ \$ 0.05	▼ \$ (0.03)

	Current	Δ from YD	Δ from 7D Avg
WTI Prompt	\$ 78.73	▲ \$ 0.43	▲ \$ 1.6

	Current	Δ from YD	Δ from 7D Avg
Brent Prompt	\$ 82.33	▲ \$ 0.38	▲ \$ 1.7

### Page Menu

[Short-term Weather Model Outlooks](#)

[Lower 48 Component Models](#)

[Regional S/D Models Storage Projection](#)

[Weather Model Storage Projection](#)

[Supply – Demand Trends](#)

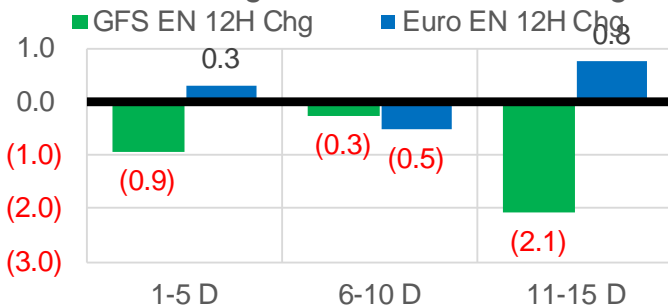
[Nat Gas Options Volume and Open Interest](#)

[Nat Gas Futures Open Interest](#)

[Price Summary](#)

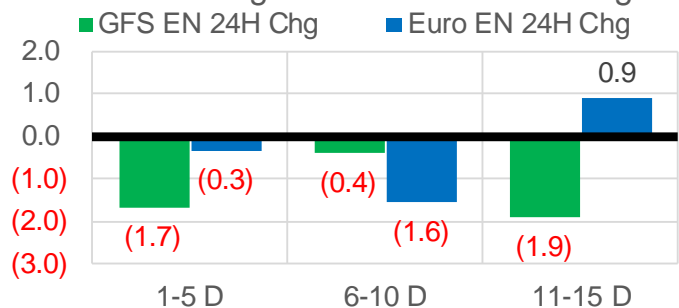
### Vs. 12H Ago

L48 Region - 00z TDD vs 12H Ago



### Vs. 24H Ago

L48 Region - 00z TDD vs 24H Ago



	Current	Δ from YD	Δ from 7D Avg
US Dry Production	93.5	▲ 1.11	▲ 0.69

	Current	Δ from YD	Δ from 7D Avg
US Power Burns	32.5	▼ -1.40	▼ -0.07

	Current	Δ from YD	Δ from 7D Avg
US ResComm	8.7	▲ 0.68	▲ 0.61

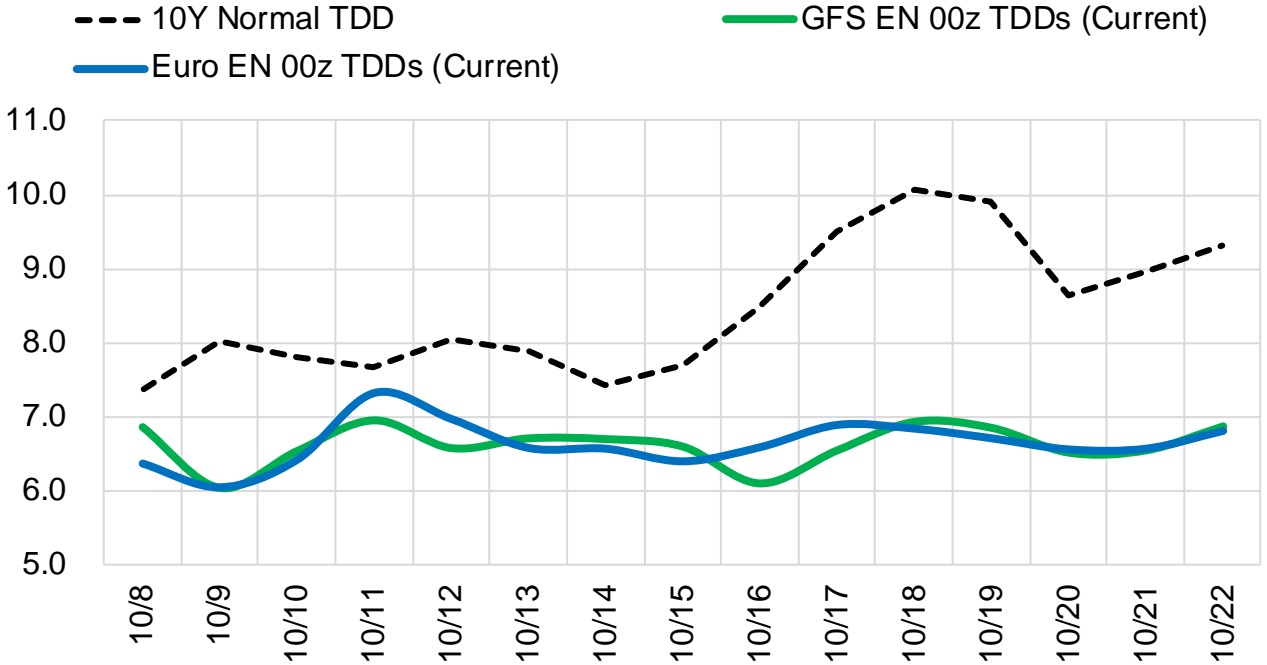
	Current	Δ from YD	Δ from 7D Avg
Canadian Imports	4.8	▼ -0.22	▼ -0.54

	Current	Δ from YD	Δ from 7D Avg
Net LNG Exports	10.7	▲ 0.64	▲ 0.76

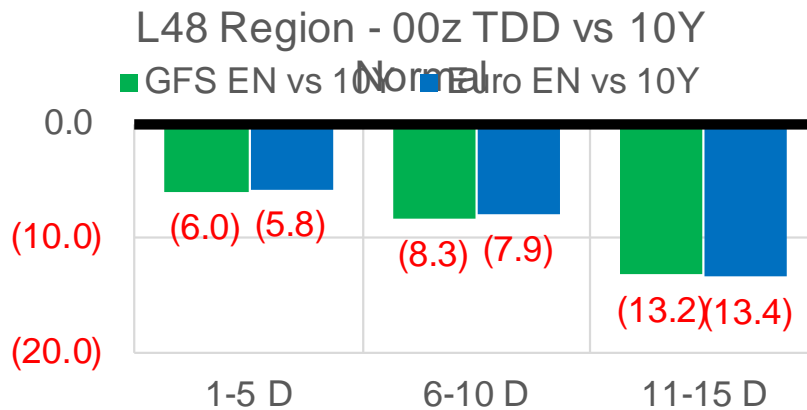
	Current	Δ from YD	Δ from 7D Avg
Mexican Exports	6.6	▼ -0.10	▲ 0.02

### Short-term Weather Model Outlooks (00z)

#### L48 Region



### Vs. 10Y Normal



Source: WSI, Bloomberg

## Lower 48 Component Models

### Daily Balances

	2-Oct	3-Oct	4-Oct	5-Oct	6-Oct	7-Oct	8-Oct	DoD	vs. 7D
<b>Lower 48 Dry Production</b>	<b>93.1</b>	<b>93.3</b>	<b>93.3</b>	<b>92.7</b>	<b>92.2</b>	<b>92.4</b>	<b>93.5</b>	▲ 1.1	▲ 0.7
<b>Canadian Imports</b>	<b>5.4</b>	<b>5.5</b>	<b>5.4</b>	<b>5.2</b>	<b>5.0</b>	<b>5.0</b>	<b>4.8</b>	▼ -0.2	▼ -0.5
L48 Power	30.2	31.8	34.0	33.5	33.6	33.9	32.5	▼ -1.4	▼ -0.3
L48 Residential & Commercial	7.8	7.5	7.7	8.2	7.8	8.0	8.7	▲ 0.7	▲ 0.9
L48 Industrial	21.4	21.5	21.6	21.7	21.6	21.4	20.7	▼ -0.7	▼ -0.8
L48 Lease and Plant Fuel	5.1	5.1	5.1	5.1	5.0	5.0	5.0	▼ 0.0	▼ -0.1
L48 Pipeline Distribution	2.0	2.1	2.2	2.2	2.2	2.2	2.2	▼ 0.0	▲ 0.0
<b>L48 Regional Gas Consumption</b>	<b>66.5</b>	<b>68.0</b>	<b>70.6</b>	<b>70.7</b>	<b>70.3</b>	<b>70.6</b>	<b>69.1</b>	▼ -1.5	▼ -0.3
<b>Net LNG Delivered</b>	<b>10.60</b>	<b>10.39</b>	<b>10.25</b>	<b>9.07</b>	<b>8.95</b>	<b>10.03</b>	<b>10.66</b>	▲ 0.6	▲ 0.8
<b>Total Mexican Exports</b>	<b>6.4</b>	<b>6.4</b>	<b>6.7</b>	<b>6.7</b>	<b>6.5</b>	<b>6.7</b>	<b>6.6</b>	▼ -0.1	▲ 0.0
<b>Implied Daily Storage Activity</b>	<b>15.2</b>	<b>14.0</b>	<b>11.2</b>	<b>11.5</b>	<b>11.4</b>	<b>10.1</b>	<b>11.9</b>		
<b>EIA Reported Daily Storage Activity</b>									
<b>Daily Model Error</b>									

### EIA Storage Week Balances

	3-Sep	10-Sep	17-Sep	24-Sep	1-Oct	8-Oct	WoW	vs. 4W
<b>Lower 48 Dry Production</b>	<b>90.9</b>	<b>91.3</b>	<b>91.8</b>	<b>92.9</b>	<b>93.2</b>	<b>92.8</b>	▼ -0.4	▲ 0.5
<b>Canadian Imports</b>	<b>5.0</b>	<b>4.8</b>	<b>5.2</b>	<b>5.2</b>	<b>5.7</b>	<b>5.3</b>	▼ -0.4	▲ 0.1
L48 Power	38.1	33.8	35.0	33.2	30.2	32.6	▲ 2.4	▼ -0.4
L48 Residential & Commercial	7.4	6.9	7.2	8.0	8.3	8.1	▼ -0.3	▲ 0.5
L48 Industrial	18.9	19.6	20.8	20.5	20.2	21.4	▲ 1.2	▲ 1.2
L48 Lease and Plant Fuel	5.0	5.0	5.0	5.1	5.1	5.1	▼ 0.0	▲ 0.0
L48 Pipeline Distribution	2.4	2.2	2.3	2.3	2.1	2.2	▲ 0.1	▼ -0.1
<b>L48 Regional Gas Consumption</b>	<b>71.7</b>	<b>67.5</b>	<b>70.3</b>	<b>69.1</b>	<b>66.0</b>	<b>69.4</b>	▲ 3.4	▲ 1.1
<b>Net LNG Exports</b>	<b>10.5</b>	<b>11.0</b>	<b>10.2</b>	<b>9.9</b>	<b>10.3</b>	<b>9.9</b>	▼ -0.4	▼ -0.4
<b>Total Mexican Exports</b>	<b>7.0</b>	<b>6.7</b>	<b>6.6</b>	<b>6.8</b>	<b>6.7</b>	<b>6.6</b>	▼ -0.1	▼ -0.1
<b>Implied Daily Storage Activity</b>	<b>6.7</b>	<b>10.9</b>	<b>9.8</b>	<b>12.2</b>	<b>16.0</b>	<b>12.3</b>	-3.7	
<b>EIA Reported Daily Storage Activity</b>	<b>7.4</b>	<b>11.9</b>	<b>10.9</b>	<b>12.6</b>	<b>16.9</b>			
<b>Daily Model Error</b>	<b>-0.7</b>	<b>-1.0</b>	<b>-1.0</b>	<b>-0.4</b>	<b>-0.9</b>			

### Monthly Balances

	2Yr Ago Oct-19	LY Oct-20	Jun-21	Jul-21	Aug-21	Sep-21	MTD Oct-21	MoM	vs. LY
<b>Lower 48 Dry Production</b>	<b>95.1</b>	<b>88.3</b>	<b>93.3</b>	<b>93.3</b>	<b>92.4</b>	<b>92.2</b>	<b>92.7</b>	▲ 0.5	▲ 4.4
<b>Canadian Imports</b>	<b>4.6</b>	<b>4.3</b>	<b>4.9</b>	<b>5.2</b>	<b>5.1</b>	<b>5.2</b>	<b>5.2</b>	▲ 0.1	▲ 1.0
L48 Power	30.3	30.8	35.9	39.4	40.2	33.1	32.6	▼ -0.5	▲ 1.8
L48 Residential & Commercial	15.3	15.3	8.8	8.1	7.7	7.6	8.2	▲ 0.5	▼ -7.1
L48 Industrial	23.5	22.6	20.5	20.8	20.2	20.2	21.4	▲ 1.2	▼ -1.2
L48 Lease and Plant Fuel	5.1	4.8	5.0	5.1	5.0	5.0	5.0	▲ 0.0	▲ 0.2
L48 Pipeline Distribution	2.4	2.5	2.4	2.5	2.5	2.2	2.2	▼ -0.1	▼ -0.3
<b>L48 Regional Gas Consumption</b>	<b>76.6</b>	<b>75.9</b>	<b>72.7</b>	<b>76.0</b>	<b>75.7</b>	<b>68.1</b>	<b>69.3</b>	▲ 1.2	▼ -6.6
<b>Net LNG Exports</b>	<b>6.7</b>	<b>8.0</b>	<b>10.2</b>	<b>10.8</b>	<b>10.5</b>	<b>10.3</b>	<b>10.0</b>	▼ -0.3	▲ 2.0
<b>Total Mexican Exports</b>	<b>5.4</b>	<b>6.0</b>	<b>7.4</b>	<b>7.1</b>	<b>6.9</b>	<b>6.7</b>	<b>6.6</b>	▼ -0.2	▲ 0.6
<b>Implied Daily Storage Activity</b>	<b>11.1</b>	<b>2.7</b>	<b>7.8</b>	<b>4.6</b>	<b>4.5</b>	<b>12.1</b>	<b>12.0</b>		
<b>EIA Reported Daily Storage Activity</b>									
<b>Daily Model Error</b>									

Source: Bloomberg, analytix.ai

## Daily Average Generation Data

### Nuclear Generation Daily Average - GWh (NRC)

	30-Sep	1-Oct	2-Oct	3-Oct	4-Oct	5-Oct	6-Oct	DoD	vs. 7D
NRC Nuclear Daily Output	84.4	84.8	82.0	83.0	81.6	81.7	81.0	-0.7	-2.0
NRC Nuclear Max Capacity	104.9	104.9	104.9	104.9	104.9	104.9	104.9	0.0	0.0
NRC Nuclear Outage	20.5	20.1	22.8	21.9	23.3	23.2	23.9	0.7	2.0
NRC % Nuclear Cap Utilization	85.8	86.2	83.4	84.4	82.9	83.1	82.3	-0.7	-2.0

### Wind Generation Daily Average - MWh (EIA)

	30-Sep	1-Oct	2-Oct	3-Oct	4-Oct	5-Oct	6-Oct	DoD	vs. 7D
CALI Wind	917	295	313	425	752	1812	2162	351	1410
TEXAS Wind	11121	3603	1684	1553	2617	5609	6824	1214	2459
US Wind	32138	13566	13223	14192	12934	23782	31367	7585	13061

### Generation Daily Average - MWh (EIA)

	30-Sep	1-Oct	2-Oct	3-Oct	4-Oct	5-Oct	6-Oct	DoD	vs. 7D
US Wind	32138	13566	13223	14192	12934	23782	31367	7585	13061
US Solar	12038	11689	13033	11970	10120	10176	10540	365	-964
US Petroleum	4102	4456	4058	4016	4383	3362	3490	128	-573
US Other	9264	9167	8703	9100	12076	11771	12114	343	2101
US Coal	103268	106201	99597	96694	103437	101665	98440	-3225	-3371
US Nuke	87822	87850	85063	85687	82373	81938	81560	-378	-3562
US Hydro	24195	24136	22657	22506	25444	25294	24923	-371	884
<b>US Gas</b>	<b>170050</b>	<b>173603</b>	<b>164196</b>	<b>170473</b>	<b>193482</b>	<b>182974</b>	<b>175192</b>	<b>-7782</b>	<b>-605</b>

See National Wind and Nuclear daily charts

Source: Bloomberg, analytix.ai

## Storage Week Average Generation Data

### Nuclear Generation Weekly Average - GWh (NRC)

	3-Sep	10-Sep	17-Sep	24-Sep	1-Oct	8-Oct	WoW	WoW Bcf/d Impact
NRC Nuclear Daily Output	90.2	90.3	86.7	85.9	85.1	82.1	-3.0	0.5
NRC Nuclear Max Capacity	104.9	104.9	104.9	104.9	104.9	104.9	0.0	
NRC Nuclear Outage	14.7	14.6	18.2	19.0	19.8	22.7	3.0	
NRC % Nuclear Cap Utilization	0.1	0.1	0.1	0.1	0.1	0.1	0.0	

### Wind Generation Weekly Average - MWh (EIA)

	3-Sep	10-Sep	17-Sep	24-Sep	1-Oct	8-Oct	WoW	WoW Bcf/d Impact
CALI Wind	2247	1236	2083	1936	2467	1132	-1335	0.2
TEXAS Wind	7534	7327	9541	9780	10364	4102	-6262	1.1
US Wind	35441	30659	42378	43250	43452	20062	-23390	4.2
					201.4			
					0%			

### Generation Weekly Average - MWh (EIA)

	3-Sep	10-Sep	17-Sep	24-Sep	1-Oct	8-Oct	WoW	WoW Bcf/d Impact
US Wind	35441	30659	42378	43250	43452	20062	-23390	<b>4.2</b>
US Solar	13358	14254	14057	12185	12897	11153	-1745	<b>0.3</b>
US Petroleum	3135	2072	2470	2594	2712	3894	1182	<b>-0.2</b>
US Other	9765	8934	9277	9125	8680	10721	2040	-0.4
US Coal	136318	116993	115066	109063	94776	100639	5864	-1.1
US Nuke	92365	93162	89490	88789	88402	83719	-4684	<b>0.8</b>
US Hydro	28181	26944	24138	25340	25278	24269	-1009	0.2
<b>US Gas</b>	<b>205503</b>	<b>181094</b>	<b>182116</b>	<b>175354</b>	<b>153676</b>	<b>176445</b>	<b>22769</b>	-4.1

See National Wind and Nuclear daily charts

Source: Bloomberg, analytix.ai

## Monthly Average Generation Data

### Nuclear Generation Monthly Average - GWh (NRC)

	2Yr Ago		LY		MTD			Last 30 days	MoM (MTD vs LY)	Last 30 days YoY
	Same 30 days	Same 30 days	Jul-21	Aug-21	Sep-21	Oct-21				
	NRC Nuclear Daily Output	86.2	85.8	90.1	91.5	87.2	82.0			
NRC Nuclear Max Capacity	104.9	104.9	104.9	104.9	104.9	104.9	104.9	0.0	0.0	
NRC Nuclear Outage	18.6	19.1	14.8	13.4	17.7	22.9	19.9	5.2	0.7	
NRC % Nuclear Cap Utilization	87.7	87.2	91.6	93.0	88.7	83.4	86.5	-5.3	-0.8	

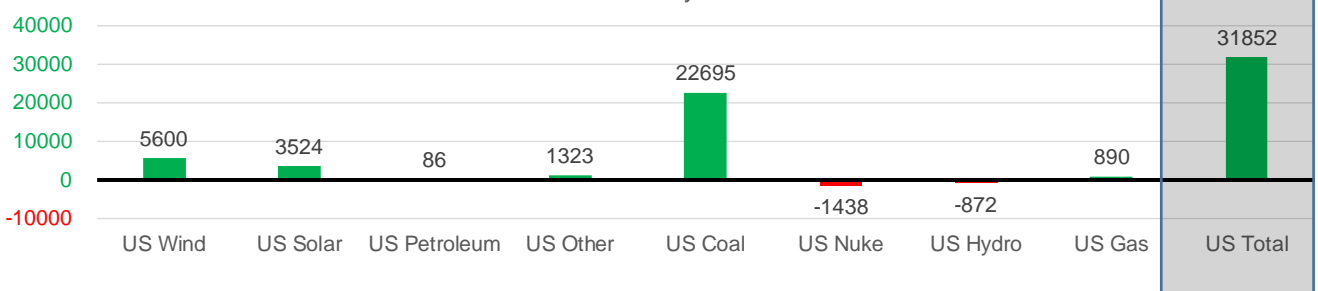
### Wind Generation Monthly Average - MWh (EIA)

	2Yr Ago		LY		MTD			Last 30 days	MoM (MTD vs LY)	Last 30 days YoY
	Same 30 days	Same 30 days	Jul-21	Aug-21	Sep-21	Oct-21				
	CALI Wind	1988	1258	2338	2442	2020	1260			
TEXAS Wind	8972	7074	7217	9901	9400	4442	8342	-4957	1268	
US Wind	35793	31089	29217	35830	40210	21475	36690	-18735	5600	

### Generation Monthly Average - MWh (EIA)

	2Yr Ago		LY		MTD			Last 30 days	MoM (MTD vs LY)	Last 30 days YoY
	Same 30 days	Same 30 days	Jul-21	Aug-21	Sep-21	Oct-21				
	US Wind	35793	31089	29217	35830	40210	21475			
US Solar	8714	8981	14140	13787	13365	11076	12504	▲ 1428.4	▲ 3524	
US Petroleum	4329	2843	4233	4484	2452	3843	2929	▼ -914	▲ 86	
US Other	8408	8197	9327	9929	9004	10895	9519	▼ -1375	▲ 1323	
US Coal	112438	82474	137228	137655	110033	100364	105168	▲ 4804	▲ 22695	
US Nuke	92683	89028	92911	94062	90146	83449	87591	▲ 4142	▼ -1438	
US Hydro	25110	25742	29941	28532	25639	24351	24870	▲ 519	▼ -872	
<b>US Gas</b>	<b>181648</b>	<b>171902</b>	<b>207823</b>	<b>210824</b>	<b>173504</b>	<b>176288</b>	<b>172792</b>	<b>▲ 23819</b>	<b>▲ 890</b>	
<b>US Total</b>	<b>470149</b>	<b>420294</b>	<b>524834</b>	<b>534937</b>	<b>464570</b>	<b>431209</b>	<b>452145</b>	<b>▲ 32423</b>	<b>▲ 31852</b>	

Last 30 days YoY



See National Wind and Nuclear daily charts

Source: Bloomberg, analytix.ai

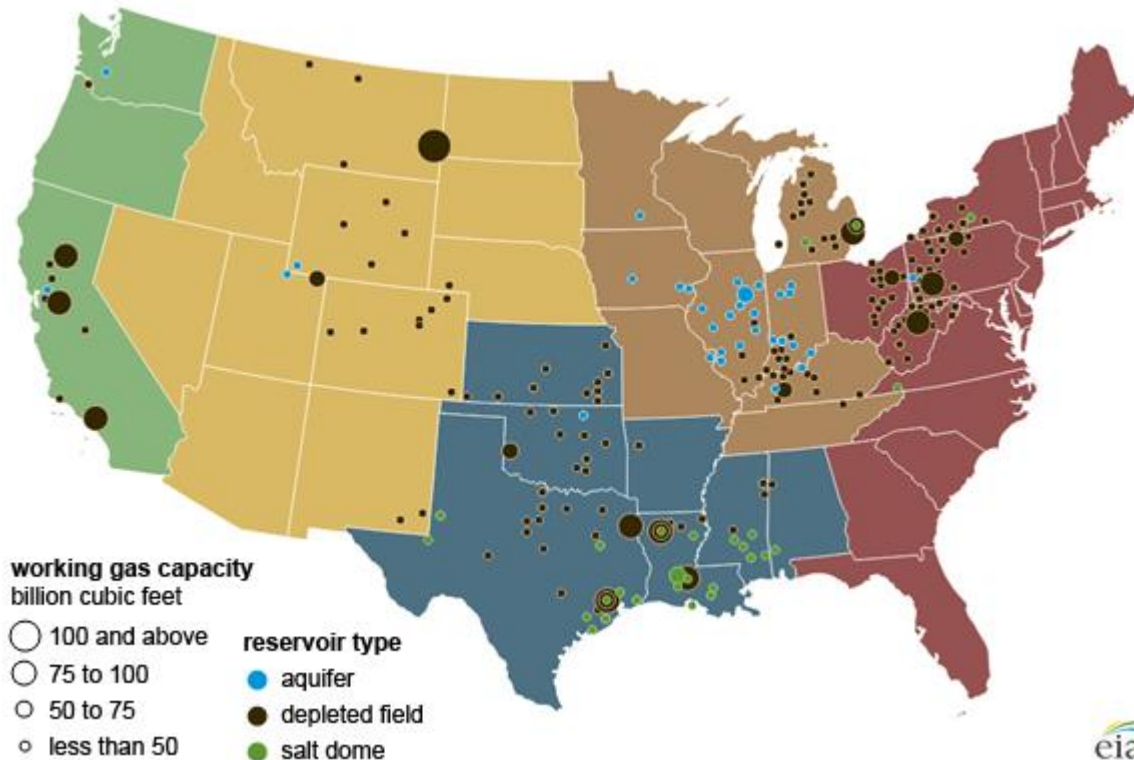
### Regional S/D Models Storage Projection

Week Ending 8-Oct

	Daily Raw Storage	Daily Adjustment Factor	Daily Average Storage Activity (Adjusted) *	Weekly Adjusted Storage Activity
L48	12.0	1.2	13.2	92
East	3.1	0.6	3.6	25
Midwest	4.5	-0.7	3.7	26
Mountain	3.8	-3.2	0.5	4
South Central	-0.3	5.2	4.9	34
Pacific	0.9	-0.5	0.4	3

\*Adjustment Factor is calculated based on historical regional deltas

U.S. underground natural gas storage facilities by type (July 2015)

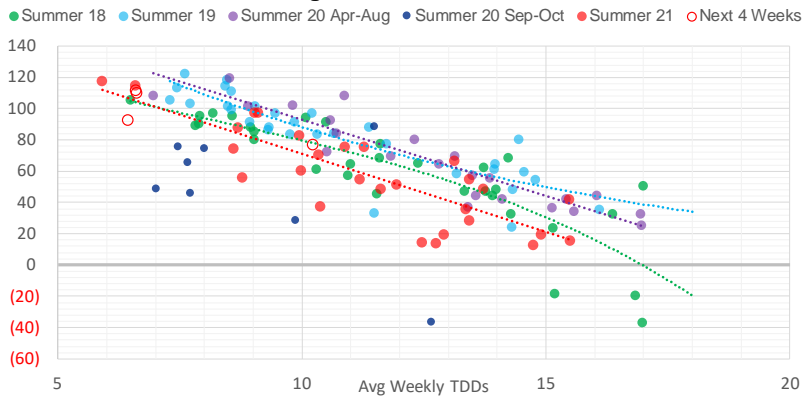


### Weather Model Storage Projection

Next report  
and beyond

Week Ending	GWDDs	Week Storage Projection
08-Oct	6.5	92
15-Oct	6.6	111
22-Oct	6.6	110
29-Oct	10.2	77

**Weather Storage Model - Next 4 Week Forecast**

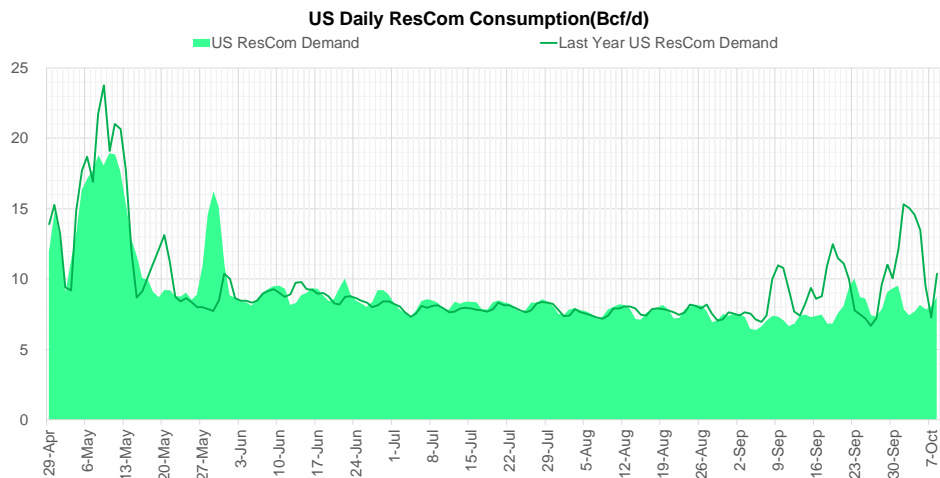
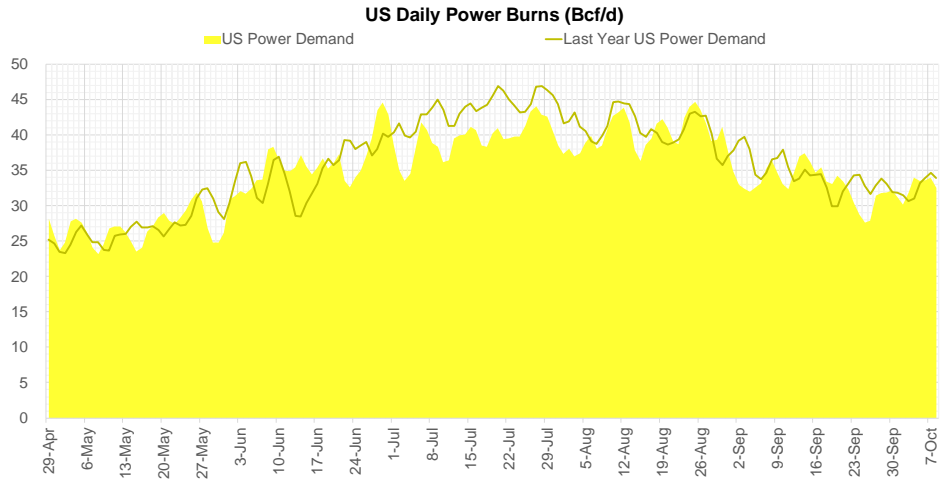
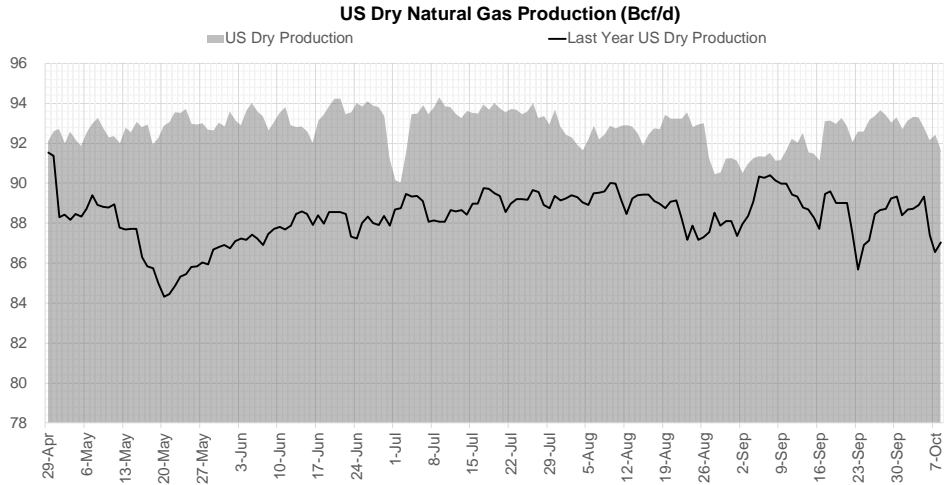


Go to larger image



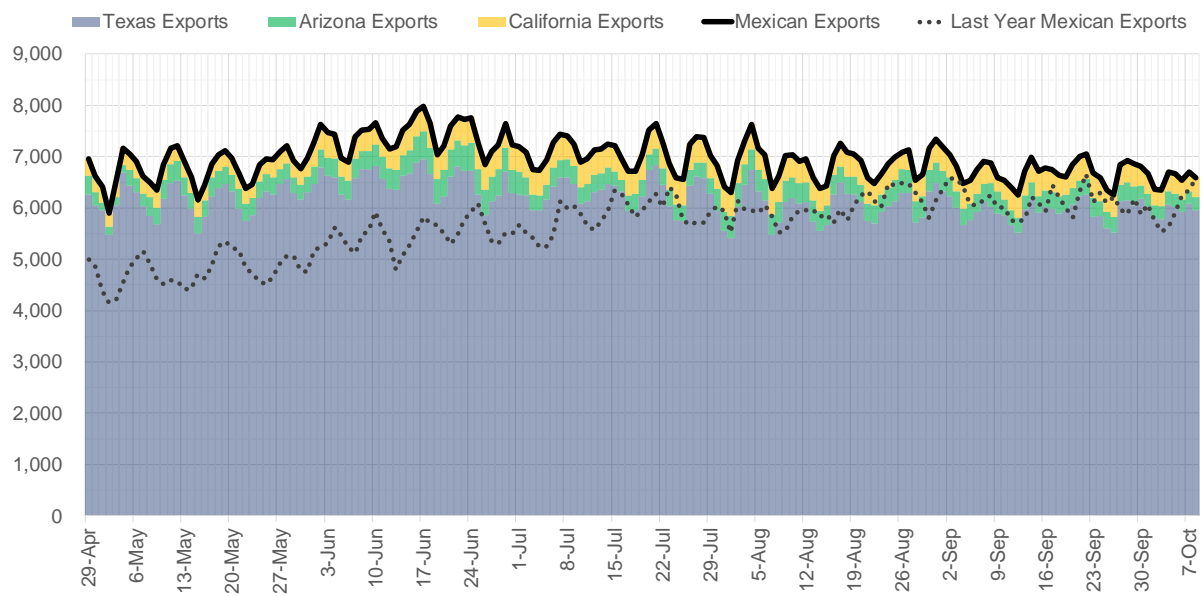


## Supply – Demand Trends

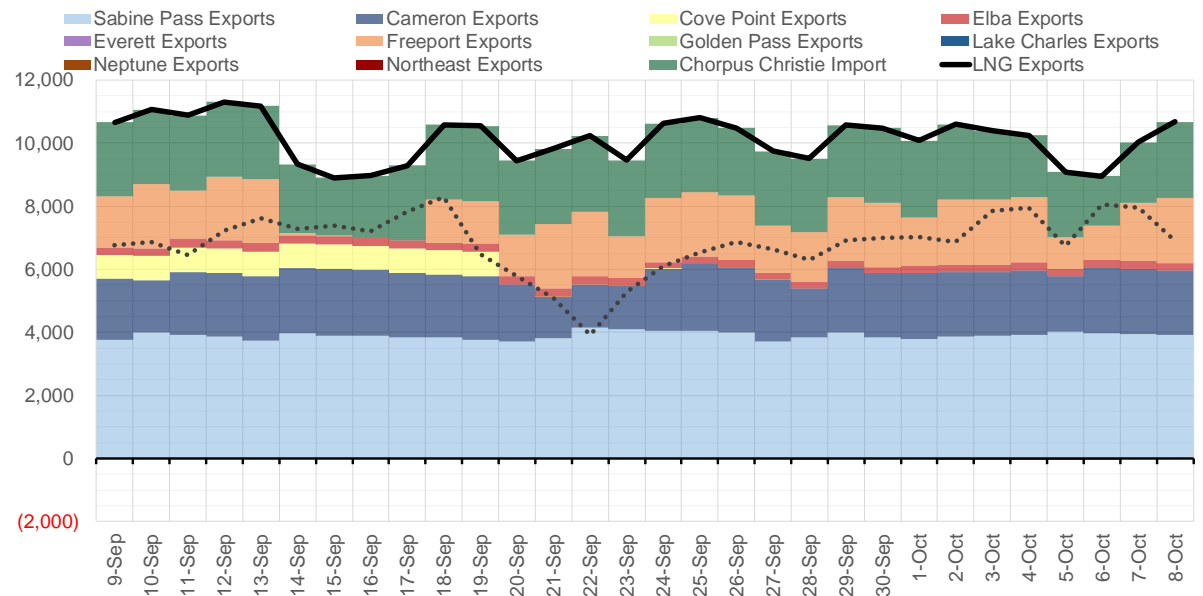


Source: Bloomberg

### Mexican Exports (MMcf/d)



### Net LNG Exports - Last 30 days (MMcf/d)



Source: Bloomberg

The risk of trading futures and options and other derivatives involves a substantial risk of loss and is not suitable for all persons. Each person must consider whether a particular trade, combination of trades, or strategy is suitable for that person's financial means and objectives. Past results are not necessarily indicative of future results. This communication may contain links to third party websites which are not under the control of and are not maintained by ION Energy Group, and ION Energy Group is not responsible for their content.

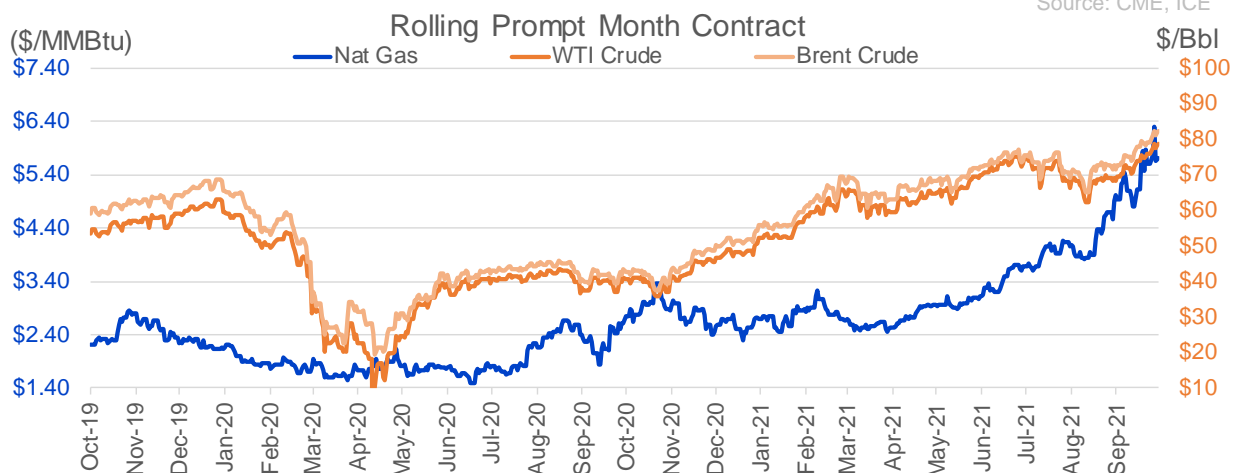
## Nat Gas Options Volume and Open Interest CME, ICE and Nasdaq Combined

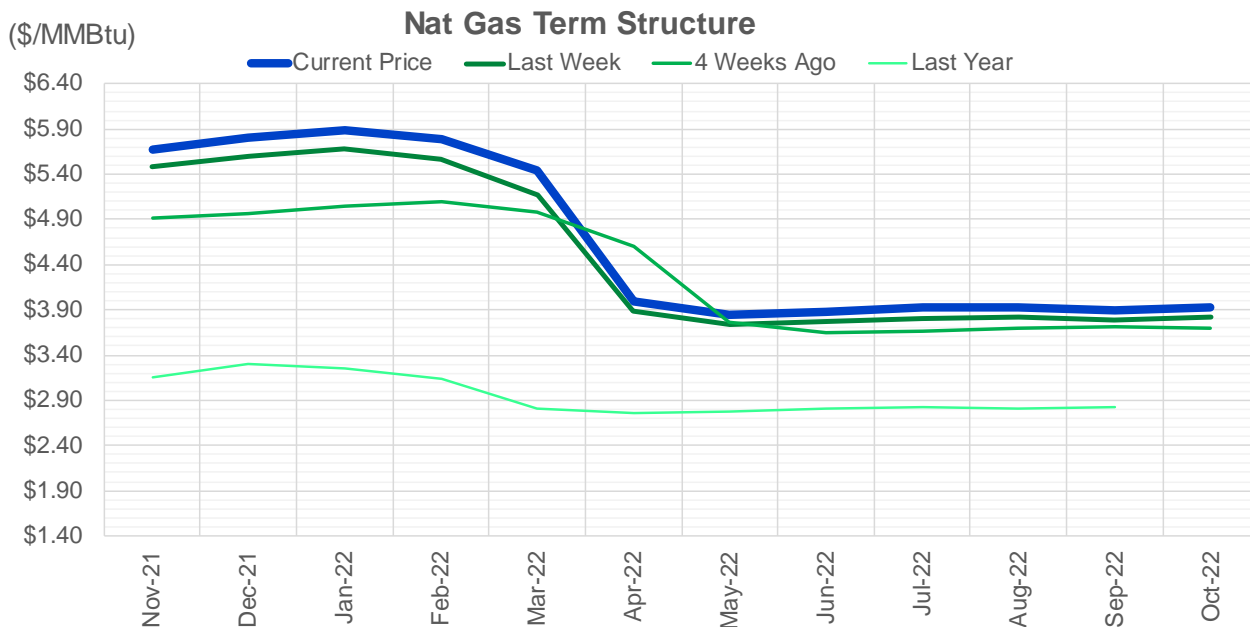
CONTRACT MONTH	CONTRACT YEAR	PUT/CALL	STRIKE	CUMULATIVE VOL	CONTRACT MONTH	CONTRACT YEAR	PUT/CALL	STRIKE	CUMULATIVE OI
3	2022	P	3.00	3301	12	2021	P	2.75	43912
11	2021	C	7.00	3096	12	2021	P	2.50	38567
12	2021	C	15.00	2937	12	2021	P	3.00	32186
11	2021	P	5.00	2801	12	2021	P	4.00	31274
11	2021	C	8.00	2676	3	2022	C	10.00	31237
11	2021	P	4.00	2585	11	2021	P	3.00	30167
11	2021	C	9.00	2540	11	2021	P	4.00	27463
12	2021	P	5.00	2281	3	2022	C	8.00	26530
3	2022	P	4.00	2270	11	2021	P	4.50	25871
11	2021	C	6.00	1986	12	2021	P	3.50	25611
11	2021	P	4.50	1945	11	2021	P	5.00	25180
12	2021	P	4.00	1867	11	2021	C	7.00	24048
11	2021	P	4.60	1693	3	2022	C	5.00	22926
11	2021	P	4.25	1679	12	2021	C	4.00	22526
1	2022	P	4.50	1522	11	2021	P	3.50	20293
2	2022	P	4.25	1450	11	2021	C	4.00	20146
6	2022	P	3.50	1450	4	2022	C	3.00	19760
1	2022	P	5.00	1418	11	2021	C	6.00	19159
2	2022	P	3.25	1400	1	2022	P	3.50	18461
12	2021	C	10.00	1373	1	2022	C	5.00	18070
11	2021	P	4.75	1363	3	2022	P	3.50	17917
12	2021	P	4.50	1274	2	2022	P	3.50	17855
12	2021	C	8.00	1248	12	2021	C	6.00	17731
11	2021	C	6.50	1207	2	2022	C	5.00	17376
5	2022	P	3.50	1200	3	2022	P	2.50	16788
1	2022	P	4.25	1072	3	2022	P	4.00	16534
11	2021	C	8.50	1061	12	2021	C	7.00	16388
11	2021	C	10.00	1050	3	2022	C	4.00	15831
2	2022	C	5.00	1025	1	2022	C	6.00	15513
2	2022	C	6.00	1013	11	2021	C	5.00	15149
11	2021	C	5.00	1002	11	2021	C	4.50	14903
12	2021	C	5.00	1001	1	2022	C	4.00	14503
3	2022	C	5.00	1001	11	2021	P	2.50	14488
11	2021	C	3.40	1000	11	2021	C	3.75	14479
12	2021	C	3.40	1000	4	2022	C	5.00	14474
1	2022	C	3.40	1000	12	2022	C	5.00	14372
1	2022	C	5.00	1000	4	2022	P	2.50	14225
2	2022	C	3.40	1000	11	2021	P	3.25	14214
3	2022	C	3.40	1000	1	2022	P	4.00	13945
1	2022	C	15.00	963	12	2021	P	2.00	13885
3	2022	C	10.00	950	11	2021	C	5.50	13686
3	2022	C	8.00	925	3	2022	P	5.00	13619
2	2022	C	8.00	920	12	2021	C	8.00	13530
1	2022	C	8.00	902	2	2022	C	6.00	13379
11	2021	P	5.10	901	11	2021	C	4.25	13282
1	2022	C	5.75	880	12	2022	C	5.25	13241
2	2022	C	5.75	880	12	2022	C	4.50	13115
12	2021	C	7.00	866	5	2022	C	3.00	13110
1	2022	C	6.00	864	2	2022	C	4.00	12914
					12	2021	C	5	12872.5

Source: CME, ICE

## Nat Gas Futures Open Interest CME, and ICE Combined

CME Henry Hub Futures (10,000 MMBtu)				ICE Henry Hub Futures Contract Equivalent (10,000 MM			
	Current	Prior	Daily Change		Current	Prior	Daily Change
NOV 21	212671	238250	-25579	NOV 21	86329	85991	339
DEC 21	117441	110482	6959	DEC 21	83469	80680	2789
JAN 22	179419	173179	6240	JAN 22	93277	94372	-1095
FEB 22	62980	62246	734	FEB 22	69613	69662	-49
MAR 22	134929	131026	3903	MAR 22	74831	75100	-269
APR 22	121303	122854	-1551	APR 22	74893	74754	140
MAY 22	118592	120351	-1759	MAY 22	70283	70448	-165
JUN 22	40452	39111	1341	JUN 22	54926	54798	128
JUL 22	33003	32758	245	JUL 22	56819	56822	-3
AUG 22	30404	31138	-734	AUG 22	55964	55964	1
SEP 22	34714	34710	4	SEP 22	56862	56886	-24
OCT 22	81984	82185	-201	OCT 22	62716	62509	207
NOV 22	31429	31226	203	NOV 22	48567	48545	22
DEC 22	25776	25606	170	DEC 22	51804	51815	-11
JAN 23	23353	22703	650	JAN 23	38298	38255	43
FEB 23	10252	10212	40	FEB 23	31682	31671	12
MAR 23	12862	12758	104	MAR 23	33170	33391	-221
APR 23	12807	12766	41	APR 23	33359	33002	357
MAY 23	7857	7901	-44	MAY 23	31937	31875	63
JUN 23	6495	6276	219	JUN 23	29678	29626	52
JUL 23	4326	4296	30	JUL 23	29909	29855	54
AUG 23	3877	3883	-6	AUG 23	29715	29662	53
SEP 23	4198	4196	2	SEP 23	28837	28785	52
OCT 23	5675	5689	-14	OCT 23	31902	31841	62
NOV 23	2662	2668	-6	NOV 23	30281	30258	23
DEC 23	2317	2363	-46	DEC 23	28206	28181	25
JAN 24	1212	1180	32	JAN 24	15713	15680	34
FEB 24	1180	1071	109	FEB 24	13467	13369	98
MAR 24	3368	3361	7	MAR 24	18209	18149	60
APR 24	3007	3422	-415	APR 24	12390	12347	43





	Nov-21	Dec-21	Jan-22	Feb-22	Mar-22	Apr-22	May-22	Jun-22	Jul-22	Aug-22	Sep-22	Oct-22
<b>Current Price</b>	<b>\$5.675</b>	<b>\$5.803</b>	<b>\$5.888</b>	<b>\$5.787</b>	<b>\$5.437</b>	<b>\$3.997</b>	<b>\$3.841</b>	<b>\$3.877</b>	<b>\$3.919</b>	<b>\$3.922</b>	<b>\$3.901</b>	<b>\$3.931</b>
Last Week	\$5.477	\$5.595	\$5.675	\$5.560	\$5.166	\$3.886	\$3.730	\$3.764	\$3.807	\$3.812	\$3.793	\$3.822
vs. Last Week	\$0.198	\$0.208	\$0.213	\$0.227	\$0.271	\$0.111	\$0.111	\$0.113	\$0.112	\$0.110	\$0.108	\$0.109
4 Weeks Ago	\$4.914	\$4.962	\$5.046	\$5.103	\$4.985	\$4.609	\$3.761	\$3.641	\$3.667	\$3.698	\$3.706	\$3.691
vs. 4 Weeks Ago	\$0.761	\$0.841	\$0.842	\$0.684	\$0.452	-\$0.612	\$0.080	\$0.236	\$0.252	\$0.224	\$0.195	\$0.240
Last Year	\$2.606	\$3.149	\$3.294	\$3.248	\$3.130	\$2.804	\$2.752	\$2.779	\$2.815	\$2.820	\$2.804	\$2.830
vs. Last Year	\$3.069	\$2.654	\$2.594	\$2.539	\$2.307	\$1.193	\$1.089	\$1.098	\$1.104	\$1.102	\$1.097	\$1.101

	Units	Cash Settled	Prompt Settle	Cash to Prompt
AGT Citygate	\$/MMBtu	5.34	9.52	4.18
TETCO M3	\$/MMBtu	4.76	5.75	0.99
FGT Zone 3	\$/MMBtu	5.18	6.10	0.92
Zone 6 NY	\$/MMBtu	5.18	5.84	0.66
Chicago Citygate	\$/MMBtu	5.39	5.83	0.44
Michcon	\$/MMBtu	5.36	5.72	0.36
Columbia TCO Pool	\$/MMBtu	4.77	5.34	0.57
Ventura	\$/MMBtu	5.35	6.11	0.76
Rockies/Opal	\$/MMBtu	5.89	5.83	-0.06
El Paso Permian Basin	\$/MMBtu	5.29	5.65	0.36
Socal Citygate	\$/MMBtu	6.54	7.34	0.80
Malin	\$/MMBtu	6.03	6.69	0.66
Houston Ship Channel	\$/MMBtu	5.47	5.89	0.42
Henry Hub Cash	\$/MMBtu	5.71	5.73	0.02
AECO Cash	C\$/GJ	4.35	3.84	-0.51
Station2 Cash	C\$/GJ	3.88	7.20	3.32
Dawn Cash	C\$/GJ	5.37	5.79	0.42

Source: CME, Bloomberg

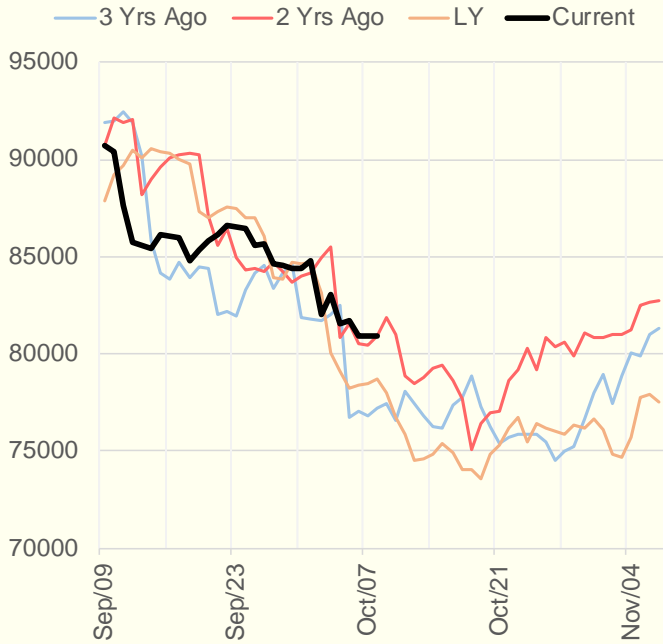
	Units	Current Price	vs. Last Week	vs. 4 Weeks Ago	vs. Last Year
NatGas Jul21/Oct21	\$/MMBtu	2.224	▲ 0.000	▲ 0.810	▲ 2.203
NatGas Oct21/Nov21	\$/MMBtu	-0.164	▼ -0.190	▼ -0.205	▼ -0.220
NatGas Oct21/Jan22	\$/MMBtu	0.069	▼ -0.163	▼ -0.116	▼ -0.221
NatGas Apr22/Oct22	\$/MMBtu	-0.061	▲ 0.022	▼ -0.020	▼ -0.067
WTI Crude	\$/Bbl	78.30	▲ 3.270	▲ 10.160	▲ 37.110
Brent Crude	\$/Bbl	81.95	▲ 3.430	▲ 10.500	▲ 38.610
Fuel Oil, NY Harbour 1%	\$/Bbl	97.18	▲ 0.000	▲ 0.000	▲ 0.000
Heating Oil	cents/Gallon	245.96	▲ 11.790	▲ 34.590	▲ 126.730
Propane, Mt. Bel	cents/Gallon	1.47	▲ 0.178	▲ 0.268	▲ 0.948
Ethane, Mt. Bel	cents/Gallon	0.44	▲ 0.047	▲ 0.063	▲ 0.241
Coal, PRB	\$/MTon	12.30	▲ 0.000	▲ 0.000	▲ 0.000
Coal, PRB	\$/MMBtu	0.70			
Coal, ILB	\$/MTon	31.05	▲ 0.000	▲ 0.000	▲ 0.000
Coal, ILB	\$/MMBtu	1.32			

### Weather Storage Model - Next 4 Week Forecast

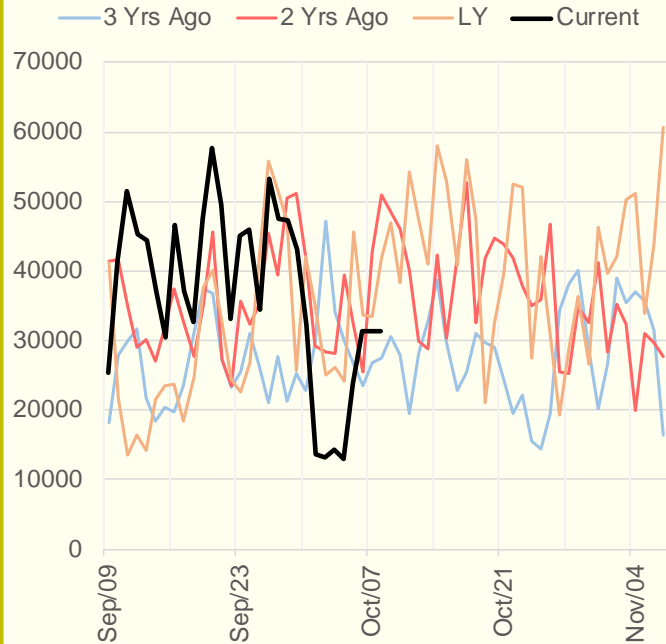


The risk of trading futures and options and other derivatives involves a substantial risk of loss and is not suitable for all persons. Each person must consider whether a particular trade, combination of trades, or strategy is suitable for that person's financial means and objectives. Past results are not necessarily indicative of future results. This communication may contain links to third party websites which are not under the control of and are not maintained by ION Energy Group, and ION Energy Group is not responsible for their content.

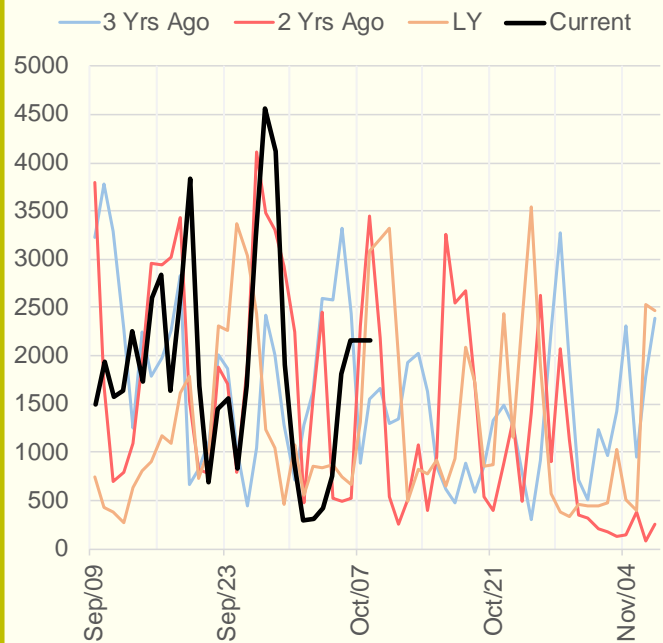
### NRC Nuclear Daily Output



### US Wind



### CALI Wind



### TEXAS Wind

