

	Current	Δ from YD	Δ from 7D Avg
Nat Gas Prompt	\$ 5.00	▼ \$ (0.09)	▼ \$ (0.37)

	Current	Δ from YD	Δ from 7D Avg
WTI Prompt	\$ 82.20	▼ \$ (0.76)	▲ \$ 0.2

	Current	Δ from YD	Δ from 7D Avg
Brent Prompt	\$ 84.27	▼ \$ (0.81)	▼ \$ (0.2)

Page Menu

[Short-term Weather Model Outlooks](#)

[Lower 48 Component Models](#)

[Regional S/D Models Storage Projection](#)

[Weather Model Storage Projection](#)

[Supply – Demand Trends](#)

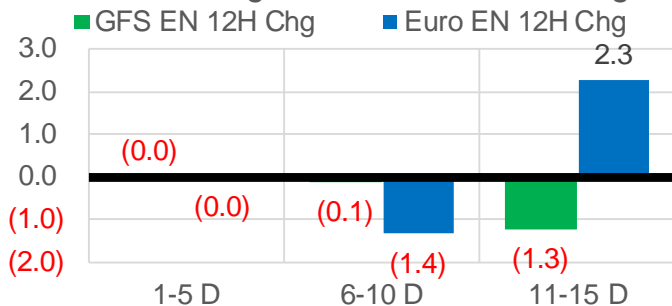
[Nat Gas Options Volume and Open Interest](#)

[Nat Gas Futures Open Interest](#)

[Price Summary](#)

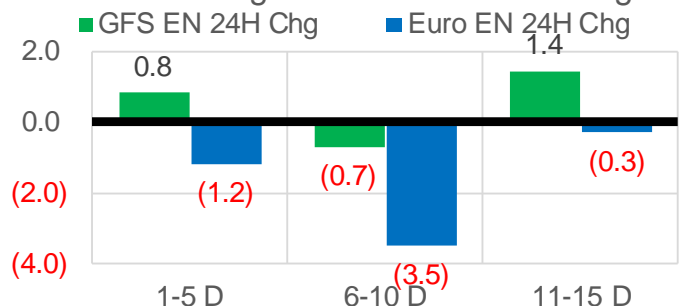
Vs. 12H Ago

L48 Region - 00z TDD vs 12H Ago



Vs. 24H Ago

L48 Region - 00z TDD vs 24H Ago



	Current	Δ from YD	Δ from 7D Avg
US Dry Production	90.7	▼ -1.01	▼ -1.54

	Current	Δ from YD	Δ from 7D Avg
US Power Burns	29.2	▲ 0.50	▼ -0.43

	Current	Δ from YD	Δ from 7D Avg
US ResComm	11.8	▼ -2.98	▼ -1.46

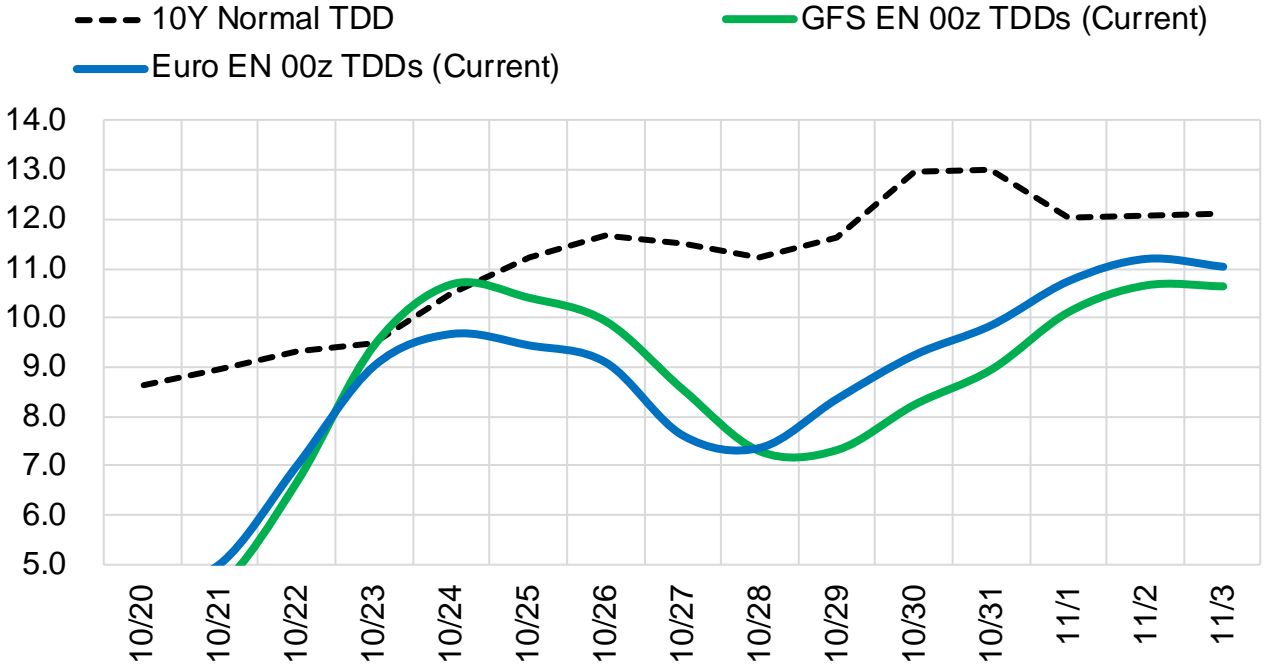
	Current	Δ from YD	Δ from 7D Avg
Canadian Imports	5.2	▼ -0.35	▼ -0.22

	Current	Δ from YD	Δ from 7D Avg
Net LNG Exports	10.1	▼ -0.82	▼ -0.92

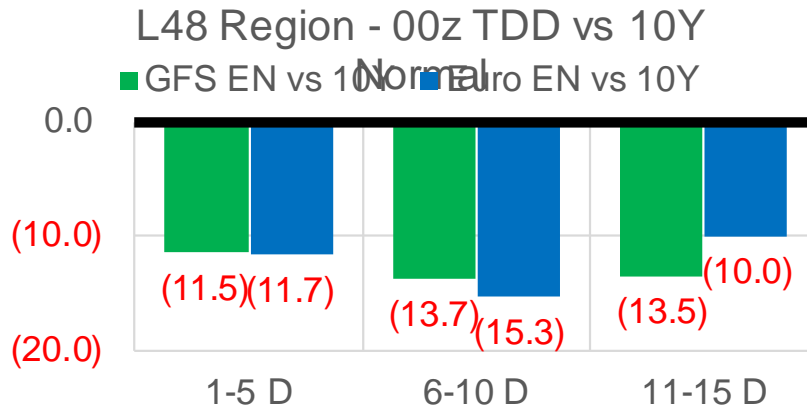
	Current	Δ from YD	Δ from 7D Avg
Mexican Exports	5.9	▼ -0.77	▼ -0.81

Short-term Weather Model Outlooks (00z)

L48 Region



Vs. 10Y Normal



Source: WSI, Bloomberg

Lower 48 Component Models

Daily Balances

	14-Oct	15-Oct	16-Oct	17-Oct	18-Oct	19-Oct	20-Oct	DoD	vs. 7D
Lower 48 Dry Production	92.3	92.9	92.0	92.4	92.5	91.7	90.7	▼ -1.0	▼ -1.6
Canadian Imports	5.4	5.5	5.6	5.6	5.5	5.5	5.2	▼ -0.3	▼ -0.3
L48 Power	33.4	31.4	27.1	26.9	28.1	28.6	29.2	▲ 0.5	▼ -0.1
L48 Residential & Commercial	10.7	11.5	13.1	15.6	16.4	14.8	11.8	▼ -3.0	▼ -1.9
L48 Industrial	19.0	18.8	18.7	18.4	18.1	17.9	18.1	▲ 0.2	▼ -0.4
L48 Lease and Plant Fuel	5.0	5.1	5.0	5.0	5.0	5.0	4.9	▼ -0.1	▼ -0.1
L48 Pipeline Distribution	2.4	2.3	2.1	2.3	2.4	2.3	2.2	▼ -0.1	▼ -0.1
L48 Regional Gas Consumption	70.5	69.1	66.1	68.1	70.0	68.6	66.1	▼ -2.5	▼ -2.6
Net LNG Delivered	11.20	11.03	11.19	10.64	11.09	10.87	10.06	▼ -0.8	▼ -0.9
Total Mexican Exports	7.2	7.1	6.6	6.1	6.5	6.7	5.9	▼ -0.8	▼ -0.8
Implied Daily Storage Activity	8.8	11.2	13.6	13.1	10.5	11.0	13.8		
EIA Reported Daily Storage Activity									
Daily Model Error									

EIA Storage Week Balances

	10-Sep	17-Sep	24-Sep	1-Oct	8-Oct	15-Oct	WoW	vs. 4W
Lower 48 Dry Production	91.2	91.9	92.9	93.2	92.8	92.4	▼ -0.4	▼ -0.3
Canadian Imports	4.8	5.0	5.2	5.7	5.3	4.9	▼ -0.4	▼ -0.4
L48 Power	33.8	35.0	33.3	30.3	32.8	31.7	▼ -1.1	▼ -1.2
L48 Residential & Commercial	6.9	7.2	8.1	8.4	8.1	9.5	▲ 1.4	▲ 1.6
L48 Industrial	19.5	20.7	20.5	20.0	22.7	19.8	▼ -2.9	▼ -1.2
L48 Lease and Plant Fuel	5.0	5.0	5.1	5.1	5.1	5.0	▼ 0.0	▼ 0.0
L48 Pipeline Distribution	2.2	2.3	2.3	2.1	2.2	2.2	▲ 0.0	▼ 0.0
L48 Regional Gas Consumption	67.4	70.2	69.2	65.9	70.9	68.2	▼ -2.7	▼ -0.8
Net LNG Exports	11.0	10.2	9.9	10.3	9.9	10.7	▲ 0.8	▲ 0.6
Total Mexican Exports	6.7	6.6	6.8	6.7	6.5	6.6	▲ 0.1	▼ 0.0
Implied Daily Storage Activity	10.9	9.8	12.1	16.0	10.7	11.8	1.1	
EIA Reported Daily Storage Activity	11.9	10.9	12.6	16.9	11.6			
Daily Model Error	-0.9	-1.0	-0.4	-0.9	-0.8			

Monthly Balances

	2Yr Ago Oct-19	LY Oct-20	Jun-21	Jul-21	Aug-21	Sep-21	MTD Oct-21	MoM	vs. LY
Lower 48 Dry Production	95.1	88.3	93.3	93.3	92.4	92.2	92.4	▲ 0.2	▲ 4.1
Canadian Imports	4.6	4.3	4.9	5.2	5.1	5.1	5.2	▲ 0.1	▲ 1.0
L48 Power	30.3	30.8	35.9	39.4	40.2	33.1	31.1	▼ -2.0	▲ 0.4
L48 Residential & Commercial	15.3	15.3	8.8	8.1	7.7	7.6	10.3	▲ 2.7	▼ -4.9
L48 Industrial	23.5	22.6	20.5	20.9	20.2	20.1	20.4	▲ 0.3	▼ -2.2
L48 Lease and Plant Fuel	5.1	4.8	5.0	5.1	5.0	5.0	5.0	▼ 0.0	▲ 0.2
L48 Pipeline Distribution	2.4	2.5	2.4	2.5	2.5	2.2	2.2	▼ 0.0	▼ -0.2
L48 Regional Gas Consumption	76.6	75.9	72.7	76.0	75.7	68.1	69.1	▲ 1.0	▼ -6.8
Net LNG Exports	6.7	8.0	10.2	10.8	10.5	10.3	10.5	▲ 0.1	▲ 2.4
Total Mexican Exports	5.4	6.0	7.4	7.1	6.9	6.7	6.6	▼ -0.2	▲ 0.6
Implied Daily Storage Activity	11.1	2.7	7.8	4.6	4.5	12.1	11.5		
EIA Reported Daily Storage Activity									
Daily Model Error									

Source: Bloomberg, analytix.ai

Daily Average Generation Data

Nuclear Generation Daily Average - GWh (NRC)

	12-Oct	13-Oct	14-Oct	15-Oct	16-Oct	17-Oct	18-Oct	DoD	vs. 7D
NRC Nuclear Daily Output	75.9	75.9	76.2	76.5	74.8	74.0	72.9	-1.1	-2.6
NRC Nuclear Max Capacity	104.9	104.9	104.9	104.9	104.9	104.9	104.9	0.0	0.0
NRC Nuclear Outage	29.0	29.0	28.6	28.4	30.1	30.9	31.9	1.1	2.6
NRC % Nuclear Cap Utilization	77.2	77.2	77.5	77.8	76.1	75.3	74.2	-1.1	-2.7

Wind Generation Daily Average - MWh (EIA)

	12-Oct	13-Oct	14-Oct	15-Oct	16-Oct	17-Oct	18-Oct	DoD	vs. 7D
CALI Wind	2794	1106	1127	1101	595	2072	3591	1518	2125
TEXAS Wind	21150	13680	7415	12848	6423	8176	16053	7877	4437
US Wind	56956	51697	35572	45459	32133	27619	57421	29802	15848

Generation Daily Average - MWh (EIA)

	12-Oct	13-Oct	14-Oct	15-Oct	16-Oct	17-Oct	18-Oct	DoD	vs. 7D
US Wind	56956	51697	35572	45459	32133	27619	57421	29802	15848
US Solar	8638	10394	12096	11812	12795	12135	11127	-1008	-185
US Petroleum	3191	3541	4133	3751	2841	2850	2744	-106	-641
US Other	12028	11892	12096	12387	10713	10813	11987	1174	332
US Coal	88611	86198	90800	86306	64885	62878	70084	7205	-9863
US Nuke	76459	76904	76915	76940	72769	73080	73626	546	-1885
US Hydro	26069	24493	23638	23800	20618	19704	22322	2618	-732
US Gas	159229	168864	176533	167896	140834	124156	137229	13073	-19022

See National Wind and Nuclear daily charts

Source: Bloomberg, analytix.ai

Storage Week Average Generation Data

Nuclear Generation Weekly Average - GWh (NRC)

	10-Sep	17-Sep	24-Sep	1-Oct	8-Oct	15-Oct	WoW	WoW Bcf/d Impact
NRC Nuclear Daily Output	90.3	86.7	85.9	85.1	82.1	76.5	-5.6	1.0
NRC Nuclear Max Capacity	104.9	104.9	104.9	104.9	104.9	104.9	0.0	
NRC Nuclear Outage	14.6	18.2	19.0	19.8	22.7	28.3	5.6	
NRC % Nuclear Cap Utilization	0.1	0.1	0.1	0.1	0.1	0.1	0.0	

Wind Generation Weekly Average - MWh (EIA)

	10-Sep	17-Sep	24-Sep	1-Oct	8-Oct	15-Oct	WoW	WoW Bcf/d Impact
CALI Wind	1236	2083	1936	2467	1099	2400	1301	-0.2
TEXAS Wind	7327	9541	9780	10364	4890	15396	10506	-1.9
US Wind	30662	42378	43250	43478	20468	49917	29449	-5.3
					-23010.0			
					-53%			

Generation Weekly Average - MWh (EIA)

	10-Sep	17-Sep	24-Sep	1-Oct	8-Oct	15-Oct	WoW	WoW Bcf/d Impact
US Wind	30662	42378	43250	43478	20468	49917	29449	-5.3
US Solar	14254	14057	12185	12957	11295	10307	-988	0.2
US Petroleum	2072	2470	2594	2712	3901	3224	-677	0.1
US Other	8932	9273	9121	8709	10972	12109	1137	-0.2
US Coal	116993	115066	109062	94792	100713	89001	-11712	2.1
US Nuke	93162	89490	88789	88402	83696	77046	-6650	1.2
US Hydro	26944	24138	25340	25370	24518	24687	169	0.0
US Gas	181094	182116	175354	153813	176848	162083	-14765	2.7

See National Wind and Nuclear daily charts

Source: Bloomberg, analytix.ai

Monthly Average Generation Data

Nuclear Generation Monthly Average - GWh (NRC)

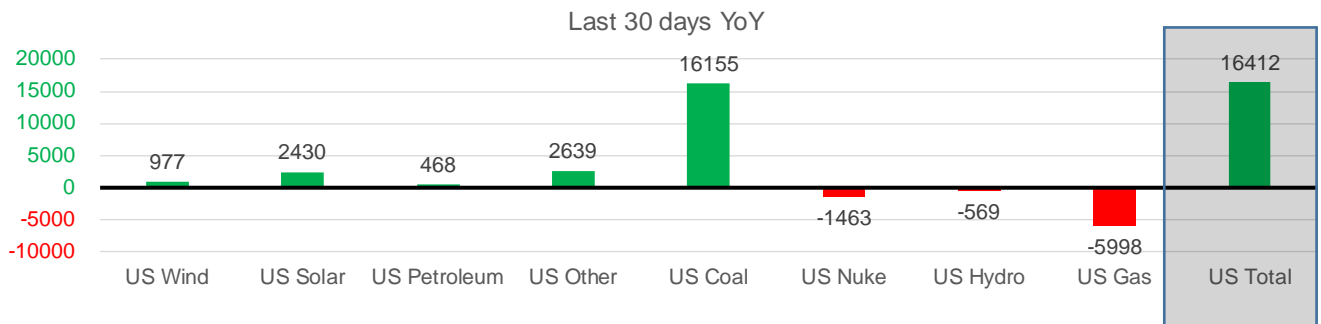
	2Yr Ago	LY	MTD				Last 30 days	MoM (MTD vs LY)	Last 30 days YoY
	Same 30 days	Same 30 days	Jul-21	Aug-21	Sep-21	Oct-21			
NRC Nuclear Daily Output	81.6	80.0	90.1	91.5	87.2	77.7	80.3	-9.5	0.2
NRC Nuclear Max Capacity	104.9	104.9	104.9	104.9	104.9	104.9	104.9	0.0	0.0
NRC Nuclear Outage	23.3	24.8	14.8	13.4	17.7	27.2	24.6	9.5	-0.2
NRC % Nuclear Cap Utilization	83.0	81.4	91.6	93.0	88.7	79.0	81.6	-9.7	0.2

Wind Generation Monthly Average - MWh (EIA)

	2Yr Ago	LY	MTD				Last 30 days	MoM (MTD vs LY)	Last 30 days YoY
	Same 30 days	Same 30 days	Jul-21	Aug-21	Sep-21	Oct-21			
CALI Wind	1719	1499	2338	2442	2020	1951	2000	-68	501
TEXAS Wind	9283	9182	7217	9901	9400	10880	10765	1481	1582
US Wind	37958	39094	29217	35830	40222	38508	40071	-1713	977

Generation Monthly Average - MWh (EIA)

	2Yr Ago	LY	MTD				Last 30 days	MoM (MTD vs LY)	Last 30 days YoY
	Same 30 days	Same 30 days	Jul-21	Aug-21	Sep-21	Oct-21			
US Wind	37958	39094	29217	35830	40222	38508	40071	▲ 1562.6	▲ 977
US Solar	8352	9172	14140	13787	13379	11067	11601	▲ 534.6	▲ 2430
US Petroleum	4012	2659	4233	4484	2452	3377	3127	▼ -250	▲ 468
US Other	8470	7994	9326	9928	9008	11572	10634	▼ -938	▲ 2639
US Coal	95583	74835	137228	137655	110037	87616	90990	▲ 3374	▲ 16155
US Nuke	87843	83342	92911	94062	90146	78443	81879	▲ 3436	▼ -1463
US Hydro	23414	25007	29941	28532	25661	23776	24438	▲ 662	▼ -569
US Gas	166243	165883	207823	210824	173536	160855	159884	▲ 8381	▼ -5998
US Total	432244	407929	524834	534937	464627	417751	424341	▲ 15199	▲ 16412



See National Wind and Nuclear daily charts

Source: Bloomberg, analytix.ai

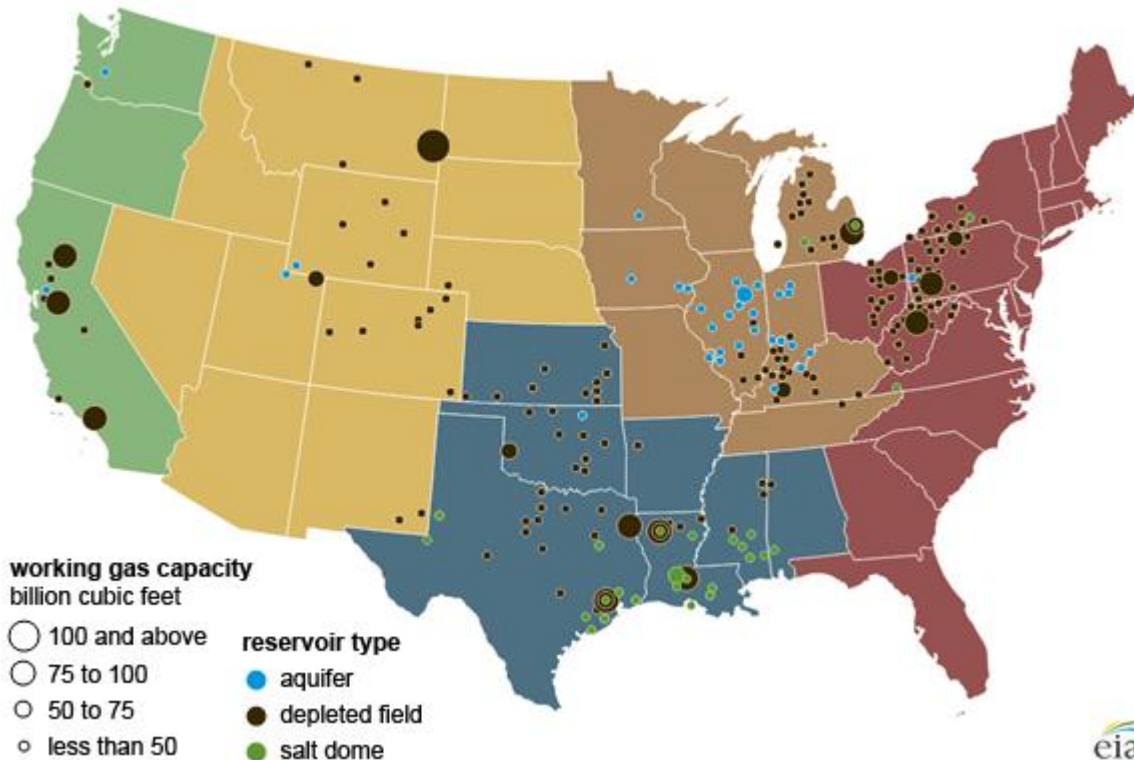
Regional S/D Models Storage Projection

Week Ending 15-Oct

	Daily Raw Storage	Daily Adjustment Factor	Daily Average Storage Activity (Adjusted) *	Weekly Adjusted Storage Activity
L48	11.5	1.2	12.7	89
East	4.1	0.6	4.8	33
Midwest	4.4	-0.6	3.8	26
Mountain	3.1	-3.1	-0.1	-1
South Central	-0.5	4.7	4.2	29
Pacific	0.5	-0.4	0.1	1

*Adjustment Factor is calculated based on historical regional deltas

U.S. underground natural gas storage facilities by type (July 2015)

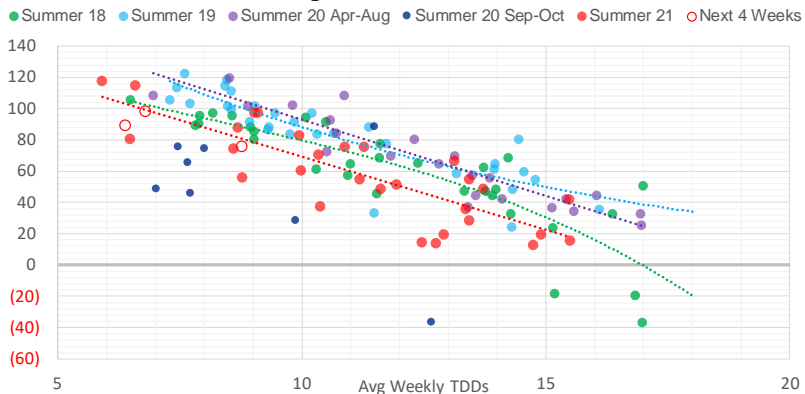


Weather Model Storage Projection

Next report
and beyond

Week Ending	GWDDs	Week Storage Projection
15-Oct	6.4	89
22-Oct	6.8	98
29-Oct	8.8	76
05-Nov	#N/A	#N/A

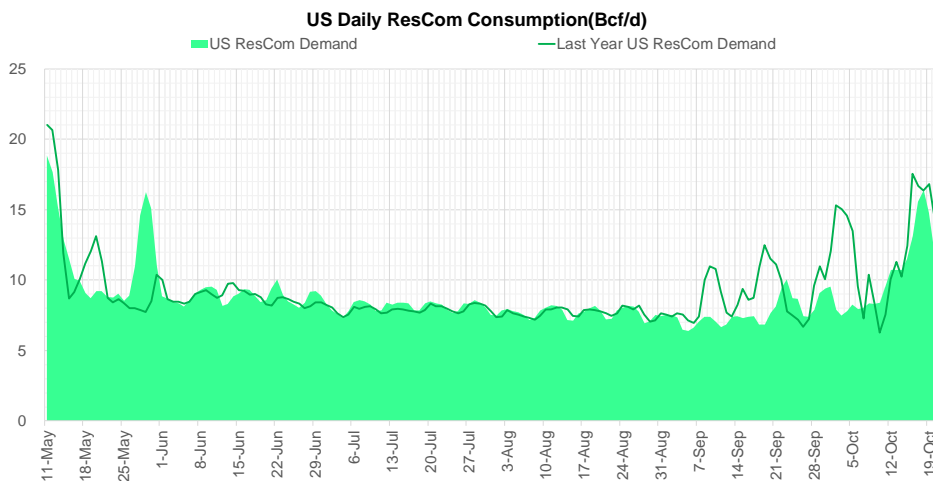
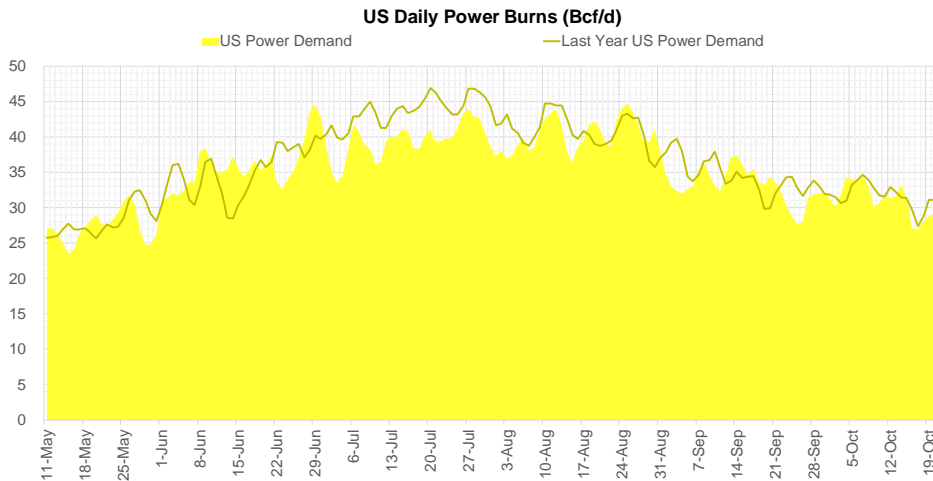
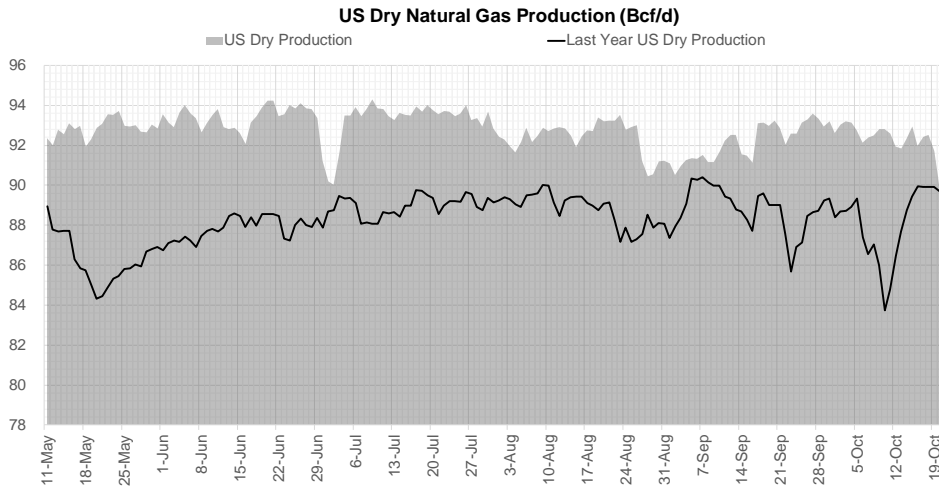
Weather Storage Model - Next 4 Week Forecast



Go to larger image



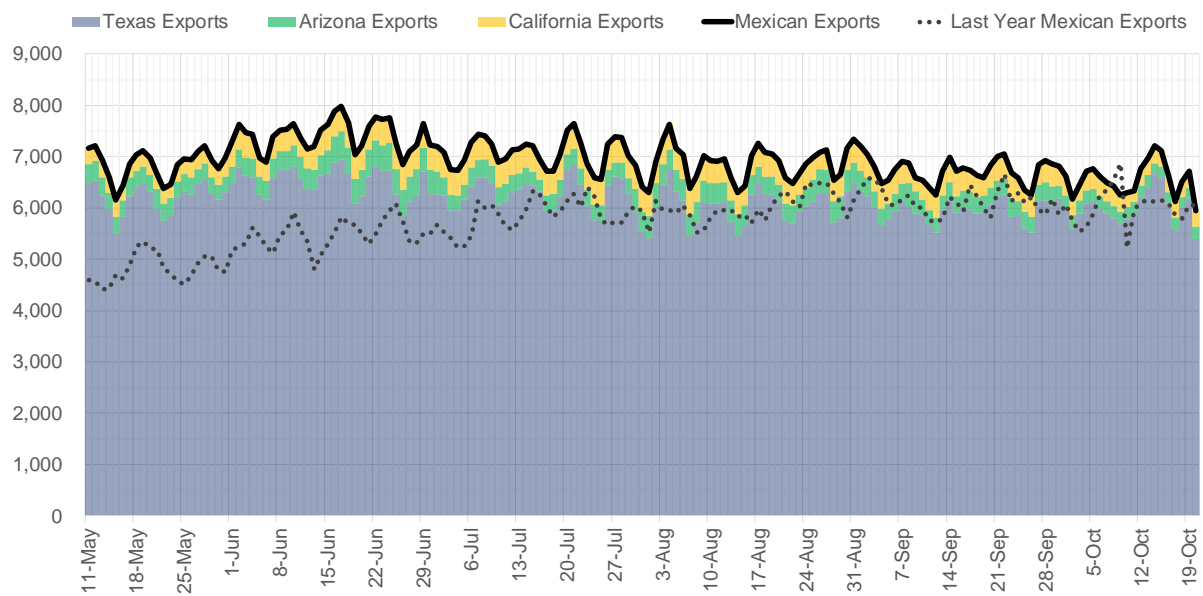
Supply – Demand Trends



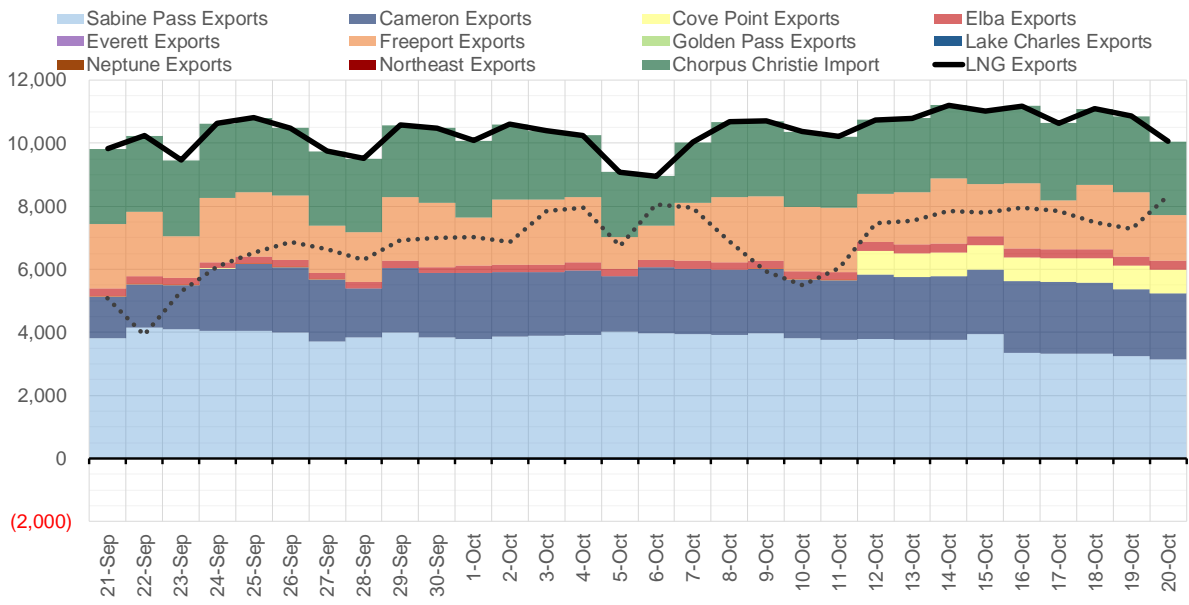
Source: Bloomberg

The risk of trading futures and options and other derivatives involves a substantial risk of loss and is not suitable for all persons. Each person must consider whether a particular trade, combination of trades, or strategy is suitable for that person's financial means and objectives. Past results are not necessarily indicative of future results. This communication may contain links to third party websites which are not under the control of and are not maintained by ION Energy Group, and ION Energy Group is not responsible for their content.

Mexican Exports (MMcf/d)



Net LNG Exports - Last 30 days (MMcf/d)



Source: Bloomberg

The risk of trading futures and options and other derivatives involves a substantial risk of loss and is not suitable for all persons. Each person must consider whether a particular trade, combination of trades, or strategy is suitable for that person's financial means and objectives. Past results are not necessarily indicative of future results. This communication may contain links to third party websites which are not under the control of and are not maintained by ION Energy Group, and ION Energy Group is not responsible for their content.

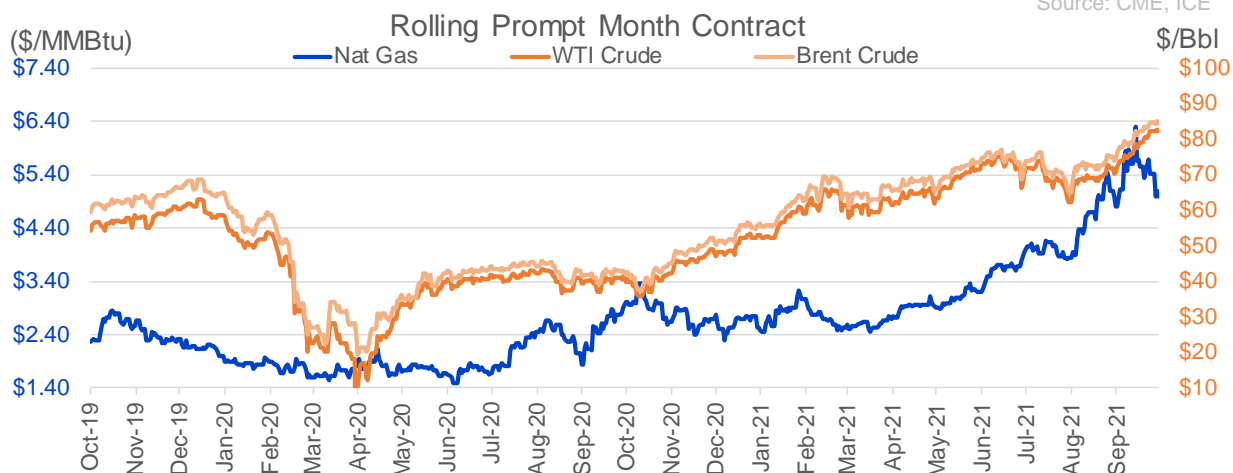
Nat Gas Options Volume and Open Interest CME, ICE and Nasdaq Combined

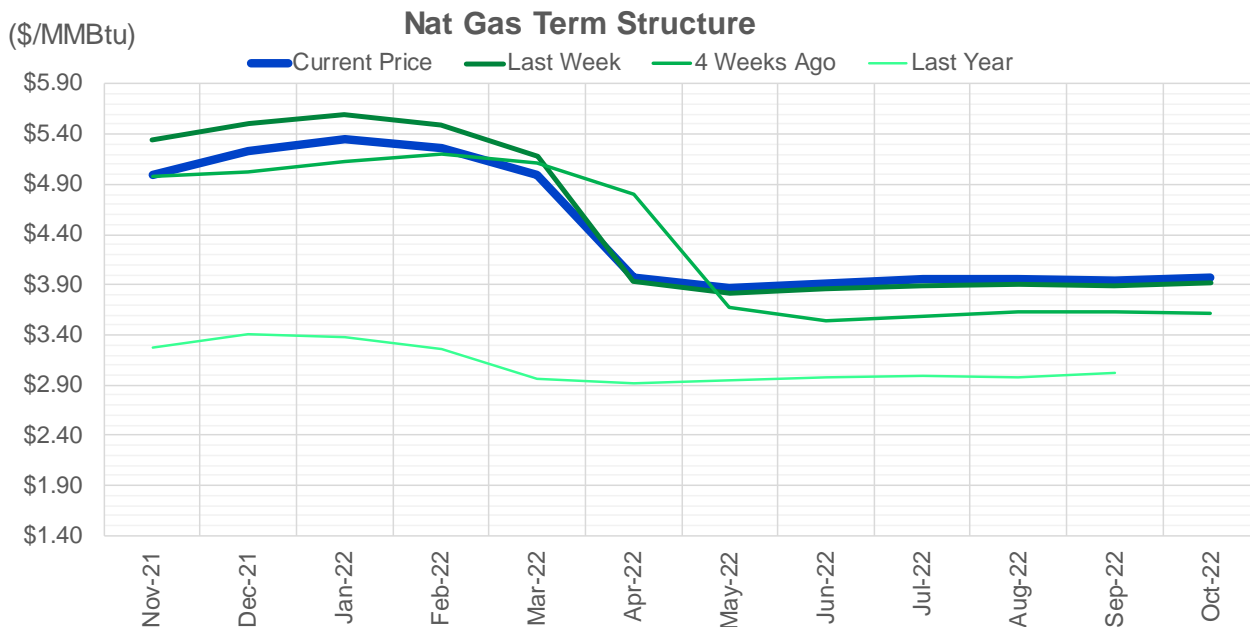
CONTRACT MONTH	CONTRACT YEAR	PUT/CALL	STRIKE	CUMULATIVE VOL	CONTRACT MONTH	CONTRACT YEAR	PUT/CALL	STRIKE	CUMULATIVE OI
11	2021	P	4.50	10502	12	2021	P	2.75	54042
11	2021	P	4.25	7089	12	2021	P	3.00	42521
11	2021	P	4.75	6223	12	2021	P	2.50	38603
12	2021	P	3.00	5810	12	2021	P	4.00	37962
1	2022	P	3.00	5001	12	2021	P	3.50	30350
12	2021	P	2.75	5000	11	2021	P	3.00	30166
1	2022	P	2.75	5000	3	2022	C	10.00	28930
11	2021	P	4.00	3938	11	2021	P	5.00	28426
11	2021	C	6.00	3719	11	2021	P	4.50	26468
6	2022	C	5.00	3425	11	2021	P	4.00	25804
6	2022	C	6.00	3250	11	2021	C	6.00	24768
6	2022	C	6.50	2600	11	2021	C	7.00	24744
7	2022	C	6.00	2475	3	2022	C	8.00	23533
11	2021	C	5.75	2459	12	2021	C	4.00	22526
7	2022	C	8.00	2100	3	2022	C	5.00	22326
1	2022	C	17.00	2000	11	2021	P	3.50	20151
11	2021	C	5.50	1908	11	2021	C	4.00	20144
6	2022	C	4.50	1750	1	2022	P	2.75	20007
12	2021	C	10.00	1745	4	2022	C	3.00	19760
12	2021	P	4.00	1656	1	2022	P	3.50	19466
1	2022	P	5.00	1602	12	2021	C	6.00	18787
1	2022	C	6.00	1515	3	2022	P	2.50	18385
2	2022	C	6.00	1503	1	2022	C	6.00	18268
3	2022	C	6.00	1485	2	2022	P	3.50	17966
12	2021	P	3.50	1482	1	2022	C	5.00	17938
3	2022	P	3.00	1400	1	2022	P	3.00	17860
2	2022	C	8.00	1370	3	2022	P	3.50	17799
1	2022	C	8.00	1333	3	2022	P	4.00	16981
3	2022	C	8.00	1302	12	2021	P	2.00	16877
11	2021	C	5.25	1275	2	2022	C	5.00	16764
11	2021	C	6.25	1179	11	2021	C	5.00	16031
1	2022	C	10.00	1162	11	2021	P	4.75	15958
11	2021	C	6.50	1066	3	2022	C	4.00	15746
12	2021	P	2.50	1000	12	2021	C	7.00	15308
3	2022	P	4.00	1000	4	2022	P	2.50	15286
6	2022	C	8.00	1000	1	2022	P	4.00	15252
1	2022	P	4.25	951	4	2022	C	5.00	15085
5	2022	C	6.00	900	12	2021	C	8.00	14898
8	2022	C	5.25	900	11	2021	C	4.50	14887
12	2021	C	7.00	875	11	2021	P	2.50	14488
6	2022	C	5.25	875	11	2021	C	3.75	14479
12	2021	P	4.75	841	1	2022	C	4.00	14463
12	2021	P	4.50	764	12	2021	P	5.00	14342
1	2022	P	4.50	751	11	2021	P	3.25	14311
4	2022	C	5.25	750	12	2022	C	5.00	14307
5	2022	C	5.25	750	3	2022	P	5.00	13470
7	2022	C	5.25	750	12	2021	P	4.50	13447
9	2022	C	5.25	750	2	2022	P	4.00	13398
10	2022	C	5.25	750	11	2021	C	4.25	13281
					12	2022	C	5.25	13243

Source: CME, ICE

Nat Gas Futures Open Interest CME, and ICE Combined

CME Henry Hub Futures (10,000 MMBtu)				ICE Henry Hub Futures Contract Equivalent (10,000 MM			
	Current	Prior	Daily Change		Current	Prior	Daily Change
NOV 21	60175	74452	-14277	NOV 21	90561	87048	3513
DEC 21	162041	156550	5491	DEC 21	91782	85977	5806
JAN 22	232208	230719	1489	JAN 22	92683	92257	426
FEB 22	70628	70666	-38	FEB 22	68937	68505	432
MAR 22	151464	149587	1877	MAR 22	75429	74935	493
APR 22	114681	114149	532	APR 22	75606	75499	107
MAY 22	112740	112758	-18	MAY 22	70390	70210	180
JUN 22	40175	39364	811	JUN 22	54107	53934	173
JUL 22	37925	37705	220	JUL 22	56258	56336	-77
AUG 22	29224	29468	-244	AUG 22	55453	55349	104
SEP 22	32578	32685	-107	SEP 22	56370	56207	163
OCT 22	80773	81742	-969	OCT 22	61893	62223	-330
NOV 22	34251	34353	-102	NOV 22	48873	48729	144
DEC 22	25906	25877	29	DEC 22	52180	51972	208
JAN 23	28372	28304	68	JAN 23	38876	38805	71
FEB 23	10463	10567	-104	FEB 23	32022	32132	-111
MAR 23	15317	15283	34	MAR 23	33711	33731	-21
APR 23	13683	13219	464	APR 23	33319	33371	-52
MAY 23	8808	8672	136	MAY 23	33329	33502	-174
JUN 23	7258	7246	12	JUN 23	29936	30156	-221
JUL 23	4835	4767	68	JUL 23	30120	30356	-236
AUG 23	3893	3887	6	AUG 23	29995	30231	-236
SEP 23	4155	4148	7	SEP 23	29149	29376	-228
OCT 23	6325	6066	259	OCT 23	32639	32759	-120
NOV 23	3352	3122	230	NOV 23	31843	31933	-90
DEC 23	3942	3938	4	DEC 23	28164	28256	-92
JAN 24	1373	1369	4	JAN 24	16091	16094	-4
FEB 24	1117	1121	-4	FEB 24	13740	13699	41
MAR 24	4262	4260	2	MAR 24	18234	18218	16
APR 24	3422	3417	5	APR 24	12773	12715	58





	Nov-21	Dec-21	Jan-22	Feb-22	Mar-22	Apr-22	May-22	Jun-22	Jul-22	Aug-22	Sep-22	Oct-22
Current Price	\$4.989	\$5.236	\$5.346	\$5.261	\$5.000	\$3.965	\$3.871	\$3.910	\$3.954	\$3.957	\$3.939	\$3.971
Last Week	\$5.345	\$5.502	\$5.597	\$5.491	\$5.183	\$3.936	\$3.820	\$3.856	\$3.896	\$3.903	\$3.886	\$3.918
vs. Last Week	-\$0.356	-\$0.266	-\$0.251	-\$0.230	-\$0.183	\$0.029	\$0.051	\$0.054	\$0.058	\$0.054	\$0.053	\$0.053
4 Weeks Ago	\$4.985	\$5.022	\$5.132	\$5.202	\$5.117	\$4.795	\$3.670	\$3.548	\$3.583	\$3.626	\$3.631	\$3.614
vs. 4 Weeks Ago	\$0.004	\$0.214	\$0.214	\$0.059	-\$0.117	-\$0.830	\$0.201	\$0.362	\$0.371	\$0.331	\$0.308	\$0.357
Last Year	\$2.795	\$3.280	\$3.414	\$3.373	\$3.256	\$2.960	\$2.920	\$2.947	\$2.984	\$2.993	\$2.980	\$3.015
vs. Last Year	\$2.194	\$1.956	\$1.932	\$1.888	\$1.744	\$1.005	\$0.951	\$0.963	\$0.970	\$0.964	\$0.959	\$0.956

	Units	Cash Settled	Prompt Settle	Cash to Prompt
AGT Citygate	\$/MMBtu	4.37	7.94	3.57
TETCO M3	\$/MMBtu	3.95	5.21	1.26
FGT Zone 3	\$/MMBtu	4.50	5.61	1.11
Zone 6 NY	\$/MMBtu	4.50	5.40	0.90
Chicago Citygate	\$/MMBtu	4.60	5.31	0.71
Michcon	\$/MMBtu	4.57	5.19	0.62
Columbia TCO Pool	\$/MMBtu	4.19	4.88	0.69
Ventura	\$/MMBtu	5.06	5.50	0.44
Rockies/Opal	\$/MMBtu	4.91	5.23	0.32
El Paso Permian Basin	\$/MMBtu	4.48	5.13	0.65
Socal Citygate	\$/MMBtu	6.07	5.98	-0.09
Malin	\$/MMBtu	4.86	5.81	0.95
Houston Ship Channel	\$/MMBtu	4.59	5.34	0.75
Henry Hub Cash	\$/MMBtu	4.79	5.24	0.45
AECO Cash	C\$/GJ	4.00	4.22	0.22
Station2 Cash	C\$/GJ	3.28	6.48	3.20
Dawn Cash	C\$/GJ	4.59	5.27	0.68

Source: CME, Bloomberg

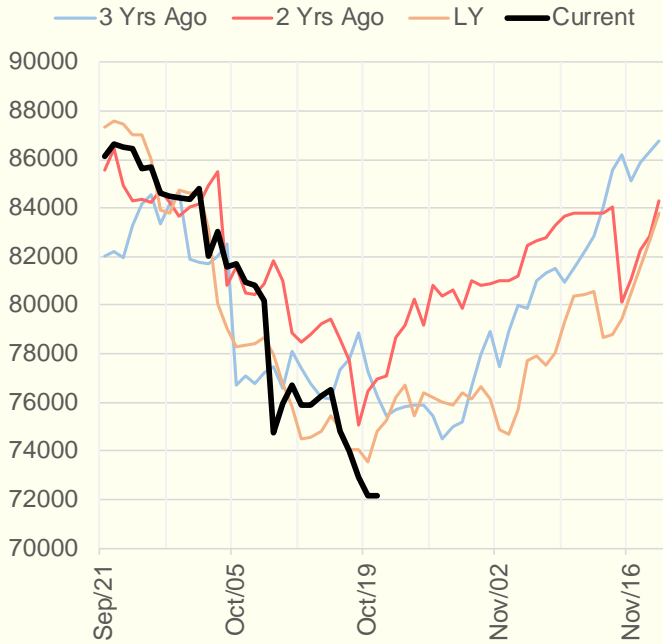
	Units	Current Price	vs. Last Week	vs. 4 Weeks Ago	vs. Last Year
NatGas Jul21/Oct21	\$/MMBtu	2.224	▲ 0.000	▲ 1.036	▲ 2.192
NatGas Oct21/Nov21	\$/MMBtu	-0.753	▼ -0.417	▼ -0.790	▼ -0.812
NatGas Oct21/Jan22	\$/MMBtu	-0.376	▼ -0.296	▼ -0.594	▼ -0.663
NatGas Apr22/Oct22	\$/MMBtu	-0.005	▲ 0.024	▲ 0.019	▼ -0.021
WTI Crude	\$/Bbl	82.96	▲ 2.320	▲ 12.400	▲ 41.500
Brent Crude	\$/Bbl	85.08	▲ 1.660	▲ 10.720	▲ 41.920
Fuel Oil, NY Harbour 1%	\$/Bbl	97.18	▲ 0.000	▲ 0.000	▲ 0.000
Heating Oil	cents/Gallon	256.07	▲ 5.070	▲ 38.690	▲ 138.720
Propane, Mt. Bel	cents/Gallon	1.48	▲ 0.018	▲ 0.206	▲ 0.954
Ethane, Mt. Bel	cents/Gallon	0.43	▼ -0.004	▲ 0.054	▲ 0.215
Coal, PRB	\$/MTon	12.30	▲ 0.000	▲ 0.000	▲ 0.000
Coal, PRB	\$/MMBtu	0.70			
Coal, ILB	\$/MTon	31.05	▲ 0.000	▲ 0.000	▲ 0.000
Coal, ILB	\$/MMBtu	1.32			

Weather Storage Model - Next 4 Week Forecast

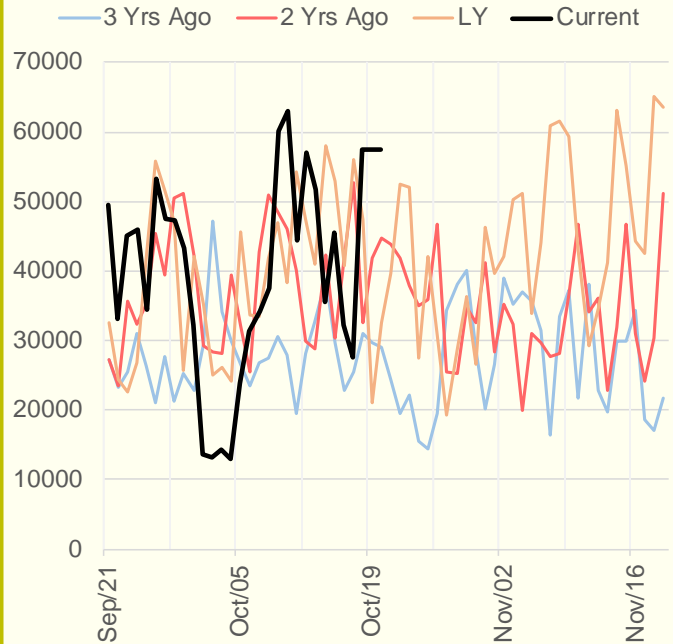


The risk of trading futures and options and other derivatives involves a substantial risk of loss and is not suitable for all persons. Each person must consider whether a particular trade, combination of trades, or strategy is suitable for that person's financial means and objectives. Past results are not necessarily indicative of future results. This communication may contain links to third party websites which are not under the control of and are not maintained by ION Energy Group, and ION Energy Group is not responsible for their content.

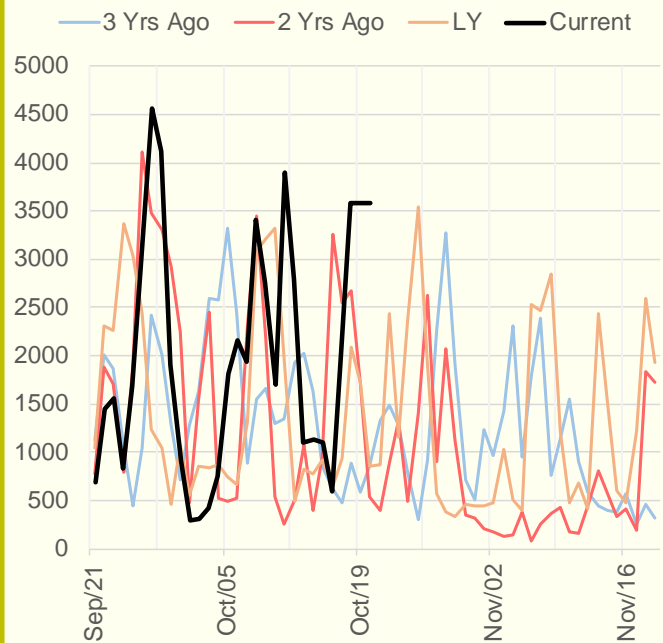
NRC Nuclear Daily Output



US Wind



CALI Wind



TEXAS Wind

