

	Current	Δ from YD	Δ from 7D Avg
Nat Gas Prompt	\$ 5.07	▼ \$ (0.10)	▼ \$ (0.24)

	Current	Δ from YD	Δ from 7D Avg
WTI Prompt	\$ 82.83	▼ \$ (1.04)	▲ \$ 0.3

	Current	Δ from YD	Δ from 7D Avg
Brent Prompt	\$ 84.90	▼ \$ (0.92)	▲ \$ 0.1

### Page Menu

[Short-term Weather Model Outlooks](#)

[Lower 48 Component Models](#)

[Regional S/D Models Storage Projection](#)

[Weather Model Storage Projection](#)

[Supply – Demand Trends](#)

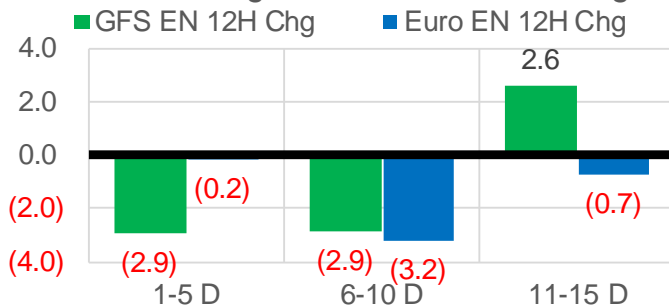
[Nat Gas Options Volume and Open Interest](#)

[Nat Gas Futures Open Interest](#)

[Price Summary](#)

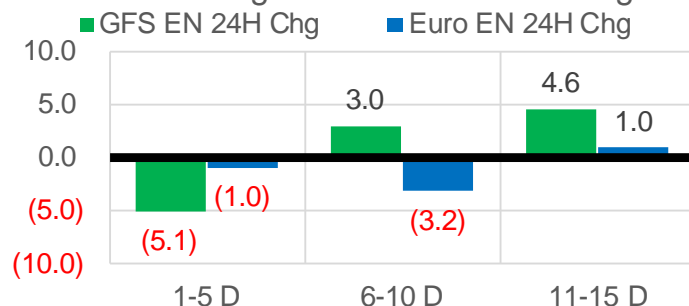
### Vs. 12H Ago

L48 Region - 00z TDD vs 12H Ago



### Vs. 24H Ago

L48 Region - 00z TDD vs 24H Ago



	Current	Δ from YD	Δ from 7D Avg
US Dry Production	91.4	▲ 0.24	▼ -0.76

	Current	Δ from YD	Δ from 7D Avg
US Power Burns	30.2	▲ 0.75	▲ 0.96

	Current	Δ from YD	Δ from 7D Avg
US ResComm	12.1	▲ 0.22	▼ -1.34

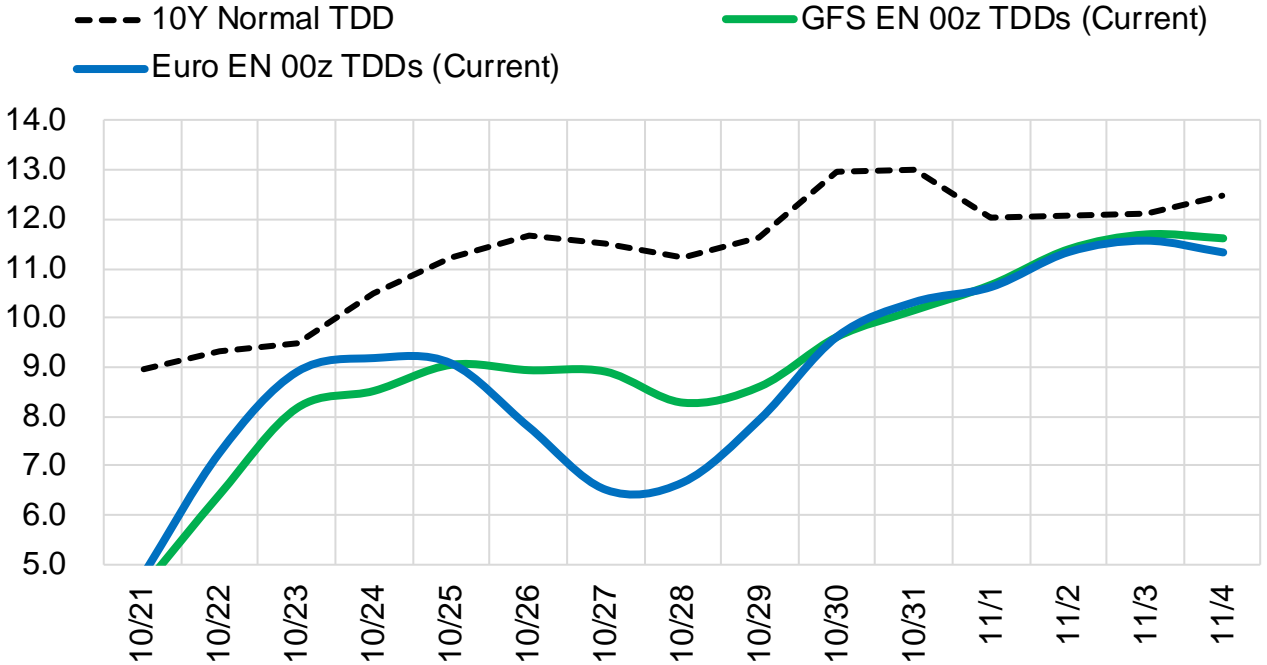
	Current	Δ from YD	Δ from 7D Avg
Canadian Imports	5.3	▼ -0.21	▼ -0.22

	Current	Δ from YD	Δ from 7D Avg
Net LNG Exports	10.6	▲ 0.44	▼ -0.28

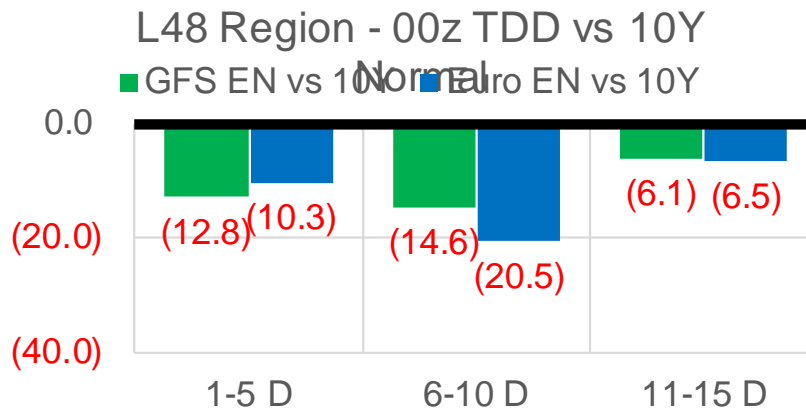
	Current	Δ from YD	Δ from 7D Avg
Mexican Exports	6.1	▼ -0.51	▼ -0.61

## Short-term Weather Model Outlooks (00z)

### L48 Region



## Vs. 10Y Normal



Source: WSI , Bloomberg

## Lower 48 Component Models

### Daily Balances

	15-Oct	16-Oct	17-Oct	18-Oct	19-Oct	20-Oct	21-Oct	DoD	vs. 7D
<b>Lower 48 Dry Production</b>	<b>93.0</b>	<b>92.0</b>	<b>92.6</b>	<b>92.6</b>	<b>91.7</b>	<b>91.2</b>	<b>91.4</b>	▲ 0.2	▼ -0.7
<b>Canadian Imports</b>	<b>5.5</b>	<b>5.6</b>	<b>5.6</b>	<b>5.5</b>	<b>5.7</b>	<b>5.5</b>	<b>5.3</b>	▼ -0.2	▼ -0.2
L48 Power	31.4	27.0	27.0	28.1	28.4	29.4	30.2	▲ 0.8	▲ 1.7
L48 Residential & Commercial	11.5	13.1	15.6	16.5	14.8	11.9	12.1	▲ 0.2	▼ -1.8
L48 Industrial	18.7	18.5	18.3	18.0	17.8	18.1	18.8	▲ 0.7	▲ 0.5
L48 Lease and Plant Fuel	5.1	5.0	5.0	5.0	5.0	5.0	4.9	▼ 0.0	▼ -0.1
L48 Pipeline Distribution	2.3	2.1	2.3	2.4	2.3	2.2	2.3	▲ 0.1	▼ 0.0
<b>L48 Regional Gas Consumption</b>	<b>69.0</b>	<b>65.8</b>	<b>68.2</b>	<b>70.0</b>	<b>68.3</b>	<b>66.6</b>	<b>68.3</b>	▲ 1.7	▲ 0.3
<b>Net LNG Delivered</b>	<b>11.03</b>	<b>11.19</b>	<b>10.64</b>	<b>11.09</b>	<b>10.87</b>	<b>10.16</b>	<b>10.61</b>	▲ 0.4	▼ -0.2
<b>Total Mexican Exports</b>	<b>7.1</b>	<b>6.6</b>	<b>6.1</b>	<b>6.5</b>	<b>6.7</b>	<b>6.6</b>	<b>6.1</b>	▼ -0.5	▼ -0.5
<b>Implied Daily Storage Activity</b>	<b>11.3</b>	<b>14.0</b>	<b>13.2</b>	<b>10.5</b>	<b>11.5</b>	<b>13.3</b>	<b>11.8</b>		
<b>EIA Reported Daily Storage Activity</b>									
<b>Daily Model Error</b>									

### EIA Storage Week Balances

	10-Sep	17-Sep	24-Sep	1-Oct	8-Oct	15-Oct	WoW	vs. 4W
<b>Lower 48 Dry Production</b>	<b>91.2</b>	<b>91.9</b>	<b>92.9</b>	<b>93.2</b>	<b>92.8</b>	<b>92.4</b>	▼ -0.4	▼ -0.2
<b>Canadian Imports</b>	<b>4.8</b>	<b>5.0</b>	<b>5.2</b>	<b>5.7</b>	<b>5.3</b>	<b>4.9</b>	▼ -0.4	▼ -0.4
L48 Power	33.8	35.0	33.2	30.3	32.8	31.7	▼ -1.1	▼ -1.1
L48 Residential & Commercial	6.9	7.1	8.1	8.4	8.1	9.5	▲ 1.4	▲ 1.6
L48 Industrial	19.5	20.7	20.5	20.0	22.7	19.7	▼ -2.9	▼ -1.2
L48 Lease and Plant Fuel	5.0	5.0	5.1	5.1	5.1	5.0	▼ 0.0	▼ 0.0
L48 Pipeline Distribution	2.2	2.3	2.3	2.1	2.2	2.2	▲ 0.0	▼ 0.0
<b>L48 Regional Gas Consumption</b>	<b>67.4</b>	<b>70.2</b>	<b>69.2</b>	<b>65.9</b>	<b>70.9</b>	<b>68.2</b>	▼ -2.7	▼ -0.8
<b>Net LNG Exports</b>	<b>11.0</b>	<b>10.2</b>	<b>9.9</b>	<b>10.3</b>	<b>9.9</b>	<b>10.7</b>	▲ 0.8	▲ 0.6
<b>Total Mexican Exports</b>	<b>6.7</b>	<b>6.6</b>	<b>6.8</b>	<b>6.7</b>	<b>6.5</b>	<b>6.6</b>	▲ 0.1	▼ 0.0
<b>Implied Daily Storage Activity</b>	<b>10.9</b>	<b>9.8</b>	<b>12.1</b>	<b>16.0</b>	<b>10.7</b>	<b>11.8</b>	1.1	
<b>EIA Reported Daily Storage Activity</b>	<b>11.9</b>	<b>10.9</b>	<b>12.6</b>	<b>16.9</b>	<b>11.6</b>			
<b>Daily Model Error</b>	<b>-0.9</b>	<b>-1.0</b>	<b>-0.4</b>	<b>-0.9</b>	<b>-0.8</b>			

### Monthly Balances

	2Yr Ago Oct-19	LY Oct-20	Jun-21	Jul-21	Aug-21	Sep-21	MTD Oct-21	MoM	vs. LY
<b>Lower 48 Dry Production</b>	<b>95.1</b>	<b>88.3</b>	<b>93.3</b>	<b>93.3</b>	<b>92.4</b>	<b>92.2</b>	<b>92.4</b>	▲ 0.2	▲ 4.1
<b>Canadian Imports</b>	<b>4.6</b>	<b>4.3</b>	<b>4.9</b>	<b>5.2</b>	<b>5.1</b>	<b>5.1</b>	<b>5.3</b>	▲ 0.1	▲ 1.0
L48 Power	30.3	30.8	35.9	39.4	40.2	33.1	31.1	▼ -2.0	▲ 0.3
L48 Residential & Commercial	15.3	15.3	8.8	8.1	7.7	7.6	10.5	▲ 2.8	▼ -4.8
L48 Industrial	23.5	22.6	20.5	20.9	20.2	20.1	20.2	▲ 0.2	▼ -2.3
L48 Lease and Plant Fuel	5.1	4.8	5.0	5.1	5.0	5.0	5.0	▼ 0.0	▲ 0.2
L48 Pipeline Distribution	2.4	2.5	2.4	2.5	2.5	2.2	2.2	▼ 0.0	▼ -0.2
<b>L48 Regional Gas Consumption</b>	<b>76.6</b>	<b>75.9</b>	<b>72.7</b>	<b>76.0</b>	<b>75.7</b>	<b>68.1</b>	<b>69.1</b>	▲ 0.9	▼ -6.8
<b>Net LNG Exports</b>	<b>6.7</b>	<b>8.0</b>	<b>10.2</b>	<b>10.8</b>	<b>10.5</b>	<b>10.3</b>	<b>10.5</b>	▲ 0.1	▲ 2.5
<b>Total Mexican Exports</b>	<b>5.4</b>	<b>6.0</b>	<b>7.4</b>	<b>7.1</b>	<b>6.9</b>	<b>6.7</b>	<b>6.6</b>	▼ -0.2	▲ 0.6
<b>Implied Daily Storage Activity</b>	<b>11.1</b>	<b>2.7</b>	<b>7.8</b>	<b>4.6</b>	<b>4.5</b>	<b>12.1</b>	<b>11.6</b>		
<b>EIA Reported Daily Storage Activity</b>									
<b>Daily Model Error</b>									

Source: Bloomberg, analytix.ai

## Daily Average Generation Data

### Nuclear Generation Daily Average - GWh (NRC)

	13-Oct	14-Oct	15-Oct	16-Oct	17-Oct	18-Oct	19-Oct	DoD	vs. 7D
NRC Nuclear Daily Output	75.9	76.2	76.5	74.8	74.0	72.9	72.2	-0.8	-2.9
NRC Nuclear Max Capacity	104.9	104.9	104.9	104.9	104.9	104.9	104.9	0.0	0.0
NRC Nuclear Outage	29.0	28.6	28.4	30.1	30.9	31.9	32.7	0.8	2.9
NRC % Nuclear Cap Utilization	77.2	77.5	77.8	76.1	75.3	74.2	73.4	-0.8	-3.0

### Wind Generation Daily Average - MWh (EIA)

	13-Oct	14-Oct	15-Oct	16-Oct	17-Oct	18-Oct	19-Oct	DoD	vs. 7D
CALI Wind	1106	1127	1101	595	2072	3591	634	-2956	-965
TEXAS Wind	13680	7415	12848	6423	8176	16053	17663	1610	6897
US Wind	51697	35572	45459	32133	27619	57421	62853	5433	21203

### Generation Daily Average - MWh (EIA)

	13-Oct	14-Oct	15-Oct	16-Oct	17-Oct	18-Oct	19-Oct	DoD	vs. 7D
US Wind	51697	35572	45459	32133	27619	57421	62853	5433	21203
US Solar	10394	12096	11812	12795	12135	11164	11628	464	-105
US Petroleum	3541	4133	3751	2841	2850	2744	2721	-23	-589
US Other	11904	12096	12387	10713	10813	11978	12053	75	405
US Coal	86198	90800	86306	64885	62878	70083	69525	-558	-7333
US Nuke	76904	76915	76940	72769	73080	73626	73036	-590	-2003
US Hydro	24493	23638	23800	20618	19704	22326	24521	2195	2091
<b>US Gas</b>	<b>168889</b>	<b>176533</b>	<b>167896</b>	<b>140834</b>	<b>124156</b>	<b>137233</b>	<b>141215</b>	<b>3982</b>	<b>-11375</b>

See National Wind and Nuclear daily charts

Source: Bloomberg, analytix.ai

## Storage Week Average Generation Data

### Nuclear Generation Weekly Average - GWh (NRC)

	10-Sep	17-Sep	24-Sep	1-Oct	8-Oct	15-Oct	WoW	WoW Bcf/d Impact
NRC Nuclear Daily Output	90.3	86.7	85.9	85.1	82.1	76.5	-5.6	1.0
NRC Nuclear Max Capacity	104.9	104.9	104.9	104.9	104.9	104.9	0.0	
NRC Nuclear Outage	14.6	18.2	19.0	19.8	22.7	28.3	5.6	
NRC % Nuclear Cap Utilization	0.1	0.1	0.1	0.1	0.1	0.1	0.0	

### Wind Generation Weekly Average - MWh (EIA)

	10-Sep	17-Sep	24-Sep	1-Oct	8-Oct	15-Oct	WoW	WoW Bcf/d Impact
CALI Wind	1236	2083	1936	2467	1099	2400	1301	-0.2
TEXAS Wind	7327	9541	9780	10364	4890	15396	10506	-1.9
US Wind	30662	42378	43250	43478	20468	49917	29449	-5.3
					-23010.0			
					-53%			

### Generation Weekly Average - MWh (EIA)

	10-Sep	17-Sep	24-Sep	1-Oct	8-Oct	15-Oct	WoW	WoW Bcf/d Impact
US Wind	30662	42378	43250	43478	20468	49917	29449	<b>-5.3</b>
US Solar	14254	14057	12185	12957	11295	10369	-926	<b>0.2</b>
US Petroleum	2072	2470	2594	2712	3901	3224	-677	<b>0.1</b>
US Other	8932	9273	9121	8709	10972	12147	1175	-0.2
US Coal	116993	115066	109062	94792	100713	89001	-11712	2.1
US Nuke	93162	89490	88789	88402	83696	77046	-6650	<b>1.2</b>
US Hydro	26944	24138	25340	25370	24518	24690	172	0.0
<b>US Gas</b>	<b>181094</b>	<b>182116</b>	<b>175354</b>	<b>153813</b>	<b>176848</b>	<b>162216</b>	<b>-14632</b>	2.6

See National Wind and Nuclear daily charts

Source: Bloomberg, analytix.ai

## Monthly Average Generation Data

### Nuclear Generation Monthly Average - GWh (NRC)

	2Yr Ago	LY	MTD				Last 30 days	MoM (MTD vs LY)	Last 30 days YoY
	Same 30 days	Same 30 days	Jul-21	Aug-21	Sep-21	Oct-21			
NRC Nuclear Daily Output	81.3	79.6	90.1	91.5	87.2	77.4	79.8	-9.8	0.2
NRC Nuclear Max Capacity	104.9	104.9	104.9	104.9	104.9	104.9	104.9	0.0	0.0
NRC Nuclear Outage	23.6	25.2	14.8	13.4	17.7	27.5	25.1	9.8	-0.2
NRC % Nuclear Cap Utilization	82.7	81.0	91.6	93.0	88.7	78.7	81.2	-9.9	0.2

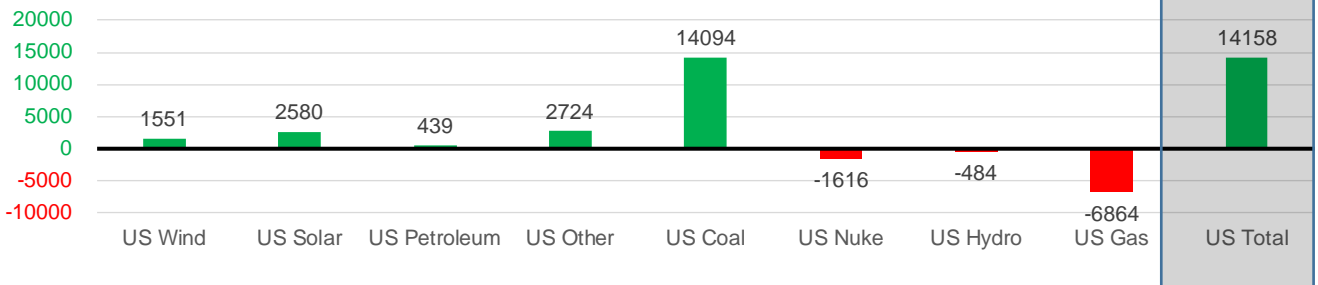
### Wind Generation Monthly Average - MWh (EIA)

	2Yr Ago	LY	MTD				Last 30 days	MoM (MTD vs LY)	Last 30 days YoY
	Same 30 days	Same 30 days	Jul-21	Aug-21	Sep-21	Oct-21			
CALI Wind	1707	1493	2338	2442	2020	1607	1801	-413	308
TEXAS Wind	9241	9460	7217	9901	9400	11357	10931	1957	1470
US Wind	38512	39327	29217	35830	40222	40185	40878	-37	1551

### Generation Monthly Average - MWh (EIA)

	2Yr Ago	LY	MTD				Last 30 days	MoM (MTD vs LY)	Last 30 days YoY
	Same 30 days	Same 30 days	Jul-21	Aug-21	Sep-21	Oct-21			
US Wind	38512	39327	29217	35830	40222	40185	40878	▲ 692.9	▲ 1551
US Solar	8301	9103	14140	13787	13379	11164	11683	▲ 519.4	▲ 2580
US Petroleum	3964	2690	4233	4484	2452	3344	3129	▼ -215	▲ 439
US Other	8504	8029	9326	9928	9008	11613	10753	▼ -860	▲ 2724
US Coal	94562	75511	137228	137655	110037	86701	89605	▲ 2904	▲ 14094
US Nuke	87546	82917	92911	94062	90146	78129	81301	▲ 3172	▼ -1616
US Hydro	23306	24999	29941	28532	25661	24022	24515	▲ 493	▼ -484
<b>US Gas</b>	<b>165731</b>	<b>165946</b>	<b>207823</b>	<b>210824</b>	<b>173536</b>	<b>160344</b>	<b>159082</b>	<b>▲ 6705</b>	<b>▼ -6864</b>
<b>US Total</b>	<b>430765</b>	<b>408447</b>	<b>524834</b>	<b>534937</b>	<b>464627</b>	<b>417838</b>	<b>422605</b>	<b>▲ 12718</b>	<b>▲ 14158</b>

Last 30 days YoY



See National Wind and Nuclear daily charts

Source: Bloomberg, analytix.ai

### Regional S/D Models Storage Projection

Week Ending 15-Oct

	Daily Raw Storage	Daily Adjustment Factor	Daily Average Storage Activity (Adjusted) *	Weekly Adjusted Storage Activity
L48	11.5	1.2	12.7	89
East	4.1	0.6	4.7	33
Midwest	4.4	-0.6	3.8	26
Mountain	3.1	-3.1	-0.1	-1
South Central	-0.5	4.7	4.2	29
Pacific	0.5	-0.4	0.1	1

\*Adjustment Factor is calculated based on historical regional deltas

U.S. underground natural gas storage facilities by type (July 2015)

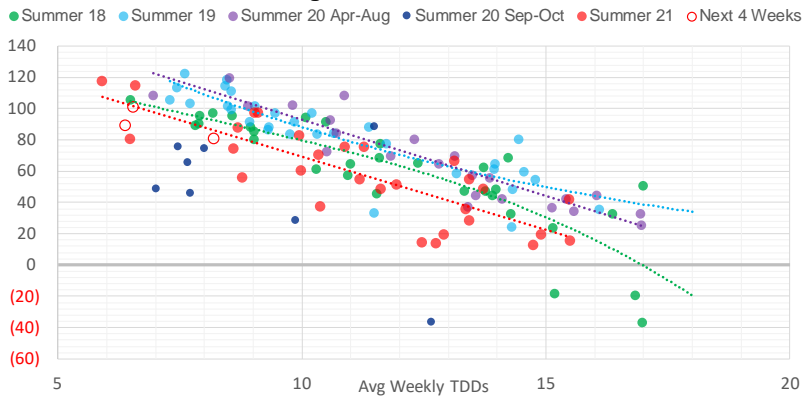


### Weather Model Storage Projection

Next report  
and beyond

Week Ending	GWDDs	Week Storage Projection
15-Oct	6.4	89
22-Oct	6.5	101
29-Oct	8.2	81
05-Nov	#N/A	#N/A

**Weather Storage Model - Next 4 Week Forecast**

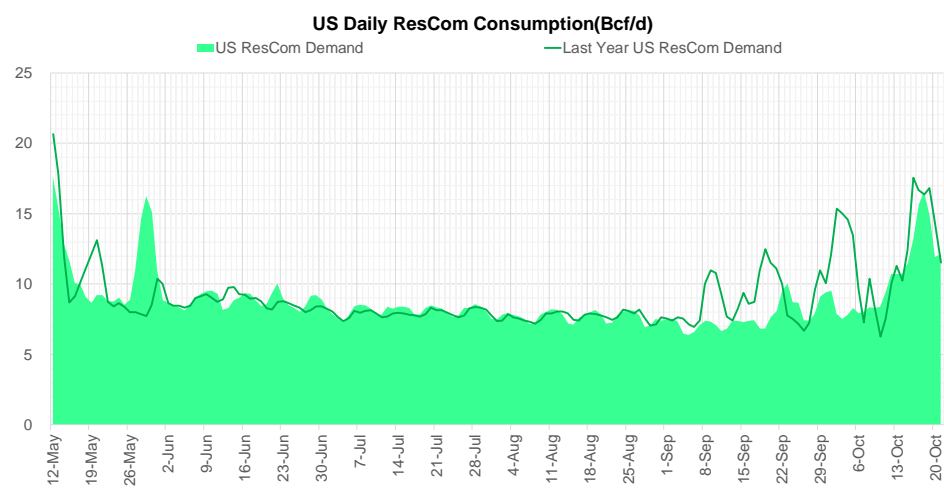
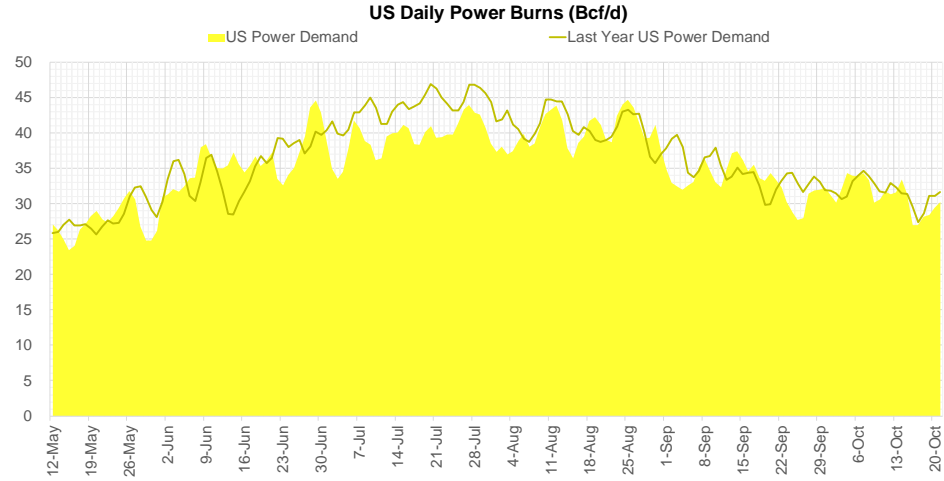
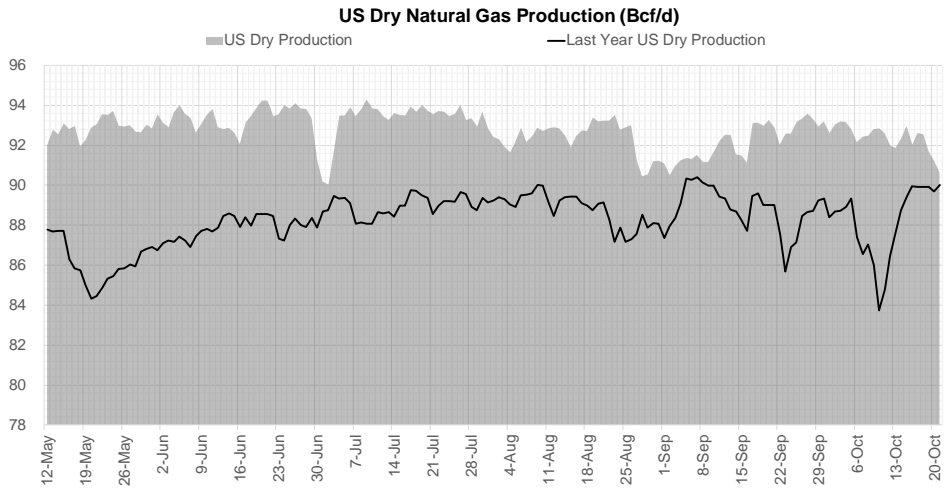


Go to larger image





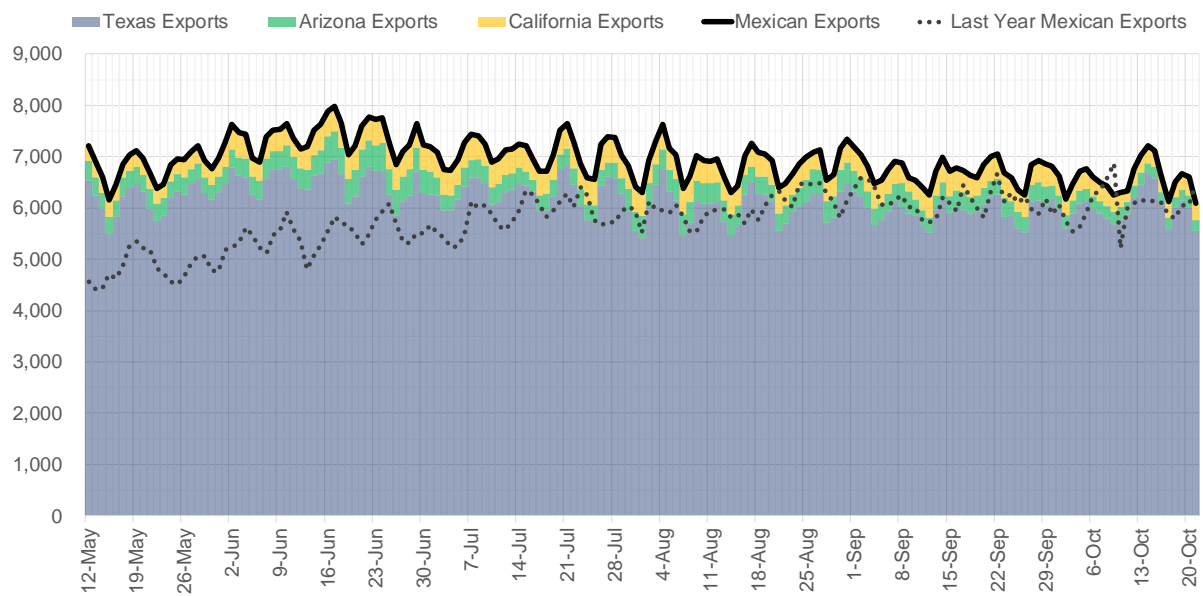
## Supply – Demand Trends



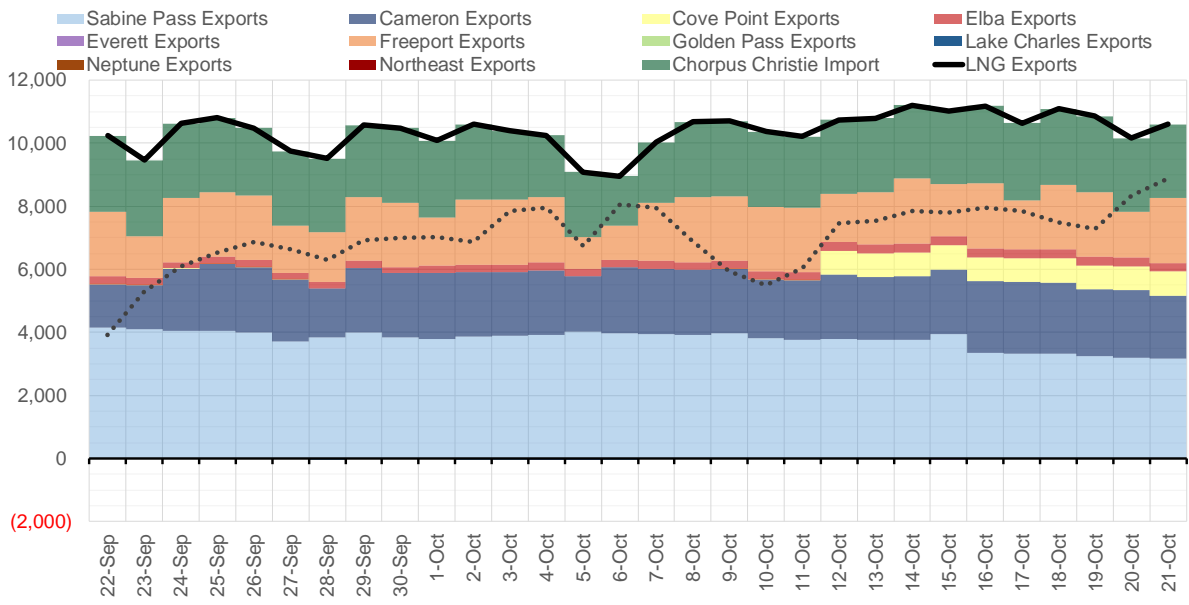
Source: Bloomberg

The risk of trading futures and options and other derivatives involves a substantial risk of loss and is not suitable for all persons. Each person must consider whether a particular trade, combination of trades, or strategy is suitable for that person's financial means and objectives. Past results are not necessarily indicative of future results. This communication may contain links to third party websites which are not under the control of and are not maintained by ION Energy Group, and ION Energy Group is not responsible for their content.

### Mexican Exports (MMcf/d)



### Net LNG Exports - Last 30 days (MMcf/d)



Source: Bloomberg

The risk of trading futures and options and other derivatives involves a substantial risk of loss and is not suitable for all persons. Each person must consider whether a particular trade, combination of trades, or strategy is suitable for that person's financial means and objectives. Past results are not necessarily indicative of future results. This communication may contain links to third party websites which are not under the control of and are not maintained by ION Energy Group, and ION Energy Group is not responsible for their content.

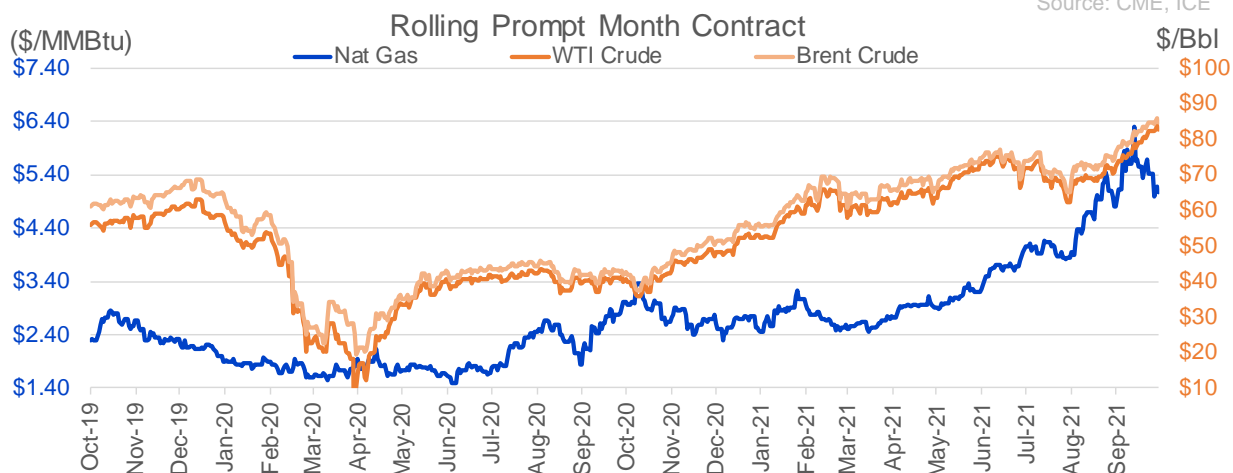
## Nat Gas Options Volume and Open Interest CME, ICE and Nasdaq Combined

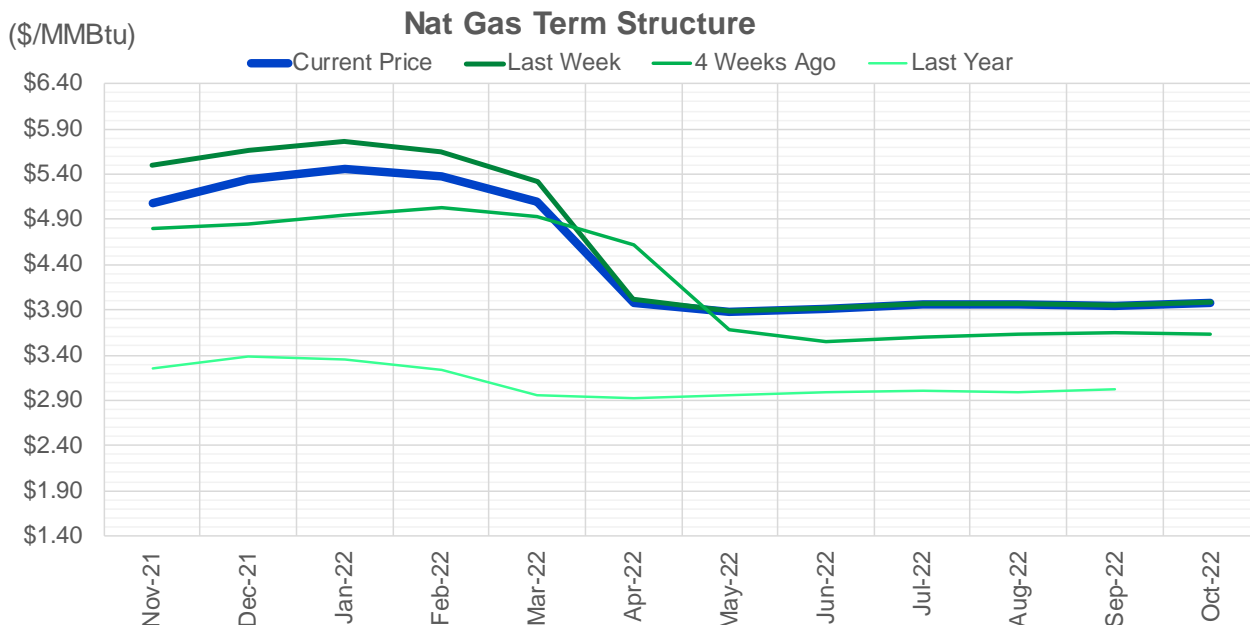
CONTRACT MONTH	CONTRACT YEAR	PUT/CALL	STRIKE	CUMULATIVE VOL	CONTRACT MONTH	CONTRACT YEAR	PUT/CALL	STRIKE	CUMULATIVE OI
11	2021	P	4.25	6022	12	2021	P	2.75	54042
11	2021	P	4.50	4445	12	2021	P	3.00	42269
11	2021	C	5.50	3959	12	2021	P	2.50	39419
11	2021	C	6.00	3576	12	2021	P	4.00	38302
6	2022	C	6.50	2800	12	2021	P	3.50	30460
6	2022	C	5.00	2700	11	2021	P	3.00	30166
11	2021	P	4.75	2699	3	2022	C	10.00	28710
11	2021	P	4.00	2405	11	2021	P	4.00	28620
2	2022	P	3.00	2200	11	2021	P	5.00	28424
6	2022	C	6.00	2200	11	2021	C	6.00	26559
11	2021	C	6.50	2188	11	2021	P	4.50	26482
11	2021	C	7.00	2101	11	2021	C	7.00	24122
2	2022	C	6.00	2069	3	2022	C	8.00	24085
6	2022	P	3.00	2050	12	2021	C	4.00	22527
3	2022	C	6.00	1951	3	2022	C	5.00	22349
12	2021	C	15.00	1914	11	2021	P	3.50	20149
12	2021	P	4.00	1867	11	2021	C	4.00	20144
6	2022	C	4.50	1775	1	2022	P	2.75	20007
5	2022	C	5.00	1700	4	2022	C	3.00	19760
12	2021	C	7.00	1562	1	2022	P	3.50	19466
11	2021	C	6.25	1542	12	2021	C	6.00	18844
11	2021	P	5.00	1431	3	2022	P	2.50	18385
3	2022	P	3.00	1401	1	2022	P	3.00	17860
12	2022	C	5.00	1400	1	2022	C	5.00	17813
12	2021	P	3.50	1393	3	2022	P	3.50	17699
1	2022	C	8.00	1335	2	2022	P	3.50	17650
1	2022	C	6.00	1256	1	2022	C	6.00	17483
1	2022	C	9.00	1241	3	2022	P	4.00	16956
11	2021	C	5.25	1213	12	2021	P	2.00	16877
1	2022	P	3.00	1207	2	2022	C	5.00	16764
1	2022	P	4.50	1202	11	2021	C	5.00	16081
3	2022	C	9.00	1200	12	2021	C	7.00	15764
1	2022	C	3.00	1175	3	2022	C	4.00	15746
2	2022	C	3.00	1175	11	2021	P	4.75	15552
3	2022	C	3.00	1175	1	2022	P	4.00	15452
11	2021	C	10.00	1123	4	2022	P	2.50	15286
5	2022	P	3.00	1050	4	2022	C	5.00	15081
7	2022	P	3.00	1050	12	2021	C	8.00	15069
11	2021	C	5.75	1035	11	2021	C	4.50	14889
3	2022	C	8.00	1002	11	2021	P	4.25	14653
2	2022	C	9.00	1000	12	2021	P	5.00	14616
2	2022	P	3.50	1000	11	2021	P	2.50	14488
3	2022	P	2.75	1000	11	2021	C	3.75	14479
12	2021	C	6.00	968	1	2022	C	4.00	14463
4	2022	P	3.00	950	11	2021	P	3.25	14311
8	2022	P	3.00	900	12	2022	C	5.00	14307
9	2022	P	3.00	900	11	2021	C	5.50	13921
10	2022	P	3.00	900	12	2021	P	4.50	13803
11	2022	P	3.00	900	3	2022	P	5.00	13470
					2	2022	P	4	13398

Source: CME, ICE

## Nat Gas Futures Open Interest CME, and ICE Combined

CME Henry Hub Futures (10,000 MMBtu)				ICE Henry Hub Futures Contract Equivalent (10,000 MM			
	Current	Prior	Daily Change		Current	Prior	Daily Change
NOV 21	46411	60164	-13753	NOV 21	85656	90561	-4905
DEC 21	164653	161994	2659	DEC 21	92140	91782	358
JAN 22	234457	232103	2354	JAN 22	93129	92683	446
FEB 22	70966	70874	92	FEB 22	69511	68937	574
MAR 22	152693	151464	1229	MAR 22	76027	75429	599
APR 22	114336	115031	-695	APR 22	75880	75606	274
MAY 22	113577	112740	837	MAY 22	70667	70390	278
JUN 22	40785	40175	610	JUN 22	54081	54107	-26
JUL 22	38496	37925	571	JUL 22	56547	56258	289
AUG 22	29345	29224	121	AUG 22	55380	55453	-73
SEP 22	32599	32578	21	SEP 22	56554	56370	185
OCT 22	80858	80773	85	OCT 22	61952	61893	59
NOV 22	34267	34251	16	NOV 22	48842	48873	-31
DEC 22	25330	25906	-576	DEC 22	52160	52180	-20
JAN 23	29071	28372	699	JAN 23	39023	38876	147
FEB 23	10528	10463	65	FEB 23	32168	32022	146
MAR 23	15771	15317	454	MAR 23	33843	33711	132
APR 23	14170	13683	487	APR 23	33056	33319	-263
MAY 23	8815	8808	7	MAY 23	33443	33329	115
JUN 23	7081	7258	-177	JUN 23	30024	29936	88
JUL 23	4856	4835	21	JUL 23	30205	30120	85
AUG 23	3896	3893	3	AUG 23	30079	29995	83
SEP 23	4445	4155	290	SEP 23	29229	29149	81
OCT 23	6169	6325	-156	OCT 23	32988	32639	349
NOV 23	3329	3352	-23	NOV 23	31785	31843	-58
DEC 23	4061	3942	119	DEC 23	28158	28164	-6
JAN 24	1379	1373	6	JAN 24	16240	16091	150
FEB 24	1161	1117	44	FEB 24	13726	13740	-15
MAR 24	4628	4262	366	MAR 24	18273	18234	39
APR 24	3502	3422	80	APR 24	12803	12773	31





	Nov-21	Dec-21	Jan-22	Feb-22	Mar-22	Apr-22	May-22	Jun-22	Jul-22	Aug-22	Sep-22	Oct-22
<b>Current Price</b>	<b>\$5.088</b>	<b>\$5.350</b>	<b>\$5.465</b>	<b>\$5.379</b>	<b>\$5.095</b>	<b>\$3.976</b>	<b>\$3.872</b>	<b>\$3.911</b>	<b>\$3.954</b>	<b>\$3.957</b>	<b>\$3.938</b>	<b>\$3.971</b>
Last Week	\$5.505	\$5.663	\$5.761	\$5.656	\$5.324	\$4.015	\$3.891	\$3.925	\$3.965	\$3.972	\$3.955	\$3.986
vs. Last Week	-\$0.417	-\$0.313	-\$0.296	-\$0.277	-\$0.229	-\$0.039	-\$0.019	-\$0.014	-\$0.011	-\$0.015	-\$0.017	-\$0.015
4 Weeks Ago	\$4.805	\$4.842	\$4.953	\$5.023	\$4.936	\$4.616	\$3.672	\$3.556	\$3.592	\$3.638	\$3.644	\$3.625
vs. 4 Weeks Ago	\$0.283	\$0.508	\$0.512	\$0.356	\$0.159	-\$0.640	\$0.200	\$0.355	\$0.362	\$0.319	\$0.294	\$0.346
Last Year	\$2.913	\$3.260	\$3.391	\$3.352	\$3.238	\$2.963	\$2.926	\$2.956	\$2.994	\$3.003	\$2.991	\$3.026
vs. Last Year	\$2.175	\$2.090	\$2.074	\$2.027	\$1.857	\$1.013	\$0.946	\$0.955	\$0.960	\$0.954	\$0.947	\$0.945

	Units	Cash Settled	Prompt Settle	Cash to Prompt
AGT Citygate	\$/MMBtu	4.70	8.38	3.68
TETCO M3	\$/MMBtu	4.18	5.24	1.06
FGT Zone 3	\$/MMBtu	4.25	5.82	1.57
Zone 6 NY	\$/MMBtu	4.25	5.59	1.34
Chicago Citygate	\$/MMBtu	4.80	5.56	0.76
Michcon	\$/MMBtu	4.57	5.43	0.86
Columbia TCO Pool	\$/MMBtu	4.33	5.09	0.76
Ventura	\$/MMBtu	5.06	5.73	0.67
Rockies/Opal	\$/MMBtu	5.08	5.41	0.33
El Paso Permian Basin	\$/MMBtu	4.58	5.34	0.76
Socal Citygate	\$/MMBtu	5.99	6.17	0.18
Malin	\$/MMBtu	4.98	5.97	0.99
Houston Ship Channel	\$/MMBtu	4.73	5.54	0.81
Henry Hub Cash	\$/MMBtu	4.75	5.45	0.70
AECO Cash	C\$/GJ	4.01	4.56	0.55
Station2 Cash	C\$/GJ	3.87	6.55	2.68
Dawn Cash	C\$/GJ	4.69	5.49	0.80

Source: CME, Bloomberg

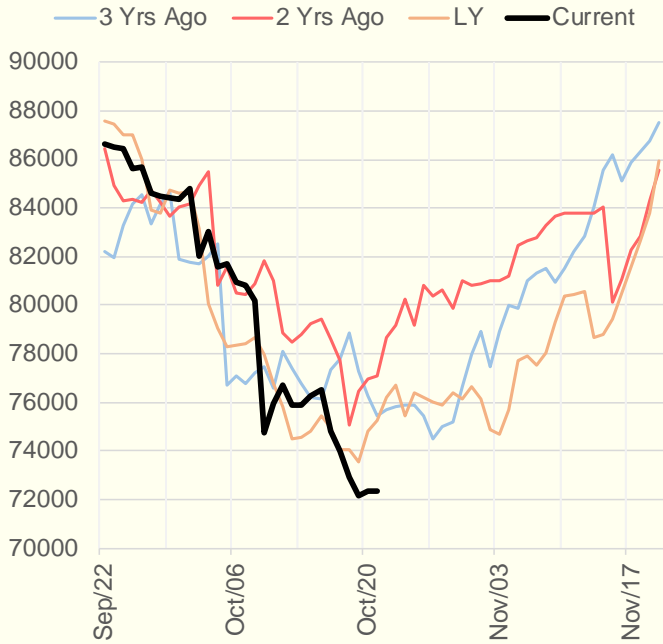
	Units	Current Price	vs. Last Week	vs. 4 Weeks Ago	vs. Last Year
NatGas Jul21/Oct21	\$/MMBtu	2.224	▲ 0.000	▲ 1.036	▲ 2.194
NatGas Oct21/Nov21	\$/MMBtu	-0.671	▼ -0.420	▼ -0.721	▼ -0.729
NatGas Oct21/Jan22	\$/MMBtu	-0.279	▼ -0.292	▼ -0.516	▼ -0.562
NatGas Apr22/Oct22	\$/MMBtu	-0.015	▲ 0.011	▲ 0.013	▼ -0.033
WTI Crude	\$/Bbl	83.87	▲ 3.430	▲ 11.640	▲ 43.840
Brent Crude	\$/Bbl	85.82	▲ 2.640	▲ 9.630	▲ 44.090
Fuel Oil, NY Harbour 1%	\$/Bbl	97.18	▲ 0.000	▲ 0.000	▲ 0.000
Heating Oil	cents/Gallon	259.23	▲ 7.120	▲ 38.070	▲ 145.240
Propane, Mt. Bel	cents/Gallon	1.47	▲ 0.026	▲ 0.194	▲ 0.948
Ethane, Mt. Bel	cents/Gallon	0.43	▼ -0.007	▲ 0.052	▲ 0.214
Coal, PRB	\$/MTon	12.30	▲ 0.000	▲ 0.000	▲ 0.000
Coal, PRB	\$/MMBtu	0.70			
Coal, ILB	\$/MTon	31.05	▲ 0.000	▲ 0.000	▲ 0.000
Coal, ILB	\$/MMBtu	1.32			

## Weather Storage Model - Next 4 Week Forecast

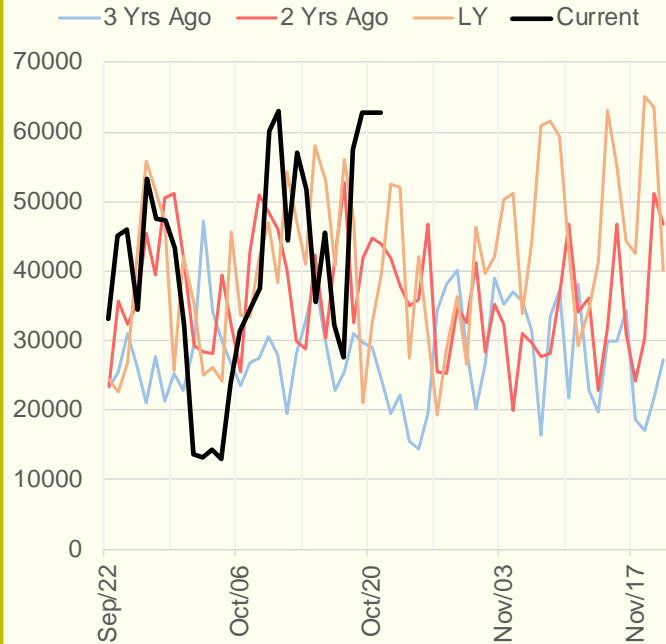


The risk of trading futures and options and other derivatives involves a substantial risk of loss and is not suitable for all persons. Each person must consider whether a particular trade, combination of trades, or strategy is suitable for that person's financial means and objectives. Past results are not necessarily indicative of future results. This communication may contain links to third party websites which are not under the control of and are not maintained by ION Energy Group, and ION Energy Group is not responsible for their content.

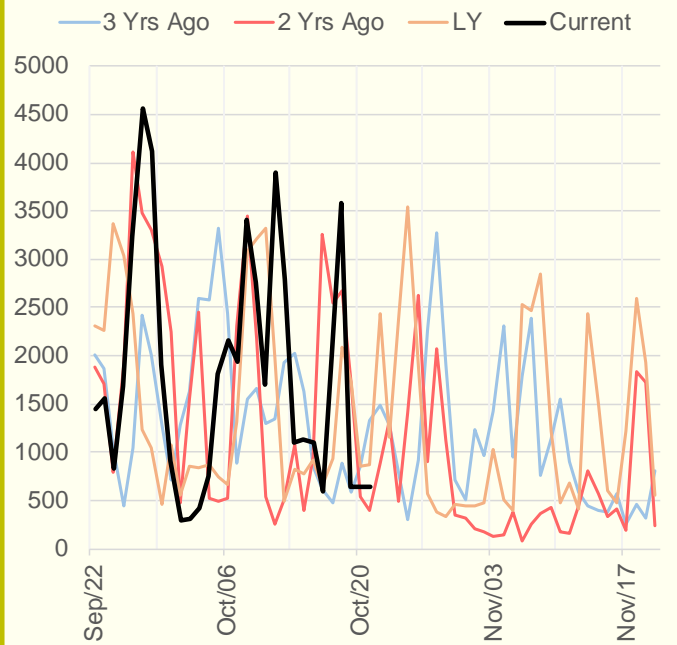
### NRC Nuclear Daily Output



### US Wind



### CALI Wind



### TEXAS Wind

