

	Current	Δ from YD	Δ from 7D Avg
Nat Gas Prompt	\$ 4.78	▼ \$ (0.29)	▼ \$ (0.24)

	Current	Δ from YD	Δ from 7D Avg
WTI Prompt	\$ 75.75	▼ \$ (0.35)	▼ \$ (2.4)

	Current	Δ from YD	Δ from 7D Avg
Brent Prompt	\$ 78.63	▼ \$ (0.26)	▼ \$ (1.8)

Page Menu

[Short-term Weather Model Outlooks](#)

[Lower 48 Component Models](#)

[Regional S/D Models Storage Projection](#)

[Weather Model Storage Projection](#)

[Supply – Demand Trends](#)

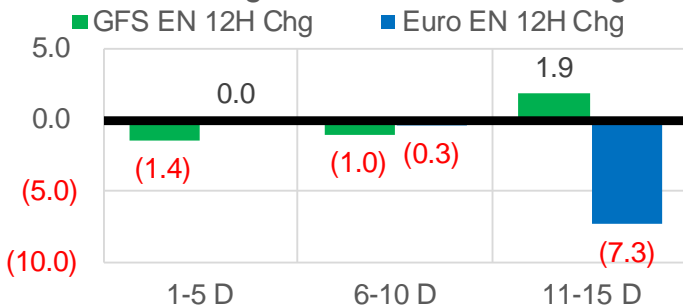
[Nat Gas Options Volume and Open Interest](#)

[Nat Gas Futures Open Interest](#)

[Price Summary](#)

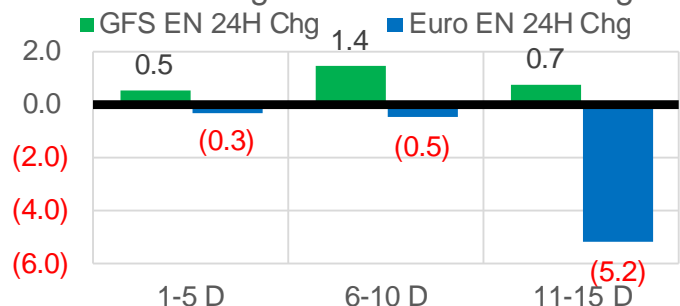
Vs. 12H Ago

L48 Region - 00z TDD vs 12H Ago



Vs. 24H Ago

L48 Region - 00z TDD vs 24H Ago



	Current	Δ from YD	Δ from 7D Avg
US Dry Production	97.0	▲ 0.61	▲ 0.66

	Current	Δ from YD	Δ from 7D Avg
US Power Burns	27.5	▲ 1.52	▲ 0.37

	Current	Δ from YD	Δ from 7D Avg
US ResComm	32.0	▲ 4.02	▲ 2.97

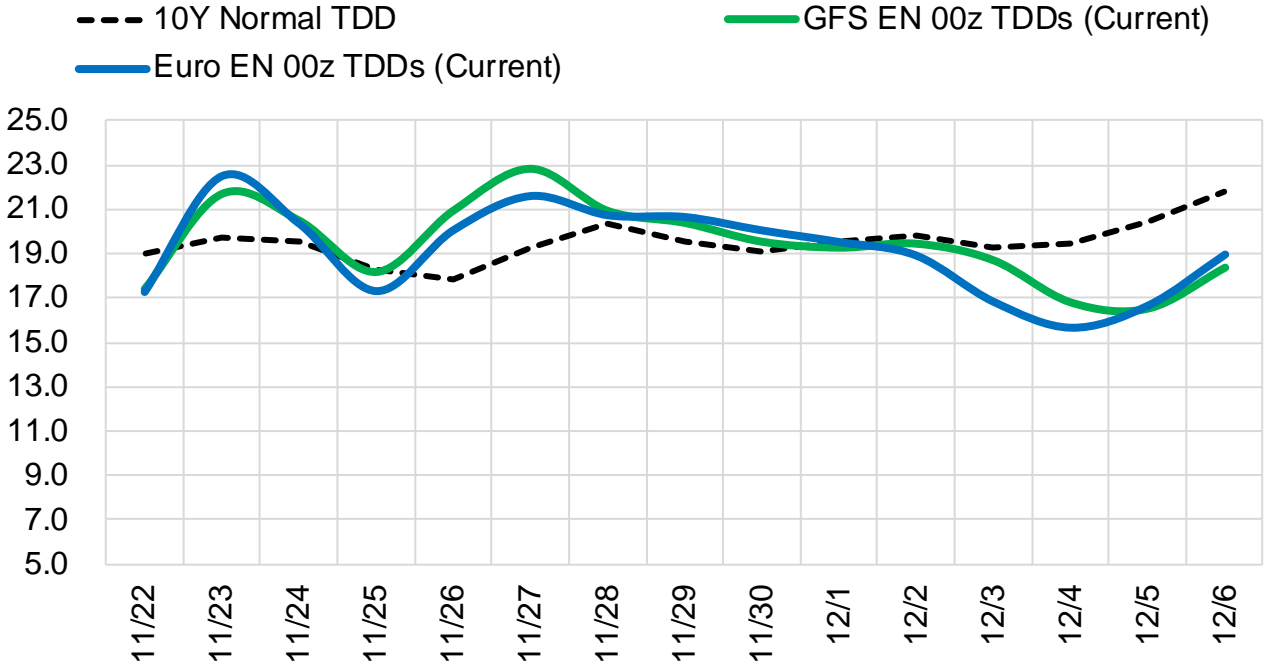
	Current	Δ from YD	Δ from 7D Avg
Canadian Imports	5.1	▼ -0.52	▲ 0.05

	Current	Δ from YD	Δ from 7D Avg
Net LNG Exports	12.0	▲ 0.20	▲ 0.53

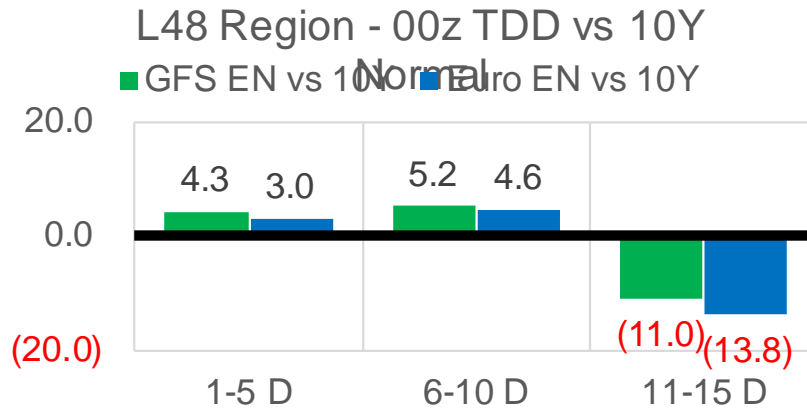
	Current	Δ from YD	Δ from 7D Avg
Mexican Exports	5.8	▲ 0.23	▼ -0.13

Short-term Weather Model Outlooks (00z)

L48 Region



Vs. 10Y Normal



Source: WSI , Bloomberg

Lower 48 Component Models

Daily Balances

	16-Nov	17-Nov	18-Nov	19-Nov	20-Nov	21-Nov	22-Nov	DoD	vs. 7D
Lower 48 Dry Production	95.7	95.8	96.0	96.7	96.5	96.4	97.0	▲ 0.6	▲ 0.8
Canadian Imports	4.9	4.4	4.8	5.1	5.4	5.7	5.1	▼ -0.5	▲ 0.1
L48 Power	27.9	27.3	27.2	27.4	26.0	25.9	27.5	▲ 1.5	▲ 0.5
L48 Residential & Commercial	27.5	23.6	28.2	34.6	30.9	28.0	32.0	▲ 4.0	▲ 3.2
L48 Industrial	25.1	24.9	25.7	26.0	25.5	25.0	25.5	▲ 0.5	▲ 0.1
L48 Lease and Plant Fuel	5.2	5.2	5.2	5.3	5.3	5.2	5.2	▼ 0.0	▲ 0.0
L48 Pipeline Distribution	3.0	2.7	3.0	3.3	3.0	2.9	3.2	▲ 0.3	▲ 0.2
L48 Regional Gas Consumption	88.7	83.7	89.3	96.6	90.6	87.1	93.4	▲ 6.3	▲ 4.0
Net LNG Delivered	11.09	11.20	11.54	12.00	11.90	11.76	11.96	▲ 0.2	▲ 0.4
Total Mexican Exports	6.1	6.2	6.1	6.1	5.8	5.6	5.8	▲ 0.2	▼ -0.2
Implied Daily Storage Activity	-5.3	-0.9	-6.2	-12.9	-6.4	-2.4	-9.0		
EIA Reported Daily Storage Activity									
Daily Model Error									

EIA Storage Week Balances

	15-Oct	22-Oct	29-Oct	5-Nov	12-Nov	19-Nov	WoW	vs. 4W
Lower 48 Dry Production	94.7	94.6	95.7	96.4	97.2	96.5	▼ -0.7	▲ 0.5
Canadian Imports	5.0	5.6	5.6	5.5	5.1	4.9	▼ -0.2	▼ -0.6
L48 Power	31.7	29.0	29.0	29.5	27.3	27.2	▼ -0.2	▼ -1.5
L48 Residential & Commercial	9.5	13.9	17.7	24.1	23.4	27.9	▲ 4.5	▲ 8.1
L48 Industrial	21.5	20.5	20.9	22.8	23.0	25.3	▲ 2.3	▲ 3.5
L48 Lease and Plant Fuel	5.2	5.1	5.2	5.2	5.3	5.3	▼ 0.0	▲ 0.0
L48 Pipeline Distribution	2.2	2.3	2.5	2.9	2.7	2.9	▲ 0.2	▲ 0.3
L48 Regional Gas Consumption	70.2	70.8	75.4	84.5	81.7	88.5	▲ 6.8	▲ 10.4
Net LNG Exports	10.7	10.8	10.8	10.9	11.2	11.1	▼ -0.1	▲ 0.2
Total Mexican Exports	6.6	6.6	6.9	6.1	6.2	6.0	▼ -0.2	▼ -0.4
Implied Daily Storage Activity	12.2	12.0	8.3	0.4	3.2	-4.3	-7.5	
EIA Reported Daily Storage Activity	13.1	12.4	9.0	1.0	3.7			
Daily Model Error	-0.9	-0.5	-0.7	-0.6	-0.6			

Monthly Balances

	2Yr Ago Nov-19	LY Nov-20	Jul-21	Aug-21	Sep-21	Oct-21	MTD Nov-21	MoM	vs. LY
Lower 48 Dry Production	96.2	91.1	93.6	94.2	94.4	95.1	96.7	▲ 1.6	▲ 5.6
Canadian Imports	4.5	4.6	5.2	5.1	5.1	5.4	5.1	▼ -0.3	▲ 0.5
L48 Power	27.5	25.7	39.4	40.1	33.1	30.3	27.9	▼ -2.4	▲ 2.2
L48 Residential & Commercial	32.8	24.4	8.1	7.8	7.7	12.9	27.2	▲ 14.3	▲ 2.8
L48 Industrial	24.9	22.4	21.2	21.9	22.1	21.7	24.3	▲ 2.6	▲ 1.9
L48 Lease and Plant Fuel	5.2	5.0	5.1	5.1	5.2	5.2	5.3	▲ 0.1	▲ 0.3
L48 Pipeline Distribution	3.0	2.7	2.5	2.6	2.2	2.3	2.9	▲ 0.6	▲ 0.3
L48 Regional Gas Consumption	93.5	80.2	76.3	77.5	70.3	72.4	87.6	▲ 15.2	▲ 7.4
Net LNG Exports	7.2	10.1	10.8	10.5	10.3	10.6	11.2	▲ 0.6	▲ 1.1
Total Mexican Exports	5.2	6.1	7.1	6.9	6.7	6.6	6.0	▼ -0.6	▼ -0.1
Implied Daily Storage Activity	-5.1	-0.7	4.6	4.6	12.2	10.9	-3.0		
EIA Reported Daily Storage Activity									
Daily Model Error									

Source: Bloomberg, analytix.ai

Daily Average Generation Data

Nuclear Generation Daily Average - GWh (NRC)

	14-Nov	15-Nov	16-Nov	17-Nov	18-Nov	19-Nov	20-Nov	DoD	vs. 7D
NRC Nuclear Daily Output	83.7	84.0	84.1	85.2	84.8	83.9	83.9	0.0	-0.4
NRC Nuclear Max Capacity	104.9	104.9	104.9	104.9	104.9	104.9	104.9	0.0	0.0
NRC Nuclear Outage	21.2	20.9	20.7	19.6	20.1	21.0	21.0	0.0	0.4
NRC % Nuclear Cap Utilization	85.1	85.4	85.6	86.7	86.2	85.3	85.3	0.0	-0.4

Wind Generation Daily Average - MWh (EIA)

	14-Nov	15-Nov	16-Nov	17-Nov	18-Nov	19-Nov	20-Nov	DoD	vs. 7D
CALI Wind	272	1244	2362	832	498	1518	1346	-172	226
TEXAS Wind	8889	10264	20787	19938	12471	15108	15689	581	1113
US Wind	49269	43525	73118	72121	55234	62388	46096	-16292	-13180

Generation Daily Average - MWh (EIA)

	14-Nov	15-Nov	16-Nov	17-Nov	18-Nov	19-Nov	20-Nov	DoD	vs. 7D
US Wind	49269	43525	73118	72121	55234	62388	46096	-16292	-13180
US Solar	10351	10356	8701	9419	8543	8691	9226	535	-118
US Petroleum	2549	3233	2436	1950	3020	3602	3230	-371	432
US Other	7587	7887	7860	8050	7866	8367	8122	-245	186
US Coal	78007	84359	77806	74593	78618	77043	84724	7682	6320
US Nuke	87638	88332	89358	89575	89059	88391	88819	428	93
US Hydro	24971	26951	27274	27262	27921	28617	26377	-2239	-788
US Gas	140838	162199	140863	137919	149820	155812	147932	-7880	23

See National Wind and Nuclear daily charts

Source: Bloomberg, analytix.ai

Storage Week Average Generation Data

Nuclear Generation Weekly Average - GWh (NRC)

	15-Oct	22-Oct	29-Oct	5-Nov	12-Nov	19-Nov	WoW	WoW Bcf/d Impact
NRC Nuclear Daily Output	76.5	73.6	71.6	72.2	79.8	83.9	4.1	-0.7
NRC Nuclear Max Capacity	104.9	104.9	104.9	104.9	104.9	104.9	0.0	
NRC Nuclear Outage	28.3	31.2	33.3	32.7	25.1	21.0	-4.1	
NRC % Nuclear Cap Utilization	0.1	0.1	0.1	0.1	0.1	0.1	0.0	

Wind Generation Weekly Average - MWh (EIA)

	15-Oct	22-Oct	29-Oct	5-Nov	12-Nov	19-Nov	WoW	WoW Bcf/d Impact
CALI Wind	2400	1270	2314	1669	1805	862	-943	0.2
TEXAS Wind	15396	10729	15462	8472	12032	13655	1624	-0.3
US Wind	49918	43721	49870	32116	51002	58367	7364	-1.3
					18886.8			
					59%			

Generation Weekly Average - MWh (EIA)

	15-Oct	22-Oct	29-Oct	5-Nov	12-Nov	19-Nov	WoW	WoW Bcf/d Impact
US Wind	49918	43721	49870	32116	51002	58367	7364	-1.3
US Solar	10530	12209	10138	9979	10015	9792	-224	0.0
US Petroleum	3224	3092	2815	3517	2532	2555	23	0.0
US Other	12221	12109	10196	9288	8202	7860	-342	0.1
US Coal	89841	74017	73355	77392	77955	77805	-150	0.0
US Nuke	77046	73748	73713	75510	84337	88331	3994	-0.7
US Hydro	24699	23105	23540	25530	25395	26225	830	-0.1
US Gas	162707	150057	152802	159071	145190	144663	-527	0.1

See National Wind and Nuclear daily charts

Source: Bloomberg, analytix.ai

Monthly Average Generation Data

Nuclear Generation Monthly Average - GWh (NRC)

	2Yr Ago	LY	MTD						
	Same 30 days	Same 30 days	Aug-21	Sep-21	Oct-21	Nov-21	Last 30 days	MoM (MTD vs LY)	Last 30 days YoY
NRC Nuclear Daily Output	82.4	78.9	91.5	87.2	75.5	80.6	78.1	5.1	-0.7
NRC Nuclear Max Capacity	104.9	104.9	104.9	104.9	104.9	104.9	104.9	0.0	0.0
NRC Nuclear Outage	22.5	26.0	13.4	17.7	29.4	24.3	26.8	-5.1	0.7
NRC % Nuclear Cap Utilization	83.8	80.2	93.0	88.7	76.8	82.0	79.4	5.2	-0.8

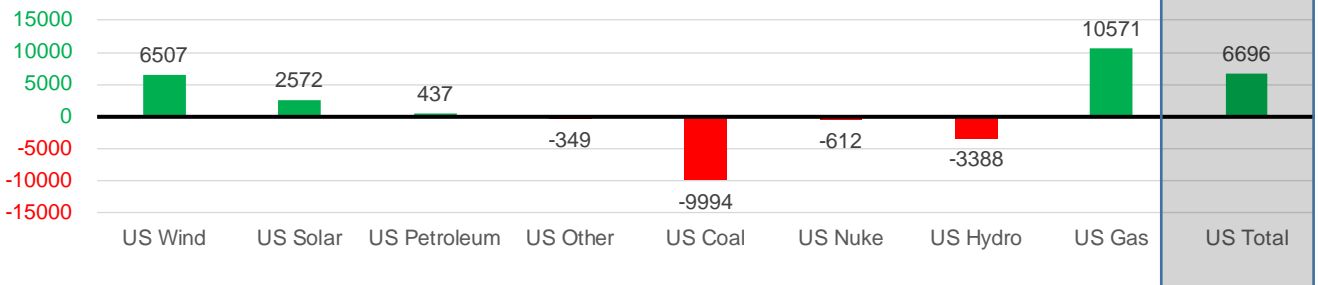
Wind Generation Monthly Average - MWh (EIA)

	2Yr Ago	LY	MTD						
	Same 30 days	Same 30 days	Aug-21	Sep-21	Oct-21	Nov-21	Last 30 days	MoM (MTD vs LY)	Last 30 days YoY
CALI Wind	637	1208	2442	2020	1765	1398	1532	-368	324
TEXAS Wind	8698	9581	9901	9400	11565	12187	12711	621	3130
US Wind	33886	42654	35830	40223	40991	48554	49161	7563	6507

Generation Monthly Average - MWh (EIA)

	2Yr Ago	LY	MTD						
	Same 30 days	Same 30 days	Aug-21	Sep-21	Oct-21	Nov-21	Last 30 days	MoM (MTD vs LY)	Last 30 days YoY
US Wind	33886	42654	35830	40223	40991	48554	49161	▲ 606.7	▲ 6507
US Solar	5886	7213	13787	13382	11044	9622	9785	▲ 163.0	▲ 2572
US Petroleum	2921	2467	4484	2452	3238	2926	2904	▼ -22	▲ 437
US Other	8091	8941	9928	9008	11099	8392	8592	▲ 201	▼ -349
US Coal	101563	87510	137655	110037	82735	80181	77516	▼ -2664	▼ -9994
US Nuke	89408	82707	94062	90146	76700	85083	82095	▼ -2988	▼ -612
US Hydro	26669	28935	28533	25665	23895	26289	25547	▼ -742	▼ -3388
US Gas	150440	139564	210824	173538	158237	151529	150135	▼ -5446	▲ 10571
US Total	419106	400545	534937	464626	410686	413115	407241	▼ -11498	▲ 6696

Last 30 days YoY



See National Wind and Nuclear daily charts

Source: Bloomberg, analytix.ai

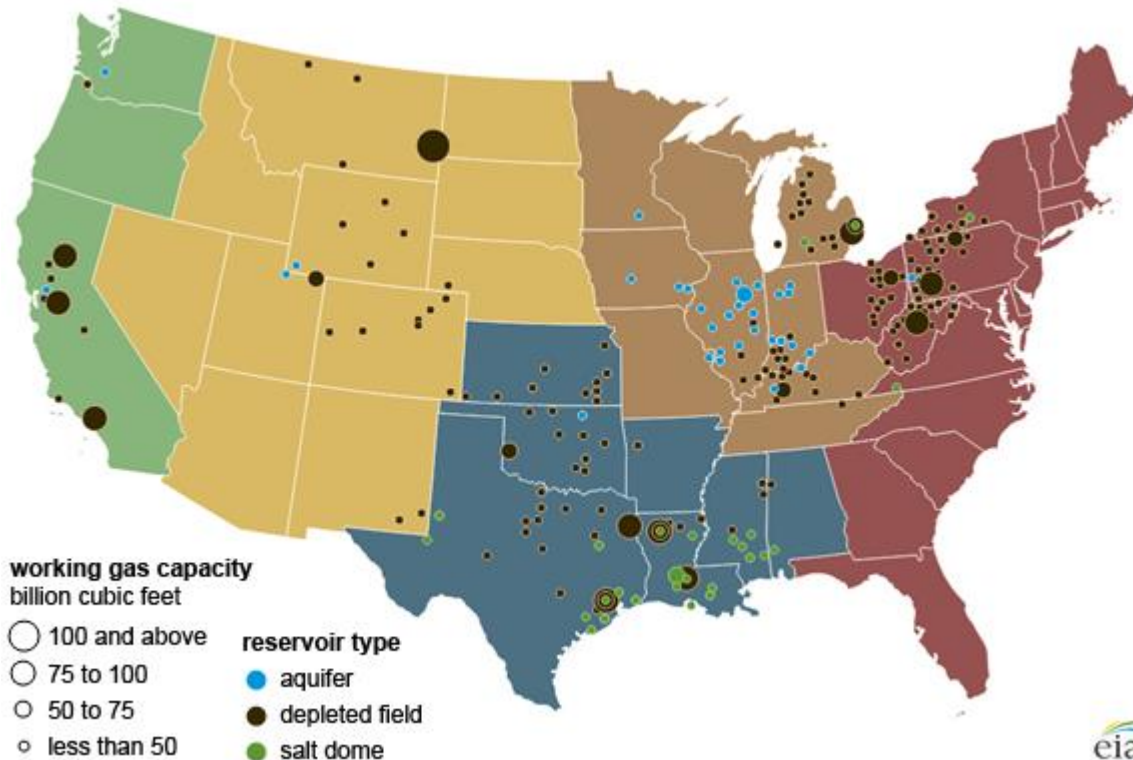
Regional S/D Models Storage Projection

Week Ending 19-Nov

	Daily Raw Storage	Daily Adjustment Factor	Daily Average Storage Activity (Adjusted) *	Weekly Adjusted Storage Activity
L48	-4.6	0.8	-3.8	-27
East	-1.8	0.4	-1.3	-9
Midwest	-2.5	0.9	-1.5	-11
Mountain	2.9	-3.4	-0.5	-3
South Central	-3.5	3.0	-0.5	-3
Pacific	0.2	-0.1	0.0	0

*Adjustment Factor is calculated based on historical regional deltas

U.S. underground natural gas storage facilities by type (July 2015)

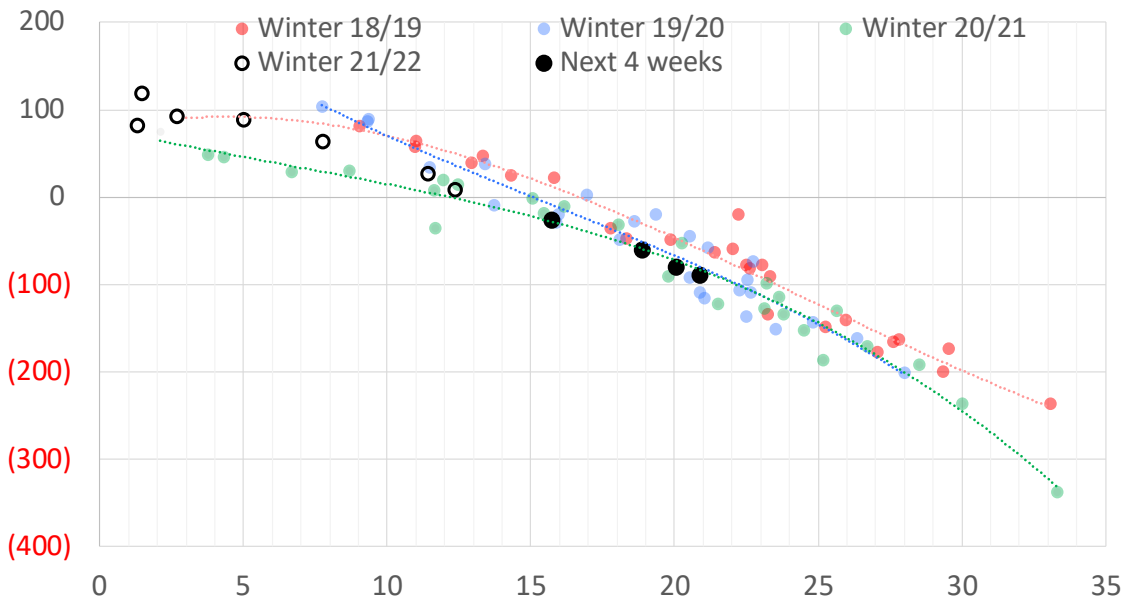


Weather Model Storage Projection

Next report
and beyond

Week Ending	GWDDs	Week Storage Projection
19-Nov	15.7	-27
26-Nov	19	-60
03-Dec	20	-80
10-Dec	21	-89

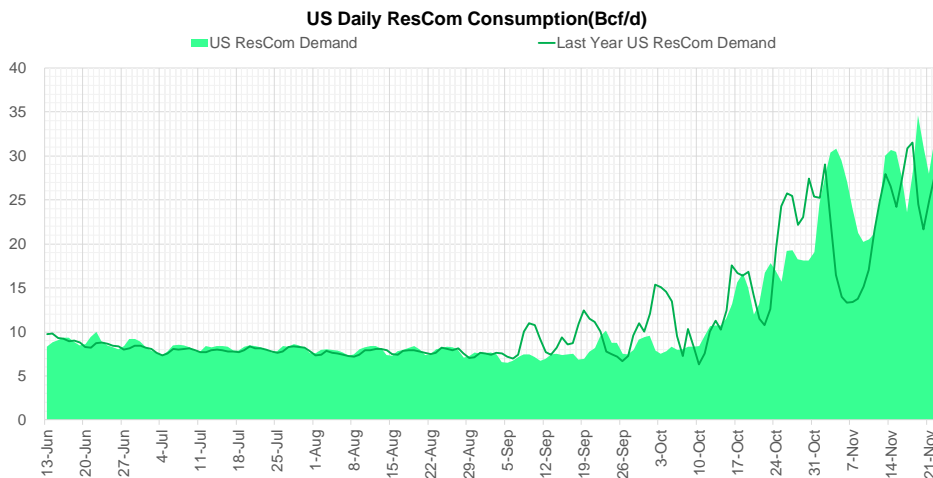
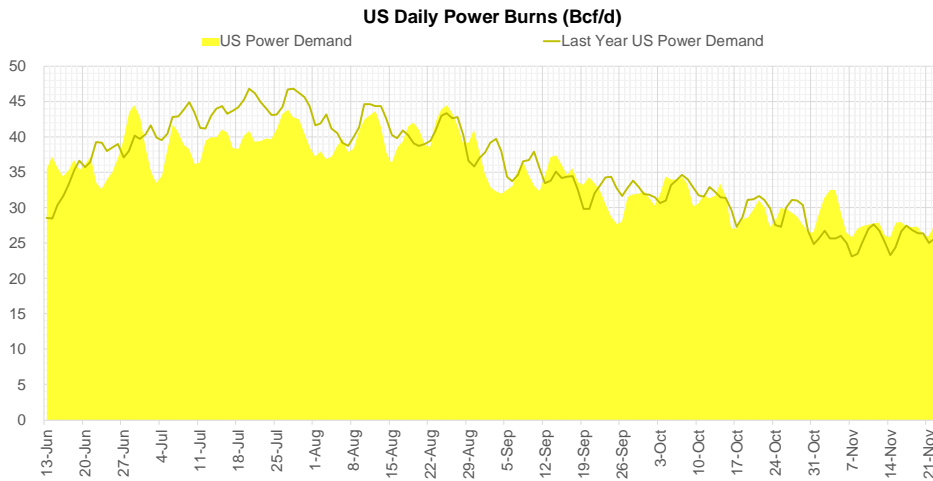
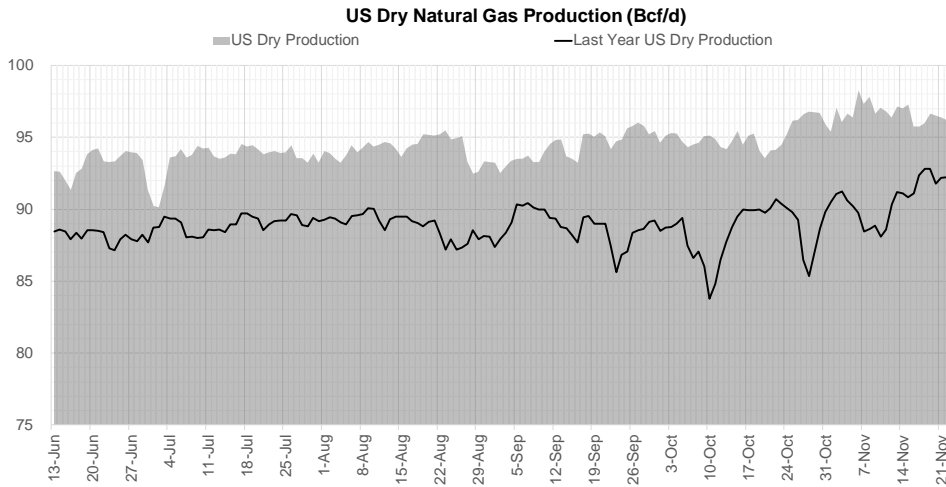
Weather Storage Model - Next 4 Week Forecast



[Go to larger image](#)



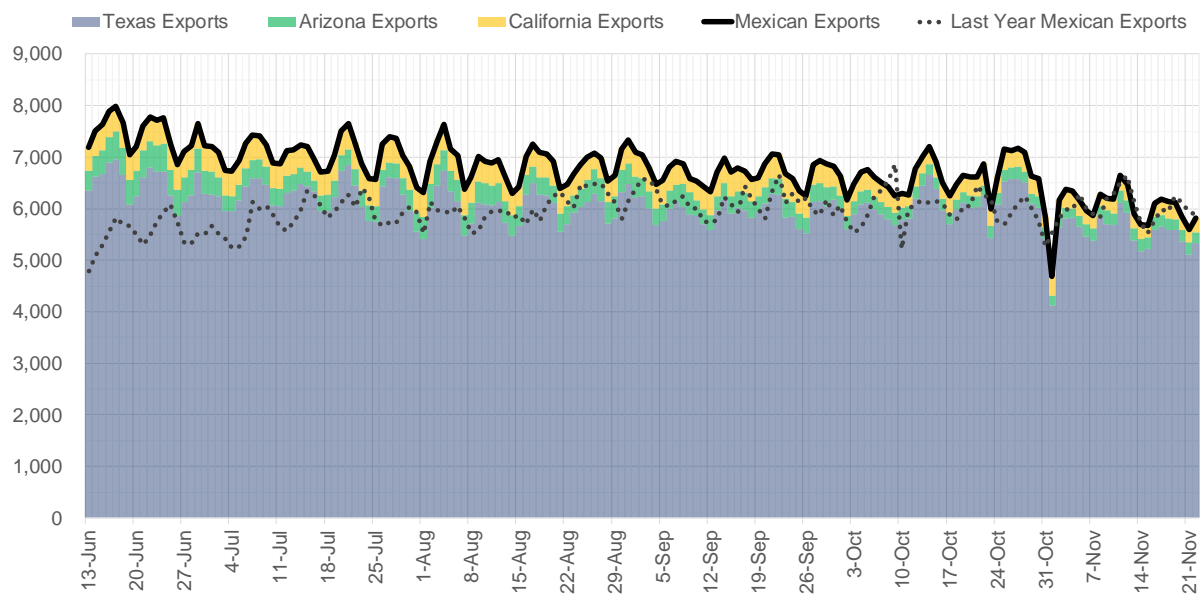
Supply – Demand Trends



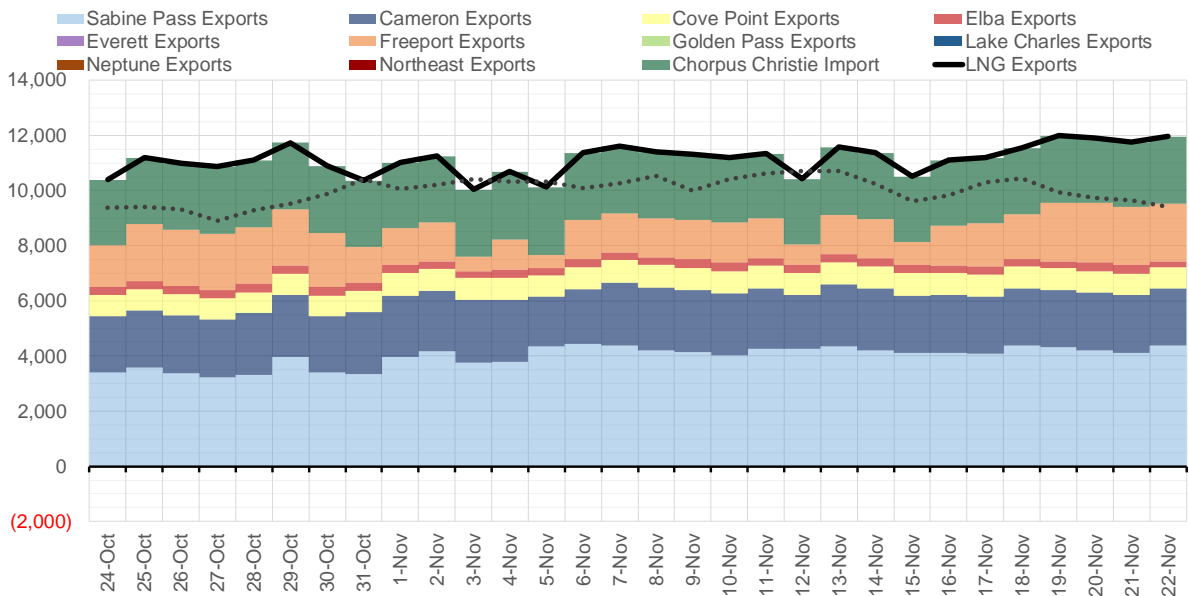
Source: Bloomberg

The risk of trading futures and options and other derivatives involves a substantial risk of loss and is not suitable for all persons. Each person must consider whether a particular trade, combination of trades, or strategy is suitable for that person's financial means and objectives. Past results are not necessarily indicative of future results. This communication may contain links to third party websites which are not under the control of and are not maintained by ION Energy Group, and ION Energy Group is not responsible for their content.

Mexican Exports (MMcf/d)



Net LNG Exports - Last 30 days (MMcf/d)



Source: Bloomberg

The risk of trading futures and options and other derivatives involves a substantial risk of loss and is not suitable for all persons. Each person must consider whether a particular trade, combination of trades, or strategy is suitable for that person's financial means and objectives. Past results are not necessarily indicative of future results. This communication may contain links to third party websites which are not under the control of and are not maintained by ION Energy Group, and ION Energy Group is not responsible for their content.

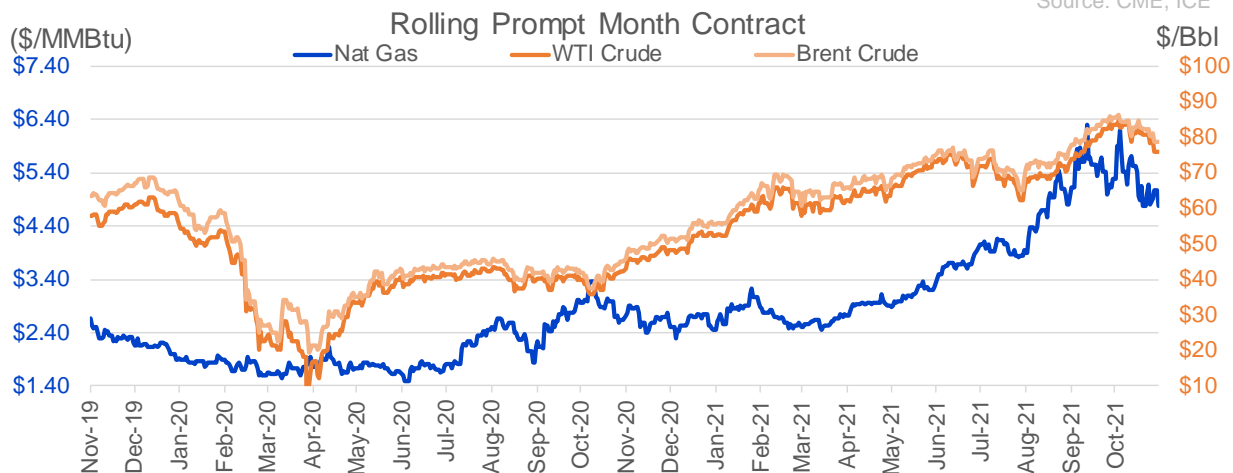
Nat Gas Options Volume and Open Interest CME, ICE and Nasdaq Combined

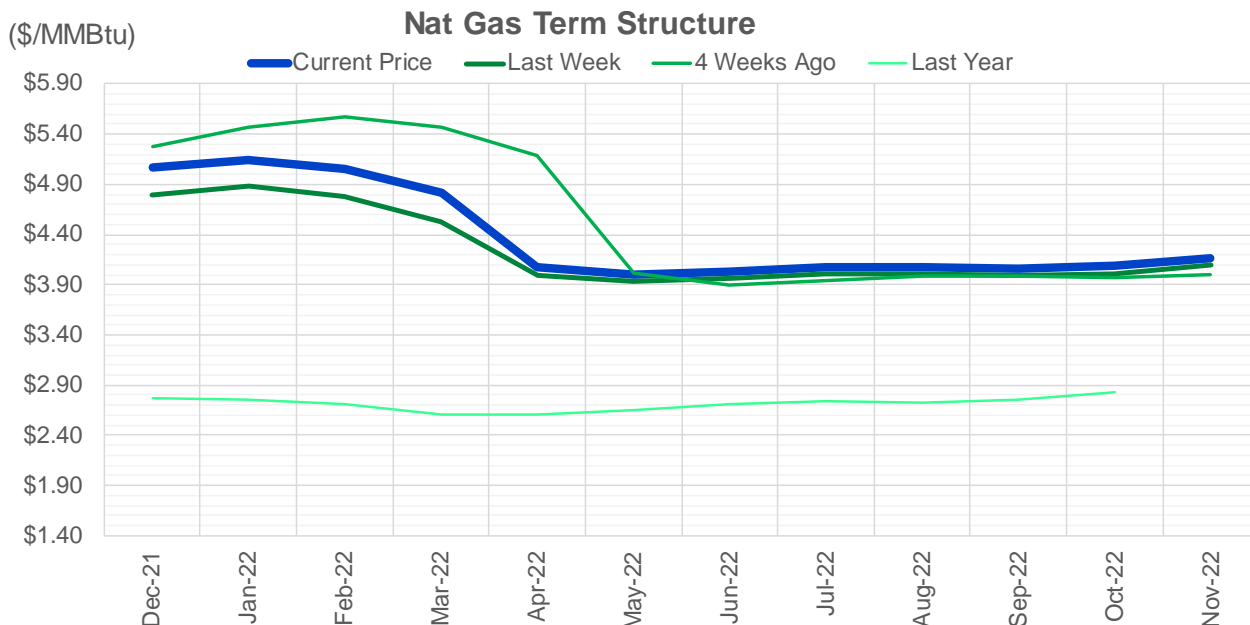
CONTRACT MONTH	CONTRACT YEAR	PUT/CALL	STRIKE	CUMULATIVE VOL	CONTRACT MONTH	CONTRACT YEAR	PUT/CALL	STRIKE	CUMULATIVE OI
3	2022	P	3.00	6100	12	2021	P	2.75	54612
12	2021	C	6.00	3907	12	2021	P	4.00	43439
12	2021	P	4.50	3710	12	2021	P	3.00	40234
12	2021	P	4.25	3359	12	2021	P	2.50	39420
12	2021	C	5.50	3310	3	2022	C	10.00	34396
12	2021	P	4.00	2202	12	2021	P	3.50	33464
12	2021	C	5.75	2183	12	2021	P	4.25	26257
1	2022	C	7.00	1655	12	2021	C	6.00	25855
3	2022	C	5.25	1579	3	2022	C	8.00	25818
3	2022	C	9.00	1493	12	2021	P	5.00	25048
1	2022	C	6.00	1469	1	2022	C	6.00	23673
3	2022	C	7.00	1454	12	2021	C	7.00	23465
1	2022	P	3.00	1378	1	2022	P	2.75	23233
12	2021	P	5.00	1368	3	2022	C	5.00	22601
12	2021	C	5.25	1349	1	2022	P	3.00	22597
12	2021	P	4.40	1242	12	2021	C	4.00	22526
12	2021	C	5.00	1070	12	2021	C	8.00	20740
10	2022	C	7.00	1000	3	2022	P	3.00	20644
3	2022	P	4.00	968	4	2022	C	3.00	19710
1	2022	C	6.25	921	3	2022	P	2.50	18839
12	2021	C	11.30	901	3	2022	P	3.50	18730
1	2022	P	4.50	853	1	2022	C	5.00	18533
11	2023	P	3.00	800	12	2021	P	4.50	17843
12	2023	P	3.00	800	3	2022	P	4.00	17811
12	2021	C	5.70	770	2	2022	C	5.00	17645
1	2022	C	5.90	737	1	2022	C	7.00	17599
1	2022	C	5.00	699	1	2022	P	3.50	17589
1	2022	P	4.25	679	3	2022	C	6.00	17410
12	2021	P	4.90	658	4	2022	C	5.00	16923
1	2022	P	4.75	653	12	2021	P	2.00	16834
1	2022	C	5.10	646	12	2021	C	5.00	16082
3	2022	P	3.50	621	12	2022	C	5.00	16047
12	2021	P	4.75	612	3	2022	C	4.00	15506
12	2021	C	9.00	603	4	2022	P	2.50	15264
12	2021	P	4.60	602	2	2022	P	3.50	15228
12	2021	P	4.70	526	12	2021	C	5.50	15215
1	2023	C	5.00	500	1	2022	P	4.00	15066
2	2023	C	5.00	500	1	2022	C	4.00	14369
1	2022	P	3.75	498	1	2022	C	10.00	14064
1	2022	P	5.00	486	1	2022	C	8.00	14042
2	2022	C	6.00	466	3	2022	P	5.00	13932
1	2022	P	4.00	458	2	2022	C	6.00	13891
5	2022	C	5.00	427	5	2022	C	3.00	13733
5	2022	P	3.50	425	3	2022	C	7.00	13562
12	2021	P	5.25	418	12	2021	C	15.00	13491
12	2021	C	6.25	400	6	2022	C	3.00	13438
5	2022	P	3.00	400	6	2022	C	5.00	13332
7	2022	P	3.05	400	12	2022	C	4.50	13267
12	2021	C	7.00	390	12	2022	C	5.25	13263
					7	2022	C	3	13230

Source: CME, ICE

Nat Gas Futures Open Interest CME, and ICE Combined

CME Henry Hub Futures (10,000 MMBtu)				ICE Henry Hub Futures Contract Equivalent (10,000 MM			
	Current	Prior	Daily Change		Current	Prior	Daily Change
DEC 21	40133	54566	-14433	DEC 21	83865	88313	-4448
JAN 22	263059	263075	-16	JAN 22	92246	89939	2308
FEB 22	79326	79298	28	FEB 22	69520	69230	291
MAR 22	166396	162129	4267	MAR 22	78373	80169	-1796
APR 22	116582	115688	894	APR 22	75443	75291	153
MAY 22	138743	139433	-690	MAY 22	72861	72799	62
JUN 22	44894	45013	-119	JUN 22	54946	54944	2
JUL 22	42629	43171	-542	JUL 22	56661	56923	-262
AUG 22	31920	31856	64	AUG 22	54948	55194	-246
SEP 22	37710	37257	453	SEP 22	55894	56087	-193
OCT 22	89396	88731	665	OCT 22	62199	62442	-243
NOV 22	35575	35537	38	NOV 22	47459	47720	-262
DEC 22	27242	27311	-69	DEC 22	50345	50466	-121
JAN 23	32658	32312	346	JAN 23	40671	40542	128
FEB 23	11659	11241	418	FEB 23	33353	33444	-91
MAR 23	25948	24565	1383	MAR 23	37353	37176	178
APR 23	18266	16948	1318	APR 23	39330	38157	1173
MAY 23	10369	10047	322	MAY 23	35232	35317	-85
JUN 23	9164	9055	109	JUN 23	31527	31602	-75
JUL 23	6288	6198	90	JUL 23	31414	31468	-54
AUG 23	4971	5118	-147	AUG 23	32461	32499	-39
SEP 23	6591	6402	189	SEP 23	30663	30715	-52
OCT 23	10575	10625	-50	OCT 23	34274	34780	-506
NOV 23	5487	5287	200	NOV 23	33643	33760	-117
DEC 23	8472	8339	133	DEC 23	31155	31276	-121
JAN 24	5076	4900	176	JAN 24	20434	20389	45
FEB 24	1450	1449	1	FEB 24	15345	15303	42
MAR 24	8694	8641	53	MAR 24	20483	20398	85
APR 24	4868	4868	0	APR 24	14483	14475	8
MAY 24	1996	1981	15	MAY 24	15055	15120	-66





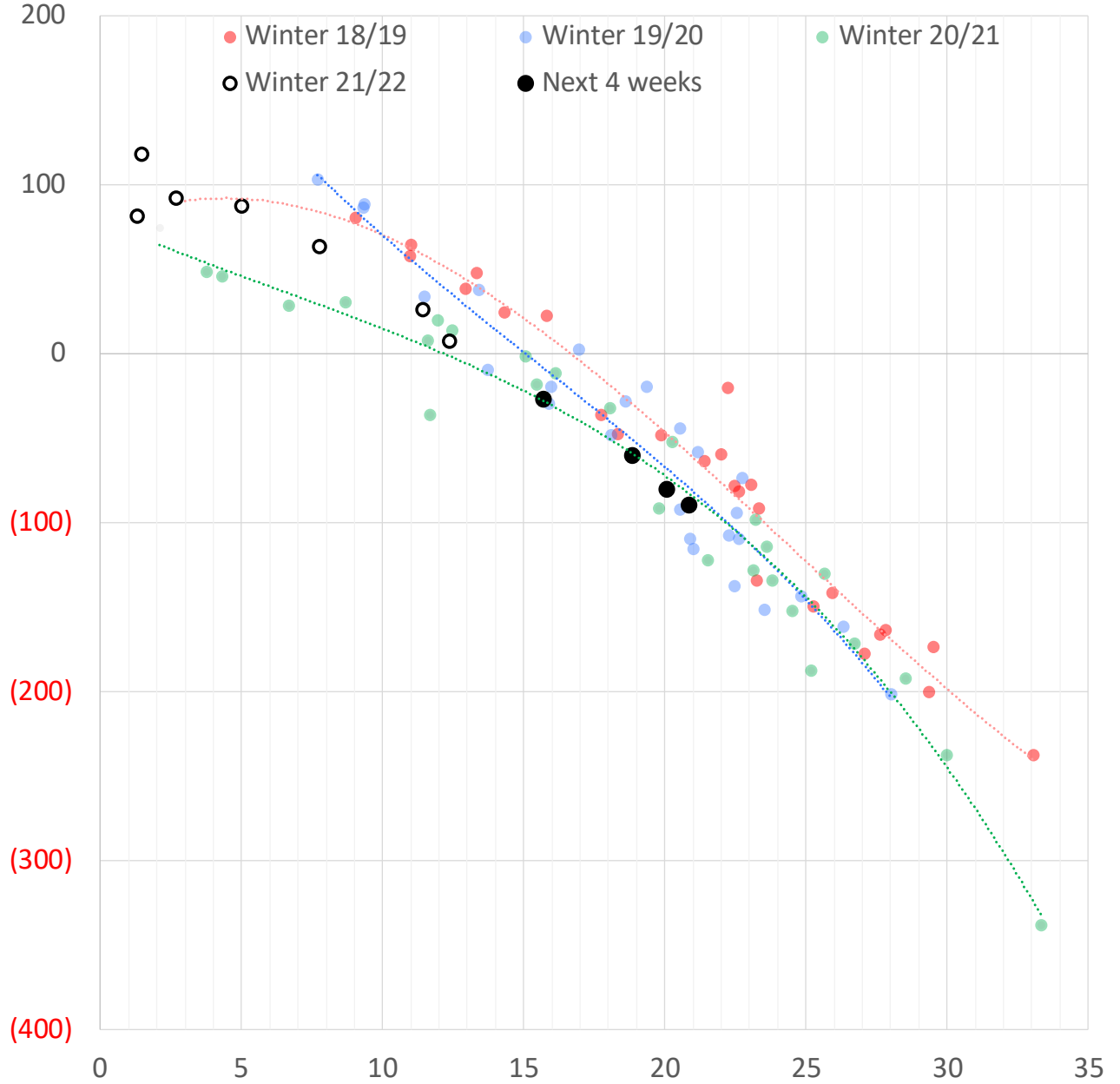
	Dec-21	Jan-22	Feb-22	Mar-22	Apr-22	May-22	Jun-22	Jul-22	Aug-22	Sep-22	Oct-22	Nov-22
Current Price	\$5.065	\$5.145	\$5.052	\$4.818	\$4.078	\$4.004	\$4.031	\$4.071	\$4.076	\$4.056	\$4.084	\$4.164
Last Week	\$4.791	\$4.880	\$4.775	\$4.529	\$3.986	\$3.929	\$3.960	\$4.005	\$4.009	\$3.987	\$4.014	\$4.092
vs. Last Week	\$0.274	\$0.265	\$0.277	\$0.289	\$0.092	\$0.075	\$0.071	\$0.066	\$0.067	\$0.069	\$0.070	\$0.072
4 Weeks Ago	\$5.280	\$5.461	\$5.565	\$5.473	\$5.187	\$4.012	\$3.904	\$3.940	\$3.980	\$3.984	\$3.965	\$3.996
vs. 4 Weeks Ago	-\$0.215	-\$0.316	-\$0.513	-\$0.655	-\$1.109	-\$0.008	\$0.127	\$0.131	\$0.096	\$0.072	\$0.119	\$0.168
Last Year	\$2.650	\$2.770	\$2.755	\$2.709	\$2.608	\$2.608	\$2.652	\$2.710	\$2.734	\$2.732	\$2.762	\$2.836
vs. Last Year	\$2.415	\$2.375	\$2.297	\$2.109	\$1.470	\$1.396	\$1.379	\$1.361	\$1.342	\$1.324	\$1.322	\$1.328

	Units	Cash Settled	Prompt Settle	Cash to Prompt
AGT Citygate	\$/MMBtu	5.01	11.34	6.33
TETCO M3	\$/MMBtu	4.68	5.95	1.27
FGT Zone 3	\$/MMBtu	4.80	4.89	0.09
Zone 6 NY	\$/MMBtu	4.80	6.52	1.72
Chicago Citygate	\$/MMBtu	4.78	5.01	0.23
Michcon	\$/MMBtu	4.76	4.54	-0.22
Columbia TCO Pool	\$/MMBtu	4.55	4.26	-0.29
Ventura	\$/MMBtu	4.79	5.36	0.57
Rockies/Opal	\$/MMBtu	5.15	4.84	-0.31
El Paso Permian Basin	\$/MMBtu	4.62	4.77	0.15
Socal Citygate	\$/MMBtu	6.62	5.80	-0.82
Malin	\$/MMBtu	5.90	5.37	-0.53
Houston Ship Channel	\$/MMBtu	4.83	4.93	0.10
Henry Hub Cash	\$/MMBtu	4.90	4.64	-0.27
AECO Cash	C\$/GJ	3.24	3.93	0.69
Station2 Cash	C\$/GJ	3.17	5.68	2.51
Dawn Cash	C\$/GJ	4.76	4.65	-0.11

Source: CME, Bloomberg

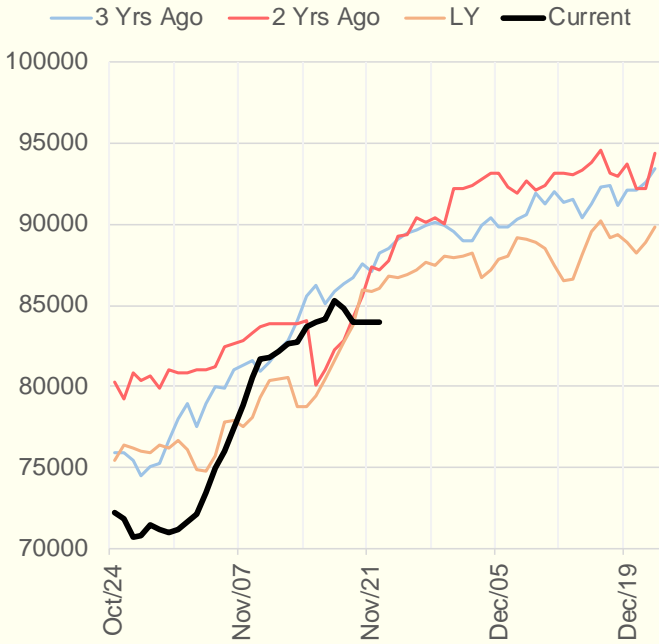
	Units	Current Price	vs. Last Week	vs. 4 Weeks Ago	vs. Last Year
NatGas Jul21/Oct21	\$/MMBtu	2.224	▲ 0.000	▲ 0.000	▲ 2.172
NatGas Oct21/Nov21	\$/MMBtu	0.361	▲ 0.000	▲ 0.922	▲ 0.287
NatGas Oct21/Jan22	\$/MMBtu	-0.696	▲ 0.265	▼ -0.420	▼ -1.006
NatGas Apr22/Oct22	\$/MMBtu	0.006	▼ -0.022	▲ 0.022	▼ -0.059
WTI Crude	\$/Bbl	76.10	▼ -4.690	▼ -7.660	▲ 33.950
Brent Crude	\$/Bbl	78.89	▼ -3.280	▼ -6.640	▲ 33.930
Fuel Oil, NY Harbour 1%	\$/Bbl	97.18	▲ 0.000	▲ 0.000	▲ 0.000
Heating Oil	cents/Gallon	229.34	▼ -11.030	▼ -24.550	▲ 100.710
Propane, Mt. Bel	cents/Gallon	1.25	▼ -0.073	▼ -0.201	▲ 0.711
Ethane, Mt. Bel	cents/Gallon	0.40	▼ -0.003	▼ -0.028	▲ 0.187
Coal, PRB	\$/MTon	12.30	▲ 0.000	▲ 0.000	▲ 0.000
Coal, PRB	\$/MMBtu	0.70			
Coal, ILB	\$/MTon	31.05	▲ 0.000	▲ 0.000	▲ 0.000
Coal, ILB	\$/MMBtu	1.32			

Weather Storage Model - Next 4 Week Forecast

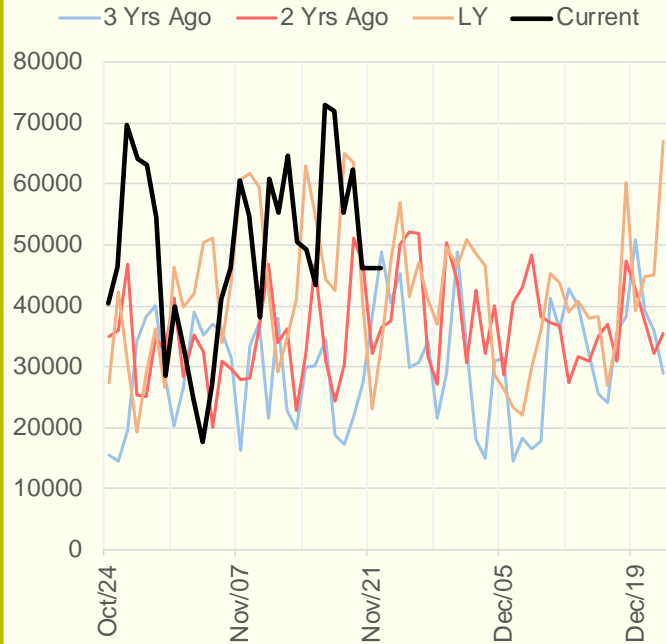


The risk of trading futures and options and other derivatives involves a substantial risk of loss and is not suitable for all persons. Each person must consider whether a particular trade, combination of trades, or strategy is suitable for that person's financial means and objectives. Past results are not necessarily indicative of future results. This communication may contain links to third party websites which are not under the control of and are not maintained by ION Energy Group, and ION Energy Group is not responsible for their content.

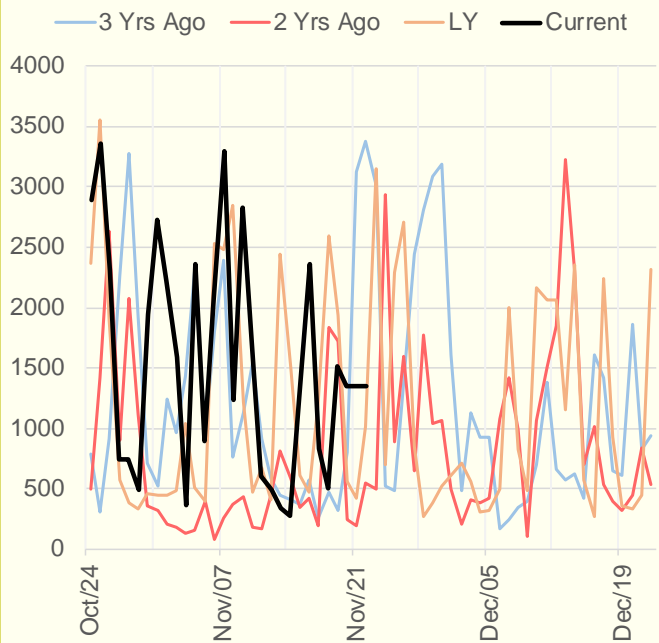
NRC Nuclear Daily Output



US Wind



CALI Wind



TEXAS Wind

