

CFTC COMMITMENT OF TRADERS REPORT

As of 11/30/2021

TRADITIONAL FUNDS net position changes

Wed to Tue, in 000 contracts

	Corn	Bean	Meal	Oil	Chi. Wheat	KC Wheat	Min Wheat
Futures Only	(22.2)	(10.9)	(21.2)	(20.1)	(23.2)	(0.3)	(2.3)
Futures & Options Combined	(47.8)	(15.8)	(17.5)	(18.1)	(16.1)	(1.9)	(1.9)

TRADITIONAL COMMERCIAL net position changes

	Corn	Bean	Meal	Oil	Chi. Wheat	KC Wheat	Min Wheat
Futures Only	22.6	12.2	24.5	27.0	22.5	0.8	3.1
Futures & Options Combined	47.0	18.5	20.5	25.5	14.9	2.2	2.7

MANAGED MONEY net position changes

	Corn	Bean	Meal	Oil	Chi. Wheat	KC Wheat	Min Wheat
Futures Only	(58.5)	(19.2)	(16.4)	(17.4)	(15.2)	(3.4)	(0.9)
Futures & Options Combined	(51.4)	(15.9)	(15.9)	(18.0)	(11.8)	(3.2)	(0.9)

SWAP DEALERS net position changes

	Corn	Bean	Meal	Oil	Chi. Wheat	KC Wheat	Min Wheat
Futures Only	20.1	1.8	5.6	(0.6)	8.7	0.7	0.1
Futures & Options Combined	38.2	6.0	4.8	(1.0)	(0.8)	0.4	(0.2)

PRODUCERS/END USERS net position changes

	Corn	Bean	Meal	Oil	Chi. Wheat	KC Wheat	Min Wheat
Futures Only	2.4	10.4	18.9	27.6	13.8	0.1	3.0
Futures & Options Combined	8.8	12.5	15.7	26.5	15.7	1.8	2.9

INDEX net position changes

	Corn	Bean	Meal	Oil	Chi. Wheat	KC Wheat	Min Wheat
Futures & Options Combined	13.3	(4.7)	2.1	1.3	(3.5)	(1.7)	NA

SUPPLEMENTAL NON-COMMERCIAL net position changes

	Corn	Bean	Meal	Oil	Chi. Wheat	KC Wheat	Min Wheat
Futures & Options Combined	(41.8)	(11.3)	(16.1)	(19.0)	(16.1)	(0.4)	NA

OPEN INTEREST net position changes

Wed to Tue, in 000 contracts

	Corn	Bean	Meal	Oil	Chi. Wheat	KC Wheat	Min Wheat
Futures Only	(206.8)	(19.9)	(43.9)	(31.7)	(53.7)	(11.7)	(0.4)
Futures & Options Combined	(418.2)	(32.5)	(67.5)	(61.8)	(136.5)	(33.6)	(4.0)

Source: CFTC and FI

Wed to Tue, in 000 contracts

**COMMITMENT OF TRADERS
FUTURES ONLY NET POSITIONS
AS OF 11/30/2021
(IN THOUSAND CONTRACTS)**

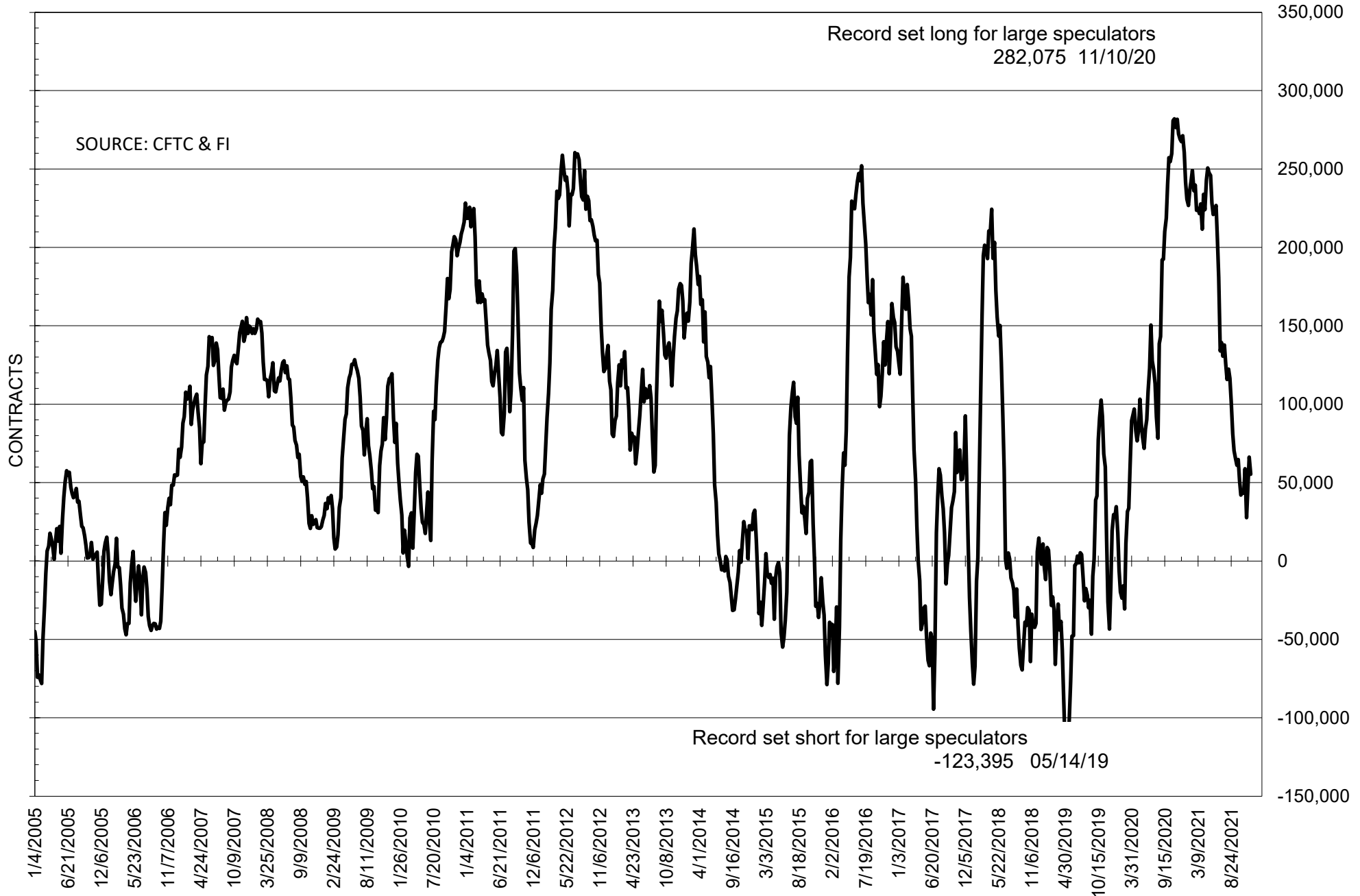
	COMMERCIAL				(FUND) NON COMMERCIAL				(SPEC) NON-REPORTABLE			
	30-Nov	23-Nov	16-Nov	9-Nov	30-Nov	23-Nov	16-Nov	9-Nov	30-Nov	23-Nov	16-Nov	9-Nov
	WHEAT											
Chicago	-10.4	-32.9	-28.0	-13.4	18.3	41.5	36.8	19.2	-7.9	-8.6	-8.8	-5.8
Kansas City	-53.9	-54.7	-54.4	-50.2	52.6	52.9	50.5	49.3	1.3	1.8	3.9	0.9
Minneapolis	-28.5	-31.6	-33.1	-34.2	24.5	26.8	26.4	27.9	4.0	4.8	6.7	6.3
All Wheat	-92.8	-119.2	-115.4	-97.8	95.4	121.2	113.7	96.4	-2.6	-2.0	1.8	1.4
CORN	-341.1	-363.7	-340.7	-320.9	394.9	417.1	399.2	375.3	-53.8	-53.4	-58.5	-54.4
OATS	-0.7	-0.5	-0.7	-0.7	0.7	0.7	0.7	0.6	0.0	-0.2	0.0	0.1
SOYBEANS	-17.0	-29.2	-4.9	9.1	55.3	66.2	46.9	27.6	-38.3	-37.0	-42.0	-36.7
SOY OIL	-67.7	-94.6	-87.2	-84.3	65.0	85.1	78.6	78.7	2.6	9.5	8.6	5.6
SOY MEAL	-84.4	-108.9	-99.9	-70.6	61.1	82.3	74.0	45.6	23.3	26.7	25.9	25.0

Oats positions thin to be reported

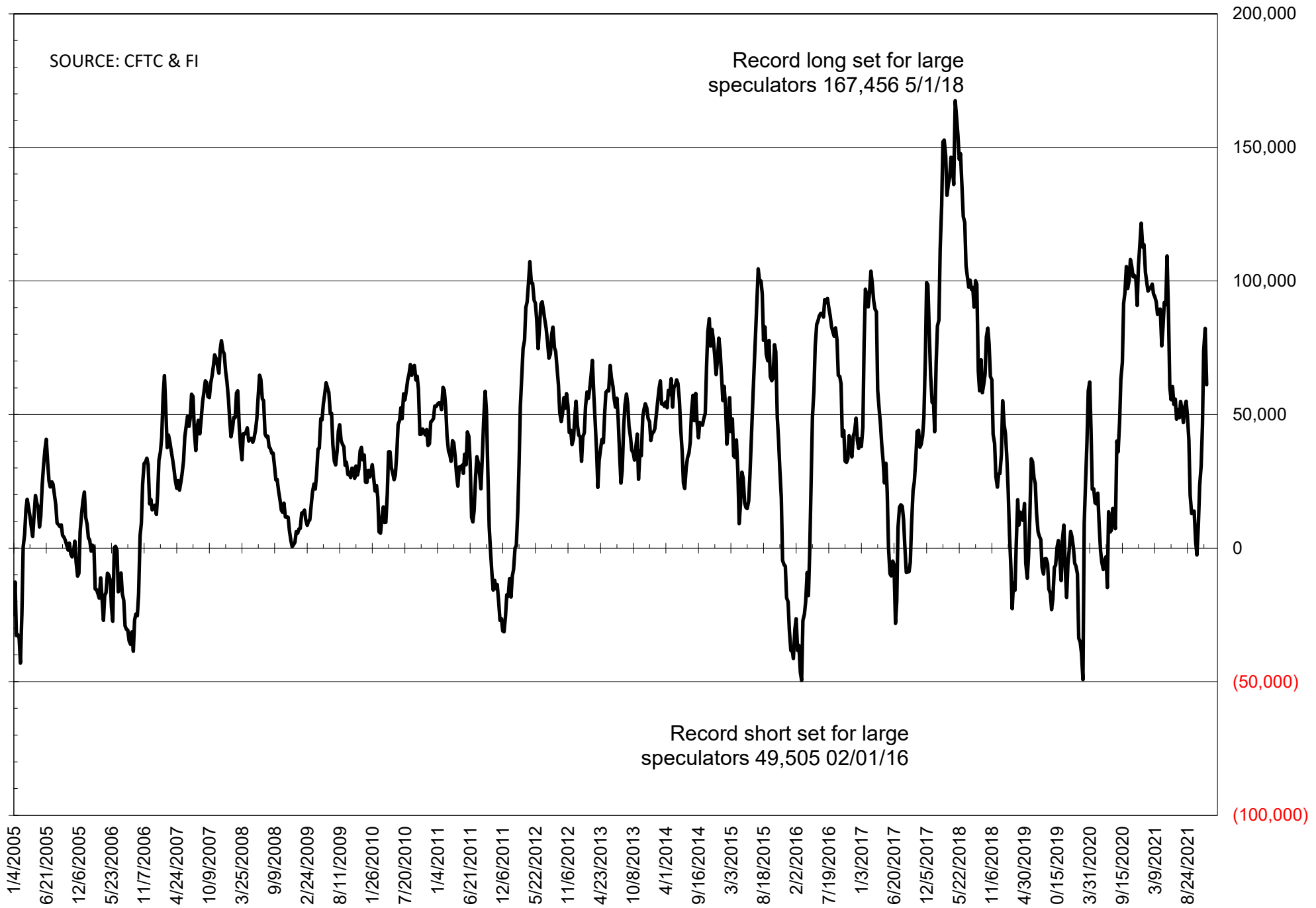
	TOTAL OPEN INTEREST				NEARBY FUTURES PRICE					30-Nov-21 LAST REPORTED % HELD BY TRADERS			
	30-Nov	23-Nov	16-Nov	9-Nov	F/H Latest	F/H 30-Nov	Z/F 23-Nov	Z/F 16-Nov	Z/F 9-Nov	LARGE FUND		SMALL	
										LONG	SHORT	LONG	SHORT
WHEAT													
Chicago	371575	425301	427786	405438	803.75	787.25	856.00	810.25	778.50	0%	26%	0%	11%
Kansas City	227423	239102	237136	233489	824.25	822.25	878.75	820.75	793.50	0%	17%	0%	9%
Minneapolis	75577	75958	75836	77422	1020.75	1010.00	1038.50	1015.00	1023.75	0%	4%	0%	14%
CORN	1405105	1611856	1598926	1540731	584.00	567.50	580.50	571.00	554.75	0%	6%	0%	13%
OATS	4853	5625	5612	5549	716.50	714.00	747.25	730.50	716.25	0%	2%	0%	51%
SOYBEANS	671433	691303	662972	644317	1267.25	1217.25	1273.00	1251.25	1212.00	19%	11%	7%	13%
SOY OIL	399439	431185	429487	423882	57.22	55.21	60.14	59.17	58.47	0%	11%	0%	7%
SOY MEAL	395673	439569	459356	451149	358.60	341.80	362.20	367.50	342.50	0%	7%	0%	6%

SOURCE: CFTC & FI

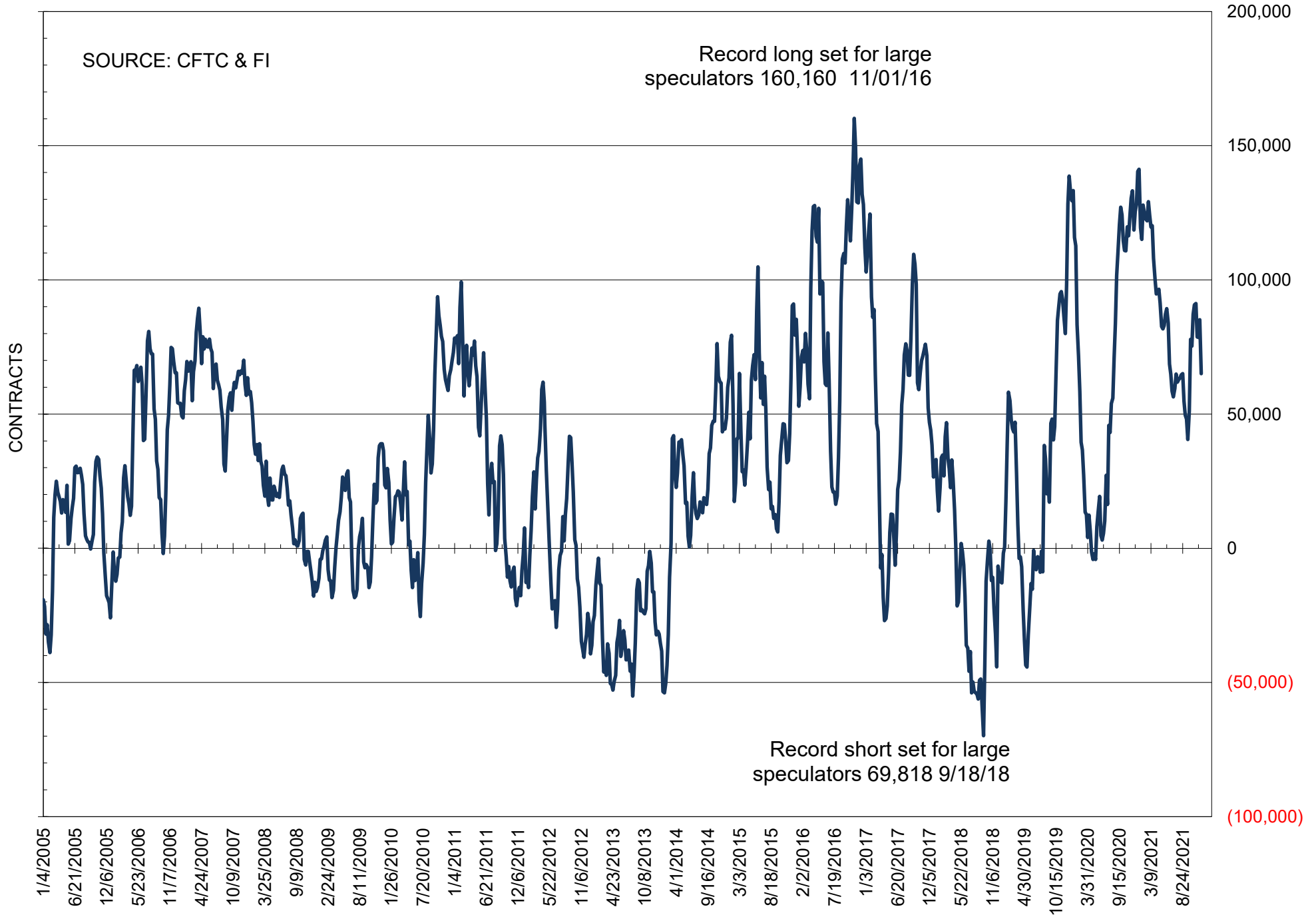
NET POSITION OF FUTURES ONLY LARGE SPECS IN SOYBEANS



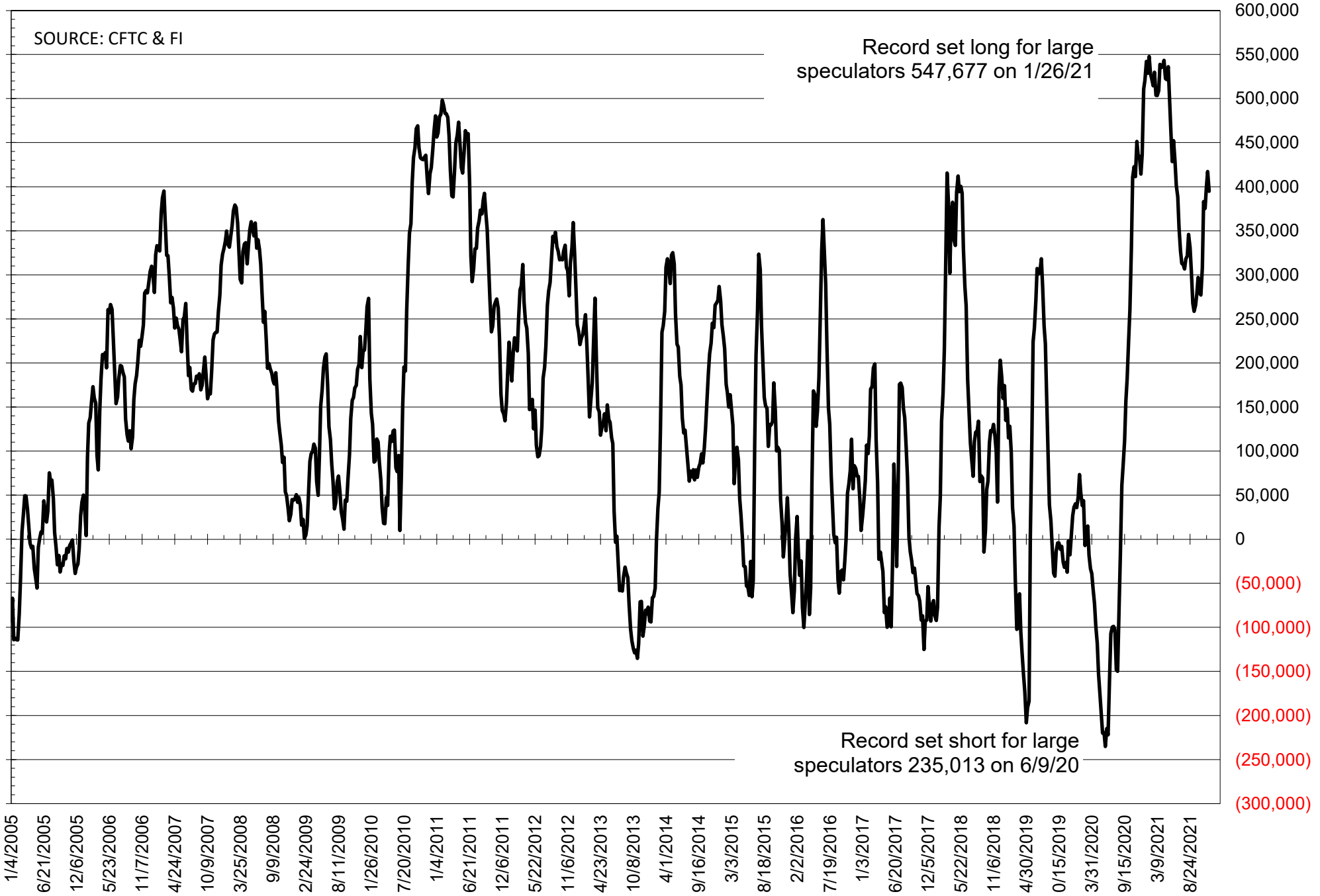
NET POSITION OF FUTURES ONLY LARGE SPECS IN SOYMEAL



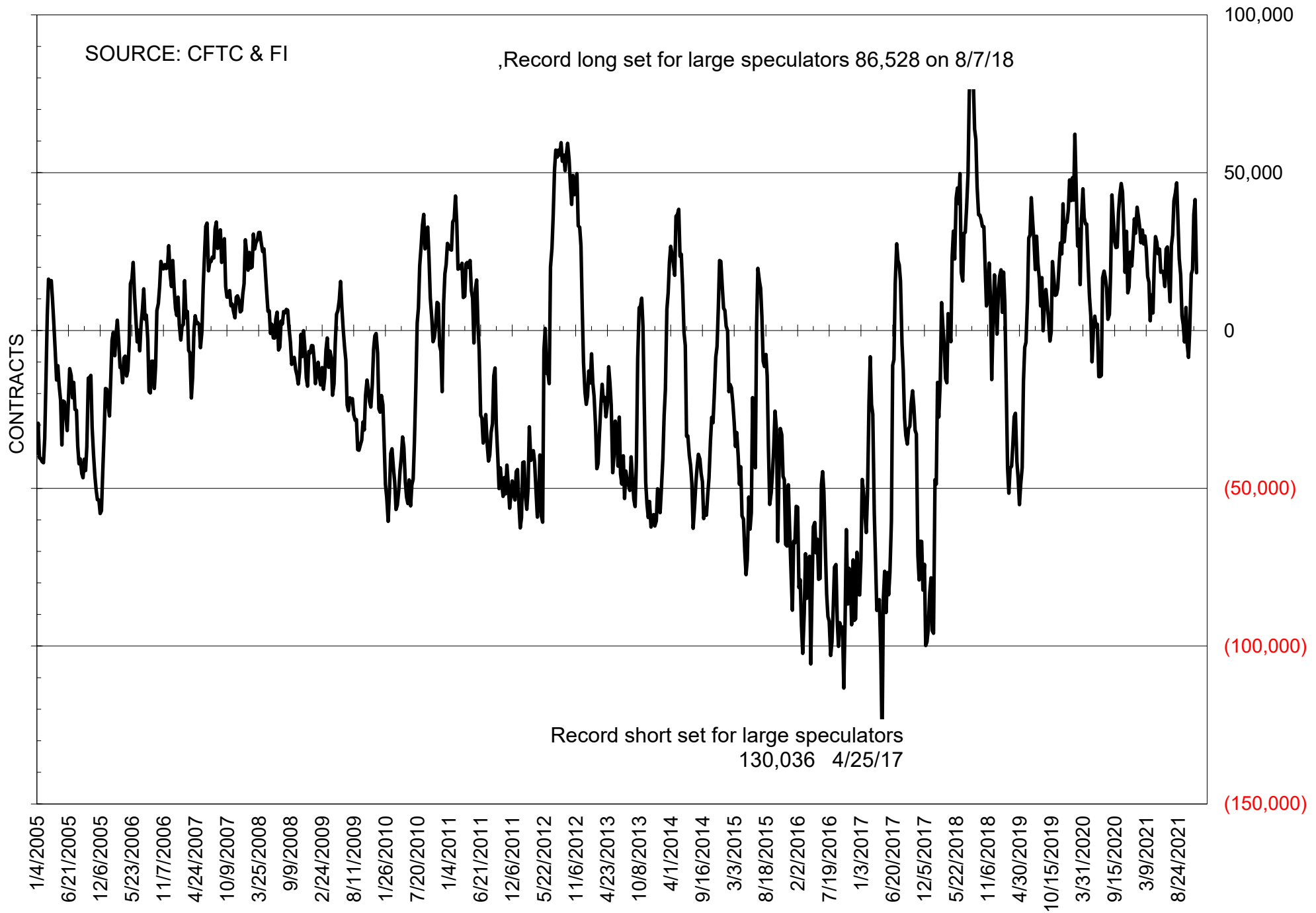
NET POSITION OF FUTURES ONLY LARGE SPECS IN SOYOIL



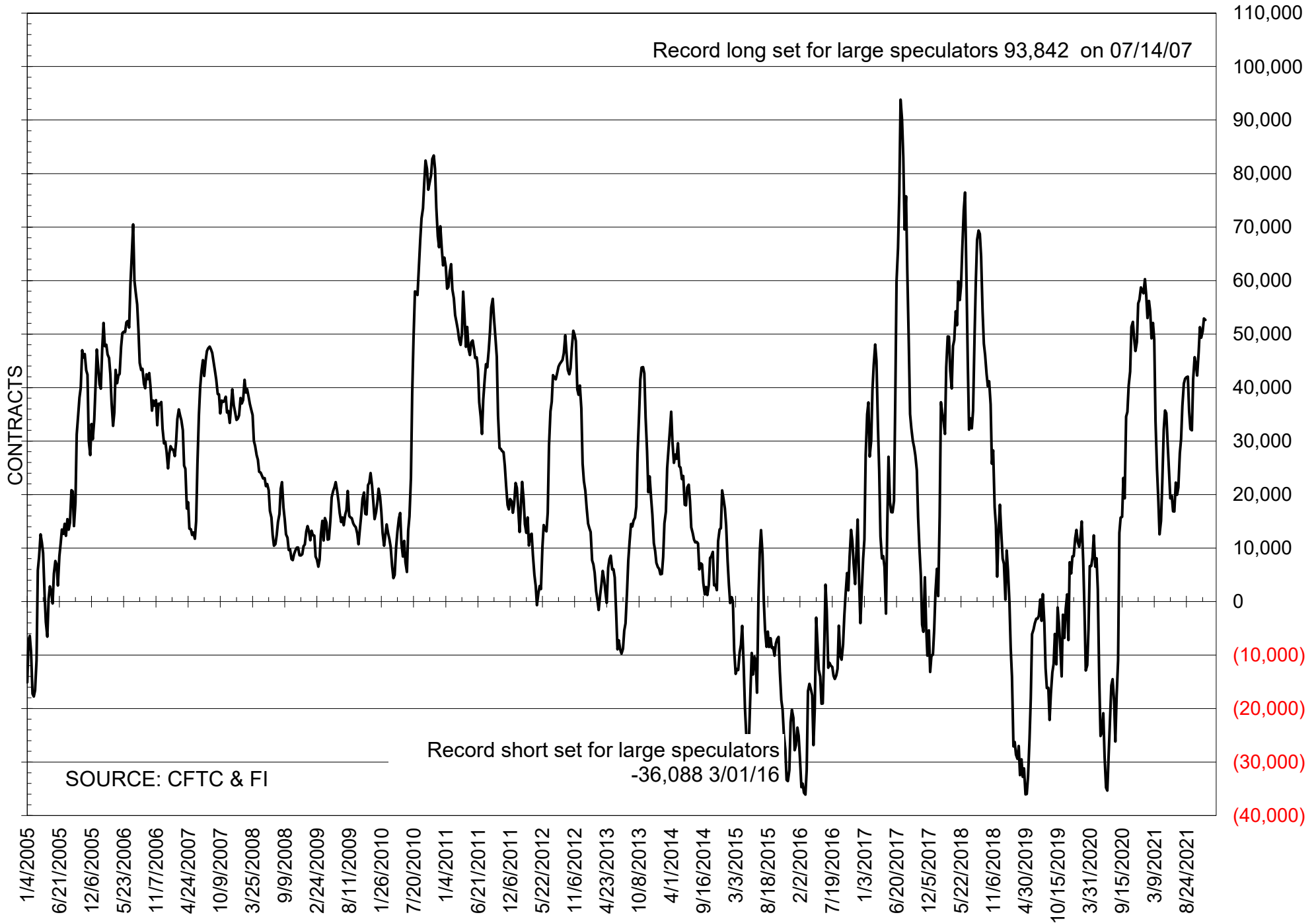
NET POSITION OF LARGE SPECULATORS IN CORN



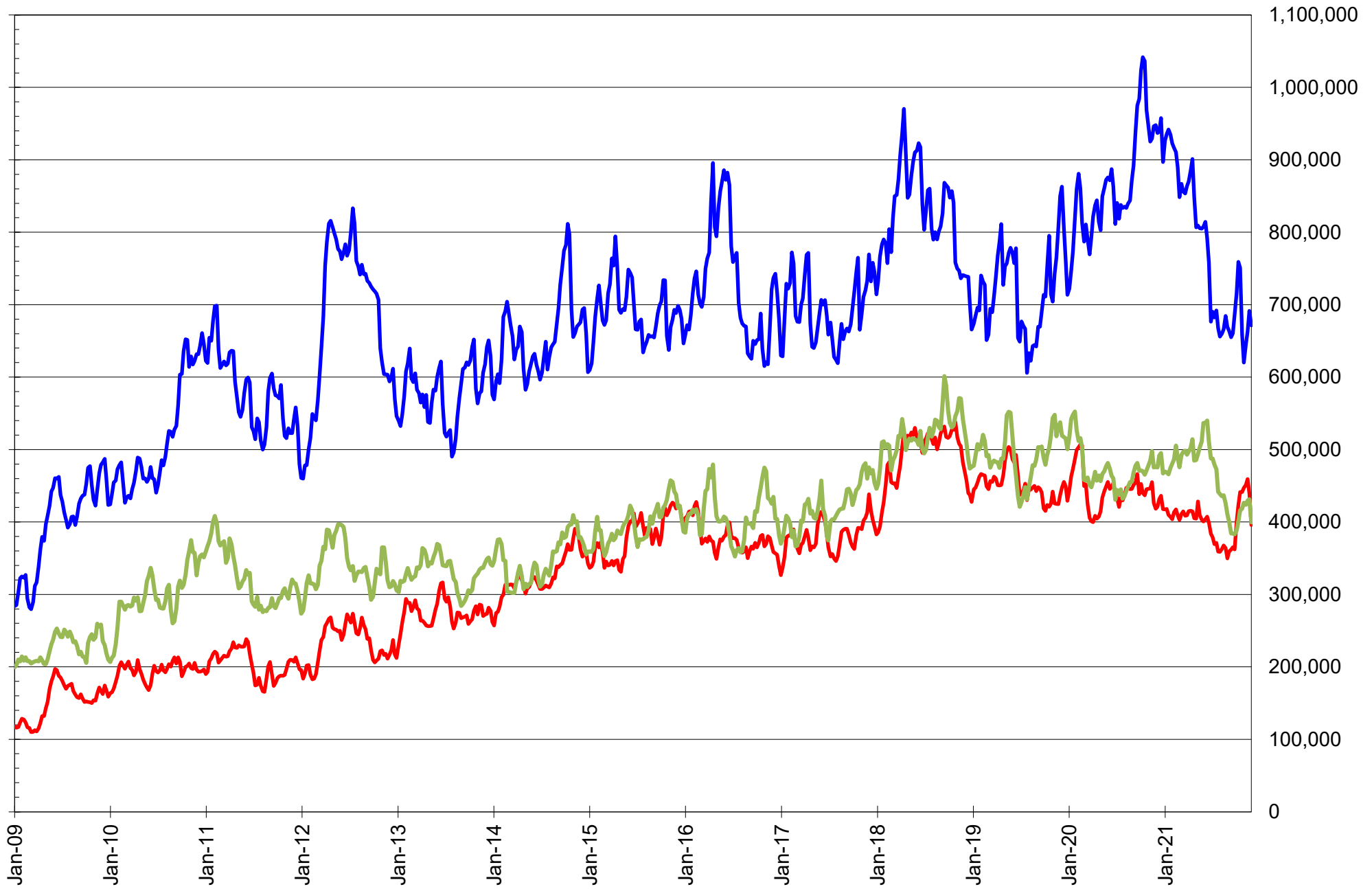
NET POSITION OF FUTURES ONLY LARGE SPECS IN CHICAGO WHEAT



NET POSITION OF LARGE SPECULATORS IN KANSAS CITY WHEAT



TOTAL OPEN INTEREST IN SOYBEANS, MEAL AND OIL, FUTURES ONLY



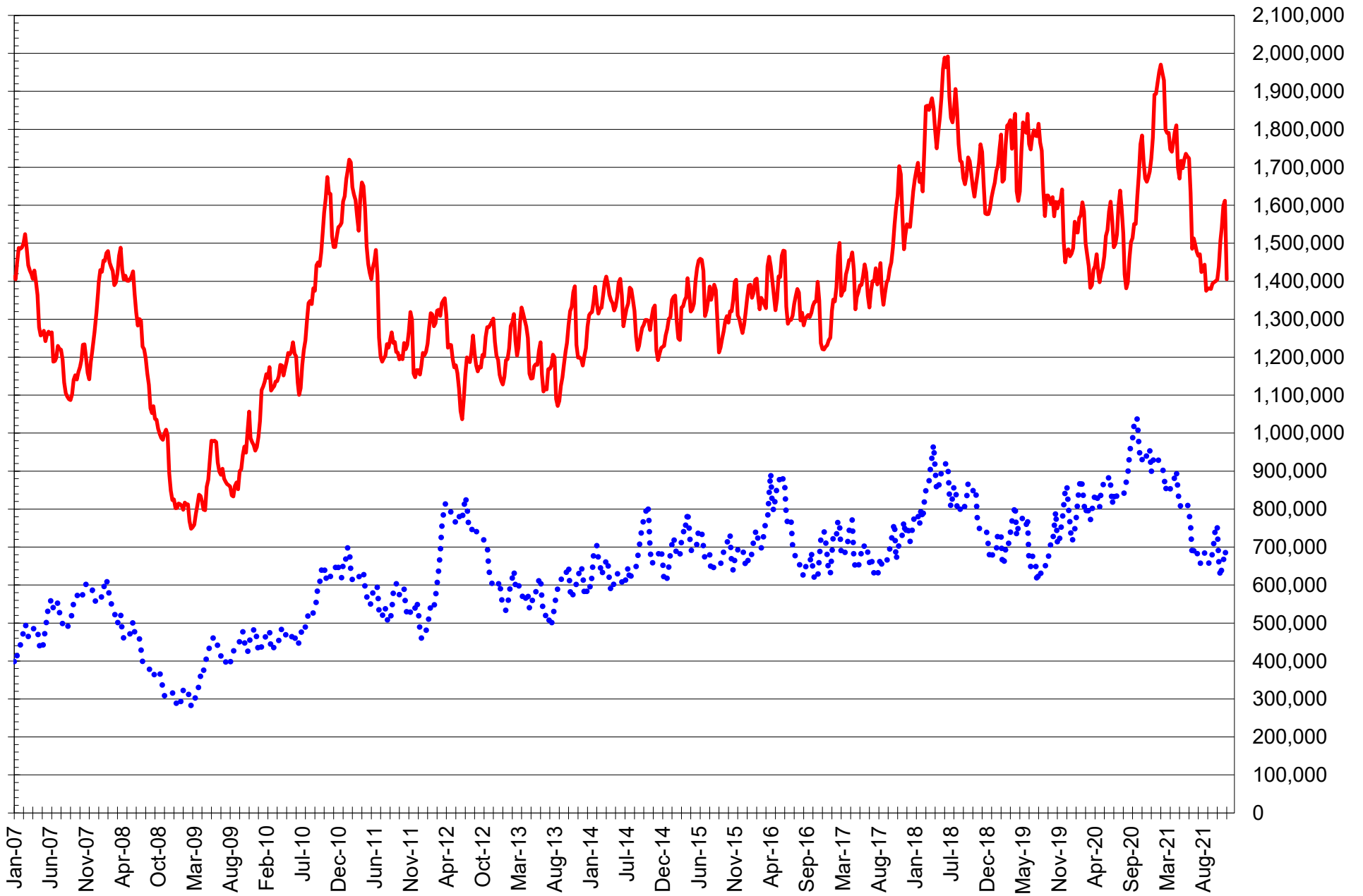
SOURCE: CFTC & FI

— SOYBEANS

— SOYBEAN MEAL

— SOYBEAN OIL

TOTAL OPEN INTEREST IN CORN AND SOYBEANS, FUTURES ONLY



SOURCE: CFTC & FI

— CORN

•••• SOYBEANS

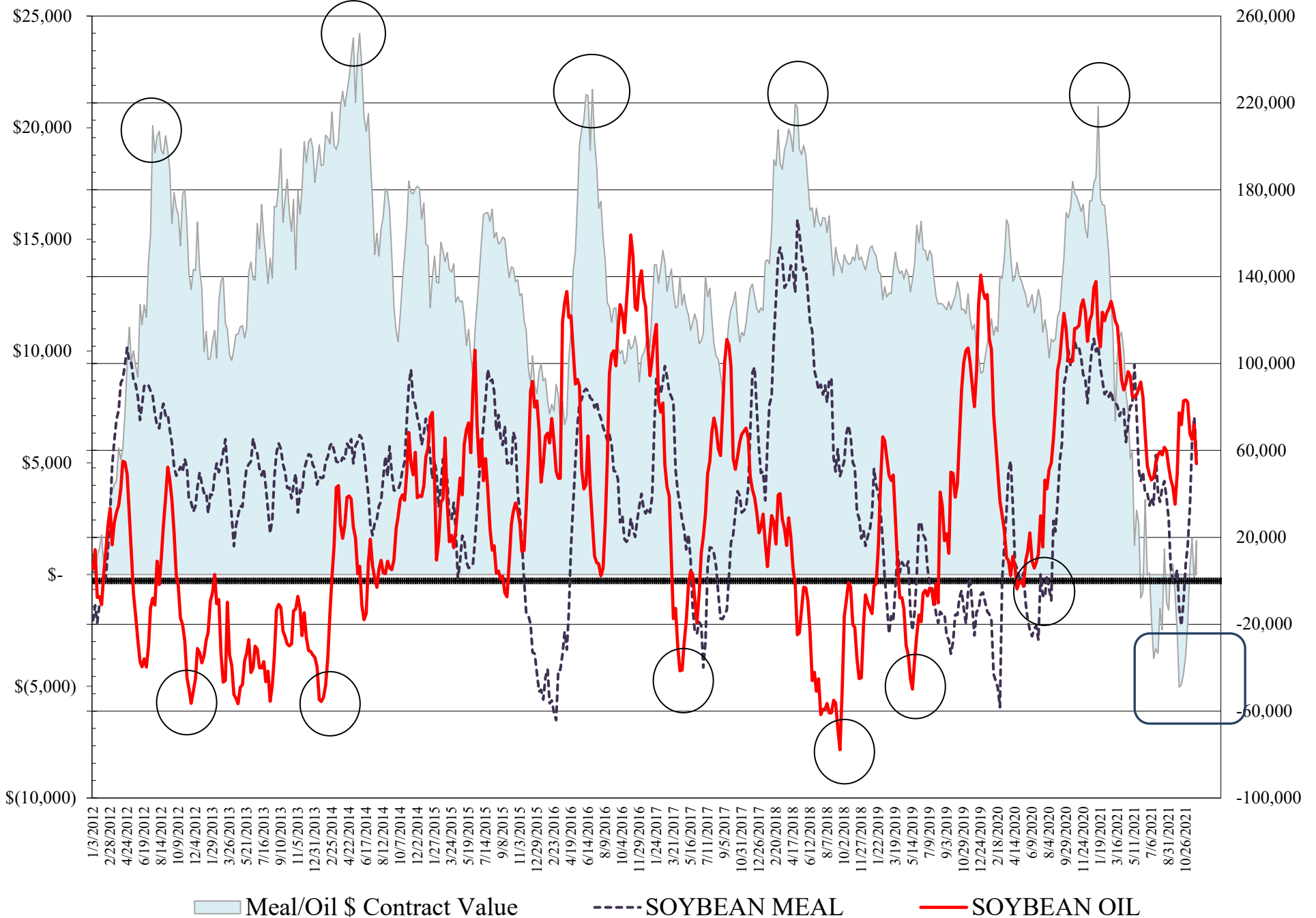
**COMMITMENT OF TRADERS
FUTURES & OPTIONS NET POSITIONS
AS OF 11/30/2021
(IN THOUSAND CONTRACTS)**

	COMMERCIAL				(FUND) NON COMMERCIAL				(SPEC) NON-REPORTABLE			
	30-Nov	23-Nov	16-Nov	9-Nov	30-Nov	23-Nov	16-Nov	9-Nov	30-Nov	23-Nov	16-Nov	9-Nov
WHEAT												
Chicago	-4.1	-18.9	-15.3	-5.0	11.4	27.5	23.7	10.4	-7.4	-8.6	-8.4	-5.4
Kansas City	-53.2	-55.4	-53.8	-49.7	51.9	53.8	49.9	48.5	1.2	1.6	3.9	1.2
Minneapolis	-27.6	-30.4	-32.2	-33.2	23.3	25.2	25.2	26.5	4.3	5.2	7.0	6.7
All Wheat	-84.9	-104.7	-101.2	-87.8	86.7	106.5	98.7	85.3	-1.8	-1.8	2.4	2.5
CORN	-335.7	-382.7	-356.7	-335.1	381.7	429.5	408.6	386.6	-46.0	-46.8	-51.9	-51.6
OATS	-0.7	-0.5	-0.7	-0.7	0.7	0.7	0.7	0.6	-0.1	-0.2	0.0	0.1
SOYBEANS	-17.7	-36.2	-10.3	2.0	59.1	74.9	53.8	36.9	-41.4	-38.8	-43.5	-38.9
SOY OIL	-57.5	-83.0	-74.6	-74.3	53.9	72.0	65.1	67.8	3.6	11.0	9.5	6.5
SOY MEAL	-84.1	-104.6	-93.6	-61.8	57.8	75.3	64.4	33.8	26.3	29.3	29.2	28.1

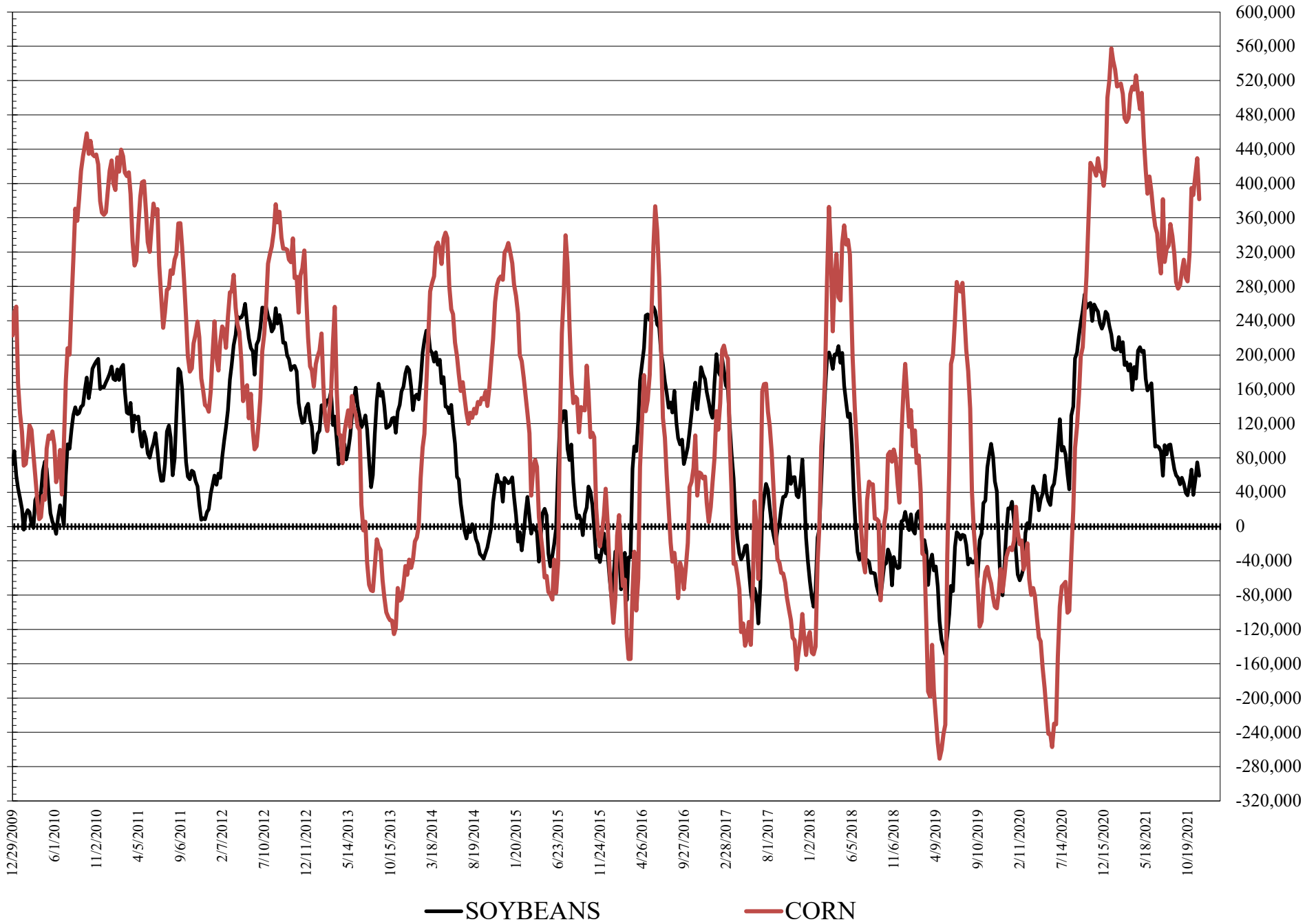
	TOTAL OPEN INTEREST				% HELD BY TRADERS					
	30-Nov	23-Nov	16-Nov	9-Nov	COMMERCIALS		LARGE (FUNDS)		SMALL (NON-REP)	
					LONG	SHORT	LONG	SHORT	LONG	SHORT
WHEAT										
Chicago	449,530	586,045	565,036	523,259	35%	36%	24%	21%	8%	9%
Kansas City	251,380	285,026	273,576	264,960	32%	53%	37%	16%	9%	9%
Minneapolis	79,324	83,336	82,158	84,442	39%	74%	34%	4%	19%	14%
CORN	1,681,394	2,099,574	2,075,468	2,002,111	43%	63%	27%	4%	10%	12%
OATS	4,947	6,406	6,322	6,208						
SOYBEANS	790,880	823,369	785,185	765,567	54%	56%	16%	9%	7%	12%
SOY OIL	436,518	498,334	495,844	484,856	50%	63%	22%	10%	7%	6%
SOY MEAL	430,317	497,835	519,884	499,172	47%	67%	19%	6%	12%	6%

SOURCE: CFTC & FI

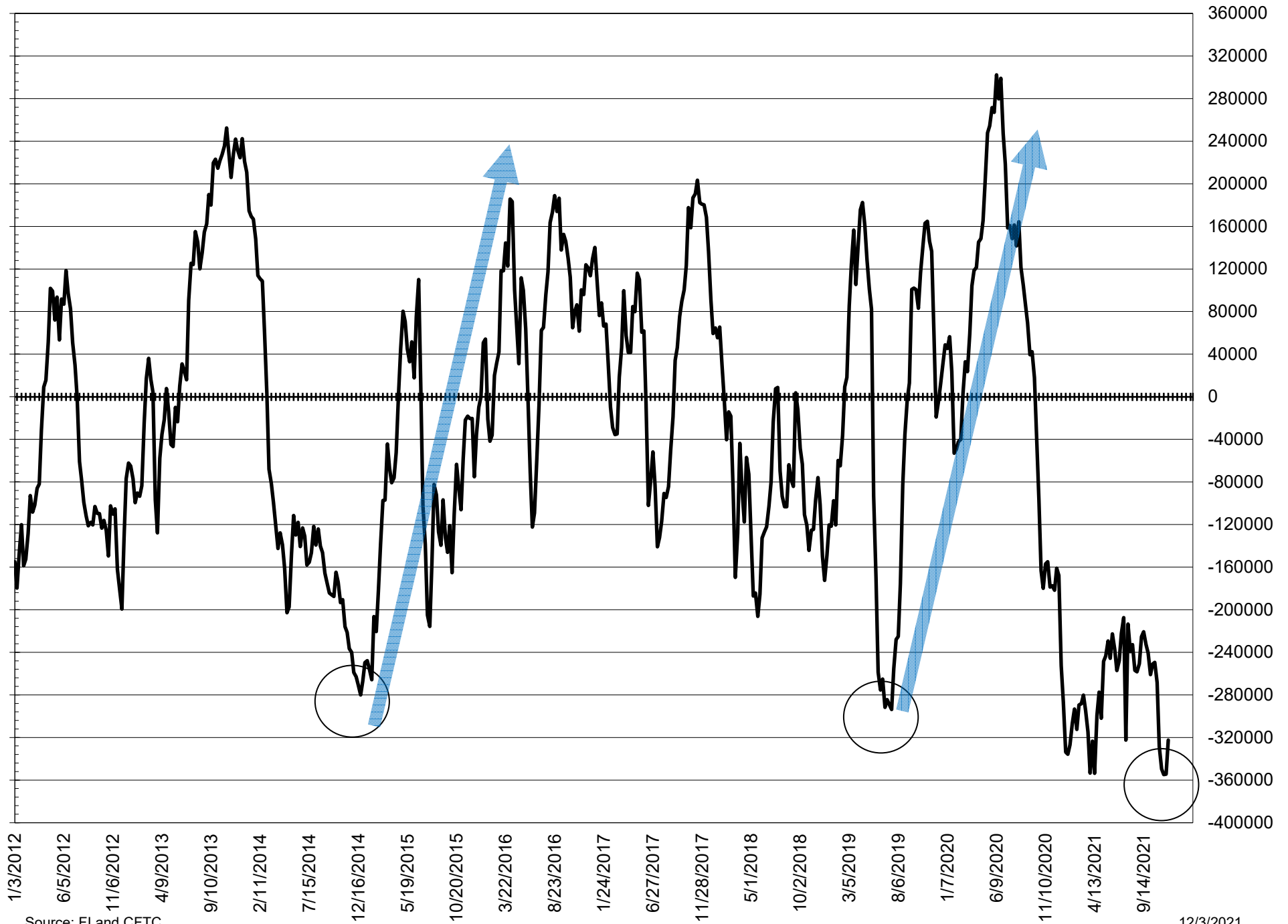
NET POSITION FUTURES AND OPTIONS OF LARGE SPECULATORS IN SOYBEAN MEAL AND SOYBEAN OIL



NET POSITION FUTURES AND OPTIONS OF LARGE SPECULATORS IN SOYBEANS AND CORN



NET POSITION FUTURES AND OPTIONS SPREAD OF LARGE SPECULATORS IN SOYBEANS MINUS CORN



Source: FI and CFTC

12/3/2021

DISAGGREGATED COMMITMENT OF TRADERS
FUTURES ONLY NET POSITIONS
AS OF 11/30/2021
(IN THOUSAND CONTRACTS)

	PRODUCER / MERCHANT / PROCESSOR / USER				(INDEX/ETF) SWAP DEALERS				(CTA/CPO/OTHER UNREGISTERED) MANAGED MONEY			
	30-Nov	23-Nov	16-Nov	9-Nov	30-Nov	23-Nov	16-Nov	9-Nov	30-Nov	23-Nov	16-Nov	9-Nov
	WHEAT											
Chicago	(81.2)	(95.0)	(92.7)	(79.8)	70.8	62.1	64.7	66.3	4.9	20.1	16.2	1.7
Kansas City	(82.5)	(82.5)	(85.4)	(84.3)	28.6	27.9	31.0	34.1	61.9	65.3	59.5	56.1
Minneapolis	(29.9)	(32.9)	(34.1)	(35.3)	1.4	1.3	1.0	1.0	14.2	15.1	14.9	16.4
All Wheat	(193.6)	(210.5)	(212.1)	(199.3)	100.8	91.3	96.7	101.4	81.0	100.5	90.7	74.2
CORN	(614.1)	(616.5)	(591.9)	(573.3)	273.0	252.8	251.2	252.5	303.5	362.0	335.3	311.6
OATS	(0.7)	(0.5)	(0.7)	(0.8)	0.0	0.0	0.0	0.1	0.5	0.5	0.5	0.4
SOYBEANS	(159.8)	(170.3)	(146.3)	(133.3)	142.9	141.1	141.4	142.4	31.1	50.3	29.5	9.2
SOY OIL	(165.8)	(193.5)	(186.6)	(184.7)	98.2	98.8	99.4	100.4	64.2	81.6	76.1	72.8
SOY MEAL	(176.6)	(195.5)	(186.1)	(158.2)	92.2	86.6	86.2	87.5	37.6	54.0	37.6	9.1

Managed % of OI

Chicago W	1%	5%	4%	0%
Corn	22%	22%	21%	20%

	TOTAL OPEN INTEREST				OTHER REPORTABLE				NON REPORTABLE			
	30-Nov	23-Nov	16-Nov	9-Nov	30-Nov	23-Nov	16-Nov	9-Nov	30-Nov	23-Nov	16-Nov	9-Nov
	WHEAT											
Chicago	371,575	425,301	427,786	405,438	13.4	21.4	20.5	17.5	(7.9)	(8.6)	(8.8)	(5.8)
Kansas City	227,423	239,102	237,136	233,489	(9.3)	(12.4)	(9.0)	(6.8)	1.3	1.8	3.9	0.9
Minneapolis	75,577	75,958	75,836	77,422	10.3	11.7	11.5	11.5	4.0	4.8	6.7	6.3
All Wheat	674,575	740,361	740,758	716,349	14.5	20.6	23.0	22.2	(2.6)	(2.0)	1.8	1.4
CORN	1,405,105	1,611,856	1,598,926	1,540,731	91.4	55.1	63.9	63.7	(53.8)	(53.4)	(58.5)	(54.4)
OATS	4,853	5,625	5,612	5,549	0.2	0.2	0.2	0.2	(0.0)	(0.2)	(0.0)	0.1
SOYBEANS	671,433	691,303	662,972	644,317	24.2	15.9	17.4	18.4	(38.3)	(37.0)	(42.0)	(36.7)
SOY OIL	399,439	431,185	429,487	423,882	0.8	3.5	2.4	6.0	2.6	9.5	8.6	5.6
SOY MEAL	395,673	439,569	459,356	451,149	23.5	28.3	36.4	36.5	23.3	26.7	25.9	25.0

SOURCE: CFTC & FI

12/3/2021

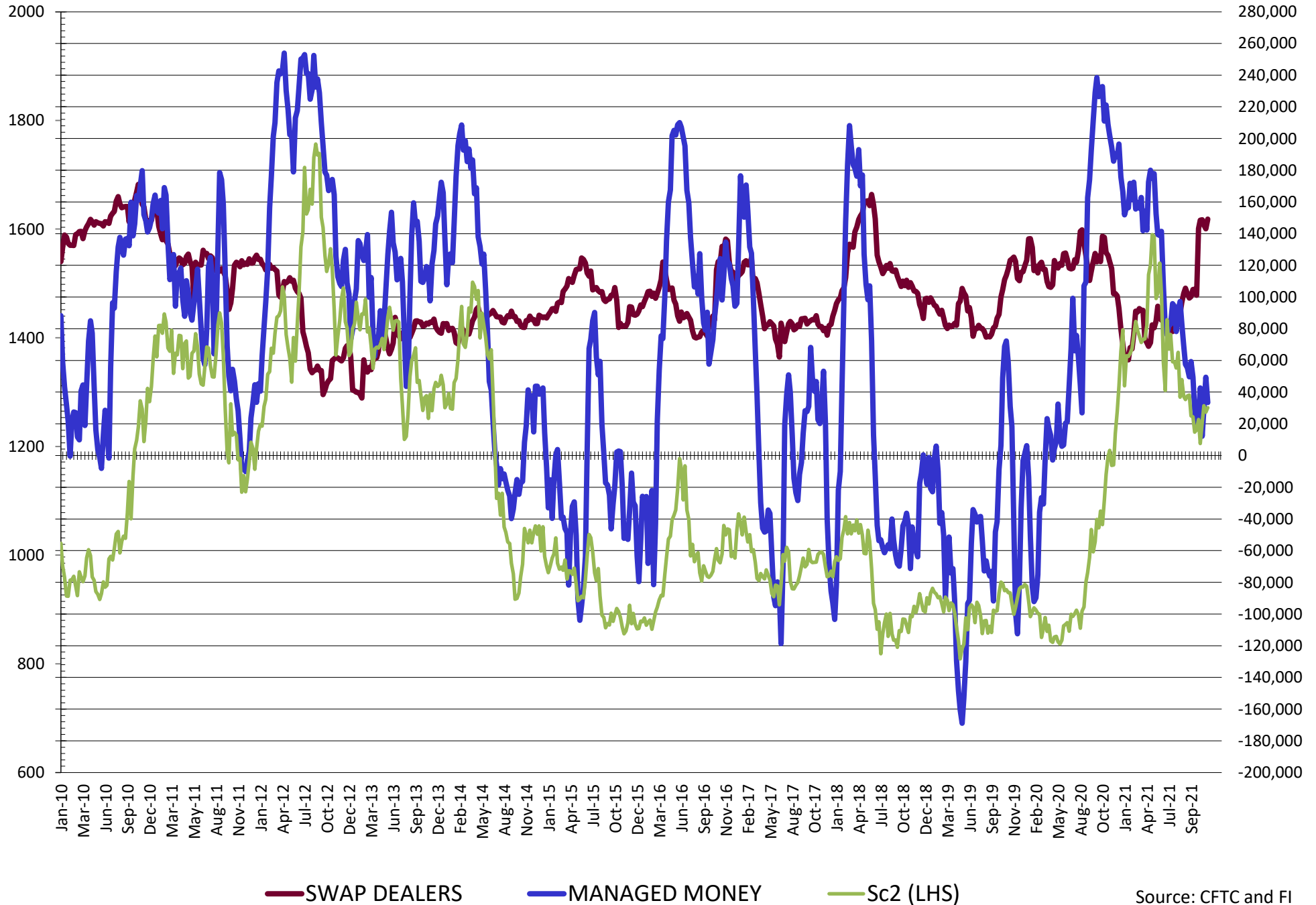
**DISAGGREGATED COMMITMENT OF TRADERS
FUTURES & OPTIONS NET POSITIONS
AS OF 11/30/2021
(IN THOUSAND CONTRACTS)**

	PRODUCER / MERCHANT / PROCESSOR / USER				(INDEX/ETF) SWAP DEALERS				(CTA/CPO/OTHER UNREGISTERED) MANAGED MONEY			
	30-Nov	23-Nov	16-Nov	9-Nov	30-Nov	23-Nov	16-Nov	9-Nov	30-Nov	23-Nov	16-Nov	9-Nov
	WHEAT											
Chicago	(72.6)	(88.3)	(85.2)	(70.5)	68.6	69.4	70.0	65.6	6.2	18.0	15.3	3.3
Kansas City	(80.9)	(82.8)	(84.2)	(82.7)	27.7	27.4	30.5	33.1	62.4	65.6	60.6	57.4
Minneapolis	(29.0)	(31.9)	(33.3)	(34.4)	1.3	1.5	1.2	1.2	14.2	15.1	15.0	16.5
All Wheat	(182.5)	(202.9)	(202.8)	(187.6)	97.7	98.3	101.6	99.8	82.8	98.7	90.8	77.2
CORN	(606.2)	(615.0)	(588.0)	(568.6)	270.5	232.3	231.3	233.5	315.3	366.7	341.1	319.6
OATS	(0.7)	(0.6)	(0.7)	(0.7)	0.0	0.0	0.0	0.1	0.5	0.5	0.5	0.4
SOYBEANS	(166.8)	(179.2)	(155.7)	(146.8)	149.1	143.0	145.4	148.7	33.4	49.4	29.5	12.1
SOY OIL	(156.1)	(182.6)	(173.9)	(174.6)	98.6	99.6	99.3	100.4	64.4	82.4	76.2	72.6
SOY MEAL	(176.8)	(192.5)	(180.5)	(150.6)	92.7	87.9	86.9	88.7	37.7	53.6	37.5	9.3

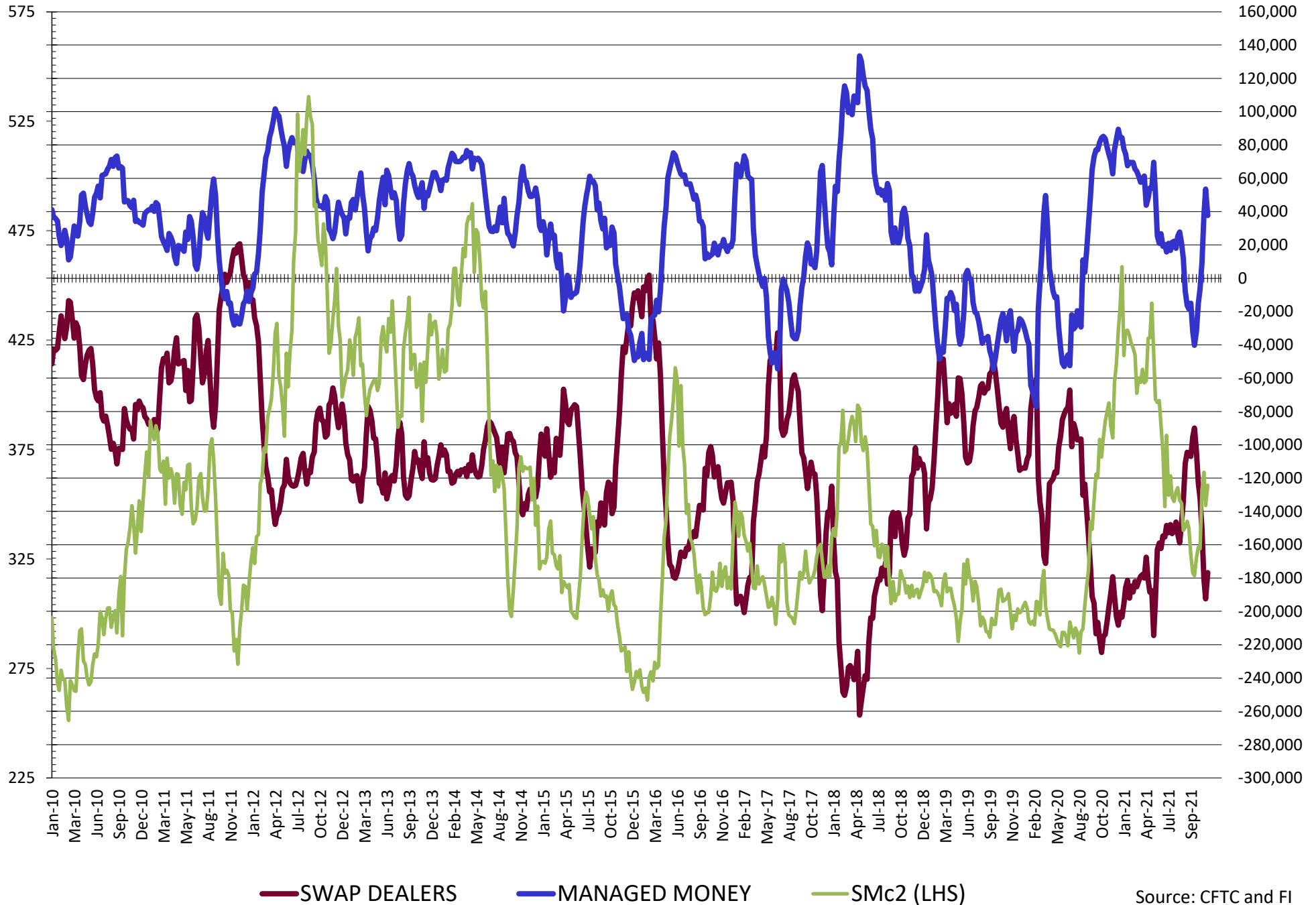
	TOTAL OPEN INTEREST				OTHER REPORTABLE				NON REPORTABLE			
	30-Nov	23-Nov	16-Nov	9-Nov	30-Nov	23-Nov	16-Nov	9-Nov	30-Nov	23-Nov	16-Nov	9-Nov
	WHEAT											
Chicago	449,530	586,045	565,036	523,259	5.2	9.6	8.4	7.1	(7.4)	(8.6)	(8.4)	(5.4)
Kansas City	251,380	285,026	273,576	264,960	(10.4)	(11.8)	(10.7)	(8.9)	1.2	1.6	3.9	1.2
Minneapolis	79,324	83,336	82,158	84,442	9.1	10.1	10.2	10.0	4.3	5.2	7.0	6.7
All Wheat	780,234	954,407	920,770	872,661	3.9	7.8	8.0	8.1	(1.8)	(1.8)	2.4	2.5
CORN	1,681,394	2,099,574	2,075,468	2,002,111	66.4	62.8	67.4	67.0	(46.0)	(46.8)	(46.8)	(46.8)
OATS	4,947	6,406	6,322	6,208	0.2	0.2	0.2	0.2	(0.1)	(0.2)	(0.0)	0.1
SOYBEANS	790,880	823,369	785,185	765,567	25.7	25.6	24.3	24.8	(41.4)	(38.8)	(43.5)	(38.9)
SOY OIL	436,518	498,334	495,844	484,856	(10.5)	(10.4)	(11.2)	(4.8)	3.6	11.0	9.5	6.5
SOY MEAL	430,317	497,835	519,884	499,172	20.1	21.7	26.9	24.5	26.3	29.3	29.2	28.1

SOURCE: CFTC & FI

NET POSITION FUTURES AND OPTIONS OF SWAP AND MANAGED FUNDS IN SOYBEANS

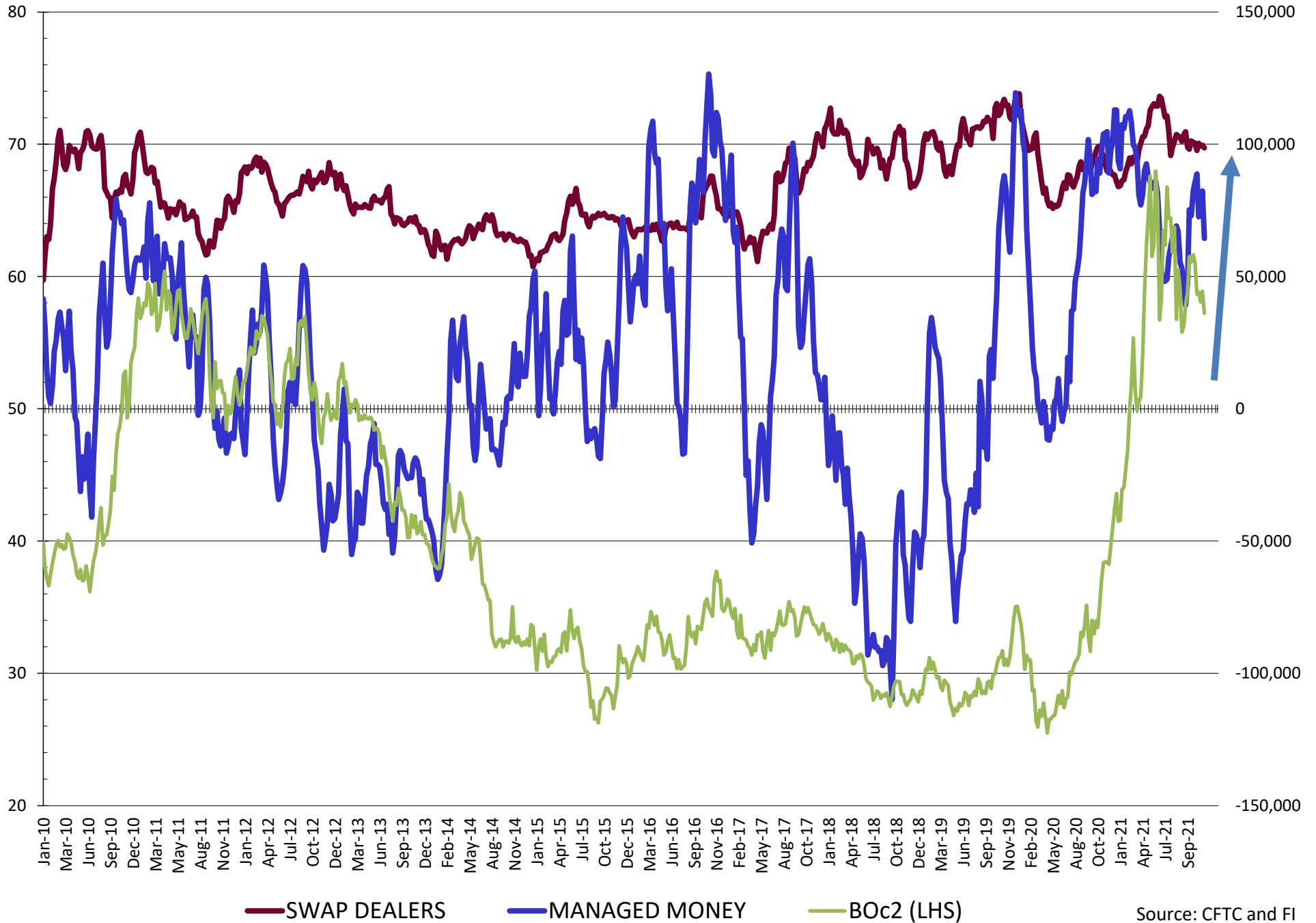


NET POSITION FUTURES AND OPTIONS OF SWAP AND MANAGED FUNDS IN SOYBEAN MEAL

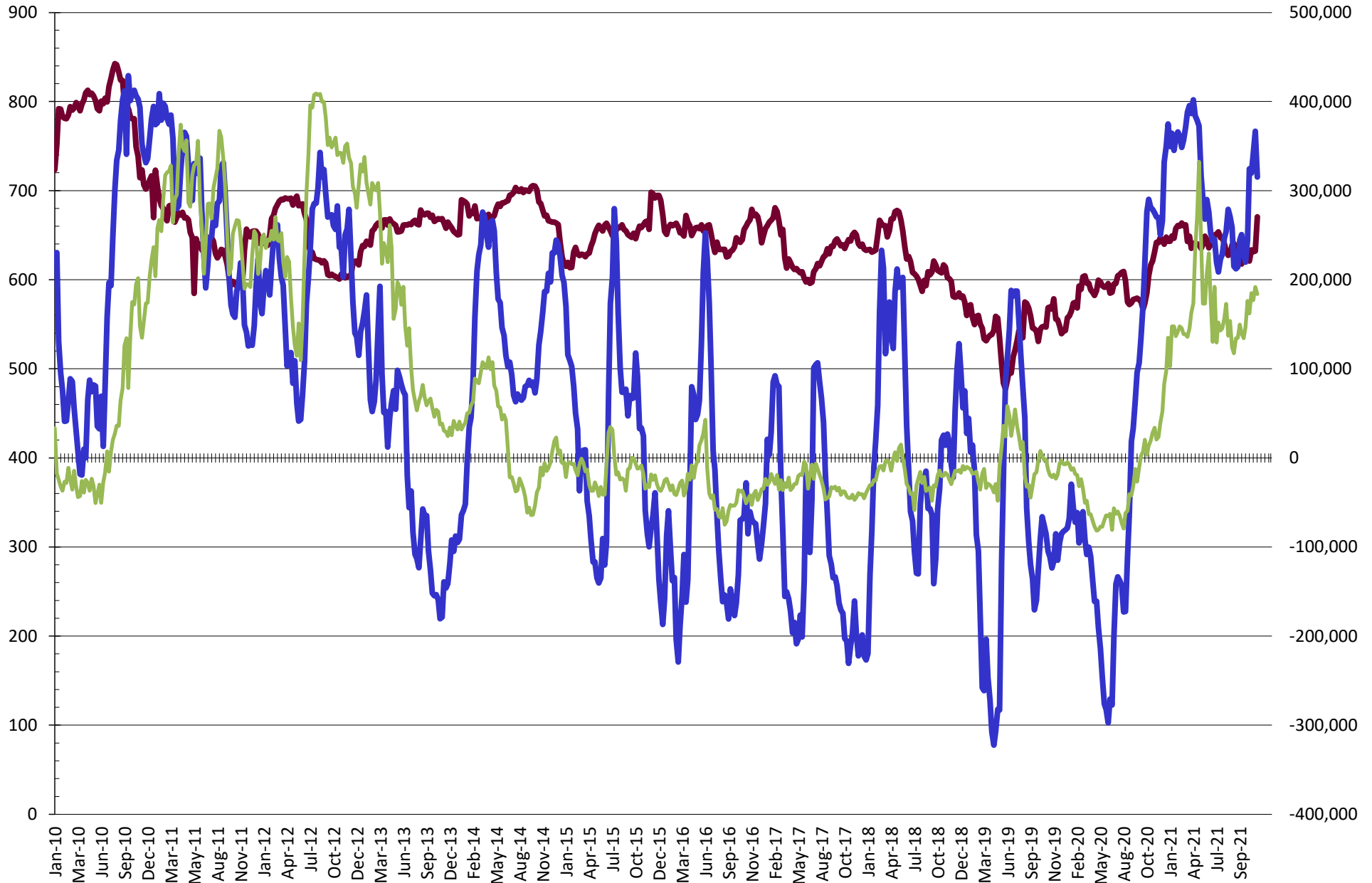


Source: CFTC and FI
12/3/2021

NET POSITION FUTURES AND OPTIONS OF SWAP AND MANAGED FUNDS IN SOYBEAN OIL



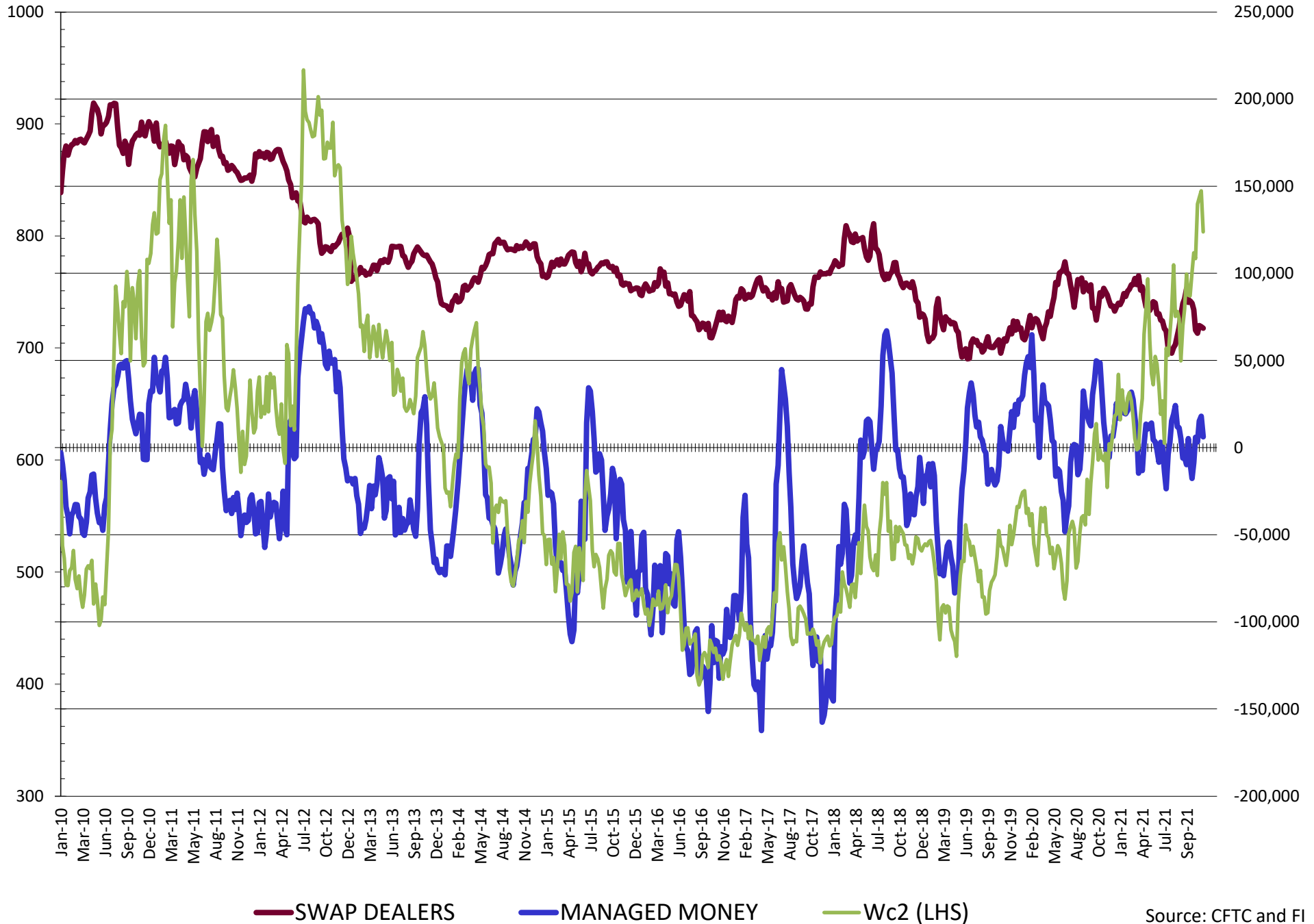
NET POSITION FUTURES AND OPTIONS OF SWAP AND MANAGED FUNDS IN CORN



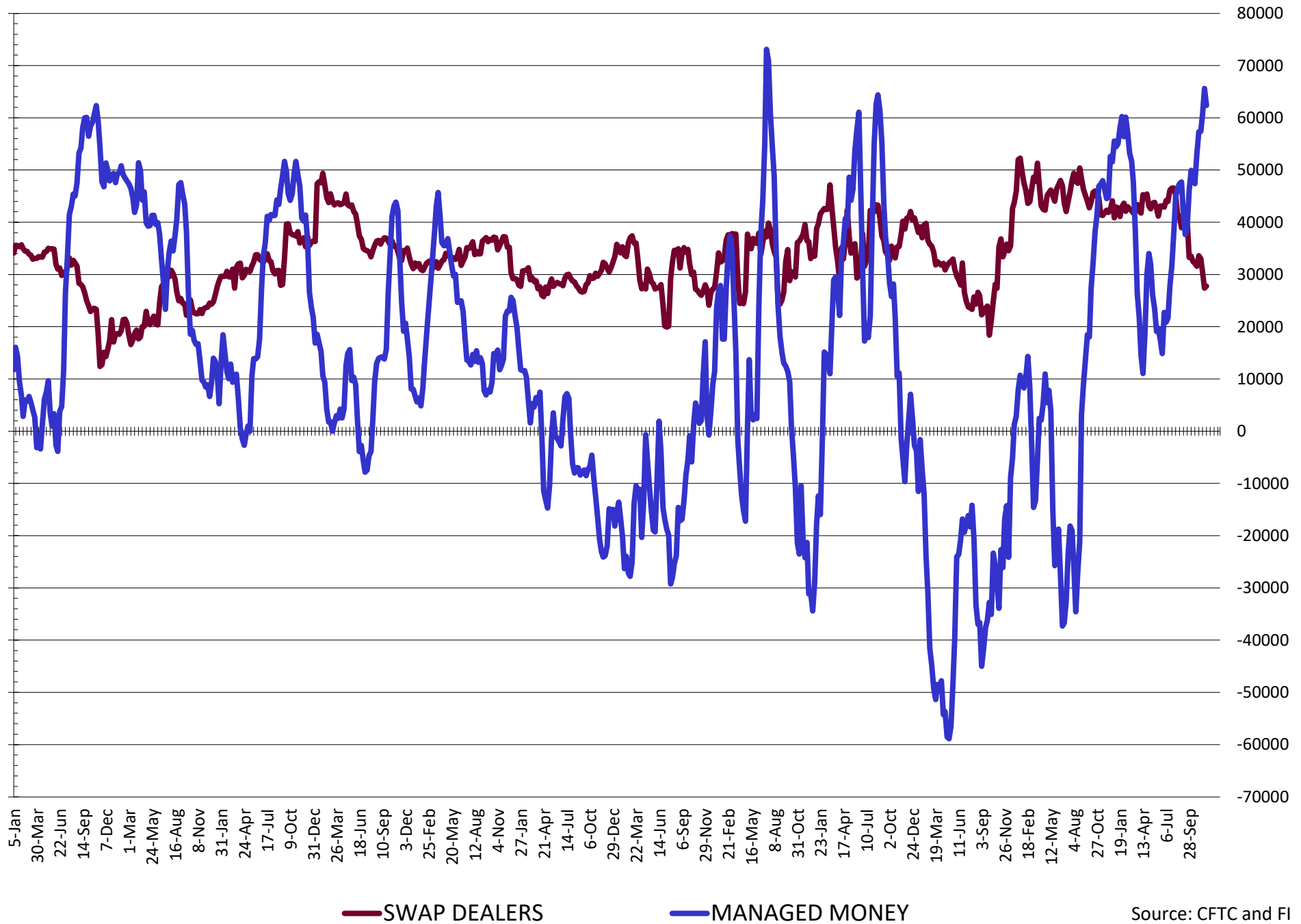
— SWAP DEALERS
 — MANAGED MONEY
 — Cc2 (LHS)

Source: CFTC and FI
12/3/2021

NET POSITION FUTURES AND OPTIONS OF SWAP AND MANAGED FUNDS IN CHICAGO WHEAT

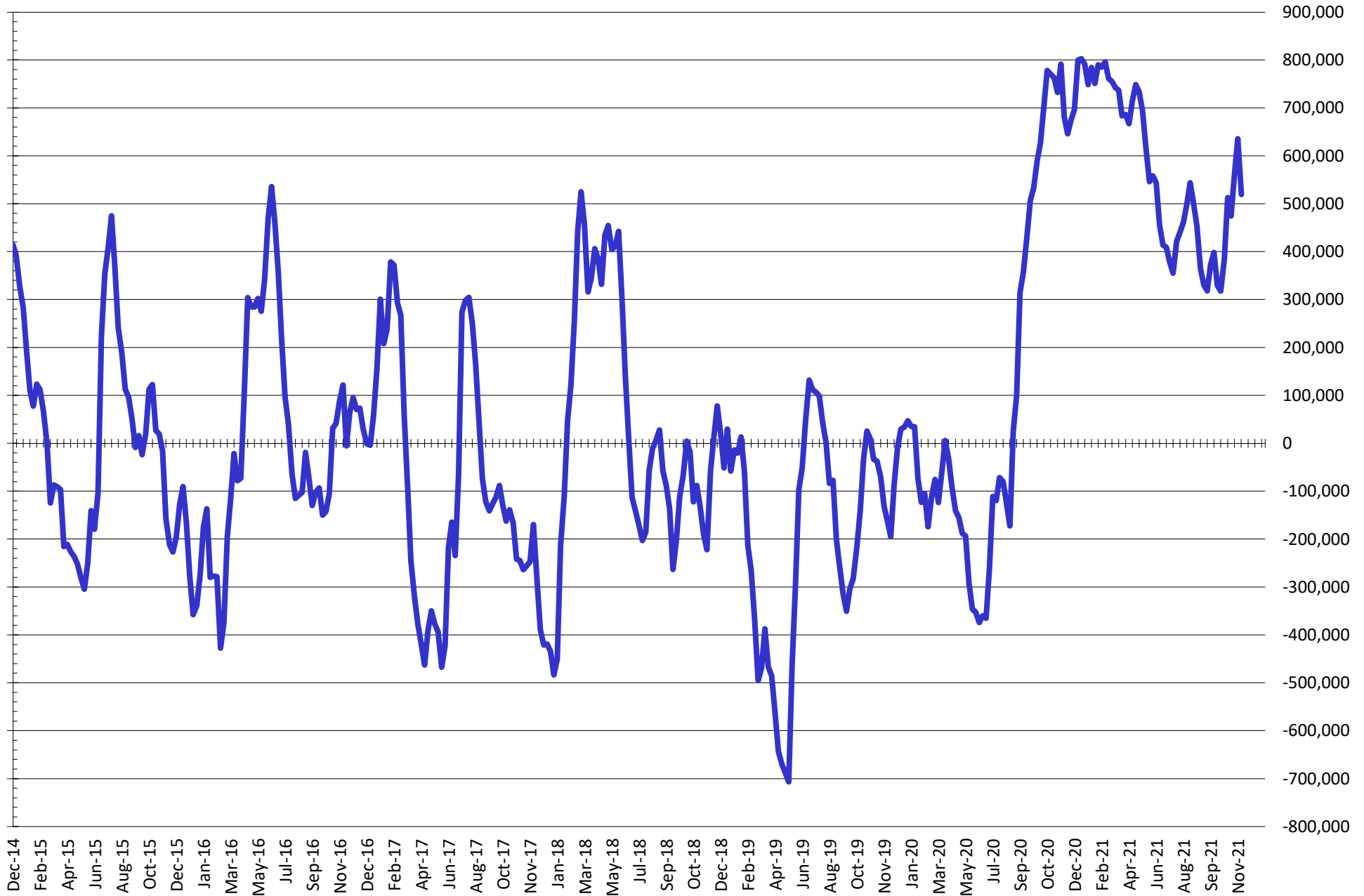


NET POSITION FUTURES AND OPTIONS OF SWAP DEALERS AND MANAGED FUNDS IN KANSAS WHEAT



Source: CFTC and FI
12/3/2021

NET POSITION FUTURES AND OPTIONS OF SWAP AND MANAGED FUNDS IN COMBINED SRW, HRW, CORN, SOYBEANS, SOYMEAL AND SOYOIL



— Net Managed Money

Source: CFTC and FI
12/3/2021

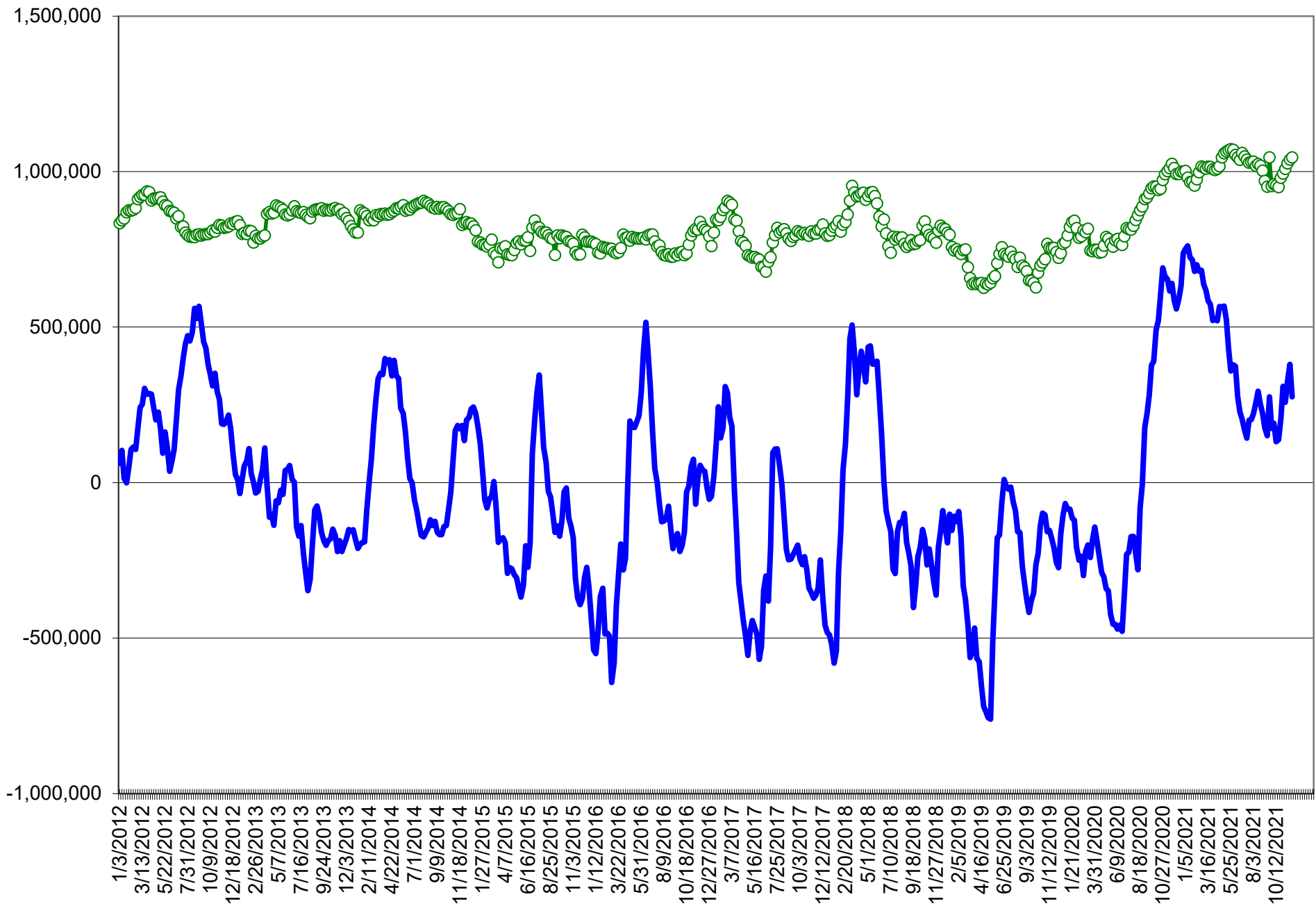
COMMITMENT OF TRADERS
FUTURES & OPTIONS NET POSITIONS (INDEX BROKEN OUT)
AS OF 11/30/2021
(IN THOUSAND CONTRACTS)

	COMMERCIAL				(FUND) NON COMMERCIAL				(SPEC) NON-REPORTABLE			
	30-Nov	23-Nov	16-Nov	9-Nov	30-Nov	23-Nov	16-Nov	9-Nov	30-Nov	23-Nov	16-Nov	9-Nov
	WHEAT											
Chicago	(90.9)	(109.2)	(106.9)	(92.3)	(22.1)	(6.0)	(8.3)	(18.9)	(7.4)	(8.6)	(8.4)	(5.4)
Kansas City	(92.8)	(95.3)	(94.2)	(89.8)	33.2	33.6	29.3	27.1	1.2	1.6	3.9	1.2
Minneapolis	-	-	-	-	-	-	-	-	-	-	-	-
All Wheat	(183.7)	(204.5)	(201.1)	(182.1)	11.1	27.6	21.0	8.2	(6.1)	(7.0)	(4.6)	(4.2)
CORN	(606.7)	(634.4)	(607.9)	(586.0)	221.6	263.4	250.4	232.1	(46.0)	(46.8)	(51.9)	(51.6)
OATS	-	-	-	-	-	-	-	-	-	-	-	-
SOYBEANS	(156.6)	(175.3)	(149.4)	(139.3)	6.6	17.8	(3.7)	(16.4)	(41.4)	(38.8)	(43.5)	(38.9)
SOY OIL	(148.5)	(173.6)	(165.4)	(164.8)	16.6	35.6	30.3	34.1	3.6	11.0	9.5	6.5
SOY MEAL	(162.3)	(179.3)	(165.2)	(133.6)	19.8	35.9	26.0	(0.5)	26.3	29.3	29.2	28.1

	TOTAL OPEN INTEREST				(INDEX) COMMERCIAL INDEX TRADERS				(INDEX) % NET OF TOTAL OPEN INTEREST			
	30-Nov	23-Nov	16-Nov	9-Nov	30-Nov	23-Nov	16-Nov	9-Nov	30-Nov	23-Nov	16-Nov	9-Nov
	WHEAT											
Chicago	449,530	586,045	565,036	523,259	120.4	123.8	123.6	116.6	26.8%	21.1%	21.9%	22.3%
Kansas City	251,380	285,026	273,576	264,960	58.4	60.1	61.0	61.5	23.2%	21.1%	22.3%	23.2%
Minneapolis	-	-	-	-	-	-	-	-	-	-	-	-
All Wheat	700,910	871,071	838,612	788,219	178.7	183.9	184.7	178.1	25.5%	21.1%	22.0%	22.6%
CORN	1,681,394	2,099,574	2,075,468	2,002,111	431.0	417.8	409.4	405.5	25.6%	19.9%	19.7%	20.3%
OATS	-	-	-	-	-	-	-	-	-	-	-	-
SOYBEANS	790,880	823,369	785,185	765,567	191.5	196.2	196.7	194.6	24.2%	23.8%	25.0%	25.4%
SOY OIL	436,518	498,334	495,844	484,856	128.3	126.9	125.6	124.2	29.4%	25.5%	25.3%	25.6%
SOY MEAL	430,317	497,835	519,884	499,172	116.2	114.1	109.9	106.0	27.0%	22.9%	21.1%	21.2%

SOURCE: CFTC & FI

NET POSITION FUTURES AND OPTIONS OF SPECULATORS AND INDEX FUNDS IN COMBINED SRW, HRW, CORN, SOYBEANS, SOYMEAL AND SOYOIL



Source: CFTC and FI

○ Net Index

— Net Speculator

Traditional Daily Estimate of Funds 11/30/21

	(Neg)-"Short"	Pos-"Long"			
Actual less Est.	22.8	33.1	32.8	(9.2)	1.9
	Corn	Bean	Chi. Wheat	Meal	Oil
Actual	394.9	55.3	18.3	61.1	65.0
1-Dec	4.0	5.0	2.0	5.0	(2.0)
2-Dec	8.0	9.0	13.0	0.0	6.0
3-Dec	4.0	11.0	(7.0)	7.0	5.0
6-Dec					
7-Dec					
FI Est. of Futures Only 11/30/21	410.9	80.3	26.3	73.1	74.0
FI Est. Futures & Options	397.7	84.1	19.4	69.8	62.8
Futures only record long "Traditional Funds"	547.7 1/26/2021	280.9 11/10/2020	86.5 8/7/2018	167.5 5/1/2018	160.2 11/1/2016
Futures only record short	(235.0) 6/9/2020	(118.3) 4/30/2019	(130.0) 4/25/2017	(49.5) 3/1/2016	(69.8) 9/18/2018
Futures and options record net long	557.6 1/12/2021	270.9 10/6/2020	64.8 8/7/2012	132.1 5/1/2018	159.2 1/1/2016
Futures and options record net short	(270.6) 4/26/2019	(132.0) 4/30/2019	(143.3) 4/25/2017	(64.1) 3/1/2016	(77.8) 9/18/2018

Managed Money Daily Estimate of Funds 11/30/21

	Corn	Bean	Chi. Wheat	Meal	Oil
Latest CFTC Fut. Only	303.5	31.1	4.9	37.6	64.2
Latest CFTC F&O	315.3	33.4	6.2	37.7	64.4
FI Est. Managed Fut. Only	320	56	13	50	73
FI Est. Managed Money F&O	331	58	14	50	73

Index Funds Latest Positions (as of last Tuesday)

Index Futures & Options	431.0	191.5	120.4	NA	128.3
Change From Previous Week	13.3	(4.7)	(3.5)	NA	1.3

Source: Reuters, CFTC & FI (FI est. are noted with latest date)

Disclaimer

TO CLIENTS/PROSPECTS OF FUTURES INTERNATIONAL, SEE RISK DISCLOSURE BELOW:

THIS COMMUNICATION IS CONVEYED AS A SOLICITATION FOR ENTERING INTO A DERIVATIVES TRANSACTION.

Any trading recommendations and market or other information to Customer by Futures International (FI), although based upon information obtained from sources believed by FI to be reliable may not be accurate and may be changed without notice to customer. FI makes no guarantee as to the accuracy or completeness of any of the information or recommendations furnished to Customer. Customer understands that FI, its managers, employees and/or affiliates may have a position in commodity futures, options or other derivatives which may not be consistent with the recommendations furnished by FI to Customer.

The risk of trading futures and options and other derivatives involves a substantial risk of loss and is not suitable for all persons. In purchasing an option, the risk is limited to the premium paid, and all commissions and fees involved with the trade. When an option is shorted or written, the writer of the option has unlimited risk with respect to the option written. The use of options strategies such as a straddles and strangles involve multiple option positions and may substantially increase the amount of commissions and fees paid to execute the strategy. Option prices do not necessarily move in tandem with cash or futures prices. Each person must consider whether a particular trade, combination of trades or strategy is suitable for that person's financial means and objectives.

This material may include discussions of seasonal patterns, however, futures prices have already factored in the seasonal aspects of supply and demand, and seasonal patterns are no indication of future market trends. Finally, past performance is not indicative of future results.

This communication may contain links to third party websites which are not under the control of FI and FI is not responsible for their content. Products and services are offered only in jurisdictions where solicitation and sale are lawful, and in accordance with applicable laws and regulations in each such jurisdiction.