

CFTC COMMITMENT OF TRADERS REPORT

As of 12/7/2021

TRADITIONAL FUNDS net position changes

Wed to Tue, in 000 contracts

	Corn	Bean	Meal	Oil	Chi. Wheat	KC Wheat	Min Wheat
Futures Only	15.9	4.3	(8.5)	(2.6)	(2.6)	(3.5)	(2.8)
Futures & Options Combined	18.4	2.3	(11.3)	(3.0)	(1.9)	(4.0)	(2.8)

TRADITIONAL COMMERCIAL net position changes

	Corn	Bean	Meal	Oil	Chi. Wheat	KC Wheat	Min Wheat
Futures Only	(26.8)	(5.8)	10.0	2.2	2.0	1.7	1.0
Futures & Options Combined	(31.2)	(4.8)	12.9	2.3	1.2	2.0	1.0

MANAGED MONEY net position changes

	Corn	Bean	Meal	Oil	Chi. Wheat	KC Wheat	Min Wheat
Futures Only	17.4	5.4	(9.6)	(5.9)	(6.0)	(2.7)	(1.7)
Futures & Options Combined	17.2	4.5	(9.8)	(5.5)	(5.5)	(2.8)	(1.7)

SWAP DEALERS net position changes

	Corn	Bean	Meal	Oil	Chi. Wheat	KC Wheat	Min Wheat
Futures Only	0.3	(1.2)	(2.8)	(2.8)	(0.8)	0.1	(0.3)
Futures & Options Combined	(2.4)	(3.0)	(3.5)	(2.8)	(0.8)	0.4	(0.3)

PRODUCERS/END USERS net position changes

	Corn	Bean	Meal	Oil	Chi. Wheat	KC Wheat	Min Wheat
Futures Only	(27.1)	(4.6)	12.9	5.0	2.8	1.5	1.3
Futures & Options Combined	(28.8)	(1.8)	16.3	5.1	2.1	1.6	1.3

INDEX net position changes

	Corn	Bean	Meal	Oil	Chi. Wheat	KC Wheat	Min Wheat
Futures & Options Combined	(5.3)	(8.3)	(3.0)	(7.6)	(3.7)	0.5	NA

SUPPLEMENTAL NON-COMMERCIAL net position changes

	Corn	Bean	Meal	Oil	Chi. Wheat	KC Wheat	Min Wheat
Futures & Options Combined	21.3	6.9	(11.1)	0.8	0.7	(4.0)	NA

OPEN INTEREST net position changes

Wed to Tue, in 000 contracts

	Corn	Bean	Meal	Oil	Chi. Wheat	KC Wheat	Min Wheat
Futures Only	25.3	0.7	(14.0)	(14.5)	(12.4)	(5.6)	(0.5)
Futures & Options Combined	42.8	0.7	(12.2)	(11.1)	(8.8)	(3.9)	0.3

Source: CFTC and FI

Wed to Tue, in 000 contracts

12/10/2021

**COMMITMENT OF TRADERS
FUTURES ONLY NET POSITIONS
AS OF 12/07/2021
(IN THOUSAND CONTRACTS)**

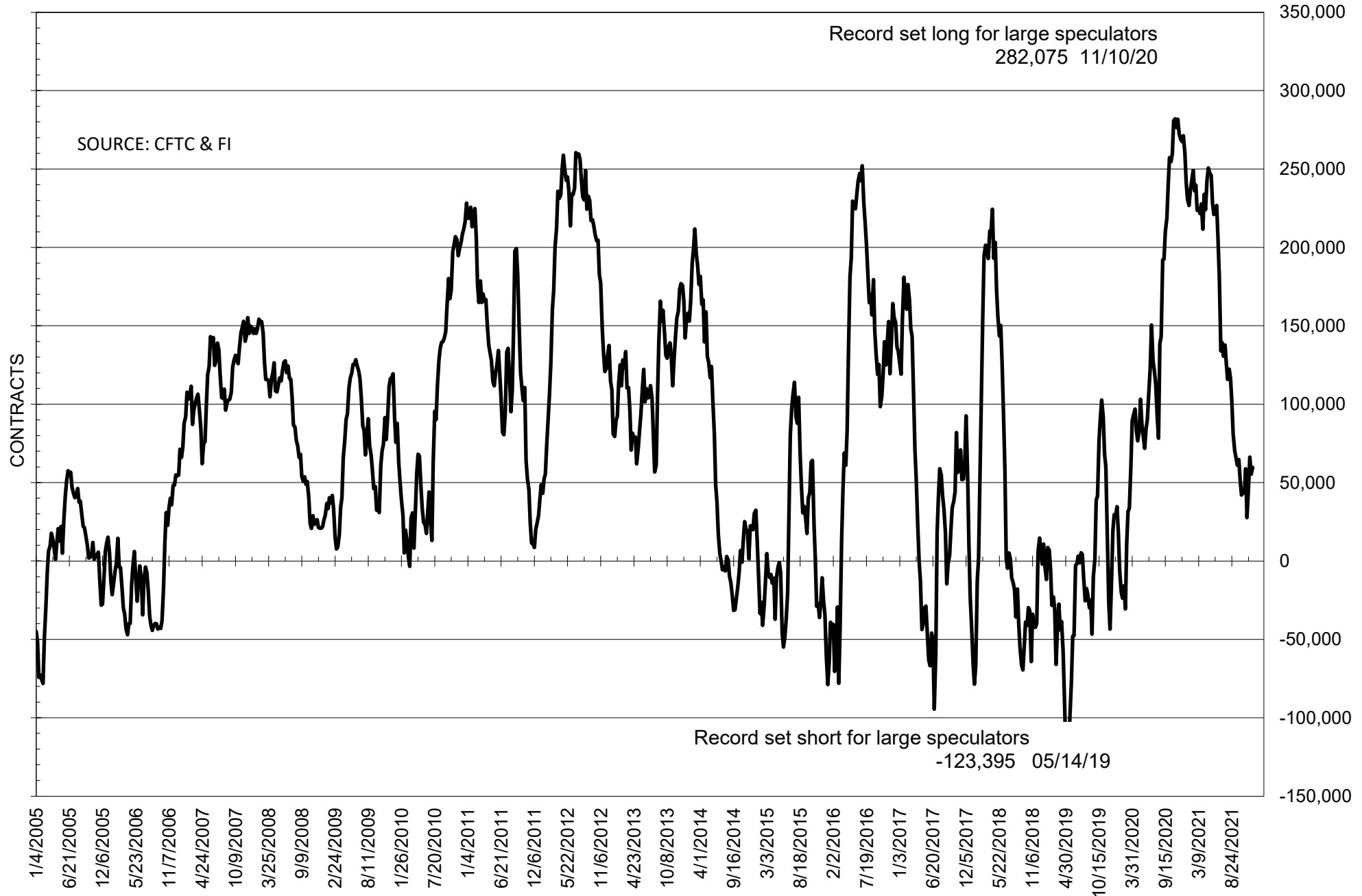
	COMMERCIAL				(FUND) NON COMMERCIAL				(SPEC) NON-REPORTABLE			
	7-Dec	30-Nov	23-Nov	16-Nov	7-Dec	30-Nov	23-Nov	16-Nov	7-Dec	30-Nov	23-Nov	16-Nov
	WHEAT											
Chicago	-8.4	-10.4	-32.9	-28.0	15.7	18.3	41.5	36.8	-7.3	-7.9	-8.6	-8.8
Kansas City	-52.2	-53.9	-54.7	-54.4	49.1	52.6	52.9	50.5	3.1	1.3	1.8	3.9
Minneapolis	-27.5	-28.5	-31.6	-33.1	21.7	24.5	26.8	26.4	5.8	4.0	4.8	6.7
All Wheat	-88.1	-92.8	-119.2	-115.4	86.5	95.4	121.2	113.7	1.6	-2.6	-2.0	1.8
CORN	-367.9	-341.1	-363.7	-340.7	410.8	394.9	417.1	399.2	-42.9	-53.8	-53.4	-58.5
OATS	-0.4	-0.7	-0.5	-0.7	0.7	0.7	0.7	0.7	-0.3	0.0	-0.2	0.0
SOYBEANS	-22.7	-17.0	-29.2	-4.9	59.7	55.3	66.2	46.9	-36.9	-38.3	-37.0	-42.0
SOY OIL	-65.5	-67.7	-94.6	-87.2	62.4	65.0	85.1	78.6	3.1	2.6	9.5	8.6
SOY MEAL	-74.3	-84.4	-108.9	-99.9	52.6	61.1	82.3	74.0	21.7	23.3	26.7	25.9

Oats positions thin to be reported

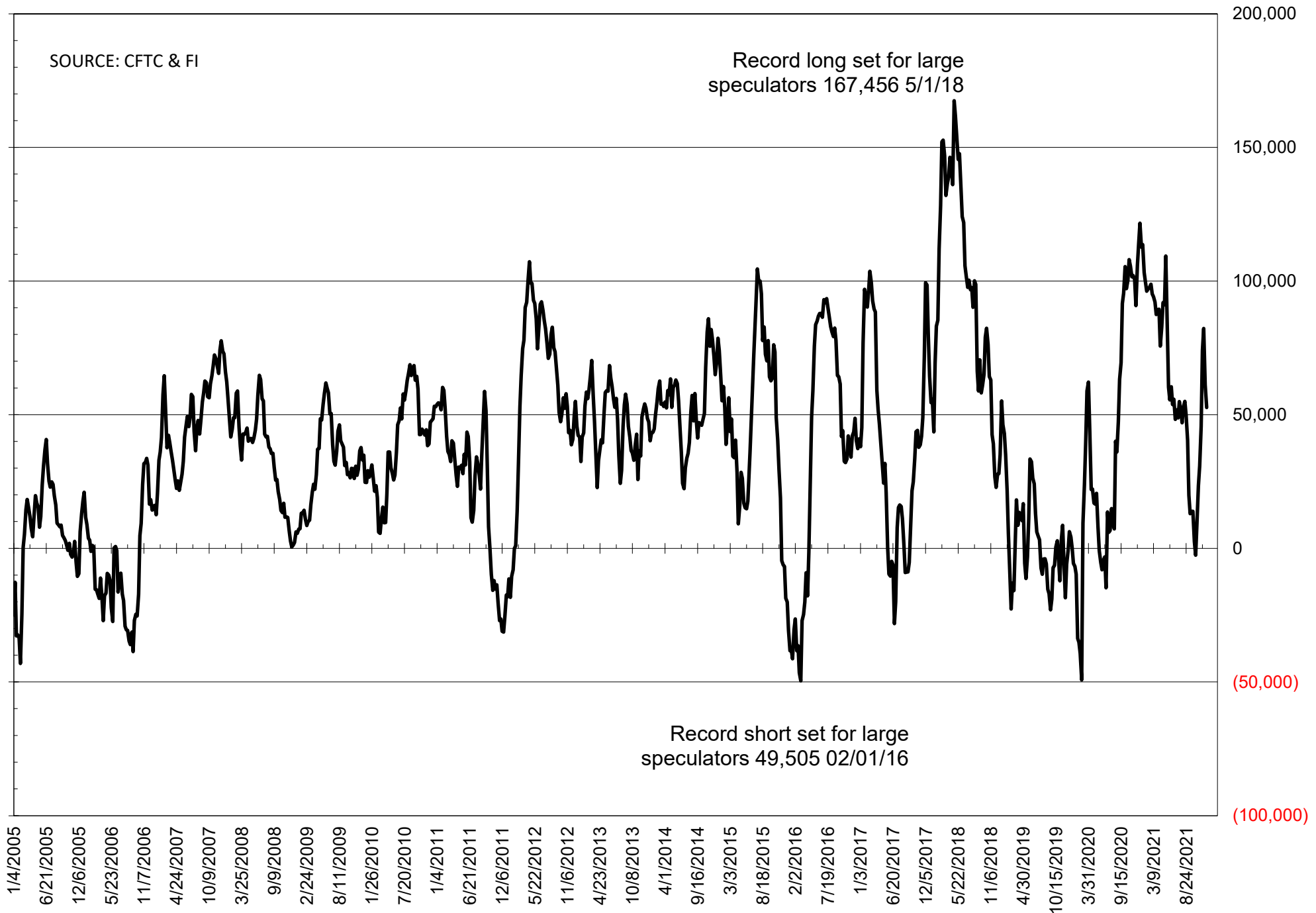
	TOTAL OPEN INTEREST				NEARBY FUTURES PRICE					7-Dec-21 LAST REPORTED % HELD BY TRADERS			
	7-Dec	30-Nov	23-Nov	16-Nov	F/H Latest	F/H 7-Dec	F/H 30-Nov	Z/F 23-Nov	Z/F 16-Nov	LARGE FUND		SMALL	
										LONG	SHORT	LONG	SHORT
WHEAT													
Chicago	359186	371575	425301	427786	785.25	808.50	787.25	856.00	810.25	0%	27%	0%	11%
Kansas City	221831	227423	239102	237136	805.50	827.50	822.25	878.75	820.75	0%	18%	0%	9%
Minneapolis	75116	75577	75958	75836	1021.75	1036.50	1010.00	1038.50	1015.00	0%	6%	0%	13%
CORN	1430401	1405105	1611856	1598926	590.00	586.00	567.50	580.50	571.00	0%	5%	0%	12%
OATS	4732	4853	5625	5612	713.00	732.25	714.00	747.25	730.50	0%	2%	0%	55%
SOYBEANS	672116	671433	691303	662972	1267.75	1250.25	1217.25	1273.00	1251.25	19%	10%	7%	12%
SOY OIL	384956	399439	431185	429487	53.69	57.10	55.21	60.14	59.17	0%	10%	0%	6%
SOY MEAL	381626	395673	439569	459356	366.80	349.70	341.80	362.20	367.50	0%	8%	0%	7%

SOURCE: CFTC & FI

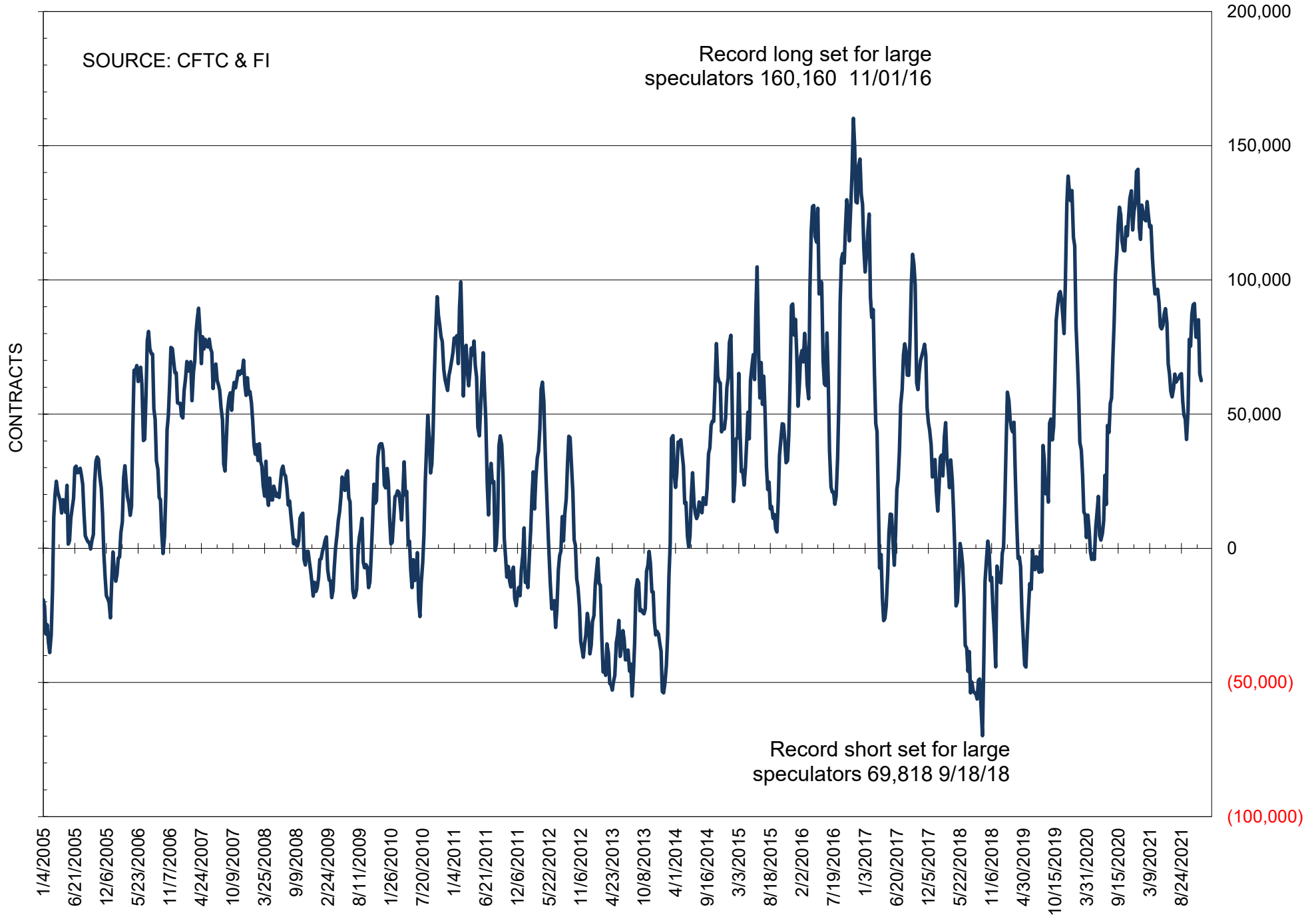
NET POSITION OF FUTURES ONLY LARGE SPECS IN SOYBEANS



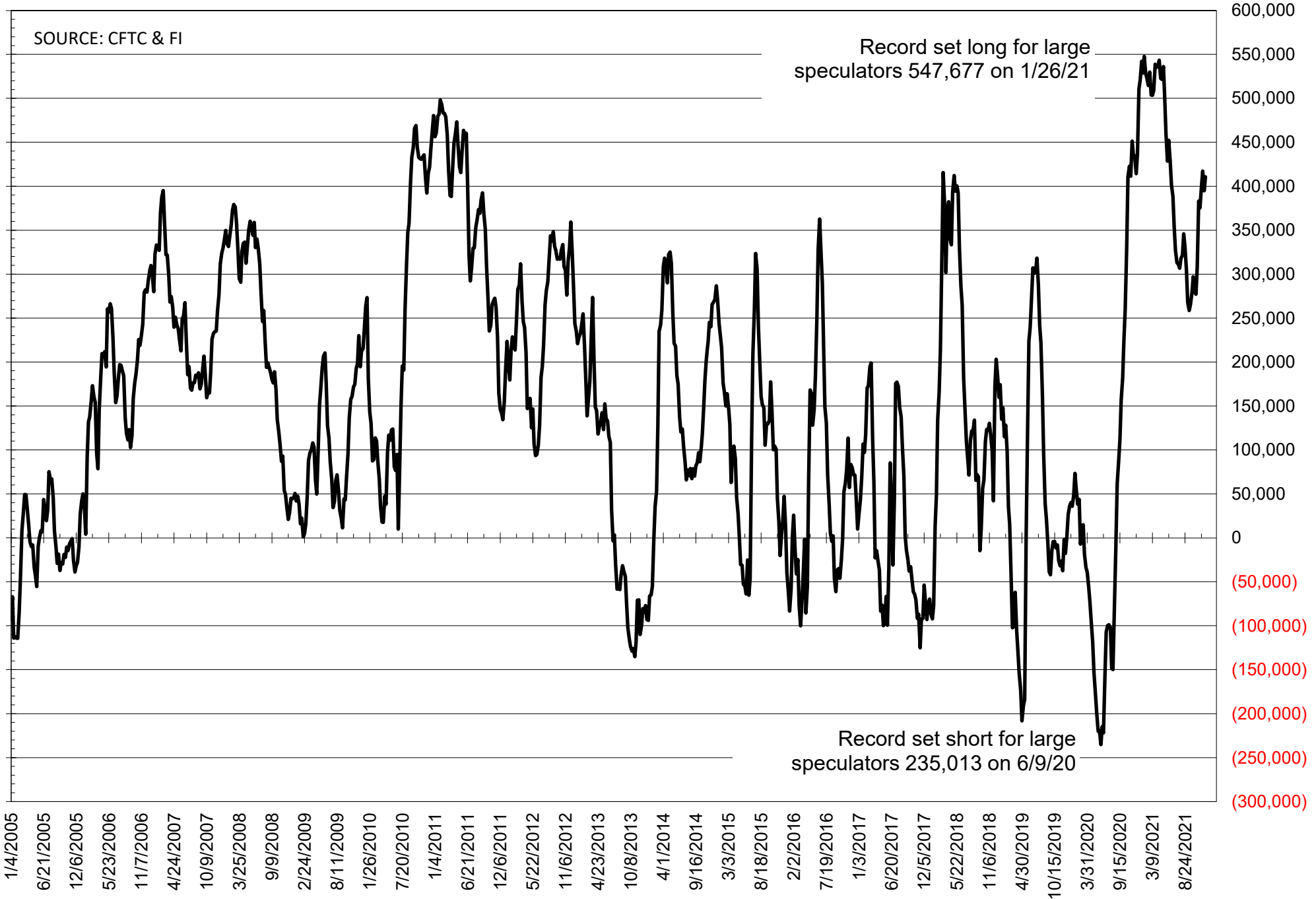
NET POSITION OF FUTURES ONLY LARGE SPECS IN SOYMEAL



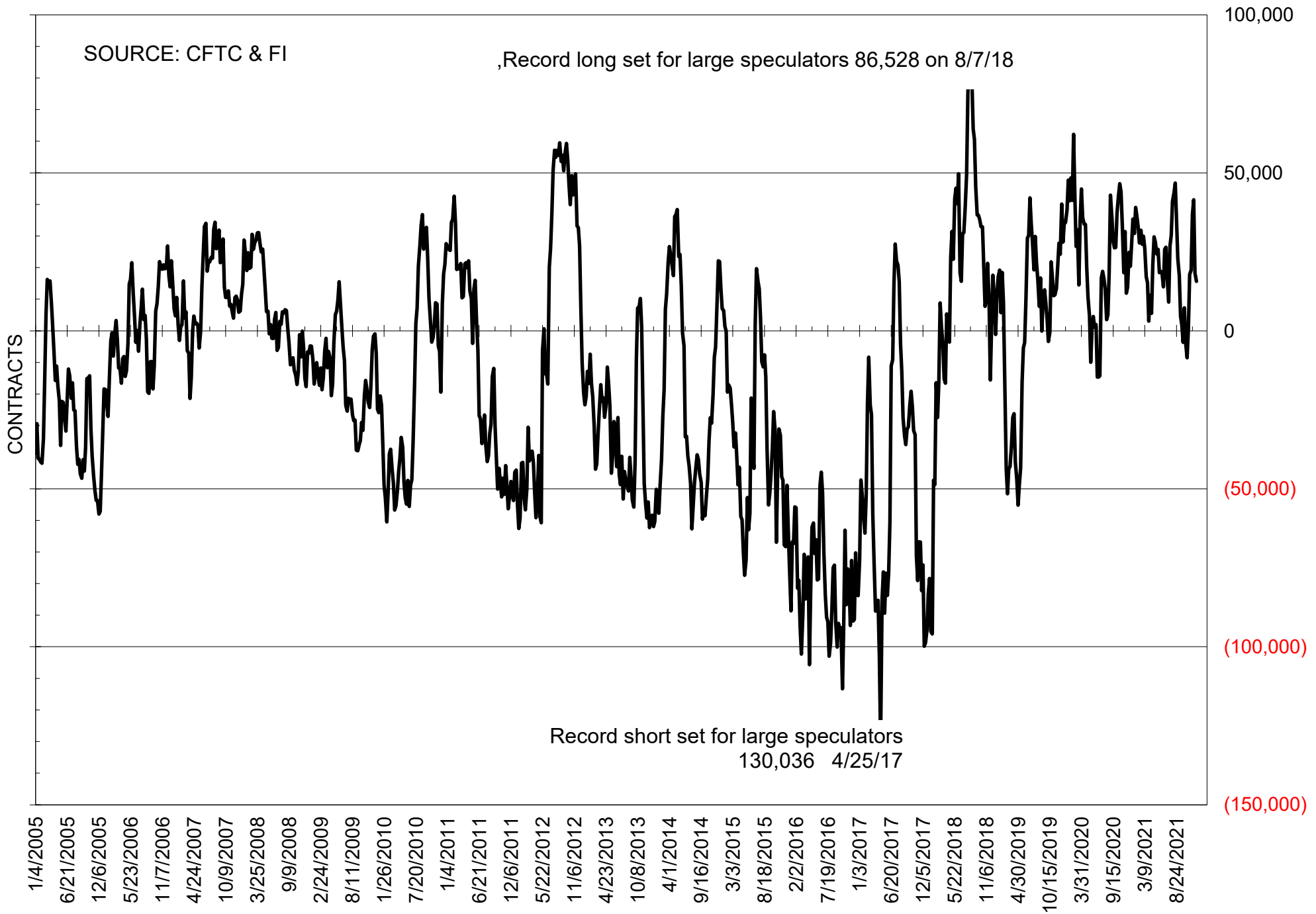
NET POSITION OF FUTURES ONLY LARGE SPECS IN SOYOIL



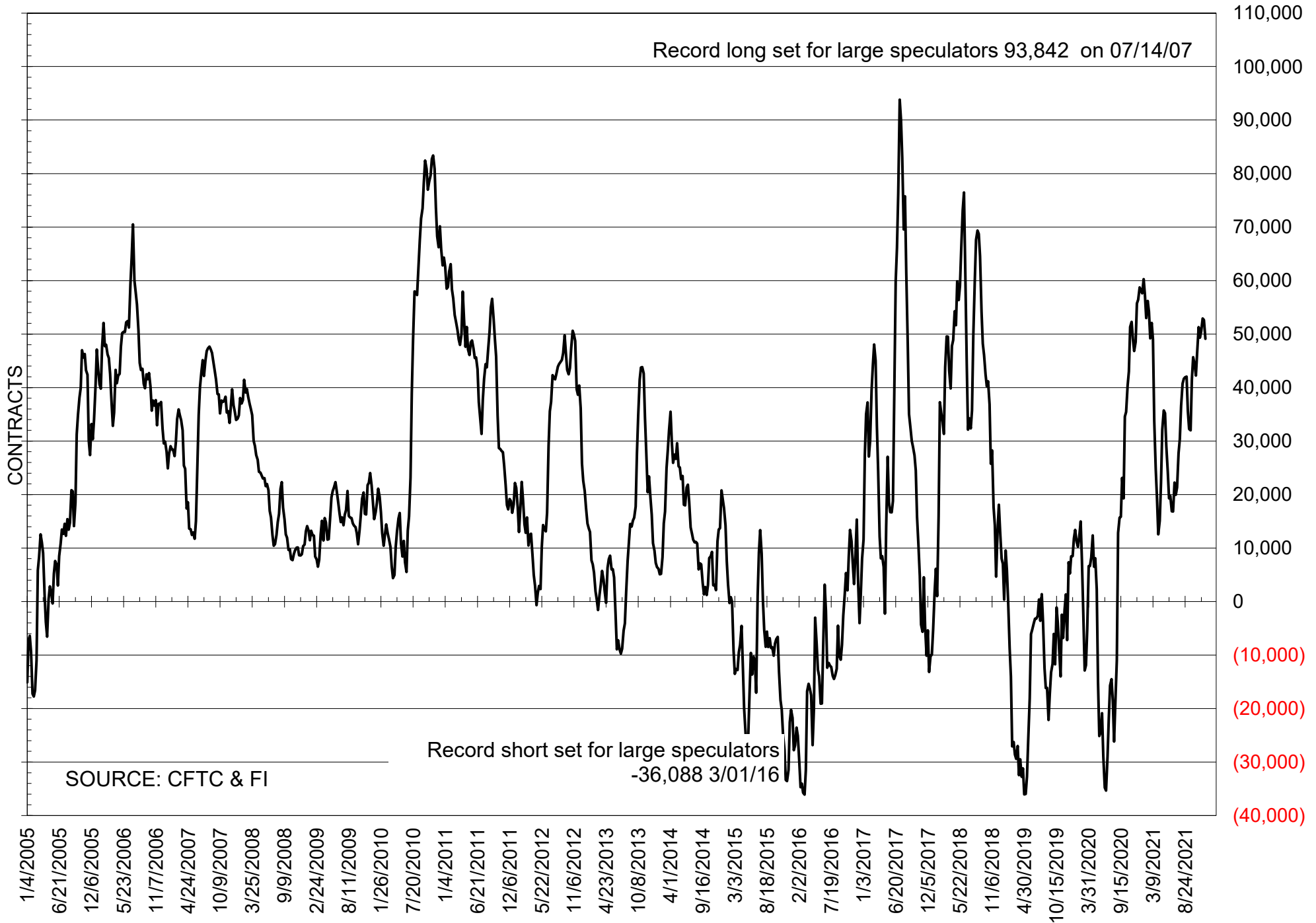
NET POSITION OF LARGE SPECULATORS IN CORN



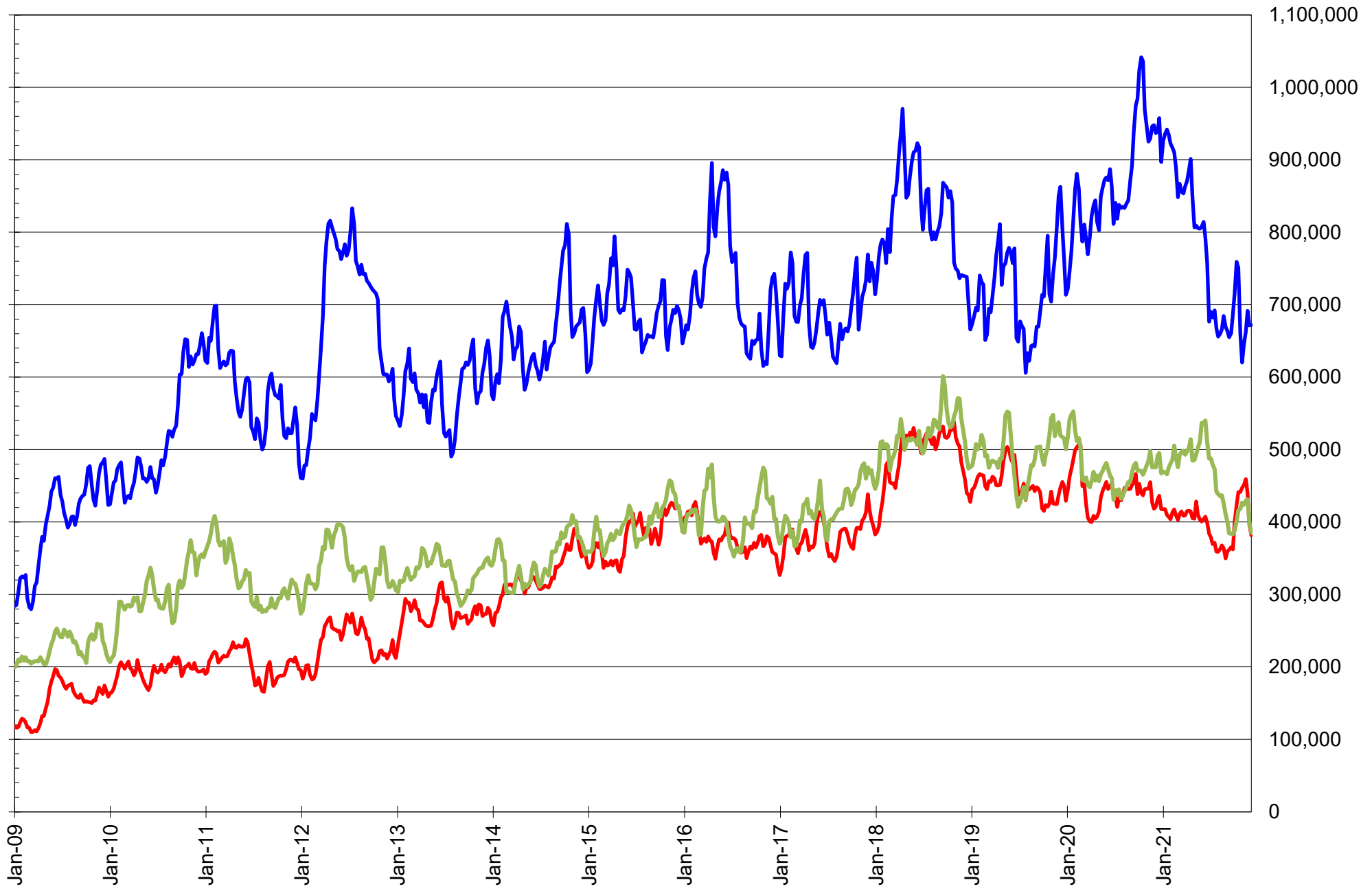
NET POSITION OF FUTURES ONLY LARGE SPECS IN CHICAGO WHEAT



NET POSITION OF LARGE SPECULATORS IN KANSAS CITY WHEAT



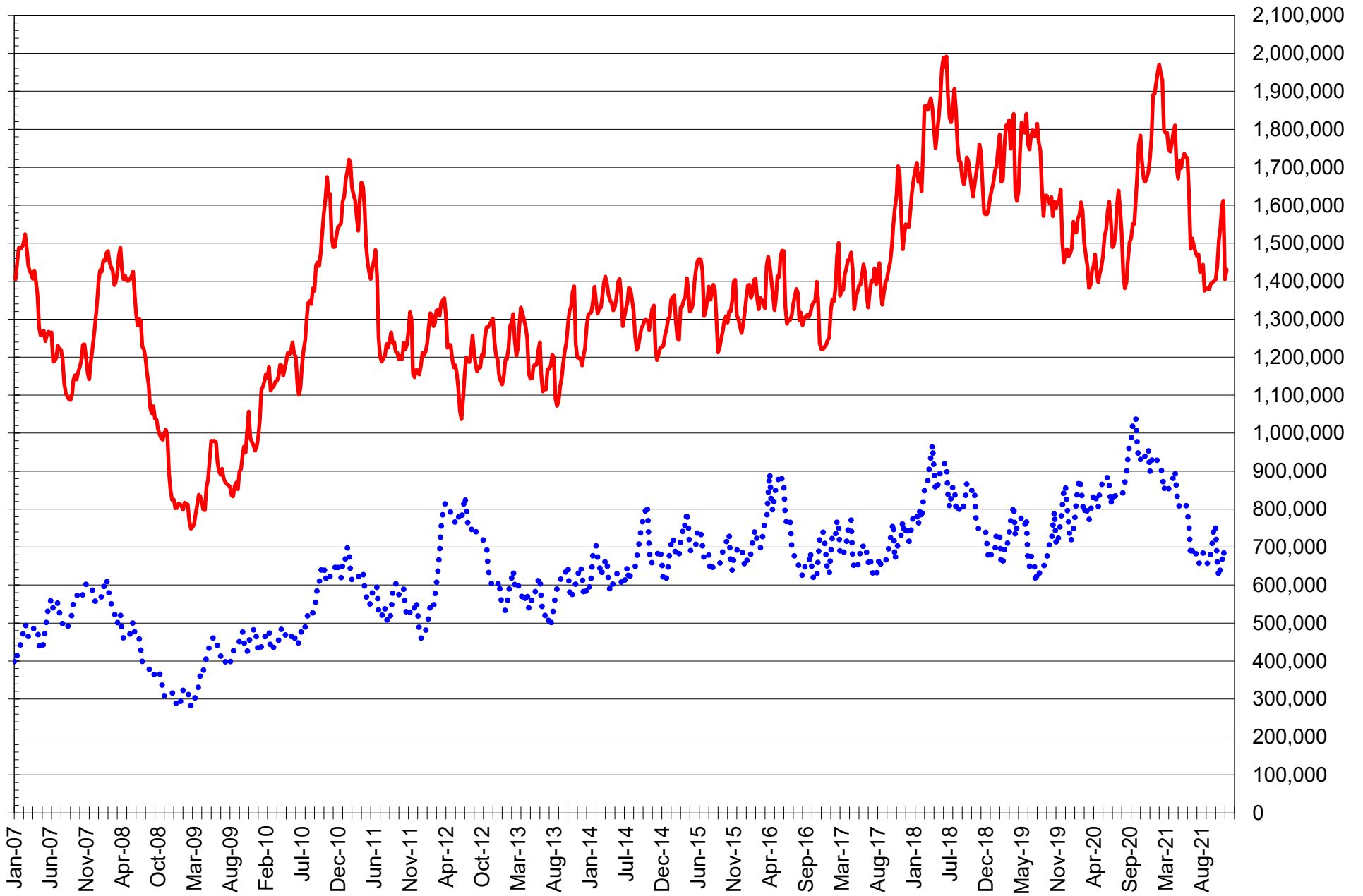
TOTAL OPEN INTEREST IN SOYBEANS, MEAL AND OIL, FUTURES ONLY



SOURCE: CFTC & FI

— SOYBEANS — SOYBEAN MEAL — SOYBEAN OIL

TOTAL OPEN INTEREST IN CORN AND SOYBEANS, FUTURES ONLY



SOURCE: CFTC & FI

— CORN

..... SOYBEANS

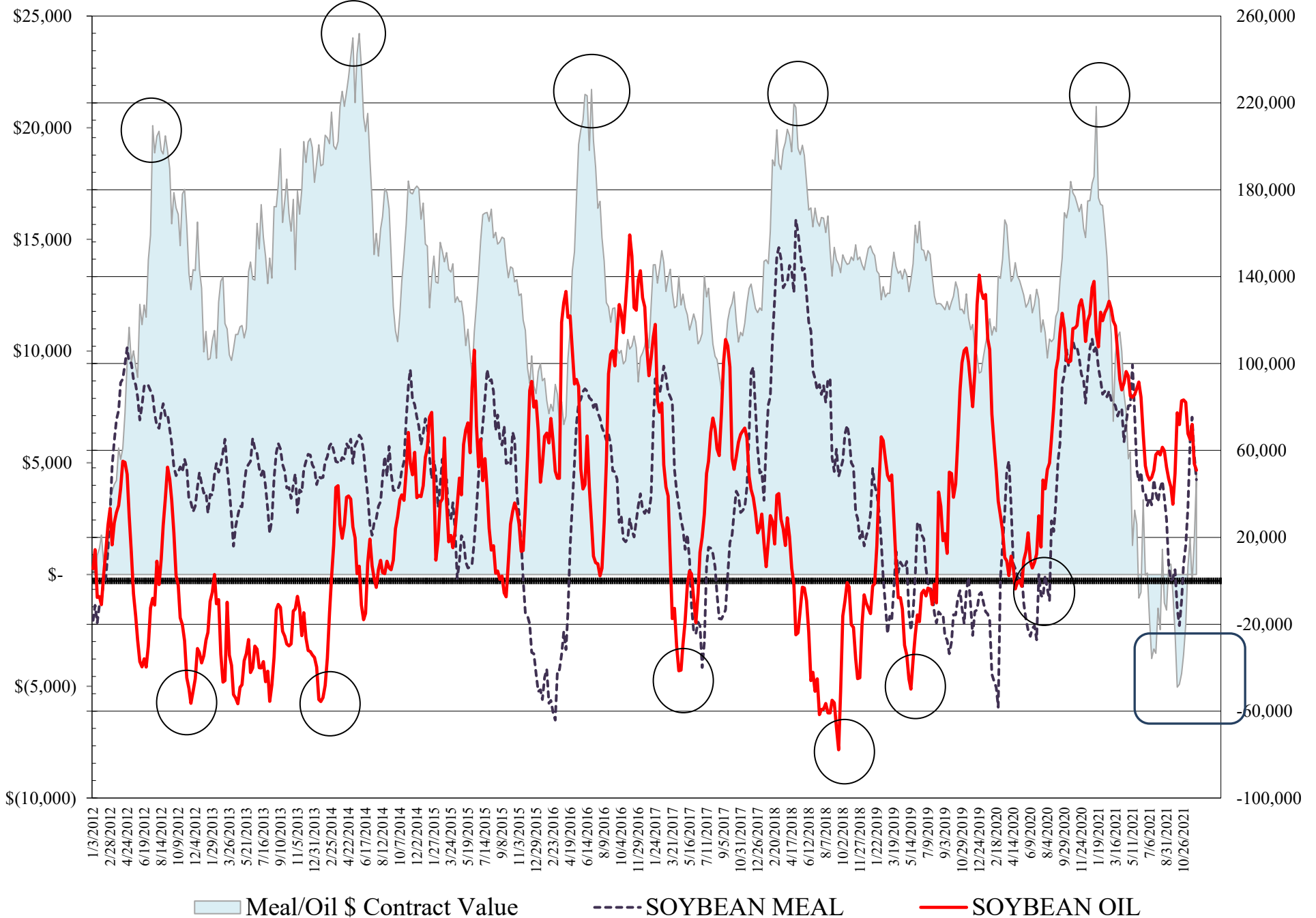
**COMMITMENT OF TRADERS
FUTURES & OPTIONS NET POSITIONS
AS OF 12/07/2021
(IN THOUSAND CONTRACTS)**

	COMMERCIAL				(FUND) NON COMMERCIAL				(SPEC) NON-REPORTABLE			
	7-Dec	30-Nov	23-Nov	16-Nov	7-Dec	30-Nov	23-Nov	16-Nov	7-Dec	30-Nov	23-Nov	16-Nov
WHEAT												
Chicago	-2.8	-4.1	-18.9	-15.3	9.5	11.4	27.5	23.7	-6.7	-7.4	-8.6	-8.4
Kansas City	-51.2	-53.2	-55.4	-53.8	47.9	51.9	53.8	49.9	3.2	1.2	1.6	3.9
Minneapolis	-26.6	-27.6	-30.4	-32.2	20.5	23.3	25.2	25.2	6.1	4.3	5.2	7.0
All Wheat	-80.6	-84.9	-104.7	-101.2	78.0	86.7	106.5	98.7	2.6	-1.8	-1.8	2.4
CORN	-366.9	-335.7	-382.7	-356.7	400.1	381.7	429.5	408.6	-33.2	-46.0	-46.8	-51.9
OATS	-0.4	-0.7	-0.5	-0.7	0.7	0.7	0.7	0.7	-0.3	-0.1	-0.2	0.0
SOYBEANS	-22.5	-17.7	-36.2	-10.3	61.4	59.1	74.9	53.8	-38.9	-41.4	-38.8	-43.5
SOY OIL	-55.1	-57.5	-83.0	-74.6	50.9	53.9	72.0	65.1	4.3	3.6	11.0	9.5
SOY MEAL	-71.2	-84.1	-104.6	-93.6	46.5	57.8	75.3	64.4	24.7	26.3	29.3	29.2

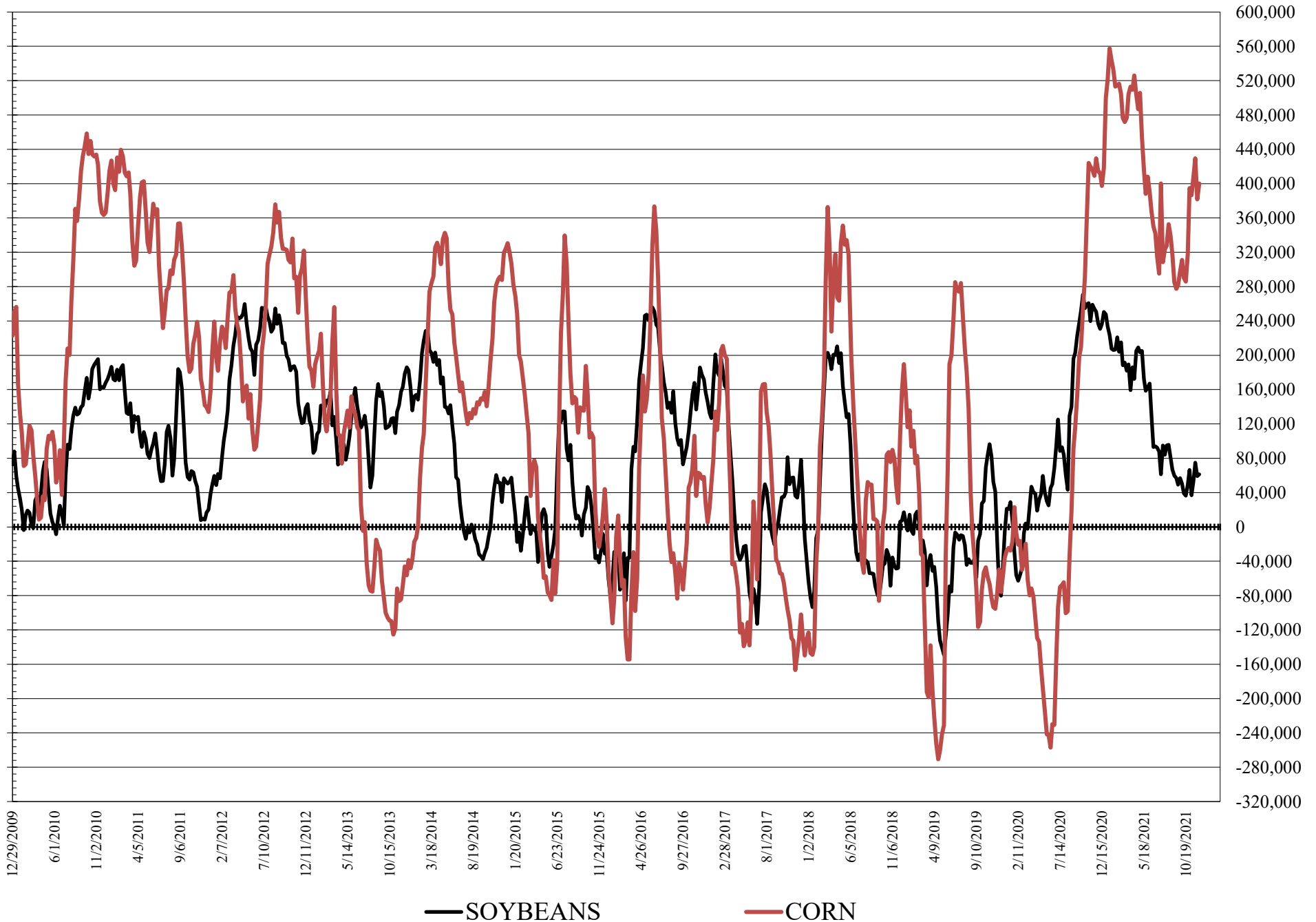
	TOTAL OPEN INTEREST				COMMERCIALS		% HELD BY TRADERS LARGE (FUNDS)		SMALL (NON-REP)	
	7-Dec	30-Nov	23-Nov	16-Nov	LONG	SHORT	LONG	SHORT	LONG	SHORT
WHEAT										
Chicago	440,731	449,530	586,045	565,036	35%	36%	23%	21%	8%	10%
Kansas City	247,516	251,380	285,026	273,576	32%	52%	36%	16%	10%	9%
Minneapolis	79,583	79,324	83,336	82,158	40%	73%	32%	6%	20%	13%
CORN	1,724,182	1,681,394	2,099,574	2,075,468	43%	64%	27%	4%	10%	12%
OATS	4,827	4,947	6,406	6,322						
SOYBEANS	791,580	790,880	823,369	785,185	53%	56%	16%	8%	7%	12%
SOY OIL	425,461	436,518	498,334	495,844	52%	65%	21%	9%	7%	6%
SOY MEAL	418,151	430,317	497,835	519,884	48%	65%	18%	7%	13%	7%

SOURCE: CFTC & FI

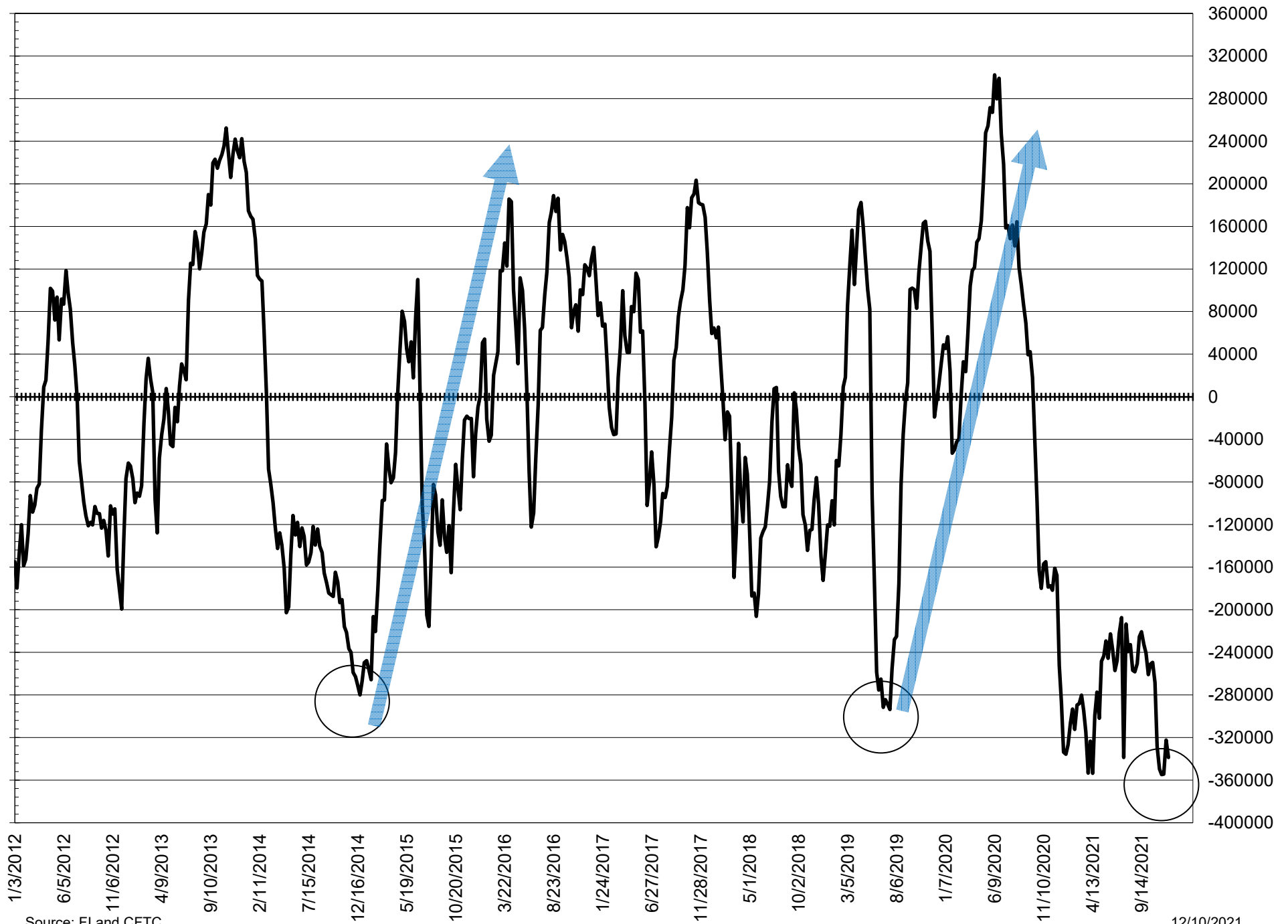
NET POSITION FUTURES AND OPTIONS OF LARGE SPECULATORS IN SOYBEAN MEAL AND SOYBEAN OIL



NET POSITION FUTURES AND OPTIONS OF LARGE SPECULATORS IN SOYBEANS AND CORN



NET POSITION FUTURES AND OPTIONS SPREAD OF LARGE SPECULATORS IN SOYBEANS MINUS CORN



Source: FI and CFTC

12/10/2021

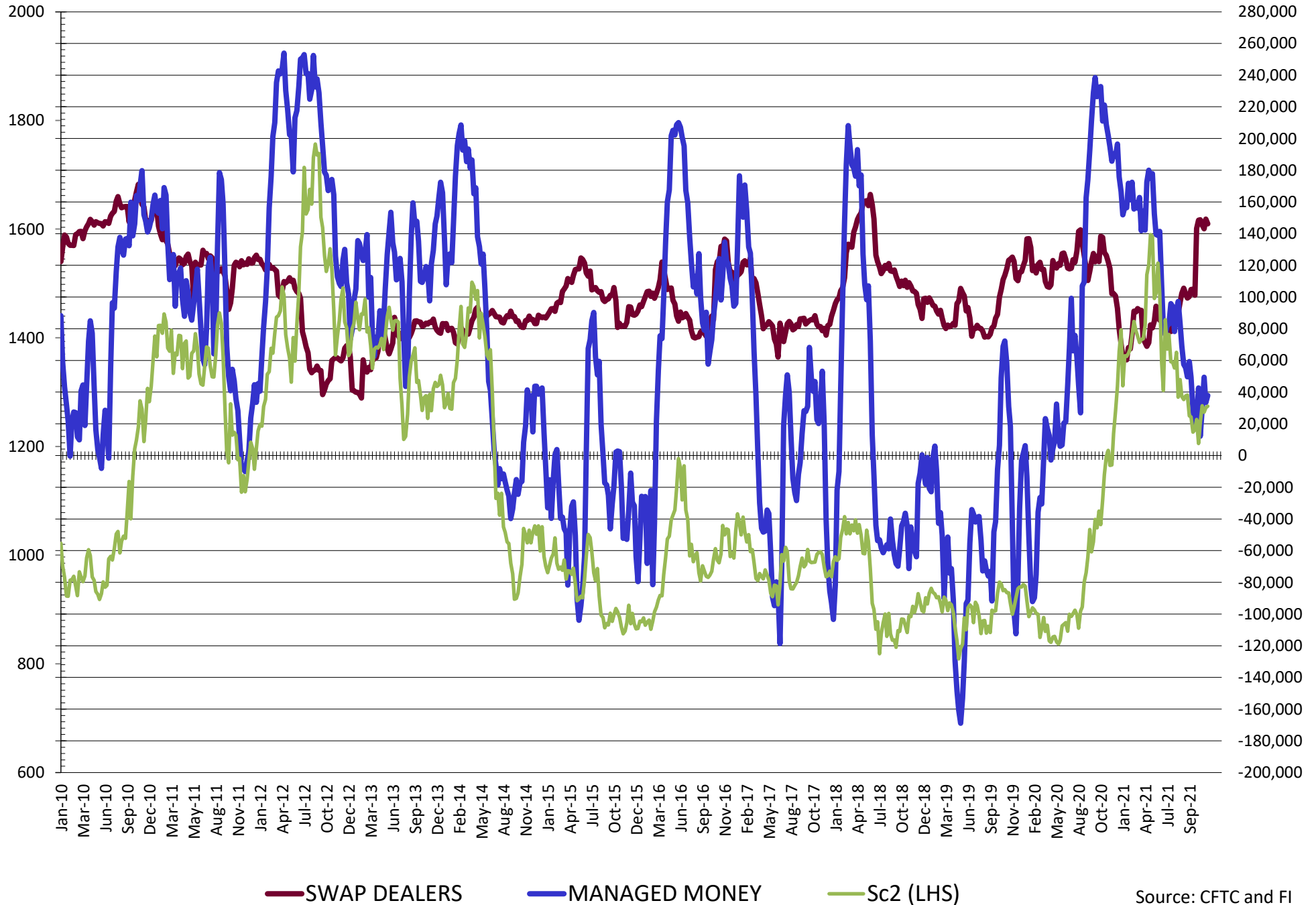
**DISAGGREGATED COMMITMENT OF TRADERS
FUTURES & OPTIONS NET POSITIONS
AS OF 12/07/2021
(IN THOUSAND CONTRACTS)**

	PRODUCER / MERCHANT / PROCESSOR / USER				(INDEX/ETF) SWAP DEALERS				(CTA/CPO/OTHER UNREGISTERED) MANAGED MONEY			
	7-Dec	30-Nov	23-Nov	16-Nov	7-Dec	30-Nov	23-Nov	16-Nov	7-Dec	30-Nov	23-Nov	16-Nov
	WHEAT											
Chicago	(70.6)	(72.6)	(88.3)	(85.2)	67.7	68.6	69.4	70.0	0.7	6.2	18.0	15.3
Kansas City	(79.3)	(80.9)	(82.8)	(84.2)	28.2	27.7	27.4	30.5	59.6	62.4	65.6	60.6
Minneapolis	(27.6)	(29.0)	(31.9)	(33.3)	1.1	1.3	1.5	1.2	12.5	14.2	15.1	15.0
All Wheat	(177.5)	(182.5)	(202.9)	(202.8)	96.9	97.7	98.3	101.6	72.8	82.8	98.7	90.8
CORN	(635.0)	(606.2)	(615.0)	(588.0)	268.1	270.5	232.3	231.3	332.5	315.3	366.7	341.1
OATS	(0.5)	(0.7)	(0.6)	(0.7)	0.0	0.0	0.0	0.0	0.5	0.5	0.5	0.5
SOYBEANS	(168.6)	(166.8)	(179.2)	(155.7)	146.1	149.1	143.0	145.4	37.9	33.4	49.4	29.5
SOY OIL	(151.0)	(156.1)	(182.6)	(173.9)	95.8	98.6	99.6	99.3	58.8	64.4	82.4	76.2
SOY MEAL	(160.5)	(176.8)	(192.5)	(180.5)	89.3	92.7	87.9	86.9	27.9	37.7	53.6	37.5

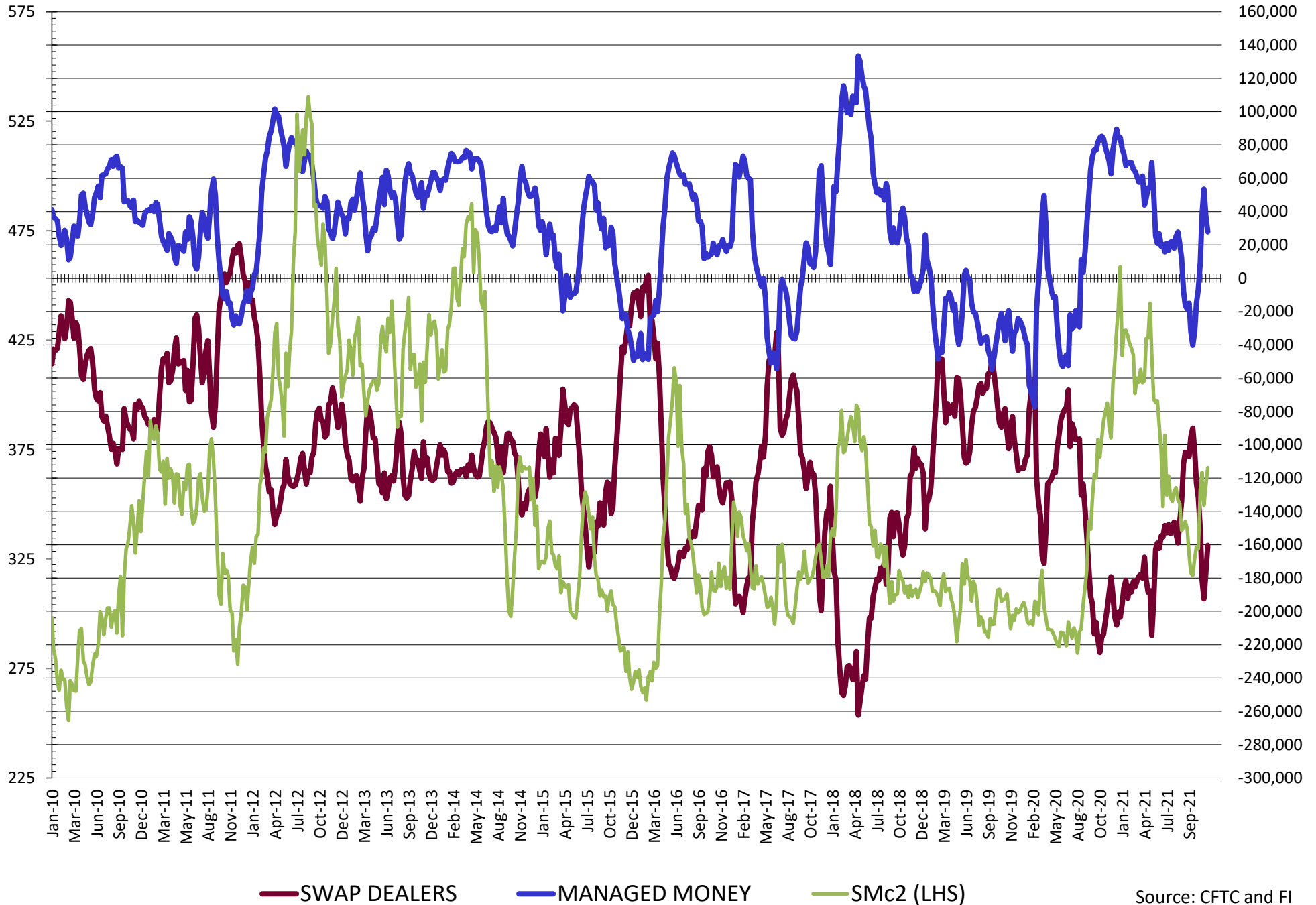
	TOTAL OPEN INTEREST				OTHER REPORTABLE				NON REPORTABLE			
	7-Dec	30-Nov	23-Nov	16-Nov	7-Dec	30-Nov	23-Nov	16-Nov	7-Dec	30-Nov	23-Nov	16-Nov
	WHEAT											
Chicago	440,731	449,530	586,045	565,036	8.8	5.2	9.6	8.4	(6.7)	(7.4)	(8.6)	(8.4)
Kansas City	247,516	251,380	285,026	273,576	(11.6)	(10.4)	(11.8)	(10.7)	3.2	1.2	1.6	3.9
Minneapolis	79,583	79,324	83,336	82,158	8.0	9.1	10.1	10.2	6.1	4.3	5.2	7.0
All Wheat	767,830	780,234	954,407	920,770	5.2	3.9	7.8	8.0	2.6	(1.8)	(1.8)	2.4
CORN	1,724,182	1,681,394	2,099,574	2,075,468	67.6	66.4	62.8	67.4	(33.2)	(46.0)	(46.0)	(46.0)
OATS	4,827	4,947	6,406	6,322	0.2	0.2	0.2	0.2	(0.3)	(0.1)	(0.2)	(0.0)
SOYBEANS	791,580	790,880	823,369	785,185	23.5	25.7	25.6	24.3	(38.9)	(41.4)	(38.8)	(43.5)
SOY OIL	425,461	436,518	498,334	495,844	(8.0)	(10.5)	(10.4)	(11.2)	4.3	3.6	11.0	9.5
SOY MEAL	418,151	430,317	497,835	519,884	18.6	20.1	21.7	26.9	24.7	26.3	29.3	29.2

SOURCE: CFTC & FI

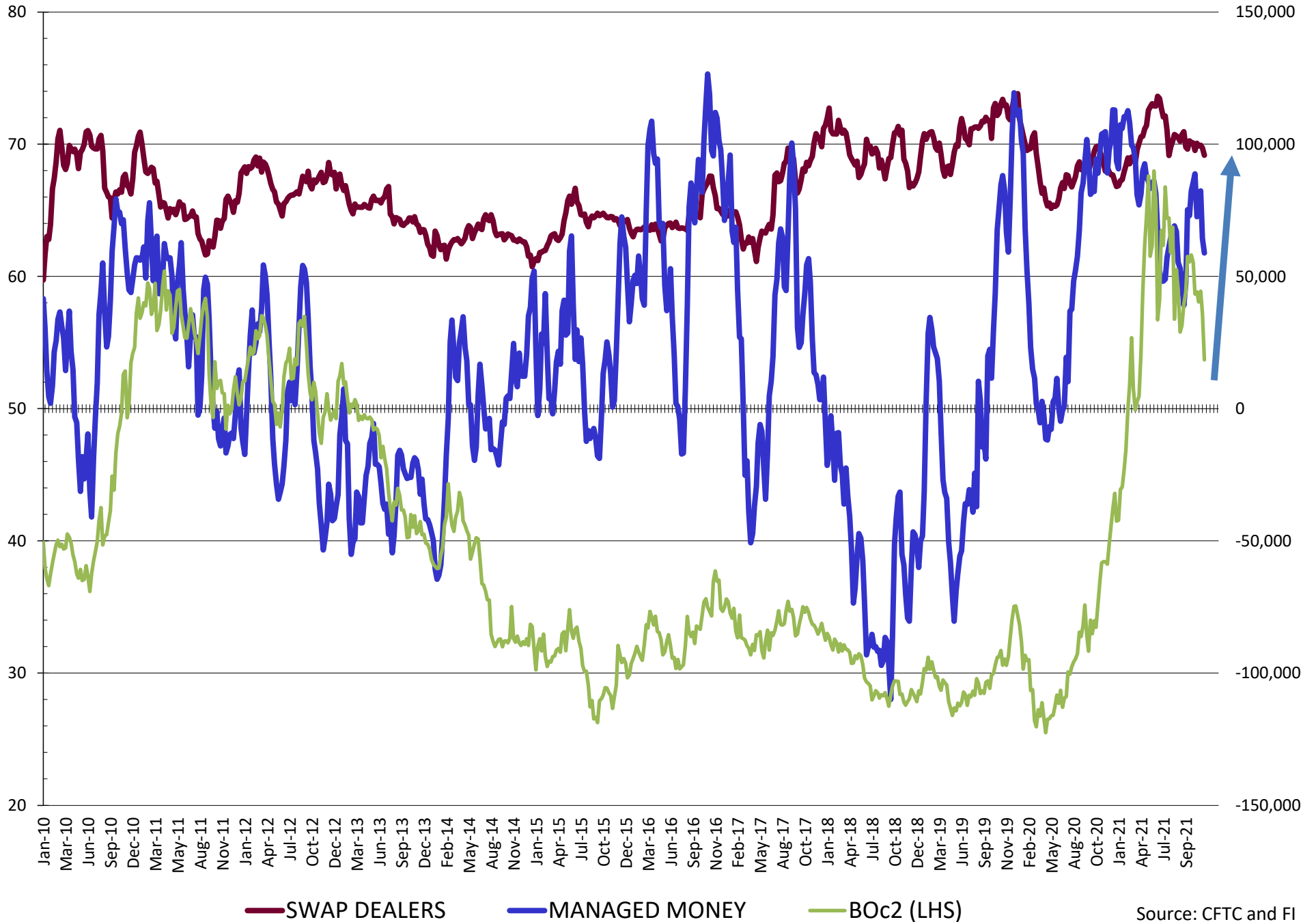
NET POSITION FUTURES AND OPTIONS OF SWAP AND MANAGED FUNDS IN SOYBEANS



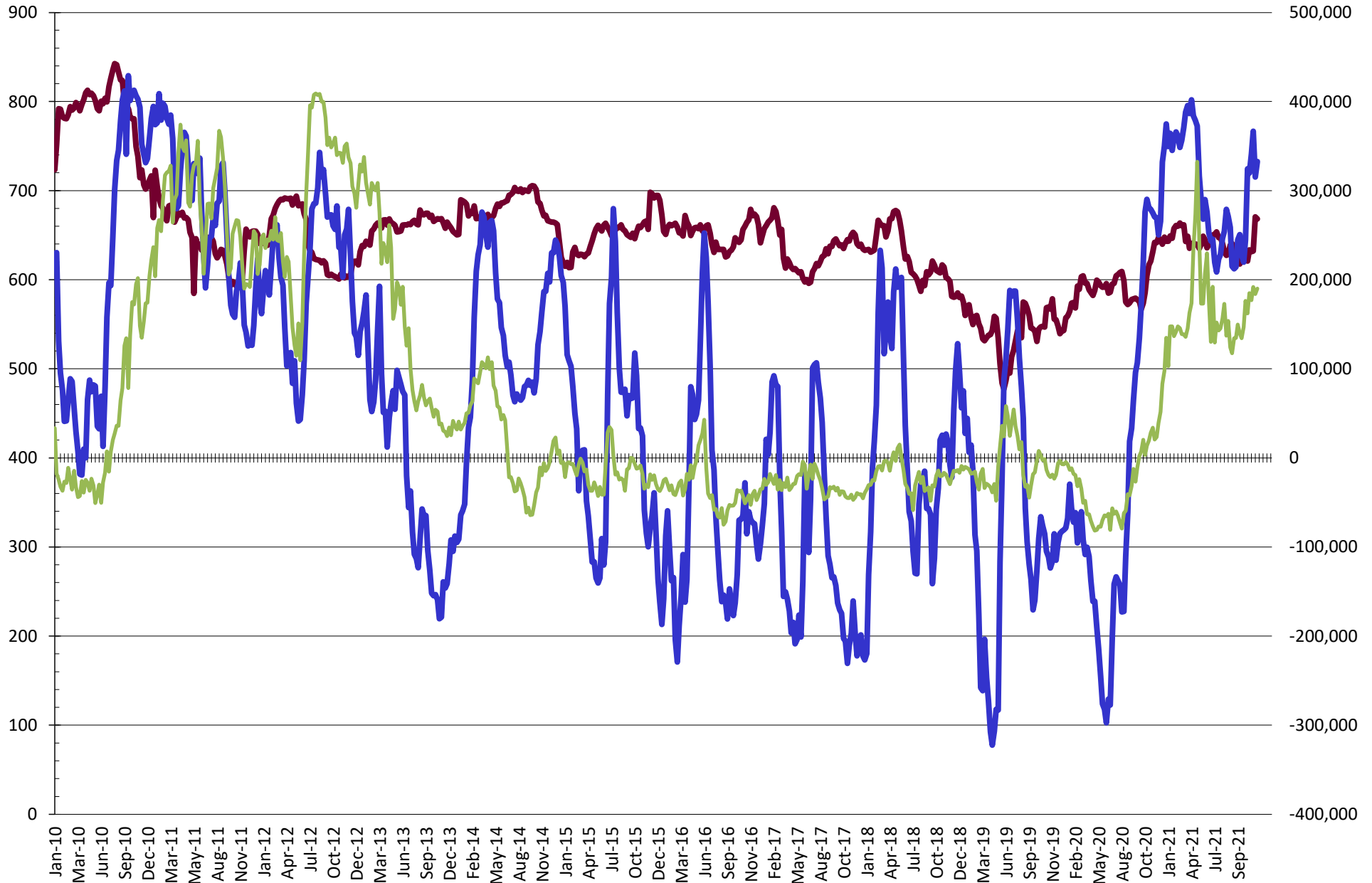
NET POSITION FUTURES AND OPTIONS OF SWAP AND MANAGED FUNDS IN SOYBEAN MEAL



NET POSITION FUTURES AND OPTIONS OF SWAP AND MANAGED FUNDS IN SOYBEAN OIL

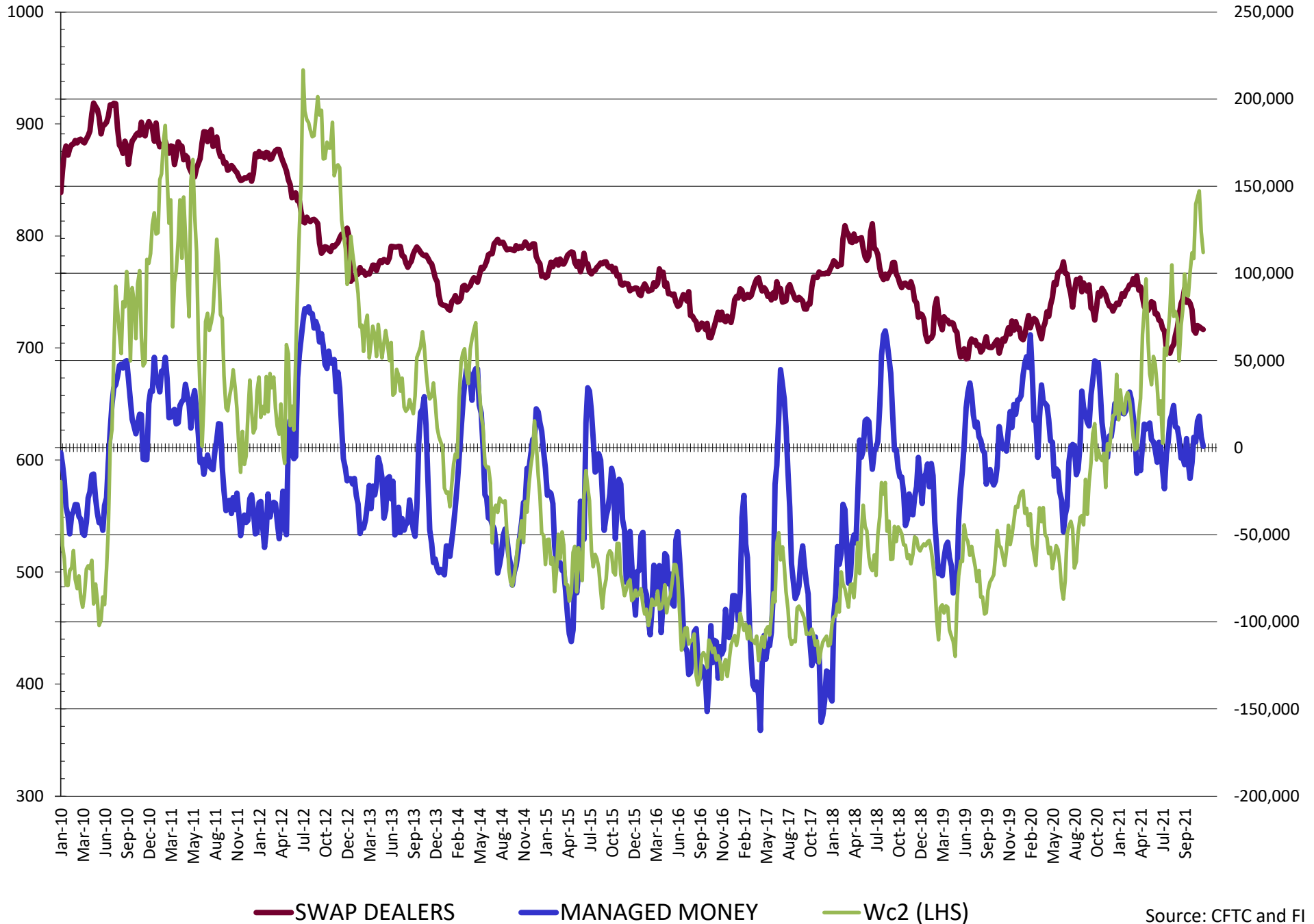


NET POSITION FUTURES AND OPTIONS OF SWAP AND MANAGED FUNDS IN CORN

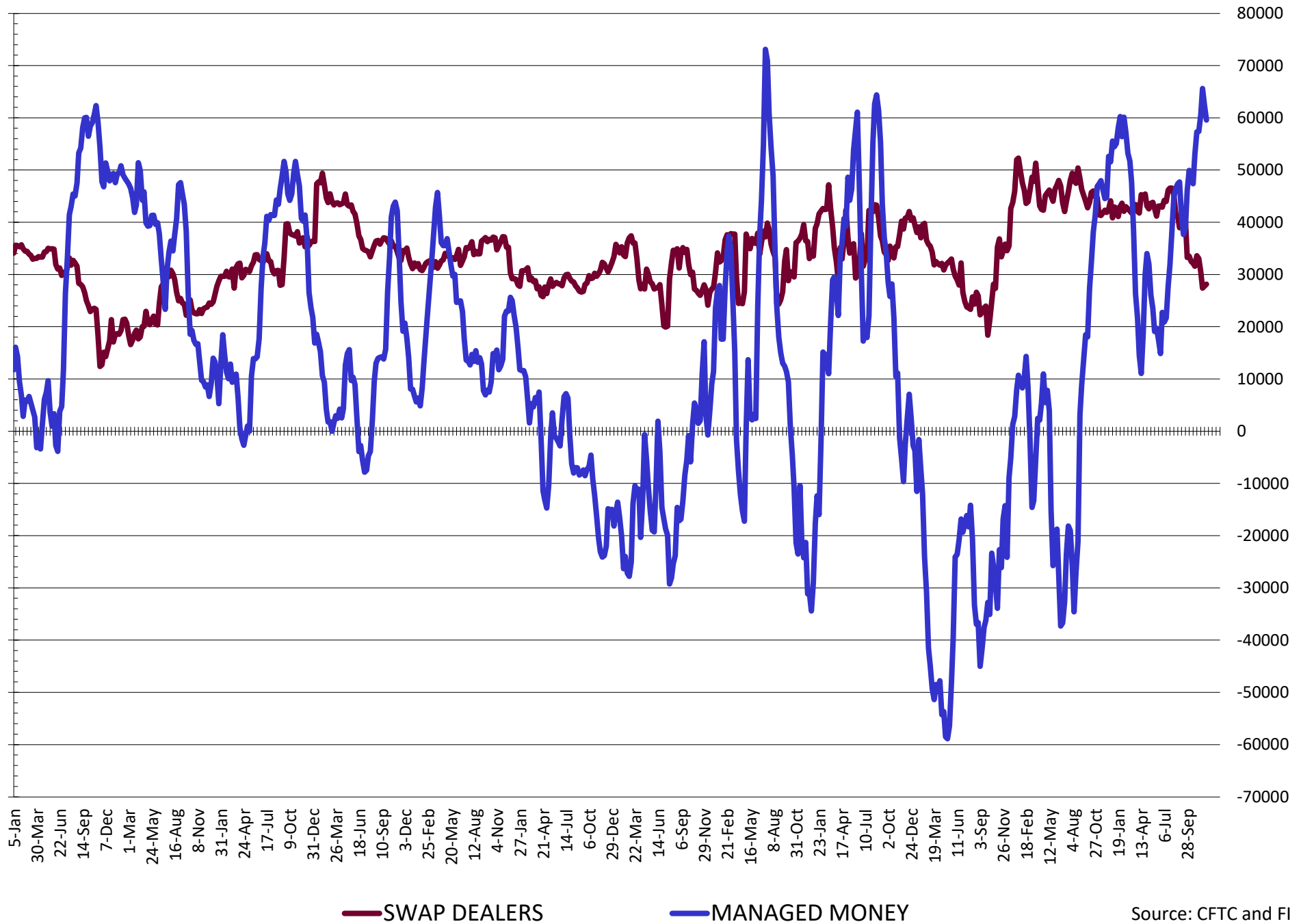


— SWAP DEALERS
 — MANAGED MONEY
 — Cc2 (LHS)

NET POSITION FUTURES AND OPTIONS OF SWAP AND MANAGED FUNDS IN CHICAGO WHEAT

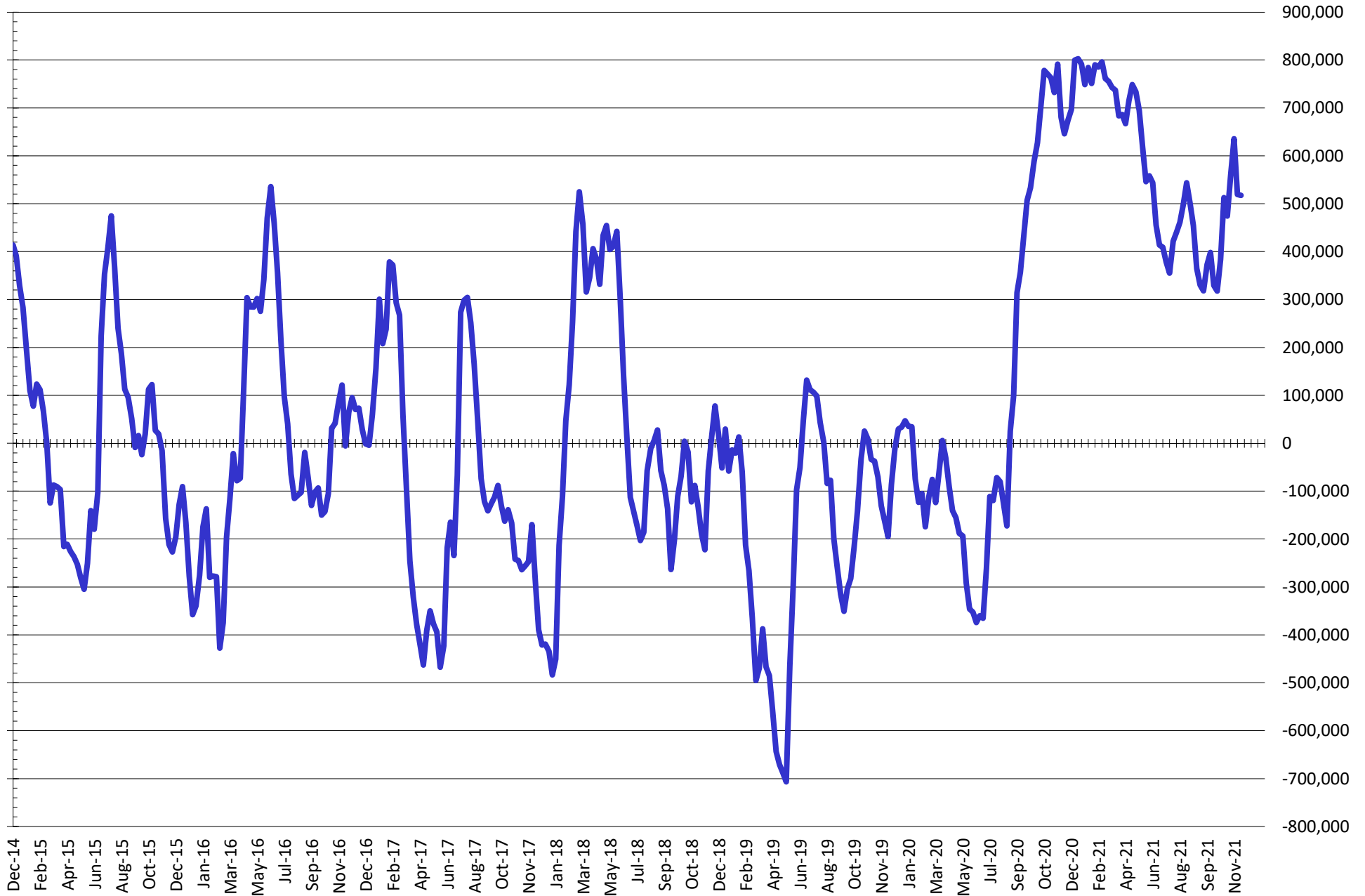


NET POSITION FUTURES AND OPTIONS OF SWAP AND MANAGED FUNDS IN KANSAS WHEAT



Source: CFTC and FI
12/10/2021

NET POSITION FUTURES AND OPTIONS OF SWAP AND MANAGED FUNDS IN COMBINED SRW, HRW, CORN, SOYBEANS, SOYMEAL AND SOYOIL



— Net Managed Money

Source: CFTC and FI
12/10/2021

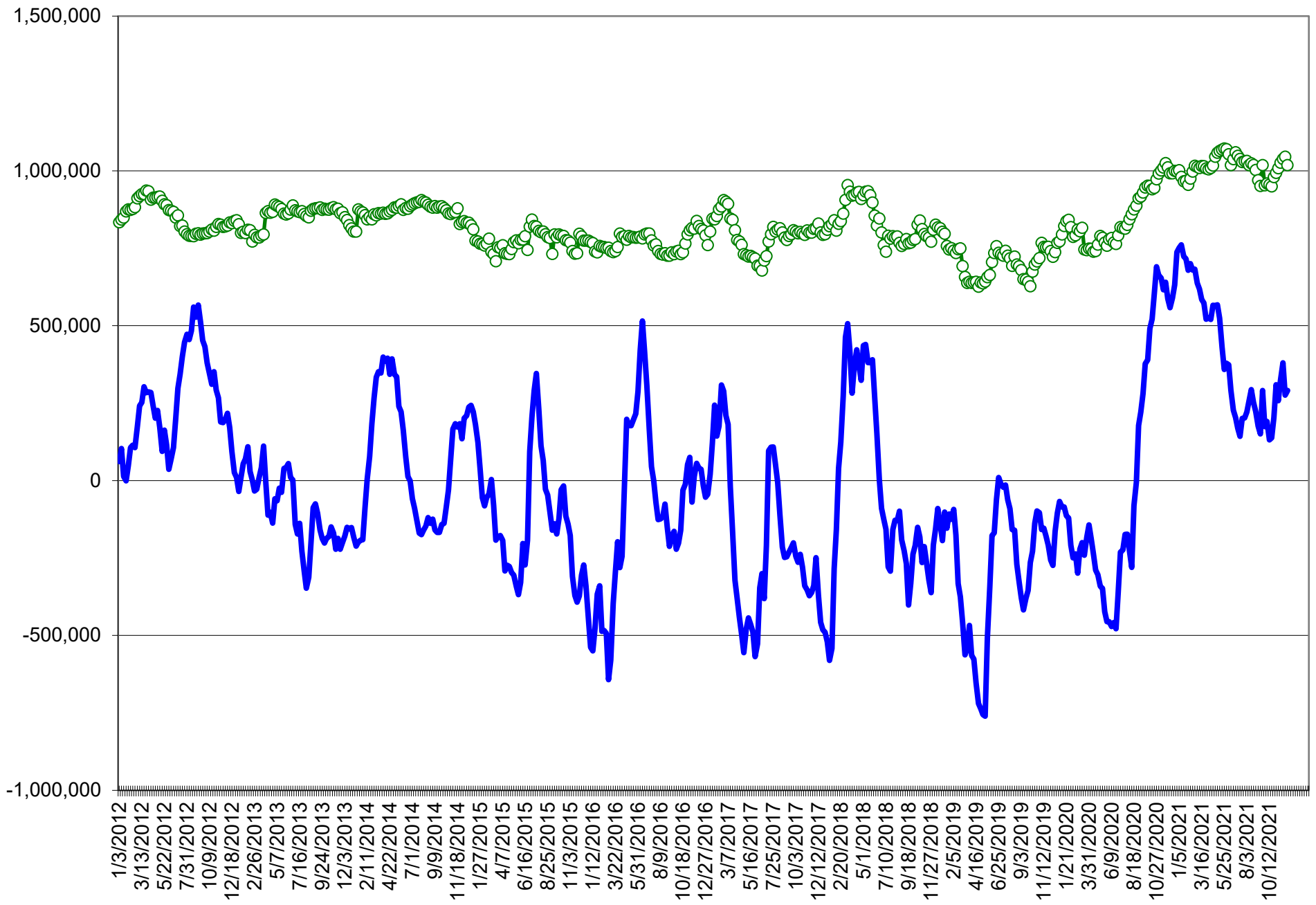
COMMITMENT OF TRADERS
FUTURES & OPTIONS NET POSITIONS (INDEX BROKEN OUT)
AS OF 12/07/2021
(IN THOUSAND CONTRACTS)

	COMMERCIAL				(FUND) NON COMMERCIAL				(SPEC) NON-REPORTABLE			
	7-Dec	30-Nov	23-Nov	16-Nov	7-Dec	30-Nov	23-Nov	16-Nov	7-Dec	30-Nov	23-Nov	16-Nov
	WHEAT											
Chicago	(88.6)	(90.9)	(109.2)	(106.9)	(21.4)	(22.1)	(6.0)	(8.3)	(6.7)	(7.4)	(8.6)	(8.4)
Kansas City	(91.3)	(92.8)	(95.3)	(94.2)	29.2	33.2	33.6	29.3	3.2	1.2	1.6	3.9
Minneapolis	-	-	-	-	-	-	-	-	-	-	-	-
All Wheat	(179.9)	(183.7)	(204.5)	(201.1)	7.8	11.1	27.6	21.0	(3.4)	(6.1)	(7.0)	(4.6)
CORN	(635.6)	(606.7)	(634.4)	(607.9)	243.0	221.6	263.4	250.4	(33.2)	(46.0)	(46.8)	(51.9)
OATS	-	-	-	-	-	-	-	-	-	-	-	-
SOYBEANS	(157.8)	(156.6)	(175.3)	(149.4)	13.5	6.6	17.8	(3.7)	(38.9)	(41.4)	(38.8)	(43.5)
SOY OIL	(142.4)	(148.5)	(173.6)	(165.4)	17.5	16.6	35.6	30.3	4.3	3.6	11.0	9.5
SOY MEAL	(146.7)	(162.3)	(179.3)	(165.2)	8.7	19.8	35.9	26.0	24.7	26.3	29.3	29.2

	TOTAL OPEN INTEREST				(INDEX) COMMERCIAL INDEX TRADERS				(INDEX) % NET OF TOTAL OPEN INTEREST			
	7-Dec	30-Nov	23-Nov	16-Nov	7-Dec	30-Nov	23-Nov	16-Nov	7-Dec	30-Nov	23-Nov	16-Nov
	WHEAT											
Chicago	440,731	449,530	586,045	565,036	116.7	120.4	123.8	123.6	26.5%	26.8%	21.1%	21.9%
Kansas City	247,516	251,380	285,026	273,576	58.8	58.4	60.1	61.0	23.8%	23.2%	21.1%	22.3%
Minneapolis	-	-	-	-	-	-	-	-	-	-	-	-
All Wheat	688,247	700,910	871,071	838,612	175.5	178.7	183.9	184.7	25.5%	25.5%	21.1%	22.0%
CORN	1,724,182	1,681,394	2,099,574	2,075,468	425.8	431.0	417.8	409.4	24.7%	25.6%	19.9%	19.7%
OATS	-	-	-	-	-	-	-	-	-	-	-	-
SOYBEANS	791,580	790,880	823,369	785,185	183.3	191.5	196.2	196.7	23.2%	24.2%	23.8%	25.0%
SOY OIL	425,461	436,518	498,334	495,844	120.6	128.3	126.9	125.6	28.4%	29.4%	25.5%	25.3%
SOY MEAL	418,151	430,317	497,835	519,884	113.2	116.2	114.1	109.9	27.1%	27.0%	22.9%	21.1%

SOURCE: CFTC & FI

NET POSITION FUTURES AND OPTIONS OF SPECULATORS AND INDEX FUNDS IN COMBINED SRW, HRW, CORN, SOYBEANS, SOYMEAL AND SOYOIL



Source: CFTC and FI

○ Net Index
 — Net Speculator

Traditional Daily Estimate of Funds 12/7/21

	(Neg)-"Short"	Pos-"Long"			
Actual less Est.	1.9	(8.6)	(14.6)	(10.5)	(10.6)
	Corn	Bean	Chi. Wheat	Meal	Oil
Actual	410.8	59.7	15.7	52.6	62.4
8-Dec	2.0	8.0	(8.0)	6.0	(5.0)
9-Dec	3.0	(2.0)	(10.0)	2.0	(2.0)
10-Dec	0.0	3.0	4.0	7.0	(4.0)
13-Dec					
14-Dec					
FI Est. of Futures Only 12/7/21	415.8	68.7	1.7	67.6	51.4
FI Est. Futures & Options	405.1	70.4	(4.4)	61.4	39.8
Futures only record long "Traditional Funds"	547.7 1/26/2021	280.9 11/10/2020	86.5 8/7/2018	167.5 5/1/2018	160.2 11/1/2016
Futures only record short	(235.0) 6/9/2020	(118.3) 4/30/2019	(130.0) 4/25/2017	(49.5) 3/1/2016	(69.8) 9/18/2018
Futures and options record net long	557.6 1/12/2021	270.9 10/6/2020	64.8 8/7/2012	132.1 5/1/2018	159.2 1/1/2016
Futures and options record net short	(270.6) 4/26/2019	(132.0) 4/30/2019	(143.3) 4/25/2017	(64.1) 3/1/2016	(77.8) 9/18/2018

Managed Money Daily Estimate of Funds 12/7/21

	Corn	Bean	Chi. Wheat	Meal	Oil
Latest CFTC Fut. Only	320.9	36.5	(1.2)	28.0	58.3
Latest CFTC F&O	332.5	37.9	0.7	27.9	58.8
FI Est. Managed Fut. Only	326	45	(15)	43	47
FI Est. Managed Money F&O	338	47	(13)	43	48

Index Funds Latest Positions (as of last Tuesday)

Index Futures & Options	425.8	183.3	116.7	NA	120.6
Change From Previous Week	(5.3)	(8.3)	(3.7)	NA	(7.6)

Source: Reuters, CFTC & FI (FI est. are noted with latest date)

Disclaimer

TO CLIENTS/PROSPECTS OF FUTURES INTERNATIONAL, SEE RISK DISCLOSURE BELOW:

THIS COMMUNICATION IS CONVEYED AS A SOLICITATION FOR ENTERING INTO A DERIVATIVES TRANSACTION.

Any trading recommendations and market or other information to Customer by Futures International (FI), although based upon information obtained from sources believed by FI to be reliable may not be accurate and may be changed without notice to customer. FI makes no guarantee as to the accuracy or completeness of any of the information or recommendations furnished to Customer. Customer understands that FI, its managers, employees and/or affiliates may have a position in commodity futures, options or other derivatives which may not be consistent with the recommendations furnished by FI to Customer.

The risk of trading futures and options and other derivatives involves a substantial risk of loss and is not suitable for all persons. In purchasing an option, the risk is limited to the premium paid, and all commissions and fees involved with the trade. When an option is shorted or written, the writer of the option has unlimited risk with respect to the option written. The use of options strategies such as a straddles and strangles involve multiple option positions and may substantially increase the amount of commissions and fees paid to execute the strategy. Option prices do not necessarily move in tandem with cash or futures prices. Each person must consider whether a particular trade, combination of trades or strategy is suitable for that person's financial means and objectives.

This material may include discussions of seasonal patterns, however, futures prices have already factored in the seasonal aspects of supply and demand, and seasonal patterns are no indication of future market trends. Finally, past performance is not indicative of future results.

This communication may contain links to third party websites which are not under the control of FI and FI is not responsible for their content. Products and services are offered only in jurisdictions where solicitation and sale are lawful, and in accordance with applicable laws and regulations in each such jurisdiction.