

	Current	Δ from YD	Δ from 7D Avg
Nat Gas Prompt	\$ 3.77	▼ \$ (0.04)	▼ \$ (0.18)

	Current	Δ from YD	Δ from 7D Avg
WTI Prompt	\$ 71.53	▼ \$ (0.83)	▲ \$ 3.1

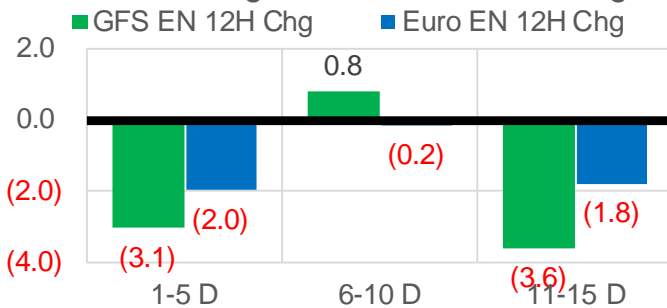
	Current	Δ from YD	Δ from 7D Avg
Brent Prompt	\$ 74.94	▼ \$ (0.88)	▲ \$ 3.0

Page Menu

- [Short-term Weather Model Outlooks](#)
- [Lower 48 Component Models](#)
- [Regional S/D Models Storage Projection](#)
- [Weather Model Storage Projection](#)
- [Supply – Demand Trends](#)
- [Nat Gas Options Volume and Open Interest](#)
- [Nat Gas Futures Open Interest](#)
- [Price Summary](#)

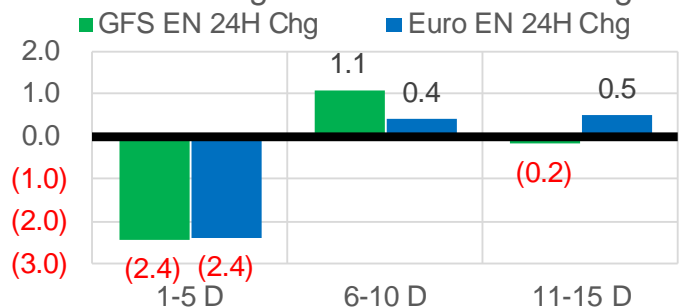
Vs. 12H Ago

L48 Region - 00z TDD vs 12H Ago



Vs. 24H Ago

L48 Region - 00z TDD vs 24H Ago



	Current	Δ from YD	Δ from 7D Avg
US Dry Production	96.0	▼ -0.49	▼ -0.58

	Current	Δ from YD	Δ from 7D Avg
US Power Burns	29.7	▼ -1.68	▲ 1.16

	Current	Δ from YD	Δ from 7D Avg
US ResComm	37.2	▼ -3.70	▲ 3.70

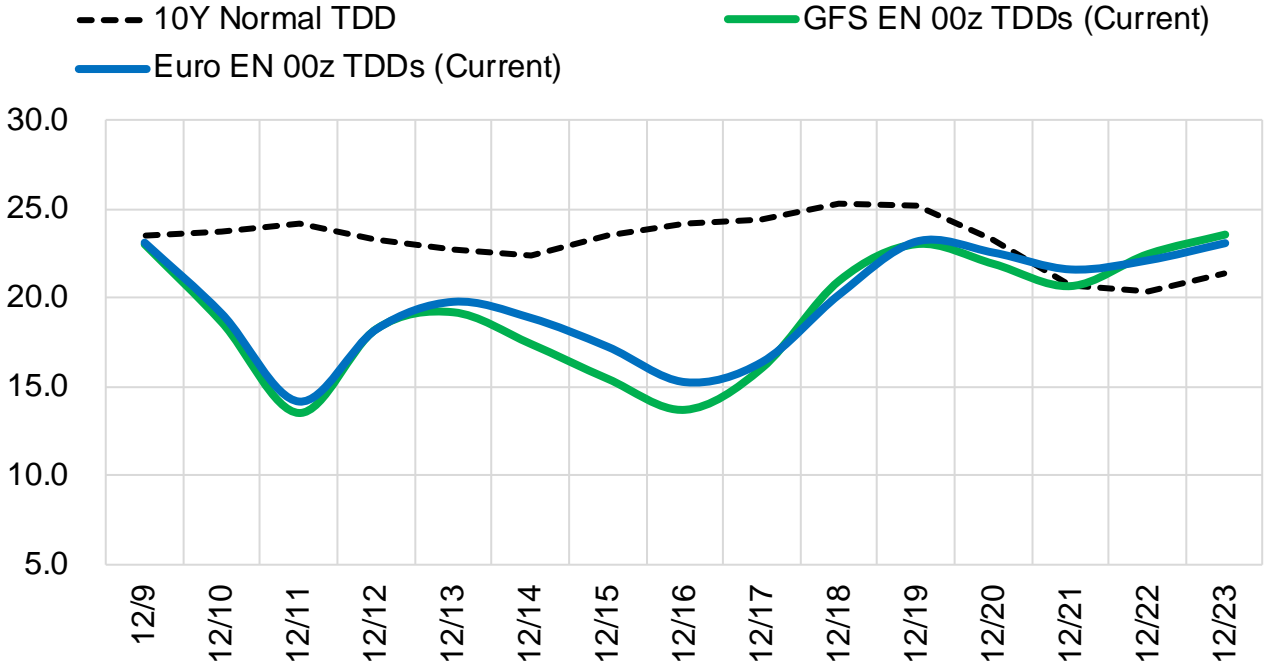
	Current	Δ from YD	Δ from 7D Avg
Canadian Imports	5.2	▼ -0.74	▼ -0.01

	Current	Δ from YD	Δ from 7D Avg
Net LNG Exports	12.2	▼ -0.17	▲ 0.23

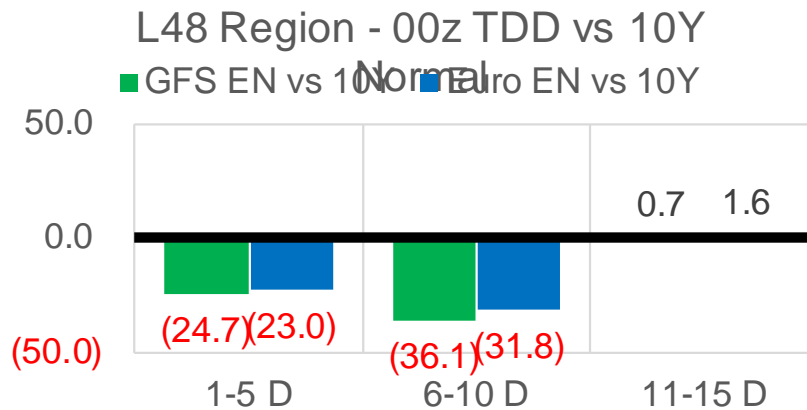
	Current	Δ from YD	Δ from 7D Avg
Mexican Exports	6.5	▼ -0.13	▲ 0.02

Short-term Weather Model Outlooks (00z)

L48 Region



Vs. 10Y Normal



Source: WSI , Bloomberg

Lower 48 Component Models

Daily Balances

	3-Dec	4-Dec	5-Dec	6-Dec	7-Dec	8-Dec	9-Dec	DoD	vs. 7D
Lower 48 Dry Production	96.8	96.7	96.8	96.7	96.5	96.5	96.0	▼ -0.5	▼ -0.7
Canadian Imports	5.0	5.1	5.0	4.9	5.6	5.9	5.2	▼ -0.7	▼ -0.1
L48 Power	27.1	26.1	25.9	28.8	32.6	31.3	29.7	▼ -1.7	▲ 1.0
L48 Residential & Commercial	29.5	31.6	30.3	34.7	43.1	41.0	37.2	▼ -3.7	▲ 2.2
L48 Industrial	22.4	22.8	22.9	23.7	24.5	24.0	23.5	▼ -0.4	▲ 0.1
L48 Lease and Plant Fuel	5.2	5.2	5.3	5.2	5.2	5.2	5.2	▼ 0.0	▼ -0.1
L48 Pipeline Distribution	2.8	2.9	2.8	3.2	3.8	3.6	3.3	▼ -0.3	▲ 0.2
L48 Regional Gas Consumption	87.0	88.6	87.1	95.6	109.2	105.1	99.0	▼ -6.1	▲ 3.5
Net LNG Delivered	12.12	12.41	12.40	12.17	11.20	12.35	12.19	▼ -0.2	▲ 0.1
Total Mexican Exports	6.7	6.1	6.1	6.5	6.8	6.7	6.5	▼ -0.1	▲ 0.0
Implied Daily Storage Activity	-4.1	-5.3	-3.8	-12.7	-25.1	-21.7	-16.5		
EIA Reported Daily Storage Activity									
Daily Model Error									

EIA Storage Week Balances

	29-Oct	5-Nov	12-Nov	19-Nov	26-Nov	3-Dec	WoW	vs. 4W
Lower 48 Dry Production	94.5	95.1	95.9	95.1	96.2	96.9	▲ 0.7	▲ 1.4
Canadian Imports	5.6	5.5	5.1	4.9	5.5	5.6	▲ 0.0	▲ 0.3
L48 Power	29.0	29.6	27.5	27.8	29.2	28.8	▼ -0.4	▲ 0.3
L48 Residential & Commercial	18.0	24.3	23.6	28.0	33.3	33.3	▲ 0.0	▲ 6.0
L48 Industrial	19.6	21.2	21.4	23.1	22.4	22.1	▼ -0.3	▲ 0.1
L48 Lease and Plant Fuel	5.1	5.2	5.2	5.2	5.2	5.3	▲ 0.0	▲ 0.1
L48 Pipeline Distribution	2.5	2.9	2.7	3.0	3.3	3.3	▼ -0.1	▲ 0.3
L48 Regional Gas Consumption	74.2	83.2	80.3	87.0	93.5	92.7	▼ -0.8	▲ 6.7
Net LNG Exports	10.8	10.9	11.2	11.1	11.7	11.8	▲ 0.1	▲ 0.6
Total Mexican Exports	6.9	6.1	6.2	6.1	6.0	6.4	▲ 0.4	▲ 0.3
Implied Daily Storage Activity	8.3	0.4	3.2	-4.2	-9.5	-8.5	1.1	
EIA Reported Daily Storage Activity	9.0	1.0	3.7	-3.0	-8.4			
Daily Model Error	-0.7	-0.6	-0.5	-1.2	-1.1			

Monthly Balances

	2Yr Ago Dec-19	LY Dec-20	Aug-21	Sep-21	Oct-21	Nov-21	MTD Dec-21	MoM	vs. LY
Lower 48 Dry Production	95.9	91.6	94.0	93.4	94.0	95.9	96.5	▲ 0.7	▲ 5.0
Canadian Imports	4.5	5.8	5.1	5.1	5.4	5.3	5.2	▼ -0.1	▼ -0.6
L48 Power	29.3	28.0	40.1	33.0	30.2	28.8	28.6	▼ -0.2	▲ 0.6
L48 Residential & Commercial	39.1	40.3	7.9	8.7	13.2	29.6	33.1	▲ 3.5	▼ -7.2
L48 Industrial	24.6	23.4	21.5	20.3	20.3	22.2	23.0	▲ 0.7	▼ -0.4
L48 Lease and Plant Fuel	5.2	5.0	5.1	5.1	5.1	5.2	5.2	▲ 0.0	▲ 0.3
L48 Pipeline Distribution	3.4	3.4	2.6	2.3	2.3	3.1	3.1	▼ 0.0	▼ -0.3
L48 Regional Gas Consumption	101.6	100.0	77.2	69.4	71.3	88.9	92.9	▲ 4.0	▼ -7.1
Net LNG Exports	7.8	11.0	10.5	10.3	10.6	11.4	11.9	▲ 0.5	▲ 0.9
Total Mexican Exports	4.9	5.8	6.9	6.7	6.6	6.1	6.5	▲ 0.4	▲ 0.7
Implied Daily Storage Activity	-13.8	-19.5	4.6	12.1	10.9	-5.2	-9.6		
EIA Reported Daily Storage Activity									
Daily Model Error									

Source: Bloomberg, analytix.ai

Daily Average Generation Data

Nuclear Generation Daily Average - GWh (NRC)

	1-Dec	2-Dec	3-Dec	4-Dec	5-Dec	6-Dec	7-Dec	DoD	vs. 7D
NRC Nuclear Daily Output	86.8	86.5	87.4	87.5	88.1	87.9	87.2	-0.7	-0.2
NRC Nuclear Max Capacity	104.9	104.9	104.9	104.9	104.9	104.9	104.9	0.0	0.0
NRC Nuclear Outage	18.1	18.4	17.5	17.4	16.8	16.9	17.7	0.7	0.2
NRC % Nuclear Cap Utilization	88.3	87.9	88.9	89.0	89.6	89.4	88.7	-0.7	-0.2

Wind Generation Daily Average - MWh (EIA)

	1-Dec	2-Dec	3-Dec	4-Dec	5-Dec	6-Dec	7-Dec	DoD	vs. 7D
CALI Wind	369	263	623	704	602	1177	995	-183	372
TEXAS Wind	5946	7886	12447	7675	18043	13906	8370	-5537	-2614
US Wind	45656	47349	45523	38850	68914	60665	38188	-22476	-12971

Generation Daily Average - MWh (EIA)

	1-Dec	2-Dec	3-Dec	4-Dec	5-Dec	6-Dec	7-Dec	DoD	vs. 7D
US Wind	45656	47349	45523	38850	68914	60665	38188	-22476	-12971
US Solar	9193	12016	10287	9198	9884	7170	5865	-1305	-3760
US Petroleum	2306	2963	3276	2798	2104	3216	4893	1677	2116
US Other	8379	8324	7889	7727	7981	8230	8412	183	324
US Coal	82813	78513	78051	78452	71350	80899	91628	10729	13282
US Nuke	91851	91591	92126	92072	93159	92410	92882	472	681
US Hydro	28222	26996	29962	27512	26979	29335	30500	1165	2332
US Gas	166052	151902	149897	146489	126485	152327	184712	32385	35853

See National Wind and Nuclear daily charts

Source: Bloomberg, analytix.ai

Storage Week Average Generation Data

Nuclear Generation Weekly Average - GWh (NRC)

	29-Oct	5-Nov	12-Nov	19-Nov	26-Nov	3-Dec	WoW	WoW Bcf/d Impact
NRC Nuclear Daily Output	71.6	72.2	79.8	83.9	86.1	87.8	1.7	-0.3
NRC Nuclear Max Capacity	104.9	104.9	104.9	104.9	104.9	104.9	0.0	
NRC Nuclear Outage	33.3	32.7	25.1	21.0	18.8	17.1	-1.7	
NRC % Nuclear Cap Utilization	0.1	0.1	0.1	0.1	0.1	0.1	0.0	

Wind Generation Weekly Average - MWh (EIA)

	29-Oct	5-Nov	12-Nov	19-Nov	26-Nov	3-Dec	WoW	WoW Bcf/d Impact
CALI Wind	2314	1669	1805	862	1496	363	-1134	0.2
TEXAS Wind	15462	8472	12032	13655	14691	8733	-5958	1.1
US Wind	54004	35306	51002	58367	56260	47211	-9049	1.6
					-2107.9			
					-4%			

Generation Weekly Average - MWh (EIA)

	29-Oct	5-Nov	12-Nov	19-Nov	26-Nov	3-Dec	WoW	WoW Bcf/d Impact
US Wind	54004	35306	51002	58367	56260	47211	-9049	1.6
US Solar	10168	9994	10015	10068	9086	10136	1050	-0.2
US Petroleum	2815	3517	2532	2555	3342	3167	-176	0.0
US Other	10213	9302	8205	7849	8442	8405	-36	0.0
US Coal	75327	80024	77955	77863	82301	82307	6	0.0
US Nuke	74294	76091	84337	88331	91252	92817	1564	-0.3
US Hydro	23806	25818	25422	26227	27837	26769	-1067	0.2
US Gas	154022	160442	145216	145263	148208	154939	6731	-1.2

See National Wind and Nuclear daily charts

Source: Bloomberg, analytix.ai

Monthly Average Generation Data

Nuclear Generation Monthly Average - GWh (NRC)

	2Yr Ago		LY		MTD			Last 30 days	MoM (MTD vs LY)	Last 30 days YoY
	Same 30 days	Same 30 days	Sep-21	Oct-21	Nov-21	Dec-21				
	NRC Nuclear Daily Output	88.1	85.2	87.1	75.5	82.7	87.6			
NRC Nuclear Max Capacity	104.9	104.9	104.9	104.9	104.9	104.9	104.9	0.0	0.0	
NRC Nuclear Outage	16.8	19.7	17.8	29.4	22.2	17.3	18.8	-4.9	-0.9	
NRC % Nuclear Cap Utilization	89.6	86.7	88.6	76.8	84.1	89.1	87.6	5.0	0.9	

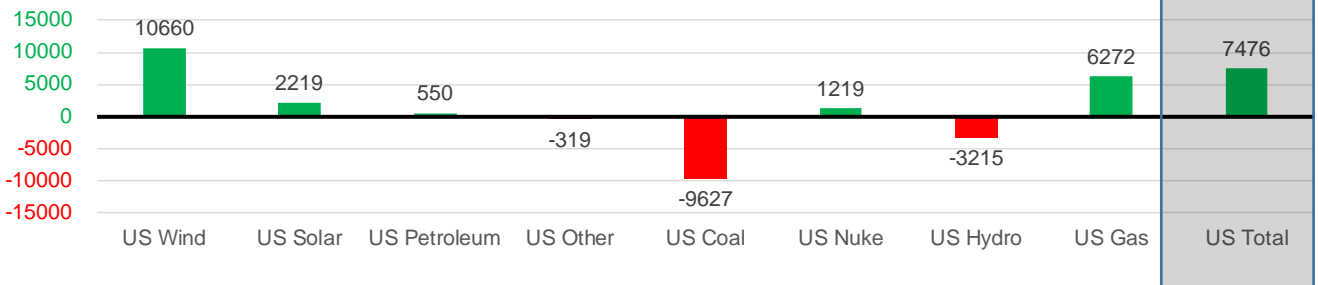
Wind Generation Monthly Average - MWh (EIA)

	2Yr Ago		LY		MTD			Last 30 days	MoM (MTD vs LY)	Last 30 days YoY
	Same 30 days	Same 30 days	Sep-21	Oct-21	Nov-21	Dec-21				
	CALI Wind	786	1049	1964	1765	1252	747			
TEXAS Wind	9062	9473	9213	11565	11869	10112	12019	-1756	2546	
US Wind	38629	41926	39362	43142	49974	46836	52587	-3138	10660	

Generation Monthly Average - MWh (EIA)

	2Yr Ago		LY		MTD			Last 30 days	MoM (MTD vs LY)	Last 30 days YoY
	Same 30 days	Same 30 days	Sep-21	Oct-21	Nov-21	Dec-21				
	US Wind	38629	41926	39362	43142	49974	46836			
US Solar	4584	7094	13345	11059	9687	8371	9312	▲ 941.1	▲ 2219	
US Petroleum	2343	2585	2517	3239	3045	3483	3135	▼ -348	▲ 550	
US Other	7963	8511	9021	11109	8435	8196	8192	▼ -5	▼ -319	
US Coal	99330	90665	109915	84433	80848	82774	81038	▼ -1735	▼ -9627	
US Nuke	95661	89733	90072	77089	87404	92428	90952	▼ -1476	▲ 1219	
US Hydro	27791	30675	25622	24078	26595	28945	27460	▼ -1485	▼ -3215	
US Gas	150937	145364	173566	159045	151462	160810	151636	▲ 1643	▲ 6272	
US Total	427252	417016	463578	413351	417920	431452	424491	▼ -2464	▲ 7476	

Last 30 days YoY



See National Wind and Nuclear daily charts

Source: Bloomberg, analytix.ai

Regional S/D Models Storage Projection

Week Ending 3-Dec

	Daily Raw Storage	Daily Adjustment Factor	Daily Average Storage Activity (Adjusted) *	Weekly Adjusted Storage Activity
L48	-8.7	1.2	-7.6	-53
East	-5.4	1.7	-3.7	-26
Midwest	-3.5	0.3	-3.2	-22
Mountain	3.3	-3.6	-0.2	-2
South Central	-4.2	2.9	-1.2	-9
Pacific	0.9	-0.1	0.8	6

*Adjustment Factor is calculated based on historical regional deltas

U.S. underground natural gas storage facilities by type (July 2015)

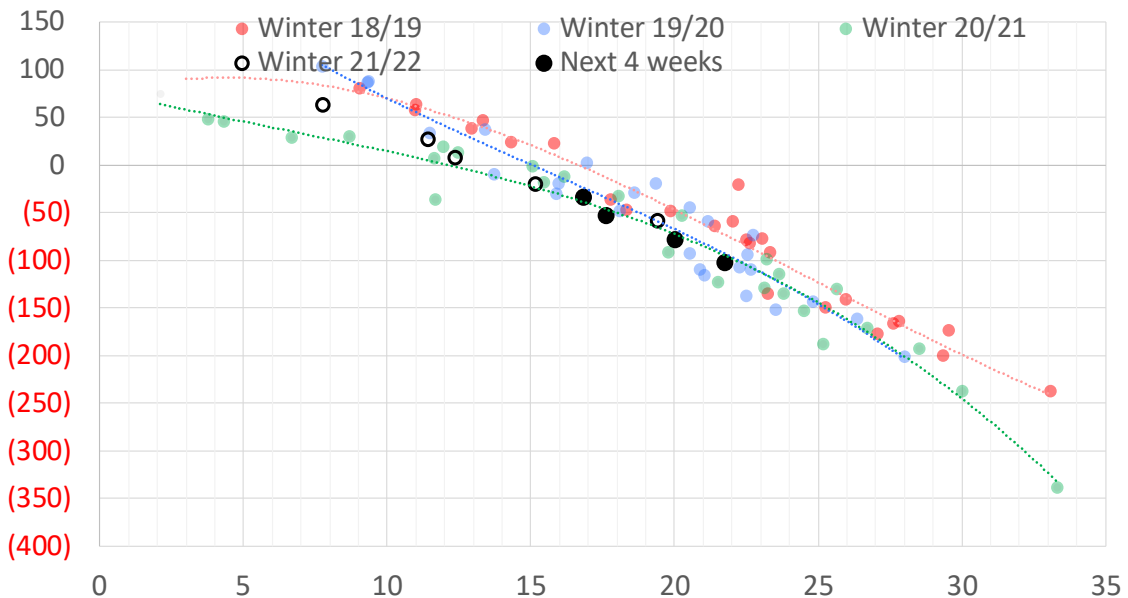


Weather Model Storage Projection

Next report
and beyond

Week Ending	GWDDs	Week Storage Projection
03-Dec	18	-53
10-Dec	20	-78
17-Dec	17	-33
24-Dec	22	-102

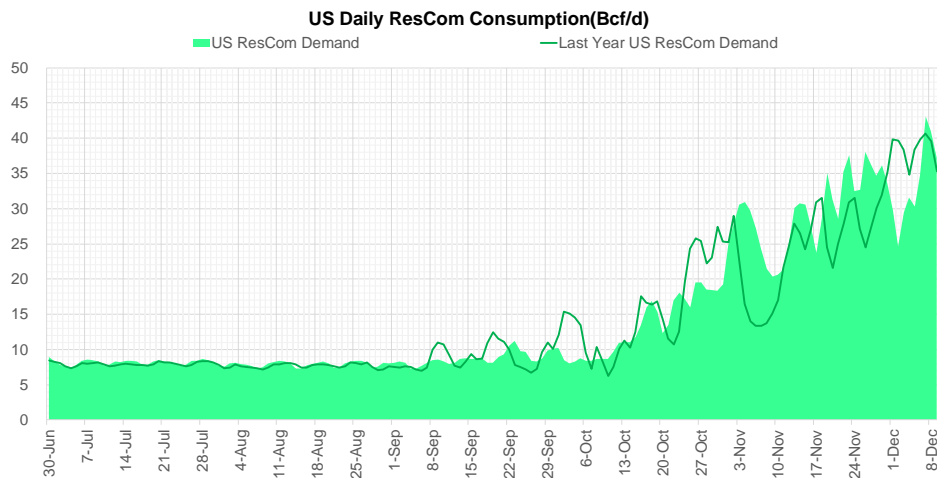
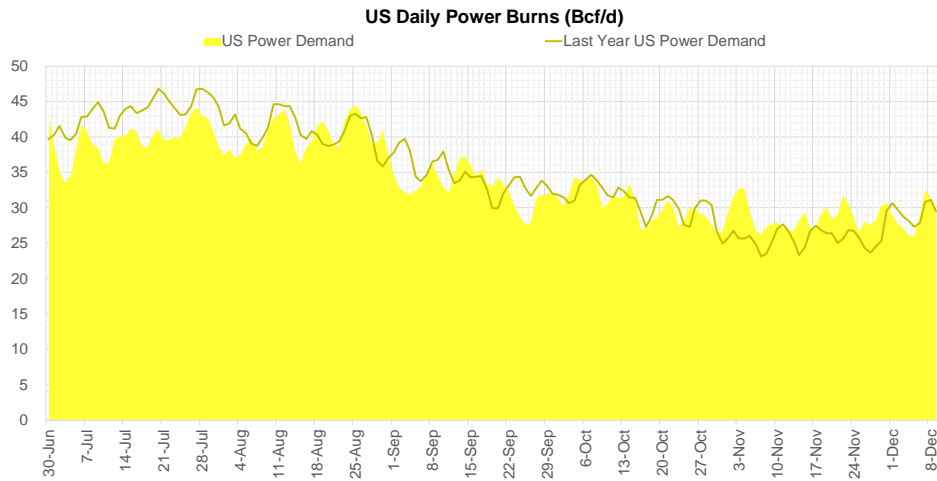
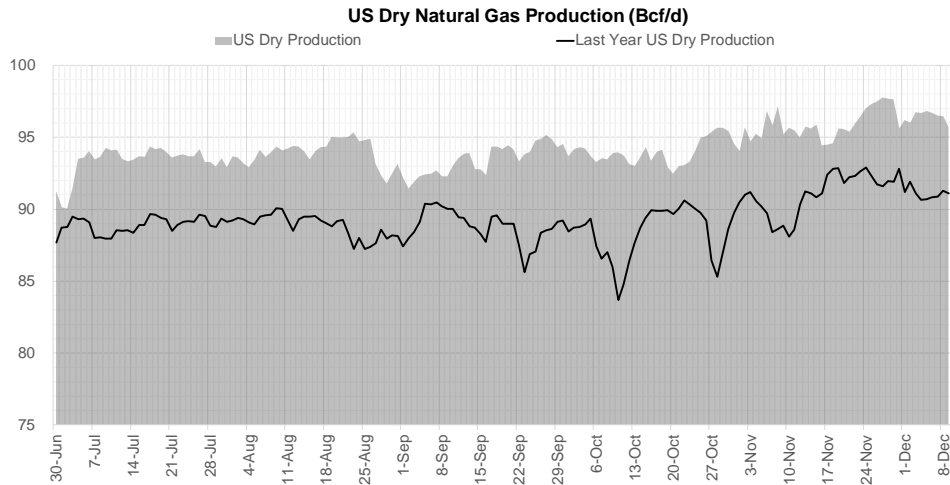
Weather Storage Model - Next 4 Week Forecast



Go to larger image



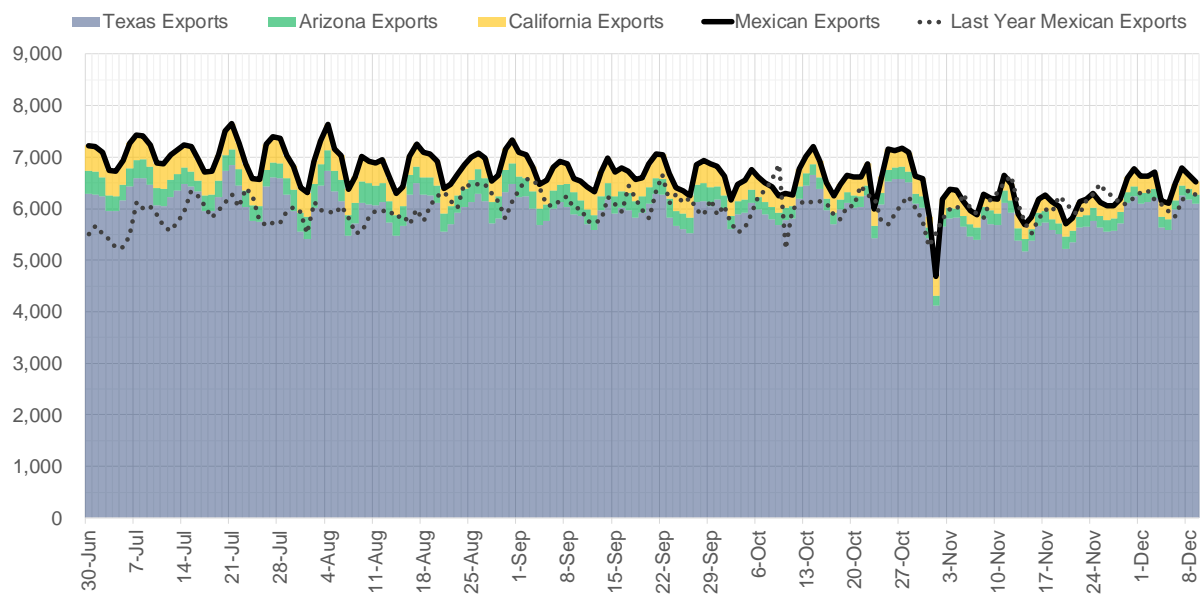
Supply – Demand Trends



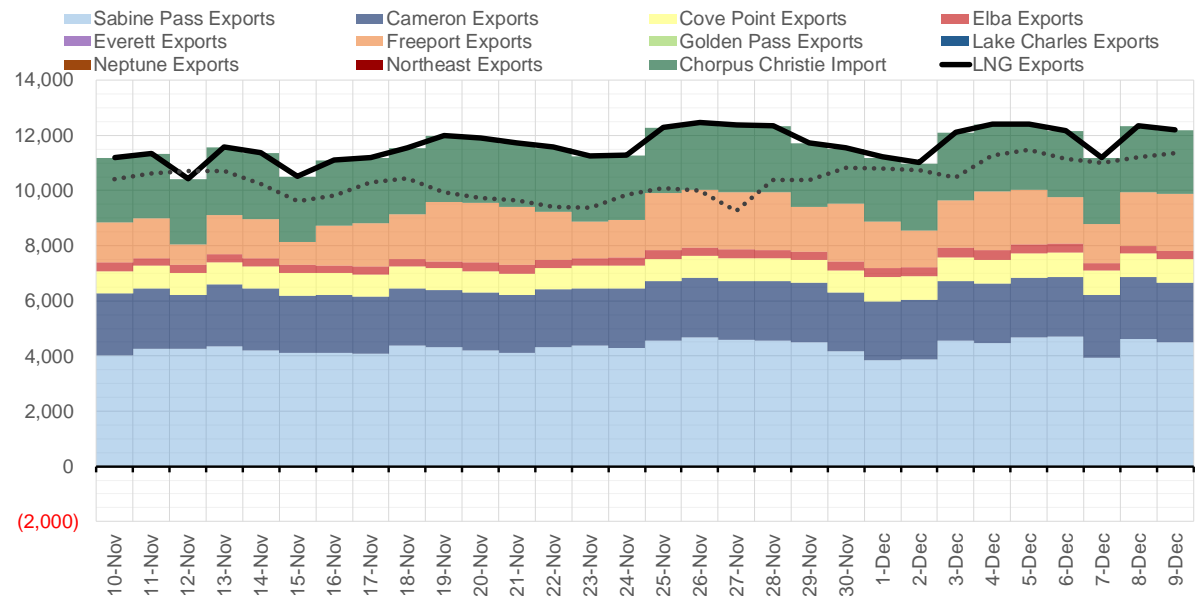
Source: Bloomberg

The risk of trading futures and options and other derivatives involves a substantial risk of loss and is not suitable for all persons. Each person must consider whether a particular trade, combination of trades, or strategy is suitable for that person's financial means and objectives. Past results are not necessarily indicative of future results. This communication may contain links to third party websites which are not under the control of and are not maintained by ION Energy Group, and ION Energy Group is not responsible for their content.

Mexican Exports (MMcf/d)



Net LNG Exports - Last 30 days (MMcf/d)



Source: Bloomberg

The risk of trading futures and options and other derivatives involves a substantial risk of loss and is not suitable for all persons. Each person must consider whether a particular trade, combination of trades, or strategy is suitable for that person's financial means and objectives. Past results are not necessarily indicative of future results. This communication may contain links to third party websites which are not under the control of and are not maintained by ION Energy Group, and ION Energy Group is not responsible for their content.

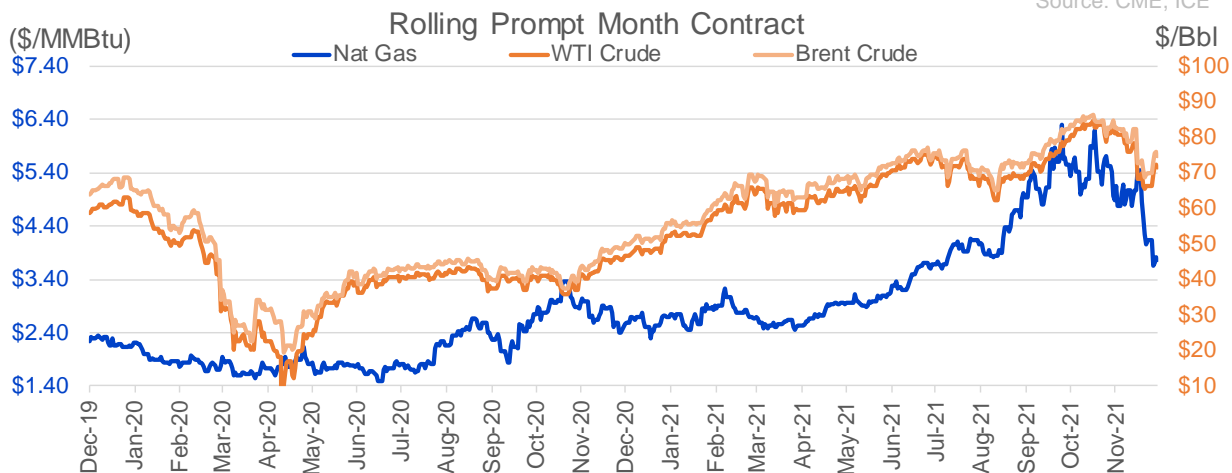
Nat Gas Options Volume and Open Interest CME, ICE and Nasdaq Combined

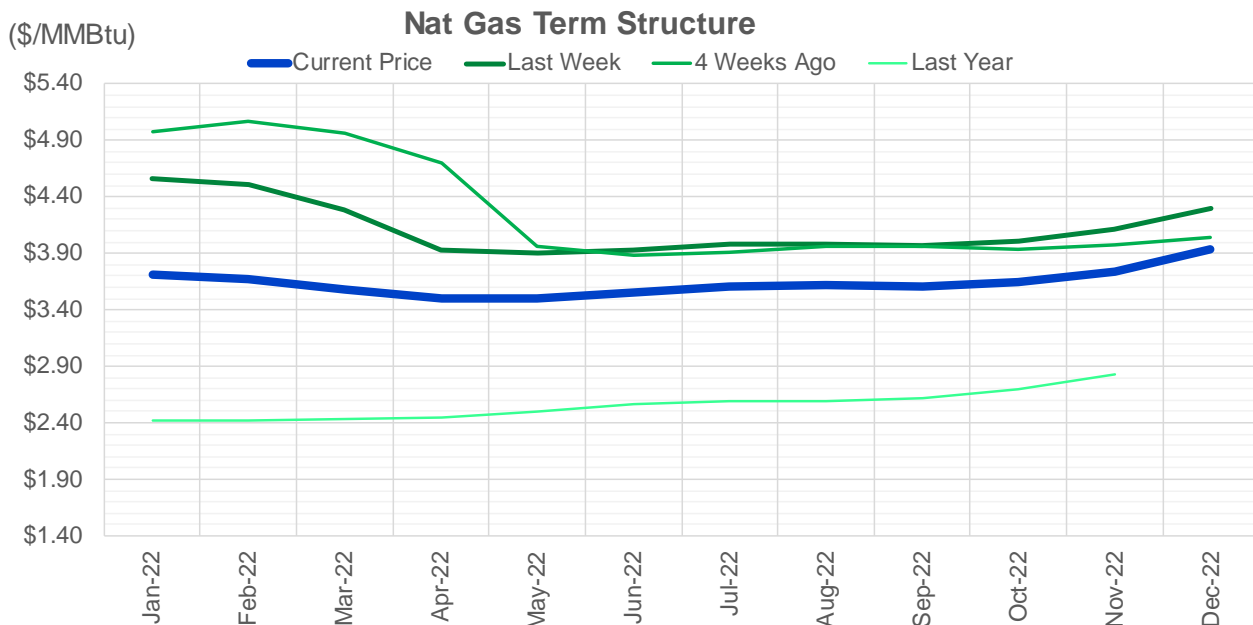
CONTRACT MONTH	CONTRACT YEAR	PUT/CALL	STRIKE	CUMULATIVE VOL	CONTRACT MONTH	CONTRACT YEAR	PUT/CALL	STRIKE	CUMULATIVE OI
1	2022	P	3.80	4587	3	2022	C	10.00	34532
10	2022	P	2.00	4375	1	2022	P	4.00	26790
4	2022	C	5.00	3259	3	2022	C	8.00	25610
1	2022	C	4.00	2825	1	2022	P	3.00	25287
1	2022	C	4.25	2616	3	2022	C	5.00	24392
9	2022	P	2.25	2500	1	2022	C	6.00	23976
5	2022	P	2.00	2475	1	2022	C	5.00	23309
6	2022	P	2.00	2475	1	2022	P	2.75	23258
7	2022	P	2.00	2475	1	2022	C	4.00	22889
2	2022	P	3.00	2376	3	2022	P	2.50	21356
4	2022	P	2.00	2375	2	2022	C	5.00	21248
8	2022	P	2.00	2375	1	2022	P	3.50	20767
9	2022	P	2.00	2375	4	2022	C	5.00	20315
5	2022	C	4.00	2100	12	2022	C	5.00	20297
6	2022	P	2.50	1950	3	2022	C	6.00	19900
1	2022	P	3.50	1817	4	2022	C	3.00	19710
2	2022	C	6.00	1747	3	2022	P	3.00	18602
1	2022	P	3.00	1552	1	2022	C	10.00	18306
1	2022	P	3.25	1507	1	2022	C	7.00	17807
5	2022	C	6.00	1500	3	2022	C	4.00	17383
1	2022	C	5.00	1476	2	2022	C	6.00	17087
3	2022	C	3.75	1466	3	2022	P	4.00	17065
9	2022	P	2.50	1400	1	2022	P	3.25	17045
5	2022	C	5.00	1380	2	2022	P	3.50	16714
4	2022	C	3.75	1300	1	2022	C	4.50	16566
5	2022	P	2.50	1200	3	2022	P	3.50	16139
7	2022	P	2.50	1200	2	2022	C	4.00	16009
4	2022	P	2.50	1150	2	2022	P	4.00	15762
8	2022	P	2.50	1150	4	2022	P	2.50	15439
10	2022	P	2.50	1150	5	2022	C	5.00	15308
1	2022	C	4.50	1071	6	2022	C	5.00	15262
8	2022	C	4.00	1000	3	2022	C	7.00	15177
8	2022	C	6.00	1000	2	2022	C	10.00	13964
2	2022	P	3.50	982	5	2022	C	3.00	13733
3	2022	C	4.50	947	1	2022	C	8.00	13588
3	2022	P	3.70	926	3	2022	P	5.00	13464
2	2022	C	5.00	925	6	2022	C	3.00	13438
1	2022	P	2.75	912	12	2022	C	5.25	13263
4	2022	C	5.50	901	1	2022	C	5.50	13250
4	2022	P	3.70	900	12	2022	C	4.50	13247
3	2022	C	4.00	876	7	2022	C	3.00	13230
5	2022	C	4.50	875	8	2022	C	3.00	13226
1	2022	C	3.90	871	9	2022	C	3.00	13225
1	2022	P	3.75	816	3	2022	C	3.00	13178
1	2022	P	2.50	757	10	2022	C	3.00	13114
2	2022	C	4.00	736	5	2022	P	3.00	12903
2	2022	C	4.50	726	8	2022	C	5.00	12763
10	2022	P	3.00	725	3	2022	C	3.50	12743
11	2022	P	3.50	700	1	2022	P	4.50	12687
					2	2022	C	5.5	12615

Source: CME, ICE

Nat Gas Futures Open Interest CME, and ICE Combined

CME Henry Hub Futures (10,000 MMBtu)				ICE Henry Hub Futures Contract Equivalent (10,000 MM			
	Current	Prior	Daily Change		Current	Prior	Daily Change
JAN 22	189480	217455	-27975	JAN 22	104280	102593	1687
FEB 22	79491	79985	-494	FEB 22	71997	70929	1069
MAR 22	189712	180526	9186	MAR 22	89031	86695	2336
APR 22	94719	95511	-792	APR 22	72763	73615	-853
MAY 22	117594	119512	-1918	MAY 22	70685	70943	-258
JUN 22	49002	49265	-263	JUN 22	53114	53365	-250
JUL 22	42585	44679	-2094	JUL 22	56708	57121	-413
AUG 22	32019	31755	264	AUG 22	54566	54865	-299
SEP 22	42619	39761	2858	SEP 22	55852	55995	-143
OCT 22	78545	78935	-390	OCT 22	62942	63237	-295
NOV 22	34661	34863	-202	NOV 22	49149	48922	227
DEC 22	32381	27776	4605	DEC 22	57659	52923	4736
JAN 23	43376	44427	-1051	JAN 23	45074	44863	211
FEB 23	11884	11872	12	FEB 23	35114	34773	341
MAR 23	26081	26520	-439	MAR 23	39638	39259	379
APR 23	17991	17626	365	APR 23	39872	39360	513
MAY 23	12957	12995	-38	MAY 23	35372	35541	-168
JUN 23	9842	9855	-13	JUN 23	31852	31800	53
JUL 23	7203	7127	76	JUL 23	31393	31545	-153
AUG 23	4978	4957	21	AUG 23	32329	32481	-153
SEP 23	6706	6695	11	SEP 23	30810	30935	-125
OCT 23	10637	10511	126	OCT 23	35102	35209	-106
NOV 23	5980	6019	-39	NOV 23	33812	33863	-52
DEC 23	8496	8911	-415	DEC 23	32354	31961	393
JAN 24	6277	6181	96	JAN 24	22889	21994	895
FEB 24	1469	1496	-27	FEB 24	16042	15913	129
MAR 24	9066	9054	12	MAR 24	21589	21605	-16
APR 24	4727	4715	12	APR 24	15262	15096	166
MAY 24	2036	2031	5	MAY 24	15842	15834	8
JUN 24	928	928	0	JUN 24	16238	16230	8





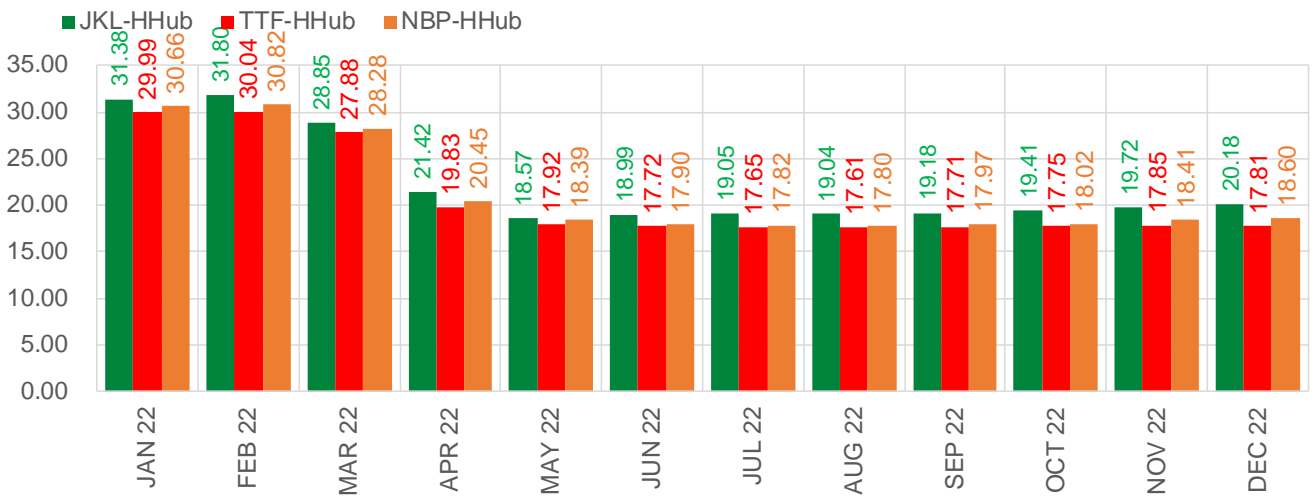
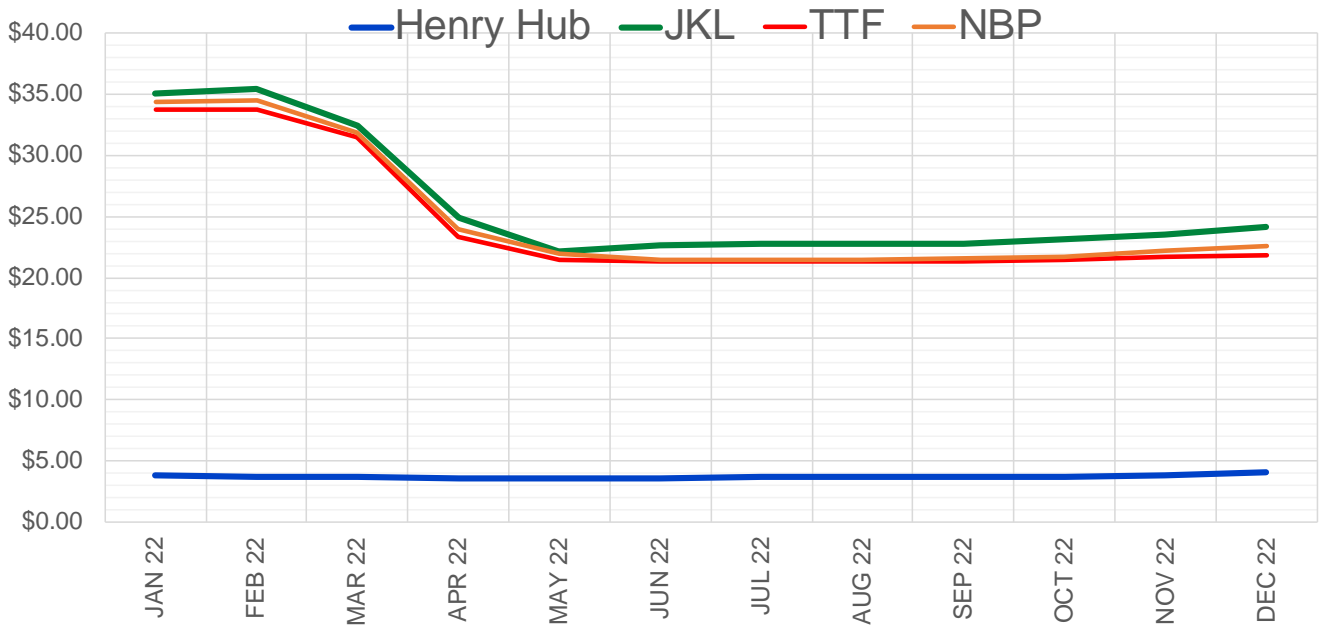
	Jan-22	Feb-22	Mar-22	Apr-22	May-22	Jun-22	Jul-22	Aug-22	Sep-22	Oct-22	Nov-22	Dec-22
Current Price	\$3.708	\$3.674	\$3.585	\$3.497	\$3.505	\$3.552	\$3.607	\$3.622	\$3.610	\$3.645	\$3.742	\$3.932
Last Week	\$4.567	\$4.506	\$4.280	\$3.934	\$3.900	\$3.932	\$3.977	\$3.987	\$3.973	\$4.012	\$4.108	\$4.293
vs. Last Week	-\$0.859	-\$0.832	-\$0.695	-\$0.437	-\$0.395	-\$0.380	-\$0.370	-\$0.365	-\$0.363	-\$0.367	-\$0.366	-\$0.361
4 Weeks Ago	\$4.979	\$5.070	\$4.959	\$4.699	\$3.957	\$3.886	\$3.915	\$3.958	\$3.963	\$3.942	\$3.969	\$4.046
vs. 4 Weeks Ago	-\$1.271	-\$1.396	-\$1.374	-\$1.202	-\$0.452	-\$0.334	-\$0.308	-\$0.336	-\$0.353	-\$0.297	-\$0.227	-\$0.114
Last Year	\$2.399	\$2.422	\$2.419	\$2.428	\$2.452	\$2.501	\$2.562	\$2.590	\$2.588	\$2.618	\$2.692	\$2.829
vs. Last Year	\$1.309	\$1.252	\$1.166	\$1.069	\$1.053	\$1.051	\$1.045	\$1.032	\$1.022	\$1.027	\$1.050	\$1.103

	Units	Cash Settled	Prompt Settle	Cash to Prompt
AGT Citygate	\$/MMBtu	7.65	18.84	11.19
TETCO M3	\$/MMBtu	3.40	8.41	5.01
FGT Zone 3	\$/MMBtu	5.69	4.39	-1.31
Zone 6 NY	\$/MMBtu	5.69	9.54	3.85
Chicago Citygate	\$/MMBtu	3.57	4.63	1.06
Michcon	\$/MMBtu	3.58	3.98	0.40
Columbia TCO Pool	\$/MMBtu	3.28	3.84	0.56
Ventura	\$/MMBtu	3.55	5.17	1.62
Rockies/Opal	\$/MMBtu	4.45	4.45	0.00
El Paso Permian Basin	\$/MMBtu	3.44	4.28	0.84
Socal Citygate	\$/MMBtu	7.19	5.11	-2.08
Malin	\$/MMBtu	4.94	4.70	-0.24
Houston Ship Channel	\$/MMBtu	3.53	4.51	0.98
Henry Hub Cash	\$/MMBtu	3.79	4.12	0.33
AECO Cash	C\$/GJ	3.08	2.89	-0.19
Station2 Cash	C\$/GJ	2.92	5.00	2.08
Dawn Cash	C\$/GJ	3.73	4.19	0.46

Source: CME, Bloomberg

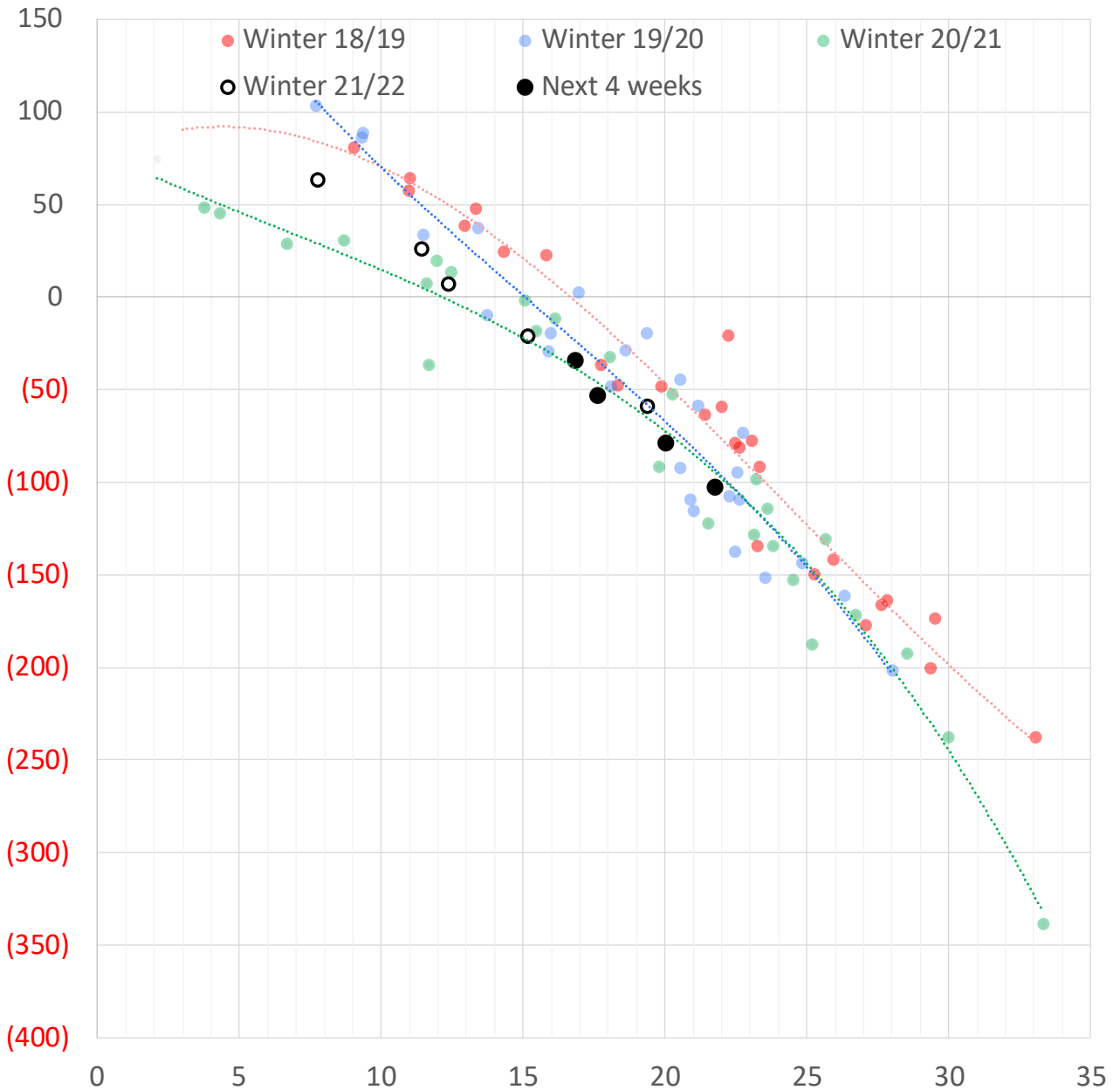
	Units	Current Price	vs. Last Week	vs. 4 Weeks Ago	vs. Last Year
NatGas Jul21/Oct21	\$/MMBtu	2.224	▲ 0.000	▲ 0.000	▲ 2.177
NatGas Oct21/Nov21	\$/MMBtu	0.361	▲ 0.000	▲ 0.000	▲ 0.290
NatGas Oct21/Jan22	\$/MMBtu	-2.026	▼ -0.443	▼ -1.159	▼ -2.324
NatGas Apr22/Oct22	\$/MMBtu	0.146	▲ 0.057	▲ 0.129	▲ 0.081
WTI Crude	\$/Bbl	72.36	▲ 6.790	▼ -8.980	▲ 26.840
Brent Crude	\$/Bbl	75.82	▲ 6.950	▼ -6.820	▲ 26.960
Fuel Oil, NY Harbour 1%	\$/Bbl	97.18	▲ 0.000	▲ 0.000	▲ 0.000
Heating Oil	cents/Gallon	226.13	▲ 18.420	▼ -19.080	▲ 86.240
Propane, Mt. Bel	cents/Gallon	1.01	▲ 0.007	▼ -0.379	▲ 0.421
Ethane, Mt. Bel	cents/Gallon	0.34	▼ -0.012	▼ -0.063	▲ 0.150
Coal, PRB	\$/MTon	12.30	▲ 0.000	▲ 0.000	▲ 0.000
Coal, PRB	\$/MMBtu	0.70			
Coal, ILB	\$/MTon	31.05	▲ 0.000	▲ 0.000	▲ 0.000
Coal, ILB	\$/MMBtu	1.32			

Nat Gas Term Structure (\$MMBTU)

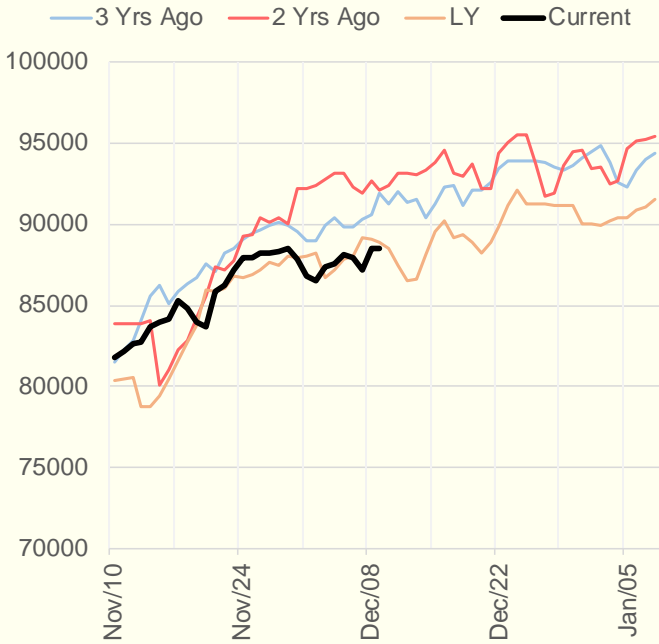


	JAN 22	FEB 22	MAR 22	APR 22	MAY 22	JUN 22	JUL 22	AUG 22	SEP 22	OCT 22	NOV 22	DEC 22
Henry Hub	\$3.771	\$3.720	\$3.621	\$3.543	\$3.548	\$3.596	\$3.665	\$3.685	\$3.659	\$3.703	\$3.834	\$4.028
JKL	\$35.150	\$35.515	\$32.470	\$24.965	\$22.120	\$22.590	\$22.715	\$22.725	\$22.835	\$23.110	\$23.550	\$24.205
JKL-HHub	\$31.379	\$31.795	\$28.849	\$21.422	\$18.572	\$18.994	\$19.050	\$19.040	\$19.176	\$19.407	\$19.716	\$20.177
TTF	\$33.764	\$33.755	\$31.504	\$23.369	\$21.466	\$21.315	\$21.313	\$21.295	\$21.366	\$21.457	\$21.681	\$21.841
TTF-HHub	\$29.993	\$30.035	\$27.883	\$19.826	\$17.918	\$17.719	\$17.648	\$17.610	\$17.707	\$17.754	\$17.847	\$17.813
NBP	\$34.427	\$34.544	\$31.897	\$23.997	\$21.941	\$21.500	\$21.488	\$21.485	\$21.632	\$21.721	\$22.244	\$22.625
NBP-HHub	\$30.656	\$30.824	\$28.276	\$20.454	\$18.393	\$17.904	\$17.823	\$17.800	\$17.973	\$18.018	\$18.410	\$18.597

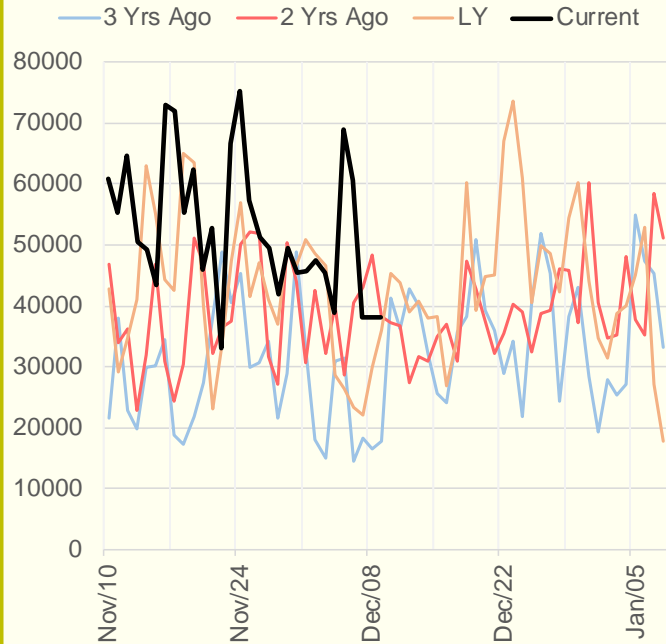
Weather Storage Model - Next 4 Week Forecast



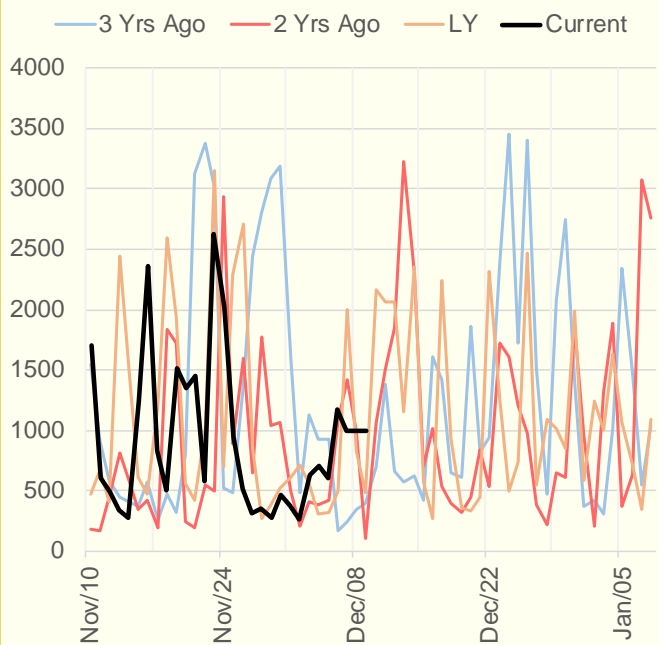
NRC Nuclear Daily Output



US Wind



CALI Wind



TEXAS Wind

