

CFTC COMMITMENT OF TRADERS REPORT

As of 1/11/2022

TRADITIONAL FUNDS net position changes

Wed to Tue, in 000 contracts

	Corn	Bean	Meal	Oil	Chi. Wheat	KC Wheat	Min Wheat
Futures Only	(38.0)	7.7	(1.9)	0.2	(5.5)	(6.3)	(6.4)
Futures & Options Combined	(43.1)	6.4	(2.9)	2.9	(8.3)	(7.8)	(6.8)

TRADITIONAL COMMERCIAL net position changes

	Corn	Bean	Meal	Oil	Chi. Wheat	KC Wheat	Min Wheat
Futures Only	16.0	(13.0)	0.6	(3.3)	5.9	6.5	6.3
Futures & Options Combined	22.2	(10.4)	1.5	(5.8)	8.6	7.4	6.7

MANAGED MONEY net position changes

	Corn	Bean	Meal	Oil	Chi. Wheat	KC Wheat	Min Wheat
Futures Only	(20.6)	7.0	2.5	1.6	(8.5)	(9.1)	(3.7)
Futures & Options Combined	(21.5)	8.0	2.2	2.7	(7.9)	(9.1)	(3.7)

SWAP DEALERS net position changes

	Corn	Bean	Meal	Oil	Chi. Wheat	KC Wheat	Min Wheat
Futures Only	23.5	8.2	6.9	(2.6)	9.3	(3.0)	0.7
Futures & Options Combined	24.9	9.1	7.0	(2.7)	9.8	(3.0)	0.7

PRODUCERS/END USERS net position changes

	Corn	Bean	Meal	Oil	Chi. Wheat	KC Wheat	Min Wheat
Futures Only	(7.6)	(21.2)	(6.3)	(0.8)	(3.4)	9.5	5.6
Futures & Options Combined	(2.7)	(19.5)	(5.5)	(3.2)	(1.2)	10.5	6.0

INDEX net position changes

	Corn	Bean	Meal	Oil	Chi. Wheat	KC Wheat	Min Wheat
Futures & Options Combined	6.7	12.7	6.8	(1.7)	8.7	(6.3)	NA

SUPPLEMENTAL NON-COMMERCIAL net position changes

	Corn	Bean	Meal	Oil	Chi. Wheat	KC Wheat	Min Wheat
Futures & Options Combined	(28.8)	(0.6)	(2.2)	1.4	(9.1)	(4.3)	NA

OPEN INTEREST net position changes

Wed to Tue, in 000 contracts

	Corn	Bean	Meal	Oil	Chi. Wheat	KC Wheat	Min Wheat
Futures Only	(16.0)	30.5	14.5	6.8	10.1	(7.1)	(6.1)
Futures & Options Combined	(4.2)	44.6	18.0	8.0	16.1	(4.3)	(6.0)

Source: CFTC and FI

Wed to Tue, in 000 contracts

**COMMITMENT OF TRADERS
FUTURES ONLY NET POSITIONS
AS OF 01/11/2022
(IN THOUSAND CONTRACTS)**

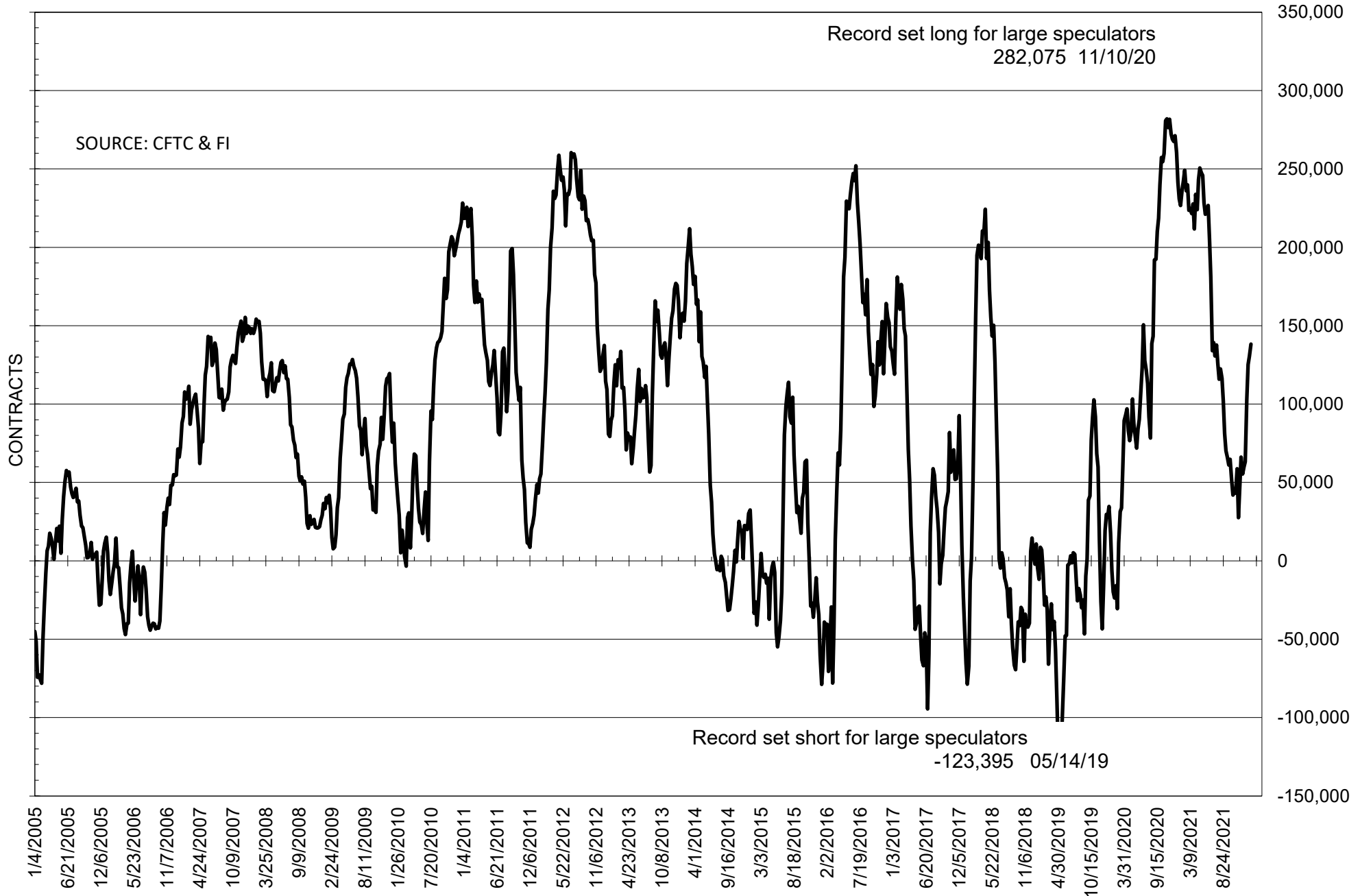
	COMMERCIAL				(FUND) NON COMMERCIAL				(SPEC) NON-REPORTABLE			
	11-Jan	4-Jan	28-Dec	21-Dec	11-Jan	4-Jan	28-Dec	21-Dec	11-Jan	4-Jan	28-Dec	21-Dec
	WHEAT											
Chicago	12.1	6.2	1.6	-1.6	-1.5	4.1	5.9	9.1	-10.6	-10.3	-7.5	-7.5
Kansas City	-41.5	-48.0	-53.8	-52.9	38.8	45.0	52.6	50.1	2.7	3.0	1.3	2.8
Minneapolis	-13.8	-20.1	-24.1	-27.0	11.3	17.7	20.4	22.0	2.5	2.5	3.7	5.0
All Wheat	-43.2	-61.9	-76.4	-81.5	48.6	66.8	78.9	81.3	-5.4	-4.8	-2.5	0.2
CORN	-366.8	-382.8	-411.8	-401.3	407.5	445.5	458.2	445.3	-40.7	-62.7	-46.4	-44.0
OATS	-0.1	#VALUE!	-0.1	0.1	0.6	#####	0.7	0.7	-0.5	#VALUE!	-0.6	-0.8
SOYBEANS	-104.9	-91.9	-93.1	-72.4	138.3	130.6	125.3	102.9	-33.4	-38.7	-32.2	-30.5
SOY OIL	-59.1	-55.8	-44.5	-39.3	49.9	49.7	40.6	40.4	9.2	6.1	3.9	-1.1
SOY MEAL	-122.8	-123.4	-114.1	-101.5	97.2	99.0	91.7	80.1	25.7	24.4	22.4	21.3

Oats positions thin to be reported

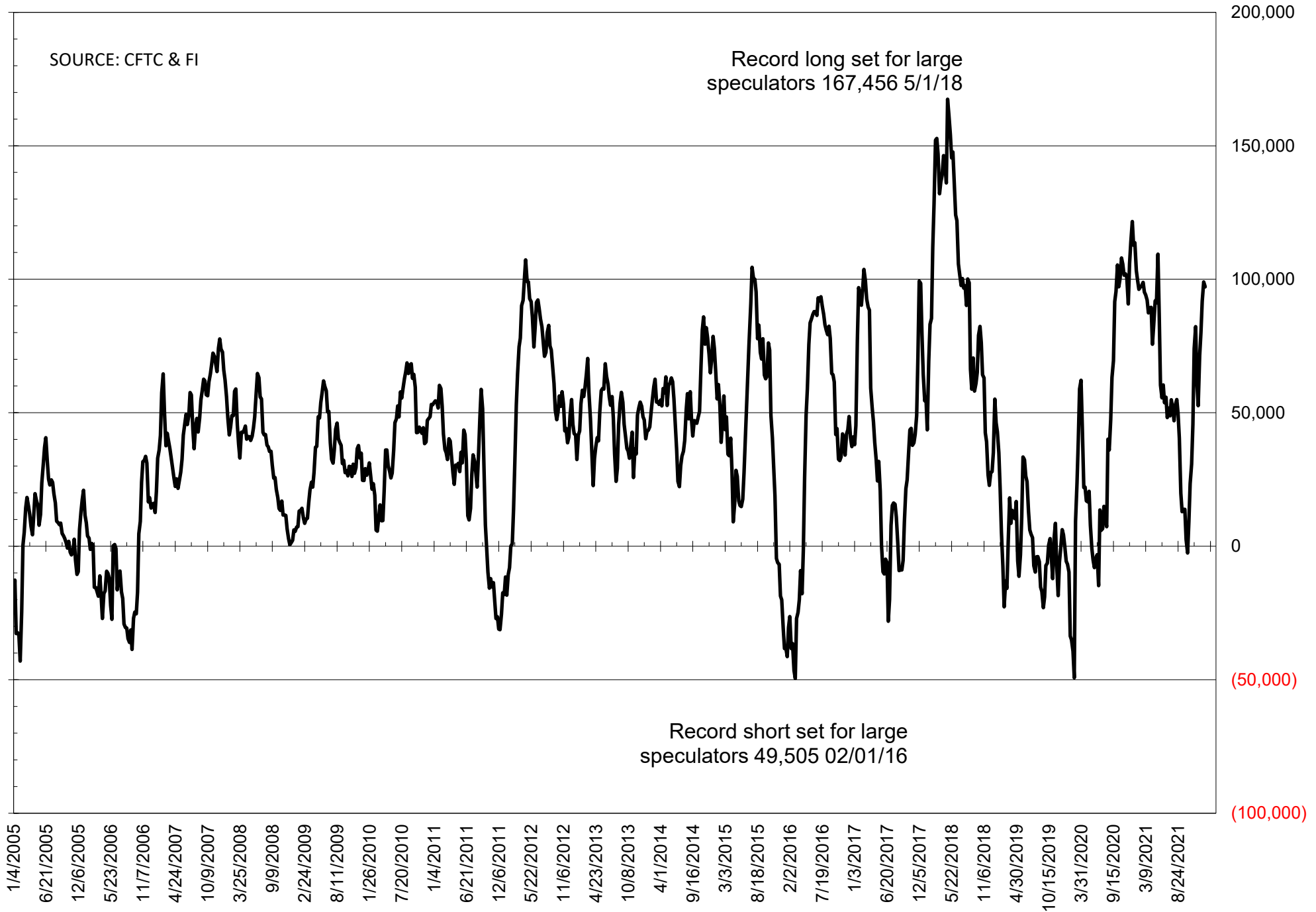
	TOTAL OPEN INTEREST				NEARBY FUTURES PRICE					11-Jan-22 LAST REPORTED % HELD BY TRADERS			
	11-Jan	4-Jan	28-Dec	21-Dec	H Latest	H 11-Jan	H 4-Jan	F/H 28-Dec	F/H 21-Dec	LARGE FUND		SMALL	
										LONG	SHORT	LONG	SHORT
WHEAT													
Chicago	369218	359139	356439	357381	741.50	770.25	770.00	783.50	799.00	0%	28%	0%	11%
Kansas City	215528	222583	220413	216719	745.00	791.75	804.00	821.75	841.50	0%	16%	0%	10%
Minneapolis	67259	73366	73766	74243	878.25	928.25	970.50	1002.50	1025.50	0%	9%	0%	18%
CORN	1504234	1520233	1522692	1485412	596.25	601.00	609.50	604.75	598.25	0%	6%	0%	12%
OATS	4019	#VALUE!	4383	4532	609.00	656.00	692.00	702.50	666.75	0%	4%	0%	64%
SOYBEANS	678613	648148	647225	654460	1396.75	1386.50	1389.75	1359.25	1308.00	27%	6%	7%	12%
SOY OIL	386373	379609	380321	406225	58.46	58.87	58.33	56.55	53.90	0%	12%	0%	6%
SOY MEAL	404223	389727	388667	400752	406.20	413.10	414.70	415.90	394.00	0%	5%	0%	5%

SOURCE: CFTC & FI

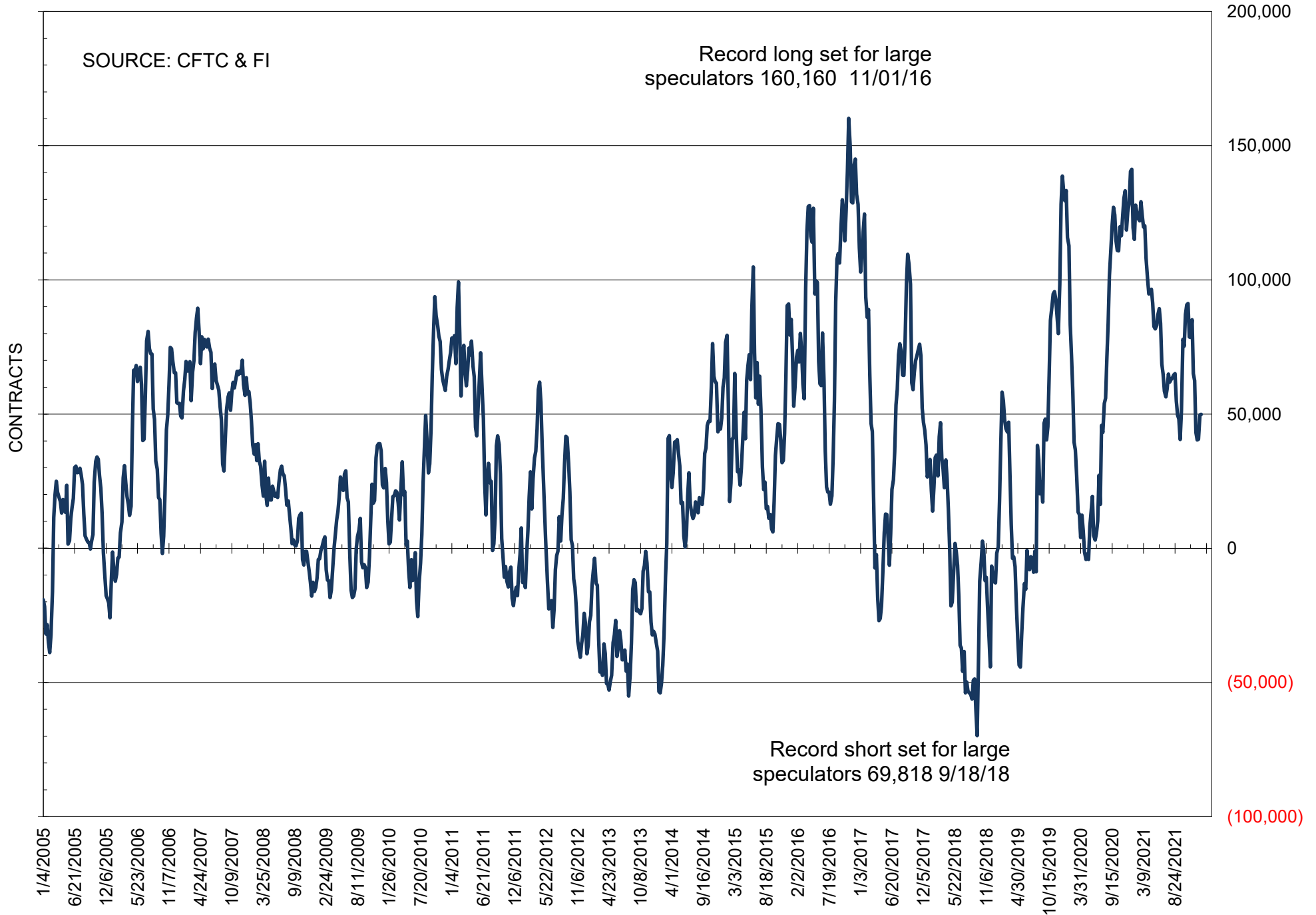
NET POSITION OF FUTURES ONLY LARGE SPECS IN SOYBEANS



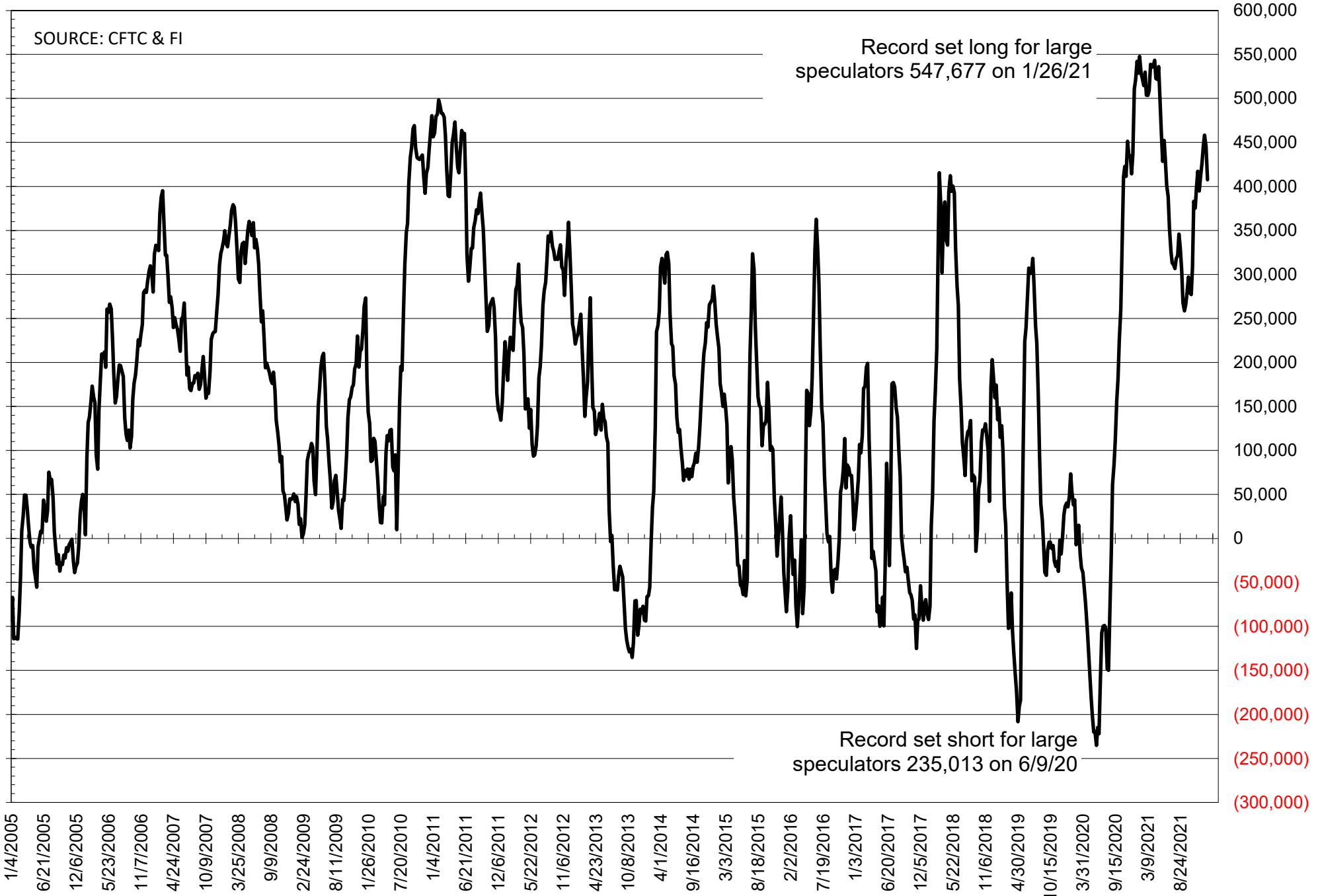
NET POSITION OF FUTURES ONLY LARGE SPECS IN SOYMEAL



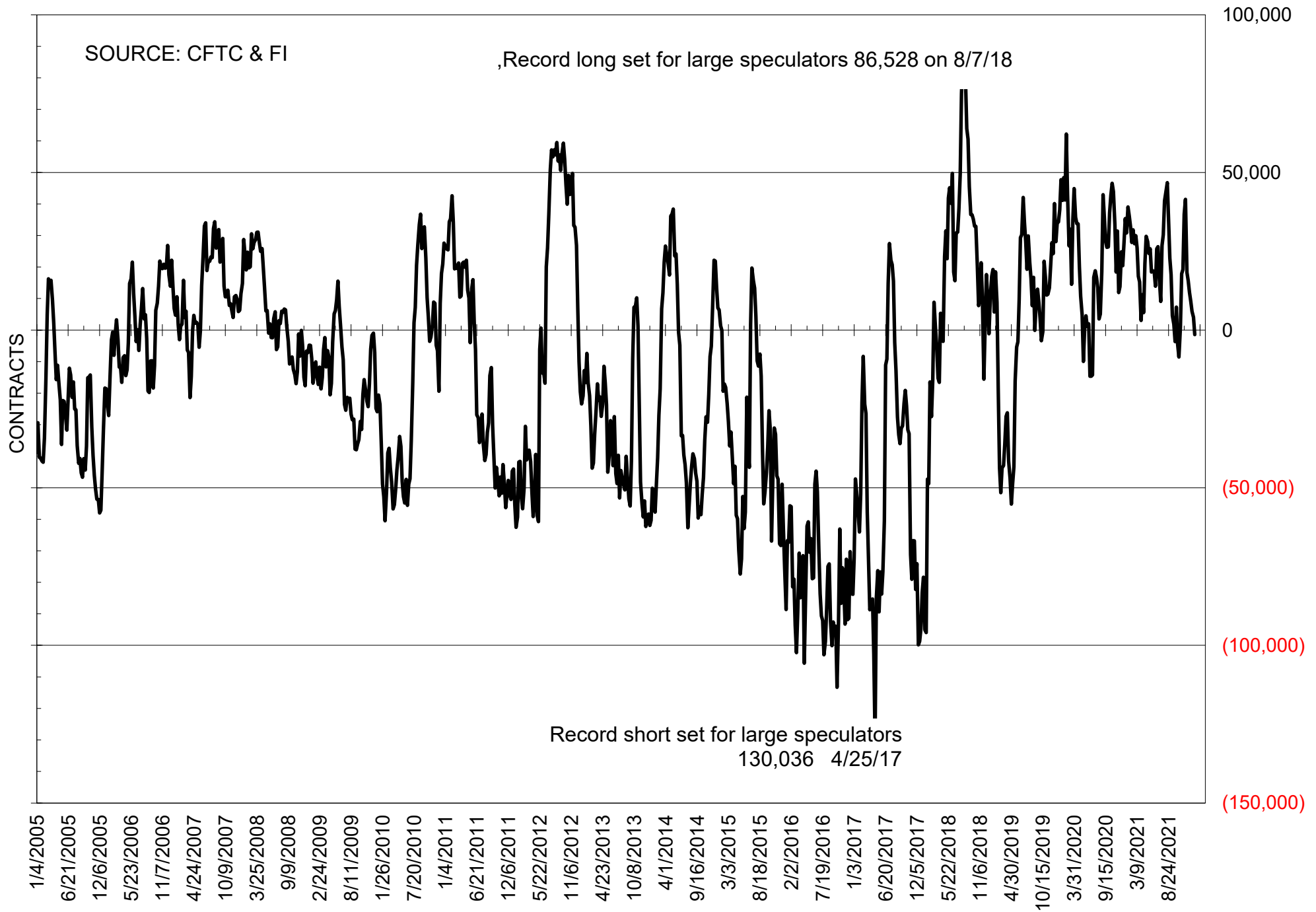
NET POSITION OF FUTURES ONLY LARGE SPECS IN SOYOIL



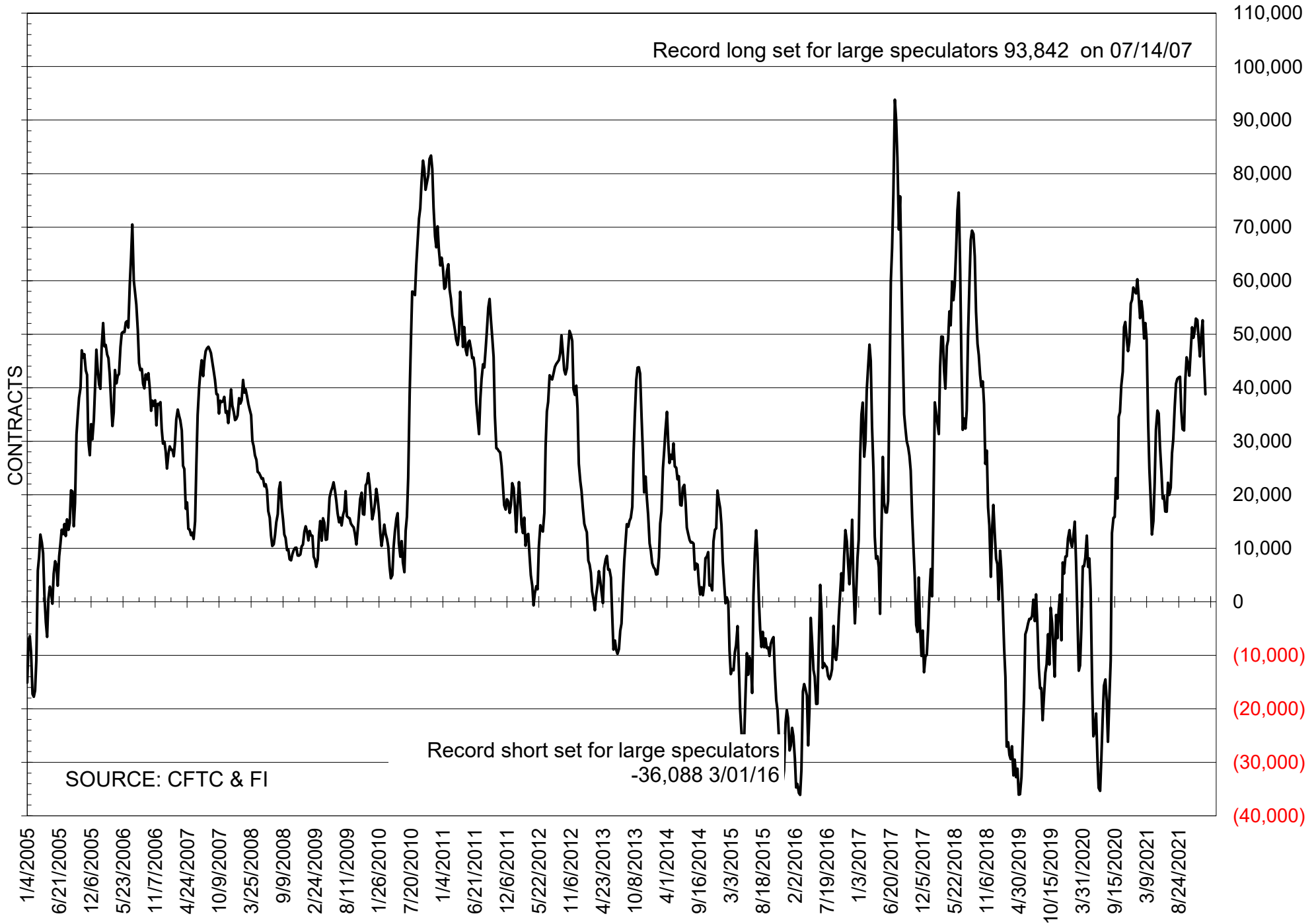
NET POSITION OF LARGE SPECULATORS IN CORN



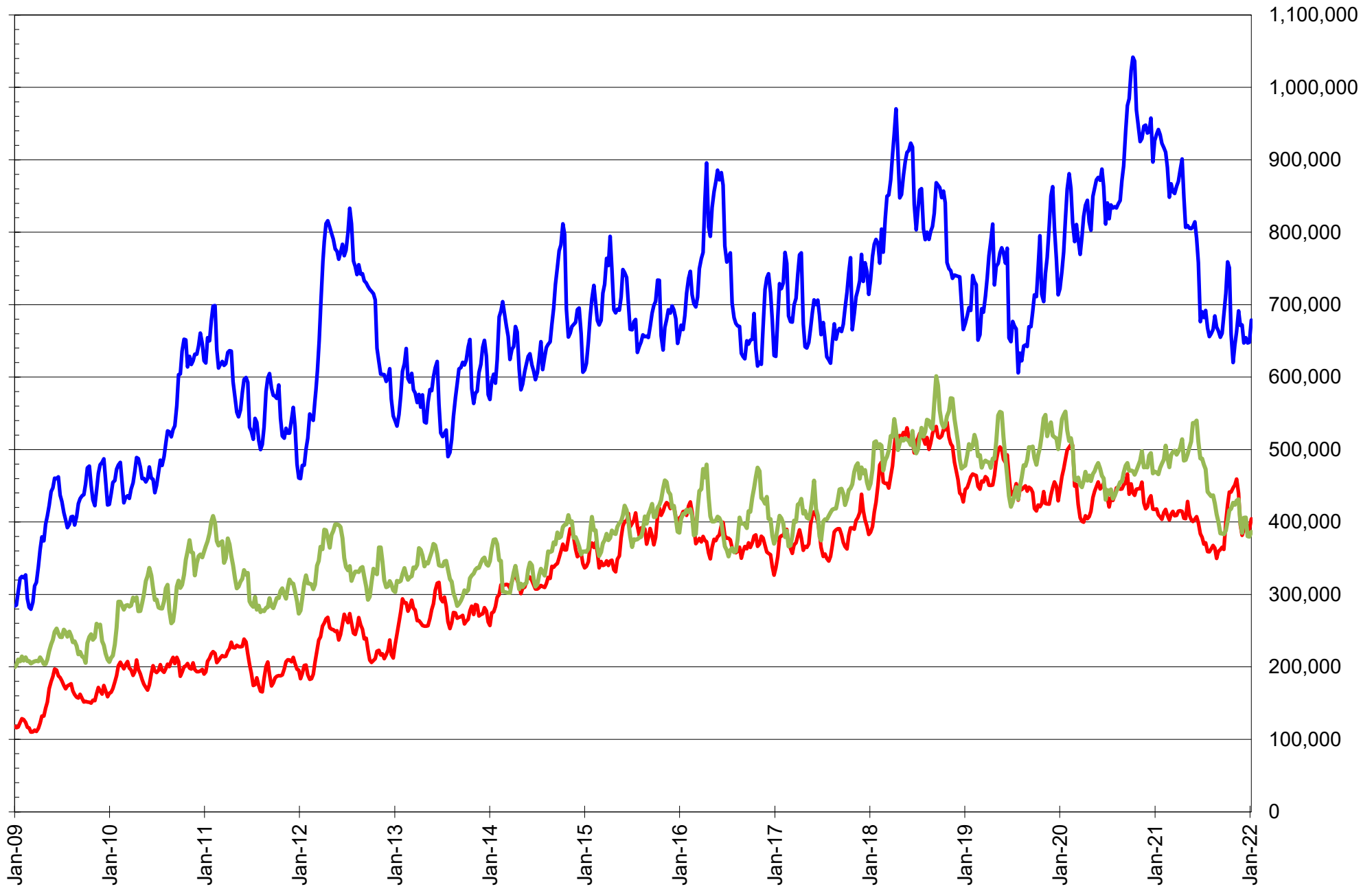
NET POSITION OF FUTURES ONLY LARGE SPECS IN CHICAGO WHEAT



NET POSITION OF LARGE SPECULATORS IN KANSAS CITY WHEAT



TOTAL OPEN INTEREST IN SOYBEANS, MEAL AND OIL, FUTURES ONLY



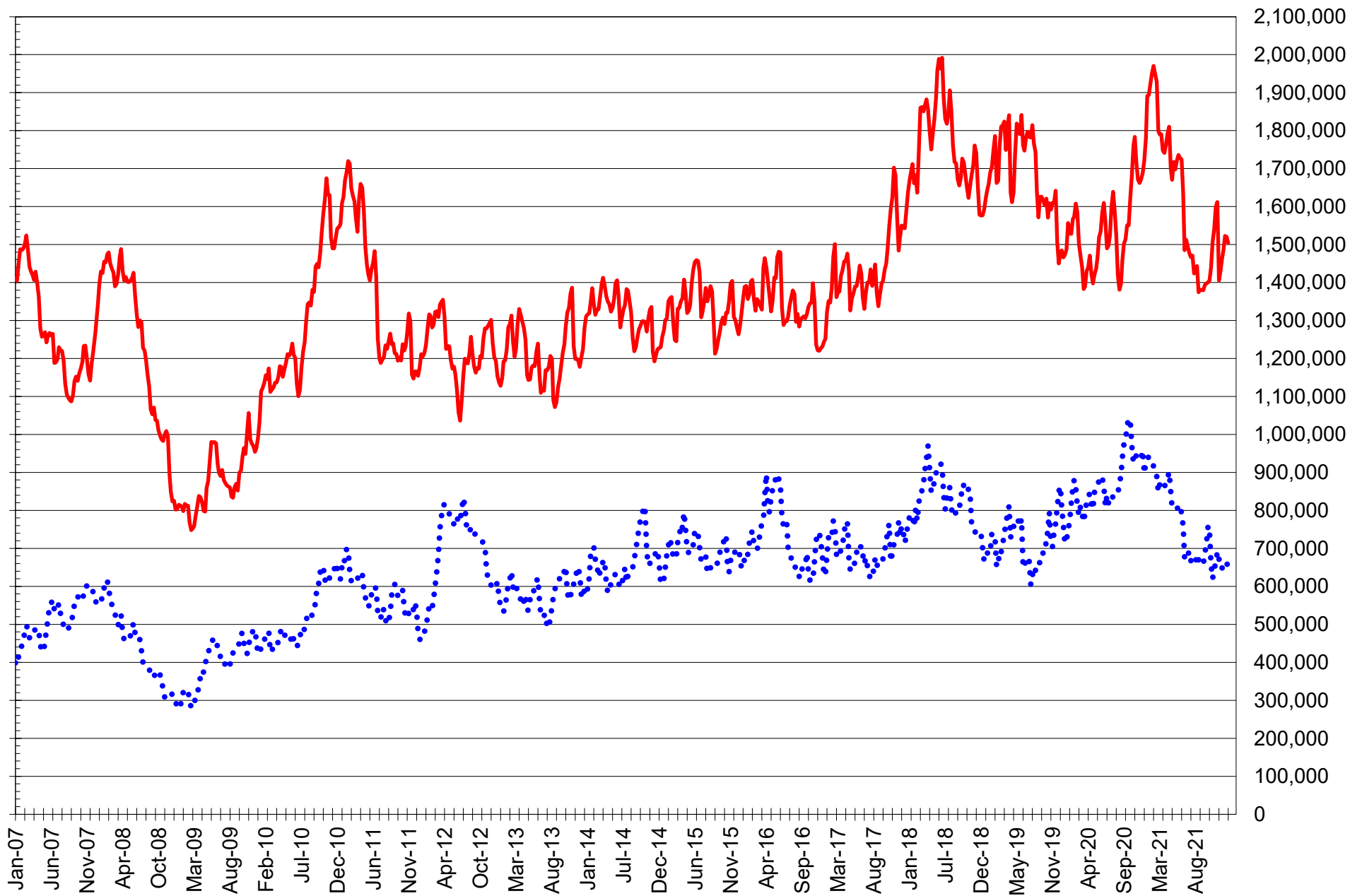
SOURCE: CFTC & FI

— SOYBEANS

— SOYBEAN MEAL

— SOYBEAN OIL

TOTAL OPEN INTEREST IN CORN AND SOYBEANS, FUTURES ONLY



SOURCE: CFTC & FI

— CORN

..... SOYBEANS

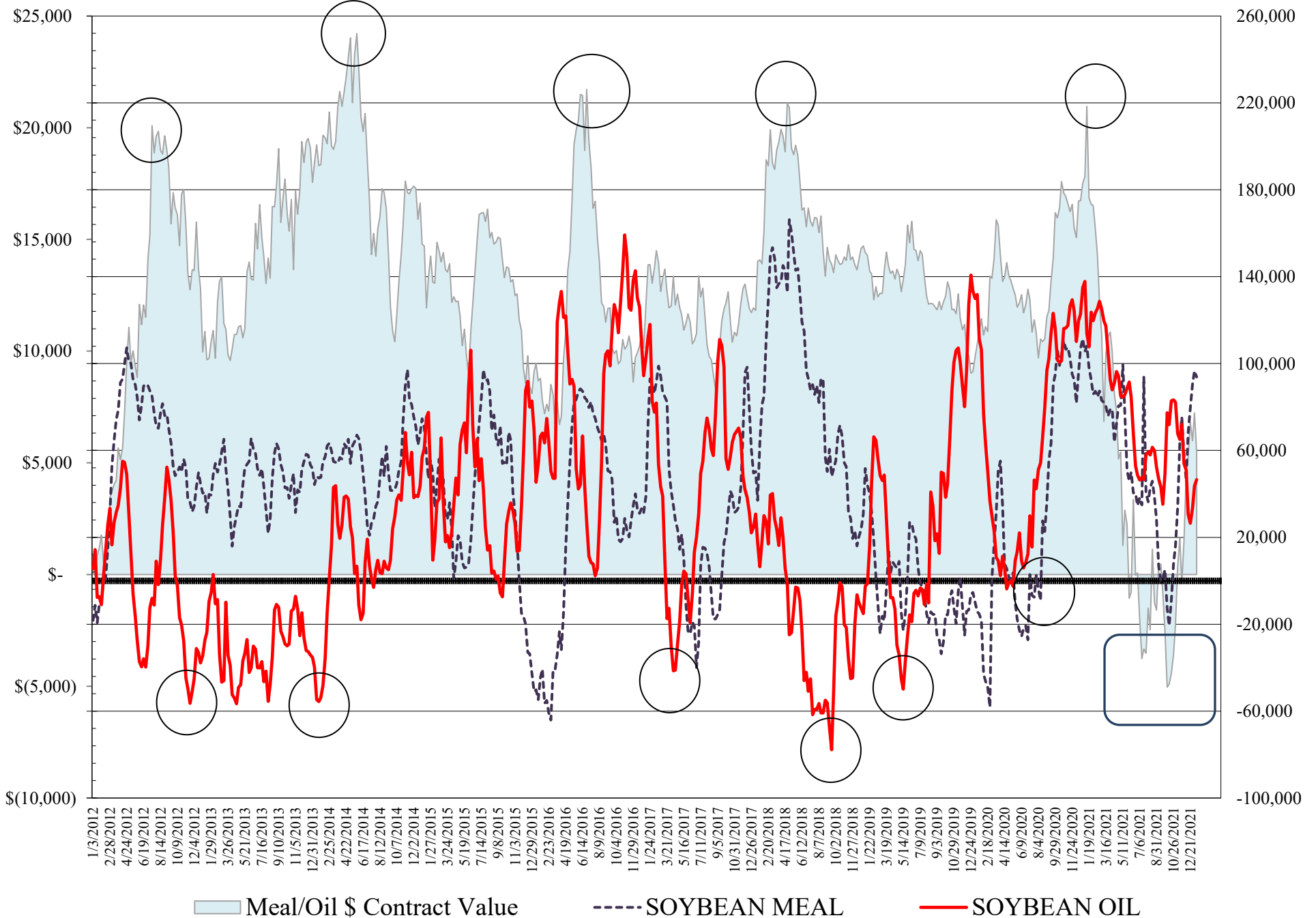
**COMMITMENT OF TRADERS
FUTURES & OPTIONS NET POSITIONS
AS OF 01/11/2022
(IN THOUSAND CONTRACTS)**

	COMMERCIAL				(FUND) NON COMMERCIAL				(SPEC) NON-REPORTABLE			
	11-Jan	4-Jan	28-Dec	21-Dec	11-Jan	4-Jan	28-Dec	21-Dec	11-Jan	4-Jan	28-Dec	21-Dec
WHEAT												
Chicago	23.5	15.0	7.0	5.8	-13.8	-5.5	-0.4	0.8	-9.7	-9.4	-6.7	-6.6
Kansas City	-40.0	-47.4	-54.0	-51.7	36.2	44.0	52.6	48.6	3.8	3.5	1.4	3.1
Minneapolis	-12.3	-19.0	-23.0	-26.0	9.5	16.3	19.1	20.8	2.8	2.7	4.0	5.2
All Wheat	-28.8	-51.5	-70.0	-71.9	31.9	54.8	71.3	70.1	-3.2	-3.3	-1.3	1.8
CORN	-365.5	-387.7	-414.1	-400.0	394.1	437.3	447.8	432.9	-28.7	-49.6	-33.7	-32.9
OATS	0.0	#VALUE!	-0.1	0.1	0.6	#VALUE!	0.7	0.7	-0.5	#VALUE!	-0.6	-0.8
SOYBEANS	-103.1	-92.7	-93.5	-69.6	138.1	131.8	126.4	101.2	-35.0	-39.1	-33.0	-31.6
SOY OIL	-56.6	-50.7	-38.3	-26.9	46.6	43.6	33.4	26.5	10.0	7.1	4.9	0.4
SOY MEAL	-122.4	-123.9	-116.3	-104.8	93.8	96.7	90.5	79.7	28.7	27.3	25.8	25.2

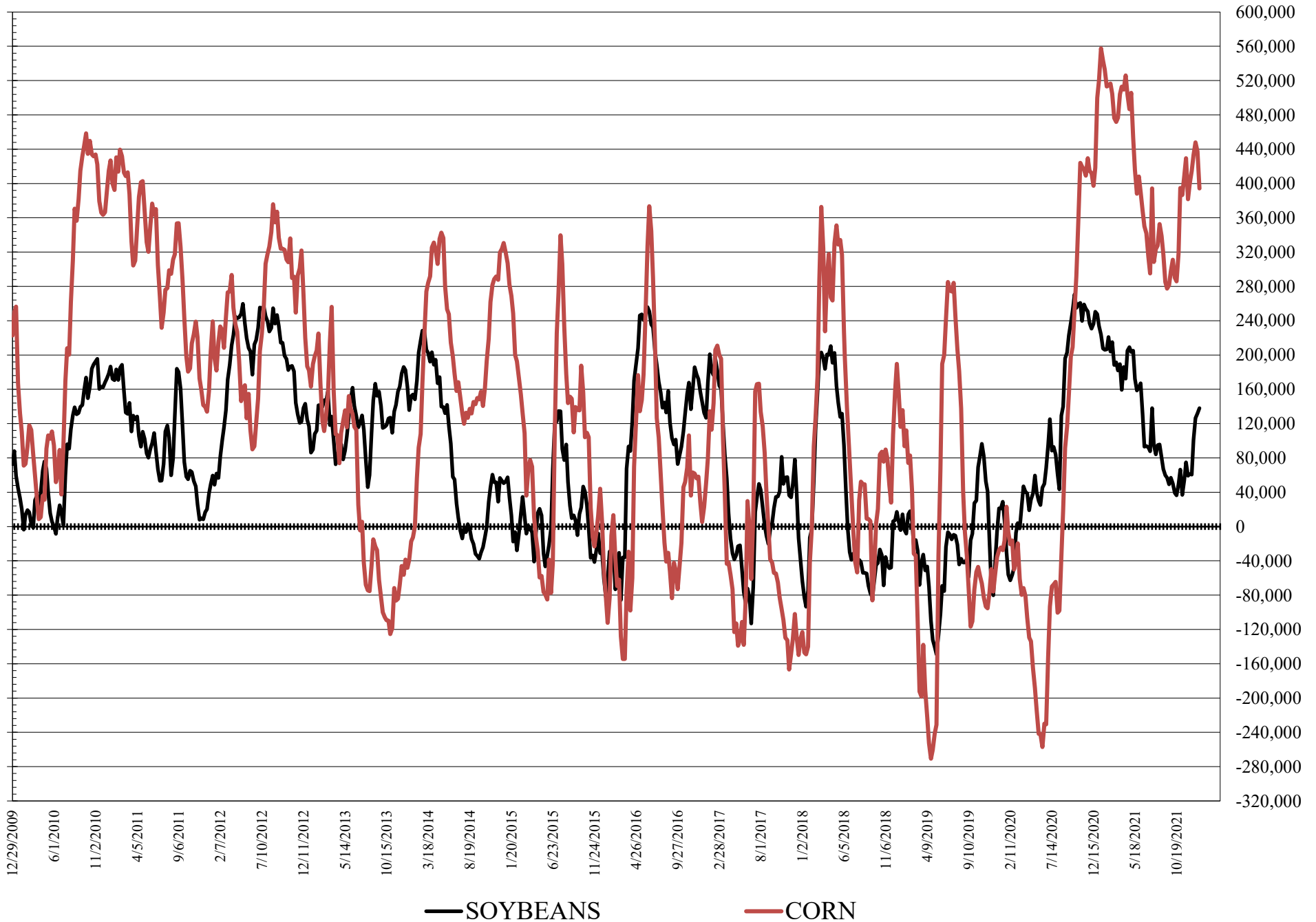
	TOTAL OPEN INTEREST				COMMERCIALS		% HELD BY TRADERS LARGE (FUNDS)		SMALL (NON-REP)	
	11-Jan	4-Jan	28-Dec	21-Dec	LONG	SHORT	LONG	SHORT	LONG	SHORT
WHEAT										
Chicago	455,595	439,485	433,728	444,789	40%	35%	18%	21%	7%	9%
Kansas City	242,770	247,064	244,520	247,544	34%	51%	30%	15%	11%	9%
Minneapolis	71,192	77,161	77,597	78,648	48%	66%	21%	8%	21%	17%
CORN	1,861,529	1,865,691	1,843,102	1,801,189	42%	61%	25%	4%	10%	12%
OATS	4,122	#VALUE!	4,486	4,634						
SOYBEANS	833,968	789,340	767,439	789,405	47%	59%	21%	5%	7%	11%
SOY OIL	430,663	422,697	419,844	456,215	49%	62%	21%	10%	8%	6%
SOY MEAL	454,258	436,279	430,303	452,464	43%	70%	25%	4%	12%	6%

SOURCE: CFTC & FI

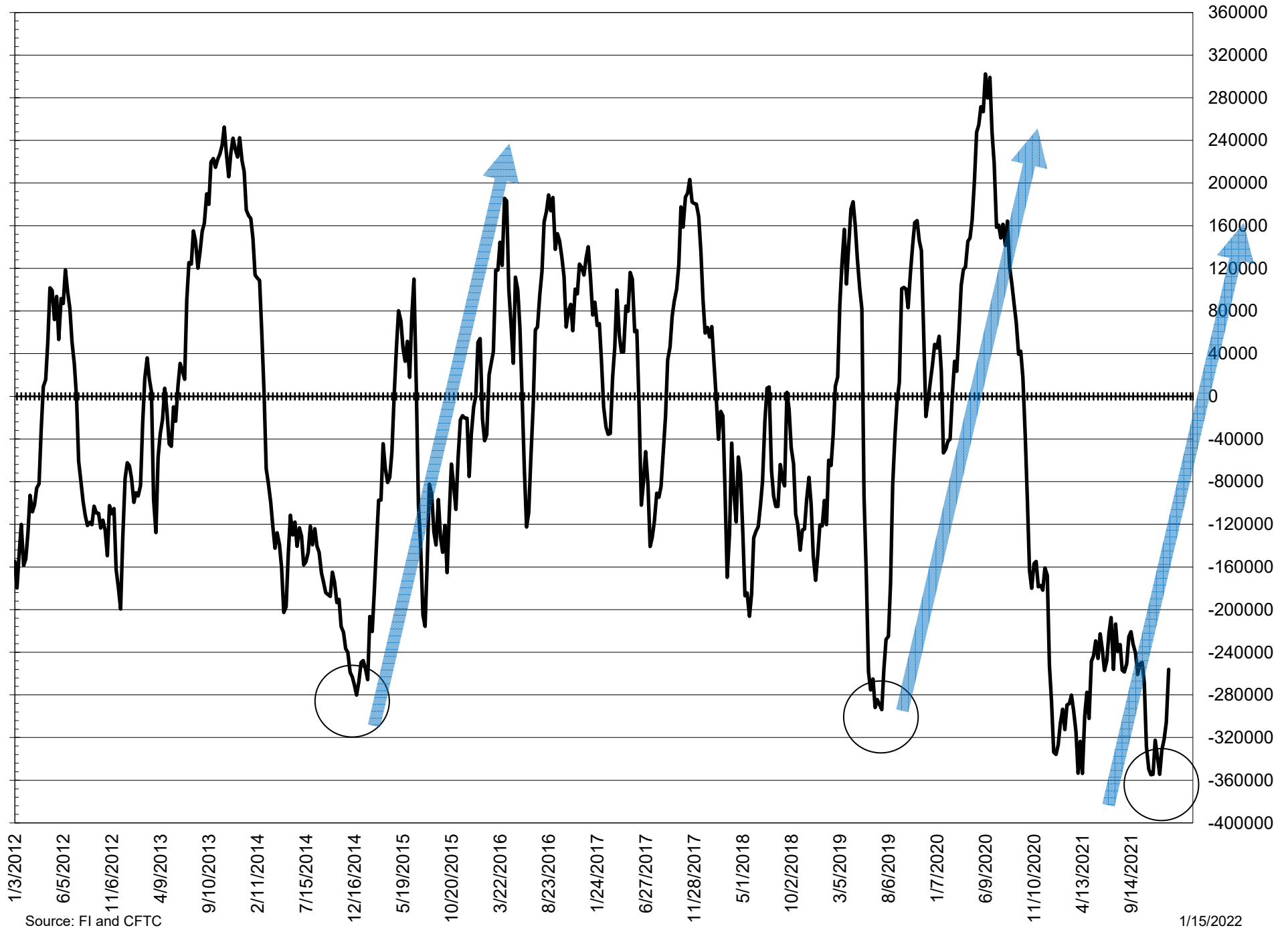
NET POSITION FUTURES AND OPTIONS OF LARGE SPECULATORS IN SOYBEAN MEAL AND SOYBEAN OIL



NET POSITION FUTURES AND OPTIONS OF LARGE SPECULATORS IN SOYBEANS AND CORN



NET POSITION FUTURES AND OPTIONS SPREAD OF LARGE SPECULATORS IN SOYBEANS MINUS CORN



Source: FI and CFTC

1/15/2022

**DISAGGREGATED COMMITMENT OF TRADERS
FUTURES & OPTIONS NET POSITIONS
AS OF 01/11/2022
(IN THOUSAND CONTRACTS)**

	PRODUCER / MERCHANT / PROCESSOR / USER				(INDEX/ETF) SWAP DEALERS				(CTA/CPO/OTHER UNREGISTERED) MANAGED MONEY			
	11-Jan	4-Jan	28-Dec	21-Dec	11-Jan	4-Jan	28-Dec	21-Dec	11-Jan	4-Jan	28-Dec	21-Dec
	WHEAT											
Chicago	(63.6)	(62.4)	(66.5)	(64.4)	87.1	77.4	73.5	70.2	(27.8)	(19.8)	(11.8)	(11.0)
Kansas City	(61.8)	(72.2)	(79.6)	(77.3)	21.8	24.8	25.6	25.6	42.7	51.8	59.4	58.8
Minneapolis	(14.6)	(20.7)	(24.2)	(27.2)	2.3	1.6	1.1	1.2	5.7	9.5	12.0	13.2
All Wheat	(140.0)	(155.3)	(170.2)	(168.9)	111.3	103.8	100.2	97.0	20.6	41.4	59.7	61.0
CORN	(651.6)	(648.9)	(674.3)	(662.9)	286.1	261.2	260.2	262.9	344.4	365.9	373.3	360.4
OATS	(0.1)	0.0	(0.1)	0.1	0.1	0.0	0.0	(0.0)	0.4	0.0	0.6	0.6
SOYBEANS	(252.2)	(232.7)	(228.2)	(206.7)	149.1	140.1	134.8	137.1	106.9	98.9	98.1	72.9
SOY OIL	(145.1)	(142.0)	(132.4)	(121.6)	88.6	91.2	94.1	94.7	55.9	53.2	45.4	39.1
SOY MEAL	(216.5)	(211.0)	(203.3)	(192.3)	94.1	87.1	87.0	87.5	72.9	70.8	61.2	50.6
	TOTAL				OTHER REPORTABLE				NON REPORTABLE			
	OPEN INTEREST				OTHER REPORTABLE				NON REPORTABLE			
	11-Jan	4-Jan	28-Dec	21-Dec	11-Jan	4-Jan	28-Dec	21-Dec	11-Jan	4-Jan	28-Dec	21-Dec
WHEAT												
Chicago	455,595	439,485	433,728	444,789	14.0	14.3	11.4	11.8	(9.7)	(9.4)	(6.7)	(6.6)
Kansas City	242,770	247,064	244,520	247,544	(6.5)	(7.8)	(6.8)	(10.2)	3.8	3.5	1.4	3.1
Minneapolis	71,192	77,161	77,597	78,648	3.8	6.9	7.0	7.6	2.8	2.7	4.0	5.2
All Wheat	769,557	763,710	755,845	770,981	11.3	13.4	11.7	9.2	(3.2)	(3.3)	(1.3)	1.8
CORN	1,861,529	1,865,691	1,843,102	1,801,189	49.8	71.4	74.4	72.5	(28.7)	(49.6)	(49.6)	(49.6)
OATS	4,122	0	4,486	4,634	0.1	0.0	0.1	0.1	(0.5)	0.0	(0.6)	(0.8)
SOYBEANS	833,968	789,340	767,439	789,405	31.3	32.9	28.4	28.3	(35.0)	(39.1)	(33.0)	(31.6)
SOY OIL	430,663	422,697	419,844	456,215	(9.3)	(9.5)	(11.9)	(12.5)	10.0	7.1	4.9	0.4
SOY MEAL	454,258	436,279	430,303	452,464	20.9	25.9	29.4	29.1	28.7	27.3	25.8	25.2

SOURCE: CFTC & FI

**DISAGGREGATED COMMITMENT OF TRADERS
FUTURES ONLY NET POSITIONS
AS OF 01/11/2022
(IN THOUSAND CONTRACTS)**

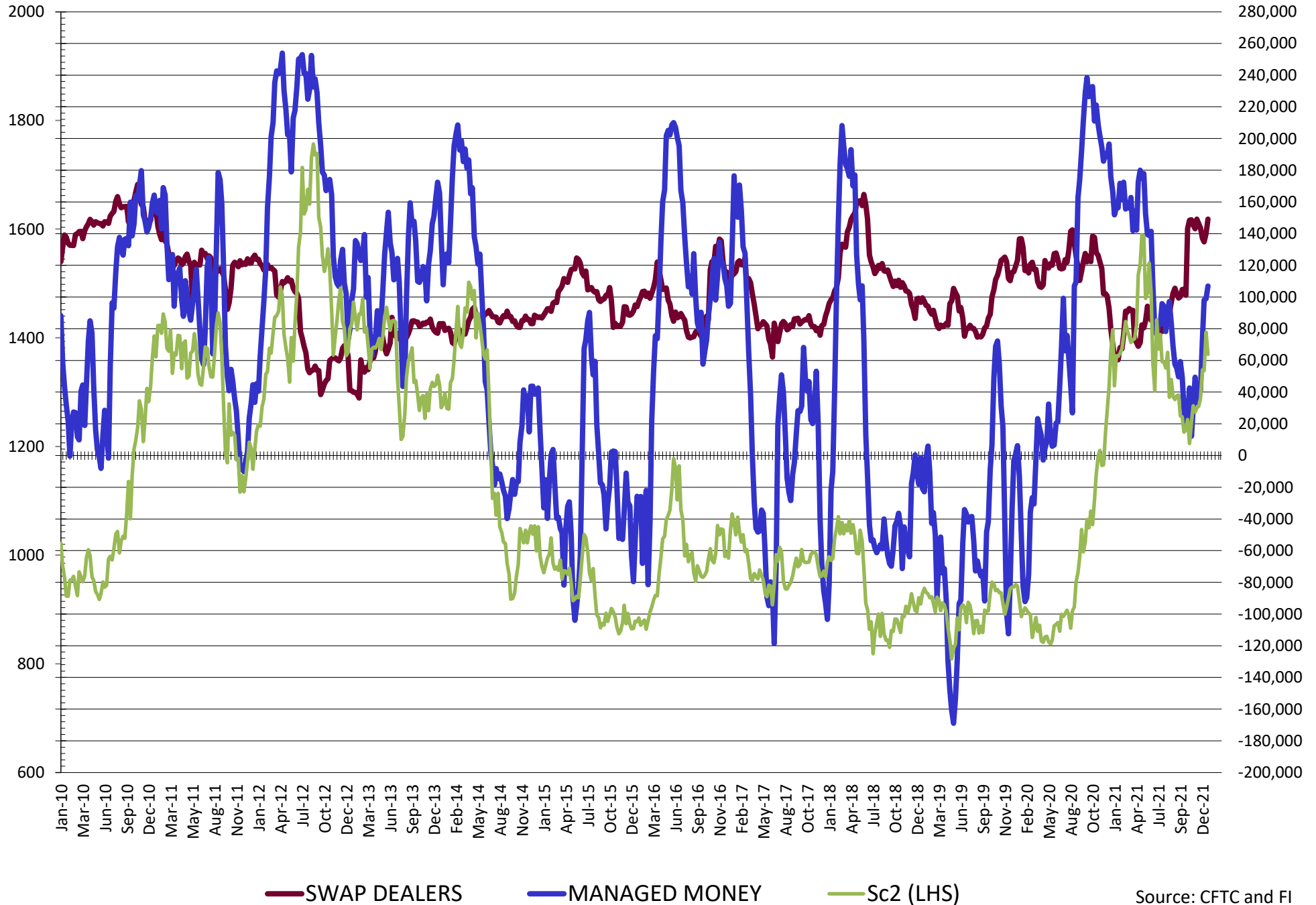
	PRODUCER / MERCHANT / PROCESSOR / USER				(INDEX/ETF) SWAP DEALERS				(CTA/CPO/OTHER UNREGISTERED) MANAGED MONEY			
	11-Jan	4-Jan	28-Dec	21-Dec	11-Jan	4-Jan	28-Dec	21-Dec	11-Jan	4-Jan	28-Dec	21-Dec
	WHEAT											
Chicago	(75.1)	(71.7)	(73.4)	(73.6)	87.2	77.9	75.0	72.0	(31.2)	(22.7)	(14.2)	(12.7)
Kansas City	(64.1)	(73.6)	(80.3)	(79.3)	22.6	25.6	26.5	26.4	42.1	51.2	58.6	57.9
Minneapolis	(16.5)	(22.1)	(25.3)	(28.3)	2.6	2.0	1.2	1.3	5.7	9.5	12.0	13.1
All Wheat	(155.7)	(167.4)	(179.1)	(181.1)	112.5	105.5	102.7	99.7	16.6	37.9	56.4	58.3
CORN	(663.3)	(655.7)	(682.8)	(672.0)	296.5	272.9	271.0	270.7	334.8	355.4	362.5	350.9
OATS	(0.2)	#REF!	(0.1)	0.1	0.1	#REF!	0.0	(0.0)	0.4	#REF!	0.6	0.6
SOYBEANS	(257.5)	(236.3)	(230.5)	(210.1)	152.6	144.4	137.4	137.8	107.3	100.3	99.1	74.0
SOY OIL	(148.6)	(147.8)	(139.2)	(134.0)	89.5	92.0	94.7	94.7	52.7	51.1	43.9	38.5
SOY MEAL	(218.4)	(212.1)	(202.9)	(190.9)	95.6	88.7	88.7	89.5	72.9	70.4	60.8	50.6

	Managed % of OI			
Chicago W	-8%	-6%	-4%	-4%
Corn	22%	23%	24%	24%

	TOTAL OPEN INTEREST				OTHER REPORTABLE				NON REPORTABLE			
	11-Jan	4-Jan	28-Dec	21-Dec	11-Jan	4-Jan	28-Dec	21-Dec	11-Jan	4-Jan	28-Dec	21-Dec
WHEAT												
Chicago	369,218	359,139	356,439	357,381	29.7	26.8	20.1	21.9	(10.6)	(10.3)	(7.5)	(7.5)
Kansas City	215,528	222,583	220,413	216,719	(3.3)	(6.2)	(6.0)	(7.9)	2.7	3.0	1.3	2.8
Minneapolis	67,259	73,366	73,766	74,243	5.6	8.2	8.4	8.9	2.5	2.5	3.7	5.0
All Wheat	652,005	655,088	650,618	648,343	32.0	28.8	22.5	22.9	(5.4)	(4.8)	(2.5)	0.2
CORN	1,504,234	1,520,233	1,522,692	1,485,412	72.7	90.1	95.6	94.4	(40.7)	(62.7)	(46.4)	(44.0)
OATS	4,019	#REF!	4,383	4,532	0.1	#REF!	0.1	0.1	(0.5)	#REF!	(0.6)	(0.8)
SOYBEANS	678,613	648,148	647,225	654,460	31.0	30.3	26.2	28.9	(33.4)	(38.7)	(32.2)	(30.5)
SOY OIL	386,373	379,609	380,321	406,225	(2.8)	(1.4)	(3.3)	1.9	9.2	6.1	3.9	(1.1)
SOY MEAL	404,223	389,727	388,667	400,752	24.2	28.6	30.9	29.5	25.7	24.4	22.4	21.3

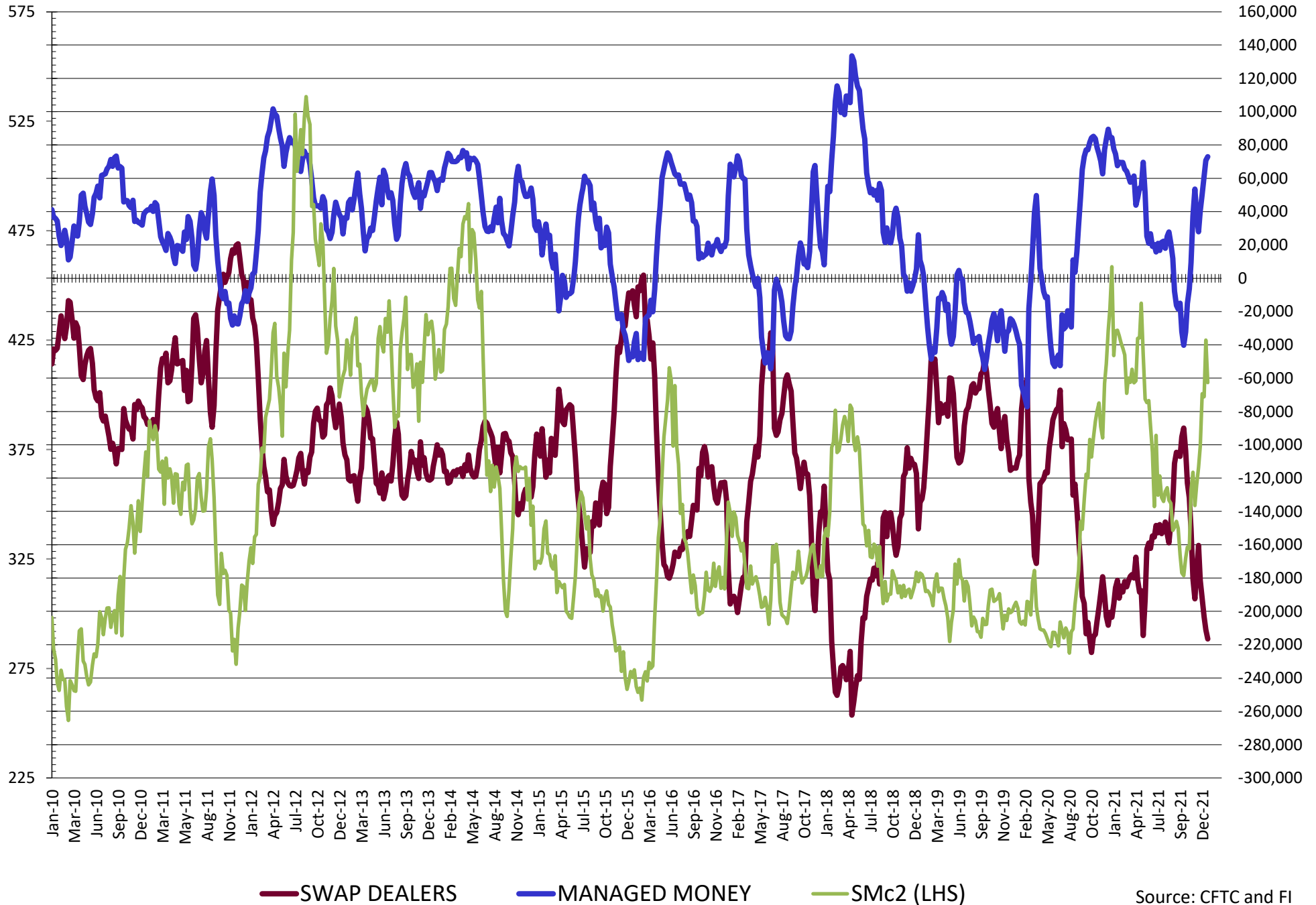
SOURCE: CFTC & FI

NET POSITION FUTURES AND OPTIONS OF SWAP AND MANAGED FUNDS IN SOYBEANS

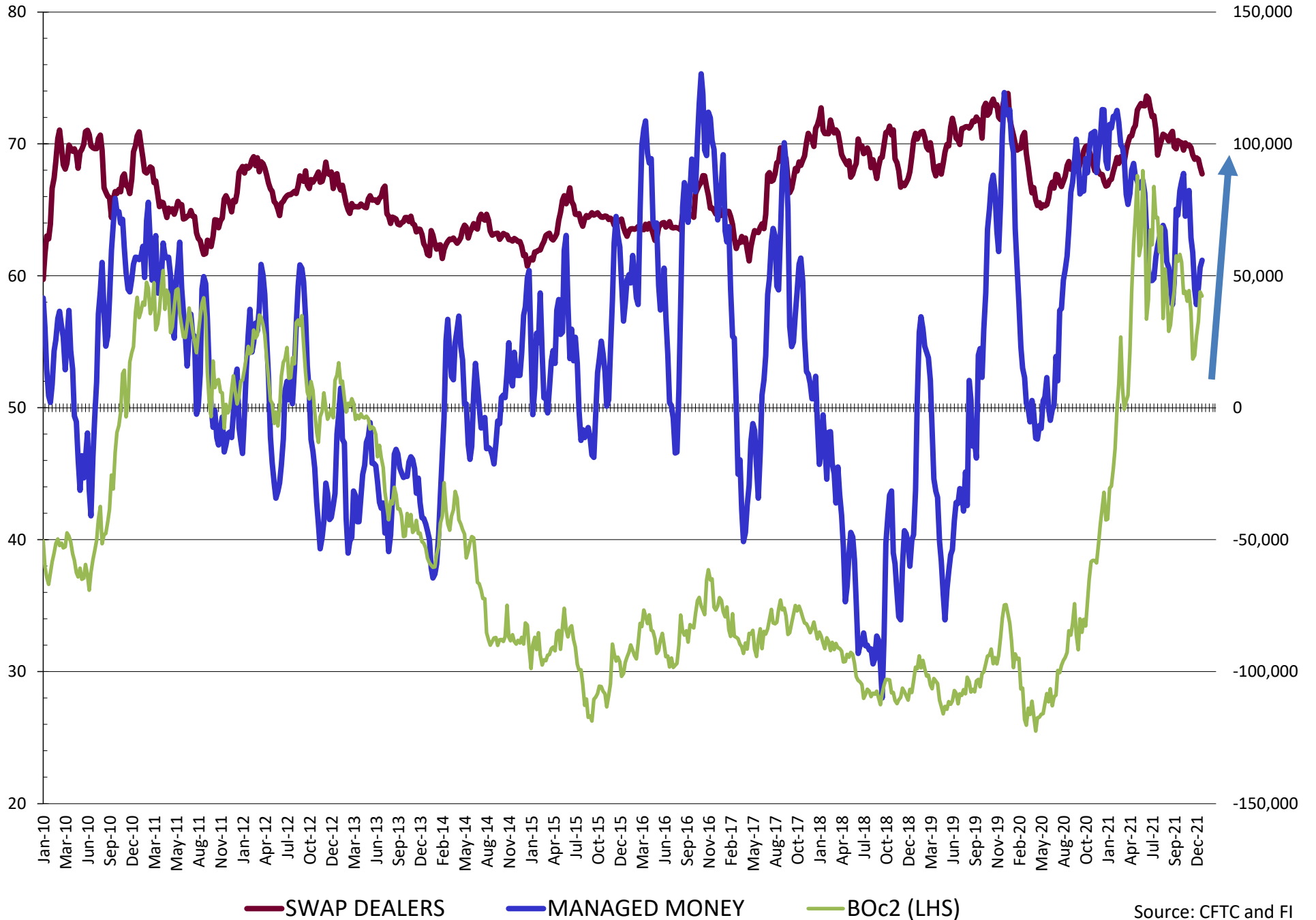


Source: CFTC and FI
1/15/2022

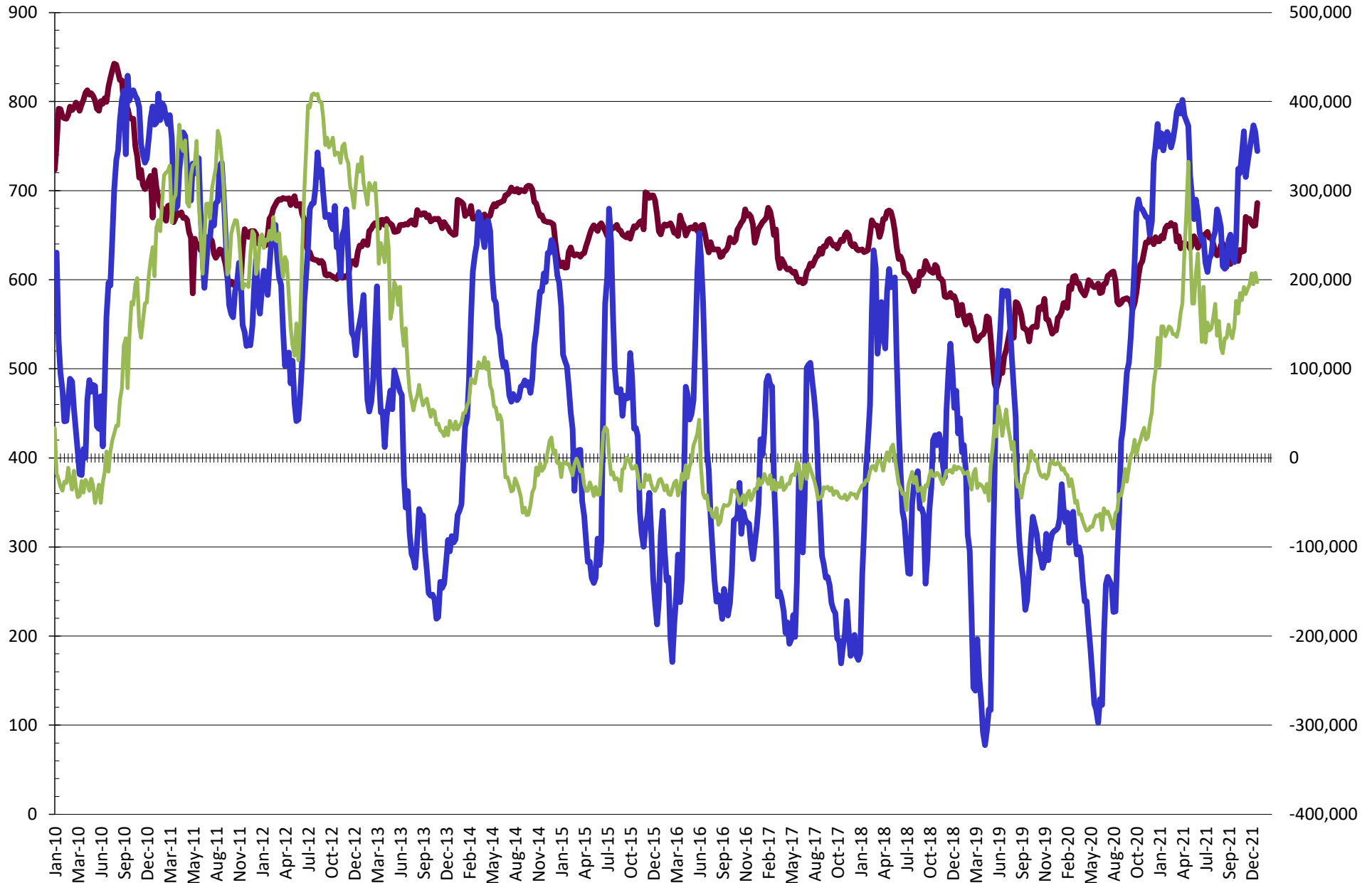
NET POSITION FUTURES AND OPTIONS OF SWAP AND MANAGED FUNDS IN SOYBEAN MEAL



NET POSITION FUTURES AND OPTIONS OF SWAP AND MANAGED FUNDS IN SOYBEAN OIL

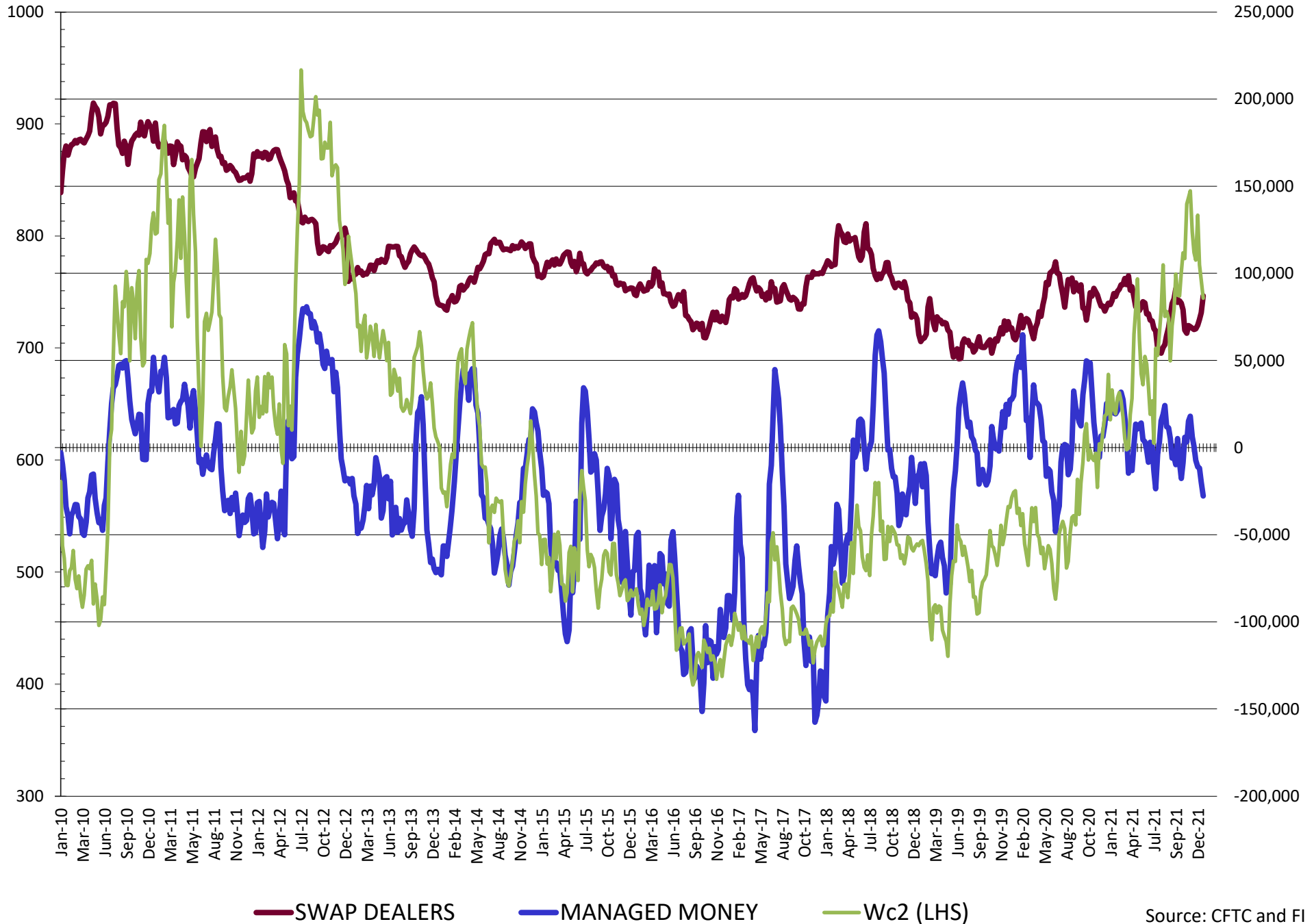


NET POSITION FUTURES AND OPTIONS OF SWAP AND MANAGED FUNDS IN CORN

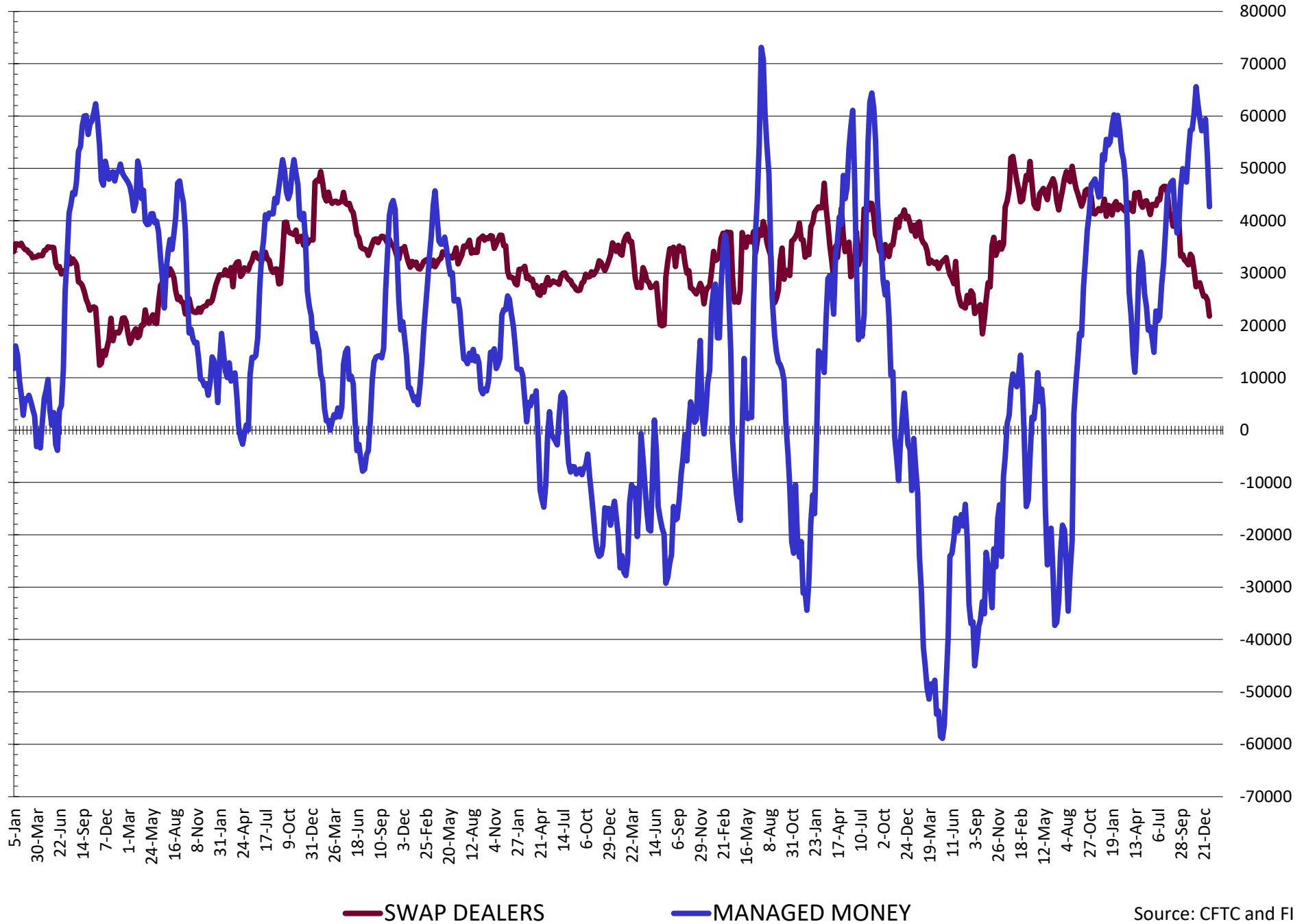


— SWAP DEALERS
 — MANAGED MONEY
 — Cc2 (LHS)

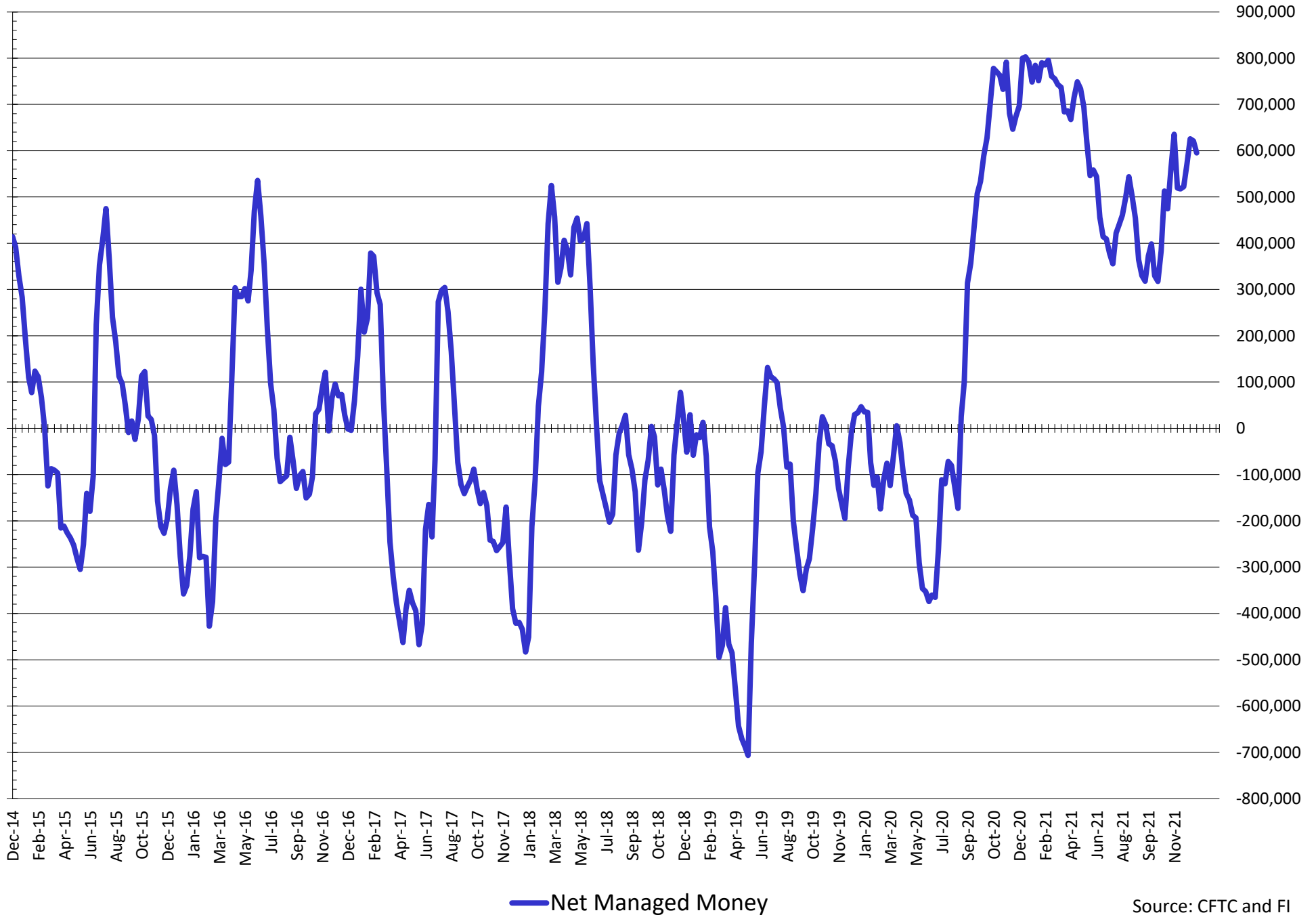
NET POSITION FUTURES AND OPTIONS OF SWAP AND MANAGED FUNDS IN CHICAGO WHEAT



NET POSITION FUTURES AND OPTIONS OF SWAP AND MANAGED FUNDS IN KANSAS WHEAT



NET POSITION FUTURES AND OPTIONS OF SWAP AND MANAGED FUNDS IN COMBINED SRW, HRW, CORN, SOYBEANS, SOYMEAL AND SOYOIL



Source: CFTC and FI
1/15/2022

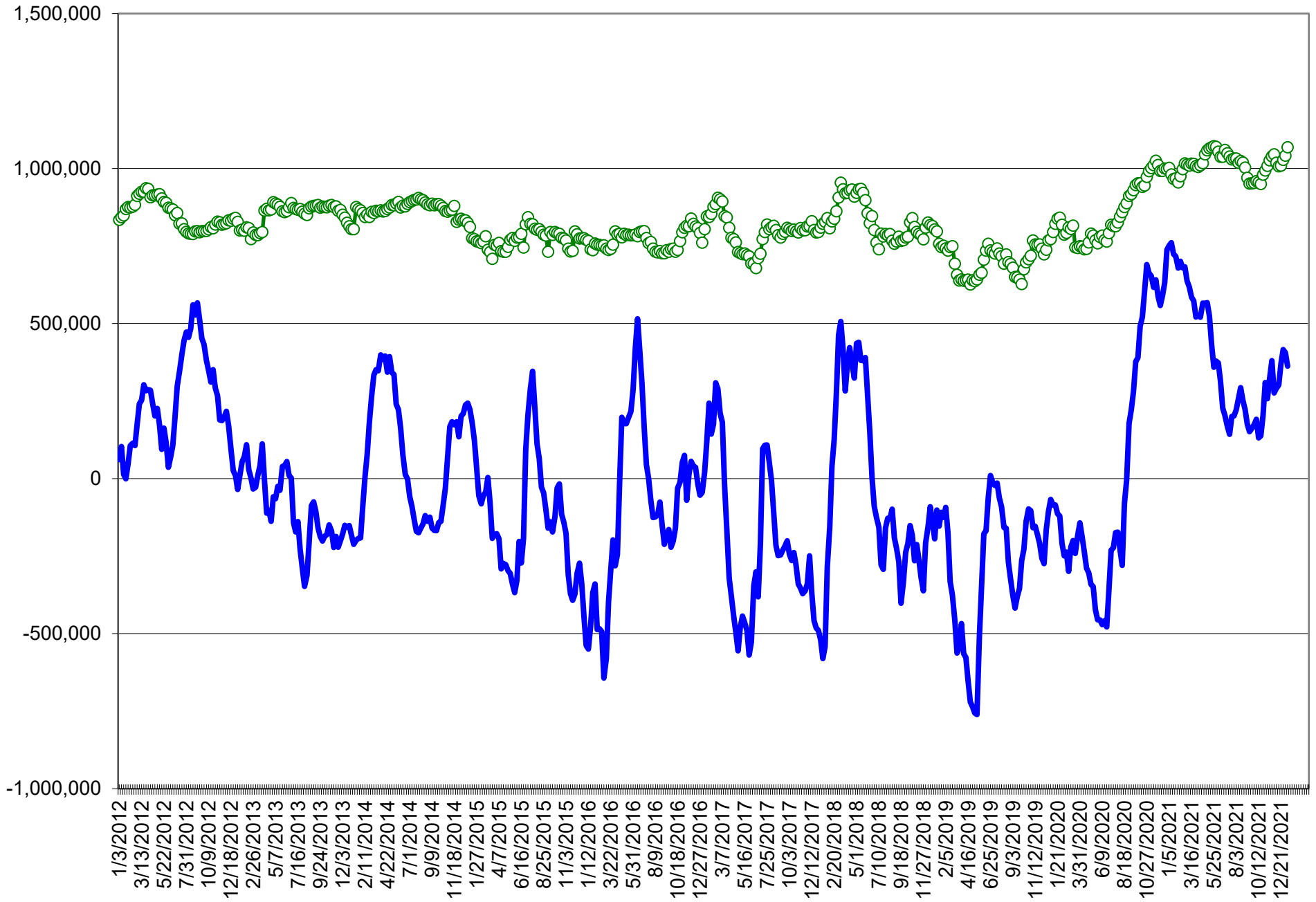
COMMITMENT OF TRADERS
FUTURES & OPTIONS NET POSITIONS (INDEX BROKEN OUT)
AS OF 01/11/2022
(IN THOUSAND CONTRACTS)

	COMMERCIAL				(FUND) NON COMMERCIAL				(SPEC) NON-REPORTABLE			
	11-Jan	4-Jan	28-Dec	21-Dec	11-Jan	4-Jan	28-Dec	21-Dec	11-Jan	4-Jan	28-Dec	21-Dec
	WHEAT											
Chicago	(78.4)	(79.1)	(84.2)	(81.9)	(45.2)	(36.1)	(30.5)	(28.1)	(9.7)	(9.4)	(6.7)	(6.6)
Kansas City	(74.2)	(84.5)	(92.7)	(90.3)	17.2	21.5	29.7	29.8	3.8	3.5	1.4	3.1
Minneapolis	-	-	-	-	-	-	-	-	-	-	-	-
All Wheat	(152.6)	(163.6)	(177.0)	(172.2)	(28.0)	(14.6)	(0.8)	1.7	(5.9)	(6.0)	(5.3)	(3.5)
CORN	(657.1)	(658.2)	(683.3)	(669.8)	240.2	269.0	282.8	275.0	(28.7)	(49.6)	(33.7)	(32.9)
OATS	-	-	-	-	-	-	-	-	-	-	-	-
SOYBEANS	(243.9)	(227.7)	(224.9)	(201.2)	85.3	85.9	80.7	57.2	(35.0)	(39.1)	(33.0)	(31.6)
SOY OIL	(139.7)	(137.1)	(124.7)	(113.1)	10.4	9.0	1.6	(5.1)	10.0	7.1	4.9	0.4
SOY MEAL	(206.7)	(200.7)	(192.6)	(180.7)	54.8	57.0	51.8	41.4	28.7	27.3	25.8	25.2

	TOTAL OPEN INTEREST				(INDEX) COMMERCIAL INDEX TRADERS				(INDEX) % NET OF TOTAL OPEN INTEREST			
	11-Jan	4-Jan	28-Dec	21-Dec	11-Jan	4-Jan	28-Dec	21-Dec	11-Jan	4-Jan	28-Dec	21-Dec
	WHEAT											
Chicago	455,595	439,485	433,728	444,789	133.3	124.6	121.4	116.6	29.3%	28.4%	28.0%	26.2%
Kansas City	242,770	247,064	244,520	247,544	53.2	59.6	61.7	57.4	21.9%	24.1%	25.2%	23.2%
Minneapolis	-	-	-	-	-	-	-	-	-	-	-	-
All Wheat	698,365	686,549	678,248	692,333	186.5	184.2	183.1	174.0	26.7%	26.8%	27.0%	25.1%
CORN	1,861,529	1,865,691	1,843,102	1,801,189	445.6	438.8	434.2	427.7	23.9%	23.5%	23.6%	23.7%
OATS	-	-	-	-	-	-	-	-	-	-	-	-
SOYBEANS	833,968	789,340	767,439	789,405	193.6	180.9	177.1	175.5	23.2%	22.9%	23.1%	22.2%
SOY OIL	430,663	422,697	419,844	456,215	119.2	121.0	118.3	117.8	27.7%	28.6%	28.2%	25.8%
SOY MEAL	454,258	436,279	430,303	452,464	123.3	116.4	115.0	114.2	27.1%	26.7%	26.7%	25.2%

SOURCE: CFTC & FI

NET POSITION FUTURES AND OPTIONS OF SPECULATORS AND INDEX FUNDS IN COMBINED SRW, HRW, CORN, SOYBEANS, SOYMEAL AND SOYOIL



Source: CFTC and FI

○ Net Index

— Net Speculator

Traditional Daily Estimate of Funds 1/11/22

	(Neg)-"Short"	Pos-"Long"			
Actual less Est.	(28.0)	8.7	(4.6)	3.2	0.2
	Corn	Bean	Chi. Wheat	Meal	Oil
Act.	407.5	138.3	(1.5)	97.2	49.9
12-Jan	(3.0)	6.0	(9.0)	2.0	2.0
13-Jan	(16.0)	(14.0)	(8.0)	(5.0)	(4.0)
14-Jan	7.0	(4.0)	(4.0)	(2.0)	0.0
17-Jan					
18-Jan					
FI Est. of Futures Only 1/11/22	395.5	126.3	(22.5)	92.2	47.9
FI Est. Futures & Options	382.2	126.2	(34.8)	88.8	44.6
Futures only record long "Traditional Funds"	547.7 1/26/2021	280.9 11/10/2020	86.5 8/7/2018	167.5 5/1/2018	160.2 11/1/2016
Futures only record short	(235.0) 6/9/2020	(118.3) 4/30/2019	(130.0) 4/25/2017	(49.5) 3/1/2016	(69.8) 9/18/2018
Futures and options record net long	557.6 1/12/2021	270.9 10/6/2020	64.8 8/7/2012	132.1 5/1/2018	159.2 1/1/2016
Futures and options record net short	(270.6) 4/26/2019	(132.0) 4/30/2019	(143.3) 4/25/2017	(64.1) 3/1/2016	(77.8) 9/18/2018

Managed Money Daily Estimate of Funds 1/11/22

	Corn	Bean	Chi. Wheat	Meal	Oil
Latest CFTC Fut. Only	334.8	107.3	(31.2)	72.9	52.7
Latest CFTC F&O	344.4	106.9	(27.8)	72.9	55.9
FI Est. Managed Fut. Only	323	95	(52)	68	51
FI Est. Managed Money F&O	332	95	(49)	68	54

Index Funds Latest Positions (as of last Tuesday)

Index Futures & Options	445.6	193.6	133.3	NA	119.2
Change From Previous Week	6.7	12.7	8.7	NA	(1.7)

Source: Reuters, CFTC & FI (FI est. are noted with latest date)

Disclaimer

TO CLIENTS/PROSPECTS OF FUTURES INTERNATIONAL, SEE RISK DISCLOSURE BELOW:

THIS COMMUNICATION IS CONVEYED AS A SOLICITATION FOR ENTERING INTO A DERIVATIVES TRANSACTION.

Any trading recommendations and market or other information to Customer by Futures International (FI), although based upon information obtained from sources believed by FI to be reliable may not be accurate and may be changed without notice to customer. FI makes no guarantee as to the accuracy or completeness of any of the information or recommendations furnished to Customer. Customer understands that FI, its managers, employees and/or affiliates may have a position in commodity futures, options or other derivatives which may not be consistent with the recommendations furnished by FI to Customer.

The risk of trading futures and options and other derivatives involves a substantial risk of loss and is not suitable for all persons. In purchasing an option, the risk is limited to the premium paid, and all commissions and fees involved with the trade. When an option is shorted or written, the writer of the option has unlimited risk with respect to the option written. The use of options strategies such as a straddles and strangles involve multiple option positions and may substantially increase the amount of commissions and fees paid to execute the strategy. Option prices do not necessarily move in tandem with cash or futures prices. Each person must consider whether a particular trade, combination of trades or strategy is suitable for that person's financial means and objectives.

This material may include discussions of seasonal patterns, however, futures prices have already factored in the seasonal aspects of supply and demand, and seasonal patterns are no indication of future market trends. Finally, past performance is not indicative of future results.

This communication may contain links to third party websites which are not under the control of FI and FI is not responsible for their content. Products and services are offered only in jurisdictions where solicitation and sale are lawful, and in accordance with applicable laws and regulations in each such jurisdiction.