

CFTC COMMITMENT OF TRADERS REPORT

As of 1/25/2022

TRADITIONAL FUNDS net position changes

Wed to Tue, in 000 contracts

	Corn	Bean	Meal	Oil	Chi. Wheat	KC Wheat	Min Wheat
Futures Only	51.0	20.9	(1.9)	17.0	6.8	1.3	(0.0)
Futures & Options Combined	50.6	21.5	(2.8)	19.4	11.1	5.3	0.3

TRADITIONAL COMMERCIAL net position changes

	Corn	Bean	Meal	Oil	Chi. Wheat	KC Wheat	Min Wheat
Futures Only	(46.8)	(20.6)	3.6	(18.3)	(8.7)	1.0	(1.6)
Futures & Options Combined	(47.8)	(23.3)	4.4	(21.0)	(12.2)	(3.0)	(2.0)

MANAGED MONEY net position changes

	Corn	Bean	Meal	Oil	Chi. Wheat	KC Wheat	Min Wheat
Futures Only	41.2	9.6	(0.3)	10.7	13.2	4.0	(0.5)
Futures & Options Combined	39.1	15.3	(0.4)	10.6	11.5	4.5	(0.5)

SWAP DEALERS net position changes

	Corn	Bean	Meal	Oil	Chi. Wheat	KC Wheat	Min Wheat
Futures Only	0.9	(11.1)	(0.3)	(0.7)	(4.7)	0.4	0.0
Futures & Options Combined	(0.3)	(15.7)	(0.0)	(0.8)	(4.2)	(0.3)	(0.0)

PRODUCERS/END USERS net position changes

	Corn	Bean	Meal	Oil	Chi. Wheat	KC Wheat	Min Wheat
Futures Only	(47.7)	(9.5)	3.9	(17.5)	(4.0)	0.7	(1.6)
Futures & Options Combined	(47.5)	(7.6)	4.4	(20.2)	(8.0)	(2.7)	(1.9)

INDEX net position changes

	Corn	Bean	Meal	Oil	Chi. Wheat	KC Wheat	Min Wheat
Futures & Options Combined	0.2	(14.2)	(2.6)	0.5	0.4	1.1	NA

SUPPLEMENTAL NON-COMMERCIAL net position changes

	Corn	Bean	Meal	Oil	Chi. Wheat	KC Wheat	Min Wheat
Futures & Options Combined	51.7	18.3	(2.2)	15.6	9.1	4.0	NA

OPEN INTEREST net position changes

Wed to Tue, in 000 contracts

	Corn	Bean	Meal	Oil	Chi. Wheat	KC Wheat	Min Wheat
Futures Only	51.3	43.9	(4.8)	19.0	11.8	(0.2)	0.5
Futures & Options Combined	75.5	42.4	(7.2)	21.1	29.3	2.2	0.7

Source: CFTC and FI

Wed to Tue, in 000 contracts

**COMMITMENT OF TRADERS
FUTURES ONLY NET POSITIONS
AS OF 01/25/2022
(IN THOUSAND CONTRACTS)**

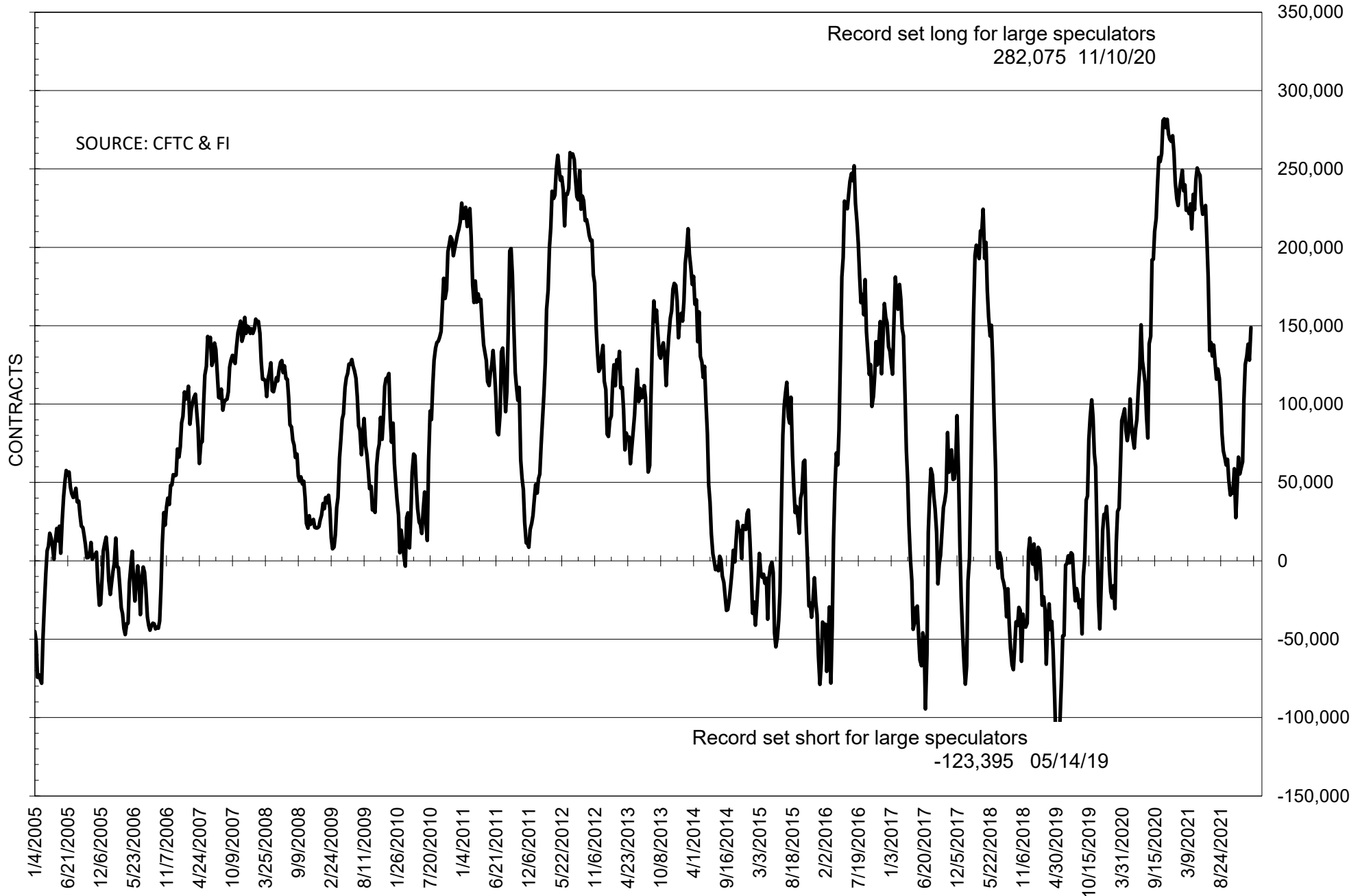
	COMMERCIAL				(FUND) NON COMMERCIAL				(SPEC) NON-REPORTABLE			
	25-Jan	18-Jan	11-Jan	4-Jan	25-Jan	18-Jan	11-Jan	4-Jan	25-Jan	18-Jan	11-Jan	4-Jan
	WHEAT											
Chicago	-3.5	5.2	12.1	6.2	11.7	4.8	-1.5	4.1	-8.1	-10.0	-10.6	-10.3
Kansas City	-34.8	-35.9	-41.5	-48.0	34.9	33.6	38.8	45.0	-0.1	2.3	2.7	3.0
Minneapolis	-12.5	-10.9	-13.8	-20.1	8.8	8.8	11.3	17.7	3.8	2.2	2.5	2.5
All Wheat	-50.9	-41.6	-43.2	-61.9	55.3	47.2	48.6	66.8	-4.5	-5.5	-5.4	-4.8
CORN	-389.5	-342.7	-366.8	-382.8	439.1	388.1	407.5	445.5	-49.6	-45.5	-40.7	-62.7
OATS	#VALUE!	#VALUE!	-0.1	#VALUE!	#VALUE!	#####	0.6	#VALUE!	#VALUE!	#VALUE!	-0.5	#VALUE!
SOYBEANS	-112.8	-92.2	-104.9	-91.9	148.9	128.0	138.3	130.6	-36.1	-35.8	-33.4	-38.7
SOY OIL	-78.4	-60.1	-59.1	-55.8	68.5	51.5	49.9	49.7	9.9	8.6	9.2	6.1
SOY MEAL	-104.4	-108.0	-122.8	-123.4	79.0	80.9	97.2	99.0	25.4	27.1	25.7	24.4

Oats positions thin to be reported

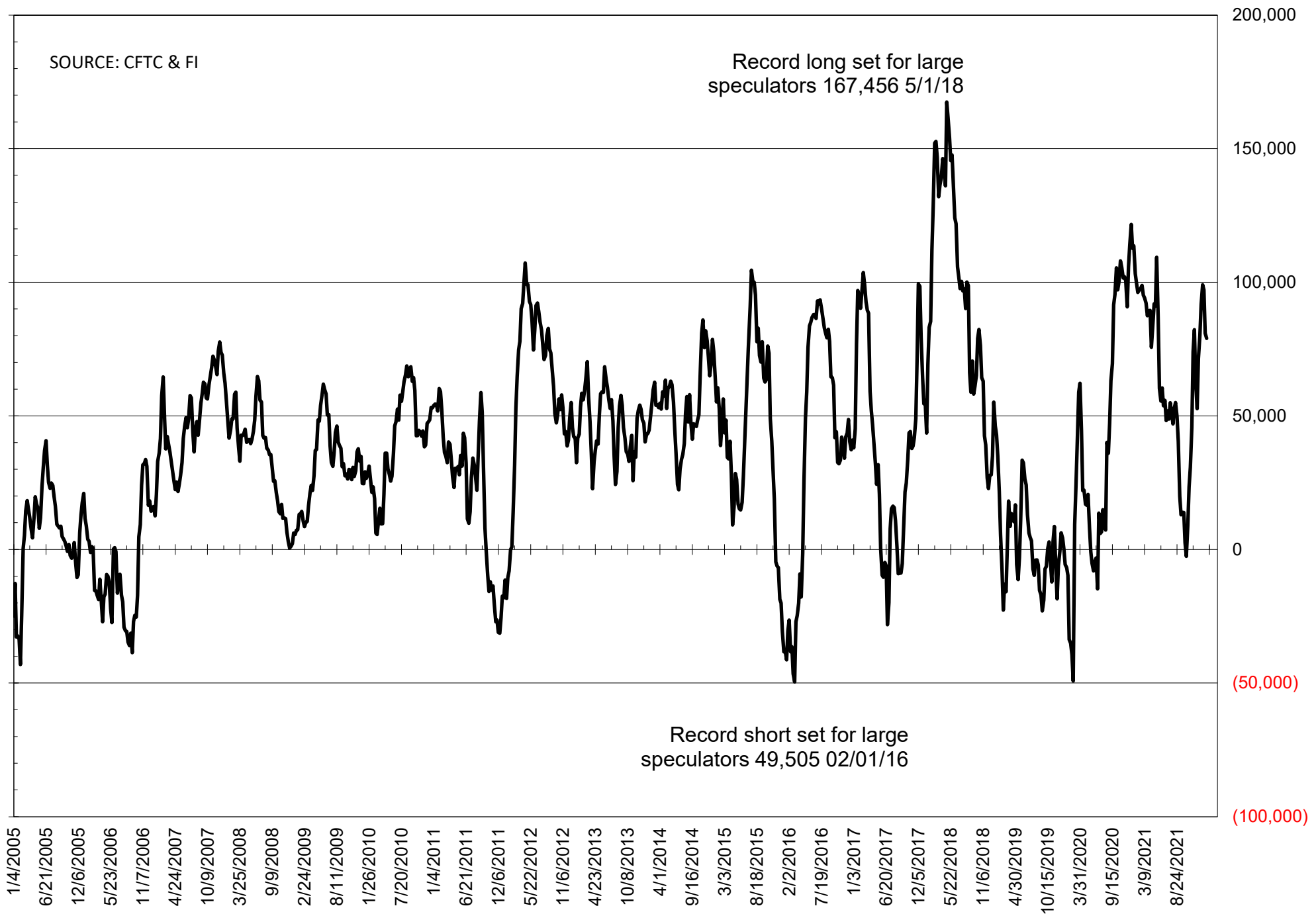
	TOTAL OPEN INTEREST				NEARBY FUTURES PRICE					25-Jan-22 LAST REPORTED % HELD BY TRADERS			
	25-Jan	18-Jan	11-Jan	4-Jan	H Latest	H 25-Jan	H 18-Jan	H 11-Jan	H 4-Jan	LARGE FUND		SMALL	
										LONG	SHORT	LONG	SHORT
WHEAT													
Chicago	390266	378456	369218	359139	786.25	818.00	769.00	770.25	770.00	0%	25%	0%	10%
Kansas City	211960	212141	215528	222583	802.25	834.50	772.75	791.75	804.00	0%	14%	0%	11%
Minneapolis	68398	67923	67259	73366	922.50	947.75	903.50	928.25	970.50	0%	7%	0%	18%
CORN	1539124	1487858	1504234	1520233	636.00	620.00	599.50	601.00	609.50	0%	6%	0%	12%
OATS	#VALUE!	#VALUE!	4019	#VALUE!	675.50	652.50	646.75	656.00	692.00	0%	#VALUE!	0%	#VALUE!
SOYBEANS	735966	692022	678613	648148	1470.00	1407.25	1361.25	1386.50	1389.75	27%	7%	7%	12%
SOY OIL	411832	392795	386373	379609	65.27	62.51	59.08	58.87	58.33	0%	9%	0%	6%
SOY MEAL	406335	411123	404223	389727	411.20	392.00	590.80	413.10	414.70	0%	5%	0%	6%

SOURCE: CFTC & FI

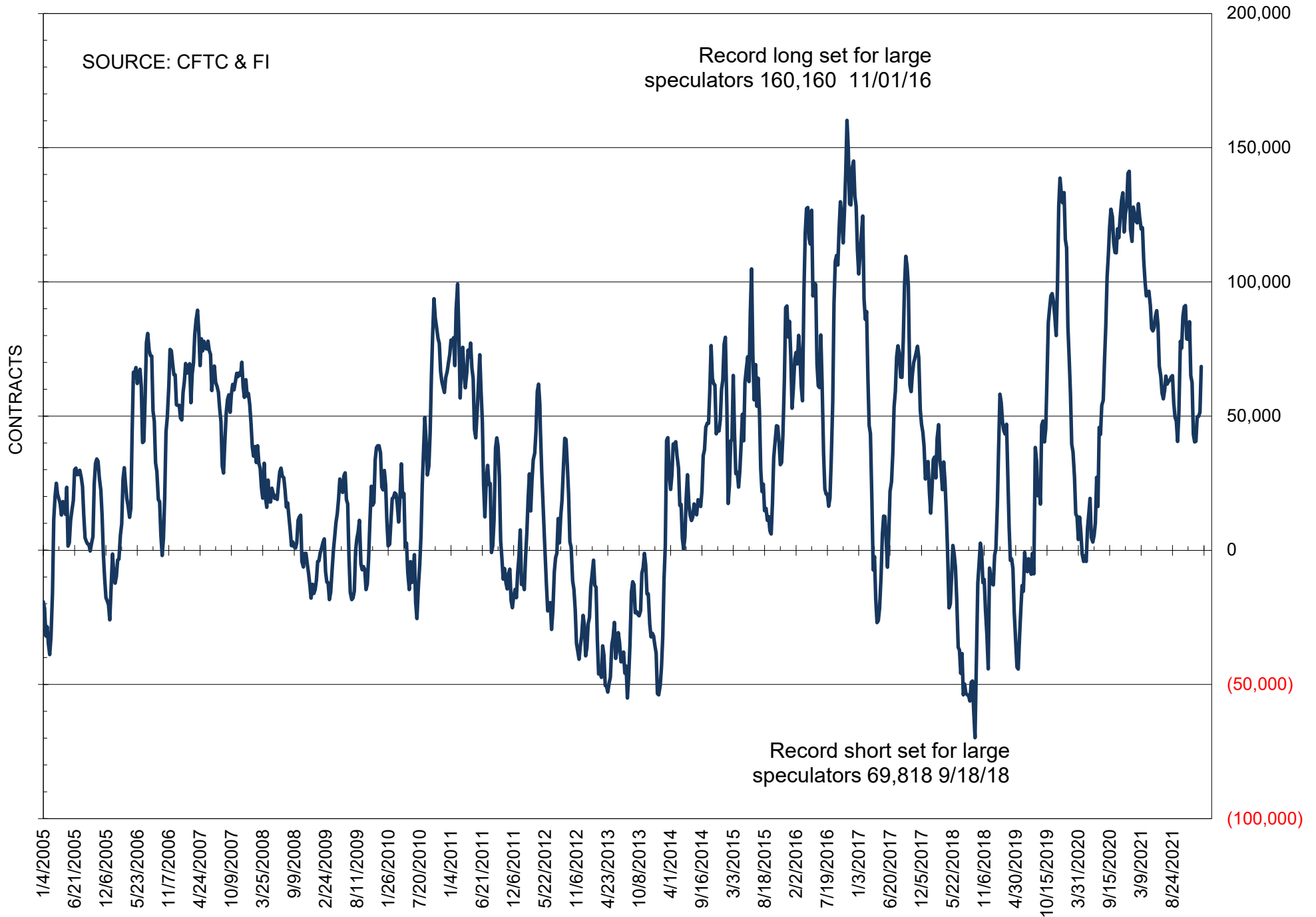
NET POSITION OF FUTURES ONLY LARGE SPECS IN SOYBEANS



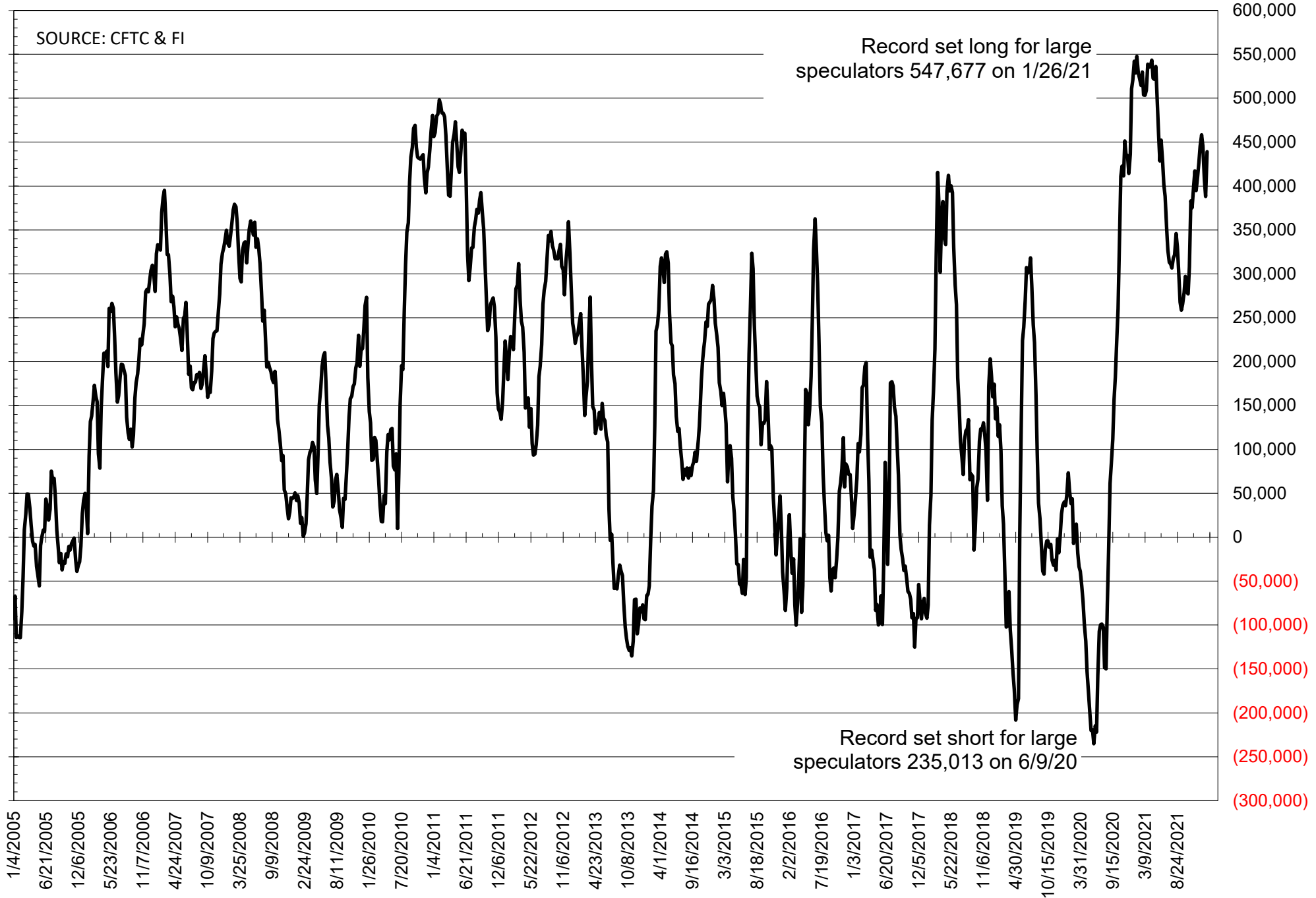
NET POSITION OF FUTURES ONLY LARGE SPECS IN SOYMEAL



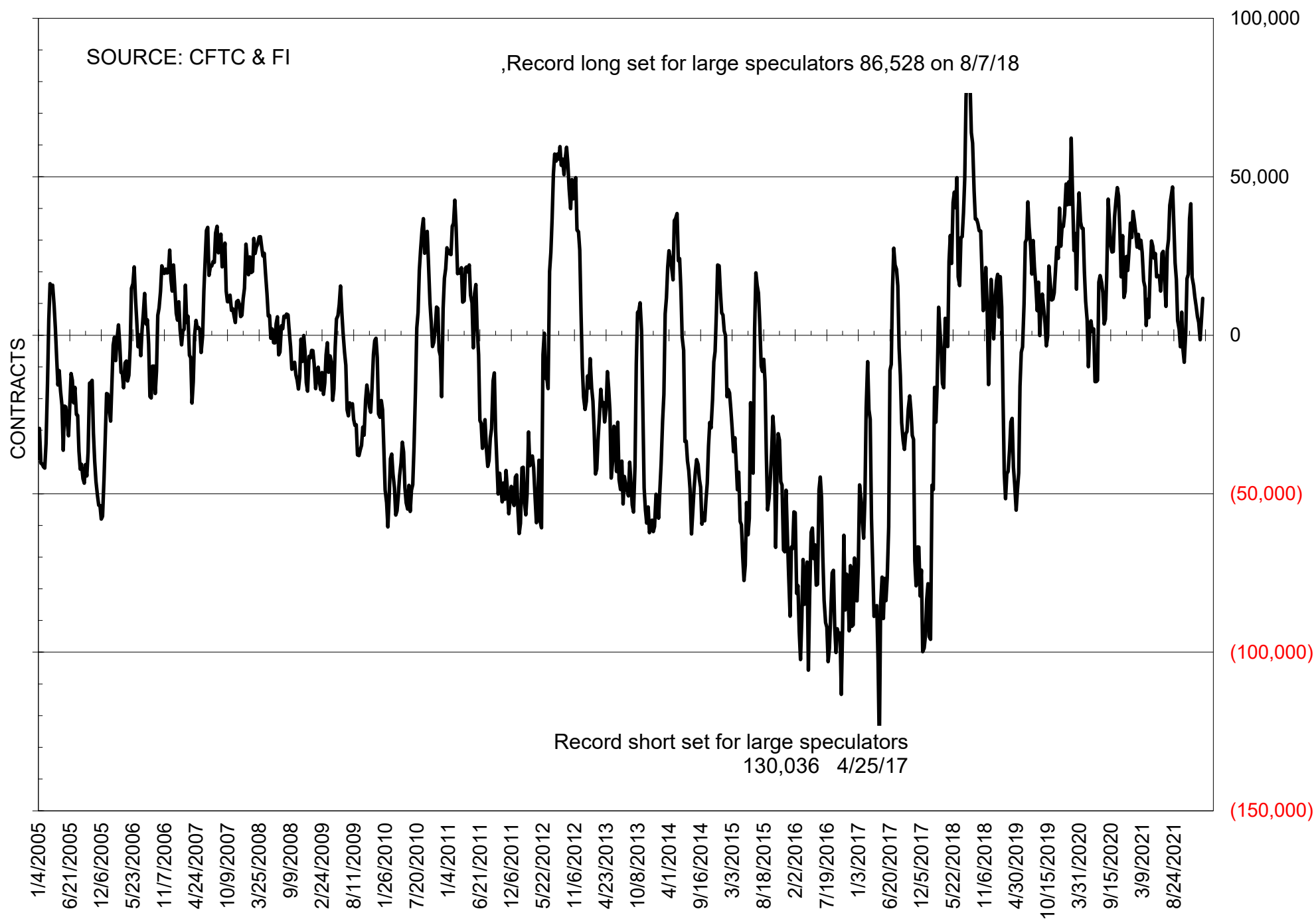
NET POSITION OF FUTURES ONLY LARGE SPECS IN SOYOIL



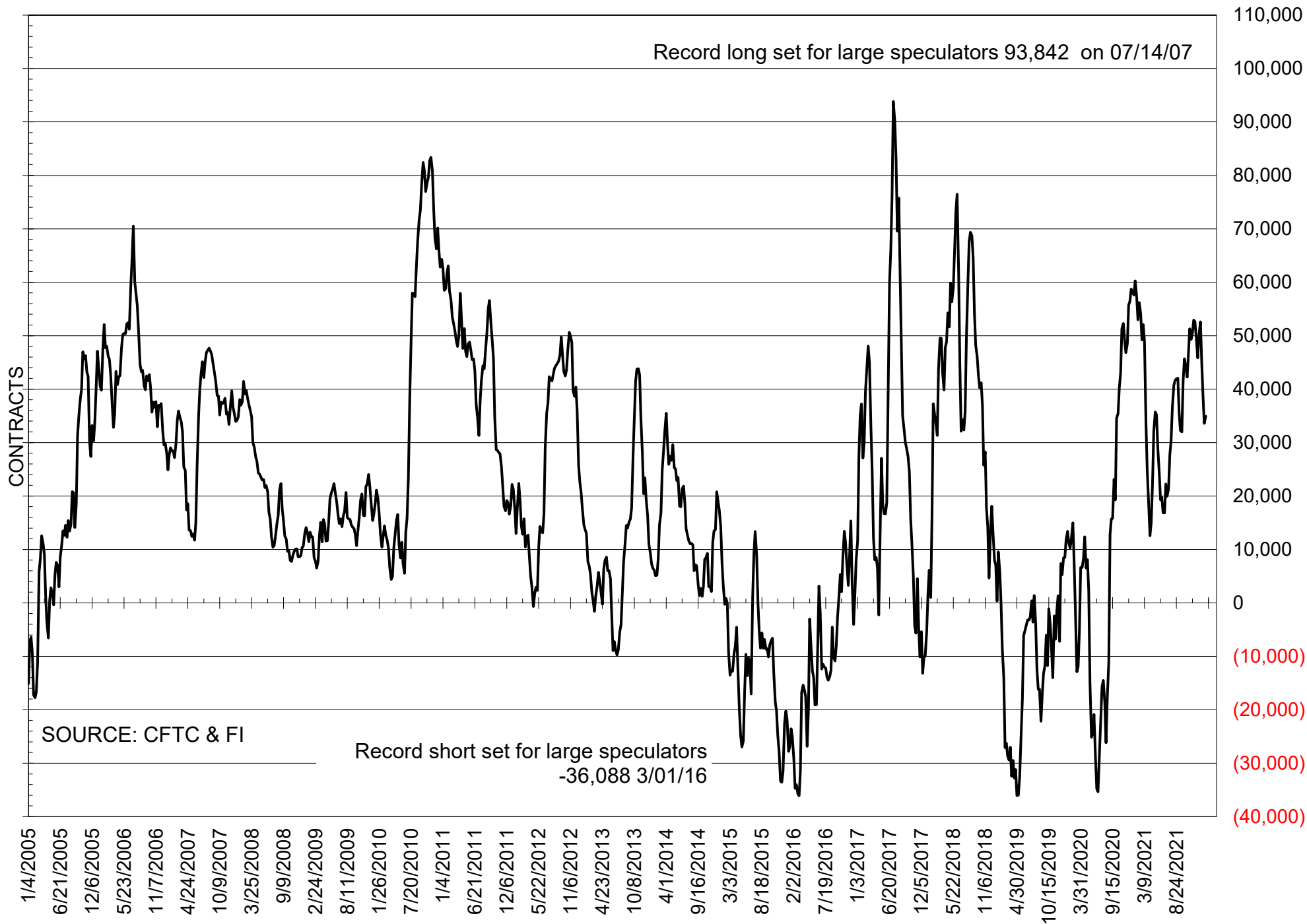
NET POSITION OF LARGE SPECULATORS IN CORN



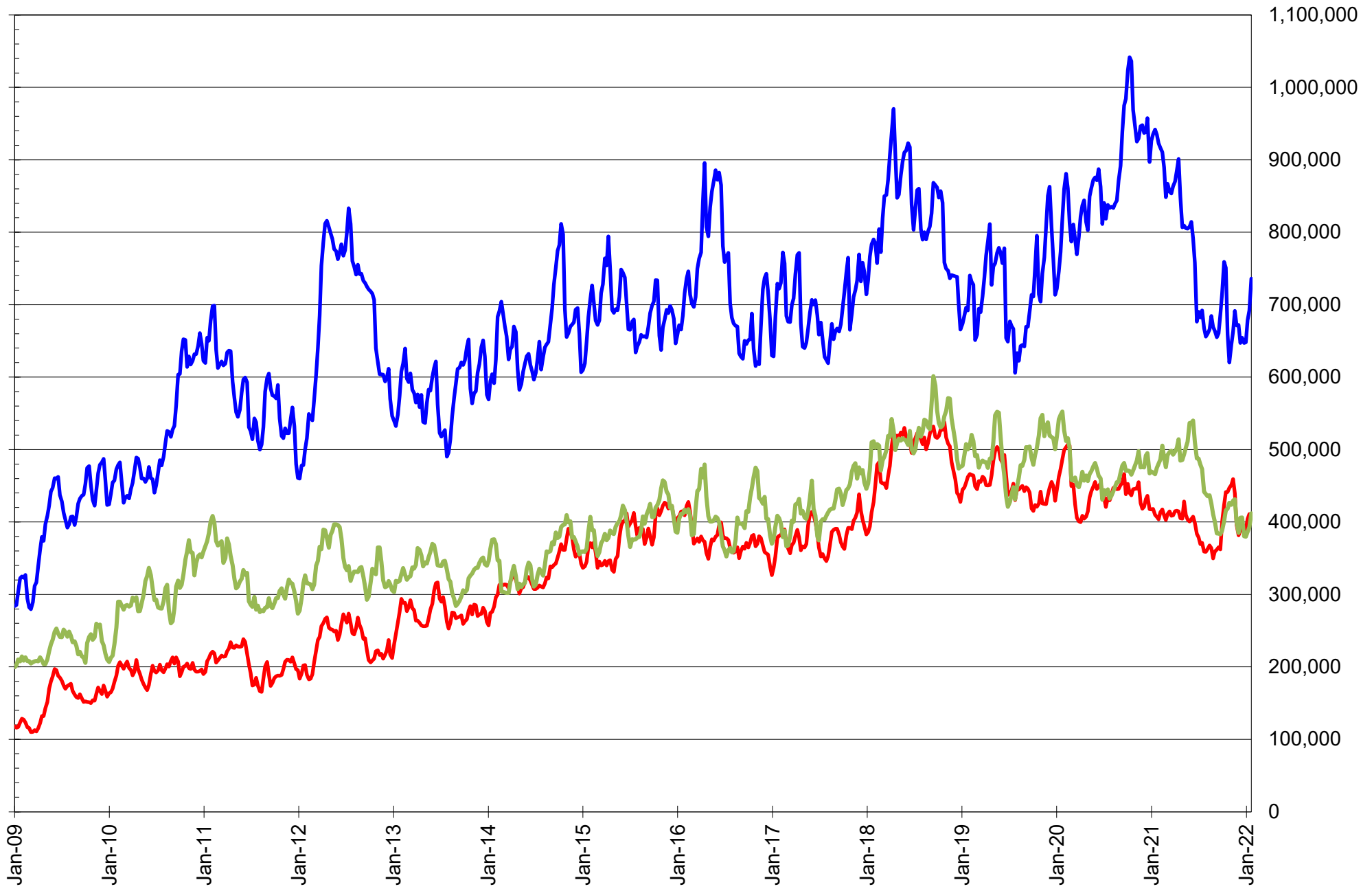
NET POSITION OF FUTURES ONLY LARGE SPECS IN CHICAGO WHEAT



NET POSITION OF LARGE SPECULATORS IN KANSAS CITY WHEAT



TOTAL OPEN INTEREST IN SOYBEANS, MEAL AND OIL, FUTURES ONLY



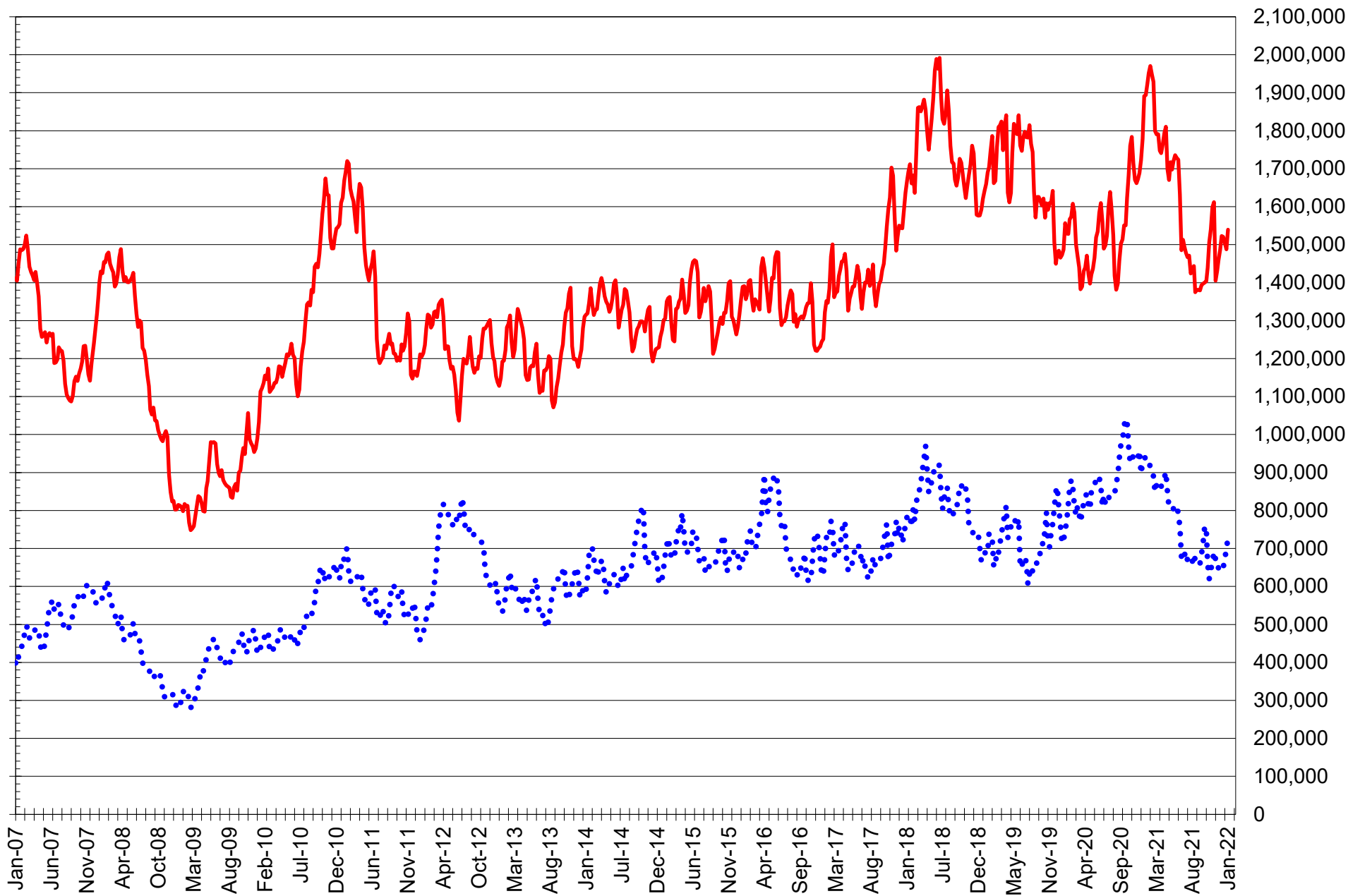
SOURCE: CFTC & FI

— SOYBEANS

— SOYBEAN MEAL

— SOYBEAN OIL

TOTAL OPEN INTEREST IN CORN AND SOYBEANS, FUTURES ONLY



SOURCE: CFTC & FI

— CORN

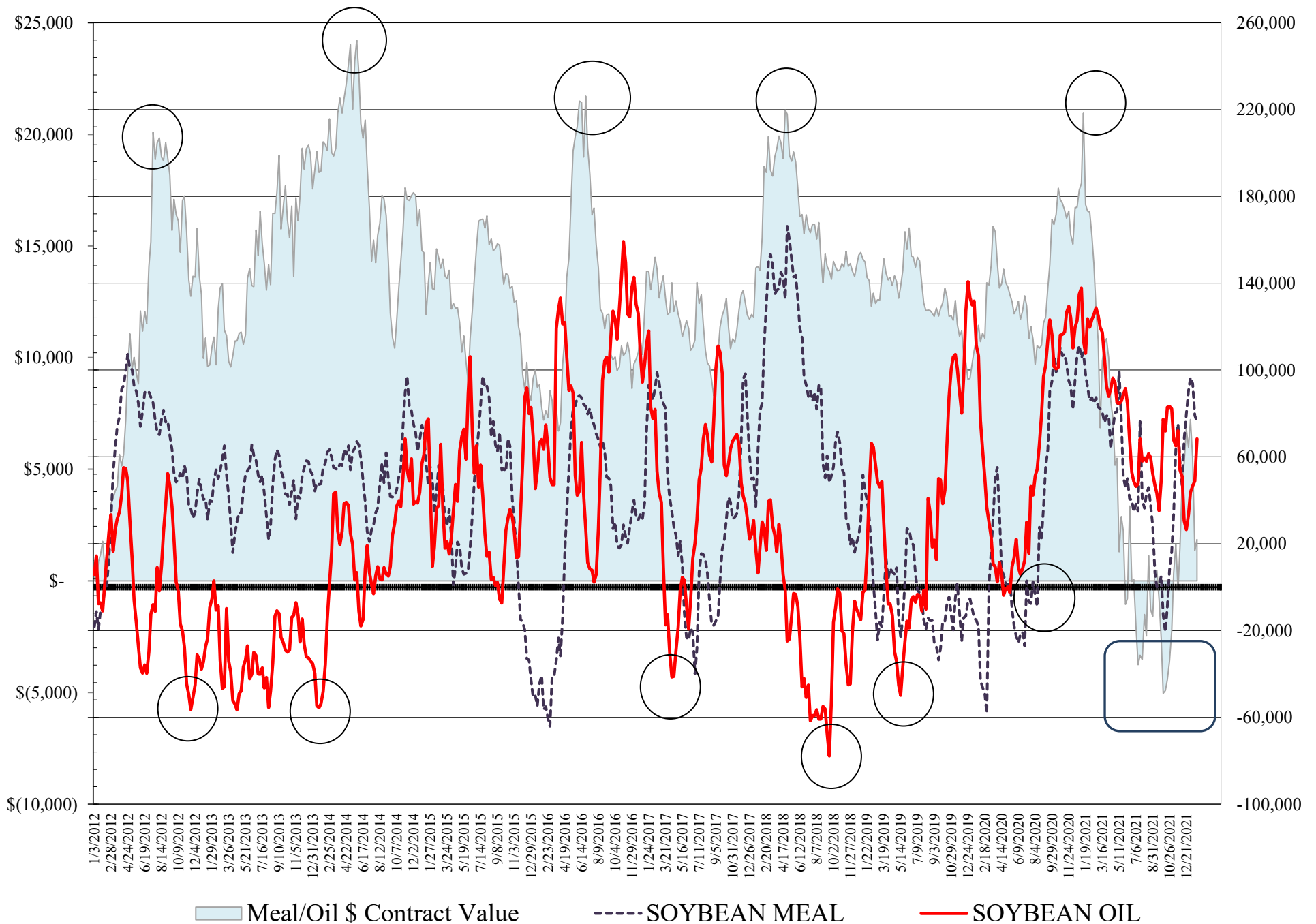
•••• SOYBEANS

**COMMITMENT OF TRADERS
FUTURES & OPTIONS NET POSITIONS
AS OF 01/25/2022
(IN THOUSAND CONTRACTS)**

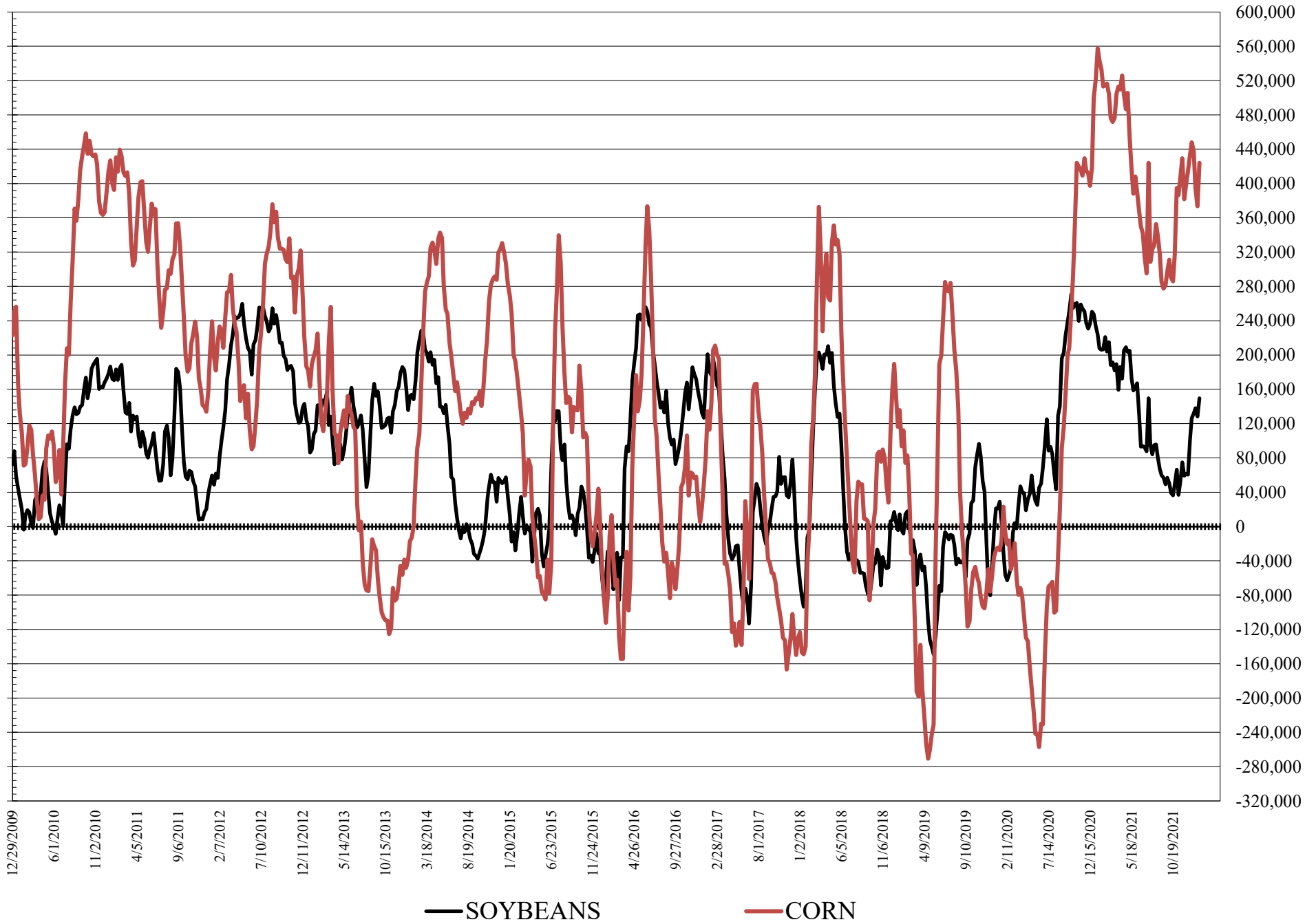
	COMMERCIAL				(FUND) NON COMMERCIAL				(SPEC) NON-REPORTABLE			
	25-Jan	18-Jan	11-Jan	4-Jan	25-Jan	18-Jan	11-Jan	4-Jan	25-Jan	18-Jan	11-Jan	4-Jan
	WHEAT											
Chicago	7.3	19.5	23.5	15.0	0.8	-10.3	-13.8	-5.5	-8.1	-9.2	-9.7	-9.4
Kansas City	-36.6	-33.6	-40.0	-47.4	35.8	30.5	36.2	44.0	0.8	3.1	3.8	3.5
Minneapolis	-11.4	-9.4	-12.3	-19.0	7.2	6.9	9.5	16.3	4.2	2.5	2.8	2.7
All Wheat	-40.7	-23.5	-28.8	-51.5	43.8	27.1	31.9	54.8	-3.1	-3.6	-3.2	-3.3
CORN	-386.9	-339.1	-365.5	-387.7	424.1	373.5	394.1	437.3	-37.2	-34.4	-28.7	-49.6
OATS	#VALUE!	#VALUE!	0.0	#VALUE!	#VALUE!	#VALUE!	0.6	#VALUE!	#VALUE!	#VALUE!	-0.5	#VALUE!
SOYBEANS	-112.7	-89.4	-103.1	-92.7	149.7	128.2	138.1	131.8	-37.0	-38.7	-35.0	-39.1
SOY OIL	-79.3	-58.4	-56.6	-50.7	68.3	48.9	46.6	43.6	11.1	9.5	10.0	7.1
SOY MEAL	-104.6	-109.0	-122.4	-123.9	76.2	79.0	93.8	96.7	28.4	30.0	28.7	27.3
		TOTAL							% HELD BY TRADERS			
		OPEN INTEREST				COMMERCIALS			LARGE (FUNDS)		SMALL (NON-REP)	
	25-Jan	18-Jan	11-Jan	4-Jan	LONG	SHORT			LONG	SHORT	LONG	SHORT
WHEAT												
Chicago	498,029	468,778	455,595	439,485	39%	37%			19%	19%	7%	9%
Kansas City	242,083	239,872	242,770	247,064	35%	50%			27%	12%	11%	10%
Minneapolis	72,609	71,926	71,192	77,161	51%	66%			17%	7%	24%	18%
CORN	1,903,794	1,828,316	1,861,529	1,865,691	41%	61%			26%	4%	10%	12%
OATS	#VALUE!	#VALUE!	4,122	#VALUE!								
SOYBEANS	883,842	841,473	833,968	789,340	46%	59%			22%	5%	7%	11%
SOY OIL	455,930	434,799	430,663	422,697	46%	63%			22%	8%	8%	6%
SOY MEAL	451,424	458,623	454,258	436,279	46%	69%			22%	5%	12%	6%

SOURCE: CFTC & FI

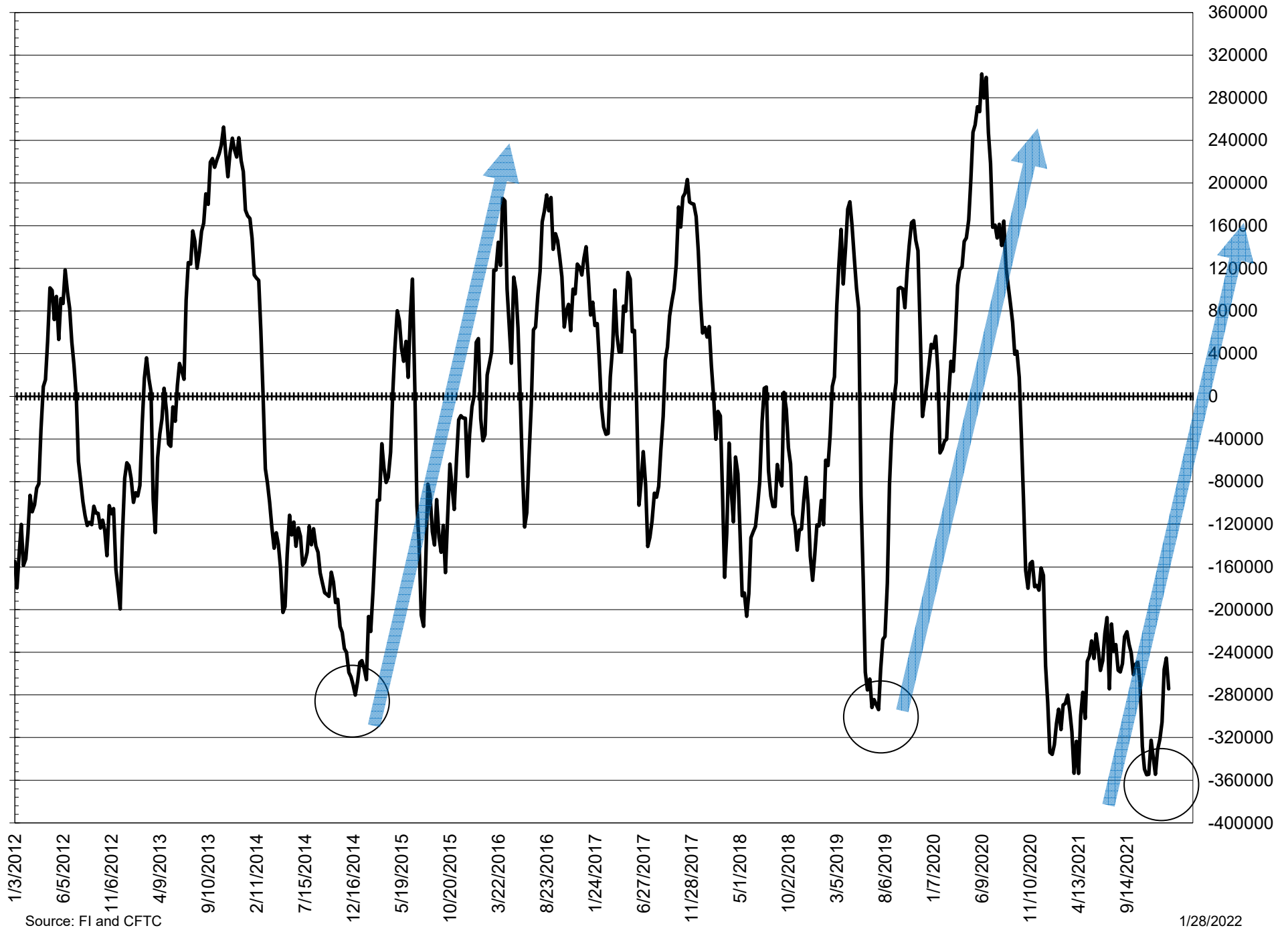
NET POSITION FUTURES AND OPTIONS OF LARGE SPECULATORS IN SOYBEAN MEAL AND SOYBEAN OIL



NET POSITION FUTURES AND OPTIONS OF LARGE SPECULATORS IN SOYBEANS AND CORN



NET POSITION FUTURES AND OPTIONS SPREAD OF LARGE SPECULATORS IN SOYBEANS MINUS CORN



Source: FI and CFTC

DISAGGREGATED COMMITMENT OF TRADERS
FUTURES ONLY NET POSITIONS
AS OF 01/25/2022
(IN THOUSAND CONTRACTS)

	PRODUCER / MERCHANT / PROCESSOR / USER				(INDEX/ETF) SWAP DEALERS				(CTA/CPO/OTHER UNREGISTERED) MANAGED MONEY				
					25-Jan	18-Jan	11-Jan	4-Jan	25-Jan	18-Jan	11-Jan	4-Jan	25-Jan
	25-Jan	18-Jan	11-Jan	4-Jan	25-Jan	18-Jan	11-Jan	4-Jan	25-Jan	18-Jan	11-Jan	4-Jan	
WHEAT													
Chicago	(90.0)	(85.9)	(75.1)	(71.7)	86.4	91.1	87.2	77.9	(15.2)	(28.4)	(31.2)	(22.7)	
Kansas City	(62.0)	(62.7)	(64.1)	(73.6)	27.2	26.8	22.6	25.6	39.4	35.4	42.1	51.2	
Minneapolis	(14.8)	(13.2)	(16.5)	(22.1)	2.3	2.3	2.6	2.0	3.3	3.9	5.7	9.5	
All Wheat	(166.8)	(161.8)	(155.7)	(167.4)	115.9	120.2	112.5	105.5	27.5	10.8	16.6	37.9	
CORN	(692.3)	(644.7)	(663.3)	(655.7)	302.9	302.0	296.5	272.9	360.1	318.9	334.8	355.4	
OATS	-	-	(0.2)	#REF!	-	-	0.1	#REF!	-	-	0.4	#REF!	
SOYBEANS	(263.7)	(254.2)	(257.5)	(236.3)	150.9	162.0	152.6	144.4	108.0	98.5	107.3	100.3	
SOY OIL	(167.5)	(149.9)	(148.6)	(147.8)	89.1	89.8	89.5	92.0	66.9	56.2	52.7	51.1	
SOY MEAL	(205.2)	(209.1)	(218.4)	(212.1)	100.8	101.1	95.6	88.7	64.7	65.0	72.9	70.4	
									Managed % of OI				
									Chicago W	-4%	-8%	-8%	-6%
									Corn	23%	21%	22%	23%
	TOTAL				OTHER REPORTABLE				NON REPORTABLE				
	OPEN INTEREST				OTHER REPORTABLE				NON REPORTABLE				
	25-Jan	18-Jan	11-Jan	4-Jan	25-Jan	18-Jan	11-Jan	4-Jan	25-Jan	18-Jan	11-Jan	4-Jan	
WHEAT													
Chicago	390,266	378,456	369,218	359,139	26.9	33.2	29.7	26.8	(8.1)	(10.0)	(10.6)	(10.3)	
Kansas City	211,960	212,141	215,528	222,583	(4.5)	(1.8)	(3.3)	(6.2)	(0.1)	2.3	2.7	3.0	
Minneapolis	68,398	67,923	67,259	73,366	5.4	4.9	5.6	8.2	3.8	2.2	2.5	2.5	
All Wheat	670,624	658,520	652,005	655,088	27.8	36.3	32.0	28.8	(4.5)	(5.5)	(5.4)	(4.8)	
CORN	1,539,124	1,487,858	1,504,234	1,520,233	79.0	69.2	72.7	90.1	(49.6)	(45.5)	(40.7)	(62.7)	
OATS	-	-	4,019	#REF!	-	-	0.1	#REF!	-	-	(0.5)	#REF!	
SOYBEANS	735,966	692,022	678,613	648,148	40.9	29.6	31.0	30.3	(36.1)	(35.8)	(33.4)	(38.7)	
SOY OIL	411,832	392,795	386,373	379,609	1.6	(4.7)	(2.8)	(1.4)	9.9	8.6	9.2	6.1	
SOY MEAL	406,335	411,123	404,223	389,727	14.3	15.9	24.2	28.6	25.4	27.1	25.7	24.4	

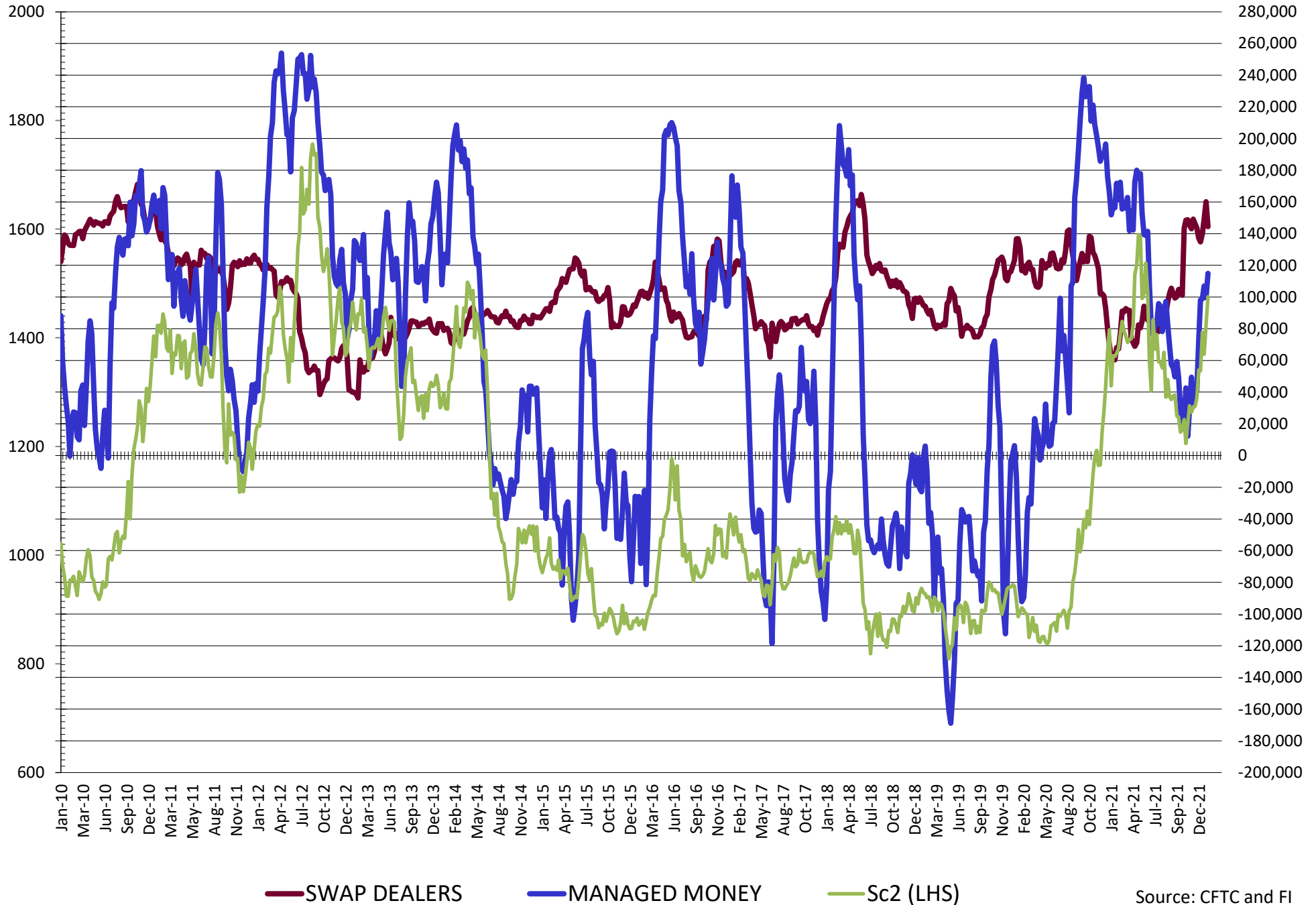
SOURCE: CFTC & FI

**DISAGGREGATED COMMITMENT OF TRADERS
FUTURES & OPTIONS NET POSITIONS
AS OF 01/25/2022
(IN THOUSAND CONTRACTS)**

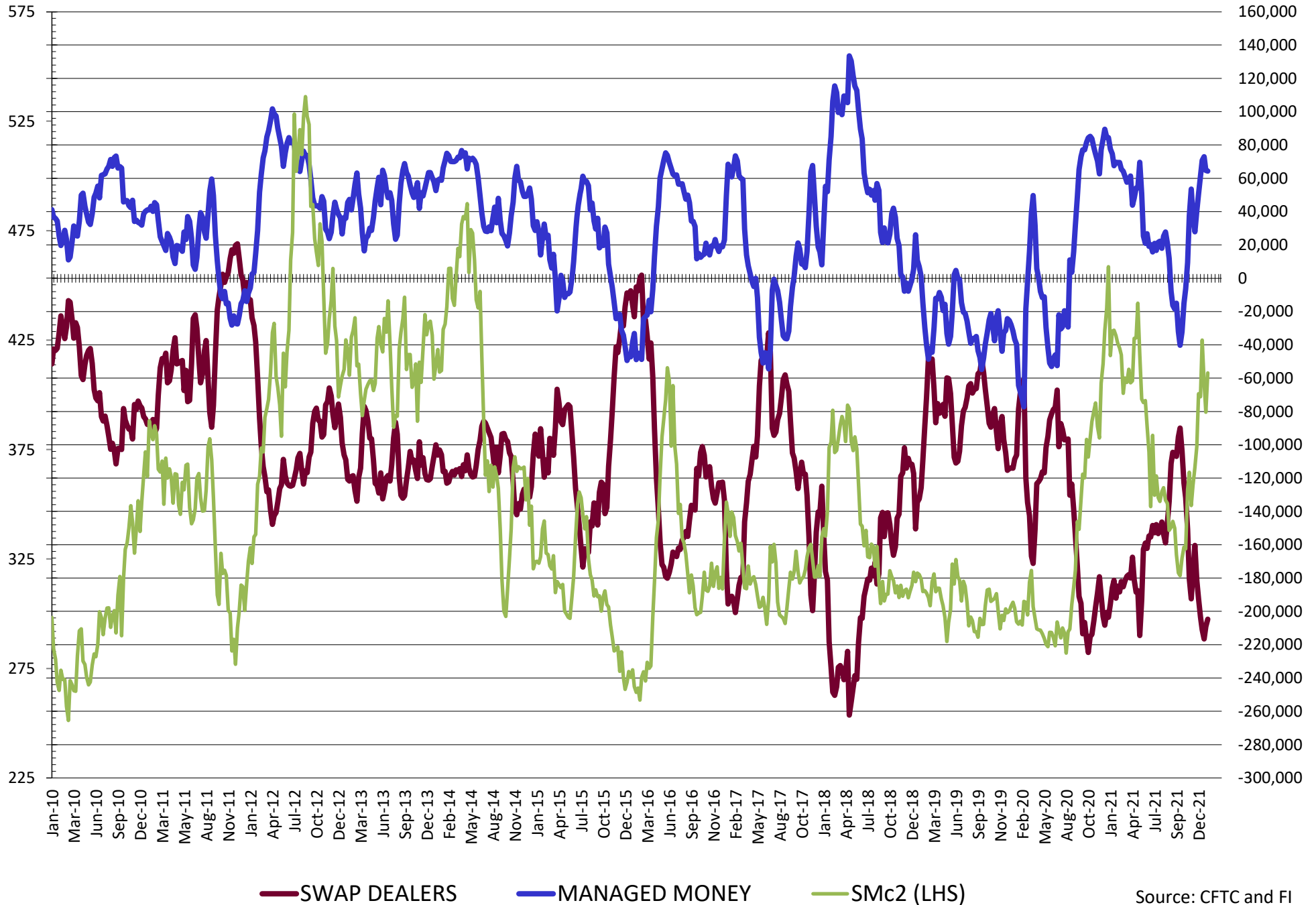
	PRODUCER / MERCHANT / PROCESSOR / USER				(INDEX/ETF) SWAP DEALERS				(CTA/CPO/OTHER UNREGISTERED) MANAGED MONEY			
	25-Jan	18-Jan	11-Jan	4-Jan	25-Jan	18-Jan	11-Jan	4-Jan	25-Jan	18-Jan	11-Jan	4-Jan
	WHEAT											
Chicago	(80.8)	(72.9)	(63.6)	(62.4)	88.2	92.4	87.1	77.4	(13.4)	(24.9)	(27.8)	(19.8)
Kansas City	(62.5)	(59.8)	(61.8)	(72.2)	25.8	26.2	21.8	24.8	40.6	36.1	42.7	51.8
Minneapolis	(13.3)	(11.4)	(14.6)	(20.7)	1.9	2.0	2.3	1.6	3.3	3.9	5.7	9.5
All Wheat	(156.6)	(144.0)	(140.0)	(155.3)	116.0	120.5	111.3	103.8	30.5	15.1	20.6	41.4
CORN	(678.3)	(630.8)	(651.6)	(648.9)	291.4	291.7	286.1	261.2	365.6	326.5	344.4	365.9
OATS	0.0	0.0	(0.1)	0.0	0.0	0.0	0.1	0.0	0.0	0.0	0.4	0.0
SOYBEANS	(257.1)	(249.5)	(252.2)	(232.7)	144.4	160.1	149.1	140.1	114.9	99.6	106.9	98.9
SOY OIL	(167.5)	(147.3)	(145.1)	(142.0)	88.1	88.9	88.6	91.2	68.8	58.2	55.9	53.2
SOY MEAL	(204.7)	(209.1)	(216.5)	(211.0)	100.1	100.1	94.1	87.1	64.3	64.7	72.9	70.8
	TOTAL				OTHER REPORTABLE				NON REPORTABLE			
	OPEN INTEREST				SWAP DEALERS				MANAGED MONEY			
	25-Jan	18-Jan	11-Jan	4-Jan	25-Jan	18-Jan	11-Jan	4-Jan	25-Jan	18-Jan	11-Jan	4-Jan
WHEAT												
Chicago	498,029	468,778	455,595	439,485	14.2	14.6	14.0	14.3	(8.1)	(9.2)	(9.7)	(9.4)
Kansas City	242,083	239,872	242,770	247,064	(4.8)	(5.6)	(6.5)	(7.8)	0.8	3.1	3.8	3.5
Minneapolis	72,609	71,926	71,192	77,161	3.8	3.0	3.8	6.9	4.2	2.5	2.8	2.7
All Wheat	812,721	780,576	769,557	763,710	13.2	12.0	11.3	13.4	(3.1)	(3.6)	(3.2)	(3.3)
CORN	1,903,794	1,828,316	1,861,529	1,865,691	58.5	47.0	49.8	71.4	(37.2)	(34.4)	(34.4)	(34.4)
OATS	0	0	4,122	0	0.0	0.0	0.1	0.0	0.0	0.0	(0.5)	0.0
SOYBEANS	883,842	841,473	833,968	789,340	34.8	28.5	31.3	32.9	(37.0)	(38.7)	(35.0)	(39.1)
SOY OIL	455,930	434,799	430,663	422,697	(0.5)	(9.3)	(9.3)	(9.5)	11.1	9.5	10.0	7.1
SOY MEAL	451,424	458,623	454,258	436,279	11.9	14.3	20.9	25.9	28.4	30.0	28.7	27.3

SOURCE: CFTC & FI

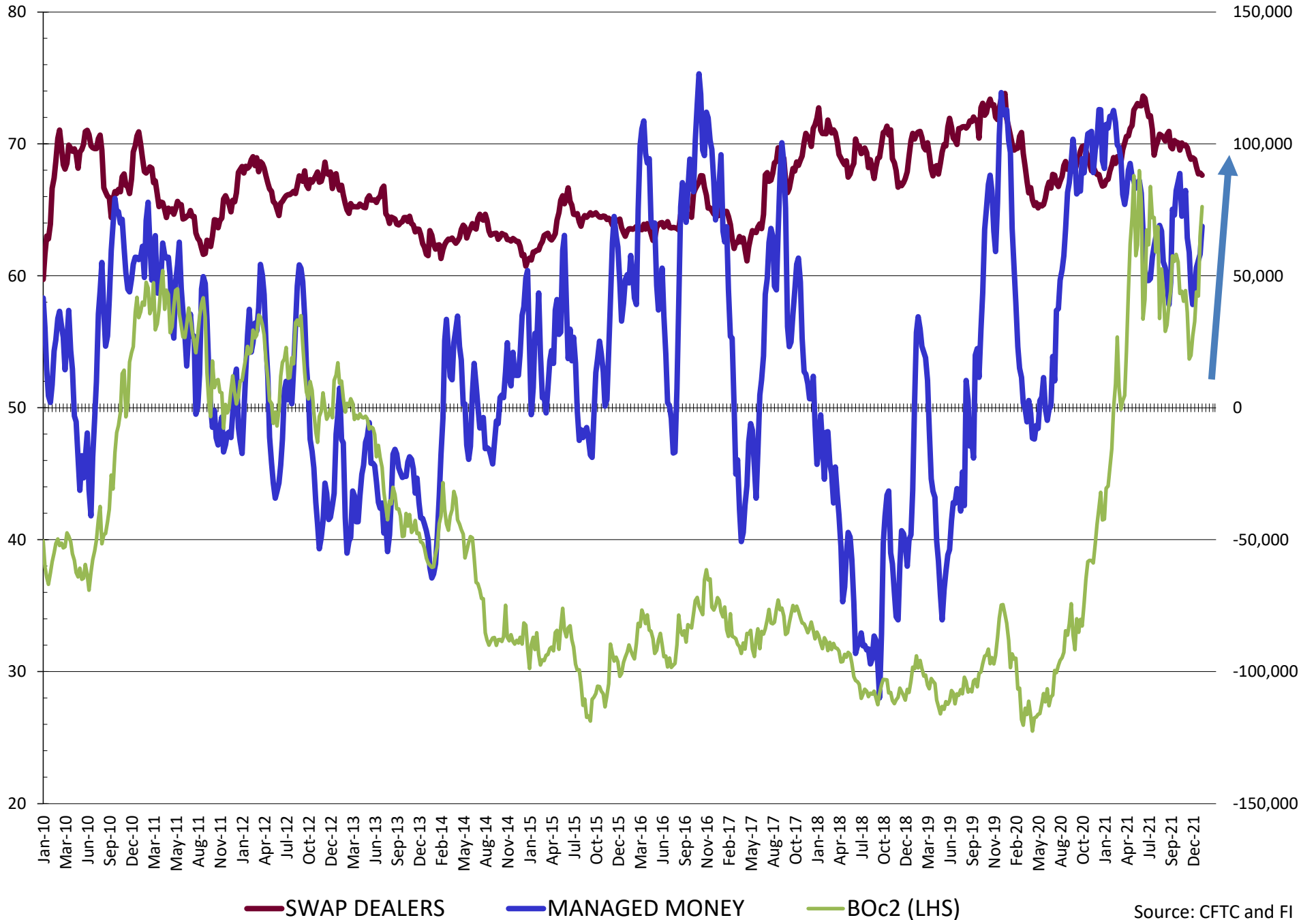
NET POSITION FUTURES AND OPTIONS OF SWAP AND MANAGED FUNDS IN SOYBEANS



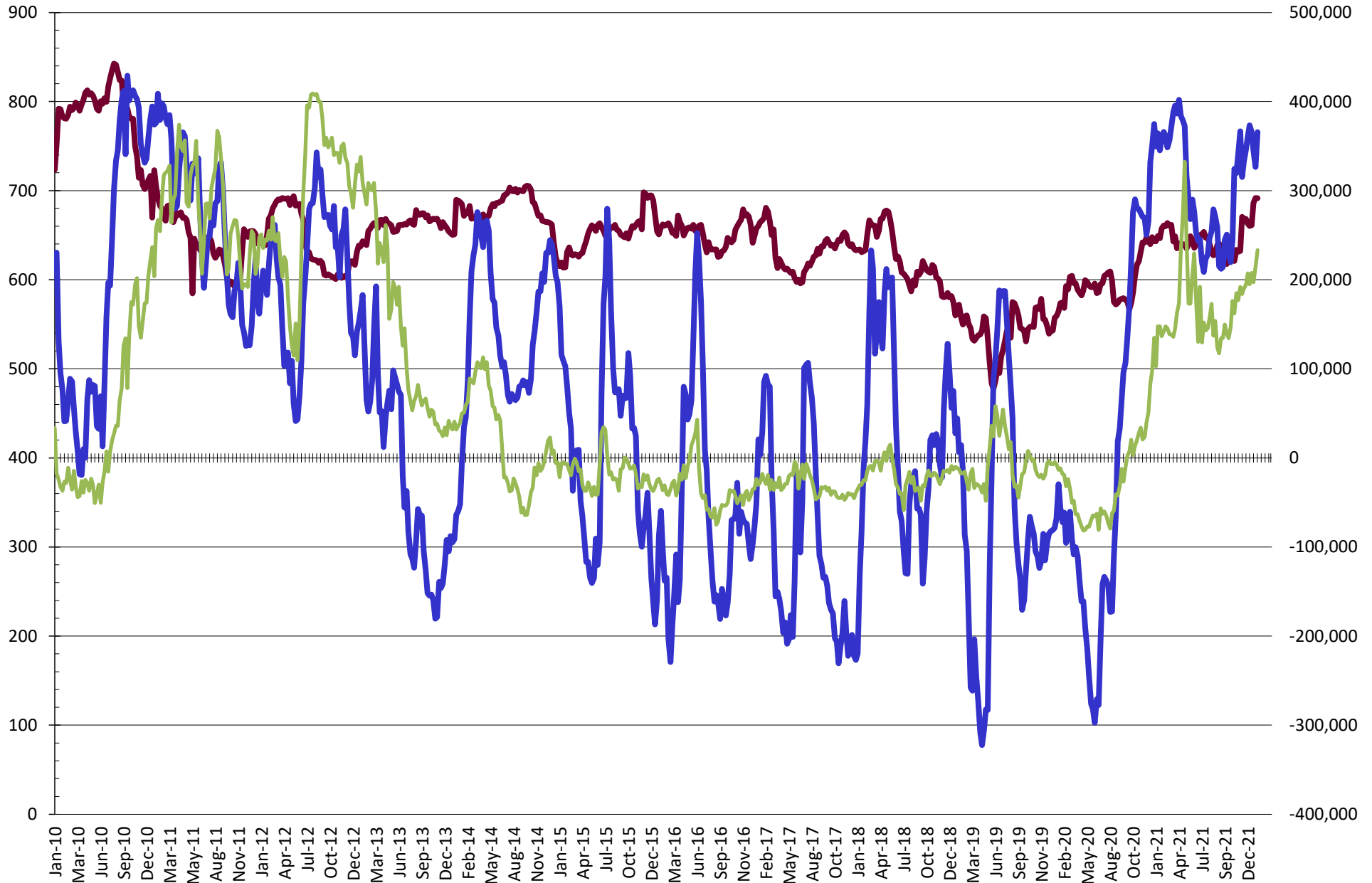
NET POSITION FUTURES AND OPTIONS OF SWAP AND MANAGED FUNDS IN SOYBEAN MEAL



NET POSITION FUTURES AND OPTIONS OF SWAP AND MANAGED FUNDS IN SOYBEAN OIL

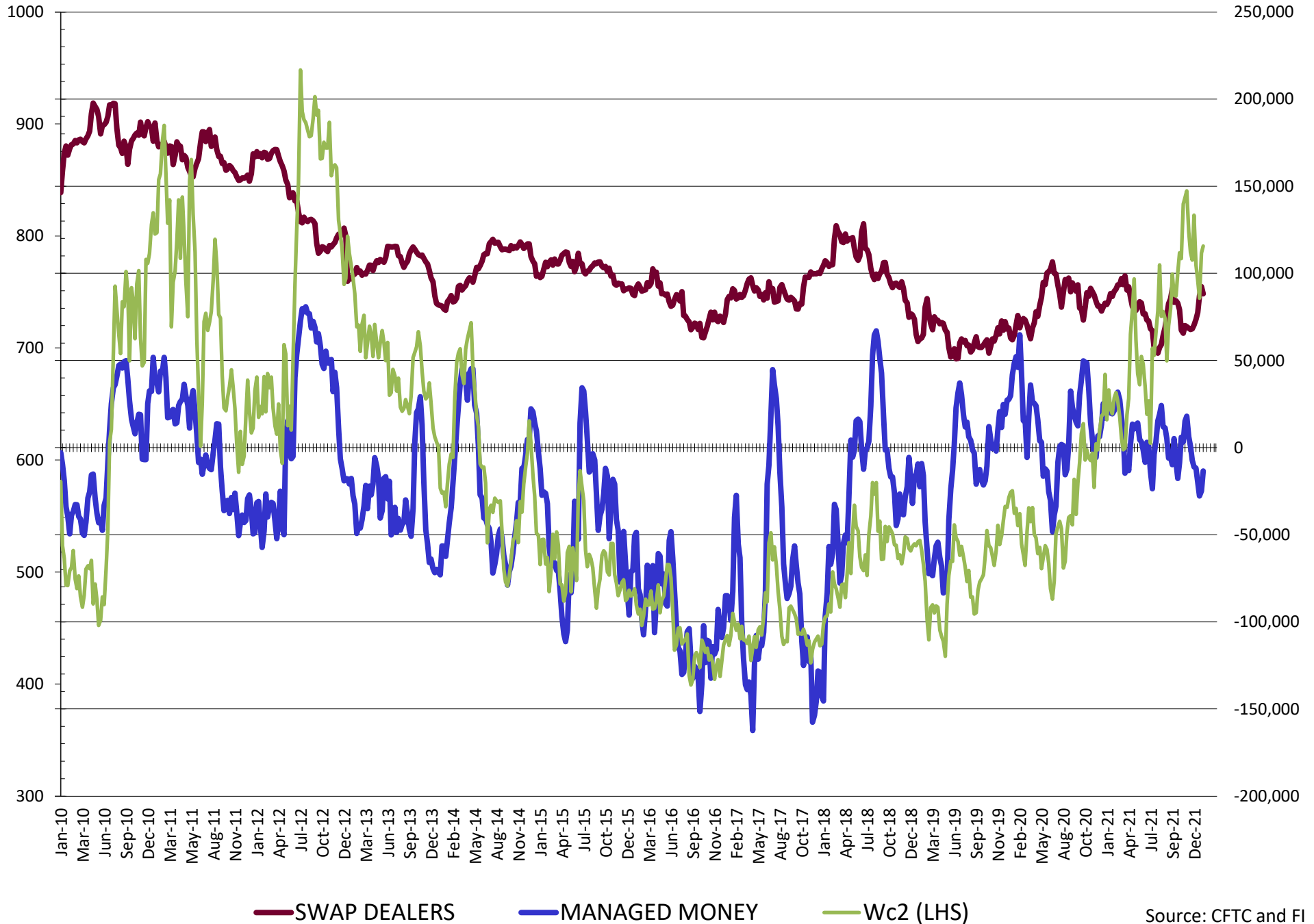


NET POSITION FUTURES AND OPTIONS OF SWAP AND MANAGED FUNDS IN CORN

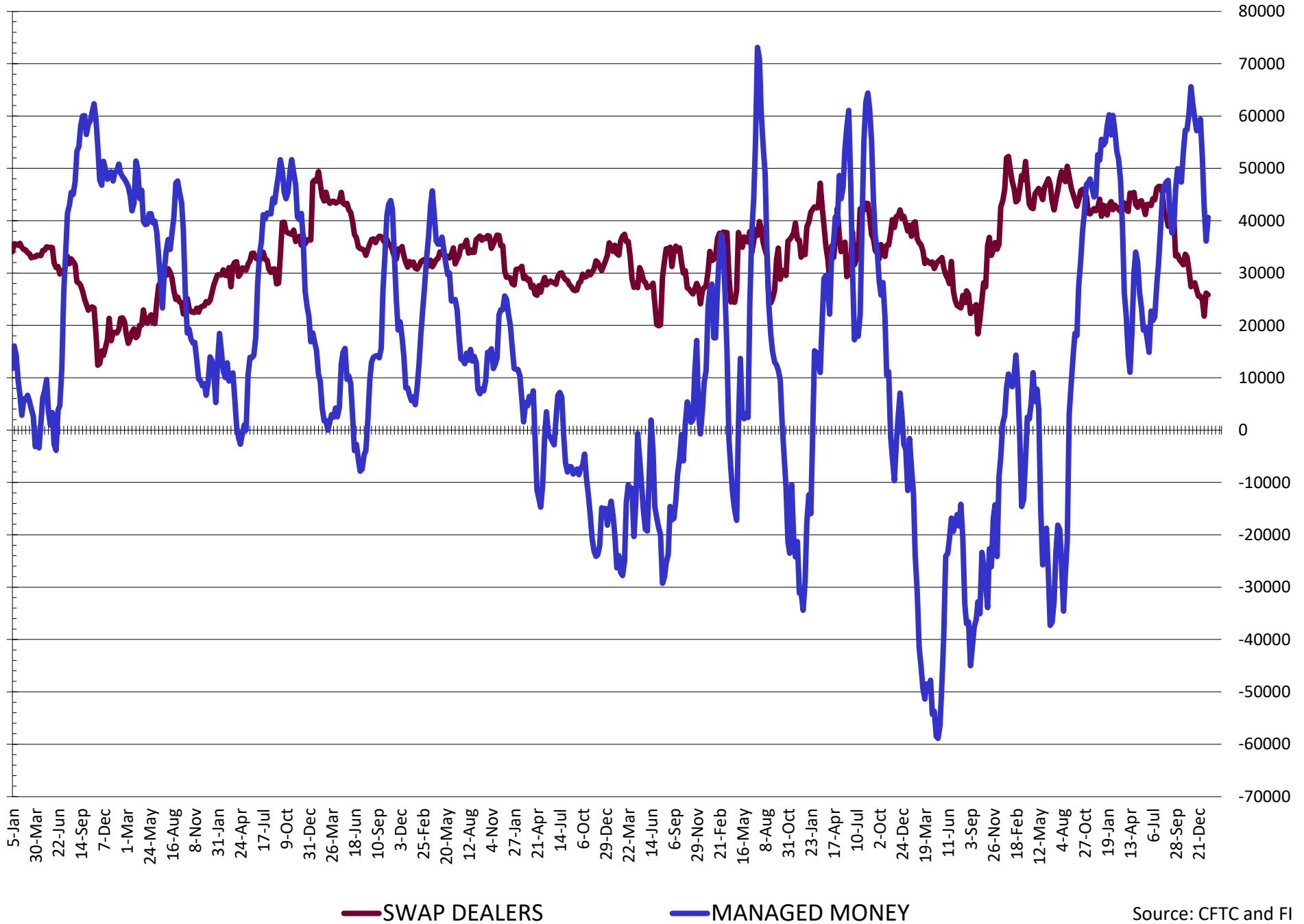


— SWAP DEALERS
 — MANAGED MONEY
 — Cc2 (LHS)

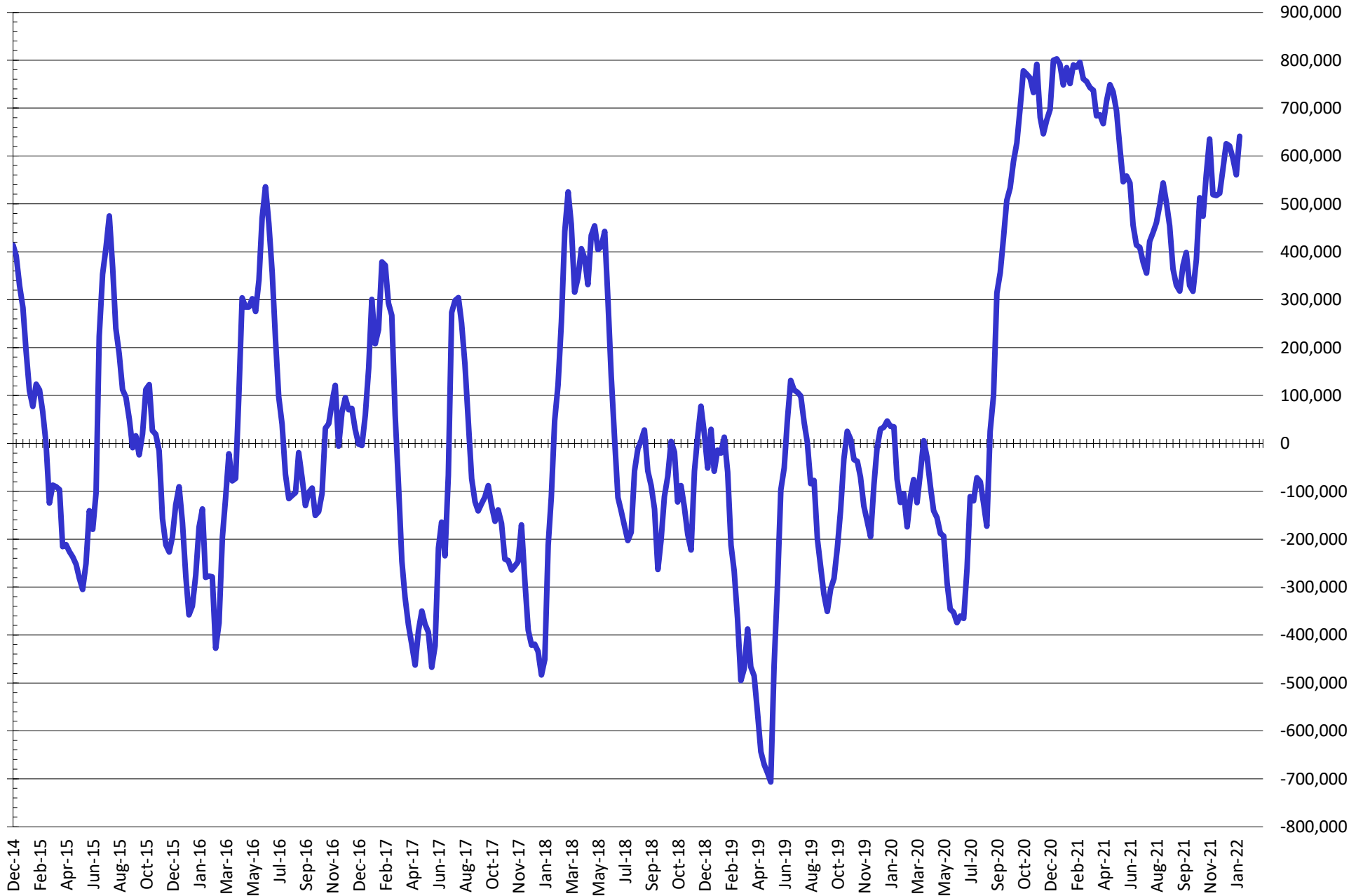
NET POSITION FUTURES AND OPTIONS OF SWAP AND MANAGED FUNDS IN CHICAGO WHEAT



NET POSITION FUTURES AND OPTIONS OF SWAP DEALERS AND MANAGED FUNDS IN KANSAS WHEAT



NET POSITION FUTURES AND OPTIONS OF SWAP AND MANAGED FUNDS IN COMBINED SRW, HRW, CORN, SOYBEANS, SOYMEAL AND SOYOIL



— Net Managed Money

Source: CFTC and FI
1/28/2022

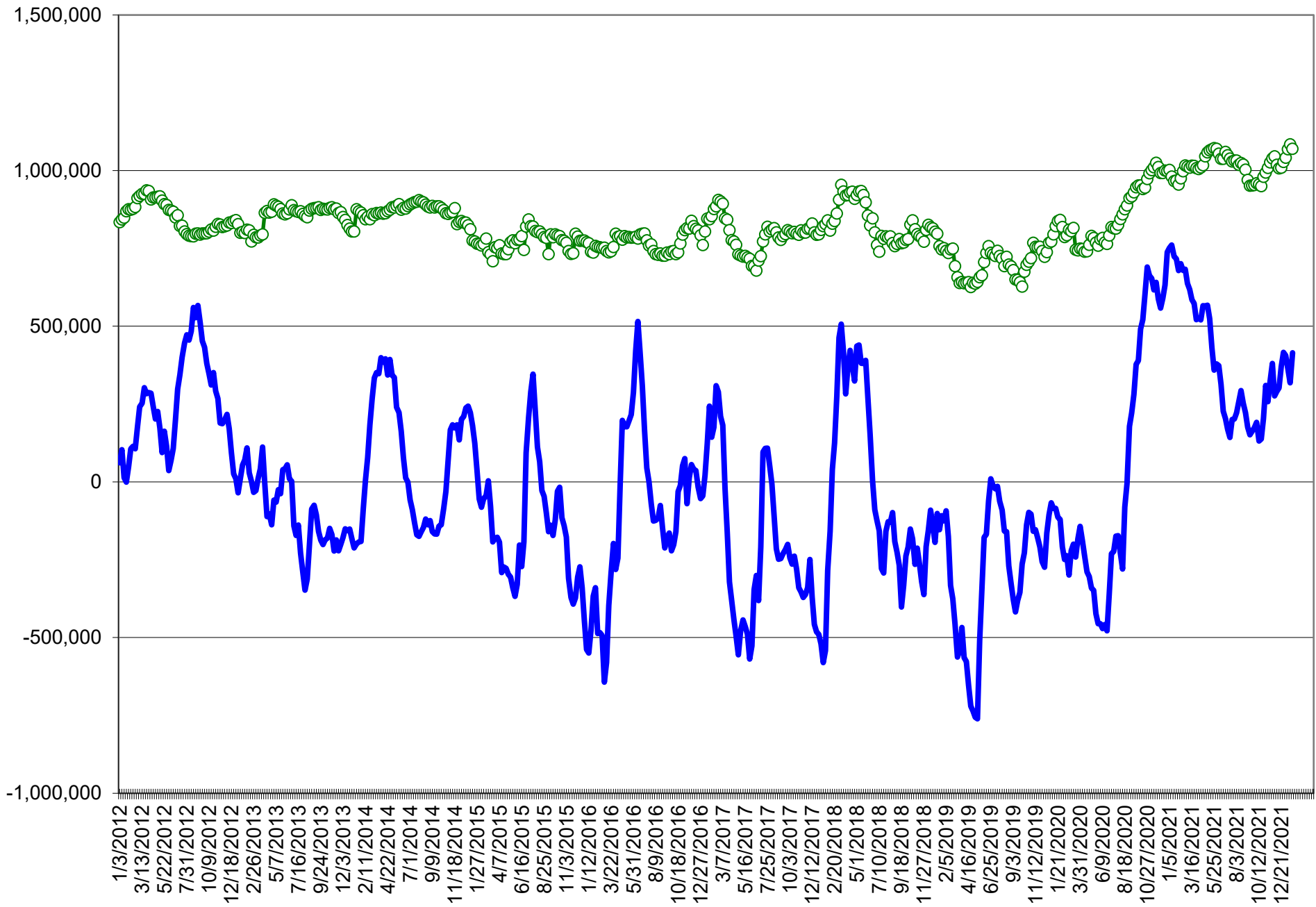
COMMITMENT OF TRADERS
FUTURES & OPTIONS NET POSITIONS (INDEX BROKEN OUT)
AS OF 01/25/2022
(IN THOUSAND CONTRACTS)

	COMMERCIAL				(FUND) NON COMMERCIAL				(SPEC) NON-REPORTABLE			
	25-Jan	18-Jan	11-Jan	4-Jan	25-Jan	18-Jan	11-Jan	4-Jan	25-Jan	18-Jan	11-Jan	4-Jan
	WHEAT											
Chicago	(97.1)	(86.5)	(78.4)	(79.1)	(33.0)	(42.1)	(45.2)	(36.1)	(8.1)	(9.2)	(9.7)	(9.4)
Kansas City	(72.6)	(69.8)	(74.2)	(84.5)	15.8	11.8	17.2	21.5	0.8	3.1	3.8	3.5
Minneapolis	-	-	-	-	-	-	-	-	-	-	-	-
All Wheat	(169.7)	(156.3)	(152.6)	(163.6)	(17.2)	(30.3)	(28.0)	(14.6)	(7.3)	(6.1)	(5.9)	(6.0)
CORN	(681.8)	(632.5)	(657.1)	(658.2)	276.5	224.8	240.2	269.0	(37.2)	(34.4)	(28.7)	(49.6)
OATS	-	-	-	-	-	-	-	-	-	-	-	-
SOYBEANS	(243.8)	(237.9)	(243.9)	(227.7)	89.7	71.3	85.3	85.9	(37.0)	(38.7)	(35.0)	(39.1)
SOY OIL	(158.1)	(140.4)	(139.7)	(137.1)	27.5	12.0	10.4	9.0	11.1	9.5	10.0	7.1
SOY MEAL	(188.8)	(195.2)	(206.7)	(200.7)	38.1	40.3	54.8	57.0	28.4	30.0	28.7	27.3

	TOTAL OPEN INTEREST				(INDEX) COMMERCIAL INDEX TRADERS				(INDEX) % NET OF TOTAL OPEN INTEREST			
	25-Jan	18-Jan	11-Jan	4-Jan	25-Jan	18-Jan	11-Jan	4-Jan	25-Jan	18-Jan	11-Jan	4-Jan
	WHEAT											
Chicago	498,029	468,778	455,595	439,485	138.2	137.8	133.3	124.6	27.8%	29.4%	29.3%	28.4%
Kansas City	242,083	239,872	242,770	247,064	56.1	54.9	53.2	59.6	23.2%	22.9%	21.9%	24.1%
Minneapolis	-	-	-	-	-	-	-	-	-	-	-	-
All Wheat	740,112	708,650	698,365	686,549	194.3	192.8	186.5	184.2	26.2%	27.2%	26.7%	26.8%
CORN	1,903,794	1,828,316	1,861,529	1,865,691	442.4	442.2	445.6	438.8	23.2%	24.2%	23.9%	23.5%
OATS	-	-	-	-	-	-	-	-	-	-	-	-
SOYBEANS	883,842	841,473	833,968	789,340	191.1	205.3	193.6	180.9	21.6%	24.4%	23.2%	22.9%
SOY OIL	455,930	434,799	430,663	422,697	119.5	119.0	119.2	121.0	26.2%	27.4%	27.7%	28.6%
SOY MEAL	451,424	458,623	454,258	436,279	122.3	124.9	123.3	116.4	27.1%	27.2%	27.1%	26.7%

SOURCE: CFTC & FI

NET POSITION FUTURES AND OPTIONS OF SPECULATORS AND INDEX FUNDS IN COMBINED SRW, HRW, CORN, SOYBEANS, SOYMEAL AND SOYOIL



Source: CFTC and FI

○ Net Index

— Net Speculator

Traditional Daily Estimate of Funds 1/25/22

	(Neg)-"Short"	Pos-"Long"			
Actual less Est.	18.0	(3.1)	(21.1)	(2.9)	(2.5)
	Corn	Bean	Chi. Wheat	Meal	Oil
Act.	439.1	148.9	11.7	79.0	68.5
26-Jan	8.0	15.0	(12.0)	6.0	6.0
27-Jan	(5.0)	4.0	(10.0)	2.0	2.0
28-Jan	19.0	13.0	6.0	4.0	6.0
31-Jan					
1-Feb					
FI Est. of Futures Only 1/25/22	461.1	180.9	(4.3)	91.0	82.5
FI Est. Futures & Options	446.1	181.7	(15.2)	88.2	82.3
Futures only record long "Traditional Funds"	547.7 1/26/2021	280.9 11/10/2020	86.5 8/7/2018	167.5 5/1/2018	160.2 11/1/2016
Futures only record short	(235.0) 6/9/2020	(118.3) 4/30/2019	(130.0) 4/25/2017	(49.5) 3/1/2016	(69.8) 9/18/2018
Futures and options record net long	557.6 1/12/2021	270.9 10/6/2020	64.8 8/7/2012	132.1 5/1/2018	159.2 1/1/2016
Futures and options record net short	(270.6) 4/26/2019	(132.0) 4/30/2019	(143.3) 4/25/2017	(64.1) 3/1/2016	(77.8) 9/18/2018

Managed Money Daily Estimate of Funds 1/25/22

	Corn	Bean	Chi. Wheat	Meal	Oil
Latest CFTC Fut. Only	360.1	108.0	(15.2)	64.7	66.9
Latest CFTC F&O	365.6	114.9	(13.4)	64.3	68.8
	Corn	Bean	Chi. Wheat	Meal	Oil
FI Est. Managed Fut. Only	382	140	(31)	77	81
FI Est. Managed Money F&O	388	147	(29)	76	83

Index Funds Latest Positions (as of last Tuesday)

Index Futures & Options	442.4	191.1	138.2	NA	119.5
Change From Previous Week	0.2	(14.2)	0.4	NA	0.5

Source: Reuters, CFTC & FI (FI est. are noted with latest date)

Disclaimer

TO CLIENTS/PROSPECTS OF FUTURES INTERNATIONAL, SEE RISK DISCLOSURE BELOW:

THIS COMMUNICATION IS CONVEYED AS A SOLICITATION FOR ENTERING INTO A DERIVATIVES TRANSACTION.

Any trading recommendations and market or other information to Customer by Futures International (FI), although based upon information obtained from sources believed by FI to be reliable may not be accurate and may be changed without notice to customer. FI makes no guarantee as to the accuracy or completeness of any of the information or recommendations furnished to Customer. Customer understands that FI, its managers, employees and/or affiliates may have a position in commodity futures, options or other derivatives which may not be consistent with the recommendations furnished by FI to Customer.

The risk of trading futures and options and other derivatives involves a substantial risk of loss and is not suitable for all persons. In purchasing an option, the risk is limited to the premium paid, and all commissions and fees involved with the trade. When an option is shorted or written, the writer of the option has unlimited risk with respect to the option written. The use of options strategies such as a straddles and strangles involve multiple option positions and may substantially increase the amount of commissions and fees paid to execute the strategy. Option prices do not necessarily move in tandem with cash or futures prices. Each person must consider whether a particular trade, combination of trades or strategy is suitable for that person's financial means and objectives.

This material may include discussions of seasonal patterns, however, futures prices have already factored in the seasonal aspects of supply and demand, and seasonal patterns are no indication of future market trends. Finally, past performance is not indicative of future results.

This communication may contain links to third party websites which are not under the control of FI and FI is not responsible for their content. Products and services are offered only in jurisdictions where solicitation and sale are lawful, and in accordance with applicable laws and regulations in each such jurisdiction.