

	Current	Δ from YD	Δ from 7D Avg
Nat Gas Prompt	\$ 3.80 ▲	\$ 0.08 ▲	\$ 0.04

	Current	Δ from YD	Δ from 7D Avg
WTI Prompt	\$ 77.20 ▲	\$ 0.21 ▲	\$ 1.2

	Current	Δ from YD	Δ from 7D Avg
Brent Prompt	\$ 80.31 ▲	\$ 0.31 ▲	\$ 1.6

### Page Menu

[Short-term Weather Model Outlooks](#)

[Lower 48 Component Models](#)

[Regional S/D Models Storage Projection](#)

[Weather Model Storage Projection](#)

[Supply – Demand Trends](#)

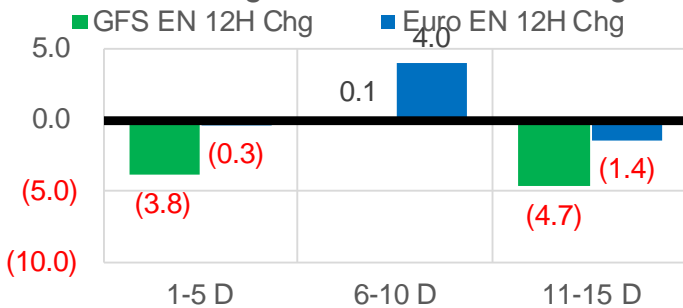
[Nat Gas Options Volume and Open Interest](#)

[Nat Gas Futures Open Interest](#)

[Price Summary](#)

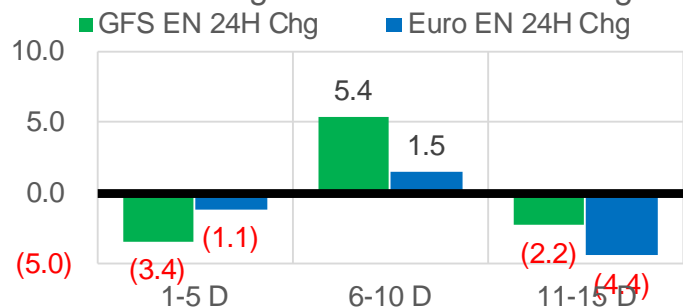
### Vs. 12H Ago

L48 Region - 00z TDD vs 12H Ago



### Vs. 24H Ago

L48 Region - 00z TDD vs 24H Ago



	Current	Δ from YD	Δ from 7D Avg
US Dry Production	92.1 ▼	-0.84 ▼	-2.71

	Current	Δ from YD	Δ from 7D Avg
US Power Burns	30.3 ▲	0.32 ▲	1.54

	Current	Δ from YD	Δ from 7D Avg
US ResComm	42.2 ▼	-4.33 ▼	1.95 ▲

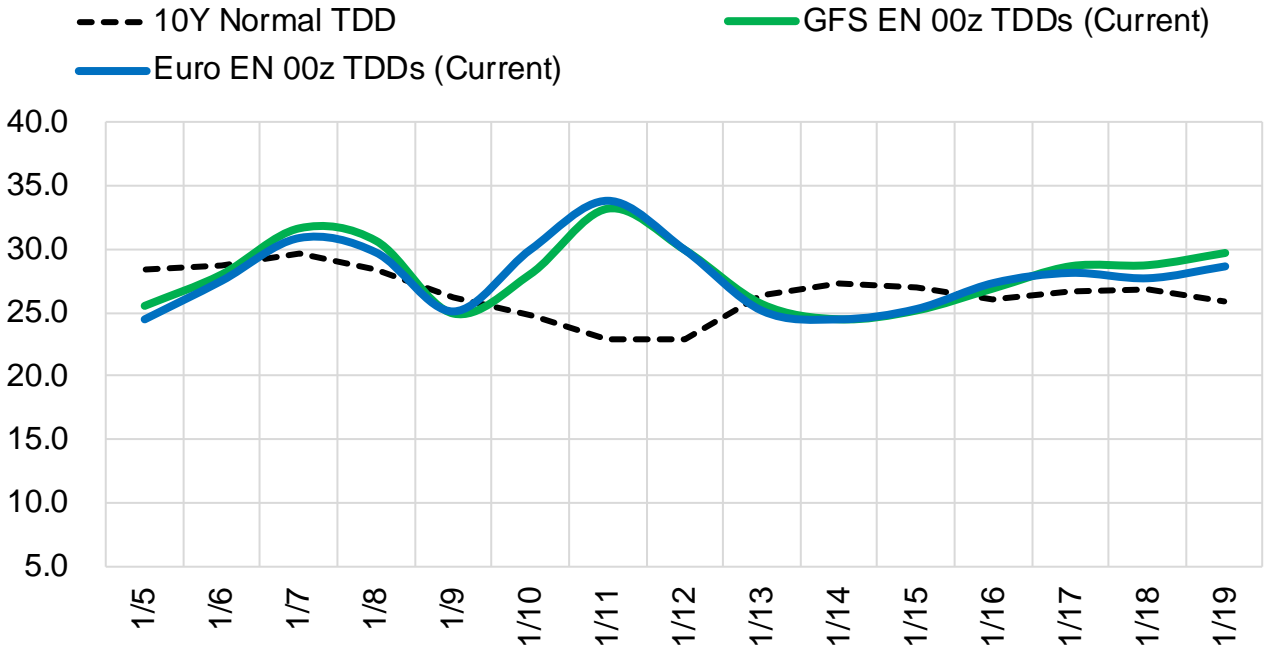
	Current	Δ from YD	Δ from 7D Avg
Canadian Imports	5.4 ▼	-0.12 ▼	0.28 ▲

	Current	Δ from YD	Δ from 7D Avg
Net LNG Exports	12.3 ▼	-0.01 ▼	0.35 ▲

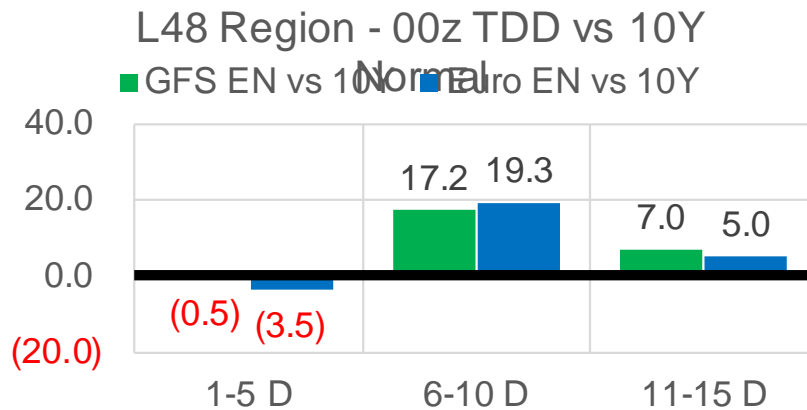
	Current	Δ from YD	Δ from 7D Avg
Mexican Exports	6.2 ▼	-0.13 ▼	0.35 ▲

## Short-term Weather Model Outlooks (00z)

### L48 Region



## Vs. 10Y Normal



Source: WSI , Bloomberg

## Lower 48 Component Models

### Daily Balances

	30-Dec	31-Dec	1-Jan	2-Jan	3-Jan	4-Jan	5-Jan	DoD	vs. 7D
<b>Lower 48 Dry Production</b>	<b>97.9</b>	<b>97.9</b>	<b>93.4</b>	<b>90.1</b>	<b>93.3</b>	<b>92.9</b>	<b>92.1</b>	▼ -0.8	▼ -2.2
<b>Canadian Imports</b>	<b>4.0</b>	<b>4.2</b>	<b>5.4</b>	<b>6.0</b>	<b>6.8</b>	<b>5.5</b>	<b>5.4</b>	▼ -0.1	▲ 0.1
L48 Power	27.9	25.7	26.2	30.2	31.8	30.0	30.3	▲ 0.3	▲ 1.6
L48 Residential & Commercial	34.0	31.0	35.5	46.0	52.5	46.5	42.2	▼ -4.3	▲ 1.3
L48 Industrial	23.2	22.6	23.2	24.4	24.9	24.1	23.8	▼ -0.2	▲ 0.1
L48 Lease and Plant Fuel	5.3	5.3	5.1	4.9	5.1	5.1	5.0	▼ -0.1	▼ -0.1
L48 Pipeline Distribution	3.1	2.8	3.0	3.7	4.1	3.7	3.5	▼ -0.2	▲ 0.1
<b>L48 Regional Gas Consumption</b>	<b>93.6</b>	<b>87.5</b>	<b>93.1</b>	<b>109.2</b>	<b>118.5</b>	<b>109.3</b>	<b>104.9</b>	▼ -4.5	▲ 3.0
<b>Net LNG Delivered</b>	<b>11.88</b>	<b>11.89</b>	<b>11.94</b>	<b>11.64</b>	<b>11.81</b>	<b>12.28</b>	<b>12.27</b>	▼ 0.0	▲ 0.4
<b>Total Mexican Exports</b>	<b>6.1</b>	<b>5.8</b>	<b>5.1</b>	<b>5.2</b>	<b>6.1</b>	<b>6.3</b>	<b>6.2</b>	▼ -0.1	▲ 0.4
<b>Implied Daily Storage Activity</b>	<b>-9.6</b>	<b>-3.1</b>	<b>-11.4</b>	<b>-29.9</b>	<b>-36.3</b>	<b>-29.5</b>	<b>-25.8</b>		
<b>EIA Reported Daily Storage Activity</b>									
<b>Daily Model Error</b>									

### EIA Storage Week Balances

	26-Nov	3-Dec	10-Dec	17-Dec	24-Dec	31-Dec	WoW	vs. 4W
<b>Lower 48 Dry Production</b>	<b>96.2</b>	<b>96.8</b>	<b>96.6</b>	<b>96.5</b>	<b>96.8</b>	<b>98.6</b>	▲ 1.9	▲ 2.0
<b>Canadian Imports</b>	<b>5.5</b>	<b>5.6</b>	<b>5.3</b>	<b>4.6</b>	<b>5.0</b>	<b>4.2</b>	▼ -0.8	▼ -0.9
L48 Power	29.2	28.7	29.1	28.4	29.9	26.4	▼ -3.5	▼ -2.6
L48 Residential & Commercial	33.2	33.1	35.4	31.4	40.3	33.4	▼ -6.9	▼ -1.7
L48 Industrial	22.5	22.5	23.7	23.7	24.1	23.4	▼ -0.7	▼ -0.1
L48 Lease and Plant Fuel	5.2	5.3	5.2	5.2	5.2	5.4	▲ 0.1	▲ 0.1
L48 Pipeline Distribution	3.3	3.2	3.2	3.0	3.5	3.0	▼ -0.5	▼ -0.3
<b>L48 Regional Gas Consumption</b>	<b>93.4</b>	<b>92.9</b>	<b>96.7</b>	<b>91.7</b>	<b>103.1</b>	<b>91.6</b>	▼ -11.5	▼ -4.5
<b>Net LNG Exports</b>	<b>11.7</b>	<b>11.8</b>	<b>12.0</b>	<b>11.9</b>	<b>12.7</b>	<b>12.3</b>	▼ -0.4	▲ 0.2
<b>Total Mexican Exports</b>	<b>6.0</b>	<b>6.4</b>	<b>6.4</b>	<b>6.2</b>	<b>6.1</b>	<b>5.8</b>	▼ -0.3	▼ -0.5
<b>Implied Daily Storage Activity</b>	<b>-9.5</b>	<b>-8.7</b>	<b>-13.2</b>	<b>-8.8</b>	<b>-20.0</b>	<b>-6.8</b>	13.2	
<b>EIA Reported Daily Storage Activity</b>	<b>-8.4</b>	<b>-8.4</b>	<b>-12.6</b>	<b>-7.9</b>	<b>-19.4</b>			
<b>Daily Model Error</b>	<b>-1.1</b>	<b>-0.3</b>	<b>-0.6</b>	<b>-0.9</b>	<b>-0.6</b>			

### Monthly Balances

	2Yr Ago Jan-20	LY Jan-21	Sep-21	Oct-21	Nov-21	Dec-21	MTD Jan-22	MoM	vs. LY
<b>Lower 48 Dry Production</b>	<b>94.6</b>	<b>91.4</b>	<b>93.4</b>	<b>94.3</b>	<b>95.9</b>	<b>97.1</b>	<b>92.4</b>	▼ -4.7	▲ 1.0
<b>Canadian Imports</b>	<b>4.8</b>	<b>6.3</b>	<b>5.1</b>	<b>5.4</b>	<b>5.3</b>	<b>4.8</b>	<b>5.9</b>	▲ 1.2	▼ -0.3
L48 Power	29.9	28.3	33.1	30.5	28.8	28.4	29.6	▲ 1.2	▲ 1.3
L48 Residential & Commercial	41.7	44.0	8.8	12.5	29.4	34.5	45.1	▲ 10.7	▲ 1.2
L48 Industrial	24.5	23.8	20.2	21.0	22.4	23.6	24.1	▲ 0.5	▲ 0.3
L48 Lease and Plant Fuel	5.1	5.0	5.1	5.2	5.2	5.3	5.1	▼ -0.2	▲ 0.1
L48 Pipeline Distribution	3.6	3.5	2.3	2.4	3.1	3.1	3.6	▲ 0.5	▲ 0.1
<b>L48 Regional Gas Consumption</b>	<b>104.8</b>	<b>104.6</b>	<b>69.4</b>	<b>71.5</b>	<b>88.9</b>	<b>94.8</b>	<b>107.5</b>	▲ 12.7	▲ 3.0
<b>Net LNG Exports</b>	<b>8.4</b>	<b>10.5</b>	<b>10.3</b>	<b>10.6</b>	<b>11.4</b>	<b>12.1</b>	<b>11.9</b>	▼ -0.2	▲ 1.4
<b>Total Mexican Exports</b>	<b>5.1</b>	<b>6.2</b>	<b>6.7</b>	<b>6.6</b>	<b>6.1</b>	<b>6.2</b>	<b>5.7</b>	▼ -0.5	▼ -0.5
<b>Implied Daily Storage Activity</b>	<b>-18.9</b>	<b>-23.5</b>	<b>12.1</b>	<b>11.0</b>	<b>-5.2</b>	<b>-11.3</b>	<b>-26.7</b>		
<b>EIA Reported Daily Storage Activity</b>									
<b>Daily Model Error</b>									

Source: Bloomberg, analytix.ai

## Daily Average Generation Data

### Nuclear Generation Daily Average - GWh (NRC)

	28-Dec	29-Dec	30-Dec	31-Dec	1-Jan	2-Jan	3-Jan	DoD	vs. 7D
NRC Nuclear Daily Output	92.3	92.3	91.5	91.4	91.4	91.0	91.5	0.5	-0.1
NRC Nuclear Max Capacity	104.9	104.9	104.9	104.9	104.9	104.9	104.9	0.0	0.0
NRC Nuclear Outage	12.6	12.6	13.4	13.5	13.5	13.9	13.4	-0.5	0.1
NRC % Nuclear Cap Utilization	93.8	93.8	93.0	93.0	92.9	92.5	93.0	0.5	-0.2

### Wind Generation Daily Average - MWh (EIA)

	28-Dec	29-Dec	30-Dec	31-Dec	1-Jan	2-Jan	3-Jan	DoD	vs. 7D
CALI Wind	3079	1709	1250	2958	1402	651	1546	894	-296
TEXAS Wind	14063	10065	9205	13872	17498	12326	9691	-2635	-3147
US Wind	57801	32412	36927	54363	62058	42057	45789	3732	-1814

### Generation Daily Average - MWh (EIA)

	28-Dec	29-Dec	30-Dec	31-Dec	1-Jan	2-Jan	3-Jan	DoD	vs. 7D
US Wind	57801	32412	36927	54363	62058	42057	45789	3732	-1814
US Solar	6515	6863	5283	5516	7722	8389	8867	478	2152
US Petroleum	3480	4058	3544	2260	2303	3007	4104	1097	995
US Other	7276	7292	7474	7417	7452	7392	8244	852	861
US Coal	81112	90961	89604	81214	80210	92816	102002	9187	16016
US Nuke	97279	96903	96483	96412	96050	96052	96542	490	12
US Hydro	32999	34021	34636	33579	33608	33239	36440	3202	2760
<b>US Gas</b>	<b>145052</b>	<b>160857</b>	<b>150604</b>	<b>130528</b>	<b>117509</b>	<b>149044</b>	<b>180797</b>	<b>31753</b>	<b>38531</b>

See National Wind and Nuclear daily charts

Source: Bloomberg, analytix.ai

## Storage Week Average Generation Data

### Nuclear Generation Weekly Average - GWh (NRC)

	26-Nov	3-Dec	10-Dec	17-Dec	24-Dec	31-Dec	WoW	WoW Bcf/d Impact
NRC Nuclear Daily Output	86.1	87.8	88.0	90.0	92.1	92.1	0.0	0.0
NRC Nuclear Max Capacity	104.9	104.9	104.9	104.9	104.9	104.9	0.0	
NRC Nuclear Outage	18.8	17.1	16.9	14.9	12.8	12.8	0.0	
NRC % Nuclear Cap Utilization	0.1	0.1	0.1	0.1	0.1	0.1	0.0	

### Wind Generation Weekly Average - MWh (EIA)

	26-Nov	3-Dec	10-Dec	17-Dec	24-Dec	31-Dec	WoW	WoW Bcf/d Impact
CALI Wind	1496	363	1263	1709	943	2591	1648	-0.3
TEXAS Wind	14691	8733	12216	16176	11007	13891	2884	-0.5
US Wind	56260	47210	51470	68300	48623	52980	4357	-0.8
					-19676.7			
					-29%			

### Generation Weekly Average - MWh (EIA)

	26-Nov	3-Dec	10-Dec	17-Dec	24-Dec	31-Dec	WoW	WoW Bcf/d Impact
US Wind	56260	47210	51470	68300	48623	52980	4357	<b>-0.8</b>
US Solar	9086	9918	7406	7559	7089	6857	-233	<b>0.0</b>
US Petroleum	3342	3166	3441	2701	3581	3084	-497	<b>0.1</b>
US Other	8442	8483	8401	8302	8531	7470	-1061	0.2
US Coal	82301	82287	82743	77026	87476	79867	-7609	1.4
US Nuke	91252	92816	92983	95055	97425	97083	-343	<b>0.1</b>
US Hydro	27837	26777	29626	30257	32560	31268	-1293	0.2
<b>US Gas</b>	<b>148208</b>	<b>155286</b>	<b>159457</b>	<b>148905</b>	<b>166309</b>	<b>134752</b>	<b>-31557</b>	

See National Wind and Nuclear daily charts

Source: Bloomberg, analytix.ai

## Monthly Average Generation Data

### Nuclear Generation Monthly Average - GWh (NRC)

	2Yr Ago	LY	MTD				Last 30 days	MoM (MTD vs LY)	Last 30 days YoY
	Same 30 days	Same 30 days	Oct-21	Nov-21	Dec-21	Jan-22			
	NRC Nuclear Daily Output	93.4	89.7	75.5	82.7	90.3			
NRC Nuclear Max Capacity	104.9	104.9	104.9	104.9	104.9	104.9	104.9	0.0	0.0
NRC Nuclear Outage	11.5	15.2	29.4	22.2	14.6	13.5	13.8	-1.0	-1.4
NRC % Nuclear Cap Utilization	95.0	91.2	76.8	84.1	91.8	92.9	92.6	1.1	1.4

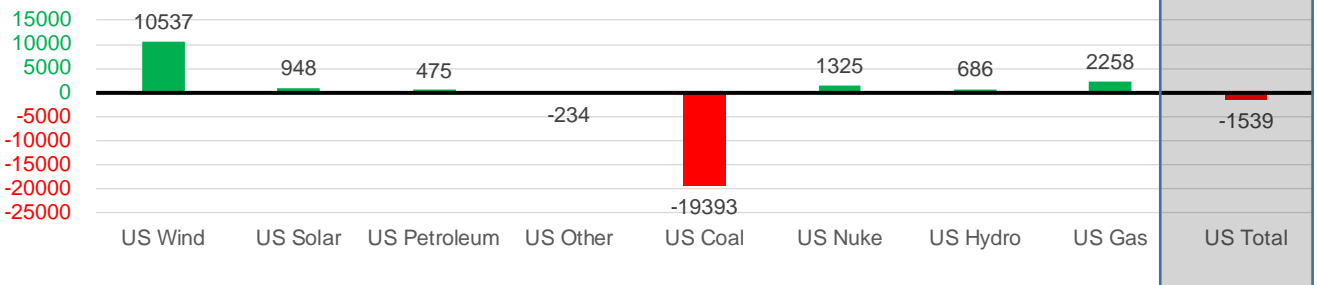
### Wind Generation Monthly Average - MWh (EIA)

	2Yr Ago	LY	MTD				Last 30 days	MoM (MTD vs LY)	Last 30 days YoY
	Same 30 days	Same 30 days	Oct-21	Nov-21	Dec-21	Jan-22			
	CALI Wind	1038	1216	1765	1252	1585			
TEXAS Wind	9412	11366	11565	11869	12927	11779	13124	-1147	1758
US Wind	38870	43847	43142	49974	54742	48296	54384	-6445	10537

### Generation Monthly Average - MWh (EIA)

	2Yr Ago	LY	MTD				Last 30 days	MoM (MTD vs LY)	Last 30 days YoY
	Same 30 days	Same 30 days	Oct-21	Nov-21	Dec-21	Jan-22			
	US Wind	38870	43847	43142	49974	54742			
US Solar	4482	6281	11059	9690	7338	8542	7229	▼ -1313.5	▲ 948
US Petroleum	3503	2796	3239	3045	3135	3524	3271	▼ -253	▲ 475
US Other	7720	8332	11109	8435	8180	7915	8099	▲ 183	▼ -234
US Coal	88816	104080	84433	80848	81683	95807	84687	▼ -11120	▼ -19393
US Nuke	97869	94868	77089	87404	95409	96346	96193	▼ -152	▲ 1325
US Hydro	29126	31374	24078	26593	30801	35233	32060	▼ -3173	▲ 686
<b>US Gas</b>	<b>153570</b>	<b>151941</b>	<b>159049</b>	<b>151462</b>	<b>152158</b>	<b>161789</b>	<b>154198</b>	<b>▼ -9741</b>	<b>▲ 2258</b>
<b>US Total</b>	<b>427389</b>	<b>442002</b>	<b>413354</b>	<b>417925</b>	<b>433750</b>	<b>457647</b>	<b>440462</b>	<b>▼ -25570</b>	<b>▼ -1539</b>

Last 30 days YoY



See National Wind and Nuclear daily charts

Source: Bloomberg, analytix.ai

## Regional S/D Models Storage Projection

Week Ending 31-Dec

	Daily Raw Storage	Daily Adjustment Factor	Daily Average Storage Activity (Adjusted) *	Weekly Adjusted Storage Activity
L48	-7.1	0.9	-6.2	-43
East	-4.5	2.5	-2.0	-14
Midwest	-5.2	0.3	-4.8	-34
Mountain	1.9	-3.4	-1.4	-10
South Central	2.2	2.3	4.5	31
Pacific	-1.5	-0.9	-2.4	-17

\*Adjustment Factor is calculated based on historical regional deltas

U.S. underground natural gas storage facilities by type (July 2015)

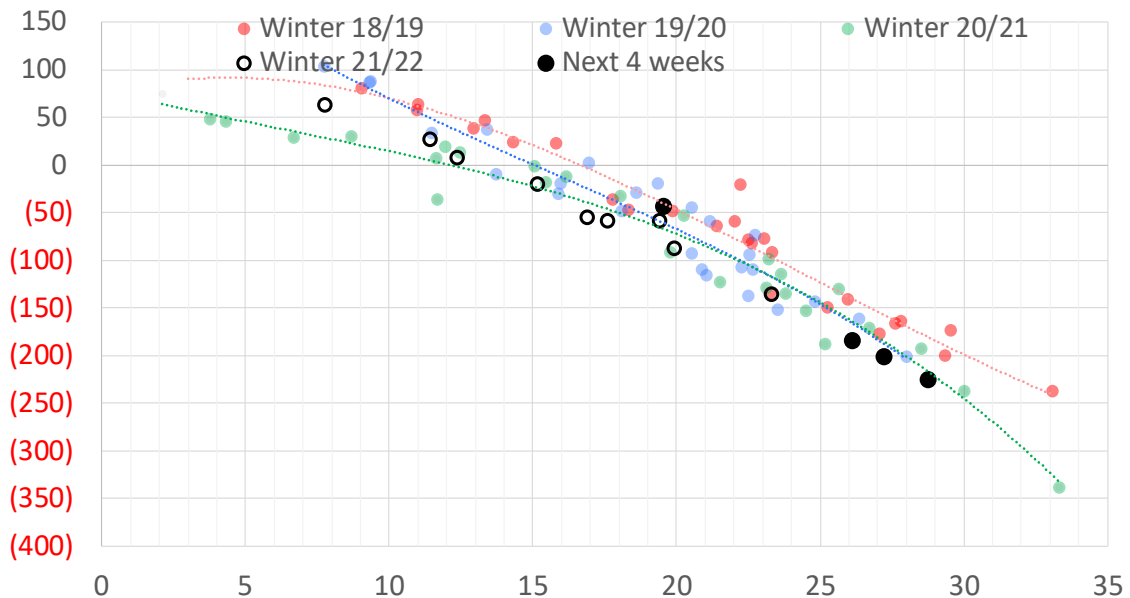


### Weather Model Storage Projection

Next report  
and beyond

Week Ending	GWDDs	Week Storage Projection
31-Dec	20	-43
07-Jan	26	-184
14-Jan	29	-225
21-Jan	27	-200

Weather Storage Model - Next 4 Week Forecast

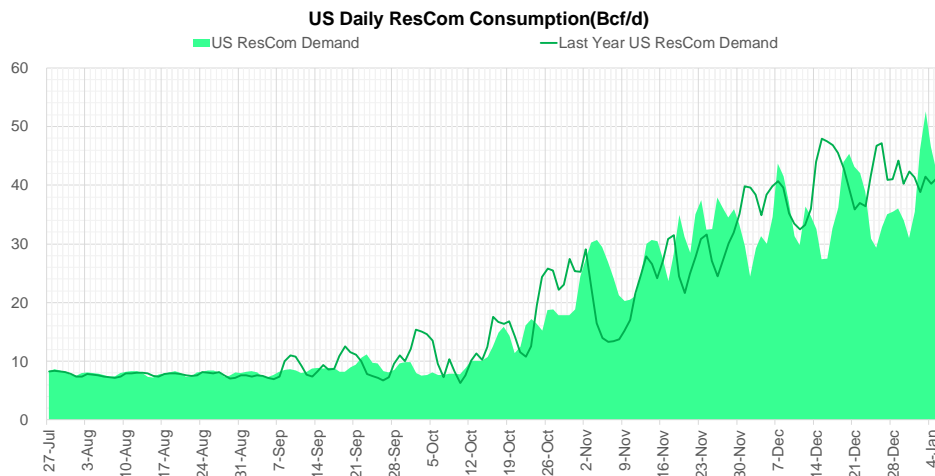
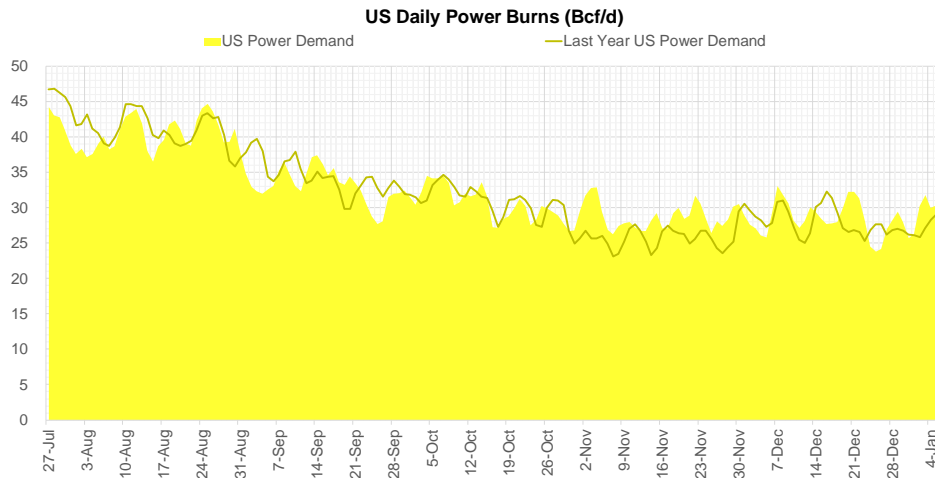
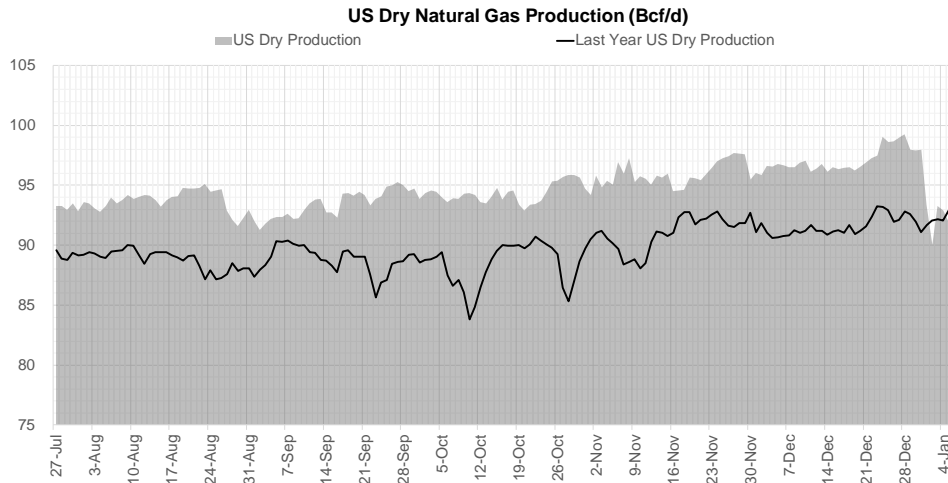


Go to larger image





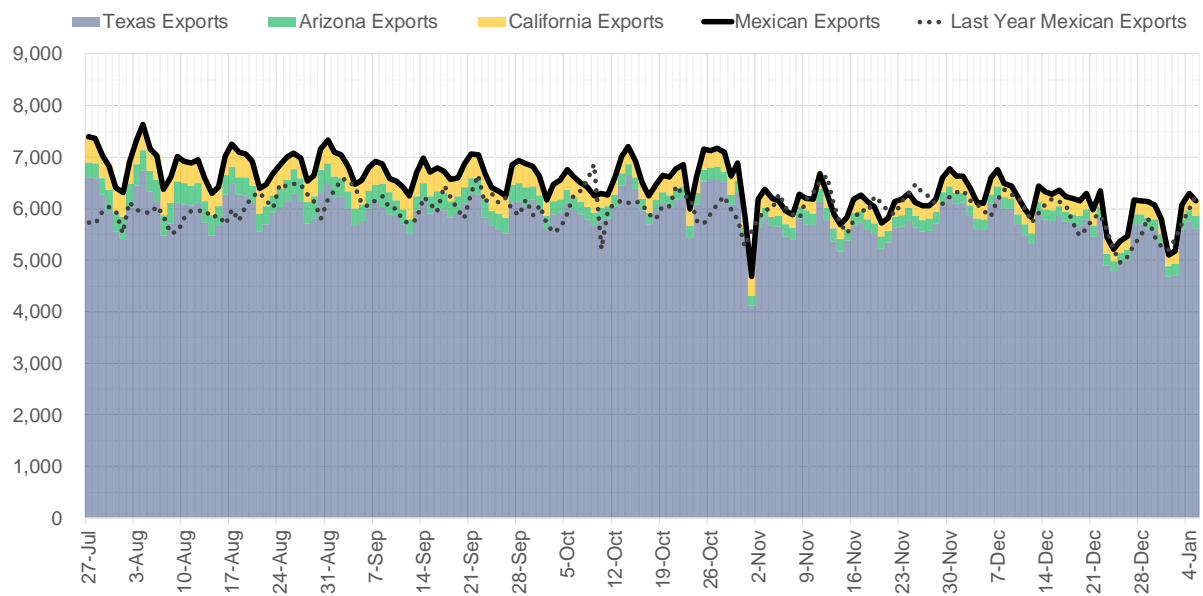
## Supply – Demand Trends



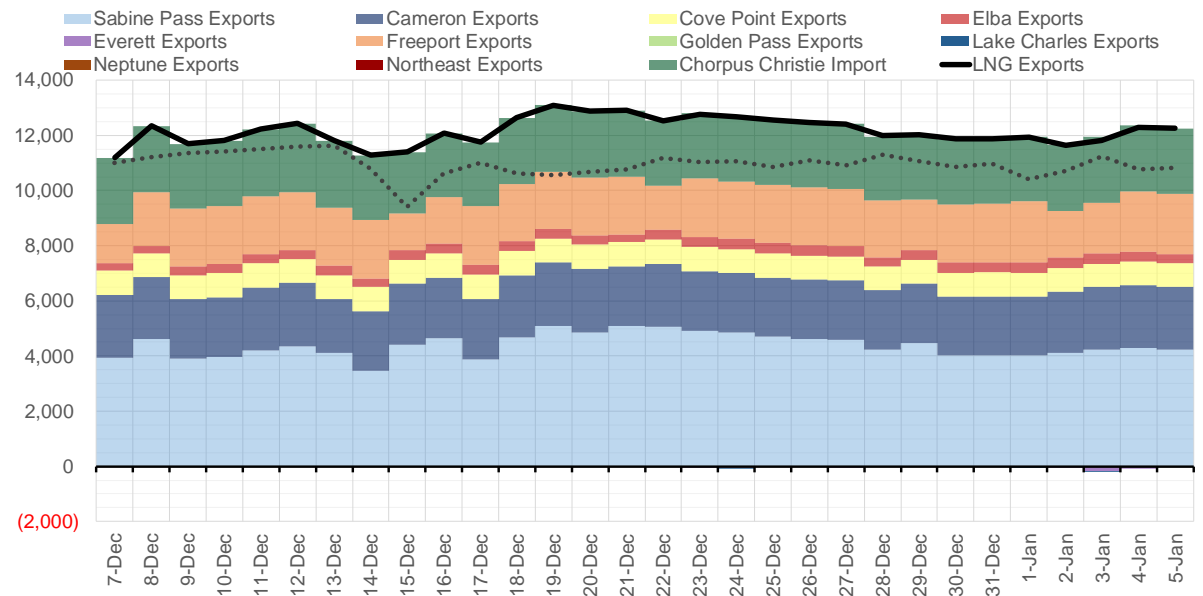
Source: Bloomberg

The risk of trading futures and options and other derivatives involves a substantial risk of loss and is not suitable for all persons. Each person must consider whether a particular trade, combination of trades, or strategy is suitable for that person's financial means and objectives. Past results are not necessarily indicative of future results. This communication may contain links to third party websites which are not under the control of and are not maintained by ION Energy Group, and ION Energy Group is not responsible for their content.

### Mexican Exports (MMcf/d)



### Net LNG Exports - Last 30 days (MMcf/d)



Source: Bloomberg

The risk of trading futures and options and other derivatives involves a substantial risk of loss and is not suitable for all persons. Each person must consider whether a particular trade, combination of trades, or strategy is suitable for that person's financial means and objectives. Past results are not necessarily indicative of future results. This communication may contain links to third party websites which are not under the control of and are not maintained by ION Energy Group, and ION Energy Group is not responsible for their content.

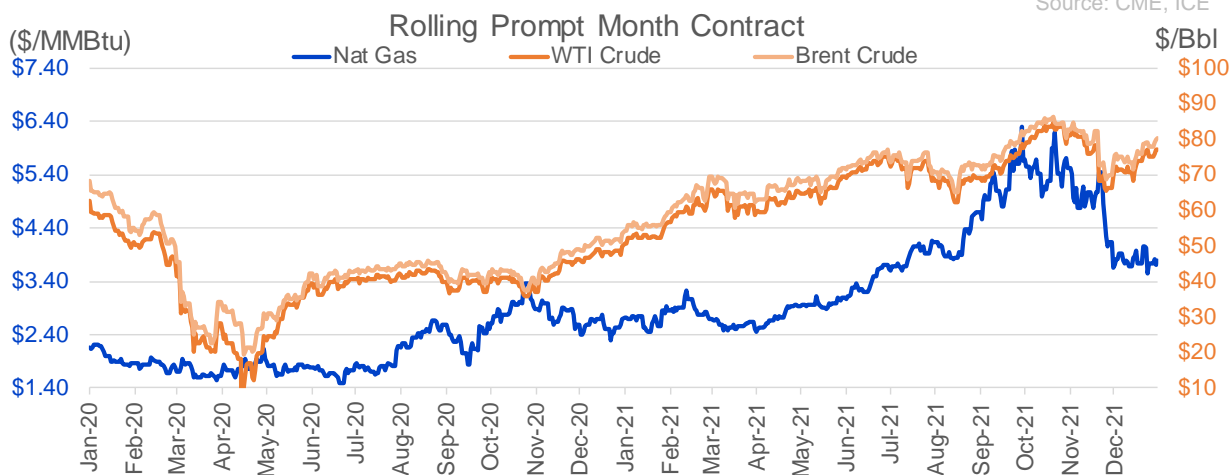
## Nat Gas Options Volume and Open Interest CME and ICE Combined

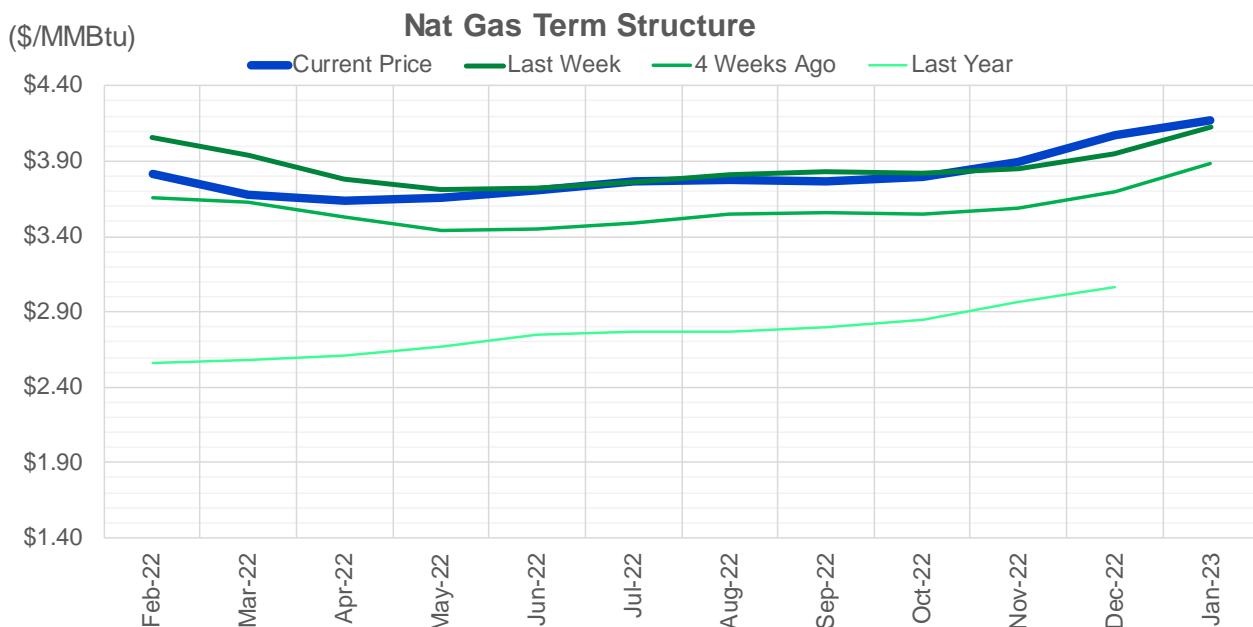
CONTRACT MONTH	CONTRACT YEAR	PUT/CALL	STRIKE	CUMULATIVE VOL	CONTRACT MONTH	CONTRACT YEAR	PUT/CALL	STRIKE	CUMULATIVE OI
2	2022	C	4.00	17765	3	2022	C	10.00	36178
2	2022	C	5.00	4260	3	2022	C	5.00	32289
2	2022	P	3.50	4188	2	2022	C	5.00	25919
2	2022	C	4.50	4127	3	2022	C	8.00	25707
2	2022	P	3.75	2356	3	2022	C	4.00	24709
2	2022	C	3.97	2304	2	2022	C	4.00	21494
3	2022	C	6.75	2200	3	2022	C	6.00	21243
3	2022	P	3.25	1985	12	2022	C	5.00	20797
2	2022	C	4.25	1925	3	2022	P	2.50	19922
2	2022	C	4.75	1575	4	2022	C	3.00	19710
3	2022	C	3.70	1359	4	2022	C	5.00	19700
3	2022	C	6.00	1307	2	2022	C	6.00	19074
2	2022	P	3.25	1248	2	2022	P	3.50	17748
4	2022	P	3.00	1221	3	2022	P	3.00	16965
3	2022	C	4.00	1181	3	2022	P	3.50	16365
4	2022	C	5.00	1161	3	2022	P	4.00	16332
4	2022	P	2.75	1105	2	2022	P	4.00	16100
3	2022	C	4.25	1076	3	2022	C	7.00	16054
3	2022	C	3.75	1001	2	2022	C	4.50	15903
3	2022	C	4.50	942	5	2022	C	5.00	15827
2	2022	C	6.00	848	6	2022	C	5.00	15367
2	2022	C	3.80	840	4	2022	P	2.50	15356
3	2022	P	3.50	829	10	2022	C	5.00	15138
2	2022	C	3.75	785	3	2022	P	2.00	14936
3	2022	P	3.00	754	2	2022	C	5.50	14822
2	2022	C	5.50	751	10	2022	C	6.00	14650
5	2022	C	5.00	750	2	2022	C	10.00	14310
6	2022	C	5.00	750	2	2022	P	3.00	14194
7	2022	C	5.00	750	3	2022	P	2.25	14152
8	2022	C	5.00	750	10	2022	P	2.00	13844
9	2022	C	5.00	750	5	2022	C	3.00	13733
10	2022	C	5.00	750	3	2022	P	5.00	13557
5	2022	P	3.00	728	2	2022	C	4.25	13533
2	2022	P	3.00	718	5	2022	P	3.00	13527
4	2022	C	4.00	685	6	2022	C	3.00	13438
3	2022	C	5.00	610	4	2022	C	4.00	13319
5	2022	P	3.25	576	12	2022	C	4.50	13282
5	2022	P	3.50	575	3	2022	C	3.50	13256
4	2022	C	3.70	550	3	2022	C	3.00	13246
3	2022	P	3.40	522	7	2022	C	3.00	13230
3	2022	C	7.00	500	8	2022	C	3.00	13226
4	2022	C	3.65	500	9	2022	C	3.00	13225
4	2022	P	3.10	500	8	2022	C	5.00	13168
5	2022	P	3.10	500	4	2022	P	3.00	13146
6	2022	C	6.00	500	10	2022	C	3.00	13114
6	2022	P	3.10	500	12	2022	C	5.25	13113
8	2022	C	4.50	500	2	2022	C	8.00	12496
2	2022	P	3.40	440	2	2022	P	2.50	12397
3	2022	P	3.65	417	3	2022	C	5.50	12240
					4	2022	P	2	12075

Source: CME, ICE

## Nat Gas Futures Open Interest CME and ICE Combined

CME Henry Hub Futures (10,000 MMBtu)				ICE Henry Hub Futures Contract Equivalent (10,000 MM			
	Current	Prior	Daily Change		Current	Prior	Daily Change
FEB 22	115052	117120	-2068	FEB 22	78931	77558	1373
MAR 22	257960	255347	2613	MAR 22	87314	86665	649
APR 22	82344	81855	489	APR 22	75568	75684	-116
MAY 22	114950	114108	842	MAY 22	66803	68019	-1217
JUN 22	53447	52600	847	JUN 22	53739	53655	84
JUL 22	46107	45831	276	JUL 22	59296	59148	147
AUG 22	33855	32755	1100	AUG 22	55542	55262	281
SEP 22	48793	48075	718	SEP 22	56587	56321	266
OCT 22	76430	74382	2048	OCT 22	63133	63542	-410
NOV 22	35024	35147	-123	NOV 22	51040	50964	77
DEC 22	36379	36241	138	DEC 22	60404	60033	371
JAN 23	42416	42458	-42	JAN 23	48156	47885	271
FEB 23	11837	11644	193	FEB 23	36733	36621	112
MAR 23	27854	28240	-386	MAR 23	41218	41187	31
APR 23	21226	20580	646	APR 23	40785	40398	387
MAY 23	13185	13085	100	MAY 23	36269	36202	67
JUN 23	10181	10032	149	JUN 23	33045	32988	57
JUL 23	7837	7679	158	JUL 23	32209	32151	59
AUG 23	4956	4837	119	AUG 23	33077	33018	59
SEP 23	7823	7664	159	SEP 23	31627	31505	122
OCT 23	12985	12518	467	OCT 23	35903	36020	-117
NOV 23	7055	6959	96	NOV 23	35401	35324	78
DEC 23	9520	9516	4	DEC 23	33256	33192	65
JAN 24	6696	6693	3	JAN 24	23847	23837	10
FEB 24	1731	1730	1	FEB 24	16741	16741	0
MAR 24	9702	9700	2	MAR 24	22632	22632	0
APR 24	5259	5259	0	APR 24	16025	15985	40
MAY 24	2055	2055	0	MAY 24	16400	16359	41
JUN 24	931	931	0	JUN 24	16524	16554	-30
JUL 24	563	563	0	JUL 24	17119	17149	-30





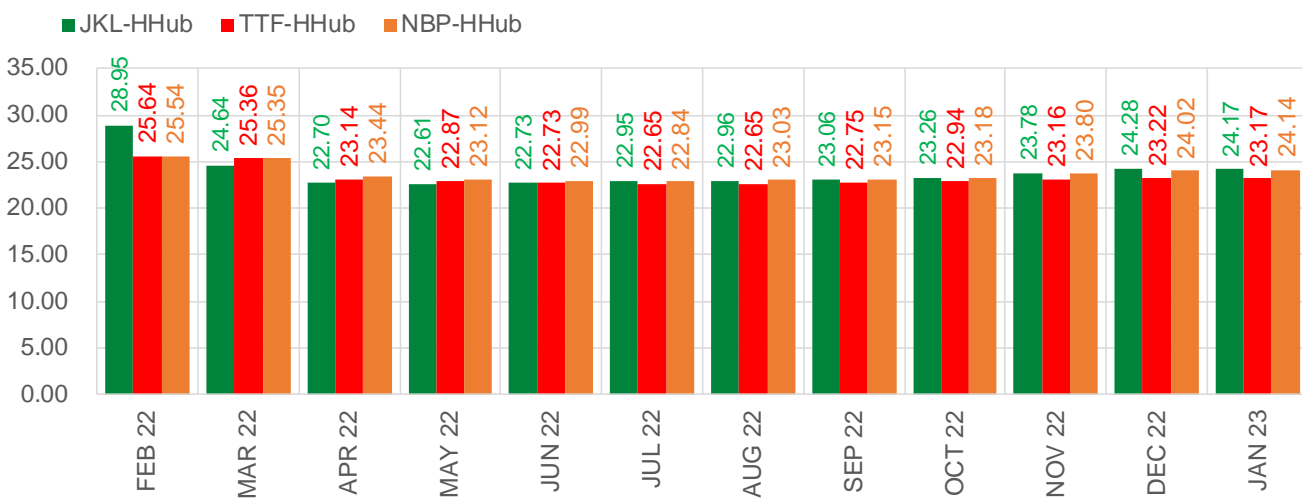
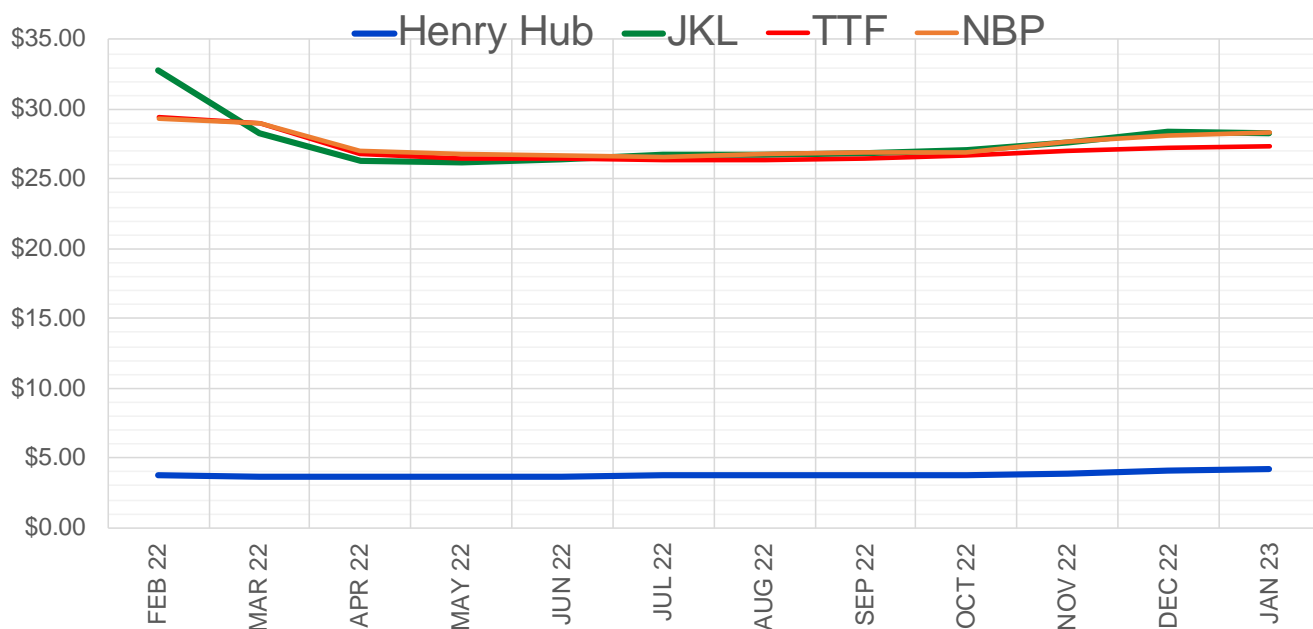
	Feb-22	Mar-22	Apr-22	May-22	Jun-22	Jul-22	Aug-22	Sep-22	Oct-22	Nov-22	Dec-22	Jan-23
<b>Current Price</b>	<b>\$3.815</b>	<b>\$3.678</b>	<b>\$3.635</b>	<b>\$3.653</b>	<b>\$3.706</b>	<b>\$3.765</b>	<b>\$3.780</b>	<b>\$3.766</b>	<b>\$3.795</b>	<b>\$3.893</b>	<b>\$4.074</b>	<b>\$4.174</b>
Last Week	\$4.060	\$3.942	\$3.782	\$3.708	\$3.724	\$3.766	\$3.815	\$3.828	\$3.817	\$3.849	\$3.947	\$4.126
vs. Last Week	-\$0.245	-\$0.264	-\$0.147	-\$0.055	-\$0.018	-\$0.001	-\$0.035	-\$0.062	-\$0.022	\$0.044	\$0.127	\$0.048
4 Weeks Ago	\$3.657	\$3.625	\$3.525	\$3.442	\$3.447	\$3.493	\$3.550	\$3.563	\$3.550	\$3.587	\$3.692	\$3.886
vs. 4 Weeks Ago	\$0.158	\$0.053	\$0.110	\$0.211	\$0.259	\$0.272	\$0.230	\$0.203	\$0.245	\$0.306	\$0.382	\$0.288
Last Year	\$2.581	\$2.561	\$2.582	\$2.608	\$2.668	\$2.744	\$2.772	\$2.767	\$2.793	\$2.850	\$2.970	\$3.065
vs. Last Year	\$1.234	\$1.117	\$1.053	\$1.045	\$1.038	\$1.021	\$1.008	\$0.999	\$1.002	\$1.043	\$1.104	\$1.109

	Units	Cash Settled	Prompt Settle	Cash to Prompt
AGT Citygate	\$/MMBtu	4.00	21.09	17.09
TETCO M3	\$/MMBtu	5.09	6.24	1.15
FGT Zone 3	\$/MMBtu	5.50	4.16	-1.34
Zone 6 NY	\$/MMBtu	5.50	7.90	2.40
Chicago Citygate	\$/MMBtu	3.89	5.58	1.69
Michcon	\$/MMBtu	3.59	3.97	0.38
Columbia TCO Pool	\$/MMBtu	3.04	3.36	0.33
Ventura	\$/MMBtu	3.78	6.74	2.96
Rockies/Opal	\$/MMBtu	5.36	5.05	-0.31
El Paso Permian Basin	\$/MMBtu	3.57	4.55	0.98
Socal Citygate	\$/MMBtu	5.99	8.57	2.58
Malin	\$/MMBtu	5.05	7.58	2.53
Houston Ship Channel	\$/MMBtu	3.47	4.59	1.12
Henry Hub Cash	\$/MMBtu	3.73	4.00	0.27
AECO Cash	C\$/GJ	3.65	3.65	0.00
Station2 Cash	C\$/GJ	4.20	10.17	5.97
Dawn Cash	C\$/GJ	3.76	4.16	0.40

Source: CME, Bloomberg

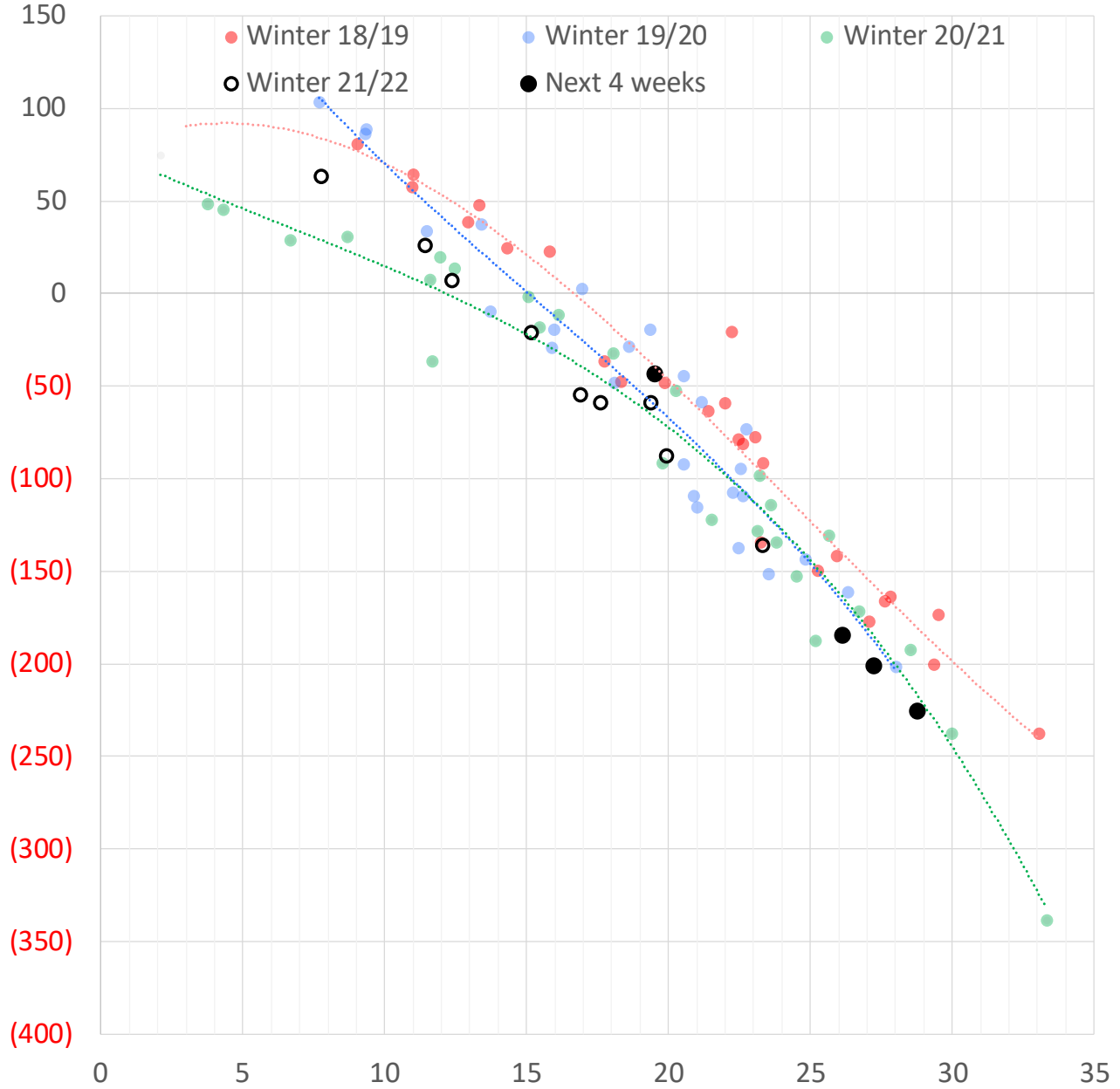
	Units	Current Price	vs. Last Week	vs. 4 Weeks Ago	vs. Last Year
NatGas Jul21/Oct21	\$/MMBtu	2.224	▲ 0.000	▲ 0.000	▲ 2.187
NatGas Oct21/Nov21	\$/MMBtu	0.361	▲ 0.000	▲ 0.000	▲ 0.307
NatGas Oct21/Jan22	\$/MMBtu	-1.817	▼ -0.031	▲ 0.316	▼ -2.080
NatGas Apr22/Oct22	\$/MMBtu	0.172	▲ 0.030	▲ 0.024	▲ 0.155
WTI Crude	\$/Bbl	76.99	▲ 1.010	▲ 4.940	▲ 27.060
Brent Crude	\$/Bbl	80.00	▲ 1.060	▲ 4.560	▲ 26.400
Fuel Oil, NY Harbour 1%	\$/Bbl	97.18	▲ 0.000	▲ 0.000	▲ 0.000
Heating Oil	cents/Gallon	240.95	▲ 3.810	▲ 18.490	▲ 89.060
Propane, Mt. Bel	cents/Gallon	1.11	▲ 0.079	▲ 0.104	▲ 0.316
Ethane, Mt. Bel	cents/Gallon	0.34	▲ 0.007	▲ 0.003	▲ 0.120
Coal, PRB	\$/MTon	12.30	▲ 0.000	▲ 0.000	▲ 0.000
Coal, PRB	\$/MMBtu	0.70			
Coal, ILB	\$/MTon	31.05	▲ 0.000	▲ 0.000	▲ 0.000
Coal, ILB	\$/MMBtu	1.32			

### Nat Gas Term Structure (\$MMBTU)



	FEB 22	MAR 22	APR 22	MAY 22	JUN 22	JUL 22	AUG 22	SEP 22	OCT 22	NOV 22	DEC 22	JAN 23
<b>Henry Hub</b>	\$3.798	\$3.655	\$3.616	\$3.641	\$3.692	\$3.752	\$3.763	\$3.749	\$3.781	\$3.895	\$4.070	\$4.157
<b>JKL</b>	\$32.745	\$28.295	\$26.315	\$26.250	\$26.420	\$26.700	\$26.720	\$26.810	\$27.040	\$27.675	\$28.350	\$28.330
<b>JKL-HHub</b>	\$28.947	\$24.640	\$22.699	\$22.609	\$22.728	\$22.948	\$22.957	\$23.061	\$23.259	\$23.780	\$24.280	\$24.173
<b>TTF</b>	\$29.439	\$29.018	\$26.753	\$26.511	\$26.426	\$26.400	\$26.416	\$26.503	\$26.717	\$27.052	\$27.292	\$27.325
<b>TTF-HHub</b>	\$25.641	\$25.363	\$23.137	\$22.870	\$22.734	\$22.648	\$22.653	\$22.754	\$22.936	\$23.157	\$23.222	\$23.168
<b>NBP</b>	\$29.340	\$29.001	\$27.052	\$26.757	\$26.680	\$26.596	\$26.789	\$26.899	\$26.959	\$27.695	\$28.094	\$28.292
<b>NBP-HHub</b>	\$25.542	\$25.346	\$23.436	\$23.116	\$22.988	\$22.844	\$23.026	\$23.150	\$23.178	\$23.800	\$24.024	\$24.135

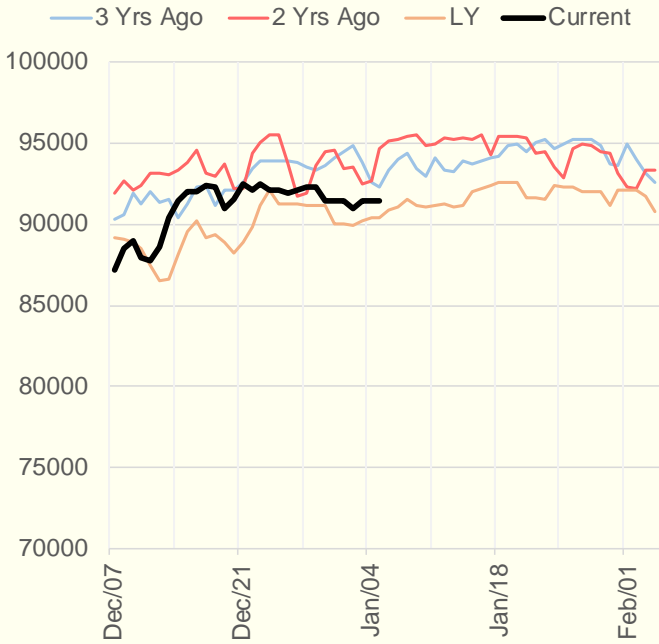
### Weather Storage Model - Next 4 Week Forecast



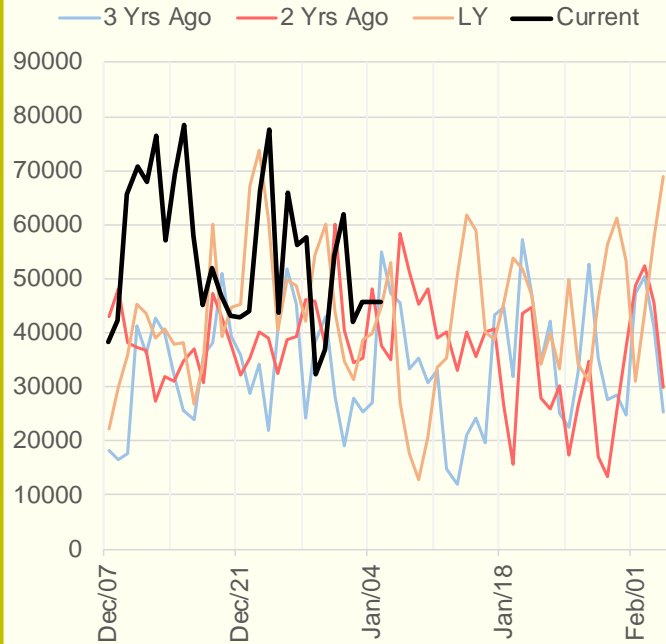
The risk of trading futures and options and other derivatives involves a substantial risk of loss and is not suitable for all persons. Each person must consider whether a particular trade, combination of trades, or strategy is suitable for that person's financial means and objectives. Past results are not necessarily indicative of future results. This communication may contain links to third party websites which are not under the control of and are not maintained by ION Energy Group, and ION Energy Group is not responsible for their content.



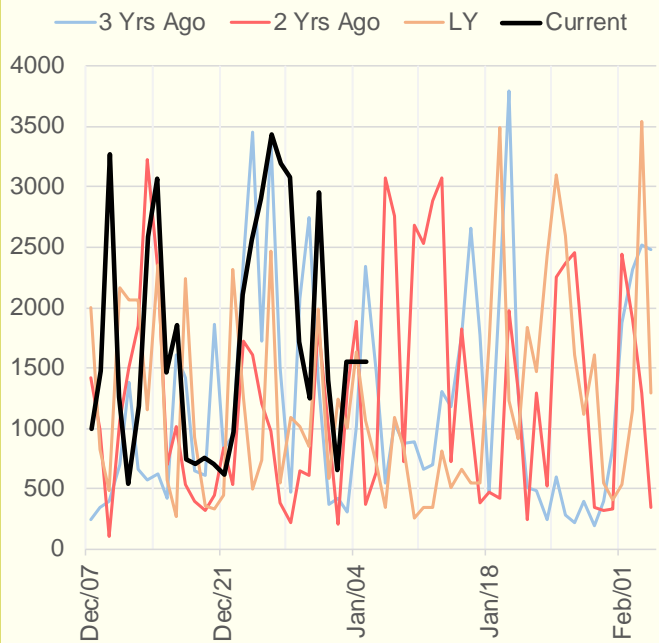
### NRC Nuclear Daily Output



### US Wind



### CALI Wind



### TEXAS Wind

