

	Current	Δ from YD	Δ from 7D Avg
Nat Gas Prompt	\$ 4.08 ▲	\$ 0.00 ▲	\$ 0.19 ▲

	Current	Δ from YD	Δ from 7D Avg
WTI Prompt	\$ 79.49 ▲	\$ 1.26 ▲	\$ 1.0 ▲

	Current	Δ from YD	Δ from 7D Avg
Brent Prompt	\$ 82.04 ▲	\$ 1.17 ▲	\$ 0.8 ▲

Page Menu

[Short-term Weather Model Outlooks](#)

[Lower 48 Component Models](#)

[Regional S/D Models Storage Projection](#)

[Weather Model Storage Projection](#)

[Supply – Demand Trends](#)

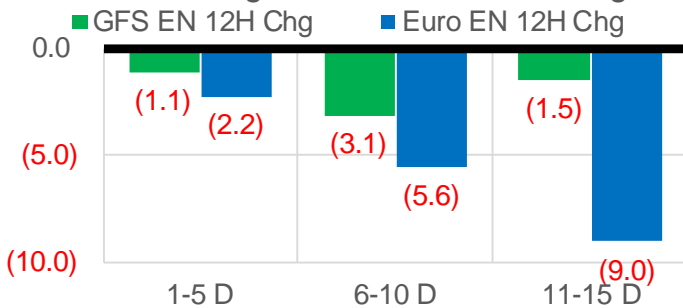
[Nat Gas Options Volume and Open Interest](#)

[Nat Gas Futures Open Interest](#)

[Price Summary](#)

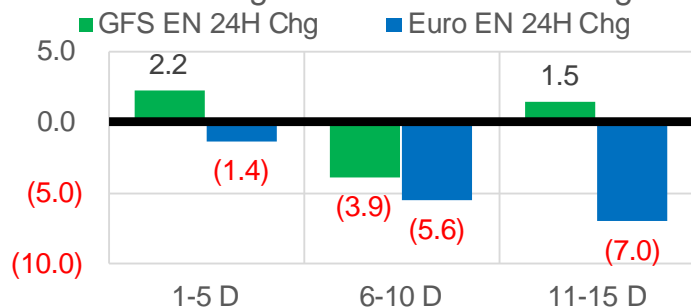
Vs. 12H Ago

L48 Region - 00z TDD vs 12H Ago



Vs. 24H Ago

L48 Region - 00z TDD vs 24H Ago



	Current	Δ from YD	Δ from 7D Avg
US Dry Production	92.1 ▼	-0.72 ▼	-0.69 ▼

	Current	Δ from YD	Δ from 7D Avg
US Power Burns	30.5 ▼	-1.21 ▼	-0.29 ▼

	Current	Δ from YD	Δ from 7D Avg
US ResComm	51.5 ▲	0.27 ▲	2.28 ▲

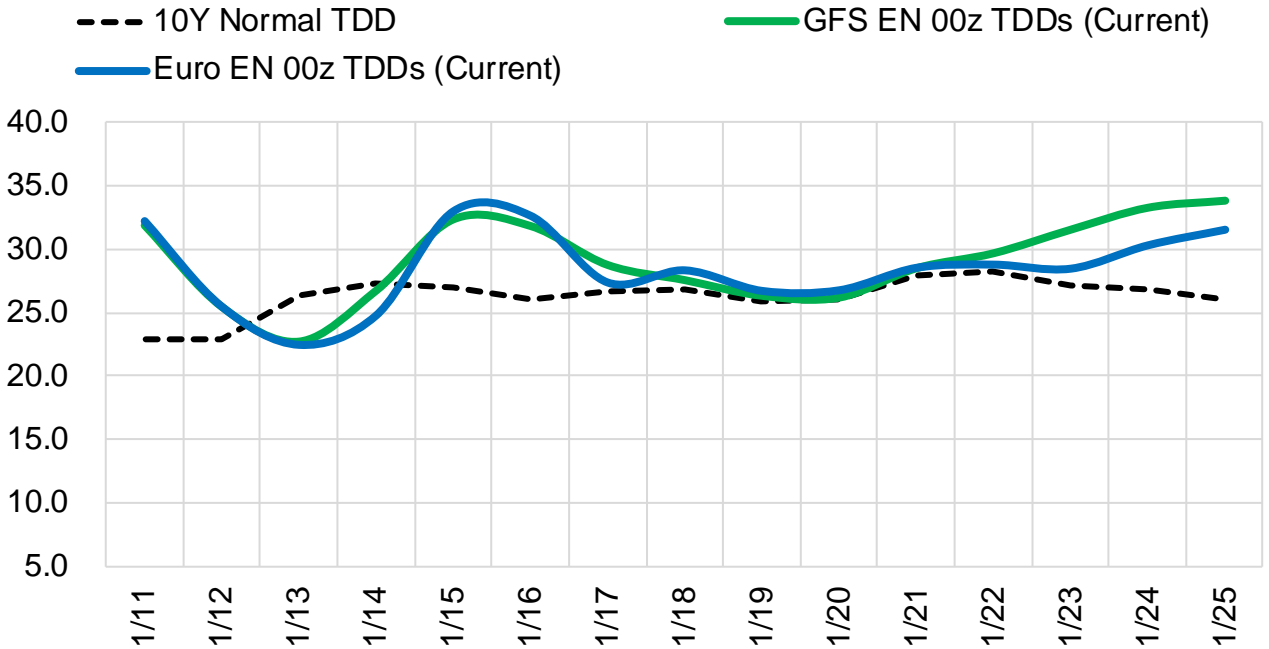
	Current	Δ from YD	Δ from 7D Avg
Canadian Imports	6.6 ▼	-0.40 ▼	0.36 ▲

	Current	Δ from YD	Δ from 7D Avg
Net LNG Exports	12.1 ▼	-0.16 ▼	-0.03 ▼

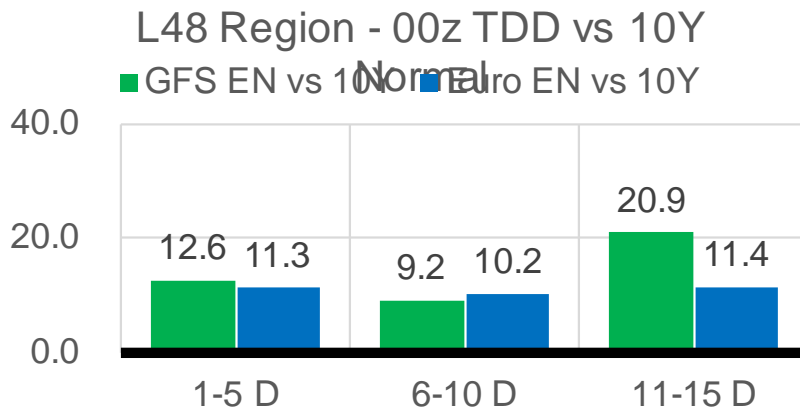
	Current	Δ from YD	Δ from 7D Avg
Mexican Exports	6.3 ▲	0.07 ▲	0.14 ▲

Short-term Weather Model Outlooks (00z)

L48 Region



Vs. 10Y Normal



Source: WSI , Bloomberg

Lower 48 Component Models

Daily Balances

	5-Jan	6-Jan	7-Jan	8-Jan	9-Jan	10-Jan	11-Jan	DoD	vs. 7D
Lower 48 Dry Production	93.0	92.5	92.7	92.4	93.1	92.8	92.1	▼-0.7	▼-0.6
Canadian Imports	5.5	6.2	6.3	6.5	6.5	7.0	6.6	▼-0.4	▲0.3
L48 Power	31.0	33.3	31.2	28.6	29.4	31.7	30.5	▼-1.2	▼-0.4
L48 Residential & Commercial	44.9	52.3	56.5	47.9	44.0	51.2	51.5	▲0.3	▲2.0
L48 Industrial	24.7	25.6	25.8	24.4	24.2	24.9	25.0	▲0.1	▲0.1
L48 Lease and Plant Fuel	5.1	5.1	5.1	5.1	5.1	5.1	5.0	▼-0.1	▼-0.1
L48 Pipeline Distribution	3.7	4.2	4.3	3.7	3.6	4.0	4.0	▼0.0	▲0.1
L48 Regional Gas Consumption	109.4	120.4	122.9	109.6	106.3	116.9	116.0	▼-1.0	▲1.7
Net LNG Delivered	12.26	11.56	12.29	12.04	12.14	12.26	12.10	▼-0.2	▲0.0
Total Mexican Exports	6.4	6.4	6.2	5.9	6.0	6.3	6.3	▲0.1	▲0.2
Implied Daily Storage Activity	-29.5	-39.7	-42.3	-28.6	-24.9	-35.6	-35.7		
EIA Reported Daily Storage Activity									
Daily Model Error									

EIA Storage Week Balances

	3-Dec	10-Dec	17-Dec	24-Dec	31-Dec	7-Jan	WoW	vs. 4W
Lower 48 Dry Production	96.8	96.6	96.5	96.8	98.6	93.4	▼-5.2	▼-3.7
Canadian Imports	5.6	5.3	4.6	5.0	4.2	5.7	▲1.5	▲0.9
L48 Power	28.7	29.1	28.4	29.9	26.4	29.9	▲3.4	▲1.4
L48 Residential & Commercial	33.1	35.4	31.4	40.3	33.4	44.5	▲11.1	▲9.3
L48 Industrial	22.5	23.7	23.7	24.0	22.0	24.4	▲2.4	▲1.1
L48 Lease and Plant Fuel	5.3	5.2	5.2	5.2	5.3	5.1	▼-0.2	▼-0.2
L48 Pipeline Distribution	3.2	3.2	3.0	3.5	3.0	3.6	▲0.6	▲0.4
L48 Regional Gas Consumption	92.9	96.7	91.7	103.0	90.2	107.5	▲17.3	▲12.1
Net LNG Exports	11.8	12.0	11.9	12.7	12.3	11.9	▼-0.4	▼-0.3
Total Mexican Exports	6.4	6.4	6.2	6.1	5.8	5.9	▲0.1	▼-0.2
Implied Daily Storage Activity	-8.7	-13.2	-8.7	-20.0	-5.5	-26.3	-20.8	
EIA Reported Daily Storage Activity	-8.4	-12.6	-7.9	-19.4	-4.4			
Daily Model Error	-0.3	-0.6	-0.9	-0.5	-1.0			

Monthly Balances

	2Yr Ago Jan-20	LY Jan-21	Sep-21	Oct-21	Nov-21	Dec-21	MTD Jan-22	MoM	vs. LY
Lower 48 Dry Production	94.6	91.4	93.4	94.3	95.9	97.1	92.7	▼-4.4	▲1.2
Canadian Imports	4.8	6.3	5.1	5.4	5.3	4.8	6.2	▲1.4	▼-0.1
L48 Power	29.9	28.3	33.1	30.5	28.8	28.4	30.4	▲2.1	▲2.2
L48 Residential & Commercial	41.7	44.0	8.8	12.5	29.4	34.5	48.0	▲13.5	▲4.0
L48 Industrial	24.5	23.8	20.2	21.0	22.4	23.2	24.8	▲1.6	▲1.0
L48 Lease and Plant Fuel	5.1	5.0	5.1	5.2	5.2	5.3	5.1	▼-0.2	▲0.1
L48 Pipeline Distribution	3.6	3.5	2.3	2.4	3.1	3.1	3.8	▲0.7	▲0.3
L48 Regional Gas Consumption	104.8	104.6	69.4	71.5	88.9	94.5	112.1	▲17.6	▲7.6
Net LNG Exports	8.4	10.5	10.3	10.6	11.4	12.1	12.0	▼-0.1	▲1.5
Total Mexican Exports	5.1	6.2	6.7	6.6	6.1	6.1	6.0	▼-0.1	▼-0.1
Implied Daily Storage Activity	-18.9	-23.5	12.1	11.0	-5.2	-10.9	-31.3		
EIA Reported Daily Storage Activity									
Daily Model Error									

Source: Bloomberg, analytix.ai

Daily Average Generation Data

Nuclear Generation Daily Average - GWh (NRC)

	3-Jan	4-Jan	5-Jan	6-Jan	7-Jan	8-Jan	9-Jan	DoD	vs. 7D
NRC Nuclear Daily Output	91.5	91.4	91.1	91.3	90.8	89.8	89.9	0.0	-1.1
NRC Nuclear Max Capacity	104.9	104.9	104.9	104.9	104.9	104.9	104.9	0.0	0.0
NRC Nuclear Outage	13.4	13.4	13.8	13.6	14.1	15.0	15.0	0.0	1.1
NRC % Nuclear Cap Utilization	93.0	93.0	92.7	92.8	92.3	91.4	91.4	0.0	-1.1

Wind Generation Daily Average - MWh (EIA)

	3-Jan	4-Jan	5-Jan	6-Jan	7-Jan	8-Jan	9-Jan	DoD	vs. 7D
CALI Wind	1546	2595	1583	690	2872	1800	1278	-522	-570
TEXAS Wind	9691	17944	10851	13037	11809	16261	17906	1644	4640
US Wind	45896	75408	67568	52646	53864	72220	62845	-9375	1579

Generation Daily Average - MWh (EIA)

	3-Jan	4-Jan	5-Jan	6-Jan	7-Jan	8-Jan	9-Jan	DoD	vs. 7D
US Wind	45896	75408	67568	52646	53864	72220	62845	-9375	1579
US Solar	8866	8824	8518	9096	9397	9064	7734	-1330	-1226
US Petroleum	4104	2695	2496	4403	6080	4176	3920	-257	-73
US Other	8256	8827	8565	8477	8775	8911	8458	-454	-177
US Coal	101911	98363	99636	109789	121955	110967	102209	-8758	-4895
US Nuke	96542	96538	96251	96549	95542	95132	94745	-387	-1347
US Hydro	36444	35709	33297	35267	35759	34506	31871	-2636	-3293
US Gas	180762	166820	157724	171441	177925	140639	130013	-10626	-35872

See National Wind and Nuclear daily charts

Source: Bloomberg, analytix.ai

Storage Week Average Generation Data

Nuclear Generation Weekly Average - GWh (NRC)

	3-Dec	10-Dec	17-Dec	24-Dec	31-Dec	7-Jan	WoW	WoW Bcf/d Impact
NRC Nuclear Daily Output	87.8	88.0	90.0	92.1	92.1	91.3	-0.7	0.1
NRC Nuclear Max Capacity	104.9	104.9	104.9	104.9	104.9	104.9	0.0	
NRC Nuclear Outage	17.1	16.9	14.9	12.8	12.8	13.6	0.7	
NRC % Nuclear Cap Utilization	0.1	0.1	0.1	0.1	0.1	0.1	0.0	

Wind Generation Weekly Average - MWh (EIA)

	3-Dec	10-Dec	17-Dec	24-Dec	31-Dec	7-Jan	WoW	WoW Bcf/d Impact
CALI Wind	363	1263	1709	943	2591	1632	-958	0.2
TEXAS Wind	8733	12216	16176	11007	13891	13603	-288	0.1
US Wind	47210	51470	68300	48623	52980	57160	4179	-0.8
					4356.9			
					9%			

Generation Weekly Average - MWh (EIA)

	3-Dec	10-Dec	17-Dec	24-Dec	31-Dec	7-Jan	WoW	WoW Bcf/d Impact
US Wind	47210	51470	68300	48623	52980	57160	4179	-0.8
US Solar	9921	7413	7570	7095	6951	8240	1289	-0.2
US Petroleum	3166	3440	2700	3581	3084	3038	-46	0.0
US Other	8482	8398	8301	8531	7580	8167	587	-0.1
US Coal	82287	82743	77026	87476	79866	94810	14944	-2.7
US Nuke	92817	92983	95054	97422	97083	96342	-741	0.1
US Hydro	26777	29626	30257	32560	31278	34474	3196	-0.6
US Gas	155286	159457	148905	166309	135037	153579	18542	

See National Wind and Nuclear daily charts

Source: Bloomberg, analytix.ai

Monthly Average Generation Data

Nuclear Generation Monthly Average - GWh (NRC)

	2Yr Ago	LY	MTD				Last 30 days	MoM (MTD vs LY)	Last 30 days YoY
	Same 30 days	Same 30 days	Oct-21	Nov-21	Dec-21	Jan-22			
NRC Nuclear Daily Output	93.9	90.3	75.5	82.7	90.3	90.8	91.5	0.5	1.2
NRC Nuclear Max Capacity	104.9	104.9	104.9	104.9	104.9	104.9	104.9	0.0	0.0
NRC Nuclear Outage	10.9	14.6	29.4	22.2	14.6	14.1	13.4	-0.5	-1.2
NRC % Nuclear Cap Utilization	95.5	91.8	76.8	84.1	91.8	92.3	93.0	0.5	1.3

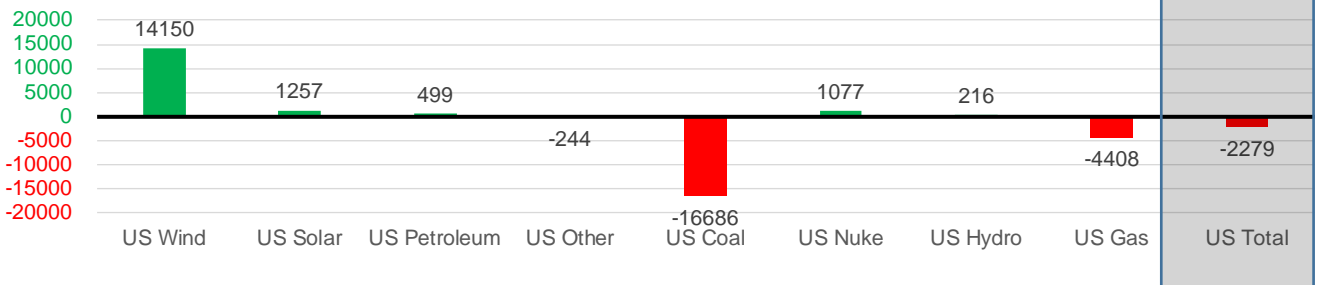
Wind Generation Monthly Average - MWh (EIA)

	2Yr Ago	LY	MTD				Last 30 days	MoM (MTD vs LY)	Last 30 days YoY
	Same 30 days	Same 30 days	Oct-21	Nov-21	Dec-21	Jan-22			
CALI Wind	1221	1016	1765	1252	1585	1543	1788	-42	772
TEXAS Wind	10150	11518	11565	11869	12927	14830	13855	1904	2338
US Wind	40429	42142	43142	49974	54742	60034	56293	5292	14150

Generation Monthly Average - MWh (EIA)

	2Yr Ago	LY	MTD				Last 30 days	MoM (MTD vs LY)	Last 30 days YoY
	Same 30 days	Same 30 days	Oct-21	Nov-21	Dec-21	Jan-22			
US Wind	40429	42142	43142	49974	54742	60034	56293	▼-3741.3	▲14150
US Solar	4735	6296	11059	9690	7374	8508	7553	▼-954.4	▲1257
US Petroleum	3550	2875	3239	3045	3134	3729	3374	▼-355	▲499
US Other	8022	8463	11109	8435	8212	8413	8219	▼-194	▼-244
US Coal	83665	106446	84433	80848	81683	102000	89761	▼-12240	▼-16686
US Nuke	97589	95512	77089	87404	95408	95717	96589	▲871	▲1077
US Hydro	29498	32388	24078	26593	30805	33960	32604	▼-1356	▲216
US Gas	148457	154732	159049	151462	152238	150238	150324	▼-17969	▼-4408
US Total	423596	447376	413354	417925	433901	463060	445096	▼-32198	▼-2279

Last 30 days YoY



See National Wind and Nuclear daily charts

Source: Bloomberg, analytix.ai

Regional S/D Models Storage Projection

Week Ending 7-Jan

	Daily Raw Storage	Daily Adjustment Factor	Daily Average Storage Activity (Adjusted) *	Weekly Adjusted Storage Activity
L48	-26.5	1.0	-25.5	-178
East	-7.5	2.6	-4.9	-34
Midwest	-7.1	0.8	-6.3	-44
Mountain	0.9	-3.3	-2.4	-17
South Central	-11.3	1.8	-9.5	-67
Pacific	-1.4	-0.9	-2.4	-16

*Adjustment Factor is calculated based on historical regional deltas

U.S. underground natural gas storage facilities by type (July 2015)

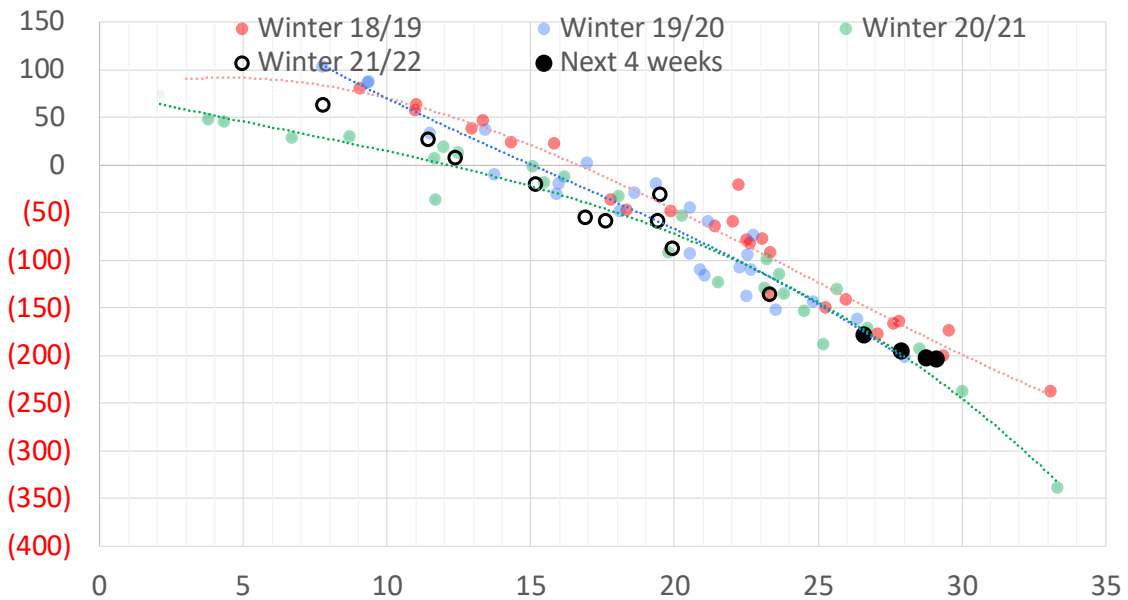


Weather Model Storage Projection

Next report
and beyond

Week Ending	GWDDs	Week Storage Projection
07-Jan	27	-178
14-Jan	28	-195
21-Jan	29	-202
28-Jan	29	-204

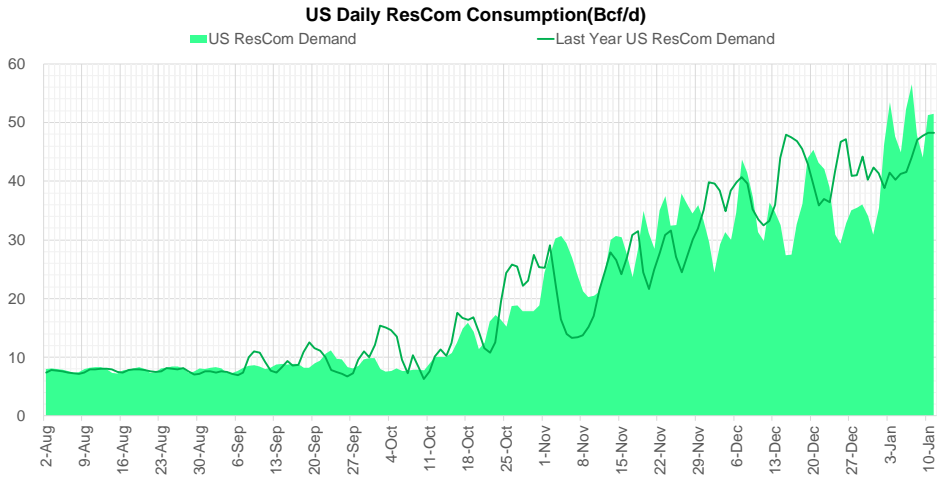
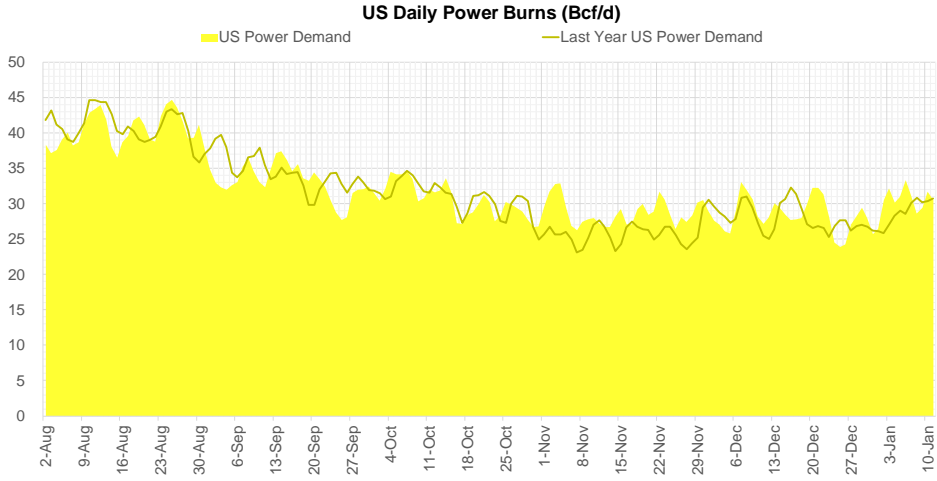
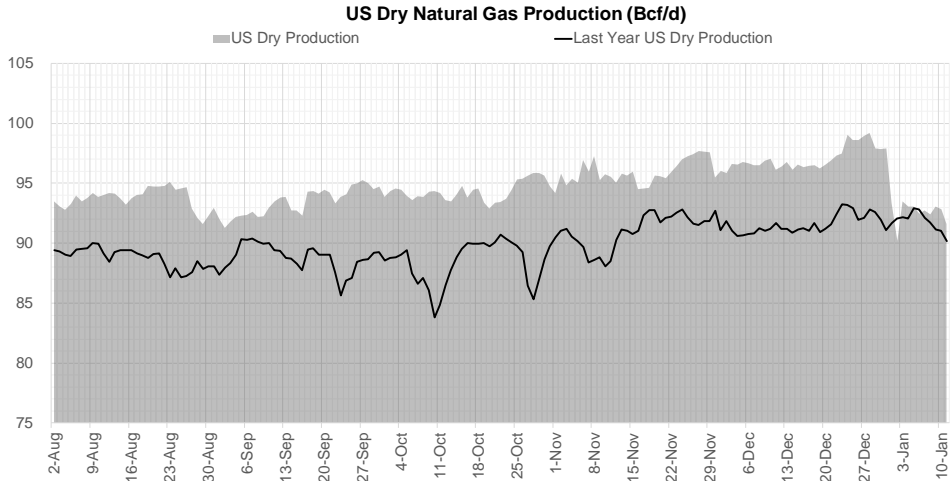
Weather Storage Model - Next 4 Week Forecast



Go to larger image



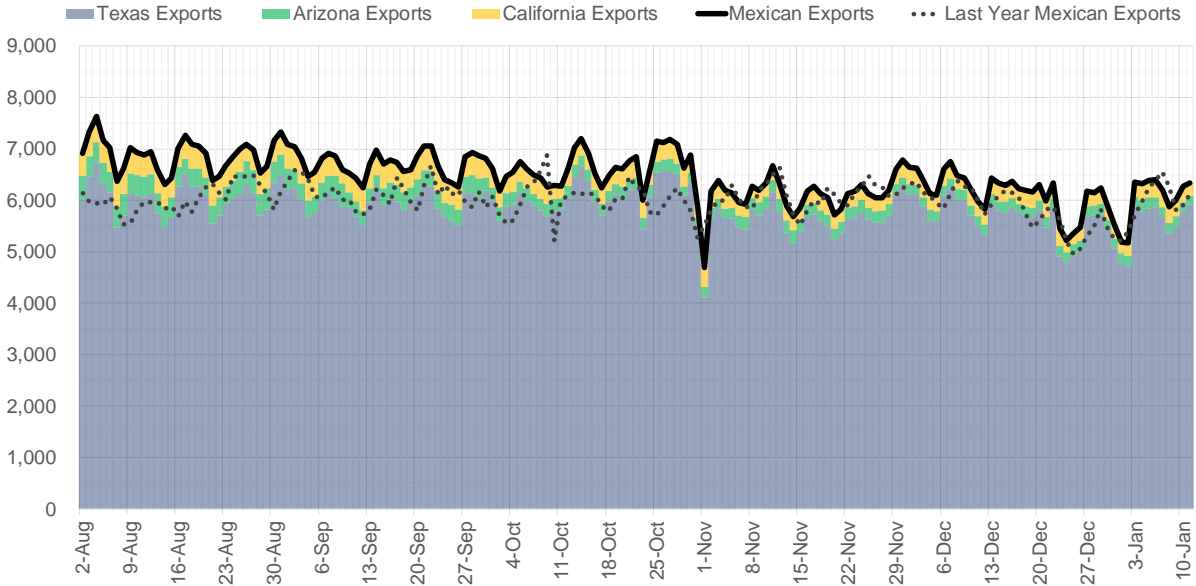
Supply – Demand Trends



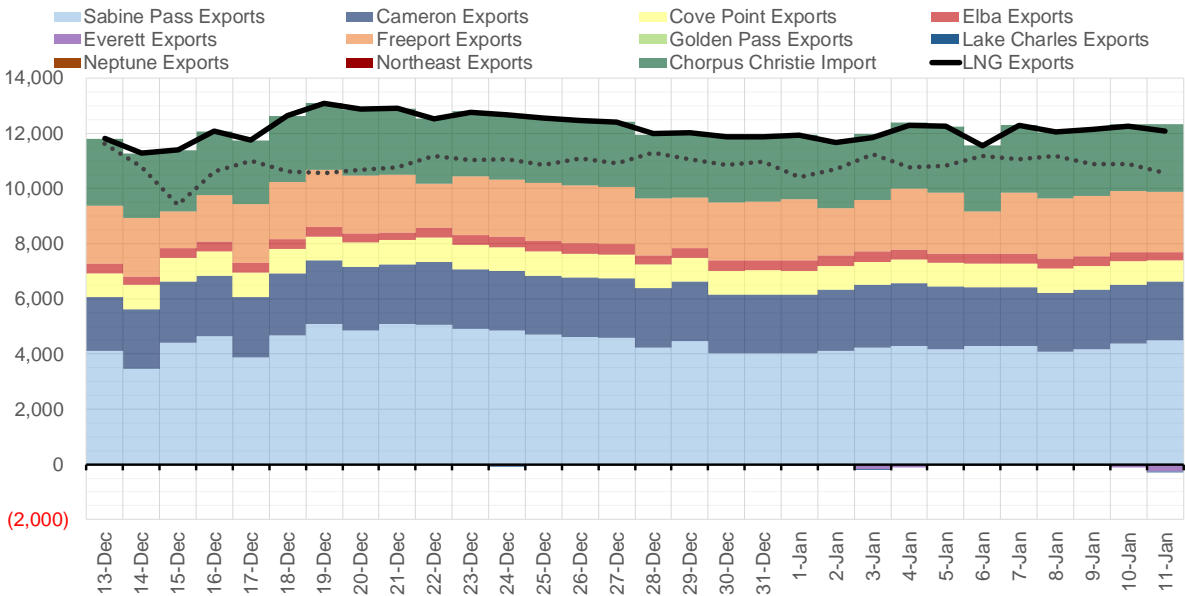
Source: Bloomberg

The risk of trading futures and options and other derivatives involves a substantial risk of loss and is not suitable for all persons. Each person must consider whether a particular trade, combination of trades, or strategy is suitable for that person's financial means and objectives. Past results are not necessarily indicative of future results. This communication may contain links to third party websites which are not under the control of and are not maintained by ION Energy Group, and ION Energy Group is not responsible for their content.

Mexican Exports (MMcf/d)



Net LNG Exports - Last 30 days (MMcf/d)



Source: Bloomberg

The risk of trading futures and options and other derivatives involves a substantial risk of loss and is not suitable for all persons. Each person must consider whether a particular trade, combination of trades, or strategy is suitable for that person's financial means and objectives. Past results are not necessarily indicative of future results. This communication may contain links to third party websites which are not under the control of and are not maintained by ION Energy Group, and ION Energy Group is not responsible for their content.

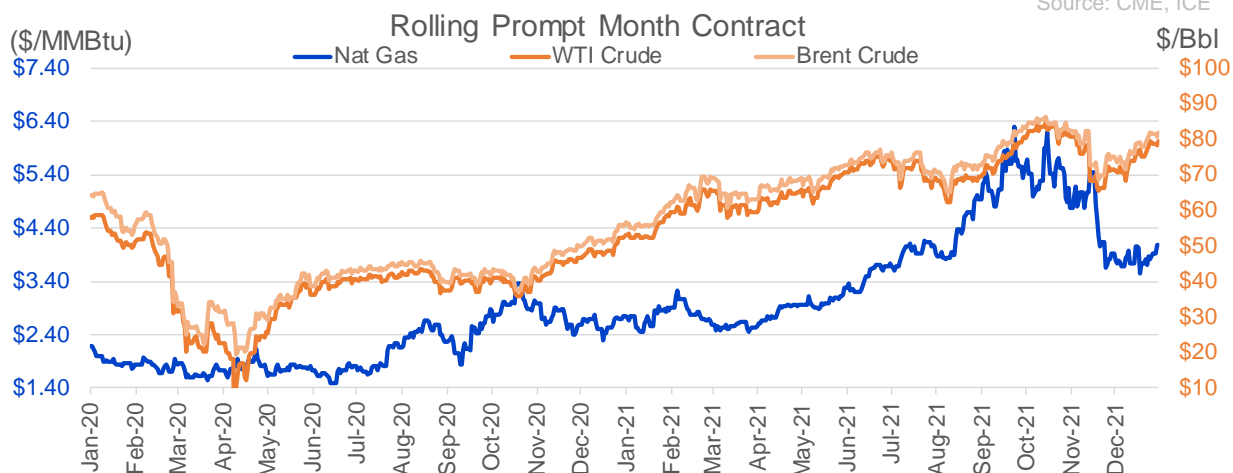
Nat Gas Options Volume and Open Interest CME and ICE Combined

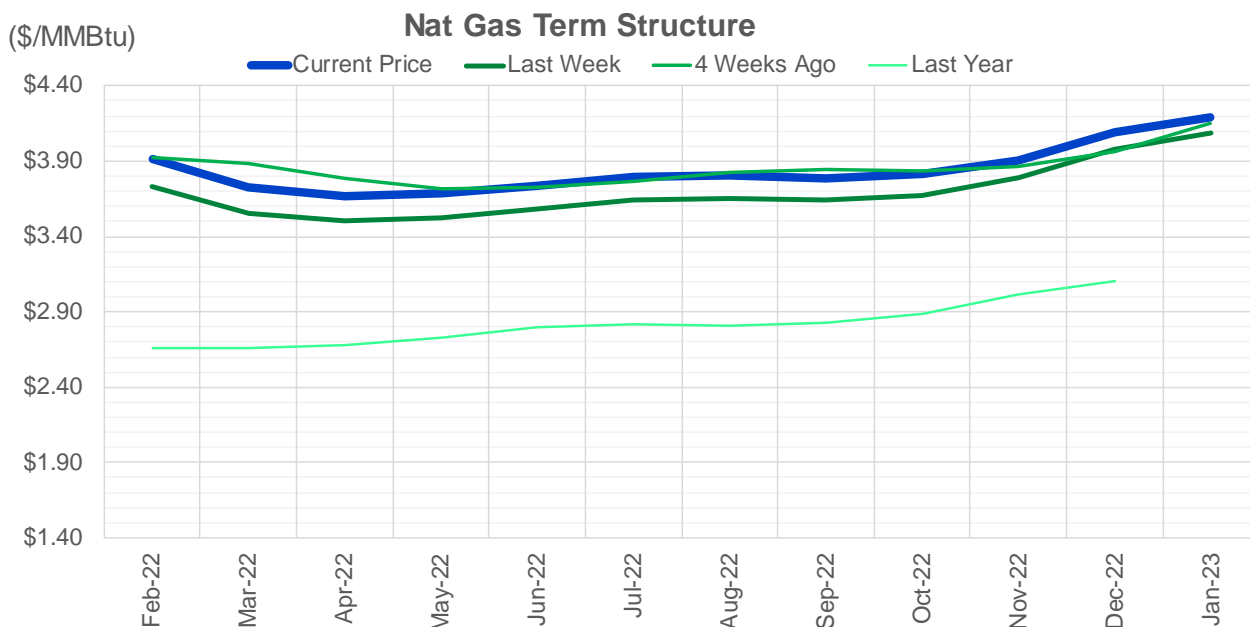
CONTRACT MONTH	CONTRACT YEAR	PUT/CALL	STRIKE	CUMULATIVE VOL	CONTRACT MONTH	CONTRACT YEAR	PUT/CALL	STRIKE	CUMULATIVE OI
2	2022	P	3.75	6095	3	2022	C	10.00	36029
2	2022	C	4.25	5282	3	2022	C	5.00	33801
2	2022	C	5.00	3874	2	2022	C	4.00	29856
2	2022	C	4.50	2807	3	2022	C	8.00	27472
2	2022	C	4.00	2453	2	2022	C	5.00	26804
3	2022	C	4.00	2434	3	2022	C	4.00	26492
2	2022	P	3.50	2176	3	2022	C	6.00	22610
2	2022	P	4.00	1911	3	2022	P	2.50	21478
3	2022	C	6.00	1839	12	2022	C	5.00	20917
4	2022	P	3.00	1582	2	2022	P	3.50	20797
4	2022	C	4.50	1486	2	2022	C	6.00	20163
3	2022	C	4.50	1439	4	2022	C	3.00	19710
2	2022	P	3.80	1380	4	2022	C	5.00	19591
2	2022	C	6.00	1352	3	2022	P	3.00	19560
4	2022	P	3.25	1300	2	2022	C	4.50	17356
3	2022	P	4.00	1273	3	2022	C	7.00	16546
4	2022	P	4.00	1250	3	2022	P	4.00	16387
6	2022	C	4.50	1225	6	2022	C	5.00	16342
3	2022	P	3.50	1169	3	2022	P	3.50	16242
5	2022	P	3.00	1151	4	2022	P	2.50	16014
2	2022	C	4.75	1068	5	2022	C	5.00	15923
3	2022	P	3.00	1027	2	2022	C	4.25	15862
4	2022	C	5.50	1003	5	2022	P	3.00	15740
4	2022	P	2.25	1000	2	2022	P	4.00	15544
10	2022	P	2.80	1000	10	2022	C	6.00	15305
10	2022	P	3.40	1000	10	2022	C	5.00	15113
4	2022	P	3.50	891	4	2022	P	3.00	15054
5	2022	P	3.50	891	3	2022	P	2.00	14985
6	2022	C	5.00	875	2	2022	P	3.00	14779
2	2022	C	4.15	816	2	2022	C	10.00	14428
2	2022	P	3.70	701	3	2022	C	4.50	14117
1	2023	P	3.50	650	10	2022	P	2.00	13921
3	2022	C	3.85	636	3	2022	P	2.25	13917
2	2022	P	3.00	609	2	2022	C	5.50	13860
3	2022	P	2.75	600	4	2022	C	4.00	13749
4	2022	C	4.00	600	5	2022	C	3.00	13733
10	2022	C	4.00	600	8	2022	C	5.00	13663
1	2023	C	8.00	600	3	2022	P	5.00	13560
3	2022	C	4.25	586	6	2022	C	3.00	13438
2	2022	P	3.90	567	3	2022	C	3.00	13282
3	2022	C	5.00	561	12	2022	C	4.50	13282
9	2022	C	5.00	526	3	2022	C	3.50	13255
5	2022	C	5.00	525	7	2022	C	3.00	13230
7	2022	C	5.00	525	8	2022	C	3.00	13226
8	2022	C	5.00	525	9	2022	C	3.00	13225
10	2022	C	5.00	525	10	2022	C	3.00	13114
3	2022	P	3.25	520	12	2022	C	5.25	13113
3	2022	C	3.90	513	2	2022	C	8.00	12491
2	2022	P	4.10	511	5	2022	P	2.50	12398
					2	2022	P	2.5	12397

Source: CME, ICE

Nat Gas Futures Open Interest CME and ICE Combined

CME Henry Hub Futures (10,000 MMBtu)				ICE Henry Hub Futures Contract Equivalent (10,000 MM			
	Current	Prior	Daily Change		Current	Prior	Daily Change
FEB 22	98642	105604	-6962	FEB 22	77927	78084	-157
MAR 22	262500	261594	906	MAR 22	88957	86986	1971
APR 22	85451	84620	831	APR 22	74762	75022	-260
MAY 22	115117	113991	1126	MAY 22	67362	67209	152
JUN 22	55769	55921	-152	JUN 22	55093	54030	1063
JUL 22	51594	49547	2047	JUL 22	59088	58792	297
AUG 22	35209	35032	177	AUG 22	55314	55077	237
SEP 22	48653	48834	-181	SEP 22	56465	56296	170
OCT 22	77374	78603	-1229	OCT 22	61553	62389	-836
NOV 22	35689	35803	-114	NOV 22	51911	51339	572
DEC 22	36381	36332	49	DEC 22	60409	60330	79
JAN 23	44804	42746	2058	JAN 23	48801	48354	448
FEB 23	13540	13167	373	FEB 23	37585	37159	426
MAR 23	27899	27742	157	MAR 23	41990	41614	377
APR 23	25486	23130	2356	APR 23	43721	41161	2560
MAY 23	13894	13768	126	MAY 23	36553	36451	103
JUN 23	10121	10343	-222	JUN 23	33845	33404	442
JUL 23	8445	8336	109	JUL 23	33167	32718	450
AUG 23	5911	5843	68	AUG 23	33469	33336	133
SEP 23	8398	8363	35	SEP 23	32656	32221	435
OCT 23	13180	12994	186	OCT 23	36353	36304	49
NOV 23	7874	7792	82	NOV 23	36607	35701	905
DEC 23	9609	9897	-288	DEC 23	33645	33507	139
JAN 24	5987	5841	146	JAN 24	23769	23739	30
FEB 24	1773	1747	26	FEB 24	17015	16908	107
MAR 24	9704	9702	2	MAR 24	22964	22850	115
APR 24	5186	5234	-48	APR 24	16214	16140	74
MAY 24	2064	2060	4	MAY 24	16555	16479	77
JUN 24	932	932	0	JUN 24	16736	16609	127
JUL 24	564	563	1	JUL 24	17339	17207	132





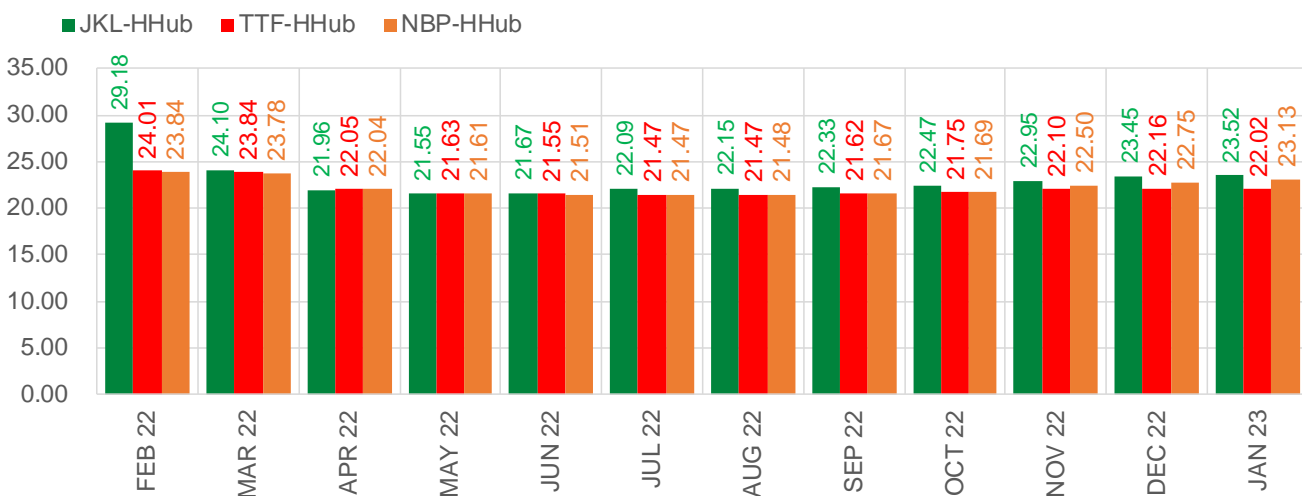
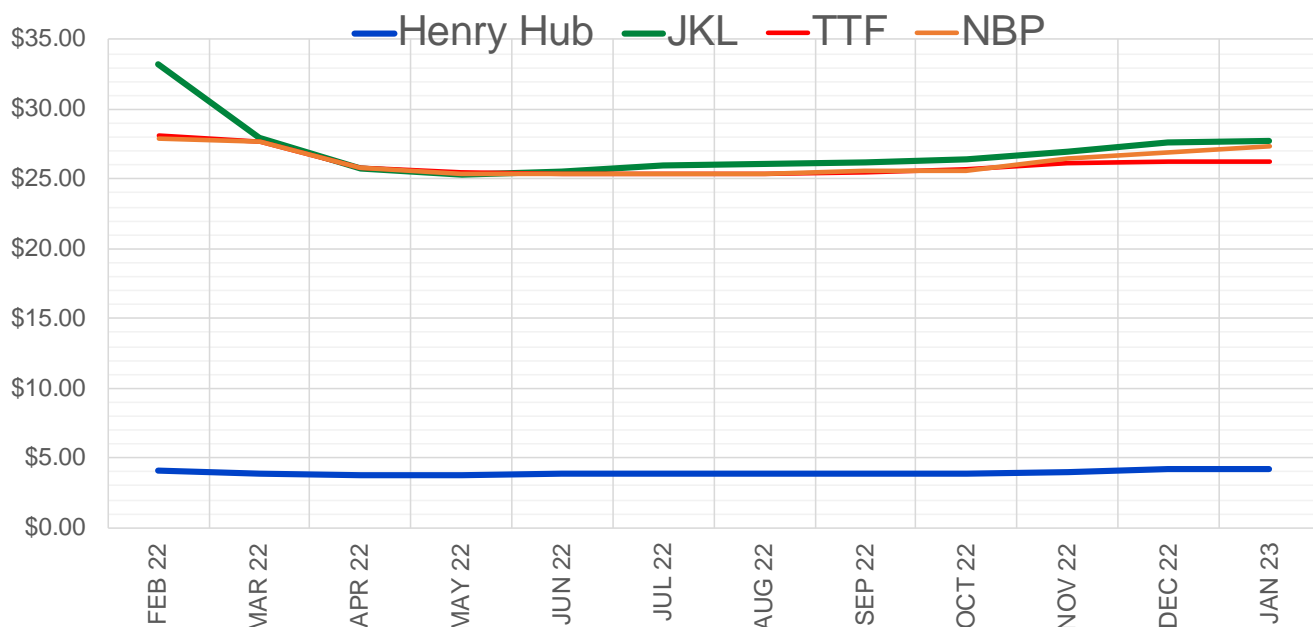
	Feb-22	Mar-22	Apr-22	May-22	Jun-22	Jul-22	Aug-22	Sep-22	Oct-22	Nov-22	Dec-22	Jan-23
Current Price	\$3.916	\$3.726	\$3.667	\$3.685	\$3.736	\$3.794	\$3.805	\$3.787	\$3.817	\$3.908	\$4.088	\$4.195
Last Week	\$3.730	\$3.557	\$3.507	\$3.525	\$3.579	\$3.638	\$3.657	\$3.645	\$3.676	\$3.786	\$3.983	\$4.090
vs. Last Week	\$0.186	\$0.169	\$0.160	\$0.160	\$0.157	\$0.156	\$0.148	\$0.142	\$0.141	\$0.122	\$0.105	\$0.105
4 Weeks Ago	\$3.925	\$3.889	\$3.788	\$3.714	\$3.725	\$3.769	\$3.824	\$3.843	\$3.834	\$3.866	\$3.967	\$4.147
vs. 4 Weeks Ago	-\$0.009	-\$0.163	-\$0.121	-\$0.029	\$0.011	\$0.025	-\$0.019	-\$0.056	-\$0.017	\$0.042	\$0.121	\$0.048
Last Year	\$2.700	\$2.656	\$2.659	\$2.680	\$2.733	\$2.798	\$2.816	\$2.804	\$2.829	\$2.886	\$3.014	\$3.102
vs. Last Year	\$1.216	\$1.070	\$1.008	\$1.005	\$1.003	\$0.996	\$0.989	\$0.983	\$0.988	\$1.022	\$1.074	\$1.093

	Units	Cash Settled	Prompt Settle	Cash to Prompt
AGT Citygate	\$/MMBtu	13.20	17.38	4.18
TETCO M3	\$/MMBtu	10.23	6.00	-4.23
FGT Zone 3	\$/MMBtu	7.91	3.95	-3.97
Zone 6 NY	\$/MMBtu	7.91	6.77	-1.15
Chicago Citygate	\$/MMBtu	3.96	4.43	0.47
Michcon	\$/MMBtu	3.90	3.62	-0.28
Columbia TCO Pool	\$/MMBtu	3.83	3.33	-0.50
Ventura	\$/MMBtu	3.92	5.75	1.83
Rockies/Opal	\$/MMBtu	4.08	4.29	0.22
El Paso Permian Basin	\$/MMBtu	3.75	3.90	0.15
Socal Citygate	\$/MMBtu	5.25	5.45	0.20
Malin	\$/MMBtu	4.70	5.07	0.37
Houston Ship Channel	\$/MMBtu	3.73	3.93	0.20
Henry Hub Cash	\$/MMBtu	4.13	3.71	-0.42
AECO Cash	C\$/GJ	3.52	3.29	-0.24
Station2 Cash	C\$/GJ	3.47	5.35	1.88
Dawn Cash	C\$/GJ	3.97	3.89	-0.08

Source: CME, Bloomberg

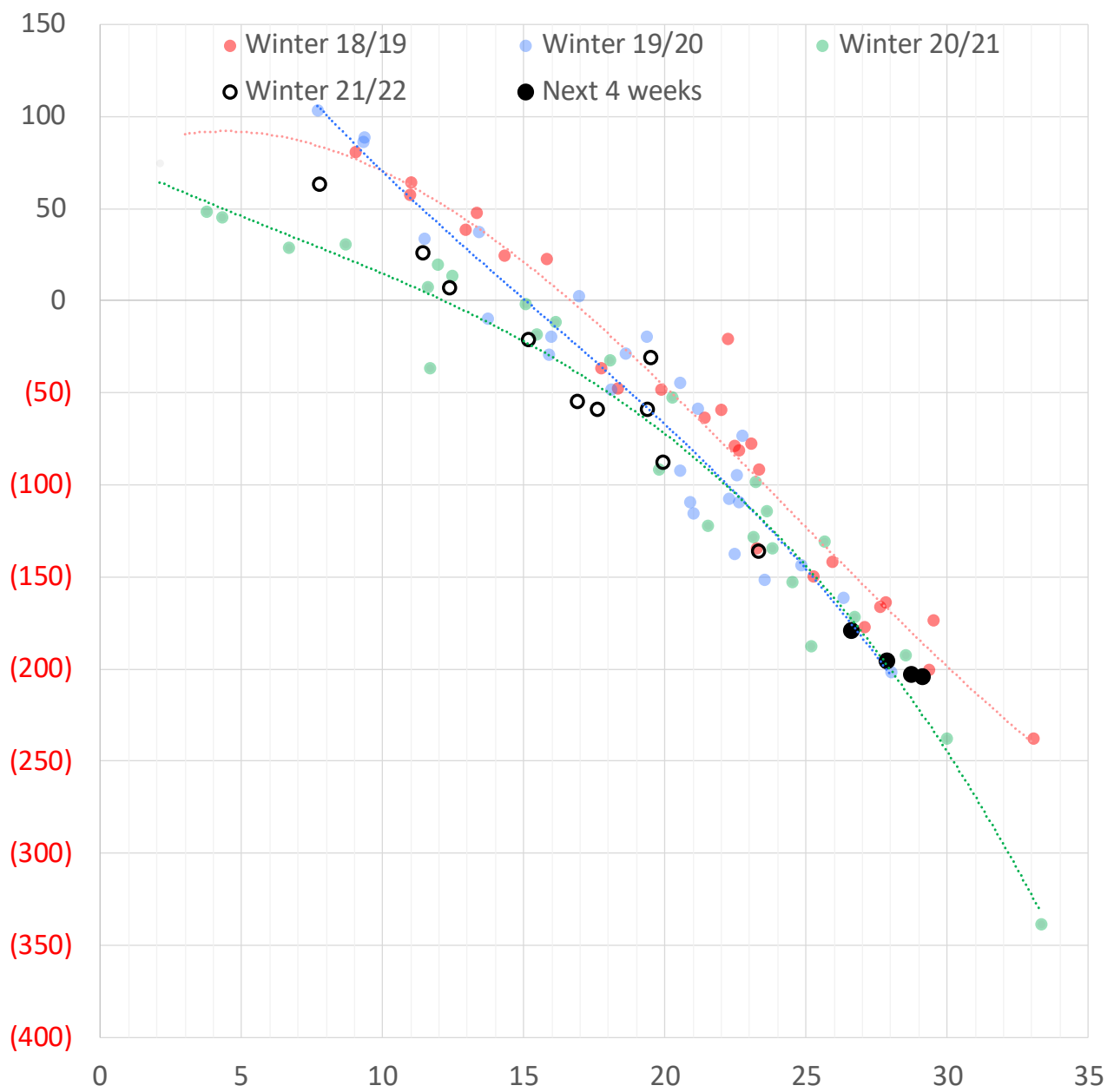
	Units	Current Price	vs. Last Week	vs. 4 Weeks Ago	vs. Last Year
NatGas Jul21/Oct21	\$/MMBtu	2.224	▲ 0.000	▲ 0.000	▲ 2.200
NatGas Oct21/Nov21	\$/MMBtu	0.361	▲ 0.000	▲ 0.000	▲ 0.308
NatGas Oct21/Jan22	\$/MMBtu	-1.817	▲ 0.000	▲ 0.230	▼ -2.084
NatGas Apr22/Oct22	\$/MMBtu	0.148	▼ -0.012	▼ -0.017	▲ 0.138
WTI Crude	\$/Bbl	78.23	▲ 2.150	▲ 6.940	▲ 25.980
Brent Crude	\$/Bbl	80.87	▲ 1.890	▲ 6.480	▲ 25.210
Fuel Oil, NY Harbour 1%	\$/Bbl	97.18	▲ 0.000	▲ 0.000	▲ 0.000
Heating Oil	cents/Gallon	248.76	▲ 13.020	▲ 25.480	▲ 91.410
Propane, Mt. Bel	cents/Gallon	1.12	▲ 0.017	▲ 0.079	▲ 0.261
Ethane, Mt. Bel	cents/Gallon	0.36	▲ 0.024	▲ 0.023	▲ 0.133
Coal, PRB	\$/MTon	12.30	▲ 0.000	▲ 0.000	▲ 0.000
Coal, PRB	\$/MMBtu	0.70			
Coal, ILB	\$/MTon	31.05	▲ 0.000	▲ 0.000	▲ 0.000
Coal, ILB	\$/MMBtu	1.32			

Nat Gas Term Structure (\$MMBTU)



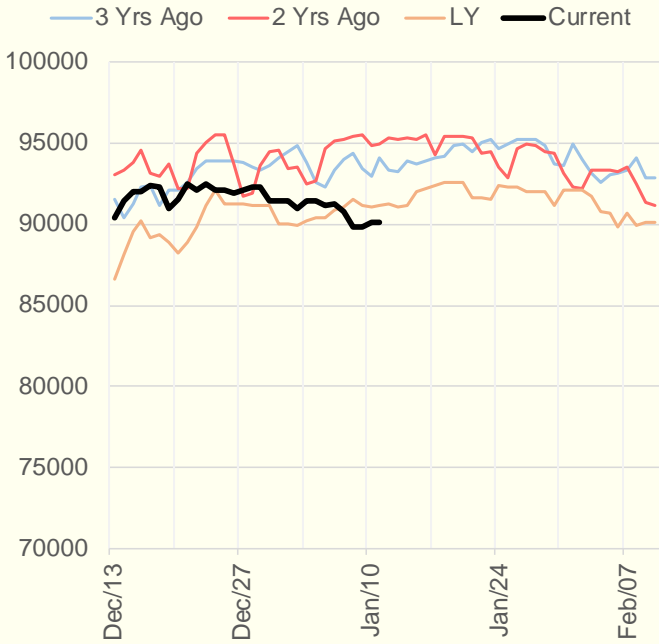
	FEB 22	MAR 22	APR 22	MAY 22	JUN 22	JUL 22	AUG 22	SEP 22	OCT 22	NOV 22	DEC 22	JAN 23
Henry Hub	\$4.084	\$3.851	\$3.792	\$3.807	\$3.848	\$3.917	\$3.917	\$3.891	\$3.928	\$3.998	\$4.151	\$4.255
JKL	\$33.265	\$27.955	\$25.750	\$25.360	\$25.515	\$26.005	\$26.070	\$26.220	\$26.400	\$26.950	\$27.605	\$27.775
JKL-HHub	\$29.181	\$24.104	\$21.958	\$21.553	\$21.667	\$22.088	\$22.153	\$22.329	\$22.472	\$22.952	\$23.454	\$23.520
TTF	\$28.094	\$27.686	\$25.837	\$25.437	\$25.394	\$25.386	\$25.384	\$25.506	\$25.678	\$26.096	\$26.307	\$26.275
TTF-HHub	\$24.010	\$23.835	\$22.045	\$21.630	\$21.546	\$21.469	\$21.467	\$21.615	\$21.750	\$22.098	\$22.156	\$22.020
NBP	\$27.920	\$27.633	\$25.827	\$25.416	\$25.354	\$25.386	\$25.394	\$25.557	\$25.620	\$26.496	\$26.898	\$27.382
NBP-HHub	\$23.836	\$23.782	\$22.035	\$21.609	\$21.506	\$21.469	\$21.477	\$21.666	\$21.692	\$22.498	\$22.747	\$23.127

Weather Storage Model - Next 4 Week Forecast

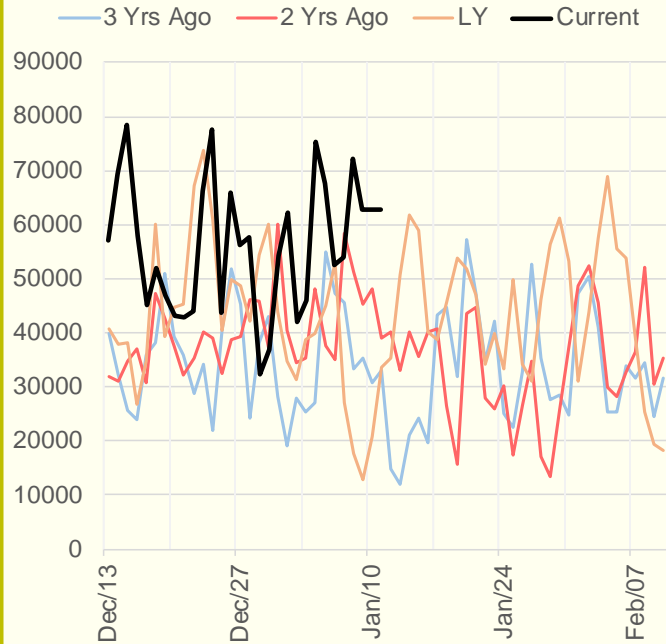


The risk of trading futures and options and other derivatives involves a substantial risk of loss and is not suitable for all persons. Each person must consider whether a particular trade, combination of trades, or strategy is suitable for that person's financial means and objectives. Past results are not necessarily indicative of future results. This communication may contain links to third party websites which are not under the control of and are not maintained by ION Energy Group, and ION Energy Group is not responsible for their content.

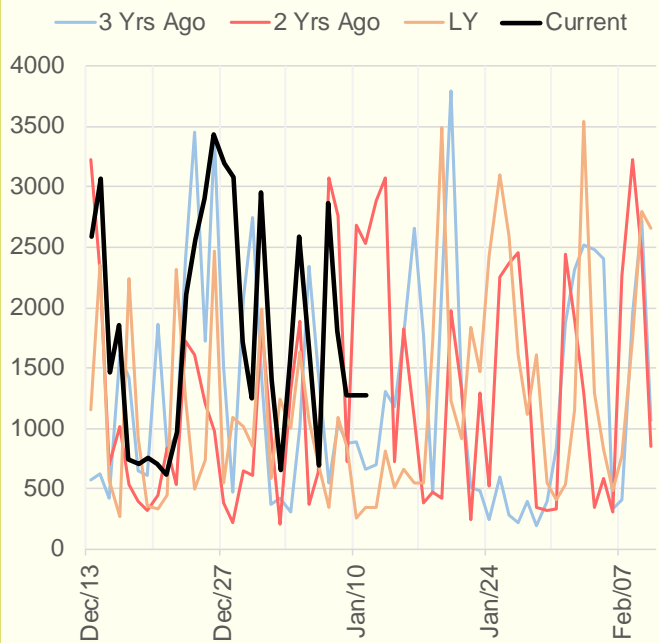
NRC Nuclear Daily Output



US Wind



CALI Wind



TEXAS Wind

