

	Current	Δ from YD	Δ from 7D Avg
Nat Gas Prompt	\$ 3.90 ▲	\$ 0.10	\$ (0.26) ▼

	Current	Δ from YD	Δ from 7D Avg
WTI Prompt	\$ 84.07 ▼	\$ (2.83)	\$ (0.9) ▼

	Current	Δ from YD	Δ from 7D Avg
Brent Prompt	\$ 86.95 ▼	\$ (1.43)	\$ (0.0) ▼

Page Menu

[Short-term Weather Model Outlooks](#)

[Lower 48 Component Models](#)

[Regional S/D Models Storage Projection](#)

[Weather Model Storage Projection](#)

[Supply – Demand Trends](#)

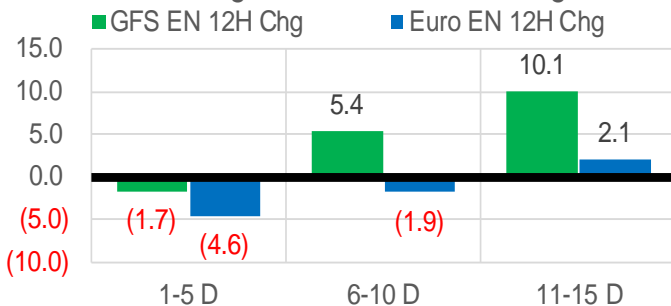
[Nat Gas Options Volume and Open Interest](#)

[Nat Gas Futures Open Interest](#)

[Price Summary](#)

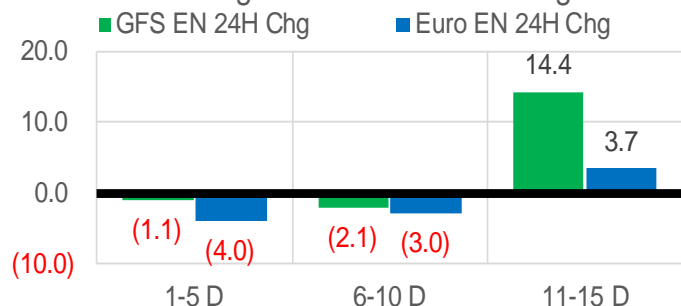
Vs. 12H Ago

L48 Region - 00z TDD vs 12H Ago



Vs. 24H Ago

L48 Region - 00z TDD vs 24H Ago



	Current	Δ from YD	Δ from 7D Avg
US Dry Production	93.2 ▼	-0.52	-1.78 ▼

	Current	Δ from YD	Δ from 7D Avg
US Power Burns	33.0 ▼	-0.36	2.81 ▲

	Current	Δ from YD	Δ from 7D Avg
US ResComm	57.2 ▲	3.08	9.22 ▲

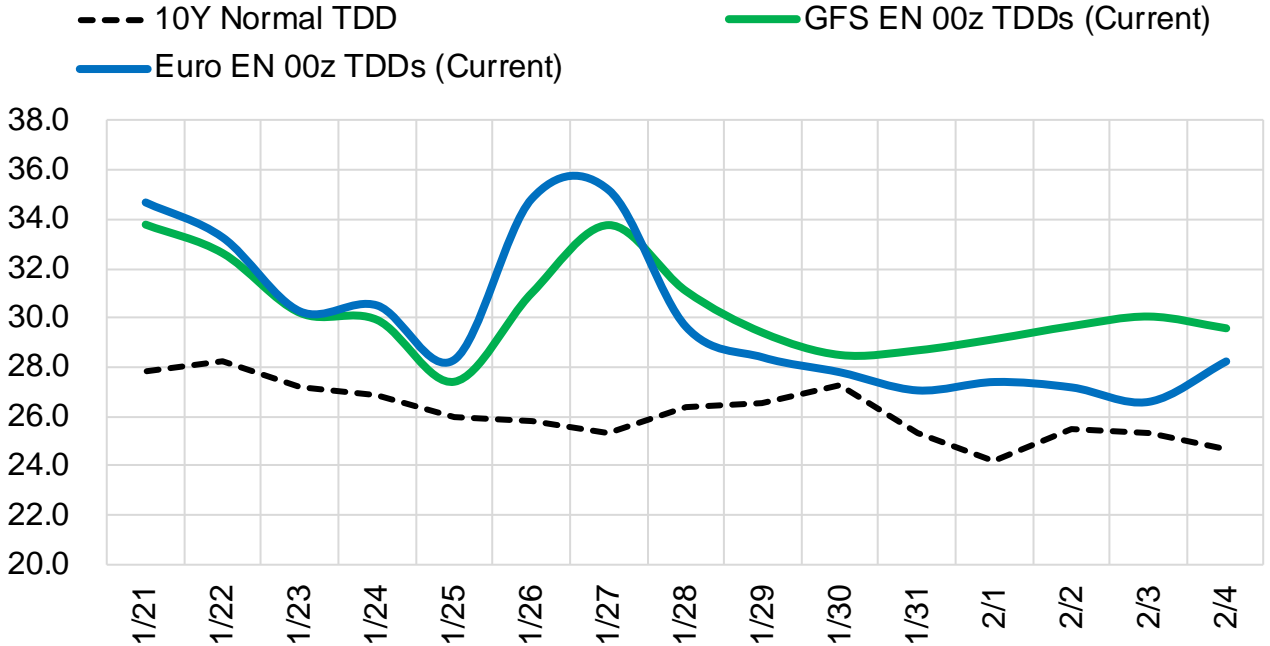
	Current	Δ from YD	Δ from 7D Avg
Canadian Imports	7.7 ▼	-0.46	0.64 ▲

	Current	Δ from YD	Δ from 7D Avg
Net LNG Exports	12.6 ▼	-0.44	-0.26 ▼

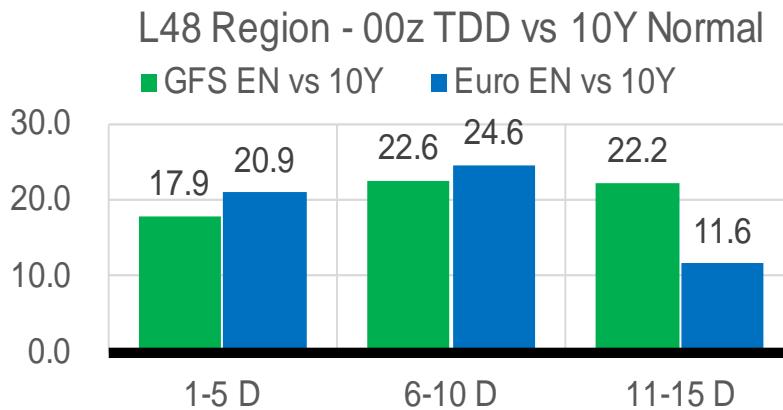
	Current	Δ from YD	Δ from 7D Avg
Mexican Exports	6.4 ▼	-0.29	0.00 ▲

Short-term Weather Model Outlooks (00z)

L48 Region



Vs. 10Y Normal



Source: WSI , Bloomberg

Lower 48 Component Models

Daily Balances

	15-Jan	16-Jan	17-Jan	18-Jan	19-Jan	20-Jan	21-Jan	DoD	vs. 7D
Lower 48 Dry Production	95.0	95.4	94.3	94.9	95.7	93.7	93.2	▼ -0.5	▼ -1.6
Canadian Imports	7.2	6.9	6.9	6.9	6.3	8.1	7.7	▼ -0.5	▲ 0.6
L48 Power	29.5	30.9	31.0	29.2	29.5	33.3	33.0	▼ -0.4	▲ 2.4
L48 Residential & Commercial	53.4	51.3	46.2	43.6	43.2	54.1	57.2	▲ 3.1	▲ 8.5
L48 Industrial	28.2	28.2	27.3	26.1	25.3	25.7	24.8	▼ -0.9	▼ -2.0
L48 Lease and Plant Fuel	5.2	5.2	5.2	5.2	5.2	5.1	5.1	▼ -0.1	▼ -0.1
L48 Pipeline Distribution	4.0	4.0	3.7	3.5	3.5	4.2	4.4	▲ 0.1	▲ 0.5
L48 Regional Gas Consumption	120.2	119.7	113.4	107.6	106.9	122.5	124.4	▲ 1.9	▲ 9.3
Net LNG Delivered	13.10	13.22	12.99	12.17	12.58	13.27	12.99	▼ -0.3	▲ 0.1
Total Mexican Exports	6.1	6.2	6.3	6.4	6.6	6.7	6.4	▼ -0.3	▲ 0.0
Implied Daily Storage Activity	-37.2	-36.8	-31.5	-24.3	-24.1	-40.6	-42.9		
EIA Reported Daily Storage Activity									
Daily Model Error									

EIA Storage Week Balances

	17-Dec	24-Dec	31-Dec	7-Jan	14-Jan	21-Jan	WoW	vs. 4W
Lower 48 Dry Production	96.4	96.7	98.6	95.3	95.4	95.0	▼ -0.4	▼ -1.5
Canadian Imports	4.6	5.0	4.2	5.7	6.5	7.0	▲ 0.5	▲ 1.7
L48 Power	28.4	29.9	26.4	29.9	30.4	30.2	▼ -0.3	▲ 1.0
L48 Residential & Commercial	31.4	40.3	33.4	44.3	47.4	47.9	▲ 0.5	▲ 6.6
L48 Industrial	23.7	24.0	22.2	26.1	25.8	26.8	▲ 1.0	▲ 2.2
L48 Lease and Plant Fuel	5.2	5.2	5.4	5.2	5.2	5.2	▼ 0.0	▼ -0.1
L48 Pipeline Distribution	3.0	3.5	3.0	3.6	3.8	3.8	▲ 0.0	▲ 0.3
L48 Regional Gas Consumption	91.7	103.0	90.3	109.1	112.7	113.9	▲ 1.2	▲ 10.1
Net LNG Exports	11.9	12.7	12.3	11.9	12.3	12.9	▲ 0.6	▲ 0.6
Total Mexican Exports	6.2	6.1	5.8	5.9	6.3	6.4	▲ 0.1	▲ 0.4
Implied Daily Storage Activity	-8.8	-20.0	-5.6	-25.9	-29.4	-31.2	-1.8	
EIA Reported Daily Storage Activity	-7.9	-19.4	-4.4	-25.6	-29.4			
Daily Model Error	-1.0	-0.6	-1.1	-0.4	0.0			

Monthly Balances

	2Yr Ago Jan-20	LY Jan-21	Sep-21	Oct-21	Nov-21	Dec-21	MTD Jan-22	MoM	vs. LY
Lower 48 Dry Production	94.6	91.4	93.4	94.3	95.9	97.0	95.1	▼ -1.9	▲ 3.6
Canadian Imports	4.8	6.3	5.1	5.4	5.3	4.8	6.5	▲ 1.8	▲ 0.3
L48 Power	29.9	28.3	33.1	30.5	28.8	28.4	30.4	▲ 2.0	▲ 2.1
L48 Residential & Commercial	41.7	44.0	8.8	12.5	29.4	34.5	47.3	▲ 12.9	▲ 3.4
L48 Industrial	24.5	23.8	20.2	21.0	22.4	23.3	26.4	▲ 3.1	▲ 2.6
L48 Lease and Plant Fuel	5.1	5.0	5.1	5.2	5.2	5.3	5.2	▼ -0.1	▲ 0.2
L48 Pipeline Distribution	3.6	3.5	2.3	2.4	3.1	3.1	3.8	▲ 0.6	▲ 0.3
L48 Regional Gas Consumption	104.8	104.6	69.4	71.5	88.9	94.5	113.1	▲ 18.5	▲ 8.5
Net LNG Exports	8.4	10.5	10.3	10.6	11.4	12.1	12.4	▲ 0.3	▲ 1.9
Total Mexican Exports	5.1	6.2	6.7	6.6	6.1	6.1	6.3	▲ 0.1	▲ 0.1
Implied Daily Storage Activity	-18.9	-23.5	12.1	11.0	-5.2	-11.0	-30.1		
EIA Reported Daily Storage Activity									
Daily Model Error									

Source: Bloomberg, analytix.ai

Daily Average Generation Data

Nuclear Generation Daily Average - GWh (NRC)

	13-Jan	14-Jan	15-Jan	16-Jan	17-Jan	18-Jan	19-Jan	DoD	vs. 7D
NRC Nuclear Daily Output	91.4	91.5	89.1	89.4	89.4	89.3	89.4	0.0	-0.7
NRC Nuclear Max Capacity	104.9	104.9	104.9	104.9	104.9	104.9	104.9	0.0	0.0
NRC Nuclear Outage	13.5	13.4	15.8	15.5	15.5	15.5	15.5	0.0	0.7
NRC % Nuclear Cap Utilization	92.9	93.0	90.6	90.9	90.9	90.8	90.9	0.0	-0.7

Wind Generation Daily Average - MWh (EIA)

	13-Jan	14-Jan	15-Jan	16-Jan	17-Jan	18-Jan	19-Jan	DoD	vs. 7D
CALI Wind	905	2010	1011	467	1029	2710	1056	-1654	-299
TEXAS Wind	2637	17366	21278	6333	9975	19238	18934	-304	6130
US Wind	29134	57108	62976	39183	44867	67577	72151	4575	22011

Generation Daily Average - MWh (EIA)

	13-Jan	14-Jan	15-Jan	16-Jan	17-Jan	18-Jan	19-Jan	DoD	vs. 7D
US Wind	29134	57108	62976	39183	44867	67577	72151	4575	22011
US Solar	8830	8921	5975	7872	8480	9635	9115	-520	829
US Petroleum	4448	4159	6337	6645	5541	4831	4024	-807	-1302
US Other	6159	6574	7138	7669	8666	8528	7796	-733	340
US Coal	113798	109093	112364	124016	123248	115605	111816	-3789	-4538
US Nuke	96343	95928	94104	94380	94199	94291	94356	65	-519
US Hydro	32751	33740	34977	34186	34928	33245	34305	1059	333
US Gas	167299	140985	148947	167602	165522	148004	142001	-6003	-14393

See National Wind and Nuclear daily charts

Source: Bloomberg, analytix.ai

Storage Week Average Generation Data

Nuclear Generation Weekly Average - GWh (NRC)

	17-Dec	24-Dec	31-Dec	7-Jan	14-Jan	21-Jan	WoW	WoW Bcf/d Impact
NRC Nuclear Daily Output	90.0	92.1	92.1	91.3	90.6	89.7	-0.9	0.2
NRC Nuclear Max Capacity	104.9	104.9	104.9	104.9	104.9	104.9	0.0	
NRC Nuclear Outage	14.9	12.8	12.8	13.6	14.3	15.1	0.9	
NRC % Nuclear Cap Utilization	0.1	0.1	0.1	0.1	0.1	0.1	0.0	

Wind Generation Weekly Average - MWh (EIA)

	17-Dec	24-Dec	31-Dec	7-Jan	14-Jan	21-Jan	WoW	WoW Bcf/d Impact
CALI Wind	1709	943	2591	1603	1266	1334	68	0.0
TEXAS Wind	16176	11007	13891	13603	10192	16008	5816	-1.0
US Wind	68412	48727	53100	57154	50730	59430	8700	-1.6
					-6423.1			
					-11%			

Generation Weekly Average - MWh (EIA)

	17-Dec	24-Dec	31-Dec	7-Jan	14-Jan	21-Jan	WoW	WoW Bcf/d Impact
US Wind	68412	48727	53100	57154	50730	59430	8700	-1.6
US Solar	7570	7098	6957	8464	9320	8445	-875	0.2
US Petroleum	2700	3581	3084	3038	4915	5080	165	0.0
US Other	8301	8532	7584	8301	8288	7738	-550	0.1
US Coal	76931	87380	80022	94994	115156	115422	267	0.0
US Nuke	95054	97422	97083	96342	95714	94516	-1198	0.2
US Hydro	30257	32560	31279	34503	34154	34241	87	0.0
US Gas	148807	166457	136071	154297	161762	150723	-11039	

See National Wind and Nuclear daily charts

Source: Bloomberg, analytix.ai

Monthly Average Generation Data

Nuclear Generation Monthly Average - GWh (NRC)

	2Yr Ago		LY		MTD		Last 30 days	MoM (MTD vs LY)	Last 30 days YoY
	Same 30 days	Same 30 days	Oct-21	Nov-21	Dec-21	Jan-22			
	NRC Nuclear Daily Output	94.6	91.3	75.5	82.7	90.3			
NRC Nuclear Max Capacity	104.9	104.9	104.9	104.9	104.9	104.9	104.9	0.0	0.0
NRC Nuclear Outage	10.3	13.6	29.4	22.2	14.6	14.4	13.9	-0.2	0.3
NRC % Nuclear Cap Utilization	96.2	92.8	76.8	84.1	91.8	92.0	92.5	0.2	-0.3

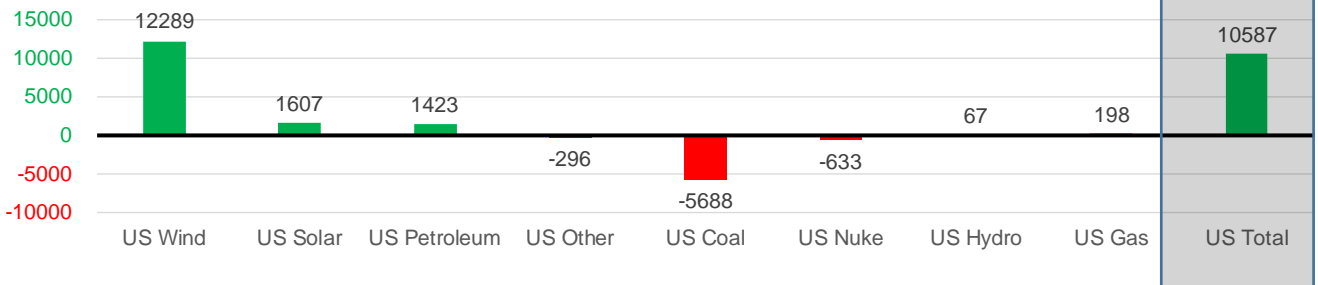
Wind Generation Monthly Average - MWh (EIA)

	2Yr Ago		LY		MTD		Last 30 days	MoM (MTD vs LY)	Last 30 days YoY
	Same 30 days	Same 30 days	Oct-21	Nov-21	Dec-21	Jan-22			
	CALI Wind	1350	1009	1765	1252	1585			
TEXAS Wind	10560	11496	11565	11869	12927	13509	13794	582	2298
US Wind	40443	43759	43141	49974	54821	56613	56048	1791	12289

Generation Monthly Average - MWh (EIA)

	2Yr Ago		LY		MTD		Last 30 days	MoM (MTD vs LY)	Last 30 days YoY
	Same 30 days	Same 30 days	Oct-21	Nov-21	Dec-21	Jan-22			
	US Wind	40443	43759	43141	49974	54821			
US Solar	4876	6689	11059	9690	7376	8902	8296	▼-606.6	▲1607
US Petroleum	3637	2572	3239	3045	3134	4429	3995	▼-434	▲1423
US Other	8625	8294	11110	8435	8214	8114	7998	▼-116	▼-296
US Coal	78843	106989	84432	80848	81683	109970	101301	▼-8669	▼-5688
US Nuke	96833	96564	77089	87404	95408	95426	95930	▲504	▼-633
US Hydro	31219	33416	24078	26593	30805	34331	33483	▼-848	▲67
US Gas	145882	150206	159049	151462	152503	156086	150404	▼-10734	▲198
US Total	424599	447056	413352	417925	434203	473997	457643	▼-20903	▲10587

Last 30 days YoY



See National Wind and Nuclear daily charts

Source: Bloomberg, analytix.ai

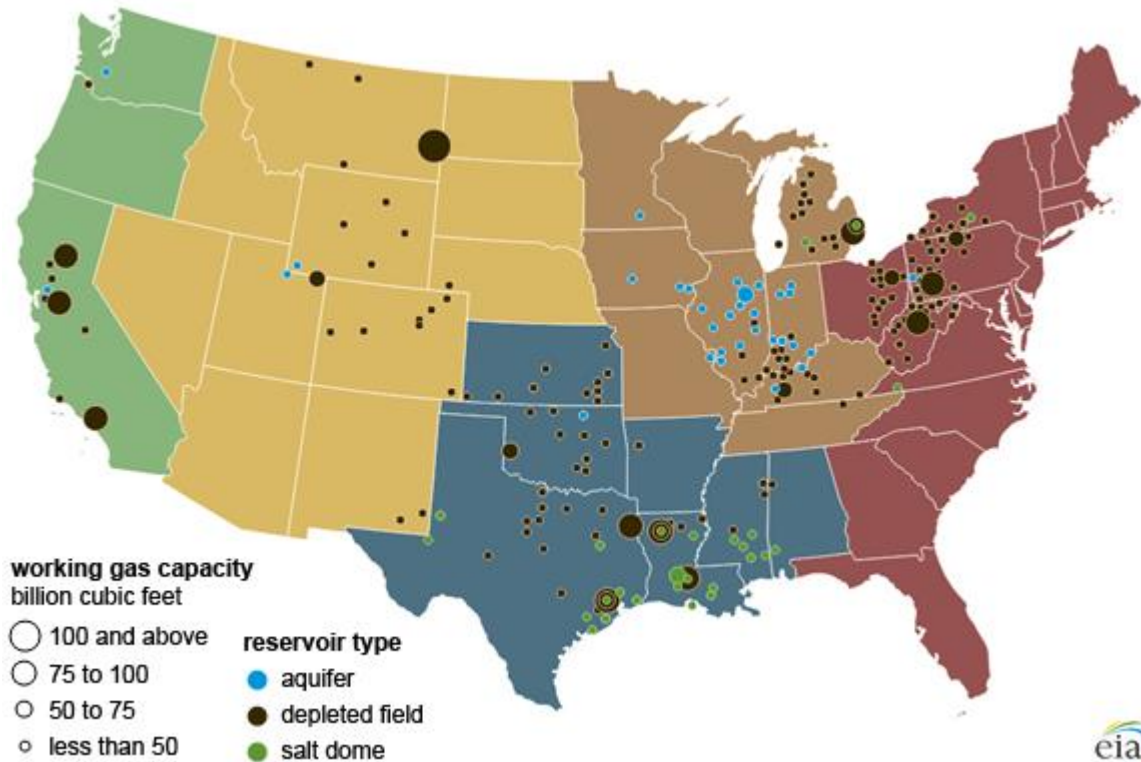
Regional S/D Models Storage Projection

Week Ending 21-Jan

	Daily Raw Storage	Daily Adjustment Factor	Daily Average Storage Activity (Adjusted) *	Weekly Adjusted Storage Activity
L48	-31.4	0.6	-30.8	-215
East	-10.3	2.7	-7.6	-53
Midwest	-9.7	-0.4	-10.1	-71
Mountain	2.0	-3.0	-1.0	-7
South Central	-13.7	1.8	-11.8	-83
Pacific	0.3	-0.5	-0.3	-2

*Adjustment Factor is calculated based on historical regional deltas

U.S. underground natural gas storage facilities by type (July 2015)

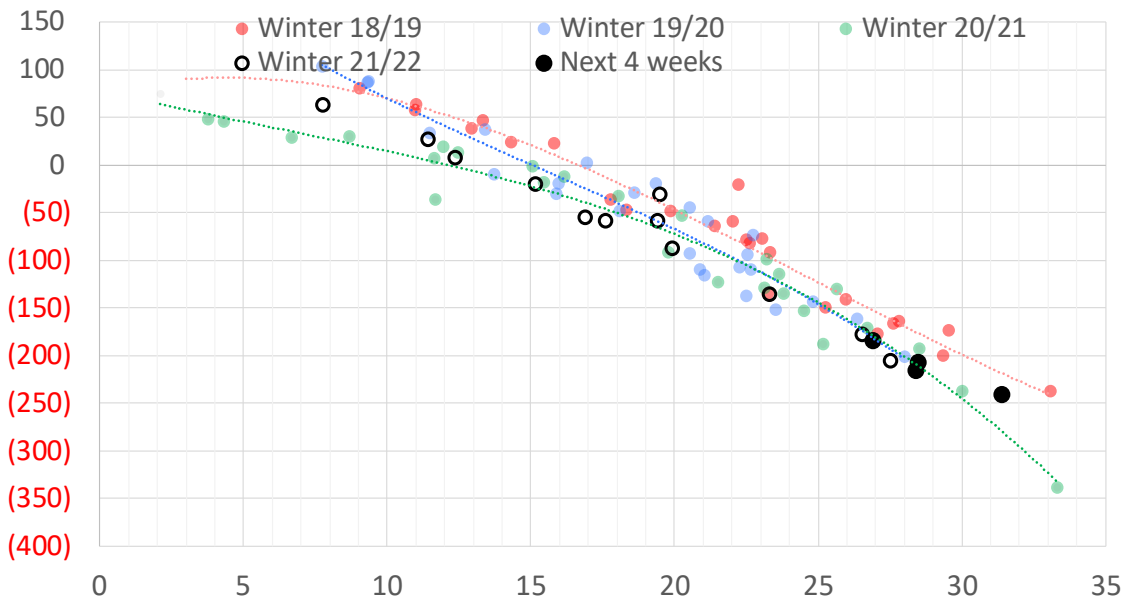


Weather Model Storage Projection

Next report
and beyond

Week Ending	GWDDs	Week Storage Projection
21-Jan	28	-215
28-Jan	31	-241
04-Feb	28	-207
11-Feb	27	-183

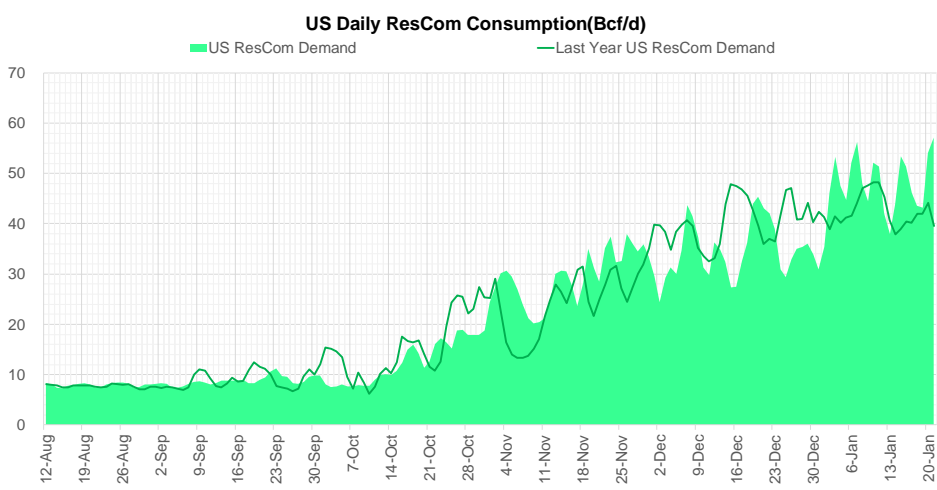
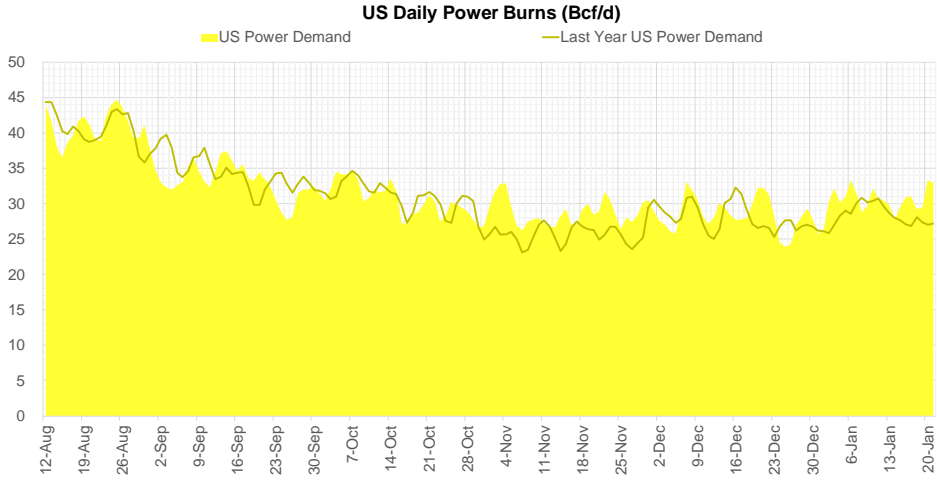
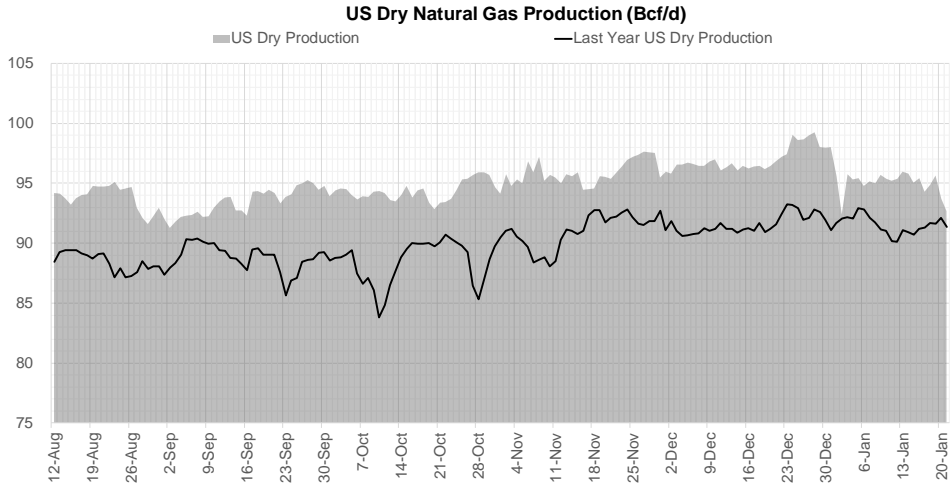
Weather Storage Model - Next 4 Week Forecast



Go to larger image



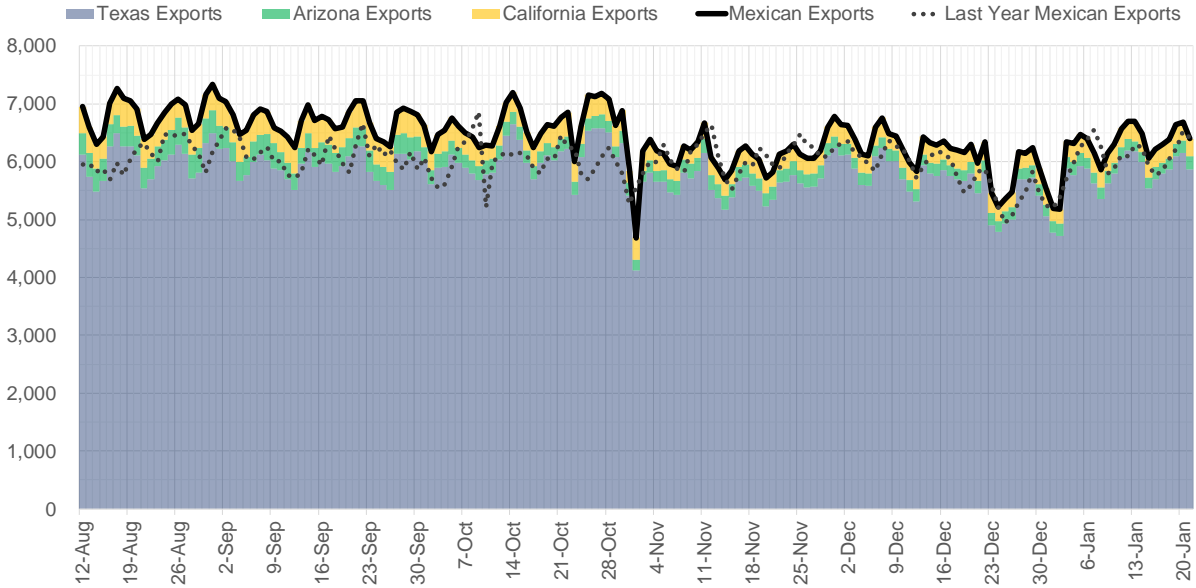
Supply – Demand Trends



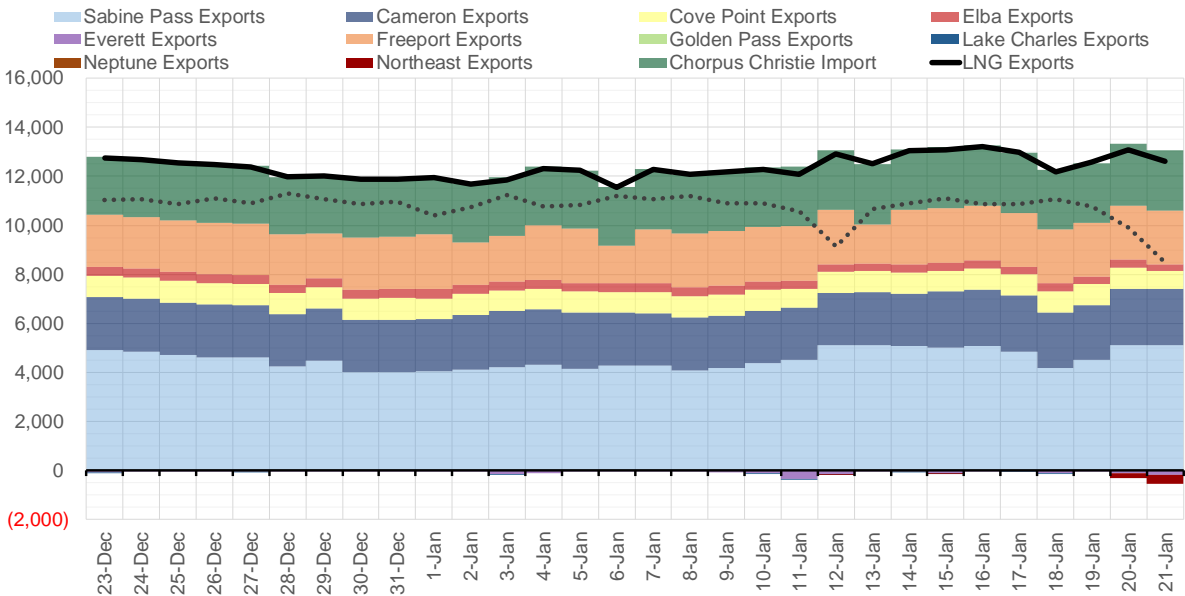
Source: Bloomberg

The risk of trading futures and options and other derivatives involves a substantial risk of loss and is not suitable for all persons. Each person must consider whether a particular trade, combination of trades, or strategy is suitable for that person's financial means and objectives. Past results are not necessarily indicative of future results. This communication may contain links to third party websites which are not under the control of and are not maintained by ION Energy Group, and ION Energy Group is not responsible for their content.

Mexican Exports (MMcf/d)



Net LNG Exports - Last 30 days (MMcf/d)



Source: Bloomberg

The risk of trading futures and options and other derivatives involves a substantial risk of loss and is not suitable for all persons. Each person must consider whether a particular trade, combination of trades, or strategy is suitable for that person's financial means and objectives. Past results are not necessarily indicative of future results. This communication may contain links to third party websites which are not under the control of and are not maintained by ION Energy Group, and ION Energy Group is not responsible for their content.

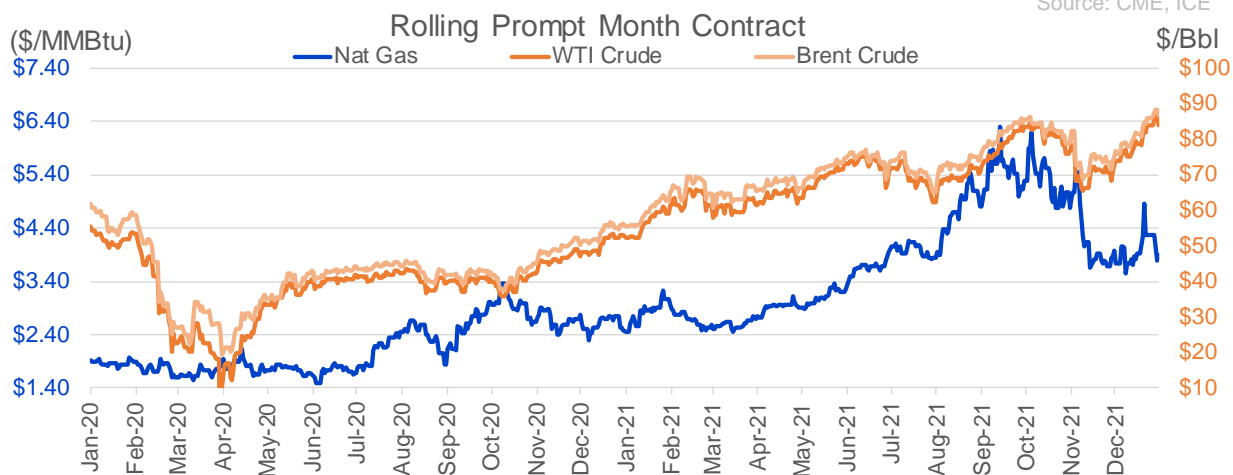
Nat Gas Options Volume and Open Interest CME and ICE Combined

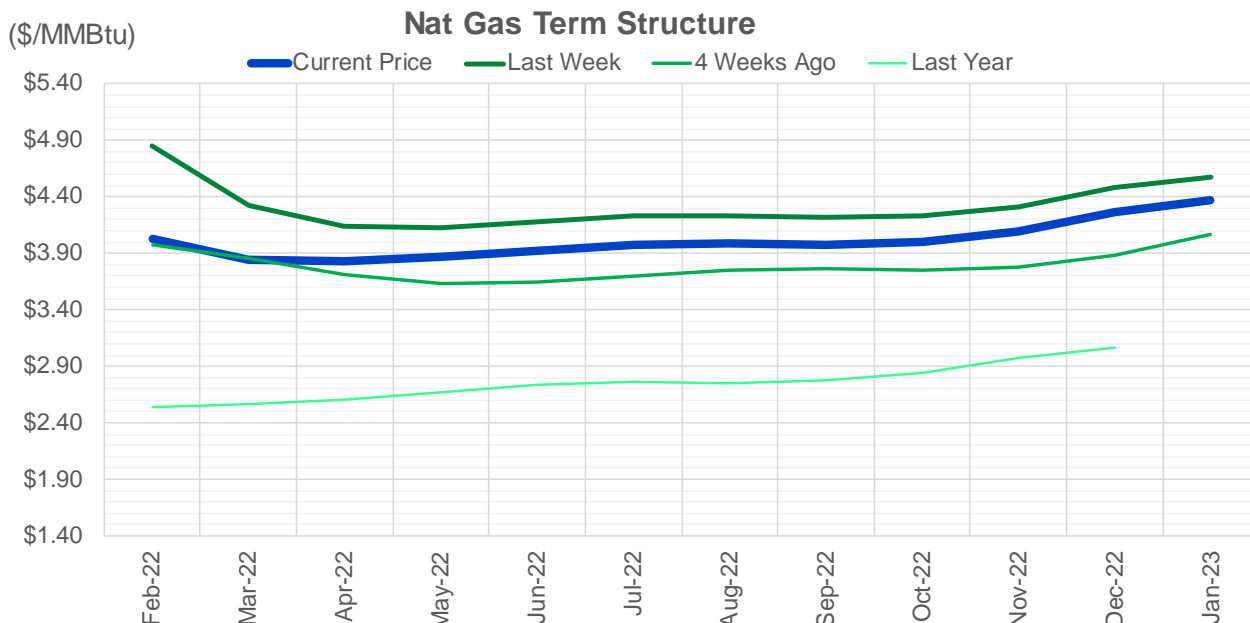
CONTRACT MONTH	CONTRACT YEAR	PUT/CALL	STRIKE	CUMULATIVE VOL	CONTRACT MONTH	CONTRACT YEAR	PUT/CALL	STRIKE	CUMULATIVE OI
3	2022	C	4.00	6999	3	2022	C	5.00	36407
10	2022	C	5.00	4872	3	2022	C	10.00	34866
4	2022	C	5.00	4682	3	2022	C	8.00	32419
7	2022	C	5.00	4522	2	2022	C	4.00	26351
2	2022	P	3.50	4052	2	2022	C	5.00	25548
4	2022	P	3.50	4046	3	2022	C	4.00	24358
9	2022	C	5.00	3920	3	2022	P	3.00	22162
5	2022	C	5.00	3878	2	2022	P	3.50	22091
6	2022	C	5.00	3874	3	2022	P	2.50	21527
8	2022	C	5.00	3873	3	2022	P	4.00	21515
3	2022	P	3.50	3791	3	2022	C	6.00	21092
2	2022	C	4.00	3710	10	2022	C	6.00	20430
2	2022	C	5.00	3110	3	2022	P	3.50	19864
2	2022	P	3.80	2788	12	2022	C	5.00	19847
2	2022	P	4.00	2557	4	2022	C	3.00	19710
3	2022	P	3.75	2542	2	2022	P	4.00	19689
3	2022	C	5.00	2457	2	2022	C	6.00	18944
2	2022	P	3.75	2390	2	2022	C	4.50	17646
2	2022	C	4.25	2311	5	2022	P	3.00	17562
2	2022	C	4.50	2284	4	2022	P	3.00	17376
3	2022	P	3.25	2122	4	2022	P	2.50	17358
3	2022	C	6.00	2118	6	2022	C	5.00	16670
3	2022	C	4.25	2095	4	2022	C	5.00	16547
5	2022	P	3.75	1875	3	2022	C	7.00	16209
2	2022	P	3.90	1830	3	2022	C	4.50	16157
2	2022	C	6.00	1697	3	2022	P	3.75	16122
10	2022	C	6.00	1661	3	2022	P	3.25	15424
3	2022	C	4.50	1640	3	2022	P	2.00	14981
3	2022	P	3.00	1526	2	2022	P	3.00	14852
3	2022	P	2.75	1390	2	2022	C	8.00	14670
3	2022	C	8.00	1300	2	2022	C	7.00	14657
5	2023	C	3.25	1250	2	2022	C	10.00	14444
3	2022	P	4.00	1235	4	2022	P	3.50	14318
2	2022	C	4.15	1106	4	2022	C	6.00	13964
3	2022	C	4.75	1077	10	2022	P	2.00	13921
10	2022	P	3.25	1050	3	2022	P	2.25	13916
2	2022	P	3.70	1046	5	2022	C	3.00	13733
2	2022	C	4.10	1008	3	2022	P	5.00	13592
5	2022	P	3.90	1002	5	2022	P	2.50	13448
4	2022	P	3.00	987	6	2022	C	3.00	13438
3	2022	P	3.65	969	2	2022	P	3.75	13416
2	2022	P	3.00	933	4	2022	C	4.00	13343
2	2022	C	4.40	930	5	2022	P	3.50	13319
2	2022	C	3.90	913	3	2022	C	3.50	13316
6	2022	P	3.00	893	12	2022	C	4.50	13287
7	2022	C	6.00	892	10	2022	P	3.00	13284
1	2023	P	4.00	825	3	2022	C	3.00	13267
3	2023	P	4.00	825	2	2022	C	5.50	13266
2	2022	C	3.85	821	6	2022	C	6.00	13251
					7	2022	C	3	13230

Source: CME, ICE

Nat Gas Futures Open Interest CME and ICE Combined

CME Henry Hub Futures (10,000 MMBtu)				ICE Henry Hub Futures Contract Equivalent (10,000 MM			
	Current	Prior	Daily Change		Current	Prior	Daily Change
FEB 22	33821	43734	-9913	FEB 22	73461	74604	-1143
MAR 22	281804	285398	-3594	MAR 22	94101	90054	4048
APR 22	85079	82472	2607	APR 22	73488	73657	-169
MAY 22	115203	113083	2120	MAY 22	69278	69421	-143
JUN 22	62243	63206	-963	JUN 22	57343	57349	-6
JUL 22	63738	62842	896	JUL 22	60244	60127	118
AUG 22	40776	39069	1707	AUG 22	57304	57411	-107
SEP 22	50527	49512	1015	SEP 22	58277	58329	-52
OCT 22	81966	83594	-1628	OCT 22	62993	62766	227
NOV 22	36117	36514	-397	NOV 22	52508	52443	65
DEC 22	38421	38788	-367	DEC 22	61663	61618	45
JAN 23	55539	54788	751	JAN 23	49138	49556	-418
FEB 23	17764	17154	610	FEB 23	39810	39636	175
MAR 23	30499	30990	-491	MAR 23	44974	44889	85
APR 23	31858	31877	-19	APR 23	45872	45767	105
MAY 23	17250	17292	-42	MAY 23	38774	38661	113
JUN 23	11072	11075	-3	JUN 23	36563	36451	112
JUL 23	9716	9885	-169	JUL 23	36083	35936	146
AUG 23	7023	6870	153	AUG 23	35418	35376	42
SEP 23	9684	9588	96	SEP 23	35399	35287	112
OCT 23	13238	13289	-51	OCT 23	39362	39237	125
NOV 23	8769	8828	-59	NOV 23	38153	38132	20
DEC 23	11366	11273	93	DEC 23	34116	34095	21
JAN 24	8446	7973	473	JAN 24	24110	24056	54
FEB 24	1610	1606	4	FEB 24	17574	17528	46
MAR 24	11309	10206	1103	MAR 24	23501	23453	49
APR 24	5584	5587	-3	APR 24	16378	16445	-68
MAY 24	2077	2076	1	MAY 24	16764	16827	-62
JUN 24	922	921	1	JUN 24	16962	16945	17
JUL 24	565	564	1	JUL 24	17573	17555	18





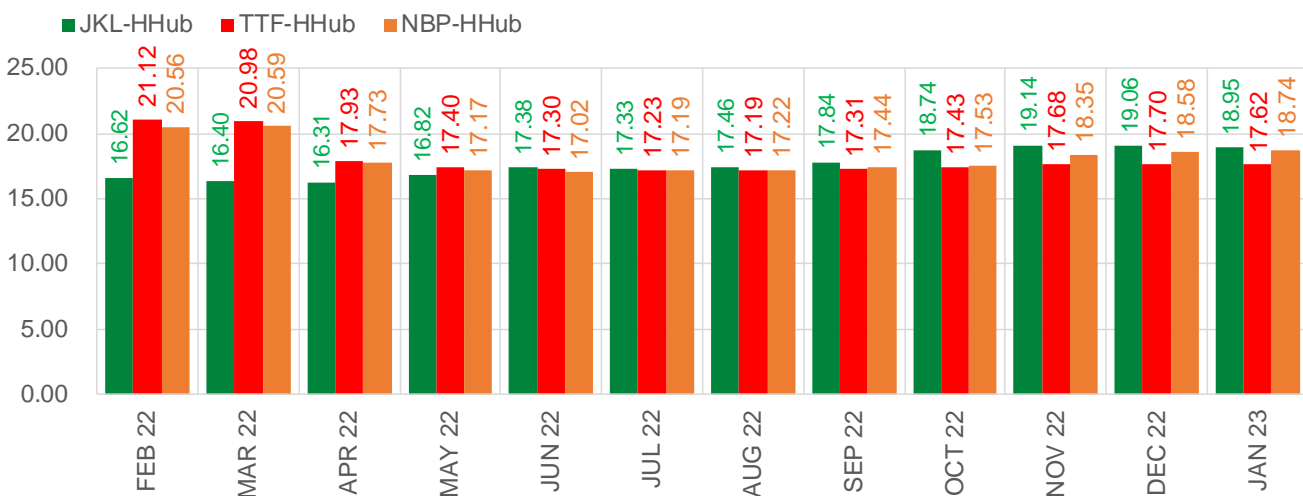
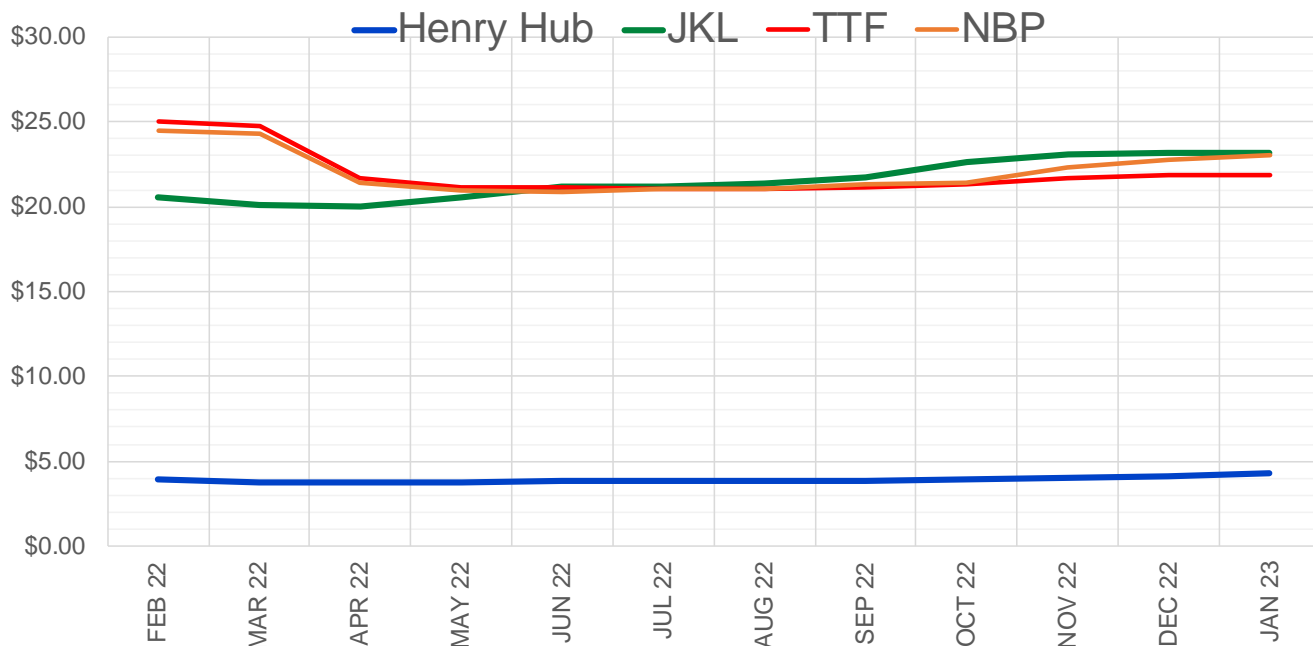
	Feb-22	Mar-22	Apr-22	May-22	Jun-22	Jul-22	Aug-22	Sep-22	Oct-22	Nov-22	Dec-22	Jan-23
Current Price	\$4.031	\$3.845	\$3.826	\$3.865	\$3.918	\$3.977	\$3.993	\$3.978	\$4.004	\$4.097	\$4.271	\$4.371
Last Week	\$4.857	\$4.327	\$4.134	\$4.132	\$4.176	\$4.229	\$4.236	\$4.214	\$4.236	\$4.314	\$4.480	\$4.570
vs. Last Week	-\$0.826	-\$0.482	-\$0.308	-\$0.267	-\$0.258	-\$0.252	-\$0.243	-\$0.236	-\$0.232	-\$0.217	-\$0.209	-\$0.199
4 Weeks Ago	\$3.976	\$3.860	\$3.713	\$3.635	\$3.649	\$3.697	\$3.750	\$3.765	\$3.752	\$3.783	\$3.886	\$4.066
vs. 4 Weeks Ago	\$0.055	-\$0.015	\$0.113	\$0.230	\$0.269	\$0.280	\$0.243	\$0.213	\$0.252	\$0.314	\$0.385	\$0.305
Last Year	\$2.539	\$2.533	\$2.562	\$2.607	\$2.672	\$2.741	\$2.765	\$2.755	\$2.781	\$2.848	\$2.980	\$3.069
vs. Last Year	\$1.492	\$1.312	\$1.264	\$1.258	\$1.246	\$1.236	\$1.228	\$1.223	\$1.223	\$1.249	\$1.291	\$1.302

	Units	Cash Settled	Prompt Settle	Cash to Prompt
AGT Citygate	\$/MMBtu	15.00	20.05	5.05
TETCO M3	\$/MMBtu	17.43	7.60	-9.83
FGT Zone 3	\$/MMBtu	15.44	4.40	-11.04
Zone 6 NY	\$/MMBtu	15.44	9.85	-5.59
Chicago Citygate	\$/MMBtu	3.99	5.39	1.40
Michcon	\$/MMBtu	3.79	4.20	0.41
Columbia TCO Pool	\$/MMBtu	4.05	3.80	-0.25
Ventura	\$/MMBtu	3.99	7.50	3.51
Rockies/Opal	\$/MMBtu	4.12	5.13	1.01
El Paso Permian Basin	\$/MMBtu	3.90	4.63	0.73
Socal Citygate	\$/MMBtu	4.87	6.32	1.45
Malin	\$/MMBtu	4.20	5.78	1.58
Houston Ship Channel	\$/MMBtu	4.25	4.57	0.32
Henry Hub Cash	\$/MMBtu	4.17	4.31	0.14
AECO Cash	C\$/GJ	3.13	3.69	0.56
Station2 Cash	C\$/GJ	3.16	6.11	2.95
Dawn Cash	C\$/GJ	3.92	4.45	0.53

Source: CME, Bloomberg

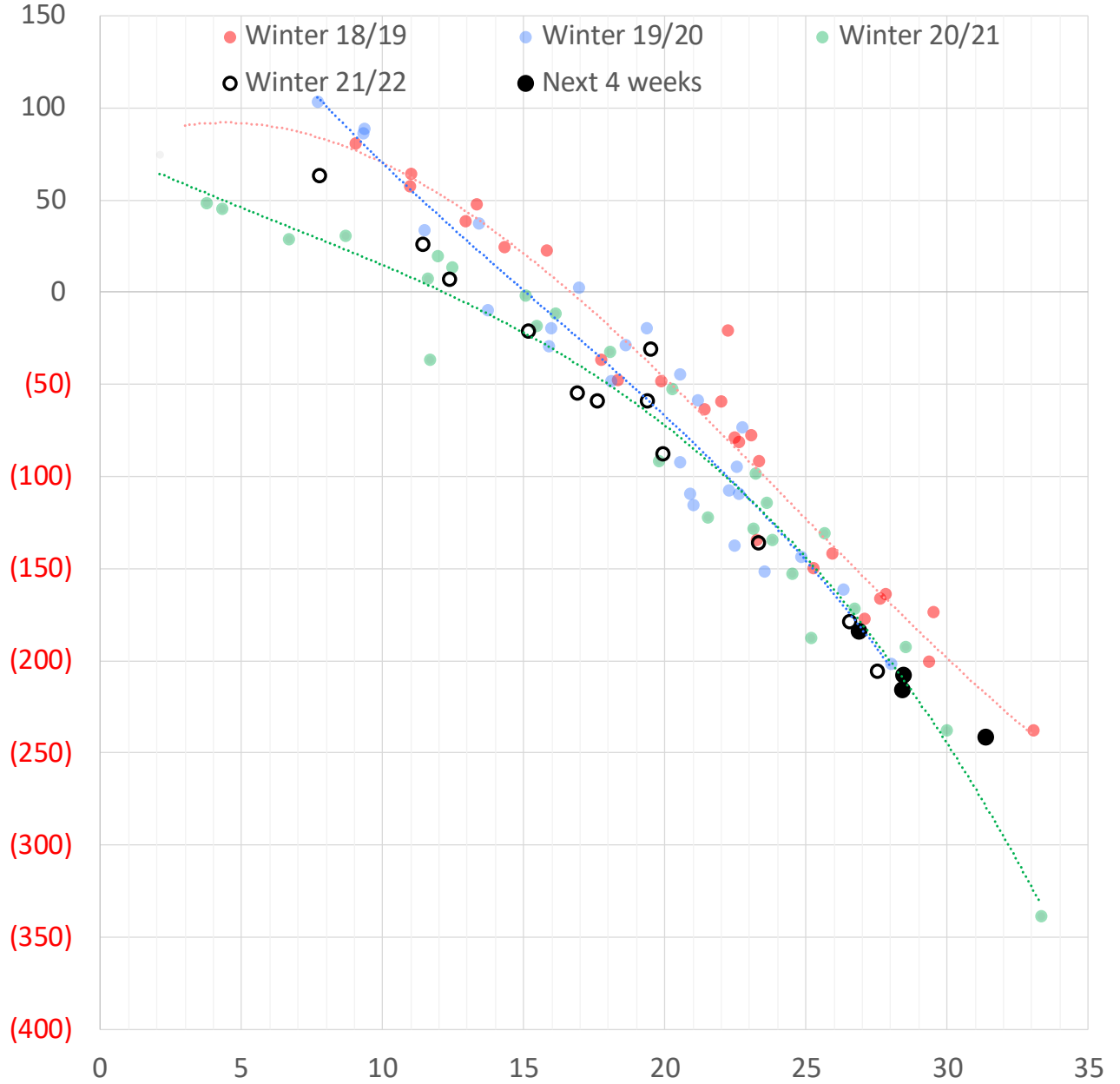
	Units	Current Price	vs. Last Week	vs. 4 Weeks Ago	vs. Last Year
NatGas Jul21/Oct21	\$/MMBtu	2.224	▲ 0.000	▲ 0.000	▲ 2.184
NatGas Oct21/Nov21	\$/MMBtu	0.361	▲ 0.000	▲ 0.000	▲ 0.295
NatGas Oct21/Jan22	\$/MMBtu	-1.817	▲ 0.000	▲ 0.293	▼ -2.109
NatGas Apr22/Oct22	\$/MMBtu	0.186	▲ 0.038	▲ 0.004	▲ 0.146
WTI Crude	\$/Bbl	86.90	▲ 4.780	▲ 13.110	▲ 33.770
Brent Crude	\$/Bbl	88.38	▲ 3.910	▲ 11.530	▲ 32.280
Fuel Oil, NY Harbour 1%	\$/Bbl	97.18	▲ 0.000	▲ 0.000	▲ 0.000
Heating Oil	cents/Gallon	267.18	▲ 6.330	▲ 34.040	▲ 107.120
Propane, Mt. Bel	cents/Gallon	1.15	▲ 0.007	▲ 0.124	▲ 0.292
Ethane, Mt. Bel	cents/Gallon	0.37	▼ -0.008	▲ 0.032	▲ 0.136
Coal, PRB	\$/MTon	12.30	▲ 0.000	▲ 0.000	▲ 0.000
Coal, PRB	\$/MMBtu	0.70			
Coal, ILB	\$/MTon	31.05	▲ 0.000	▲ 0.000	▲ 0.000
Coal, ILB	\$/MMBtu	1.32			

Nat Gas Term Structure (\$MMBTU)



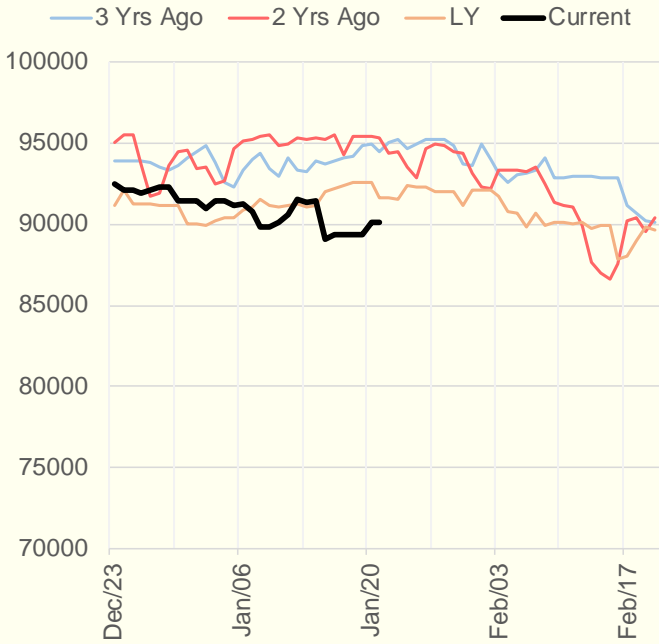
	FEB 22	MAR 22	APR 22	MAY 22	JUN 22	JUL 22	AUG 22	SEP 22	OCT 22	NOV 22	DEC 22	JAN 23
Henry Hub	\$3.902	\$3.729	\$3.715	\$3.750	\$3.806	\$3.863	\$3.875	\$3.857	\$3.885	\$3.973	\$4.143	\$4.250
JKL	\$20.525	\$20.130	\$20.025	\$20.570	\$21.190	\$21.190	\$21.335	\$21.700	\$22.620	\$23.115	\$23.205	\$23.195
JKL-HHub	\$16.623	\$16.401	\$16.310	\$16.820	\$17.384	\$17.327	\$17.460	\$17.843	\$18.735	\$19.142	\$19.062	\$18.945
TTF	\$25.024	\$24.710	\$21.644	\$21.147	\$21.105	\$21.093	\$21.066	\$21.170	\$21.312	\$21.648	\$21.839	\$21.869
TTF-HHub	\$21.122	\$20.981	\$17.929	\$17.397	\$17.299	\$17.230	\$17.191	\$17.313	\$17.427	\$17.675	\$17.696	\$17.619
NBP	\$24.457	\$24.321	\$21.449	\$20.922	\$20.827	\$21.053	\$21.093	\$21.293	\$21.412	\$22.327	\$22.721	\$22.992
NBP-HHub	\$20.555	\$20.592	\$17.734	\$17.172	\$17.021	\$17.190	\$17.218	\$17.436	\$17.527	\$18.354	\$18.578	\$18.742

Weather Storage Model - Next 4 Week Forecast

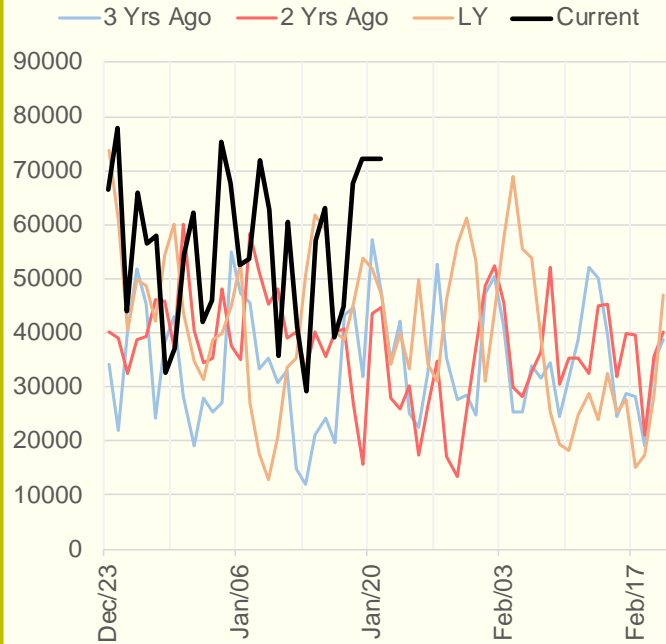


The risk of trading futures and options and other derivatives involves a substantial risk of loss and is not suitable for all persons. Each person must consider whether a particular trade, combination of trades, or strategy is suitable for that person's financial means and objectives. Past results are not necessarily indicative of future results. This communication may contain links to third party websites which are not under the control of and are not maintained by ION Energy Group, and ION Energy Group is not responsible for their content.

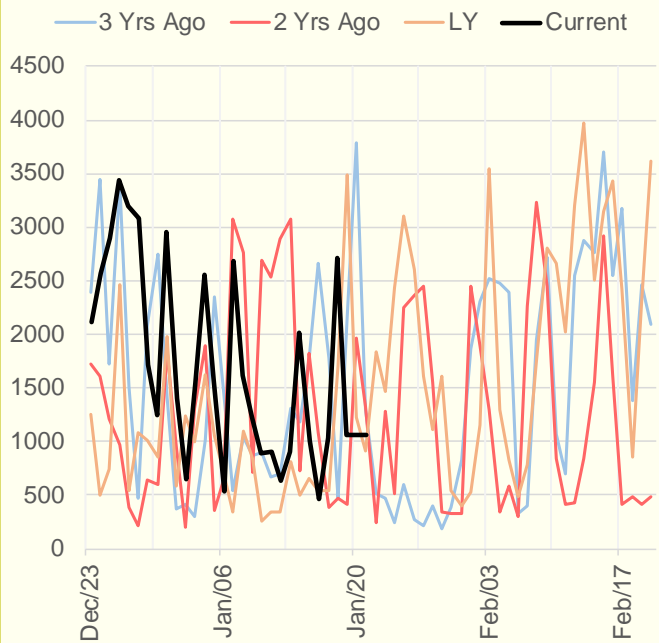
NRC Nuclear Daily Output



US Wind



CALI Wind



TEXAS Wind

