

	Current	Δ from YD	Δ from 7D Avg
Nat Gas Prompt	\$ 3.97	▼ \$ (0.03)	▼ \$ (0.09)

	Current	Δ from YD	Δ from 7D Avg
WTI Prompt	\$ 84.94	▼ \$ (0.20)	▼ \$ (0.6)

	Current	Δ from YD	Δ from 7D Avg
Brent Prompt	\$ 87.82	▼ \$ (0.07)	▲ \$ 0.0

Page Menu

[Short-term Weather Model Outlooks](#)

[Lower 48 Component Models](#)

[Regional S/D Models Storage Projection](#)

[Weather Model Storage Projection](#)

[Supply – Demand Trends](#)

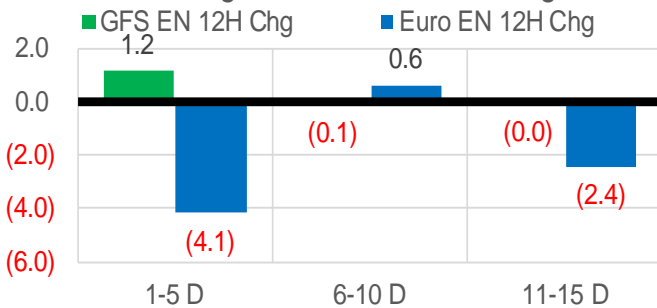
[Nat Gas Options Volume and Open Interest](#)

[Nat Gas Futures Open Interest](#)

[Price Summary](#)

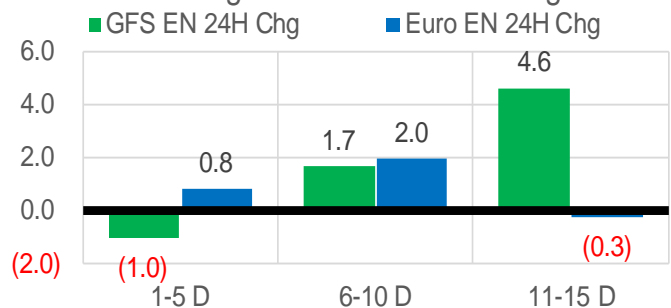
Vs. 12H Ago

L48 Region - 00z TDD vs 12H Ago



Vs. 24H Ago

L48 Region - 00z TDD vs 24H Ago



	Current	Δ from YD	Δ from 7D Avg
US Dry Production	94.5	▲ 0.04	▲ 0.03

	Current	Δ from YD	Δ from 7D Avg
US Power Burns	31.4	▼ -0.49	▼ -0.11

	Current	Δ from YD	Δ from 7D Avg
US ResComm	48.5	▼ -1.94	▼ -1.74

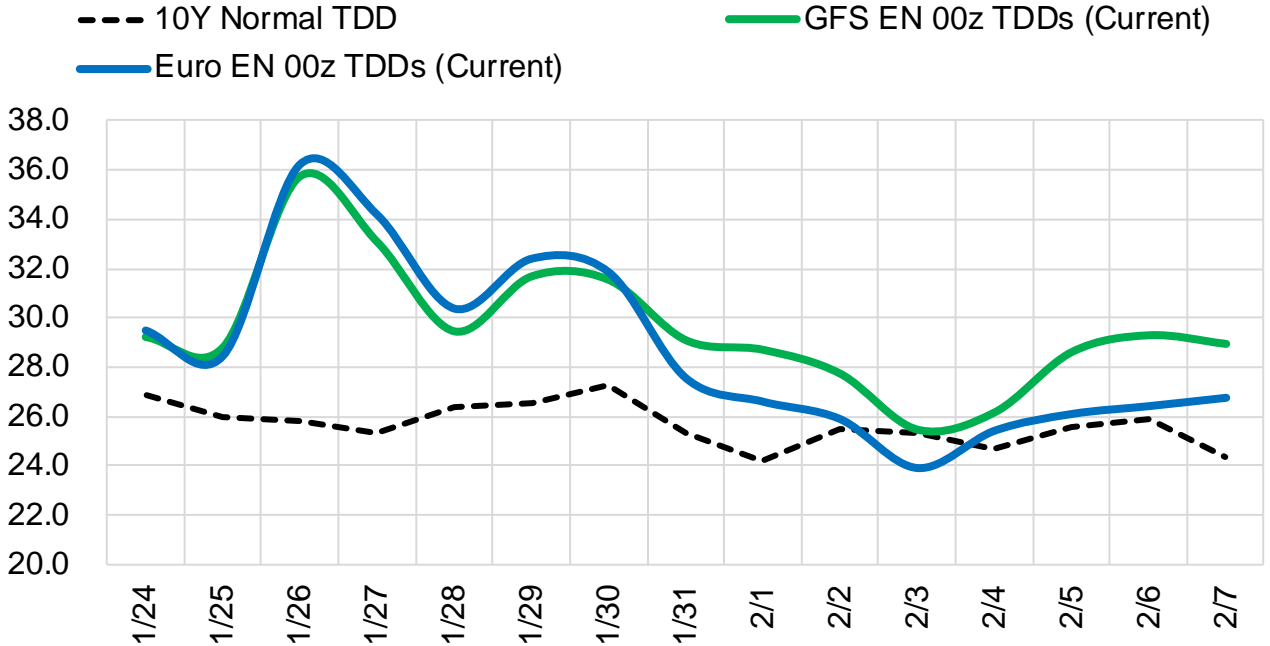
	Current	Δ from YD	Δ from 7D Avg
Canadian Imports	6.8	▼ -0.17	▼ -0.35

	Current	Δ from YD	Δ from 7D Avg
Net LNG Exports	13.0	▲ 1.80	▲ 0.54

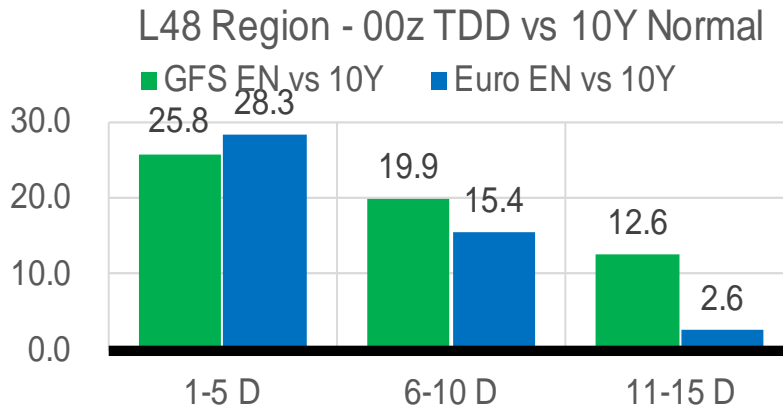
	Current	Δ from YD	Δ from 7D Avg
Mexican Exports	6.1	▲ 0.05	▼ -0.32

Short-term Weather Model Outlooks (00z)

L48 Region



Vs. 10Y Normal



Source: WSI , Bloomberg

Lower 48 Component Models

Daily Balances

	18-Jan	19-Jan	20-Jan	21-Jan	22-Jan	23-Jan	24-Jan	DoD	vs. 7D
Lower 48 Dry Production	95.0	95.8	94.0	93.7	94.0	94.4	94.5	▲ 0.0	▼ 0.0
Canadian Imports	6.9	6.3	8.1	7.9	7.1	7.0	6.8	▼ -0.2	▼ -0.4
L48 Power	29.3	29.8	33.5	33.0	31.7	31.8	31.4	▼ -0.5	▼ -0.2
L48 Residential & Commercial	44.0	43.9	55.4	58.7	53.1	50.5	48.5	▼ -1.9	▼ -2.4
L48 Industrial	26.1	25.9	27.3	27.3	26.7	26.0	25.7	▼ -0.3	▼ -0.8
L48 Lease and Plant Fuel	5.2	5.2	5.1	5.1	5.1	5.2	5.1	▼ 0.0	▼ 0.0
L48 Pipeline Distribution	3.6	3.6	4.3	4.4	4.1	4.0	3.9	▼ -0.1	▼ -0.1
L48 Regional Gas Consumption	108.2	108.4	125.6	128.6	120.7	117.5	114.6	▼ -2.9	▼ -3.6
Net LNG Delivered	12.18	12.61	13.29	12.52	13.04	11.28	13.14	▲ 1.9	▲ 0.7
Total Mexican Exports	6.4	6.6	6.7	6.7	6.1	6.0	6.1	▲ 0.0	▼ -0.3
Implied Daily Storage Activity	-24.8	-25.6	-43.6	-46.2	-38.8	-33.4	-32.6		
EIA Reported Daily Storage Activity									
Daily Model Error									

EIA Storage Week Balances

	17-Dec	24-Dec	31-Dec	7-Jan	14-Jan	21-Jan	WoW	vs. 4W
Lower 48 Dry Production	96.4	96.7	98.6	95.3	95.3	95.0	▼ -0.3	▼ -1.5
Canadian Imports	4.6	5.0	4.2	5.7	6.5	7.0	▲ 0.5	▲ 1.7
L48 Power	28.4	29.9	26.4	29.9	30.4	30.2	▼ -0.2	▲ 1.1
L48 Residential & Commercial	31.4	40.3	33.4	44.3	47.5	48.3	▲ 0.8	▲ 6.9
L48 Industrial	23.7	24.0	22.2	26.0	25.8	26.8	▲ 1.1	▲ 2.3
L48 Lease and Plant Fuel	5.2	5.2	5.4	5.2	5.2	5.2	▼ 0.0	▼ -0.1
L48 Pipeline Distribution	3.0	3.5	3.0	3.6	3.8	3.8	▲ 0.0	▲ 0.3
L48 Regional Gas Consumption	91.7	103.0	90.3	109.0	112.7	114.4	▲ 1.7	▲ 10.7
Net LNG Exports	11.9	12.7	12.3	11.9	12.3	12.9	▲ 0.6	▲ 0.6
Total Mexican Exports	6.2	6.1	5.8	5.9	6.3	6.4	▲ 0.1	▲ 0.4
Implied Daily Storage Activity	-8.8	-20.0	-5.6	-25.9	-29.5	-31.7	-2.2	
EIA Reported Daily Storage Activity	-7.9	-19.4	-4.4	-25.6	-29.4			
Daily Model Error	-1.0	-0.6	-1.1	-0.3	-0.1			

Monthly Balances

	2Yr Ago Jan-20	LY Jan-21	Sep-21	Oct-21	Nov-21	Dec-21	MTD Jan-22	MoM	vs. LY
Lower 48 Dry Production	94.6	91.4	93.4	94.3	95.9	97.0	94.9	▼ -2.1	▲ 3.5
Canadian Imports	4.8	6.3	5.1	5.4	5.3	4.8	6.6	▲ 1.9	▲ 0.4
L48 Power	29.9	28.3	33.1	30.5	28.8	28.4	30.6	▲ 2.3	▲ 2.4
L48 Residential & Commercial	41.7	44.0	8.8	12.5	29.4	34.5	48.4	▲ 13.9	▲ 4.4
L48 Industrial	24.5	23.8	20.2	21.0	22.4	23.3	26.4	▲ 3.1	▲ 2.6
L48 Lease and Plant Fuel	5.1	5.0	5.1	5.2	5.2	5.3	5.2	▼ -0.1	▲ 0.2
L48 Pipeline Distribution	3.6	3.5	2.3	2.4	3.1	3.1	3.8	▲ 0.7	▲ 0.3
L48 Regional Gas Consumption	104.8	104.6	69.4	71.5	88.9	94.5	114.4	▲ 19.9	▲ 9.9
Net LNG Exports	8.4	10.5	10.3	10.6	11.4	12.1	12.4	▲ 0.3	▲ 1.9
Total Mexican Exports	5.1	6.2	6.7	6.6	6.1	6.1	6.3	▲ 0.1	▲ 0.1
Implied Daily Storage Activity	-18.9	-23.5	12.1	11.0	-5.2	-11.0	-31.5		
EIA Reported Daily Storage Activity									
Daily Model Error									

Source: Bloomberg, analytix.ai

Daily Average Generation Data

Nuclear Generation Daily Average - GWh (NRC)

	16-Jan	17-Jan	18-Jan	19-Jan	20-Jan	21-Jan	22-Jan	DoD	vs. 7D
NRC Nuclear Daily Output	89.4	89.4	89.3	89.4	90.2	91.0	91.0	0.0	1.2
NRC Nuclear Max Capacity	104.9	104.9	104.9	104.9	104.9	104.9	104.9	0.0	0.0
NRC Nuclear Outage	15.5	15.5	15.5	15.5	14.7	13.9	13.9	0.0	-1.2
NRC % Nuclear Cap Utilization	90.9	90.9	90.8	90.9	91.7	92.5	92.5	0.0	1.2

Wind Generation Daily Average - MWh (EIA)

	16-Jan	17-Jan	18-Jan	19-Jan	20-Jan	21-Jan	22-Jan	DoD	vs. 7D
CALI Wind	467	1029	2710	1056	632	3172	2418	-753	907
TEXAS Wind	6333	9975	19238	18934	16289	7943	4930	-3013	-8189
US Wind	39182	44873	67617	72157	45852	49458	43233	-6226	-9957

Generation Daily Average - MWh (EIA)

	16-Jan	17-Jan	18-Jan	19-Jan	20-Jan	21-Jan	22-Jan	DoD	vs. 7D
US Wind	39182	44873	67617	72157	45852	49458	43233	-6226	-9957
US Solar	7872	8480	9635	9117	7778	8713	7902	-812	-698
US Petroleum	6645	5541	4831	4024	5250	7131	6629	-502	1059
US Other	7679	8666	8528	7791	8928	9426	8895	-531	392
US Coal	124016	123248	115613	111826	128808	137062	131073	-5989	7644
US Nuke	94380	94199	94291	94356	95250	96028	95680	-348	930
US Hydro	34186	34929	33730	35043	34034	35087	35056	-32	554
US Gas	167627	165522	148004	142013	178641	196319	182454	-13865	16099

See National Wind and Nuclear daily charts

Source: Bloomberg, analytix.ai

Storage Week Average Generation Data

Nuclear Generation Weekly Average - GWh (NRC)

	17-Dec	24-Dec	31-Dec	7-Jan	14-Jan	21-Jan	WoW	WoW Bcf/d Impact
NRC Nuclear Daily Output	90.0	92.1	92.1	91.3	90.6	89.7	-0.9	0.2
NRC Nuclear Max Capacity	104.9	104.9	104.9	104.9	104.9	104.9	0.0	
NRC Nuclear Outage	14.9	12.8	12.8	13.6	14.3	15.1	0.9	
NRC % Nuclear Cap Utilization	0.1	0.1	0.1	0.1	0.1	0.1	0.0	

Wind Generation Weekly Average - MWh (EIA)

	17-Dec	24-Dec	31-Dec	7-Jan	14-Jan	21-Jan	WoW	WoW Bcf/d Impact
CALI Wind	1709	943	2591	1603	1266	1273	8	0.0
TEXAS Wind	16176	11007	13891	13603	10192	15630	5438	-1.0
US Wind	68412	48727	53100	57136	50736	55682	4946	-0.9
					-6400.1			
					-11%			

Generation Weekly Average - MWh (EIA)

	17-Dec	24-Dec	31-Dec	7-Jan	14-Jan	21-Jan	WoW	WoW Bcf/d Impact
US Wind	68412	48727	53100	57136	50736	55682	4946	-0.9
US Solar	7570	7098	6957	8464	9382	8351	-1031	0.2
US Petroleum	2700	3581	3084	3038	4915	5255	340	-0.1
US Other	8301	8532	7584	8301	8319	7964	-355	0.1
US Coal	76931	87380	80022	94994	115155	117852	2697	-0.5
US Nuke	95054	97422	97083	96342	95714	94644	-1070	0.2
US Hydro	30257	32560	31279	34583	34172	34386	214	0.0
US Gas	148807	166457	136071	154295	161856	156145	-5711	

See National Wind and Nuclear daily charts

Source: Bloomberg, analytix.ai

Monthly Average Generation Data

Nuclear Generation Monthly Average - GWh (NRC)

	2Yr Ago		LY		MTD		Last 30 days	MoM (MTD vs LY)	Last 30 days YoY
	Same 30 days	Same 30 days	Oct-21	Nov-21	Dec-21	Jan-22			
	NRC Nuclear Daily Output	94.4	91.3	75.5	82.7	90.3			
NRC Nuclear Max Capacity	104.9	104.9	104.9	104.9	104.9	104.9	104.9	0.0	0.0
NRC Nuclear Outage	10.4	13.6	29.4	22.2	14.6	14.3	14.0	-0.3	0.5
NRC % Nuclear Cap Utilization	96.0	92.8	76.8	84.1	91.8	92.1	92.4	0.3	-0.5

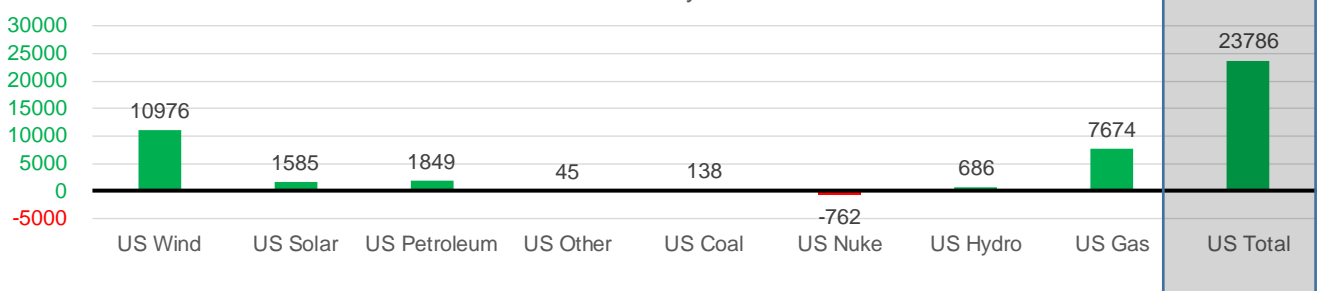
Wind Generation Monthly Average - MWh (EIA)

	2Yr Ago		LY		MTD		Last 30 days	MoM (MTD vs LY)	Last 30 days YoY
	Same 30 days	Same 30 days	Oct-21	Nov-21	Dec-21	Jan-22			
	CALI Wind	1266	1117	1765	1252	1585			
TEXAS Wind	10386	10907	11565	11869	12927	11868	12110	-1058	1203
US Wind	39516	41489	43141	49974	54821	52898	52465	-1924	10976

Generation Monthly Average - MWh (EIA)

	2Yr Ago		LY		MTD		Last 30 days	MoM (MTD vs LY)	Last 30 days YoY
	Same 30 days	Same 30 days	Oct-21	Nov-21	Dec-21	Jan-22			
	US Wind	39516	41489	43141	49974	54821			
US Solar	5044	6720	11059	9690	7376	8751	8305	▼ -446.3	▲ 1585
US Petroleum	3671	2693	3239	3045	3134	4884	4542	▼ -342	▲ 1849
US Other	8820	8159	11110	8435	8214	8355	8204	▼ -151	▲ 45
US Coal	79694	107762	84432	80848	81683	114368	107900	▼ -6468	▲ 138
US Nuke	96302	96598	77089	87404	95408	95565	95837	▲ 272	▼ -762
US Hydro	31777	33462	24078	26593	30805	34525	34148	▼ -377	▲ 686
US Gas	148092	151243	159049	151462	152503	163253	158917	▼ -7945	▲ 7674
US Total	429020	446681	413352	417925	434203	482714	470467	▼ -15458	▲ 23786

Last 30 days YoY



See National Wind and Nuclear daily charts

Source: Bloomberg, analytix.ai

Regional S/D Models Storage Projection

Week Ending 21-Jan

	Daily Raw Storage	Daily Adjustment Factor	Daily Average Storage Activity (Adjusted) *	Weekly Adjusted Storage Activity
L48	-31.9	0.6	-31.3	-219
East	-10.7	2.7	-8.0	-56
Midwest	-9.6	-0.4	-10.0	-70
Mountain	2.0	-3.0	-1.0	-7
South Central	-13.9	1.8	-12.0	-84
Pacific	0.3	-0.5	-0.3	-2

*Adjustment Factor is calculated based on historical regional deltas

U.S. underground natural gas storage facilities by type (July 2015)

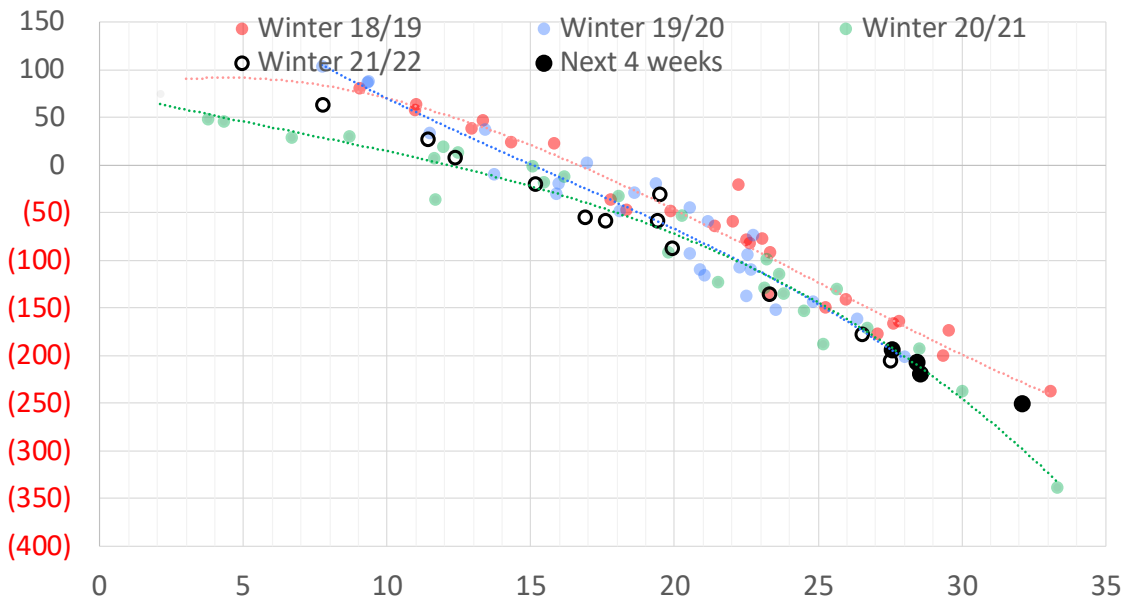


Weather Model Storage Projection

Next report
and beyond

Week Ending	GWDDs	Week Storage Projection
21-Jan	29	-219
28-Jan	32	-251
04-Feb	28	-207
11-Feb	28	-193

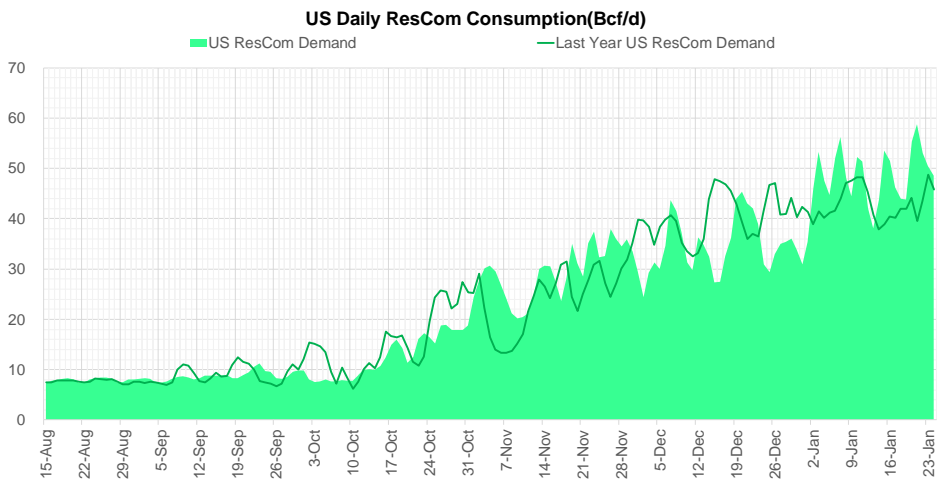
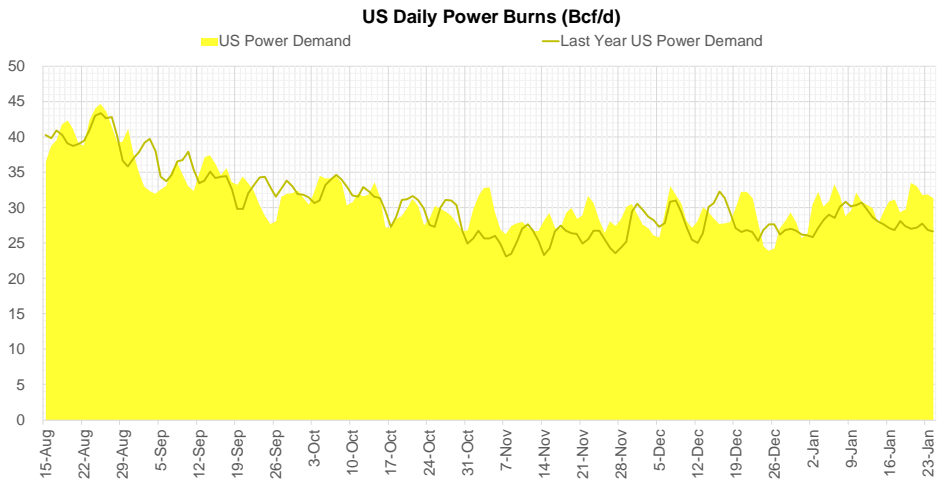
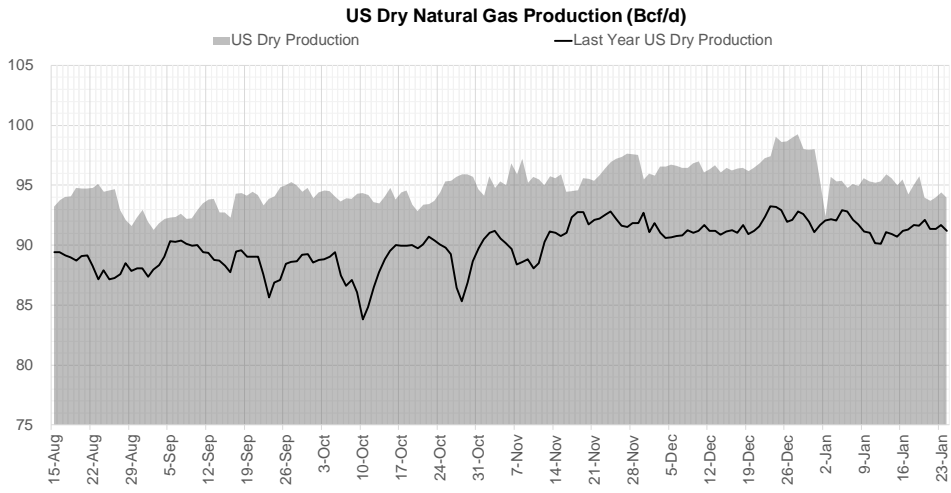
Weather Storage Model - Next 4 Week Forecast



Go to larger image



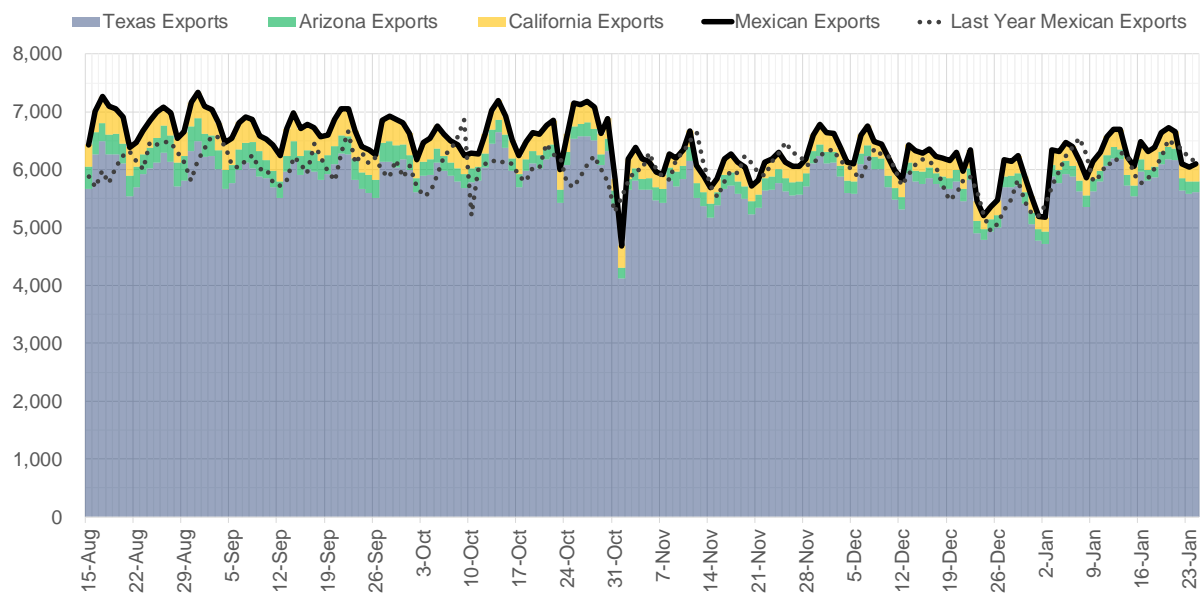
Supply – Demand Trends



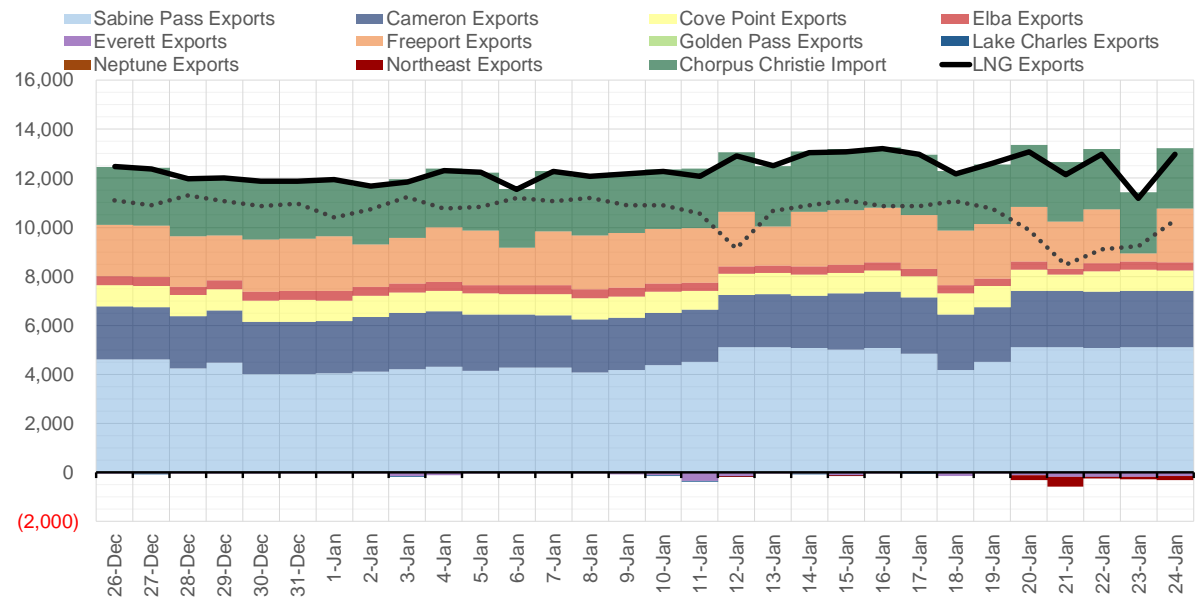
Source: Bloomberg

The risk of trading futures and options and other derivatives involves a substantial risk of loss and is not suitable for all persons. Each person must consider whether a particular trade, combination of trades, or strategy is suitable for that person's financial means and objectives. Past results are not necessarily indicative of future results. This communication may contain links to third party websites which are not under the control of and are not maintained by ION Energy Group, and ION Energy Group is not responsible for their content.

Mexican Exports (MMcf/d)



Net LNG Exports - Last 30 days (MMcf/d)



Source: Bloomberg

The risk of trading futures and options and other derivatives involves a substantial risk of loss and is not suitable for all persons. Each person must consider whether a particular trade, combination of trades, or strategy is suitable for that person's financial means and objectives. Past results are not necessarily indicative of future results. This communication may contain links to third party websites which are not under the control of and are not maintained by ION Energy Group, and ION Energy Group is not responsible for their content.

Nat Gas Options Volume and Open Interest CME and ICE Combined

ICE Data not
updated today

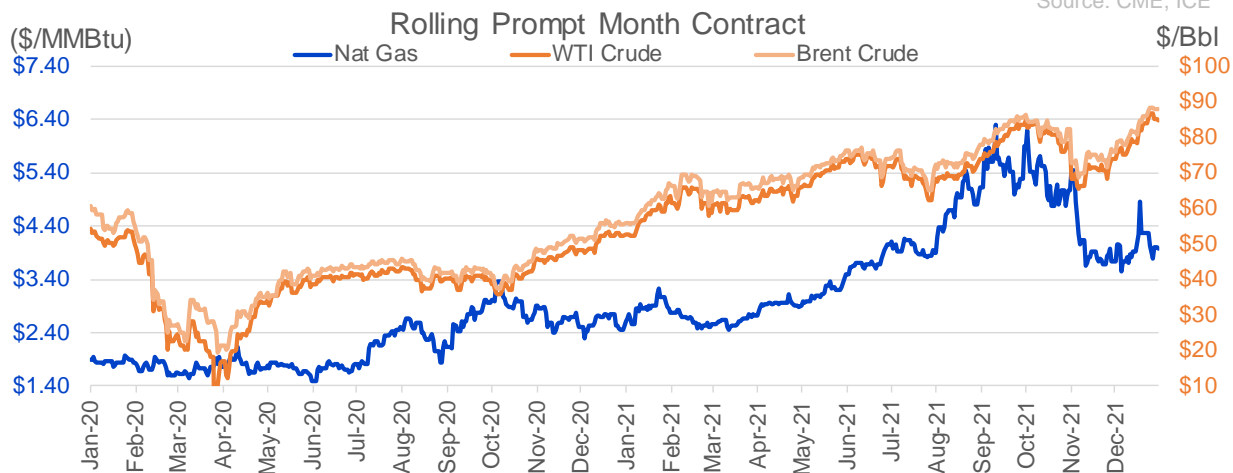
CONTRACT MONTH	CONTRACT YEAR	PUT/CALL	STRIKE	CUMULATIVE VOL	CONTRACT MONTH	CONTRACT YEAR	PUT/CALL	STRIKE	CUMULATIVE OI
3	2022	C	4.00	5785	3	2022	C	5.00	36595
2	2022	C	4.00	5183	3	2022	C	10.00	34866
6	2022	C	5.00	4627	3	2022	C	8.00	32219
2	2022	C	4.25	4445	2	2022	C	4.00	26612
2	2022	C	5.00	4294	2	2022	C	5.00	24836
4	2022	P	3.50	4268	3	2022	C	4.00	24519
7	2022	C	5.00	4195	2	2022	P	3.50	23561
5	2022	C	5.00	4049	3	2022	P	4.00	21658
9	2022	C	5.00	3870	3	2022	P	3.00	21605
4	2022	C	5.00	3838	3	2022	P	2.50	21527
10	2022	C	5.00	3822	3	2022	P	3.50	21358
8	2022	C	5.00	3796	3	2022	C	6.00	21273
2	2022	C	4.50	3792	10	2022	C	6.00	20980
3	2022	C	5.00	3020	12	2022	C	5.00	19847
3	2022	C	6.00	2855	4	2022	C	3.00	19710
4	2022	P	3.00	2492	2	2022	C	6.00	18944
3	2022	C	8.00	2107	2	2022	P	4.00	18844
2	2022	P	3.75	2089	5	2022	P	3.00	17561
5	2022	P	3.75	2050	4	2022	P	2.50	17393
3	2022	P	3.20	2049	4	2022	P	3.00	17284
8	2022	P	3.75	2000	2	2022	C	4.50	17094
3	2022	P	3.00	1934	6	2022	C	5.00	16695
3	2022	C	4.25	1894	4	2022	C	5.00	16390
3	2022	C	4.75	1844	3	2022	C	4.50	16255
2	2022	C	6.00	1752	3	2022	C	7.00	16208
3	2022	P	3.75	1694	3	2022	P	3.75	15856
4	2022	P	2.75	1602	3	2022	P	3.25	15714
3	2022	P	3.50	1550	3	2022	P	2.00	14981
8	2022	P	3.25	1500	2	2022	C	8.00	14670
3	2023	P	3.00	1375	2	2022	C	7.00	14656
3	2022	P	3.60	1325	2	2022	C	10.00	14444
3	2022	C	4.50	1227	4	2022	P	3.50	14426
2	2022	P	3.50	1124	2	2022	P	3.00	14250
2	2022	P	3.80	1099	4	2022	C	6.00	13961
7	2022	C	6.00	1082	10	2022	P	2.00	13921
2	2022	P	4.00	1056	3	2022	P	2.25	13916
5	2022	P	3.90	1000	5	2022	C	3.00	13733
3	2022	P	3.25	985	3	2022	P	5.00	13592
3	2022	P	4.00	937	10	2022	C	5.00	13556
6	2022	P	3.00	906	2	2022	P	3.75	13538
4	2022	P	3.75	901	5	2022	P	2.50	13458
3	2022	C	5.50	816	6	2022	C	3.00	13438
5	2022	P	3.25	800	4	2022	C	4.00	13380
2	2022	P	3.60	760	3	2022	C	3.50	13355
5	2022	P	3.00	752	5	2022	P	3.50	13319
7	2022	P	3.00	750	2	2022	C	5.50	13290
8	2022	P	3.00	750	12	2022	C	4.50	13287
9	2022	P	3.00	750	10	2022	P	3.00	13284
10	2022	P	3.00	750	3	2022	C	3.00	13276
					6	2022	C	6	13251

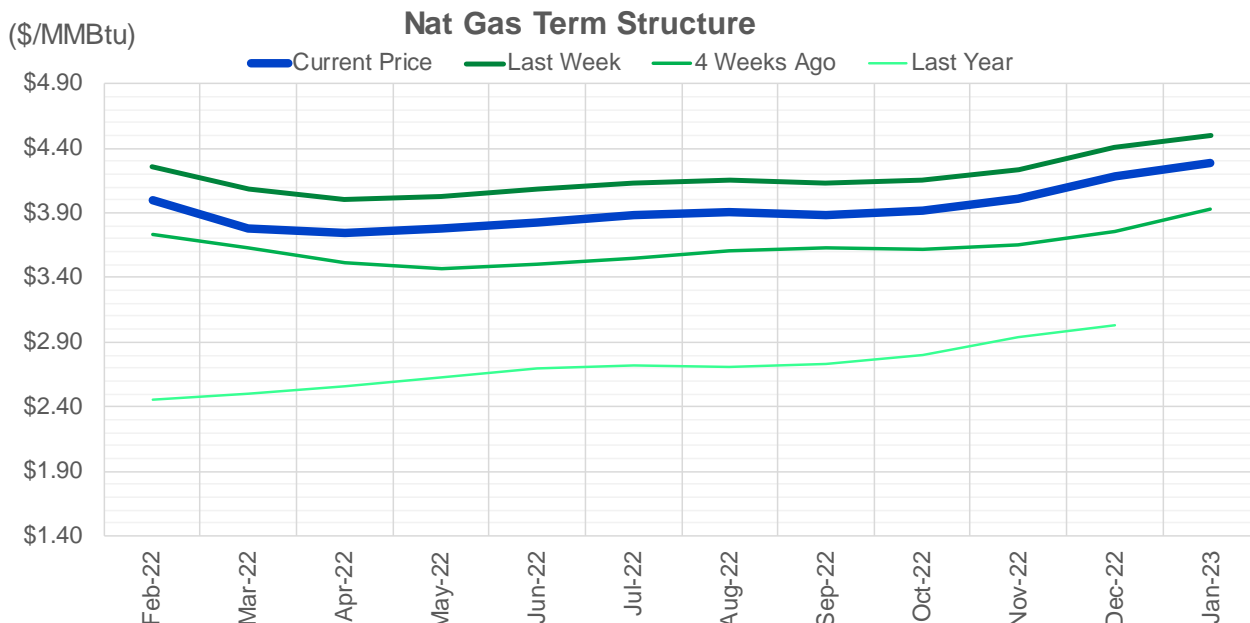
Source: CME, ICE

Nat Gas Futures Open Interest CME and ICE Combined

ICE Data not updated today

CME Henry Hub Futures (10,000 MMBtu)				ICE Henry Hub Futures Contract Equivalent (10,000 MM			
	Current	Prior	Daily Change		Current	Prior	Daily Change
FEB 22	28058	33784	-5726	FEB 22	73461	74604	-1143
MAR 22	280979	281797	-818	MAR 22	94101	90054	4048
APR 22	82784	85073	-2289	APR 22	73488	73657	-169
MAY 22	118189	115203	2986	MAY 22	69278	69421	-143
JUN 22	62708	62248	460	JUN 22	57343	57349	-6
JUL 22	64290	63738	552	JUL 22	60244	60127	118
AUG 22	40655	40776	-121	AUG 22	57304	57411	-107
SEP 22	50751	50527	224	SEP 22	58277	58329	-52
OCT 22	82284	81966	318	OCT 22	62993	62766	227
NOV 22	36237	36117	120	NOV 22	52508	52443	65
DEC 22	38480	38421	59	DEC 22	61663	61618	45
JAN 23	55671	55539	132	JAN 23	49138	49556	-418
FEB 23	17745	17764	-19	FEB 23	39810	39636	175
MAR 23	31109	30499	610	MAR 23	44974	44889	85
APR 23	32132	31858	274	APR 23	45872	45767	105
MAY 23	17286	17250	36	MAY 23	38774	38661	113
JUN 23	11110	11072	38	JUN 23	36563	36451	112
JUL 23	9984	9716	268	JUL 23	36083	35936	146
AUG 23	7074	7023	51	AUG 23	35418	35376	42
SEP 23	9797	9684	113	SEP 23	35399	35287	112
OCT 23	13383	13238	145	OCT 23	39362	39237	125
NOV 23	8863	8769	94	NOV 23	38153	38132	20
DEC 23	11364	11366	-2	DEC 23	34116	34095	21
JAN 24	8601	8446	155	JAN 24	24110	24056	54
FEB 24	1593	1610	-17	FEB 24	17574	17528	46
MAR 24	11359	11309	50	MAR 24	23501	23453	49
APR 24	5634	5584	50	APR 24	16378	16445	-68
MAY 24	2077	2077	0	MAY 24	16764	16827	-62
JUN 24	922	922	0	JUN 24	16962	16945	17
JUL 24	565	565	0	JUL 24	17573	17555	18





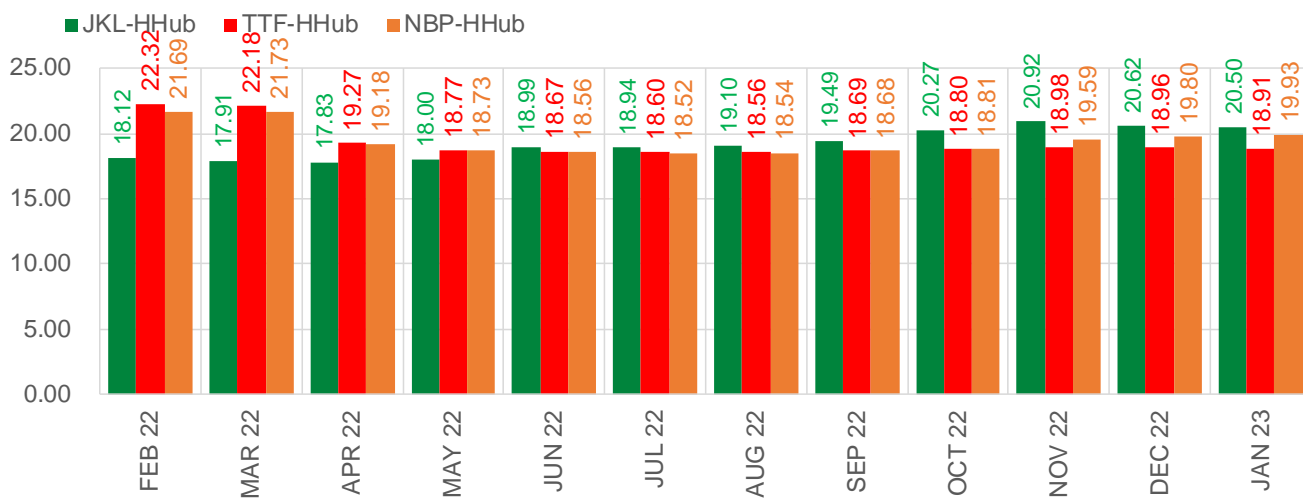
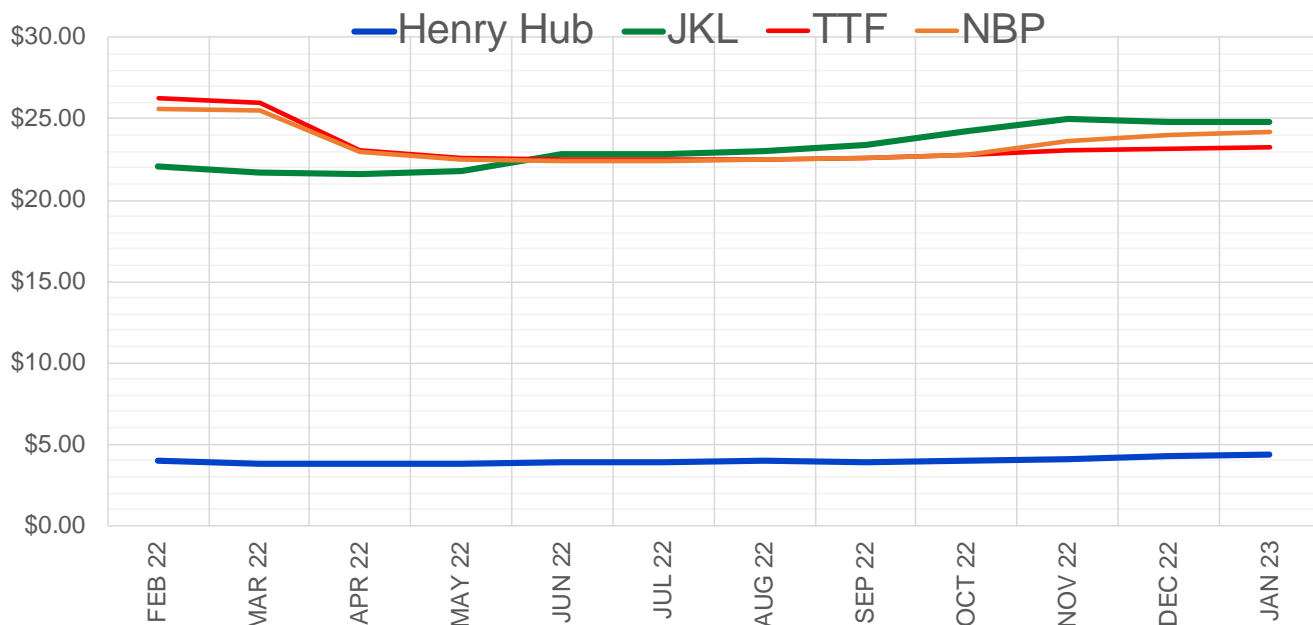
	Feb-22	Mar-22	Apr-22	May-22	Jun-22	Jul-22	Aug-22	Sep-22	Oct-22	Nov-22	Dec-22	Jan-23
Current Price	\$3.999	\$3.782	\$3.746	\$3.777	\$3.830	\$3.889	\$3.902	\$3.887	\$3.914	\$4.010	\$4.183	\$4.282
Last Week	\$4.262	\$4.081	\$4.007	\$4.030	\$4.080	\$4.137	\$4.150	\$4.131	\$4.153	\$4.239	\$4.406	\$4.502
vs. Last Week	-\$0.263	-\$0.299	-\$0.261	-\$0.253	-\$0.250	-\$0.248	-\$0.248	-\$0.244	-\$0.239	-\$0.229	-\$0.223	-\$0.220
4 Weeks Ago	\$3.731	\$3.630	\$3.514	\$3.469	\$3.500	\$3.552	\$3.609	\$3.627	\$3.617	\$3.651	\$3.754	\$3.935
vs. 4 Weeks Ago	\$0.268	\$0.152	\$0.232	\$0.308	\$0.330	\$0.337	\$0.293	\$0.260	\$0.297	\$0.359	\$0.429	\$0.347
Last Year	\$2.446	\$2.456	\$2.503	\$2.557	\$2.623	\$2.694	\$2.721	\$2.712	\$2.735	\$2.801	\$2.935	\$3.030
vs. Last Year	\$1.553	\$1.326	\$1.243	\$1.220	\$1.207	\$1.195	\$1.181	\$1.175	\$1.179	\$1.209	\$1.248	\$1.252

	Units	Cash Settled	Prompt Settle	Cash to Prompt
AGT Citygate	\$/MMBtu	15.00	19.63	4.63
TETCO M3	\$/MMBtu	12.21	9.10	-3.11
FGT Zone 3	\$/MMBtu	14.59	4.35	-10.24
Zone 6 NY	\$/MMBtu	14.59	9.72	-4.87
Chicago Citygate	\$/MMBtu	3.89	5.97	2.08
Michcon	\$/MMBtu	3.80	4.17	0.37
Columbia TCO Pool	\$/MMBtu	3.71	3.76	0.05
Ventura	\$/MMBtu	3.86	7.69	3.83
Rockies/Opal	\$/MMBtu	4.02	6.00	1.98
El Paso Permian Basin	\$/MMBtu	3.61	4.67	1.06
Socal Citygate	\$/MMBtu	4.34	6.34	2.00
Malin	\$/MMBtu	4.10	5.79	1.69
Houston Ship Channel	\$/MMBtu	3.80	4.76	0.96
Henry Hub Cash	\$/MMBtu	4.09	4.27	0.18
AECO Cash	C\$/GJ	3.06	3.36	0.30
Station2 Cash	C\$/GJ	3.02	6.11	3.09
Dawn Cash	C\$/GJ	3.90	4.40	0.50

Source: CME, Bloomberg

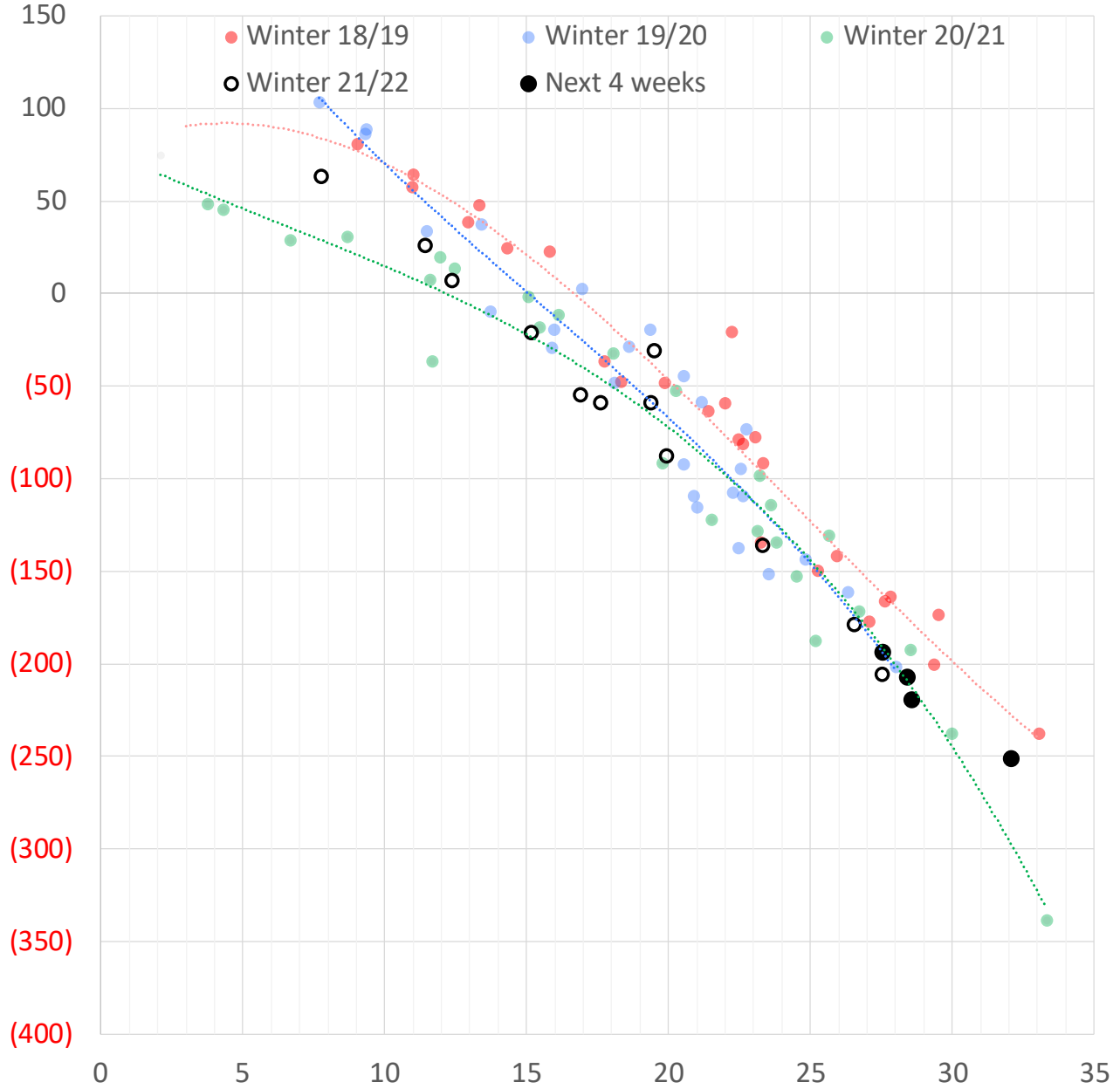
	Units	Current Price	vs. Last Week	vs. 4 Weeks Ago	vs. Last Year
NatGas Jul21/Oct21	\$/MMBtu	2.224	▲ 0.000	▲ 0.000	▲ 2.183
NatGas Oct21/Nov21	\$/MMBtu	0.361	▲ 0.000	▲ 0.000	▲ 0.295
NatGas Oct21/Jan22	\$/MMBtu	-1.817	▲ 0.000	▲ 0.293	▼ -2.112
NatGas Apr22/Oct22	\$/MMBtu	0.168	▲ 0.022	▼ -0.014	▲ 0.121
WTI Crude	\$/Bbl	85.14	▲ 1.320	▲ 11.350	▲ 32.870
Brent Crude	\$/Bbl	87.89	▲ 1.830	▲ 11.750	▲ 32.480
Fuel Oil, NY Harbour 1%	\$/Bbl	97.18	▲ 0.000	▲ 0.000	▲ 0.000
Heating Oil	cents/Gallon	269.12	▲ 5.690	▲ 35.980	▲ 111.520
Propane, Mt. Bel	cents/Gallon	1.15	▲ 0.007	▲ 0.123	▲ 0.285
Ethane, Mt. Bel	cents/Gallon	0.37	▼ 0.000	▲ 0.034	▲ 0.137
Coal, PRB	\$/MTon	12.30	▲ 0.000	▲ 0.000	▲ 0.000
Coal, PRB	\$/MMBtu	0.70			
Coal, ILB	\$/MTon	31.05	▲ 0.000	▲ 0.000	▲ 0.000
Coal, ILB	\$/MMBtu	1.32			

Nat Gas Term Structure (\$MMBTU)



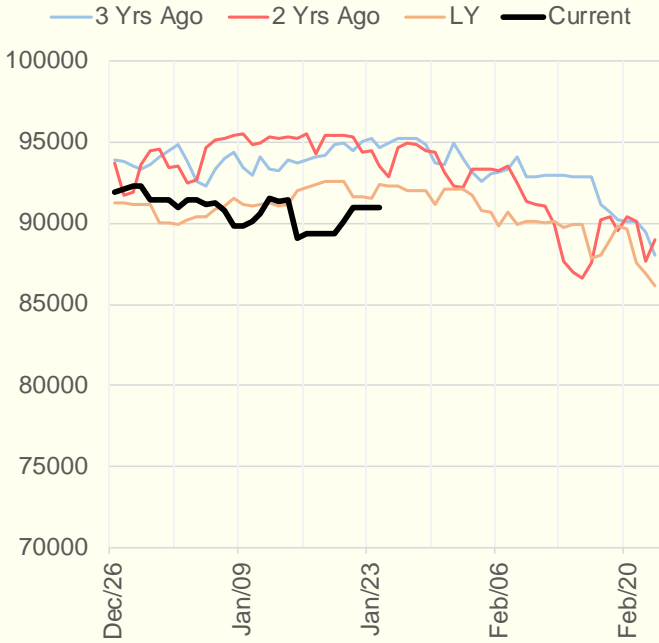
	FEB 22	MAR 22	APR 22	MAY 22	JUN 22	JUL 22	AUG 22	SEP 22	OCT 22	NOV 22	DEC 22	JAN 23
Henry Hub	\$3.968	\$3.800	\$3.776	\$3.809	\$3.860	\$3.924	\$3.935	\$3.913	\$3.944	\$4.040	\$4.219	\$4.316
JKL	\$22.090	\$21.710	\$21.605	\$21.810	\$22.845	\$22.865	\$23.030	\$23.400	\$24.215	\$24.960	\$24.835	\$24.820
JKL-HHub	\$18.122	\$17.910	\$17.829	\$18.001	\$18.985	\$18.941	\$19.095	\$19.487	\$20.271	\$20.920	\$20.616	\$20.504
TTF	\$26.284	\$25.976	\$23.047	\$22.574	\$22.532	\$22.520	\$22.495	\$22.600	\$22.744	\$23.022	\$23.181	\$23.222
TTF-HHub	\$22.316	\$22.176	\$19.271	\$18.765	\$18.672	\$18.596	\$18.560	\$18.687	\$18.800	\$18.982	\$18.962	\$18.906
NBP	\$25.659	\$25.526	\$22.960	\$22.536	\$22.423	\$22.445	\$22.477	\$22.593	\$22.752	\$23.630	\$24.021	\$24.243
NBP-HHub	\$21.691	\$21.726	\$19.184	\$18.727	\$18.563	\$18.521	\$18.542	\$18.680	\$18.808	\$19.590	\$19.802	\$19.927

Weather Storage Model - Next 4 Week Forecast

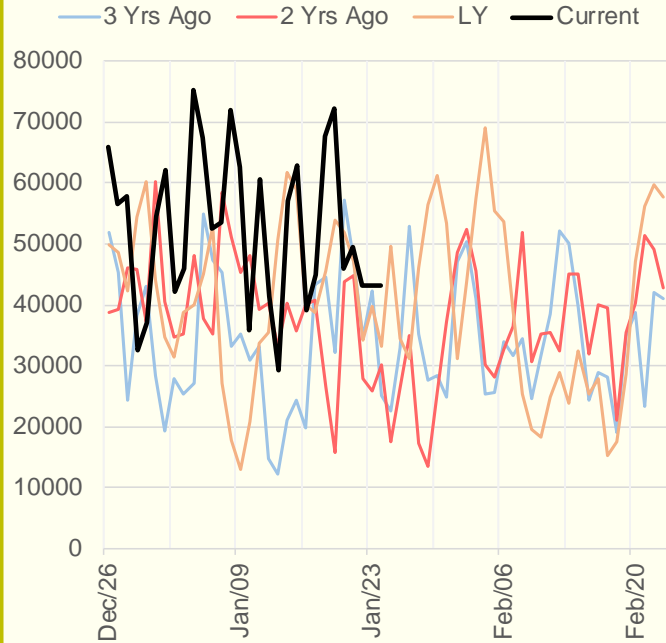


The risk of trading futures and options and other derivatives involves a substantial risk of loss and is not suitable for all persons. Each person must consider whether a particular trade, combination of trades, or strategy is suitable for that person's financial means and objectives. Past results are not necessarily indicative of future results. This communication may contain links to third party websites which are not under the control of and are not maintained by ION Energy Group, and ION Energy Group is not responsible for their content.

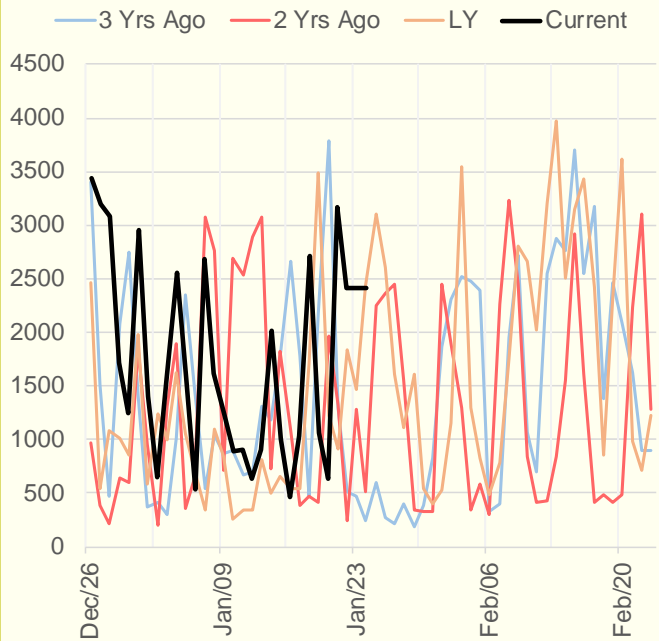
NRC Nuclear Daily Output



US Wind



CALI Wind



TEXAS Wind

