

**COMMITMENT OF TRADERS
FUTURES ONLY NET POSITIONS
AS OF 02/01/2022
(IN THOUSAND CONTRACTS)**

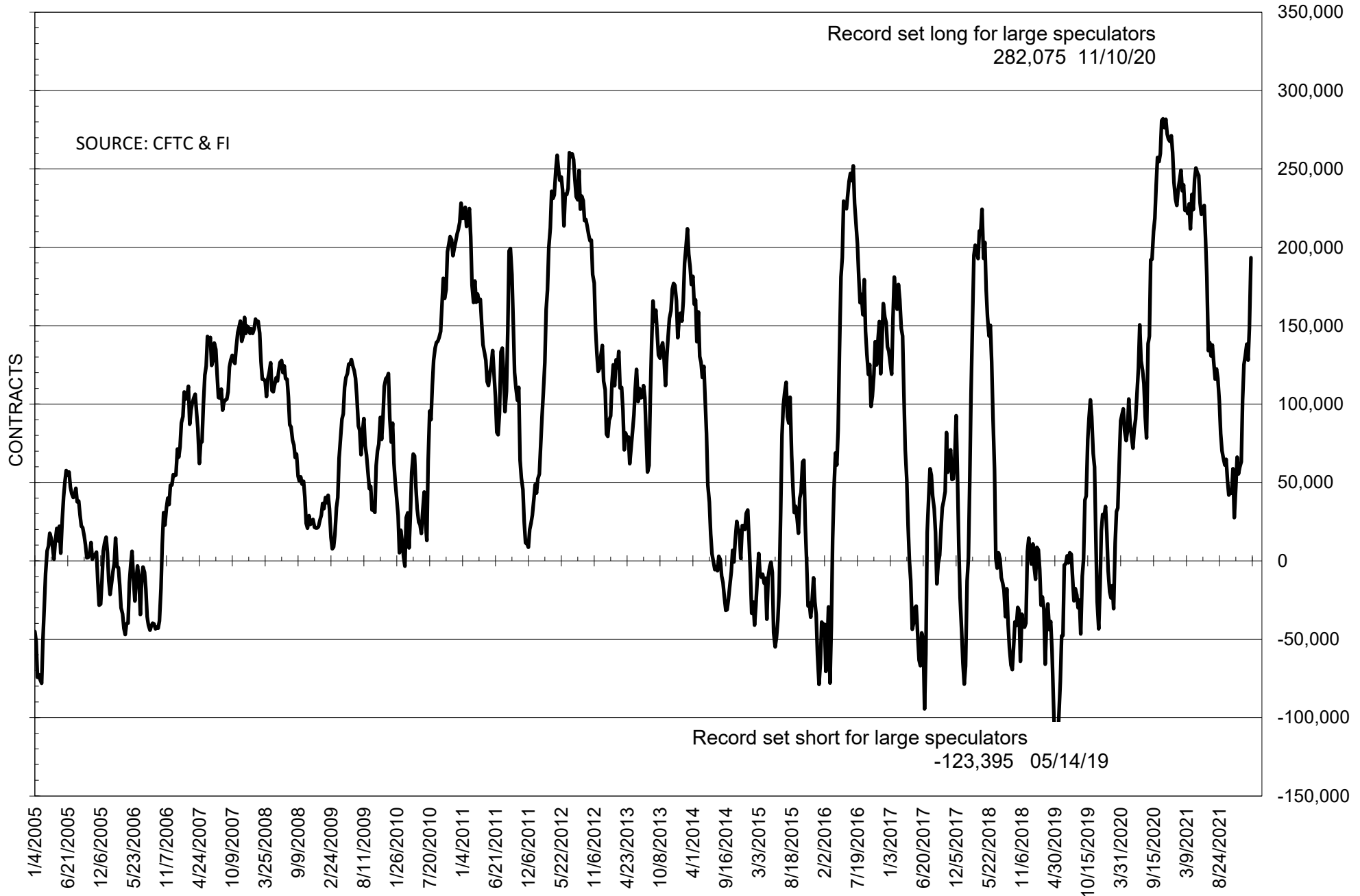
	COMMERCIAL				(FUND) NON COMMERCIAL				(SPEC) NON-REPORTABLE			
	1-Feb	25-Jan	18-Jan	11-Jan	1-Feb	25-Jan	18-Jan	11-Jan	1-Feb	25-Jan	18-Jan	11-Jan
	WHEAT											
Chicago	5.1	-3.5	5.2	12.1	0.4	11.7	4.8	-1.5	-5.5	-8.1	-10.0	-10.6
Kansas City	-36.0	-34.8	-35.9	-41.5	34.8	34.9	33.6	38.8	1.2	-0.1	2.3	2.7
Minneapolis	-12.7	-12.5	-10.9	-13.8	9.3	8.8	8.8	11.3	3.3	3.8	2.2	2.5
All Wheat	-43.6	-50.9	-41.6	-43.2	44.5	55.3	47.2	48.6	-0.9	-4.5	-5.5	-5.4
CORN	-407.7	-389.5	-342.7	-366.8	455.2	439.1	388.1	407.5	-47.6	-49.6	-45.5	-40.7
OATS	#VALUE!	#VALUE!	#VALUE!	-0.1	#VALUE!	#####	#VALUE!	0.6	#VALUE!	#VALUE!	#VALUE!	-0.5
SOYBEANS	-155.6	-112.8	-92.2	-104.9	193.4	148.9	128.0	138.3	-37.8	-36.1	-35.8	-33.4
SOY OIL	-86.6	-78.4	-60.1	-59.1	74.4	68.5	51.5	49.9	12.2	9.9	8.6	9.2
SOY MEAL	-127.0	-104.4	-108.0	-122.8	98.8	79.0	80.9	97.2	28.1	25.4	27.1	25.7

Oats positions thin to be reported

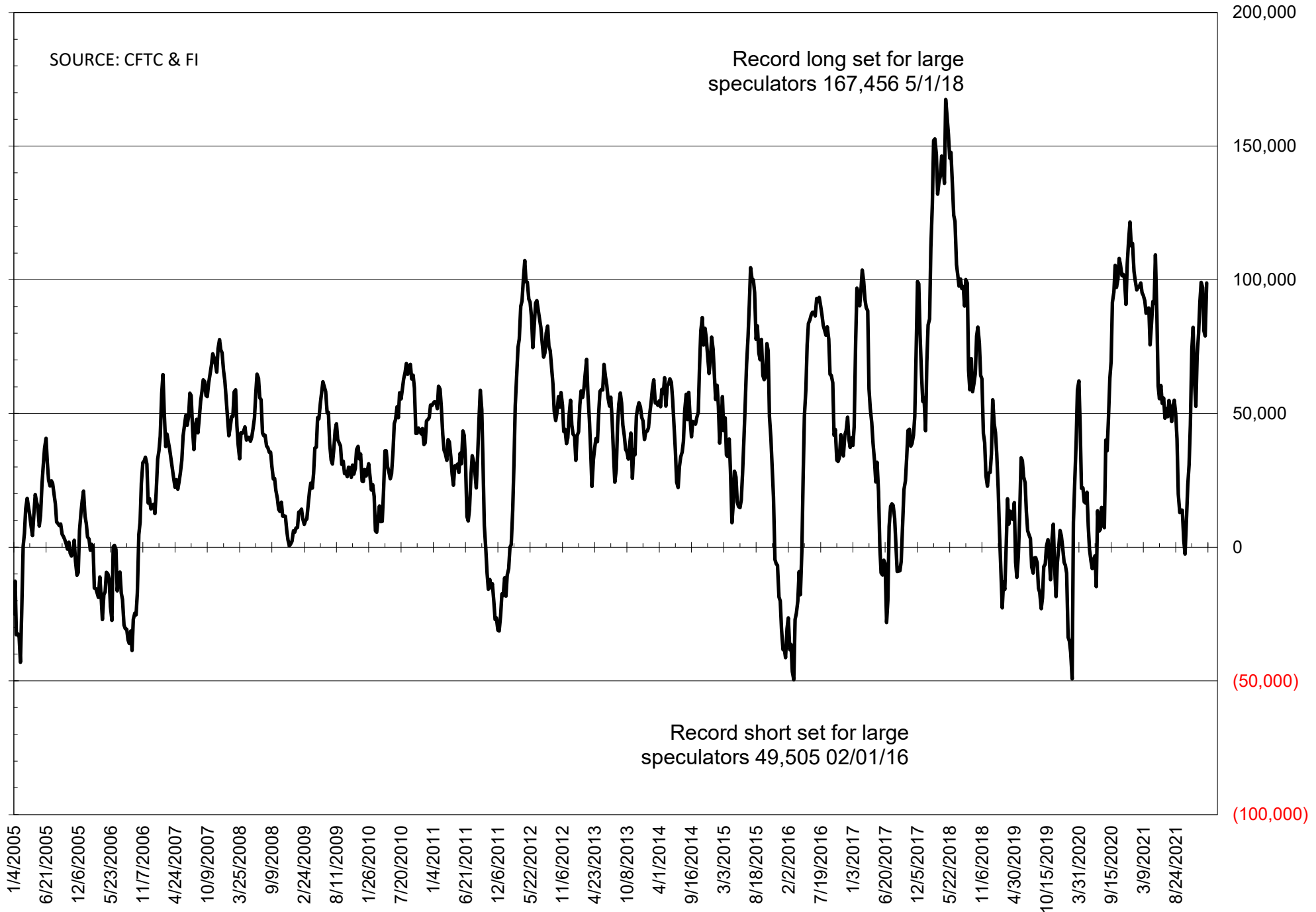
	TOTAL OPEN INTEREST				NEARBY FUTURES PRICE					1-Feb-22 LAST REPORTED % HELD BY TRADERS			
	1-Feb	25-Jan	18-Jan	11-Jan	H Latest	H 1-Feb	H 25-Jan	H 18-Jan	H 11-Jan	LARGE FUND		SMALL	
										LONG	SHORT	LONG	SHORT
WHEAT													
Chicago	391162	390266	378456	369218	763.25	769.00	818.00	769.00	770.25	0%	27%	0%	10%
Kansas City	218513	211960	212141	215528	785.75	786.25	834.50	772.75	791.75	0%	13%	0%	11%
Minneapolis	67962	68398	67923	67259	913.00	916.50	947.75	903.50	928.25	0%	7%	0%	17%
CORN	1568959	1539124	1487858	1504234	620.50	634.75	620.00	599.50	601.00	0%	6%	0%	12%
OATS	#VALUE!	#VALUE!	#VALUE!	4019	731.00	715.00	652.50	646.75	656.00	0%	#VALUE!	0%	#VALUE!
SOYBEANS	796285	735966	692022	678613	1553.50	1528.50	1407.25	1361.25	1386.50	30%	5%	6%	11%
SOY OIL	439646	411832	392795	386373	65.36	65.83	62.51	59.08	58.87	0%	9%	0%	6%
SOY MEAL	415978	406335	411123	404223	443.90	436.00	392.00	590.80	413.10	0%	4%	0%	5%

SOURCE: CFTC & FI

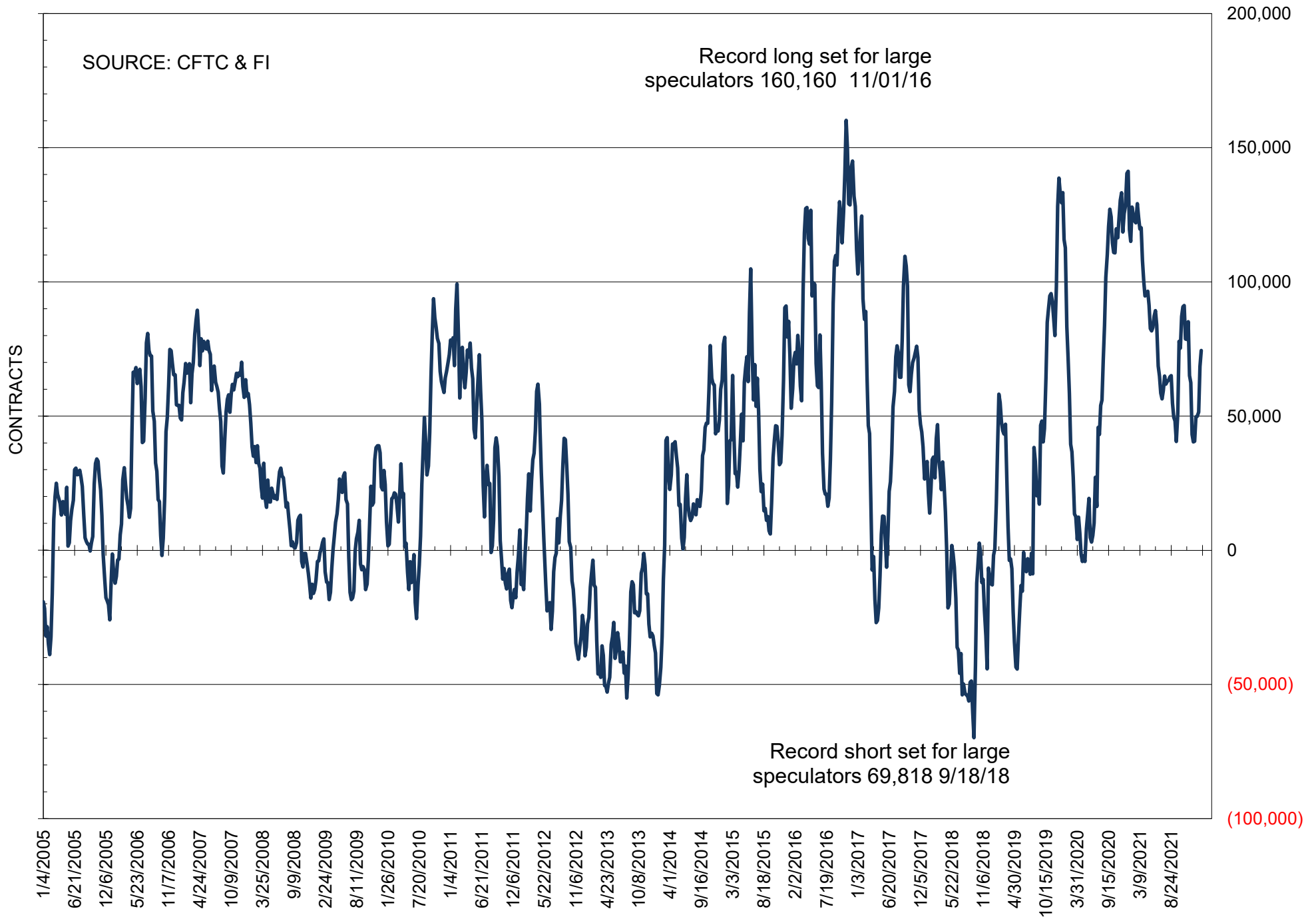
NET POSITION OF FUTURES ONLY LARGE SPECS IN SOYBEANS



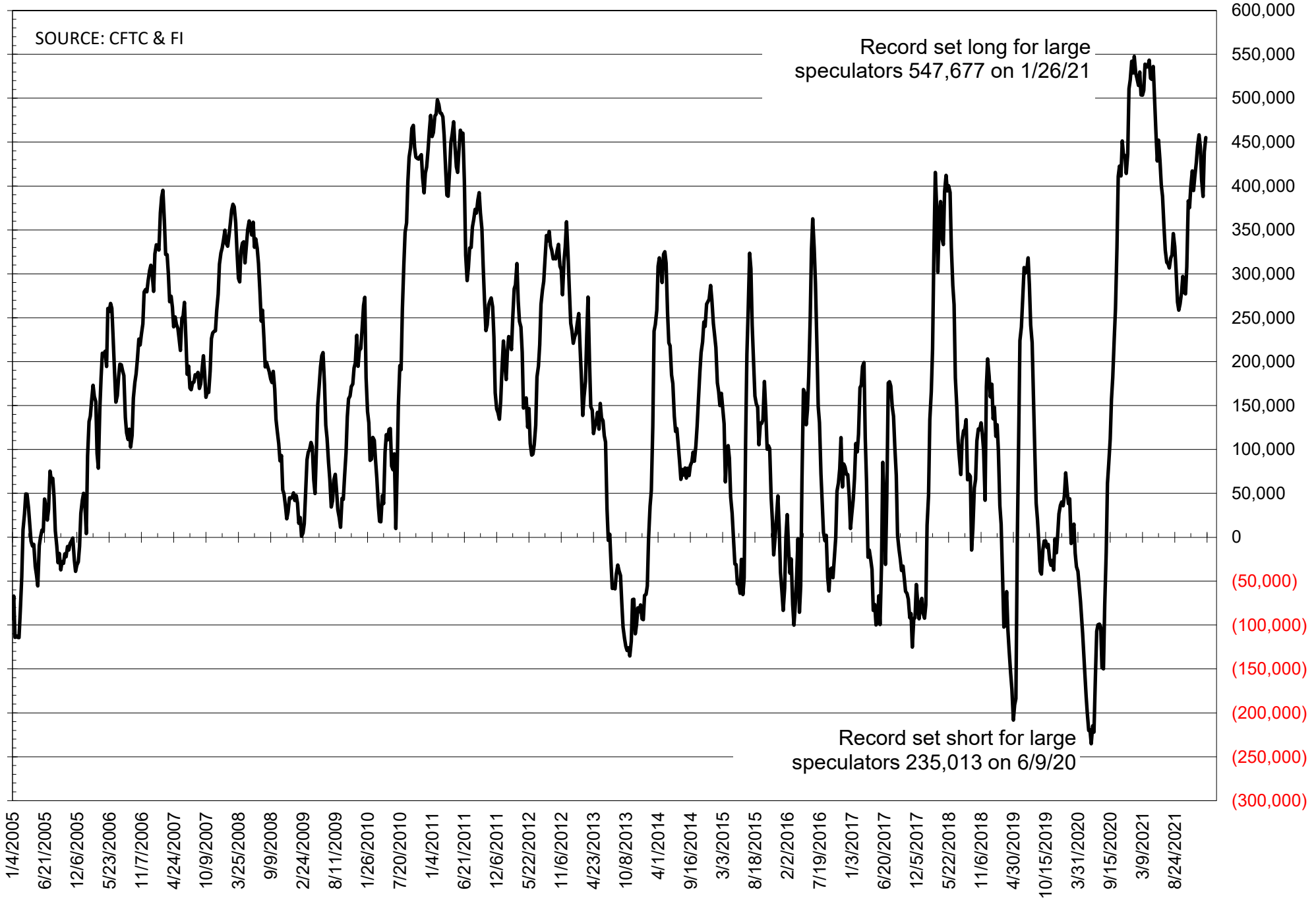
NET POSITION OF FUTURES ONLY LARGE SPECS IN SOYMEAL



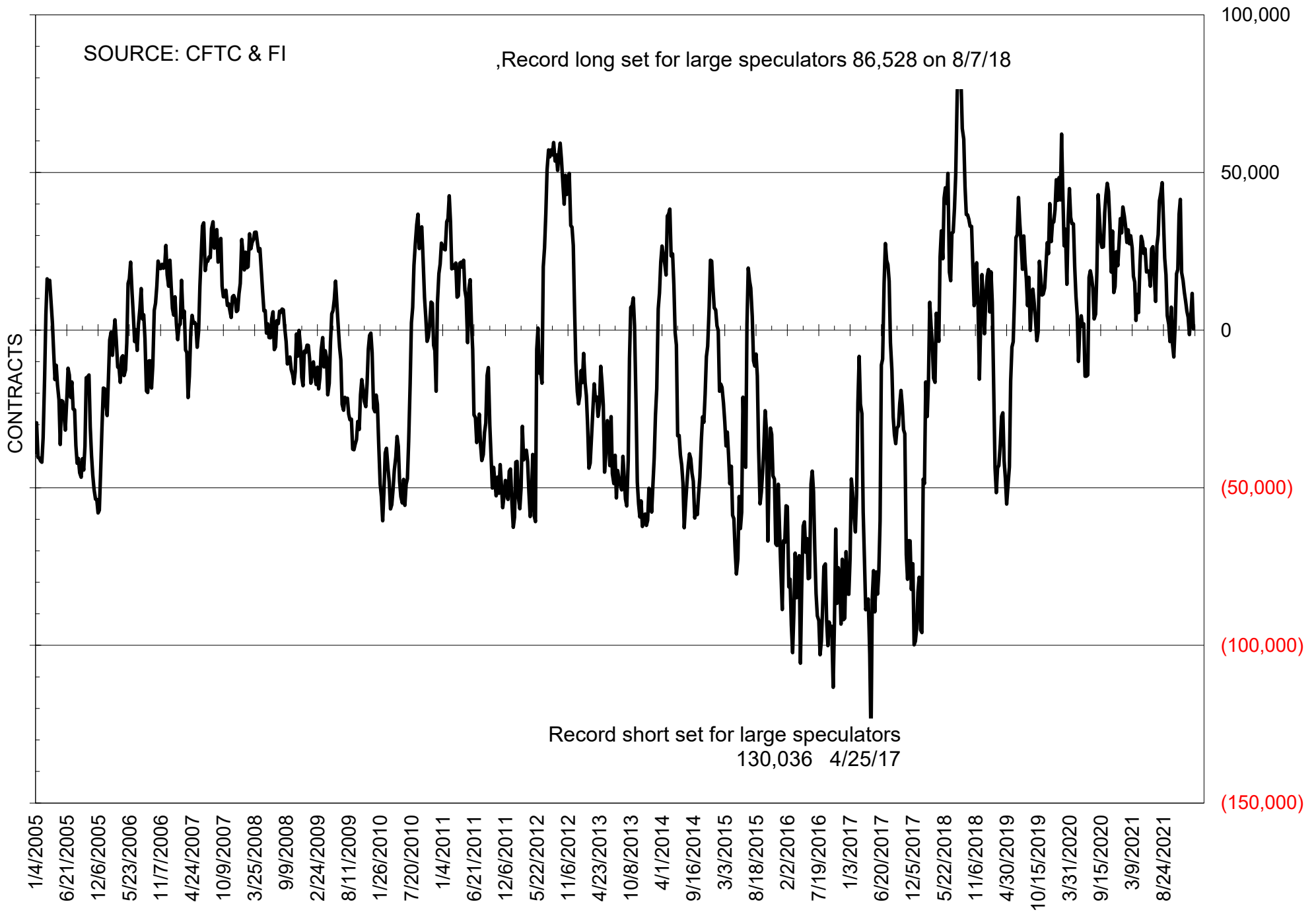
NET POSITION OF FUTURES ONLY LARGE SPECS IN SOYOIL



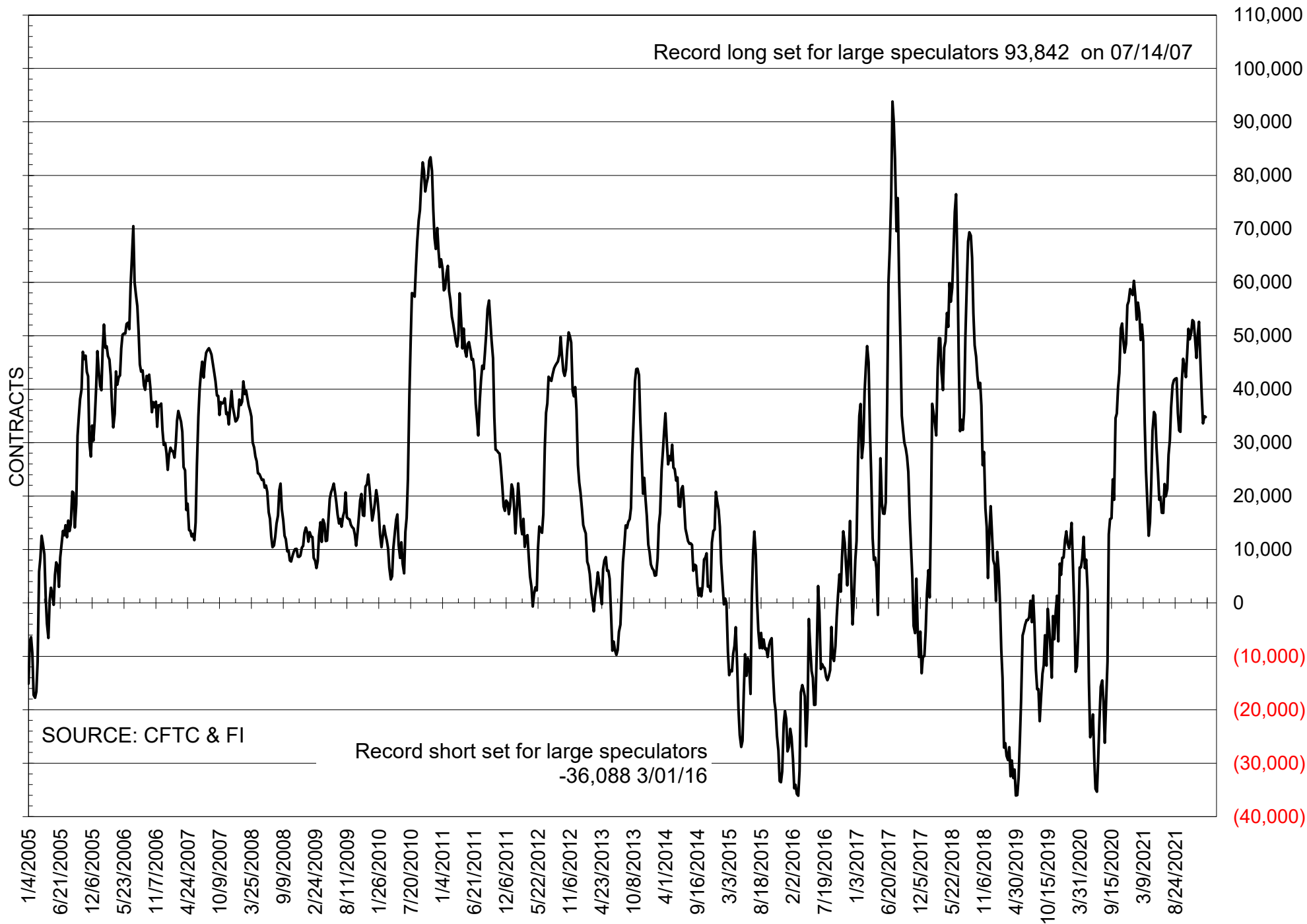
NET POSITION OF LARGE SPECULATORS IN CORN



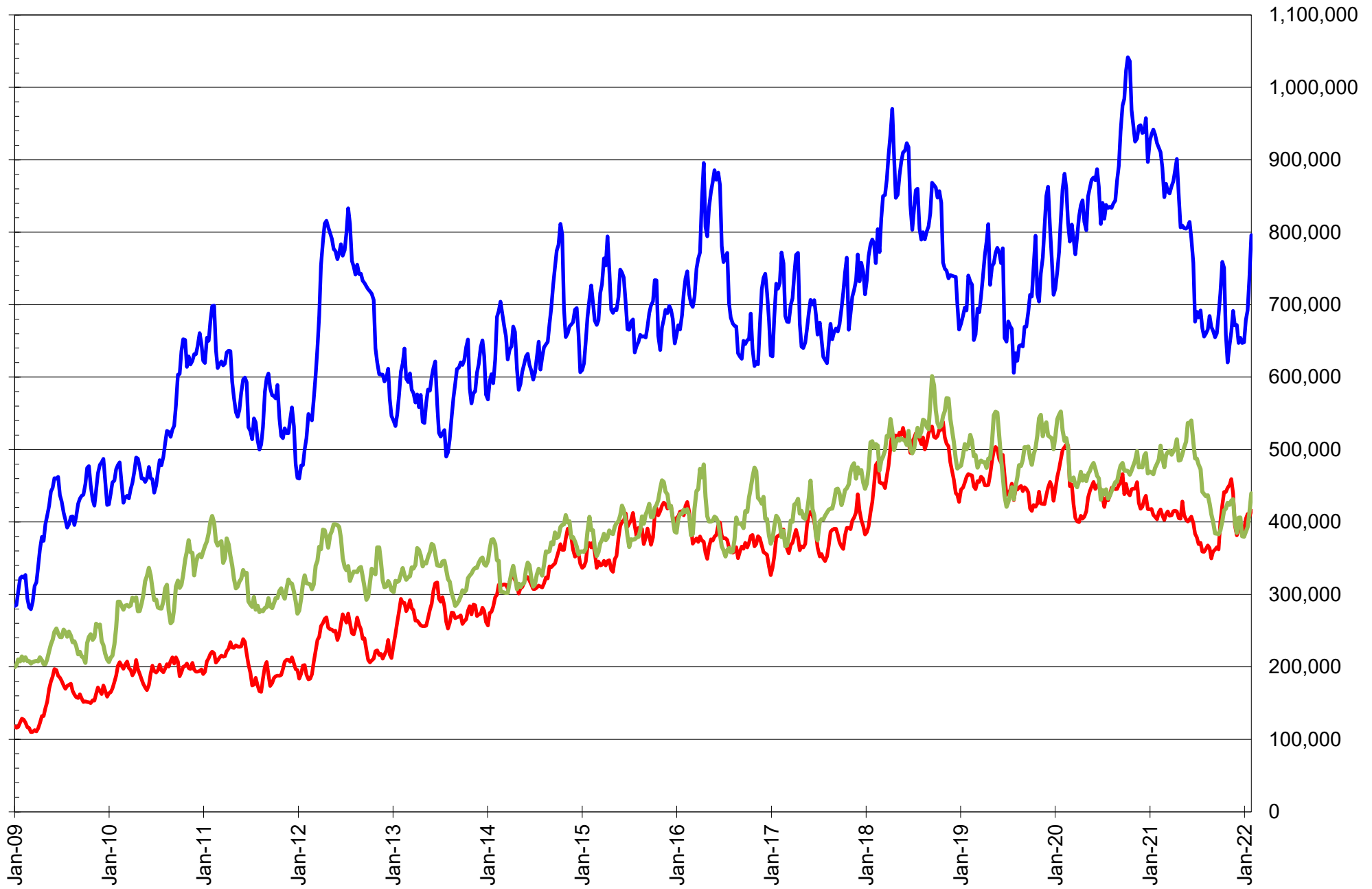
NET POSITION OF FUTURES ONLY LARGE SPECS IN CHICAGO WHEAT



NET POSITION OF LARGE SPECULATORS IN KANSAS CITY WHEAT



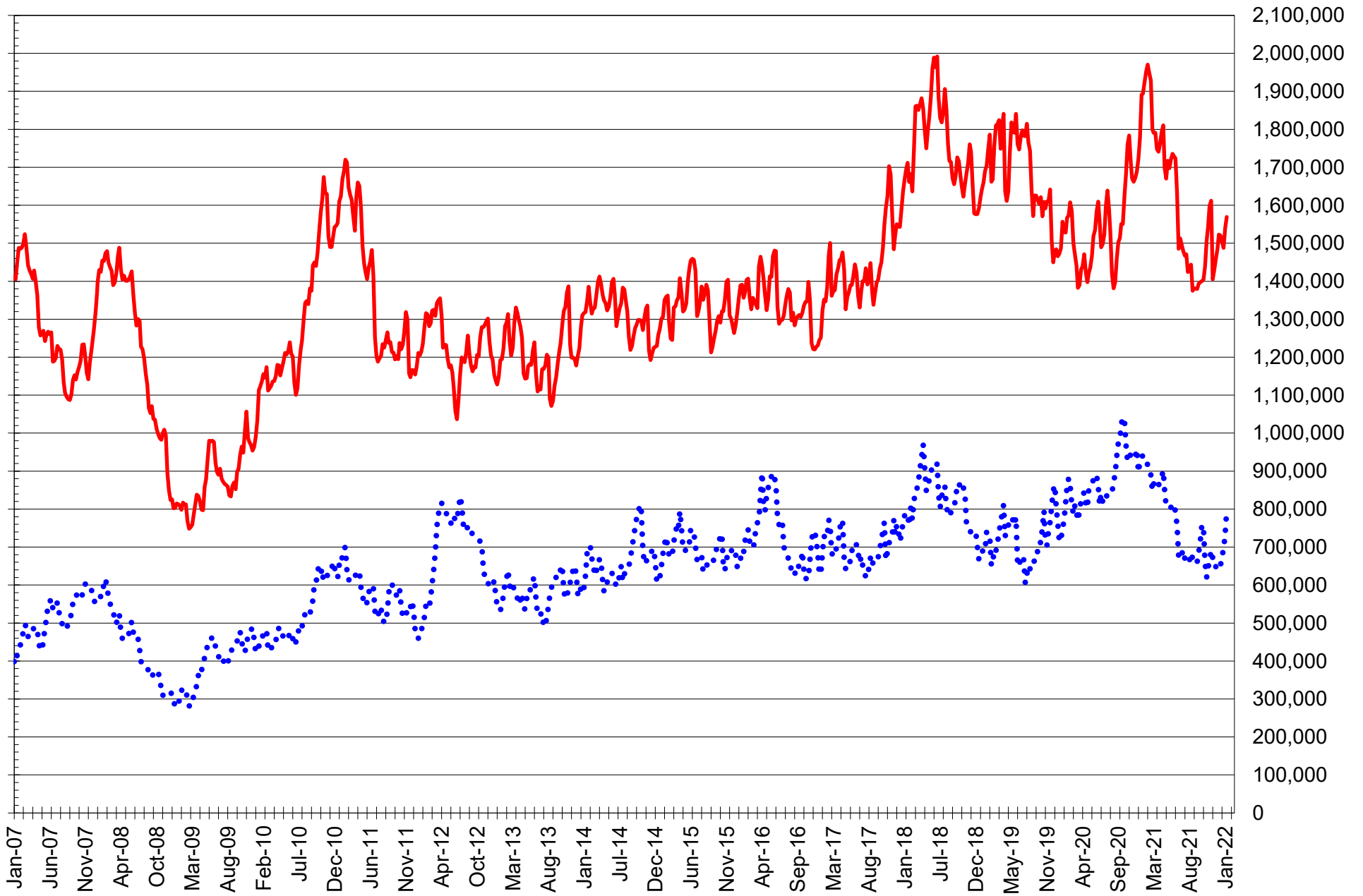
TOTAL OPEN INTEREST IN SOYBEANS, MEAL AND OIL, FUTURES ONLY



SOURCE: CFTC & FI

— SOYBEANS — SOYBEAN MEAL — SOYBEAN OIL

TOTAL OPEN INTEREST IN CORN AND SOYBEANS, FUTURES ONLY



SOURCE: CFTC & FI

— CORN

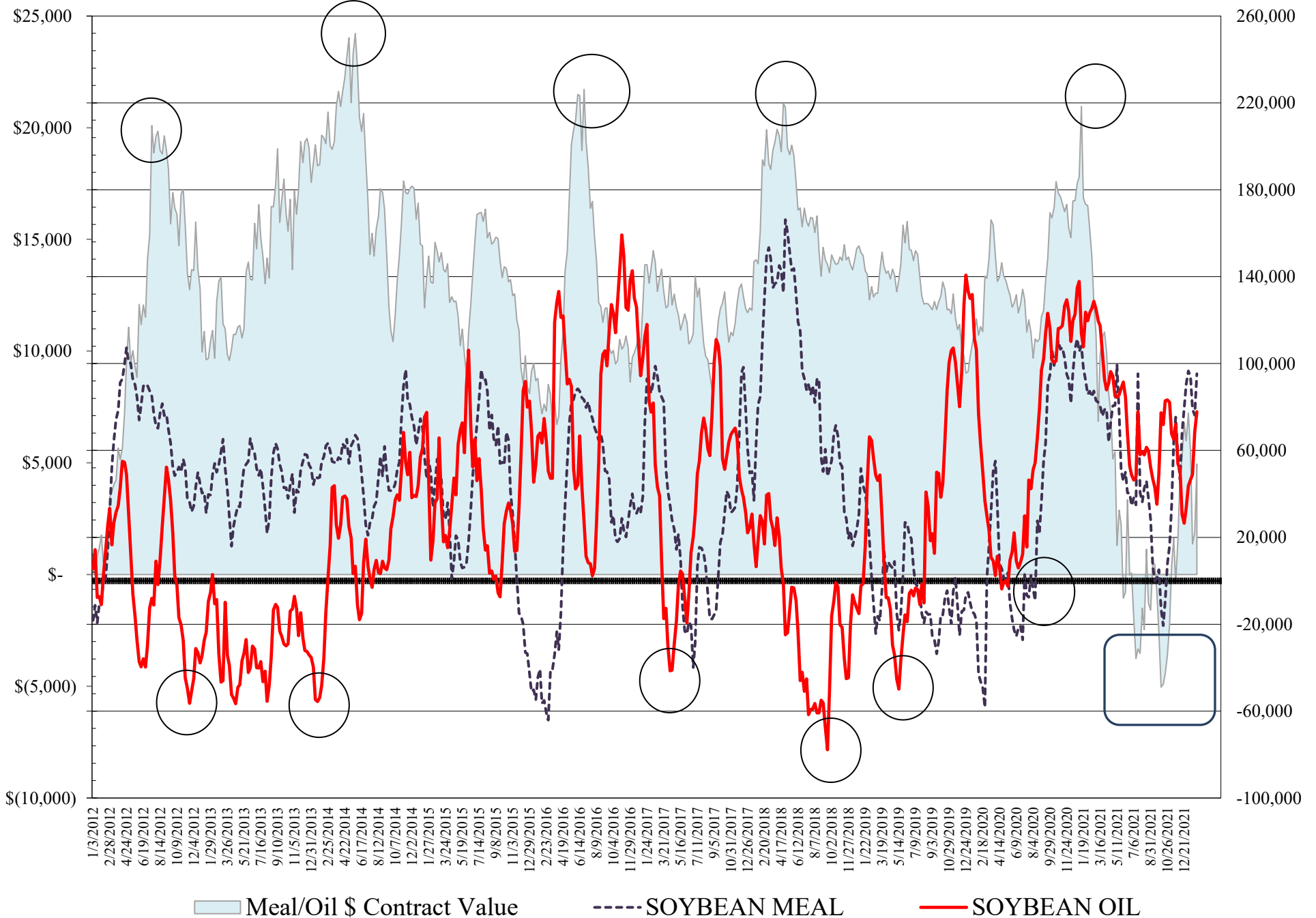
•••• SOYBEANS

**COMMITMENT OF TRADERS
FUTURES & OPTIONS NET POSITIONS
AS OF 02/01/2022
(IN THOUSAND CONTRACTS)**

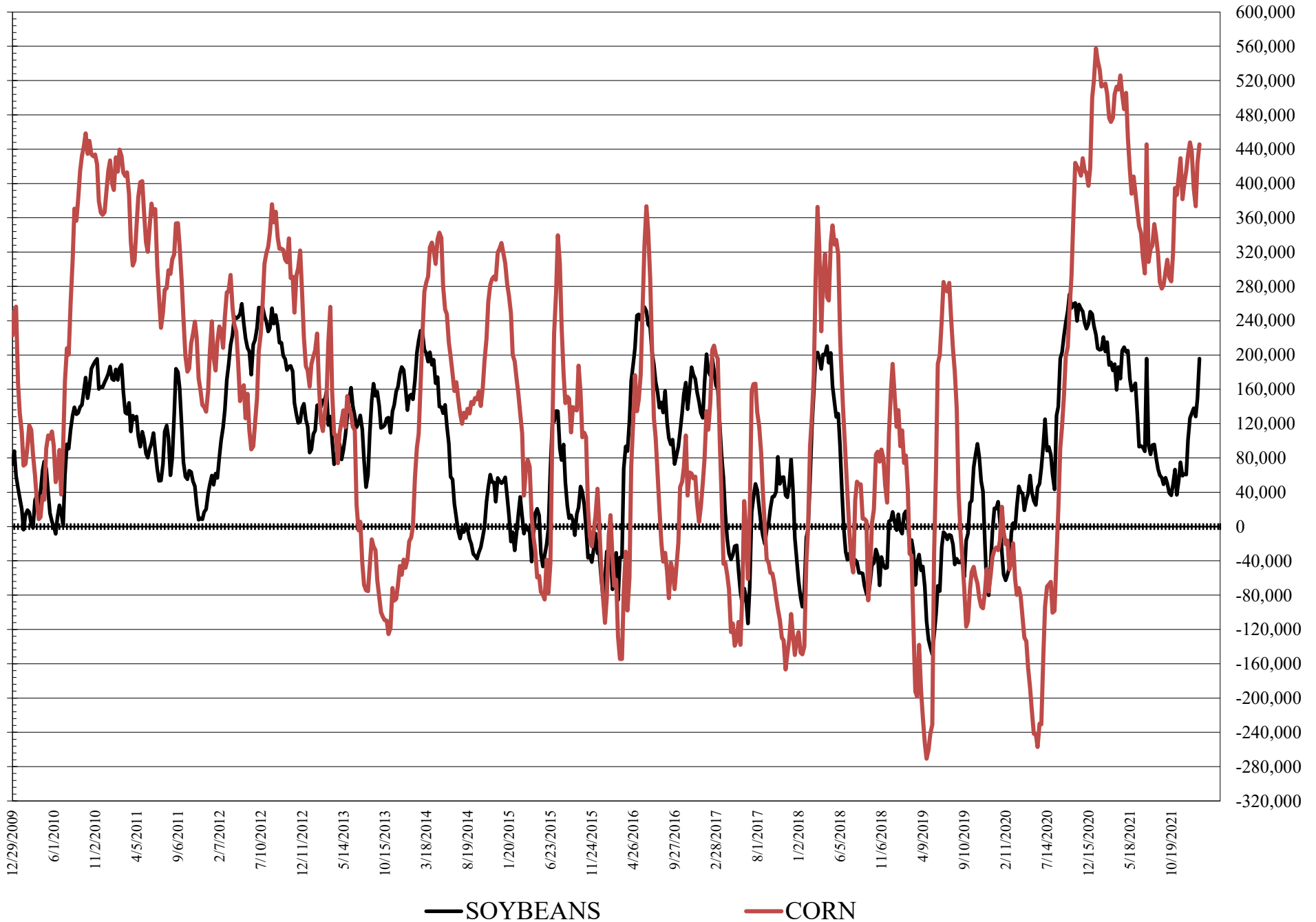
	COMMERCIAL				(FUND) NON COMMERCIAL				(SPEC) NON-REPORTABLE			
	1-Feb	25-Jan	18-Jan	11-Jan	1-Feb	25-Jan	18-Jan	11-Jan	1-Feb	25-Jan	18-Jan	11-Jan
	WHEAT											
Chicago	17.2	7.3	19.5	23.5	-12.8	0.8	-10.3	-13.8	-4.4	-8.1	-9.2	-9.7
Kansas City	-35.9	-36.6	-33.6	-40.0	34.1	35.8	30.5	36.2	1.8	0.8	3.1	3.8
Minneapolis	-11.3	-11.4	-9.4	-12.3	7.6	7.2	6.9	9.5	3.7	4.2	2.5	2.8
All Wheat	-30.1	-40.7	-23.5	-28.8	29.0	43.8	27.1	31.9	1.2	-3.1	-3.6	-3.2
CORN	-409.4	-386.9	-339.1	-365.5	445.5	424.1	373.5	394.1	-36.1	-37.2	-34.4	-28.7
OATS	#VALUE!	#VALUE!	#VALUE!	0.0	#VALUE!	#VALUE!	#VALUE!	0.6	#VALUE!	#VALUE!	#VALUE!	-0.5
SOYBEANS	-156.0	-112.7	-89.4	-103.1	195.8	149.7	128.2	138.1	-39.8	-37.0	-38.7	-35.0
SOY OIL	-91.1	-79.3	-58.4	-56.6	77.8	68.3	48.9	46.6	13.3	11.1	9.5	10.0
SOY MEAL	-127.2	-104.6	-109.0	-122.4	95.3	76.2	79.0	93.8	31.9	28.4	30.0	28.7
	TOTAL OPEN INTEREST				COMMERCIALS		% HELD BY TRADERS					
	1-Feb	25-Jan	18-Jan	11-Jan	LONG	SHORT	LARGE (FUNDS)		SMALL (NON-REP)			
							LONG	SHORT	LONG	SHORT		
WHEAT												
Chicago	492,052	498,029	468,778	455,595	38%	35%	18%	21%	8%	8%		
Kansas City	246,168	242,083	239,872	242,770	35%	50%	25%	11%	11%	10%		
Minneapolis	71,980	72,609	71,926	71,192	51%	67%	17%	6%	22%	17%		
CORN	1,979,521	1,903,794	1,828,316	1,861,529	39%	60%	27%	4%	10%	12%		
OATS	#VALUE!	#VALUE!	#VALUE!	4,122								
SOYBEANS	1,006,519	883,842	841,473	833,968	42%	58%	23%	4%	6%	10%		
SOY OIL	496,168	455,930	434,799	430,663	44%	62%	23%	7%	8%	5%		
SOY MEAL	478,164	451,424	458,623	454,258	42%	69%	24%	4%	12%	5%		

SOURCE: CFTC & FI

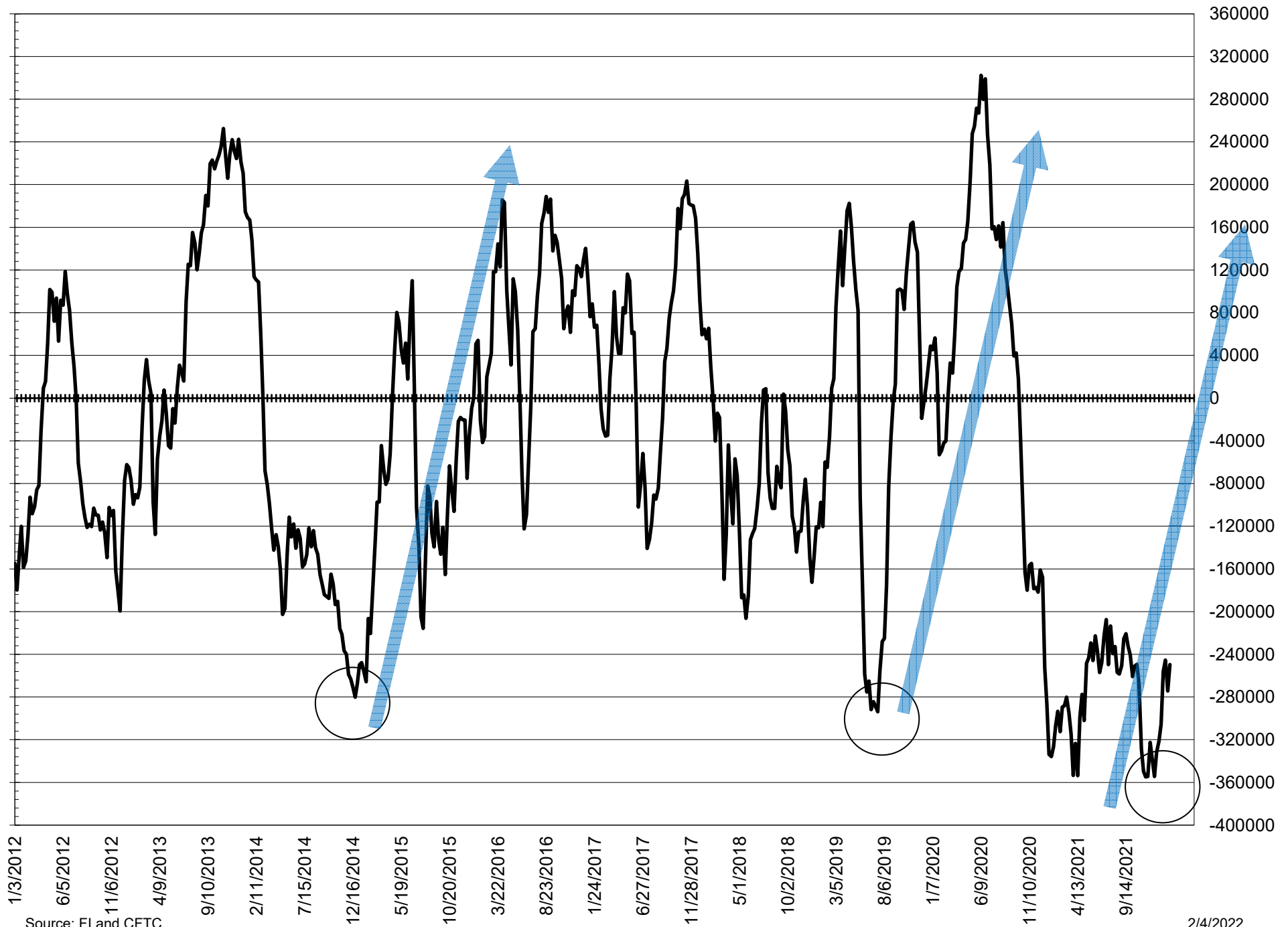
NET POSITION FUTURES AND OPTIONS OF LARGE SPECULATORS IN SOYBEAN MEAL AND SOYBEAN OIL



NET POSITION FUTURES AND OPTIONS OF LARGE SPECULATORS IN SOYBEANS AND CORN



NET POSITION FUTURES AND OPTIONS SPREAD OF LARGE SPECULATORS IN SOYBEANS MINUS CORN



Source: FI and CFTC

2/4/2022

**DISAGGREGATED COMMITMENT OF TRADERS
FUTURES ONLY NET POSITIONS
AS OF 02/01/2022
(IN THOUSAND CONTRACTS)**

	PRODUCER / MERCHANT / PROCESSOR / USER				(INDEX/ETF) SWAP DEALERS				(CTA/CPO/OTHER UNREGISTERED) MANAGED MONEY				
	1-Feb	25-Jan	18-Jan	11-Jan	1-Feb	25-Jan	18-Jan	11-Jan	1-Feb	25-Jan	18-Jan	11-Jan	
WHEAT													
Chicago	(82.7)	(90.0)	(85.9)	(75.1)	87.8	86.4	91.1	87.2	(29.1)	(15.2)	(28.4)	(31.2)	
Kansas City	(61.8)	(62.0)	(62.7)	(64.1)	25.8	27.2	26.8	22.6	37.4	39.4	35.4	42.1	
Minneapolis	(15.4)	(14.8)	(13.2)	(16.5)	2.7	2.3	2.3	2.6	4.0	3.3	3.9	5.7	
All Wheat	(159.8)	(166.8)	(161.8)	(155.7)	116.2	115.9	120.2	112.5	12.2	27.5	10.8	16.6	
CORN	(697.4)	(692.3)	(644.7)	(663.3)	289.8	302.9	302.0	296.5	368.8	360.1	318.9	334.8	
OATS	-	-	-	(0.2)	-	-	-	0.1	-	-	-	0.4	
SOYBEANS	(302.2)	(263.7)	(254.2)	(257.5)	146.6	150.9	162.0	152.6	149.4	108.0	98.5	107.3	
SOY OIL	(174.1)	(167.5)	(149.9)	(148.6)	87.5	89.1	89.8	89.5	78.9	66.9	56.2	52.7	
SOY MEAL	(224.1)	(205.2)	(209.1)	(218.4)	97.2	100.8	101.1	95.6	77.6	64.7	65.0	72.9	
									Managed % of OI				
									Chicago W	-7%	-4%	-8%	-8%
									Corn	24%	23%	21%	22%
TOTAL OPEN INTEREST				OTHER REPORTABLE				NON REPORTABLE					
	1-Feb	25-Jan	18-Jan	11-Jan	1-Feb	25-Jan	18-Jan	11-Jan	1-Feb	25-Jan	18-Jan	11-Jan	
WHEAT													
Chicago	391,162	390,266	378,456	369,218	29.5	26.9	33.2	29.7	(5.5)	(8.1)	(10.0)	(10.6)	
Kansas City	218,513	211,960	212,141	215,528	(2.6)	(4.5)	(1.8)	(3.3)	1.2	(0.1)	2.3	2.7	
Minneapolis	67,962	68,398	67,923	67,259	5.4	5.4	4.9	5.6	3.3	3.8	2.2	2.5	
All Wheat	677,637	670,624	658,520	652,005	32.2	27.8	36.3	32.0	(0.9)	(4.5)	(5.5)	(5.4)	
CORN	1,568,959	1,539,124	1,487,858	1,504,234	86.4	79.0	69.2	72.7	(47.6)	(49.6)	(45.5)	(40.7)	
OATS	-	-	-	4,019	-	-	-	0.1	-	-	-	(0.5)	
SOYBEANS	796,285	735,966	692,022	678,613	43.9	40.9	29.6	31.0	(37.8)	(36.1)	(35.8)	(33.4)	
SOY OIL	439,646	411,832	392,795	386,373	(4.5)	1.6	(4.7)	(2.8)	12.2	9.9	8.6	9.2	
SOY MEAL	415,978	406,335	411,123	404,223	21.3	14.3	15.9	24.2	28.1	25.4	27.1	25.7	

SOURCE: CFTC & FI

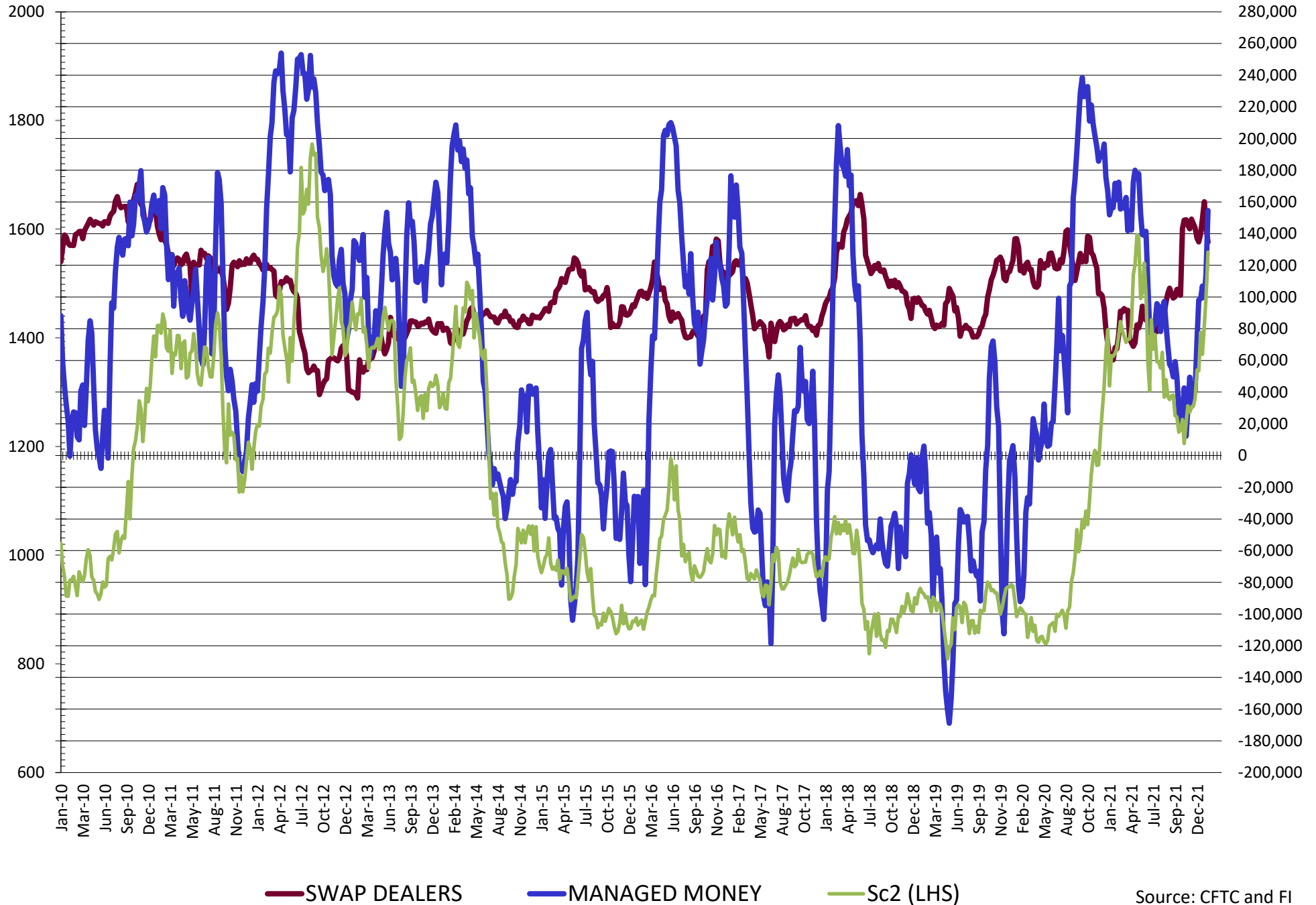
2/4/2022

**DISAGGREGATED COMMITMENT OF TRADERS
FUTURES & OPTIONS NET POSITIONS
AS OF 02/01/2022
(IN THOUSAND CONTRACTS)**

	PRODUCER / MERCHANT / PROCESSOR / USER				(INDEX/ETF) SWAP DEALERS				(CTA/CPO/OTHER UNREGISTERED) MANAGED MONEY			
	1-Feb	25-Jan	18-Jan	11-Jan	1-Feb	25-Jan	18-Jan	11-Jan	1-Feb	25-Jan	18-Jan	11-Jan
	WHEAT											
Chicago	(72.3)	(80.8)	(72.9)	(63.6)	89.4	88.2	92.4	87.1	(26.5)	(13.4)	(24.9)	(27.8)
Kansas City	(61.4)	(62.5)	(59.8)	(61.8)	25.5	25.8	26.2	21.8	37.8	40.6	36.1	42.7
Minneapolis	(13.8)	(13.3)	(11.4)	(14.6)	2.4	1.9	2.0	2.3	4.0	3.3	3.9	5.7
All Wheat	(147.5)	(156.6)	(144.0)	(140.0)	117.4	116.0	120.5	111.3	15.3	30.5	15.1	20.6
CORN	(685.6)	(678.3)	(630.8)	(651.6)	276.2	291.4	291.7	286.1	372.6	365.6	326.5	344.4
OATS	0.0	0.0	0.0	(0.1)	0.0	0.0	0.0	0.1	0.0	0.0	0.0	0.4
SOYBEANS	(290.7)	(257.1)	(249.5)	(252.2)	134.7	144.4	160.1	149.1	154.5	114.9	99.6	106.9
SOY OIL	(177.5)	(167.5)	(147.3)	(145.1)	86.4	88.1	88.9	88.6	80.5	68.8	58.2	55.9
SOY MEAL	(222.2)	(204.7)	(209.1)	(216.5)	95.0	100.1	100.1	94.1	76.7	64.3	64.7	72.9
	TOTAL				OTHER REPORTABLE				NON REPORTABLE			
	OPEN INTEREST				11-Jan				11-Jan			
	1-Feb	25-Jan	18-Jan	11-Jan	1-Feb	25-Jan	18-Jan	11-Jan	1-Feb	25-Jan	18-Jan	11-Jan
WHEAT												
Chicago	492,052	498,029	468,778	455,595	13.7	14.2	14.6	14.0	(4.4)	(8.1)	(9.2)	(9.7)
Kansas City	246,168	242,083	239,872	242,770	(3.7)	(4.8)	(5.6)	(6.5)	1.8	0.8	3.1	3.8
Minneapolis	71,980	72,609	71,926	71,192	3.6	3.8	3.0	3.8	3.7	4.2	2.5	2.8
All Wheat	810,200	812,721	780,576	769,557	13.6	13.2	12.0	11.3	1.2	(3.1)	(3.6)	(3.2)
CORN	1,979,521	1,903,794	1,828,316	1,861,529	73.0	58.5	47.0	49.8	(36.1)	(37.2)	(37.2)	(37.2)
OATS	0	0	0	4,122	0.0	0.0	0.0	0.1	0.0	0.0	0.0	(0.5)
SOYBEANS	1,006,519	883,842	841,473	833,968	41.3	34.8	28.5	31.3	(39.8)	(37.0)	(38.7)	(35.0)
SOY OIL	496,168	455,930	434,799	430,663	(2.7)	(0.5)	(9.3)	(9.3)	13.3	11.1	9.5	10.0
SOY MEAL	478,164	451,424	458,623	454,258	18.6	11.9	14.3	20.9	31.9	28.4	30.0	28.7

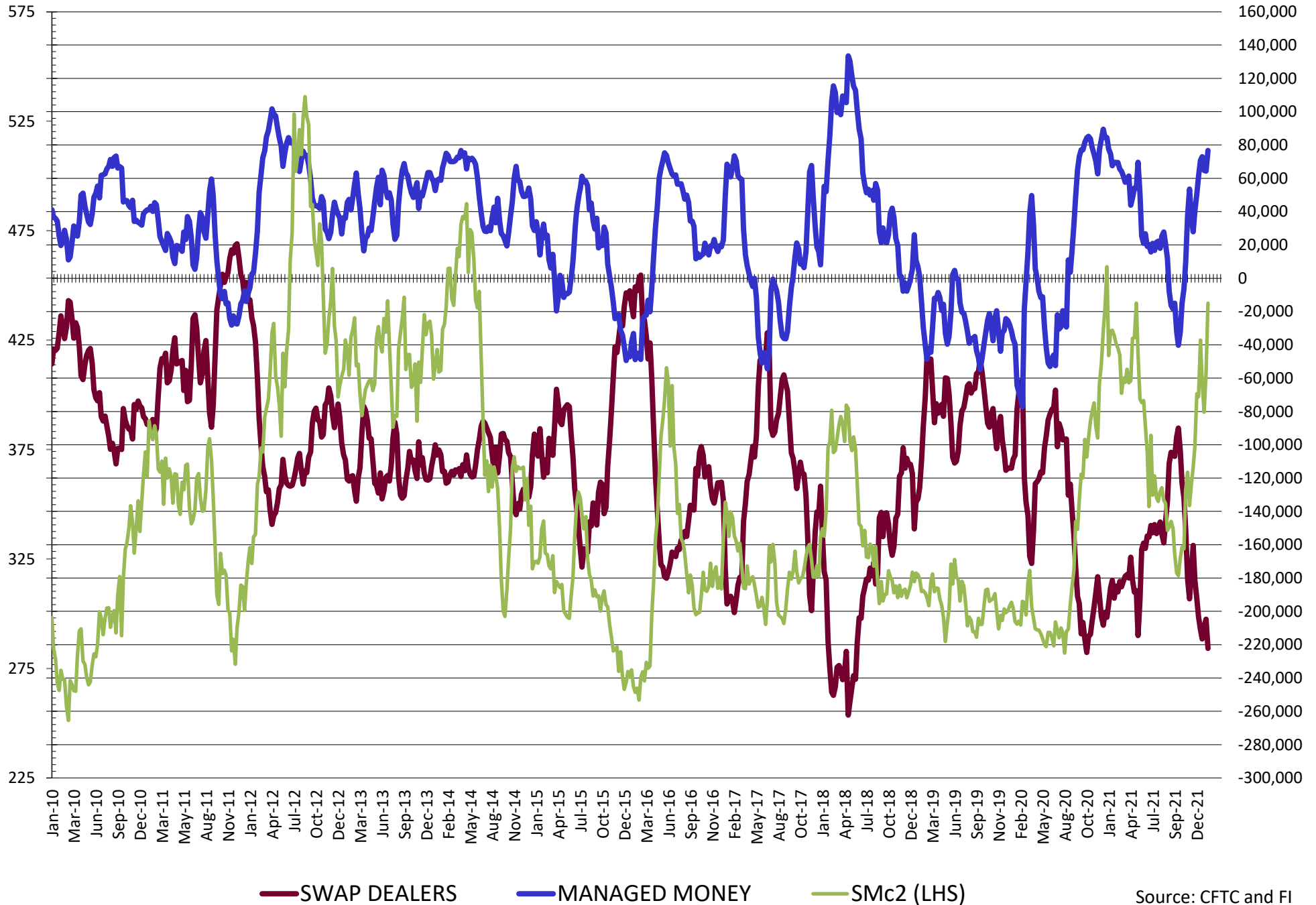
SOURCE: CFTC & FI

NET POSITION FUTURES AND OPTIONS OF SWAP AND MANAGED FUNDS IN SOYBEANS

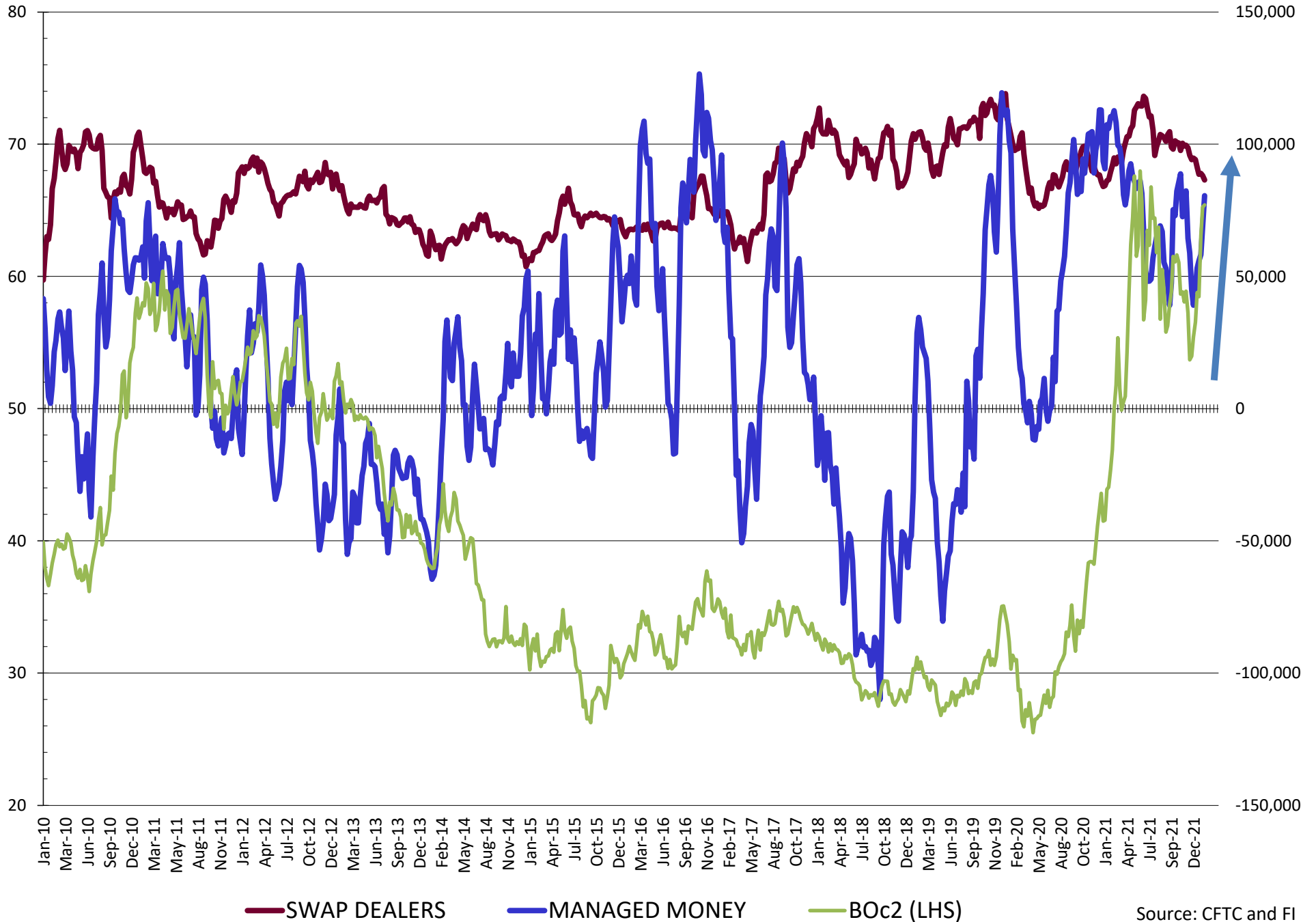


Source: CFTC and FI
2/4/2022

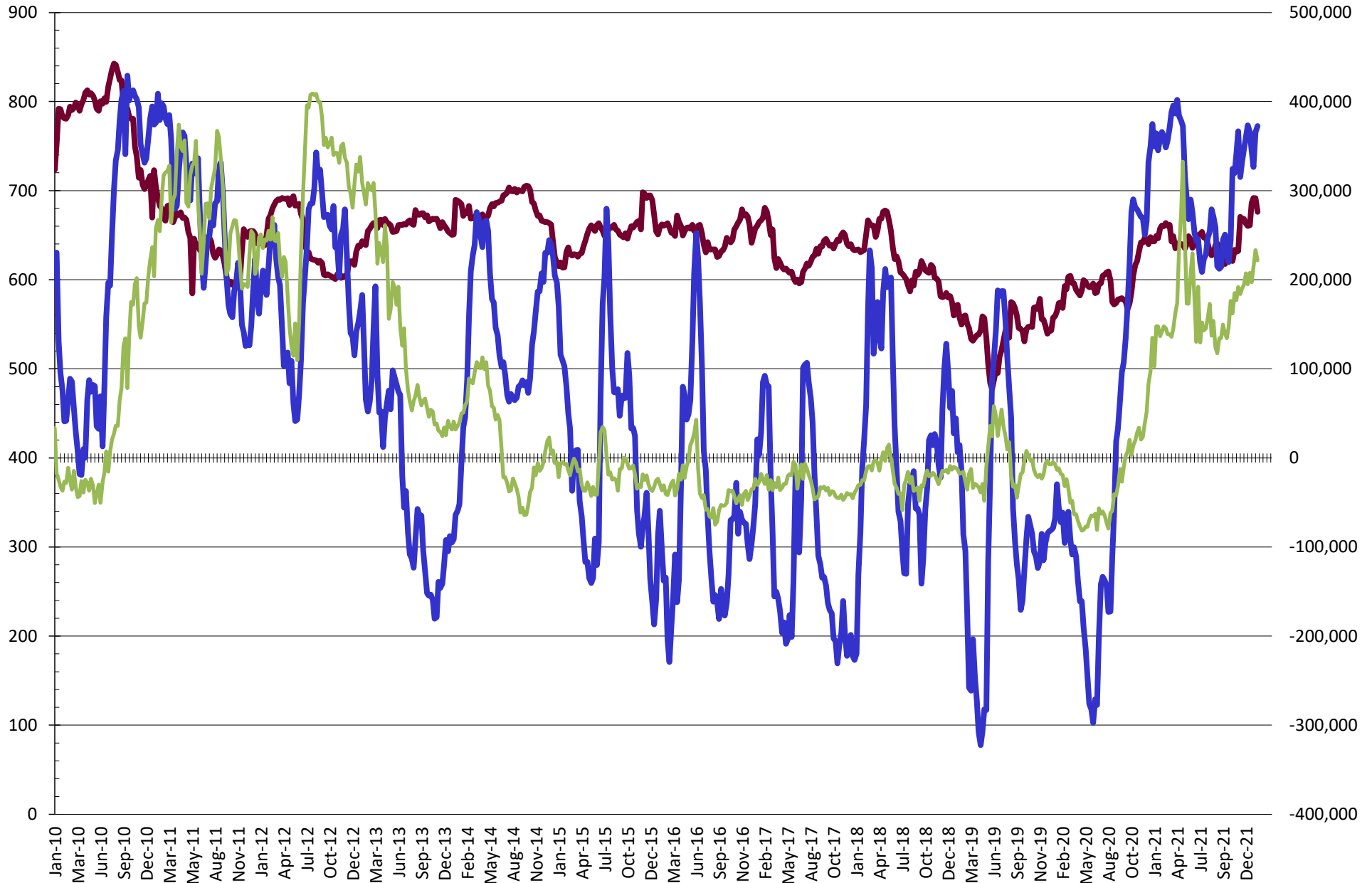
NET POSITION FUTURES AND OPTIONS OF SWAP AND MANAGED FUNDS IN SOYBEAN MEAL



NET POSITION FUTURES AND OPTIONS OF SWAP AND MANAGED FUNDS IN SOYBEAN OIL

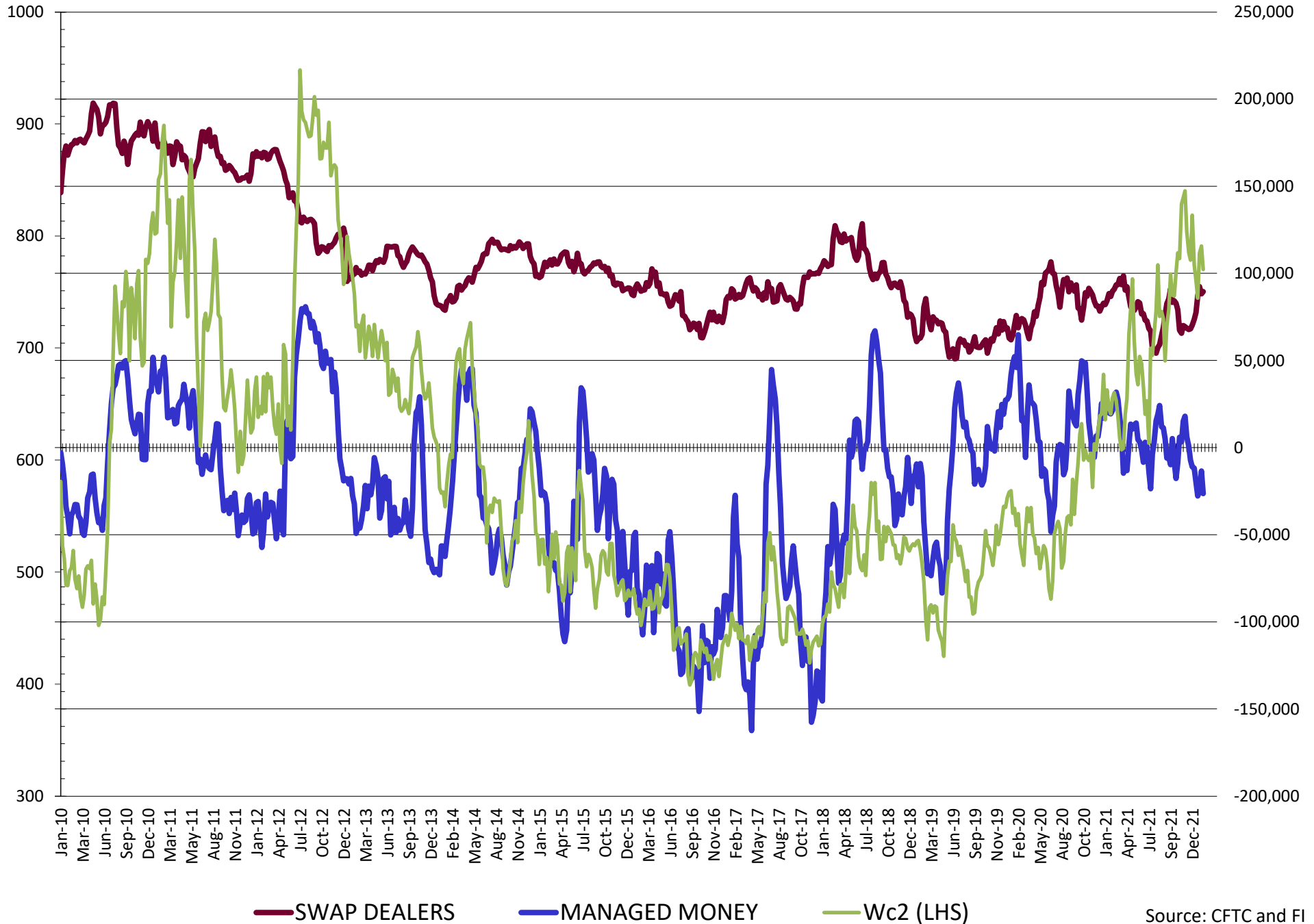


NET POSITION FUTURES AND OPTIONS OF SWAP AND MANAGED FUNDS IN CORN

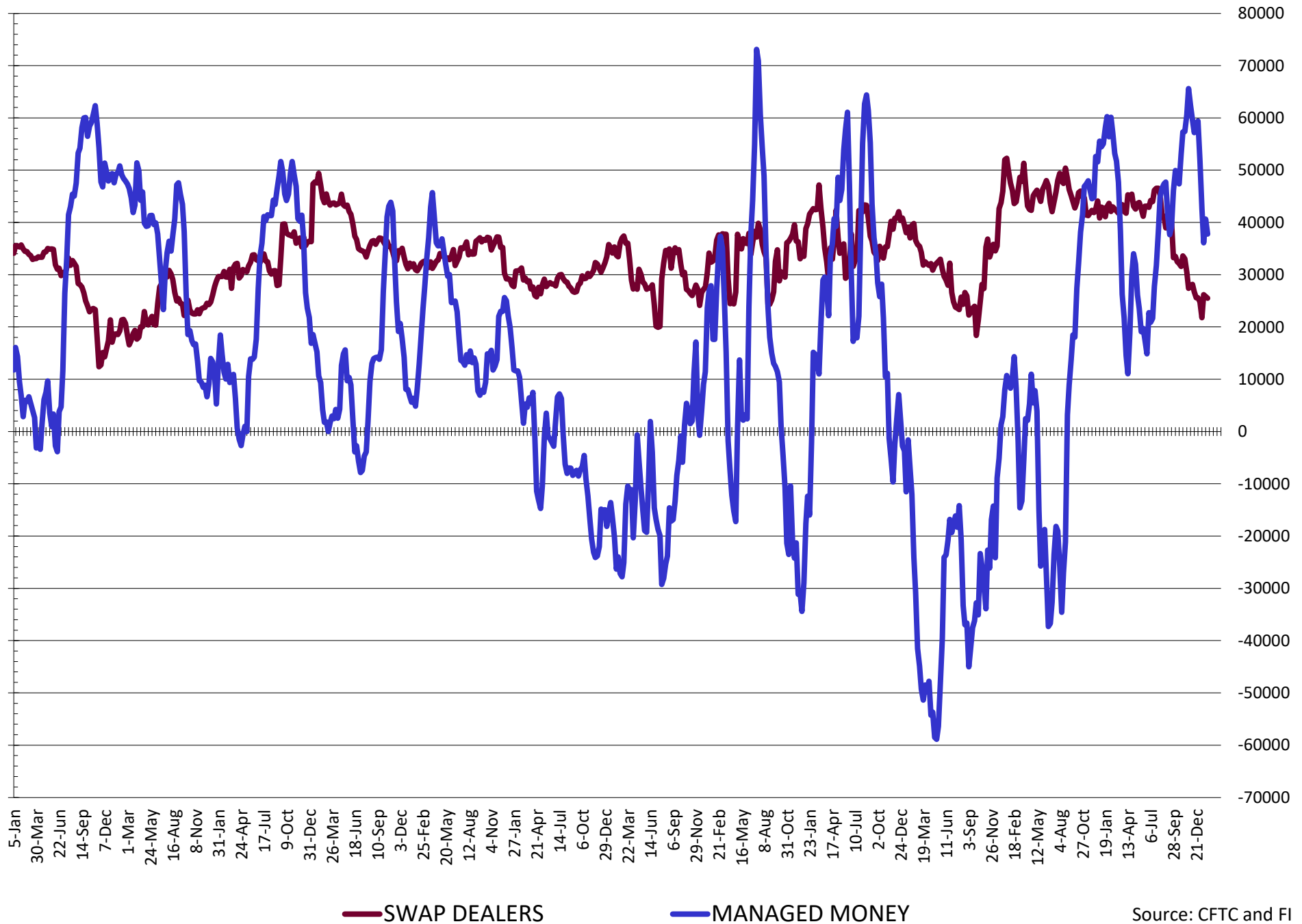


— SWAP DEALERS
 — MANAGED MONEY
 — Cc2 (LHS)

NET POSITION FUTURES AND OPTIONS OF SWAP AND MANAGED FUNDS IN CHICAGO WHEAT

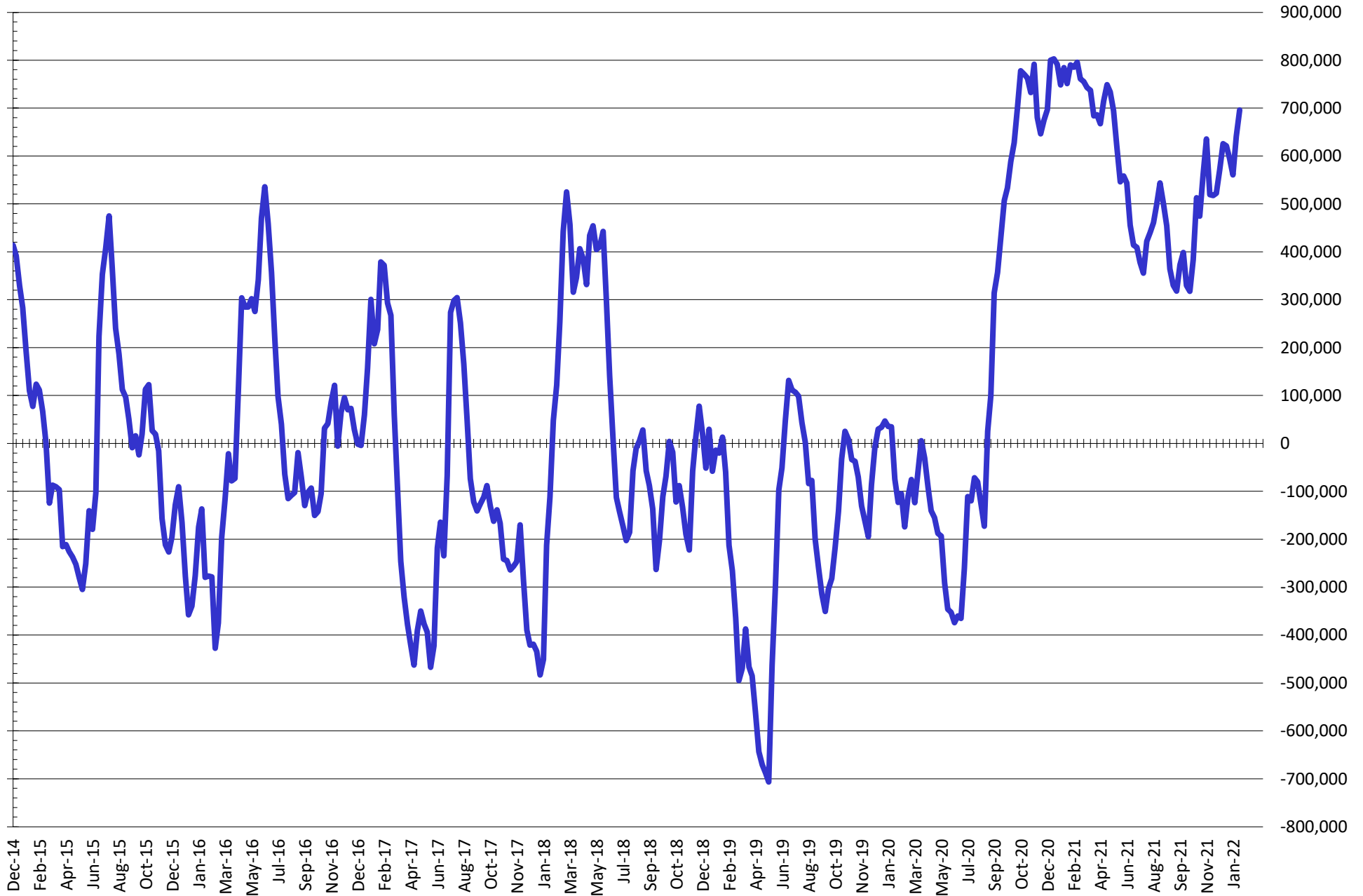


NET POSITION FUTURES AND OPTIONS OF SWAP DEALERS AND MANAGED FUNDS IN KANSAS WHEAT



Source: CFTC and FI
2/4/2022

NET POSITION FUTURES AND OPTIONS OF SWAP AND MANAGED FUNDS IN COMBINED SRW, HRW, CORN, SOYBEANS, SOYMEAL AND SOYOIL



— Net Managed Money

Source: CFTC and FI
2/4/2022

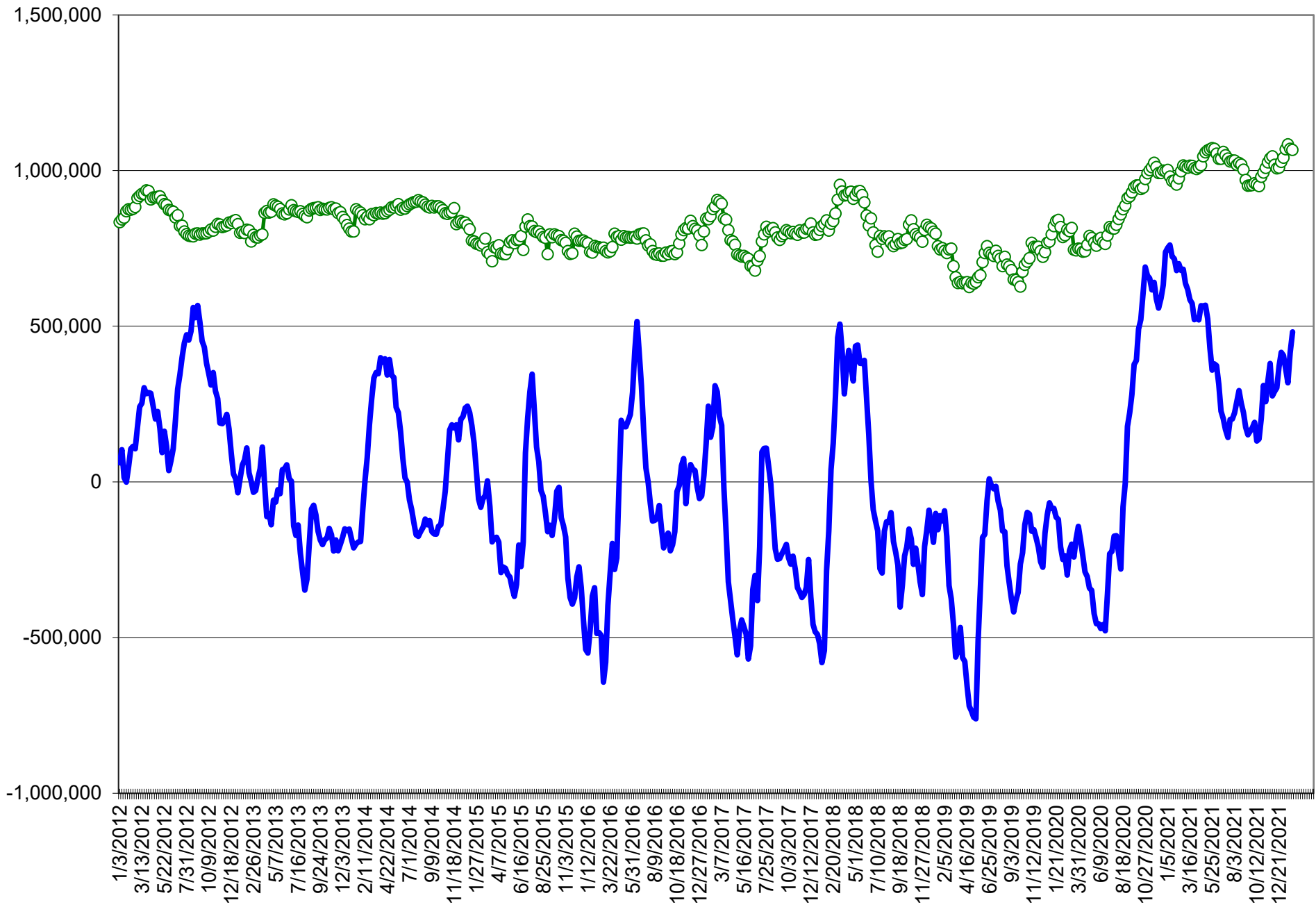
COMMITMENT OF TRADERS
FUTURES & OPTIONS NET POSITIONS (INDEX BROKEN OUT)
AS OF 02/01/2022
(IN THOUSAND CONTRACTS)

	COMMERCIAL				(FUND) NON COMMERCIAL				(SPEC) NON-REPORTABLE			
	1-Feb	25-Jan	18-Jan	11-Jan	1-Feb	25-Jan	18-Jan	11-Jan	1-Feb	25-Jan	18-Jan	11-Jan
	WHEAT											
Chicago	(88.8)	(97.1)	(86.5)	(78.4)	(46.5)	(33.0)	(42.1)	(45.2)	(4.4)	(8.1)	(9.2)	(9.7)
Kansas City	(71.8)	(72.6)	(69.8)	(74.2)	14.4	15.8	11.8	17.2	1.8	0.8	3.1	3.8
Minneapolis	-	-	-	-	-	-	-	-	-	-	-	-
All Wheat	(160.6)	(169.7)	(156.3)	(152.6)	(32.0)	(17.2)	(30.3)	(28.0)	(2.6)	(7.3)	(6.1)	(5.9)
CORN	(688.8)	(681.8)	(632.5)	(657.1)	289.3	276.5	224.8	240.2	(36.1)	(37.2)	(34.4)	(28.7)
OATS	-	-	-	-	-	-	-	-	-	-	-	-
SOYBEANS	(284.6)	(243.8)	(237.9)	(243.9)	132.5	89.7	71.3	85.3	(39.8)	(37.0)	(38.7)	(35.0)
SOY OIL	(170.4)	(158.1)	(140.4)	(139.7)	38.1	27.5	12.0	10.4	13.3	11.1	9.5	10.0
SOY MEAL	(210.2)	(188.8)	(195.2)	(206.7)	53.7	38.1	40.3	54.8	31.9	28.4	30.0	28.7

	TOTAL OPEN INTEREST				(INDEX) COMMERCIAL INDEX TRADERS				(INDEX) % NET OF TOTAL OPEN INTEREST			
	1-Feb	25-Jan	18-Jan	11-Jan	1-Feb	25-Jan	18-Jan	11-Jan	1-Feb	25-Jan	18-Jan	11-Jan
	WHEAT											
Chicago	492,052	498,029	468,778	455,595	139.7	138.2	137.8	133.3	28.4%	27.8%	29.4%	29.3%
Kansas City	246,168	242,083	239,872	242,770	55.5	56.1	54.9	53.2	22.6%	23.2%	22.9%	21.9%
Minneapolis	-	-	-	-	-	-	-	-	-	-	-	-
All Wheat	738,220	740,112	708,650	698,365	195.2	194.3	192.8	186.5	26.4%	26.2%	27.2%	26.7%
CORN	1,979,521	1,903,794	1,828,316	1,861,529	435.6	442.4	442.2	445.6	22.0%	23.2%	24.2%	23.9%
OATS	-	-	-	-	-	-	-	-	-	-	-	-
SOYBEANS	1,006,519	883,842	841,473	833,968	191.9	191.1	205.3	193.6	19.1%	21.6%	24.4%	23.2%
SOY OIL	496,168	455,930	434,799	430,663	119.0	119.5	119.0	119.2	24.0%	26.2%	27.4%	27.7%
SOY MEAL	478,164	451,424	458,623	454,258	124.6	122.3	124.9	123.3	26.1%	27.1%	27.2%	27.1%

SOURCE: CFTC & FI

NET POSITION FUTURES AND OPTIONS OF SPECULATORS AND INDEX FUNDS IN COMBINED SRW, HRW, CORN, SOYBEANS, SOYMEAL AND SOYOIL



Source: CFTC and FI

○ Net Index

— Net Speculator