

# CFTC COMMITMENT OF TRADERS REPORT

As of 2/8/2022

## TRADITIONAL FUNDS net position changes

Wed to Tue, in 000 contracts

	Corn	Bean	Meal	Oil	Chi. Wheat	KC Wheat	Min Wheat
Futures Only	(35.6)	16.4	7.4	(8.4)	(3.9)	(2.0)	(0.2)
Futures & Options Combined	(35.6)	9.2	8.3	(8.6)	(4.2)	(2.2)	(0.1)

## TRADITIONAL COMMERCIAL net position changes

	Corn	Bean	Meal	Oil	Chi. Wheat	KC Wheat	Min Wheat
Futures Only	24.8	(20.5)	(5.6)	8.8	2.9	1.1	(1.0)
Futures & Options Combined	25.2	(13.3)	(6.5)	9.4	3.5	1.1	(1.0)

## MANAGED MONEY net position changes

	Corn	Bean	Meal	Oil	Chi. Wheat	KC Wheat	Min Wheat
Futures Only	(34.4)	14.9	10.9	(7.3)	(2.8)	(3.4)	(0.4)
Futures & Options Combined	(35.2)	11.8	11.4	(7.7)	(3.1)	(3.3)	(0.4)

## SWAP DEALERS net position changes

	Corn	Bean	Meal	Oil	Chi. Wheat	KC Wheat	Min Wheat
Futures Only	1.4	(7.5)	(1.5)	2.3	4.3	1.4	(0.1)
Futures & Options Combined	2.5	(7.4)	(2.0)	3.2	4.2	1.5	(0.1)

## PRODUCERS/END USERS net position changes

	Corn	Bean	Meal	Oil	Chi. Wheat	KC Wheat	Min Wheat
Futures Only	23.4	(13.0)	(4.1)	6.5	(1.5)	(0.2)	(1.0)
Futures & Options Combined	22.7	(5.9)	(4.4)	6.2	(0.6)	(0.4)	(1.0)

## INDEX net position changes

	Corn	Bean	Meal	Oil	Chi. Wheat	KC Wheat	Min Wheat
Futures & Options Combined	6.1	(4.1)	2.3	(0.0)	3.5	1.6	NA

## SUPPLEMENTAL NON-COMMERCIAL net position changes

	Corn	Bean	Meal	Oil	Chi. Wheat	KC Wheat	Min Wheat
Futures & Options Combined	(35.7)	7.0	6.3	(5.6)	(3.8)	(2.6)	NA

## OPEN INTEREST net position changes

Wed to Tue, in 000 contracts

	Corn	Bean	Meal	Oil	Chi. Wheat	KC Wheat	Min Wheat
Futures Only	6.4	36.3	20.0	(10.6)	(6.0)	(5.8)	0.0
Futures & Options Combined	18.5	72.2	32.2	(11.6)	(5.6)	(5.8)	0.3

Source: CFTC and FI

Wed to Tue, in 000 contracts

2/11/2022

**COMMITMENT OF TRADERS  
FUTURES ONLY NET POSITIONS  
AS OF 02/08/2022  
(IN THOUSAND CONTRACTS)**

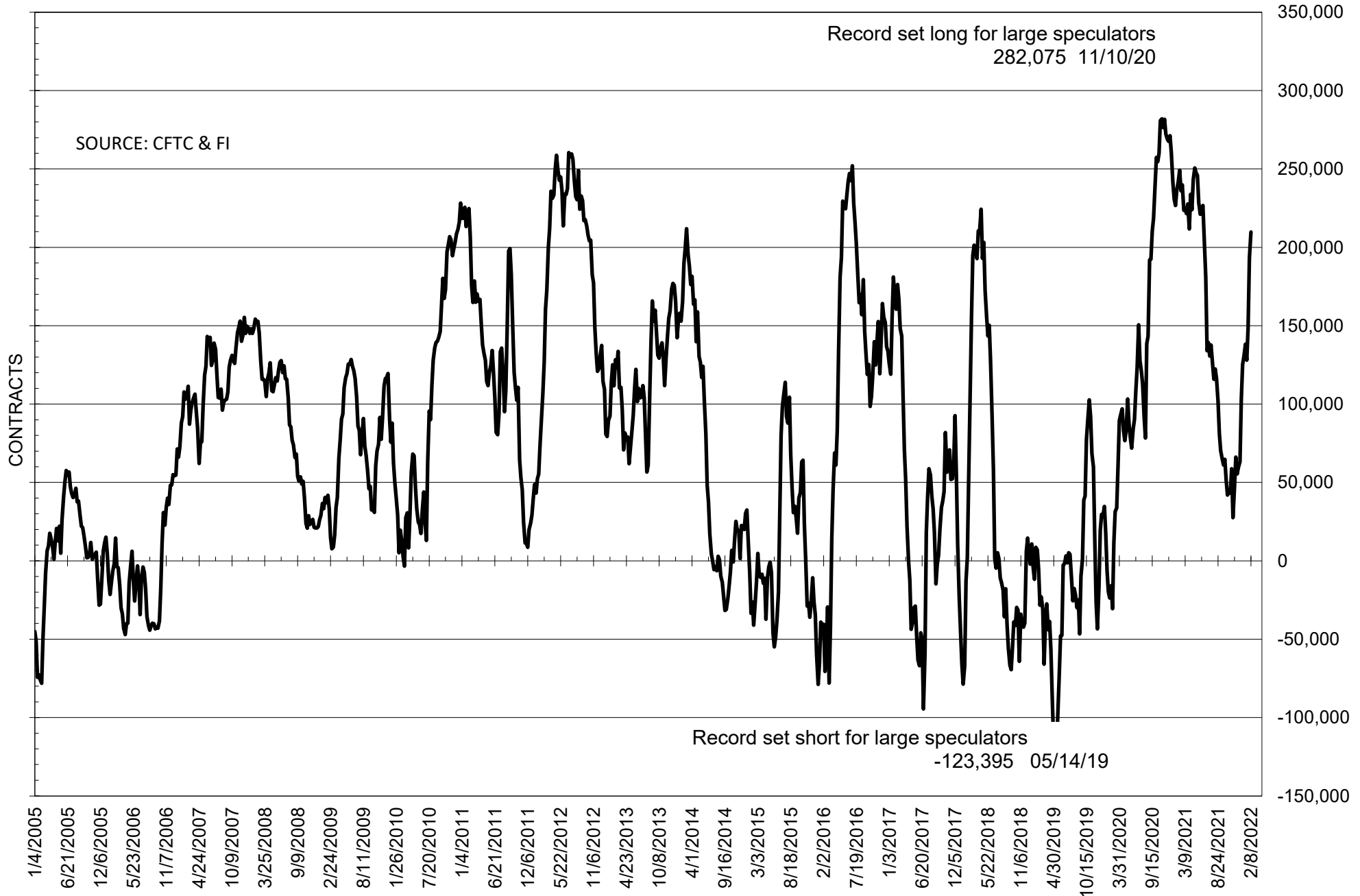
	COMMERCIAL				(FUND) NON COMMERCIAL				(SPEC) NON-REPORTABLE			
	8-Feb	1-Feb	25-Jan	18-Jan	8-Feb	1-Feb	25-Jan	18-Jan	8-Feb	1-Feb	25-Jan	18-Jan
	<b>WHEAT</b>											
Chicago	8.0	5.1	-3.5	5.2	-3.6	0.4	11.7	4.8	-4.4	-5.5	-8.1	-10.0
Kansas City	-34.9	-36.0	-34.8	-35.9	32.8	34.8	34.9	33.6	2.1	1.2	-0.1	2.3
Minneapolis	-13.7	-12.7	-12.5	-10.9	9.2	9.3	8.8	8.8	4.5	3.3	3.8	2.2
All Wheat	-40.6	-43.6	-50.9	-41.6	38.4	44.5	55.3	47.2	2.2	-0.9	-4.5	-5.5
<b>CORN</b>	-382.9	-407.7	-389.5	-342.7	419.6	455.2	439.1	388.1	-36.7	-47.6	-49.6	-45.5
<b>OATS</b>	#VALUE!	#VALUE!	#VALUE!	#VALUE!	#VALUE!	#####	#VALUE!	#VALUE!	#VALUE!	#VALUE!	#VALUE!	#VALUE!
<b>SOYBEANS</b>	-176.1	-155.6	-112.8	-92.2	209.7	193.4	148.9	128.0	-33.7	-37.8	-36.1	-35.8
<b>SOY OIL</b>	-77.8	-86.6	-78.4	-60.1	66.0	74.4	68.5	51.5	11.7	12.2	9.9	8.6
<b>SOY MEAL</b>	-132.5	-127.0	-104.4	-108.0	106.3	98.8	79.0	80.9	26.3	28.1	25.4	27.1

Oats positions thin to be reported

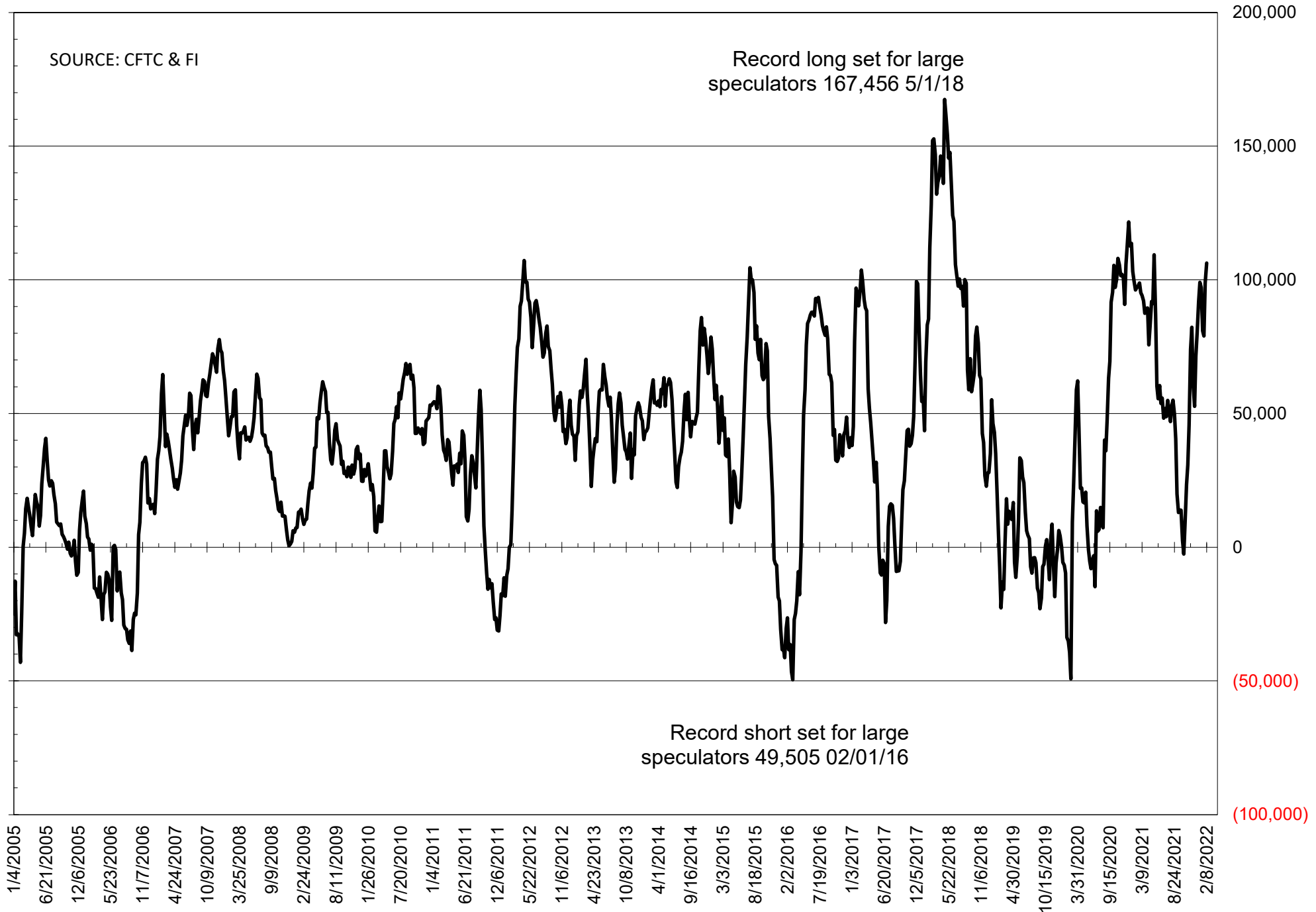
	TOTAL OPEN INTEREST				NEARBY FUTURES PRICE					8-Feb-22 LAST REPORTED % HELD BY TRADERS			
	8-Feb	1-Feb	25-Jan	18-Jan	H Latest	H 8-Feb	H 1-Feb	H 25-Jan	H 18-Jan	LARGE FUND		SMALL	
										LONG	SHORT	LONG	SHORT
<b>WHEAT</b>													
Chicago	385172	391162	390266	378456	797.75	778.75	769.00	818.00	769.00	0%	28%	0%	11%
Kansas City	212689	218513	211960	212141	824.25	801.25	786.25	834.50	772.75	0%	13%	0%	11%
Minneapolis	68004	67962	68398	67923	961.50	940.50	916.50	947.75	903.50	0%	7%	0%	18%
<b>CORN</b>	1575318	1568959	1539124	1487858	651.00	632.25	634.75	620.00	599.50	0%	6%	0%	12%
<b>OATS</b>	#VALUE!	#VALUE!	#VALUE!	#VALUE!	749.75	745.75	715.00	652.50	646.75	0%	#VALUE!	0%	#VALUE!
<b>SOYBEANS</b>	832618	796285	735966	692022	1583.00	1569.00	1528.50	1407.25	1361.25	31%	5%	7%	11%
<b>SOY OIL</b>	429012	439646	411832	392795	65.72	63.35	65.83	62.51	59.08	0%	10%	0%	6%
<b>SOY MEAL</b>	435938	415978	406335	411123	456.60	454.10	436.00	392.00	590.80	0%	5%	0%	5%

SOURCE: CFTC & FI

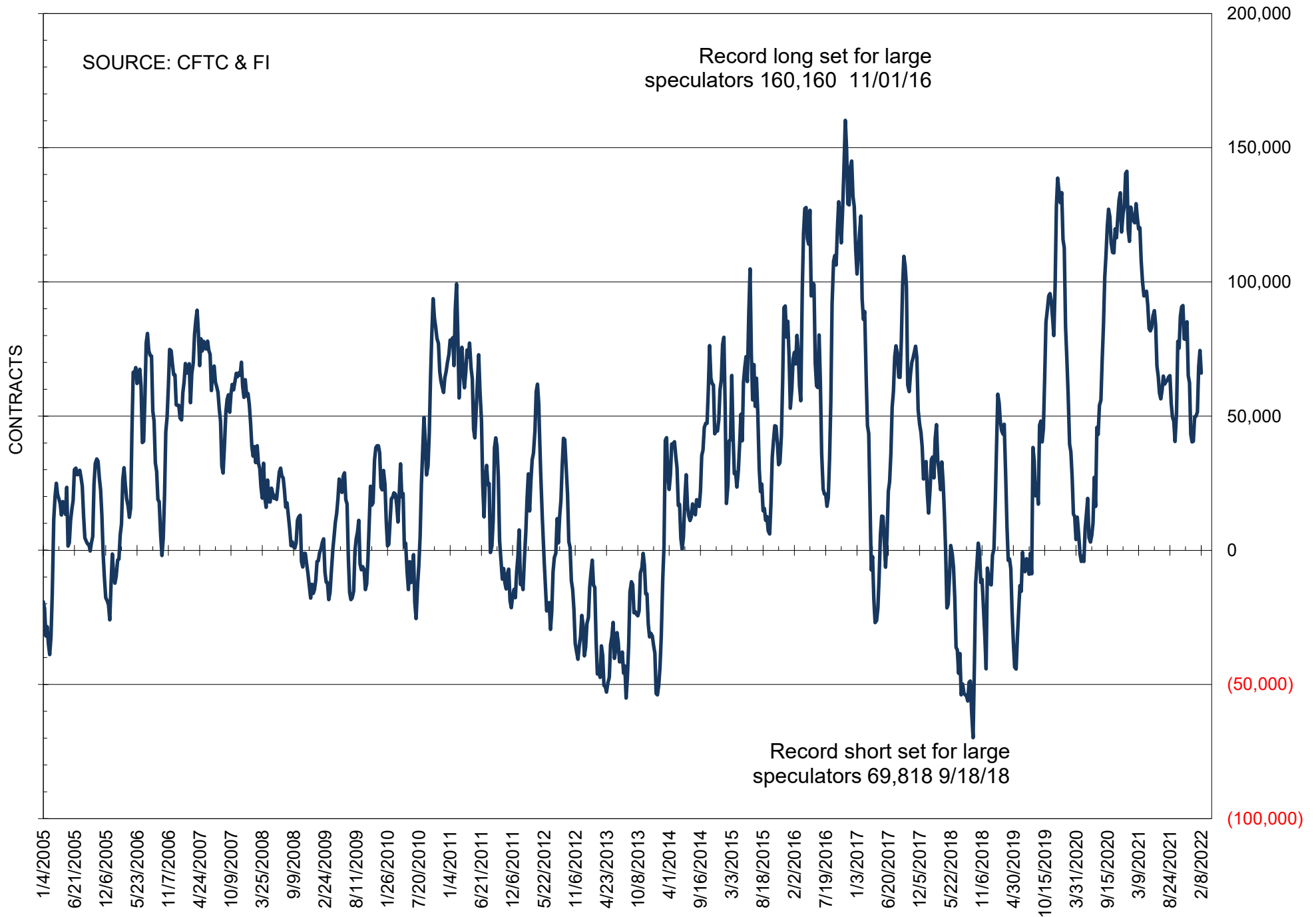
# NET POSITION OF FUTURES ONLY LARGE SPECS IN SOYBEANS



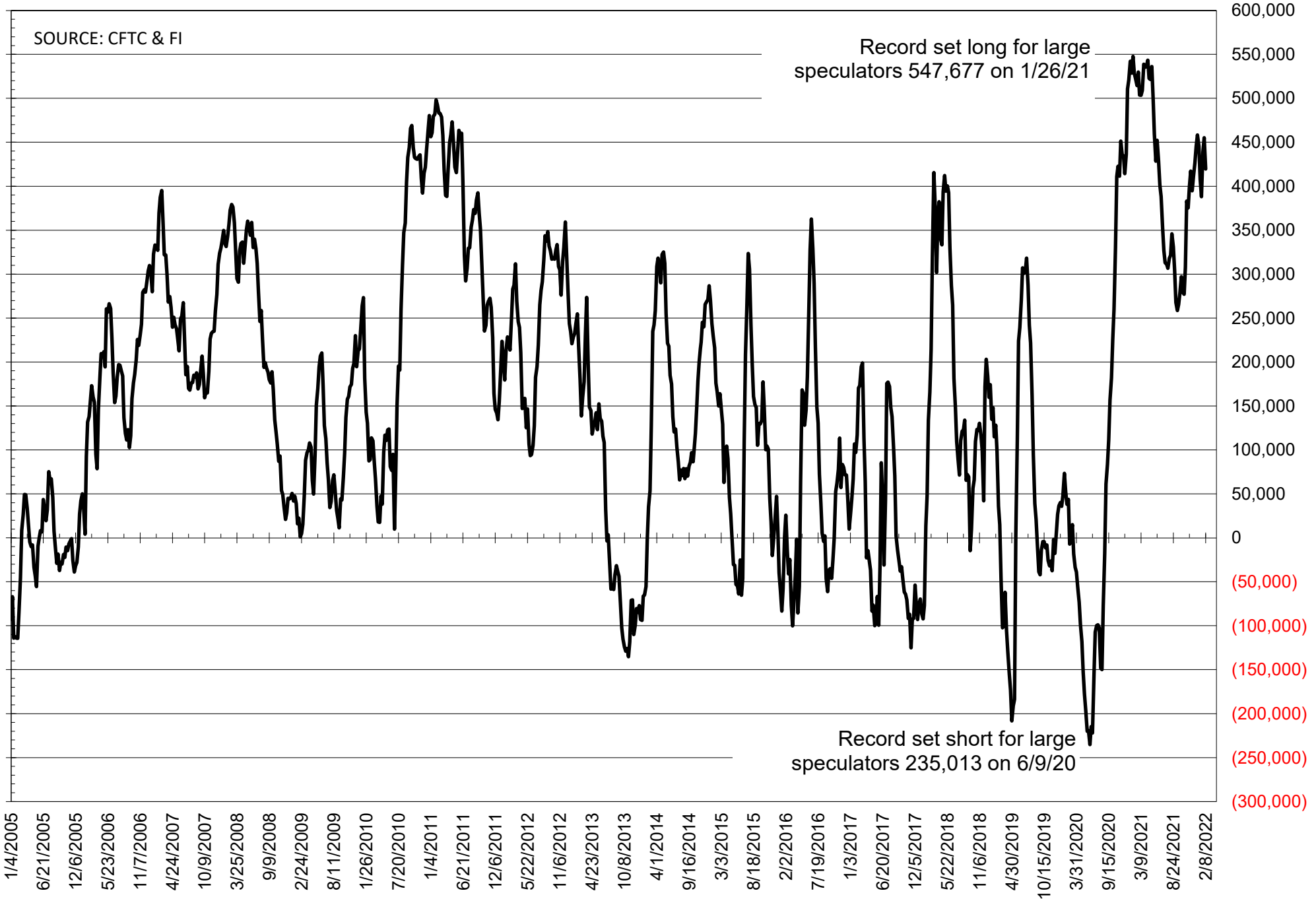
# NET POSITION OF FUTURES ONLY LARGE SPECS IN SOYMEAL



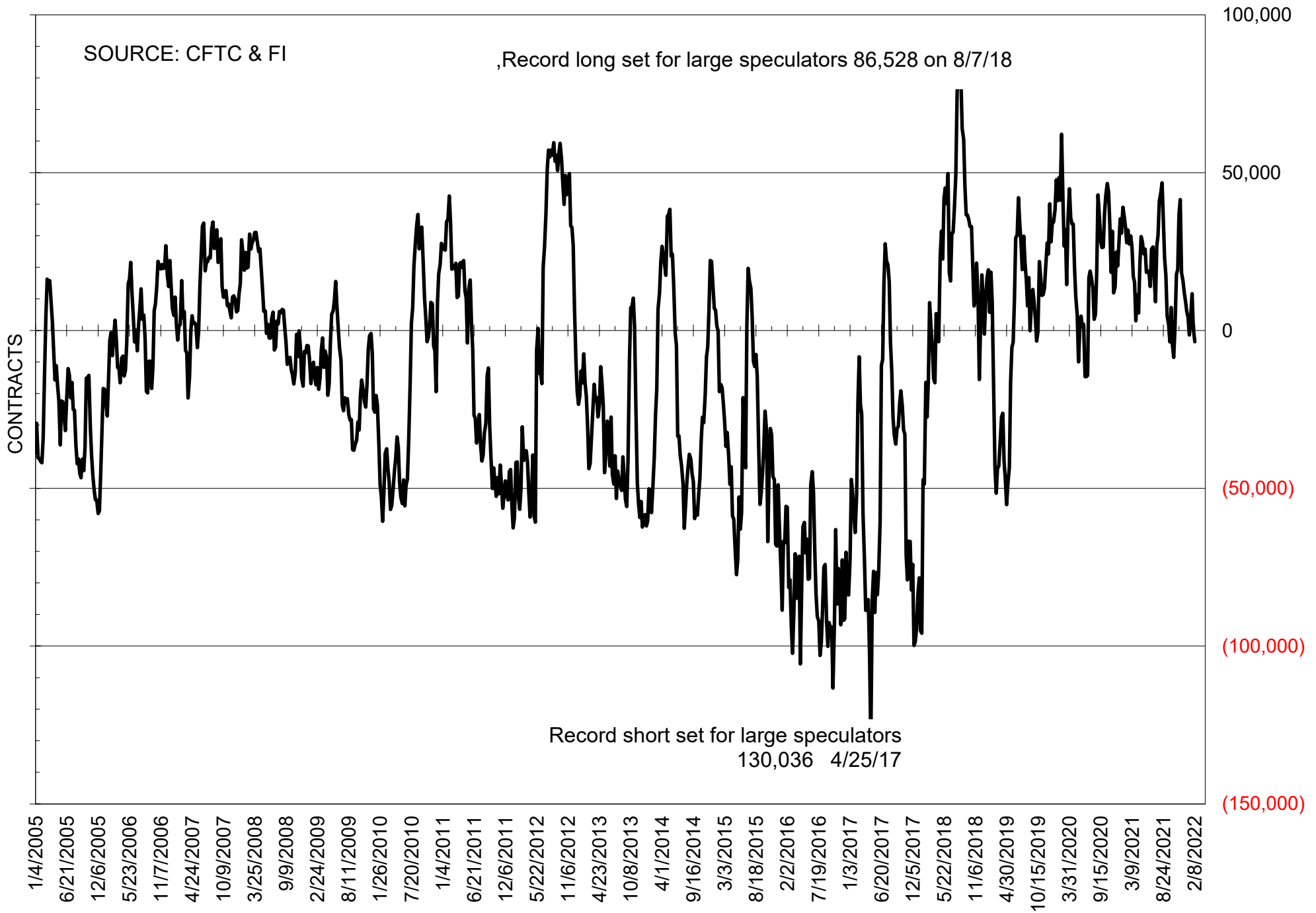
# NET POSITION OF FUTURES ONLY LARGE SPECS IN SOYOIL



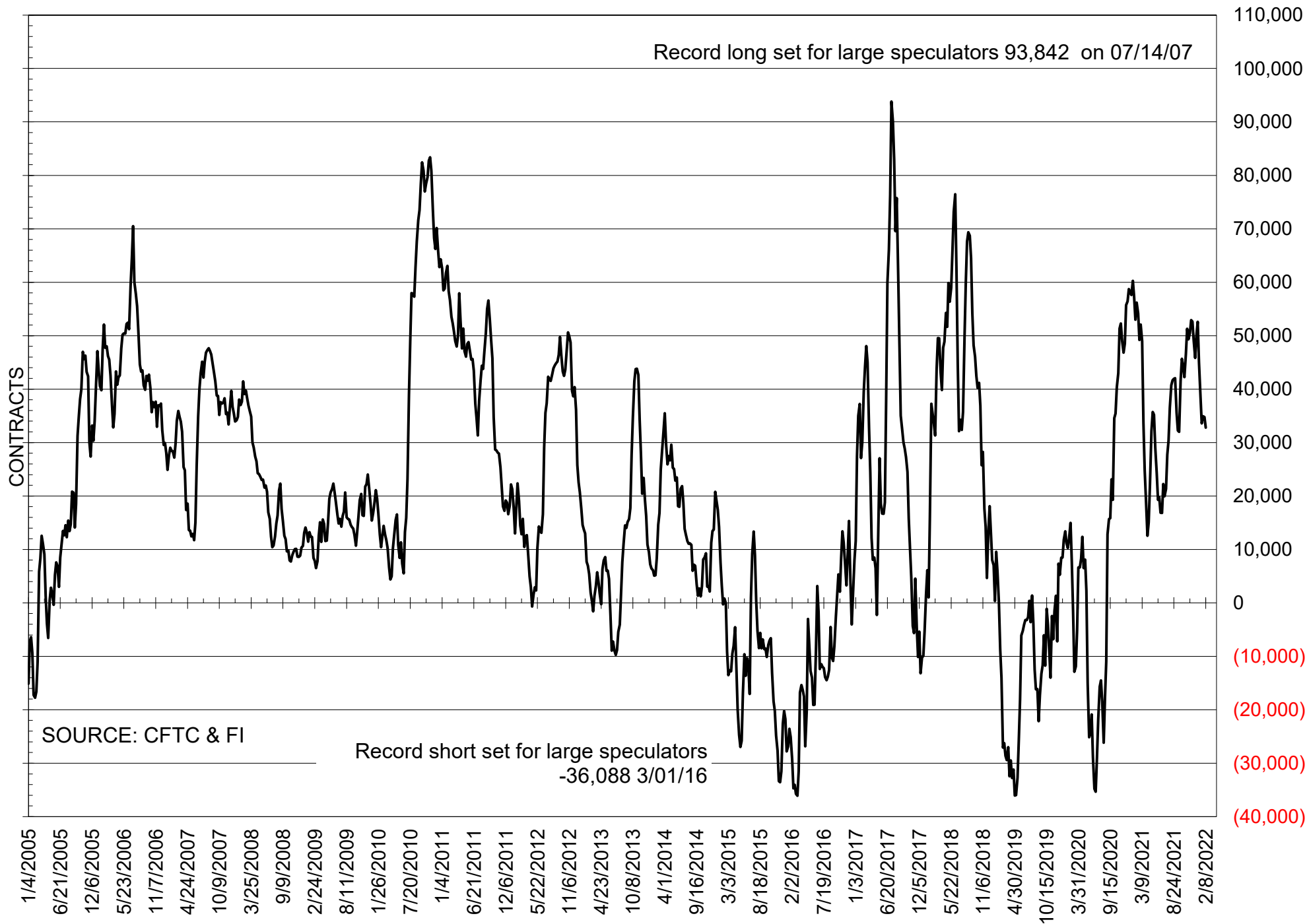
# NET POSITION OF LARGE SPECULATORS IN CORN



# NET POSITION OF FUTURES ONLY LARGE SPECS IN CHICAGO WHEAT

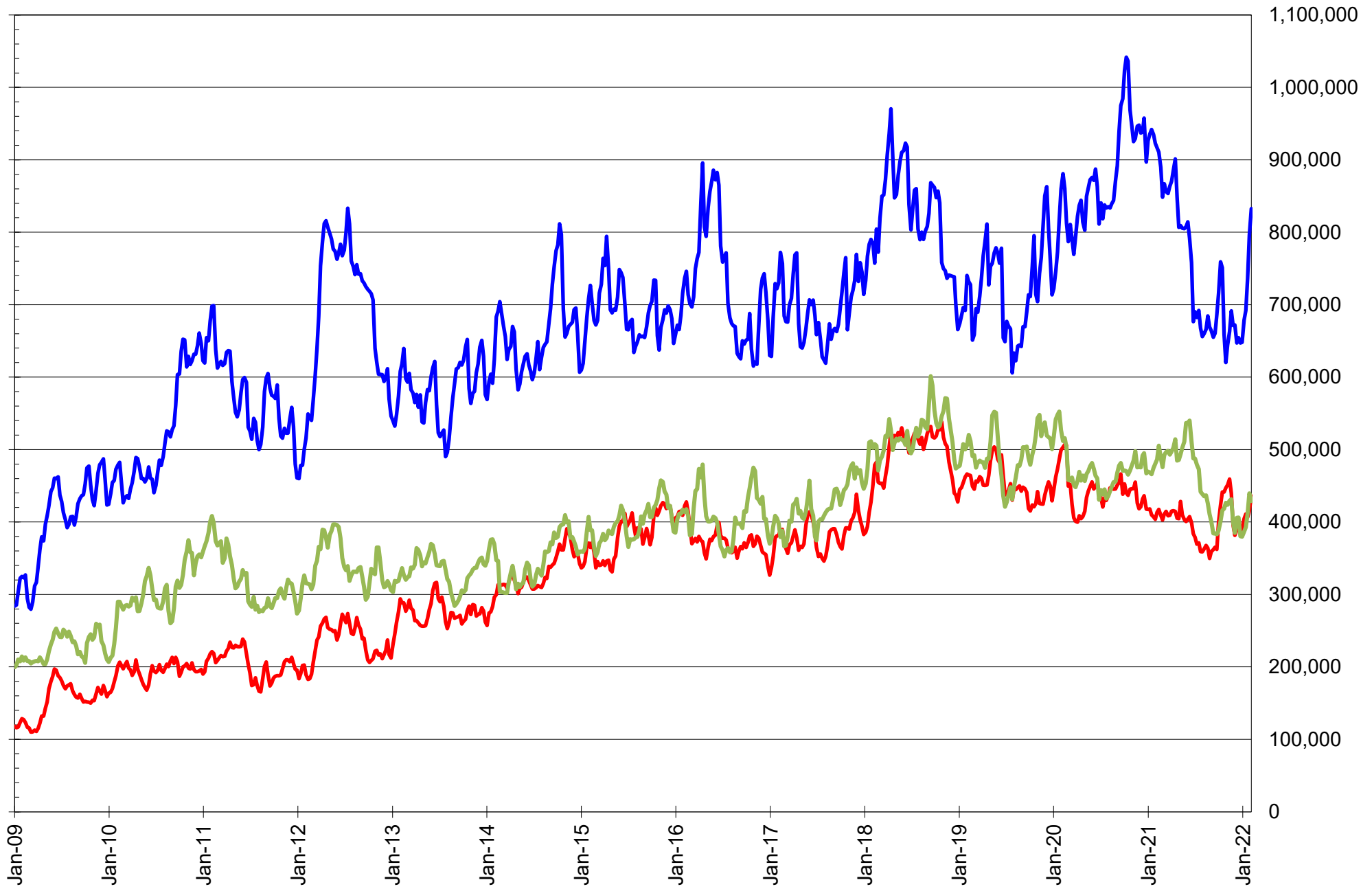


# NET POSITION OF LARGE SPECULATORS IN KANSAS CITY WHEAT





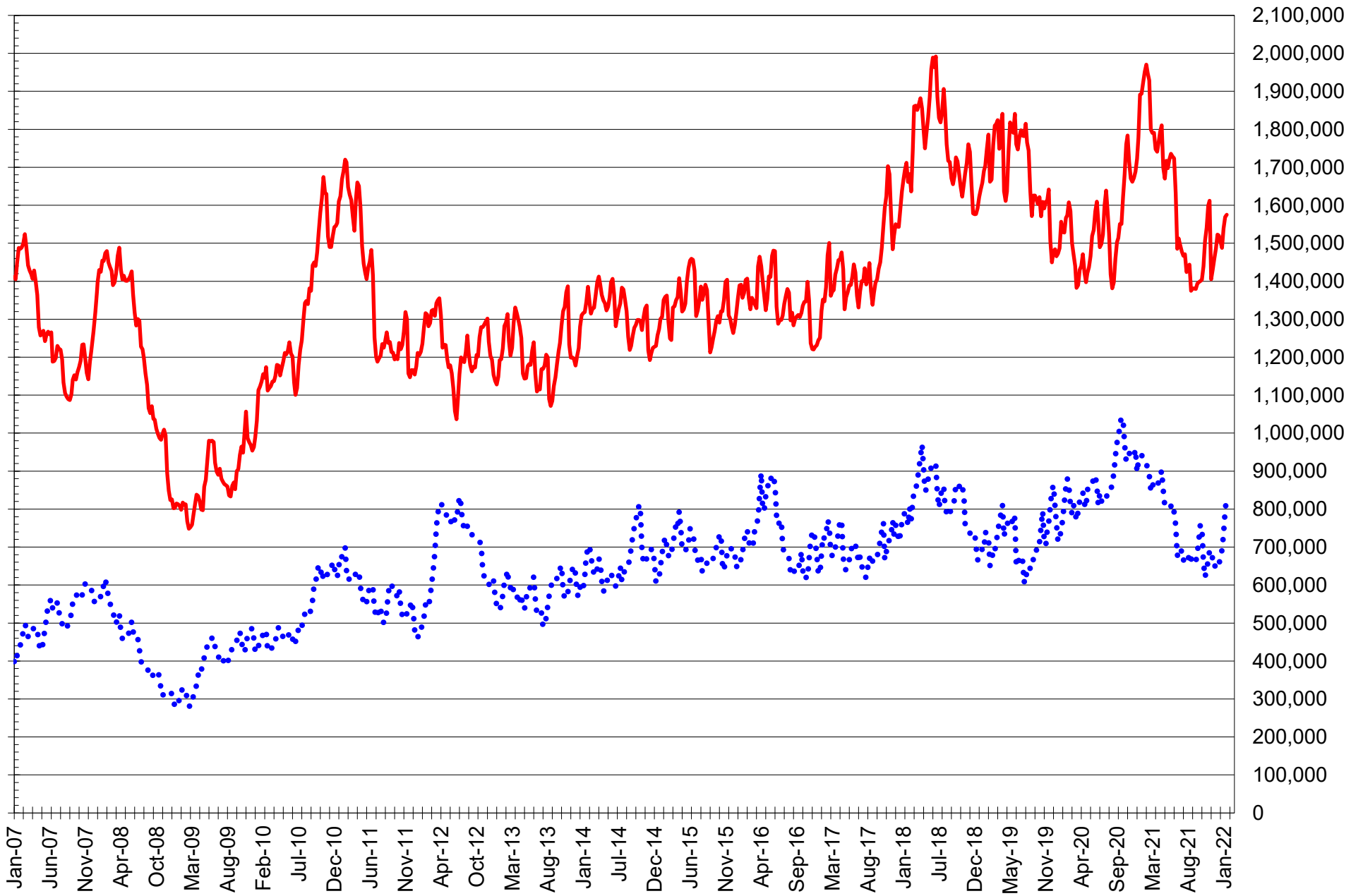
# TOTAL OPEN INTEREST IN SOYBEANS, MEAL AND OIL, FUTURES ONLY



SOURCE: CFTC & FI

— SOYBEANS — SOYBEAN MEAL — SOYBEAN OIL

# TOTAL OPEN INTEREST IN CORN AND SOYBEANS, FUTURES ONLY



SOURCE: CFTC & FI

— CORN

•••• SOYBEANS

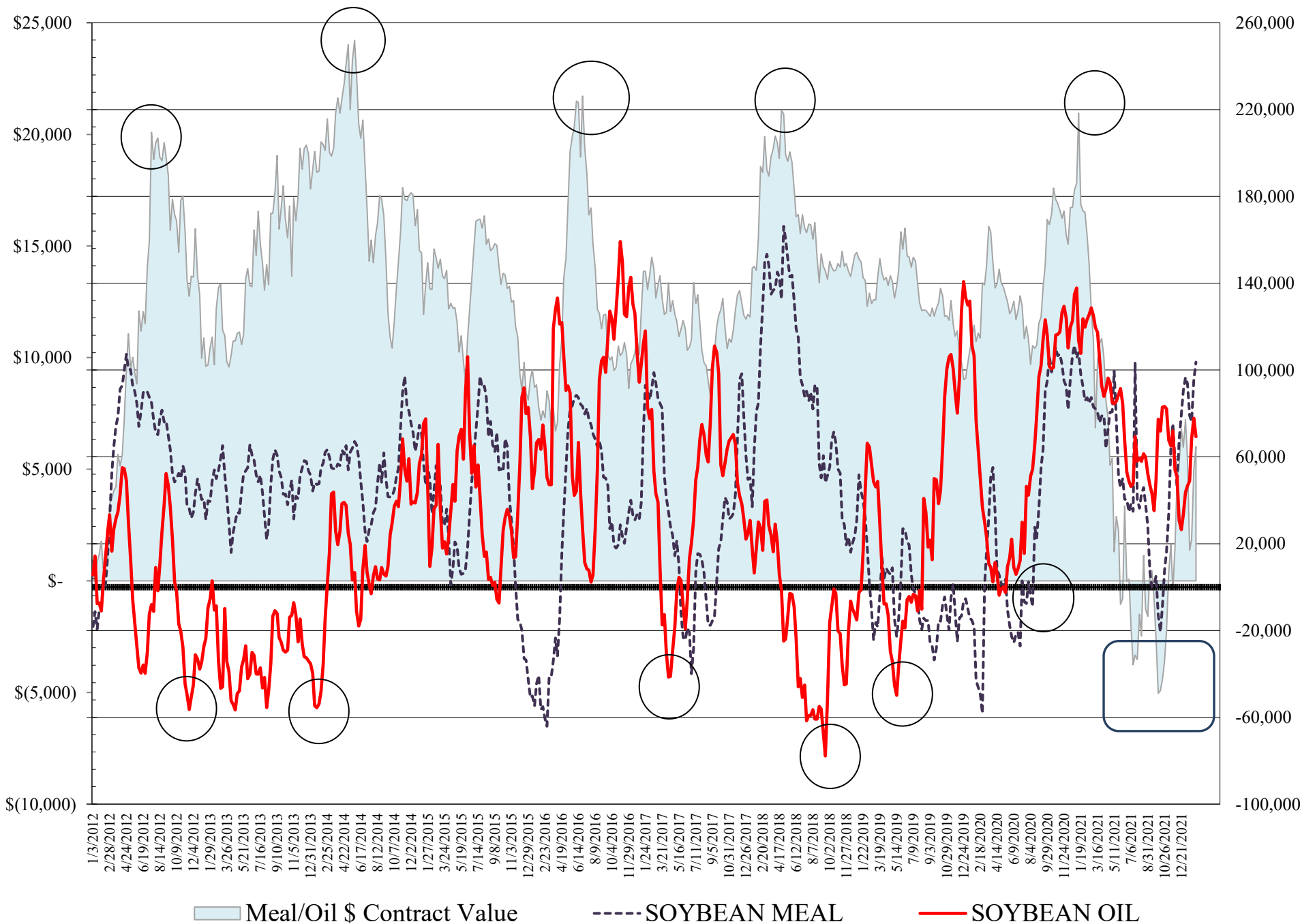
**COMMITMENT OF TRADERS  
FUTURES & OPTIONS NET POSITIONS  
AS OF 02/08/2022  
(IN THOUSAND CONTRACTS)**

	COMMERCIAL				(FUND) NON COMMERCIAL				(SPEC) NON-REPORTABLE			
	8-Feb	1-Feb	25-Jan	18-Jan	8-Feb	1-Feb	25-Jan	18-Jan	8-Feb	1-Feb	25-Jan	18-Jan
<b>WHEAT</b>												
Chicago	20.7	17.2	7.3	19.5	-17.0	-12.8	0.8	-10.3	-3.7	-4.4	-8.1	-9.2
Kansas City	-34.8	-35.9	-36.6	-33.6	31.9	34.1	35.8	30.5	2.9	1.8	0.8	3.1
Minneapolis	-12.4	-11.3	-11.4	-9.4	7.5	7.6	7.2	6.9	4.9	3.7	4.2	2.5
All Wheat	-26.5	-30.1	-40.7	-23.5	22.4	29.0	43.8	27.1	4.1	1.2	-3.1	-3.6
<b>CORN</b>	-384.2	-409.4	-386.9	-339.1	409.9	445.5	424.1	373.5	-25.7	-36.1	-37.2	-34.4
<b>OATS</b>	#VALUE!	#VALUE!	#VALUE!	#VALUE!	#VALUE!	#VALUE!	#VALUE!	#VALUE!	#VALUE!	#VALUE!	#VALUE!	#VALUE!
<b>SOYBEANS</b>	-169.2	-156.0	-112.7	-89.4	205.0	195.8	149.7	128.2	-35.8	-39.8	-37.0	-38.7
<b>SOY OIL</b>	-81.7	-91.1	-79.3	-58.4	69.3	77.8	68.3	48.9	12.4	13.3	11.1	9.5
<b>SOY MEAL</b>	-133.7	-127.2	-104.6	-109.0	103.6	95.3	76.2	79.0	30.1	31.9	28.4	30.0

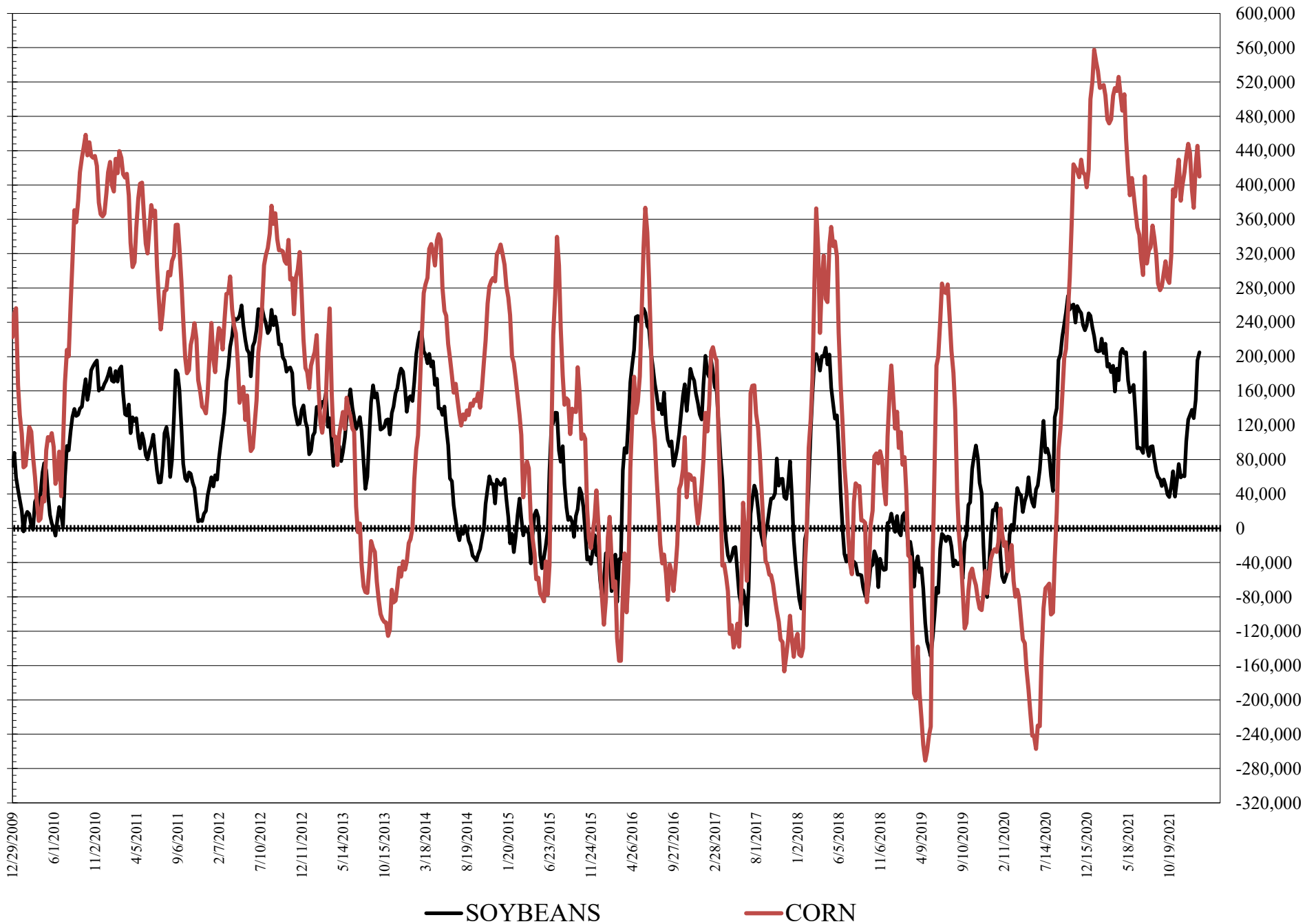
	TOTAL OPEN INTEREST				COMMERCIALS		% HELD BY TRADERS LARGE (FUNDS)		SMALL (NON-REP)	
	8-Feb	1-Feb	25-Jan	18-Jan	LONG	SHORT	LONG	SHORT	LONG	SHORT
<b>WHEAT</b>										
Chicago	486,477	492,052	498,029	468,778			18%	22%	8%	9%
Kansas City	240,374	246,168	242,083	239,872			25%	12%	12%	11%
Minneapolis	72,269	71,980	72,609	71,926			16%	6%	24%	17%
<b>CORN</b>	1,998,012	1,979,521	1,903,794	1,828,316			25%	5%	10%	11%
<b>OATS</b>	#VALUE!	#VALUE!	#VALUE!	#VALUE!						
<b>SOYBEANS</b>	1,078,690	1,006,519	883,842	841,473			23%	4%	6%	10%
<b>SOY OIL</b>	484,568	496,168	455,930	434,799			22%	8%	8%	6%
<b>SOY MEAL</b>	510,347	478,164	451,424	458,623			24%	4%	11%	5%

SOURCE: CFTC & FI

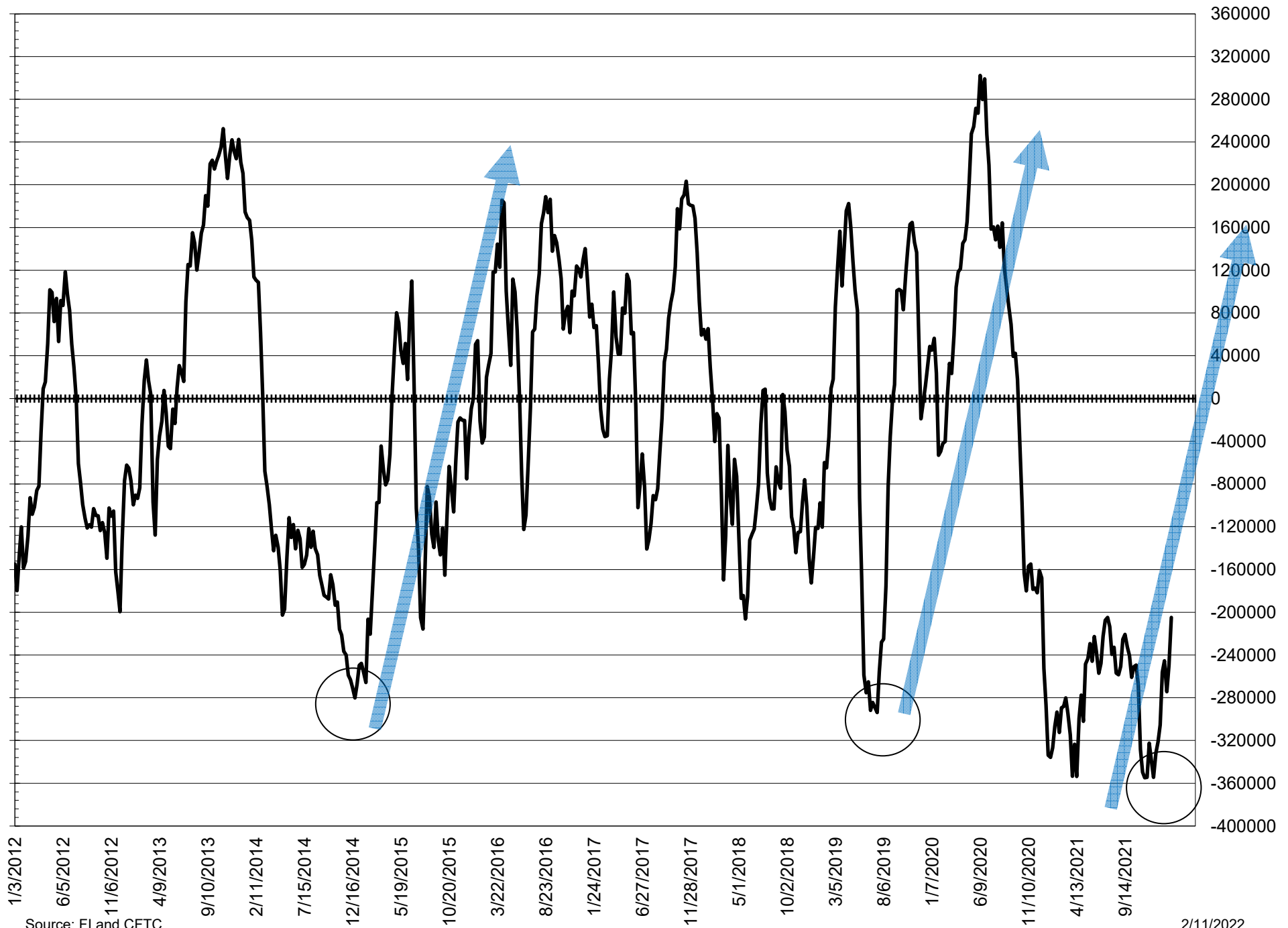
# NET POSITION FUTURES AND OPTIONS OF LARGE SPECULATORS IN SOYBEAN MEAL AND SOYBEAN OIL



# NET POSITION FUTURES AND OPTIONS OF LARGE SPECULATORS IN SOYBEANS AND CORN



# NET POSITION FUTURES AND OPTIONS SPREAD OF LARGE SPECULATORS IN SOYBEANS MINUS CORN



Source: FI and CFTC

2/11/2022

**DISAGGREGATED COMMITMENT OF TRADERS**  
**FUTURES ONLY NET POSITIONS**  
**AS OF 02/08/2022**  
(IN THOUSAND CONTRACTS)

	PRODUCER / MERCHANT / PROCESSOR / USER				(INDEX/ETF) SWAP DEALERS				(CTA/CPO/OTHER UNREGISTERED) MANAGED MONEY			
	8-Feb	1-Feb	25-Jan	18-Jan	8-Feb	1-Feb	25-Jan	18-Jan	8-Feb	1-Feb	25-Jan	18-Jan
	WHEAT											
Chicago	(84.1)	(82.7)	(90.0)	(85.9)	92.1	87.8	86.4	91.1	(32.0)	(29.1)	(15.2)	(28.4)
Kansas City	(62.0)	(61.8)	(62.0)	(62.7)	27.1	25.8	27.2	26.8	34.0	37.4	39.4	35.4
Minneapolis	(16.3)	(15.4)	(14.8)	(13.2)	2.6	2.7	2.3	2.3	3.6	4.0	3.3	3.9
All Wheat	(162.5)	(159.8)	(166.8)	(161.8)	121.9	116.2	115.9	120.2	5.7	12.2	27.5	10.8
CORN	(674.0)	(697.4)	(692.3)	(644.7)	291.2	289.8	302.9	302.0	334.5	368.8	360.1	318.9
OATS	-	-	-	-	-	-	-	-	-	-	-	-
SOYBEANS	(315.2)	(302.2)	(263.7)	(254.2)	139.1	146.6	150.9	162.0	164.3	149.4	108.0	98.5
SOY OIL	(167.6)	(174.1)	(167.5)	(149.9)	89.9	87.5	89.1	89.8	71.6	78.9	66.9	56.2
SOY MEAL	(228.2)	(224.1)	(205.2)	(209.1)	95.7	97.2	100.8	101.1	88.5	77.6	64.7	65.0

	Managed % of OI			
Chicago W	-8%	-7%	-4%	-8%
Corn	21%	24%	23%	21%

	TOTAL OPEN INTEREST				OTHER REPORTABLE				NON REPORTABLE			
	8-Feb	1-Feb	25-Jan	18-Jan	8-Feb	1-Feb	25-Jan	18-Jan	8-Feb	1-Feb	25-Jan	18-Jan
	WHEAT											
Chicago	385,172	391,162	390,266	378,456	28.4	29.5	26.9	33.2	(4.4)	(5.5)	(8.1)	(10.0)
Kansas City	212,689	218,513	211,960	212,141	(1.2)	(2.6)	(4.5)	(1.8)	2.1	1.2	(0.1)	2.3
Minneapolis	68,004	67,962	68,398	67,923	5.6	5.4	5.4	4.9	4.5	3.3	3.8	2.2
All Wheat	665,865	677,637	670,624	658,520	32.7	32.2	27.8	36.3	2.2	(0.9)	(4.5)	(5.5)
CORN	1,575,318	1,568,959	1,539,124	1,487,858	85.2	86.4	79.0	69.2	(36.7)	(47.6)	(49.6)	(45.5)
OATS	-	-	-	-	-	-	-	-	-	-	-	-
SOYBEANS	832,618	796,285	735,966	692,022	45.4	43.9	40.9	29.6	(33.7)	(37.8)	(36.1)	(35.8)
SOY OIL	429,012	439,646	411,832	392,795	(5.5)	(4.5)	1.6	(4.7)	11.7	12.2	9.9	8.6
SOY MEAL	435,938	415,978	406,335	411,123	17.8	21.3	14.3	15.9	26.3	28.1	25.4	27.1

SOURCE: CFTC & FI

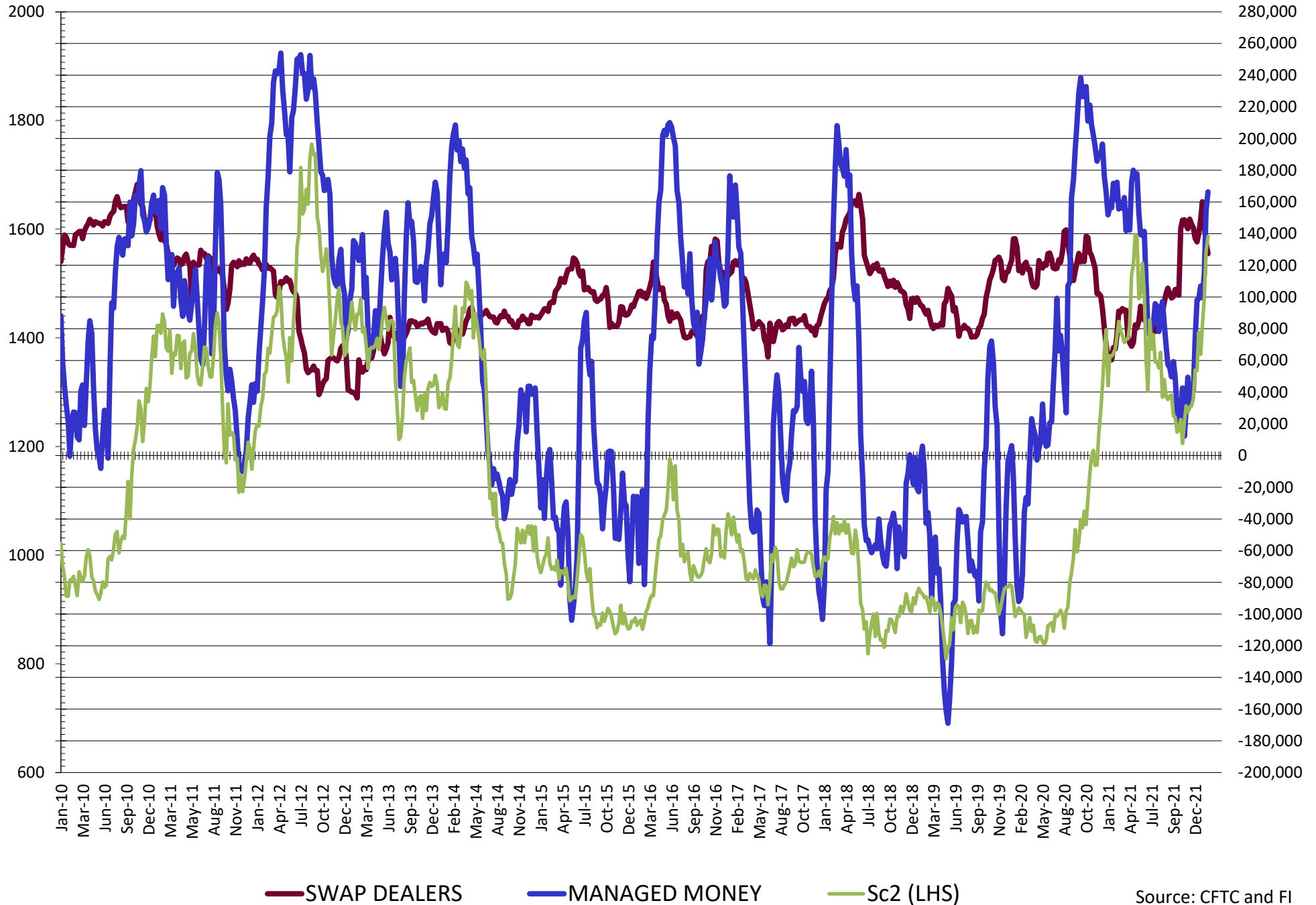
**DISAGGREGATED COMMITMENT OF TRADERS  
FUTURES & OPTIONS NET POSITIONS  
AS OF 02/08/2022  
(IN THOUSAND CONTRACTS)**

	PRODUCER / MERCHANT / PROCESSOR / USER				(INDEX/ETF) SWAP DEALERS				(CTA/CPO/OTHER UNREGISTERED) MANAGED MONEY			
	8-Feb	1-Feb	25-Jan	18-Jan	8-Feb	1-Feb	25-Jan	18-Jan	8-Feb	1-Feb	25-Jan	18-Jan
	WHEAT											
Chicago	(72.9)	(72.3)	(80.8)	(72.9)	93.6	89.4	88.2	92.4	(29.6)	(26.5)	(13.4)	(24.9)
Kansas City	(61.8)	(61.4)	(62.5)	(59.8)	27.0	25.5	25.8	26.2	34.5	37.8	40.6	36.1
Minneapolis	(14.7)	(13.8)	(13.3)	(11.4)	2.4	2.4	1.9	2.0	3.6	4.0	3.3	3.9
All Wheat	(149.5)	(147.5)	(156.6)	(144.0)	123.0	117.4	116.0	120.5	8.5	15.3	30.5	15.1
CORN	(662.9)	(685.6)	(678.3)	(630.8)	278.7	276.2	291.4	291.7	337.3	372.6	365.6	326.5
OATS	0.0	0.0	0.0	0.0	0.0	0.0	0.0	0.0	0.0	0.0	0.0	0.0
SOYBEANS	(296.5)	(290.7)	(257.1)	(249.5)	127.3	134.7	144.4	160.1	166.3	154.5	114.9	99.6
SOY OIL	(171.3)	(177.5)	(167.5)	(147.3)	89.6	86.4	88.1	88.9	72.8	80.5	68.8	58.2
SOY MEAL	(226.7)	(222.2)	(204.7)	(209.1)	93.0	95.0	100.1	100.1	88.1	76.7	64.3	64.7
	TOTAL				OTHER REPORTABLE				NON REPORTABLE			
	OPEN INTEREST				8-Feb				18-Jan			
	8-Feb	1-Feb	25-Jan	18-Jan	8-Feb	1-Feb	25-Jan	18-Jan	8-Feb	1-Feb	25-Jan	18-Jan
WHEAT												
Chicago	486,477	492,052	498,029	468,778	12.5	13.7	14.2	14.6	(3.7)	(4.4)	(8.1)	(9.2)
Kansas City	240,374	246,168	242,083	239,872	(2.6)	(3.7)	(4.8)	(5.6)	2.9	1.8	0.8	3.1
Minneapolis	72,269	71,980	72,609	71,926	3.9	3.6	3.8	3.0	4.9	3.7	4.2	2.5
All Wheat	799,120	810,200	812,721	780,576	13.9	13.6	13.2	12.0	4.1	1.2	(3.1)	(3.6)
CORN	1,998,012	1,979,521	1,903,794	1,828,316	72.6	73.0	58.5	47.0	(25.7)	(36.1)	(36.1)	(36.1)
OATS	0	0	0	0	0.0	0.0	0.0	0.0	0.0	0.0	0.0	0.0
SOYBEANS	1,078,690	1,006,519	883,842	841,473	38.7	41.3	34.8	28.5	(35.8)	(39.8)	(37.0)	(38.7)
SOY OIL	484,568	496,168	455,930	434,799	(3.5)	(2.7)	(0.5)	(9.3)	12.4	13.3	11.1	9.5
SOY MEAL	510,347	478,164	451,424	458,623	15.5	18.6	11.9	14.3	30.1	31.9	28.4	30.0

SOURCE: CFTC & FI

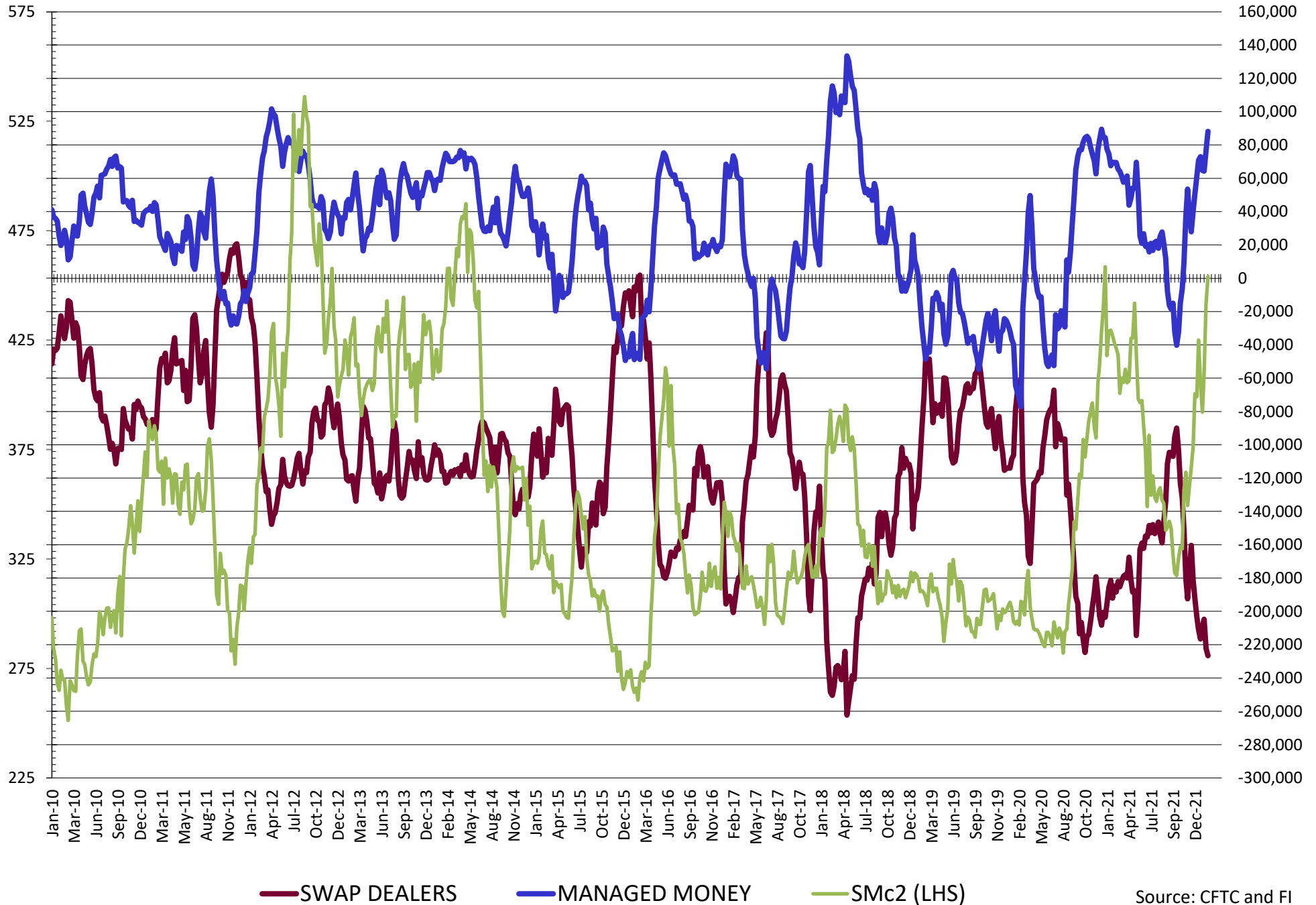


# NET POSITION FUTURES AND OPTIONS OF SWAP AND MANAGED FUNDS IN SOYBEANS

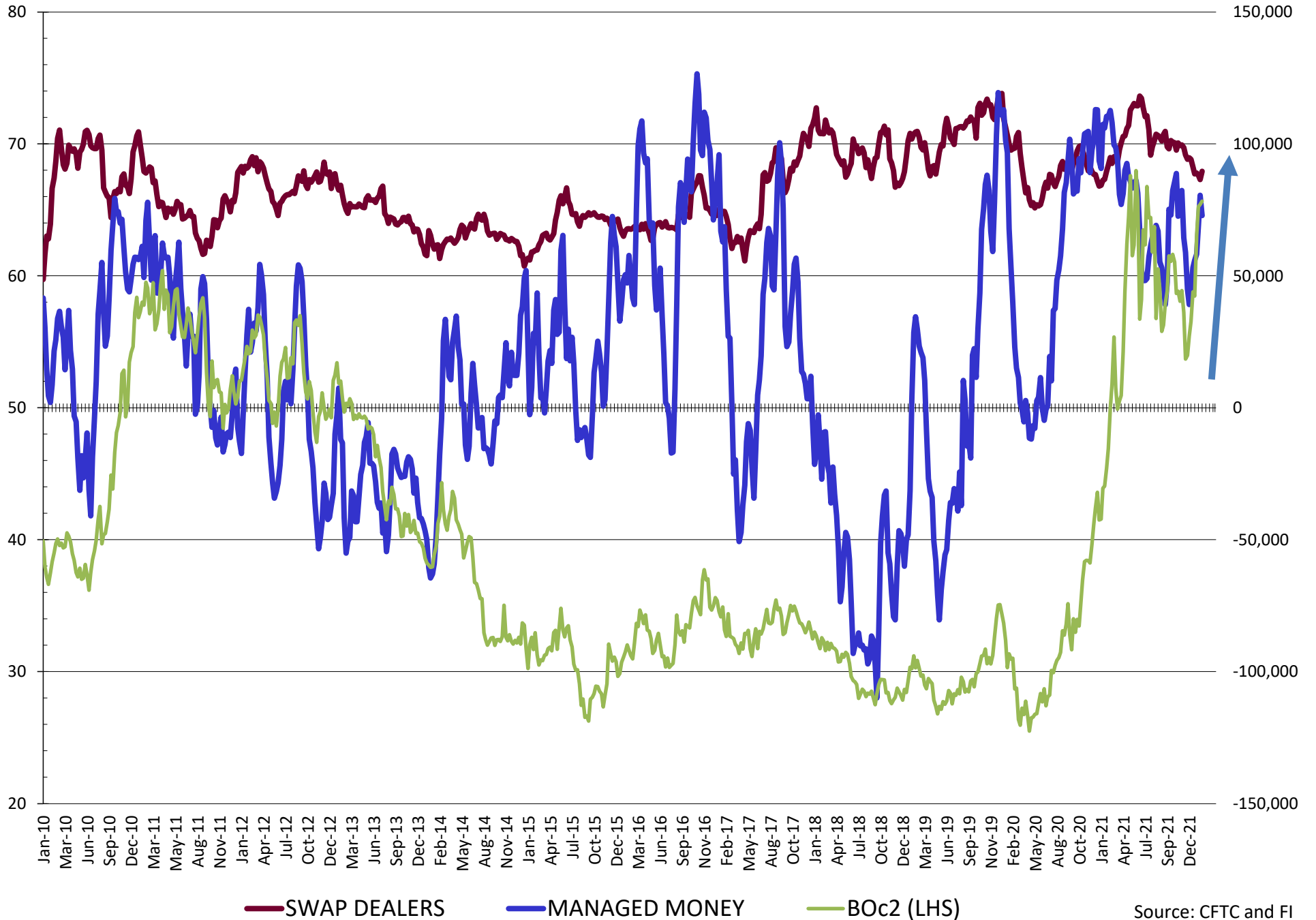


Source: CFTC and FI  
2/11/2022

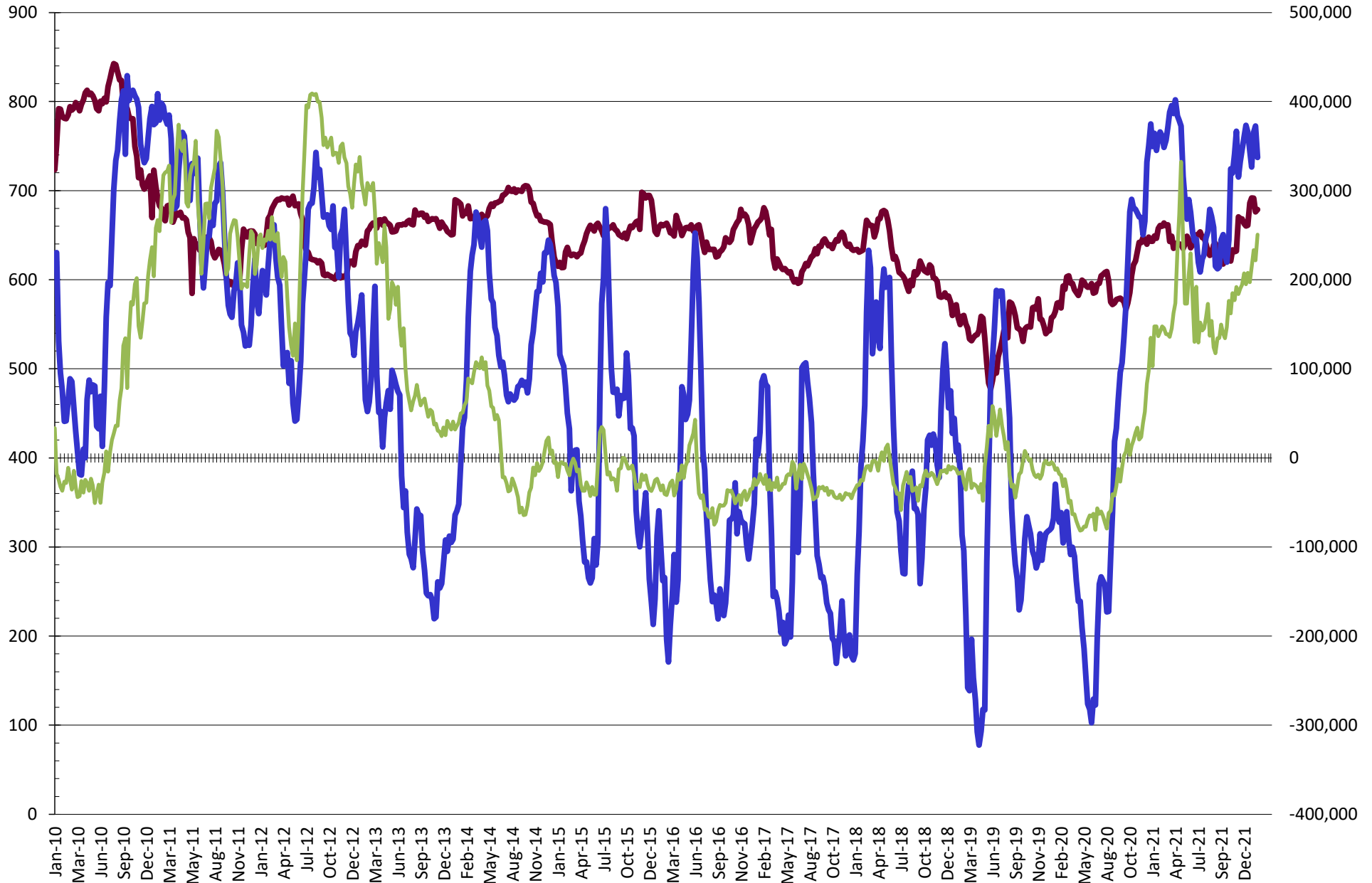
# NET POSITION FUTURES AND OPTIONS OF SWAP AND MANAGED FUNDS IN SOYBEAN MEAL



# NET POSITION FUTURES AND OPTIONS OF SWAP AND MANAGED FUNDS IN SOYBEAN OIL

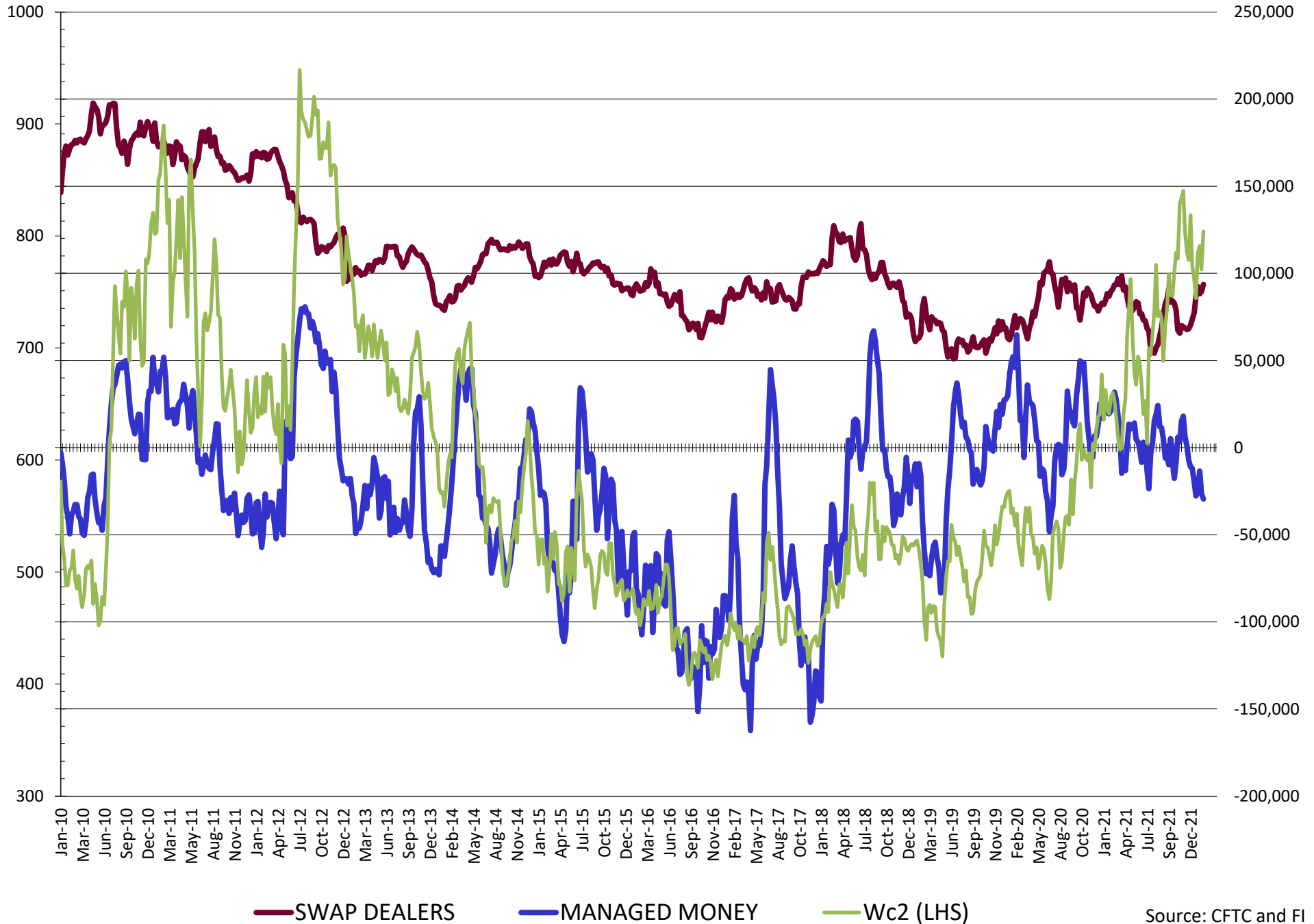


# NET POSITION FUTURES AND OPTIONS OF SWAP AND MANAGED FUNDS IN CORN

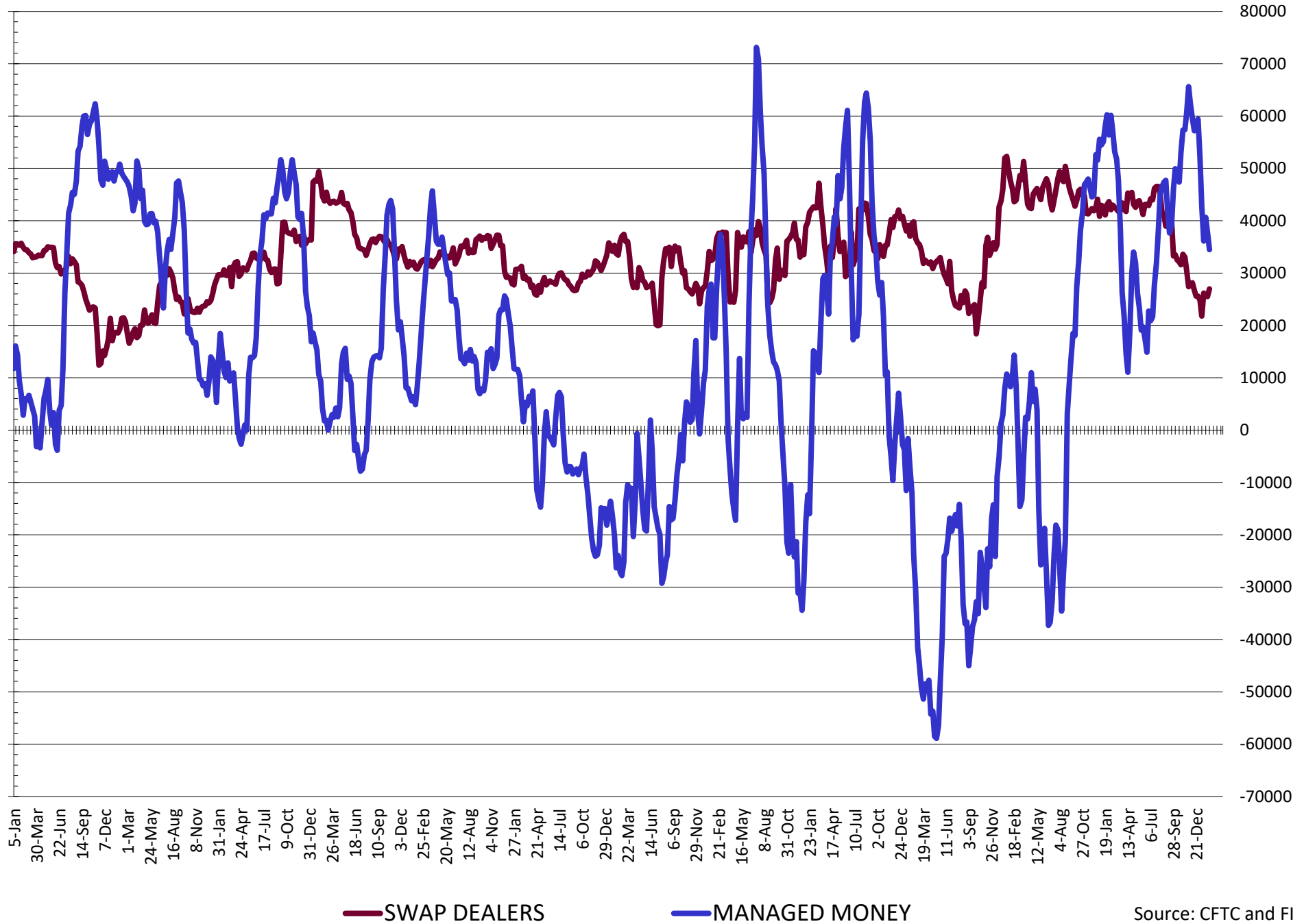


— SWAP DEALERS     
 — MANAGED MONEY     
 — Cc2 (LHS)

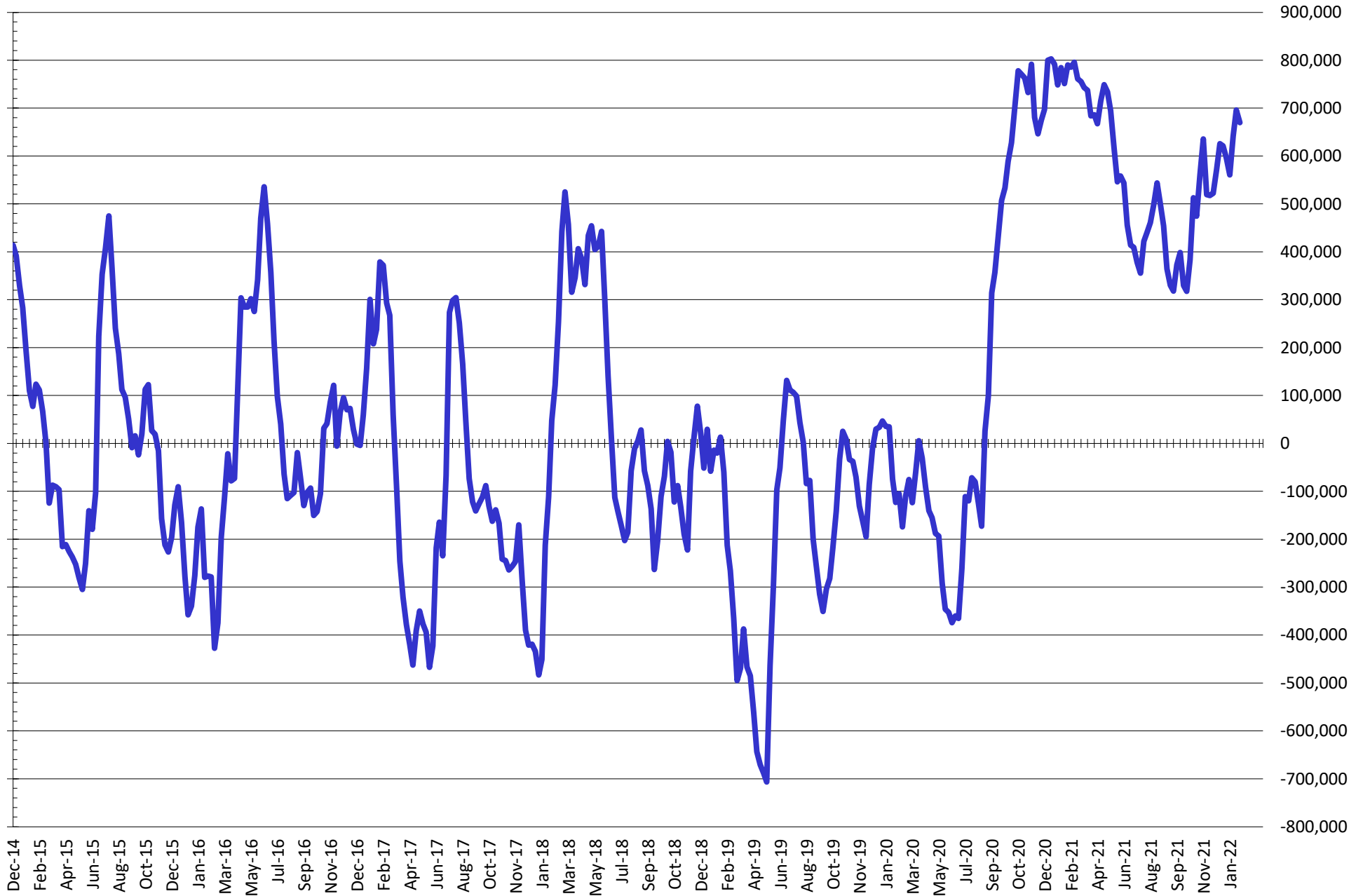
# NET POSITION FUTURES AND OPTIONS OF SWAP AND MANAGED FUNDS IN CHICAGO WHEAT



# NET POSITION FUTURES AND OPTIONS OF SWAP DEALERS AND MANAGED FUNDS IN KANSAS WHEAT



# NET POSITION FUTURES AND OPTIONS OF SWAP AND MANAGED FUNDS IN COMBINED SRW, HRW, CORN, SOYBEANS, SOYMEAL AND SOYOIL



— Net Managed Money

Source: CFTC and FI  
2/11/2022

**COMMITMENT OF TRADERS**  
**FUTURES & OPTIONS NET POSITIONS (INDEX BROKEN OUT)**  
**AS OF 02/08/2022**  
(IN THOUSAND CONTRACTS)

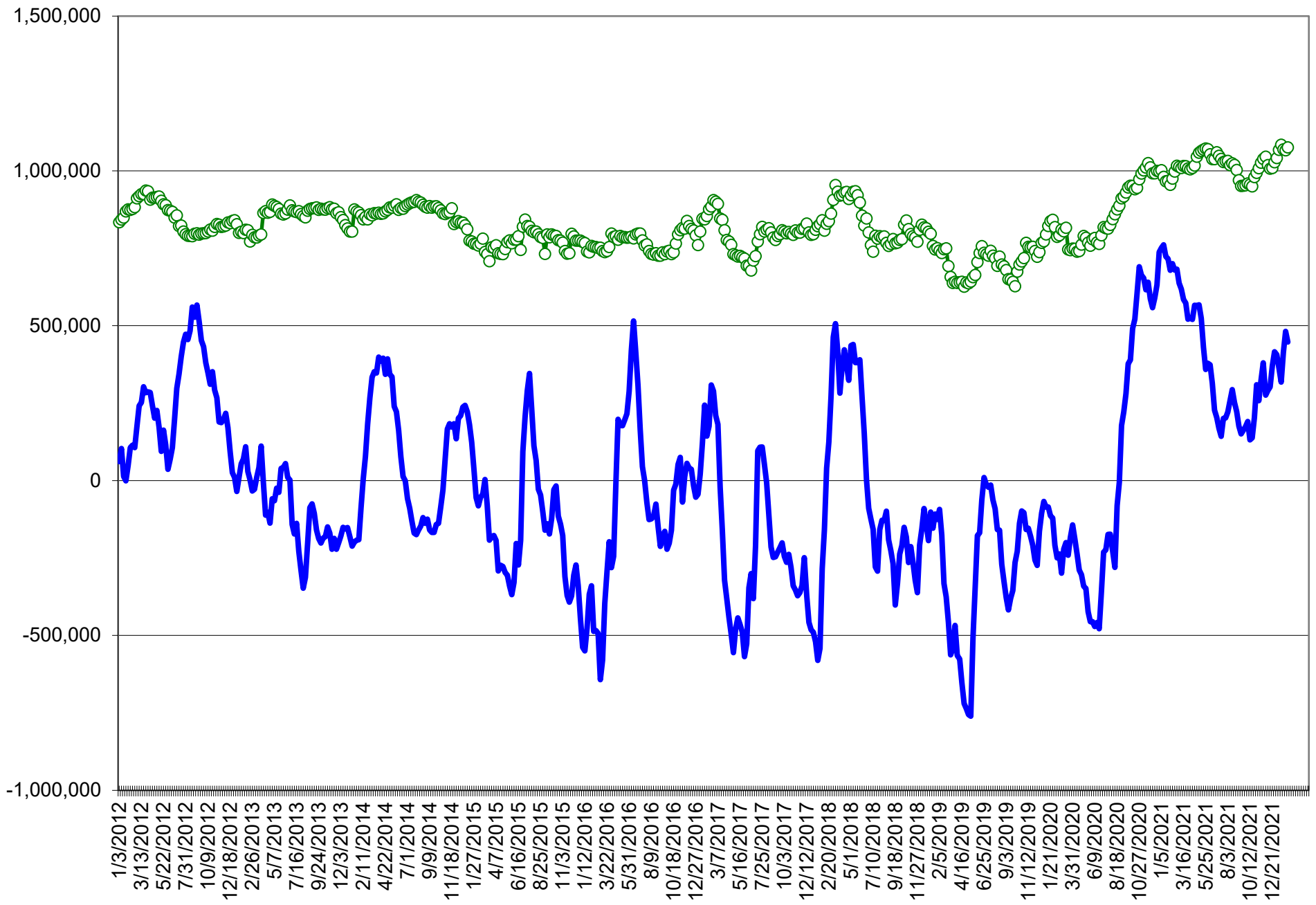
	COMMERCIAL				(FUND) NON COMMERCIAL				(SPEC) NON-REPORTABLE			
	8-Feb	1-Feb	25-Jan	18-Jan	8-Feb	1-Feb	25-Jan	18-Jan	8-Feb	1-Feb	25-Jan	18-Jan
	WHEAT											
Chicago	(89.2)	(88.8)	(97.1)	(86.5)	(50.2)	(46.5)	(33.0)	(42.1)	(3.7)	(4.4)	(8.1)	(9.2)
Kansas City	(71.9)	(71.8)	(72.6)	(69.8)	11.9	14.4	15.8	11.8	2.9	1.8	0.8	3.1
Minneapolis	-	-	-	-	-	-	-	-	-	-	-	-
All Wheat	(161.1)	(160.6)	(169.7)	(156.3)	(38.4)	(32.0)	(17.2)	(30.3)	(0.8)	(2.6)	(7.3)	(6.1)
CORN	(669.7)	(688.8)	(681.8)	(632.5)	253.6	289.3	276.5	224.8	(25.7)	(36.1)	(37.2)	(34.4)
OATS	-	-	-	-	-	-	-	-	-	-	-	-
SOYBEANS	(291.5)	(284.6)	(243.8)	(237.9)	139.5	132.5	89.7	71.3	(35.8)	(39.8)	(37.0)	(38.7)
SOY OIL	(163.9)	(170.4)	(158.1)	(140.4)	32.5	38.1	27.5	12.0	12.4	13.3	11.1	9.5
SOY MEAL	(217.0)	(210.2)	(188.8)	(195.2)	59.9	53.7	38.1	40.3	30.1	31.9	28.4	30.0

	TOTAL OPEN INTEREST				(INDEX) COMMERCIAL INDEX TRADERS				(INDEX) % NET OF TOTAL OPEN INTEREST			
	8-Feb	1-Feb	25-Jan	18-Jan	8-Feb	1-Feb	25-Jan	18-Jan	8-Feb	1-Feb	25-Jan	18-Jan
	WHEAT											
Chicago	486,477	492,052	498,029	468,778	143.2	139.7	138.2	137.8	29.4%	28.4%	27.8%	29.4%
Kansas City	240,374	246,168	242,083	239,872	57.1	55.5	56.1	54.9	23.8%	22.6%	23.2%	22.9%
Minneapolis	-	-	-	-	-	-	-	-	-	-	-	-
All Wheat	726,851	738,220	740,112	708,650	200.3	195.2	194.3	192.8	27.6%	26.4%	26.2%	27.2%
CORN	1,998,012	1,979,521	1,903,794	1,828,316	441.8	435.6	442.4	442.2	22.1%	22.0%	23.2%	24.2%
OATS	-	-	-	-	-	-	-	-	-	-	-	-
SOYBEANS	1,078,690	1,006,519	883,842	841,473	187.8	191.9	191.1	205.3	17.4%	19.1%	21.6%	24.4%
SOY OIL	484,568	496,168	455,930	434,799	119.0	119.0	119.5	119.0	24.6%	24.0%	26.2%	27.4%
SOY MEAL	510,347	478,164	451,424	458,623	126.9	124.6	122.3	124.9	24.9%	26.1%	27.1%	27.2%

SOURCE: CFTC & FI



NET POSITION FUTURES AND OPTIONS OF SPECULATORS AND INDEX FUNDS IN  
 COMBINED SRW, HRW, CORN, SOYBEANS, SOYMEAL AND SOYOIL



Source: CFTC and FI

○ Net Index      — Net Speculator

## Traditional Daily Estimate of Funds 2/8/22

	(Neg)-"Short"	Pos-"Long"			
Actual less Est.	(26.6)	(4.7)	(7.0)	(4.5)	0.6
	<b>Corn</b>	<b>Bean</b>	<b>Chi. Wheat</b>	<b>Meal</b>	<b>Oil</b>
Actual	419.6	209.7	(3.6)	106.3	66.0
9-Feb	15.0	12.0	4.0	4.0	4.0
10-Feb	(6.0)	(9.0)	(8.0)	(3.0)	1.0
11-Feb	5.0	5.0	14.0	1.0	3.0
14-Feb					
15-Feb					
<b>FI Est. of Futures Only 2/8/22</b>	<b>433.6</b>	<b>217.7</b>	<b>6.4</b>	<b>108.3</b>	<b>74.0</b>
<b>FI Est. Futures &amp; Options</b>	<b>423.9</b>	<b>213.0</b>	<b>(7.0)</b>	<b>105.7</b>	<b>77.2</b>
Futures only record long "Traditional Funds"	547.7 1/26/2021	280.9 11/10/2020	86.5 8/7/2018	167.5 5/1/2018	160.2 11/1/2016
Futures only record short	(235.0) 6/9/2020	(118.3) 4/30/2019	(130.0) 4/25/2017	(49.5) 3/1/2016	(69.8) 9/18/2018
Futures and options record net long	557.6 1/12/2021	270.9 10/6/2020	64.8 8/7/2012	132.1 5/1/2018	159.2 1/1/2016
Futures and options record net short	(270.6) 4/26/2019	(132.0) 4/30/2019	(143.3) 4/25/2017	(64.1) 3/1/2016	(77.8) 9/18/2018

## Managed Money Daily Estimate of Funds 2/8/22

	Corn	Bean	Chi. Wheat	Meal	Oil
Latest CFTC Fut. Only	334.5	164.3	(32.0)	88.5	71.6
Latest CFTC F&O	337.3	166.3	(29.6)	88.1	72.8
	Corn	Bean	Chi. Wheat	Meal	Oil
FI Est. Managed Fut. Only	348	172	(22)	90	80
FI Est. Managed Money F&O	351	174	(20)	90	81

## Index Funds Latest Positions (as of last Tuesday)

Index Futures & Options	441.8	187.8	143.2	NA	119.0
Change From Previous Week	6.1	(4.1)	3.5	NA	(0.0)

Source: Reuters, CFTC & FI (FI est. are noted with latest date)

# Disclaimer

TO CLIENTS/PROSPECTS OF FUTURES INTERNATIONAL, SEE RISK DISCLOSURE BELOW:

THIS COMMUNICATION IS CONVEYED AS A SOLICITATION FOR ENTERING INTO A DERIVATIVES TRANSACTION.

Any trading recommendations and market or other information to Customer by Futures International (FI), although based upon information obtained from sources believed by FI to be reliable may not be accurate and may be changed without notice to customer. FI makes no guarantee as to the accuracy or completeness of any of the information or recommendations furnished to Customer. Customer understands that FI, its managers, employees and/or affiliates may have a position in commodity futures, options or other derivatives which may not be consistent with the recommendations furnished by FI to Customer.

The risk of trading futures and options and other derivatives involves a substantial risk of loss and is not suitable for all persons. In purchasing an option, the risk is limited to the premium paid, and all commissions and fees involved with the trade. When an option is shorted or written, the writer of the option has unlimited risk with respect to the option written. The use of options strategies such as a straddles and strangles involve multiple option positions and may substantially increase the amount of commissions and fees paid to execute the strategy. Option prices do not necessarily move in tandem with cash or futures prices. Each person must consider whether a particular trade, combination of trades or strategy is suitable for that person's financial means and objectives.

This material may include discussions of seasonal patterns, however, futures prices have already factored in the seasonal aspects of supply and demand, and seasonal patterns are no indication of future market trends. Finally, past performance is not indicative of future results.

This communication may contain links to third party websites which are not under the control of FI and FI is not responsible for their content. Products and services are offered only in jurisdictions where solicitation and sale are lawful, and in accordance with applicable laws and regulations in each such jurisdiction.