

	Current	Δ from YD	Δ from 7D Avg
Nat Gas Prompt	\$ 4.66	▼ \$ (0.05)	▲ \$ 0.52

	Current	Δ from YD	Δ from 7D Avg
WTI Prompt	\$ 92.24	▼ \$ (1.42)	▼ \$ (0.7)

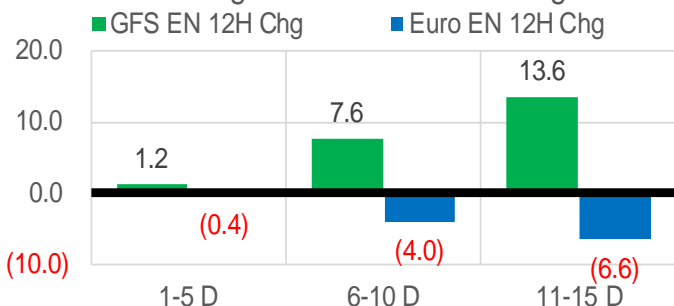
	Current	Δ from YD	Δ from 7D Avg
Brent Prompt	\$ 93.49	▼ \$ (1.32)	▼ \$ (0.7)

### Page Menu

- [Short-term Weather Model Outlooks](#)
- [Lower 48 Component Models](#)
- [Regional S/D Models Storage Projection](#)
- [Weather Model Storage Projection](#)
- [Supply – Demand Trends](#)
- [Nat Gas Options Volume and Open Interest](#)
- [Nat Gas Futures Open Interest](#)
- [Price Summary](#)

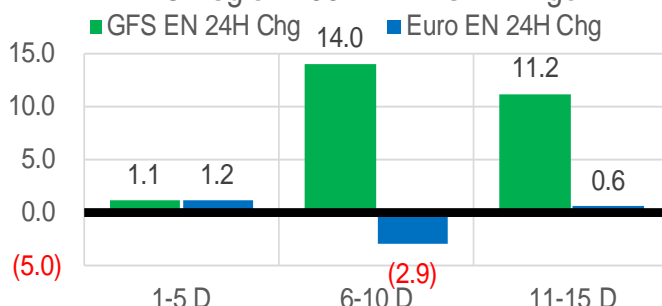
### Vs. 12H Ago

L48 Region - 00z TDD vs 12H Ago



### Vs. 24H Ago

L48 Region - 00z TDD vs 24H Ago



	Current	Δ from YD	Δ from 7D Avg
US Dry Production	96.1	▼ -0.08	▲ 0.10

	Current	Δ from YD	Δ from 7D Avg
US Power Burns	23.8	▼ -0.62	▼ -3.25

	Current	Δ from YD	Δ from 7D Avg
US ResComm	31.3	▼ -0.56	▼ -8.67

	Current	Δ from YD	Δ from 7D Avg
Canadian Imports	5.9	▼ -0.04	▼ -0.25

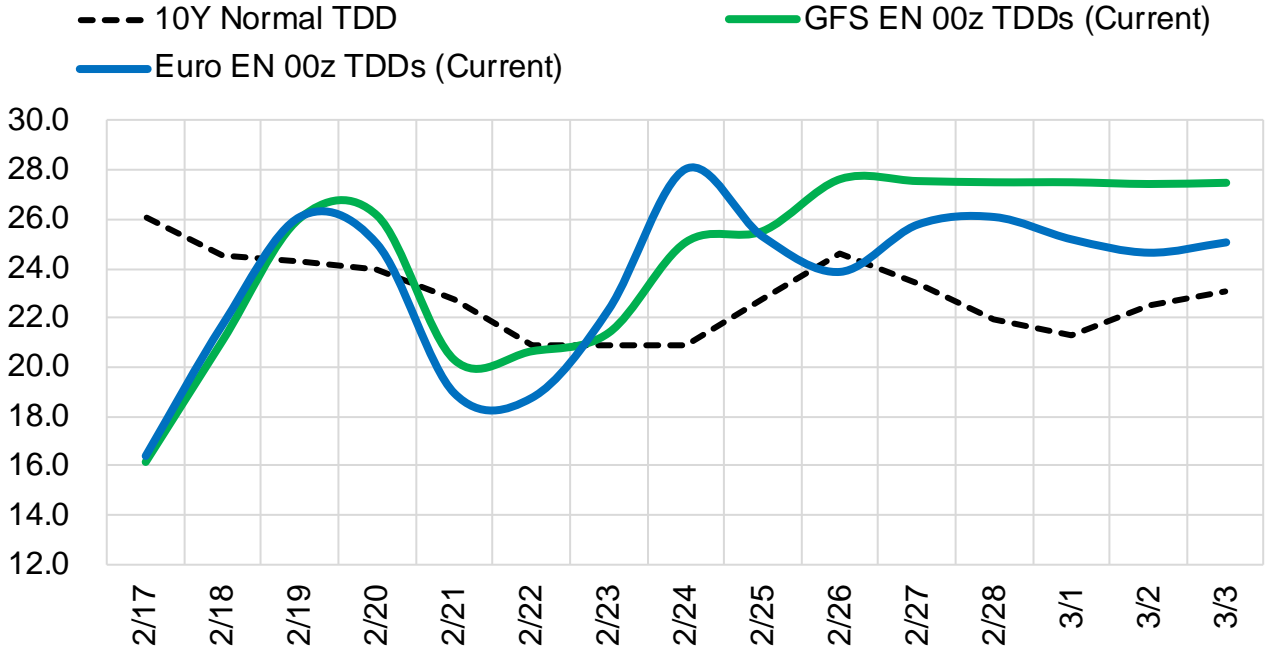
	Current	Δ from YD	Δ from 7D Avg
Net LNG Exports	13.1	▲ 0.12	▲ 0.39

	Current	Δ from YD	Δ from 7D Avg
Mexican Exports	5.9	▼ -0.09	▼ -0.06

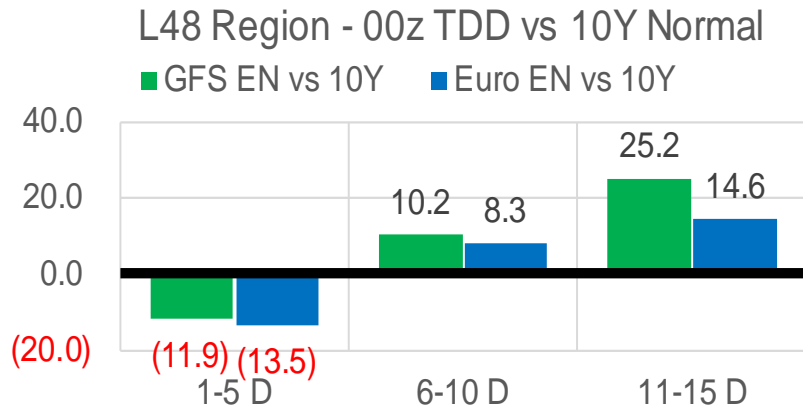
The risk of trading futures and options and other derivatives involves a substantial risk of loss and is not suitable for all persons. Each person must consider whether a particular trade, combination of trades, or strategy is suitable for that person's financial means and objectives. Past results are not necessarily indicative of future results. This communication may contain links to third party websites which are not under the control of and are not maintained by ION Energy Group, and ION Energy Group is not responsible for their content.

## Short-term Weather Model Outlooks (00z)

### L48 Region



## Vs. 10Y Normal



Source: WSI , Bloomberg

## Lower 48 Component Models

### Daily Balances

	11-Feb	12-Feb	13-Feb	14-Feb	15-Feb	16-Feb	17-Feb	DoD	vs. 7D
<b>Lower 48 Dry Production</b>	<b>96.3</b>	<b>95.6</b>	<b>95.6</b>	<b>96.5</b>	<b>96.3</b>	<b>96.2</b>	<b>96.1</b>	▼ -0.1	▲ 0.1
<b>Canadian Imports</b>	<b>5.8</b>	<b>6.0</b>	<b>6.4</b>	<b>6.8</b>	<b>6.1</b>	<b>6.0</b>	<b>5.9</b>	▼ 0.0	▼ -0.3
L48 Power	25.8	28.3	29.7	28.1	26.2	24.4	23.8	▼ -0.6	▼ -3.3
L48 Residential & Commercial	32.1	39.8	48.3	49.4	43.3	31.8	31.3	▼ -0.6	▼ -9.5
L48 Industrial	26.1	27.5	28.6	28.2	27.0	25.2	25.2	▼ 0.0	▼ -1.9
L48 Lease and Plant Fuel	5.3	5.2	5.2	5.3	5.3	5.3	5.2	▼ 0.0	▼ 0.0
L48 Pipeline Distribution	2.7	3.2	3.7	3.7	3.3	2.7	2.6	▼ -0.1	▼ -0.6
<b>L48 Regional Gas Consumption</b>	<b>91.9</b>	<b>104.0</b>	<b>115.5</b>	<b>114.6</b>	<b>105.1</b>	<b>89.4</b>	<b>88.1</b>	▼ -1.3	▼ -15.3
<b>Net LNG Delivered</b>	<b>13.15</b>	<b>13.31</b>	<b>13.06</b>	<b>12.33</b>	<b>12.97</b>	<b>13.02</b>	<b>13.14</b>	▲ 0.1	▲ 0.2
<b>Total Mexican Exports</b>	<b>6.2</b>	<b>5.7</b>	<b>5.6</b>	<b>6.1</b>	<b>6.2</b>	<b>6.0</b>	<b>5.9</b>	▼ -0.1	▼ 0.0
Implied Daily Storage Activity	-9.2	-21.5	-32.1	-29.8	-21.9	-6.3	-5.2		
EIA Reported Daily Storage Activity									
Daily Model Error									

### EIA Storage Week Balances

	7-Jan	14-Jan	21-Jan	28-Jan	4-Feb	11-Feb	WoW	vs. 4W
<b>Lower 48 Dry Production</b>	<b>94.9</b>	<b>95.0</b>	<b>94.7</b>	<b>94.5</b>	<b>94.4</b>	<b>92.1</b>	▼ -2.4	▼ -2.6
<b>Canadian Imports</b>	<b>5.7</b>	<b>6.5</b>	<b>7.0</b>	<b>7.1</b>	<b>7.1</b>	<b>7.1</b>	▲ 0.0	▲ 0.2
L48 Power	29.8	30.4	30.3	32.1	29.8	29.4	▼ -0.4	▼ -1.2
L48 Residential & Commercial	42.9	46.3	47.1	52.8	48.2	45.0	▼ -3.2	▼ -3.6
L48 Industrial	27.3	26.8	28.0	27.6	28.3	25.9	▼ -2.4	▼ -1.8
L48 Lease and Plant Fuel	5.2	5.2	5.2	5.2	5.2	5.0	▼ -0.1	▼ -0.1
L48 Pipeline Distribution	3.5	3.7	3.8	4.1	3.7	3.5	▼ -0.2	▼ -0.3
<b>L48 Regional Gas Consumption</b>	<b>108.7</b>	<b>112.4</b>	<b>114.3</b>	<b>121.7</b>	<b>115.2</b>	<b>108.8</b>	▼ -6.4	▼ -7.1
<b>Net LNG Exports</b>	<b>11.9</b>	<b>12.3</b>	<b>12.9</b>	<b>12.5</b>	<b>12.1</b>	<b>12.4</b>	▲ 0.3	▼ -0.1
<b>Total Mexican Exports</b>	<b>5.9</b>	<b>6.3</b>	<b>6.4</b>	<b>6.5</b>	<b>6.4</b>	<b>6.1</b>	▼ -0.3	▼ -0.3
Implied Daily Storage Activity	-25.9	-29.5	-32.0	-39.0	-32.2	-28.2	4.0	
EIA Reported Daily Storage Activity	-25.6	-29.4	-31.3	-38.3	-31.7			
Daily Model Error	-0.4	-0.1	-0.7	-0.7	-0.4			

### Monthly Balances

	2Yr Ago Feb-20	LY Feb-21	Oct-21	Nov-21	Dec-21	Jan-22	MTD Feb-22	MoM	vs. LY
<b>Lower 48 Dry Production</b>	<b>94.2</b>	<b>84.3</b>	<b>94.3</b>	<b>95.6</b>	<b>96.9</b>	<b>94.9</b>	<b>93.6</b>	▼ -1.3	▲ 9.3
<b>Canadian Imports</b>	<b>5.3</b>	<b>6.4</b>	<b>5.4</b>	<b>5.3</b>	<b>4.8</b>	<b>6.7</b>	<b>6.8</b>	▲ 0.1	▲ 0.4
L48 Power	30.2	27.6	30.5	29.1	28.4	30.8	28.5	▼ -2.3	▲ 0.8
L48 Residential & Commercial	40.6	48.1	12.4	27.1	32.6	48.3	43.3	▼ -5.0	▼ -4.8
L48 Industrial	25.1	21.1	21.1	24.3	25.1	27.7	26.7	▼ -1.0	▲ 5.7
L48 Lease and Plant Fuel	5.1	4.6	5.2	5.2	5.3	5.2	5.1	▼ -0.1	▲ 0.5
L48 Pipeline Distribution	3.5	3.6	2.4	2.9	3.0	3.8	3.4	▼ -0.4	▼ -0.2
<b>L48 Regional Gas Consumption</b>	<b>104.5</b>	<b>104.9</b>	<b>71.6</b>	<b>88.7</b>	<b>94.4</b>	<b>115.8</b>	<b>107.0</b>	▼ -8.7	▲ 2.1
<b>Net LNG Exports</b>	<b>8.5</b>	<b>8.4</b>	<b>10.6</b>	<b>11.4</b>	<b>12.1</b>	<b>12.4</b>	<b>12.6</b>	▲ 0.2	▲ 4.2
<b>Total Mexican Exports</b>	<b>5.2</b>	<b>5.7</b>	<b>6.6</b>	<b>6.1</b>	<b>6.1</b>	<b>6.3</b>	<b>6.1</b>	▼ -0.2	▲ 0.4
Implied Daily Storage Activity	-18.7	-28.4	10.9	-5.3	-11.0	-32.9	-25.4		
EIA Reported Daily Storage Activity									
Daily Model Error									

Source: Bloomberg, analytix.ai

## Daily Average Generation Data

### Nuclear Generation Daily Average - GWh (NRC)

	9-Feb	10-Feb	11-Feb	12-Feb	13-Feb	14-Feb	15-Feb	DoD	vs. 7D
NRC Nuclear Daily Output	87.7	88.3	88.3	87.3	88.5	88.3	88.2	-0.2	0.1
NRC Nuclear Max Capacity	104.9	104.9	104.9	104.9	104.9	104.9	104.9	0.0	0.0
NRC Nuclear Outage	17.1	16.6	16.5	17.6	16.4	16.5	16.7	0.2	-0.1
NRC % Nuclear Cap Utilization	89.2	89.8	89.8	88.7	89.9	89.8	89.6	-0.2	0.1

### Wind Generation Daily Average - MWh (EIA)

	9-Feb	10-Feb	11-Feb	12-Feb	13-Feb	14-Feb	15-Feb	DoD	vs. 7D
CALI Wind	1261	1388	944	850	670	2749	4765	2016	3454
TEXAS Wind	5090	5144	17325	14640	8876	15919	21879	5960	10713
US Wind	54050	51981	77936	47784	37941	48141	77853	29712	24881

### Generation Daily Average - MWh (EIA)

	9-Feb	10-Feb	11-Feb	12-Feb	13-Feb	14-Feb	15-Feb	DoD	vs. 7D
US Wind	54050	51981	77936	47784	37941	48141	77853	29712	24881
US Solar	15652	13688	12903	12513	12244	13886	10259	-3627	-3222
US Petroleum	2598	3129	2496	3904	4463	6199	5601	-598	1803
US Other	8765	8514	8515	8224	8954	10222	9966	-256	1100
US Coal	104059	100612	87418	99034	108973	117847	106520	-11327	3530
US Nuke	92960	93477	89932	92619	93651	93506	93142	-364	451
US Hydro	30322	30768	31591	30532	31720	33649	32601	-1048	1171
<b>US Gas</b>	<b>156382</b>	<b>151573</b>	<b>126701</b>	<b>133762</b>	<b>153384</b>	<b>162155</b>	<b>140504</b>	<b>-21651</b>	<b>-6822</b>

See National Wind and Nuclear daily charts

Source: Bloomberg, analytix.ai

## Storage Week Average Generation Data

### Nuclear Generation Weekly Average - GWh (NRC)

	7-Jan	14-Jan	21-Jan	28-Jan	4-Feb	11-Feb	WoW	WoW Bcf/d Impact
NRC Nuclear Daily Output	91.3	90.6	89.7	89.7	89.5	87.6	-1.9	0.3
NRC Nuclear Max Capacity	104.9	104.9	104.9	104.9	104.9	104.9	0.0	
NRC Nuclear Outage	13.6	14.3	15.1	15.2	15.4	17.3	1.9	
NRC % Nuclear Cap Utilization	0.1	0.1	0.1	0.1	0.1	0.1	0.0	

### Wind Generation Weekly Average - MWh (EIA)

	7-Jan	14-Jan	21-Jan	28-Jan	4-Feb	11-Feb	WoW	WoW Bcf/d Impact
CALI Wind	1603	1266	1273	1580	1627	1156	-471	0.1
TEXAS Wind	13603	10192	15630	7185	12223	9259	-2964	0.5
US Wind	57109	50716	55686	45244	53914	53944	30	0.0
					8670.0			
					19%			

### Generation Weekly Average - MWh (EIA)

	7-Jan	14-Jan	21-Jan	28-Jan	4-Feb	11-Feb	WoW	WoW Bcf/d Impact
						est.		
US Wind	57109	50716	55686	45244	53914	53944	30	0.0
US Solar	8468	9389	8609	10087	10457	12406	1949	-0.4
US Petroleum	3038	4915	5260	5993	4672	3554	-1119	0.2
US Other	8303	8254	8109	9663	9656	9295	-361	0.1
US Coal	94949	115096	117880	130576	124851	113847	-11004	2.0
US Nuke	96362	95713	94657	94693	94661	92640	-2021	0.4
US Hydro	34608	34200	34490	34128	31800	32166	366	-0.1
<b>US Gas</b>	<b>154375</b>	<b>161930</b>	<b>156870</b>	<b>177830</b>	<b>159397</b>	<b>162062</b>	<b>2665</b>	

See National Wind and Nuclear daily charts

Source: Bloomberg, analytix.ai

## Monthly Average Generation Data

### Nuclear Generation Monthly Average - GWh (NRC)

	2Yr Ago	LY	MTD				Last 30 days	MoM (MTD vs LY)	Last 30 days YoY
	Same 30 days	Same 30 days	Nov-21	Dec-21	Jan-22	Feb-22			
NRC Nuclear Daily Output	92.5	91.0	82.8	90.3	90.2	88.2	88.8	-2.0	-2.2
NRC Nuclear Max Capacity	104.9	104.9	104.9	104.9	104.9	104.9	104.9	0.0	0.0
NRC Nuclear Outage	12.4	13.9	22.0	14.6	14.7	16.7	16.1	2.0	2.2
NRC % Nuclear Cap Utilization	94.0	92.5	84.2	91.8	91.7	89.6	90.3	-2.1	-2.3

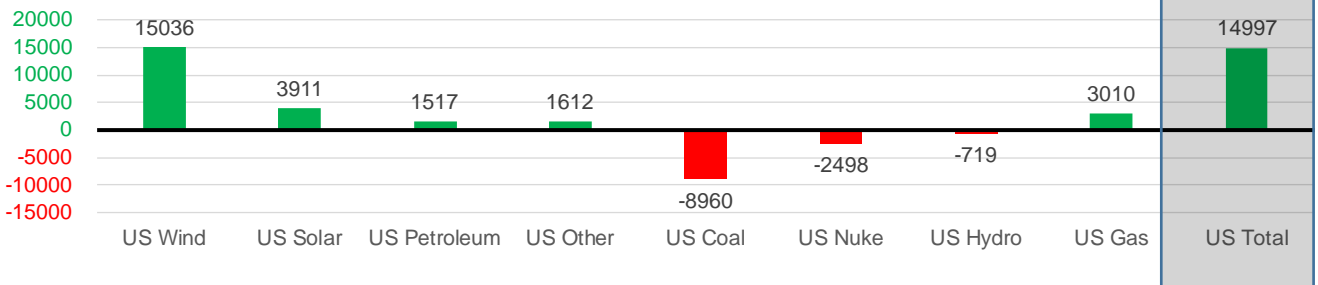
### Wind Generation Monthly Average - MWh (EIA)

	2Yr Ago	LY	MTD				Last 30 days	MoM (MTD vs LY)	Last 30 days YoY
	Same 30 days	Same 30 days	Nov-21	Dec-21	Jan-22	Feb-22			
CALI Wind	1306	1963	1224	1585	1364	1988	1724	624	-238
TEXAS Wind	9502	9264	11678	12927	11355	13715	11943	2360	2679
US Wind	34053	39468	49838	54810	51165	60065	54504	8900	15036

### Generation Monthly Average - MWh (EIA)

	2Yr Ago	LY	MTD				Last 30 days	MoM (MTD vs LY)	Last 30 days YoY
	Same 30 days	Same 30 days	Nov-21	Dec-21	Jan-22	Feb-22			
US Wind	34053	39468	49838	54810	51165	60065	54504	▼-5561.4	▲15036
US Solar	6143	7107	9688	7376	9476	11689	11019	▼-670.3	▲3911
US Petroleum	3598	3239	3022	3135	5021	3999	4757	▲758	▲1517
US Other	8009	7830	8445	8222	8792	9325	9442	▲117	▲1612
US Coal	81465	127580	80906	81617	118026	110161	118620	▲8459	▼-8960
US Nuke	93547	96258	87558	95449	95259	92988	93760	▲773	▼-2498
US Hydro	36080	33425	26649	30826	34107	32003	32705	▲703	▼-719
<b>US Gas</b>	<b>165439</b>	<b>157495</b>	<b>151991</b>	<b>152627</b>	<b>164025</b>	<b>152273</b>	<b>160505</b>	<b>▲4577</b>	<b>▲3010</b>
<b>US Total</b>	<b>435179</b>	<b>470678</b>	<b>418455</b>	<b>434177</b>	<b>485994</b>	<b>473030</b>	<b>485675</b>	<b>▲14716</b>	<b>▲14997</b>

Last 30 days YoY



See National Wind and Nuclear daily charts

Source: Bloomberg, analytix.ai

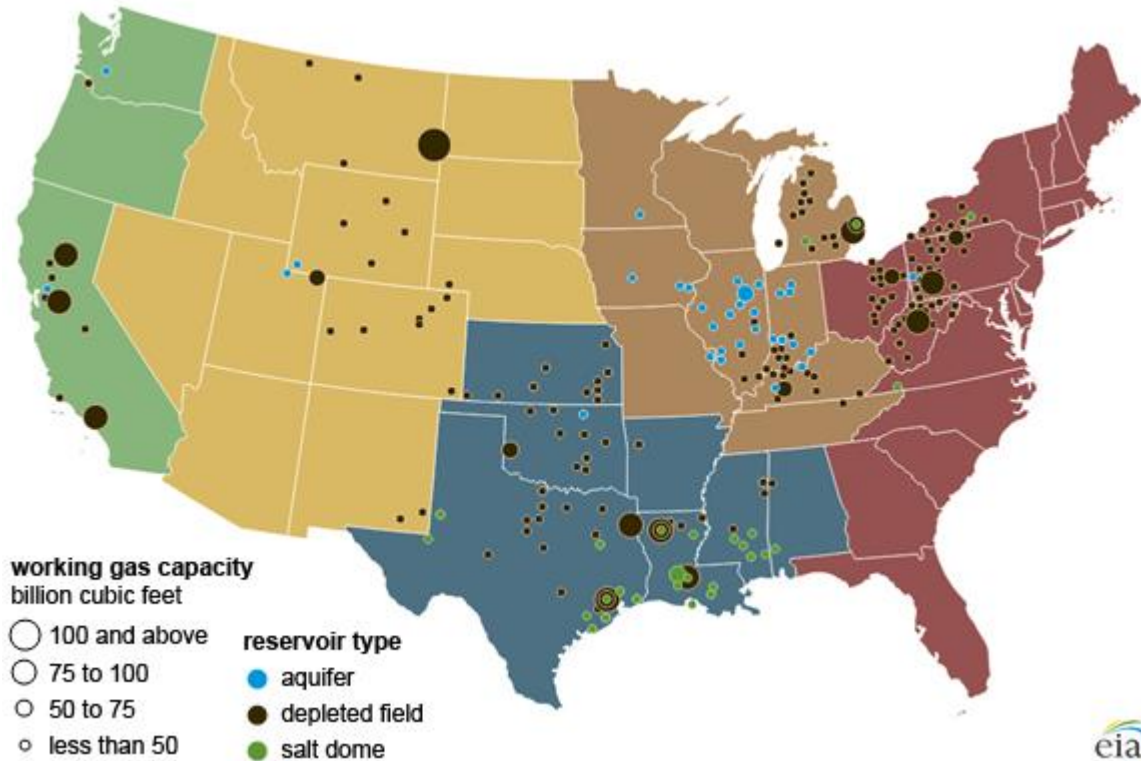
## Regional S/D Models Storage Projection

Week Ending 11-Feb

	Daily Raw Storage	Daily Adjustment Factor	Daily Average Storage Activity (Adjusted) *	Weekly Adjusted Storage Activity
L48	-28.2	0.7	-27.4	-192
East	-8.4	2.3	-6.2	-43
Midwest	-8.2	-0.3	-8.5	-59
Mountain	2.3	-3.3	-1.0	-7
South Central	-13.9	2.7	-11.2	-78
Pacific	0.0	-0.6	-0.6	-4

\*Adjustment Factor is calculated based on historical regional deltas

U.S. underground natural gas storage facilities by type (July 2015)

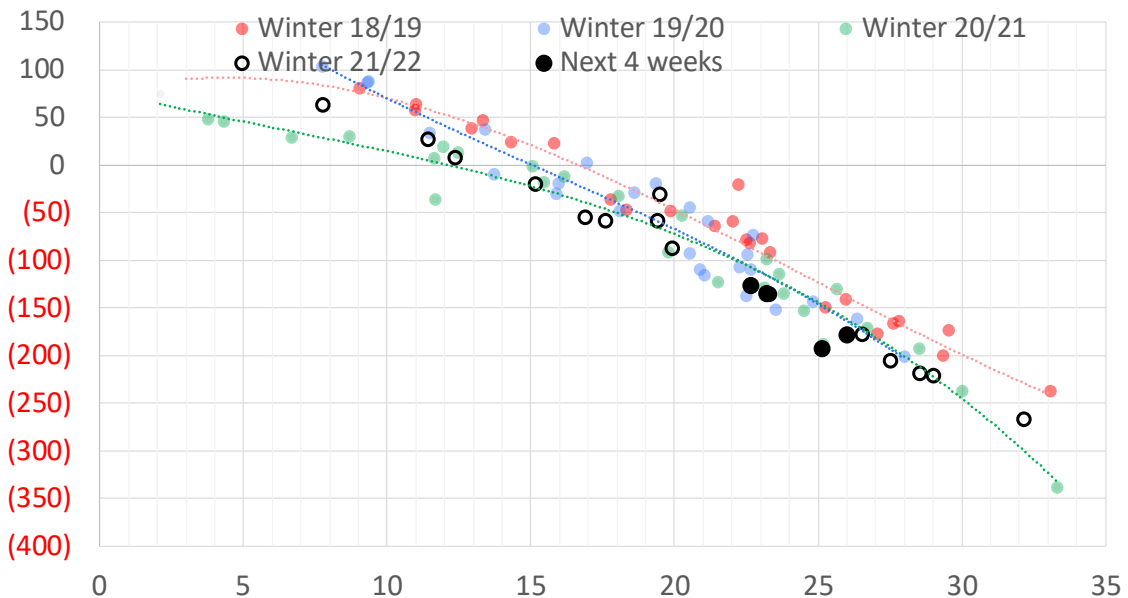


## Weather Model Storage Projection

Next report  
and beyond

Week Ending	GWDDs	Week Storage Projection
11-Feb	25	-192
18-Feb	23	-126
25-Feb	23	-134
04-Mar	26	-178

Weather Storage Model - Next 4 Week Forecast

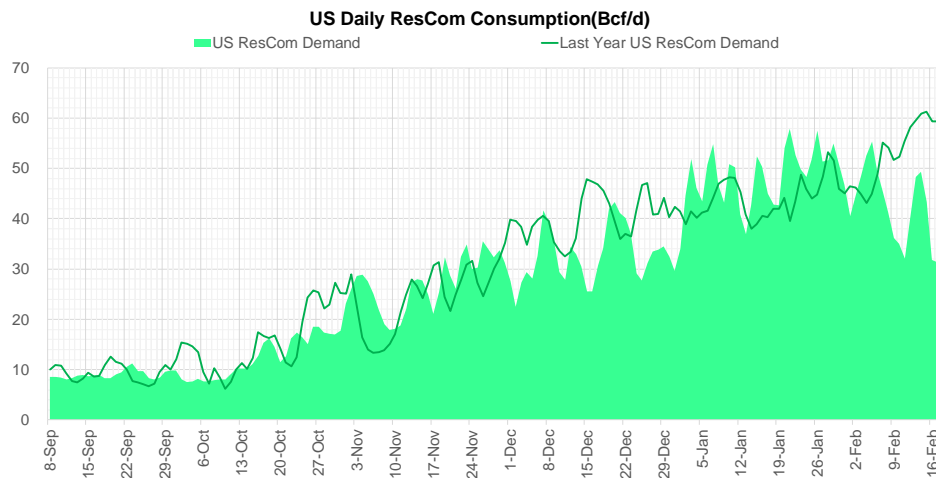
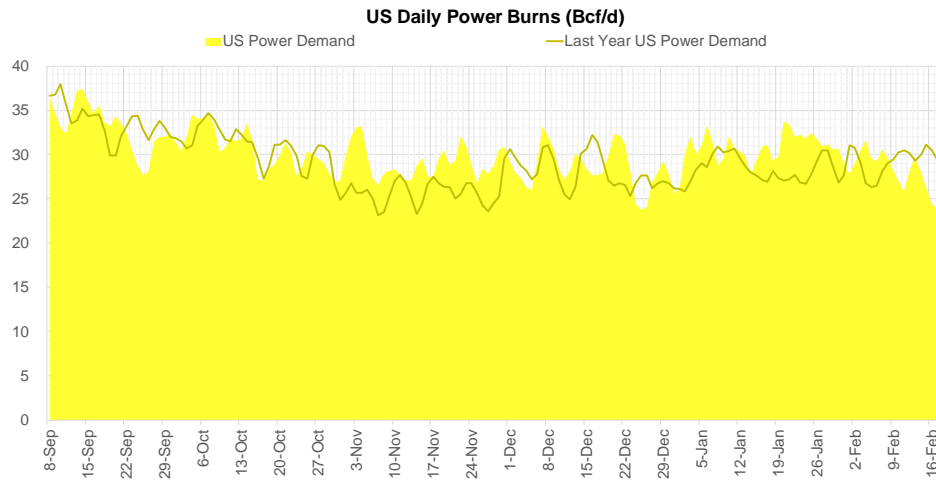
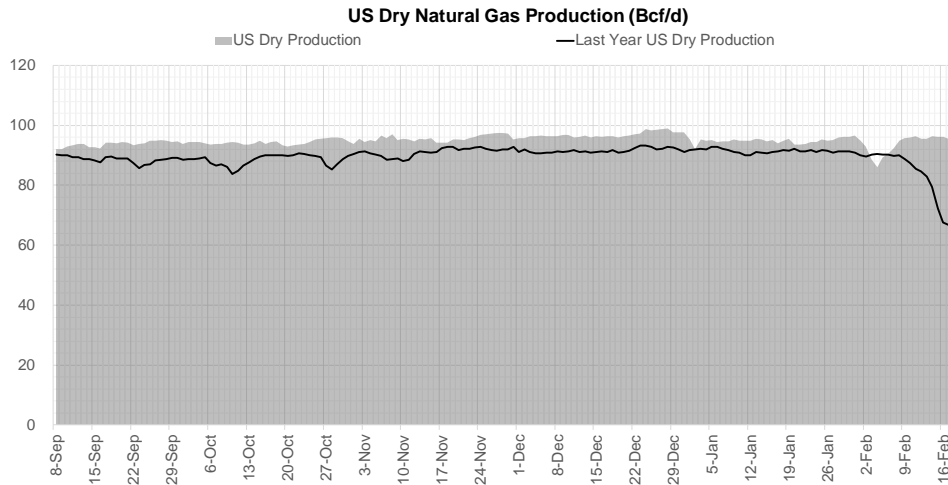


Go to larger image





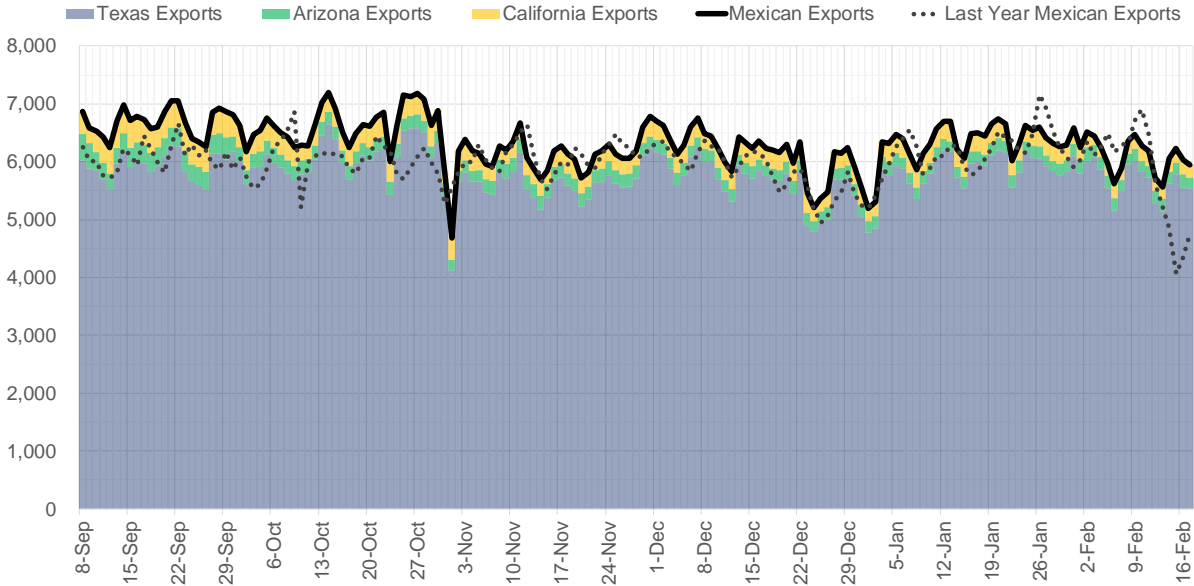
## Supply – Demand Trends



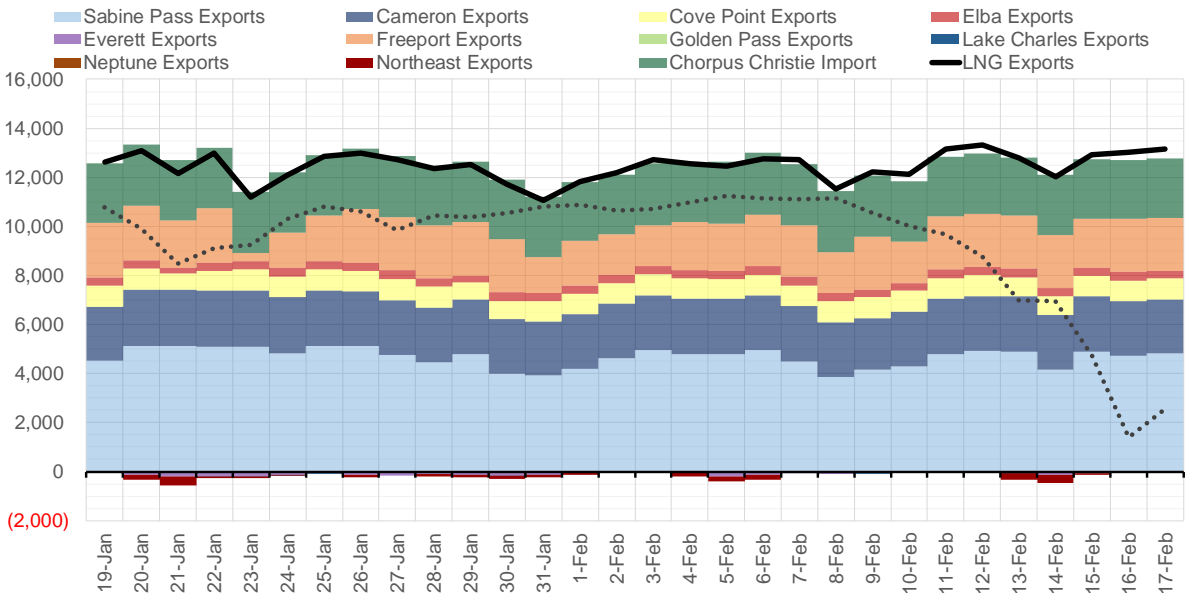
Source: Bloomberg

The risk of trading futures and options and other derivatives involves a substantial risk of loss and is not suitable for all persons. Each person must consider whether a particular trade, combination of trades, or strategy is suitable for that person's financial means and objectives. Past results are not necessarily indicative of future results. This communication may contain links to third party websites which are not under the control of and are not maintained by ION Energy Group, and ION Energy Group is not responsible for their content.

### Mexican Exports (MMcf/d)



### Net LNG Exports - Last 30 days (MMcf/d)



Source: Bloomberg

The risk of trading futures and options and other derivatives involves a substantial risk of loss and is not suitable for all persons. Each person must consider whether a particular trade, combination of trades, or strategy is suitable for that person's financial means and objectives. Past results are not necessarily indicative of future results. This communication may contain links to third party websites which are not under the control of and are not maintained by ION Energy Group, and ION Energy Group is not responsible for their content.

## Nat Gas Options Volume and Open Interest CME and ICE Combined

ICE Data not  
updated today

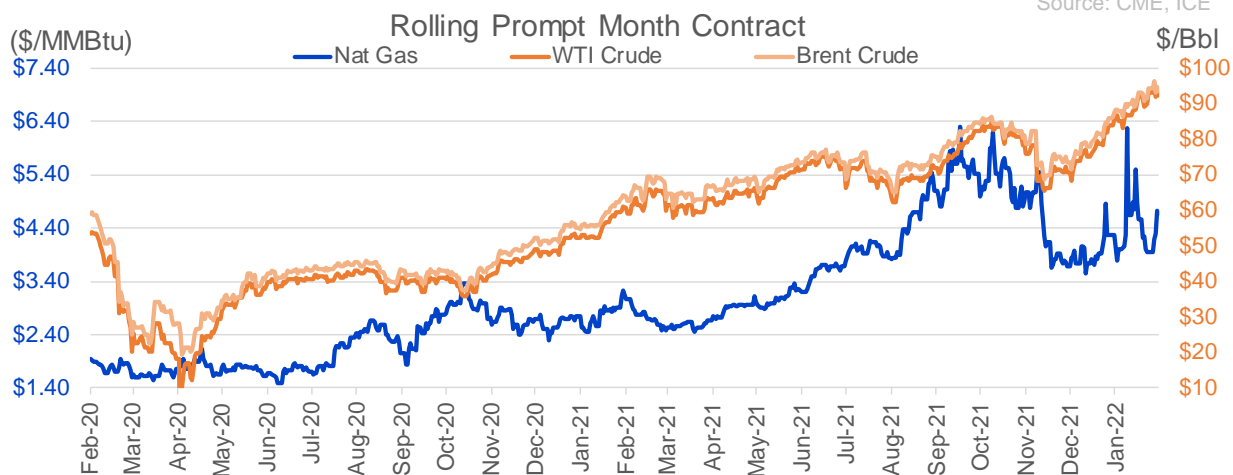
CONTRACT MONTH	CONTRACT YEAR	PUT/CALL	STRIKE	CUMULATIVE VOL	CONTRACT MONTH	CONTRACT YEAR	PUT/CALL	STRIKE	CUMULATIVE OI
4	2022	P	3.50	10954	3	2022	P	3.00	45355
3	2022	C	5.00	9475	3	2022	C	10.00	41931
3	2022	P	4.00	8241	3	2022	P	4.00	39440
3	2022	P	3.75	7823	3	2022	C	5.00	35418
4	2022	C	5.00	6091	4	2022	P	3.50	34124
4	2022	P	4.00	5968	3	2022	P	3.50	32752
4	2022	C	6.00	5520	3	2022	P	3.75	29543
3	2022	C	4.50	5365	10	2022	C	6.00	26792
3	2022	C	5.50	5260	4	2022	C	5.00	26785
3	2022	C	6.00	4964	3	2022	C	8.00	25905
3	2022	C	5.25	4788	3	2022	C	6.00	25086
3	2022	C	4.75	4056	4	2022	P	3.00	25060
5	2022	P	3.50	3523	3	2022	P	2.50	24084
4	2022	P	3.00	3384	3	2022	C	4.50	23986
4	2022	P	3.25	3371	3	2022	C	4.00	23063
6	2022	P	3.50	3044	3	2022	P	4.50	22991
4	2022	C	8.00	3023	10	2022	C	5.00	22051
7	2022	P	3.00	2951	5	2022	P	3.00	21380
5	2022	C	5.00	2927	6	2022	C	6.00	21246
4	2022	C	4.75	2854	6	2022	C	5.00	21209
5	2022	C	7.00	2809	3	2022	C	7.00	20794
6	2022	C	6.00	2664	3	2022	P	3.25	20559
5	2022	P	3.00	2452	5	2022	P	2.50	20077
6	2022	P	3.00	2451	5	2022	C	5.00	19897
8	2022	P	3.00	2450	3	2022	P	3.90	19621
9	2022	P	3.00	2450	4	2022	C	4.50	18830
10	2022	P	3.00	2450	3	2022	C	5.50	18605
4	2022	P	4.25	2334	4	2022	C	6.00	18552
10	2022	P	4.00	2302	4	2022	C	3.00	17511
3	2022	P	4.50	2292	5	2022	P	2.75	17499
4	2022	C	7.00	2238	12	2022	C	5.00	17369
5	2022	C	6.00	2220	4	2022	P	2.50	17193
6	2022	P	3.85	2083	7	2022	P	3.25	17146
3	2022	C	4.25	2080	6	2022	P	3.00	16813
7	2022	C	6.00	2067	5	2022	C	6.00	16417
12	2022	C	6.50	2000	9	2022	C	6.00	16348
8	2022	C	6.00	1985	10	2022	P	3.00	16280
5	2022	P	3.85	1973	4	2022	C	4.75	15808
9	2022	C	6.00	1960	4	2022	P	4.00	15780
4	2022	C	4.50	1848	4	2022	C	8.00	15508
10	2022	C	7.00	1847	3	2022	P	5.00	15413
5	2022	C	4.50	1800	3	2022	P	2.00	14981
8	2022	C	7.00	1800	6	2022	C	4.50	14827
4	2022	C	5.25	1785	7	2022	C	6.00	14617
9	2022	C	7.00	1756	4	2022	P	3.25	14441
10	2022	C	6.00	1744	5	2022	P	3.50	14400
7	2022	P	3.25	1706	4	2022	C	4.00	14341
6	2022	C	7.00	1552	3	2022	C	4.25	14069
7	2022	C	7.00	1550	7	2022	C	5.00	14044
					10	2022	C	7	13950

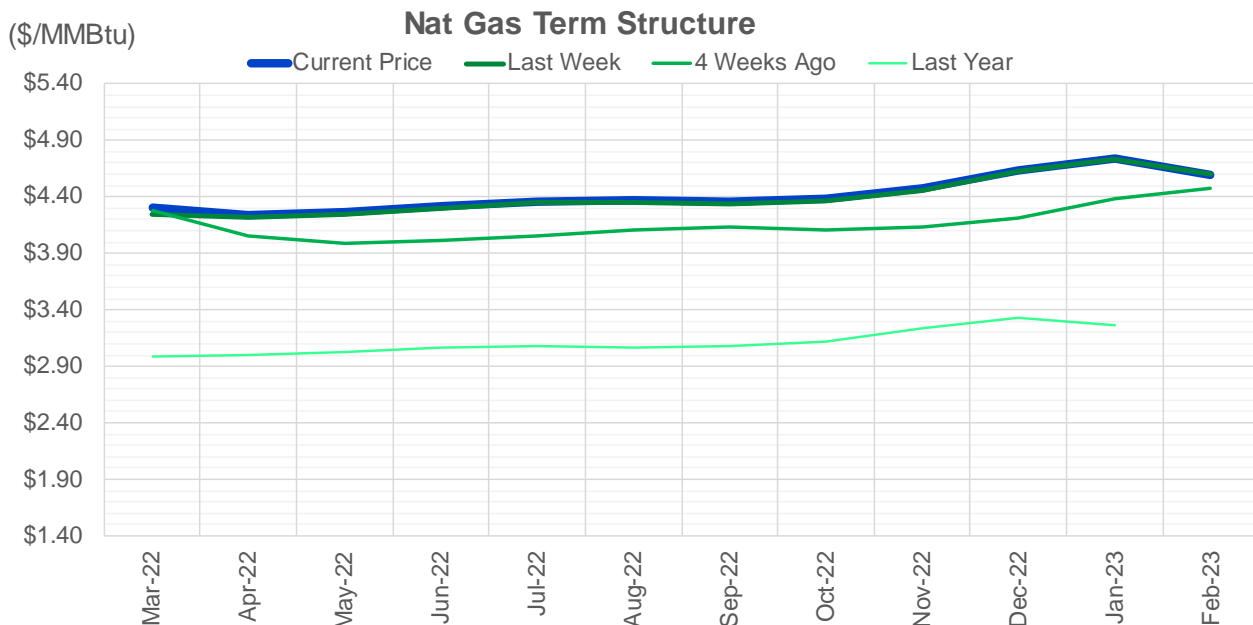
Source: CME, ICE

## Nat Gas Futures Open Interest CME and ICE Combined

ICE Data not updated today

CME Henry Hub Futures (10,000 MMBtu)				ICE Henry Hub Futures Contract Equivalent (10,000 MM			
	Current	Prior	Daily Change		Current	Prior	Daily Change
MAR 22	48350	54942	-6592	MAR 22	77378	77856	-478
APR 22	135637	131033	4604	APR 22	81410	84657	-3247
MAY 22	180131	178943	1188	MAY 22	80331	81466	-1135
JUN 22	70571	72250	-1679	JUN 22	71493	71168	325
JUL 22	82747	80534	2213	JUL 22	66992	66903	89
AUG 22	43117	42746	371	AUG 22	61366	61125	242
SEP 22	66612	65250	1362	SEP 22	61330	61228	103
OCT 22	77995	75795	2200	OCT 22	69630	68793	837
NOV 22	44442	43261	1181	NOV 22	55036	54900	136
DEC 22	41410	41049	361	DEC 22	65056	64346	710
JAN 23	57846	56064	1782	JAN 23	57340	56386	954
FEB 23	21656	21036	620	FEB 23	44649	44230	419
MAR 23	42146	40785	1361	MAR 23	47472	46203	1269
APR 23	33624	32579	1045	APR 23	47477	47170	308
MAY 23	21746	21018	728	MAY 23	41093	41005	88
JUN 23	12832	12633	199	JUN 23	38123	37876	248
JUL 23	10109	10036	73	JUL 23	38040	37830	210
AUG 23	7380	7230	150	AUG 23	37550	37439	111
SEP 23	10490	10188	302	SEP 23	37087	36839	248
OCT 23	19669	19393	276	OCT 23	40932	40663	269
NOV 23	9837	9801	36	NOV 23	40128	39854	274
DEC 23	13083	12895	188	DEC 23	34885	34634	252
JAN 24	13022	12524	498	JAN 24	27692	27677	15
FEB 24	3238	3180	58	FEB 24	19422	19303	120
MAR 24	12436	12429	7	MAR 24	25281	25146	135
APR 24	6490	6472	18	APR 24	18827	18692	135
MAY 24	2283	2304	-21	MAY 24	18372	18250	123
JUN 24	1104	1102	2	JUN 24	18240	18144	96
JUL 24	652	652	0	JUL 24	18925	18803	122
AUG 24	785	785	0	AUG 24	18743	18603	140





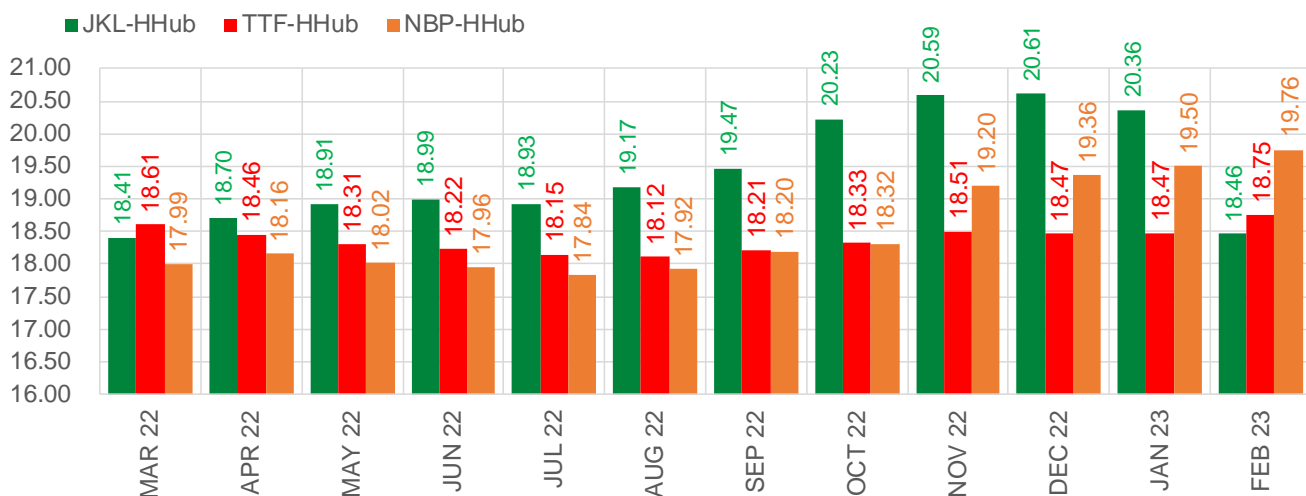
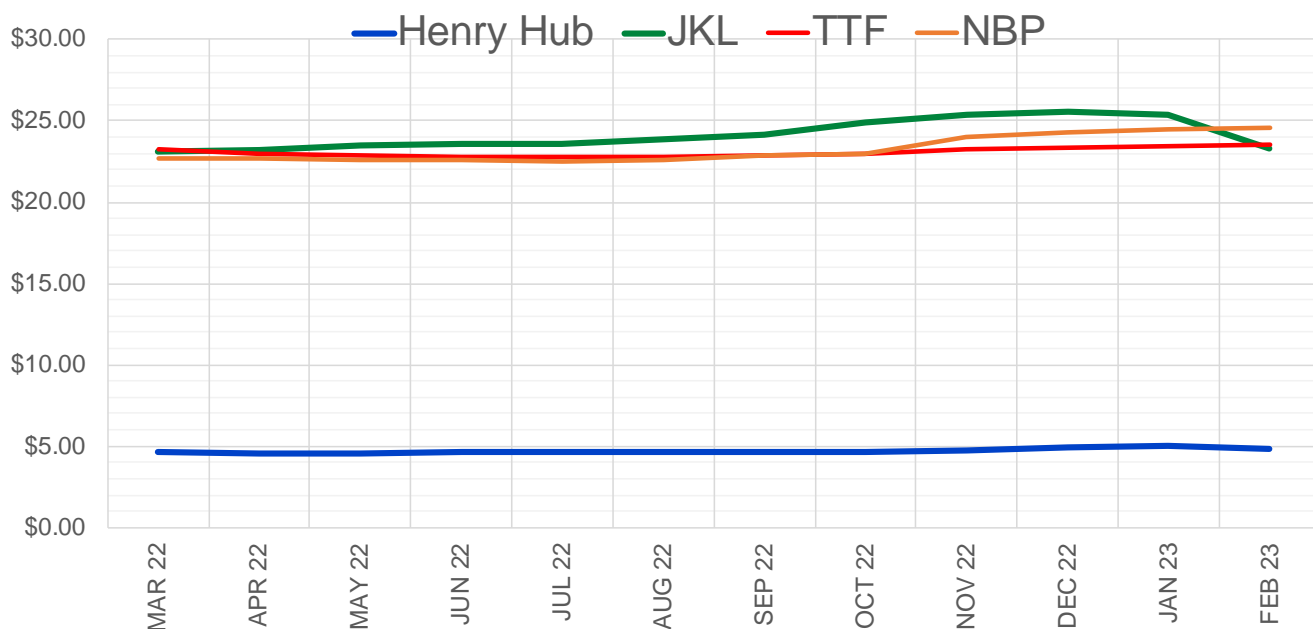
	Mar-22	Apr-22	May-22	Jun-22	Jul-22	Aug-22	Sep-22	Oct-22	Nov-22	Dec-22	Jan-23	Feb-23
<b>Current Price</b>	<b>\$4.306</b>	<b>\$4.241</b>	<b>\$4.267</b>	<b>\$4.312</b>	<b>\$4.362</b>	<b>\$4.372</b>	<b>\$4.355</b>	<b>\$4.378</b>	<b>\$4.476</b>	<b>\$4.640</b>	<b>\$4.744</b>	<b>\$4.598</b>
Last Week	\$4.248	\$4.218	\$4.245	\$4.292	\$4.345	\$4.355	\$4.339	\$4.361	\$4.457	\$4.628	\$4.736	\$4.595
vs. Last Week	\$0.058	\$0.023	\$0.022	\$0.020	\$0.017	\$0.017	\$0.016	\$0.017	\$0.019	\$0.012	\$0.008	\$0.003
4 Weeks Ago	\$4.283	\$4.048	\$3.983	\$4.008	\$4.057	\$4.113	\$4.128	\$4.110	\$4.132	\$4.218	\$4.386	\$4.481
vs. 4 Weeks Ago	\$0.023	\$0.193	\$0.284	\$0.304	\$0.305	\$0.259	\$0.227	\$0.268	\$0.344	\$0.422	\$0.358	\$0.117
Last Year	\$3.129	\$2.983	\$2.995	\$3.030	\$3.068	\$3.077	\$3.064	\$3.073	\$3.125	\$3.243	\$3.334	\$3.270
vs. Last Year	\$1.177	\$1.258	\$1.272	\$1.282	\$1.294	\$1.295	\$1.291	\$1.305	\$1.351	\$1.397	\$1.410	\$1.328

	Units	Cash Settled	Prompt Settle	Cash to Prompt
AGT Citygate	\$/MMBtu	4.15	8.24	4.09
TETCO M3	\$/MMBtu	3.79	4.05	0.26
FGT Zone 3	\$/MMBtu	3.78	4.13	0.35
Zone 6 NY	\$/MMBtu	3.78	4.29	0.51
Chicago Citygate	\$/MMBtu	4.32	3.92	-0.40
Michcon	\$/MMBtu	4.28	3.89	-0.39
Columbia TCO Pool	\$/MMBtu	3.78	3.57	-0.21
Ventura	\$/MMBtu	3.81	4.00	0.19
Rockies/Opal	\$/MMBtu	4.14	3.57	-0.57
El Paso Permian Basin	\$/MMBtu	3.90	3.37	-0.53
Socal Citygate	\$/MMBtu	4.37	3.67	-0.70
Malin	\$/MMBtu	3.89	3.65	-0.24
Houston Ship Channel	\$/MMBtu	3.92	3.87	-0.05
Henry Hub Cash	\$/MMBtu	4.39	3.82	-0.58
AECO Cash	C\$/GJ	3.69	3.35	-0.34
Station2 Cash	C\$/GJ	3.56	3.47	-0.10
Dawn Cash	C\$/GJ	4.30	4.19	-0.12

Source: CME, Bloomberg

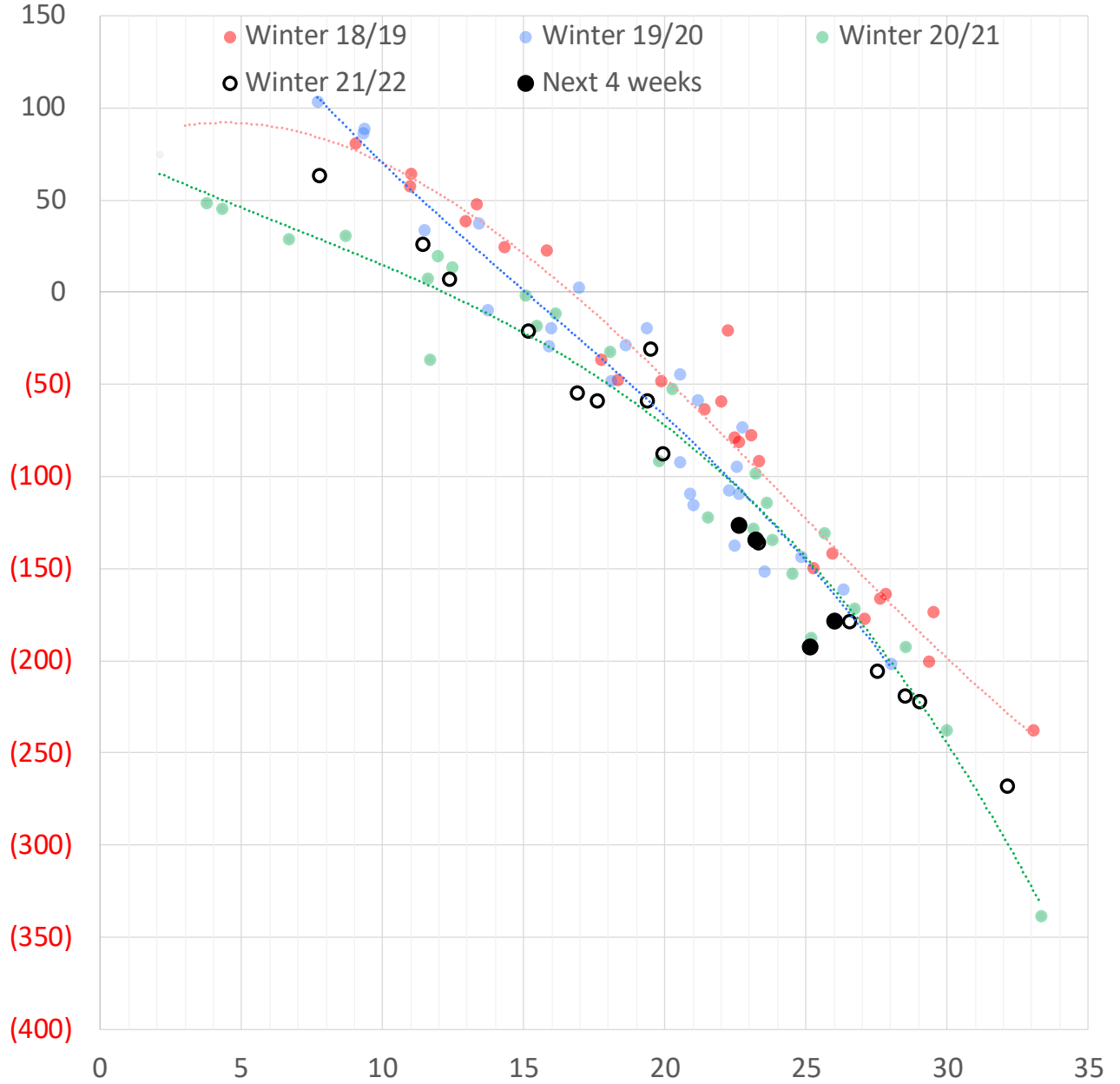
	Units	Current Price	vs. Last Week	vs. 4 Weeks Ago	vs. Last Year
NatGas Jul21/Oct21	\$/MMBtu	2.224	▲ 0.000	▲ 0.000	▲ 2.220
NatGas Oct21/Nov21	\$/MMBtu	0.361	▲ 0.000	▲ 0.000	▲ 0.311
NatGas Oct21/Jan22	\$/MMBtu	-1.817	▲ 0.000	▲ 0.000	▼ -2.067
NatGas Apr22/Oct22	\$/MMBtu	0.107	▼ -0.046	▼ -0.071	▲ 0.107
WTI Crude	\$/Bbl	93.66	▲ 4.000	▲ 6.700	▲ 32.520
Brent Crude	\$/Bbl	94.81	▲ 3.260	▲ 6.370	▲ 30.470
Fuel Oil, NY Harbour 1%	\$/Bbl	97.18	▲ 0.000	▲ 0.000	▲ 0.000
Heating Oil	cents/Gallon	285.75	▲ 3.260	▲ 16.520	▲ 101.980
Propane, Mt. Bel	cents/Gallon	1.27	▲ 0.021	▲ 0.120	▲ 0.357
Ethane, Mt. Bel	cents/Gallon	0.39	▲ 0.010	▲ 0.024	▲ 0.117
Coal, PRB	\$/MTon	12.30	▲ 0.000	▲ 0.000	▲ 0.000
Coal, PRB	\$/MMBtu	0.70			
Coal, ILB	\$/MTon	31.05	▲ 0.000	▲ 0.000	▲ 0.000
Coal, ILB	\$/MMBtu	1.32			

### Nat Gas Term Structure (\$MMBTU)



	MAR 22	APR 22	MAY 22	JUN 22	JUL 22	AUG 22	SEP 22	OCT 22	NOV 22	DEC 22	JAN 23	FEB 23
<b>Henry Hub</b>	\$4.663	\$4.554	\$4.565	\$4.607	\$4.675	\$4.684	\$4.645	\$4.683	\$4.772	\$4.909	\$5.006	\$4.805
<b>JKL</b>	\$23.075	\$23.255	\$23.475	\$23.600	\$23.605	\$23.855	\$24.110	\$24.910	\$25.360	\$25.520	\$25.365	\$23.265
<b>JKL-HHub</b>	\$18.412	\$18.701	\$18.910	\$18.993	\$18.930	\$19.171	\$19.465	\$20.227	\$20.588	\$20.611	\$20.359	\$18.460
<b>TTF</b>	\$23.268	\$23.011	\$22.870	\$22.831	\$22.822	\$22.799	\$22.854	\$23.011	\$23.277	\$23.376	\$23.476	\$23.553
<b>TTF-HHub</b>	\$18.605	\$18.457	\$18.305	\$18.224	\$18.147	\$18.115	\$18.209	\$18.328	\$18.505	\$18.467	\$18.470	\$18.748
<b>NBP</b>	\$22.657	\$22.709	\$22.588	\$22.566	\$22.513	\$22.603	\$22.843	\$23.000	\$23.970	\$24.273	\$24.510	\$24.562
<b>NBP-HHub</b>	\$17.994	\$18.155	\$18.023	\$17.959	\$17.838	\$17.919	\$18.198	\$18.317	\$19.198	\$19.364	\$19.504	\$19.757

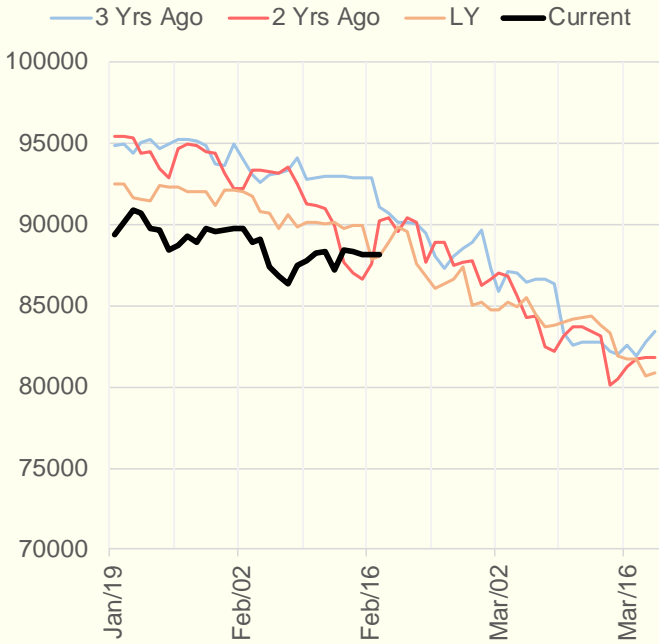
### Weather Storage Model - Next 4 Week Forecast



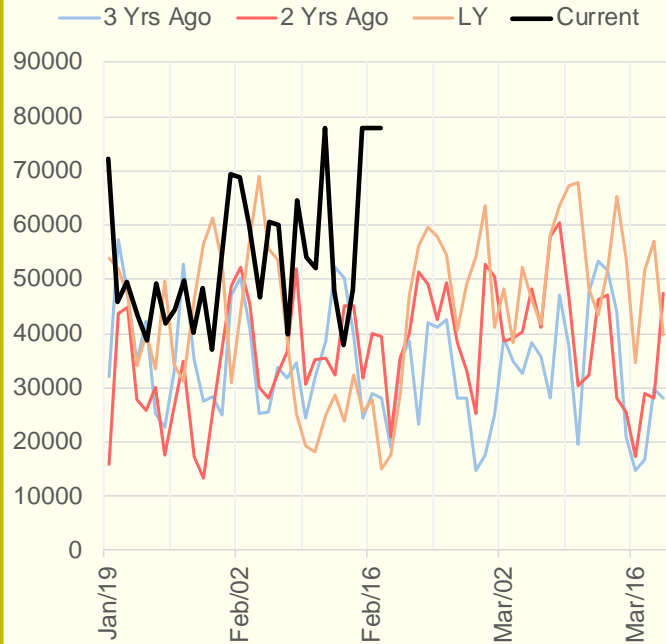
The risk of trading futures and options and other derivatives involves a substantial risk of loss and is not suitable for all persons. Each person must consider whether a particular trade, combination of trades, or strategy is suitable for that person's financial means and objectives. Past results are not necessarily indicative of future results. This communication may contain links to third party websites which are not under the control of and are not maintained by ION Energy Group, and ION Energy Group is not responsible for their content.



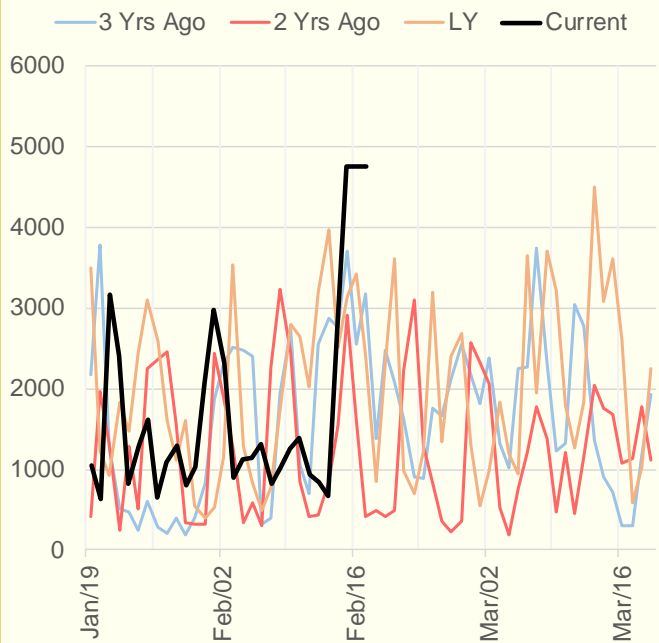
### NRC Nuclear Daily Output



### US Wind



### CALI Wind



### TEXAS Wind

